

Data Path : Z:\svoasrv\HPCHEM1\BNA\_P\Data\BP050824\  
 Data File : BP020236.D  
 Acq On : 08 May 2024 10:33  
 Operator : MA/JU  
 Sample : P2369-23  
 Misc :  
 ALS Vial : 4 Sample Multiplier: 1

Instrument :  
 BNA\_P  
 ClientSampleId :  
 A43Y5

Integration Parameters: LSCINT.P

Integrator: RTE  
 Smoothing : OFF Filtering: 5  
 Sampling : 1 Min Area: 0.1 % of largest Peak  
 Start Thrs: 0.2 Max Peaks: 100  
 Stop Thrs : 0 Peak Location: TOP

If leading or trailing edge < 100 prefer < Baseline drop else tangent >  
 Peak separation: 5

Method : Z:\svoasrv\HPCHEM1\BNA\_P\Methods\SFAM-EPA-BP050124.MA.M  
 Title : SVOA CALIBRATION

Signal : TIC: BP020236.D\data.ms

peak #	R.T. min	first scan	max scan	last scan	PK TY	peak height	corr. area	corr. % max.	% of total
1	3.217	19	22	28	rVB	15144	21780	0.11%	0.008%
2	3.911	135	140	145	rBV	15548	23679	0.11%	0.009%
3	6.828	624	636	650	rBV2	880287	2118391	10.27%	0.815%
4	6.975	654	661	669	rVV	284658	459179	2.23%	0.177%
5	7.064	669	676	685	rVV	1329663	1943864	9.42%	0.748%
6	7.152	685	691	693	rVV	390083	571905	2.77%	0.220%
7	7.187	693	697	707	rVB	679419	1197360	5.80%	0.461%
8	7.505	743	751	763	rBV	1164331	1921489	9.31%	0.739%
9	7.616	763	770	772	rVV	386080	608060	2.95%	0.234%
10	7.652	772	776	786	rVV	993818	1684915	8.17%	0.648%
11	7.963	821	829	845	rVB	4157005	6632388	32.14%	2.552%
12	8.340	886	893	901	rBV2	495744	850415	4.12%	0.327%
13	8.434	901	909	936	rVB	2903071	5119623	24.81%	1.970%
14	8.781	960	968	970	rBV	407896	643465	3.12%	0.248%
15	8.828	970	976	992	rVB	1723190	3045458	14.76%	1.172%
16	9.528	1081	1095	1109	rBV2	1798047	3743165	18.14%	1.441%
17	9.828	1138	1146	1158	rVB	1580745	2575398	12.48%	0.991%
18	10.046	1172	1183	1209	rBV2	2874467	6056752	29.35%	2.331%
19	10.252	1211	1218	1229	rVV10	12739	37725	0.18%	0.015%
20	10.393	1230	1242	1256	rVB	521693	967312	4.69%	0.372%
21	10.557	1262	1270	1285	rBV	365923	768717	3.73%	0.296%
22	10.705	1290	1295	1302	rVB2	13526	26256	0.13%	0.010%
23	11.175	1366	1375	1380	rBV3	34812	87679	0.42%	0.034%
24	11.704	1456	1465	1482	rBV	3322379	6194553	30.02%	2.384%
25	12.522	1597	1604	1610	rBV	23500	40675	0.20%	0.016%
26	12.699	1626	1634	1640	rBV	2052031	2968699	14.39%	1.142%
27	12.775	1640	1647	1666	rVB	2262322	4182472	20.27%	1.610%
28	13.240	1721	1726	1733	rBV2	28282	56638	0.27%	0.022%
29	13.710	1799	1806	1818	rBV	967402	1654395	8.02%	0.637%
30	13.904	1831	1839	1845	rBV	2602243	3798841	18.41%	1.462%
31	13.987	1845	1853	1863	rVB2	1051525	1837094	8.90%	0.707%
32	14.204	1883	1890	1898	rVB8	10860	23041	0.11%	0.009%
33	14.298	1898	1906	1911	rBV	901602	1368221	6.63%	0.527%
34	14.369	1911	1918	1925	rVV	7625303	10817600	52.42%	4.163%
35	14.440	1925	1930	1935	rVB	113225	149801	0.73%	0.058%
36	14.563	1945	1951	1970	rVB4	1840600	4376796	21.21%	1.684%

Data Path : Z:\svoasrv\HPCHEM1\BNA\_P\Data\BP050824\  
 Data File : BP020236.D  
 Acq On : 08 May 2024 10:33  
 Operator : MA/JU  
 Sample : P2369-23  
 Misc :  
 ALS Vial : 4 Sample Multiplier: 1

Instrument :  
 BNA\_P  
 ClientSampleId :  
 A43Y5

Integration Parameters: LSCINT.P

Integrator: RTE  
 Smoothing : OFF  
 Sampling : 1  
 Start Thrs: 0.2  
 Stop Thrs : 0

Filtering: 5  
 Min Area: 0.1 % of largest Peak  
 Max Peaks: 100  
 Peak Location: TOP

If leading or trailing edge < 100 prefer < Baseline drop else tangent >  
 Peak separation: 5

Method : Z:\svoasrv\HPCHEM1\BNA\_P\Methods\SFAM-EPA-BP050124.MA.M  
 Title : SVOA CALIBRATION

37	14.722	1970	1978	1992	rVB	4664028	7126557	34.54%	2.743%
38	14.951	2013	2017	2024	rVB2	54653	87171	0.42%	0.034%
39	15.169	2048	2054	2059	rVV	3318450	4121043	19.97%	1.586%
40	15.222	2059	2063	2072	rVB3	33141	56356	0.27%	0.022%
41	15.328	2074	2081	2085	rBV	1452464	2384226	11.55%	0.918%
42	15.381	2085	2090	2101	rVB	5560497	8104526	39.28%	3.119%
43	15.481	2101	2107	2116	rBV	523151	876167	4.25%	0.337%
44	15.640	2129	2134	2138	rVB	83214	116567	0.56%	0.045%
45	16.098	2205	2212	2224	rVB4	48532	126383	0.61%	0.049%
46	16.304	2238	2247	2256	rVB	2851541	4564953	22.12%	1.757%
47	16.475	2267	2276	2282	rBV	10086	35096	0.17%	0.014%
48	16.534	2282	2286	2291	rBV2	28552	42308	0.21%	0.016%
49	16.787	2321	2329	2340	rBV	5199904	8302456	40.23%	3.195%
50	16.963	2353	2359	2372	rVB4	78213	210042	1.02%	0.081%
51	17.063	2372	2376	2379	rBV5	15030	23765	0.12%	0.009%
52	17.145	2381	2390	2393	rVV	1142392	1752967	8.50%	0.675%
53	17.192	2393	2398	2403	rVV	6968564	9567171	46.36%	3.682%
54	17.251	2403	2408	2410	rVV	1792053	2715127	13.16%	1.045%
55	17.287	2410	2414	2421	rVV	2306801	3448016	16.71%	1.327%
56	17.463	2441	2444	2449	rVB	19737	29770	0.14%	0.011%
57	17.592	2459	2466	2473	rBV5	41397	83121	0.40%	0.032%
58	17.728	2485	2489	2493	rBV6	17032	27781	0.13%	0.011%
59	17.798	2496	2501	2504	rVV6	32554	61151	0.30%	0.024%
60	17.869	2508	2513	2521	rVB	286960	354717	1.72%	0.137%
61	18.039	2539	2542	2547	rVB6	19483	26831	0.13%	0.010%
62	18.104	2547	2553	2560	rBV	602377	927323	4.49%	0.357%
63	18.181	2560	2566	2576	rVB	10116200	13906134	67.39%	5.352%
64	18.322	2588	2590	2596	rVB5	15669	23649	0.11%	0.009%
65	18.404	2599	2604	2610	rBV4	33235	58528	0.28%	0.023%
66	18.504	2615	2621	2627	rBV2	95158	205927	1.00%	0.079%
67	18.563	2628	2631	2639	rVV3	27770	58906	0.29%	0.023%
68	18.645	2640	2645	2653	rVB	210582	331029	1.60%	0.127%
69	19.069	2713	2717	2718	rBV3	42597	51160	0.25%	0.020%
70	19.098	2718	2722	2726	rVB	200505	257120	1.25%	0.099%
71	19.181	2733	2736	2739	rBV2	28999	38729	0.19%	0.015%
72	19.233	2741	2745	2749	rVV2	128150	193336	0.94%	0.074%
73	19.298	2749	2756	2773	rVB	5960540	8515056	41.26%	3.277%
74	19.451	2777	2782	2791	rBV	393736	597059	2.89%	0.230%
75	19.545	2794	2798	2804	rVB	246614	366437	1.78%	0.141%
76	19.645	2809	2815	2816	rBV	1975252	2562546	12.42%	0.986%

Data Path : Z:\svoasrv\HPCHEM1\BNA\_P\Data\BP050824\  
 Data File : BP020236.D  
 Acq On : 08 May 2024 10:33  
 Operator : MA/JU  
 Sample : P2369-23  
 Misc :  
 ALS Vial : 4 Sample Multiplier: 1

Instrument :  
 BNA\_P  
 ClientSampleId :  
 A43Y5

Integration Parameters: LSCINT.P

Integrator: RTE  
 Smoothing : OFF Filtering: 5  
 Sampling : 1 Min Area: 0.1 % of largest Peak  
 Start Thrs: 0.2 Max Peaks: 100  
 Stop Thrs : 0 Peak Location: TOP

If leading or trailing edge < 100 prefer < Baseline drop else tangent >  
 Peak separation: 5

Method : Z:\svoasrv\HPCHEM1\BNA\_P\Methods\SFAM-EPA-BP050124.MA.M  
 Title : SVOA CALIBRATION

77	19.686	2816	2822	2827	rVB	13642126	20635090	100.00%	7.941%
78	19.804	2838	2842	2847	rBV2	77045	118925	0.58%	0.046%
79	20.239	2912	2916	2920	rBV2	84433	124664	0.60%	0.048%
80	20.398	2940	2943	2947	rVB	102505	118186	0.57%	0.045%
81	20.645	2980	2985	2990	rBV	6811669	8211354	39.79%	3.160%
82	21.322	3096	3100	3112	rVB3	366760	805801	3.91%	0.310%
83	21.480	3124	3127	3134	rVB	207056	294711	1.43%	0.113%
84	21.569	3135	3142	3146	rBV	8677013	13325857	64.58%	5.128%
85	21.616	3146	3150	3156	rVV2	4944602	9176471	44.47%	3.531%
86	21.680	3156	3161	3167	rVB	2992044	4775499	23.14%	1.838%
87	22.780	3344	3348	3353	rVB2	156517	259669	1.26%	0.100%
88	22.869	3355	3363	3371	rVV	7400515	14203300	68.83%	5.466%
89	23.939	3536	3545	3551	rBV	1242802	3537137	17.14%	1.361%
90	24.016	3551	3558	3567	rVB	2468347	5885645	28.52%	2.265%
91	24.269	3597	3601	3613	rVB3	121017	367345	1.78%	0.141%
92	24.780	3677	3688	3692	rBV2	869192	2426627	11.76%	0.934%
93	24.845	3693	3699	3710	rVB	933935	2577455	12.49%	0.992%
94	24.998	3717	3725	3738	rVB	592288	1480177	7.17%	0.570%
95	28.798	4363	4371	4372	rBV	256081	426917	2.07%	0.164%
96	28.921	4378	4392	4409	rVB	2400930	10187908	49.37%	3.921%

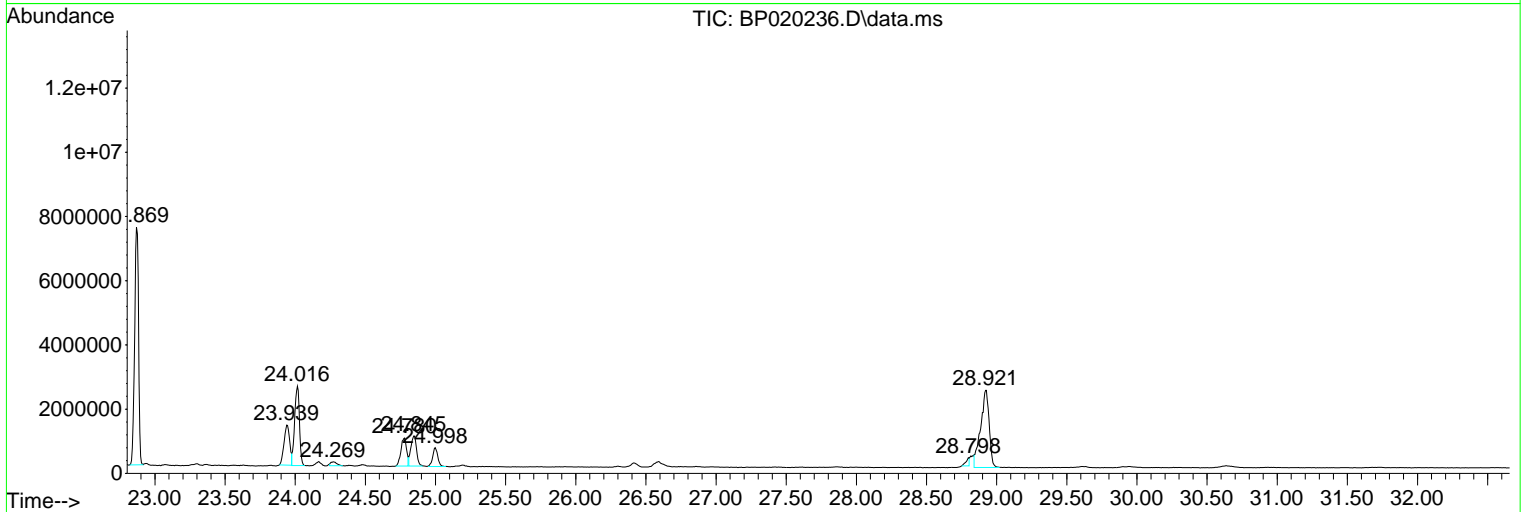
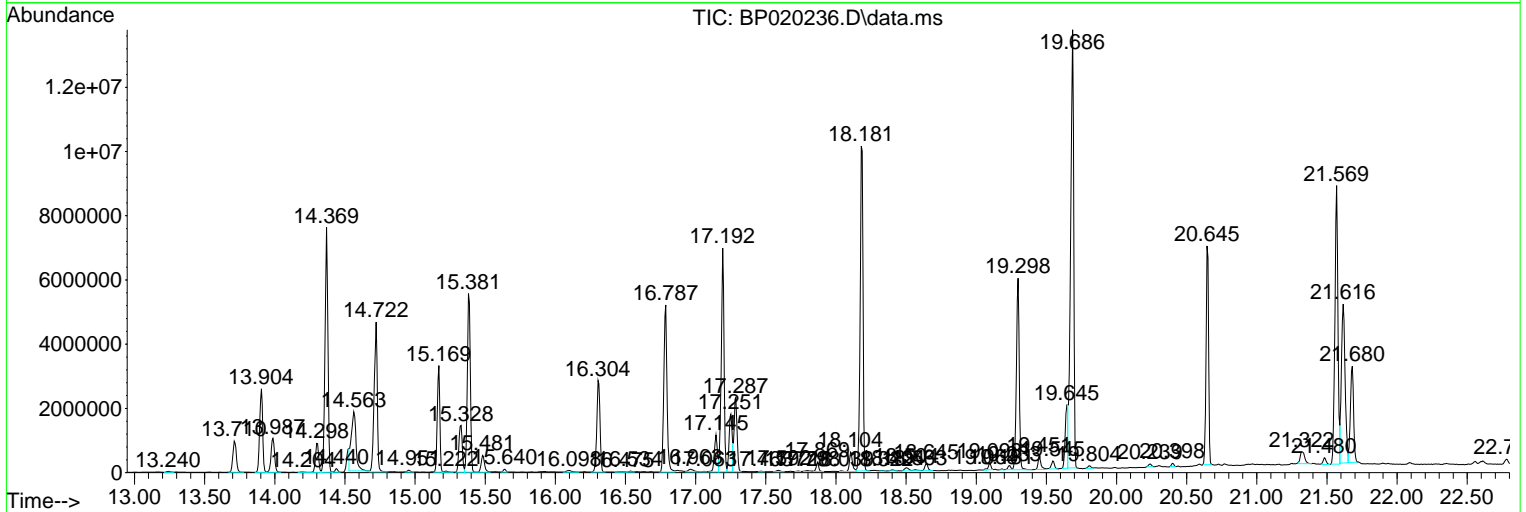
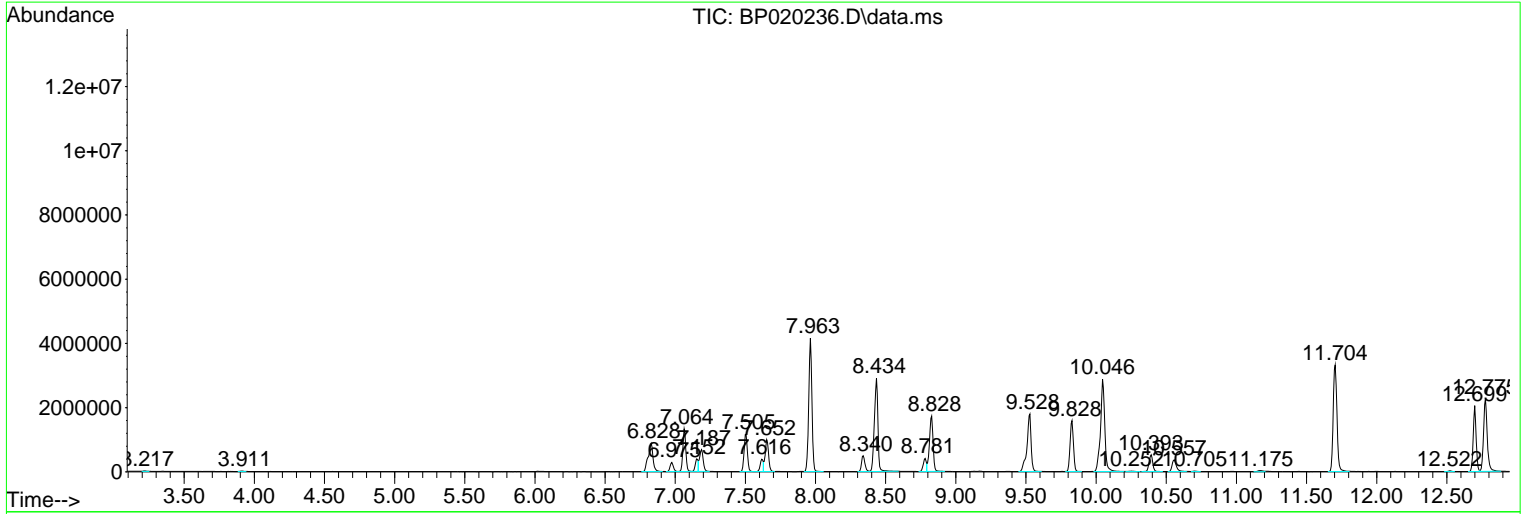
Sum of corrected areas: 259849746

Data Path : Z:\svoasrv\HPCHEM1\BNA\_P\Data\BP050824\  
 Data File : BP020236.D  
 Acq On : 08 May 2024 10:33  
 Operator : MA/JU  
 Sample : P2369-23  
 Misc :  
 ALS Vial : 4 Sample Multiplier: 1

Instrument :  
 BNA\_P  
 ClientSampleId :  
 A43Y5

Quant Method : Z:\svoasrv\HPCHEM1\BNA\_P\Methods\SFAM-EPA-BP050124.MA.M  
 Quant Title : SVOA CALIBRATION

TIC Library : C:\DATABASE\NIST20.L  
 TIC Integration Parameters: LSCINT.P



Data Path : Z:\svoasrv\HPCHEM1\BNA\_P\Data\BP050824\  
 Data File : BP020236.D  
 Acq On : 08 May 2024 10:33  
 Operator : MA/JU  
 Sample : P2369-23  
 Misc :  
 ALS Vial : 4 Sample Multiplier: 1

Instrument :  
 BNA\_P  
 ClientSampleId :  
 A43Y5

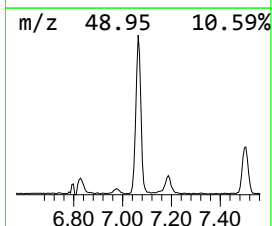
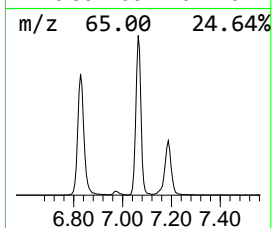
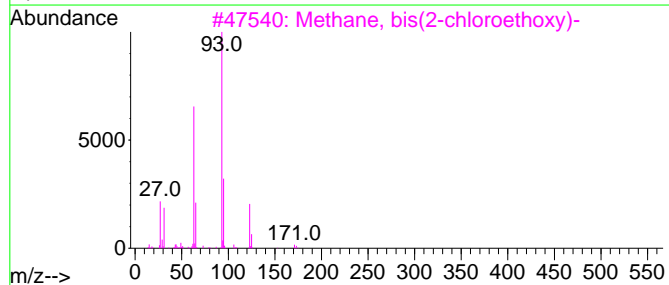
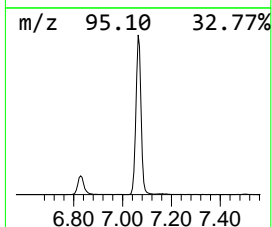
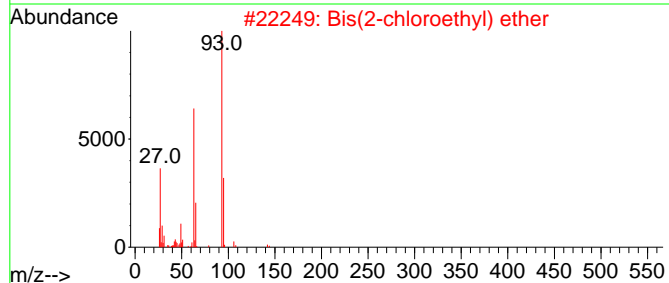
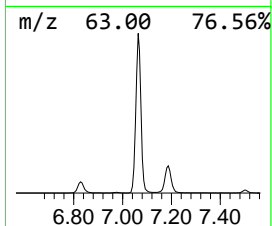
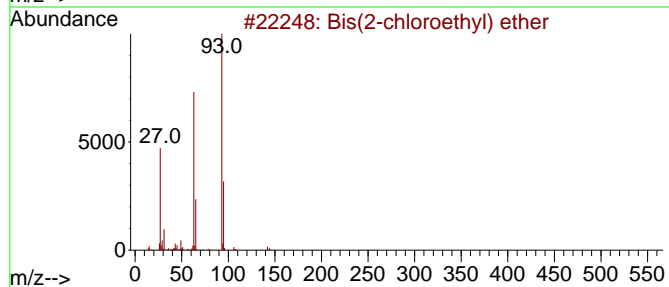
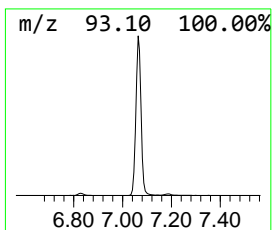
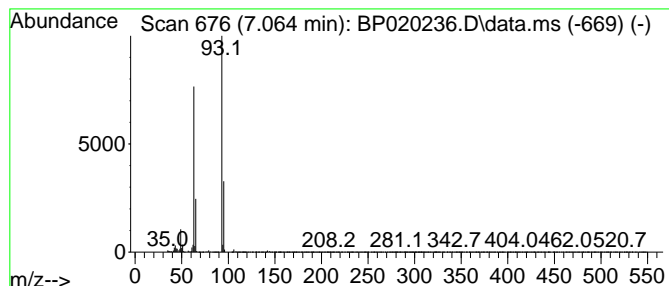
Quant Method : Z:\svoasrv\HPCHEM1\BNA\_P\Methods\SFAM-EPA-BP050124.MA.M  
 Quant Title : SVOA CALIBRATION

TIC Library : C:\DATABASE\NIST20.L  
 TIC Integration Parameters: LSCINT.P

\*\*\*\*\*  
 Peak Number 1 Bis(2-chloroethyl) ether Concentration Rank 11

R.T.	EstConc	Area	Relative to ISTD	R.T.
7.064	63.94 ng/ul	1943860	1,4-Dichlorobenzene-d4	7.616

Hit#	of	5	Tentative ID	MW	MolForm	CAS#	Qual
1			Bis(2-chloroethyl) ether	142	C4H8Cl2O	000111-44-4	83
2			Bis(2-chloroethyl) ether	142	C4H8Cl2O	000111-44-4	83
3			Methane, bis(2-chloroethoxy)-	172	C5H10Cl2O2	000111-91-1	83
4			Bis(2-chloroethyl) ether	142	C4H8Cl2O	000111-44-4	74
5			Methane, bis(2-chloroethoxy)-	172	C5H10Cl2O2	000111-91-1	74



Data Path : Z:\svoasrv\HPCHEM1\BNA\_P\Data\BP050824\  
 Data File : BP020236.D  
 Acq On : 08 May 2024 10:33  
 Operator : MA/JU  
 Sample : P2369-23  
 Misc :  
 ALS Vial : 4 Sample Multiplier: 1

Instrument :  
 BNA\_P  
 ClientSampleId :  
 A43Y5

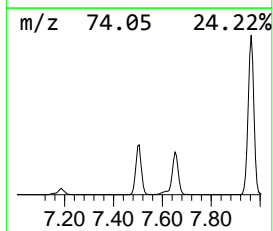
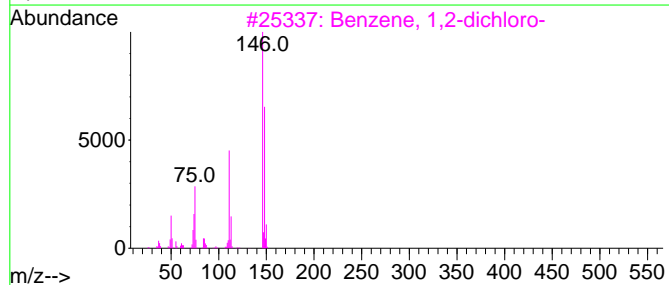
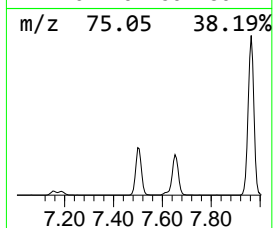
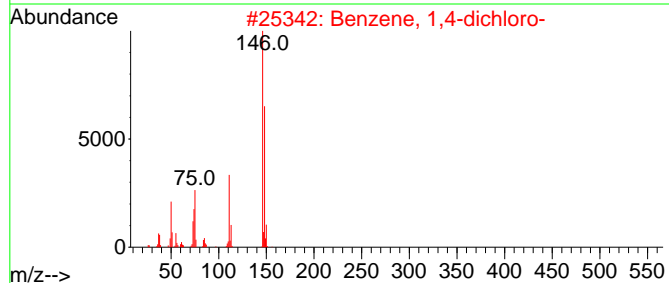
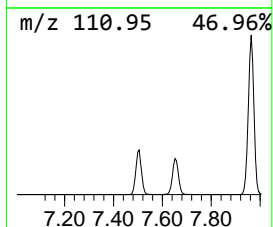
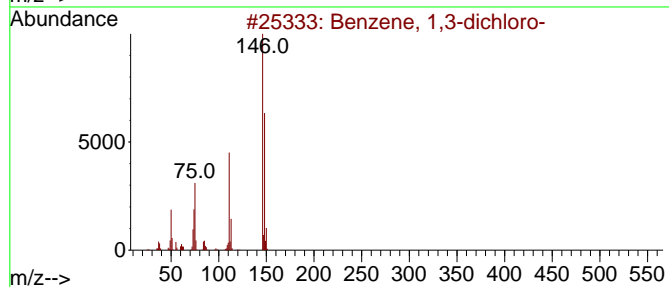
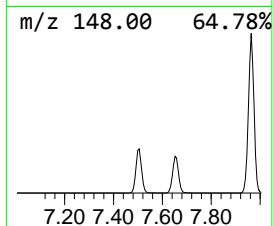
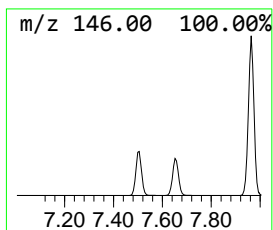
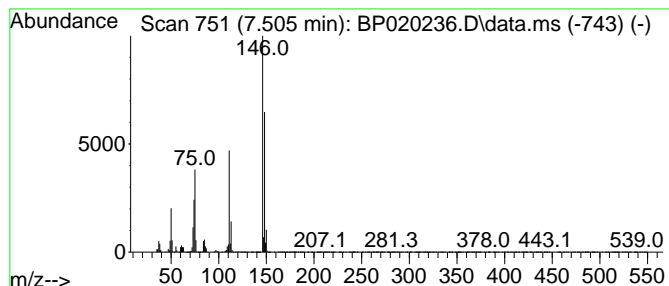
Quant Method : Z:\svoasrv\HPCHEM1\BNA\_P\Methods\SFAM-EPA-BP050124.MA.M  
 Quant Title : SVOA CALIBRATION

TIC Library : C:\DATABASE\NIST20.L  
 TIC Integration Parameters: LSCINT.P

\*\*\*\*\*  
 Peak Number 2 Benzene, 1,3-dichloro- Concentration Rank 12

R.T.	EstConc	Area	Relative to ISTD	R.T.
7.505	63.20 ng/ul	1921490	1,4-Dichlorobenzene-d4	7.616

Hit#	of	5	Tentative ID	MW	MolForm	CAS#	Qual
1			Benzene, 1,3-dichloro-	146	C6H4Cl2	000541-73-1	98
2			Benzene, 1,4-dichloro-	146	C6H4Cl2	000106-46-7	96
3			Benzene, 1,2-dichloro-	146	C6H4Cl2	000095-50-1	96
4			Benzene, 1,3-dichloro-	146	C6H4Cl2	000541-73-1	96
5			Benzene, 1,4-dichloro-	146	C6H4Cl2	000106-46-7	96



Data Path : Z:\svoasrv\HPCHEM1\BNA\_P\Data\BP050824\  
 Data File : BP020236.D  
 Acq On : 08 May 2024 10:33  
 Operator : MA/JU  
 Sample : P2369-23  
 Misc :  
 ALS Vial : 4 Sample Multiplier: 1

Instrument :  
 BNA\_P  
 ClientSampleId :  
 A43Y5

Quant Method : Z:\svoasrv\HPCHEM1\BNA\_P\Methods\SFAM-EPA-BP050124.MA.M  
 Quant Title : SVOA CALIBRATION

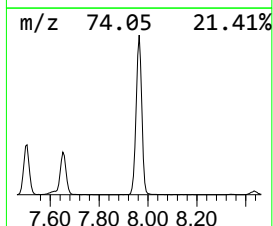
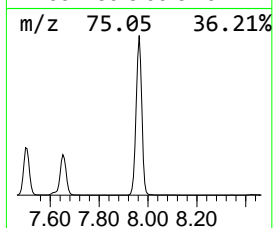
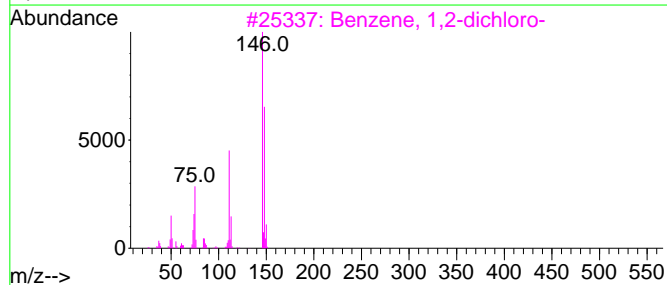
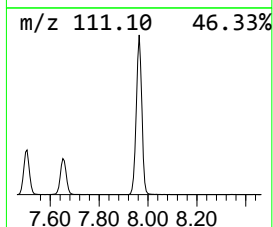
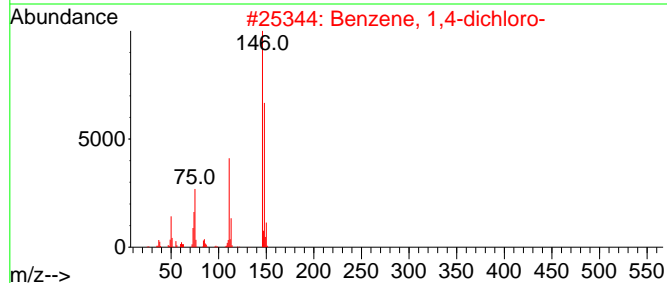
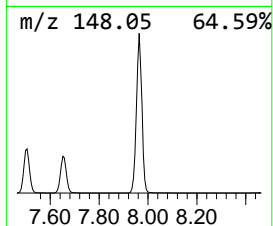
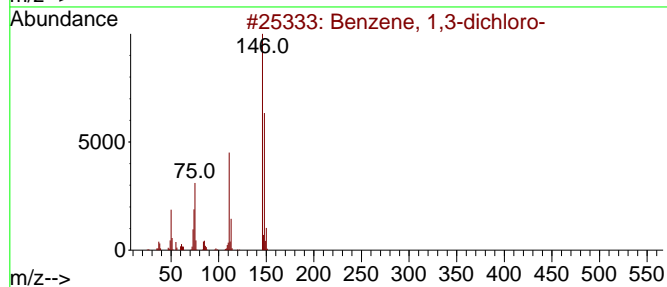
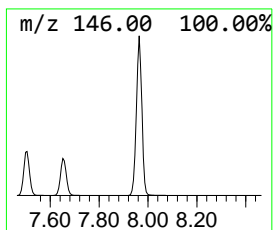
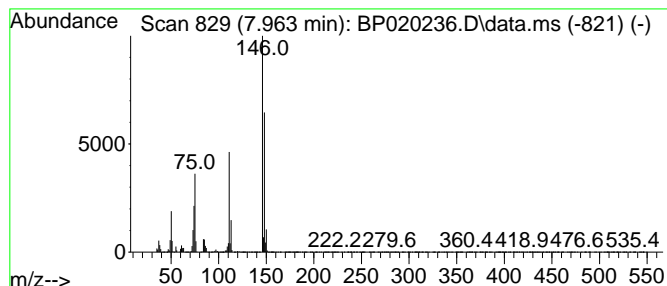
TIC Library : C:\DATABASE\NIST20.L  
 TIC Integration Parameters: LSCINT.P

\*\*\*\*\*  
 Peak Number 3 Benzene, 1,4-dichloro- Concentration Rank 1

R.T.	EstConc	Area	Relative to ISTD	R.T.
7.963	218.15 ng/ul	6632390	1,4-Dichlorobenzene-d4	7.616

Hit#	of	5	Tentative ID	MW	MolForm	CAS#	Qual
1			Benzene, 1,3-dichloro-	146	C6H4Cl2	000541-73-1	98
2			Benzene, 1,4-dichloro-	146	C6H4Cl2	000106-46-7	98
3			Benzene, 1,2-dichloro-	146	C6H4Cl2	000095-50-1	98
4			Benzene, 1,4-dichloro-	146	C6H4Cl2	000106-46-7	97
5			Benzene, 1,3-dichloro-	146	C6H4Cl2	000541-73-1	96



Data Path : Z:\svoasrv\HPCHEM1\BNA\_P\Data\BP050824\  
 Data File : BP020236.D  
 Acq On : 08 May 2024 10:33  
 Operator : MA/JU  
 Sample : P2369-23  
 Misc :  
 ALS Vial : 4 Sample Multiplier: 1

Instrument :  
 BNA\_P  
 ClientSampleId :  
 A43Y5

Quant Method : Z:\svoasrv\HPCHEM1\BNA\_P\Methods\SFAM-EPA-BP050124.MA.M  
 Quant Title : SVOA CALIBRATION

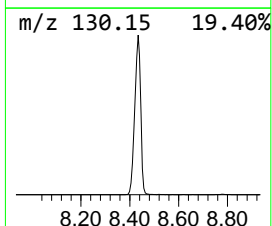
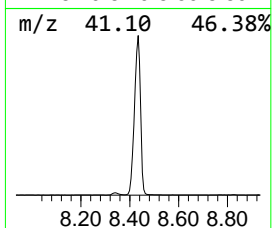
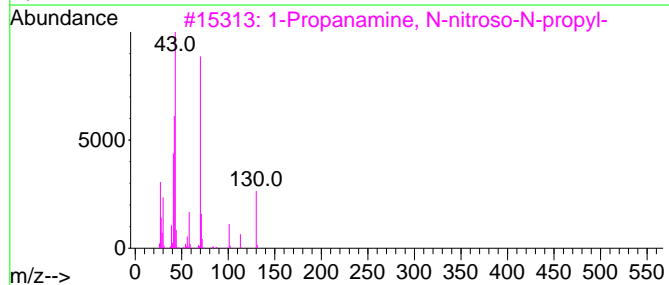
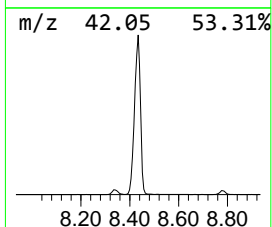
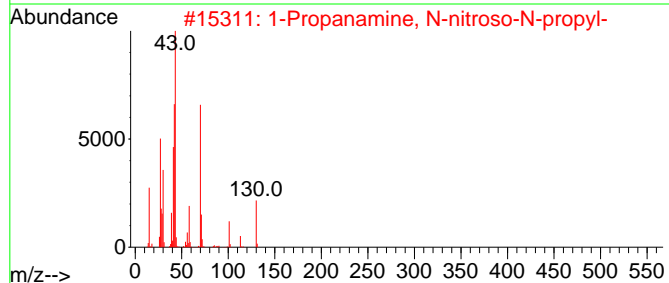
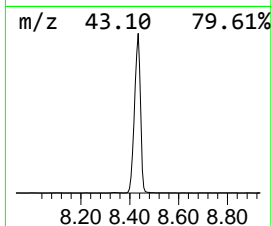
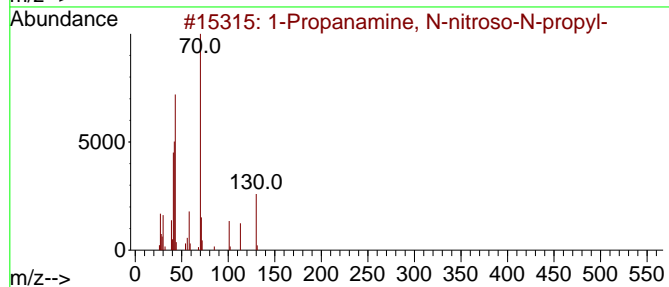
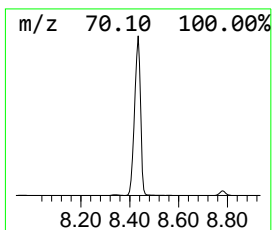
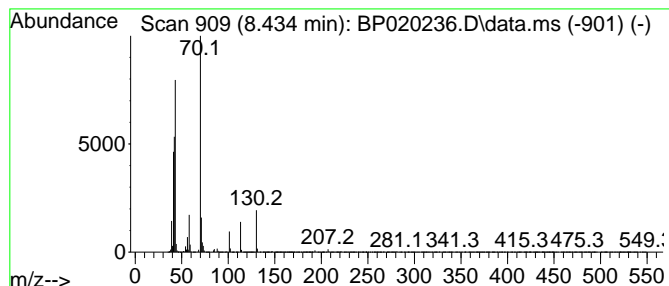
TIC Library : C:\DATABASE\NIST20.L  
 TIC Integration Parameters: LSCINT.P

\*\*\*\*\*  
 Peak Number 4 1-Propanamine, N-nitroso-N-... Concentration Rank 2

R.T.	EstConc	Area	Relative to ISTD	R.T.
8.434	168.39 ng/ul	5119620	1,4-Dichlorobenzene-d4	7.616

Hit#	of 5	Tentative ID	MW	MolForm	CAS#	Qual
1		1-Propanamine, N-nitroso-N-propyl-	130	C6H14N2O	000621-64-7	87
2		1-Propanamine, N-nitroso-N-propyl-	130	C6H14N2O	000621-64-7	76
3		1-Propanamine, N-nitroso-N-propyl-	130	C6H14N2O	000621-64-7	76
4		Oxazolidine, 2,2-dimethyl-	101	C5H11NO	020515-62-2	59
5		1-Propanamine, N-nitroso-N-propyl-	130	C6H14N2O	000621-64-7	50





Data Path : Z:\svoasrv\HPCHEM1\BNA\_P\Data\BP050824\  
 Data File : BP020236.D  
 Acq On : 08 May 2024 10:33  
 Operator : MA/JU  
 Sample : P2369-23  
 Misc :  
 ALS Vial : 4 Sample Multiplier: 1

Instrument :  
 BNA\_P  
 ClientSampleId :  
 A43Y5

Quant Method : Z:\svoasrv\HPCHEM1\BNA\_P\Methods\SFAM-EPA-BP050124.MA.M  
 Quant Title : SVOA CALIBRATION

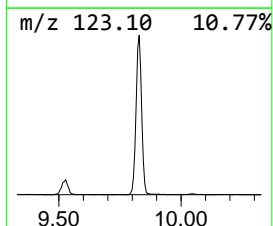
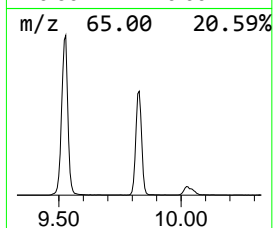
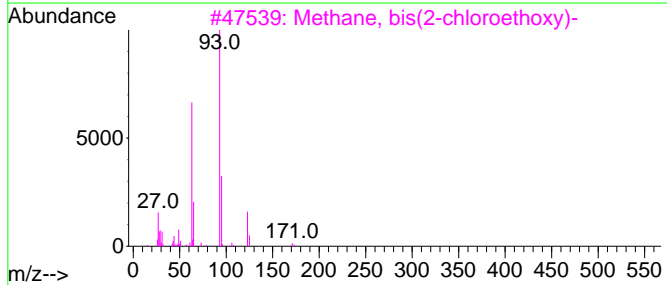
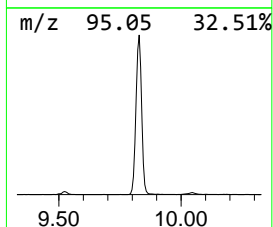
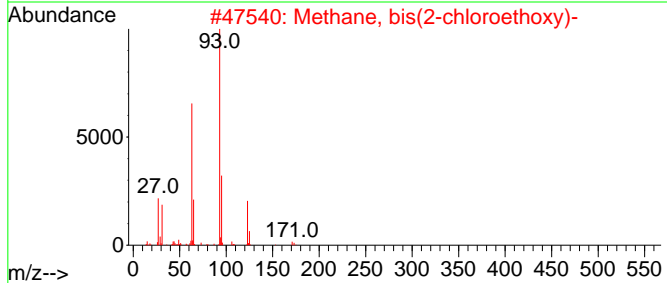
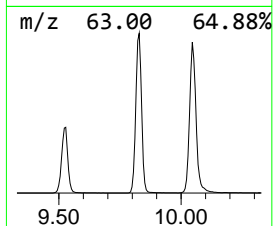
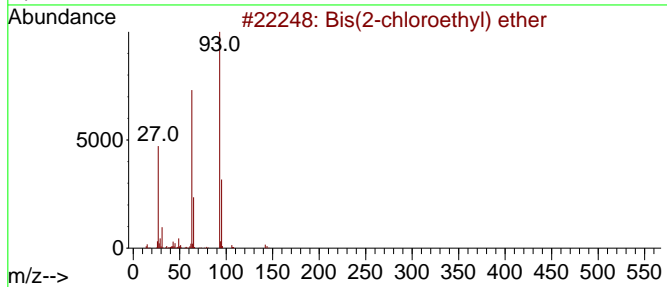
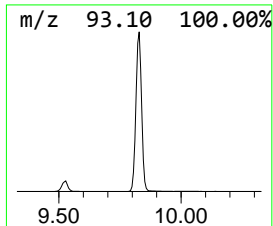
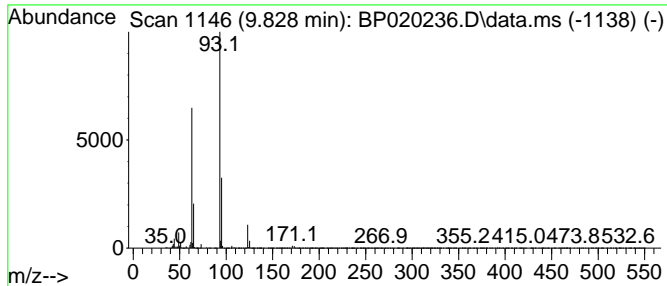
TIC Library : C:\DATABASE\NIST20.L  
 TIC Integration Parameters: LSCINT.P

\*\*\*\*\*  
 Peak Number 5 Methane, bis(2-chloroethoxy)- Concentration Rank 16

R.T.	EstConc	Area	Relative to ISTD	R.T.
9.828	53.25 ng/ul	2575400	Naphthalene-d8	10.393

Hit#	of	5	Tentative ID	MW	MolForm	CAS#	Qual
1			Bis(2-chloroethyl) ether	142	C4H8Cl2O	000111-44-4	83
2			Methane, bis(2-chloroethoxy)-	172	C5H10Cl2O2	000111-91-1	74
3			Methane, bis(2-chloroethoxy)-	172	C5H10Cl2O2	000111-91-1	64
4			ethanol, 2,2'-[oxybis(methylenes...	262	C6H14O7S2	1010401-58-0	56
5			Bis(2-chloroethyl) ether	142	C4H8Cl2O	000111-44-4	50



Data Path : Z:\svoasrv\HPCHEM1\BNA\_P\Data\BP050824\  
 Data File : BP020236.D  
 Acq On : 08 May 2024 10:33  
 Operator : MA/JU  
 Sample : P2369-23  
 Misc :  
 ALS Vial : 4 Sample Multiplier: 1

Instrument :  
 BNA\_P  
 ClientSampleId :  
 A43Y5

Quant Method : Z:\svoasrv\HPCHEM1\BNA\_P\Methods\SFAM-EPA-BP050124.MA.M  
 Quant Title : SVOA CALIBRATION

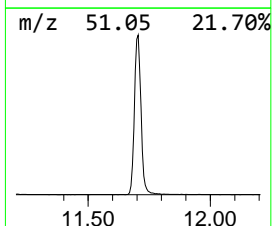
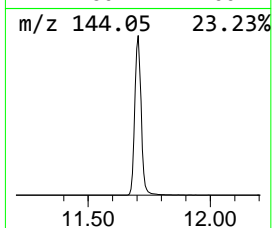
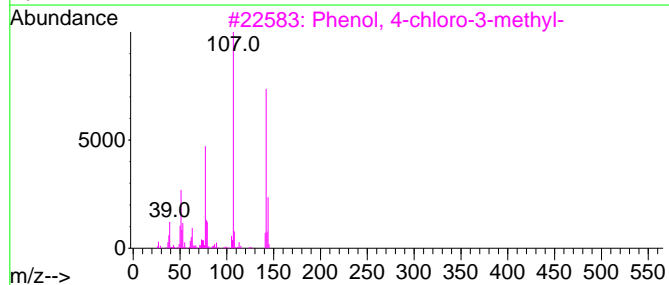
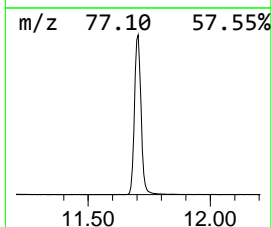
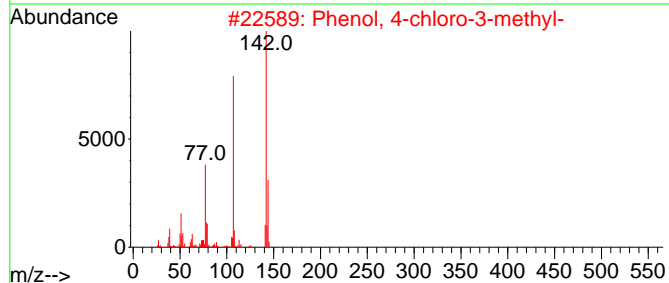
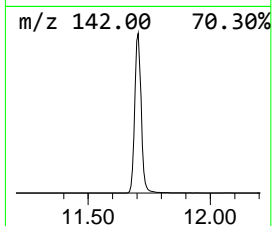
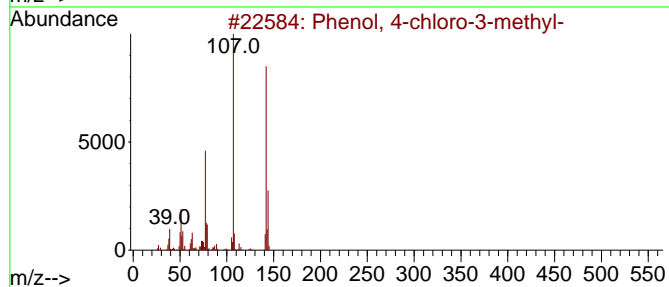
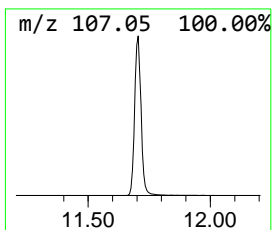
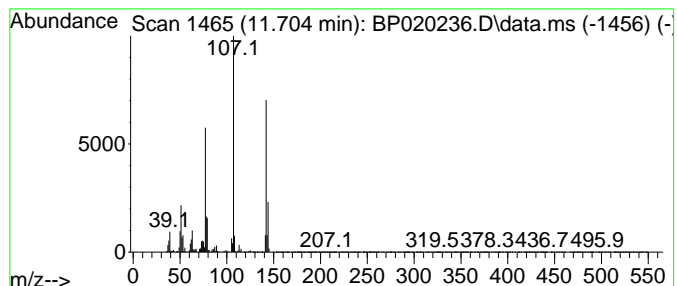
TIC Library : C:\DATABASE\NIST20.L  
 TIC Integration Parameters: LSCINT.P

\*\*\*\*\*  
 Peak Number 6 Phenol, 4-chloro-3-methyl- Concentration Rank 6

R.T.	EstConc	Area	Relative to ISTD	R.T.
11.704	128.08 ng/ul	6194550	Naphthalene-d8	10.393

Hit#	of	5	Tentative ID	MW	MolForm	CAS#	Qual
1			Phenol, 4-chloro-3-methyl-	142	C7H7ClO	000059-50-7	97
2			Phenol, 4-chloro-3-methyl-	142	C7H7ClO	000059-50-7	96
3			Phenol, 4-chloro-3-methyl-	142	C7H7ClO	000059-50-7	96
4			Phenol, 4-chloro-3-methyl-	142	C7H7ClO	000059-50-7	95
5			Phenol, 4-chloro-2-methyl-	142	C7H7ClO	001570-64-5	94



Data Path : Z:\svoasrv\HPCHEM1\BNA\_P\Data\BP050824\  
 Data File : BP020236.D  
 Acq On : 08 May 2024 10:33  
 Operator : MA/JU  
 Sample : P2369-23  
 Misc :  
 ALS Vial : 4 Sample Multiplier: 1

Instrument :  
 BNA\_P  
 ClientSampleId :  
 A43Y5

Quant Method : Z:\svoasrv\HPCHEM1\BNA\_P\Methods\SFAM-EPA-BP050124.MA.M  
 Quant Title : SVOA CALIBRATION

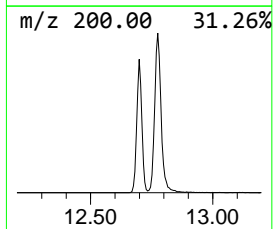
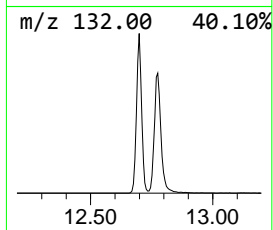
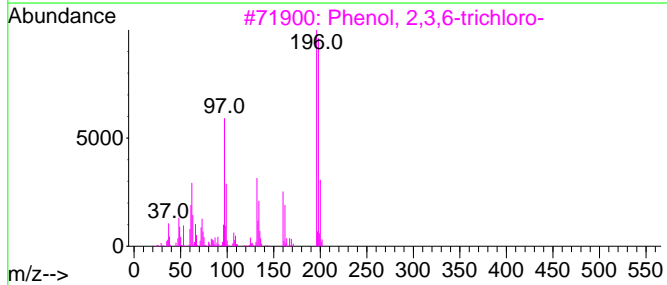
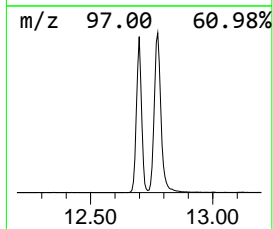
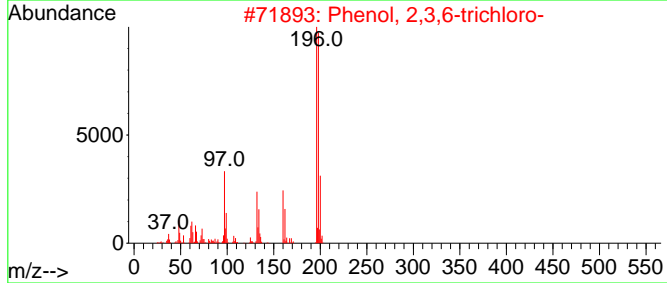
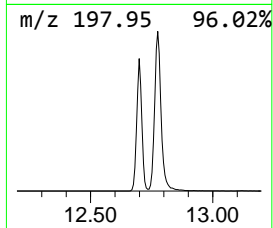
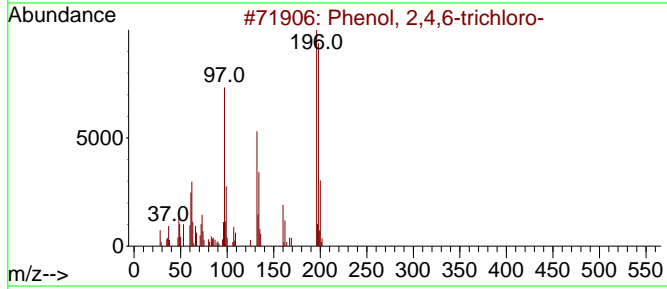
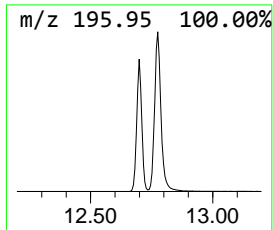
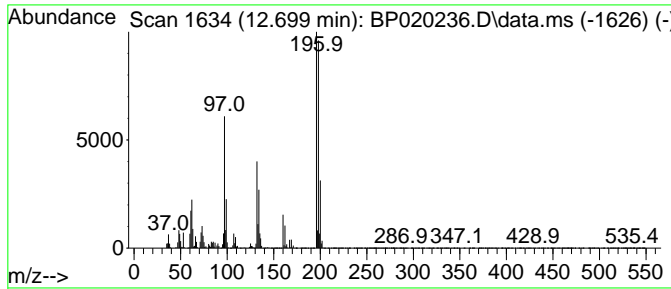
TIC Library : C:\DATABASE\NIST20.L  
 TIC Integration Parameters: LSCINT.P

\*\*\*\*\*  
 Peak Number 7 Phenol, 2,4,6-trichloro- Concentration Rank 19

R.T.	EstConc	Area	Relative to ISTD	R.T.
12.698	43.40 ng/ul	2968700	Acenaphthene-d10	14.299

Hit#	of	5	Tentative ID	MW	MolForm	CAS#	Qual
1			Phenol, 2,4,6-trichloro-	196	C6H3Cl3O	000088-06-2	99
2			Phenol, 2,3,6-trichloro-	196	C6H3Cl3O	000933-75-5	95
3			Phenol, 2,3,6-trichloro-	196	C6H3Cl3O	000933-75-5	95
4			Phenol, 2,4,5-trichloro-	196	C6H3Cl3O	000095-95-4	94
5			Phenol, 2,4,6-trichloro-	196	C6H3Cl3O	000088-06-2	94



Data Path : Z:\svoasrv\HPCHEM1\BNA\_P\Data\BP050824\  
 Data File : BP020236.D  
 Acq On : 08 May 2024 10:33  
 Operator : MA/JU  
 Sample : P2369-23  
 Misc :  
 ALS Vial : 4 Sample Multiplier: 1

Instrument :  
 BNA\_P  
 ClientSampleId :  
 A43Y5

Quant Method : Z:\svoasrv\HPCHEM1\BNA\_P\Methods\SFAM-EPA-BP050124.MA.M  
 Quant Title : SVOA CALIBRATION

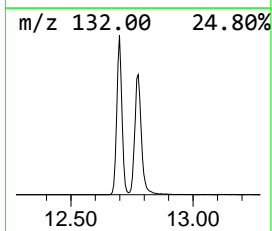
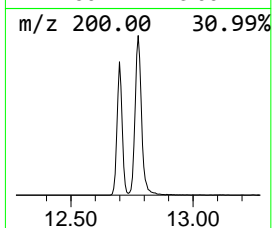
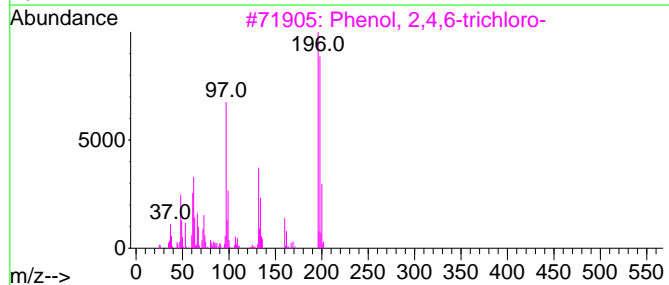
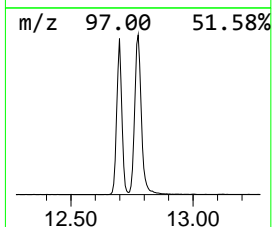
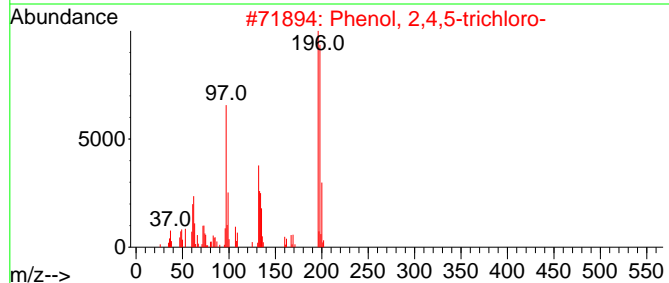
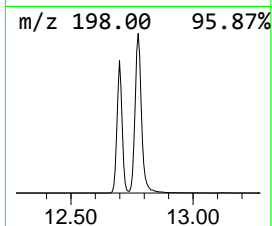
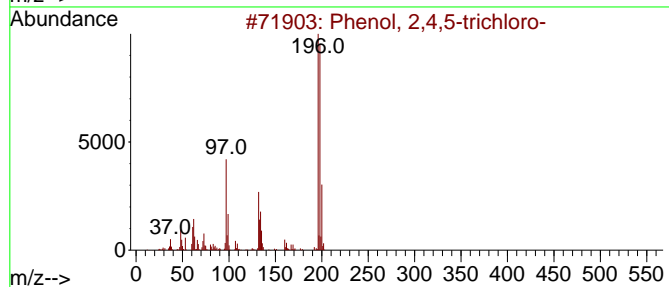
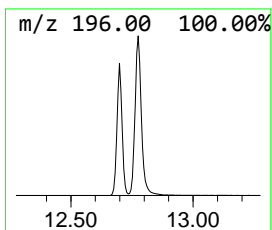
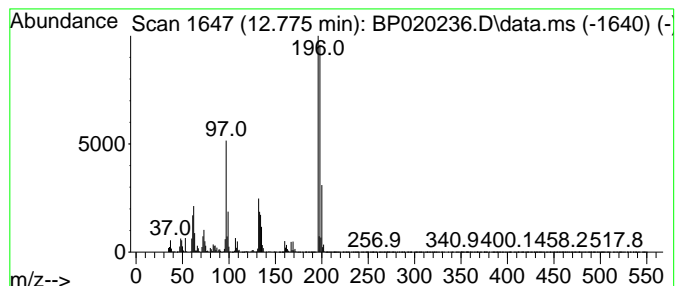
TIC Library : C:\DATABASE\NIST20.L  
 TIC Integration Parameters: LSCINT.P

\*\*\*\*\*  
 Peak Number 8 Phenol, 2,4,5-trichloro- Concentration Rank 13

R.T.	EstConc	Area	Relative to ISTD	R.T.
12.775	61.14 ng/ul	4182470	Acenaphthene-d10	14.299

Hit#	of	5	Tentative ID	MW	MolForm	CAS#	Qual
1			Phenol, 2,4,5-trichloro-	196	C6H3Cl3O	000095-95-4	95
2			Phenol, 2,4,5-trichloro-	196	C6H3Cl3O	000095-95-4	95
3			Phenol, 2,4,6-trichloro-	196	C6H3Cl3O	000088-06-2	95
4			Phenol, 2,3,4-trichloro-	196	C6H3Cl3O	015950-66-0	93
5			Phenol, 2,4,5-trichloro-	196	C6H3Cl3O	000095-95-4	93



Data Path : Z:\svoasrv\HPCHEM1\BNA\_P\Data\BP050824\  
 Data File : BP020236.D  
 Acq On : 08 May 2024 10:33  
 Operator : MA/JU  
 Sample : P2369-23  
 Misc :  
 ALS Vial : 4 Sample Multiplier: 1

Instrument :  
 BNA\_P  
 ClientSampleId :  
 A43Y5

Quant Method : Z:\svoasrv\HPCHEM1\BNA\_P\Methods\SFAM-EPA-BP050124.MA.M  
 Quant Title : SVOA CALIBRATION

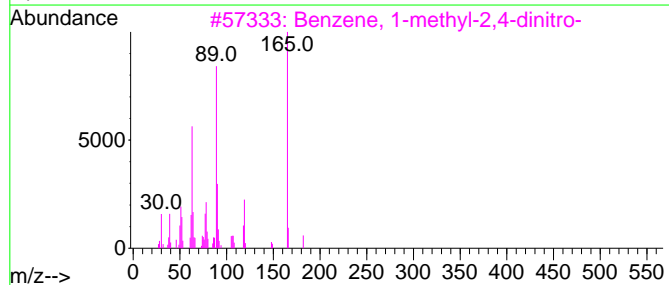
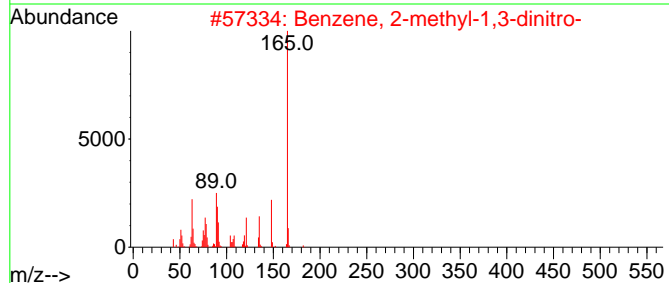
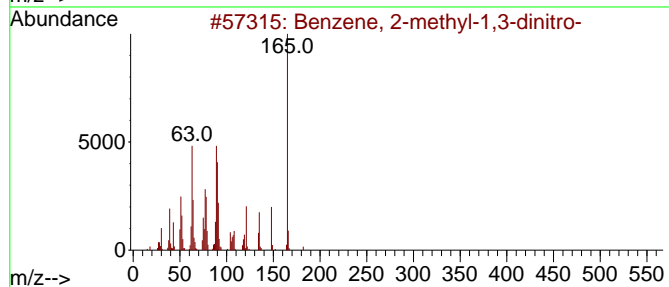
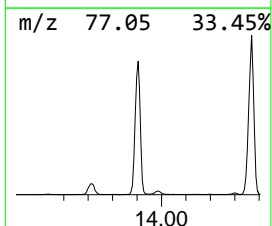
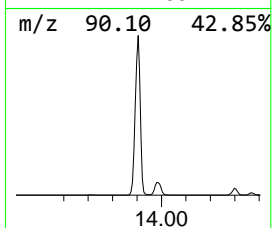
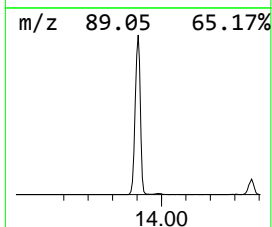
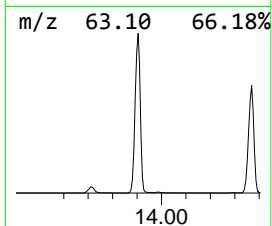
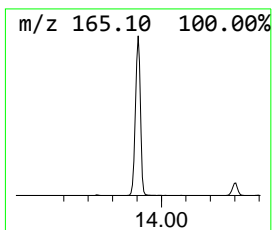
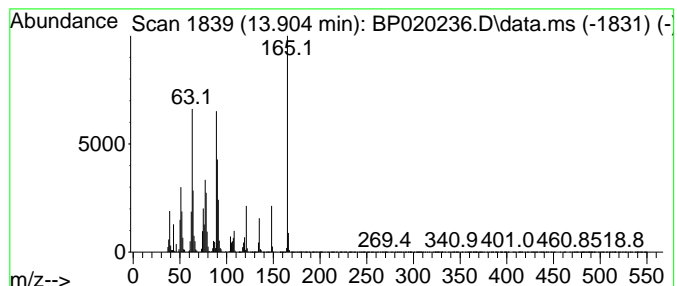
TIC Library : C:\DATABASE\NIST20.L  
 TIC Integration Parameters: LSCINT.P

\*\*\*\*\*  
 Peak Number 9 Benzene, 2-methyl-1,3-dinitro- Concentration Rank 15

R.T.	EstConc	Area	Relative to ISTD	R.T.
13.904	55.53 ng/ul	3798840	Acenaphthene-d10	14.299

Hit#	of	5	Tentative ID	MW	MolForm	CAS#	Qual
1			Benzene, 2-methyl-1,3-dinitro-	182	C7H6N2O4	000606-20-2	90
2			Benzene, 2-methyl-1,3-dinitro-	182	C7H6N2O4	000606-20-2	80
3			Benzene, 1-methyl-2,4-dinitro-	182	C7H6N2O4	000121-14-2	50
4			Benzene, 2-methyl-1,3-dinitro-	182	C7H6N2O4	000606-20-2	50
5			Benzene, 1-methyl-2,4-dinitro-	182	C7H6N2O4	000121-14-2	50



Data Path : Z:\svoasrv\HPCHEM1\BNA\_P\Data\BP050824\  
 Data File : BP020236.D  
 Acq On : 08 May 2024 10:33  
 Operator : MA/JU  
 Sample : P2369-23  
 Misc :  
 ALS Vial : 4 Sample Multiplier: 1

Instrument :  
 BNA\_P  
 ClientSampleId :  
 A43Y5

Quant Method : Z:\svoasrv\HPCHEM1\BNA\_P\Methods\SFAM-EPA-BP050124.MA.M  
 Quant Title : SVOA CALIBRATION

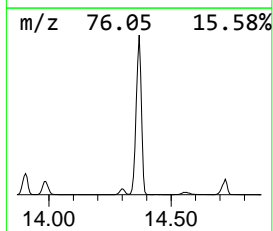
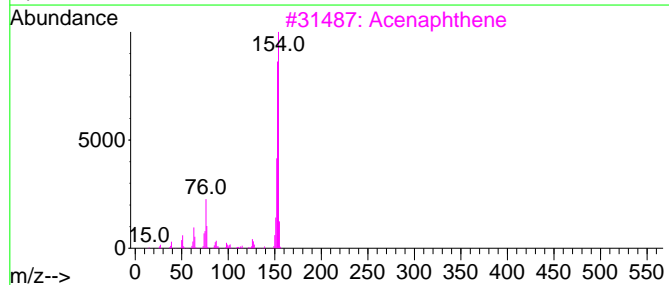
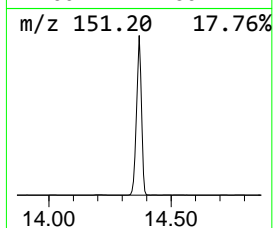
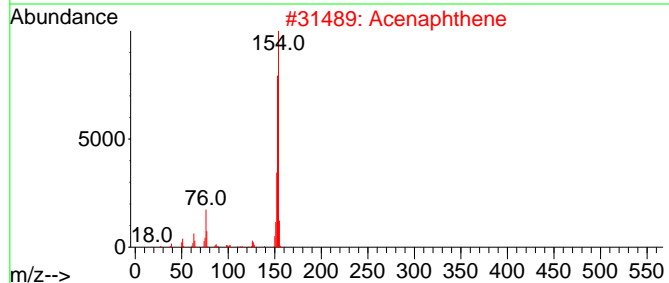
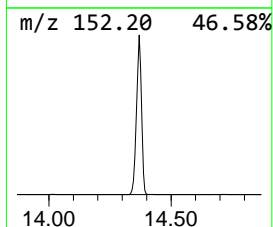
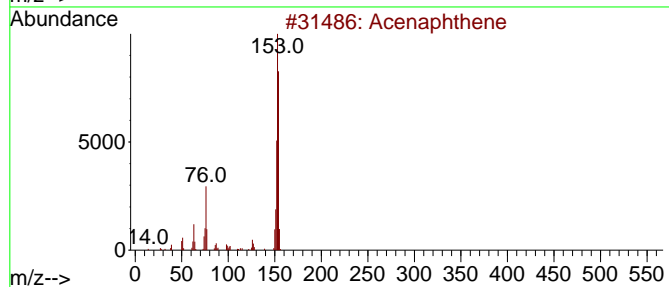
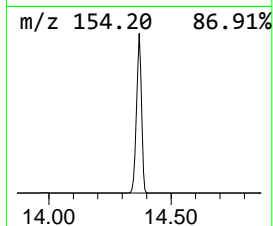
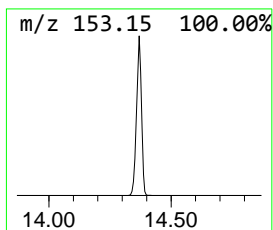
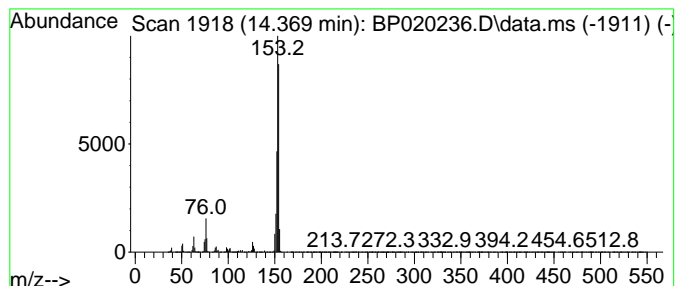
TIC Library : C:\DATABASE\NIST20.L  
 TIC Integration Parameters: LSCINT.P

\*\*\*\*\*  
 Peak Number 10 Acena phthene Concentration Rank 4

R.T.	EstConc	Area	Relative to ISTD	R.T.
14.369	158.13 ng/ul	10817600	Acenaphthene-d10	14.299

Hit#	of 5	Tentative ID	MW	MolForm	CAS#	Qual
1		Acenaphthene	154	C12H10	000083-32-9	89
2		Acenaphthene	154	C12H10	000083-32-9	81
3		Acenaphthene	154	C12H10	000083-32-9	64
4		Hexa-2,4-diyne-1-ylbenzene	154	C12H10	000520-74-1	59
5		Naphthalene, 2-ethenyl-	154	C12H10	000827-54-3	59



Data Path : Z:\svoasrv\HPCHEM1\BNA\_P\Data\BP050824\  
 Data File : BP020236.D  
 Acq On : 08 May 2024 10:33  
 Operator : MA/JU  
 Sample : P2369-23  
 Misc :  
 ALS Vial : 4 Sample Multiplier: 1

Instrument :  
 BNA\_P  
 ClientSampleId :  
 A43Y5

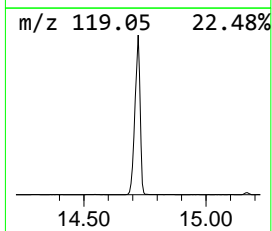
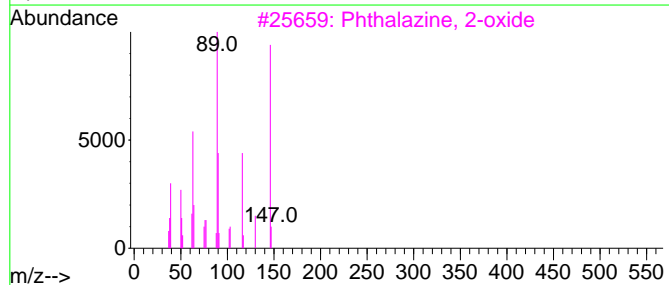
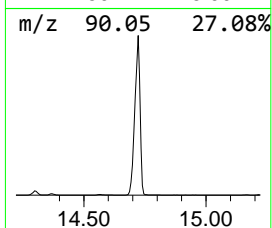
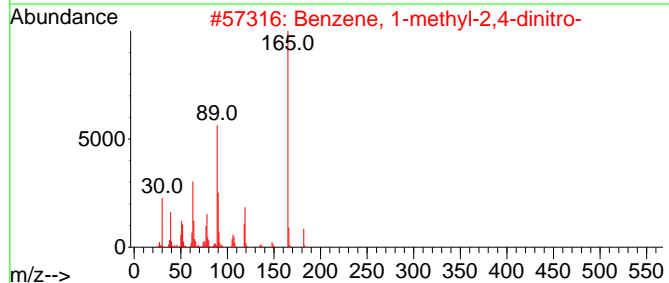
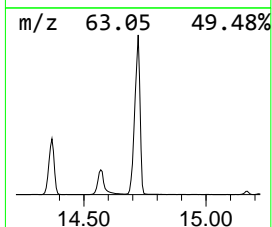
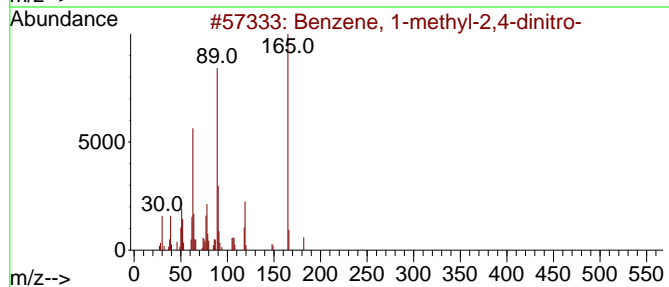
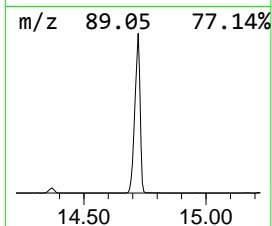
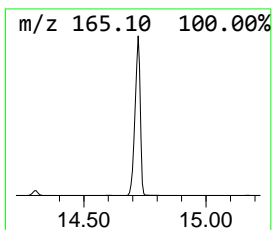
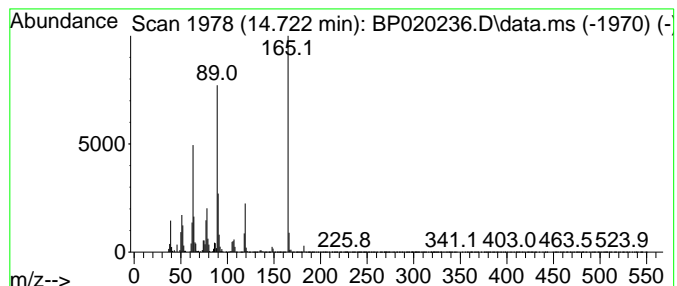
Quant Method : Z:\svoasrv\HPCHEM1\BNA\_P\Methods\SFAM-EPA-BP050124.MA.M  
 Quant Title : SVOA CALIBRATION

TIC Library : C:\DATABASE\NIST20.L  
 TIC Integration Parameters: LSCINT.P

\*\*\*\*\*  
 Peak Number 12 Benzene, 1-methyl-2,4-dinitro- Concentration Rank 8

R.T.	EstConc	Area	Relative to ISTD	R.T.
14.722	104.17 ng/ul	7126560	Acenaphthene-d10	14.299

Hit#	of	5	Tentative ID	MW	MolForm	CAS#	Qual
1			Benzene, 1-methyl-2,4-dinitro-	182	C7H6N2O4	000121-14-2	91
2			Benzene, 1-methyl-2,4-dinitro-	182	C7H6N2O4	000121-14-2	64
3			Phthalazine, 2-oxide	146	C8H6N2O	018636-89-0	39
4			Ethanol, 1-(4-nitrophenyl)-2-[1-...	304	C17H24N2O3	1000264-75-7	39
5			6-Nitro-o-tolunitrile	162	C8H6N2O2	001885-76-3	25



Data Path : Z:\svoasrv\HPCHEM1\BNA\_P\Data\BP050824\  
 Data File : BP020236.D  
 Acq On : 08 May 2024 10:33  
 Operator : MA/JU  
 Sample : P2369-23  
 Misc :  
 ALS Vial : 4 Sample Multiplier: 1

Instrument :  
 BNA\_P  
 ClientSampleId :  
 A43Y5

Quant Method : Z:\svoasrv\HPCHEM1\BNA\_P\Methods\SFAM-EPA-BP050124.MA.M  
 Quant Title : SVOA CALIBRATION

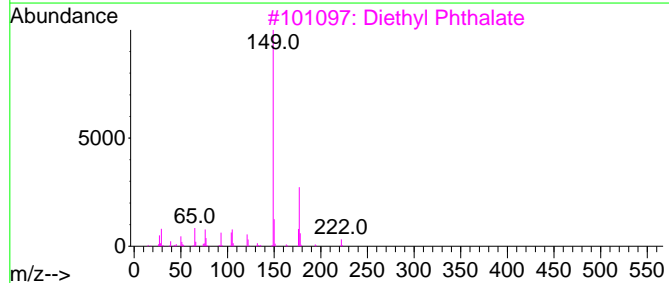
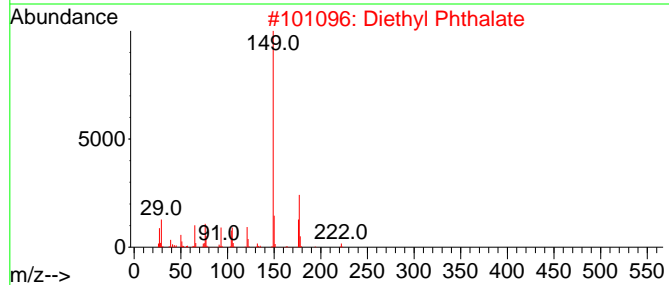
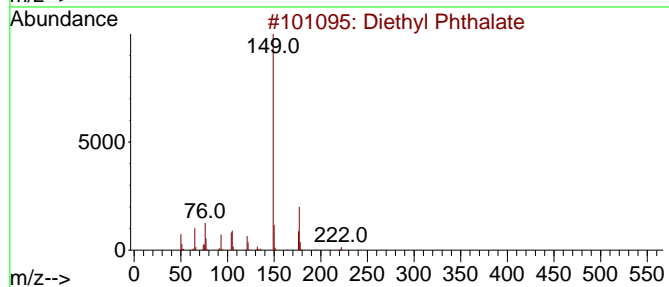
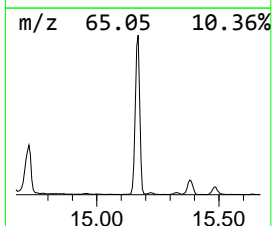
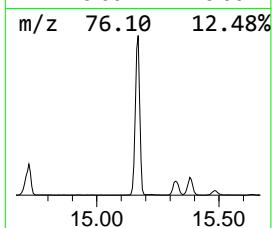
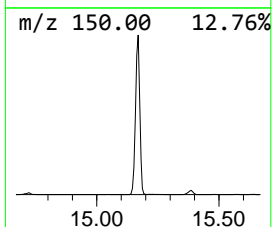
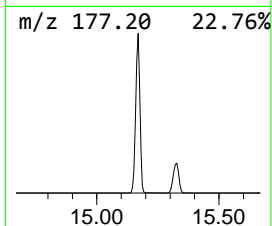
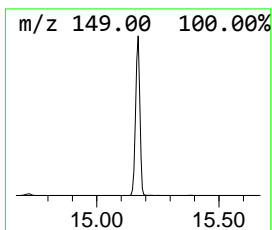
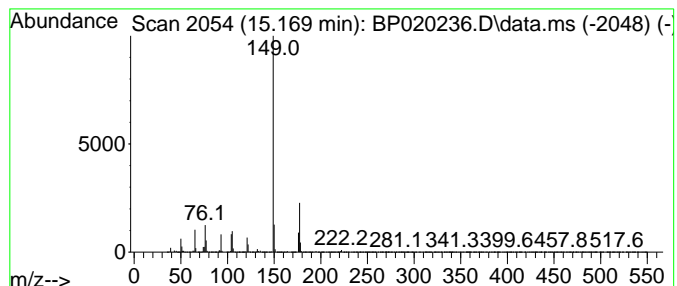
TIC Library : C:\DATABASE\NIST20.L  
 TIC Integration Parameters: LSCINT.P

\*\*\*\*\*  
 Peak Number 13 Diethyl Phthalate Concentration Rank 14

R.T.	EstConc	Area	Relative to ISTD	R.T.
15.169	60.24 ng/ul	4121040	Acenaphthene-d10	14.299

Hit#	of	5	Tentative ID	MW	MolForm	CAS#	Qual
1			Diethyl Phthalate	222	C12H14O4	000084-66-2	97
2			Diethyl Phthalate	222	C12H14O4	000084-66-2	97
3			Diethyl Phthalate	222	C12H14O4	000084-66-2	92
4			Diethyl Phthalate	222	C12H14O4	000084-66-2	91
5			Phthalic acid, 7-bromoheptyl eth...	370	C17H23BrO4	1000415-51-6	78





Data Path : Z:\svoasrv\HPCHEM1\BNA\_P\Data\BP050824\  
 Data File : BP020236.D  
 Acq On : 08 May 2024 10:33  
 Operator : MA/JU  
 Sample : P2369-23  
 Misc :  
 ALS Vial : 4 Sample Multiplier: 1

Instrument :  
 BNA\_P  
 ClientSampleId :  
 A43Y5

Quant Method : Z:\svoasrv\HPCHEM1\BNA\_P\Methods\SFAM-EPA-BP050124.MA.M  
 Quant Title : SVOA CALIBRATION

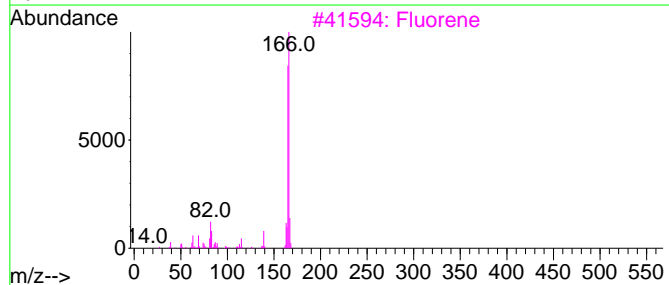
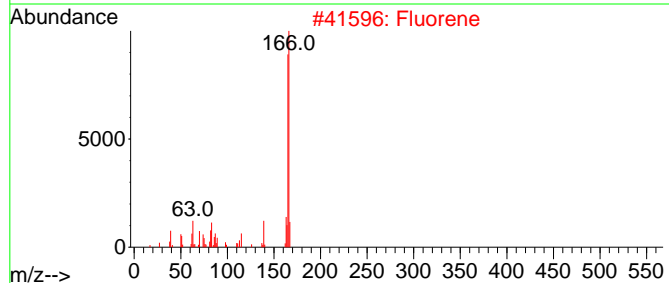
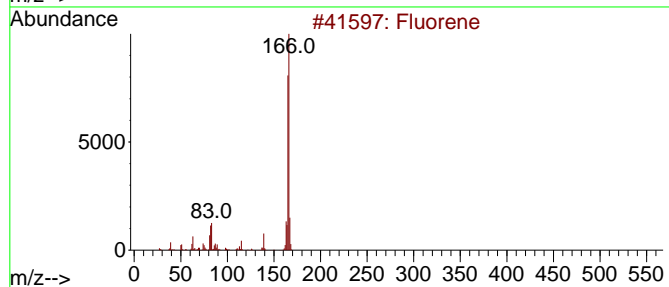
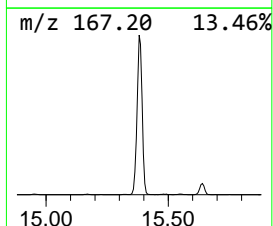
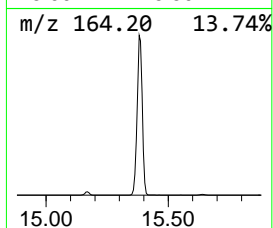
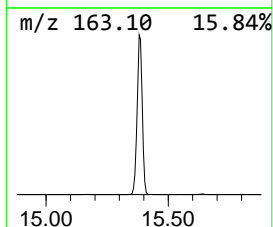
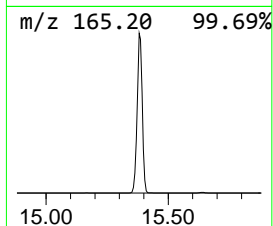
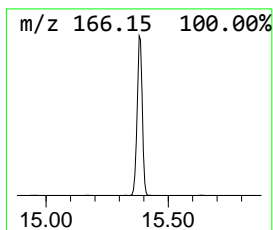
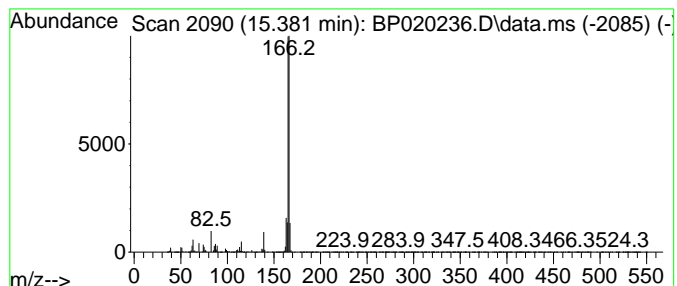
TIC Library : C:\DATABASE\NIST20.L  
 TIC Integration Parameters: LSCINT.P

\*\*\*\*\*  
 Peak Number 14 Fluorene Concentration Rank 7

R.T.	EstConc	Area	Relative to ISTD	R.T.
15.381	118.47 ng/ul	8104530	Acenaphthene-d10	14.299

Hit#	of 5	Tentative ID	MW	MolForm	CAS#	Qual
1		Fluorene	166	C13H10	000086-73-7	95
2		Fluorene	166	C13H10	000086-73-7	95
3		Fluorene	166	C13H10	000086-73-7	94
4		Fluorene	166	C13H10	000086-73-7	94
5		Benzene, 5-heptene-1,3-diyne-1-yl-	166	C13H10	013678-98-3	72



Data Path : Z:\svoasrv\HPCHEM1\BNA\_P\Data\BP050824\  
 Data File : BP020236.D  
 Acq On : 08 May 2024 10:33  
 Operator : MA/JU  
 Sample : P2369-23  
 Misc :  
 ALS Vial : 4 Sample Multiplier: 1

Instrument :  
 BNA\_P  
 ClientSampleId :  
 A43Y5

Quant Method : Z:\svoasrv\HPCHEM1\BNA\_P\Methods\SFAM-EPA-BP050124.MA.M  
 Quant Title : SVOA CALIBRATION

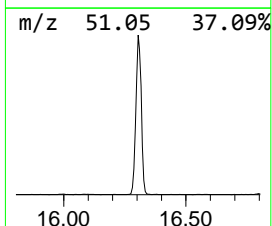
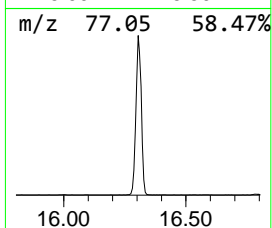
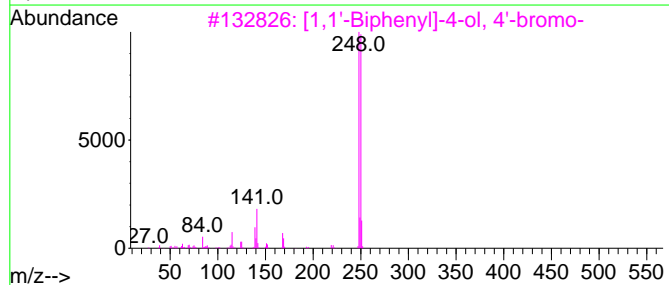
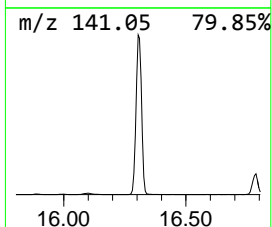
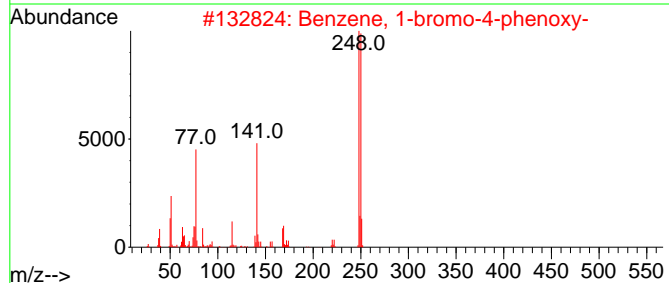
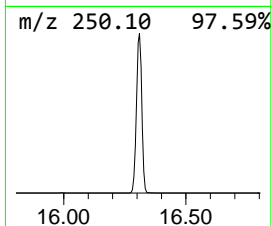
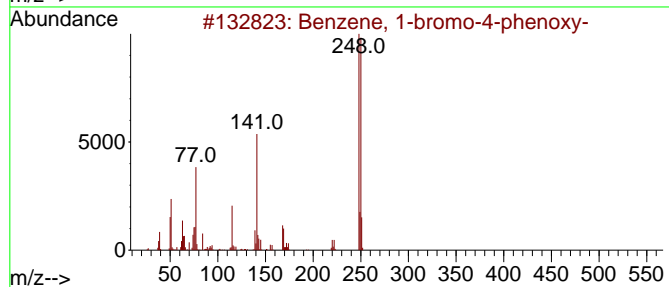
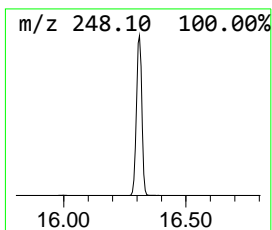
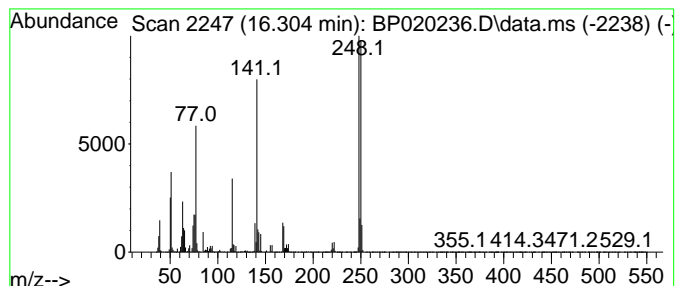
TIC Library : C:\DATABASE\NIST20.L  
 TIC Integration Parameters: LSCINT.P

\*\*\*\*\*  
 Peak Number 15 Benzene, 1-bromo-4-phenoxy- Concentration Rank 17

R.T.	EstConc	Area	Relative to ISTD	R.T.
16.304	52.08 ng/ul	4564950	Phenanthrene-d10	17.145

Hit#	of	5	Tentative ID	MW	MolForm	CAS#	Qual
1			Benzene, 1-bromo-4-phenoxy-	248	C12H9BrO	000101-55-3	99
2			Benzene, 1-bromo-4-phenoxy-	248	C12H9BrO	000101-55-3	96
3			[1,1'-Biphenyl]-4-ol, 4'-bromo-	248	C12H9BrO	029558-77-8	90
4			1,4-Dichlorophenazine	248	C12H6Cl2N2	002881-86-9	43
5			2,3-Dichlorophenazine	248	C12H6Cl2N2	003265-11-0	30



Data Path : Z:\svoasrv\HPCHEM1\BNA\_P\Data\BP050824\  
 Data File : BP020236.D  
 Acq On : 08 May 2024 10:33  
 Operator : MA/JU  
 Sample : P2369-23  
 Misc :  
 ALS Vial : 4 Sample Multiplier: 1

Instrument :  
 BNA\_P  
 ClientSampleId :  
 A43Y5

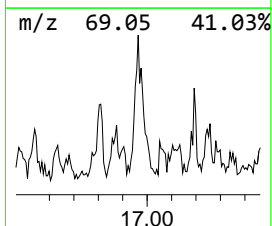
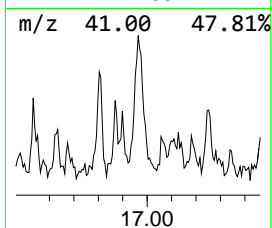
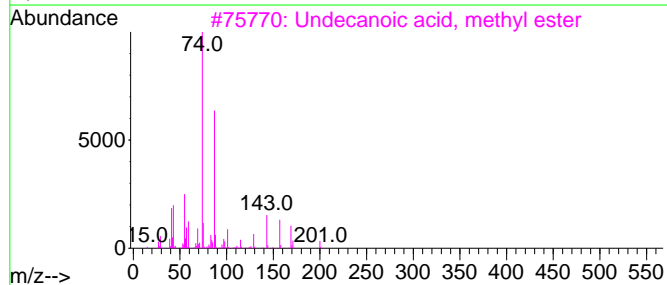
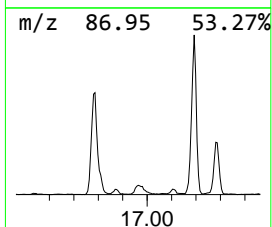
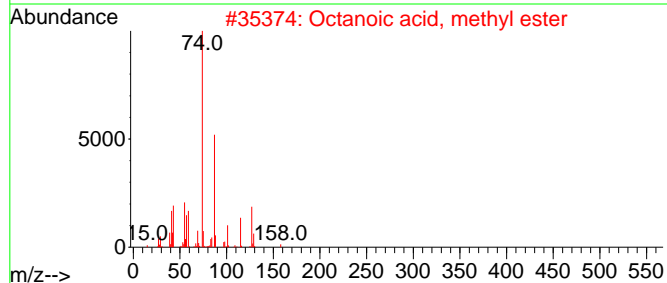
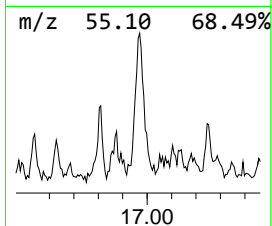
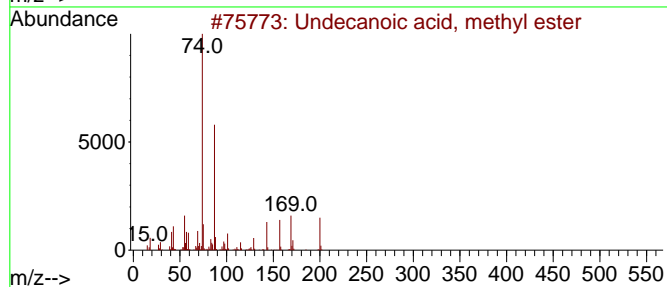
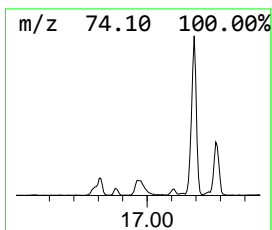
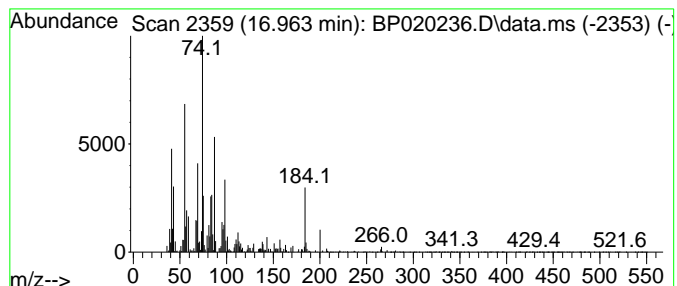
Quant Method : Z:\svoasrv\HPCHEM1\BNA\_P\Methods\SFAM-EPA-BP050124.MA.M  
 Quant Title : SVOA CALIBRATION

TIC Library : C:\DATABASE\NIST20.L  
 TIC Integration Parameters: LSCINT.P

\*\*\*\*\*  
 Peak Number 16 unknown-01 Concentration Rank 30

R.T.	EstConc	Area	Relative to ISTD	R.T.
16.963	2.40 ng/ul	210042	Phenanthrene-d10	17.145

Hit#	of	5	Tentative ID	MW	MolForm	CAS#	Qual
1			Undecanoic acid, methyl ester	200	C12H24O2	001731-86-8	49
2			Octanoic acid, methyl ester	158	C9H18O2	000111-11-5	46
3			Undecanoic acid, methyl ester	200	C12H24O2	001731-86-8	46
4			Octanoic acid, methyl ester	158	C9H18O2	000111-11-5	43
5			Cyclopentaneundecanoic acid, met...	268	C17H32O2	025779-85-5	43



Data Path : Z:\svoasrv\HPCHEM1\BNA\_P\Data\BP050824\  
 Data File : BP020236.D  
 Acq On : 08 May 2024 10:33  
 Operator : MA/JU  
 Sample : P2369-23  
 Misc :  
 ALS Vial : 4 Sample Multiplier: 1

Instrument :  
 BNA\_P  
 ClientSampleId :  
 A43Y5

Quant Method : Z:\svoasrv\HPCHEM1\BNA\_P\Methods\SFAM-EPA-BP050124.MA.M  
 Quant Title : SVOA CALIBRATION

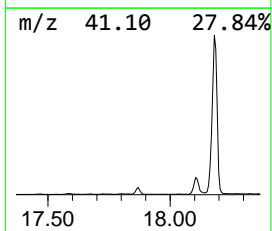
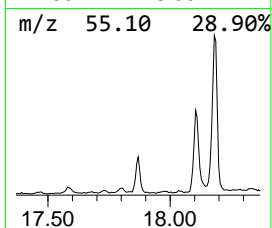
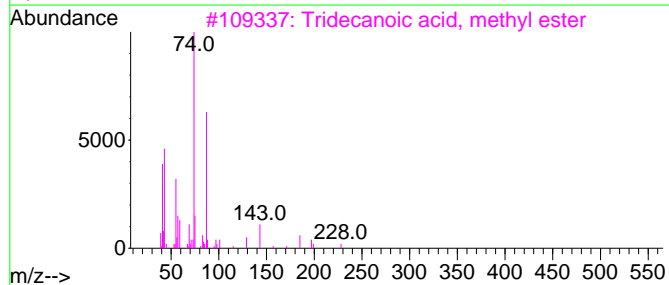
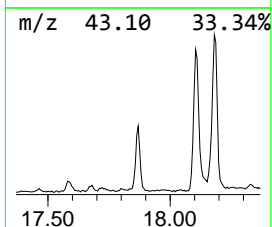
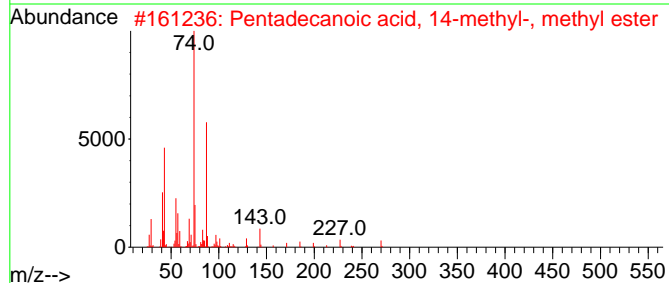
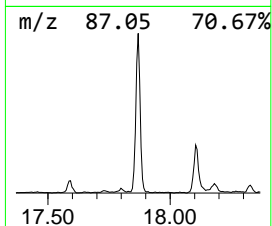
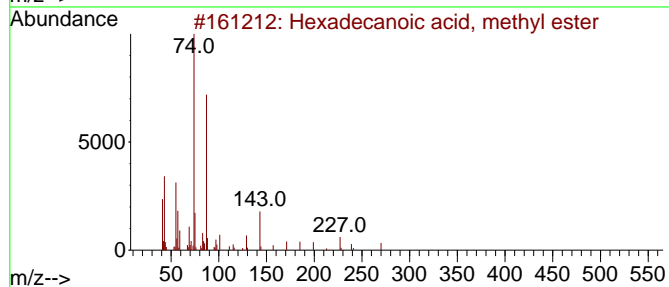
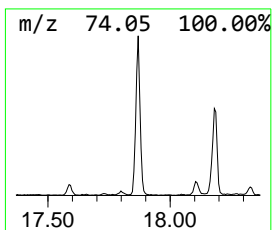
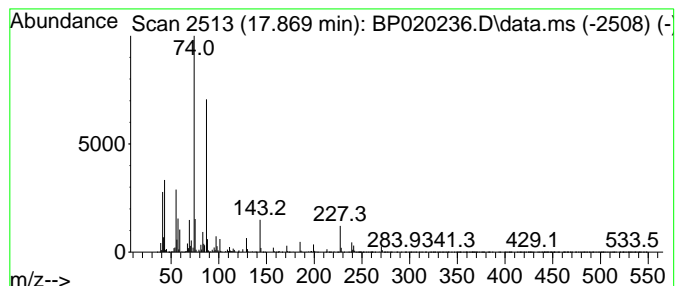
TIC Library : C:\DATABASE\NIST20.L  
 TIC Integration Parameters: LSCINT.P

\*\*\*\*\*  
 Peak Number 17 Hexadecanoic acid, methyl e... Concentration Rank 27

R.T.	EstConc	Area	Relative to ISTD	R.T.
17.869	4.05 ng/ul	354717	Phenanthrene-d10	17.145

Hit#	of	5	Tentative ID	MW	MolForm	CAS#	Qual
1			Hexadecanoic acid, methyl ester	270	C17H34O2	000112-39-0	98
2			Pentadecanoic acid, 14-methyl-, ...	270	C17H34O2	005129-60-2	94
3			Tridecanoic acid, methyl ester	228	C14H28O2	001731-88-0	93
4			Hexadecanoic acid, methyl ester	270	C17H34O2	000112-39-0	91
5			Hexadecanoic acid, methyl ester	270	C17H34O2	000112-39-0	90



Data Path : Z:\svoasrv\HPCHEM1\BNA\_P\Data\BP050824\  
 Data File : BP020236.D  
 Acq On : 08 May 2024 10:33  
 Operator : MA/JU  
 Sample : P2369-23  
 Misc :  
 ALS Vial : 4 Sample Multiplier: 1

Instrument :  
 BNA\_P  
 ClientSampleId :  
 A43Y5

Quant Method : Z:\svoasrv\HPCHEM1\BNA\_P\Methods\SFAM-EPA-BP050124.MA.M  
 Quant Title : SVOA CALIBRATION

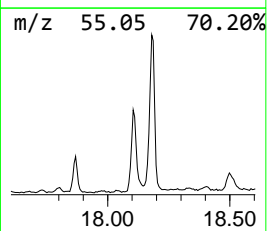
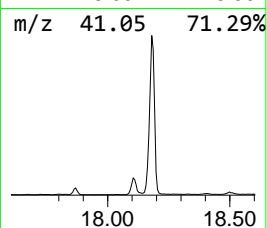
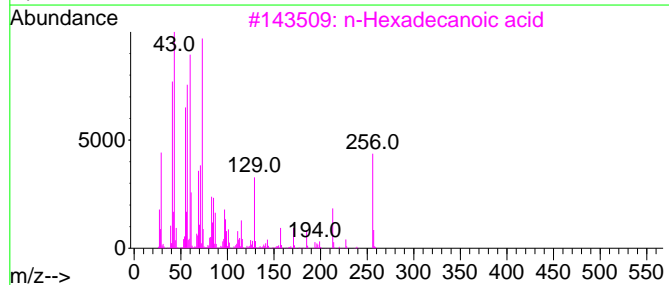
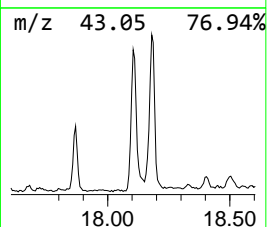
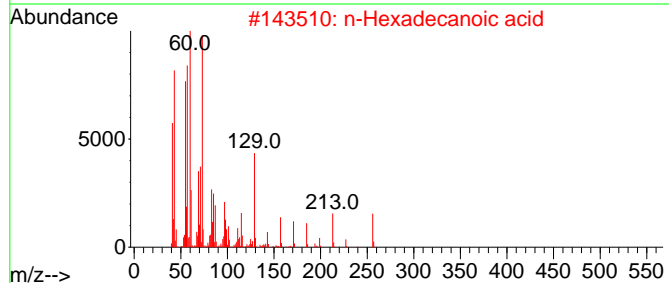
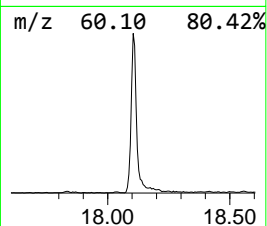
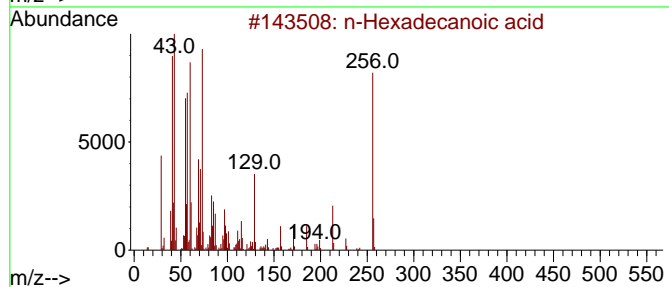
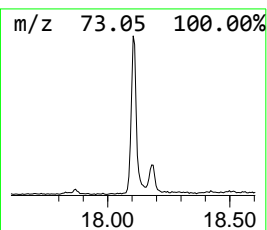
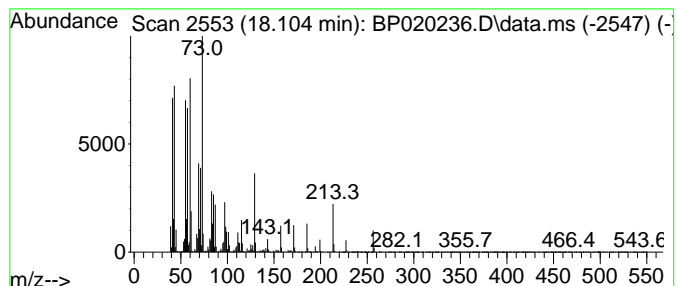
TIC Library : C:\DATABASE\NIST20.L  
 TIC Integration Parameters: LSCINT.P

\*\*\*\*\*  
 Peak Number 18 n-Hexadecanoic acid Concentration Rank 24

R.T.	EstConc	Area	Relative to ISTD	R.T.
18.104	10.58 ng/ul	927323	Phenanthrene-d10	17.145

Hit#	of 5	Tentative ID	MW	MolForm	CAS#	Qual
1		n-Hexadecanoic acid	256	C16H32O2	000057-10-3	99
2		n-Hexadecanoic acid	256	C16H32O2	000057-10-3	99
3		n-Hexadecanoic acid	256	C16H32O2	000057-10-3	98
4		n-Hexadecanoic acid	256	C16H32O2	000057-10-3	97
5		Tridecanoic acid	214	C13H26O2	000638-53-9	91



Data Path : Z:\svoasrv\HPCHEM1\BNA\_P\Data\BP050824\  
 Data File : BP020236.D  
 Acq On : 08 May 2024 10:33  
 Operator : MA/JU  
 Sample : P2369-23  
 Misc :  
 ALS Vial : 4 Sample Multiplier: 1

Instrument :  
 BNA\_P  
 ClientSampleId :  
 A43Y5

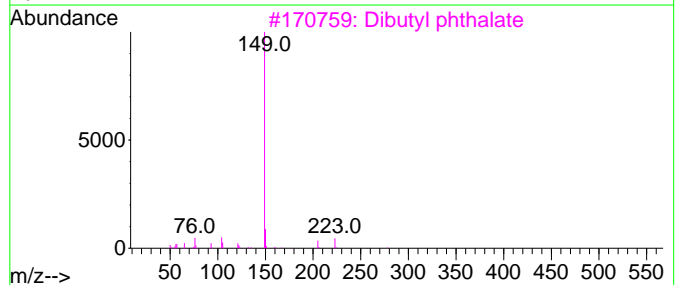
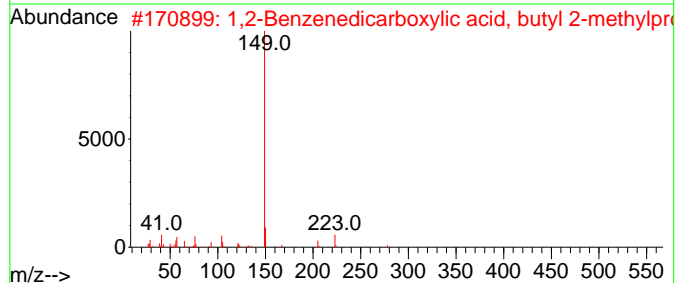
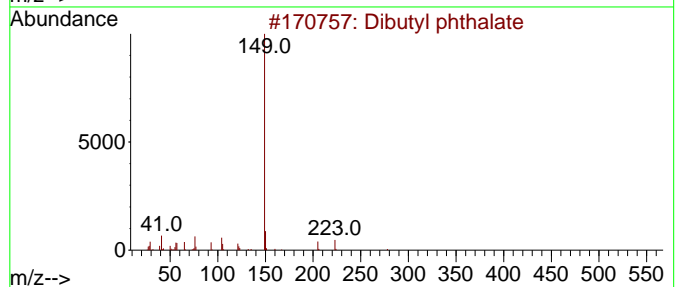
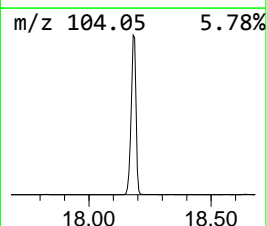
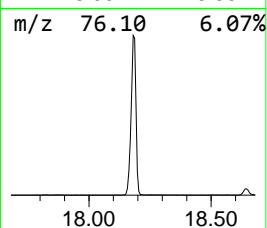
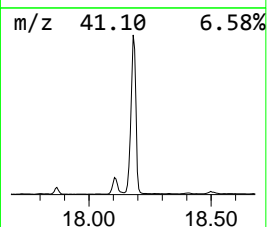
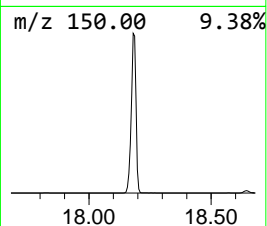
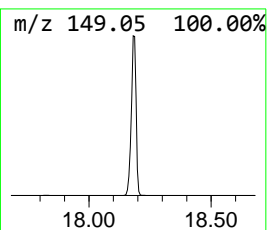
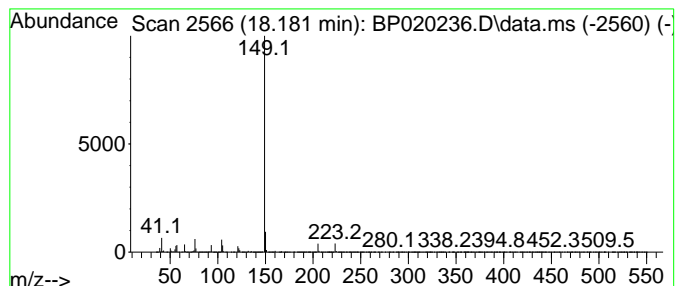
Quant Method : Z:\svoasrv\HPCHEM1\BNA\_P\Methods\SFAM-EPA-BP050124.MA.M  
 Quant Title : SVOA CALIBRATION

TIC Library : C:\DATABASE\NIST20.L  
 TIC Integration Parameters: LSCINT.P

\*\*\*\*\*  
 Peak Number 19 Dibutyl phthalate Concentration Rank 3

R.T.	EstConc	Area	Relative to ISTD	R.T.
18.181	158.66 ng/ul	13906100	Phenanthrene-d10	17.145

Hit#	of	5	Tentative ID	MW	MolForm	CAS#	Qual
1			Dibutyl phthalate	278	C16H22O4	000084-74-2	94
2			1,2-Benzenedicarboxylic acid, bu...	278	C16H22O4	017851-53-5	91
3			Dibutyl phthalate	278	C16H22O4	000084-74-2	91
4			1,4-Dibutyl benzene-1,4-dicarbox...	278	C16H22O4	001962-75-0	90
5			1,2-Benzenedicarboxylic acid, bu...	304	C18H24O4	000084-64-0	90



Data Path : Z:\svoasrv\HPCHEM1\BNA\_P\Data\BP050824\  
 Data File : BP020236.D  
 Acq On : 08 May 2024 10:33  
 Operator : MA/JU  
 Sample : P2369-23  
 Misc :  
 ALS Vial : 4 Sample Multiplier: 1

Instrument :  
 BNA\_P  
 ClientSampleId :  
 A43Y5

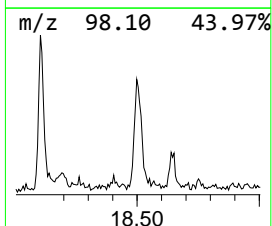
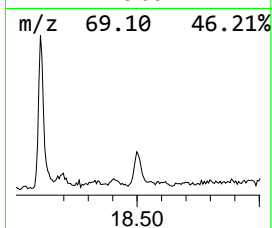
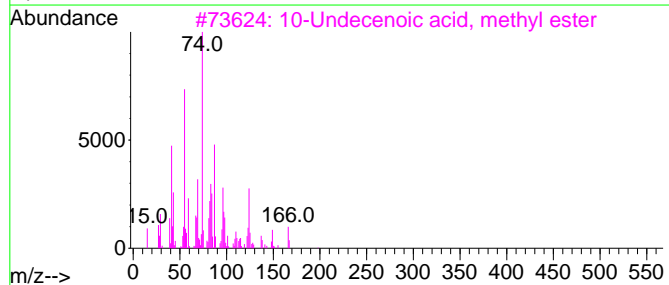
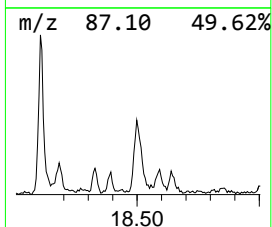
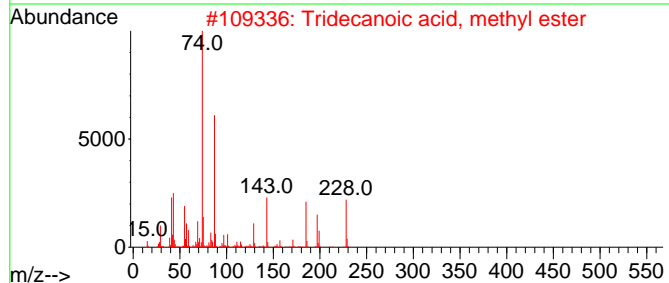
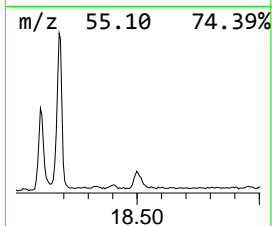
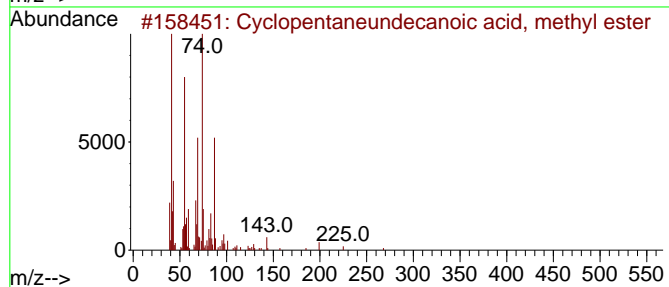
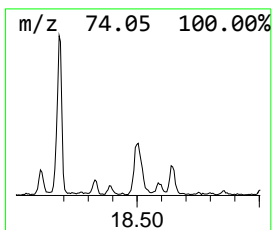
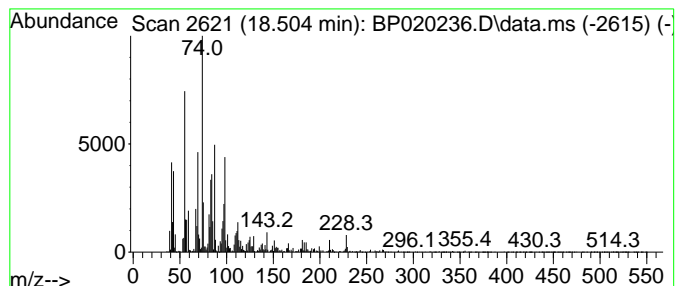
Quant Method : Z:\svoasrv\HPCHEM1\BNA\_P\Methods\SFAM-EPA-BP050124.MA.M  
 Quant Title : SVOA CALIBRATION

TIC Library : C:\DATABASE\NIST20.L  
 TIC Integration Parameters: LSCINT.P

\*\*\*\*\*  
 Peak Number 20 Cyclopentaneundecanoic acid... Concentration Rank 31

R.T.	EstConc	Area	Relative to ISTD	R.T.
18.504	2.35 ng/ul	205927	Phenanthrene-d10	17.145

Hit#	of 5	Tentative ID	MW	MolForm	CAS#	Qual
1		Cyclopentaneundecanoic acid, met...	268	C17H32O2	025779-85-5	83
2		Tridecanoic acid, methyl ester	228	C14H28O2	001731-88-0	60
3		10-Undecenoic acid, methyl ester	198	C12H22O2	000111-81-9	58
4		Tridecanoic acid, methyl ester	228	C14H28O2	001731-88-0	55
5		Dodecanoic acid, 10-methyl-, met...	228	C14H28O2	005129-65-7	49



Data Path : Z:\svoasrv\HPCHEM1\BNA\_P\Data\BP050824\  
 Data File : BP020236.D  
 Acq On : 08 May 2024 10:33  
 Operator : MA/JU  
 Sample : P2369-23  
 Misc :  
 ALS Vial : 4 Sample Multiplier: 1

Instrument :  
 BNA\_P  
 ClientSampleId :  
 A43Y5

Quant Method : Z:\svoasrv\HPCHEM1\BNA\_P\Methods\SFAM-EPA-BP050124.MA.M  
 Quant Title : SVOA CALIBRATION

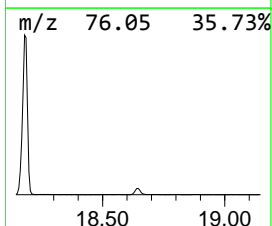
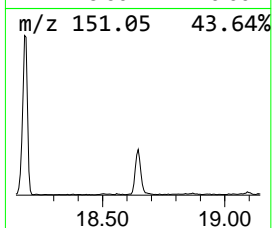
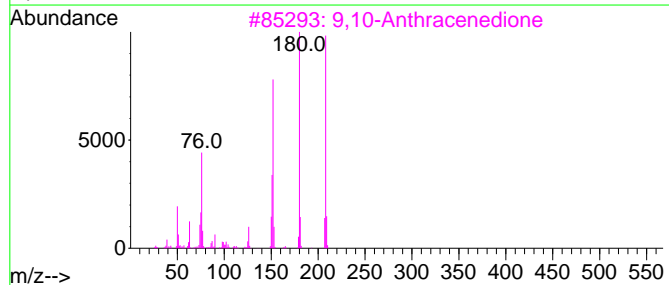
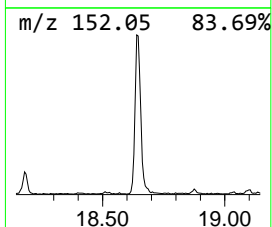
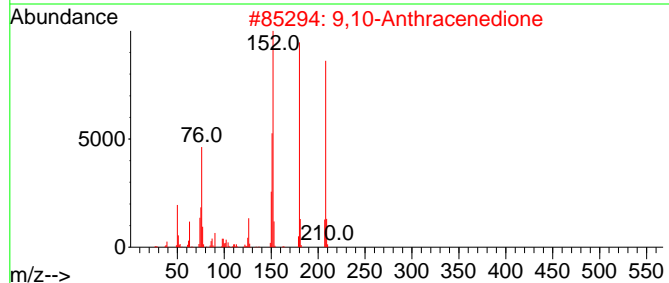
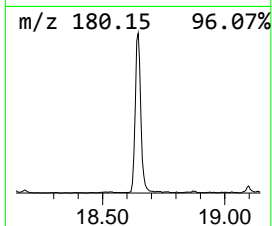
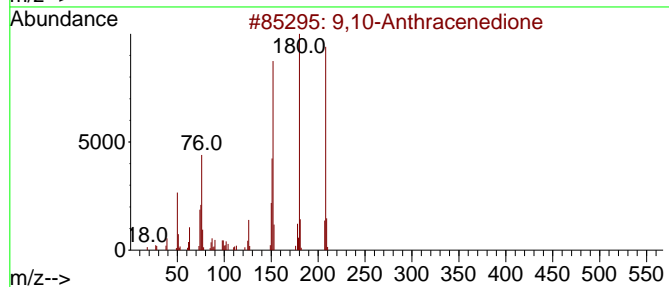
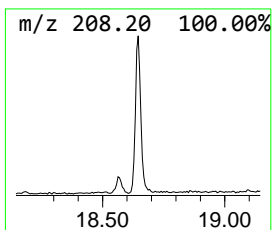
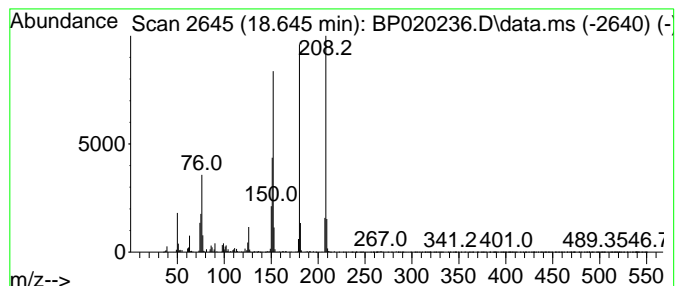
TIC Library : C:\DATABASE\NIST20.L  
 TIC Integration Parameters: LSCINT.P

\*\*\*\*\*  
 Peak Number 21 9,10-Anthracenedione Concentration Rank 28

R.T.	EstConc	Area	Relative to ISTD	R.T.
18.645	3.78 ng/ul	331029	Phenanthrene-d10	17.145

Hit#	of	5	Tentative ID	MW	MolForm	CAS#	Qual
1	9,10-Anthracenedione			208	C14H8O2	000084-65-1	98
2	9,10-Anthracenedione			208	C14H8O2	000084-65-1	98
3	9,10-Anthracenedione			208	C14H8O2	000084-65-1	95
4	9,10-Anthracenedione			208	C14H8O2	000084-65-1	94
5	9H-Fluoren-9-one			180	C13H8O	000486-25-9	91





Data Path : Z:\svoasrv\HPCHEM1\BNA\_P\Data\BP050824\  
 Data File : BP020236.D  
 Acq On : 08 May 2024 10:33  
 Operator : MA/JU  
 Sample : P2369-23  
 Misc :  
 ALS Vial : 4 Sample Multiplier: 1

Instrument :  
 BNA\_P  
 ClientSampleId :  
 A43Y5

Quant Method : Z:\svoasrv\HPCHEM1\BNA\_P\Methods\SFAM-EPA-BP050124.MA.M  
 Quant Title : SVOA CALIBRATION

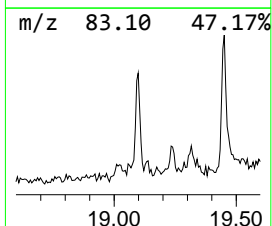
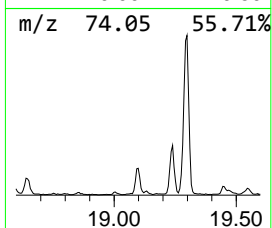
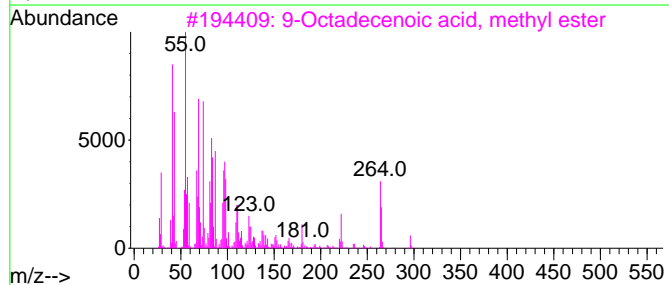
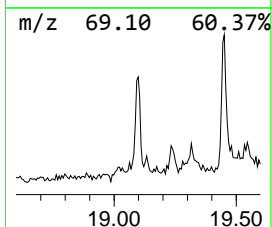
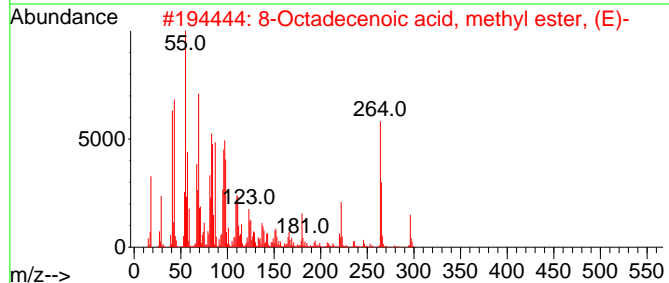
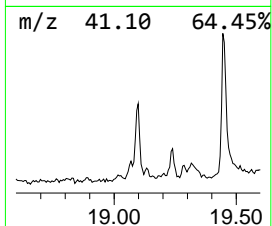
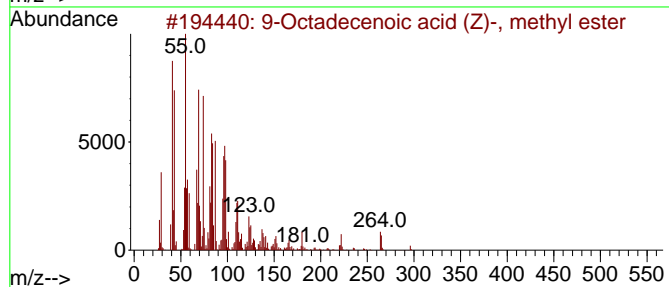
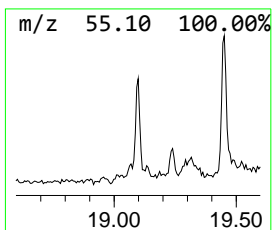
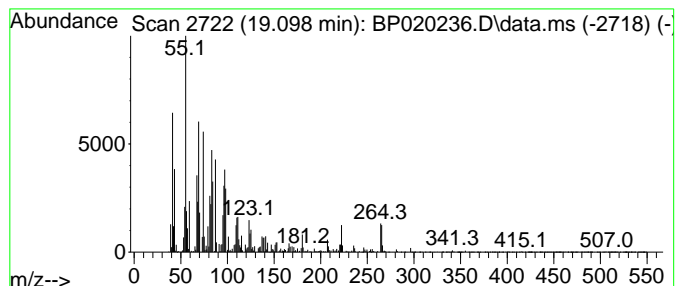
TIC Library : C:\DATABASE\NIST20.L  
 TIC Integration Parameters: LSCINT.P

\*\*\*\*\*  
 Peak Number 22 9-Octadecenoic acid (Z)-, m... Concentration Rank 29

R.T.	EstConc	Area	Relative to ISTD	R.T.
19.098	2.93 ng/ul	257120	Phenanthrene-d10	17.145

Hit#	of	5	Tentative ID	MW	MolForm	CAS#	Qual
1			9-Octadecenoic acid (Z)-, methyl...	296	C19H36O2	000112-62-9	99
2			8-Octadecenoic acid, methyl este...	296	C19H36O2	026528-50-7	99
3			9-Octadecenoic acid, methyl ester	296	C19H36O2	002462-84-2	99
4			14-Octadecenoic acid, methyl ester	296	C19H36O2	056554-48-4	99
5			11-Octadecenoic acid, methyl ester	296	C19H36O2	052380-33-3	99



Data Path : Z:\svoasrv\HPCHEM1\BNA\_P\Data\BP050824\  
 Data File : BP020236.D  
 Acq On : 08 May 2024 10:33  
 Operator : MA/JU  
 Sample : P2369-23  
 Misc :  
 ALS Vial : 4 Sample Multiplier: 1

Instrument :  
 BNA\_P  
 ClientSampleId :  
 A43Y5

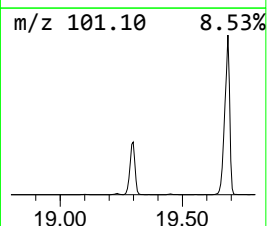
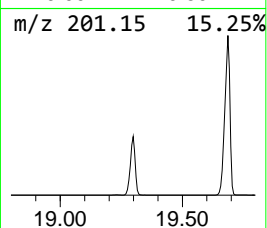
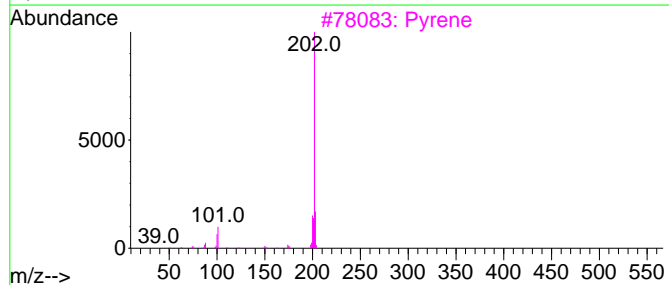
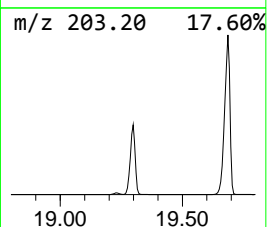
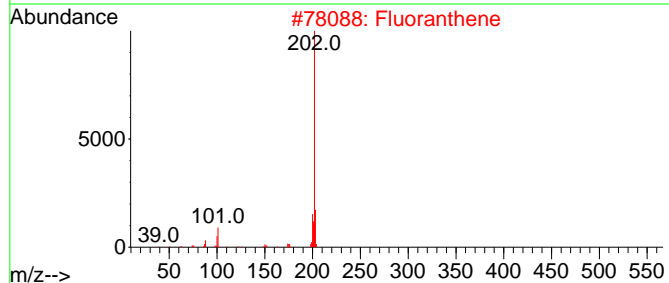
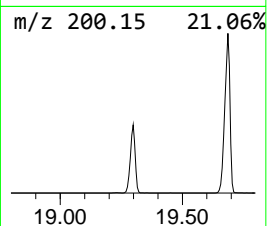
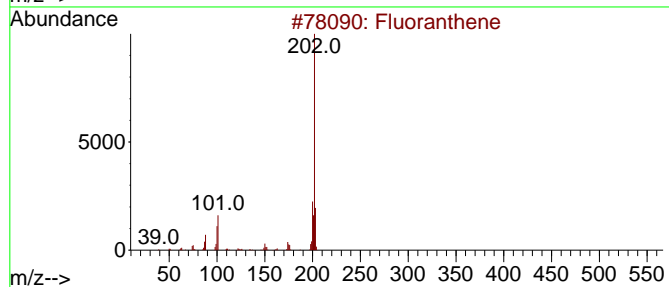
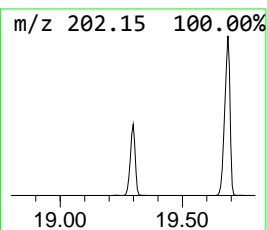
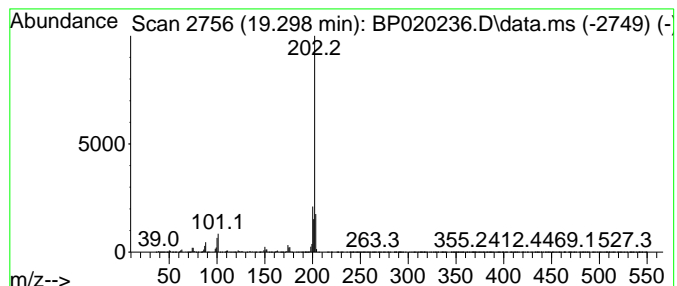
Quant Method : Z:\svoasrv\HPCHEM1\BNA\_P\Methods\SFAM-EPA-BP050124.MA.M  
 Quant Title : SVOA CALIBRATION

TIC Library : C:\DATABASE\NIST20.L  
 TIC Integration Parameters: LSCINT.P

\*\*\*\*\*  
 Peak Number 24 Fluoranthene Concentration Rank 9

R.T.	EstConc	Area	Relative to ISTD	R.T.
19.298	97.15 ng/ul	8515060	Phenanthrene-d10	17.145

Hit#	of	5	Tentative ID	MW	MolForm	CAS#	Qual
1			Fluoranthene	202	C16H10	000206-44-0	96
2			Fluoranthene	202	C16H10	000206-44-0	96
3			Pyrene	202	C16H10	000129-00-0	93
4			Pyrene	202	C16H10	000129-00-0	90
5			Pyrene	202	C16H10	000129-00-0	87



Data Path : Z:\svoasrv\HPCHEM1\BNA\_P\Data\BP050824\  
 Data File : BP020236.D  
 Acq On : 08 May 2024 10:33  
 Operator : MA/JU  
 Sample : P2369-23  
 Misc :  
 ALS Vial : 4 Sample Multiplier: 1

Instrument :  
 BNA\_P  
 ClientSampleId :  
 A43Y5

Quant Method : Z:\svoasrv\HPCHEM1\BNA\_P\Methods\SFAM-EPA-BP050124.MA.M  
 Quant Title : SVOA CALIBRATION

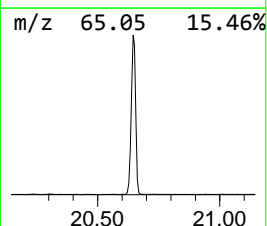
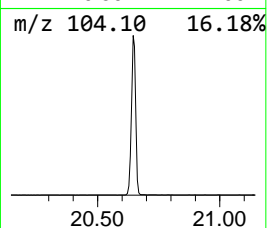
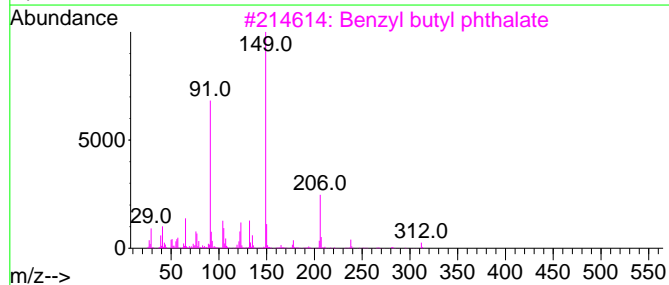
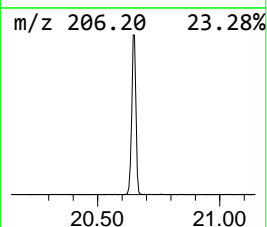
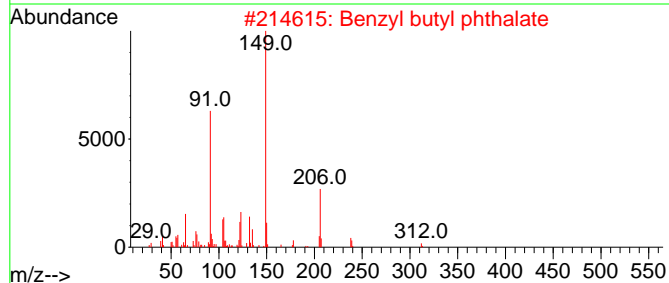
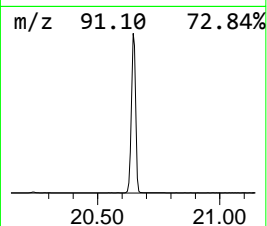
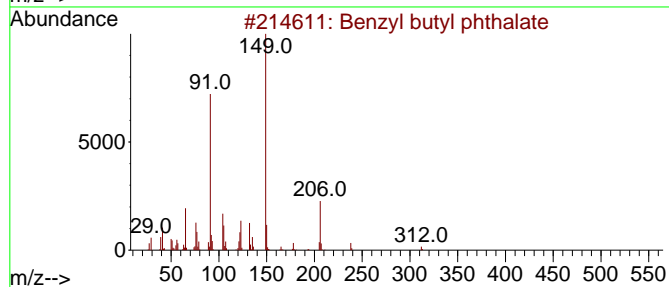
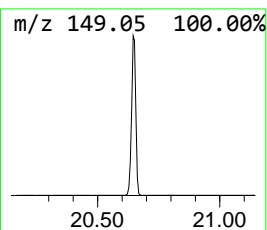
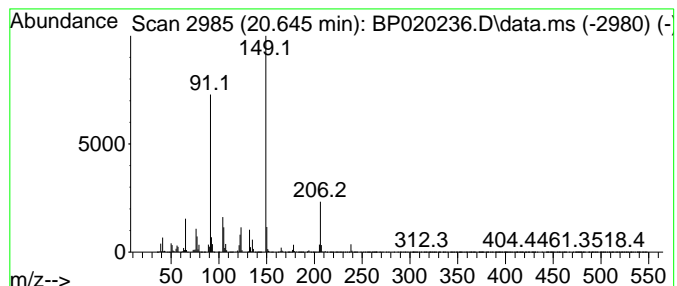
TIC Library : C:\DATABASE\NIST20.L  
 TIC Integration Parameters: LSCINT.P

\*\*\*\*\*  
 Peak Number 25 Benzyl butyl phthalate Concentration Rank 23

R.T.	EstConc	Area	Relative to ISTD	R.T.
20.645	17.90 ng/ul	8211350	Chrysene-d12	21.633

Hit#	of	5	Tentative ID	MW	MolForm	CAS#	Qual
1			Benzyl butyl phthalate	312	C19H20O4	000085-68-7	94
2			Benzyl butyl phthalate	312	C19H20O4	000085-68-7	91
3			Benzyl butyl phthalate	312	C19H20O4	000085-68-7	91
4			Benzyl butyl phthalate	312	C19H20O4	000085-68-7	90
5			Benzyl butyl phthalate	312	C19H20O4	000085-68-7	78



Data Path : Z:\svoasrv\HPCHEM1\BNA\_P\Data\BP050824\  
 Data File : BP020236.D  
 Acq On : 08 May 2024 10:33  
 Operator : MA/JU  
 Sample : P2369-23  
 Misc :  
 ALS Vial : 4 Sample Multiplier: 1

Instrument :  
 BNA\_P  
 ClientSampleId :  
 A43Y5

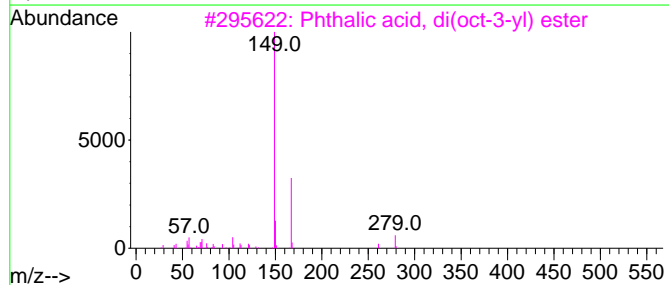
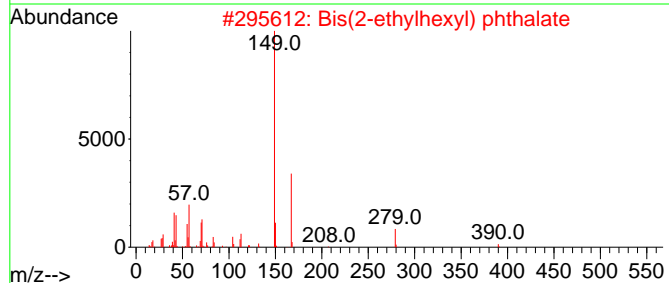
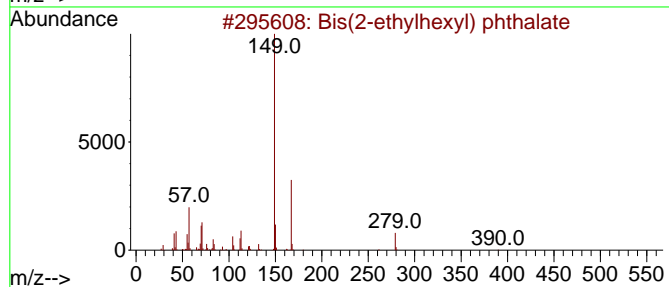
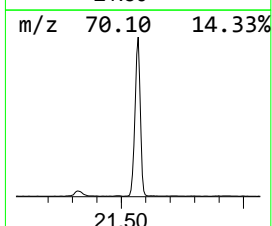
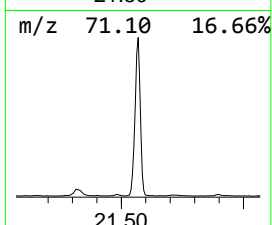
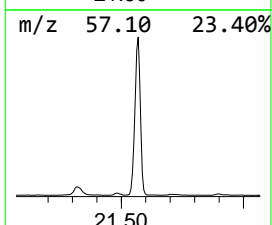
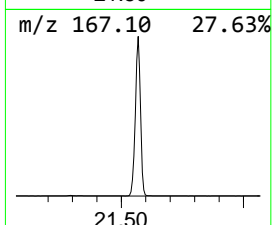
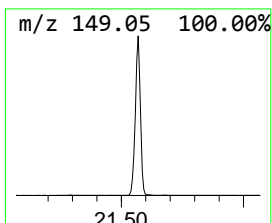
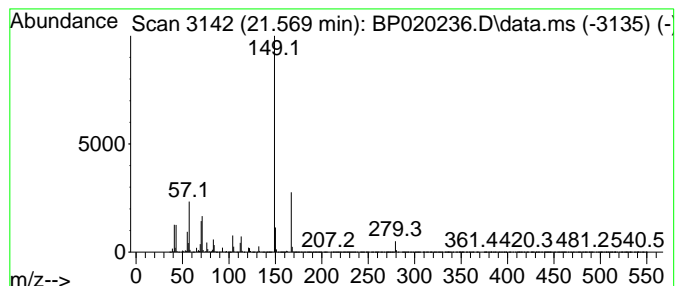
Quant Method : Z:\svoasrv\HPCHEM1\BNA\_P\Methods\SFAM-EPA-BP050124.MA.M  
 Quant Title : SVOA CALIBRATION

TIC Library : C:\DATABASE\NIST20.L  
 TIC Integration Parameters: LSCINT.P

\*\*\*\*\*  
 Peak Number 26 Bis(2-ethylhexyl) phthalate Concentration Rank 22

R.T.	EstConc	Area	Relative to ISTD	R.T.
21.569	29.04 ng/ul	13325900	Chrysene-d12	21.633

Hit#	of	5	Tentative ID	MW	MolForm	CAS#	Qual
1			Bis(2-ethylhexyl) phthalate	390	C24H38O4	000117-81-7	91
2			Bis(2-ethylhexyl) phthalate	390	C24H38O4	000117-81-7	91
3			Phthalic acid, di(oct-3-yl) ester	390	C24H38O4	1000377-72-3	80
4			Phthalic acid, 2-ethylhexyl hexy...	362	C22H34O4	1000309-02-5	72
5			1,2-Benzenedicarboxylic acid, bu...	334	C20H30O4	000085-69-8	72



Data Path : Z:\svoasrv\HPCHEM1\BNA\_P\Data\BP050824\  
 Data File : BP020236.D  
 Acq On : 08 May 2024 10:33  
 Operator : MA/JU  
 Sample : P2369-23  
 Misc :  
 ALS Vial : 4 Sample Multiplier: 1

Instrument :  
 BNA\_P  
 ClientSampleId :  
 A43Y5

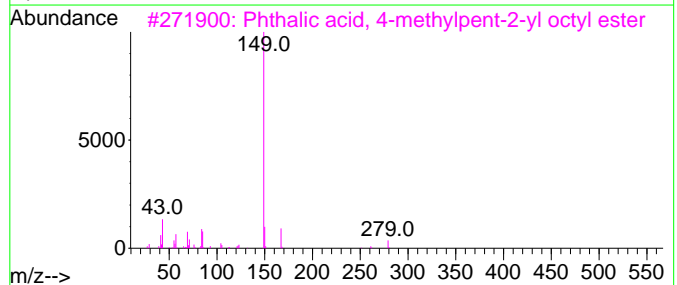
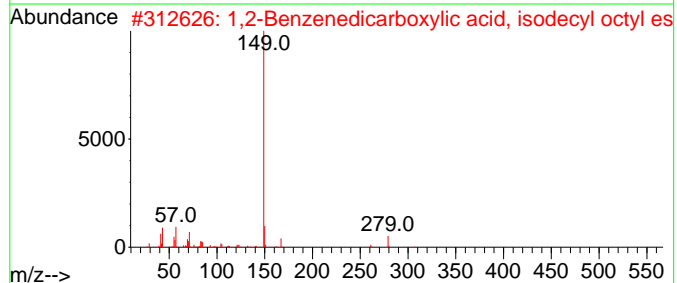
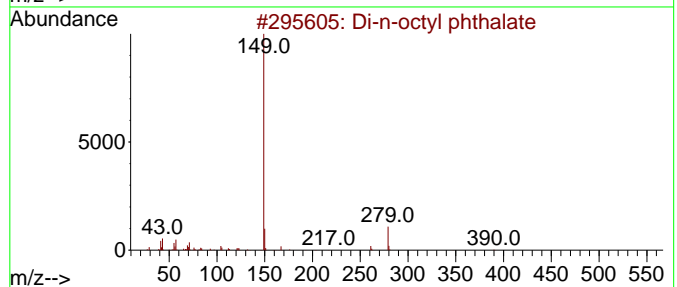
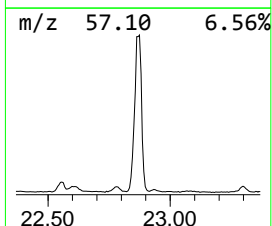
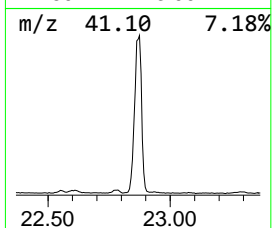
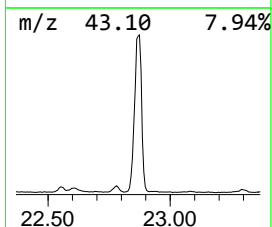
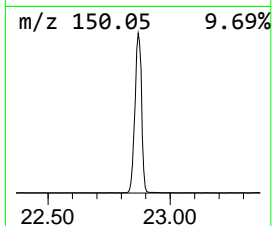
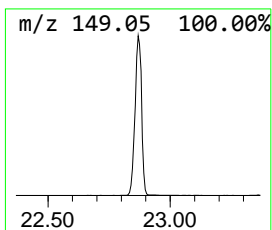
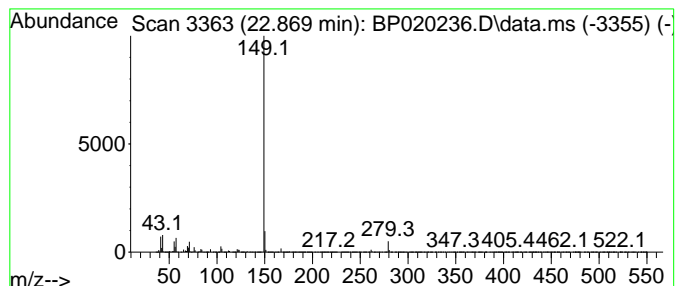
Quant Method : Z:\svoasrv\HPCHEM1\BNA\_P\Methods\SFAM-EPA-BP050124.MA.M  
 Quant Title : SVOA CALIBRATION

TIC Library : C:\DATABASE\NIST20.L  
 TIC Integration Parameters: LSCINT.P

\*\*\*\*\*  
 Peak Number 27 Di-n-octyl phthalate Concentration Rank 21

R.T.	EstConc	Area	Relative to ISTD	R.T.
22.869	30.96 ng/ul	14203300	Chrysene-d12	21.633

Hit#	of	5	Tentative ID	MW	MolForm	CAS#	Qual
1			Di-n-octyl phthalate	390	C24H38O4	000117-84-0	95
2			1,2-Benzenedicarboxylic acid, is...	418	C26H42O4	001330-96-7	90
3			Phthalic acid, 4-methylpent-2-yl...	362	C22H34O4	1000356-87-8	86
4			1,2-Benzenedicarboxylic acid, de...	418	C26H42O4	000119-07-3	86
5			Phthalic acid, 3-methylbut-3-eny...	346	C21H30O4	1000357-10-6	86



Data Path : Z:\svoasrv\HPCHEM1\BNA\_P\Data\BP050824\  
 Data File : BP020236.D  
 Acq On : 08 May 2024 10:33  
 Operator : MA/JU  
 Sample : P2369-23  
 Misc :  
 ALS Vial : 4 Sample Multiplier: 1

Instrument :  
 BNA\_P  
 ClientSampleId :  
 A43Y5

Quant Method : Z:\svoasrv\HPCHEM1\BNA\_P\Methods\SFAM-EPA-BP050124.MA.M  
 Quant Title : SVOA CALIBRATION

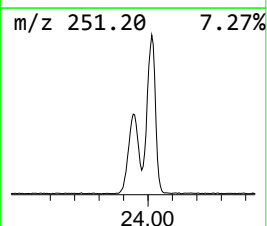
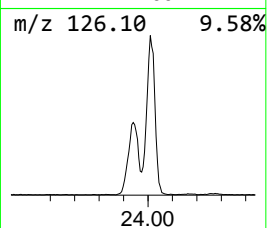
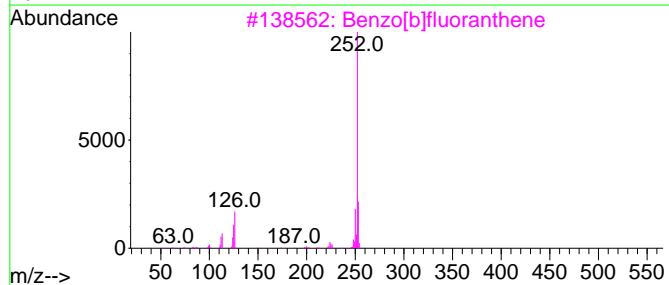
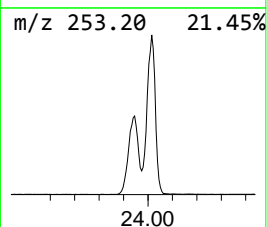
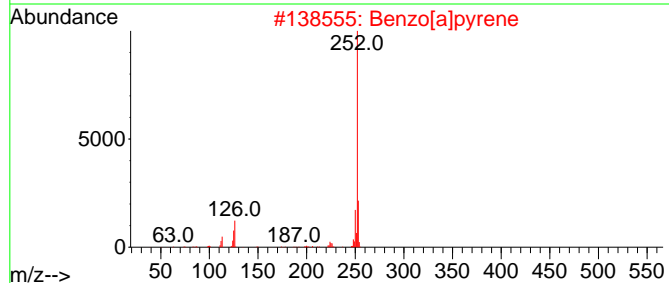
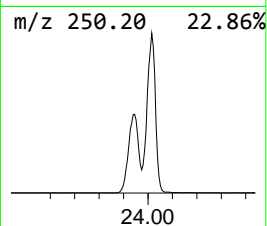
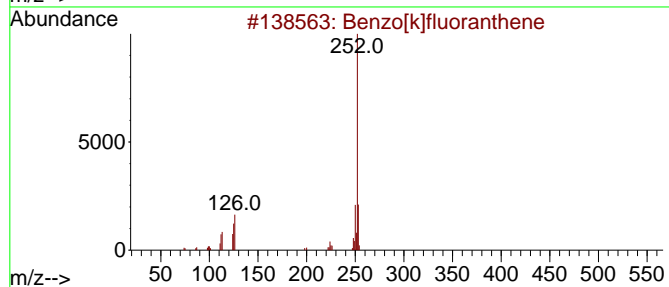
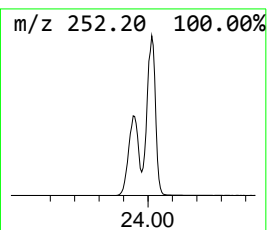
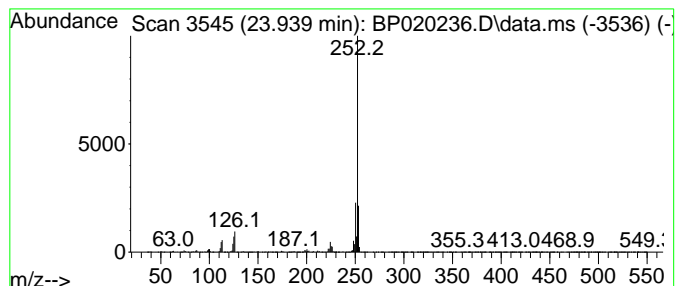
TIC Library : C:\DATABASE\NIST20.L  
 TIC Integration Parameters: LSCINT.P

\*\*\*\*\*  
 Peak Number 28 Benzo[k]fluoranthene Concentration Rank 18

R.T.	EstConc	Area	Relative to ISTD	R.T.
23.939	47.79 ng/ul	3537140	Perylene-d12	24.998

Hit#	of	5	Tentative ID	MW	MolForm	CAS#	Qual
1			Benzo[k]fluoranthene	252	C20H12	000207-08-9	98
2			Benzo[a]pyrene	252	C20H12	000050-32-8	96
3			Benzo[b]fluoranthene	252	C20H12	000205-99-2	96
4			Benzo[e]pyrene	252	C20H12	000192-97-2	95
5			Benzo[j]fluoranthene	252	C20H12	000205-82-3	93



Data Path : Z:\svoasrv\HPCHEM1\BNA\_P\Data\BP050824\  
 Data File : BP020236.D  
 Acq On : 08 May 2024 10:33  
 Operator : MA/JU  
 Sample : P2369-23  
 Misc :  
 ALS Vial : 4 Sample Multiplier: 1

Instrument :  
 BNA\_P  
 ClientSampleId :  
 A43Y5

Quant Method : Z:\svoasrv\HPCHEM1\BNA\_P\Methods\SFAM-EPA-BP050124.MA.M  
 Quant Title : SVOA CALIBRATION

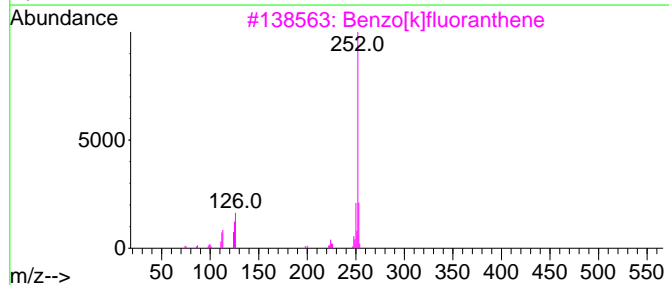
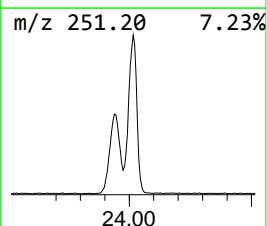
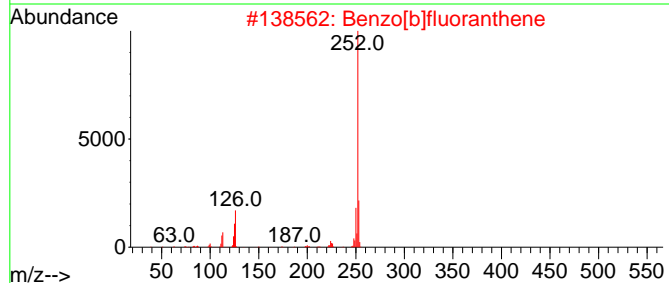
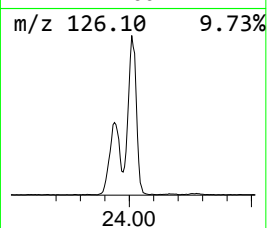
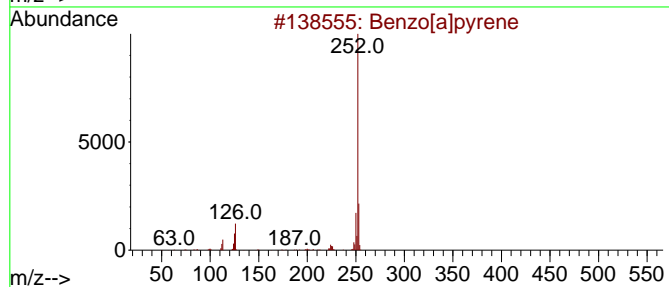
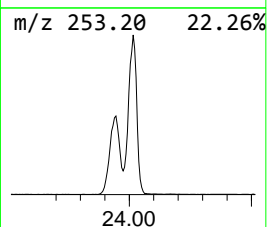
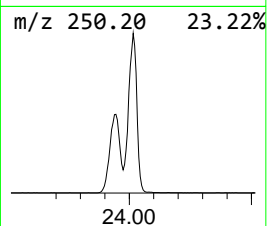
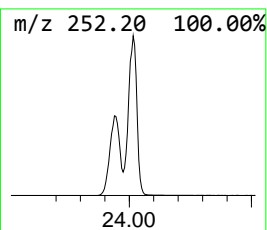
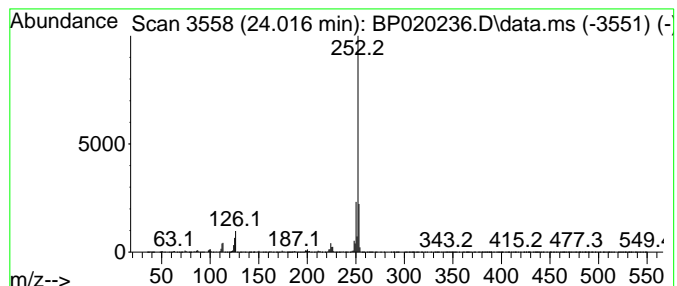
TIC Library : C:\DATABASE\NIST20.L  
 TIC Integration Parameters: LSCINT.P

\*\*\*\*\*  
 Peak Number 29 Benzo[a]pyrene Concentration Rank 10

R.T.	EstConc	Area	Relative to ISTD	R.T.
24.016	79.53 ng/ul	5885650	Perylene-d12	24.998

Hit#	of 5	Tentative ID	MW	MolForm	CAS#	Qual
1		Benzo[a]pyrene	252	C20H12	000050-32-8	98
2		Benzo[b]fluoranthene	252	C20H12	000205-99-2	95
3		Benzo[k]fluoranthene	252	C20H12	000207-08-9	95
4		Benzo[e]pyrene	252	C20H12	000192-97-2	95
5		Perylene	252	C20H12	000198-55-0	94



Data Path : Z:\svoasrv\HPCHEM1\BNA\_P\Data\BP050824\  
 Data File : BP020236.D  
 Acq On : 08 May 2024 10:33  
 Operator : MA/JU  
 Sample : P2369-23  
 Misc :  
 ALS Vial : 4 Sample Multiplier: 1

Instrument :  
 BNA\_P  
 ClientSampleId :  
 A43Y5

Quant Method : Z:\svoasrv\HPCHEM1\BNA\_P\Methods\SFAM-EPA-BP050124.MA.M  
 Quant Title : SVOA CALIBRATION

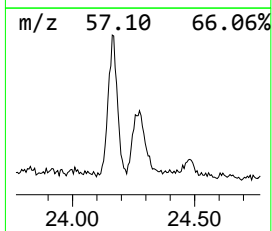
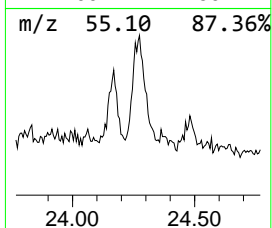
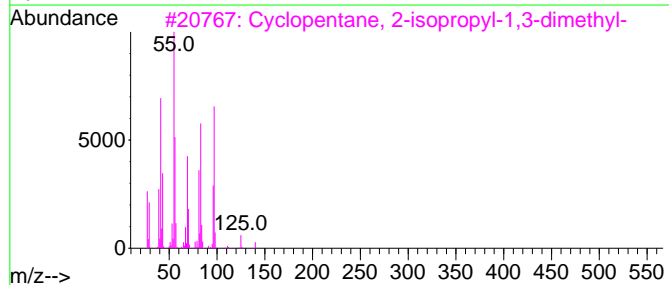
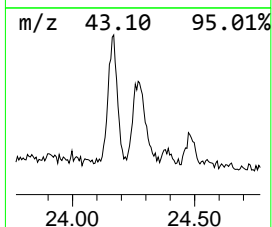
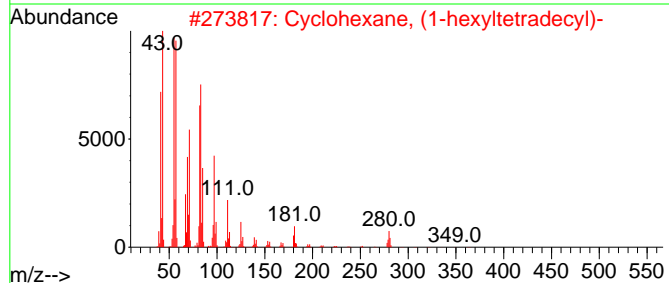
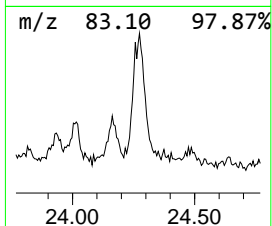
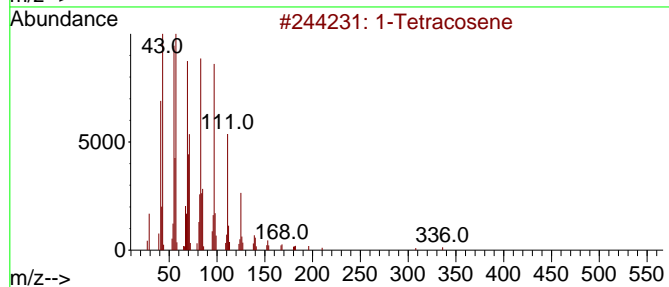
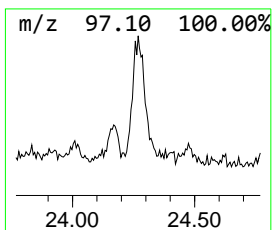
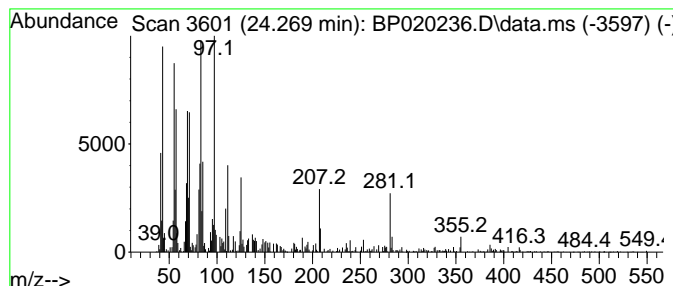
TIC Library : C:\DATABASE\NIST20.L  
 TIC Integration Parameters: LSCINT.P

\*\*\*\*\*  
 Peak Number 30 (DEL) Alkane: Straight-Chai... Concentration Rank 26

R.T.	EstConc	Area	Relative to ISTD	R.T.
24.269	4.96 ng/ul	367345	Perylene-d12	24.998

Hit#	of 5	Tentative ID	MW	MolForm	CAS#	Qual
1		1-Tetracosene	336	C24H48	010192-32-2	86
2		Cyclohexane, (1-hexyltetradecyl)-	364	C26H52	004443-60-1	49
3		Cyclopentane, 2-isopropyl-1,3-di...	140	C10H20	032281-85-9	38
4		(2-Methylbutyl)cyclohexane	154	C11H22	054105-77-0	30
5		1-Docosanol, methyl ether	340	C23H48O	1000333-91-9	30





Data Path : Z:\svoasrv\HPCHEM1\BNA\_P\Data\BP050824\  
 Data File : BP020236.D  
 Acq On : 08 May 2024 10:33  
 Operator : MA/JU  
 Sample : P2369-23  
 Misc :  
 ALS Vial : 4 Sample Multiplier: 1

Instrument :  
 BNA\_P  
 ClientSampleId :  
 A43Y5

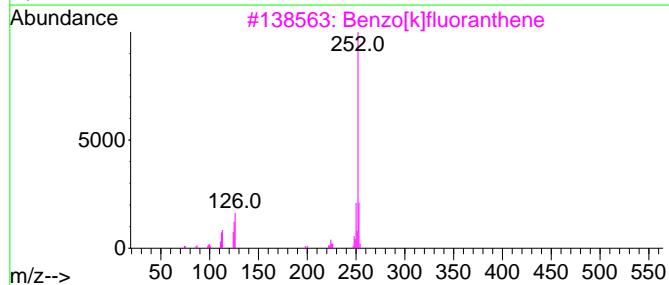
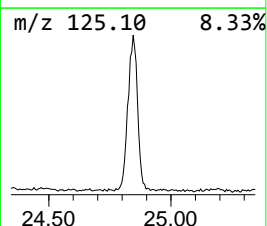
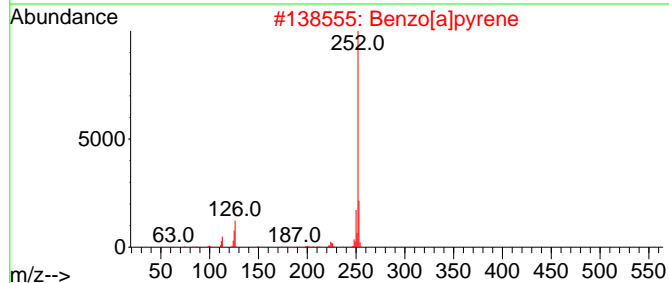
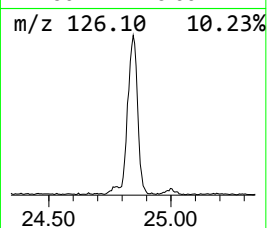
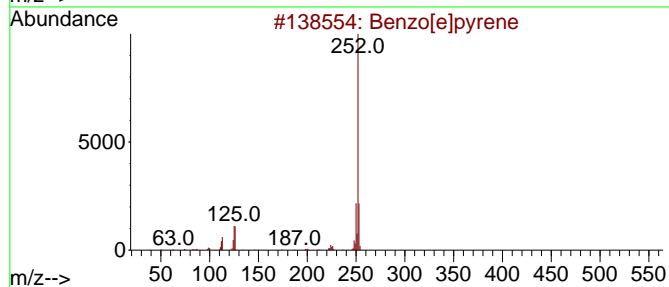
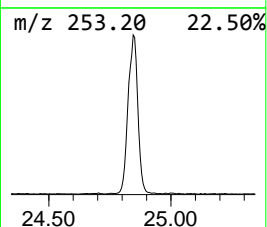
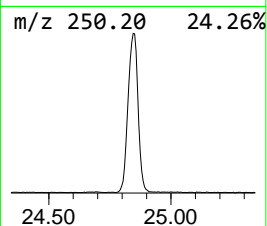
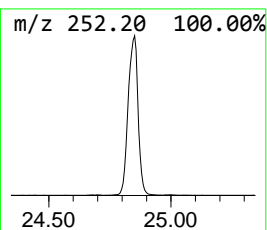
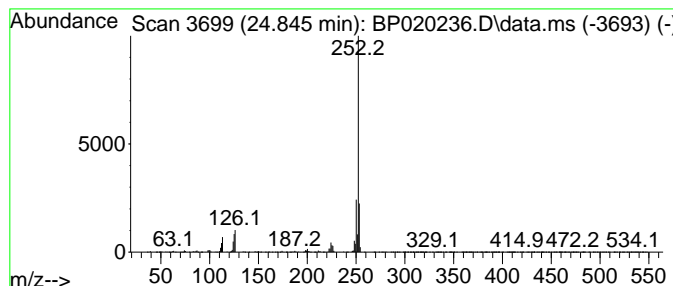
Quant Method : Z:\svoasrv\HPCHEM1\BNA\_P\Methods\SFAM-EPA-BP050124.MA.M  
 Quant Title : SVOA CALIBRATION

TIC Library : C:\DATABASE\NIST20.L  
 TIC Integration Parameters: LSCINT.P

\*\*\*\*\*  
 Peak Number 31 Benzo[e]pyrene Concentration Rank 20

R.T.	EstConc	Area	Relative to ISTD	R.T.
24.845	34.83 ng/ul	2577460	Perylene-d12	24.998

Hit#	of	5	Tentative ID	MW	MolForm	CAS#	Qual
1			Benzo[e]pyrene	252	C20H12	000192-97-2	97
2			Benzo[a]pyrene	252	C20H12	000050-32-8	97
3			Benzo[k]fluoranthene	252	C20H12	000207-08-9	97
4			Benzo[b]fluoranthene	252	C20H12	000205-99-2	94
5			Perylene	252	C20H12	000198-55-0	93



Data Path : Z:\svoasrv\HPCHEM1\BNA\_P\Data\BP050824\  
 Data File : BP020236.D  
 Acq On : 08 May 2024 10:33  
 Operator : MA/JU  
 Sample : P2369-23  
 Misc :  
 ALS Vial : 4 Sample Multiplier: 1

Instrument :  
 BNA\_P  
 ClientSampleId :  
 A43Y5

Quant Method : Z:\svoasrv\HPCHEM1\BNA\_P\Methods\SFAM-EPA-BP050124.MA.M  
 Quant Title : SVOA CALIBRATION

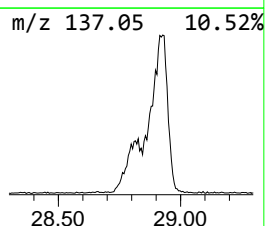
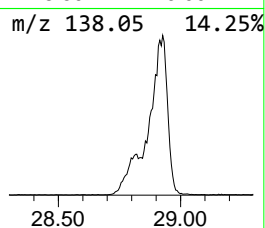
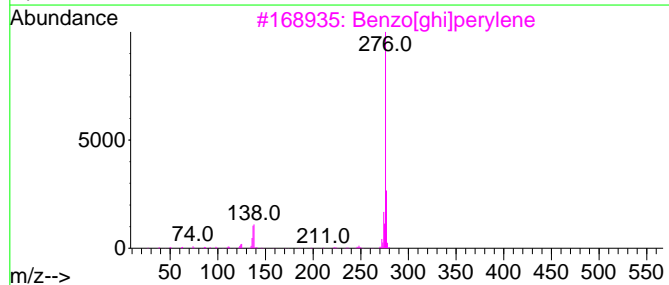
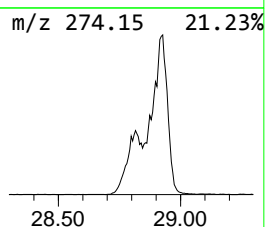
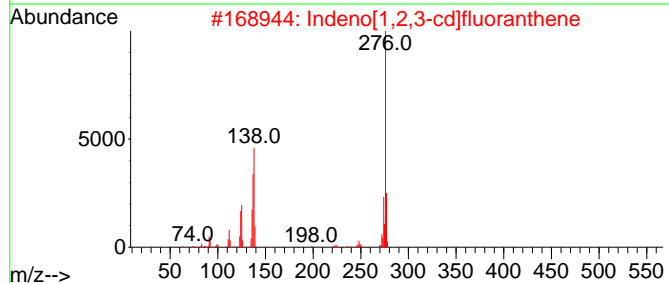
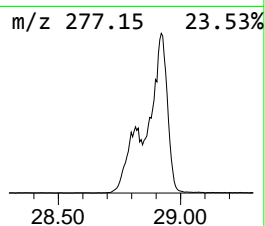
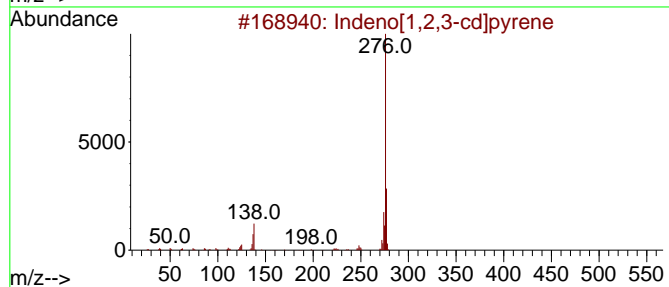
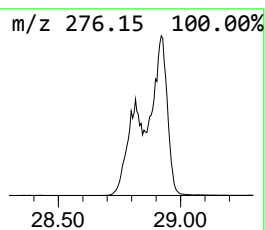
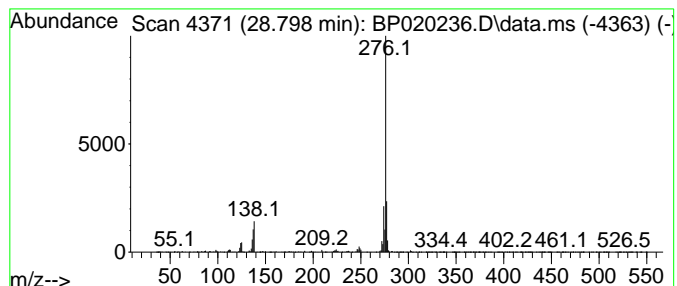
TIC Library : C:\DATABASE\NIST20.L  
 TIC Integration Parameters: LSCINT.P

\*\*\*\*\*  
 Peak Number 32 Indeno[1,2,3-cd]pyrene Concentration Rank 25

R.T.	EstConc	Area	Relative to ISTD	R.T.
28.798	5.77 ng/ul	426917	Perylene-d12	24.998

Hit#	of	5	Tentative ID	MW	MolForm	CAS#	Qual
1			Indeno[1,2,3-cd]pyrene	276	C22H12	000193-39-5	97
2			Indeno[1,2,3-cd]fluoranthene	276	C22H12	000193-43-1	96
3			Benzo[ghi]perylene	276	C22H12	000191-24-2	94
4			Indeno[1,2,3-cd]pyrene	276	C22H12	000193-39-5	94
5			Dibenzo[def,mno]chrysene	276	C22H12	000191-26-4	91



Data Path : Z:\svoasrv\HPCHEM1\BNA\_P\Data\BP050824\  
 Data File : BP020236.D  
 Acq On : 08 May 2024 10:33  
 Operator : MA/JU  
 Sample : P2369-23  
 Misc :  
 ALS Vial : 4 Sample Multiplier: 1

Instrument :  
 BNA\_P  
 ClientSampleId :  
 A43Y5

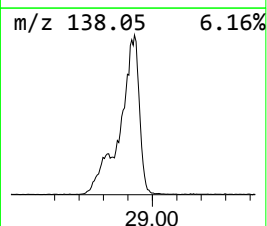
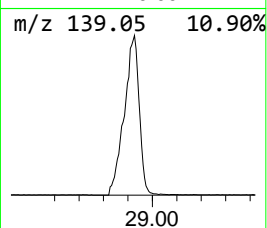
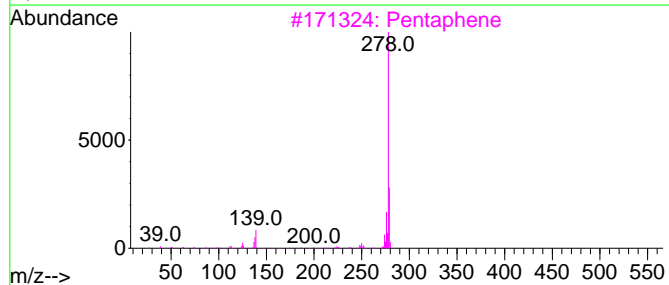
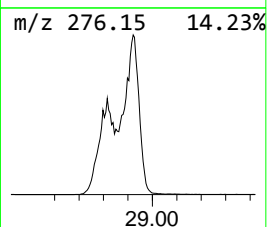
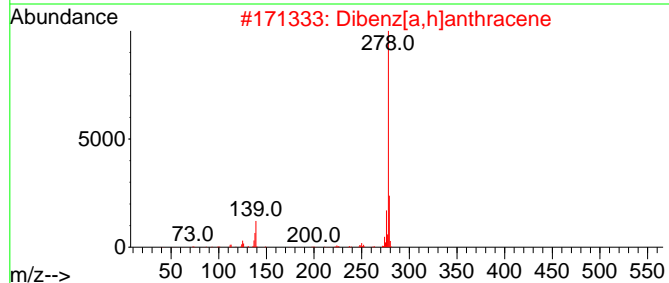
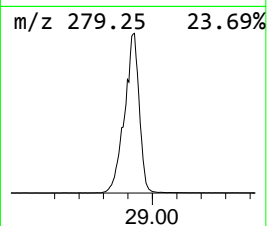
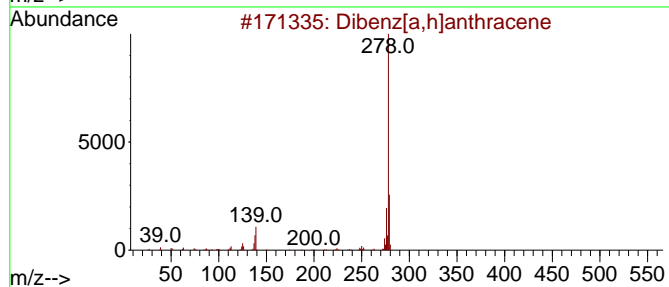
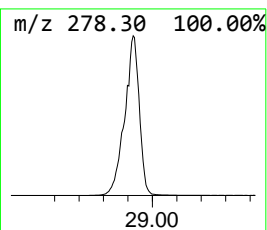
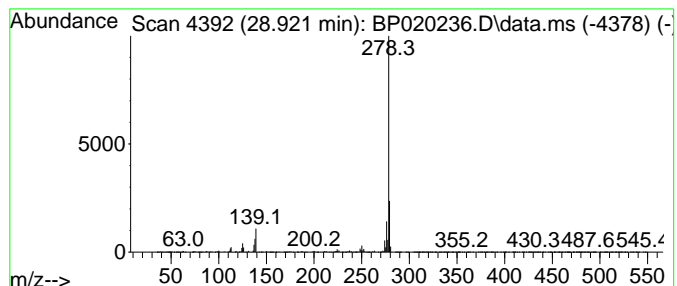
Quant Method : Z:\svoasrv\HPCHEM1\BNA\_P\Methods\SFAM-EPA-BP050124.MA.M  
 Quant Title : SVOA CALIBRATION

TIC Library : C:\DATABASE\NIST20.L  
 TIC Integration Parameters: LSCINT.P

\*\*\*\*\*  
 Peak Number 33 Dibenz[a,h]anthracene Concentration Rank 5

R.T.	EstConc	Area	Relative to ISTD	R.T.
28.921	137.66 ng/ul	10187900	Perylene-d12	24.998

Hit#	of 5	Tentative ID	MW	MolForm	CAS#	Qual
1		Dibenz[a,h]anthracene	278	C22H14	000053-70-3	99
2		Dibenz[a,h]anthracene	278	C22H14	000053-70-3	98
3		Pentaphene	278	C22H14	000222-93-5	96
4		Naphtho[1,2-a]anthracene	278	C22H14	000195-06-2	96
5		Benzo[b]chrysene	278	C22H14	000214-17-5	96



Data Path : Z:\svoasrv\HPCHEM1\BNA\_P\Data\BP050824\  
 Data File : BP020236.D  
 Acq On : 08 May 2024 10:33  
 Operator : MA/JU  
 Sample : P2369-23  
 Misc :  
 ALS Vial : 4 Sample Multiplier: 1

Instrument :  
 BNA\_P  
 ClientSampleId :  
 A43Y5

Quant Method : Z:\svoasrv\HPCHEM1\BNA\_P\Methods\SFAM-EPA-BP050124.MA.M  
 Quant Title : SVOA CALIBRATION

TIC Library : C:\DATABASE\NIST0.L  
 TIC Integration Parameters: LSCINT.P

TIC Top Hit name	RT	EstConc	Units	Response	--Internal Standard--			
					#	RT	Resp	Conc
Bis(2-chloroeth...	7.064	63.9	ng/ul	1943860	1	7.616	608060	20.0
Benzene, 1,3-di...	7.505	63.2	ng/ul	1921490	1	7.616	608060	20.0
Benzene, 1,4-di...	7.963	218.2	ng/ul	6632390	1	7.616	608060	20.0
1-Propanamine, ...	8.434	168.4	ng/ul	5119620	1	7.616	608060	20.0
Methane, bis(2-...	9.828	53.3	ng/ul	2575400	2	10.393	967312	20.0
Phenol, 4-chlor...	11.704	128.1	ng/ul	6194550	2	10.393	967312	20.0
Phenol, 2,4,6-t...	12.698	43.4	ng/ul	2968700	3	14.299	1368220	20.0
Phenol, 2,4,5-t...	12.775	61.1	ng/ul	4182470	3	14.299	1368220	20.0
Benzene, 2-meth...	13.904	55.5	ng/ul	3798840	3	14.299	1368220	20.0
Acena phthene	14.369	158.1	ng/ul	10817600	3	14.299	1368220	20.0
Benzene, 1-meth...	14.722	104.2	ng/ul	7126560	3	14.299	1368220	20.0
Diethyl Phthalate	15.169	60.2	ng/ul	4121040	3	14.299	1368220	20.0
Fluo rene	15.381	118.5	ng/ul	8104530	3	14.299	1368220	20.0
Benzene, 1-brom...	16.304	52.1	ng/ul	4564950	4	17.145	1752970	20.0
unknown-01	16.963	2.4	ng/ul	210042	4	17.145	1752970	20.0
Hexadecanoic ac...	17.869	4.0	ng/ul	354717	4	17.145	1752970	20.0
n-Hexadecanoic ...	18.104	10.6	ng/ul	927323	4	17.145	1752970	20.0
Dibutyl phthalate	18.181	158.7	ng/ul	13906100	4	17.145	1752970	20.0
Cyclopentaneund...	18.504	2.4	ng/ul	205927	4	17.145	1752970	20.0
9,10-Anthracene...	18.645	3.8	ng/ul	331029	4	17.145	1752970	20.0
9-Octadecenoic ...	19.098	2.9	ng/ul	257120	4	17.145	1752970	20.0
Fluoran thene	19.298	97.2	ng/ul	8515060	4	17.145	1752970	20.0
Benzyl butyl ph...	20.645	17.9	ng/ul	8211350	5	21.633	9176470	20.0
Bis(2-ethylhexy...	21.569	29.0	ng/ul	13325900	5	21.633	9176470	20.0
Di-n-octyl ph t...	22.869	31.0	ng/ul	14203300	5	21.633	9176470	20.0
Benzo[k]fluoran...	23.939	47.8	ng/ul	3537140	6	24.998	1480180	20.0
Benzo[a]pyrene	24.016	79.5	ng/ul	5885650	6	24.998	1480180	20.0
(DEL) Alkane: S...	24.269	5.0	ng/ul	367345	6	24.998	1480180	20.0
Benzo[e]pyrene	24.845	34.8	ng/ul	2577460	6	24.998	1480180	20.0
Indeno[1,2,3-cd...	28.798	5.8	ng/ul	426917	6	24.998	1480180	20.0
Dibenz[a,h]anth...	28.921	137.7	ng/ul	10187900	6	24.998	1480180	20.0