

Data Path : Z:\svoasrv\HPCHEM1\BNA_P\Data\BP051622\
 Data File : BP010368.D
 Acq On : 16 May 2022 21:28
 Operator : CG/JU
 Sample : N2831-05
 Misc :
 ALS Vial : 15 Sample Multiplier: 1

Instrument :
 BNA_P
 ClientSampleId :
 YB2K2

Integration Parameters: LSCINT.P
 Integrator: RTE
 Smoothing : OFF Filtering: 5
 Sampling : 1 Min Area: 0.1 % of largest Peak
 Start Thrs: 0.2 Max Peaks: 100
 Stop Thrs : 0 Peak Location: TOP

If leading or trailing edge < 100 prefer < Baseline drop else tangent >
 Peak separation: 5

Method : Z:\svoasrv\HPCHEM1\BNA_P\Methods\SFAM-EPA-BP051322.M
 Title : SVOA CALIBRATION

Signal : TIC: BP010368.D\data.ms

peak #	R.T. min	first scan	max scan	last scan	PK TY	peak height	corr. area	corr. % max.	% of total
1	3.311	34	38	41	rBV2	22601	31145	0.75%	0.073%
2	3.346	41	44	48	rVV2	21370	26798	0.65%	0.063%
3	3.634	91	93	96	rBV2	5517	5678	0.14%	0.013%
4	3.769	112	116	133	rBV	147074	307564	7.42%	0.724%
5	3.999	149	155	162	rVB9	7330	16903	0.41%	0.040%
6	4.087	166	170	174	rVB2	10238	13560	0.33%	0.032%
7	4.452	227	232	238	rVB3	21068	36906	0.89%	0.087%
8	4.616	255	260	268	rVB5	19478	34751	0.84%	0.082%
9	5.011	322	327	336	rBV3	5578	11934	0.29%	0.028%
10	5.405	391	394	401	rVB8	4605	8514	0.21%	0.020%
11	5.693	440	443	447	rVB4	5529	6366	0.15%	0.015%
12	5.952	483	487	493	rVV7	8677	16163	0.39%	0.038%
13	6.005	493	496	500	rVB6	3887	5356	0.13%	0.013%
14	6.905	644	649	657	rVV5	6543	14972	0.36%	0.035%
15	7.063	670	676	687	rVB	140696	248041	5.98%	0.584%
16	7.228	694	704	712	rBV	434317	707245	17.06%	1.665%
17	7.305	712	717	724	rVB	20335	37550	0.91%	0.088%
18	7.428	731	738	749	rBV	438443	737324	17.79%	1.736%
19	7.528	752	755	759	rVV6	5328	7790	0.19%	0.018%
20	7.593	761	766	772	rVB2	32262	47741	1.15%	0.112%
21	7.899	811	818	825	rBV	554618	890342	21.48%	2.096%
22	7.963	825	829	841	rVB	115162	190469	4.59%	0.448%
23	8.487	913	918	920	rBV6	4407	7332	0.18%	0.017%
24	8.605	931	938	956	rBV	395784	734541	17.72%	1.729%
25	8.716	956	957	965	rVB8	3548	6254	0.15%	0.015%
26	9.057	1007	1015	1026	rBV	561143	987669	23.83%	2.325%
27	9.187	1031	1037	1039	rVV	22886	34405	0.83%	0.081%
28	9.222	1039	1043	1053	rVB	117915	194902	4.70%	0.459%
29	9.504	1085	1091	1096	rBV2	14743	24454	0.59%	0.058%
30	9.781	1130	1138	1151	rBV	447521	775569	18.71%	1.826%
31	10.028	1173	1180	1189	rBV3	24121	51961	1.25%	0.122%
32	10.169	1200	1204	1207	rVB6	2441	4295	0.10%	0.010%
33	10.234	1207	1215	1223	rBV4	21434	47387	1.14%	0.112%
34	10.322	1223	1230	1244	rVV	658352	1181110	28.49%	2.781%
35	10.699	1284	1294	1309	rBV	777418	1338534	32.29%	3.151%
36	10.834	1309	1317	1334	rBV	593520	1203995	29.05%	2.834%

Data Path : Z:\svoasrv\HPCHEM1\BNA_P\Data\BP051622\
 Data File : BP010368.D
 Acq On : 16 May 2022 21:28
 Operator : CG/JU
 Sample : N2831-05
 Misc :
 ALS Vial : 15 Sample Multiplier: 1

Instrument :
 BNA_P
 ClientSampleId :
 YB2K2

Integration Parameters: LSCINT.P

Integrator: RTE
 Smoothing : OFF Filtering: 5
 Sampling : 1 Min Area: 0.1 % of largest Peak
 Start Thrs: 0.2 Max Peaks: 100
 Stop Thrs : 0 Peak Location: TOP

If leading or trailing edge < 100 prefer < Baseline drop else tangent >
 Peak separation: 5

Method : Z:\svoasrv\HPCHEM1\BNA_P\Methods\SFAM-EPA-BP051322.M
 Title : SVOA CALIBRATION

37	11.128	1360	1367	1372	rVB	5452	12217	0.29%	0.029%
38	11.522	1425	1434	1445	rBV	272517	541986	13.07%	1.276%
39	12.134	1528	1538	1543	rBV3	10228	17837	0.43%	0.042%
40	12.198	1546	1549	1553	rVB6	3943	5204	0.13%	0.012%
41	12.287	1553	1564	1568	rBV	12563	26418	0.64%	0.062%
42	12.328	1568	1571	1579	rVB4	5258	10678	0.26%	0.025%
43	12.498	1595	1600	1603	rBV6	3058	5171	0.12%	0.012%
44	12.810	1648	1653	1658	rVV7	7571	16062	0.39%	0.038%
45	12.898	1665	1668	1671	rBV5	5094	5935	0.14%	0.014%
46	12.945	1671	1676	1681	rVB2	21443	35068	0.85%	0.083%
47	13.022	1686	1689	1695	rBV8	2843	6478	0.16%	0.015%
48	13.081	1695	1699	1702	rVB5	4000	5968	0.14%	0.014%
49	13.151	1707	1711	1713	rVB5	4123	4749	0.11%	0.011%
50	13.275	1728	1732	1735	rBV6	3379	5133	0.12%	0.012%
51	13.363	1742	1747	1754	rVB	39611	57196	1.38%	0.135%
52	13.504	1767	1771	1773	rBV5	5744	8256	0.20%	0.019%
53	13.940	1838	1845	1857	rBV	1470972	2045689	49.35%	4.816%
54	14.057	1863	1865	1869	rVB5	4472	5224	0.13%	0.012%
55	14.140	1875	1879	1883	rBV7	4551	8573	0.21%	0.020%
56	14.222	1883	1893	1908	rVV	1552241	2301104	55.51%	5.417%
57	14.434	1925	1929	1935	rVB3	12980	16081	0.39%	0.038%
58	14.528	1935	1945	1956	rBV2	1228227	1966925	47.45%	4.631%
59	14.734	1975	1980	1995	rVV2	83295	207337	5.00%	0.488%
60	14.951	2012	2017	2022	rBV2	39695	57428	1.39%	0.135%
61	15.116	2031	2045	2053	rBV5	46380	231204	5.58%	0.544%
62	15.339	2079	2083	2087	rBV3	9645	14993	0.36%	0.035%
63	15.387	2089	2091	2095	rVB4	10772	10216	0.25%	0.024%
64	15.522	2108	2114	2124	rBV	2061250	3016308	72.77%	7.101%
65	15.639	2128	2134	2148	rBV	488608	742916	17.92%	1.749%
66	15.769	2151	2156	2160	rBV2	22459	32363	0.78%	0.076%
67	15.939	2182	2185	2188	rBV5	3467	4699	0.11%	0.011%
68	16.081	2206	2209	2210	rBV3	6241	6175	0.15%	0.015%
69	16.245	2235	2237	2240	rVB4	6519	6457	0.16%	0.015%
70	16.304	2244	2247	2252	rVB2	20215	28016	0.68%	0.066%
71	16.681	2306	2311	2315	rBV7	10960	19509	0.47%	0.046%
72	16.963	2355	2359	2362	rBV6	6727	10829	0.26%	0.025%
73	17.051	2369	2374	2377	rBV4	47271	84217	2.03%	0.198%
74	17.204	2397	2400	2403	rBV5	6022	8307	0.20%	0.020%
75	17.281	2407	2413	2421	rBV	1581872	2266004	54.66%	5.335%
76	17.381	2423	2430	2442	rVV	2430854	3434142	82.84%	8.085%

Data Path : Z:\svoasrv\HPCHEM1\BNA_P\Data\BP051622\
 Data File : BP010368.D
 Acq On : 16 May 2022 21:28
 Operator : CG/JU
 Sample : N2831-05
 Misc :
 ALS Vial : 15 Sample Multiplier: 1

Instrument :
 BNA_P
 ClientSampleId :
 YB2K2

Integration Parameters: LSCINT.P

Integrator: RTE
 Smoothing : OFF Filtering: 5
 Sampling : 1 Min Area: 0.1 % of largest Peak
 Start Thrs: 0.2 Max Peaks: 100
 Stop Thrs : 0 Peak Location: TOP

If leading or trailing edge < 100 prefer < Baseline drop else tangent >
 Peak separation: 5

Method : Z:\svoasrv\HPCHEM1\BNA_P\Methods\SFAM-EPA-BP051322.M
 Title : SVOA CALIBRATION

77	17.510	2448	2452	2457	rVB	58273	71301	1.72%	0.168%
78	17.951	2524	2527	2532	rVB3	29960	36482	0.88%	0.086%
79	18.192	2559	2568	2573	rBV2	439956	852639	20.57%	2.007%
80	18.239	2573	2576	2581	rVB	56317	82918	2.00%	0.195%
81	19.192	2734	2738	2746	rVB5	47456	83136	2.01%	0.196%
82	19.263	2746	2750	2752	rBV	34363	52007	1.25%	0.122%
83	19.398	2769	2773	2781	rBV6	67656	100183	2.42%	0.236%
84	19.616	2804	2810	2815	rBV	3101636	4145263	100.00%	9.759%
85	19.839	2845	2848	2855	rVB3	33122	45073	1.09%	0.106%
86	20.051	2881	2884	2891	rBV3	63517	107816	2.60%	0.254%
87	20.139	2897	2899	2903	rVB	44062	46670	1.13%	0.110%
88	20.622	2978	2981	2985	rVB3	54745	63792	1.54%	0.150%
89	21.074	3054	3058	3067	rBV	602343	881888	21.27%	2.076%
90	21.363	3102	3107	3113	rBV	1883679	2513247	60.63%	5.917%
91	23.639	3487	3494	3501	rBV2	1876912	3685511	88.91%	8.676%
92	23.792	3513	3520	3532	rVB2	1155901	2424438	58.49%	5.708%

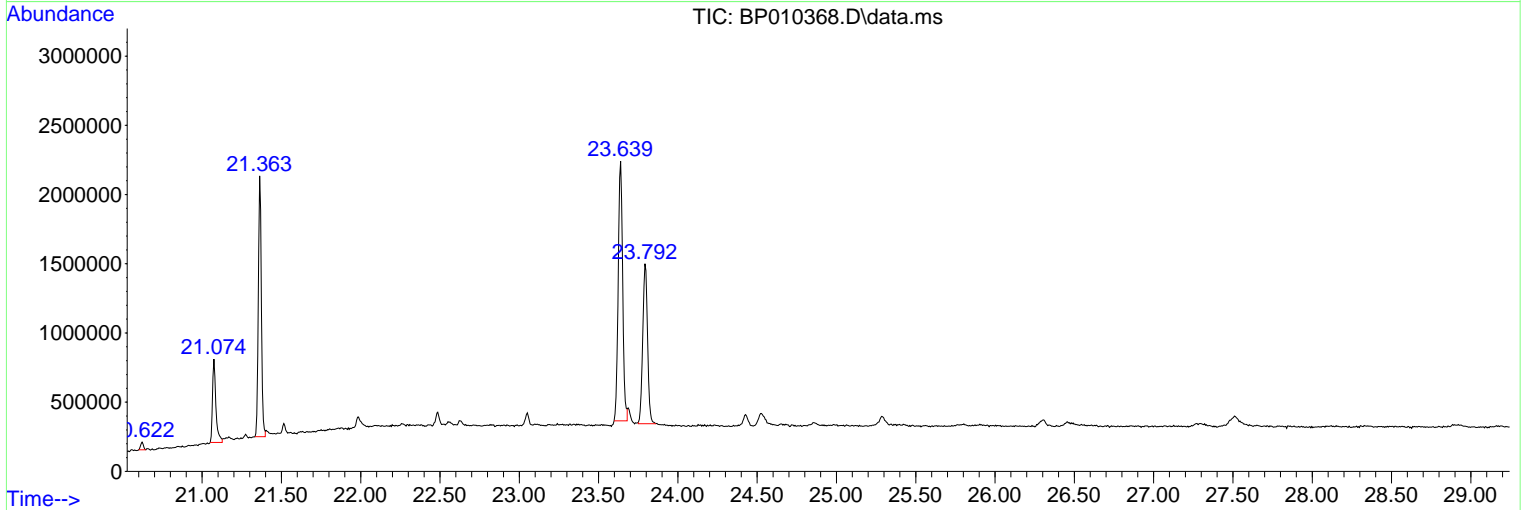
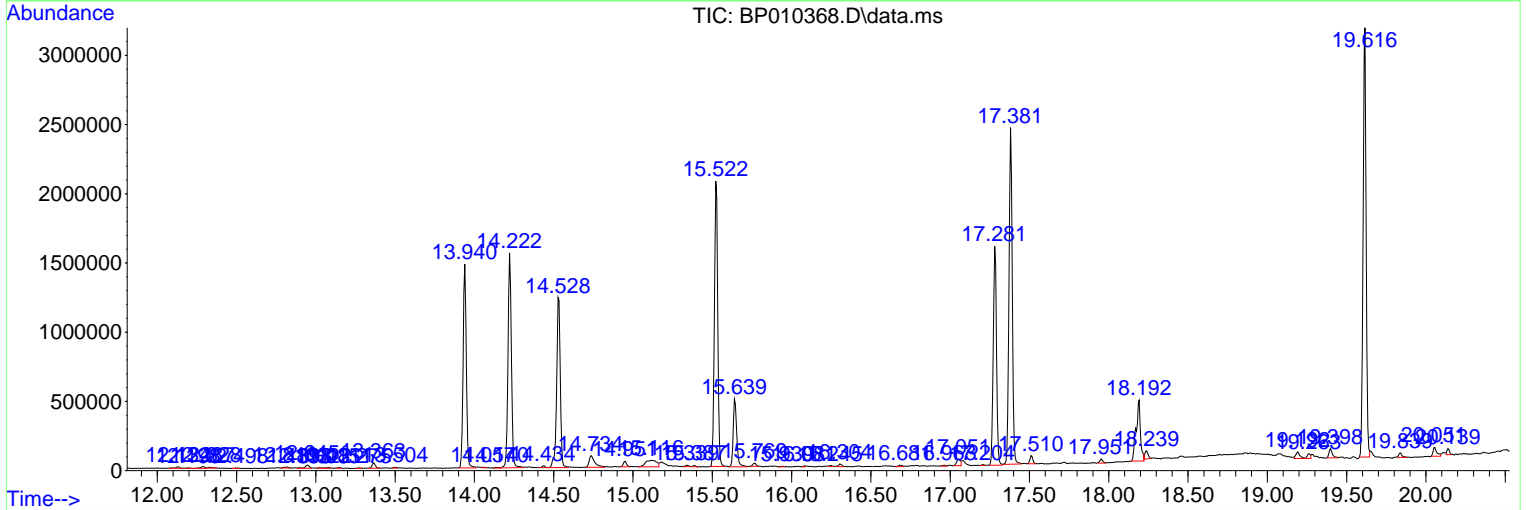
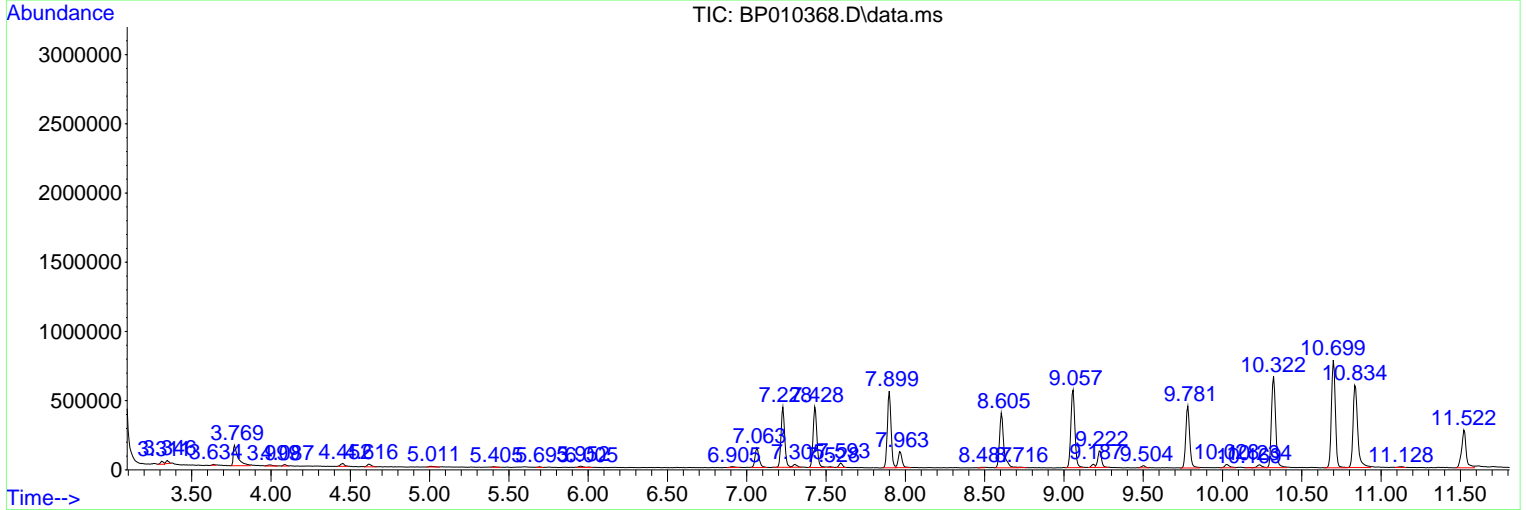
Sum of corrected areas: 42476956

Data Path : Z:\svoasrv\HPCHEM1\BNA_P\Data\BP051622\
 Data File : BP010368.D
 Acq On : 16 May 2022 21:28
 Operator : CG/JU
 Sample : N2831-05
 Misc :
 ALS Vial : 15 Sample Multiplier: 1

Instrument :
 BNA_P
ClientSampleId :
 YB2K2

Quant Method : Z:\svoasrv\HPCHEM1\BNA_P\Methods\SFAM-EPA-BP051322.M
 Quant Title : SVOA CALIBRATION

TIC Library : C:\DATABASE\NIST20.L
 TIC Integration Parameters: LSCINT.P



Data Path : Z:\svoasrv\HPCHEM1\BNA_P\Data\BP051622\
 Data File : BP010368.D
 Acq On : 16 May 2022 21:28
 Operator : CG/JU
 Sample : N2831-05
 Misc :
 ALS Vial : 15 Sample Multiplier: 1

Instrument :
 BNA_P
 ClientSampleId :
 YB2K2

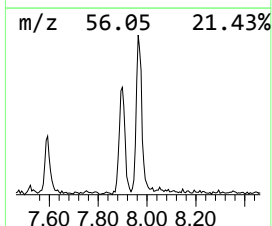
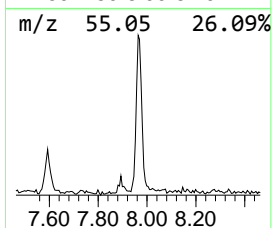
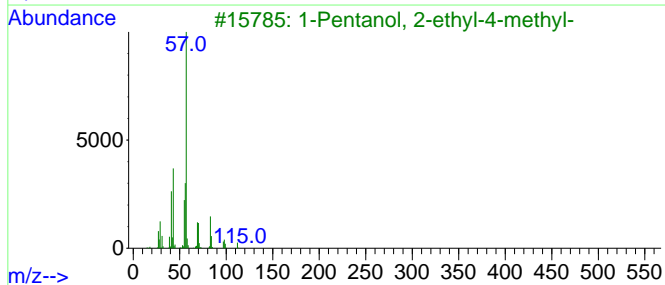
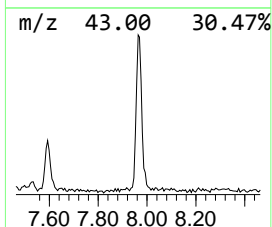
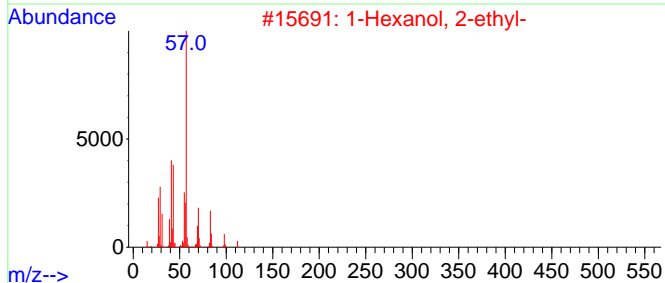
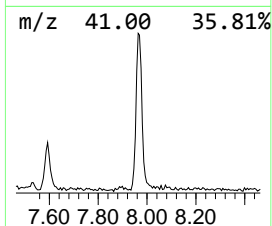
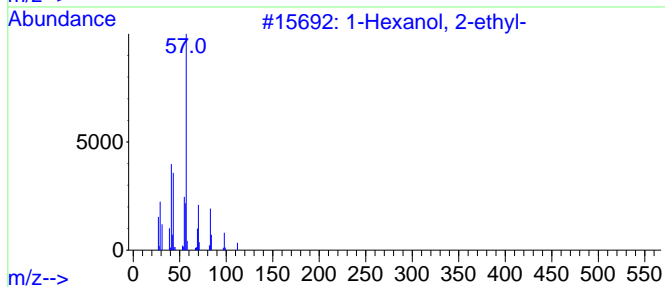
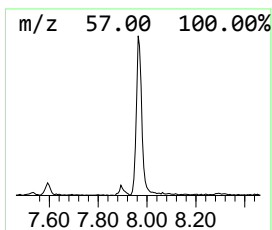
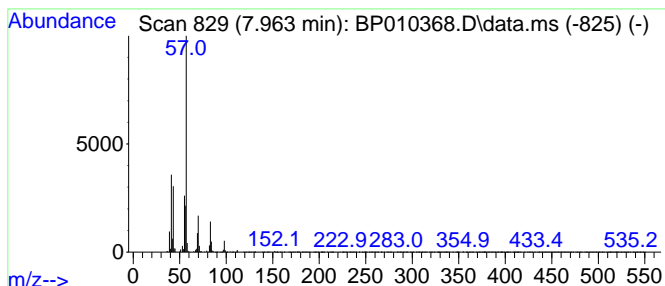
Quant Method : Z:\svoasrv\HPCHEM1\BNA_P\Methods\SFAM-EPA-BP051322.M
 Quant Title : SVOA CALIBRATION

TIC Library : C:\DATABASE\NIST20.L
 TIC Integration Parameters: LSCINT.P

 Peak Number 1 1-Hexanol, 2-ethyl- Concentration Rank 5

R.T.	EstConc	Area	Relative to ISTD	R.T.
7.963	4.28 ng/ul	190469	1,4-Dichlorobenzene-d4	7.899

Hit#	of 5	Tentative ID	MW	MolForm	CAS#	Qual
1		1-Hexanol, 2-ethyl-	130	C8H18O	000104-76-7	83
2		1-Hexanol, 2-ethyl-	130	C8H18O	000104-76-7	74
3		1-Pentanol, 2-ethyl-4-methyl-	130	C8H18O	000106-67-2	64
4		Heptane, 2,5-dimethyl-	128	C9H20	002216-30-0	59
5		1-Hexanol, 2-ethyl-	130	C8H18O	000104-76-7	53



Data Path : Z:\svoasrv\HPCHEM1\BNA_P\Data\BP051622\
 Data File : BP010368.D
 Acq On : 16 May 2022 21:28
 Operator : CG/JU
 Sample : N2831-05
 Misc :
 ALS Vial : 15 Sample Multiplier: 1

Instrument :
 BNA_P
 ClientSampleId :
 YB2K2

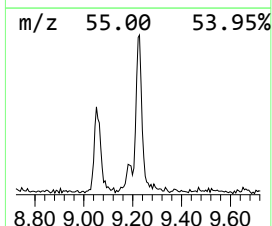
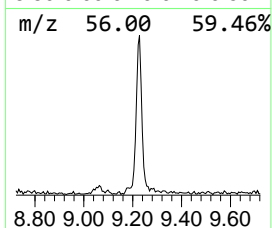
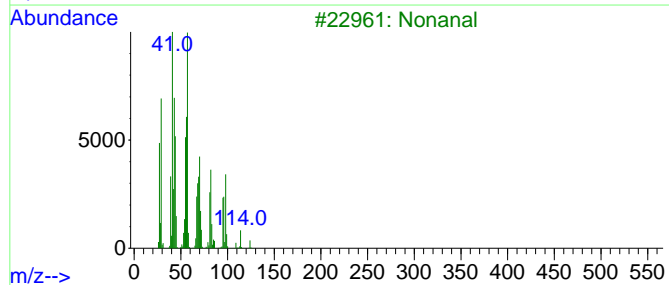
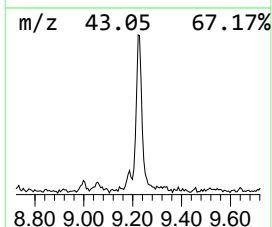
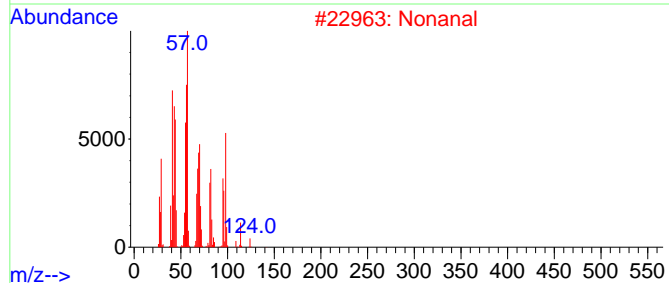
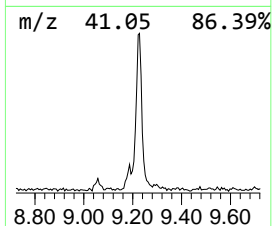
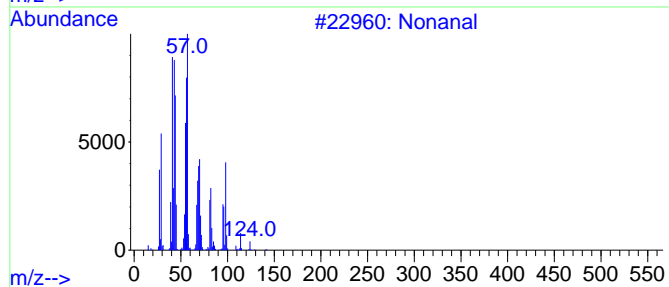
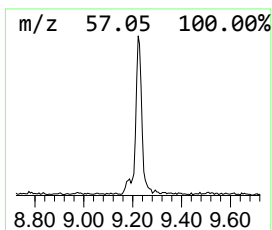
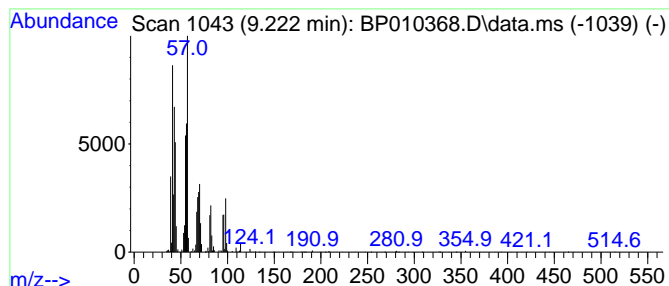
Quant Method : Z:\svoasrv\HPCHEM1\BNA_P\Methods\SFAM-EPA-BP051322.M
 Quant Title : SVOA CALIBRATION

TIC Library : C:\DATABASE\NIST20.L
 TIC Integration Parameters: LSCINT.P

 Peak Number 2 Nonanal Concentration Rank 4

R.T.	EstConc	Area	Relative to ISTD	R.T.
9.222	4.38 ng/ul	194902	1,4-Dichlorobenzene-d4	7.899

Hit#	of	5	Tentative ID	MW	MolForm	CAS#	Qual
1			Nonanal	142	C9H18O	000124-19-6	90
2			Nonanal	142	C9H18O	000124-19-6	83
3			Nonanal	142	C9H18O	000124-19-6	72
4			2-Heptene	98	C7H14	000592-77-8	38
5			(Z)-2-Heptene	98	C7H14	006443-92-1	30



Data Path : Z:\svoasrv\HPCHEM1\BNA_P\Data\BP051622\
 Data File : BP010368.D
 Acq On : 16 May 2022 21:28
 Operator : CG/JU
 Sample : N2831-05
 Misc :
 ALS Vial : 15 Sample Multiplier: 1

Instrument :
 BNA_P
 ClientSampleId :
 YB2K2

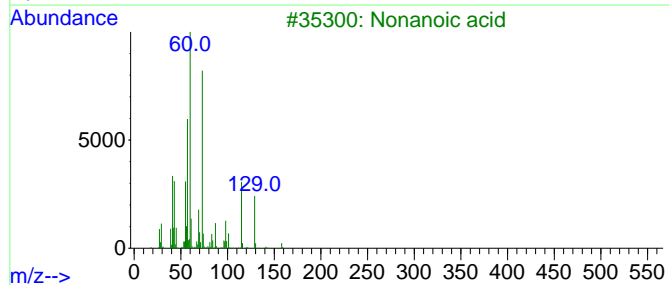
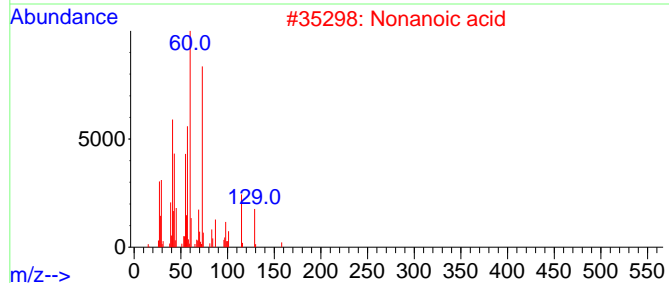
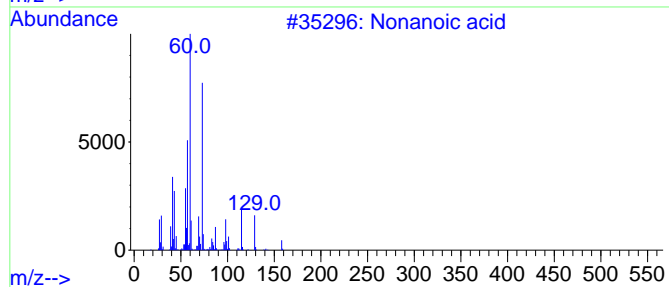
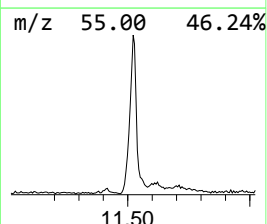
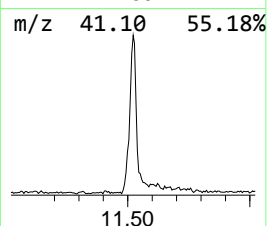
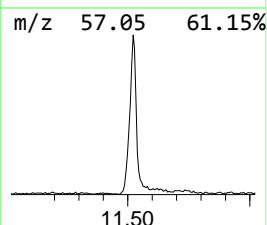
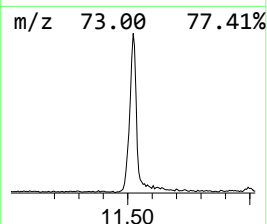
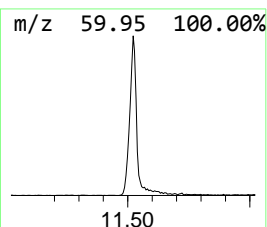
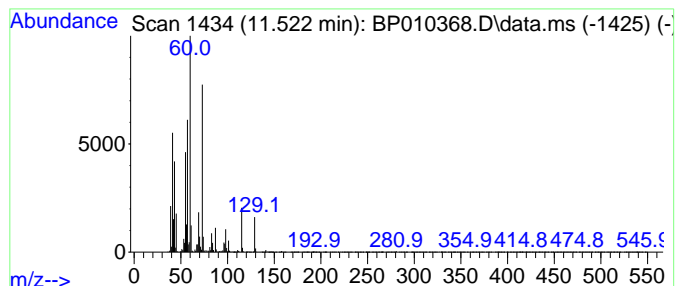
Quant Method : Z:\svoasrv\HPCHEM1\BNA_P\Methods\SFAM-EPA-BP051322.M
 Quant Title : SVOA CALIBRATION

TIC Library : C:\DATABASE\NIST20.L
 TIC Integration Parameters: LSCINT.P

 Peak Number 3 Nonanoic acid Concentration Rank 1

R.T.	EstConc	Area	Relative to ISTD	R.T.
11.522	8.10 ng/ul	541986	Naphthalene-d8	10.698

Hit#	of	5	Tentative ID	MW	MolForm	CAS#	Qual
1			Nonanoic acid	158	C9H18O2	000112-05-0	90
2			Nonanoic acid	158	C9H18O2	000112-05-0	90
3			Nonanoic acid	158	C9H18O2	000112-05-0	90
4			Nonanoic acid	158	C9H18O2	000112-05-0	90
5			n-Decanoic acid	172	C10H20O2	000334-48-5	72



Data Path : Z:\svoasrv\HPCHEM1\BNA_P\Data\BP051622\
 Data File : BP010368.D
 Acq On : 16 May 2022 21:28
 Operator : CG/JU
 Sample : N2831-05
 Misc :
 ALS Vial : 15 Sample Multiplier: 1

Instrument :
 BNA_P
 ClientSampleId :
 YB2K2

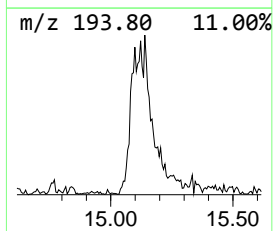
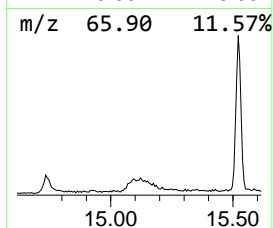
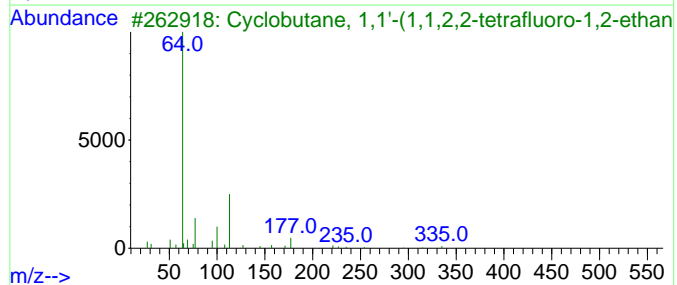
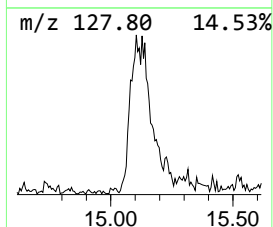
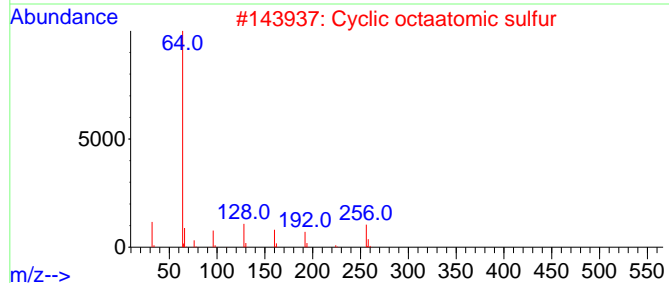
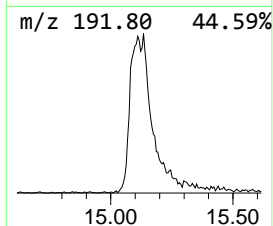
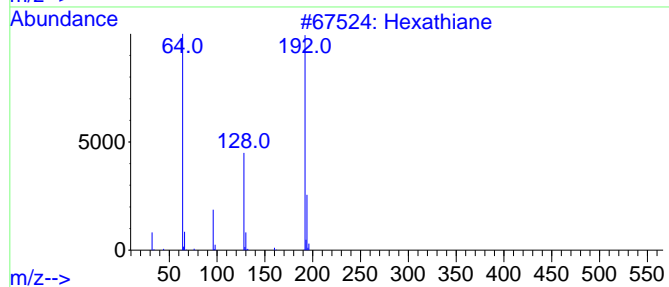
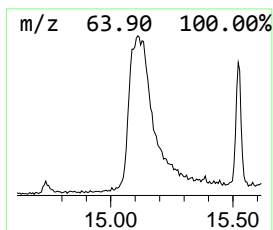
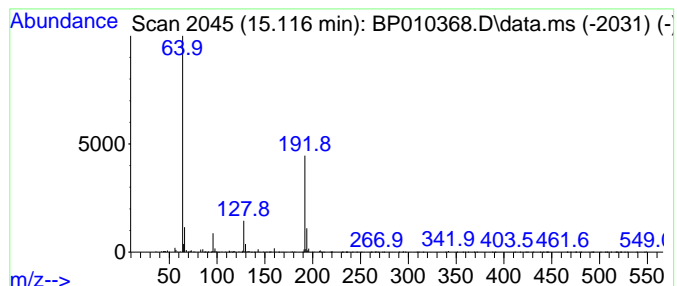
Quant Method : Z:\svoasrv\HPCHEM1\BNA_P\Methods\SFAM-EPA-BP051322.M
 Quant Title : SVOA CALIBRATION

TIC Library : C:\DATABASE\NIST20.L
 TIC Integration Parameters: LSCINT.P

 Peak Number 4 Hexathiane Concentration Rank 6

R.T.	EstConc	Area	Relative to ISTD	R.T.
15.116	2.35 ng/ul	231204	Acenaphthene-d10	14.528

Hit#	of	5	Tentative ID	MW	MolForm	CAS#	Qual
1			Hexathiane	192	S6	013798-23-7	91
2			Cyclic octaatomic sulfur	256	S8	010544-50-0	40
3			Cyclobutane, 1,1'-(1,1,2,2-tetra...	354	C10H6F12	035207-94-4	7
4			Tetrazolo[1,5-b]pyridazine, 6-ch...	155	C4H2ClN5	021413-15-0	5
5			Sulfur dioxide	64	O2S	007446-09-5	4



Data Path : Z:\svoasrv\HPCHEM1\BNA_P\Data\BP051622\
 Data File : BP010368.D
 Acq On : 16 May 2022 21:28
 Operator : CG/JU
 Sample : N2831-05
 Misc :
 ALS Vial : 15 Sample Multiplier: 1

Instrument :
 BNA_P
 ClientSampleId :
 YB2K2

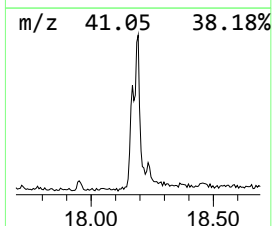
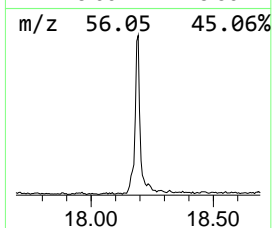
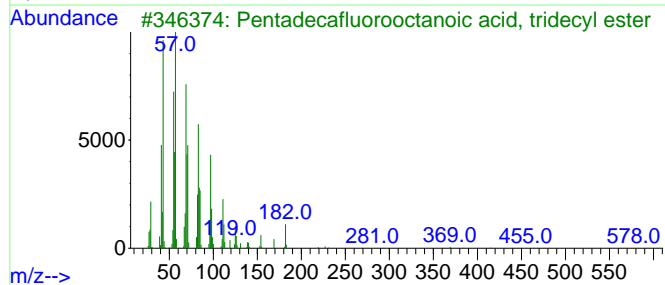
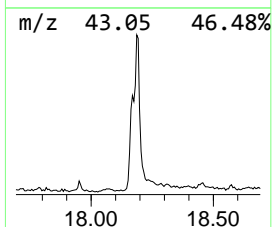
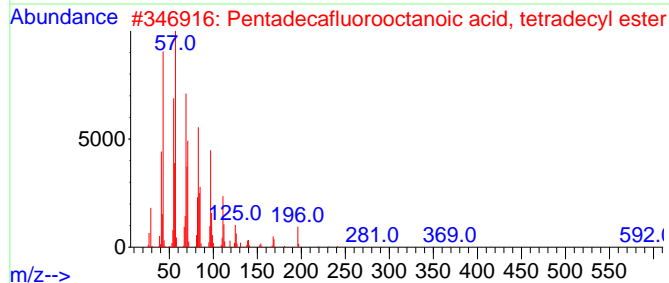
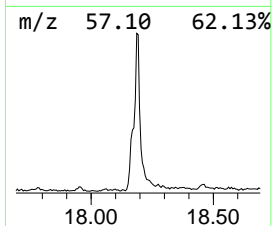
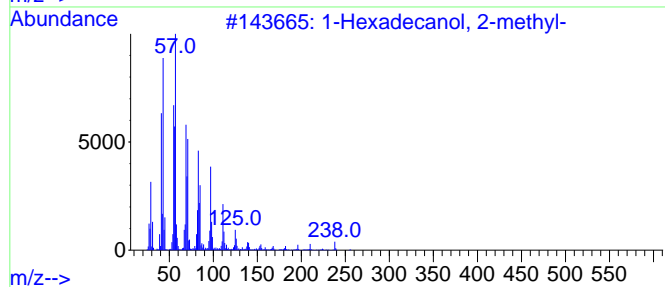
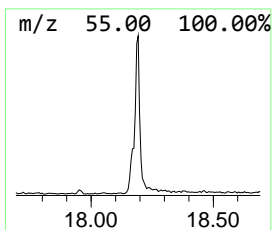
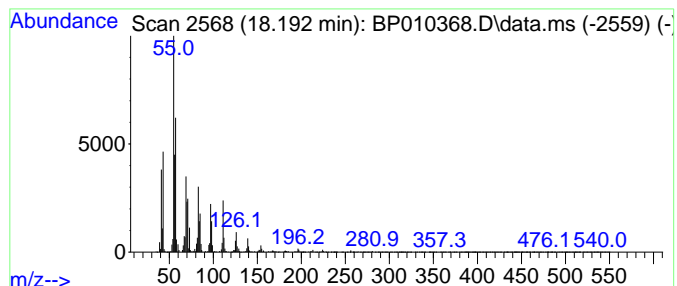
Quant Method : Z:\svoasrv\HPCHEM1\BNA_P\Methods\SFAM-EPA-BP051322.M
 Quant Title : SVOA CALIBRATION

TIC Library : C:\DATABASE\NIST20.L
 TIC Integration Parameters: LSCINT.P

 Peak Number 5 1-Hexadecanol, 2-methyl- Concentration Rank 2

R.T.	EstConc	Area	Relative to ISTD	R.T.
18.192	7.53 ng/ul	852639	Phenanthrene-d10	17.281

Hit#	of	5	Tentative ID	MW	MolForm	CAS#	Qual
1			1-Hexadecanol, 2-methyl-	256	C17H36O	002490-48-4	58
2			Pentadecafluorooctanoic acid, te...	610	C22H29F15O2	1000406-04-4	58
3			Pentadecafluorooctanoic acid, tr...	596	C21H27F15O2	1000406-04-3	58
4			Pentadecafluorooctanoic acid, pe...	624	C23H31F15O2	1000406-04-5	58
5			n-Tridecan-1-ol	200	C13H28O	000112-70-9	55



Data Path : Z:\svoasrv\HPCHEM1\BNA_P\Data\BP051622\
 Data File : BP010368.D
 Acq On : 16 May 2022 21:28
 Operator : CG/JU
 Sample : N2831-05
 Misc :
 ALS Vial : 15 Sample Multiplier: 1

Instrument :
 BNA_P
 ClientSampleId :
 YB2K2

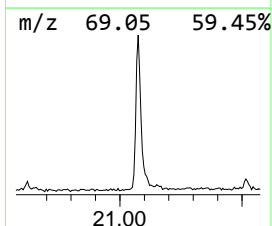
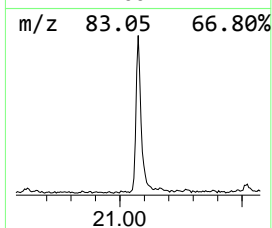
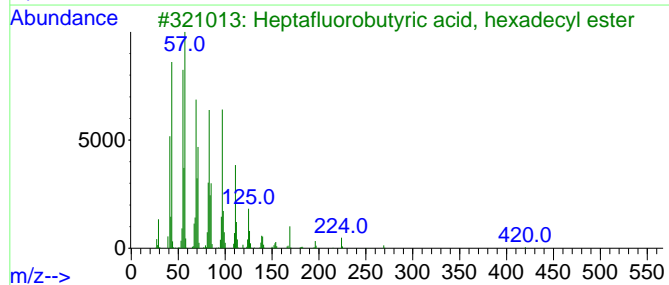
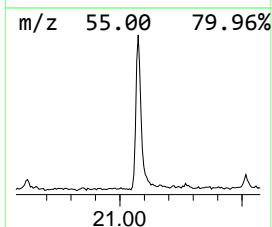
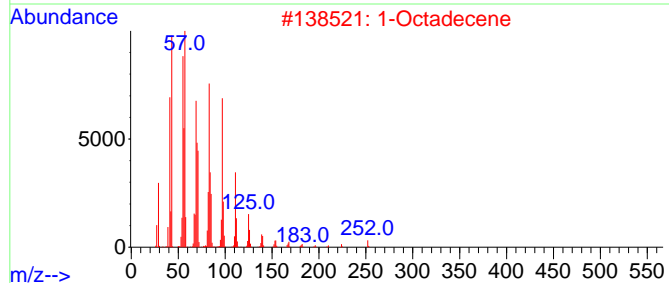
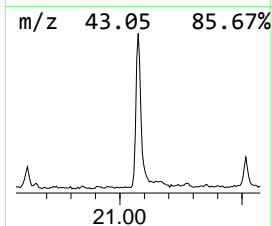
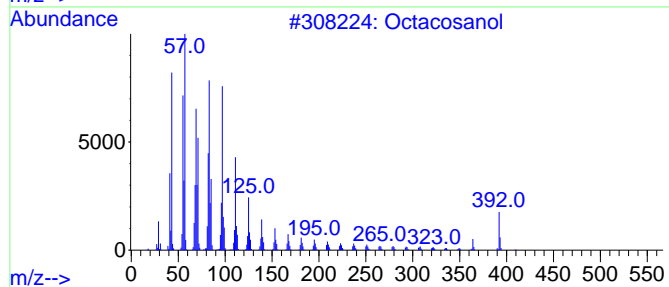
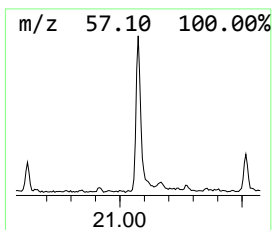
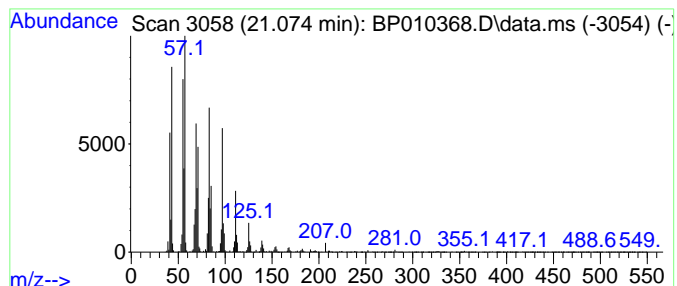
Quant Method : Z:\svoasrv\HPCHEM1\BNA_P\Methods\SFAM-EPA-BP051322.M
 Quant Title : SVOA CALIBRATION

TIC Library : C:\DATABASE\NIST20.L
 TIC Integration Parameters: LSCINT.P

 Peak Number 6 Octacosanol Concentration Rank 3

R.T.	EstConc	Area	Relative to ISTD	R.T.
21.074	7.02 ng/ul	881888	Chrysene-d12	21.363

Hit#	of	5	Tentative ID	MW	MolForm	CAS#	Qual
1			Octacosanol	410	C28H58O	000557-61-9	94
2			1-Octadecene	252	C18H36	000112-88-9	94
3			Heptafluorobutyric acid, hexadec...	438	C20H33F7O2	006385-15-5	94
4			Heptafluorobutyric acid, pentade...	424	C19H31F7O2	959261-23-5	94
5			Pentadecafluorooctanoic acid, oc...	666	C26H37F15O2	1000406-04-8	94



Data Path : Z:\svoasrv\HPCHEM1\BNA_P\Data\BP051622\
 Data File : BP010368.D
 Acq On : 16 May 2022 21:28
 Operator : CG/JU
 Sample : N2831-05
 Misc :
 ALS Vial : 15 Sample Multiplier: 1

Instrument :
 BNA_P
 ClientSampleId :
 YB2K2

Quant Method : Z:\svoasrv\HPCHEM1\BNA_P\Methods\SFAM-EPA-BP051322.M
 Quant Title : SVOA CALIBRATION

TIC Library : C:\DATABASE\NIST20.L
 TIC Integration Parameters: LSCINT.P

TIC Top Hit name	RT	EstConc	Units	Response	--Internal Standard--			
					#	RT	Resp	Conc
1-Hexanol, 2-et...	7.963	4.3	ng/ul	190469	1	7.899	890342	20.0
Nonanal	9.222	4.4	ng/ul	194902	1	7.899	890342	20.0
Nonanoic acid	11.522	8.1	ng/ul	541986	2	10.698	1338530	20.0
Hexathiane	15.116	2.4	ng/ul	231204	3	14.528	1966930	20.0
1-Hexadecanol, ...	18.192	7.5	ng/ul	852639	4	17.281	2266000	20.0
Octacosanol	21.074	7.0	ng/ul	881888	5	21.363	2513250	20.0