

Data Path : Z:\svoasrv\HPCHEM1\BNA\_P\Data\BP052522\  
 Data File : BP010563.D  
 Acq On : 26 May 2022 07:05  
 Operator : CG/JU  
 Sample : PB145042BS  
 Misc :  
 ALS Vial : 34 Sample Multiplier: 1

Instrument :  
 BNA\_P  
 ClientSampleId :  
 SLCS042

Manual Integrations  
 APPROVED

Reviewed By :Jagrut Upadhyay 05/26/2022  
 Supervised By :mohammad ahmed 05/27/2022

Quant Time: May 26 07:44:06 2022  
 Quant Method : Z:\svoasrv\HPCHEM1\BNA\_P\Methods\SFAM-EPA-BP051322.M  
 Quant Title : SVOA CALIBRATION  
 QLast Update : Tue May 24 05:50:40 2022  
 Response via : Initial Calibration

Compound	R.T.	QIon	Response	Conc	Units	Dev(Min)
Internal Standards						
1) 1,4-Dichlorobenzene-d4	7.881	152	163646	20.000	ng/ul	0.00
20) Naphthalene-d8	10.681	136	705186	20.000	ng/ul	0.00
38) Acenaphthene-d10	14.510	164	485718	20.000	ng/ul	-0.01
64) Phenanthrene-d10	17.263	188	1069878	20.000	ng/ul	# 0.00
79) Chrysene-d12	21.351	240	963133	20.000	ng/ul	# 0.00
88) Perylene-d12	23.763	264	753619	20.000	ng/ul	-0.01
System Monitoring Compounds						
3) 1,4-Dioxane-d8	3.334	96	23385	6.091	ng/uL	0.00
4) Pyridine-d5	3.752	84	346956	31.828	ng/ul	0.00
7) Phenol-d5	7.052	99	462626	33.682	ng/ul	0.00
9) Bis-(2-Chloroethyl)eth...	7.211	67	310963	33.697	ng/ul	0.00
11) 2-Chlorophenol-d4	7.411	132	368756	35.086	ng/ul	-0.01
15) 4-Methylphenol-d8	8.593	113	393296	33.694	ng/ul	0.00
21) Nitrobenzene-d5	9.040	128	192765	35.320	ng/ul	0.00
24) 2-Nitrophenol-d4	9.763	143	211622	36.588	ng/ul	0.00
28) 2,4-Dichlorophenol-d3	10.305	165	384394	35.148	ng/ul	0.00
31) 4-Chloroaniline-d4	10.816	131	524110	32.231	ng/ul	-0.01
46) Dimethylphthalate-d6	13.922	166	1287772	35.985	ng/ul	0.00
49) Acenaphthylene-d8	14.204	160	1473297	35.692	ng/ul	0.00
54) 4-Nitrophenol-d4	14.716	143	210146	32.992	ng/ul	0.00
60) Fluorene-d10	15.504	176	1101047	35.366	ng/ul	0.00
65) 4,6-Dinitro-2-methylph...	15.634	200	221177	35.348	ng/ul	0.00
73) Anthracene-d10	17.363	188	1716451	35.430	ng/ul	0.00
81) Pyrene-d10	19.598	212	2018902	39.471	ng/ul	0.00
92) Benzo(a)pyrene-d12	23.610	264	1385040	36.601	ng/ul	0.00
Target Compounds						
2) 1,4-Dioxane	3.370	88	49717	12.501	ng/uL#	3
5) Pyridine	3.770	79	353057	31.164	ng/ul#	29
6) Benzaldehyde	7.022	77	321491	44.277	ng/ul	94
8) Phenol	7.075	94	495551	33.443	ng/ul#	91
10) Bis(2-Chloroethyl)ether	7.305	93	396547	34.037	ng/ul#	75
12) 2-Chlorophenol	7.446	128	378465	34.494	ng/ul	96
13) 2-Methylphenol	8.328	108	373296	33.746	ng/ul	97
14) 2,2'-oxybis(1-Chloropr...	8.416	45	671991	35.391	ng/ul#	81
16) Acetophenone	8.705	105	613574	33.456	ng/ul#	76
17) N-Nitroso-di-n-propyla...	8.699	70	350544	35.714	ng/ul#	69
18) 4-Methylphenol	8.658	108	410007	33.537	ng/ul	97
19) Hexachloroethane	8.958	117	164384	34.448	ng/ul#	78
22) Nitrobenzene	9.081	77	501611	34.974	ng/ul#	82
23) Isophorone	9.611	82	962228	36.298	ng/ul#	98
25) 2-Nitrophenol	9.793	139	226504	35.666	ng/ul#	86
26) 2,4-Dimethylphenol	9.858	107	471082	34.186	ng/ul#	82
27) Bis(2-Chloroethoxy)met...	10.093	93	553188	35.047	ng/ul#	98
29) 2,4-Dichlorophenol	10.328	162	386761	34.589	ng/ul#	82
30) Naphthalene	10.728	128	1258252	34.161	ng/ul	97
32) 4-Chloroaniline	10.840	127	526928	32.652	ng/ul	97
33) Hexachlorobutadiene	11.022	225	271429	34.257	ng/ul	97
34) Caprolactam	11.628	113	142555m	36.532	ng/ul	
35) 4-Chloro-3-methylphenol	11.969	107	473622	36.209	ng/ul#	73
36) 2-Methylnaphthalene	12.340	142	897115	34.405	ng/ul	92

Data Path : Z:\svoasrv\HPCHEM1\BNA\_P\Data\BP052522\  
 Data File : BP010563.D  
 Acq On : 26 May 2022 07:05  
 Operator : CG/JU  
 Sample : PB145042BS  
 Misc :  
 ALS Vial : 34 Sample Multiplier: 1

**Instrument :**  
 BNA\_P  
**ClientSampleId :**  
 SLCS042

**Manual Integrations**  
**APPROVED**  
 Reviewed By :Jagrut Upadhyay 05/26/2022  
 Supervised By :mohammad ahmed 05/27/2022

Quant Time: May 26 07:44:06 2022  
 Quant Method : Z:\svoasrv\HPCHEM1\BNA\_P\Methods\SFAM-EPA-BP051322.M  
 Quant Title : SVOA CALIBRATION  
 QLast Update : Tue May 24 05:50:40 2022  
 Response via : Initial Calibration

Compound	R.T.	QIon	Response	Conc	Units	Dev(Min)
37) 1-Methylnaphthalene	12.557	142	925339	35.147	ng/ul#	95
39) 1,2,4,5-Tetrachloroben...	12.710	216	507406	34.232	ng/ul	96
40) Hexachlorocyclopentadiene	12.693	237	242588	30.104	ng/ul	96
41) 2,4,6-Trichlorophenol	12.951	196	335545	36.316	ng/ul#	84
42) 2,4,5-Trichlorophenol	13.022	196	369536	35.820	ng/ul#	87
43) 1,1'-Biphenyl	13.346	154	1252691	35.137	ng/ul#	95
44) 2-Chloronaphthalene	13.393	162	959412	34.842	ng/ul	93
45) 2-Nitroaniline	13.593	65	356163	39.300	ng/ul#	75
47) Dimethylphthalate	13.975	163	1274511	35.904	ng/ul#	92
48) 2,6-Dinitrotoluene	14.093	165	276506	38.211	ng/ul	95
50) Acenaphthylene	14.234	152	1585900	35.515	ng/ul	95
51) 3-Nitroaniline	14.422	138	260114	38.300	ng/ul#	83
52) Acenaphthene	14.581	153	1021886	35.079	ng/ul	97
53) 2,4-Dinitrophenol	14.634	184	129375	32.024	ng/ul#	76
55) 4-Nitrophenol	14.734	109	196422	34.680	ng/ul#	44
56) Dibenzofuran	14.916	168	1492280	34.955	ng/ul	98
57) 2,4-Dinitrotoluene	14.881	165	395402	37.958	ng/ul#	76
58) 2,3,4,6-Tetrachlorophenol	15.140	232	317832	35.828	ng/ul#	86
59) Diethylphthalate	15.340	149	1329486	36.705	ng/ul#	93
61) Fluorene	15.563	166	1234717	35.366	ng/ul	91
62) 4-Chlorophenyl-phenyle...	15.557	204	638926	35.182	ng/ul	98
63) 4-Nitroaniline	15.587	138	264736	39.478	ng/ul#	80
66) 4,6-Dinitro-2-methylph...	15.651	198	217378	34.837	ng/ul#	88
67) N-Nitrosodiphenylamine	15.769	169	1078653	35.950	ng/ul	95
68) 4-Bromophenyl-phenylether	16.451	248	397982	36.120	ng/ul	95
69) Hexachlorobenzene	16.575	284	439739	34.696	ng/ul#	90
70) Atrazine	16.728	200	437298	36.382	ng/ul	90
71) Pentachlorophenol	16.916	266	270241	33.982	ng/ul#	81
72) Phenanthrene	17.310	178	2016818	35.322	ng/ul	99
74) Anthracene	17.398	178	2012925	35.142	ng/ul	98
75) 1,2,3,4-Tetrachloroben...	13.316	216	525455	32.317	ng/uL#	85
76) Pentachlorobenzene	14.840	250	504883	34.224	ng/uL	91
77) Carbazole	17.669	167	1777693	35.314	ng/ul#	96
78) Di-n-butylphthalate	18.222	149	2355533	38.420	ng/ul#	93
80) Fluoranthene	19.275	202	2408393	40.518	ng/ul	96
82) Pyrene	19.628	202	2453353	39.551	ng/ul#	95
83) Butylbenzylphthalate	20.492	149	1071594	43.203	ng/ul#	83
84) 3,3'-Dichlorobenzidine	21.263	252	669968	34.610	ng/ul#	95
85) Benzo(a)anthracene	21.333	228	2164602	35.940	ng/ul	95
86) Bis(2-ethylhexyl)phtha...	21.257	149	1563494	42.955	ng/ul#	80
87) Chrysene	21.386	228	2081354	35.133	ng/ul	98
89) Di-n-octyl phthalate	22.186	149	2566211	45.391	ng/ul	100
90) Benzo(b)fluoranthene	23.027	252	1863201	37.093	ng/ul	99
91) Benzo(k)fluoranthene	23.080	252	1789601	37.486	ng/ul#	97
93) Benzo(a)pyrene	23.663	252	1703754	36.507	ng/ul#	98
94) Indeno(1,2,3-cd)pyrene	26.280	276	1643316	37.429	ng/ul#	93
95) Dibenzo(a,h)anthracene	26.298	278	1415265	37.150	ng/ul#	94
96) Benzo(g,h,i)perylene	27.057	276	1414601	38.586	ng/ul#	91

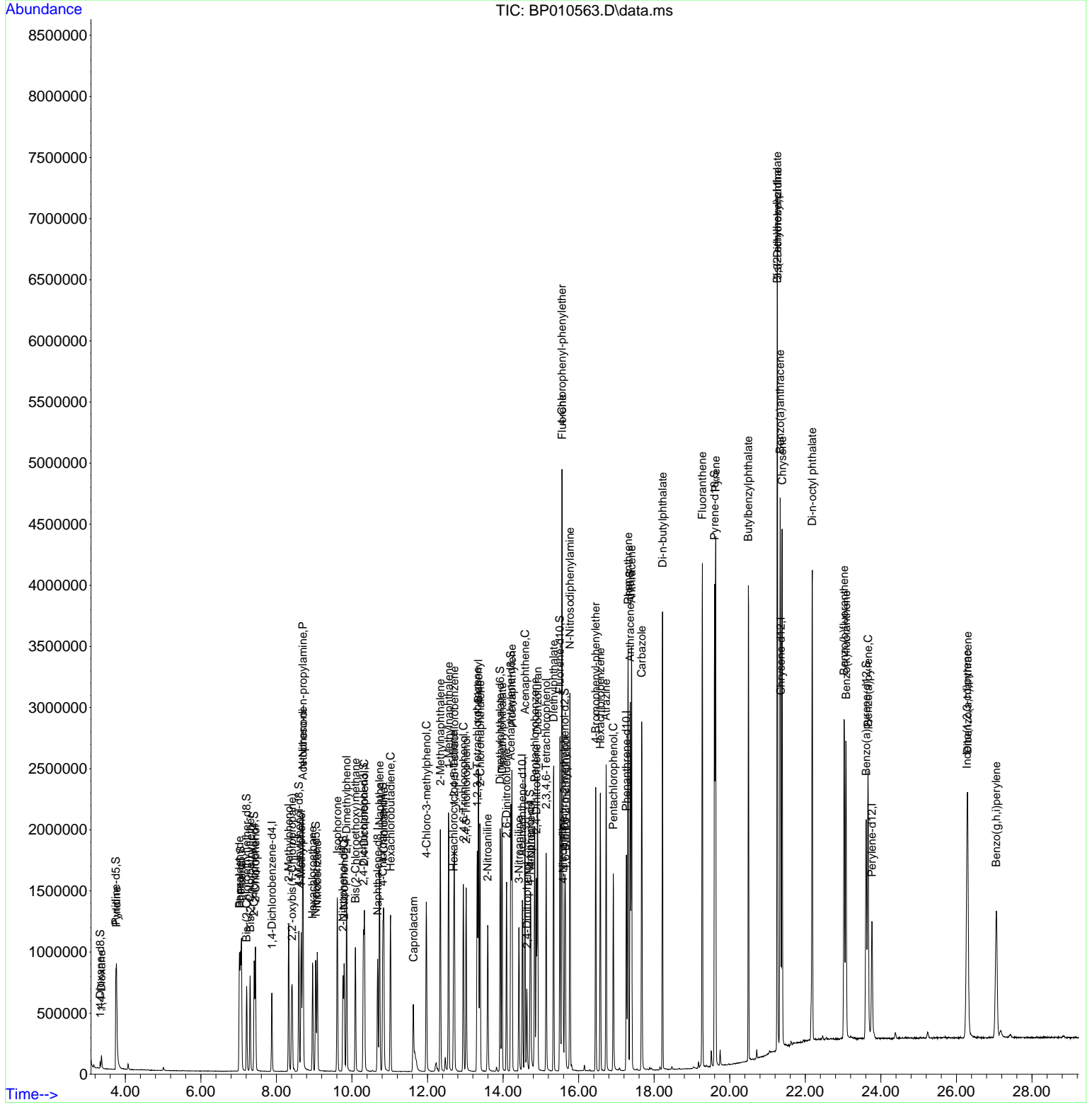
(#) = qualifier out of range (m) = manual integration (+) = signals summed

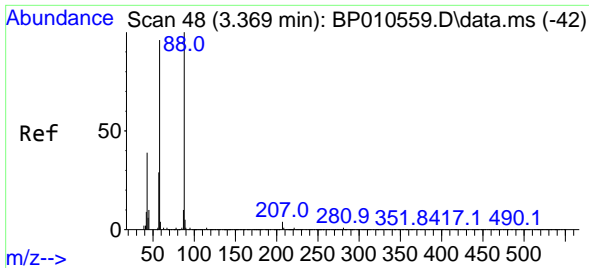
Data Path : Z:\svoasrv\HPCHEM1\BNA\_P\Data\BP052522\  
 Data File : BP010563.D  
 Acq On : 26 May 2022 07:05  
 Operator : CG/JU  
 Sample : PB145042BS  
 Misc :  
 ALS Vial : 34 Sample Multiplier: 1

**Instrument :**  
 BNA\_P  
**ClientSampleId :**  
 SLCS042

Quant Time: May 26 07:44:06 2022  
 Quant Method : Z:\svoasrv\HPCHEM1\BNA\_P\Methods\SFAM-EPA-BP051322.M  
 Quant Title : SVOA CALIBRATION  
 QLast Update : Tue May 24 05:50:40 2022  
 Response via : Initial Calibration

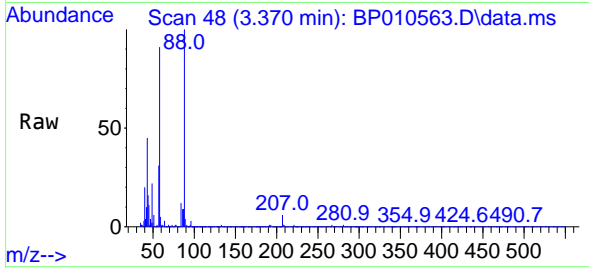
**Manual Integrations**  
**APPROVED**  
 Reviewed By :Jagrut Upadhyay 05/26/2022  
 Supervised By :mohammad ahmed 05/27/2022





#2  
 1,4-Dioxane  
 Concen: 12.501 ng/uL  
 RT: 3.370 min Scan# 48  
 Delta R.T. 0.000 min  
 Lab File: BP010563.D  
 Acq: 26 May 2022 07:05

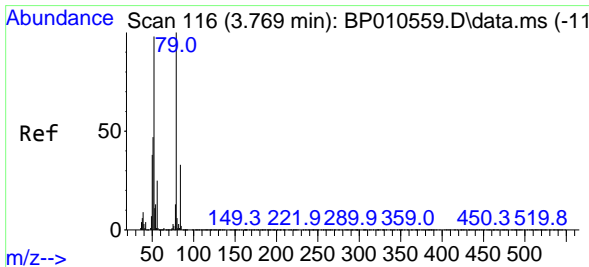
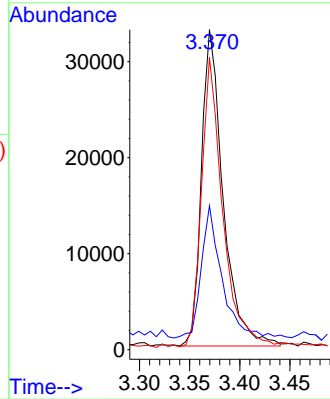
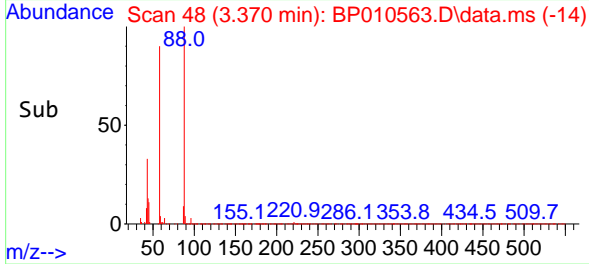
Instrument :  
 BNA\_P  
 ClientSampleId :  
 SLCS042



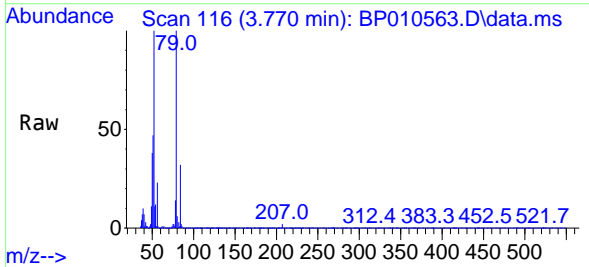
Tgt Ion: 88 Resp: 4971  
 Ion Ratio Lower Upper  
 88 100  
 43 45.0 6.8 10.2  
 58 91.3 28.4 42.6

Manual Integrations  
 APPROVED

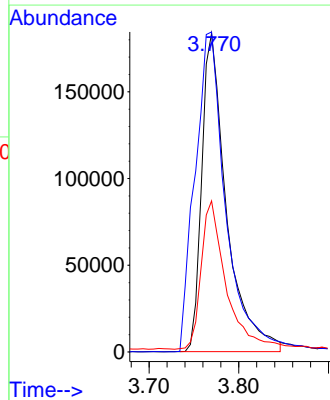
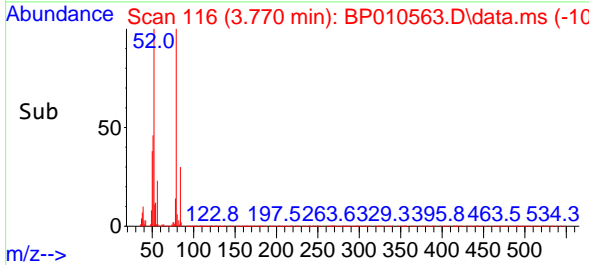
Reviewed By :Jagrut Upadhyay 05/26/2022  
 Supervised By :mohammad ahmed 05/27/2022

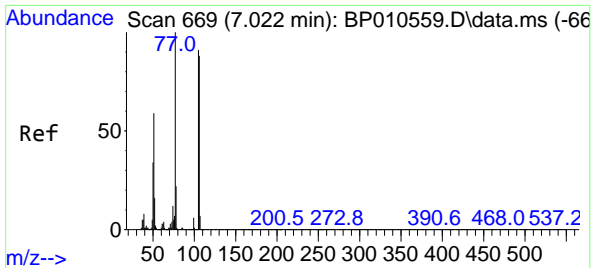


#5  
 Pyridine  
 Concen: 31.164 ng/uL  
 RT: 3.770 min Scan# 116  
 Delta R.T. -0.006 min  
 Lab File: BP010563.D  
 Acq: 26 May 2022 07:05



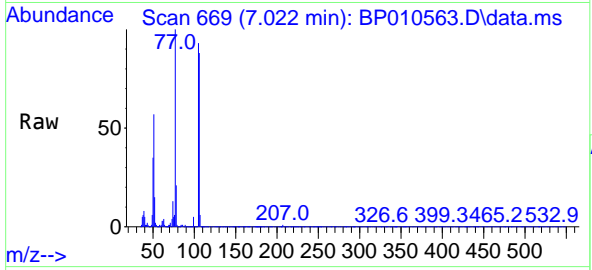
Tgt Ion: 79 Resp: 353057  
 Ion Ratio Lower Upper  
 79 100  
 52 100.5 35.5 53.3#  
 51 47.4 20.2 30.4#





#6  
Benzaldehyde  
Concen: 44.277 ng/u1  
RT: 7.022 min Scan# 669  
Delta R.T. -0.006 min  
Lab File: BP010563.D  
Acq: 26 May 2022 07:05

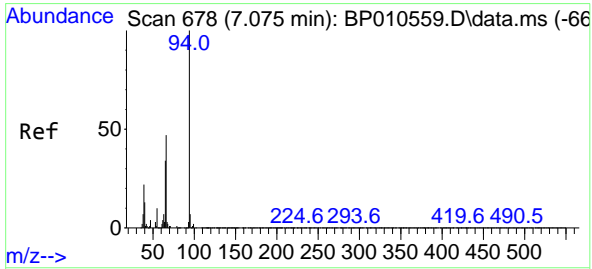
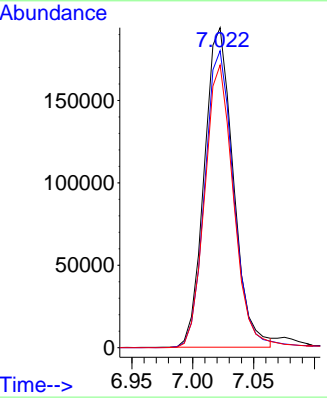
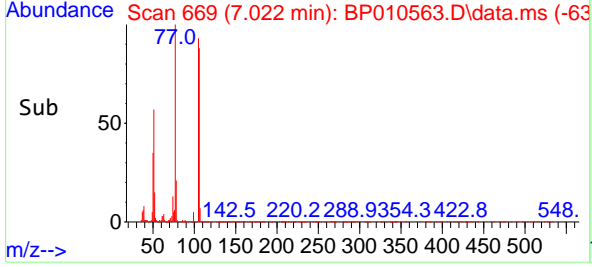
Instrument : BNA\_P  
Client SampleId : SLCS042



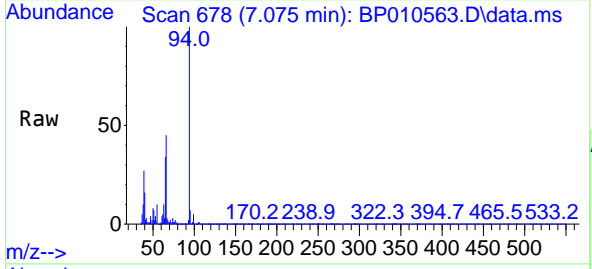
Tgt Ion: 77 Resp: 32149

Ion	Ratio	Lower	Upper
77	100		
105	92.8	77.0	115.4
106	88.4	77.0	115.4

Manual Integrations  
**APPROVED**  
Reviewed By :Jagrut Upadhyay 05/26/2022  
Supervised By :mohammad ahmed 05/27/2022

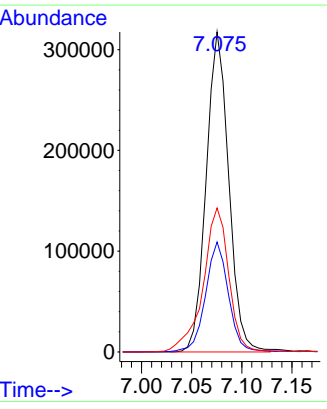
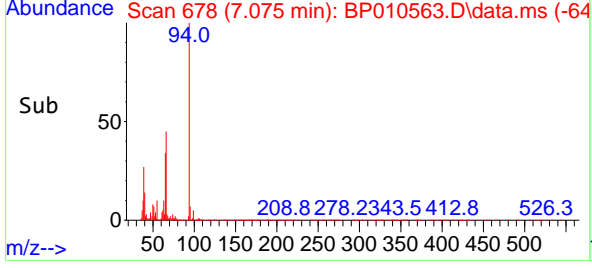


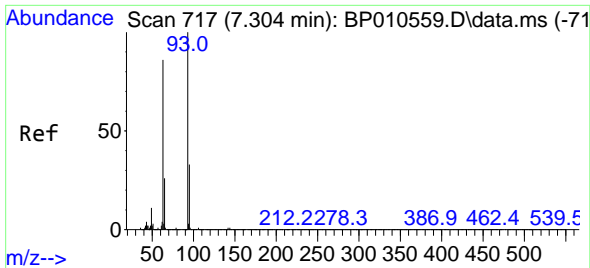
#8  
Phenol  
Concen: 33.443 ng/u1  
RT: 7.075 min Scan# 678  
Delta R.T. -0.006 min  
Lab File: BP010563.D  
Acq: 26 May 2022 07:05



Tgt Ion: 94 Resp: 495551

Ion	Ratio	Lower	Upper
94	100		
65	34.4	19.0	28.6
66	45.0	34.6	51.8





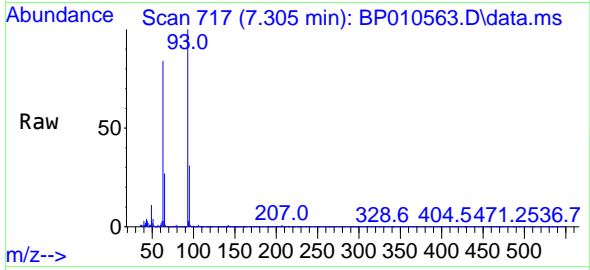
#10  
 Bis(2-Chloroethyl)ether  
 Concen: 34.037 ng/ul  
 RT: 7.305 min Scan# 717  
 Delta R.T. -0.006 min  
 Lab File: BP010563.D  
 Acq: 26 May 2022 07:05

Instrument :

BNA\_P

ClientSampleId :

SLCS042

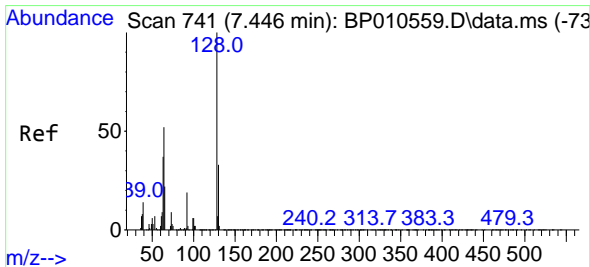
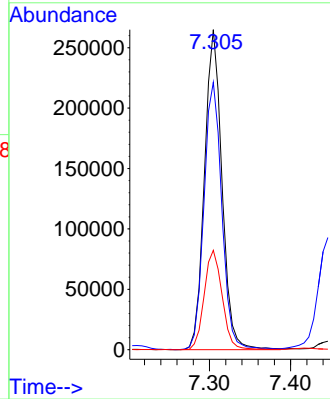
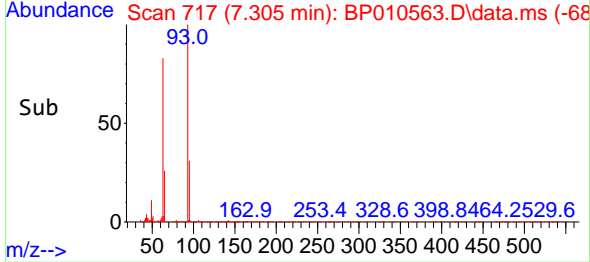


Tgt Ion: 93 Resp: 39654  
 Ion Ratio Lower Upper  
 93 100  
 63 83.6 45.0 67.4  
 95 31.0 26.3 39.5

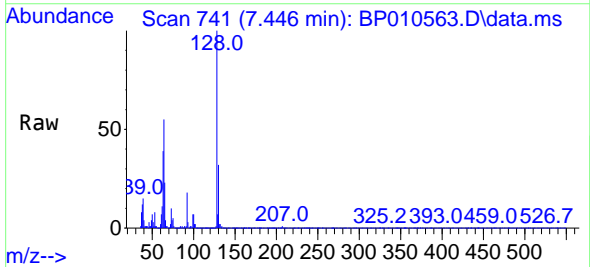
Manual Integrations

APPROVED

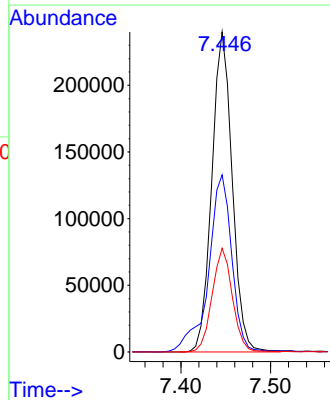
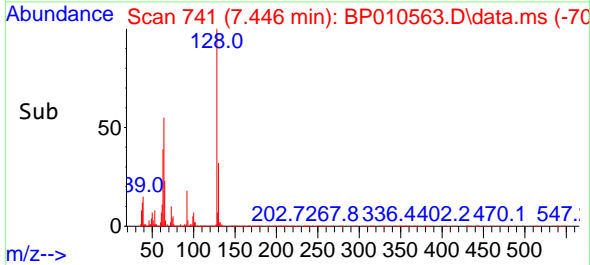
Reviewed By :Jagrut Upadhyay 05/26/2022  
 Supervised By :mohammad ahmed 05/27/2022

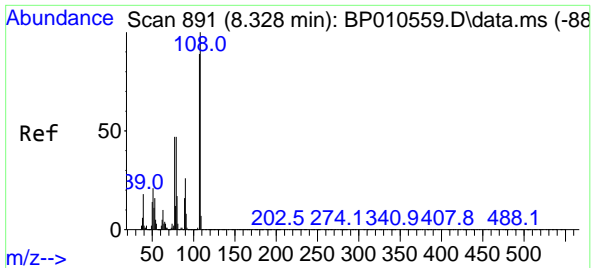


#12  
 2-Chlorophenol  
 Concen: 34.494 ng/ul  
 RT: 7.446 min Scan# 741  
 Delta R.T. -0.006 min  
 Lab File: BP010563.D  
 Acq: 26 May 2022 07:05



Tgt Ion:128 Resp: 378465  
 Ion Ratio Lower Upper  
 128 100  
 64 55.4 45.3 67.9  
 130 32.4 29.0 43.6





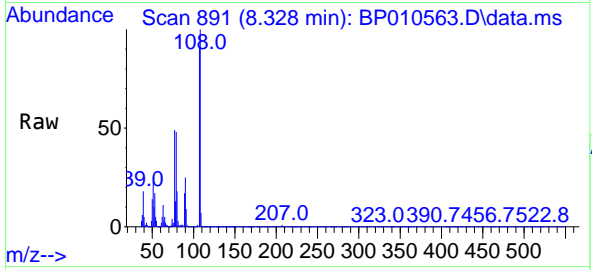
#13  
 2-Methylphenol  
 Concen: 33.746 ng/ul  
 RT: 8.328 min Scan# 891  
 Delta R.T. -0.006 min  
 Lab File: BP010563.D  
 Acq: 26 May 2022 07:05

Instrument :

BNA\_P

ClientSampleId :

SLCS042

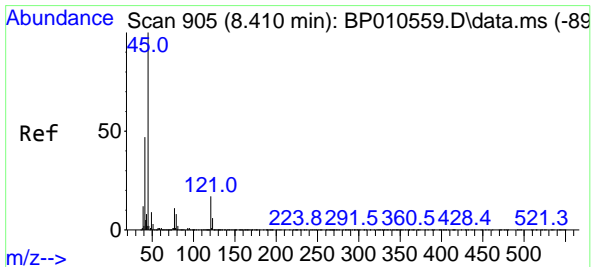
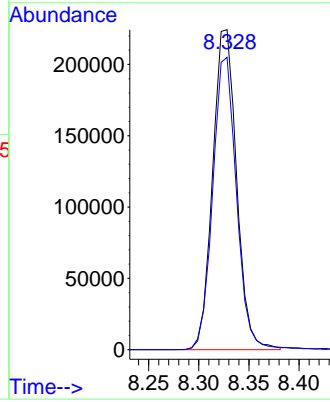
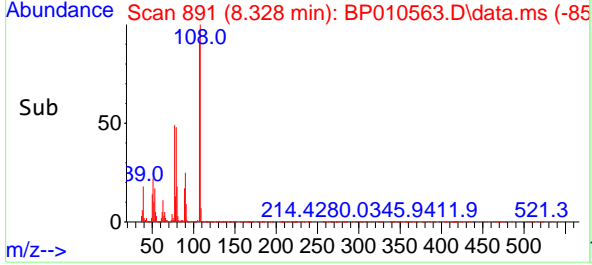


Tgt Ion:108 Resp: 373290  
 Ion Ratio Lower Upper  
 108 100  
 107 91.3 70.8 106.2

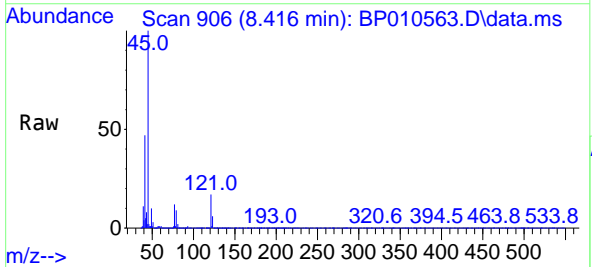
Manual Integrations

APPROVED

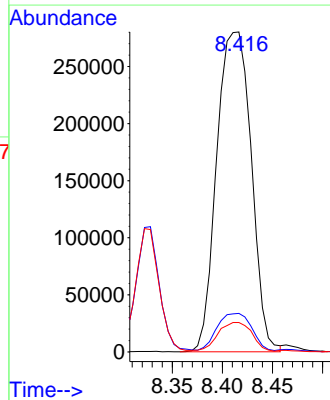
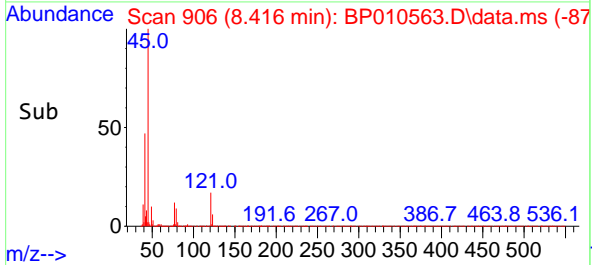
Reviewed By :Jagrut Upadhyay 05/26/2022  
 Supervised By :mohammad ahmed 05/27/2022

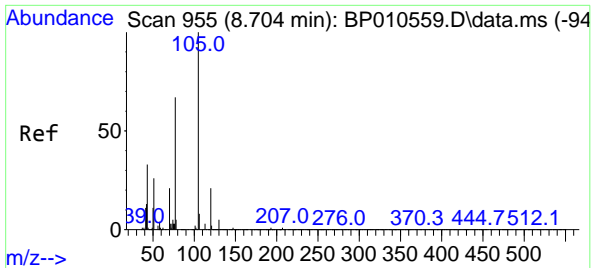


#14  
 2,2'-oxybis(1-Chloropropane)  
 Concen: 35.391 ng/ul  
 RT: 8.416 min Scan# 906  
 Delta R.T. 0.000 min  
 Lab File: BP010563.D  
 Acq: 26 May 2022 07:05



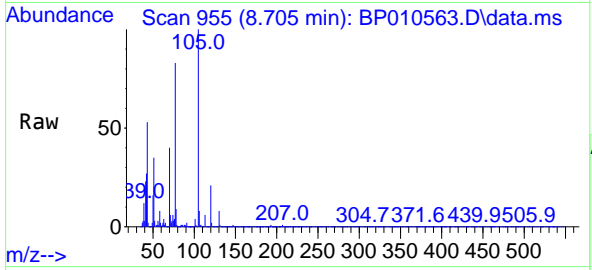
Tgt Ion: 45 Resp: 671991  
 Ion Ratio Lower Upper  
 45 100  
 77 12.1 17.1 25.7#  
 79 9.2 13.2 19.8#





#16  
 Acetophenone  
 Concen: 33.456 ng/u1  
 RT: 8.705 min Scan# 91  
 Delta R.T. -0.006 min  
 Lab File: BP010563.D  
 Acq: 26 May 2022 07:05

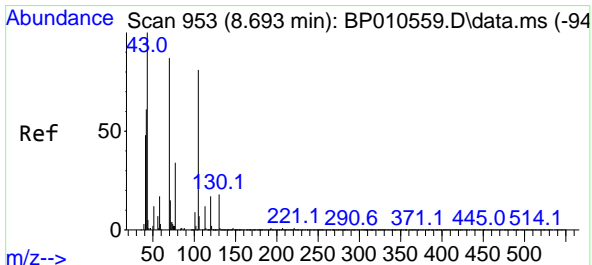
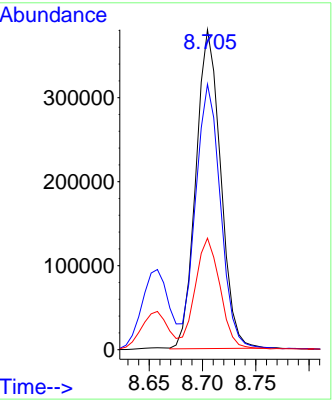
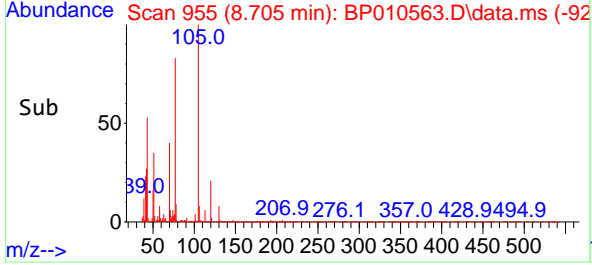
Instrument : BNA\_P  
 ClientSampleId : SLCS042



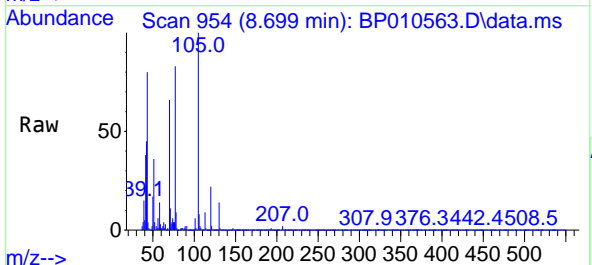
Tgt Ion: 105 Resp: 613574

Ion	Ratio	Lower	Upper
105	100		
77	82.9	53.4	80.2
51	34.8	13.8	20.8

Manual Integrations  
**APPROVED**  
 Reviewed By :Jagrut Upadhyay 05/26/2022  
 Supervised By :mohammad ahmed 05/27/2022

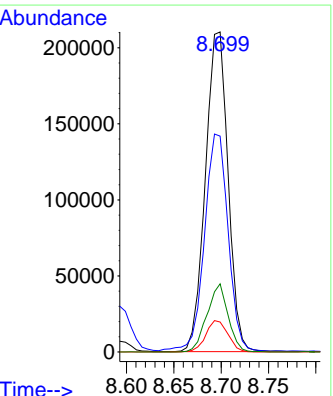
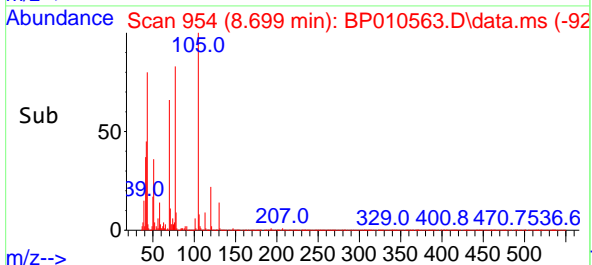


#17  
 N-Nitroso-di-n-propylamine  
 Concen: 35.714 ng/u1  
 RT: 8.699 min Scan# 954  
 Delta R.T. 0.000 min  
 Lab File: BP010563.D  
 Acq: 26 May 2022 07:05

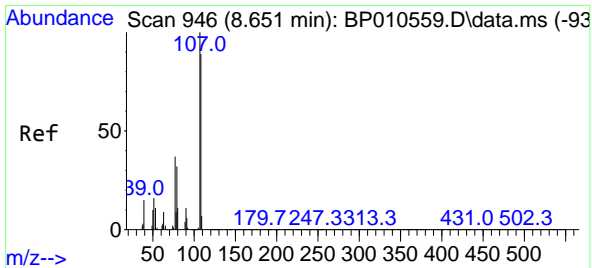


Tgt Ion: 70 Resp: 350544

Ion	Ratio	Lower	Upper
70	100		
42	67.4	31.8	47.8#
101	9.3	15.6	23.4#
130	21.3	13.7	20.5#







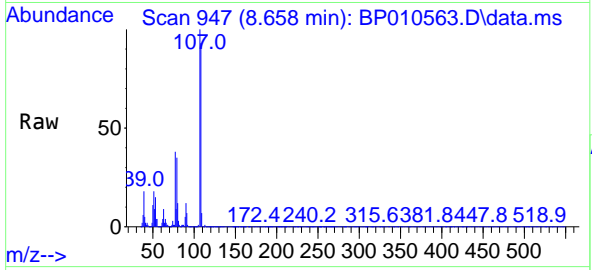
#18  
 4-Methylphenol  
 Concen: 33.537 ng/ul  
 RT: 8.658 min Scan# 946  
 Delta R.T. -0.006 min  
 Lab File: BP010563.D  
 Acq: 26 May 2022 07:05

Instrument :

BNA\_P

Client Sample Id :

SLCS042

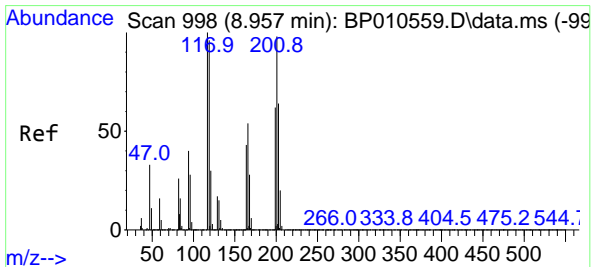
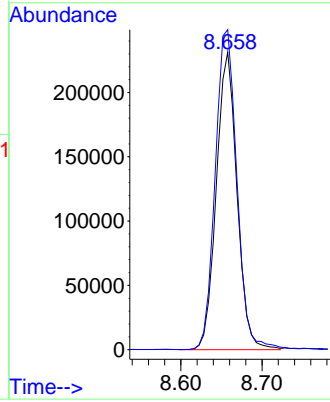
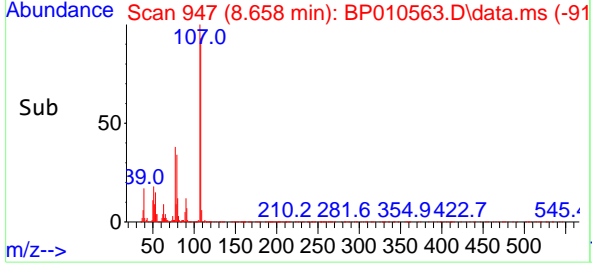


Tgt Ion:108 Resp: 41000  
 Ion Ratio Lower Upper  
 108 100  
 107 107.5 83.6 125.4

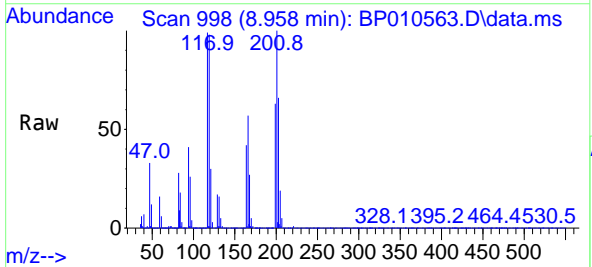
Manual Integrations

APPROVED

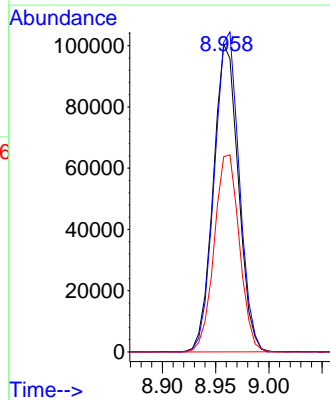
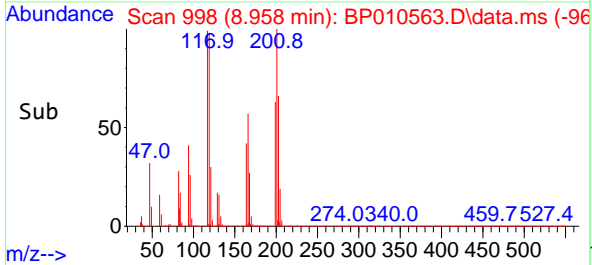
Reviewed By :Jagrut Upadhyay 05/26/2022  
 Supervised By :mohammad ahmed 05/27/2022

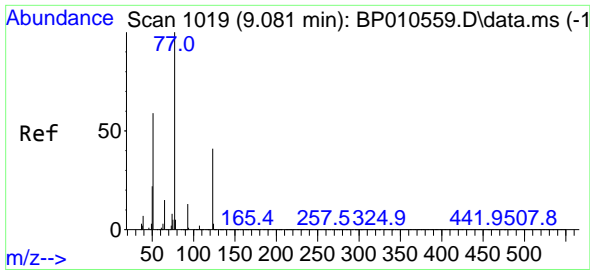


#19  
 Hexachloroethane  
 Concen: 34.448 ng/ul  
 RT: 8.958 min Scan# 998  
 Delta R.T. -0.012 min  
 Lab File: BP010563.D  
 Acq: 26 May 2022 07:05



Tgt Ion:117 Resp: 164384  
 Ion Ratio Lower Upper  
 117 100  
 201 100.6 106.5 159.7#  
 199 63.5 59.0 88.6





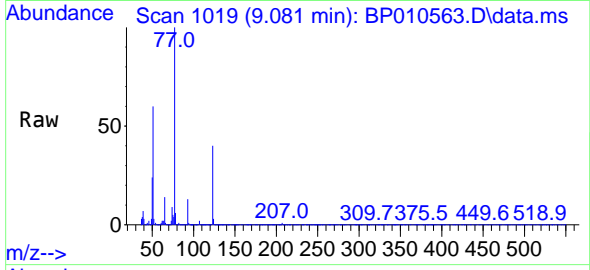
#22  
 Nitrobenzene  
 Concen: 34.974 ng/u1  
 RT: 9.081 min Scan# 1019  
 Delta R.T. -0.006 min  
 Lab File: BP010563.D  
 Acq: 26 May 2022 07:05

Instrument :

BNA\_P

ClientSampleId :

SLCS042

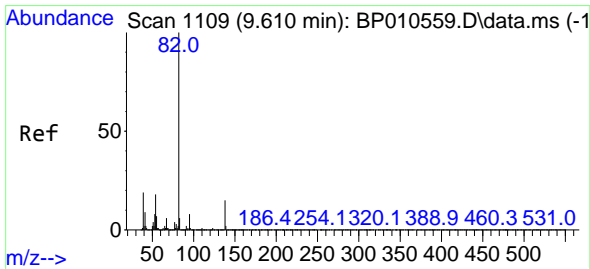
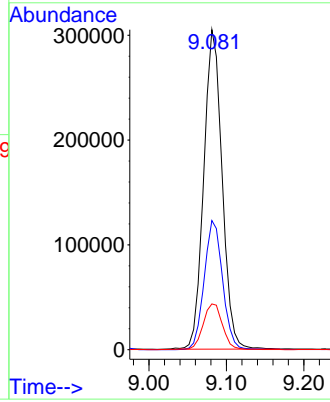
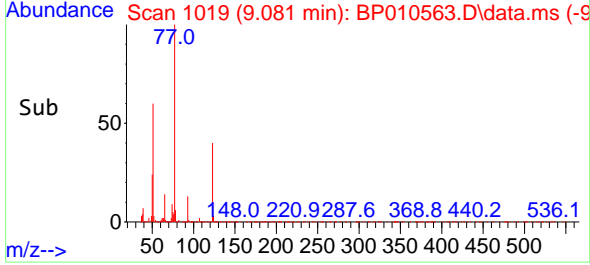


Tgt Ion: 77 Resp: 50161  
 Ion Ratio Lower Upper  
 77 100  
 123 40.4 42.3 63.5  
 65 14.3 5.8 8.8

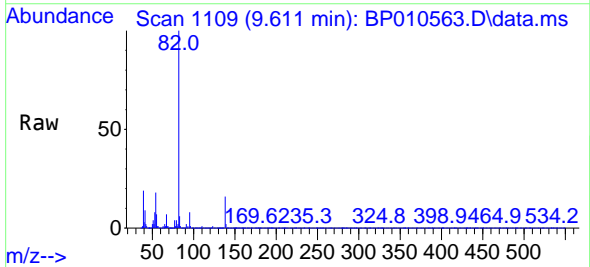
Manual Integrations

APPROVED

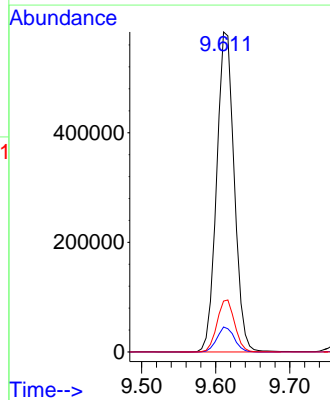
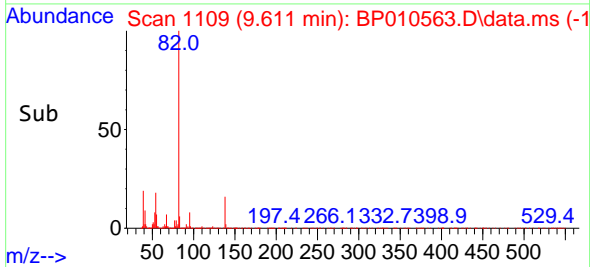
Reviewed By :Jagrut Upadhyay 05/26/2022  
 Supervised By :mohammad ahmed 05/27/2022

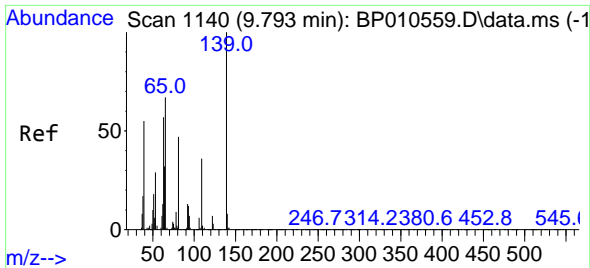


#23  
 Isophorone  
 Concen: 36.298 ng/u1  
 RT: 9.611 min Scan# 1109  
 Delta R.T. -0.006 min  
 Lab File: BP010563.D  
 Acq: 26 May 2022 07:05



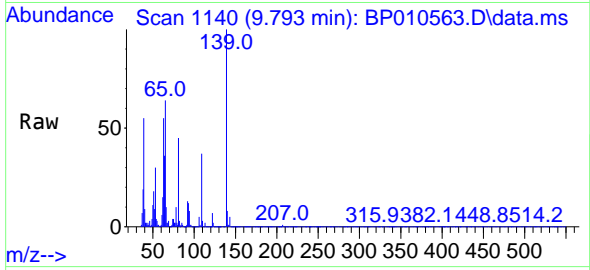
Tgt Ion: 82 Resp: 962228  
 Ion Ratio Lower Upper  
 82 100  
 95 7.8 7.8 11.8  
 138 15.9 12.9 19.3





#25  
 2-Nitrophenol  
 Concen: 35.666 ng/u1  
 RT: 9.793 min Scan# 1140  
 Delta R.T. -0.006 min  
 Lab File: BP010563.D  
 Acq: 26 May 2022 07:05

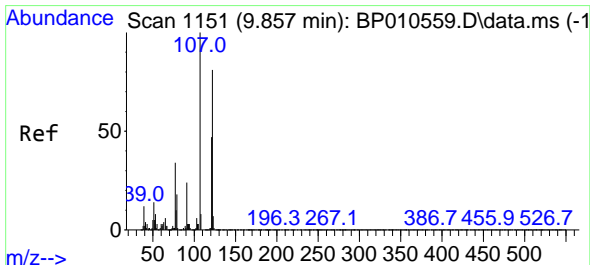
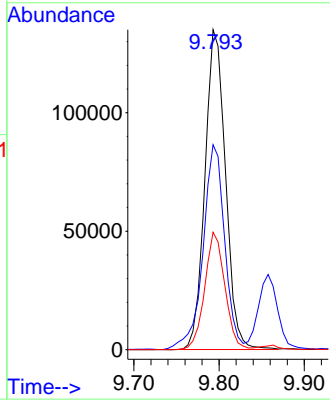
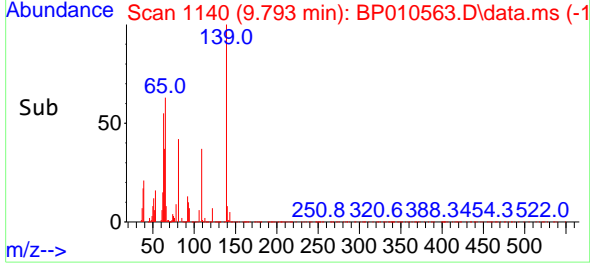
Instrument : BNA\_P  
 ClientSampleId : SLCS042



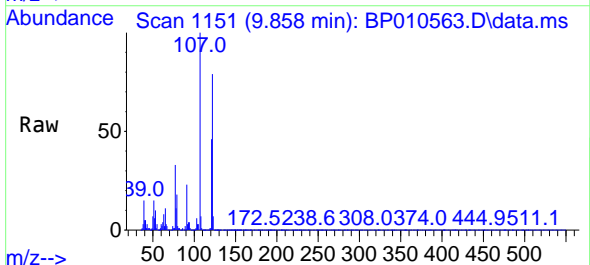
Tgt Ion:139 Resp: 226504

Ion	Ratio	Lower	Upper
139	100		
65	64.1	49.4	74.2
109	36.7	44.7	67.1

Manual Integrations  
**APPROVED**  
 Reviewed By :Jagrut Upadhyay 05/26/2022  
 Supervised By :mohammad ahmed 05/27/2022

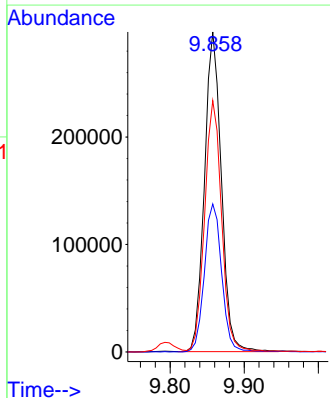
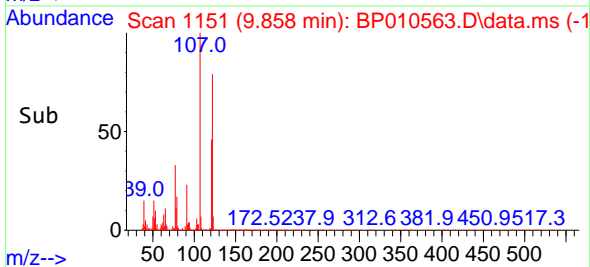


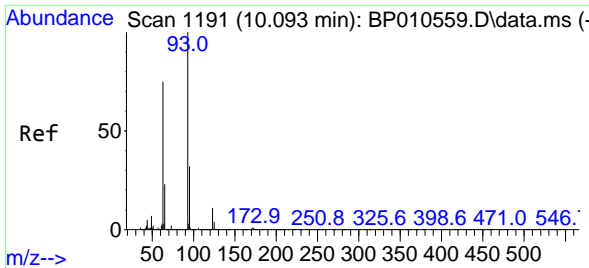
#26  
 2,4-Dimethylphenol  
 Concen: 34.186 ng/u1  
 RT: 9.858 min Scan# 1151  
 Delta R.T. -0.006 min  
 Lab File: BP010563.D  
 Acq: 26 May 2022 07:05



Tgt Ion:107 Resp: 471082

Ion	Ratio	Lower	Upper
107	100		
121	46.3	34.1	51.1
122	78.5	46.3	69.5





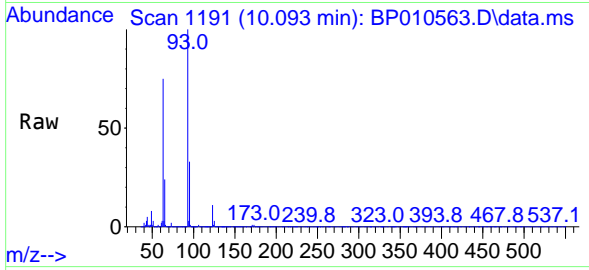
#27  
 Bis(2-Chloroethoxy)methane  
 Concen: 35.047 ng/ul  
 RT: 10.093 min Scan# 1191  
 Delta R.T. -0.006 min  
 Lab File: BP010563.D  
 Acq: 26 May 2022 07:05

Instrument :

BNA\_P

ClientSampleId :

SLCS042

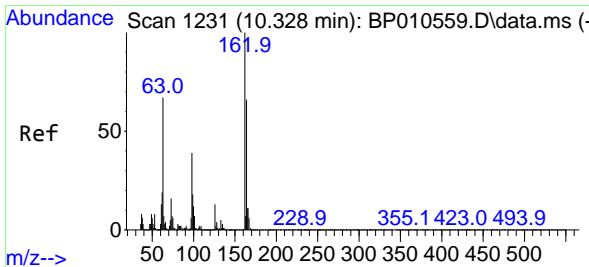
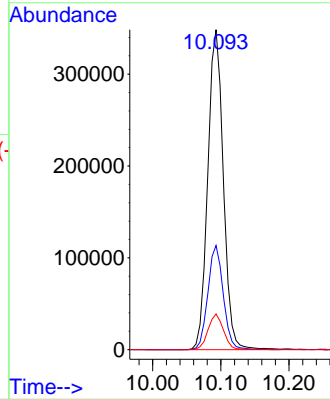
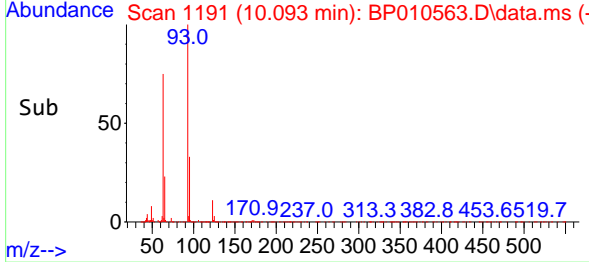


Tgt Ion: 93 Resp: 55318  
 Ion Ratio Lower Upper  
 93 100  
 95 32.5 26.2 39.4  
 123 11.2 6.2 9.4

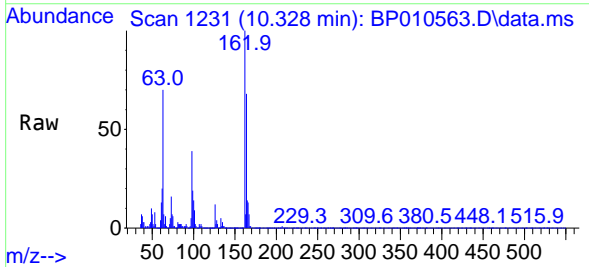
Manual Integrations

APPROVED

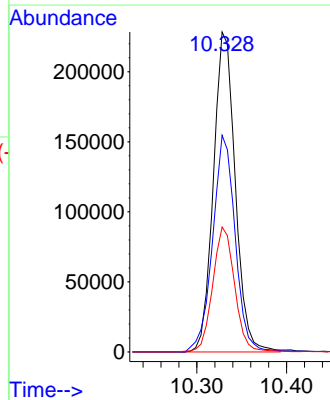
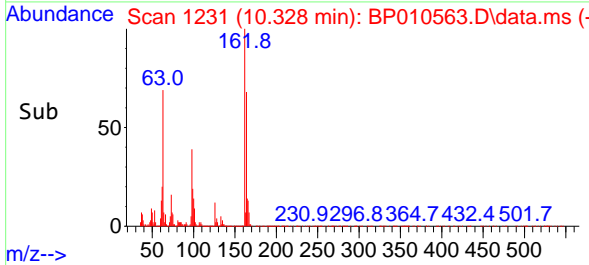
Reviewed By :Jagrut Upadhyay 05/26/2022  
 Supervised By :mohammad ahmed 05/27/2022

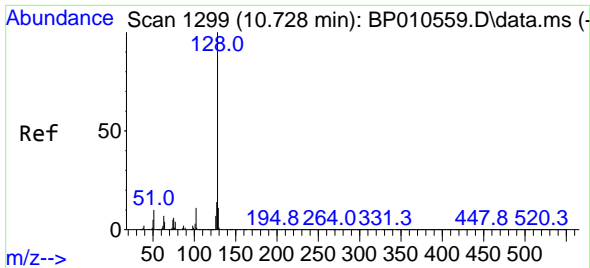


#29  
 2,4-Dichlorophenol  
 Concen: 34.589 ng/ul  
 RT: 10.328 min Scan# 1231  
 Delta R.T. -0.006 min  
 Lab File: BP010563.D  
 Acq: 26 May 2022 07:05



Tgt Ion:162 Resp: 386761  
 Ion Ratio Lower Upper  
 162 100  
 164 67.7 37.0 55.6#  
 98 39.0 31.0 46.6





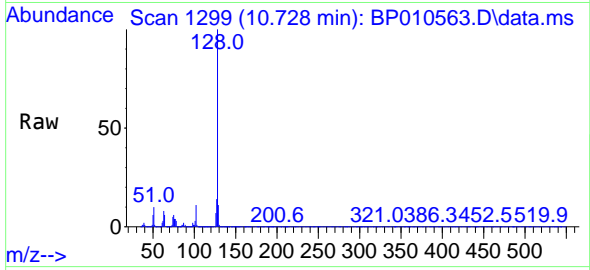
#30  
 Naphthalene  
 Concen: 34.161 ng/uI  
 RT: 10.728 min Scan# 1299  
 Delta R.T. -0.012 min  
 Lab File: BP010563.D  
 Acq: 26 May 2022 07:05

Instrument :

BNA\_P

ClientSampleId :

SLCS042

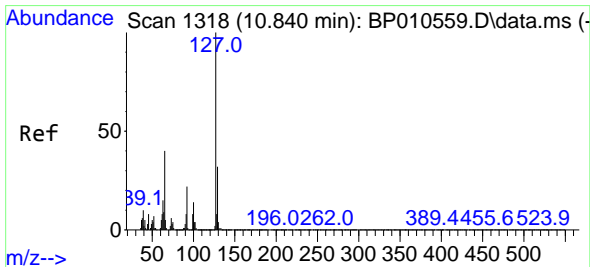
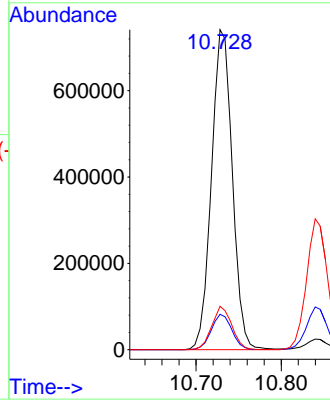
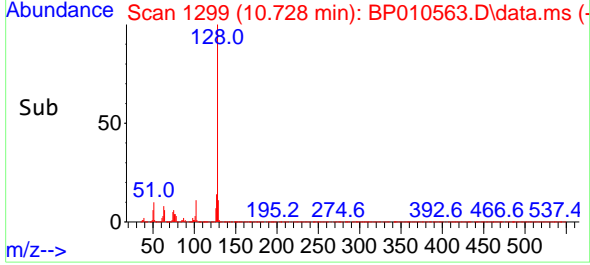


Tgt Ion:128 Resp: 125825  
 Ion Ratio Lower Upper  
 128 100  
 129 11.0 8.6 13.0  
 127 13.6 12.2 18.4

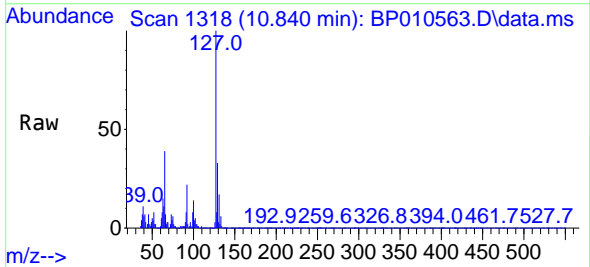
Manual Integrations

APPROVED

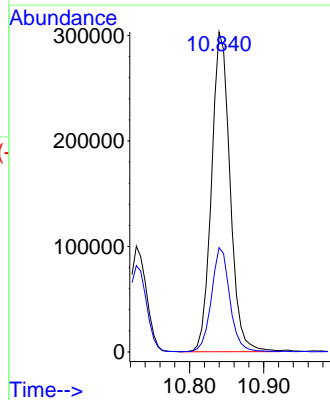
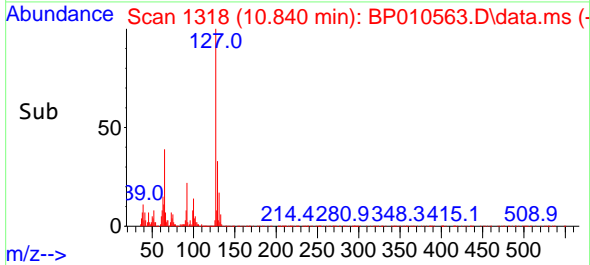
Reviewed By :Jagrut Upadhyay 05/26/2022  
 Supervised By :mohammad ahmed 05/27/2022

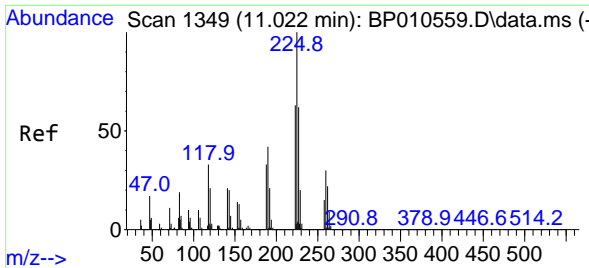


#32  
 4-Chloroaniline  
 Concen: 32.652 ng/uI  
 RT: 10.840 min Scan# 1318  
 Delta R.T. -0.006 min  
 Lab File: BP010563.D  
 Acq: 26 May 2022 07:05



Tgt Ion:127 Resp: 526928  
 Ion Ratio Lower Upper  
 127 100  
 129 32.6 24.6 37.0





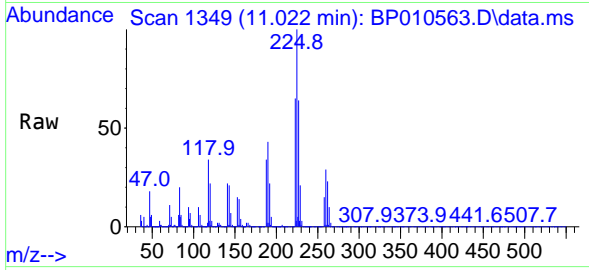
#33  
 Hexachlorobutadiene  
 Concen: 34.257 ng/u1  
 RT: 11.022 min Scan# 11  
 Delta R.T. -0.006 min  
 Lab File: BP010563.D  
 Acq: 26 May 2022 07:05

Instrument :

BNA\_P

ClientSampleId :

SLCS042

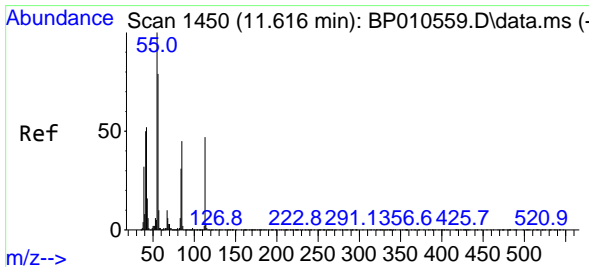
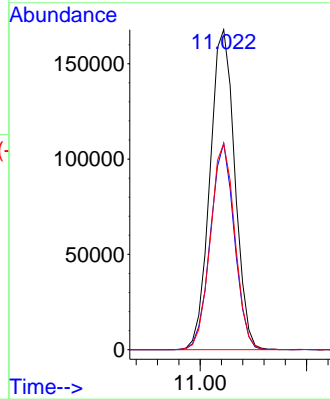
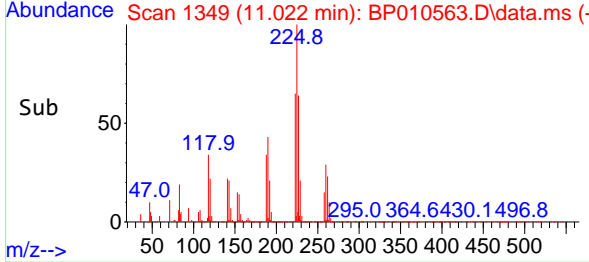


Tgt Ion:225 Resp: 271429  
 Ion Ratio Lower Upper  
 225 100  
 223 64.5 53.4 80.0  
 227 64.4 53.8 80.8

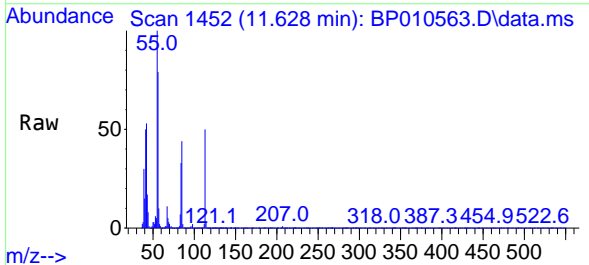
Manual Integrations

APPROVED

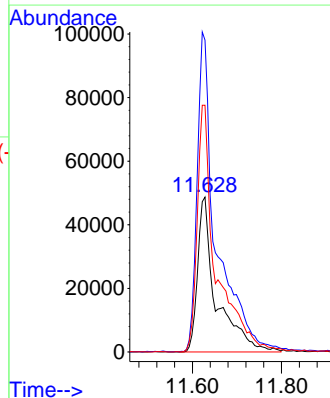
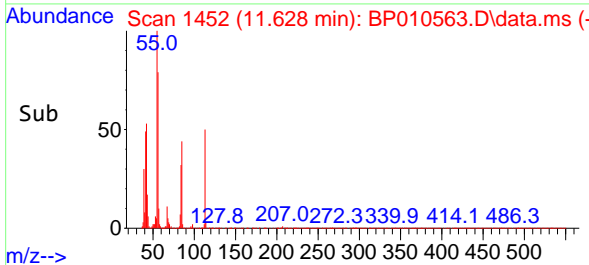
Reviewed By :Jagrut Upadhyay 05/26/2022  
 Supervised By :mohammad ahmed 05/27/2022

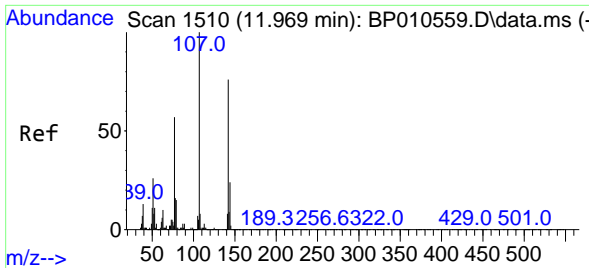


#34  
 Caprolactam  
 Concen: 36.532 ng/u1 m  
 RT: 11.628 min Scan# 1452  
 Delta R.T. 0.006 min  
 Lab File: BP010563.D  
 Acq: 26 May 2022 07:05



Tgt Ion:113 Resp: 142555  
 Ion Ratio Lower Upper  
 113 100  
 55 201.2 58.2 87.2#  
 56 159.2 68.6 103.0#





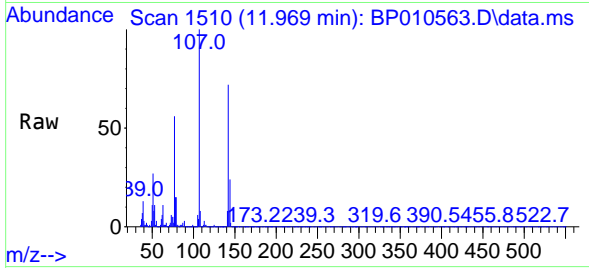
#35  
 4-Chloro-3-methylphenol  
 Concen: 36.209 ng/u1  
 RT: 11.969 min Scan# 1510  
 Delta R.T. -0.006 min  
 Lab File: BP010563.D  
 Acq: 26 May 2022 07:05

Instrument :

BNA\_P

ClientSampleId :

SLCS042

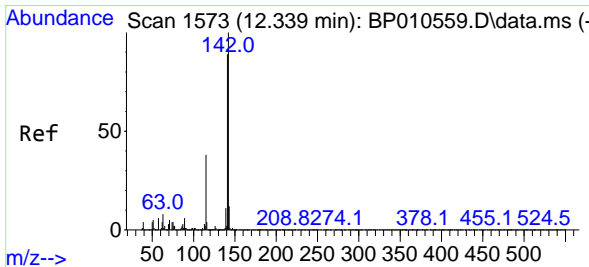
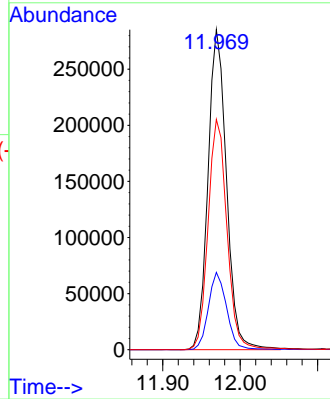
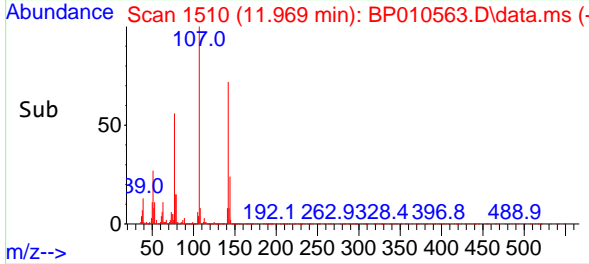


Tgt Ion:107 Resp: 47362  
 Ion Ratio Lower Upper  
 107 100  
 144 24.1 15.8 23.8  
 142 72.0 38.9 58.3

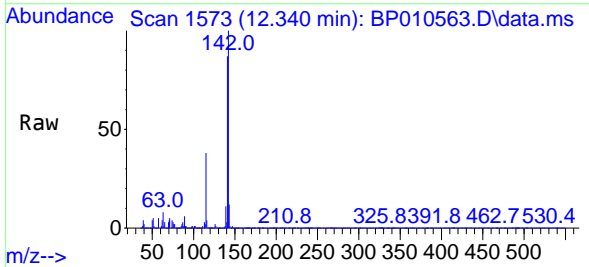
Manual Integrations

APPROVED

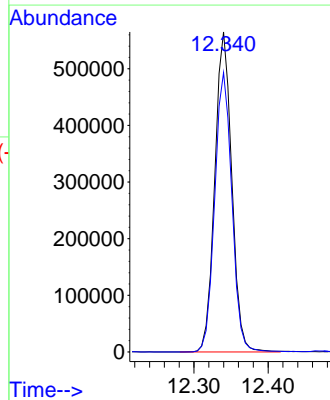
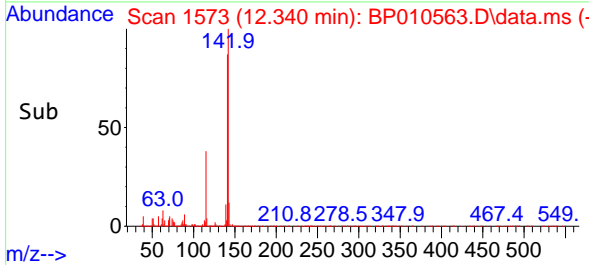
Reviewed By :Jagrut Upadhyay 05/26/2022  
 Supervised By :mohammad ahmed 05/27/2022

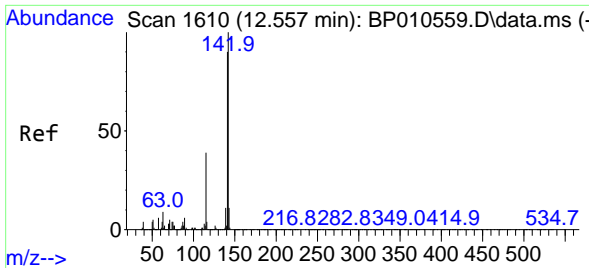


#36  
 2-Methylnaphthalene  
 Concen: 34.405 ng/u1  
 RT: 12.340 min Scan# 1573  
 Delta R.T. -0.006 min  
 Lab File: BP010563.D  
 Acq: 26 May 2022 07:05



Tgt Ion:142 Resp: 897115  
 Ion Ratio Lower Upper  
 142 100  
 141 87.3 64.3 96.5





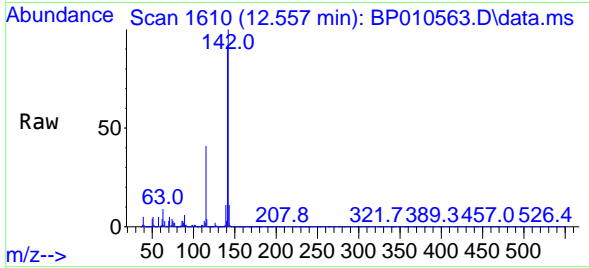
#37  
 1-Methylnaphthalene  
 Concen: 35.147 ng/ul  
 RT: 12.557 min Scan# 1610  
 Delta R.T. -0.006 min  
 Lab File: BP010563.D  
 Acq: 26 May 2022 07:05

Instrument :

BNA\_P

ClientSampleId :

SLCS042

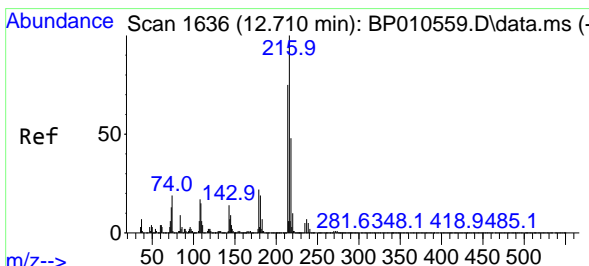
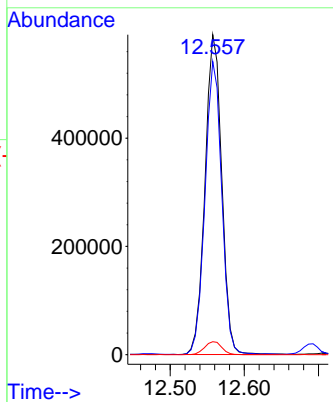
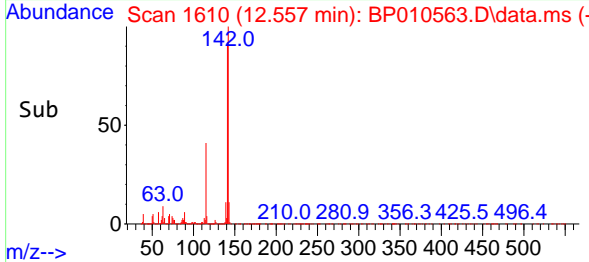


Tgt Ion:142 Resp: 925339  
 Ion Ratio Lower Upper  
 142 100  
 141 91.6 69.8 104.8  
 116 4.1 5.6 8.4

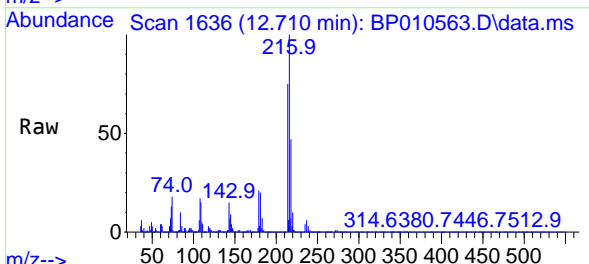
Manual Integrations

APPROVED

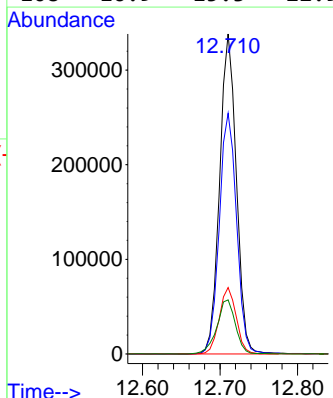
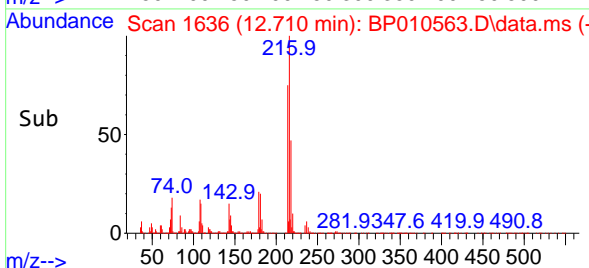
Reviewed By :Jagrut Upadhyay 05/26/2022  
 Supervised By :mohammad ahmed 05/27/2022



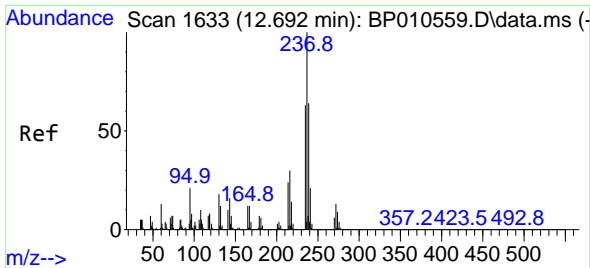
#39  
 1,2,4,5-Tetrachlorobenzene  
 Concen: 34.232 ng/ul  
 RT: 12.710 min Scan# 1636  
 Delta R.T. -0.006 min  
 Lab File: BP010563.D  
 Acq: 26 May 2022 07:05



Tgt Ion:216 Resp: 507406  
 Ion Ratio Lower Upper  
 216 100  
 214 75.2 58.2 87.2  
 179 20.7 14.2 21.2  
 108 16.9 15.3 22.9







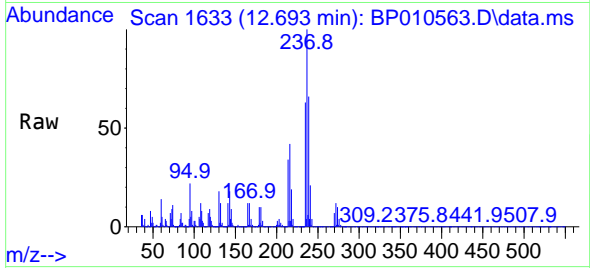
#40  
 Hexachlorocyclopentadiene  
 Concen: 30.104 ng/ul  
 RT: 12.693 min Scan# 1633  
 Delta R.T. -0.006 min  
 Lab File: BP010563.D  
 Acq: 26 May 2022 07:05

Instrument :

BNA\_P

Client SampleId :

SLCS042

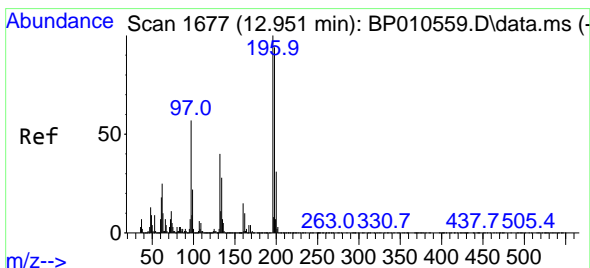
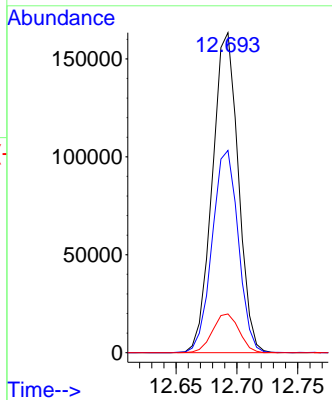
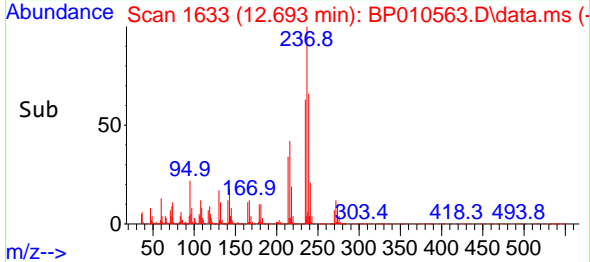


Tgt Ion:237 Resp: 242588  
 Ion Ratio Lower Upper  
 237 100  
 235 63.2 53.2 79.8  
 272 12.7 10.8 16.2

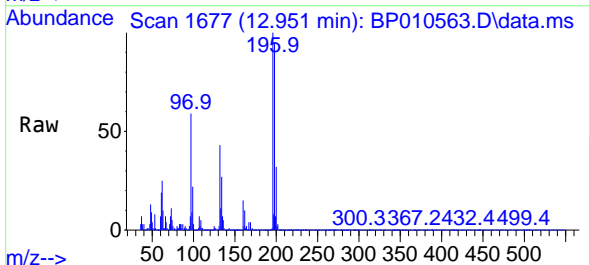
Manual Integrations

APPROVED

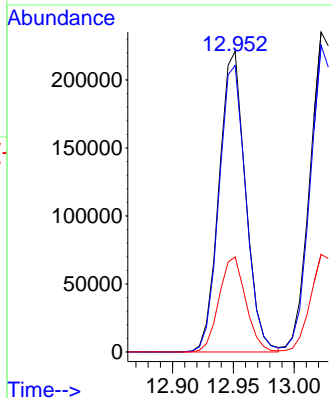
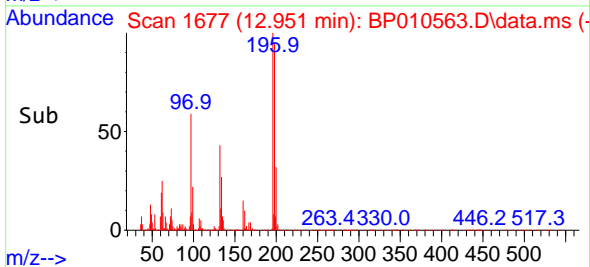
Reviewed By :Jagrut Upadhyay 05/26/2022  
 Supervised By :mohammad ahmed 05/27/2022

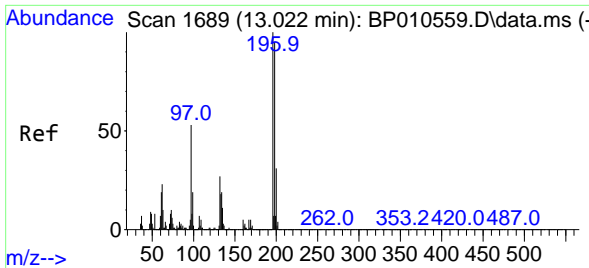


#41  
 2,4,6-Trichlorophenol  
 Concen: 36.316 ng/ul  
 RT: 12.951 min Scan# 1677  
 Delta R.T. -0.006 min  
 Lab File: BP010563.D  
 Acq: 26 May 2022 07:05



Tgt Ion:196 Resp: 335545  
 Ion Ratio Lower Upper  
 196 100  
 198 95.3 64.1 96.1  
 200 31.6 19.9 29.9#





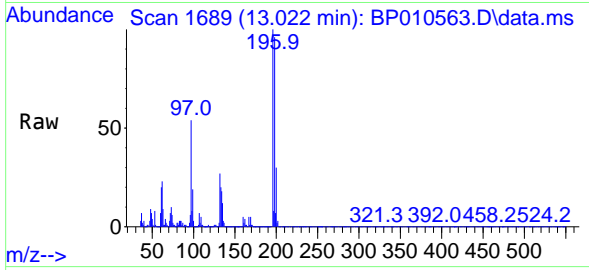
#42  
 2,4,5-Trichlorophenol  
 Concen: 35.820 ng/u1  
 RT: 13.022 min Scan# 1689  
 Delta R.T. -0.006 min  
 Lab File: BP010563.D  
 Acq: 26 May 2022 07:05

Instrument :

BNA\_P

ClientSampleId :

SLCS042

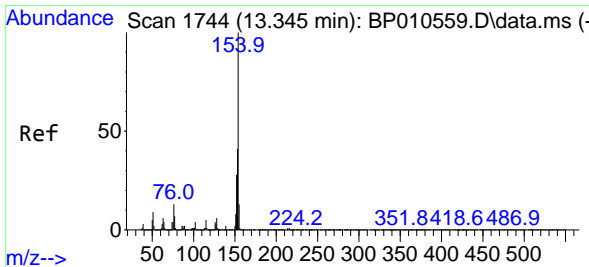
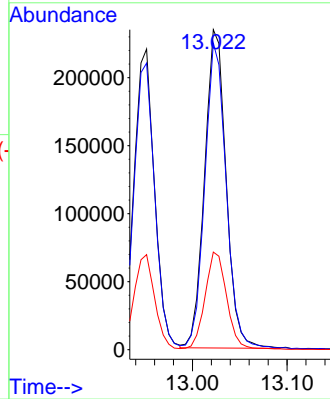
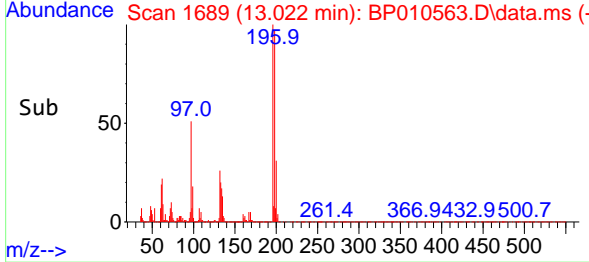


Tgt Ion:196 Resp: 369530  
 Ion Ratio Lower Upper  
 196 100  
 198 95.8 68.6 103.0  
 200 30.5 32.8 49.2

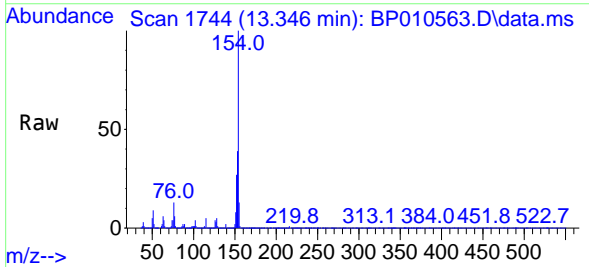
Manual Integrations

APPROVED

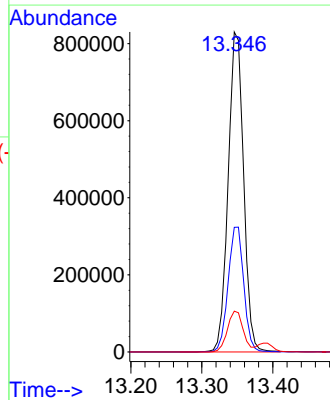
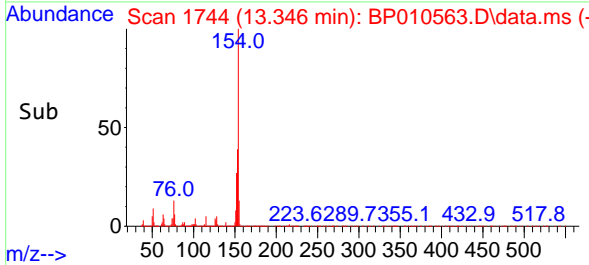
Reviewed By :Jagrut Upadhyay 05/26/2022  
 Supervised By :mohammad ahmed 05/27/2022

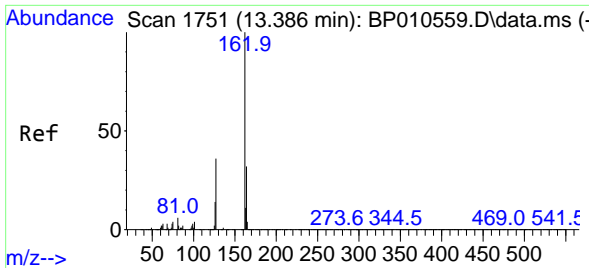


#43  
 1,1'-Biphenyl  
 Concen: 35.137 ng/u1  
 RT: 13.346 min Scan# 1744  
 Delta R.T. -0.006 min  
 Lab File: BP010563.D  
 Acq: 26 May 2022 07:05



Tgt Ion:154 Resp: 1252691  
 Ion Ratio Lower Upper  
 154 100  
 153 39.0 28.6 43.0  
 76 12.8 8.5 12.7#





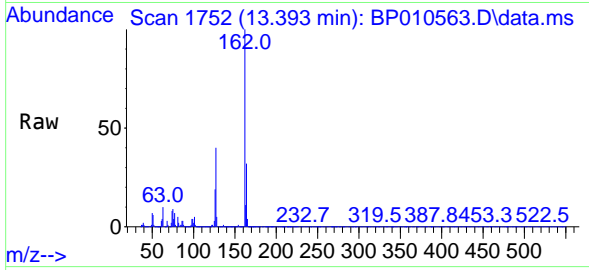
#44  
 2-Chloronaphthalene  
 Concen: 34.842 ng/u1  
 RT: 13.393 min Scan# 1751  
 Delta R.T. 0.000 min  
 Lab File: BP010563.D  
 Acq: 26 May 2022 07:05

Instrument :

BNA\_P

ClientSampleId :

SLCS042

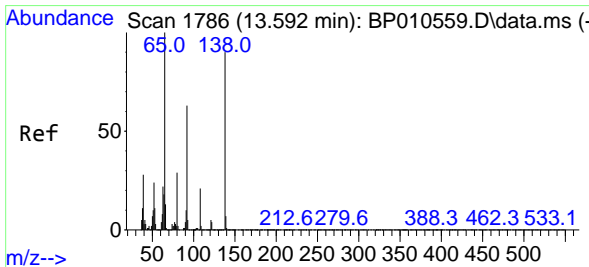
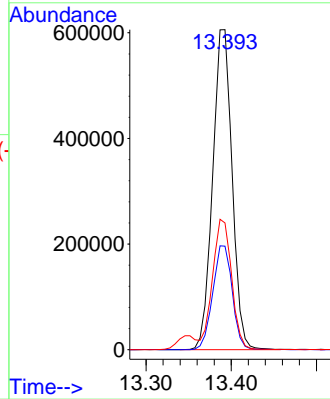
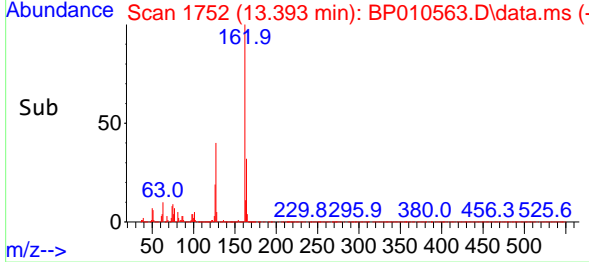


Tgt Ion:162 Resp: 95941  
 Ion Ratio Lower Upper  
 162 100  
 164 32.4 27.5 41.3  
 127 39.6 37.1 55.7

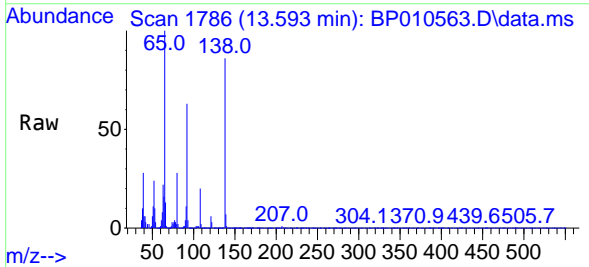
Manual Integrations

APPROVED

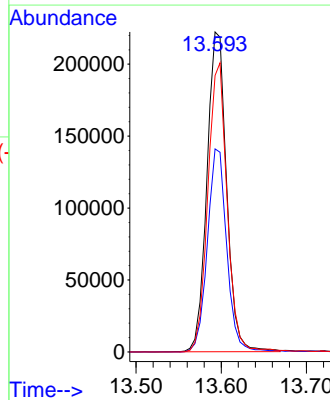
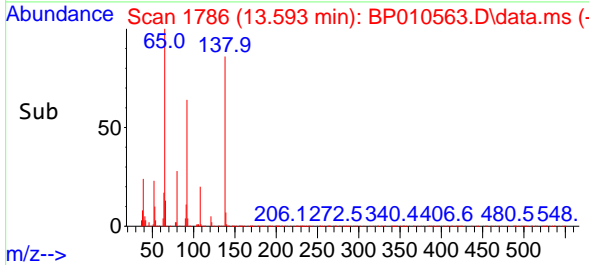
Reviewed By :Jagrut Upadhyay 05/26/2022  
 Supervised By :mohammad ahmed 05/27/2022

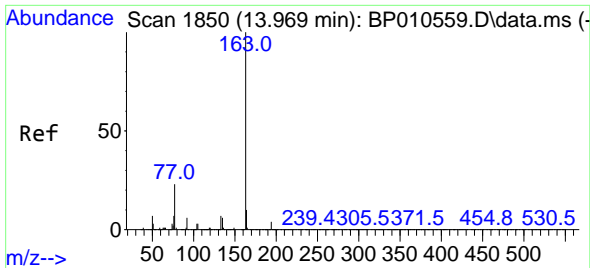


#45  
 2-Nitroaniline  
 Concen: 39.300 ng/u1  
 RT: 13.593 min Scan# 1786  
 Delta R.T. -0.006 min  
 Lab File: BP010563.D  
 Acq: 26 May 2022 07:05



Tgt Ion: 65 Resp: 356163  
 Ion Ratio Lower Upper  
 65 100  
 92 63.5 77.9 116.9#  
 138 86.4 81.5 122.3





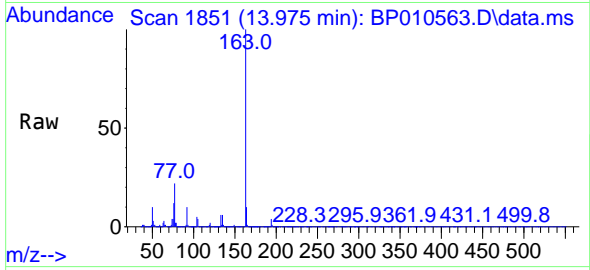
#47  
 Dimethylphthalate  
 Concen: 35.904 ng/uI  
 RT: 13.975 min Scan# 1851  
 Delta R.T. 0.000 min  
 Lab File: BP010563.D  
 Acq: 26 May 2022 07:05

Instrument :

BNA\_P

ClientSampleId :

SLCS042

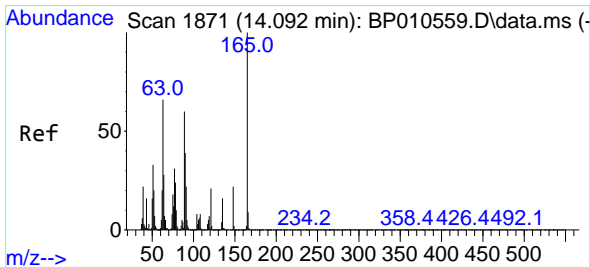
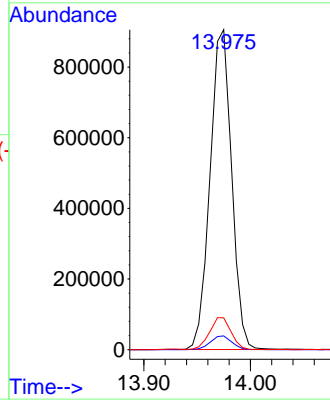
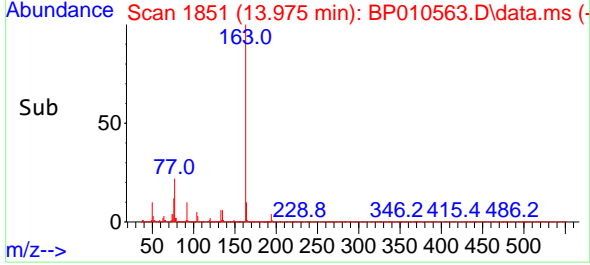


Tgt Ion:163 Resp: 127451  
 Ion Ratio Lower Upper  
 163 100  
 194 4.3 4.1 6.1  
 164 9.9 11.3 16.9

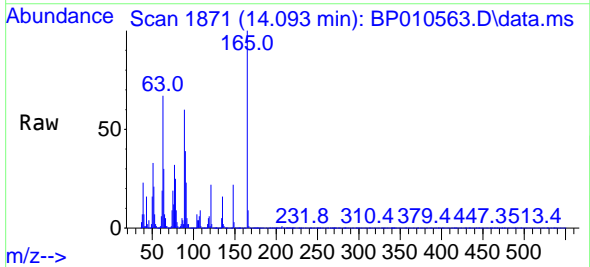
Manual Integrations

APPROVED

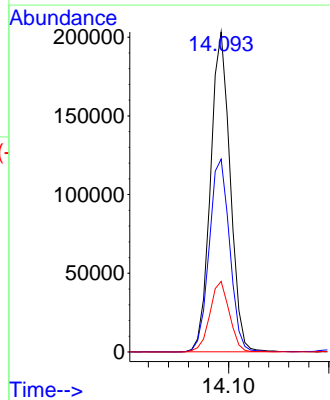
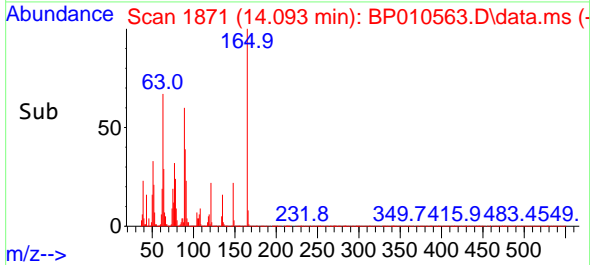
Reviewed By :Jagrut Upadhyay 05/26/2022  
 Supervised By :mohammad ahmed 05/27/2022

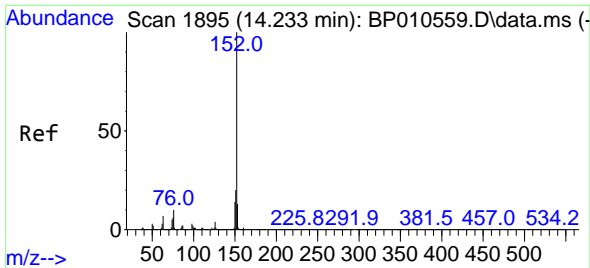


#48  
 2,6-Dinitrotoluene  
 Concen: 38.211 ng/uI  
 RT: 14.093 min Scan# 1871  
 Delta R.T. 0.000 min  
 Lab File: BP010563.D  
 Acq: 26 May 2022 07:05



Tgt Ion:165 Resp: 276506  
 Ion Ratio Lower Upper  
 165 100  
 89 60.3 51.7 77.5  
 121 22.1 18.3 27.5





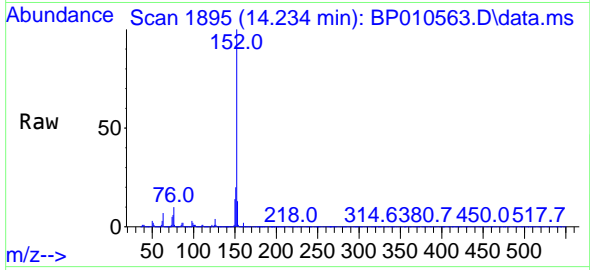
#50  
 Acenaphthylene  
 Concen: 35.515 ng/u1  
 RT: 14.234 min Scan# 1895  
 Delta R.T. -0.006 min  
 Lab File: BP010563.D  
 Acq: 26 May 2022 07:05

Instrument :

BNA\_P

Client SampleId :

SLCS042

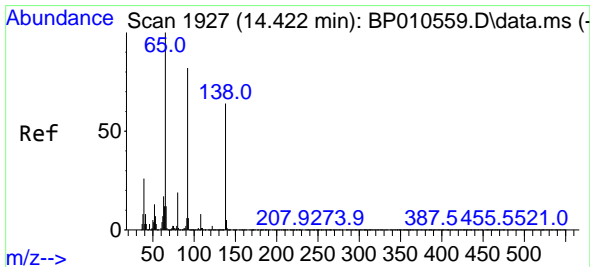
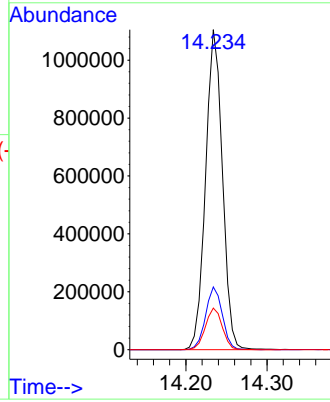
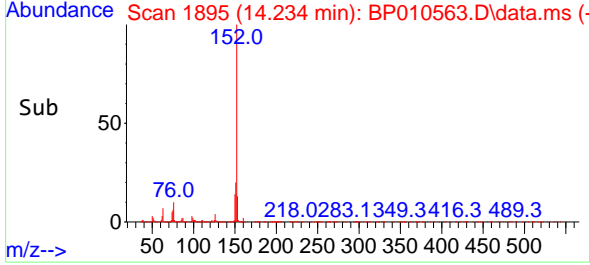


Tgt Ion:152 Resp: 1585900  
 Ion Ratio Lower Upper  
 152 100  
 151 19.6 18.3 27.5  
 153 13.0 11.0 16.6

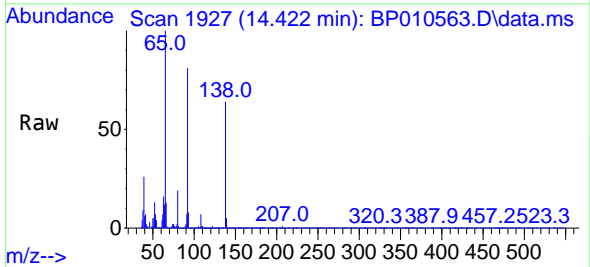
Manual Integrations

APPROVED

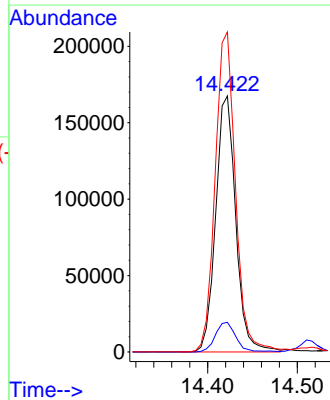
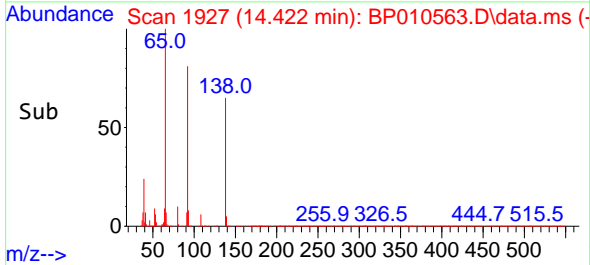
Reviewed By :Jagrut Upadhyay 05/26/2022  
 Supervised By :mohammad ahmed 05/27/2022

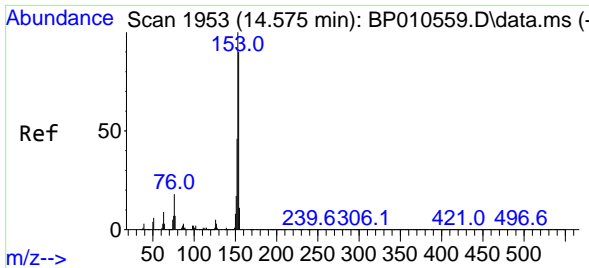


#51  
 3-Nitroaniline  
 Concen: 38.300 ng/u1  
 RT: 14.422 min Scan# 1927  
 Delta R.T. 0.000 min  
 Lab File: BP010563.D  
 Acq: 26 May 2022 07:05



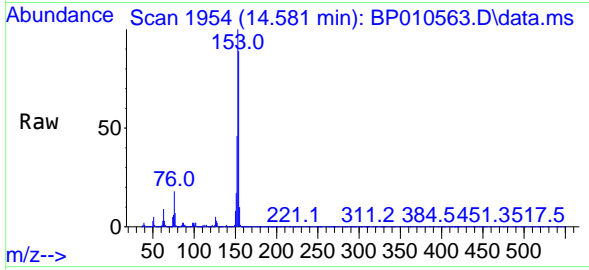
Tgt Ion:138 Resp: 260114  
 Ion Ratio Lower Upper  
 138 100  
 108 11.6 15.8 23.8#  
 92 125.0 117.1 175.7





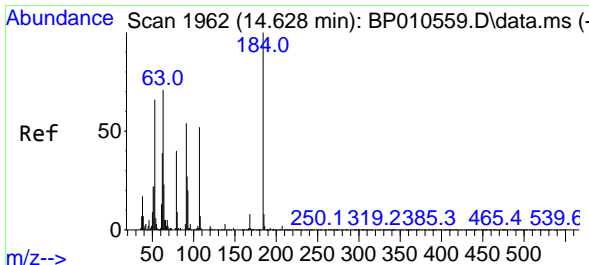
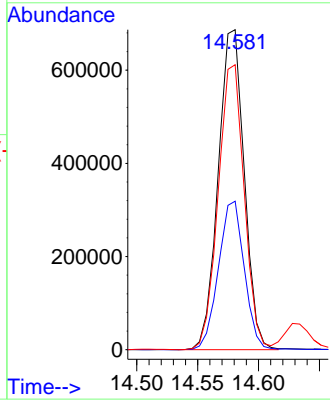
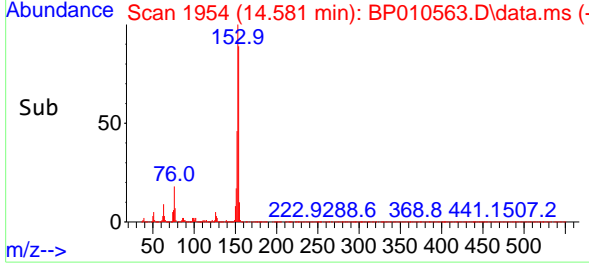
#52  
 Acenaphthene  
 Concen: 35.079 ng/u1  
 RT: 14.581 min Scan# 1953  
 Delta R.T. 0.000 min  
 Lab File: BP010563.D  
 Acq: 26 May 2022 07:05

Instrument : BNA\_P  
 ClientSampleId : SLCS042

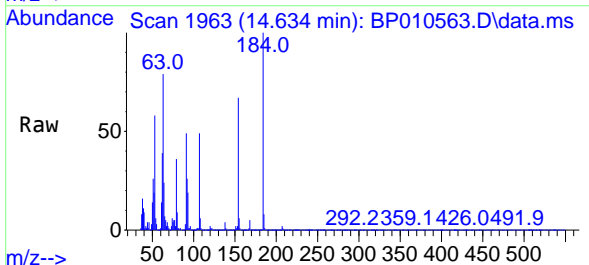


Tgt Ion:153 Resp: 102188  
 Ion Ratio Lower Upper  
 153 100  
 152 46.4 34.3 51.5  
 154 89.0 70.0 105.0

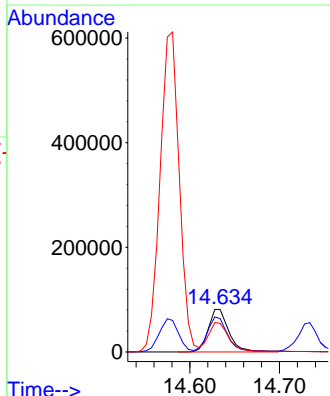
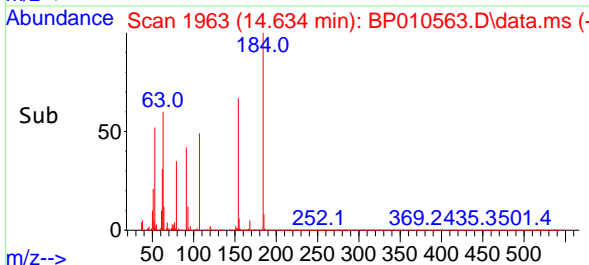
Manual Integrations  
**APPROVED**  
 Reviewed By :Jagrut Upadhyay 05/26/2022  
 Supervised By :mohammad ahmed 05/27/2022

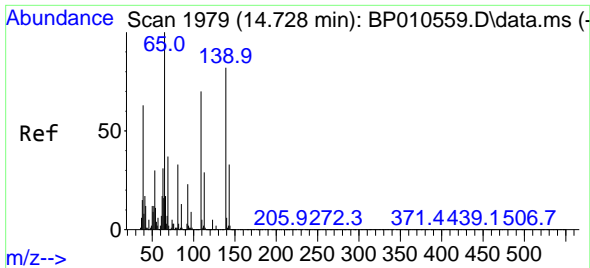


#53  
 2,4-Dinitrophenol  
 Concen: 32.024 ng/u1  
 RT: 14.634 min Scan# 1963  
 Delta R.T. 0.000 min  
 Lab File: BP010563.D  
 Acq: 26 May 2022 07:05



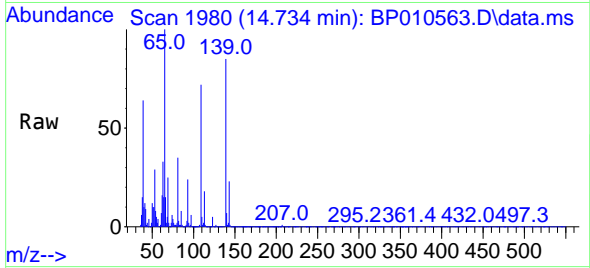
Tgt Ion:184 Resp: 129375  
 Ion Ratio Lower Upper  
 184 100  
 63 78.5 34.6 52.0#  
 154 67.4 57.7 86.5





#55  
 4-Nitrophenol  
 Concen: 34.680 ng/u1  
 RT: 14.734 min Scan# 1979  
 Delta R.T. 0.000 min  
 Lab File: BP010563.D  
 Acq: 26 May 2022 07:05

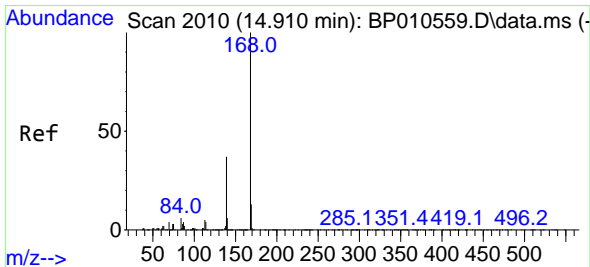
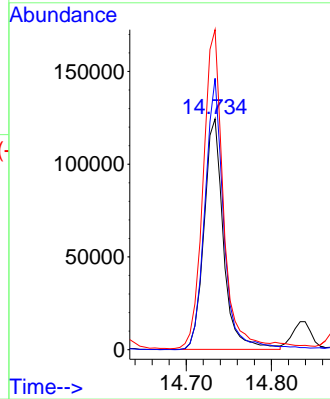
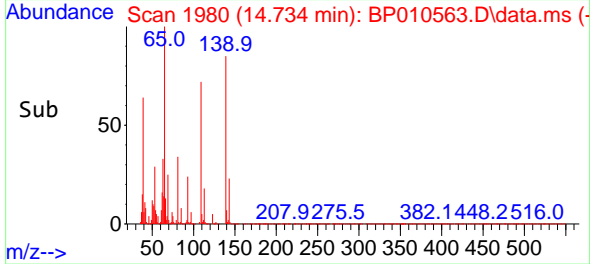
Instrument :  
 BNA\_P  
 ClientSampleId :  
 SLCS042



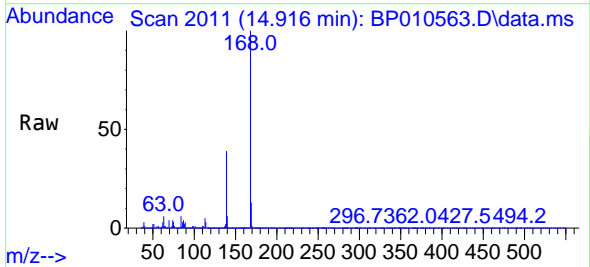
Tgt Ion:109 Resp: 19642  
 Ion Ratio Lower Upper  
 109 100  
 139 117.5 61.4 92.2  
 65 138.6 65.3 97.9

Manual Integrations  
 APPROVED

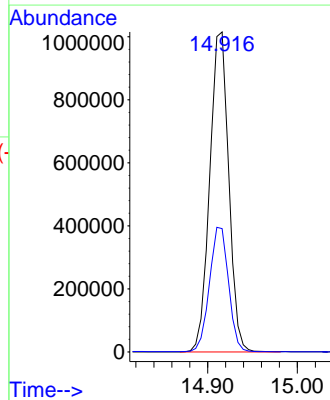
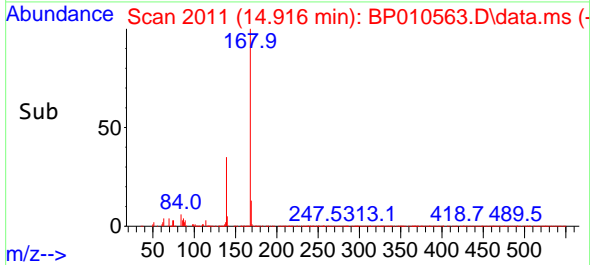
Reviewed By :Jagrut Upadhyay 05/26/2022  
 Supervised By :mohammad ahmed 05/27/2022

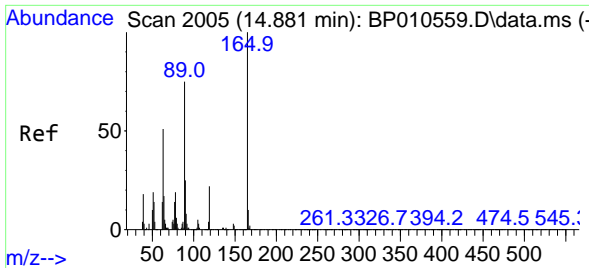


#56  
 Dibenzofuran  
 Concen: 34.955 ng/u1  
 RT: 14.916 min Scan# 2011  
 Delta R.T. 0.000 min  
 Lab File: BP010563.D  
 Acq: 26 May 2022 07:05



Tgt Ion:168 Resp: 1492280  
 Ion Ratio Lower Upper  
 168 100  
 139 38.6 30.1 45.1





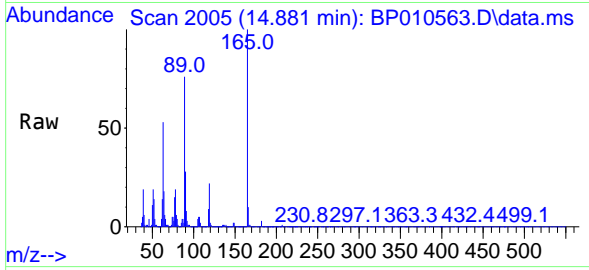
#57  
 2,4-Dinitrotoluene  
 Concen: 37.958 ng/ul  
 RT: 14.881 min Scan# 2005  
 Delta R.T. -0.006 min  
 Lab File: BP010563.D  
 Acq: 26 May 2022 07:05

Instrument :

BNA\_P

Client SampleId :

SLCS042

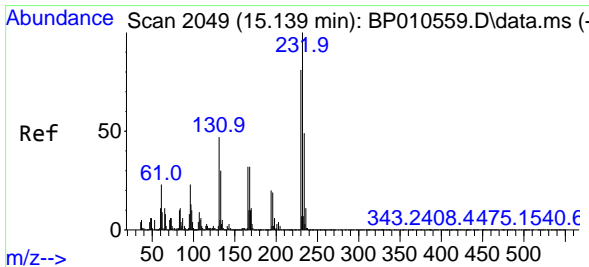
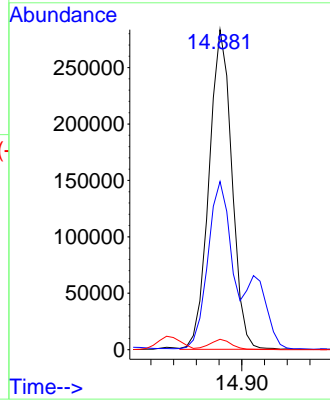
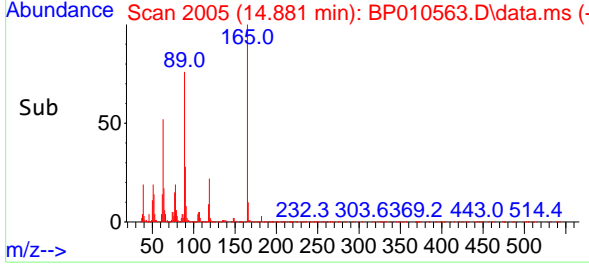


Tgt Ion:165 Resp: 39540  
 Ion Ratio Lower Upper  
 165 100  
 63 52.6 29.5 44.3#  
 182 3.3 2.8 4.2

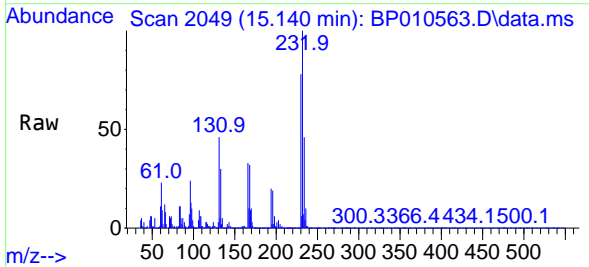
Manual Integrations

APPROVED

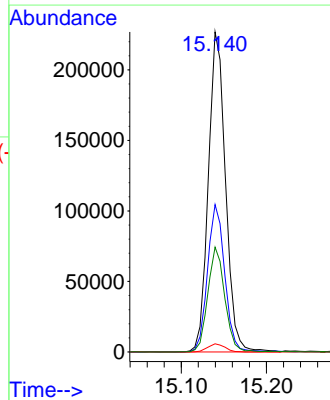
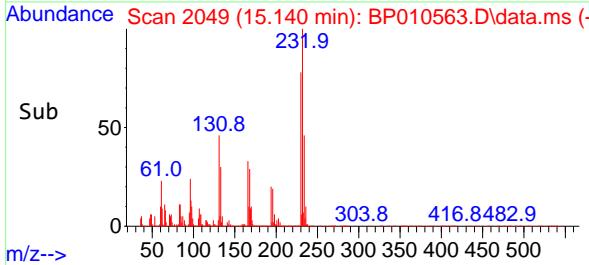
Reviewed By :Jagrut Upadhyay 05/26/2022  
 Supervised By :mohammad ahmed 05/27/2022



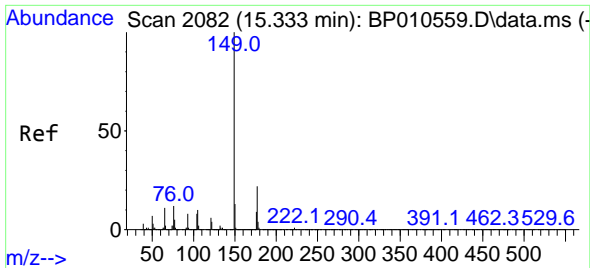
#58  
 2,3,4,6-Tetrachlorophenol  
 Concen: 35.828 ng/ul  
 RT: 15.140 min Scan# 2049  
 Delta R.T. -0.006 min  
 Lab File: BP010563.D  
 Acq: 26 May 2022 07:05



Tgt Ion:232 Resp: 317832  
 Ion Ratio Lower Upper  
 232 100  
 131 46.0 25.4 38.2#  
 130 2.5 4.2 6.2#  
 166 32.8 28.1 42.1







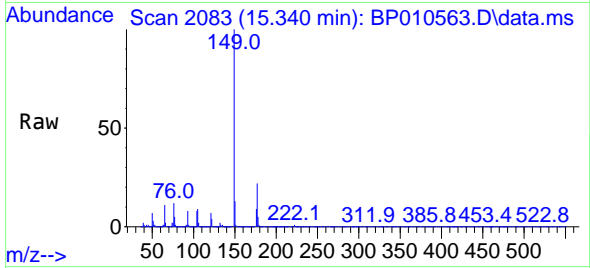
#59  
 Diethylphthalate  
 Concen: 36.705 ng/u1  
 RT: 15.340 min Scan# 2082  
 Delta R.T. 0.000 min  
 Lab File: BP010563.D  
 Acq: 26 May 2022 07:05

Instrument :

BNA\_P

Client SampleId :

SLCS042

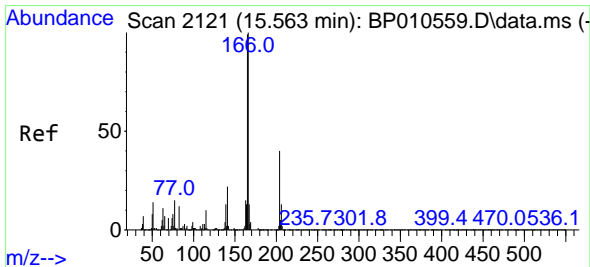
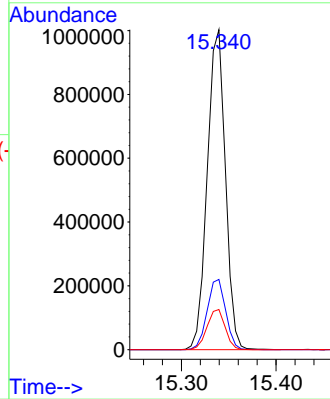
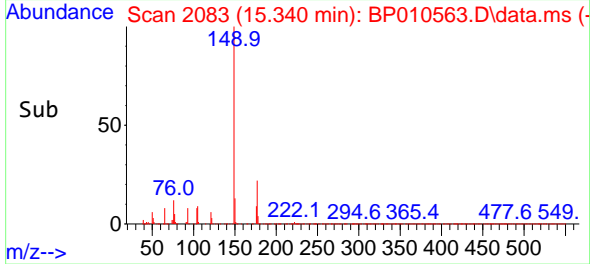


Tgt Ion:149 Resp: 1329480  
 Ion Ratio Lower Upper  
 149 100  
 177 22.0 22.0 33.0  
 150 12.5 10.2 15.2

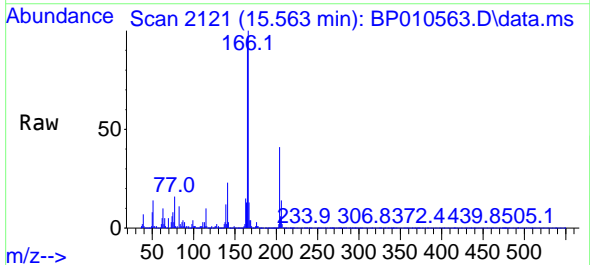
Manual Integrations

APPROVED

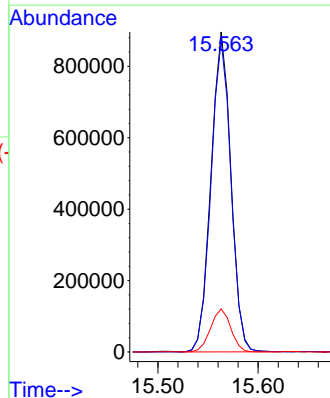
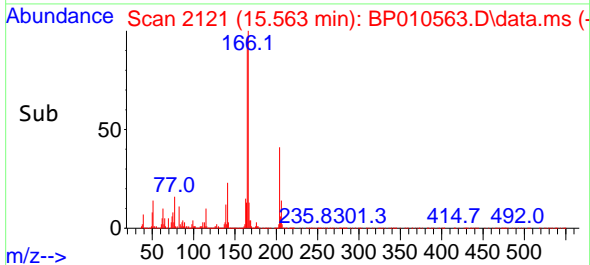
Reviewed By :Jagrut Upadhyay 05/26/2022  
 Supervised By :mohammad ahmed 05/27/2022

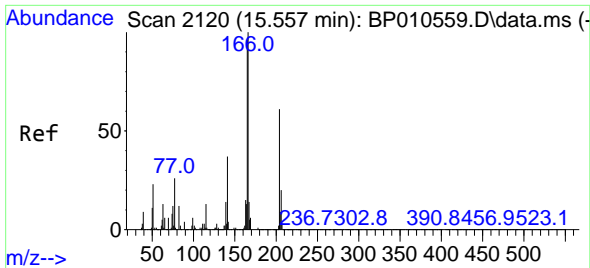


#61  
 Fluorene  
 Concen: 35.366 ng/u1  
 RT: 15.563 min Scan# 2121  
 Delta R.T. -0.006 min  
 Lab File: BP010563.D  
 Acq: 26 May 2022 07:05



Tgt Ion:166 Resp: 1234717  
 Ion Ratio Lower Upper  
 166 100  
 165 97.4 70.3 105.5  
 167 13.5 9.5 14.3





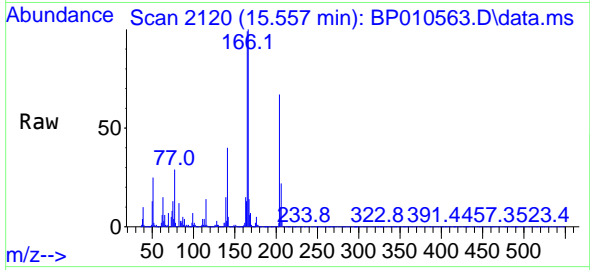
#62  
 4-Chlorophenyl-phenylether  
 Concen: 35.182 ng/ul  
 RT: 15.557 min Scan# 2120  
 Delta R.T. -0.006 min  
 Lab File: BP010563.D  
 Acq: 26 May 2022 07:05

Instrument :

BNA\_P

ClientSampleId :

SLCS042

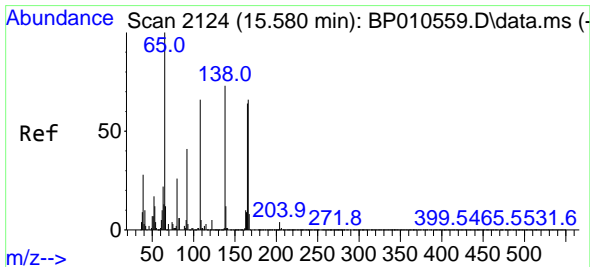
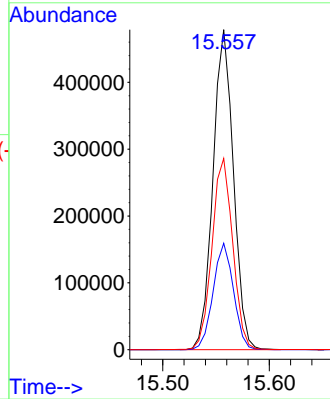
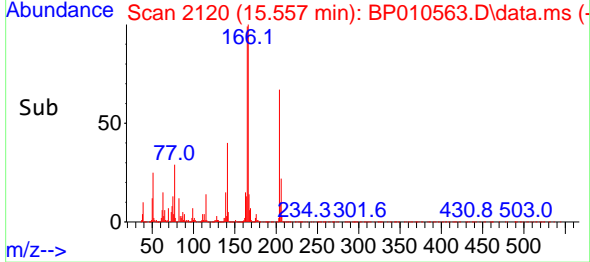


Tgt Ion:204 Resp: 638920  
 Ion Ratio Lower Upper  
 204 100  
 206 33.3 27.6 41.4  
 141 59.8 46.6 69.8

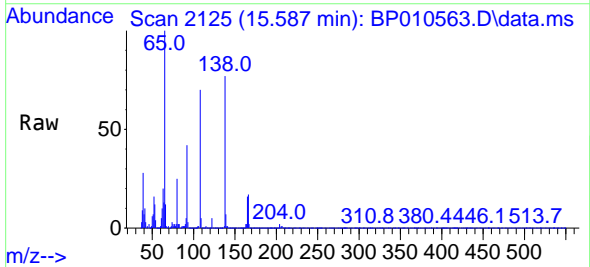
Manual Integrations

APPROVED

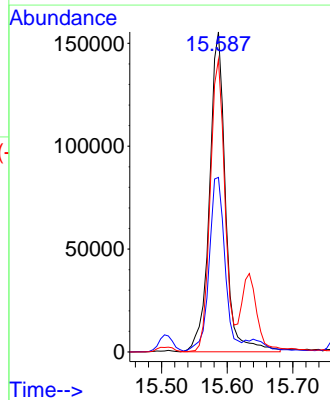
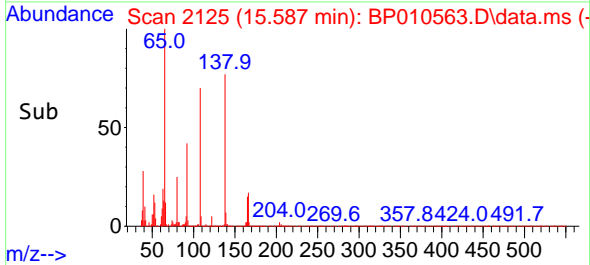
Reviewed By :Jagrut Upadhyay 05/26/2022  
 Supervised By :mohammad ahmed 05/27/2022

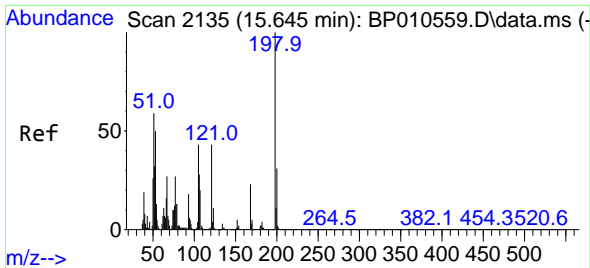


#63  
 4-Nitroaniline  
 Concen: 39.478 ng/ul  
 RT: 15.587 min Scan# 2125  
 Delta R.T. 0.000 min  
 Lab File: BP010563.D  
 Acq: 26 May 2022 07:05



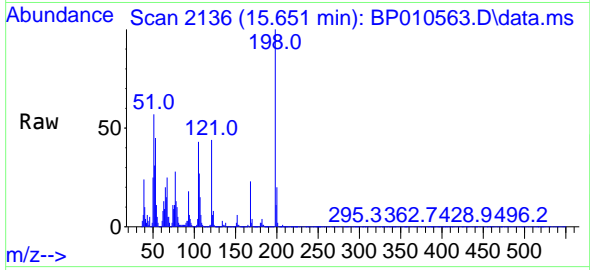
Tgt Ion:138 Resp: 264736  
 Ion Ratio Lower Upper  
 138 100  
 92 54.6 41.6 62.4  
 108 91.4 97.6 146.4#





#66  
 4,6-Dinitro-2-methylphenol  
 Concen: 34.837 ng/ul  
 RT: 15.651 min Scan# 2135  
 Delta R.T. 0.000 min  
 Lab File: BP010563.D  
 Acq: 26 May 2022 07:05

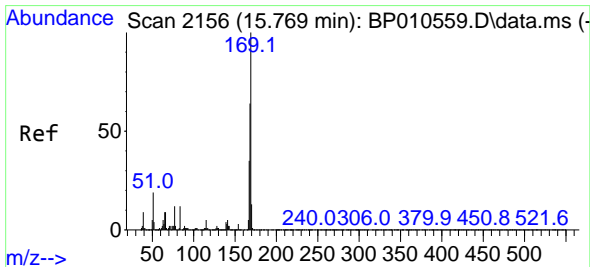
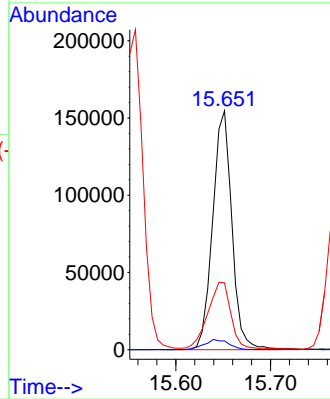
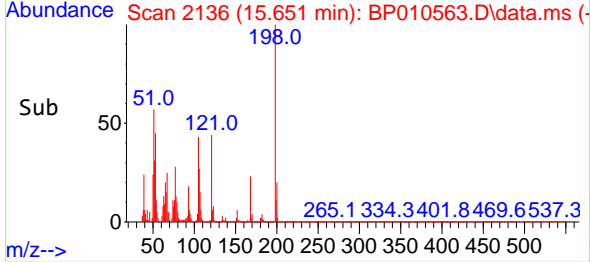
Instrument :  
 BNA\_P  
 ClientSampleId :  
 SLCS042



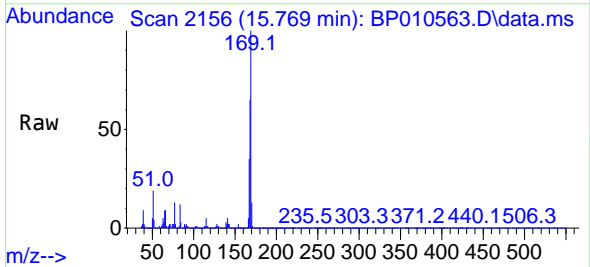
Tgt Ion:198 Resp: 217378  
 Ion Ratio Lower Upper  
 198 100  
 182 3.7 6.0 9.0  
 77 28.0 17.7 26.5

Manual Integrations  
 APPROVED

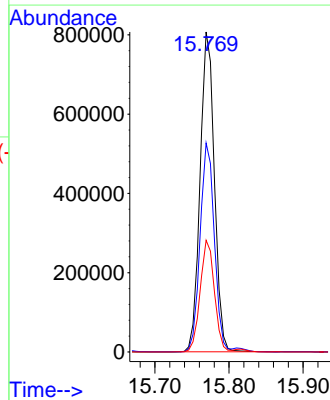
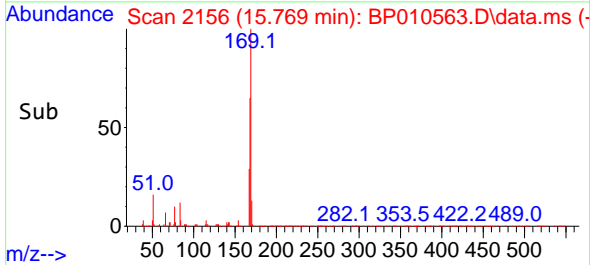
Reviewed By :Jagrut Upadhyay 05/26/2022  
 Supervised By :mohammad ahmed 05/27/2022

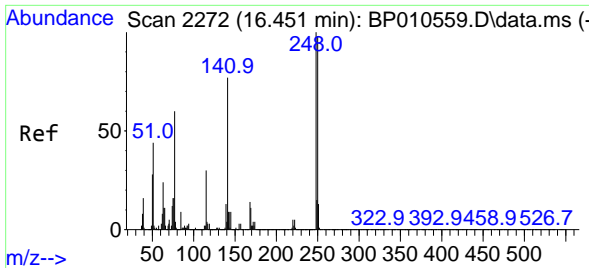


#67  
 N-Nitrosodiphenylamine  
 Concen: 35.950 ng/ul  
 RT: 15.769 min Scan# 2156  
 Delta R.T. -0.006 min  
 Lab File: BP010563.D  
 Acq: 26 May 2022 07:05



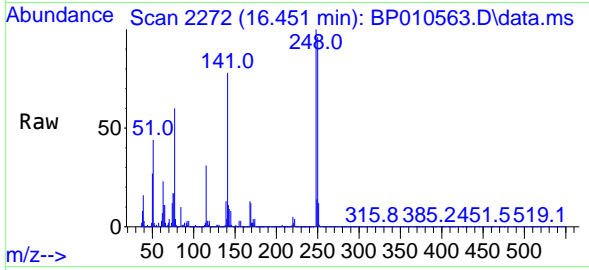
Tgt Ion:169 Resp: 1078653  
 Ion Ratio Lower Upper  
 169 100  
 168 65.3 48.3 72.5  
 167 34.9 29.6 44.4





#68  
 4-Bromophenyl-phenylether  
 Concen: 36.120 ng/ul  
 RT: 16.451 min Scan# 21  
 Delta R.T. -0.006 min  
 Lab File: BP010563.D  
 Acq: 26 May 2022 07:05

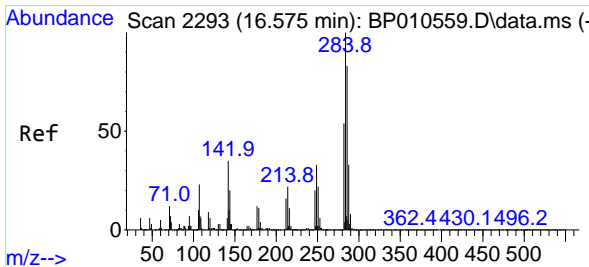
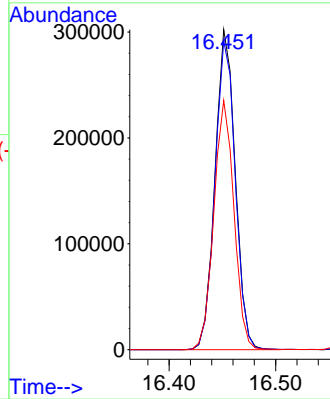
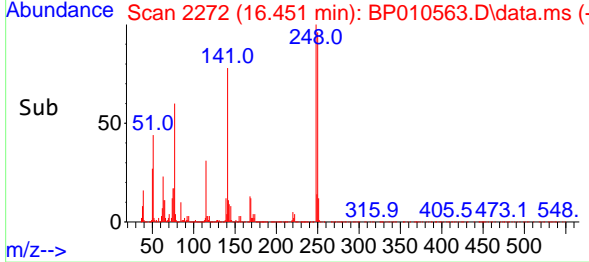
Instrument :  
 BNA\_P  
 ClientSampleId :  
 SLCS042



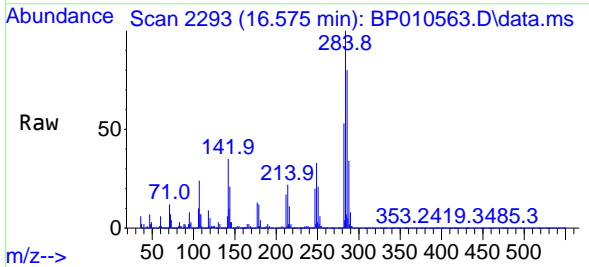
Tgt Ion:248 Resp: 39798  
 Ion Ratio Lower Upper  
 248 100  
 250 96.5 79.4 119.0  
 141 77.9 67.2 100.8

Manual Integrations  
 APPROVED

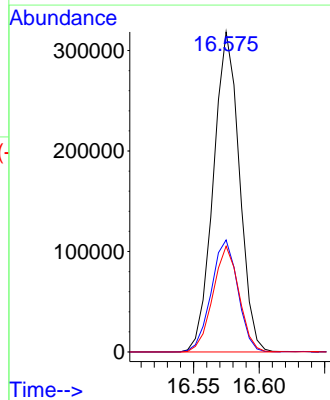
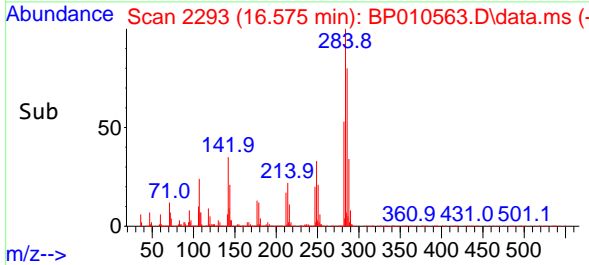
Reviewed By :Jagrut Upadhyay 05/26/2022  
 Supervised By :mohammad ahmed 05/27/2022

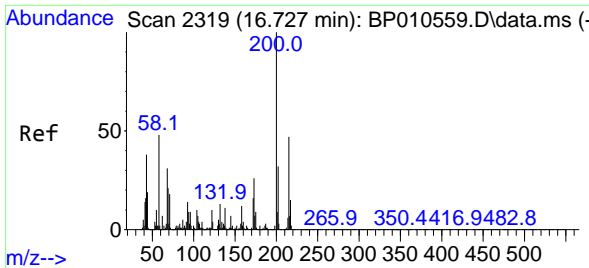


#69  
 Hexachlorobenzene  
 Concen: 34.696 ng/ul  
 RT: 16.575 min Scan# 2293  
 Delta R.T. -0.006 min  
 Lab File: BP010563.D  
 Acq: 26 May 2022 07:05



Tgt Ion:284 Resp: 439739  
 Ion Ratio Lower Upper  
 284 100  
 142 35.0 19.2 28.8#  
 249 33.0 27.4 41.2





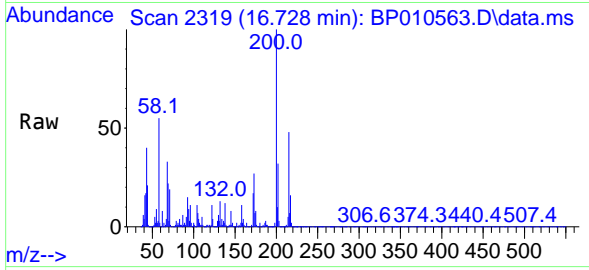
#70  
 Atrazine  
 Concen: 36.382 ng/u1  
 RT: 16.728 min Scan# 21  
 Delta R.T. -0.006 min  
 Lab File: BP010563.D  
 Acq: 26 May 2022 07:05

Instrument :

BNA\_P

ClientSampleId :

SLCS042

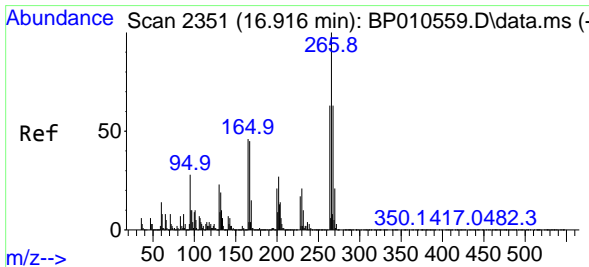
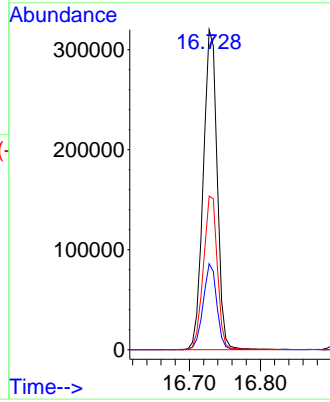
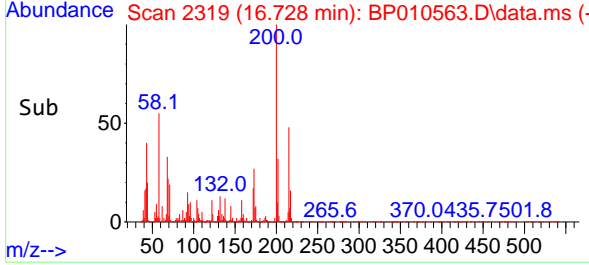


Tgt Ion:200 Resp: 437298  
 Ion Ratio Lower Upper  
 200 100  
 173 26.8 19.2 28.8  
 215 48.0 32.2 48.4

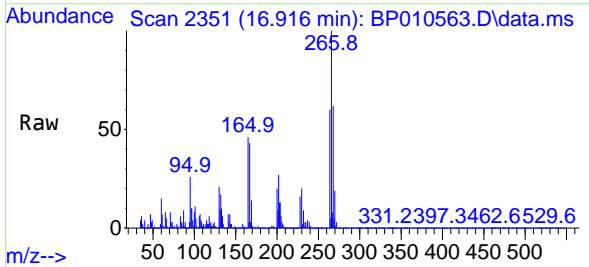
Manual Integrations

APPROVED

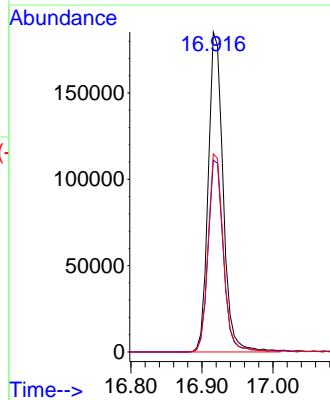
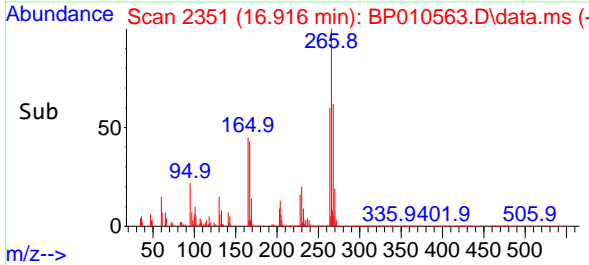
Reviewed By :Jagrut Upadhyay 05/26/2022  
 Supervised By :mohammad ahmed 05/27/2022

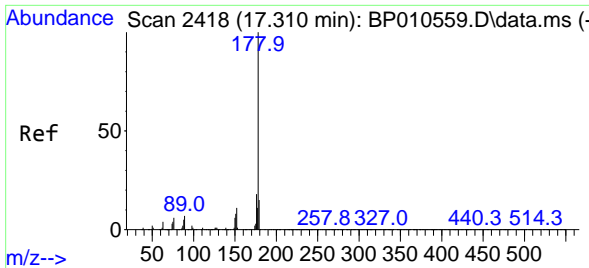


#71  
 Pentachlorophenol  
 Concen: 33.982 ng/u1  
 RT: 16.916 min Scan# 2351  
 Delta R.T. -0.006 min  
 Lab File: BP010563.D  
 Acq: 26 May 2022 07:05



Tgt Ion:266 Resp: 270241  
 Ion Ratio Lower Upper  
 266 100  
 264 59.9 57.3 85.9  
 268 61.9 65.7 98.5#





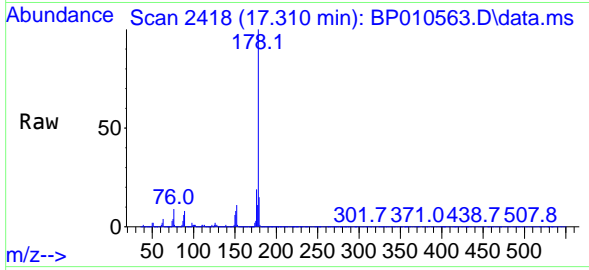
#72  
 Phenanthrene  
 Concen: 35.322 ng/u1  
 RT: 17.310 min Scan# 2418  
 Delta R.T. -0.006 min  
 Lab File: BP010563.D  
 Acq: 26 May 2022 07:05

Instrument :

BNA\_P

Client SampleId :

SLCS042

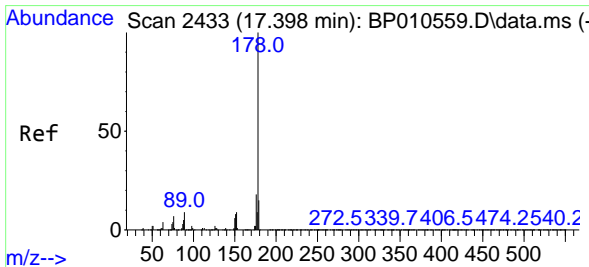
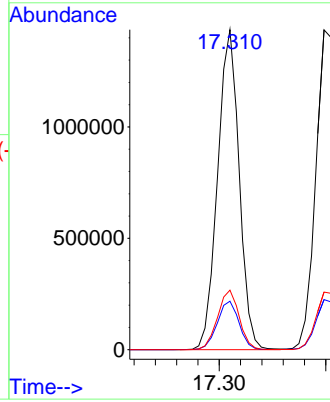
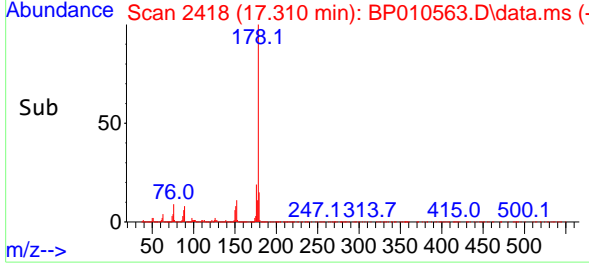


Tgt Ion:178 Resp: 2016818  
 Ion Ratio Lower Upper  
 178 100  
 179 15.1 11.7 17.5  
 176 18.6 14.5 21.7

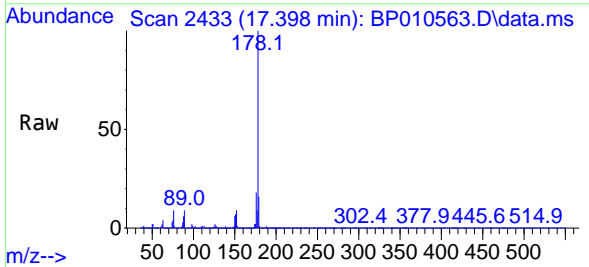
Manual Integrations

APPROVED

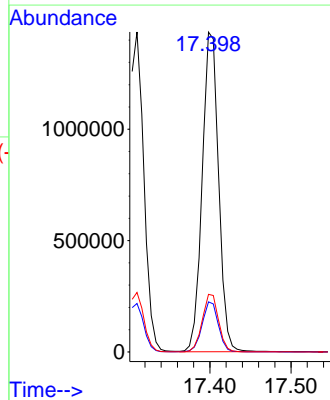
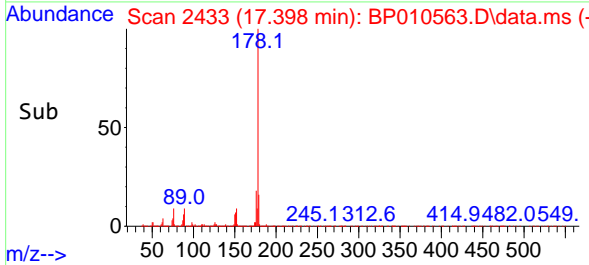
Reviewed By :Jagrut Upadhyay 05/26/2022  
 Supervised By :mohammad ahmed 05/27/2022

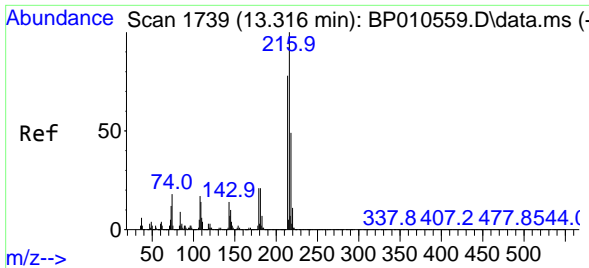


#74  
 Anthracene  
 Concen: 35.142 ng/u1  
 RT: 17.398 min Scan# 2433  
 Delta R.T. -0.006 min  
 Lab File: BP010563.D  
 Acq: 26 May 2022 07:05



Tgt Ion:178 Resp: 2012925  
 Ion Ratio Lower Upper  
 178 100  
 179 15.7 12.3 18.5  
 176 18.0 13.4 20.2





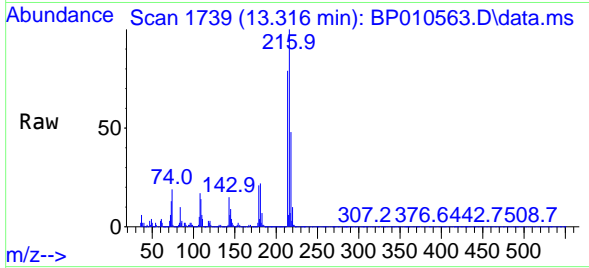
#75  
 1,2,3,4-Tetrachlorobenzene  
 Concen: 32.317 ng/uL  
 RT: 13.316 min Scan# 1739  
 Delta R.T. -0.006 min  
 Lab File: BP010563.D  
 Acq: 26 May 2022 07:05

Instrument :

BNA\_P

Client Sample Id :

SLCS042

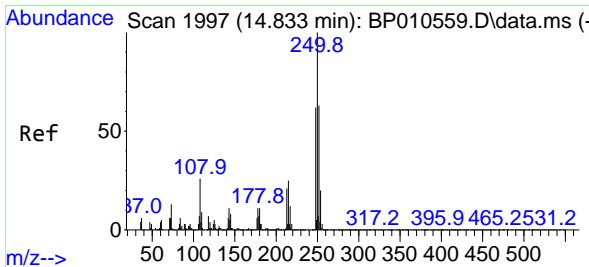
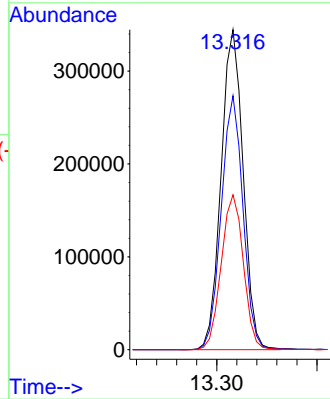
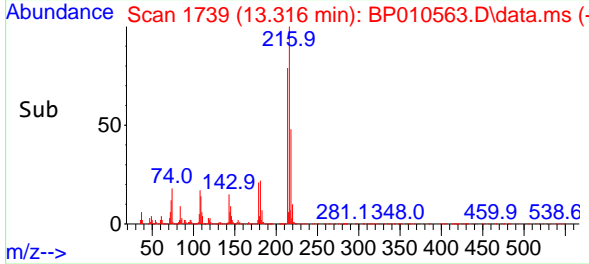


Tgt Ion:216 Resp: 52545  
 Ion Ratio Lower Upper  
 216 100  
 214 79.3 50.4 75.6  
 218 48.4 35.2 52.8

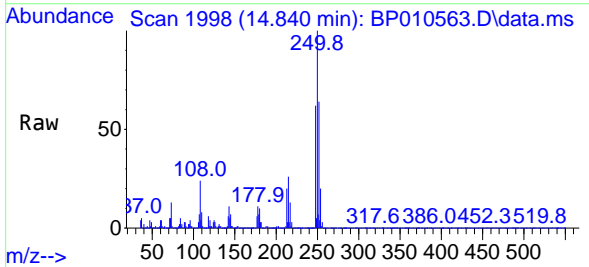
Manual Integrations

APPROVED

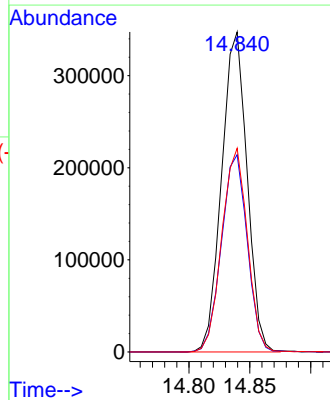
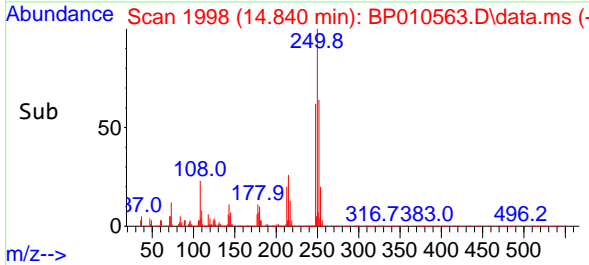
Reviewed By :Jagrut Upadhyay 05/26/2022  
 Supervised By :mohammad ahmed 05/27/2022

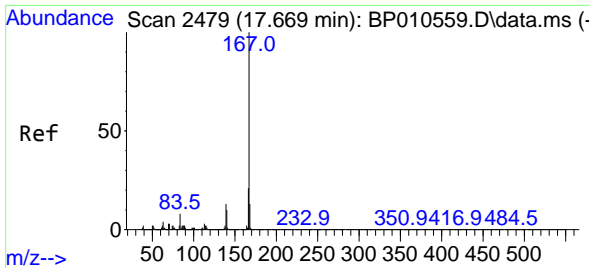


#76  
 Pentachlorobenzene  
 Concen: 34.224 ng/uL  
 RT: 14.840 min Scan# 1998  
 Delta R.T. -0.006 min  
 Lab File: BP010563.D  
 Acq: 26 May 2022 07:05



Tgt Ion:250 Resp: 504883  
 Ion Ratio Lower Upper  
 250 100  
 248 61.6 43.5 65.3  
 252 63.6 46.5 69.7





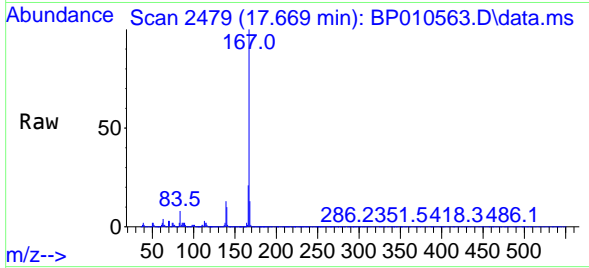
#77  
 Carbazole  
 Concen: 35.314 ng/u1  
 RT: 17.669 min Scan# 2479  
 Delta R.T. -0.006 min  
 Lab File: BP010563.D  
 Acq: 26 May 2022 07:05

Instrument :

BNA\_P

Client SampleId :

SLCS042

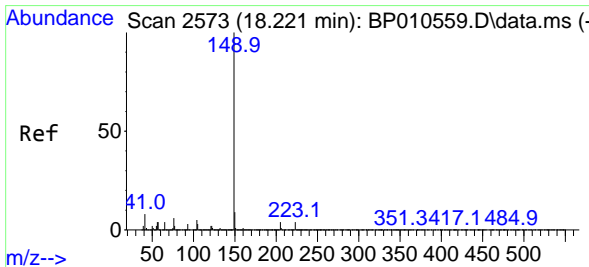
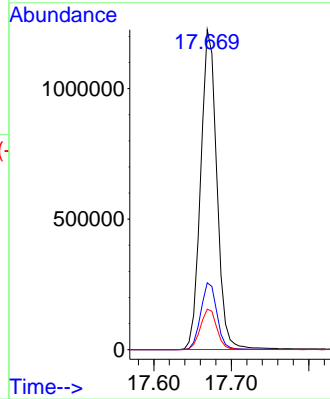
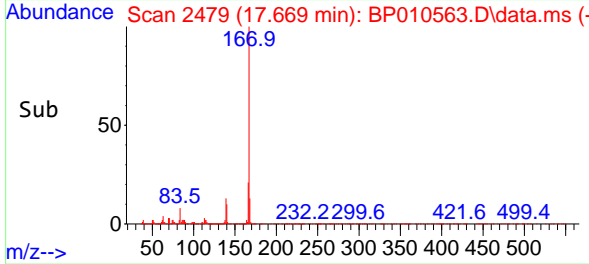


Tgt Ion:167 Resp: 177769  
 Ion Ratio Lower Upper  
 167 100  
 166 20.9 15.8 23.8  
 139 12.6 8.3 12.5

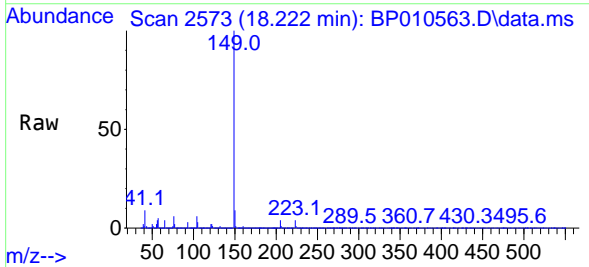
Manual Integrations

APPROVED

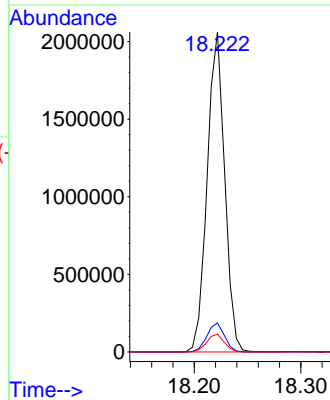
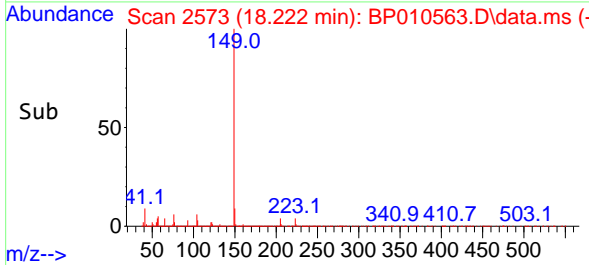
Reviewed By :Jagrut Upadhyay 05/26/2022  
 Supervised By :mohammad ahmed 05/27/2022



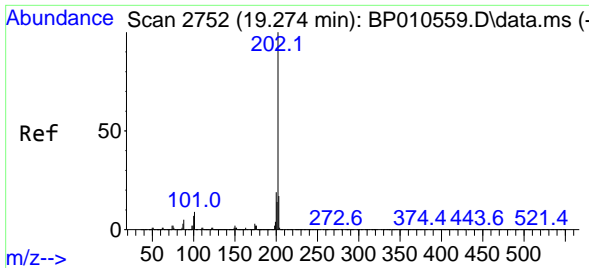
#78  
 Di-n-butylphthalate  
 Concen: 38.420 ng/u1  
 RT: 18.222 min Scan# 2573  
 Delta R.T. -0.006 min  
 Lab File: BP010563.D  
 Acq: 26 May 2022 07:05



Tgt Ion:149 Resp: 2355533  
 Ion Ratio Lower Upper  
 149 100  
 150 9.1 9.6 14.4#  
 104 5.6 6.2 9.4#







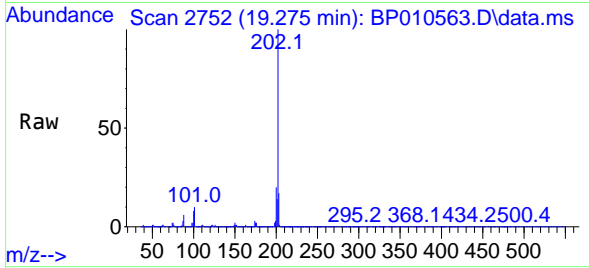
#80  
 Fluoranthene  
 Concen: 40.518 ng/u1  
 RT: 19.275 min Scan# 21  
 Delta R.T. -0.006 min  
 Lab File: BP010563.D  
 Acq: 26 May 2022 07:05

Instrument :

BNA\_P

ClientSampleId :

SLCS042

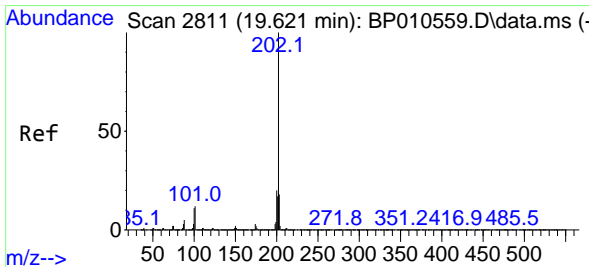
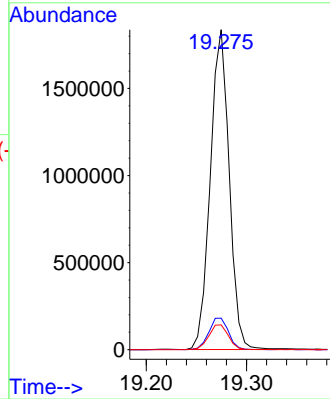
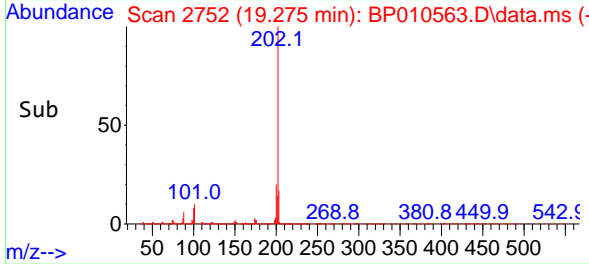


Tgt Ion:202 Resp: 240839  
 Ion Ratio Lower Upper  
 202 100  
 101 9.8 9.6 14.4  
 100 7.7 6.3 9.5

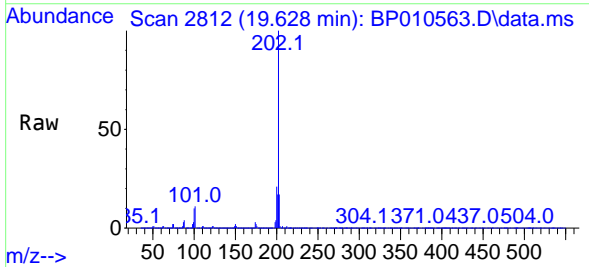
Manual Integrations

APPROVED

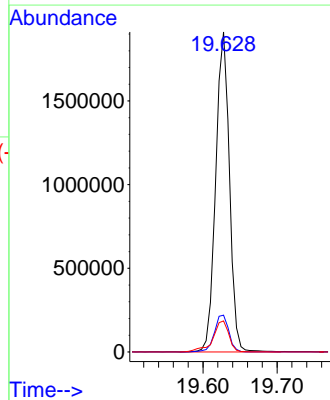
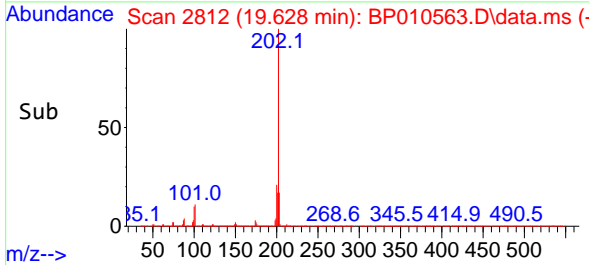
Reviewed By :Jagrut Upadhyay 05/26/2022  
 Supervised By :mohammad ahmed 05/27/2022

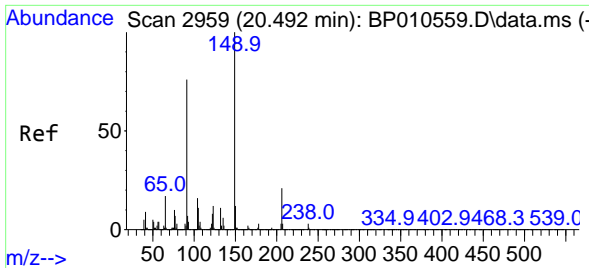


#82  
 Pyrene  
 Concen: 39.551 ng/u1  
 RT: 19.628 min Scan# 2812  
 Delta R.T. 0.000 min  
 Lab File: BP010563.D  
 Acq: 26 May 2022 07:05



Tgt Ion:202 Resp: 2453353  
 Ion Ratio Lower Upper  
 202 100  
 101 11.5 10.6 15.8  
 100 9.7 9.8 14.6#





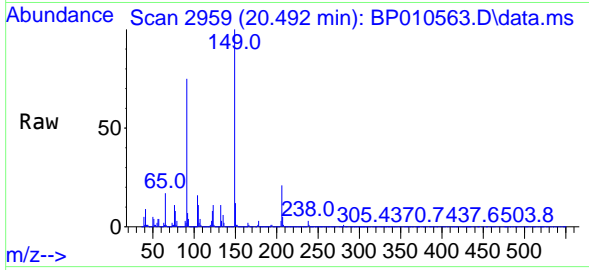
#83  
 Butylbenzylphthalate  
 Concen: 43.203 ng/u1  
 RT: 20.492 min Scan# 2959  
 Delta R.T. -0.006 min  
 Lab File: BP010563.D  
 Acq: 26 May 2022 07:05

Instrument :

BNA\_P

ClientSampleId :

SLCS042

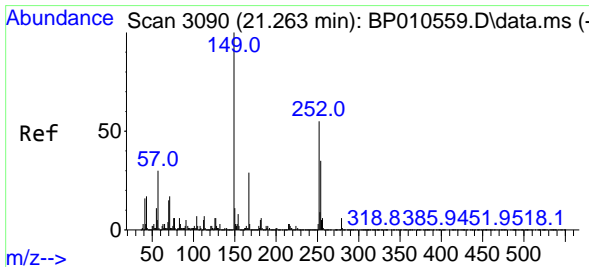
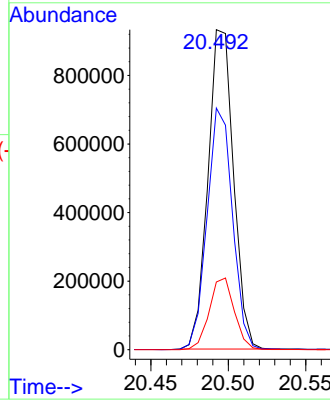
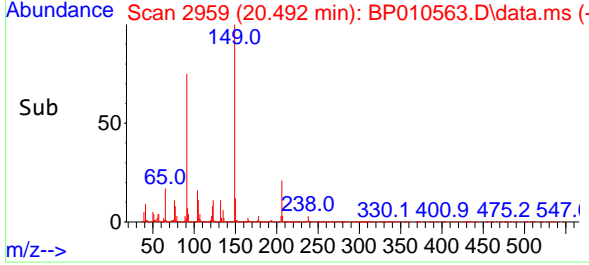


Tgt Ion:149 Resp: 1071594  
 Ion Ratio Lower Upper  
 149 100  
 91 75.5 71.1 106.7  
 206 21.2 28.8 43.2

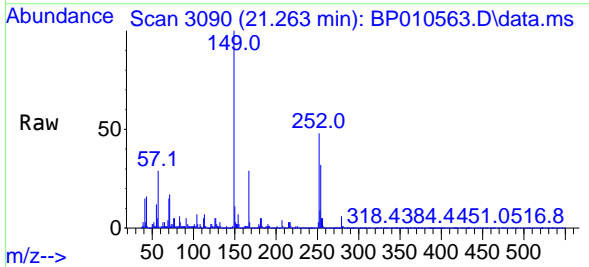
Manual Integrations

APPROVED

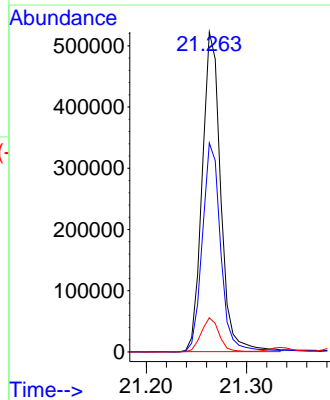
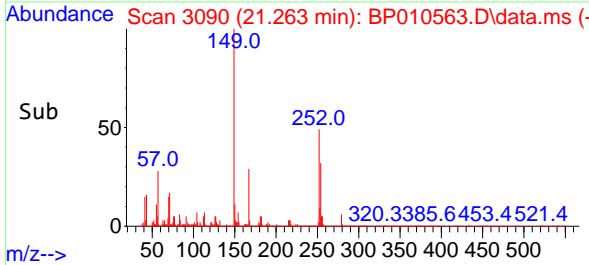
Reviewed By :Jagrut Upadhyay 05/26/2022  
 Supervised By :mohammad ahmed 05/27/2022

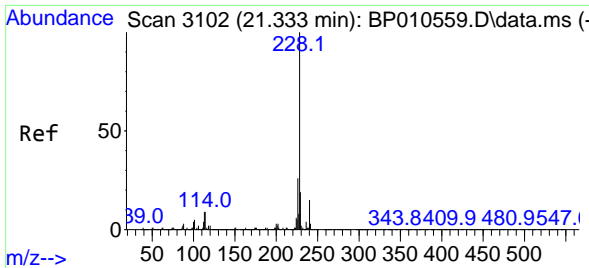


#84  
 3,3'-Dichlorobenzidine  
 Concen: 34.610 ng/u1  
 RT: 21.263 min Scan# 3090  
 Delta R.T. -0.006 min  
 Lab File: BP010563.D  
 Acq: 26 May 2022 07:05



Tgt Ion:252 Resp: 669968  
 Ion Ratio Lower Upper  
 252 100  
 254 65.3 49.8 74.6  
 126 10.7 4.3 6.5





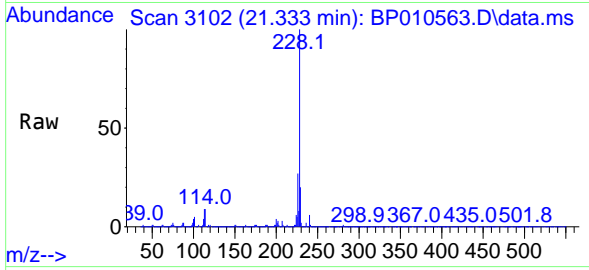
#85  
 Benzo(a)anthracene  
 Concen: 35.940 ng/uI  
 RT: 21.333 min Scan# 3102  
 Delta R.T. -0.006 min  
 Lab File: BP010563.D  
 Acq: 26 May 2022 07:05

Instrument :

BNA\_P

ClientSampleId :

SLCS042

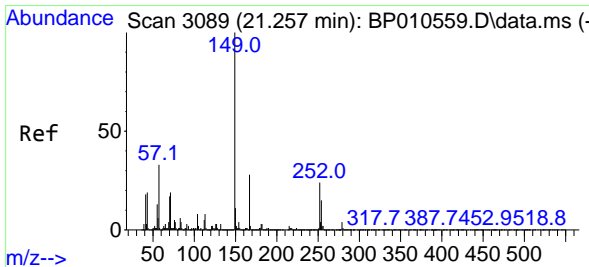
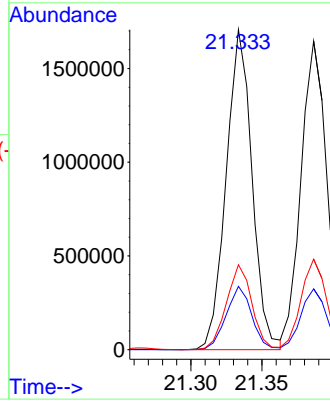
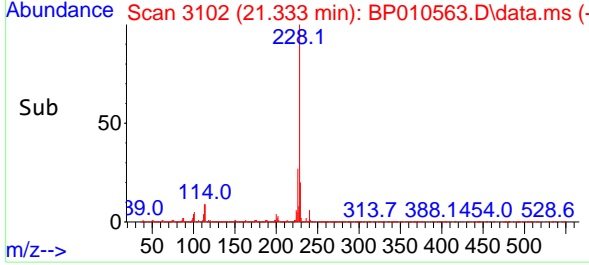


Tgt Ion:228 Resp: 216460  
 Ion Ratio Lower Upper  
 228 100  
 229 19.8 18.2 27.2  
 226 26.5 22.8 34.2

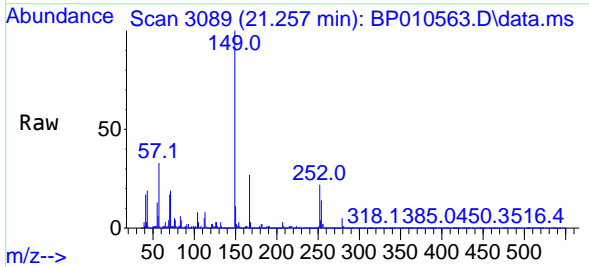
Manual Integrations

APPROVED

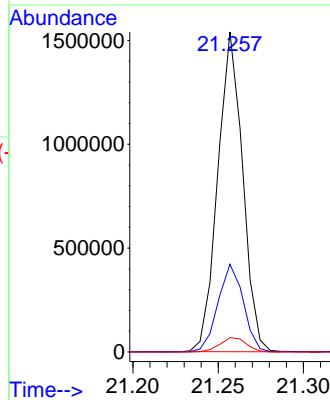
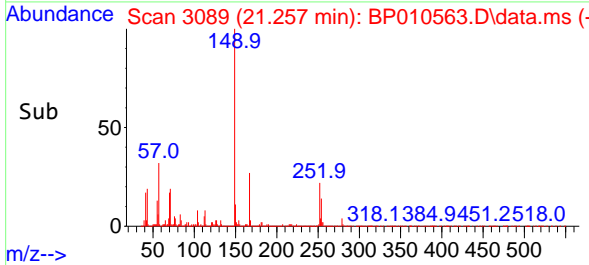
Reviewed By :Jagrut Upadhyay 05/26/2022  
 Supervised By :mohammad ahmed 05/27/2022

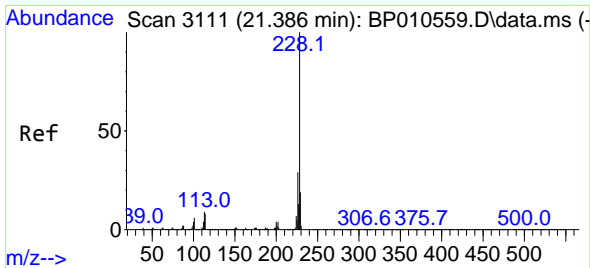


#86  
 Bis(2-ethylhexyl)phthalate  
 Concen: 42.955 ng/uI  
 RT: 21.257 min Scan# 3089  
 Delta R.T. -0.006 min  
 Lab File: BP010563.D  
 Acq: 26 May 2022 07:05



Tgt Ion:149 Resp: 1563494  
 Ion Ratio Lower Upper  
 149 100  
 167 27.4 32.8 49.2#  
 279 4.5 5.6 8.4#





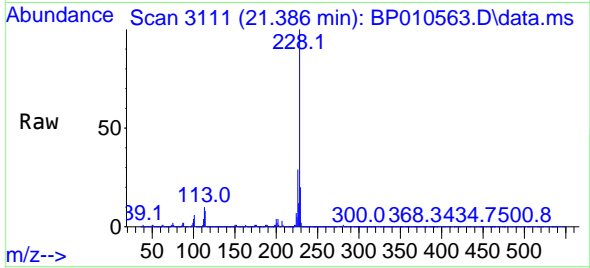
#87  
 Chrysene  
 Concen: 35.133 ng/u1  
 RT: 21.386 min Scan# 3111  
 Delta R.T. -0.006 min  
 Lab File: BP010563.D  
 Acq: 26 May 2022 07:05

Instrument :

BNA\_P

ClientSampleId :

SLCS042

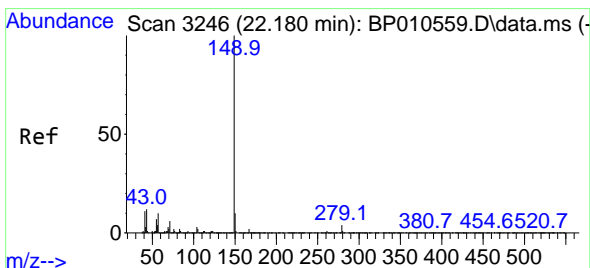
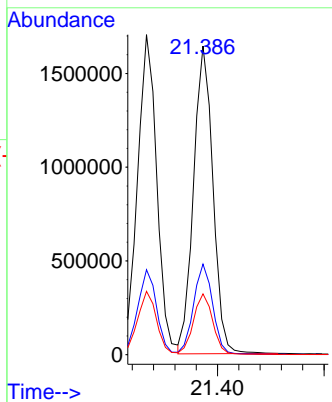
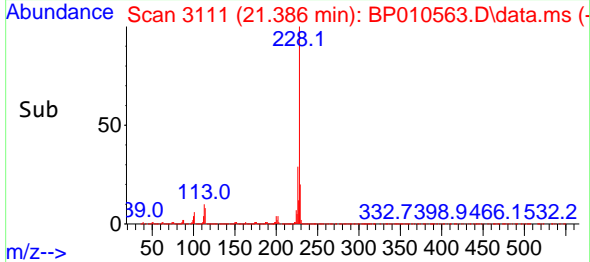


Tgt Ion:228 Resp: 2081354  
 Ion Ratio Lower Upper  
 228 100  
 226 29.3 22.7 34.1  
 229 19.7 15.2 22.8

Manual Integrations

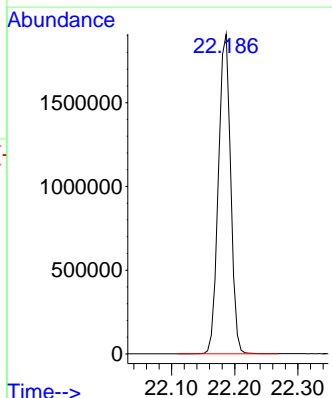
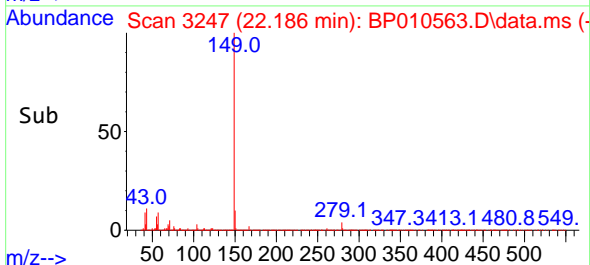
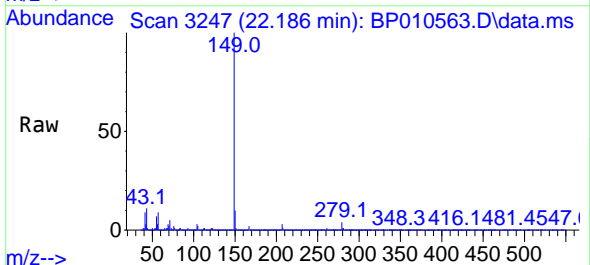
APPROVED

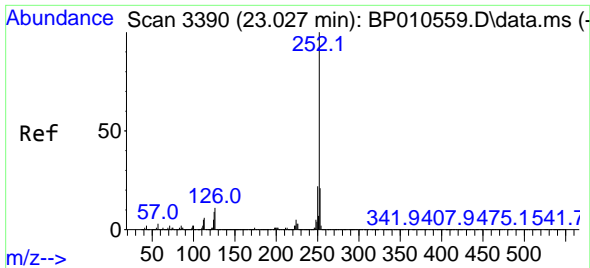
Reviewed By :Jagrut Upadhyay 05/26/2022  
 Supervised By :mohammad ahmed 05/27/2022



#89  
 Di-n-octyl phthalate  
 Concen: 45.391 ng/u1  
 RT: 22.186 min Scan# 3247  
 Delta R.T. -0.006 min  
 Lab File: BP010563.D  
 Acq: 26 May 2022 07:05

Tgt Ion:149 Resp: 2566211





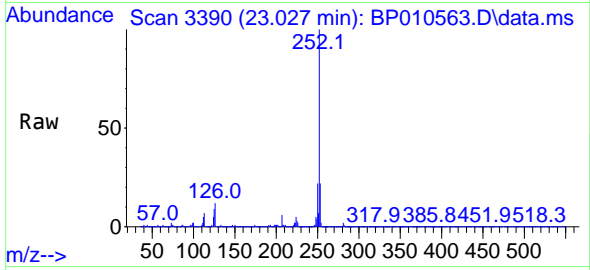
#90  
 Benzo(b)fluoranthene  
 Concen: 37.093 ng/u1  
 RT: 23.027 min Scan# 3390  
 Delta R.T. -0.006 min  
 Lab File: BP010563.D  
 Acq: 26 May 2022 07:05

Instrument :

BNA\_P

ClientSampleId :

SLCS042

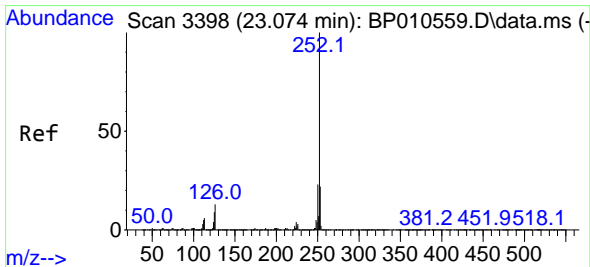
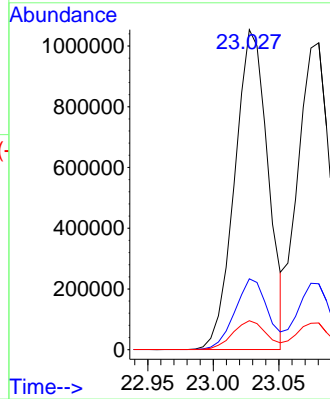
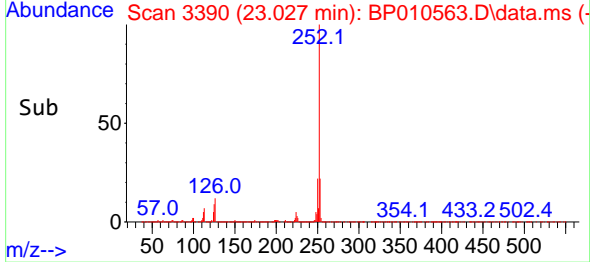


Tgt Ion:252 Resp: 186320  
 Ion Ratio Lower Upper  
 252 100  
 253 22.2 17.4 26.0  
 125 9.0 7.3 10.9

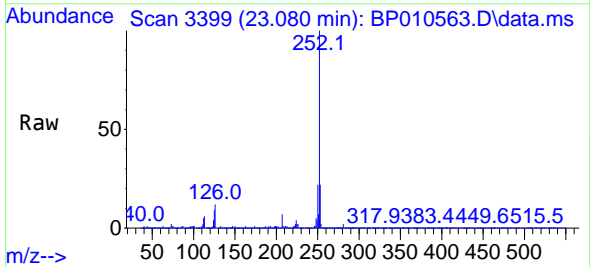
Manual Integrations

APPROVED

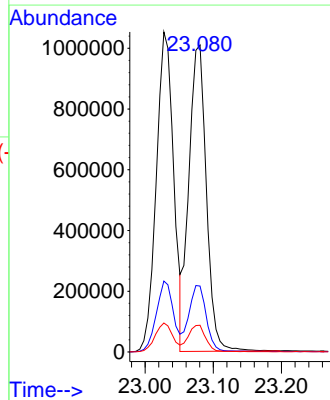
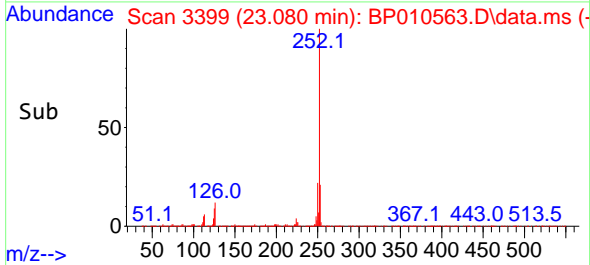
Reviewed By :Jagrut Upadhyay 05/26/2022  
 Supervised By :mohammad ahmed 05/27/2022

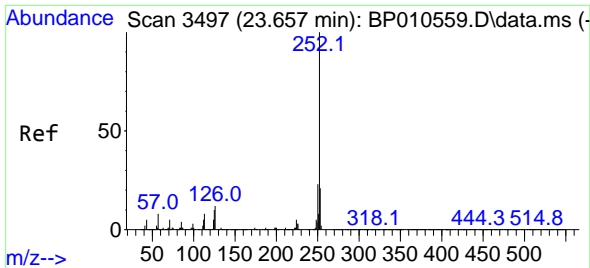


#91  
 Benzo(k)fluoranthene  
 Concen: 37.486 ng/u1  
 RT: 23.080 min Scan# 3399  
 Delta R.T. -0.006 min  
 Lab File: BP010563.D  
 Acq: 26 May 2022 07:05



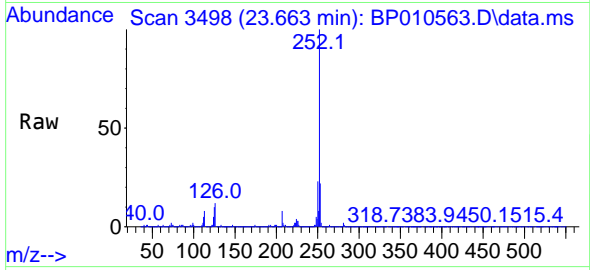
Tgt Ion:252 Resp: 1789601  
 Ion Ratio Lower Upper  
 252 100  
 253 21.5 17.9 26.9  
 125 8.7 5.1 7.7#





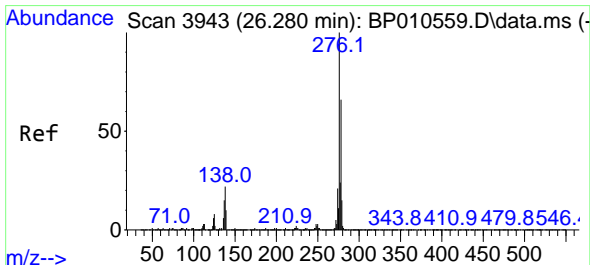
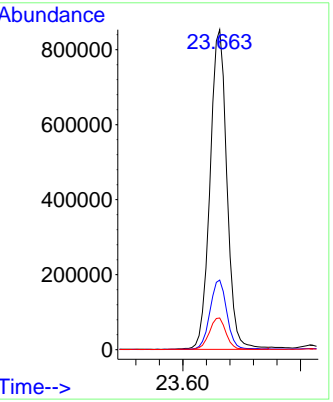
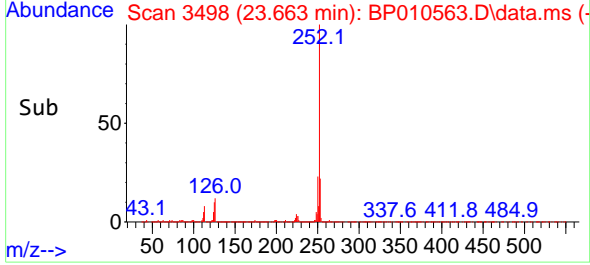
#93  
 Benzo(a)pyrene  
 Concen: 36.507 ng/u1  
 RT: 23.663 min Scan# 3498  
 Delta R.T. -0.006 min  
 Lab File: BP010563.D  
 Acq: 26 May 2022 07:05

Instrument : BNA\_P  
 Client SampleId : SLCS042

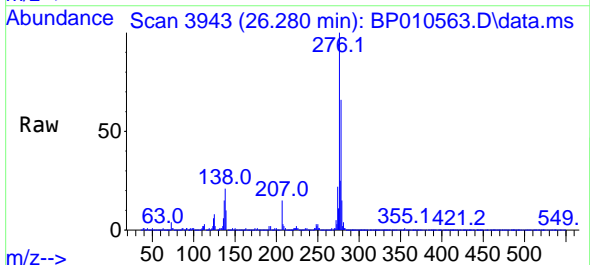


Tgt Ion: 252 Resp: 170375  
 Ion Ratio Lower Upper  
 252 100  
 253 21.8 17.5 26.3  
 125 9.9 6.4 9.6

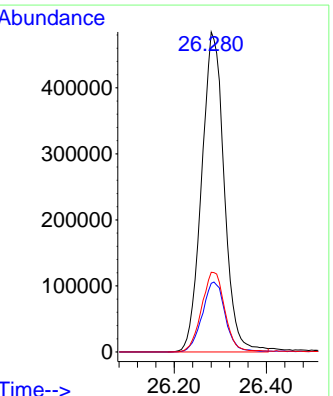
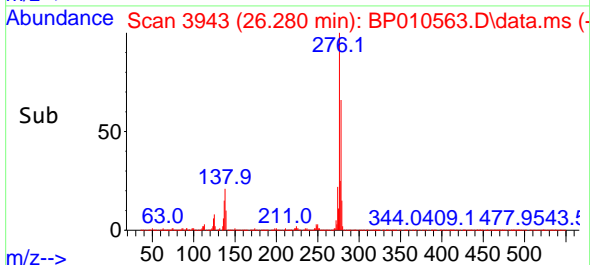
Manual Integrations  
**APPROVED**  
 Reviewed By :Jagrut Upadhyay 05/26/2022  
 Supervised By :mohammad ahmed 05/27/2022

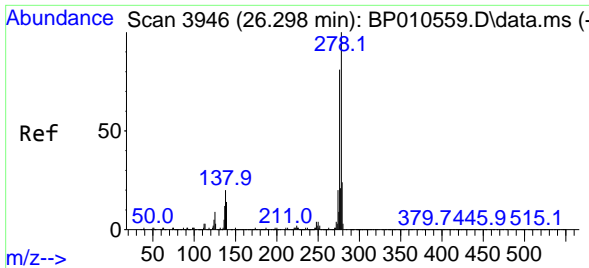


#94  
 Indeno(1,2,3-cd)pyrene  
 Concen: 37.429 ng/u1  
 RT: 26.280 min Scan# 3943  
 Delta R.T. -0.012 min  
 Lab File: BP010563.D  
 Acq: 26 May 2022 07:05



Tgt Ion: 276 Resp: 1643316  
 Ion Ratio Lower Upper  
 276 100  
 138 21.5 12.3 18.5#  
 277 24.9 19.3 28.9





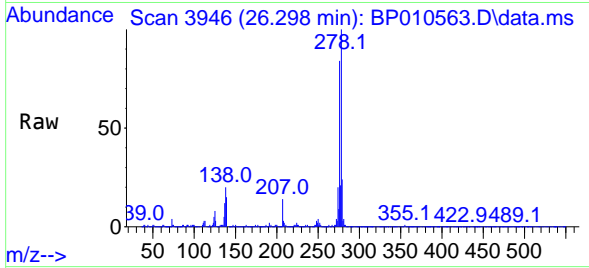
#95  
 Dibenzo(a,h)anthracene  
 Concen: 37.150 ng/ul  
 RT: 26.298 min Scan# 3946  
 Delta R.T. -0.012 min  
 Lab File: BP010563.D  
 Acq: 26 May 2022 07:05

Instrument :

BNA\_P

Client Sample Id :

SLCS042

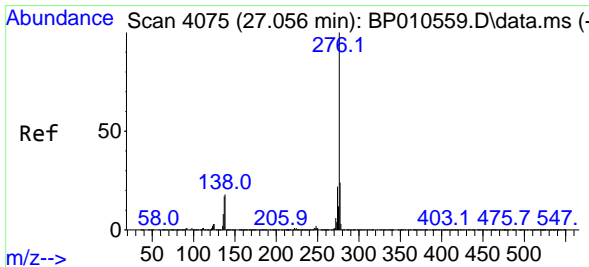
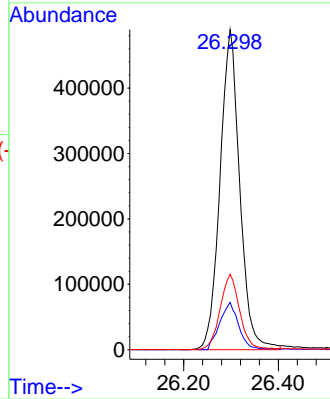
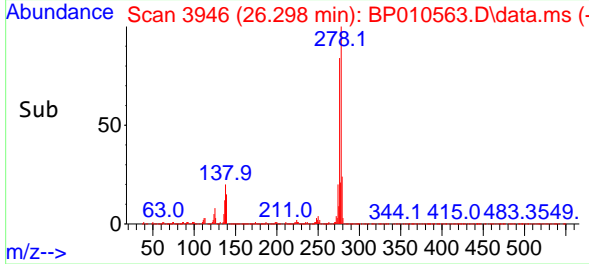


Tgt Ion: 278 Resp: 141526  
 Ion Ratio Lower Upper  
 278 100  
 139 14.8 6.6 10.0  
 279 23.6 18.4 27.6

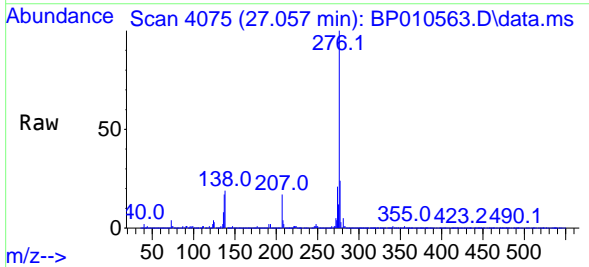
Manual Integrations

APPROVED

Reviewed By :Jagrut Upadhyay 05/26/2022  
 Supervised By :mohammad ahmed 05/27/2022



#96  
 Benzo(g,h,i)perylene  
 Concen: 38.586 ng/ul  
 RT: 27.057 min Scan# 4075  
 Delta R.T. -0.012 min  
 Lab File: BP010563.D  
 Acq: 26 May 2022 07:05



Tgt Ion: 276 Resp: 1414601  
 Ion Ratio Lower Upper  
 276 100  
 138 18.7 11.6 17.4  
 277 23.8 15.9 23.9

