

Data Path : Z:\svoasrv\HPCHEM1\BNA_P\Data\BP060625\
 Data File : BP024869.D
 Acq On : 06 Jun 2025 17:50
 Operator : RC/JU
 Sample : PB168259BL
 Misc :
 ALS Vial : 12 Sample Multiplier: 1

Instrument :
 BNA_P
 ClientSampleId :
 PB168259BL

Quant Time: Jun 06 18:10:20 2025
 Quant Method : Z:\svoasrv\HPCHEM1\BNA_P\Methods\8270E-BP060625.M
 Quant Title : ASP BNA STANDARDS FOR 5 POINT CALIBRATION
 QLast Update : Fri Jun 06 16:20:27 2025
 Response via : Initial Calibration

Compound	R.T.	QIon	Response	Conc	Units	Dev(Min)
Internal Standards						
1) 1,4-Dichlorobenzene-d4	7.607	152	238156	20.000	ng	0.00
21) Naphthalene-d8	10.378	136	903930	20.000	ng	0.00
39) Acenaphthene-d10	14.248	164	542748	20.000	ng	0.00
64) Phenanthrene-d10	17.060	188	1071759	20.000	ng	0.00
76) Chrysene-d12	21.477	240	1228490	20.000	ng	0.00
86) Perylene-d12	24.730	264	1511415	20.000	ng	0.01
System Monitoring Compounds						
5) 2-Fluorophenol	5.237	112	2019699	141.558	ng	0.00
7) Phenol-d6	6.813	99	2485312	131.654	ng	0.00
23) Nitrobenzene-d5	8.760	82	1566171	84.193	ng	0.00
42) 2,4,6-Tribromophenol	15.766	330	1029845	137.243	ng	-0.02
45) 2-Fluorobiphenyl	12.854	172	3415232	84.767	ng	0.00
79) Terphenyl-d14	19.772	244	5665509	82.654	ng	-0.02

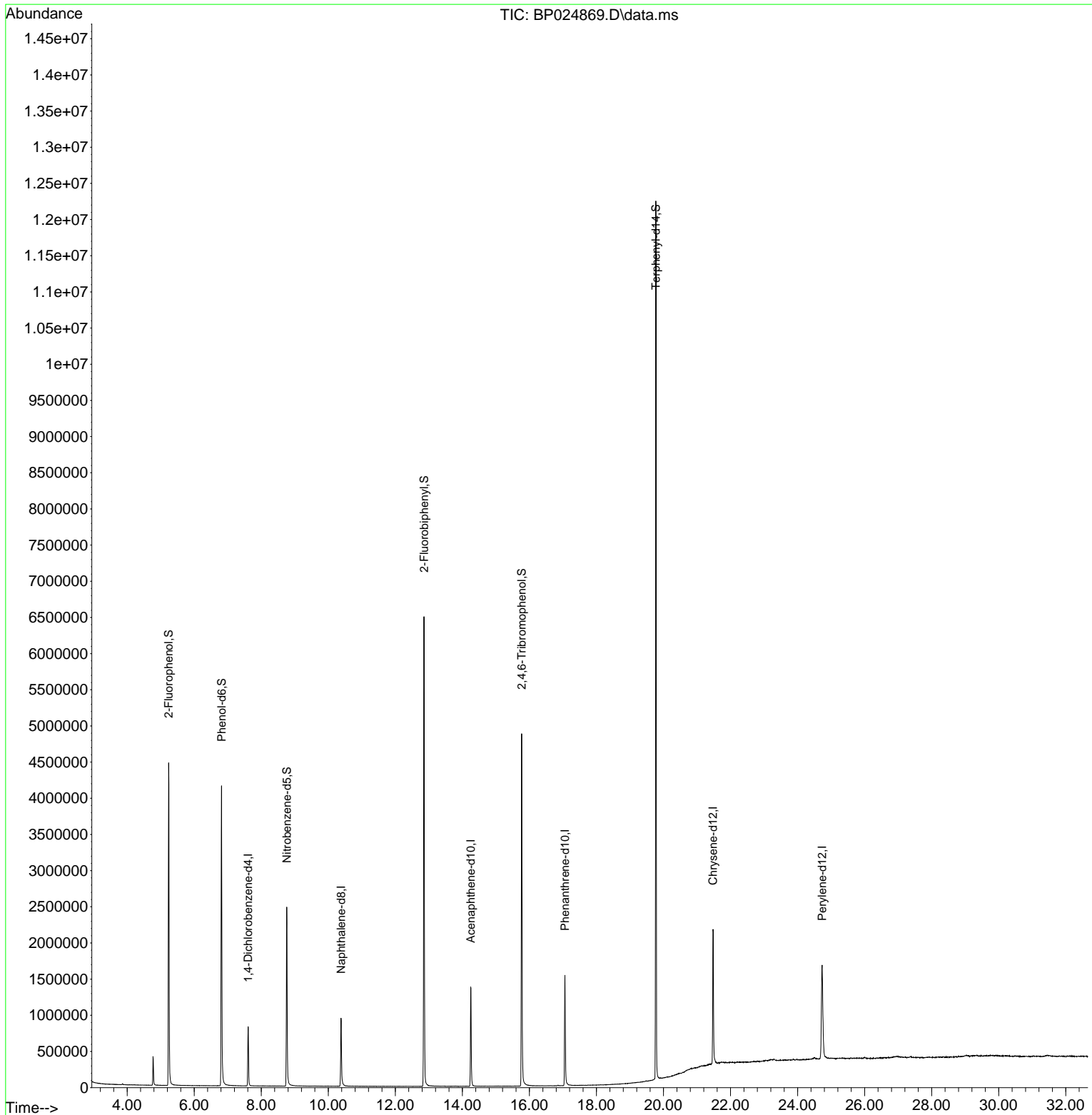
Target Compounds Qvalue

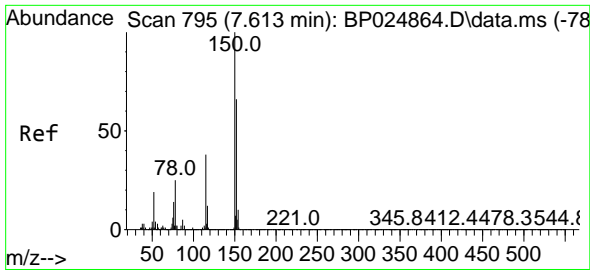
(#) = qualifier out of range (m) = manual integration (+) = signals summed

Data Path : Z:\svoasrv\HPCHEM1\BNA_P\Data\BP060625\
Data File : BP024869.D
Acq On : 06 Jun 2025 17:50
Operator : RC/JU
Sample : PB168259BL
Misc :
ALS Vial : 12 Sample Multiplier: 1

Instrument :
BNA_P
ClientSampleId :
PB168259BL

Quant Time: Jun 06 18:10:20 2025
Quant Method : Z:\svoasrv\HPCHEM1\BNA_P\Methods\8270E-BP060625.M
Quant Title : ASP BNA STANDARDS FOR 5 POINT CALIBRATION
QLast Update : Fri Jun 06 16:20:27 2025
Response via : Initial Calibration

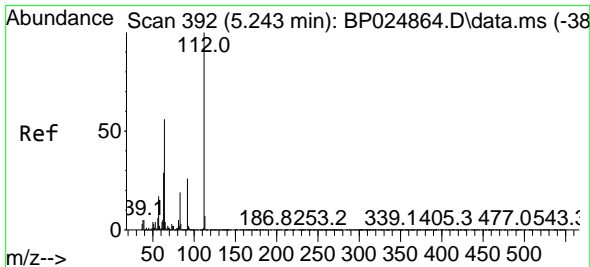
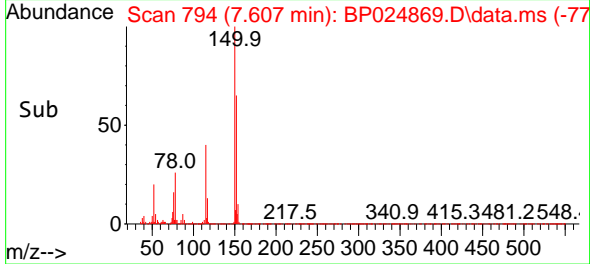
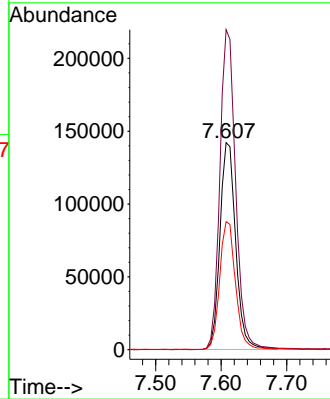
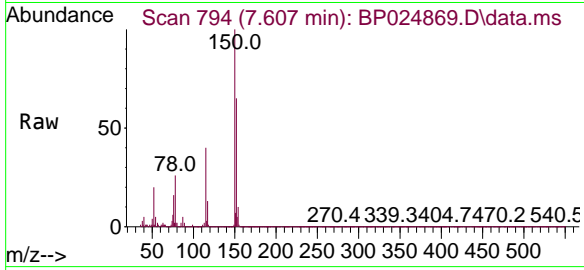




#1
 1,4-Dichlorobenzene-d4
 Concen: 20.000 ng
 RT: 7.607 min Scan# 795
 Delta R.T. -0.006 min
 Lab File: BP024869.D
 Acq: 06 Jun 2025 17:50

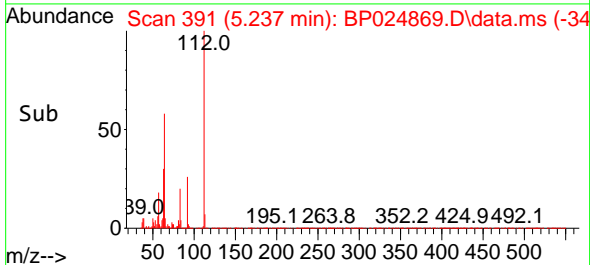
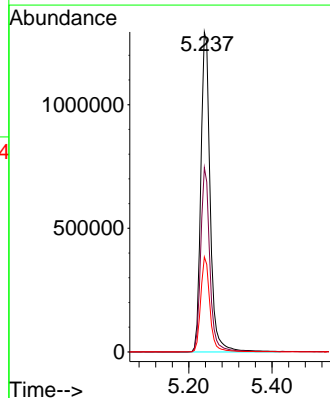
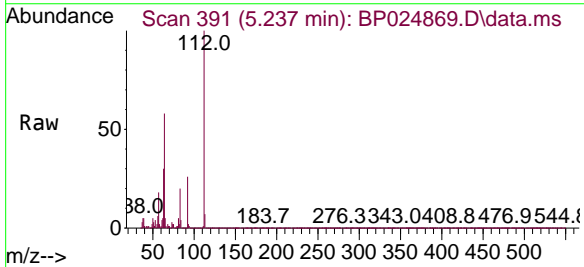
Instrument :
 BNA_P
 ClientSampleId :
 PB168259BL

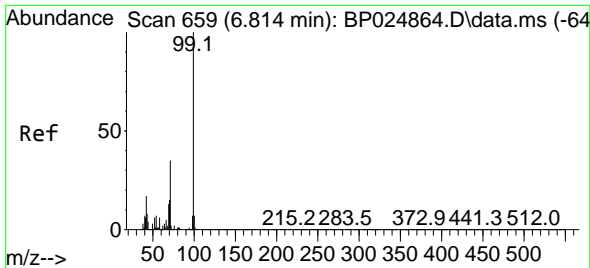
Tgt Ion:152 Resp: 238156
 Ion Ratio Lower Upper
 152 100
 150 154.6 122.1 183.1
 115 61.8 46.4 69.6



#5
 2-Fluorophenol
 Concen: 141.558 ng
 RT: 5.237 min Scan# 391
 Delta R.T. -0.006 min
 Lab File: BP024869.D
 Acq: 06 Jun 2025 17:50

Tgt Ion:112 Resp: 2019699
 Ion Ratio Lower Upper
 112 100
 64 57.6 44.7 67.1
 63 29.7 23.5 35.3



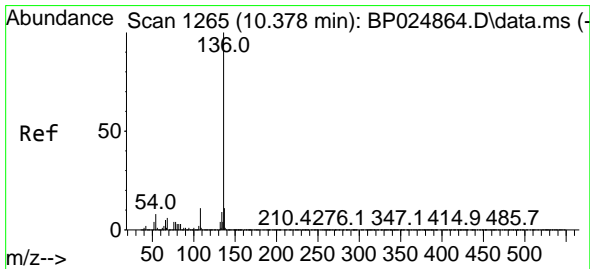
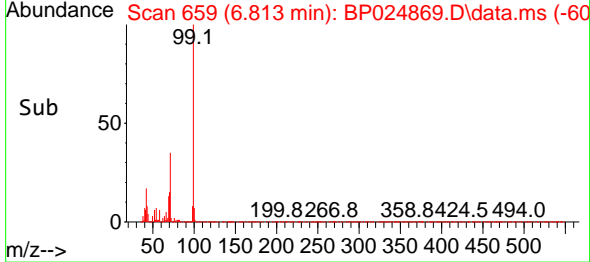
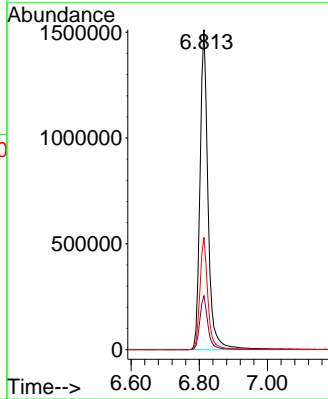
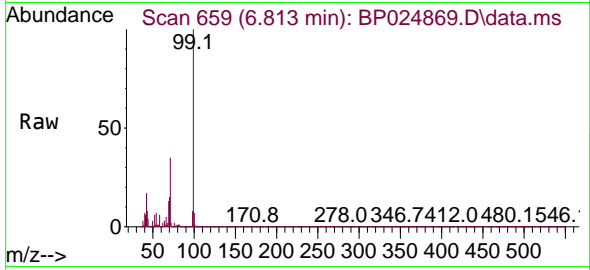


#7
 Phenol-d6
 Concen: 131.654 ng
 RT: 6.813 min Scan# 61
 Delta R.T. -0.000 min
 Lab File: BP024869.D
 Acq: 06 Jun 2025 17:50

Instrument :
 BNA_P
 ClientSampleId :
 PB168259BL

Tgt Ion: 99 Resp: 2485312

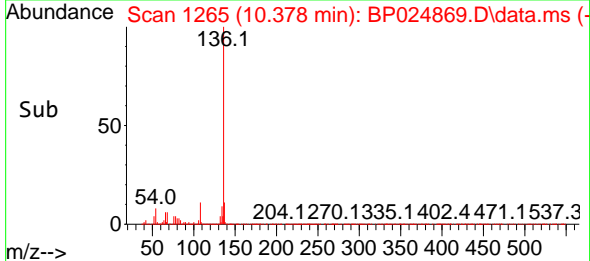
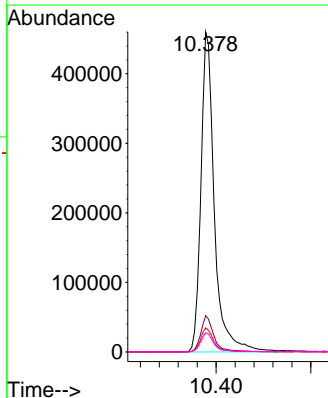
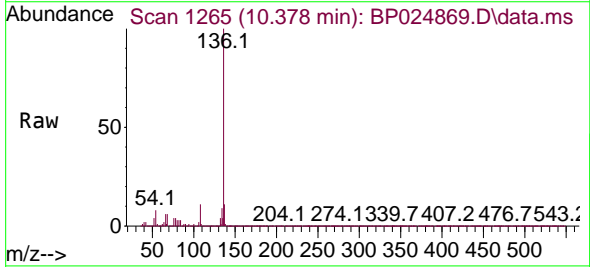
Ion	Ratio	Lower	Upper
99	100		
42	16.8	13.4	20.2
71	35.1	27.6	41.4

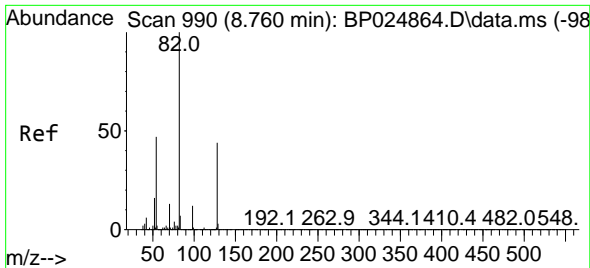


#21
 Naphthalene-d8
 Concen: 20.000 ng
 RT: 10.378 min Scan# 1265
 Delta R.T. -0.000 min
 Lab File: BP024869.D
 Acq: 06 Jun 2025 17:50

Tgt Ion: 136 Resp: 903930

Ion	Ratio	Lower	Upper
136	100		
137	11.3	8.9	13.3
54	7.5	6.1	9.1
68	6.0	4.6	7.0



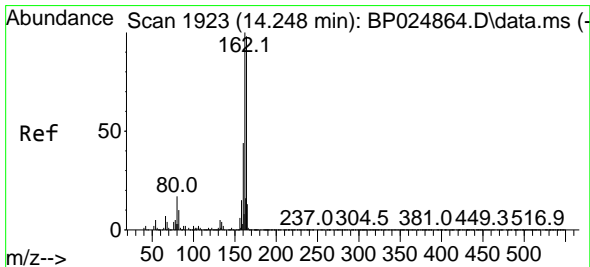
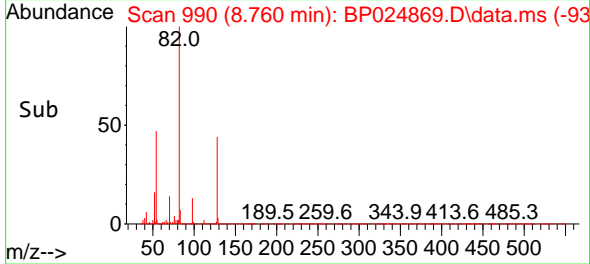
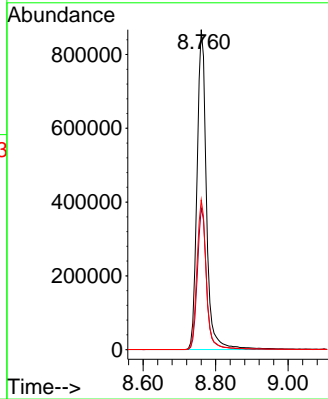
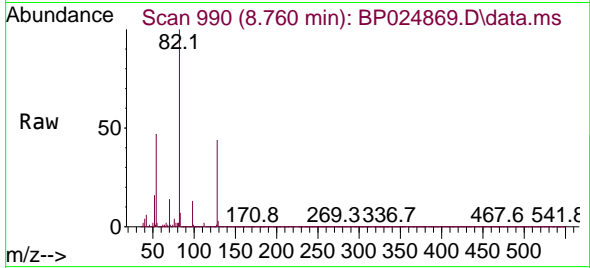


#23
 Nitrobenzene-d5
 Concen: 84.193 ng
 RT: 8.760 min Scan# 990
 Delta R.T. -0.000 min
 Lab File: BP024869.D
 Acq: 06 Jun 2025 17:50

Instrument :
 BNA_P
 ClientSampleId :
 PB168259BL

Tgt Ion: 82 Resp: 1566171

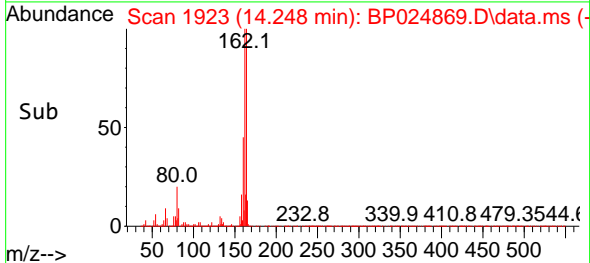
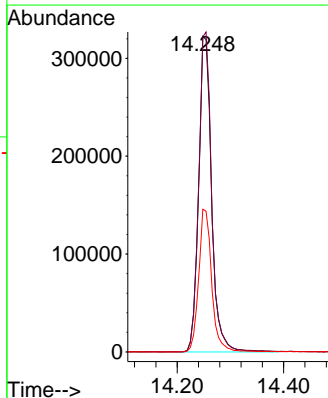
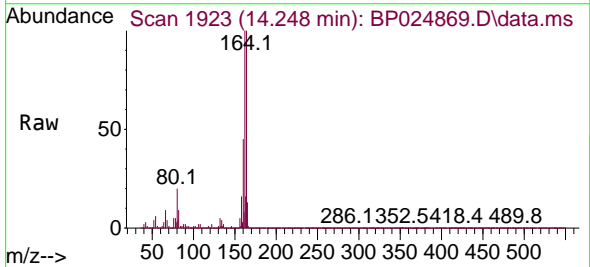
Ion	Ratio	Lower	Upper
82	100		
128	44.3	35.3	52.9
54	46.8	37.4	56.0

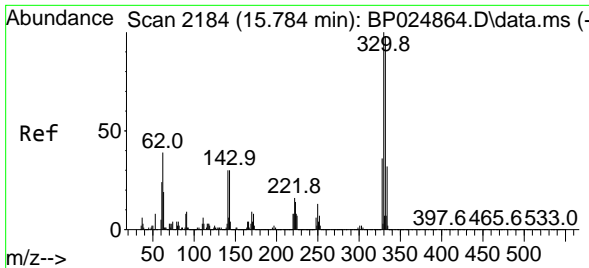


#39
 Acenaphthene-d10
 Concen: 20.000 ng
 RT: 14.248 min Scan# 1923
 Delta R.T. -0.000 min
 Lab File: BP024869.D
 Acq: 06 Jun 2025 17:50

Tgt Ion: 164 Resp: 542748

Ion	Ratio	Lower	Upper
164	100		
162	99.8	81.6	122.4
160	45.2	36.2	54.2



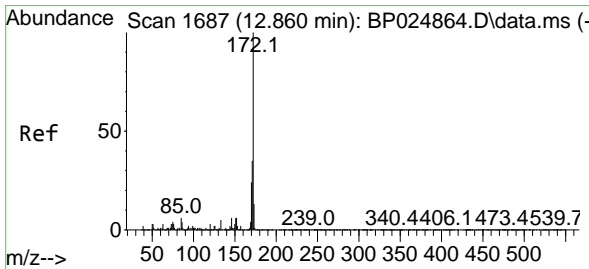
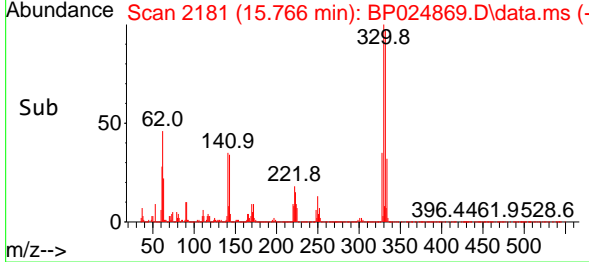
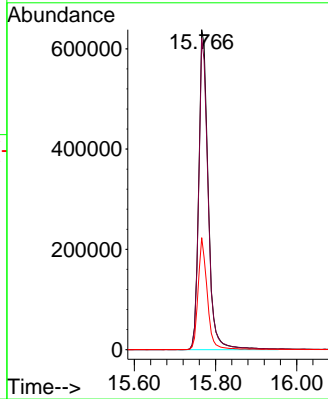
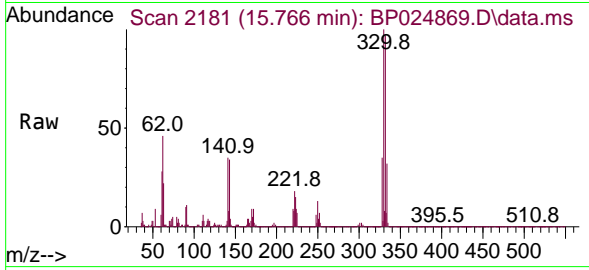


#42
 2,4,6-Tribromophenol
 Concen: 137.243 ng
 RT: 15.766 min Scan# 2184
 Delta R.T. -0.018 min
 Lab File: BP024869.D
 Acq: 06 Jun 2025 17:50

Instrument : BNA_P
 Client Sample Id : PB168259BL

Tgt Ion: 330 Resp: 1029845

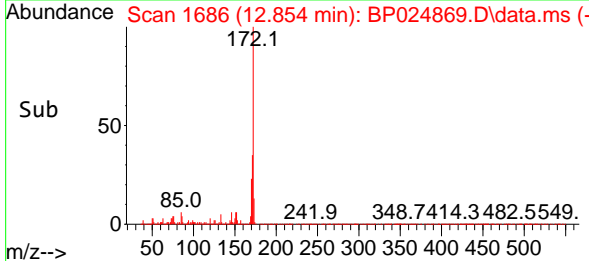
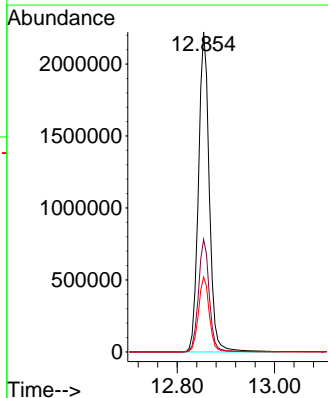
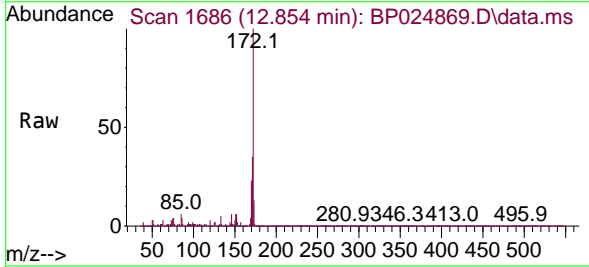
Ion	Ratio	Lower	Upper
330	100		
332	96.6	77.7	116.5
141	33.3	26.4	39.6

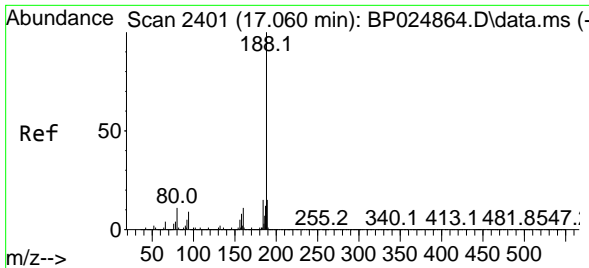


#45
 2-Fluorobiphenyl
 Concen: 84.767 ng
 RT: 12.854 min Scan# 1686
 Delta R.T. -0.006 min
 Lab File: BP024869.D
 Acq: 06 Jun 2025 17:50

Tgt Ion: 172 Resp: 3415232

Ion	Ratio	Lower	Upper
172	100		
171	35.2	28.3	42.5
170	23.4	19.0	28.4



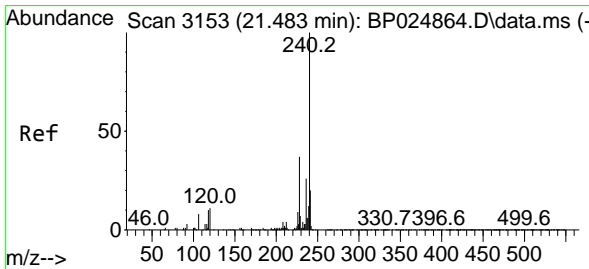
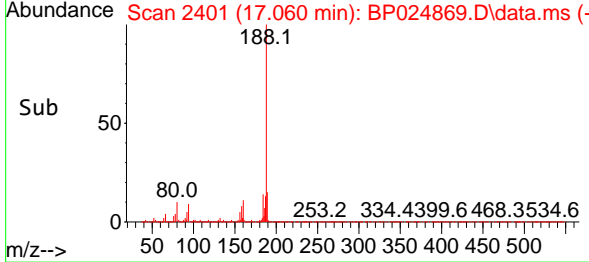
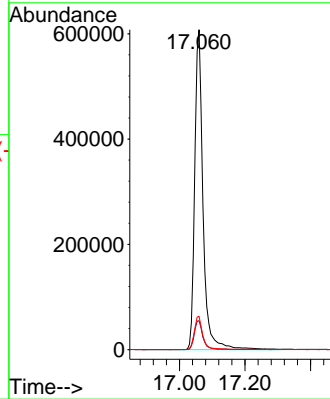
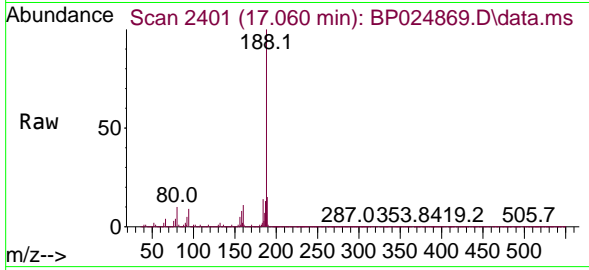


#64
 Phenanthrene-d10
 Concen: 20.000 ng
 RT: 17.060 min Scan# 24
 Delta R.T. -0.000 min
 Lab File: BP024869.D
 Acq: 06 Jun 2025 17:50

Instrument :
 BNA_P
 ClientSampleId :
 PB168259BL

Tgt Ion:188 Resp: 1071759

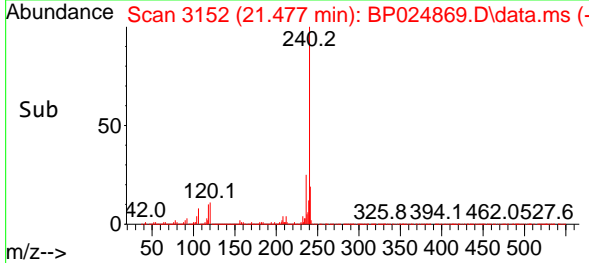
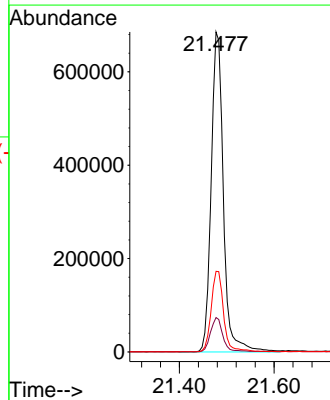
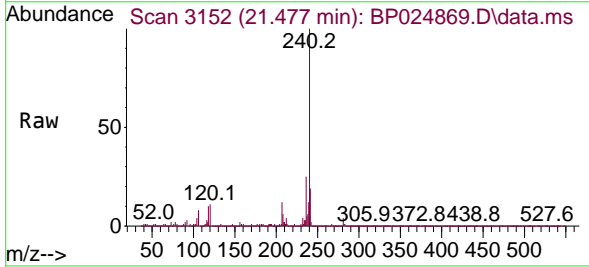
Ion	Ratio	Lower	Upper
188	100		
94	9.0	7.3	10.9
80	10.4	8.5	12.7

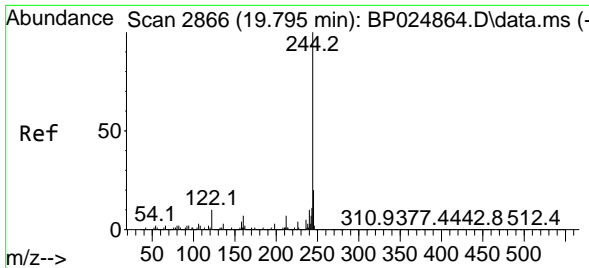


#76
 Chrysene-d12
 Concen: 20.000 ng
 RT: 21.477 min Scan# 3152
 Delta R.T. -0.006 min
 Lab File: BP024869.D
 Acq: 06 Jun 2025 17:50

Tgt Ion:240 Resp: 1228490

Ion	Ratio	Lower	Upper
240	100		
120	10.7	8.9	13.3
236	25.2	20.9	31.3

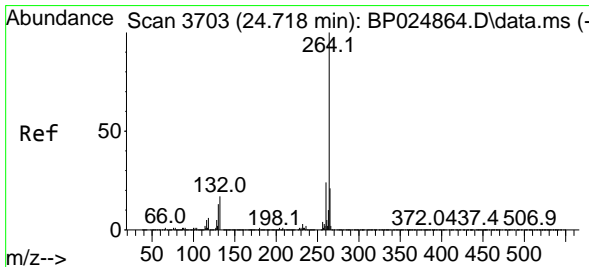
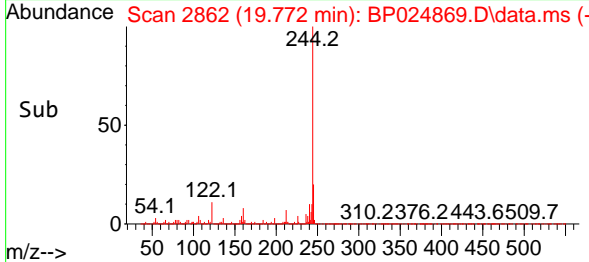
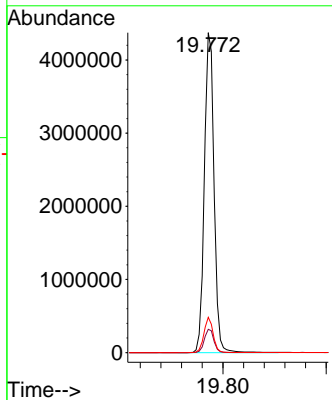
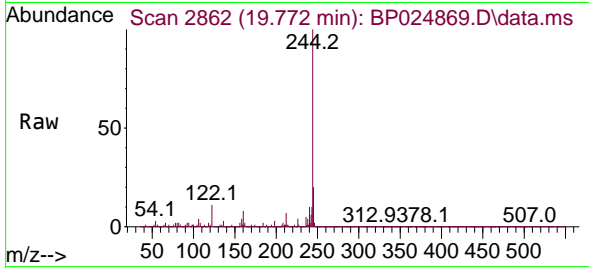




#79
 Terphenyl-d14
 Concen: 82.654 ng
 RT: 19.772 min Scan# 2862
 Delta R.T. -0.024 min
 Lab File: BP024869.D
 Acq: 06 Jun 2025 17:50

Instrument :
 BNA_P
 ClientSampleId :
 PB168259BL

Tgt Ion:244 Resp: 5665509
 Ion Ratio Lower Upper
 244 100
 212 7.3 5.6 8.4
 122 11.0 7.7 11.5



#86
 Perylene-d12
 Concen: 20.000 ng
 RT: 24.730 min Scan# 3705
 Delta R.T. 0.012 min
 Lab File: BP024869.D
 Acq: 06 Jun 2025 17:50

Tgt Ion:264 Resp: 1511415
 Ion Ratio Lower Upper
 264 100
 260 23.0 19.0 28.4
 265 22.4 17.4 26.0

