

Data Path : Z:\svoasrv\HPCHEM1\BNA_P\Data\BP060625\
 Data File : BP024869.D
 Acq On : 06 Jun 2025 17:50
 Operator : RC/JU
 Sample : PB168259BL
 Misc :
 ALS Vial : 12 Sample Multiplier: 1

Instrument :
 BNA_P
 ClientSampleId :
 PB168259BL

Integration Parameters: rteint.p
 Integrator: RTE
 Smoothing : ON Filtering: 5
 Sampling : 1 Min Area: 3 % of largest Peak
 Start Thrs: 0.2 Max Peaks: 100
 Stop Thrs : 0 Peak Location: TOP

If leading or trailing edge < 100 prefer < Baseline drop else tangent >
 Peak separation: 5

Method : Z:\svoasrv\HPCHEM1\BNA_P\Methods\8270E-BP060625.M
 Title : ASP BNA STANDARDS FOR 5 POINT CALIBRATION

Signal : TIC: BP024869.D\data.ms

| peak # | R.T. min | first scan | max scan | last scan | PK TY | peak height | corr. area | corr. % max. | % of total |
|--------|----------|------------|----------|-----------|-------|-------------|------------|--------------|------------|
| 1 | 4.772 | 307 | 312 | 328 | rVB | 398153 | 575835 | 3.70% | 0.855% |
| 2 | 5.237 | 385 | 391 | 417 | rBV | 4460896 | 6869027 | 44.12% | 10.199% |
| 3 | 6.813 | 652 | 659 | 683 | rBV | 4146073 | 6849098 | 43.99% | 10.169% |
| 4 | 7.607 | 787 | 794 | 808 | rBV | 819655 | 1379076 | 8.86% | 2.048% |
| 5 | 8.760 | 983 | 990 | 1017 | rBV | 2474327 | 4455563 | 28.62% | 6.615% |
| 6 | 10.378 | 1258 | 1265 | 1287 | rBV | 942722 | 1841968 | 11.83% | 2.735% |
| 7 | 12.854 | 1677 | 1686 | 1710 | rBV | 6494570 | 9999589 | 64.23% | 14.847% |
| 8 | 14.248 | 1915 | 1923 | 1942 | rBV | 1367025 | 2348731 | 15.09% | 3.487% |
| 9 | 15.766 | 2174 | 2181 | 2201 | rBV | 4872611 | 7694893 | 49.42% | 11.425% |
| 10 | 17.060 | 2394 | 2401 | 2420 | rBV2 | 1528747 | 2693145 | 17.30% | 3.999% |
| 11 | 19.772 | 2856 | 2862 | 2878 | rBV | 12139805 | 15569466 | 100.00% | 23.117% |
| 12 | 21.477 | 3146 | 3152 | 3169 | rBV2 | 1859142 | 3364405 | 21.61% | 4.995% |
| 13 | 24.730 | 3697 | 3705 | 3721 | rVB | 1269929 | 3710081 | 23.83% | 5.509% |

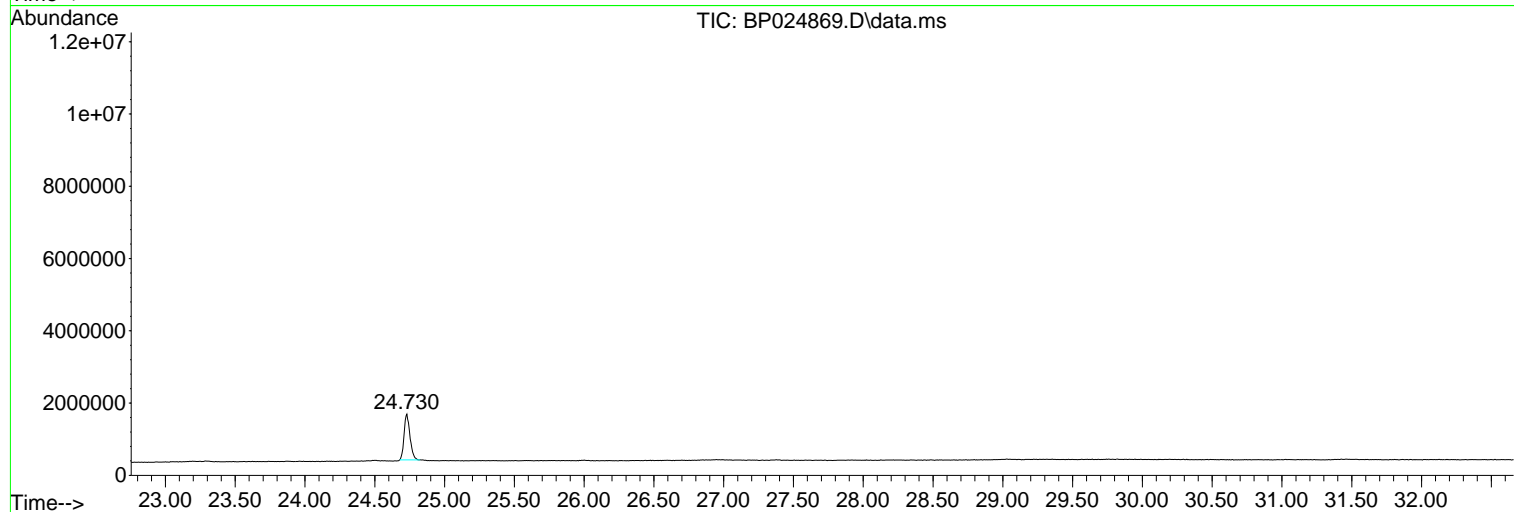
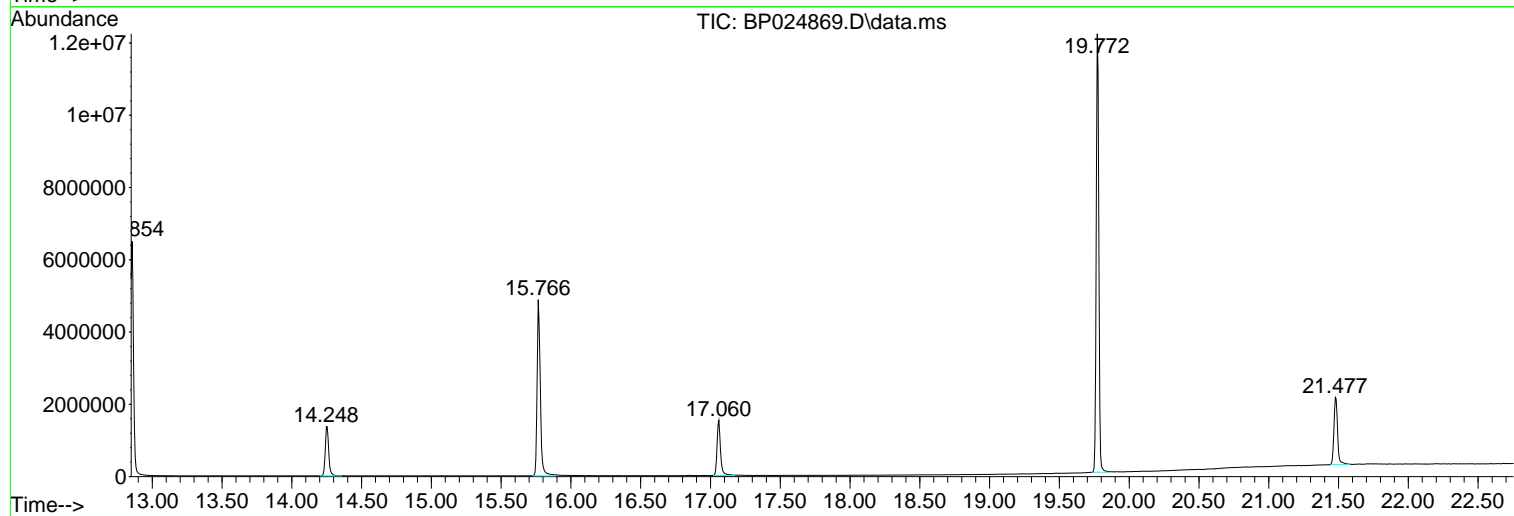
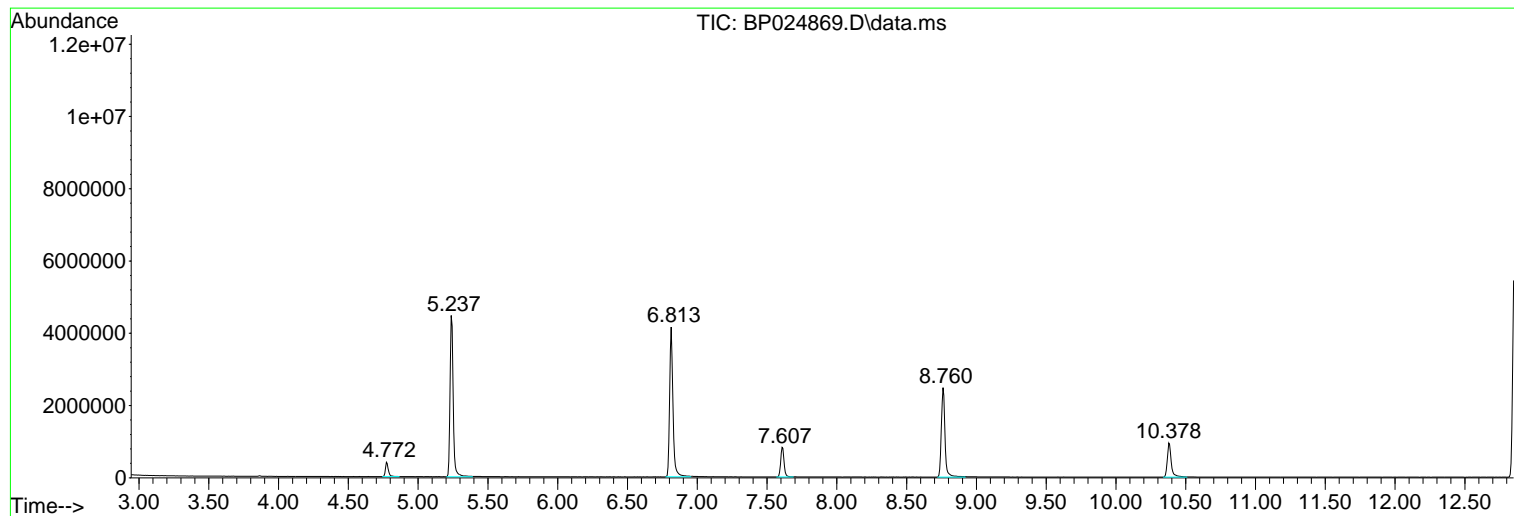
Sum of corrected areas: 67350877

Data Path : Z:\svoasrv\HPCHEM1\BNA_P\Data\BP060625\
Data File : BP024869.D
Acq On : 06 Jun 2025 17:50
Operator : RC/JU
Sample : PB168259BL
Misc :
ALS Vial : 12 Sample Multiplier: 1

Instrument :
BNA_P
ClientSampleId :
PB168259BL

Quant Method : Z:\svoasrv\HPCHEM1\BNA_P\Methods\8270E-BP060625.M
Quant Title : ASP BNA STANDARDS FOR 5 POINT CALIBRATION

TIC Library : C:\Database\NIST20.L
TIC Integration Parameters: LSCINT.P



Data Path : Z:\svoasrv\HPCHEM1\BNA_P\Data\BP060625\
 Data File : BP024869.D
 Acq On : 06 Jun 2025 17:50
 Operator : RC/JU
 Sample : PB168259BL
 Misc :
 ALS Vial : 12 Sample Multiplier: 1

Instrument :
 BNA_P
 ClientSampleId :
 PB168259BL

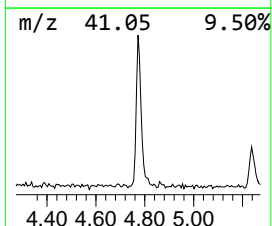
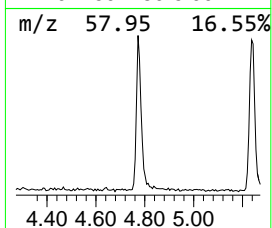
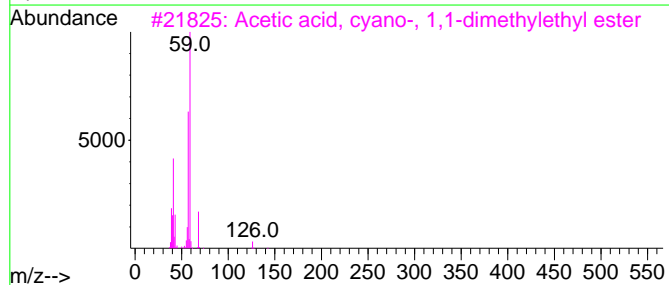
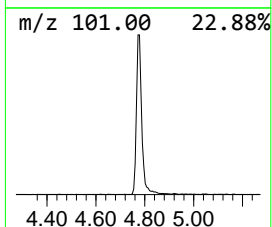
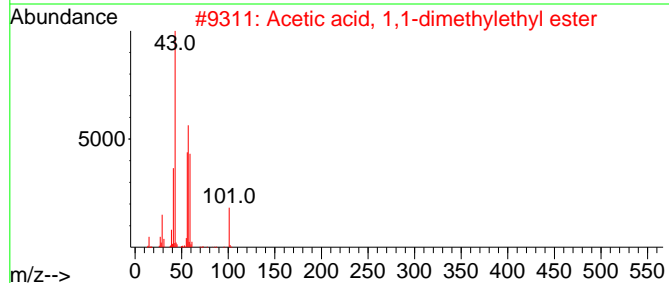
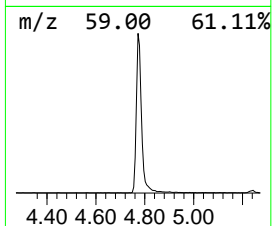
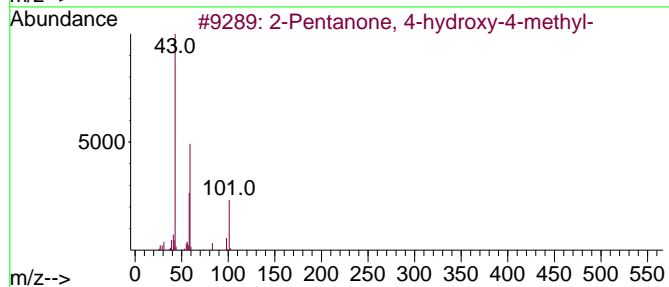
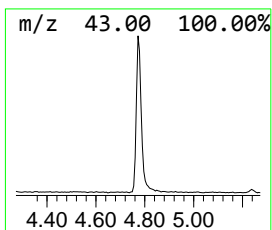
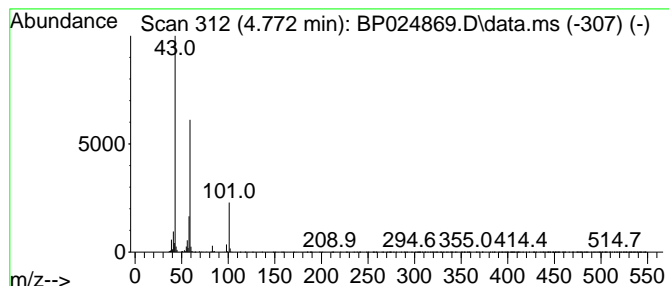
Quant Method : Z:\svoasrv\HPCHEM1\BNA_P\Methods\8270E-BP060625.M
 Quant Title : ASP BNA STANDARDS FOR 5 POINT CALIBRATION

TIC Library : C:\Database\NIST20.L
 TIC Integration Parameters: LSCINT.P

 Peak Number 1 2-Pentanone, 4-hydroxy-4-me... Concentration Rank 1

| R.T. | EstConc | Area | Relative to ISTD | R.T. |
|-------|---------|--------|------------------------|-------|
| 4.772 | 8.35 ng | 575835 | 1,4-Dichlorobenzene-d4 | 7.607 |

| Hit# | of 5 | Tentative ID | MW | MolForm | CAS# | Qual |
|------|------|-------------------------------------|-----|----------|-------------|------|
| 1 | | 2-Pentanone, 4-hydroxy-4-methyl- | 116 | C6H12O2 | 000123-42-2 | 50 |
| 2 | | Acetic acid, 1,1-dimethylethyl e... | 116 | C6H12O2 | 000540-88-5 | 39 |
| 3 | | Acetic acid, cyano-, 1,1-dimethy... | 141 | C7H11NO2 | 001116-98-9 | 25 |
| 4 | | Butane, 1-ethoxy- | 102 | C6H14O | 000628-81-9 | 9 |
| 5 | | (+)-4-Amino-4,5-dihydro-2(3H)-f... | 101 | C4H7NO2 | 016504-58-8 | 9 |



Data Path : Z:\svoasrv\HPCHEM1\BNA_P\Data\BP060625\
Data File : BP024869.D
Acq On : 06 Jun 2025 17:50
Operator : RC/JU
Sample : PB168259BL
Misc :
ALS Vial : 12 Sample Multiplier: 1

Instrument :
BNA_P
ClientSampleId :
PB168259BL

Quant Method : Z:\svoasrv\HPCHEM1\BNA_P\Methods\8270E-BP060625.M
Quant Title : ASP BNA STANDARDS FOR 5 POINT CALIBRATION

TIC Library : C:\Database\NIST20.L
TIC Integration Parameters: LSCINT.P

| TIC Top Hit name | RT | EstConc | Units | Response | --Internal Standard-- | | | |
|--------------------|-------|---------|-------|----------|-----------------------|-------|---------|------|
| | | | | | # | RT | Resp | Conc |
| 2-Pentanone, 4-... | 4.772 | 8.3 | ng | 575835 | 1 | 7.607 | 1379080 | 20.0 |