

Data Path : Z:\svoasrv\HPCHEM1\BNA\_P\Data\BP060823\  
 Data File : BP015435.D  
 Acq On : 08 Jun 2023 14:56  
 Operator : MA/JU  
 Sample : 02960-06MSD  
 Misc :  
 ALS Vial : 14 Sample Multiplier: 1

Instrument :  
 BNA\_P  
 ClientSampleId :  
 HOFN8MSD

Quant Time: Jun 09 01:17:44 2023  
 Quant Method : Z:\svoasrv\HPCHEM1\BNA\_P\Methods\SFAM-EPA-BP060723.MA.M  
 Quant Title : SVOA CALIBRATION  
 QLast Update : Wed Jun 07 23:46:15 2023  
 Response via : Initial Calibration

Compound	R.T.	QIon	Response	Conc	Units	Dev(Min)
Internal Standards						
1) 1,4-Dichlorobenzene-d4	8.099	152	120521	20.000	ng/ul	0.00
20) Naphthalene-d8	10.922	136	561286	20.000	ng/ul	0.00
38) Acenaphthene-d10	14.740	164	388203	20.000	ng/ul	0.00
64) Phenanthrene-d10	17.498	188	908478	20.000	ng/ul	0.00
79) Chrysene-d12	21.580	240	906533	20.000	ng/ul	0.00
88) Perylene-d12	24.133	264	974859	20.000	ng/ul	0.00
System Monitoring Compounds						
3) 1,4-Dioxane-d8	3.411	96	7979	2.452	ng/uL	0.00
4) Pyridine-d5	3.840	84	401	0.047	ng/ul	-0.01
7) Phenol-d5	7.252	99	156188	14.067	ng/ul	0.00
9) Bis-(2-Chloroethyl)eth...	7.416	67	99612	15.022	ng/ul	0.00
11) 2-Chlorophenol-d4	7.622	132	122882	15.265	ng/ul	0.00
15) 4-Methylphenol-d8	8.810	113	132871	14.581	ng/ul	0.00
21) Nitrobenzene-d5	9.275	128	66766	15.151	ng/ul	0.00
24) 2-Nitrophenol-d4	9.999	143	75542	15.011	ng/ul	0.00
28) 2,4-Dichlorophenol-d3	10.540	165	143413	15.623	ng/ul	-0.01
31) 4-Chloroaniline-d4	11.063	131	171100	12.985	ng/ul	0.00
46) Dimethylphthalate-d6	14.146	166	515178	16.829	ng/ul	0.00
49) Acenaphthylene-d8	14.434	160	544954	16.280	ng/ul	0.00
54) 4-Nitrophenol-d4	14.940	143	64032	11.680	ng/ul	0.00
60) Fluorene-d10	15.734	176	425361	16.478	ng/ul	0.00
65) 4,6-Dinitro-2-methylph...	15.857	200	76542	13.299	ng/ul	0.00
73) Anthracene-d10	17.592	188	680630	16.466	ng/ul	0.00
81) Pyrene-d10	19.816	212	869623	17.923	ng/ul	0.00
92) Benzo(a)pyrene-d12	23.963	264	846514	17.306	ng/ul	-0.01
Target Compounds						
2) 1,4-Dioxane	3.446	88	23254	6.764	ng/uL#	87
6) Benzaldehyde	7.228	77	128327	30.238	ng/ul	95
8) Phenol	7.275	94	226839	19.803	ng/ul	98
10) Bis(2-Chloroethyl)ether	7.511	93	169953	18.765	ng/ul	99
12) 2-Chlorophenol	7.658	128	159960	18.807	ng/ul	97
13) 2-Methylphenol	8.546	108	157994	17.926	ng/ul	98
14) 2,2'-oxybis(1-Chloropr...	8.628	45	230126	19.174	ng/ul	97
16) Acetophenone	8.934	105	372870	25.640	ng/ul	99
17) N-Nitroso-di-n-propyla...	8.910	70	156174	19.897	ng/ul	98
18) 4-Methylphenol	8.875	108	180175	18.580	ng/ul	100
19) Hexachloroethane	9.187	117	68190	18.972	ng/ul	97
22) Nitrobenzene	9.316	77	220898	18.902	ng/ul	98
23) Isophorone	9.840	82	454163	19.414	ng/ul	100
25) 2-Nitrophenol	10.034	139	104140	19.167	ng/ul	98
26) 2,4-Dimethylphenol	10.087	107	139500	12.107	ng/ul	98
27) Bis(2-Chloroethoxy)met...	10.322	93	259861	19.106	ng/ul	100
29) 2,4-Dichlorophenol	10.569	162	177567	19.455	ng/ul	97
30) Naphthalene	10.975	128	577782	18.996	ng/ul	100
32) 4-Chloroaniline	11.093	127	201566	14.784	ng/ul	99
33) Hexachlorobutadiene	11.252	225	116285	18.892	ng/ul	98
34) Caprolactam	11.863	113	61829	17.995	ng/ul	96
35) 4-Chloro-3-methylphenol	12.204	107	219081	19.811	ng/ul	98
36) 2-Methylnaphthalene	12.575	142	412243	19.280	ng/ul	98
37) 1-Methylnaphthalene	12.793	142	417372	19.387	ng/ul	96

Data Path : Z:\svoasrv\HPCHEM1\BNA\_P\Data\BP060823\  
 Data File : BP015435.D  
 Acq On : 08 Jun 2023 14:56  
 Operator : MA/JU  
 Sample : 02960-06MSD  
 Misc :  
 ALS Vial : 14 Sample Multiplier: 1

Instrument :  
 BNA\_P  
 ClientSampleId :  
 HOFN8MSD

Quant Time: Jun 09 01:17:44 2023  
 Quant Method : Z:\svoasrv\HPCHEM1\BNA\_P\Methods\SFAM-EPA-BP060723.MA.M  
 Quant Title : SVOA CALIBRATION  
 QLast Update : Wed Jun 07 23:46:15 2023  
 Response via : Initial Calibration

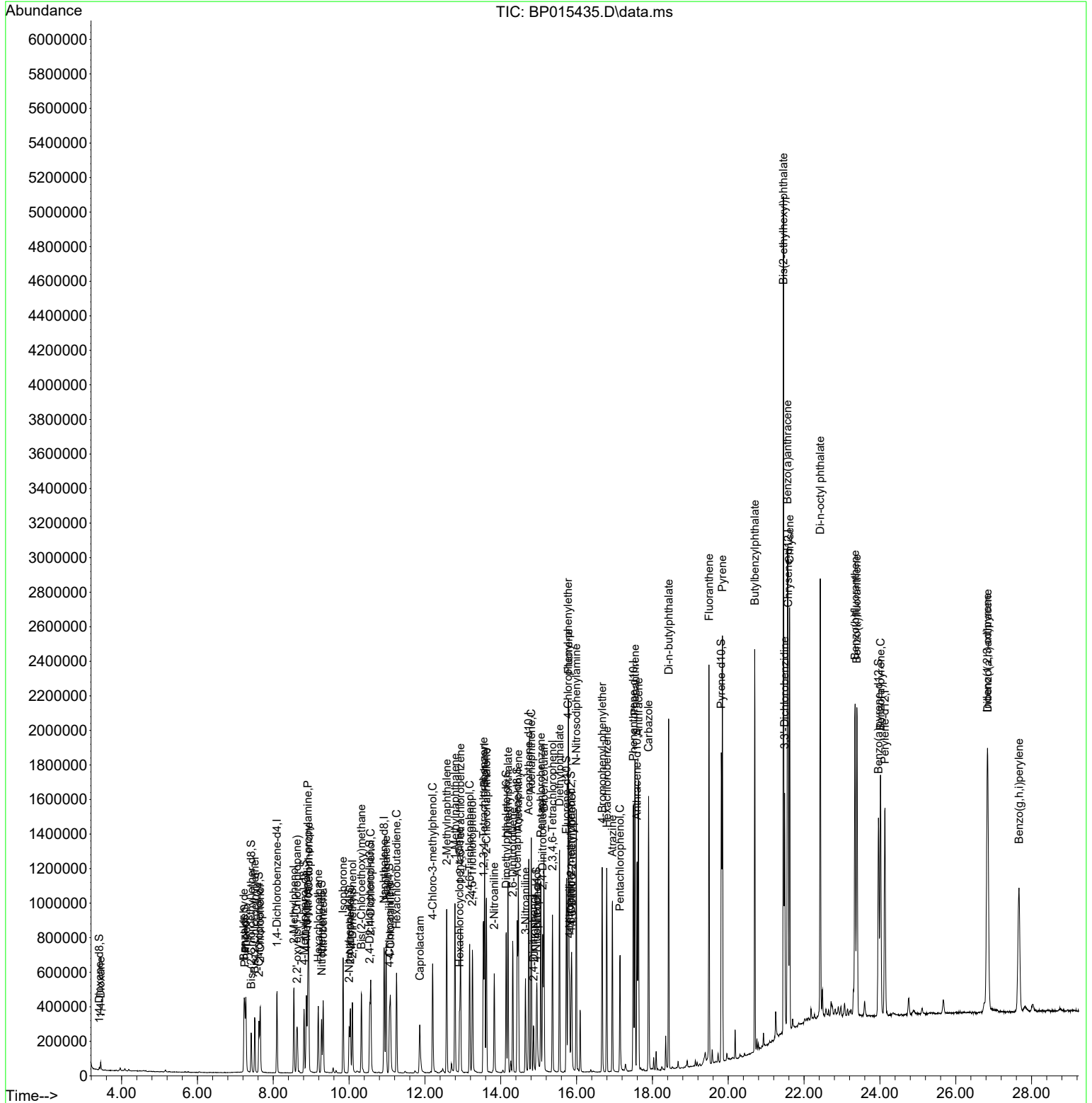
Compound	R.T.	QIon	Response	Conc	Units	Dev(Min)
39) 1,2,4,5-Tetrachloroben...	12.940	216	237549	19.651	ng/ul	99
40) Hexachlorocyclopentadiene	12.910	237	84918	17.137	ng/ul	98
41) 2,4,6-Trichlorophenol	13.181	196	161013	20.013	ng/ul	96
42) 2,4,5-Trichlorophenol	13.251	196	179983	20.529	ng/ul	97
43) 1,1'-Biphenyl	13.575	154	591811	19.713	ng/ul	100
44) 2-Chloronaphthalene	13.622	162	459310	19.500	ng/ul	99
45) 2-Nitroaniline	13.828	65	155190	20.587	ng/ul	99
47) Dimethylphthalate	14.193	163	648230	20.509	ng/ul	99
48) 2,6-Dinitrotoluene	14.316	165	133640	20.638	ng/ul	97
50) Acenaphthylene	14.463	152	730924	19.718	ng/ul	99
51) 3-Nitroaniline	14.651	138	125524	23.482	ng/ul	98
52) Acenaphthene	14.804	153	511041	19.944	ng/ul	99
53) 2,4-Dinitrophenol	14.863	184	58827	15.102	ng/ul	98
55) 4-Nitrophenol	14.951	109	96656	18.279	ng/ul	91
56) Dibenzofuran	15.140	168	740541	20.391	ng/ul	97
57) 2,4-Dinitrotoluene	15.104	165	196488	20.631	ng/ul	97
58) 2,3,4,6-Tetrachlorophenol	15.363	232	163131	20.607	ng/ul	99
59) Diethylphthalate	15.551	149	688619	21.258	ng/ul	99
61) Fluorene	15.787	166	605263	20.445	ng/ul	100
62) 4-Chlorophenyl-phenyle...	15.775	204	307172	20.587	ng/ul	99
63) 4-Nitroaniline	15.816	138	133166	26.263	ng/ul	98
66) 4,6-Dinitro-2-methylph...	15.875	198	115271	19.638	ng/ul#	96
67) N-Nitrosodiphenylamine	15.992	169	534802	20.750	ng/ul	100
68) 4-Bromophenyl-phenylether	16.675	248	201949	20.778	ng/ul	98
69) Hexachlorobenzene	16.798	284	237393	20.706	ng/ul	95
70) Atrazine	16.945	200	172083	16.720	ng/ul	98
71) Pentachlorophenol	17.145	266	120991	18.671	ng/ul	98
72) Phenanthrene	17.539	178	1028555	21.097	ng/ul	99
74) Anthracene	17.634	178	1017116	20.562	ng/ul	99
75) 1,2,3,4-Tetrachloroben...	13.546	216	248538	19.822	ng/uL	99
76) Pentachlorobenzene	15.057	250	256187	19.515	ng/uL	96
77) Carbazole	17.898	167	958394	21.517	ng/ul	99
78) Di-n-butylphthalate	18.428	149	1285539	22.748	ng/ul	99
80) Fluoranthene	19.492	202	1308825	22.146	ng/ul	99
82) Pyrene	19.845	202	1351212	22.099	ng/ul	99
83) Butylbenzylphthalate	20.698	149	628503	23.256	ng/ul	99
84) 3,3'-Dichlorobenzidine	21.486	252	410459	19.165	ng/ul	100
85) Benzo(a)anthracene	21.563	228	1353686	21.360	ng/ul	100
86) Bis(2-ethylhexyl)phtha...	21.457	149	1620189	40.560	ng/ul	99
87) Chrysene	21.616	228	1284028	21.436	ng/ul	100
89) Di-n-octyl phthalate	22.427	149	1692201	26.412	ng/ul	100
90) Benzo(b)fluoranthene	23.345	252	1383410	21.984	ng/ul	99
91) Benzo(k)fluoranthene	23.392	252	1318387	21.674	ng/ul	99
93) Benzo(a)pyrene	24.016	252	1153507	21.025	ng/ul	99
94) Indeno(1,2,3-cd)pyrene	26.833	276	1361396	19.174	ng/ul	98
95) Dibenzo(a,h)anthracene	26.845	278	1124708	19.443	ng/ul	100
96) Benzo(g,h,i)perylene	27.668	276	1039466	17.765	ng/ul	100

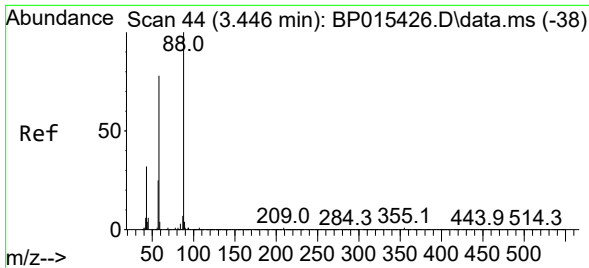
(#) = qualifier out of range (m) = manual integration (+) = signals summed

Data Path : Z:\svoasrv\HPCHEM1\BNA\_P\Data\BP060823\  
 Data File : BP015435.D  
 Acq On : 08 Jun 2023 14:56  
 Operator : MA/JU  
 Sample : 02960-06MSD  
 Misc :  
 ALS Vial : 14 Sample Multiplier: 1

Instrument :  
 BNA\_P  
 ClientSampleId :  
 H0FN8MSD

Quant Time: Jun 09 01:17:44 2023  
 Quant Method : Z:\svoasrv\HPCHEM1\BNA\_P\Methods\SFAM-EPA-BP060723.MA.M  
 Quant Title : SVOA CALIBRATION  
 QLast Update : Wed Jun 07 23:46:15 2023  
 Response via : Initial Calibration



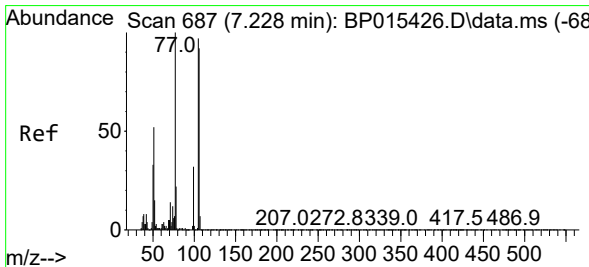
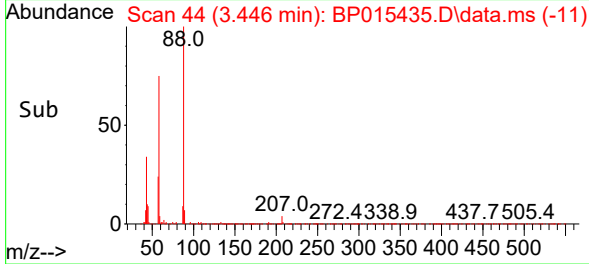
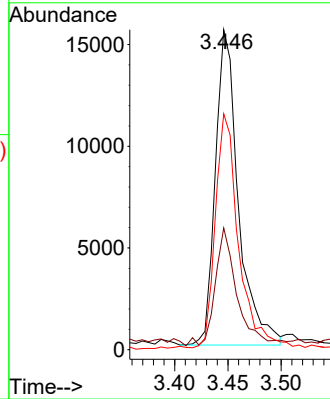
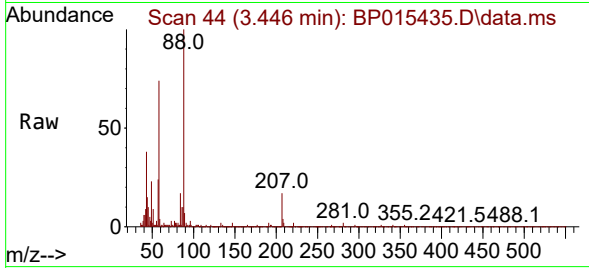


#2  
 1,4-Dioxane  
 Concen: 6.764 ng/uL  
 RT: 3.446 min Scan# 44  
 Delta R.T. -0.006 min  
 Lab File: BP015435.D  
 Acq: 08 Jun 2023 14:56

Instrument :  
 BNA\_P  
 ClientSampleId :  
 H0FN8MSD

Tgt Ion: 88 Resp: 23254

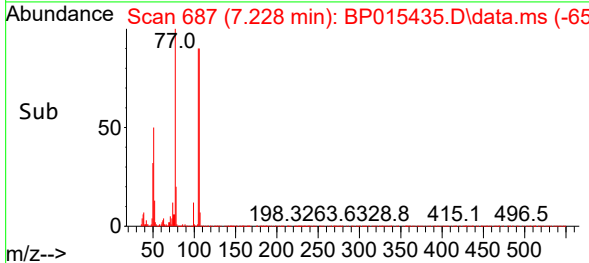
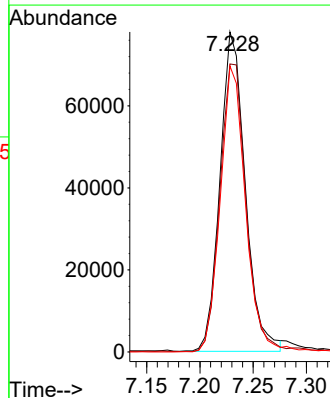
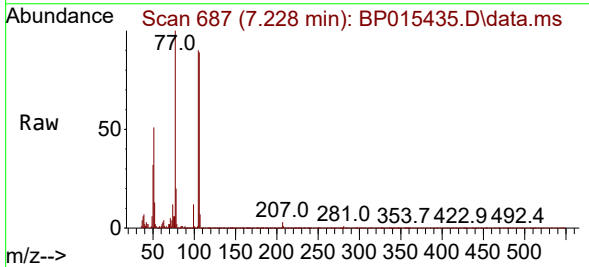
Ion	Ratio	Lower	Upper
88	100		
43	38.0	23.9	35.9#
58	73.7	51.4	77.2

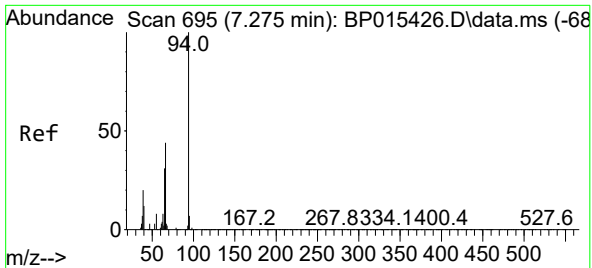


#6  
 Benzaldehyde  
 Concen: 30.238 ng/uL  
 RT: 7.228 min Scan# 687  
 Delta R.T. -0.006 min  
 Lab File: BP015435.D  
 Acq: 08 Jun 2023 14:56

Tgt Ion: 77 Resp: 128327

Ion	Ratio	Lower	Upper
77	100		
105	90.0	77.3	115.9
106	89.4	73.3	109.9

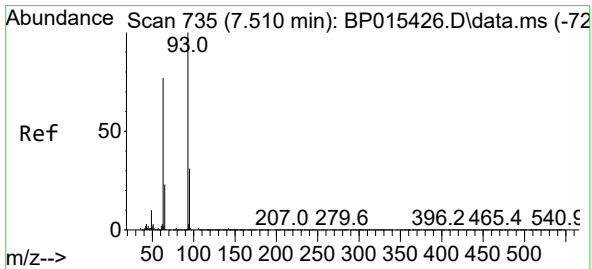
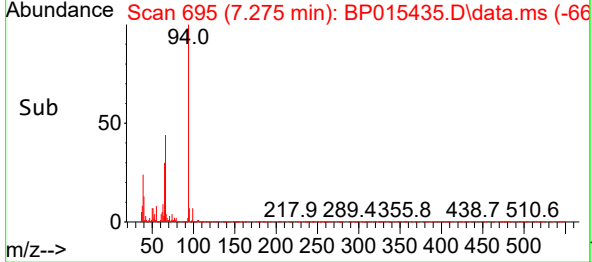
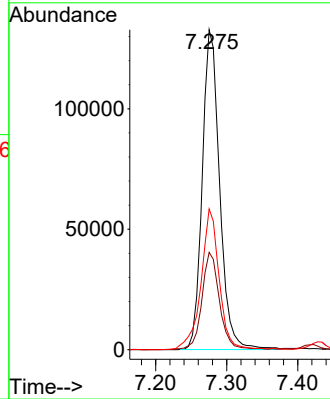
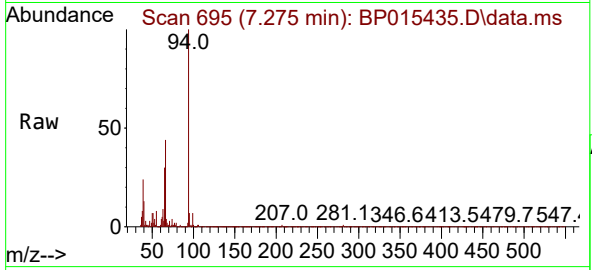




#8  
 Phenol  
 Concen: 19.803 ng/uI  
 RT: 7.275 min Scan# 695  
 Delta R.T. -0.006 min  
 Lab File: BP015435.D  
 Acq: 08 Jun 2023 14:56

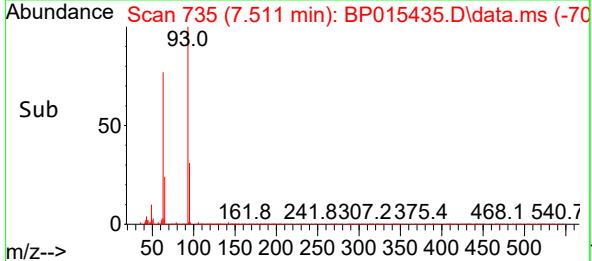
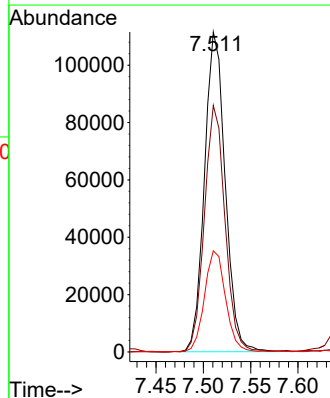
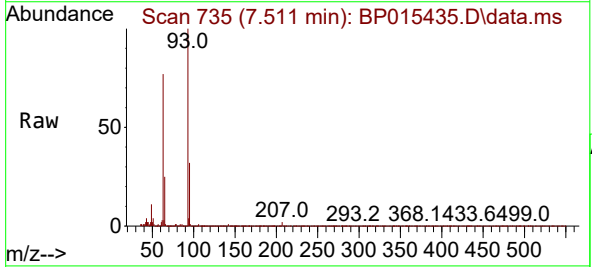
Instrument :  
 BNA\_P  
 ClientSampleId :  
 H0FN8MSD

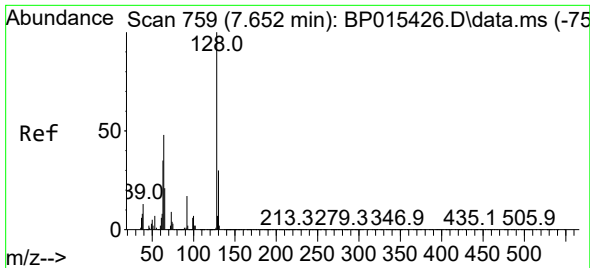
Tgt Ion	Resp	Lower	Upper
94	100		
65	30.4	23.5	35.3
66	44.0	34.2	51.4



#10  
 Bis(2-Chloroethyl)ether  
 Concen: 18.765 ng/uI  
 RT: 7.511 min Scan# 735  
 Delta R.T. -0.006 min  
 Lab File: BP015435.D  
 Acq: 08 Jun 2023 14:56

Tgt Ion	Resp	Lower	Upper
93	100		
63	77.0	62.6	93.8
95	31.6	25.5	38.3



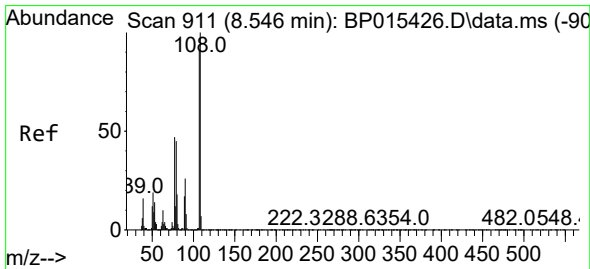
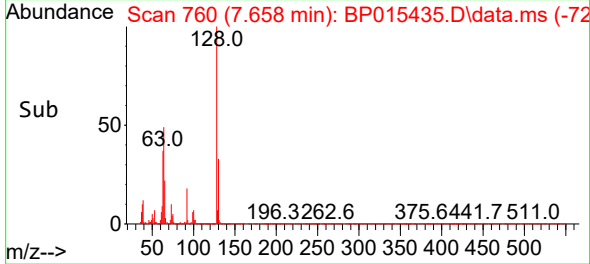
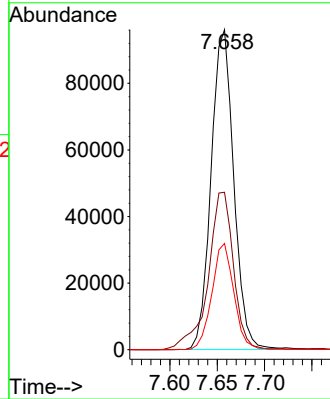
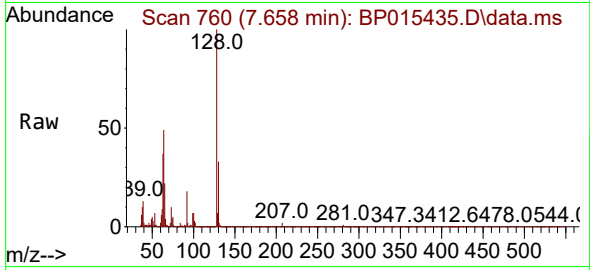


#12  
 2-Chlorophenol  
 Concen: 18.807 ng/ul  
 RT: 7.658 min Scan# 70  
 Delta R.T. 0.000 min  
 Lab File: BP015435.D  
 Acq: 08 Jun 2023 14:56

Instrument :  
 BNA\_P  
 ClientSampleId :  
 H0FN8MSD

Tgt Ion:128 Resp: 159960

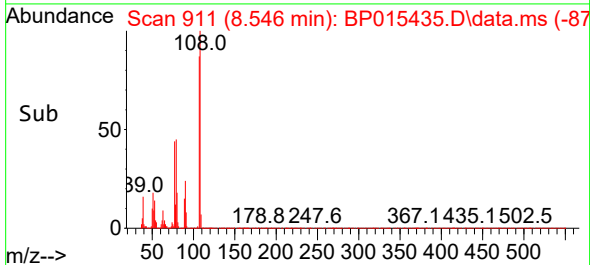
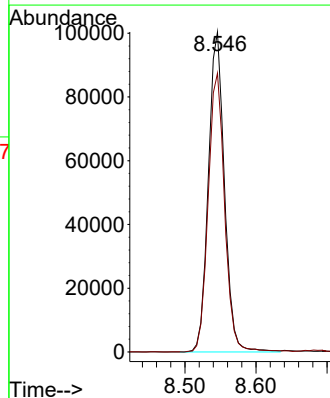
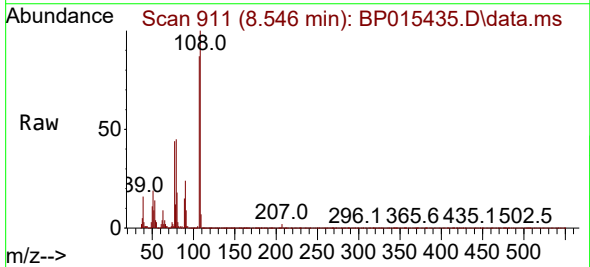
Ion	Ratio	Lower	Upper
128	100		
64	49.2	40.2	60.4
130	33.2	24.5	36.7

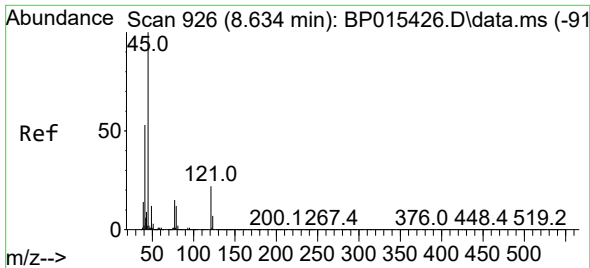


#13  
 2-Methylphenol  
 Concen: 17.926 ng/ul  
 RT: 8.546 min Scan# 911  
 Delta R.T. 0.000 min  
 Lab File: BP015435.D  
 Acq: 08 Jun 2023 14:56

Tgt Ion:108 Resp: 157994

Ion	Ratio	Lower	Upper
108	100		
107	87.1	71.2	106.8



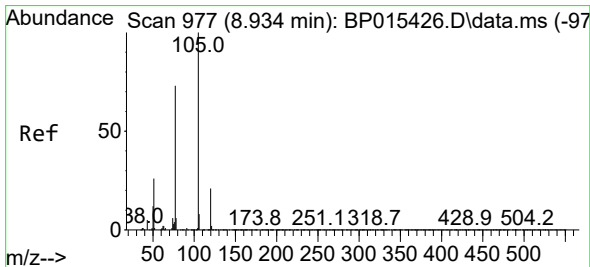
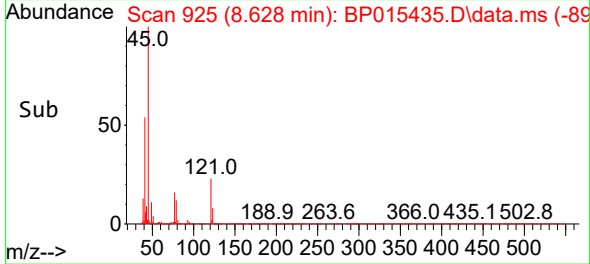
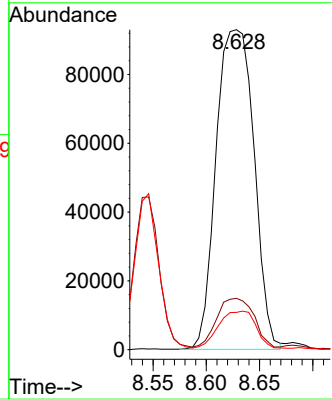
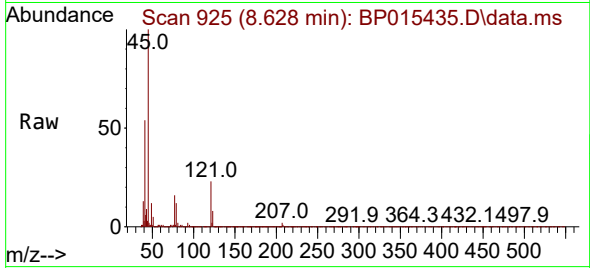


#14  
 2,2'-oxybis(1-Chloropropane)  
 Concen: 19.174 ng/uI  
 RT: 8.628 min Scan# 911  
 Delta R.T. 0.000 min  
 Lab File: BP015435.D  
 Acq: 08 Jun 2023 14:56

Instrument :  
 BNA\_P  
 ClientSampleId :  
 H0FN8MSD

Tgt Ion: 45 Resp: 230126

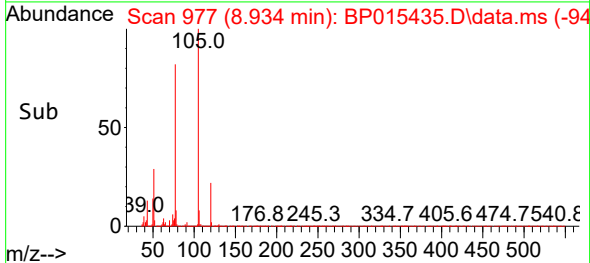
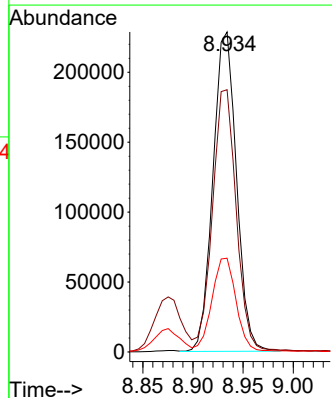
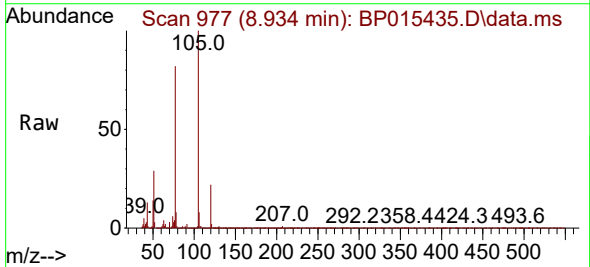
Ion	Ratio	Lower	Upper
45	100		
77	16.0	11.8	17.8
79	11.7	8.7	13.1

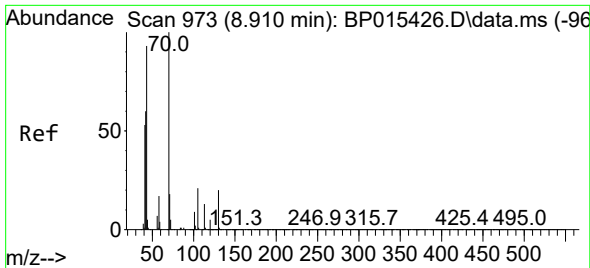


#16  
 Acetophenone  
 Concen: 25.640 ng/uI  
 RT: 8.934 min Scan# 977  
 Delta R.T. 0.000 min  
 Lab File: BP015435.D  
 Acq: 08 Jun 2023 14:56

Tgt Ion: 105 Resp: 372870

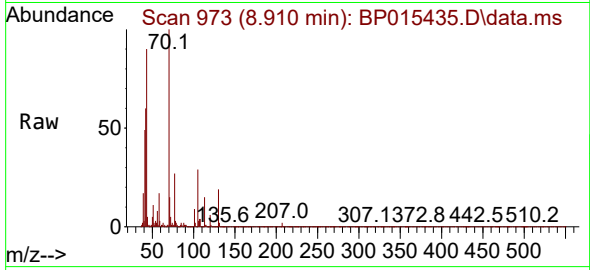
Ion	Ratio	Lower	Upper
105	100		
77	82.0	64.9	97.3
51	29.3	23.5	35.3





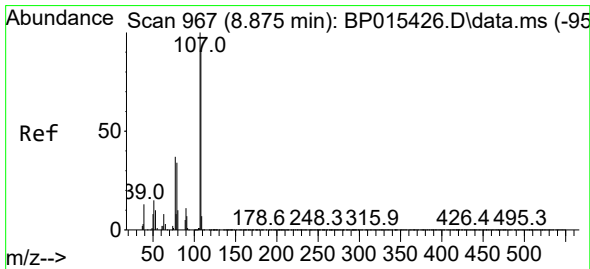
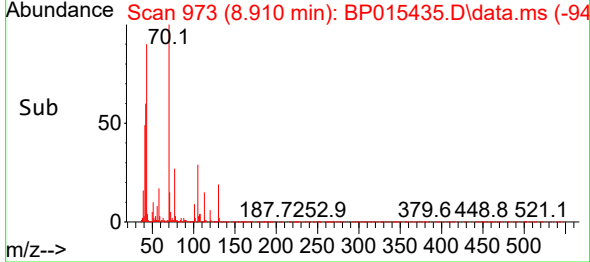
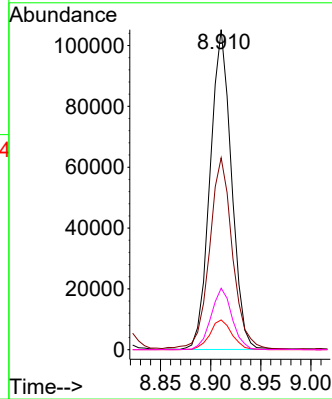
#17  
 N-Nitroso-di-n-propylamine  
 Concen: 19.897 ng/ul  
 RT: 8.910 min Scan# 91  
 Delta R.T. -0.006 min  
 Lab File: BP015435.D  
 Acq: 08 Jun 2023 14:56

Instrument :  
 BNA\_P  
 ClientSampleId :  
 H0FN8MSD

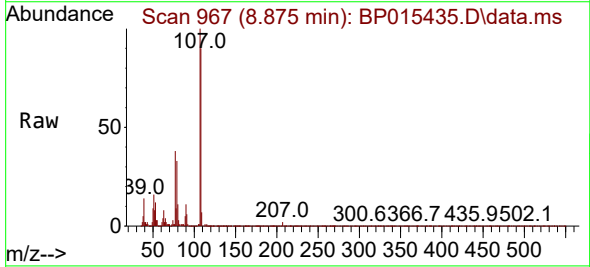


Tgt Ion: 70 Resp: 156174

Ion	Ratio	Lower	Upper
70	100		
42	60.0	46.6	69.8
101	9.3	7.8	11.6
130	19.2	15.9	23.9

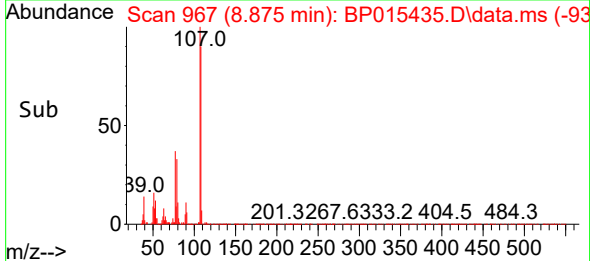
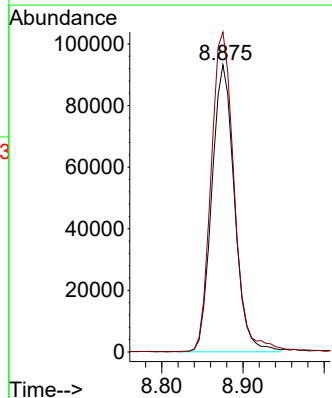


#18  
 4-Methylphenol  
 Concen: 18.580 ng/ul  
 RT: 8.875 min Scan# 967  
 Delta R.T. -0.006 min  
 Lab File: BP015435.D  
 Acq: 08 Jun 2023 14:56

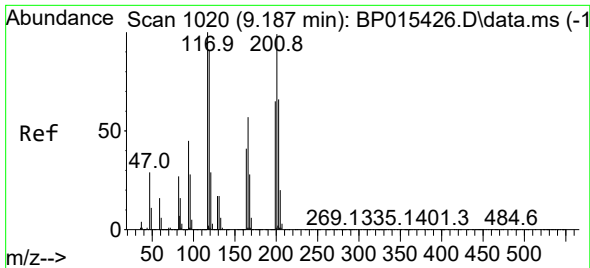


Tgt Ion: 108 Resp: 180175

Ion	Ratio	Lower	Upper
108	100		
107	111.4	89.3	133.9

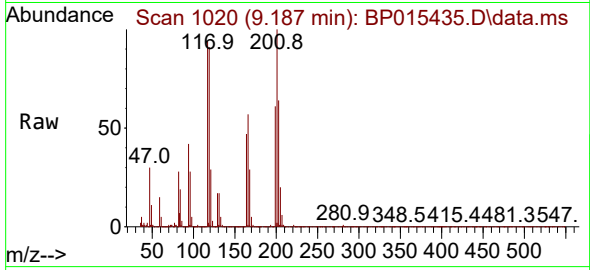




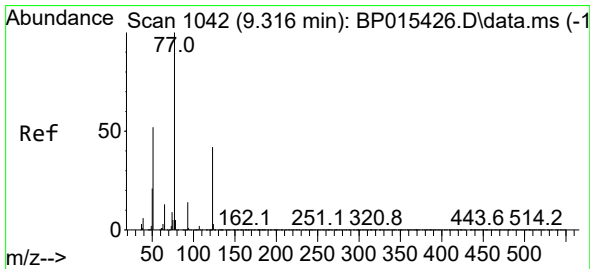
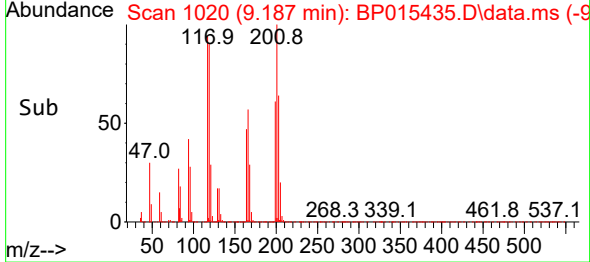
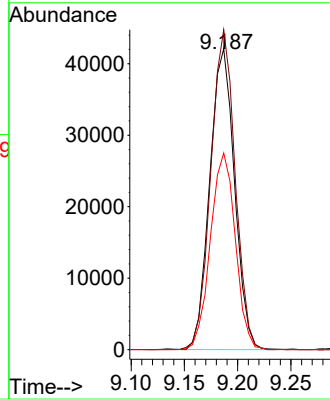


#19  
 Hexachloroethane  
 Concen: 18.972 ng/u1  
 RT: 9.187 min Scan# 1020  
 Delta R.T. -0.006 min  
 Lab File: BP015435.D  
 Acq: 08 Jun 2023 14:56

Instrument : BNA\_P  
 ClientSampleId : H0FN8MSD

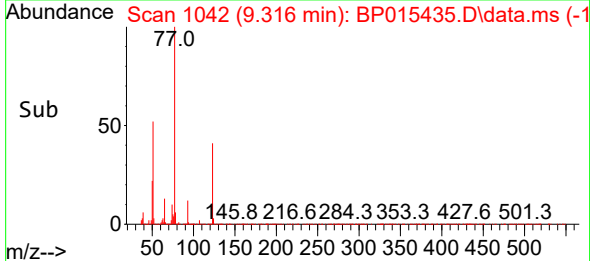
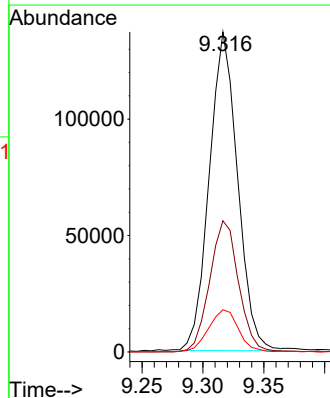
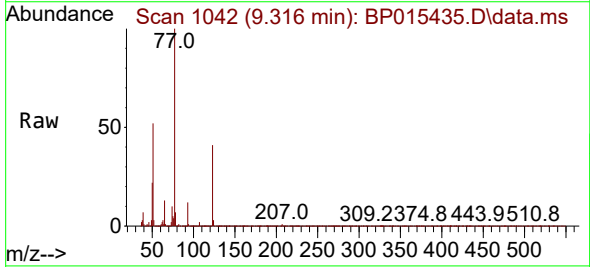


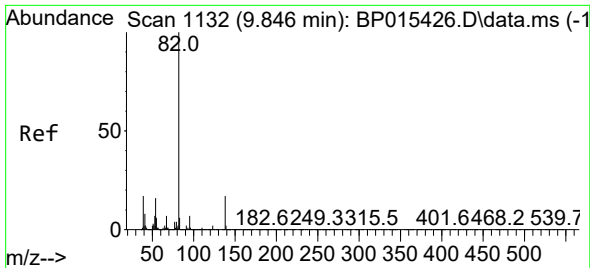
Tgt Ion:117 Resp: 68190  
 Ion Ratio Lower Upper  
 117 100  
 201 106.3 82.8 124.2  
 199 65.3 50.6 76.0



#22  
 Nitrobenzene  
 Concen: 18.902 ng/u1  
 RT: 9.316 min Scan# 1042  
 Delta R.T. -0.006 min  
 Lab File: BP015435.D  
 Acq: 08 Jun 2023 14:56

Tgt Ion: 77 Resp: 220898  
 Ion Ratio Lower Upper  
 77 100  
 123 41.0 33.5 50.3  
 65 13.2 11.6 17.4



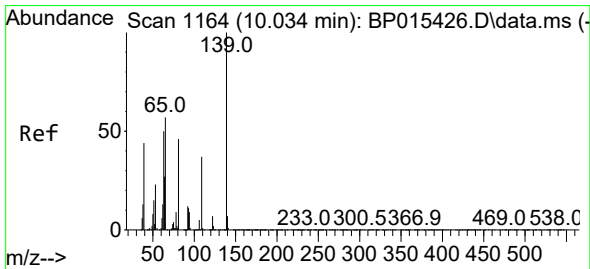
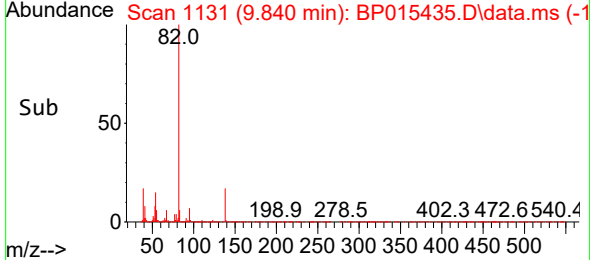
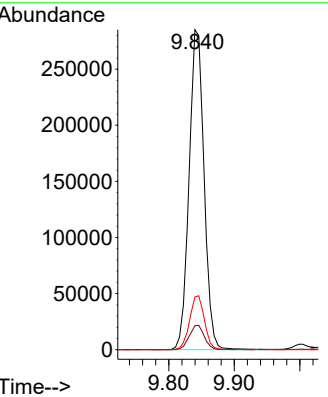
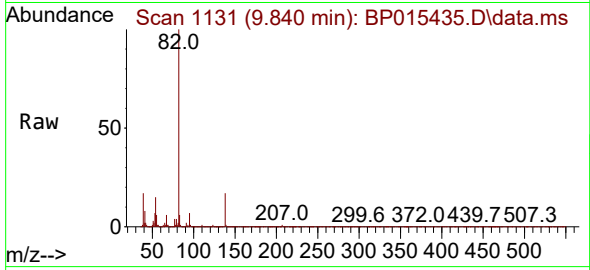


#23  
 Isophorone  
 Concen: 19.414 ng/uI  
 RT: 9.840 min Scan# 1132  
 Delta R.T. -0.012 min  
 Lab File: BP015435.D  
 Acq: 08 Jun 2023 14:56

Instrument :  
 BNA\_P  
 ClientSampleId :  
 H0FN8MSD

Tgt Ion: 82 Resp: 454163

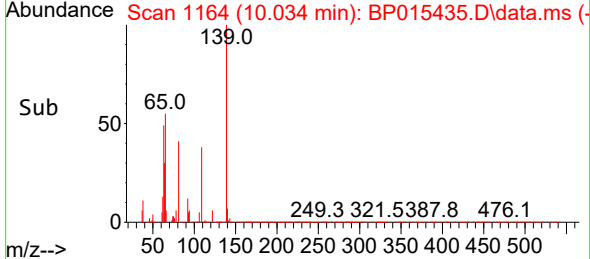
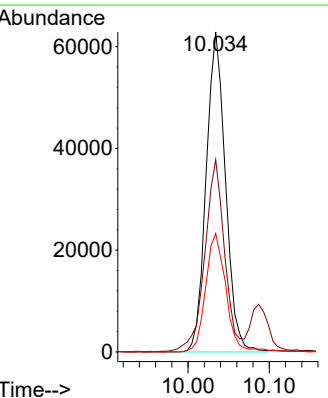
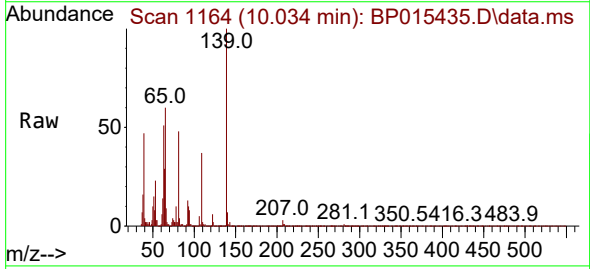
Ion	Ratio	Lower	Upper
82	100		
95	7.5	5.8	8.8
138	16.5	13.1	19.7

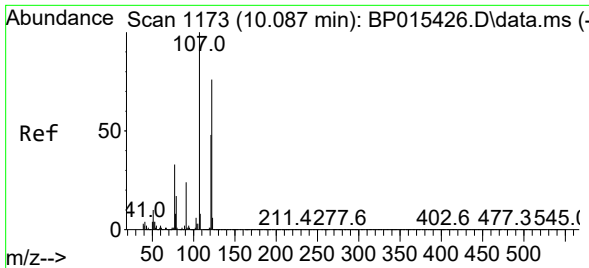


#25  
 2-Nitrophenol  
 Concen: 19.167 ng/uI  
 RT: 10.034 min Scan# 1164  
 Delta R.T. -0.006 min  
 Lab File: BP015435.D  
 Acq: 08 Jun 2023 14:56

Tgt Ion: 139 Resp: 104140

Ion	Ratio	Lower	Upper
139	100		
65	60.1	46.9	70.3
109	37.0	30.2	45.2

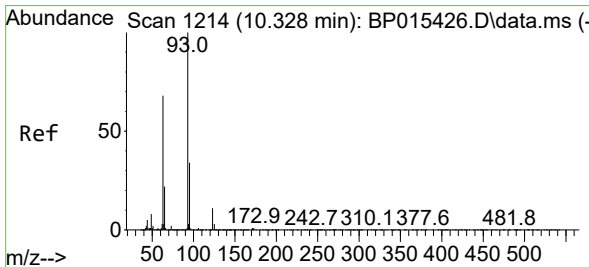
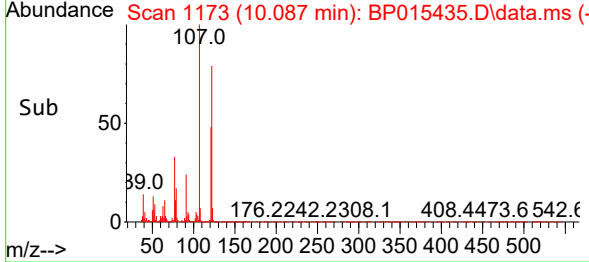
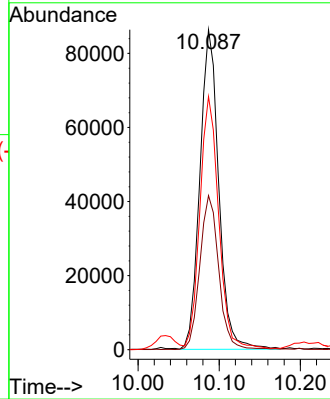
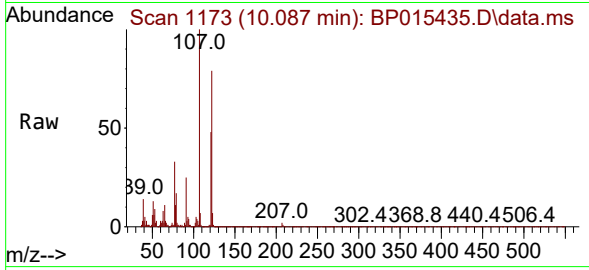




#26  
 2,4-Dimethylphenol  
 Concen: 12.107 ng/ul  
 RT: 10.087 min Scan# 1173  
 Delta R.T. -0.006 min  
 Lab File: BP015435.D  
 Acq: 08 Jun 2023 14:56

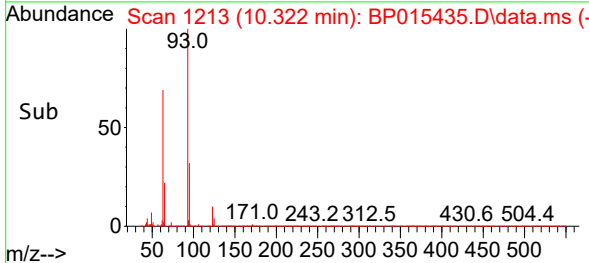
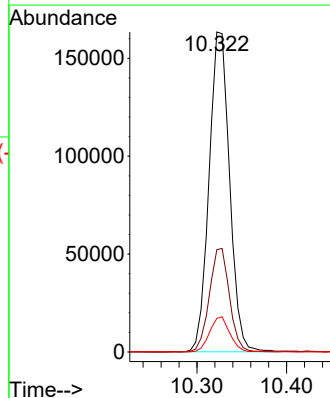
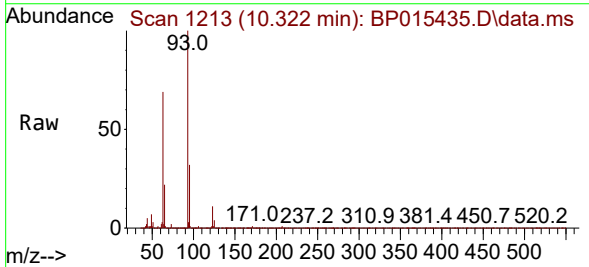
Instrument : BNA\_P  
 ClientSampleId : H0FN8MSD

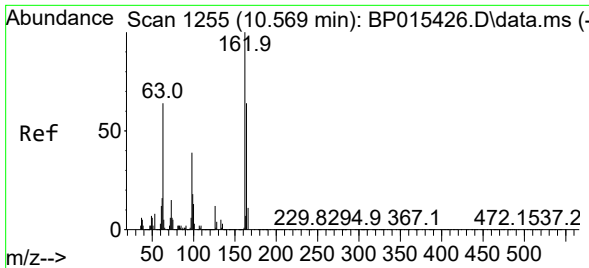
Tgt Ion	Resp	Lower	Upper
107	139500		
121	48.2	39.0	58.6
122	79.1	64.8	97.2



#27  
 Bis(2-Chloroethoxy)methane  
 Concen: 19.106 ng/ul  
 RT: 10.322 min Scan# 1213  
 Delta R.T. -0.012 min  
 Lab File: BP015435.D  
 Acq: 08 Jun 2023 14:56

Tgt Ion	Resp	Lower	Upper
93	259861		
95	31.9	25.7	38.5
123	10.5	8.6	13.0



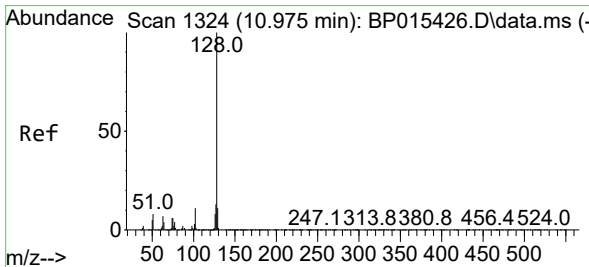
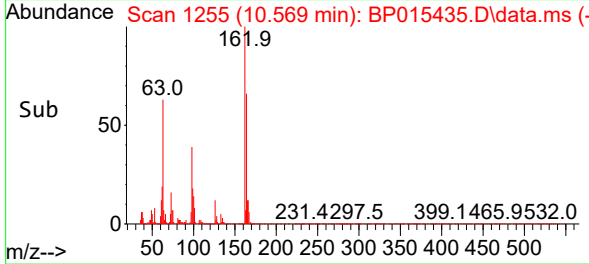
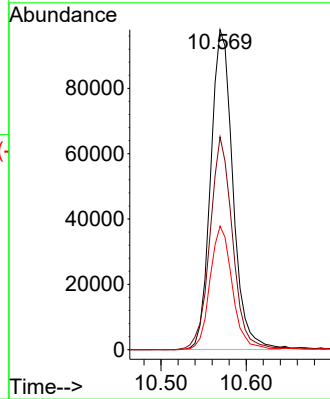
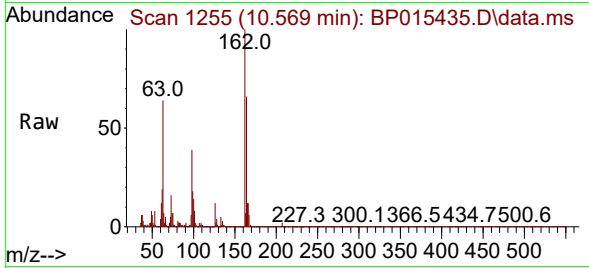


#29  
 2,4-Dichlorophenol  
 Concen: 19.455 ng/ul  
 RT: 10.569 min Scan# 11  
 Delta R.T. -0.006 min  
 Lab File: BP015435.D  
 Acq: 08 Jun 2023 14:56

Instrument :  
 BNA\_P  
 ClientSampleId :  
 H0FN8MSD

Tgt Ion:162 Resp: 177567

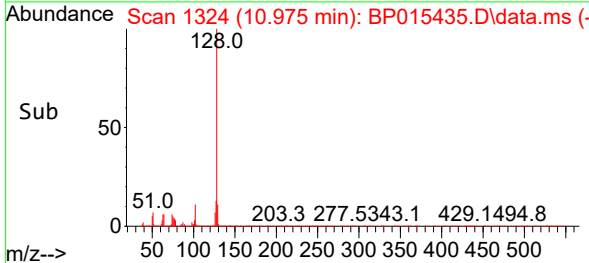
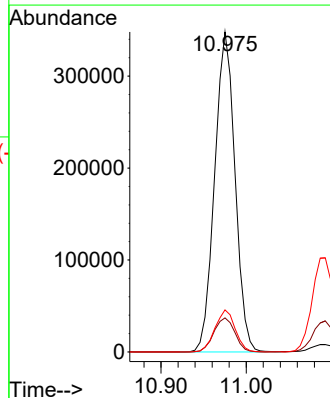
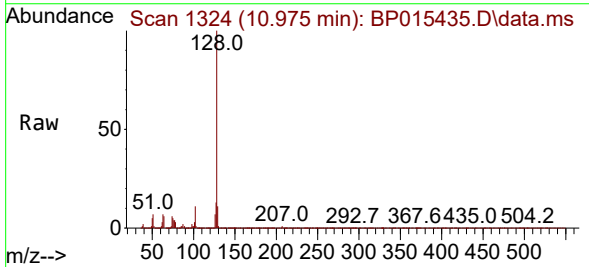
Ion	Ratio	Lower	Upper
162	100		
164	66.5	50.6	76.0
98	38.6	30.2	45.2

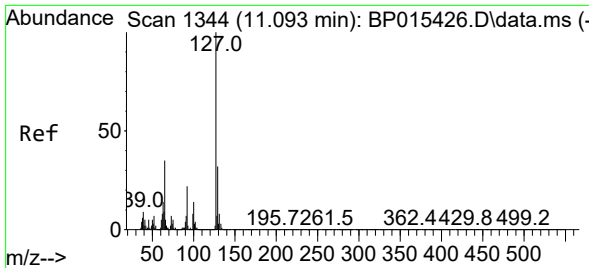


#30  
 Naphthalene  
 Concen: 18.996 ng/ul  
 RT: 10.975 min Scan# 1324  
 Delta R.T. -0.006 min  
 Lab File: BP015435.D  
 Acq: 08 Jun 2023 14:56

Tgt Ion:128 Resp: 577782

Ion	Ratio	Lower	Upper
128	100		
129	10.6	8.6	13.0
127	13.1	10.5	15.7

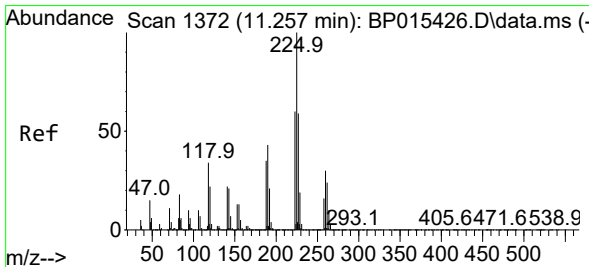
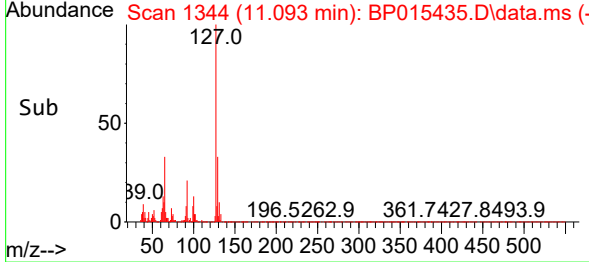
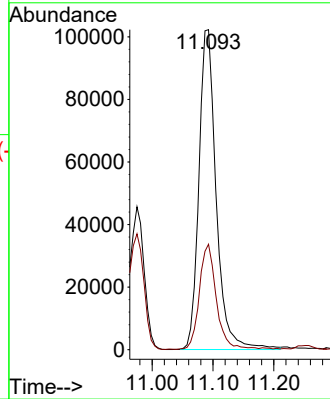
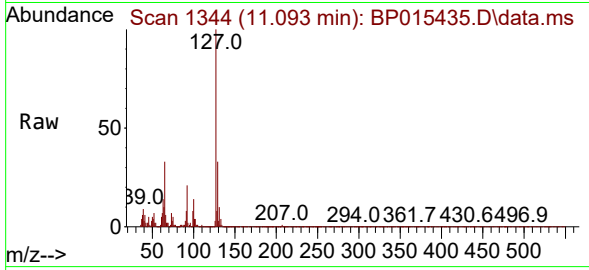




#32  
 4-Chloroaniline  
 Concen: 14.784 ng/uI  
 RT: 11.093 min Scan# 11  
 Delta R.T. -0.000 min  
 Lab File: BP015435.D  
 Acq: 08 Jun 2023 14:56

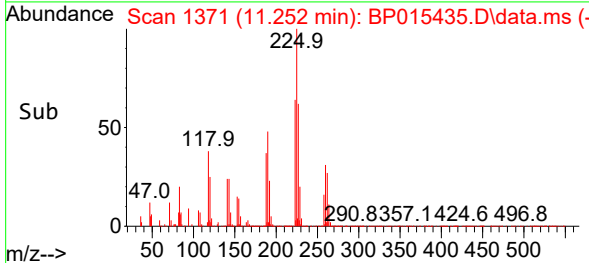
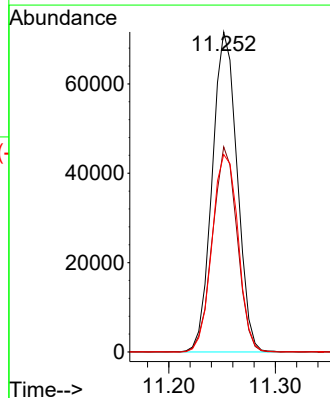
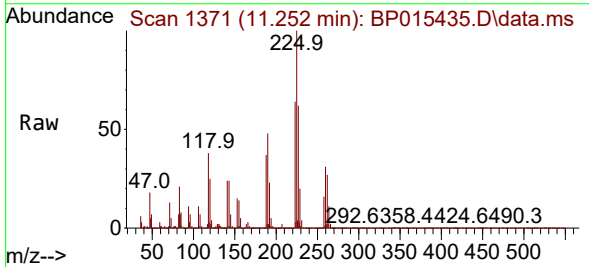
Instrument :  
 BNA\_P  
 ClientSampleId :  
 H0FN8MSD

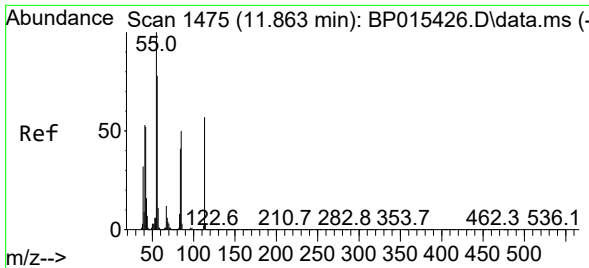
Tgt Ion:127 Resp: 201566  
 Ion Ratio Lower Upper  
 127 100  
 129 33.0 26.1 39.1



#33  
 Hexachlorobutadiene  
 Concen: 18.892 ng/uI  
 RT: 11.252 min Scan# 1371  
 Delta R.T. -0.006 min  
 Lab File: BP015435.D  
 Acq: 08 Jun 2023 14:56

Tgt Ion:225 Resp: 116285  
 Ion Ratio Lower Upper  
 225 100  
 223 64.1 52.0 78.0  
 227 61.7 50.6 75.8

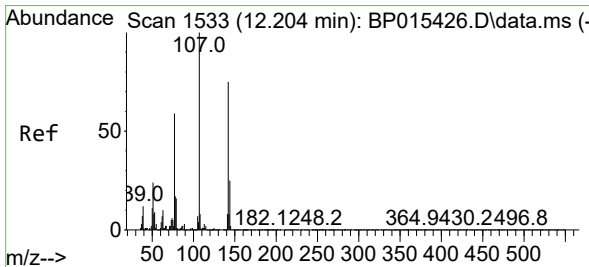
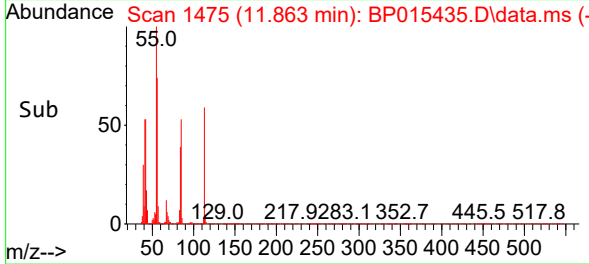
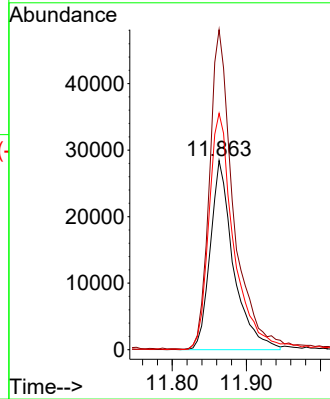
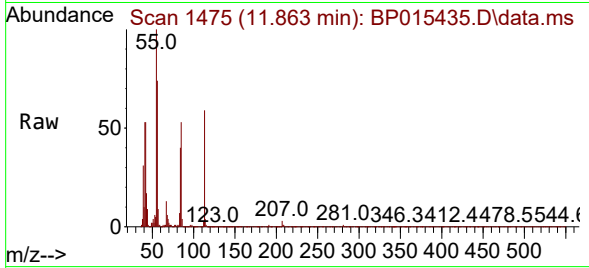




#34  
 Caprolactam  
 Concen: 17.995 ng/uI  
 RT: 11.863 min Scan# 1475  
 Delta R.T. -0.006 min  
 Lab File: BP015435.D  
 Acq: 08 Jun 2023 14:56

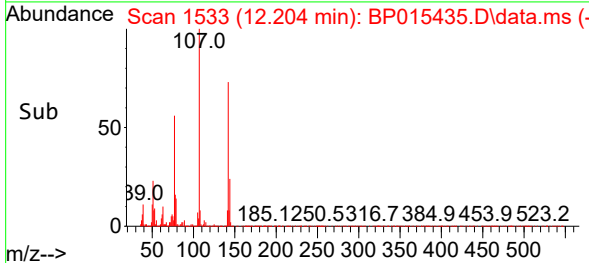
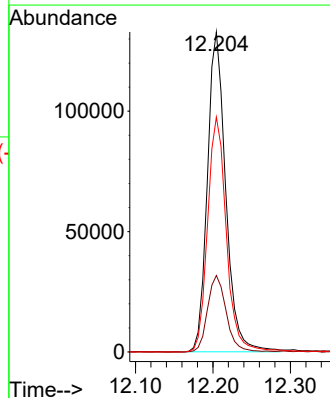
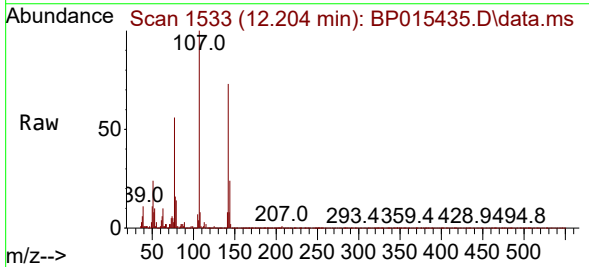
Instrument :  
 BNA\_P  
 ClientSampleId :  
 H0FN8MSD

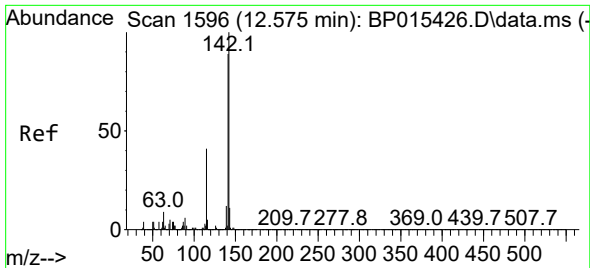
Tgt Ion:113 Resp: 61829  
 Ion Ratio Lower Upper  
 113 100  
 55 169.1 127.9 191.9  
 56 125.0 101.1 151.7



#35  
 4-Chloro-3-methylphenol  
 Concen: 19.811 ng/uI  
 RT: 12.204 min Scan# 1533  
 Delta R.T. -0.006 min  
 Lab File: BP015435.D  
 Acq: 08 Jun 2023 14:56

Tgt Ion:107 Resp: 219081  
 Ion Ratio Lower Upper  
 107 100  
 144 23.9 19.4 29.0  
 142 73.4 60.4 90.6

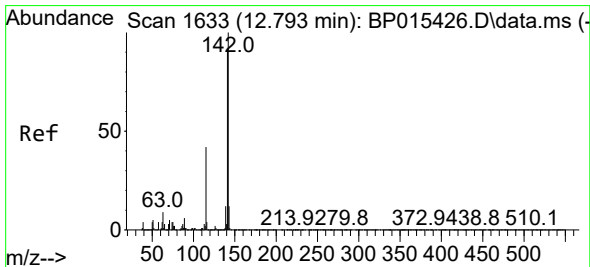
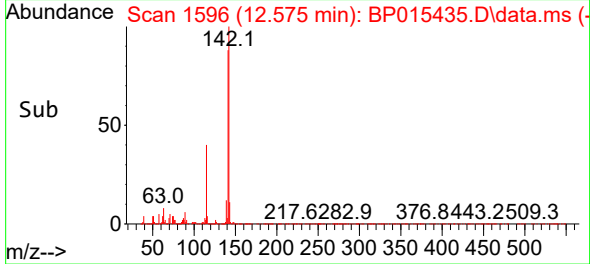
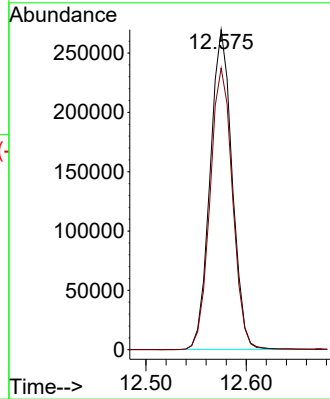
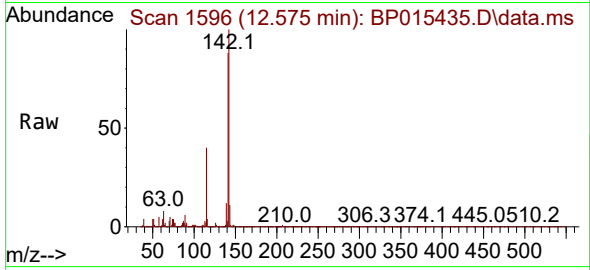




#36  
 2-Methylnaphthalene  
 Concen: 19.280 ng/ul  
 RT: 12.575 min Scan# 1596  
 Delta R.T. -0.006 min  
 Lab File: BP015435.D  
 Acq: 08 Jun 2023 14:56

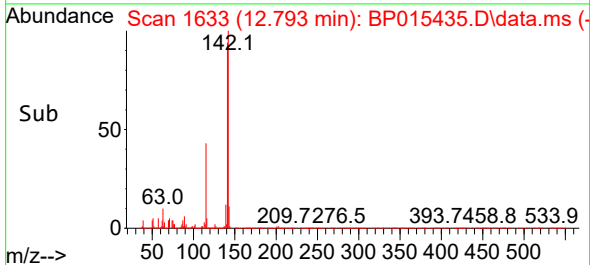
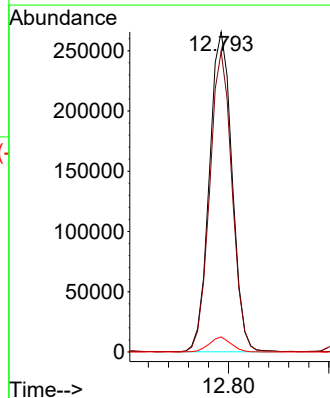
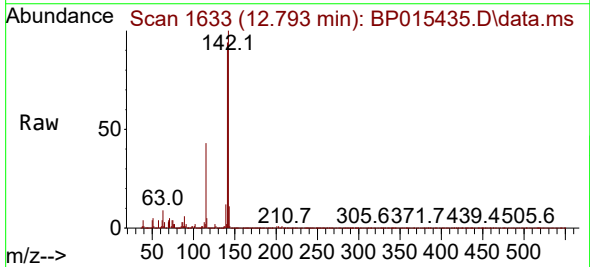
Instrument :  
 BNA\_P  
 ClientSampleId :  
 H0FN8MSD

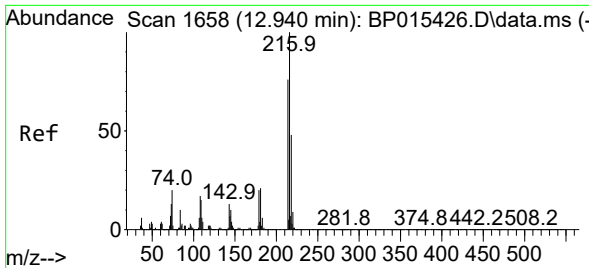
Tgt Ion:142 Resp: 412243  
 Ion Ratio Lower Upper  
 142 100  
 141 88.0 72.0 108.0



#37  
 1-Methylnaphthalene  
 Concen: 19.387 ng/ul  
 RT: 12.793 min Scan# 1633  
 Delta R.T. -0.006 min  
 Lab File: BP015435.D  
 Acq: 08 Jun 2023 14:56

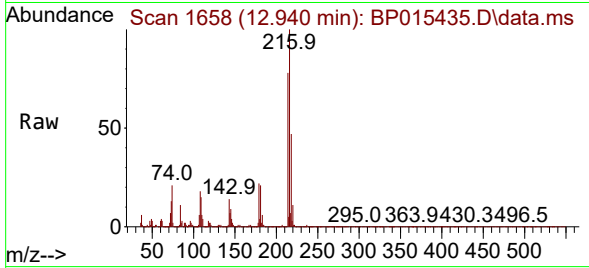
Tgt Ion:142 Resp: 417372  
 Ion Ratio Lower Upper  
 142 100  
 141 93.9 71.9 107.9  
 116 4.7 3.4 5.2





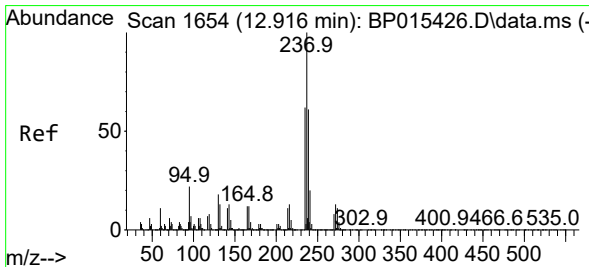
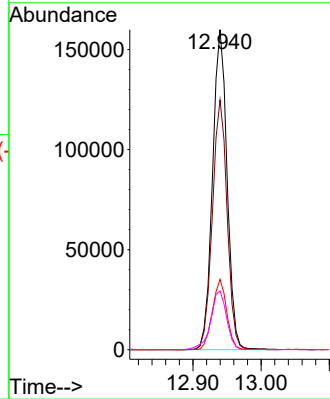
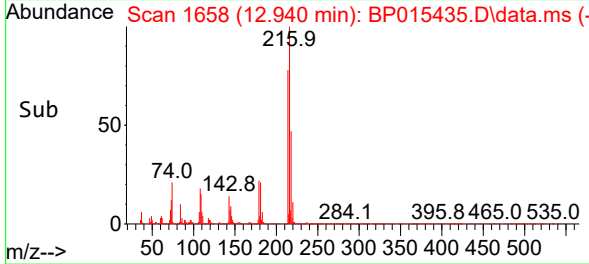
#39  
 1,2,4,5-Tetrachlorobenzene  
 Concen: 19.651 ng/ul  
 RT: 12.940 min Scan# 1658  
 Delta R.T. -0.006 min  
 Lab File: BP015435.D  
 Acq: 08 Jun 2023 14:56

Instrument : BNA\_P  
 ClientSampleId : H0FN8MSD

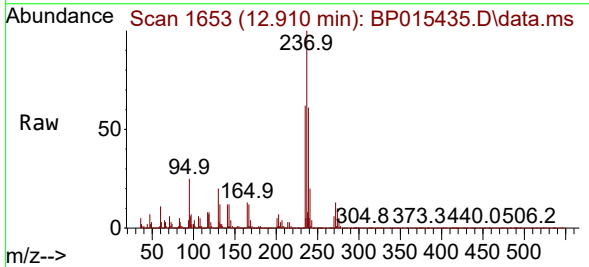


Tgt Ion:216 Resp: 237549

Ion	Ratio	Lower	Upper
216	100		
214	78.0	62.2	93.2
179	22.0	17.4	26.2
108	18.3	14.2	21.4

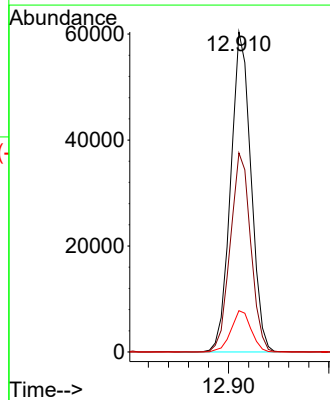
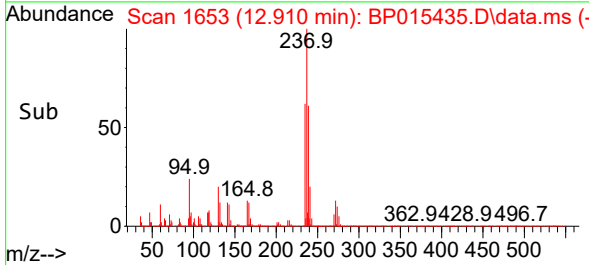


#40  
 Hexachlorocyclopentadiene  
 Concen: 17.137 ng/ul  
 RT: 12.910 min Scan# 1653  
 Delta R.T. -0.012 min  
 Lab File: BP015435.D  
 Acq: 08 Jun 2023 14:56

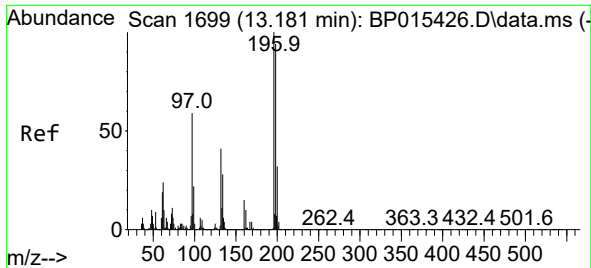


Tgt Ion:237 Resp: 84918

Ion	Ratio	Lower	Upper
237	100		
235	62.2	48.2	72.2
272	12.9	10.3	15.5



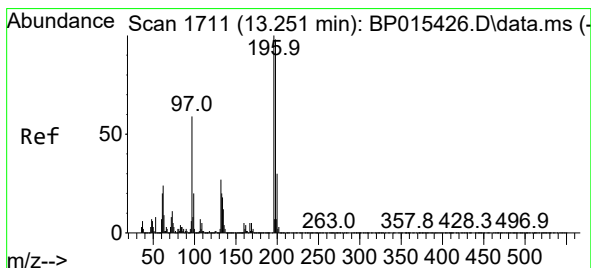
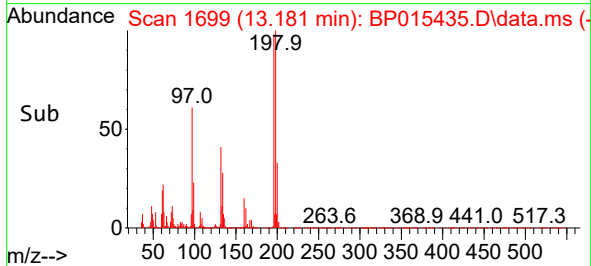
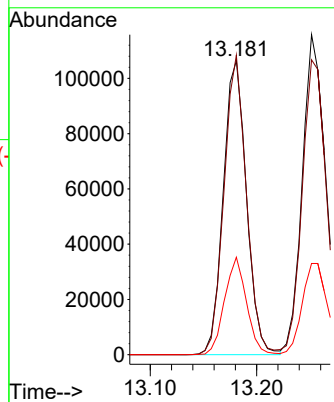
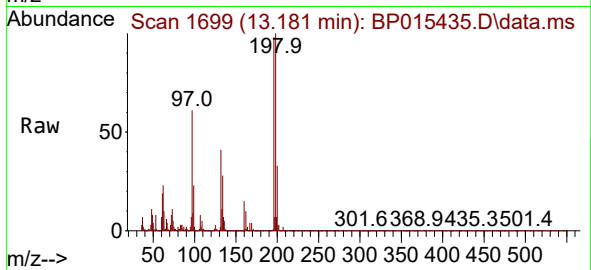




#41  
 2,4,6-Trichlorophenol  
 Concen: 20.013 ng/ul  
 RT: 13.181 min Scan# 1699  
 Delta R.T. -0.006 min  
 Lab File: BP015435.D  
 Acq: 08 Jun 2023 14:56

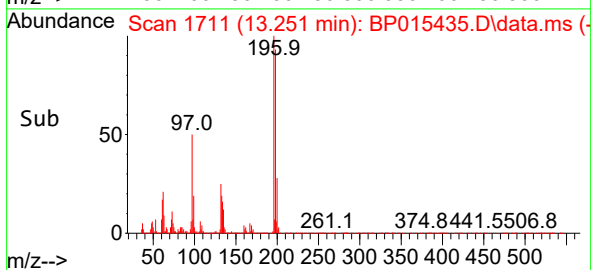
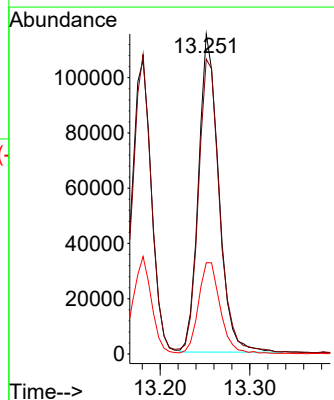
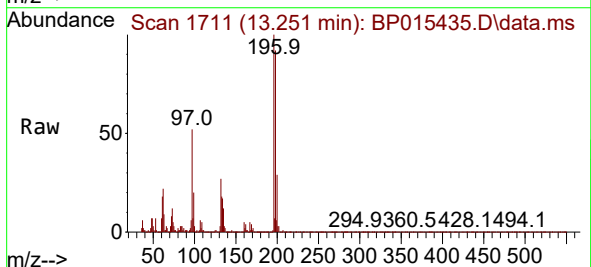
Instrument :  
 BNA\_P  
 ClientSampleId :  
 H0FN8MSD

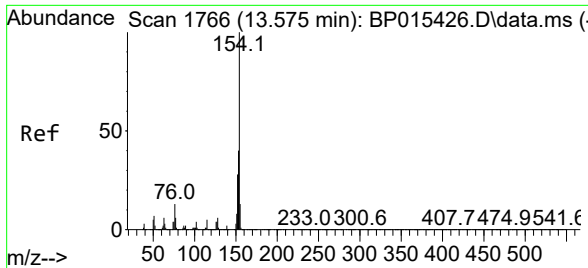
Tgt Ion:196 Resp: 161013  
 Ion Ratio Lower Upper  
 196 100  
 198 101.9 77.8 116.6  
 200 33.1 25.8 38.6



#42  
 2,4,5-Trichlorophenol  
 Concen: 20.529 ng/ul  
 RT: 13.251 min Scan# 1711  
 Delta R.T. -0.006 min  
 Lab File: BP015435.D  
 Acq: 08 Jun 2023 14:56

Tgt Ion:196 Resp: 179983  
 Ion Ratio Lower Upper  
 196 100  
 198 92.2 75.5 113.3  
 200 28.5 24.7 37.1

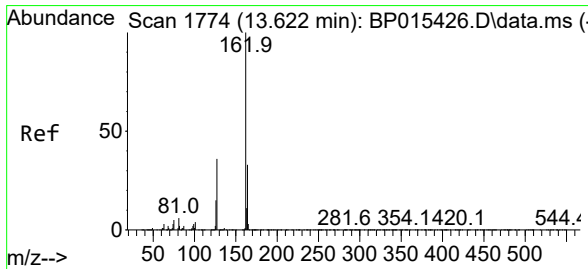
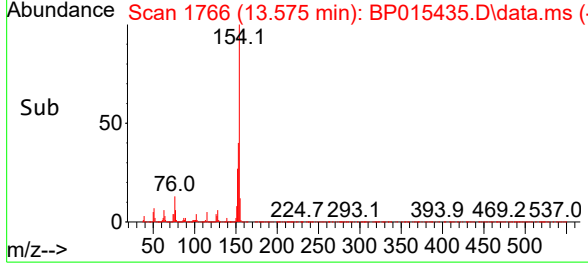
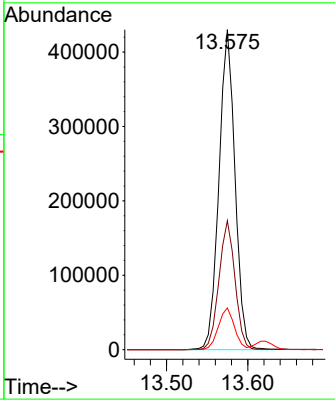
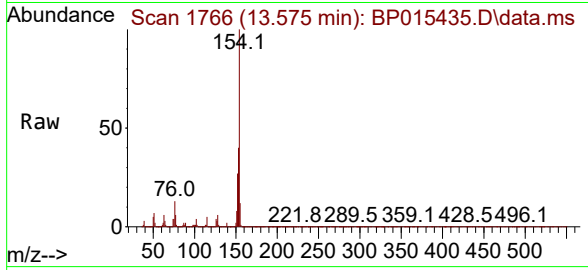




#43  
 1,1'-Biphenyl  
 Concen: 19.713 ng/uI  
 RT: 13.575 min Scan# 1766  
 Delta R.T. -0.006 min  
 Lab File: BP015435.D  
 Acq: 08 Jun 2023 14:56

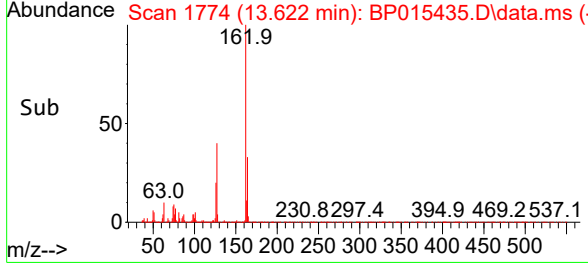
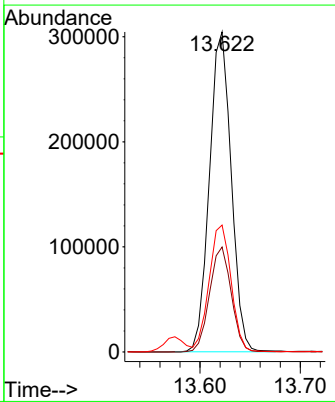
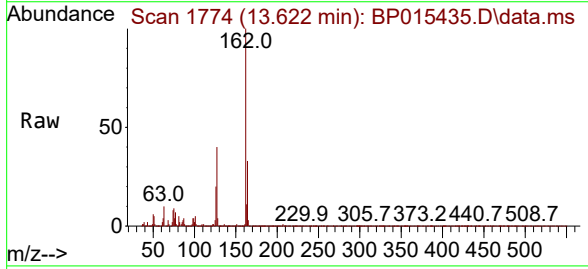
Instrument : BNA\_P  
 ClientSampleId : H0FN8MSD

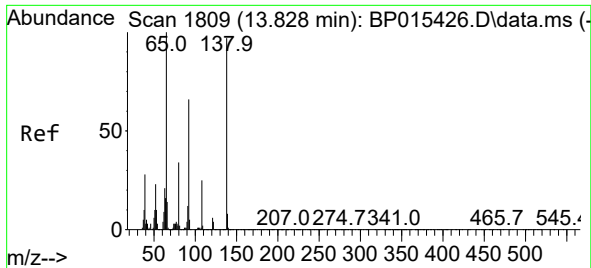
Tgt Ion	Resp	Lower	Upper
154	591811		
154	100		
153	40.3	32.2	48.2
76	13.0	10.4	15.6



#44  
 2-Chloronaphthalene  
 Concen: 19.500 ng/uI  
 RT: 13.622 min Scan# 1774  
 Delta R.T. -0.006 min  
 Lab File: BP015435.D  
 Acq: 08 Jun 2023 14:56

Tgt Ion	Resp	Lower	Upper
162	459310		
162	100		
164	32.8	27.0	40.6
127	39.6	32.2	48.4



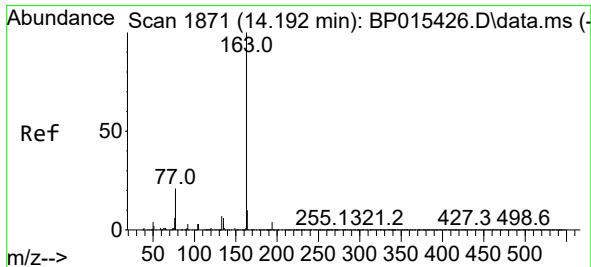
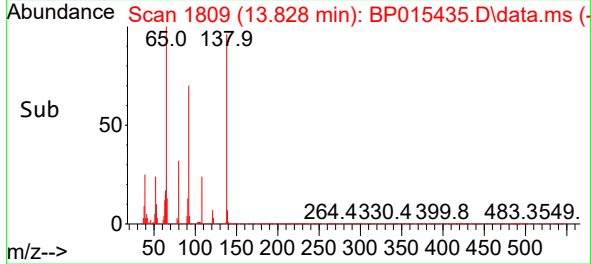
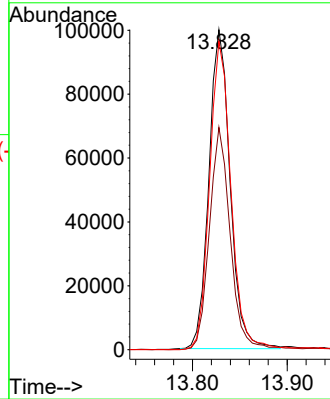
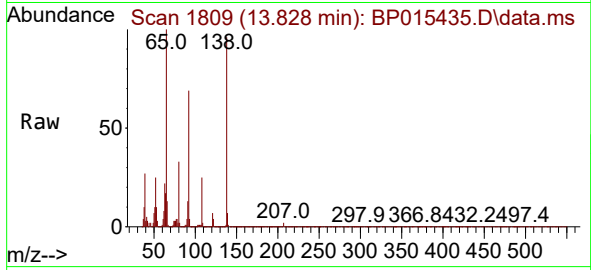


#45  
 2-Nitroaniline  
 Concen: 20.587 ng/ul  
 RT: 13.828 min Scan# 1809  
 Delta R.T. -0.006 min  
 Lab File: BP015435.D  
 Acq: 08 Jun 2023 14:56

Instrument :  
 BNA\_P  
 ClientSampleId :  
 H0FN8MSD

Tgt Ion: 65 Resp: 155190

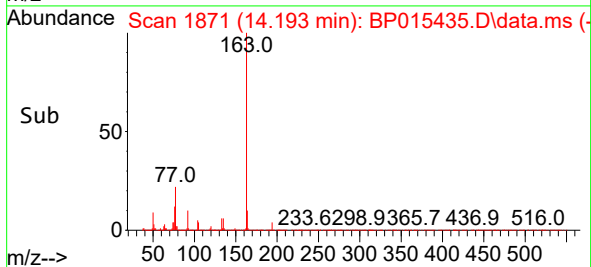
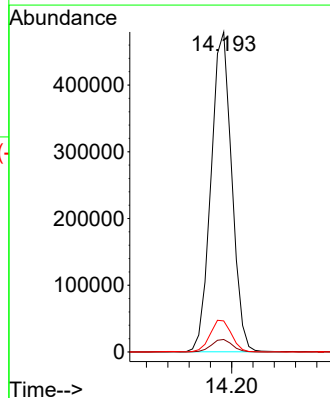
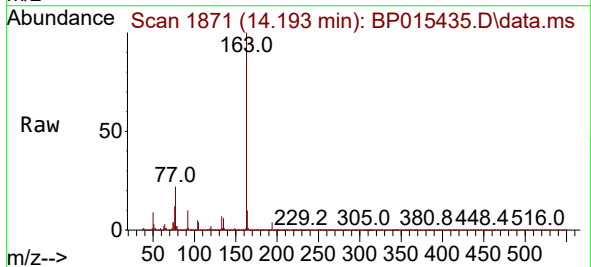
Ion	Ratio	Lower	Upper
65	100		
92	69.4	55.4	83.2
138	96.3	78.8	118.2

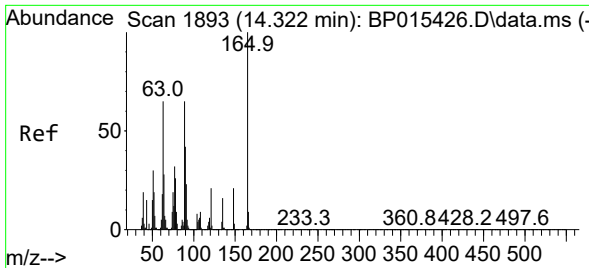


#47  
 Dimethylphthalate  
 Concen: 20.509 ng/ul  
 RT: 14.193 min Scan# 1871  
 Delta R.T. -0.006 min  
 Lab File: BP015435.D  
 Acq: 08 Jun 2023 14:56

Tgt Ion: 163 Resp: 648230

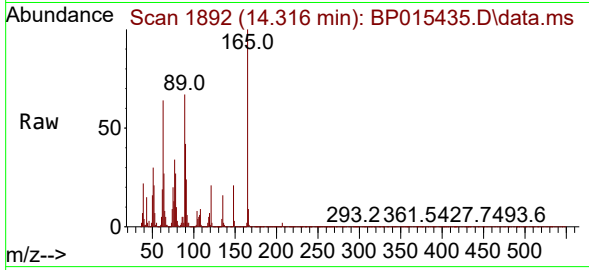
Ion	Ratio	Lower	Upper
163	100		
194	3.9	3.2	4.8
164	9.7	8.2	12.2



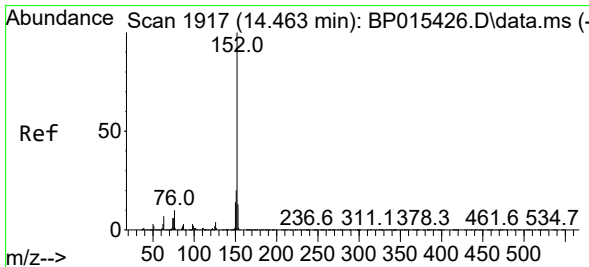
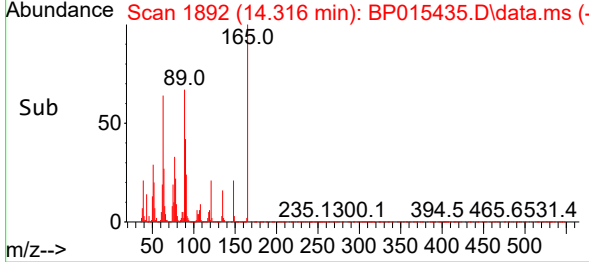
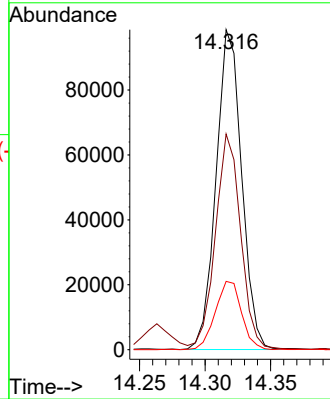


#48  
 2,6-Dinitrotoluene  
 Concen: 20.638 ng/ul  
 RT: 14.316 min Scan# 1892  
 Delta R.T. -0.006 min  
 Lab File: BP015435.D  
 Acq: 08 Jun 2023 14:56

Instrument :  
 BNA\_P  
 ClientSampleId :  
 H0FN8MSD

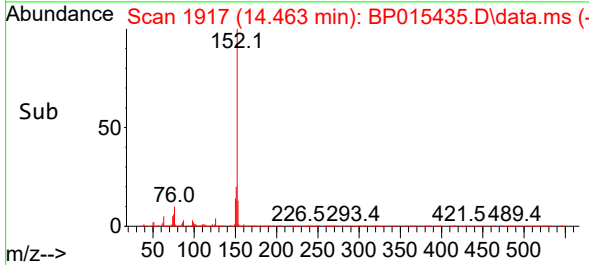
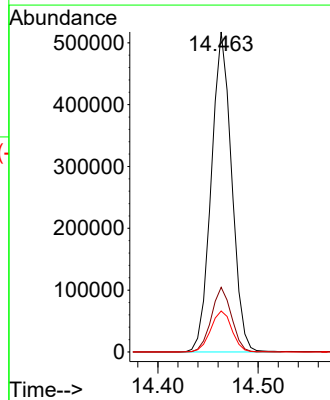
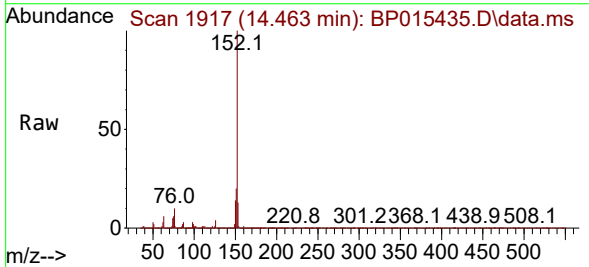


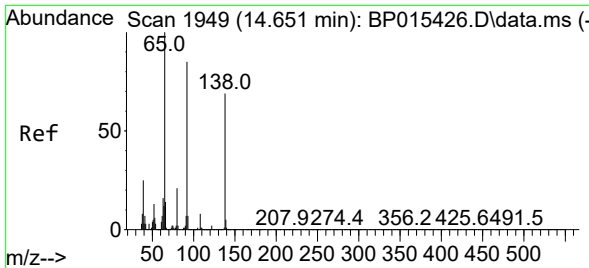
Tgt Ion:165 Resp: 133640  
 Ion Ratio Lower Upper  
 165 100  
 89 67.4 51.5 77.3  
 121 21.3 17.3 25.9



#50  
 Acenaphthylene  
 Concen: 19.718 ng/ul  
 RT: 14.463 min Scan# 1917  
 Delta R.T. -0.006 min  
 Lab File: BP015435.D  
 Acq: 08 Jun 2023 14:56

Tgt Ion:152 Resp: 730924  
 Ion Ratio Lower Upper  
 152 100  
 151 20.2 16.0 24.0  
 153 12.8 10.6 15.8

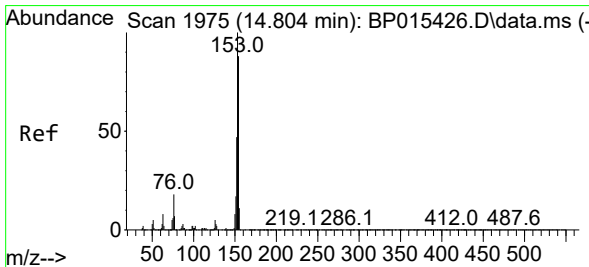
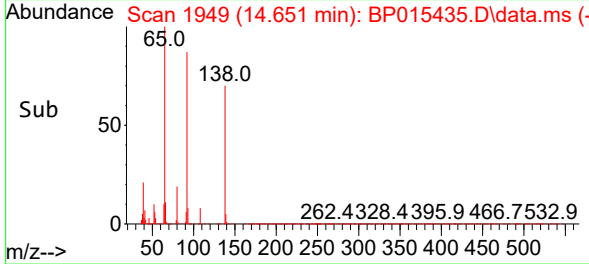
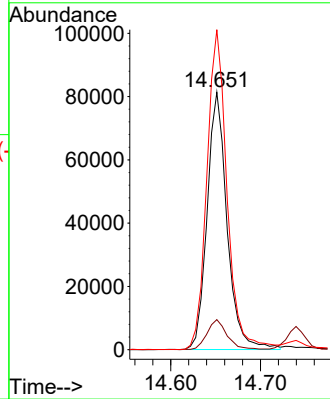
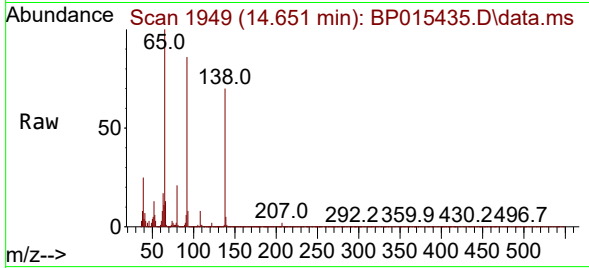




#51  
 3-Nitroaniline  
 Concen: 23.482 ng/ul  
 RT: 14.651 min Scan# 1949  
 Delta R.T. -0.006 min  
 Lab File: BP015435.D  
 Acq: 08 Jun 2023 14:56

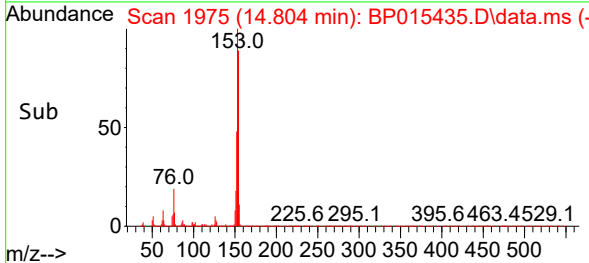
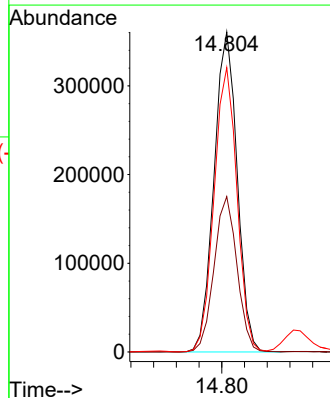
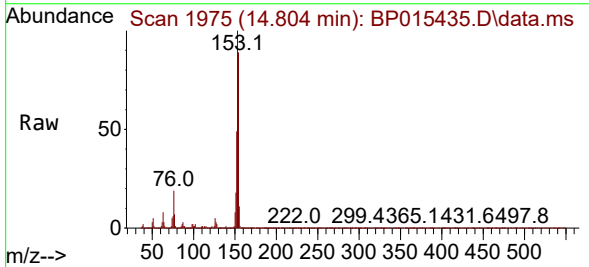
Instrument :  
 BNA\_P  
 ClientSampleId :  
 H0FN8MSD

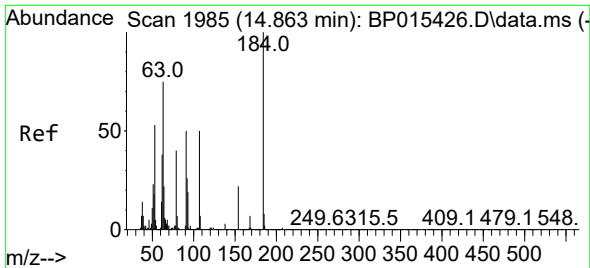
Tgt Ion	Resp	Lower	Upper
138	100		
108	11.7	8.4	12.6
92	124.3	98.0	147.0



#52  
 Acenaphthene  
 Concen: 19.944 ng/ul  
 RT: 14.804 min Scan# 1975  
 Delta R.T. -0.006 min  
 Lab File: BP015435.D  
 Acq: 08 Jun 2023 14:56

Tgt Ion	Resp	Lower	Upper
153	100		
152	48.5	38.3	57.5
154	88.8	69.8	104.6

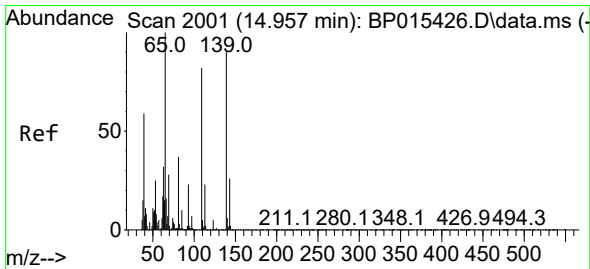
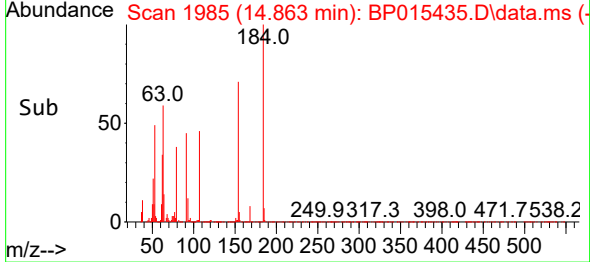
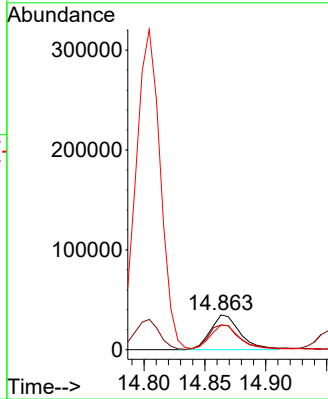
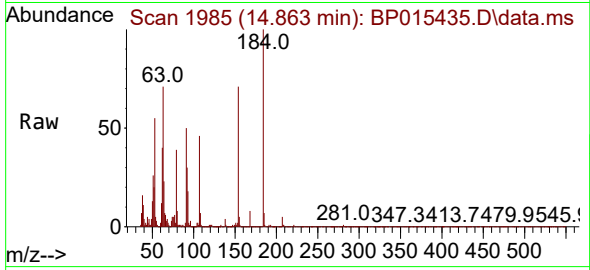




#53  
 2,4-Dinitrophenol  
 Concen: 15.102 ng/ul  
 RT: 14.863 min Scan# 1985  
 Delta R.T. -0.006 min  
 Lab File: BP015435.D  
 Acq: 08 Jun 2023 14:56

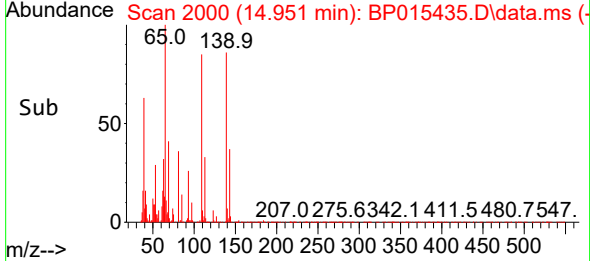
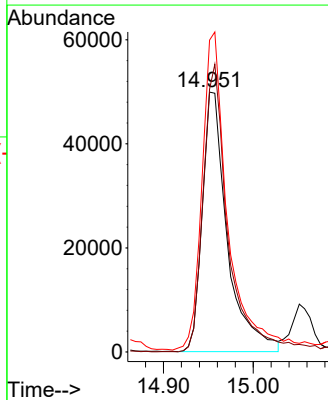
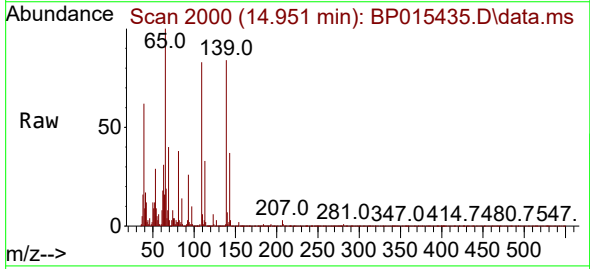
Instrument :  
 BNA\_P  
 ClientSampleId :  
 H0FN8MSD

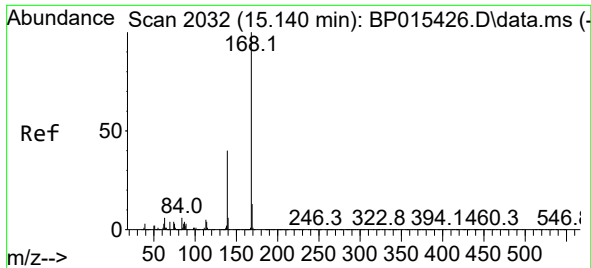
Tgt Ion	Resp	Lower	Upper
184	58827	100	100
63	71.0	59.0	88.4
154	70.9	57.6	86.4



#55  
 4-Nitrophenol  
 Concen: 18.279 ng/ul  
 RT: 14.951 min Scan# 2000  
 Delta R.T. -0.006 min  
 Lab File: BP015435.D  
 Acq: 08 Jun 2023 14:56

Tgt Ion	Resp	Lower	Upper
109	96656	100	100
139	101.2	89.1	133.7
65	120.1	103.1	154.7

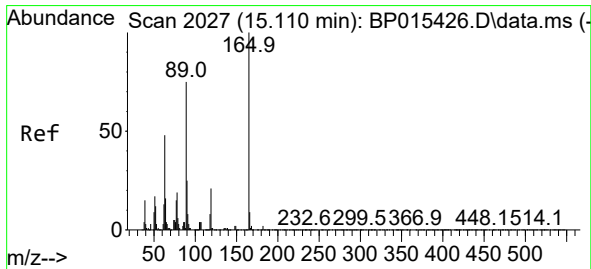
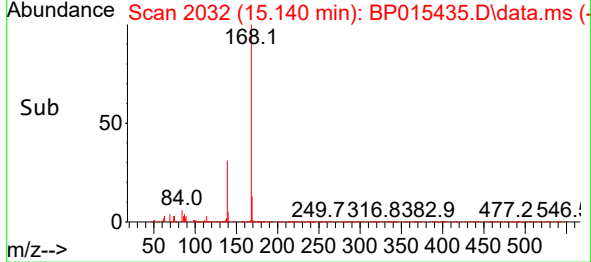
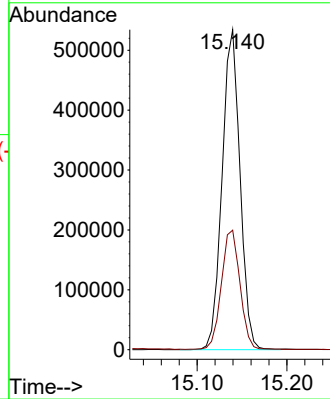
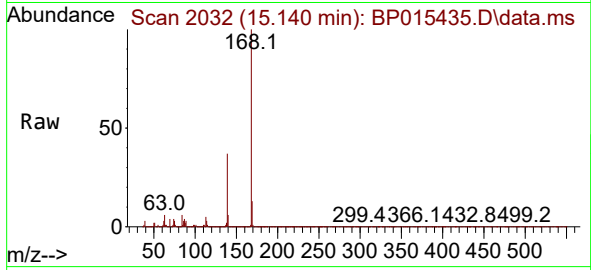




#56  
 Dibenzofuran  
 Concen: 20.391 ng/uI  
 RT: 15.140 min Scan# 2032  
 Delta R.T. -0.006 min  
 Lab File: BP015435.D  
 Acq: 08 Jun 2023 14:56

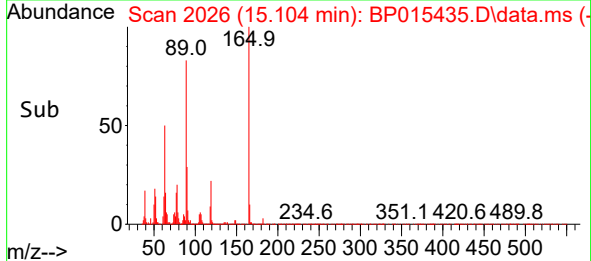
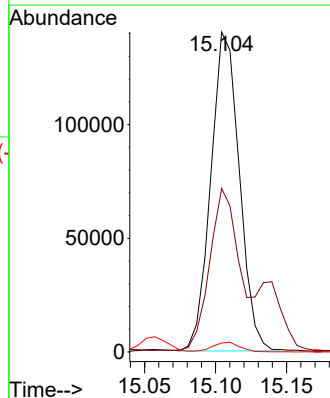
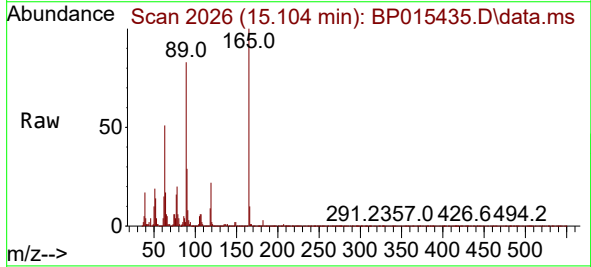
Instrument :  
 BNA\_P  
 ClientSampleId :  
 H0FN8MSD

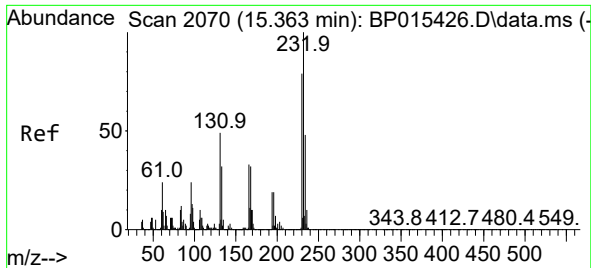
Tgt Ion:168 Resp: 740541  
 Ion Ratio Lower Upper  
 168 100  
 139 37.4 31.2 46.8



#57  
 2,4-Dinitrotoluene  
 Concen: 20.631 ng/uI  
 RT: 15.104 min Scan# 2026  
 Delta R.T. -0.006 min  
 Lab File: BP015435.D  
 Acq: 08 Jun 2023 14:56

Tgt Ion:165 Resp: 196488  
 Ion Ratio Lower Upper  
 165 100  
 63 51.1 39.1 58.7  
 182 2.8 2.2 3.4

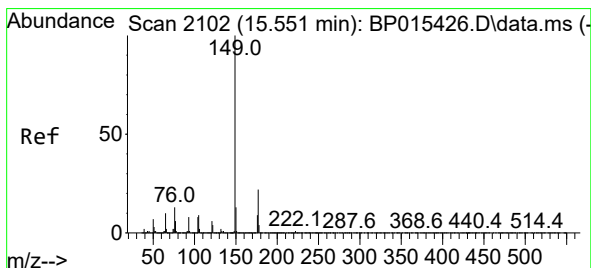
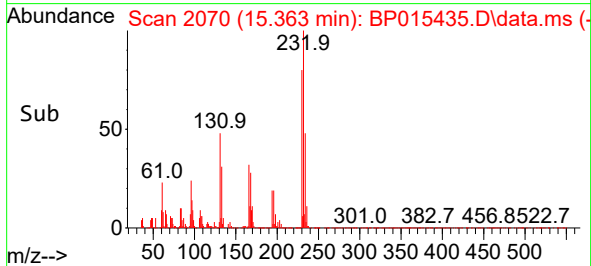
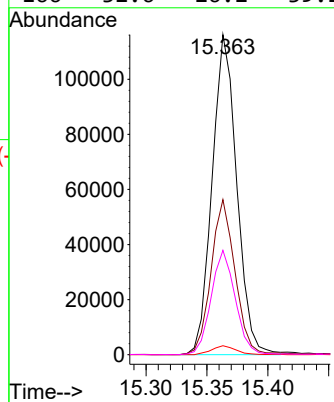
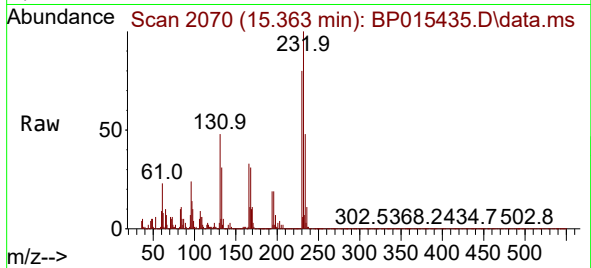




#58  
 2,3,4,6-Tetrachlorophenol  
 Concen: 20.607 ng/ul  
 RT: 15.363 min Scan# 2070  
 Delta R.T. -0.006 min  
 Lab File: BP015435.D  
 Acq: 08 Jun 2023 14:56

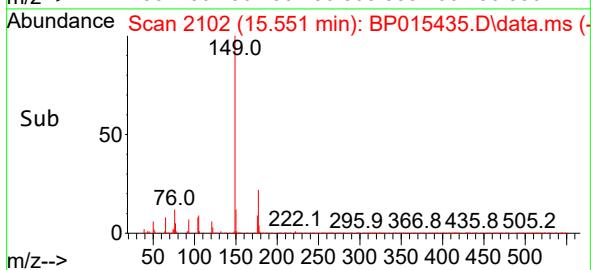
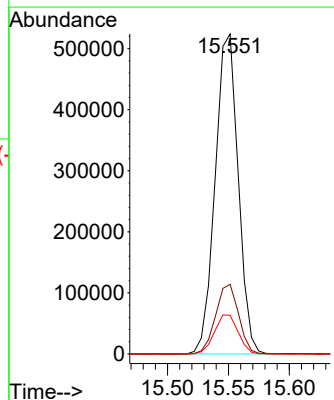
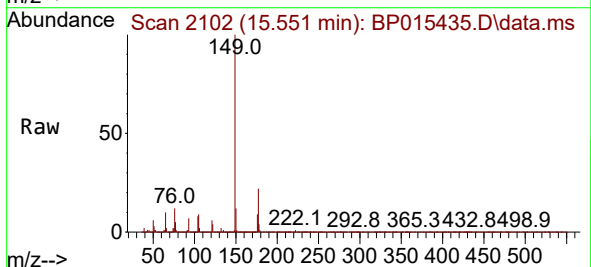
Instrument :  
 BNA\_P  
 ClientSampleId :  
 H0FN8MSD

Tgt Ion	Resp	Lower	Upper
232	163131		
232	100		
131	48.4	37.8	56.8
130	2.8	1.9	2.9
166	32.6	26.2	39.2

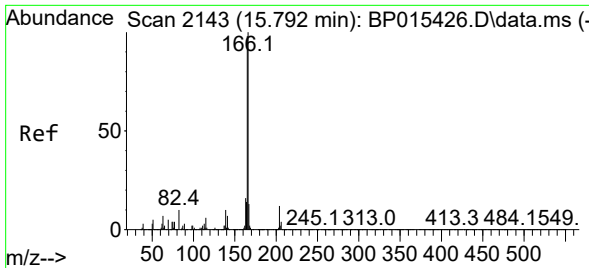


#59  
 Diethylphthalate  
 Concen: 21.258 ng/ul  
 RT: 15.551 min Scan# 2102  
 Delta R.T. -0.006 min  
 Lab File: BP015435.D  
 Acq: 08 Jun 2023 14:56

Tgt Ion	Resp	Lower	Upper
149	688619		
149	100		
177	21.8	17.8	26.8
150	12.1	10.1	15.1

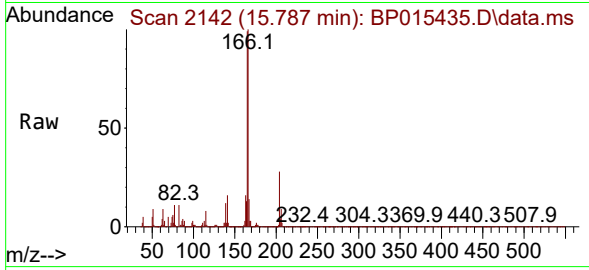






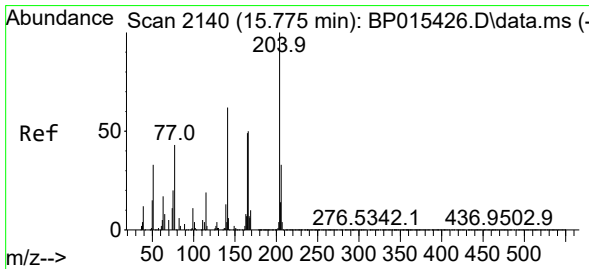
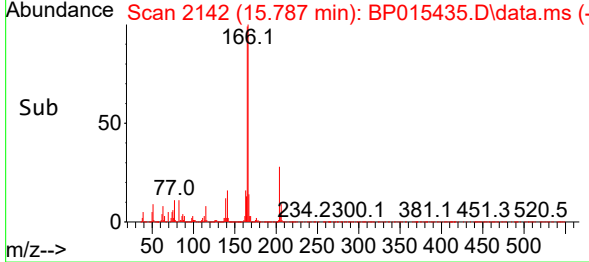
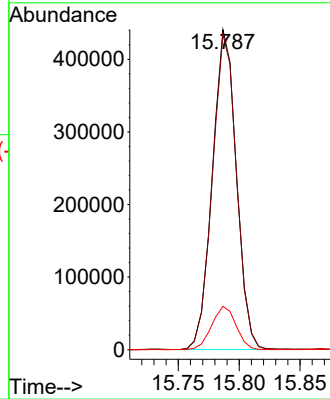
#61  
 Fluorene  
 Concen: 20.445 ng/u1  
 RT: 15.787 min Scan# 2142  
 Delta R.T. -0.006 min  
 Lab File: BP015435.D  
 Acq: 08 Jun 2023 14:56

Instrument :  
 BNA\_P  
 ClientSampleId :  
 H0FN8MSD



Tgt Ion:166 Resp: 605263

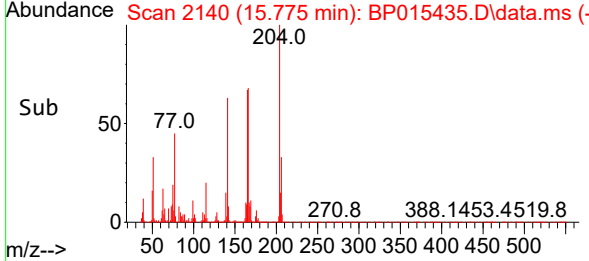
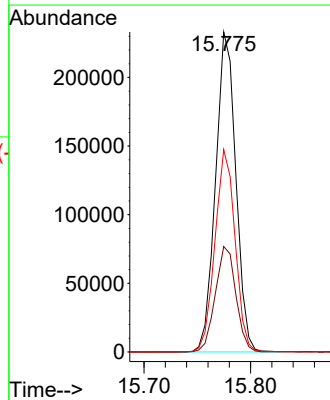
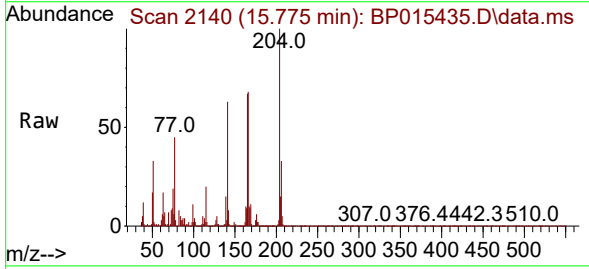
Ion	Ratio	Lower	Upper
166	100		
165	98.6	79.1	118.7
167	13.5	10.6	16.0

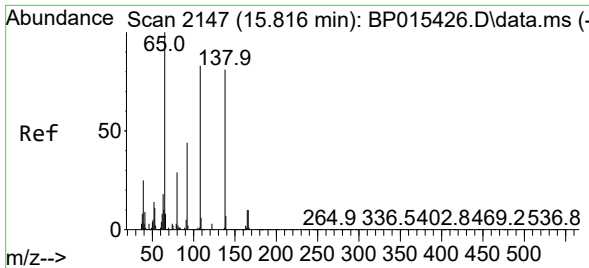


#62  
 4-Chlorophenyl-phenylether  
 Concen: 20.587 ng/u1  
 RT: 15.775 min Scan# 2140  
 Delta R.T. -0.006 min  
 Lab File: BP015435.D  
 Acq: 08 Jun 2023 14:56

Tgt Ion:204 Resp: 307172

Ion	Ratio	Lower	Upper
204	100		
206	33.0	26.6	40.0
141	63.2	49.8	74.8

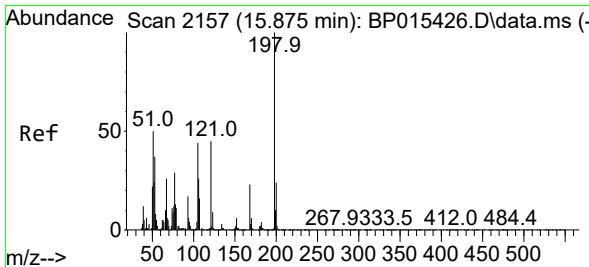
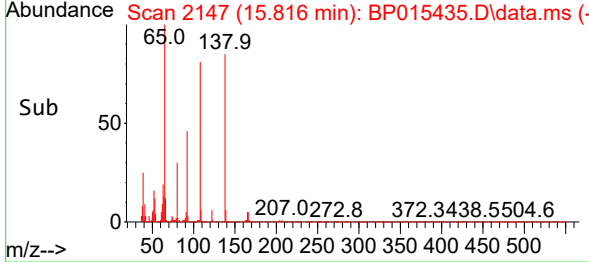
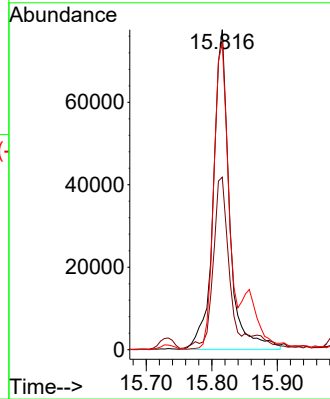
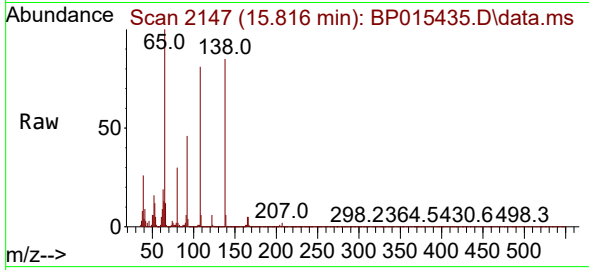




#63  
 4-Nitroaniline  
 Concen: 26.263 ng/ul  
 RT: 15.816 min Scan# 2147  
 Delta R.T. 0.000 min  
 Lab File: BP015435.D  
 Acq: 08 Jun 2023 14:56

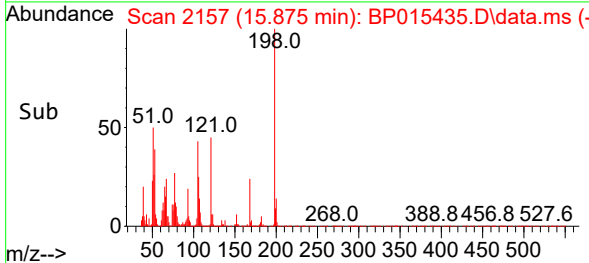
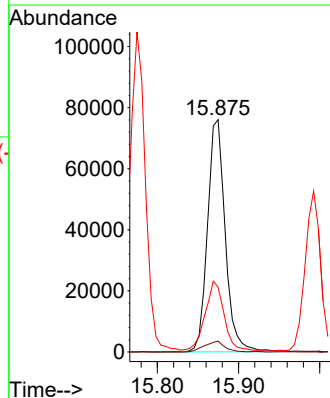
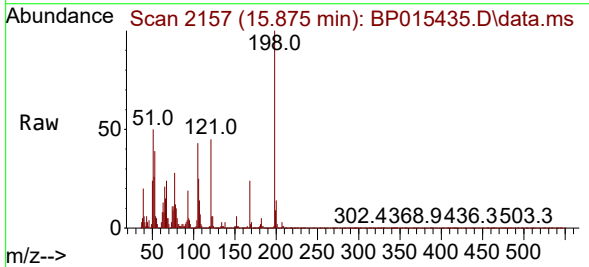
Instrument :  
 BNA\_P  
 ClientSampleId :  
 H0FN8MSD

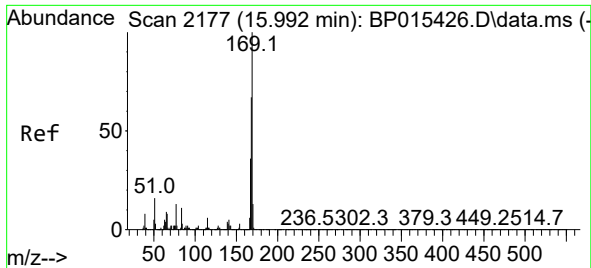
Tgt Ion:138 Resp: 133166  
 Ion Ratio Lower Upper  
 138 100  
 92 53.9 44.6 67.0  
 108 95.8 78.4 117.6



#66  
 4,6-Dinitro-2-methylphenol  
 Concen: 19.638 ng/ul  
 RT: 15.875 min Scan# 2157  
 Delta R.T. -0.006 min  
 Lab File: BP015435.D  
 Acq: 08 Jun 2023 14:56

Tgt Ion:198 Resp: 115271  
 Ion Ratio Lower Upper  
 198 100  
 182 4.7 3.0 4.4#  
 77 27.8 20.5 30.7



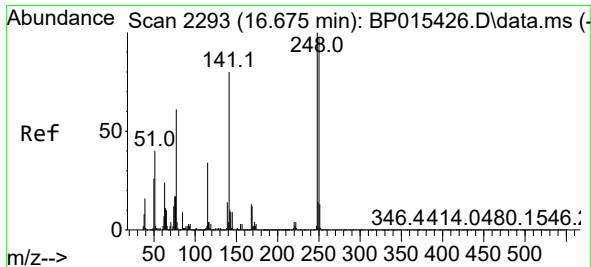
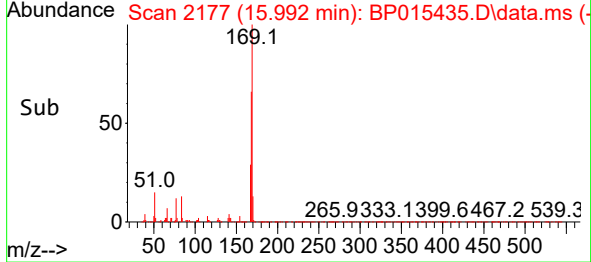
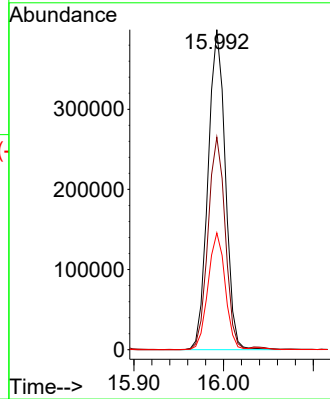
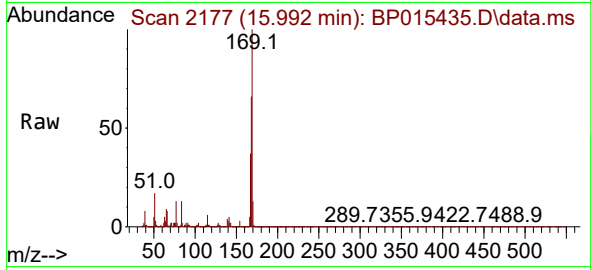


#67  
 N-Nitrosodiphenylamine  
 Concen: 20.750 ng/ul  
 RT: 15.992 min Scan# 2177  
 Delta R.T. -0.006 min  
 Lab File: BP015435.D  
 Acq: 08 Jun 2023 14:56

Instrument : BNA\_P  
 ClientSampleId : H0FN8MSD

Tgt Ion:169 Resp: 534802

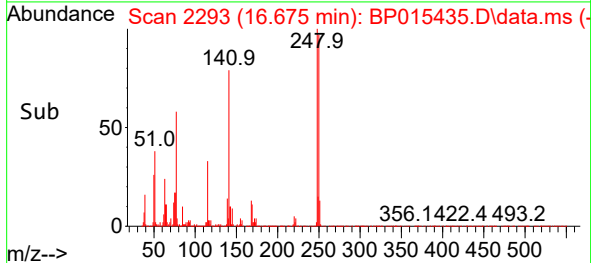
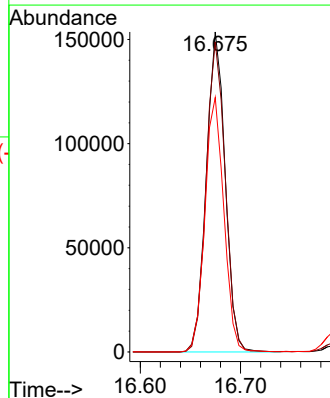
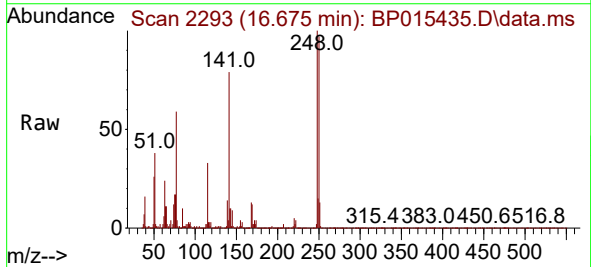
Ion	Ratio	Lower	Upper
169	100		
168	66.4	53.0	79.4
167	36.5	28.9	43.3

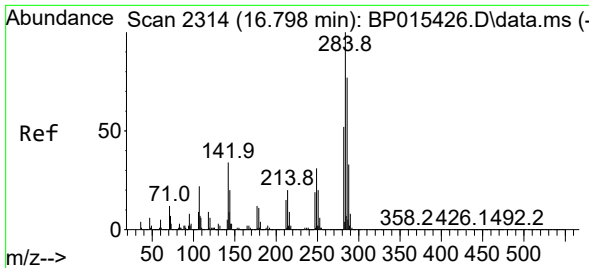


#68  
 4-Bromophenyl-phenylether  
 Concen: 20.778 ng/ul  
 RT: 16.675 min Scan# 2293  
 Delta R.T. -0.006 min  
 Lab File: BP015435.D  
 Acq: 08 Jun 2023 14:56

Tgt Ion:248 Resp: 201949

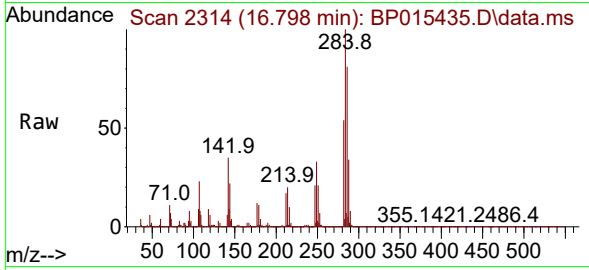
Ion	Ratio	Lower	Upper
248	100		
250	96.9	78.3	117.5
141	79.5	61.1	91.7



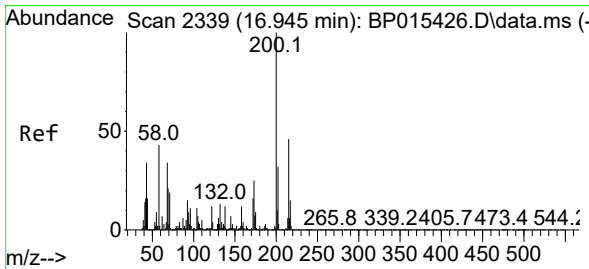
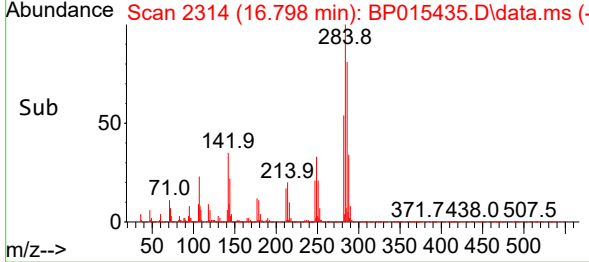
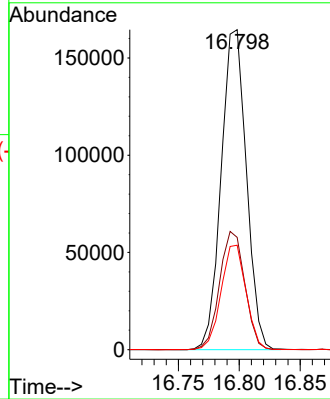


#69  
 Hexachlorobenzene  
 Concen: 20.706 ng/u1  
 RT: 16.798 min Scan# 21  
 Delta R.T. -0.006 min  
 Lab File: BP015435.D  
 Acq: 08 Jun 2023 14:56

Instrument :  
 BNA\_P  
 ClientSampleId :  
 H0FN8MSD

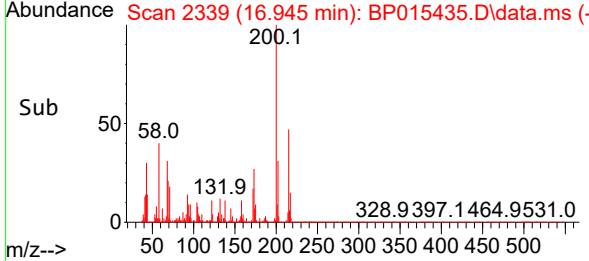
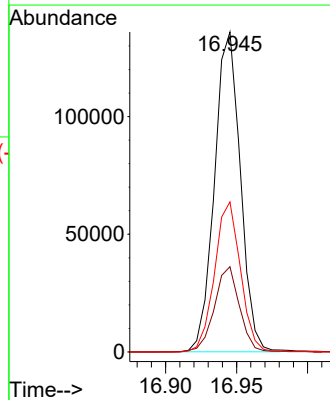
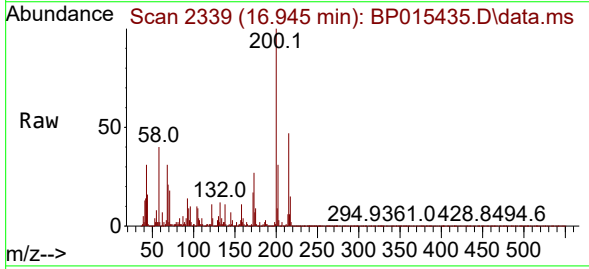


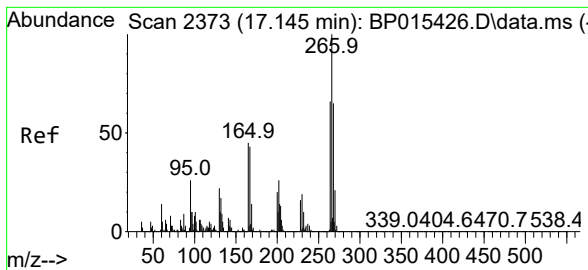
Tgt Ion:284 Resp: 237393  
 Ion Ratio Lower Upper  
 284 100  
 142 35.1 25.4 38.2  
 249 32.7 24.8 37.2



#70  
 Atrazine  
 Concen: 16.720 ng/u1  
 RT: 16.945 min Scan# 2339  
 Delta R.T. -0.006 min  
 Lab File: BP015435.D  
 Acq: 08 Jun 2023 14:56

Tgt Ion:200 Resp: 172083  
 Ion Ratio Lower Upper  
 200 100  
 173 26.7 19.8 29.6  
 215 46.9 37.4 56.0



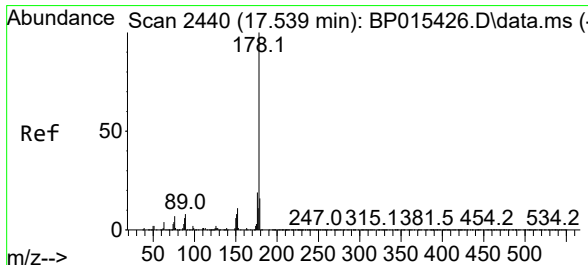
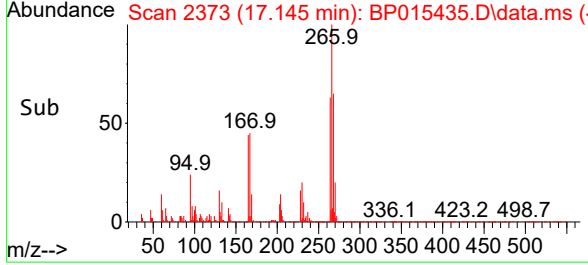
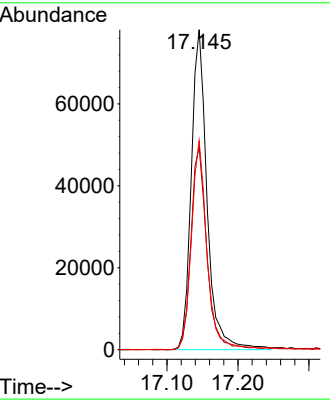
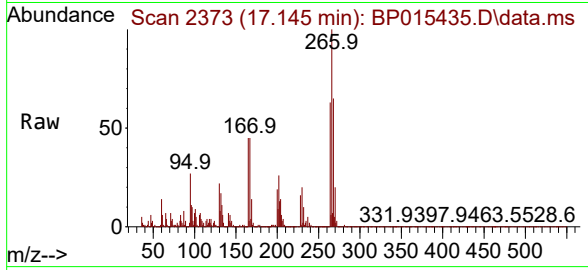


#71  
 Pentachlorophenol  
 Concen: 18.671 ng/ul  
 RT: 17.145 min Scan# 21  
 Delta R.T. -0.006 min  
 Lab File: BP015435.D  
 Acq: 08 Jun 2023 14:56

Instrument : BNA\_P  
 ClientSampleId : H0FN8MSD

Tgt Ion: 266 Resp: 120991

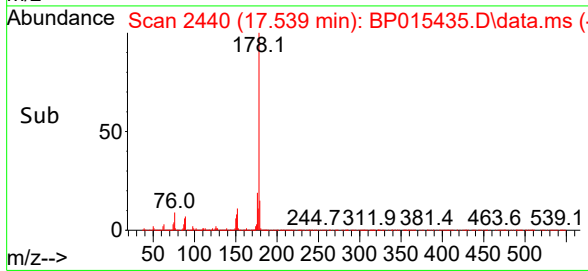
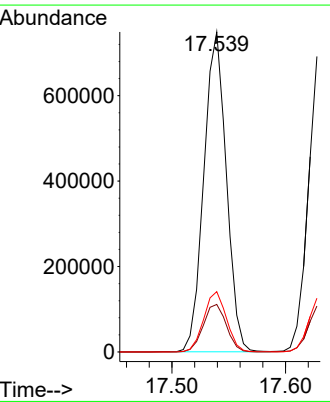
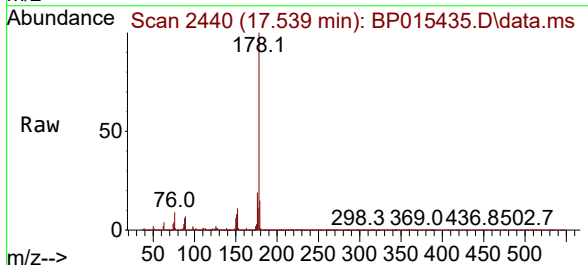
Ion	Ratio	Lower	Upper
266	100		
264	63.3	49.6	74.4
268	65.3	51.0	76.6

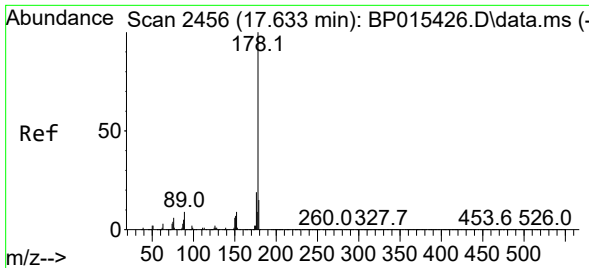


#72  
 Phenanthrene  
 Concen: 21.097 ng/ul  
 RT: 17.539 min Scan# 2440  
 Delta R.T. -0.006 min  
 Lab File: BP015435.D  
 Acq: 08 Jun 2023 14:56

Tgt Ion: 178 Resp: 1028555

Ion	Ratio	Lower	Upper
178	100		
179	14.9	12.3	18.5
176	18.9	15.4	23.0



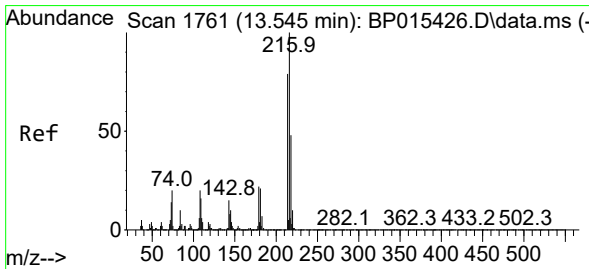
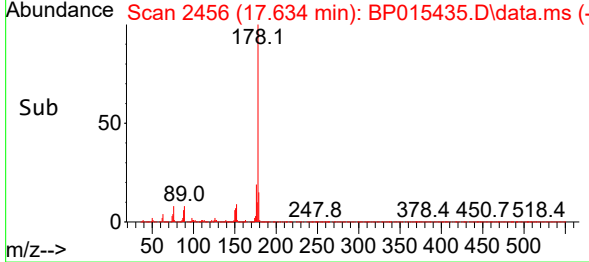
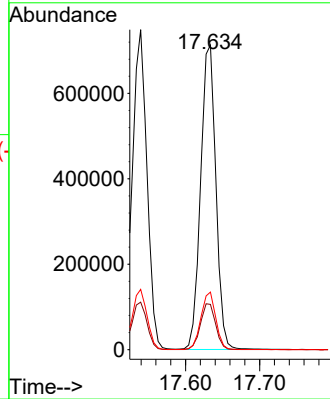
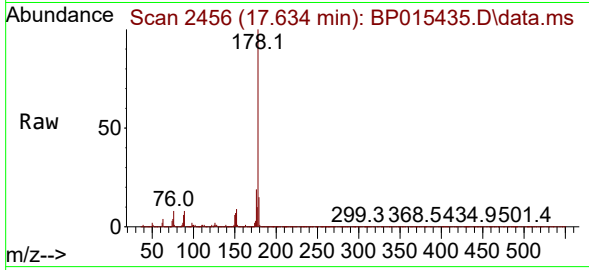


#74  
 Anthracene  
 Concen: 20.562 ng/uL  
 RT: 17.634 min Scan# 2456  
 Delta R.T. -0.000 min  
 Lab File: BP015435.D  
 Acq: 08 Jun 2023 14:56

Instrument :  
 BNA\_P  
 ClientSampleId :  
 H0FN8MSD

Tgt Ion:178 Resp: 1017116

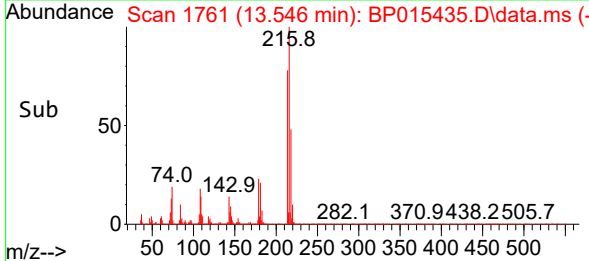
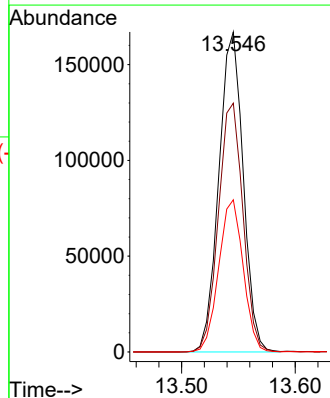
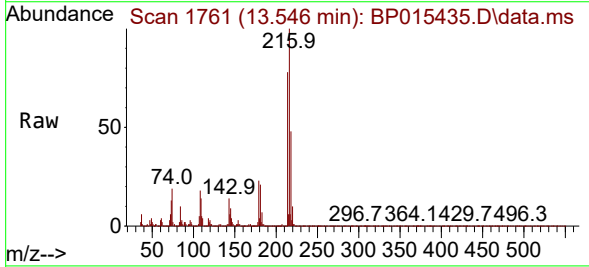
Ion	Ratio	Lower	Upper
178	100		
179	14.9	12.4	18.6
176	18.9	15.0	22.4

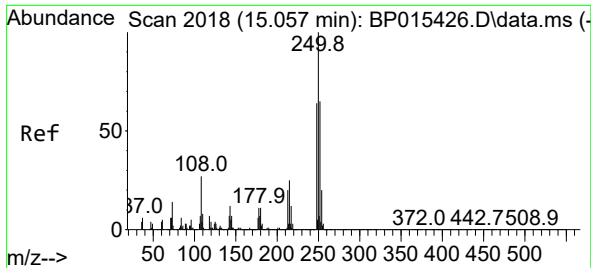


#75  
 1,2,3,4-Tetrachlorobenzene  
 Concen: 19.822 ng/uL  
 RT: 13.546 min Scan# 1761  
 Delta R.T. -0.006 min  
 Lab File: BP015435.D  
 Acq: 08 Jun 2023 14:56

Tgt Ion:216 Resp: 248538

Ion	Ratio	Lower	Upper
216	100		
214	77.7	62.1	93.1
218	47.6	39.0	58.4





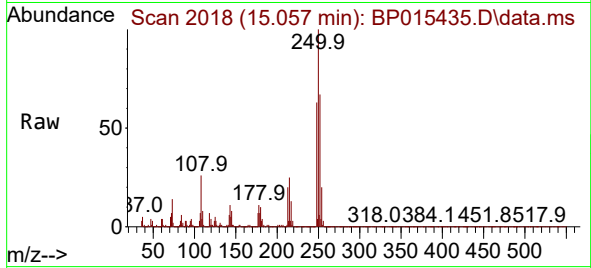
#76  
 Pentachlorobenzene  
 Concen: 19.515 ng/uL  
 RT: 15.057 min Scan# 2018  
 Delta R.T. -0.006 min  
 Lab File: BP015435.D  
 Acq: 08 Jun 2023 14:56

Instrument :

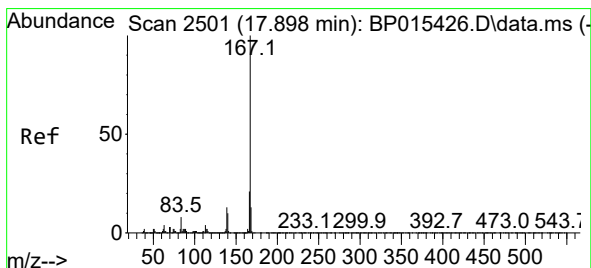
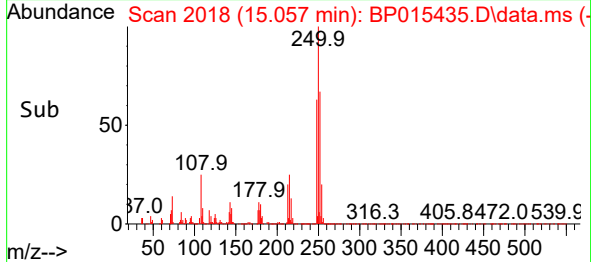
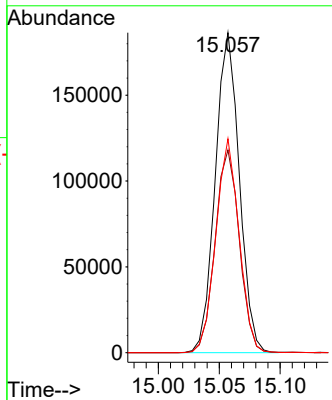
BNA\_P

ClientSampleId :

H0FN8MSD

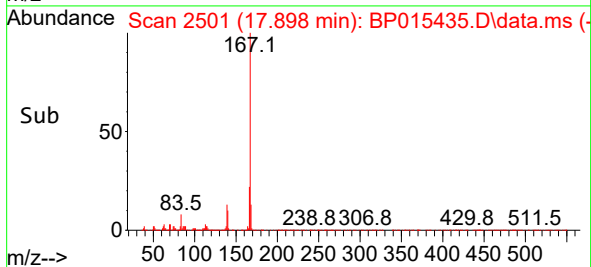
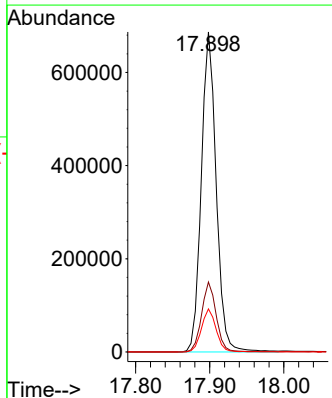
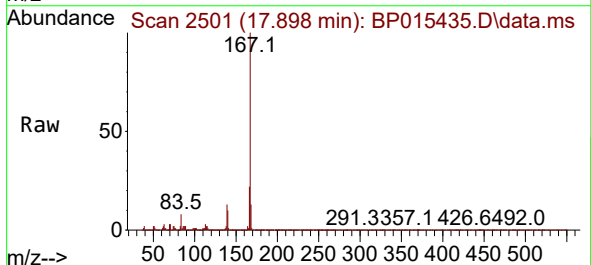


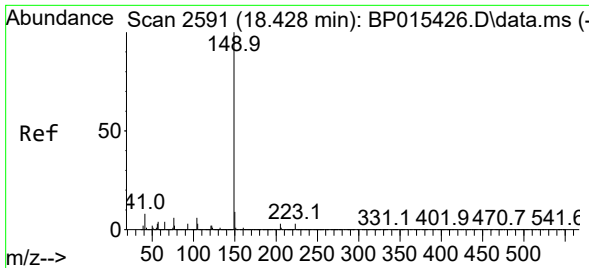
Tgt Ion:250 Resp: 256187  
 Ion Ratio Lower Upper  
 250 100  
 248 63.4 49.0 73.4  
 252 66.9 49.9 74.9



#77  
 Carbazole  
 Concen: 21.517 ng/uL  
 RT: 17.898 min Scan# 2501  
 Delta R.T. -0.006 min  
 Lab File: BP015435.D  
 Acq: 08 Jun 2023 14:56

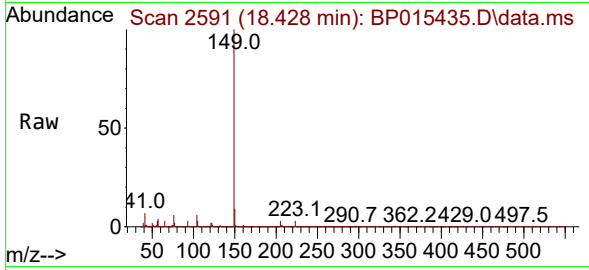
Tgt Ion:167 Resp: 958394  
 Ion Ratio Lower Upper  
 167 100  
 166 21.9 17.2 25.8  
 139 13.5 10.6 16.0





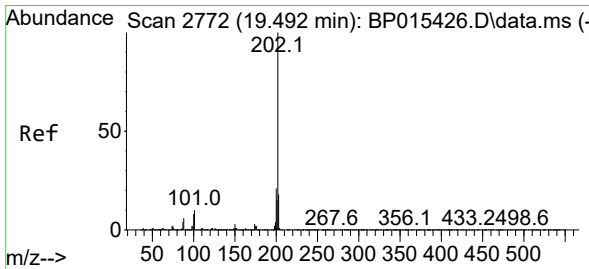
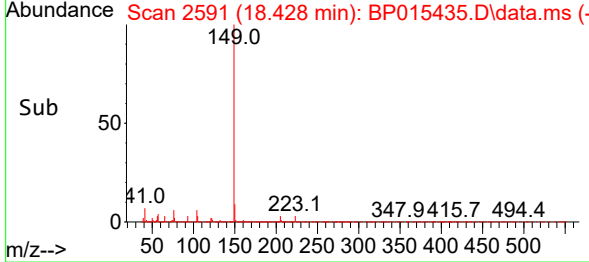
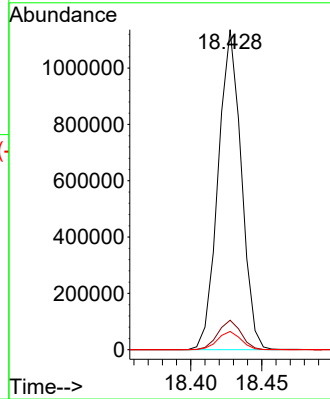
#78  
 Di-n-butylphthalate  
 Concen: 22.748 ng/ul  
 RT: 18.428 min Scan# 2591  
 Delta R.T. -0.006 min  
 Lab File: BP015435.D  
 Acq: 08 Jun 2023 14:56

Instrument : BNA\_P  
 ClientSampleId : H0FN8MSD



Tgt Ion:149 Resp: 1285539

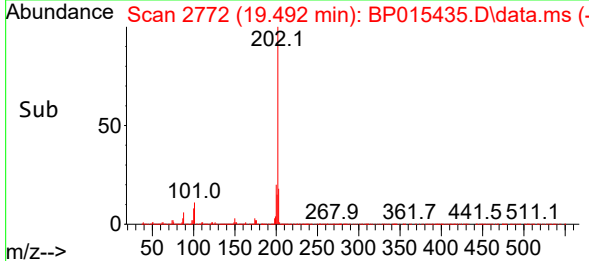
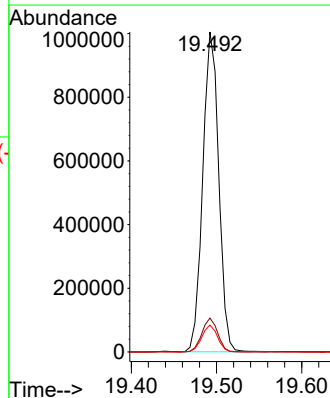
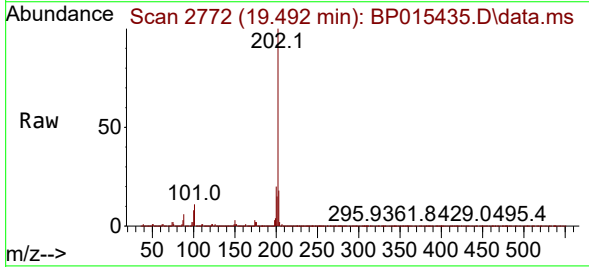
Ion	Ratio	Lower	Upper
149	100		
150	9.2	7.1	10.7
104	5.7	4.5	6.7



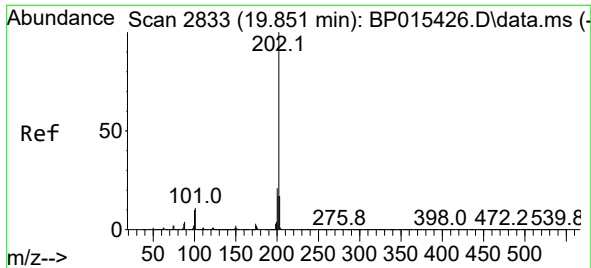
#80  
 Fluoranthene  
 Concen: 22.146 ng/ul  
 RT: 19.492 min Scan# 2772  
 Delta R.T. -0.006 min  
 Lab File: BP015435.D  
 Acq: 08 Jun 2023 14:56

Tgt Ion:202 Resp: 1308825

Ion	Ratio	Lower	Upper
202	100		
101	10.6	8.6	13.0
100	8.4	6.6	9.8





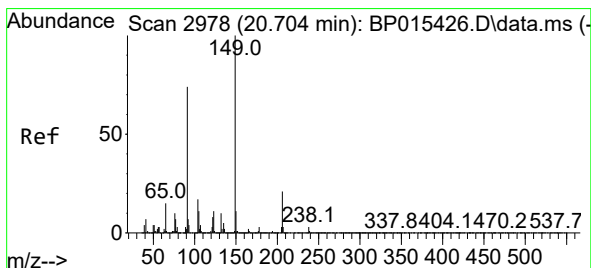
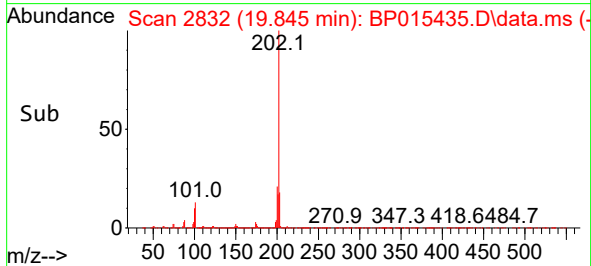
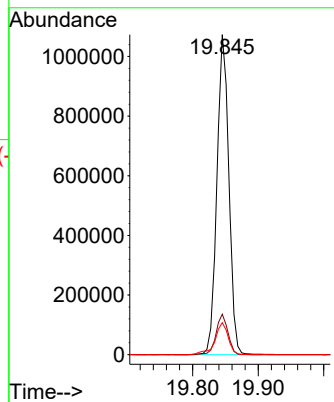
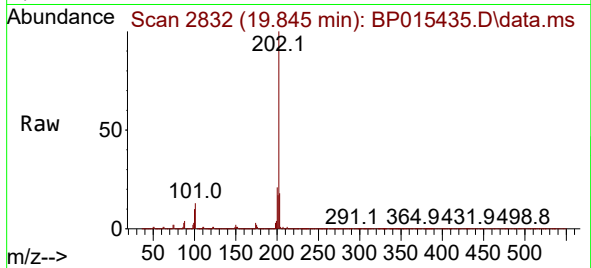


#82  
 Pyrene  
 Concen: 22.099 ng/uI  
 RT: 19.845 min Scan# 2832  
 Delta R.T. -0.006 min  
 Lab File: BP015435.D  
 Acq: 08 Jun 2023 14:56

Instrument : BNA\_P  
 ClientSampleId : H0FN8MSD

Tgt Ion: 202 Resp: 1351212

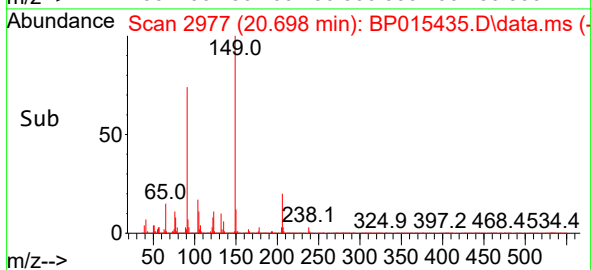
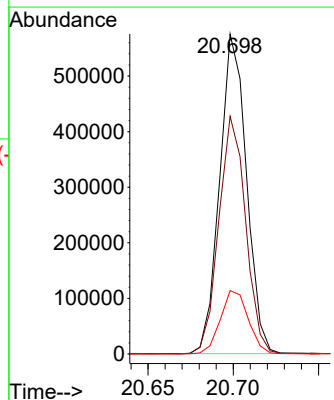
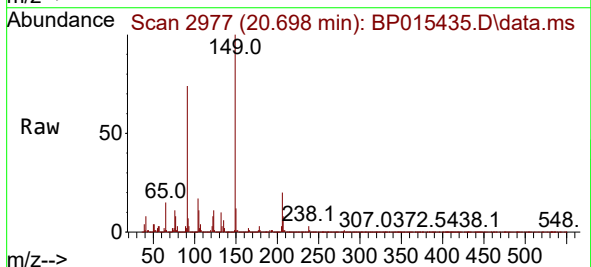
Ion	Ratio	Lower	Upper
202	100		
101	12.7	9.9	14.9
100	10.0	8.4	12.6

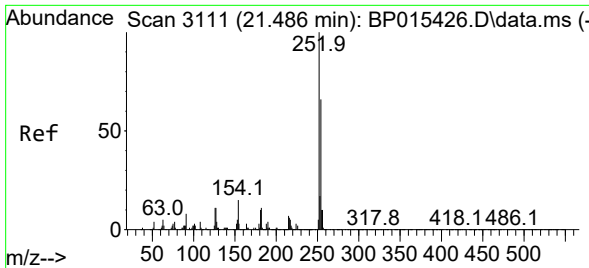


#83  
 Butylbenzylphthalate  
 Concen: 23.256 ng/uI  
 RT: 20.698 min Scan# 2977  
 Delta R.T. -0.006 min  
 Lab File: BP015435.D  
 Acq: 08 Jun 2023 14:56

Tgt Ion: 149 Resp: 628503

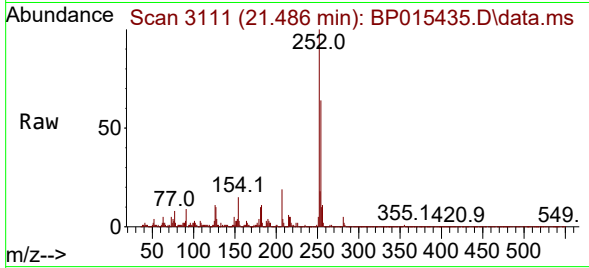
Ion	Ratio	Lower	Upper
149	100		
91	74.2	60.4	90.6
206	19.8	16.4	24.6



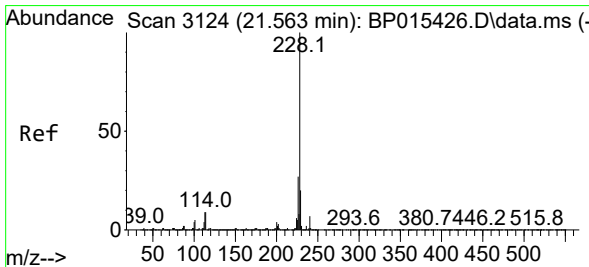
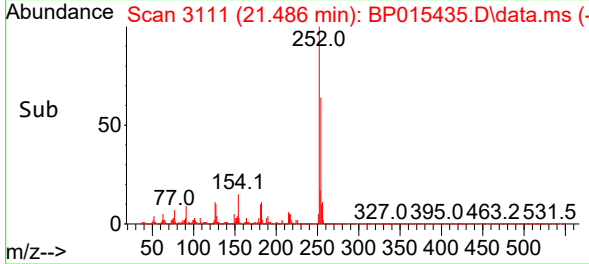
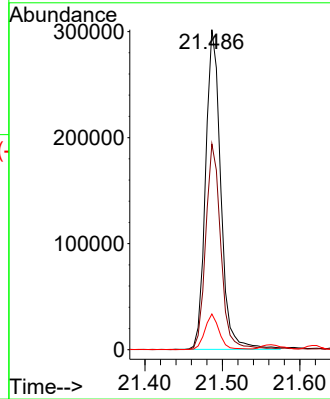


#84  
 3,3'-Dichlorobenzidine  
 Concen: 19.165 ng/ul  
 RT: 21.486 min Scan# 3111  
 Delta R.T. -0.006 min  
 Lab File: BP015435.D  
 Acq: 08 Jun 2023 14:56

Instrument :  
 BNA\_P  
 ClientSampleId :  
 H0FN8MSD

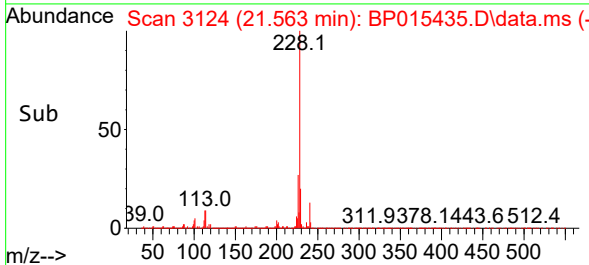
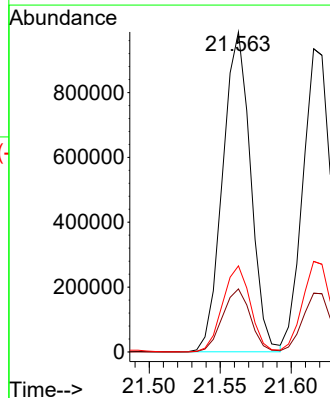
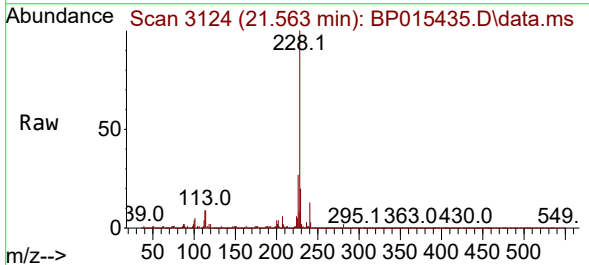


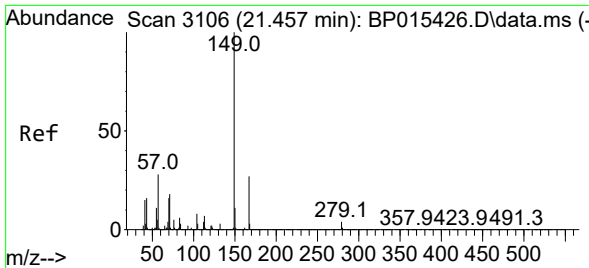
Tgt Ion:252 Resp: 410459  
 Ion Ratio Lower Upper  
 252 100  
 254 64.3 51.6 77.4  
 126 11.1 8.5 12.7



#85  
 Benzo(a)anthracene  
 Concen: 21.360 ng/ul  
 RT: 21.563 min Scan# 3124  
 Delta R.T. -0.006 min  
 Lab File: BP015435.D  
 Acq: 08 Jun 2023 14:56

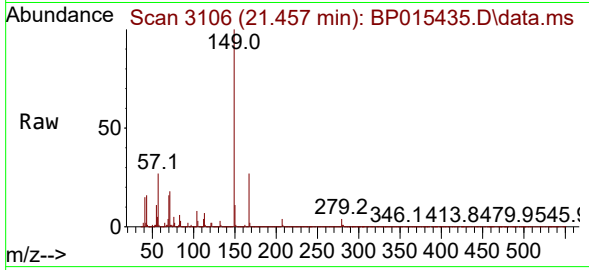
Tgt Ion:228 Resp: 1353686  
 Ion Ratio Lower Upper  
 228 100  
 229 19.7 15.8 23.6  
 226 26.9 21.8 32.6



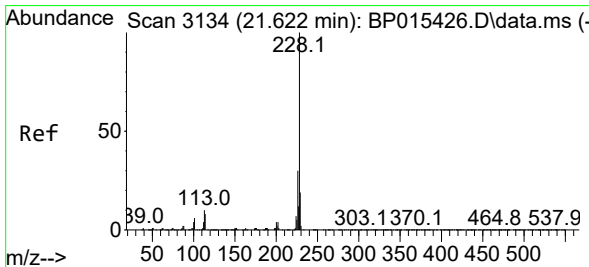
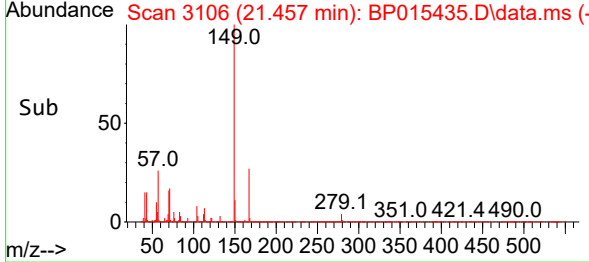
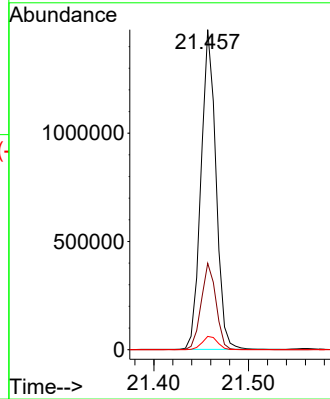


#86  
 Bis(2-ethylhexyl)phthalate  
 Concen: 40.560 ng/ul  
 RT: 21.457 min Scan# 3106  
 Delta R.T. -0.006 min  
 Lab File: BP015435.D  
 Acq: 08 Jun 2023 14:56

Instrument : BNA\_P  
 ClientSampleId : H0FN8MSD

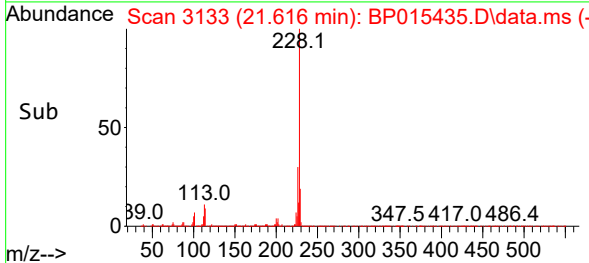
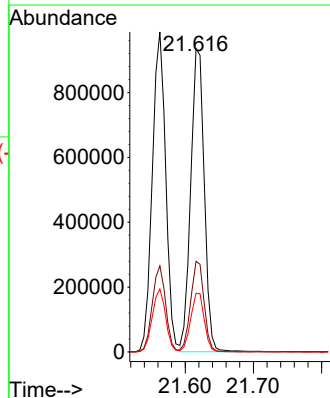
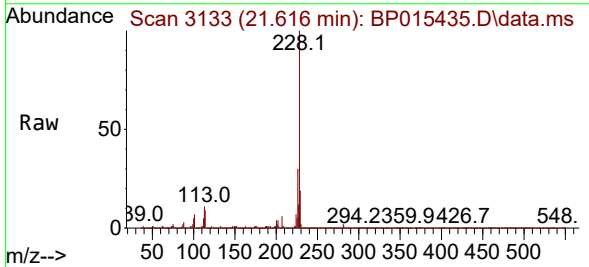


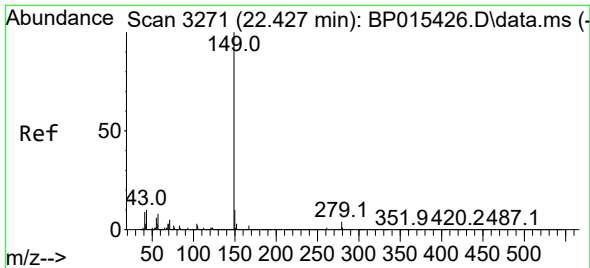
Tgt Ion:149 Resp: 1620189  
 Ion Ratio Lower Upper  
 149 100  
 167 27.0 21.8 32.8  
 279 4.2 3.7 5.5



#87  
 Chrysene  
 Concen: 21.436 ng/ul  
 RT: 21.616 min Scan# 3133  
 Delta R.T. -0.006 min  
 Lab File: BP015435.D  
 Acq: 08 Jun 2023 14:56

Tgt Ion:228 Resp: 1284028  
 Ion Ratio Lower Upper  
 228 100  
 226 29.9 23.9 35.9  
 229 19.4 15.1 22.7

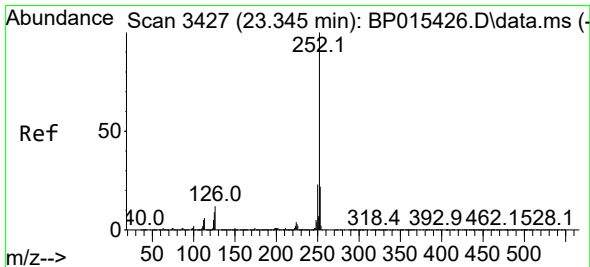
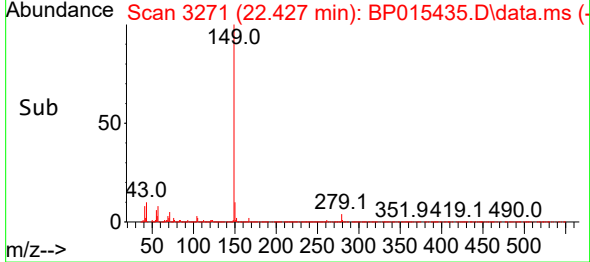
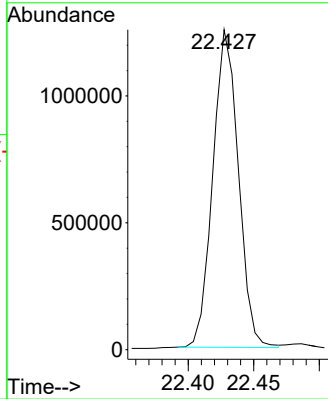
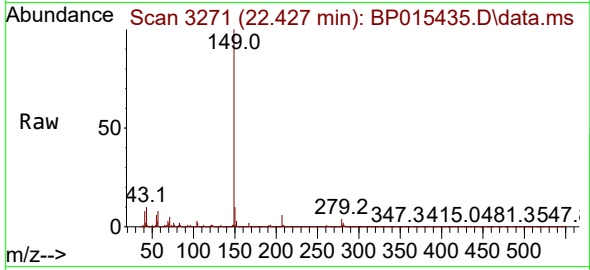




#89  
 Di-n-octyl phthalate  
 Concen: 26.412 ng/ul  
 RT: 22.427 min Scan# 31  
 Delta R.T. -0.006 min  
 Lab File: BP015435.D  
 Acq: 08 Jun 2023 14:56

Tgt Ion:149 Resp: 1692201

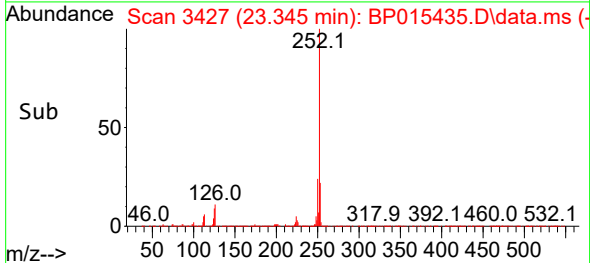
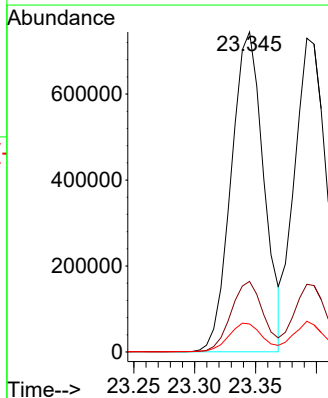
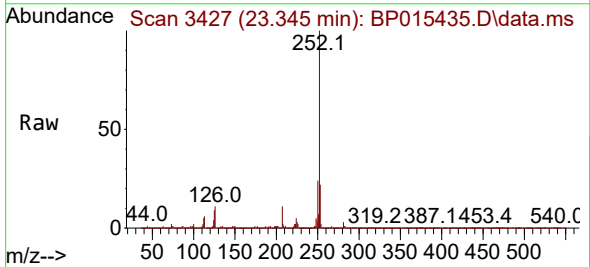
Instrument :  
 BNA\_P  
 ClientSampleId :  
 H0FN8MSD

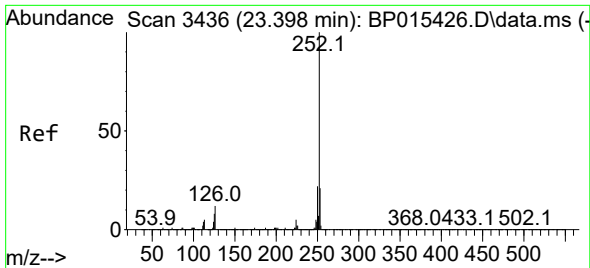


#90  
 Benzo(b)fluoranthene  
 Concen: 21.984 ng/ul  
 RT: 23.345 min Scan# 3427  
 Delta R.T. -0.006 min  
 Lab File: BP015435.D  
 Acq: 08 Jun 2023 14:56

Tgt Ion:252 Resp: 1383410

Ion	Ratio	Lower	Upper
252	100		
253	22.0	17.4	26.2
125	8.7	7.3	10.9



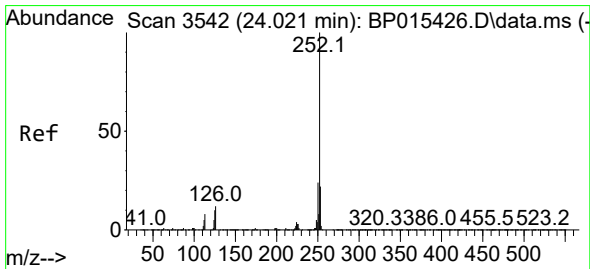
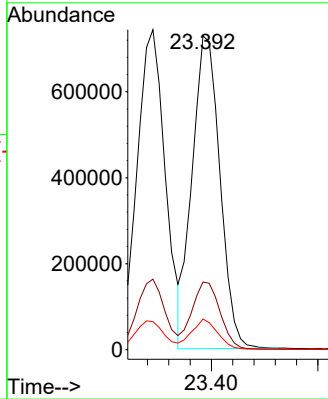
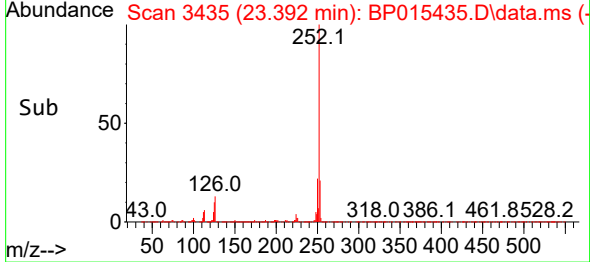
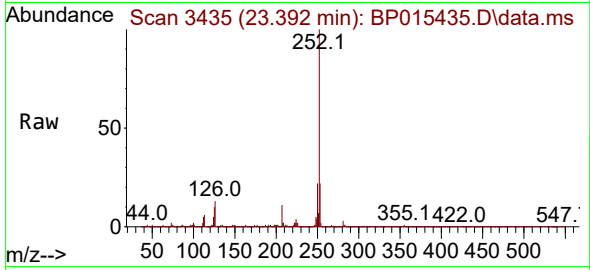


#91  
 Benzo(k)fluoranthene  
 Concen: 21.674 ng/u1  
 RT: 23.392 min Scan# 3435  
 Delta R.T. -0.012 min  
 Lab File: BP015435.D  
 Acq: 08 Jun 2023 14:56

Instrument :  
 BNA\_P  
 ClientSampleId :  
 H0FN8MSD

Tgt Ion:252 Resp: 1318387

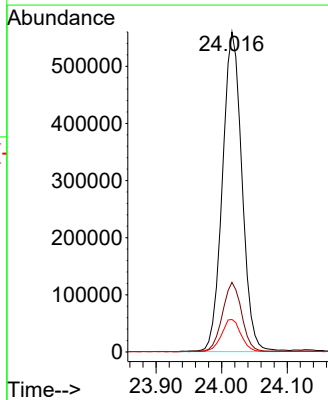
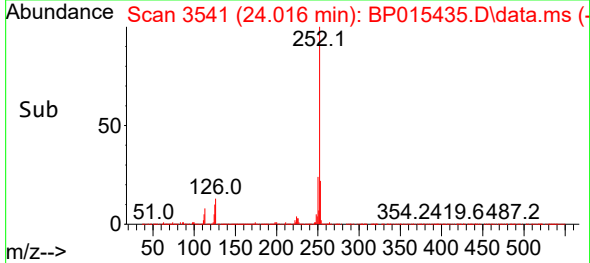
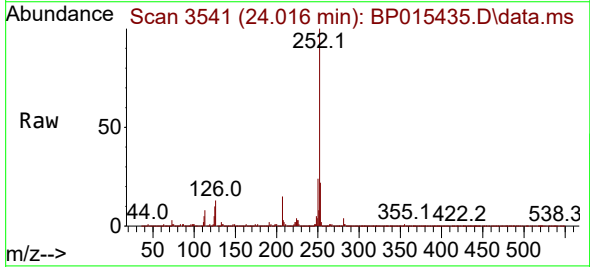
Ion	Ratio	Lower	Upper
252	100		
253	21.6	17.7	26.5
125	9.8	7.3	10.9

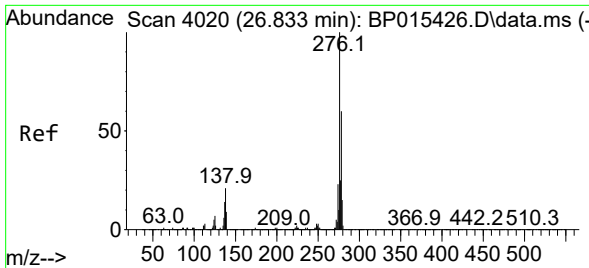


#93  
 Benzo(a)pyrene  
 Concen: 21.025 ng/u1  
 RT: 24.016 min Scan# 3541  
 Delta R.T. -0.012 min  
 Lab File: BP015435.D  
 Acq: 08 Jun 2023 14:56

Tgt Ion:252 Resp: 1153507

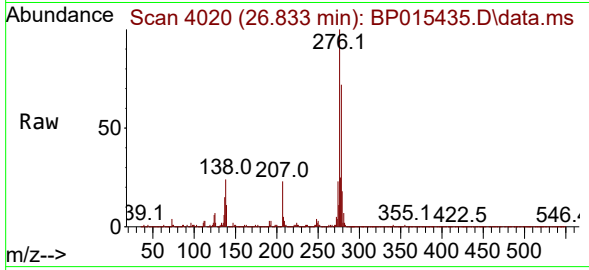
Ion	Ratio	Lower	Upper
252	100		
253	21.8	17.8	26.6
125	10.2	8.1	12.1





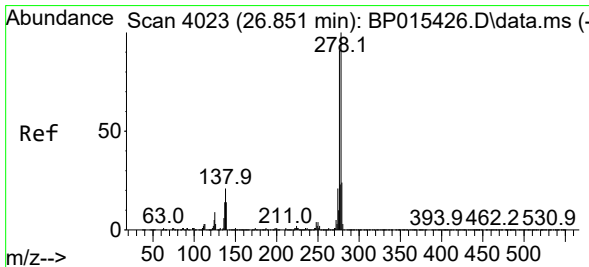
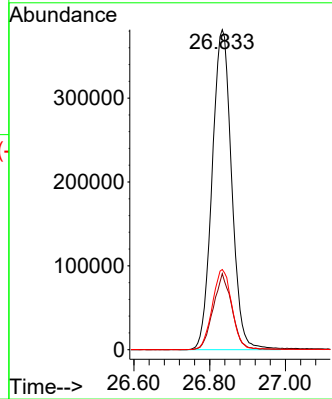
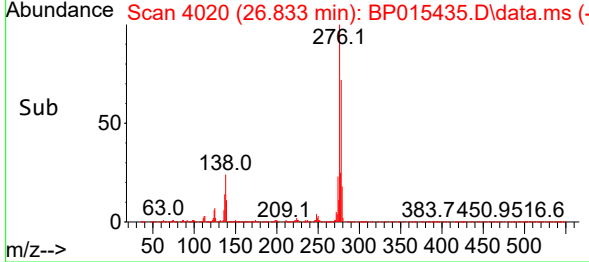
#94  
 Indeno(1,2,3-cd)pyrene  
 Concen: 19.174 ng/ul  
 RT: 26.833 min Scan# 4020  
 Delta R.T. -0.012 min  
 Lab File: BP015435.D  
 Acq: 08 Jun 2023 14:56

**Instrument :**  
 BNA\_P  
**Client SampleId :**  
 H0FN8MSD

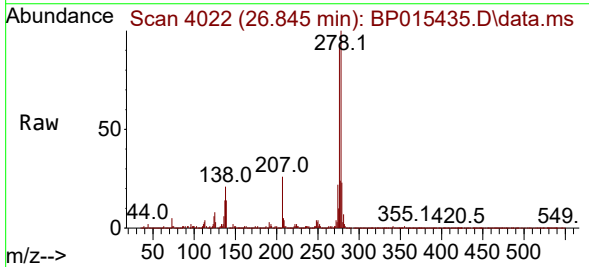


Tgt Ion: 276 Resp: 1361396  

Ion	Ratio	Lower	Upper
276	100		
138	23.7	17.3	25.9
277	25.1	20.2	30.2

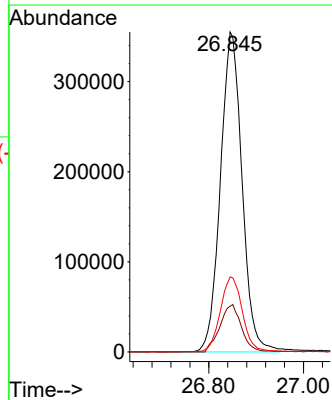
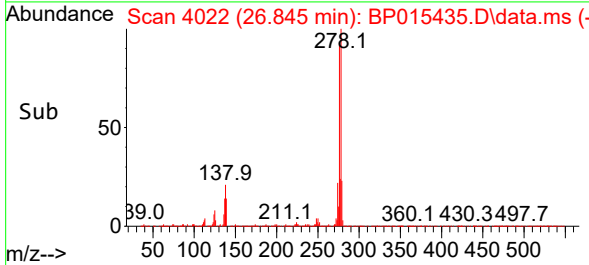


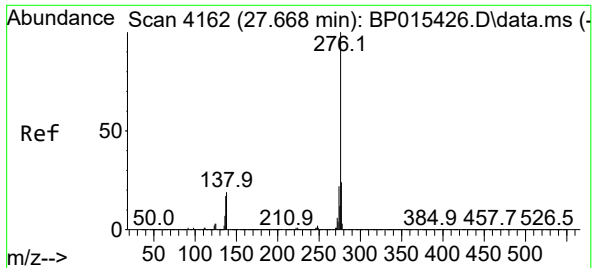
#95  
 Dibenzo(a,h)anthracene  
 Concen: 19.443 ng/ul  
 RT: 26.845 min Scan# 4022  
 Delta R.T. -0.018 min  
 Lab File: BP015435.D  
 Acq: 08 Jun 2023 14:56



Tgt Ion: 278 Resp: 1124708  

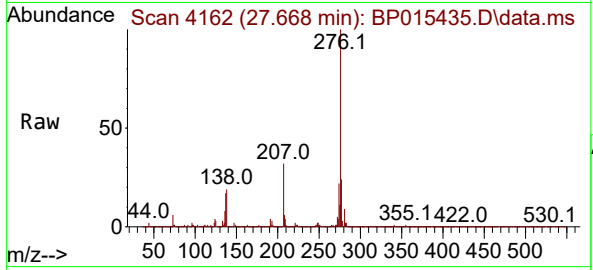
Ion	Ratio	Lower	Upper
278	100		
139	14.3	11.4	17.0
279	23.5	18.7	28.1





#96  
 Benzo(g,h,i)perylene  
 Concen: 17.765 ng/ul  
 RT: 27.668 min Scan# 4162  
 Delta R.T. -0.018 min  
 Lab File: BP015435.D  
 Acq: 08 Jun 2023 14:56

Instrument : BNA\_P  
 ClientSampleId : H0FN8MSD



Tgt Ion: 276 Resp: 1039466

Ion	Ratio	Lower	Upper
276	100		
138	19.3	15.6	23.4
277	23.9	19.0	28.6

