

Data Path : Z:\svoasrv\HPCHEM1\BNA_P\Data\BP060823\
 Data File : BP015444.D
 Acq On : 08 Jun 2023 20:33
 Operator : MA/JU
 Sample : 02950-16
 Misc :
 ALS Vial : 23 Sample Multiplier: 1

Instrument :
 BNA_P
 ClientSampleId :
 EW992

Integration Parameters: LSCINT.P

Integrator: RTE
 Smoothing : OFF Filtering: 5
 Sampling : 1 Min Area: 0.1 % of largest Peak
 Start Thrs: 0.2 Max Peaks: 100
 Stop Thrs : 0 Peak Location: TOP

If leading or trailing edge < 100 prefer < Baseline drop else tangent >
 Peak separation: 5

Method : Z:\svoasrv\HPCHEM1\BNA_P\Methods\SFAM-EPA-BP060723.MA.M
 Title : SVOA CALIBRATION

Signal : TIC: BP015444.D\data.ms

peak #	R.T. min	first scan	max scan	last scan	PK TY	peak height	corr. area	corr. % max.	% of total
1	3.411	34	38	45	rVB	24512	35640	0.94%	0.083%
2	3.864	112	115	129	rBV	73961	146333	3.87%	0.341%
3	4.087	149	153	160	rVB	15670	25674	0.68%	0.060%
4	4.187	167	170	174	rBV3	8619	10667	0.28%	0.025%
5	5.134	328	331	335	rBV5	4308	6131	0.16%	0.014%
6	5.228	342	347	352	rBV7	5549	10534	0.28%	0.025%
7	6.311	524	531	538	rBV6	6688	14367	0.38%	0.034%
8	7.246	680	690	707	rBV	425318	789096	20.85%	1.840%
9	7.417	713	719	727	rBV	358126	566422	14.96%	1.321%
10	7.622	747	754	764	rVV	454407	756067	19.97%	1.763%
11	7.699	764	767	773	rVB7	8689	14117	0.37%	0.033%
12	8.093	824	834	845	rBV	490516	816588	21.57%	1.904%
13	8.652	924	929	933	rBV7	7984	11993	0.32%	0.028%
14	8.811	947	956	971	rBV	558625	985525	26.04%	2.298%
15	8.934	971	977	986	rVV	123609	209387	5.53%	0.488%
16	9.275	1027	1035	1047	rBV	449778	793404	20.96%	1.850%
17	9.428	1055	1061	1070	rVB	7288	21410	0.57%	0.050%
18	9.528	1074	1078	1082	rBV7	3684	6791	0.18%	0.016%
19	9.658	1090	1100	1106	rBV4	10937	22432	0.59%	0.052%
20	9.999	1151	1158	1169	rBV	401149	701071	18.52%	1.635%
21	10.187	1186	1190	1191	rBV4	5434	7938	0.21%	0.019%
22	10.322	1209	1213	1215	rBV5	5437	5923	0.16%	0.014%
23	10.363	1216	1220	1224	rVB3	11539	18978	0.50%	0.044%
24	10.546	1244	1251	1271	rBV	556617	1046837	27.66%	2.441%
25	10.875	1301	1307	1309	rBV	24168	34086	0.90%	0.079%
26	10.922	1309	1315	1324	rVB	763358	1259175	33.27%	2.936%
27	11.063	1332	1339	1358	rBV	469301	925740	24.46%	2.159%
28	11.399	1391	1396	1401	rVB5	17255	28626	0.76%	0.067%
29	11.475	1403	1409	1415	rBV5	4622	11918	0.31%	0.028%
30	11.581	1423	1427	1430	rBV6	6067	10955	0.29%	0.026%
31	11.740	1448	1454	1459	rBV8	13248	29676	0.78%	0.069%
32	11.822	1465	1468	1476	rVB10	9778	18605	0.49%	0.043%
33	11.922	1481	1485	1490	rVV	24398	38856	1.03%	0.091%
34	11.963	1490	1492	1496	rVB5	7670	10895	0.29%	0.025%
35	12.104	1512	1516	1521	rVB6	9576	15499	0.41%	0.036%
36	12.157	1521	1525	1526	rBV4	4111	5981	0.16%	0.014%

Data Path : Z:\svoasrv\HPCHEM1\BNA_P\Data\BP060823\
 Data File : BP015444.D
 Acq On : 08 Jun 2023 20:33
 Operator : MA/JU
 Sample : 02950-16
 Misc :
 ALS Vial : 23 Sample Multiplier: 1

Instrument :
 BNA_P
 ClientSampleId :
 EW992

Integration Parameters: LSCINT.P

Integrator: RTE
 Smoothing : OFF Filtering: 5
 Sampling : 1 Min Area: 0.1 % of largest Peak
 Start Thrs: 0.2 Max Peaks: 100
 Stop Thrs : 0 Peak Location: TOP

If leading or trailing edge < 100 prefer < Baseline drop else tangent >
 Peak separation: 5

Method : Z:\svoasrv\HPCHEM1\BNA_P\Methods\SFAM-EPA-BP060723.MA.M
 Title : SVOA CALIBRATION

37	12.193	1526	1531	1535	rVV6	9591	15338	0.41%	0.036%
38	12.316	1546	1552	1560	rBV	55042	88177	2.33%	0.206%
39	12.510	1579	1585	1588	rBV2	12400	23688	0.63%	0.055%
40	12.640	1603	1607	1610	rBV6	5834	10185	0.27%	0.024%
41	12.728	1617	1622	1627	rBV	23864	41415	1.09%	0.097%
42	12.940	1655	1658	1662	rBV6	9876	15978	0.42%	0.037%
43	13.181	1695	1699	1701	rBV5	7266	9572	0.25%	0.022%
44	13.257	1707	1712	1720	rVB2	47658	78509	2.07%	0.183%
45	13.340	1720	1726	1730	rBV9	7930	15617	0.41%	0.036%
46	13.546	1754	1761	1767	rBV	84078	135525	3.58%	0.316%
47	13.616	1770	1773	1777	rBV7	13239	21592	0.57%	0.050%
48	13.863	1812	1815	1818	rBV4	6269	7450	0.20%	0.017%
49	14.140	1854	1862	1869	rBV	1236977	1786709	47.20%	4.167%
50	14.199	1869	1872	1876	rVV2	66455	88846	2.35%	0.207%
51	14.240	1876	1879	1887	rVB10	12804	25770	0.68%	0.060%
52	14.316	1889	1892	1893	rVV3	10342	11368	0.30%	0.027%
53	14.340	1894	1896	1900	rVB	17896	20681	0.55%	0.048%
54	14.434	1906	1912	1924	rBV	1356731	1977627	52.25%	4.612%
55	14.557	1931	1933	1937	rVB4	8238	8388	0.22%	0.020%
56	14.616	1938	1943	1949	rVB	98548	133297	3.52%	0.311%
57	14.740	1958	1964	1971	rBV	1235362	1811876	47.87%	4.225%
58	14.946	1994	1999	2014	rBV	269110	676387	17.87%	1.577%
59	15.134	2029	2031	2035	rBV4	12898	13004	0.34%	0.030%
60	15.357	2065	2069	2073	rBV7	9770	17343	0.46%	0.040%
61	15.416	2076	2079	2083	rBV2	14197	19408	0.51%	0.045%
62	15.516	2094	2096	2099	rBV4	7758	8986	0.24%	0.021%
63	15.563	2100	2104	2109	rVB	91604	114312	3.02%	0.267%
64	15.734	2126	2133	2139	rBV	1676503	2511882	66.36%	5.858%
65	15.857	2148	2154	2163	rBV	495827	760901	20.10%	1.774%
66	15.969	2168	2173	2184	rVB	74348	132190	3.49%	0.308%
67	16.093	2188	2194	2200	rBV	179860	266783	7.05%	0.622%
68	16.198	2208	2212	2220	rVB3	24740	42048	1.11%	0.098%
69	16.428	2247	2251	2252	rBV	119691	132773	3.51%	0.310%
70	16.451	2252	2255	2261	rVB2	151412	224007	5.92%	0.522%
71	16.663	2287	2291	2297	rVB3	21392	28553	0.75%	0.067%
72	17.222	2382	2386	2390	rBV	83964	109286	2.89%	0.255%
73	17.275	2391	2395	2399	rVV	64831	93775	2.48%	0.219%
74	17.492	2426	2432	2440	rBV	1665449	2357195	62.27%	5.497%
75	17.592	2443	2449	2461	rVB2	2081654	2869349	75.80%	6.691%
76	17.757	2474	2477	2485	rVB3	32093	49367	1.30%	0.115%

Data Path : Z:\svoasrv\HPCHEM1\BNA_P\Data\BP060823\
 Data File : BP015444.D
 Acq On : 08 Jun 2023 20:33
 Operator : MA/JU
 Sample : 02950-16
 Misc :
 ALS Vial : 23 Sample Multiplier: 1

Instrument :
 BNA_P
 ClientSampleId :
 EW992

Integration Parameters: LSCINT.P

Integrator: RTE
 Smoothing : OFF Filtering: 5
 Sampling : 1 Min Area: 0.1 % of largest Peak
 Start Thrs: 0.2 Max Peaks: 100
 Stop Thrs : 0 Peak Location: TOP

If leading or trailing edge < 100 prefer < Baseline drop else tangent >
 Peak separation: 5

Method : Z:\svoasrv\HPCHEM1\BNA_P\Methods\SFAM-EPA-BP060723.MA.M
 Title : SVOA CALIBRATION

77	17.881	2495	2498	2508	rVB3	18165	42518	1.12%	0.099%
78	17.963	2508	2512	2518	rBV2	102233	138644	3.66%	0.323%
79	18.181	2546	2549	2551	rBV	20594	21239	0.56%	0.050%
80	18.351	2573	2578	2589	rBV	331315	514252	13.59%	1.199%
81	18.628	2621	2625	2630	rBV	86194	99376	2.63%	0.232%
82	19.134	2707	2711	2715	rVB2	40048	56803	1.50%	0.132%
83	19.234	2725	2728	2734	rVB	101869	107807	2.85%	0.251%
84	19.575	2782	2786	2792	rBV2	111690	150040	3.96%	0.350%
85	19.816	2820	2827	2835	rBV	2866421	3713924	98.12%	8.661%
86	20.104	2874	2876	2880	rBV3	34456	39034	1.03%	0.091%
87	20.145	2880	2883	2886	rVB	52899	54810	1.45%	0.128%
88	20.310	2908	2911	2915	rVB	98379	108237	2.86%	0.252%
89	20.575	2953	2956	2961	rVB3	44414	46657	1.23%	0.109%
90	20.786	2989	2992	2996	rBV	82880	100756	2.66%	0.235%
91	21.245	3066	3070	3087	rBV	496992	1000039	26.42%	2.332%
92	21.575	3121	3126	3134	rVB	2028064	2693552	71.16%	6.281%
93	21.692	3144	3146	3153	rVB2	94363	121978	3.22%	0.284%
94	22.175	3226	3228	3231	rBV	94545	104701	2.77%	0.244%
95	22.704	3315	3318	3324	rVB	108365	147455	3.90%	0.344%
96	22.857	3341	3344	3352	rVB	152800	231642	6.12%	0.540%
97	23.292	3415	3418	3425	rVB	219927	354233	9.36%	0.826%
98	23.957	3524	3531	3543	rVB2	1788903	3785189	100.00%	8.827%
99	24.127	3552	3560	3573	rVB	1226507	2712387	71.66%	6.325%
100	24.745	3662	3665	3674	rVB	184320	368271	9.73%	0.859%

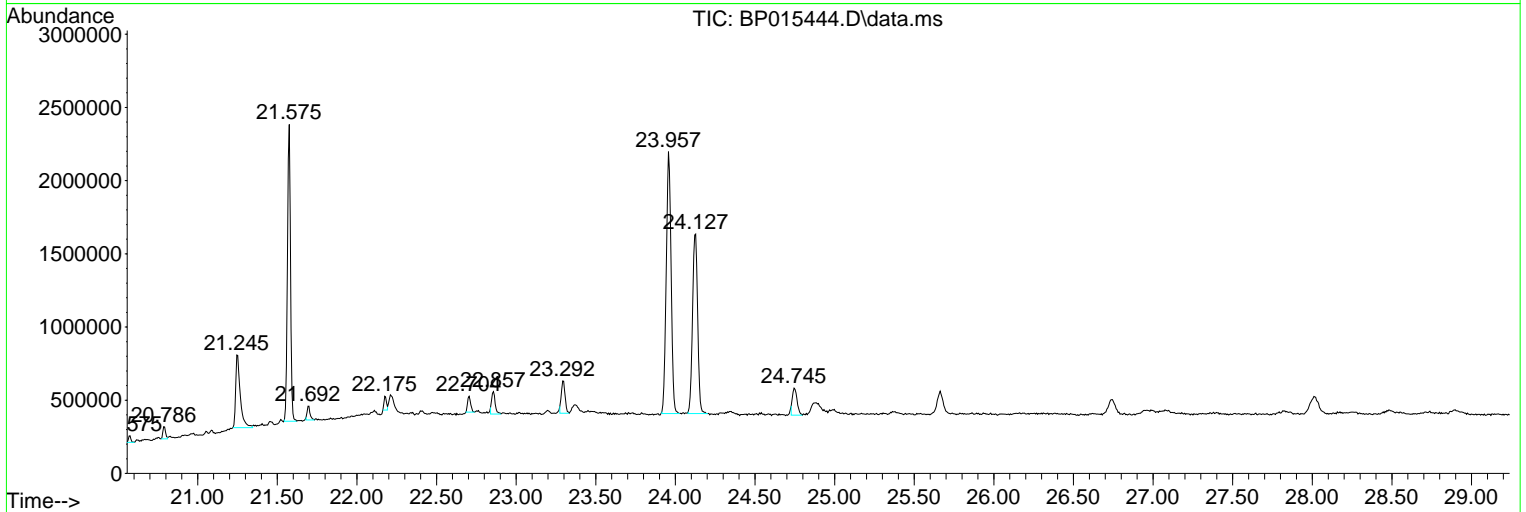
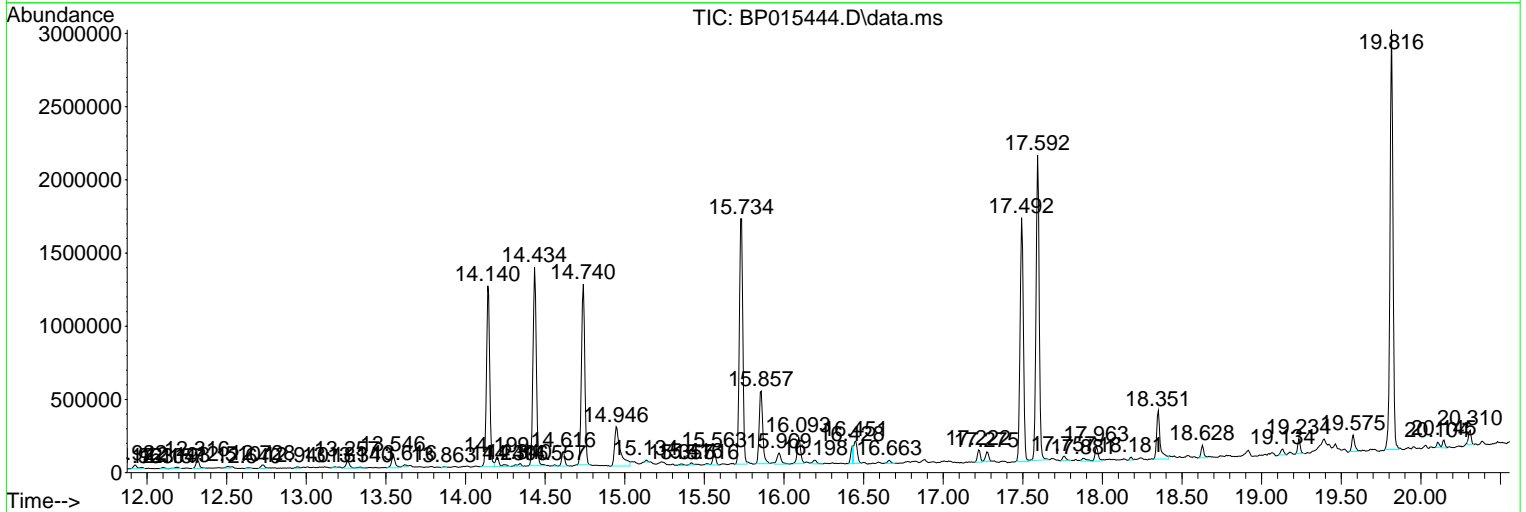
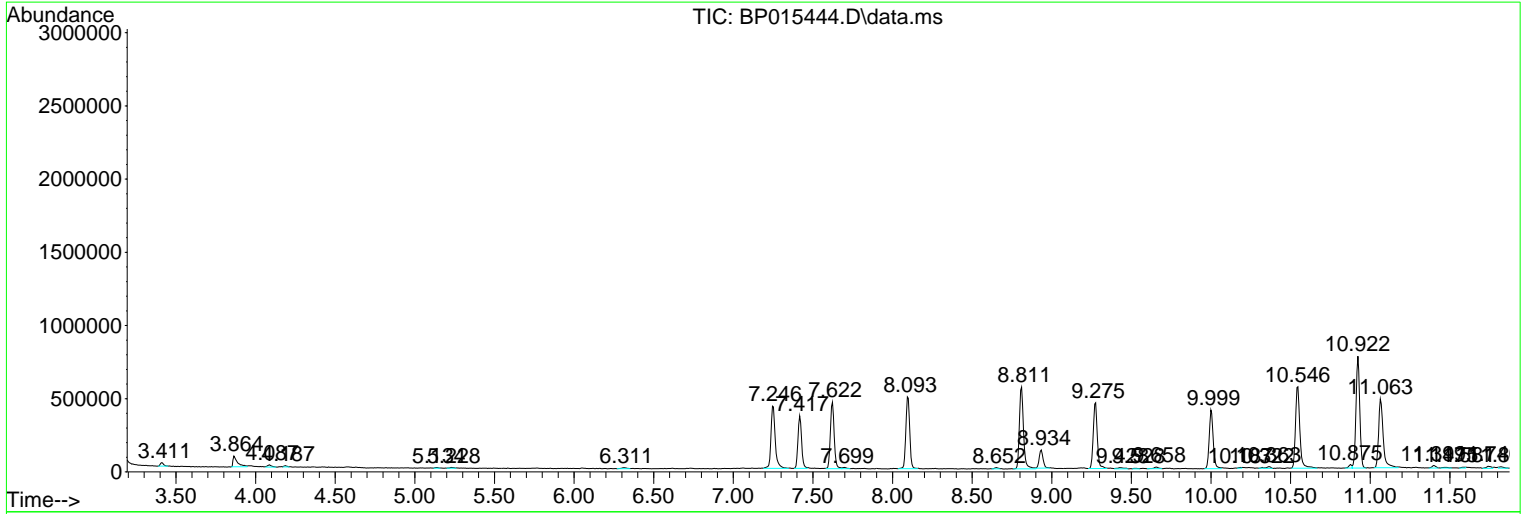
Sum of corrected areas: 42882038

Data Path : Z:\svoasrv\HPCHEM1\BNA_P\Data\BP060823\
 Data File : BP015444.D
 Acq On : 08 Jun 2023 20:33
 Operator : MA/JU
 Sample : 02950-16
 Misc :
 ALS Vial : 23 Sample Multiplier: 1

Instrument :
 BNA_P
 ClientSampleId :
 EW992

Quant Method : Z:\svoasrv\HPCHEM1\BNA_P\Methods\SFAM-EPA-BP060723.MA.M
 Quant Title : SVOA CALIBRATION

TIC Library : C:\DATABASE\NIST20.L
 TIC Integration Parameters: LSCINT.P



Data Path : Z:\svoasrv\HPCHEM1\BNA_P\Data\BP060823\
 Data File : BP015444.D
 Acq On : 08 Jun 2023 20:33
 Operator : MA/JU
 Sample : 02950-16
 Misc :
 ALS Vial : 23 Sample Multiplier: 1

Instrument :
 BNA_P
 ClientSampleId :
 EW992

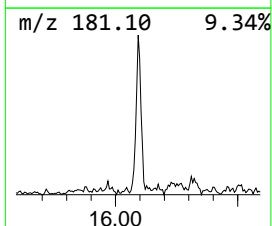
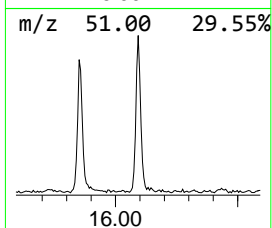
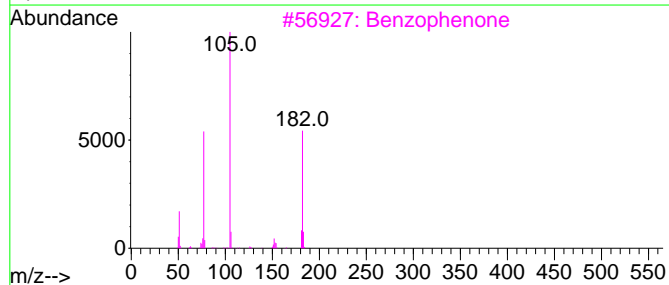
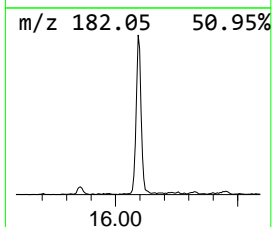
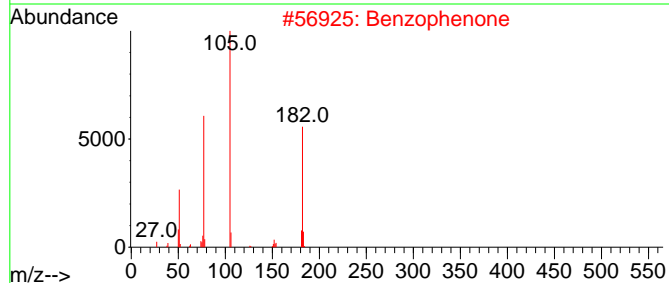
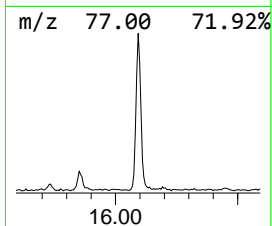
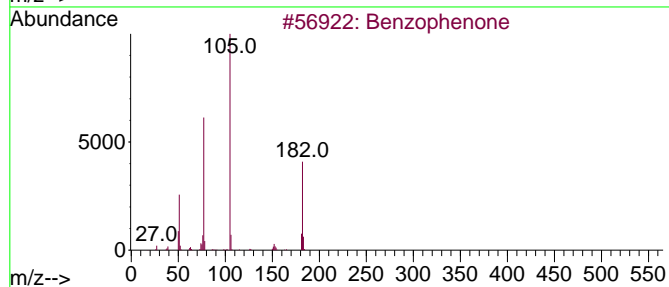
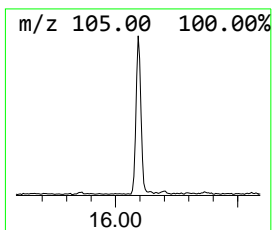
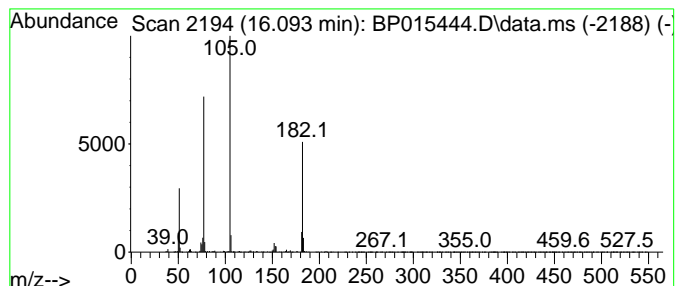
Quant Method : Z:\svoasrv\HPCHEM1\BNA_P\Methods\SFAM-EPA-BP060723.MA.M
 Quant Title : SVOA CALIBRATION

TIC Library : C:\DATABASE\NIST20.L
 TIC Integration Parameters: LSCINT.P

 Peak Number 1 Benzophenone Concentration Rank 3

R.T.	EstConc	Area	Relative to ISTD	R.T.
16.093	2.94 ng/ul	266783	Acenaphthene-d10	14.740

Hit#	of 5	Tentative ID	MW	MolForm	CAS#	Qual
1		Benzophenone	182	C13H10O	000119-61-9	97
2		Benzophenone	182	C13H10O	000119-61-9	96
3		Benzophenone	182	C13H10O	000119-61-9	95
4		Benzophenone	182	C13H10O	000119-61-9	91
5		Benzophenone	182	C13H10O	000119-61-9	91



Data Path : Z:\svoasrv\HPCHEM1\BNA_P\Data\BP060823\
 Data File : BP015444.D
 Acq On : 08 Jun 2023 20:33
 Operator : MA/JU
 Sample : 02950-16
 Misc :
 ALS Vial : 23 Sample Multiplier: 1

Instrument :
 BNA_P
 ClientSampleId :
 EW992

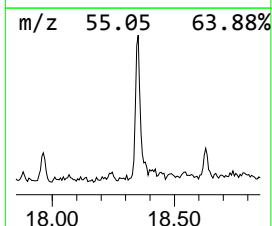
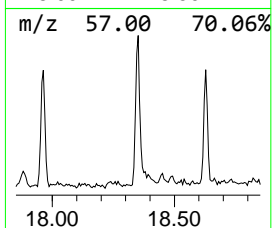
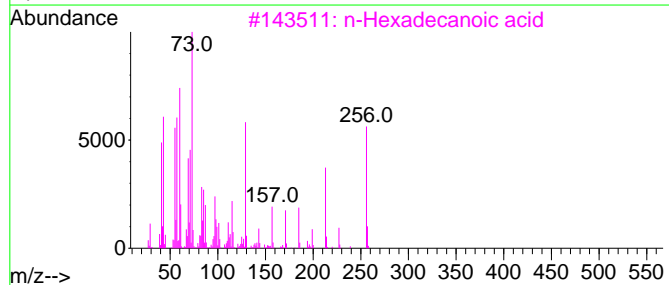
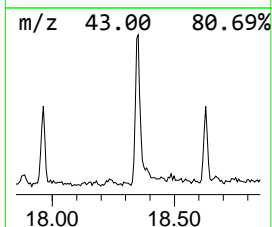
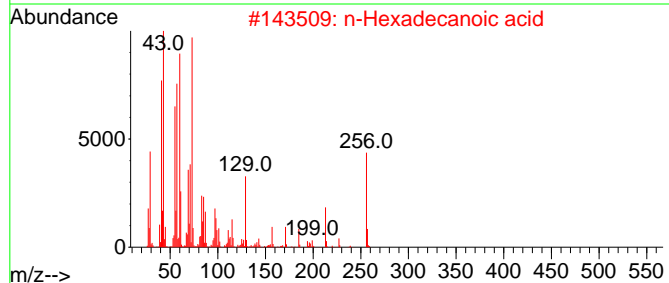
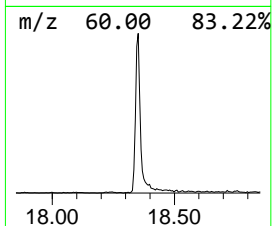
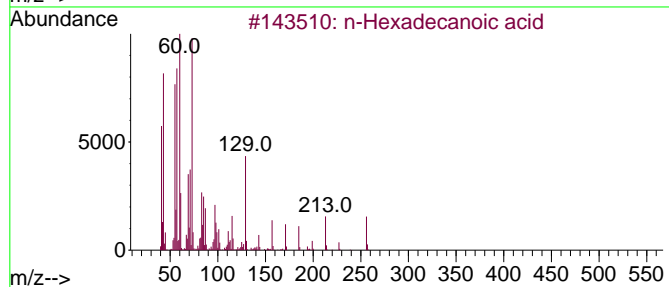
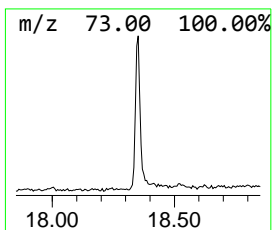
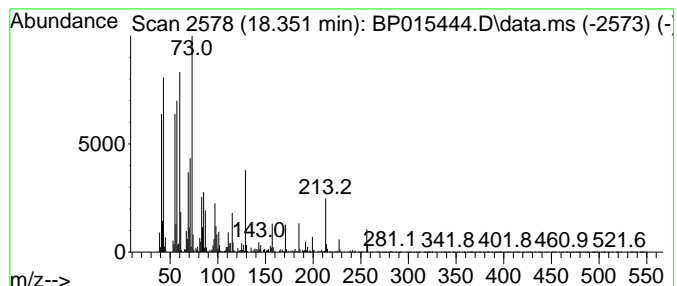
Quant Method : Z:\svoasrv\HPCHEM1\BNA_P\Methods\SFAM-EPA-BP060723.MA.M
 Quant Title : SVOA CALIBRATION

TIC Library : C:\DATABASE\NIST20.L
 TIC Integration Parameters: LSCINT.P

 Peak Number 2 n-Hexadecanoic acid Concentration Rank 2

R.T.	EstConc	Area	Relative to ISTD	R.T.
18.351	4.36 ng/ul	514252	Phenanthrene-d10	17.492

Hit#	of	5	Tentative ID	MW	MolForm	CAS#	Qual
1	n-Hexadecanoic acid	256	C16H32O2	000057-10-3	99		
2	n-Hexadecanoic acid	256	C16H32O2	000057-10-3	98		
3	n-Hexadecanoic acid	256	C16H32O2	000057-10-3	98		
4	Tridecanoic acid	214	C13H26O2	000638-53-9	86		
5	Octadecanoic acid	284	C18H36O2	000057-11-4	83		



Data Path : Z:\svoasrv\HPCHEM1\BNA_P\Data\BP060823\
 Data File : BP015444.D
 Acq On : 08 Jun 2023 20:33
 Operator : MA/JU
 Sample : 02950-16
 Misc :
 ALS Vial : 23 Sample Multiplier: 1

Instrument :
 BNA_P
 ClientSampleId :
 EW992

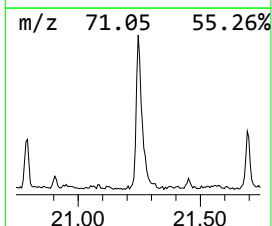
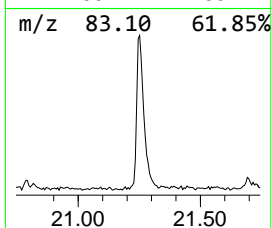
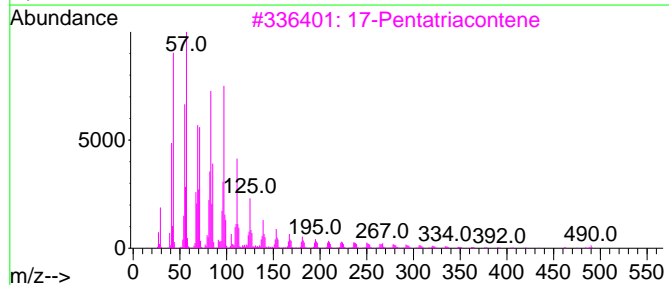
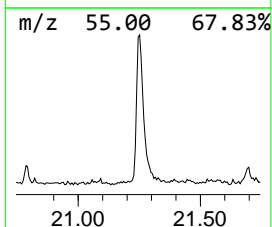
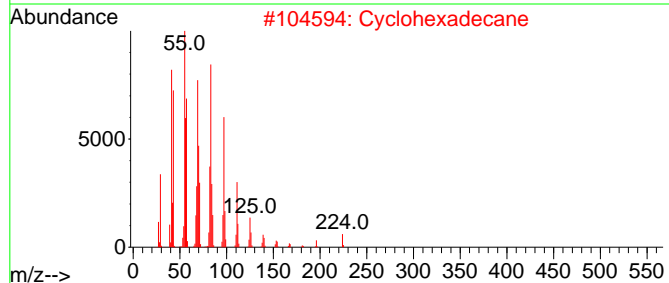
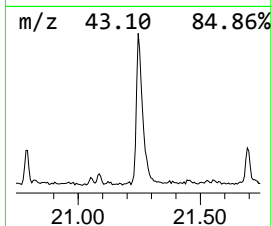
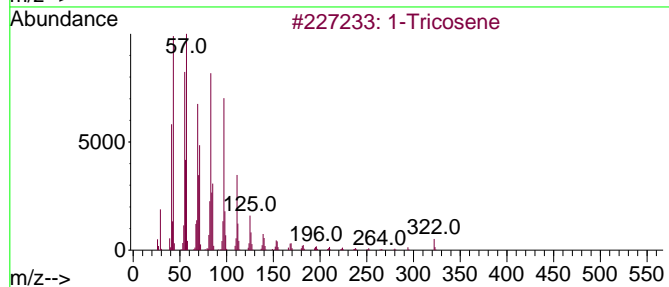
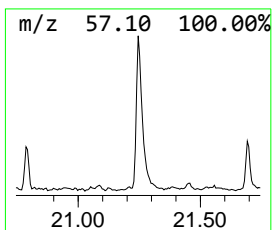
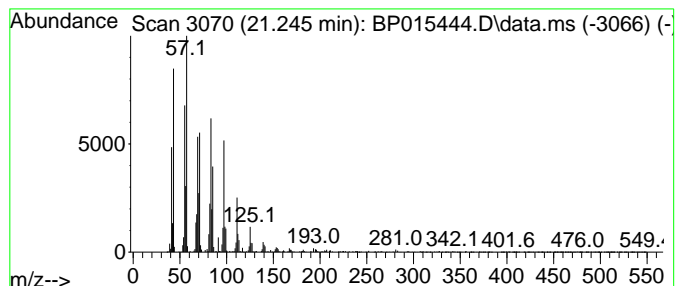
Quant Method : Z:\svoasrv\HPCHEM1\BNA_P\Methods\SFAM-EPA-BP060723.MA.M
 Quant Title : SVOA CALIBRATION

TIC Library : C:\DATABASE\NIST20.L
 TIC Integration Parameters: LSCINT.P

 Peak Number 3 (DEL) Alkane: Straight-Chai... Concentration Rank 1

R.T.	EstConc	Area	Relative to ISTD	R.T.
21.245	7.43 ng/ul	1000040	Chrysene-d12	21.575

Hit#	of 5	Tentative ID	MW	MolForm	CAS#	Qual
1		1-Tricosene	322	C23H46	018835-32-0	98
2		Cyclohexadecane	224	C16H32	000295-65-8	96
3		17-Pentatriacontene	491	C35H70	006971-40-0	94
4		Pentadecafluorooctanoic acid, oc...	666	C26H37F15O2	1000406-04-8	93
5		Ethanol, 2-(tetradecyloxy)-	258	C16H34O2	002136-70-1	91



Data Path : Z:\svoasrv\HPCHEM1\BNA_P\Data\BP060823\
 Data File : BP015444.D
 Acq On : 08 Jun 2023 20:33
 Operator : MA/JU
 Sample : 02950-16
 Misc :
 ALS Vial : 23 Sample Multiplier: 1

Instrument :
 BNA_P
 ClientSampleId :
 EW992

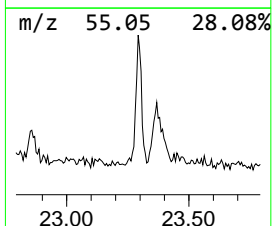
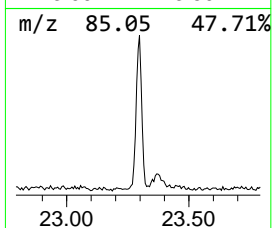
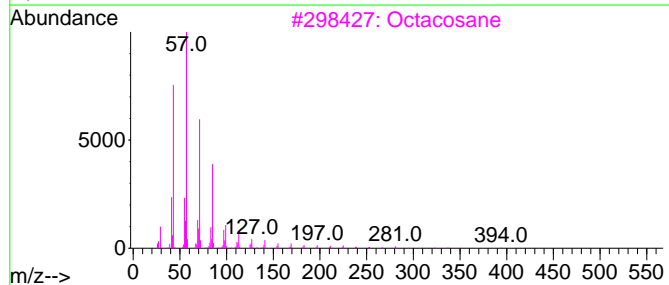
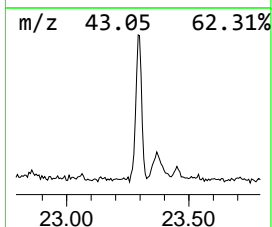
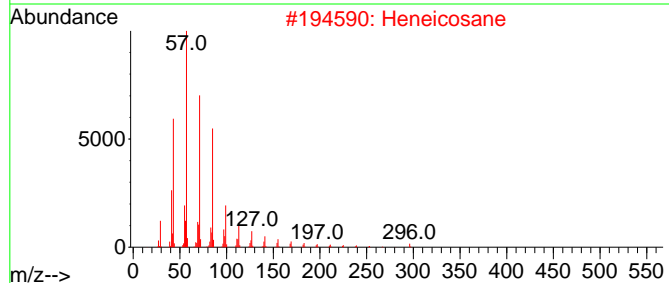
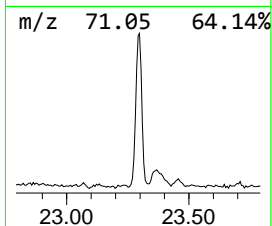
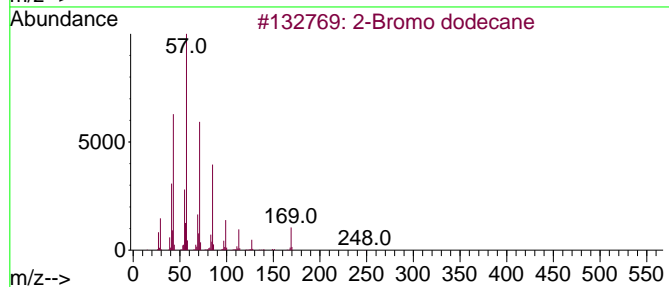
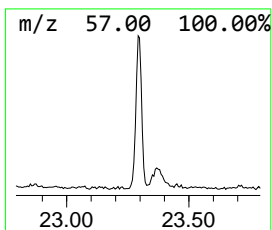
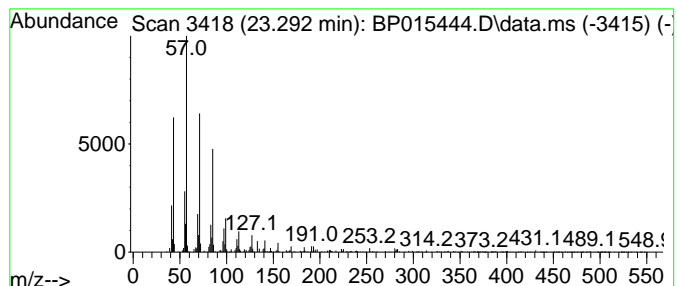
Quant Method : Z:\svoasrv\HPCHEM1\BNA_P\Methods\SFAM-EPA-BP060723.MA.M
 Quant Title : SVOA CALIBRATION

TIC Library : C:\DATABASE\NIST20.L
 TIC Integration Parameters: LSCINT.P

 Peak Number 4 2-Bromo dodecane Concentration Rank 5

R.T.	EstConc	Area	Relative to ISTD	R.T.
23.292	2.61 ng/ul	354233	Perylene-d12	24.127

Hit#	of	Tentative ID	MW	MolForm	CAS#	Qual
1	5	2-Bromo dodecane	248	C12H25Br	013187-99-0	93
2		Heneicosane	296	C21H44	000629-94-7	90
3		Octacosane	394	C28H58	000630-02-4	90
4		Eicosane, 9-octyl-	394	C28H58	013475-77-9	90
5		Octacosane, 2-methyl-	408	C29H60	001560-98-1	90



Data Path : Z:\svoasrv\HPCHEM1\BNA_P\Data\BP060823\
 Data File : BP015444.D
 Acq On : 08 Jun 2023 20:33
 Operator : MA/JU
 Sample : 02950-16
 Misc :
 ALS Vial : 23 Sample Multiplier: 1

Instrument :
 BNA_P
 ClientSampleId :
 EW992

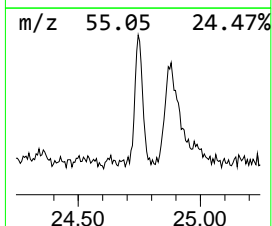
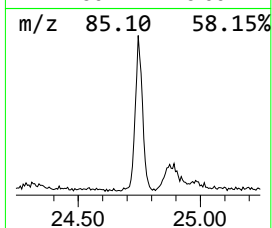
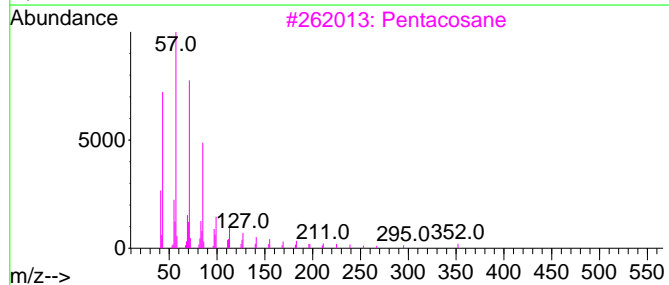
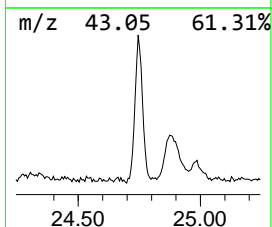
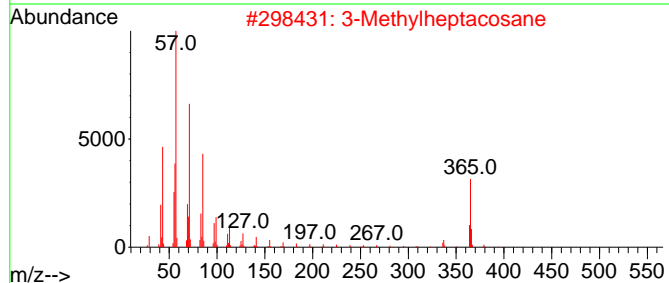
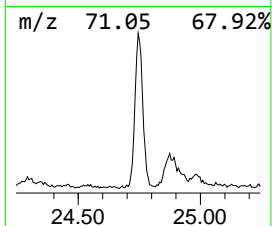
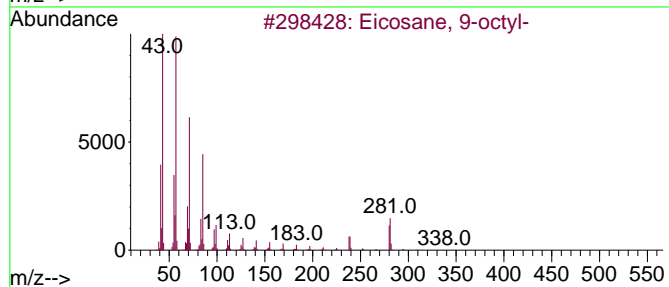
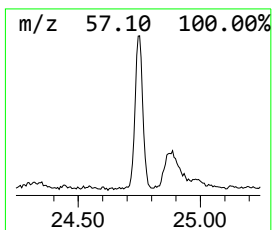
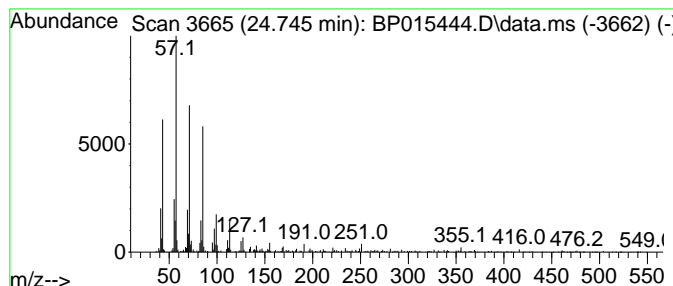
Quant Method : Z:\svoasrv\HPCHEM1\BNA_P\Methods\SFAM-EPA-BP060723.MA.M
 Quant Title : SVOA CALIBRATION

TIC Library : C:\DATABASE\NIST20.L
 TIC Integration Parameters: LSCINT.P

 Peak Number 5 (DEL) Alkane: Straight-Chai... Concentration Rank 4

R.T.	EstConc	Area	Relative to ISTD	R.T.
24.745	2.72 ng/ul	368271	Perylene-d12	24.127

Hit#	of 5	Tentative ID	MW	MolForm	CAS#	Qual
1		Eicosane, 9-octyl-	394	C28H58	013475-77-9	90
2		3-Methylheptacosane	394	C28H58	014167-66-9	87
3		Pentacosane	352	C25H52	000629-99-2	87
4		Heptadecane, 9-octyl-	352	C25H52	007225-64-1	86
5		2-Methylheptacosane	394	C28H58	001561-00-8	86



Data Path : Z:\svoasrv\HPCHEM1\BNA_P\Data\BP060823\
 Data File : BP015444.D
 Acq On : 08 Jun 2023 20:33
 Operator : MA/JU
 Sample : 02950-16
 Misc :
 ALS Vial : 23 Sample Multiplier: 1

Instrument :
 BNA_P
 ClientSampleId :
 EW992

Quant Method : Z:\svoasrv\HPCHEM1\BNA_P\Methods\SFAM-EPA-BP060723.MA.M
 Quant Title : SVOA CALIBRATION

TIC Library : C:\DATABASE\NIST20.L
 TIC Integration Parameters: LSCINT.P

TIC Top Hit name	RT	EstConc	Units	Response	--Internal Standard--			
					#	RT	Resp	Conc
Benzophenone	16.093	2.9	ng/u1	266783	3	14.740	1811880	20.0
n-Hexadecanoic ...	18.351	4.4	ng/u1	514252	4	17.492	2357200	20.0
(DEL) Alkane: S...	21.245	7.4	ng/u1	1000040	5	21.575	2693550	20.0
2-Bromo dodecane	23.292	2.6	ng/u1	354233	6	24.127	2712390	20.0
(DEL) Alkane: S...	24.745	2.7	ng/u1	368271	6	24.127	2712390	20.0