

Data Path : Z:\svoasrv\HPCHEM1\BNA_P\Data\BP061423\
 Data File : BP015564.D
 Acq On : 15 Jun 2023 19:50
 Operator : MA/JU
 Sample : PB153379BS
 Misc :
 ALS Vial : 58 Sample Multiplier: 1

Instrument :
 BNA_P
 ClientSampleId :
 SLC379

Quant Time: Jun 15 22:07:31 2023
 Quant Method : Z:\svoasrv\HPCHEM1\BNA_P\Methods\SFAM-EPA-BP060723.MA.M
 Quant Title : SVOA CALIBRATION
 QLast Update : Thu Jun 15 05:36:46 2023
 Response via : Initial Calibration

Compound	R.T.	QIon	Response	Conc	Units	Dev(Min)
Internal Standards						
1) 1,4-Dichlorobenzene-d4	8.087	152	102358	20.000	ng/ul	0.00
20) Naphthalene-d8	10.910	136	467879	20.000	ng/ul	0.00
38) Acenaphthene-d10	14.728	164	322496	20.000	ng/ul	0.00
64) Phenanthrene-d10	17.486	188	783249	20.000	ng/ul	0.00
79) Chrysene-d12	21.569	240	839058	20.000	ng/ul	0.00
88) Perylene-d12	24.115	264	961574	20.000	ng/ul	0.00
System Monitoring Compounds						
3) 1,4-Dioxane-d8	3.405	96	19738	7.141	ng/uL	0.00
4) Pyridine-d5	3.846	84	267589	37.269	ng/ul	0.00
7) Phenol-d5	7.246	99	380090	40.307	ng/ul	0.00
9) Bis-(2-Chloroethyl)eth...	7.410	67	227798	40.449	ng/ul	0.00
11) 2-Chlorophenol-d4	7.610	132	293239	42.891	ng/ul	0.00
15) 4-Methylphenol-d8	8.804	113	326943	42.245	ng/ul	0.00
21) Nitrobenzene-d5	9.263	128	153836	41.879	ng/ul	0.00
24) 2-Nitrophenol-d4	9.993	143	183180	43.667	ng/ul	0.00
28) 2,4-Dichlorophenol-d3	10.534	165	329017	42.996	ng/ul	0.00
31) 4-Chloroaniline-d4	11.057	131	416238	37.896	ng/ul	0.00
46) Dimethylphthalate-d6	14.134	166	1080307	42.480	ng/ul	0.00
49) Acenaphthylene-d8	14.428	160	1186403	42.665	ng/ul	0.00
54) 4-Nitrophenol-d4	14.939	143	197274	43.318	ng/ul	0.00
60) Fluorene-d10	15.722	176	904110	42.159	ng/ul	0.00
65) 4,6-Dinitro-2-methylph...	15.851	200	200500	40.408	ng/ul	0.00
73) Anthracene-d10	17.586	188	1490725	41.831	ng/ul	0.00
81) Pyrene-d10	19.810	212	1927618	42.924	ng/ul	0.00
92) Benzo(a)pyrene-d12	23.951	264	2108362	43.699	ng/ul	0.00
Target Compounds						
2) 1,4-Dioxane	3.440	88	41046	14.058	ng/uL#	86
5) Pyridine	3.864	79	279032	37.486	ng/ul	95
6) Benzaldehyde	7.222	77	167757	46.543	ng/ul	96
8) Phenol	7.269	94	392124	40.307	ng/ul	96
10) Bis(2-Chloroethyl)ether	7.505	93	298541	38.813	ng/ul	99
12) 2-Chlorophenol	7.646	128	292164	40.446	ng/ul	97
13) 2-Methylphenol	8.534	108	302535	40.418	ng/ul	99
14) 2,2'-oxybis(1-Chloropr...	8.610	45	399393	39.183	ng/ul	99
16) Acetophenone	8.922	105	496547	40.203	ng/ul	98
17) N-Nitroso-di-n-propyla...	8.904	70	263625	39.547	ng/ul	99
18) 4-Methylphenol	8.869	108	332715	40.399	ng/ul	98
19) Hexachloroethane	9.175	117	121768	39.891	ng/ul	99
22) Nitrobenzene	9.304	77	406082	41.686	ng/ul	97
23) Isophorone	9.834	82	768931	39.431	ng/ul	99
25) 2-Nitrophenol	10.022	139	186770	41.237	ng/ul	97
26) 2,4-Dimethylphenol	10.081	107	372308	38.762	ng/ul	98
27) Bis(2-Chloroethoxy)met...	10.316	93	439074	38.728	ng/ul	100
29) 2,4-Dichlorophenol	10.557	162	319805	42.034	ng/ul	98
30) Naphthalene	10.963	128	995798	39.276	ng/ul	99
32) 4-Chloroaniline	11.081	127	319951	28.152	ng/ul	97
33) Hexachlorobutadiene	11.240	225	209954	40.918	ng/ul	97
34) Caprolactam	11.869	113	118327	41.314	ng/ul	90
35) 4-Chloro-3-methylphenol	12.198	107	395143	42.865	ng/ul	98
36) 2-Methylnaphthalene	12.563	142	710330	39.853	ng/ul	100

Data Path : Z:\svoasrv\HPCHEM1\BNA_P\Data\BP061423\
 Data File : BP015564.D
 Acq On : 15 Jun 2023 19:50
 Operator : MA/JU
 Sample : PB153379BS
 Misc :
 ALS Vial : 58 Sample Multiplier: 1

Instrument :
 BNA_P
 ClientSampleId :
 SLCS379

Quant Time: Jun 15 22:07:31 2023
 Quant Method : Z:\svoasrv\HPCHEM1\BNA_P\Methods\SFAM-EPA-BP060723.MA.M
 Quant Title : SVOA CALIBRATION
 QLast Update : Thu Jun 15 05:36:46 2023
 Response via : Initial Calibration

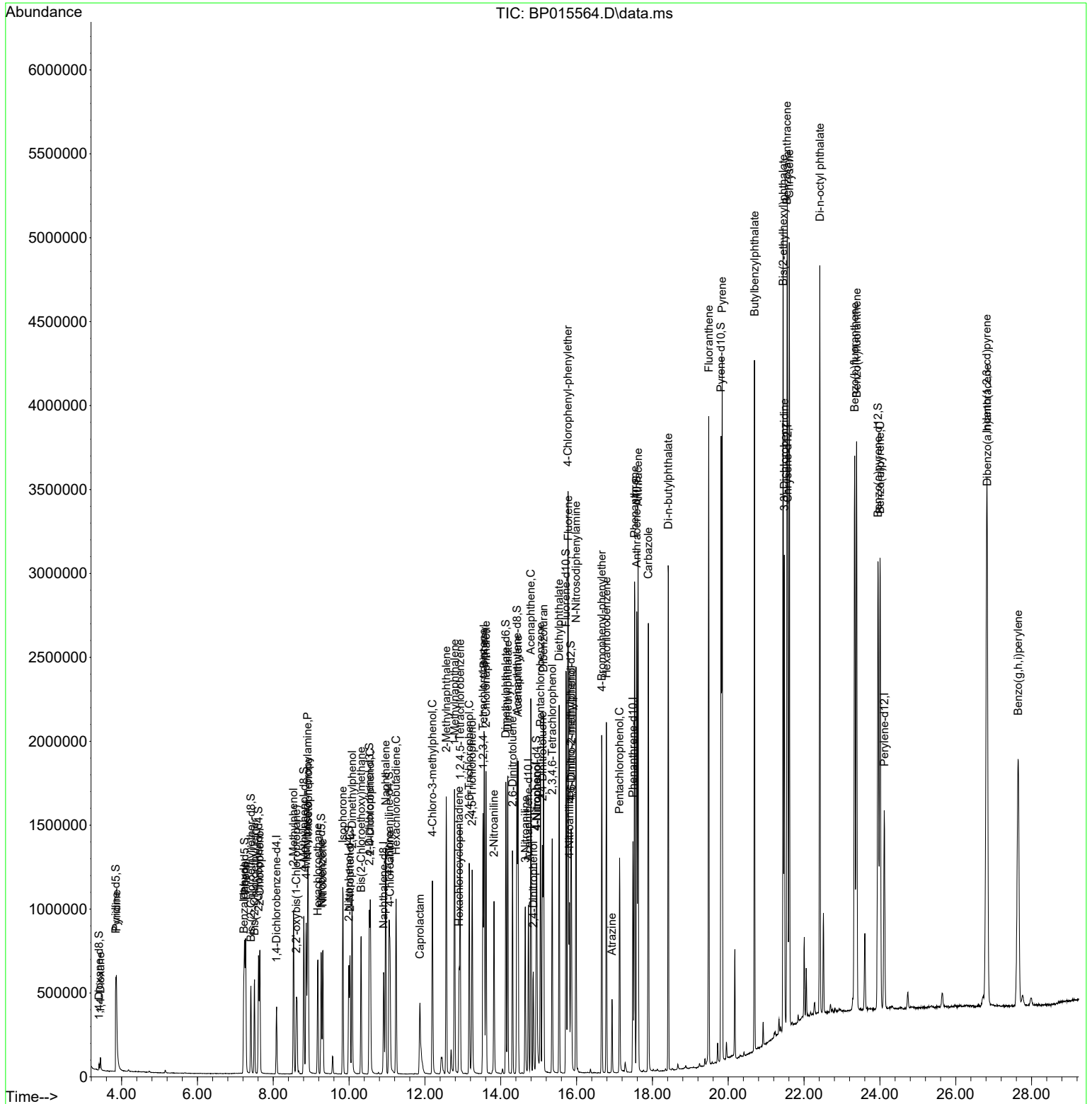
Compound	R.T.	QIon	Response	Conc	Units	Dev(Min)
37) 1-Methylnaphthalene	12.781	142	710997	39.619	ng/ul	97
39) 1,2,4,5-Tetrachloroben...	12.928	216	411955	41.022	ng/ul	99
40) Hexachlorocyclopentadiene	12.898	237	154785	37.602	ng/ul	97
41) 2,4,6-Trichlorophenol	13.169	196	265606	39.739	ng/ul	96
42) 2,4,5-Trichlorophenol	13.245	196	296887	40.762	ng/ul	100
43) 1,1'-Biphenyl	13.563	154	999533	40.078	ng/ul	99
44) 2-Chloronaphthalene	13.610	162	784049	40.069	ng/ul	99
45) 2-Nitroaniline	13.822	65	281526	44.955	ng/ul	97
47) Dimethylphthalate	14.187	163	1068946	40.711	ng/ul	99
48) 2,6-Dinitrotoluene	14.310	165	230938	42.929	ng/ul	98
50) Acenaphthylene	14.457	152	1227369	39.857	ng/ul	99
51) 3-Nitroaniline	14.645	138	222989	50.213	ng/ul	96
52) Acenaphthene	14.792	153	857083	40.264	ng/ul	99
53) 2,4-Dinitrophenol	14.857	184	128474	39.701	ng/ul	97
55) 4-Nitrophenol	14.951	109	193904	44.142	ng/ul	91
56) Dibenzofuran	15.128	168	1226504	40.653	ng/ul	98
57) 2,4-Dinitrotoluene	15.098	165	343843	43.458	ng/ul	98
58) 2,3,4,6-Tetrachlorophenol	15.357	232	255336	38.827	ng/ul	98
59) Diethylphthalate	15.539	149	1123063	41.733	ng/ul	99
61) Fluorene	15.781	166	1006924	40.942	ng/ul	98
62) 4-Chlorophenyl-phenyle...	15.769	204	506329	40.849	ng/ul	98
63) 4-Nitroaniline	15.810	138	241141	57.247	ng/ul	93
66) 4,6-Dinitro-2-methylph...	15.863	198	197934	39.112	ng/ul	92
67) N-Nitrosodiphenylamine	15.986	169	875578	39.404	ng/ul	99
68) 4-Bromophenyl-phenylether	16.663	248	336976	40.214	ng/ul	95
69) Hexachlorobenzene	16.786	284	405129	40.987	ng/ul	95
70) Atrazine	16.933	200	73553	8.289	ng/ul	97
71) Pentachlorophenol	17.133	266	215080	38.498	ng/ul	100
72) Phenanthrene	17.528	178	1725059	41.041	ng/ul	100
74) Anthracene	17.622	178	1711061	40.121	ng/ul	100
75) 1,2,3,4-Tetrachloroben...	13.534	216	425801	39.390	ng/uL	100
76) Pentachlorobenzene	15.045	250	432811	38.241	ng/uL	100
77) Carbazole	17.892	167	1615644	42.073	ng/ul	100
78) Di-n-butylphthalate	18.422	149	2071587	42.519	ng/ul	100
80) Fluoranthene	19.486	202	2233903	40.838	ng/ul	97
82) Pyrene	19.839	202	2301822	40.673	ng/ul	97
83) Butylbenzylphthalate	20.692	149	1094097	43.740	ng/ul	99
84) 3,3'-Dichlorobenzidine	21.480	252	849029	42.831	ng/ul	100
85) Benzo(a)anthracene	21.551	228	2433559	41.488	ng/ul	99
86) Bis(2-ethylhexyl)phtha...	21.445	149	1633682	44.187	ng/ul	99
87) Chrysene	21.610	228	2300886	41.500	ng/ul	99
89) Di-n-octyl phthalate	22.416	149	2933003	46.410	ng/ul	100
90) Benzo(b)fluoranthene	23.333	252	2562998	41.292	ng/ul	100
91) Benzo(k)fluoranthene	23.386	252	2515989	41.933	ng/ul	99
93) Benzo(a)pyrene	24.004	252	2203461	40.718	ng/ul	98
94) Indeno(1,2,3-cd)pyrene	26.821	276	2703043	38.596	ng/ul	99
95) Dibenzo(a,h)anthracene	26.833	278	2232891	39.134	ng/ul	98
96) Benzo(g,h,i)perylene	27.645	276	2195263	38.036	ng/ul	98

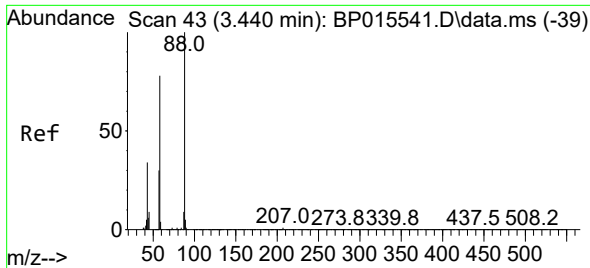
(#) = qualifier out of range (m) = manual integration (+) = signals summed

Data Path : Z:\svoasrv\HPCHEM1\BNA_P\Data\BP061423\
 Data File : BP015564.D
 Acq On : 15 Jun 2023 19:50
 Operator : MA/JU
 Sample : PB153379BS
 Misc :
 ALS Vial : 58 Sample Multiplier: 1

Instrument :
 BNA_P
 ClientSampleId :
 SLCS379

Quant Time: Jun 15 22:07:31 2023
 Quant Method : Z:\svoasrv\HPCHEM1\BNA_P\Methods\SFAM-EPA-BP060723.MA.M
 Quant Title : SVOA CALIBRATION
 QLast Update : Thu Jun 15 05:36:46 2023
 Response via : Initial Calibration



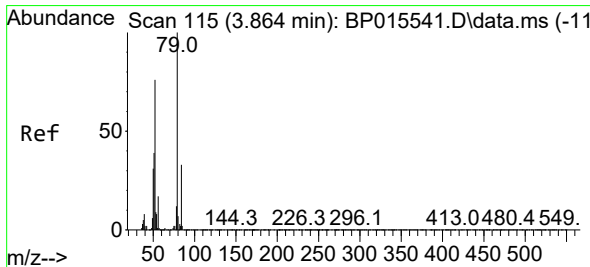
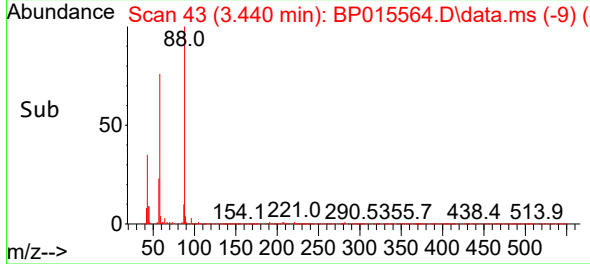
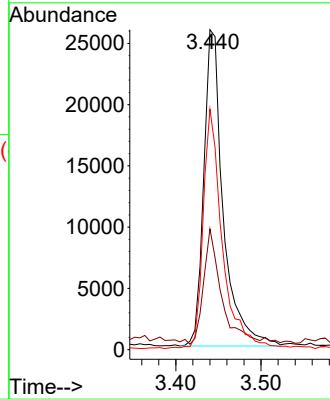
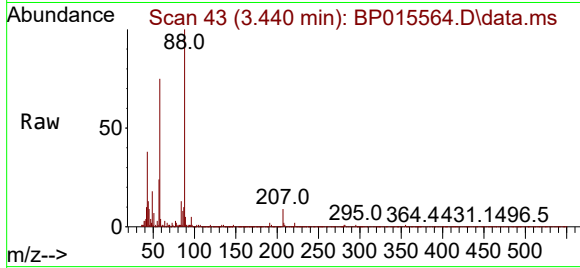


#2
 1,4-Dioxane
 Concen: 14.058 ng/uL
 RT: 3.440 min Scan# 41
 Delta R.T. -0.000 min
 Lab File: BP015564.D
 Acq: 15 Jun 2023 19:50

Instrument :
 BNA_P
 ClientSampleId :
 SLCS379

Tgt Ion: 88 Resp: 41046

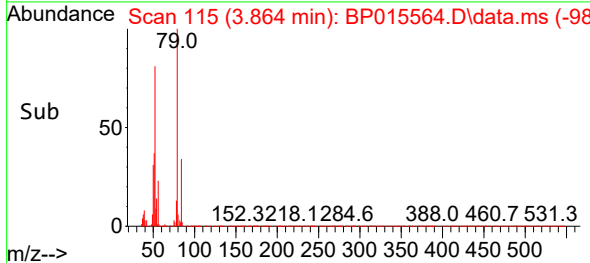
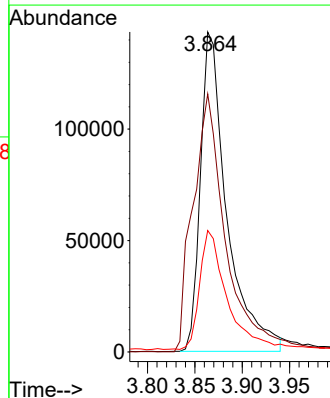
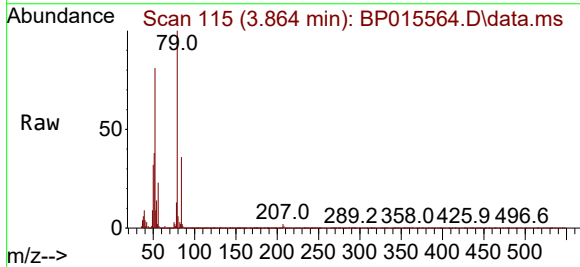
Ion	Ratio	Lower	Upper
88	100		
43	37.8	23.9	35.9#
58	75.1	51.4	77.2

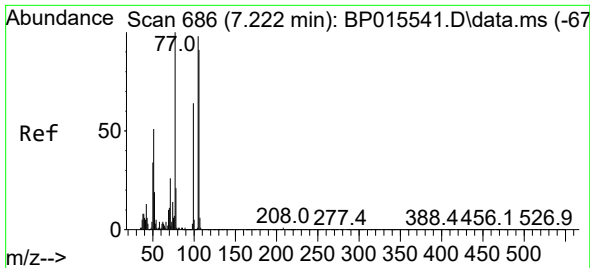


#5
 Pyridine
 Concen: 37.486 ng/uL
 RT: 3.864 min Scan# 115
 Delta R.T. -0.000 min
 Lab File: BP015564.D
 Acq: 15 Jun 2023 19:50

Tgt Ion: 79 Resp: 279032

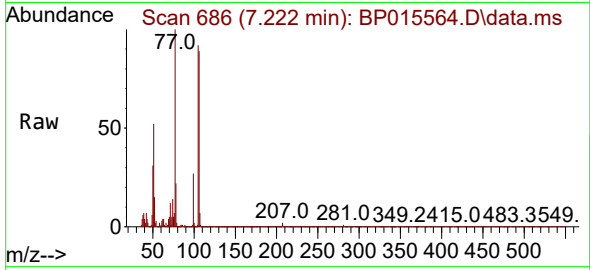
Ion	Ratio	Lower	Upper
79	100		
52	80.6	59.5	89.3
51	37.9	29.8	44.6



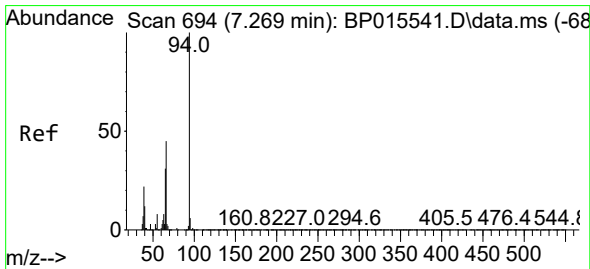
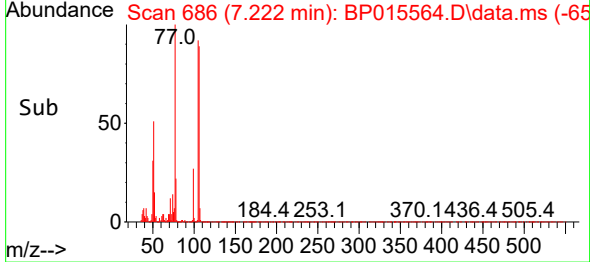
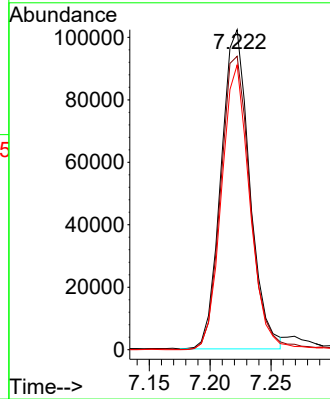


#6
Benzaldehyde
Concen: 46.543 ng/u1
RT: 7.222 min Scan# 686
Delta R.T. -0.000 min
Lab File: BP015564.D
Acq: 15 Jun 2023 19:50

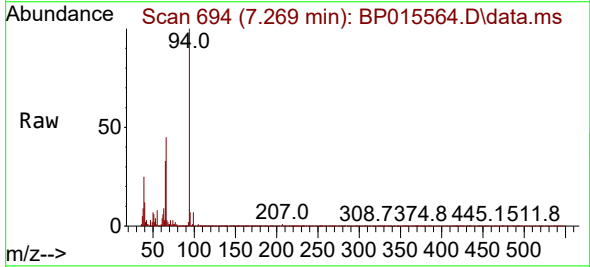
Instrument : BNA_P
ClientSampleId : SLCS379



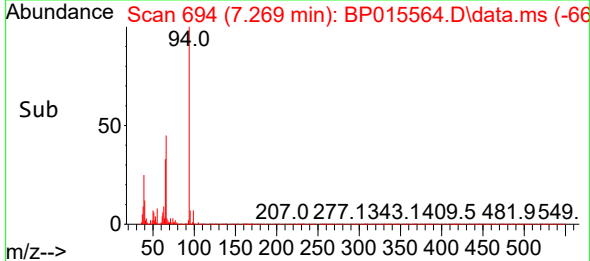
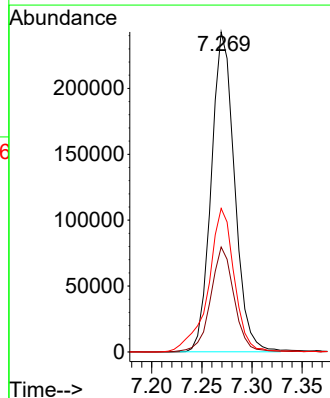
Tgt Ion: 77 Resp: 167757
Ion Ratio Lower Upper
77 100
105 91.7 77.3 115.9
106 89.0 73.3 109.9

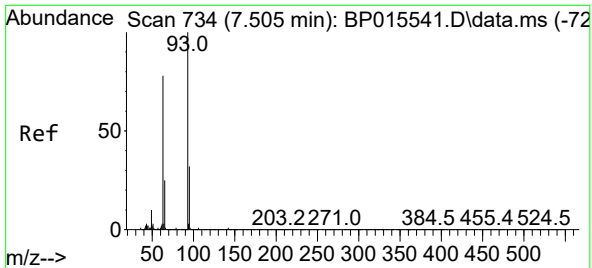


#8
Phenol
Concen: 40.307 ng/u1
RT: 7.269 min Scan# 694
Delta R.T. -0.000 min
Lab File: BP015564.D
Acq: 15 Jun 2023 19:50



Tgt Ion: 94 Resp: 392124
Ion Ratio Lower Upper
94 100
65 32.8 23.5 35.3
66 44.9 34.2 51.4

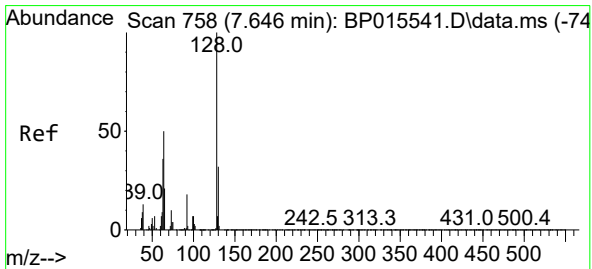
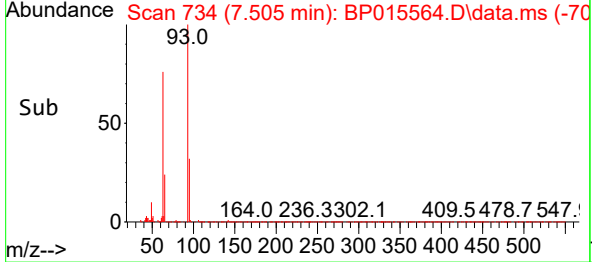
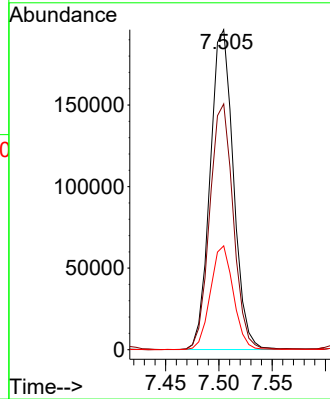
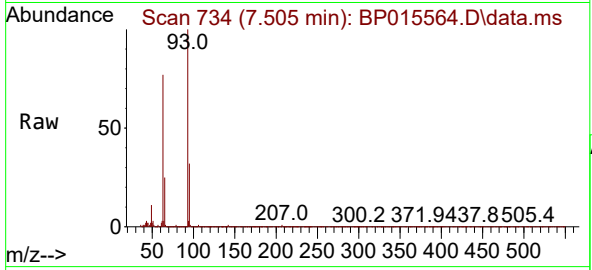




#10
 Bis(2-Chloroethyl)ether
 Concen: 38.813 ng/ul
 RT: 7.505 min Scan# 734
 Delta R.T. -0.000 min
 Lab File: BP015564.D
 Acq: 15 Jun 2023 19:50

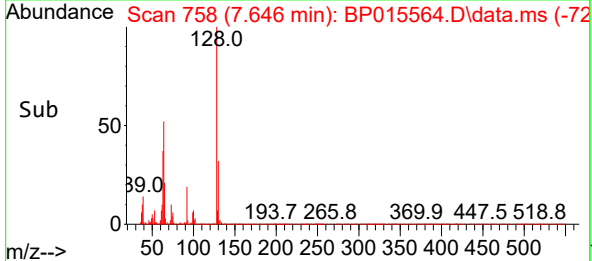
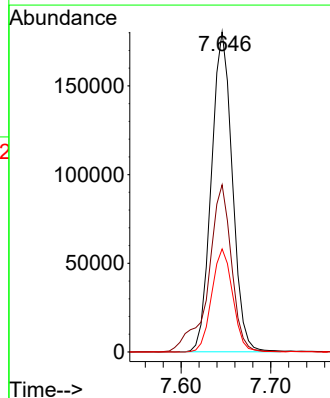
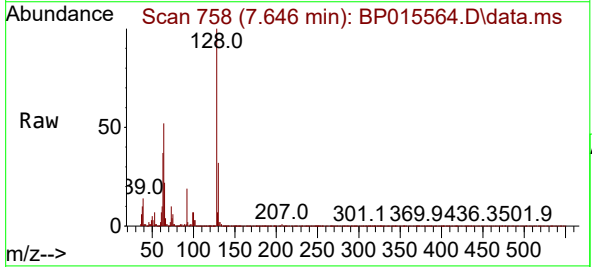
Instrument :
 BNA_P
 ClientSampleId :
 SLCS379

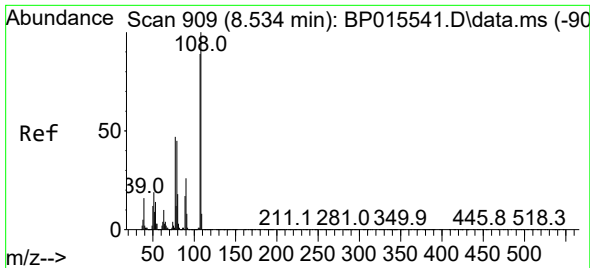
Tgt Ion	Resp	Lower	Upper
93	100		
63	76.8	62.6	93.8
95	32.5	25.5	38.3



#12
 2-Chlorophenol
 Concen: 40.446 ng/ul
 RT: 7.646 min Scan# 758
 Delta R.T. -0.000 min
 Lab File: BP015564.D
 Acq: 15 Jun 2023 19:50

Tgt Ion	Resp	Lower	Upper
128	100		
64	52.3	40.2	60.4
130	32.2	24.5	36.7

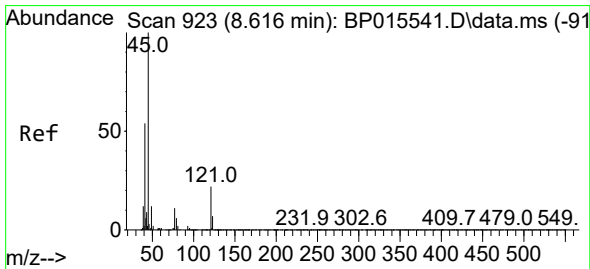
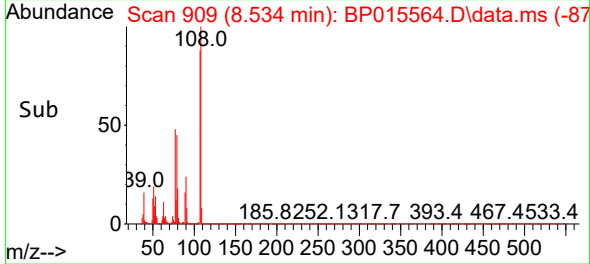
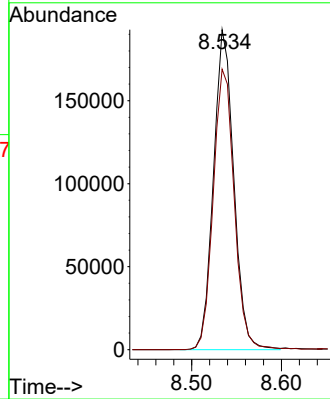
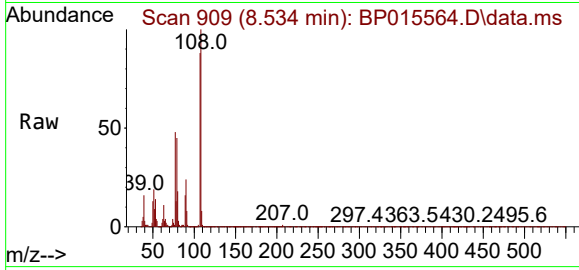




#13
 2-Methylphenol
 Concen: 40.418 ng/ul
 RT: 8.534 min Scan# 909
 Delta R.T. -0.000 min
 Lab File: BP015564.D
 Acq: 15 Jun 2023 19:50

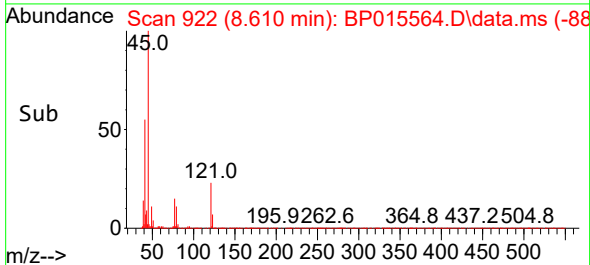
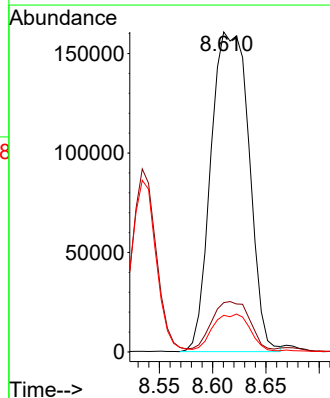
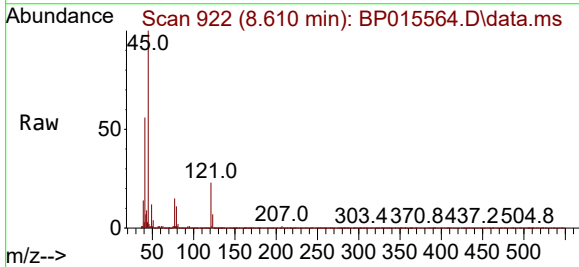
Instrument :
 BNA_P
 ClientSampleId :
 SLCS379

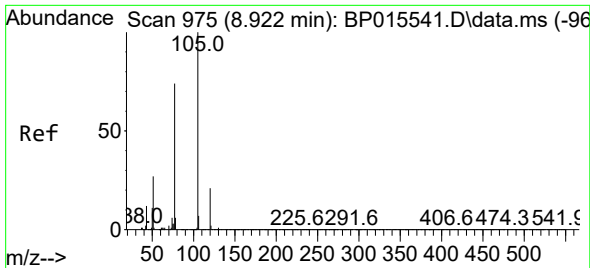
Tgt Ion:108 Resp: 302535
 Ion Ratio Lower Upper
 108 100
 107 87.6 71.2 106.8



#14
 2,2'-oxybis(1-Chloropropane)
 Concen: 39.183 ng/ul
 RT: 8.610 min Scan# 922
 Delta R.T. -0.006 min
 Lab File: BP015564.D
 Acq: 15 Jun 2023 19:50

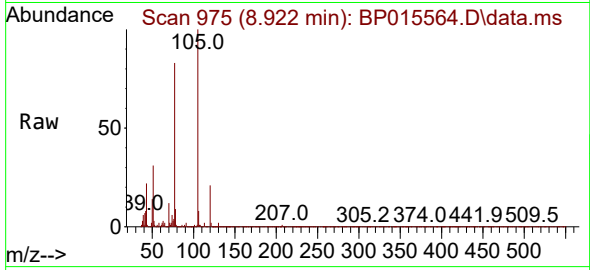
Tgt Ion: 45 Resp: 399393
 Ion Ratio Lower Upper
 45 100
 77 15.4 11.8 17.8
 79 11.5 8.7 13.1





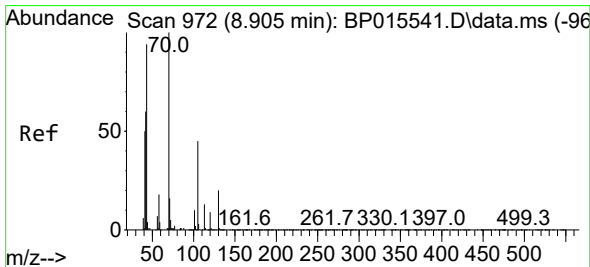
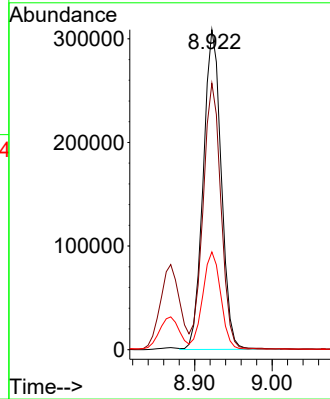
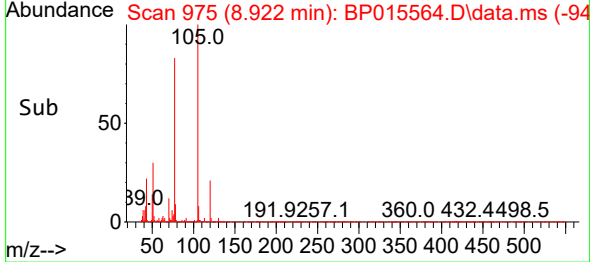
#16
 Acetophenone
 Concen: 40.203 ng/ul
 RT: 8.922 min Scan# 91
 Delta R.T. -0.000 min
 Lab File: BP015564.D
 Acq: 15 Jun 2023 19:50

Instrument :
 BNA_P
 ClientSampleId :
 SLCS379

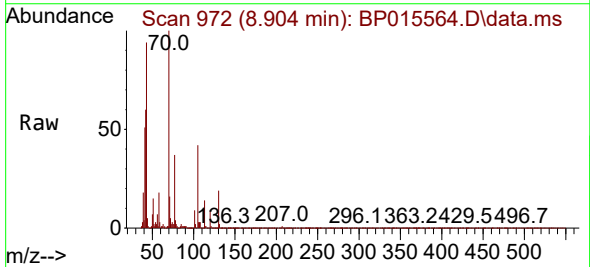


Tgt Ion: 105 Resp: 496547

Ion	Ratio	Lower	Upper
105	100		
77	83.2	64.9	97.3
51	30.6	23.5	35.3

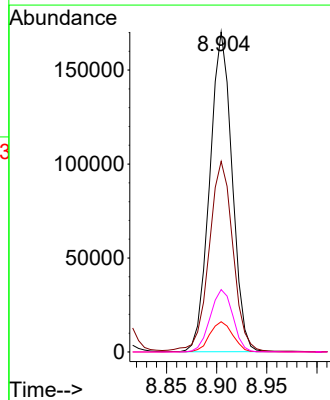
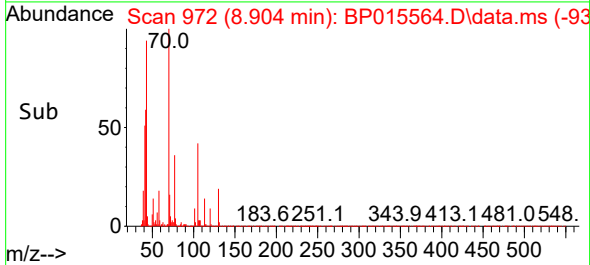


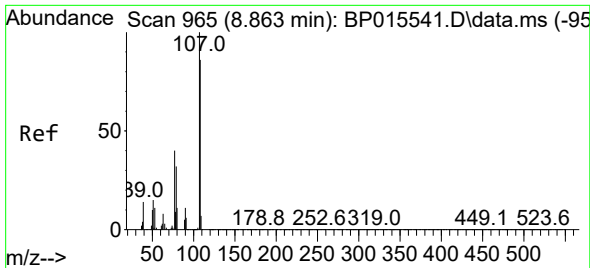
#17
 N-Nitroso-di-n-propylamine
 Concen: 39.547 ng/ul
 RT: 8.904 min Scan# 972
 Delta R.T. -0.000 min
 Lab File: BP015564.D
 Acq: 15 Jun 2023 19:50



Tgt Ion: 70 Resp: 263625

Ion	Ratio	Lower	Upper
70	100		
42	59.5	46.6	69.8
101	9.5	7.8	11.6
130	19.5	15.9	23.9

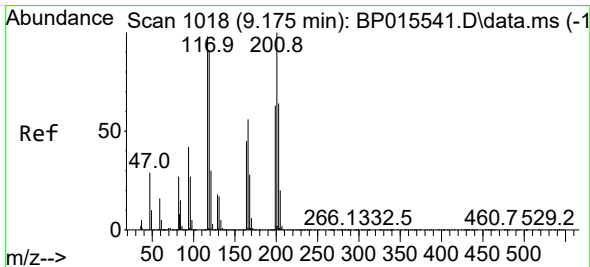
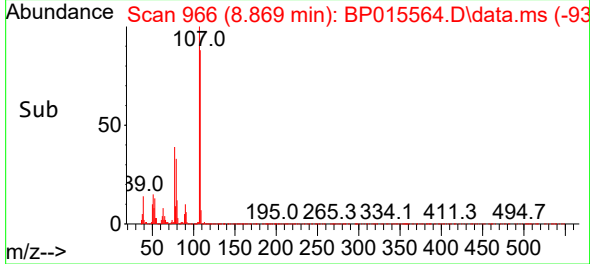
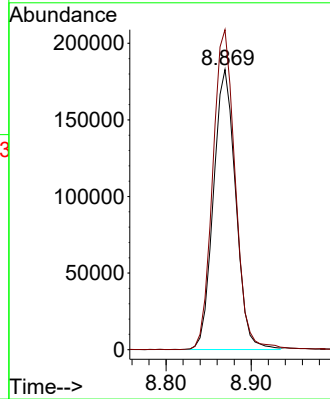
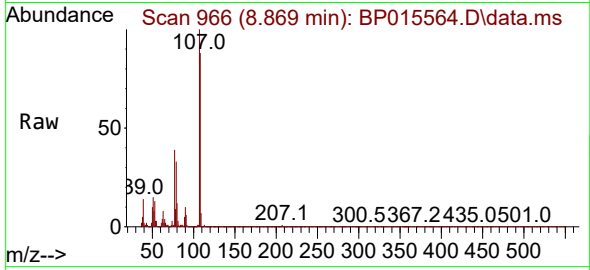




#18
4-Methylphenol
Concen: 40.399 ng/ul
RT: 8.869 min Scan# 965
Delta R.T. 0.006 min
Lab File: BP015564.D
Acq: 15 Jun 2023 19:50

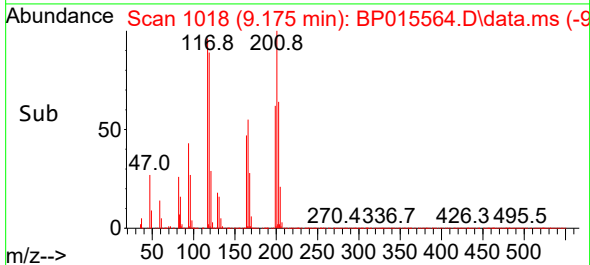
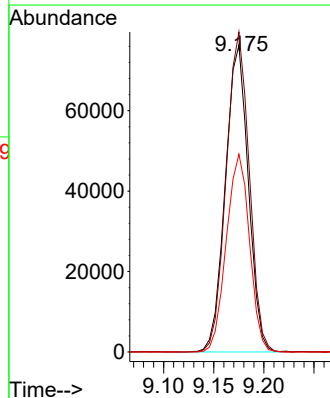
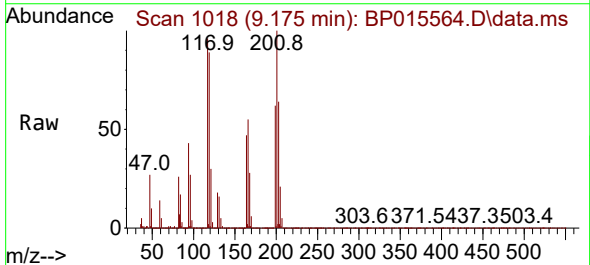
Instrument :
BNA_P
ClientSampleId :
SLCS379

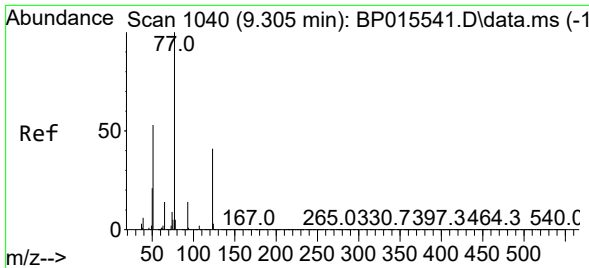
Tgt Ion:108 Resp: 332715
Ion Ratio Lower Upper
108 100
107 114.2 89.3 133.9



#19
Hexachloroethane
Concen: 39.891 ng/ul
RT: 9.175 min Scan# 1018
Delta R.T. -0.000 min
Lab File: BP015564.D
Acq: 15 Jun 2023 19:50

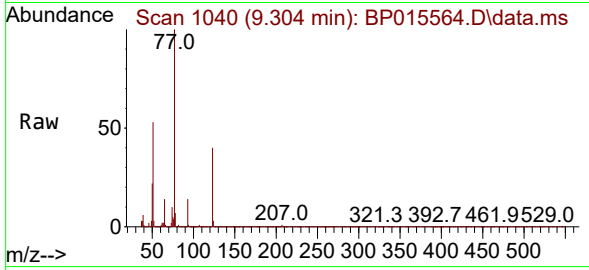
Tgt Ion:117 Resp: 121768
Ion Ratio Lower Upper
117 100
201 104.4 82.8 124.2
199 64.5 50.6 76.0





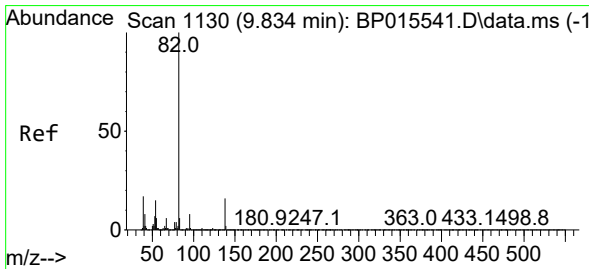
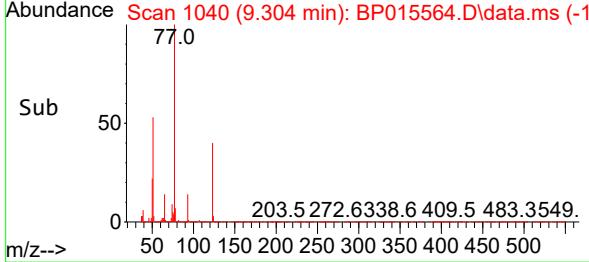
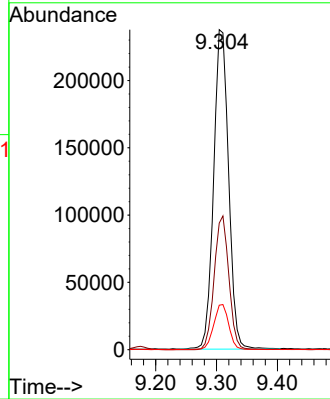
#22
 Nitrobenzene
 Concen: 41.686 ng/ul
 RT: 9.304 min Scan# 1040
 Delta R.T. -0.000 min
 Lab File: BP015564.D
 Acq: 15 Jun 2023 19:50

Instrument :
 BNA_P
 ClientSampleId :
 SLCS379

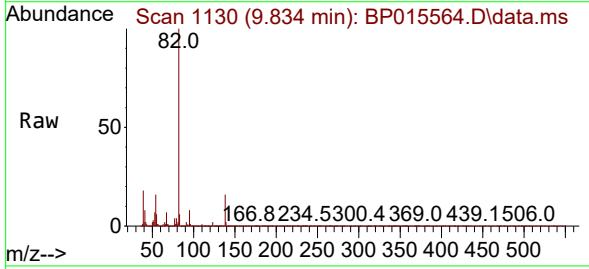


Tgt Ion: 77 Resp: 406082

Ion	Ratio	Lower	Upper
77	100		
123	39.5	33.5	50.3
65	13.9	11.6	17.4

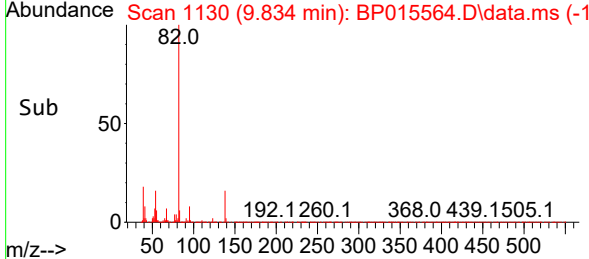
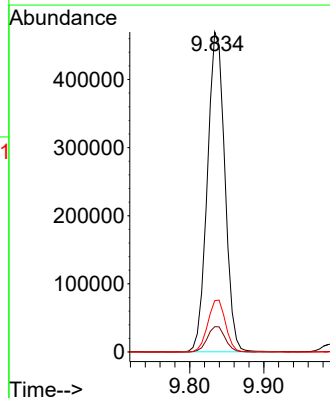


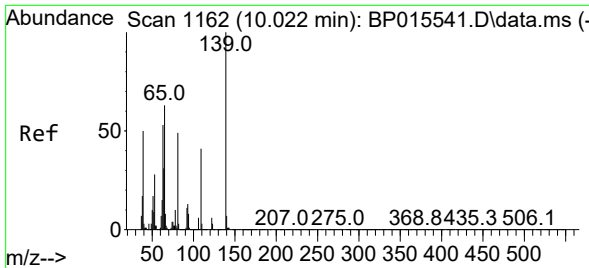
#23
 Isophorone
 Concen: 39.431 ng/ul
 RT: 9.834 min Scan# 1130
 Delta R.T. -0.000 min
 Lab File: BP015564.D
 Acq: 15 Jun 2023 19:50



Tgt Ion: 82 Resp: 768931

Ion	Ratio	Lower	Upper
82	100		
95	7.9	5.8	8.8
138	16.1	13.1	19.7

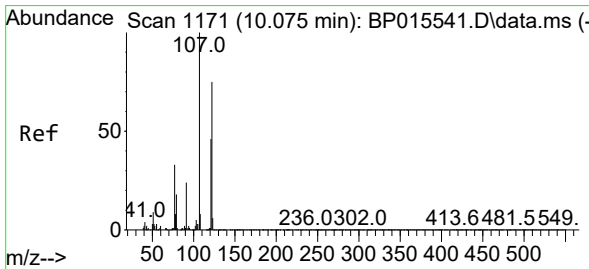
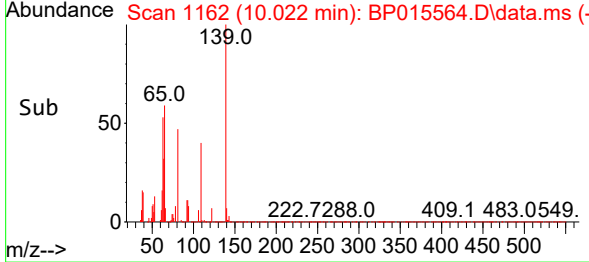
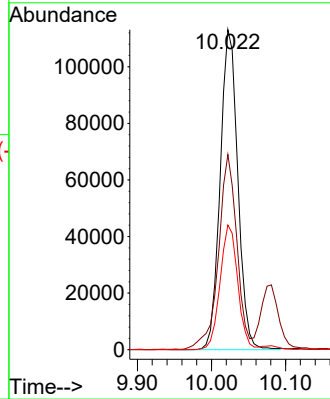
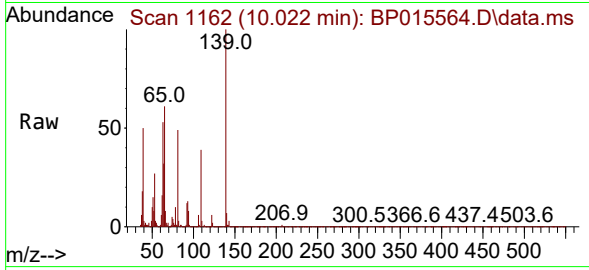




#25
 2-Nitrophenol
 Concen: 41.237 ng/ul
 RT: 10.022 min Scan# 1162
 Delta R.T. -0.000 min
 Lab File: BP015564.D
 Acq: 15 Jun 2023 19:50

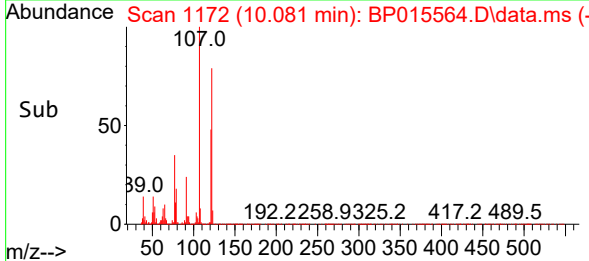
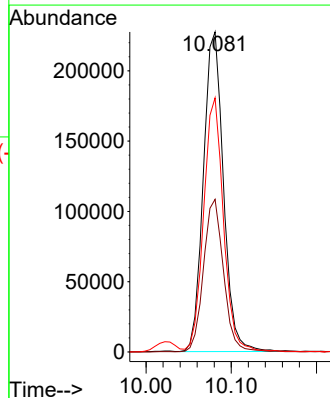
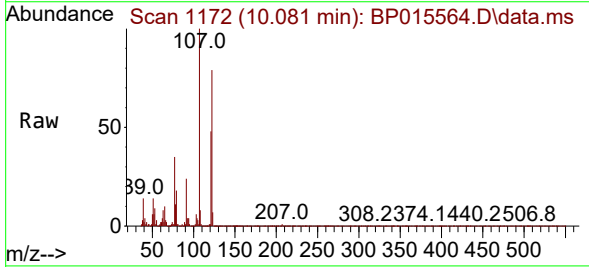
Instrument : BNA_P
 ClientSampleId : SLCS379

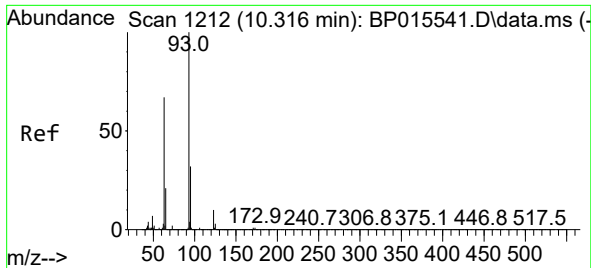
Tgt Ion	Resp	Lower	Upper
139	186770	100	100
65	61.0	46.9	70.3
109	38.9	30.2	45.2



#26
 2,4-Dimethylphenol
 Concen: 38.762 ng/ul
 RT: 10.081 min Scan# 1172
 Delta R.T. 0.006 min
 Lab File: BP015564.D
 Acq: 15 Jun 2023 19:50

Tgt Ion	Resp	Lower	Upper
107	372308	100	100
121	47.7	39.0	58.6
122	79.4	64.8	97.2



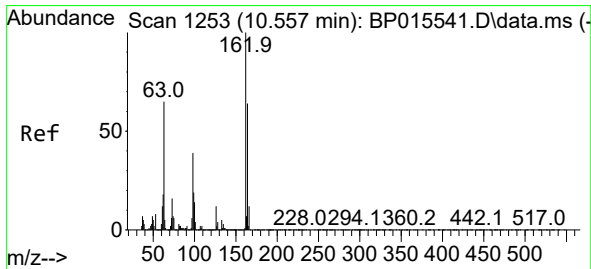
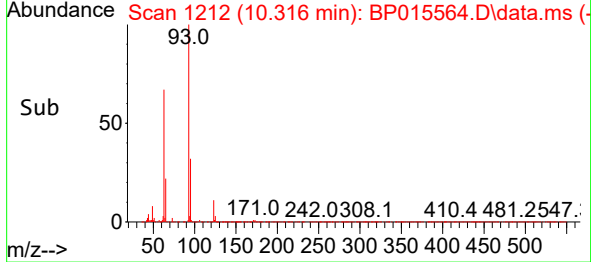
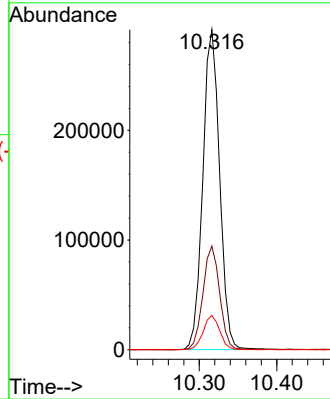
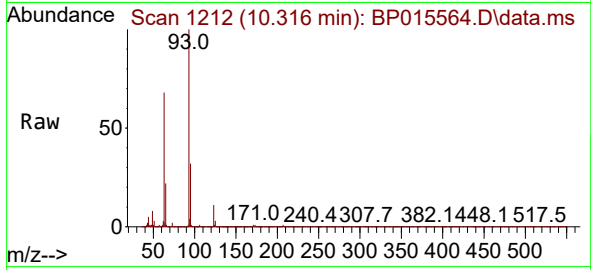


#27
 Bis(2-Chloroethoxy)methane
 Concen: 38.728 ng/ul
 RT: 10.316 min Scan# 11
 Delta R.T. -0.000 min
 Lab File: BP015564.D
 Acq: 15 Jun 2023 19:50

Instrument :
 BNA_P
 ClientSampleId :
 SLCS379

Tgt Ion: 93 Resp: 439074

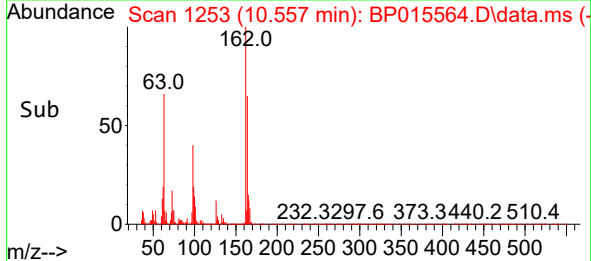
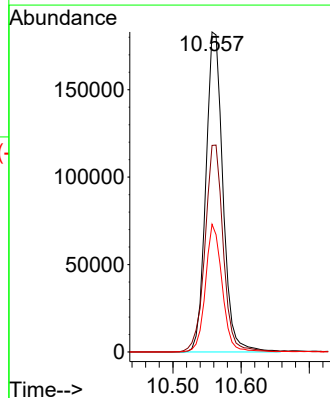
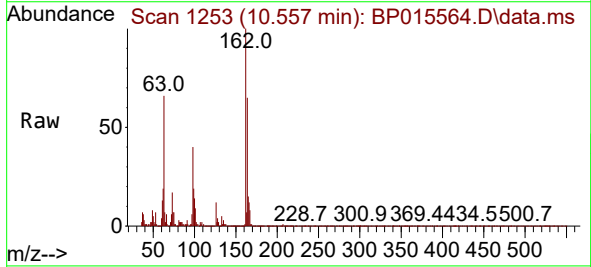
Ion	Ratio	Lower	Upper
93	100		
95	32.3	25.7	38.5
123	10.7	8.6	13.0

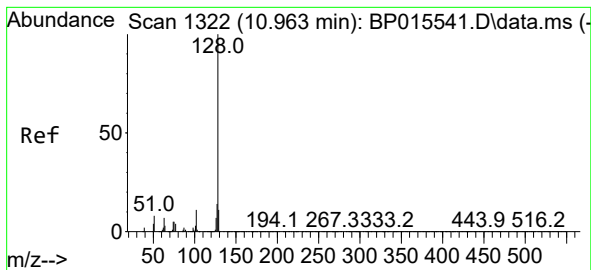


#29
 2,4-Dichlorophenol
 Concen: 42.034 ng/ul
 RT: 10.557 min Scan# 1253
 Delta R.T. -0.000 min
 Lab File: BP015564.D
 Acq: 15 Jun 2023 19:50

Tgt Ion: 162 Resp: 319805

Ion	Ratio	Lower	Upper
162	100		
164	64.6	50.6	76.0
98	39.9	30.2	45.2

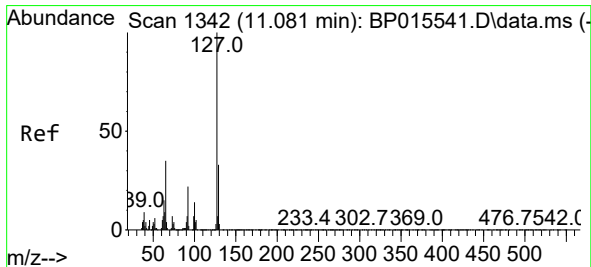
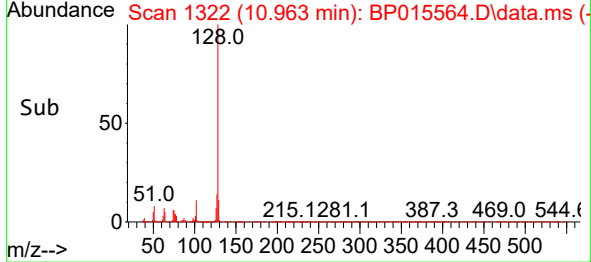
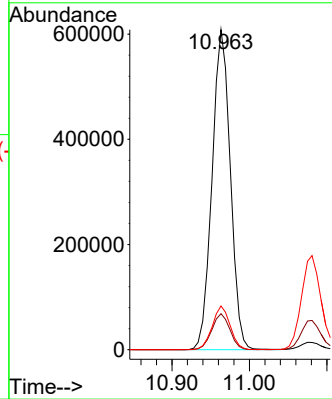
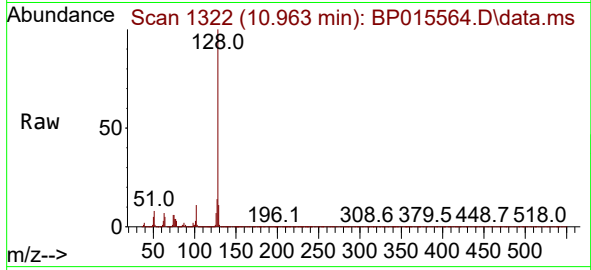




#30
 Naphthalene
 Concen: 39.276 ng/u1
 RT: 10.963 min Scan# 1322
 Delta R.T. -0.000 min
 Lab File: BP015564.D
 Acq: 15 Jun 2023 19:50

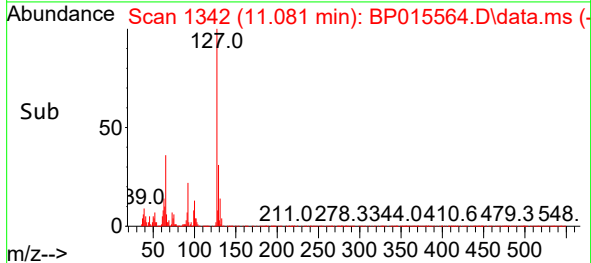
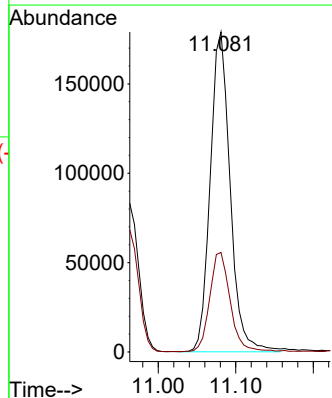
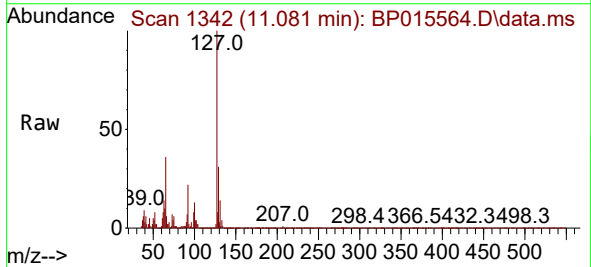
Instrument :
 BNA_P
 ClientSampleId :
 SLCS379

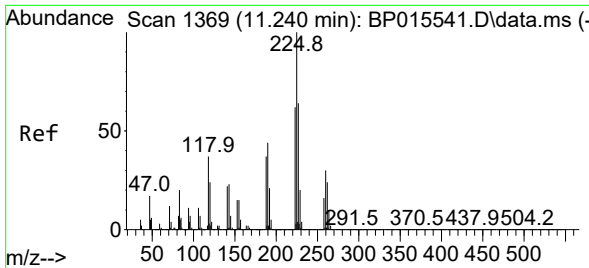
Tgt Ion	Resp	Lower	Upper
128	100		
129	11.2	8.6	13.0
127	13.7	10.5	15.7



#32
 4-Chloroaniline
 Concen: 28.152 ng/u1
 RT: 11.081 min Scan# 1342
 Delta R.T. -0.000 min
 Lab File: BP015564.D
 Acq: 15 Jun 2023 19:50

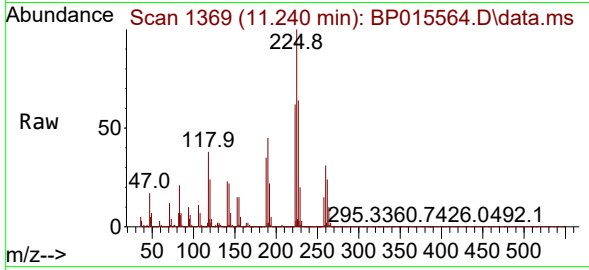
Tgt Ion	Resp	Lower	Upper
127	100		
129	31.1	26.1	39.1



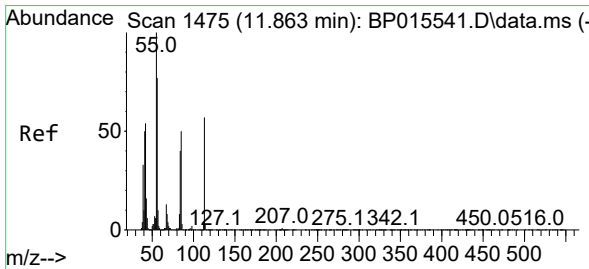
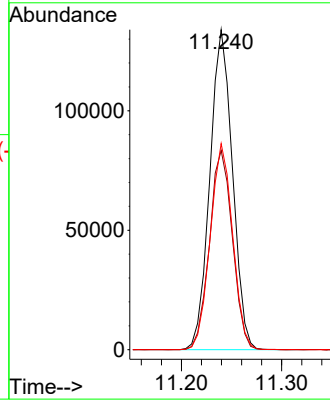
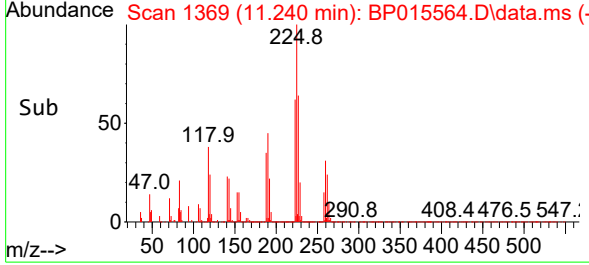


#33
 Hexachlorobutadiene
 Concen: 40.918 ng/ul
 RT: 11.240 min Scan# 1369
 Delta R.T. -0.000 min
 Lab File: BP015564.D
 Acq: 15 Jun 2023 19:50

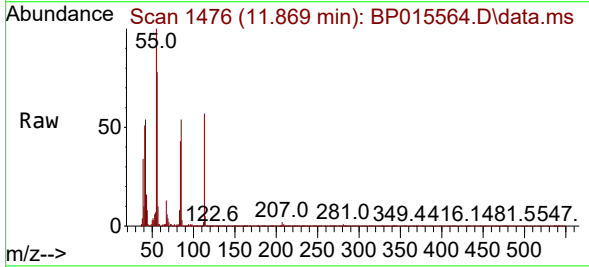
Instrument :
 BNA_P
 ClientSampleId :
 SLCS379



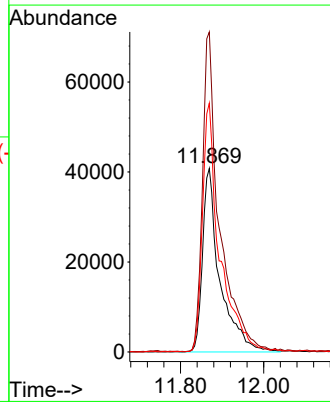
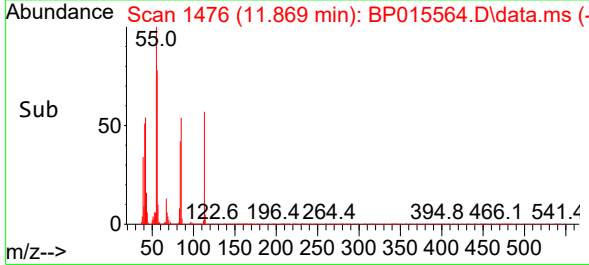
Tgt Ion:225 Resp: 209954
 Ion Ratio Lower Upper
 225 100
 223 62.2 52.0 78.0
 227 64.4 50.6 75.8

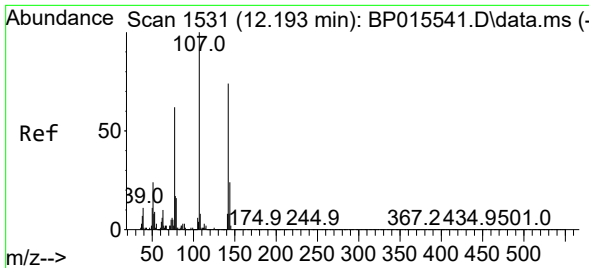


#34
 Caprolactam
 Concen: 41.314 ng/ul
 RT: 11.869 min Scan# 1476
 Delta R.T. 0.006 min
 Lab File: BP015564.D
 Acq: 15 Jun 2023 19:50



Tgt Ion:113 Resp: 118327
 Ion Ratio Lower Upper
 113 100
 55 174.3 127.9 191.9
 56 135.5 101.1 151.7

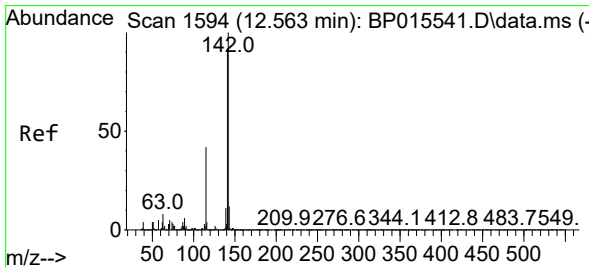
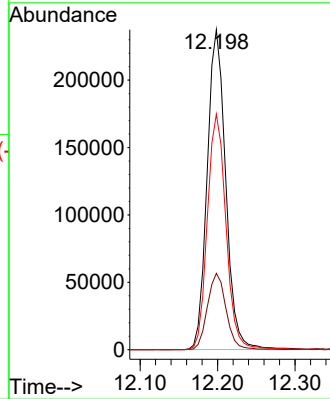
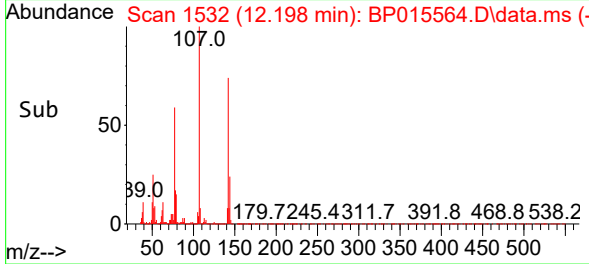
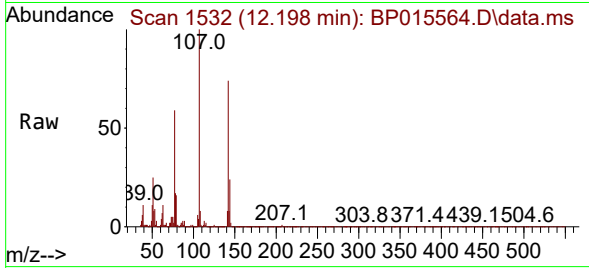




#35
 4-Chloro-3-methylphenol
 Concen: 42.865 ng/ul
 RT: 12.198 min Scan# 1532
 Delta R.T. 0.006 min
 Lab File: BP015564.D
 Acq: 15 Jun 2023 19:50

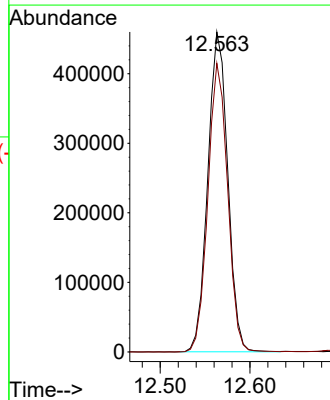
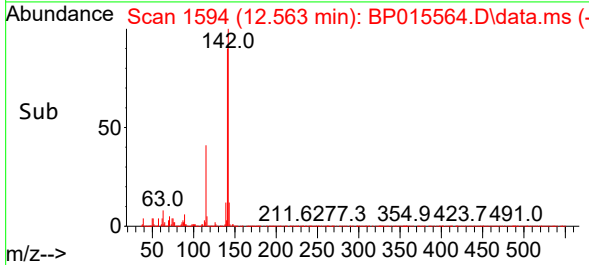
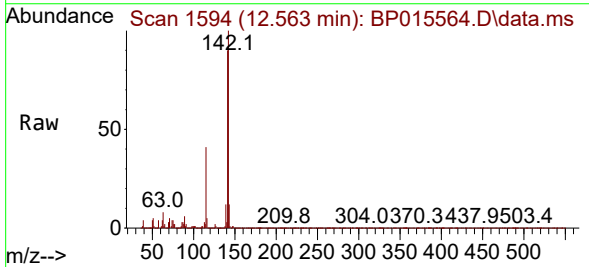
Instrument : BNA_P
 ClientSampleId : SLCS379

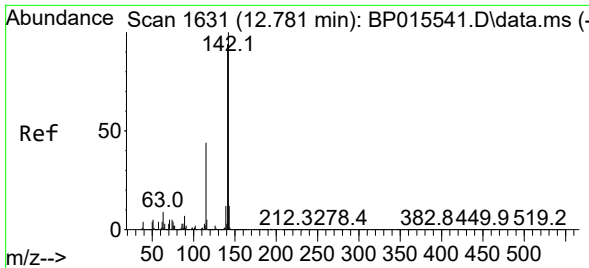
Tgt Ion	Resp	Lower	Upper
107	395143		
144	23.8	19.4	29.0
142	73.6	60.4	90.6



#36
 2-Methylnaphthalene
 Concen: 39.853 ng/ul
 RT: 12.563 min Scan# 1594
 Delta R.T. -0.000 min
 Lab File: BP015564.D
 Acq: 15 Jun 2023 19:50

Tgt Ion	Resp	Lower	Upper
142	710330		
141	90.2	72.0	108.0



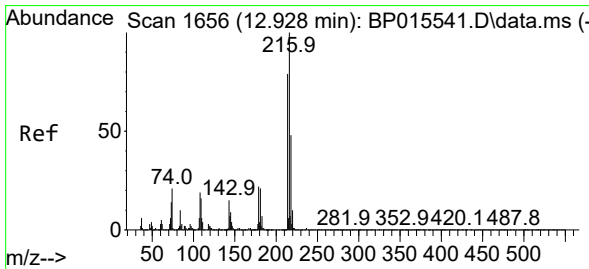
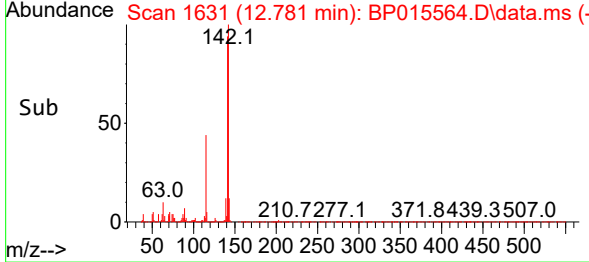
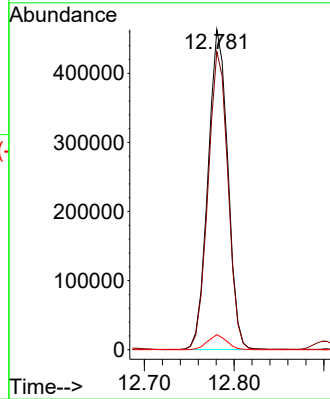
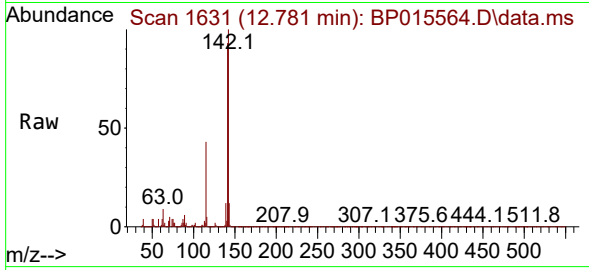


#37
 1-Methylnaphthalene
 Concen: 39.619 ng/ul
 RT: 12.781 min Scan# 1631
 Delta R.T. -0.000 min
 Lab File: BP015564.D
 Acq: 15 Jun 2023 19:50

Instrument : BNA_P
 ClientSampleId : SLCS379

Tgt Ion:142 Resp: 710997

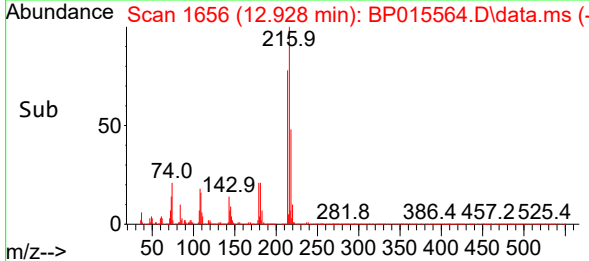
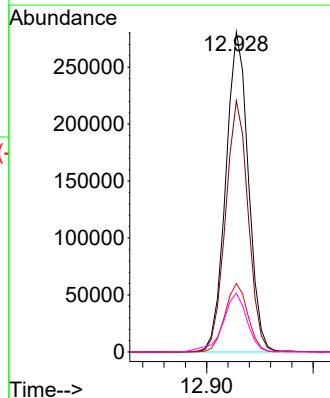
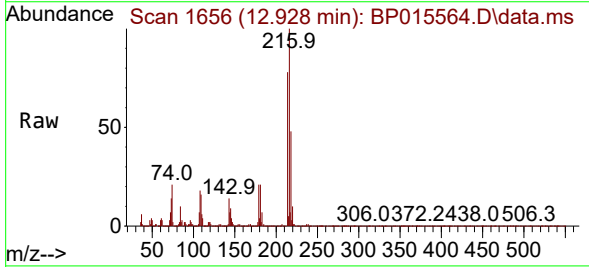
Ion	Ratio	Lower	Upper
142	100		
141	93.1	71.9	107.9
116	4.7	3.4	5.2

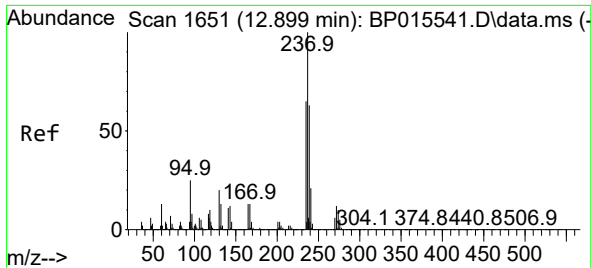


#39
 1,2,4,5-Tetrachlorobenzene
 Concen: 41.022 ng/ul
 RT: 12.928 min Scan# 1656
 Delta R.T. -0.000 min
 Lab File: BP015564.D
 Acq: 15 Jun 2023 19:50

Tgt Ion:216 Resp: 411955

Ion	Ratio	Lower	Upper
216	100		
214	78.5	62.2	93.2
179	21.4	17.4	26.2
108	18.4	14.2	21.4

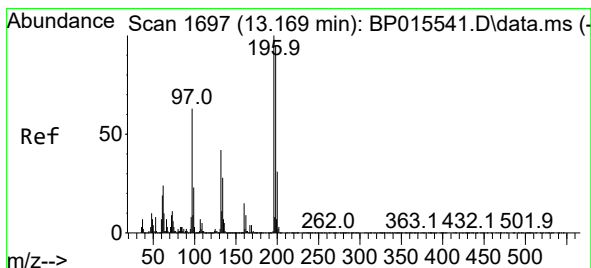
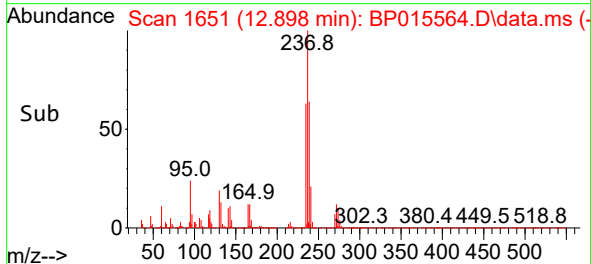
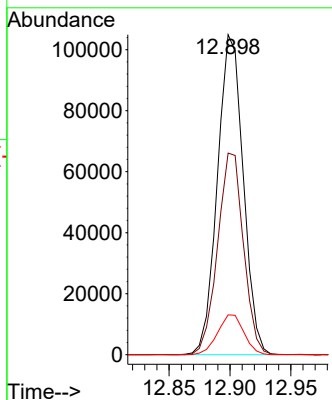
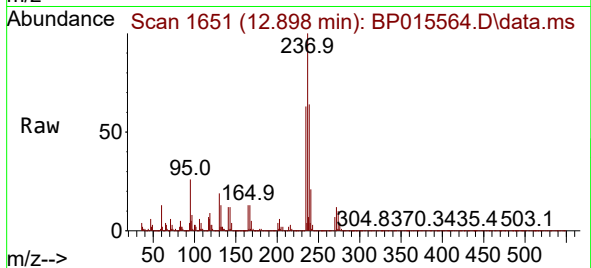




#40
 Hexachlorocyclopentadiene
 Concen: 37.602 ng/ul
 RT: 12.898 min Scan# 1651
 Delta R.T. -0.000 min
 Lab File: BP015564.D
 Acq: 15 Jun 2023 19:50

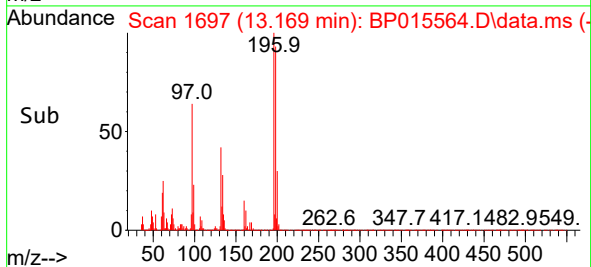
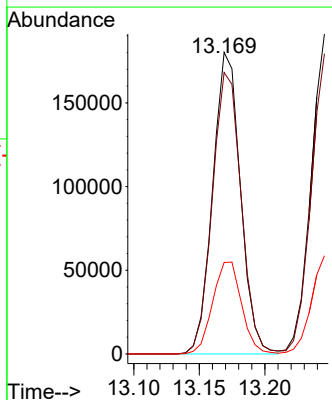
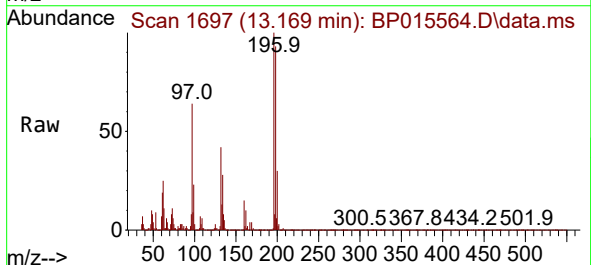
Instrument : BNA_P
 ClientSampleId : SLCS379

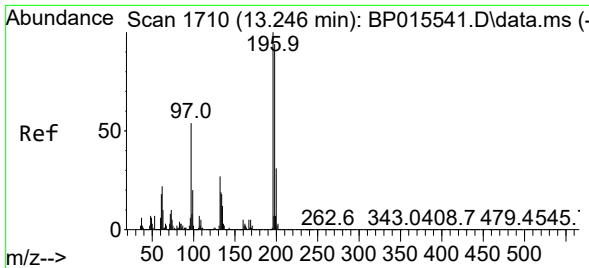
Tgt Ion	Resp	Lower	Upper
237	154785		
235	63.0	48.2	72.2
272	12.5	10.3	15.5



#41
 2,4,6-Trichlorophenol
 Concen: 39.739 ng/ul
 RT: 13.169 min Scan# 1697
 Delta R.T. -0.000 min
 Lab File: BP015564.D
 Acq: 15 Jun 2023 19:50

Tgt Ion	Resp	Lower	Upper
196	265606		
198	93.3	77.8	116.6
200	30.4	25.8	38.6



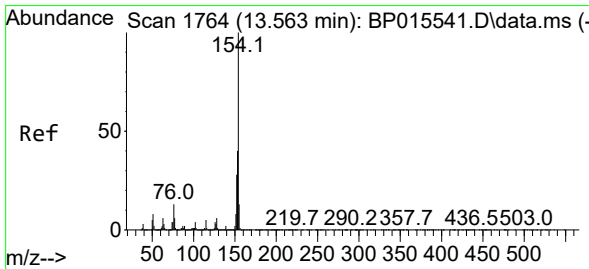
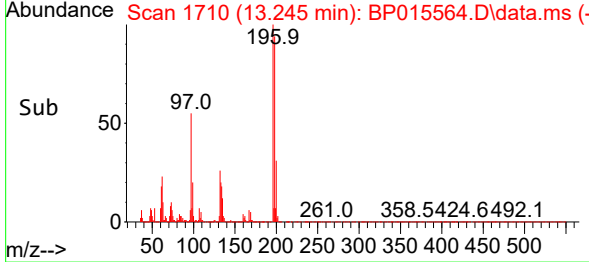
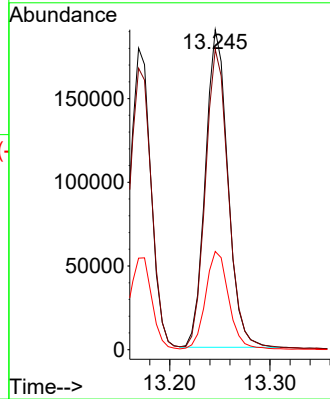
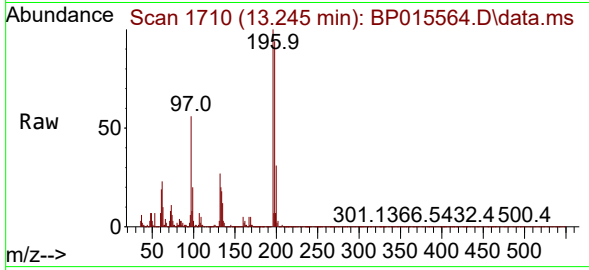


#42
 2,4,5-Trichlorophenol
 Concen: 40.762 ng/ul
 RT: 13.245 min Scan# 1710
 Delta R.T. -0.000 min
 Lab File: BP015564.D
 Acq: 15 Jun 2023 19:50

Instrument : BNA_P
 ClientSampleId : SLCS379

Tgt Ion:196 Resp: 296887

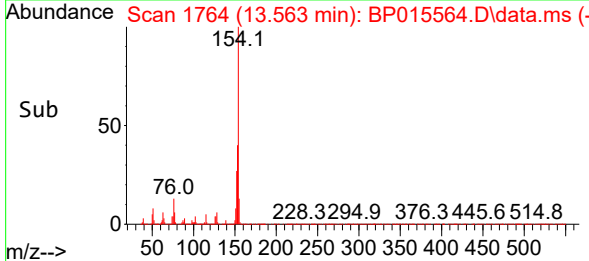
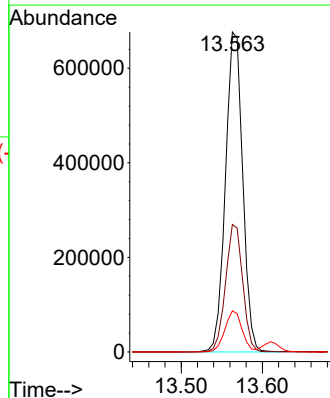
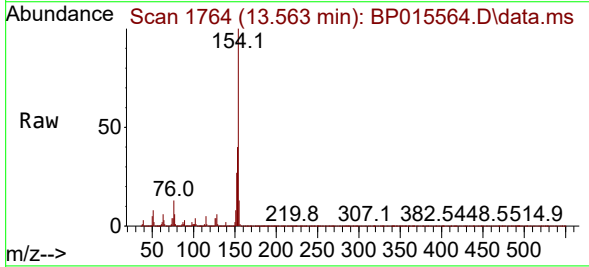
Ion	Ratio	Lower	Upper
196	100		
198	93.9	75.5	113.3
200	30.7	24.7	37.1

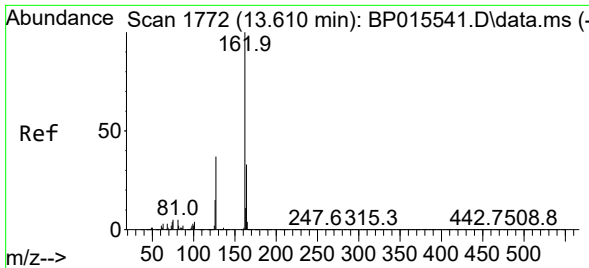


#43
 1,1'-Biphenyl
 Concen: 40.078 ng/ul
 RT: 13.563 min Scan# 1764
 Delta R.T. -0.000 min
 Lab File: BP015564.D
 Acq: 15 Jun 2023 19:50

Tgt Ion:154 Resp: 999533

Ion	Ratio	Lower	Upper
154	100		
153	39.8	32.2	48.2
76	12.9	10.4	15.6



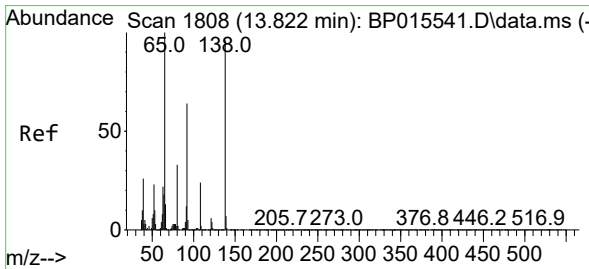
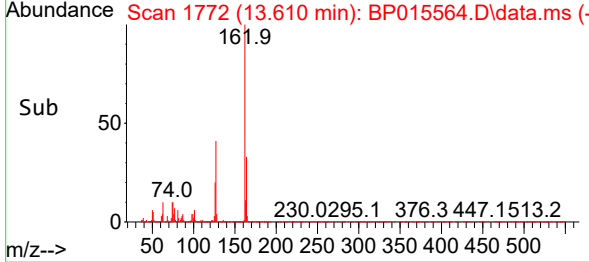
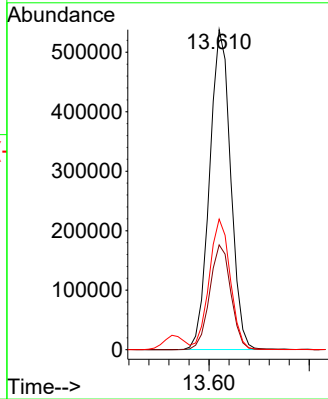
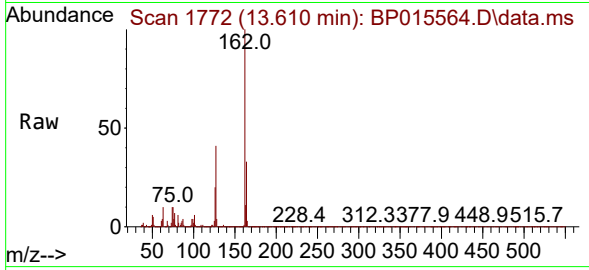


#44
 2-Chloronaphthalene
 Concen: 40.069 ng/ul
 RT: 13.610 min Scan# 1772
 Delta R.T. -0.000 min
 Lab File: BP015564.D
 Acq: 15 Jun 2023 19:50

Instrument : BNA_P
 ClientSampleId : SLCS379

Tgt Ion:162 Resp: 784049

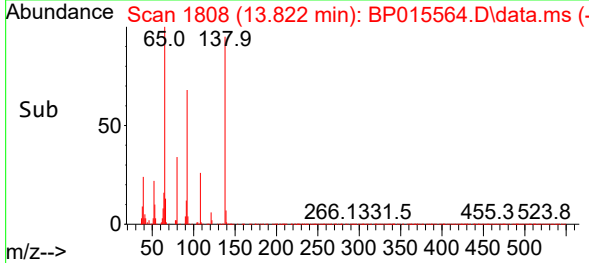
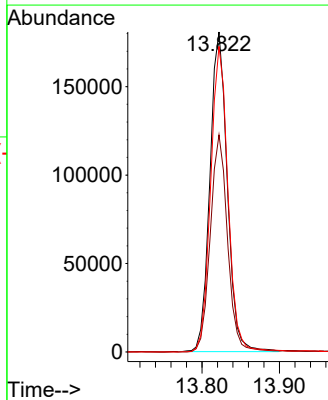
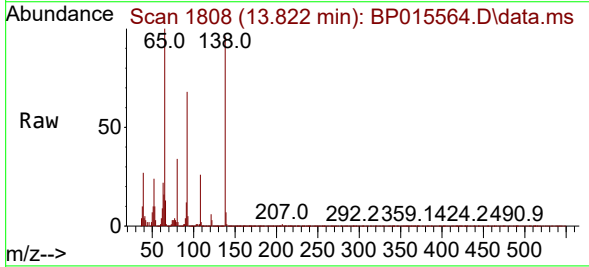
Ion	Ratio	Lower	Upper
162	100		
164	32.8	27.0	40.6
127	40.8	32.2	48.4

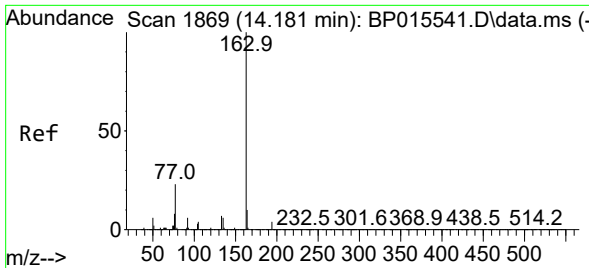


#45
 2-Nitroaniline
 Concen: 44.955 ng/ul
 RT: 13.822 min Scan# 1808
 Delta R.T. -0.000 min
 Lab File: BP015564.D
 Acq: 15 Jun 2023 19:50

Tgt Ion: 65 Resp: 281526

Ion	Ratio	Lower	Upper
65	100		
92	67.8	55.4	83.2
138	95.5	78.8	118.2

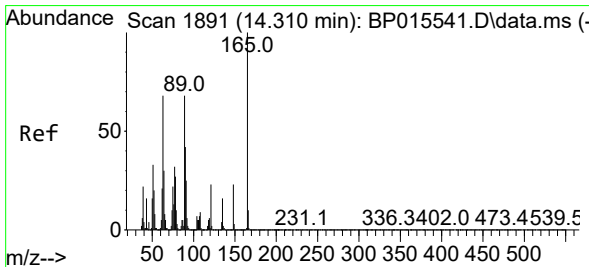
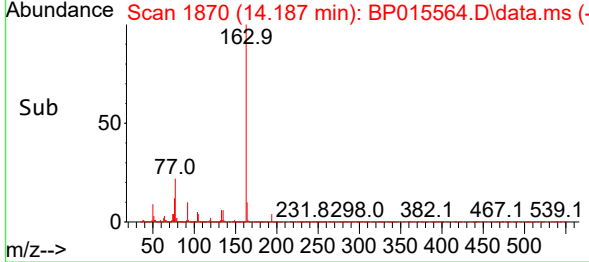
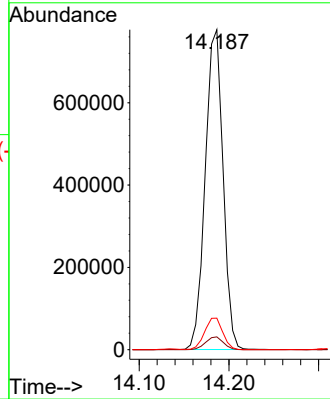
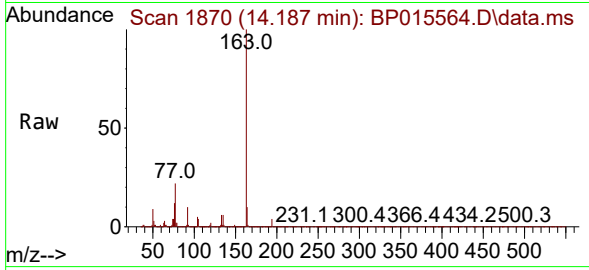




#47
 Dimethylphthalate
 Concen: 40.711 ng/ul
 RT: 14.187 min Scan# 1870
 Delta R.T. 0.006 min
 Lab File: BP015564.D
 Acq: 15 Jun 2023 19:50

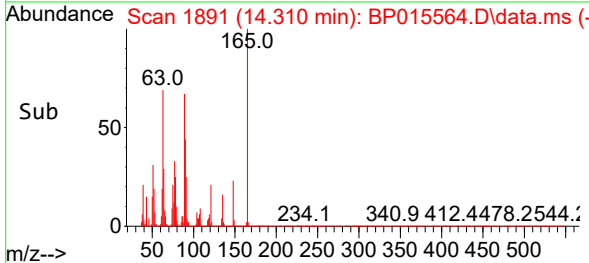
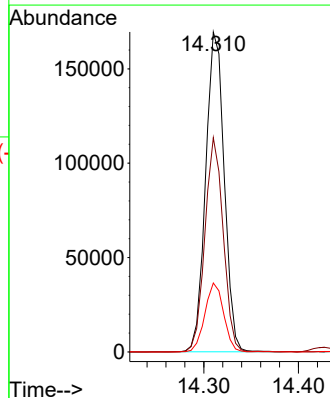
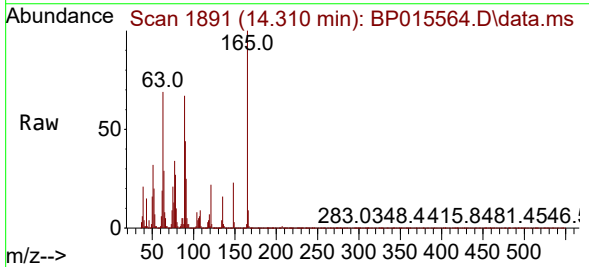
Instrument :
 BNA_P
 ClientSampleId :
 SLCS379

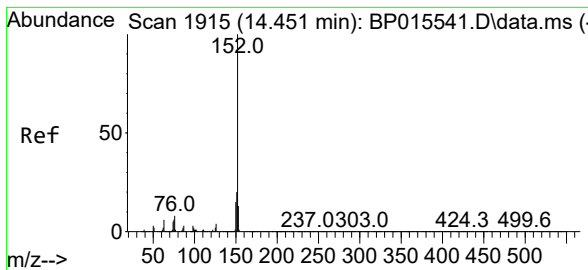
Tgt Ion:163 Resp: 1068946
 Ion Ratio Lower Upper
 163 100
 194 4.0 3.2 4.8
 164 9.9 8.2 12.2



#48
 2,6-Dinitrotoluene
 Concen: 42.929 ng/ul
 RT: 14.310 min Scan# 1891
 Delta R.T. -0.000 min
 Lab File: BP015564.D
 Acq: 15 Jun 2023 19:50

Tgt Ion:165 Resp: 230938
 Ion Ratio Lower Upper
 165 100
 89 67.0 51.5 77.3
 121 21.5 17.3 25.9



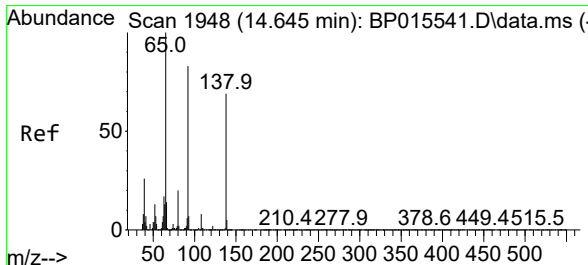
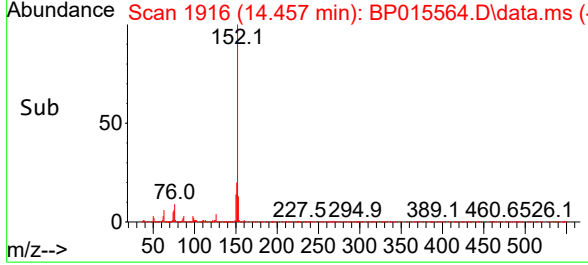
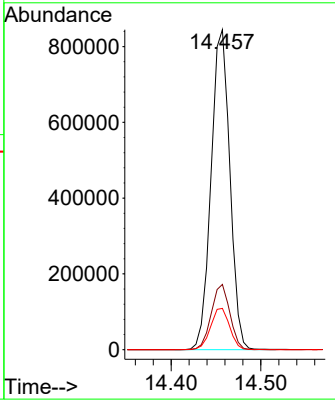
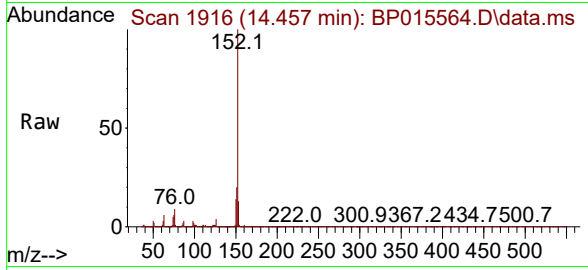


#50
 Acenaphthylene
 Concen: 39.857 ng/ul
 RT: 14.457 min Scan# 1916
 Delta R.T. 0.006 min
 Lab File: BP015564.D
 Acq: 15 Jun 2023 19:50

Instrument : BNA_P
 Client SampleId : SLCS379

Tgt Ion:152 Resp: 1227369

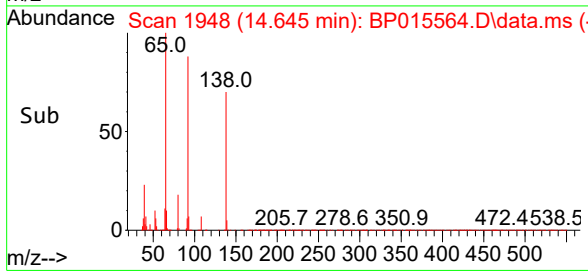
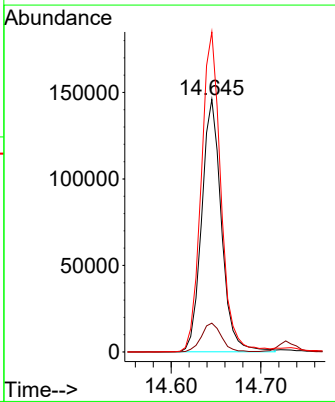
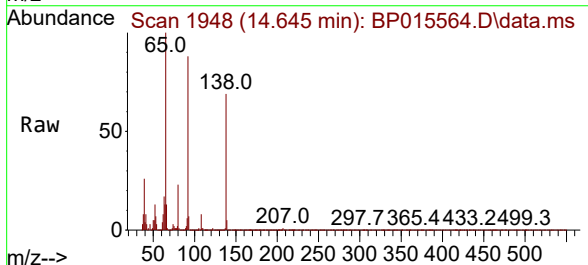
Ion	Ratio	Lower	Upper
152	100		
151	20.4	16.0	24.0
153	12.9	10.6	15.8

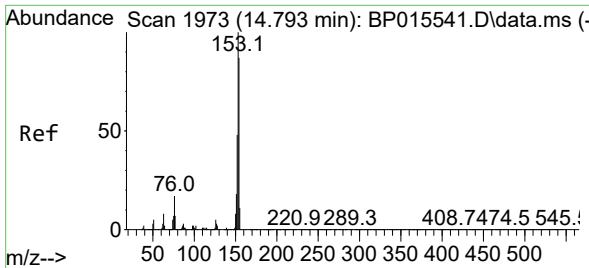


#51
 3-Nitroaniline
 Concen: 50.213 ng/ul
 RT: 14.645 min Scan# 1948
 Delta R.T. -0.000 min
 Lab File: BP015564.D
 Acq: 15 Jun 2023 19:50

Tgt Ion:138 Resp: 222989

Ion	Ratio	Lower	Upper
138	100		
108	11.4	8.4	12.6
92	126.7	98.0	147.0

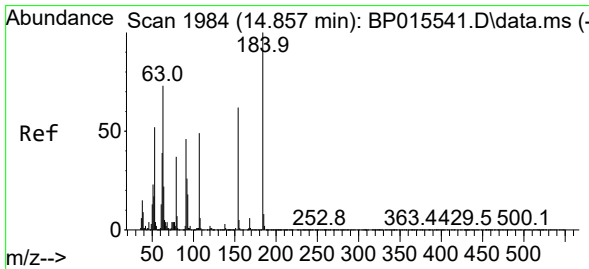
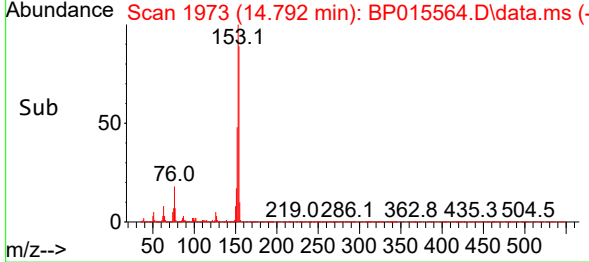
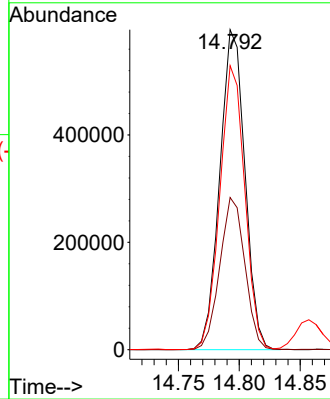
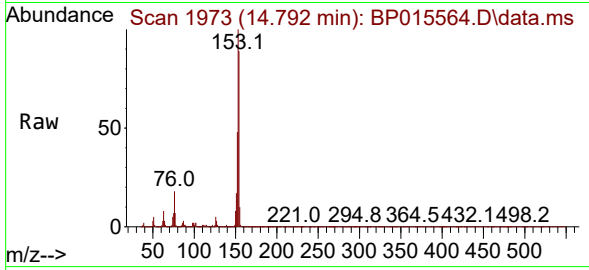




#52
 Acenaphthene
 Concen: 40.264 ng/uI
 RT: 14.792 min Scan# 1973
 Delta R.T. -0.000 min
 Lab File: BP015564.D
 Acq: 15 Jun 2023 19:50

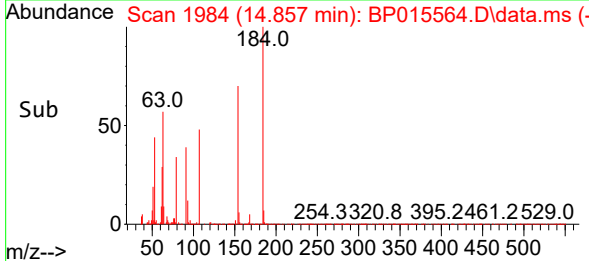
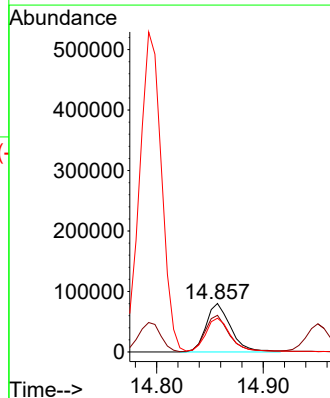
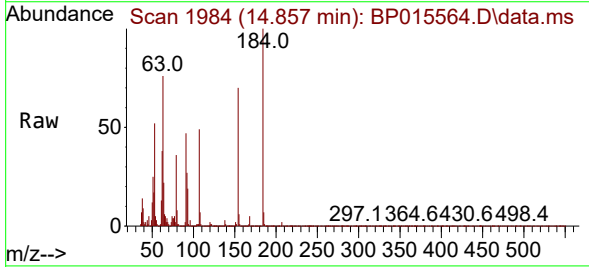
Instrument :
 BNA_P
 ClientSampleId :
 SLCS379

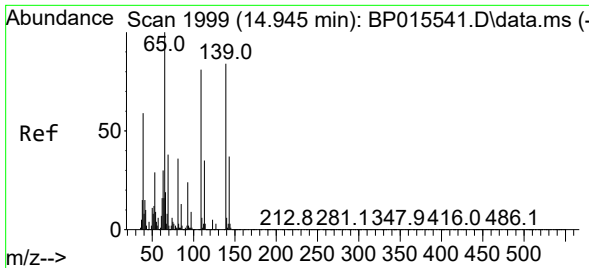
Tgt Ion	Resp	Lower	Upper
153	857083		
152	47.6	38.3	57.5
154	88.8	69.8	104.6



#53
 2,4-Dinitrophenol
 Concen: 39.701 ng/uI
 RT: 14.857 min Scan# 1984
 Delta R.T. -0.000 min
 Lab File: BP015564.D
 Acq: 15 Jun 2023 19:50

Tgt Ion	Resp	Lower	Upper
184	128474		
63	75.8	59.0	88.4
154	69.6	57.6	86.4



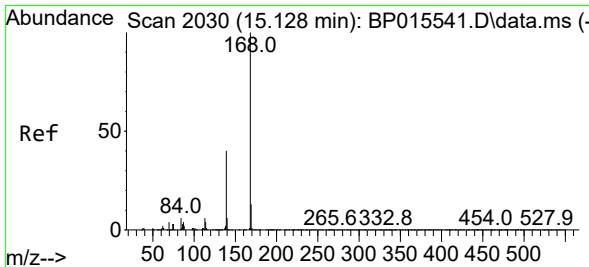
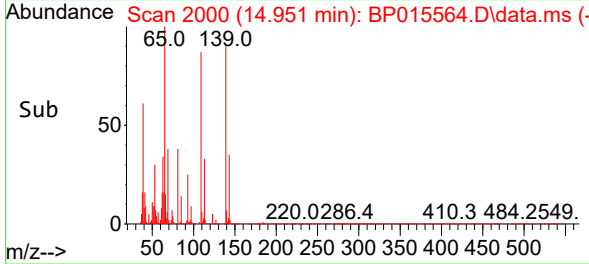
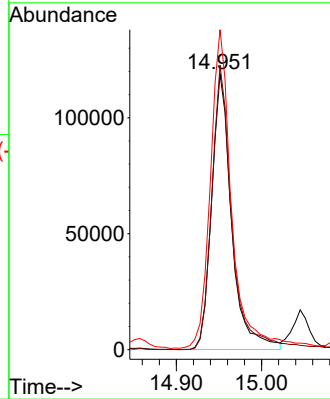
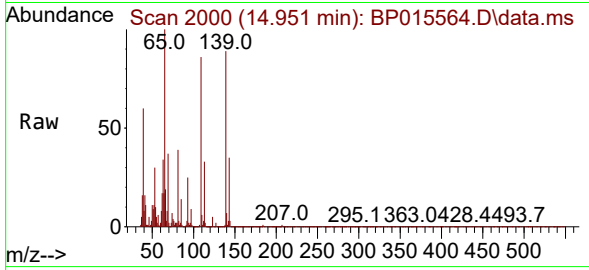


#55
 4-Nitrophenol
 Concen: 44.142 ng/ul
 RT: 14.951 min Scan# 2000
 Delta R.T. 0.006 min
 Lab File: BP015564.D
 Acq: 15 Jun 2023 19:50

Instrument :
 BNA_P
 ClientSampleId :
 SLCS379

Tgt Ion:109 Resp: 193904

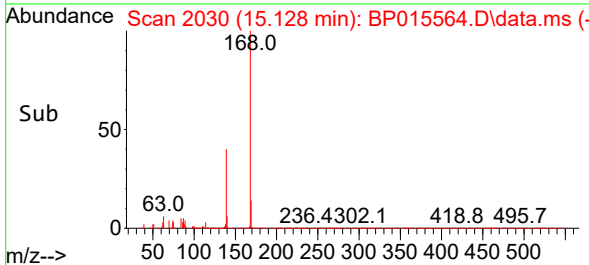
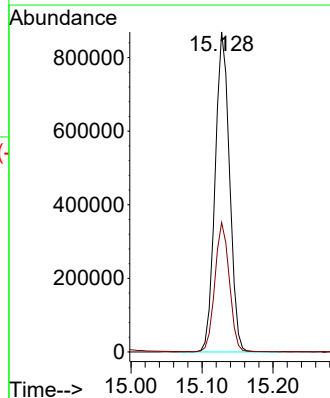
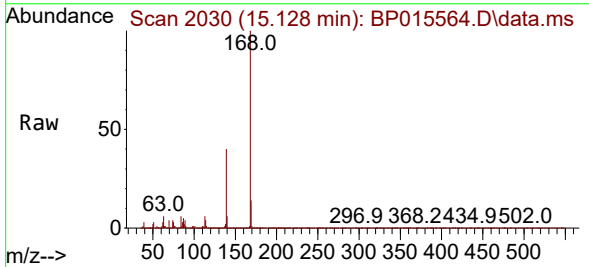
Ion	Ratio	Lower	Upper
109	100		
139	103.2	89.1	133.7
65	116.1	103.1	154.7

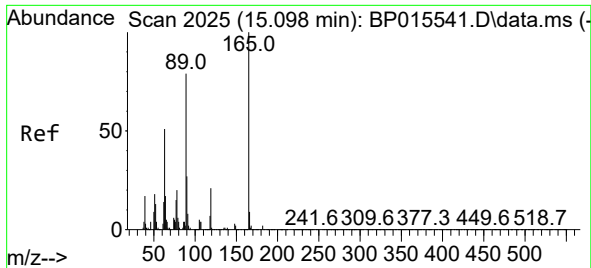


#56
 Dibenzofuran
 Concen: 40.653 ng/ul
 RT: 15.128 min Scan# 2030
 Delta R.T. -0.000 min
 Lab File: BP015564.D
 Acq: 15 Jun 2023 19:50

Tgt Ion:168 Resp: 1226504

Ion	Ratio	Lower	Upper
168	100		
139	40.5	31.2	46.8



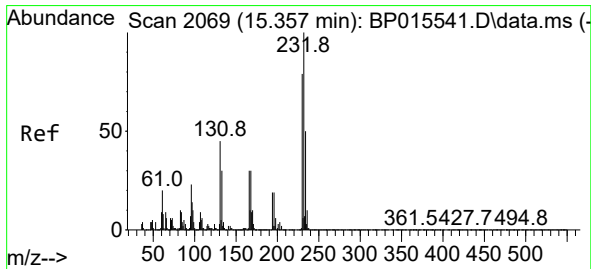
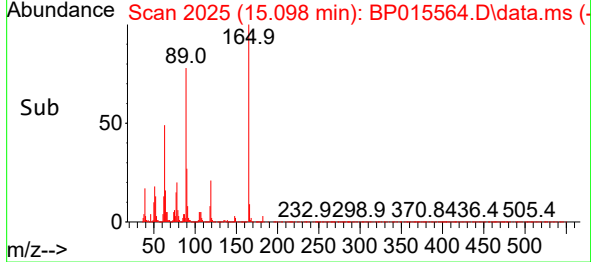
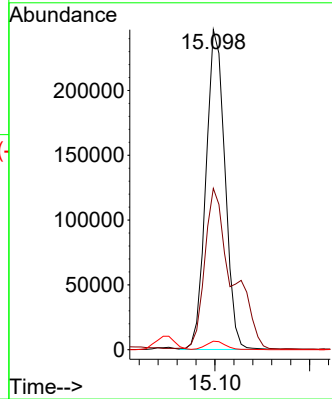
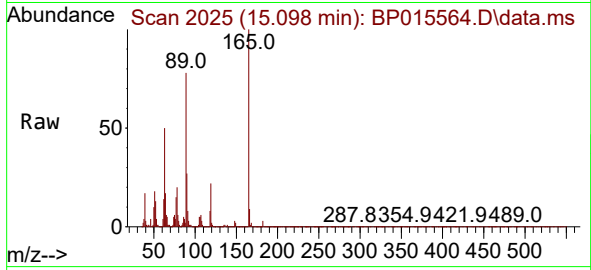


#57
 2,4-Dinitrotoluene
 Concen: 43.458 ng/ul
 RT: 15.098 min Scan# 2025
 Delta R.T. -0.000 min
 Lab File: BP015564.D
 Acq: 15 Jun 2023 19:50

Instrument :
 BNA_P
 ClientSampleId :
 SLCS379

Tgt Ion:165 Resp: 343843

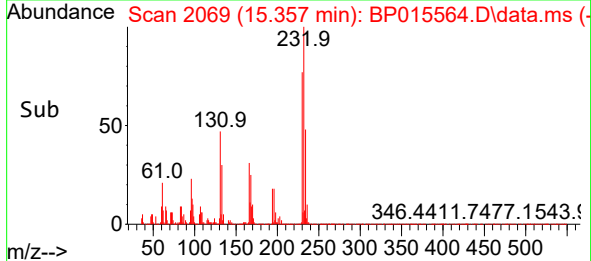
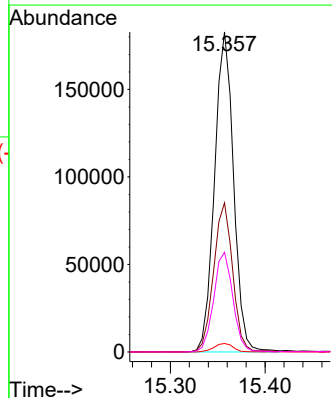
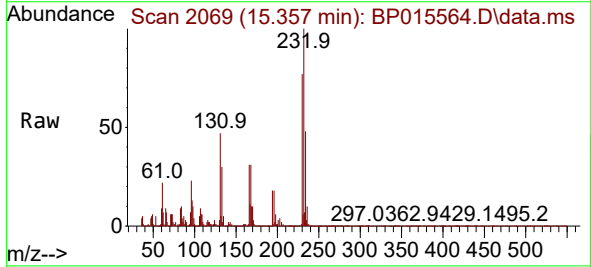
Ion	Ratio	Lower	Upper
165	100		
63	50.4	39.1	58.7
182	2.7	2.2	3.4

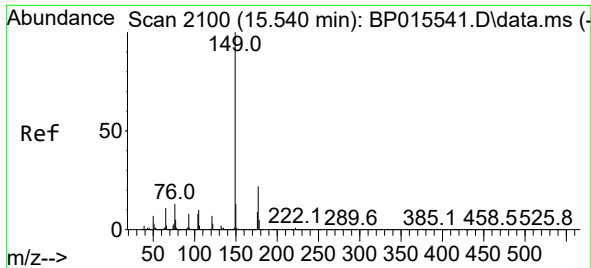


#58
 2,3,4,6-Tetrachlorophenol
 Concen: 38.827 ng/ul
 RT: 15.357 min Scan# 2069
 Delta R.T. -0.000 min
 Lab File: BP015564.D
 Acq: 15 Jun 2023 19:50

Tgt Ion:232 Resp: 255336

Ion	Ratio	Lower	Upper
232	100		
131	46.6	37.8	56.8
130	2.6	1.9	2.9
166	31.2	26.2	39.2

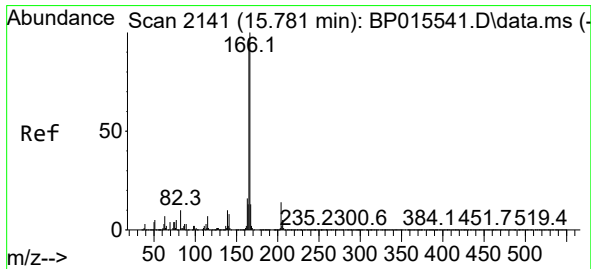
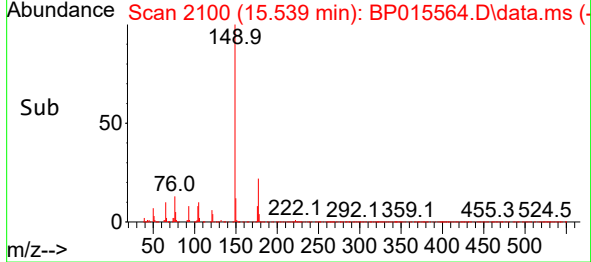
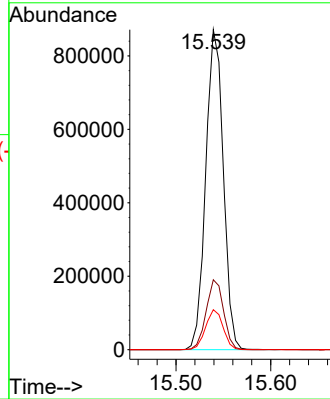
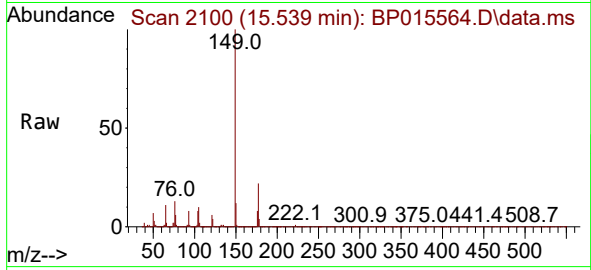




#59
 Diethylphthalate
 Concen: 41.733 ng/ul
 RT: 15.539 min Scan# 2100
 Delta R.T. -0.000 min
 Lab File: BP015564.D
 Acq: 15 Jun 2023 19:50

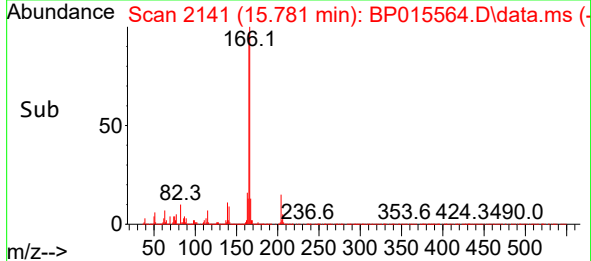
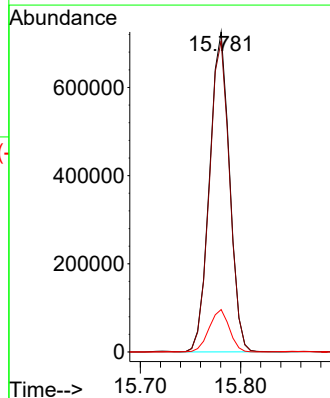
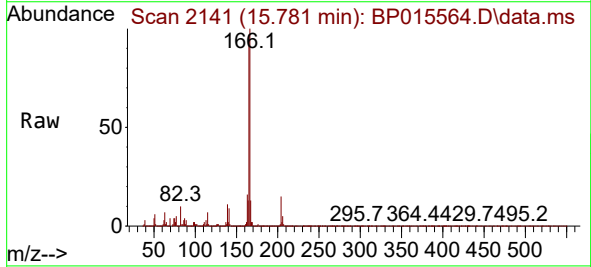
Instrument :
 BNA_P
 ClientSampleId :
 SLCS379

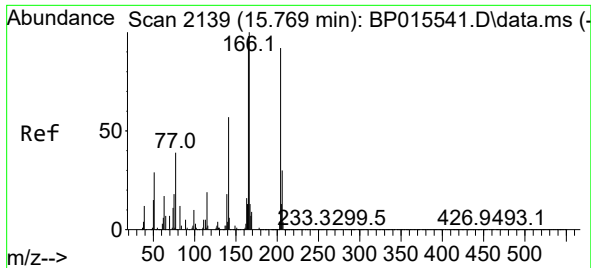
Tgt Ion:149 Resp: 1123063
 Ion Ratio Lower Upper
 149 100
 177 21.9 17.8 26.8
 150 12.5 10.1 15.1



#61
 Fluorene
 Concen: 40.942 ng/ul
 RT: 15.781 min Scan# 2141
 Delta R.T. -0.000 min
 Lab File: BP015564.D
 Acq: 15 Jun 2023 19:50

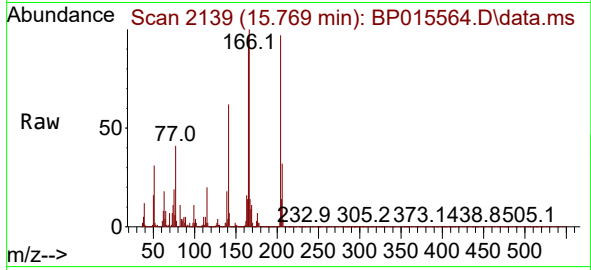
Tgt Ion:166 Resp: 1006924
 Ion Ratio Lower Upper
 166 100
 165 97.2 79.1 118.7
 167 13.2 10.6 16.0



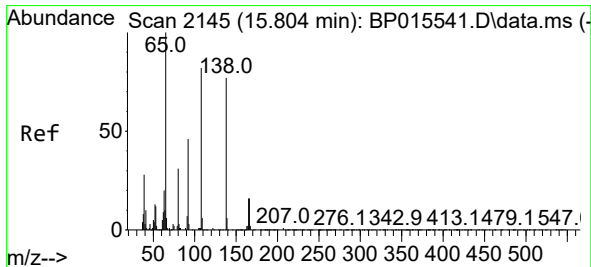
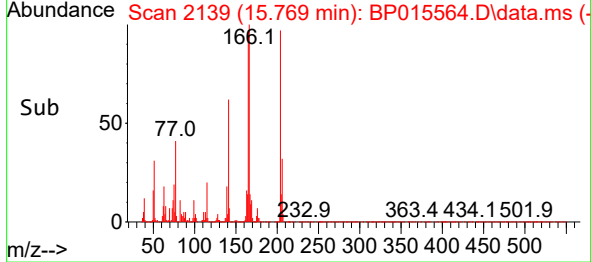
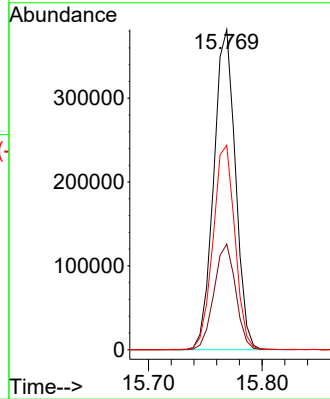


#62
 4-Chlorophenyl-phenylether
 Concen: 40.849 ng/ul
 RT: 15.769 min Scan# 2139
 Delta R.T. -0.000 min
 Lab File: BP015564.D
 Acq: 15 Jun 2023 19:50

Instrument : BNA_P
 ClientSampleId : SLCS379

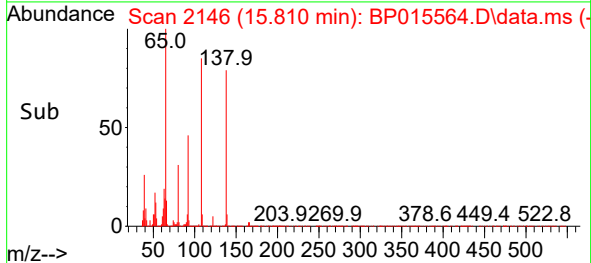
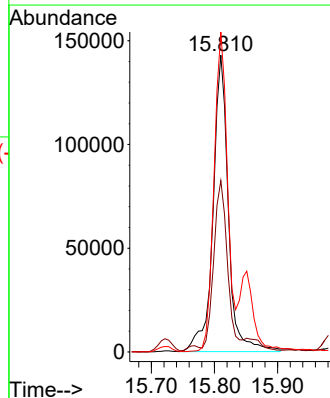
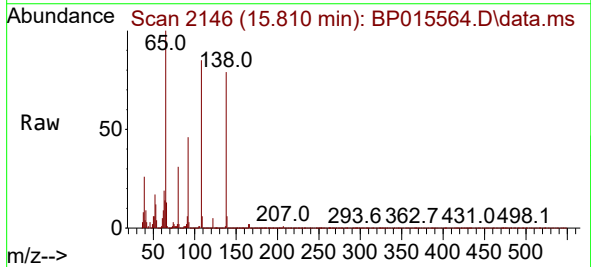


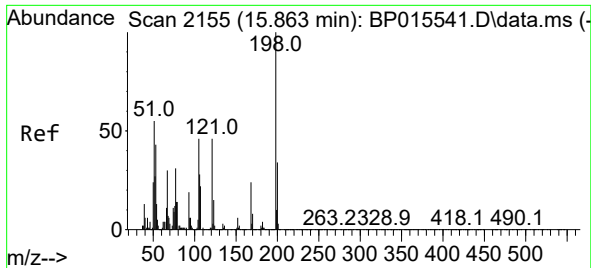
Tgt Ion:204 Resp: 506329
 Ion Ratio Lower Upper
 204 100
 206 33.0 26.6 40.0
 141 63.9 49.8 74.8



#63
 4-Nitroaniline
 Concen: 57.247 ng/ul
 RT: 15.810 min Scan# 2146
 Delta R.T. 0.006 min
 Lab File: BP015564.D
 Acq: 15 Jun 2023 19:50

Tgt Ion:138 Resp: 241141
 Ion Ratio Lower Upper
 138 100
 92 57.8 44.6 67.0
 108 107.8 78.4 117.6



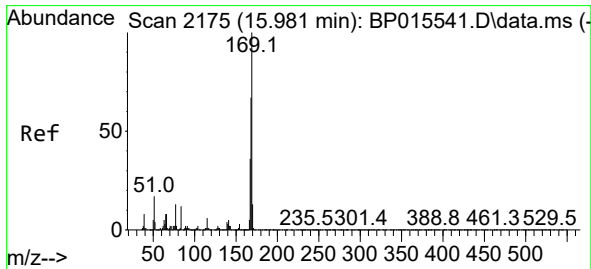
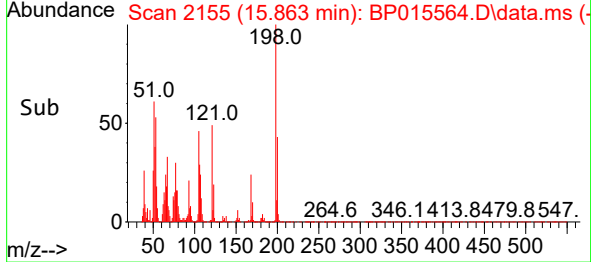
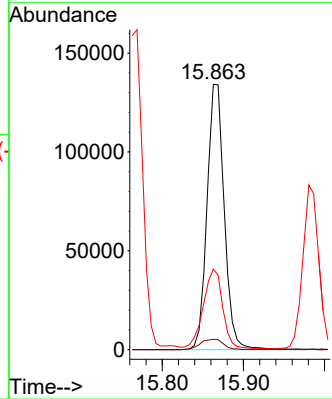
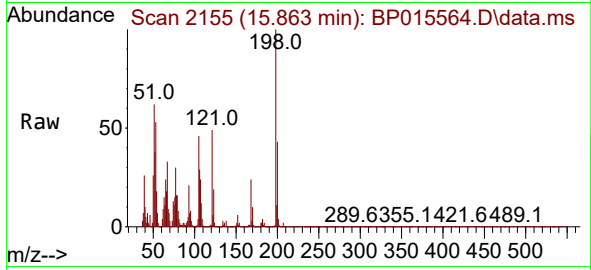


#66
 4,6-Dinitro-2-methylphenol
 Concen: 39.112 ng/ul
 RT: 15.863 min Scan# 2155
 Delta R.T. -0.000 min
 Lab File: BP015564.D
 Acq: 15 Jun 2023 19:50

Instrument :
 BNA_P
 ClientSampleId :
 SLCS379

Tgt Ion:198 Resp: 197934

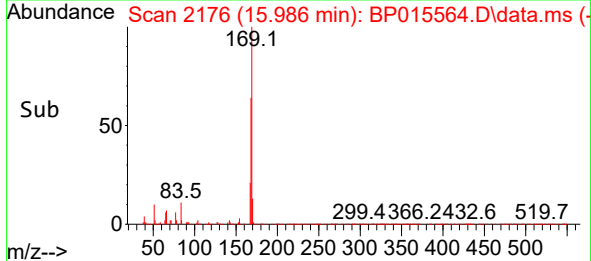
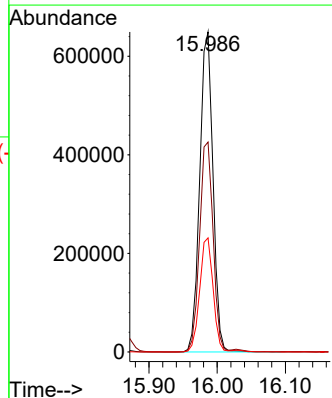
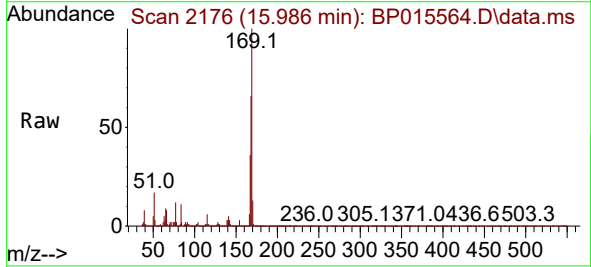
Ion	Ratio	Lower	Upper
198	100		
182	3.9	3.0	4.4
77	30.4	20.5	30.7

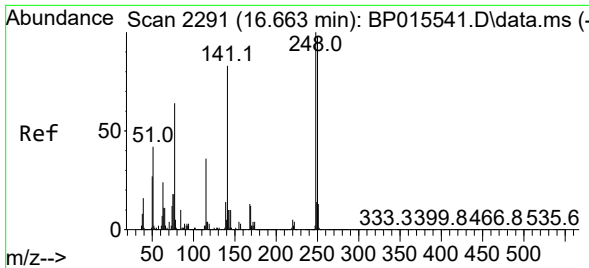


#67
 N-Nitrosodiphenylamine
 Concen: 39.404 ng/ul
 RT: 15.986 min Scan# 2176
 Delta R.T. 0.006 min
 Lab File: BP015564.D
 Acq: 15 Jun 2023 19:50

Tgt Ion:169 Resp: 875578

Ion	Ratio	Lower	Upper
169	100		
168	65.6	53.0	79.4
167	35.7	28.9	43.3

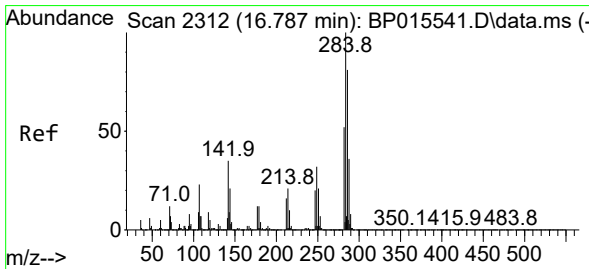
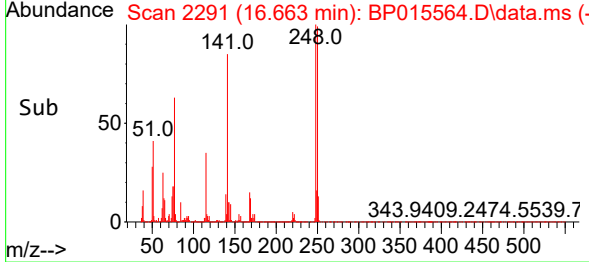
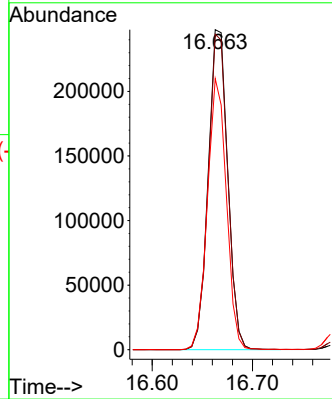
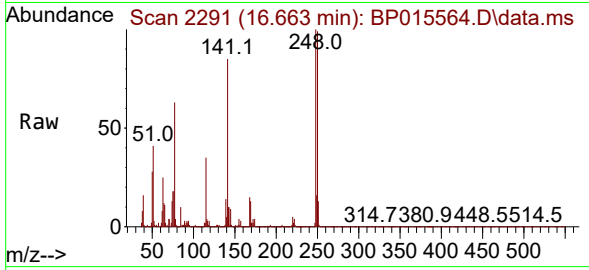




#68
 4-Bromophenyl-phenylether
 Concen: 40.214 ng/ul
 RT: 16.663 min Scan# 2291
 Delta R.T. -0.000 min
 Lab File: BP015564.D
 Acq: 15 Jun 2023 19:50

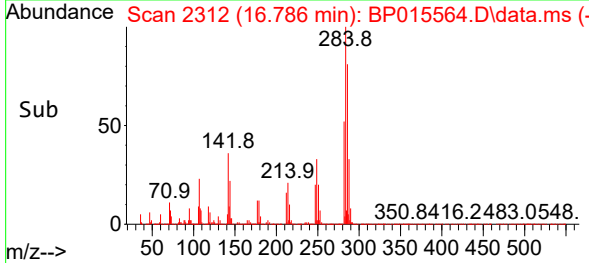
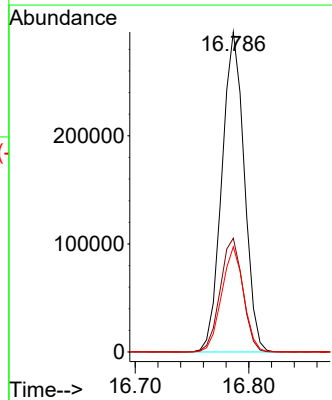
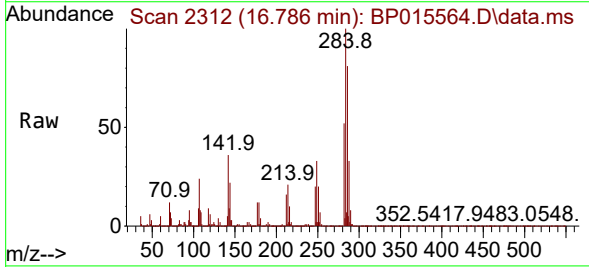
Instrument : BNA_P
 ClientSampleId : SLCS379

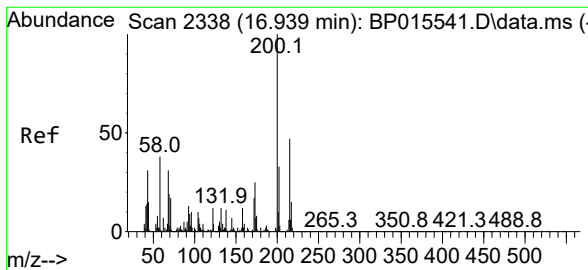
Tgt Ion	Resp	Lower	Upper
248	100		
250	98.6	78.3	117.5
141	84.7	61.1	91.7



#69
 Hexachlorobenzene
 Concen: 40.987 ng/ul
 RT: 16.786 min Scan# 2312
 Delta R.T. -0.000 min
 Lab File: BP015564.D
 Acq: 15 Jun 2023 19:50

Tgt Ion	Resp	Lower	Upper
284	100		
142	35.5	25.4	38.2
249	32.9	24.8	37.2

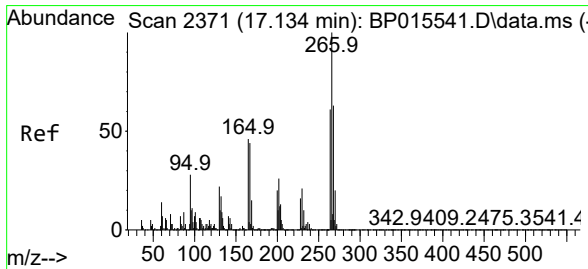
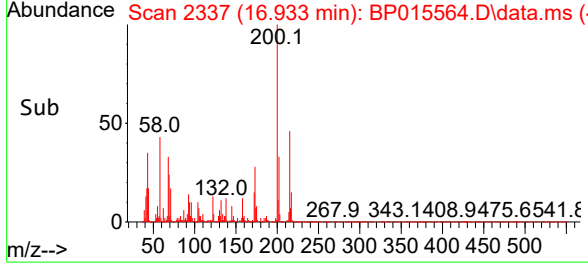
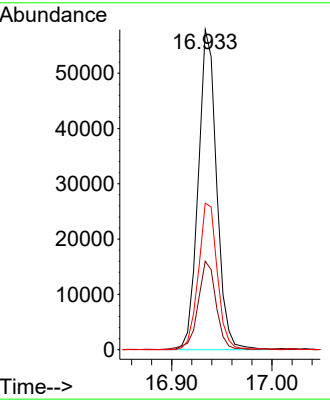
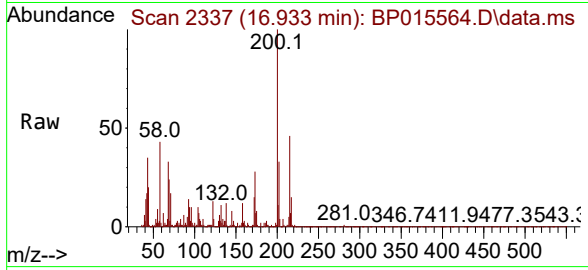




#70
 Atrazine
 Concen: 8.289 ng/ul
 RT: 16.933 min Scan# 21
 Delta R.T. -0.006 min
 Lab File: BP015564.D
 Acq: 15 Jun 2023 19:50

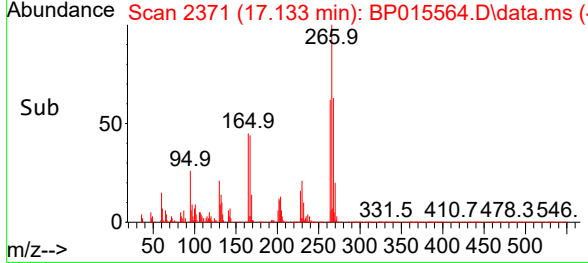
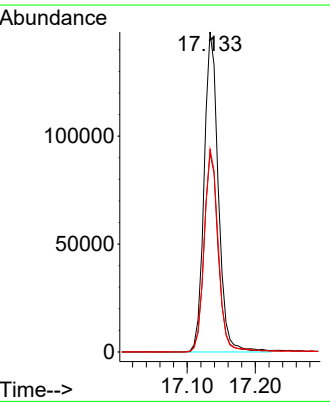
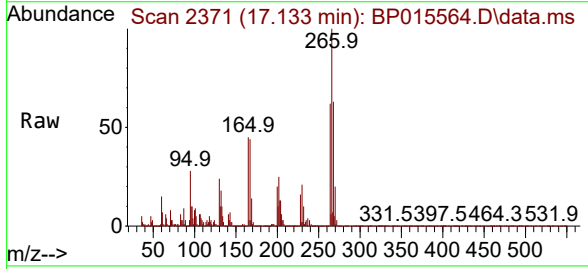
Instrument :
 BNA_P
 ClientSampleId :
 SLCS379

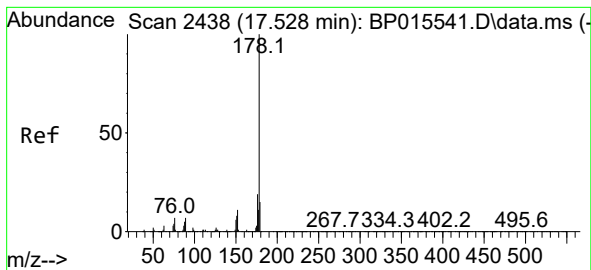
Tgt Ion	Resp	Lower	Upper
200	73553		
200	100		
173	27.6	19.8	29.6
215	45.8	37.4	56.0



#71
 Pentachlorophenol
 Concen: 38.498 ng/ul
 RT: 17.133 min Scan# 2371
 Delta R.T. -0.000 min
 Lab File: BP015564.D
 Acq: 15 Jun 2023 19:50

Tgt Ion	Resp	Lower	Upper
266	215080		
266	100		
264	62.2	49.6	74.4
268	63.4	51.0	76.6



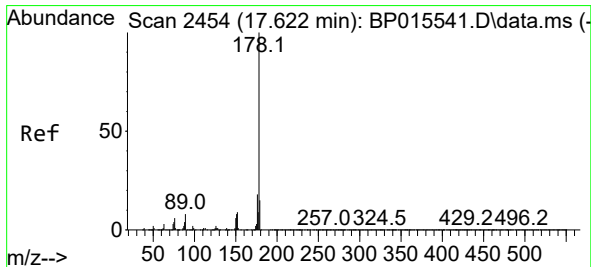
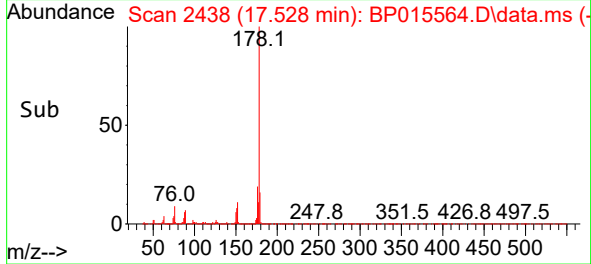
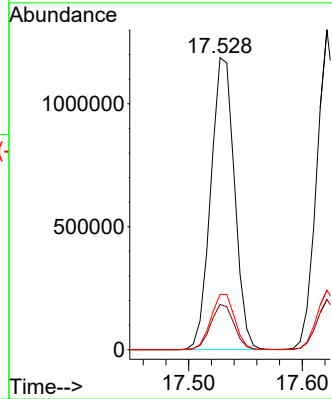
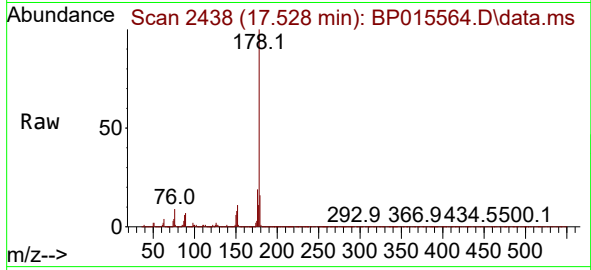


#72
 Phenanthrene
 Concen: 41.041 ng/u1
 RT: 17.528 min Scan# 2438
 Delta R.T. -0.000 min
 Lab File: BP015564.D
 Acq: 15 Jun 2023 19:50

Instrument :
 BNA_P
 ClientSampleId :
 SLCS379

Tgt Ion:178 Resp: 1725059

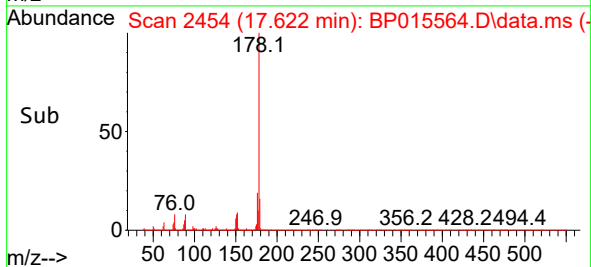
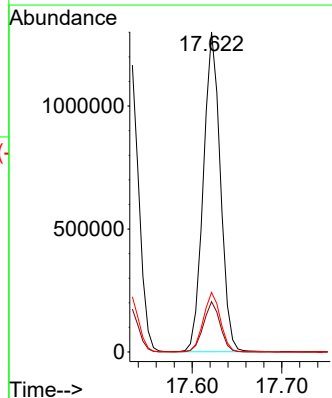
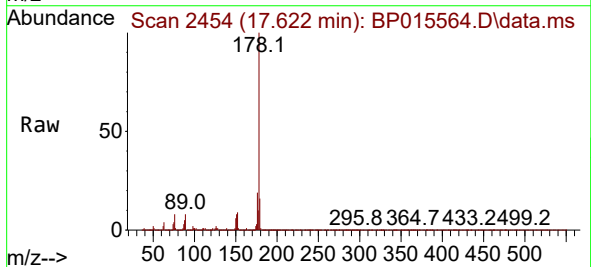
Ion	Ratio	Lower	Upper
178	100		
179	15.5	12.3	18.5
176	19.0	15.4	23.0

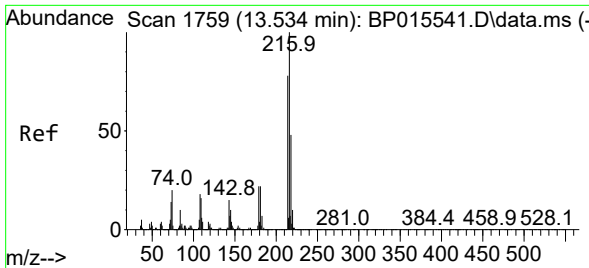


#74
 Anthracene
 Concen: 40.121 ng/u1
 RT: 17.622 min Scan# 2454
 Delta R.T. -0.000 min
 Lab File: BP015564.D
 Acq: 15 Jun 2023 19:50

Tgt Ion:178 Resp: 1711061

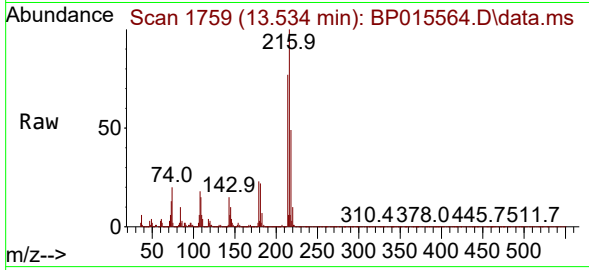
Ion	Ratio	Lower	Upper
178	100		
179	15.7	12.4	18.6
176	18.6	15.0	22.4





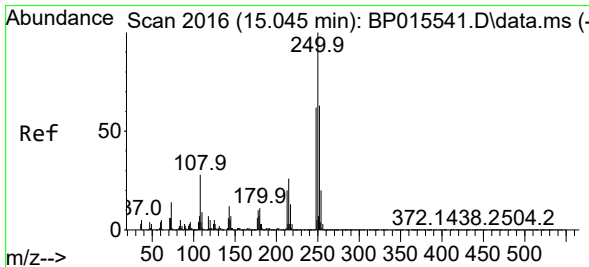
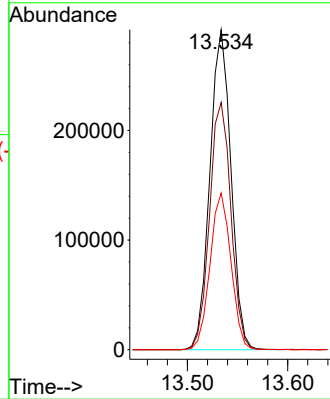
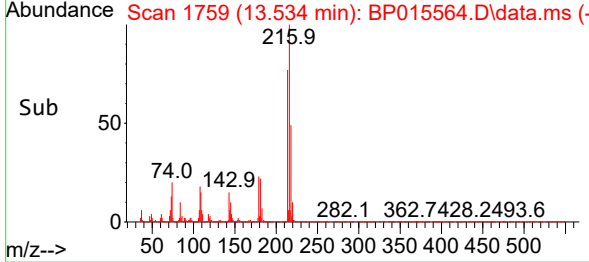
#75
 1,2,3,4-Tetrachlorobenzene
 Concen: 39.390 ng/uL
 RT: 13.534 min Scan# 1759
 Delta R.T. -0.000 min
 Lab File: BP015564.D
 Acq: 15 Jun 2023 19:50

Instrument : BNA_P
 ClientSampleId : SLCS379

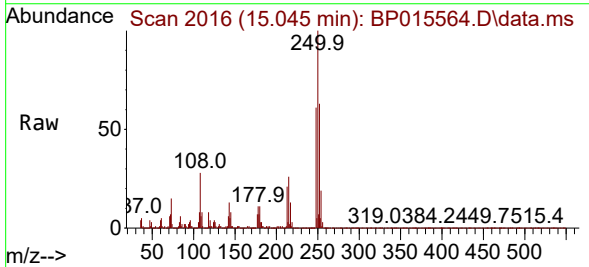


Tgt Ion: 216 Resp: 425801

Ion	Ratio	Lower	Upper
216	100		
214	77.2	62.1	93.1
218	48.9	39.0	58.4

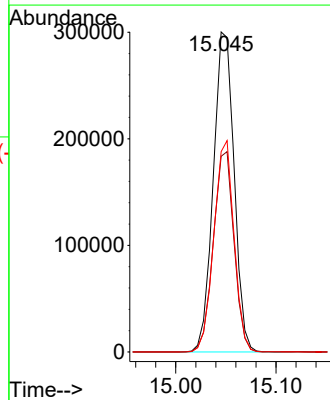
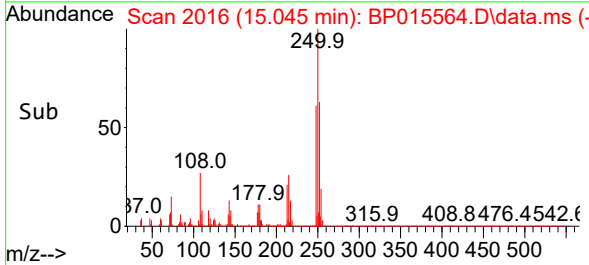


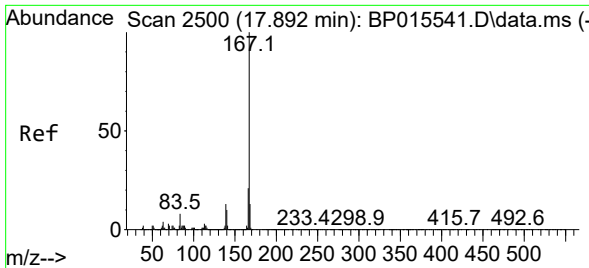
#76
 Pentachlorobenzene
 Concen: 38.241 ng/uL
 RT: 15.045 min Scan# 2016
 Delta R.T. -0.000 min
 Lab File: BP015564.D
 Acq: 15 Jun 2023 19:50



Tgt Ion: 250 Resp: 432811

Ion	Ratio	Lower	Upper
250	100		
248	61.2	49.0	73.4
252	62.6	49.9	74.9



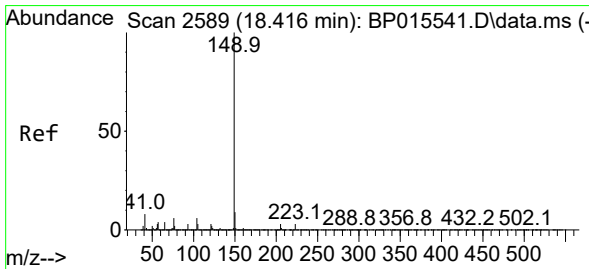
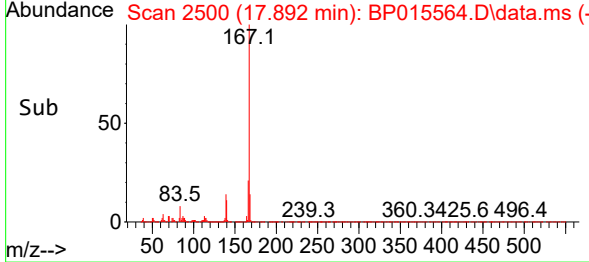
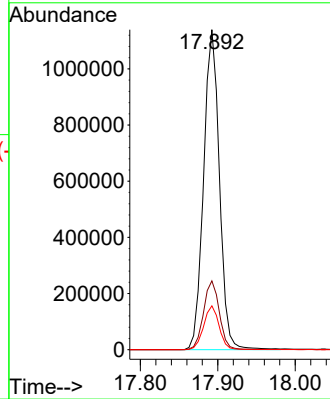
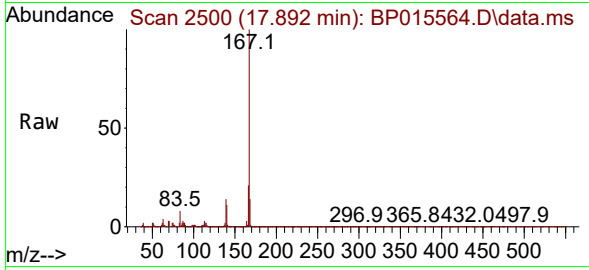


#77
 Carbazole
 Concen: 42.073 ng/uI
 RT: 17.892 min Scan# 2500
 Delta R.T. -0.000 min
 Lab File: BP015564.D
 Acq: 15 Jun 2023 19:50

Instrument :
 BNA_P
 ClientSampleId :
 SLCS379

Tgt Ion:167 Resp: 1615644

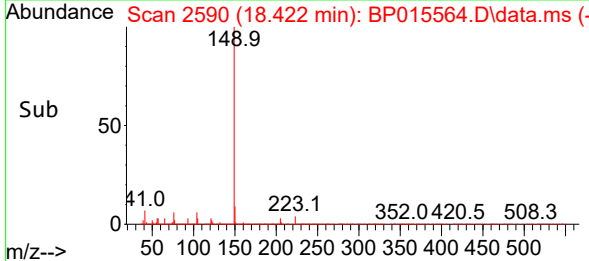
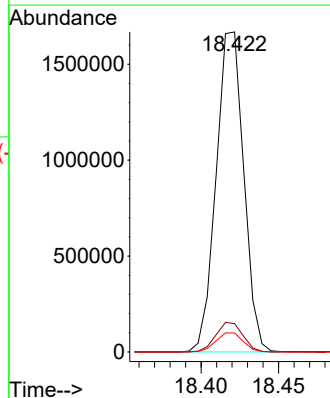
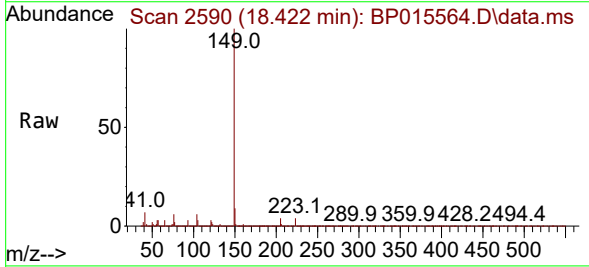
Ion	Ratio	Lower	Upper
167	100		
166	21.5	17.2	25.8
139	13.7	10.6	16.0

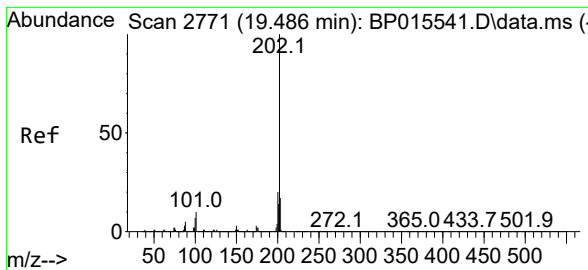


#78
 Di-n-butylphthalate
 Concen: 42.519 ng/uI
 RT: 18.422 min Scan# 2590
 Delta R.T. 0.006 min
 Lab File: BP015564.D
 Acq: 15 Jun 2023 19:50

Tgt Ion:149 Resp: 2071587

Ion	Ratio	Lower	Upper
149	100		
150	8.9	7.1	10.7
104	5.9	4.5	6.7



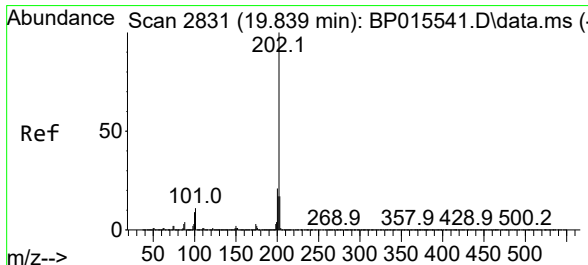
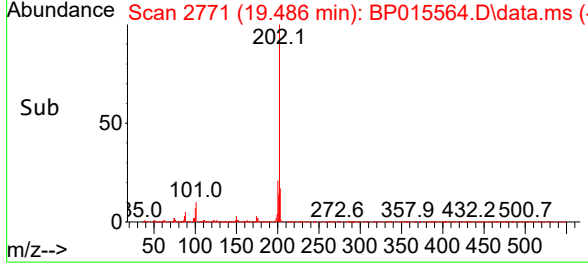
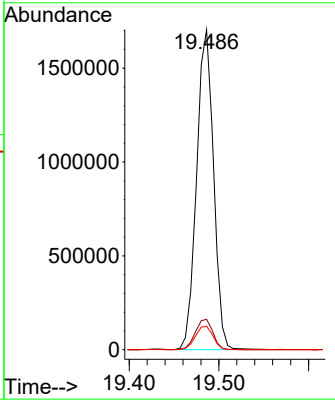
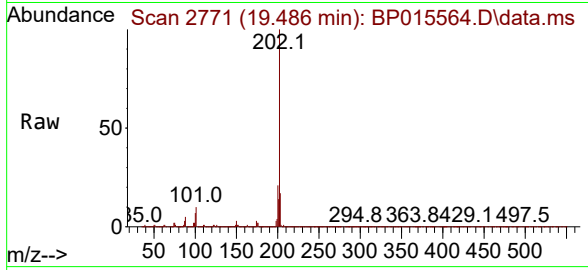


#80
 Fluoranthene
 Concen: 40.838 ng/u1
 RT: 19.486 min Scan# 2771
 Delta R.T. -0.000 min
 Lab File: BP015564.D
 Acq: 15 Jun 2023 19:50

Instrument :
 BNA_P
 ClientSampleId :
 SLCS379

Tgt Ion:202 Resp: 2233903

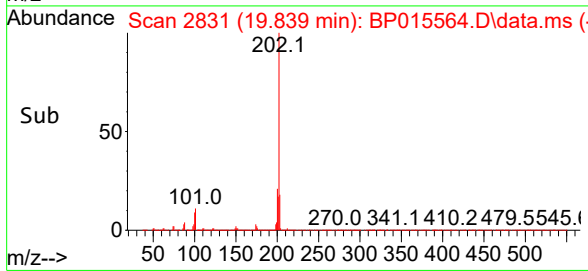
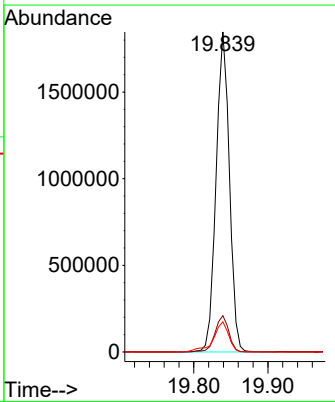
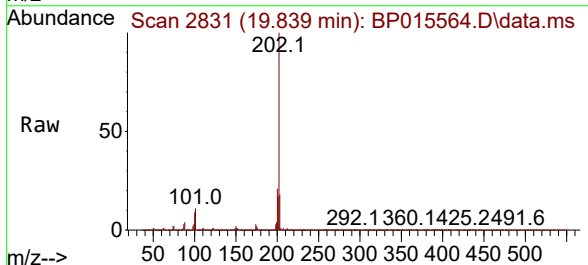
Ion	Ratio	Lower	Upper
202	100		
101	9.5	8.6	13.0
100	7.3	6.6	9.8

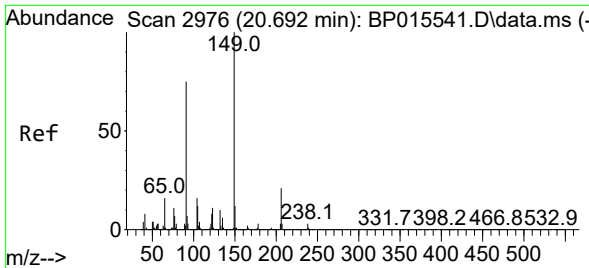


#82
 Pyrene
 Concen: 40.673 ng/u1
 RT: 19.839 min Scan# 2831
 Delta R.T. -0.000 min
 Lab File: BP015564.D
 Acq: 15 Jun 2023 19:50

Tgt Ion:202 Resp: 2301822

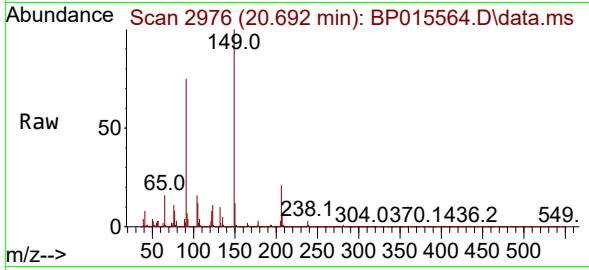
Ion	Ratio	Lower	Upper
202	100		
101	11.3	9.9	14.9
100	9.4	8.4	12.6





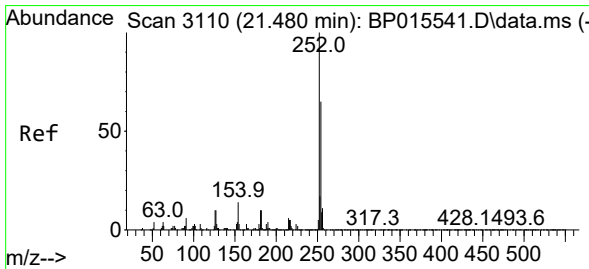
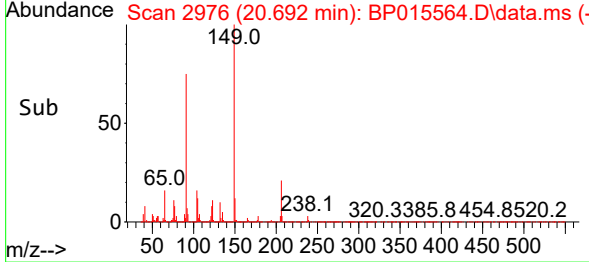
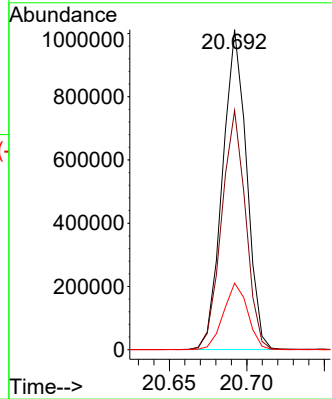
#83
 Butylbenzylphthalate
 Concen: 43.740 ng/ul
 RT: 20.692 min Scan# 2976
 Delta R.T. -0.000 min
 Lab File: BP015564.D
 Acq: 15 Jun 2023 19:50

Instrument :
 BNA_P
 ClientSampleId :
 SLCS379



Tgt Ion:149 Resp: 1094097

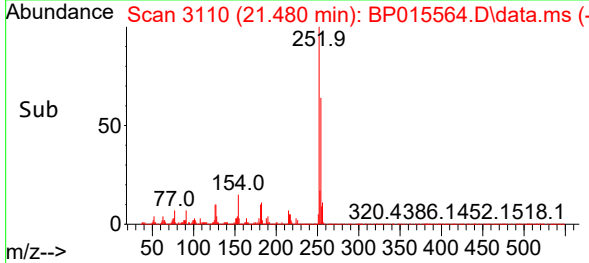
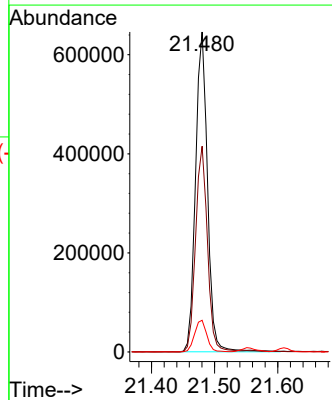
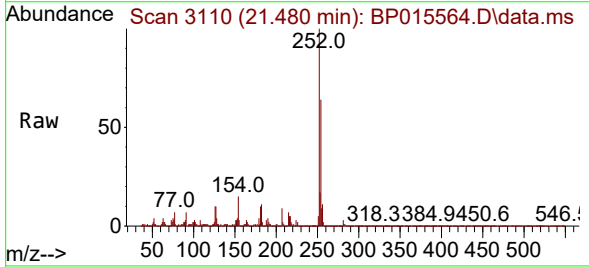
Ion	Ratio	Lower	Upper
149	100		
91	74.7	60.4	90.6
206	20.8	16.4	24.6

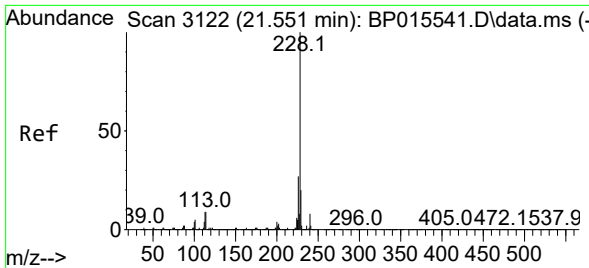


#84
 3,3'-Dichlorobenzidine
 Concen: 42.831 ng/ul
 RT: 21.480 min Scan# 3110
 Delta R.T. -0.000 min
 Lab File: BP015564.D
 Acq: 15 Jun 2023 19:50

Tgt Ion:252 Resp: 849029

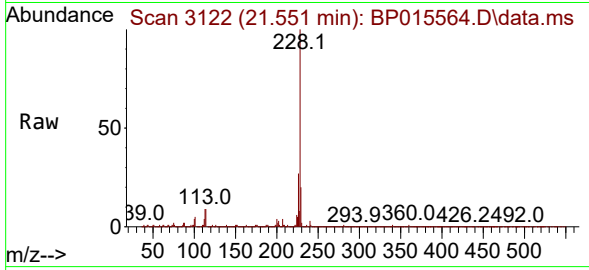
Ion	Ratio	Lower	Upper
252	100		
254	64.3	51.6	77.4
126	9.9	8.5	12.7



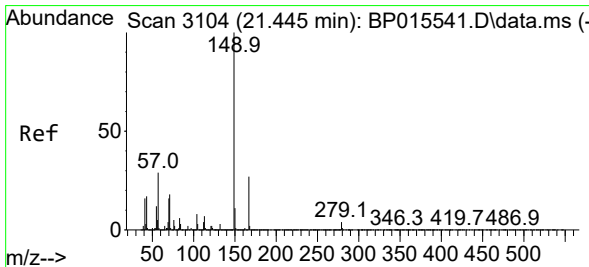
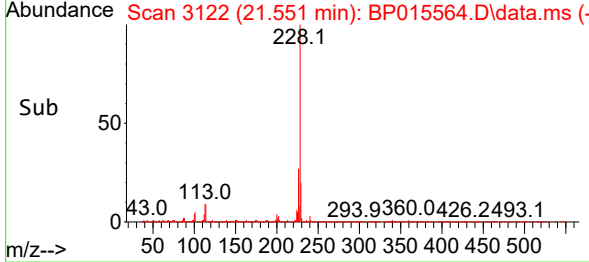
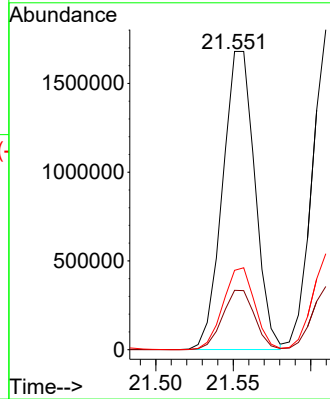


#85
 Benzo(a)anthracene
 Concen: 41.488 ng/ul
 RT: 21.551 min Scan# 3122
 Delta R.T. -0.000 min
 Lab File: BP015564.D
 Acq: 15 Jun 2023 19:50

Instrument :
 BNA_P
 ClientSampleId :
 SLCS379

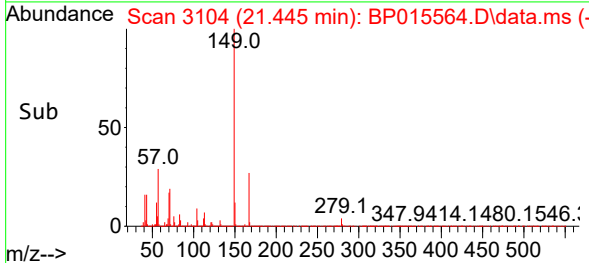
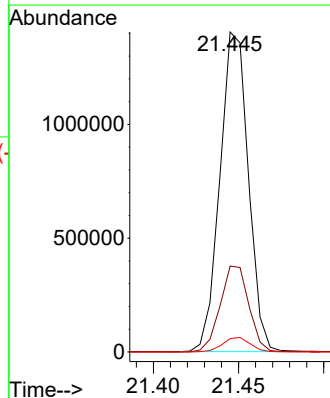
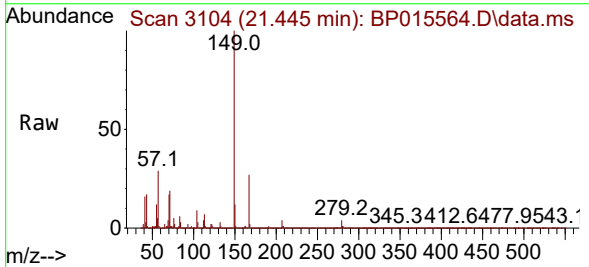


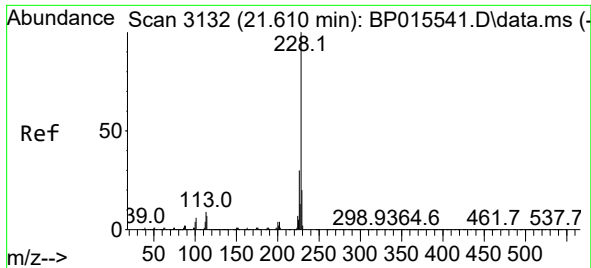
Tgt Ion:228 Resp: 2433559
 Ion Ratio Lower Upper
 228 100
 229 19.9 15.8 23.6
 226 26.6 21.8 32.6



#86
 Bis(2-ethylhexyl)phthalate
 Concen: 44.187 ng/ul
 RT: 21.445 min Scan# 3104
 Delta R.T. -0.000 min
 Lab File: BP015564.D
 Acq: 15 Jun 2023 19:50

Tgt Ion:149 Resp: 1633682
 Ion Ratio Lower Upper
 149 100
 167 26.8 21.8 32.8
 279 4.1 3.7 5.5



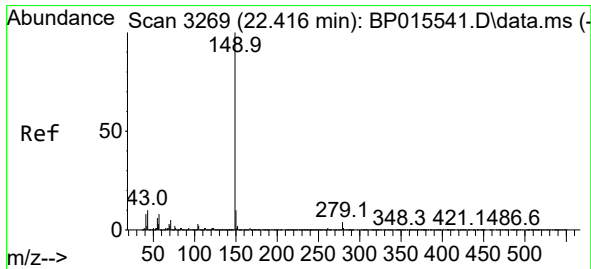
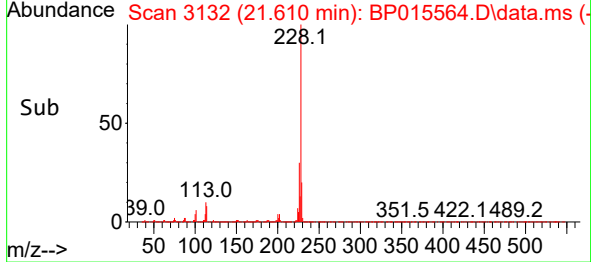
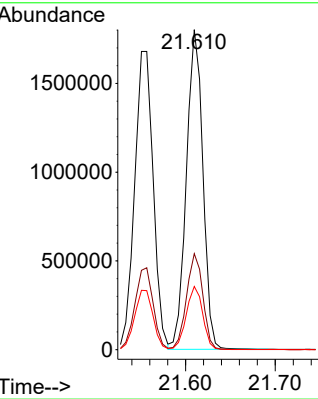
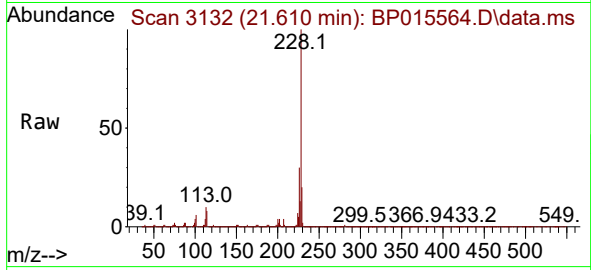


#87
 Chrysene
 Concen: 41.500 ng/uI
 RT: 21.610 min Scan# 3132
 Delta R.T. -0.000 min
 Lab File: BP015564.D
 Acq: 15 Jun 2023 19:50

Instrument :
 BNA_P
 ClientSampleId :
 SLCS379

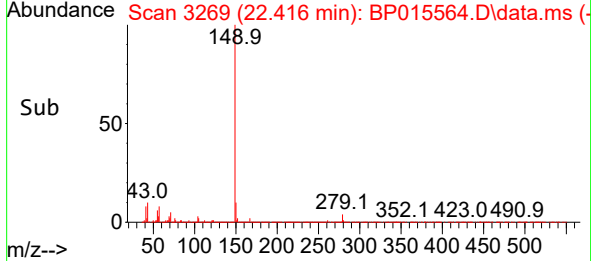
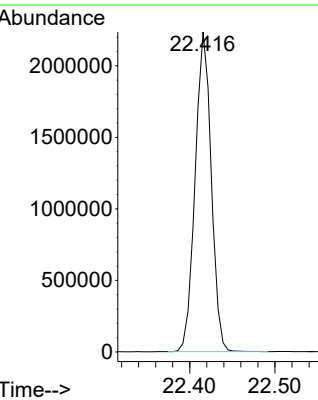
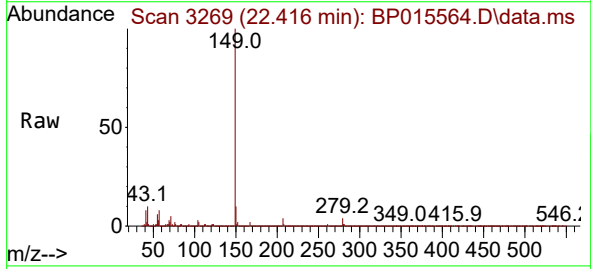
Tgt Ion:228 Resp: 2300886

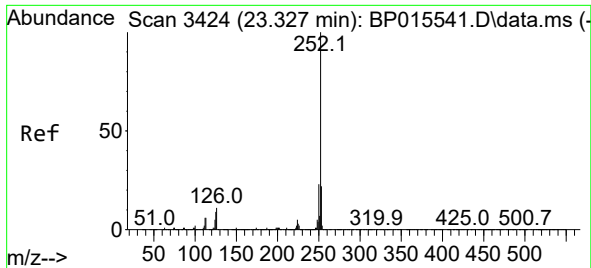
Ion	Ratio	Lower	Upper
228	100		
226	30.0	23.9	35.9
229	19.7	15.1	22.7



#89
 Di-n-octyl phthalate
 Concen: 46.410 ng/uI
 RT: 22.416 min Scan# 3269
 Delta R.T. -0.000 min
 Lab File: BP015564.D
 Acq: 15 Jun 2023 19:50

Tgt Ion:149 Resp: 2933003



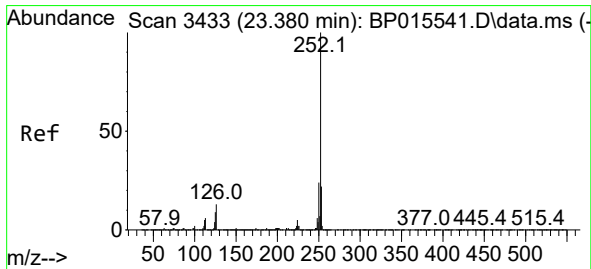
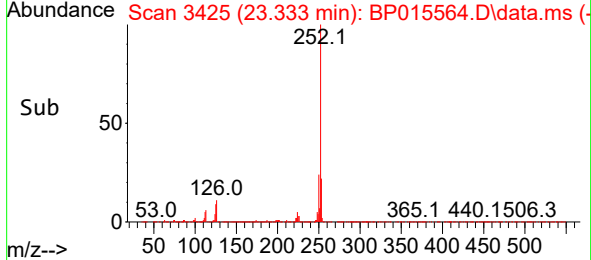
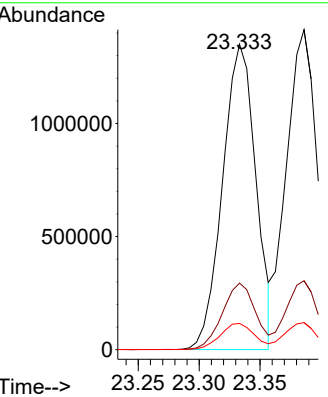
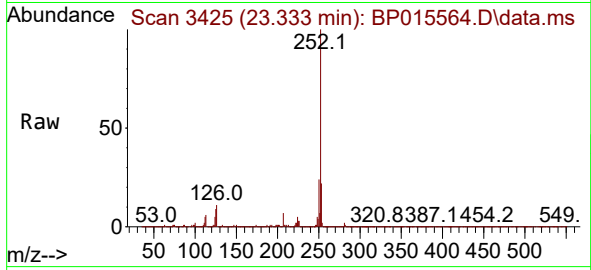


#90
 Benzo(b)fluoranthene
 Concen: 41.292 ng/ul
 RT: 23.333 min Scan# 3425
 Delta R.T. 0.006 min
 Lab File: BP015564.D
 Acq: 15 Jun 2023 19:50

Instrument : BNA_P
 ClientSampleId : SLCS379

Tgt Ion:252 Resp: 2562998

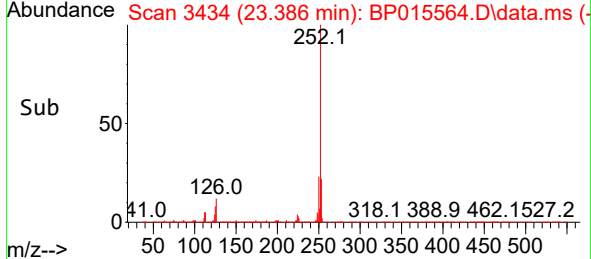
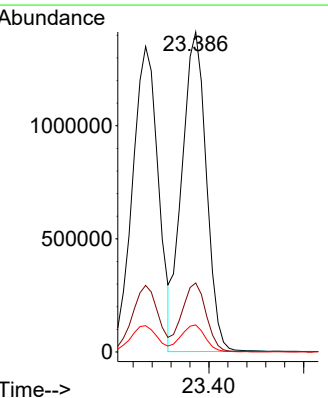
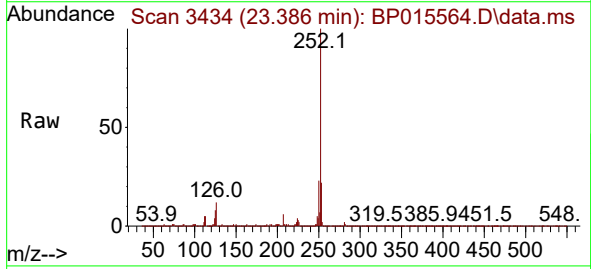
Ion	Ratio	Lower	Upper
252	100		
253	21.8	17.4	26.2
125	8.6	7.3	10.9

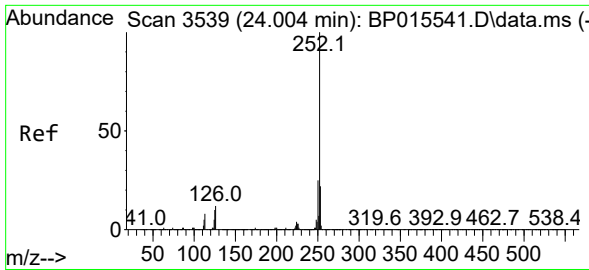


#91
 Benzo(k)fluoranthene
 Concen: 41.933 ng/ul
 RT: 23.386 min Scan# 3434
 Delta R.T. 0.006 min
 Lab File: BP015564.D
 Acq: 15 Jun 2023 19:50

Tgt Ion:252 Resp: 2515989

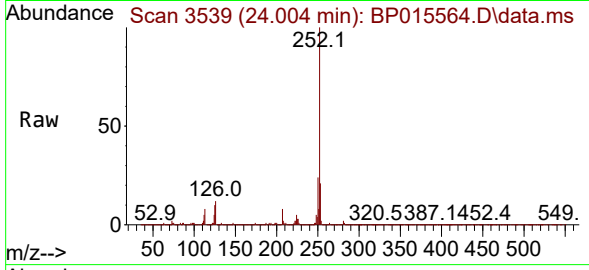
Ion	Ratio	Lower	Upper
252	100		
253	21.6	17.7	26.5
125	8.4	7.3	10.9



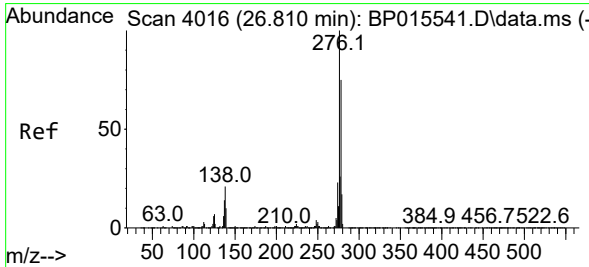
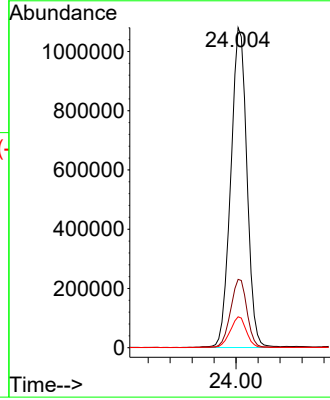
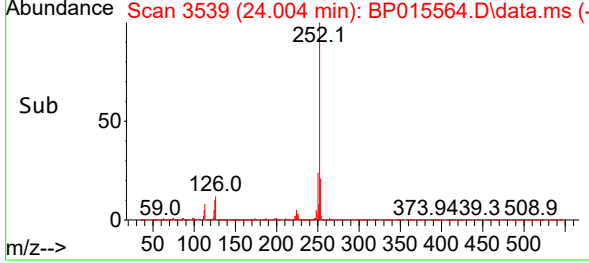


#93
 Benzo(a)pyrene
 Concen: 40.718 ng/u1
 RT: 24.004 min Scan# 31
 Delta R.T. -0.000 min
 Lab File: BP015564.D
 Acq: 15 Jun 2023 19:50

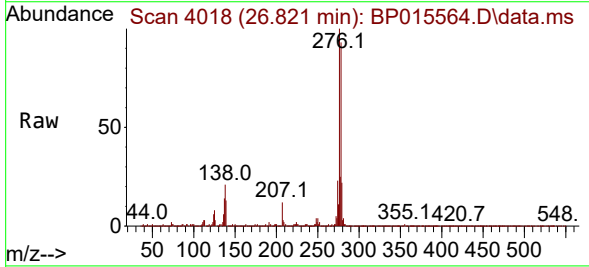
Instrument :
 BNA_P
 ClientSampleId :
 SLCS379



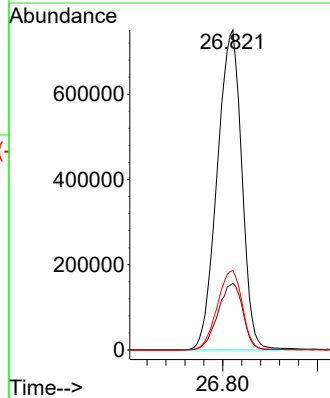
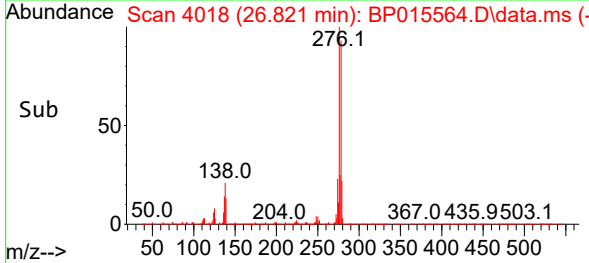
Tgt Ion:252 Resp: 2203461
 Ion Ratio Lower Upper
 252 100
 253 21.3 17.8 26.6
 125 9.7 8.1 12.1

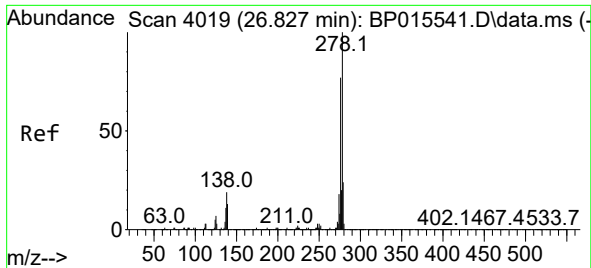


#94
 Indeno(1,2,3-cd)pyrene
 Concen: 38.596 ng/u1
 RT: 26.821 min Scan# 4018
 Delta R.T. 0.012 min
 Lab File: BP015564.D
 Acq: 15 Jun 2023 19:50



Tgt Ion:276 Resp: 2703043
 Ion Ratio Lower Upper
 276 100
 138 20.8 17.3 25.9
 277 24.8 20.2 30.2

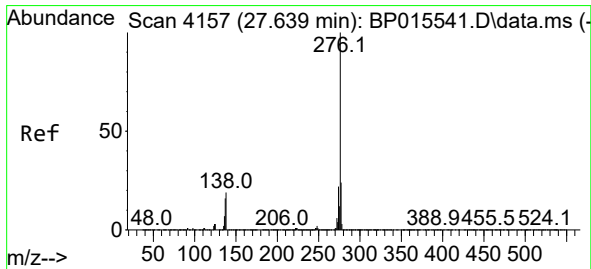
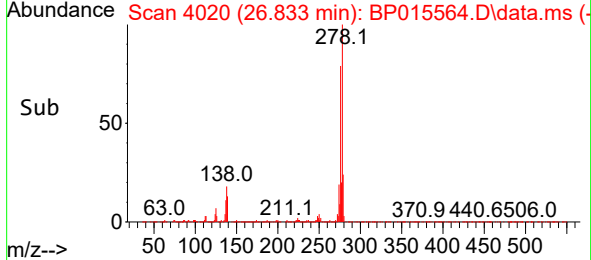
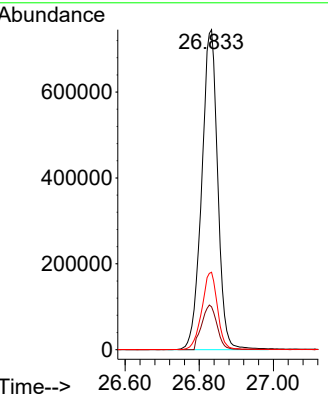
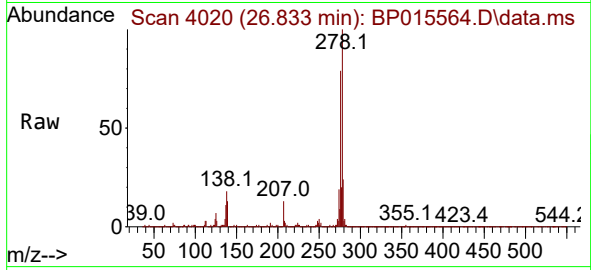




#95
 Dibenzo(a,h)anthracene
 Concen: 39.134 ng/ul
 RT: 26.833 min Scan# 4019
 Delta R.T. 0.006 min
 Lab File: BP015564.D
 Acq: 15 Jun 2023 19:50

Instrument :
 BNA_P
 ClientSampleId :
 SLCS379

Tgt Ion:278 Resp: 2232891
 Ion Ratio Lower Upper
 278 100
 139 13.4 11.4 17.0
 279 24.2 18.7 28.1



#96
 Benzo(g,h,i)perylene
 Concen: 38.036 ng/ul
 RT: 27.645 min Scan# 4158
 Delta R.T. 0.006 min
 Lab File: BP015564.D
 Acq: 15 Jun 2023 19:50

Tgt Ion:276 Resp: 2195263
 Ion Ratio Lower Upper
 276 100
 138 18.1 15.6 23.4
 277 23.6 19.0 28.6

