

Data Path : Z:\svoasrv\HPCHEM1\BNA\_P\Data\BP062723\  
 Data File : BP015757.D  
 Acq On : 27 Jun 2023 20:52  
 Operator : MA/JU  
 Sample : SSTDCC020  
 Misc :  
 ALS Vial : 2 Sample Multiplier: 1

Instrument :  
 BNA\_P  
 ClientSampleId :

Quant Time: Jun 27 22:12:13 2023  
 Quant Method : Z:\svoasrv\HPCHEM1\BNA\_P\Methods\SFAM-EPA-BP062623.MA.M  
 Quant Title : SVOA CALIBRATION  
 QLast Update : Tue Jun 27 00:56:58 2023  
 Response via : Initial Calibration

Compound	R.T.	QIon	Response	Conc	Units	Dev(Min)
Internal Standards						
1) 1,4-Dichlorobenzene-d4	8.058	152	165429	20.000	ng/ul	0.00
20) Naphthalene-d8	10.887	136	637330	20.000	ng/ul	0.00
38) Acenaphthene-d10	14.710	164	336965	20.000	ng/ul	0.00
64) Phenanthrene-d10	17.469	188	621969	20.000	ng/ul	0.00
79) Chrysene-d12	21.557	240	587459	20.000	ng/ul	0.00
88) Perylene-d12	24.110	264	748609	20.000	ng/ul	0.00
System Monitoring Compounds						
3) 1,4-Dioxane-d8	3.381	96	38753	8.428	ng/uL	0.00
4) Pyridine-d5	3.828	84	244208	21.070	ng/ul	0.00
7) Phenol-d5	7.228	99	285533	20.173	ng/ul	0.00
9) Bis-(2-Chloroethyl)eth...	7.381	67	184392	21.057	ng/ul	0.00
11) 2-Chlorophenol-d4	7.587	132	226995	21.245	ng/ul	0.00
15) 4-Methylphenol-d8	8.787	113	222216	19.873	ng/ul	0.00
21) Nitrobenzene-d5	9.240	128	109442	22.469	ng/ul	0.00
24) 2-Nitrophenol-d4	9.969	143	121011	21.287	ng/ul	0.00
28) 2,4-Dichlorophenol-d3	10.522	165	212472	20.974	ng/ul	0.00
31) 4-Chloroaniline-d4	11.040	131	250491	19.249	ng/ul	0.00
46) Dimethylphthalate-d6	14.116	166	539239	20.704	ng/ul	0.00
49) Acenaphthylene-d8	14.404	160	632871	21.616	ng/ul	0.00
54) 4-Nitrophenol-d4	14.957	143	56215	16.356	ng/ul	0.01
60) Fluorene-d10	15.704	176	435290	20.298	ng/ul	0.00
65) 4,6-Dinitro-2-methylph...	15.857	200	72529	18.962	ng/ul	0.00
73) Anthracene-d10	17.569	188	611487	21.523	ng/ul	0.00
81) Pyrene-d10	19.798	212	664667	17.327	ng/ul	0.00
92) Benzo(a)pyrene-d12	23.939	264	780385	20.665	ng/ul	0.00
Target Compounds						
2) 1,4-Dioxane	3.423	88	43264	8.743	ng/uL	99
5) Pyridine	3.846	79	262631	21.660	ng/ul	97
6) Benzaldehyde	7.205	77	117879	20.599	ng/ul	97
8) Phenol	7.258	94	301203	20.506	ng/ul	98
10) Bis(2-Chloroethyl)ether	7.481	93	243096	20.801	ng/ul	98
12) 2-Chlorophenol	7.622	128	239178	21.070	ng/ul	99
13) 2-Methylphenol	8.516	108	227256	20.492	ng/ul	97
14) 2,2'-oxybis(1-Chloropr...	8.593	45	341879	21.418	ng/ul	99
16) Acetophenone	8.899	105	364180	19.813	ng/ul	97
17) N-Nitroso-di-n-propyla...	8.875	70	199197	19.512	ng/ul	97
18) 4-Methylphenol	8.852	108	238224	19.993	ng/ul	99
19) Hexachloroethane	9.140	117	109396	20.866	ng/ul	97
22) Nitrobenzene	9.287	77	300245	21.951	ng/ul	99
23) Isophorone	9.810	82	530148	20.254	ng/ul	100
25) 2-Nitrophenol	10.005	139	129789	21.513	ng/ul	99
26) 2,4-Dimethylphenol	10.058	107	279394	21.066	ng/ul	99
27) Bis(2-Chloroethoxy)met...	10.293	93	312994	21.182	ng/ul	97
29) 2,4-Dichlorophenol	10.546	162	210542	20.905	ng/ul	100
30) Naphthalene	10.934	128	732407	21.139	ng/ul	99
32) 4-Chloroaniline	11.069	127	262099	19.386	ng/ul	100
33) Hexachlorobutadiene	11.204	225	161249	21.201	ng/ul	98
34) Caprolactam	11.857	113	52296	16.976	ng/ul	93
35) 4-Chloro-3-methylphenol	12.193	107	224152	19.014	ng/ul	99
36) 2-Methylnaphthalene	12.546	142	463370	20.316	ng/ul	98

Data Path : Z:\svoasrv\HPCHEM1\BNA\_P\Data\BP062723\  
 Data File : BP015757.D  
 Acq On : 27 Jun 2023 20:52  
 Operator : MA/JU  
 Sample : SSTDCCC020  
 Misc :  
 ALS Vial : 2 Sample Multiplier: 1

Instrument :  
 BNA\_P  
 ClientSampleId :

Quant Time: Jun 27 22:12:13 2023  
 Quant Method : Z:\svoasrv\HPCHEM1\BNA\_P\Methods\SFAM-EPA-BP062623.MA.M  
 Quant Title : SVOA CALIBRATION  
 QLast Update : Tue Jun 27 00:56:58 2023  
 Response via : Initial Calibration

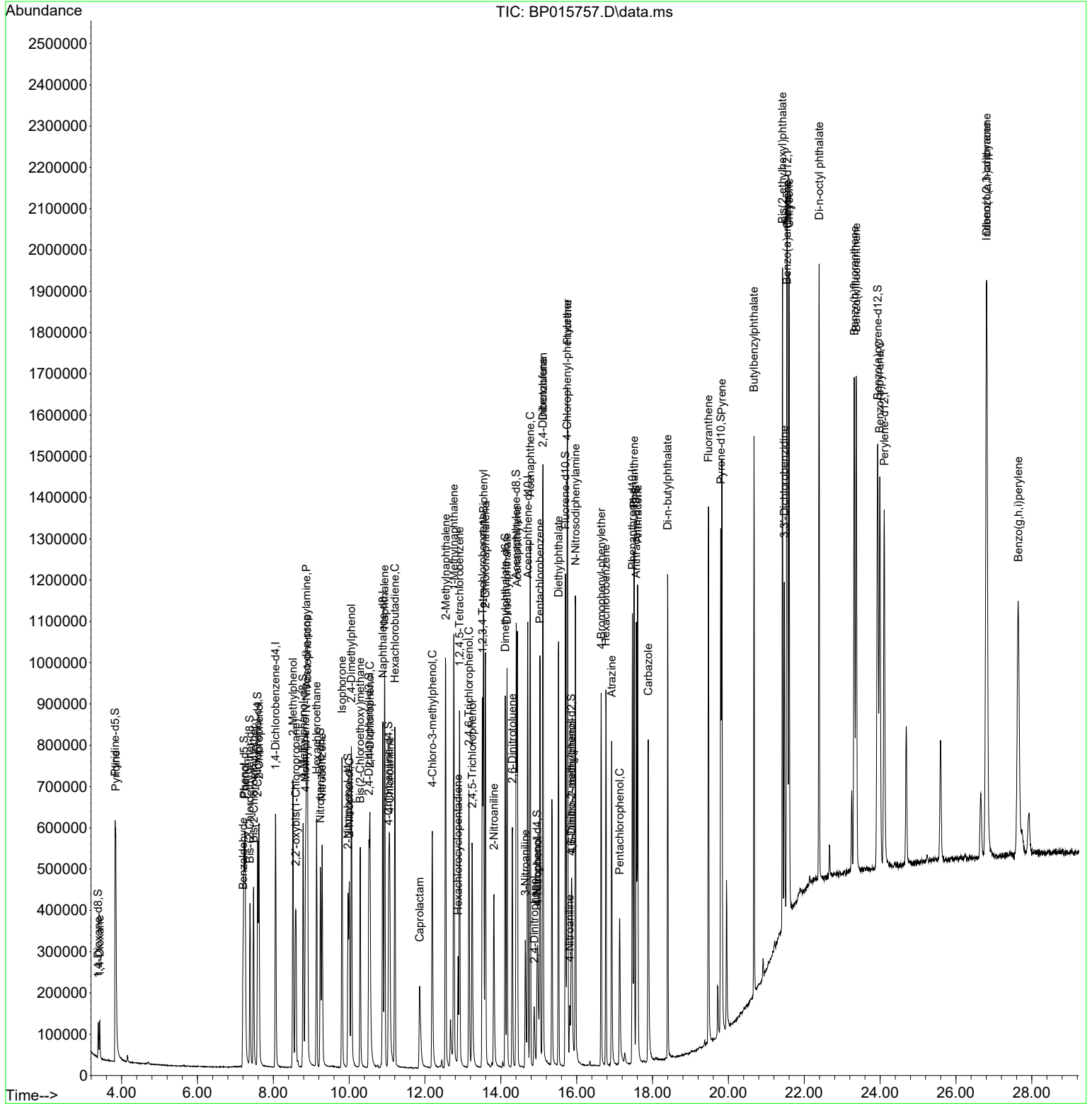
Compound	R.T.	QIon	Response	Conc	Units	Dev(Min)
37) 1-Methylnaphthalene	12.763	142	456790	19.633	ng/ul	99
39) 1,2,4,5-Tetrachloroben...	12.910	216	256213	23.074	ng/ul	99
40) Hexachlorocyclopentadiene	12.875	237	68175	20.523	ng/ul	96
41) 2,4,6-Trichlorophenol	13.157	196	155314	22.132	ng/ul	97
42) 2,4,5-Trichlorophenol	13.246	196	162659	21.853	ng/ul	99
43) 1,1'-Biphenyl	13.546	154	602485	22.574	ng/ul	98
44) 2-Chloronaphthalene	13.593	162	474049	22.546	ng/ul	99
45) 2-Nitroaniline	13.816	65	141308	21.359	ng/ul	95
47) Dimethylphthalate	14.163	163	557998	20.702	ng/ul	99
48) 2,6-Dinitrotoluene	14.304	165	110871	20.278	ng/ul	98
50) Acenaphthylene	14.434	152	697059	21.608	ng/ul	100
51) 3-Nitroaniline	14.646	138	86328	20.135	ng/ul	90
52) Acenaphthene	14.775	153	482804	21.582	ng/ul	98
53) 2,4-Dinitrophenol	14.881	184	39241	13.528	ng/ul	87
55) 4-Nitrophenol	14.969	109	53741	15.089	ng/ul	97
56) Dibenzofuran	15.110	168	646001	20.802	ng/ul	99
57) 2,4-Dinitrotoluene	15.104	165	144658	19.415	ng/ul#	89
59) Diethylphthalate	15.522	149	540236	19.806	ng/ul	99
61) Fluorene	15.757	166	509524	20.228	ng/ul	98
62) 4-Chlorophenyl-phenyle...	15.745	204	258938	20.090	ng/ul	98
63) 4-Nitroaniline	15.816	138	50676	17.269	ng/ul	95
66) 4,6-Dinitro-2-methylph...	15.875	198	73395	18.965	ng/ul	93
67) N-Nitrosodiphenylamine	15.969	169	419201	22.514	ng/ul	99
68) 4-Bromophenyl-phenylether	16.645	248	154851	21.803	ng/ul	92
69) Hexachlorobenzene	16.769	284	174920	20.872	ng/ul	95
70) Atrazine	16.922	200	146751	20.590	ng/ul	99
71) Pentachlorophenol	17.134	266	80307	19.966	ng/ul	94
72) Phenanthrene	17.510	178	717376	21.231	ng/ul	99
74) Anthracene	17.610	178	723278	21.303	ng/ul	100
75) 1,2,3,4-Tetrachloroben...	13.516	216	253044	25.003	ng/uL	98
76) Pentachlorobenzene	15.034	250	232017	22.715	ng/uL	98
77) Carbazole	17.887	167	617738	21.587	ng/ul	99
78) Di-n-butylphthalate	18.398	149	800290	21.095	ng/ul	100
80) Fluoranthene	19.475	202	806730	16.922	ng/ul	99
82) Pyrene	19.828	202	845789	17.392	ng/ul	97
83) Butylbenzylphthalate	20.675	149	361770	18.234	ng/ul	96
84) 3,3'-Dichlorobenzidine	21.475	252	297361	22.392	ng/ul	100
85) Benzo(a)anthracene	21.545	228	883020	21.368	ng/ul	99
86) Bis(2-ethylhexyl)phtha...	21.427	149	528532	19.384	ng/ul	99
87) Chrysene	21.598	228	839283	21.406	ng/ul	99
89) Di-n-octyl phthalate	22.392	149	945670	17.285	ng/ul	100
90) Benzo(b)fluoranthene	23.322	252	979499	20.363	ng/ul	99
91) Benzo(k)fluoranthene	23.369	252	952447	19.598	ng/ul	99
93) Benzo(a)pyrene	23.992	252	859727	20.455	ng/ul	99
94) Indeno(1,2,3-cd)pyrene	26.804	276	1222994	21.435	ng/ul	98
95) Dibenzo(a,h)anthracene	26.810	278	1007326	21.494	ng/ul	97
96) Benzo(g,h,i)perylene	27.645	276	1014909	21.622	ng/ul	100

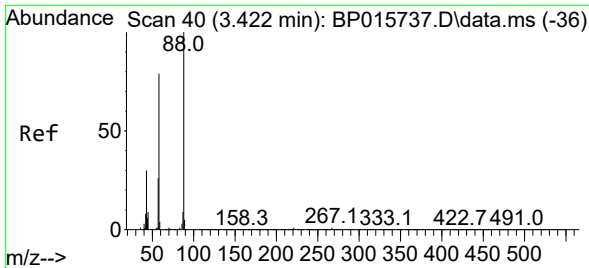
(#) = qualifier out of range (m) = manual integration (+) = signals summed

Data Path : Z:\svoasrv\HPCHEM1\BNA\_P\Data\BP062723\  
 Data File : BP015757.D  
 Acq On : 27 Jun 2023 20:52  
 Operator : MA/JU  
 Sample : SSTDCCC020  
 Misc :  
 ALS Vial : 2 Sample Multiplier: 1

Instrument :  
 BNA\_P  
 ClientSampleId :

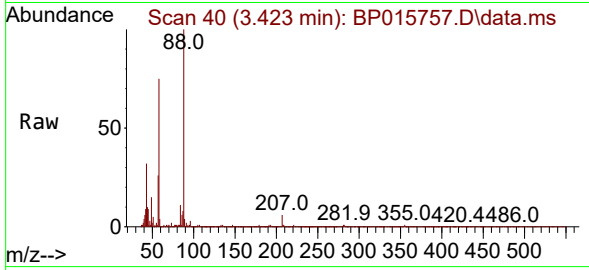
Quant Time: Jun 27 22:12:13 2023  
 Quant Method : Z:\svoasrv\HPCHEM1\BNA\_P\Methods\SFAM-EPA-BP062623.MA.M  
 Quant Title : SVOA CALIBRATION  
 QLast Update : Tue Jun 27 00:56:58 2023  
 Response via : Initial Calibration





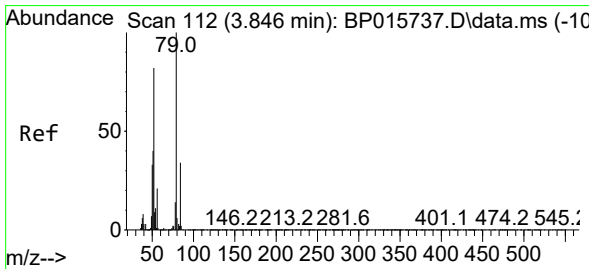
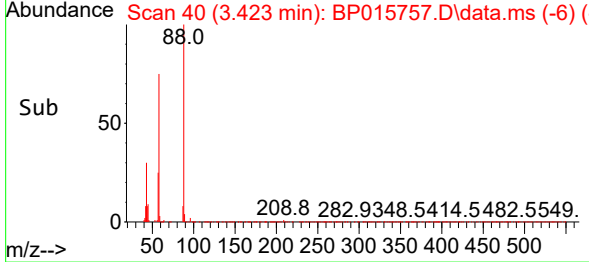
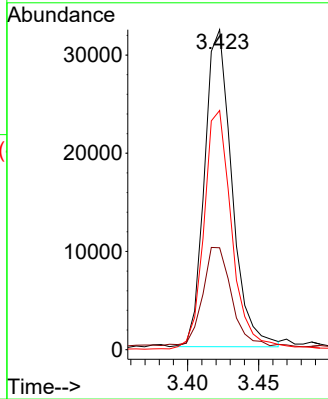
#2  
 1,4-Dioxane  
 Concen: 8.743 ng/uL  
 RT: 3.423 min Scan# 40  
 Delta R.T. 0.001 min  
 Lab File: BP015757.D  
 Acq: 27 Jun 2023 20:52

Instrument :  
 BNA\_P  
 ClientSampleId :



Tgt Ion: 88 Resp: 43264

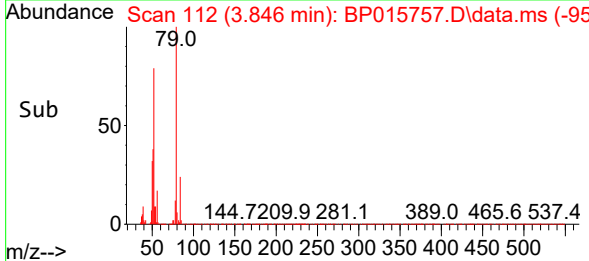
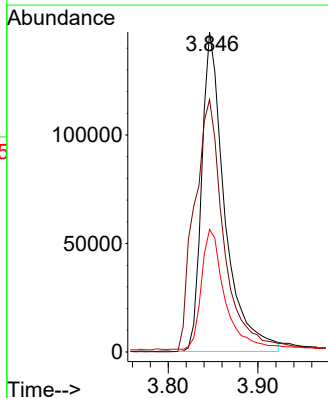
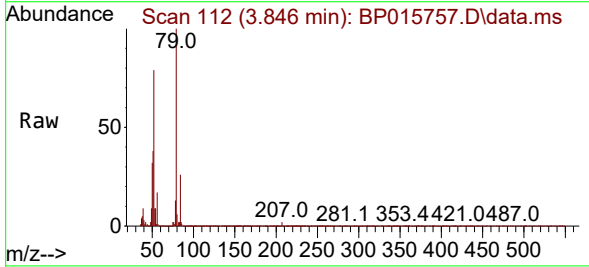
Ion	Ratio	Lower	Upper
88	100		
43	31.8	27.4	41.2
58	74.7	59.8	89.8

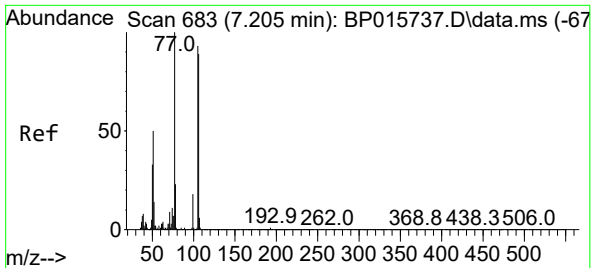


#5  
 Pyridine  
 Concen: 21.660 ng/uL  
 RT: 3.846 min Scan# 112  
 Delta R.T. 0.000 min  
 Lab File: BP015757.D  
 Acq: 27 Jun 2023 20:52

Tgt Ion: 79 Resp: 262631

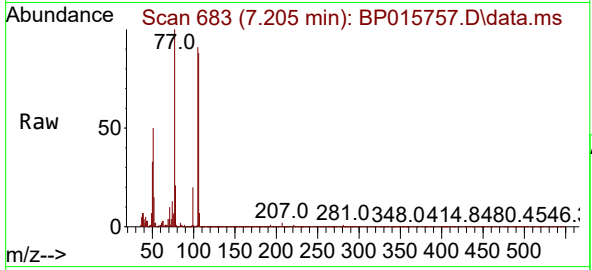
Ion	Ratio	Lower	Upper
79	100		
52	78.8	65.5	98.3
51	38.3	31.8	47.8





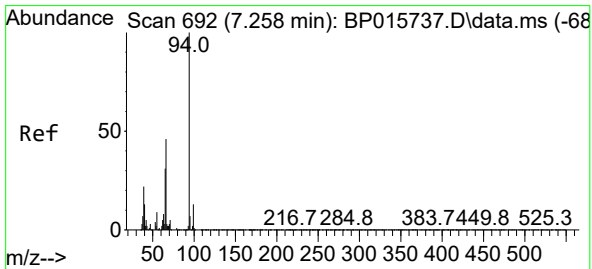
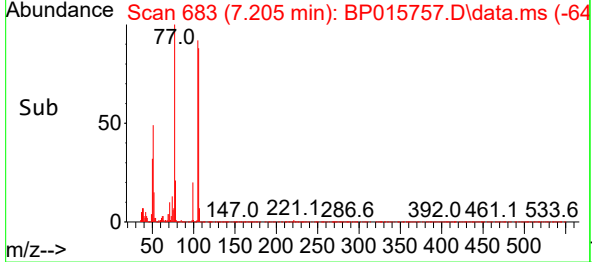
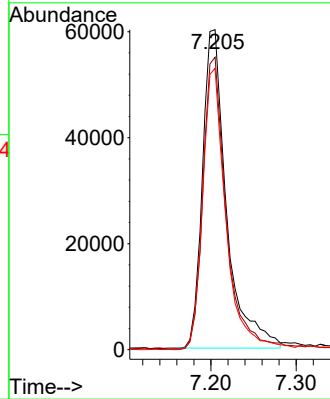
#6  
Benzaldehyde  
Concen: 20.599 ng/u1  
RT: 7.205 min Scan# 683  
Delta R.T. 0.000 min  
Lab File: BP015757.D  
Acq: 27 Jun 2023 20:52

Instrument :  
BNA\_P  
ClientSampleId :



Tgt Ion: 77 Resp: 117879

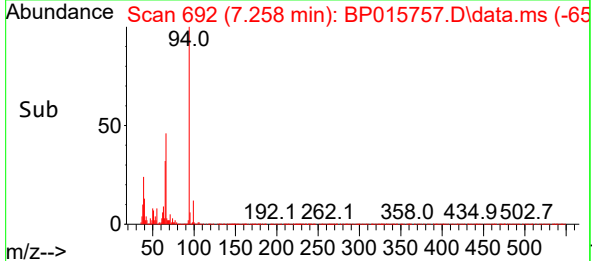
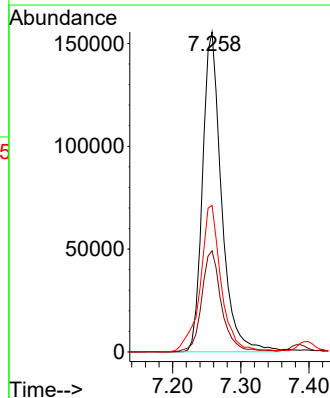
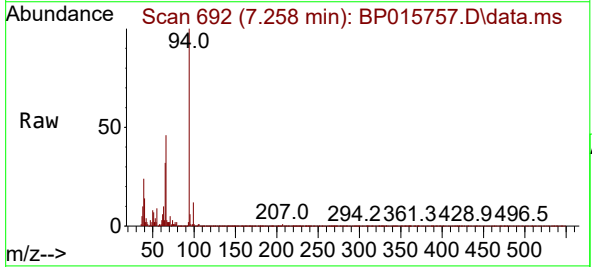
Ion	Ratio	Lower	Upper
77	100		
105	91.4	73.4	110.0
106	87.9	66.6	100.0

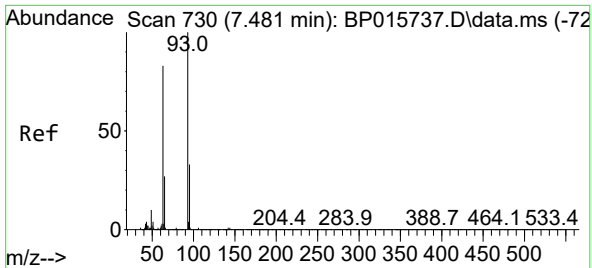


#8  
Phenol  
Concen: 20.506 ng/u1  
RT: 7.258 min Scan# 692  
Delta R.T. 0.000 min  
Lab File: BP015757.D  
Acq: 27 Jun 2023 20:52

Tgt Ion: 94 Resp: 301203

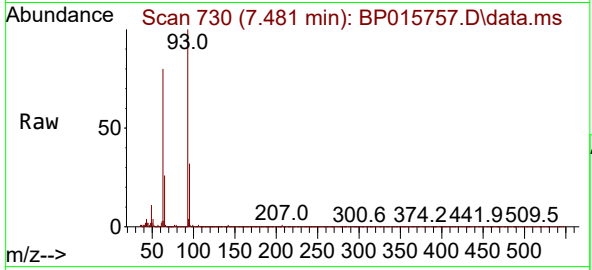
Ion	Ratio	Lower	Upper
94	100		
65	31.6	26.4	39.6
66	45.8	37.3	55.9





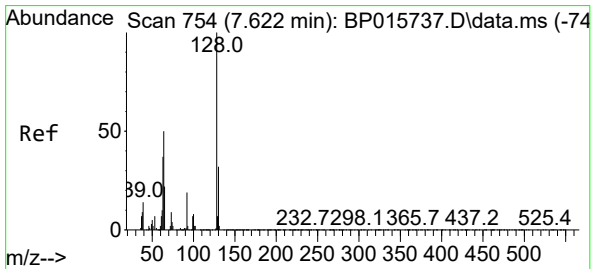
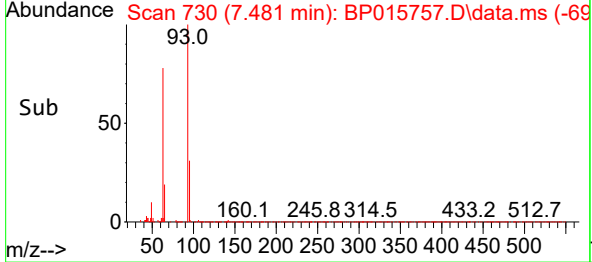
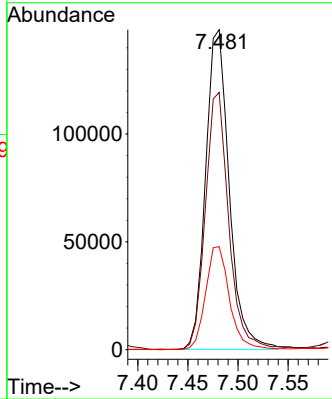
#10  
 Bis(2-Chloroethyl)ether  
 Concen: 20.801 ng/ul  
 RT: 7.481 min Scan# 710  
 Delta R.T. 0.000 min  
 Lab File: BP015757.D  
 Acq: 27 Jun 2023 20:52

Instrument : BNA\_P  
 ClientSampleId :

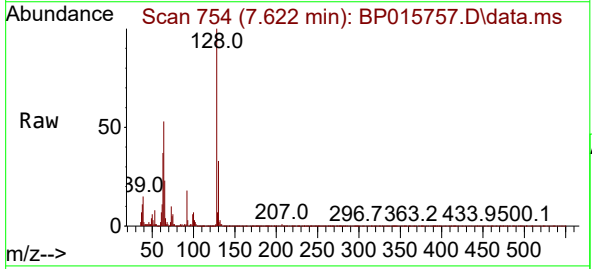


Tgt Ion: 93 Resp: 243096

Ion	Ratio	Lower	Upper
93	100		
63	80.4	62.8	94.2
95	32.2	25.6	38.4

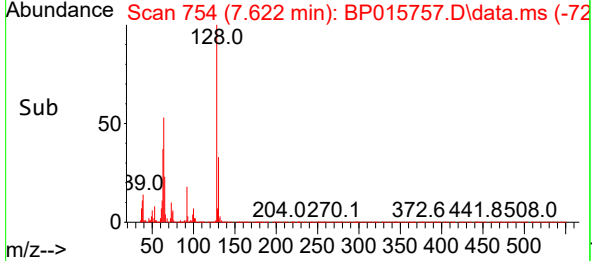
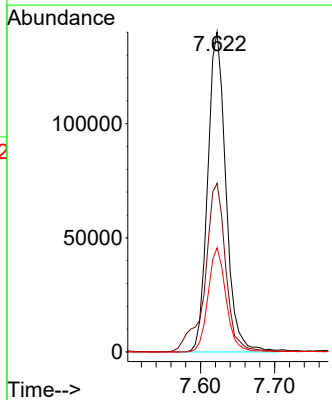


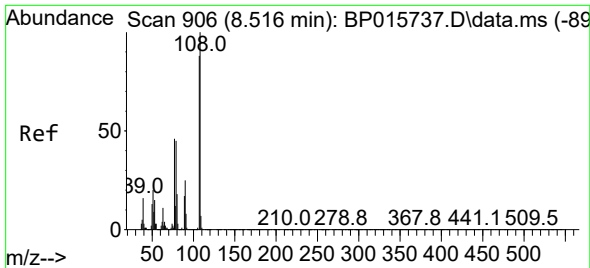
#12  
 2-Chlorophenol  
 Concen: 21.070 ng/ul  
 RT: 7.622 min Scan# 754  
 Delta R.T. -0.006 min  
 Lab File: BP015757.D  
 Acq: 27 Jun 2023 20:52



Tgt Ion: 128 Resp: 239178

Ion	Ratio	Lower	Upper
128	100		
64	52.7	41.2	61.8
130	32.5	26.0	39.0

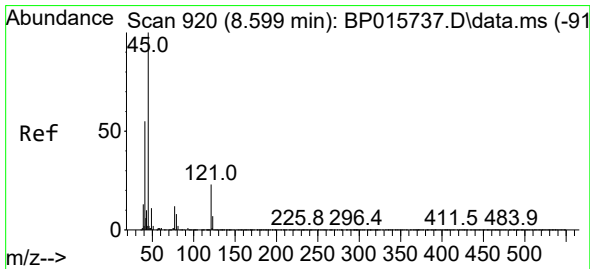
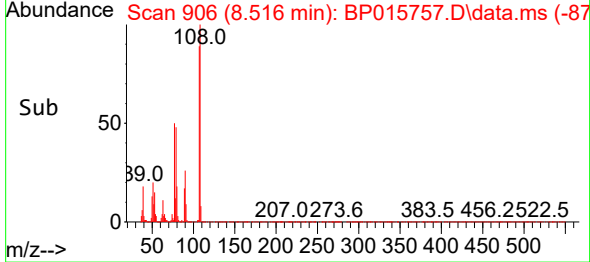
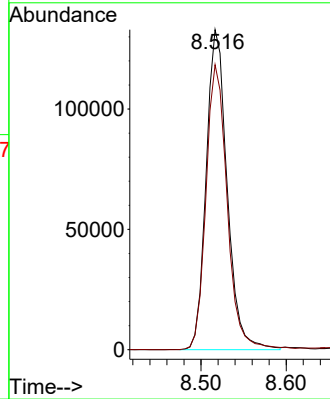
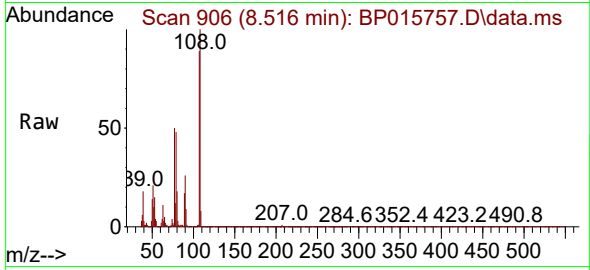




#13  
 2-Methylphenol  
 Concen: 20.492 ng/ul  
 RT: 8.516 min Scan# 906  
 Delta R.T. -0.006 min  
 Lab File: BP015757.D  
 Acq: 27 Jun 2023 20:52

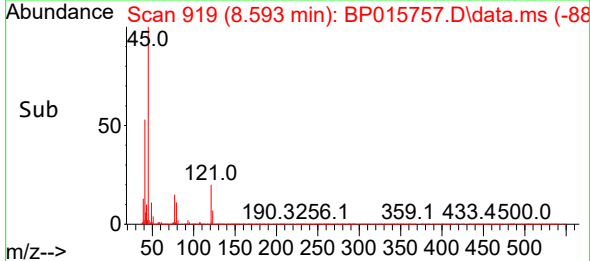
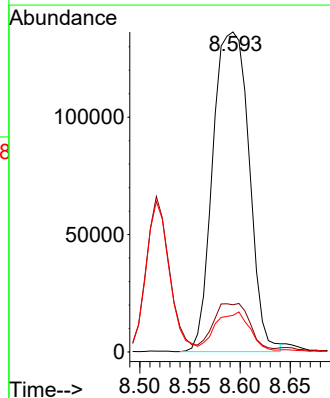
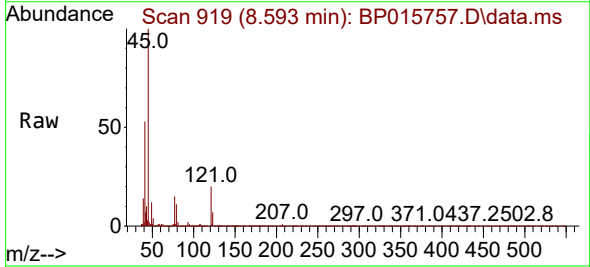
Instrument :  
 BNA\_P  
 ClientSampleId :

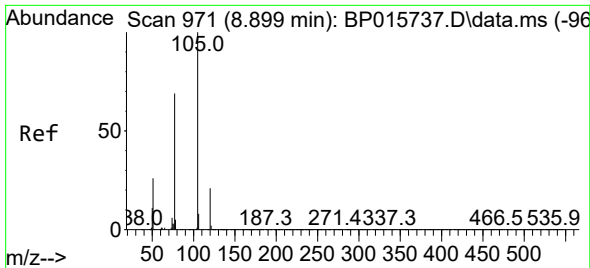
Tgt Ion:108 Resp: 227256  
 Ion Ratio Lower Upper  
 108 100  
 107 89.1 73.8 110.6



#14  
 2,2'-oxybis(1-Chloropropane)  
 Concen: 21.418 ng/ul  
 RT: 8.593 min Scan# 919  
 Delta R.T. 0.000 min  
 Lab File: BP015757.D  
 Acq: 27 Jun 2023 20:52

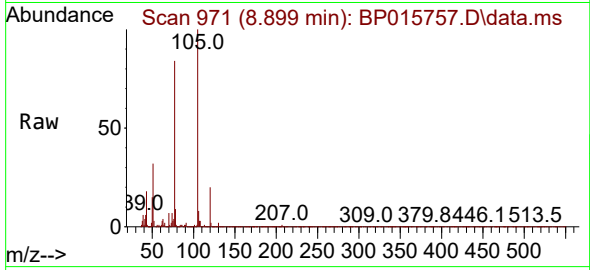
Tgt Ion: 45 Resp: 341879  
 Ion Ratio Lower Upper  
 45 100  
 77 14.8 12.4 18.6  
 79 11.5 9.3 13.9



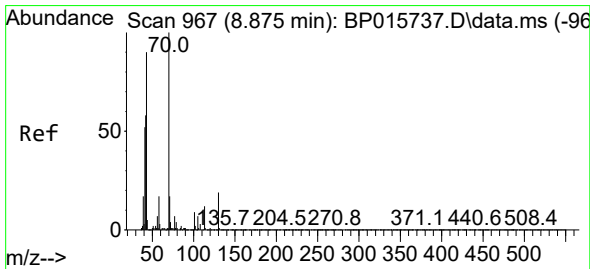
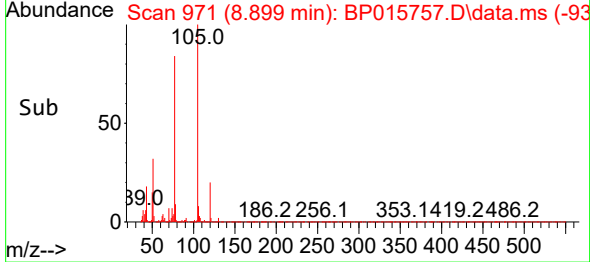
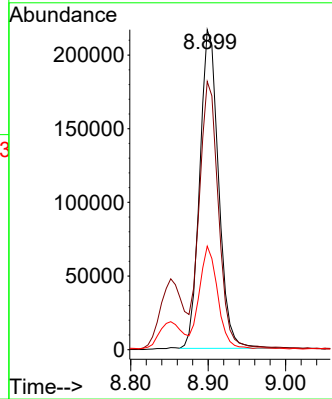


#16  
 Acetophenone  
 Concen: 19.813 ng/uI  
 RT: 8.899 min Scan# 91  
 Delta R.T. -0.006 min  
 Lab File: BP015757.D  
 Acq: 27 Jun 2023 20:52

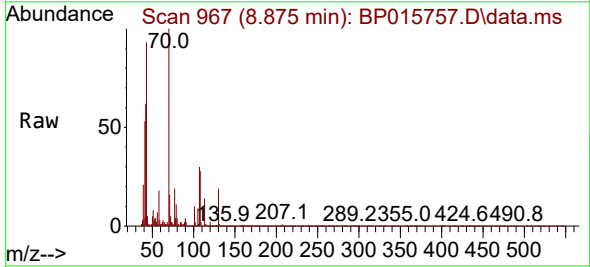
Instrument :  
 BNA\_P  
 ClientSampleId :



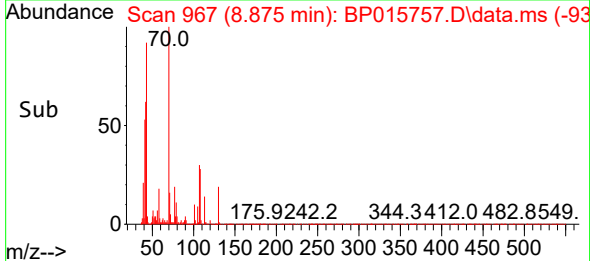
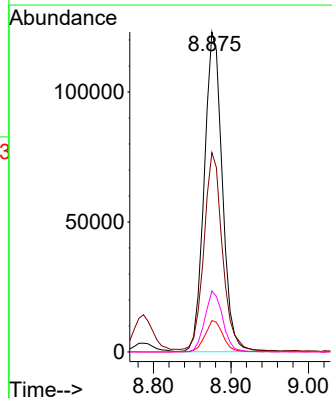
Tgt Ion: 105 Resp: 364180  
 Ion Ratio Lower Upper  
 105 100  
 77 83.8 65.0 97.4  
 51 32.4 25.1 37.7



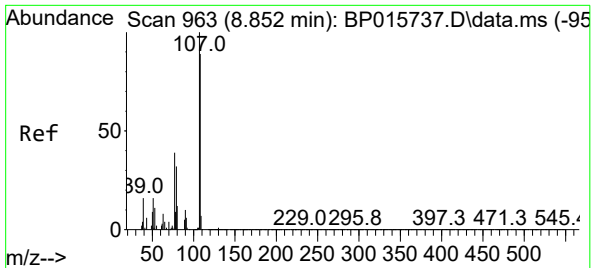
#17  
 N-Nitroso-di-n-propylamine  
 Concen: 19.512 ng/uI  
 RT: 8.875 min Scan# 967  
 Delta R.T. -0.006 min  
 Lab File: BP015757.D  
 Acq: 27 Jun 2023 20:52



Tgt Ion: 70 Resp: 199197  
 Ion Ratio Lower Upper  
 70 100  
 42 62.3 48.2 72.2  
 101 9.8 7.6 11.4  
 130 19.1 13.9 20.9

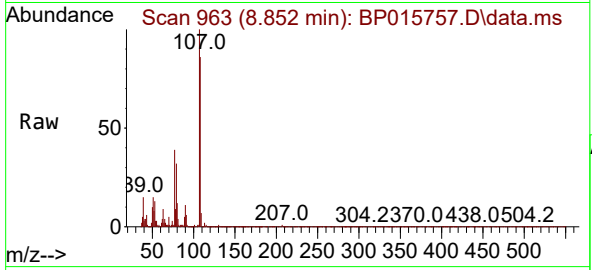




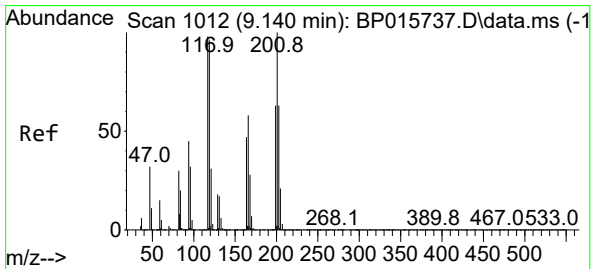
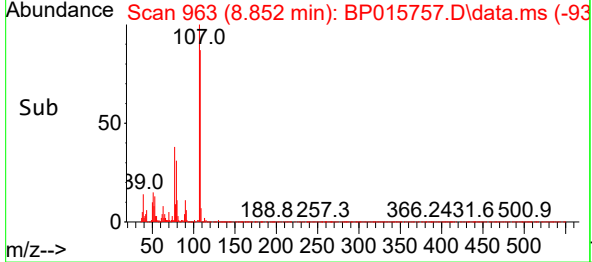
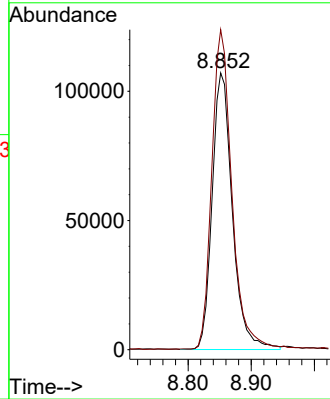


#18  
 4-Methylphenol  
 Concen: 19.993 ng/uI  
 RT: 8.852 min Scan# 901  
 Delta R.T. -0.006 min  
 Lab File: BP015757.D  
 Acq: 27 Jun 2023 20:52

Instrument :  
 BNA\_P  
 ClientSampleId :

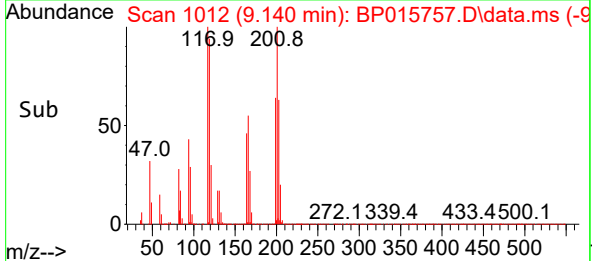
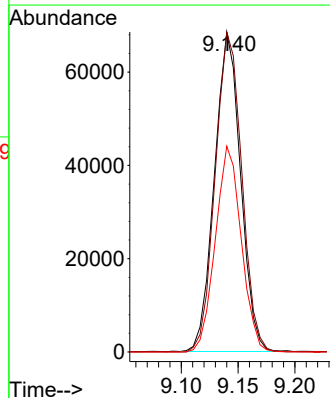
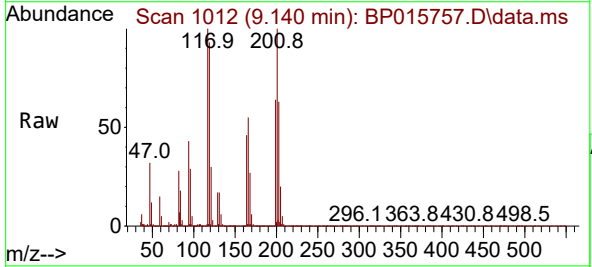


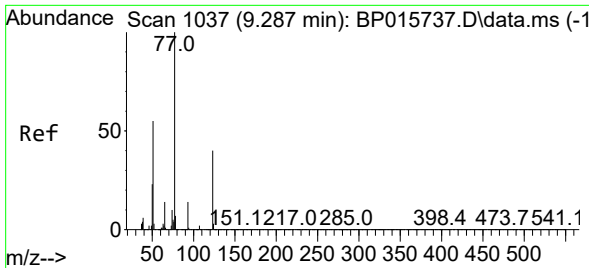
Tgt Ion:108 Resp: 238224  
 Ion Ratio Lower Upper  
 108 100  
 107 115.6 91.3 136.9



#19  
 Hexachloroethane  
 Concen: 20.866 ng/uI  
 RT: 9.140 min Scan# 1012  
 Delta R.T. -0.006 min  
 Lab File: BP015757.D  
 Acq: 27 Jun 2023 20:52

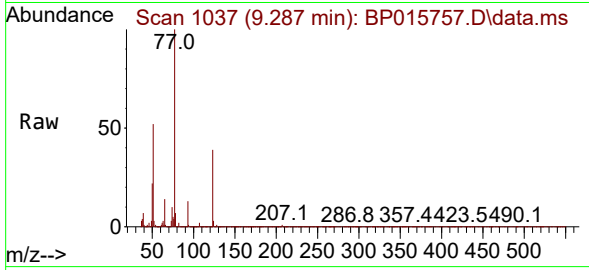
Tgt Ion:117 Resp: 109396  
 Ion Ratio Lower Upper  
 117 100  
 201 99.9 84.2 126.2  
 199 64.3 51.8 77.8





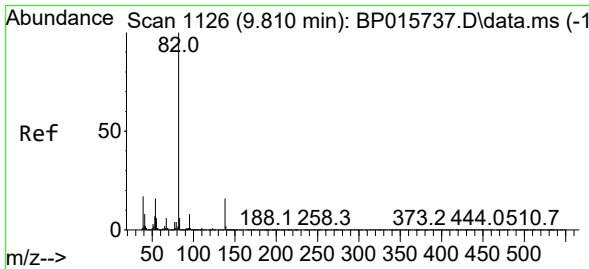
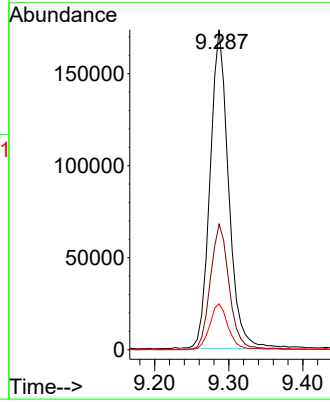
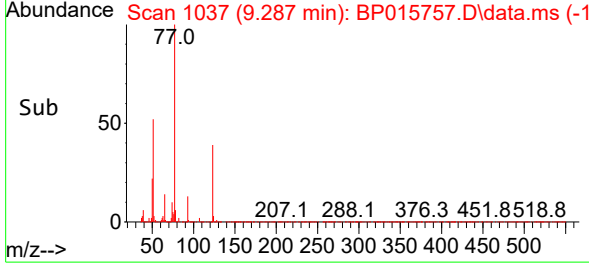
#22  
 Nitrobenzene  
 Concen: 21.951 ng/uI  
 RT: 9.287 min Scan# 1037  
 Delta R.T. 0.000 min  
 Lab File: BP015757.D  
 Acq: 27 Jun 2023 20:52

Instrument :  
 BNA\_P  
 ClientSampleId :

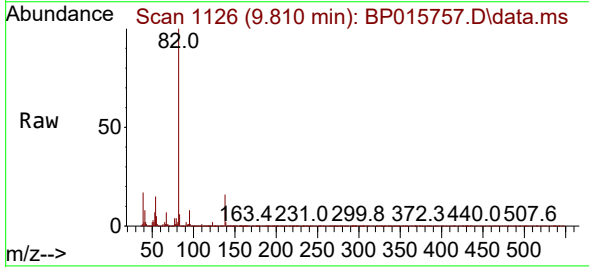


Tgt Ion: 77 Resp: 300245

Ion	Ratio	Lower	Upper
77	100		
123	39.2	31.0	46.4
65	14.3	11.3	16.9

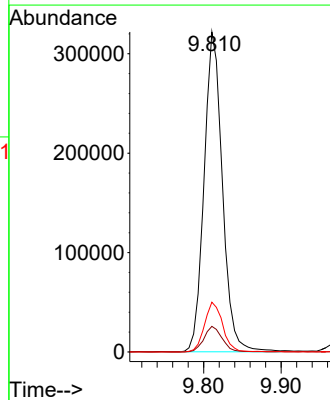
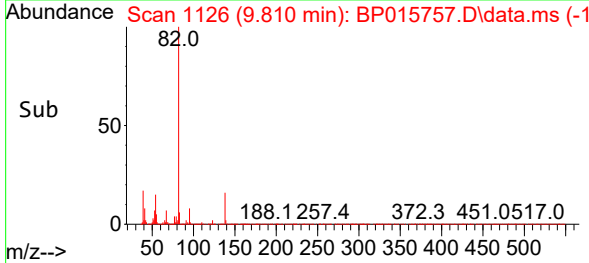


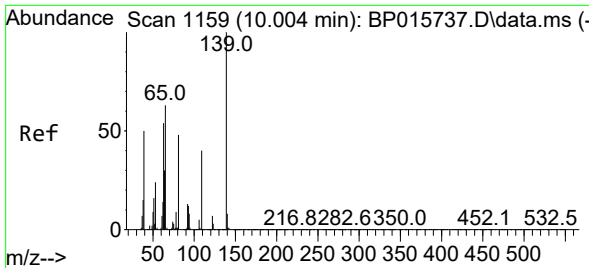
#23  
 Isophorone  
 Concen: 20.254 ng/uI  
 RT: 9.810 min Scan# 1126  
 Delta R.T. -0.006 min  
 Lab File: BP015757.D  
 Acq: 27 Jun 2023 20:52



Tgt Ion: 82 Resp: 530148

Ion	Ratio	Lower	Upper
82	100		
95	8.0	6.3	9.5
138	15.6	12.3	18.5

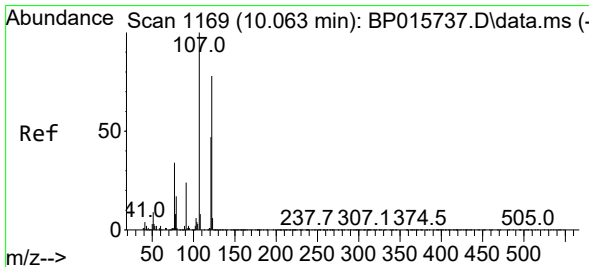
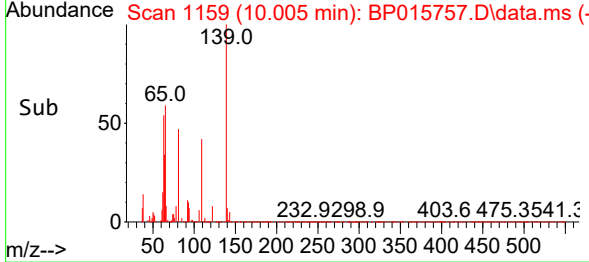
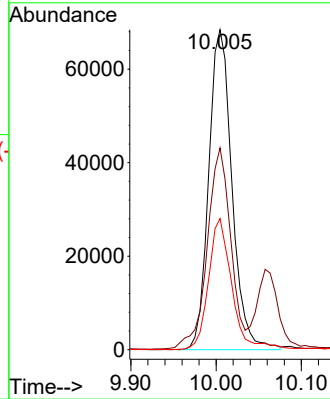
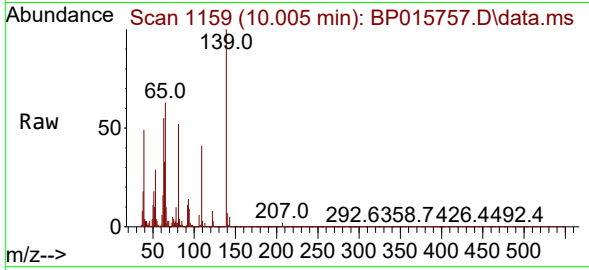




#25  
 2-Nitrophenol  
 Concen: 21.513 ng/ul  
 RT: 10.005 min Scan# 1159  
 Delta R.T. 0.000 min  
 Lab File: BP015757.D  
 Acq: 27 Jun 2023 20:52

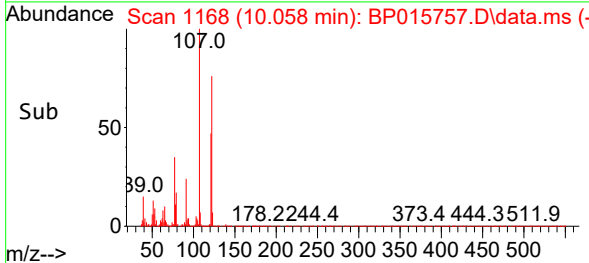
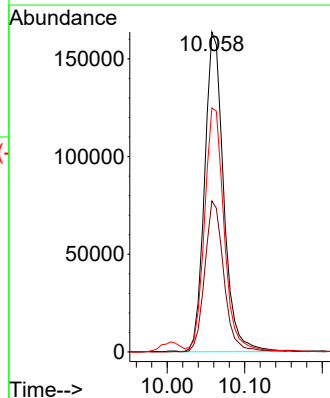
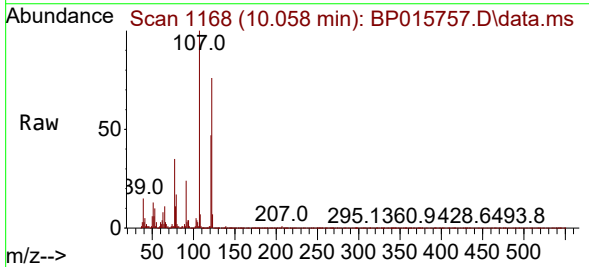
Instrument :  
 BNA\_P  
 ClientSampleId :

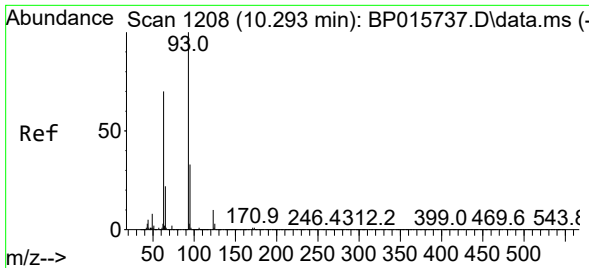
Tgt Ion:139 Resp: 129789  
 Ion Ratio Lower Upper  
 139 100  
 65 63.0 50.2 75.2  
 109 41.0 31.3 46.9



#26  
 2,4-Dimethylphenol  
 Concen: 21.066 ng/ul  
 RT: 10.058 min Scan# 1168  
 Delta R.T. -0.006 min  
 Lab File: BP015757.D  
 Acq: 27 Jun 2023 20:52

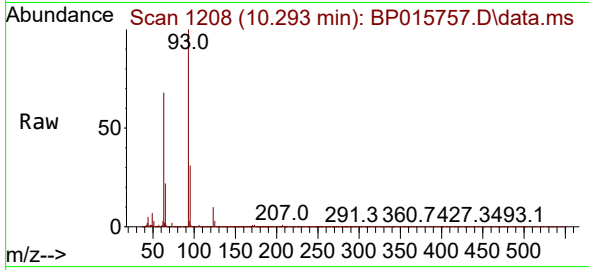
Tgt Ion:107 Resp: 279394  
 Ion Ratio Lower Upper  
 107 100  
 121 47.2 38.2 57.2  
 122 76.2 62.1 93.1





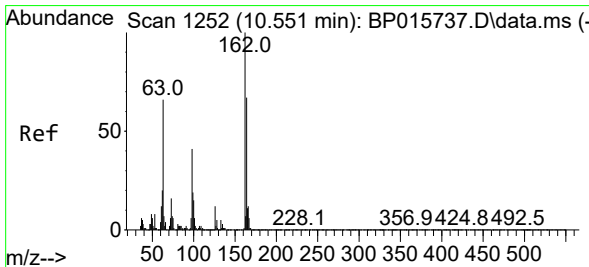
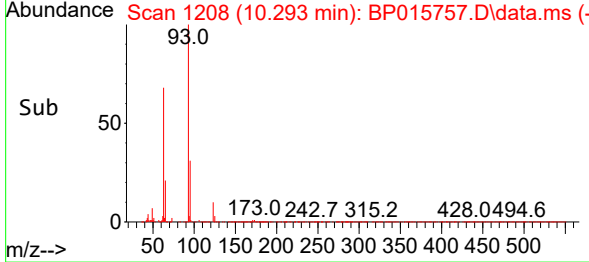
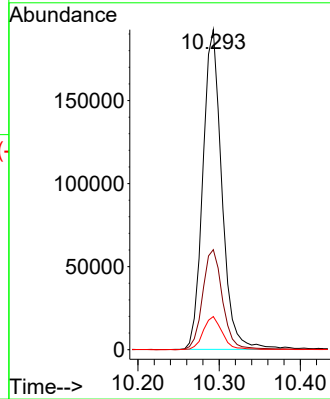
#27  
 Bis(2-Chloroethoxy)methane  
 Concen: 21.182 ng/ul  
 RT: 10.293 min Scan# 11  
 Delta R.T. 0.000 min  
 Lab File: BP015757.D  
 Acq: 27 Jun 2023 20:52

Instrument :  
 BNA\_P  
 ClientSampleId :



Tgt Ion: 93 Resp: 312994

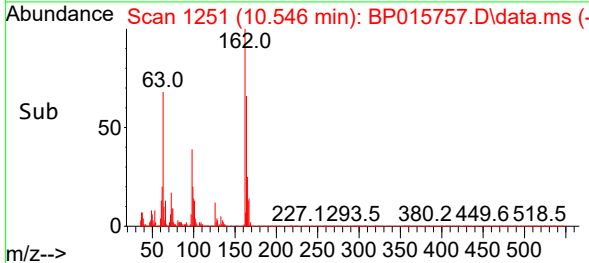
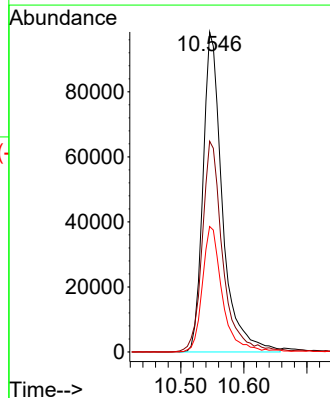
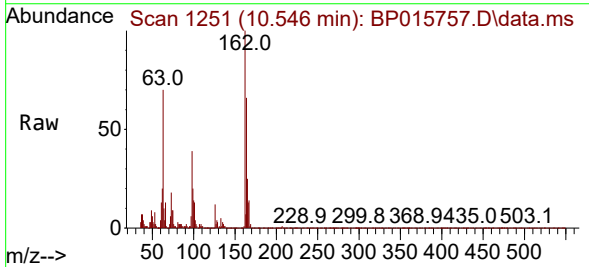
Ion	Ratio	Lower	Upper
93	100		
95	31.2	26.6	39.8
123	10.3	8.6	13.0

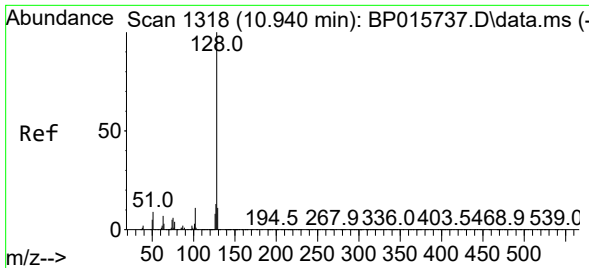


#29  
 2,4-Dichlorophenol  
 Concen: 20.905 ng/ul  
 RT: 10.546 min Scan# 1251  
 Delta R.T. -0.006 min  
 Lab File: BP015757.D  
 Acq: 27 Jun 2023 20:52

Tgt Ion: 162 Resp: 210542

Ion	Ratio	Lower	Upper
162	100		
164	65.9	53.0	79.6
98	39.2	31.3	46.9



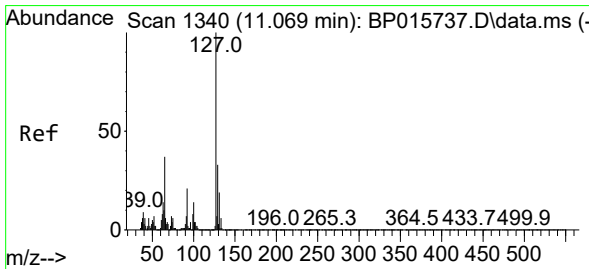
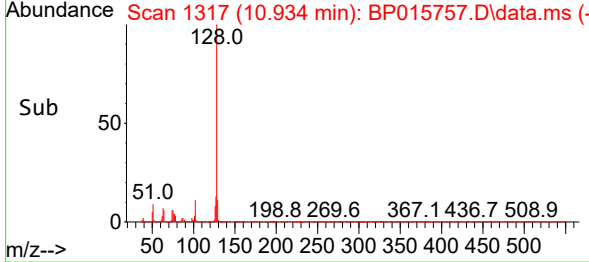
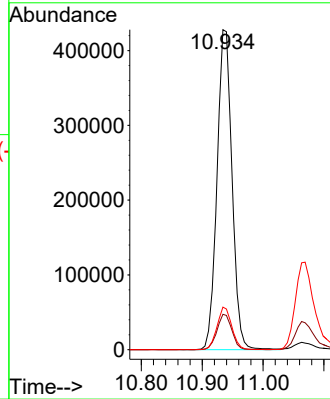
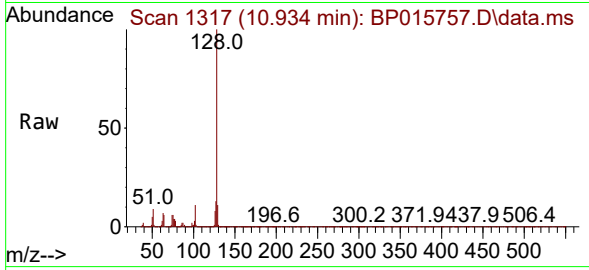


#30  
 Naphthalene  
 Concen: 21.139 ng/u1  
 RT: 10.934 min Scan# 11  
 Delta R.T. -0.006 min  
 Lab File: BP015757.D  
 Acq: 27 Jun 2023 20:52

Instrument :  
 BNA\_P  
 ClientSampleId :

Tgt Ion:128 Resp: 732407

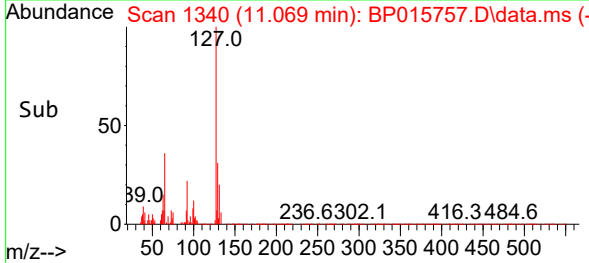
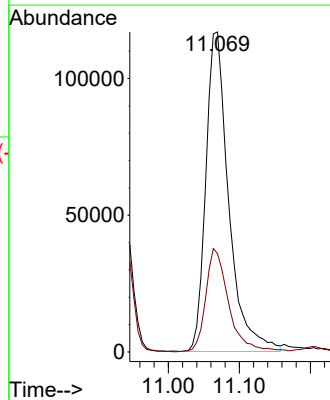
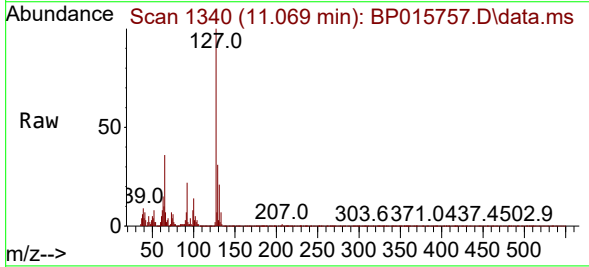
Ion	Ratio	Lower	Upper
128	100		
129	11.1	8.6	12.8
127	13.3	10.3	15.5

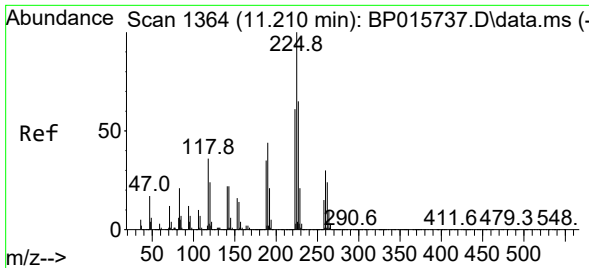


#32  
 4-Chloroaniline  
 Concen: 19.386 ng/u1  
 RT: 11.069 min Scan# 1340  
 Delta R.T. 0.000 min  
 Lab File: BP015757.D  
 Acq: 27 Jun 2023 20:52

Tgt Ion:127 Resp: 262099

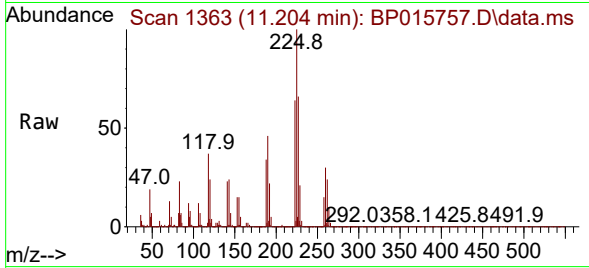
Ion	Ratio	Lower	Upper
127	100		
129	30.8	24.7	37.1



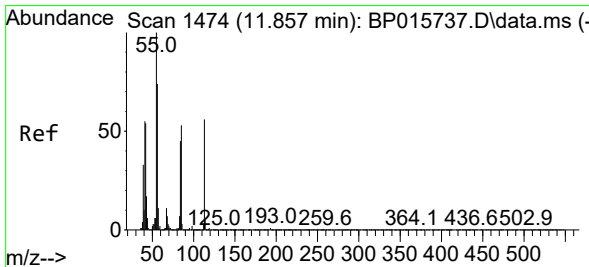
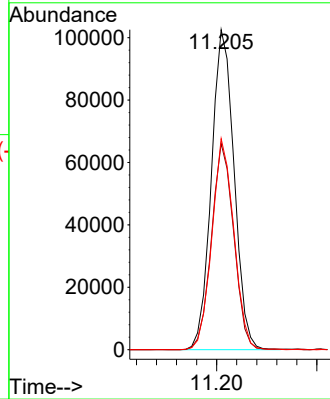
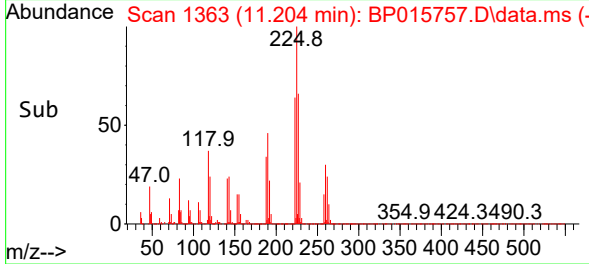


#33  
 Hexachlorobutadiene  
 Concen: 21.201 ng/uI  
 RT: 11.204 min Scan# 11  
 Delta R.T. -0.006 min  
 Lab File: BP015757.D  
 Acq: 27 Jun 2023 20:52

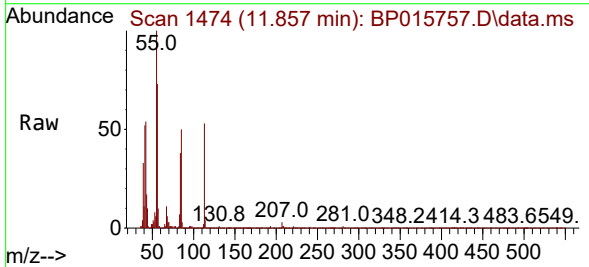
Instrument :  
 BNA\_P  
 ClientSampleId :



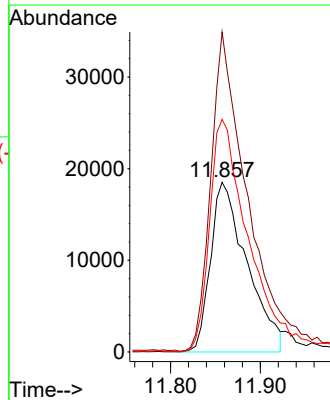
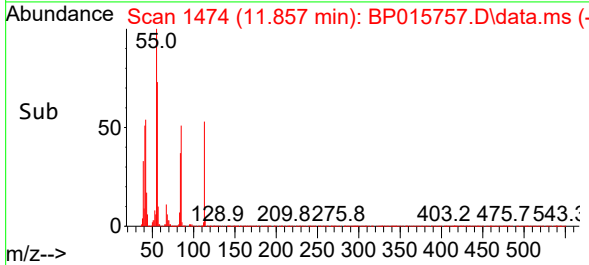
Tgt Ion:225 Resp: 161249  
 Ion Ratio Lower Upper  
 225 100  
 223 64.4 50.4 75.6  
 227 66.0 51.0 76.4

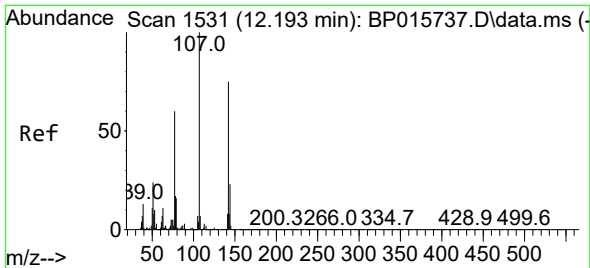


#34  
 Caprolactam  
 Concen: 16.976 ng/uI  
 RT: 11.857 min Scan# 1474  
 Delta R.T. 0.000 min  
 Lab File: BP015757.D  
 Acq: 27 Jun 2023 20:52



Tgt Ion:113 Resp: 52296  
 Ion Ratio Lower Upper  
 113 100  
 55 188.6 142.8 214.2  
 56 137.1 116.9 175.3



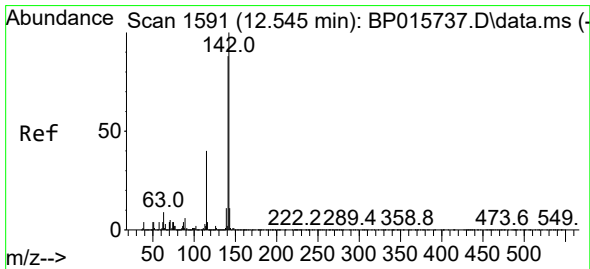
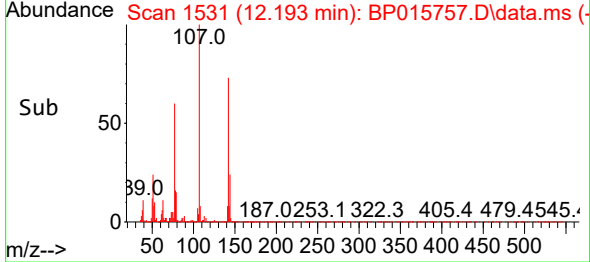
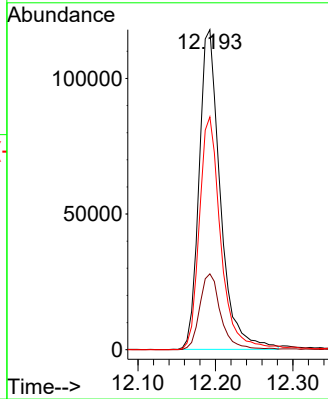
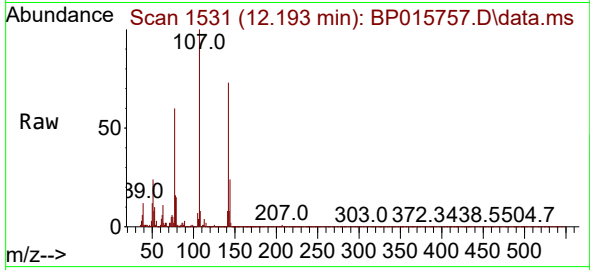


#35  
 4-Chloro-3-methylphenol  
 Concen: 19.014 ng/ul  
 RT: 12.193 min Scan# 1531  
 Delta R.T. 0.006 min  
 Lab File: BP015757.D  
 Acq: 27 Jun 2023 20:52

Instrument :  
 BNA\_P  
 ClientSampleId :

Tgt Ion:107 Resp: 224152

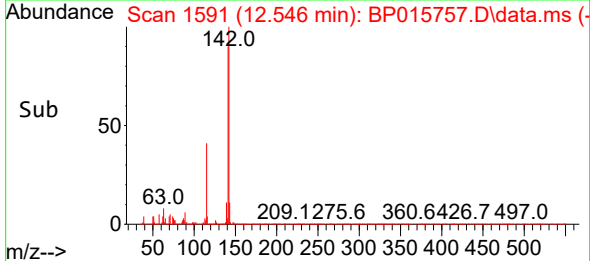
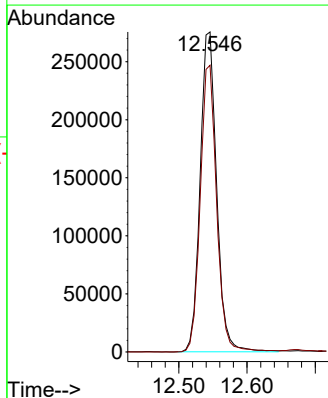
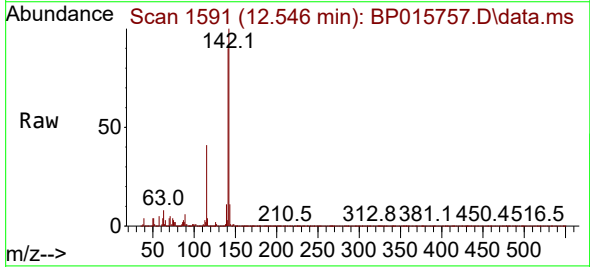
Ion	Ratio	Lower	Upper
107	100		
144	23.7	18.4	27.6
142	72.7	58.6	87.8

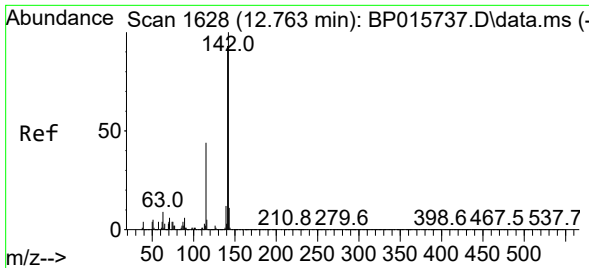


#36  
 2-Methylnaphthalene  
 Concen: 20.316 ng/ul  
 RT: 12.546 min Scan# 1591  
 Delta R.T. 0.000 min  
 Lab File: BP015757.D  
 Acq: 27 Jun 2023 20:52

Tgt Ion:142 Resp: 463370

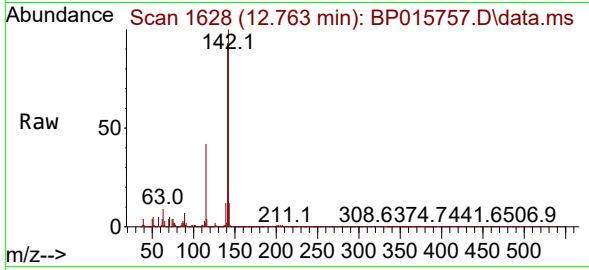
Ion	Ratio	Lower	Upper
142	100		
141	89.6	73.2	109.8



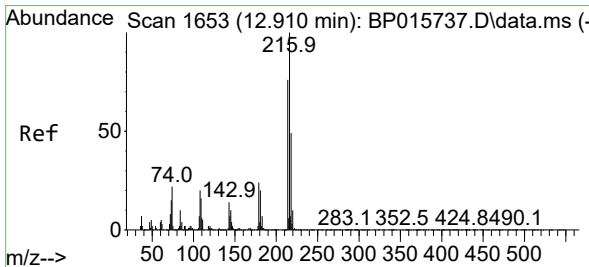
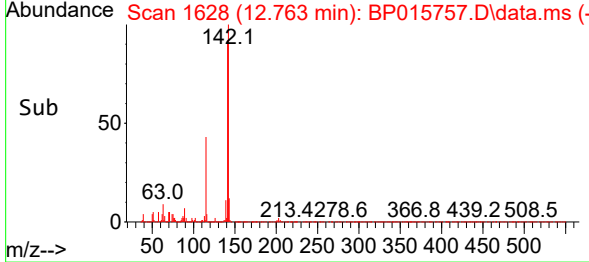
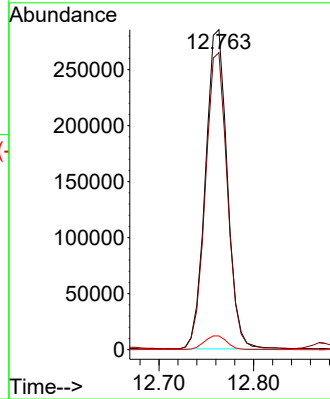


#37  
 1-Methylnaphthalene  
 Concen: 19.633 ng/ul  
 RT: 12.763 min Scan# 1628  
 Delta R.T. 0.000 min  
 Lab File: BP015757.D  
 Acq: 27 Jun 2023 20:52

Instrument : BNA\_P  
 ClientSampleId :

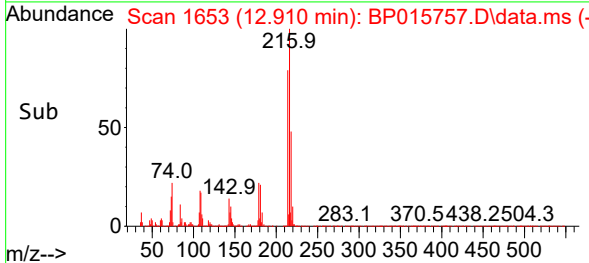
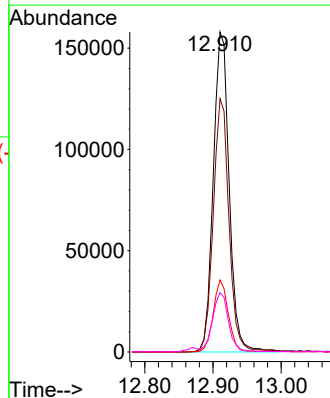
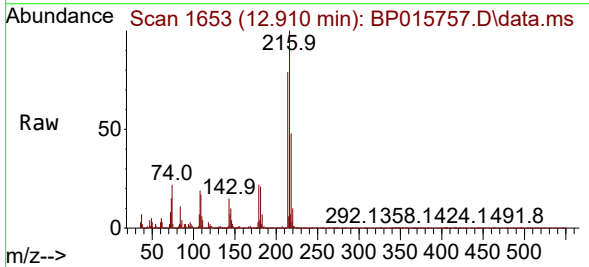


Tgt Ion:142 Resp: 456790  
 Ion Ratio Lower Upper  
 142 100  
 141 92.8 73.1 109.7  
 116 4.3 4.0 6.0

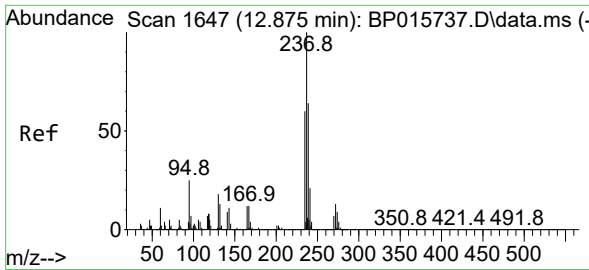


#39  
 1,2,4,5-Tetrachlorobenzene  
 Concen: 23.074 ng/ul  
 RT: 12.910 min Scan# 1653  
 Delta R.T. 0.000 min  
 Lab File: BP015757.D  
 Acq: 27 Jun 2023 20:52

Tgt Ion:216 Resp: 256213  
 Ion Ratio Lower Upper  
 216 100  
 214 79.2 62.4 93.6  
 179 22.5 17.6 26.4  
 108 18.5 15.5 23.3

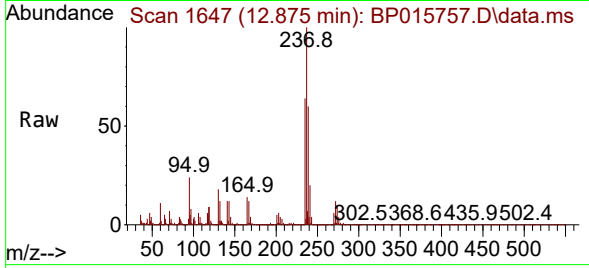






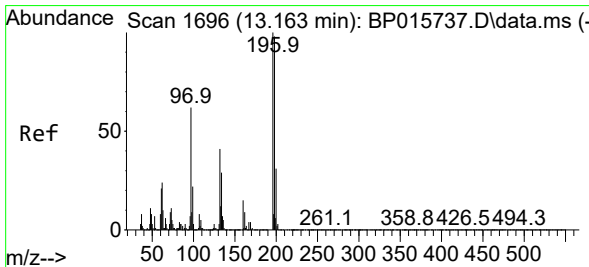
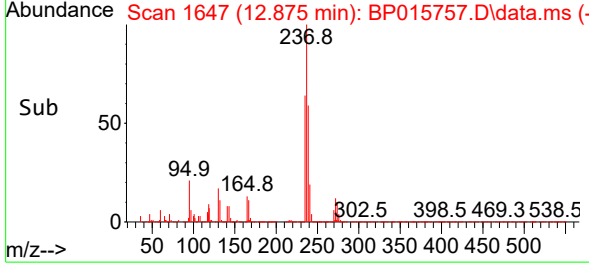
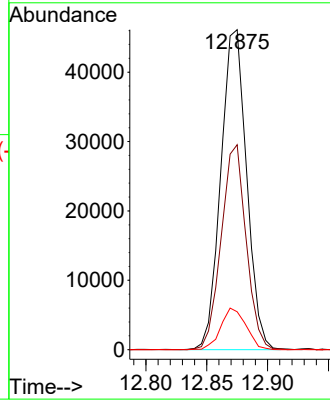
#40  
 Hexachlorocyclopentadiene  
 Concen: 20.523 ng/ul  
 RT: 12.875 min Scan# 1647  
 Delta R.T. 0.000 min  
 Lab File: BP015757.D  
 Acq: 27 Jun 2023 20:52

Instrument : BNA\_P  
 ClientSampleId :



Tgt Ion: 237 Resp: 68175

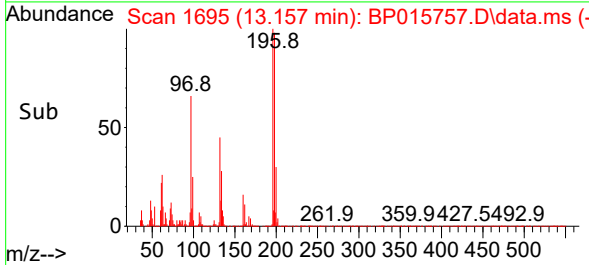
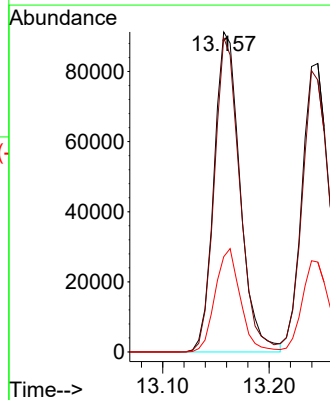
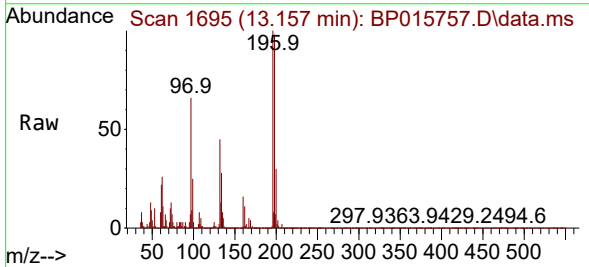
Ion	Ratio	Lower	Upper
237	100		
235	64.1	48.6	73.0
272	11.8	10.5	15.7

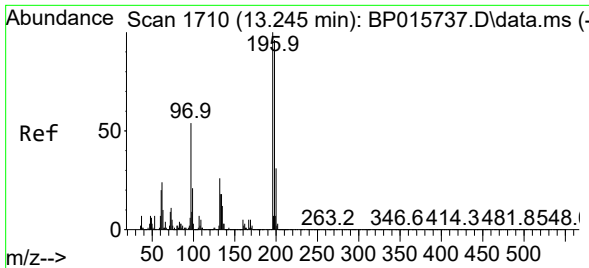


#41  
 2,4,6-Trichlorophenol  
 Concen: 22.132 ng/ul  
 RT: 13.157 min Scan# 1695  
 Delta R.T. 0.000 min  
 Lab File: BP015757.D  
 Acq: 27 Jun 2023 20:52

Tgt Ion: 196 Resp: 155314

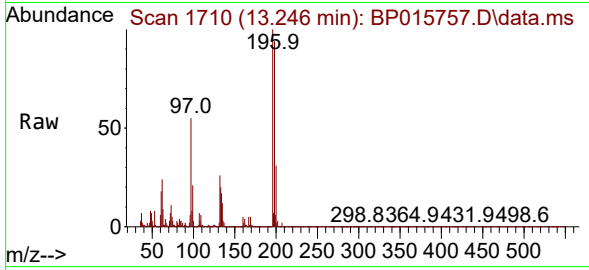
Ion	Ratio	Lower	Upper
196	100		
198	98.2	75.4	113.2
200	29.8	23.6	35.4



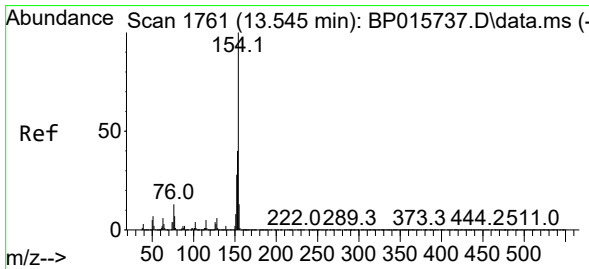
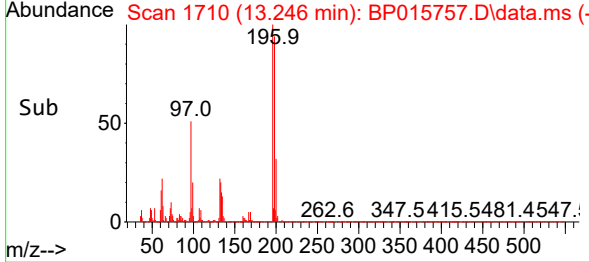
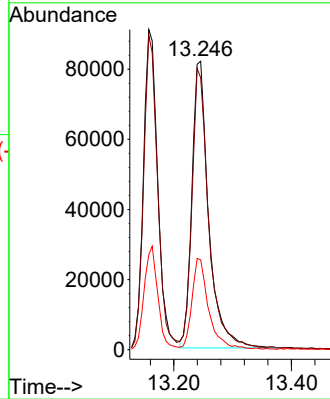


#42  
 2,4,5-Trichlorophenol  
 Concen: 21.853 ng/ul  
 RT: 13.246 min Scan# 1710  
 Delta R.T. 0.006 min  
 Lab File: BP015757.D  
 Acq: 27 Jun 2023 20:52

Instrument :  
 BNA\_P  
 ClientSampleId :

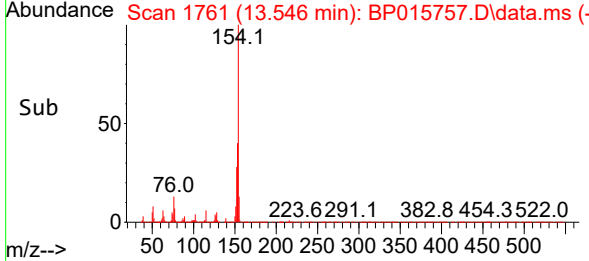
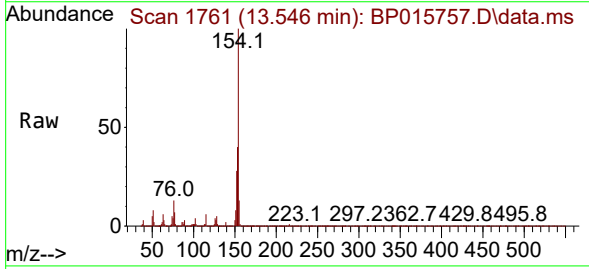
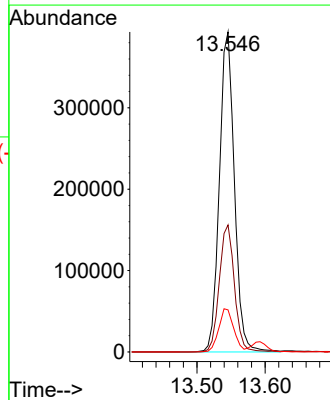


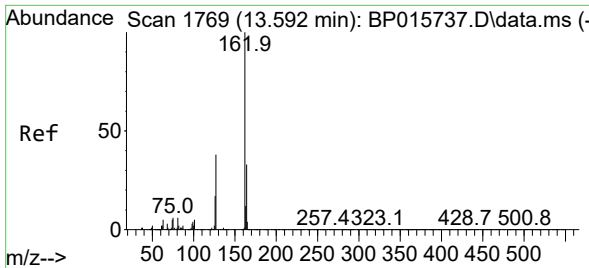
Tgt Ion:196 Resp: 162659  
 Ion Ratio Lower Upper  
 196 100  
 198 94.2 74.9 112.3  
 200 31.2 24.3 36.5



#43  
 1,1'-Biphenyl  
 Concen: 22.574 ng/ul  
 RT: 13.546 min Scan# 1761  
 Delta R.T. 0.000 min  
 Lab File: BP015757.D  
 Acq: 27 Jun 2023 20:52

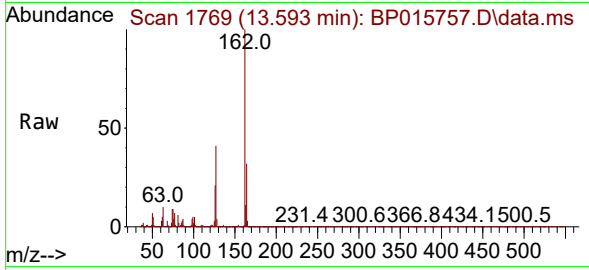
Tgt Ion:154 Resp: 602485  
 Ion Ratio Lower Upper  
 154 100  
 153 39.7 32.8 49.2  
 76 13.1 10.7 16.1



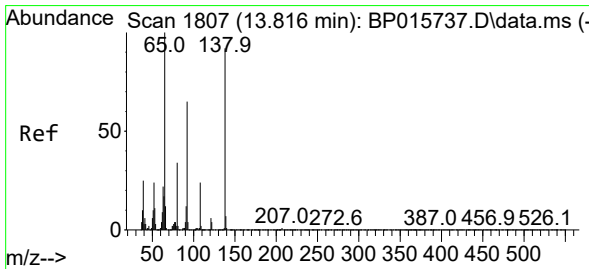
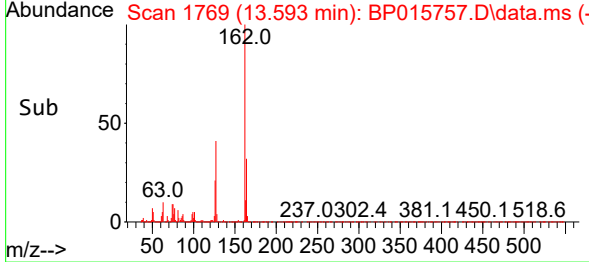
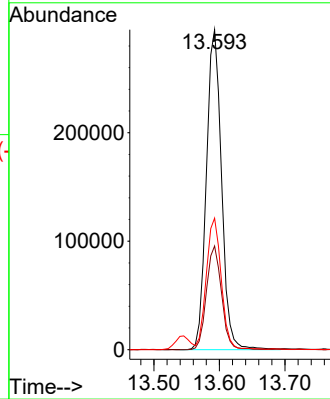


#44  
 2-Chloronaphthalene  
 Concen: 22.546 ng/ul  
 RT: 13.593 min Scan# 1769  
 Delta R.T. 0.000 min  
 Lab File: BP015757.D  
 Acq: 27 Jun 2023 20:52

Instrument :  
 BNA\_P  
 ClientSampleId :

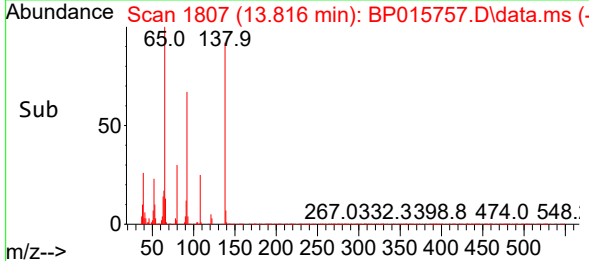
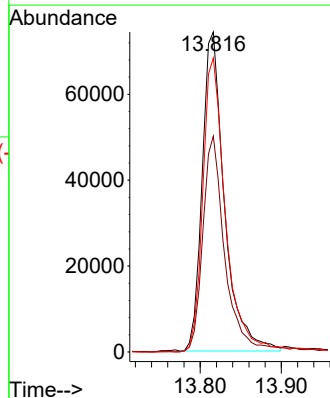
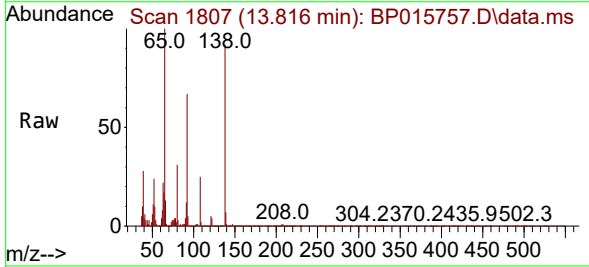


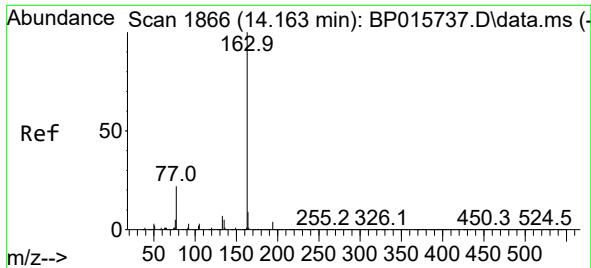
Tgt Ion:162 Resp: 474049  
 Ion Ratio Lower Upper  
 162 100  
 164 32.4 26.1 39.1  
 127 41.1 33.4 50.0



#45  
 2-Nitroaniline  
 Concen: 21.359 ng/ul  
 RT: 13.816 min Scan# 1807  
 Delta R.T. 0.006 min  
 Lab File: BP015757.D  
 Acq: 27 Jun 2023 20:52

Tgt Ion: 65 Resp: 141308  
 Ion Ratio Lower Upper  
 65 100  
 92 67.4 49.5 74.3  
 138 91.9 71.4 107.2

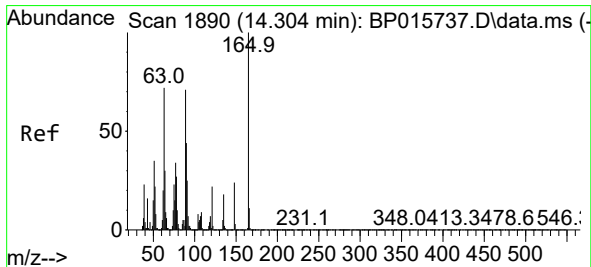
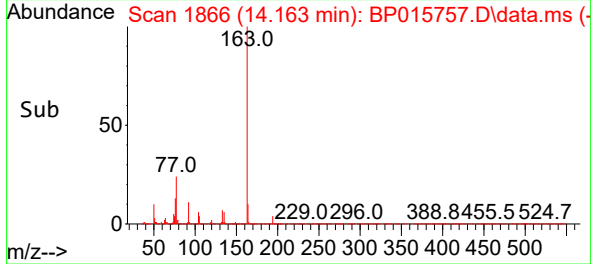
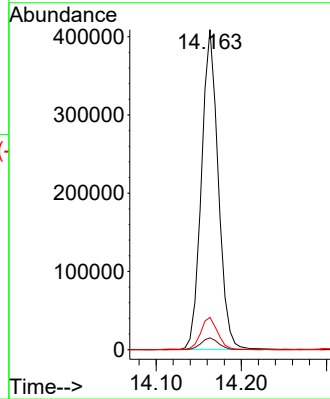
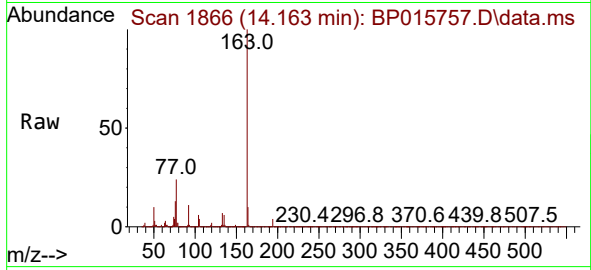




#47  
 Dimethylphthalate  
 Concen: 20.702 ng/ul  
 RT: 14.163 min Scan# 1866  
 Delta R.T. -0.006 min  
 Lab File: BP015757.D  
 Acq: 27 Jun 2023 20:52

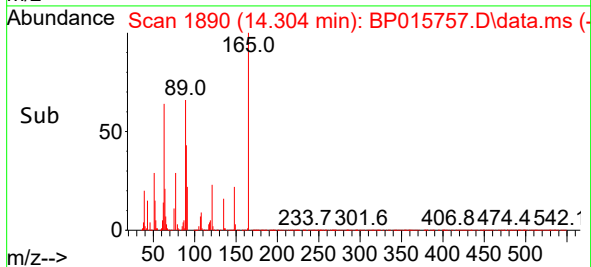
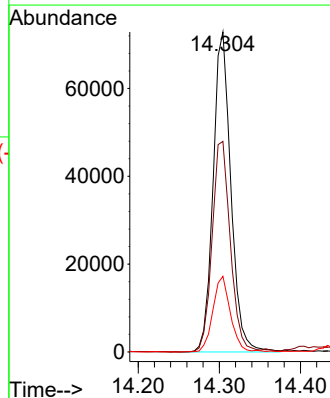
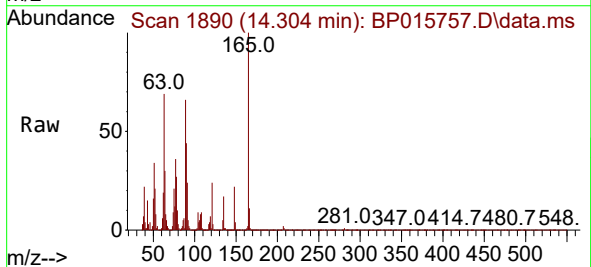
Instrument :  
 BNA\_P  
 ClientSampleId :

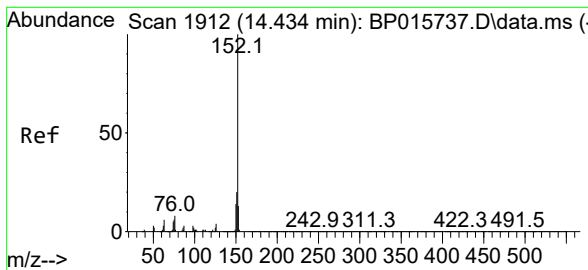
Tgt Ion:163 Resp: 557998  
 Ion Ratio Lower Upper  
 163 100  
 194 3.7 3.1 4.7  
 164 10.1 7.7 11.5



#48  
 2,6-Dinitrotoluene  
 Concen: 20.278 ng/ul  
 RT: 14.304 min Scan# 1890  
 Delta R.T. 0.000 min  
 Lab File: BP015757.D  
 Acq: 27 Jun 2023 20:52

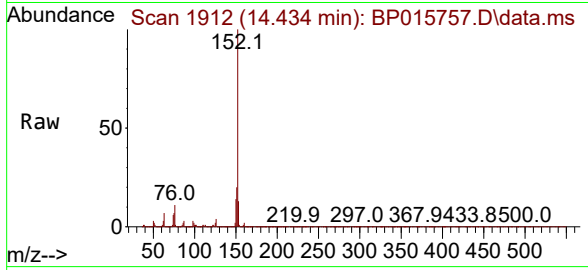
Tgt Ion:165 Resp: 110871  
 Ion Ratio Lower Upper  
 165 100  
 89 65.8 54.1 81.1  
 121 23.6 18.2 27.2





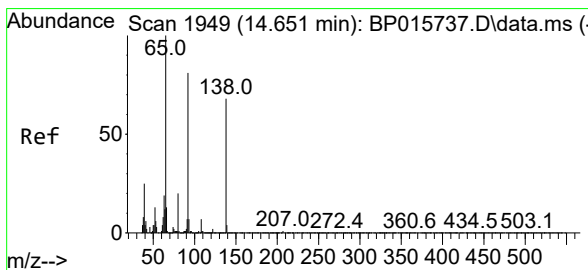
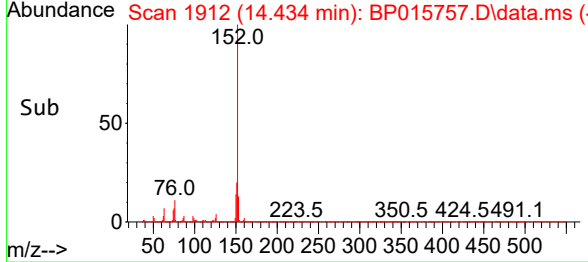
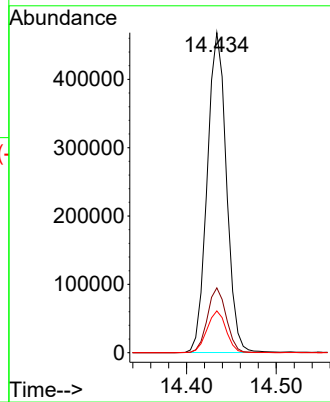
#50  
 Acenaphthylene  
 Concen: 21.608 ng/ul  
 RT: 14.434 min Scan# 1912  
 Delta R.T. -0.006 min  
 Lab File: BP015757.D  
 Acq: 27 Jun 2023 20:52

Instrument :  
 BNA\_P  
 ClientSampleId :

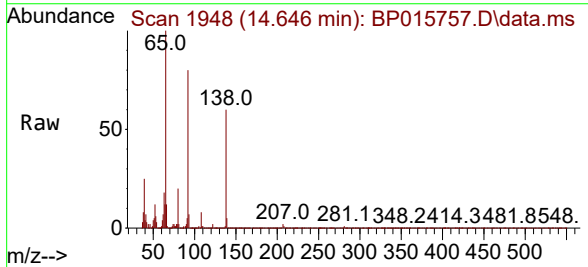


Tgt Ion:152 Resp: 697059

Ion	Ratio	Lower	Upper
152	100		
151	20.2	16.2	24.2
153	13.1	10.5	15.7

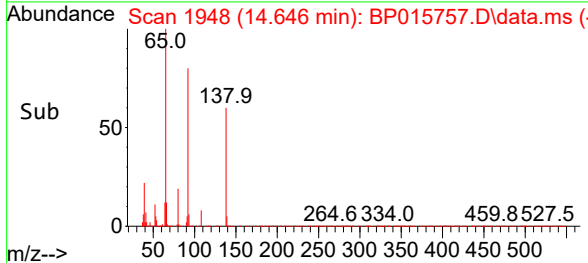
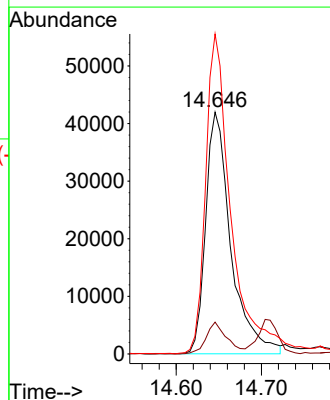


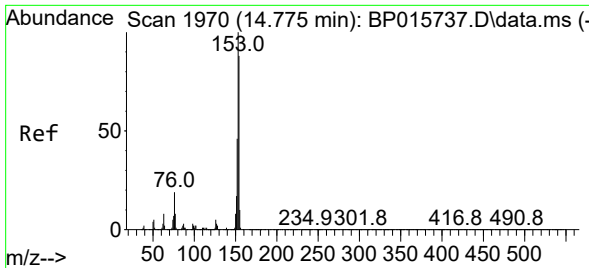
#51  
 3-Nitroaniline  
 Concen: 20.135 ng/ul  
 RT: 14.646 min Scan# 1948  
 Delta R.T. 0.000 min  
 Lab File: BP015757.D  
 Acq: 27 Jun 2023 20:52



Tgt Ion:138 Resp: 86328

Ion	Ratio	Lower	Upper
138	100		
108	13.1	9.1	13.7
92	132.4	96.8	145.2

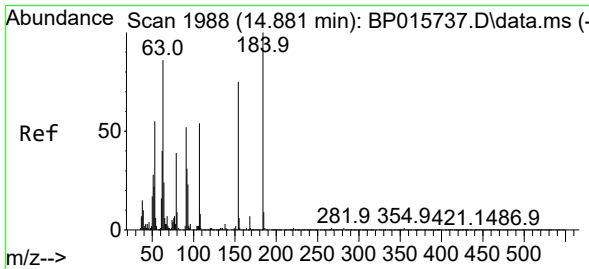
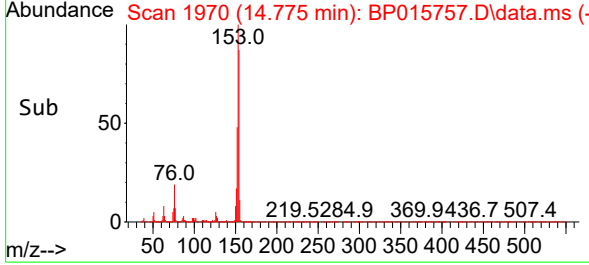
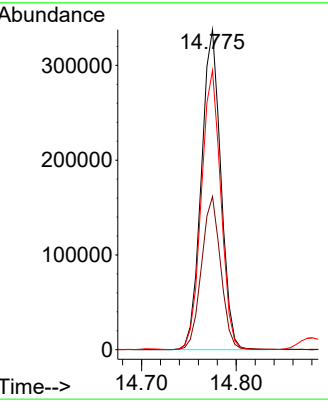
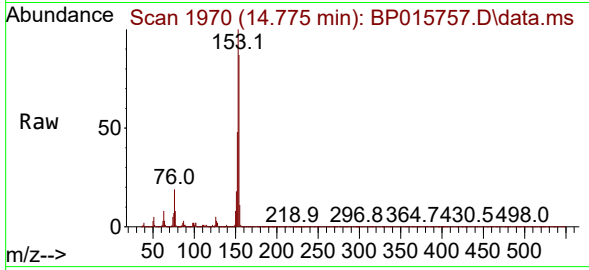




#52  
 Acenaphthene  
 Concen: 21.582 ng/uI  
 RT: 14.775 min Scan# 1970  
 Delta R.T. 0.000 min  
 Lab File: BP015757.D  
 Acq: 27 Jun 2023 20:52

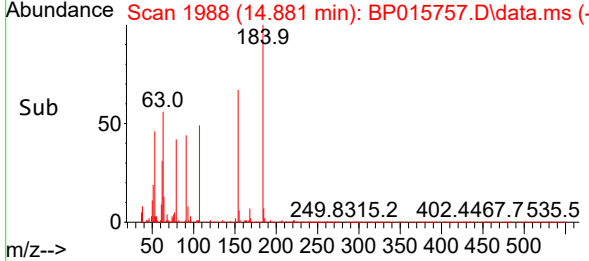
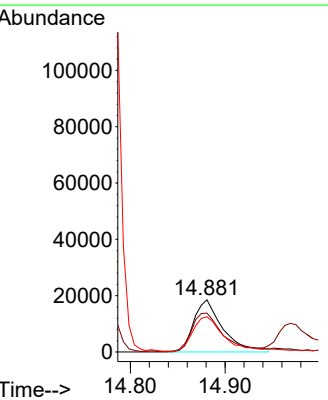
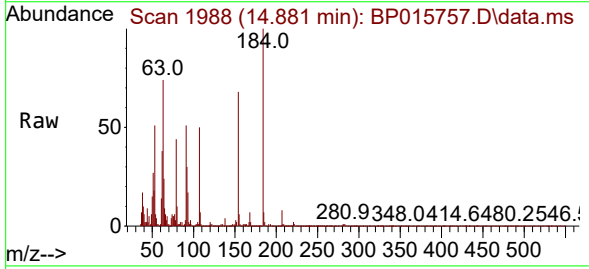
Instrument : BNA\_P  
 ClientSampleId :

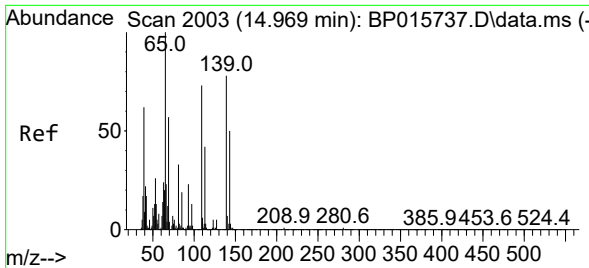
Tgt Ion	Resp	Lower	Upper
153	482804		
152	47.8	39.4	59.2
154	87.3	71.4	107.2



#53  
 2,4-Dinitrophenol  
 Concen: 13.528 ng/uI  
 RT: 14.881 min Scan# 1988  
 Delta R.T. 0.012 min  
 Lab File: BP015757.D  
 Acq: 27 Jun 2023 20:52

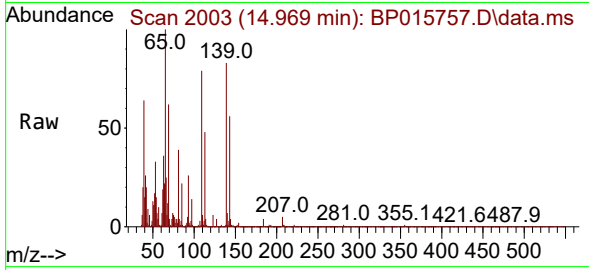
Tgt Ion	Resp	Lower	Upper
184	39241		
184	100		
63	74.4	71.4	107.0
154	67.6	61.1	91.7



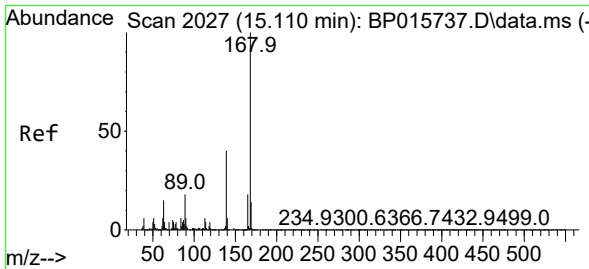
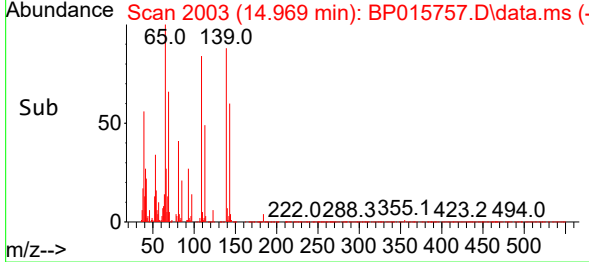
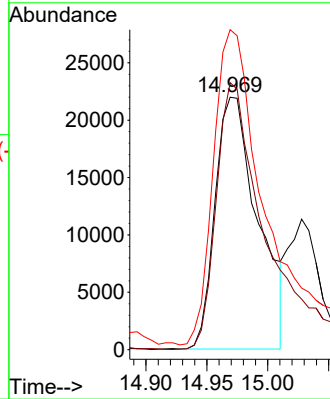


#55  
 4-Nitrophenol  
 Concen: 15.089 ng/uI  
 RT: 14.969 min Scan# 2003  
 Delta R.T. 0.012 min  
 Lab File: BP015757.D  
 Acq: 27 Jun 2023 20:52

Instrument : BNA\_P  
 ClientSampleId :

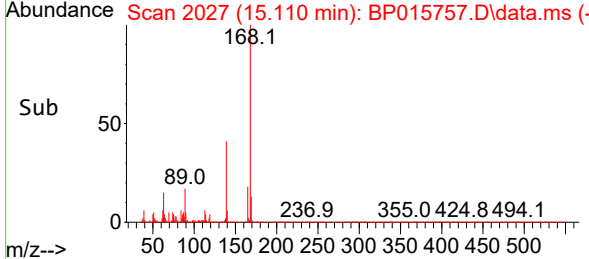
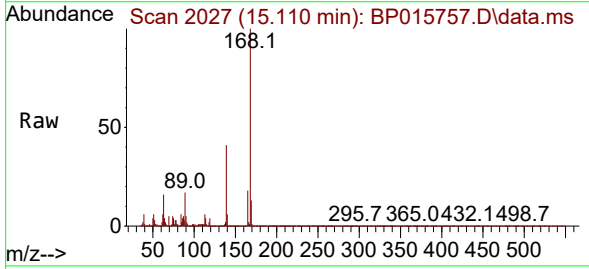
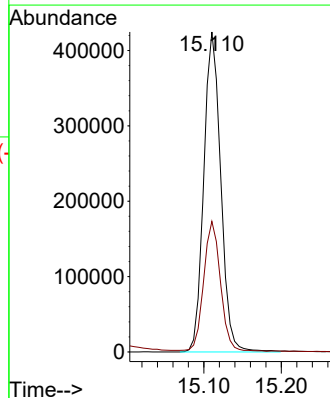


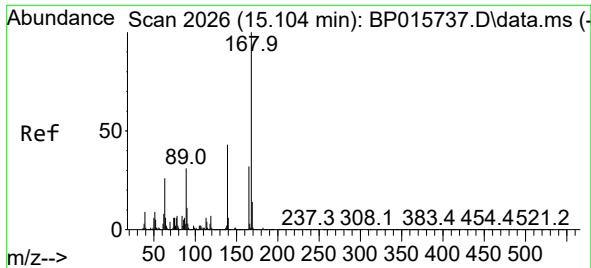
Tgt Ion	Resp	Lower	Upper
109	53741		
109	100		
139	105.8	81.3	121.9
65	126.8	99.9	149.9



#56  
 Dibenzofuran  
 Concen: 20.802 ng/uI  
 RT: 15.110 min Scan# 2027  
 Delta R.T. -0.006 min  
 Lab File: BP015757.D  
 Acq: 27 Jun 2023 20:52

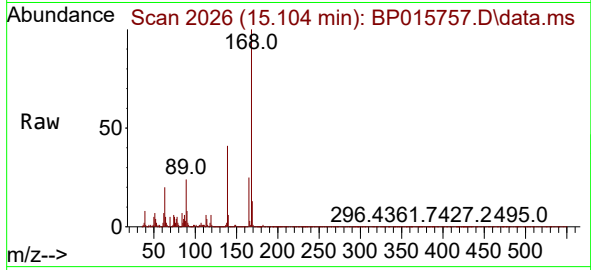
Tgt Ion	Resp	Lower	Upper
168	646001		
168	100		
139	40.8	32.2	48.4



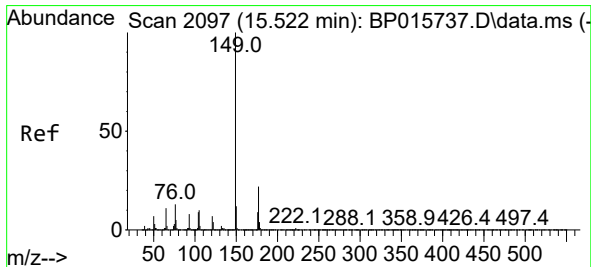
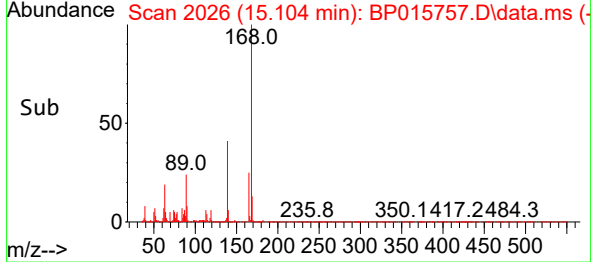
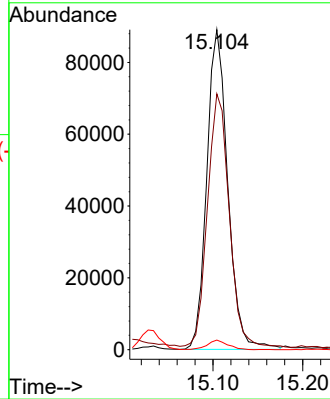


#57  
 2,4-Dinitrotoluene  
 Concen: 19.415 ng/ul  
 RT: 15.104 min Scan# 2026  
 Delta R.T. 0.000 min  
 Lab File: BP015757.D  
 Acq: 27 Jun 2023 20:52

Instrument :  
 BNA\_P  
 ClientSampleId :

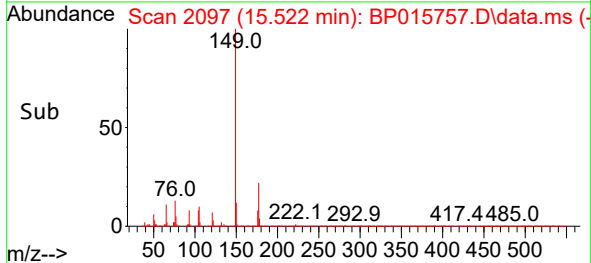
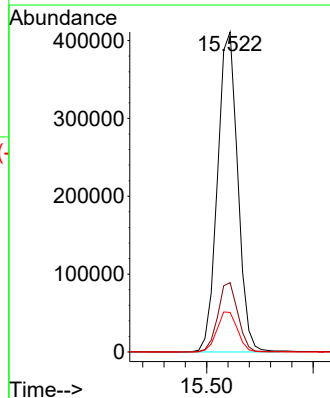
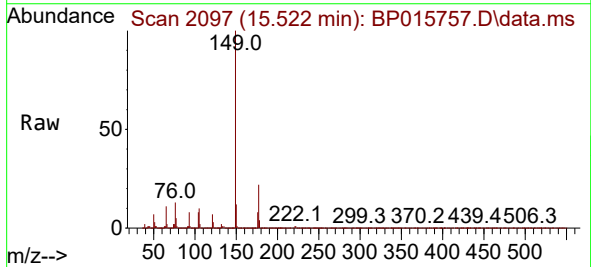


Tgt Ion:165 Resp: 144658  
 Ion Ratio Lower Upper  
 165 100  
 63 80.0 56.8 85.2  
 182 3.0 2.0 3.0#

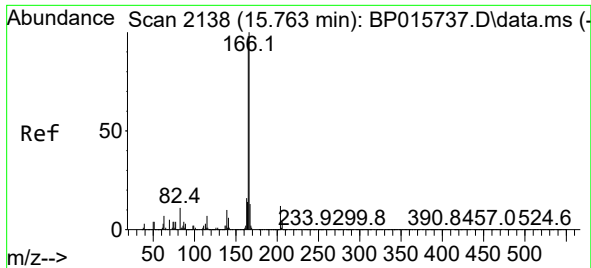


#59  
 Diethylphthalate  
 Concen: 19.806 ng/ul  
 RT: 15.522 min Scan# 2097  
 Delta R.T. 0.000 min  
 Lab File: BP015757.D  
 Acq: 27 Jun 2023 20:52

Tgt Ion:149 Resp: 540236  
 Ion Ratio Lower Upper  
 149 100  
 177 21.7 16.8 25.2  
 150 12.4 10.3 15.5



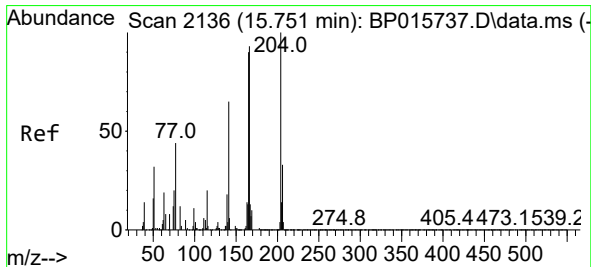
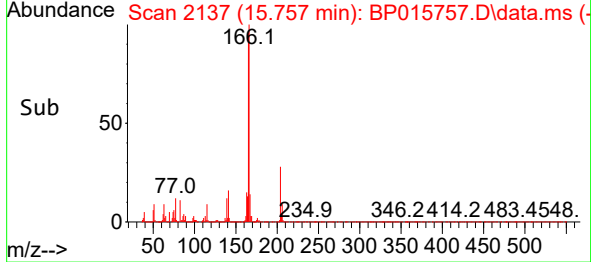
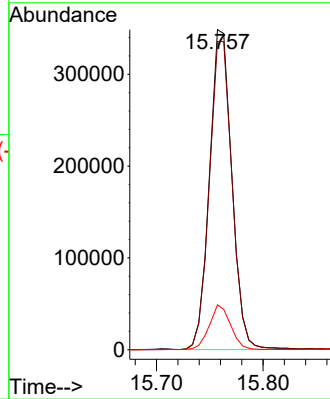
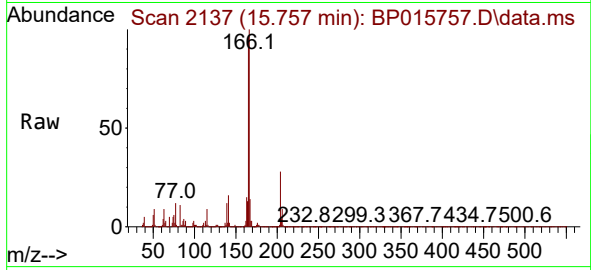




#61  
 Fluorene  
 Concen: 20.228 ng/ul  
 RT: 15.757 min Scan# 2137  
 Delta R.T. -0.006 min  
 Lab File: BP015757.D  
 Acq: 27 Jun 2023 20:52

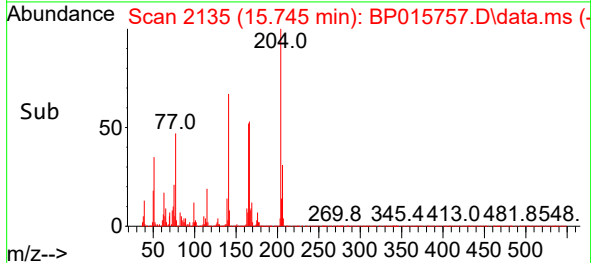
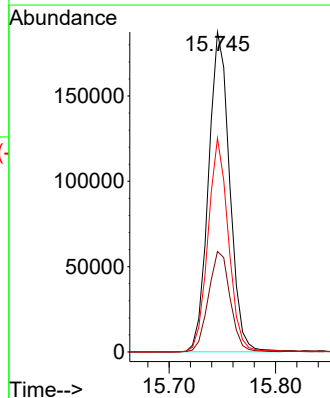
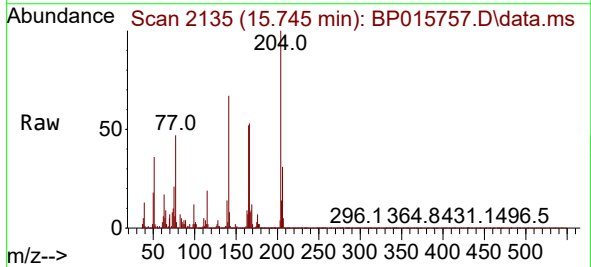
Instrument :  
 BNA\_P  
 ClientSampleId :

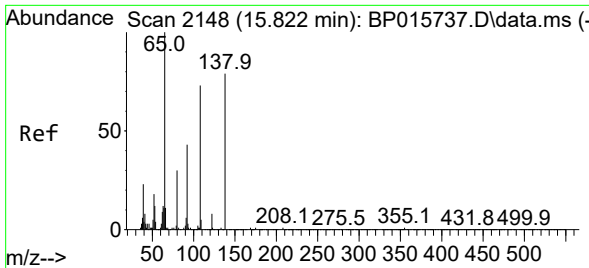
Tgt Ion:166 Resp: 509524  
 Ion Ratio Lower Upper  
 166 100  
 165 96.3 78.7 118.1  
 167 14.0 10.5 15.7



#62  
 4-Chlorophenyl-phenylether  
 Concen: 20.090 ng/ul  
 RT: 15.745 min Scan# 2135  
 Delta R.T. -0.006 min  
 Lab File: BP015757.D  
 Acq: 27 Jun 2023 20:52

Tgt Ion:204 Resp: 258938  
 Ion Ratio Lower Upper  
 204 100  
 206 31.4 26.0 39.0  
 141 66.8 51.8 77.8

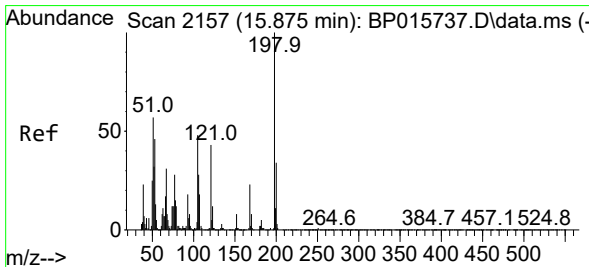
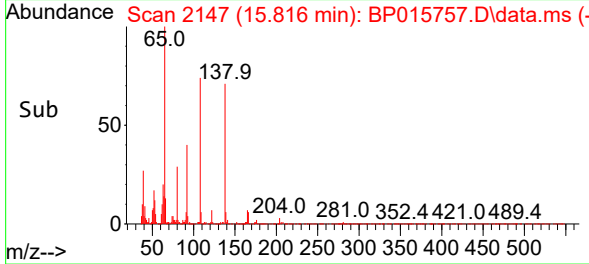
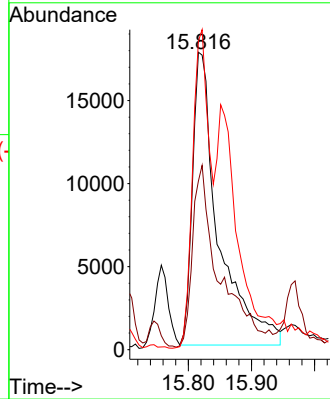
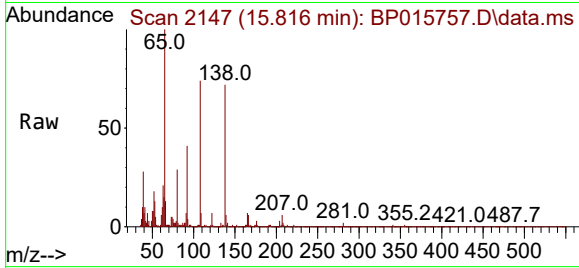




#63  
 4-Nitroaniline  
 Concen: 17.269 ng/ul  
 RT: 15.816 min Scan# 2148  
 Delta R.T. 0.000 min  
 Lab File: BP015757.D  
 Acq: 27 Jun 2023 20:52

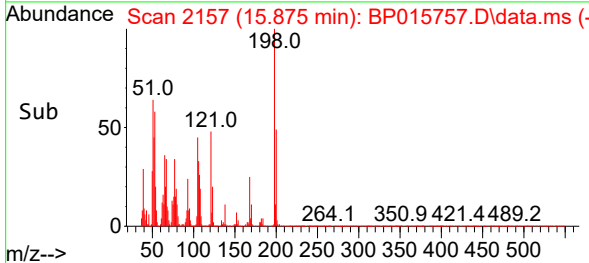
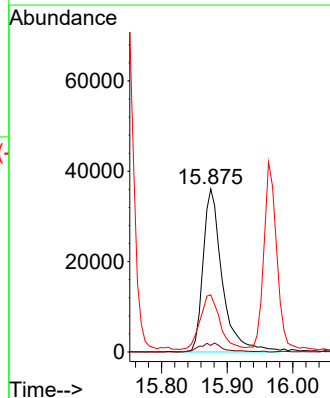
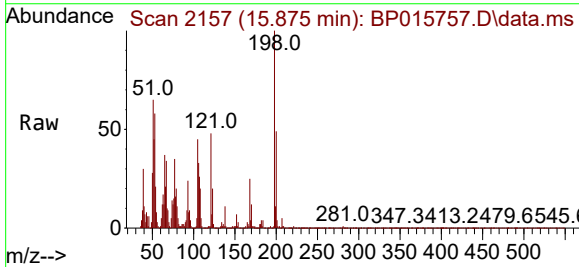
Instrument :  
 BNA\_P  
 ClientSampleId :

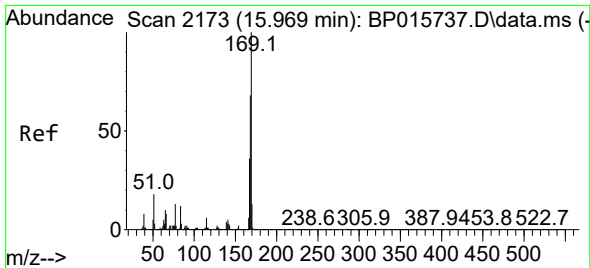
Tgt Ion:138 Resp: 50676  
 Ion Ratio Lower Upper  
 138 100  
 92 56.8 50.1 75.1  
 108 103.8 85.5 128.3



#66  
 4,6-Dinitro-2-methylphenol  
 Concen: 18.965 ng/ul  
 RT: 15.875 min Scan# 2157  
 Delta R.T. 0.000 min  
 Lab File: BP015757.D  
 Acq: 27 Jun 2023 20:52

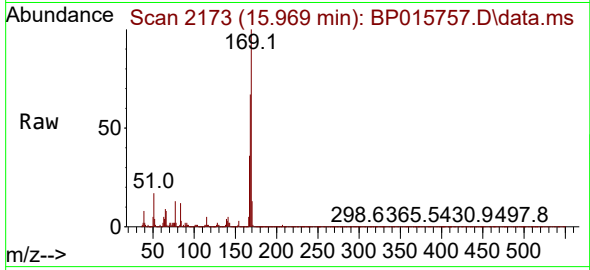
Tgt Ion:198 Resp: 73395  
 Ion Ratio Lower Upper  
 198 100  
 182 4.1 3.4 5.2  
 77 35.1 24.4 36.6



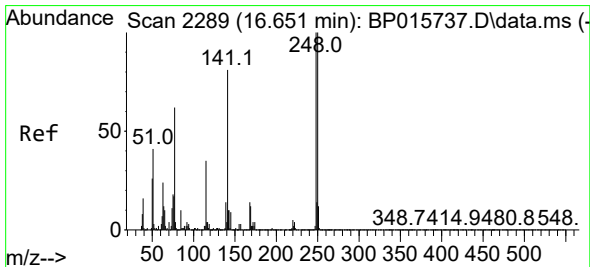
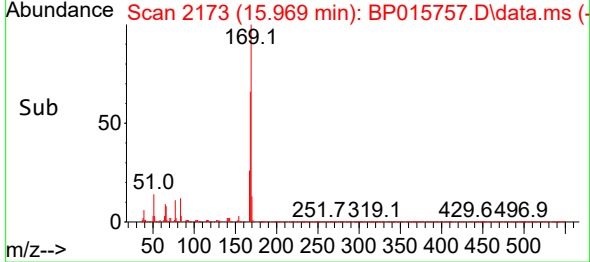
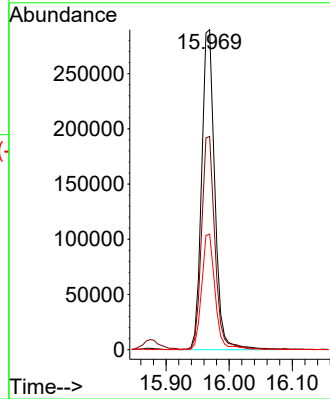


#67  
 N-Nitrosodiphenylamine  
 Concen: 22.514 ng/ul  
 RT: 15.969 min Scan# 2173  
 Delta R.T. 0.000 min  
 Lab File: BP015757.D  
 Acq: 27 Jun 2023 20:52

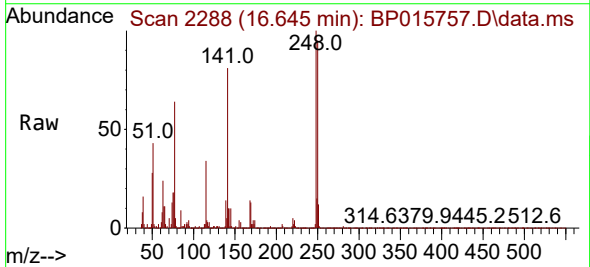
Instrument :  
 BNA\_P  
 ClientSampleId :



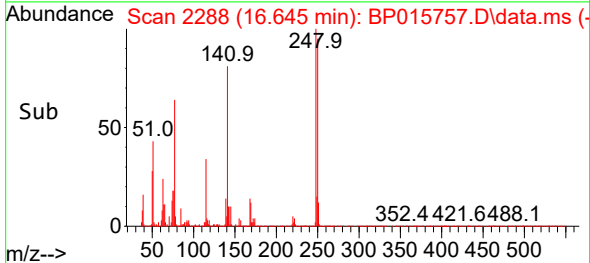
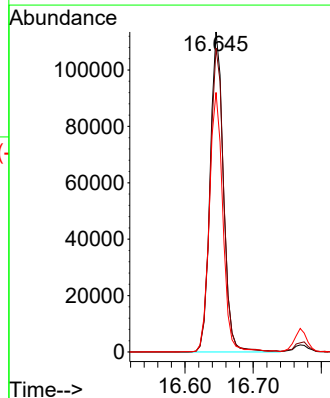
Tgt Ion:169 Resp: 419201  
 Ion Ratio Lower Upper  
 169 100  
 168 66.7 54.2 81.4  
 167 36.2 29.7 44.5

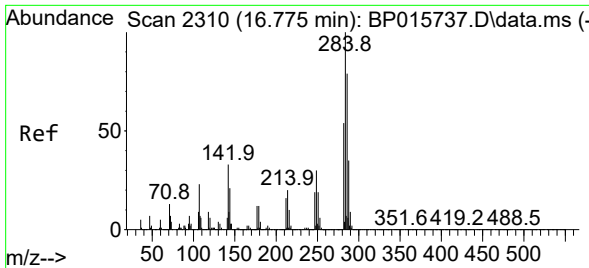


#68  
 4-Bromophenyl-phenylether  
 Concen: 21.803 ng/ul  
 RT: 16.645 min Scan# 2288  
 Delta R.T. -0.006 min  
 Lab File: BP015757.D  
 Acq: 27 Jun 2023 20:52



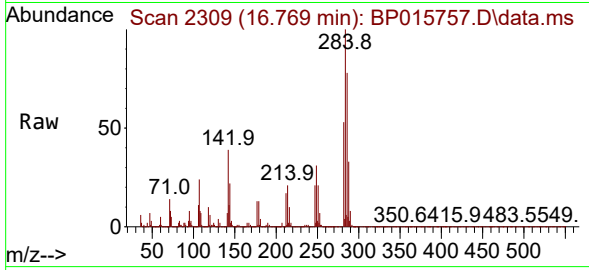
Tgt Ion:248 Resp: 154851  
 Ion Ratio Lower Upper  
 248 100  
 250 95.0 84.6 126.8  
 141 81.1 67.8 101.6



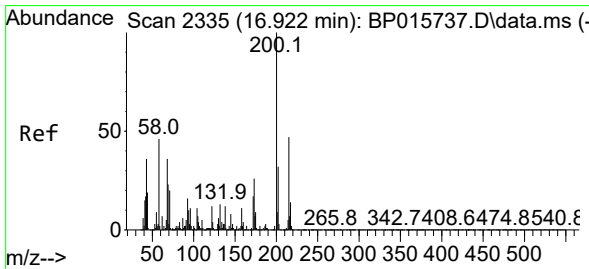
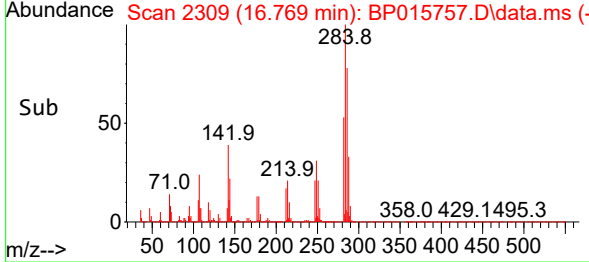
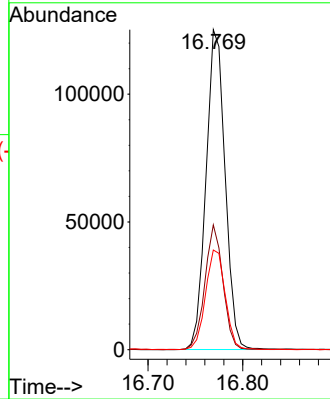


#69  
 Hexachlorobenzene  
 Concen: 20.872 ng/uI  
 RT: 16.769 min Scan# 21  
 Delta R.T. -0.006 min  
 Lab File: BP015757.D  
 Acq: 27 Jun 2023 20:52

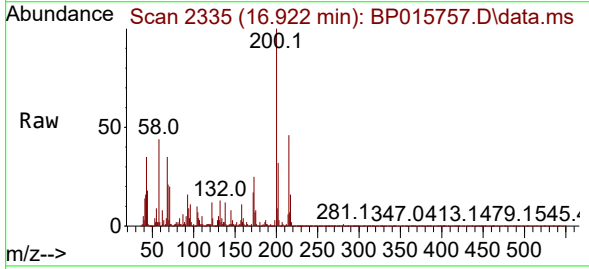
Instrument :  
 BNA\_P  
 ClientSampleId :



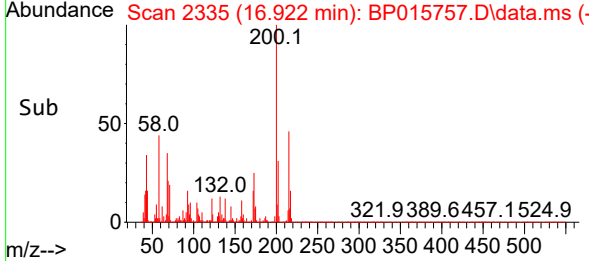
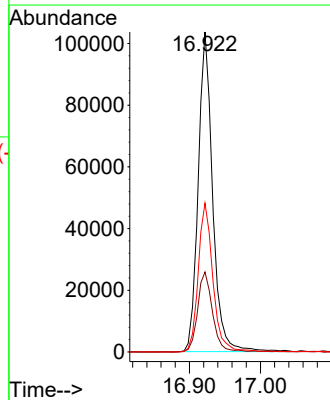
Tgt Ion:284 Resp: 174920  
 Ion Ratio Lower Upper  
 284 100  
 142 39.0 27.8 41.8  
 249 31.2 26.1 39.1

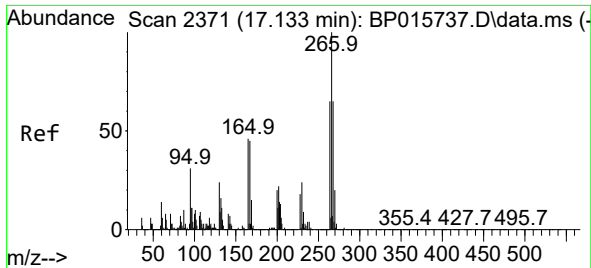


#70  
 Atrazine  
 Concen: 20.590 ng/uI  
 RT: 16.922 min Scan# 2335  
 Delta R.T. -0.006 min  
 Lab File: BP015757.D  
 Acq: 27 Jun 2023 20:52



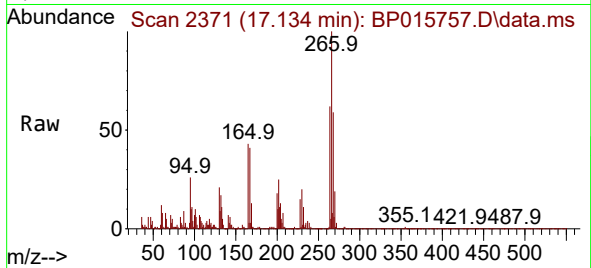
Tgt Ion:200 Resp: 146751  
 Ion Ratio Lower Upper  
 200 100  
 173 25.0 19.8 29.8  
 215 46.5 36.8 55.2



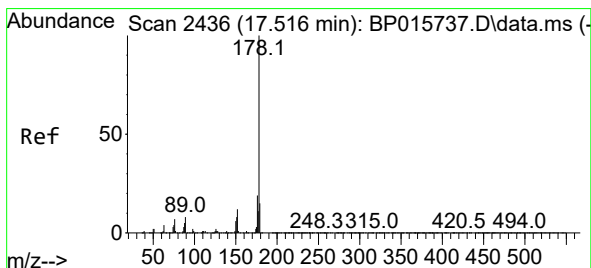
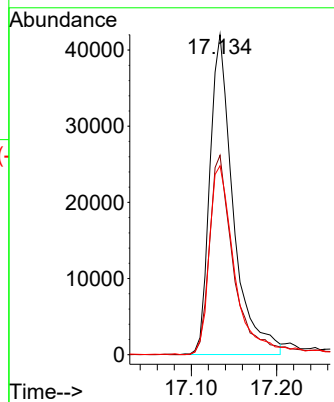
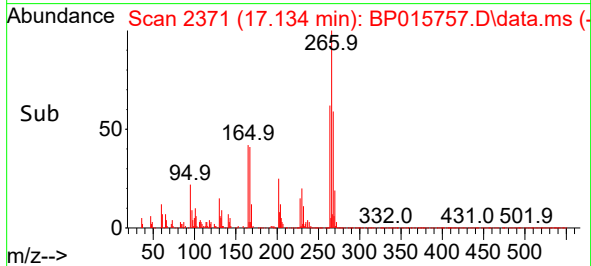


#71  
 Pentachlorophenol  
 Concen: 19.966 ng/ul  
 RT: 17.134 min Scan# 21  
 Delta R.T. 0.000 min  
 Lab File: BP015757.D  
 Acq: 27 Jun 2023 20:52

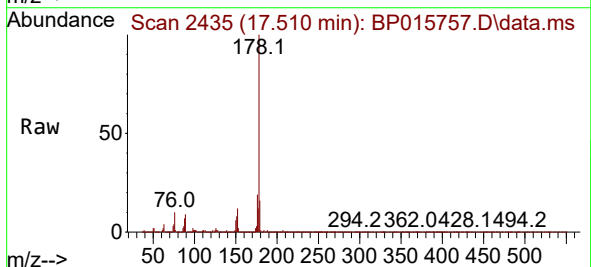
Instrument :  
 BNA\_P  
 ClientSampleId :



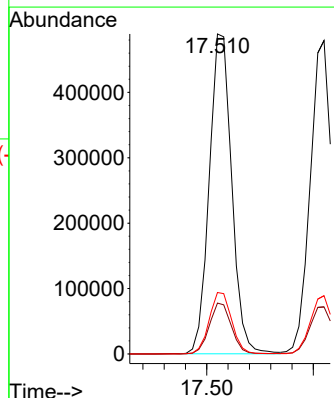
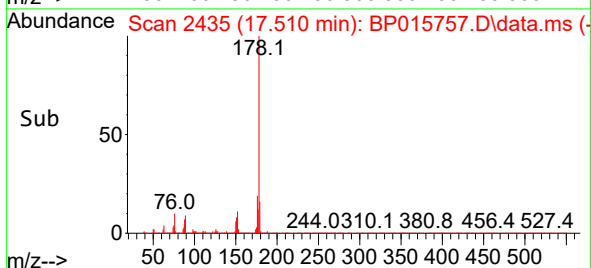
Tgt Ion:266 Resp: 80307  
 Ion Ratio Lower Upper  
 266 100  
 264 62.3 53.4 80.2  
 268 59.1 51.4 77.2

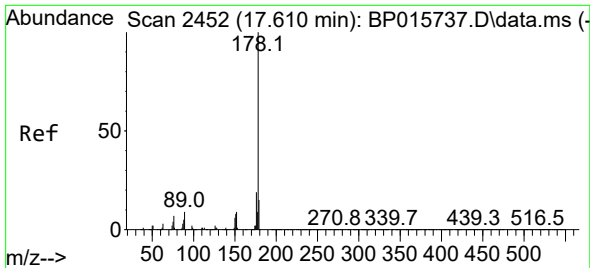


#72  
 Phenanthrene  
 Concen: 21.231 ng/ul  
 RT: 17.510 min Scan# 2435  
 Delta R.T. -0.006 min  
 Lab File: BP015757.D  
 Acq: 27 Jun 2023 20:52



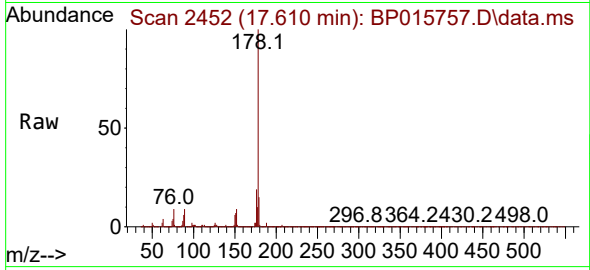
Tgt Ion:178 Resp: 717376  
 Ion Ratio Lower Upper  
 178 100  
 179 15.9 12.4 18.6  
 176 19.2 15.6 23.4



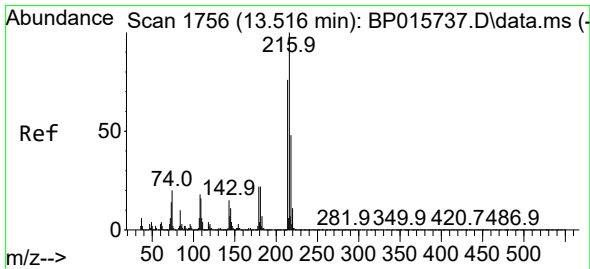
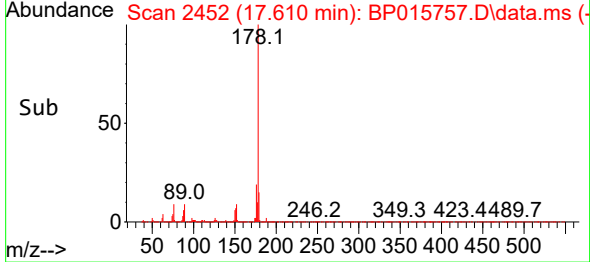
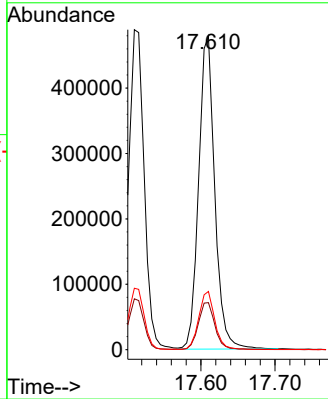


#74  
 Anthracene  
 Concen: 21.303 ng/u1  
 RT: 17.610 min Scan# 2452  
 Delta R.T. 0.000 min  
 Lab File: BP015757.D  
 Acq: 27 Jun 2023 20:52

Instrument : BNA\_P  
 Client SampleId :

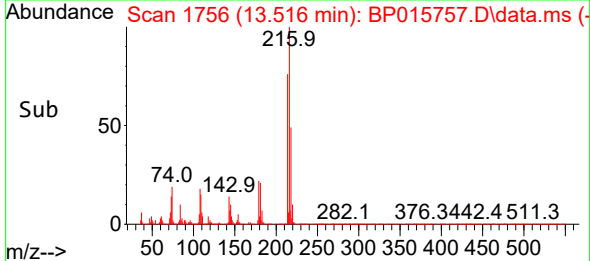
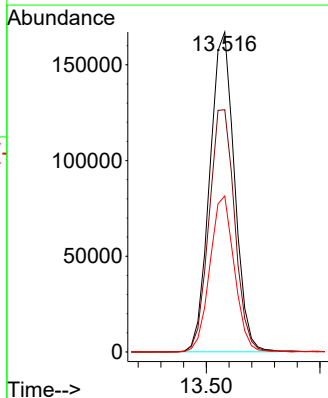
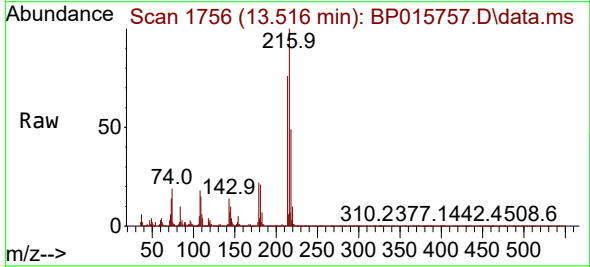


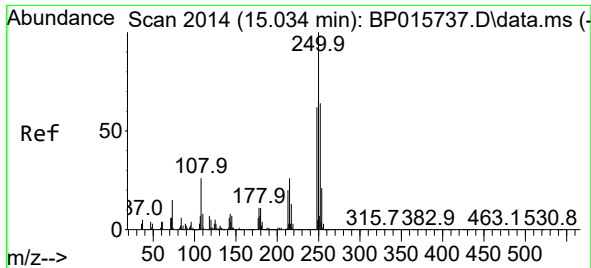
Tgt Ion:178 Resp: 723278  
 Ion Ratio Lower Upper  
 178 100  
 179 15.0 12.1 18.1  
 176 18.6 14.6 22.0



#75  
 1,2,3,4-Tetrachlorobenzene  
 Concen: 25.003 ng/uL  
 RT: 13.516 min Scan# 1756  
 Delta R.T. 0.000 min  
 Lab File: BP015757.D  
 Acq: 27 Jun 2023 20:52

Tgt Ion:216 Resp: 253044  
 Ion Ratio Lower Upper  
 216 100  
 214 75.7 62.0 93.0  
 218 48.7 38.4 57.6



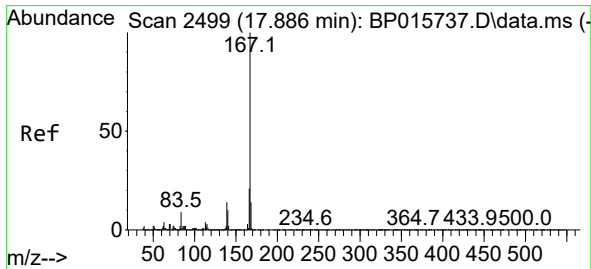
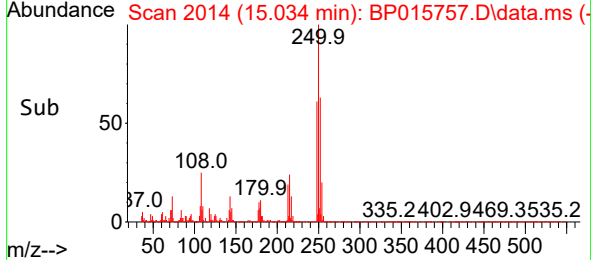
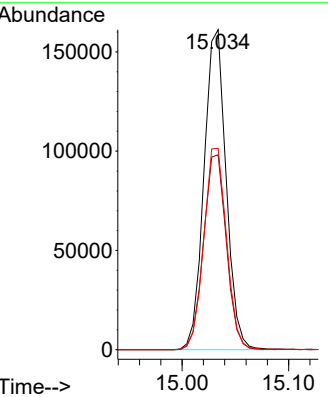
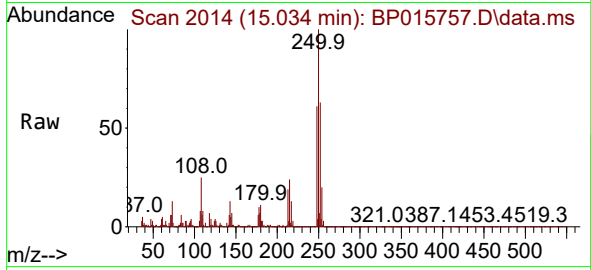


#76  
 Pentachlorobenzene  
 Concen: 22.715 ng/uL  
 RT: 15.034 min Scan# 2014  
 Delta R.T. 0.000 min  
 Lab File: BP015757.D  
 Acq: 27 Jun 2023 20:52

Instrument : BNA\_P  
 ClientSampleId :

Tgt Ion:250 Resp: 232017

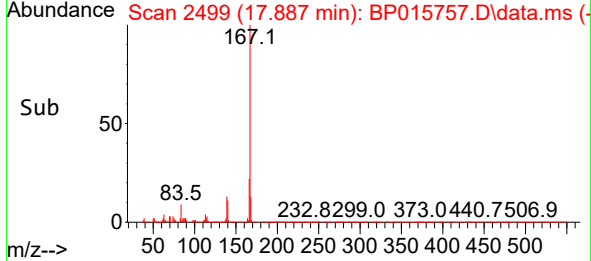
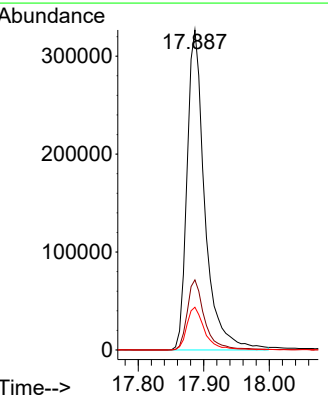
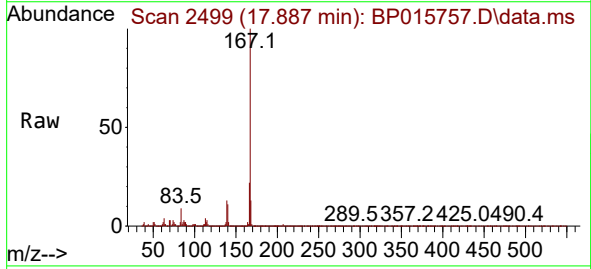
Ion	Ratio	Lower	Upper
250	100		
248	60.9	50.7	76.1
252	62.9	51.2	76.8

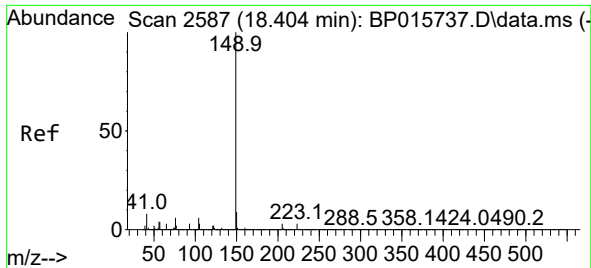


#77  
 Carbazole  
 Concen: 21.587 ng/uL  
 RT: 17.887 min Scan# 2499  
 Delta R.T. 0.000 min  
 Lab File: BP015757.D  
 Acq: 27 Jun 2023 20:52

Tgt Ion:167 Resp: 617738

Ion	Ratio	Lower	Upper
167	100		
166	21.9	17.4	26.0
139	13.4	11.0	16.4

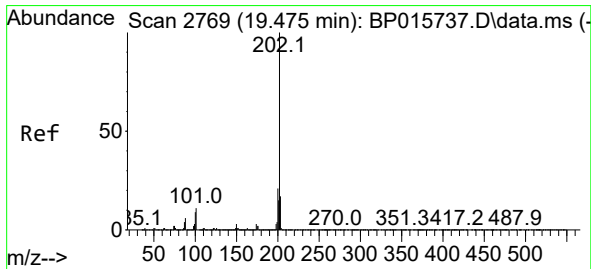
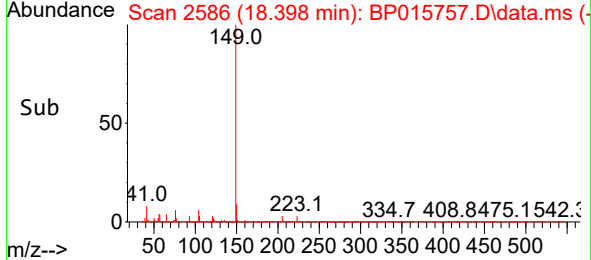
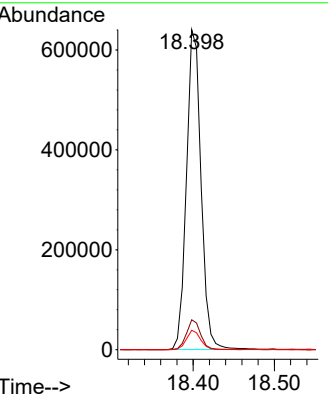
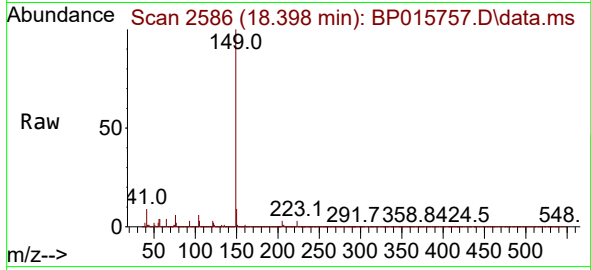




#78  
 Di-n-butylphthalate  
 Concen: 21.095 ng/u1  
 RT: 18.398 min Scan# 21  
 Delta R.T. -0.006 min  
 Lab File: BP015757.D  
 Acq: 27 Jun 2023 20:52

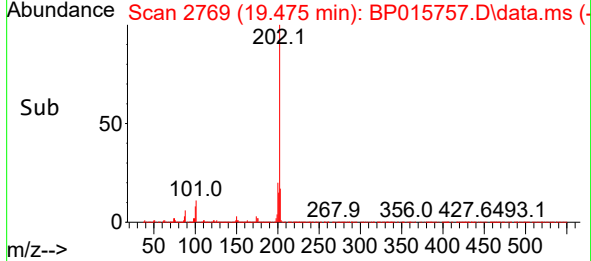
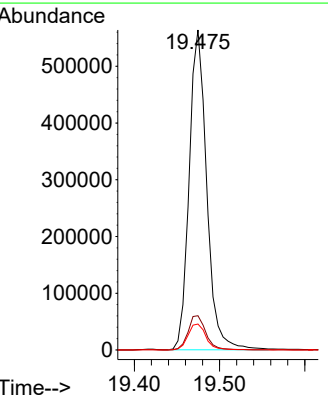
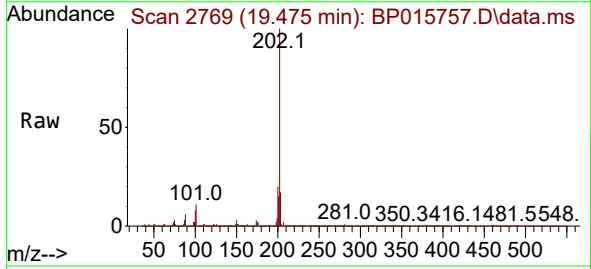
Instrument : BNA\_P  
 ClientSampleId :

Tgt Ion	Resp	Lower	Upper
149	100		
150	9.3	7.5	11.3
104	6.1	4.6	7.0

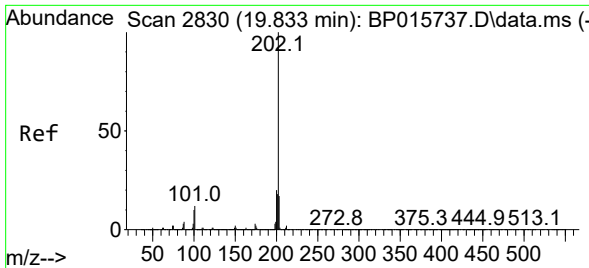


#80  
 Fluoranthene  
 Concen: 16.922 ng/u1  
 RT: 19.475 min Scan# 2769  
 Delta R.T. 0.000 min  
 Lab File: BP015757.D  
 Acq: 27 Jun 2023 20:52

Tgt Ion	Resp	Lower	Upper
202	100		
101	10.7	8.3	12.5
100	8.1	6.6	9.8

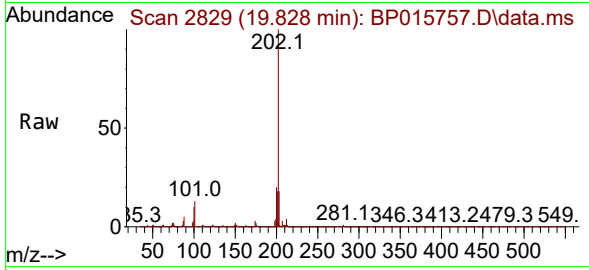






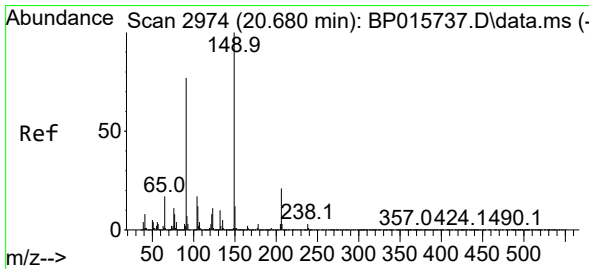
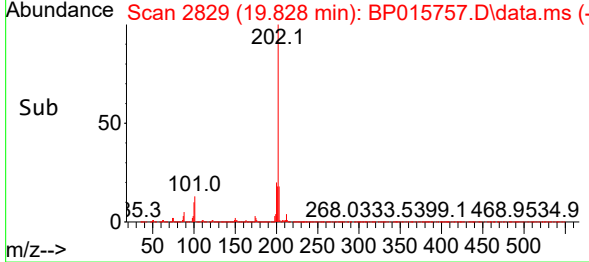
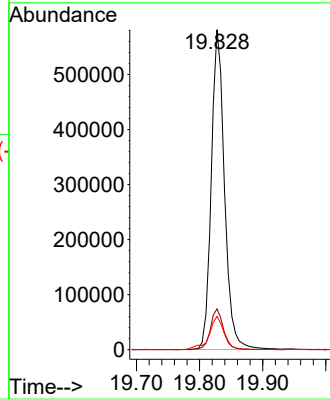
#82  
 Pyrene  
 Concen: 17.392 ng/ul  
 RT: 19.828 min Scan# 2829  
 Delta R.T. -0.006 min  
 Lab File: BP015757.D  
 Acq: 27 Jun 2023 20:52

Instrument :  
 BNA\_P  
 ClientSampleId :



Tgt Ion: 202 Resp: 845789

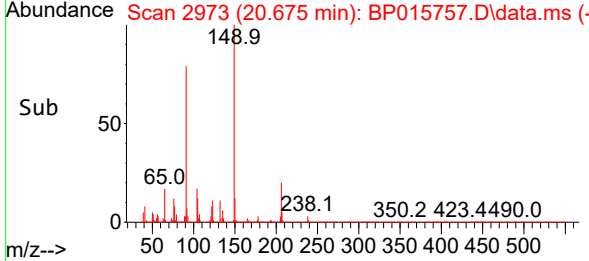
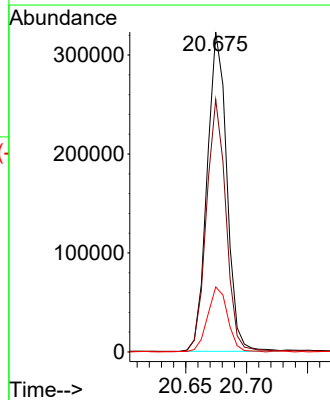
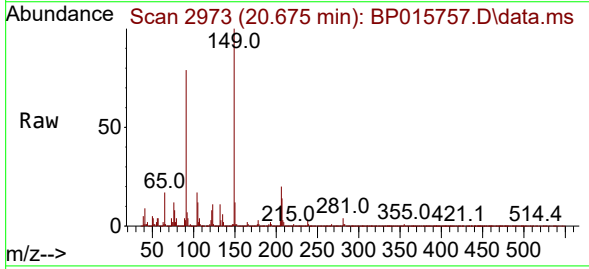
Ion	Ratio	Lower	Upper
202	100		
101	12.8	9.3	13.9
100	10.4	7.6	11.4

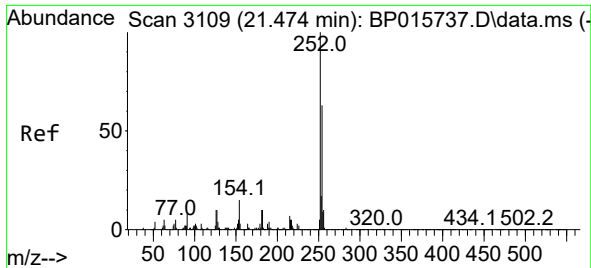


#83  
 Butylbenzylphthalate  
 Concen: 18.234 ng/ul  
 RT: 20.675 min Scan# 2973  
 Delta R.T. -0.006 min  
 Lab File: BP015757.D  
 Acq: 27 Jun 2023 20:52

Tgt Ion: 149 Resp: 361770

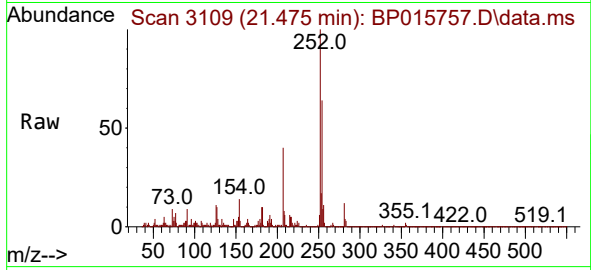
Ion	Ratio	Lower	Upper
149	100		
91	78.9	59.8	89.6
206	20.3	16.4	24.6



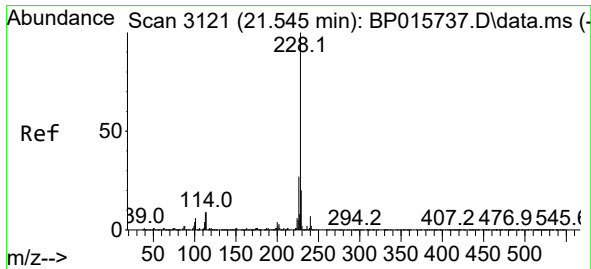
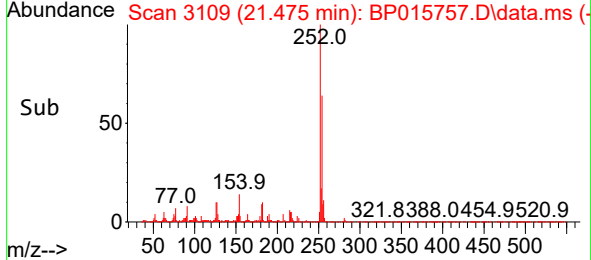
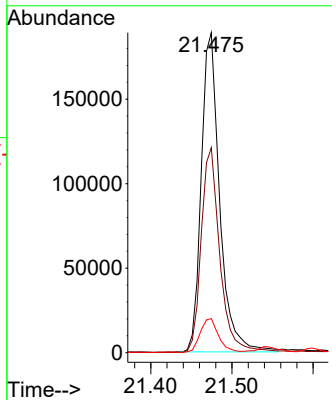


#84  
 3,3'-Dichlorobenzidine  
 Concen: 22.392 ng/ul  
 RT: 21.475 min Scan# 3109  
 Delta R.T. 0.000 min  
 Lab File: BP015757.D  
 Acq: 27 Jun 2023 20:52

Instrument : BNA\_P  
 ClientSampleId :

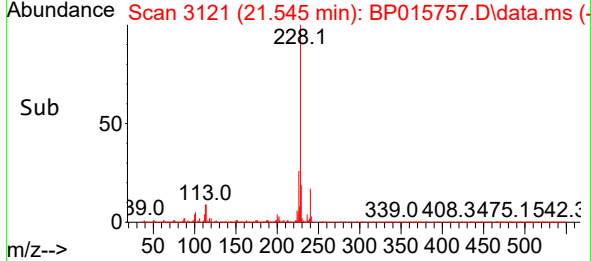
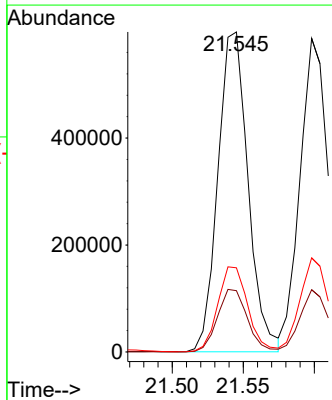
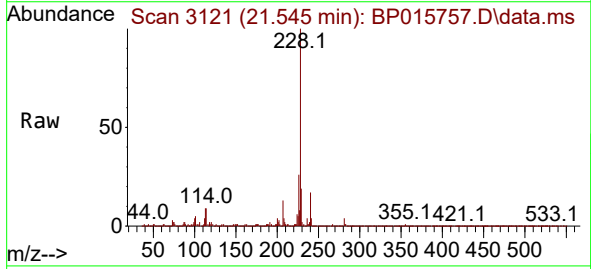


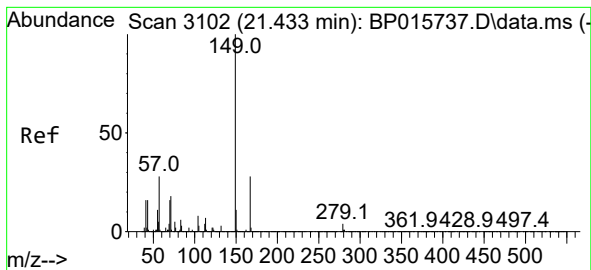
Tgt Ion:252 Resp: 297361  
 Ion Ratio Lower Upper  
 252 100  
 254 64.0 51.0 76.6  
 126 10.7 8.6 13.0



#85  
 Benzo(a)anthracene  
 Concen: 21.368 ng/ul  
 RT: 21.545 min Scan# 3121  
 Delta R.T. 0.000 min  
 Lab File: BP015757.D  
 Acq: 27 Jun 2023 20:52

Tgt Ion:228 Resp: 883020  
 Ion Ratio Lower Upper  
 228 100  
 229 19.2 15.3 22.9  
 226 26.3 21.4 32.0



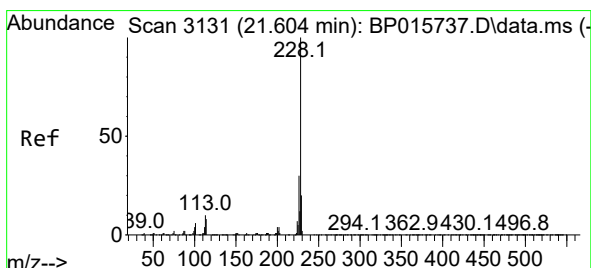
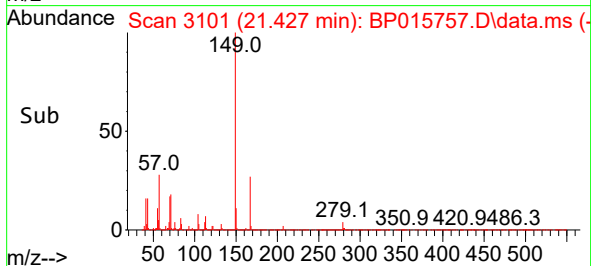
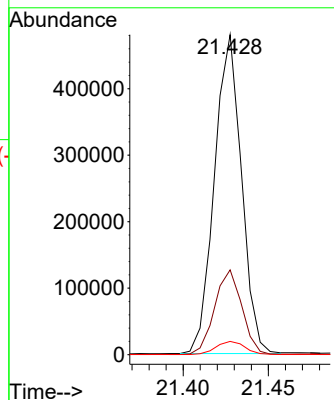
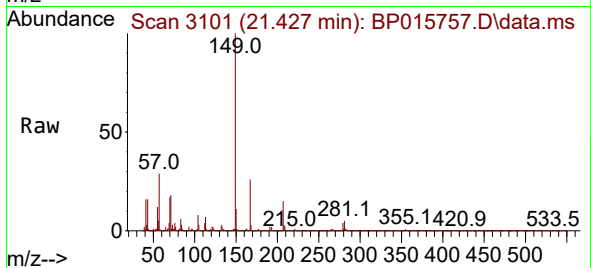


#86  
 Bis(2-ethylhexyl)phthalate  
 Concen: 19.384 ng/ul  
 RT: 21.427 min Scan# 3101  
 Delta R.T. -0.006 min  
 Lab File: BP015757.D  
 Acq: 27 Jun 2023 20:52

Instrument :  
 BNA\_P  
 ClientSampleId :

Tgt Ion:149 Resp: 528532

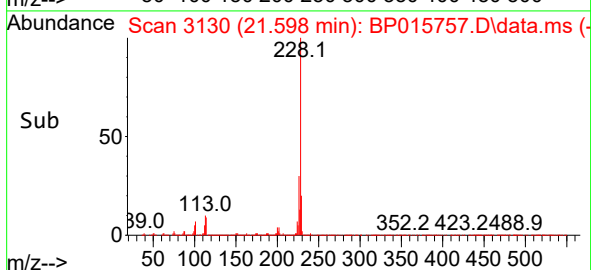
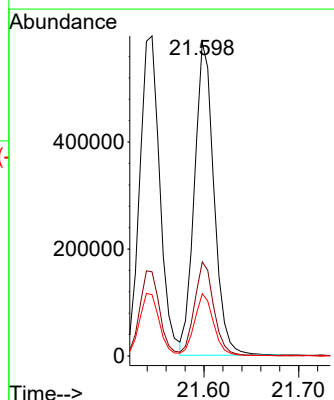
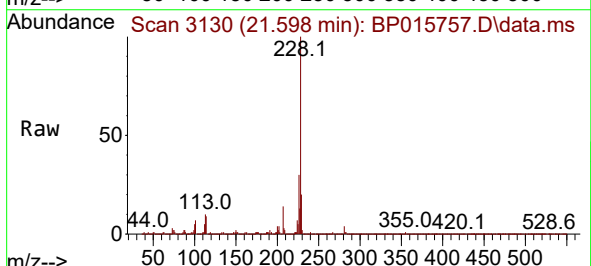
Ion	Ratio	Lower	Upper
149	100		
167	26.5	21.0	31.6
279	4.2	3.8	5.6

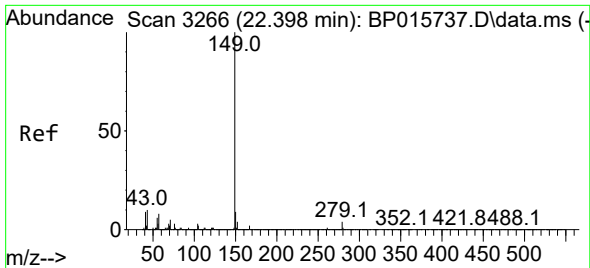


#87  
 Chrysene  
 Concen: 21.406 ng/ul  
 RT: 21.598 min Scan# 3130  
 Delta R.T. -0.006 min  
 Lab File: BP015757.D  
 Acq: 27 Jun 2023 20:52

Tgt Ion:228 Resp: 839283

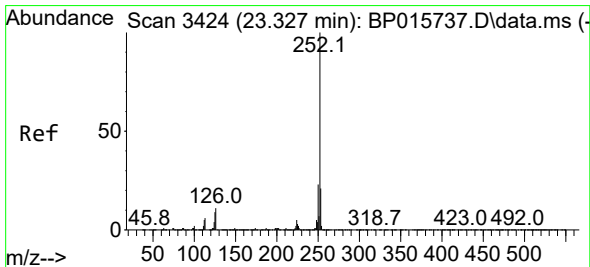
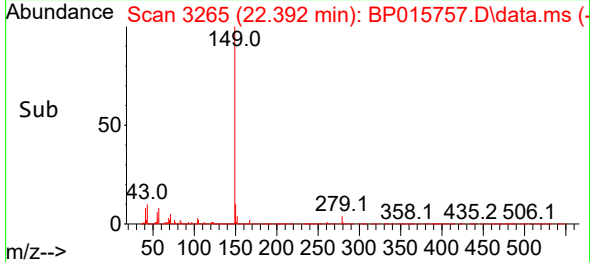
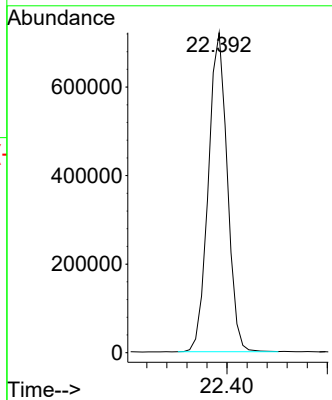
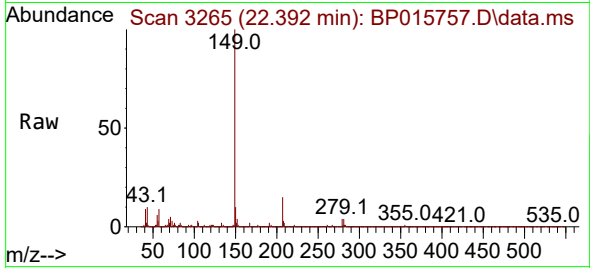
Ion	Ratio	Lower	Upper
228	100		
226	30.0	24.3	36.5
229	19.9	15.5	23.3



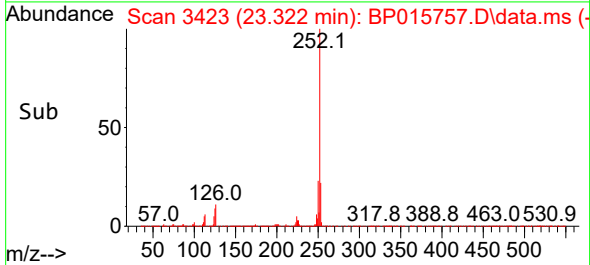
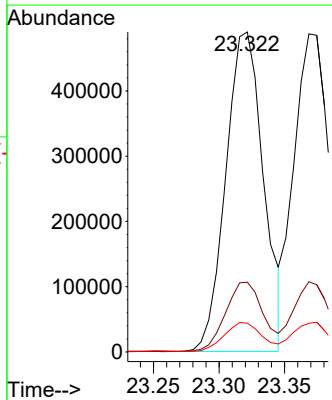
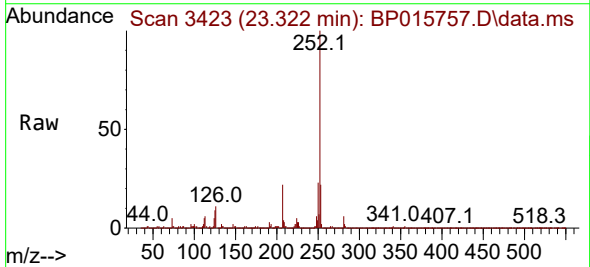


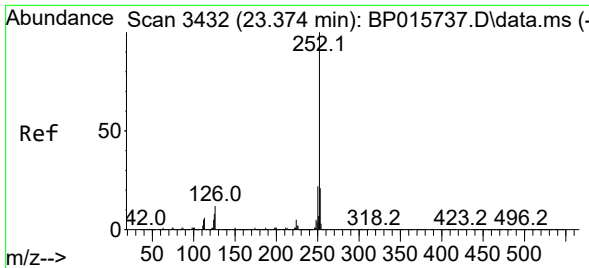
#89  
 Di-n-octyl phthalate  
 Concen: 17.285 ng/ul  
 RT: 22.392 min Scan# 31  
 Delta R.T. -0.006 min  
 Lab File: BP015757.D  
 Acq: 27 Jun 2023 20:52  
 Tgt Ion:149 Resp: 945670

Instrument :  
 BNA\_P  
 ClientSampleId :



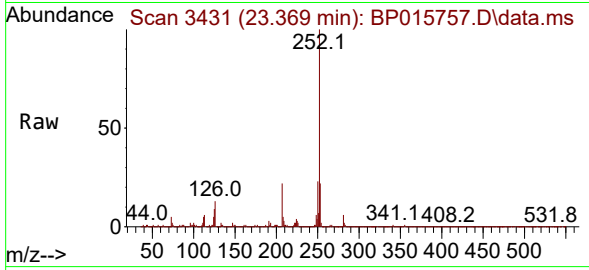
#90  
 Benzo(b)fluoranthene  
 Concen: 20.363 ng/ul  
 RT: 23.322 min Scan# 3423  
 Delta R.T. -0.006 min  
 Lab File: BP015757.D  
 Acq: 27 Jun 2023 20:52  
 Tgt Ion:252 Resp: 979499  
 Ion Ratio Lower Upper  
 252 100  
 253 21.8 17.3 25.9  
 125 9.0 7.5 11.3



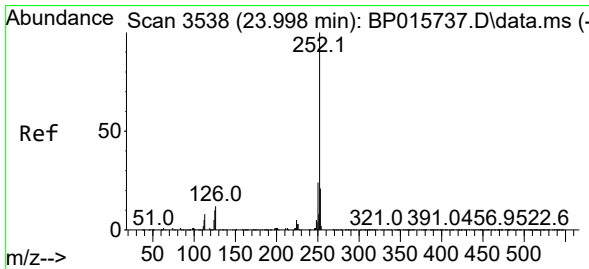
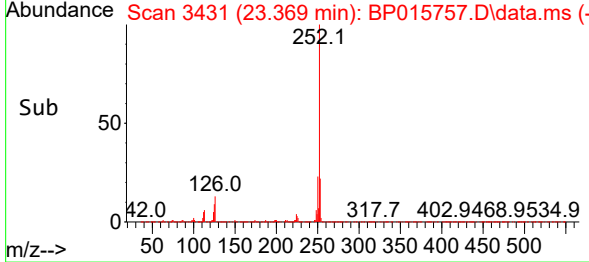
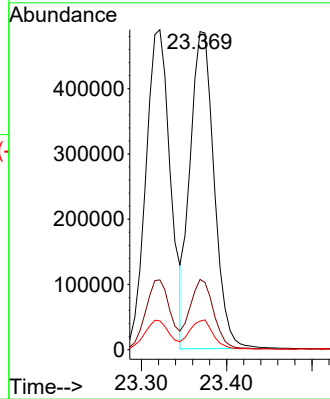


#91  
 Benzo(k)fluoranthene  
 Concen: 19.598 ng/ul  
 RT: 23.369 min Scan# 3431  
 Delta R.T. -0.012 min  
 Lab File: BP015757.D  
 Acq: 27 Jun 2023 20:52

Instrument : BNA\_P  
 Client SampleId :

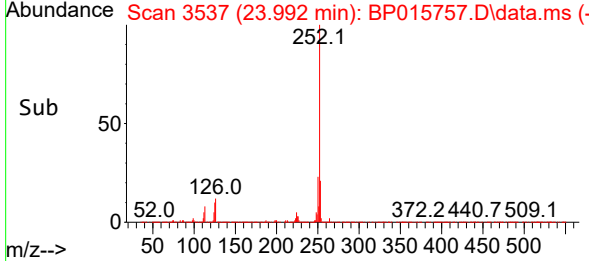
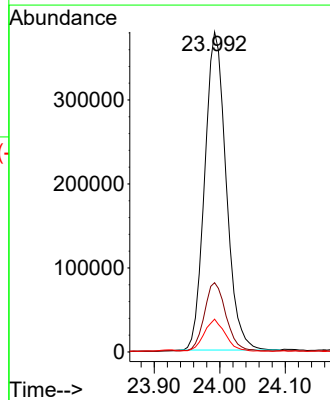
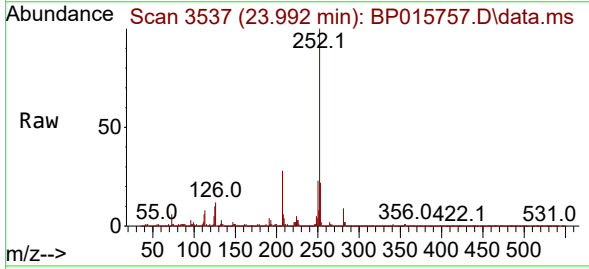


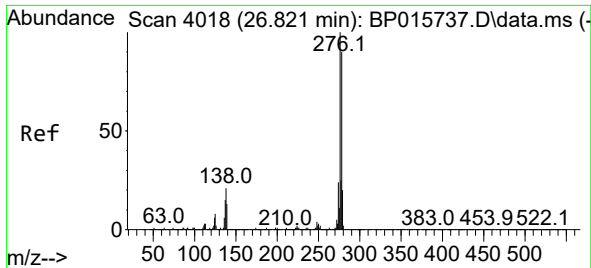
Tgt Ion:252 Resp: 952447  
 Ion Ratio Lower Upper  
 252 100  
 253 22.1 17.0 25.4  
 125 9.0 7.3 10.9



#93  
 Benzo(a)pyrene  
 Concen: 20.455 ng/ul  
 RT: 23.992 min Scan# 3537  
 Delta R.T. -0.012 min  
 Lab File: BP015757.D  
 Acq: 27 Jun 2023 20:52

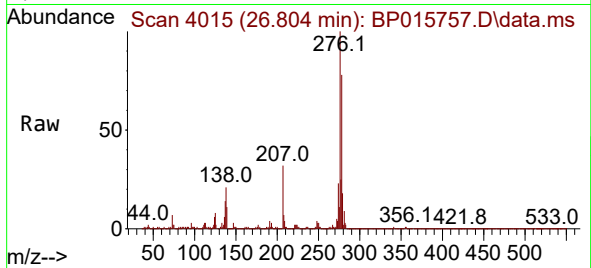
Tgt Ion:252 Resp: 859727  
 Ion Ratio Lower Upper  
 252 100  
 253 21.7 17.7 26.5  
 125 10.2 8.2 12.2



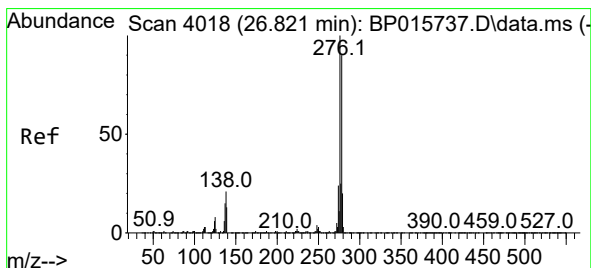
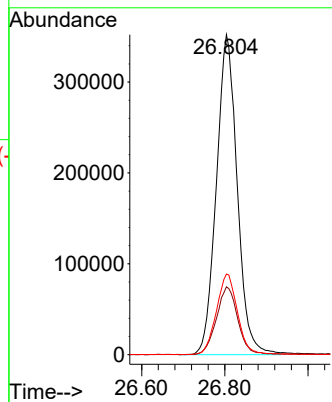
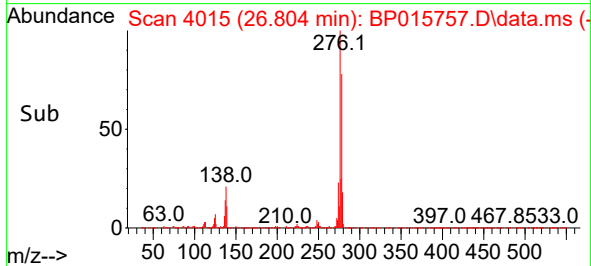


#94  
 Indeno(1,2,3-cd)pyrene  
 Concen: 21.435 ng/ul  
 RT: 26.804 min Scan# 4015  
 Delta R.T. -0.012 min  
 Lab File: BP015757.D  
 Acq: 27 Jun 2023 20:52

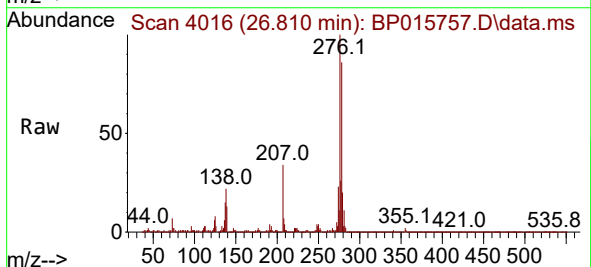
Instrument :  
 BNA\_P  
 ClientSampleId :



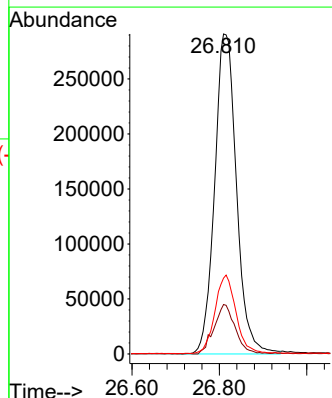
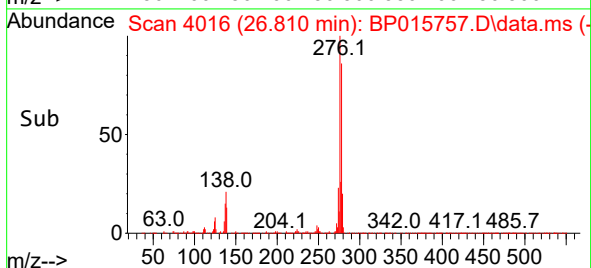
Tgt Ion:276 Resp: 1222994  
 Ion Ratio Lower Upper  
 276 100  
 138 21.2 15.7 23.5  
 277 25.2 19.6 29.4

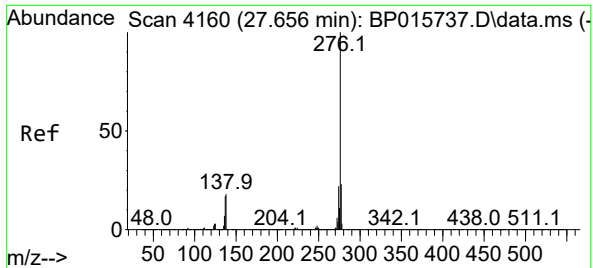


#95  
 Dibenzo(a,h)anthracene  
 Concen: 21.494 ng/ul  
 RT: 26.810 min Scan# 4016  
 Delta R.T. -0.017 min  
 Lab File: BP015757.D  
 Acq: 27 Jun 2023 20:52



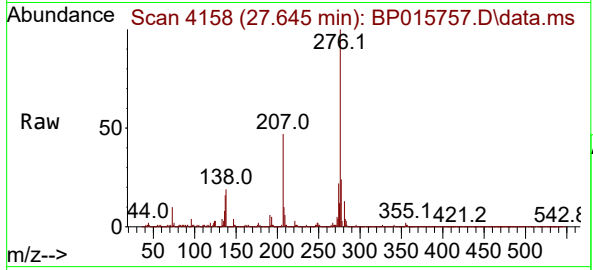
Tgt Ion:278 Resp: 1007326  
 Ion Ratio Lower Upper  
 278 100  
 139 15.5 10.5 15.7  
 279 23.7 18.4 27.6





#96  
 Benzo(g,h,i)perylene  
 Concen: 21.622 ng/ul  
 RT: 27.645 min Scan# 41  
 Delta R.T. -0.012 min  
 Lab File: BP015757.D  
 Acq: 27 Jun 2023 20:52

Instrument :  
 BNA\_P  
 ClientSampleId :



Tgt Ion: 276 Resp: 1014909

Ion	Ratio	Lower	Upper
276	100		
138	19.0	15.1	22.7
277	23.8	18.8	28.2

