

Data Path : Z:\svoasrv\HPCHEM1\BNA_P\Data\BP062723\
 Data File : BP015763.D
 Acq On : 28 Jun 2023 00:48
 Operator : MA/JU
 Sample : 03101-08
 Misc :
 ALS Vial : 28 Sample Multiplier: 1

Instrument :
 BNA_P
 ClientSampleId :
 EZEM4

Integration Parameters: LSCINT.P

Integrator: RTE
 Smoothing : OFF Filtering: 5
 Sampling : 1 Min Area: 0.1 % of largest Peak
 Start Thrs: 0.2 Max Peaks: 100
 Stop Thrs : 0 Peak Location: TOP

If leading or trailing edge < 100 prefer < Baseline drop else tangent >
 Peak separation: 5

Method : Z:\svoasrv\HPCHEM1\BNA_P\Methods\SFAM-EPA-BP062623.MA.M
 Title : SVOA CALIBRATION

Signal : TIC: BP015763.D\data.ms

peak #	R.T. min	first scan	max scan	last scan	PK TY	peak height	corr. area	corr. % max.	% of total
1	3.381	29	33	38	rVB	48688	59266	1.34%	0.135%
2	3.828	106	109	123	rBV	405162	671560	15.15%	1.524%
3	4.052	142	147	153	rVB	26035	42883	0.97%	0.097%
4	4.152	160	164	173	rVB	12499	21690	0.49%	0.049%
5	5.099	323	325	330	rVB4	6832	9272	0.21%	0.021%
6	7.228	681	687	706	rBV	535072	1188504	26.80%	2.697%
7	7.381	707	713	733	rVB	529864	952300	21.48%	2.161%
8	7.587	741	748	765	rBV	720960	1286538	29.02%	2.920%
9	8.058	821	828	846	rBV	528215	1007736	22.73%	2.287%
10	8.787	945	952	973	rBV	690206	1511879	34.10%	3.431%
11	9.246	1022	1030	1051	rBV	605118	1233148	27.81%	2.799%
12	9.605	1087	1091	1094	rVB6	7046	8489	0.19%	0.019%
13	9.975	1147	1154	1169	rBV	504174	1036900	23.39%	2.353%
14	10.528	1240	1248	1279	rBV	489183	1478799	33.35%	3.356%
15	10.887	1302	1309	1325	rBV	759435	1350291	30.45%	3.064%
16	11.052	1329	1337	1371	rBV	437373	1372675	30.96%	3.115%
17	11.393	1393	1395	1400	rVB6	3670	5117	0.12%	0.012%
18	12.516	1578	1586	1592	rBV4	9391	25015	0.56%	0.057%
19	13.228	1704	1707	1714	rVB9	2641	4573	0.10%	0.010%
20	13.516	1752	1756	1763	rBV10	5211	7957	0.18%	0.018%
21	13.593	1763	1769	1780	rVB	16790	32906	0.74%	0.075%
22	13.687	1780	1785	1789	rBV7	3475	5532	0.12%	0.013%
23	14.116	1851	1858	1874	rVV	1343457	2225263	50.19%	5.050%
24	14.404	1899	1907	1927	rBV	1650260	2635589	59.44%	5.981%
25	14.710	1952	1959	1973	rBV	1117697	1682106	37.94%	3.818%
26	14.975	1998	2004	2027	rBV2	153435	666229	15.03%	1.512%
27	15.475	2087	2089	2094	rVB6	3877	5076	0.11%	0.012%
28	15.534	2096	2099	2104	rVB7	4030	5652	0.13%	0.013%
29	15.710	2122	2129	2145	rBV	1832732	3156447	71.19%	7.164%
30	15.863	2150	2155	2182	rVV	313583	773316	17.44%	1.755%
31	16.075	2185	2191	2207	rVV	441094	673952	15.20%	1.530%
32	16.404	2245	2247	2252	rVB6	4944	5849	0.13%	0.013%
33	16.634	2282	2286	2287	rBV4	7580	7704	0.17%	0.017%
34	17.469	2422	2428	2439	rBV	1321296	1986301	44.80%	4.508%
35	17.575	2439	2446	2462	rVV	1965274	3313829	74.74%	7.521%
36	18.328	2569	2574	2581	rBV	230570	379947	8.57%	0.862%

Data Path : Z:\svoasrv\HPCHEM1\BNA_P\Data\BP062723\
 Data File : BP015763.D
 Acq On : 28 Jun 2023 00:48
 Operator : MA/JU
 Sample : 03101-08
 Misc :
 ALS Vial : 28 Sample Multiplier: 1

Instrument :
 BNA_P
 ClientSampleId :
 EZEM4

Integration Parameters: LSCINT.P
 Integrator: RTE
 Smoothing : OFF Filtering: 5
 Sampling : 1 Min Area: 0.1 % of largest Peak
 Start Thrs: 0.2 Max Peaks: 100
 Stop Thrs : 0 Peak Location: TOP

If leading or trailing edge < 100 prefer < Baseline drop else tangent >
 Peak separation: 5

Method : Z:\svoasrv\HPCHEM1\BNA_P\Methods\SFAM-EPA-BP062623.MA.M
 Title : SVOA CALIBRATION

37	19.551	2779	2782	2789	rBV2	99817	153229	3.46%	0.348%
38	19.798	2818	2824	2842	rBV	2835330	4206544	94.87%	9.547%
39	21.563	3119	3124	3133	rBV	1244272	2000779	45.12%	4.541%
40	22.139	3220	3222	3227	rVB2	221384	242260	5.46%	0.550%
41	23.939	3520	3528	3540	rVB2	1867507	4433972	100.00%	10.063%
42	24.104	3550	3556	3571	rVB	910509	2195519	49.52%	4.983%

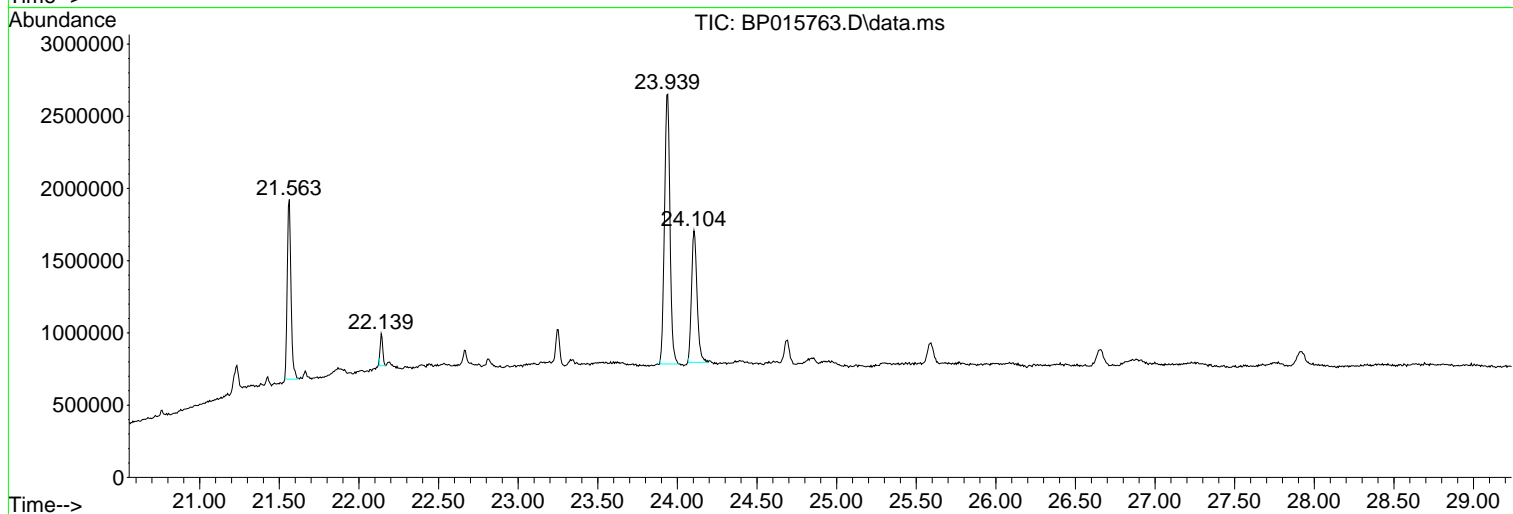
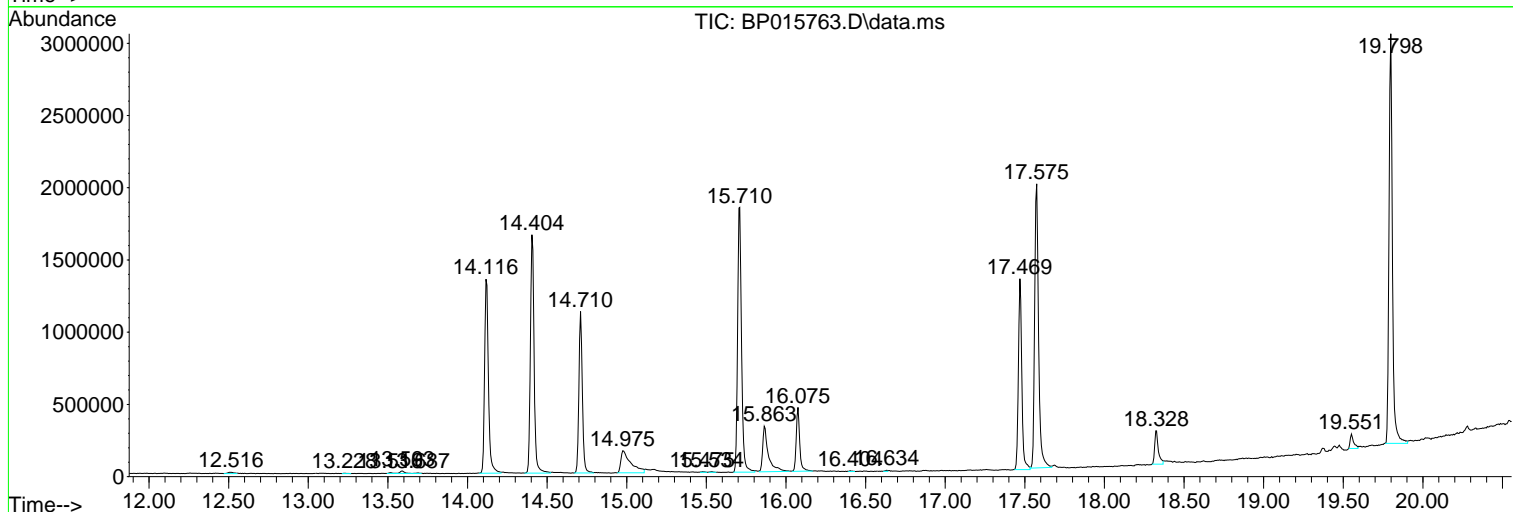
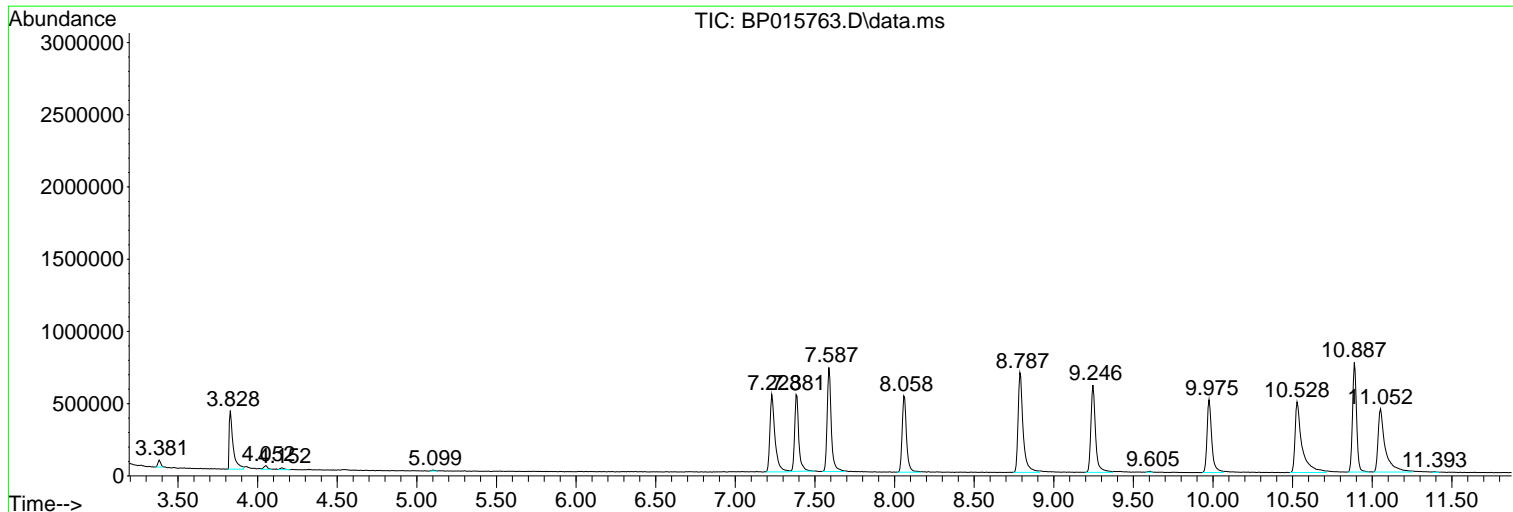
Sum of corrected areas: 44062593

Data Path : Z:\svoasrv\HPCHEM1\BNA_P\Data\BP062723\
 Data File : BP015763.D
 Acq On : 28 Jun 2023 00:48
 Operator : MA/JU
 Sample : 03101-08
 Misc :
 ALS Vial : 28 Sample Multiplier: 1

Instrument :
 BNA_P
 ClientSampleId :
 EZEM4

Quant Method : Z:\svoasrv\HPCHEM1\BNA_P\Methods\SFAM-EPA-BP062623.MA.M
 Quant Title : SVOA CALIBRATION

TIC Library : C:\DATABASE\NIST20.L
 TIC Integration Parameters: LSCINT.P



Data Path : Z:\svoasrv\HPCHEM1\BNA_P\Data\BP062723\
 Data File : BP015763.D
 Acq On : 28 Jun 2023 00:48
 Operator : MA/JU
 Sample : 03101-08
 Misc :
 ALS Vial : 28 Sample Multiplier: 1

Instrument :
 BNA_P
 ClientSampleId :
 EZEM4

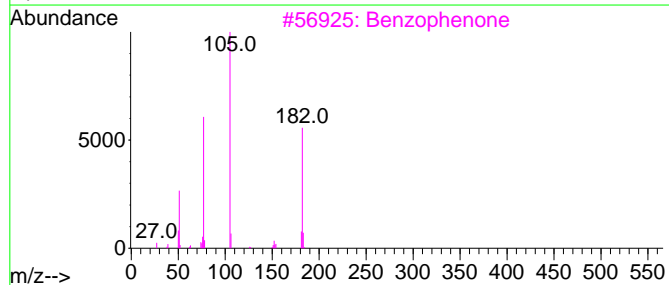
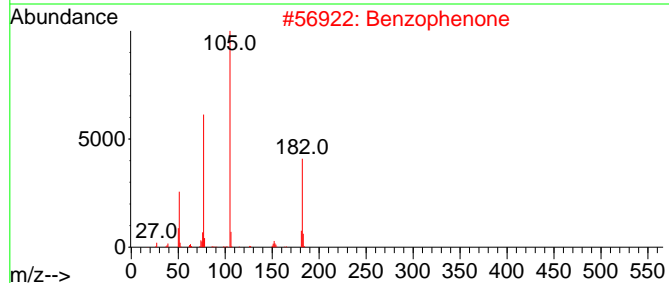
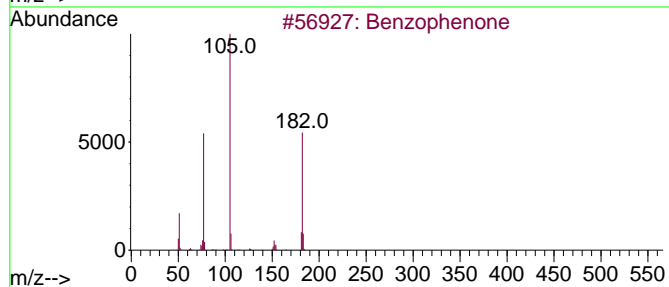
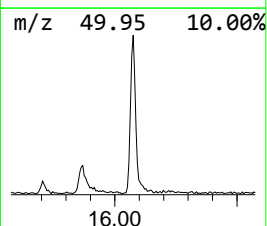
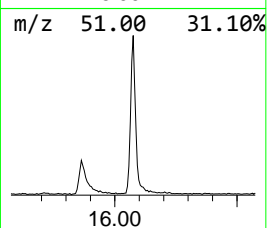
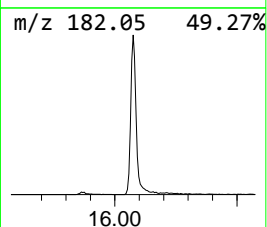
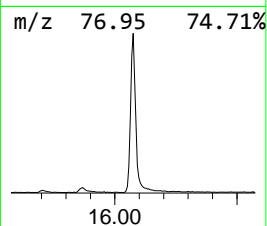
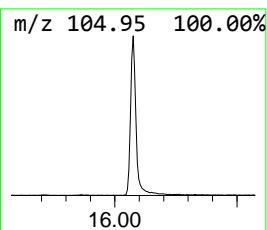
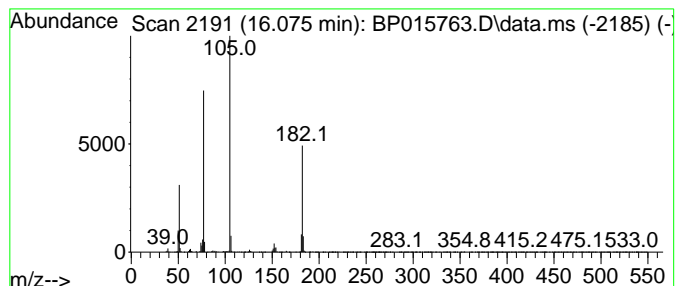
Quant Method : Z:\svoasrv\HPCHEM1\BNA_P\Methods\SFAM-EPA-BP062623.MA.M
 Quant Title : SVOA CALIBRATION

TIC Library : C:\DATABASE\NIST20.L
 TIC Integration Parameters: LSCINT.P

 Peak Number 1 Benzophenone Concentration Rank 1

R.T.	EstConc	Area	Relative to ISTD	R.T.
16.075	8.01 ng/ul	673952	Acenaphthene-d10	14.710

Hit#	of	5	Tentative ID	MW	MolForm	CAS#	Qual
1			Benzophenone	182	C13H10O	000119-61-9	97
2			Benzophenone	182	C13H10O	000119-61-9	96
3			Benzophenone	182	C13H10O	000119-61-9	96
4			Benzophenone	182	C13H10O	000119-61-9	91
5			Benzophenone	182	C13H10O	000119-61-9	89



Data Path : Z:\svoasrv\HPCHEM1\BNA_P\Data\BP062723\
 Data File : BP015763.D
 Acq On : 28 Jun 2023 00:48
 Operator : MA/JU
 Sample : 03101-08
 Misc :
 ALS Vial : 28 Sample Multiplier: 1

Instrument :
 BNA_P
 ClientSampleId :
 EZEM4

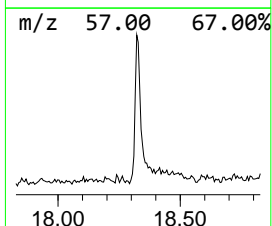
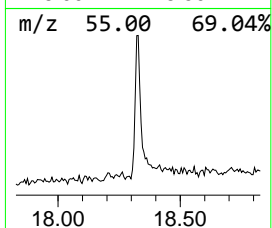
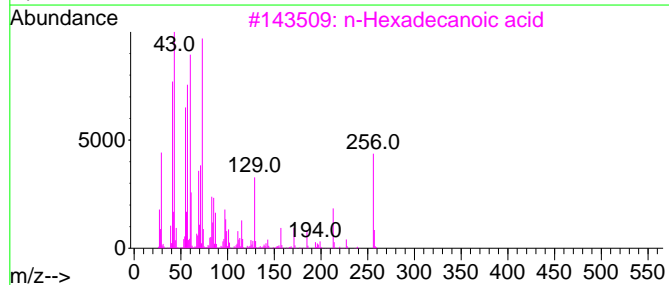
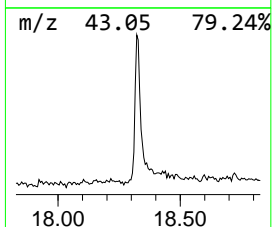
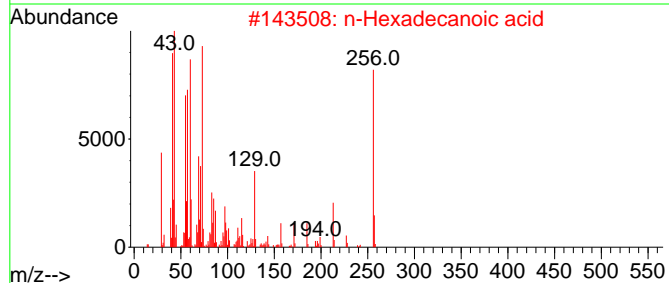
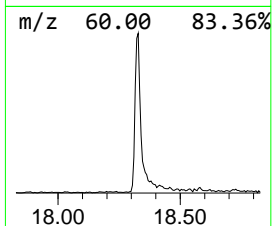
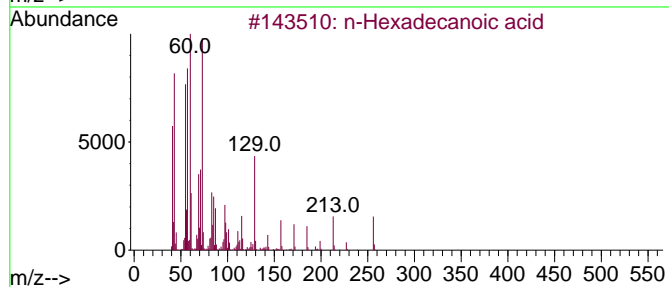
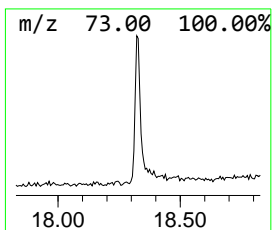
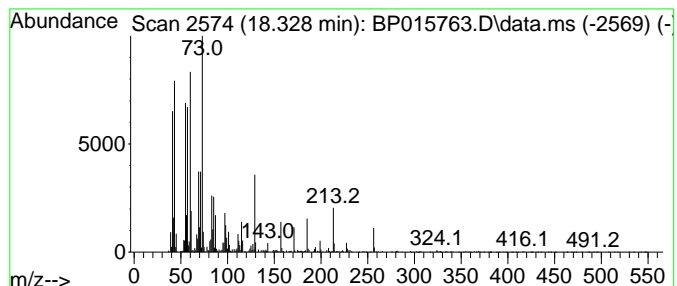
Quant Method : Z:\svoasrv\HPCHEM1\BNA_P\Methods\SFAM-EPA-BP062623.MA.M
 Quant Title : SVOA CALIBRATION

TIC Library : C:\DATABASE\NIST20.L
 TIC Integration Parameters: LSCINT.P

 Peak Number 2 n-Hexadecanoic acid Concentration Rank 2

R.T.	EstConc	Area	Relative to ISTD	R.T.
18.328	3.83 ng/ul	379947	Phenanthrene-d10	17.469

Hit#	of 5	Tentative ID	MW	MolForm	CAS#	Qual
1		n-Hexadecanoic acid	256	C16H32O2	000057-10-3	99
2		n-Hexadecanoic acid	256	C16H32O2	000057-10-3	99
3		n-Hexadecanoic acid	256	C16H32O2	000057-10-3	98
4		n-Hexadecanoic acid	256	C16H32O2	000057-10-3	98
5		Tetradecanoic acid	228	C14H28O2	000544-63-8	93



Data Path : Z:\svoasrv\HPCHEM1\BNA_P\Data\BP062723\
 Data File : BP015763.D
 Acq On : 28 Jun 2023 00:48
 Operator : MA/JU
 Sample : 03101-08
 Misc :
 ALS Vial : 28 Sample Multiplier: 1

Instrument :
 BNA_P
 ClientSampleId :
 EZEM4

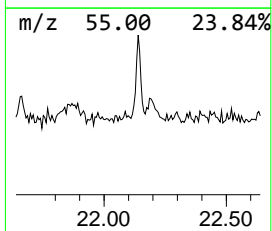
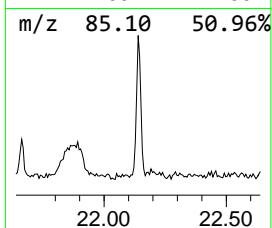
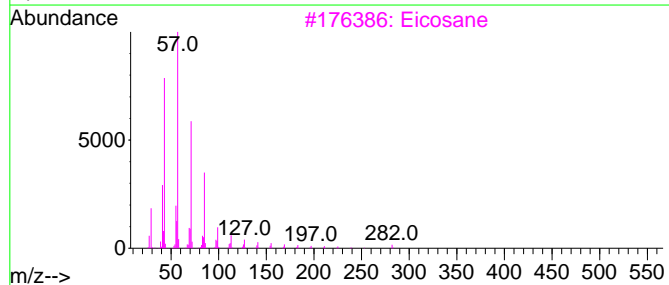
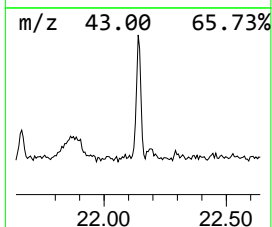
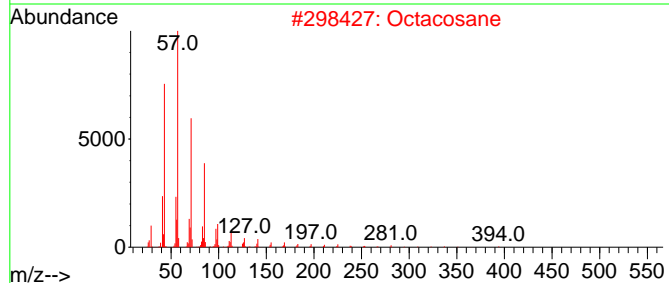
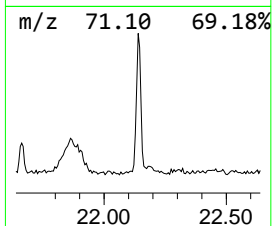
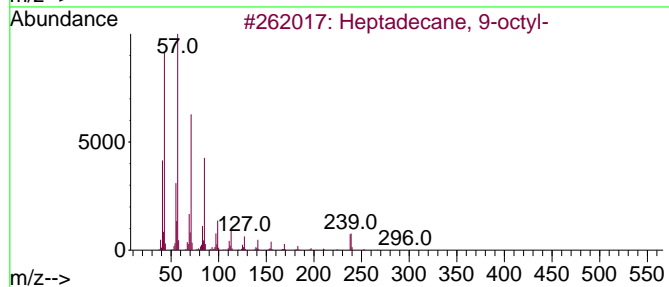
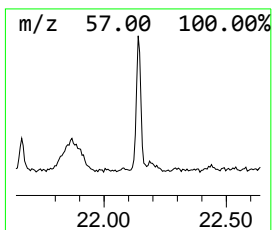
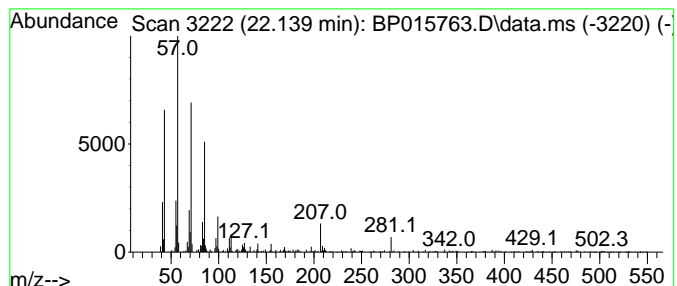
Quant Method : Z:\svoasrv\HPCHEM1\BNA_P\Methods\SFAM-EPA-BP062623.MA.M
 Quant Title : SVOA CALIBRATION

TIC Library : C:\DATABASE\NIST20.L
 TIC Integration Parameters: LSCINT.P

 Peak Number 3 (DEL) Alkane: Straight-Chai... Concentration Rank 3

R.T.	EstConc	Area	Relative to ISTD	R.T.
22.139	2.42 ng/ul	242260	Chrysene-d12	21.563

Hit#	of 5	Tentative ID	MW	MolForm	CAS#	Qual
1		Heptadecane, 9-octyl-	352	C25H52	007225-64-1	92
2		Octacosane	394	C28H58	000630-02-4	86
3		Eicosane	282	C20H42	000112-95-8	70
4		Pentacosane	352	C25H52	000629-99-2	70
5		Nonane, 3,7-dimethyl-	156	C11H24	017302-32-8	62



Data Path : Z:\svoasrv\HPCHEM1\BNA_P\Data\BP062723\
Data File : BP015763.D
Acq On : 28 Jun 2023 00:48
Operator : MA/JU
Sample : 03101-08
Misc :
ALS Vial : 28 Sample Multiplier: 1

Instrument :
BNA_P
ClientSampleId :
EZEM4

Quant Method : Z:\svoasrv\HPCHEM1\BNA_P\Methods\SFAM-EPA-BP062623.MA.M
Quant Title : SVOA CALIBRATION

TIC Library : C:\DATABASE\NIST20.L
TIC Integration Parameters: LSCINT.P

TIC Top Hit name	RT	EstConc	Units	Response	--Internal Standard--			
					#	RT	Resp	Conc
Benzophenone	16.075	8.0	ng/u1	673952	3	14.710	1682110	20.0
n-Hexadecanoic ...	18.328	3.8	ng/u1	379947	4	17.469	1986300	20.0
(DEL) Alkane: S...	22.139	2.4	ng/u1	242260	5	21.563	2000780	20.0