

Data Path : Z:\svoasrv\HPCHEM1\BNA_P\Data\BP062823\
 Data File : BP015775.D
 Acq On : 28 Jun 2023 12:42
 Operator : MA/JU
 Sample : 03142-15
 Misc :
 ALS Vial : 9 Sample Multiplier: 1

Instrument :
 BNA_P
 ClientSampleId :
 DCFT2

Integration Parameters: LSCINT.P

Integrator: RTE
 Smoothing : OFF Filtering: 5
 Sampling : 1 Min Area: 0.1 % of largest Peak
 Start Thrs: 0.2 Max Peaks: 100
 Stop Thrs : 0 Peak Location: TOP

If leading or trailing edge < 100 prefer < Baseline drop else tangent >
 Peak separation: 5

Method : Z:\svoasrv\HPCHEM1\BNA_P\Methods\SFAM-EPA-BP062623.MA.M
 Title : SVOA CALIBRATION

Signal : TIC: BP015775.D\data.ms

peak #	R.T. min	first scan	max scan	last scan	PK TY	peak height	corr. area	corr. % max.	% of total
1	3.381	30	33	41	rVB	38700	51877	0.47%	0.055%
2	3.834	107	110	123	rBV	227405	398058	3.61%	0.421%
3	3.934	123	127	133	rVB	50311	75743	0.69%	0.080%
4	4.052	142	147	152	rVB2	28292	44459	0.40%	0.047%
5	4.152	161	164	171	rVB	14697	21243	0.19%	0.022%
6	4.728	259	262	271	rVB5	8871	13967	0.13%	0.015%
7	5.128	327	330	335	rVB2	16114	22512	0.20%	0.024%
8	7.234	681	688	708	rBV	380369	925001	8.40%	0.978%
9	7.387	708	714	737	rVB	421347	793260	7.20%	0.839%
10	7.587	742	748	764	rBV	538045	1003793	9.11%	1.061%
11	8.057	822	828	842	rVV	671874	1254800	11.39%	1.327%
12	8.793	945	953	972	rBV	345471	825909	7.50%	0.873%
13	8.922	972	975	980	rVB7	8122	14984	0.14%	0.016%
14	9.246	1022	1030	1045	rBV	478850	1011572	9.19%	1.069%
15	9.399	1053	1056	1070	rVB	10401	28291	0.26%	0.030%
16	9.975	1145	1154	1181	rBV	382017	908506	8.25%	0.960%
17	10.546	1243	1251	1277	rBV	355744	1157186	10.51%	1.223%
18	10.887	1302	1309	1328	rBV	950620	1788138	16.24%	1.890%
19	11.075	1334	1341	1358	rBV	93971	324026	2.94%	0.343%
20	11.887	1473	1479	1484	rBV8	7024	13416	0.12%	0.014%
21	12.087	1506	1513	1521	rVB8	6864	17280	0.16%	0.018%
22	12.293	1544	1548	1554	rVB9	6504	12023	0.11%	0.013%
23	12.498	1579	1583	1591	rVB8	7959	17880	0.16%	0.019%
24	13.098	1682	1685	1693	rVB8	7050	11496	0.10%	0.012%
25	13.222	1703	1706	1712	rBV7	9492	14798	0.13%	0.016%
26	13.510	1750	1755	1759	rBV4	15519	24481	0.22%	0.026%
27	13.592	1761	1769	1774	rVB6	12945	29817	0.27%	0.032%
28	14.022	1838	1842	1848	rVB8	10187	18159	0.16%	0.019%
29	14.116	1848	1858	1871	rBV	1228181	2008910	18.24%	2.124%
30	14.222	1871	1876	1881	rVB4	22405	37110	0.34%	0.039%
31	14.298	1885	1889	1894	rVB	12183	18567	0.17%	0.020%
32	14.404	1897	1907	1920	rBV	1535196	2348915	21.33%	2.483%
33	14.575	1933	1936	1941	rVB2	18181	23889	0.22%	0.025%
34	14.710	1953	1959	1974	rBV	1501547	2309270	20.97%	2.441%
35	14.981	1999	2005	2018	rBV3	123116	421491	3.83%	0.446%
36	15.116	2025	2028	2036	rVB8	25029	40432	0.37%	0.043%

Data Path : Z:\svoasrv\HPCHEM1\BNA_P\Data\BP062823\
 Data File : BP015775.D
 Acq On : 28 Jun 2023 12:42
 Operator : MA/JU
 Sample : 03142-15
 Misc :
 ALS Vial : 9 Sample Multiplier: 1

Instrument :
 BNA_P
 ClientSampleId :
 DCFT2

Integration Parameters: LSCINT.P

Integrator: RTE
 Smoothing : OFF Filtering: 5
 Sampling : 1 Min Area: 0.1 % of largest Peak
 Start Thrs: 0.2 Max Peaks: 100
 Stop Thrs : 0 Peak Location: TOP

If leading or trailing edge < 100 prefer < Baseline drop else tangent >
 Peak separation: 5

Method : Z:\svoasrv\HPCHEM1\BNA_P\Methods\SFAM-EPA-BP062623.MA.M
 Title : SVOA CALIBRATION

37	15.475	2087	2089	2095	rVV4	10394	14704	0.13%	0.016%
38	15.528	2095	2098	2103	rVB	21968	26984	0.25%	0.029%
39	15.704	2122	2128	2148	rBV	1692163	2871902	26.08%	3.036%
40	15.863	2150	2155	2172	rBV	286057	671870	6.10%	0.710%
41	16.069	2184	2190	2202	rBV	736161	1165445	10.58%	1.232%
42	16.257	2219	2222	2227	rVB7	7983	13206	0.12%	0.014%
43	16.392	2242	2245	2246	rBV	25900	25584	0.23%	0.027%
44	16.557	2269	2273	2278	rBV5	24798	34483	0.31%	0.036%
45	16.633	2279	2286	2295	rVB2	163676	288206	2.62%	0.305%
46	16.851	2318	2323	2327	rBV3	30758	45820	0.42%	0.048%
47	17.004	2345	2349	2354	rBV7	11527	18727	0.17%	0.020%
48	17.157	2371	2375	2378	rBV5	17868	25038	0.23%	0.026%
49	17.192	2378	2381	2385	rVB2	27070	33308	0.30%	0.035%
50	17.339	2402	2406	2414	rBV4	53722	102817	0.93%	0.109%
51	17.410	2414	2418	2421	rBV2	37506	44088	0.40%	0.047%
52	17.469	2422	2428	2433	rBV	1724210	2569819	23.34%	2.717%
53	17.516	2433	2436	2441	rVV2	159166	314776	2.86%	0.333%
54	17.575	2441	2446	2458	rVB2	1553992	2657921	24.14%	2.810%
55	17.928	2503	2506	2509	rVB2	30645	30087	0.27%	0.032%
56	18.069	2528	2530	2533	rBV4	17178	22421	0.20%	0.024%
57	18.104	2533	2536	2541	rVB2	52865	64047	0.58%	0.068%
58	18.210	2551	2554	2558	rVB2	46861	59426	0.54%	0.063%
59	18.269	2560	2564	2569	rBV	228962	298630	2.71%	0.316%
60	18.328	2569	2574	2582	rBV	2434957	3172648	28.81%	3.354%
61	18.598	2616	2620	2628	rBV4	63823	149076	1.35%	0.158%
62	18.963	2680	2682	2689	rVB4	36677	61283	0.56%	0.065%
63	19.204	2720	2723	2728	rBV2	108208	135353	1.23%	0.143%
64	19.310	2738	2741	2746	rVB	118263	161285	1.46%	0.171%
65	19.410	2755	2758	2760	rBV	343995	404441	3.67%	0.428%
66	19.439	2760	2763	2764	rVV	343392	411278	3.73%	0.435%
67	19.469	2764	2768	2778	rVV	482851	1070609	9.72%	1.132%
68	19.551	2778	2782	2793	rVV	939001	1330486	12.08%	1.407%
69	19.763	2815	2818	2819	rBV	67746	73490	0.67%	0.078%
70	19.798	2819	2824	2837	rVB2	2184710	3483160	31.63%	3.682%
71	20.104	2871	2876	2881	rBV	833919	1040123	9.44%	1.100%
72	20.274	2901	2905	2909	rBV	281201	347805	3.16%	0.368%
73	20.598	2956	2960	2965	rBV4	227920	402608	3.66%	0.426%
74	20.763	2985	2988	2998	rVB4	169736	277645	2.52%	0.294%
75	21.233	3061	3068	3075	rBV2	1217396	2252797	20.46%	2.382%
76	21.421	3098	3100	3104	rVB	152565	169603	1.54%	0.179%

Data Path : Z:\svoasrv\HPCHEM1\BNA_P\Data\BP062823\
 Data File : BP015775.D
 Acq On : 28 Jun 2023 12:42
 Operator : MA/JU
 Sample : 03142-15
 Misc :
 ALS Vial : 9 Sample Multiplier: 1

Instrument :
 BNA_P
 ClientSampleId :
 DCFT2

Integration Parameters: LSCINT.P

Integrator: RTE
 Smoothing : OFF Filtering: 5
 Sampling : 1 Min Area: 0.1 % of largest Peak
 Start Thrs: 0.2 Max Peaks: 100
 Stop Thrs : 0 Peak Location: TOP

If leading or trailing edge < 100 prefer < Baseline drop else tangent >
 Peak separation: 5

Method : Z:\svoasrv\HPCHEM1\BNA_P\Methods\SFAM-EPA-BP062623.MA.M
 Title : SVOA CALIBRATION

77	21.557	3114	3123	3129	rBV	1561742	3066128	27.84%	3.241%
78	22.139	3219	3222	3226	rBV	551352	680698	6.18%	0.720%
79	22.186	3226	3230	3239	rVB	1311320	2357269	21.40%	2.492%
80	22.933	3353	3357	3362	rVB	416714	581403	5.28%	0.615%
81	23.251	3405	3411	3418	rVB	4497495	7589086	68.91%	8.023%
82	23.333	3419	3425	3436	rVV2	1041325	2586543	23.49%	2.734%
83	23.933	3521	3527	3534	rVB3	1029463	2505187	22.75%	2.648%
84	24.104	3551	3556	3564	rVB	804988	1710587	15.53%	1.808%
85	24.298	3584	3589	3597	rVB	786300	1544636	14.03%	1.633%
86	24.698	3648	3657	3671	rVB	4965749	11012714	100.00%	11.642%
87	24.833	3674	3680	3691	rVB3	624219	1854933	16.84%	1.961%
88	26.145	3896	3903	3915	rVB	1140169	3158136	28.68%	3.339%
89	26.662	3983	3991	4012	rVB	1421095	4984413	45.26%	5.269%
90	27.762	4168	4178	4196	rVB2	1564816	6585289	59.80%	6.962%

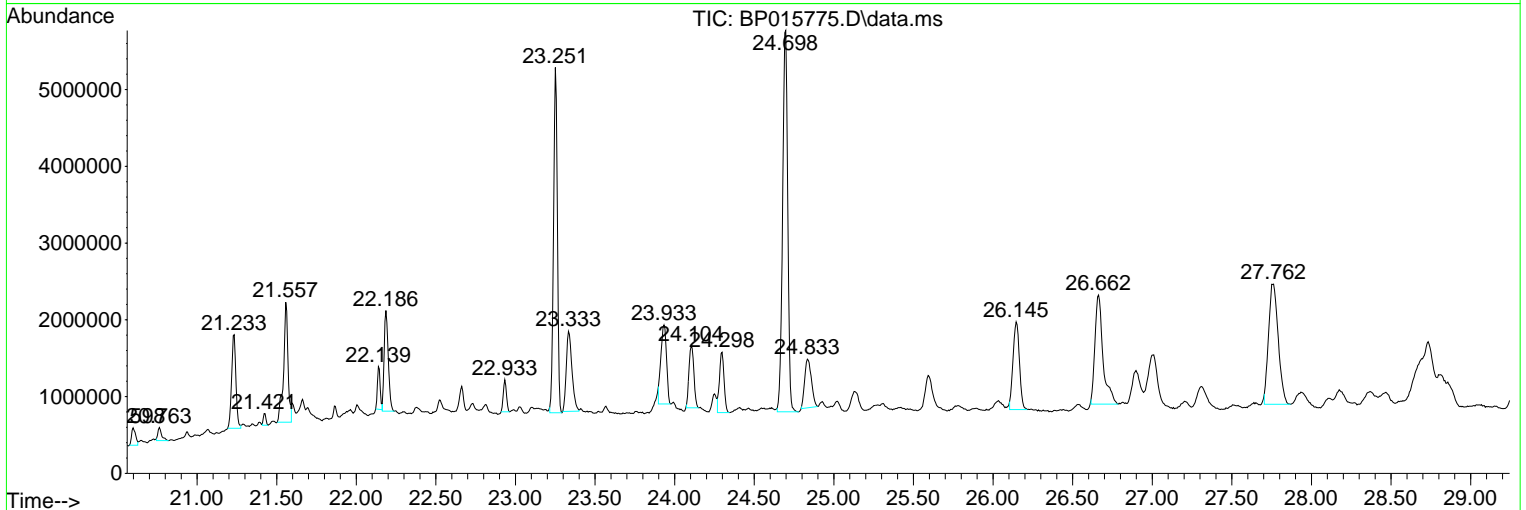
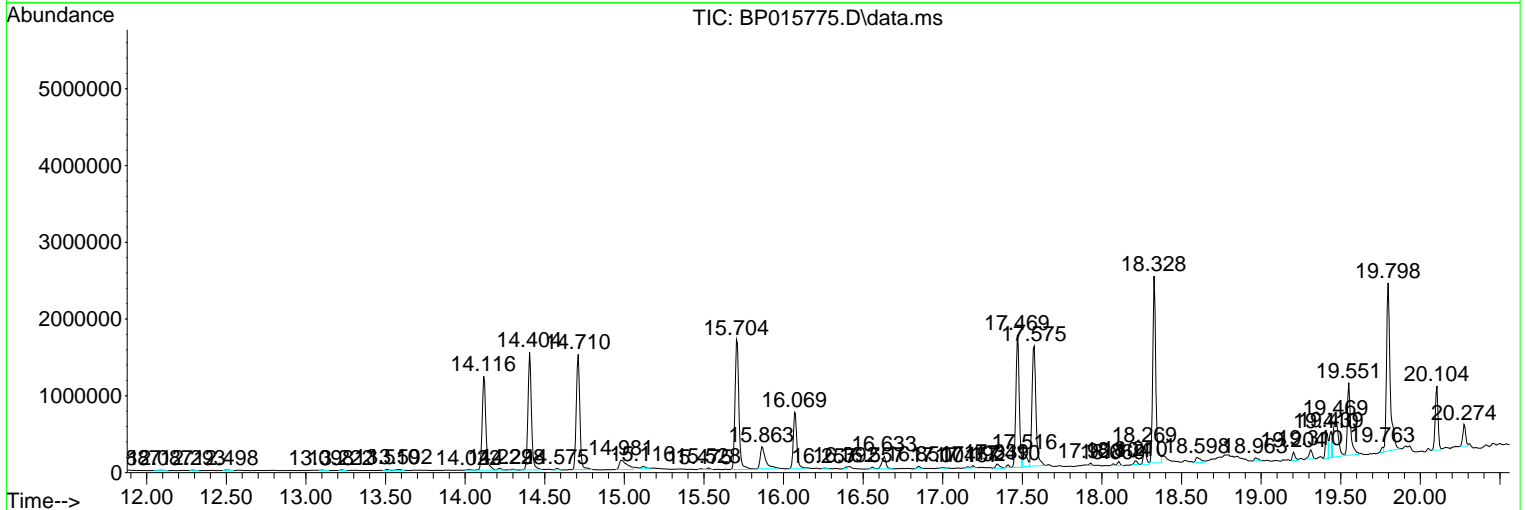
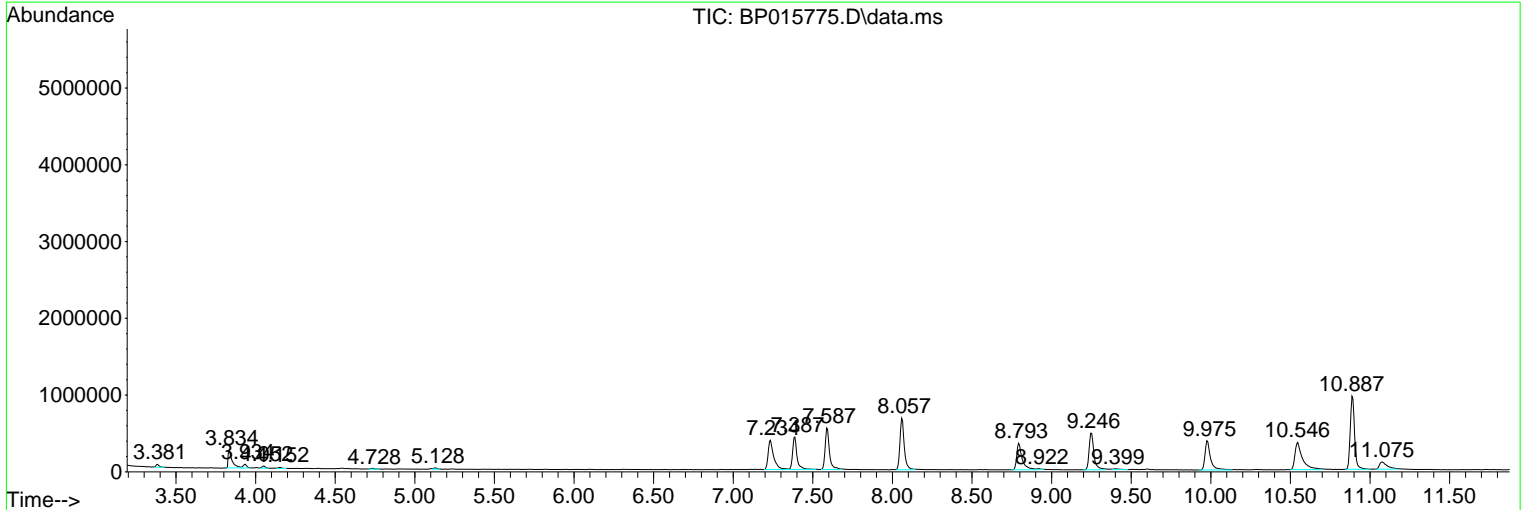
Sum of corrected areas: 94591280

Data Path : Z:\svoasrv\HPCHEM1\BNA_P\Data\BP062823\
 Data File : BP015775.D
 Acq On : 28 Jun 2023 12:42
 Operator : MA/JU
 Sample : 03142-15
 Misc :
 ALS Vial : 9 Sample Multiplier: 1

Instrument :
 BNA_P
ClientSampleId :
 DCFT2

Quant Method : Z:\svoasrv\HPCHEM1\BNA_P\Methods\SFAM-EPA-BP062623.MA.M
 Quant Title : SVOA CALIBRATION

TIC Library : C:\DATABASE\NIST20.L
 TIC Integration Parameters: LSCINT.P



Data Path : Z:\svoasrv\HPCHEM1\BNA_P\Data\BP062823\
 Data File : BP015775.D
 Acq On : 28 Jun 2023 12:42
 Operator : MA/JU
 Sample : 03142-15
 Misc :
 ALS Vial : 9 Sample Multiplier: 1

Instrument :
 BNA_P
 ClientSampleId :
 DCFT2

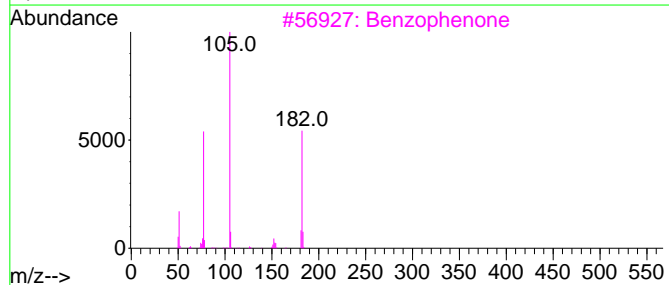
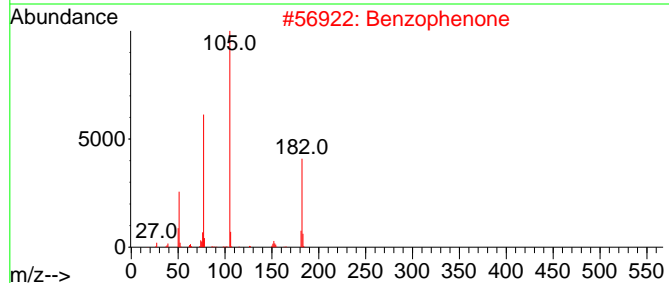
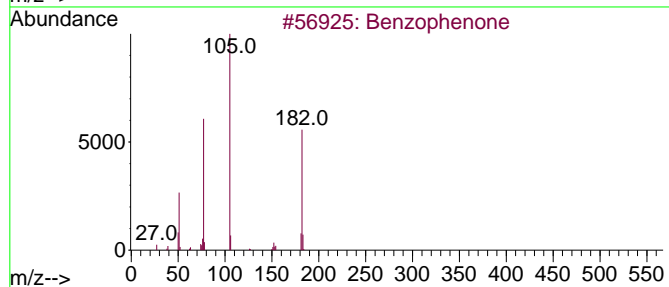
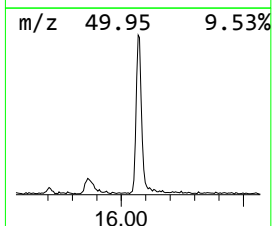
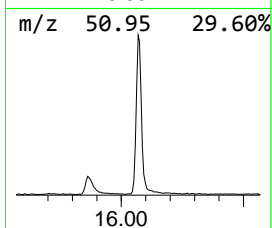
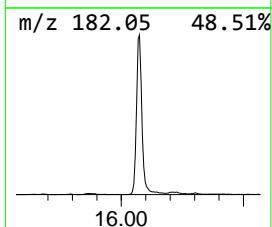
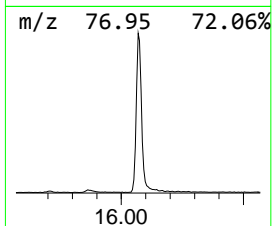
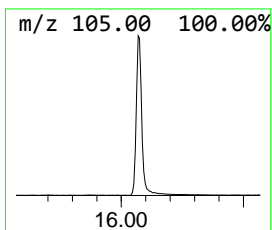
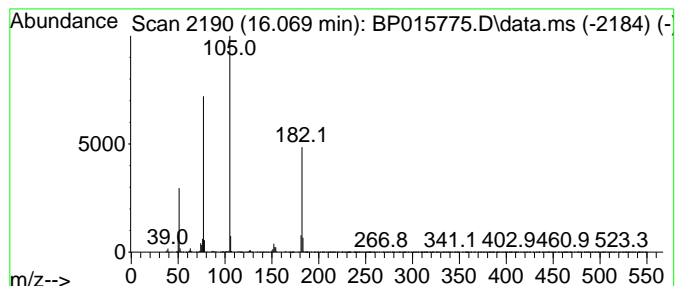
Quant Method : Z:\svoasrv\HPCHEM1\BNA_P\Methods\SFAM-EPA-BP062623.MA.M
 Quant Title : SVOA CALIBRATION

TIC Library : C:\DATABASE\NIST20.L
 TIC Integration Parameters: LSCINT.P

 Peak Number 1 Benzophenone Concentration Rank 11

R.T.	EstConc	Area	Relative to ISTD	R.T.
16.069	10.09 ng/ul	1165450	Acenaphthene-d10	14.710

Hit#	of 5	Tentative ID	MW	MolForm	CAS#	Qual
1		Benzophenone	182	C13H10O	000119-61-9	96
2		Benzophenone	182	C13H10O	000119-61-9	96
3		Benzophenone	182	C13H10O	000119-61-9	95
4		Benzophenone	182	C13H10O	000119-61-9	91
5		Benzophenone	182	C13H10O	000119-61-9	86



Data Path : Z:\svoasrv\HPCHEM1\BNA_P\Data\BP062823\
 Data File : BP015775.D
 Acq On : 28 Jun 2023 12:42
 Operator : MA/JU
 Sample : 03142-15
 Misc :
 ALS Vial : 9 Sample Multiplier: 1

Instrument :
 BNA_P
 ClientSampleId :
 DCFT2

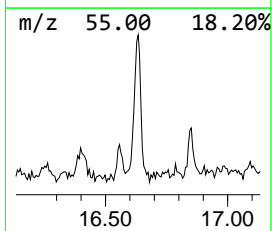
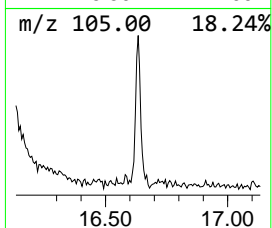
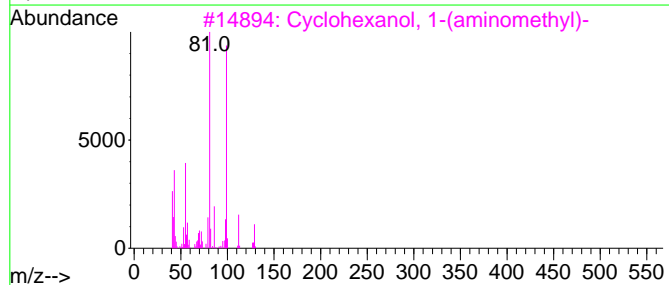
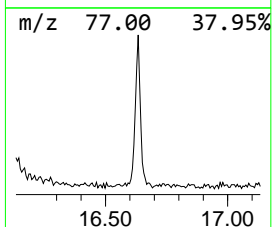
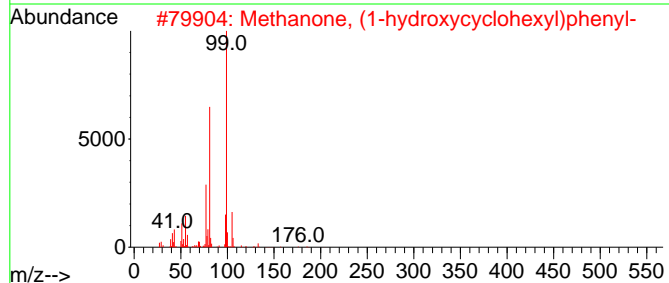
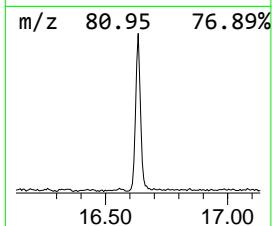
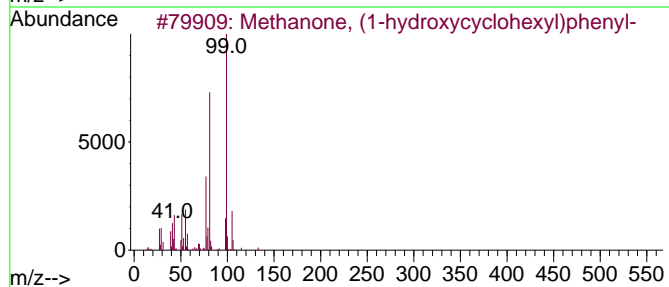
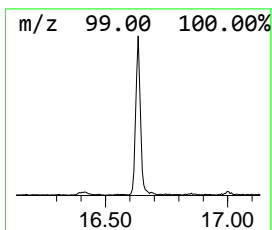
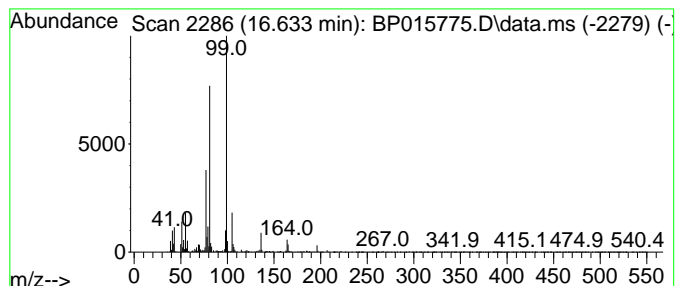
Quant Method : Z:\svoasrv\HPCHEM1\BNA_P\Methods\SFAM-EPA-BP062623.MA.M
 Quant Title : SVOA CALIBRATION

TIC Library : C:\DATABASE\NIST20.L
 TIC Integration Parameters: LSCINT.P

 Peak Number 2 Methanone, (1-hydroxycyclohexyl) Concentration Rank 20

R.T.	EstConc	Area	Relative to ISTD	R.T.
16.634	2.24 ng/ul	288206	Phenanthrene-d10	17.469

Hit#	of 5	Tentative ID	MW	MolForm	CAS#	Qual
1		Methanone, (1-hydroxycyclohexyl)...	204	C13H16O2	000947-19-3	78
2		Methanone, (1-hydroxycyclohexyl)...	204	C13H16O2	000947-19-3	72
3		Cyclohexanol, 1-(aminomethyl)-	129	C7H15NO	004000-72-0	45
4		1,1'-Bicyclohexyl-1,1'-diol	198	C12H22O2	002888-11-1	42
5		Cyclohexanol, 1-(aminomethyl)-	129	C7H15NO	004000-72-0	38



Data Path : Z:\svoasrv\HPCHEM1\BNA_P\Data\BP062823\
 Data File : BP015775.D
 Acq On : 28 Jun 2023 12:42
 Operator : MA/JU
 Sample : 03142-15
 Misc :
 ALS Vial : 9 Sample Multiplier: 1

Instrument :
 BNA_P
 ClientSampleId :
 DCFT2

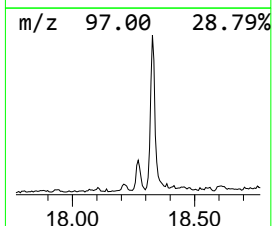
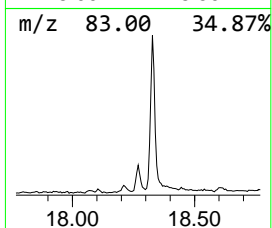
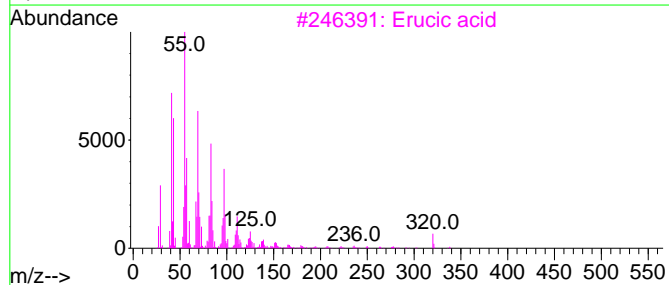
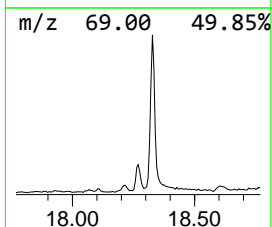
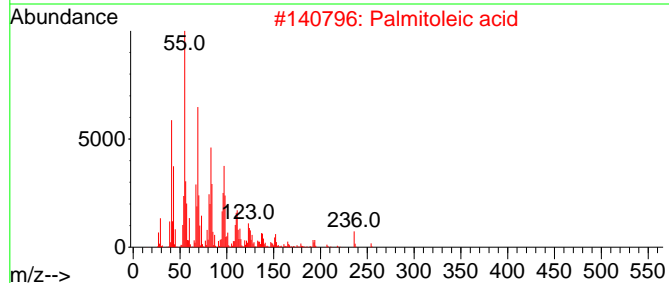
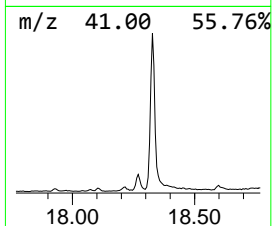
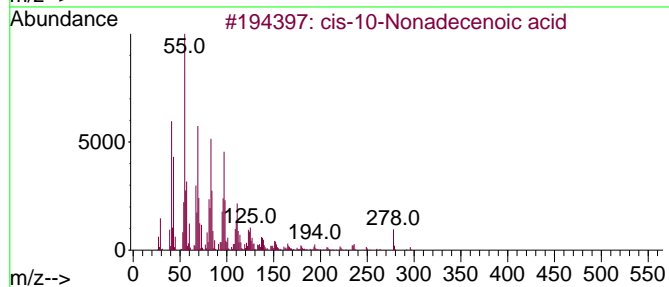
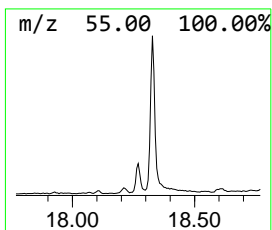
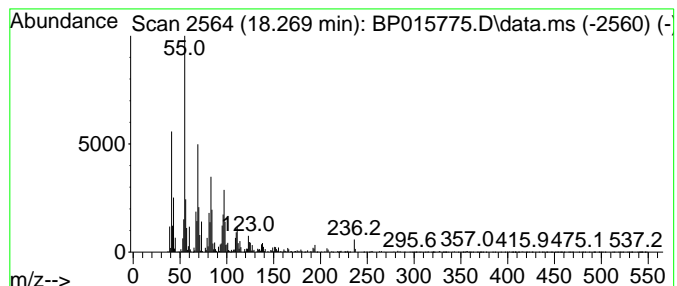
Quant Method : Z:\svoasrv\HPCHEM1\BNA_P\Methods\SFAM-EPA-BP062623.MA.M
 Quant Title : SVOA CALIBRATION

TIC Library : C:\DATABASE\NIST20.L
 TIC Integration Parameters: LSCINT.P

 Peak Number 3 cis-10-Nonadecenoic acid Concentration Rank 18

R.T.	EstConc	Area	Relative to ISTD	R.T.
18.269	2.32 ng/ul	298630	Phenanthrene-d10	17.469

Hit#	of	5	Tentative ID	MW	MolForm	CAS#	Qual
1			cis-10-Nonadecenoic acid	296	C19H36O2	073033-09-7	95
2			Palmitoleic acid	254	C16H30O2	000373-49-9	94
3			Erucic acid	338	C22H42O2	000112-86-7	93
4			cis-Vaccenic acid	282	C18H34O2	000506-17-2	91
5			Hexadecenoic acid, Z-11-	254	C16H30O2	002416-20-8	91



Data Path : Z:\svoasrv\HPCHEM1\BNA_P\Data\BP062823\
 Data File : BP015775.D
 Acq On : 28 Jun 2023 12:42
 Operator : MA/JU
 Sample : 03142-15
 Misc :
 ALS Vial : 9 Sample Multiplier: 1

Instrument :
 BNA_P
 ClientSampleId :
 DCFT2

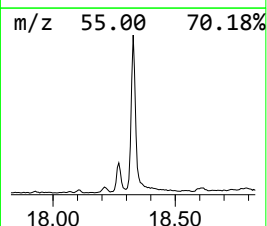
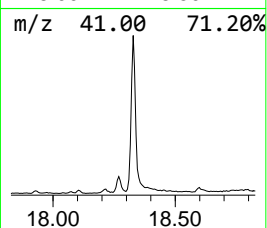
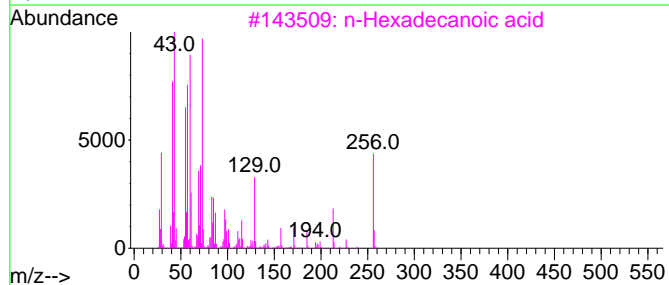
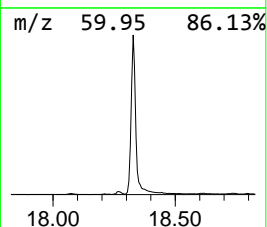
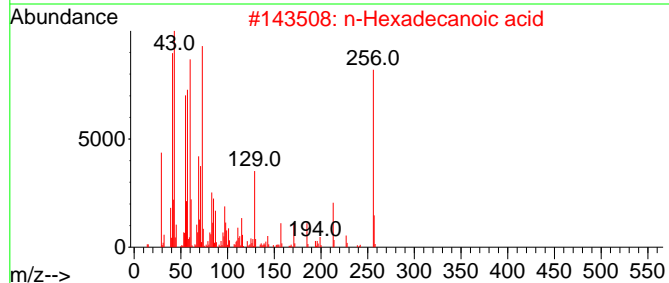
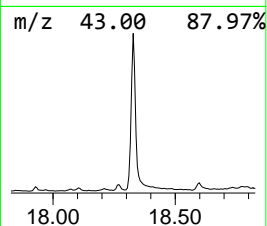
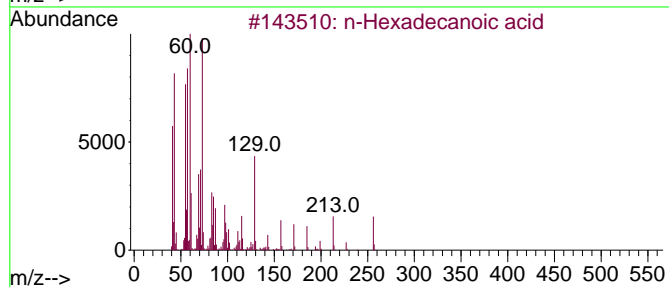
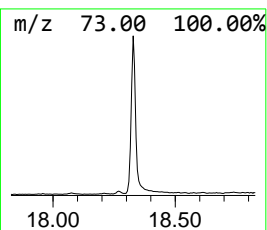
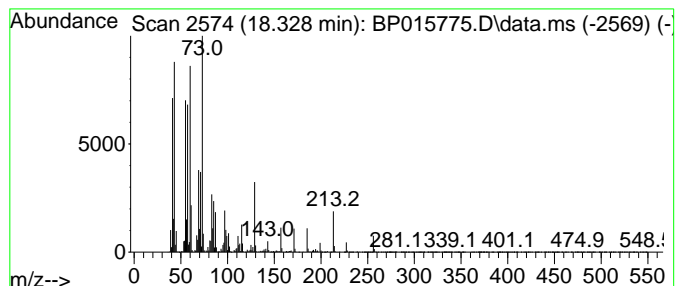
Quant Method : Z:\svoasrv\HPCHEM1\BNA_P\Methods\SFAM-EPA-BP062623.MA.M
 Quant Title : SVOA CALIBRATION

TIC Library : C:\DATABASE\NIST20.L
 TIC Integration Parameters: LSCINT.P

 Peak Number 4 n-Hexadecanoic acid Concentration Rank 6

R.T.	EstConc	Area	Relative to ISTD	R.T.
18.328	24.69 ng/ul	3172650	Phenanthrene-d10	17.469

Hit#	of	5	Tentative ID	MW	MolForm	CAS#	Qual
1			n-Hexadecanoic acid	256	C16H32O2	000057-10-3	99
2			n-Hexadecanoic acid	256	C16H32O2	000057-10-3	99
3			n-Hexadecanoic acid	256	C16H32O2	000057-10-3	98
4			n-Hexadecanoic acid	256	C16H32O2	000057-10-3	97
5			Pentadecanoic acid	242	C15H30O2	001002-84-2	90



Data Path : Z:\svoasrv\HPCHEM1\BNA_P\Data\BP062823\
 Data File : BP015775.D
 Acq On : 28 Jun 2023 12:42
 Operator : MA/JU
 Sample : 03142-15
 Misc :
 ALS Vial : 9 Sample Multiplier: 1

Instrument :
 BNA_P
 ClientSampleId :
 DCFT2

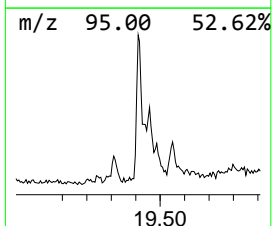
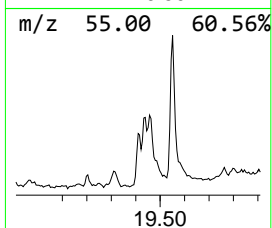
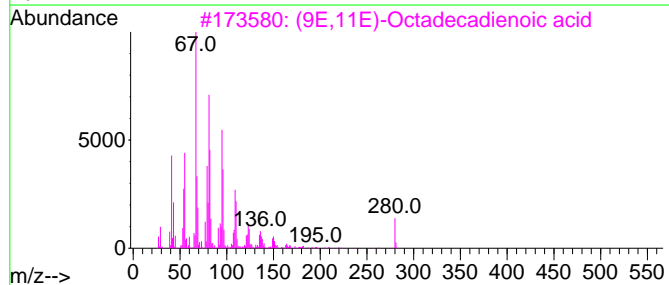
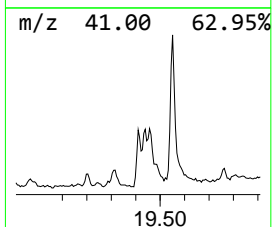
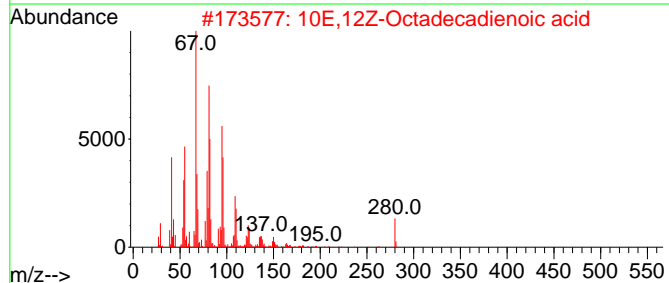
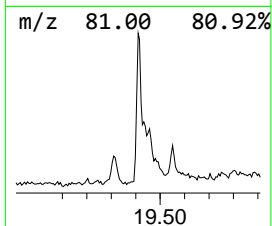
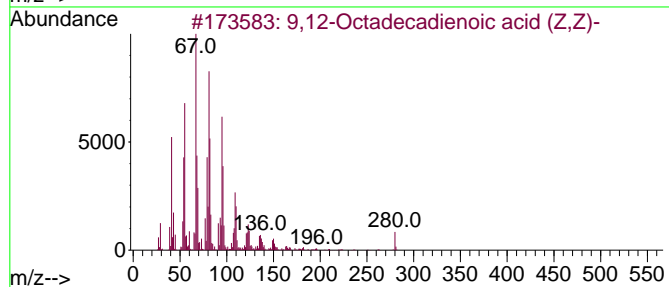
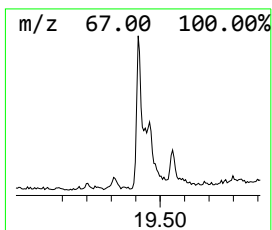
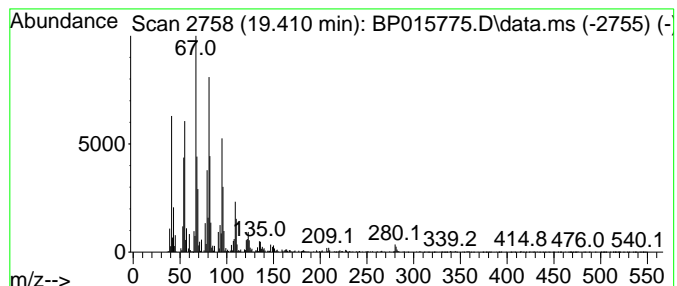
Quant Method : Z:\svoasrv\HPCHEM1\BNA_P\Methods\SFAM-EPA-BP062623.MA.M
 Quant Title : SVOA CALIBRATION

TIC Library : C:\DATABASE\NIST20.L
 TIC Integration Parameters: LSCINT.P

 Peak Number 5 9,12-Octadecadienoic acid (... Concentration Rank 16

R.T.	EstConc	Area	Relative to ISTD	R.T.
19.410	3.15 ng/ul	404441	Phenanthrene-d10	17.469

Hit#	of 5	Tentative ID	MW	MolForm	CAS#	Qual
1		9,12-Octadecadienoic acid (Z,Z)-	280	C18H32O2	000060-33-3	99
2		10E,12Z-Octadecadienoic acid	280	C18H32O2	002420-56-6	96
3		(9E,11E)-Octadecadienoic acid	280	C18H32O2	000544-71-8	96
4		9,12-Octadecadienoic acid (Z,Z)-	280	C18H32O2	000060-33-3	95
5		9,12-Octadecadienoic acid (Z,Z)-	280	C18H32O2	000060-33-3	94



Data Path : Z:\svoasrv\HPCHEM1\BNA_P\Data\BP062823\
 Data File : BP015775.D
 Acq On : 28 Jun 2023 12:42
 Operator : MA/JU
 Sample : 03142-15
 Misc :
 ALS Vial : 9 Sample Multiplier: 1

Instrument :
 BNA_P
 ClientSampleId :
 DCFT2

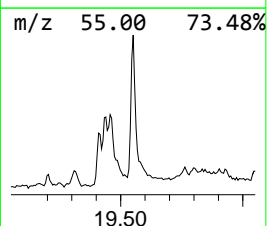
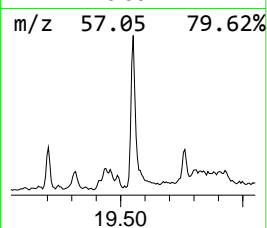
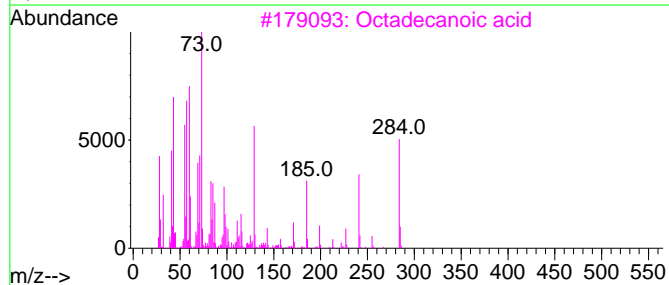
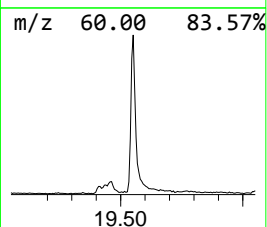
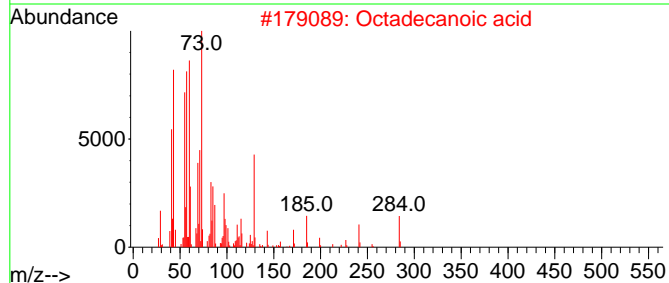
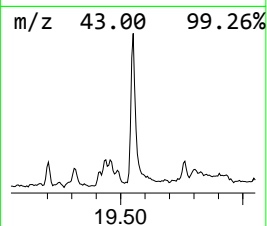
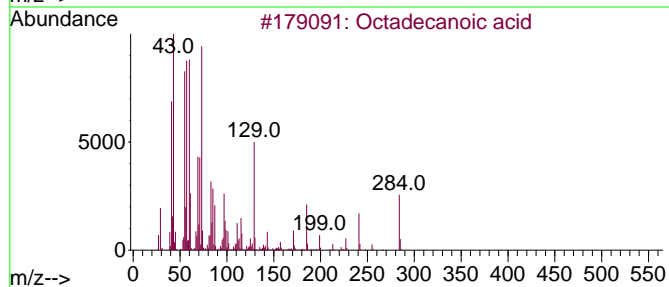
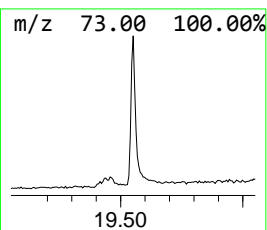
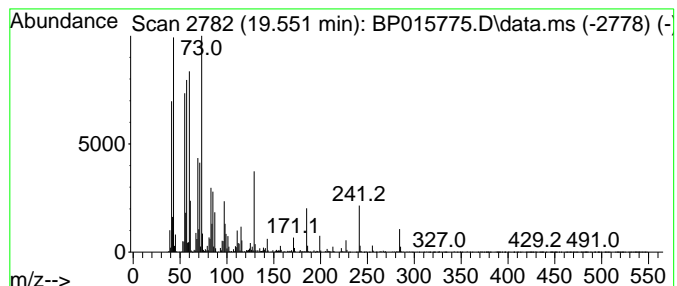
Quant Method : Z:\svoasrv\HPCHEM1\BNA_P\Methods\SFAM-EPA-BP062623.MA.M
 Quant Title : SVOA CALIBRATION

TIC Library : C:\DATABASE\NIST20.L
 TIC Integration Parameters: LSCINT.P

 Peak Number 6 Octadecanoic acid Concentration Rank 12

R.T.	EstConc	Area	Relative to ISTD	R.T.
19.551	8.68 ng/ul	1330490	Chrysene-d12	21.557

Hit#	of	5	Tentative ID	MW	MolForm	CAS#	Qual
1			Octadecanoic acid	284	C18H36O2	000057-11-4	99
2			Octadecanoic acid	284	C18H36O2	000057-11-4	99
3			Octadecanoic acid	284	C18H36O2	000057-11-4	99
4			Octadecanoic acid	284	C18H36O2	000057-11-4	98
5			Octadecanoic acid	284	C18H36O2	000057-11-4	94



Data Path : Z:\svoasrv\HPCHEM1\BNA_P\Data\BP062823\
 Data File : BP015775.D
 Acq On : 28 Jun 2023 12:42
 Operator : MA/JU
 Sample : 03142-15
 Misc :
 ALS Vial : 9 Sample Multiplier: 1

Instrument :
 BNA_P
 ClientSampleId :
 DCFT2

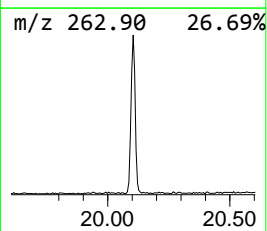
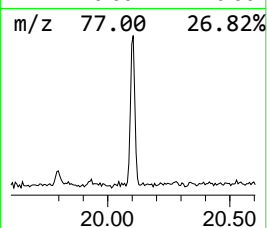
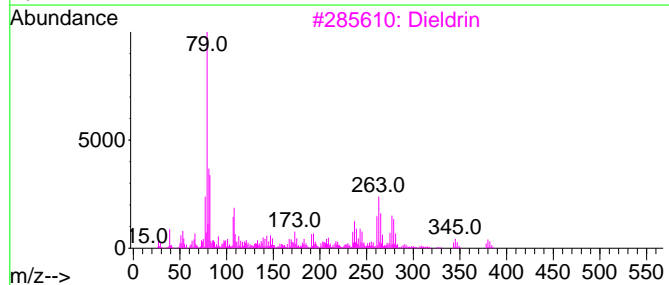
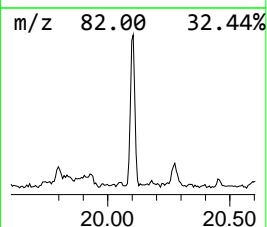
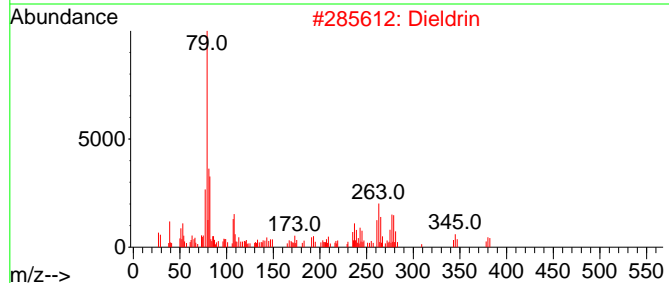
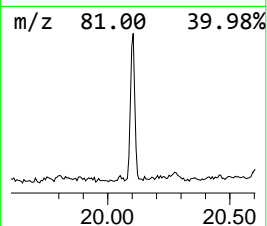
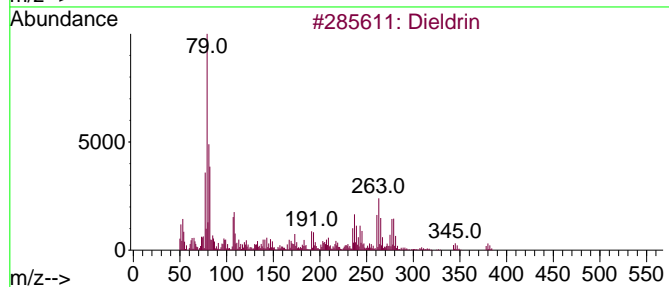
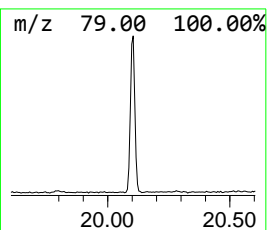
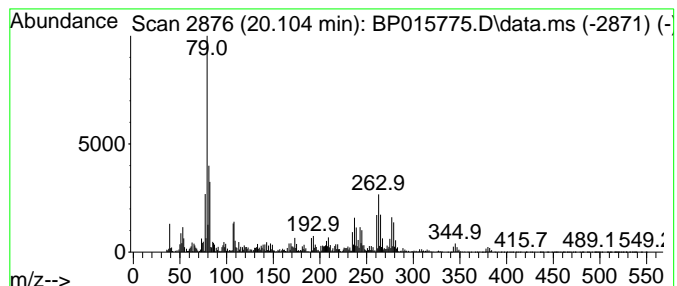
Quant Method : Z:\svoasrv\HPCHEM1\BNA_P\Methods\SFAM-EPA-BP062623.MA.M
 Quant Title : SVOA CALIBRATION

TIC Library : C:\DATABASE\NIST20.L
 TIC Integration Parameters: LSCINT.P

 Peak Number 7 Dieldrin Concentration Rank 14

R.T.	EstConc	Area	Relative to ISTD	R.T.
20.104	6.78 ng/ul	1040120	Chrysene-d12	21.557

Hit#	of	5	Tentative ID	MW	MolForm	CAS#	Qual
1			Dieldrin	378	C12H8Cl6O	000060-57-1	99
2			Dieldrin	378	C12H8Cl6O	000060-57-1	99
3			Dieldrin	378	C12H8Cl6O	000060-57-1	98
4			1,2,3,4,10,10-Hexachloro-6,7-epo...	378	C12H8Cl6O	056816-04-7	96
5			Dieldrin	378	C12H8Cl6O	000060-57-1	96



Data Path : Z:\svoasrv\HPCHEM1\BNA_P\Data\BP062823\
 Data File : BP015775.D
 Acq On : 28 Jun 2023 12:42
 Operator : MA/JU
 Sample : 03142-15
 Misc :
 ALS Vial : 9 Sample Multiplier: 1

Instrument :
 BNA_P
 ClientSampleId :
 DCFT2

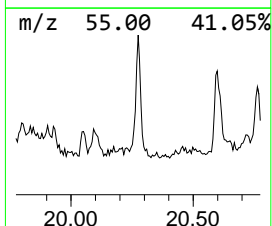
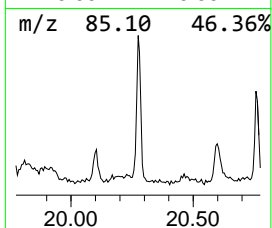
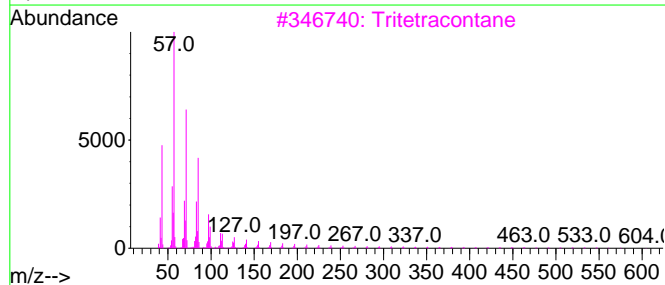
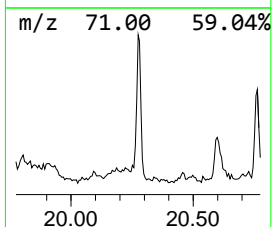
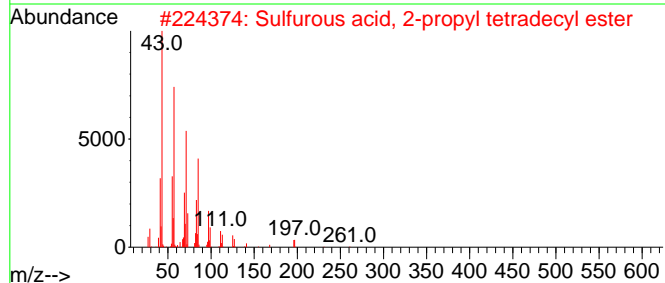
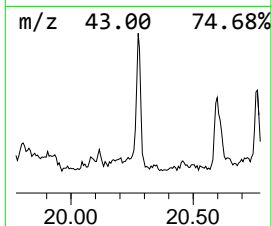
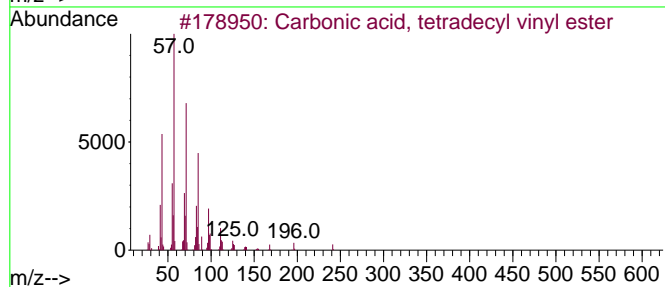
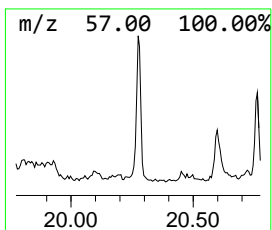
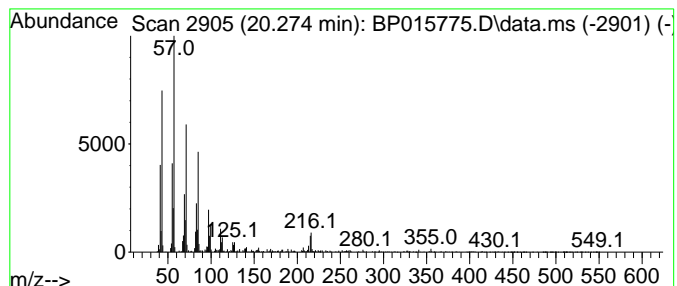
Quant Method : Z:\svoasrv\HPCHEM1\BNA_P\Methods\SFAM-EPA-BP062623.MA.M
 Quant Title : SVOA CALIBRATION

TIC Library : C:\DATABASE\NIST20.L
 TIC Integration Parameters: LSCINT.P

 Peak Number 8 Carbonic acid, tetradecyl v... Concentration Rank 19

R.T.	EstConc	Area	Relative to ISTD	R.T.
20.275	2.27 ng/ul	347805	Chrysene-d12	21.557

Hit#	of	5	Tentative ID	MW	MolForm	CAS#	Qual
1			Carbonic acid, tetradecyl vinyl ...	284	C17H32O3	1000382-54-5	91
2			Sulfurous acid, 2-propyl tetrade...	320	C17H36O3S	1010309-12-5	91
3			Tritetracontane	605	C43H88	007098-21-7	91
4			Octadecane, 1-chloro-	288	C18H37Cl	003386-33-2	91
5			1-Heptadecene	238	C17H34	006765-39-5	90



Data Path : Z:\svoasrv\HPCHEM1\BNA_P\Data\BP062823\
 Data File : BP015775.D
 Acq On : 28 Jun 2023 12:42
 Operator : MA/JU
 Sample : 03142-15
 Misc :
 ALS Vial : 9 Sample Multiplier: 1

Instrument :
 BNA_P
 ClientSampleId :
 DCFT2

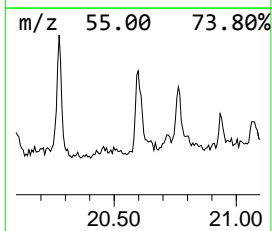
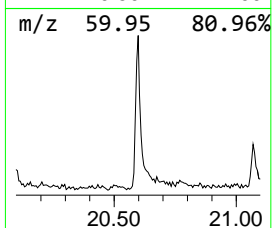
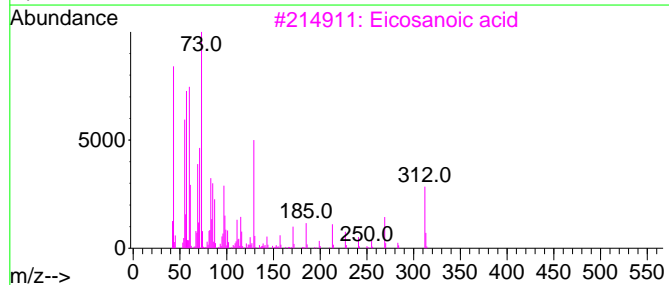
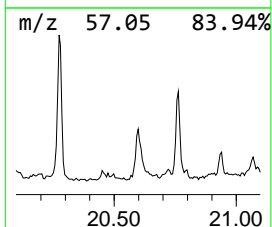
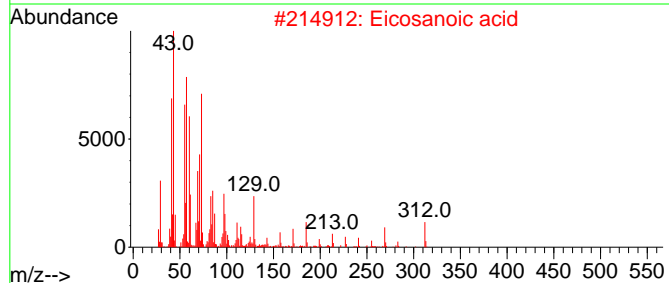
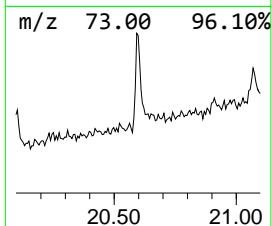
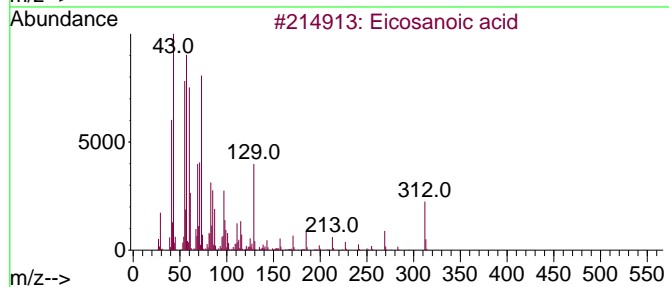
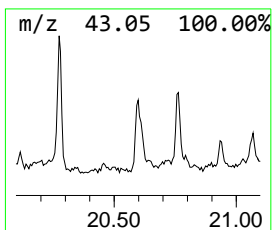
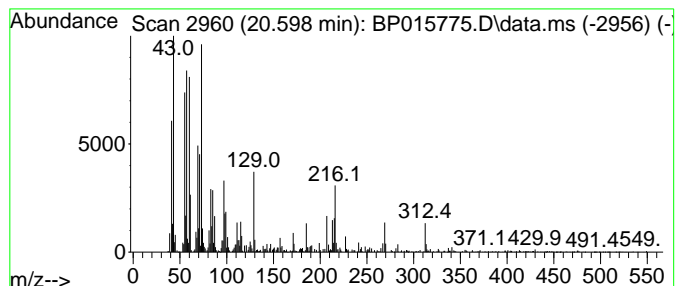
Quant Method : Z:\svoasrv\HPCHEM1\BNA_P\Methods\SFAM-EPA-BP062623.MA.M
 Quant Title : SVOA CALIBRATION

TIC Library : C:\DATABASE\NIST20.L
 TIC Integration Parameters: LSCINT.P

 Peak Number 9 Eicosanoic acid Concentration Rank 17

R.T.	EstConc	Area	Relative to ISTD	R.T.
20.598	2.63 ng/ul	402608	Chrysene-d12	21.557

Hit#	of	5	Tentative ID	MW	MolForm	CAS#	Qual
1			Eicosanoic acid	312	C20H40O2	000506-30-9	99
2			Eicosanoic acid	312	C20H40O2	000506-30-9	98
3			Eicosanoic acid	312	C20H40O2	000506-30-9	97
4			Heptadecanoic acid	270	C17H34O2	000506-12-7	94
5			Heneicosanoic acid	326	C21H42O2	002363-71-5	93



Data Path : Z:\svoasrv\HPCHEM1\BNA_P\Data\BP062823\
 Data File : BP015775.D
 Acq On : 28 Jun 2023 12:42
 Operator : MA/JU
 Sample : 03142-15
 Misc :
 ALS Vial : 9 Sample Multiplier: 1

Instrument :
 BNA_P
 ClientSampleId :
 DCFT2

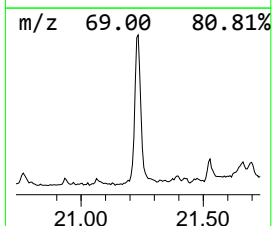
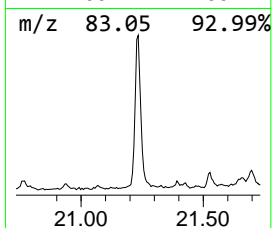
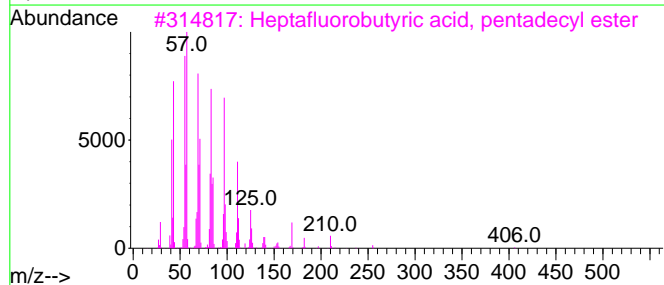
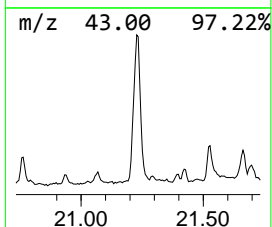
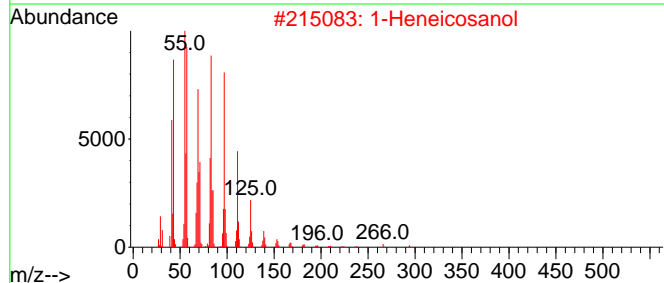
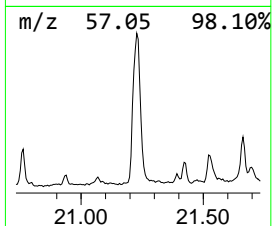
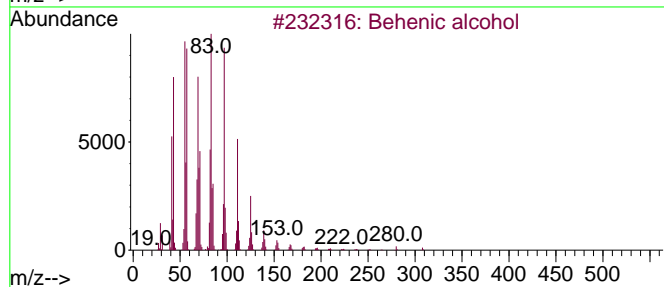
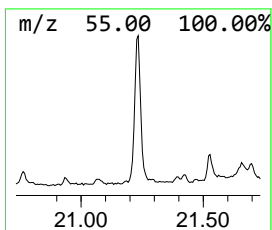
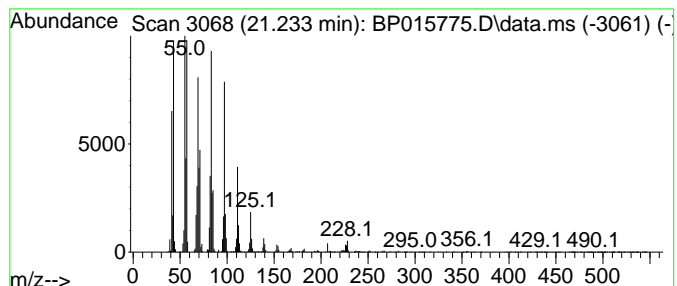
Quant Method : Z:\svoasrv\HPCHEM1\BNA_P\Methods\SFAM-EPA-BP062623.MA.M
 Quant Title : SVOA CALIBRATION

TIC Library : C:\DATABASE\NIST20.L
 TIC Integration Parameters: LSCINT.P

 Peak Number 10 Behenic alcohol Concentration Rank 10

R.T.	EstConc	Area	Relative to ISTD	R.T.
21.233	14.69 ng/ul	2252800	Chrysene-d12	21.557

Hit#	of	5	Tentative ID	MW	MolForm	CAS#	Qual
1			Behenic alcohol	326	C22H46O	000661-19-8	95
2			1-Heneicosanol	312	C21H44O	015594-90-8	95
3			Heptafluorobutyric acid, pentade...	424	C19H31F7O2	959261-23-5	94
4			Trichloroacetic acid, hexadecyl ...	386	C18H33Cl3O2	074339-54-1	94
5			Trifluoroacetoxy hexadecane	338	C18H33F3O2	006222-03-3	94



Data Path : Z:\svoasrv\HPCHEM1\BNA_P\Data\BP062823\
 Data File : BP015775.D
 Acq On : 28 Jun 2023 12:42
 Operator : MA/JU
 Sample : 03142-15
 Misc :
 ALS Vial : 9 Sample Multiplier: 1

Instrument :
 BNA_P
 ClientSampleId :
 DCFT2

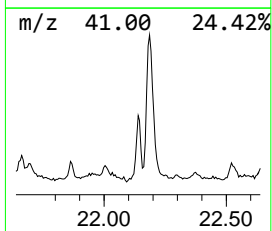
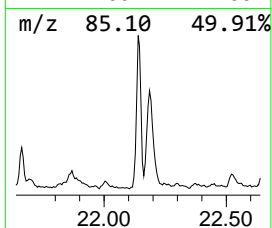
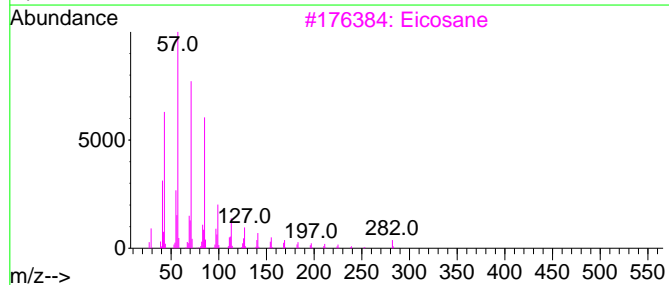
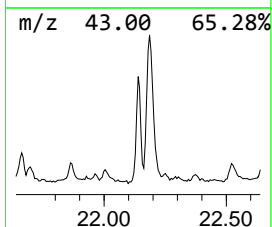
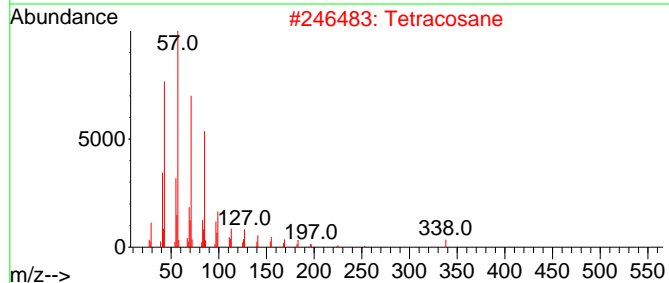
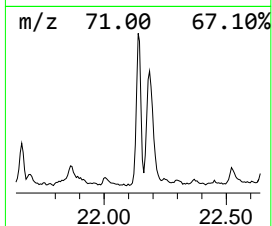
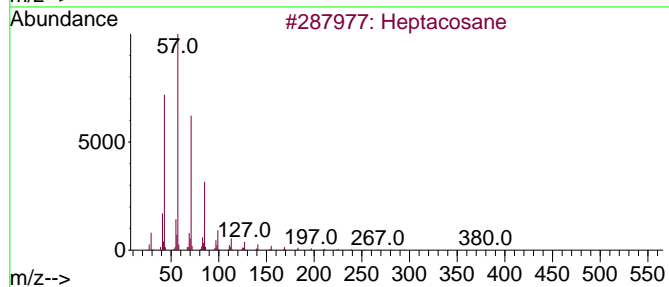
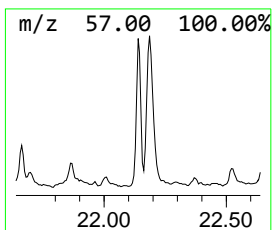
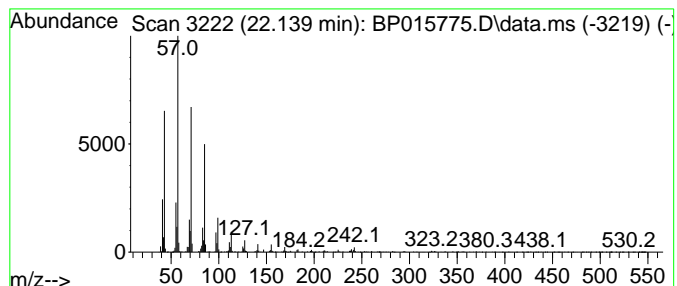
Quant Method : Z:\svoasrv\HPCHEM1\BNA_P\Methods\SFAM-EPA-BP062623.MA.M
 Quant Title : SVOA CALIBRATION

TIC Library : C:\DATABASE\NIST20.L
 TIC Integration Parameters: LSCINT.P

 Peak Number 11 (DEL) Alkane: Straight-Chai... Concentration Rank 15

R.T.	EstConc	Area	Relative to ISTD	R.T.
22.139	4.44 ng/ul	680698	Chrysene-d12	21.557

Hit#	of 5	Tentative ID	MW	MolForm	CAS#	Qual
1		Heptacosane	380	C27H56	000593-49-7	97
2		Tetracosane	338	C24H50	000646-31-1	95
3		Eicosane	282	C20H42	000112-95-8	94
4		Tricosane	324	C23H48	000638-67-5	93
5		Pentadecane, 8-hexyl-	296	C21H44	013475-75-7	93



Data Path : Z:\svoasrv\HPCHEM1\BNA_P\Data\BP062823\
 Data File : BP015775.D
 Acq On : 28 Jun 2023 12:42
 Operator : MA/JU
 Sample : 03142-15
 Misc :
 ALS Vial : 9 Sample Multiplier: 1

Instrument :
 BNA_P
 ClientSampleId :
 DCFT2

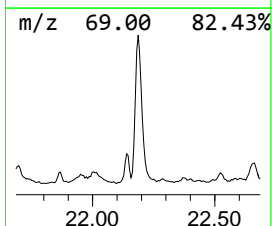
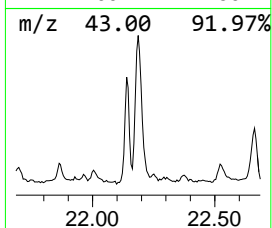
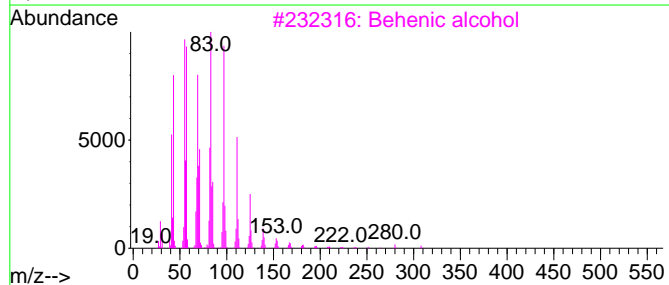
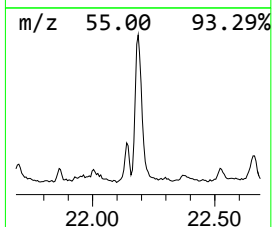
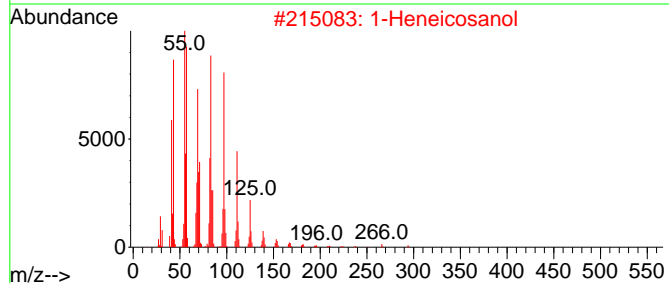
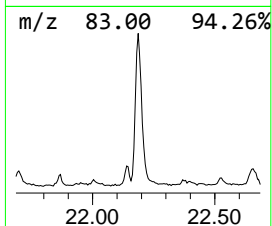
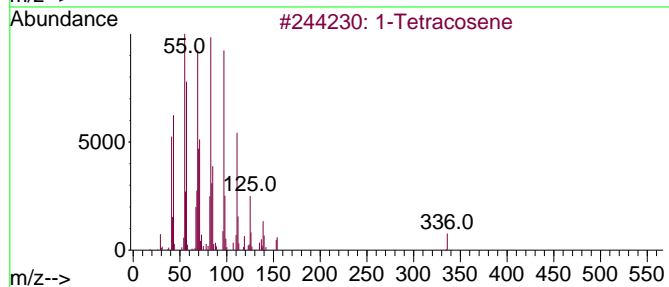
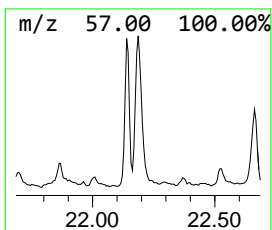
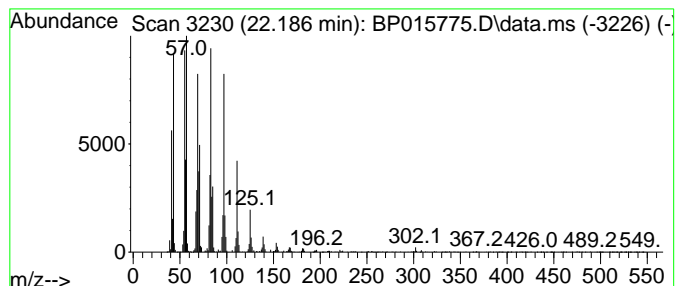
Quant Method : Z:\svoasrv\HPCHEM1\BNA_P\Methods\SFAM-EPA-BP062623.MA.M
 Quant Title : SVOA CALIBRATION

TIC Library : C:\DATABASE\NIST20.L
 TIC Integration Parameters: LSCINT.P

 Peak Number 12 (DEL) Alkane: Straight-Chai... Concentration Rank 9

R.T.	EstConc	Area	Relative to ISTD	R.T.
22.186	15.38 ng/ul	2357270	Chrysene-d12	21.557

Hit#	of 5	Tentative ID	MW	MolForm	CAS#	Qual
1		1-Tetracosene	336	C24H48	010192-32-2	95
2		1-Heneicosanol	312	C21H44O	015594-90-8	95
3		Behenic alcohol	326	C22H46O	000661-19-8	95
4		1-Heneicosyl formate	340	C22H44O2	077899-03-7	95
5		Heptacos-1-ene	378	C27H54	015306-27-1	94



Data Path : Z:\svoasrv\HPCHEM1\BNA_P\Data\BP062823\
 Data File : BP015775.D
 Acq On : 28 Jun 2023 12:42
 Operator : MA/JU
 Sample : 03142-15
 Misc :
 ALS Vial : 9 Sample Multiplier: 1

Instrument :
 BNA_P
 ClientSampleId :
 DCFT2

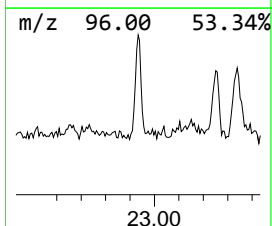
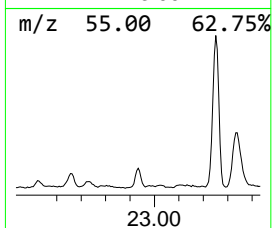
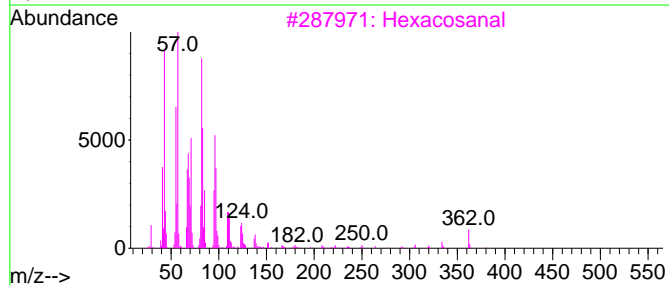
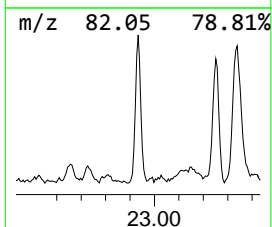
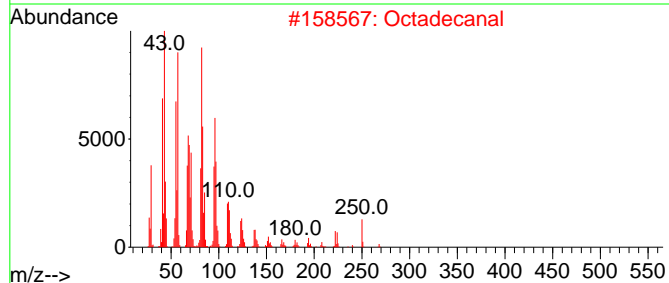
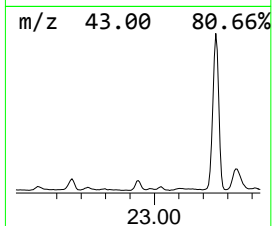
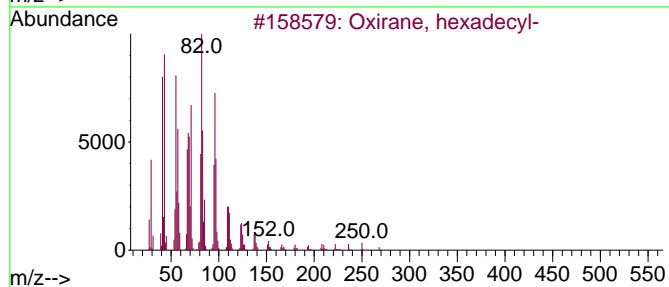
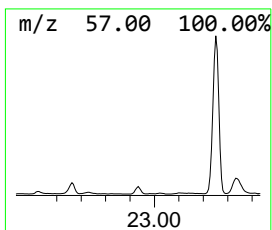
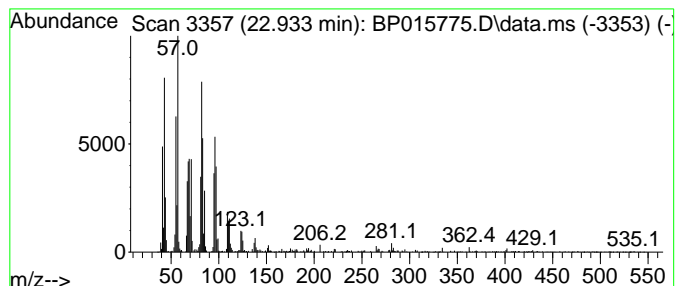
Quant Method : Z:\svoasrv\HPCHEM1\BNA_P\Methods\SFAM-EPA-BP062623.MA.M
 Quant Title : SVOA CALIBRATION

TIC Library : C:\DATABASE\NIST20.L
 TIC Integration Parameters: LSCINT.P

 Peak Number 13 Oxirane, hexadecyl- Concentration Rank 13

R.T.	EstConc	Area	Relative to ISTD	R.T.
22.933	6.80 ng/ul	581403	Perylene-d12	24.104

Hit#	of 5	Tentative ID	MW	MolForm	CAS#	Qual
1		Oxirane, hexadecyl-	268	C18H36O	007390-81-0	96
2		Octadecanal	268	C18H36O	000638-66-4	95
3		Hexacosanal	380	C26H52O	026627-85-0	95
4		Octadecanal	268	C18H36O	000638-66-4	94
5		Tetradecanal	212	C14H28O	000124-25-4	93



Data Path : Z:\svoasrv\HPCHEM1\BNA_P\Data\BP062823\
 Data File : BP015775.D
 Acq On : 28 Jun 2023 12:42
 Operator : MA/JU
 Sample : 03142-15
 Misc :
 ALS Vial : 9 Sample Multiplier: 1

Instrument :
 BNA_P
 ClientSampleId :
 DCFT2

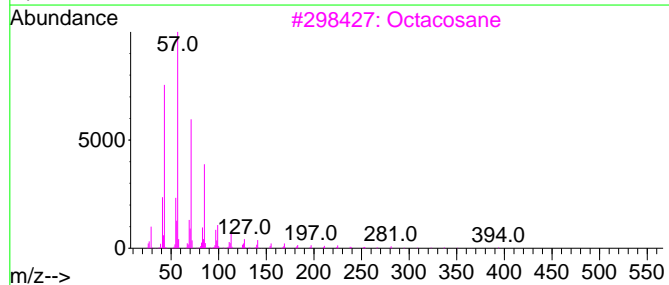
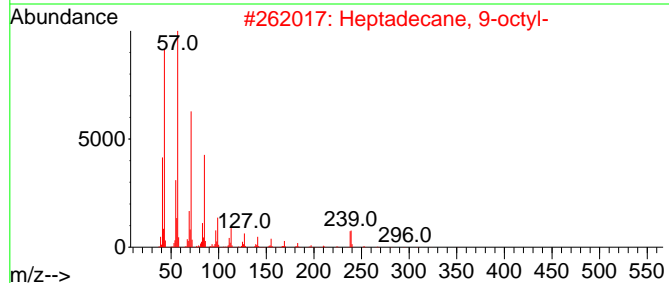
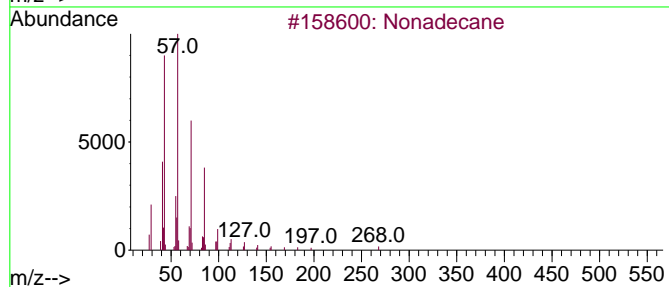
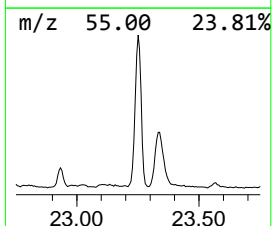
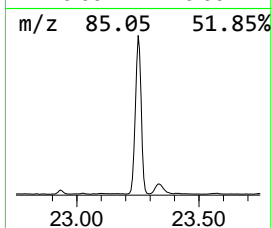
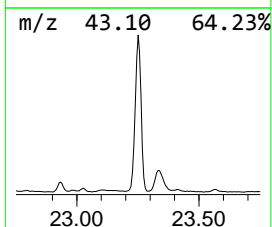
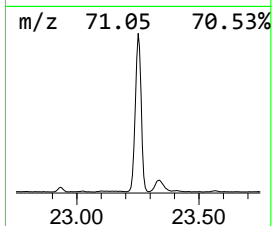
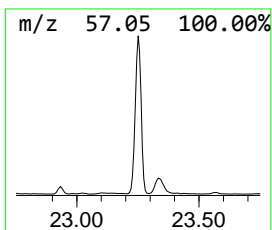
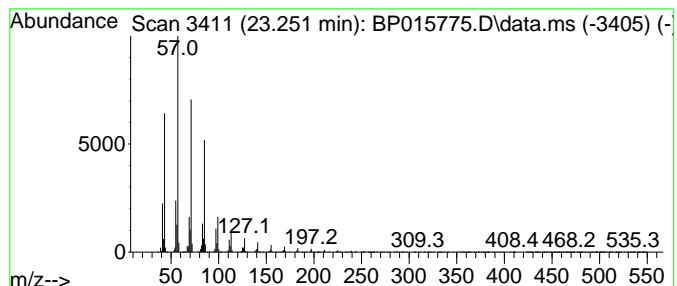
Quant Method : Z:\svoasrv\HPCHEM1\BNA_P\Methods\SFAM-EPA-BP062623.MA.M
 Quant Title : SVOA CALIBRATION

TIC Library : C:\DATABASE\NIST20.L
 TIC Integration Parameters: LSCINT.P

 Peak Number 14 (DEL) Alkane: Straight-Chai... Concentration Rank 2

R.T.	EstConc	Area	Relative to ISTD	R.T.
23.251	88.73 ng/ul	7589090	Perylene-d12	24.104

Hit#	of 5	Tentative ID	MW	MolForm	CAS#	Qual
1		Nonadecane	268	C19H40	000629-92-5	95
2		Heptadecane, 9-octyl-	352	C25H52	007225-64-1	91
3		Octacosane	394	C28H58	000630-02-4	91
4		Heneicosane	296	C21H44	000629-94-7	91
5		Dotriacontane, 1-iodo-	576	C32H65I	1000406-32-4	91



Data Path : Z:\svoasrv\HPCHEM1\BNA_P\Data\BP062823\
 Data File : BP015775.D
 Acq On : 28 Jun 2023 12:42
 Operator : MA/JU
 Sample : 03142-15
 Misc :
 ALS Vial : 9 Sample Multiplier: 1

Instrument :
 BNA_P
 ClientSampleId :
 DCFT2

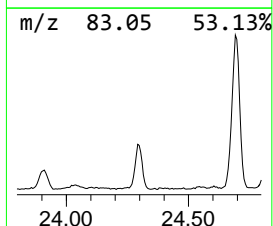
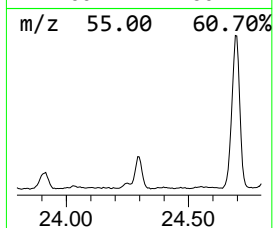
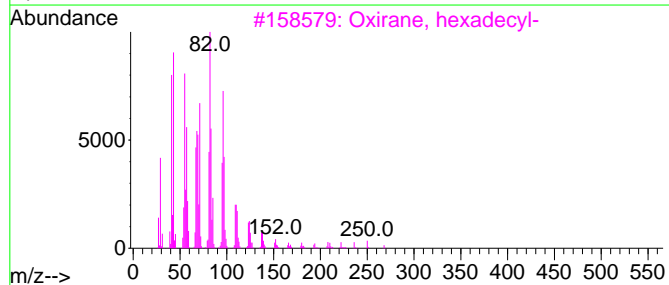
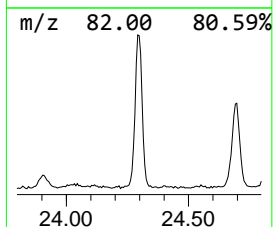
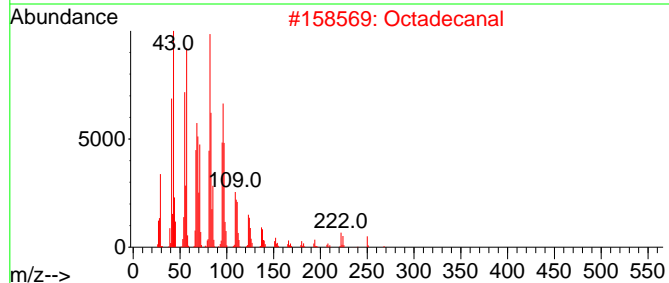
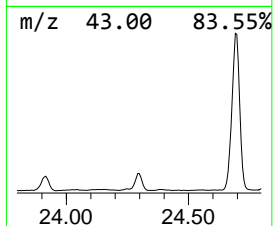
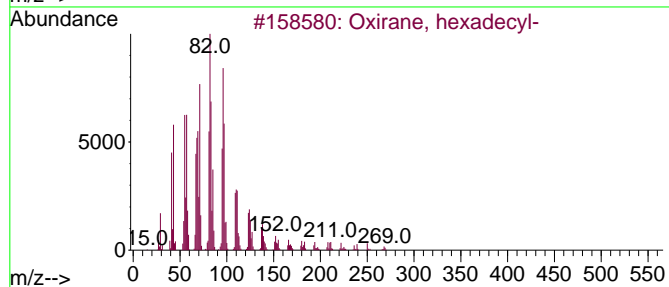
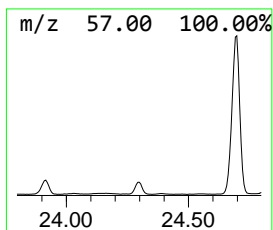
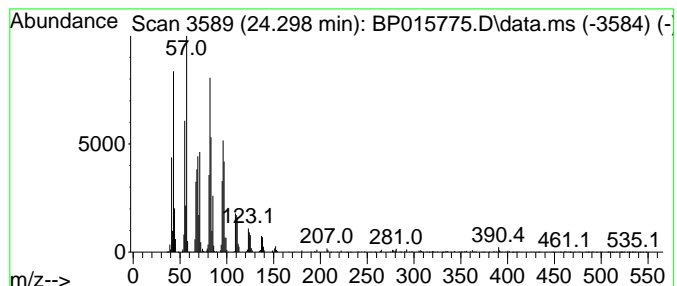
Quant Method : Z:\svoasrv\HPCHEM1\BNA_P\Methods\SFAM-EPA-BP062623.MA.M
 Quant Title : SVOA CALIBRATION

TIC Library : C:\DATABASE\NIST20.L
 TIC Integration Parameters: LSCINT.P

 Peak Number 15 Octadecanal Concentration Rank 8

R.T.	EstConc	Area	Relative to ISTD	R.T.
24.298	18.06 ng/ul	1544640	Perylene-d12	24.104

Hit#	of	5	Tentative ID	MW	MolForm	CAS#	Qual
1			Oxirane, hexadecyl-	268	C18H36O	007390-81-0	91
2			Octadecanal	268	C18H36O	000638-66-4	91
3			Oxirane, hexadecyl-	268	C18H36O	007390-81-0	91
4			Oxirane, heptadecyl-	282	C19H38O	067860-04-2	91
5			Octacosanal	408	C28H56O	022725-64-0	91



Data Path : Z:\svoasrv\HPCHEM1\BNA_P\Data\BP062823\
 Data File : BP015775.D
 Acq On : 28 Jun 2023 12:42
 Operator : MA/JU
 Sample : 03142-15
 Misc :
 ALS Vial : 9 Sample Multiplier: 1

Instrument :
 BNA_P
 ClientSampleId :
 DCFT2

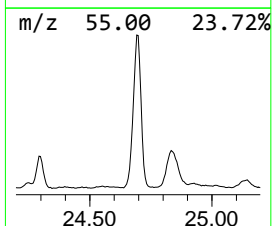
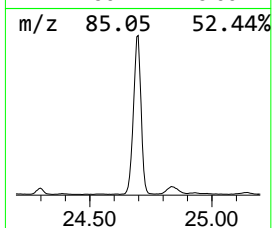
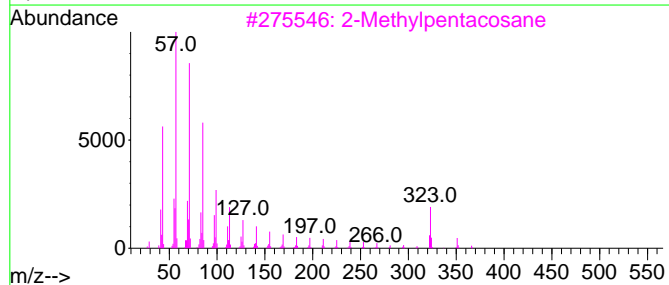
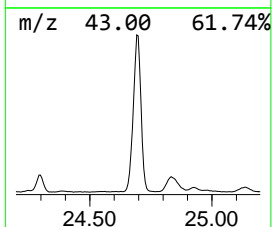
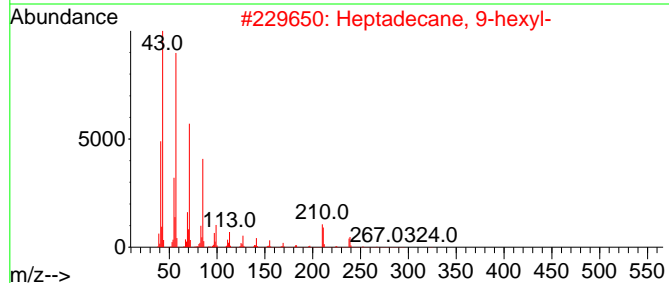
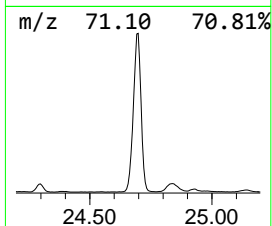
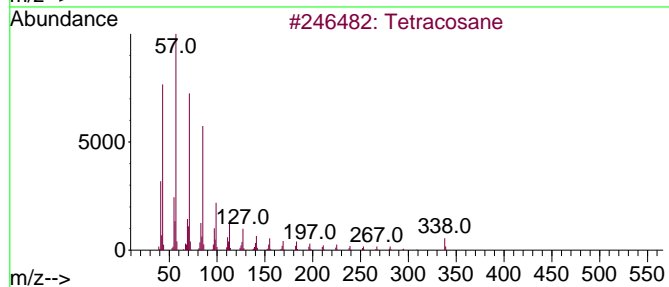
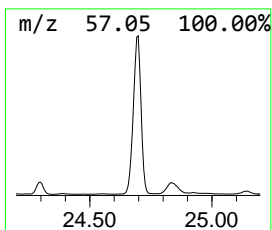
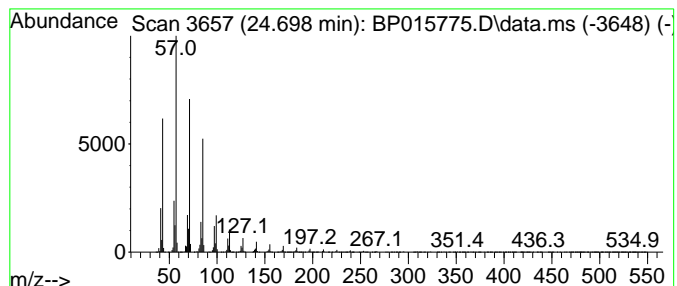
Quant Method : Z:\svoasrv\HPCHEM1\BNA_P\Methods\SFAM-EPA-BP062623.MA.M
 Quant Title : SVOA CALIBRATION

TIC Library : C:\DATABASE\NIST20.L
 TIC Integration Parameters: LSCINT.P

 Peak Number 16 (DEL) Alkane: Straight-Chai... Concentration Rank 1

R.T.	EstConc	Area	Relative to ISTD	R.T.
24.698	128.76 ng/ul	11012700	Perylene-d12	24.104

Hit#	of 5	Tentative ID	MW	MolForm	CAS#	Qual
1		Tetracosane	338	C24H50	000646-31-1	96
2		Heptadecane, 9-hexyl-	324	C23H48	055124-79-3	94
3		2-Methylpentacosane	366	C26H54	000629-87-8	93
4		Octacosane, 2-methyl-	408	C29H60	001560-98-1	91
5		Dotriacontane, 1-iodo-	576	C32H65I	1000406-32-4	91



Data Path : Z:\svoasrv\HPCHEM1\BNA_P\Data\BP062823\
 Data File : BP015775.D
 Acq On : 28 Jun 2023 12:42
 Operator : MA/JU
 Sample : 03142-15
 Misc :
 ALS Vial : 9 Sample Multiplier: 1

Instrument :
 BNA_P
 ClientSampleId :
 DCFT2

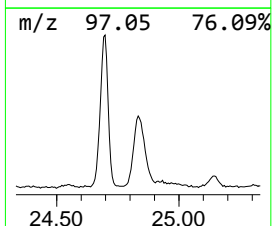
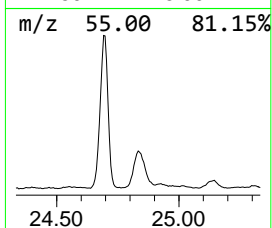
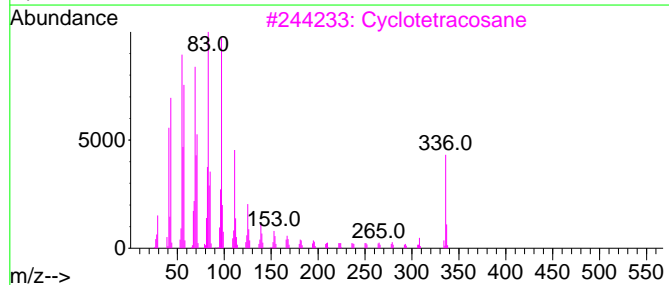
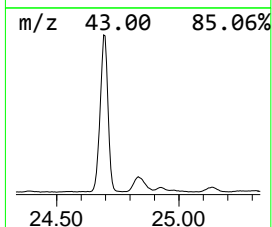
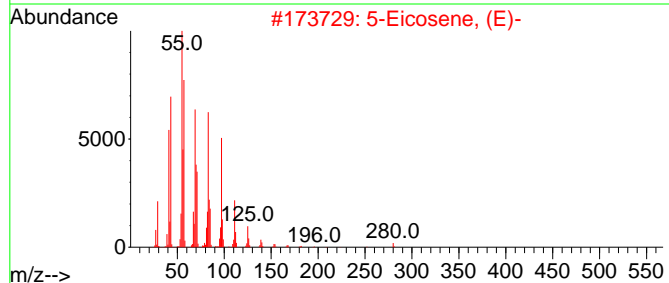
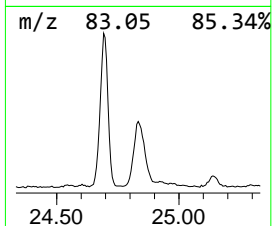
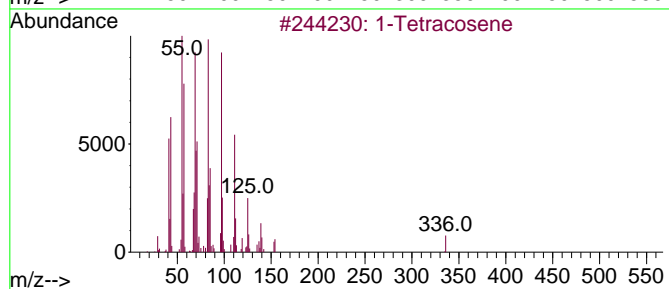
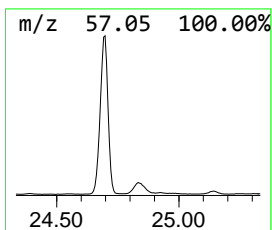
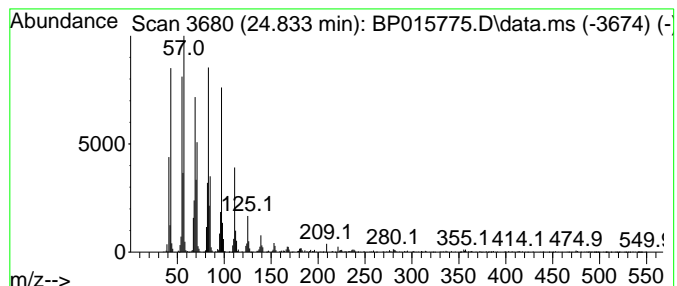
Quant Method : Z:\svoasrv\HPCHEM1\BNA_P\Methods\SFAM-EPA-BP062623.MA.M
 Quant Title : SVOA CALIBRATION

TIC Library : C:\DATABASE\NIST20.L
 TIC Integration Parameters: LSCINT.P

 Peak Number 17 (DEL) Alkane: Straight-Chai... Concentration Rank 7

R.T.	EstConc	Area	Relative to ISTD	R.T.
24.833	21.69 ng/ul	1854930	Perylene-d12	24.104

Hit#	of 5	Tentative ID	MW	MolForm	CAS#	Qual
1		1-Tetracosene	336	C24H48	010192-32-2	96
2		5-Eicosene, (E)-	280	C20H40	074685-30-6	96
3		Cyclotetracosane	336	C24H48	000297-03-0	95
4		Behenic alcohol	326	C22H46O	000661-19-8	93
5		Octacosyl acetate	452	C30H60O2	018206-97-8	93



Data Path : Z:\svoasrv\HPCHEM1\BNA_P\Data\BP062823\
 Data File : BP015775.D
 Acq On : 28 Jun 2023 12:42
 Operator : MA/JU
 Sample : 03142-15
 Misc :
 ALS Vial : 9 Sample Multiplier: 1

Instrument :
 BNA_P
 ClientSampleId :
 DCFT2

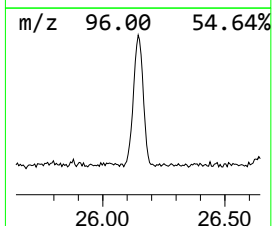
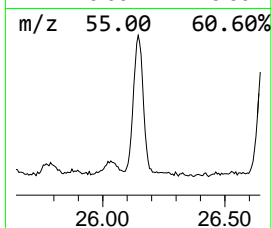
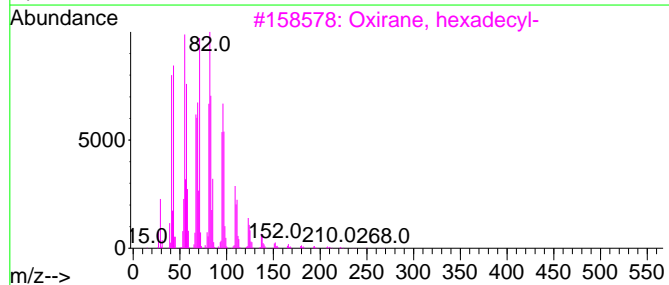
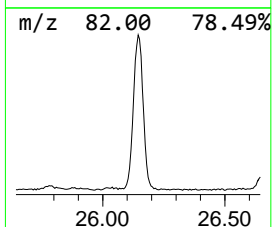
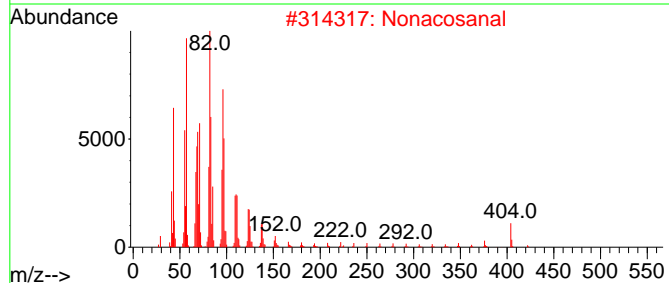
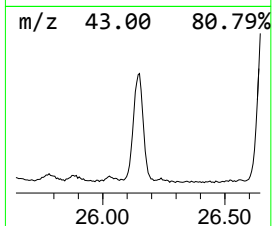
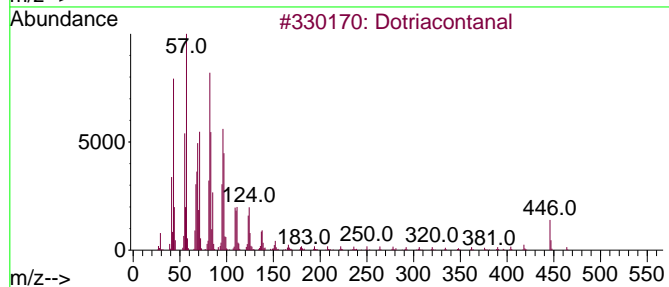
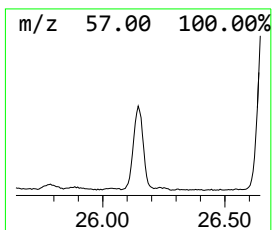
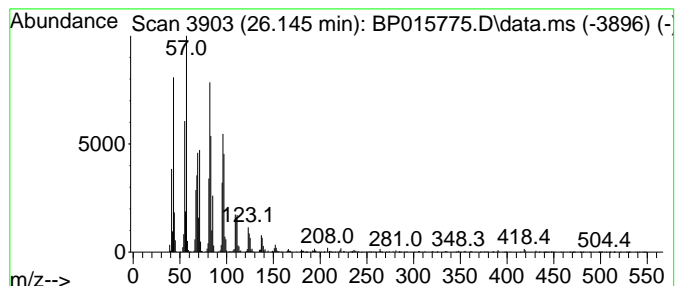
Quant Method : Z:\svoasrv\HPCHEM1\BNA_P\Methods\SFAM-EPA-BP062623.MA.M
 Quant Title : SVOA CALIBRATION

TIC Library : C:\DATABASE\NIST20.L
 TIC Integration Parameters: LSCINT.P

 Peak Number 18 Dotriacontanal Concentration Rank 5

R.T.	EstConc	Area	Relative to ISTD	R.T.
26.145	36.92 ng/ul	3158140	Perylene-d12	24.104

Hit#	of 5	Tentative ID	MW	MolForm	CAS#	Qual
1		Dotriacontanal	464	C32H64O	057878-00-9	94
2		Nonacosanal	422	C29H58O	072934-04-4	91
3		Oxirane, hexadecyl-	268	C18H36O	007390-81-0	91
4		(Z)-14-Tricosenyl formate	366	C24H46O2	077899-10-6	89
5		Hexacosanal	380	C26H52O	026627-85-0	87



Data Path : Z:\svoasrv\HPCHEM1\BNA_P\Data\BP062823\
 Data File : BP015775.D
 Acq On : 28 Jun 2023 12:42
 Operator : MA/JU
 Sample : 03142-15
 Misc :
 ALS Vial : 9 Sample Multiplier: 1

Instrument :
 BNA_P
 ClientSampleId :
 DCFT2

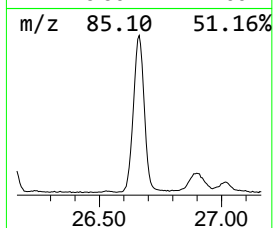
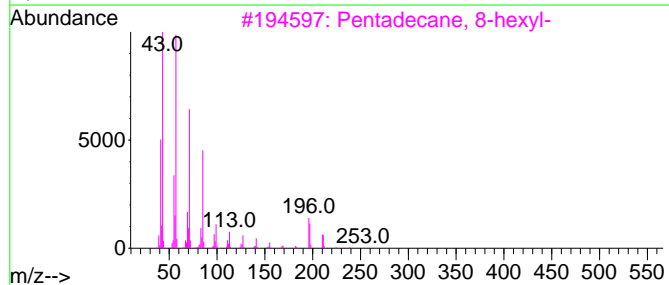
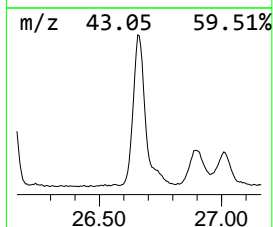
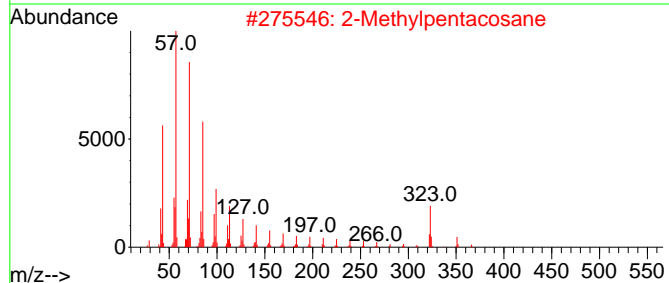
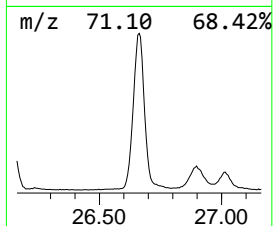
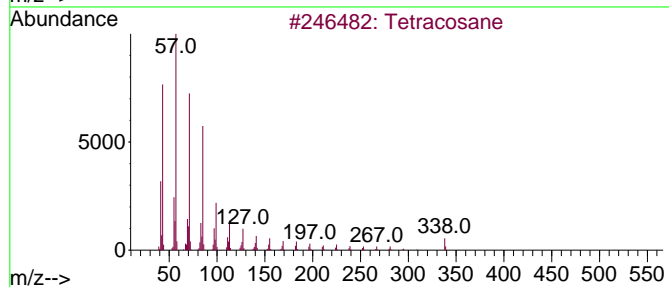
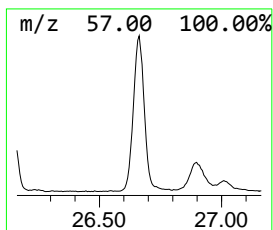
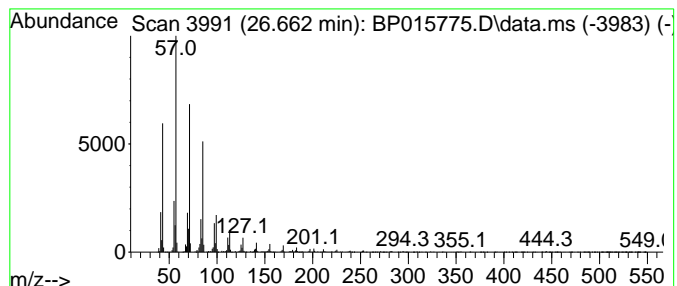
Quant Method : Z:\svoasrv\HPCHEM1\BNA_P\Methods\SFAM-EPA-BP062623.MA.M
 Quant Title : SVOA CALIBRATION

TIC Library : C:\DATABASE\NIST20.L
 TIC Integration Parameters: LSCINT.P

 Peak Number 19 (DEL) Alkane: Straight-Chai... Concentration Rank 4

R.T.	EstConc	Area	Relative to ISTD	R.T.
26.662	58.28 ng/ul	4984410	Perylene-d12	24.104

Hit#	of 5	Tentative ID	MW	MolForm	CAS#	Qual
1		Tetracosane	338	C24H50	000646-31-1	97
2		2-Methylpentacosane	366	C26H54	000629-87-8	94
3		Pentadecane, 8-hexyl-	296	C21H44	013475-75-7	94
4		Eicosane, 10-methyl-	296	C21H44	054833-23-7	93
5		Dotriacontane, 1-iodo-	576	C32H65I	1000406-32-4	91



Data Path : Z:\svoasrv\HPCHEM1\BNA_P\Data\BP062823\
 Data File : BP015775.D
 Acq On : 28 Jun 2023 12:42
 Operator : MA/JU
 Sample : 03142-15
 Misc :
 ALS Vial : 9 Sample Multiplier: 1

Instrument :
 BNA_P
 ClientSampleId :
 DCFT2

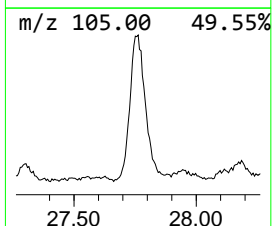
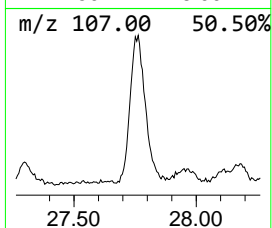
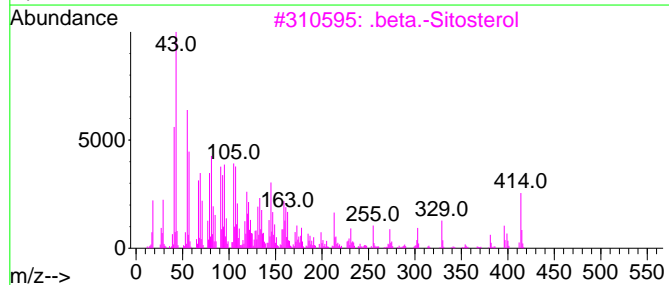
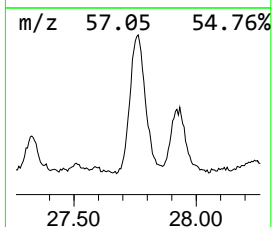
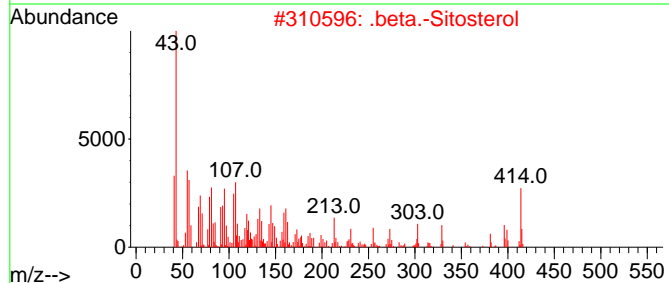
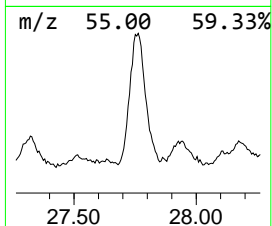
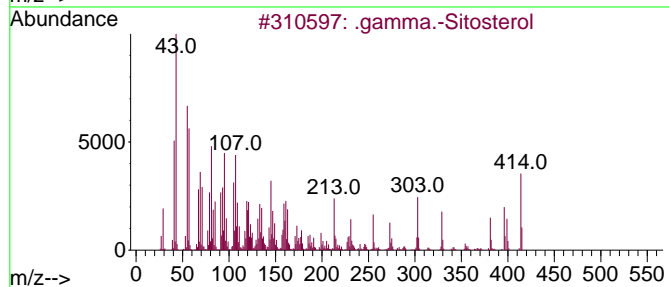
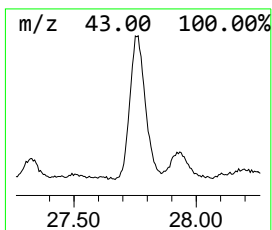
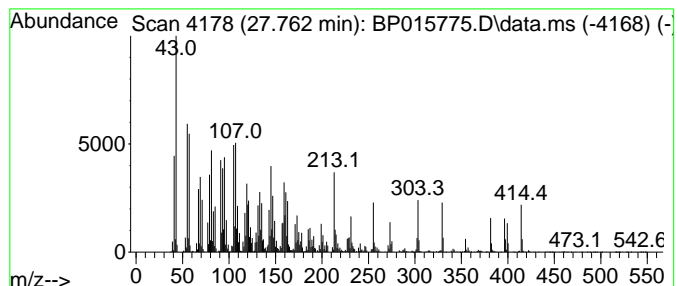
Quant Method : Z:\svoasrv\HPCHEM1\BNA_P\Methods\SFAM-EPA-BP062623.MA.M
 Quant Title : SVOA CALIBRATION

TIC Library : C:\DATABASE\NIST20.L
 TIC Integration Parameters: LSCINT.P

 Peak Number 20 .gamma.-Sitosterol Concentration Rank 3

R.T.	EstConc	Area	Relative to ISTD	R.T.
27.762	76.99 ng/ul	6585290	Perylene-d12	24.104

Hit#	of 5	Tentative ID	MW	MolForm	CAS#	Qual
1		.gamma.-Sitosterol	414	C29H50O	000083-47-6	99
2		.beta.-Sitosterol	414	C29H50O	000083-46-5	94
3		.beta.-Sitosterol	414	C29H50O	000083-46-5	93
4		.gamma.-Sitosterol	414	C29H50O	000083-47-6	86
5		Ergost-7-en-3-ol	400	C28H48O	116179-22-7	60



Data Path : Z:\svoasrv\HPCHEM1\BNA_P\Data\BP062823\
 Data File : BP015775.D
 Acq On : 28 Jun 2023 12:42
 Operator : MA/JU
 Sample : 03142-15
 Misc :
 ALS Vial : 9 Sample Multiplier: 1

Instrument :
 BNA_P
 ClientSampleId :
 DCFT2

Quant Method : Z:\svoasrv\HPCHEM1\BNA_P\Methods\SFAM-EPA-BP062623.MA.M
 Quant Title : SVOA CALIBRATION

TIC Library : C:\DATABASE\NIST20.L
 TIC Integration Parameters: LSCINT.P

TIC Top Hit name	RT	EstConc	Units	Response	--Internal Standard--			
					#	RT	Resp	Conc
Benzophenone	16.069	10.1	ng/ul	1165450	3	14.710	2309270	20.0
Methanone, (1-h...	16.634	2.2	ng/ul	288206	4	17.469	2569820	20.0
cis-10-Nonadece...	18.269	2.3	ng/ul	298630	4	17.469	2569820	20.0
n-Hexadecanoic ...	18.328	24.7	ng/ul	3172650	4	17.469	2569820	20.0
9,12-Octadecadi...	19.410	3.1	ng/ul	404441	4	17.469	2569820	20.0
Octadecanoic acid	19.551	8.7	ng/ul	1330490	5	21.557	3066130	20.0
Dieldrin	20.104	6.8	ng/ul	1040120	5	21.557	3066130	20.0
Carbonic acid, ...	20.275	2.3	ng/ul	347805	5	21.557	3066130	20.0
Eicosanoic acid	20.598	2.6	ng/ul	402608	5	21.557	3066130	20.0
Behenic alcohol	21.233	14.7	ng/ul	2252800	5	21.557	3066130	20.0
(DEL) Alkane: S...	22.139	4.4	ng/ul	680698	5	21.557	3066130	20.0
(DEL) Alkane: S...	22.186	15.4	ng/ul	2357270	5	21.557	3066130	20.0
Oxirane, hexade...	22.933	6.8	ng/ul	581403	6	24.104	1710590	20.0
(DEL) Alkane: S...	23.251	88.7	ng/ul	7589090	6	24.104	1710590	20.0
Octadecanal	24.298	18.1	ng/ul	1544640	6	24.104	1710590	20.0
(DEL) Alkane: S...	24.698	128.8	ng/ul	11012700	6	24.104	1710590	20.0
(DEL) Alkane: S...	24.833	21.7	ng/ul	1854930	6	24.104	1710590	20.0
Dotriacontanal	26.145	36.9	ng/ul	3158140	6	24.104	1710590	20.0
(DEL) Alkane: S...	26.662	58.3	ng/ul	4984410	6	24.104	1710590	20.0
.gamma.-Sitosterol	27.762	77.0	ng/ul	6585290	6	24.104	1710590	20.0