

Data Path : Z:\svoasrv\HPCHEM1\BNA_P\Data\BP062923\
 Data File : BP015810.D
 Acq On : 29 Jun 2023 14:39
 Operator : MA/JU
 Sample : 03143-20
 Misc :
 ALS Vial : 15 Sample Multiplier: 1

Instrument :
 BNA_P
 ClientSampleId :
 DCFV7

Integration Parameters: LSCINT.P

Integrator: RTE
 Smoothing : OFF Filtering: 5
 Sampling : 1 Min Area: 0.1 % of largest Peak
 Start Thrs: 0.2 Max Peaks: 100
 Stop Thrs : 0 Peak Location: TOP

If leading or trailing edge < 100 prefer < Baseline drop else tangent >
 Peak separation: 5

Method : Z:\svoasrv\HPCHEM1\BNA_P\Methods\SFAM-EPA-BP062623.MA.M
 Title : SVOA CALIBRATION

Signal : TIC: BP015810.D\data.ms

peak #	R.T. min	first scan	max scan	last scan	PK TY	peak height	corr. area	corr. % max.	% of total
1	3.381	30	33	38	rVB	29089	38052	1.28%	0.093%
2	3.929	122	126	131	rVB	41655	53041	1.79%	0.129%
3	4.046	142	146	151	rVB	38672	57459	1.93%	0.140%
4	4.152	160	164	171	rVB	15263	22720	0.77%	0.055%
5	4.387	201	204	209	rBV3	25898	36849	1.24%	0.090%
6	4.540	227	230	232	rBV4	5225	6715	0.23%	0.016%
7	4.728	260	262	268	rVB6	8176	13131	0.44%	0.032%
8	4.817	273	277	278	rBV3	8092	9473	0.32%	0.023%
9	5.099	321	325	327	rBV3	9611	12800	0.43%	0.031%
10	5.128	328	330	333	rVB4	8938	9522	0.32%	0.023%
11	5.234	344	348	354	rVB8	6296	9275	0.31%	0.023%
12	5.564	402	404	405	rBV2	5086	4379	0.15%	0.011%
13	6.270	521	524	529	rBV7	2645	4565	0.15%	0.011%
14	6.699	593	597	601	rVB4	17388	25950	0.87%	0.063%
15	7.011	648	650	654	rVB5	3965	4983	0.17%	0.012%
16	7.246	682	690	708	rBV2	219958	695366	23.42%	1.694%
17	7.387	708	714	726	rBV	267157	510957	17.21%	1.245%
18	7.593	743	749	772	rVB	343060	727985	24.51%	1.774%
19	8.058	821	828	841	rBV	574221	1151590	38.78%	2.806%
20	8.269	862	864	868	rVB6	4285	5820	0.20%	0.014%
21	8.452	891	895	899	rVB7	2705	4254	0.14%	0.010%
22	8.805	949	955	970	rBV2	190452	604554	20.36%	1.473%
23	8.916	970	974	987	rVB	81069	196745	6.63%	0.479%
24	9.258	1025	1032	1050	rBV	266538	672391	22.64%	1.638%
25	9.593	1084	1089	1096	rVV9	5741	12542	0.42%	0.031%
26	9.987	1149	1156	1175	rBV	173688	544753	18.34%	1.327%
27	10.193	1185	1191	1196	rVB10	9260	21326	0.72%	0.052%
28	10.281	1199	1206	1207	rBV7	5155	8360	0.28%	0.020%
29	10.381	1219	1223	1224	rBV4	4808	6046	0.20%	0.015%
30	10.569	1247	1255	1281	rBV2	196758	771386	25.97%	1.880%
31	10.893	1301	1310	1329	rBV	750386	1667530	56.15%	4.063%
32	11.093	1336	1344	1361	rBV	89963	333230	11.22%	0.812%
33	11.587	1424	1428	1431	rVB6	3134	4570	0.15%	0.011%
34	11.775	1457	1460	1463	rBV5	3437	4870	0.16%	0.012%
35	12.087	1510	1513	1521	rVB10	4652	7467	0.25%	0.018%
36	12.163	1521	1526	1534	rBV4	17026	44835	1.51%	0.109%

Data Path : Z:\svoasrv\HPCHEM1\BNA_P\Data\BP062923\
 Data File : BP015810.D
 Acq On : 29 Jun 2023 14:39
 Operator : MA/JU
 Sample : 03143-20
 Misc :
 ALS Vial : 15 Sample Multiplier: 1

Instrument :
 BNA_P
 ClientSampleId :
 DCFV7

Integration Parameters: LSCINT.P

Integrator: RTE
 Smoothing : OFF Filtering: 5
 Sampling : 1 Min Area: 0.1 % of largest Peak
 Start Thrs: 0.2 Max Peaks: 100
 Stop Thrs : 0 Peak Location: TOP

If leading or trailing edge < 100 prefer < Baseline drop else tangent >
 Peak separation: 5

Method : Z:\svoasrv\HPCHEM1\BNA_P\Methods\SFAM-EPA-BP062623.MA.M
 Title : SVOA CALIBRATION

37	12.287	1540	1547	1556	rBV3	13809	27602	0.93%	0.067%
38	12.510	1580	1585	1590	rBV9	5443	10299	0.35%	0.025%
39	12.575	1594	1596	1598	rBV3	4294	4139	0.14%	0.010%
40	12.793	1622	1633	1637	rBV3	5406	16408	0.55%	0.040%
41	12.916	1649	1654	1656	rBV6	3191	4225	0.14%	0.010%
42	13.057	1673	1678	1680	rVV6	3912	6729	0.23%	0.016%
43	13.128	1685	1690	1695	rVB9	6963	12797	0.43%	0.031%
44	13.299	1716	1719	1720	rBV3	5323	5183	0.17%	0.013%
45	13.428	1737	1741	1742	rBV4	4176	4423	0.15%	0.011%
46	13.457	1742	1746	1751	rVB8	5816	9973	0.34%	0.024%
47	13.504	1751	1754	1758	rBV6	9145	16248	0.55%	0.040%
48	13.587	1761	1768	1777	rVV4	27187	54509	1.84%	0.133%
49	13.681	1780	1784	1789	rVB8	5380	8401	0.28%	0.020%
50	13.916	1821	1824	1828	rVV6	3076	4062	0.14%	0.010%
51	14.022	1837	1842	1843	rBV5	7659	11539	0.39%	0.028%
52	14.040	1843	1845	1848	rVB4	5755	6039	0.20%	0.015%
53	14.075	1848	1851	1852	rBV3	3226	4387	0.15%	0.011%
54	14.122	1852	1859	1880	rVV	677521	1272435	42.85%	3.100%
55	14.404	1899	1907	1922	rBV	927607	1604166	54.02%	3.909%
56	14.546	1927	1931	1934	rVV6	15227	24978	0.84%	0.061%
57	14.575	1934	1936	1943	rVB3	10801	14911	0.50%	0.036%
58	14.657	1946	1950	1952	rBV5	4072	6258	0.21%	0.015%
59	14.710	1952	1959	1975	rBV	1278145	2106110	70.92%	5.132%
60	15.016	2006	2011	2020	rBV4	55868	196828	6.63%	0.480%
61	15.187	2038	2040	2047	rVB8	9947	16767	0.56%	0.041%
62	15.475	2086	2089	2093	rBV6	5085	7246	0.24%	0.018%
63	15.534	2095	2099	2102	rBV4	9424	11221	0.38%	0.027%
64	15.616	2108	2113	2115	rBV6	5318	8317	0.28%	0.020%
65	15.710	2123	2129	2149	rBV	1007853	1917292	64.56%	4.672%
66	15.881	2152	2158	2173	rBV3	128815	370317	12.47%	0.902%
67	16.081	2186	2192	2202	rBV	117570	215256	7.25%	0.524%
68	16.175	2204	2208	2212	rVB4	19867	30902	1.04%	0.075%
69	16.404	2241	2247	2253	rBV6	25581	66321	2.23%	0.162%
70	16.557	2269	2273	2280	rBV5	30468	50195	1.69%	0.122%
71	16.628	2280	2285	2289	rBV7	14494	27772	0.94%	0.068%
72	16.845	2319	2322	2327	rVB7	12182	15681	0.53%	0.038%
73	17.004	2345	2349	2352	rBV5	7534	11943	0.40%	0.029%
74	17.187	2377	2380	2384	rBV4	15429	20232	0.68%	0.049%
75	17.340	2402	2406	2411	rBV2	62204	97495	3.28%	0.238%
76	17.404	2414	2417	2422	rBV3	37322	53577	1.80%	0.131%

Data Path : Z:\svoasrv\HPCHEM1\BNA_P\Data\BP062923\
 Data File : BP015810.D
 Acq On : 29 Jun 2023 14:39
 Operator : MA/JU
 Sample : 03143-20
 Misc :
 ALS Vial : 15 Sample Multiplier: 1

Instrument :
 BNA_P
 ClientSampleId :
 DCFV7

Integration Parameters: LSCINT.P

Integrator: RTE
 Smoothing : OFF Filtering: 5
 Sampling : 1 Min Area: 0.1 % of largest Peak
 Start Thrs: 0.2 Max Peaks: 100
 Stop Thrs : 0 Peak Location: TOP

If leading or trailing edge < 100 prefer < Baseline drop else tangent >
 Peak separation: 5

Method : Z:\svoasrv\HPCHEM1\BNA_P\Methods\SFAM-EPA-BP062623.MA.M
 Title : SVOA CALIBRATION

77	17.469	2422	2428	2433	rBV	1506786	2333232	78.57%	5.685%
78	17.510	2433	2435	2440	rVV	215696	313953	10.57%	0.765%
79	17.575	2440	2446	2460	rVB	1020698	1848026	62.23%	4.503%
80	17.898	2498	2501	2502	rBV2	20066	20013	0.67%	0.049%
81	18.210	2549	2554	2559	rBV8	41368	82667	2.78%	0.201%
82	18.263	2559	2563	2568	rVV	128775	173768	5.85%	0.423%
83	18.322	2568	2573	2581	rVV	821857	1199721	40.40%	2.923%
84	18.392	2582	2585	2591	rVB2	79515	131417	4.43%	0.320%
85	18.522	2604	2607	2611	rBV3	38121	59099	1.99%	0.144%
86	19.198	2719	2722	2729	rBV3	54381	96499	3.25%	0.235%
87	19.434	2759	2762	2764	rBV2	143186	158293	5.33%	0.386%
88	19.469	2764	2768	2776	rVB	584227	868747	29.25%	2.117%
89	19.545	2777	2781	2791	rBV	582698	848985	28.59%	2.069%
90	19.792	2818	2823	2827	rBV	1688213	2476136	83.38%	6.033%
91	20.275	2902	2905	2908	rBV3	106196	115014	3.87%	0.280%
92	21.228	3061	3067	3073	rVB4	694174	1216500	40.96%	2.964%
93	21.422	3096	3100	3107	rBV	529338	632647	21.30%	1.542%
94	21.557	3118	3123	3128	rBV2	1667306	2609638	87.87%	6.359%
95	22.133	3219	3221	3224	rBV	215254	223568	7.53%	0.545%
96	22.180	3226	3229	3239	rVB2	482575	824862	27.78%	2.010%
97	23.239	3405	3409	3416	rVB	1125339	1826657	61.51%	4.451%
98	24.098	3550	3555	3574	rVB	1166285	2969735	100.00%	7.236%
99	24.569	3629	3635	3645	rVB3	896832	1949482	65.64%	4.750%
100	24.680	3649	3654	3663	rVB	670595	1403244	47.25%	3.419%

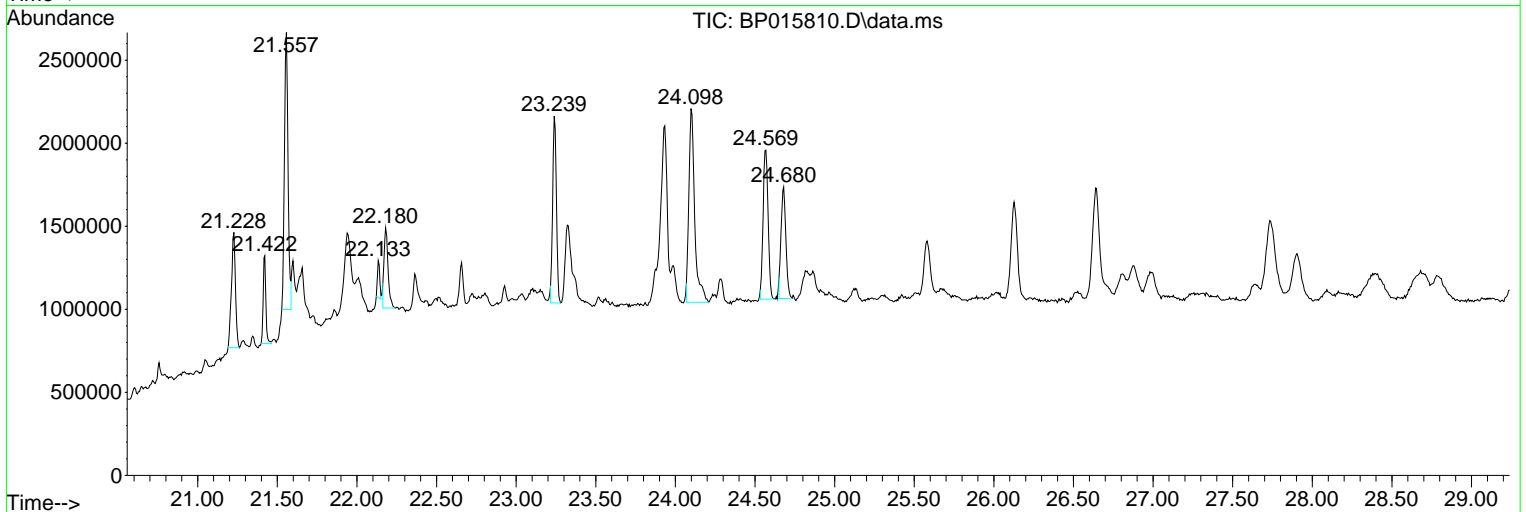
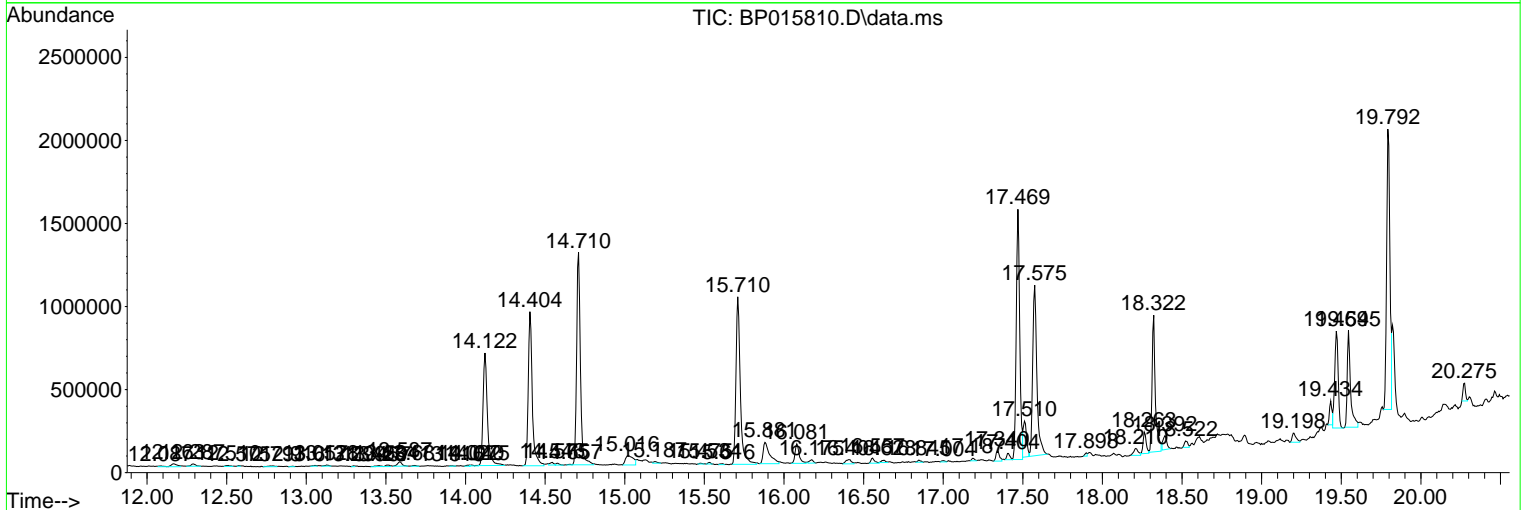
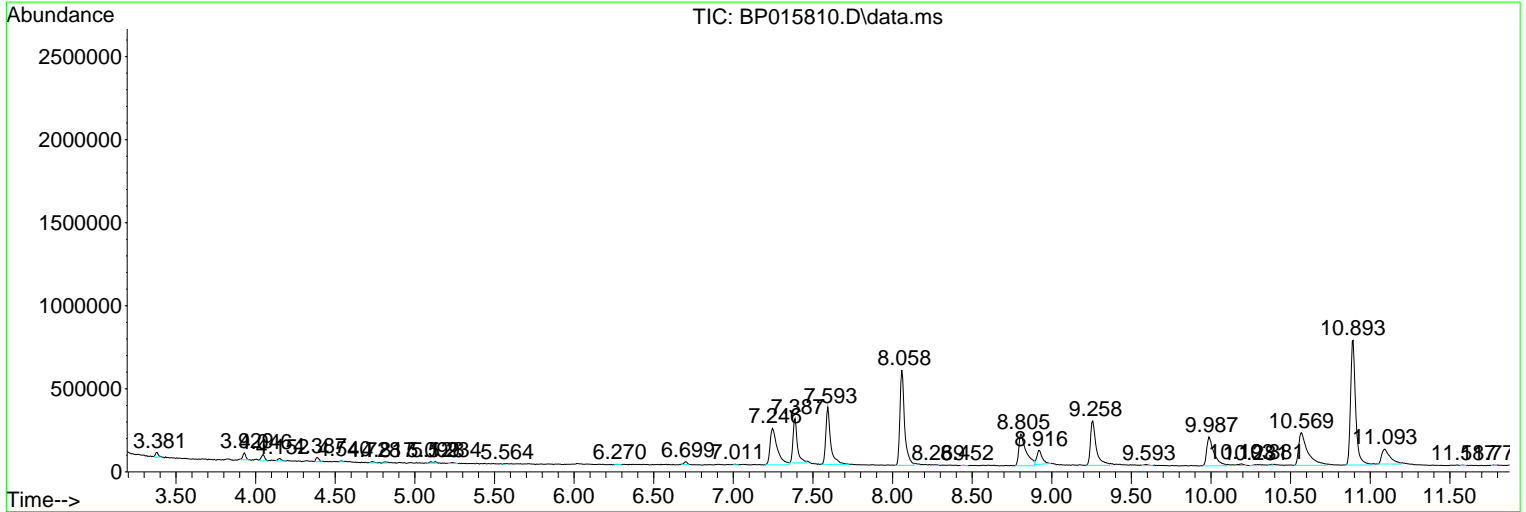
Sum of corrected areas: 41040577

Data Path : Z:\svoasrv\HPCHEM1\BNA_P\Data\BP062923\
 Data File : BP015810.D
 Acq On : 29 Jun 2023 14:39
 Operator : MA/JU
 Sample : 03143-20
 Misc :
 ALS Vial : 15 Sample Multiplier: 1

Instrument :
 BNA_P
 ClientSampleId :
 DCFV7

Quant Method : Z:\svoasrv\HPCHEM1\BNA_P\Methods\SFAM-EPA-BP062623.MA.M
 Quant Title : SVOA CALIBRATION

TIC Library : C:\DATABASE\NIST20.L
 TIC Integration Parameters: LSCINT.P



Data Path : Z:\svoasrv\HPCHEM1\BNA_P\Data\BP062923\
 Data File : BP015810.D
 Acq On : 29 Jun 2023 14:39
 Operator : MA/JU
 Sample : 03143-20
 Misc :
 ALS Vial : 15 Sample Multiplier: 1

Instrument :
 BNA_P
 ClientSampleId :
 DCFV7

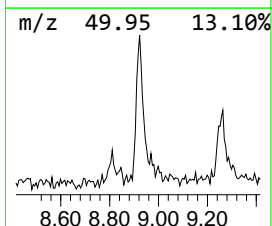
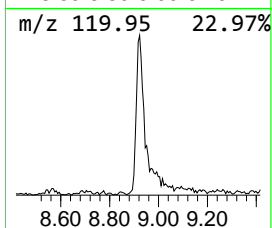
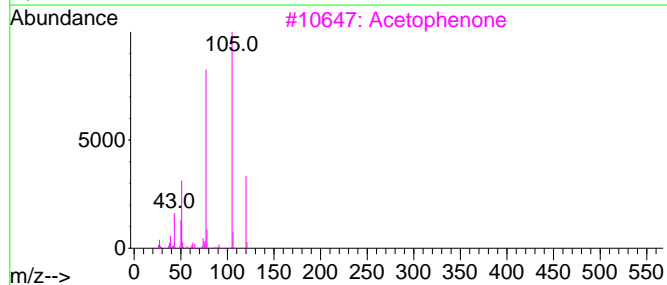
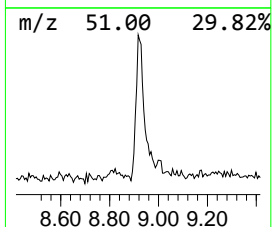
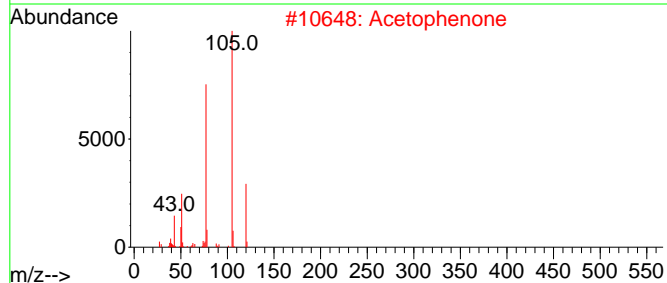
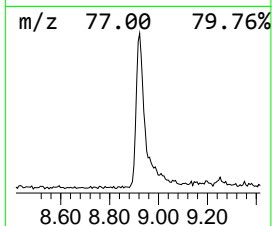
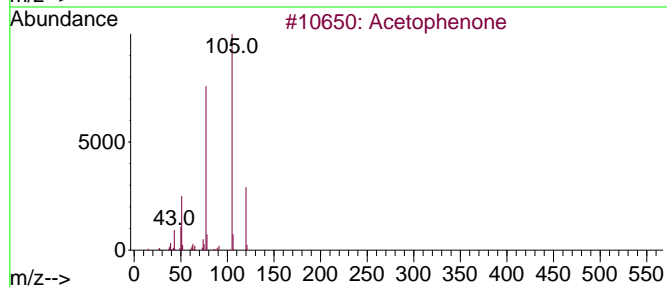
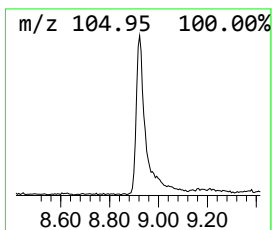
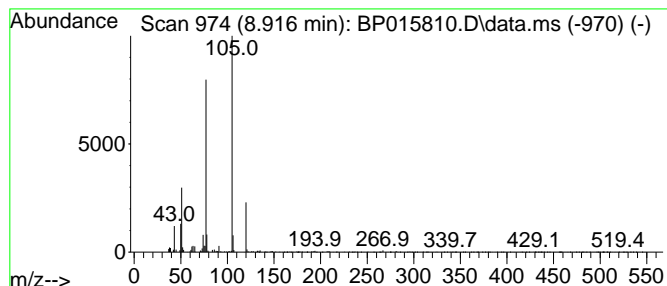
Quant Method : Z:\svoasrv\HPCHEM1\BNA_P\Methods\SFAM-EPA-BP062623.MA.M
 Quant Title : SVOA CALIBRATION

TIC Library : C:\DATABASE\NIST20.L
 TIC Integration Parameters: LSCINT.P

 Peak Number 1 Aceto phenone Concentration Rank 9

R.T.	EstConc	Area	Relative to ISTD	R.T.
8.916	3.42 ng/ul	196745	1,4-Dichlorobenzene-d4	8.058

Hit#	of 5	Tentative ID	MW	MolForm	CAS#	Qual
1		Acetophenone	120	C8H8O	000098-86-2	90
2		Acetophenone	120	C8H8O	000098-86-2	90
3		Acetophenone	120	C8H8O	000098-86-2	90
4		Acetophenone	120	C8H8O	000098-86-2	87
5		Acetophenone	120	C8H8O	000098-86-2	87



Data Path : Z:\svoasrv\HPCHEM1\BNA_P\Data\BP062923\
 Data File : BP015810.D
 Acq On : 29 Jun 2023 14:39
 Operator : MA/JU
 Sample : 03143-20
 Misc :
 ALS Vial : 15 Sample Multiplier: 1

Instrument :
 BNA_P
 ClientSampleId :
 DCFV7

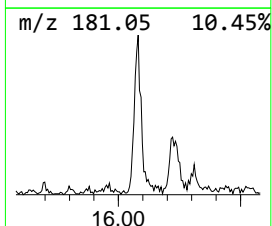
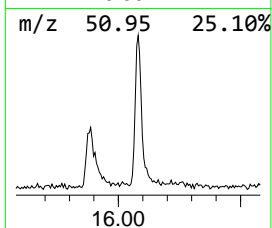
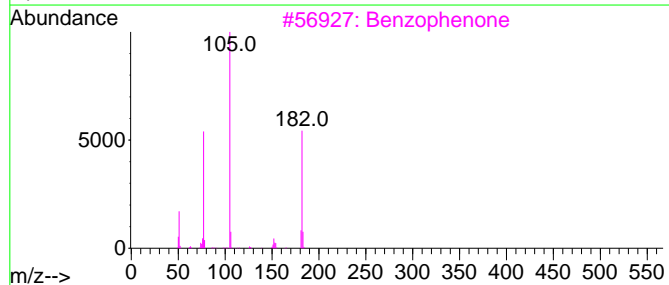
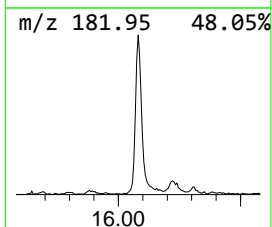
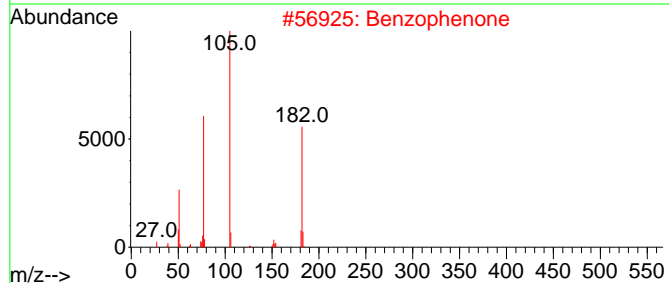
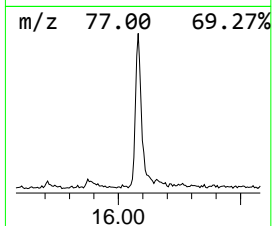
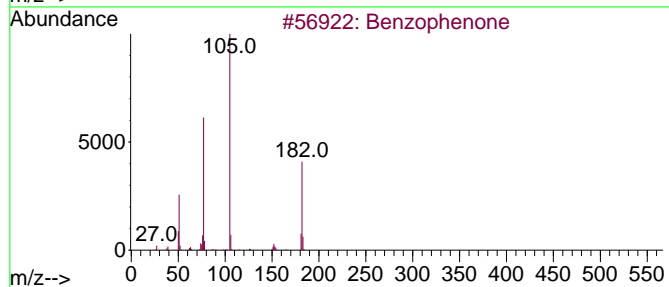
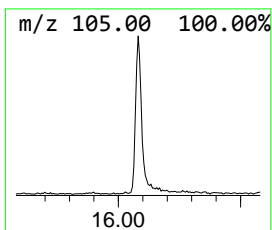
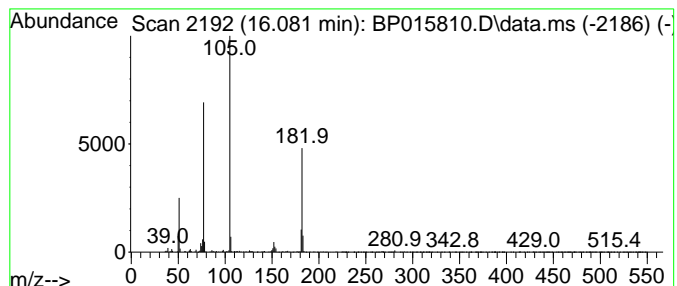
Quant Method : Z:\svoasrv\HPCHEM1\BNA_P\Methods\SFAM-EPA-BP062623.MA.M
 Quant Title : SVOA CALIBRATION

TIC Library : C:\DATABASE\NIST20.L
 TIC Integration Parameters: LSCINT.P

 Peak Number 2 Benzophenone Concentration Rank 10

R.T.	EstConc	Area	Relative to ISTD	R.T.
16.081	2.04 ng/ul	215256	Acenaphthene-d10	14.710

Hit#	of	5	Tentative ID	MW	MolForm	CAS#	Qual
1			Benzophenone	182	C13H10O	000119-61-9	96
2			Benzophenone	182	C13H10O	000119-61-9	96
3			Benzophenone	182	C13H10O	000119-61-9	95
4			Benzophenone	182	C13H10O	000119-61-9	87
5			1,2,4,5-Tetroxane, 3,3,6,6-tetra...	396	C26H20O4	016204-36-7	56



Data Path : Z:\svoasrv\HPCHEM1\BNA_P\Data\BP062923\
 Data File : BP015810.D
 Acq On : 29 Jun 2023 14:39
 Operator : MA/JU
 Sample : 03143-20
 Misc :
 ALS Vial : 15 Sample Multiplier: 1

Instrument :
 BNA_P
 ClientSampleId :
 DCFV7

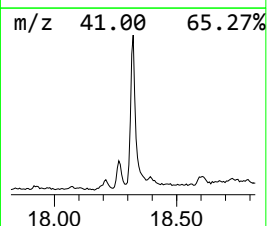
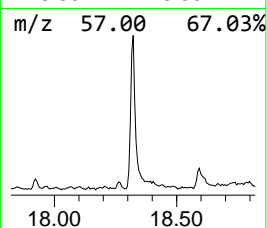
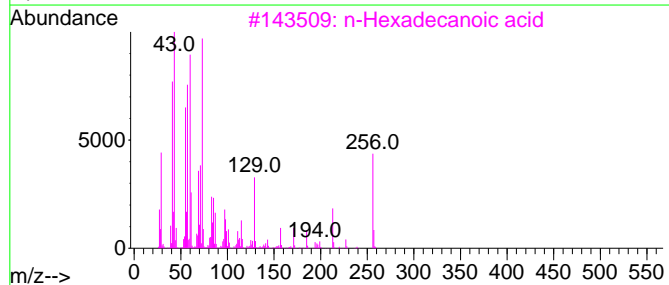
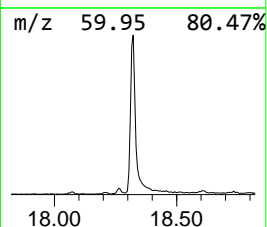
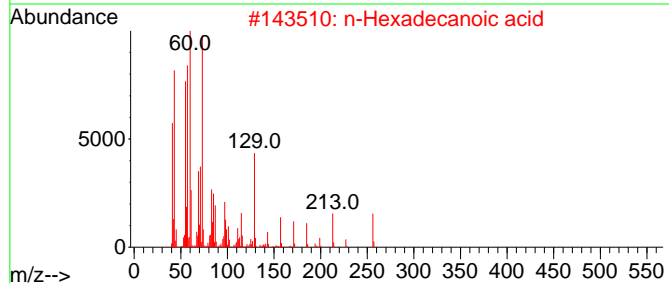
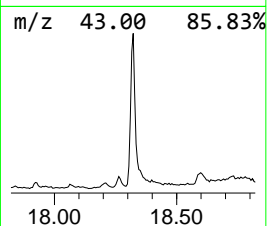
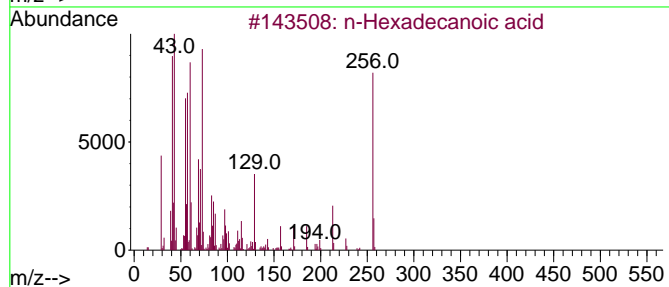
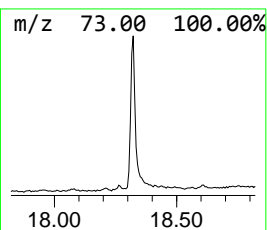
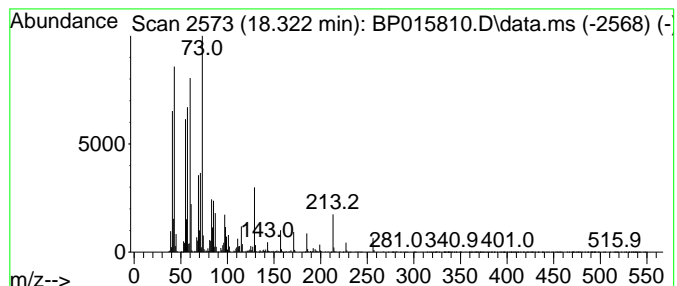
Quant Method : Z:\svoasrv\HPCHEM1\BNA_P\Methods\SFAM-EPA-BP062623.MA.M
 Quant Title : SVOA CALIBRATION

TIC Library : C:\DATABASE\NIST20.L
 TIC Integration Parameters: LSCINT.P

 Peak Number 3 n-Hexadecanoic acid Concentration Rank 3

R.T.	EstConc	Area	Relative to ISTD	R.T.
18.322	10.28 ng/ul	1199720	Phenanthrene-d10	17.469

Hit#	of	5	Tentative ID	MW	MolForm	CAS#	Qual
1			n-Hexadecanoic acid	256	C16H32O2	000057-10-3	99
2			n-Hexadecanoic acid	256	C16H32O2	000057-10-3	98
3			n-Hexadecanoic acid	256	C16H32O2	000057-10-3	96
4			Tetradecanoic acid	228	C14H28O2	000544-63-8	91
5			n-Hexadecanoic acid	256	C16H32O2	000057-10-3	91



Data Path : Z:\svoasrv\HPCHEM1\BNA_P\Data\BP062923\
 Data File : BP015810.D
 Acq On : 29 Jun 2023 14:39
 Operator : MA/JU
 Sample : 03143-20
 Misc :
 ALS Vial : 15 Sample Multiplier: 1

Instrument :
 BNA_P
 ClientSampleId :
 DCFV7

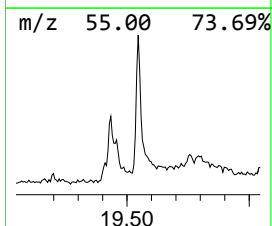
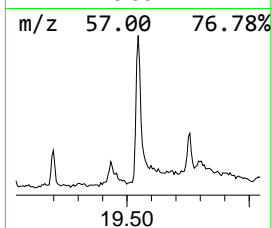
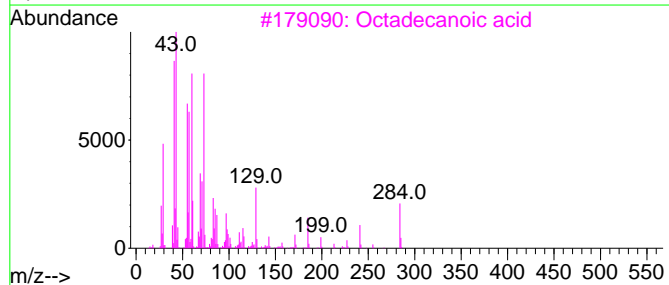
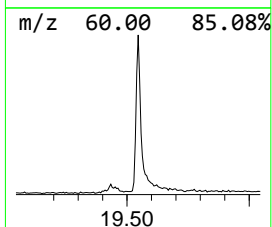
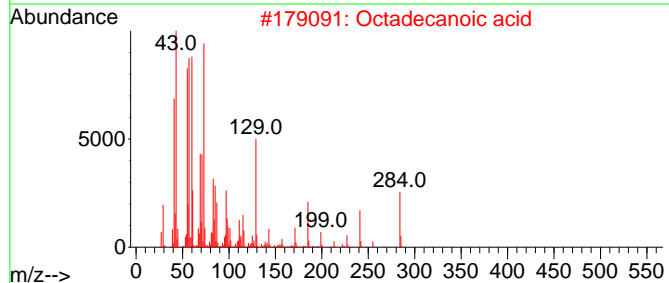
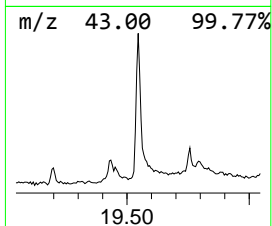
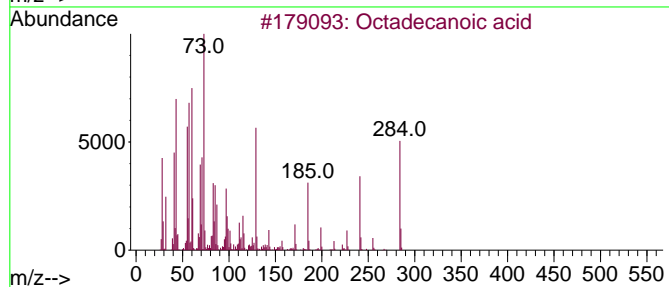
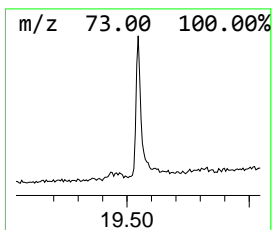
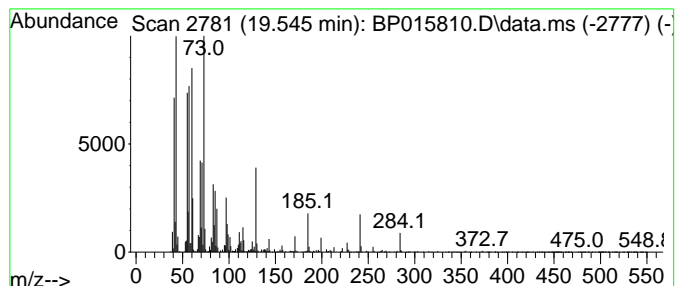
Quant Method : Z:\svoasrv\HPCHEM1\BNA_P\Methods\SFAM-EPA-BP062623.MA.M
 Quant Title : SVOA CALIBRATION

TIC Library : C:\DATABASE\NIST20.L
 TIC Integration Parameters: LSCINT.P

 Peak Number 4 Octadecanoic acid Concentration Rank 6

R.T.	EstConc	Area	Relative to ISTD	R.T.
19.545	6.51 ng/ul	848985	Chrysene-d12	21.557

Hit#	of	5	Tentative ID	MW	MolForm	CAS#	Qual
1			Octadecanoic acid	284	C18H36O2	000057-11-4	99
2			Octadecanoic acid	284	C18H36O2	000057-11-4	99
3			Octadecanoic acid	284	C18H36O2	000057-11-4	99
4			Octadecanoic acid	284	C18H36O2	000057-11-4	98
5			Octadecanoic acid	284	C18H36O2	000057-11-4	95



Data Path : Z:\svoasrv\HPCHEM1\BNA_P\Data\BP062923\
 Data File : BP015810.D
 Acq On : 29 Jun 2023 14:39
 Operator : MA/JU
 Sample : 03143-20
 Misc :
 ALS Vial : 15 Sample Multiplier: 1

Instrument :
 BNA_P
 ClientSampleId :
 DCFV7

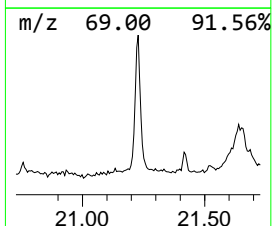
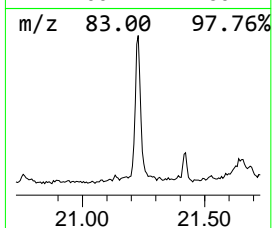
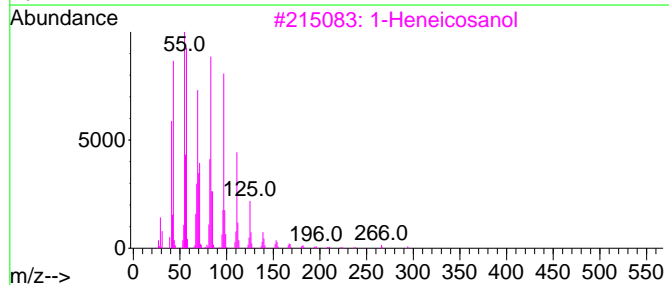
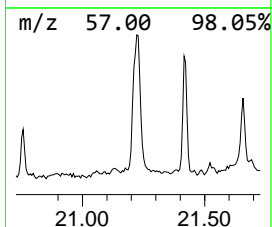
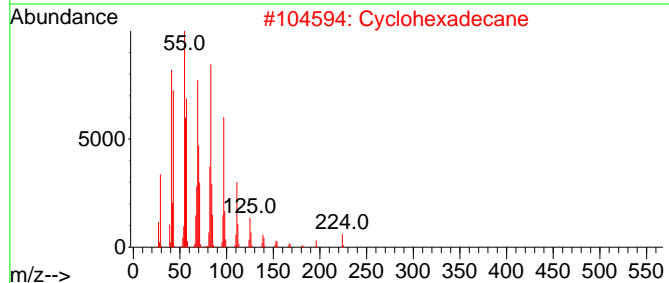
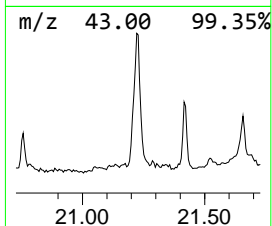
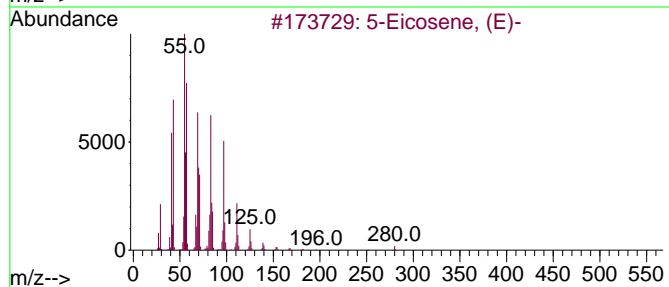
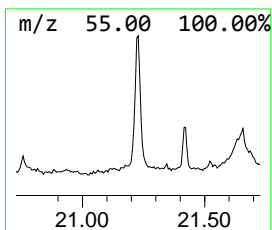
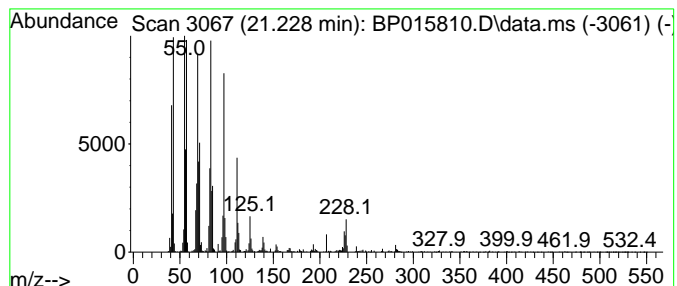
Quant Method : Z:\svoasrv\HPCHEM1\BNA_P\Methods\SFAM-EPA-BP062623.MA.M
 Quant Title : SVOA CALIBRATION

TIC Library : C:\DATABASE\NIST20.L
 TIC Integration Parameters: LSCINT.P

 Peak Number 5 (DEL) Alkane: Straight-Chai... Concentration Rank 5

R.T.	EstConc	Area	Relative to ISTD	R.T.
21.228	9.32 ng/ul	1216500	Chrysene-d12	21.557

Hit#	of 5	Tentative ID	MW	MolForm	CAS#	Qual
1		5-Eicosene, (E)-	280	C20H40	074685-30-6	97
2		Cyclohexadecane	224	C16H32	000295-65-8	94
3		1-Heneicosanol	312	C21H44O	015594-90-8	94
4		Pentacos-1-ene	350	C25H50	016980-85-1	94
5		n-Tetracosanol-1	354	C24H50O	000506-51-4	94



Data Path : Z:\svoasrv\HPCHEM1\BNA_P\Data\BP062923\
 Data File : BP015810.D
 Acq On : 29 Jun 2023 14:39
 Operator : MA/JU
 Sample : 03143-20
 Misc :
 ALS Vial : 15 Sample Multiplier: 1

Instrument :
 BNA_P
 ClientSampleId :
 DCFV7

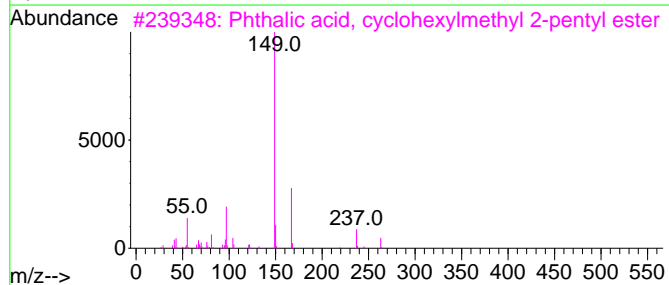
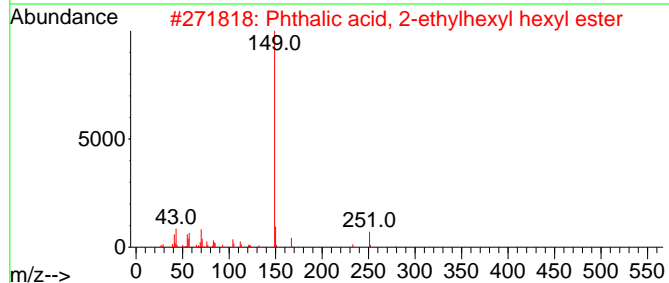
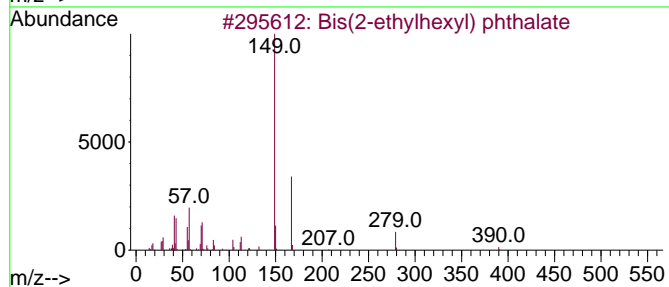
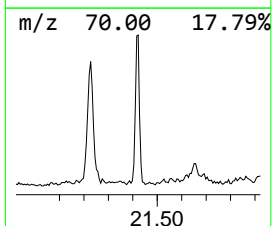
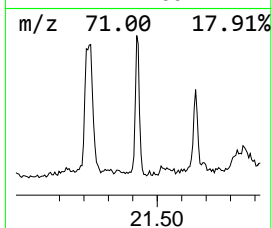
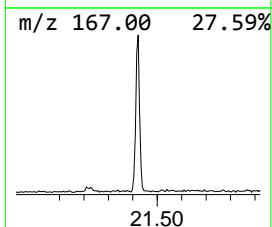
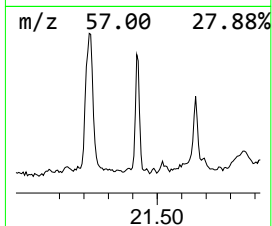
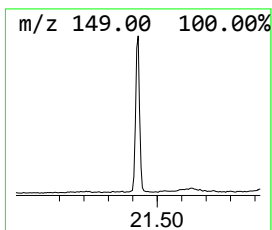
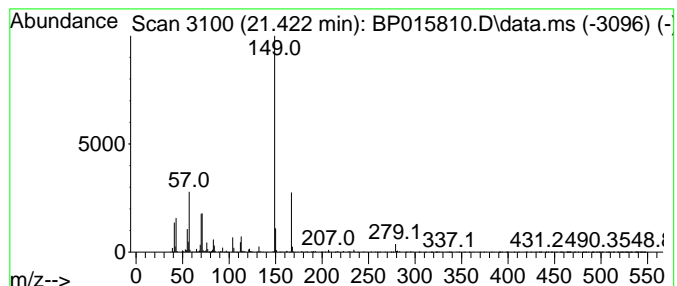
Quant Method : Z:\svoasrv\HPCHEM1\BNA_P\Methods\SFAM-EPA-BP062623.MA.M
 Quant Title : SVOA CALIBRATION

TIC Library : C:\DATABASE\NIST20.L
 TIC Integration Parameters: LSCINT.P

 Peak Number 6 Bis(2-ethylhexyl) phthalate Concentration Rank 8

R.T.	EstConc	Area	Relative to ISTD	R.T.
21.422	4.85 ng/ul	632647	Chrysene-d12	21.557

Hit#	of	5	Tentative ID	MW	MolForm	CAS#	Qual
1			Bis(2-ethylhexyl) phthalate	390	C24H38O4	000117-81-7	91
2			Phthalic acid, 2-ethylhexyl hexy...	362	C22H34O4	1000309-02-5	72
3			Phthalic acid, cyclohexylmethyl ...	332	C20H28O4	1000315-55-5	64
4			Phthalic acid, decyl 2-ethylhexy...	418	C26H42O4	1000309-00-0	64
5			Phthalic acid, hept-4-yl isohexy...	348	C21H32O4	1000356-78-6	64



Data Path : Z:\svoasrv\HPCHEM1\BNA_P\Data\BP062923\
 Data File : BP015810.D
 Acq On : 29 Jun 2023 14:39
 Operator : MA/JU
 Sample : 03143-20
 Misc :
 ALS Vial : 15 Sample Multiplier: 1

Instrument :
 BNA_P
 ClientSampleId :
 DCFV7

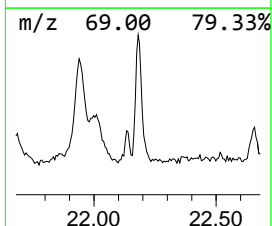
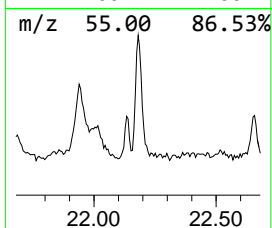
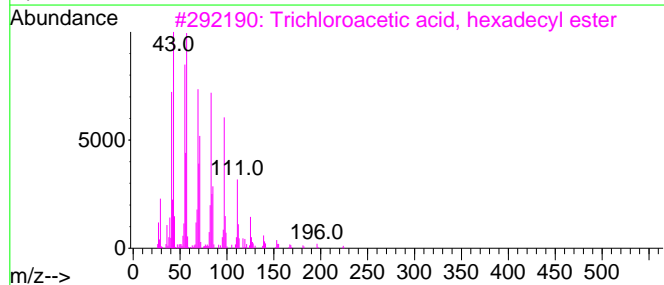
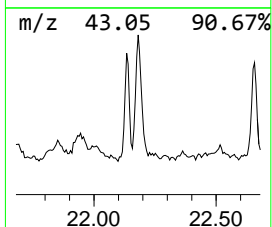
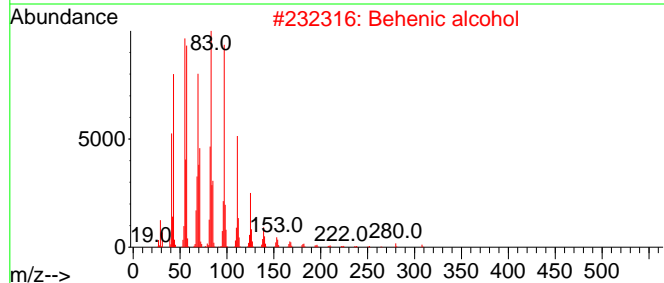
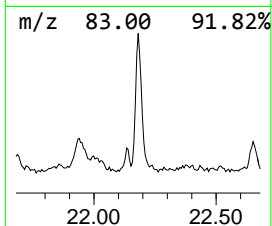
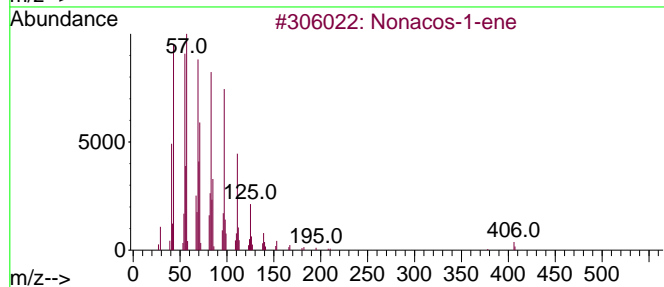
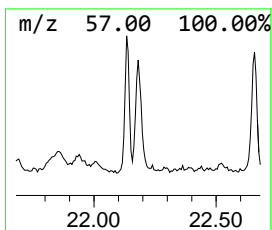
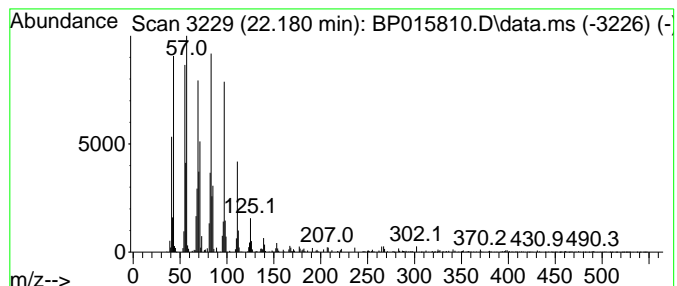
Quant Method : Z:\svoasrv\HPCHEM1\BNA_P\Methods\SFAM-EPA-BP062623.MA.M
 Quant Title : SVOA CALIBRATION

TIC Library : C:\DATABASE\NIST20.L
 TIC Integration Parameters: LSCINT.P

 Peak Number 7 (DEL) Alkane: Straight-Chai... Concentration Rank 7

R.T.	EstConc	Area	Relative to ISTD	R.T.
22.180	6.32 ng/ul	824862	Chrysene-d12	21.557

Hit#	of 5	Tentative ID	MW	MolForm	CAS#	Qual
1		Nonacos-1-ene	406	C29H58	018835-35-3	94
2		Behenic alcohol	326	C22H46O	000661-19-8	94
3		Trichloroacetic acid, hexadecyl ...	386	C18H33Cl3O2	074339-54-1	94
4		1-Tetracosene	336	C24H48	010192-32-2	94
5		Pentacos-1-ene	350	C25H50	016980-85-1	94



Data Path : Z:\svoasrv\HPCHEM1\BNA_P\Data\BP062923\
 Data File : BP015810.D
 Acq On : 29 Jun 2023 14:39
 Operator : MA/JU
 Sample : 03143-20
 Misc :
 ALS Vial : 15 Sample Multiplier: 1

Instrument :
 BNA_P
 ClientSampleId :
 DCFV7

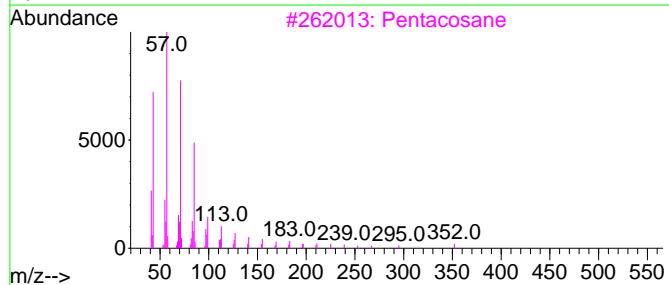
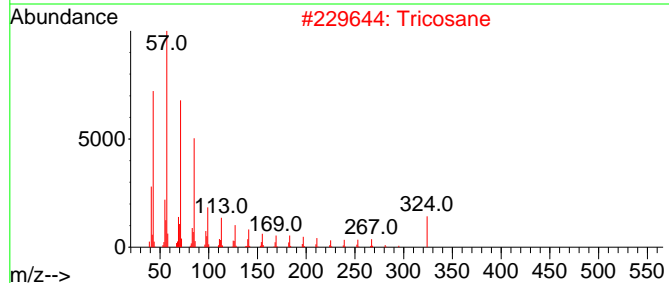
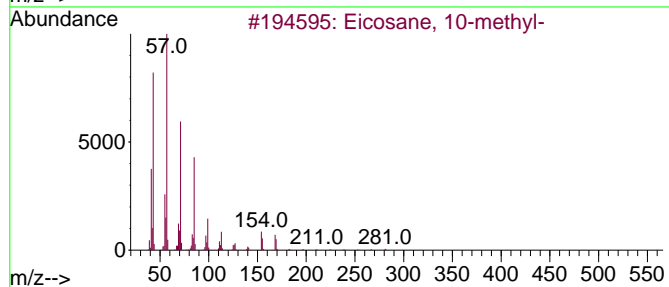
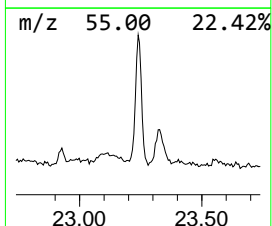
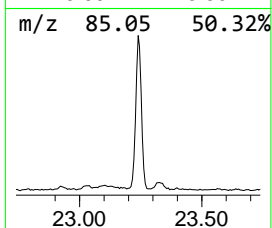
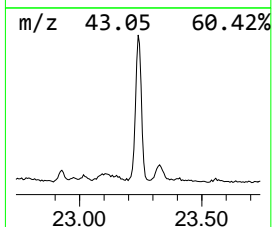
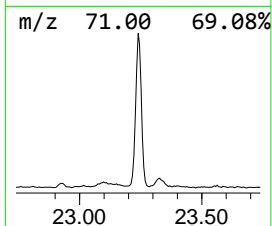
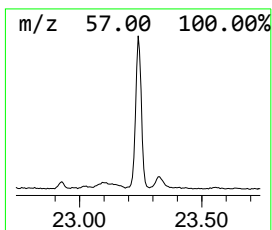
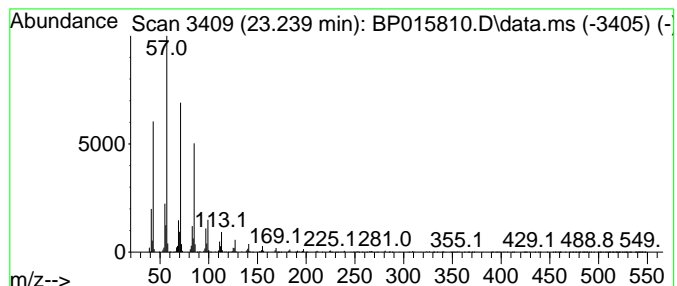
Quant Method : Z:\svoasrv\HPCHEM1\BNA_P\Methods\SFAM-EPA-BP062623.MA.M
 Quant Title : SVOA CALIBRATION

TIC Library : C:\DATABASE\NIST20.L
 TIC Integration Parameters: LSCINT.P

 Peak Number 8 (DEL) Alkane: Straight-Chai... Concentration Rank 2

R.T.	EstConc	Area	Relative to ISTD	R.T.
23.239	12.30 ng/ul	1826660	Perylene-d12	24.098

Hit#	of 5	Tentative ID	MW	MolForm	CAS#	Qual
1		Eicosane, 10-methyl-	296	C21H44	054833-23-7	94
2		Tricosane	324	C23H48	000638-67-5	93
3		Pentacosane	352	C25H52	000629-99-2	93
4		Heptadecane	240	C17H36	000629-78-7	93
5		Tetradecane, 1-iodo-	324	C14H29I	019218-94-1	93



Data Path : Z:\svoasrv\HPCHEM1\BNA_P\Data\BP062923\
 Data File : BP015810.D
 Acq On : 29 Jun 2023 14:39
 Operator : MA/JU
 Sample : 03143-20
 Misc :
 ALS Vial : 15 Sample Multiplier: 1

Instrument :
 BNA_P
 ClientSampleId :
 DCFV7

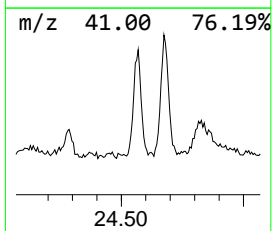
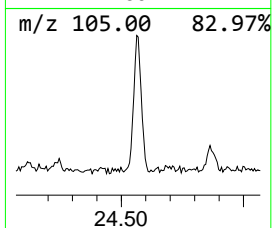
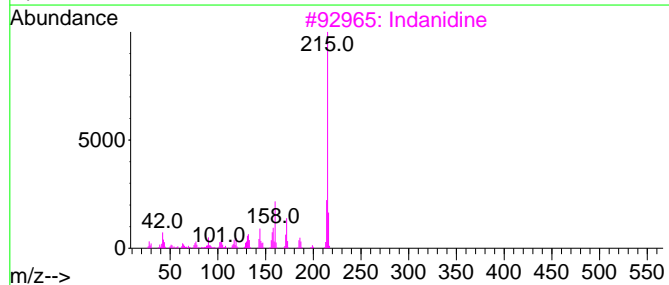
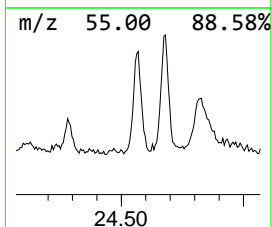
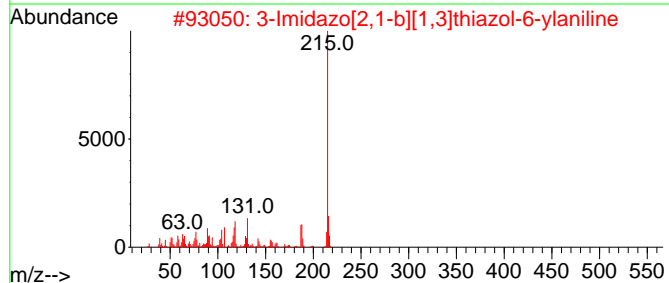
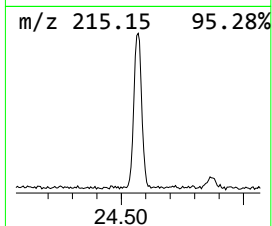
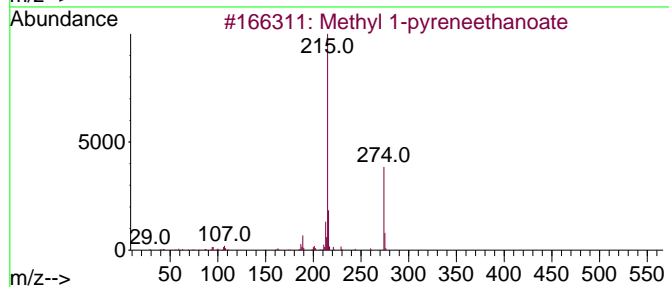
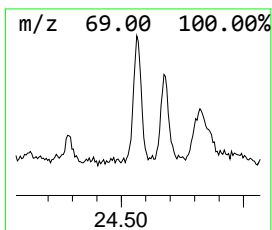
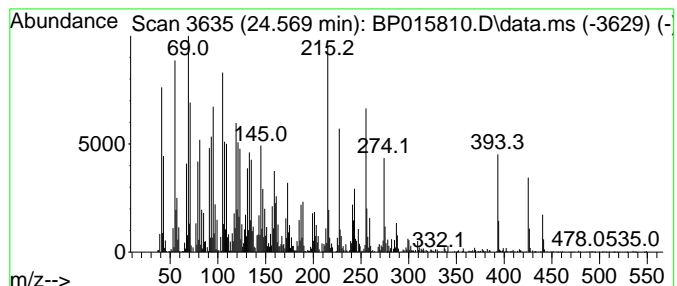
Quant Method : Z:\svoasrv\HPCHEM1\BNA_P\Methods\SFAM-EPA-BP062623.MA.M
 Quant Title : SVOA CALIBRATION

TIC Library : C:\DATABASE\NIST20.L
 TIC Integration Parameters: LSCINT.P

 Peak Number 9 unknown-01 Concentration Rank 1

R.T.	EstConc	Area	Relative to ISTD	R.T.
24.569	13.13 ng/ul	1949480	Perylene-d12	24.098

Hit#	of	5	Tentative ID	MW	MolForm	CAS#	Qual
1			Methyl 1-pyreneethanoate	274	C19H14O2	073654-19-0	25
2			3-Imidazo[2,1-b][1,3]thiazol-6-y...	215	C11H9N3S	861206-26-0	20
3			Indanidine	215	C11H13N5	085392-79-6	20
4			10-Fluoro-2,4-dimethylpyrimido[1...	215	C12H10FN3	1000388-01-0	18
5			Ethyl 4-[3-trifluoromethylphenyl...	288	C13H11F3O4	1000211-86-0	18



Data Path : Z:\svoasrv\HPCHEM1\BNA_P\Data\BP062923\
 Data File : BP015810.D
 Acq On : 29 Jun 2023 14:39
 Operator : MA/JU
 Sample : 03143-20
 Misc :
 ALS Vial : 15 Sample Multiplier: 1

Instrument :
 BNA_P
 ClientSampleId :
 DCFV7

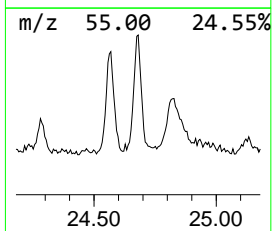
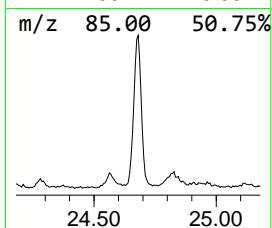
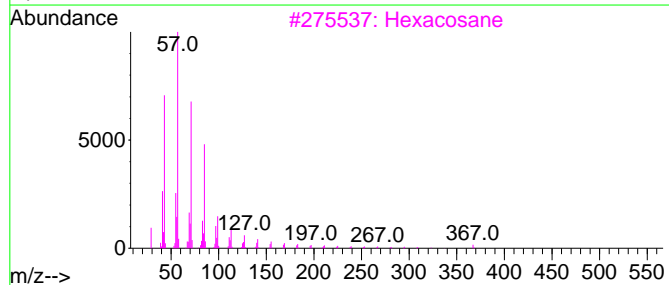
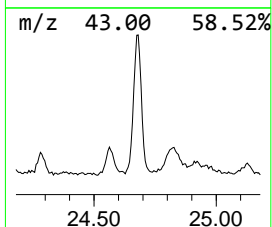
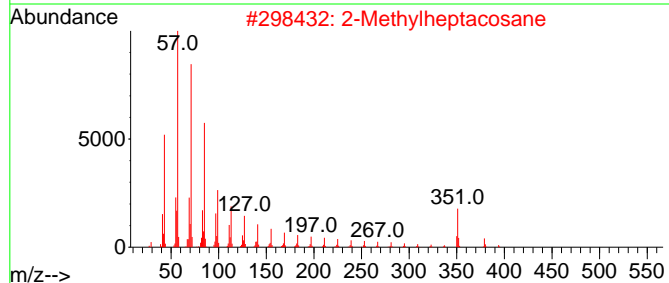
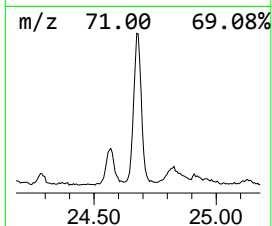
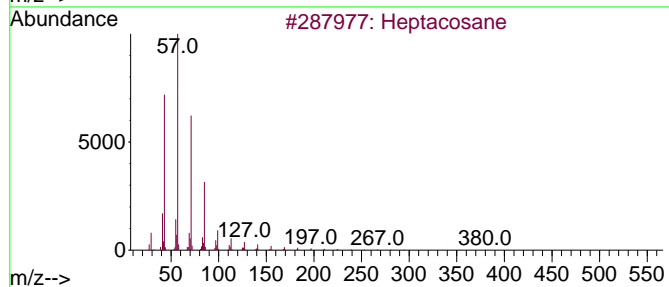
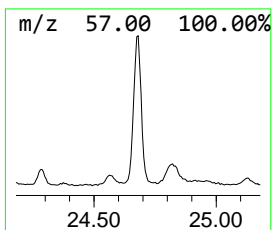
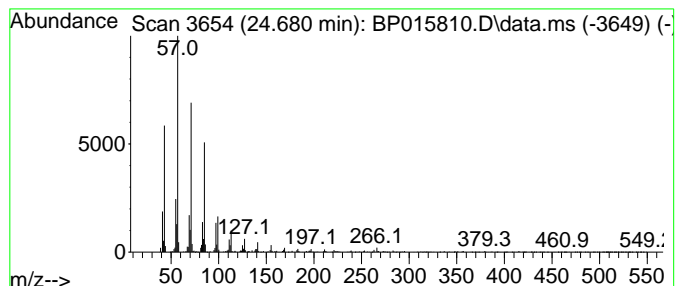
Quant Method : Z:\svoasrv\HPCHEM1\BNA_P\Methods\SFAM-EPA-BP062623.MA.M
 Quant Title : SVOA CALIBRATION

TIC Library : C:\DATABASE\NIST20.L
 TIC Integration Parameters: LSCINT.P

 Peak Number 10 (DEL) Alkane: Straight-Chai... Concentration Rank 4

R.T.	EstConc	Area	Relative to ISTD	R.T.
24.680	9.45 ng/ul	1403240	Perylene-d12	24.098

Hit#	of 5	Tentative ID	MW	MolForm	CAS#	Qual
1		Heptacosane	380	C27H56	000593-49-7	94
2		2-Methylheptacosane	394	C28H58	001561-00-8	94
3		Hexacosane	366	C26H54	000630-01-3	90
4		Octacosane	394	C28H58	000630-02-4	90
5		Tetracosane	338	C24H50	000646-31-1	90



Data Path : Z:\svoasrv\HPCHEM1\BNA_P\Data\BP062923\
 Data File : BP015810.D
 Acq On : 29 Jun 2023 14:39
 Operator : MA/JU
 Sample : 03143-20
 Misc :
 ALS Vial : 15 Sample Multiplier: 1

Instrument :
 BNA_P
 ClientSampleId :
 DCFV7

Quant Method : Z:\svoasrv\HPCHEM1\BNA_P\Methods\SFAM-EPA-BP062623.MA.M
 Quant Title : SVOA CALIBRATION

TIC Library : C:\DATABASE\NIST20.L
 TIC Integration Parameters: LSCINT.P

TIC Top Hit name	RT	EstConc	Units	Response	--Internal Standard--			
					#	RT	Resp	Conc
Aceto phenone	8.916	3.4	ng/u1	196745	1	8.058	1151590	20.0
Benzophenone	16.081	2.0	ng/u1	215256	3	14.710	2106110	20.0
n-Hexadecanoic ...	18.322	10.3	ng/u1	1199720	4	17.469	2333230	20.0
Octadecanoic acid	19.545	6.5	ng/u1	848985	5	21.557	2609640	20.0
(DEL) Alkane: S...	21.228	9.3	ng/u1	1216500	5	21.557	2609640	20.0
Bis(2-ethylhexy...	21.422	4.8	ng/u1	632647	5	21.557	2609640	20.0
(DEL) Alkane: S...	22.180	6.3	ng/u1	824862	5	21.557	2609640	20.0
(DEL) Alkane: S...	23.239	12.3	ng/u1	1826660	6	24.098	2969740	20.0
unknown-01	24.569	13.1	ng/u1	1949480	6	24.098	2969740	20.0
(DEL) Alkane: S...	24.680	9.4	ng/u1	1403240	6	24.098	2969740	20.0