

Data Path : Z:\svoasrv\HPCHEM1\BNA\_P\Data\BP063023\  
 Data File : BP015860.D  
 Acq On : 01 Jul 2023 00:12  
 Operator : MA/JU  
 Sample : 03239-15  
 Misc :  
 ALS Vial : 26 Sample Multiplier: 1

Instrument :  
 BNA\_P  
 ClientSampleId :  
 DCFZ3

Quant Time: Jul 01 00:44:06 2023  
 Quant Method : Z:\svoasrv\HPCHEM1\BNA\_P\Methods\SFAM-EPA-BP062623.MA.M  
 Quant Title : SVOA CALIBRATION  
 QLast Update : Fri Jun 30 22:30:25 2023  
 Response via : Initial Calibration

Compound	R.T.	QIon	Response	Conc	Units	Dev(Min)
Internal Standards						
1) 1,4-Dichlorobenzene-d4	8.052	152	85	20.000	ng/ul	# 0.00
20) Naphthalene-d8	10.887	136	229	20.000	ng/ul	# 0.01
38) Acenaphthene-d10	14.704	164	751	20.000	ng/ul	# 0.00
64) Phenanthrene-d10	17.569	188	1270785	20.000	ng/ul	# 0.11
79) Chrysene-d12	21.698	240	87	20.000	ng/ul	# 0.14
88) Perylene-d12	24.257	264	231	20.000	ng/ul	# 0.15
System Monitoring Compounds						
3) 1,4-Dioxane-d8	3.376	96	22277	9429.368	ng/uL	0.00
4) Pyridine-d5	3.846	84	38531	6469.912	ng/ul	0.02
7) Phenol-d5	7.240	99	404823	55663.194	ng/ul	0.02
9) Bis-(2-Chloroethyl)eth...	7.381	67	294431	65436.844	ng/ul	0.00
11) 2-Chlorophenol-d4	7.587	132	337539	61482.930	ng/ul	0.00
15) 4-Methylphenol-d8	8.799	113	263598	45880.207	ng/ul	0.02
21) Nitrobenzene-d5	9.246	128	171233	97841.951	ng/ul	0.00
24) 2-Nitrophenol-d4	9.981	143	182190	89195.849	ng/ul	0.02
28) 2,4-Dichlorophenol-d3	10.552	165	302738	83172.502	ng/ul	0.04
31) 4-Chloroaniline-d4	11.075	131	205279	43902.729	ng/ul	0.04
46) Dimethylphthalate-d6	14.116	166	1113221	19178.088	ng/ul	0.00
49) Acenaphthylene-d8	14.404	160	1241956	19033.159	ng/ul	0.00
54) 4-Nitrophenol-d4	14.945	143	110	14.360	ng/ul	0.00
60) Fluorene-d10	15.704	176	925858	19371.257	ng/ul	0.00
65) 4,6-Dinitro-2-methylph...	15.875	200	91968	11.768	ng/ul	0.02
73) Anthracene-d10	17.569	188	1289815	22.220	ng/ul	0.00
81) Pyrene-d10	19.792	212	1441339	253715.999	ng/ul	0.00
92) Benzo(a)pyrene-d12	24.116	264	1204	103.324	ng/ul	0.18
Target Compounds						
2) 1,4-Dioxane	3.417	88	304	119.570	ng/uL#	1
5) Pyridine	3.852	79	423	67.895	ng/ul#	1
6) Benzaldehyde	7.199	77	238	80.942	ng/ul#	23
8) Phenol	7.264	94	1447	191.729	ng/ul#	1
10) Bis(2-Chloroethyl)ether	7.464	93	197	32.807	ng/ul#	66
12) 2-Chlorophenol	7.469	128	117	20.060	ng/ul	90
13) 2-Methylphenol	8.475	108	62	10.881	ng/ul	88
14) 2,2'-oxybis(1-Chloropr...	8.575	45	255	31.092	ng/ul#	1
16) Acetophenone	8.875	105	189	20.012	ng/ul#	1
17) N-Nitroso-di-n-propyla...	8.869	70	520	99.133	ng/ul#	1
18) 4-Methylphenol	8.875	108	74	12.087	ng/ul	95
19) Hexachloroethane	9.116	117	83	30.811	ng/ul#	16
22) Nitrobenzene	9.293	77	612	124.526	ng/ul#	54
23) Isophorone	9.805	82	267	28.389	ng/ul#	58
25) 2-Nitrophenol	10.005	139	40	18.452	ng/ul#	1
26) 2,4-Dimethylphenol	10.063	107	68	14.269	ng/ul#	50
27) Bis(2-Chloroethoxy)met...	10.287	93	87	16.387	ng/ul#	38
29) 2,4-Dichlorophenol	10.546	162	38	10.501	ng/ul#	1
30) Naphthalene	10.952	128	4451	357.540	ng/ul#	94
32) 4-Chloroaniline	11.075	127	111	22.849	ng/ul#	1
33) Hexachlorobutadiene	11.281	225	27	9.880	ng/ul	94
34) Caprolactam	11.887	113	383	346.008	ng/ul	85
35) 4-Chloro-3-methylphenol	12.210	107	20	4.722	ng/ul#	72
36) 2-Methylnaphthalene	12.581	142	2538	309.696	ng/ul	96

Data Path : Z:\svoasrv\HPCHEM1\BNA\_P\Data\BP063023\  
 Data File : BP015860.D  
 Acq On : 01 Jul 2023 00:12  
 Operator : MA/JU  
 Sample : 03239-15  
 Misc :  
 ALS Vial : 26 Sample Multiplier: 1

Instrument :  
 BNA\_P  
 ClientSampleId :  
 DCFZ3

Quant Time: Jul 01 00:44:06 2023  
 Quant Method : Z:\svoasrv\HPCHEM1\BNA\_P\Methods\SFAM-EPA-BP062623.MA.M  
 Quant Title : SVOA CALIBRATION  
 QLast Update : Fri Jun 30 22:30:25 2023  
 Response via : Initial Calibration

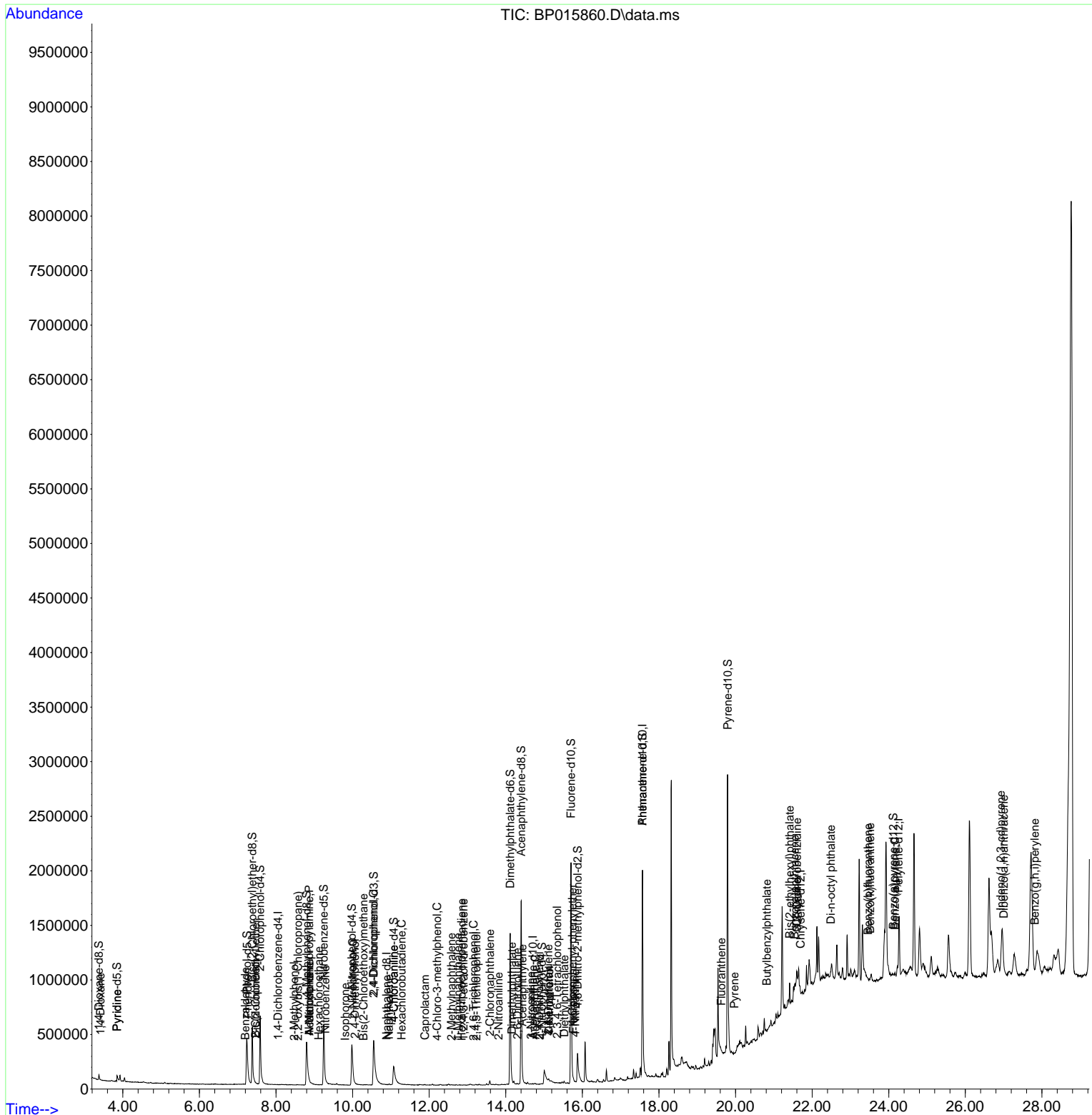
Compound	R.T.	QIon	Response	Conc	Units	Dev(Min)
37) 1-Methylnaphthalene	12.746	142	71	8.493	ng/ul#	53
39) 1,2,4,5-Tetrachloroben...	12.899	216	26	1.051	ng/ul#	1
40) Hexachlorocyclopentadiene	12.846	237	36	4.862	ng/ul#	93
41) 2,4,6-Trichlorophenol	13.163	196	17	1.087	ng/ul#	89
42) 2,4,5-Trichlorophenol	13.234	196	49	2.954	ng/ul#	55
44) 2-Chloronaphthalene	13.587	162	50	1.067	ng/ul#	1
45) 2-Nitroaniline	13.810	65	67	4.544	ng/ul#	36
47) Dimethylphthalate	14.163	163	5004	83.299	ng/ul#	86
48) 2,6-Dinitrotoluene	14.304	165	85	6.975	ng/ul#	34
50) Acenaphthylene	14.434	152	3565	49.584	ng/ul#	84
51) 3-Nitroaniline	14.657	138	16	1.674	ng/ul#	1
52) Acenaphthene	14.775	153	2070	41.519	ng/ul#	86
53) 2,4-Dinitrophenol	14.875	184	15	2.320	ng/ul#	1
55) 4-Nitrophenol	15.134	109	56	7.055	ng/ul	89
56) Dibenzofuran	15.122	168	2353	33.997	ng/ul	98
57) 2,4-Dinitrotoluene	15.110	165	91	5.480	ng/ul#	82
58) 2,3,4,6-Tetrachlorophenol	15.340	232	17	1.193	ng/ul#	1
59) Diethylphthalate	15.528	149	2606	42.868	ng/ul#	79
61) Fluorene	15.763	166	1400	24.938	ng/ul#	91
62) 4-Chlorophenyl-phenyle...	15.740	204	84	2.924	ng/ul#	1
63) 4-Nitroaniline	15.816	138	138	21.101	ng/ul#	23
80) Fluoranthene	19.628	202	1306	184.979	ng/ul#	42
82) Pyrene	19.969	202	572	79.422	ng/ul#	2
83) Butylbenzylphthalate	20.816	149	217	73.854	ng/ul#	64
84) 3,3'-Dichlorobenzidine	21.610	252	479	243.556	ng/ul#	56
85) Benzo(a)anthracene	21.545	228	58971	9635.739	ng/ul	94
86) Bis(2-ethylhexyl)phtha...	21.410	149	66596	16492.436	ng/ul	99
87) Chrysene	21.598	228	67488	11622.975	ng/ul	95
89) Di-n-octyl phthalate	22.492	149	5033	298.133	ng/ul	100
90) Benzo(b)fluoranthene	23.463	252	210	14.148	ng/ul#	1
91) Benzo(k)fluoranthene	23.516	252	12791	852.925	ng/ul#	35
93) Benzo(a)pyrene	24.163	252	22790	1757.211	ng/ul#	54
94) Indeno(1,2,3-cd)pyrene	26.927	276	603	34.249	ng/ul#	1
95) Dibenzo(a,h)anthracene	27.004	278	32	2.213	ng/ul#	1
96) Benzo(g,h,i)perylene	27.815	276	180	12.427	ng/ul#	1

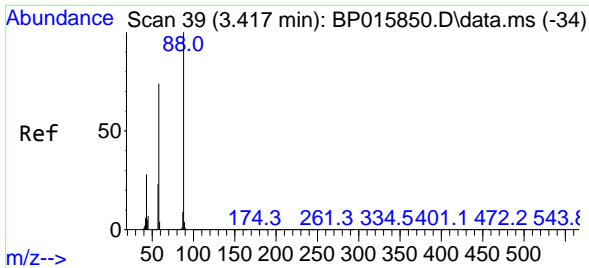
(#) = qualifier out of range (m) = manual integration (+) = signals summed

Data Path : Z:\svoasrv\HPCHEM1\BNA\_P\Data\BP063023\  
 Data File : BP015860.D  
 Acq On : 01 Jul 2023 00:12  
 Operator : MA/JU  
 Sample : 03239-15  
 Misc :  
 ALS Vial : 26 Sample Multiplier: 1

Instrument :  
 BNA\_P  
 ClientSampleId :  
 DCFZ3

Quant Time: Jul 01 00:44:06 2023  
 Quant Method : Z:\svoasrv\HPCHEM1\BNA\_P\Methods\SFAM-EPA-BP062623.MA.M  
 Quant Title : SVOA CALIBRATION  
 QLast Update : Fri Jun 30 22:30:25 2023  
 Response via : Initial Calibration



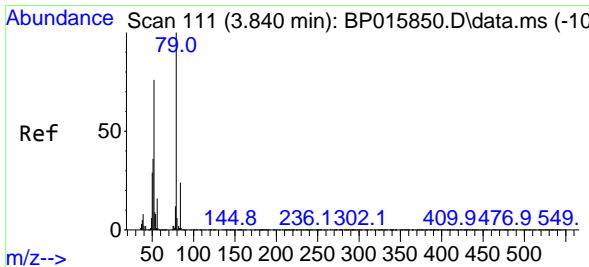
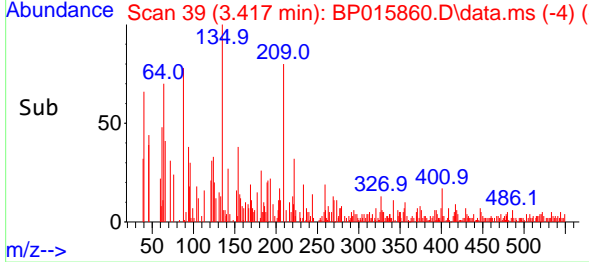
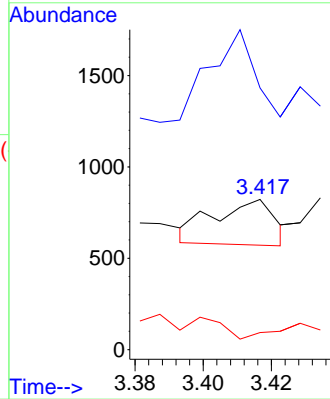
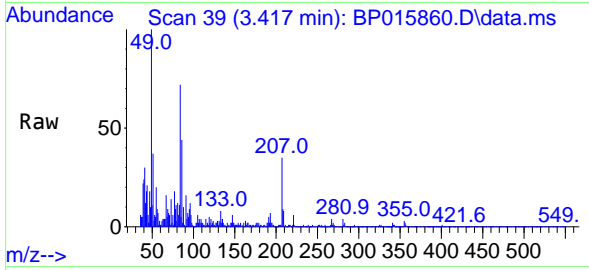


#2  
 1,4-Dioxane  
 Concen: 119.570 ng/uL  
 RT: 3.417 min Scan# 39  
 Delta R.T. 0.006 min  
 Lab File: BP015860.D  
 Acq: 01 Jul 2023 00:12

Instrument :  
 BNA\_P  
 ClientSampleId :  
 DCFZ3

Tgt Ion: 88 Resp: 304

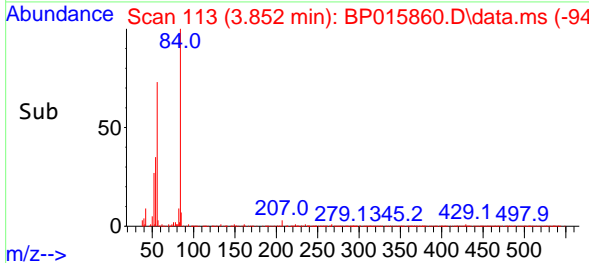
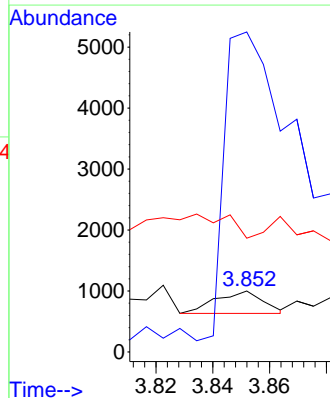
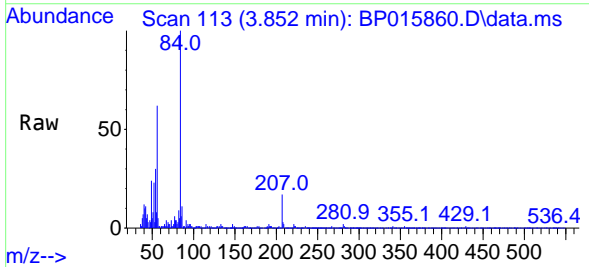
Ion	Ratio	Lower	Upper
88	100		
43	174.2	27.4	41.2#
58	11.3	59.8	89.8#

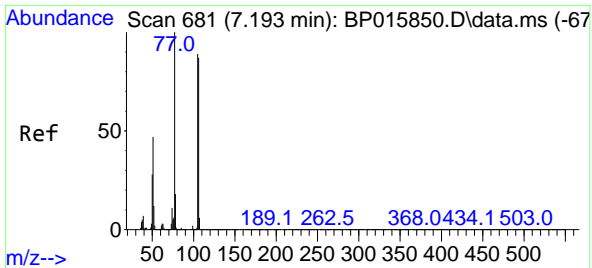


#5  
 Pyridine  
 Concen: 67.895 ng/uL  
 RT: 3.852 min Scan# 113  
 Delta R.T. 0.012 min  
 Lab File: BP015860.D  
 Acq: 01 Jul 2023 00:12

Tgt Ion: 79 Resp: 423

Ion	Ratio	Lower	Upper
79	100		
52	525.3	65.5	98.3#
51	186.7	31.8	47.8#

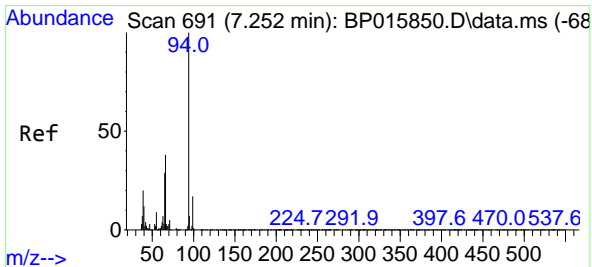
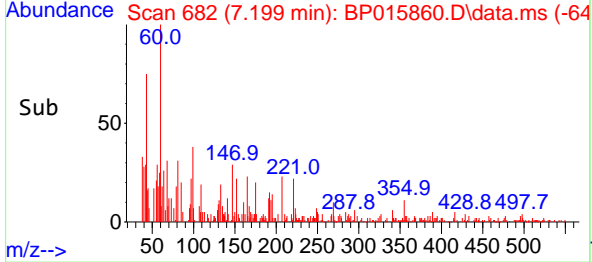
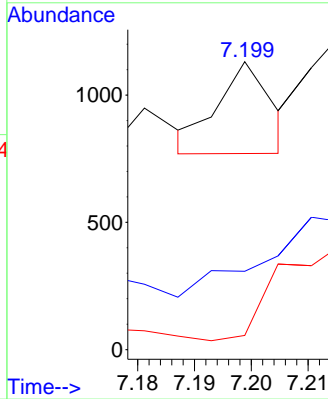
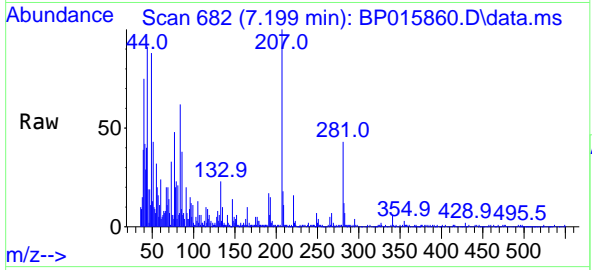




#6  
Benzaldehyde  
Concen: 80.942 ng/uI  
RT: 7.199 min Scan# 610  
Delta R.T. 0.000 min  
Lab File: BP015860.D  
Acq: 01 Jul 2023 00:12

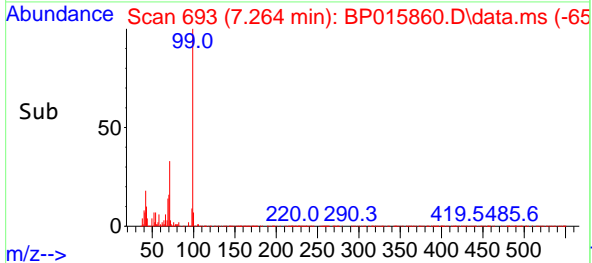
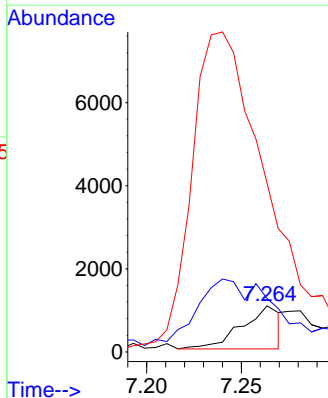
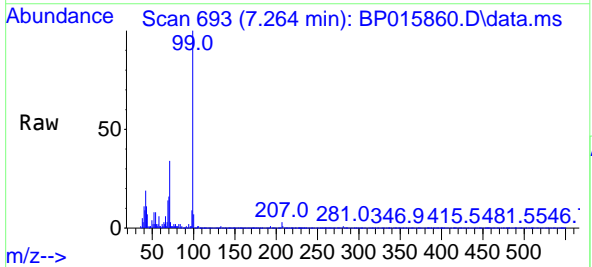
Instrument :  
BNA\_P  
Client SampleId :  
DCFZ3

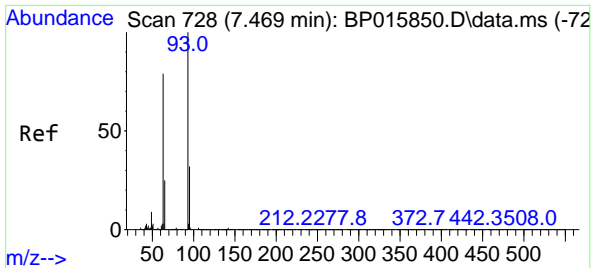
Tgt Ion: 77 Resp: 238  
Ion Ratio Lower Upper  
77 100  
105 27.2 73.4 110.0#  
106 5.0 66.6 100.0#



#8  
Phenol  
Concen: 191.729 ng/uI  
RT: 7.264 min Scan# 693  
Delta R.T. 0.012 min  
Lab File: BP015860.D  
Acq: 01 Jul 2023 00:12

Tgt Ion: 94 Resp: 1447  
Ion Ratio Lower Upper  
94 100  
65 116.3 26.4 39.6#  
66 367.4 37.3 55.9#



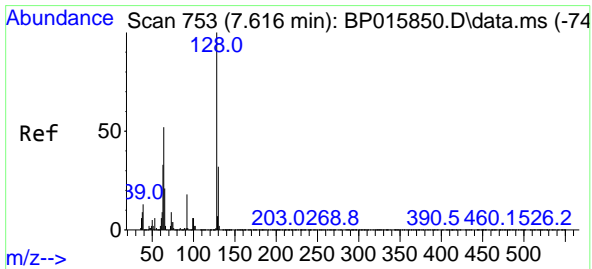
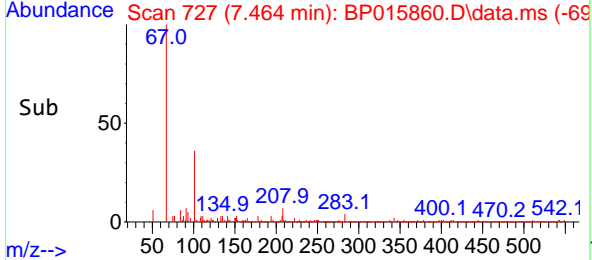
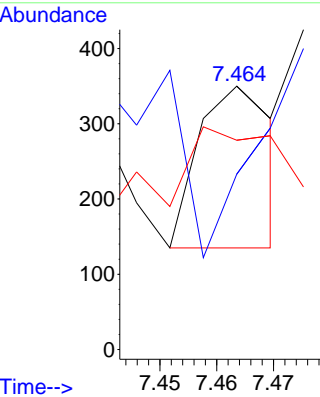
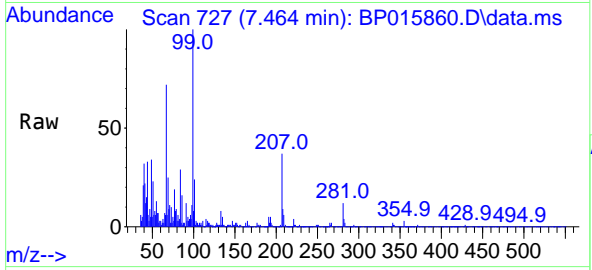


#10  
 Bis(2-Chloroethyl)ether  
 Concen: 32.807 ng/ul  
 RT: 7.464 min Scan# 71  
 Delta R.T. -0.006 min  
 Lab File: BP015860.D  
 Acq: 01 Jul 2023 00:12

Instrument :  
 BNA\_P  
 ClientSampleId :  
 DCFZ3

Tgt Ion: 93 Resp: 197

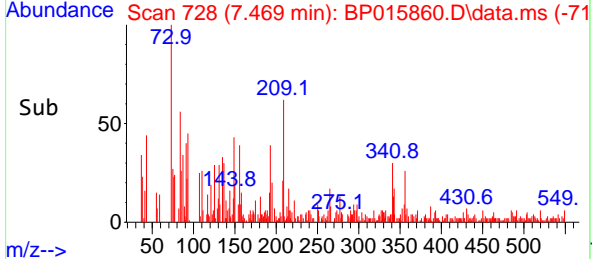
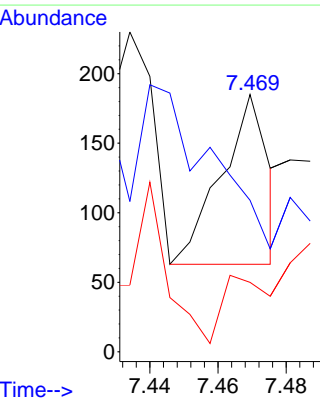
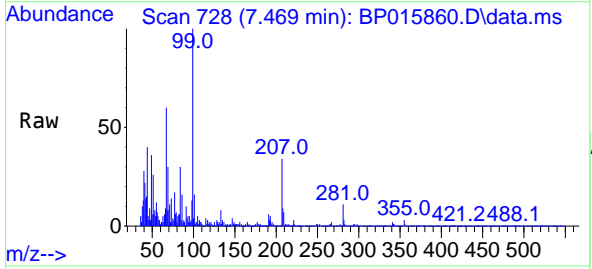
Ion	Ratio	Lower	Upper
93	100		
63	66.6	62.8	94.2
95	79.4	25.6	38.4

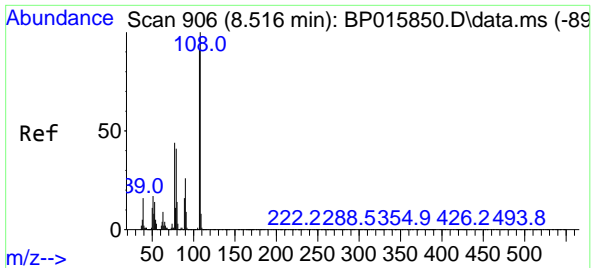


#12  
 2-Chlorophenol  
 Concen: 20.060 ng/ul  
 RT: 7.469 min Scan# 728  
 Delta R.T. -0.147 min  
 Lab File: BP015860.D  
 Acq: 01 Jul 2023 00:12

Tgt Ion: 128 Resp: 117

Ion	Ratio	Lower	Upper
128	100		
64	58.9	41.2	61.8
130	27.0	26.0	39.0

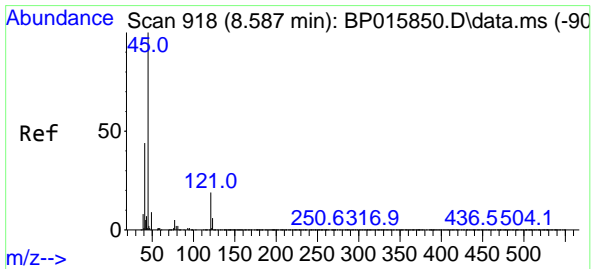
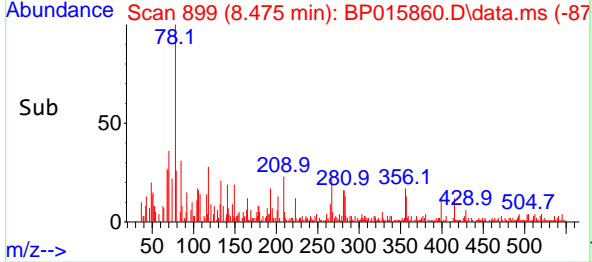
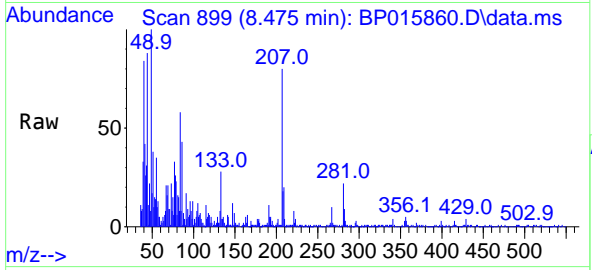




#13  
 2-Methylphenol  
 Concen: 10.881 ng/ul  
 RT: 8.475 min Scan# 899  
 Delta R.T. -0.035 min  
 Lab File: BP015860.D  
 Acq: 01 Jul 2023 00:12

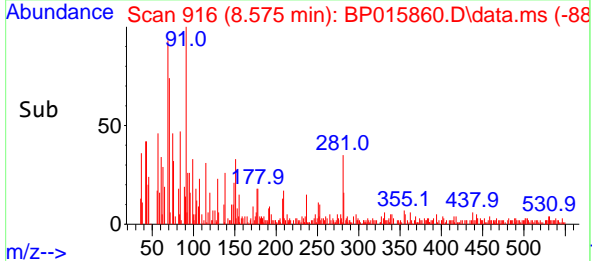
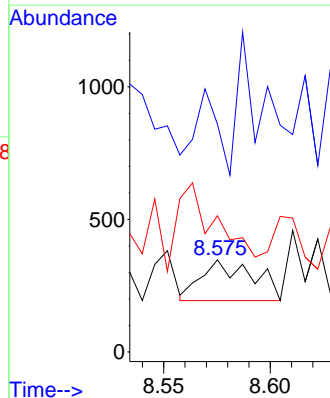
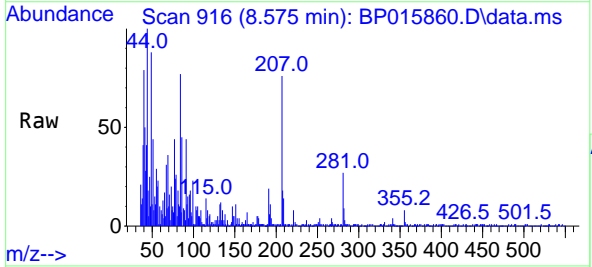
Instrument :  
 BNA\_P  
 ClientSampleId :  
 DCFZ3

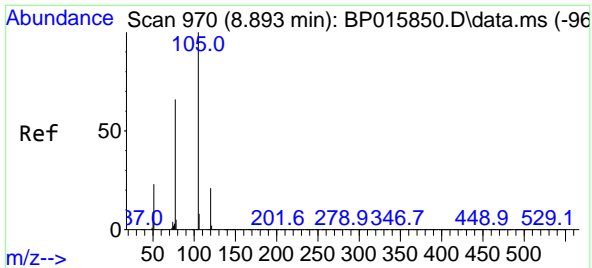
Tgt Ion:108 Resp: 62  
 Ion Ratio Lower Upper  
 108 100  
 107 80.4 73.8 110.6



#14  
 2,2'-oxybis(1-Chloropropane)  
 Concen: 31.092 ng/ul  
 RT: 8.575 min Scan# 916  
 Delta R.T. -0.012 min  
 Lab File: BP015860.D  
 Acq: 01 Jul 2023 00:12

Tgt Ion: 45 Resp: 255  
 Ion Ratio Lower Upper  
 45 100  
 77 246.8 12.4 18.6#  
 79 147.7 9.3 13.9#

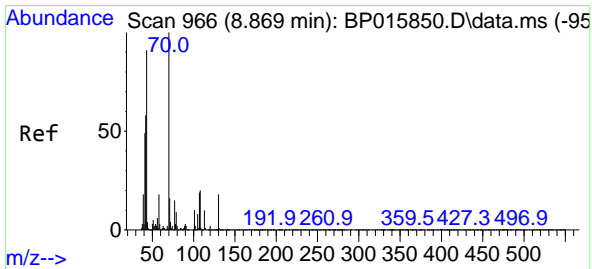
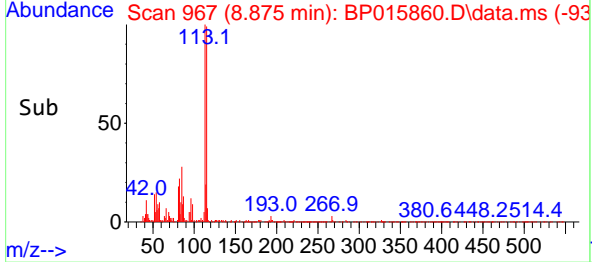
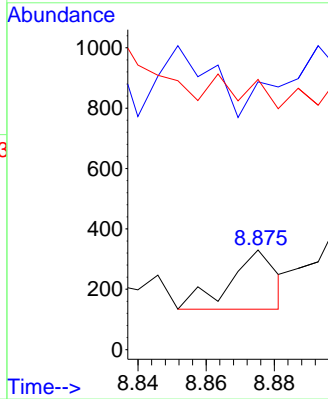
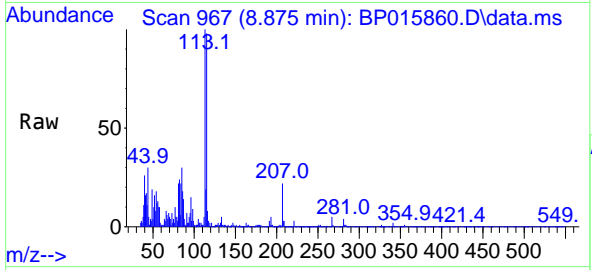




#16  
 Acetophenone  
 Concen: 20.012 ng/ul  
 RT: 8.875 min Scan# 967  
 Delta R.T. -0.018 min  
 Lab File: BP015860.D  
 Acq: 01 Jul 2023 00:12

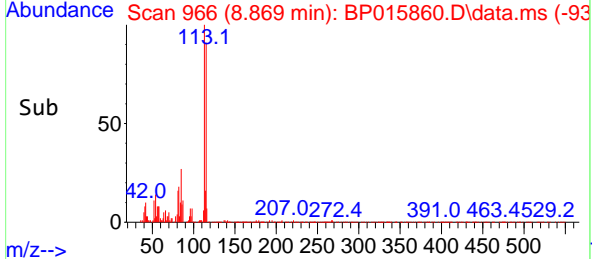
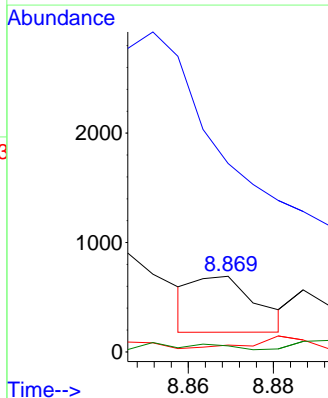
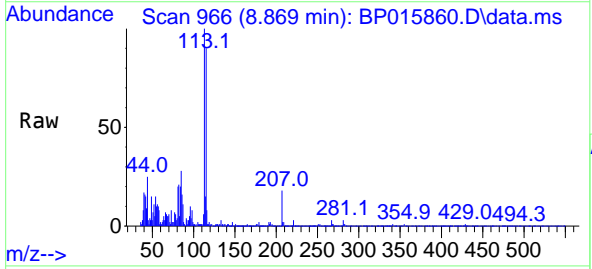
Instrument : BNA\_P  
 ClientSampleId : DCFZ3

Tgt Ion	Resp	Lower	Upper
105	100		
77	268.8	65.0	97.4#
51	271.2	25.1	37.7#

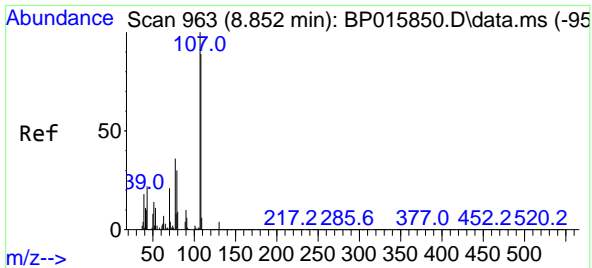


#17  
 N-Nitroso-di-n-propylamine  
 Concen: 99.133 ng/ul  
 RT: 8.869 min Scan# 966  
 Delta R.T. 0.000 min  
 Lab File: BP015860.D  
 Acq: 01 Jul 2023 00:12

Tgt Ion	Resp	Lower	Upper
70	100		
42	249.3	48.2	72.2#
101	11.4	7.6	11.4#
130	8.1	13.9	20.9#



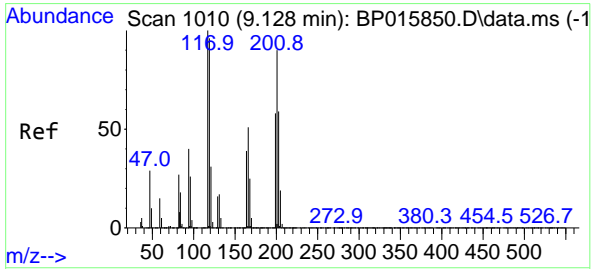
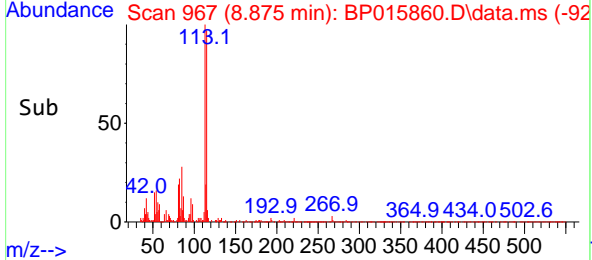
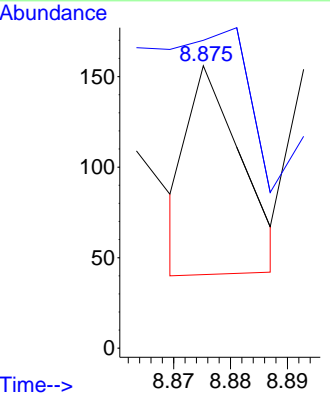
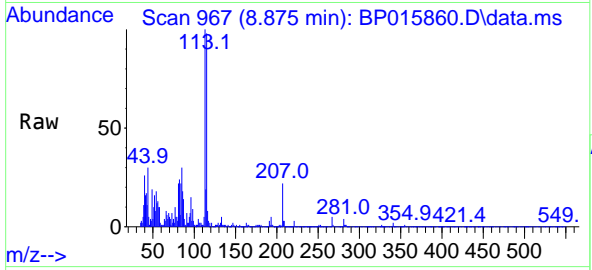




#18  
 4-Methylphenol  
 Concen: 12.087 ng/uI  
 RT: 8.875 min Scan# 90  
 Delta R.T. 0.024 min  
 Lab File: BP015860.D  
 Acq: 01 Jul 2023 00:12

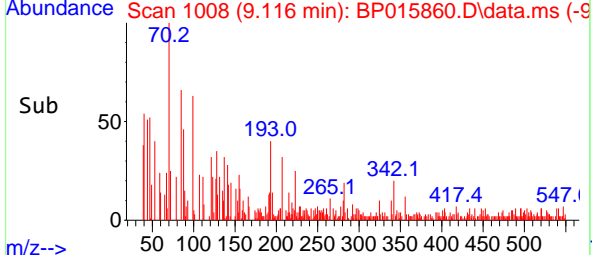
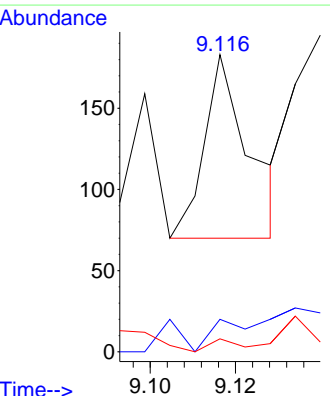
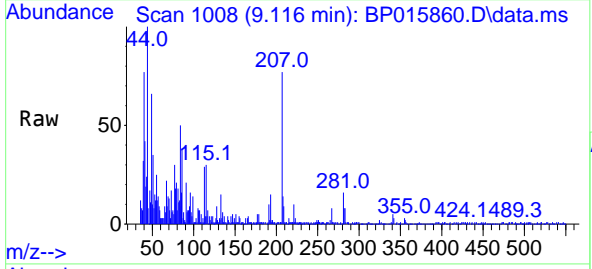
Instrument :  
 BNA\_P  
 ClientSampleId :  
 DCFZ3

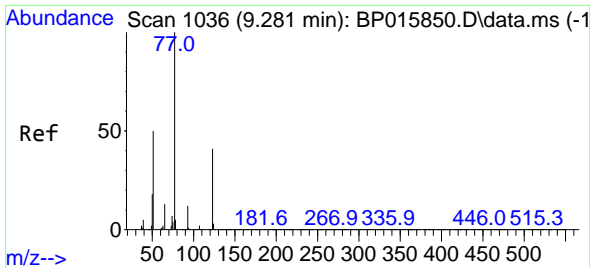
Tgt Ion:108 Resp: 74  
 Ion Ratio Lower Upper  
 108 100  
 107 109.0 91.3 136.9



#19  
 Hexachloroethane  
 Concen: 30.811 ng/uI  
 RT: 9.116 min Scan# 1008  
 Delta R.T. -0.012 min  
 Lab File: BP015860.D  
 Acq: 01 Jul 2023 00:12

Tgt Ion:117 Resp: 83  
 Ion Ratio Lower Upper  
 117 100  
 201 10.9 84.2 126.2#  
 199 8.2 51.8 77.8#



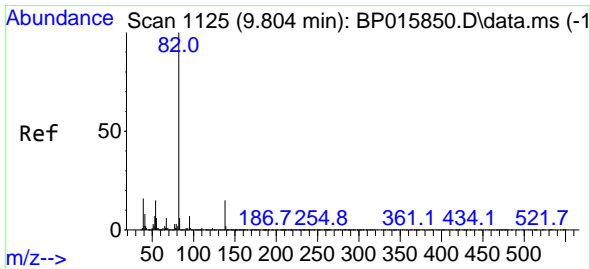
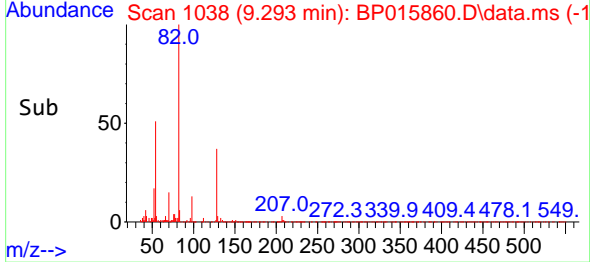
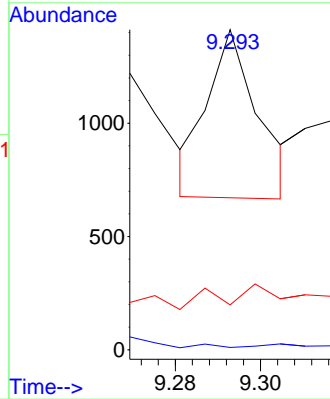
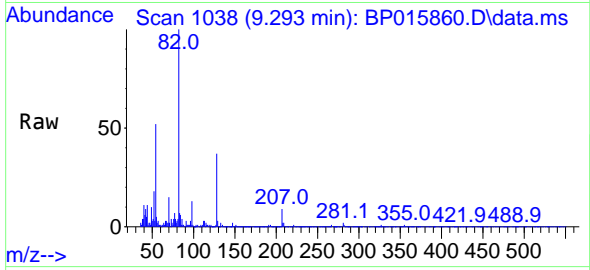


#22  
 Nitrobenzene  
 Concen: 124.526 ng/u1  
 RT: 9.293 min Scan# 1038  
 Delta R.T. 0.012 min  
 Lab File: BP015860.D  
 Acq: 01 Jul 2023 00:12

Instrument :  
 BNA\_P  
 ClientSampleId :  
 DCFZ3

Tgt Ion: 77 Resp: 612

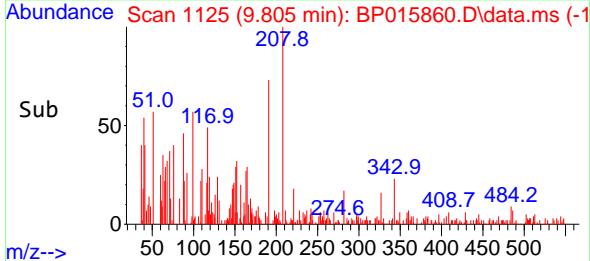
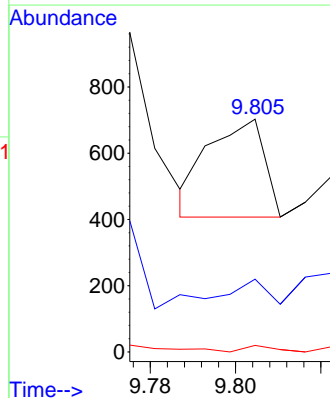
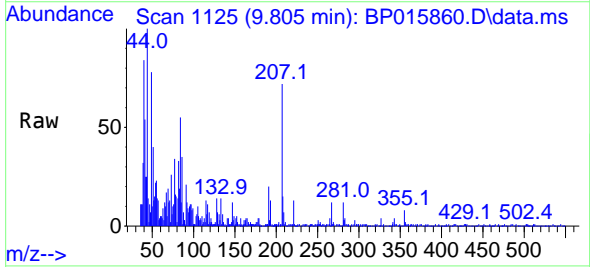
Ion	Ratio	Lower	Upper
77	100		
123	0.7	31.0	46.4#
65	14.0	11.3	16.9

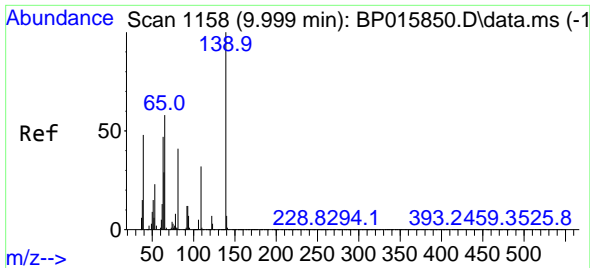


#23  
 Isophorone  
 Concen: 28.389 ng/u1  
 RT: 9.805 min Scan# 1125  
 Delta R.T. 0.000 min  
 Lab File: BP015860.D  
 Acq: 01 Jul 2023 00:12

Tgt Ion: 82 Resp: 267

Ion	Ratio	Lower	Upper
82	100		
95	31.3	6.3	9.5#
138	2.8	12.3	18.5#



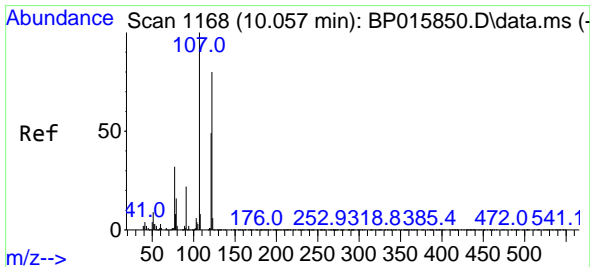
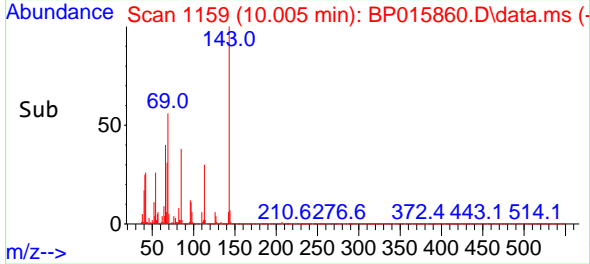
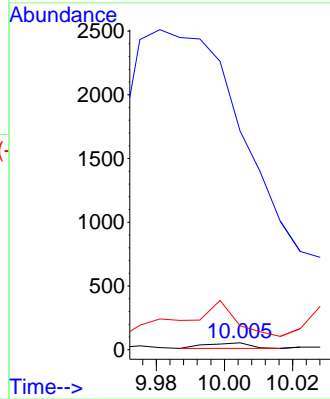
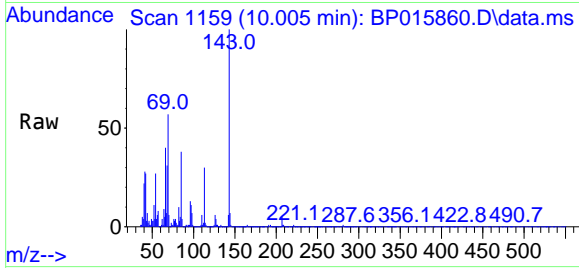


#25  
 2-Nitrophenol  
 Concen: 18.452 ng/ul  
 RT: 10.005 min Scan# 1169  
 Delta R.T. 0.006 min  
 Lab File: BP015860.D  
 Acq: 01 Jul 2023 00:12

Instrument :  
 BNA\_P  
 ClientSampleId :  
 DCFZ3

Tgt Ion:139 Resp: 40

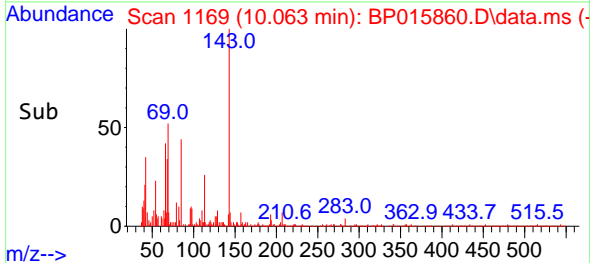
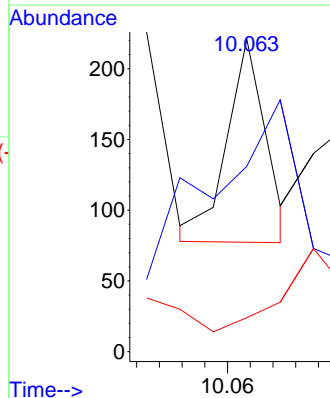
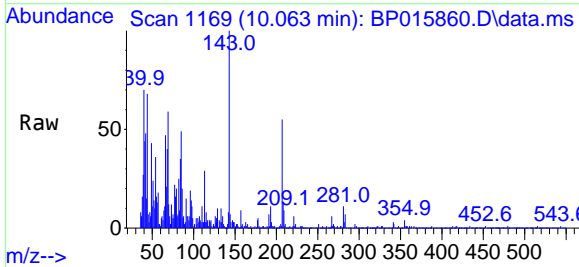
Ion	Ratio	Lower	Upper
139	100		
65	3179.6	50.2	75.2#
109	350.0	31.3	46.9#

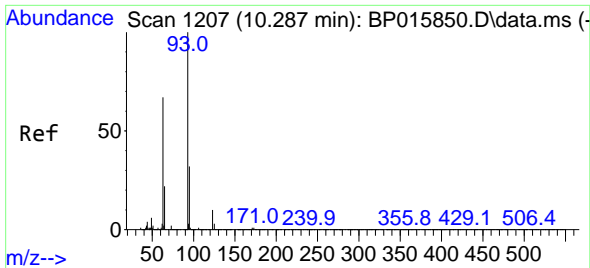


#26  
 2,4-Dimethylphenol  
 Concen: 14.269 ng/ul  
 RT: 10.063 min Scan# 1169  
 Delta R.T. 0.006 min  
 Lab File: BP015860.D  
 Acq: 01 Jul 2023 00:12

Tgt Ion:107 Resp: 68

Ion	Ratio	Lower	Upper
107	100		
121	59.3	38.2	57.2#
122	16.7	62.1	93.1#



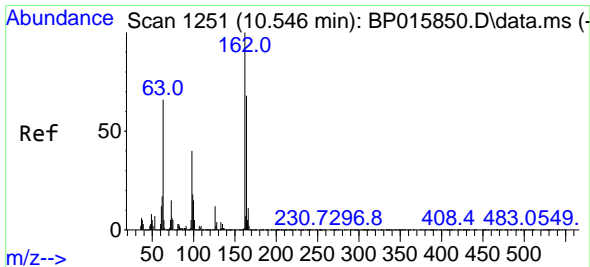
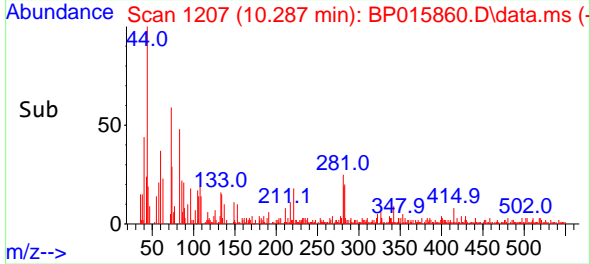
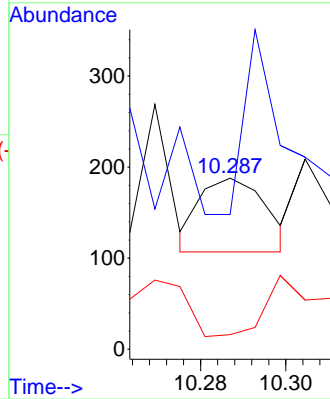
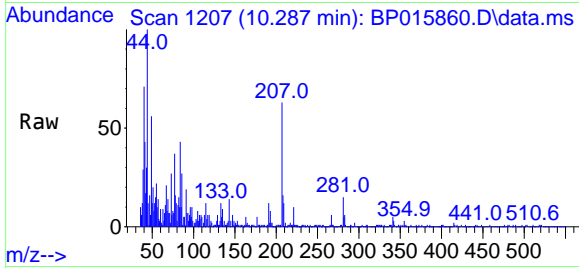


#27  
 Bis(2-Chloroethoxy)methane  
 Concen: 16.387 ng/ul  
 RT: 10.287 min Scan# 11  
 Delta R.T. 0.006 min  
 Lab File: BP015860.D  
 Acq: 01 Jul 2023 00:12

Instrument :  
 BNA\_P  
 ClientSampleId :  
 DCFZ3

Tgt Ion: 93 Resp: 87

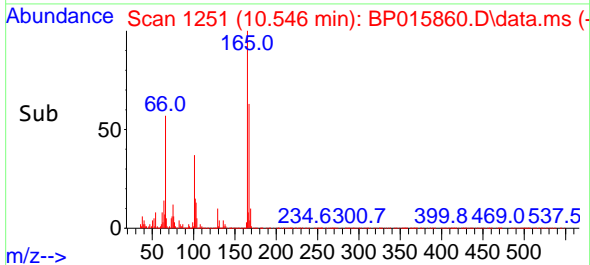
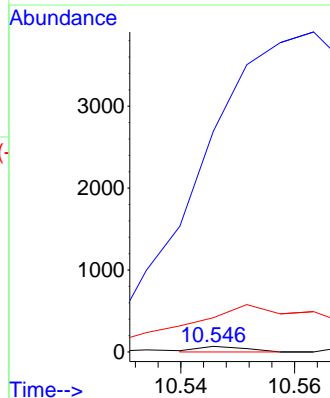
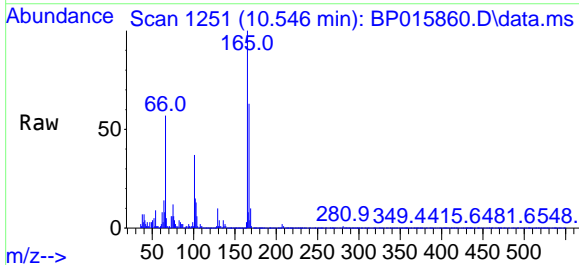
Ion	Ratio	Lower	Upper
93	100		
95	78.7	26.6	39.8#
123	8.5	8.6	13.0#

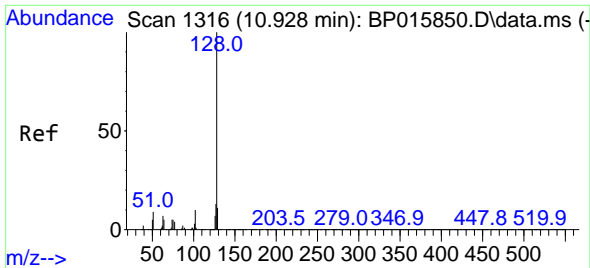


#29  
 2,4-Dichlorophenol  
 Concen: 10.501 ng/ul  
 RT: 10.546 min Scan# 1251  
 Delta R.T. 0.000 min  
 Lab File: BP015860.D  
 Acq: 01 Jul 2023 00:12

Tgt Ion: 162 Resp: 38

Ion	Ratio	Lower	Upper
162	100		
164	3961.8	53.0	79.6#
98	614.7	31.3	46.9#



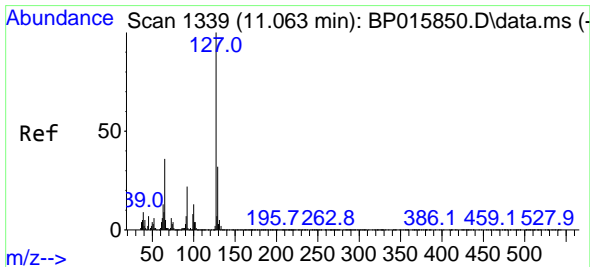
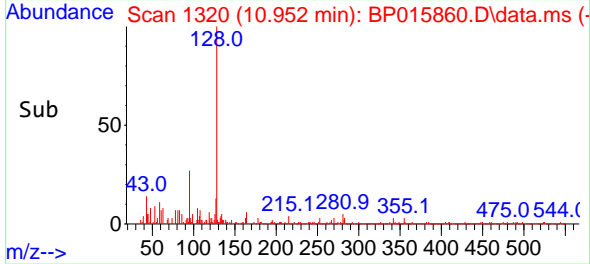
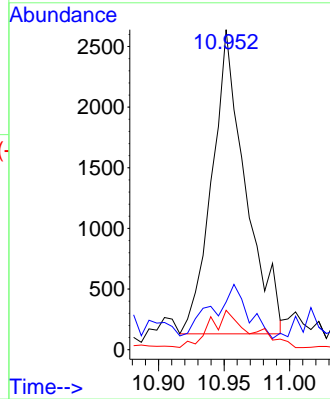
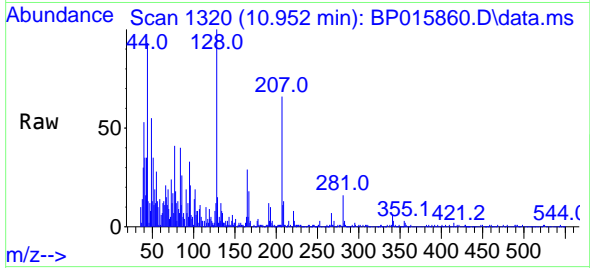


#30  
 Naphthalene  
 Concen: 357.540 ng/u1  
 RT: 10.952 min Scan# 111  
 Delta R.T. 0.024 min  
 Lab File: BP015860.D  
 Acq: 01 Jul 2023 00:12

Instrument :  
 BNA\_P  
 ClientSampleId :  
 DCFZ3

Tgt Ion:128 Resp: 4451

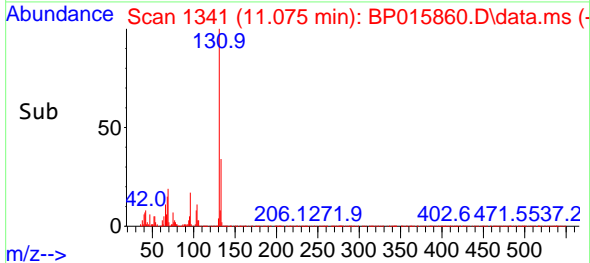
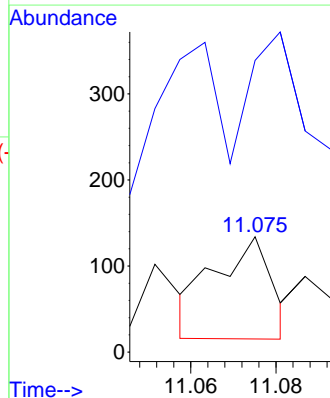
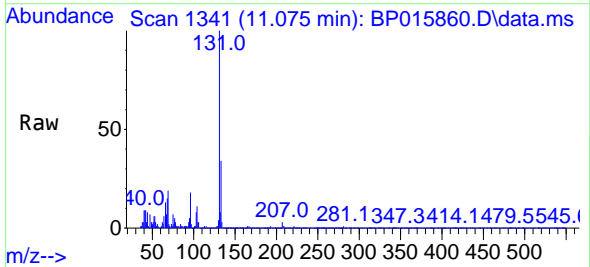
Ion	Ratio	Lower	Upper
128	100		
129	14.9	8.6	12.8#
127	12.3	10.3	15.5

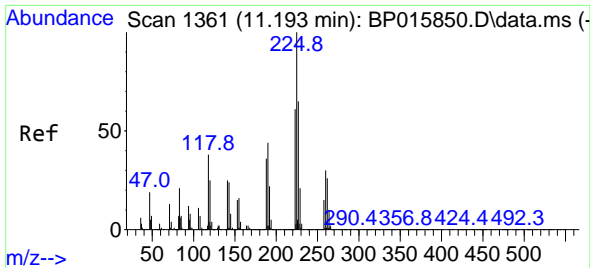


#32  
 4-Chloroaniline  
 Concen: 22.849 ng/u1  
 RT: 11.075 min Scan# 1341  
 Delta R.T. 0.012 min  
 Lab File: BP015860.D  
 Acq: 01 Jul 2023 00:12

Tgt Ion:127 Resp: 111

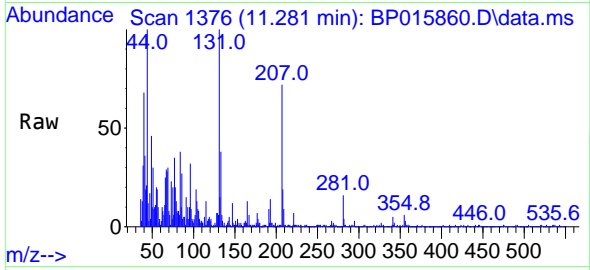
Ion	Ratio	Lower	Upper
127	100		
129	253.0	24.7	37.1#





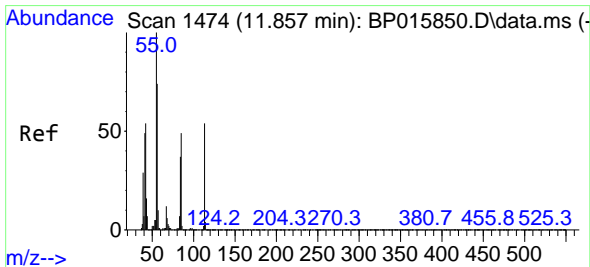
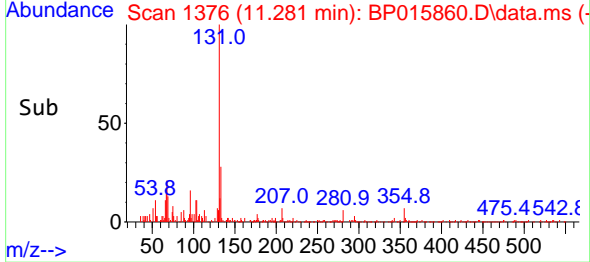
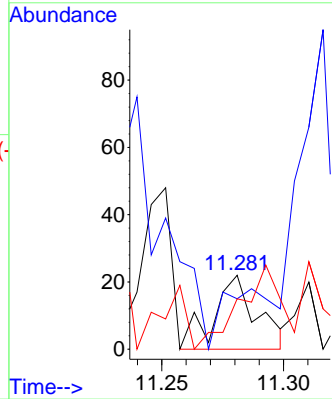
#33  
 Hexachlorobutadiene  
 Concen: 9.880 ng/u1  
 RT: 11.281 min Scan# 111  
 Delta R.T. 0.088 min  
 Lab File: BP015860.D  
 Acq: 01 Jul 2023 00:12

Instrument :  
 BNA\_P  
 ClientSampleId :  
 DCFZ3

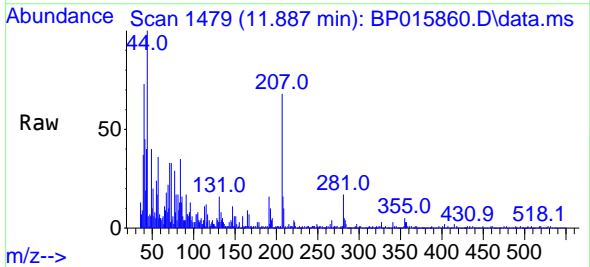


Tgt Ion: 225 Resp: 27

Ion	Ratio	Lower	Upper
225	100		
223	68.2	50.4	75.6
227	68.2	51.0	76.4

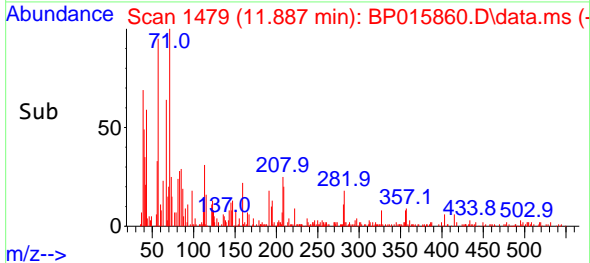
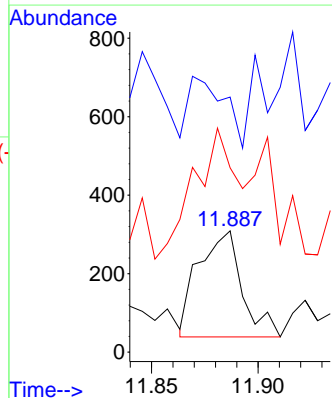


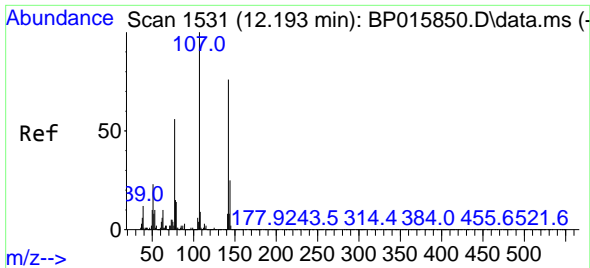
#34  
 Caprolactam  
 Concen: 346.008 ng/u1  
 RT: 11.887 min Scan# 1479  
 Delta R.T. 0.030 min  
 Lab File: BP015860.D  
 Acq: 01 Jul 2023 00:12



Tgt Ion: 113 Resp: 383

Ion	Ratio	Lower	Upper
113	100		
55	210.4	142.8	214.2
56	152.1	116.9	175.3

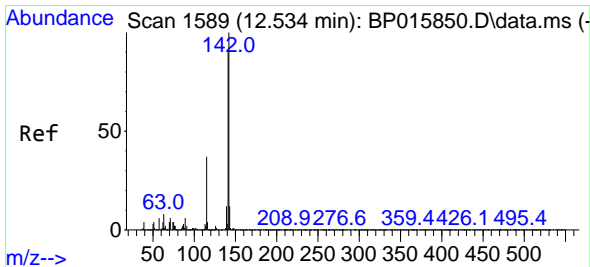
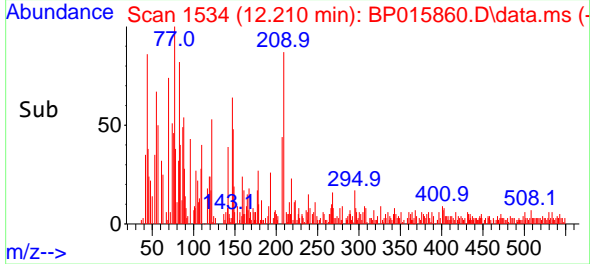
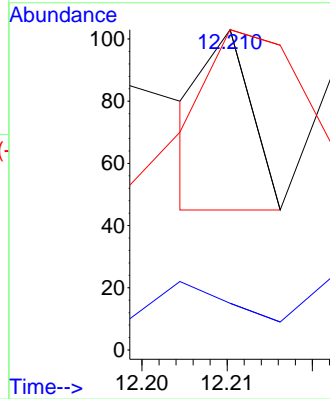
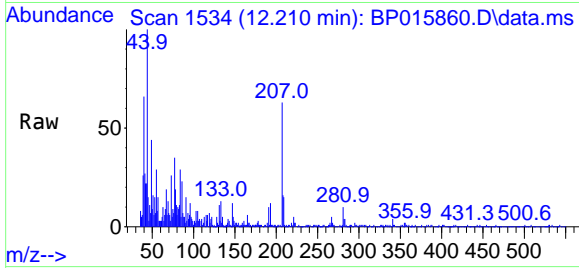




#35  
 4-Chloro-3-methylphenol  
 Concen: 4.722 ng/ul  
 RT: 12.210 min Scan# 1531  
 Delta R.T. 0.024 min  
 Lab File: BP015860.D  
 Acq: 01 Jul 2023 00:12

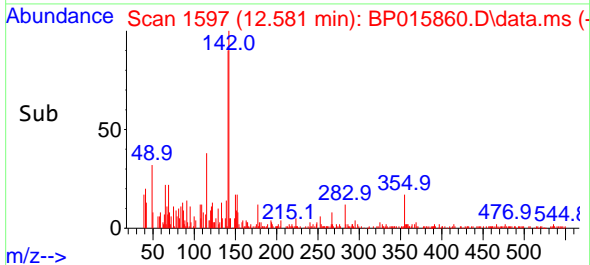
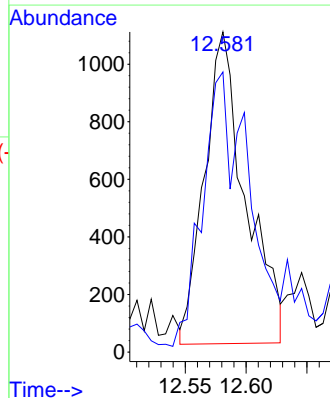
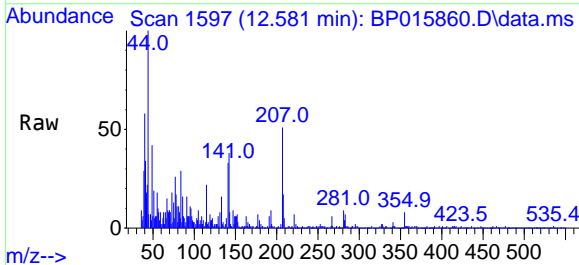
Instrument : BNA\_P  
 ClientSampleId : DCFZ3

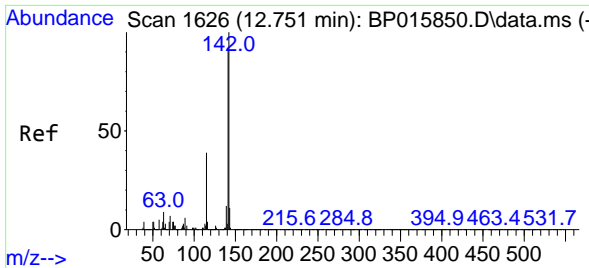
Tgt Ion	Resp	Lower	Upper
107	100		
144	14.6	18.4	27.6#
142	100.0	58.6	87.8#



#36  
 2-Methylnaphthalene  
 Concen: 309.696 ng/ul  
 RT: 12.581 min Scan# 1597  
 Delta R.T. 0.047 min  
 Lab File: BP015860.D  
 Acq: 01 Jul 2023 00:12

Tgt Ion	Resp	Lower	Upper
142	100		
141	87.5	73.2	109.8



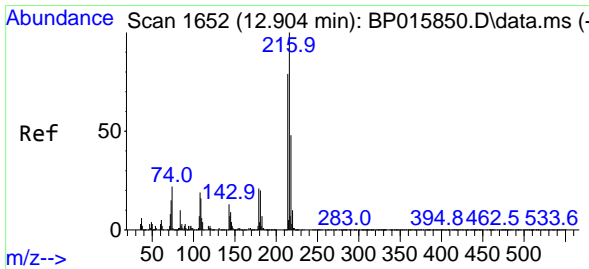
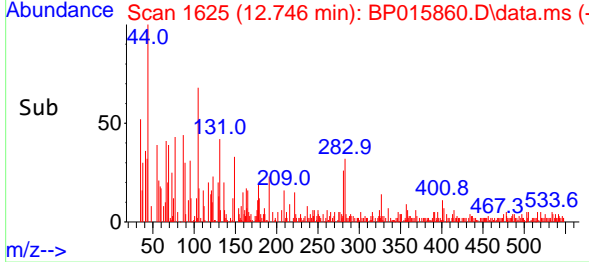
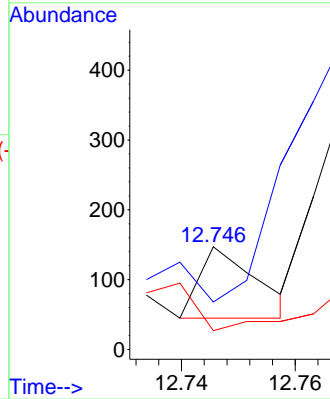
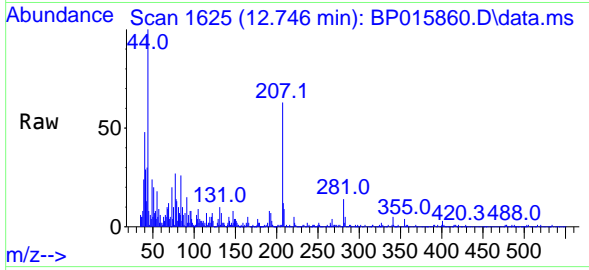


#37  
 1-Methylnaphthalene  
 Concen: 8.493 ng/ul  
 RT: 12.746 min Scan# 1626  
 Delta R.T. -0.006 min  
 Lab File: BP015860.D  
 Acq: 01 Jul 2023 00:12

Instrument :  
 BNA\_P  
 ClientSampleId :  
 DCFZ3

Tgt Ion:142 Resp: 71

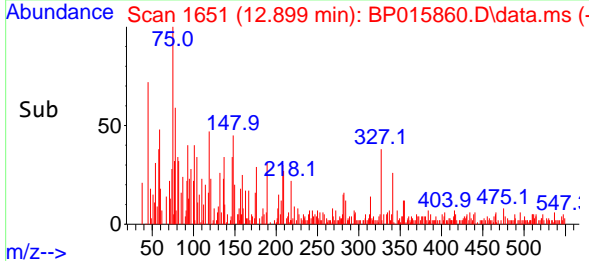
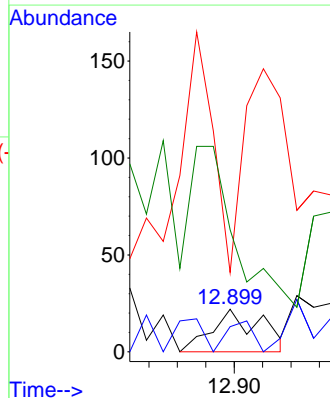
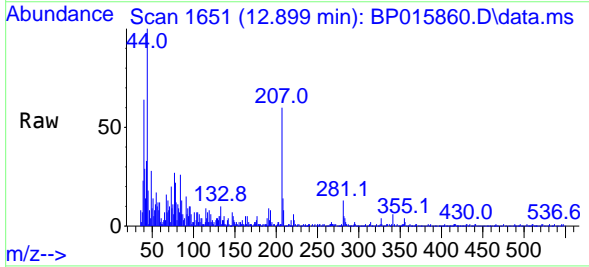
Ion	Ratio	Lower	Upper
142	100		
141	46.3	73.1	109.7#
116	18.4	4.0	6.0#



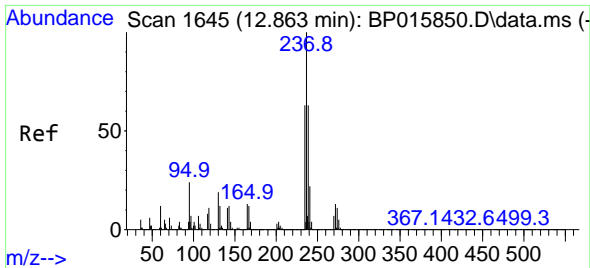
#39  
 1,2,4,5-Tetrachlorobenzene  
 Concen: 1.051 ng/ul  
 RT: 12.899 min Scan# 1651  
 Delta R.T. -0.006 min  
 Lab File: BP015860.D  
 Acq: 01 Jul 2023 00:12

Tgt Ion:216 Resp: 26

Ion	Ratio	Lower	Upper
216	100		
214	59.1	62.4	93.6#
179	186.4	17.6	26.4#
108	286.4	15.5	23.3#





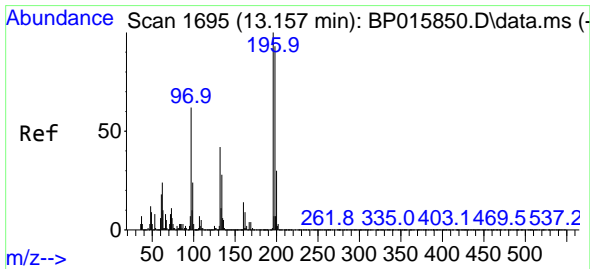
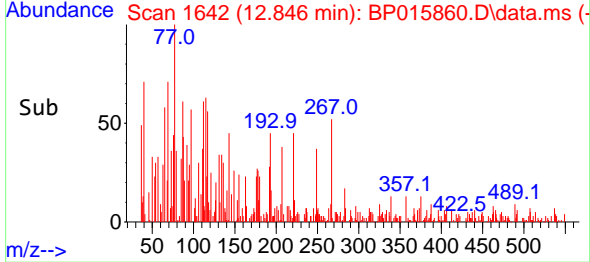
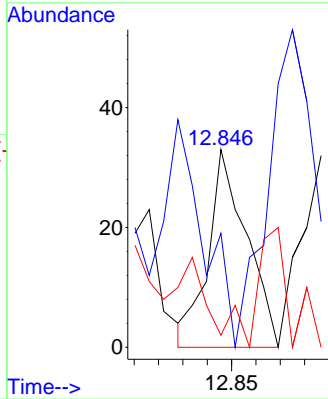
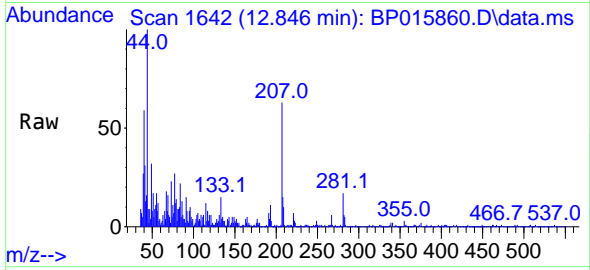


#40  
 Hexachlorocyclopentadiene  
 Concen: 4.862 ng/ul  
 RT: 12.846 min Scan# 1642  
 Delta R.T. -0.018 min  
 Lab File: BP015860.D  
 Acq: 01 Jul 2023 00:12

Instrument :  
 BNA\_P  
 ClientSampleId :  
 DCFZ3

Tgt Ion:237 Resp: 36

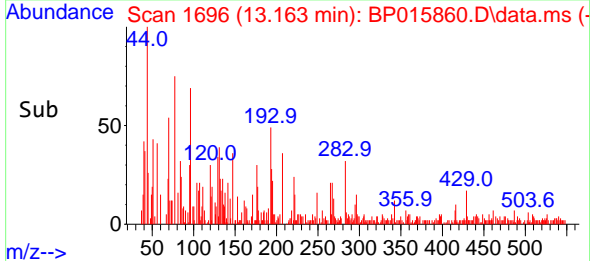
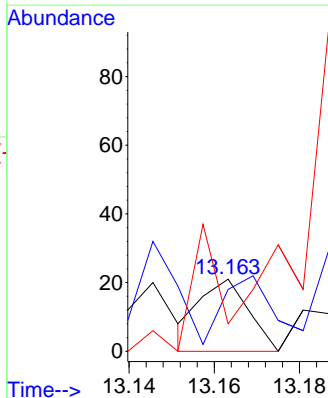
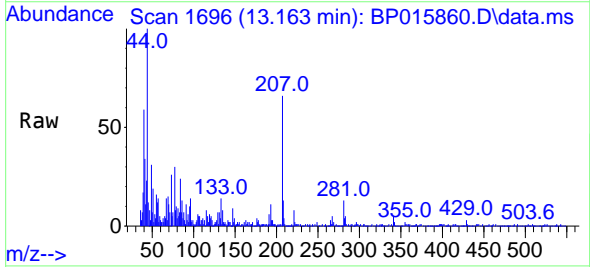
Ion	Ratio	Lower	Upper
237	100		
235	57.6	48.6	73.0
272	6.1	10.5	15.7#

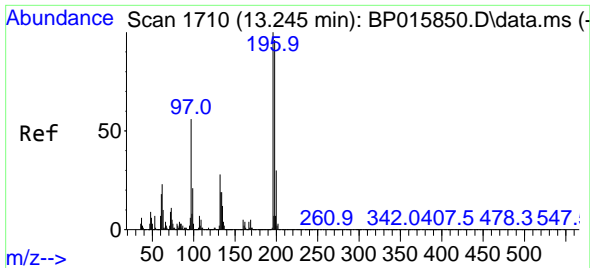


#41  
 2,4,6-Trichlorophenol  
 Concen: 1.087 ng/ul  
 RT: 13.163 min Scan# 1696  
 Delta R.T. 0.006 min  
 Lab File: BP015860.D  
 Acq: 01 Jul 2023 00:12

Tgt Ion:196 Resp: 17

Ion	Ratio	Lower	Upper
196	100		
198	85.7	75.4	113.2
200	38.1	23.6	35.4#



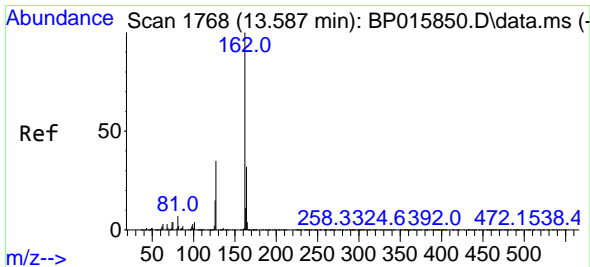
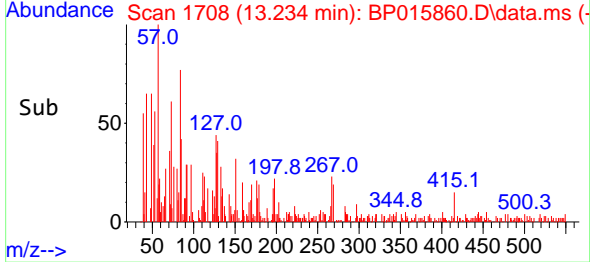
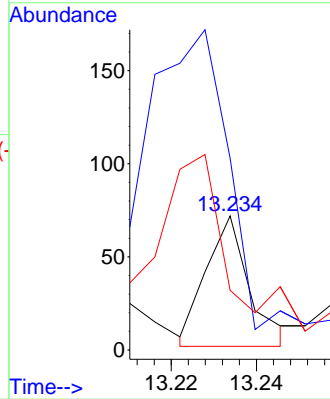
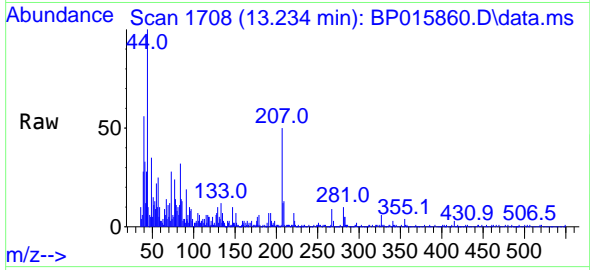


#42  
 2,4,5-Trichlorophenol  
 Concen: 2.954 ng/ul  
 RT: 13.234 min Scan# 1710  
 Delta R.T. -0.006 min  
 Lab File: BP015860.D  
 Acq: 01 Jul 2023 00:12

Instrument : BNA\_P  
 ClientSampleId : DCFZ3

Tgt Ion:196 Resp: 49

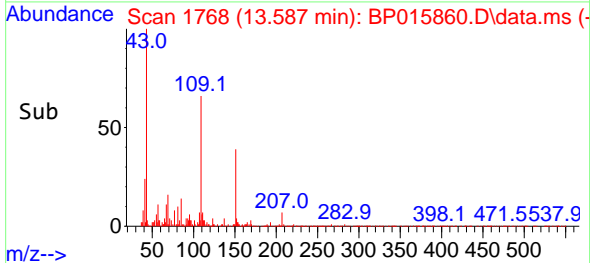
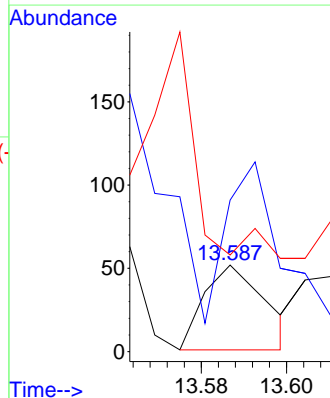
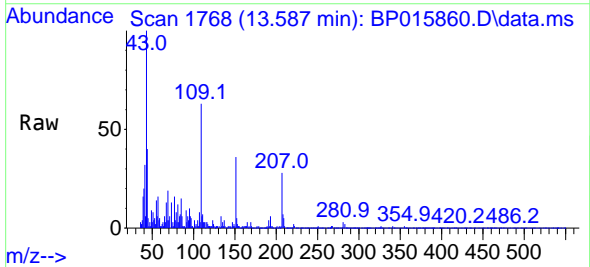
Ion	Ratio	Lower	Upper
196	100		
198	143.1	74.9	112.3#
200	44.4	24.3	36.5#

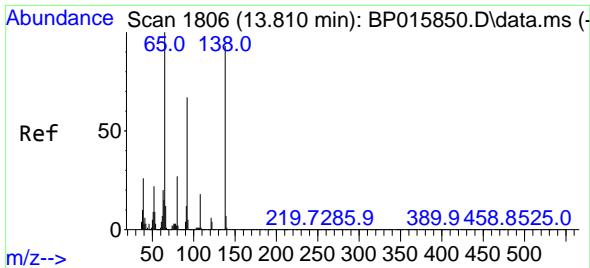


#44  
 2-Chloronaphthalene  
 Concen: 1.067 ng/ul  
 RT: 13.587 min Scan# 1768  
 Delta R.T. 0.000 min  
 Lab File: BP015860.D  
 Acq: 01 Jul 2023 00:12

Tgt Ion:162 Resp: 50

Ion	Ratio	Lower	Upper
162	100		
164	175.0	26.1	39.1#
127	111.5	33.4	50.0#



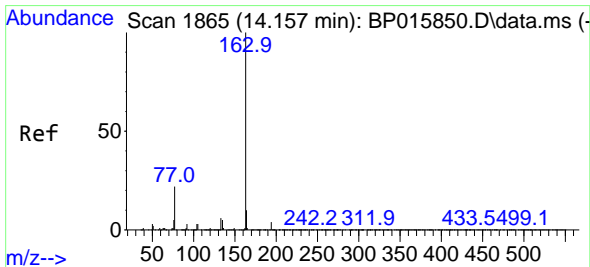
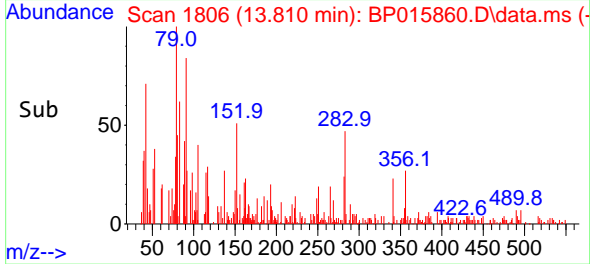
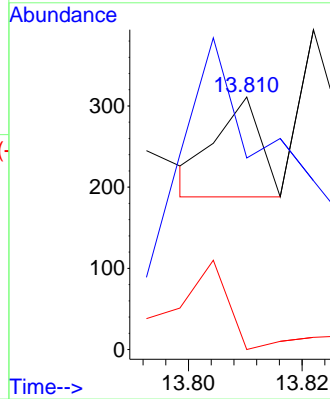
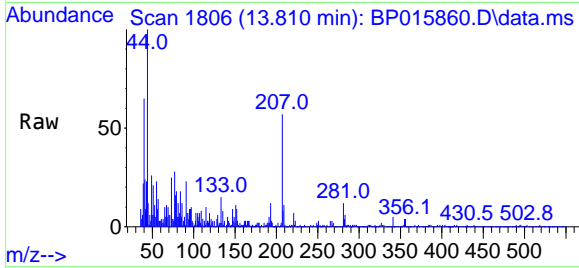


#45  
 2-Nitroaniline  
 Concen: 4.544 ng/ul  
 RT: 13.810 min Scan# 1806  
 Delta R.T. 0.000 min  
 Lab File: BP015860.D  
 Acq: 01 Jul 2023 00:12

Instrument :  
 BNA\_P  
 ClientSampleId :  
 DCFZ3

Tgt Ion: 65 Resp: 67

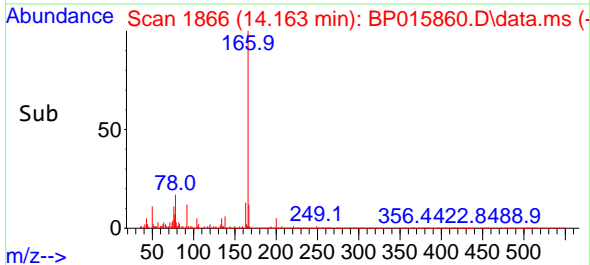
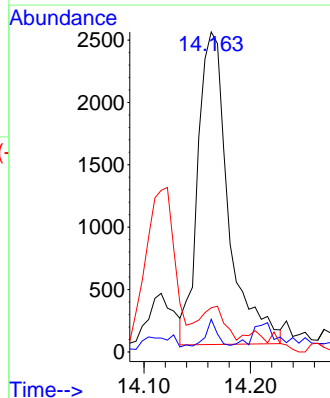
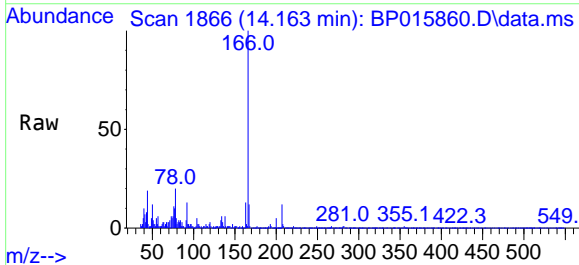
Ion	Ratio	Lower	Upper
65	100		
92	75.9	49.5	74.3#
138	0.0	71.4	107.2#

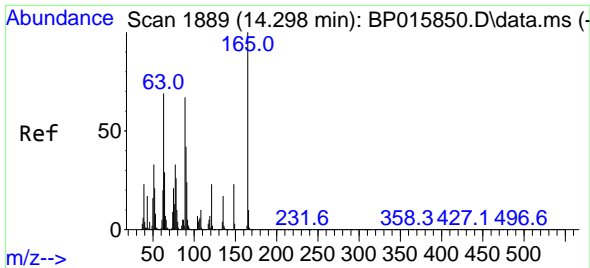


#47  
 Dimethylphthalate  
 Concen: 83.299 ng/ul  
 RT: 14.163 min Scan# 1866  
 Delta R.T. 0.006 min  
 Lab File: BP015860.D  
 Acq: 01 Jul 2023 00:12

Tgt Ion: 163 Resp: 5004

Ion	Ratio	Lower	Upper
163	100		
194	10.2	3.1	4.7#
164	13.8	7.7	11.5#



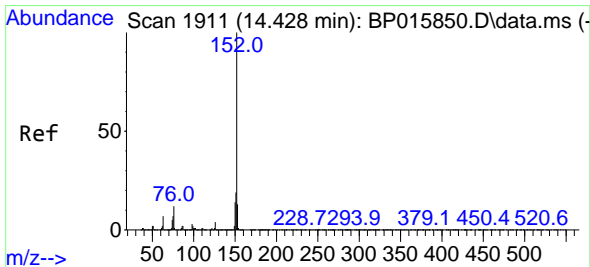
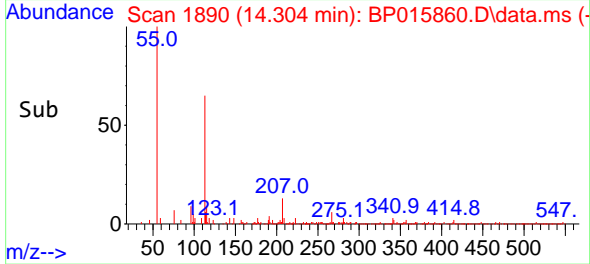
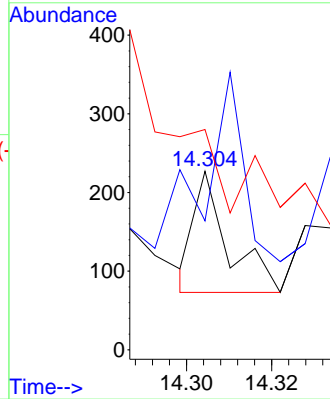
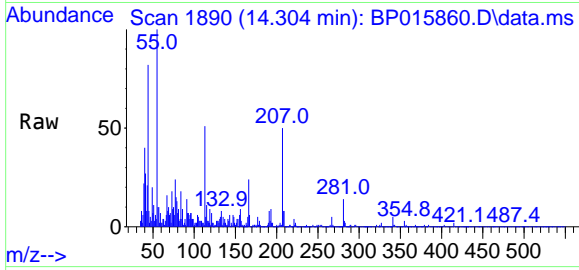


#48  
 2,6-Dinitrotoluene  
 Concen: 6.975 ng/uI  
 RT: 14.304 min Scan# 11  
 Delta R.T. 0.006 min  
 Lab File: BP015860.D  
 Acq: 01 Jul 2023 00:12

Instrument :  
 BNA\_P  
 ClientSampleId :  
 DCFZ3

Tgt Ion:165 Resp: 85

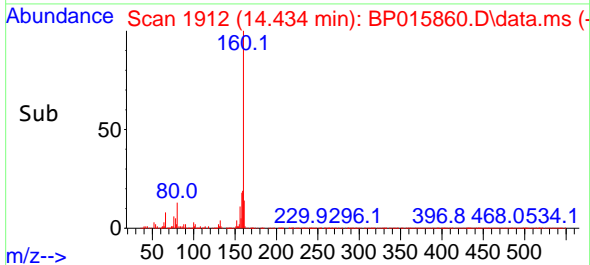
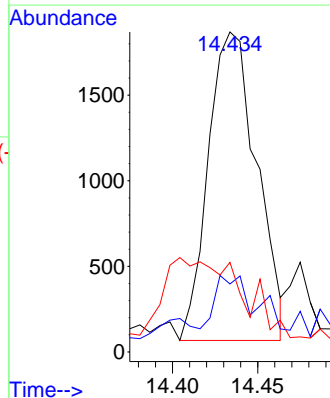
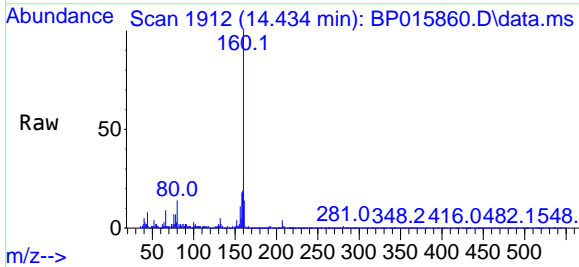
Ion	Ratio	Lower	Upper
165	100		
89	82.4	54.1	81.1#
121	123.3	18.2	27.2#

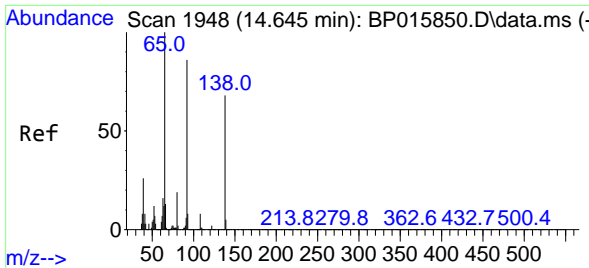


#50  
 Acenaphthylene  
 Concen: 49.584 ng/uI  
 RT: 14.434 min Scan# 1912  
 Delta R.T. 0.006 min  
 Lab File: BP015860.D  
 Acq: 01 Jul 2023 00:12

Tgt Ion:152 Resp: 3565

Ion	Ratio	Lower	Upper
152	100		
151	21.2	16.2	24.2
153	28.0	10.5	15.7#



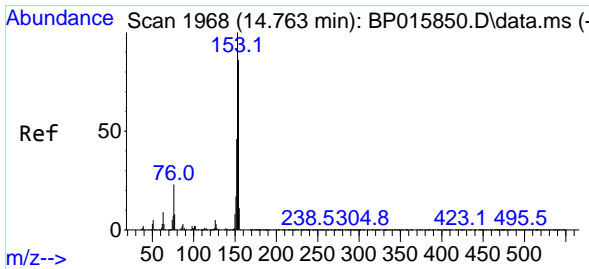
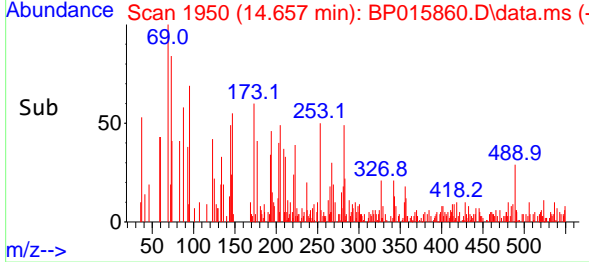
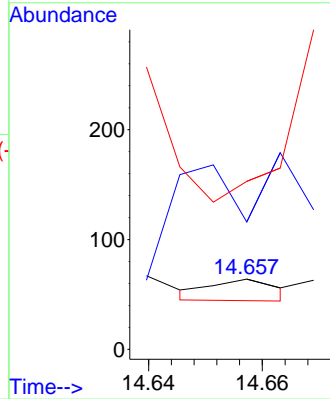
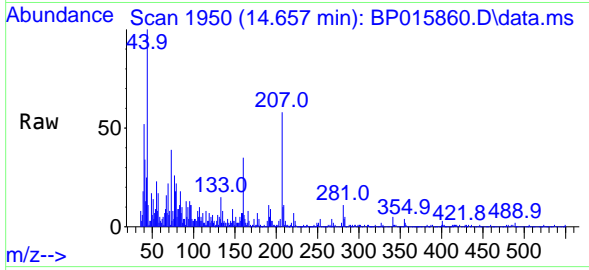


#51  
 3-Nitroaniline  
 Concen: 1.674 ng/ul  
 RT: 14.657 min Scan# 1948  
 Delta R.T. 0.012 min  
 Lab File: BP015860.D  
 Acq: 01 Jul 2023 00:12

Instrument :  
 BNA\_P  
 ClientSampleId :  
 DCFZ3

Tgt Ion:138 Resp: 16

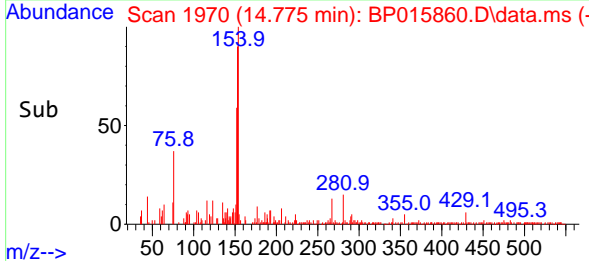
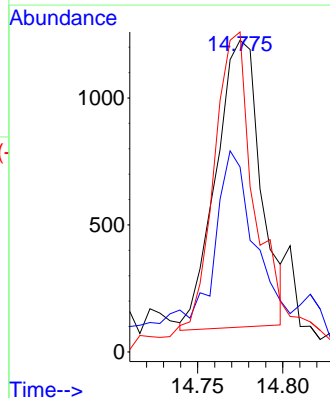
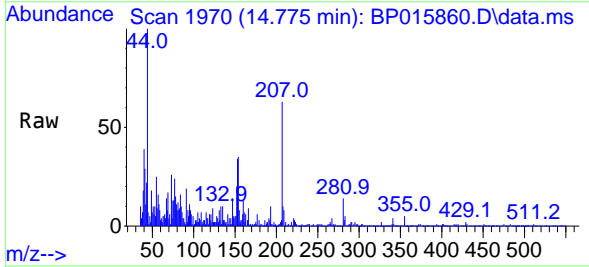
Ion	Ratio	Lower	Upper
138	100		
108	181.3	9.1	13.7#
92	239.1	96.8	145.2#

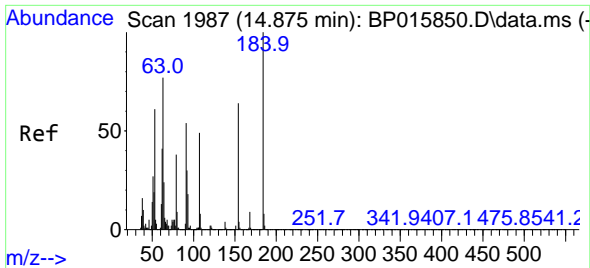


#52  
 Acenaphthene  
 Concen: 41.519 ng/ul  
 RT: 14.775 min Scan# 1970  
 Delta R.T. 0.006 min  
 Lab File: BP015860.D  
 Acq: 01 Jul 2023 00:12

Tgt Ion:153 Resp: 2070

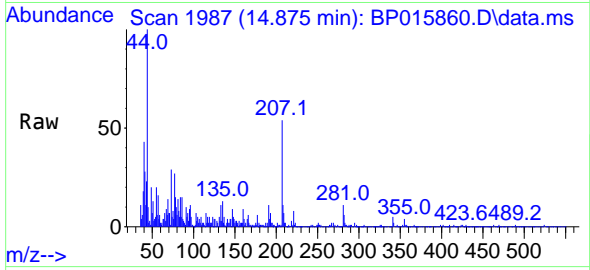
Ion	Ratio	Lower	Upper
153	100		
152	59.3	39.4	59.2#
154	102.7	71.4	107.2



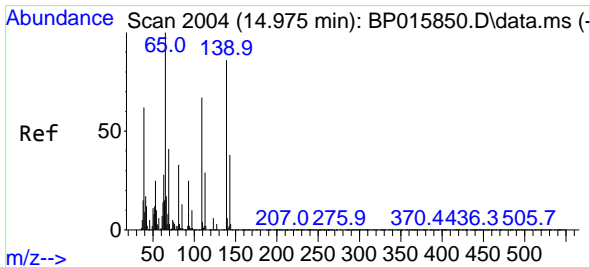
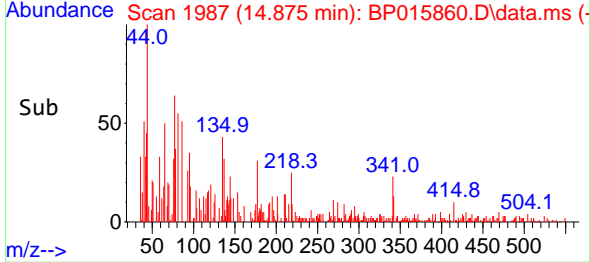
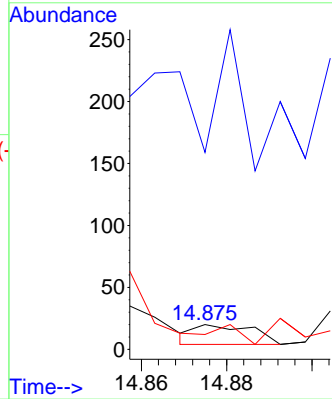


#53  
 2,4-Dinitrophenol  
 Concen: 2.320 ng/ul  
 RT: 14.875 min Scan# 1987  
 Delta R.T. 0.000 min  
 Lab File: BP015860.D  
 Acq: 01 Jul 2023 00:12

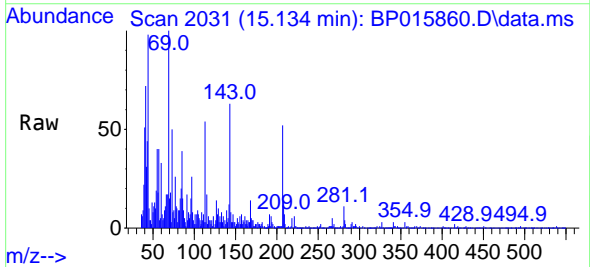
Instrument :  
 BNA\_P  
 ClientSampleId :  
 DCFZ3



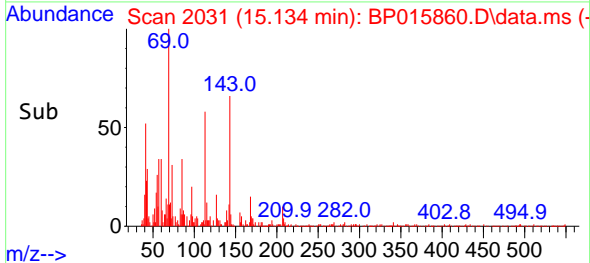
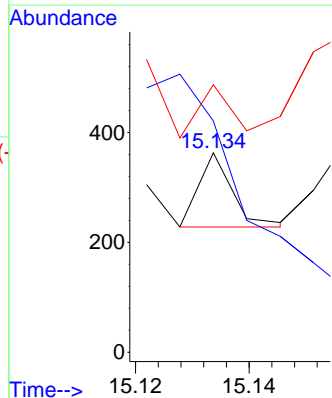
Tgt Ion:184 Resp: 15  
 Ion Ratio Lower Upper  
 184 100  
 63 795.0 71.4 107.0#  
 154 60.0 61.1 91.7#

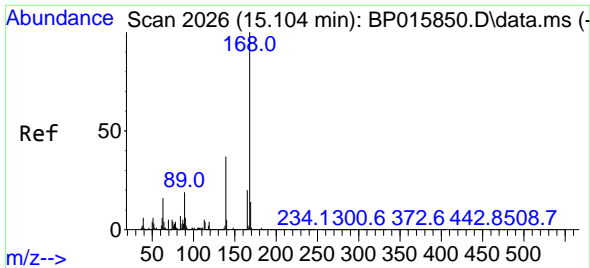


#55  
 4-Nitrophenol  
 Concen: 7.055 ng/ul  
 RT: 15.134 min Scan# 2031  
 Delta R.T. 0.165 min  
 Lab File: BP015860.D  
 Acq: 01 Jul 2023 00:12



Tgt Ion:109 Resp: 56  
 Ion Ratio Lower Upper  
 109 100  
 139 116.0 81.3 121.9  
 65 134.2 99.9 149.9

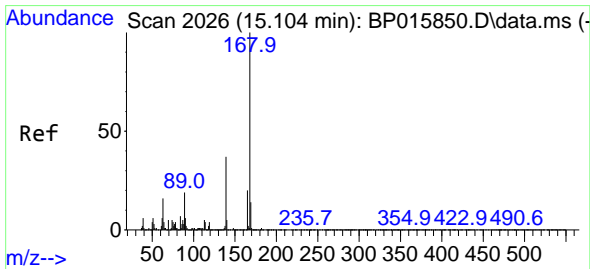
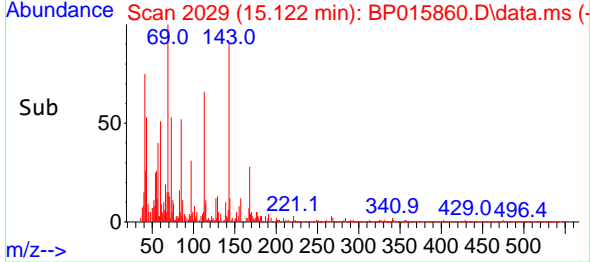
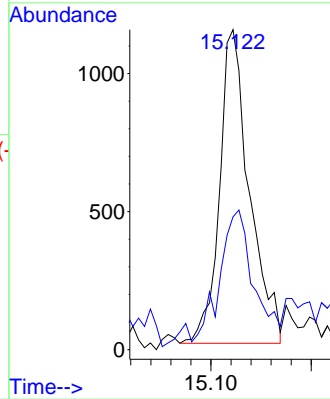
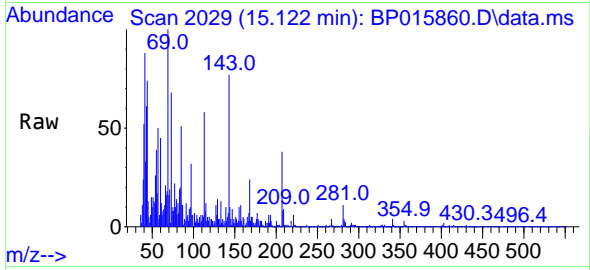




#56  
 Dibenzenofuran  
 Concen: 33.997 ng/ul  
 RT: 15.122 min Scan# 2027  
 Delta R.T. 0.018 min  
 Lab File: BP015860.D  
 Acq: 01 Jul 2023 00:12

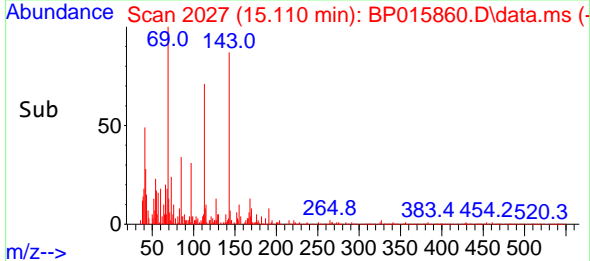
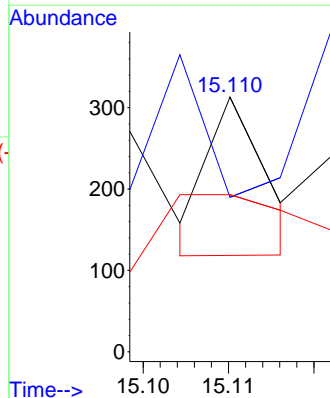
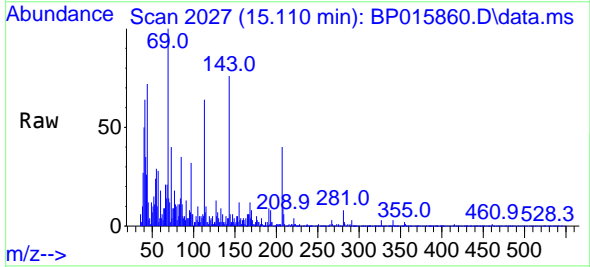
Instrument :  
 BNA\_P  
 ClientSampleId :  
 DCFZ3

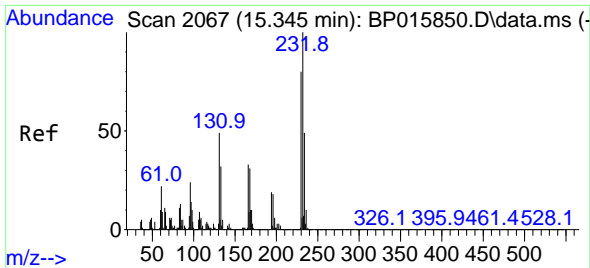
Tgt Ion:168 Resp: 2353  
 Ion Ratio Lower Upper  
 168 100  
 139 41.5 32.2 48.4



#57  
 2,4-Dinitrotoluene  
 Concen: 5.480 ng/ul  
 RT: 15.110 min Scan# 2027  
 Delta R.T. 0.006 min  
 Lab File: BP015860.D  
 Acq: 01 Jul 2023 00:12

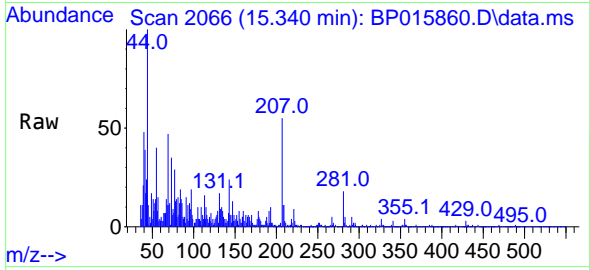
Tgt Ion:165 Resp: 91  
 Ion Ratio Lower Upper  
 165 100  
 63 60.7 56.8 85.2  
 182 61.7 2.0 3.0#



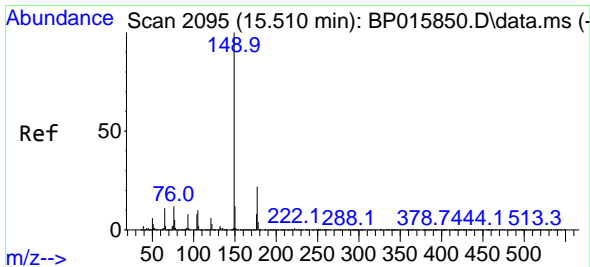
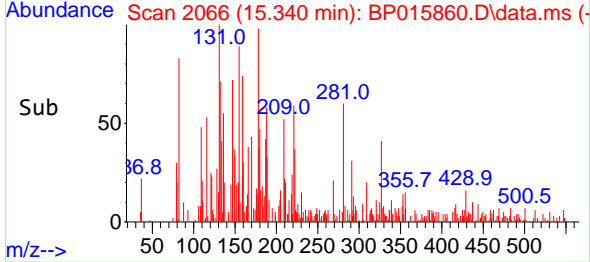
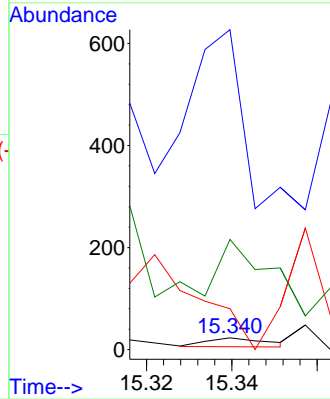


#58  
 2,3,4,6-Tetrachlorophenol  
 Concen: 1.193 ng/ul  
 RT: 15.340 min Scan# 2067  
 Delta R.T. 0.000 min  
 Lab File: BP015860.D  
 Acq: 01 Jul 2023 00:12

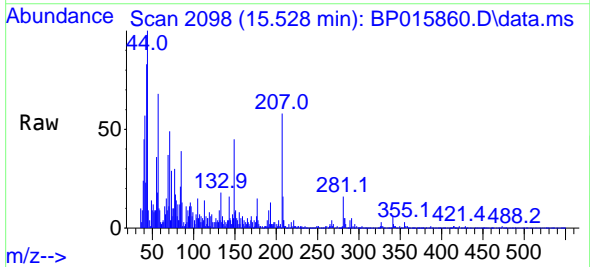
Instrument : BNA\_P  
 ClientSampleId : DCFZ3



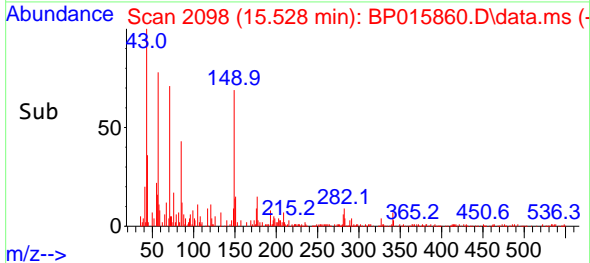
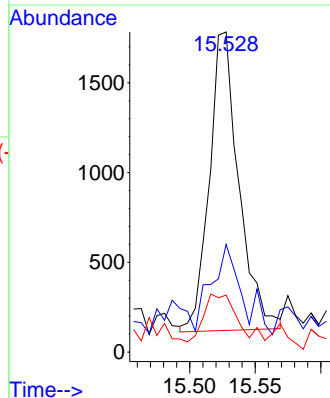
Tgt Ion:232 Resp: 17  
 Ion Ratio Lower Upper  
 232 100  
 131 2726.1 38.2 57.2#  
 130 347.8 2.2 3.2#  
 166 939.1 25.6 38.4#



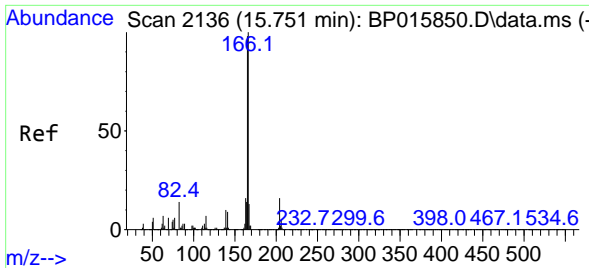
#59  
 Diethylphthalate  
 Concen: 42.868 ng/ul  
 RT: 15.528 min Scan# 2098  
 Delta R.T. 0.012 min  
 Lab File: BP015860.D  
 Acq: 01 Jul 2023 00:12



Tgt Ion:149 Resp: 2606  
 Ion Ratio Lower Upper  
 149 100  
 177 33.6 16.8 25.2#  
 150 17.8 10.3 15.5#



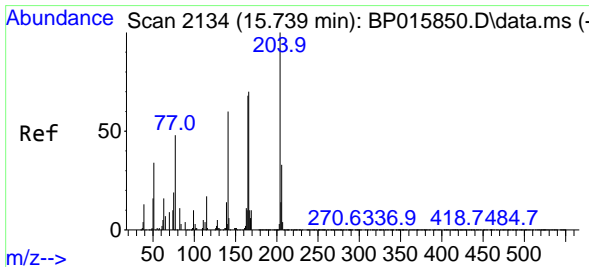
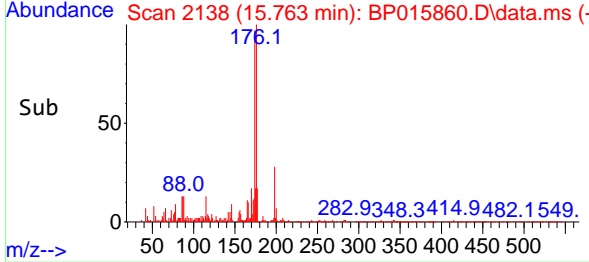
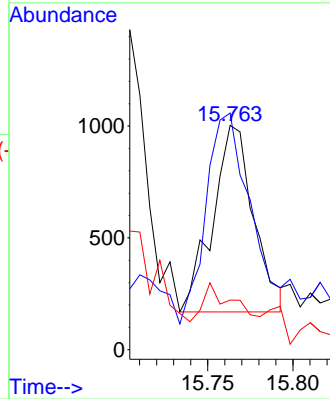
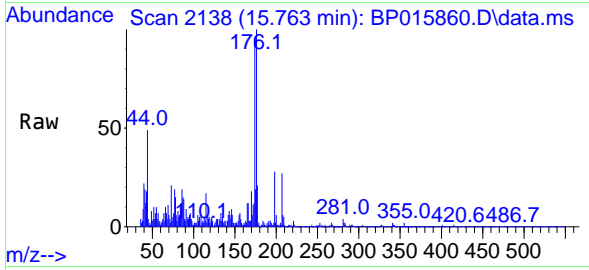




#61  
Fluorene  
Concen: 24.938 ng/u1  
RT: 15.763 min Scan# 2138  
Delta R.T. 0.012 min  
Lab File: BP015860.D  
Acq: 01 Jul 2023 00:12

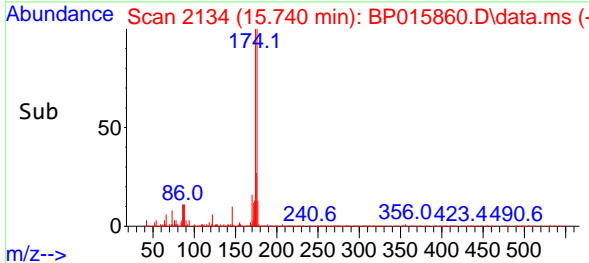
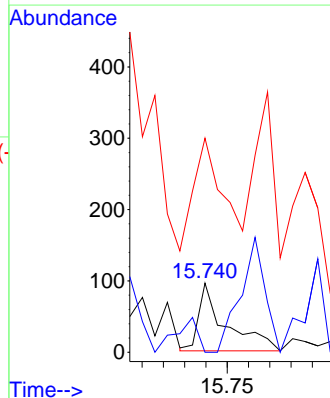
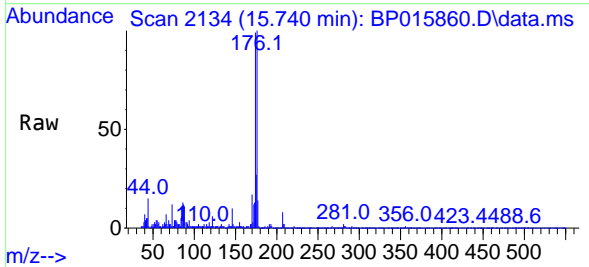
Instrument :  
BNA\_P  
ClientSampleId :  
DCFZ3

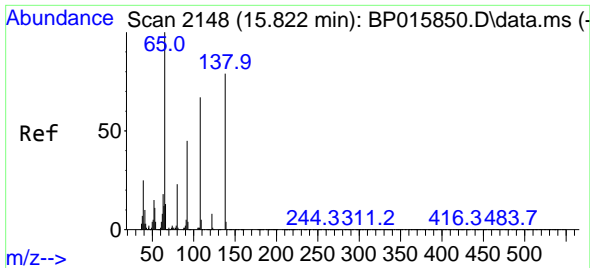
Tgt Ion:166 Resp: 1400  
Ion Ratio Lower Upper  
166 100  
165 105.5 78.7 118.1  
167 22.1 10.5 15.7#



#62  
4-Chlorophenyl-phenylether  
Concen: 2.924 ng/u1  
RT: 15.740 min Scan# 2134  
Delta R.T. 0.000 min  
Lab File: BP015860.D  
Acq: 01 Jul 2023 00:12

Tgt Ion:204 Resp: 84  
Ion Ratio Lower Upper  
204 100  
206 0.0 26.0 39.0#  
141 309.3 51.8 77.8#

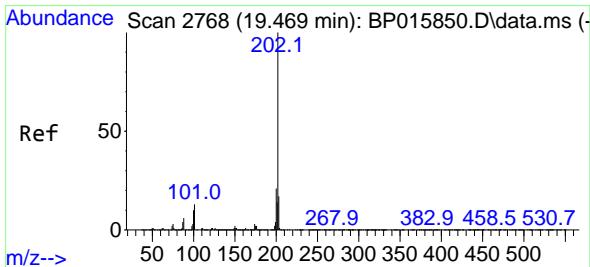
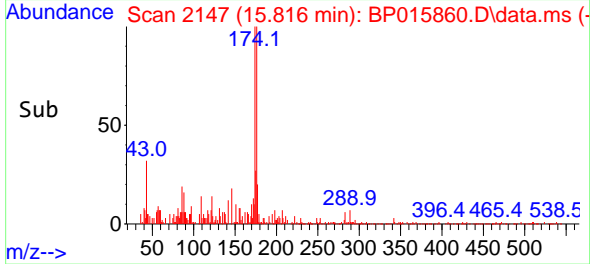
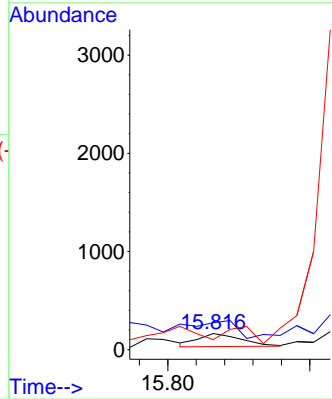
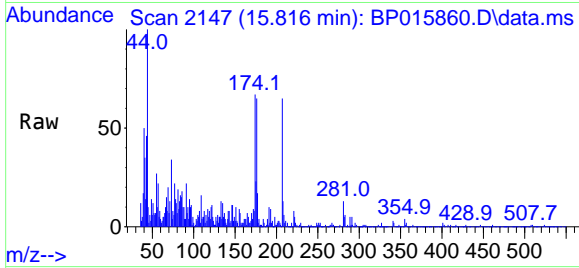




#63  
 4-Nitroaniline  
 Concen: 21.101 ng/u1  
 RT: 15.816 min Scan# 2148  
 Delta R.T. 0.000 min  
 Lab File: BP015860.D  
 Acq: 01 Jul 2023 00:12

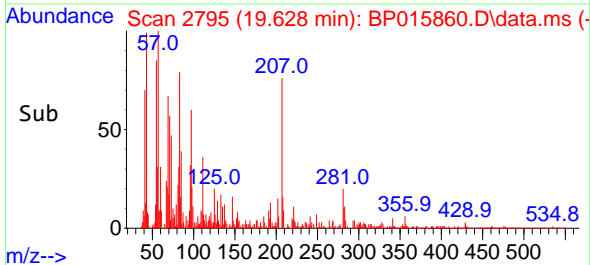
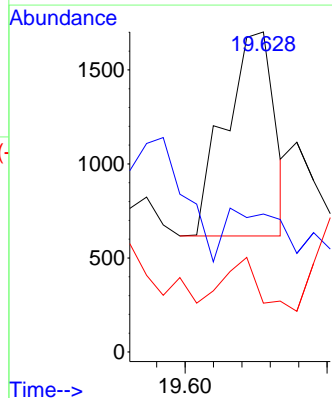
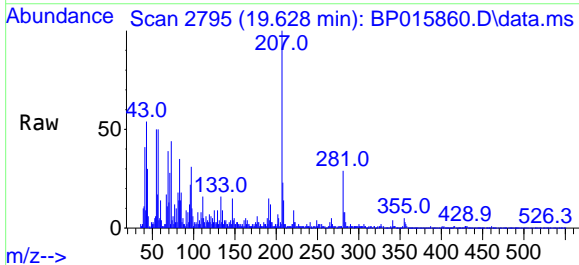
Instrument :  
 BNA\_P  
 ClientSampleId :  
 DCFZ3

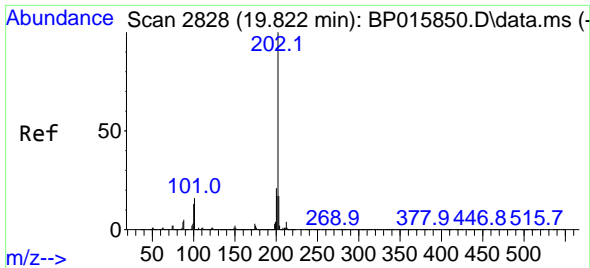
Tgt Ion:138 Resp: 138  
 Ion Ratio Lower Upper  
 138 100  
 92 168.3 50.1 75.1#  
 108 62.8 85.5 128.3#



#80  
 Fluoranthene  
 Concen: 184.979 ng/u1  
 RT: 19.628 min Scan# 2795  
 Delta R.T. 0.159 min  
 Lab File: BP015860.D  
 Acq: 01 Jul 2023 00:12

Tgt Ion:202 Resp: 1306  
 Ion Ratio Lower Upper  
 202 100  
 101 43.1 8.3 12.5#  
 100 15.3 6.6 9.8#



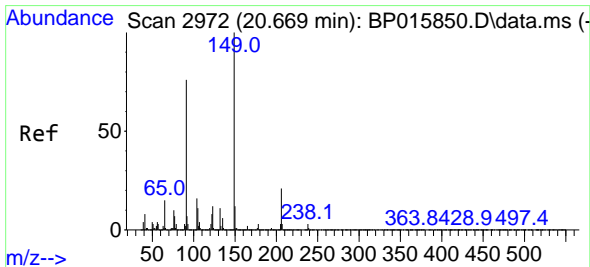
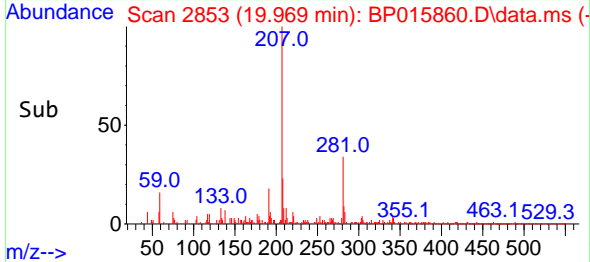
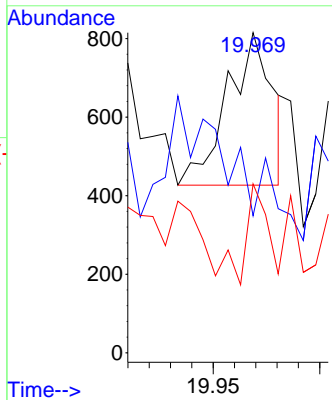
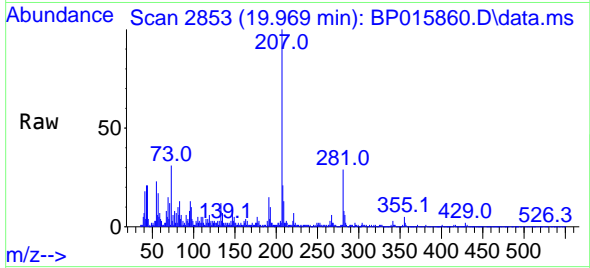


#82  
 Pyrene  
 Concen: 79.422 ng/u1  
 RT: 19.969 min Scan# 21  
 Delta R.T. 0.147 min  
 Lab File: BP015860.D  
 Acq: 01 Jul 2023 00:12

Instrument :  
 BNA\_P  
 ClientSampleId :  
 DCFZ3

Tgt Ion:202 Resp: 572

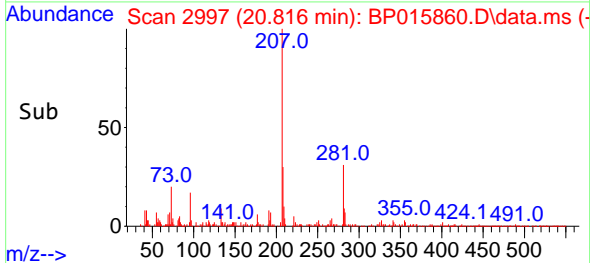
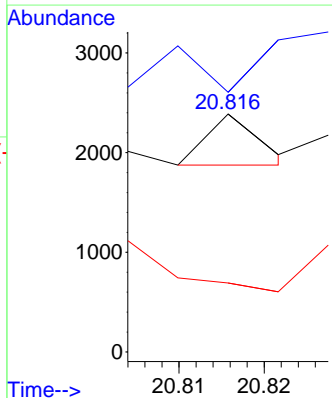
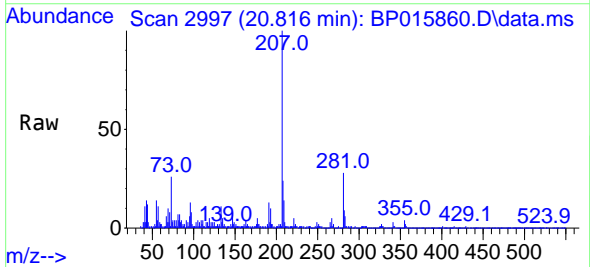
Ion	Ratio	Lower	Upper
202	100		
101	42.8	9.3	13.9#
100	52.8	7.6	11.4#

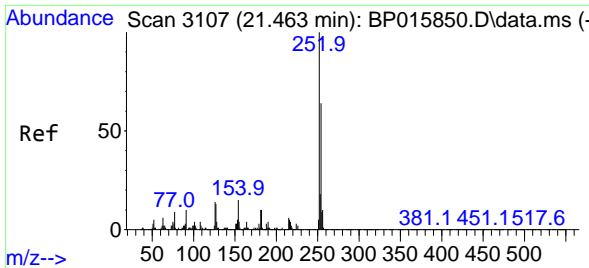


#83  
 Butylbenzylphthalate  
 Concen: 73.854 ng/u1  
 RT: 20.816 min Scan# 2997  
 Delta R.T. 0.147 min  
 Lab File: BP015860.D  
 Acq: 01 Jul 2023 00:12

Tgt Ion:149 Resp: 217

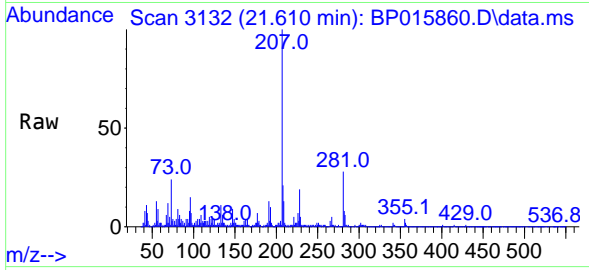
Ion	Ratio	Lower	Upper
149	100		
91	109.1	59.8	89.6#
206	29.0	16.4	24.6#



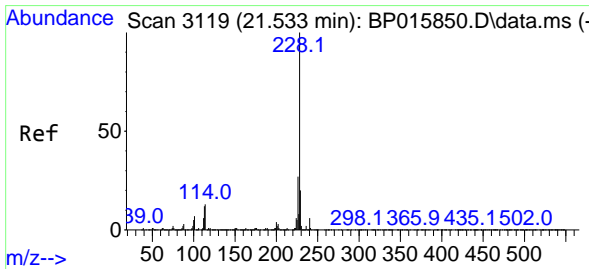
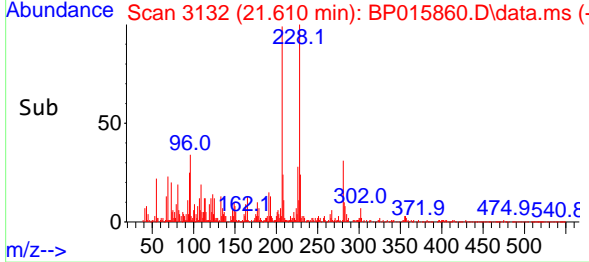
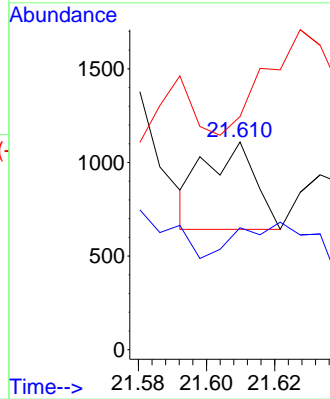


#84  
 3,3'-Dichlorobenzidine  
 Concen: 243.556 ng/ul  
 RT: 21.610 min Scan# 3112  
 Delta R.T. 0.141 min  
 Lab File: BP015860.D  
 Acq: 01 Jul 2023 00:12

Instrument :  
 BNA\_P  
 ClientSampleId :  
 DCFZ3

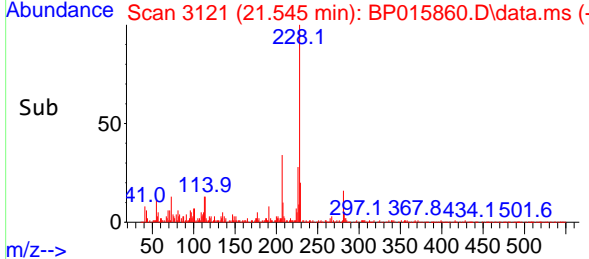
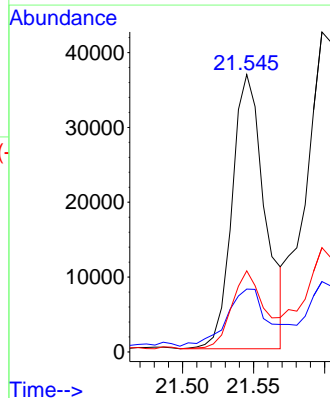
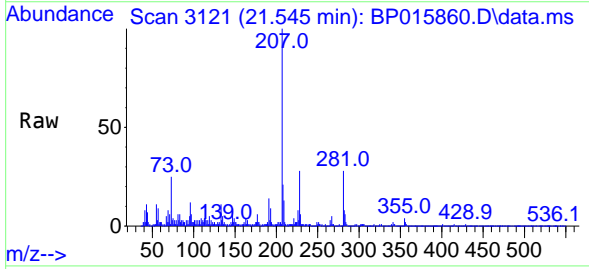


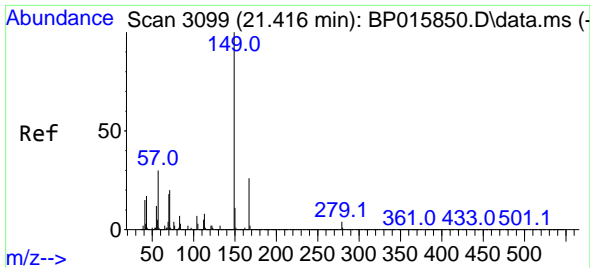
Tgt Ion:252 Resp: 479  
 Ion Ratio Lower Upper  
 252 100  
 254 58.7 51.0 76.6  
 126 112.3 8.6 13.0#



#85  
 Benzo(a)anthracene  
 Concen: 9635.739 ng/ul  
 RT: 21.545 min Scan# 3121  
 Delta R.T. 0.006 min  
 Lab File: BP015860.D  
 Acq: 01 Jul 2023 00:12

Tgt Ion:228 Resp: 58971  
 Ion Ratio Lower Upper  
 228 100  
 229 22.7 15.3 22.9  
 226 29.2 21.4 32.0



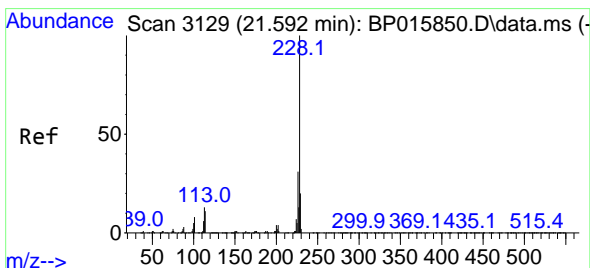
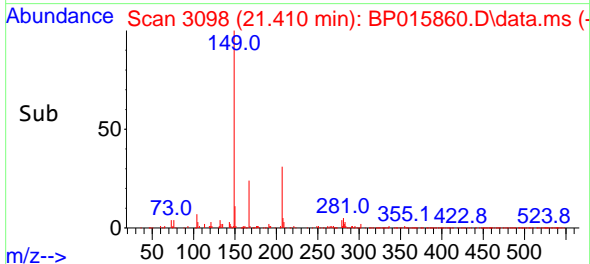
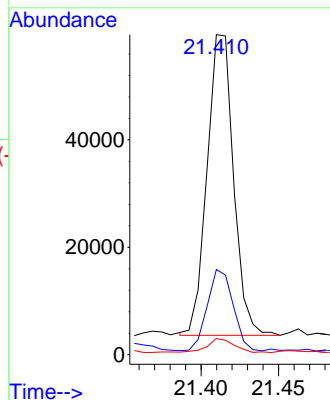
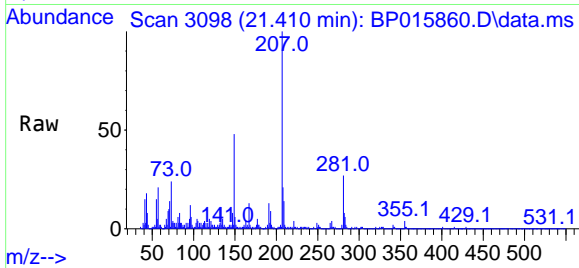


#86  
 Bis(2-ethylhexyl)phthalate  
 Concen: 16492.436 ng/ul  
 RT: 21.410 min Scan# 3099  
 Delta R.T. -0.006 min  
 Lab File: BP015860.D  
 Acq: 01 Jul 2023 00:12

Instrument :  
 BNA\_P  
 ClientSampleId :  
 DCFZ3

Tgt Ion:149 Resp: 66596

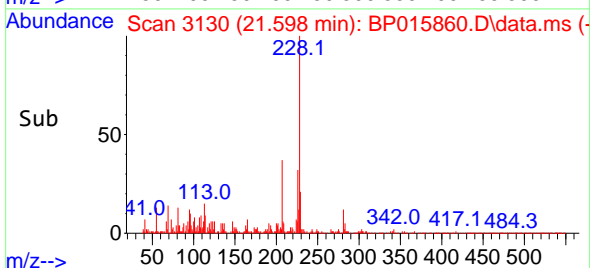
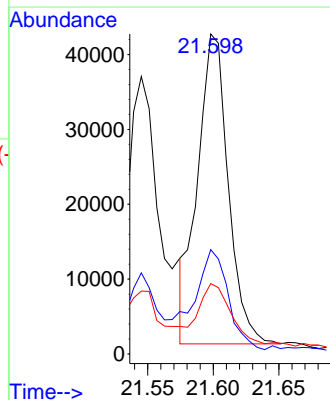
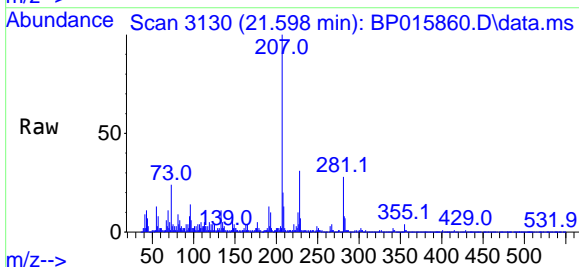
Ion	Ratio	Lower	Upper
149	100		
167	26.6	21.0	31.6
279	5.0	3.8	5.6

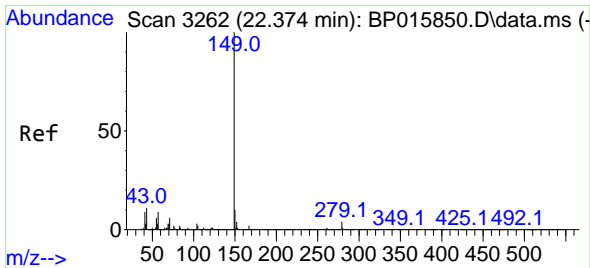


#87  
 Chrysene  
 Concen: 11622.975 ng/ul  
 RT: 21.598 min Scan# 3130  
 Delta R.T. 0.006 min  
 Lab File: BP015860.D  
 Acq: 01 Jul 2023 00:12

Tgt Ion:228 Resp: 67488

Ion	Ratio	Lower	Upper
228	100		
226	32.6	24.3	36.5
229	22.0	15.5	23.3

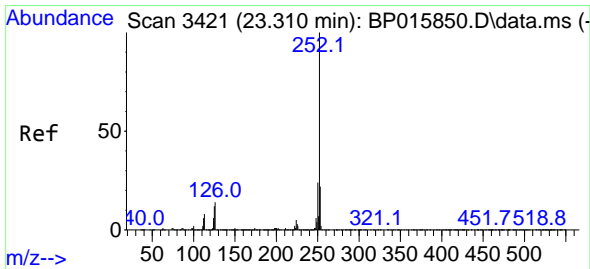
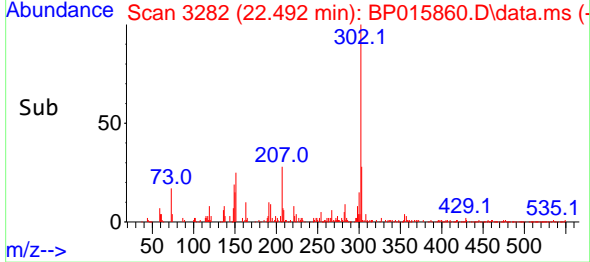
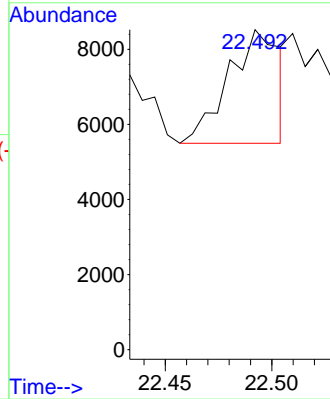
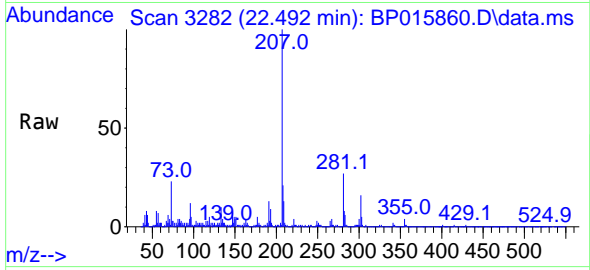




#89  
 Di-n-octyl phthalate  
 Concen: 298.133 ng/ul  
 RT: 22.492 min Scan# 31  
 Delta R.T. 0.112 min  
 Lab File: BP015860.D  
 Acq: 01 Jul 2023 00:12

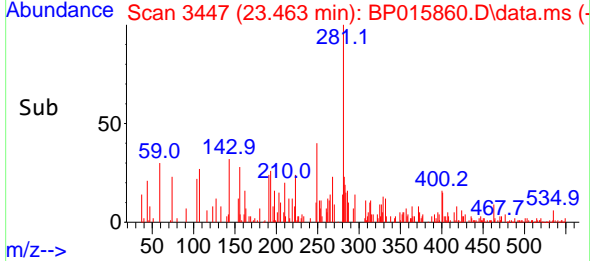
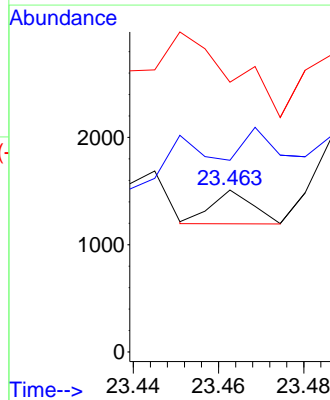
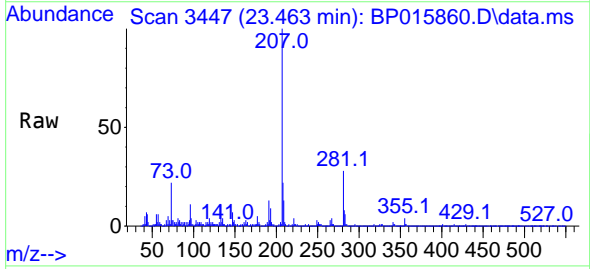
Instrument :  
 BNA\_P  
 ClientSampleId :  
 DCFZ3

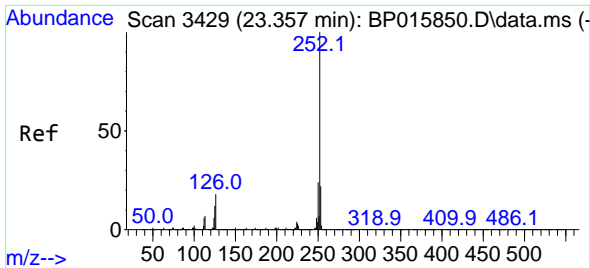
Tgt Ion:149 Resp: 5033



#90  
 Benzo(b)fluoranthene  
 Concen: 14.148 ng/ul  
 RT: 23.463 min Scan# 3447  
 Delta R.T. 0.147 min  
 Lab File: BP015860.D  
 Acq: 01 Jul 2023 00:12

Tgt Ion:252 Resp: 210  
 Ion Ratio Lower Upper  
 252 100  
 253 118.4 17.3 25.9#  
 125 166.6 7.5 11.3#

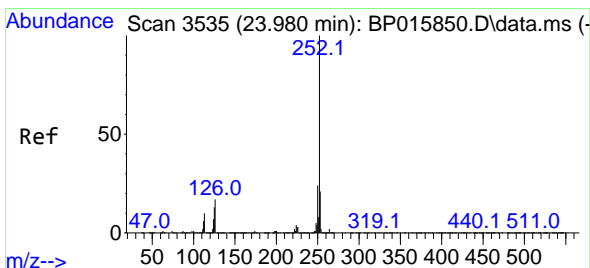
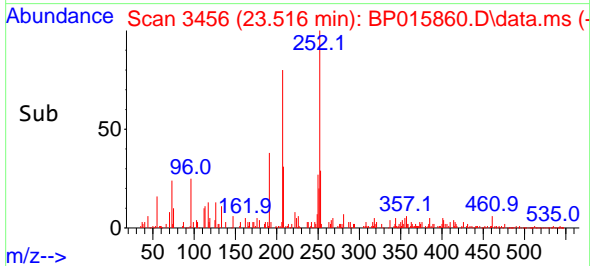
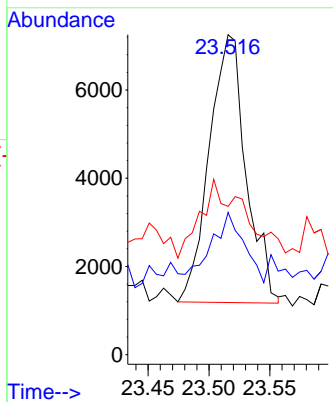
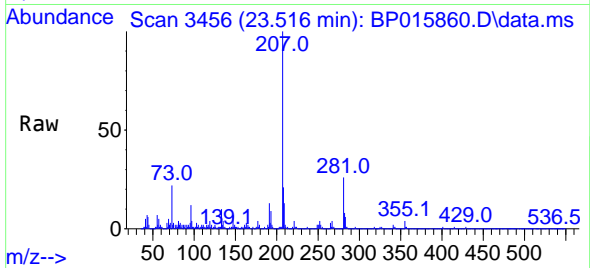




#91  
 Benzo(k)fluoranthene  
 Concen: 852.925 ng/u1  
 RT: 23.516 min Scan# 3429  
 Delta R.T. 0.153 min  
 Lab File: BP015860.D  
 Acq: 01 Jul 2023 00:12

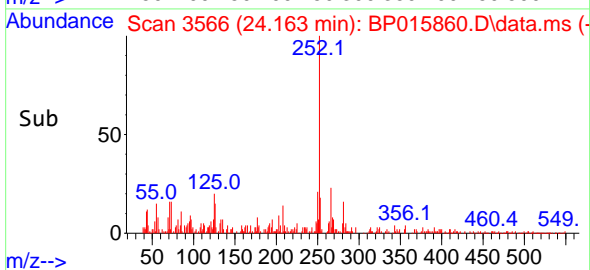
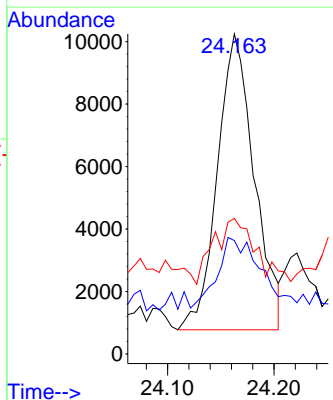
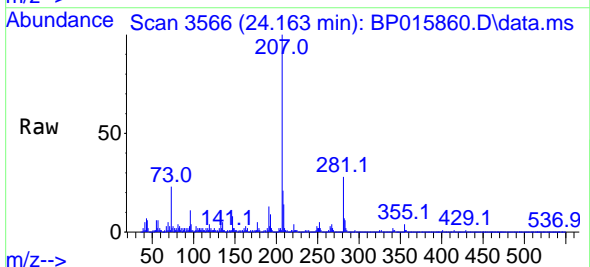
Instrument :  
 BNA\_P  
 ClientSampleId :  
 DCFZ3

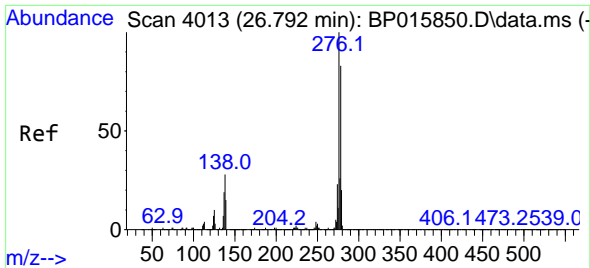
Tgt Ion:252 Resp: 12791  
 Ion Ratio Lower Upper  
 252 100  
 253 44.5 17.0 25.4#  
 125 46.3 7.3 10.9#



#93  
 Benzo(a)pyrene  
 Concen: 1757.211 ng/u1  
 RT: 24.163 min Scan# 3566  
 Delta R.T. 0.177 min  
 Lab File: BP015860.D  
 Acq: 01 Jul 2023 00:12

Tgt Ion:252 Resp: 22790  
 Ion Ratio Lower Upper  
 252 100  
 253 35.5 17.7 26.5#  
 125 42.4 8.2 12.2#

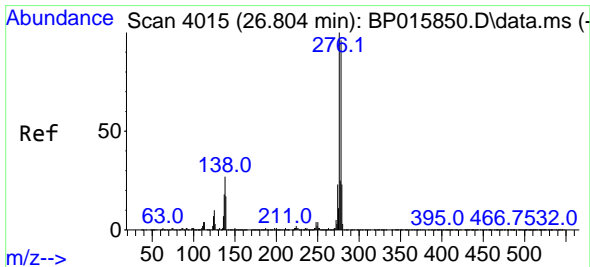
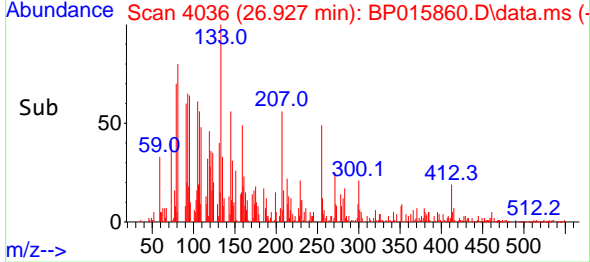
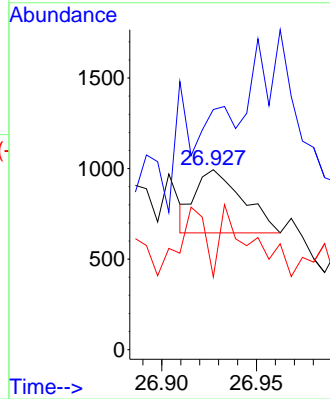
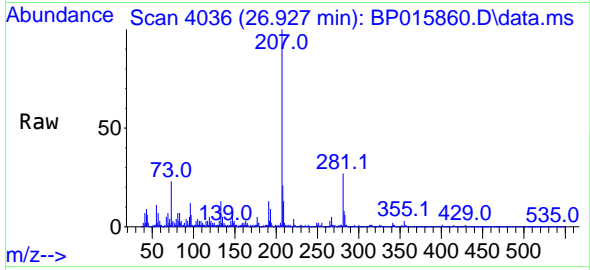




#94  
 Indeno(1,2,3-cd)pyrene  
 Concen: 34.249 ng/uI  
 RT: 26.927 min Scan# 4013  
 Delta R.T. 0.130 min  
 Lab File: BP015860.D  
 Acq: 01 Jul 2023 00:12

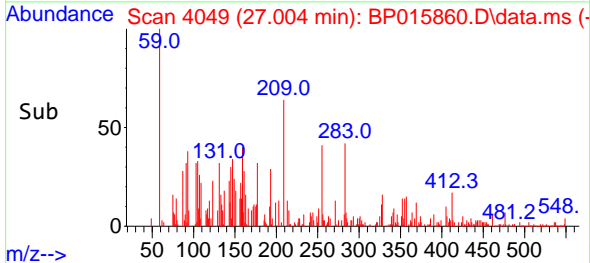
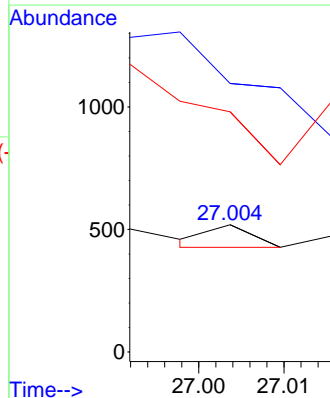
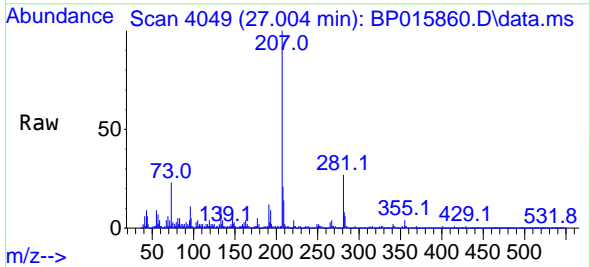
Instrument :  
 BNA\_P  
 ClientSampleId :  
 DCFZ3

Tgt Ion:276 Resp: 603  
 Ion Ratio Lower Upper  
 276 100  
 138 133.4 15.7 23.5#  
 277 40.3 19.6 29.4#

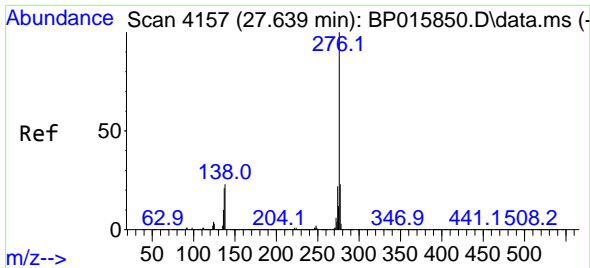


#95  
 Dibenzo(a,h)anthracene  
 Concen: 2.213 ng/uI  
 RT: 27.004 min Scan# 4049  
 Delta R.T. 0.194 min  
 Lab File: BP015860.D  
 Acq: 01 Jul 2023 00:12

Tgt Ion:278 Resp: 32  
 Ion Ratio Lower Upper  
 278 100  
 139 211.2 10.5 15.7#  
 279 188.8 18.4 27.6#

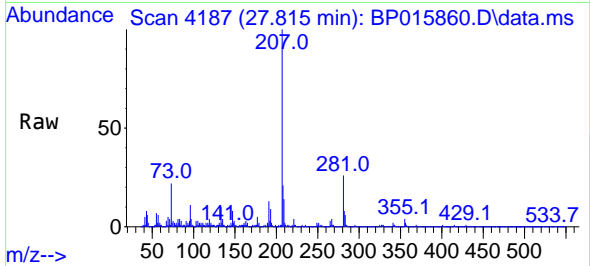






#96  
 Benzo(g,h,i)perylene  
 Concen: 12.427 ng/ul  
 RT: 27.815 min Scan# 41  
 Delta R.T. 0.177 min  
 Lab File: BP015860.D  
 Acq: 01 Jul 2023 00:12

Instrument :  
 BNA\_P  
 ClientSampleId :  
 DCFZ3



Tgt Ion: 276 Resp: 180

Ion	Ratio	Lower	Upper
276	100		
138	134.9	15.1	22.7#
277	80.6	18.8	28.2#

