

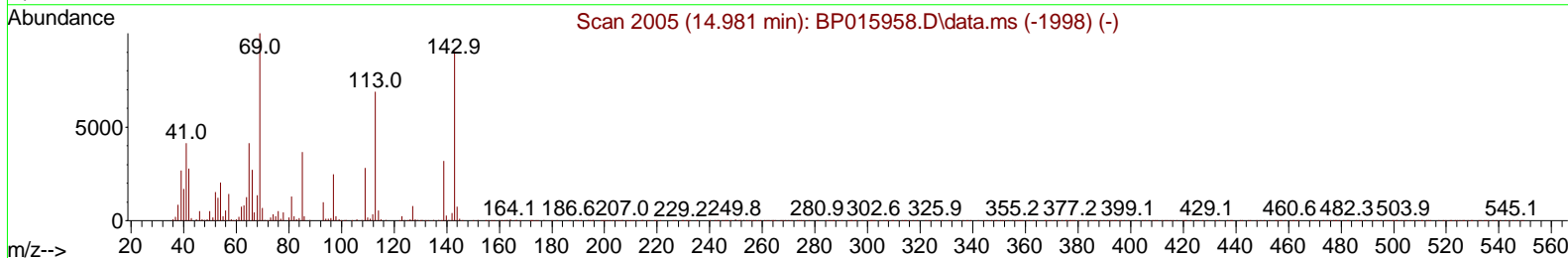
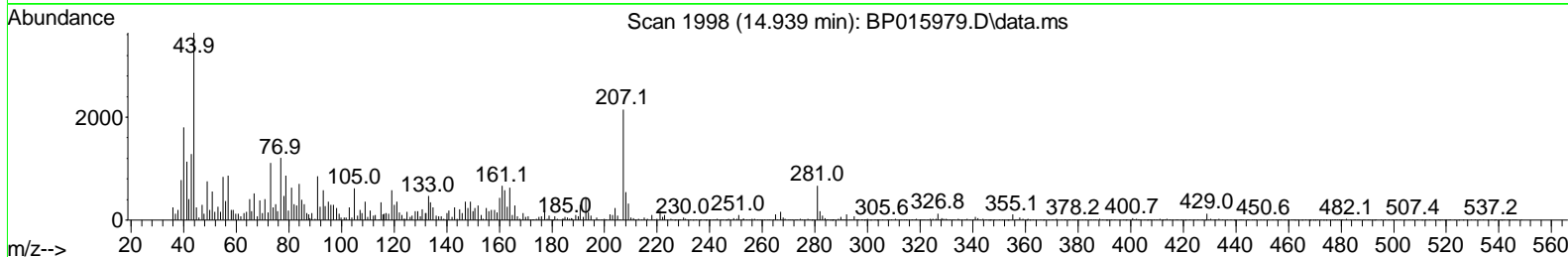
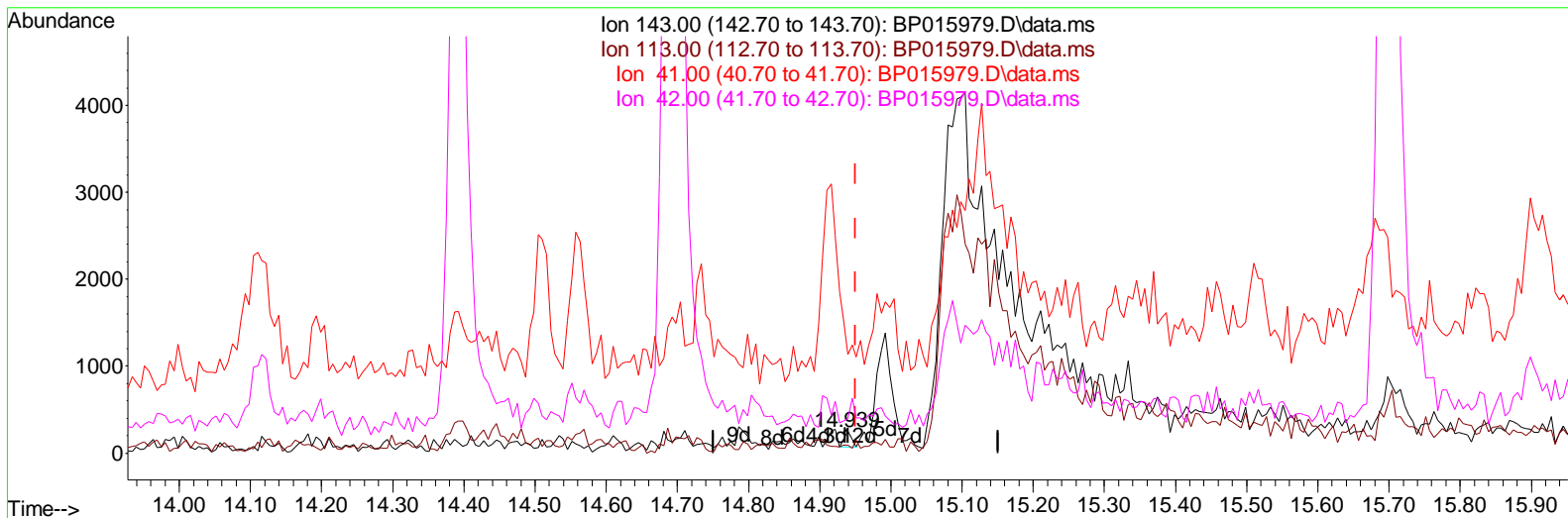
Data Path : Z:\svoasrv\HPCHEM1\BNA\_P\Data\BP070423\  
 Data File : BP015979.D  
 Acq On : 04 Jul 2023 16:50  
 Operator : MA/JU  
 Sample : 03244-09  
 Misc :  
 ALS Vial : 25 Sample Multiplier: 1

Instrument :  
 BNA\_P  
 ClientSampleId :  
 DCGE8

Manual Integrations APPROVED

Quant Time: Jul 04 21:57:48 2023  
 Quant Method : Z:\svoasrv\HPCHEM1\BNA\_P\Methods\SFAM-EPA-BP062623.MA.M  
 Quant Title : SVOA CALIBRATION  
 QLast Update : Sun Jul 02 06:12:16 2023  
 Response via : Initial Calibration

Reviewed By :Yogesh Patel 07/05/2023  
 Supervised By :mohammad ahmed 07/05/2023



TIC: BP015979.D\data.ms

(54) 4-Nitrophenol-d4 (S)

14.939min (-0.011) 0.02 ng/ul

response 127

Ion	Exp%	Act%
143.00	100.00	100.00
113.00	94.00	37.20#
41.00	45.70	455.20#
42.00	31.20	160.80#

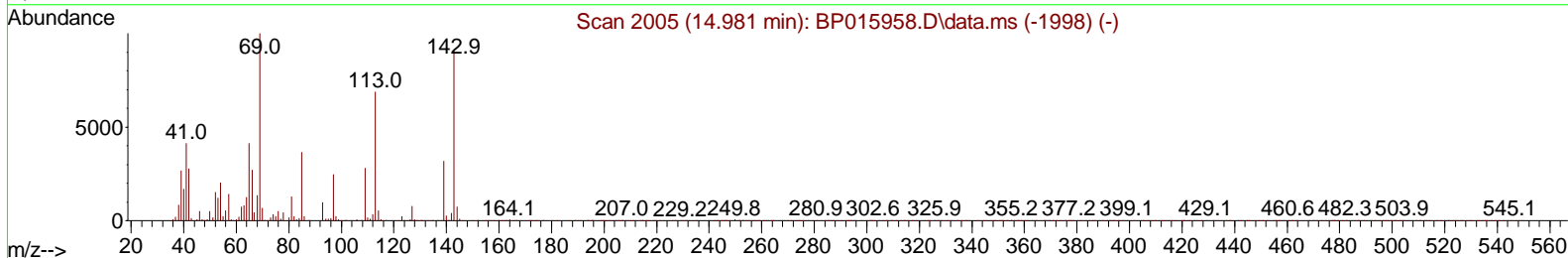
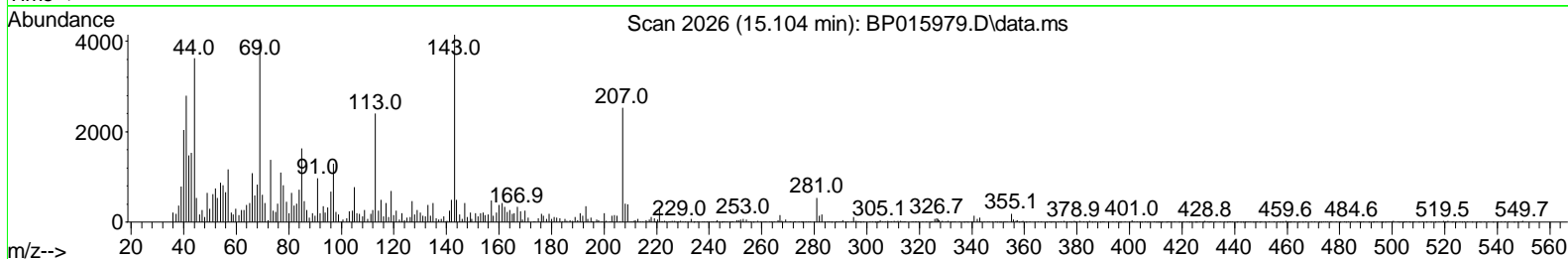
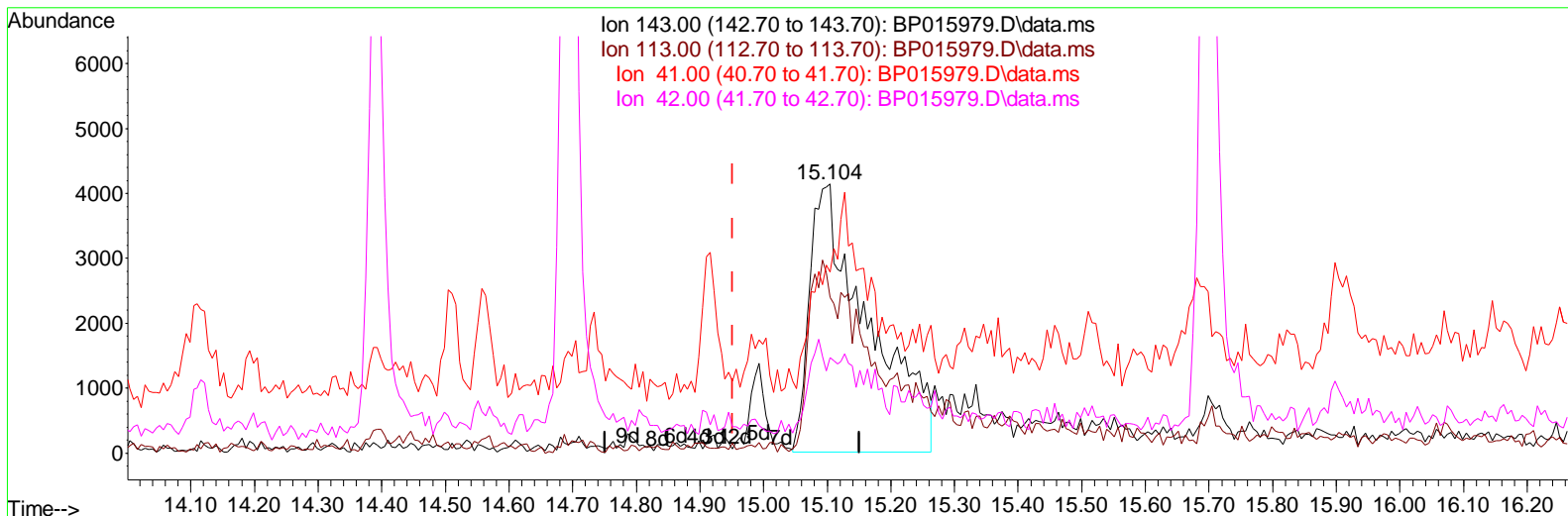
Data Path : Z:\svoasrv\HPCHEM1\BNA\_P\Data\BP070423\  
 Data File : BP015979.D  
 Acq On : 04 Jul 2023 16:50  
 Operator : MA/JU  
 Sample : 03244-09  
 Misc :  
 ALS Vial : 25 Sample Multiplier: 1

Instrument :  
 BNA\_P  
 ClientSampleId :  
 DCGE8

Manual Integrations APPROVED

Quant Time: Jul 04 21:57:48 2023  
 Quant Method : Z:\svoasrv\HPCHEM1\BNA\_P\Methods\SFAM-EPA-BP062623.MA.M  
 Quant Title : SVOA CALIBRATION  
 QLast Update : Sun Jul 02 06:12:16 2023  
 Response via : Initial Calibration

Reviewed By :Yogesh Patel 07/05/2023  
 Supervised By :mohammad ahmed 07/05/2023



TIC: BP015979.D\data.ms

(54) 4-Nitrophenol-d4 (S)

15.104min (+ 0.153) 3.68 ng/ul m

response 26394

Ion	Exp%	Act%
143.00	100.00	100.00
113.00	94.00	57.92#
41.00	45.70	67.30#
42.00	31.20	35.50

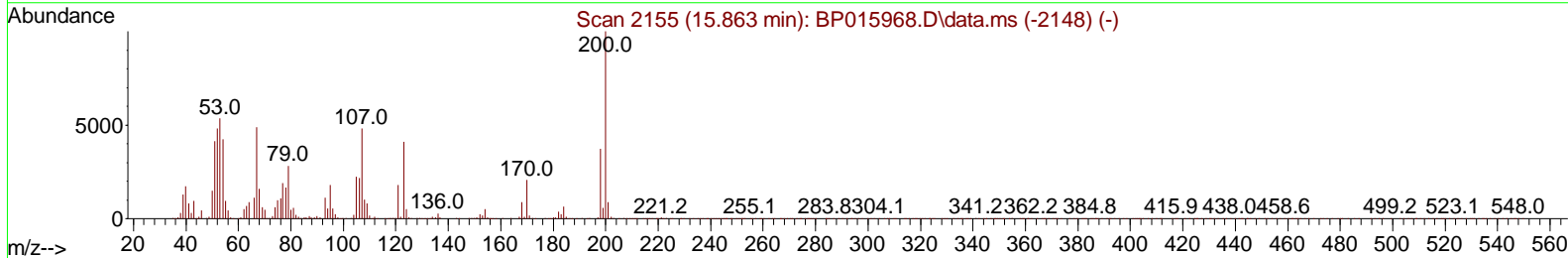
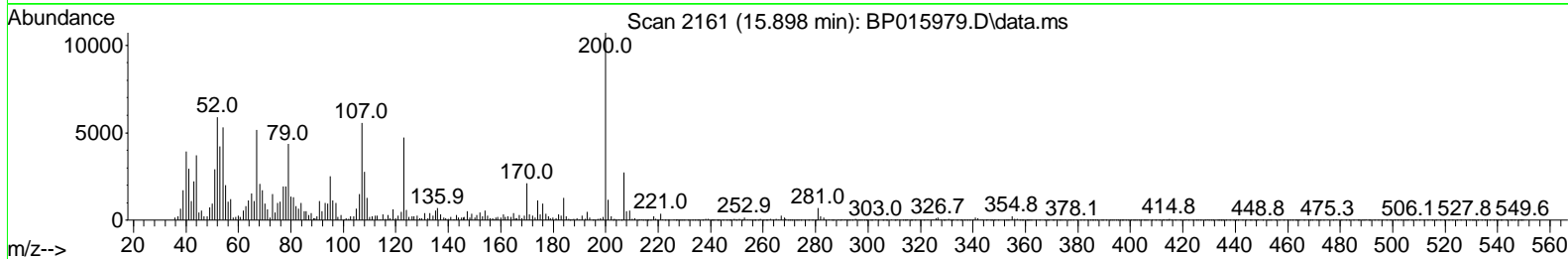
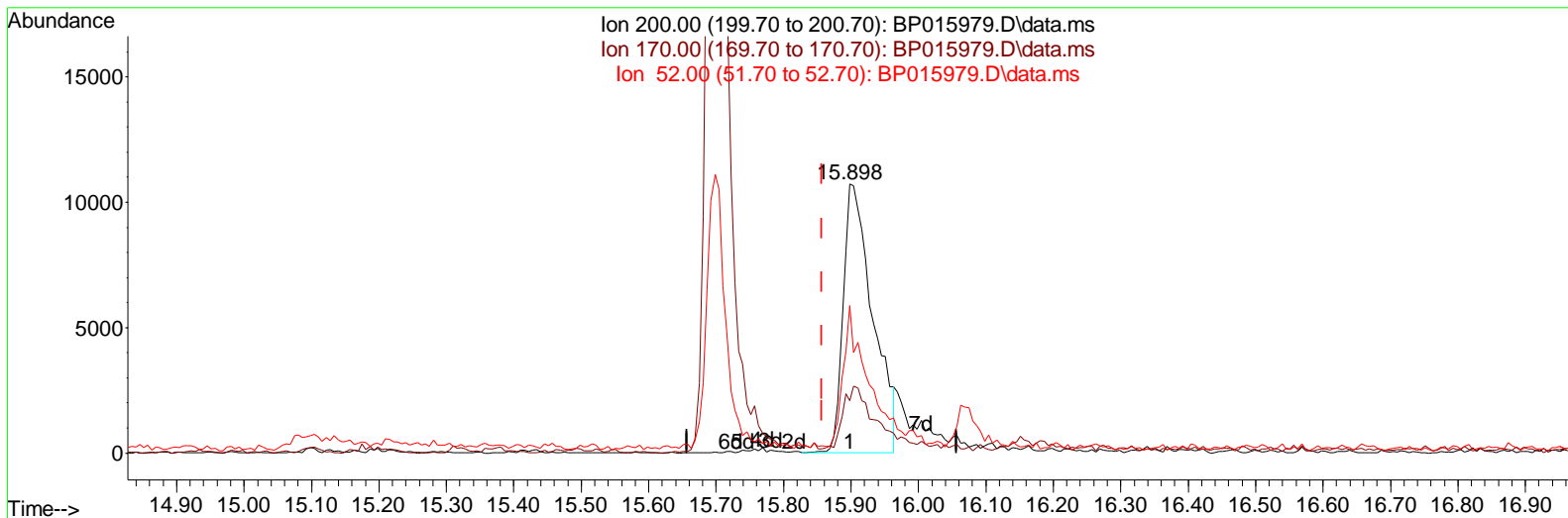
Data Path : Z:\svoasrv\HPCHEM1\BNA\_P\Data\BP070423\  
 Data File : BP015979.D  
 Acq On : 04 Jul 2023 16:50  
 Operator : MA/JU  
 Sample : 03244-09  
 Misc :  
 ALS Vial : 25 Sample Multiplier: 1

Instrument :  
 BNA\_P  
 ClientSampleId :  
 DCGE8

Manual Integrations APPROVED

Quant Time: Jul 04 21:57:48 2023  
 Quant Method : Z:\svoasrv\HPCHEM1\BNA\_P\Methods\SFAM-EPA-BP062623.MA.M  
 Quant Title : SVOA CALIBRATION  
 QLast Update : Sun Jul 02 06:12:16 2023  
 Response via : Initial Calibration

Reviewed By :Yogesh Patel 07/05/2023  
 Supervised By :mohammad ahmed 07/05/2023



TIC: BP015979.D\data.ms

(65) 4,6-Dinitro-2-methylphenol-d2 (S)

15.898min (+ 0.041) 3.97 ng/ul

response 32660

Ion	Exp%	Act%
200.00	100.00	100.00
170.00	24.30	19.57
52.00	52.20	54.93
0.00	0.00	0.00

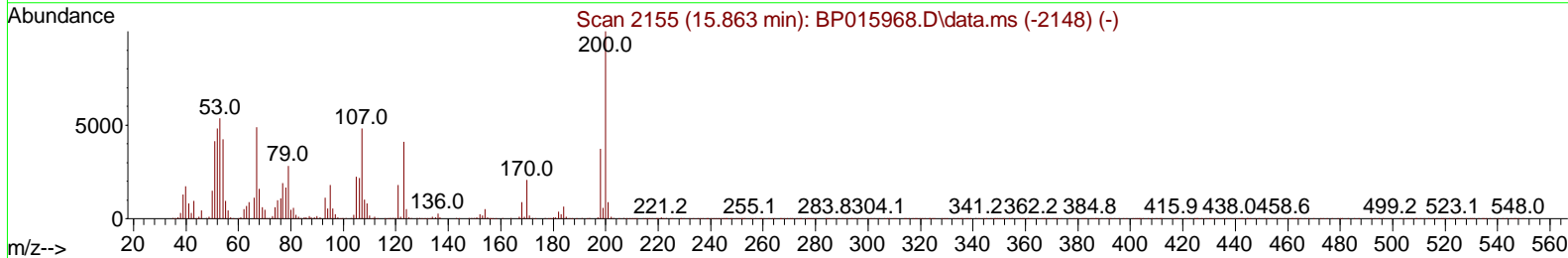
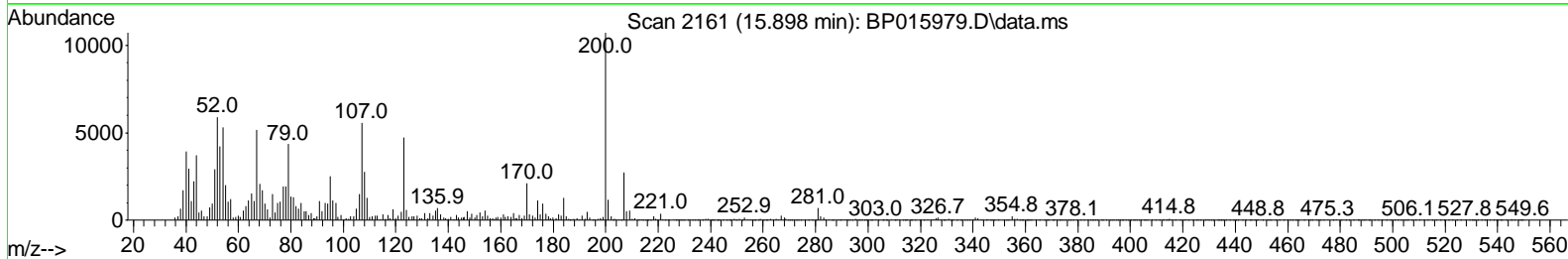
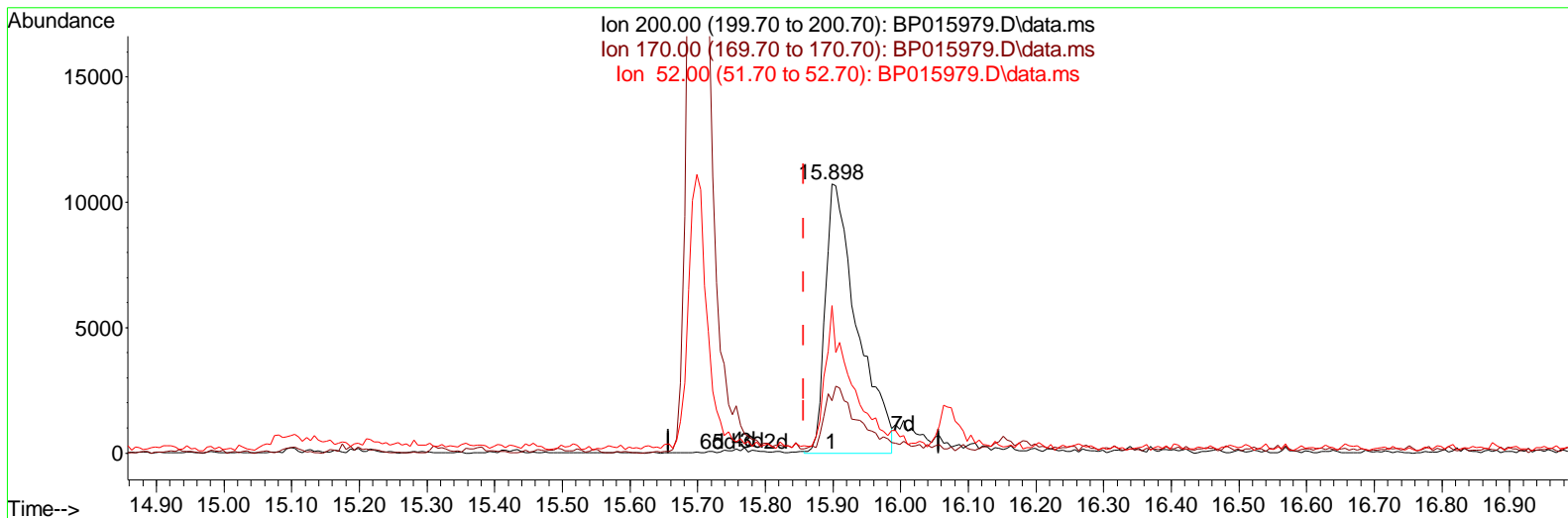
Data Path : Z:\svoasrv\HPCHEM1\BNA\_P\Data\BP070423\  
 Data File : BP015979.D  
 Acq On : 04 Jul 2023 16:50  
 Operator : MA/JU  
 Sample : 03244-09  
 Misc :  
 ALS Vial : 25 Sample Multiplier: 1

Instrument :  
 BNA\_P  
 ClientSampleId :  
 DCGE8

Manual Integrations APPROVED

Quant Time: Jul 04 23:12:12 2023  
 Quant Method : Z:\svoasrv\HPCHEM1\BNA\_P\Methods\SFAM-EPA-BP062623.MA.M  
 Quant Title : SVOA CALIBRATION  
 QLast Update : Sun Jul 02 06:12:16 2023  
 Response via : Initial Calibration

Reviewed By :Yogesh Patel 07/05/2023  
 Supervised By :mohammad ahmed 07/05/2023



TIC: BP015979.D\data.ms

(65) 4,6-Dinitro-2-methylphenol-d2 (S)

15.898min (+ 0.041) 4.26 ng/ul m

response 35100

Ion	Exp%	Act%
200.00	100.00	100.00
170.00	24.30	19.57
52.00	52.20	54.93
0.00	0.00	0.00

Data Path : Z:\svoasrv\HPCHEM1\BNA\_P\Data\BP070423\  
 Data File : BP015979.D  
 Acq On : 04 Jul 2023 16:50  
 Operator : MA/JU  
 Sample : 03244-09  
 Misc :  
 ALS Vial : 25 Sample Multiplier: 1

**Instrument :**  
 BNA\_P  
**ClientSampleId :**  
 DCGE8

**Manual IntegrationsAPPROVED**

Reviewed By :Yogesh Patel 07/05/2023  
 Supervised By :mohammad ahmed 07/05/2023

Quant Time: Jul 04 23:13:17 2023  
 Quant Method : Z:\svoasrv\HPCHEM1\BNA\_P\Methods\SFAM-EPA-BP062623.MA.M  
 Quant Title : SVOA CALIBRATION  
 QLast Update : Sun Jul 02 06:12:16 2023  
 Response via : Initial Calibration

Compound	R. T.	QI on	Response	Conc	Units	Dev(Min)
<b>Internal Standards</b>						
1) 1,4-Dichlorobenzene-d4	8.040	152	267325	20.000	ng/ul	0.00
20) Naphthalene-d8	10.875	136	1196252	20.000	ng/ul	0.00
38) Acenaphthene-d10	14.692	164	703860	20.000	ng/ul	0.00
64) Phenanthrene-d10	17.463	188	1338766	20.000	ng/ul	# 0.00
79) Chrysene-d12	21.551	240	937782	20.000	ng/ul	# 0.00
88) Perylene-d12	24.092	264	1034681	20.000	ng/ul	0.00
<b>System Monitoring Compounds</b>						
3) 1,4-Dioxane-d8	3.369	96	17289	2.327	ng/uL	0.00
4) Pyridine-d5	3.840	84	63334	3.381	ng/ul	0.02
7) Phenol-d5	7.252	99	254985	11.148	ng/ul	0.03
9) Bis-(2-Chloroethyl)eth...	7.375	67	224983	15.899	ng/ul	0.00
11) 2-Chlorophenol-d4	7.587	132	246747	14.291	ng/ul	0.01
15) 4-Methylphenol-d8	8.810	113	195813	10.837	ng/ul	0.03
21) Nitrobenzene-d5	9.246	128	128805	14.089	ng/ul	0.01
24) 2-Nitrophenol-d4	9.975	143	138305	12.962	ng/ul	0.02
28) 2,4-Dichlorophenol-d3	10.569	165	198334	10.431	ng/ul	0.06
31) 4-Chloroaniline-d4	11.075	131	213886	8.757	ng/ul	0.05
46) Dimethylphthalate-d6	14.110	166	828504	15.229	ng/ul	0.00
49) Acenaphthylene-d8	14.392	160	933619	15.266	ng/ul	0.00
54) 4-Nitrophenol-d4	15.104	143	26394m	3.676	ng/ul	0.15
60) Fluorene-d10	15.698	176	690417	15.413	ng/ul	0.00
65) 4,6-Dinitro-2-methylph...	15.898	200	35100m	4.263	ng/ul	0.04
73) Anthracene-d10	17.569	188	867137	14.180	ng/ul	0.01
81) Pyrene-d10	19.786	212	995073	16.250	ng/ul	0.00
92) Benzo(a)pyrene-d12	23.921	264	816606	15.646	ng/ul	0.00
<b>Target Compounds</b>						
80) Fluoranthene	19.469	202	76860	1.010	ng/ul #	Qvalue 92

(#) = qualifier out of range (m) = manual integration (+) = signals summed

Data Path : Z:\svoasrv\HPCHEM1\BNA\_P\Data\BP070423\  
 Data File : BP015979.D  
 Acq On : 04 Jul 2023 16:50  
 Operator : MA/JU  
 Sample : 03244-09  
 Misc :  
 ALS Vial : 25 Sample Multiplier: 1

Instrument :  
 BNA\_P  
 ClientSampleId :  
 DCGE8

Manual Integrations APPROVED

Reviewed By : Yogesh Patel 07/05/2023  
 Supervised By : mohammad ahmed 07/05/2023

Quant Time: Jul 04 23:13:17 2023  
 Quant Method : Z:\svoasrv\HPCHEM1\BNA\_P\Methods\SFAM-EPA-BP062623.MA.M  
 Quant Title : SVOA CALIBRATION  
 QLast Update : Sun Jul 02 06:12:16 2023  
 Response via : Initial Calibration

