

Data Path : Z:\svoasrv\HPCHEM1\BNA\_P\Data\BP071423\  
 Data File : BP016235.D  
 Acq On : 14 Jul 2023 20:14  
 Operator : MA/JU  
 Sample : 03414-21MSD  
 Misc :  
 ALS Vial : 20 Sample Multiplier: 1

Instrument :  
 BNA\_P  
 ClientSampleId :  
 A4634MSD

Quant Time: Jul 14 23:56:31 2023  
 Quant Method : Z:\svoasrv\HPCHEM1\BNA\_P\Methods\SFAM-EPA-BP071223.MA.M  
 Quant Title : SVOA CALIBRATION  
 QLast Update : Fri Jul 14 23:53:26 2023  
 Response via : Initial Calibration

Compound	R.T.	QIon	Response	Conc	Units	Dev(Min)
Internal Standards						
1) 1,4-Dichlorobenzene-d4	7.957	152	121996	20.000	ng/ul	0.00
20) Naphthalene-d8	10.769	136	590686	20.000	ng/ul	0.00
38) Acenaphthene-d10	14.610	164	380575	20.000	ng/ul	0.00
64) Phenanthrene-d10	17.375	188	903834	20.000	ng/ul	0.00
79) Chrysene-d12	21.463	240	893758	20.000	ng/ul	0.00
88) Perylene-d12	23.968	264	1032065	20.000	ng/ul	0.00
System Monitoring Compounds						
3) 1,4-Dioxane-d8	3.281	96	22767	6.604	ng/uL	0.00
4) Pyridine-d5	3.728	84	300075	34.900	ng/ul	-0.01
7) Phenol-d5	7.140	99	489847	44.454	ng/ul	-0.01
9) Bis-(2-Chloroethyl)eth...	7.287	67	302571	40.607	ng/ul	0.00
11) 2-Chlorophenol-d4	7.487	132	356436	44.809	ng/ul	0.00
15) 4-Methylphenol-d8	8.693	113	389731	43.905	ng/ul	-0.01
21) Nitrobenzene-d5	9.146	128	179944	44.157	ng/ul	0.00
24) 2-Nitrophenol-d4	9.869	143	211211	45.475	ng/ul	-0.01
28) 2,4-Dichlorophenol-d3	10.422	165	387718	48.206	ng/ul	-0.02
31) 4-Chloroaniline-d4	10.945	131	488974	37.929	ng/ul	-0.01
46) Dimethylphthalate-d6	14.022	166	1198672	41.290	ng/ul	0.00
49) Acenaphthylene-d8	14.304	160	1378822	43.339	ng/ul	0.00
54) 4-Nitrophenol-d4	14.881	143	149212	25.185	ng/ul	-0.05
60) Fluorene-d10	15.604	176	1050654	43.244	ng/ul	0.00
65) 4,6-Dinitro-2-methylph...	15.781	200	181146	34.718	ng/ul	-0.01
73) Anthracene-d10	17.475	188	1706889	43.174	ng/ul	0.00
81) Pyrene-d10	19.710	212	2092122	45.111	ng/ul	0.00
92) Benzo(a)pyrene-d12	23.792	264	2222887	44.850	ng/ul	0.00
Target Compounds						
2) 1,4-Dioxane	3.316	88	62438	16.511	ng/uL	96
5) Pyridine	3.752	79	375397	42.625	ng/ul	96
6) Benzaldehyde	7.110	77	336542	48.912	ng/ul	93
8) Phenol	7.169	94	603013	51.050	ng/ul	96
10) Bis(2-Chloroethyl)ether	7.381	93	454855	47.349	ng/ul	98
12) 2-Chlorophenol	7.516	128	434841	52.687	ng/ul	99
13) 2-Methylphenol	8.422	108	457840	51.497	ng/ul	98
14) 2,2'-oxybis(1-Chloropr...	8.475	45	357342	22.921	ng/ul	99
16) Acetophenone	8.799	105	725518	49.565	ng/ul	98
17) N-Nitroso-di-n-propyla...	8.775	70	409678	52.204	ng/ul	98
18) 4-Methylphenol	8.763	108	503924	51.832	ng/ul	100
19) Hexachloroethane	9.022	117	185016	49.172	ng/ul	97
22) Nitrobenzene	9.187	77	608130	51.362	ng/ul	99
23) Isophorone	9.710	82	1151883	49.080	ng/ul	100
25) 2-Nitrophenol	9.904	139	263126	52.728	ng/ul	98
26) 2,4-Dimethylphenol	9.963	107	569543	51.900	ng/ul	98
27) Bis(2-Chloroethoxy)met...	10.187	93	680413	49.789	ng/ul	99
29) 2,4-Dichlorophenol	10.451	162	446632	54.005	ng/ul	99
30) Naphthalene	10.822	128	1505993	48.583	ng/ul	98
32) 4-Chloroaniline	10.969	127	600958	46.870	ng/ul	99
33) Hexachlorobutadiene	11.081	225	273363	48.667	ng/ul	98
34) Caprolactam	11.787	113	163134	54.487	ng/ul	91
35) 4-Chloro-3-methylphenol	12.104	107	548175	53.712	ng/ul	96
36) 2-Methylnaphthalene	12.434	142	1022012	49.172	ng/ul	99

Data Path : Z:\svoasrv\HPCHEM1\BNA\_P\Data\BP071423\  
 Data File : BP016235.D  
 Acq On : 14 Jul 2023 20:14  
 Operator : MA/JU  
 Sample : 03414-21MSD  
 Misc :  
 ALS Vial : 20 Sample Multiplier: 1

Instrument :  
 BNA\_P  
 ClientSampleId :  
 A4634MSD

Quant Time: Jul 14 23:56:31 2023  
 Quant Method : Z:\svoasrv\HPCHEM1\BNA\_P\Methods\SFAM-EPA-BP071223.MA.M  
 Quant Title : SVOA CALIBRATION  
 QLast Update : Fri Jul 14 23:53:26 2023  
 Response via : Initial Calibration

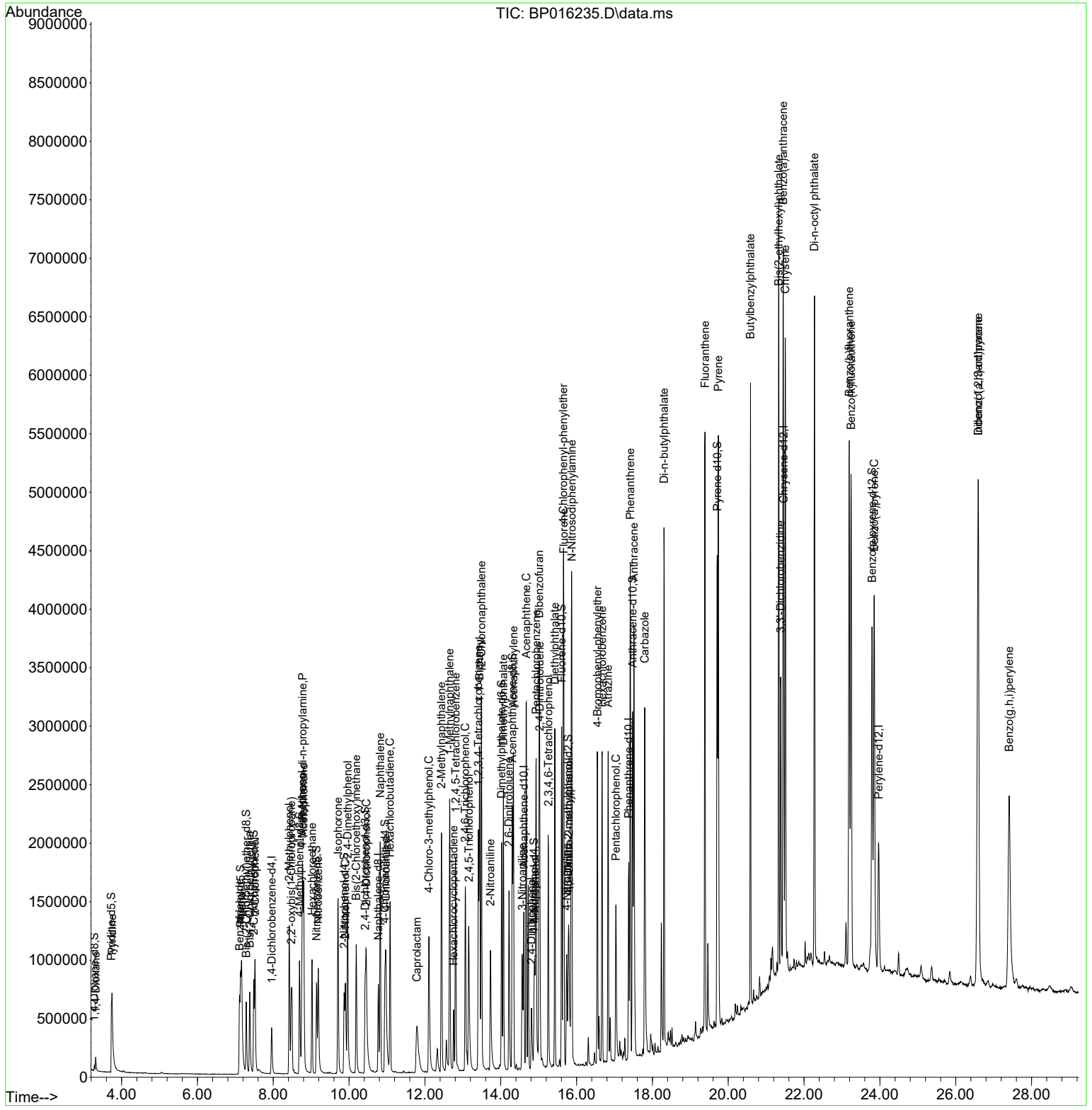
Compound	R.T.	QIon	Response	Conc	Units	Dev(Min)
37) 1-Methylnaphthalene	12.651	142	1025844	47.992	ng/ul	100
39) 1,2,4,5-Tetrachloroben...	12.810	216	548026	50.560	ng/ul	98
40) Hexachlorocyclopentadiene	12.757	237	122955	28.896	ng/ul	98
41) 2,4,6-Trichlorophenol	13.063	196	380541	55.569	ng/ul	96
42) 2,4,5-Trichlorophenol	13.157	196	410539	56.388	ng/ul	100
43) 1,1'-Biphenyl	13.439	154	1403384	50.551	ng/ul	98
44) 2-Chloronaphthalene	13.492	162	1097440	50.315	ng/ul	99
45) 2-Nitroaniline	13.728	65	396300	55.753	ng/ul	98
47) Dimethylphthalate	14.069	163	1427105	48.672	ng/ul	99
48) 2,6-Dinitrotoluene	14.216	165	303415	54.890	ng/ul	99
50) Acenaphthylene	14.334	152	1764217	48.281	ng/ul	99
51) 3-Nitroaniline	14.563	138	309371	55.114	ng/ul	97
52) Acenaphthene	14.675	153	1233288	49.902	ng/ul	99
53) 2,4-Dinitrophenol	14.810	184	127443	32.940	ng/ul	96
55) 4-Nitrophenol	14.898	109	133535	29.617	ng/ul#	73
56) Dibenzofuran	15.016	168	1721050	51.126	ng/ul	99
57) 2,4-Dinitrotoluene	15.028	165	440068	53.967	ng/ul	90
58) 2,3,4,6-Tetrachlorophenol	15.257	232	368036	55.701	ng/ul	98
59) Diethylphthalate	15.428	149	1490463	48.881	ng/ul	99
61) Fluorene	15.663	166	1421549	50.550	ng/ul	98
62) 4-Chlorophenyl-phenyle...	15.651	204	676185	49.716	ng/ul	99
63) 4-Nitroaniline	15.739	138	305350	59.230	ng/ul	98
66) 4,6-Dinitro-2-methylph...	15.798	198	220185	40.376	ng/ul	99
67) N-Nitrosodiphenylamine	15.875	169	1187402	49.563	ng/ul	99
68) 4-Bromophenyl-phenylether	16.551	248	432761	50.383	ng/ul	98
69) Hexachlorobenzene	16.675	284	513002	49.594	ng/ul	98
70) Atrazine	16.833	200	451306	47.506	ng/ul	98
71) Pentachlorophenol	17.039	266	279366	53.857	ng/ul	98
72) Phenanthrene	17.416	178	2394194	50.839	ng/ul	99
74) Anthracene	17.510	178	2388096	50.465	ng/ul	99
75) 1,2,3,4-Tetrachloroben...	13.410	216	551129	46.448	ng/uL	100
76) Pentachlorobenzene	14.933	250	553579	49.426	ng/uL	99
77) Carbazole	17.798	167	2213752	51.309	ng/ul	99
78) Di-n-butylphthalate	18.304	149	2847183	52.679	ng/ul	100
80) Fluoranthene	19.386	202	3009758	55.498	ng/ul	99
82) Pyrene	19.739	202	3134410	54.134	ng/ul	98
83) Butylbenzylphthalate	20.586	149	1413811	56.618	ng/ul	97
84) 3,3'-Dichlorobenzidine	21.380	252	880023	42.141	ng/ul	100
85) Benzo(a)anthracene	21.451	228	3070135	52.751	ng/ul	99
86) Bis(2-ethylhexyl)phtha...	21.333	149	2192553	58.776	ng/ul	100
87) Chrysene	21.504	228	2989379	50.703	ng/ul	99
89) Di-n-octyl phthalate	22.274	149	3752713	58.050	ng/ul	100
90) Benzo(b)fluoranthene	23.192	252	3328224	56.455	ng/ul	99
91) Benzo(k)fluoranthene	23.239	252	3162917	52.721	ng/ul	99
93) Benzo(a)pyrene	23.851	252	2839257	48.617	ng/ul	99
94) Indeno(1,2,3-cd)pyrene	26.592	276	3350197	46.327	ng/ul	99
95) Dibenzo(a,h)anthracene	26.592	278	2746770	46.565	ng/ul	97
96) Benzo(g,h,i)perylene	27.409	276	2658133	46.050	ng/ul	99

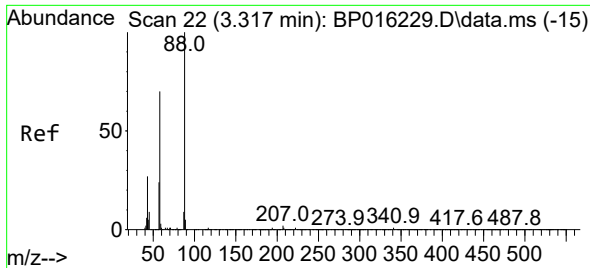
(#) = qualifier out of range (m) = manual integration (+) = signals summed

Data Path : Z:\svoasrv\HPCHEM1\BNA\_P\Data\BP071423\  
 Data File : BP016235.D  
 Acq On : 14 Jul 2023 20:14  
 Operator : MA/JU  
 Sample : 03414-21MSD  
 Misc :  
 ALS Vial : 20 Sample Multiplier: 1

Instrument :  
 BNA\_P  
 ClientSampleId :  
 A4634MSD

Quant Time: Jul 14 23:56:31 2023  
 Quant Method : Z:\svoasrv\HPCHEM1\BNA\_P\Methods\SFAM-EPA-BP071223.MA.M  
 Quant Title : SVOA CALIBRATION  
 QLast Update : Fri Jul 14 23:53:26 2023  
 Response via : Initial Calibration



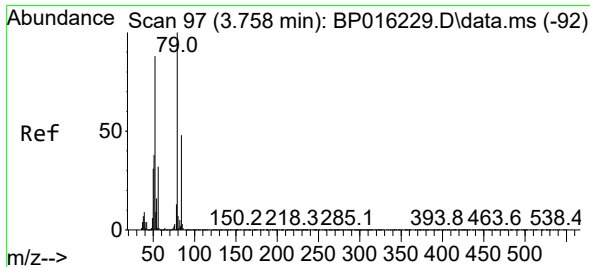
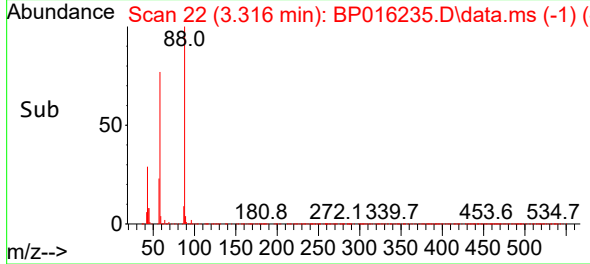
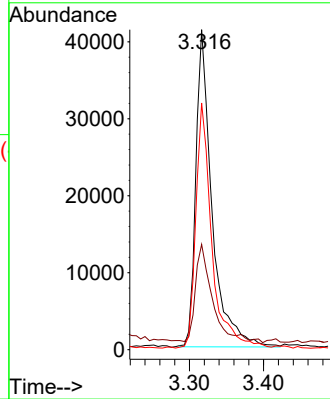
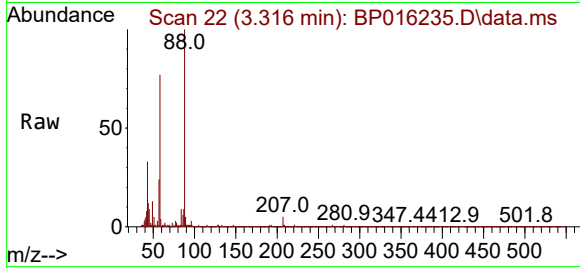


#2  
 1,4-Dioxane  
 Concen: 16.511 ng/uL  
 RT: 3.316 min Scan# 21  
 Delta R.T. -0.000 min  
 Lab File: BP016235.D  
 Acq: 14 Jul 2023 20:14

Instrument :  
 BNA\_P  
 ClientSampleId :  
 A4634MSD

Tgt Ion: 88 Resp: 62438

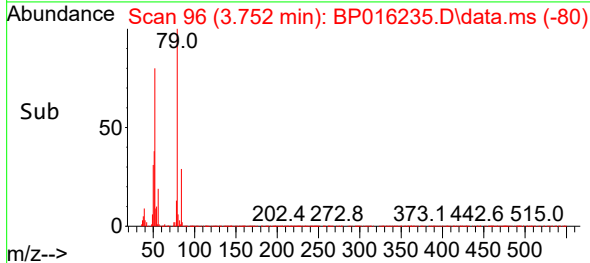
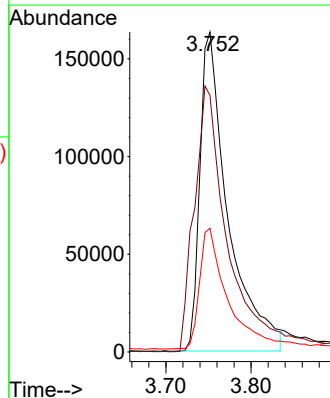
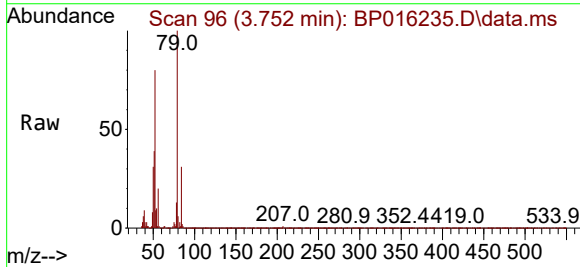
Ion	Ratio	Lower	Upper
88	100		
43	32.9	22.3	33.5
58	77.1	63.1	94.7

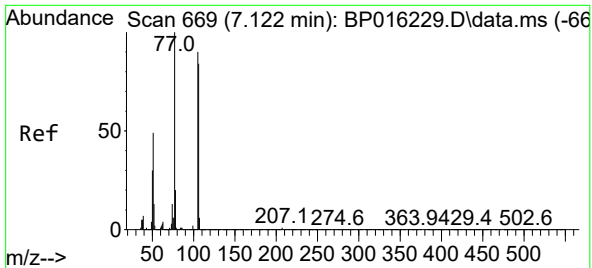


#5  
 Pyridine  
 Concen: 42.625 ng/uL  
 RT: 3.752 min Scan# 96  
 Delta R.T. -0.006 min  
 Lab File: BP016235.D  
 Acq: 14 Jul 2023 20:14

Tgt Ion: 79 Resp: 375397

Ion	Ratio	Lower	Upper
79	100		
52	80.2	67.7	101.5
51	38.7	31.7	47.5



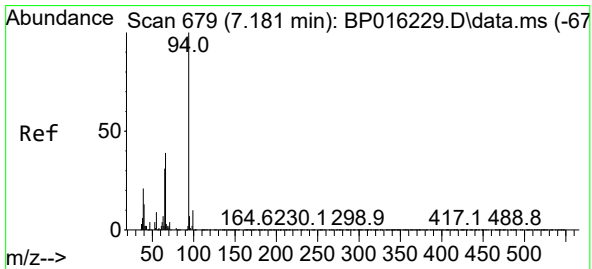
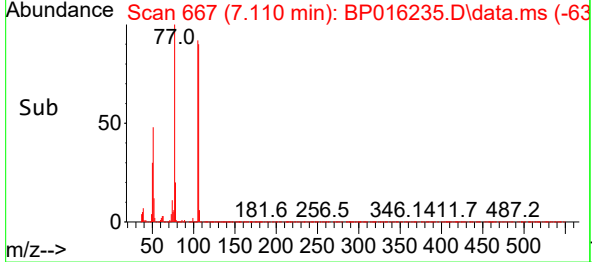
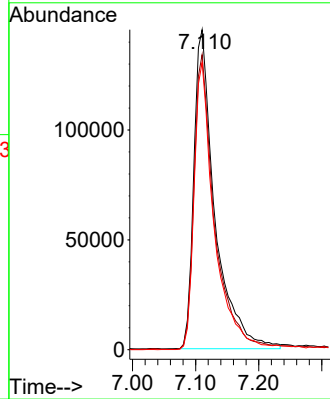
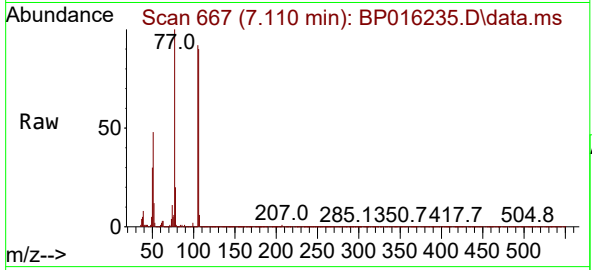


#6  
Benzaldehyde  
Concen: 48.912 ng/ul  
RT: 7.110 min Scan# 60  
Delta R.T. -0.012 min  
Lab File: BP016235.D  
Acq: 14 Jul 2023 20:14

Instrument :  
BNA\_P  
ClientSampleId :  
A4634MSD

Tgt Ion: 77 Resp: 336542

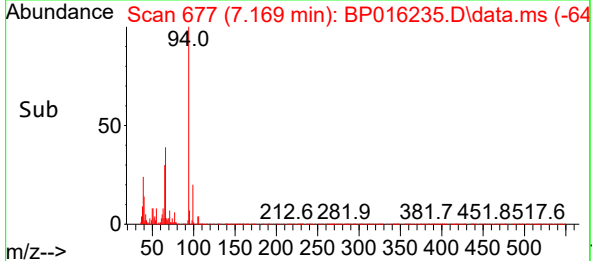
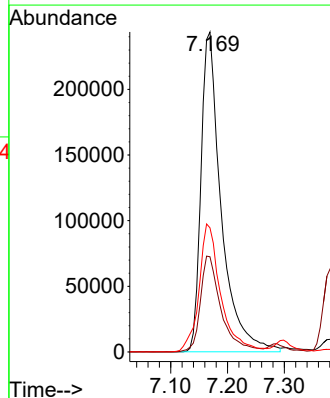
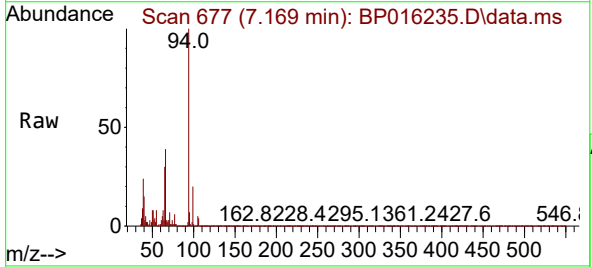
Ion	Ratio	Lower	Upper
77	100		
105	92.2	69.4	104.2
106	89.7	66.2	99.4

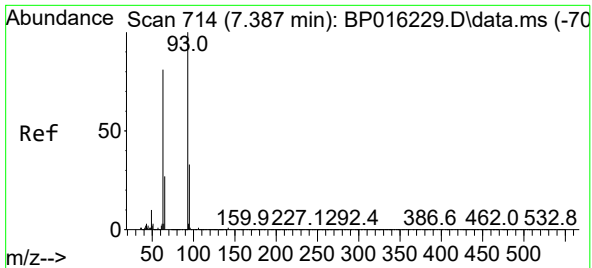


#8  
Phenol  
Concen: 51.050 ng/ul  
RT: 7.169 min Scan# 677  
Delta R.T. -0.012 min  
Lab File: BP016235.D  
Acq: 14 Jul 2023 20:14

Tgt Ion: 94 Resp: 603013

Ion	Ratio	Lower	Upper
94	100		
65	29.8	25.5	38.3
66	38.8	32.7	49.1

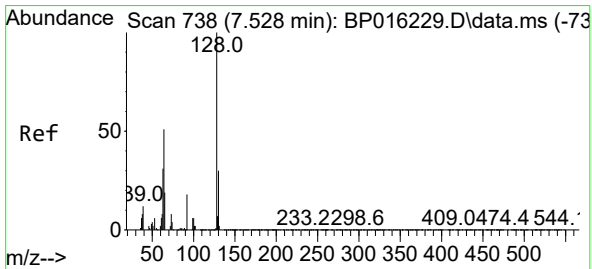
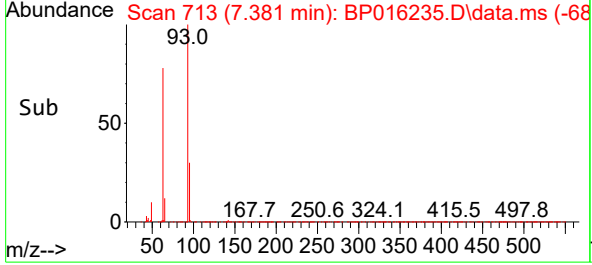
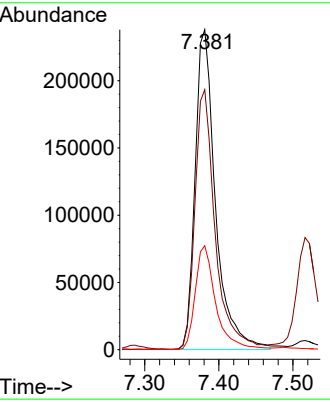
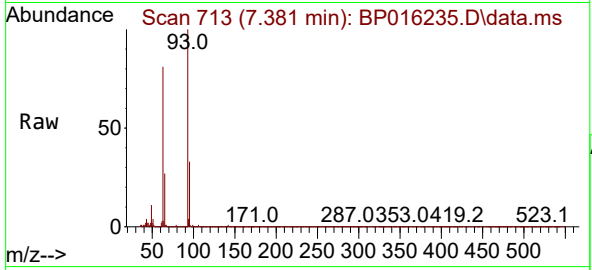




#10  
 Bis(2-Chloroethyl)ether  
 Concen: 47.349 ng/ul  
 RT: 7.381 min Scan# 711  
 Delta R.T. -0.006 min  
 Lab File: BP016235.D  
 Acq: 14 Jul 2023 20:14

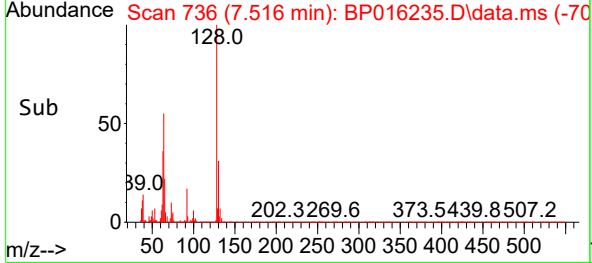
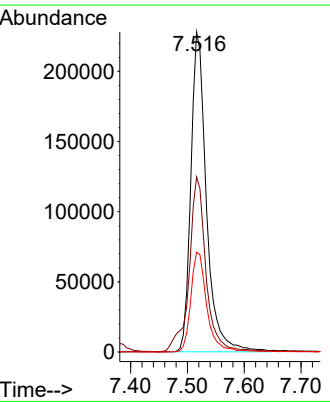
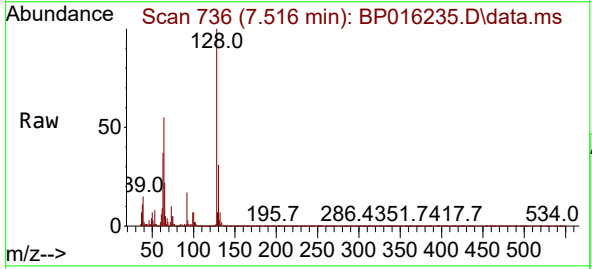
Instrument : BNA\_P  
 ClientSampleId : A4634MSD

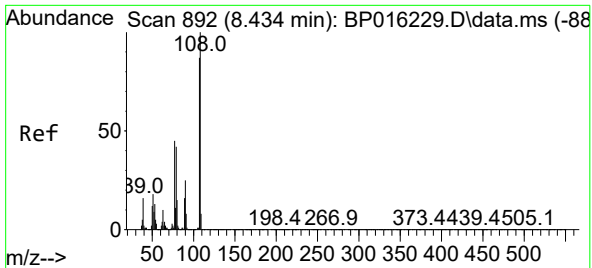
Tgt Ion	Resp	Lower	Upper
93	454855		
63	81.3	63.5	95.3
95	32.5	25.1	37.7



#12  
 2-Chlorophenol  
 Concen: 52.687 ng/ul  
 RT: 7.516 min Scan# 736  
 Delta R.T. -0.012 min  
 Lab File: BP016235.D  
 Acq: 14 Jul 2023 20:14

Tgt Ion	Resp	Lower	Upper
128	434841		
64	54.7	44.1	66.1
130	31.2	24.3	36.5

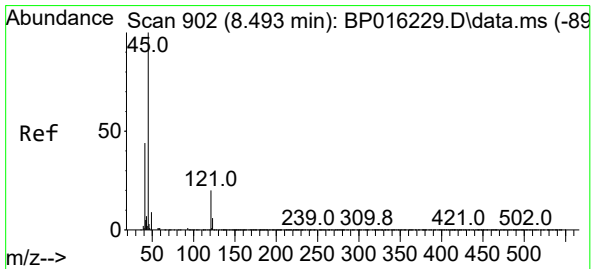
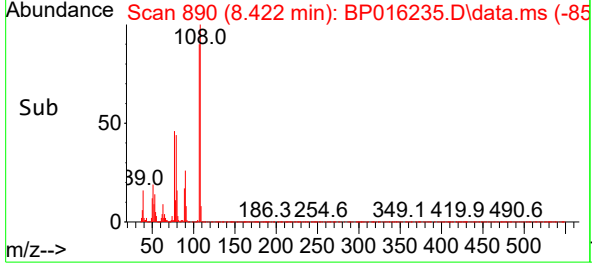
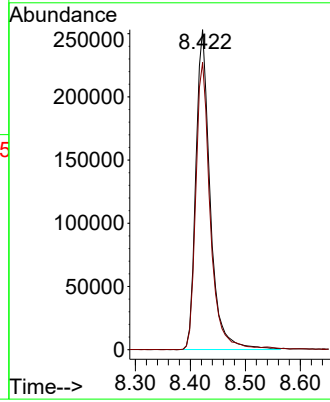
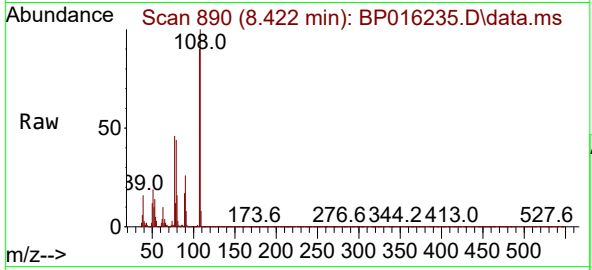




#13  
 2-Methylphenol  
 Concen: 51.497 ng/ul  
 RT: 8.422 min Scan# 892  
 Delta R.T. -0.012 min  
 Lab File: BP016235.D  
 Acq: 14 Jul 2023 20:14

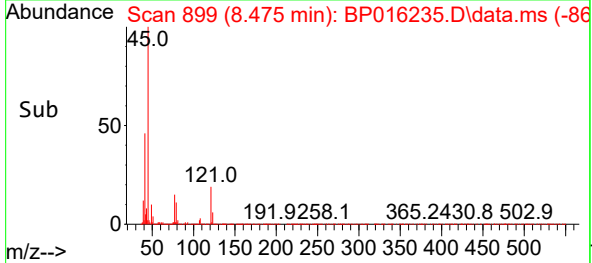
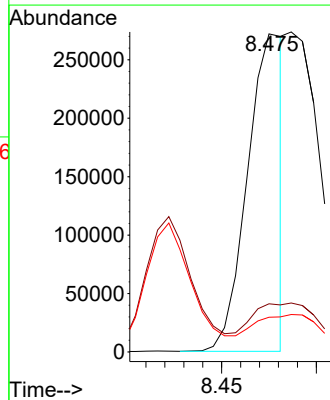
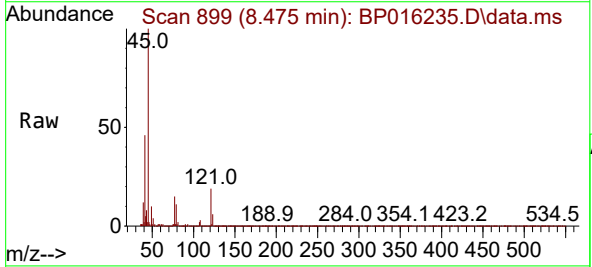
Instrument :  
 BNA\_P  
 ClientSampleId :  
 A4634MSD

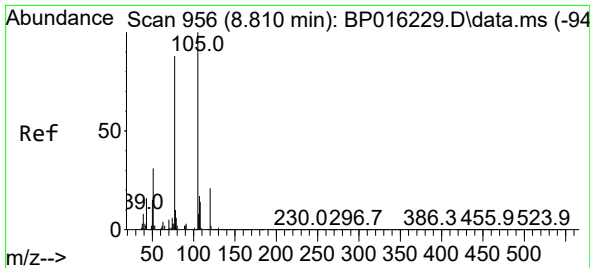
Tgt Ion:108 Resp: 457840  
 Ion Ratio Lower Upper  
 108 100  
 107 89.7 70.5 105.7



#14  
 2,2'-oxybis(1-Chloropropane)  
 Concen: 22.921 ng/ul  
 RT: 8.475 min Scan# 899  
 Delta R.T. -0.018 min  
 Lab File: BP016235.D  
 Acq: 14 Jul 2023 20:14

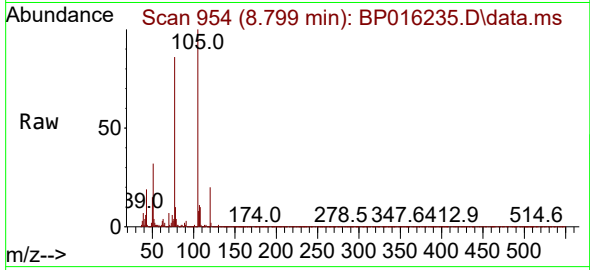
Tgt Ion: 45 Resp: 357342  
 Ion Ratio Lower Upper  
 45 100  
 77 15.1 12.5 18.7  
 79 10.9 8.7 13.1





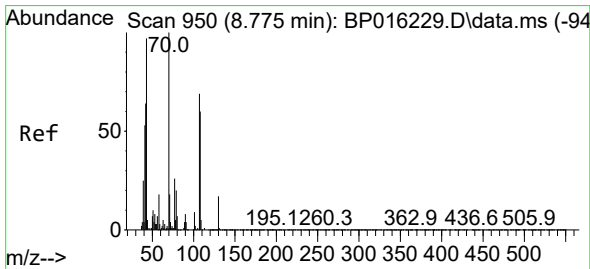
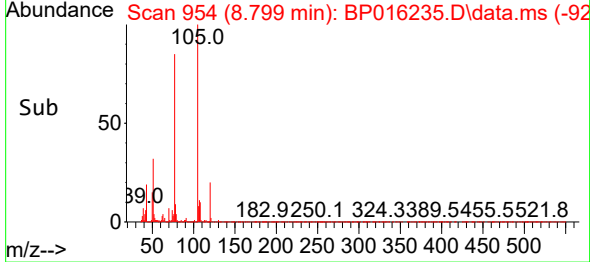
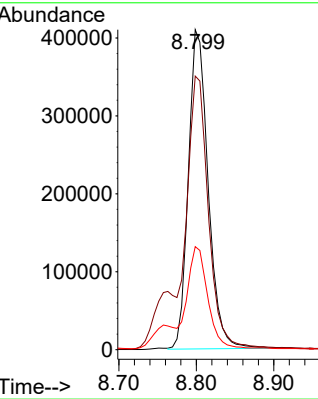
#16  
 Acetophenone  
 Concen: 49.565 ng/ul  
 RT: 8.799 min Scan# 91  
 Delta R.T. -0.012 min  
 Lab File: BP016235.D  
 Acq: 14 Jul 2023 20:14

Instrument :  
 BNA\_P  
 ClientSampleId :  
 A4634MSD



Tgt Ion: 105 Resp: 725518

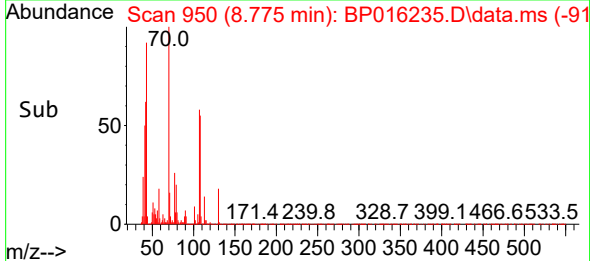
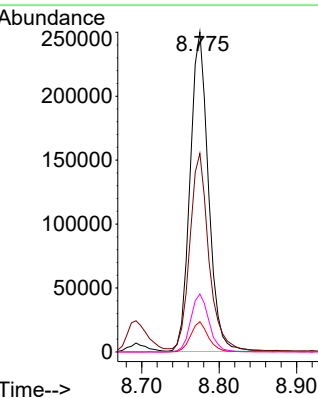
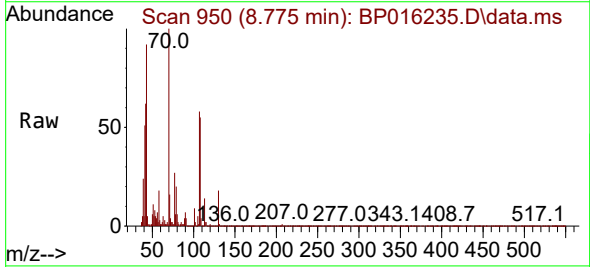
Ion	Ratio	Lower	Upper
105	100		
77	85.5	70.2	105.2
51	32.2	26.3	39.5



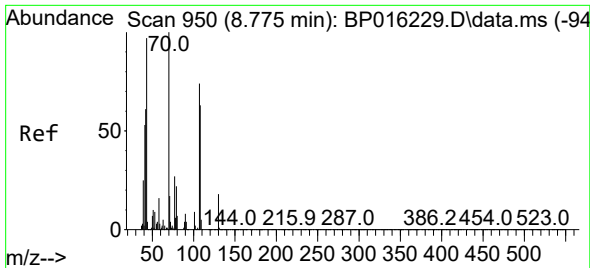
#17  
 N-Nitroso-di-n-propylamine  
 Concen: 52.204 ng/ul  
 RT: 8.775 min Scan# 950  
 Delta R.T. -0.000 min  
 Lab File: BP016235.D  
 Acq: 14 Jul 2023 20:14

Tgt Ion: 70 Resp: 409678

Ion	Ratio	Lower	Upper
70	100		
42	62.1	50.8	76.2
101	9.5	7.0	10.6
130	18.1	13.3	19.9



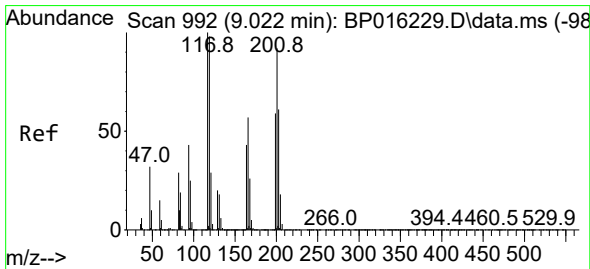
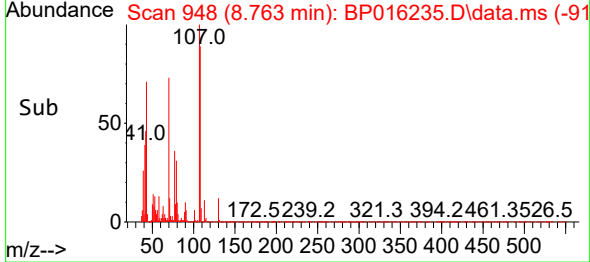
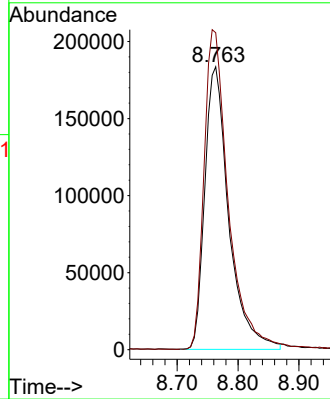
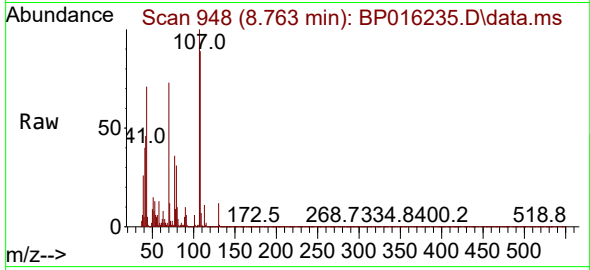




#18  
 4-Methylphenol  
 Concen: 51.832 ng/ul  
 RT: 8.763 min Scan# 948  
 Delta R.T. -0.012 min  
 Lab File: BP016235.D  
 Acq: 14 Jul 2023 20:14

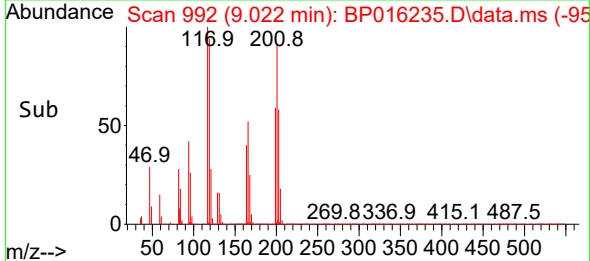
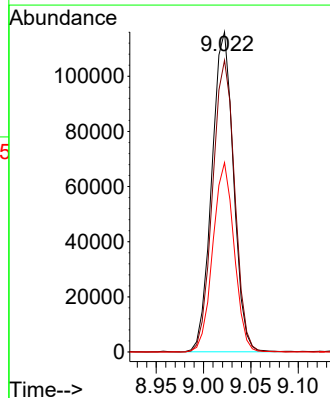
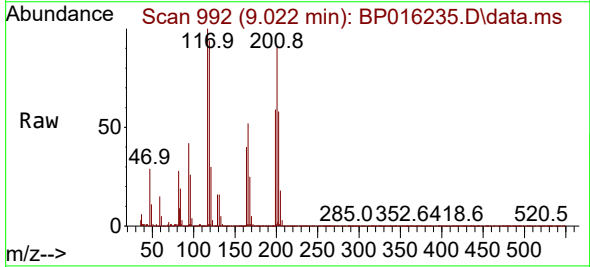
Instrument :  
 BNA\_P  
 ClientSampleId :  
 A4634MSD

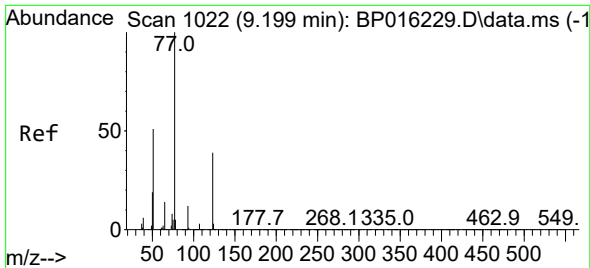
Tgt Ion:108 Resp: 503924  
 Ion Ratio Lower Upper  
 108 100  
 107 112.1 89.3 133.9



#19  
 Hexachloroethane  
 Concen: 49.172 ng/ul  
 RT: 9.022 min Scan# 992  
 Delta R.T. -0.000 min  
 Lab File: BP016235.D  
 Acq: 14 Jul 2023 20:14

Tgt Ion:117 Resp: 185016  
 Ion Ratio Lower Upper  
 117 100  
 201 91.2 76.5 114.7  
 199 59.2 47.9 71.9

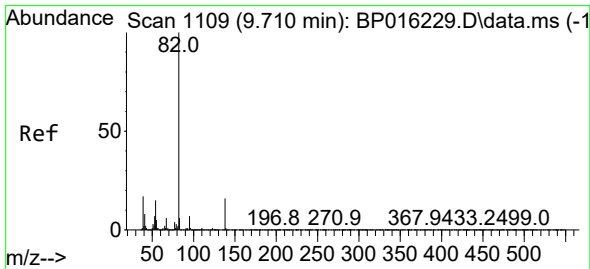
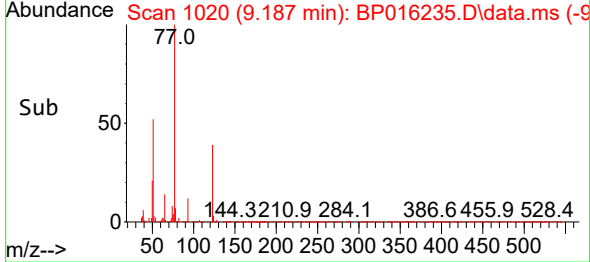
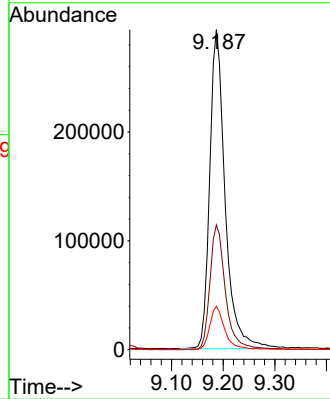
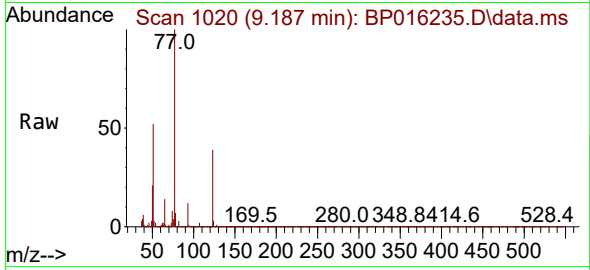




#22  
 Nitrobenzene  
 Concen: 51.362 ng/ul  
 RT: 9.187 min Scan# 1020  
 Delta R.T. -0.012 min  
 Lab File: BP016235.D  
 Acq: 14 Jul 2023 20:14

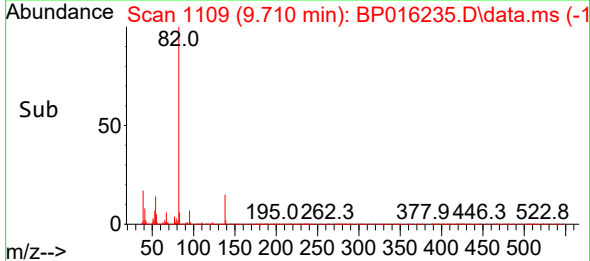
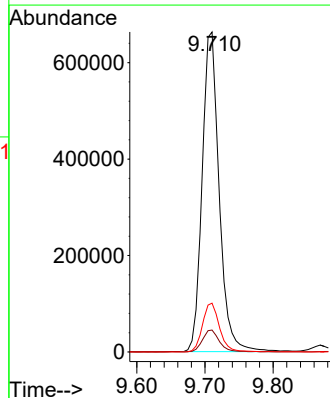
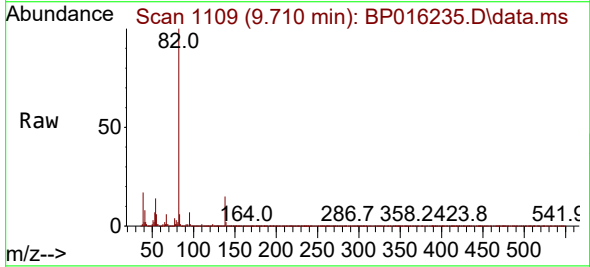
Instrument :  
 BNA\_P  
 ClientSampleId :  
 A4634MSD

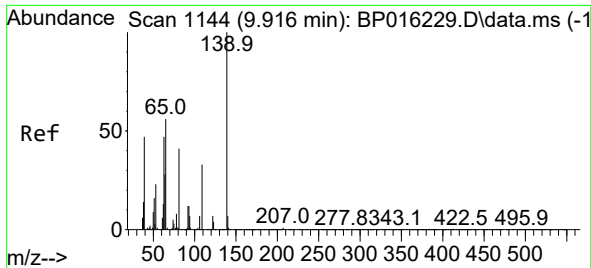
Tgt Ion: 77 Resp: 608130  
 Ion Ratio Lower Upper  
 77 100  
 123 39.0 31.8 47.8  
 65 13.6 10.4 15.6



#23  
 Isophorone  
 Concen: 49.080 ng/ul  
 RT: 9.710 min Scan# 1109  
 Delta R.T. -0.000 min  
 Lab File: BP016235.D  
 Acq: 14 Jul 2023 20:14

Tgt Ion: 82 Resp: 1151883  
 Ion Ratio Lower Upper  
 82 100  
 95 6.9 5.4 8.2  
 138 15.3 12.3 18.5



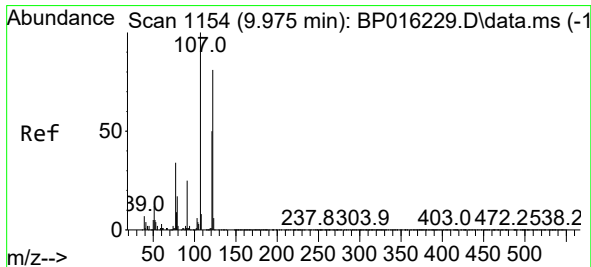
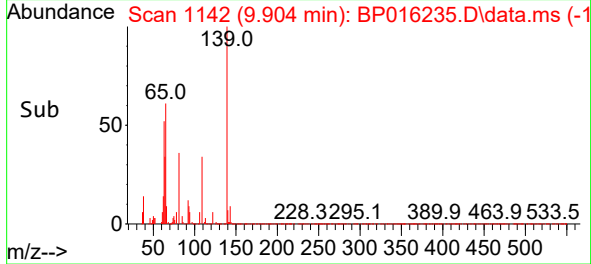
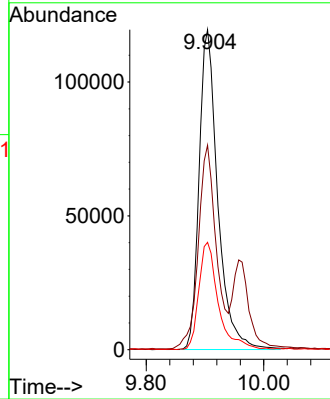
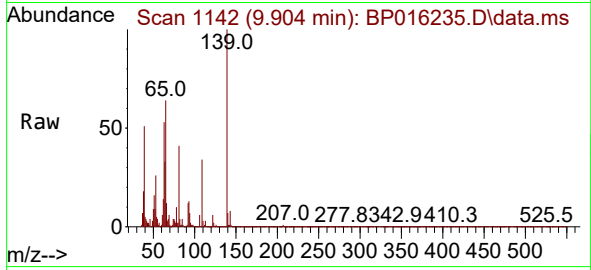


#25  
 2-Nitrophenol  
 Concen: 52.728 ng/ul  
 RT: 9.904 min Scan# 1142  
 Delta R.T. -0.012 min  
 Lab File: BP016235.D  
 Acq: 14 Jul 2023 20:14

Instrument :  
 BNA\_P  
 ClientSampleId :  
 A4634MSD

Tgt Ion:139 Resp: 263126

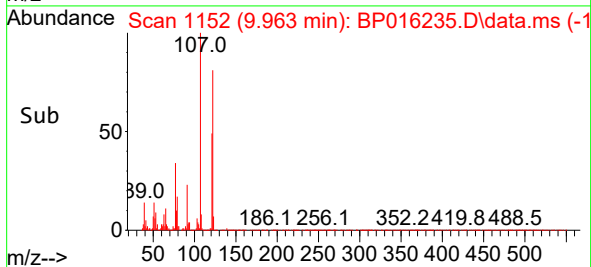
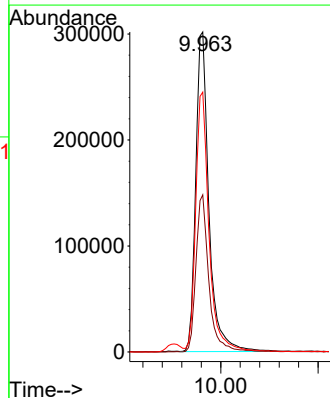
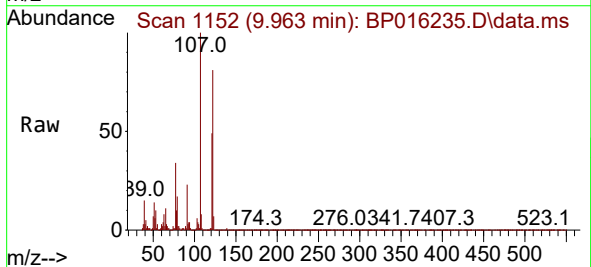
Ion	Ratio	Lower	Upper
139	100		
65	63.9	50.0	75.0
109	33.6	28.2	42.2

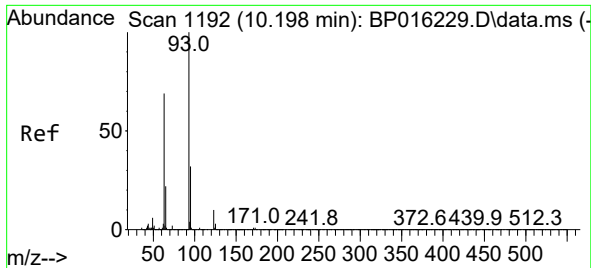


#26  
 2,4-Dimethylphenol  
 Concen: 51.900 ng/ul  
 RT: 9.963 min Scan# 1152  
 Delta R.T. -0.012 min  
 Lab File: BP016235.D  
 Acq: 14 Jul 2023 20:14

Tgt Ion:107 Resp: 569543

Ion	Ratio	Lower	Upper
107	100		
121	49.1	37.2	55.8
122	81.2	64.7	97.1



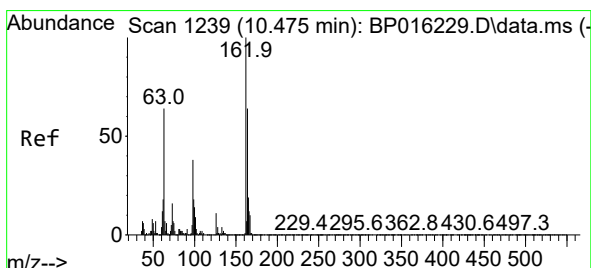
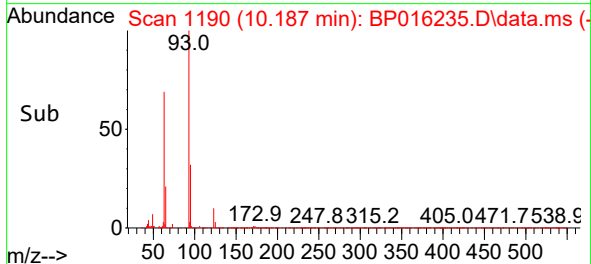
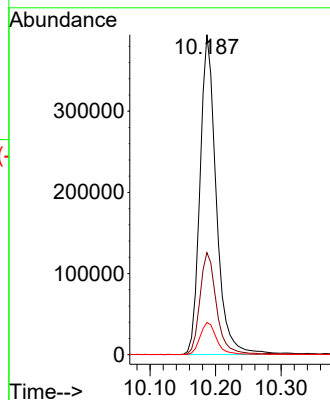
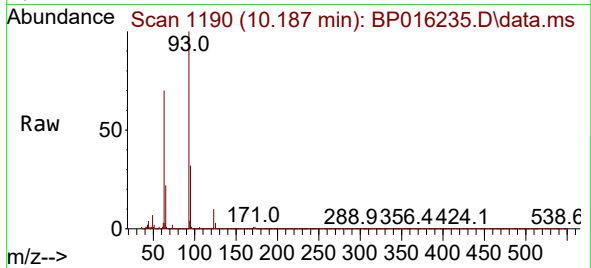


#27  
 Bis(2-Chloroethoxy)methane  
 Concen: 49.789 ng/ul  
 RT: 10.187 min Scan# 1192  
 Delta R.T. -0.012 min  
 Lab File: BP016235.D  
 Acq: 14 Jul 2023 20:14

Instrument :  
 BNA\_P  
 ClientSampleId :  
 A4634MSD

Tgt Ion: 93 Resp: 680413

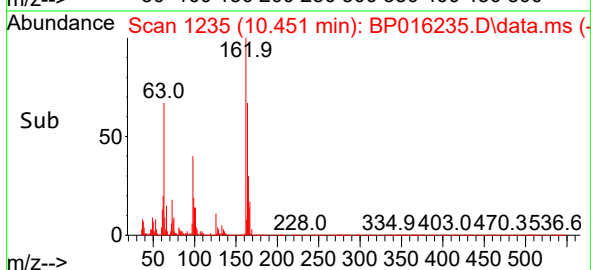
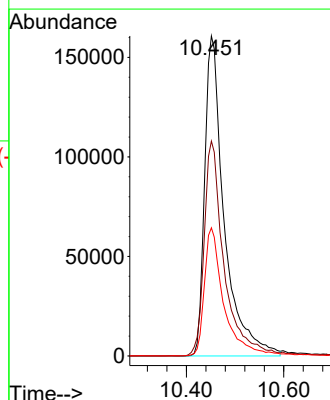
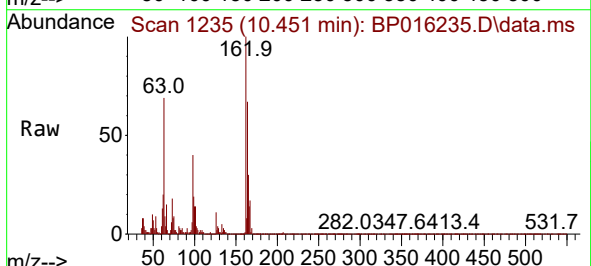
Ion	Ratio	Lower	Upper
93	100		
95	31.9	25.9	38.9
123	10.1	8.6	13.0

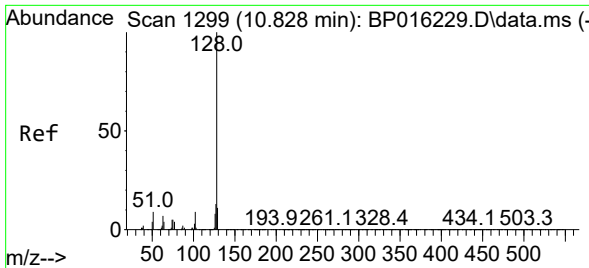


#29  
 2,4-Dichlorophenol  
 Concen: 54.005 ng/ul  
 RT: 10.451 min Scan# 1235  
 Delta R.T. -0.024 min  
 Lab File: BP016235.D  
 Acq: 14 Jul 2023 20:14

Tgt Ion: 162 Resp: 446632

Ion	Ratio	Lower	Upper
162	100		
164	67.1	54.3	81.5
98	40.1	31.8	47.8



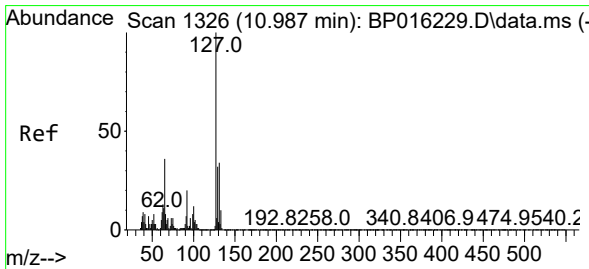
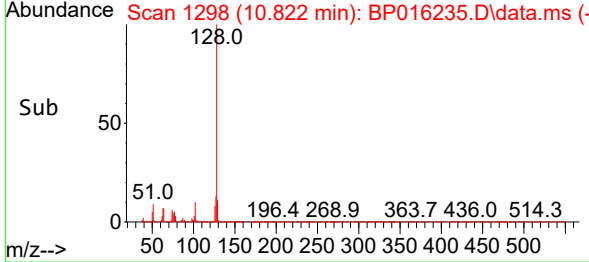
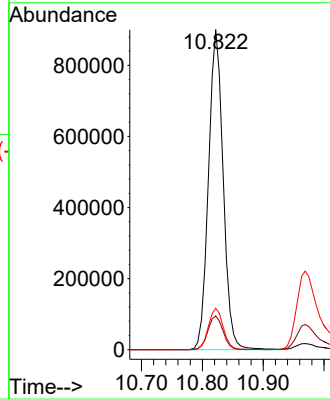
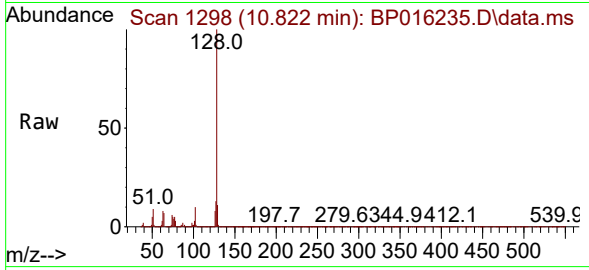


#30  
 Naphthalene  
 Concen: 48.583 ng/uI  
 RT: 10.822 min Scan# 1298  
 Delta R.T. -0.006 min  
 Lab File: BP016235.D  
 Acq: 14 Jul 2023 20:14

Instrument :  
 BNA\_P  
 ClientSampleId :  
 A4634MSD

Tgt Ion:128 Resp: 1505993

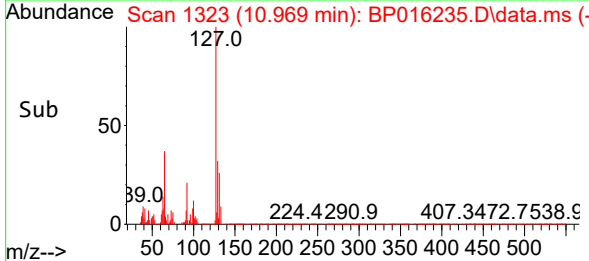
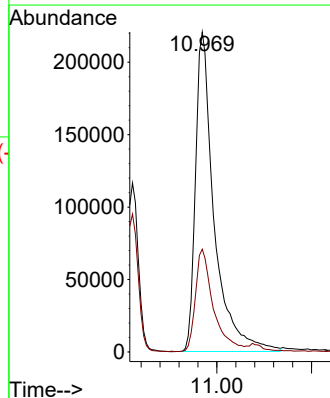
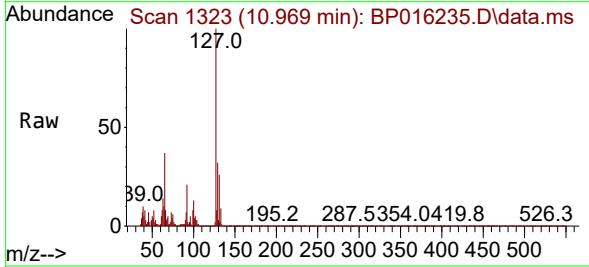
Ion	Ratio	Lower	Upper
128	100		
129	10.6	8.9	13.3
127	12.9	10.9	16.3

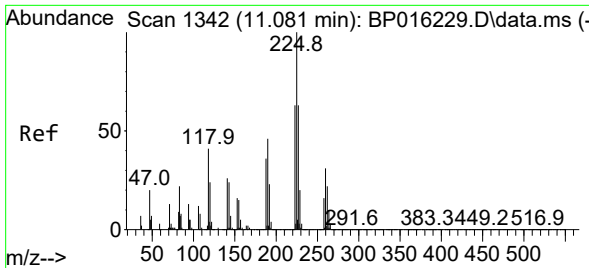


#32  
 4-Chloroaniline  
 Concen: 46.870 ng/uI  
 RT: 10.969 min Scan# 1323  
 Delta R.T. -0.018 min  
 Lab File: BP016235.D  
 Acq: 14 Jul 2023 20:14

Tgt Ion:127 Resp: 600958

Ion	Ratio	Lower	Upper
127	100		
129	32.1	26.1	39.1



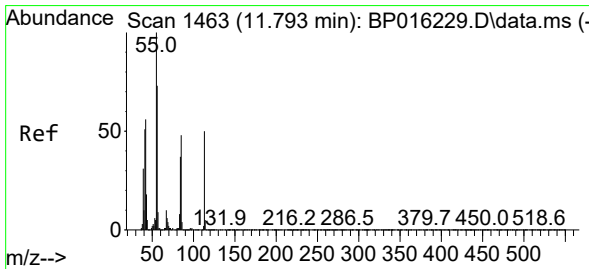
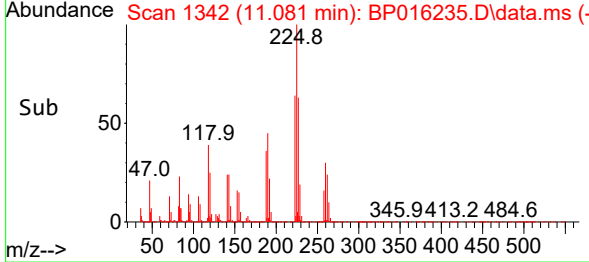
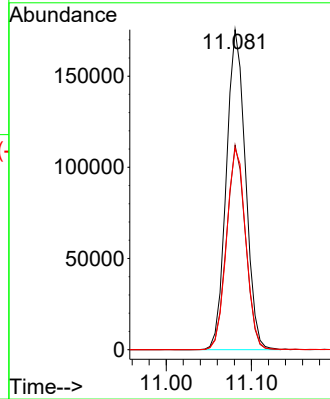
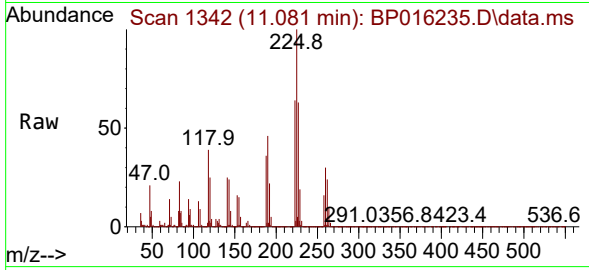


#33  
 Hexachlorobutadiene  
 Concen: 48.667 ng/ul  
 RT: 11.081 min Scan# 11  
 Delta R.T. -0.000 min  
 Lab File: BP016235.D  
 Acq: 14 Jul 2023 20:14

Instrument :  
 BNA\_P  
 ClientSampleId :  
 A4634MSD

Tgt Ion:225 Resp: 273363

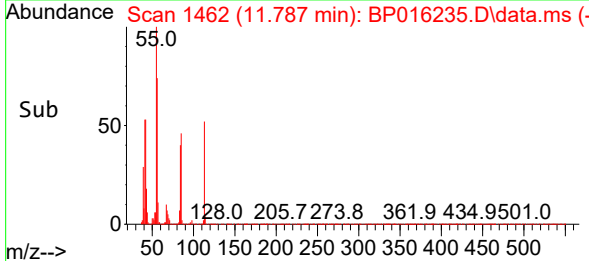
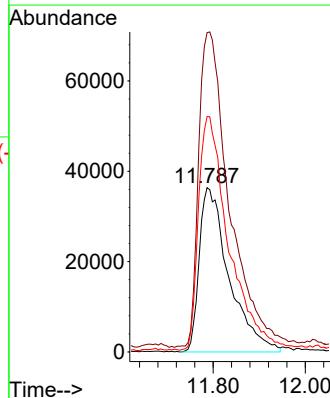
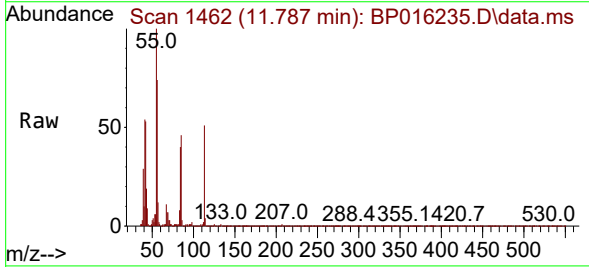
Ion	Ratio	Lower	Upper
225	100		
223	63.9	49.8	74.6
227	62.8	51.7	77.5

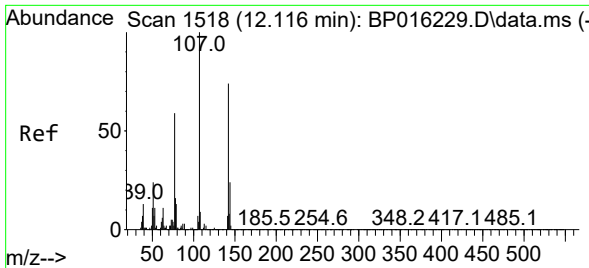


#34  
 Caprolactam  
 Concen: 54.487 ng/ul  
 RT: 11.787 min Scan# 1462  
 Delta R.T. -0.006 min  
 Lab File: BP016235.D  
 Acq: 14 Jul 2023 20:14

Tgt Ion:113 Resp: 163134

Ion	Ratio	Lower	Upper
113	100		
55	194.3	147.8	221.8
56	143.2	103.8	155.6

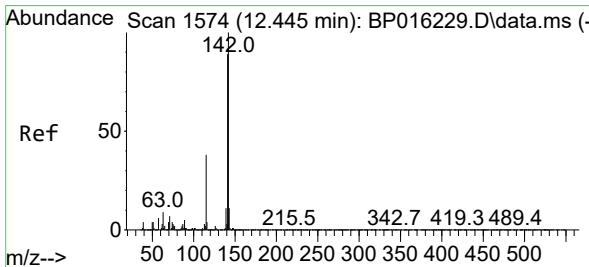
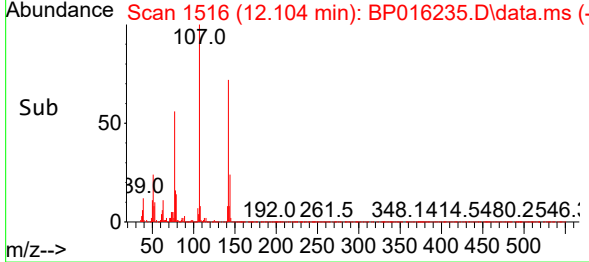
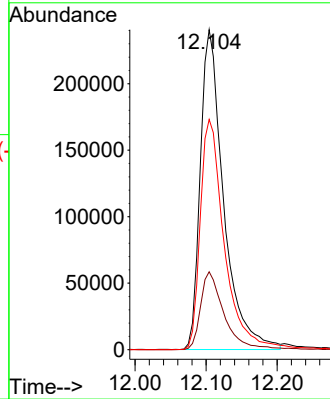
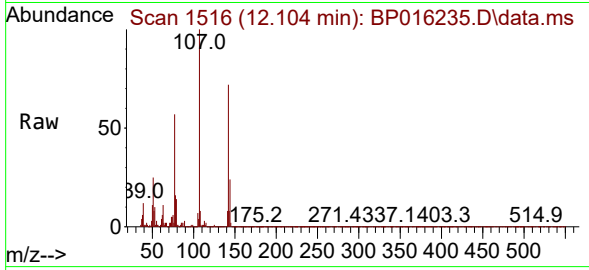




#35  
 4-Chloro-3-methylphenol  
 Concen: 53.712 ng/ul  
 RT: 12.104 min Scan# 1516  
 Delta R.T. -0.012 min  
 Lab File: BP016235.D  
 Acq: 14 Jul 2023 20:14

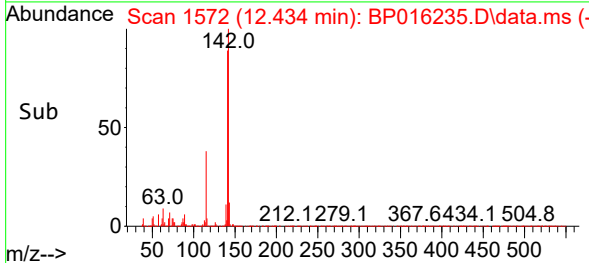
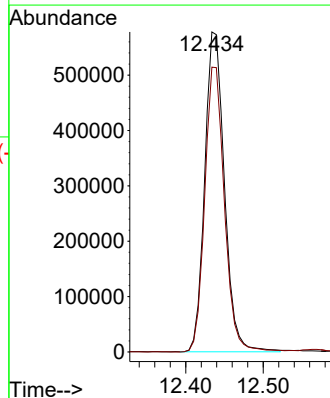
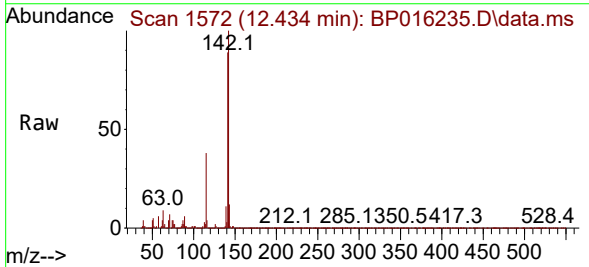
Instrument :  
 BNA\_P  
 ClientSampleId :  
 A4634MSD

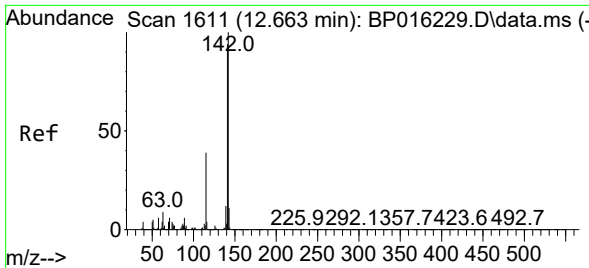
Tgt Ion:107 Resp: 548175  
 Ion Ratio Lower Upper  
 107 100  
 144 24.4 20.3 30.5  
 142 71.9 60.8 91.2



#36  
 2-Methylnaphthalene  
 Concen: 49.172 ng/ul  
 RT: 12.434 min Scan# 1572  
 Delta R.T. -0.012 min  
 Lab File: BP016235.D  
 Acq: 14 Jul 2023 20:14

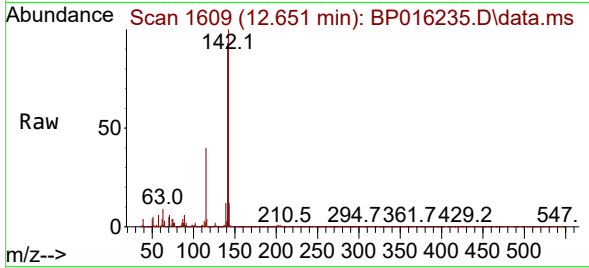
Tgt Ion:142 Resp: 1022012  
 Ion Ratio Lower Upper  
 142 100  
 141 89.0 71.9 107.9



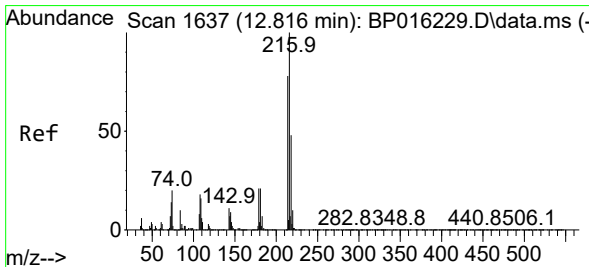
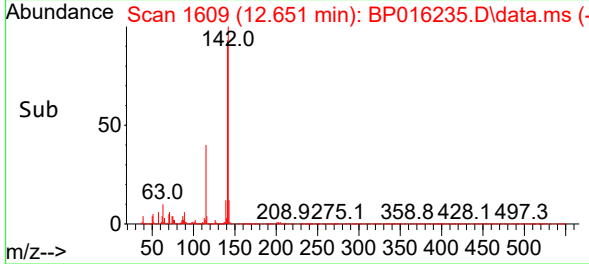
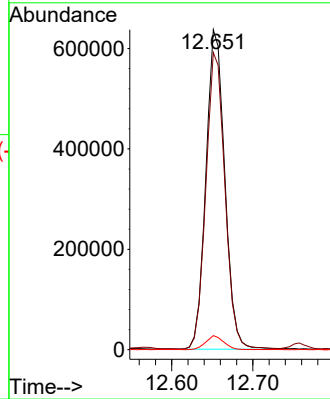


#37  
1-Methylnaphthalene  
Concen: 47.992 ng/ul  
RT: 12.651 min Scan# 1609  
Delta R.T. -0.012 min  
Lab File: BP016235.D  
Acq: 14 Jul 2023 20:14

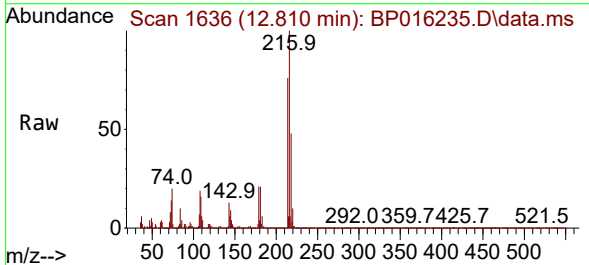
Instrument :  
BNA\_P  
ClientSampleId :  
A4634MSD



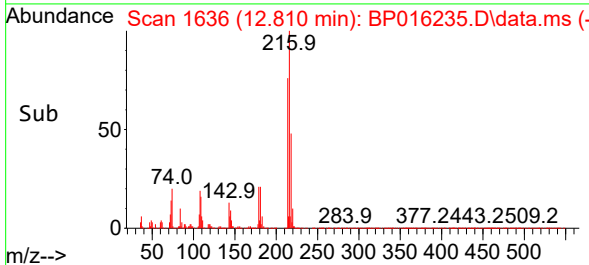
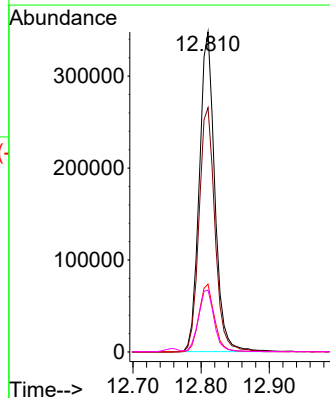
Tgt Ion:142 Resp: 1025844  
Ion Ratio Lower Upper  
142 100  
141 92.9 73.9 110.9  
116 4.4 3.4 5.2



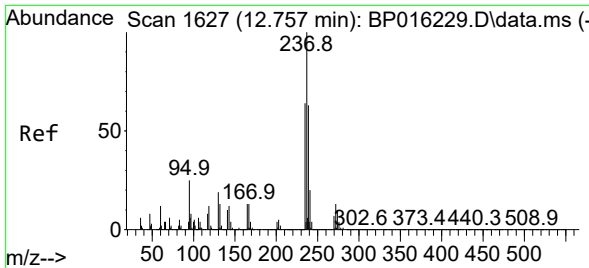
#39  
1,2,4,5-Tetrachlorobenzene  
Concen: 50.560 ng/ul  
RT: 12.810 min Scan# 1636  
Delta R.T. -0.006 min  
Lab File: BP016235.D  
Acq: 14 Jul 2023 20:14



Tgt Ion:216 Resp: 548026  
Ion Ratio Lower Upper  
216 100  
214 76.3 62.9 94.3  
179 21.2 17.8 26.6  
108 19.3 16.0 24.0



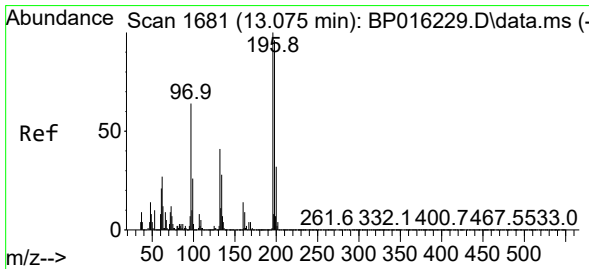
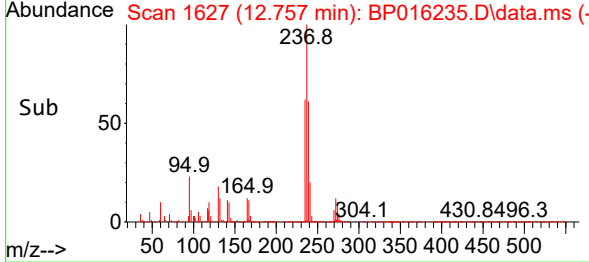
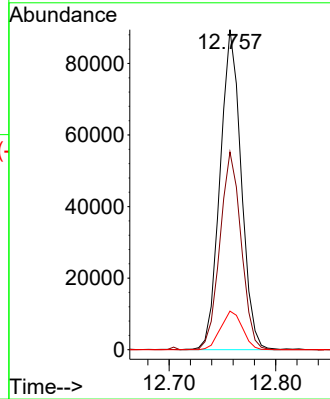
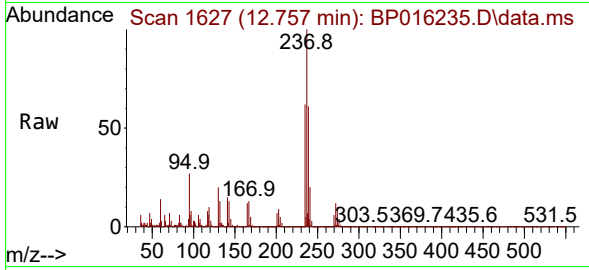




#40  
 Hexachlorocyclopentadiene  
 Concen: 28.896 ng/ul  
 RT: 12.757 min Scan# 1627  
 Delta R.T. -0.000 min  
 Lab File: BP016235.D  
 Acq: 14 Jul 2023 20:14

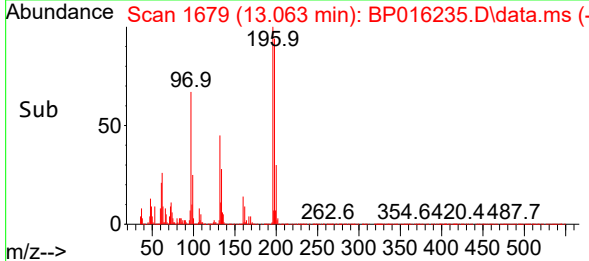
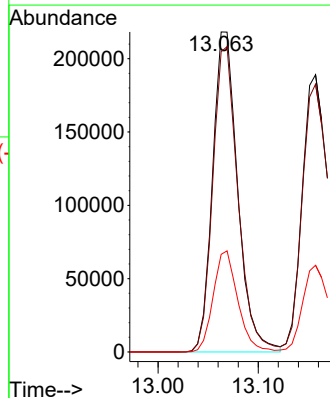
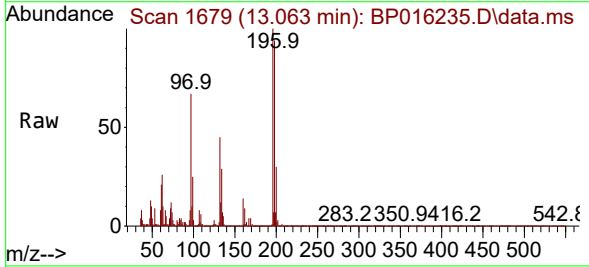
Instrument : BNA\_P  
 Client Sample Id : A4634MSD

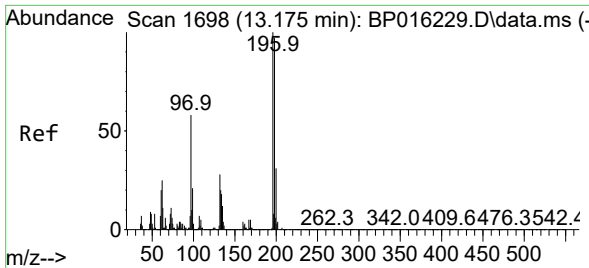
Tgt Ion	Resp	Lower	Upper
237	100		
235	61.8	48.2	72.2
272	12.1	9.5	14.3



#41  
 2,4,6-Trichlorophenol  
 Concen: 55.569 ng/ul  
 RT: 13.063 min Scan# 1679  
 Delta R.T. -0.012 min  
 Lab File: BP016235.D  
 Acq: 14 Jul 2023 20:14

Tgt Ion	Resp	Lower	Upper
196	100		
198	93.9	79.2	118.8
200	30.5	24.2	36.4



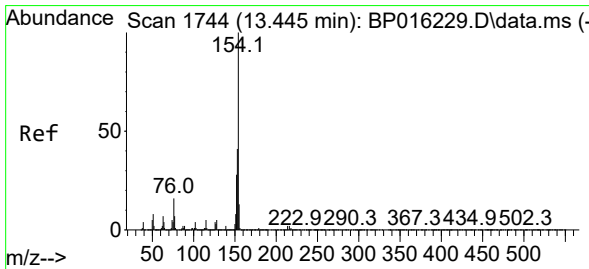
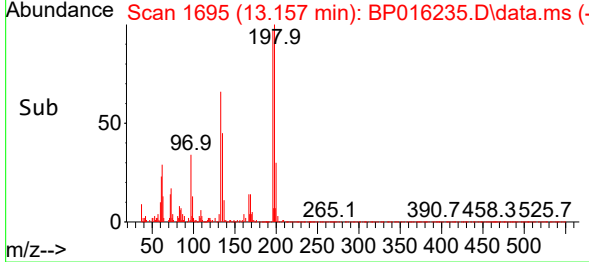
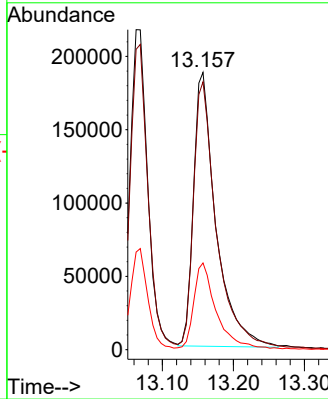
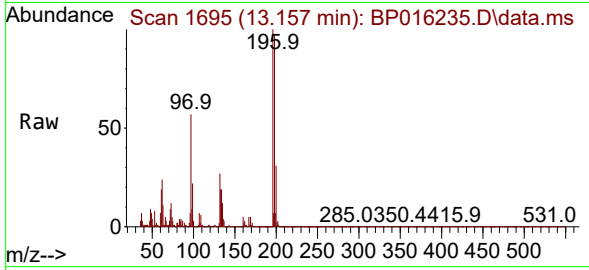


#42  
 2,4,5-Trichlorophenol  
 Concen: 56.388 ng/ul  
 RT: 13.157 min Scan# 1  
 Delta R.T. -0.018 min  
 Lab File: BP016235.D  
 Acq: 14 Jul 2023 20:14

Instrument :  
 BNA\_P  
 ClientSampleId :  
 A4634MSD

Tgt Ion:196 Resp: 410539

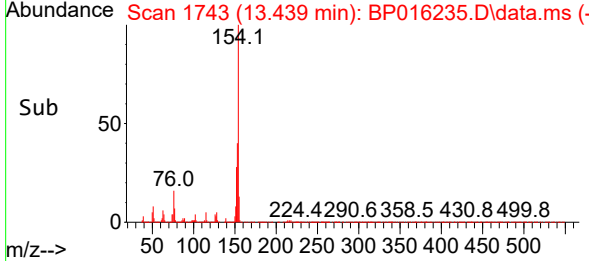
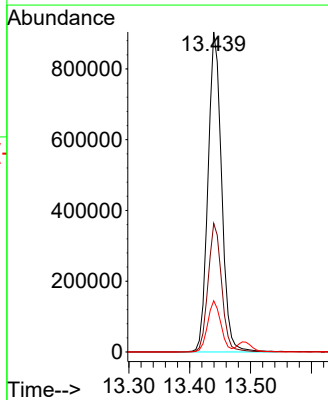
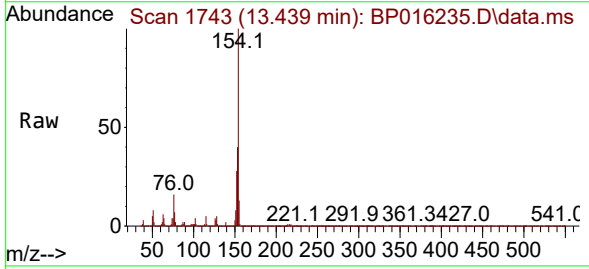
Ion	Ratio	Lower	Upper
196	100		
198	96.6	77.4	116.2
200	31.3	25.3	37.9

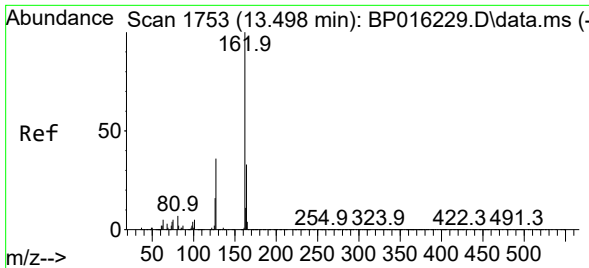


#43  
 1,1'-Biphenyl  
 Concen: 50.551 ng/ul  
 RT: 13.439 min Scan# 1743  
 Delta R.T. -0.006 min  
 Lab File: BP016235.D  
 Acq: 14 Jul 2023 20:14

Tgt Ion:154 Resp: 1403384

Ion	Ratio	Lower	Upper
154	100		
153	40.2	31.1	46.7
76	16.0	12.9	19.3



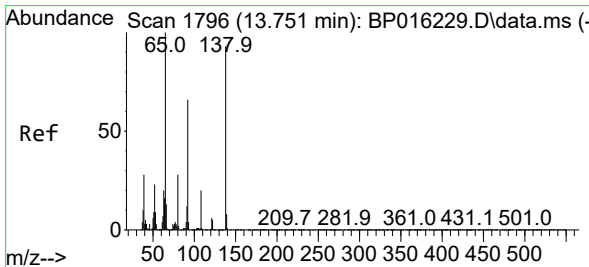
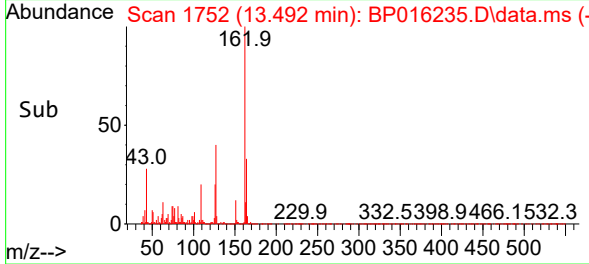
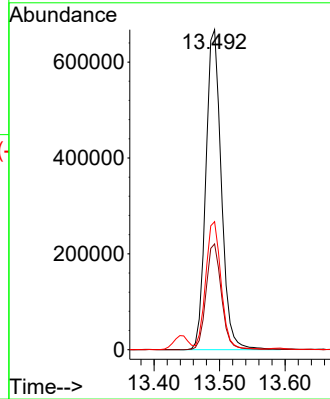
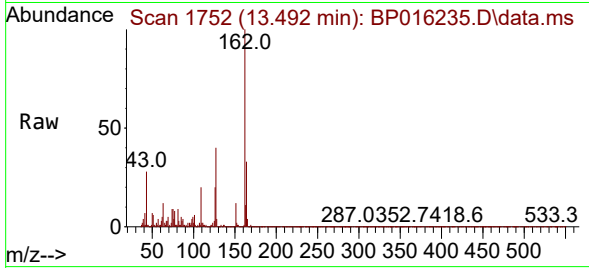


#44  
 2-Chloronaphthalene  
 Concen: 50.315 ng/ul  
 RT: 13.492 min Scan# 1752  
 Delta R.T. -0.006 min  
 Lab File: BP016235.D  
 Acq: 14 Jul 2023 20:14

Instrument :  
 BNA\_P  
 ClientSampleId :  
 A4634MSD

Tgt Ion:162 Resp: 1097440

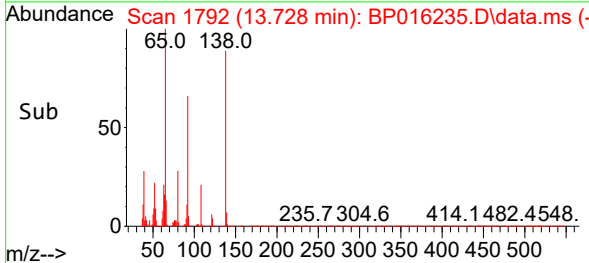
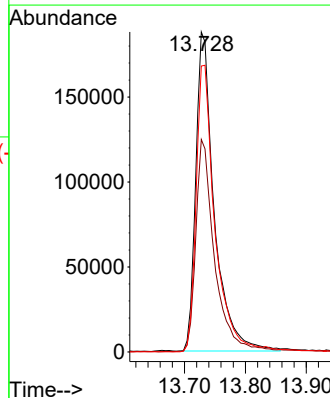
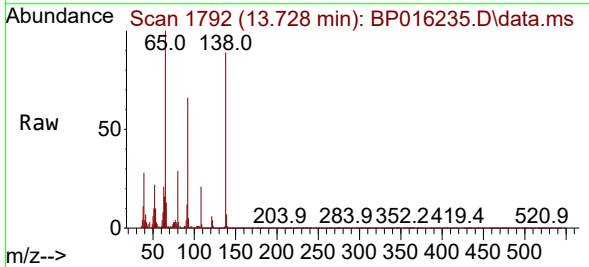
Ion	Ratio	Lower	Upper
162	100		
164	33.1	26.0	39.0
127	40.0	31.2	46.8

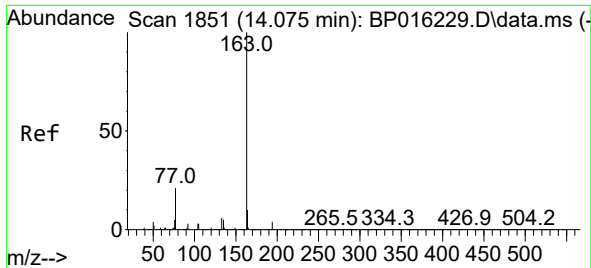


#45  
 2-Nitroaniline  
 Concen: 55.753 ng/ul  
 RT: 13.728 min Scan# 1792  
 Delta R.T. -0.024 min  
 Lab File: BP016235.D  
 Acq: 14 Jul 2023 20:14

Tgt Ion: 65 Resp: 396300

Ion	Ratio	Lower	Upper
65	100		
92	66.4	54.1	81.1
138	89.3	73.4	110.0

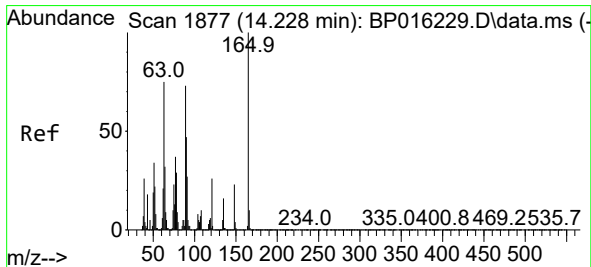
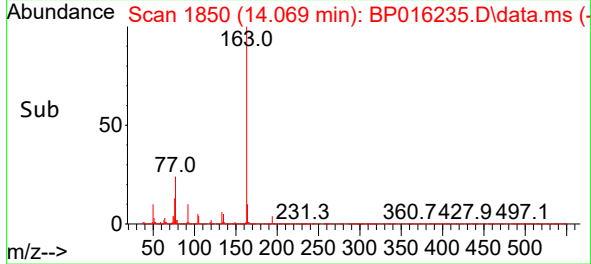
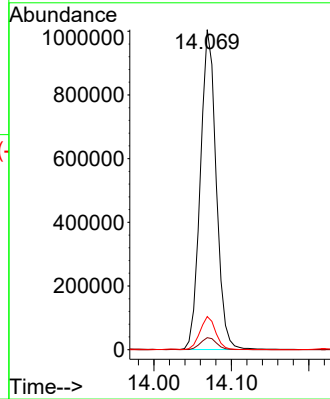
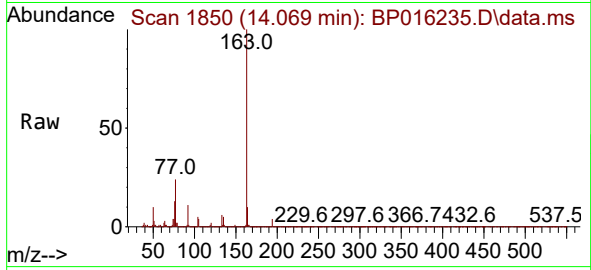




#47  
 Dimethylphthalate  
 Concen: 48.672 ng/ul  
 RT: 14.069 min Scan# 1850  
 Delta R.T. -0.006 min  
 Lab File: BP016235.D  
 Acq: 14 Jul 2023 20:14

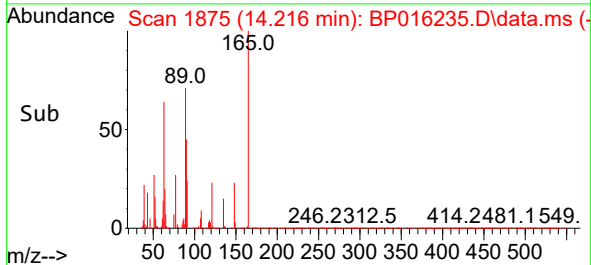
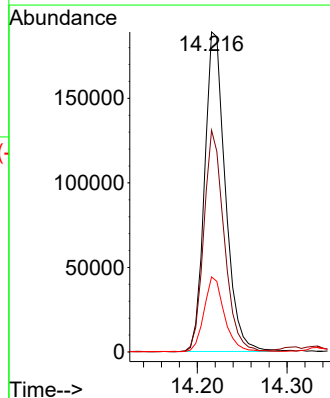
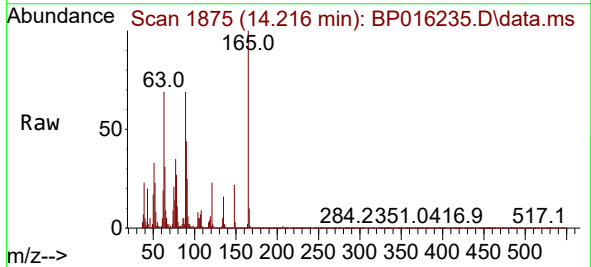
Instrument :  
 BNA\_P  
 ClientSampleId :  
 A4634MSD

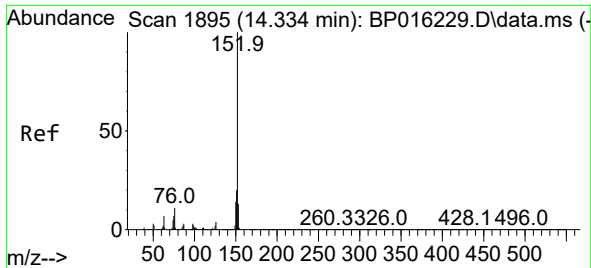
Tgt Ion:163 Resp: 1427105  
 Ion Ratio Lower Upper  
 163 100  
 194 3.8 3.0 4.6  
 164 10.4 8.0 12.0



#48  
 2,6-Dinitrotoluene  
 Concen: 54.890 ng/ul  
 RT: 14.216 min Scan# 1875  
 Delta R.T. -0.012 min  
 Lab File: BP016235.D  
 Acq: 14 Jul 2023 20:14

Tgt Ion:165 Resp: 303415  
 Ion Ratio Lower Upper  
 165 100  
 89 69.3 54.8 82.2  
 121 23.5 19.4 29.0



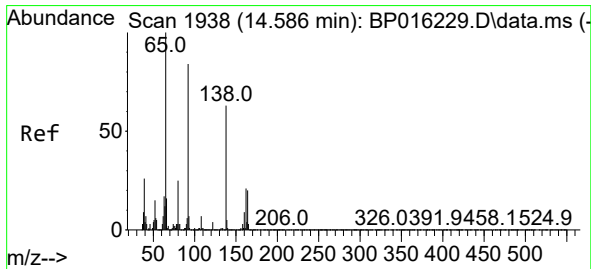
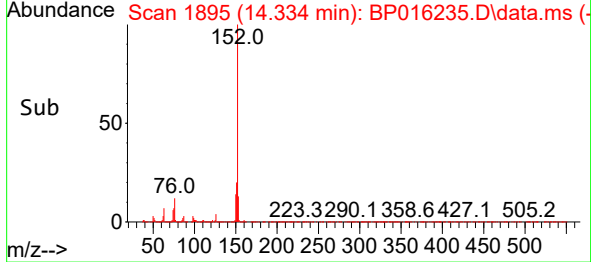
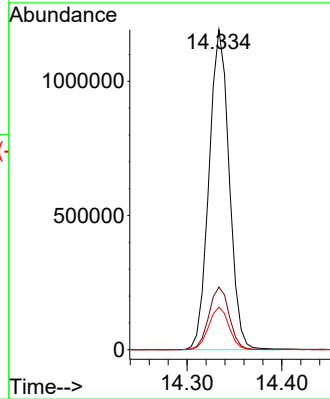
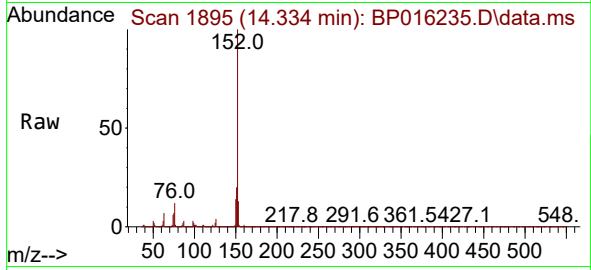


#50  
 Acenaphthylene  
 Concen: 48.281 ng/ul  
 RT: 14.334 min Scan# 1895  
 Delta R.T. -0.000 min  
 Lab File: BP016235.D  
 Acq: 14 Jul 2023 20:14

Instrument :  
 BNA\_P  
 ClientSampleId :  
 A4634MSD

Tgt Ion:152 Resp: 1764217

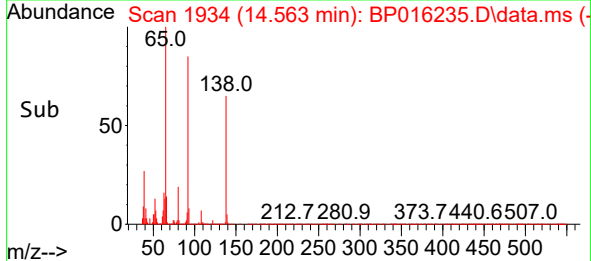
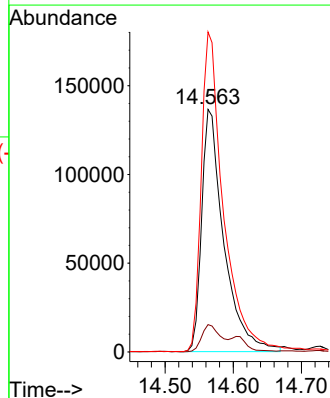
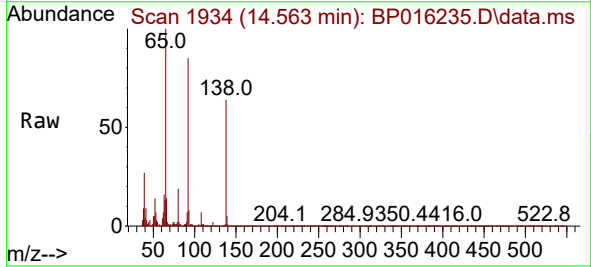
Ion	Ratio	Lower	Upper
152	100		
151	19.6	15.8	23.8
153	13.3	10.2	15.4

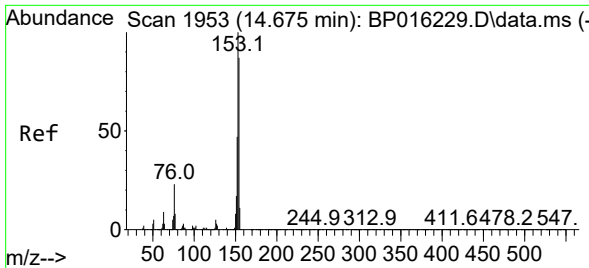


#51  
 3-Nitroaniline  
 Concen: 55.114 ng/ul  
 RT: 14.563 min Scan# 1934  
 Delta R.T. -0.024 min  
 Lab File: BP016235.D  
 Acq: 14 Jul 2023 20:14

Tgt Ion:138 Resp: 309371

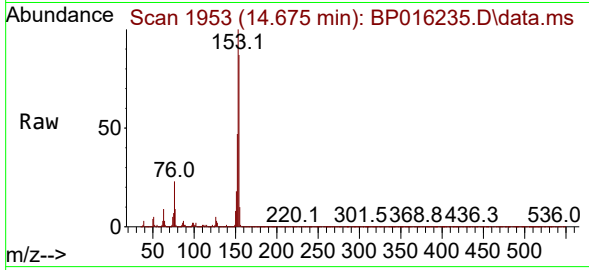
Ion	Ratio	Lower	Upper
138	100		
108	11.3	9.6	14.4
92	131.9	109.0	163.4





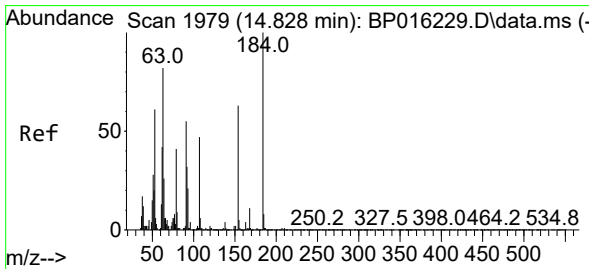
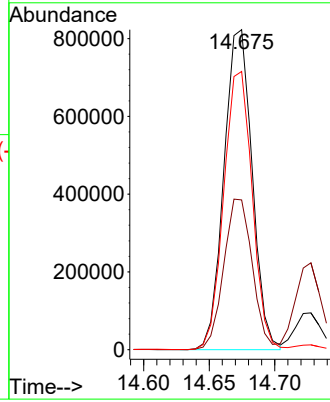
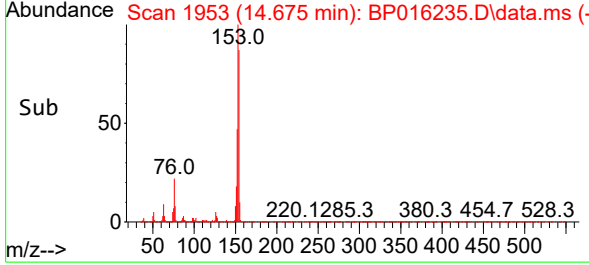
#52  
 Acenaphthene  
 Concen: 49.902 ng/ul  
 RT: 14.675 min Scan# 1953  
 Delta R.T. -0.000 min  
 Lab File: BP016235.D  
 Acq: 14 Jul 2023 20:14

Instrument :  
 BNA\_P  
 ClientSampleId :  
 A4634MSD

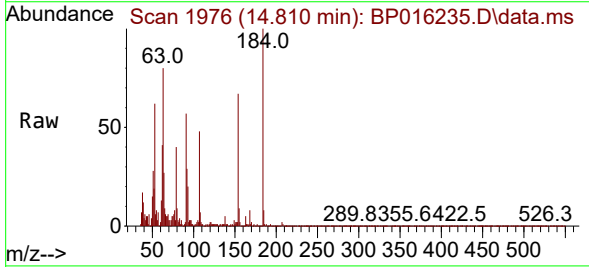


Tgt Ion:153 Resp: 1233288

Ion	Ratio	Lower	Upper
153	100		
152	46.8	37.9	56.9
154	86.9	69.3	103.9

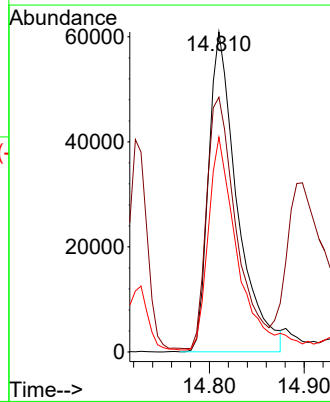
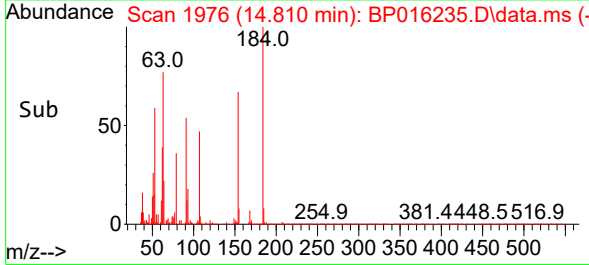


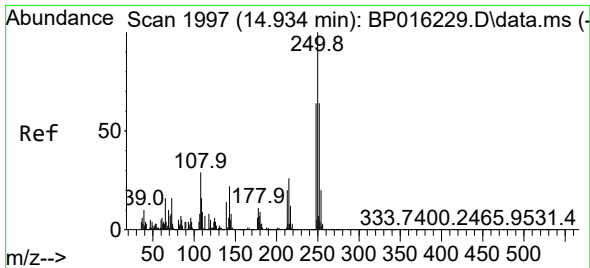
#53  
 2,4-Dinitrophenol  
 Concen: 32.940 ng/ul  
 RT: 14.810 min Scan# 1976  
 Delta R.T. -0.018 min  
 Lab File: BP016235.D  
 Acq: 14 Jul 2023 20:14



Tgt Ion:184 Resp: 127443

Ion	Ratio	Lower	Upper
184	100		
63	79.6	67.0	100.6
154	67.1	51.5	77.3

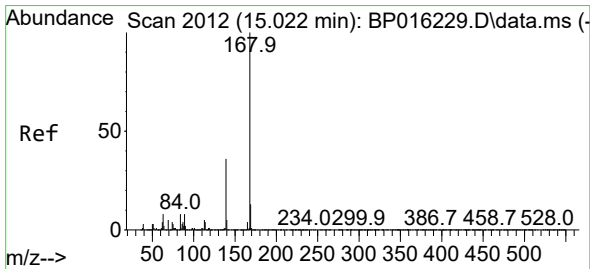
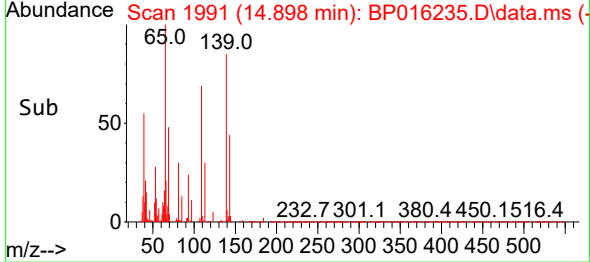
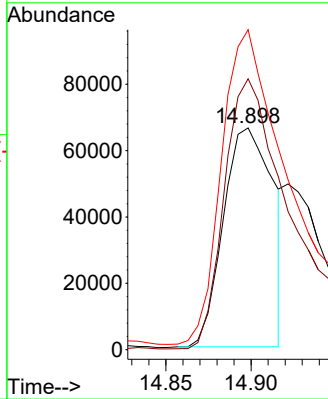
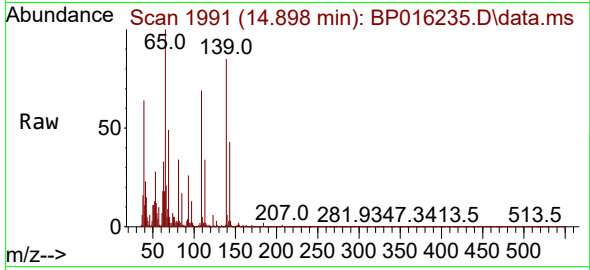




#55  
 4-Nitrophenol  
 Concen: 29.617 ng/ul  
 RT: 14.898 min Scan# 1991  
 Delta R.T. -0.035 min  
 Lab File: BP016235.D  
 Acq: 14 Jul 2023 20:14

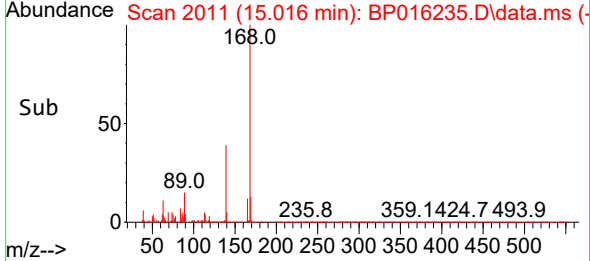
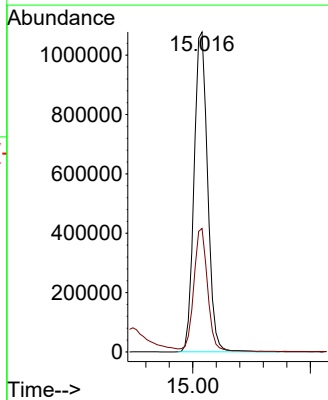
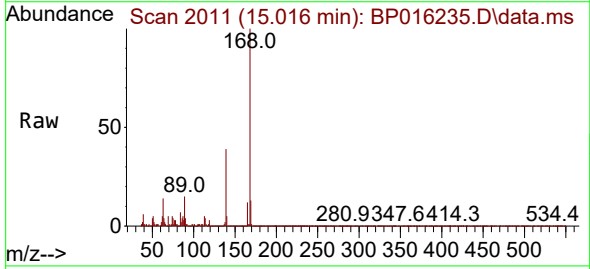
Instrument : BNA\_P  
 ClientSampleId : A4634MSD

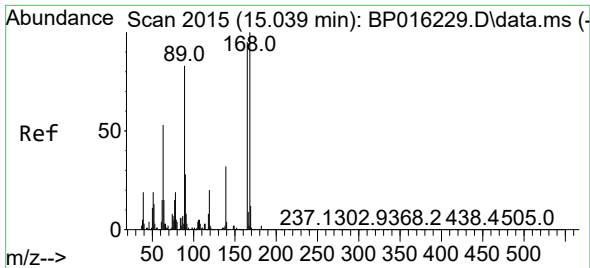
Tgt Ion	Resp	Lower	Upper
109	133535		
109	100		
139	122.1	76.8	115.2#
65	144.3	92.2	138.4#



#56  
 Dibenzofuran  
 Concen: 51.126 ng/ul  
 RT: 15.016 min Scan# 2011  
 Delta R.T. -0.006 min  
 Lab File: BP016235.D  
 Acq: 14 Jul 2023 20:14

Tgt Ion	Resp	Lower	Upper
168	1721050		
168	100		
139	38.6	30.6	45.8



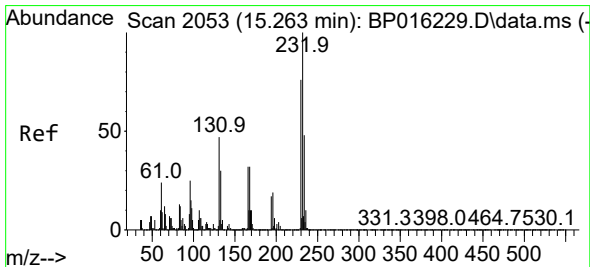
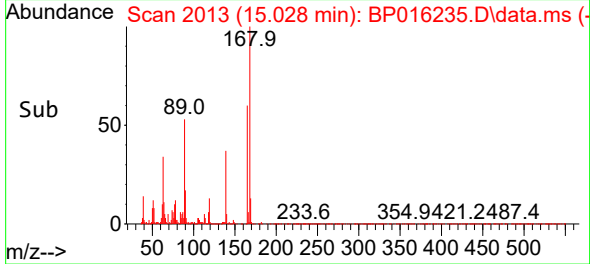
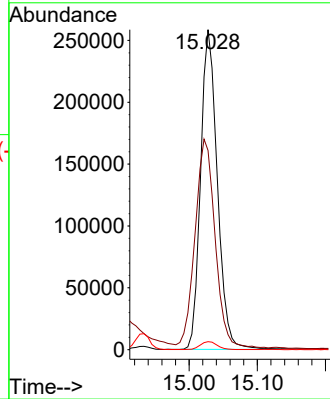
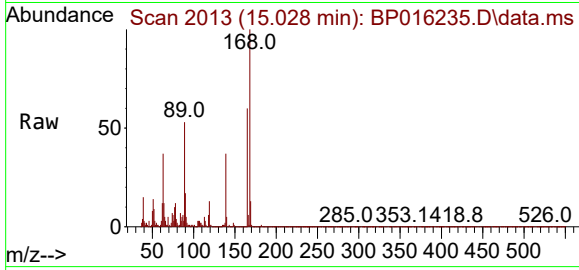


#57  
 2,4-Dinitrotoluene  
 Concen: 53.967 ng/ul  
 RT: 15.028 min Scan# 2013  
 Delta R.T. -0.012 min  
 Lab File: BP016235.D  
 Acq: 14 Jul 2023 20:14

Instrument :  
 BNA\_P  
 ClientSampleId :  
 A4634MSD

Tgt Ion:165 Resp: 440068

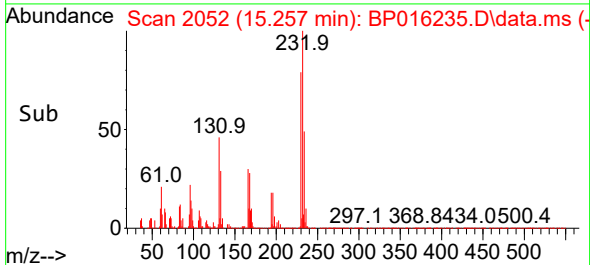
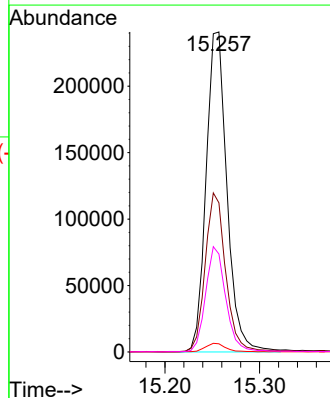
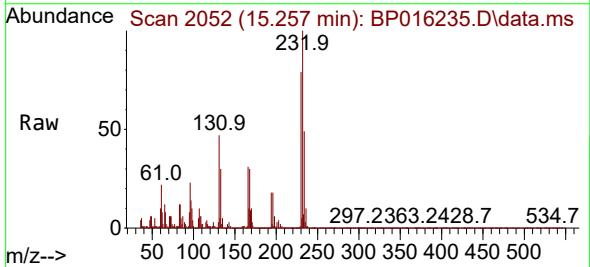
Ion	Ratio	Lower	Upper
165	100		
63	62.3	56.9	85.3
182	2.5	2.0	3.0



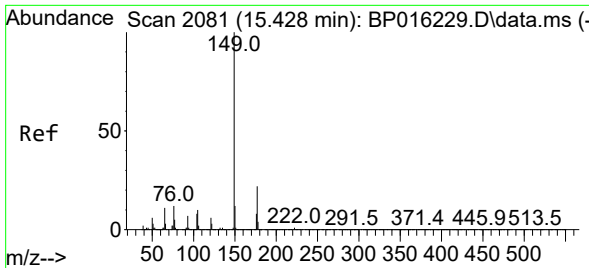
#58  
 2,3,4,6-Tetrachlorophenol  
 Concen: 55.701 ng/ul  
 RT: 15.257 min Scan# 2052  
 Delta R.T. -0.006 min  
 Lab File: BP016235.D  
 Acq: 14 Jul 2023 20:14

Tgt Ion:232 Resp: 368036

Ion	Ratio	Lower	Upper
232	100		
131	46.6	38.6	57.8
130	2.5	2.2	3.4
166	30.6	25.2	37.8





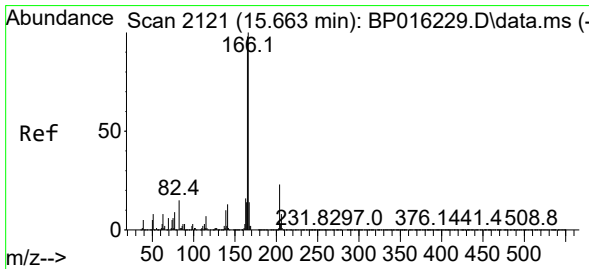
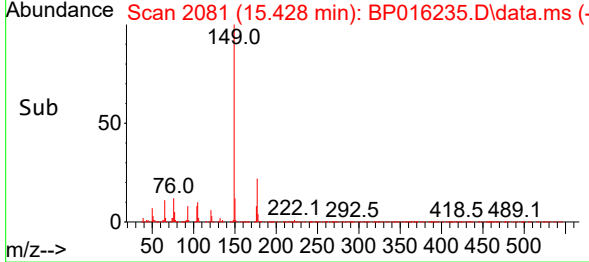
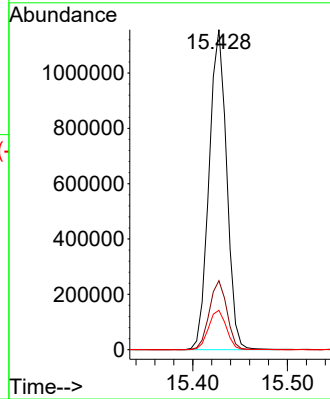
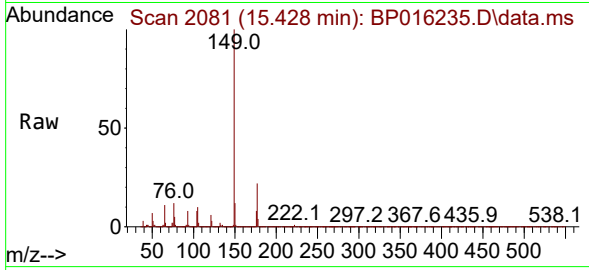


#59  
 Diethylphthalate  
 Concen: 48.881 ng/ul  
 RT: 15.428 min Scan# 2081  
 Delta R.T. -0.000 min  
 Lab File: BP016235.D  
 Acq: 14 Jul 2023 20:14

Instrument : BNA\_P  
 ClientSampleId : A4634MSD

Tgt Ion:149 Resp: 1490463

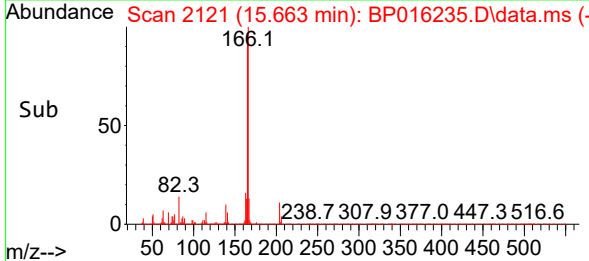
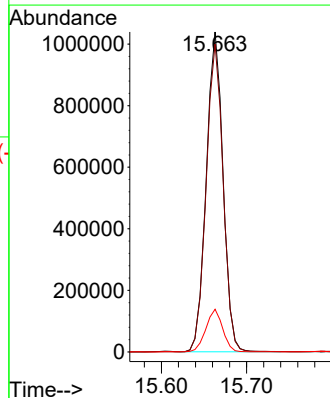
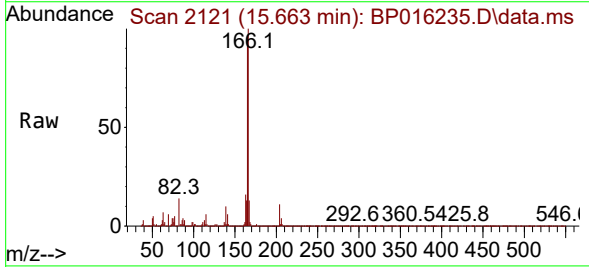
Ion	Ratio	Lower	Upper
149	100		
177	21.5	17.4	26.0
150	12.3	10.2	15.2

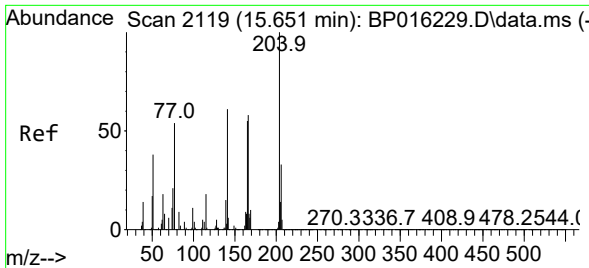


#61  
 Fluorene  
 Concen: 50.550 ng/ul  
 RT: 15.663 min Scan# 2121  
 Delta R.T. -0.000 min  
 Lab File: BP016235.D  
 Acq: 14 Jul 2023 20:14

Tgt Ion:166 Resp: 1421549

Ion	Ratio	Lower	Upper
166	100		
165	96.2	78.6	117.8
167	13.4	11.0	16.4

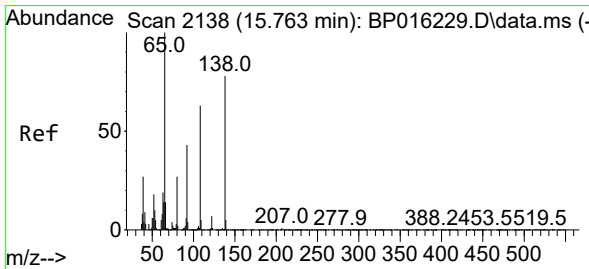
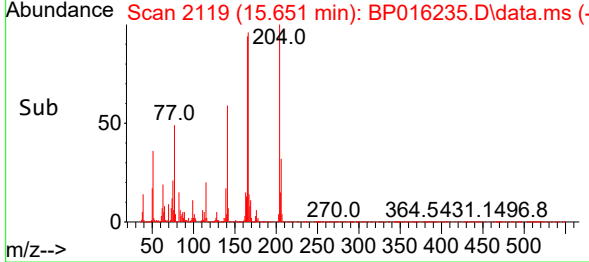
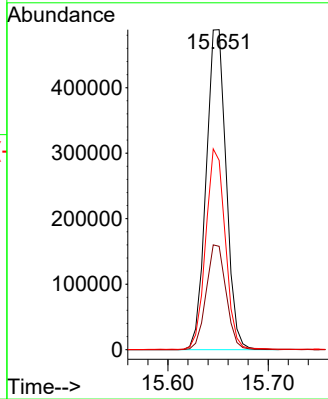
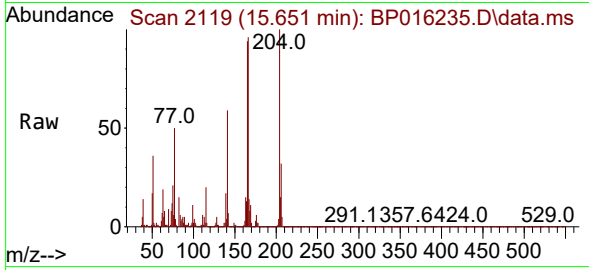




#62  
 4-Chlorophenyl-phenylether  
 Concen: 49.716 ng/ul  
 RT: 15.651 min Scan# 2119  
 Delta R.T. -0.000 min  
 Lab File: BP016235.D  
 Acq: 14 Jul 2023 20:14

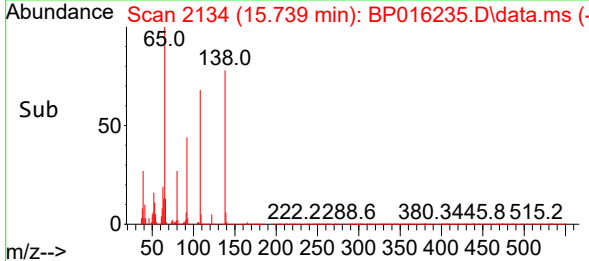
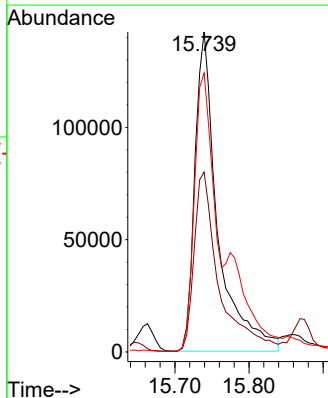
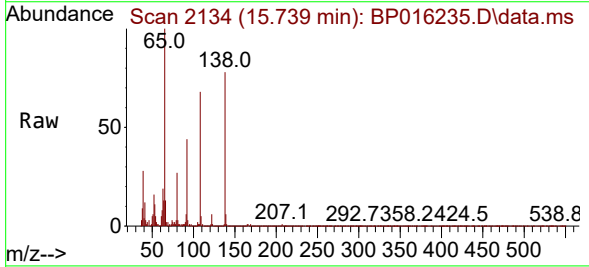
Instrument : BNA\_P  
 ClientSampleId : A4634MSD

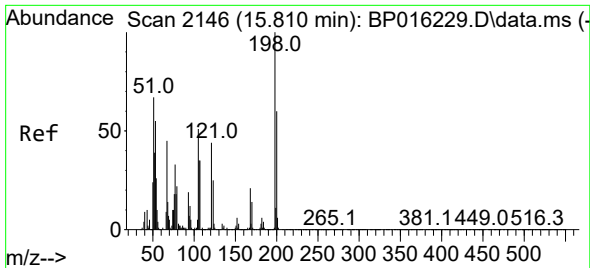
Tgt Ion	Resp	Lower	Upper
204	100		
206	32.3	25.4	38.2
141	59.2	48.2	72.2



#63  
 4-Nitroaniline  
 Concen: 59.230 ng/ul  
 RT: 15.739 min Scan# 2134  
 Delta R.T. -0.024 min  
 Lab File: BP016235.D  
 Acq: 14 Jul 2023 20:14

Tgt Ion	Resp	Lower	Upper
138	100		
92	56.2	46.6	70.0
108	87.1	68.3	102.5

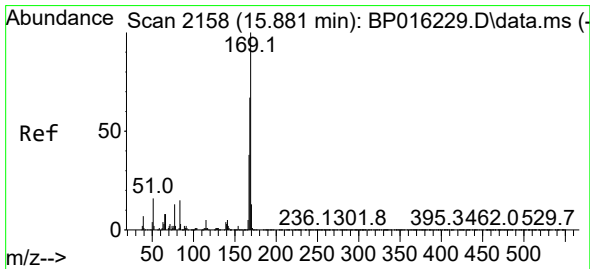
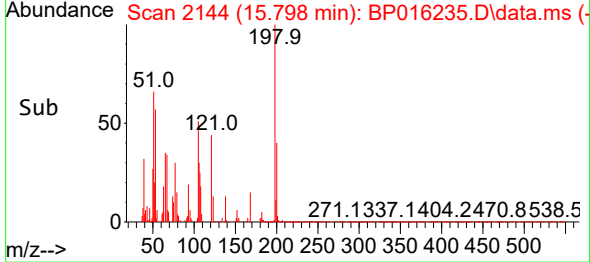
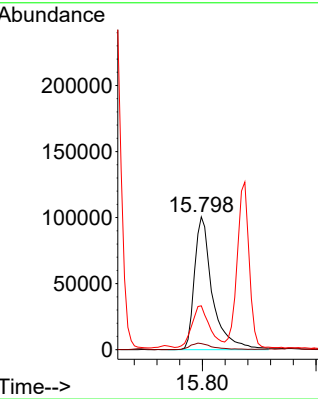
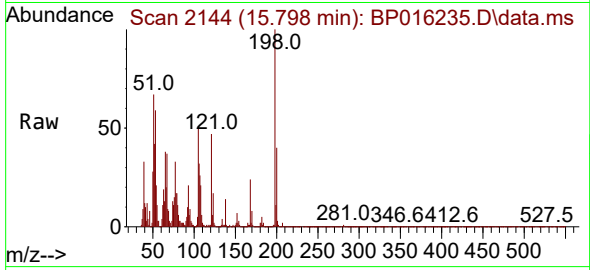




#66  
 4,6-Dinitro-2-methylphenol  
 Concen: 40.376 ng/ul  
 RT: 15.798 min Scan# 2144  
 Delta R.T. -0.012 min  
 Lab File: BP016235.D  
 Acq: 14 Jul 2023 20:14

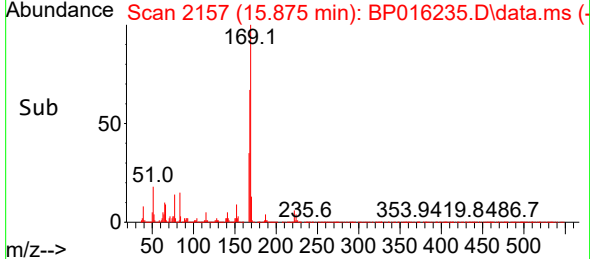
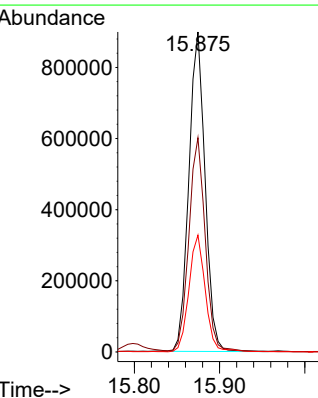
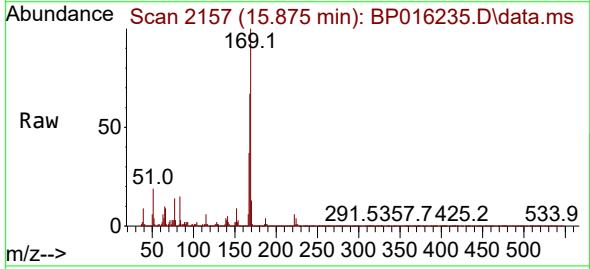
Instrument :  
 BNA\_P  
 ClientSampleId :  
 A4634MSD

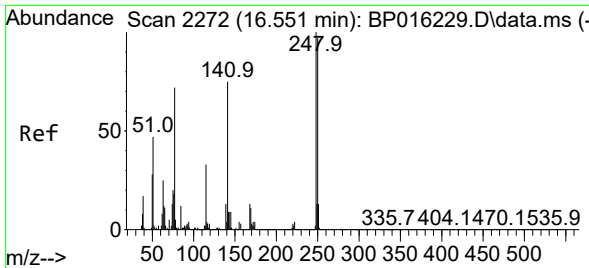
Tgt Ion	Resp	Lower	Upper
198	100		
182	4.5	4.3	6.5
77	33.0	26.3	39.5



#67  
 N-Nitrosodiphenylamine  
 Concen: 49.563 ng/ul  
 RT: 15.875 min Scan# 2157  
 Delta R.T. -0.006 min  
 Lab File: BP016235.D  
 Acq: 14 Jul 2023 20:14

Tgt Ion	Resp	Lower	Upper
169	100		
168	66.9	54.2	81.4
167	36.5	30.2	45.4

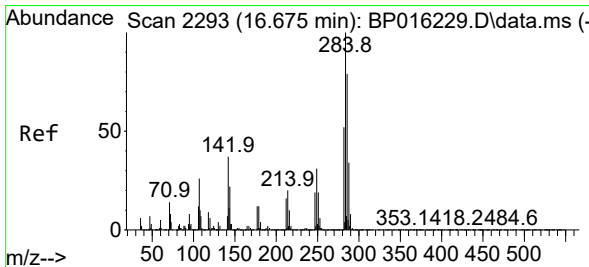
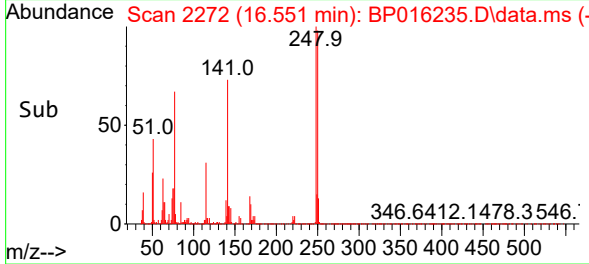
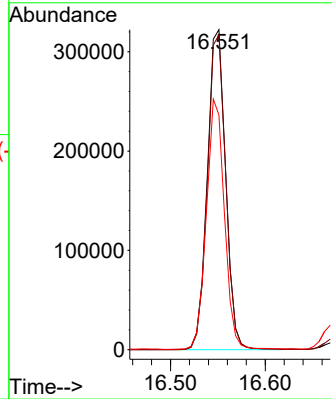
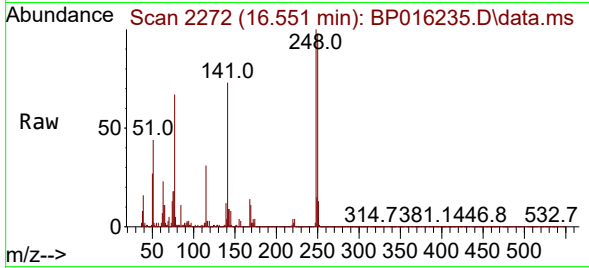




#68  
 4-Bromophenyl-phenylether  
 Concen: 50.383 ng/ul  
 RT: 16.551 min Scan# 2272  
 Delta R.T. -0.000 min  
 Lab File: BP016235.D  
 Acq: 14 Jul 2023 20:14

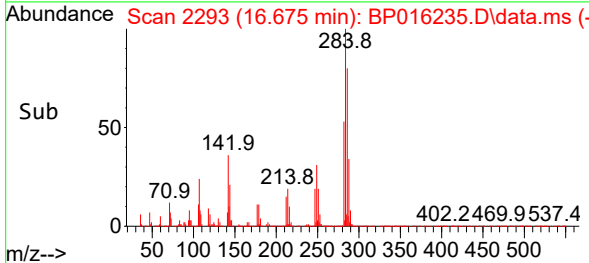
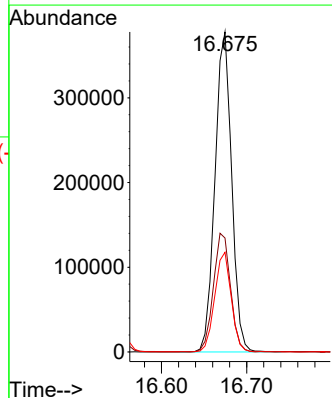
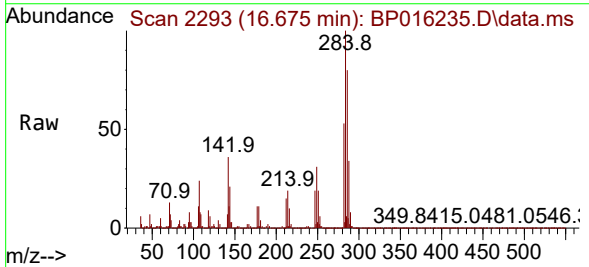
Instrument :  
 BNA\_P  
 ClientSampleId :  
 A4634MSD

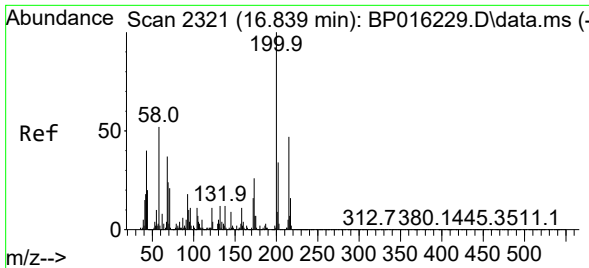
Tgt Ion:248 Resp: 432761  
 Ion Ratio Lower Upper  
 248 100  
 250 98.4 78.4 117.6  
 141 73.3 61.4 92.2



#69  
 Hexachlorobenzene  
 Concen: 49.594 ng/ul  
 RT: 16.675 min Scan# 2293  
 Delta R.T. -0.000 min  
 Lab File: BP016235.D  
 Acq: 14 Jul 2023 20:14

Tgt Ion:284 Resp: 513002  
 Ion Ratio Lower Upper  
 284 100  
 142 35.6 30.2 45.4  
 249 31.2 25.0 37.4



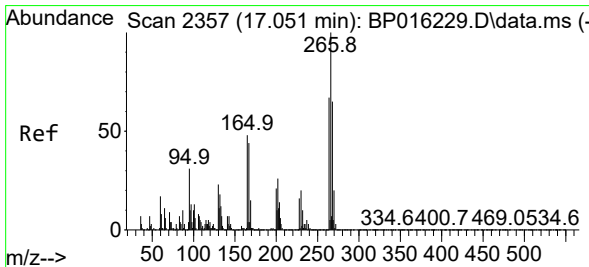
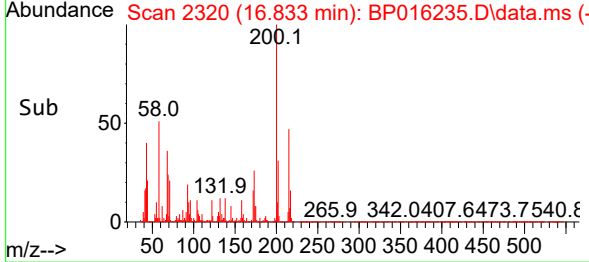
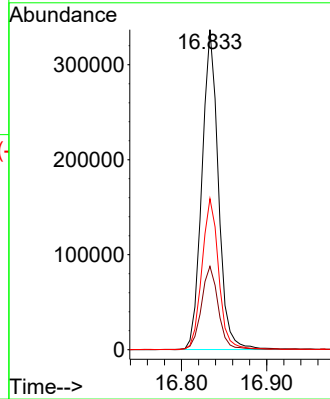
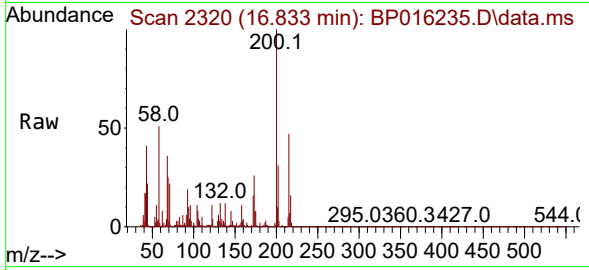


#70  
 Atrazine  
 Concen: 47.506 ng/ul  
 RT: 16.833 min Scan# 21  
 Delta R.T. -0.006 min  
 Lab File: BP016235.D  
 Acq: 14 Jul 2023 20:14

Instrument :  
 BNA\_P  
 ClientSampleId :  
 A4634MSD

Tgt Ion:200 Resp: 451306

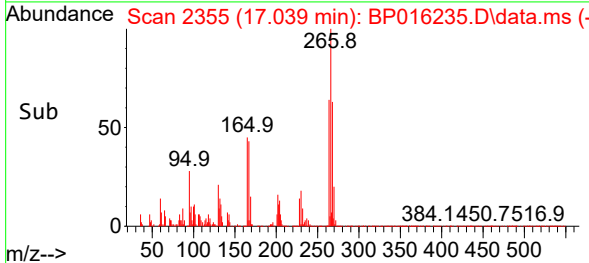
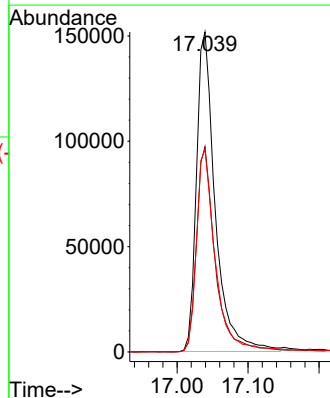
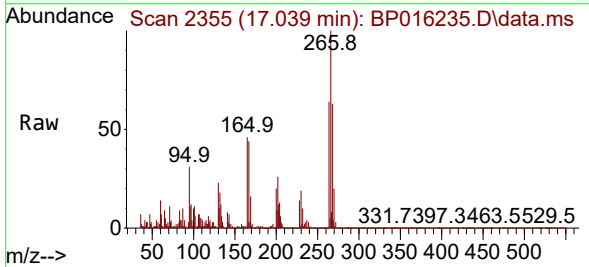
Ion	Ratio	Lower	Upper
200	100		
173	26.0	21.8	32.8
215	47.2	38.7	58.1

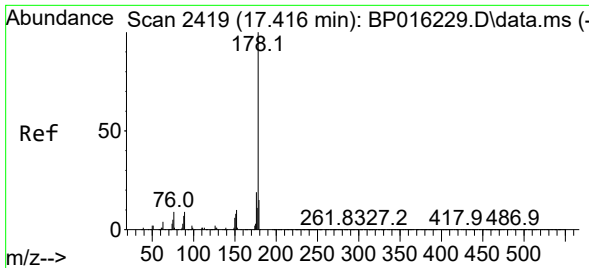


#71  
 Pentachlorophenol  
 Concen: 53.857 ng/ul  
 RT: 17.039 min Scan# 2355  
 Delta R.T. -0.012 min  
 Lab File: BP016235.D  
 Acq: 14 Jul 2023 20:14

Tgt Ion:266 Resp: 279366

Ion	Ratio	Lower	Upper
266	100		
264	64.2	49.8	74.8
268	63.3	49.5	74.3



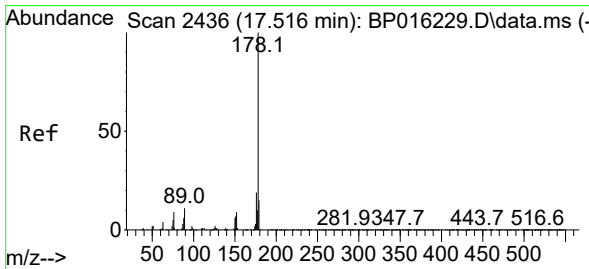
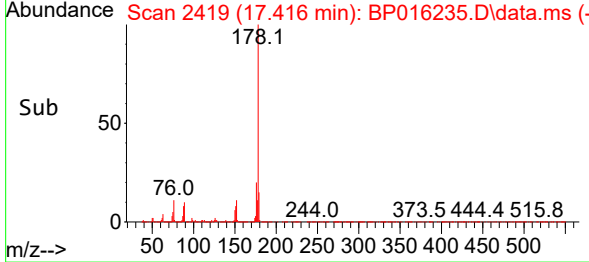
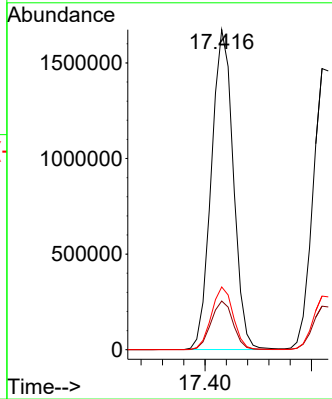
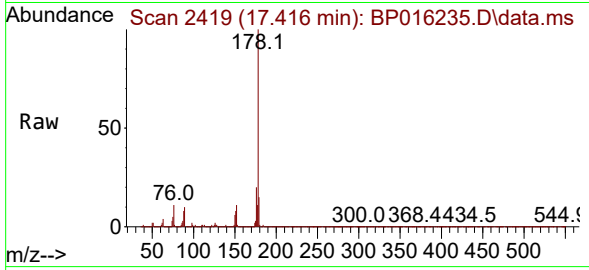


#72  
 Phenanthrene  
 Concen: 50.839 ng/uI  
 RT: 17.416 min Scan# 2419  
 Delta R.T. -0.000 min  
 Lab File: BP016235.D  
 Acq: 14 Jul 2023 20:14

Instrument : BNA\_P  
 ClientSampleId : A4634MSD

Tgt Ion:178 Resp: 2394194

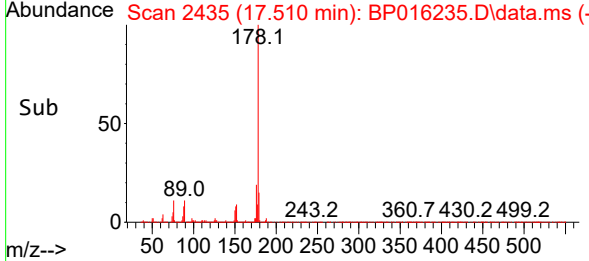
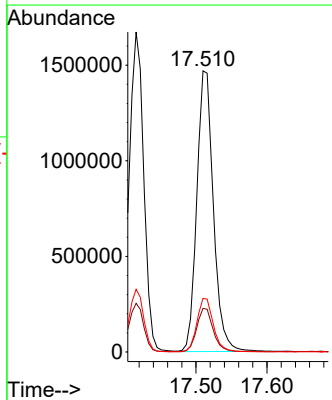
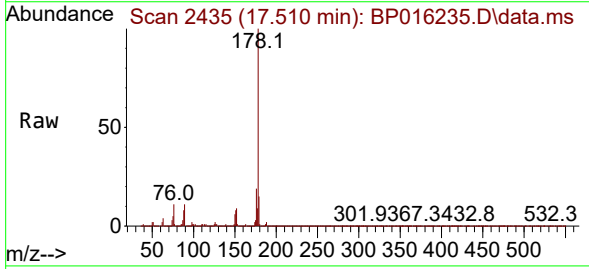
Ion	Ratio	Lower	Upper
178	100		
179	15.2	12.5	18.7
176	19.6	15.6	23.4

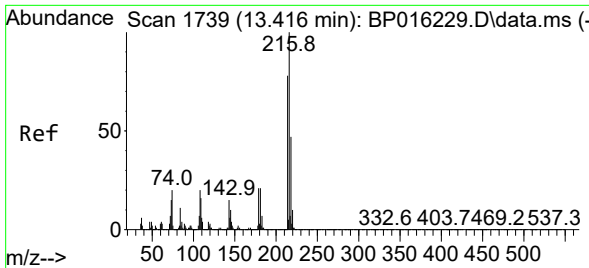


#74  
 Anthracene  
 Concen: 50.465 ng/uI  
 RT: 17.510 min Scan# 2435  
 Delta R.T. -0.006 min  
 Lab File: BP016235.D  
 Acq: 14 Jul 2023 20:14

Tgt Ion:178 Resp: 2388096

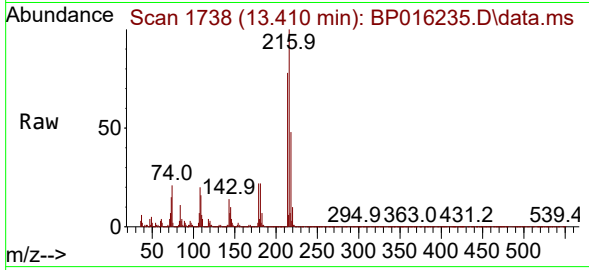
Ion	Ratio	Lower	Upper
178	100		
179	15.5	11.9	17.9
176	19.1	15.0	22.4



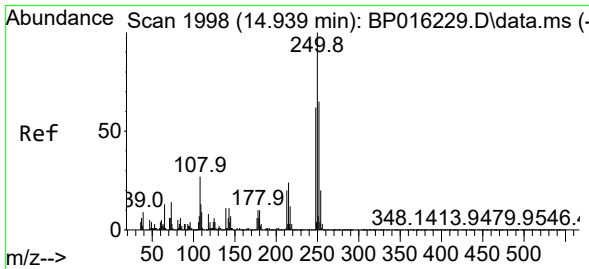
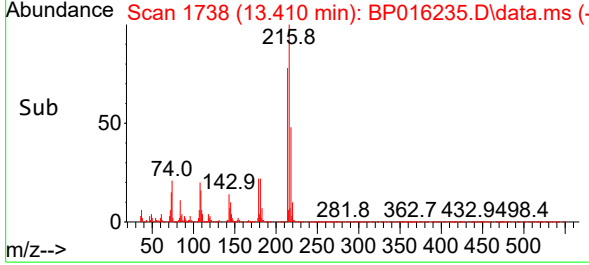
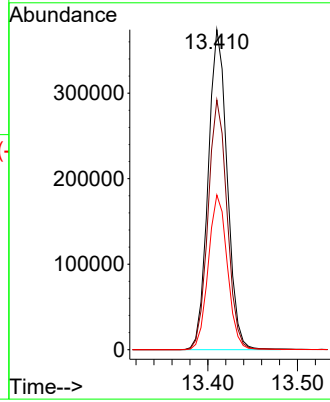


#75  
 1,2,3,4-Tetrachlorobenzene  
 Concen: 46.448 ng/uL  
 RT: 13.410 min Scan# 1738  
 Delta R.T. -0.006 min  
 Lab File: BP016235.D  
 Acq: 14 Jul 2023 20:14

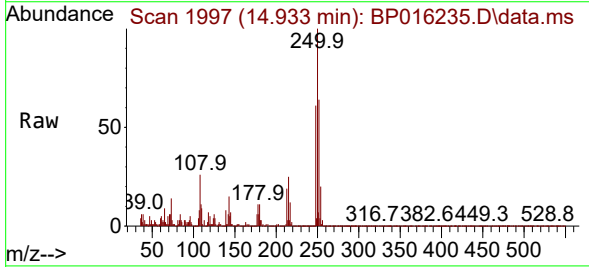
Instrument :  
 BNA\_P  
 ClientSampleId :  
 A4634MSD



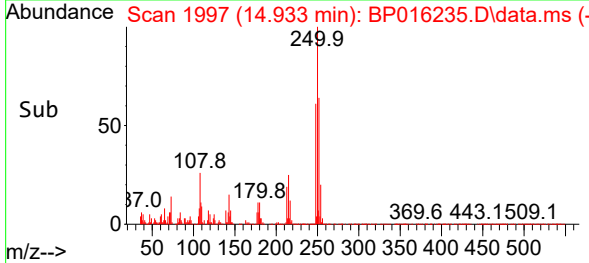
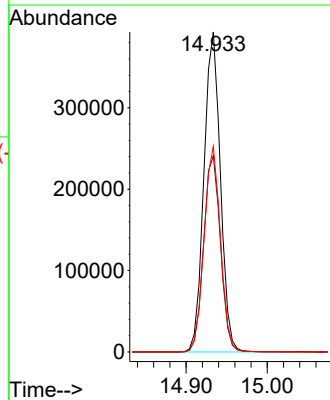
Tgt Ion: 216 Resp: 551129  
 Ion Ratio Lower Upper  
 216 100  
 214 78.1 62.6 94.0  
 218 48.4 38.5 57.7

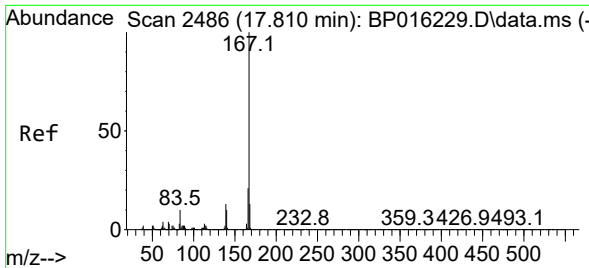


#76  
 Pentachlorobenzene  
 Concen: 49.426 ng/uL  
 RT: 14.933 min Scan# 1997  
 Delta R.T. -0.006 min  
 Lab File: BP016235.D  
 Acq: 14 Jul 2023 20:14



Tgt Ion: 250 Resp: 553579  
 Ion Ratio Lower Upper  
 250 100  
 248 61.4 50.5 75.7  
 252 64.3 51.7 77.5



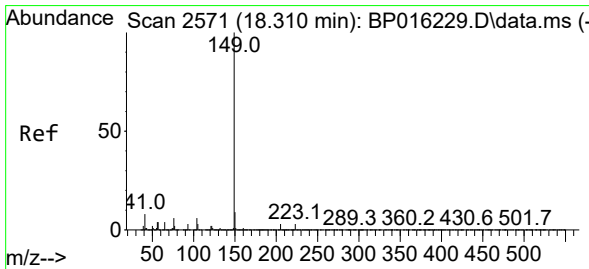
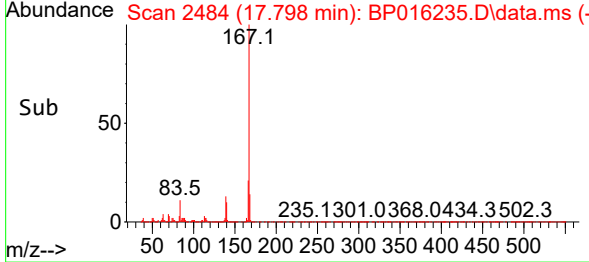
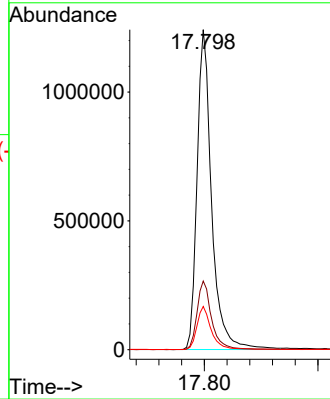
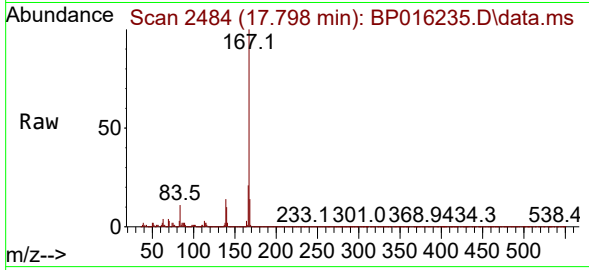


#77  
 Carbazole  
 Concen: 51.309 ng/ul  
 RT: 17.798 min Scan# 2484  
 Delta R.T. -0.012 min  
 Lab File: BP016235.D  
 Acq: 14 Jul 2023 20:14

Instrument :  
 BNA\_P  
 ClientSampleId :  
 A4634MSD

Tgt Ion:167 Resp: 2213752

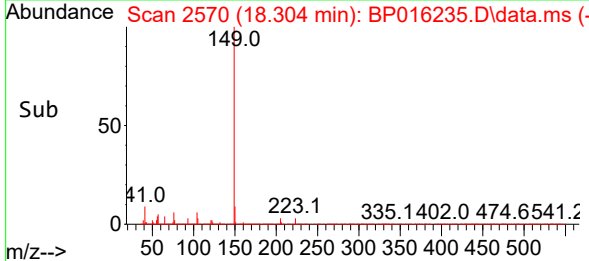
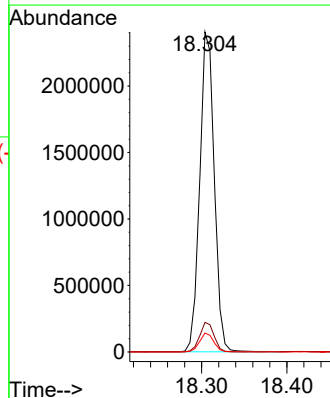
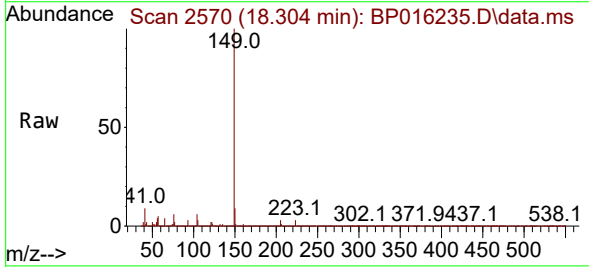
Ion	Ratio	Lower	Upper
167	100		
166	21.4	16.8	25.2
139	13.5	10.2	15.4



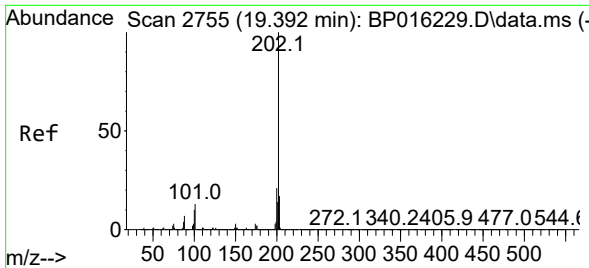
#78  
 Di-n-butylphthalate  
 Concen: 52.679 ng/ul  
 RT: 18.304 min Scan# 2570  
 Delta R.T. -0.006 min  
 Lab File: BP016235.D  
 Acq: 14 Jul 2023 20:14

Tgt Ion:149 Resp: 2847183

Ion	Ratio	Lower	Upper
149	100		
150	9.3	7.4	11.0
104	5.9	4.6	7.0





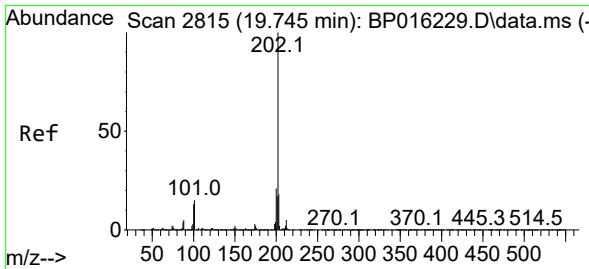
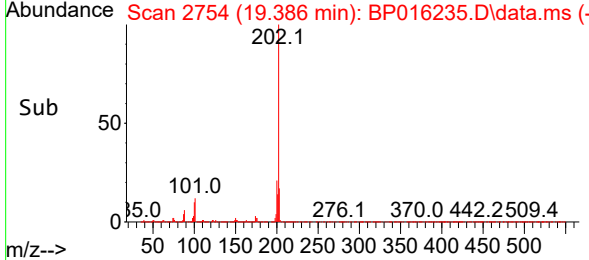
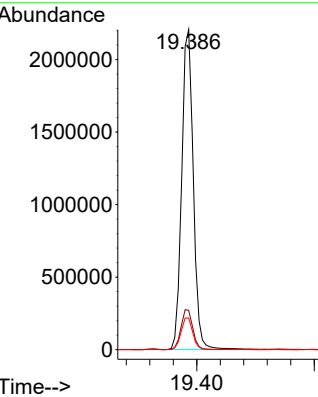
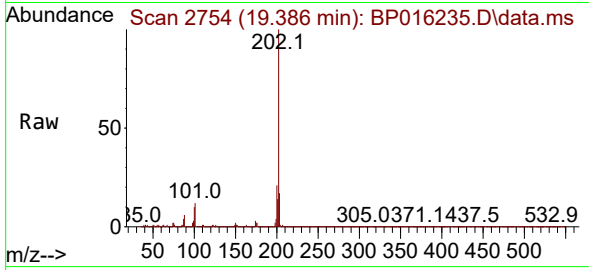


#80  
 Fluoranthene  
 Concen: 55.498 ng/uI  
 RT: 19.386 min Scan# 21  
 Delta R.T. -0.006 min  
 Lab File: BP016235.D  
 Acq: 14 Jul 2023 20:14

Instrument :  
 BNA\_P  
 ClientSampleId :  
 A4634MSD

Tgt Ion:202 Resp: 3009758

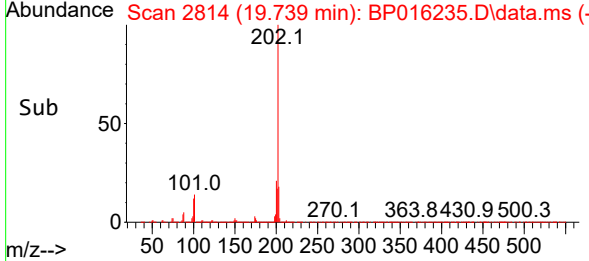
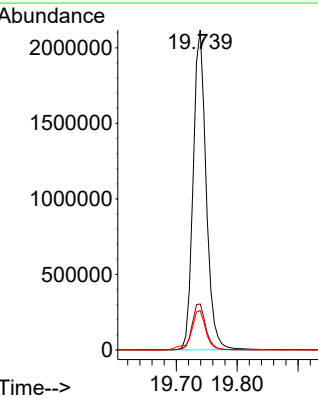
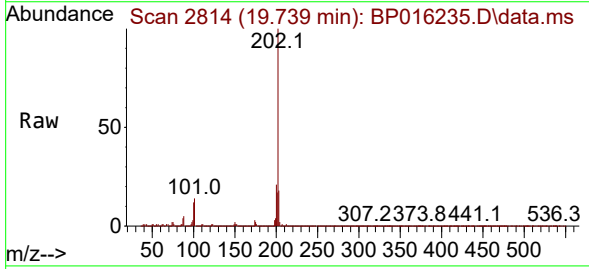
Ion	Ratio	Lower	Upper
202	100		
101	12.3	10.4	15.6
100	9.9	8.2	12.4

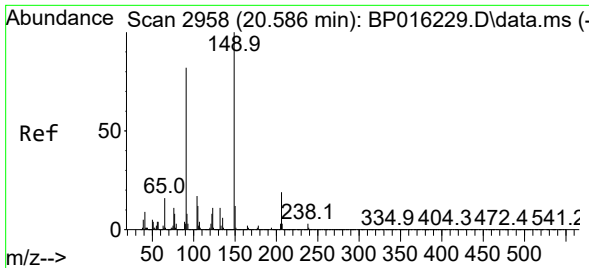


#82  
 Pyrene  
 Concen: 54.134 ng/uI  
 RT: 19.739 min Scan# 2814  
 Delta R.T. -0.006 min  
 Lab File: BP016235.D  
 Acq: 14 Jul 2023 20:14

Tgt Ion:202 Resp: 3134410

Ion	Ratio	Lower	Upper
202	100		
101	14.4	12.4	18.6
100	12.3	10.5	15.7



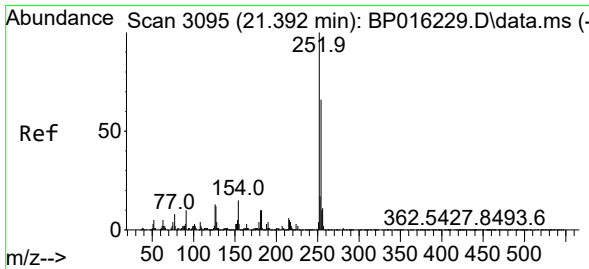
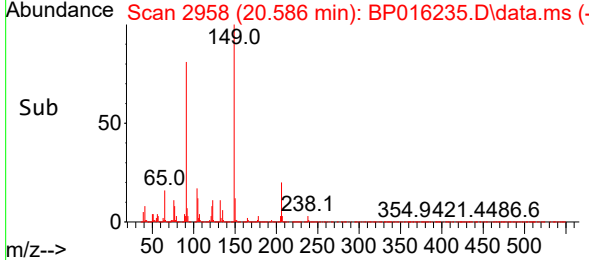
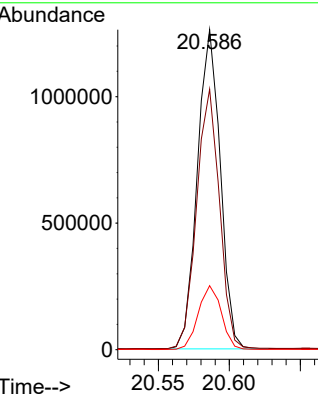
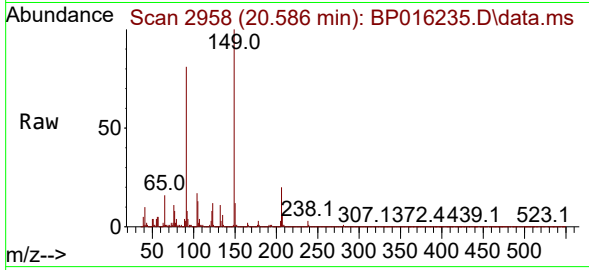


#83  
 Butylbenzylphthalate  
 Concen: 56.618 ng/ul  
 RT: 20.586 min Scan# 2958  
 Delta R.T. -0.000 min  
 Lab File: BP016235.D  
 Acq: 14 Jul 2023 20:14

Instrument : BNA\_P  
 ClientSampleId : A4634MSD

Tgt Ion:149 Resp: 1413811

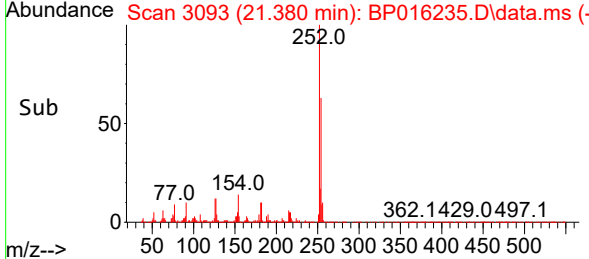
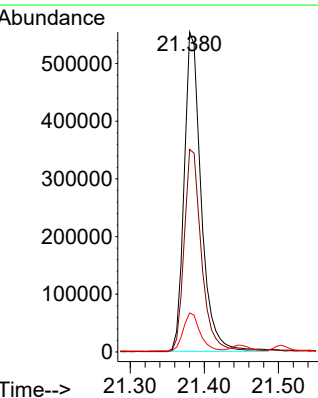
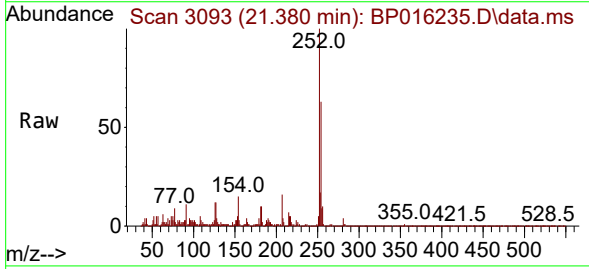
Ion	Ratio	Lower	Upper
149	100		
91	81.4	67.1	100.7
206	20.0	15.0	22.4

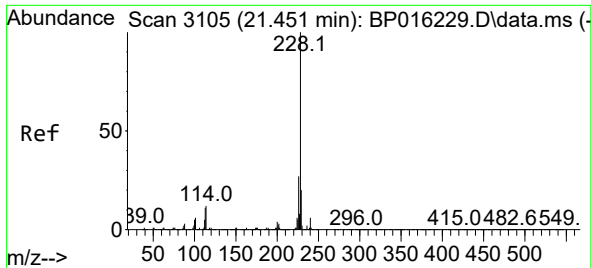


#84  
 3,3'-Dichlorobenzidine  
 Concen: 42.141 ng/ul  
 RT: 21.380 min Scan# 3093  
 Delta R.T. -0.012 min  
 Lab File: BP016235.D  
 Acq: 14 Jul 2023 20:14

Tgt Ion:252 Resp: 880023

Ion	Ratio	Lower	Upper
252	100		
254	63.3	50.6	76.0
126	12.2	9.4	14.0



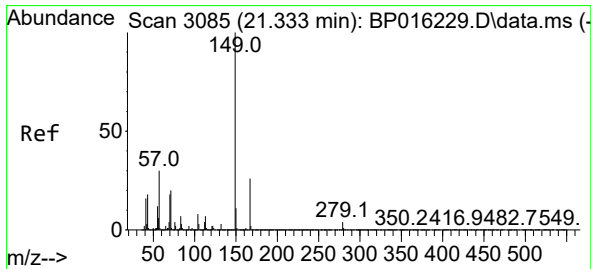
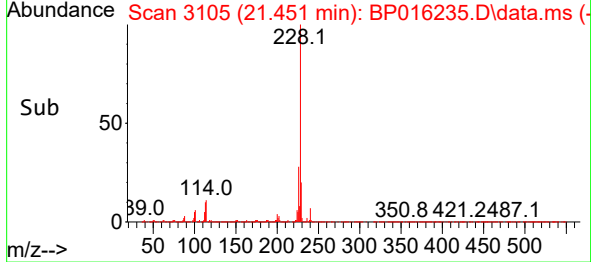
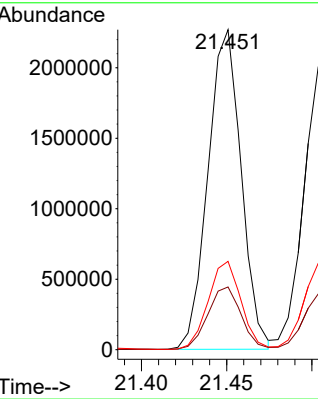
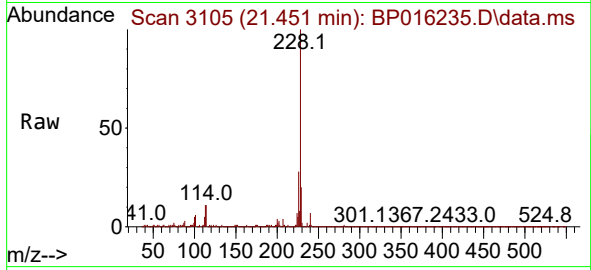


#85  
 Benzo(a)anthracene  
 Concen: 52.751 ng/ul  
 RT: 21.451 min Scan# 3105  
 Delta R.T. -0.000 min  
 Lab File: BP016235.D  
 Acq: 14 Jul 2023 20:14

Instrument :  
 BNA\_P  
 ClientSampleId :  
 A4634MSD

Tgt Ion:228 Resp: 3070135

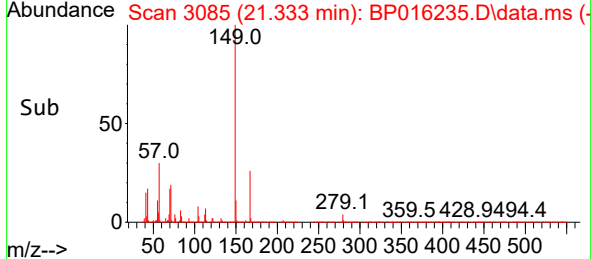
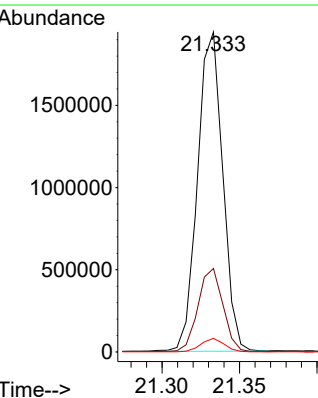
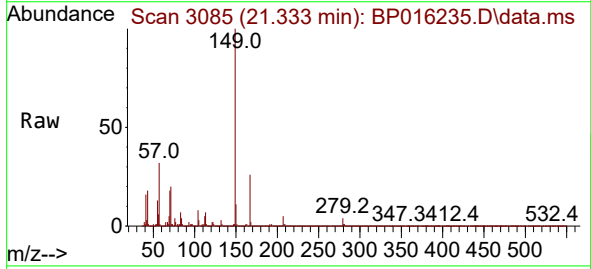
Ion	Ratio	Lower	Upper
228	100		
229	19.6	15.5	23.3
226	27.6	21.5	32.3

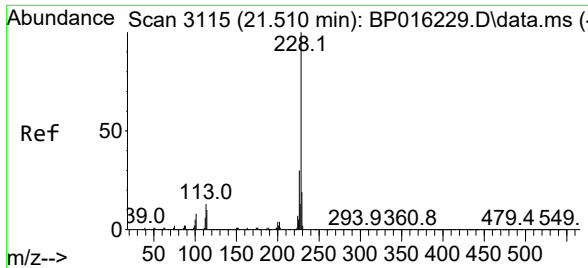


#86  
 Bis(2-ethylhexyl)phthalate  
 Concen: 58.776 ng/ul  
 RT: 21.333 min Scan# 3085  
 Delta R.T. -0.000 min  
 Lab File: BP016235.D  
 Acq: 14 Jul 2023 20:14

Tgt Ion:149 Resp: 2192553

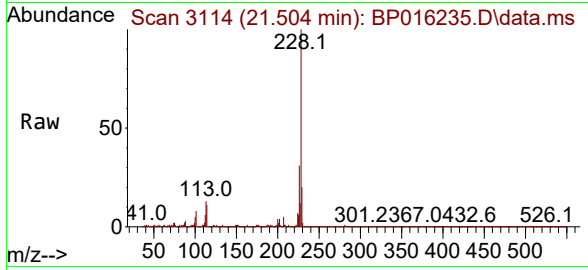
Ion	Ratio	Lower	Upper
149	100		
167	26.1	21.0	31.4
279	4.2	3.0	4.6





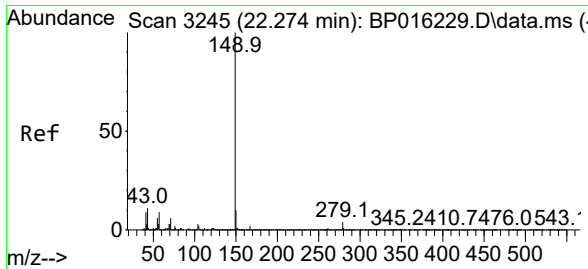
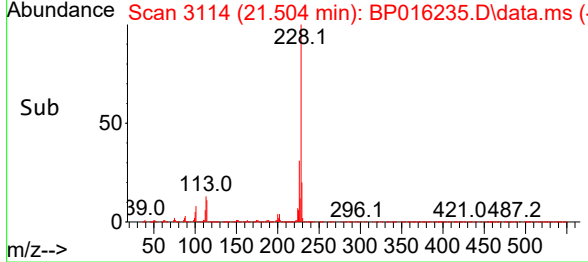
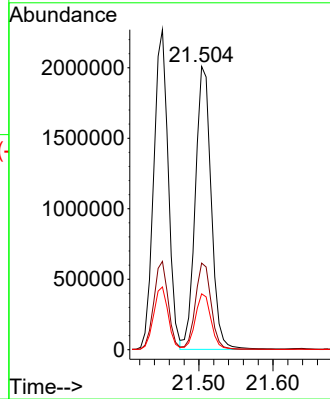
#87  
 Chrysene  
 Concen: 50.703 ng/ul  
 RT: 21.504 min Scan# 3115  
 Delta R.T. -0.006 min  
 Lab File: BP016235.D  
 Acq: 14 Jul 2023 20:14

Instrument :  
 BNA\_P  
 ClientSampleId :  
 A4634MSD



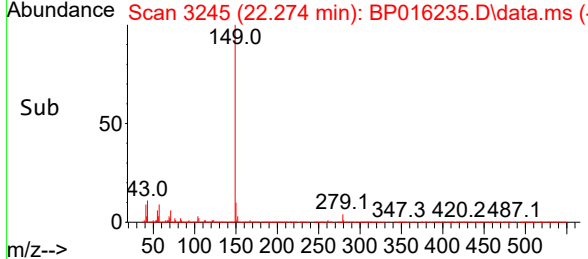
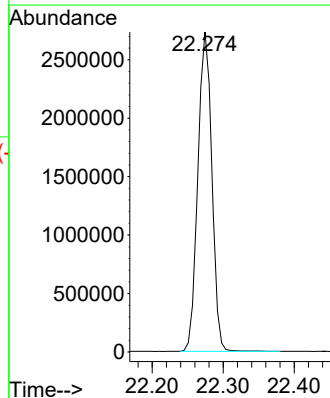
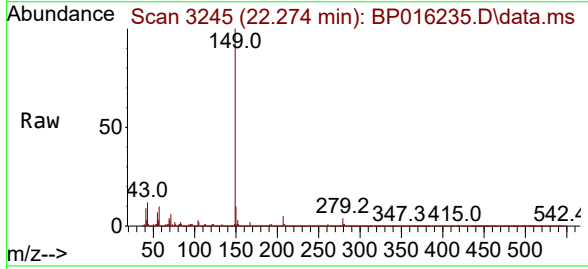
Tgt Ion:228 Resp: 2989379

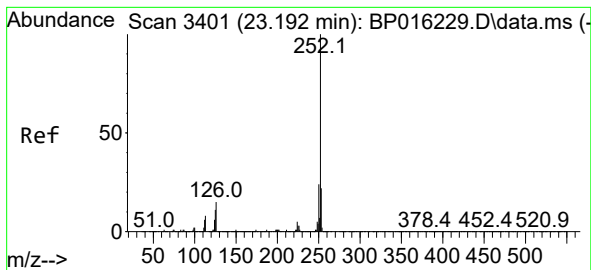
Ion	Ratio	Lower	Upper
228	100		
226	30.6	24.0	36.0
229	19.7	15.5	23.3



#89  
 Di-n-octyl phthalate  
 Concen: 58.050 ng/ul  
 RT: 22.274 min Scan# 3245  
 Delta R.T. -0.000 min  
 Lab File: BP016235.D  
 Acq: 14 Jul 2023 20:14

Tgt Ion:149 Resp: 3752713



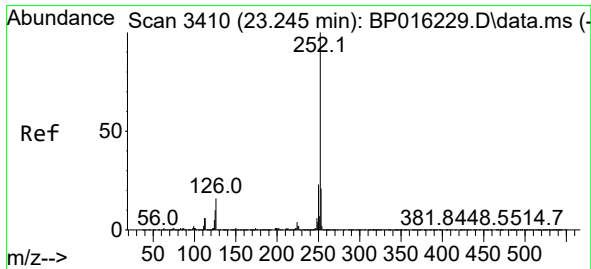
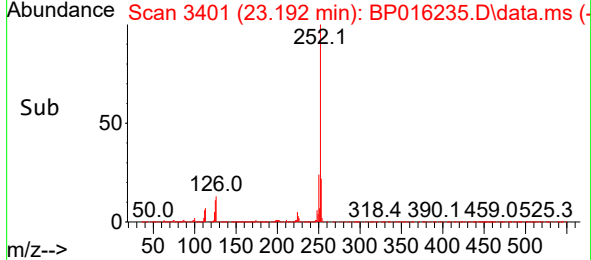
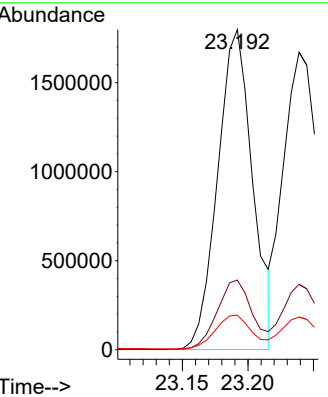
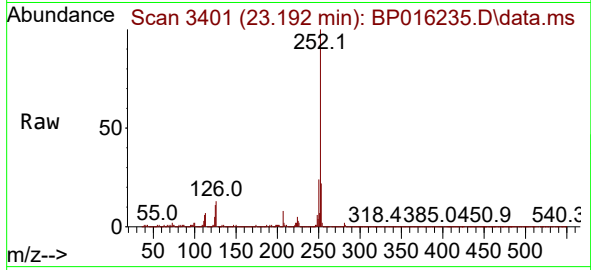


#90  
 Benzo(b)fluoranthene  
 Concen: 56.455 ng/ul  
 RT: 23.192 min Scan# 3401  
 Delta R.T. -0.000 min  
 Lab File: BP016235.D  
 Acq: 14 Jul 2023 20:14

Instrument :  
 BNA\_P  
 ClientSampleId :  
 A4634MSD

Tgt Ion:252 Resp: 3328224

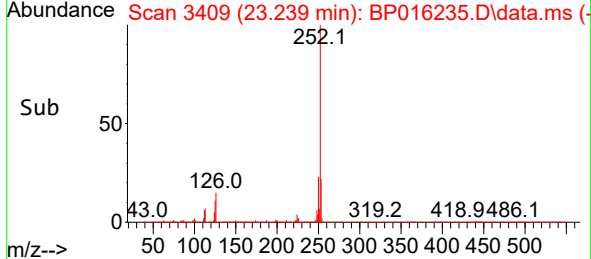
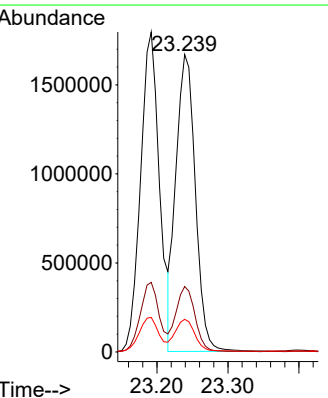
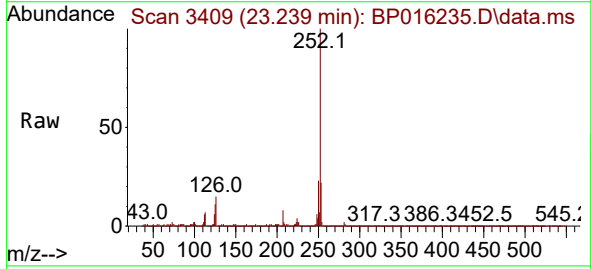
Ion	Ratio	Lower	Upper
252	100		
253	21.8	17.3	25.9
125	10.8	9.4	14.0

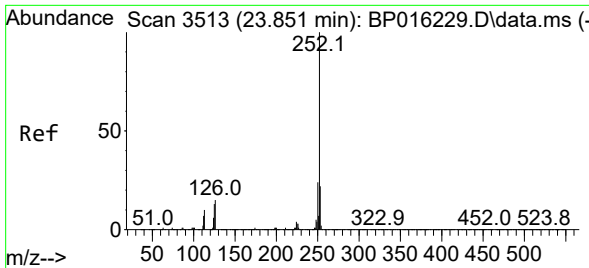


#91  
 Benzo(k)fluoranthene  
 Concen: 52.721 ng/ul  
 RT: 23.239 min Scan# 3409  
 Delta R.T. -0.006 min  
 Lab File: BP016235.D  
 Acq: 14 Jul 2023 20:14

Tgt Ion:252 Resp: 3162917

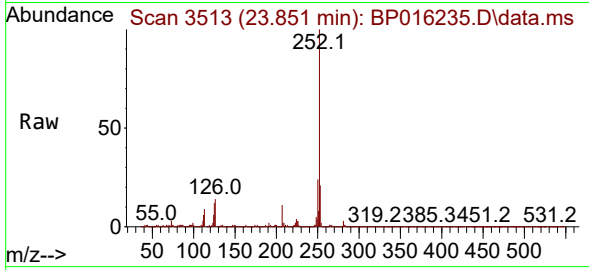
Ion	Ratio	Lower	Upper
252	100		
253	22.0	17.4	26.2
125	11.0	9.3	13.9





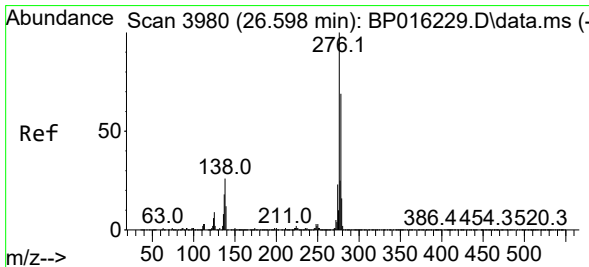
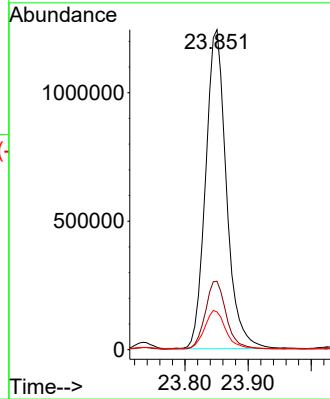
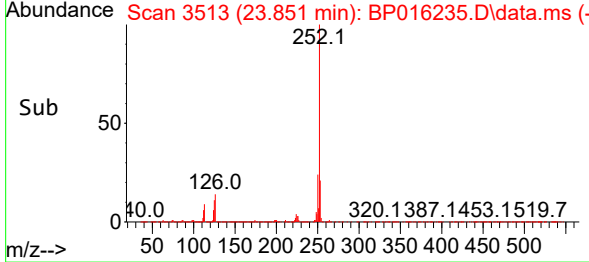
#93  
 Benzo(a)pyrene  
 Concen: 48.617 ng/ul  
 RT: 23.851 min Scan# 31  
 Delta R.T. -0.000 min  
 Lab File: BP016235.D  
 Acq: 14 Jul 2023 20:14

Instrument :  
 BNA\_P  
 ClientSampleId :  
 A4634MSD

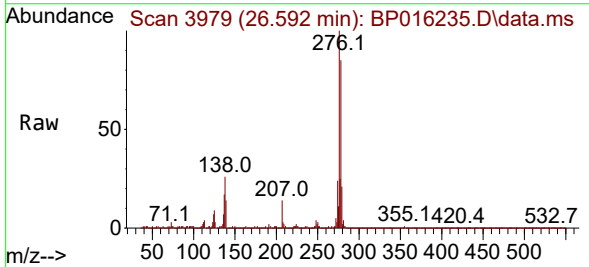


Tgt Ion: 252 Resp: 2839257

Ion	Ratio	Lower	Upper
252	100		
253	21.4	17.2	25.8
125	11.8	9.8	14.6

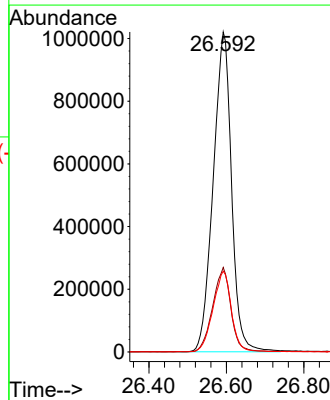
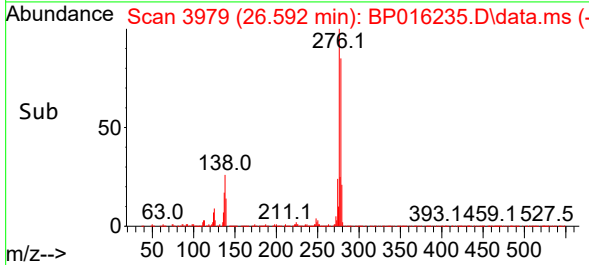


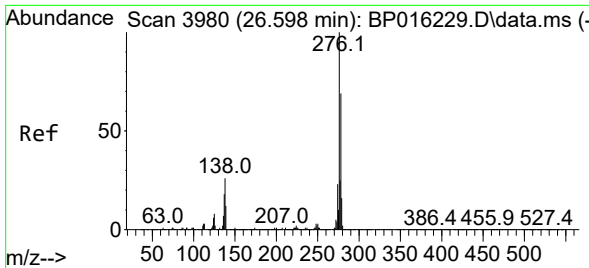
#94  
 Indeno(1,2,3-cd)pyrene  
 Concen: 46.327 ng/ul  
 RT: 26.592 min Scan# 3979  
 Delta R.T. -0.006 min  
 Lab File: BP016235.D  
 Acq: 14 Jul 2023 20:14



Tgt Ion: 276 Resp: 3350197

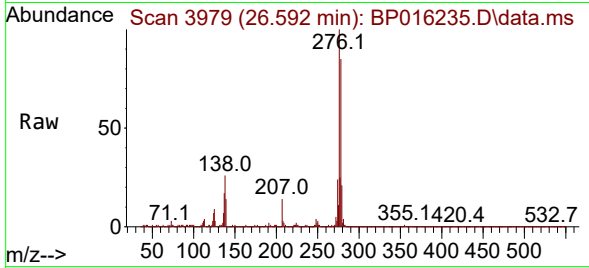
Ion	Ratio	Lower	Upper
276	100		
138	26.4	20.8	31.2
277	25.2	19.8	29.8



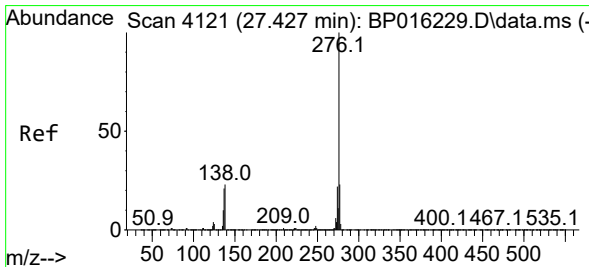
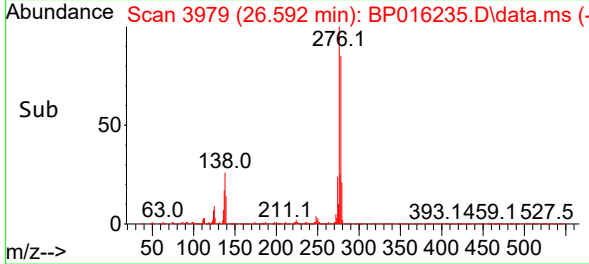
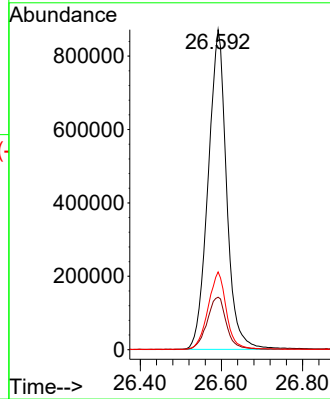


#95  
 Dibenzo(a,h)anthracene  
 Concen: 46.565 ng/ul  
 RT: 26.592 min Scan# 3980  
 Delta R.T. -0.006 min  
 Lab File: BP016235.D  
 Acq: 14 Jul 2023 20:14

Instrument : BNA\_P  
 ClientSampleId : A4634MSD



Tgt Ion:278 Resp: 2746770  
 Ion Ratio Lower Upper  
 278 100  
 139 16.4 13.9 20.9  
 279 24.3 18.2 27.4



#96  
 Benzo(g,h,i)perylene  
 Concen: 46.050 ng/ul  
 RT: 27.409 min Scan# 4118  
 Delta R.T. -0.018 min  
 Lab File: BP016235.D  
 Acq: 14 Jul 2023 20:14

Tgt Ion:276 Resp: 2658133  
 Ion Ratio Lower Upper  
 276 100  
 138 23.0 19.0 28.4  
 277 24.1 19.0 28.4

