

Data Path : Z:\svoasrv\HPCHEM1\BNA_P\Data\BP071423\
 Data File : BP016217.D
 Acq On : 14 Jul 2023 09:58
 Operator : MA/JU
 Sample : PB153997BL
 Misc :
 ALS Vial : 3 Sample Multiplier: 1

Instrument :
 BNA_P
 ClientSampleId :
 SBLK997

Integration Parameters: LSCINT.P
 Integrator: RTE
 Smoothing : OFF Filtering: 5
 Sampling : 1 Min Area: 0.1 % of largest Peak
 Start Thrs: 0.2 Max Peaks: 100
 Stop Thrs : 0 Peak Location: TOP

If leading or trailing edge < 100 prefer < Baseline drop else tangent >
 Peak separation: 5

Method : Z:\svoasrv\HPCHEM1\BNA_P\Methods\SFAM-EPA-BP071223.MA.M
 Title : SVOA CALIBRATION

Signal : TIC: BP016217.D\data.ms

peak #	R.T. min	first scan	max scan	last scan	PK TY	peak height	corr. area	corr. % max.	% of total
1	3.281	13	16	30	rVB	37869	66536	1.29%	0.150%
2	3.740	92	94	121	rBV	312426	809027	15.68%	1.827%
3	7.169	670	677	695	rBV	277217	994390	19.27%	2.245%
4	7.305	695	700	728	rVV	282032	872034	16.90%	1.969%
5	7.505	728	734	757	rVB	358137	969145	18.78%	2.188%
6	7.740	771	774	779	rVB6	3418	5373	0.10%	0.012%
7	7.975	807	814	840	rBV2	222428	763199	14.79%	1.723%
8	8.722	935	941	974	rBV2	369629	1340385	25.97%	3.026%
9	9.175	1011	1018	1053	rBV	335819	1064915	20.63%	2.404%
10	9.916	1135	1144	1175	rBV	214082	918462	17.80%	2.074%
11	10.504	1234	1244	1257	rBV2	214571	899062	17.42%	2.030%
12	10.798	1287	1294	1313	rVB	496268	1262325	24.46%	2.850%
13	11.004	1322	1329	1359	rBV	240209	1228839	23.81%	2.775%
14	12.428	1566	1571	1572	rBV5	4050	6242	0.12%	0.014%
15	13.516	1750	1756	1763	rBV6	8461	20071	0.39%	0.045%
16	14.045	1840	1846	1879	rVV	923105	2263865	43.86%	5.112%
17	14.322	1886	1893	1910	rBV	1465226	2561561	49.63%	5.784%
18	14.628	1938	1945	1966	rBV	1099081	1872594	36.28%	4.228%
19	14.987	1997	2006	2009	rBV4	93204	241798	4.68%	0.546%
20	15.522	2095	2097	2104	rVB8	4259	5714	0.11%	0.013%
21	15.634	2109	2116	2138	rBV	1413464	3384747	65.58%	7.642%
22	15.834	2144	2150	2187	rBV2	155856	801090	15.52%	1.809%
23	17.198	2379	2382	2386	rVB5	4309	5937	0.12%	0.013%
24	17.392	2408	2415	2427	rBV	1520170	2398669	46.47%	5.416%
25	17.504	2427	2434	2467	rVB2	1372420	3747418	72.61%	8.461%
26	19.316	2738	2742	2748	rBV3	31788	45042	0.87%	0.102%
27	19.398	2753	2756	2760	rBV	18298	27320	0.53%	0.062%
28	19.733	2807	2813	2838	rBV	2066335	4721997	91.49%	10.662%
29	21.504	3109	3114	3131	rBV	1261719	2803080	54.31%	6.329%
30	23.821	3501	3508	3529	rVB2	2060238	5161220	100.00%	11.654%
31	23.992	3531	3537	3557	rVB	1017098	3026444	58.64%	6.833%

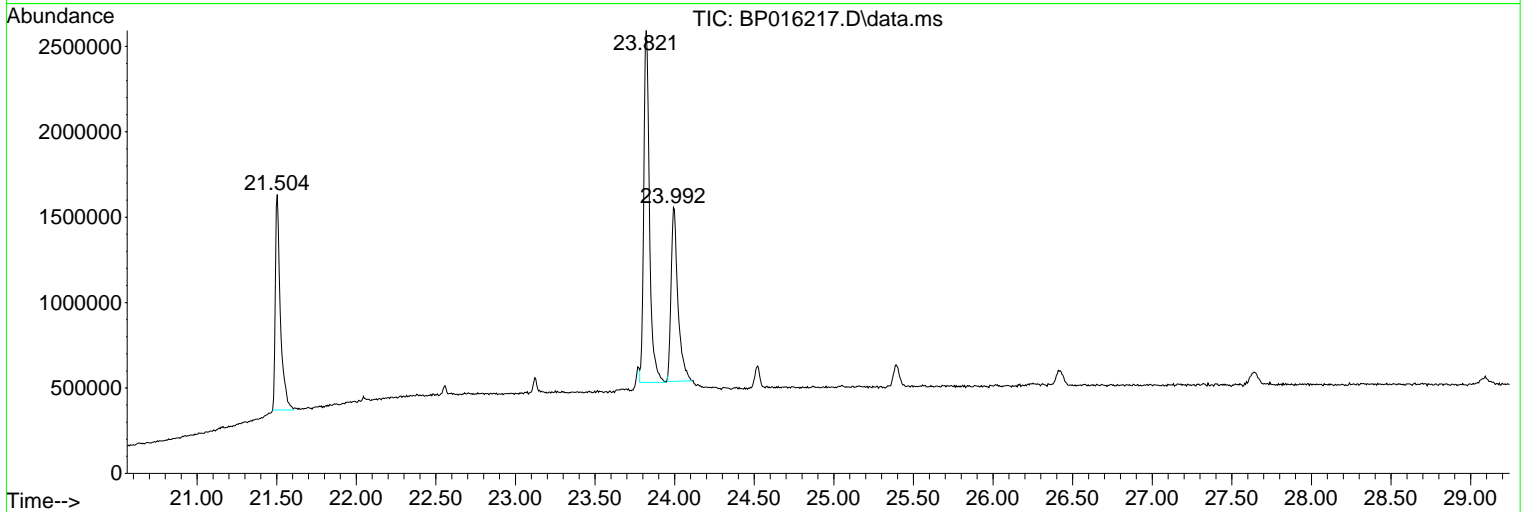
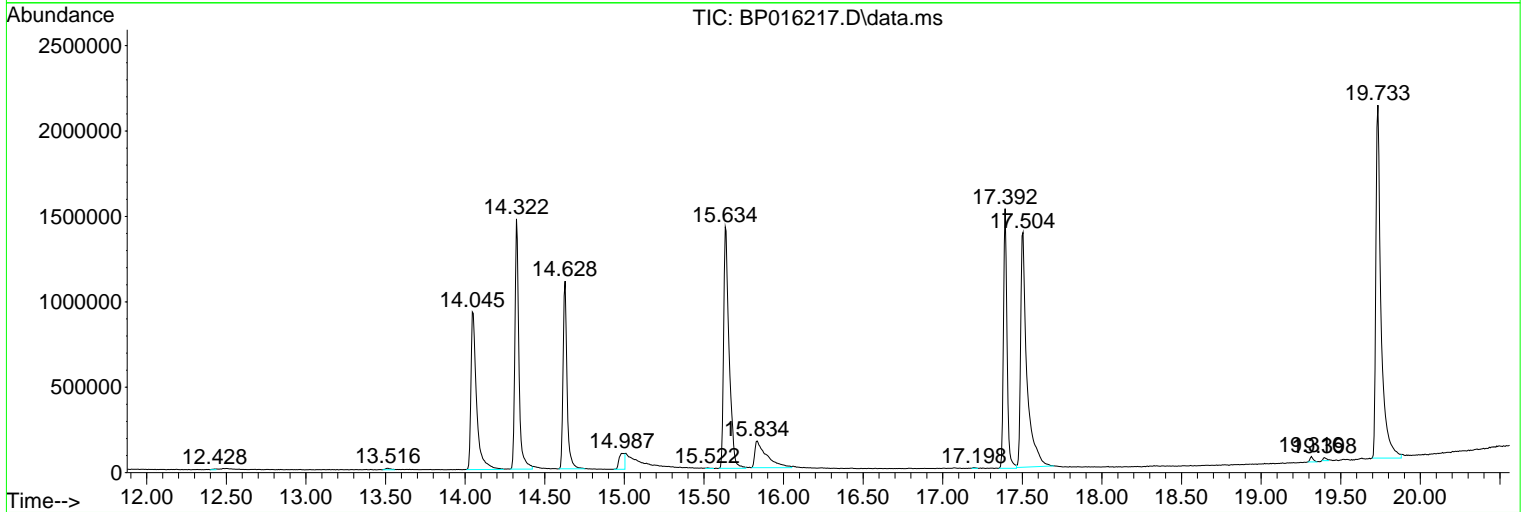
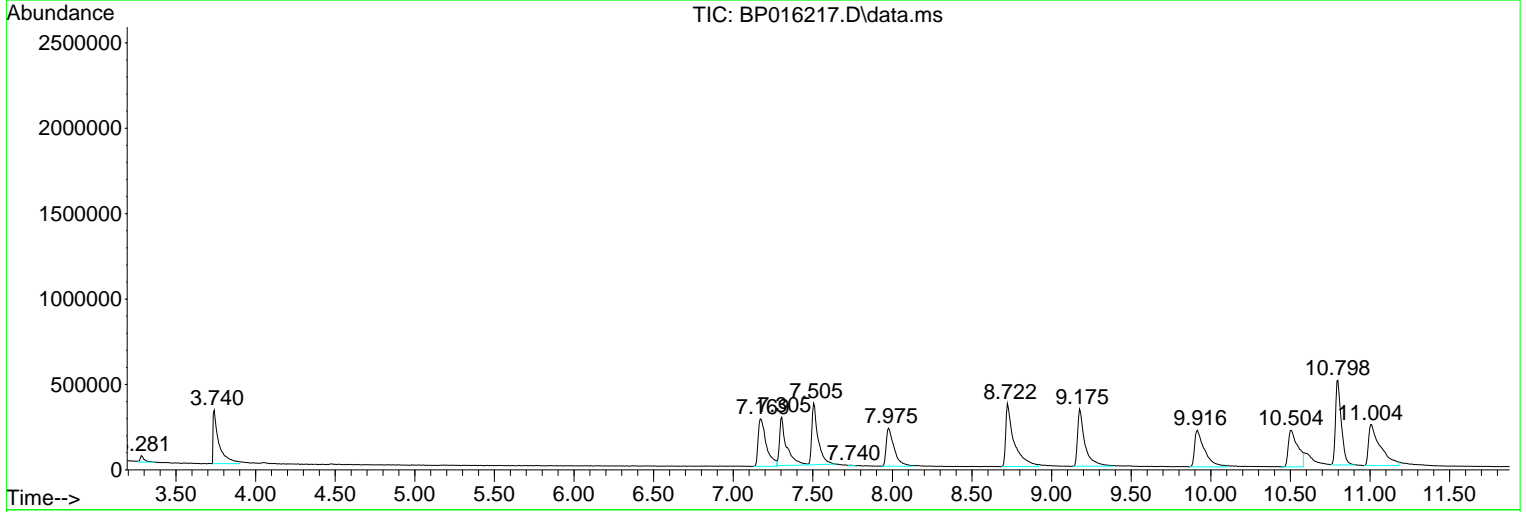
Sum of corrected areas: 44288501

Data Path : Z:\svoasrv\HPCHEM1\BNA_P\Data\BP071423\
 Data File : BP016217.D
 Acq On : 14 Jul 2023 09:58
 Operator : MA/JU
 Sample : PB153997BL
 Misc :
 ALS Vial : 3 Sample Multiplier: 1

Instrument :
 BNA_P
ClientSampleId :
 SBLK997

Quant Method : Z:\svoasrv\HPCHEM1\BNA_P\Methods\SFAM-EPA-BP071223.MA.M
 Quant Title : SVOA CALIBRATION

TIC Library : C:\DATABASE\NIST20.L
 TIC Integration Parameters: LSCINT.P



Library Search Compound Report

Data Path : Z:\svoasrv\HPCHEM1\BNA_P\Data\BP071423\
Data File : BP016217.D
Acq On : 14 Jul 2023 09:58
Operator : MA/JU
Sample : PB153997BL
Misc :
ALS Vial : 3 Sample Multiplier: 1

Instrument :
BNA_P
ClientSampleId :
SBLK997

Quant Method : Z:\svoasrv\HPCHEM1\BNA_P\Methods\SFAM-EPA-BP071223.MA.M
Quant Title : SVOA CALIBRATION

TIC Library : C:\DATABASE\NIST20.L
TIC Integration Parameters: LSCINT.P

No Library Search Compounds Detected

Data Path : Z:\svoasrv\HPCHEM1\BNA_P\Data\BP071423\
Data File : BP016217.D
Acq On : 14 Jul 2023 09:58
Operator : MA/JU
Sample : PB153997BL
Misc :
ALS Vial : 3 Sample Multiplier: 1

Instrument :
BNA_P
ClientSampleId :
SBLK997

Quant Method : Z:\svoasrv\HPCHEM1\BNA_P\Methods\SFAM-EPA-BP071223.MA.M
Quant Title : SVOA CALIBRATION

TIC Library : C:\DATABASE\NIST0.L
TIC Integration Parameters: LSCINT.P

TIC Top Hit name	RT	EstConc	Units	Response	#	RT	Resp	Conc
------------------	----	---------	-------	----------	---	----	------	------
