

Data Path : Z:\SVOASRV\HPCHEM1\BNA P\DATA\BP072220\
 Data File : BP002826.D
 Acq On : 22 Jul 2020 15:49
 Operator : CG/JU
 Sample : L3366-02
 Misc :
 ALS Vial : 7 Sample Multiplier: 1

Instrument :
 BNA_P
 ClientSampleId :
 SP-1A

Quant Time: Jul 23 02:20:20 2020
 Quant Method : Z:\SVOASRV\HPCHEM1\BNA P\METHODS\8270-BP071020.M
 Quant Title : ASP BNA STANDARDS FOR 5 POINT CALIBRATION
 QLast Update : Mon Jul 13 10:54:03 2020
 Response via : Initial Calibration

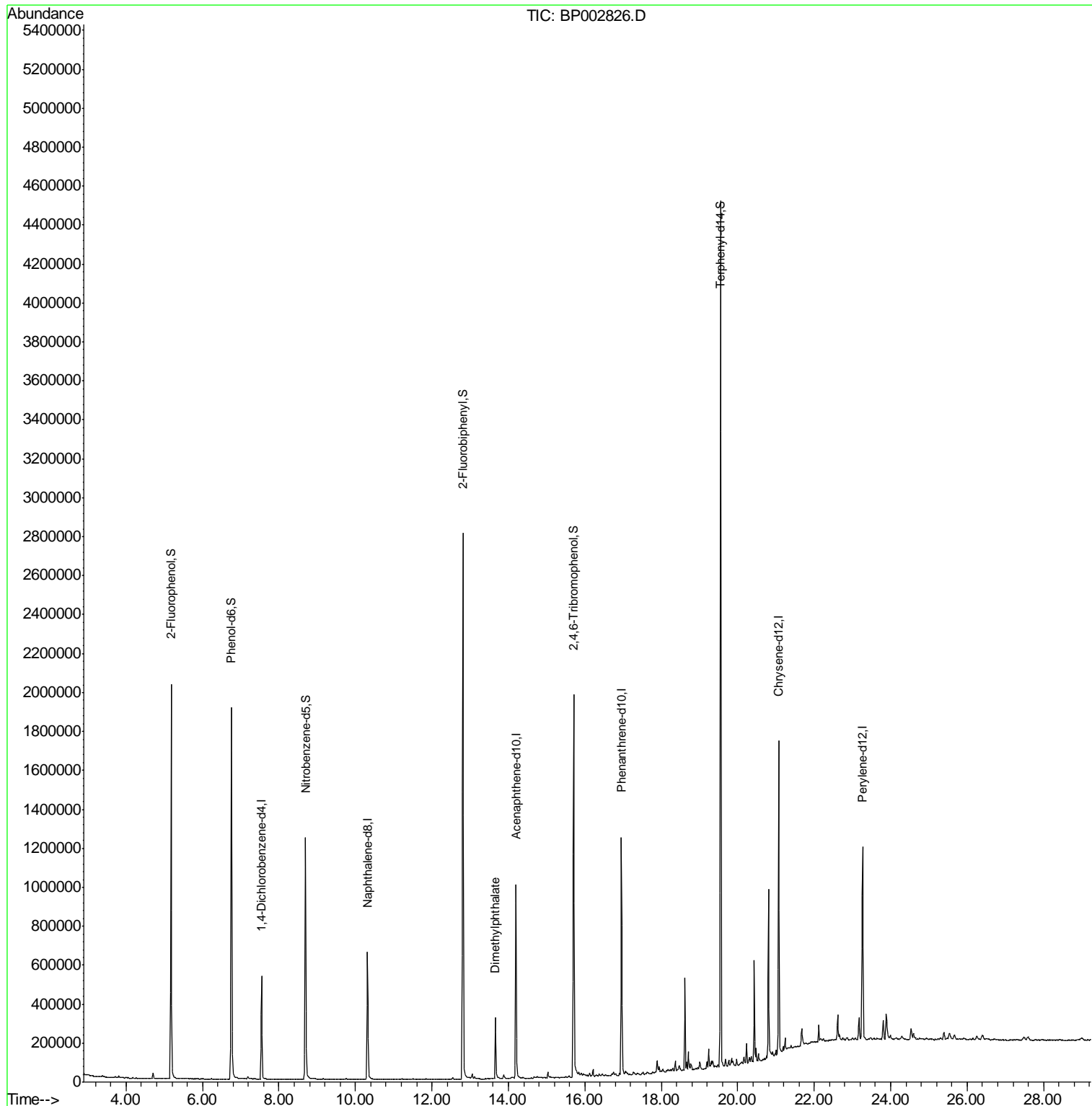
Internal Standards	R.T.	QIon	Response	Conc	Units	Dev(Min)
1) 1,4-Dichlorobenzene-d4	7.55	152	140637	20.00	ng	0.00
21) Naphthalene-d8	10.32	136	565587	20.00	ng	-0.01
39) Acenaphthene-d10	14.20	164	349740	20.00	ng	-0.01
64) Phenanthrene-d10	16.96	188	764280	20.00	ng	-0.01
76) Chrysene-d12	21.07	240	734859	20.00	ng	0.00
86) Perylene-d12	23.26	264	668714	20.00	ng	0.00
System Monitoring Compounds						
5) 2-Fluorophenol	5.18	112	894073	107.26	ng	0.00
7) Phenol-d6	6.75	99	1188486	99.90	ng	0.00
23) Nitrobenzene-d5	8.69	82	761681	72.03	ng	-0.01
42) 2,4,6-Tribromophenol	15.70	330	398453	109.14	ng	0.00
45) 2-Fluorobiphenyl	12.81	172	1515187	67.02	ng	-0.01
79) Terphenyl-d14	19.55	244	2020753	63.05	ng	0.00
Target Compounds						Qvalue
50) Dimethylphthalate	13.66	163	228533	8.568	ng	99

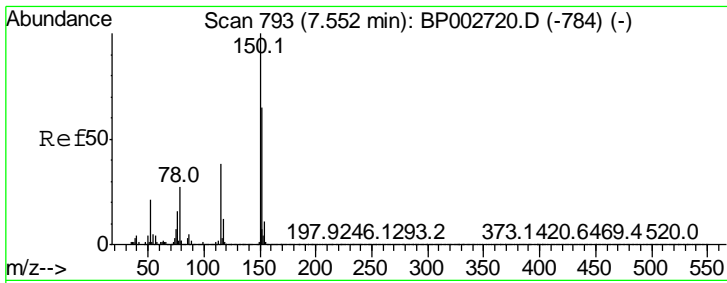
(#) = qualifier out of range (m) = manual integration (+) = signals summed

Data Path : Z:\SVOASRV\HPCHEM1\BNA P\DATA\BP072220\
Data File : BP002826.D
Acq On : 22 Jul 2020 15:49
Operator : CG/JU
Sample : L3366-02
Misc :
ALS Vial : 7 Sample Multiplier: 1

Instrument :
BNA_P
ClientSampleId :
SP-1A

Quant Time: Jul 23 02:20:20 2020
Quant Method : Z:\SVOASRV\HPCHEM1\BNA P\METHODS\8270-BP071020.M
Quant Title : ASP BNA STANDARDS FOR 5 POINT CALIBRATION
QLast Update : Mon Jul 13 10:54:03 2020
Response via : Initial Calibration

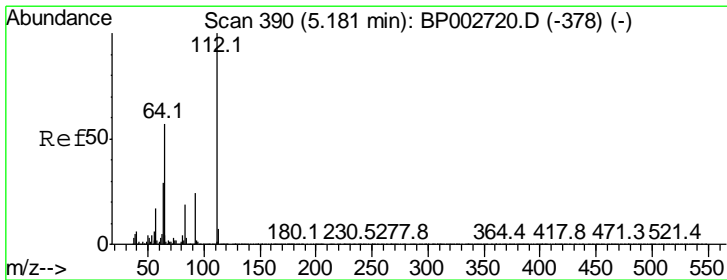
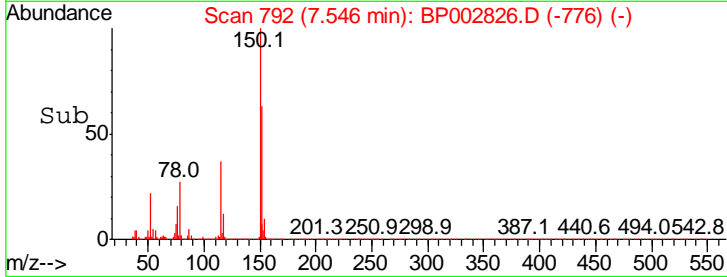
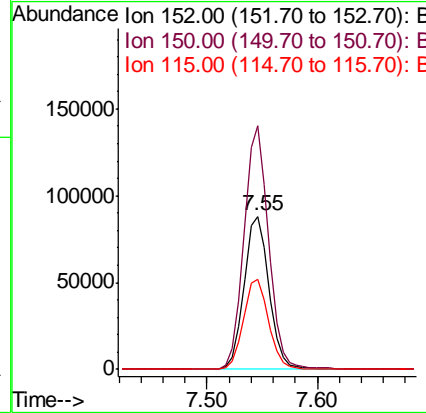
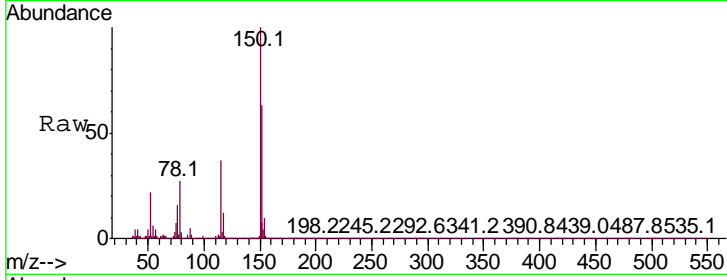




#1
 1,4-Dichlorobenzene-d4
 Concen: 20.000 ng
 RT: 7.55 min Scan# 792
 Delta R.T. -0.01 min
 Lab File: BP002826.D
 Acq: 22 Jul 2020 15:49

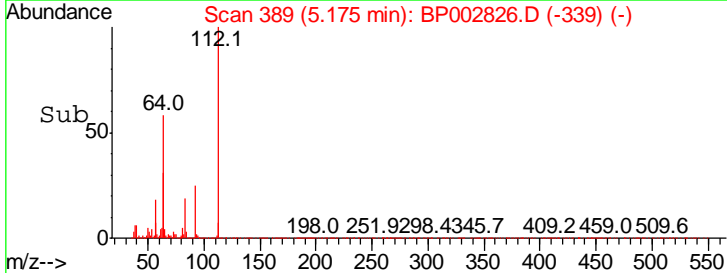
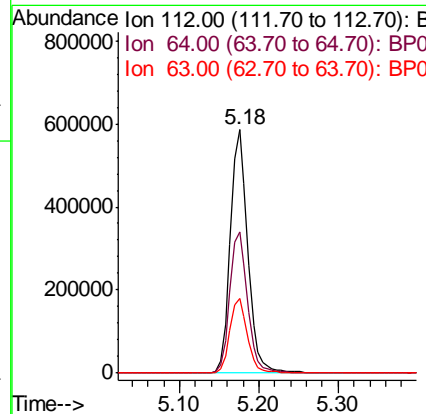
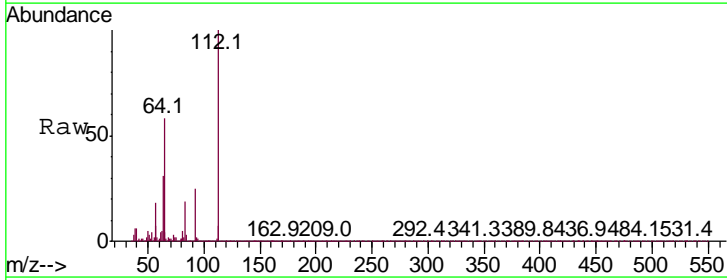
Instrument :
 BNA_P
 ClientSampleId :
 SP-1A

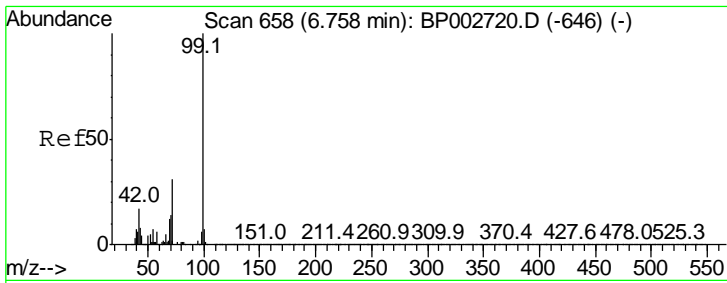
Tgt Ion	Resp	Lower	Upper
152	140637		
150	159.2	123.7	185.5
115	58.9	47.2	70.8



#5
 2-Fluorophenol
 Concen: 107.260 ng
 RT: 5.18 min Scan# 389
 Delta R.T. -0.01 min
 Lab File: BP002826.D
 Acq: 22 Jul 2020 15:49

Tgt Ion	Resp	Lower	Upper
112	894073		
112	100		
64	58.2	45.6	68.4
63	30.5	23.5	35.3



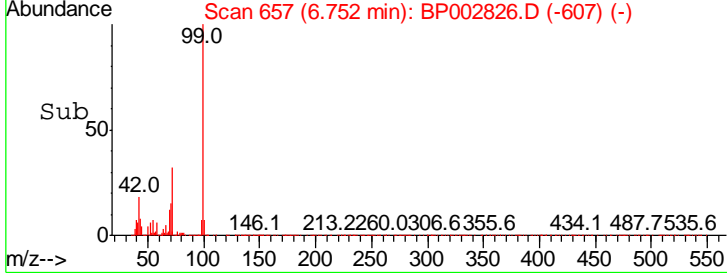
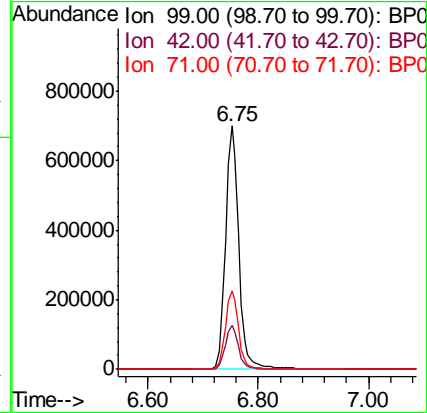
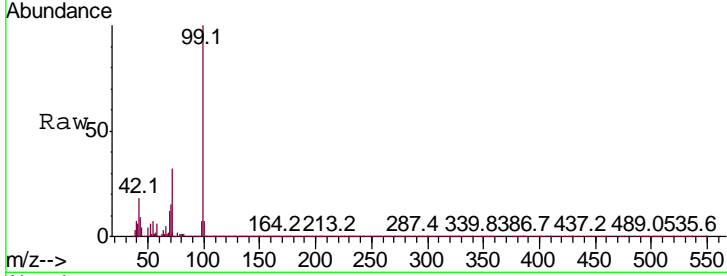


#7
 Phenol-d6
 Concen: 99.904 ng
 RT: 6.75 min Scan# 657
 Delta R.T. -0.01 min
 Lab File: BP002826.D
 Acq: 22 Jul 2020 15:49

Instrument :
 BNA_P
 ClientSampled :
 SP-1A

Tgt Ion: 99 Resp: 1188486

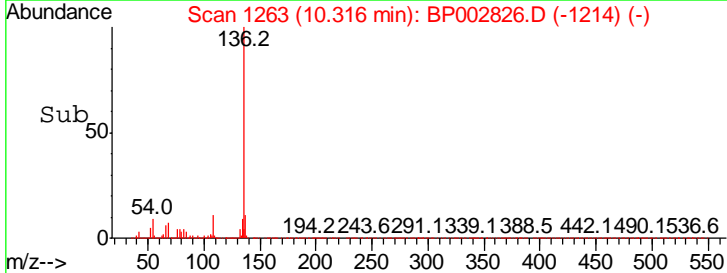
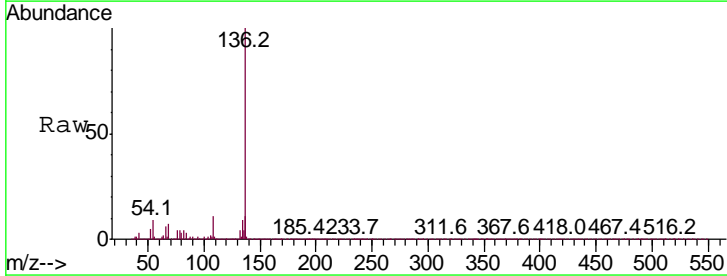
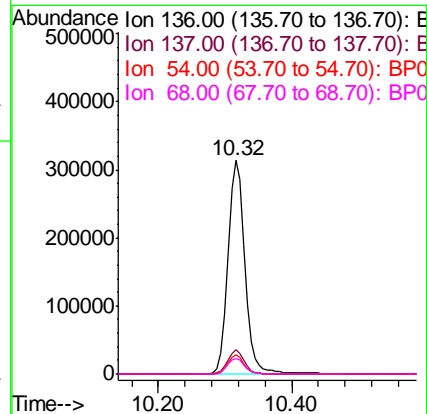
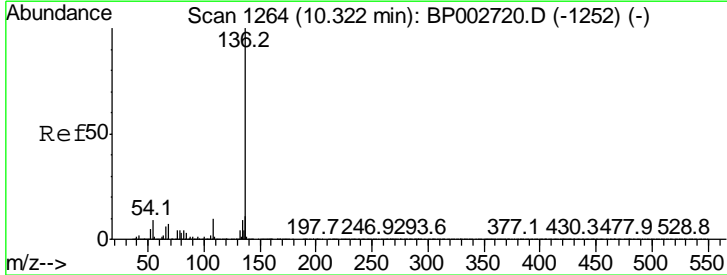
Ion	Ratio	Lower	Upper
99	100		
42	17.9	13.4	20.2
71	32.3	24.6	36.8

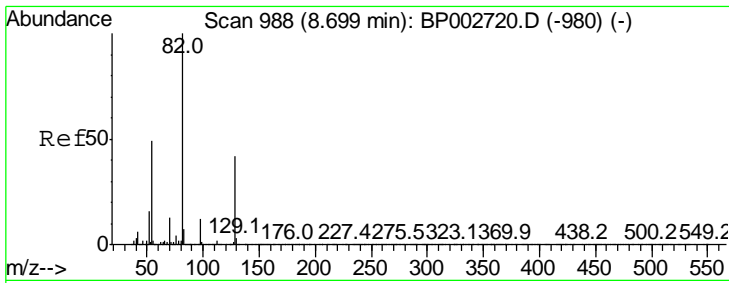


#21
 Naphthalene-d8
 Concen: 20.000 ng
 RT: 10.32 min Scan# 1263
 Delta R.T. -0.01 min
 Lab File: BP002826.D
 Acq: 22 Jul 2020 15:49

Tgt Ion: 136 Resp: 565587

Ion	Ratio	Lower	Upper
136	100		
137	11.1	8.6	13.0
54	9.1	6.9	10.3
68	7.3	5.7	8.5

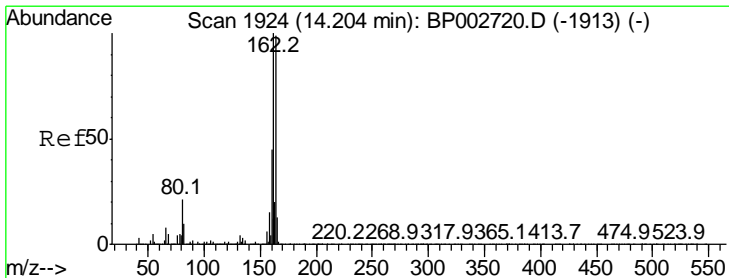
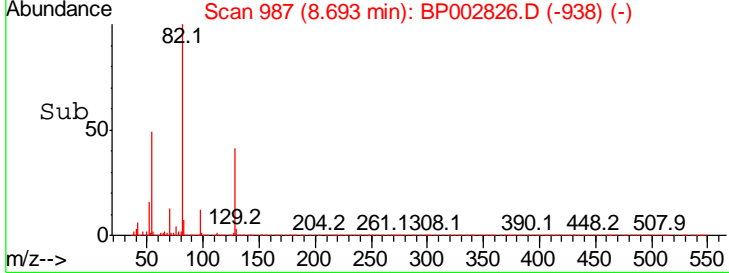
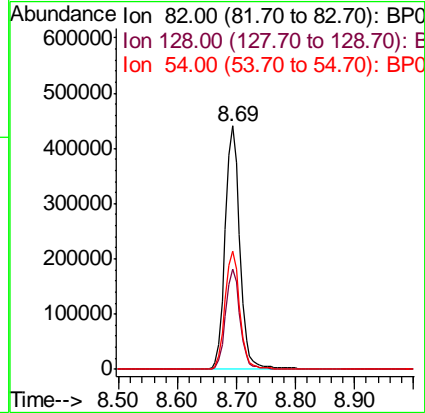
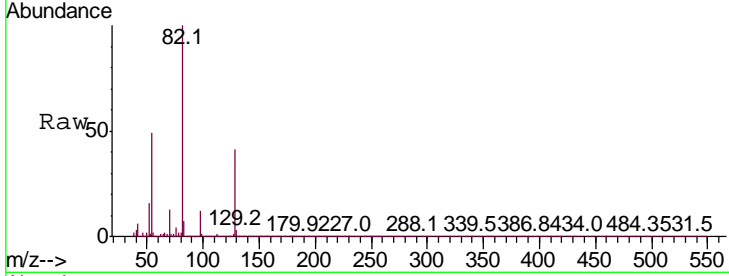




#23
 Nitrobenzene-d5
 Concen: 72.027 ng
 RT: 8.69 min Scan# 987
 Delta R.T. -0.01 min
 Lab File: BP002826.D
 Acq: 22 Jul 2020 15:49

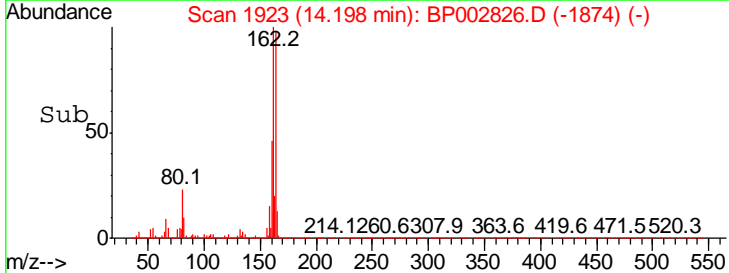
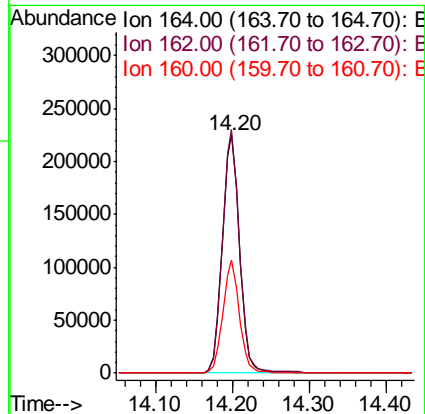
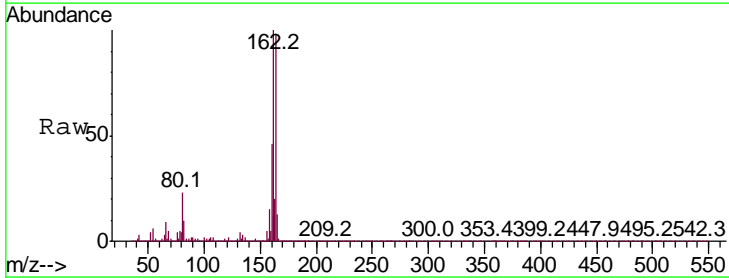
Instrument :
 BNA_P
 ClientSampled :
 SP-1A

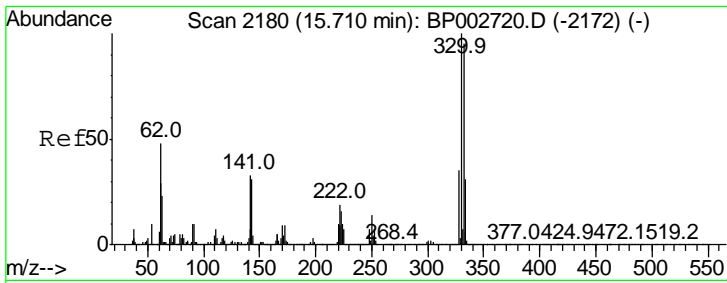
Tgt Ion	Resp	Lower	Upper
82	100		
128	40.9	33.8	50.8
54	48.6	38.8	58.2



#39
 Acenaphthene-d10
 Concen: 20.000 ng
 RT: 14.20 min Scan# 1923
 Delta R.T. -0.01 min
 Lab File: BP002826.D
 Acq: 22 Jul 2020 15:49

Tgt Ion	Resp	Lower	Upper
164	100		
162	102.2	80.6	121.0
160	47.2	36.4	54.6

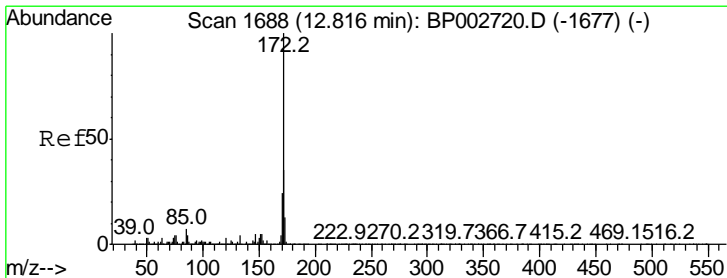
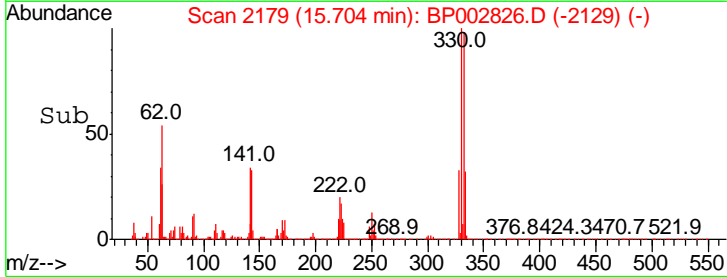
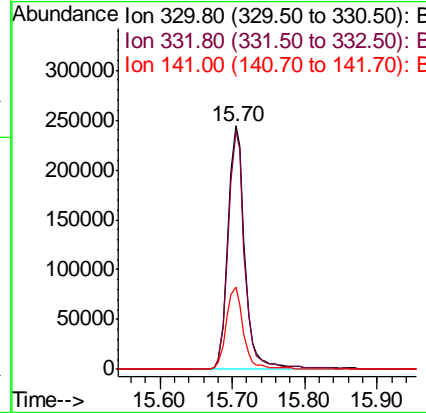
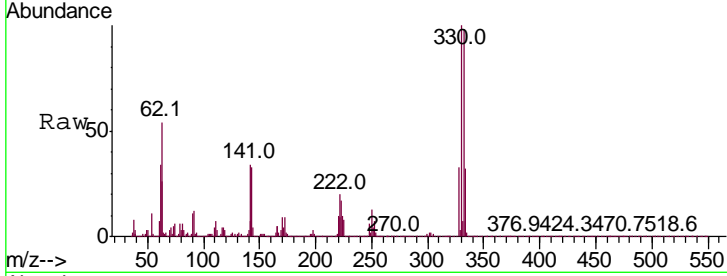




#42
 2,4,6-Tribromophenol
 Concen: 109.143 ng
 RT: 15.70 min Scan# 2179
 Delta R.T. -0.01 min
 Lab File: BP002826.D
 Acq: 22 Jul 2020 15:49

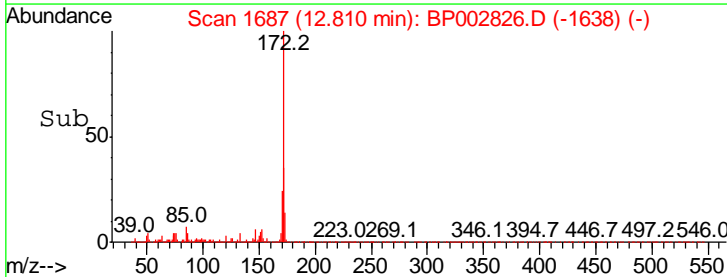
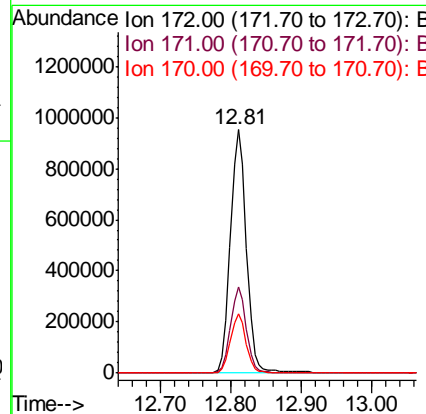
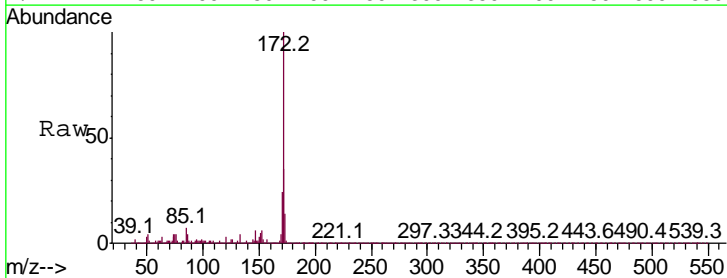
Instrument :
 BNA_P
 ClientSampled :
 SP-1A

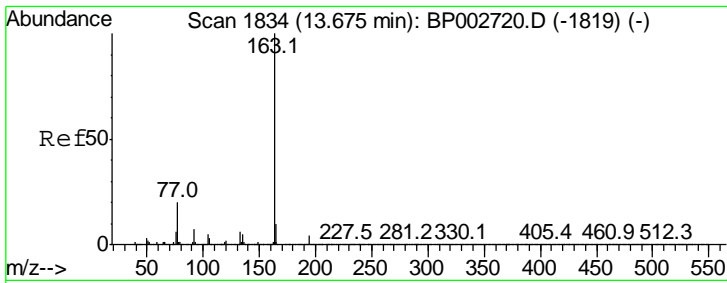
Tgt Ion	Resp	Lower	Upper
330	100		
332	97.5	76.5	114.7
141	35.2	28.8	43.2



#45
 2-Fluorobiphenyl
 Concen: 67.020 ng
 RT: 12.81 min Scan# 1687
 Delta R.T. -0.01 min
 Lab File: BP002826.D
 Acq: 22 Jul 2020 15:49

Tgt Ion	Resp	Lower	Upper
172	100		
171	35.4	28.1	42.1
170	24.1	19.3	28.9



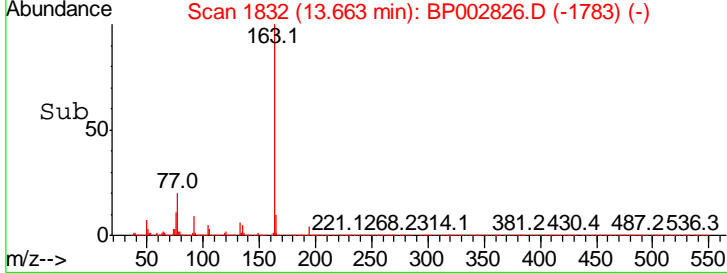
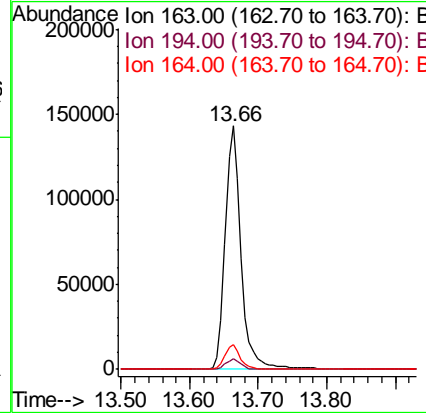
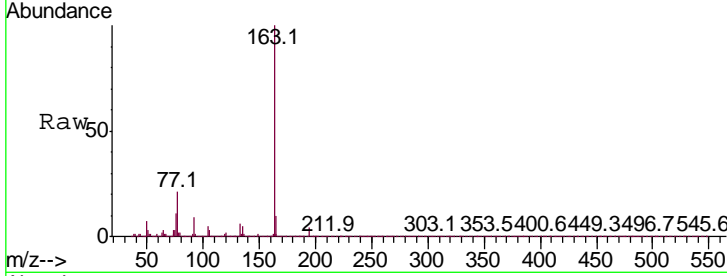


#50
 Dimethylphthalate
 Concen: 8.568 ng
 RT: 13.66 min Scan# 1832
 Delta R.T. -0.01 min
 Lab File: BP002826.D
 Acq: 22 Jul 2020 15:49

Instrument :
 BNA_P
ClientSampled :
 SP-1A

Tgt Ion: 163 Resp: 228533

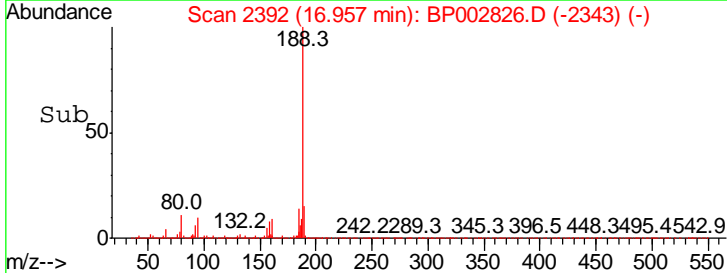
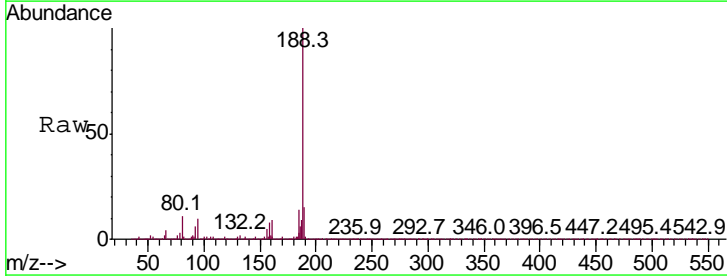
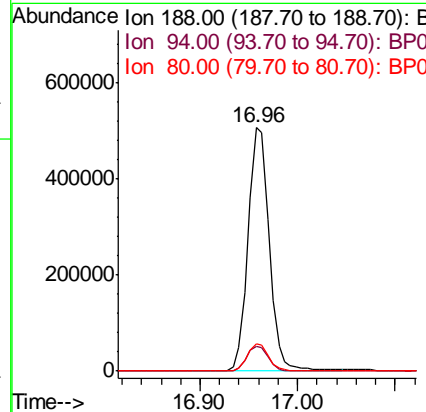
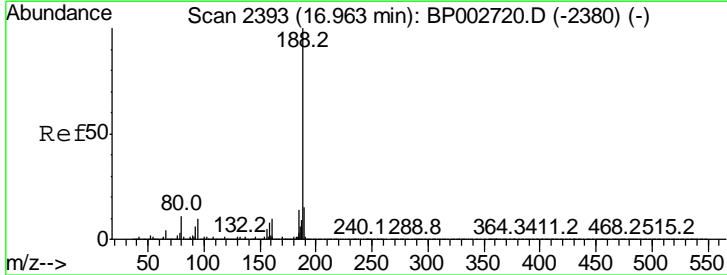
Ion	Ratio	Lower	Upper
163	100		
194	4.4	3.4	5.2
164	10.4	7.8	11.8

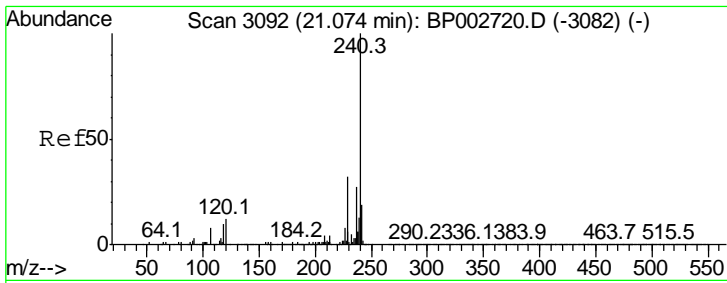


#64
 Phenanthrene-d10
 Concen: 20.000 ng
 RT: 16.96 min Scan# 2392
 Delta R.T. -0.01 min
 Lab File: BP002826.D
 Acq: 22 Jul 2020 15:49

Tgt Ion: 188 Resp: 764280

Ion	Ratio	Lower	Upper
188	100		
94	10.4	8.1	12.1
80	11.4	8.9	13.3

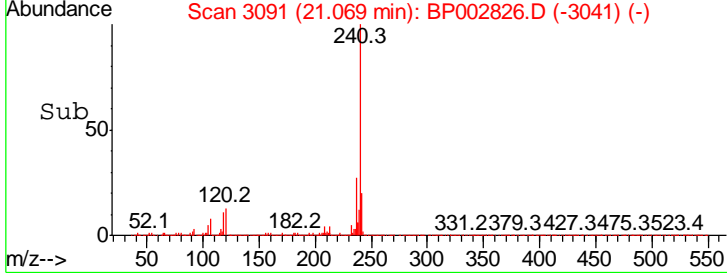
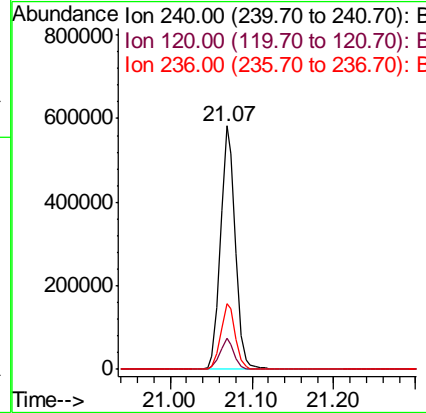
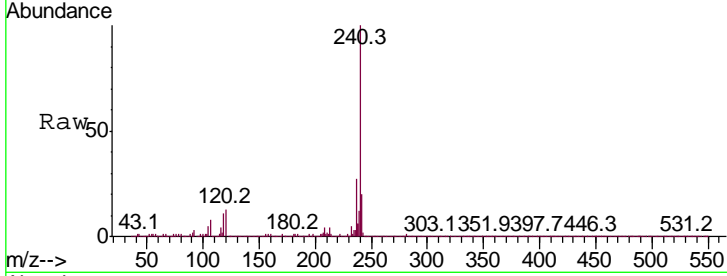




#76
 Chrysene-d12
 Concen: 20.000 ng
 RT: 21.07 min Scan# 3091
 Delta R.T. -0.01 min
 Lab File: BP002826.D
 Acq: 22 Jul 2020 15:49

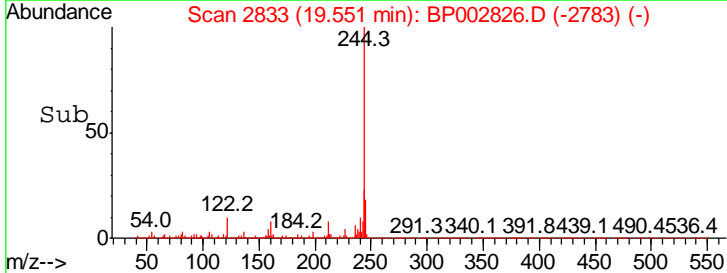
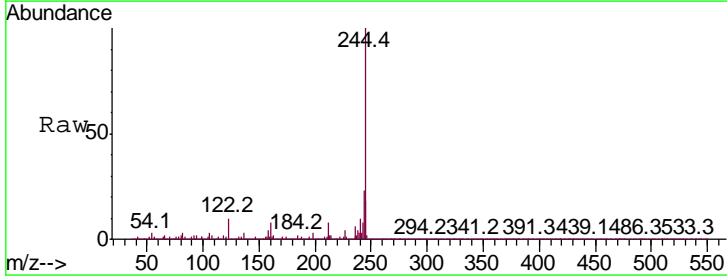
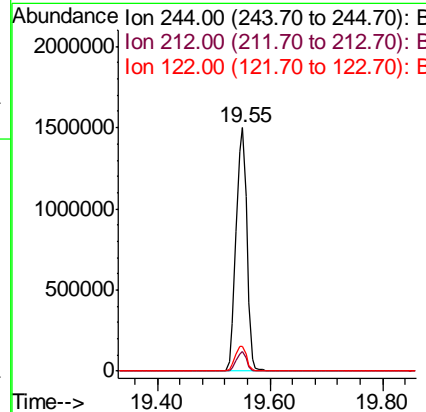
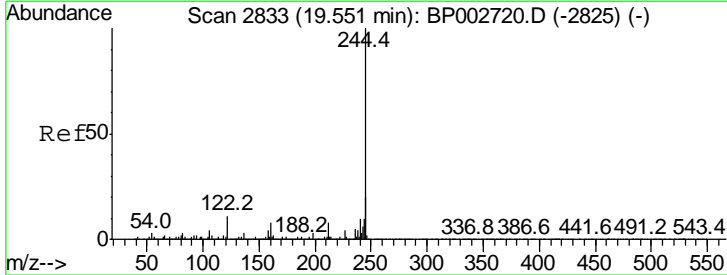
Instrument :
 BNA_P
 ClientSampled :
 SP-1A

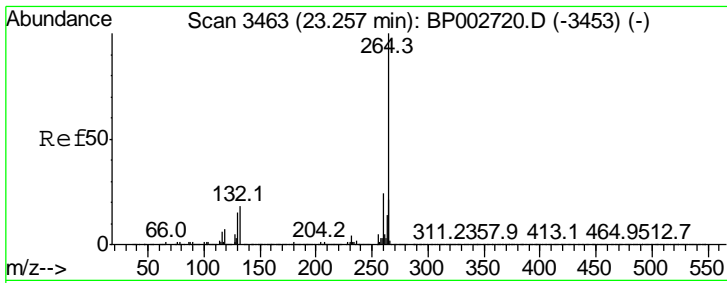
Tgt Ion	Ratio	Lower	Upper
240	100		
120	12.6	9.4	14.2
236	27.1	21.3	31.9



#79
 Terphenyl-d14
 Concen: 63.046 ng
 RT: 19.55 min Scan# 2833
 Delta R.T. -0.01 min
 Lab File: BP002826.D
 Acq: 22 Jul 2020 15:49

Tgt Ion	Ratio	Lower	Upper
244	100		
212	8.2	6.0	9.0
122	10.0	8.9	13.3





#86
 Perylene-d12
 Concen: 20.000 ng
 RT: 23.26 min Scan# 3464
 Delta R.T. 0.00 min
 Lab File: BP002826.D
 Acq: 22 Jul 2020 15:49

Instrument :
 BNA_P
 ClientSampled :
 SP-1A

Ion	Ratio	Lower	Upper
264	100		
260	24.2	19.3	28.9
265	21.3	16.8	25.2

