

Data Path : Z:\svoasrv\HPCHEM1\BNA\_M\Data\BM072423\  
 Data File : BM041105.D  
 Acq On : 25 Jul 2023 14:35  
 Operator : MA/JU  
 Sample : PB154124BS  
 Misc :  
 ALS Vial : 49 Sample Multiplier: 1

Instrument :  
 BNA\_P  
 ClientSampleId :  
 SLCS169

Quant Time: Jul 26 04:22:50 2023  
 Quant Method : Z:\svoasrv\HPCHEM1\BNA\_M\Methods\SFAM-EPA-SIM-BM072423.M  
 Quant Title : ASP BNA STANDARDS FOR 5 POINT CALIBRATION  
 QLast Update : Wed Jul 26 04:20:13 2023  
 Response via : Initial Calibration

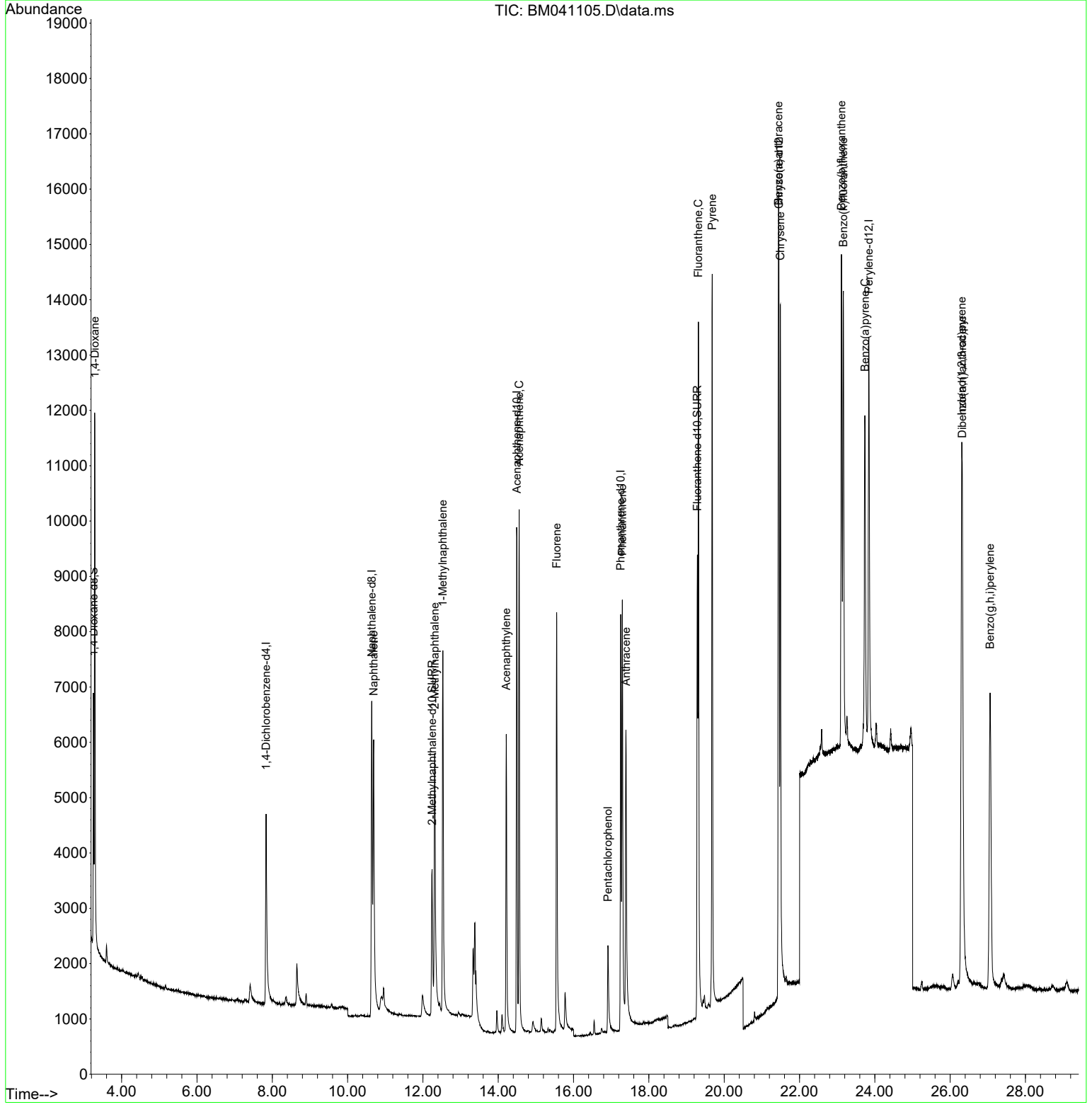
Compound	R.T.	QIon	Response	Conc	Units	Dev(Min)
-----						
Internal Standards						
1) 1,4-Dichlorobenzene-d4	7.836	152	2820	0.400	ng/ul	0.00
4) Naphthalene-d8	10.642	136	10396	0.400	ng/ul	0.00
9) Acenaphthene-d10	14.495	164	5593	0.400	ng/ul	0.00
13) Phenanthrene-d10	17.253	188	10692	0.400	ng/ul	0.00
17) Chrysene-d12	21.454	240	10247	0.400	ng/ul	0.00
23) Perylene-d12	23.842	264	11014	0.400	ng/ul	0.00
System Monitoring Compounds						
3) 1,4-Dioxane-d8	3.254	96	2705	0.622	ng/ul	0.00
6) 2-Methylnaphthalene-d10	12.242	152	5382	0.363	ng/ul	0.00
18) Fluoranthene-d10	19.287	212	10608	0.380	ng/ul	0.00
Target Compounds						
						Qvalue
2) 1,4-Dioxane	3.288	88	6227	1.401	ng/ul#	48
5) Naphthalene	10.691	128	8621	0.255	ng/ul	99
7) 2-Methylnaphthalene	12.313	142	5110	0.308	ng/ul	98
8) 1-Methylnaphthalene	12.528	142	5498	0.323	ng/ul	100
10) Acenaphthylene	14.213	152	7616	0.322	ng/ul	99
11) Acenaphthene	14.555	153	5845	0.293	ng/ul	99
12) Fluorene	15.550	166	6214	0.286	ng/ul	99
14) Pentachlorophenol	16.915	266	1537	0.494	ng/ul	98
15) Phenanthrene	17.295	178	9530	0.289	ng/ul	100
16) Anthracene	17.392	178	8091	0.303	ng/ul	98
19) Fluoranthene	19.315	202	11780	0.321	ng/ul	100
20) Pyrene	19.682	202	12577	0.311	ng/ul	99
21) Benzo(a)anthracene	21.439	228	11380	0.332	ng/ul	97
22) Chrysene	21.492	228	11685	0.295	ng/ul	97
24) Benzo(b)fluoranthene	23.114	252	12742	0.290	ng/ul	93
25) Benzo(k)fluoranthene	23.164	252	12107	0.289	ng/ul#	92
26) Benzo(a)pyrene	23.737	252	10738	0.302	ng/ul#	93
27) Indeno(1,2,3-cd)pyrene	26.307	276	15040	0.286	ng/ul#	98
28) Dibenzo(a,h)anthracene	26.324	278	11973	0.290	ng/ul	95
29) Benzo(g,h,i)perylene	27.062	276	12821	0.273	ng/ul	96

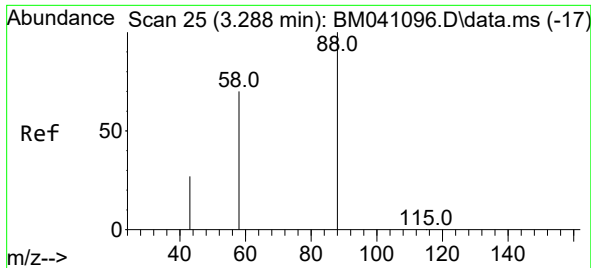
(#) = qualifier out of range (m) = manual integration (+) = signals summed

Data Path : Z:\svoasrv\HPCHEM1\BNA\_M\Data\BM072423\  
 Data File : BM041105.D  
 Acq On : 25 Jul 2023 14:35  
 Operator : MA/JU  
 Sample : PB154124BS  
 Misc :  
 ALS Vial : 49 Sample Multiplier: 1

Instrument :  
 BNA\_P  
 ClientSampleId :  
 SLCS169

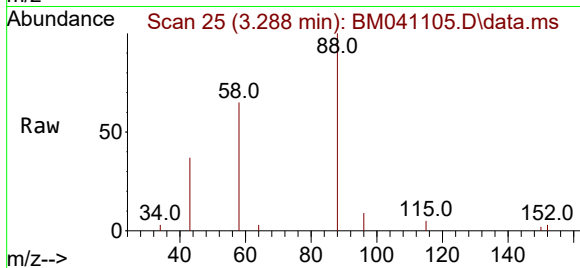
Quant Time: Jul 26 04:22:50 2023  
 Quant Method : Z:\svoasrv\HPCHEM1\BNA\_M\Methods\SFAM-EPA-SIM-BM072423.M  
 Quant Title : ASP BNA STANDARDS FOR 5 POINT CALIBRATION  
 QLast Update : Wed Jul 26 04:20:13 2023  
 Response via : Initial Calibration



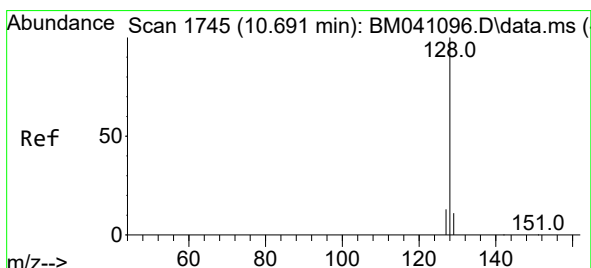
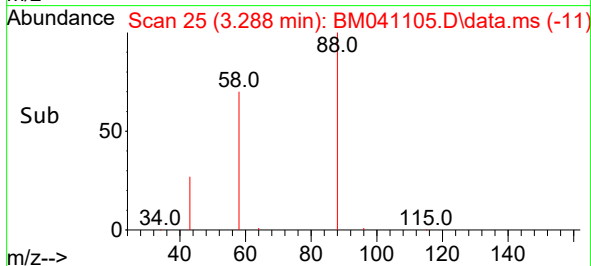
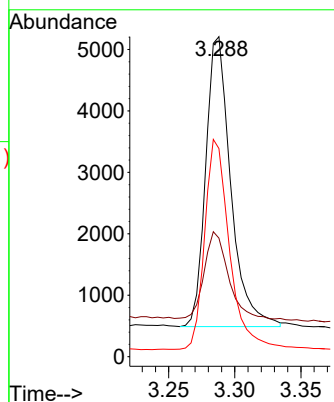


#2  
 1,4-Dioxane  
 Concen: 1.401 ng/ul  
 RT: 3.288 min Scan# 21  
 Delta R.T. -0.000 min  
 Lab File: BM041105.D  
 Acq: 25 Jul 2023 14:35

Instrument :  
 BNA\_P  
 ClientSampleId :  
 SLCS169

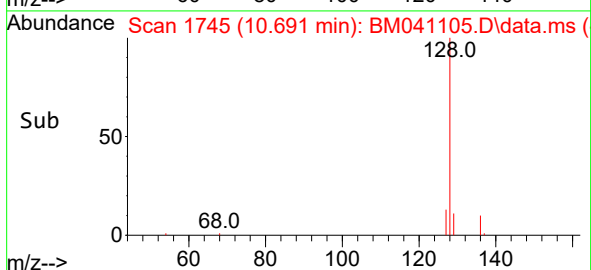
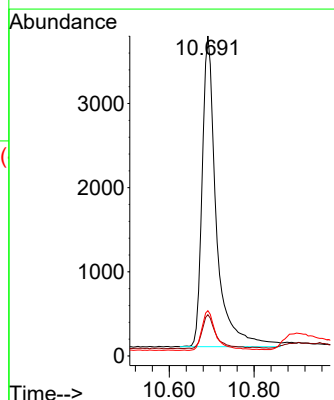
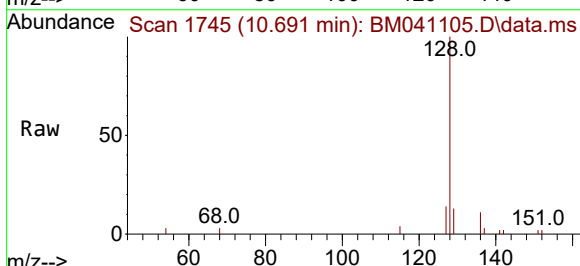


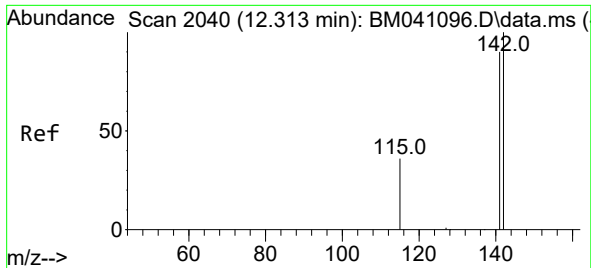
Tgt Ion: 88 Resp: 6227  
 Ion Ratio Lower Upper  
 88 100  
 43 37.1 83.1 124.7#  
 58 65.0 38.8 58.2#



#5  
 Naphthalene  
 Concen: 0.255 ng/ul  
 RT: 10.691 min Scan# 1745  
 Delta R.T. -0.000 min  
 Lab File: BM041105.D  
 Acq: 25 Jul 2023 14:35

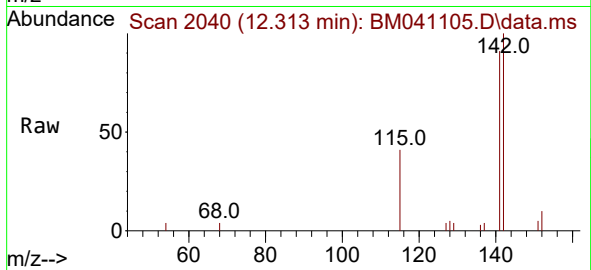
Tgt Ion: 128 Resp: 8621  
 Ion Ratio Lower Upper  
 128 100  
 129 12.9 9.8 14.8  
 127 14.2 11.1 16.7



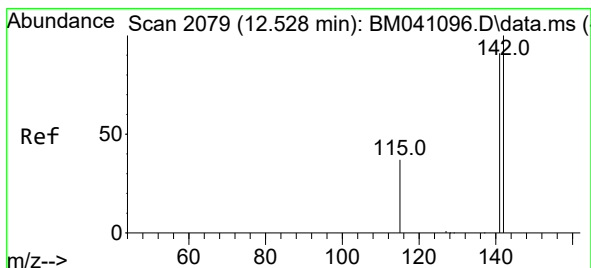
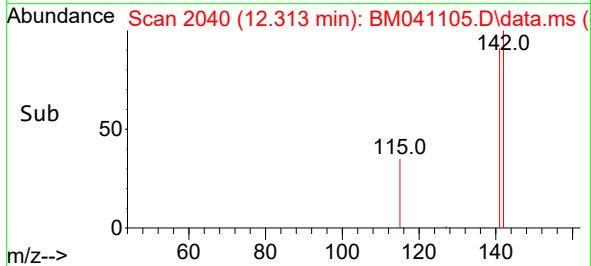
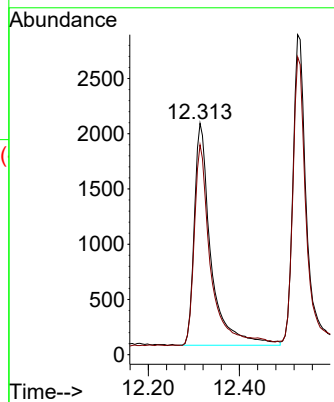


#7  
 2-Methylnaphthalene  
 Concen: 0.308 ng/ul  
 RT: 12.313 min Scan# 2040  
 Delta R.T. -0.000 min  
 Lab File: BM041105.D  
 Acq: 25 Jul 2023 14:35

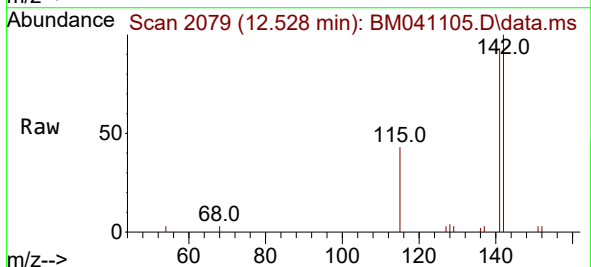
Instrument :  
 BNA\_P  
 ClientSampleId :  
 SLCS169



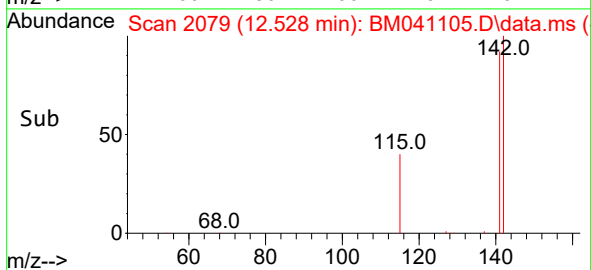
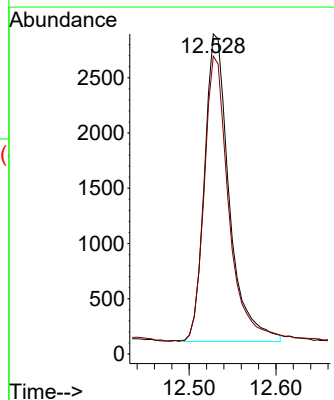
Tgt Ion:142 Resp: 5110  
 Ion Ratio Lower Upper  
 142 100  
 141 89.5 73.3 109.9

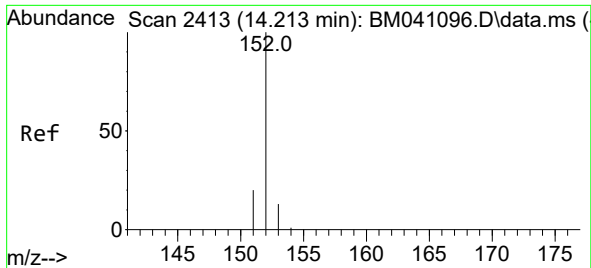


#8  
 1-Methylnaphthalene  
 Concen: 0.323 ng/ul  
 RT: 12.528 min Scan# 2079  
 Delta R.T. -0.000 min  
 Lab File: BM041105.D  
 Acq: 25 Jul 2023 14:35



Tgt Ion:142 Resp: 5498  
 Ion Ratio Lower Upper  
 142 100  
 141 92.2 73.6 110.4



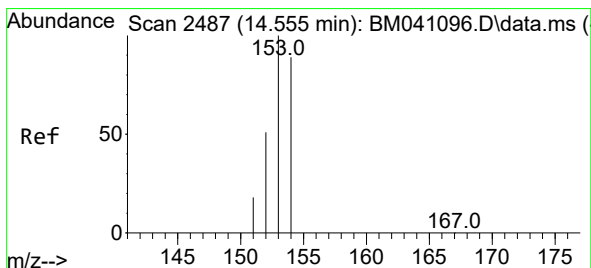
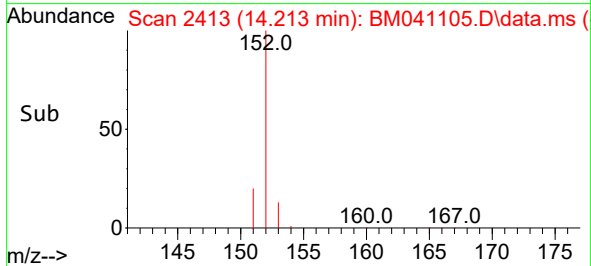
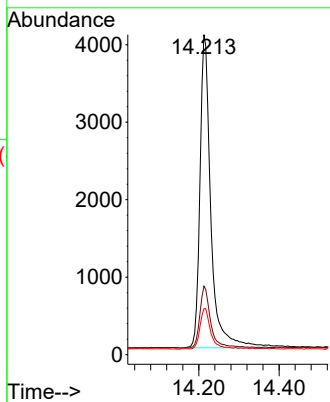
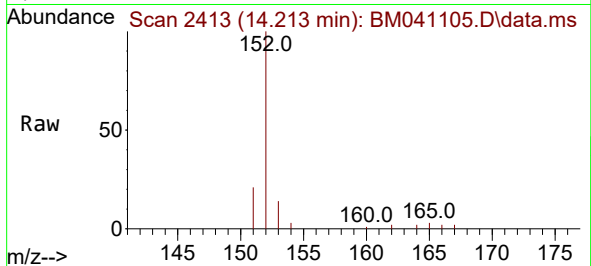


#10  
 Acenaphthylene  
 Concen: 0.322 ng/ul  
 RT: 14.213 min Scan# 2413  
 Delta R.T. -0.000 min  
 Lab File: BM041105.D  
 Acq: 25 Jul 2023 14:35

Instrument :  
 BNA\_P  
 ClientSampleId :  
 SLCS169

Tgt Ion:152 Resp: 7616

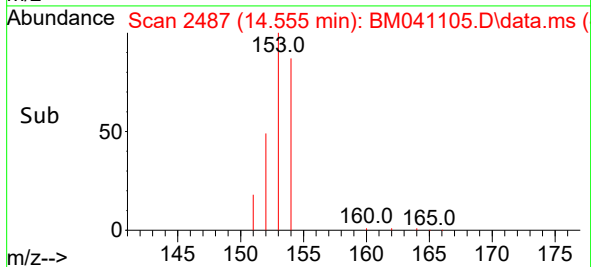
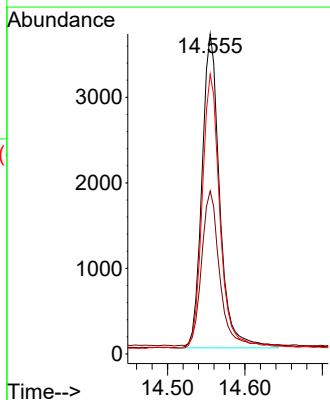
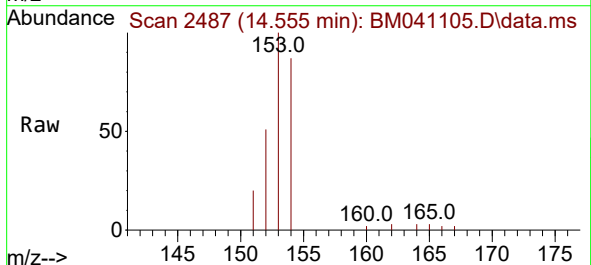
Ion	Ratio	Lower	Upper
152	100		
151	21.4	16.8	25.2
153	14.4	11.4	17.2

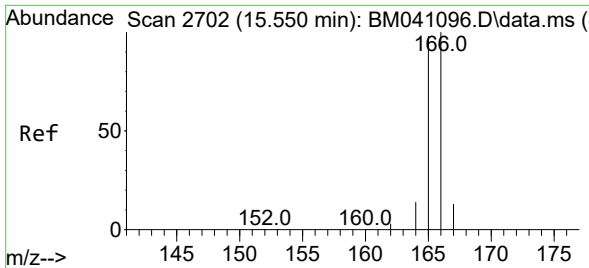


#11  
 Acenaphthene  
 Concen: 0.293 ng/ul  
 RT: 14.555 min Scan# 2487  
 Delta R.T. -0.000 min  
 Lab File: BM041105.D  
 Acq: 25 Jul 2023 14:35

Tgt Ion:153 Resp: 5845

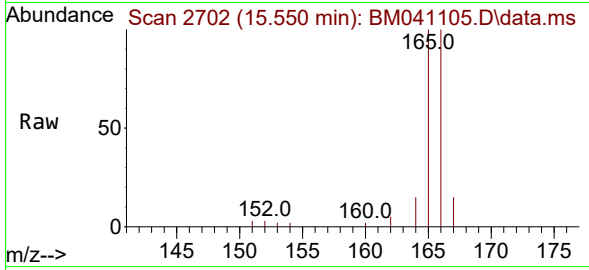
Ion	Ratio	Lower	Upper
153	100		
152	51.0	40.2	60.4
154	87.5	70.3	105.5





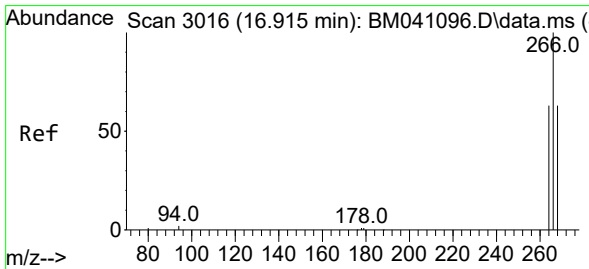
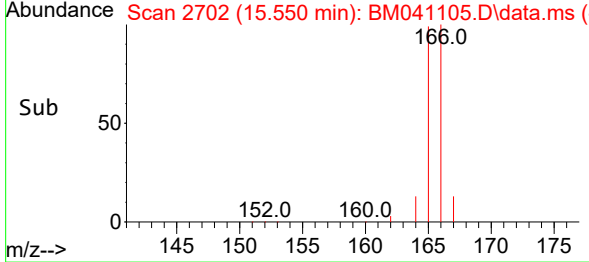
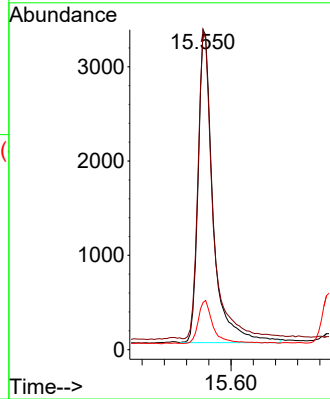
#12  
 Fluorene  
 Concen: 0.286 ng/ul  
 RT: 15.550 min Scan# 21  
 Delta R.T. -0.000 min  
 Lab File: BM041105.D  
 Acq: 25 Jul 2023 14:35

Instrument :  
 BNA\_P  
 ClientSampleId :  
 SLCS169

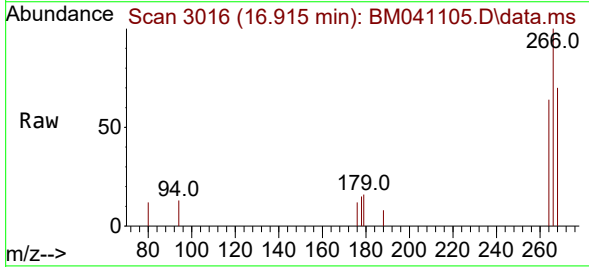


Tgt Ion:166 Resp: 6214

Ion	Ratio	Lower	Upper
166	100		
165	100.0	79.4	119.0
167	14.8	11.4	17.2

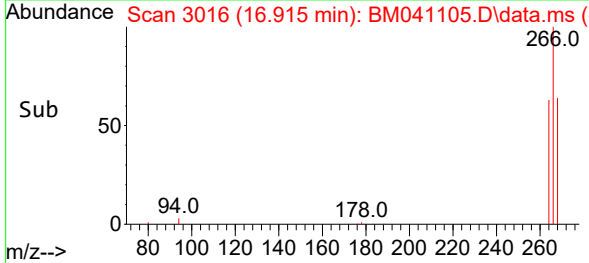
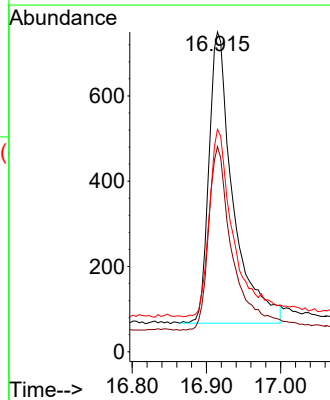


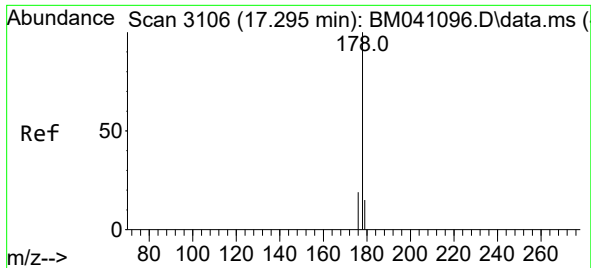
#14  
 Pentachlorophenol  
 Concen: 0.494 ng/ul  
 RT: 16.915 min Scan# 3016  
 Delta R.T. -0.000 min  
 Lab File: BM041105.D  
 Acq: 25 Jul 2023 14:35



Tgt Ion:266 Resp: 1537

Ion	Ratio	Lower	Upper
266	100		
264	63.1	49.2	73.8
268	64.5	49.9	74.9



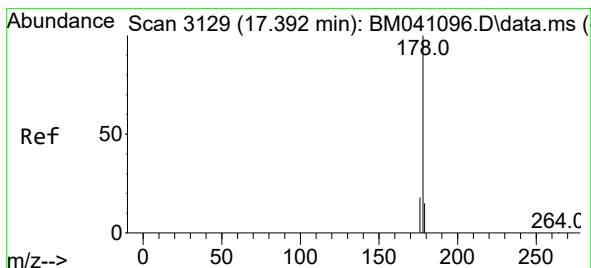
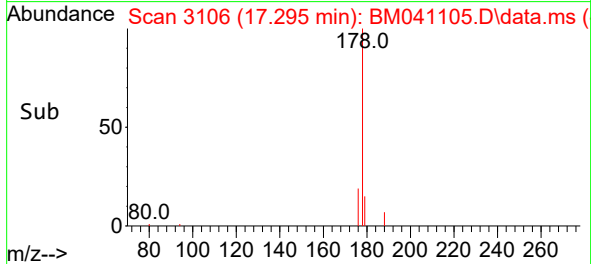
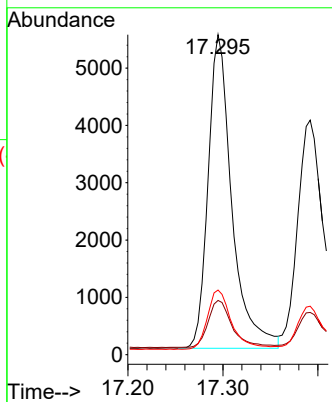
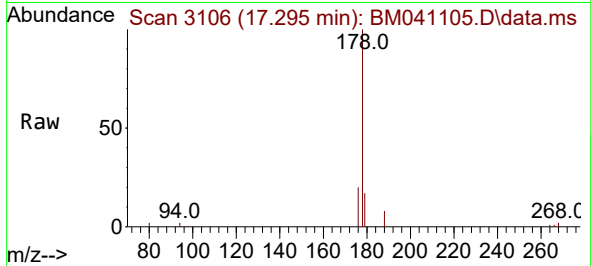


#15  
 Phenanthrene  
 Concen: 0.289 ng/u1  
 RT: 17.295 min Scan# 3106  
 Delta R.T. -0.000 min  
 Lab File: BM041105.D  
 Acq: 25 Jul 2023 14:35

Instrument : BNA\_P  
 ClientSampleId : SLCS169

Tgt Ion:178 Resp: 9530

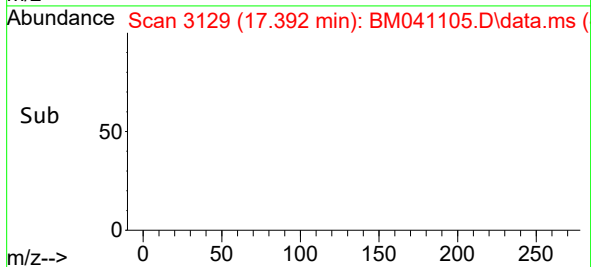
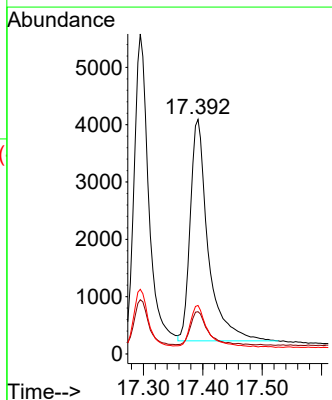
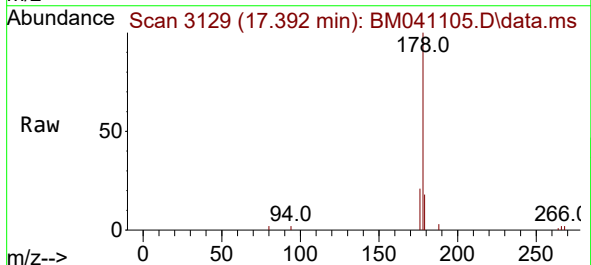
Ion	Ratio	Lower	Upper
178	100		
179	16.9	13.4	20.2
176	20.2	16.0	24.0

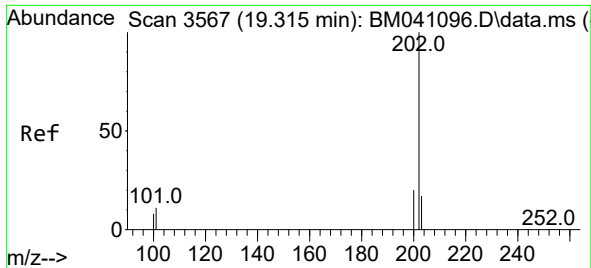


#16  
 Anthracene  
 Concen: 0.303 ng/u1  
 RT: 17.392 min Scan# 3129  
 Delta R.T. -0.000 min  
 Lab File: BM041105.D  
 Acq: 25 Jul 2023 14:35

Tgt Ion:178 Resp: 8091

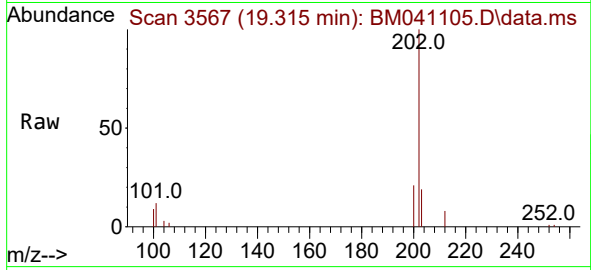
Ion	Ratio	Lower	Upper
178	100		
179	18.0	13.6	20.4
176	20.7	16.0	24.0



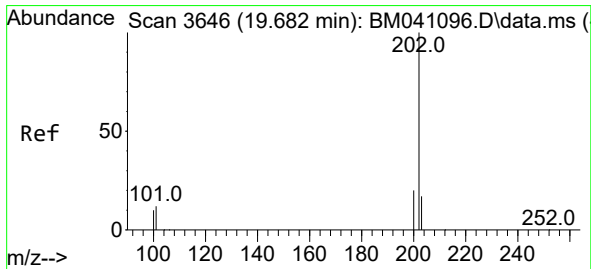
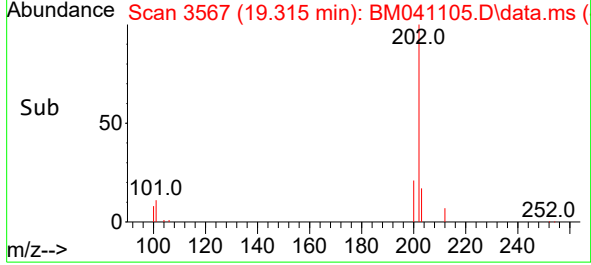
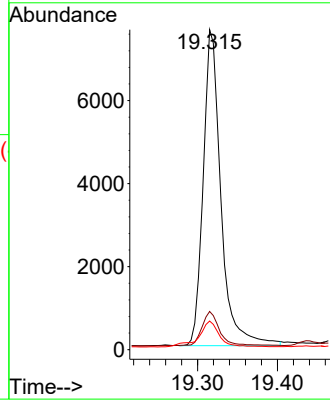


#19  
 Fluoranthene  
 Concen: 0.321 ng/uI  
 RT: 19.315 min Scan# 31  
 Delta R.T. -0.000 min  
 Lab File: BM041105.D  
 Acq: 25 Jul 2023 14:35

Instrument :  
 BNA\_P  
 ClientSampleId :  
 SLCS169

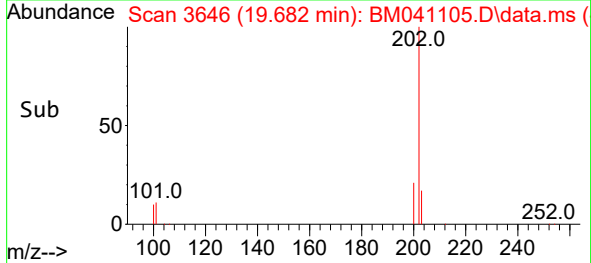
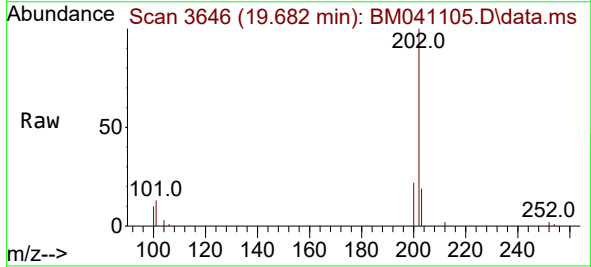
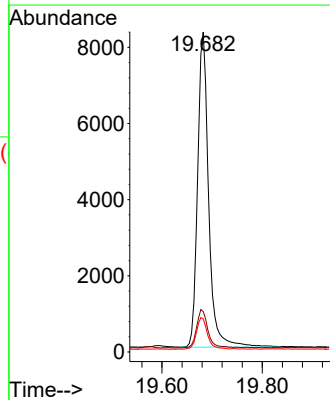


Tgt Ion:202 Resp: 11780  
 Ion Ratio Lower Upper  
 202 100  
 101 12.0 9.4 14.0  
 100 9.0 7.1 10.7

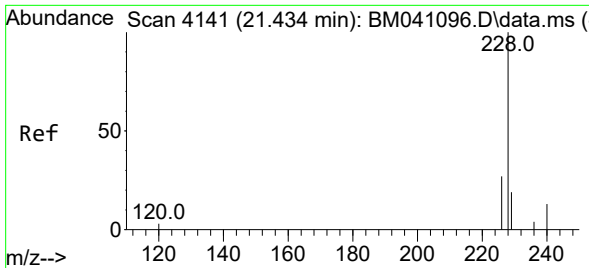


#20  
 Pyrene  
 Concen: 0.311 ng/uI  
 RT: 19.682 min Scan# 3646  
 Delta R.T. -0.000 min  
 Lab File: BM041105.D  
 Acq: 25 Jul 2023 14:35

Tgt Ion:202 Resp: 12577  
 Ion Ratio Lower Upper  
 202 100  
 101 12.6 10.7 16.1  
 100 10.4 8.5 12.7

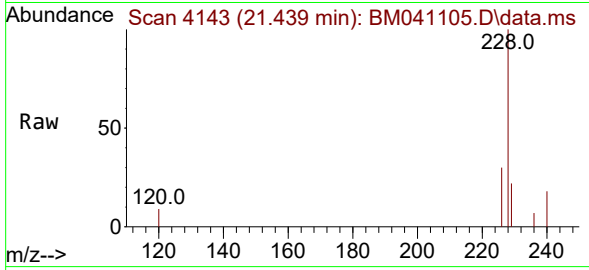




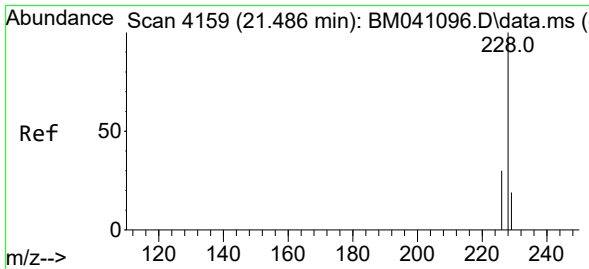
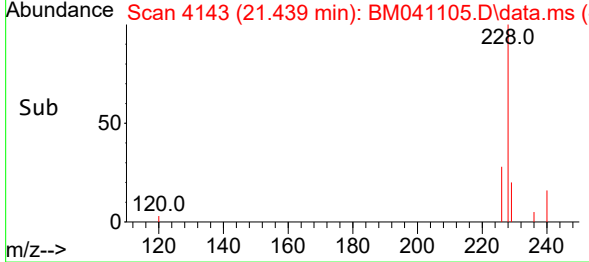
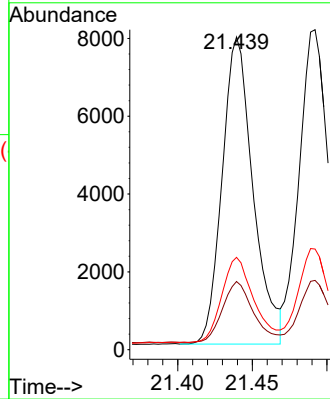


#21  
 Benzo(a)anthracene  
 Concen: 0.332 ng/u1  
 RT: 21.439 min Scan# 4113  
 Delta R.T. 0.006 min  
 Lab File: BM041105.D  
 Acq: 25 Jul 2023 14:35

Instrument :  
 BNA\_P  
 ClientSampleId :  
 SLCS169

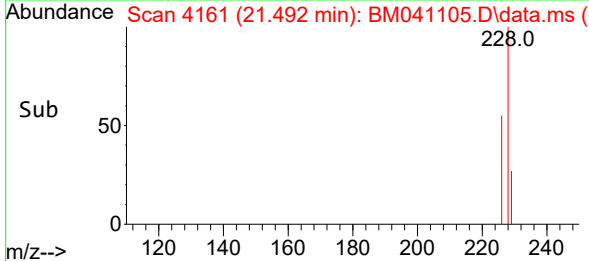
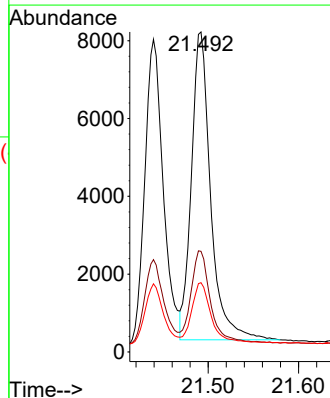
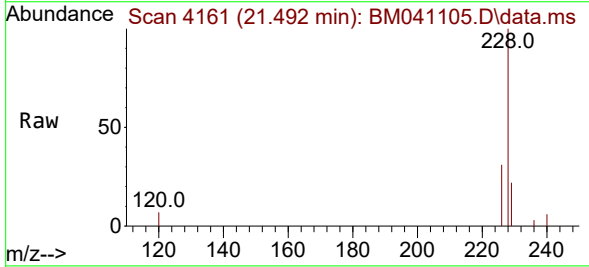


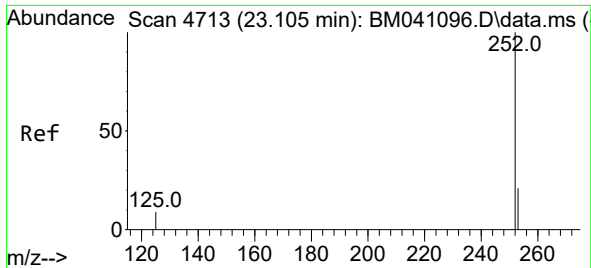
Tgt Ion:228 Resp: 11380  
 Ion Ratio Lower Upper  
 228 100  
 229 21.8 16.5 24.7  
 226 29.6 22.2 33.2



#22  
 Chrysene  
 Concen: 0.295 ng/u1  
 RT: 21.492 min Scan# 4161  
 Delta R.T. 0.006 min  
 Lab File: BM041105.D  
 Acq: 25 Jul 2023 14:35

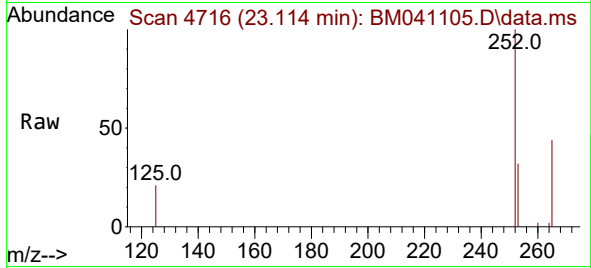
Tgt Ion:228 Resp: 11685  
 Ion Ratio Lower Upper  
 228 100  
 226 31.4 24.2 36.4  
 229 21.6 15.9 23.9



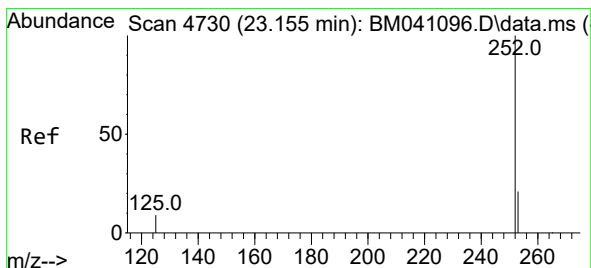
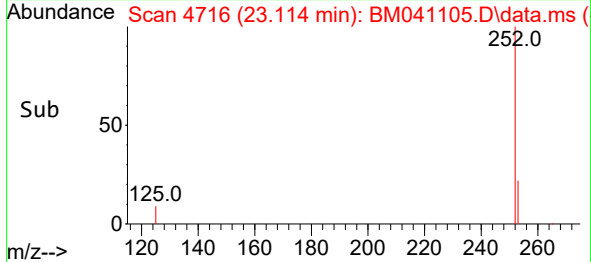
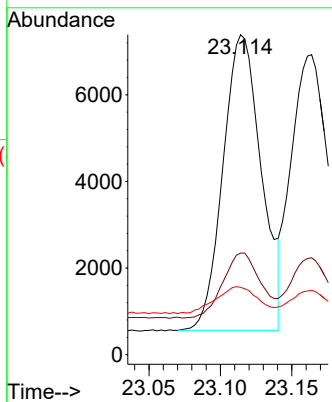


#24  
 Benzo(b)fluoranthene  
 Concen: 0.290 ng/ul  
 RT: 23.114 min Scan# 4716  
 Delta R.T. 0.009 min  
 Lab File: BM041105.D  
 Acq: 25 Jul 2023 14:35

Instrument : BNA\_P  
 ClientSampleId : SLCS169

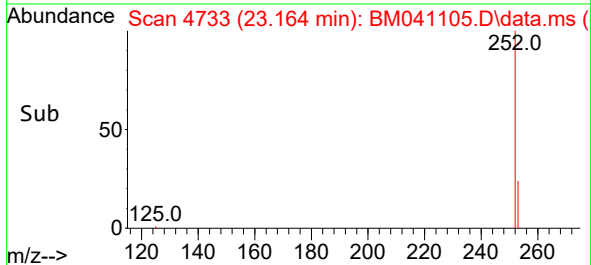
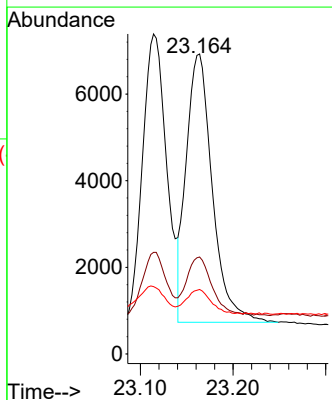
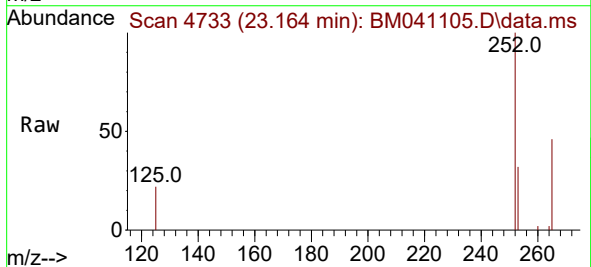


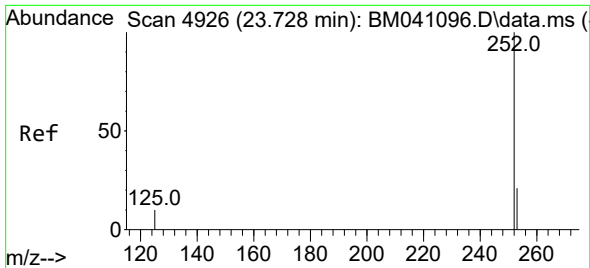
Tgt Ion:252 Resp: 12742  
 Ion Ratio Lower Upper  
 252 100  
 253 31.7 0.0 57.6  
 125 21.0 0.0 33.6



#25  
 Benzo(k)fluoranthene  
 Concen: 0.289 ng/ul  
 RT: 23.164 min Scan# 4733  
 Delta R.T. 0.009 min  
 Lab File: BM041105.D  
 Acq: 25 Jul 2023 14:35

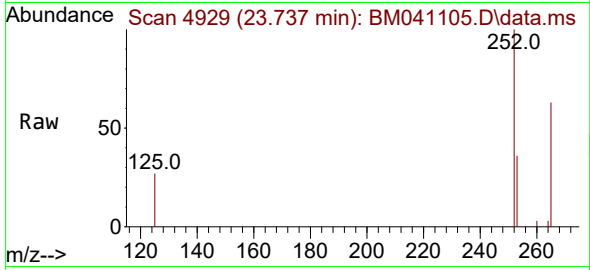
Tgt Ion:252 Resp: 12107  
 Ion Ratio Lower Upper  
 252 100  
 253 32.3 22.8 34.2  
 125 21.5 13.5 20.3#



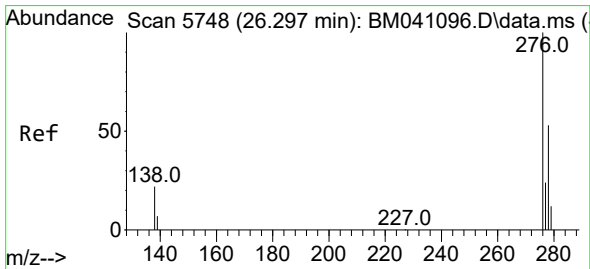
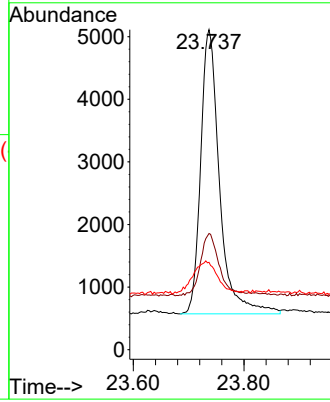
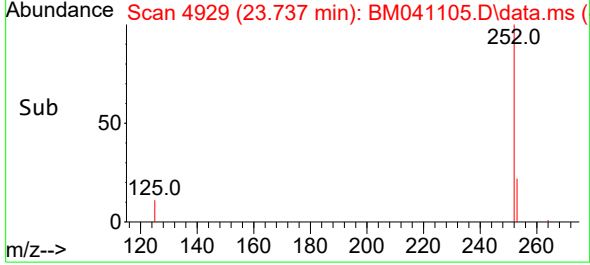


#26  
 Benzo(a)pyrene  
 Concen: 0.302 ng/u1  
 RT: 23.737 min Scan# 4929  
 Delta R.T. 0.009 min  
 Lab File: BM041105.D  
 Acq: 25 Jul 2023 14:35

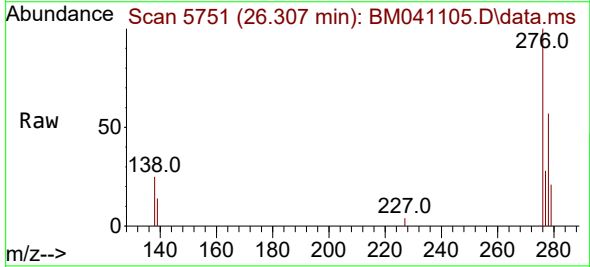
Instrument :  
 BNA\_P  
 ClientSampleId :  
 SLCS169



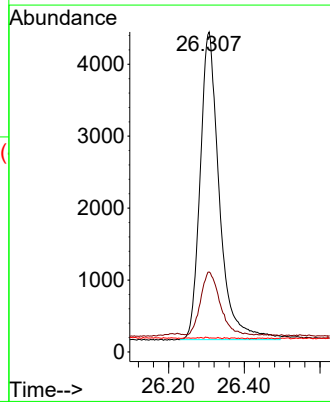
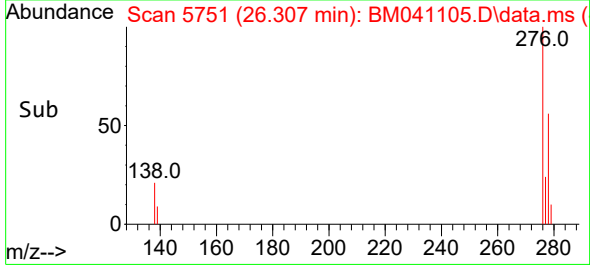
Tgt Ion:252 Resp: 10738  
 Ion Ratio Lower Upper  
 252 100  
 253 36.3 26.7 40.1  
 125 27.3 18.1 27.1#

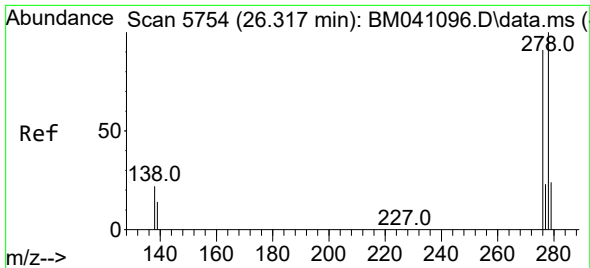


#27  
 Indeno(1,2,3-cd)pyrene  
 Concen: 0.286 ng/u1  
 RT: 26.307 min Scan# 5751  
 Delta R.T. 0.010 min  
 Lab File: BM041105.D  
 Acq: 25 Jul 2023 14:35



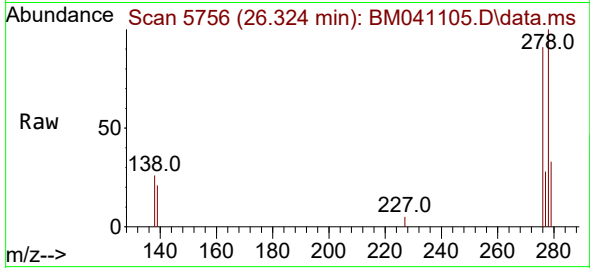
Tgt Ion:276 Resp: 15040  
 Ion Ratio Lower Upper  
 276 100  
 138 21.5 18.1 27.1  
 227 0.1 0.2 0.2#



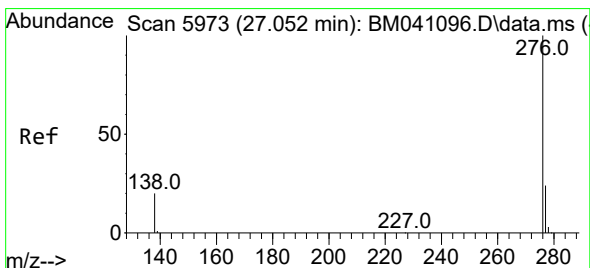
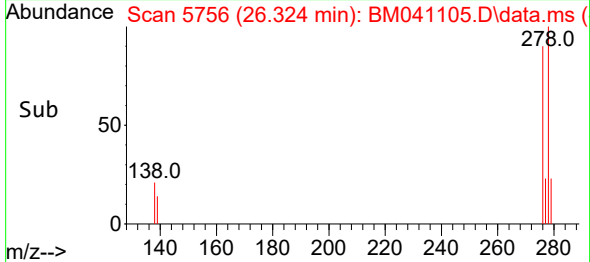
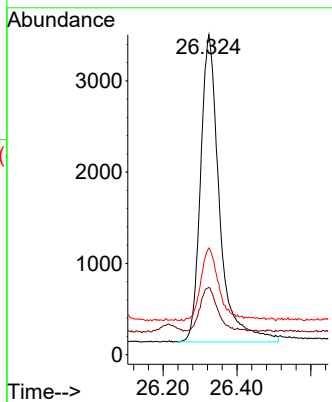


#28  
 Dibenzo(a,h)anthracene  
 Concen: 0.290 ng/ul  
 RT: 26.324 min Scan# 51  
 Delta R.T. 0.007 min  
 Lab File: BM041105.D  
 Acq: 25 Jul 2023 14:35

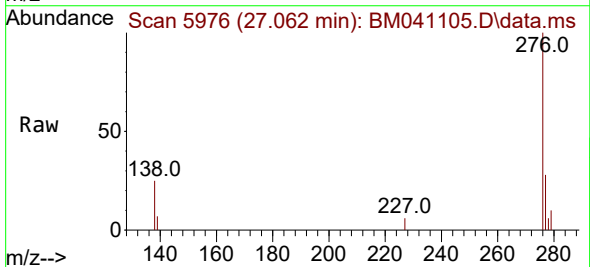
Instrument :  
 BNA\_P  
 ClientSampleId :  
 SLCS169



Tgt Ion:278 Resp: 11973  
 Ion Ratio Lower Upper  
 278 100  
 139 21.0 14.1 21.1  
 279 33.4 25.0 37.4



#29  
 Benzo(g,h,i)perylene  
 Concen: 0.273 ng/ul  
 RT: 27.062 min Scan# 5976  
 Delta R.T. 0.010 min  
 Lab File: BM041105.D  
 Acq: 25 Jul 2023 14:35



Tgt Ion:276 Resp: 12821  
 Ion Ratio Lower Upper  
 276 100  
 138 24.8 18.2 27.2  
 277 27.5 20.6 30.8

