

Data Path : Z:\svoasrv\HPCHEM1\BNA\_P\Data\BP072523\  
 Data File : BP016347.D  
 Acq On : 25 Jul 2023 14:08  
 Operator : MA/JU  
 Sample : SSTD08006  
 Misc :  
 ALS Vial : 8 Sample Multiplier: 1

Instrument :  
 BNA\_P  
 ClientSampleId :  
 SSTD080608

Quant Time: Jul 25 23:29:48 2023  
 Quant Method : Z:\svoasrv\HPCHEM1\BNA\_P\Methods\SFAM-EPA-BP072523.MA.M  
 Quant Title : SVOA CALIBRATION  
 QLast Update : Tue Jul 25 16:07:21 2023  
 Response via : Initial Calibration

Compound	R.T.	QIon	Response	Conc	Units	Dev(Min)
Internal Standards						
1) 1,4-Dichlorobenzene-d4	8.102	152	339468	20.000	ng/ul	0.00
20) Naphthalene-d8	10.937	136	1460094	20.000	ng/ul	0.00
38) Acenaphthene-d10	14.743	164	874176	20.000	ng/ul	0.00
64) Phenanthrene-d10	17.507	188	1909138	20.000	ng/ul	0.00
79) Chrysene-d12	21.601	240	1687634	20.000	ng/ul	0.00
88) Perylene-d12	24.213	264	1965908	20.000	ng/ul	0.00
System Monitoring Compounds						
3) 1,4-Dioxane-d8	3.425	96	289356	33.609	ng/uL	0.00
4) Pyridine-d5	3.855	84	2097340	85.861	ng/ul	0.00
7) Phenol-d5	7.231	99	2376915	83.672	ng/ul	0.00
9) Bis-(2-Chloroethyl)eth...	7.437	67	1384932	81.203	ng/ul	0.00
11) 2-Chlorophenol-d4	7.619	132	1876809	84.685	ng/ul	0.00
15) 4-Methylphenol-d8	8.802	113	1916941	83.909	ng/ul	0.00
21) Nitrobenzene-d5	9.302	128	871339	96.913	ng/ul	0.00
24) 2-Nitrophenol-d4	10.013	143	829092	111.810	ng/ul	0.00
28) 2,4-Dichlorophenol-d3	10.543	165	1803725	87.757	ng/ul	0.00
31) 4-Chloroaniline-d4	11.090	131	2668170	83.445	ng/ul	0.00
46) Dimethylphthalate-d6	14.160	166	5185850	81.057	ng/ul	0.00
49) Acenaphthylene-d8	14.448	160	6087973	80.545	ng/ul	0.00
54) 4-Nitrophenol-d4	14.943	143	995975	92.908	ng/ul	0.02
60) Fluorene-d10	15.742	176	4350246	79.926	ng/ul	0.00
65) 4,6-Dinitro-2-methylph...	15.860	200	635250	101.021	ng/ul	0.01
73) Anthracene-d10	17.613	188	6623587	78.323	ng/ul	0.00
81) Pyrene-d10	19.836	212	7480440	78.063	ng/ul	0.00
92) Benzo(a)pyrene-d12	24.042	264	8029109	84.652	ng/ul	0.00
Target Compounds						
2) 1,4-Dioxane	3.467	88	309170	33.866	ng/uL	97
5) Pyridine	3.873	79	2134162	85.874	ng/ul	97
6) Benzaldehyde	7.249	77	982530	63.398	ng/ul	100
8) Phenol	7.261	94	2443162	82.702	ng/ul	98
10) Bis(2-Chloroethyl)ether	7.531	93	1959080	80.952	ng/ul	99
12) 2-Chlorophenol	7.655	128	1885319	82.739	ng/ul	98
13) 2-Methylphenol	8.531	108	1891377	83.497	ng/ul	99
14) 2,2'-oxybis(1-Chloropr...	8.619	45	1485430	50.708	ng/ul	99
16) Acetophenone	8.955	105	2921501	81.033	ng/ul	99
17) N-Nitroso-di-n-propyla...	8.937	70	1461244	77.832	ng/ul	97
18) 4-Methylphenol	8.872	108	2013718	83.204	ng/ul	97
19) Hexachloroethane	9.178	117	772663	81.051	ng/ul	97
22) Nitrobenzene	9.343	77	2142625	89.016	ng/ul	97
23) Isophorone	9.866	82	4347166	80.182	ng/ul	99
25) 2-Nitrophenol	10.049	139	979127	105.823	ng/ul	98
26) 2,4-Dimethylphenol	10.084	107	2124509	81.209	ng/ul	99
27) Bis(2-Chloroethoxy)met...	10.349	93	2611935	79.906	ng/ul	99
29) 2,4-Dichlorophenol	10.566	162	1778287	85.585	ng/ul	98
30) Naphthalene	10.990	128	6001655	79.363	ng/ul	99
32) 4-Chloroaniline	11.113	127	2608645	83.219	ng/ul	99
33) Hexachlorobutadiene	11.225	225	1096751	80.313	ng/ul	100
34) Caprolactam	11.925	113	347802	45.355	ng/ul	96
35) 4-Chloro-3-methylphenol	12.201	107	1961002	85.263	ng/ul	99
36) 2-Methylnaphthalene	12.584	142	4095103	79.459	ng/ul	97

Data Path : Z:\svoasrv\HPCHEM1\BNA\_P\Data\BP072523\  
 Data File : BP016347.D  
 Acq On : 25 Jul 2023 14:08  
 Operator : MA/JU  
 Sample : SSTD08006  
 Misc :  
 ALS Vial : 8 Sample Multiplier: 1

Instrument :  
 BNA\_P  
 ClientSampleId :  
 SSTD080608

Quant Time: Jul 25 23:29:48 2023  
 Quant Method : Z:\svoasrv\HPCHEM1\BNA\_P\Methods\SFAM-EPA-BP072523.MA.M  
 Quant Title : SVOA CALIBRATION  
 QLast Update : Tue Jul 25 16:07:21 2023  
 Response via : Initial Calibration

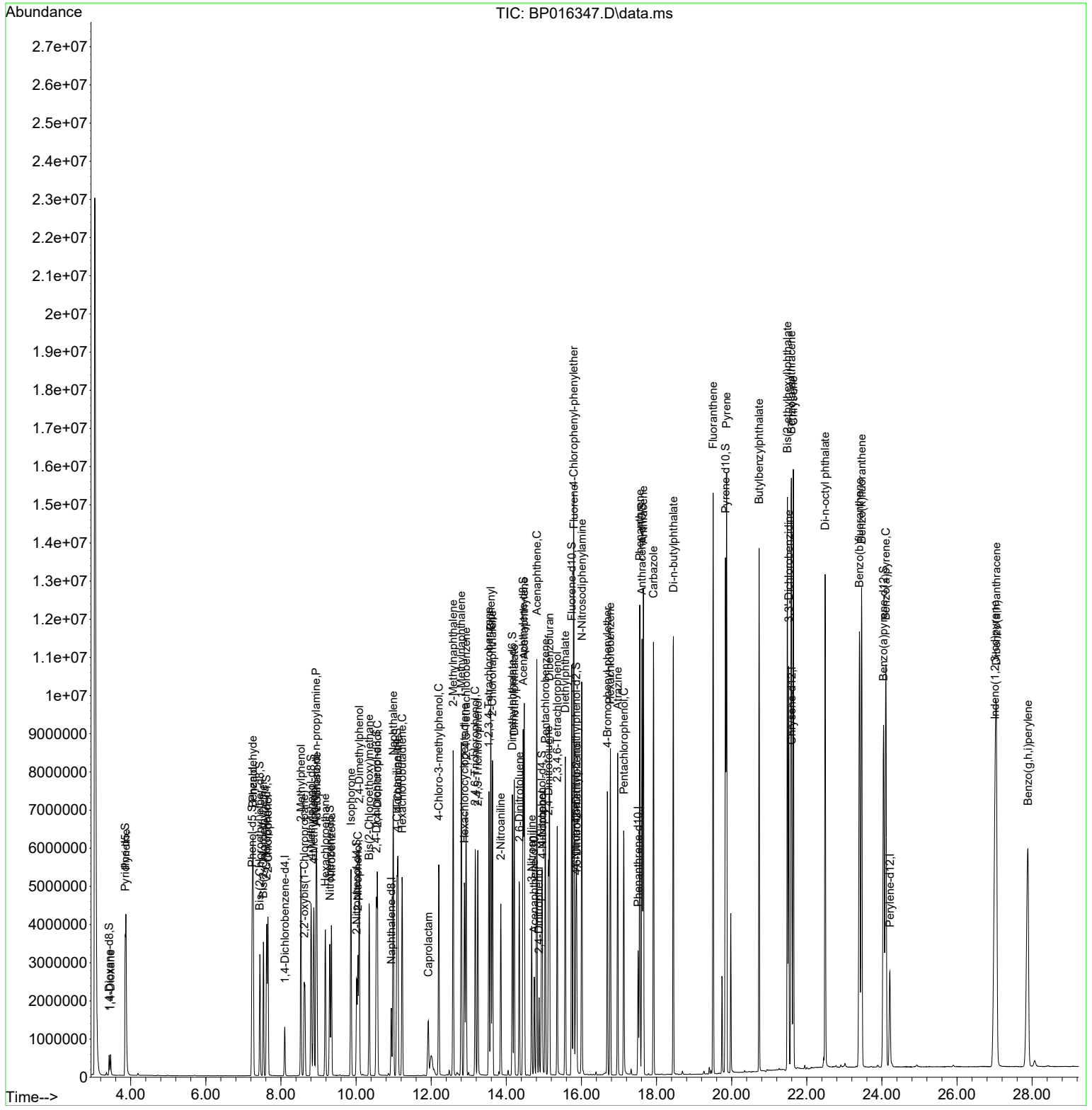
Compound	R.T.	QIon	Response	Conc	Units	Dev(Min)
37) 1-Methylnaphthalene	12.801	142	4079863	79.177	ng/ul	100
39) 1,2,4,5-Tetrachloroben...	12.931	216	2111504	81.758	ng/ul	98
40) Hexachlorocyclopentadiene	12.890	237	1354614	73.474	ng/ul	100
41) 2,4,6-Trichlorophenol	13.172	196	1379555	90.662	ng/ul	99
42) 2,4,5-Trichlorophenol	13.243	196	1489479	91.466	ng/ul	100
43) 1,1'-Biphenyl	13.590	154	5202371	78.816	ng/ul	99
44) 2-Chloronaphthalene	13.631	162	4104573	79.489	ng/ul	99
45) 2-Nitroaniline	13.854	65	1135821	105.127	ng/ul	94
47) Dimethylphthalate	14.213	163	5132310	79.547	ng/ul	100
48) 2,6-Dinitrotoluene	14.348	165	1010486	108.683	ng/ul	89
50) Acenaphthylene	14.478	152	6739846	78.270	ng/ul	99
51) 3-Nitroaniline	14.678	138	930872	85.580	ng/ul#	95
52) Acenaphthene	14.813	153	4394542	79.145	ng/ul	100
53) 2,4-Dinitrophenol	14.872	184	355457	89.390	ng/ul	94
55) 4-Nitrophenol	14.960	109	760738	88.037	ng/ul	97
56) Dibenzofuran	15.148	168	5925905	77.960	ng/ul	100
57) 2,4-Dinitrotoluene	15.125	165	1449072	109.317	ng/ul	91
58) 2,3,4,6-Tetrachlorophenol	15.354	232	1216321	93.628	ng/ul	97
59) Diethylphthalate	15.572	149	5164965	79.481	ng/ul	99
61) Fluorene	15.801	166	4606977	74.618	ng/ul	98
62) 4-Chlorophenyl-phenyle...	15.790	204	2296412	76.295	ng/ul	98
63) 4-Nitroaniline	15.848	138	814089	81.620	ng/ul	96
66) 4,6-Dinitro-2-methylph...	15.878	198	749725	99.729	ng/ul#	94
67) N-Nitrosodiphenylamine	16.013	169	4164038	77.790	ng/ul	99
68) 4-Bromophenyl-phenylether	16.689	248	1462820	80.794	ng/ul	99
69) Hexachlorobenzene	16.772	284	1756727	80.913	ng/ul	96
70) Atrazine	16.966	200	1602756	82.065	ng/ul	98
71) Pentachlorophenol	17.131	266	1104059	90.239	ng/ul	99
72) Phenanthrene	17.554	178	7669110	77.197	ng/ul	98
74) Anthracene	17.648	178	7704384	76.134	ng/ul	98
75) 1,2,3,4-Tetrachloroben...	13.537	216	2223040	80.668	ng/uL	100
76) Pentachlorobenzene	15.037	250	1931313	79.307	ng/uL	99
77) Carbazole	17.919	167	7067196	81.134	ng/ul	99
78) Di-n-butylphthalate	18.448	149	8687502	78.316	ng/ul	99
80) Fluoranthene	19.507	202	8795485	76.571	ng/ul	98
82) Pyrene	19.866	202	8896557	74.967	ng/ul	100
83) Butylbenzylphthalate	20.730	149	3953424	87.995	ng/ul	97
84) 3,3'-Dichlorobenzidine	21.519	252	3133147	84.468	ng/ul	99
85) Benzo(a)anthracene	21.589	228	8994288	78.685	ng/ul	98
86) Bis(2-ethylhexyl)phtha...	21.483	149	5833649	85.122	ng/ul#	98
87) Chrysene	21.642	228	8312412	78.526	ng/ul	98
89) Di-n-octyl phthalate	22.489	149	10113172	81.838	ng/ul	100
90) Benzo(b)fluoranthene	23.401	252	9598512	81.529	ng/ul	99
91) Benzo(k)fluoranthene	23.460	252	9438884	80.562	ng/ul	98
93) Benzo(a)pyrene	24.107	252	9119134	82.244	ng/ul	99
94) Indeno(1,2,3-cd)pyrene	27.012	276	11273615	88.051	ng/ul	98
95) Dibenzo(a,h)anthracene	27.048	278	9265304	87.496	ng/ul	99
96) Benzo(g,h,i)perylene	27.889	276	8867434	87.481	ng/ul	99

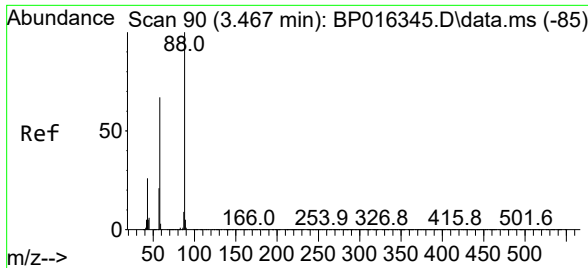
(#) = qualifier out of range (m) = manual integration (+) = signals summed

Data Path : Z:\svoasrv\HPCHEM1\BNA\_P\Data\BP072523\  
 Data File : BP016347.D  
 Acq On : 25 Jul 2023 14:08  
 Operator : MA/JU  
 Sample : SSTD08006  
 Misc :  
 ALS Vial : 8 Sample Multiplier: 1

Instrument :  
 BNA\_P  
 ClientSampleId :  
 SSTD080608

Quant Time: Jul 25 23:29:48 2023  
 Quant Method : Z:\svoasrv\HPCHEM1\BNA\_P\Methods\SFAM-EPA-BP072523.MA.M  
 Quant Title : SVOA CALIBRATION  
 QLast Update : Tue Jul 25 16:07:21 2023  
 Response via : Initial Calibration



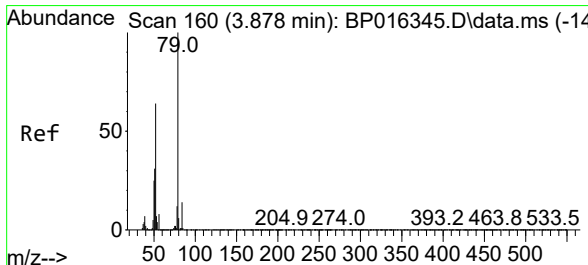
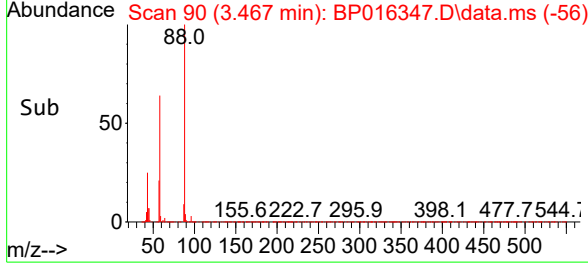
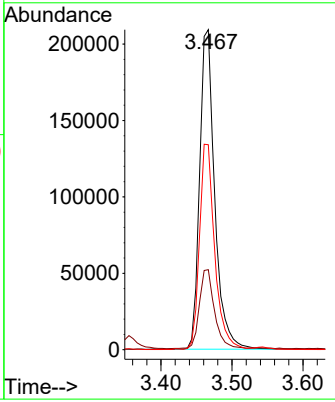
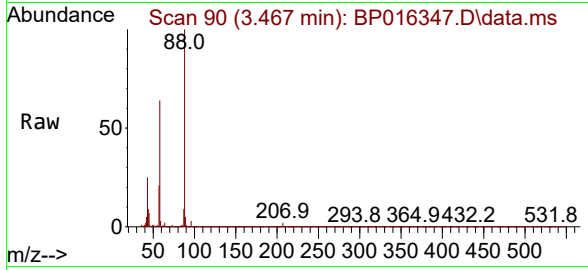


#2  
 1,4-Dioxane  
 Concen: 33.866 ng/uL  
 RT: 3.467 min Scan# 90  
 Delta R.T. -0.000 min  
 Lab File: BP016347.D  
 Acq: 25 Jul 2023 14:08

Instrument : BNA\_P  
 ClientSampleId : SSTD080608

Tgt Ion: 88 Resp: 309170

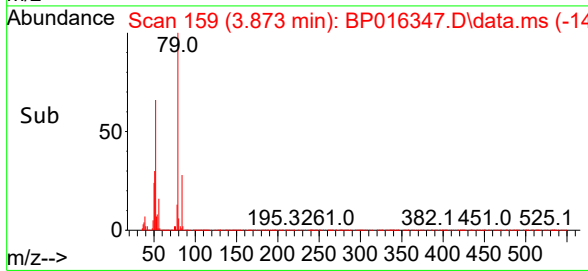
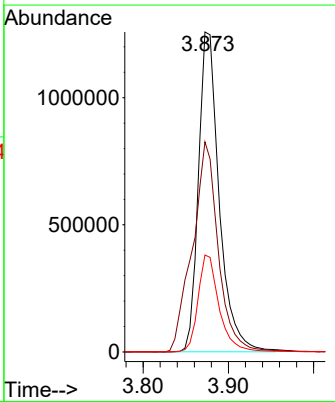
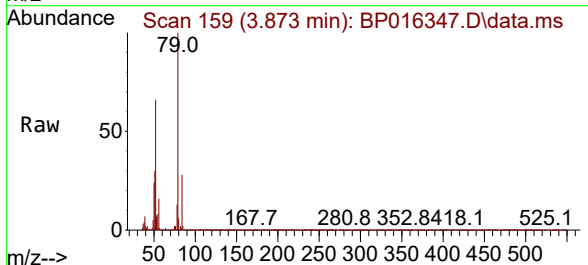
Ion	Ratio	Lower	Upper
88	100		
43	25.0	21.8	32.8
58	64.0	53.1	79.7

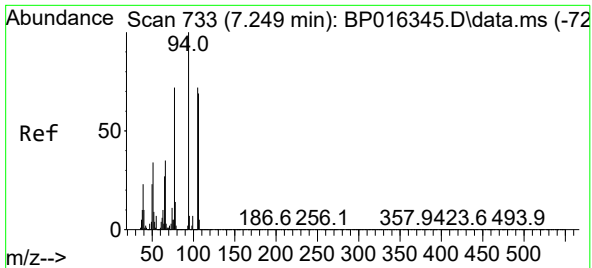


#5  
 Pyridine  
 Concen: 85.874 ng/uL  
 RT: 3.873 min Scan# 159  
 Delta R.T. -0.006 min  
 Lab File: BP016347.D  
 Acq: 25 Jul 2023 14:08

Tgt Ion: 79 Resp: 2134162

Ion	Ratio	Lower	Upper
79	100		
52	65.6	51.0	76.4
51	30.3	25.4	38.2



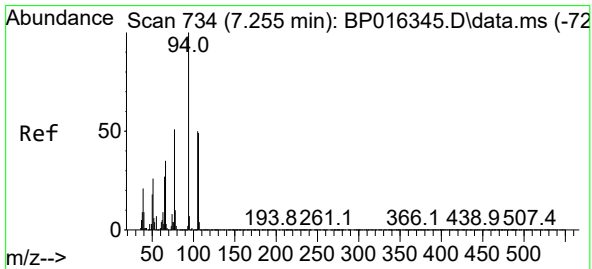
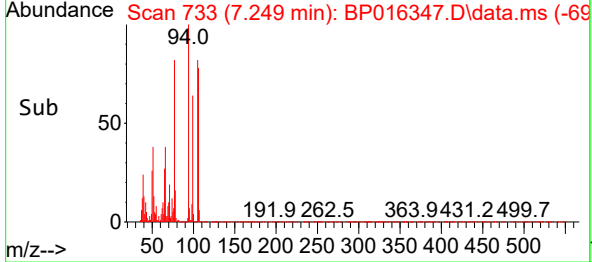
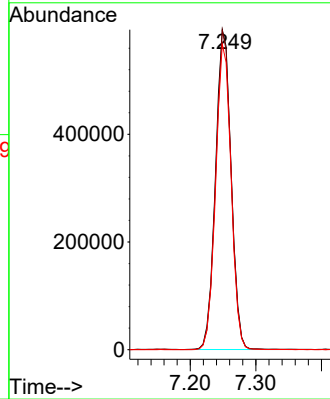
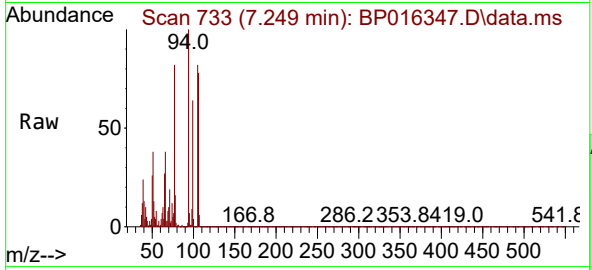


#6  
Benzaldehyde  
Concen: 63.398 ng/u1  
RT: 7.249 min Scan# 711  
Delta R.T. -0.000 min  
Lab File: BP016347.D  
Acq: 25 Jul 2023 14:08

Instrument : BNA\_P  
ClientSampleId : SSTD080608

Tgt Ion: 77 Resp: 982530

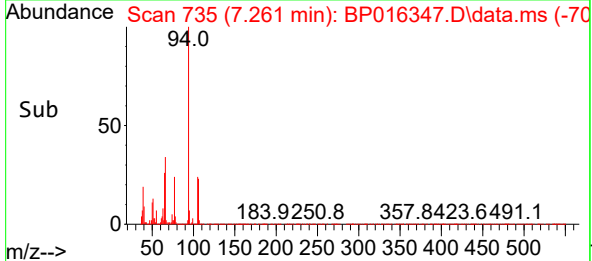
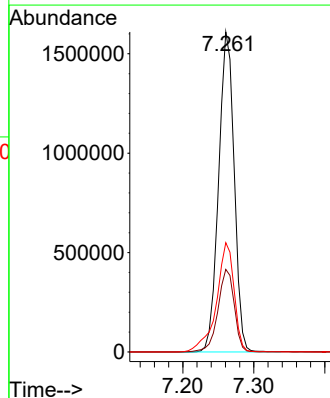
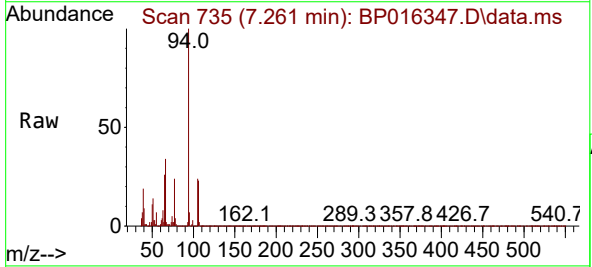
Ion	Ratio	Lower	Upper
77	100		
105	99.8	80.2	120.2
106	95.4	76.5	114.7

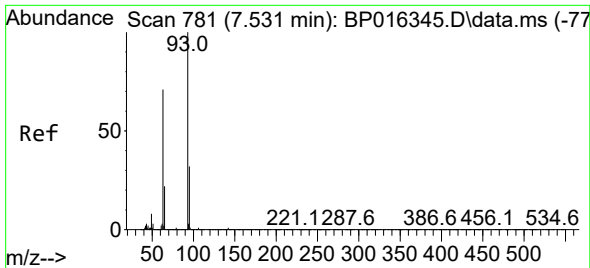


#8  
Phenol  
Concen: 82.702 ng/u1  
RT: 7.261 min Scan# 735  
Delta R.T. 0.006 min  
Lab File: BP016347.D  
Acq: 25 Jul 2023 14:08

Tgt Ion: 94 Resp: 2443162

Ion	Ratio	Lower	Upper
94	100		
65	25.8	21.4	32.2
66	34.2	28.2	42.4



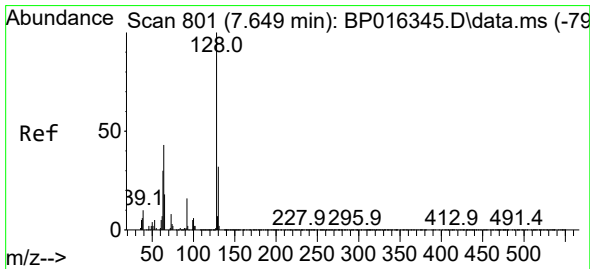
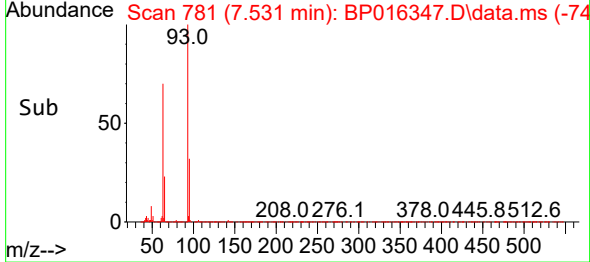
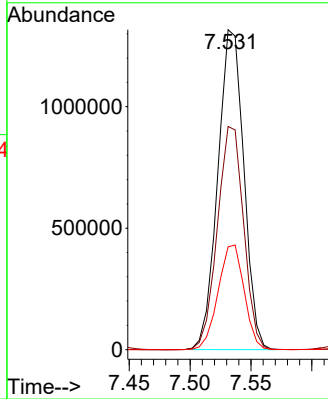
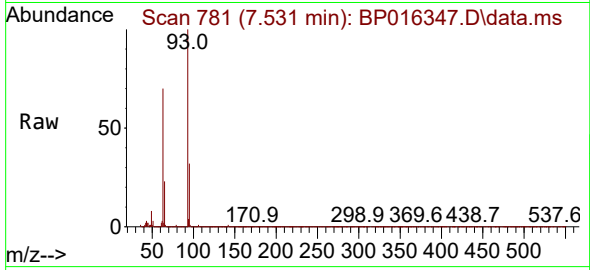


#10  
 Bis(2-Chloroethyl)ether  
 Concen: 80.952 ng/ul  
 RT: 7.531 min Scan# 781  
 Delta R.T. -0.000 min  
 Lab File: BP016347.D  
 Acq: 25 Jul 2023 14:08

Instrument :  
 BNA\_P  
 ClientSampleId :  
 SSTD080608

Tgt Ion: 93 Resp: 1959080

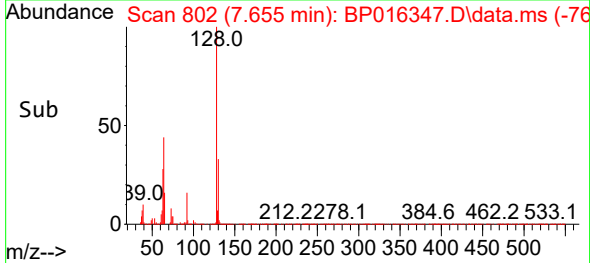
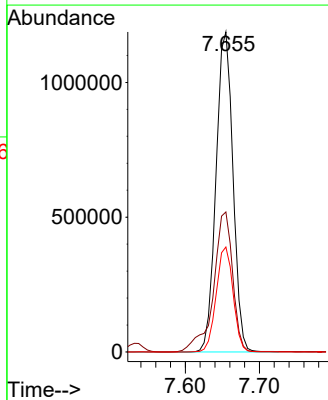
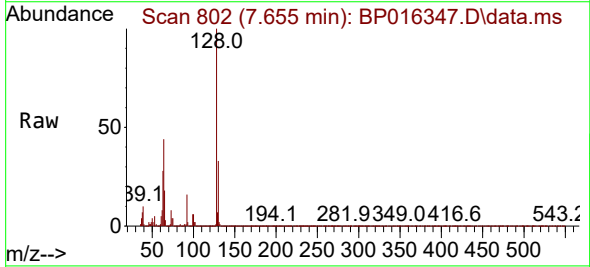
Ion	Ratio	Lower	Upper
93	100		
63	69.7	57.0	85.4
95	32.2	25.8	38.6

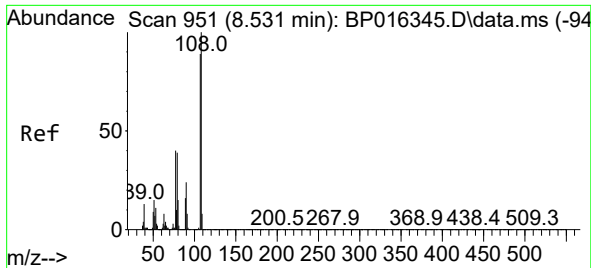


#12  
 2-Chlorophenol  
 Concen: 82.739 ng/ul  
 RT: 7.655 min Scan# 802  
 Delta R.T. 0.006 min  
 Lab File: BP016347.D  
 Acq: 25 Jul 2023 14:08

Tgt Ion: 128 Resp: 1885319

Ion	Ratio	Lower	Upper
128	100		
64	43.8	36.4	54.6
130	32.8	25.6	38.4

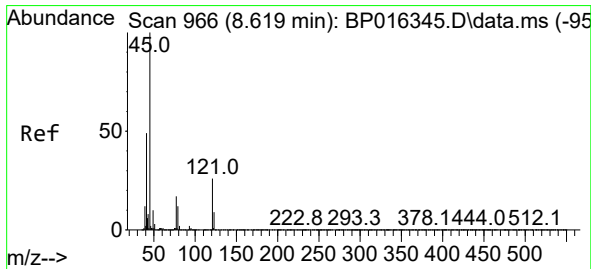
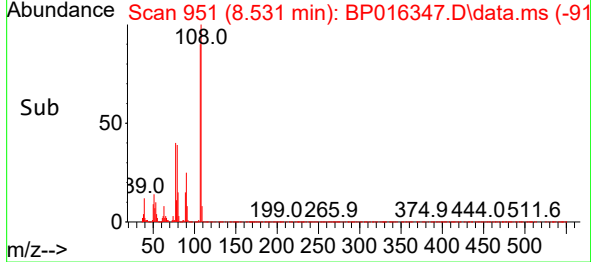
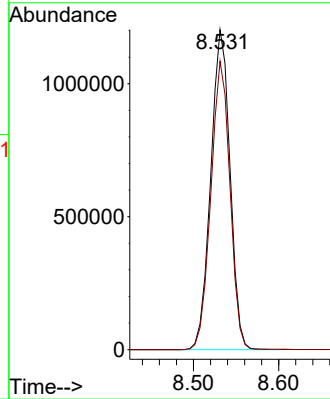
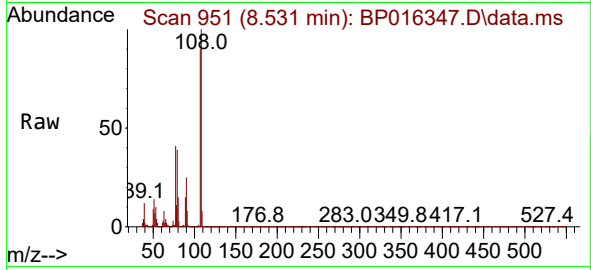




#13  
 2-Methylphenol  
 Concen: 83.497 ng/ul  
 RT: 8.531 min Scan# 951  
 Delta R.T. -0.000 min  
 Lab File: BP016347.D  
 Acq: 25 Jul 2023 14:08

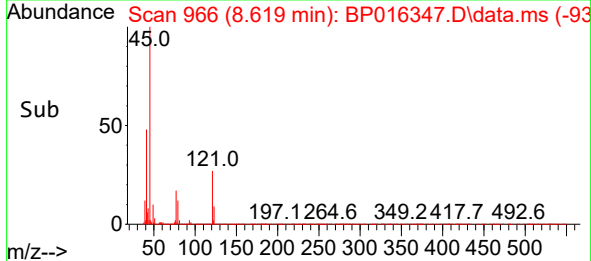
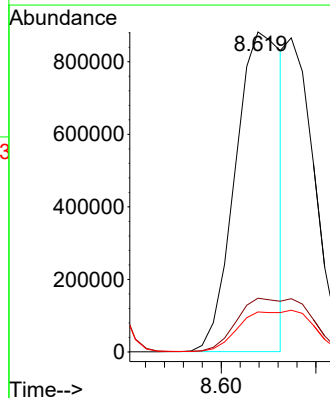
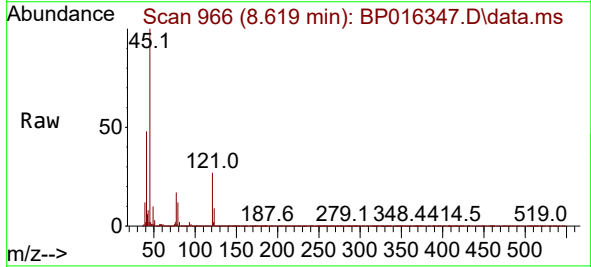
Instrument :  
 BNA\_P  
 ClientSampleId :  
 SSTD080608

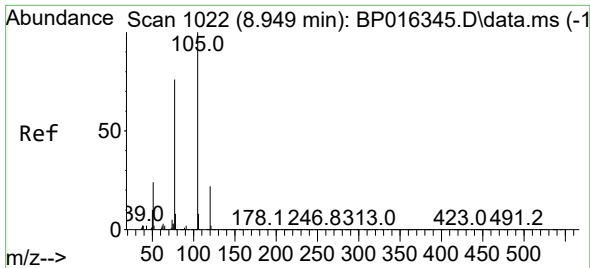
Tgt Ion:108 Resp: 1891377  
 Ion Ratio Lower Upper  
 108 100  
 107 90.1 71.3 106.9



#14  
 2,2'-oxybis(1-Chloropropane)  
 Concen: 50.708 ng/ul  
 RT: 8.619 min Scan# 966  
 Delta R.T. -0.000 min  
 Lab File: BP016347.D  
 Acq: 25 Jul 2023 14:08

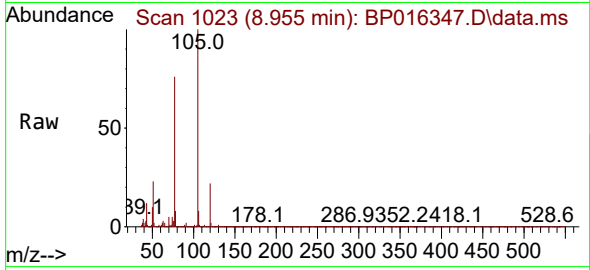
Tgt Ion: 45 Resp: 1485430  
 Ion Ratio Lower Upper  
 45 100  
 77 16.8 13.7 20.5  
 79 12.5 9.6 14.4



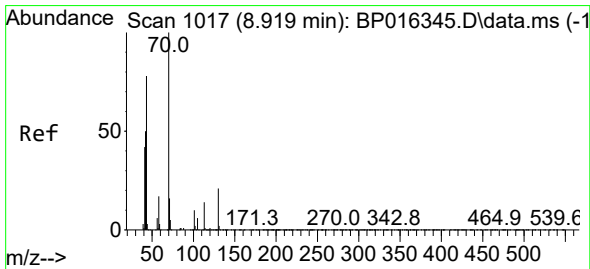
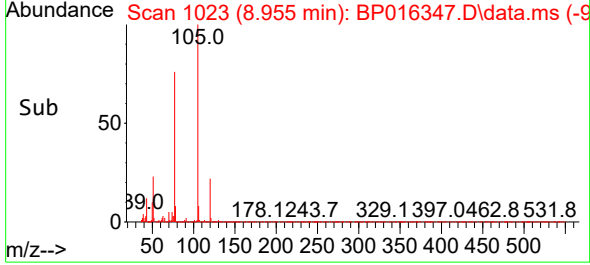
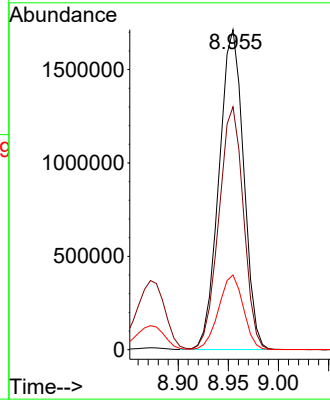


#16  
 Acetophenone  
 Concen: 81.033 ng/ul  
 RT: 8.955 min Scan# 1023  
 Delta R.T. 0.006 min  
 Lab File: BP016347.D  
 Acq: 25 Jul 2023 14:08

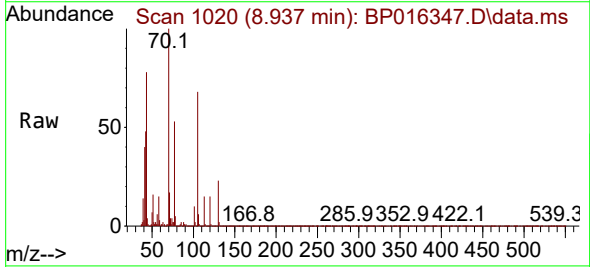
Instrument :  
 BNA\_P  
 ClientSampleId :  
 SSTD080608



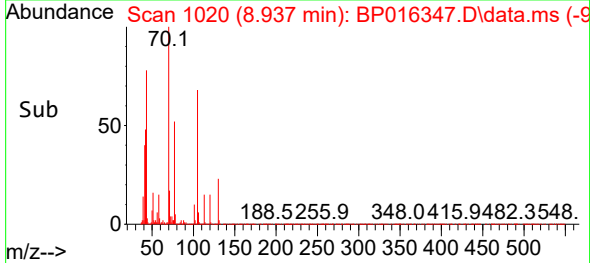
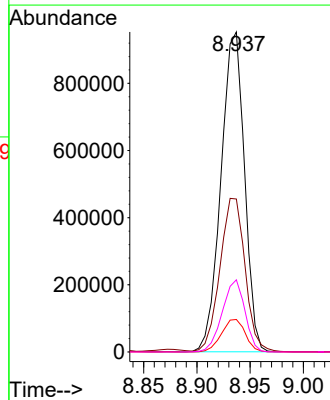
Tgt Ion:105 Resp: 2921501  
 Ion Ratio Lower Upper  
 105 100  
 77 75.9 61.2 91.8  
 51 23.3 19.1 28.7



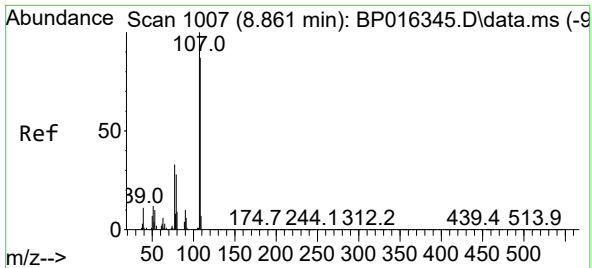
#17  
 N-Nitroso-di-n-propylamine  
 Concen: 77.832 ng/ul  
 RT: 8.937 min Scan# 1020  
 Delta R.T. 0.018 min  
 Lab File: BP016347.D  
 Acq: 25 Jul 2023 14:08



Tgt Ion: 70 Resp: 1461244  
 Ion Ratio Lower Upper  
 70 100  
 42 47.8 40.3 60.5  
 101 10.1 7.8 11.8  
 130 22.6 17.1 25.7



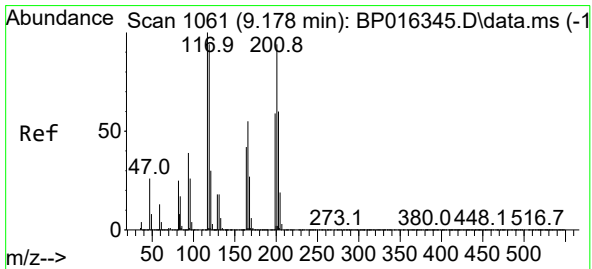
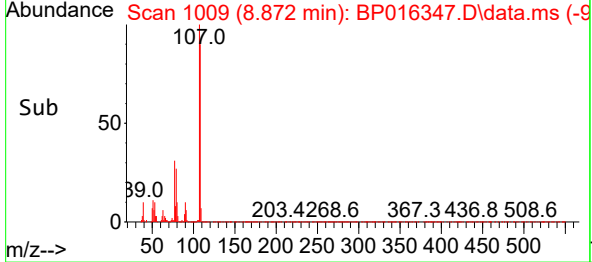
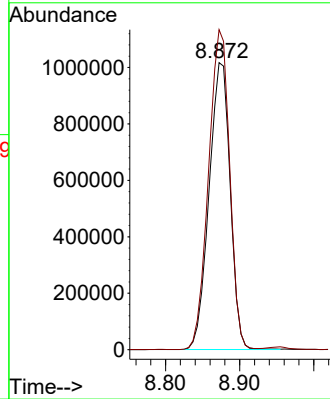
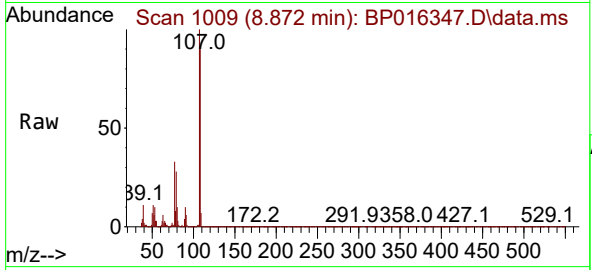




#18  
 4-Methylphenol  
 Concen: 83.204 ng/ul  
 RT: 8.872 min Scan# 1009  
 Delta R.T. 0.012 min  
 Lab File: BP016347.D  
 Acq: 25 Jul 2023 14:08

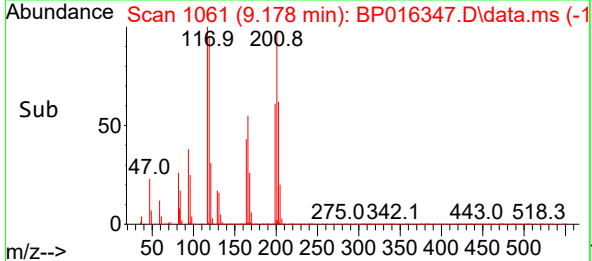
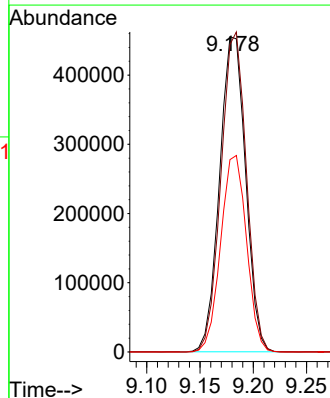
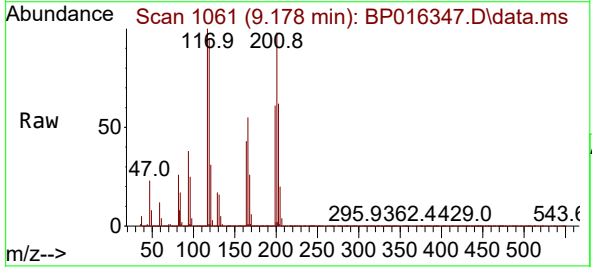
Instrument :  
 BNA\_P  
 ClientSampleId :  
 SSTD080608

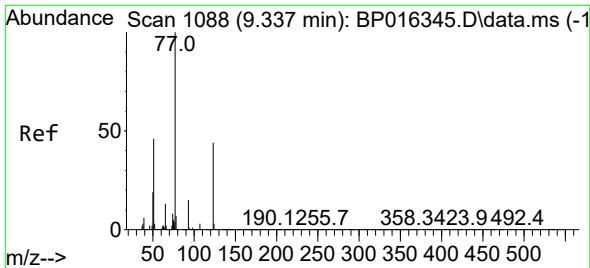
Tgt Ion:108 Resp: 2013718  
 Ion Ratio Lower Upper  
 108 100  
 107 111.5 91.6 137.4



#19  
 Hexachloroethane  
 Concen: 81.051 ng/ul  
 RT: 9.178 min Scan# 1061  
 Delta R.T. -0.000 min  
 Lab File: BP016347.D  
 Acq: 25 Jul 2023 14:08

Tgt Ion:117 Resp: 772663  
 Ion Ratio Lower Upper  
 117 100  
 201 97.5 75.0 112.6  
 199 61.0 47.4 71.0

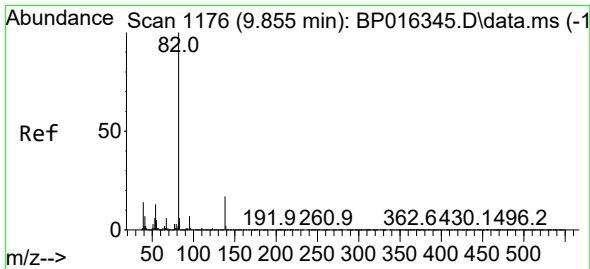
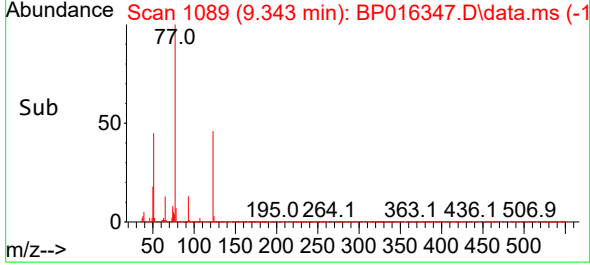
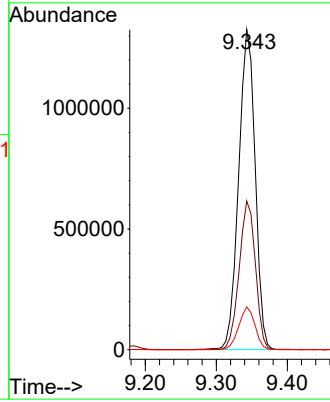
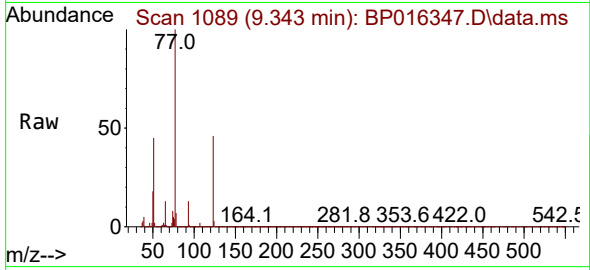




#22  
 Nitrobenzene  
 Concen: 89.016 ng/ul  
 RT: 9.343 min Scan# 1088  
 Delta R.T. 0.006 min  
 Lab File: BP016347.D  
 Acq: 25 Jul 2023 14:08

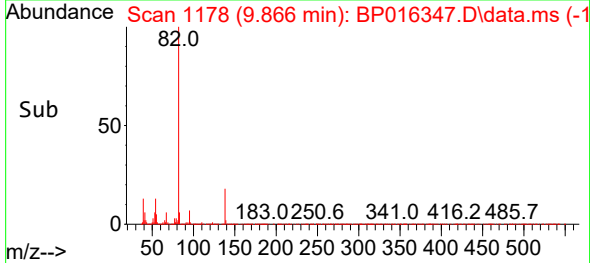
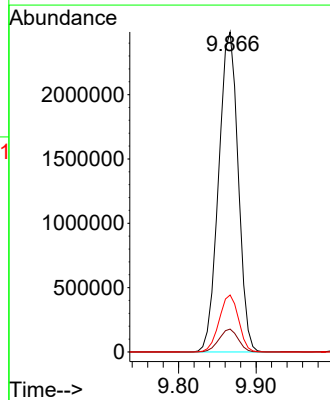
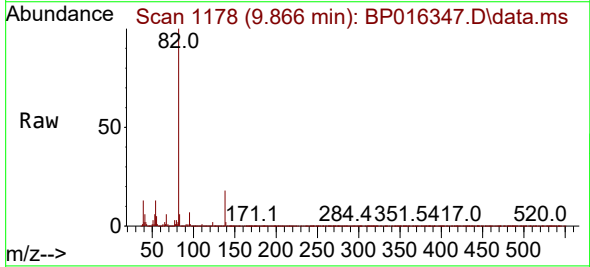
Instrument :  
 BNA\_P  
 ClientSampleId :  
 SSTD080608

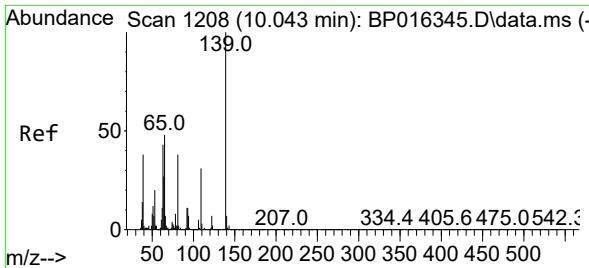
Tgt Ion: 77 Resp: 2142625  
 Ion Ratio Lower Upper  
 77 100  
 123 46.5 35.3 52.9  
 65 13.4 10.2 15.2



#23  
 Isophorone  
 Concen: 80.182 ng/ul  
 RT: 9.866 min Scan# 1178  
 Delta R.T. 0.012 min  
 Lab File: BP016347.D  
 Acq: 25 Jul 2023 14:08

Tgt Ion: 82 Resp: 4347166  
 Ion Ratio Lower Upper  
 82 100  
 95 7.2 5.6 8.4  
 138 17.8 14.0 21.0



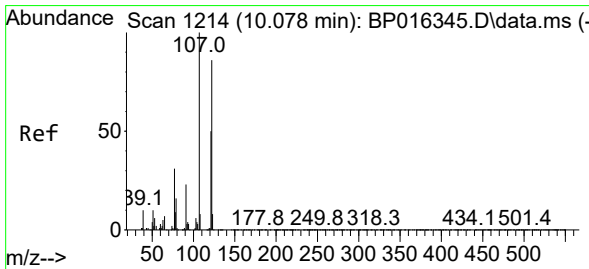
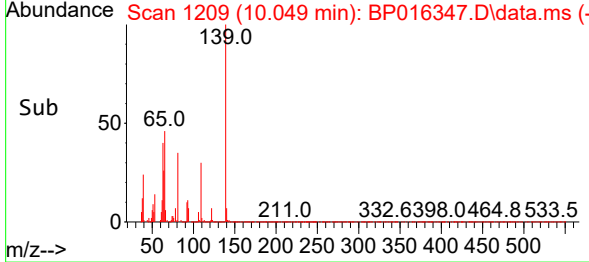
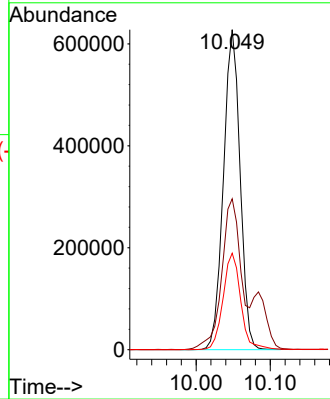
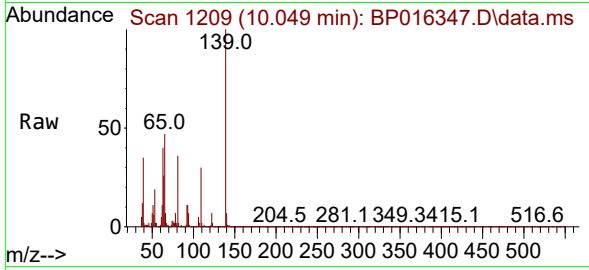


#25  
 2-Nitrophenol  
 Concen: 105.823 ng/ul  
 RT: 10.049 min Scan# 11  
 Delta R.T. 0.006 min  
 Lab File: BP016347.D  
 Acq: 25 Jul 2023 14:08

Instrument :  
 BNA\_P  
 ClientSampleId :  
 SSTD080608

Tgt Ion:139 Resp: 979127

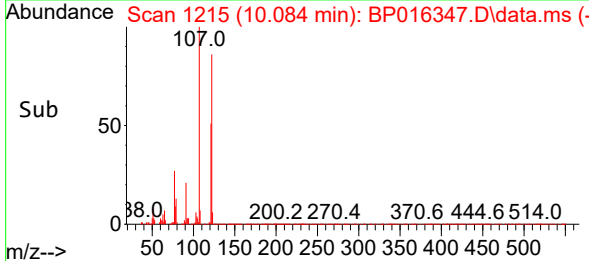
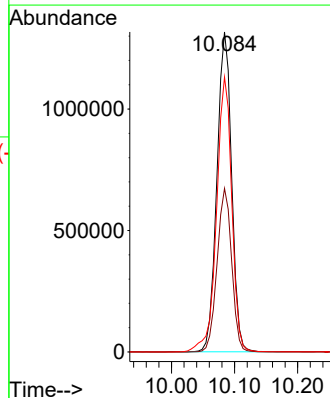
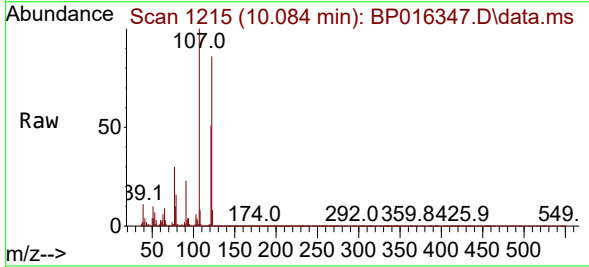
Ion	Ratio	Lower	Upper
139	100		
65	47.1	38.7	58.1
109	30.1	25.3	37.9

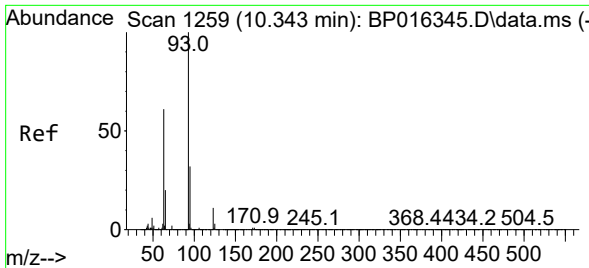


#26  
 2,4-Dimethylphenol  
 Concen: 81.209 ng/ul  
 RT: 10.084 min Scan# 1215  
 Delta R.T. 0.006 min  
 Lab File: BP016347.D  
 Acq: 25 Jul 2023 14:08

Tgt Ion:107 Resp: 2124509

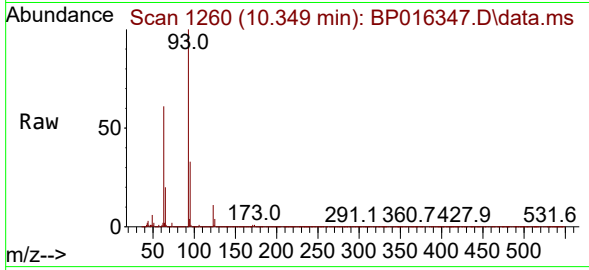
Ion	Ratio	Lower	Upper
107	100		
121	51.1	39.8	59.6
122	85.9	69.0	103.4





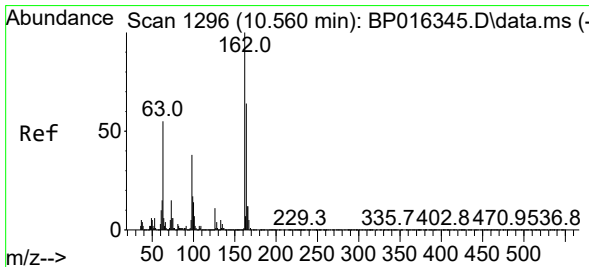
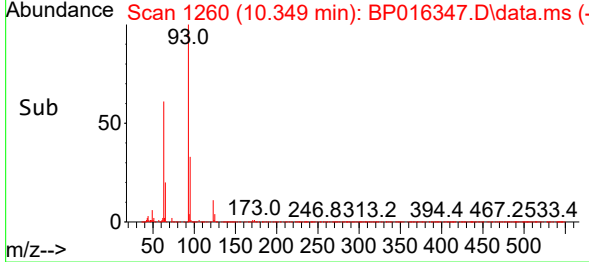
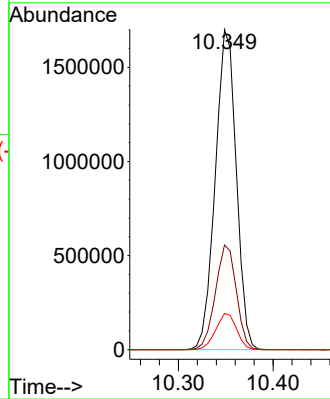
#27  
 Bis(2-Chloroethoxy)methane  
 Concen: 79.906 ng/ul  
 RT: 10.349 min Scan# 11  
 Delta R.T. 0.006 min  
 Lab File: BP016347.D  
 Acq: 25 Jul 2023 14:08

Instrument :  
 BNA\_P  
 ClientSampleId :  
 SSTD080608



Tgt Ion: 93 Resp: 2611935

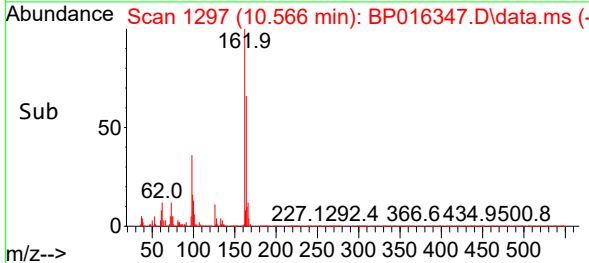
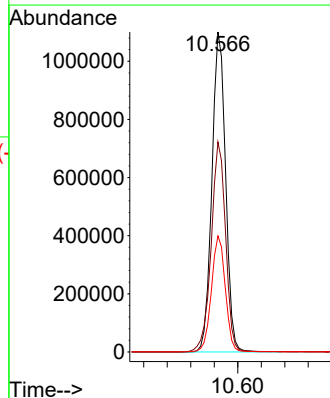
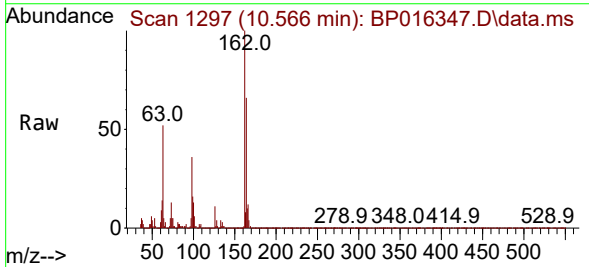
Ion	Ratio	Lower	Upper
93	100		
95	32.7	25.9	38.9
123	11.3	8.8	13.2

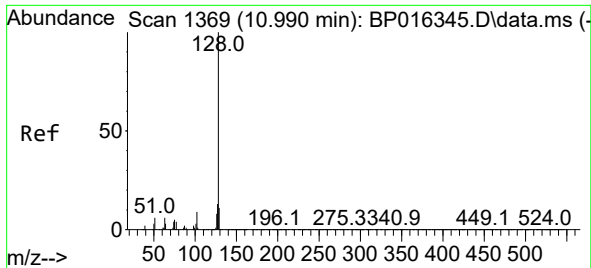


#29  
 2,4-Dichlorophenol  
 Concen: 85.585 ng/ul  
 RT: 10.566 min Scan# 1297  
 Delta R.T. 0.006 min  
 Lab File: BP016347.D  
 Acq: 25 Jul 2023 14:08

Tgt Ion: 162 Resp: 1778287

Ion	Ratio	Lower	Upper
162	100		
164	65.6	51.4	77.0
98	36.3	30.6	46.0



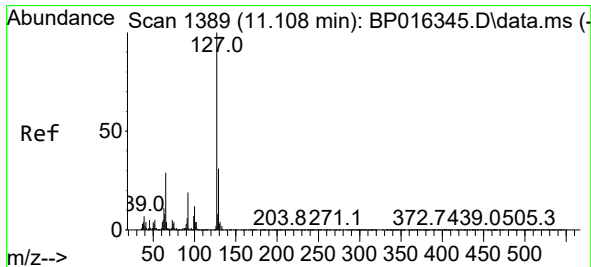
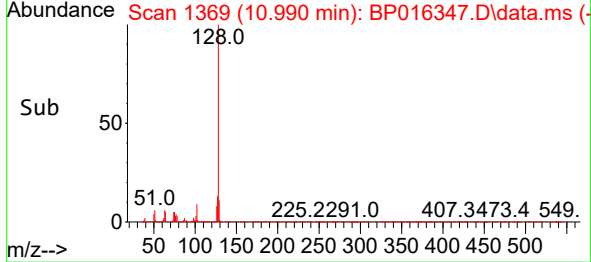
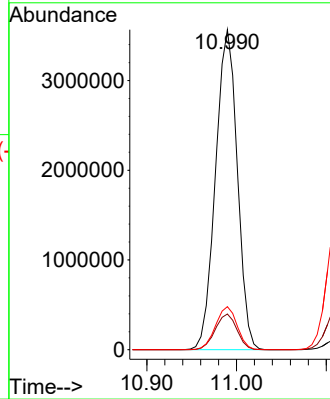
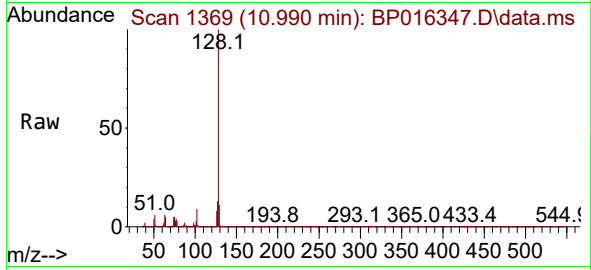


#30  
 Naphthalene  
 Concen: 79.363 ng/ul  
 RT: 10.990 min Scan# 1369  
 Delta R.T. -0.000 min  
 Lab File: BP016347.D  
 Acq: 25 Jul 2023 14:08

Instrument : BNA\_P  
 Client Sample Id : SSTD080608

Tgt Ion:128 Resp: 6001655

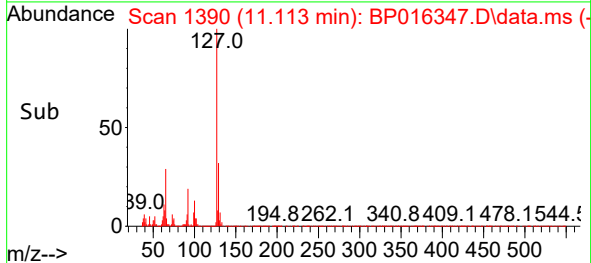
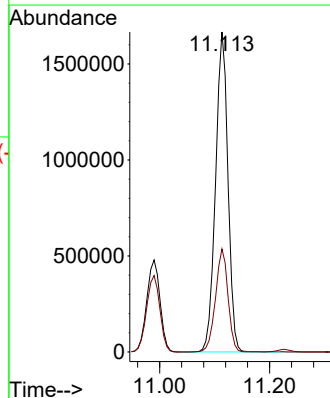
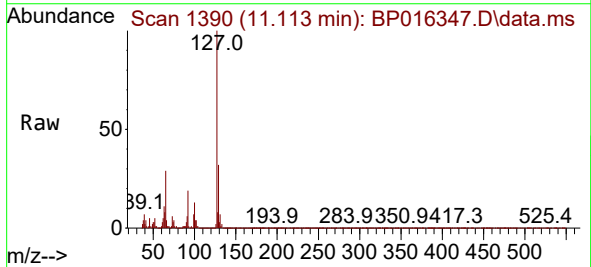
Ion	Ratio	Lower	Upper
128	100		
129	11.2	8.7	13.1
127	13.4	10.6	15.8

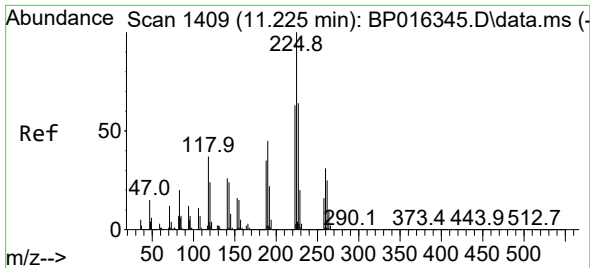


#32  
 4-Chloroaniline  
 Concen: 83.219 ng/ul  
 RT: 11.113 min Scan# 1390  
 Delta R.T. 0.006 min  
 Lab File: BP016347.D  
 Acq: 25 Jul 2023 14:08

Tgt Ion:127 Resp: 2608645

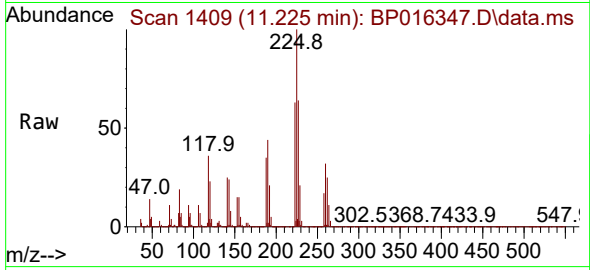
Ion	Ratio	Lower	Upper
127	100		
129	32.2	25.2	37.8



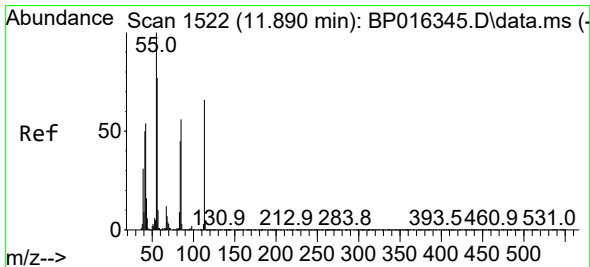
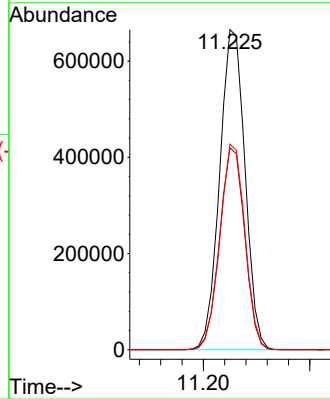
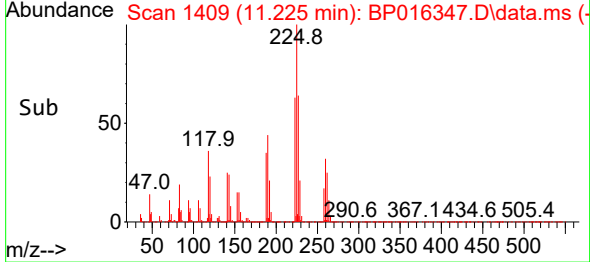


#33  
 Hexachlorobutadiene  
 Concen: 80.313 ng/ul  
 RT: 11.225 min Scan# 1409  
 Delta R.T. -0.000 min  
 Lab File: BP016347.D  
 Acq: 25 Jul 2023 14:08

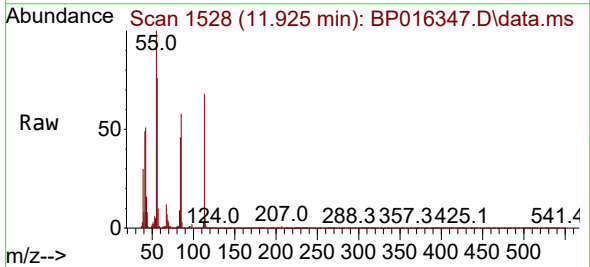
Instrument :  
 BNA\_P  
 ClientSampleId :  
 SSTD080608



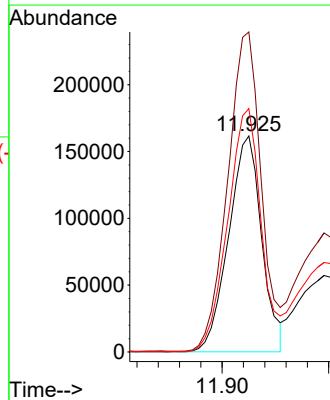
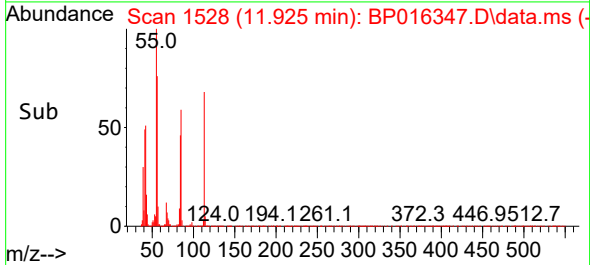
Tgt Ion:225 Resp: 1096751  
 Ion Ratio Lower Upper  
 225 100  
 223 63.1 50.1 75.1  
 227 64.3 51.5 77.3

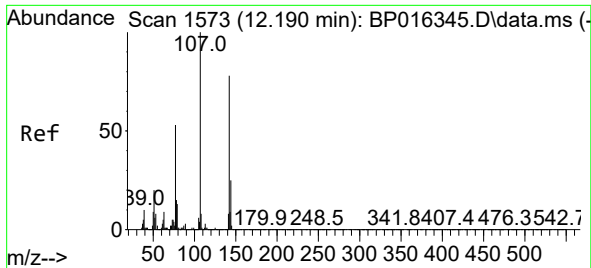


#34  
 Caprolactam  
 Concen: 45.355 ng/ul  
 RT: 11.925 min Scan# 1528  
 Delta R.T. 0.035 min  
 Lab File: BP016347.D  
 Acq: 25 Jul 2023 14:08



Tgt Ion:113 Resp: 347802  
 Ion Ratio Lower Upper  
 113 100  
 55 148.1 122.2 183.4  
 56 112.6 93.8 140.8

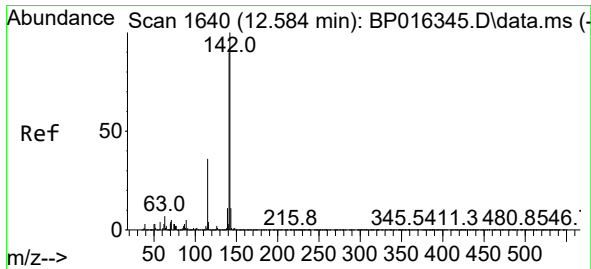
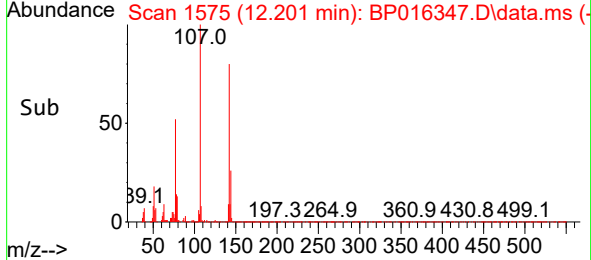
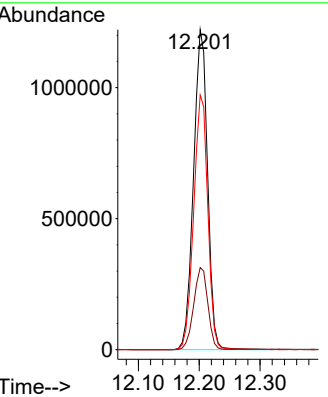
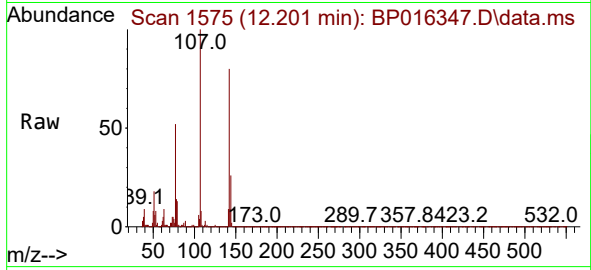




#35  
 4-Chloro-3-methylphenol  
 Concen: 85.263 ng/ul  
 RT: 12.201 min Scan# 1575  
 Delta R.T. 0.012 min  
 Lab File: BP016347.D  
 Acq: 25 Jul 2023 14:08

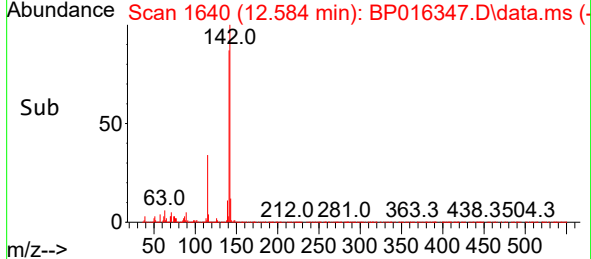
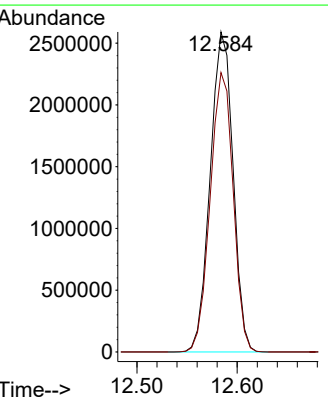
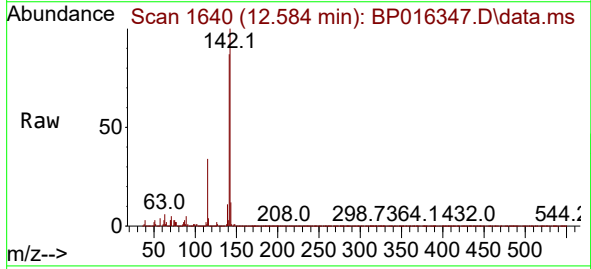
Instrument : BNA\_P  
 ClientSampleId : SSTD080608

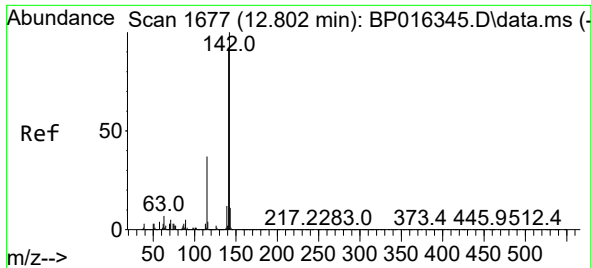
Tgt Ion	Resp	Lower	Upper
107	1961002		
144	25.6	20.2	30.2
142	79.6	62.6	93.8



#36  
 2-Methylnaphthalene  
 Concen: 79.459 ng/ul  
 RT: 12.584 min Scan# 1640  
 Delta R.T. -0.000 min  
 Lab File: BP016347.D  
 Acq: 25 Jul 2023 14:08

Tgt Ion	Resp	Lower	Upper
142	4095103		
141	87.3	71.9	107.9



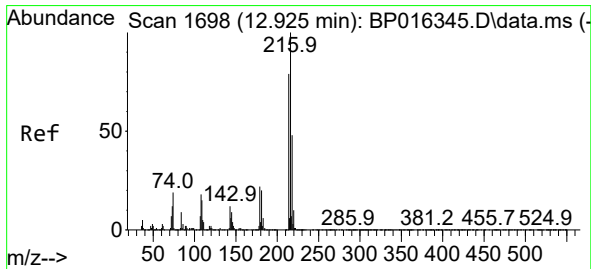
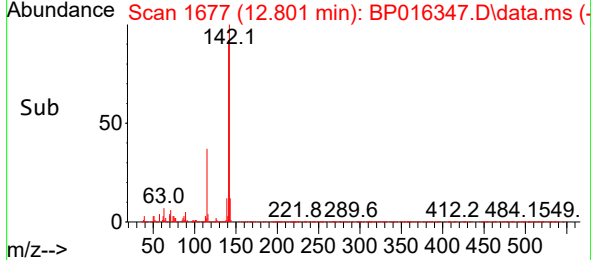
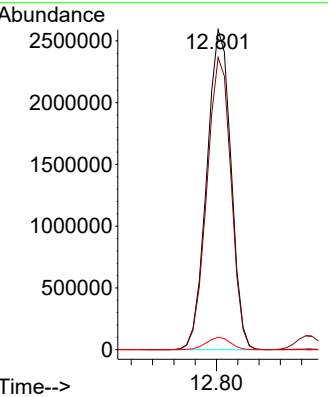
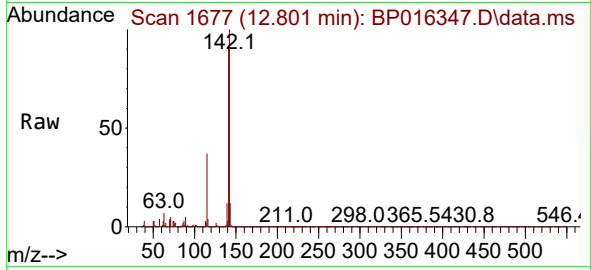


#37  
 1-Methylnaphthalene  
 Concen: 79.177 ng/ul  
 RT: 12.801 min Scan# 1677  
 Delta R.T. -0.000 min  
 Lab File: BP016347.D  
 Acq: 25 Jul 2023 14:08

Instrument : BNA\_P  
 ClientSampleId : SSTD080608

Tgt Ion:142 Resp: 4079863

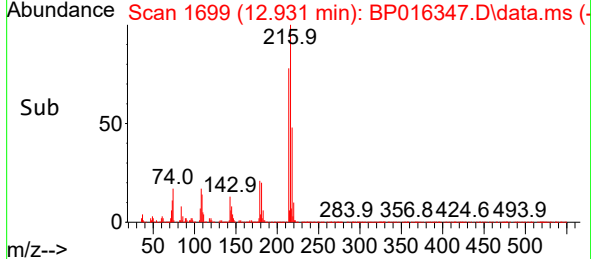
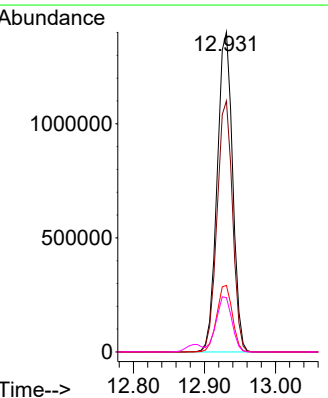
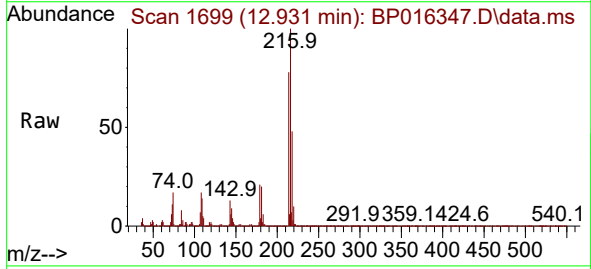
Ion	Ratio	Lower	Upper
142	100		
141	91.3	73.2	109.8
116	3.9	3.0	4.6



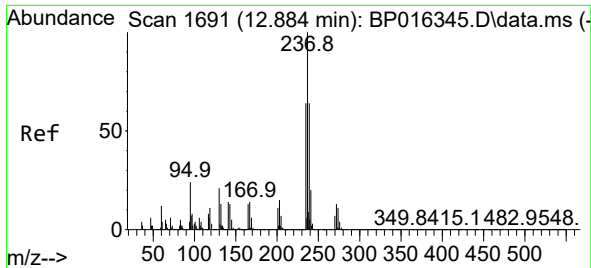
#39  
 1,2,4,5-Tetrachlorobenzene  
 Concen: 81.758 ng/ul  
 RT: 12.931 min Scan# 1699  
 Delta R.T. 0.006 min  
 Lab File: BP016347.D  
 Acq: 25 Jul 2023 14:08

Tgt Ion:216 Resp: 2111504

Ion	Ratio	Lower	Upper
216	100		
214	78.5	63.6	95.4
179	20.8	17.4	26.0
108	17.0	14.6	21.8





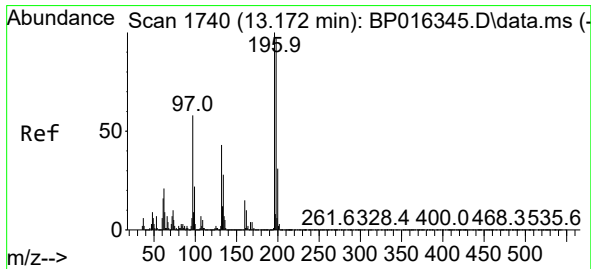
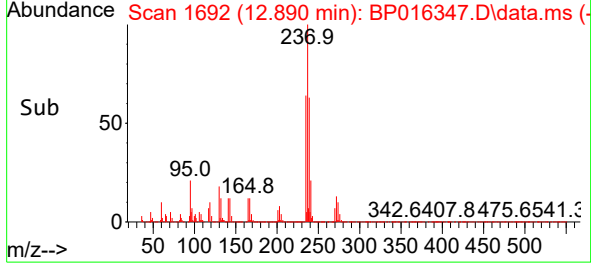
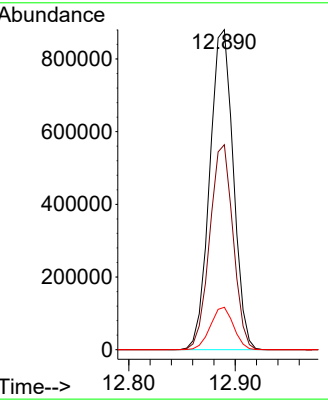
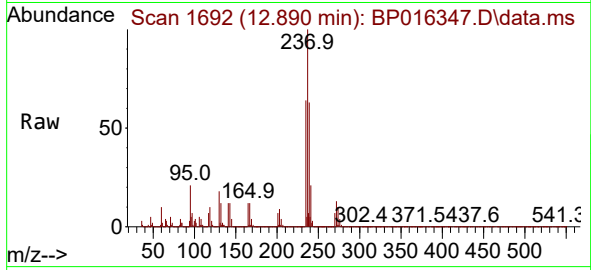


#40  
 Hexachlorocyclopentadiene  
 Concen: 73.474 ng/ul  
 RT: 12.890 min Scan# 1691  
 Delta R.T. 0.006 min  
 Lab File: BP016347.D  
 Acq: 25 Jul 2023 14:08

Instrument : BNA\_P  
 ClientSampleId : SSTD080608

Tgt Ion:237 Resp: 1354614

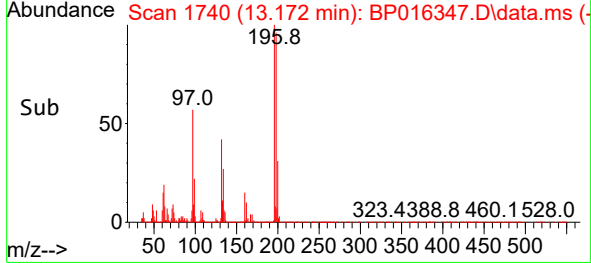
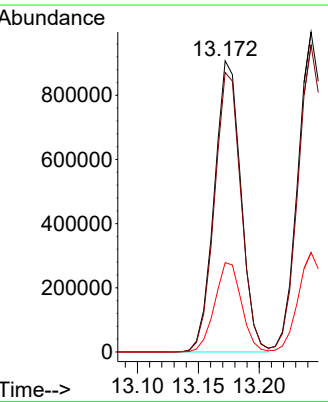
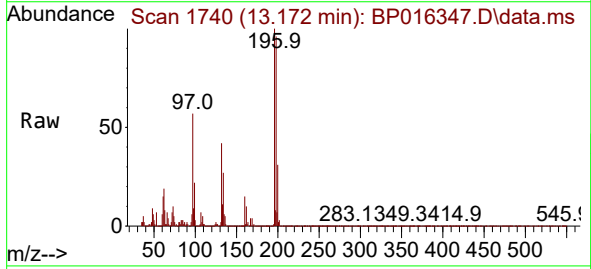
Ion	Ratio	Lower	Upper
237	100		
235	64.1	51.2	76.8
272	13.2	10.3	15.5

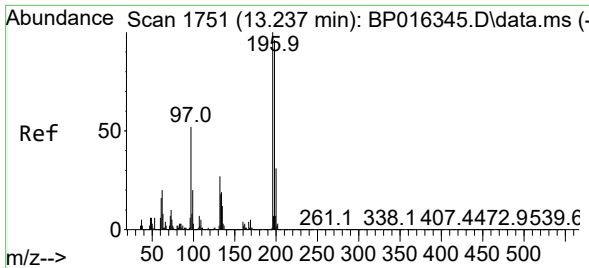


#41  
 2,4,6-Trichlorophenol  
 Concen: 90.662 ng/ul  
 RT: 13.172 min Scan# 1740  
 Delta R.T. -0.000 min  
 Lab File: BP016347.D  
 Acq: 25 Jul 2023 14:08

Tgt Ion:196 Resp: 1379555

Ion	Ratio	Lower	Upper
196	100		
198	96.0	77.7	116.5
200	30.7	25.0	37.6



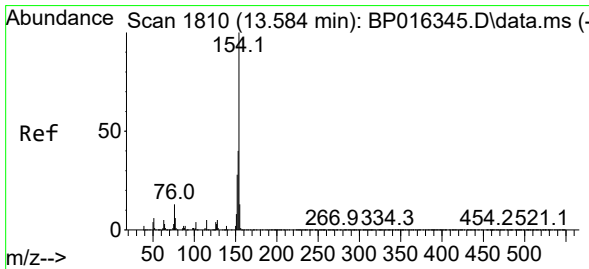
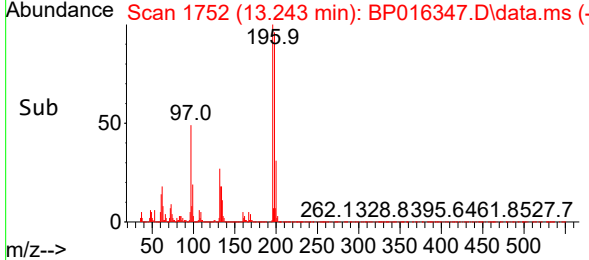
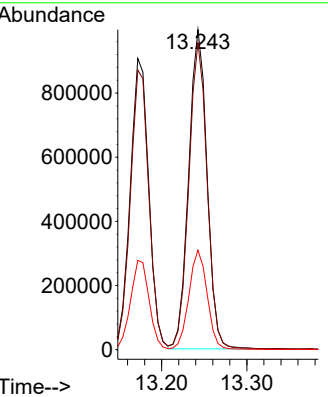
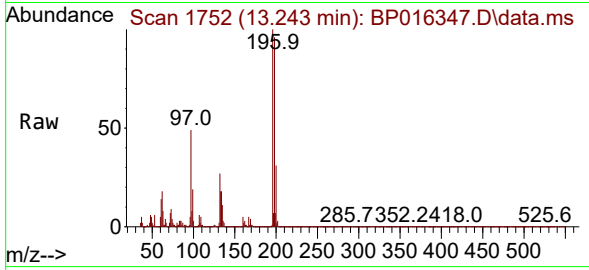


#42  
 2,4,5-Trichlorophenol  
 Concen: 91.466 ng/ul  
 RT: 13.243 min Scan# 11  
 Delta R.T. 0.006 min  
 Lab File: BP016347.D  
 Acq: 25 Jul 2023 14:08

Instrument :  
 BNA\_P  
 ClientSampleId :  
 SSTD080608

Tgt Ion:196 Resp: 1489479

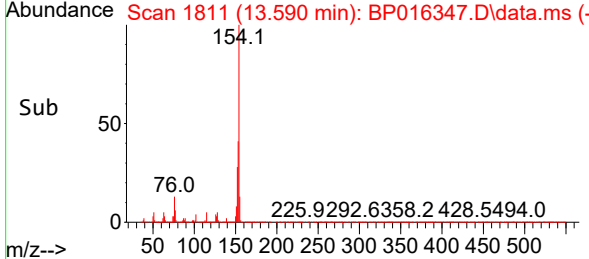
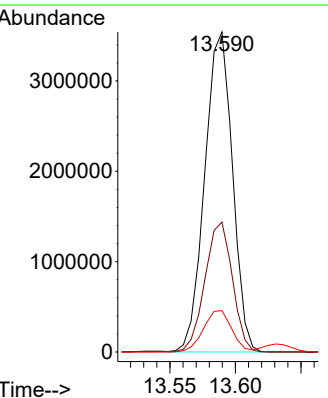
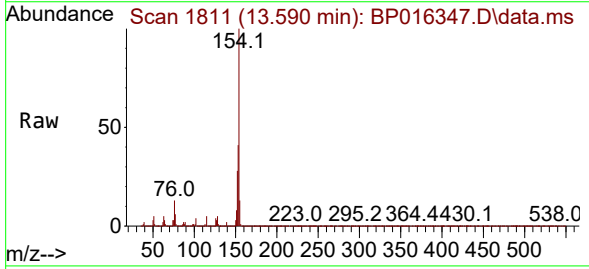
Ion	Ratio	Lower	Upper
196	100		
198	96.0	77.0	115.4
200	31.1	24.8	37.2

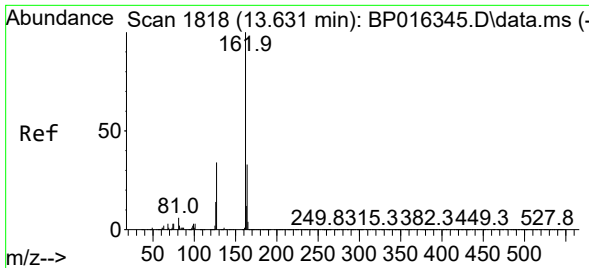


#43  
 1,1'-Biphenyl  
 Concen: 78.816 ng/ul  
 RT: 13.590 min Scan# 1811  
 Delta R.T. 0.006 min  
 Lab File: BP016347.D  
 Acq: 25 Jul 2023 14:08

Tgt Ion:154 Resp: 5202371

Ion	Ratio	Lower	Upper
154	100		
153	40.6	32.3	48.5
76	12.9	10.7	16.1



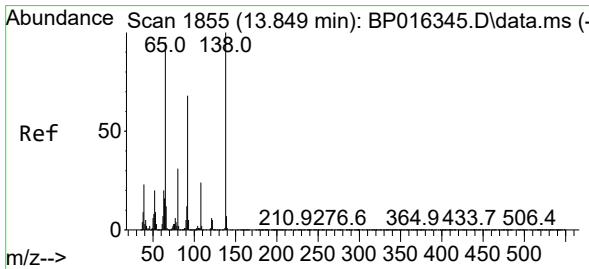
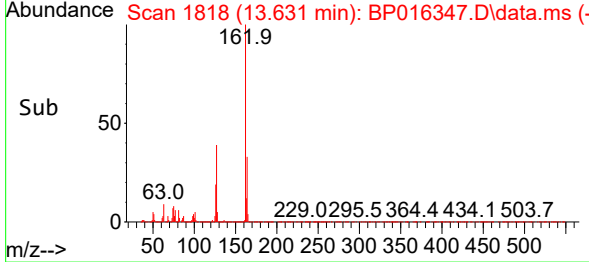
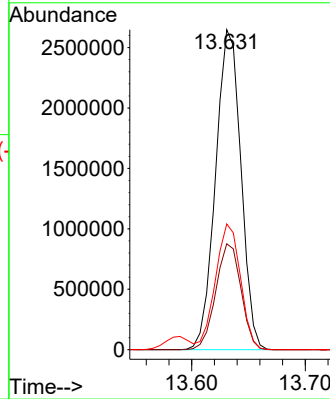
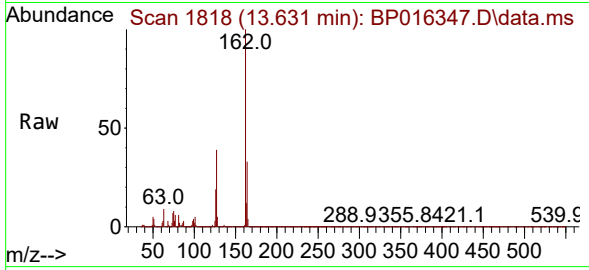


#44  
 2-Chloronaphthalene  
 Concen: 79.489 ng/ul  
 RT: 13.631 min Scan# 1818  
 Delta R.T. -0.000 min  
 Lab File: BP016347.D  
 Acq: 25 Jul 2023 14:08

Instrument : BNA\_P  
 ClientSampleId : SSTD080608

Tgt Ion:162 Resp: 4104573

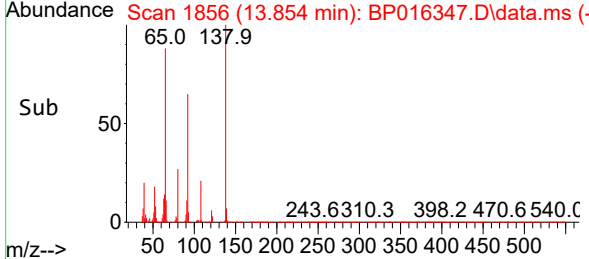
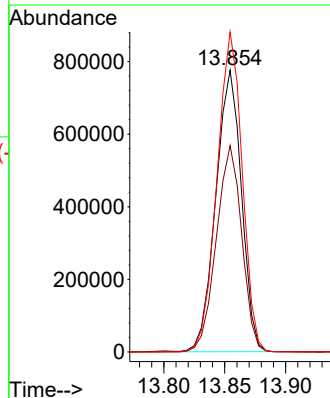
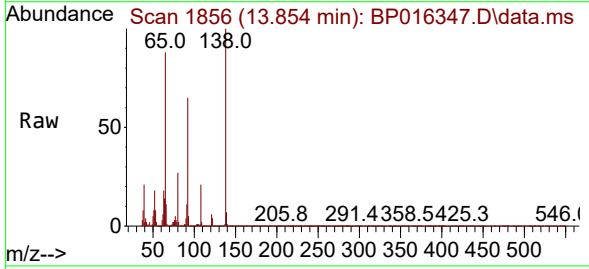
Ion	Ratio	Lower	Upper
162	100		
164	33.1	26.6	40.0
127	39.3	31.0	46.4

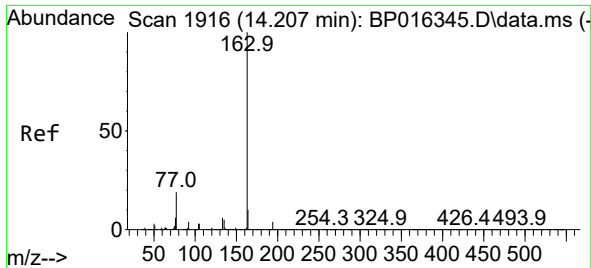


#45  
 2-Nitroaniline  
 Concen: 105.127 ng/ul  
 RT: 13.854 min Scan# 1856  
 Delta R.T. 0.006 min  
 Lab File: BP016347.D  
 Acq: 25 Jul 2023 14:08

Tgt Ion: 65 Resp: 1135821

Ion	Ratio	Lower	Upper
65	100		
92	73.3	56.8	85.2
138	113.6	83.9	125.9

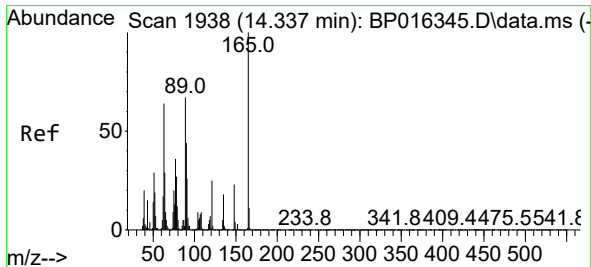
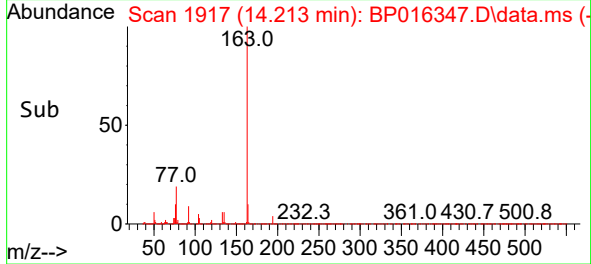
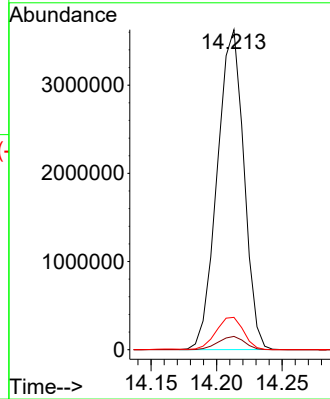
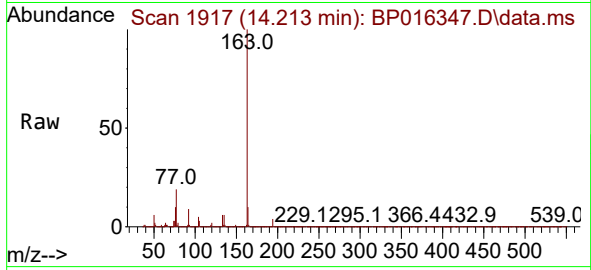




#47  
 Dimethylphthalate  
 Concen: 79.547 ng/ul  
 RT: 14.213 min Scan# 1917  
 Delta R.T. 0.006 min  
 Lab File: BP016347.D  
 Acq: 25 Jul 2023 14:08

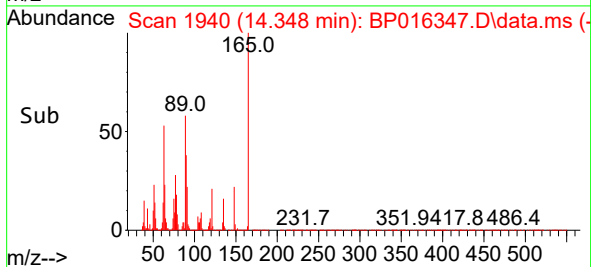
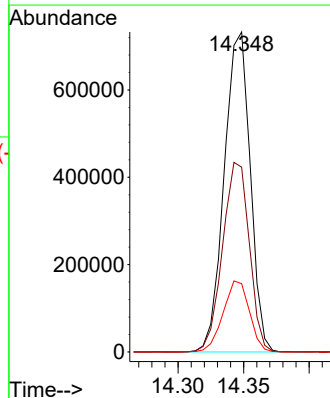
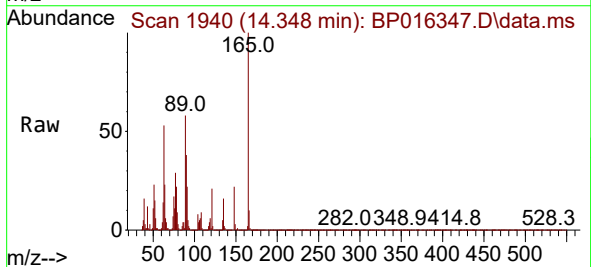
Instrument :  
 BNA\_P  
 ClientSampleId :  
 SSTD080608

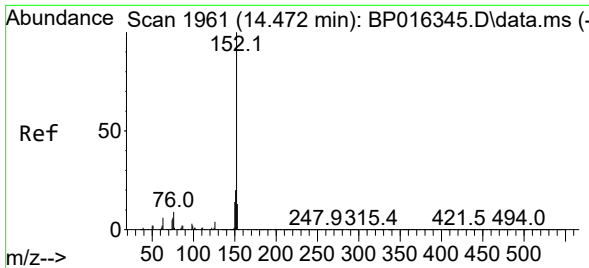
Tgt Ion:163 Resp: 5132310  
 Ion Ratio Lower Upper  
 163 100  
 194 4.2 3.3 4.9  
 164 10.1 7.9 11.9



#48  
 2,6-Dinitrotoluene  
 Concen: 108.683 ng/ul  
 RT: 14.348 min Scan# 1940  
 Delta R.T. 0.012 min  
 Lab File: BP016347.D  
 Acq: 25 Jul 2023 14:08

Tgt Ion:165 Resp: 1010486  
 Ion Ratio Lower Upper  
 165 100  
 89 57.8 53.8 80.6  
 121 21.3 20.0 30.0



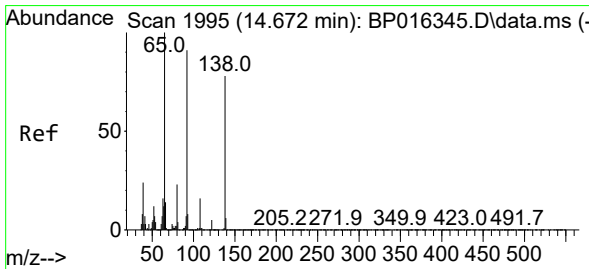
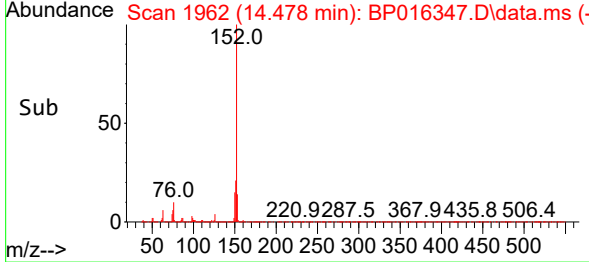
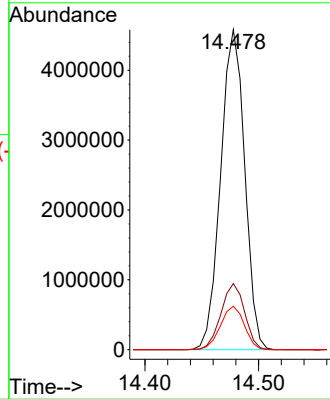
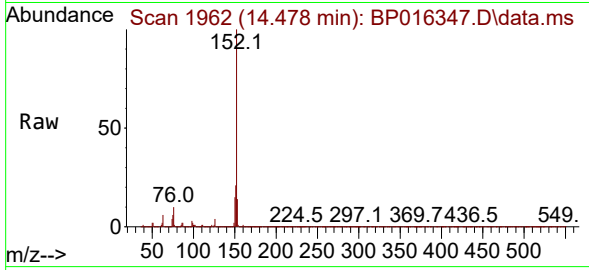


#50  
 Acenaphthylene  
 Concen: 78.270 ng/ul  
 RT: 14.478 min Scan# 1961  
 Delta R.T. 0.006 min  
 Lab File: BP016347.D  
 Acq: 25 Jul 2023 14:08

Instrument : BNA\_P  
 ClientSampleId : SSTD080608

Tgt Ion:152 Resp: 6739846

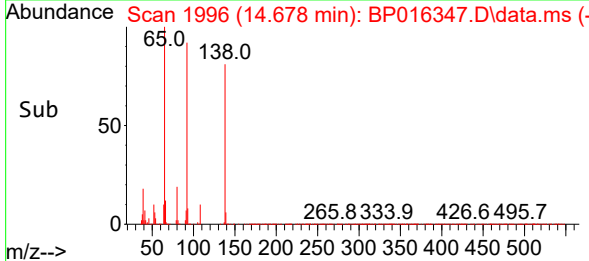
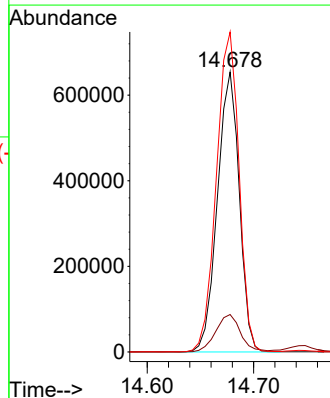
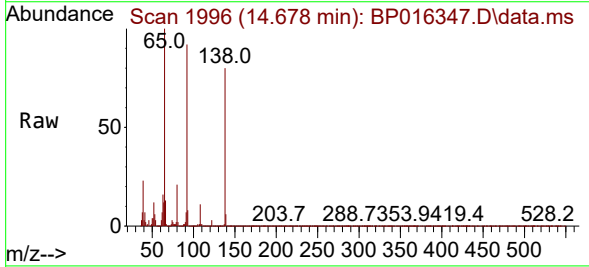
Ion	Ratio	Lower	Upper
152	100		
151	20.7	16.0	24.0
153	13.6	10.6	16.0

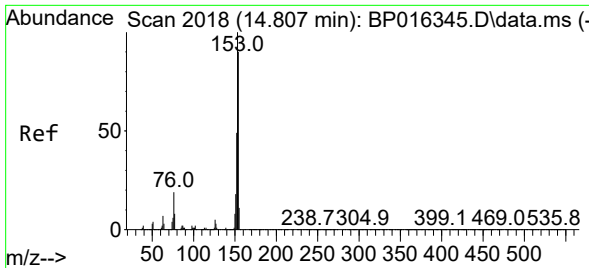


#51  
 3-Nitroaniline  
 Concen: 85.580 ng/ul  
 RT: 14.678 min Scan# 1996  
 Delta R.T. 0.006 min  
 Lab File: BP016347.D  
 Acq: 25 Jul 2023 14:08

Tgt Ion:138 Resp: 930872

Ion	Ratio	Lower	Upper
138	100		
108	13.4	16.6	24.8
92	114.3	94.3	141.5



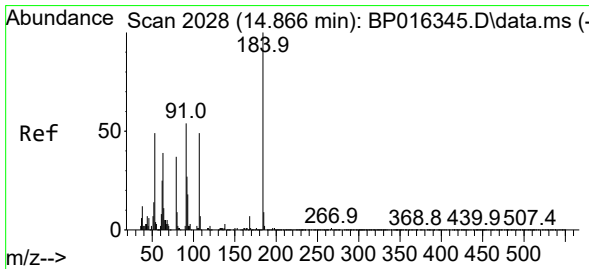
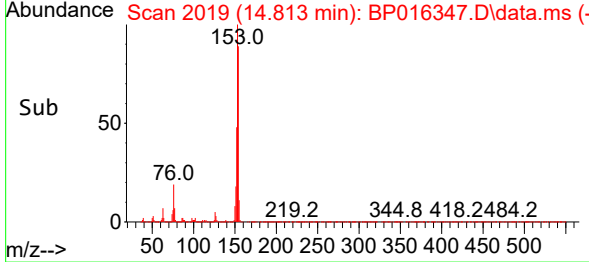
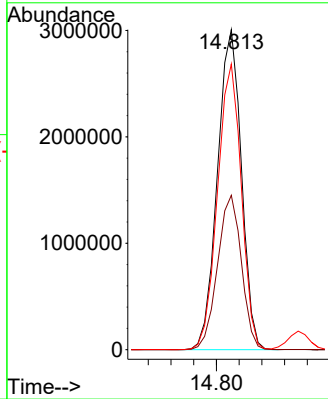
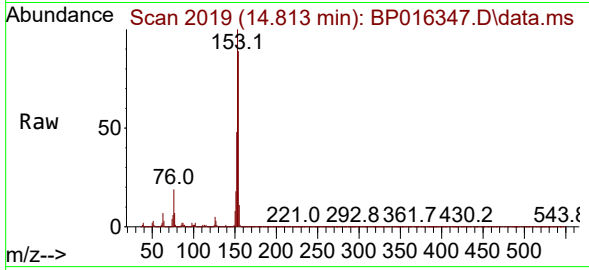


#52  
 Acenaphthene  
 Concen: 79.145 ng/uI  
 RT: 14.813 min Scan# 2019  
 Delta R.T. 0.006 min  
 Lab File: BP016347.D  
 Acq: 25 Jul 2023 14:08

Instrument : BNA\_P  
 ClientSampleId : SSTD080608

Tgt Ion:153 Resp: 4394542

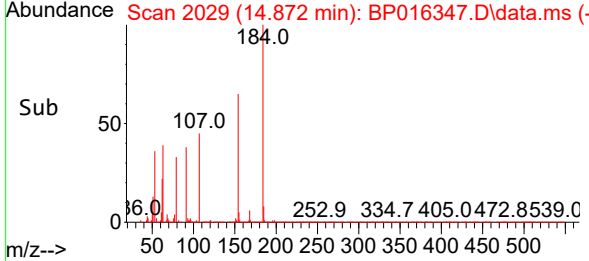
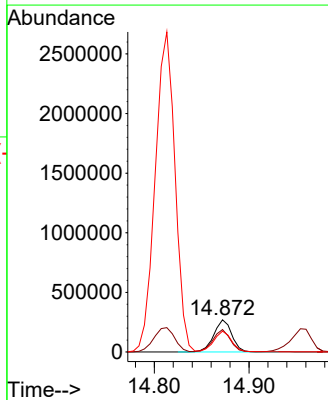
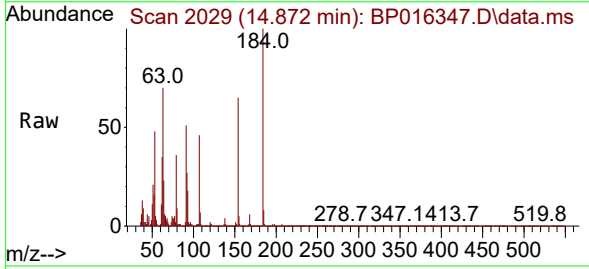
Ion	Ratio	Lower	Upper
153	100		
152	48.2	38.8	58.2
154	89.3	71.7	107.5

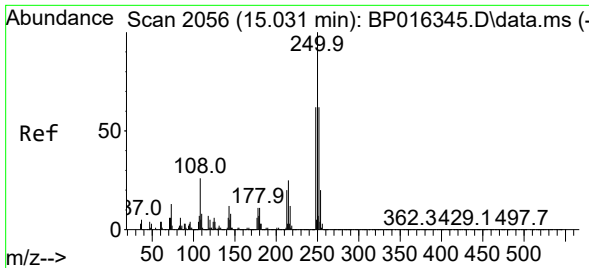


#53  
 2,4-Dinitrophenol  
 Concen: 89.390 ng/uI  
 RT: 14.872 min Scan# 2029  
 Delta R.T. 0.006 min  
 Lab File: BP016347.D  
 Acq: 25 Jul 2023 14:08

Tgt Ion:184 Resp: 355457

Ion	Ratio	Lower	Upper
184	100		
63	69.5	60.0	90.0
154	64.8	55.2	82.8



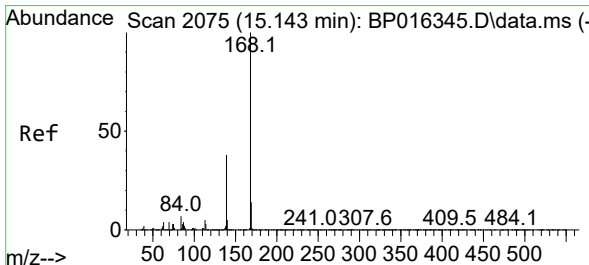
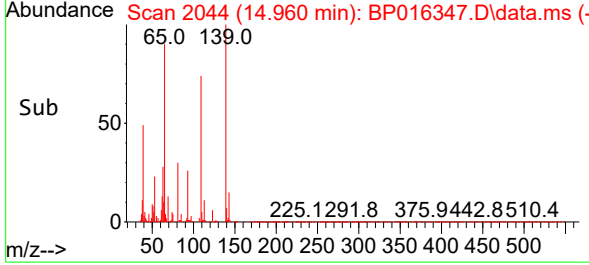
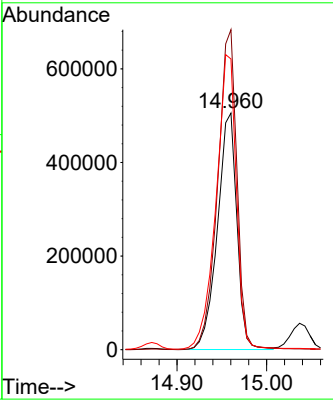
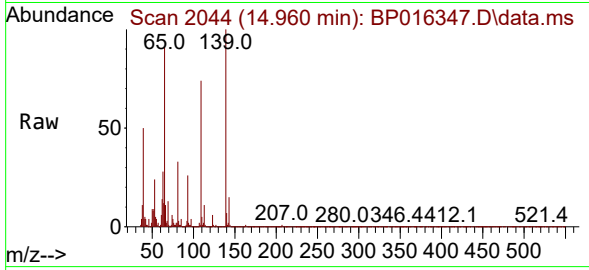


#55  
 4-Nitrophenol  
 Concen: 88.037 ng/ul  
 RT: 14.960 min Scan# 2056  
 Delta R.T. 0.018 min  
 Lab File: BP016347.D  
 Acq: 25 Jul 2023 14:08

Instrument : BNA\_P  
 ClientSampleId : SSTD080608

Tgt Ion:109 Resp: 760738

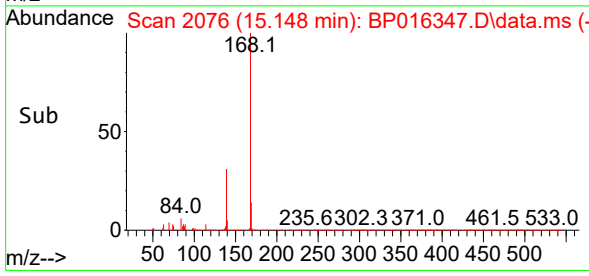
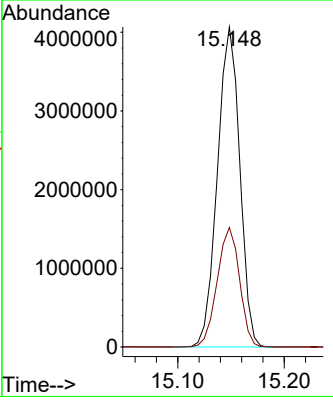
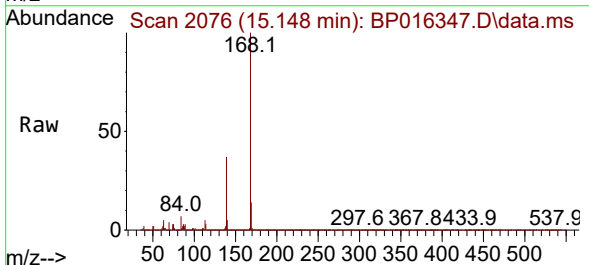
Ion	Ratio	Lower	Upper
109	100		
139	135.2	103.5	155.3
65	122.9	98.6	148.0

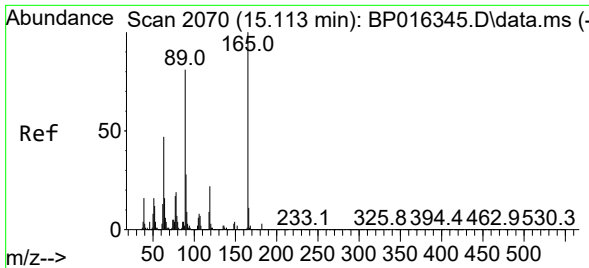


#56  
 Dibenzofuran  
 Concen: 77.960 ng/ul  
 RT: 15.148 min Scan# 2076  
 Delta R.T. 0.006 min  
 Lab File: BP016347.D  
 Acq: 25 Jul 2023 14:08

Tgt Ion:168 Resp: 5925905

Ion	Ratio	Lower	Upper
168	100		
139	37.3	30.0	45.0



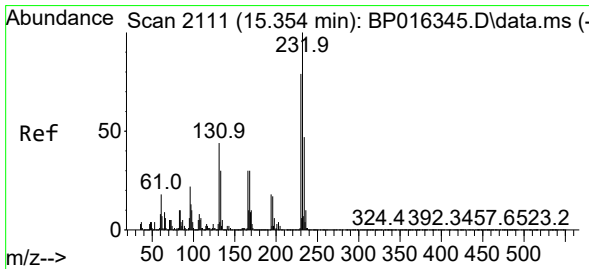
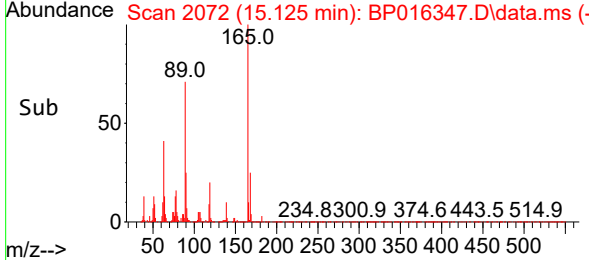
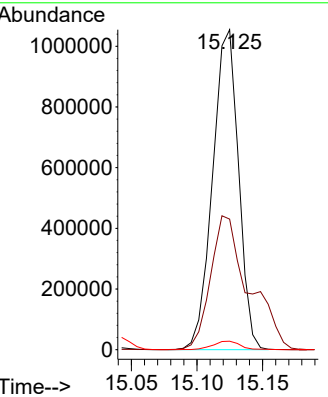
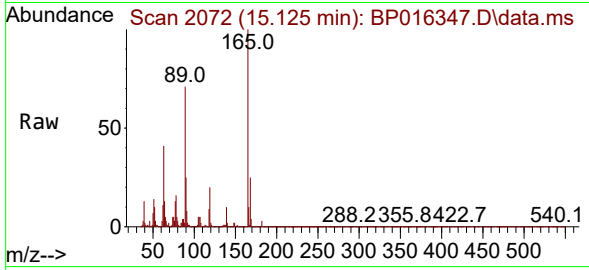


#57  
 2,4-Dinitrotoluene  
 Concen: 109.317 ng/ul  
 RT: 15.125 min Scan# 2072  
 Delta R.T. 0.012 min  
 Lab File: BP016347.D  
 Acq: 25 Jul 2023 14:08

Instrument :  
 BNA\_P  
 ClientSampleId :  
 SSTD080608

Tgt Ion:165 Resp: 1449072

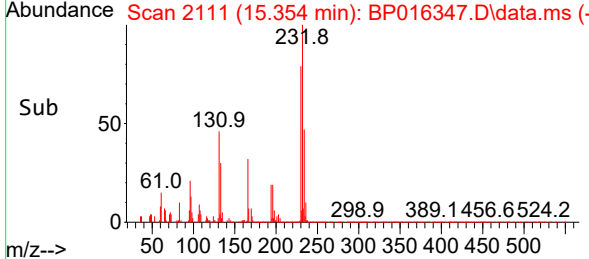
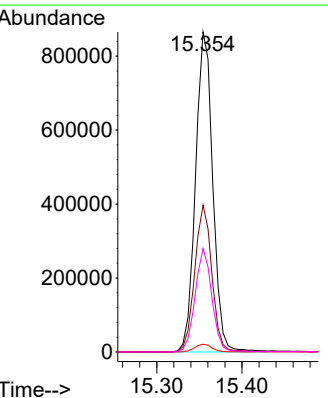
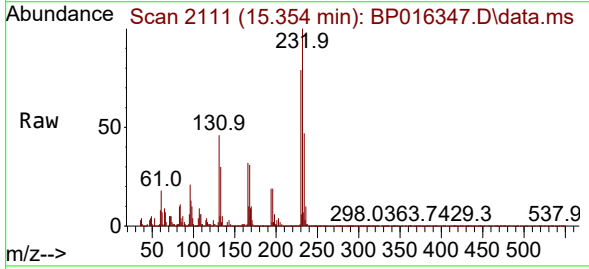
Ion	Ratio	Lower	Upper
165	100		
63	40.8	37.4	56.2
182	2.7	2.2	3.4



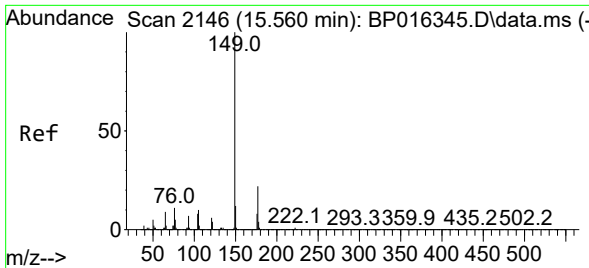
#58  
 2,3,4,6-Tetrachlorophenol  
 Concen: 93.628 ng/ul  
 RT: 15.354 min Scan# 2111  
 Delta R.T. -0.000 min  
 Lab File: BP016347.D  
 Acq: 25 Jul 2023 14:08

Tgt Ion:232 Resp: 1216321

Ion	Ratio	Lower	Upper
232	100		
131	45.9	35.1	52.7
130	2.4	2.1	3.1
166	32.3	24.2	36.2





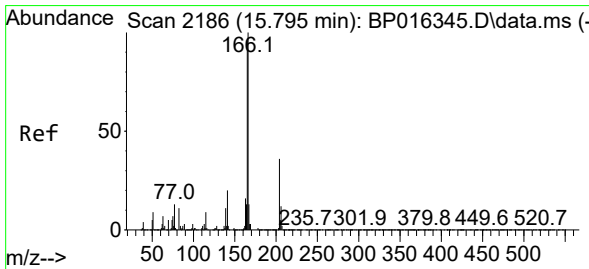
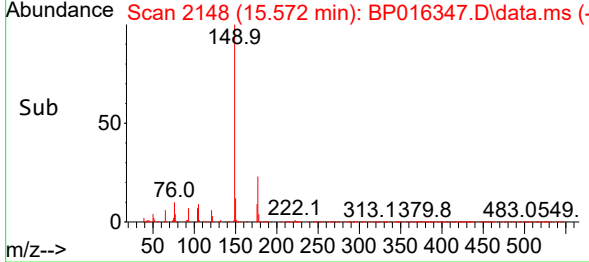
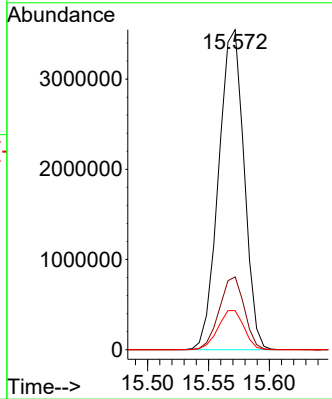
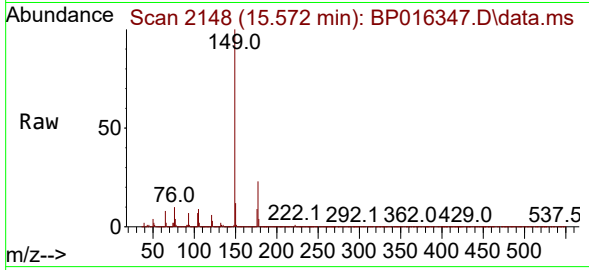


#59  
 Diethylphthalate  
 Concen: 79.481 ng/ul  
 RT: 15.572 min Scan# 2148  
 Delta R.T. 0.012 min  
 Lab File: BP016347.D  
 Acq: 25 Jul 2023 14:08

Instrument : BNA\_P  
 ClientSampleId : SSTD080608

Tgt Ion:149 Resp: 5164965

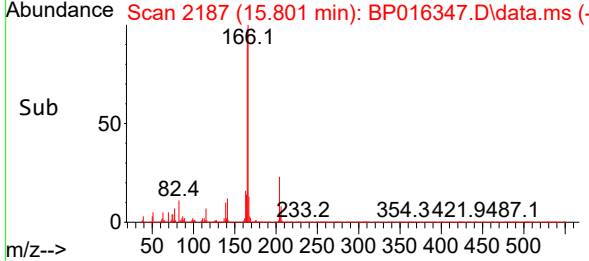
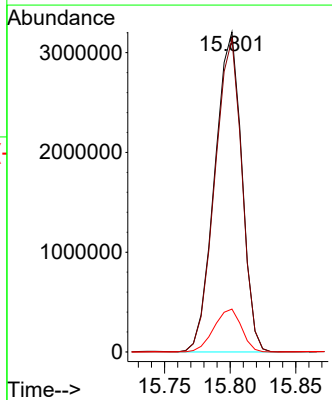
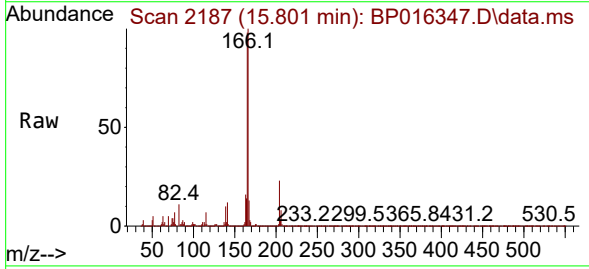
Ion	Ratio	Lower	Upper
149	100		
177	22.7	17.9	26.9
150	12.2	9.9	14.9

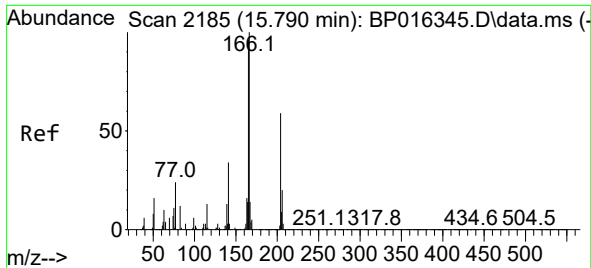


#61  
 Fluorene  
 Concen: 74.618 ng/ul  
 RT: 15.801 min Scan# 2187  
 Delta R.T. 0.006 min  
 Lab File: BP016347.D  
 Acq: 25 Jul 2023 14:08

Tgt Ion:166 Resp: 4606977

Ion	Ratio	Lower	Upper
166	100		
165	97.8	77.0	115.4
167	13.4	10.6	15.8

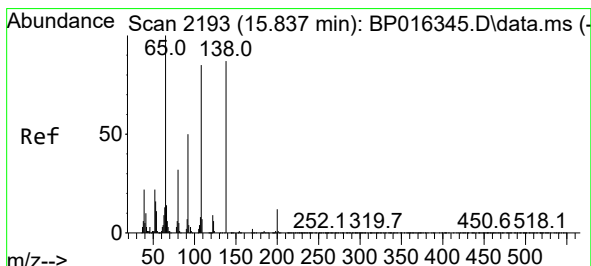
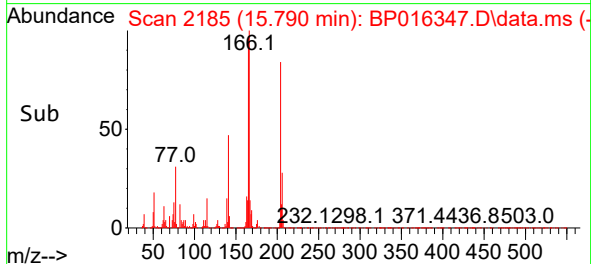
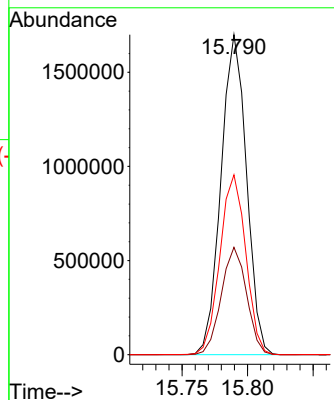
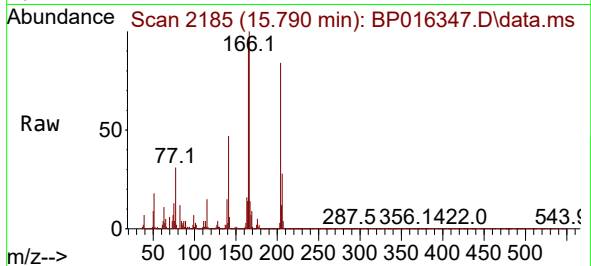




#62  
 4-Chlorophenyl-phenylether  
 Concen: 76.295 ng/ul  
 RT: 15.790 min Scan# 2185  
 Delta R.T. -0.000 min  
 Lab File: BP016347.D  
 Acq: 25 Jul 2023 14:08

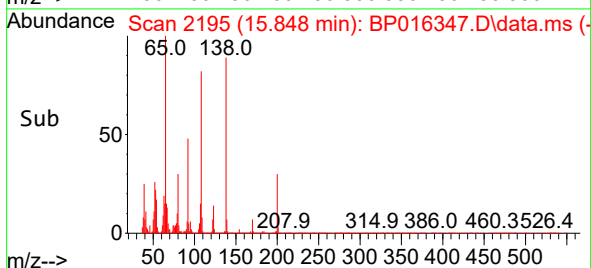
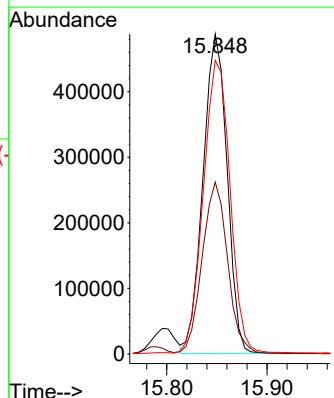
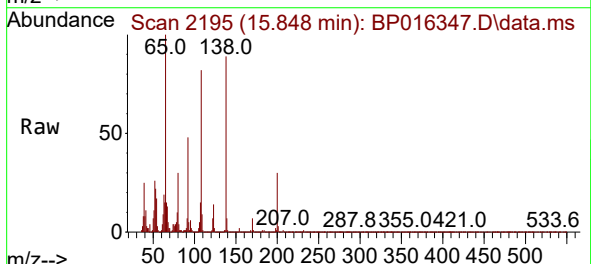
Instrument : BNA\_P  
 ClientSampleId : SSTD080608

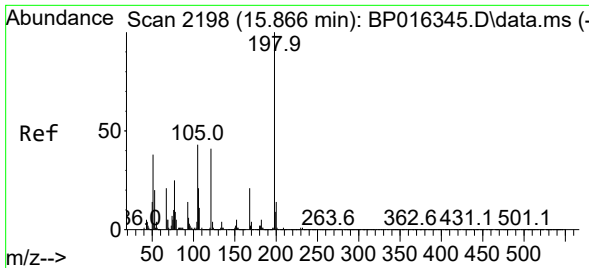
Tgt Ion:204 Resp: 2296412  
 Ion Ratio Lower Upper  
 204 100  
 206 33.6 26.5 39.7  
 141 56.2 46.2 69.4



#63  
 4-Nitroaniline  
 Concen: 81.620 ng/ul  
 RT: 15.848 min Scan# 2195  
 Delta R.T. 0.012 min  
 Lab File: BP016347.D  
 Acq: 25 Jul 2023 14:08

Tgt Ion:138 Resp: 814089  
 Ion Ratio Lower Upper  
 138 100  
 92 53.7 45.3 67.9  
 108 91.7 76.4 114.6

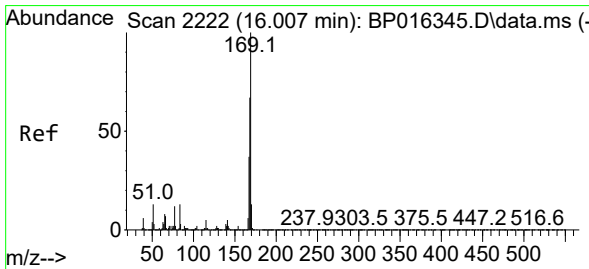
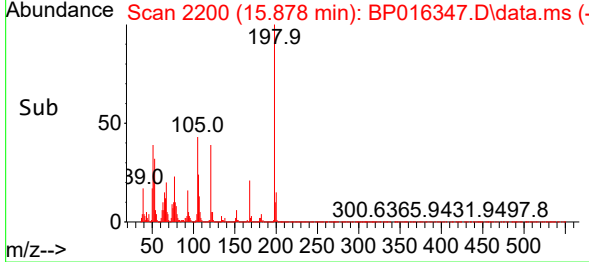
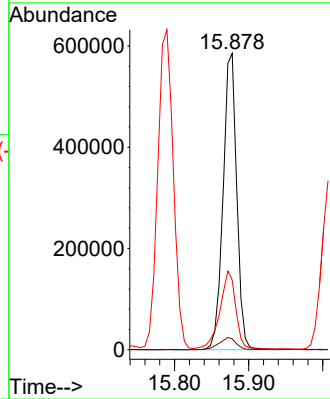
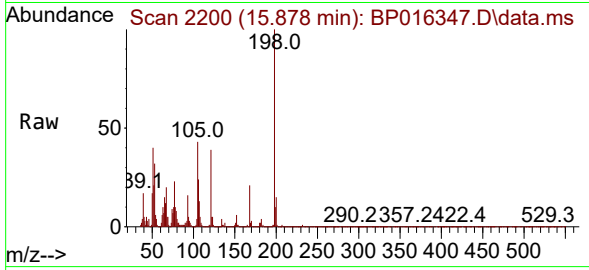




#66  
 4,6-Dinitro-2-methylphenol  
 Concen: 99.729 ng/ul  
 RT: 15.878 min Scan# 2198  
 Delta R.T. 0.012 min  
 Lab File: BP016347.D  
 Acq: 25 Jul 2023 14:08

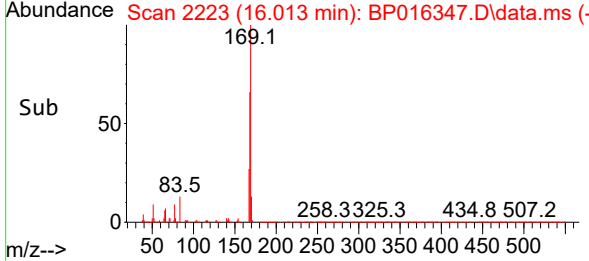
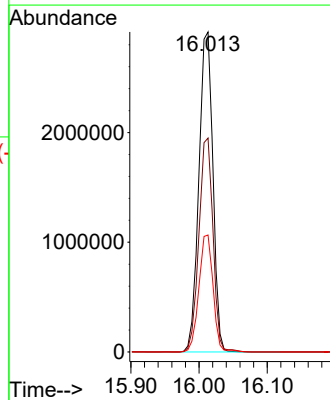
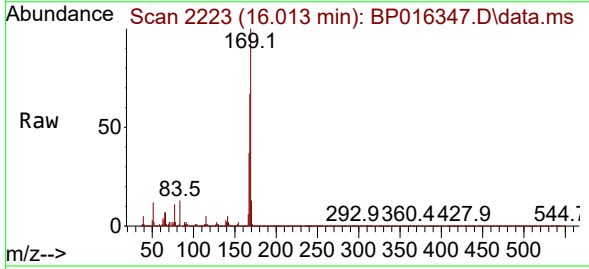
Instrument :  
 BNA\_P  
 ClientSampleId :  
 SSTD080608

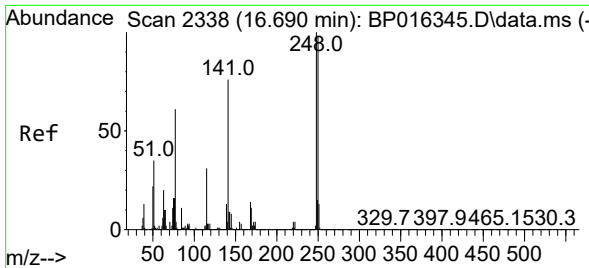
Tgt Ion:198 Resp: 749725  
 Ion Ratio Lower Upper  
 198 100  
 182 3.7 3.8 5.8#  
 77 23.5 21.6 32.4



#67  
 N-Nitrosodiphenylamine  
 Concen: 77.790 ng/ul  
 RT: 16.013 min Scan# 2223  
 Delta R.T. 0.006 min  
 Lab File: BP016347.D  
 Acq: 25 Jul 2023 14:08

Tgt Ion:169 Resp: 4164038  
 Ion Ratio Lower Upper  
 169 100  
 168 66.9 54.0 81.0  
 167 36.5 29.4 44.2



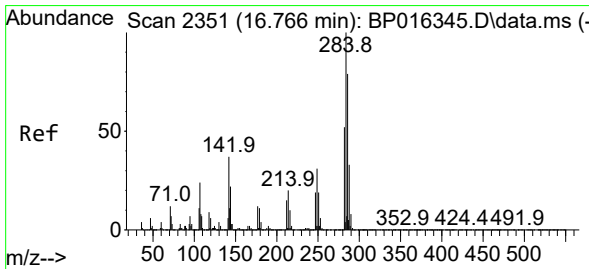
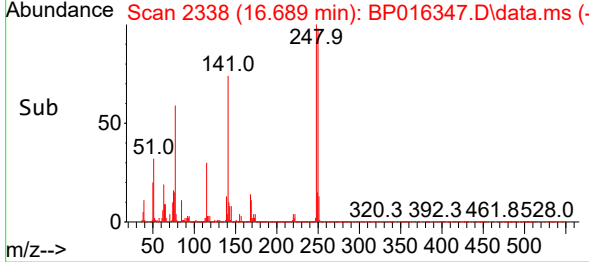
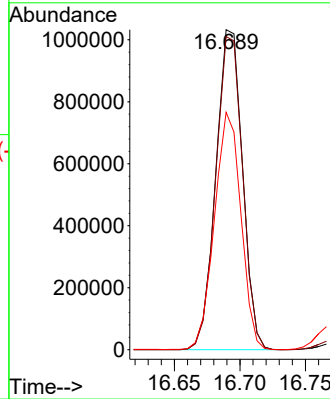
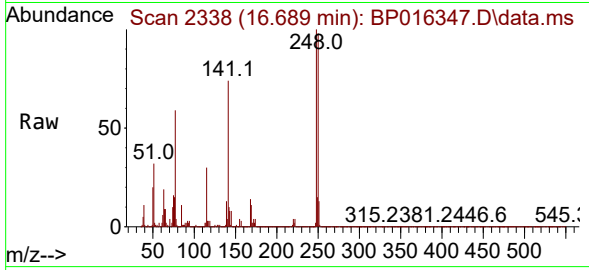


#68  
 4-Bromophenyl-phenylether  
 Concen: 80.794 ng/ul  
 RT: 16.689 min Scan# 21  
 Delta R.T. -0.000 min  
 Lab File: BP016347.D  
 Acq: 25 Jul 2023 14:08

Instrument : BNA\_P  
 ClientSampleId : SSTD080608

Tgt Ion:248 Resp: 1462820

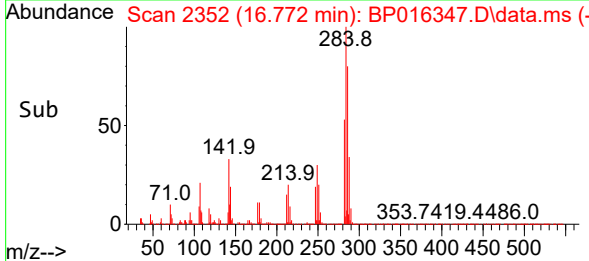
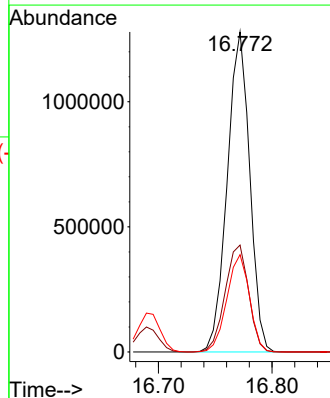
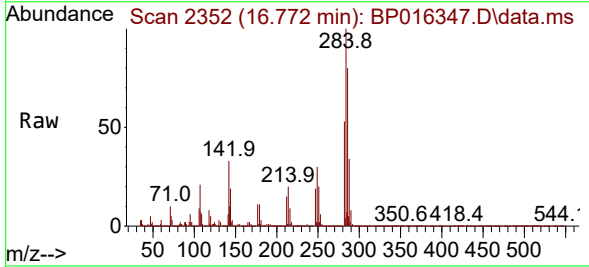
Ion	Ratio	Lower	Upper
248	100		
250	97.8	78.1	117.1
141	74.2	61.2	91.8

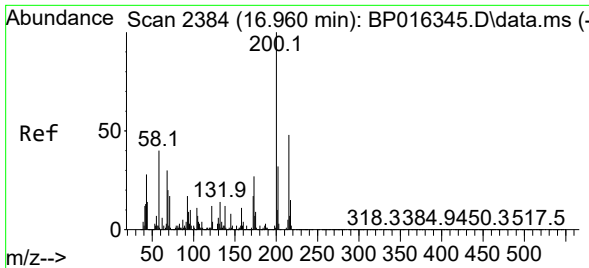


#69  
 Hexachlorobenzene  
 Concen: 80.913 ng/ul  
 RT: 16.772 min Scan# 2352  
 Delta R.T. 0.006 min  
 Lab File: BP016347.D  
 Acq: 25 Jul 2023 14:08

Tgt Ion:284 Resp: 1756727

Ion	Ratio	Lower	Upper
284	100		
142	33.4	29.7	44.5
249	30.4	24.8	37.2



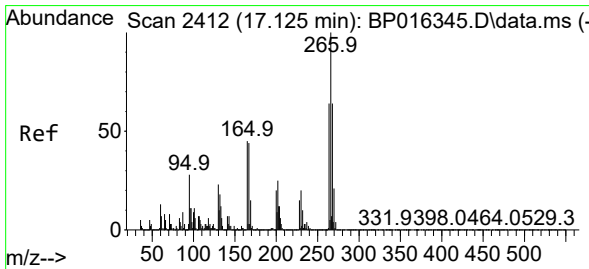
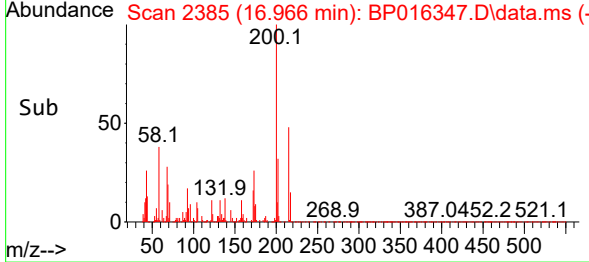
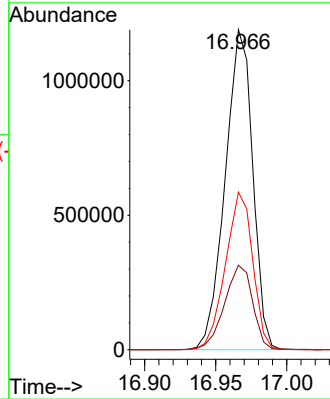
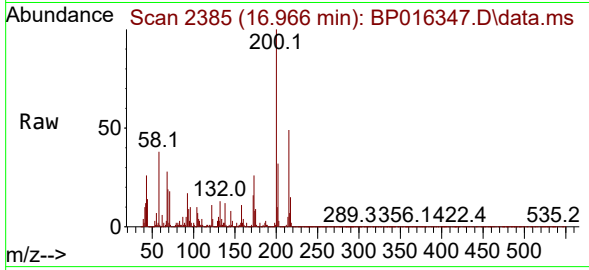


#70  
 Atrazine  
 Concen: 82.065 ng/ul  
 RT: 16.966 min Scan# 21  
 Delta R.T. 0.006 min  
 Lab File: BP016347.D  
 Acq: 25 Jul 2023 14:08

Instrument :  
 BNA\_P  
 ClientSampleId :  
 SSTD080608

Tgt Ion:200 Resp: 1602756

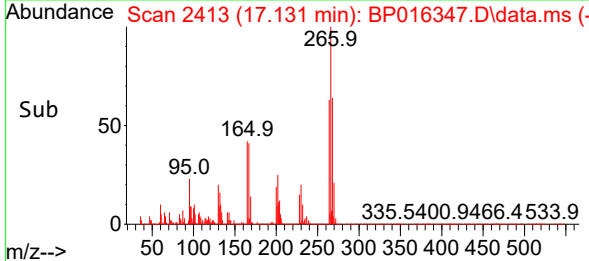
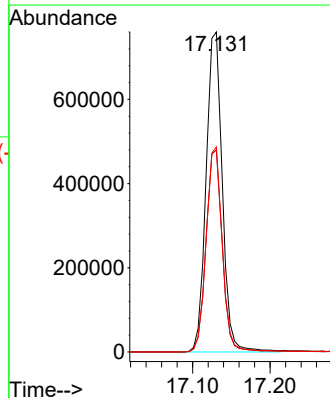
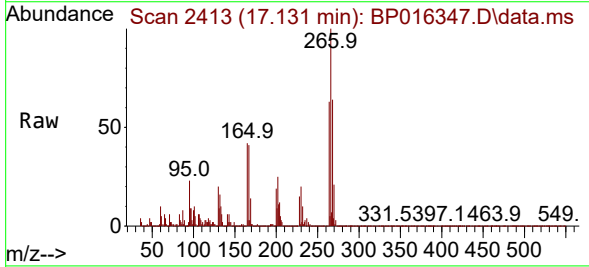
Ion	Ratio	Lower	Upper
200	100		
173	26.4	21.7	32.5
215	49.2	38.5	57.7

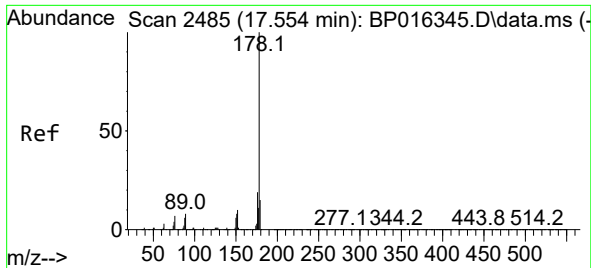


#71  
 Pentachlorophenol  
 Concen: 90.239 ng/ul  
 RT: 17.131 min Scan# 2413  
 Delta R.T. 0.006 min  
 Lab File: BP016347.D  
 Acq: 25 Jul 2023 14:08

Tgt Ion:266 Resp: 1104059

Ion	Ratio	Lower	Upper
266	100		
264	63.1	50.9	76.3
268	64.1	51.5	77.3



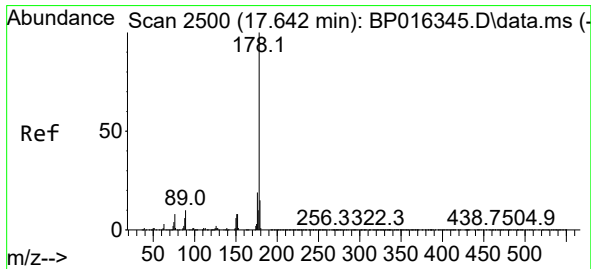
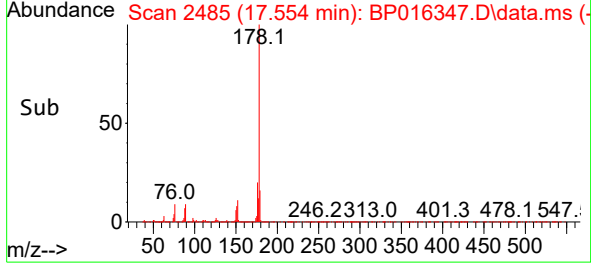
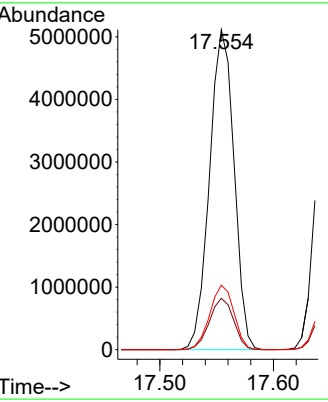
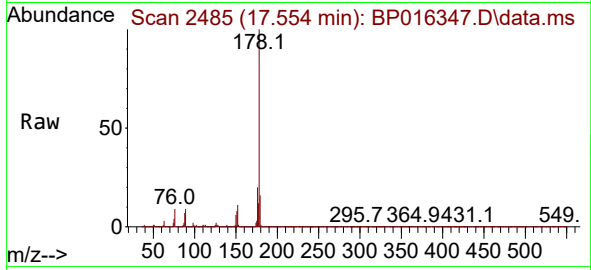


#72  
 Phenanthrene  
 Concen: 77.197 ng/uI  
 RT: 17.554 min Scan# 2485  
 Delta R.T. -0.000 min  
 Lab File: BP016347.D  
 Acq: 25 Jul 2023 14:08

Instrument : BNA\_P  
 ClientSampleId : SSTD080608

Tgt Ion:178 Resp: 7669110

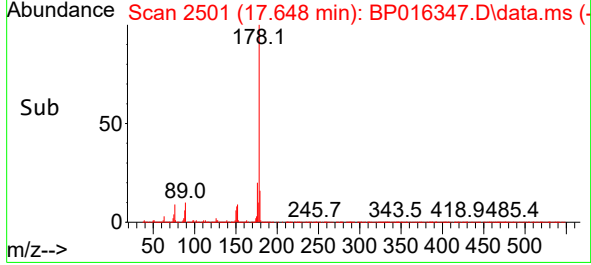
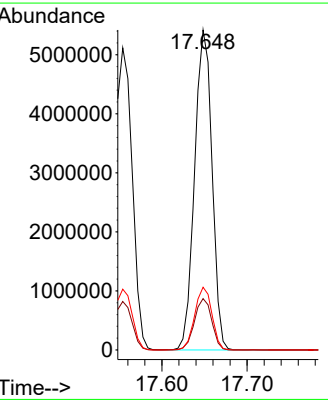
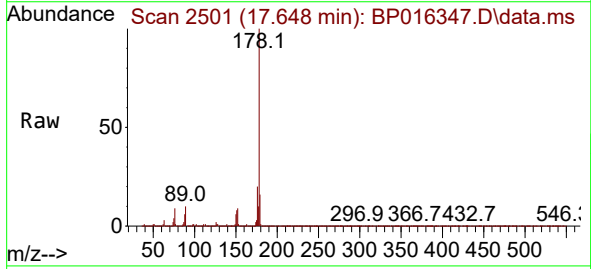
Ion	Ratio	Lower	Upper
178	100		
179	16.0	12.3	18.5
176	20.2	15.4	23.0

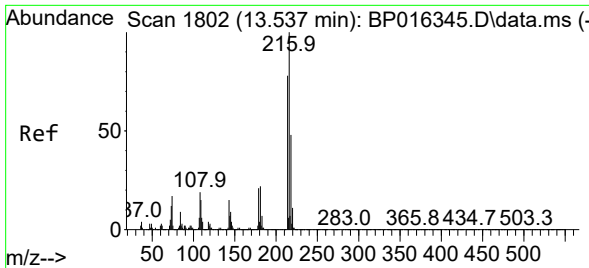


#74  
 Anthracene  
 Concen: 76.134 ng/uI  
 RT: 17.648 min Scan# 2501  
 Delta R.T. 0.006 min  
 Lab File: BP016347.D  
 Acq: 25 Jul 2023 14:08

Tgt Ion:178 Resp: 7704384

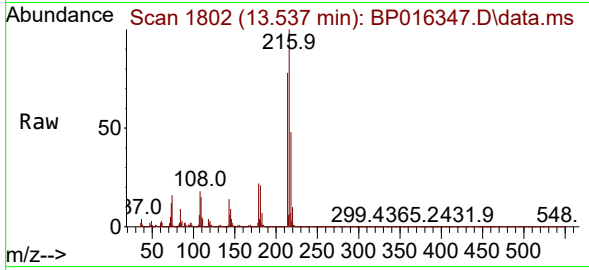
Ion	Ratio	Lower	Upper
178	100		
179	16.1	12.3	18.5
176	19.6	15.1	22.7



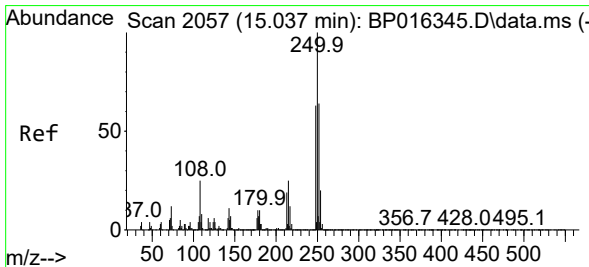
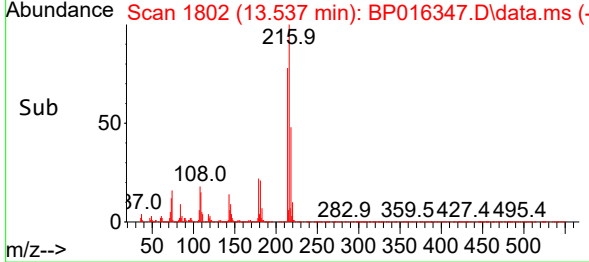
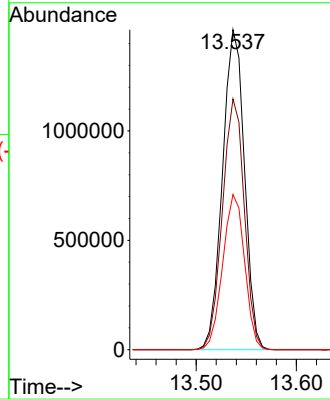


#75  
 1,2,3,4-Tetrachlorobenzene  
 Concen: 80.668 ng/uL  
 RT: 13.537 min Scan# 1802  
 Delta R.T. -0.000 min  
 Lab File: BP016347.D  
 Acq: 25 Jul 2023 14:08

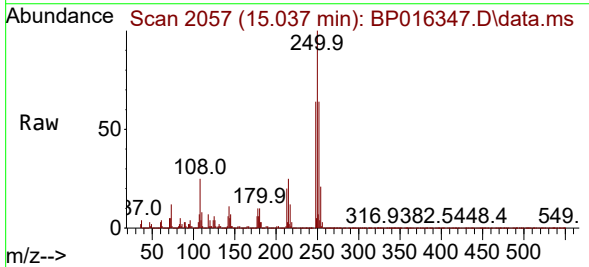
Instrument : BNA\_P  
 ClientSampleId : SSTD080608



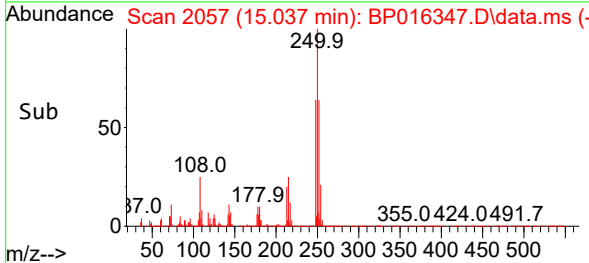
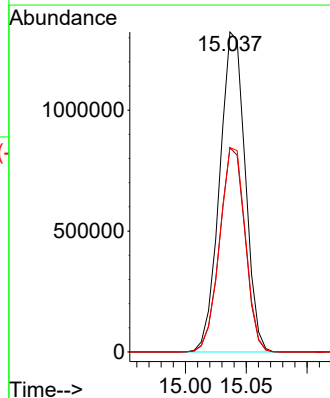
Tgt Ion:216 Resp: 2223040  
 Ion Ratio Lower Upper  
 216 100  
 214 78.3 62.8 94.2  
 218 48.5 38.6 58.0

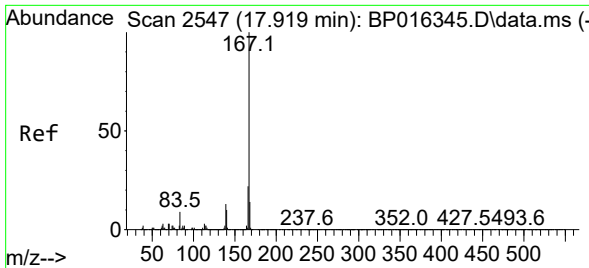


#76  
 Pentachlorobenzene  
 Concen: 79.307 ng/uL  
 RT: 15.037 min Scan# 2057  
 Delta R.T. -0.000 min  
 Lab File: BP016347.D  
 Acq: 25 Jul 2023 14:08



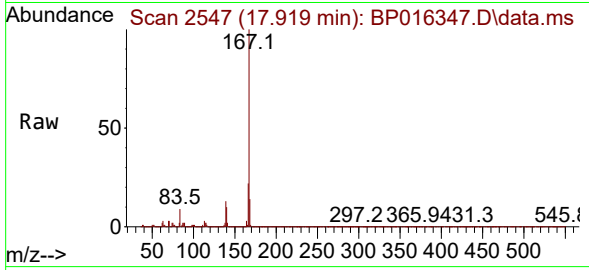
Tgt Ion:250 Resp: 1931313  
 Ion Ratio Lower Upper  
 250 100  
 248 63.9 50.1 75.1  
 252 63.9 51.0 76.6



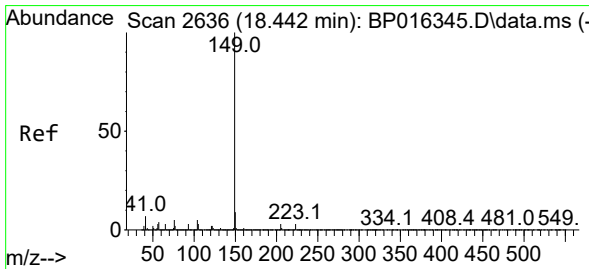
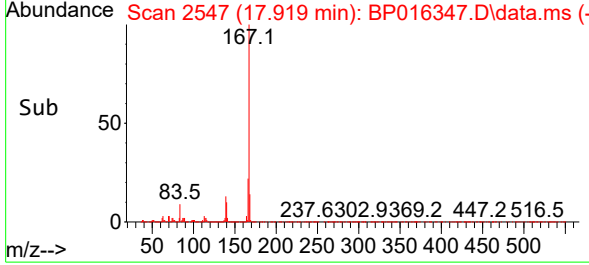
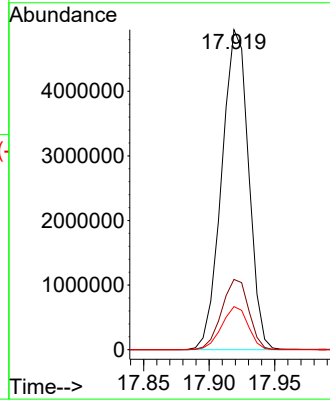


#77  
 Carbazole  
 Concen: 81.134 ng/ul  
 RT: 17.919 min Scan# 21  
 Delta R.T. -0.000 min  
 Lab File: BP016347.D  
 Acq: 25 Jul 2023 14:08

Instrument :  
 BNA\_P  
 ClientSampleId :  
 SSTD080608

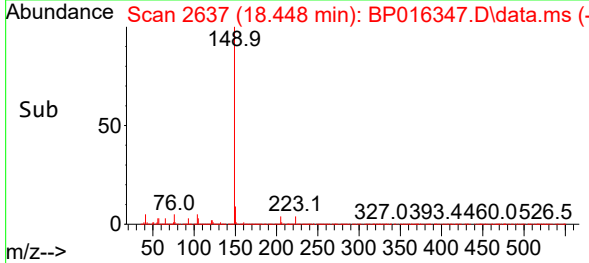
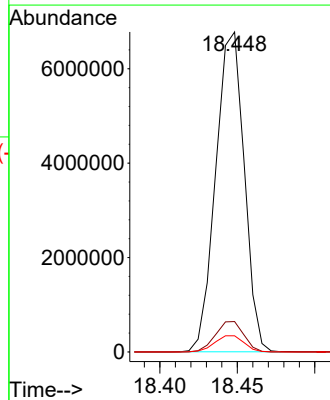
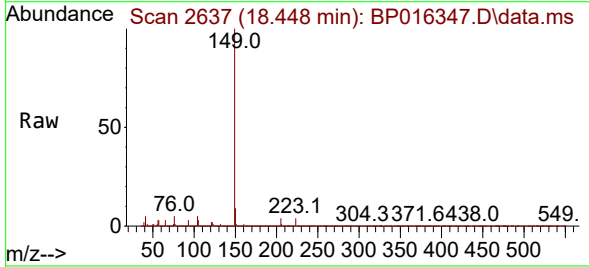


Tgt Ion:167 Resp: 7067196  
 Ion Ratio Lower Upper  
 167 100  
 166 22.0 17.3 25.9  
 139 13.4 10.4 15.6

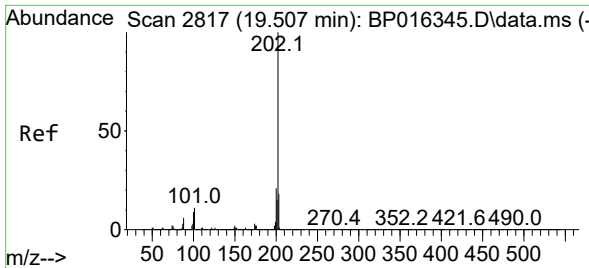


#78  
 Di-n-butylphthalate  
 Concen: 78.316 ng/ul  
 RT: 18.448 min Scan# 2637  
 Delta R.T. 0.006 min  
 Lab File: BP016347.D  
 Acq: 25 Jul 2023 14:08

Tgt Ion:149 Resp: 8687502  
 Ion Ratio Lower Upper  
 149 100  
 150 9.5 7.5 11.3  
 104 5.1 4.3 6.5







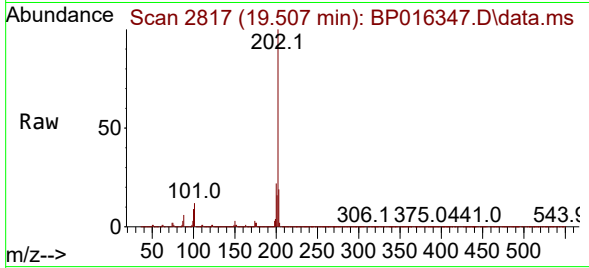
#80  
 Fluoranthene  
 Concen: 76.571 ng/uI  
 RT: 19.507 min Scan# 2817  
 Delta R.T. -0.000 min  
 Lab File: BP016347.D  
 Acq: 25 Jul 2023 14:08

Instrument :

BNA\_P

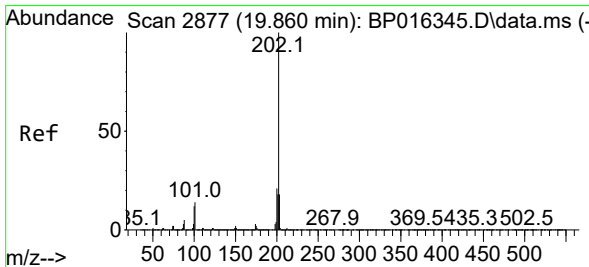
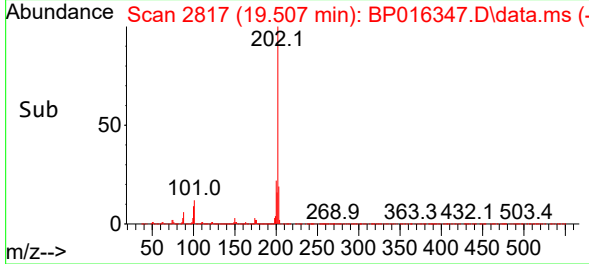
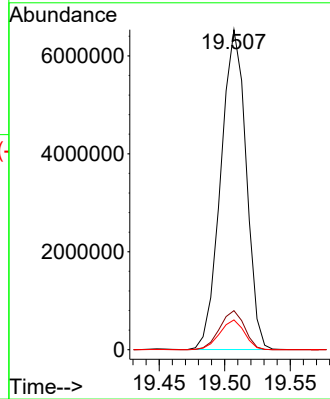
Client Sample Id :

SSTD080608



Tgt Ion: 202 Resp: 8795485

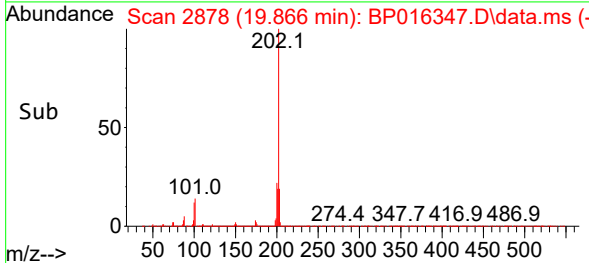
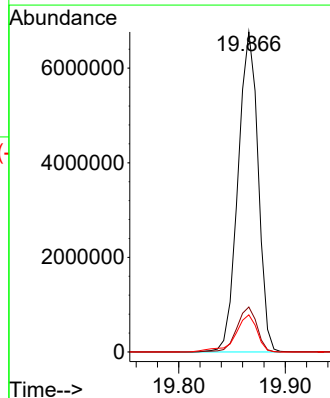
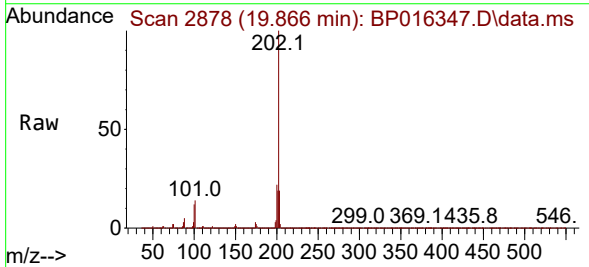
Ion	Ratio	Lower	Upper
202	100		
101	12.2	9.1	13.7
100	9.3	7.1	10.7

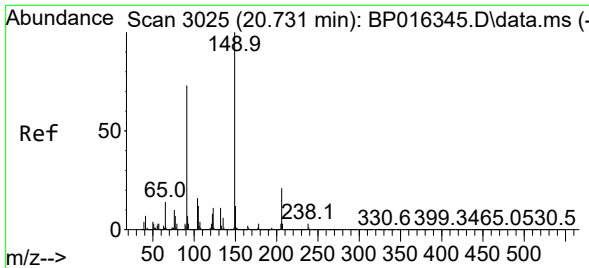


#82  
 Pyrene  
 Concen: 74.967 ng/uI  
 RT: 19.866 min Scan# 2878  
 Delta R.T. 0.006 min  
 Lab File: BP016347.D  
 Acq: 25 Jul 2023 14:08

Tgt Ion: 202 Resp: 8896557

Ion	Ratio	Lower	Upper
202	100		
101	14.1	11.2	16.8
100	11.6	9.4	14.0





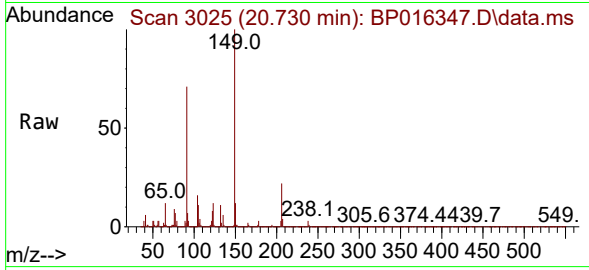
#83  
 Butylbenzylphthalate  
 Concen: 87.995 ng/ul  
 RT: 20.730 min Scan# 30  
 Delta R.T. -0.000 min  
 Lab File: BP016347.D  
 Acq: 25 Jul 2023 14:08

Instrument :

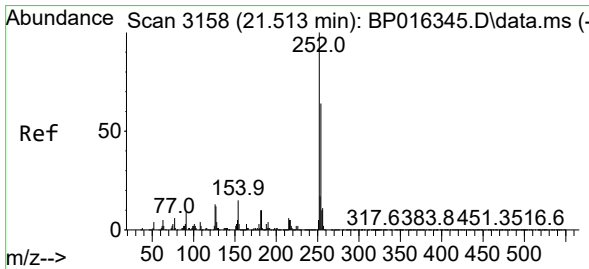
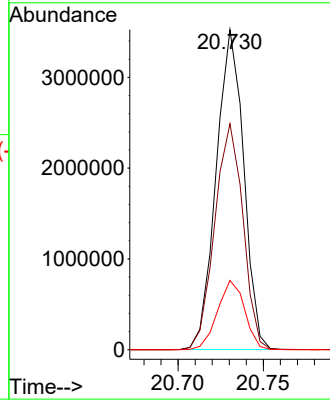
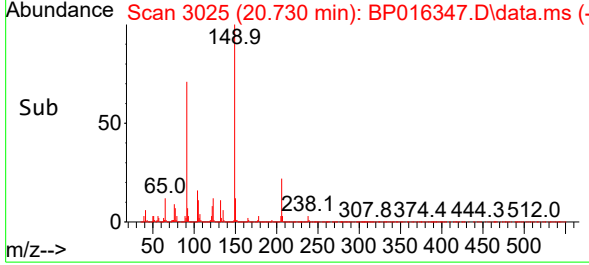
BNA\_P

ClientSampleId :

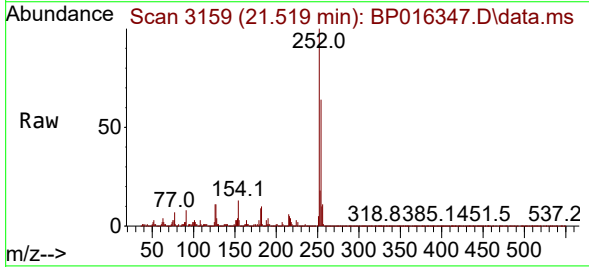
SSTD080608



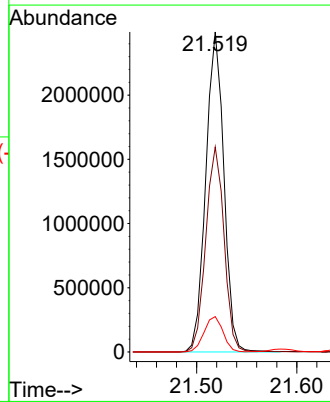
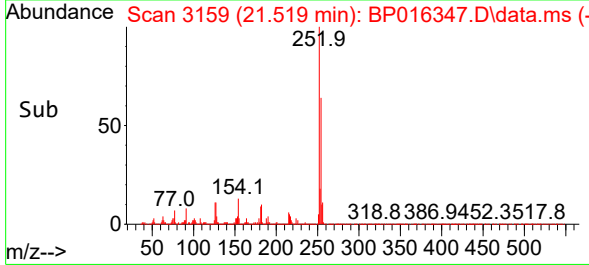
Tgt Ion:149 Resp: 3953424  
 Ion Ratio Lower Upper  
 149 100  
 91 70.6 58.5 87.7  
 206 21.7 17.0 25.4

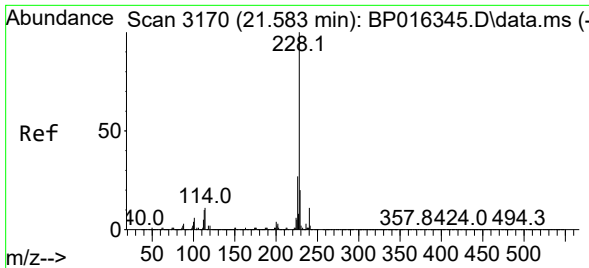


#84  
 3,3'-Dichlorobenzidine  
 Concen: 84.468 ng/ul  
 RT: 21.519 min Scan# 3159  
 Delta R.T. 0.006 min  
 Lab File: BP016347.D  
 Acq: 25 Jul 2023 14:08



Tgt Ion:252 Resp: 3133147  
 Ion Ratio Lower Upper  
 252 100  
 254 64.1 51.4 77.0  
 126 11.1 10.3 15.5



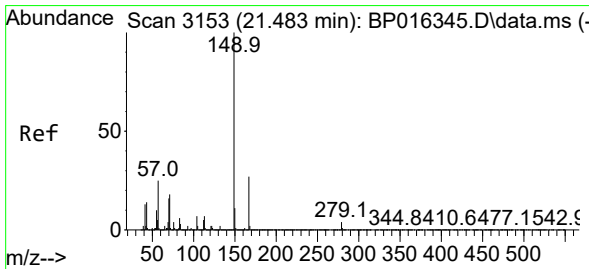
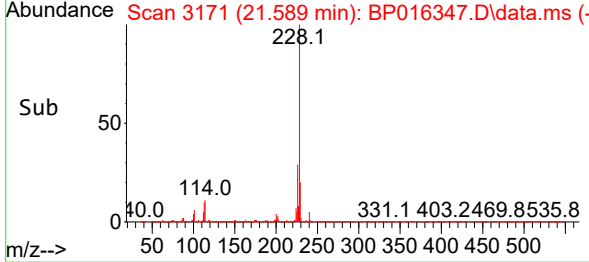
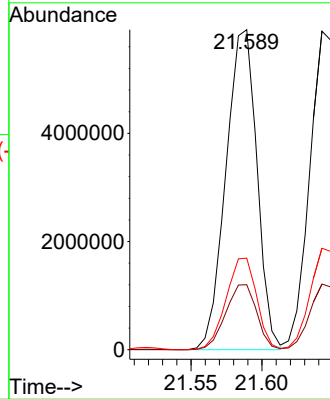
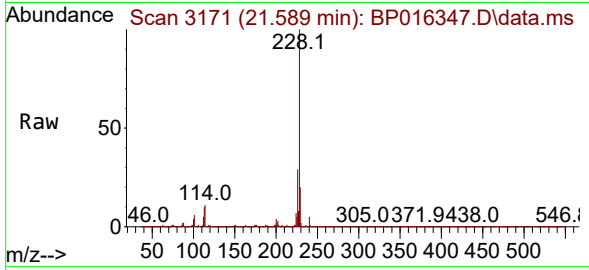


#85  
 Benzo(a)anthracene  
 Concen: 78.685 ng/ul  
 RT: 21.589 min Scan# 3171  
 Delta R.T. 0.006 min  
 Lab File: BP016347.D  
 Acq: 25 Jul 2023 14:08

Instrument : BNA\_P  
 ClientSampleId : SSTD080608

Tgt Ion:228 Resp: 8994288

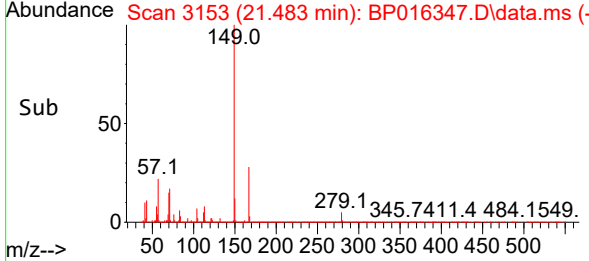
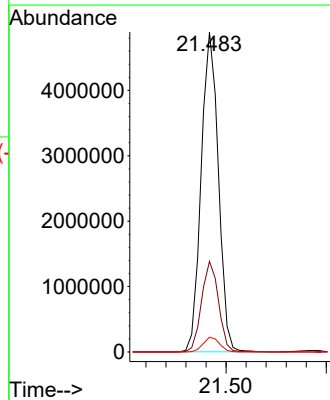
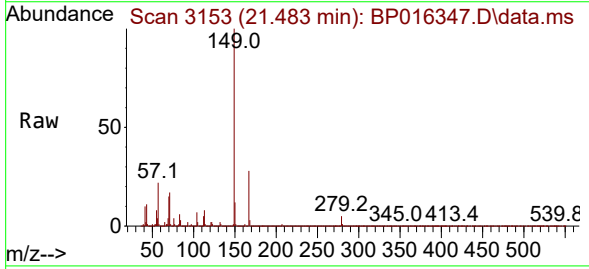
Ion	Ratio	Lower	Upper
228	100		
229	20.3	15.9	23.9
226	28.6	22.0	33.0

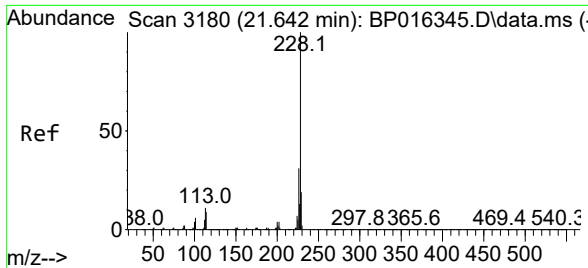


#86  
 Bis(2-ethylhexyl)phthalate  
 Concen: 85.122 ng/ul  
 RT: 21.483 min Scan# 3153  
 Delta R.T. -0.000 min  
 Lab File: BP016347.D  
 Acq: 25 Jul 2023 14:08

Tgt Ion:149 Resp: 5833649

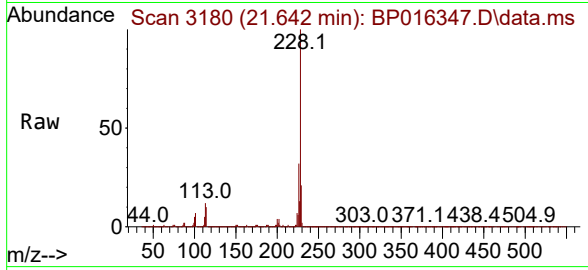
Ion	Ratio	Lower	Upper
149	100		
167	28.3	21.7	32.5
279	4.6	3.0	4.4



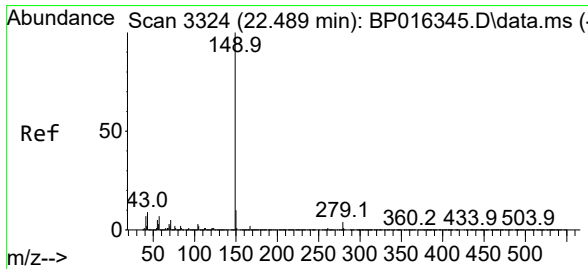
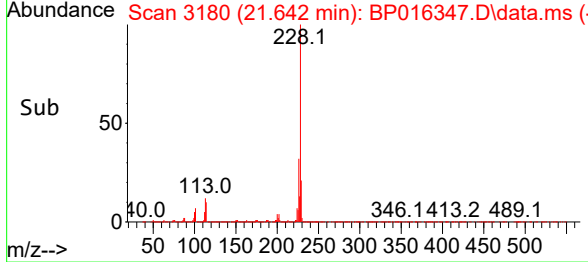
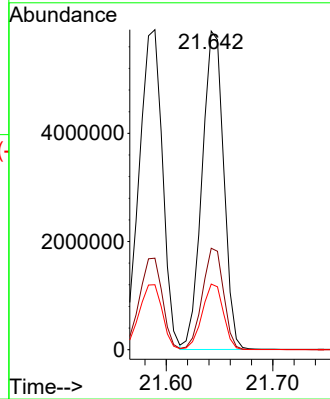


#87  
 Chrysene  
 Concen: 78.526 ng/ul  
 RT: 21.642 min Scan# 3180  
 Delta R.T. -0.000 min  
 Lab File: BP016347.D  
 Acq: 25 Jul 2023 14:08

Instrument : BNA\_P  
 Client Sample Id : SSTD080608

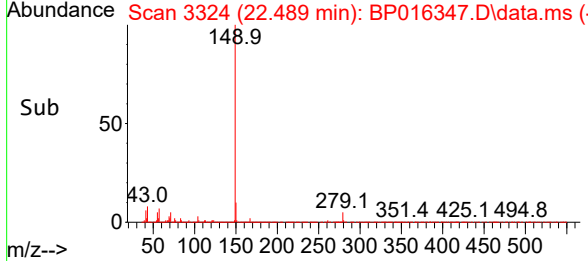
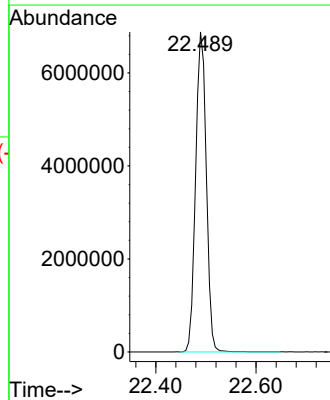
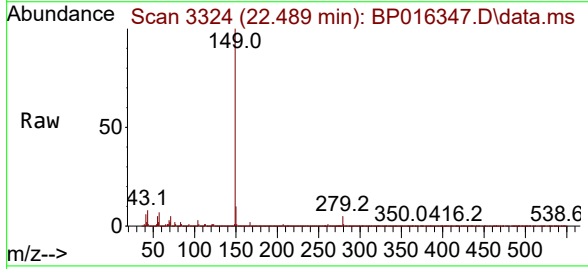


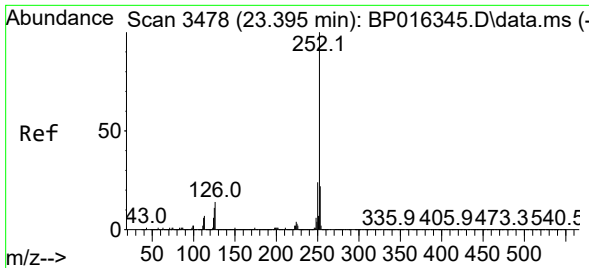
Tgt Ion: 228 Resp: 8312412  
 Ion Ratio Lower Upper  
 228 100  
 226 31.8 24.5 36.7  
 229 20.6 15.6 23.4



#89  
 Di-n-octyl phthalate  
 Concen: 81.838 ng/ul  
 RT: 22.489 min Scan# 3324  
 Delta R.T. -0.000 min  
 Lab File: BP016347.D  
 Acq: 25 Jul 2023 14:08

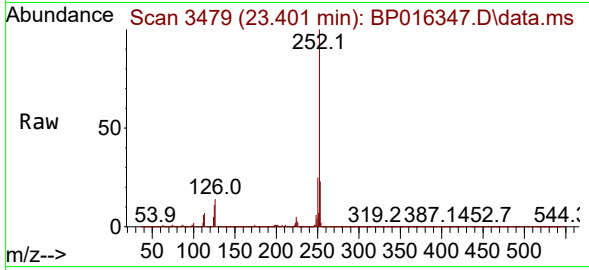
Tgt Ion: 149 Resp: 10113172



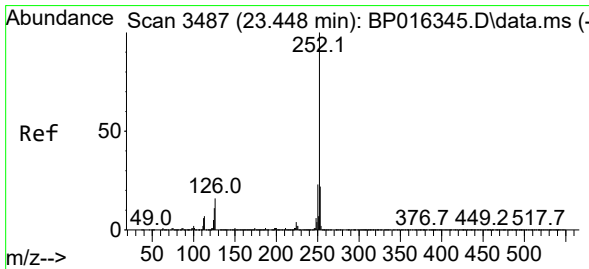
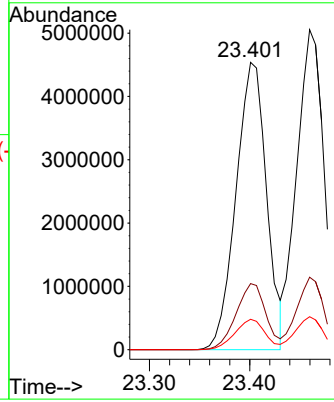
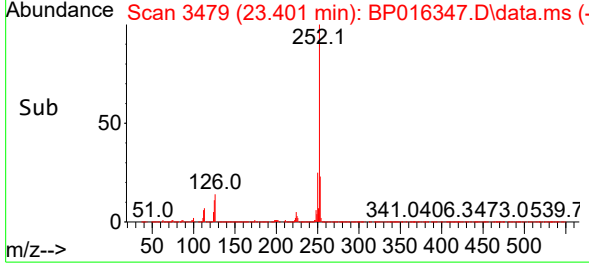


#90  
 Benzo(b)fluoranthene  
 Concen: 81.529 ng/ul  
 RT: 23.401 min Scan# 3479  
 Delta R.T. 0.006 min  
 Lab File: BP016347.D  
 Acq: 25 Jul 2023 14:08

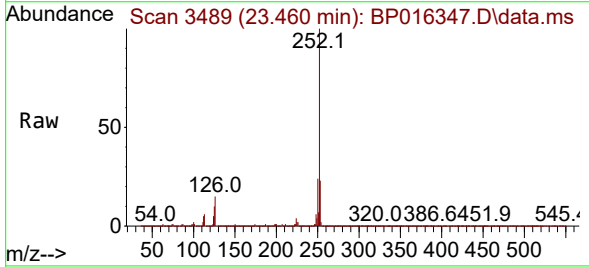
Instrument : BNA\_P  
 ClientSampleId : SSTD080608



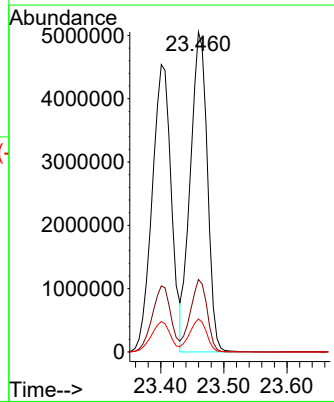
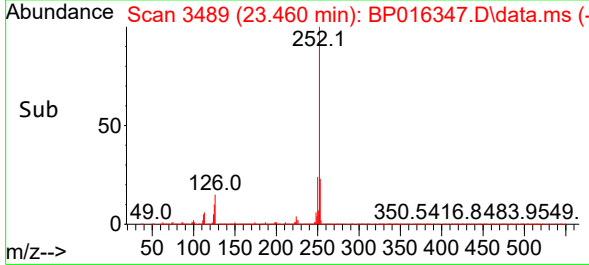
Tgt Ion:252 Resp: 9598512  
 Ion Ratio Lower Upper  
 252 100  
 253 23.0 17.9 26.9  
 125 10.6 8.8 13.2

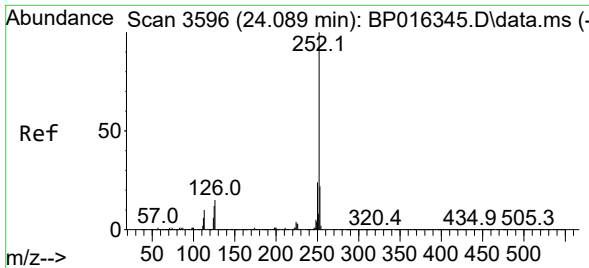


#91  
 Benzo(k)fluoranthene  
 Concen: 80.562 ng/ul  
 RT: 23.460 min Scan# 3489  
 Delta R.T. 0.012 min  
 Lab File: BP016347.D  
 Acq: 25 Jul 2023 14:08



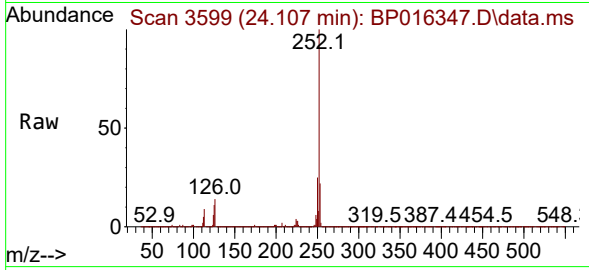
Tgt Ion:252 Resp: 9438884  
 Ion Ratio Lower Upper  
 252 100  
 253 22.7 17.7 26.5  
 125 10.3 9.0 13.6



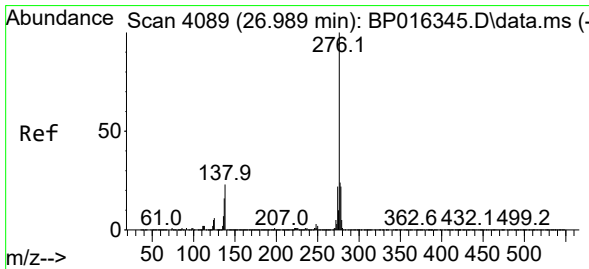
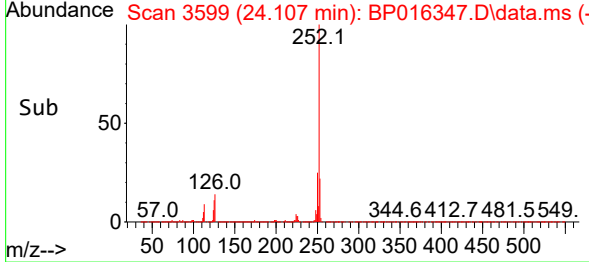
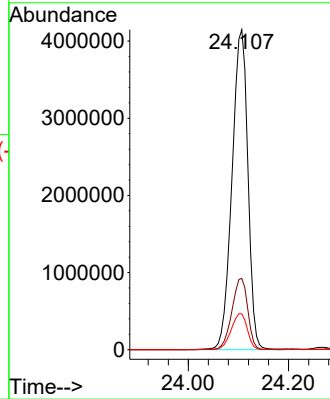


#93  
 Benzo(a)pyrene  
 Concen: 82.244 ng/ul  
 RT: 24.107 min Scan# 31  
 Delta R.T. 0.018 min  
 Lab File: BP016347.D  
 Acq: 25 Jul 2023 14:08

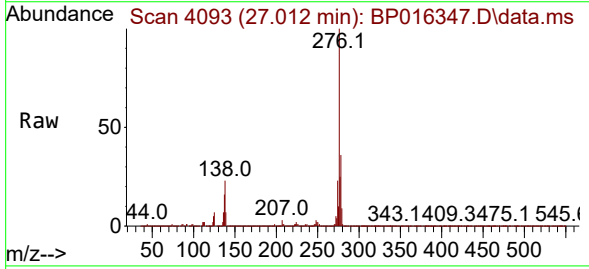
Instrument : BNA\_P  
 ClientSampleId : SSTD080608



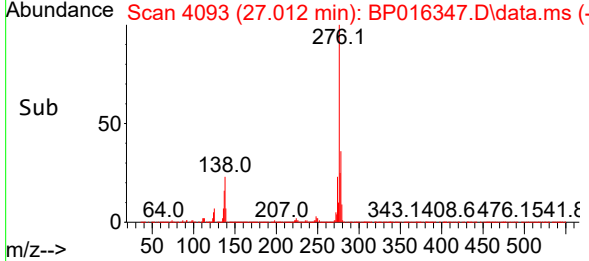
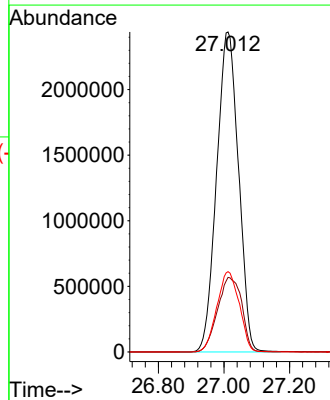
Tgt Ion:252 Resp: 9119134  
 Ion Ratio Lower Upper  
 252 100  
 253 22.2 18.0 27.0  
 125 11.2 9.4 14.0

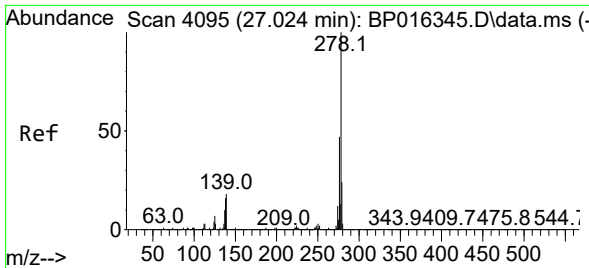


#94  
 Indeno(1,2,3-cd)pyrene  
 Concen: 88.051 ng/ul  
 RT: 27.012 min Scan# 4093  
 Delta R.T. 0.023 min  
 Lab File: BP016347.D  
 Acq: 25 Jul 2023 14:08



Tgt Ion:276 Resp:11273615  
 Ion Ratio Lower Upper  
 276 100  
 138 23.3 18.1 27.1  
 277 25.1 19.0 28.4



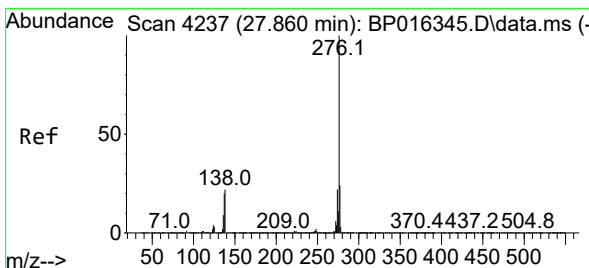
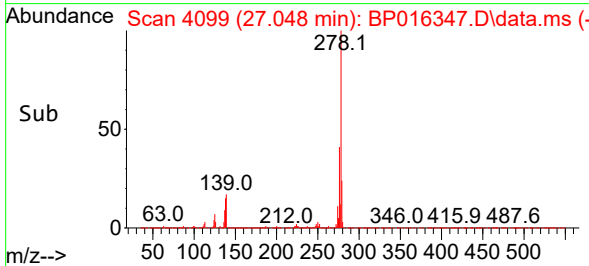
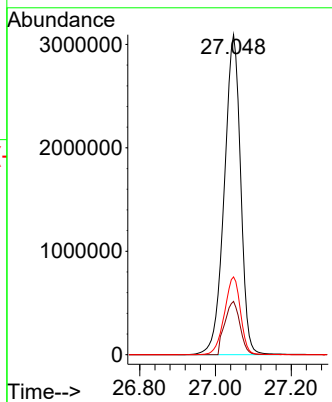
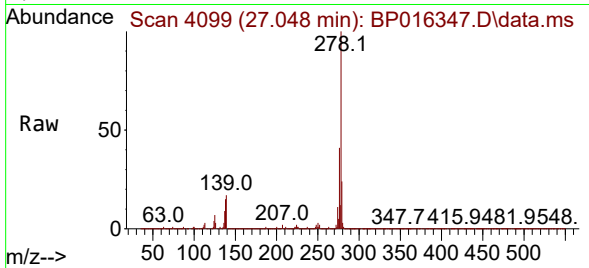


#95  
 Dibenzo(a,h)anthracene  
 Concen: 87.496 ng/ul  
 RT: 27.048 min Scan# 4099  
 Delta R.T. 0.023 min  
 Lab File: BP016347.D  
 Acq: 25 Jul 2023 14:08

Instrument : BNA\_P  
 Client Sample Id : SSTD080608

Tgt Ion: 278 Resp: 9265304

Ion	Ratio	Lower	Upper
278	100		
139	16.7	14.2	21.2
279	24.3	19.4	29.2



#96  
 Benzo(g,h,i)perylene  
 Concen: 87.481 ng/ul  
 RT: 27.889 min Scan# 4242  
 Delta R.T. 0.029 min  
 Lab File: BP016347.D  
 Acq: 25 Jul 2023 14:08

Tgt Ion: 276 Resp: 8867434

Ion	Ratio	Lower	Upper
276	100		
138	21.6	17.8	26.6
277	24.0	19.0	28.4

