

Data Path : Z:\svoasrv\HPCHEM1\BNA_P\Data\BP072924\
 Data File : BP021258.D
 Acq On : 31 Jul 2024 12:35
 Operator : CG/JU
 Sample : P3264-05
 Misc :
 ALS Vial : 6 Sample Multiplier: 1

Instrument :
 BNA_P
 ClientSampleId :
 A4DK9

Manual Integrations
 APPROVED

Reviewed By :Yogesh Patel 09/02/2024
 Supervised By :mohammad ahmed 09/04/2024

Quant Time: Jul 31 13:07:07 2024
 Quant Method : Z:\svoasrv\HPCHEM1\BNA_P\Methods\SFAM-EPA-BP071024.MA.M
 Quant Title : SVOA CALIBRATION
 QLast Update : Mon Jul 29 12:46:18 2024
 Response via : Initial Calibration

Compound	R.T.	QIon	Response	Conc	Units	Dev(Min)
Internal Standards						
1) 1,4-Dichlorobenzene-d4	7.628	152	161928	20.000	ng/ul	0.00
20) Naphthalene-d8	10.393	136	645518	20.000	ng/ul	0.00
38) Acenaphthene-d10	14.275	164	424754	20.000	ng/ul	0.00
64) Phenanthrene-d10	17.092	188	970150	20.000	ng/ul	0.00
79) Chrysene-d12	21.551	240	1005830	20.000	ng/ul	# 0.02
88) Perylene-d12	24.851	264	1050891	20.000	ng/ul	0.02
System Monitoring Compounds						
3) 1,4-Dioxane-d8	3.170	96	10728	3.015	ng/uL	0.00
4) Pyridine-d5	0.000	84	0d	0.000	ng/ul	
7) Phenol-d5	6.840	99	268648	20.350	ng/ul	0.00
9) Bis-(2-Chloroethyl)eth...	6.981	67	152254	19.031	ng/ul	0.00
11) 2-Chlorophenol-d4	7.175	132	229091	21.062	ng/ul	0.00
15) 4-Methylphenol-d8	8.364	113	216747	19.768	ng/ul	0.00
21) Nitrobenzene-d5	8.793	128	113242	22.586	ng/ul	0.00
24) 2-Nitrophenol-d4	9.505	143	131009	22.829	ng/ul	0.00
28) 2,4-Dichlorophenol-d3	10.040	165	291921	28.132	ng/ul	-0.01
31) 4-Chloroaniline-d4	10.563	131	236580	17.210	ng/ul	0.00
46) Dimethylphthalate-d6	13.687	166	917579	29.717	ng/ul	0.00
49) Acenaphthylene-d8	13.963	160	946094	27.288	ng/ul	0.00
54) 4-Nitrophenol-d4	14.563	143	143380	32.637	ng/ul	-0.02
60) Fluorene-d10	15.293	176	762274	30.092	ng/ul	0.00
65) 4,6-Dinitro-2-methylph...	15.469	200	134828	22.969	ng/ul	0.00
73) Anthracene-d10	17.198	188	1291209	29.966	ng/ul	0.00
81) Pyrene-d10	19.586	212	1675633	26.946	ng/ul	0.01
92) Benzo(a)pyrene-d12	24.610	264	1697561	32.753	ng/ul	0.01
Target Compounds						
8) Phenol	6.869	94	905003	67.747	ng/ul	97
10) Bis(2-Chloroethyl)ether	7.075	93	1438403	130.344	ng/ul	95
12) 2-Chlorophenol	7.211	128	289170	26.526	ng/ul	97
17) N-Nitroso-di-n-propyla...	8.440	70	632626	71.347	ng/ul	92
22) Nitrobenzene	8.834	77	358953	29.887	ng/ul	94
25) 2-Nitrophenol	9.534	139	528799	88.354	ng/ul	95
27) Bis(2-Chloroethoxy)met...	9.822	93	1721325	118.601	ng/ul	98
29) 2,4-Dichlorophenol	10.069	162	1244635	121.706	ng/ul	97
30) Naphthalene	10.440	128	5028165	148.084	ng/ul	99
35) 4-Chloro-3-methylphenol	11.722	107	1592989	143.304	ng/ul	98
41) 2,4,6-Trichlorophenol	12.693	196	1127883	129.399	ng/ul	98
42) 2,4,5-Trichlorophenol	12.787	196	1287598	139.619	ng/ul	100
48) 2,6-Dinitrotoluene	13.881	165	804707	128.470	ng/ul	94
50) Acenaphthylene	13.993	152	5606893	142.831	ng/ul	99
52) Acenaphthene	14.340	153	2923155	112.193	ng/ul	99
55) 4-Nitrophenol	14.575	109	714787	200.017	ng/ul	90
56) Dibenzofuran	14.687	168	3348449	93.849	ng/ul	96
59) Diethylphthalate	15.128	149	4839985	154.578	ng/ul	98
61) Fluorene	15.357	166	2442169	83.879	ng/ul	100
62) 4-Chlorophenyl-phenyle...	15.345	204	2625821	166.204	ng/ul	95
71) Pentachlorophenol	16.751	266	1268030	179.065	ng/ul	97
74) Anthracene	17.245	178	7897402	153.924	ng/ul	99
78) Di-n-butylphthalate	18.092	149	3954471	68.339	ng/ul	100
80) Fluoranthene	19.245	202	8084411	107.653	ng/ul	97

Data Path : Z:\svoasrv\HPCHEM1\BNA_P\Data\BP072924\
 Data File : BP021258.D
 Acq On : 31 Jul 2024 12:35
 Operator : CG/JU
 Sample : P3264-05
 Misc :
 ALS Vial : 6 Sample Multiplier: 1

Instrument :
 BNA_P
ClientSampleId :
 A4DK9

Manual Integrations
APPROVED

Reviewed By :Yogesh Patel 09/02/2024
 Supervised By :mohammad ahmed 09/04/2024

Quant Time: Jul 31 13:07:07 2024
 Quant Method : Z:\svoasrv\HPCHEM1\BNA_P\Methods\SFAM-EPA-BP071024.MA.M
 Quant Title : SVOA CALIBRATION
 QLast Update : Mon Jul 29 12:46:18 2024
 Response via : Initial Calibration

Compound	R.T.	QIon	Response	Conc	Units	Dev(Min)
82) Pyrene	19.628	202	10050925	131.525	ng/ul	96
83) Butylbenzylphthalate	20.563	149	4996691	156.935	ng/ul	92
85) Benzo(a)anthracene	21.528	228	6060442	86.014	ng/ul	100
86) Bis(2-ethylhexyl)phtha...	21.439	149	6214574	135.631	ng/ul#	95
87) Chrysene	21.610	228	10972218	167.588	ng/ul	97
91) Benzo(k)fluoranthene	23.869	252	5335303	83.830	ng/ul#	98
93) Benzo(a)pyrene	24.692	252	2457718	40.782	ng/ul	99
94) Indeno(1,2,3-cd)pyrene	28.657	276	8470635m	109.078	ng/ul	
95) Dibenzo(a,h)anthracene	28.680	278	2021687	31.438	ng/ul	99
96) Benzo(g,h,i)perylene	29.839	276	7942994m	125.592	ng/ul	

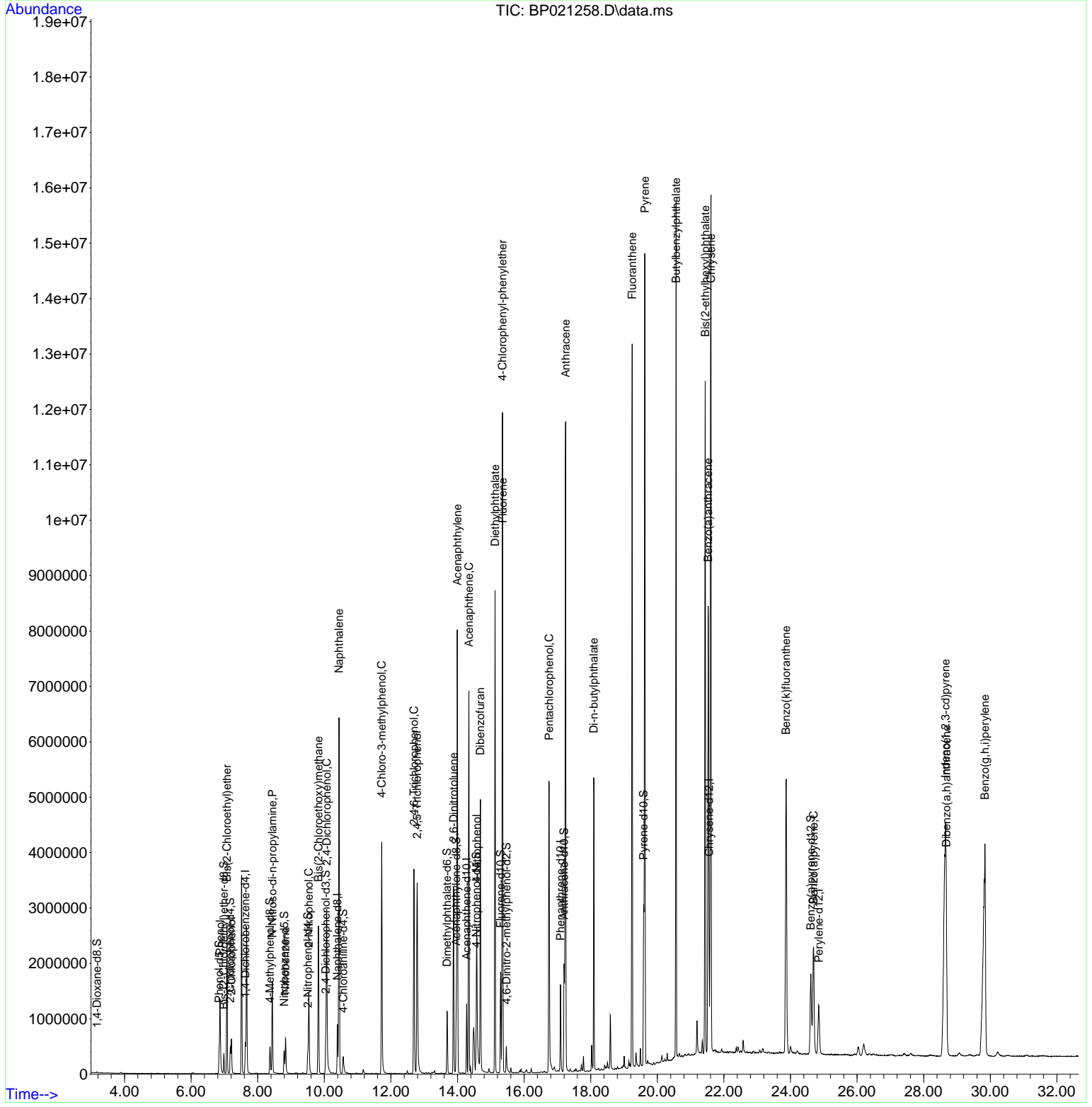
(#) = qualifier out of range (m) = manual integration (+) = signals summed

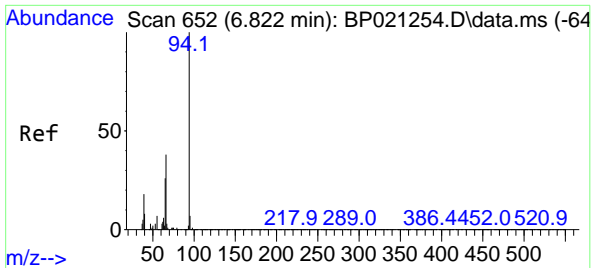
Data Path : Z:\svoasrv\HPCHEM1\BNA_P\Data\BP072924\
 Data File : BP021258.D
 Acq On : 31 Jul 2024 12:35
 Operator : CG/JU
 Sample : P3264-05
 Misc :
 ALS Vial : 6 Sample Multiplier: 1

Instrument :
 BNA_P
 ClientSampleId :
 A4DK9

Quant Time: Jul 31 13:07:07 2024
 Quant Method : Z:\svoasrv\HPCHEM1\BNA_P\Methods\SFAM-EPA-BP071024.MA.M
 Quant Title : SVOA CALIBRATION
 QLast Update : Mon Jul 29 12:46:18 2024
 Response via : Initial Calibration

Manual Integrations
APPROVED
 Reviewed By :Yogesh Patel 09/02/2024
 Supervised By :mohammad ahmed 09/04/2024





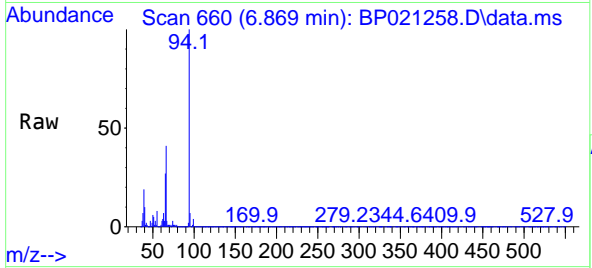
#8
Pheno1
Concen: 67.747 ng/u1
RT: 6.869 min Scan# 60
Delta R.T. -0.005 min
Lab File: BP021258.D
Acq: 31 Jul 2024 12:35

Instrument :

BNA_P

ClientSampleId :

A4DK9



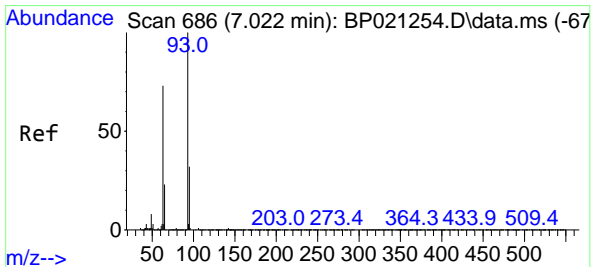
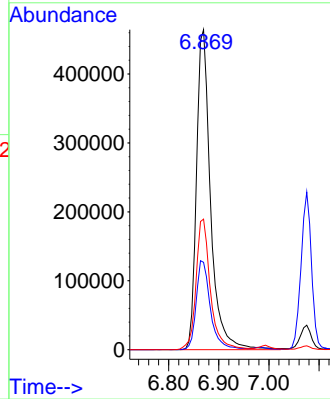
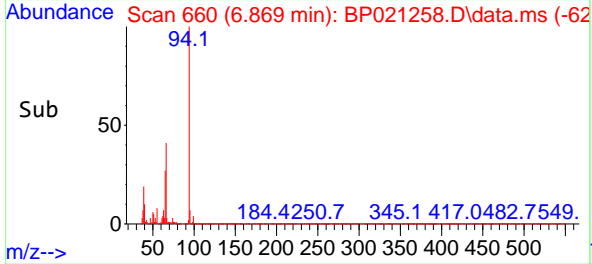
Tgt Ion: 94 Resp: 90500
Ion Ratio Lower Upper
94 100
65 27.3 23.4 35.0
66 40.8 33.9 50.9

Manual Integrations

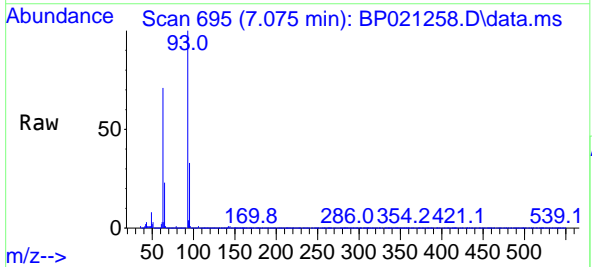
APPROVED

Reviewed By :Yogesh Patel 09/02/2024

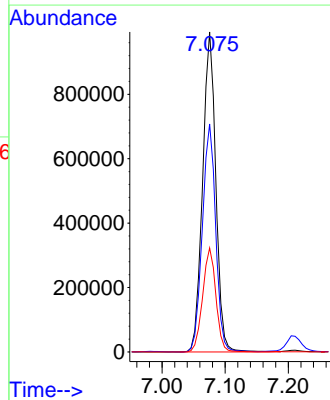
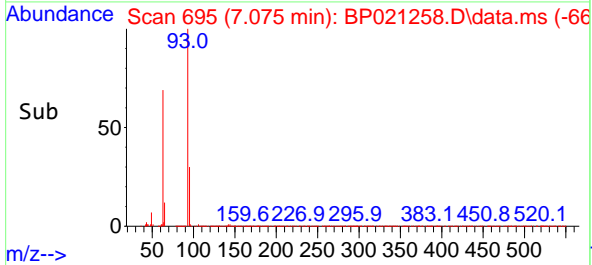
Supervised By :mohammad ahmed 09/04/2024

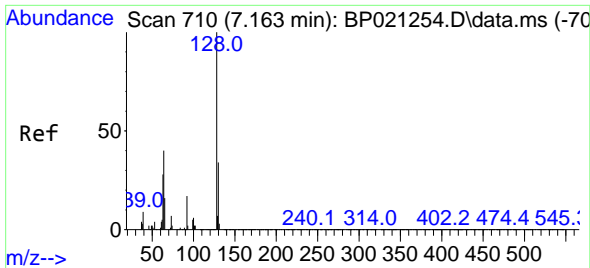


#10
Bis(2-Chloroethyl)ether
Concen: 130.344 ng/u1
RT: 7.075 min Scan# 695
Delta R.T. 0.001 min
Lab File: BP021258.D
Acq: 31 Jul 2024 12:35



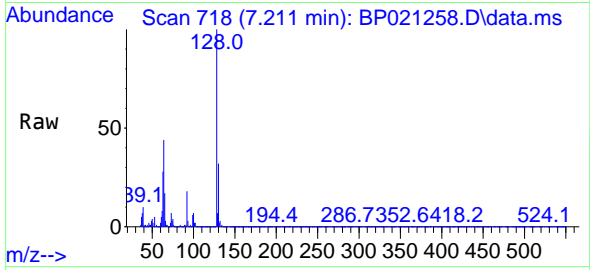
Tgt Ion: 93 Resp: 1438403
Ion Ratio Lower Upper
93 100
63 71.3 61.5 92.3
95 32.5 25.1 37.7





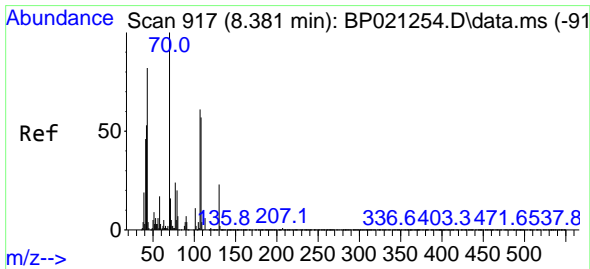
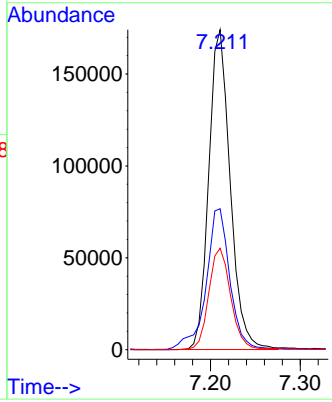
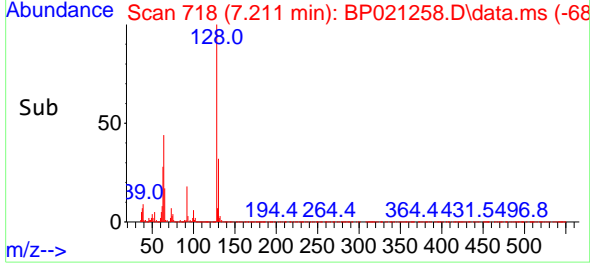
#12
 2-Chlorophenol
 Concen: 26.526 ng/ul
 RT: 7.211 min Scan# 718
 Delta R.T. 0.000 min
 Lab File: BP021258.D
 Acq: 31 Jul 2024 12:35

Instrument : BNA_P
 Client Sample Id : A4DK9

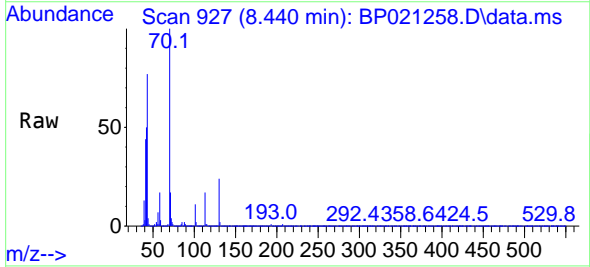


Tgt Ion: 128 Resp: 289170
 Ion Ratio Lower Upper
 128 100
 64 44.0 37.9 56.9
 130 31.7 25.6 38.4

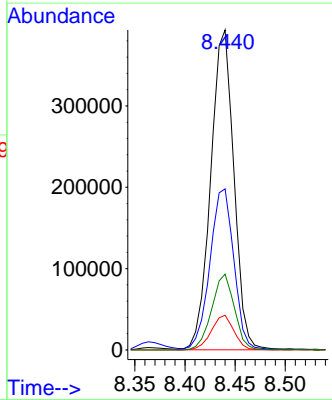
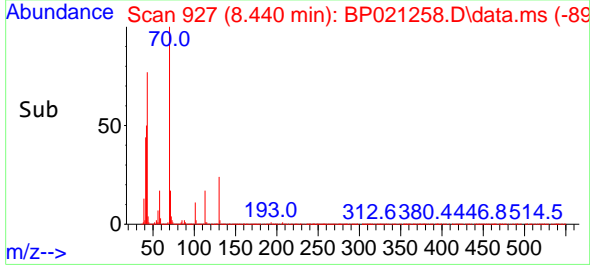
Manual Integrations
APPROVED
 Reviewed By :Yogesh Patel 09/02/2024
 Supervised By :mohammad ahmed 09/04/2024

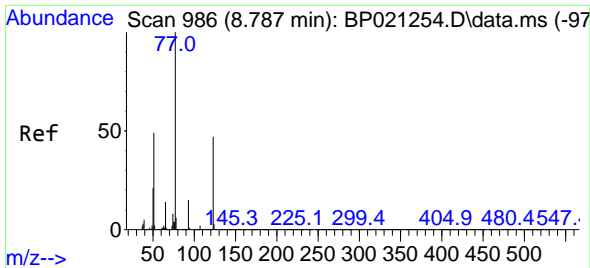


#17
 N-Nitroso-di-n-propylamine
 Concen: 71.347 ng/ul
 RT: 8.440 min Scan# 927
 Delta R.T. 0.006 min
 Lab File: BP021258.D
 Acq: 31 Jul 2024 12:35



Tgt Ion: 70 Resp: 632626
 Ion Ratio Lower Upper
 70 100
 42 50.4 46.6 69.8
 101 10.8 7.4 11.0
 130 23.7 17.2 25.8





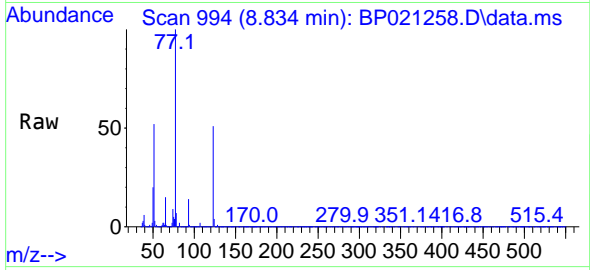
#22
 Nitrobenzene
 Concen: 29.887 ng/u1
 RT: 8.834 min Scan# 911
 Delta R.T. -0.005 min
 Lab File: BP021258.D
 Acq: 31 Jul 2024 12:35

Instrument :

BNA_P

ClientSampleId :

A4DK9



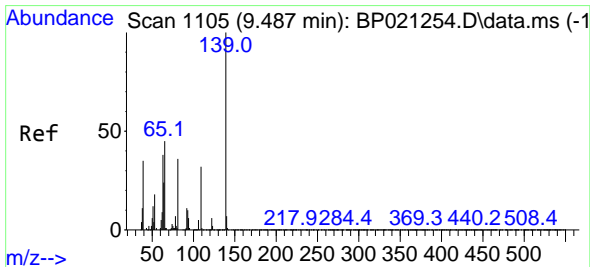
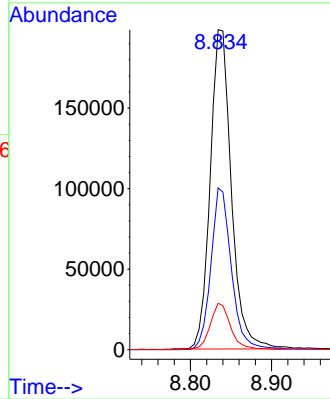
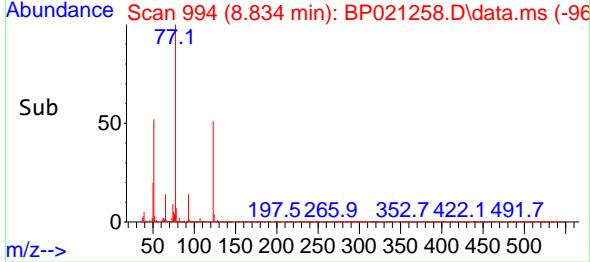
Tgt Ion: 77 Resp: 35895
 Ion Ratio Lower Upper
 77 100
 123 50.6 36.7 55.1
 65 14.5 11.1 16.7

Manual Integrations

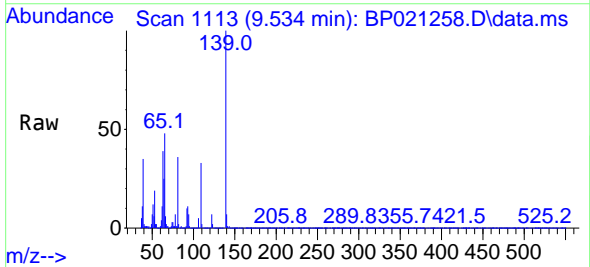
APPROVED

Reviewed By :Yogesh Patel 09/02/2024

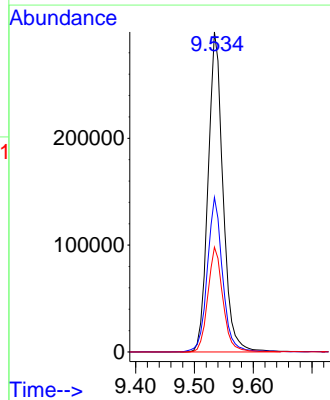
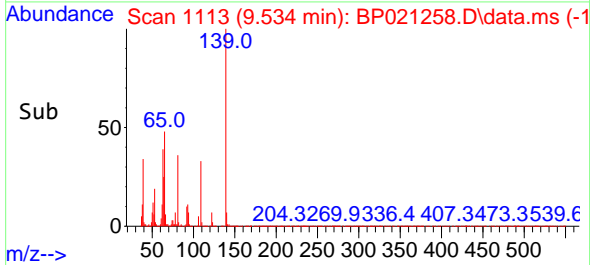
Supervised By :mohammad ahmed 09/04/2024

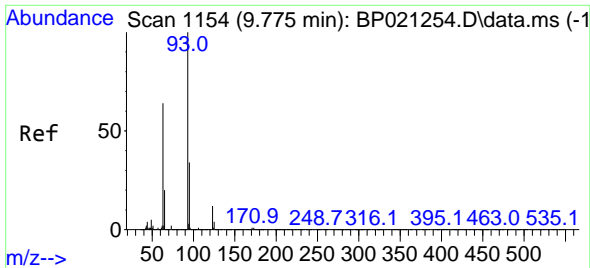


#25
 2-Nitrophenol
 Concen: 88.354 ng/u1
 RT: 9.534 min Scan# 1113
 Delta R.T. -0.005 min
 Lab File: BP021258.D
 Acq: 31 Jul 2024 12:35



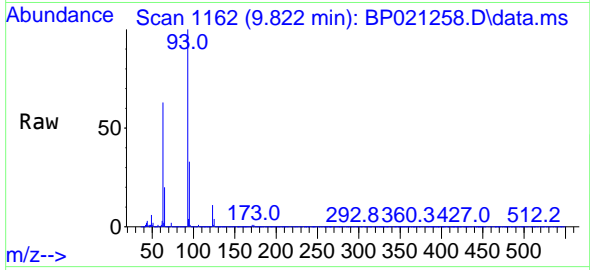
Tgt Ion:139 Resp: 528799
 Ion Ratio Lower Upper
 139 100
 65 48.3 42.9 64.3
 109 32.7 26.2 39.4





#27
 Bis(2-Chloroethoxy)methane
 Concen: 118.601 ng/ul
 RT: 9.822 min Scan# 1162
 Delta R.T. 0.001 min
 Lab File: BP021258.D
 Acq: 31 Jul 2024 12:35

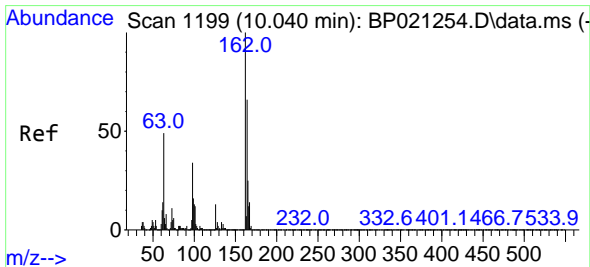
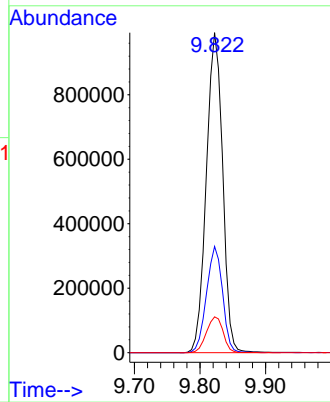
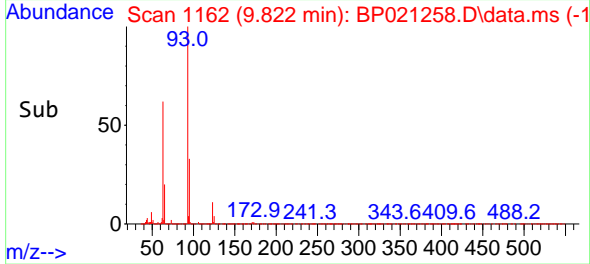
Instrument :
 BNA_P
 ClientSampleId :
 A4DK9



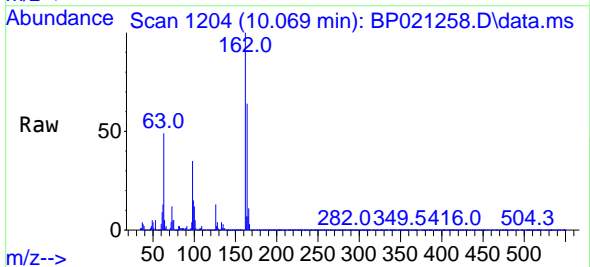
Tgt Ion: 93 Resp: 172132
 Ion Ratio Lower Upper
 93 100
 95 33.2 25.5 38.3
 123 11.2 9.0 13.4

Manual Integrations
 APPROVED

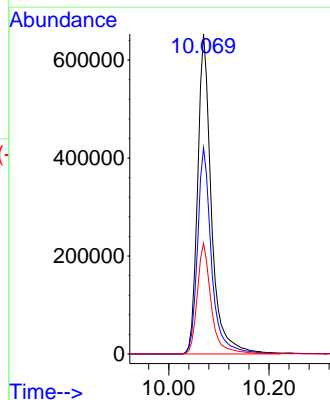
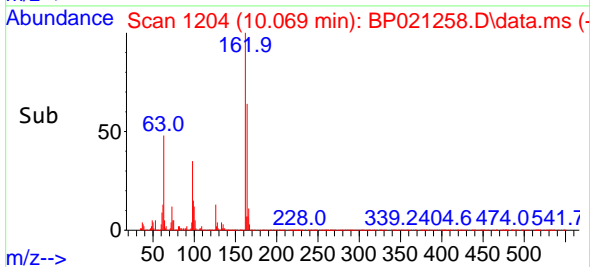
Reviewed By :Yogesh Patel 09/02/2024
 Supervised By :mohammad ahmed 09/04/2024

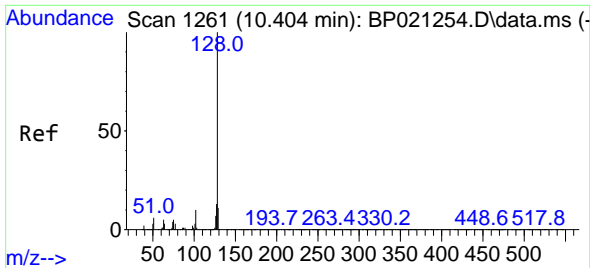


#29
 2,4-Dichlorophenol
 Concen: 121.706 ng/ul
 RT: 10.069 min Scan# 1204
 Delta R.T. -0.011 min
 Lab File: BP021258.D
 Acq: 31 Jul 2024 12:35



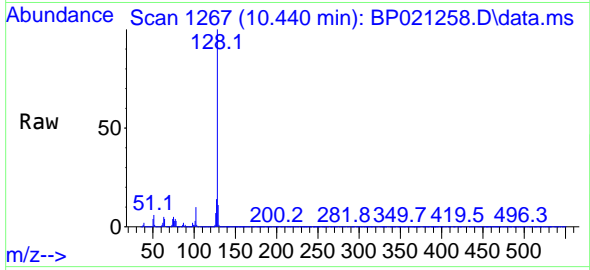
Tgt Ion:162 Resp: 1244635
 Ion Ratio Lower Upper
 162 100
 164 64.4 53.3 79.9
 98 34.6 28.7 43.1





#30
 Naphthalene
 Concen: 148.084 ng/u1
 RT: 10.440 min Scan# 11
 Delta R.T. 0.001 min
 Lab File: BP021258.D
 Acq: 31 Jul 2024 12:35

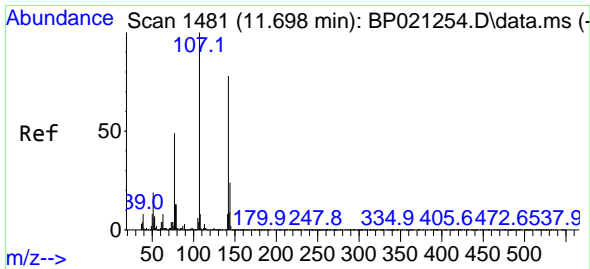
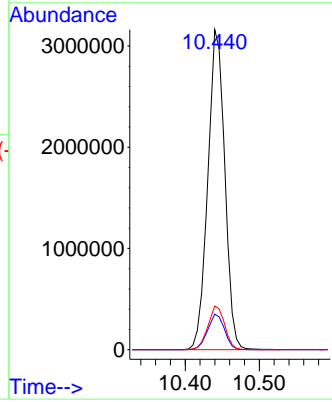
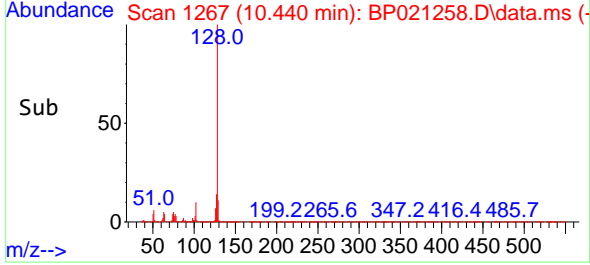
Instrument :
 BNA_P
 ClientSampleId :
 A4DK9



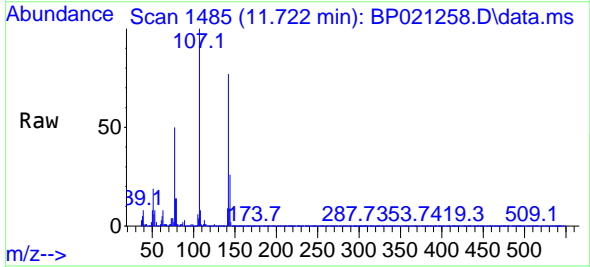
Tgt Ion:128 Resp: 502816
 Ion Ratio Lower Upper
 128 100
 129 11.1 8.6 13.0
 127 13.7 10.8 16.2

Manual Integrations
 APPROVED

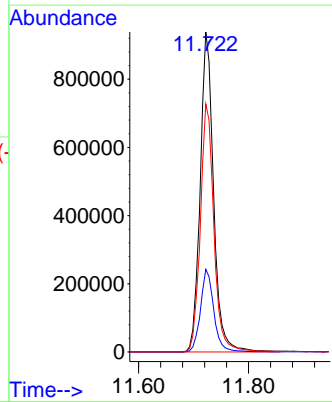
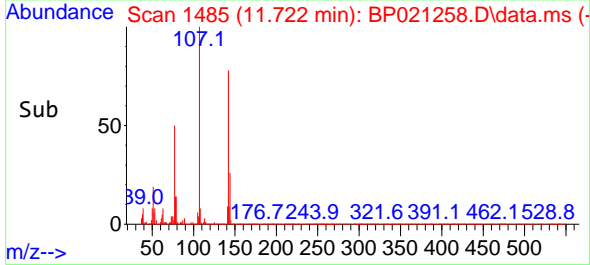
Reviewed By :Yogesh Patel 09/02/2024
 Supervised By :mohammad ahmed 09/04/2024

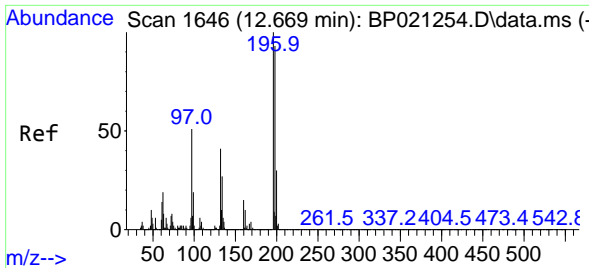


#35
 4-Chloro-3-methylphenol
 Concen: 143.304 ng/u1
 RT: 11.722 min Scan# 1485
 Delta R.T. -0.017 min
 Lab File: BP021258.D
 Acq: 31 Jul 2024 12:35



Tgt Ion:107 Resp: 1592989
 Ion Ratio Lower Upper
 107 100
 144 25.8 19.3 28.9
 142 77.5 60.7 91.1





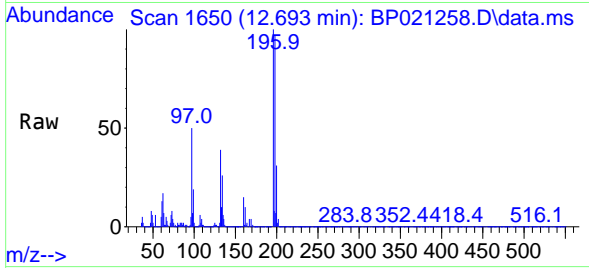
#41
 2,4,6-Trichlorophenol
 Concen: 129.399 ng/ul
 RT: 12.693 min Scan# 1650
 Delta R.T. -0.011 min
 Lab File: BP021258.D
 Acq: 31 Jul 2024 12:35

Instrument :

BNA_P

ClientSampleId :

A4DK9



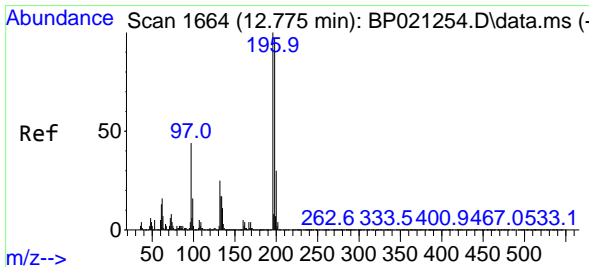
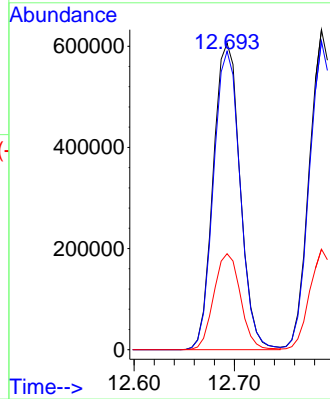
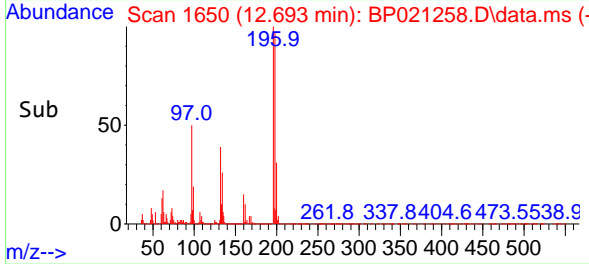
Tgt Ion:196 Resp: 112788
 Ion Ratio Lower Upper
 196 100
 198 97.4 76.6 115.0
 200 31.3 26.0 39.0

Manual Integrations

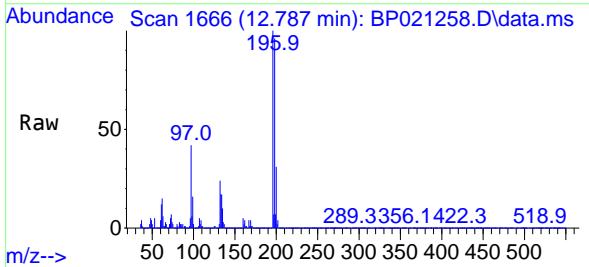
APPROVED

Reviewed By :Yogesh Patel 09/02/2024

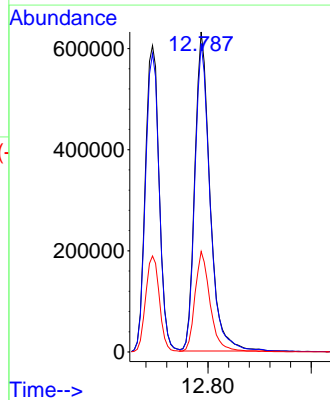
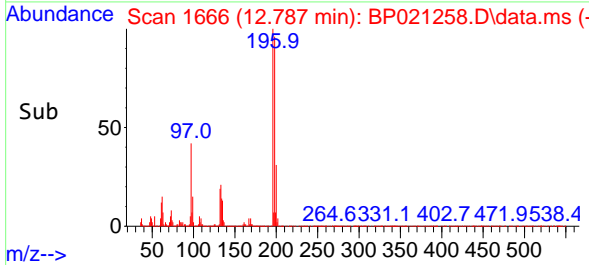
Supervised By :mohammad ahmed 09/04/2024

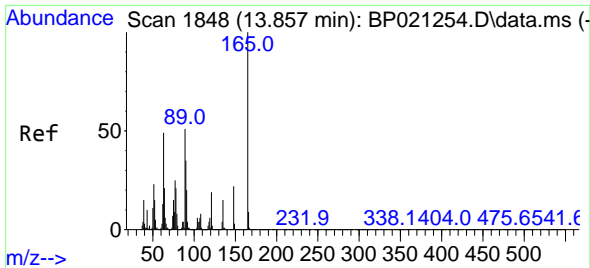


#42
 2,4,5-Trichlorophenol
 Concen: 139.619 ng/ul
 RT: 12.787 min Scan# 1666
 Delta R.T. -0.023 min
 Lab File: BP021258.D
 Acq: 31 Jul 2024 12:35



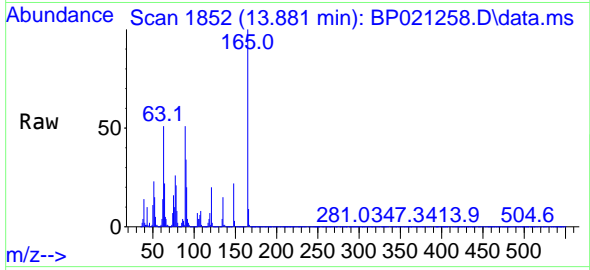
Tgt Ion:196 Resp: 1287598
 Ion Ratio Lower Upper
 196 100
 198 96.4 77.1 115.7
 200 31.4 25.3 37.9





#48
 2,6-Dinitrotoluene
 Concen: 128.470 ng/u1
 RT: 13.881 min Scan# 1848
 Delta R.T. 0.006 min
 Lab File: BP021258.D
 Acq: 31 Jul 2024 12:35

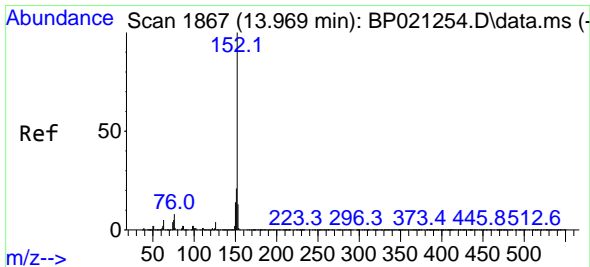
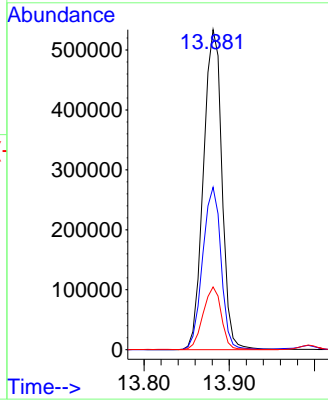
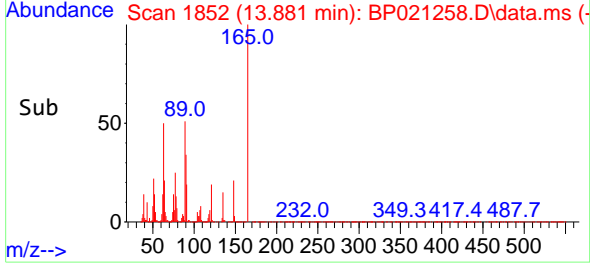
Instrument :
 BNA_P
 ClientSampleId :
 A4DK9



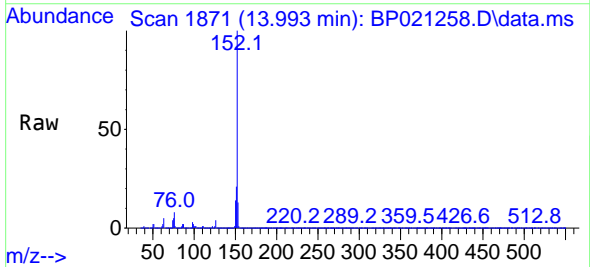
Tgt Ion:165 Resp: 80470
 Ion Ratio Lower Upper
 165 100
 89 50.8 44.7 67.1
 121 19.6 16.5 24.7

Manual Integrations
 APPROVED

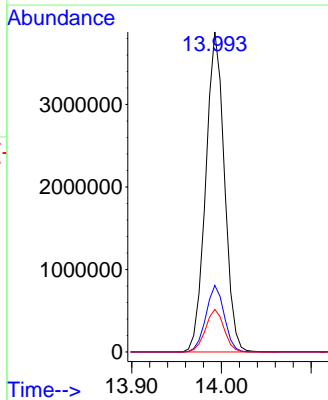
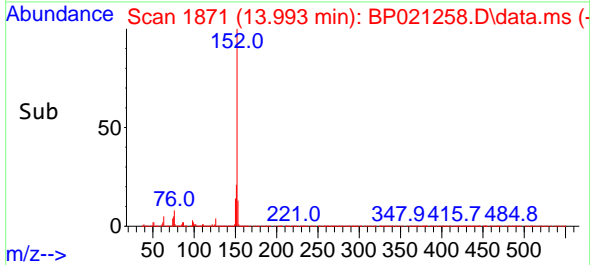
Reviewed By :Yogesh Patel 09/02/2024
 Supervised By :mohammad ahmed 09/04/2024

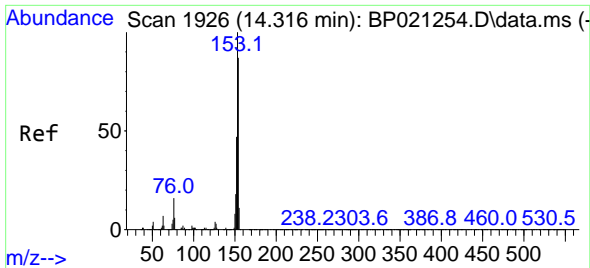


#50
 Acenaphthylene
 Concen: 142.831 ng/u1
 RT: 13.993 min Scan# 1871
 Delta R.T. 0.001 min
 Lab File: BP021258.D
 Acq: 31 Jul 2024 12:35



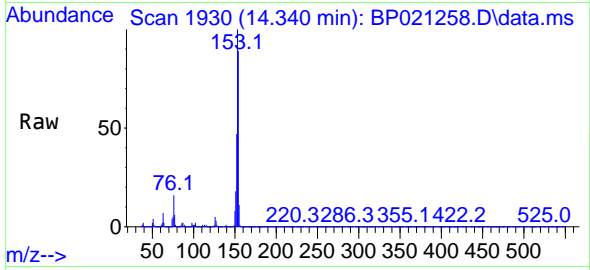
Tgt Ion:152 Resp: 5606893
 Ion Ratio Lower Upper
 152 100
 151 20.8 16.2 24.2
 153 13.3 10.3 15.5





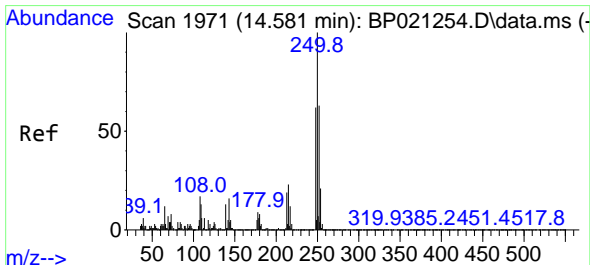
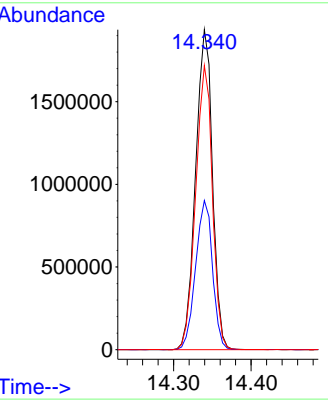
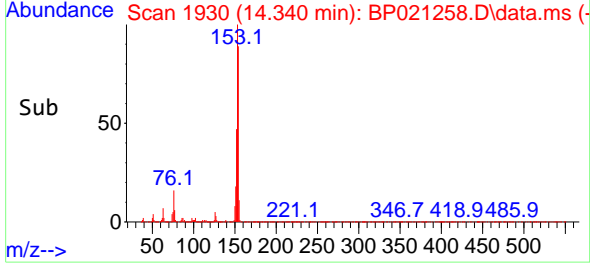
#52
 Acenaphthene
 Concen: 112.193 ng/uI
 RT: 14.340 min Scan# 1930
 Delta R.T. 0.000 min
 Lab File: BP021258.D
 Acq: 31 Jul 2024 12:35

Instrument : BNA_P
 Client SampleId : A4DK9

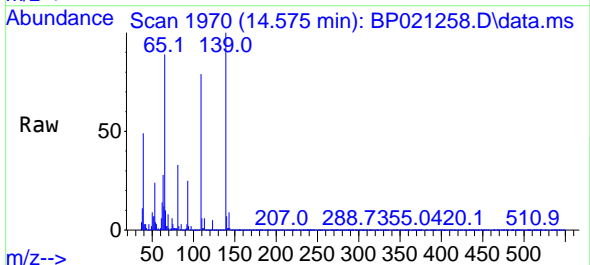


Tgt Ion:153 Resp: 292315
 Ion Ratio Lower Upper
 153 100
 152 46.6 37.8 56.6
 154 88.7 71.8 107.6

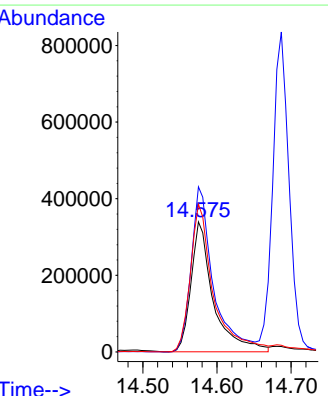
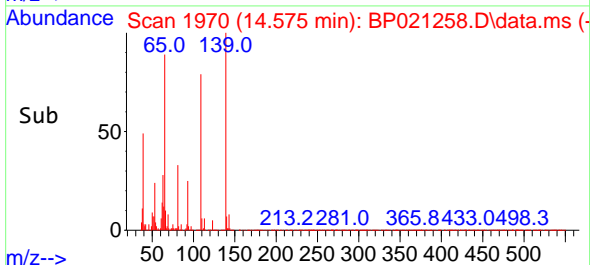
Manual Integrations
APPROVED
 Reviewed By :Yogesh Patel 09/02/2024
 Supervised By :mohammad ahmed 09/04/2024

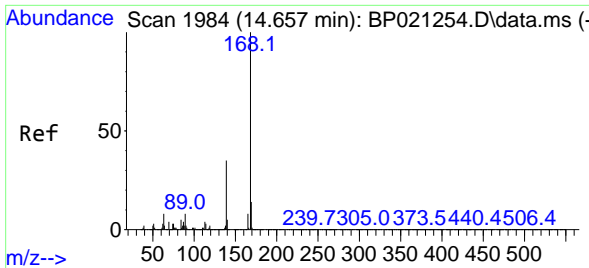


#55
 4-Nitrophenol
 Concen: 200.017 ng/uI
 RT: 14.575 min Scan# 1970
 Delta R.T. -0.017 min
 Lab File: BP021258.D
 Acq: 31 Jul 2024 12:35



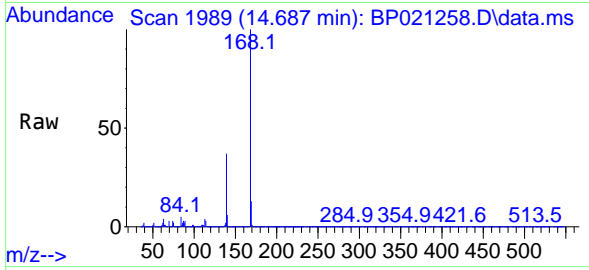
Tgt Ion:109 Resp: 714787
 Ion Ratio Lower Upper
 109 100
 139 126.9 98.0 147.0
 65 113.5 106.0 159.0





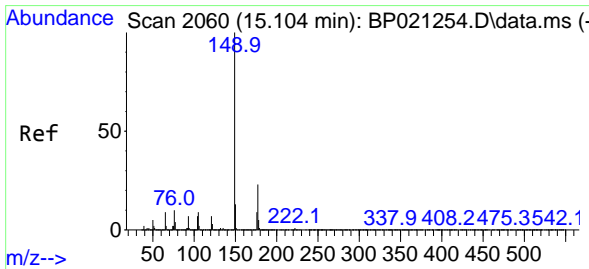
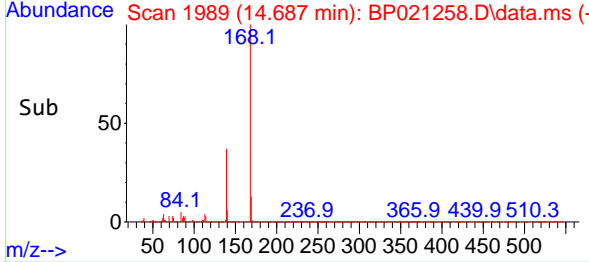
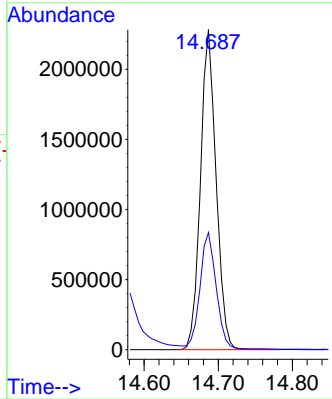
#56
 Dibenzofuran
 Concen: 93.849 ng/u1
 RT: 14.687 min Scan# 1989
 Delta R.T. 0.001 min
 Lab File: BP021258.D
 Acq: 31 Jul 2024 12:35

Instrument : BNA_P
 Client SampleId : A4DK9



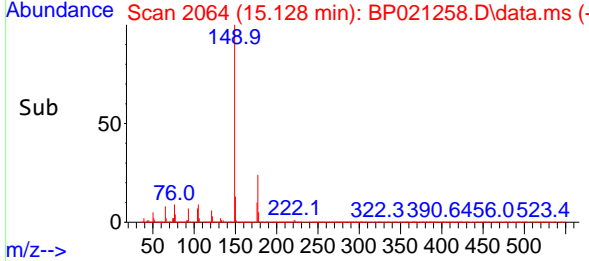
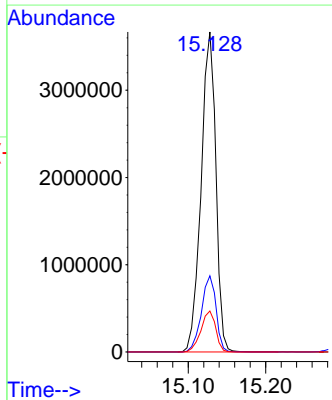
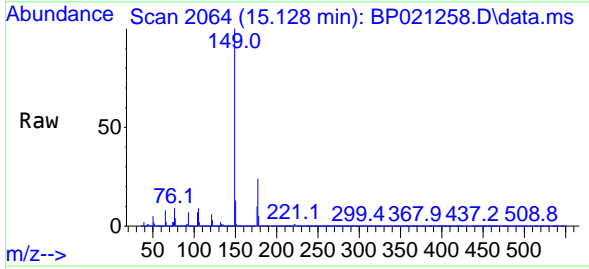
Tgt Ion:168 Resp: 3348449
 Ion Ratio Lower Upper
 168 100
 139 36.6 31.1 46.7

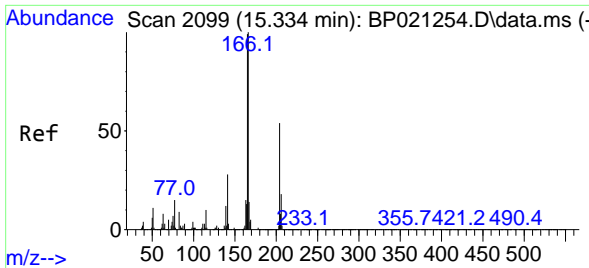
Manual Integrations
APPROVED
 Reviewed By :Yogesh Patel 09/02/2024
 Supervised By :mohammad ahmed 09/04/2024



#59
 Diethylphthalate
 Concen: 154.578 ng/u1
 RT: 15.128 min Scan# 2064
 Delta R.T. 0.006 min
 Lab File: BP021258.D
 Acq: 31 Jul 2024 12:35

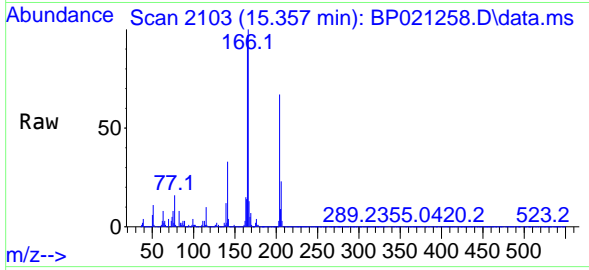
Tgt Ion:149 Resp: 4839985
 Ion Ratio Lower Upper
 149 100
 177 23.8 17.7 26.5
 150 12.8 10.2 15.2





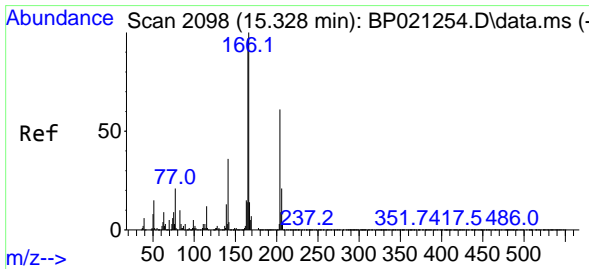
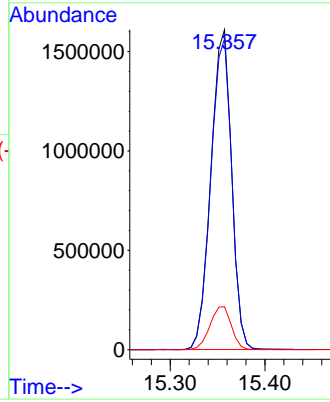
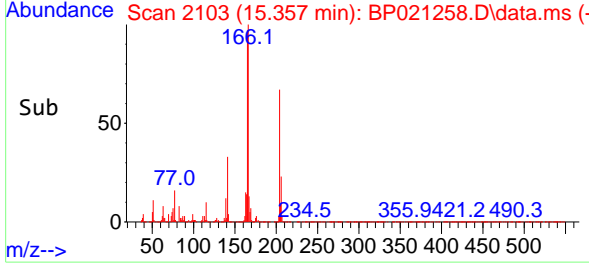
#61
 Fluorene
 Concen: 83.879 ng/u1
 RT: 15.357 min Scan# 2101
 Delta R.T. 0.012 min
 Lab File: BP021258.D
 Acq: 31 Jul 2024 12:35

Instrument : BNA_P
 ClientSampleId : A4DK9

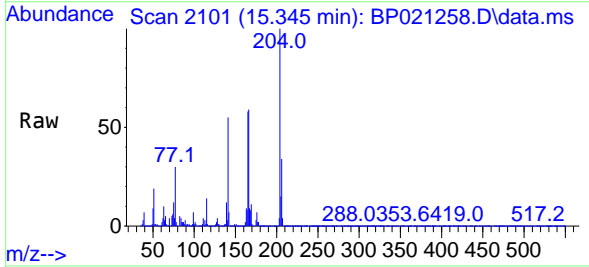


Tgt Ion:166 Resp: 2442169
 Ion Ratio Lower Upper
 166 100
 165 97.1 78.1 117.1
 167 13.4 10.9 16.3

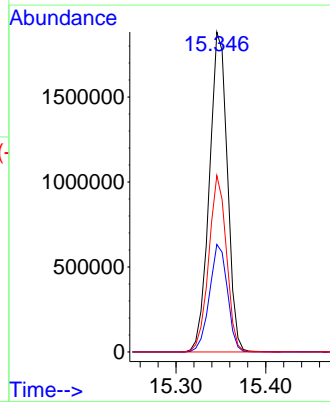
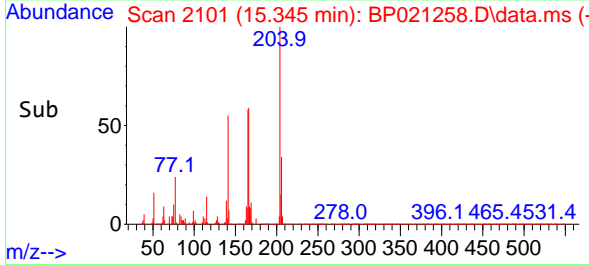
Manual Integrations
APPROVED
 Reviewed By :Yogesh Patel 09/02/2024
 Supervised By :mohammad ahmed 09/04/2024

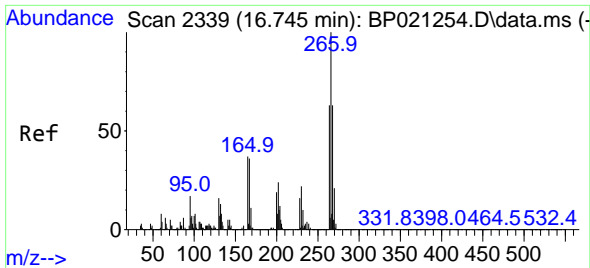


#62
 4-Chlorophenyl-phenylether
 Concen: 166.204 ng/u1
 RT: 15.345 min Scan# 2101
 Delta R.T. 0.012 min
 Lab File: BP021258.D
 Acq: 31 Jul 2024 12:35



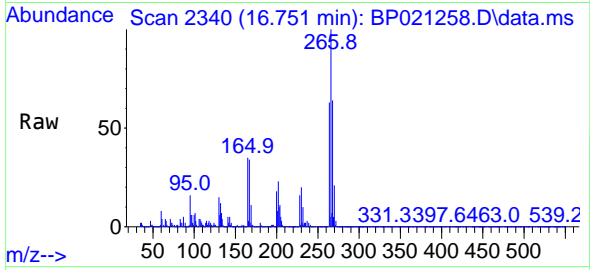
Tgt Ion:204 Resp: 2625821
 Ion Ratio Lower Upper
 204 100
 206 33.6 26.4 39.6
 141 55.2 48.5 72.7





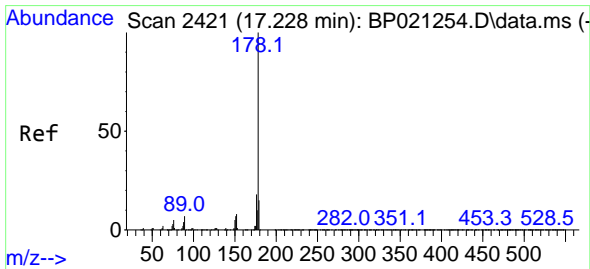
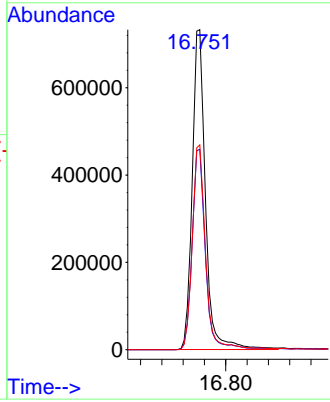
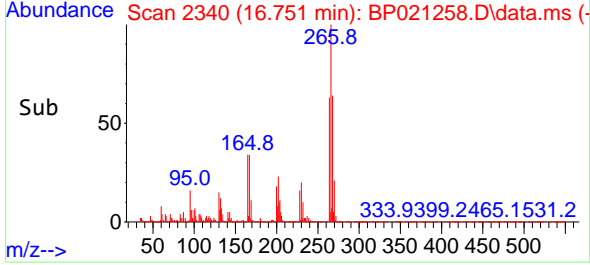
#71
 Pentachlorophenol
 Concen: 179.065 ng/u1
 RT: 16.751 min Scan# 21
 Delta R.T. 0.001 min
 Lab File: BP021258.D
 Acq: 31 Jul 2024 12:35

Instrument : BNA_P
 ClientSampleId : A4DK9

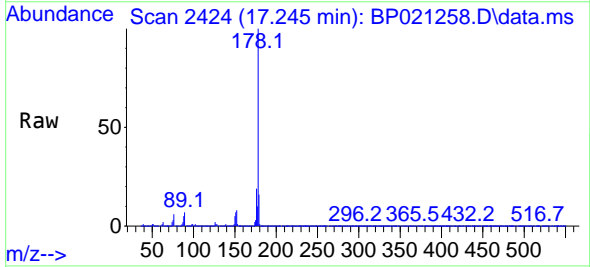


Tgt Ion:266 Resp: 1268030
 Ion Ratio Lower Upper
 266 100
 264 62.6 52.3 78.5
 268 64.0 52.3 78.5

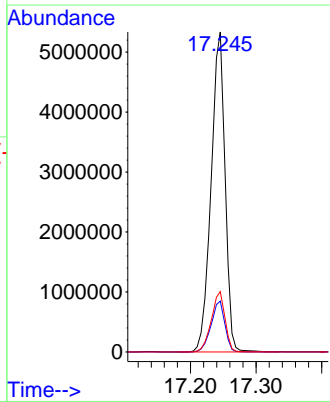
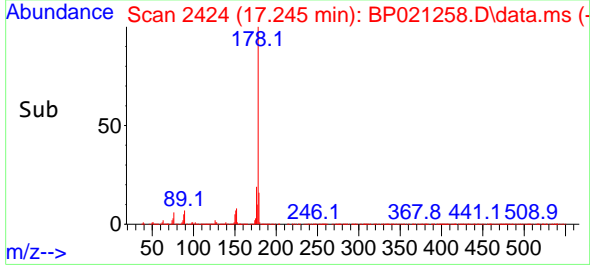
Manual Integrations
APPROVED
 Reviewed By :Yogesh Patel 09/02/2024
 Supervised By :mohammad ahmed 09/04/2024

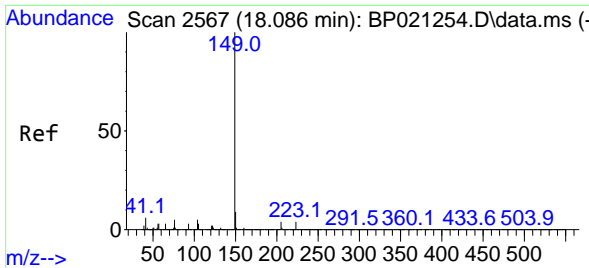


#74
 Anthracene
 Concen: 153.924 ng/u1
 RT: 17.245 min Scan# 2424
 Delta R.T. 0.012 min
 Lab File: BP021258.D
 Acq: 31 Jul 2024 12:35



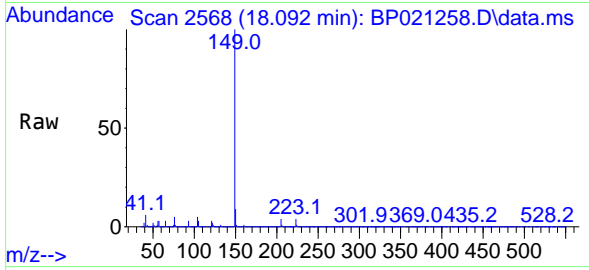
Tgt Ion:178 Resp: 7897402
 Ion Ratio Lower Upper
 178 100
 179 15.9 12.5 18.7
 176 18.9 14.8 22.2





#78
 Di-n-butylphthalate
 Concen: 68.339 ng/u1
 RT: 18.092 min Scan# 21
 Delta R.T. -0.005 min
 Lab File: BP021258.D
 Acq: 31 Jul 2024 12:35

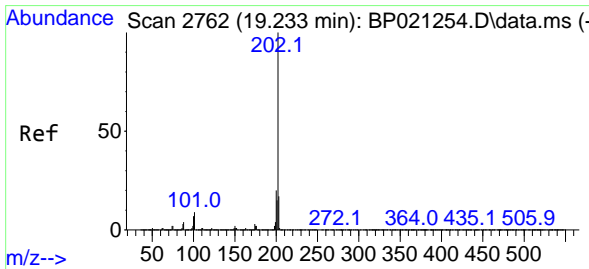
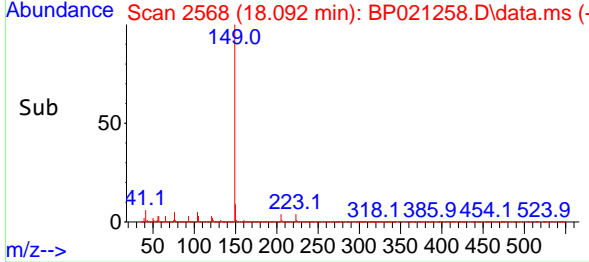
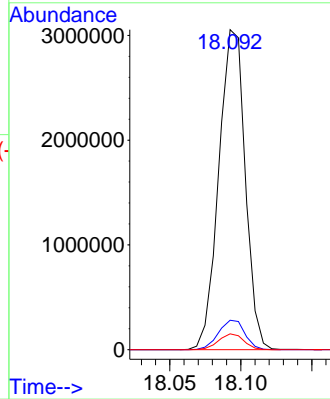
Instrument : BNA_P
 ClientSampleId : A4DK9



Tgt Ion:149 Resp: 395447
 Ion Ratio Lower Upper
 149 100
 150 9.2 7.4 11.0
 104 5.0 3.9 5.9

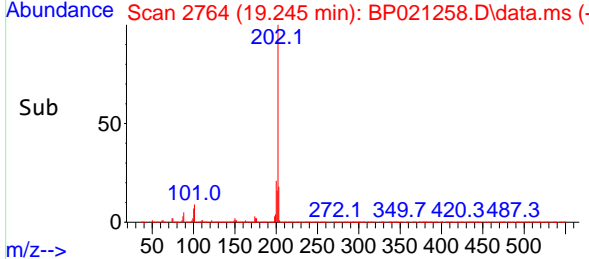
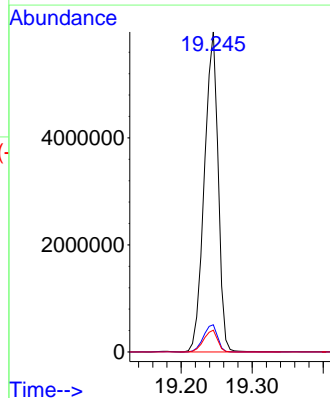
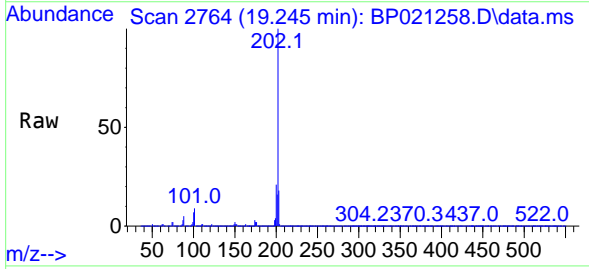
Manual Integrations
APPROVED

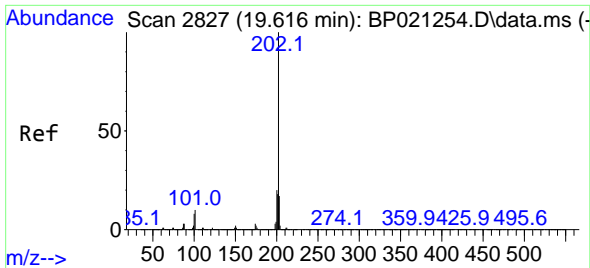
Reviewed By :Yogesh Patel 09/02/2024
 Supervised By :mohammad ahmed 09/04/2024



#80
 Fluoranthene
 Concen: 107.653 ng/u1
 RT: 19.245 min Scan# 2764
 Delta R.T. 0.012 min
 Lab File: BP021258.D
 Acq: 31 Jul 2024 12:35

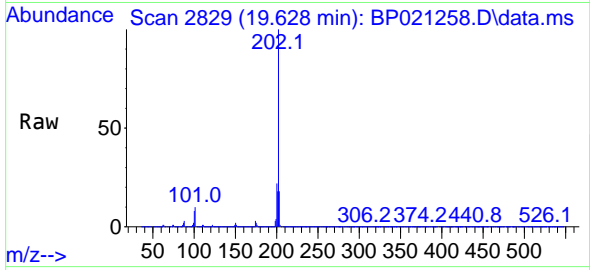
Tgt Ion:202 Resp: 8084411
 Ion Ratio Lower Upper
 202 100
 101 8.5 8.0 12.0
 100 6.8 6.1 9.1





#82
 Pyrene
 Concen: 131.525 ng/u1
 RT: 19.628 min Scan# 2829
 Delta R.T. 0.018 min
 Lab File: BP021258.D
 Acq: 31 Jul 2024 12:35

Instrument :
 BNA_P
ClientSampleId :
 A4DK9

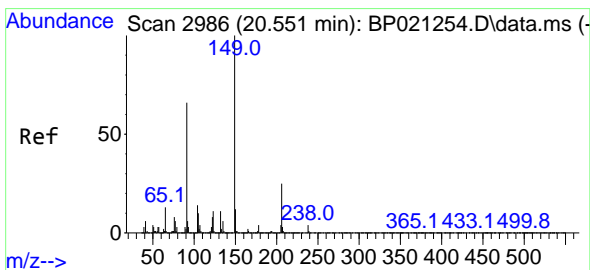
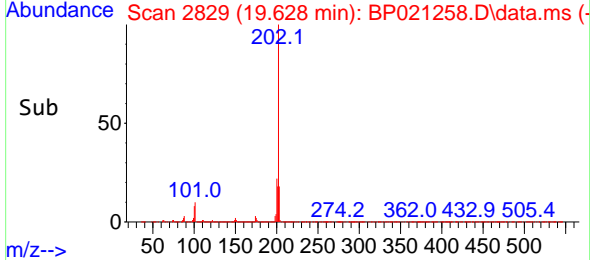
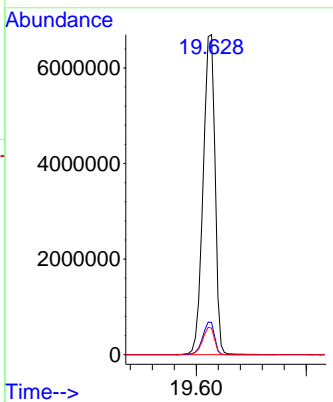


Tgt Ion: 202 Resp: 1005092

Ion	Ratio	Lower	Upper
202	100		
101	10.0	9.4	14.2
100	8.3	7.8	11.6

Manual Integrations
APPROVED

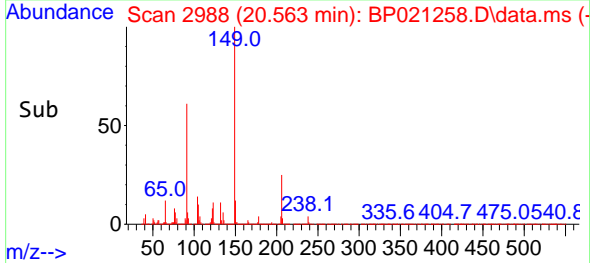
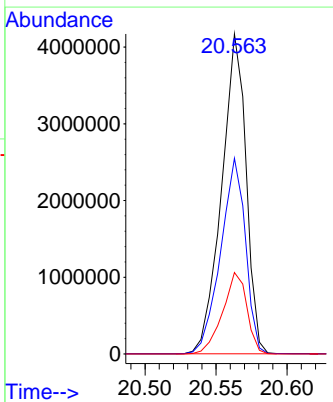
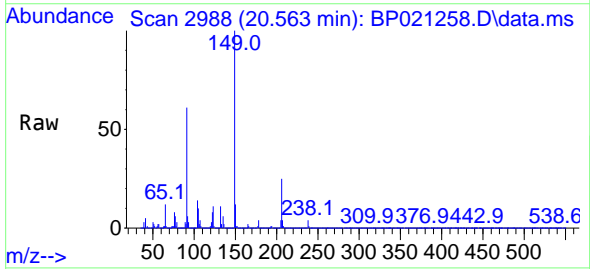
Reviewed By :Yogesh Patel 09/02/2024
 Supervised By :mohammad ahmed 09/04/2024

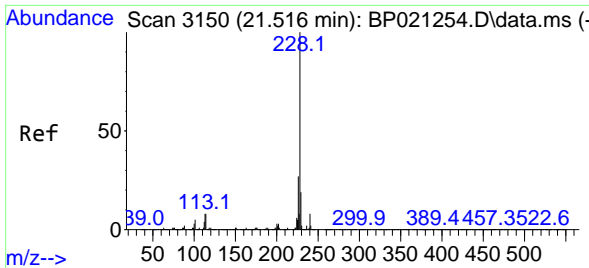


#83
 Butylbenzylphthalate
 Concen: 156.935 ng/u1
 RT: 20.563 min Scan# 2988
 Delta R.T. 0.012 min
 Lab File: BP021258.D
 Acq: 31 Jul 2024 12:35

Tgt Ion: 149 Resp: 4996691

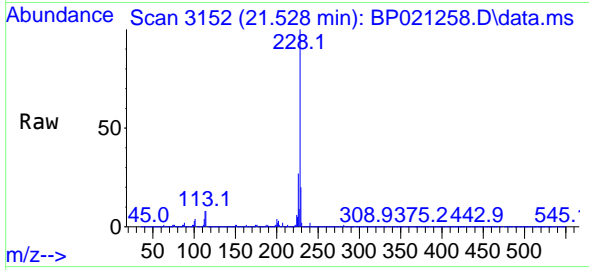
Ion	Ratio	Lower	Upper
149	100		
91	61.2	54.1	81.1
206	25.5	17.0	25.6





#85
 Benzo(a)anthracene
 Concen: 86.014 ng/uI
 RT: 21.528 min Scan# 3152
 Delta R.T. 0.018 min
 Lab File: BP021258.D
 Acq: 31 Jul 2024 12:35

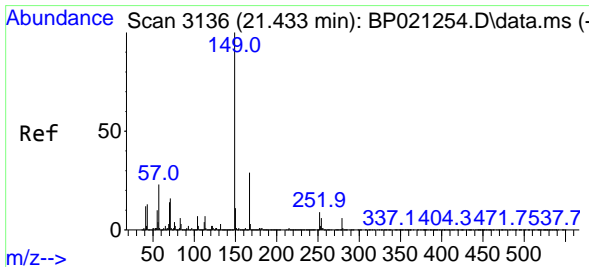
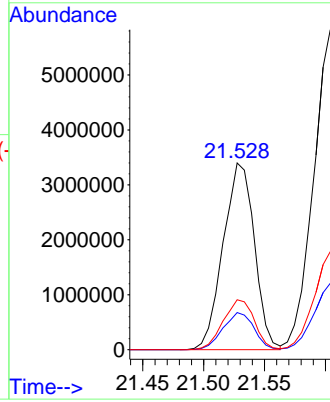
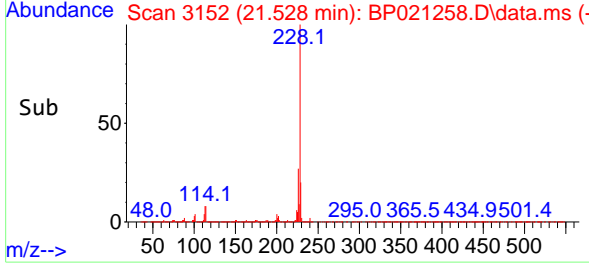
Instrument :
 BNA_P
 ClientSampleId :
 A4DK9



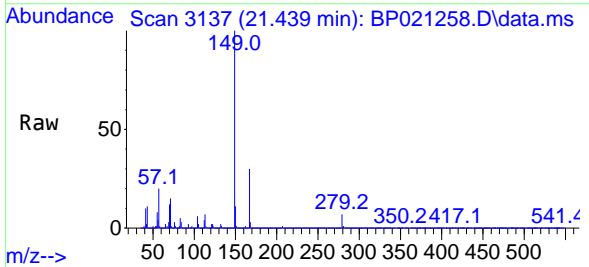
Tgt Ion:228 Resp: 606044
 Ion Ratio Lower Upper
 228 100
 229 19.9 15.5 23.3
 226 26.8 21.4 32.2

Manual Integrations
 APPROVED

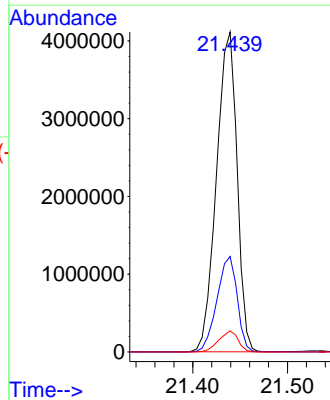
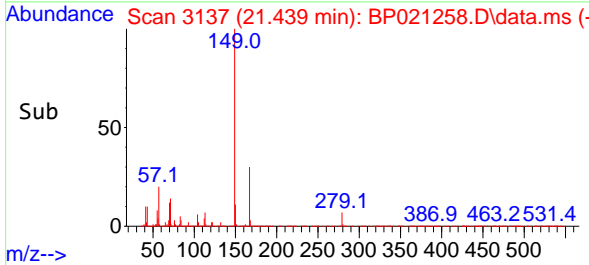
Reviewed By :Yogesh Patel 09/02/2024
 Supervised By :mohammad ahmed 09/04/2024

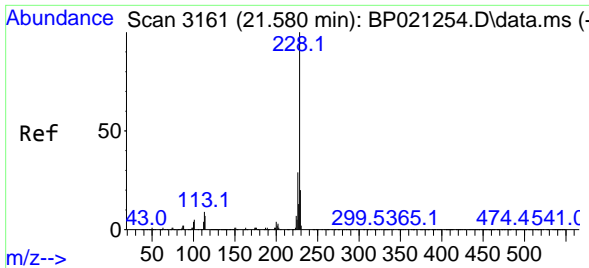


#86
 Bis(2-ethylhexyl)phthalate
 Concen: 135.631 ng/uI
 RT: 21.439 min Scan# 3137
 Delta R.T. 0.018 min
 Lab File: BP021258.D
 Acq: 31 Jul 2024 12:35



Tgt Ion:149 Resp: 6214574
 Ion Ratio Lower Upper
 149 100
 167 29.9 22.1 33.1
 279 6.6 3.7 5.5#





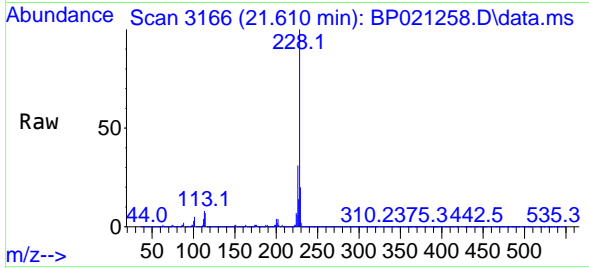
#87
 Chrysene
 Concen: 167.588 ng/u1
 RT: 21.610 min Scan# 3166
 Delta R.T. 0.024 min
 Lab File: BP021258.D
 Acq: 31 Jul 2024 12:35

Instrument :

BNA_P

Client SampleId :

A4DK9

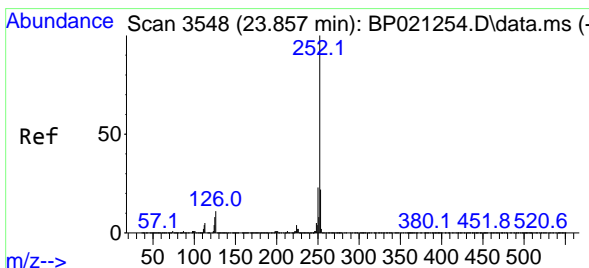
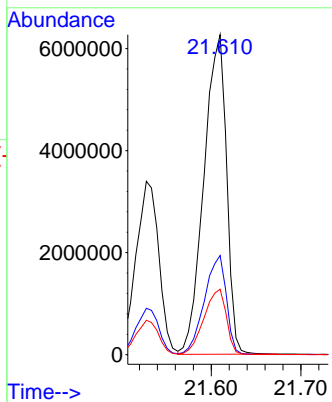
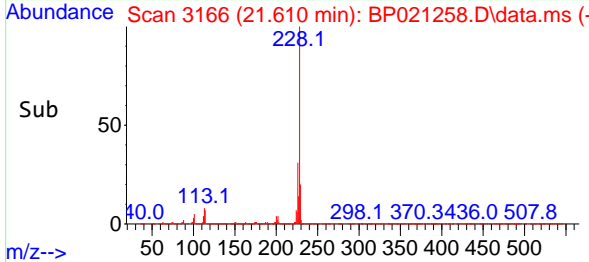


Tgt Ion: 228 Resp: 10972218
 Ion Ratio Lower Upper
 228 100
 226 31.0 23.6 35.4
 229 20.5 15.5 23.3

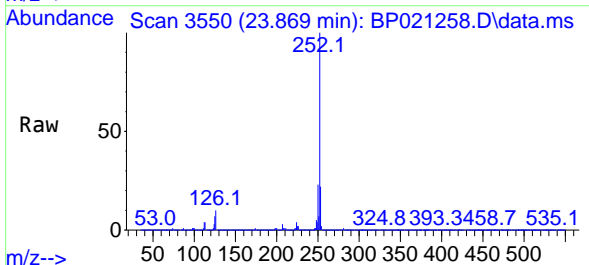
Manual Integrations

APPROVED

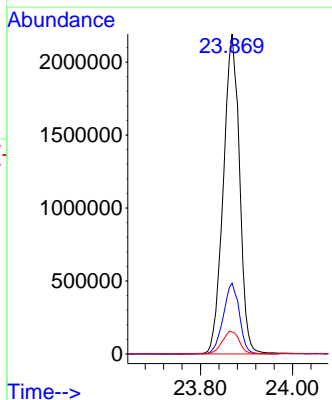
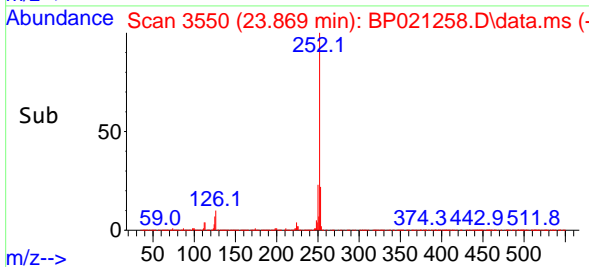
Reviewed By : Yogesh Patel 09/02/2024
 Supervised By : mohammad ahmed 09/04/2024

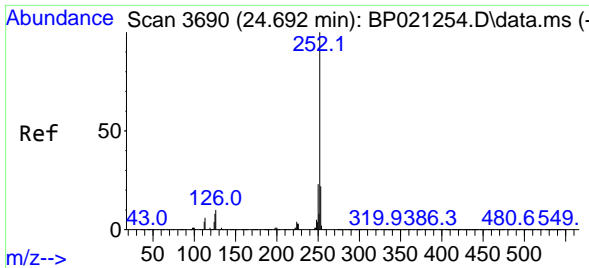


#91
 Benzo(k)fluoranthene
 Concen: 83.830 ng/u1
 RT: 23.869 min Scan# 3550
 Delta R.T. 0.018 min
 Lab File: BP021258.D
 Acq: 31 Jul 2024 12:35



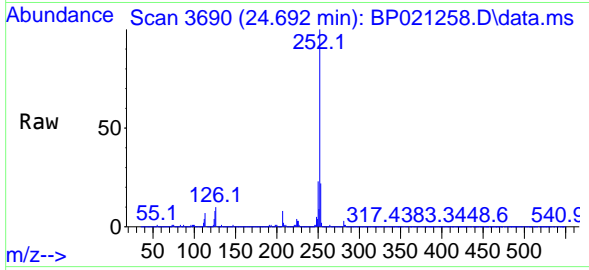
Tgt Ion: 252 Resp: 5335303
 Ion Ratio Lower Upper
 252 100
 253 22.1 17.4 26.2
 125 6.8 7.4 11.0#





#93
 Benzo(a)pyrene
 Concen: 40.782 ng/u1
 RT: 24.692 min Scan# 30
 Delta R.T. 0.012 min
 Lab File: BP021258.D
 Acq: 31 Jul 2024 12:35

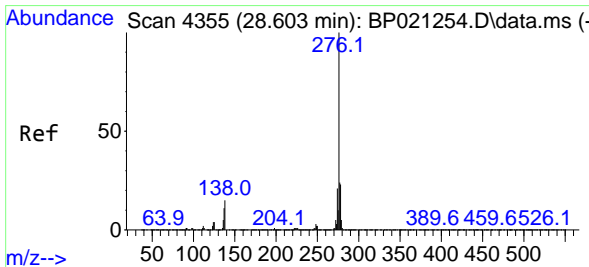
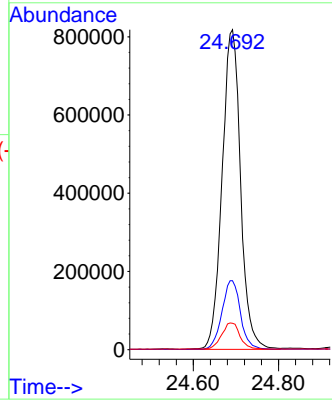
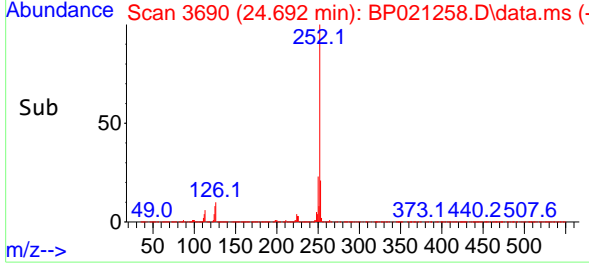
Instrument :
 BNA_P
ClientSampleId :
 A4DK9



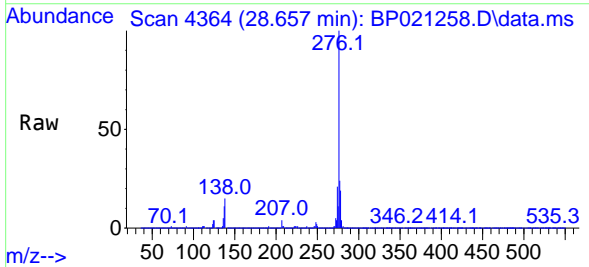
Tgt Ion:252 Resp: 2457718
 Ion Ratio Lower Upper
 252 100
 253 21.5 17.4 26.0
 125 8.2 7.7 11.5

Manual Integrations
APPROVED

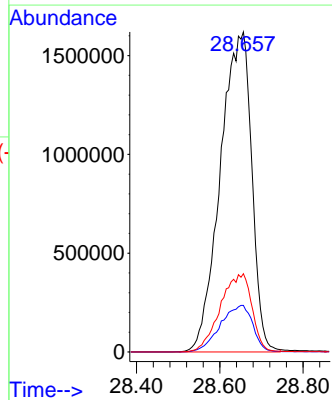
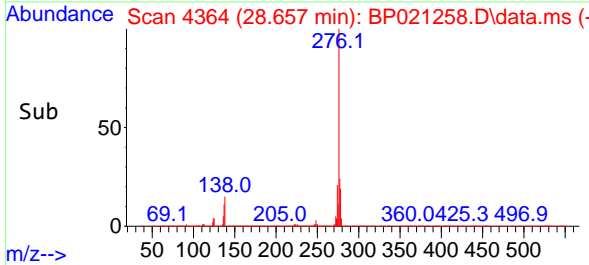
Reviewed By :Yogesh Patel 09/02/2024
 Supervised By :mohammad ahmed 09/04/2024

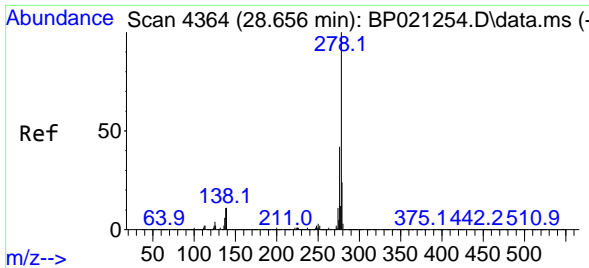


#94
 Indeno(1,2,3-cd)pyrene
 Concen: 109.078 ng/u1 m
 RT: 28.657 min Scan# 4364
 Delta R.T. 0.059 min
 Lab File: BP021258.D
 Acq: 31 Jul 2024 12:35



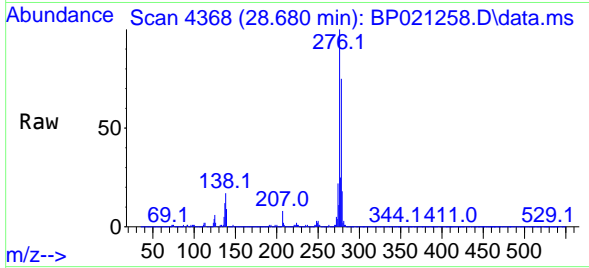
Tgt Ion:276 Resp: 8470635
 Ion Ratio Lower Upper
 276 100
 138 14.5 14.3 21.5
 277 24.4 19.2 28.8





#95
 Dibenzo(a,h)anthracene
 Concen: 31.438 ng/ul
 RT: 28.680 min Scan# 41
 Delta R.T. 0.042 min
 Lab File: BP021258.D
 Acq: 31 Jul 2024 12:35

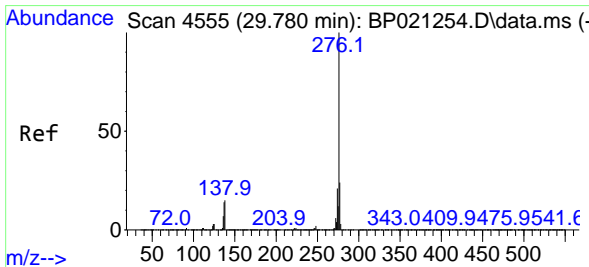
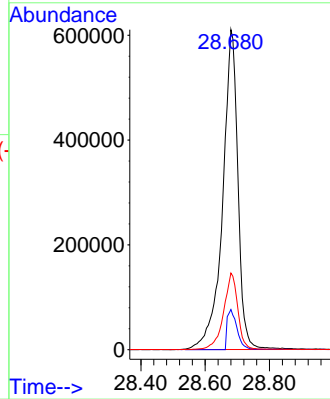
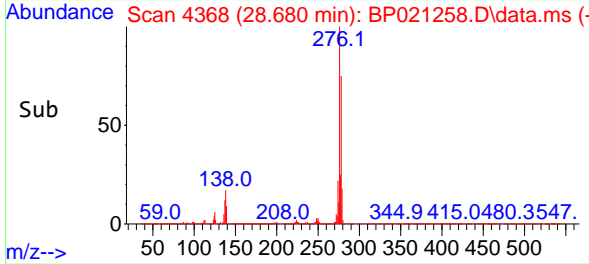
Instrument :
 BNA_P
 ClientSampleId :
 A4DK9



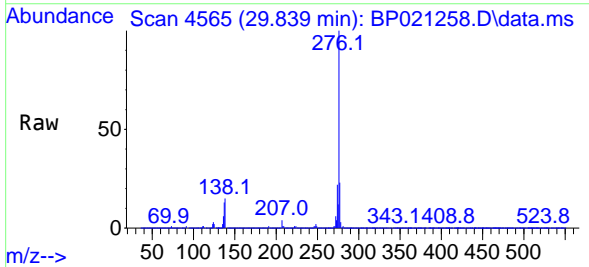
Tgt Ion:278 Resp: 202168
 Ion Ratio Lower Upper
 278 100
 139 12.6 10.9 16.3
 279 23.9 19.4 29.0

Manual Integrations
 APPROVED

Reviewed By :Yogesh Patel 09/02/2024
 Supervised By :mohammad ahmed 09/04/2024



#96
 Benzo(g,h,i)perylene
 Concen: 125.592 ng/ul m
 RT: 29.839 min Scan# 4565
 Delta R.T. 0.077 min
 Lab File: BP021258.D
 Acq: 31 Jul 2024 12:35



Tgt Ion:276 Resp: 7942994
 Ion Ratio Lower Upper
 276 100
 138 15.2 15.3 22.9#
 277 23.4 18.2 27.2

