

Data Path : Z:\svoasrv\HPCHEM1\BNA_P\Data\BP080223\
 Data File : BP016471.D
 Acq On : 02 Aug 2023 16:23
 Operator : MA/JU
 Sample : 03831-01
 Misc :
 ALS Vial : 9 Sample Multiplier: 1

Instrument :
 BNA_P
 ClientSampleId :
 MW-15-20230727

Integration Parameters: rteint.p
 Integrator: RTE
 Smoothing : ON Filtering: 5
 Sampling : 1 Min Area: 3 % of largest Peak
 Start Thrs: 0.2 Max Peaks: 100
 Stop Thrs : 0 Peak Location: TOP

If leading or trailing edge < 100 prefer < Baseline drop else tangent >
 Peak separation: 5

Method : Z:\svoasrv\HPCHEM1\BNA_P\Methods\8270E-BP072723.M
 Title : ASP BNA STANDARDS FOR 5 POINT CALIBRATION

Signal : TIC: BP016471.D\data.ms

peak #	R.T. min	first scan	max scan	last scan	PK TY	peak height	corr. area	corr. % max.	% of total
1	4.699	234	240	247	rVB	160373	244901	1.02%	0.246%
2	5.587	384	391	402	rBV	3348974	4787281	20.03%	4.809%
3	7.205	659	666	677	rBV	1941418	3052661	12.77%	3.067%
4	8.075	806	814	826	rVB	1546900	2475691	10.36%	2.487%
5	9.269	1008	1017	1030	rBV	4765332	7859372	32.88%	7.895%
6	10.905	1287	1295	1305	rBV	2167484	3637072	15.21%	3.654%
7	13.346	1699	1710	1728	rBV	12286620	18748896	78.43%	18.835%
8	14.175	1846	1851	1861	rBV	159948	246507	1.03%	0.248%
9	14.722	1934	1944	1955	rBV	3427739	5049831	21.12%	5.073%
10	16.216	2189	2198	2222	rBV	9020017	13380600	55.97%	13.442%
11	17.487	2408	2414	2421	rBV	4304804	6173512	25.83%	6.202%
12	18.328	2553	2557	2568	rBV	181354	311952	1.30%	0.313%
13	20.033	2842	2847	2853	rBV	18160749	23904831	100.00%	24.014%
14	21.586	3105	3111	3120	rBV	4068472	5584966	23.36%	5.611%
15	24.180	3545	3552	3562	rVB	1924396	4086560	17.10%	4.105%

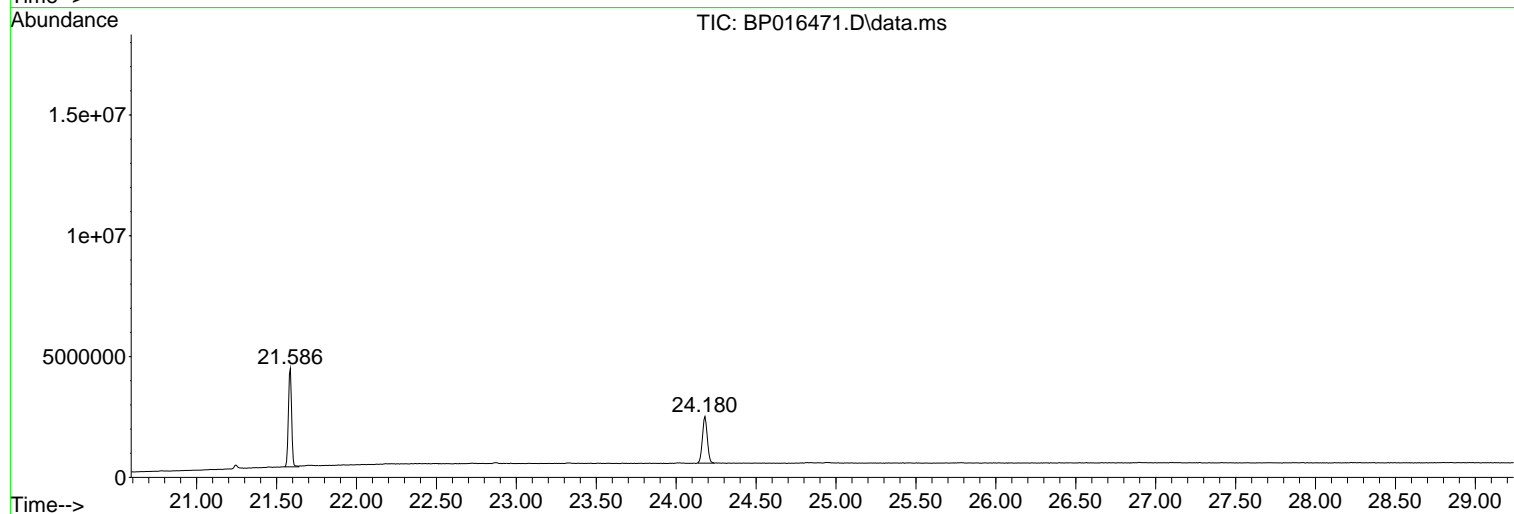
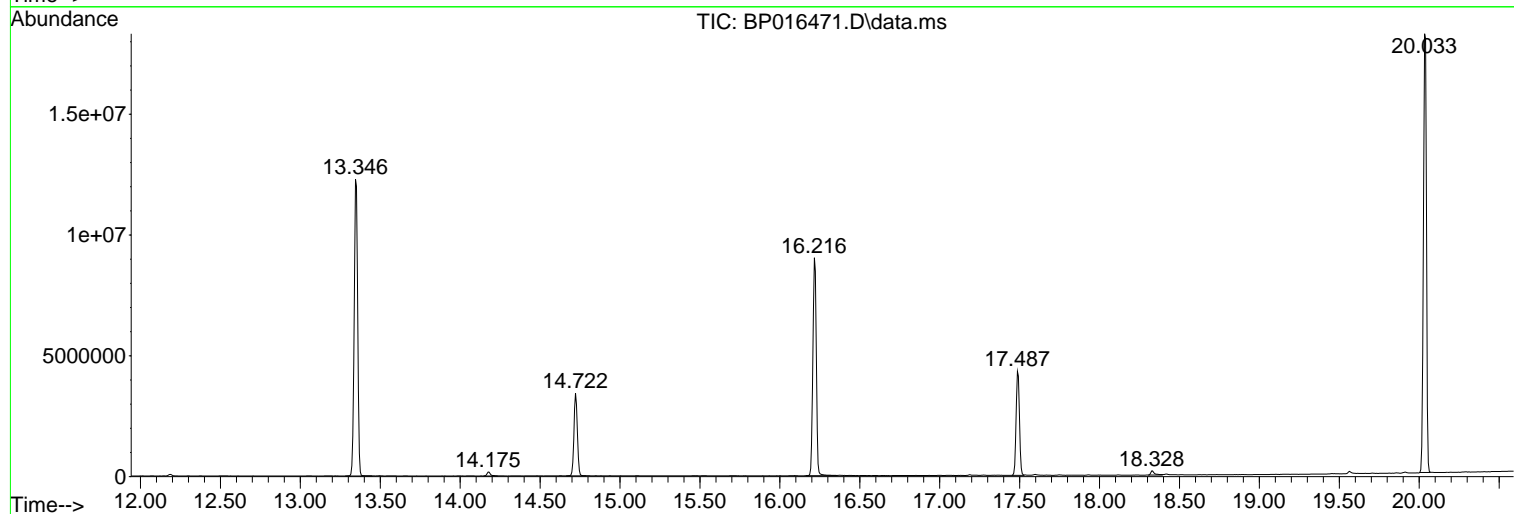
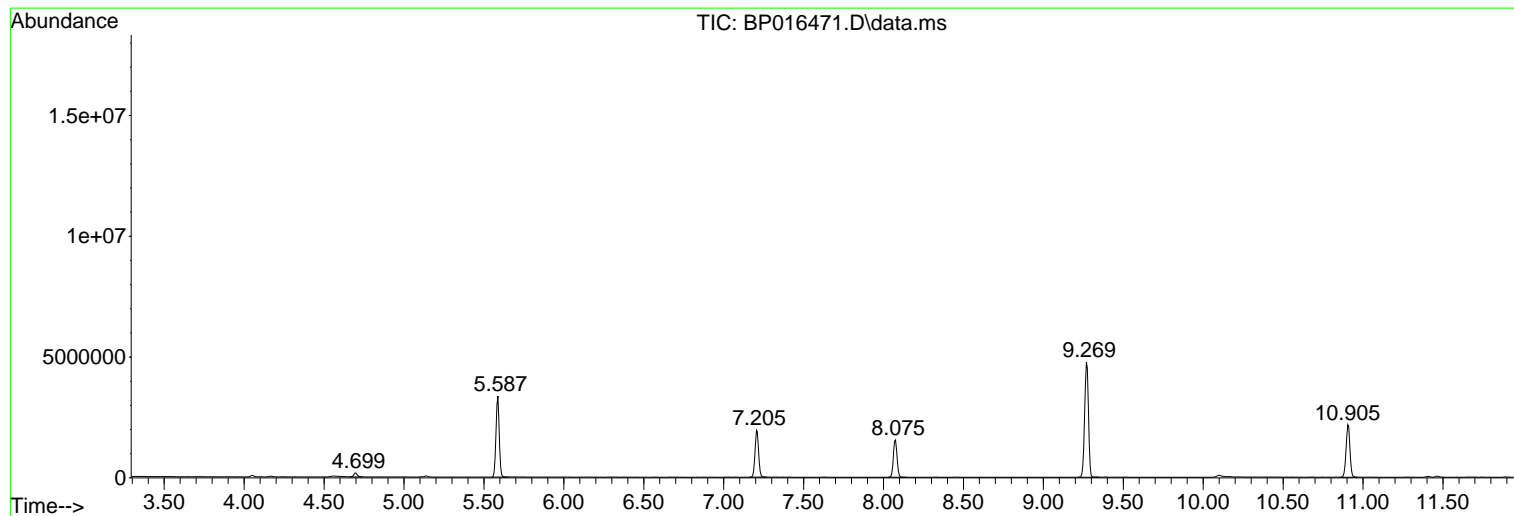
Sum of corrected areas: 99544633

Data Path : Z:\svoasrv\HPCHEM1\BNA_P\Data\BP080223\
Data File : BP016471.D
Acq On : 02 Aug 2023 16:23
Operator : MA/JU
Sample : 03831-01
Misc :
ALS Vial : 9 Sample Multiplier: 1

Instrument :
BNA_P
ClientSampleId :
MW-15-20230727

Quant Method : Z:\svoasrv\HPCHEM1\BNA_P\Methods\8270E-BP072723.M
Quant Title : ASP BNA STANDARDS FOR 5 POINT CALIBRATION

TIC Library : C:\Database\NIST20.L
TIC Integration Parameters: LSCINT.P



Library Search Compound Report

Data Path : Z:\svoasrv\HPCHEM1\BNA_P\Data\BP080223\
Data File : BP016471.D
Acq On : 02 Aug 2023 16:23
Operator : MA/JU
Sample : 03831-01
Misc :
ALS Vial : 9 Sample Multiplier: 1

Instrument :
BNA_P
ClientSampleId :
MW-15-20230727

Quant Method : Z:\svoasrv\HPCHEM1\BNA_P\Methods\8270E-BP072723.M
Quant Title : ASP BNA STANDARDS FOR 5 POINT CALIBRATION

TIC Library : C:\Database\NIST20.L
TIC Integration Parameters: LSCINT.P

No Library Search Compounds Detected

Data Path : Z:\svoasrv\HPCHEM1\BNA_P\Data\BP080223\
Data File : BP016471.D
Acq On : 02 Aug 2023 16:23
Operator : MA/JU
Sample : 03831-01
Misc :
ALS Vial : 9 Sample Multiplier: 1

Instrument :
BNA_P
ClientSampleId :
MW-15-20230727

Quant Method : Z:\svoasrv\HPCHEM1\BNA_P\Methods\8270E-BP072723.M
Quant Title : ASP BNA STANDARDS FOR 5 POINT CALIBRATION

TIC Library : C:\Database\NIST0.L
TIC Integration Parameters: LSCINT.P

TIC Top Hit name	RT	EstConc	Units	Response	#	RT	Resp	Conc
------------------	----	---------	-------	----------	---	----	------	------
