

Data Path : Z:\svoasrv\HPCHEM1\BNA_P\Data\BP081623\
 Data File : BP016627.D
 Acq On : 17 Aug 2023 05:26
 Operator : MA/JU
 Sample : 03980-05
 Misc :
 ALS Vial : 31 Sample Multiplier: 1

Instrument :
 BNA_P
 ClientSampleId :
 SVOC-GPC-BLANK

Integration Parameters: LSCINT.P
 Integrator: RTE
 Smoothing : OFF Filtering: 5
 Sampling : 1 Min Area: 0.1 % of largest Peak
 Start Thrs: 0.2 Max Peaks: 100
 Stop Thrs : 0 Peak Location: TOP

If leading or trailing edge < 100 prefer < Baseline drop else tangent >
 Peak separation: 5

Method : Z:\svoasrv\HPCHEM1\BNA_P\Methods\SFAM-EPA-BP081423.MA.M
 Title : SVOA CALIBRATION

Signal : TIC: BP016627.D\data.ms

peak #	R.T. min	first scan	max scan	last scan	PK TY	peak height	corr. area	corr. % max.	% of total
1	4.152	143	147	153	rVB	18054	31959	0.30%	0.059%
2	8.058	803	811	819	rBV	1743636	2848484	27.00%	5.227%
3	10.887	1284	1292	1308	rBV	2893562	4816360	45.66%	8.837%
4	11.893	1457	1463	1467	rBV9	5418	11114	0.11%	0.020%
5	14.704	1934	1941	1960	rBV	4888420	7139439	67.68%	13.100%
6	17.251	2371	2374	2380	rBV4	13334	25243	0.24%	0.046%
7	17.475	2405	2412	2425	rBV	6304817	9168754	86.92%	16.824%
8	18.310	2550	2554	2560	rBV3	52668	101907	0.97%	0.187%
9	21.569	3102	3108	3115	rBV	7440096	9938409	94.22%	18.236%
10	22.298	3224	3232	3252	rVB2	2763586	10548132	100.00%	19.355%
11	24.151	3540	3547	3561	rVB	4297071	9869528	93.57%	18.109%

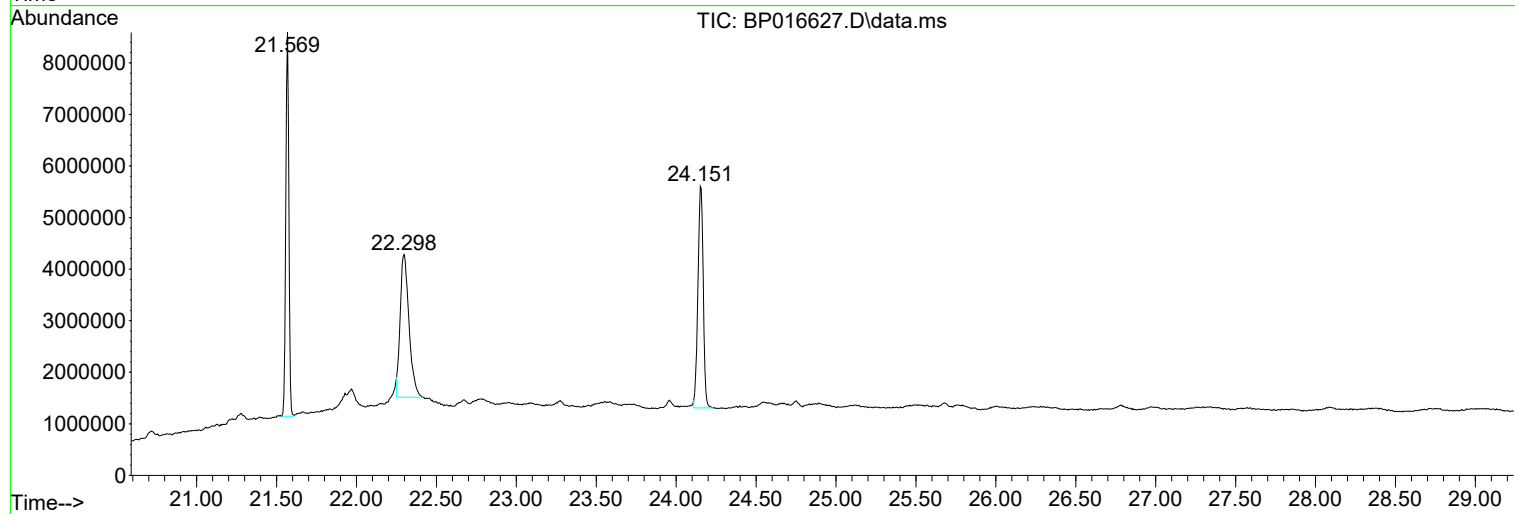
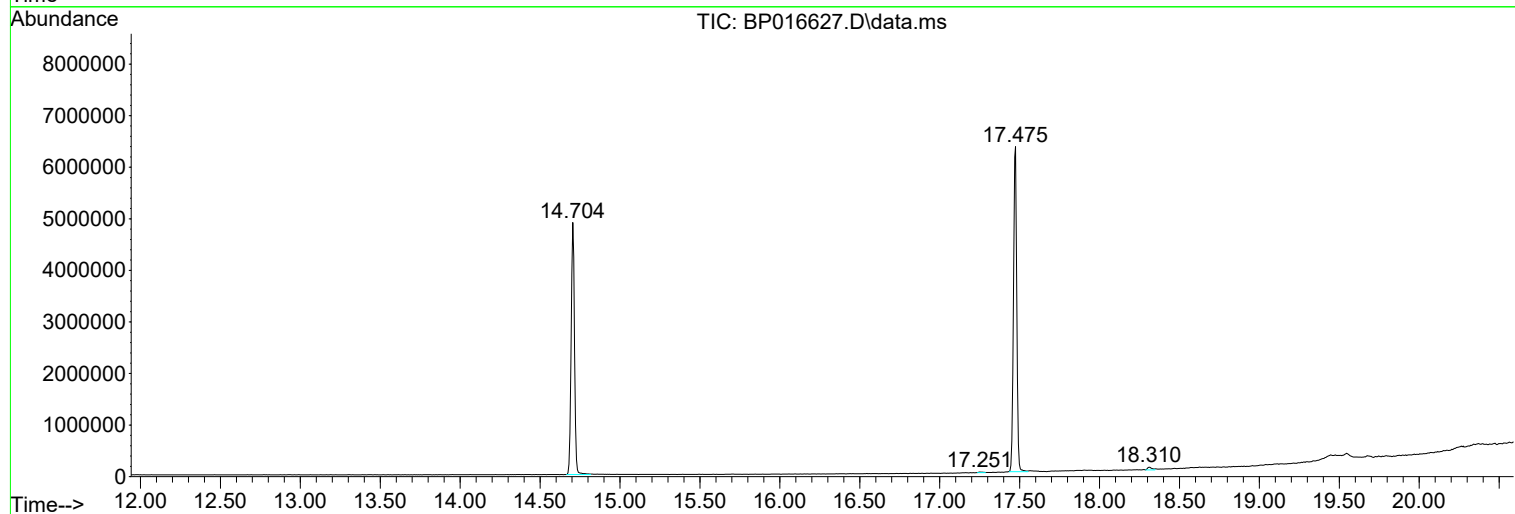
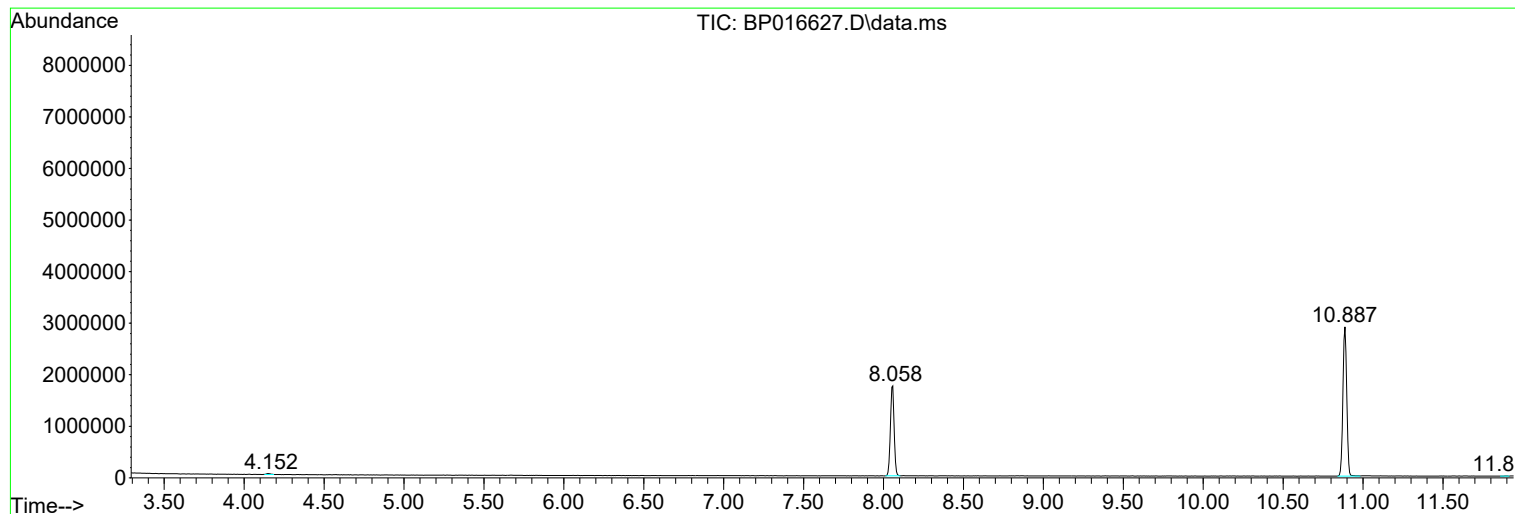
Sum of corrected areas: 54499329

Data Path : Z:\svoasrv\HPCHEM1\BNA_P\Data\BP081623\
 Data File : BP016627.D
 Acq On : 17 Aug 2023 05:26
 Operator : MA/JU
 Sample : 03980-05
 Misc :
 ALS Vial : 31 Sample Multiplier: 1

Instrument :
 BNA_P
ClientSampleId :
 SVOC-GPC-BLANK

Quant Method : Z:\svoasrv\HPCHEM1\BNA_P\Methods\SFAM-EPA-BP081423.MA.M
 Quant Title : SVOA CALIBRATION

TIC Library : C:\DATABASE\NIST20.L
 TIC Integration Parameters: LSCINT.P



Data Path : Z:\svoasrv\HPCHEM1\BNA_P\Data\BP081623\
 Data File : BP016627.D
 Acq On : 17 Aug 2023 05:26
 Operator : MA/JU
 Sample : 03980-05
 Misc :
 ALS Vial : 31 Sample Multiplier: 1

Instrument :
 BNA_P
 ClientSampleId :
 SVOC-GPC-BLANK

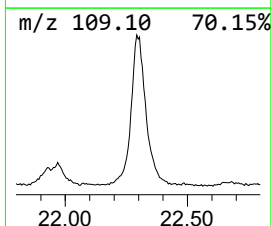
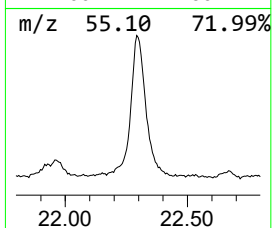
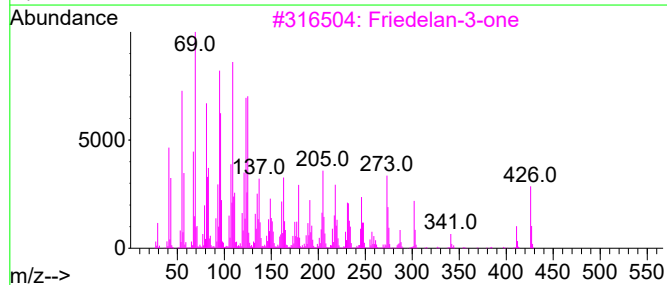
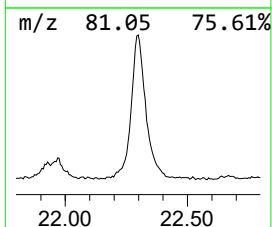
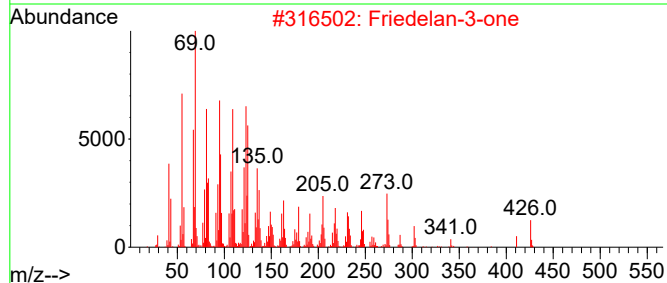
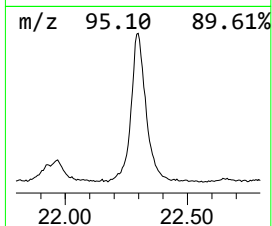
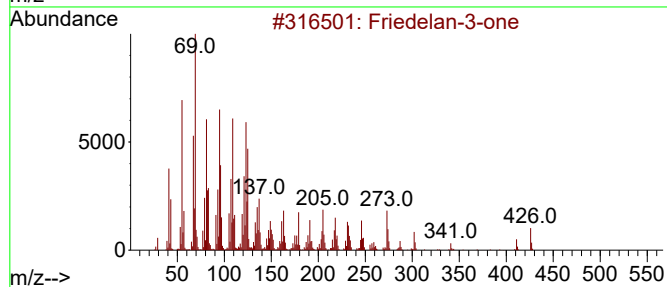
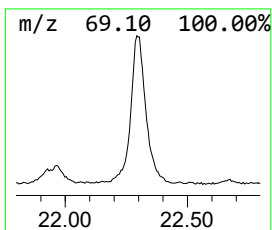
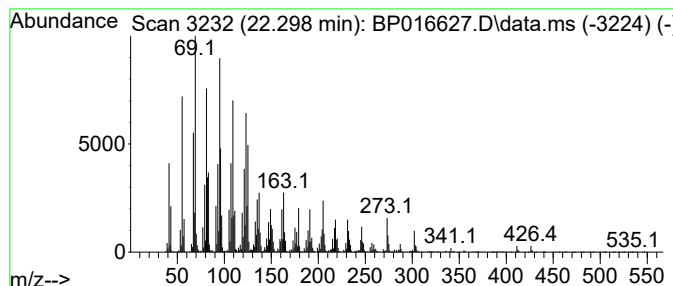
Quant Method : Z:\svoasrv\HPCHEM1\BNA_P\Methods\SFAM-EPA-BP081423.MA.M
 Quant Title : SVOA CALIBRATION

TIC Library : C:\DATABASE\NIST20.L
 TIC Integration Parameters: LSCINT.P

 Peak Number 1 Sesquirosefuran Concentration Rank 1

R.T.	EstConc	Area	Relative to ISTD	R.T.
22.298	21.23 ng/ul	10548100	Chrysene-d12	21.569

Hit#	of	5	Tentative ID	MW	MolForm	CAS#	Qual
1			Friedelan-3-one	426	C30H50O	000559-74-0	97
2			Friedelan-3-one	426	C30H50O	000559-74-0	97
3			Friedelan-3-one	426	C30H50O	000559-74-0	96
4			Sesquirosefuran	218	C15H22O	039007-93-7	81
5			Sesquirosefuran	218	C15H22O	039007-93-7	55



Data Path : Z:\svoasrv\HPCHEM1\BNA_P\Data\BP081623\
Data File : BP016627.D
Acq On : 17 Aug 2023 05:26
Operator : MA/JU
Sample : 03980-05
Misc :
ALS Vial : 31 Sample Multiplier: 1

Instrument :
BNA_P
ClientSampleId :
SVOC-GPC-BLANK

Quant Method : Z:\svoasrv\HPCHEM1\BNA_P\Methods\SFAM-EPA-BP081423.MA.M
Quant Title : SVOA CALIBRATION

TIC Library : C:\DATABASE\NIST20.L
TIC Integration Parameters: LSCINT.P

TIC Top Hit name	RT	EstConc	Units	Response	--Internal Standard--			
					#	RT	Resp	Conc
Sesquirosefuran	22.298	21.2	ng/ul	10548100	5	21.569	9938410	20.0