

Data Path : Z:\svoasrv\HPCHEM1\BNA_P\Data\BP082423\
 Data File : BP016735.D
 Acq On : 24 Aug 2023 20:12
 Operator : MA/JU
 Sample : PB154829BS
 Misc :
 ALS Vial : 11 Sample Multiplier: 1

Instrument :
 BNA_P
 ClientSampleId :
 SLCS829

Manual Integrations
 APPROVED

Reviewed By :Yogesh Patel 08/25/2023
 Supervised By :mohammad ahmed 08/25/2023

Quant Time: Aug 25 09:30:13 2023
 Quant Method : Z:\svoasrv\HPCHEM1\BNA_P\Methods\SFAM-EPA-BP082423.MA.M
 Quant Title : SVOA CALIBRATION
 QLast Update : Fri Aug 25 01:47:30 2023
 Response via : Initial Calibration

Compound	R.T.	QIon	Response	Conc	Units	Dev(Min)	Qvalue
Internal Standards							
1) 1,4-Dichlorobenzene-d4	8.040	152	377321	20.000	ng/ul	0.00	
20) Naphthalene-d8	10.869	136	1668603	20.000	ng/ul	0.00	
38) Acenaphthene-d10	14.692	164	1043923	20.000	ng/ul	0.00	
64) Phenanthrene-d10	17.457	188	2282545	20.000	ng/ul	0.00	
79) Chrysene-d12	21.551	240	2031894	20.000	ng/ul	0.00	
88) Perylene-d12	24.121	264	1852677	20.000	ng/ul	-0.01	
System Monitoring Compounds							
3) 1,4-Dioxane-d8	3.387	96	76318	8.359	ng/uL	0.00	
4) Pyridine-d5	3.822	84	900680	32.283	ng/ul	0.00	
7) Phenol-d5	7.181	99	1155973	34.454	ng/ul	0.00	
9) Bis-(2-Chloroethyl)eth...	7.375	67	710219	33.213	ng/ul	0.00	
11) 2-Chlorophenol-d4	7.558	132	853790	33.845	ng/ul	0.00	
15) 4-Methylphenol-d8	8.746	113	894278	32.651	ng/ul	0.00	
21) Nitrobenzene-d5	9.234	128	436951	34.634	ng/ul	0.00	
24) 2-Nitrophenol-d4	9.952	143	478416	35.975	ng/ul	0.00	
28) 2,4-Dichlorophenol-d3	10.475	165	869766	35.082	ng/ul	0.00	
31) 4-Chloroaniline-d4	11.028	131	1177801	30.978	ng/ul	0.00	
46) Dimethylphthalate-d6	14.104	166	2642813	33.570	ng/ul	0.00	
49) Acenaphthylene-d8	14.392	160	3031135	34.059	ng/ul	0.00	
54) 4-Nitrophenol-d4	14.898	143	534980	32.877	ng/ul	0.00	
60) Fluorene-d10	15.687	176	2257230	34.048	ng/ul	0.00	
65) 4,6-Dinitro-2-methylph...	15.810	200	449243	33.049	ng/ul	0.00	
73) Anthracene-d10	17.557	188	3448279	34.082	ng/ul	0.00	
81) Pyrene-d10	19.786	212	4068721	36.460	ng/ul	0.00	
92) Benzo(a)pyrene-d12	23.957	264	3396884	36.603	ng/ul	0.00	
Target Compounds							
2) 1,4-Dioxane	3.422	88	141544	14.237	ng/uL	98	
5) Pyridine	3.840	79	906622	31.547	ng/ul	99	
6) Benzaldehyde	7.193	77	726607	39.601	ng/ul	99	
8) Phenol	7.210	94	1240340	35.324	ng/ul	100	
10) Bis(2-Chloroethyl)ether	7.469	93	980437	34.592	ng/ul	99	
12) 2-Chlorophenol	7.593	128	927548	35.972	ng/ul	98	
13) 2-Methylphenol	8.475	108	913958	34.700	ng/ul	99	
14) 2,2'-oxybis(1-Chloropr...	8.569	45	1359697m	32.887	ng/ul		
16) Acetophenone	8.887	105	1505127	35.440	ng/ul	99	
17) N-Nitroso-di-n-propyla...	8.863	70	805845	36.005	ng/ul	99	
18) 4-Methylphenol	8.810	108	1010115	35.218	ng/ul	99	
19) Hexachloroethane	9.110	117	373225	34.787	ng/ul	98	
22) Nitrobenzene	9.281	77	1158438	35.791	ng/ul	99	
23) Isophorone	9.799	82	2256779	35.900	ng/ul	99	
25) 2-Nitrophenol	9.987	139	545151	37.074	ng/ul	98	
26) 2,4-Dimethylphenol	10.022	107	942066	31.876	ng/ul	97	
27) Bis(2-Chloroethoxy)met...	10.281	93	1381886	35.631	ng/ul	99	
29) 2,4-Dichlorophenol	10.504	162	909253	36.511	ng/ul	99	
30) Naphthalene	10.922	128	3056920	35.366	ng/ul	99	
32) 4-Chloroaniline	11.051	127	1196690	32.028	ng/ul	99	
33) Hexachlorobutadiene	11.151	225	529447	34.513	ng/ul	99	
34) Caprolactam	11.875	113	306204m	33.341	ng/ul		
35) 4-Chloro-3-methylphenol	12.146	107	1030488	36.899	ng/ul	100	
36) 2-Methylnaphthalene	12.522	142	2082578	34.906	ng/ul	100	

Data Path : Z:\svoasrv\HPCHEM1\BNA_P\Data\BP082423\
 Data File : BP016735.D
 Acq On : 24 Aug 2023 20:12
 Operator : MA/JU
 Sample : PB154829BS
 Misc :
 ALS Vial : 11 Sample Multiplier: 1

Instrument :
 BNA_P
ClientSampleId :
 SLCS829

Manual Integrations
APPROVED
 Reviewed By :Yogesh Patel 08/25/2023
 Supervised By :mohammad ahmed 08/25/2023

Quant Time: Aug 25 09:30:13 2023
 Quant Method : Z:\svoasrv\HPCHEM1\BNA_P\Methods\SFAM-EPA-BP082423.MA.M
 Quant Title : SVOA CALIBRATION
 QLast Update : Fri Aug 25 01:47:30 2023
 Response via : Initial Calibration

Compound	R.T.	QIon	Response	Conc	Units	Dev(Min)
37) 1-Methylnaphthalene	12.740	142	2087794	34.702	ng/ul	98
39) 1,2,4,5-Tetrachloroben...	12.869	216	1054601	35.445	ng/ul	99
40) Hexachlorocyclopentadiene	12.822	237	542328	24.786	ng/ul	100
41) 2,4,6-Trichlorophenol	13.116	196	735833	37.035	ng/ul	99
42) 2,4,5-Trichlorophenol	13.187	196	813658	37.845	ng/ul	98
43) 1,1'-Biphenyl	13.528	154	2824157	36.386	ng/ul	100
44) 2-Chloronaphthalene	13.575	162	2194950	35.823	ng/ul	99
45) 2-Nitroaniline	13.804	65	710372	38.229	ng/ul	97
47) Dimethylphthalate	14.151	163	2867349	35.963	ng/ul	100
48) 2,6-Dinitrotoluene	14.292	165	603099	38.603	ng/ul	99
50) Acenaphthylene	14.422	152	3444094	33.811	ng/ul	100
51) 3-Nitroaniline	14.628	138	628523	38.635	ng/ul	98
52) Acenaphthene	14.757	153	2409424	35.754	ng/ul	100
53) 2,4-Dinitrophenol	14.828	184	333665	29.391	ng/ul	99
55) 4-Nitrophenol	14.916	109	430799	35.056	ng/ul	99
56) Dibenzofuran	15.092	168	3317741	35.881	ng/ul	99
57) 2,4-Dinitrotoluene	15.075	165	878857	38.218	ng/ul	99
58) 2,3,4,6-Tetrachlorophenol	15.304	232	678150	37.050	ng/ul	99
59) Diethylphthalate	15.504	149	2926681	36.133	ng/ul	99
61) Fluorene	15.739	166	2768467	35.795	ng/ul	99
62) 4-Chlorophenyl-phenyle...	15.734	204	1363864	35.917	ng/ul	98
63) 4-Nitroaniline	15.798	138	639218	41.293	ng/ul	94
66) 4,6-Dinitro-2-methylph...	15.822	198	491345	33.527	ng/ul	96
67) N-Nitrosodiphenylamine	15.957	169	2342896	37.112	ng/ul	100
68) 4-Bromophenyl-phenylether	16.634	248	806548	36.856	ng/ul	96
69) Hexachlorobenzene	16.716	284	881634	35.981	ng/ul	98
70) Atrazine	16.910	200	776347	32.618	ng/ul	98
71) Pentachlorophenol	17.081	266	564774	31.051	ng/ul	99
72) Phenanthrene	17.498	178	4427702	36.847	ng/ul	99
74) Anthracene	17.592	178	4302181	35.408	ng/ul	99
75) 1,2,3,4-Tetrachloroben...	13.481	216	1046064	34.227	ng/uL	98
76) Pentachlorobenzene	14.981	250	998995	36.576	ng/uL	99
77) Carbazole	17.875	167	4120201	37.652	ng/ul	100
78) Di-n-butylphthalate	18.381	149	5116510	37.477	ng/ul	100
80) Fluoranthene	19.457	202	5212220	38.881	ng/ul	99
82) Pyrene	19.816	202	5319391	38.415	ng/ul	99
83) Butylbenzylphthalate	20.674	149	2410286	40.360	ng/ul	98
84) 3,3'-Dichlorobenzidine	21.474	252	1671378	38.484	ng/ul	98
85) Benzo(a)anthracene	21.533	228	5086056	36.340	ng/ul	100
86) Bis(2-ethylhexyl)phtha...	21.410	149	3488007	40.001	ng/ul	99
87) Chrysene	21.592	228	4743223	37.309	ng/ul	100
89) Di-n-octyl phthalate	22.392	149	5758515	41.274	ng/ul	100
90) Benzo(b)fluoranthene	23.321	252	4784104	40.438	ng/ul	100
91) Benzo(k)fluoranthene	23.374	252	4539294	38.796	ng/ul	99
93) Benzo(a)pyrene	24.010	252	3900441	36.449	ng/ul	99
94) Indeno(1,2,3-cd)pyrene	26.862	276	4114363	37.626	ng/ul	99
95) Dibenzo(a,h)anthracene	26.886	278	3428363	37.747	ng/ul	100
96) Benzo(g,h,i)perylene	27.715	276	3155074	38.058	ng/ul	100

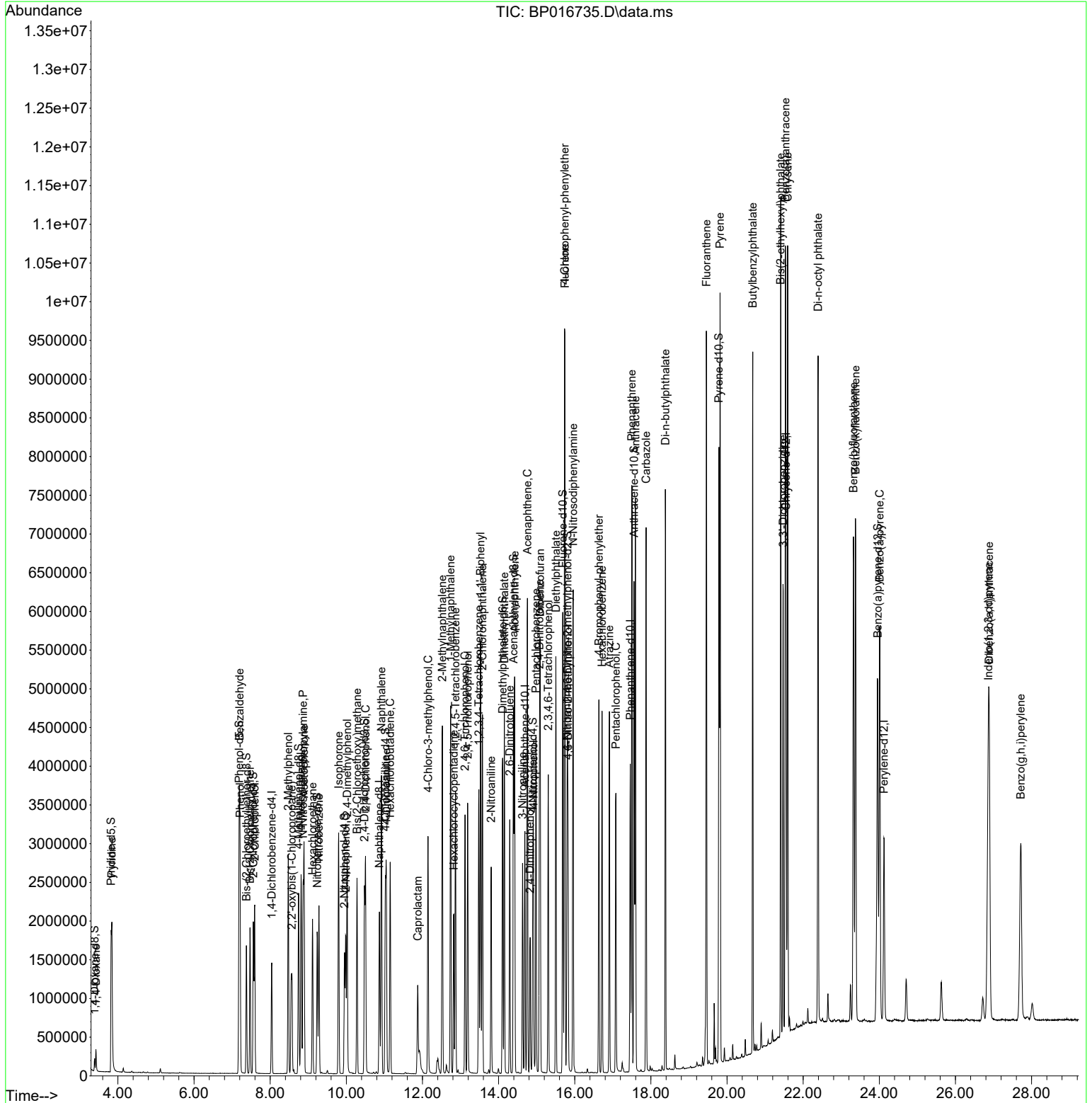
(#) = qualifier out of range (m) = manual integration (+) = signals summed

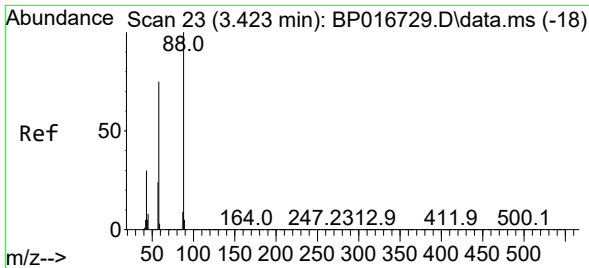
Data Path : Z:\svoasrv\HPCHEM1\BNA_P\Data\BP082423\
 Data File : BP016735.D
 Acq On : 24 Aug 2023 20:12
 Operator : MA/JU
 Sample : PB154829BS
 Misc :
 ALS Vial : 11 Sample Multiplier: 1

Instrument :
 BNA_P
 ClientSampleId :
 SLCS829

Quant Time: Aug 25 09:30:13 2023
 Quant Method : Z:\svoasrv\HPCHEM1\BNA_P\Methods\SFAM-EPA-BP082423.MA.M
 Quant Title : SVOA CALIBRATION
 QLast Update : Fri Aug 25 01:47:30 2023
 Response via : Initial Calibration

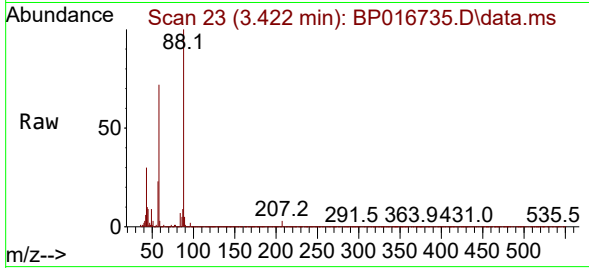
Manual Integrations
APPROVED
 Reviewed By :Yogesh Patel 08/25/2023
 Supervised By :mohammad ahmed 08/25/2023





#2
 1,4-Dioxane
 Concen: 14.237 ng/uL
 RT: 3.422 min Scan# 21
 Delta R.T. -0.001 min
 Lab File: BP016735.D
 Acq: 24 Aug 2023 20:12

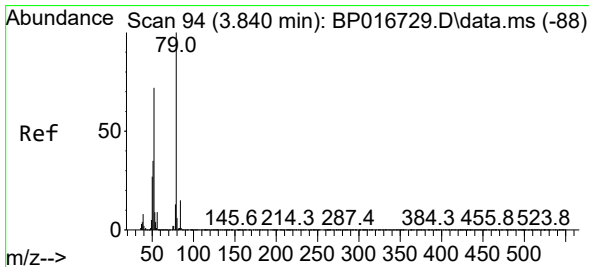
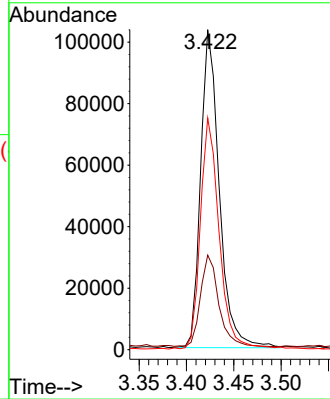
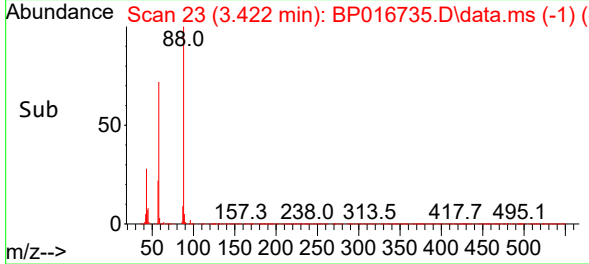
Instrument :
 BNA_P
 ClientSampleId :
 SLCS829



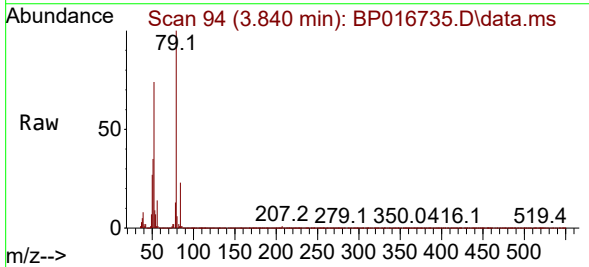
Tgt Ion: 88 Resp: 141544
 Ion Ratio Lower Upper
 88 100
 43 29.5 24.0 36.0
 58 72.4 59.8 89.8

Manual Integrations
 APPROVED

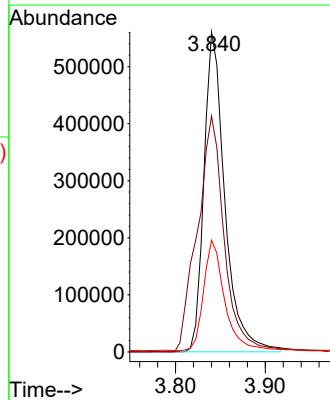
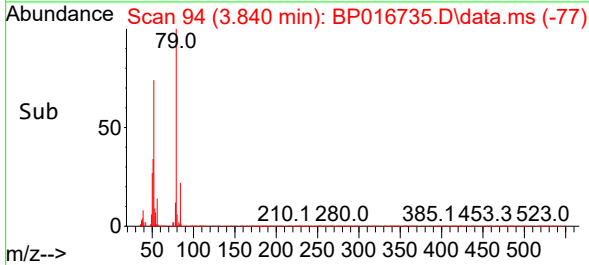
Reviewed By :Yogesh Patel 08/25/2023
 Supervised By :mohammad ahmed 08/25/2023

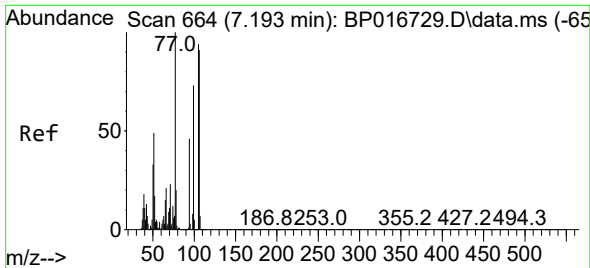


#5
 Pyridine
 Concen: 31.547 ng/uL
 RT: 3.840 min Scan# 94
 Delta R.T. -0.000 min
 Lab File: BP016735.D
 Acq: 24 Aug 2023 20:12



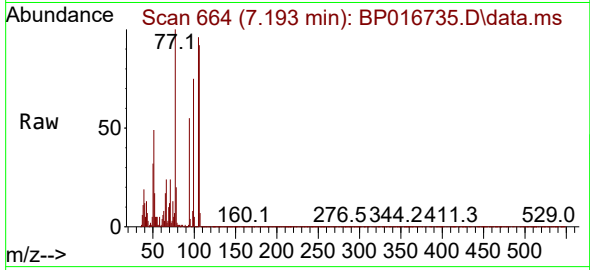
Tgt Ion: 79 Resp: 906622
 Ion Ratio Lower Upper
 79 100
 52 73.7 59.6 89.4
 51 34.9 28.2 42.2





#6
Benzaldehyde
Concen: 39.601 ng/u1
RT: 7.193 min Scan# 664
Delta R.T. -0.000 min
Lab File: BP016735.D
Acq: 24 Aug 2023 20:12

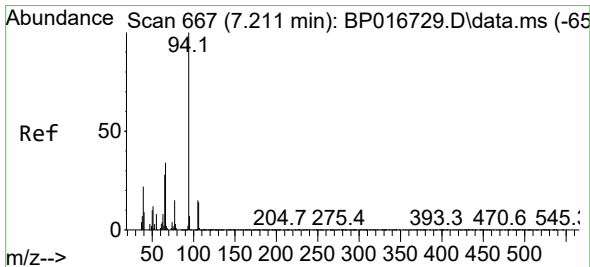
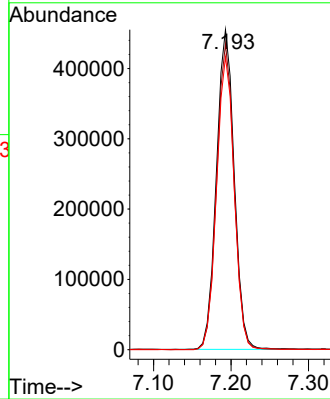
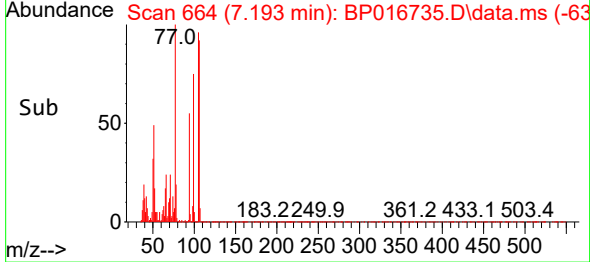
Instrument :
BNA_P
ClientSampleId :
SLCS829



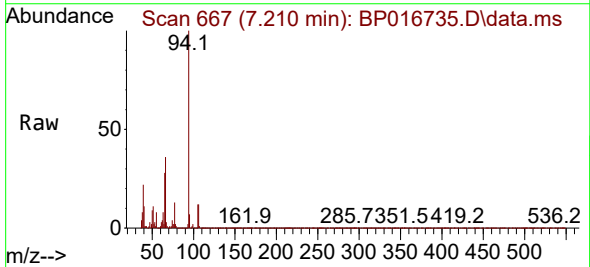
Tgt Ion: 77 Resp: 72660
Ion Ratio Lower Upper
77 100
105 95.5 75.4 113.2
106 91.5 73.1 109.7

Manual Integrations
APPROVED

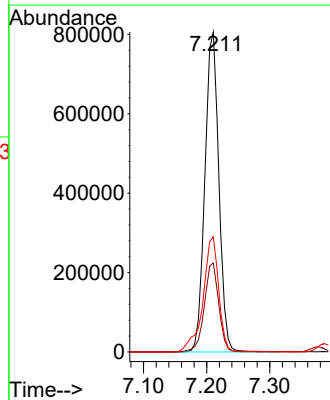
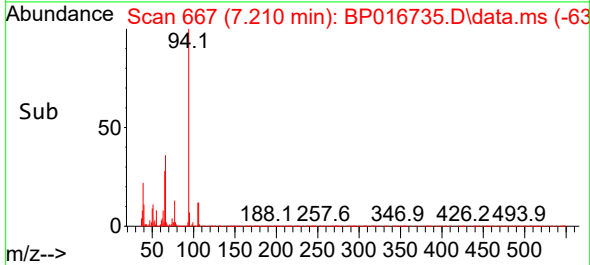
Reviewed By :Yogesh Patel 08/25/2023
Supervised By :mohammad ahmed 08/25/2023

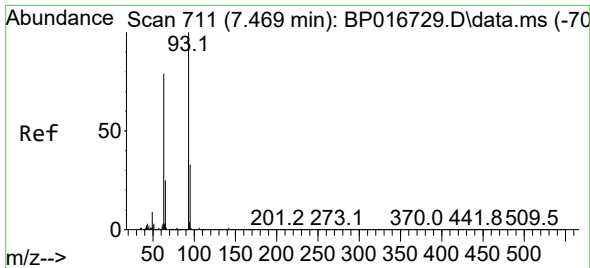


#8
Phenol
Concen: 35.324 ng/u1
RT: 7.210 min Scan# 667
Delta R.T. -0.000 min
Lab File: BP016735.D
Acq: 24 Aug 2023 20:12



Tgt Ion: 94 Resp: 1240340
Ion Ratio Lower Upper
94 100
65 27.8 22.4 33.6
66 36.0 28.6 42.8





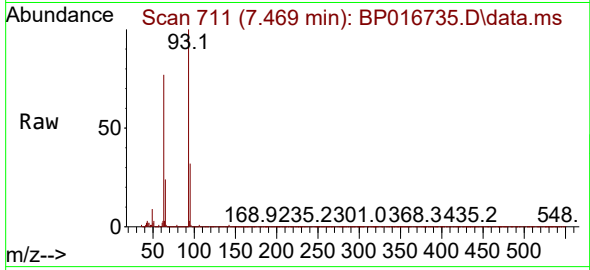
#10
 Bis(2-Chloroethyl)ether
 Concen: 34.592 ng/ul
 RT: 7.469 min Scan# 711
 Delta R.T. -0.000 min
 Lab File: BP016735.D
 Acq: 24 Aug 2023 20:12

Instrument :

BNA_P

ClientSampleId :

SLCS829



Tgt Ion: 93 Resp: 98043

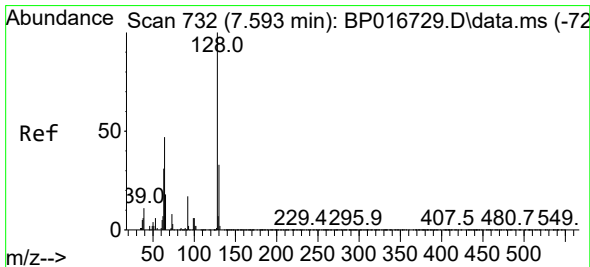
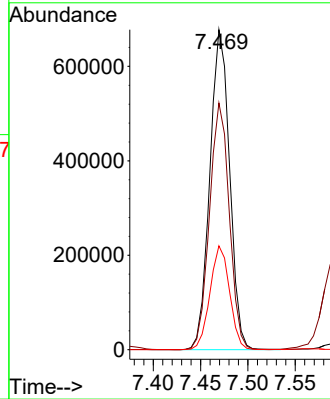
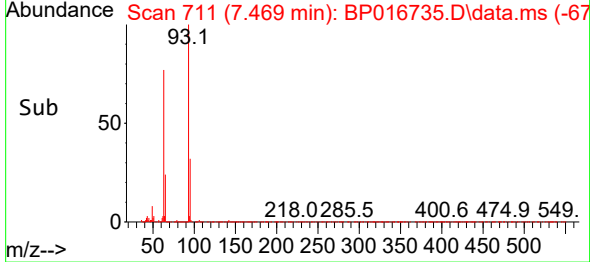
Ion	Ratio	Lower	Upper
93	100		
63	77.1	62.9	94.3
95	32.4	26.3	39.5

Manual Integrations

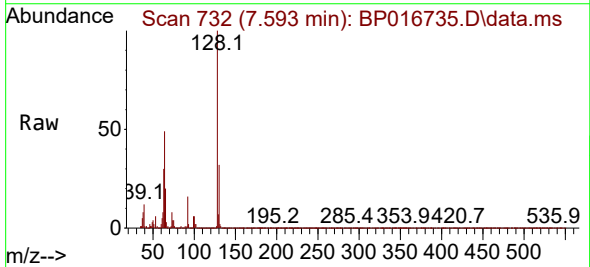
APPROVED

Reviewed By :Yogesh Patel 08/25/2023

Supervised By :mohammad ahmed 08/25/2023

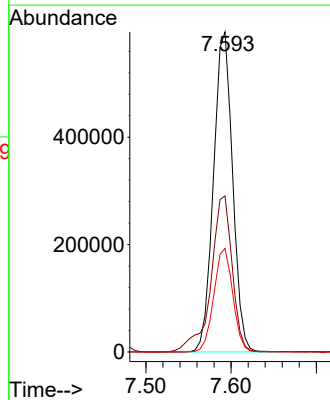
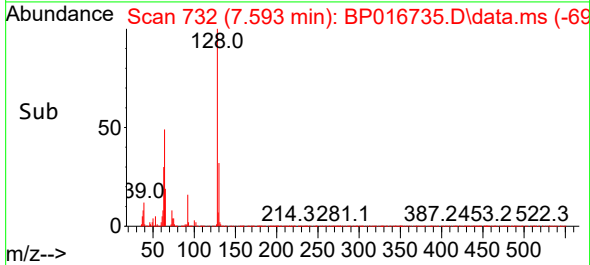


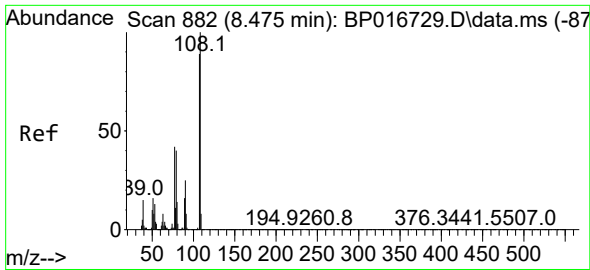
#12
 2-Chlorophenol
 Concen: 35.972 ng/ul
 RT: 7.593 min Scan# 732
 Delta R.T. -0.000 min
 Lab File: BP016735.D
 Acq: 24 Aug 2023 20:12



Tgt Ion:128 Resp: 927548

Ion	Ratio	Lower	Upper
128	100		
64	48.8	40.0	60.0
130	32.4	26.4	39.6





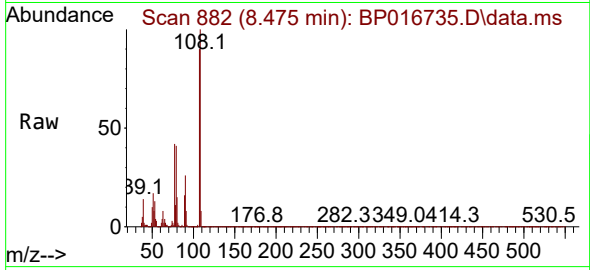
#13
 2-Methylphenol
 Concen: 34.700 ng/ul
 RT: 8.475 min Scan# 882
 Delta R.T. -0.000 min
 Lab File: BP016735.D
 Acq: 24 Aug 2023 20:12

Instrument :

BNA_P

Client SampleId :

SLCS829

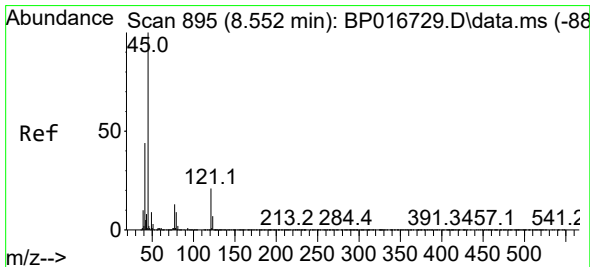
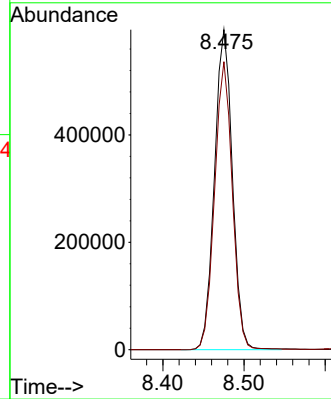
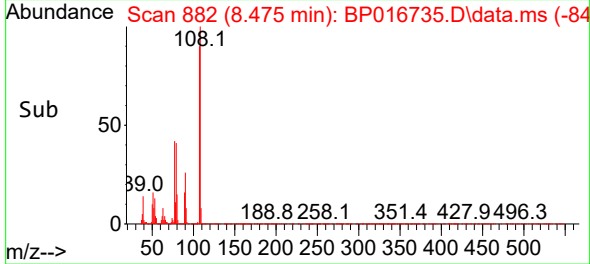


Tgt Ion: 108 Resp: 913958
 Ion Ratio Lower Upper
 108 100
 107 90.0 71.4 107.2

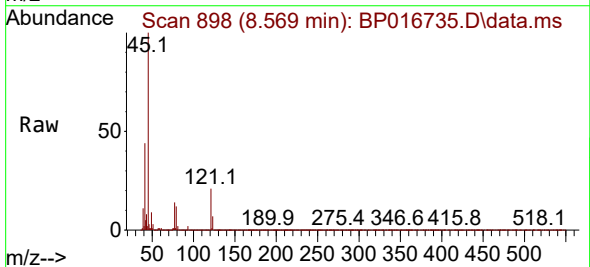
Manual Integrations

APPROVED

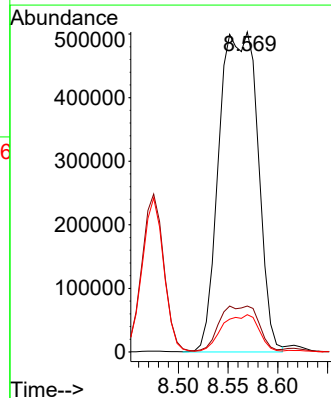
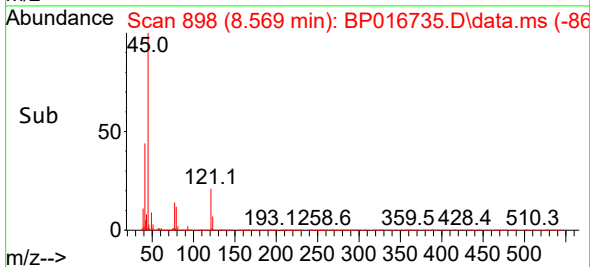
Reviewed By :Yogesh Patel 08/25/2023
 Supervised By :mohammad ahmed 08/25/2023

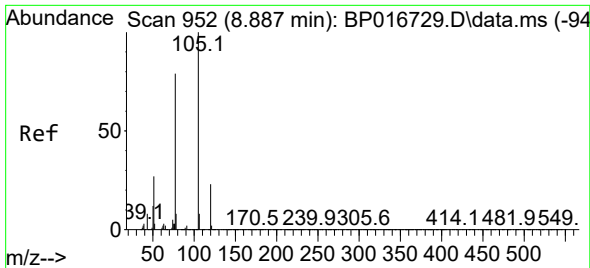


#14
 2,2'-oxybis(1-Chloropropane)
 Concen: 32.887 ng/ul m
 RT: 8.569 min Scan# 898
 Delta R.T. 0.018 min
 Lab File: BP016735.D
 Acq: 24 Aug 2023 20:12



Tgt Ion: 45 Resp: 1359697
 Ion Ratio Lower Upper
 45 100
 77 14.4 11.1 16.7
 79 11.7 8.2 12.4





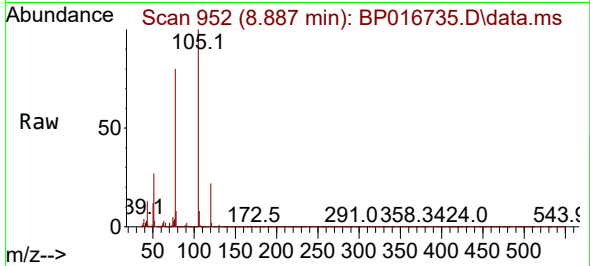
#16
 Acetophenone
 Concen: 35.440 ng/ul
 RT: 8.887 min Scan# 911
 Delta R.T. -0.000 min
 Lab File: BP016735.D
 Acq: 24 Aug 2023 20:12

Instrument :

BNA_P

Client SampleId :

SLCS829



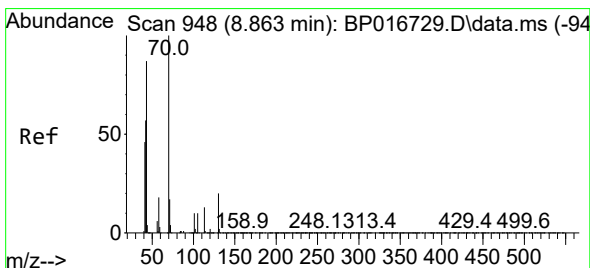
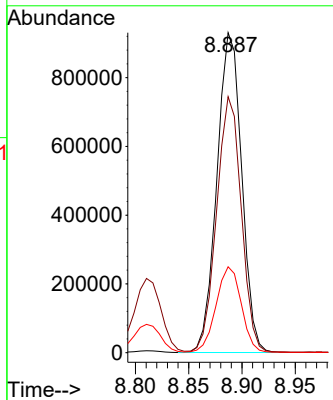
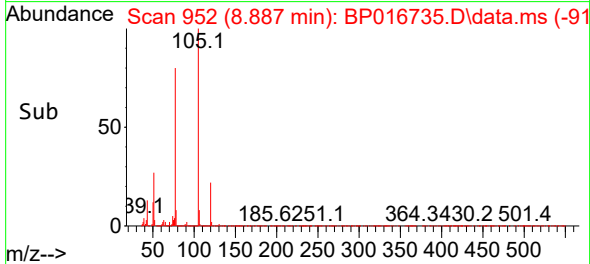
Tgt Ion: 105 Resp: 150512
 Ion Ratio Lower Upper
 105 100
 77 80.0 64.2 96.4
 51 26.8 22.2 33.4

Manual Integrations

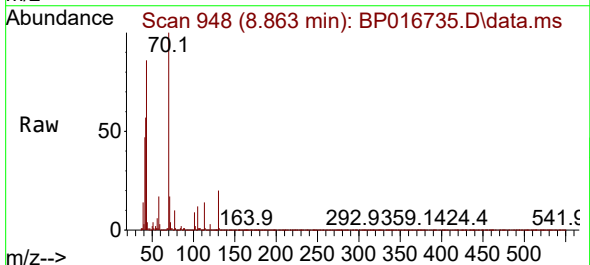
APPROVED

Reviewed By :Yogesh Patel 08/25/2023

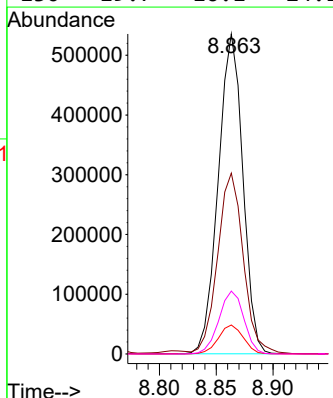
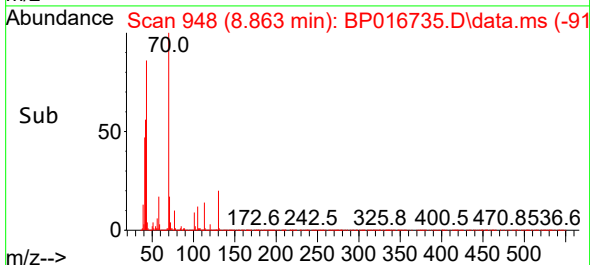
Supervised By :mohammad ahmed 08/25/2023

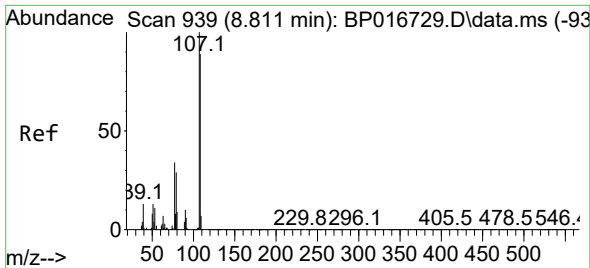


#17
 N-Nitroso-di-n-propylamine
 Concen: 36.005 ng/ul
 RT: 8.863 min Scan# 948
 Delta R.T. -0.000 min
 Lab File: BP016735.D
 Acq: 24 Aug 2023 20:12



Tgt Ion: 70 Resp: 805845
 Ion Ratio Lower Upper
 70 100
 42 56.5 46.0 69.0
 101 9.1 7.6 11.4
 130 19.7 16.1 24.1





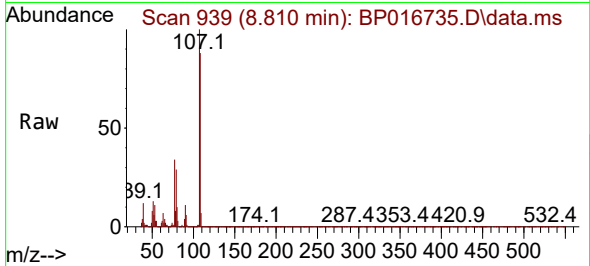
#18
 4-Methylphenol
 Concen: 35.218 ng/ul
 RT: 8.810 min Scan# 911
 Delta R.T. -0.000 min
 Lab File: BP016735.D
 Acq: 24 Aug 2023 20:12

Instrument :

BNA_P

Client SampleId :

SLCS829



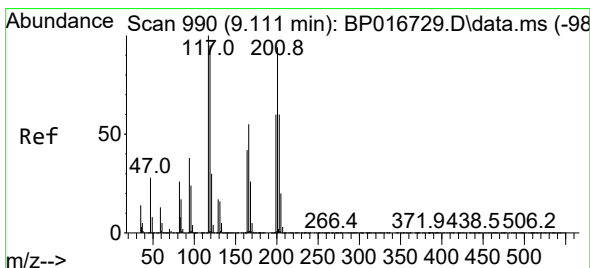
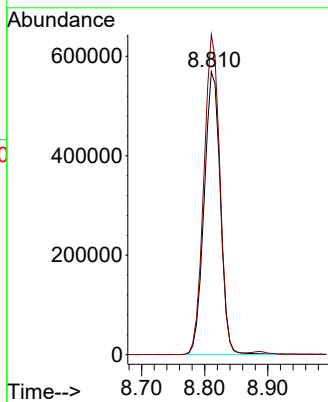
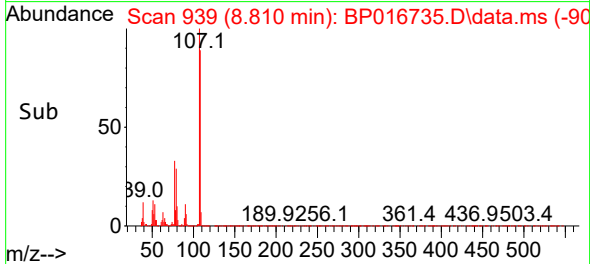
Tgt Ion: 108 Resp: 101011
 Ion Ratio Lower Upper
 108 100
 107 113.1 89.8 134.6

Manual Integrations

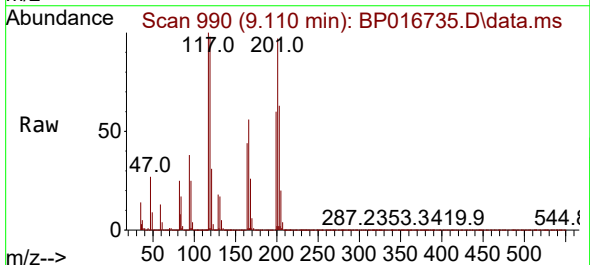
APPROVED

Reviewed By :Yogesh Patel 08/25/2023

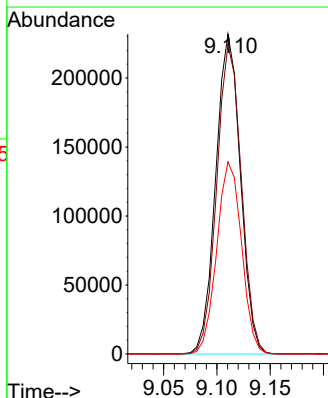
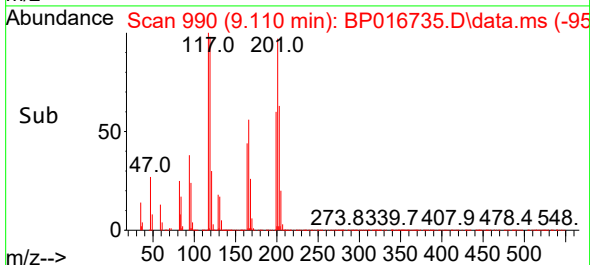
Supervised By :mohammad ahmed 08/25/2023

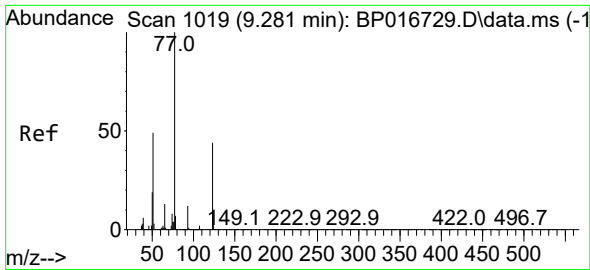


#19
 Hexachloroethane
 Concen: 34.787 ng/ul
 RT: 9.110 min Scan# 990
 Delta R.T. -0.000 min
 Lab File: BP016735.D
 Acq: 24 Aug 2023 20:12



Tgt Ion: 117 Resp: 373225
 Ion Ratio Lower Upper
 117 100
 201 96.7 75.4 113.2
 199 60.0 47.8 71.6





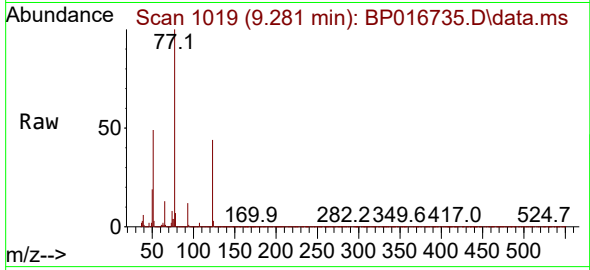
#22
 Nitrobenzene
 Concen: 35.791 ng/uI
 RT: 9.281 min Scan# 1019
 Delta R.T. -0.000 min
 Lab File: BP016735.D
 Acq: 24 Aug 2023 20:12

Instrument :

BNA_P

Client SampleId :

SLCS829



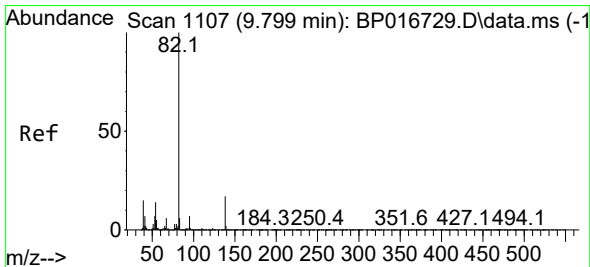
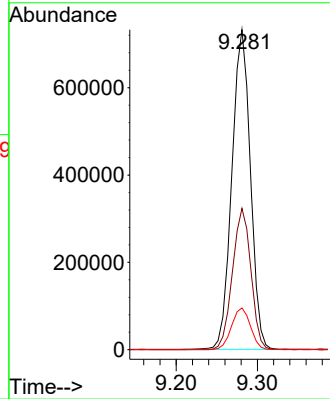
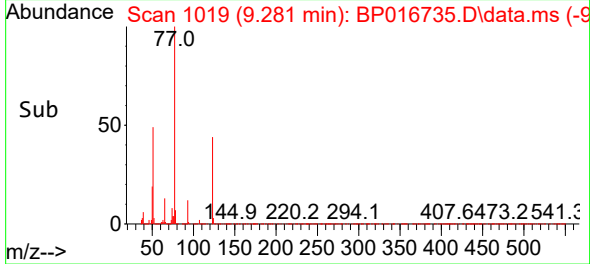
Tgt Ion: 77 Resp: 1158438
 Ion Ratio Lower Upper
 77 100
 123 44.2 34.9 52.3
 65 13.1 10.6 15.8

Manual Integrations

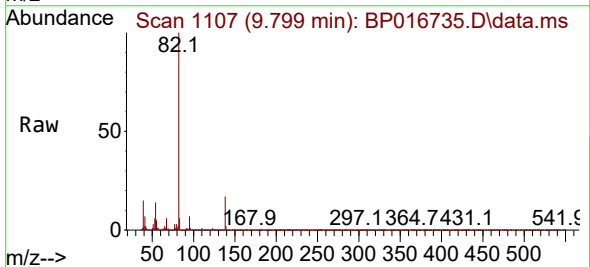
APPROVED

Reviewed By :Yogesh Patel 08/25/2023

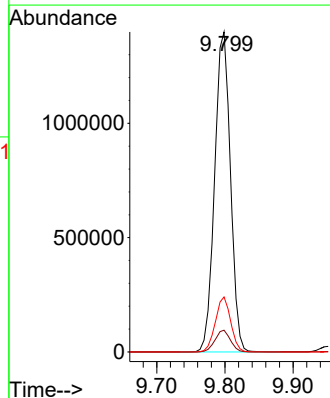
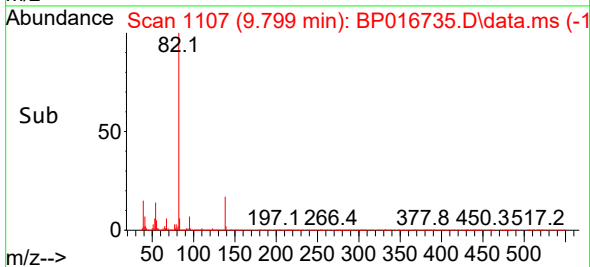
Supervised By :mohammad ahmed 08/25/2023

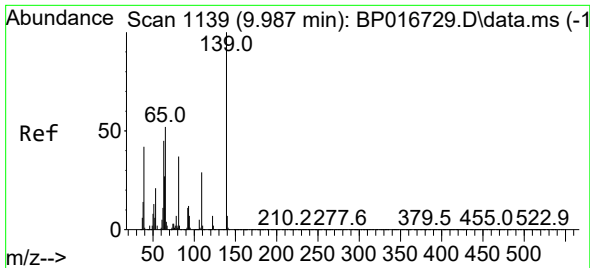


#23
 Isophorone
 Concen: 35.900 ng/uI
 RT: 9.799 min Scan# 1107
 Delta R.T. -0.000 min
 Lab File: BP016735.D
 Acq: 24 Aug 2023 20:12



Tgt Ion: 82 Resp: 2256779
 Ion Ratio Lower Upper
 82 100
 95 6.8 5.4 8.0
 138 17.2 13.5 20.3





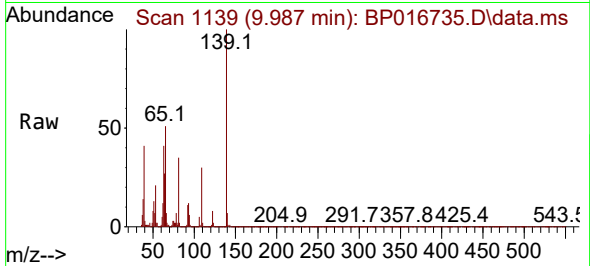
#25
 2-Nitrophenol
 Concen: 37.074 ng/ul
 RT: 9.987 min Scan# 1139
 Delta R.T. -0.000 min
 Lab File: BP016735.D
 Acq: 24 Aug 2023 20:12

Instrument :

BNA_P

ClientSampleId :

SLCS829



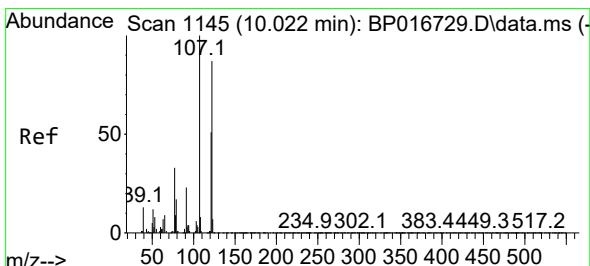
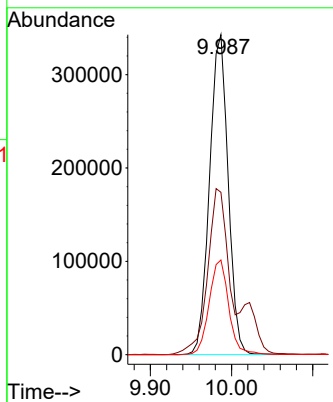
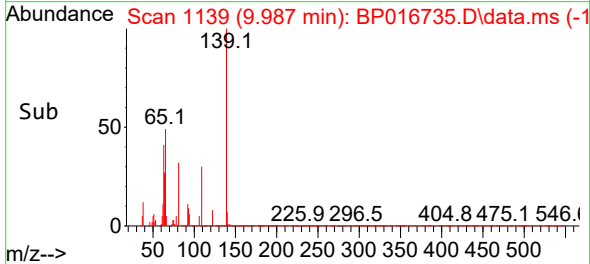
Tgt Ion:139 Resp: 54515
 Ion Ratio Lower Upper
 139 100
 65 50.8 42.0 63.0
 109 29.6 23.4 35.2

Manual Integrations

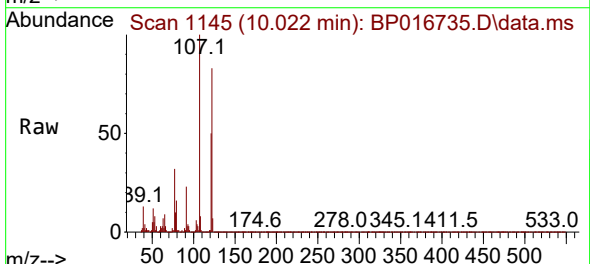
APPROVED

Reviewed By :Yogesh Patel 08/25/2023

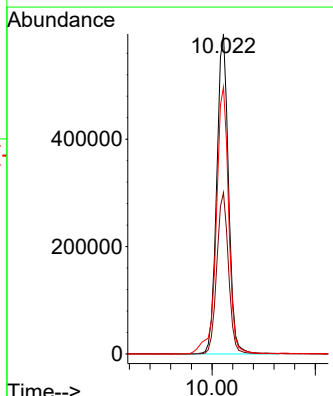
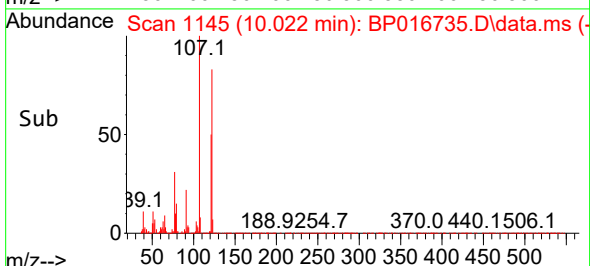
Supervised By :mohammad ahmed 08/25/2023

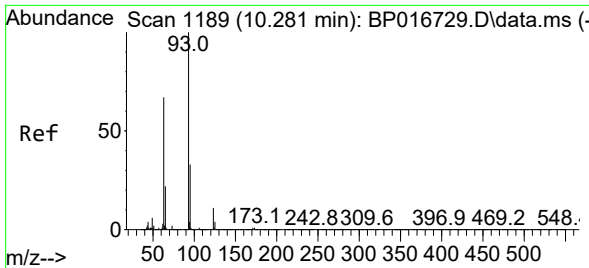


#26
 2,4-Dimethylphenol
 Concen: 31.876 ng/ul
 RT: 10.022 min Scan# 1145
 Delta R.T. -0.000 min
 Lab File: BP016735.D
 Acq: 24 Aug 2023 20:12



Tgt Ion:107 Resp: 942066
 Ion Ratio Lower Upper
 107 100
 121 50.4 40.7 61.1
 122 83.4 69.7 104.5





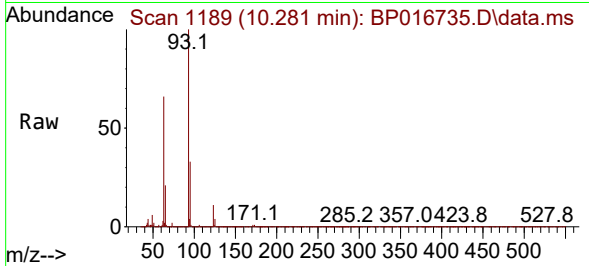
#27
 Bis(2-Chloroethoxy)methane
 Concen: 35.631 ng/ul
 RT: 10.281 min Scan# 1189
 Delta R.T. -0.000 min
 Lab File: BP016735.D
 Acq: 24 Aug 2023 20:12

Instrument :

BNA_P

ClientSampleId :

SLCS829



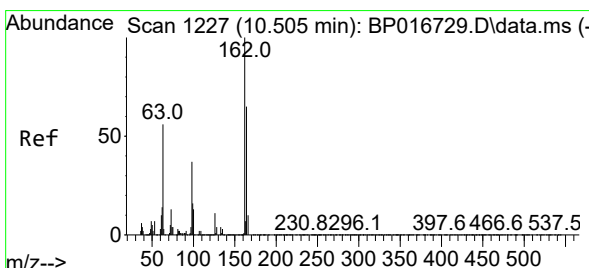
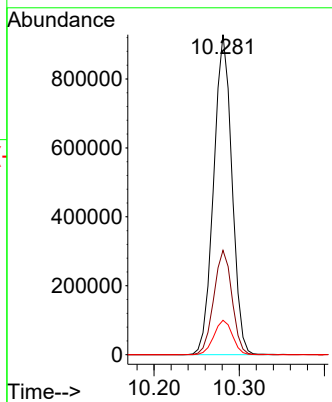
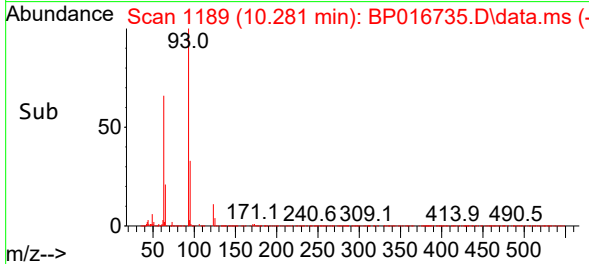
Tgt Ion: 93 Resp: 138188
 Ion Ratio Lower Upper
 93 100
 95 32.6 26.3 39.5
 123 10.8 8.8 13.2

Manual Integrations

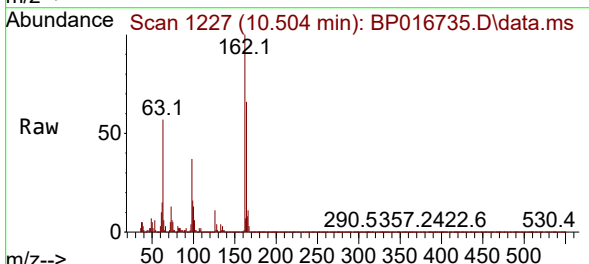
APPROVED

Reviewed By :Yogesh Patel 08/25/2023

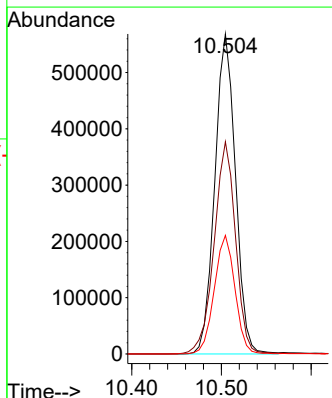
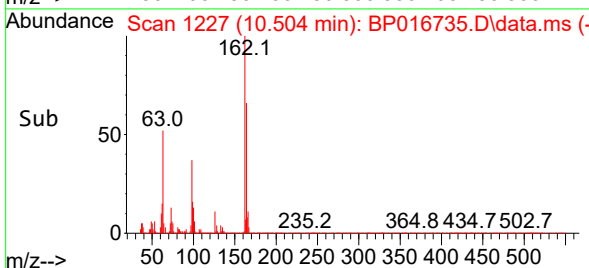
Supervised By :mohammad ahmed 08/25/2023

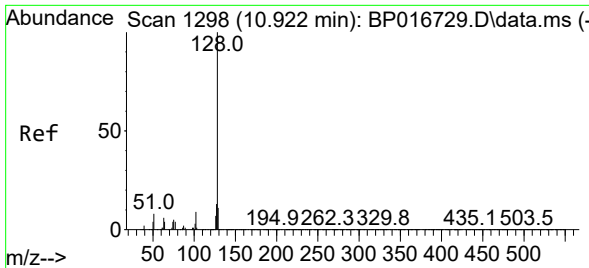


#29
 2,4-Dichlorophenol
 Concen: 36.511 ng/ul
 RT: 10.504 min Scan# 1227
 Delta R.T. -0.000 min
 Lab File: BP016735.D
 Acq: 24 Aug 2023 20:12



Tgt Ion:162 Resp: 909253
 Ion Ratio Lower Upper
 162 100
 164 66.3 52.2 78.2
 98 37.1 29.3 43.9





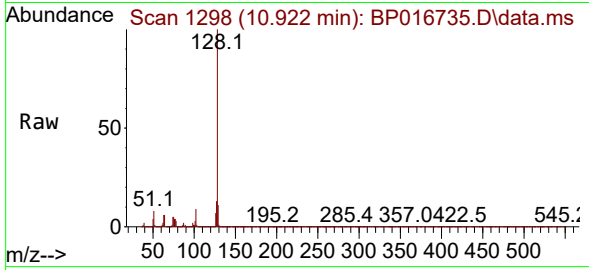
#30
 Naphthalene
 Concen: 35.366 ng/uI
 RT: 10.922 min Scan# 1298
 Delta R.T. -0.000 min
 Lab File: BP016735.D
 Acq: 24 Aug 2023 20:12

Instrument :

BNA_P

ClientSampleId :

SLCS829



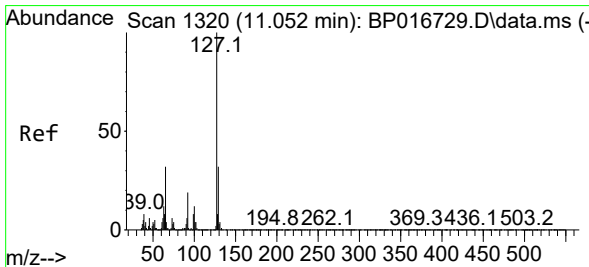
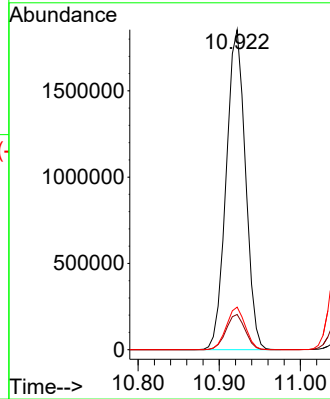
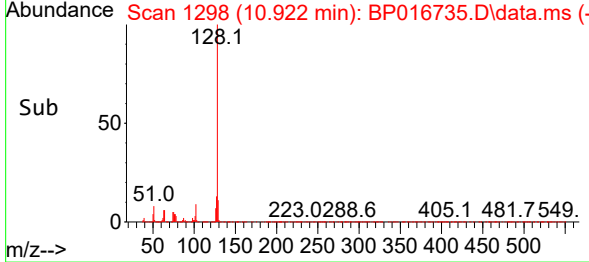
Tgt Ion:128 Resp: 3056920
 Ion Ratio Lower Upper
 128 100
 129 11.0 8.8 13.2
 127 13.3 10.3 15.5

Manual Integrations

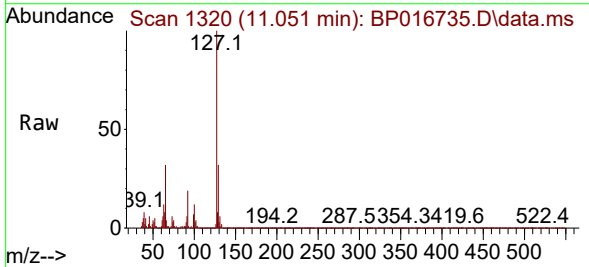
APPROVED

Reviewed By :Yogesh Patel 08/25/2023

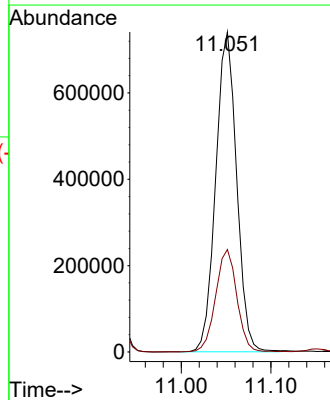
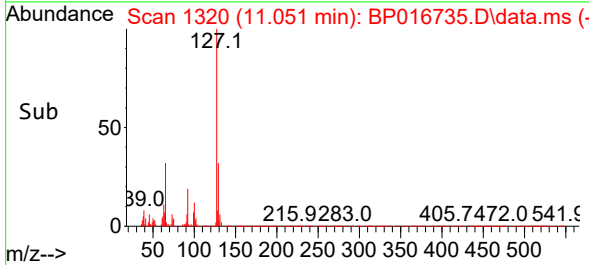
Supervised By :mohammad ahmed 08/25/2023

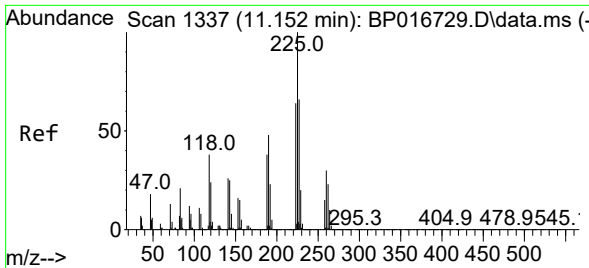


#32
 4-Chloroaniline
 Concen: 32.028 ng/uI
 RT: 11.051 min Scan# 1320
 Delta R.T. -0.000 min
 Lab File: BP016735.D
 Acq: 24 Aug 2023 20:12



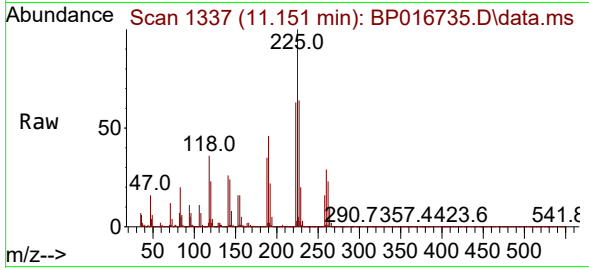
Tgt Ion:127 Resp: 1196690
 Ion Ratio Lower Upper
 127 100
 129 32.0 25.9 38.9





#33
 Hexachlorobutadiene
 Concen: 34.513 ng/ul
 RT: 11.151 min Scan# 1111
 Delta R.T. -0.000 min
 Lab File: BP016735.D
 Acq: 24 Aug 2023 20:12

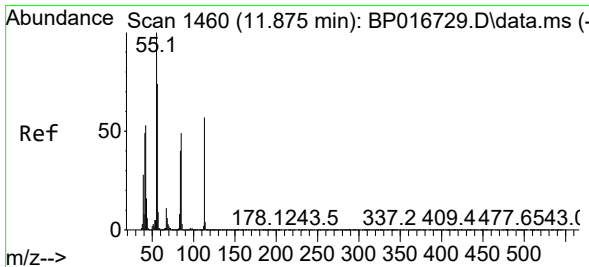
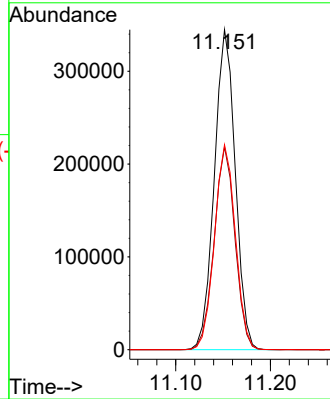
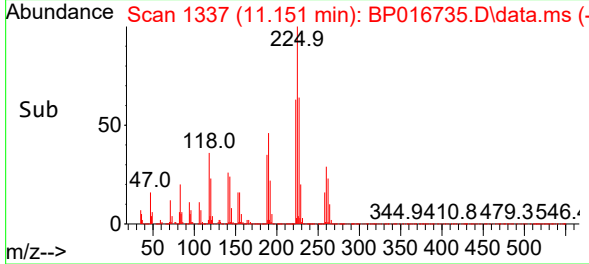
Instrument : BNA_P
 Client Sample Id : SLCS829



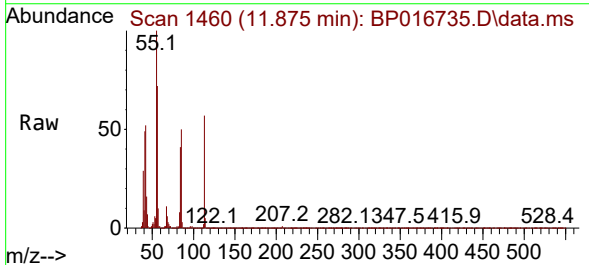
Tgt Ion: 225 Resp: 52944
 Ion Ratio Lower Upper
 225 100
 223 63.4 51.0 76.4
 227 64.0 52.5 78.7

Manual Integrations
 APPROVED

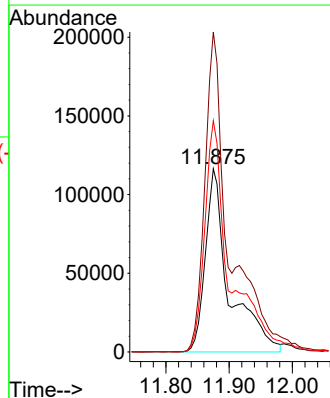
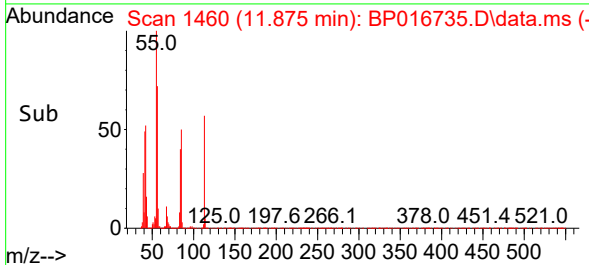
Reviewed By : Yogesh Patel 08/25/2023
 Supervised By : mohammad ahmed 08/25/2023

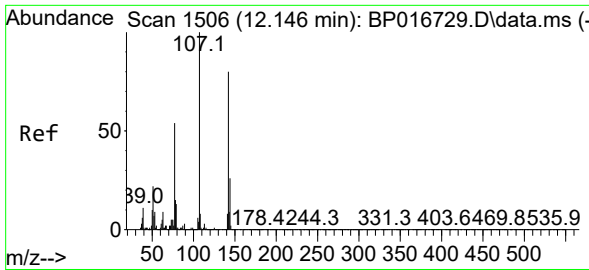


#34
 Caprolactam
 Concen: 33.341 ng/ul m
 RT: 11.875 min Scan# 1460
 Delta R.T. -0.000 min
 Lab File: BP016735.D
 Acq: 24 Aug 2023 20:12



Tgt Ion: 113 Resp: 306204
 Ion Ratio Lower Upper
 113 100
 55 174.7 140.6 210.8
 56 126.2 104.5 156.7





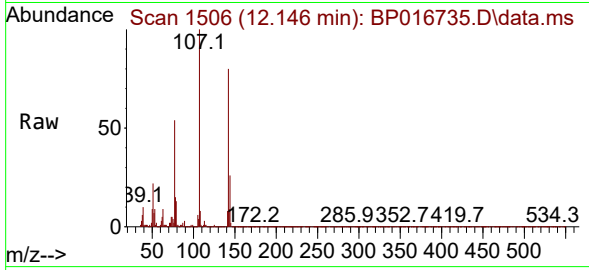
#35
 4-Chloro-3-methylphenol
 Concen: 36.899 ng/ul
 RT: 12.146 min Scan# 1506
 Delta R.T. -0.000 min
 Lab File: BP016735.D
 Acq: 24 Aug 2023 20:12

Instrument :

BNA_P

ClientSampleId :

SLCS829



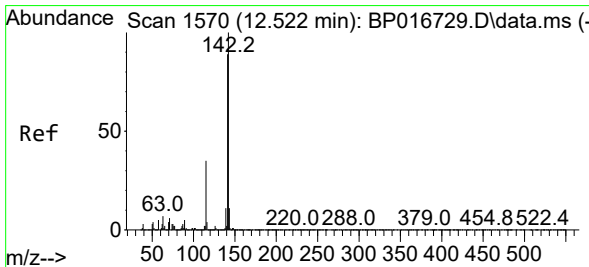
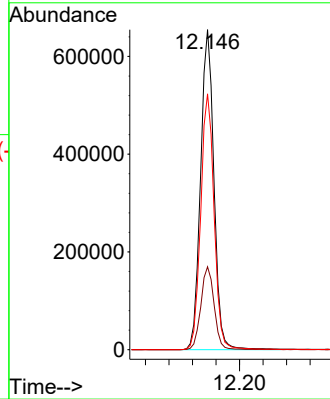
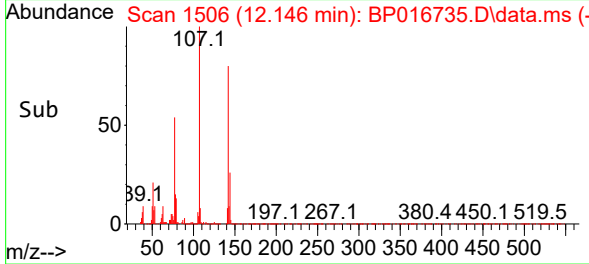
Tgt Ion:107 Resp: 103048
 Ion Ratio Lower Upper
 107 100
 144 25.9 20.6 31.0
 142 79.9 63.7 95.5

Manual Integrations

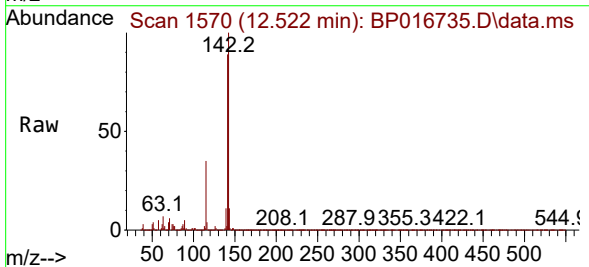
APPROVED

Reviewed By :Yogesh Patel 08/25/2023

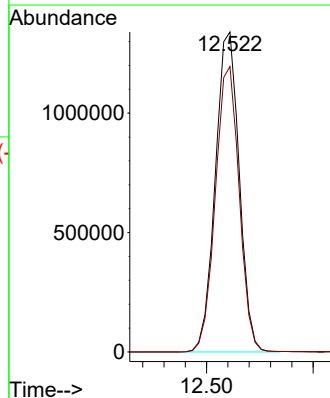
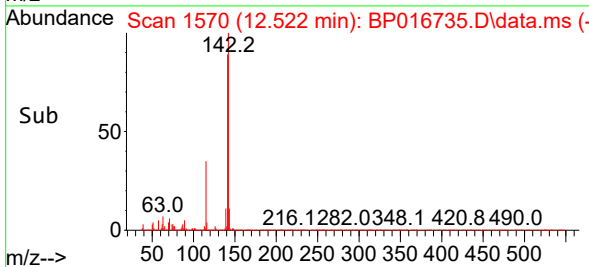
Supervised By :mohammad ahmed 08/25/2023

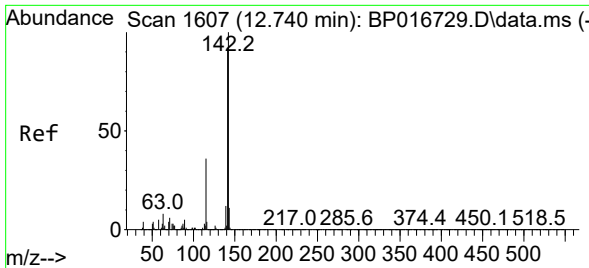


#36
 2-Methylnaphthalene
 Concen: 34.906 ng/ul
 RT: 12.522 min Scan# 1570
 Delta R.T. -0.000 min
 Lab File: BP016735.D
 Acq: 24 Aug 2023 20:12



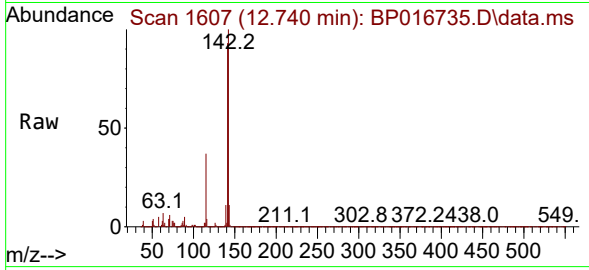
Tgt Ion:142 Resp: 2082578
 Ion Ratio Lower Upper
 142 100
 141 89.2 71.4 107.0





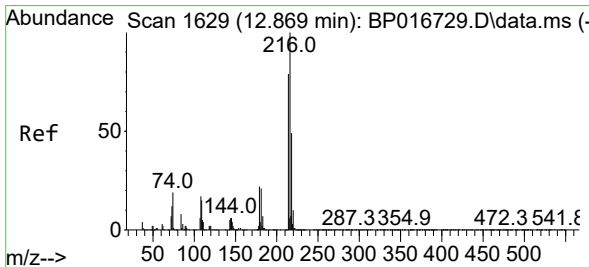
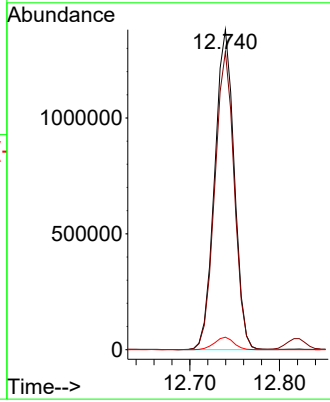
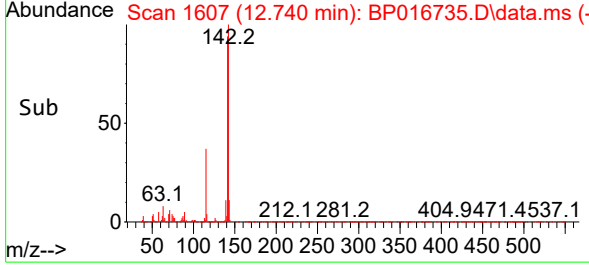
#37
 1-Methylnaphthalene
 Concen: 34.702 ng/uI
 RT: 12.740 min Scan# 1607
 Delta R.T. -0.000 min
 Lab File: BP016735.D
 Acq: 24 Aug 2023 20:12

Instrument : BNA_P
 ClientSampleId : SLCS829

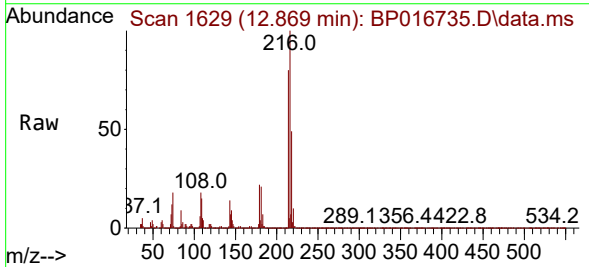


Tgt Ion:142 Resp: 2087794
 Ion Ratio Lower Upper
 142 100
 141 93.1 73.0 109.4
 116 3.9 3.1 4.7

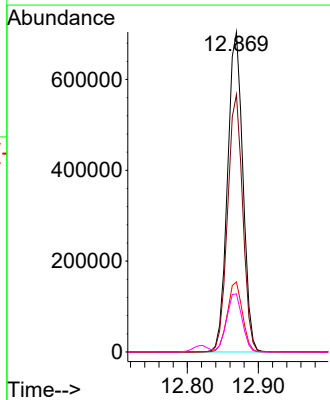
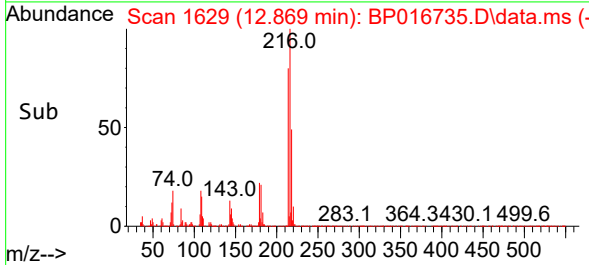
Manual Integrations
APPROVED
 Reviewed By :Yogesh Patel 08/25/2023
 Supervised By :mohammad ahmed 08/25/2023

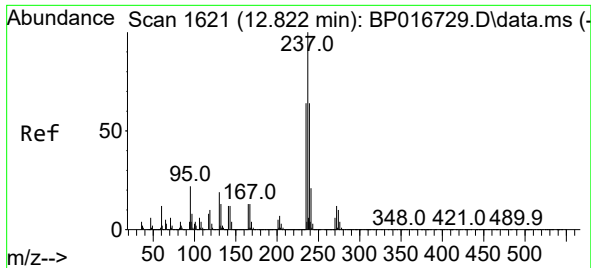


#39
 1,2,4,5-Tetrachlorobenzene
 Concen: 35.445 ng/uI
 RT: 12.869 min Scan# 1629
 Delta R.T. -0.000 min
 Lab File: BP016735.D
 Acq: 24 Aug 2023 20:12



Tgt Ion:216 Resp: 1054601
 Ion Ratio Lower Upper
 216 100
 214 80.5 63.4 95.2
 179 21.9 17.4 26.2
 108 18.1 15.3 22.9





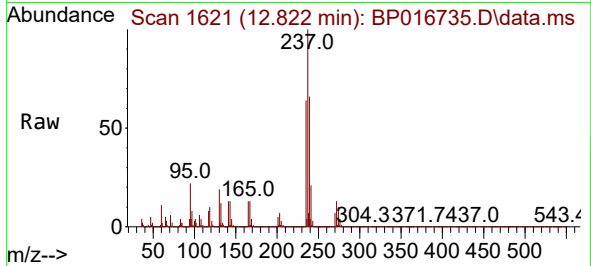
#40
 Hexachlorocyclopentadiene
 Concen: 24.786 ng/ul
 RT: 12.822 min Scan# 1621
 Delta R.T. -0.000 min
 Lab File: BP016735.D
 Acq: 24 Aug 2023 20:12

Instrument :

BNA_P

ClientSampleId :

SLCS829



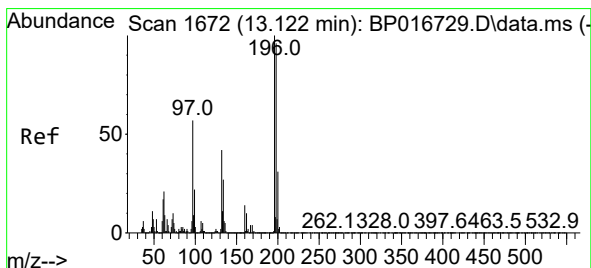
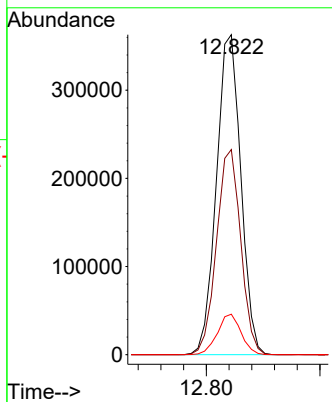
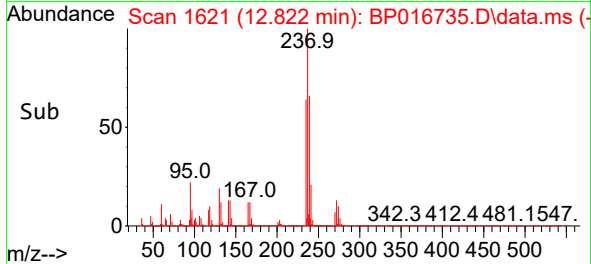
Tgt Ion:237 Resp: 542328
 Ion Ratio Lower Upper
 237 100
 235 64.1 51.3 76.9
 272 12.6 9.8 14.8

Manual Integrations

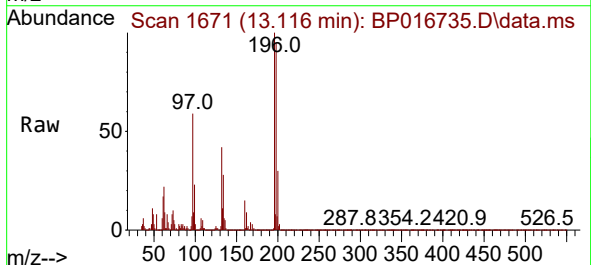
APPROVED

Reviewed By :Yogesh Patel 08/25/2023

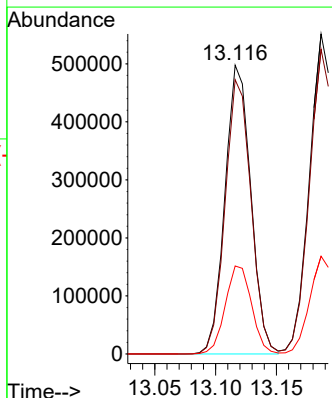
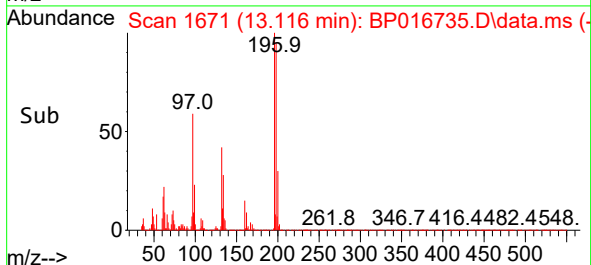
Supervised By :mohammad ahmed 08/25/2023

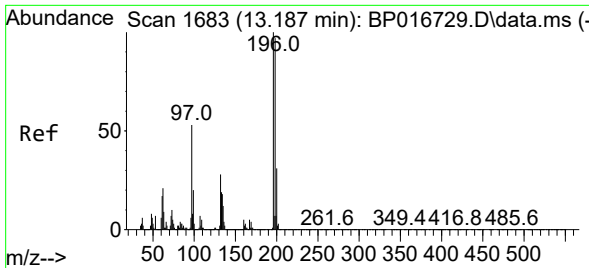


#41
 2,4,6-Trichlorophenol
 Concen: 37.035 ng/ul
 RT: 13.116 min Scan# 1671
 Delta R.T. -0.006 min
 Lab File: BP016735.D
 Acq: 24 Aug 2023 20:12



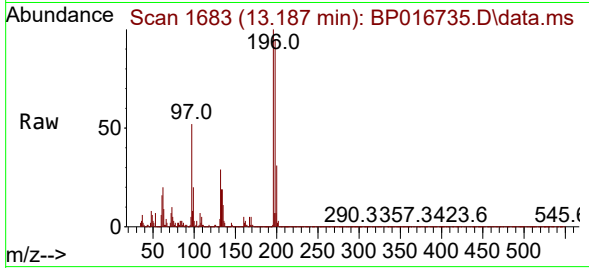
Tgt Ion:196 Resp: 735833
 Ion Ratio Lower Upper
 196 100
 198 95.0 76.6 115.0
 200 30.5 25.2 37.8





#42
 2,4,5-Trichlorophenol
 Concen: 37.845 ng/ul
 RT: 13.187 min Scan# 1683
 Delta R.T. -0.000 min
 Lab File: BP016735.D
 Acq: 24 Aug 2023 20:12

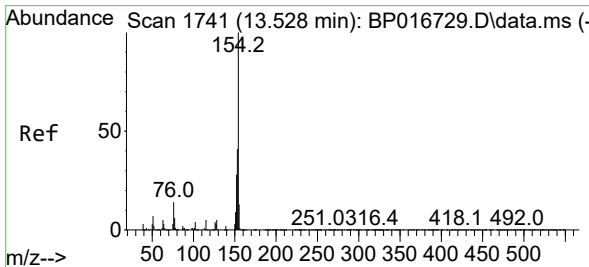
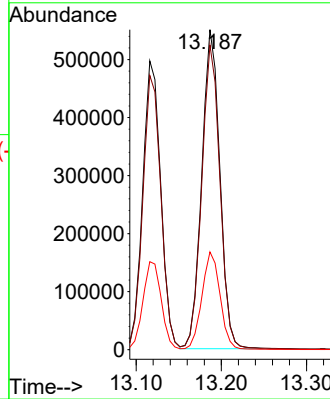
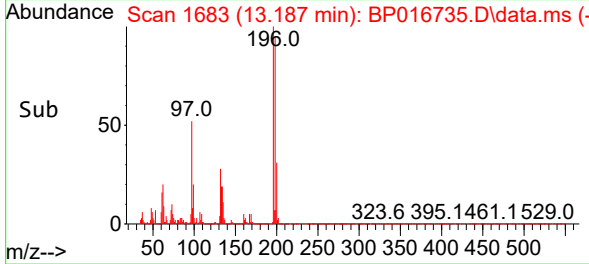
Instrument : BNA_P
 ClientSampleId : SLCS829



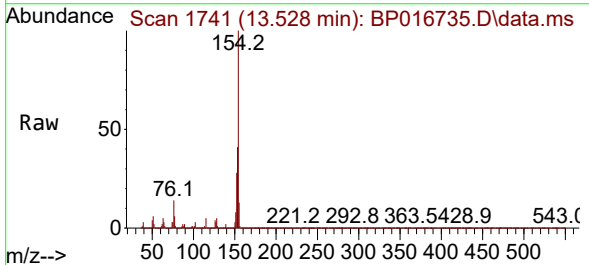
Tgt Ion:196 Resp: 813658
 Ion Ratio Lower Upper
 196 100
 198 95.2 77.8 116.8
 200 30.6 24.8 37.2

Manual Integrations
 APPROVED

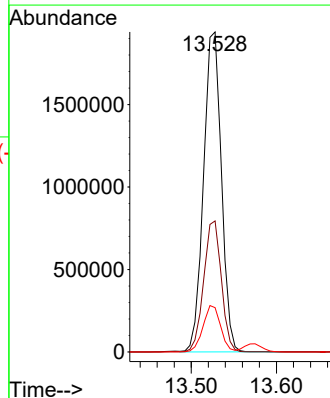
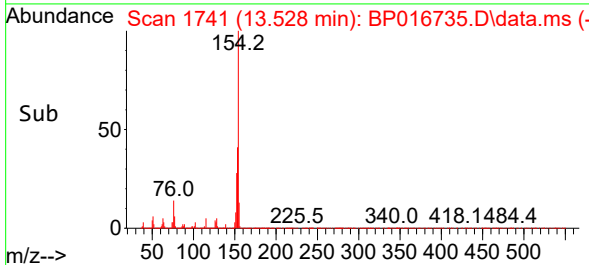
Reviewed By :Yogesh Patel 08/25/2023
 Supervised By :mohammad ahmed 08/25/2023

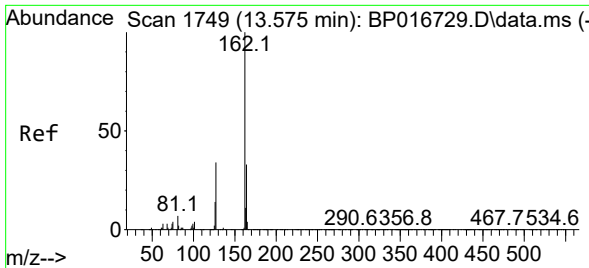


#43
 1,1'-Biphenyl
 Concen: 36.386 ng/ul
 RT: 13.528 min Scan# 1741
 Delta R.T. -0.000 min
 Lab File: BP016735.D
 Acq: 24 Aug 2023 20:12



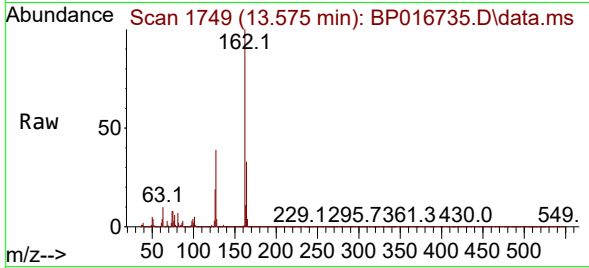
Tgt Ion:154 Resp: 2824157
 Ion Ratio Lower Upper
 154 100
 153 41.0 32.7 49.1
 76 13.9 11.3 16.9





#44
 2-Chloronaphthalene
 Concen: 35.823 ng/uI
 RT: 13.575 min Scan# 1749
 Delta R.T. -0.000 min
 Lab File: BP016735.D
 Acq: 24 Aug 2023 20:12

Instrument : BNA_P
 ClientSampleId : SLCS829

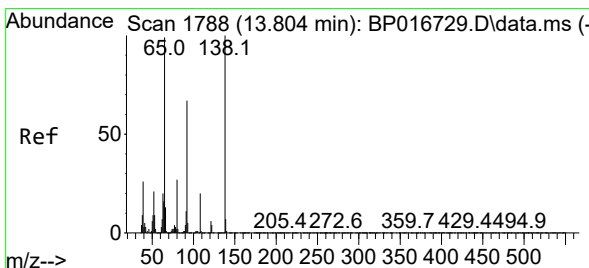
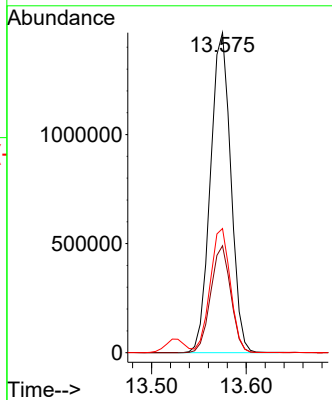
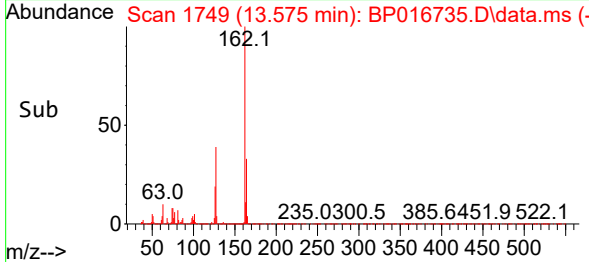


Tgt Ion: 162 Resp: 2194950

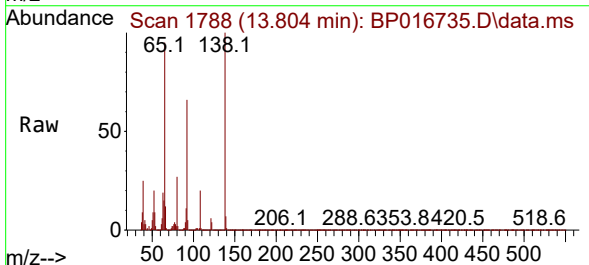
Ion	Ratio	Lower	Upper
162	100		
164	33.4	26.1	39.1
127	38.8	30.8	46.2

Manual Integrations
APPROVED

Reviewed By :Yogesh Patel 08/25/2023
 Supervised By :mohammad ahmed 08/25/2023

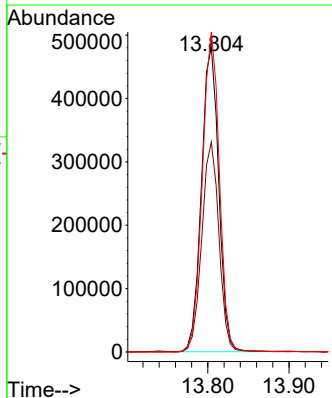
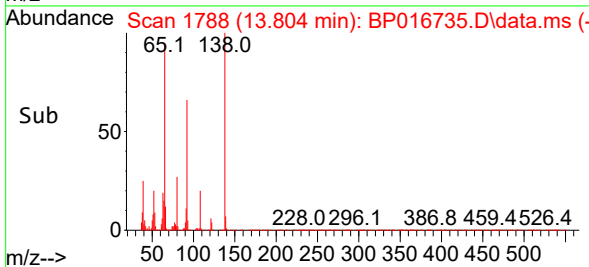


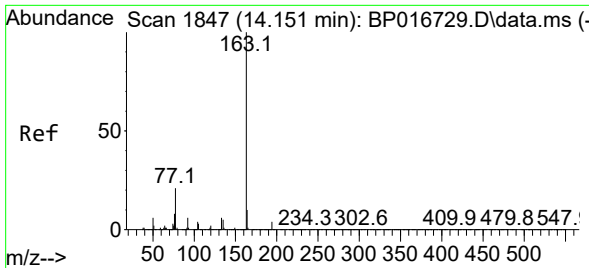
#45
 2-Nitroaniline
 Concen: 38.229 ng/uI
 RT: 13.804 min Scan# 1788
 Delta R.T. -0.000 min
 Lab File: BP016735.D
 Acq: 24 Aug 2023 20:12



Tgt Ion: 65 Resp: 710372

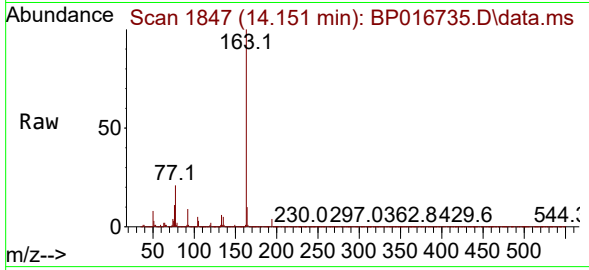
Ion	Ratio	Lower	Upper
65	100		
92	68.8	53.8	80.8
138	104.9	80.7	121.1





#47
 Dimethylphthalate
 Concen: 35.963 ng/ul
 RT: 14.151 min Scan# 1847
 Delta R.T. -0.000 min
 Lab File: BP016735.D
 Acq: 24 Aug 2023 20:12

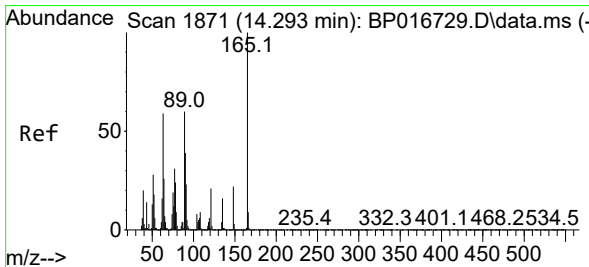
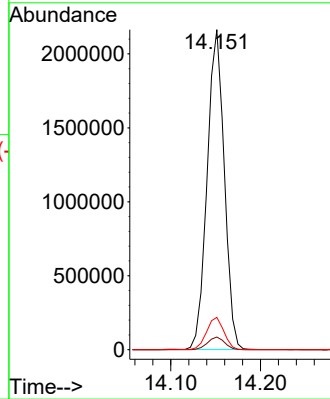
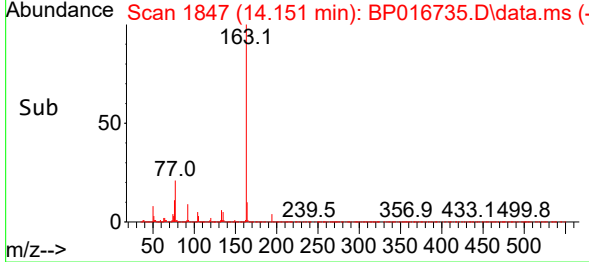
Instrument : BNA_P
 Client Sample Id : SLCS829



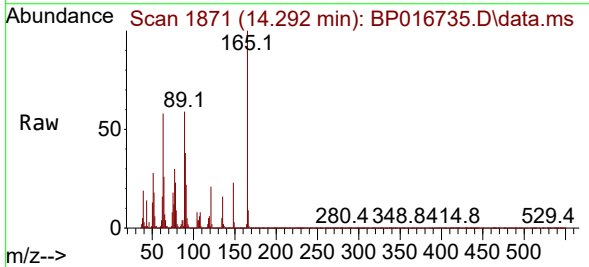
Tgt Ion: 163 Resp: 2867349
 Ion Ratio Lower Upper
 163 100
 194 4.0 3.2 4.8
 164 10.1 8.2 12.4

Manual Integrations
APPROVED

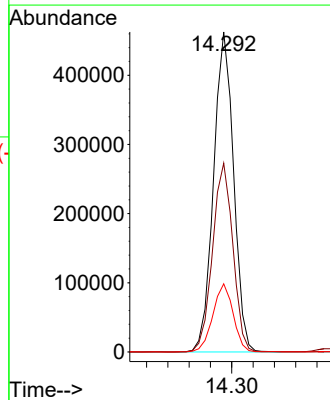
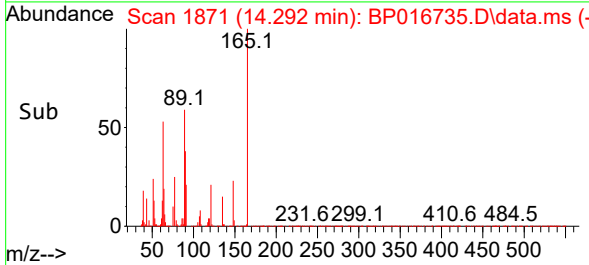
Reviewed By :Yogesh Patel 08/25/2023
 Supervised By :mohammad ahmed 08/25/2023

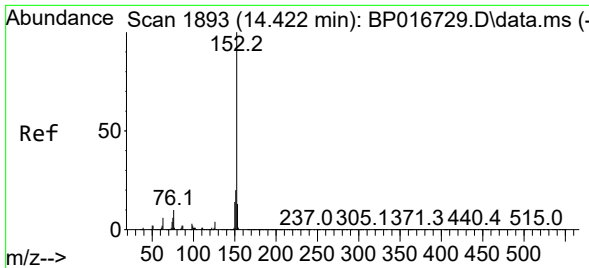


#48
 2,6-Dinitrotoluene
 Concen: 38.603 ng/ul
 RT: 14.292 min Scan# 1871
 Delta R.T. -0.000 min
 Lab File: BP016735.D
 Acq: 24 Aug 2023 20:12



Tgt Ion: 165 Resp: 603099
 Ion Ratio Lower Upper
 165 100
 89 59.0 48.0 72.0
 121 21.3 16.9 25.3





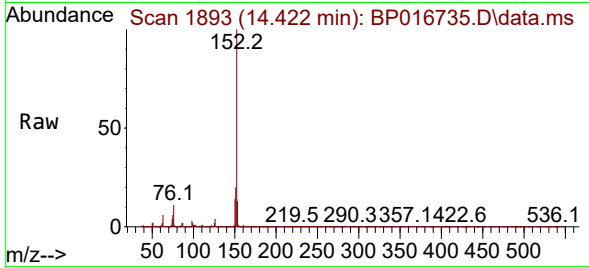
#50
 Acenaphthylene
 Concen: 33.811 ng/u1
 RT: 14.422 min Scan# 1893
 Delta R.T. -0.000 min
 Lab File: BP016735.D
 Acq: 24 Aug 2023 20:12

Instrument :

BNA_P

Client SampleId :

SLCS829



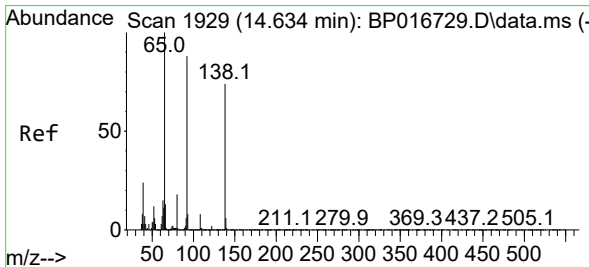
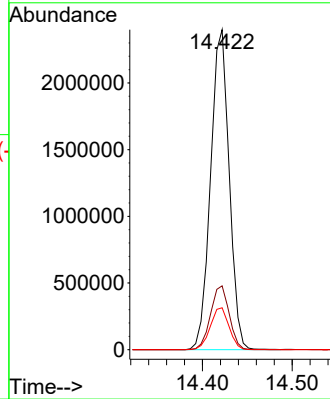
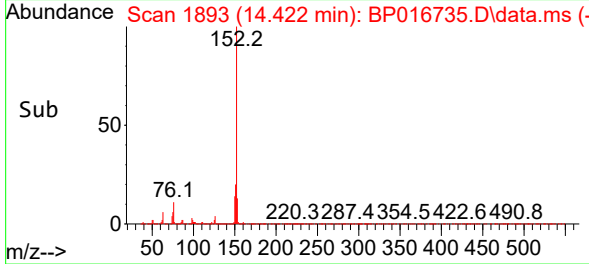
Tgt Ion:152 Resp: 3444094
 Ion Ratio Lower Upper
 152 100
 151 19.9 16.1 24.1
 153 13.1 10.6 15.8

Manual Integrations

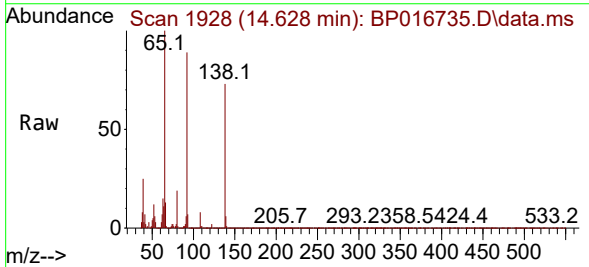
APPROVED

Reviewed By :Yogesh Patel 08/25/2023

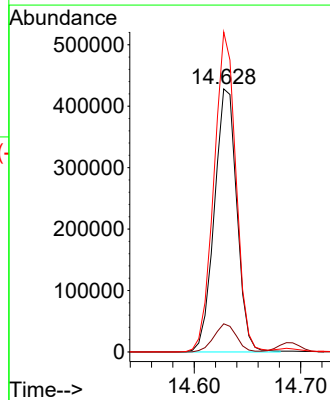
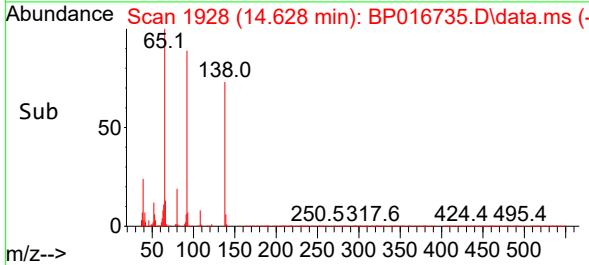
Supervised By :mohammad ahmed 08/25/2023

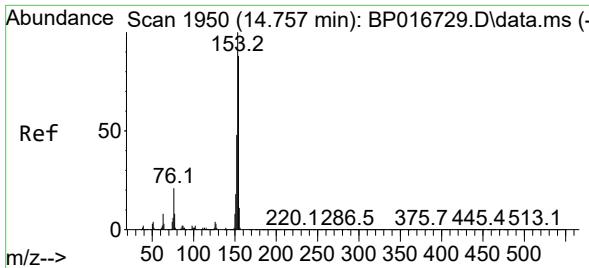


#51
 3-Nitroaniline
 Concen: 38.635 ng/u1
 RT: 14.628 min Scan# 1928
 Delta R.T. -0.006 min
 Lab File: BP016735.D
 Acq: 24 Aug 2023 20:12



Tgt Ion:138 Resp: 628523
 Ion Ratio Lower Upper
 138 100
 108 10.7 8.2 12.4
 92 121.7 95.4 143.0





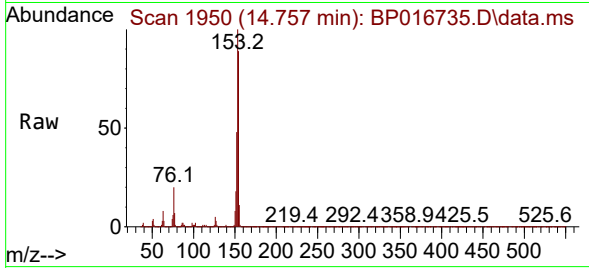
#52
 Acenaphthene
 Concen: 35.754 ng/uI
 RT: 14.757 min Scan# 1950
 Delta R.T. -0.000 min
 Lab File: BP016735.D
 Acq: 24 Aug 2023 20:12

Instrument :

BNA_P

ClientSampleId :

SLCS829



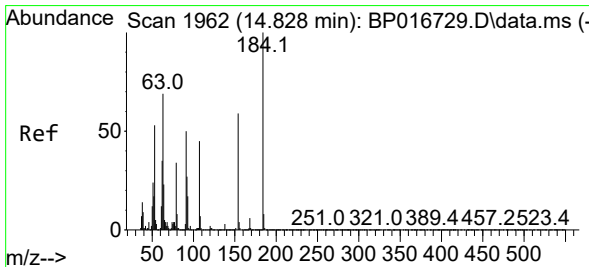
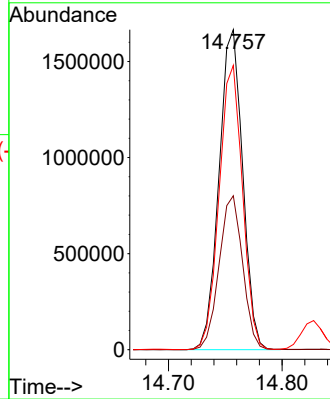
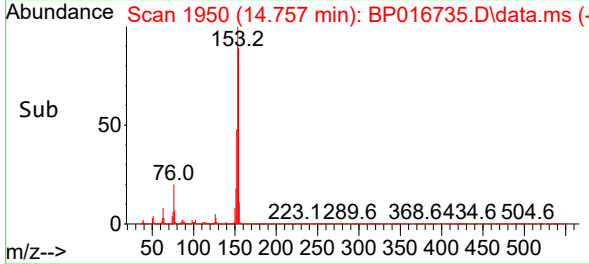
Tgt Ion:153 Resp: 240942
 Ion Ratio Lower Upper
 153 100
 152 48.1 38.5 57.7
 154 88.9 70.6 105.8

Manual Integrations

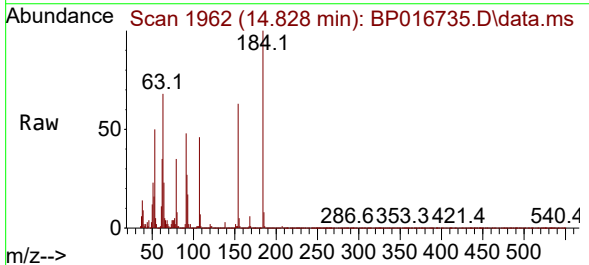
APPROVED

Reviewed By :Yogesh Patel 08/25/2023

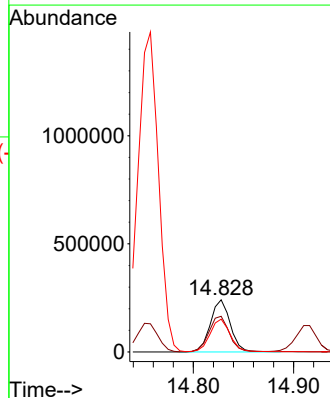
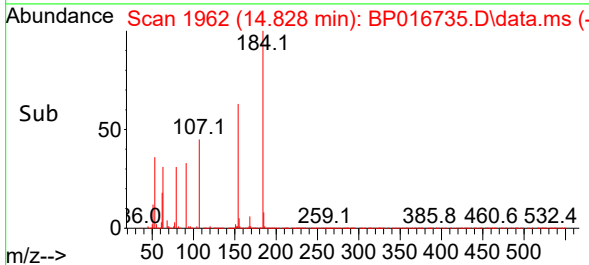
Supervised By :mohammad ahmed 08/25/2023

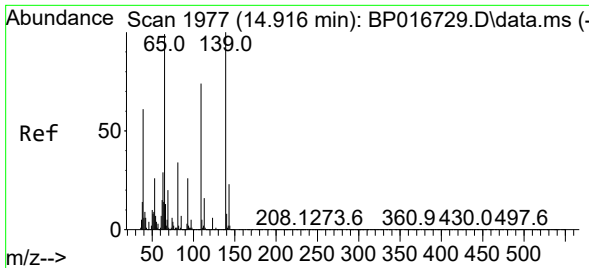


#53
 2,4-Dinitrophenol
 Concen: 29.391 ng/uI
 RT: 14.828 min Scan# 1962
 Delta R.T. -0.000 min
 Lab File: BP016735.D
 Acq: 24 Aug 2023 20:12



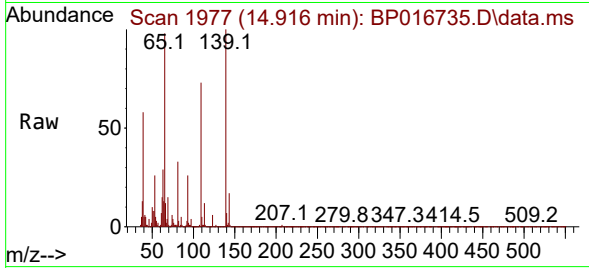
Tgt Ion:184 Resp: 333665
 Ion Ratio Lower Upper
 184 100
 63 68.2 55.3 82.9
 154 62.7 50.3 75.5





#55
 4-Nitrophenol
 Concen: 35.056 ng/uI
 RT: 14.916 min Scan# 1977
 Delta R.T. -0.000 min
 Lab File: BP016735.D
 Acq: 24 Aug 2023 20:12

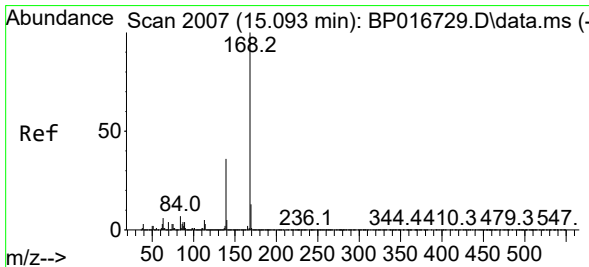
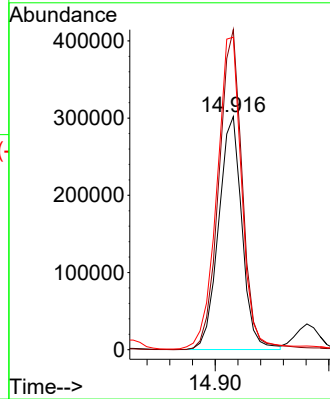
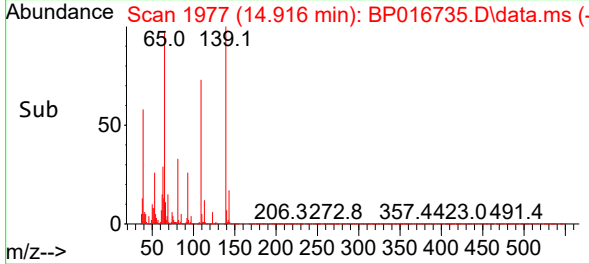
Instrument :
 BNA_P
 ClientSampleId :
 SLCS829



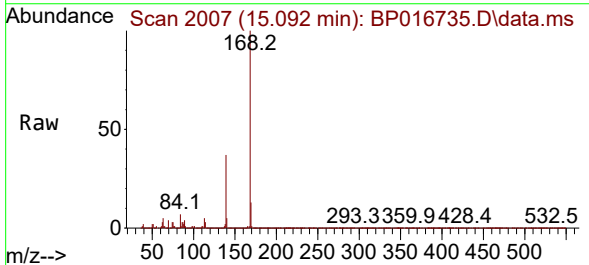
Tgt Ion:109 Resp: 430799
 Ion Ratio Lower Upper
 109 100
 139 137.2 108.6 163.0
 65 134.0 107.8 161.6

Manual Integrations
 APPROVED

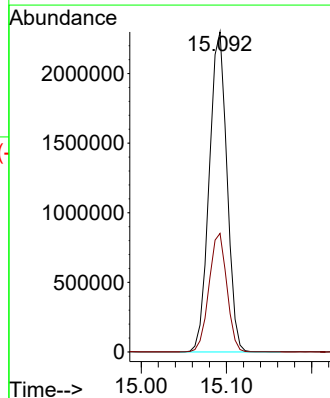
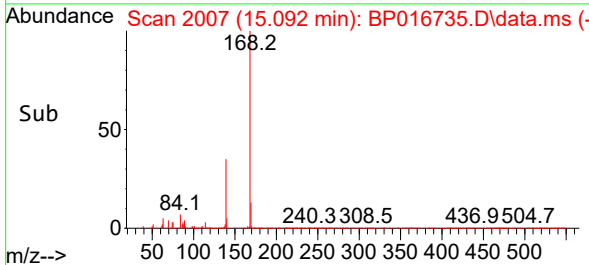
Reviewed By :Yogesh Patel 08/25/2023
 Supervised By :mohammad ahmed 08/25/2023

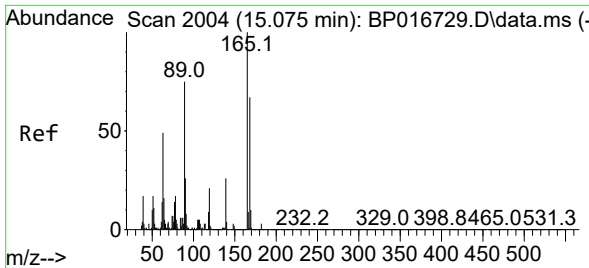


#56
 Dibenzofuran
 Concen: 35.881 ng/uI
 RT: 15.092 min Scan# 2007
 Delta R.T. -0.000 min
 Lab File: BP016735.D
 Acq: 24 Aug 2023 20:12



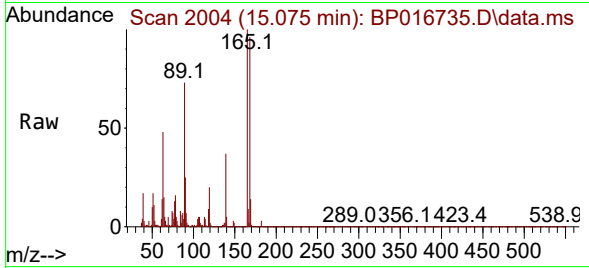
Tgt Ion:168 Resp: 3317741
 Ion Ratio Lower Upper
 168 100
 139 37.0 29.2 43.8





#57
 2,4-Dinitrotoluene
 Concen: 38.218 ng/ul
 RT: 15.075 min Scan# 2004
 Delta R.T. -0.000 min
 Lab File: BP016735.D
 Acq: 24 Aug 2023 20:12

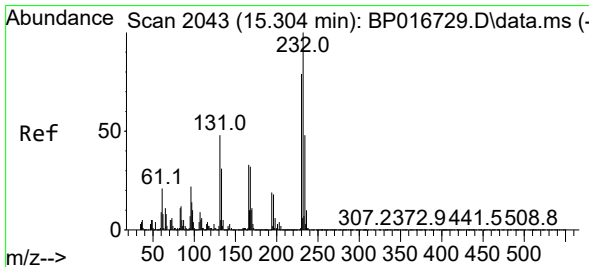
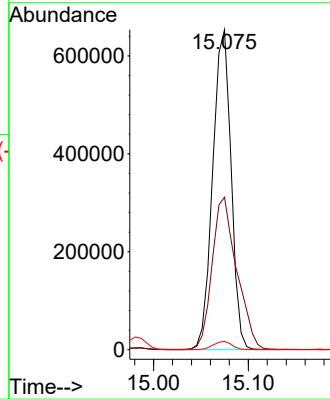
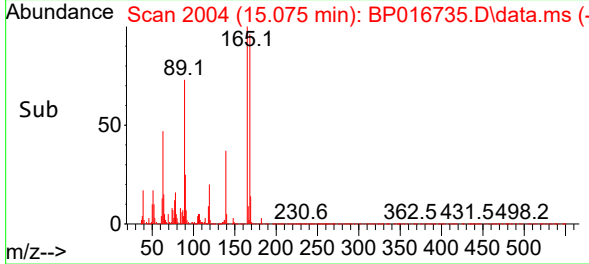
Instrument :
 BNA_P
 ClientSampleId :
 SLCS829



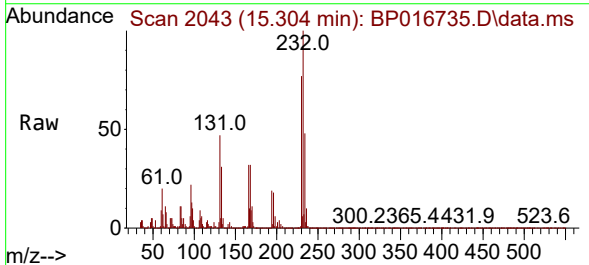
Tgt Ion:165 Resp: 87885
 Ion Ratio Lower Upper
 165 100
 63 47.6 39.0 58.4
 182 2.6 2.2 3.2

Manual Integrations
 APPROVED

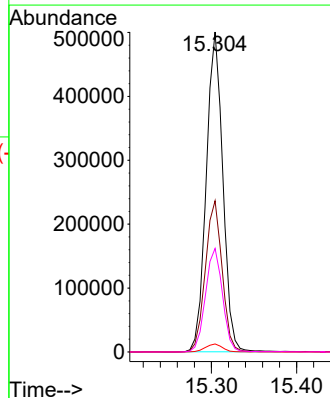
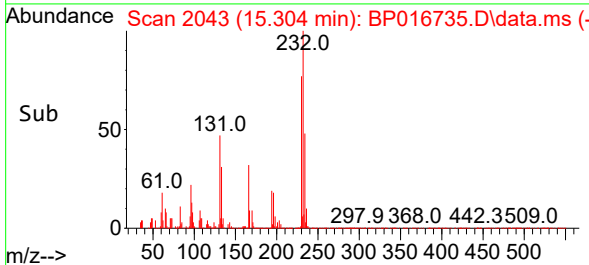
Reviewed By :Yogesh Patel 08/25/2023
 Supervised By :mohammad ahmed 08/25/2023

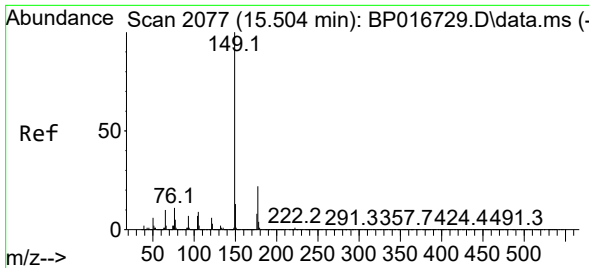


#58
 2,3,4,6-Tetrachlorophenol
 Concen: 37.050 ng/ul
 RT: 15.304 min Scan# 2043
 Delta R.T. -0.000 min
 Lab File: BP016735.D
 Acq: 24 Aug 2023 20:12



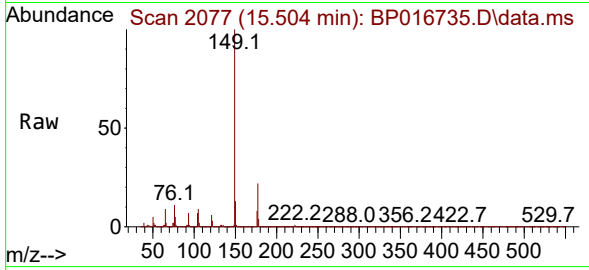
Tgt Ion:232 Resp: 678150
 Ion Ratio Lower Upper
 232 100
 131 47.3 38.1 57.1
 130 2.5 1.9 2.9
 166 32.3 26.5 39.7





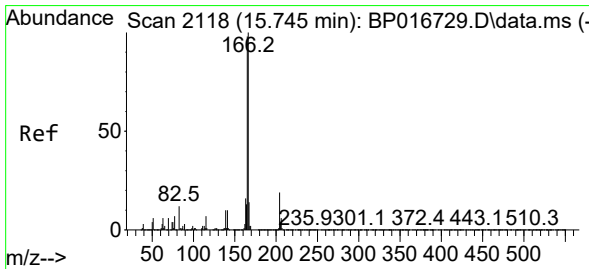
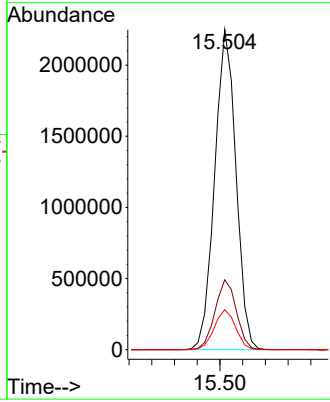
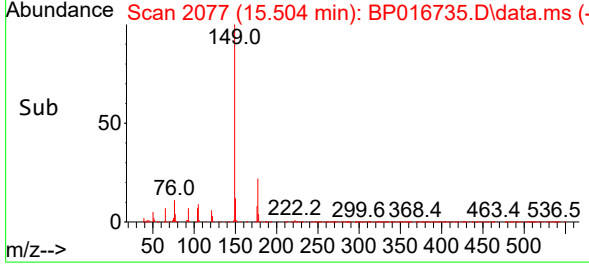
#59
 Diethylphthalate
 Concen: 36.133 ng/uI
 RT: 15.504 min Scan# 2077
 Delta R.T. -0.000 min
 Lab File: BP016735.D
 Acq: 24 Aug 2023 20:12

Instrument : BNA_P
 ClientSampleId : SLCS829

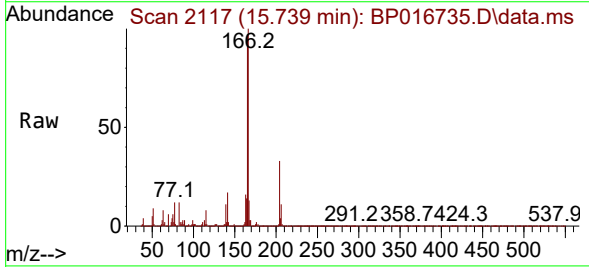


Tgt Ion:149 Resp: 292668
 Ion Ratio Lower Upper
 149 100
 177 21.9 17.3 25.9
 150 12.5 10.2 15.2

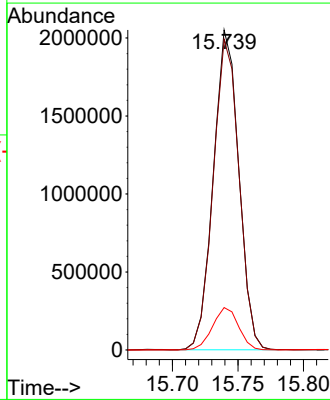
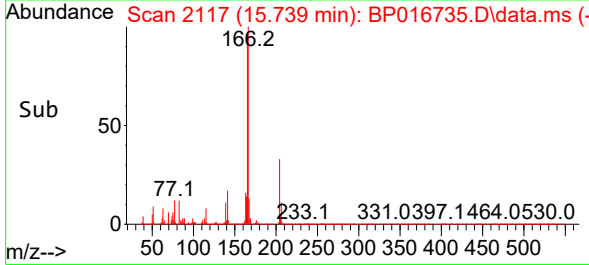
Manual Integrations
APPROVED
 Reviewed By :Yogesh Patel 08/25/2023
 Supervised By :mohammad ahmed 08/25/2023

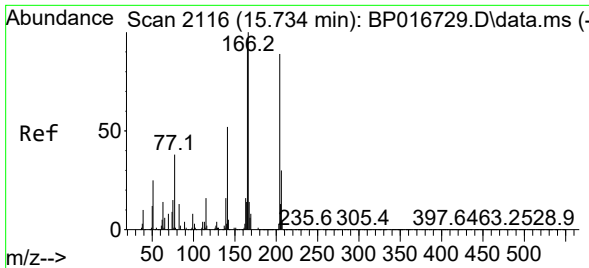


#61
 Fluorene
 Concen: 35.795 ng/uI
 RT: 15.739 min Scan# 2117
 Delta R.T. -0.006 min
 Lab File: BP016735.D
 Acq: 24 Aug 2023 20:12



Tgt Ion:166 Resp: 2768467
 Ion Ratio Lower Upper
 166 100
 165 97.1 78.8 118.2
 167 13.2 10.9 16.3





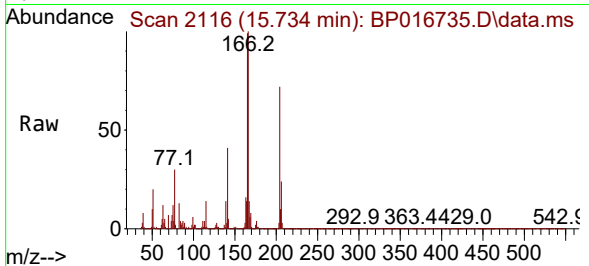
#62
 4-Chlorophenyl-phenylether
 Concen: 35.917 ng/ul
 RT: 15.734 min Scan# 2116
 Delta R.T. -0.000 min
 Lab File: BP016735.D
 Acq: 24 Aug 2023 20:12

Instrument :

BNA_P

ClientSampleId :

SLCS829



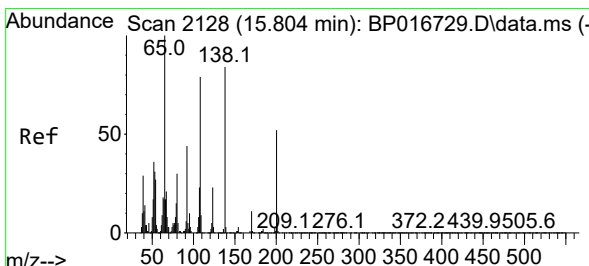
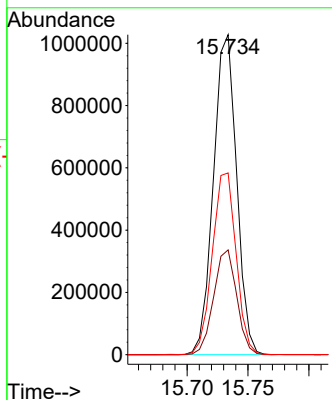
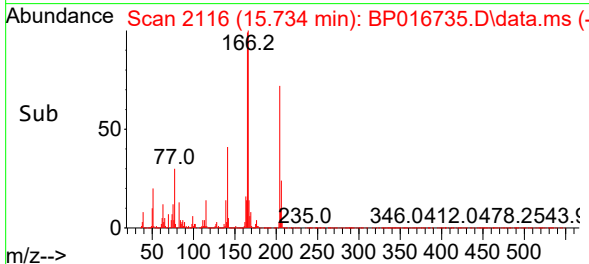
Tgt Ion:204 Resp: 136386
 Ion Ratio Lower Upper
 204 100
 206 32.7 26.7 40.1
 141 56.8 46.8 70.2

Manual Integrations

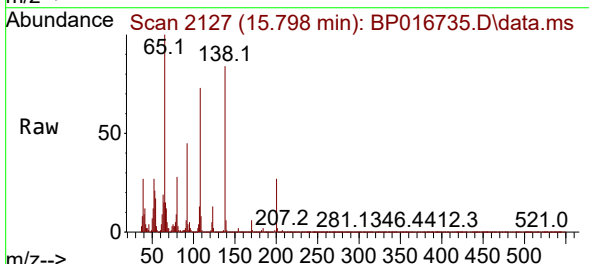
APPROVED

Reviewed By :Yogesh Patel 08/25/2023

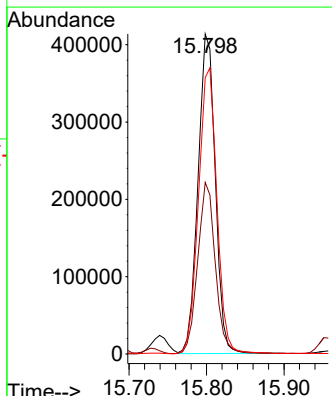
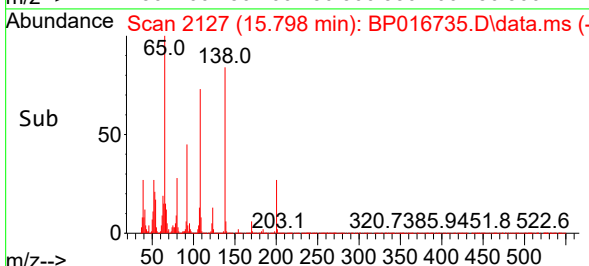
Supervised By :mohammad ahmed 08/25/2023

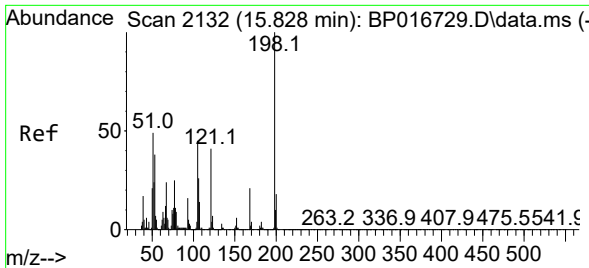


#63
 4-Nitroaniline
 Concen: 41.293 ng/ul
 RT: 15.798 min Scan# 2127
 Delta R.T. -0.006 min
 Lab File: BP016735.D
 Acq: 24 Aug 2023 20:12



Tgt Ion:138 Resp: 639218
 Ion Ratio Lower Upper
 138 100
 92 53.6 41.6 62.4
 108 86.4 74.9 112.3





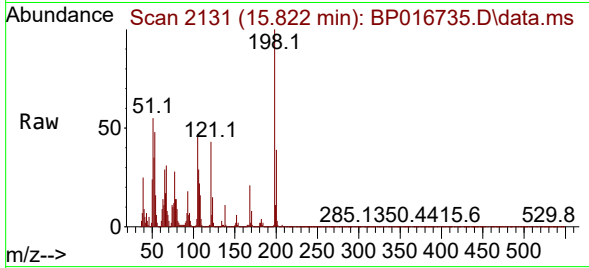
#66
 4,6-Dinitro-2-methylphenol
 Concen: 33.527 ng/ul
 RT: 15.822 min Scan# 2131
 Delta R.T. -0.006 min
 Lab File: BP016735.D
 Acq: 24 Aug 2023 20:12

Instrument :

BNA_P

ClientSampleId :

SLCS829



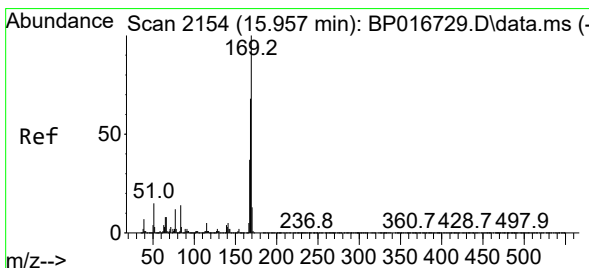
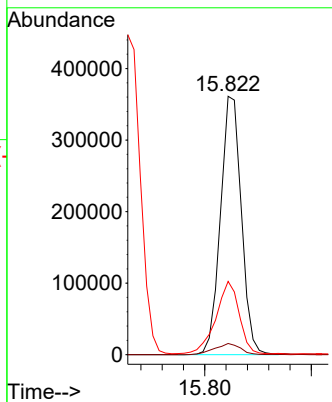
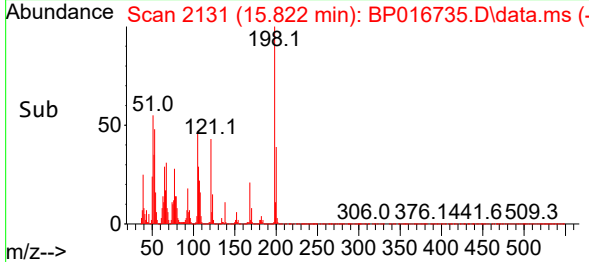
Tgt Ion:198 Resp: 491349
 Ion Ratio Lower Upper
 198 100
 182 4.3 3.2 4.8
 77 28.4 20.7 31.1

Manual Integrations

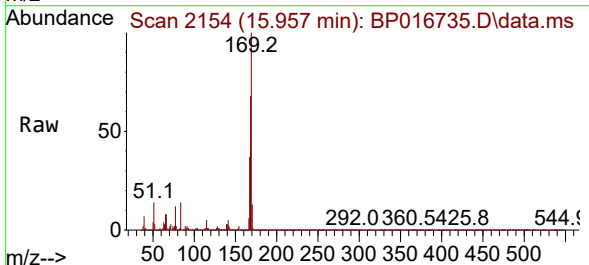
APPROVED

Reviewed By :Yogesh Patel 08/25/2023

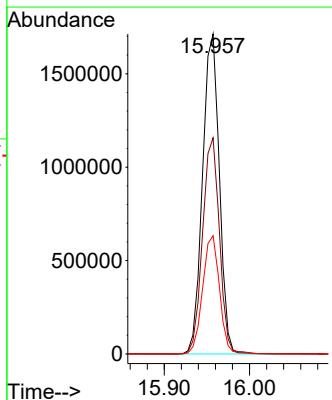
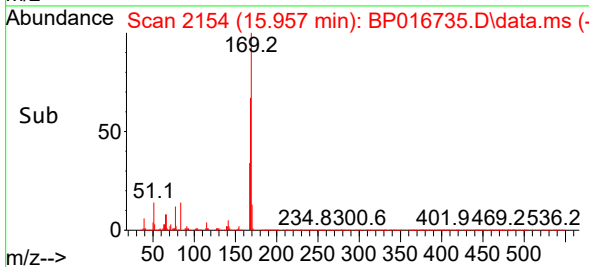
Supervised By :mohammad ahmed 08/25/2023

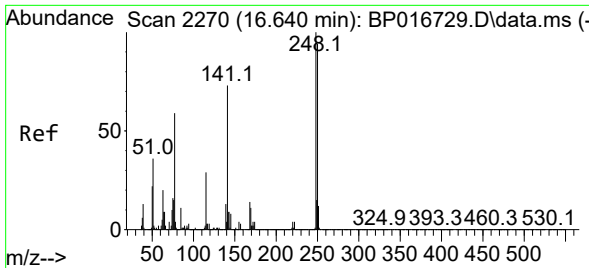


#67
 N-Nitrosodiphenylamine
 Concen: 37.112 ng/ul
 RT: 15.957 min Scan# 2154
 Delta R.T. -0.000 min
 Lab File: BP016735.D
 Acq: 24 Aug 2023 20:12



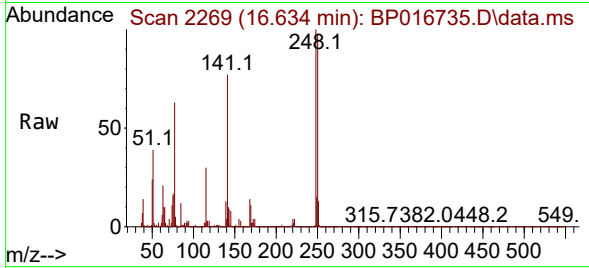
Tgt Ion:169 Resp: 2342896
 Ion Ratio Lower Upper
 169 100
 168 67.5 54.2 81.2
 167 37.0 29.4 44.2





#68
 4-Bromophenyl-phenylether
 Concen: 36.856 ng/ul
 RT: 16.634 min Scan# 21
 Delta R.T. -0.006 min
 Lab File: BP016735.D
 Acq: 24 Aug 2023 20:12

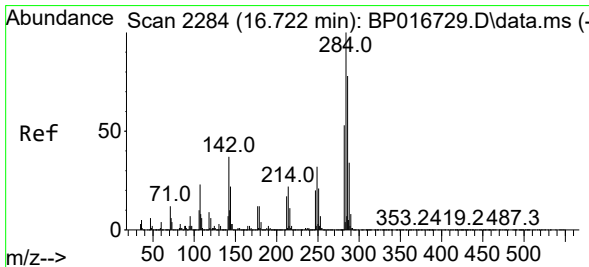
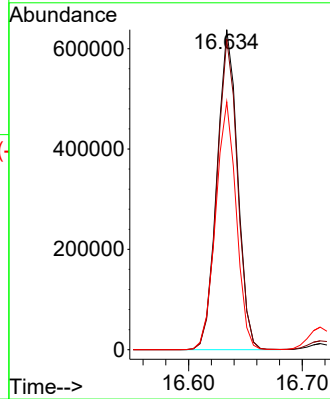
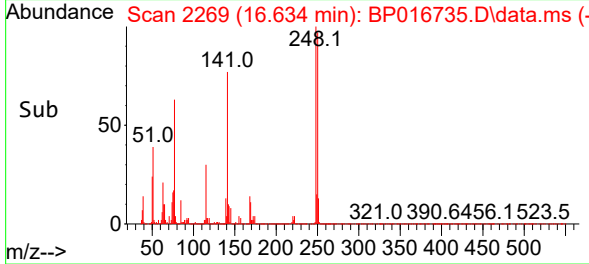
Instrument :
 BNA_P
 ClientSampleId :
 SLCS829



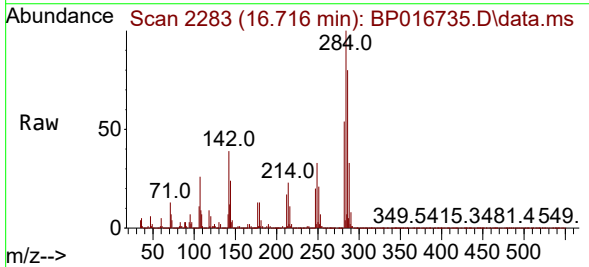
Tgt Ion:248 Resp: 806544
 Ion Ratio Lower Upper
 248 100
 250 97.0 75.4 113.2
 141 77.4 58.7 88.1

Manual Integrations
 APPROVED

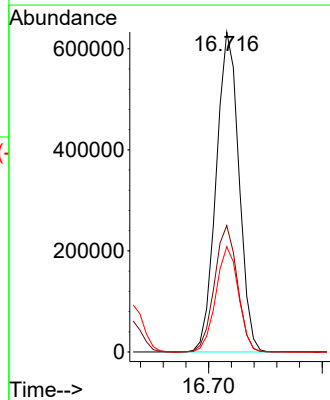
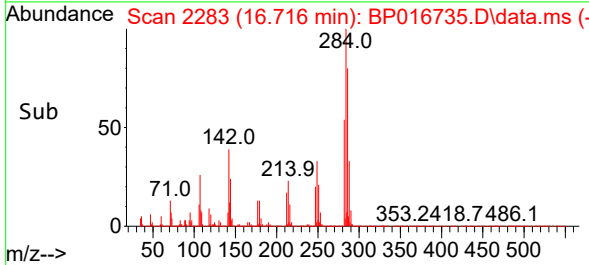
Reviewed By :Yogesh Patel 08/25/2023
 Supervised By :mohammad ahmed 08/25/2023

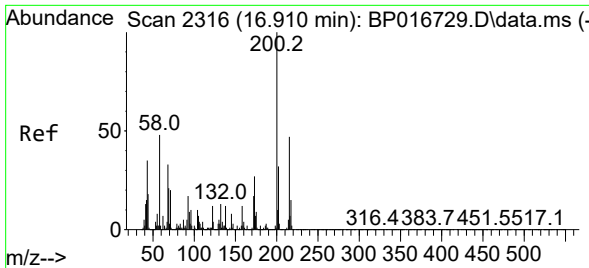


#69
 Hexachlorobenzene
 Concen: 35.981 ng/ul
 RT: 16.716 min Scan# 2283
 Delta R.T. -0.006 min
 Lab File: BP016735.D
 Acq: 24 Aug 2023 20:12



Tgt Ion:284 Resp: 881634
 Ion Ratio Lower Upper
 284 100
 142 39.5 29.8 44.8
 249 32.9 25.9 38.9





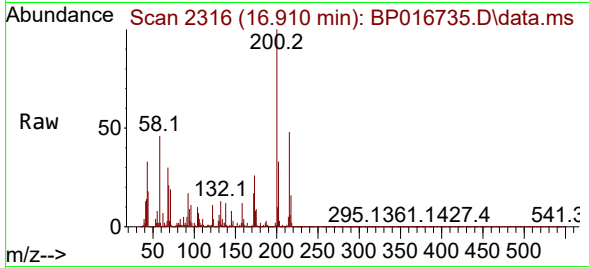
#70
 Atrazine
 Concen: 32.618 ng/uI
 RT: 16.910 min Scan# 21
 Delta R.T. -0.000 min
 Lab File: BP016735.D
 Acq: 24 Aug 2023 20:12

Instrument :

BNA_P

ClientSampleId :

SLCS829



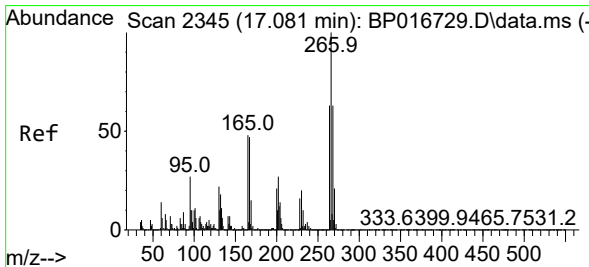
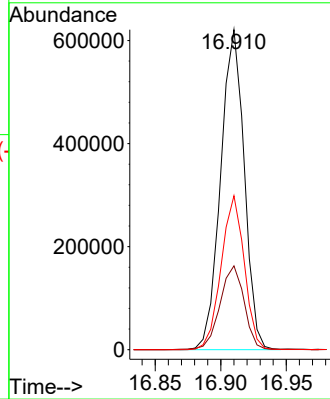
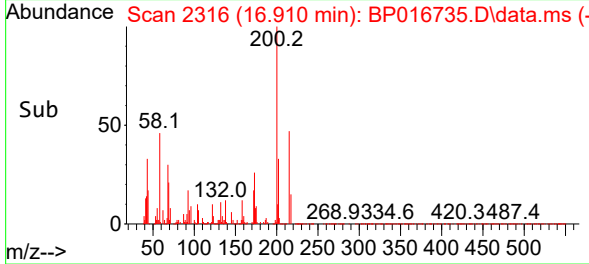
Tgt Ion:200 Resp: 77634
 Ion Ratio Lower Upper
 200 100
 173 26.2 21.4 32.2
 215 48.1 37.3 55.9

Manual Integrations

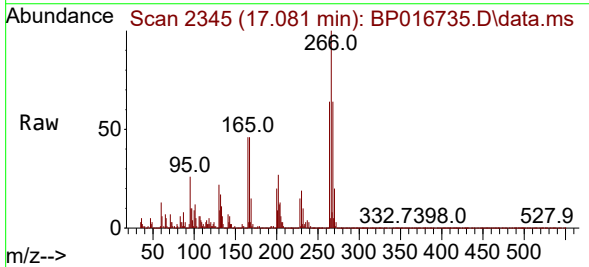
APPROVED

Reviewed By :Yogesh Patel 08/25/2023

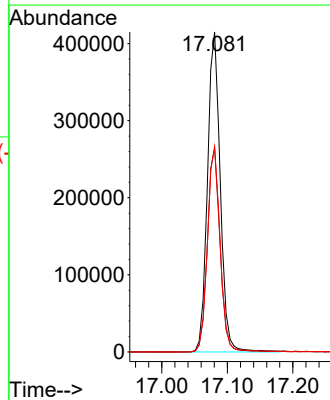
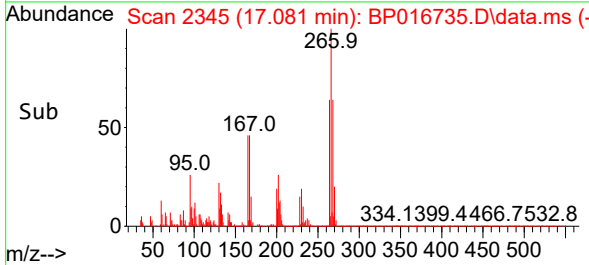
Supervised By :mohammad ahmed 08/25/2023

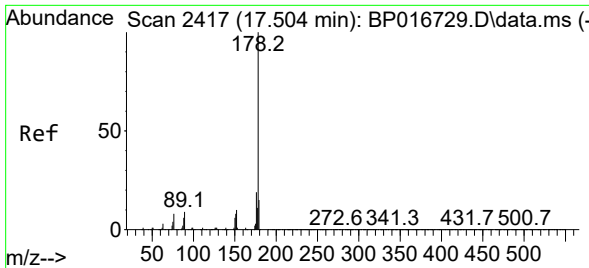


#71
 Pentachlorophenol
 Concen: 31.051 ng/uI
 RT: 17.081 min Scan# 2345
 Delta R.T. -0.000 min
 Lab File: BP016735.D
 Acq: 24 Aug 2023 20:12



Tgt Ion:266 Resp: 564774
 Ion Ratio Lower Upper
 266 100
 264 63.9 50.7 76.1
 268 64.1 50.8 76.2





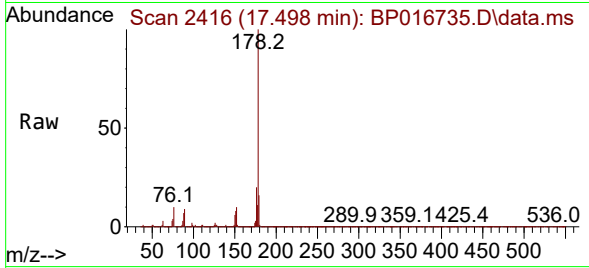
#72
 Phenanthrene
 Concen: 36.847 ng/u1
 RT: 17.498 min Scan# 2416
 Delta R.T. -0.006 min
 Lab File: BP016735.D
 Acq: 24 Aug 2023 20:12

Instrument :

BNA_P

Client SampleId :

SLCS829



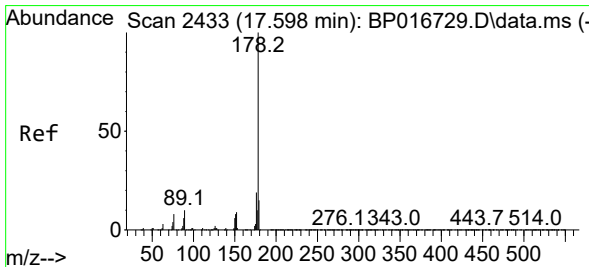
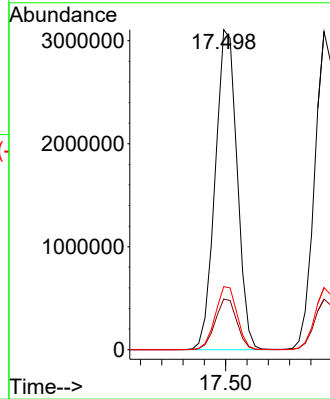
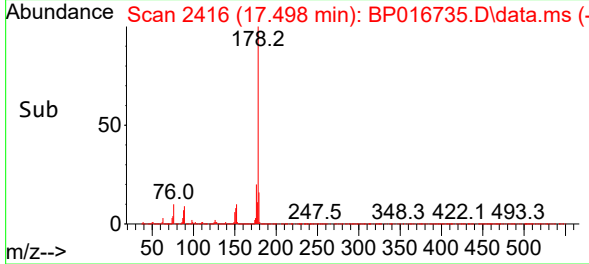
Tgt Ion:178 Resp: 442770
 Ion Ratio Lower Upper
 178 100
 179 15.9 12.4 18.6
 176 19.7 15.6 23.4

Manual Integrations

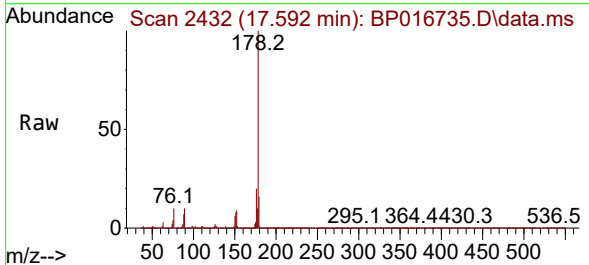
APPROVED

Reviewed By :Yogesh Patel 08/25/2023

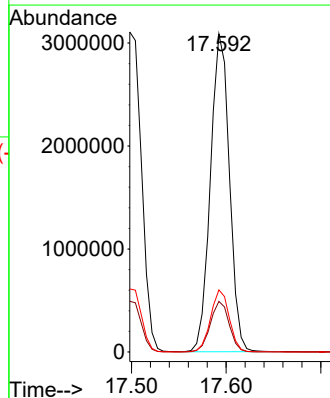
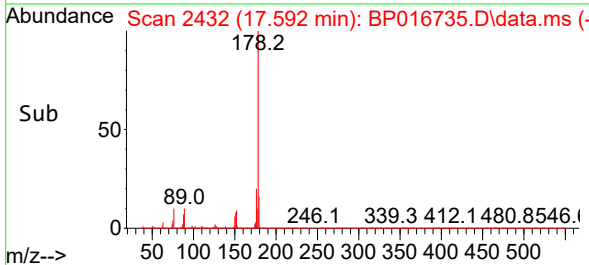
Supervised By :mohammad ahmed 08/25/2023

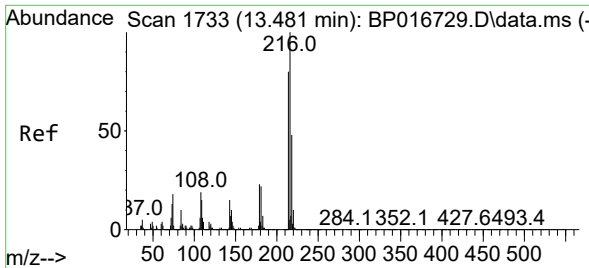


#74
 Anthracene
 Concen: 35.408 ng/u1
 RT: 17.592 min Scan# 2432
 Delta R.T. -0.006 min
 Lab File: BP016735.D
 Acq: 24 Aug 2023 20:12



Tgt Ion:178 Resp: 4302181
 Ion Ratio Lower Upper
 178 100
 179 15.9 12.4 18.6
 176 19.5 15.3 22.9





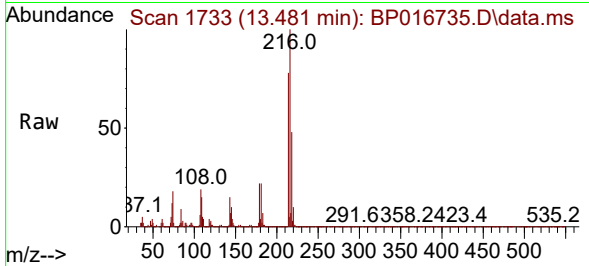
#75
 1,2,3,4-Tetrachlorobenzene
 Concen: 34.227 ng/uL
 RT: 13.481 min Scan# 1733
 Delta R.T. -0.000 min
 Lab File: BP016735.D
 Acq: 24 Aug 2023 20:12

Instrument :

BNA_P

Client SampleId :

SLCS829



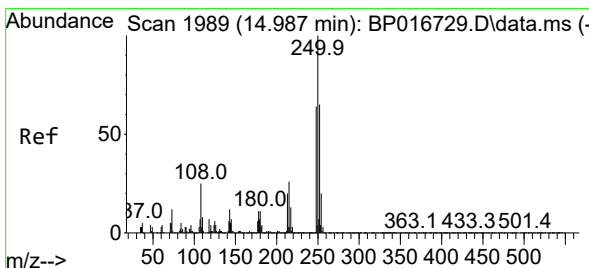
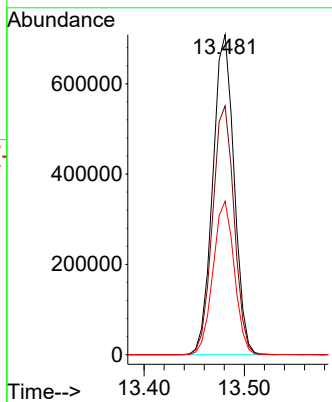
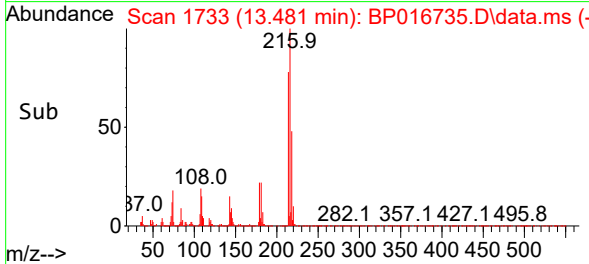
Tgt Ion:216 Resp: 104606
 Ion Ratio Lower Upper
 216 100
 214 77.8 64.0 96.0
 218 47.9 38.2 57.2

Manual Integrations

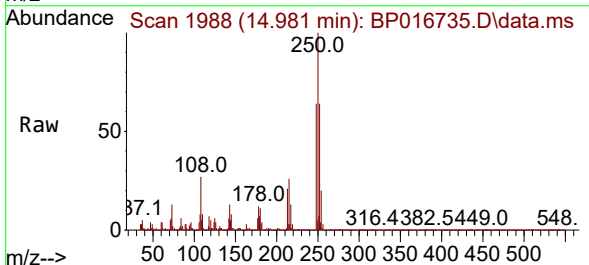
APPROVED

Reviewed By :Yogesh Patel 08/25/2023

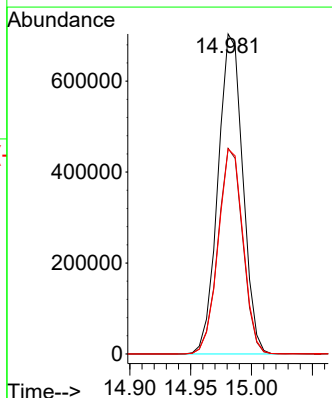
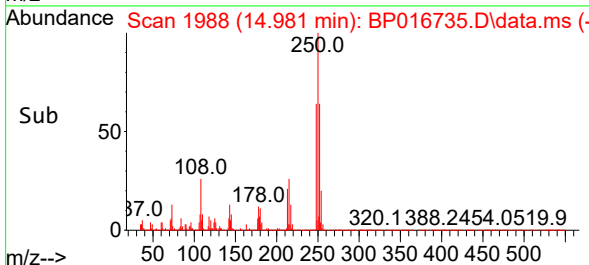
Supervised By :mohammad ahmed 08/25/2023

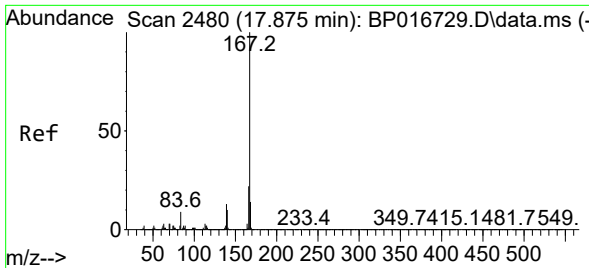


#76
 Pentachlorobenzene
 Concen: 36.576 ng/uL
 RT: 14.981 min Scan# 1988
 Delta R.T. -0.006 min
 Lab File: BP016735.D
 Acq: 24 Aug 2023 20:12



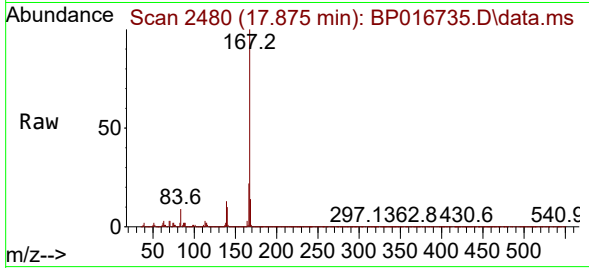
Tgt Ion:250 Resp: 998995
 Ion Ratio Lower Upper
 250 100
 248 64.3 50.9 76.3
 252 64.0 52.2 78.4





#77
 Carbazole
 Concen: 37.652 ng/uI
 RT: 17.875 min Scan# 2480
 Delta R.T. -0.000 min
 Lab File: BP016735.D
 Acq: 24 Aug 2023 20:12

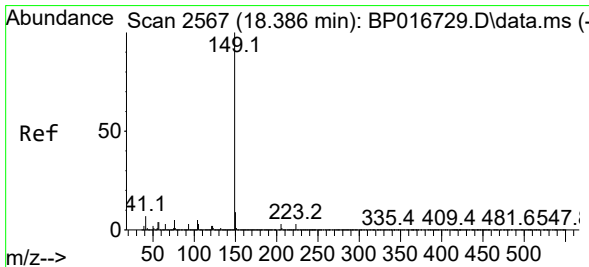
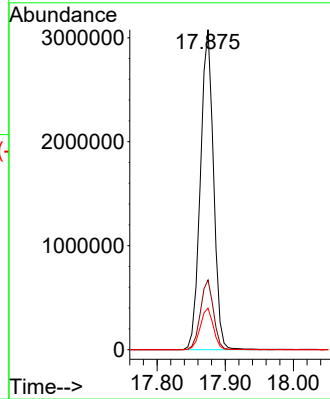
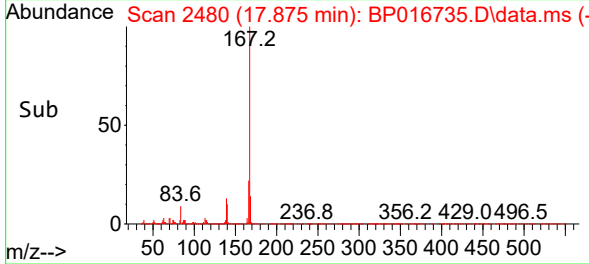
Instrument :
 BNA_P
 ClientSampleId :
 SLCS829



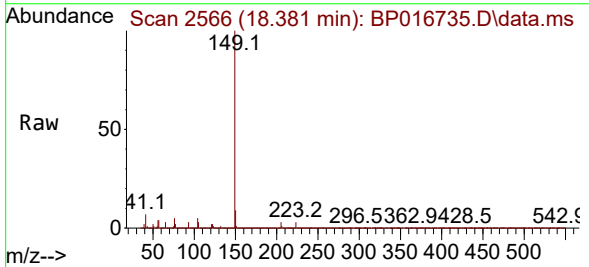
Tgt Ion:167 Resp: 412020
 Ion Ratio Lower Upper
 167 100
 166 21.8 17.4 26.2
 139 13.0 10.4 15.6

Manual Integrations
 APPROVED

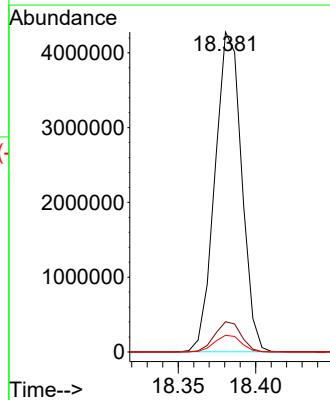
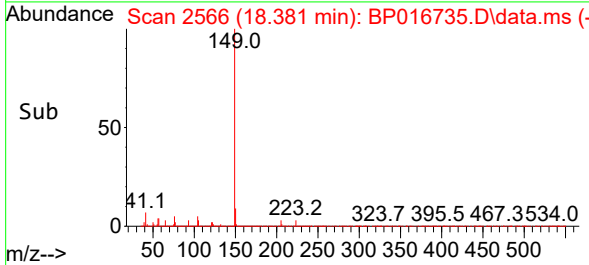
Reviewed By :Yogesh Patel 08/25/2023
 Supervised By :mohammad ahmed 08/25/2023

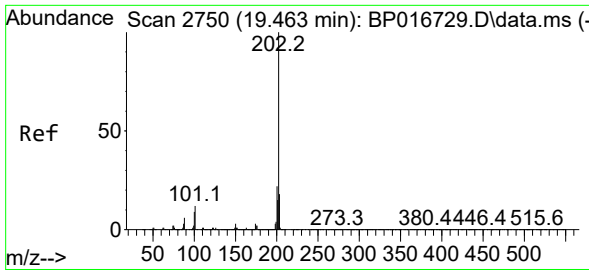


#78
 Di-n-butylphthalate
 Concen: 37.477 ng/uI
 RT: 18.381 min Scan# 2566
 Delta R.T. -0.006 min
 Lab File: BP016735.D
 Acq: 24 Aug 2023 20:12



Tgt Ion:149 Resp: 5116510
 Ion Ratio Lower Upper
 149 100
 150 9.4 7.5 11.3
 104 5.2 4.1 6.1





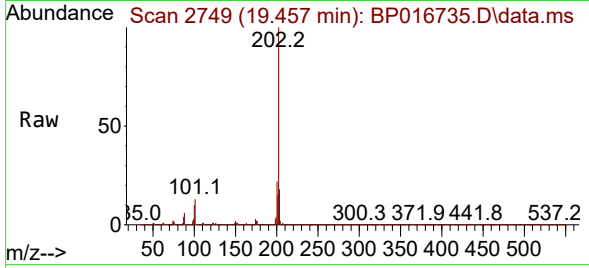
#80
 Fluoranthene
 Concen: 38.881 ng/u1
 RT: 19.457 min Scan# 21
 Delta R.T. -0.006 min
 Lab File: BP016735.D
 Acq: 24 Aug 2023 20:12

Instrument :

BNA_P

ClientSampleId :

SLCS829



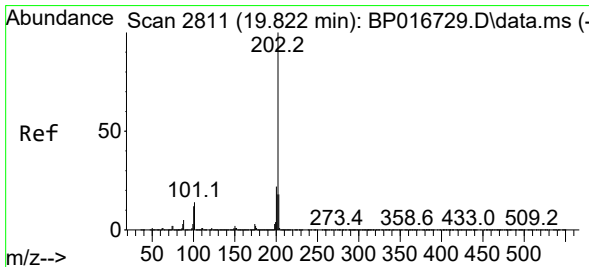
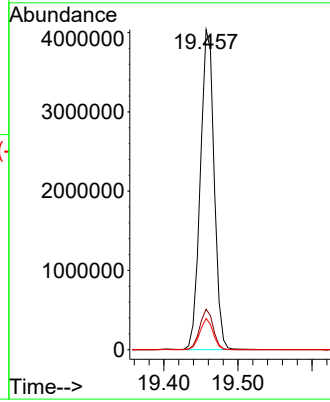
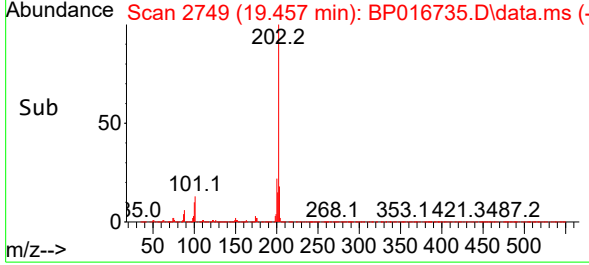
Tgt Ion:202 Resp: 5212220
 Ion Ratio Lower Upper
 202 100
 101 12.7 9.7 14.5
 100 9.8 7.4 11.2

Manual Integrations

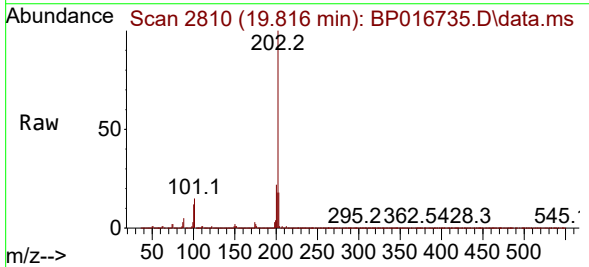
APPROVED

Reviewed By :Yogesh Patel 08/25/2023

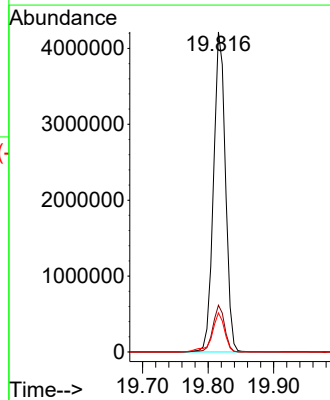
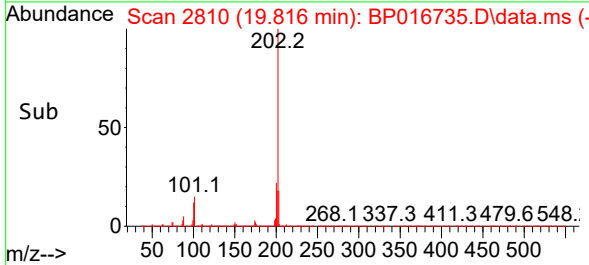
Supervised By :mohammad ahmed 08/25/2023

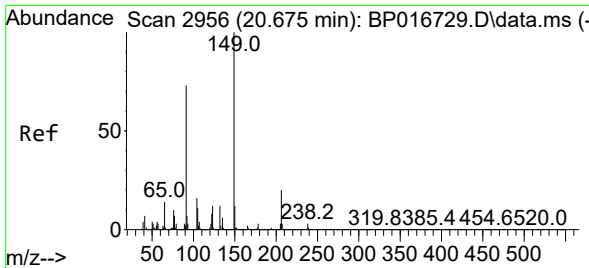


#82
 Pyrene
 Concen: 38.415 ng/u1
 RT: 19.816 min Scan# 2810
 Delta R.T. -0.006 min
 Lab File: BP016735.D
 Acq: 24 Aug 2023 20:12



Tgt Ion:202 Resp: 5319391
 Ion Ratio Lower Upper
 202 100
 101 14.6 11.4 17.2
 100 12.2 9.4 14.2





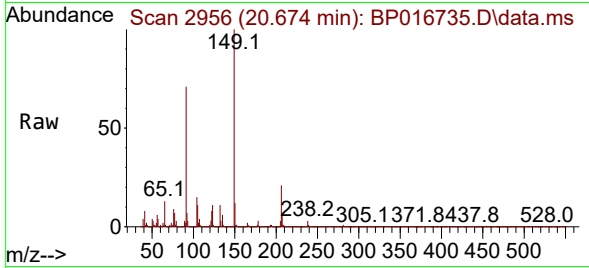
#83
 Butylbenzylphthalate
 Concen: 40.360 ng/ul
 RT: 20.674 min Scan# 2956
 Delta R.T. -0.000 min
 Lab File: BP016735.D
 Acq: 24 Aug 2023 20:12

Instrument :

BNA_P

ClientSampleId :

SLCS829



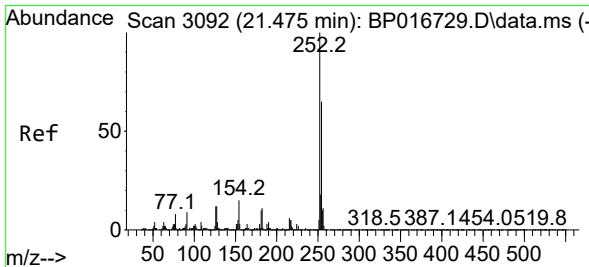
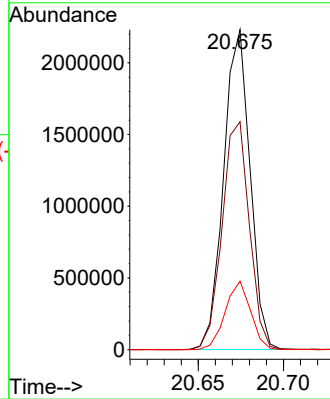
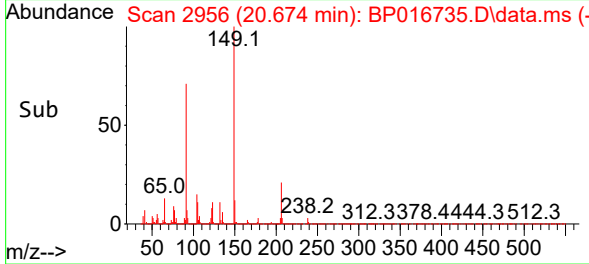
Tgt Ion:149 Resp: 2410280
 Ion Ratio Lower Upper
 149 100
 91 71.3 58.5 87.7
 206 21.4 16.1 24.1

Manual Integrations

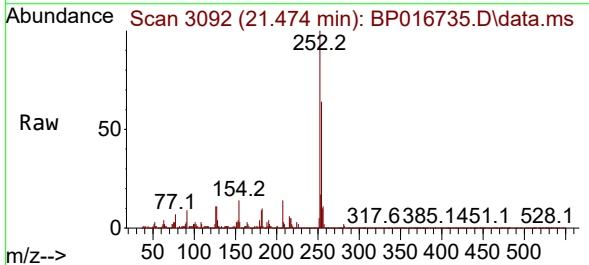
APPROVED

Reviewed By :Yogesh Patel 08/25/2023

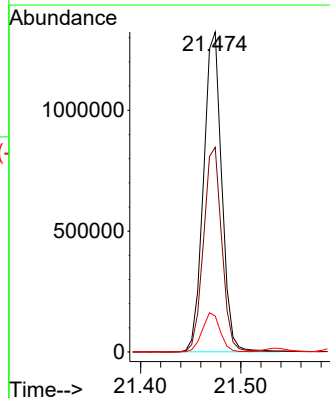
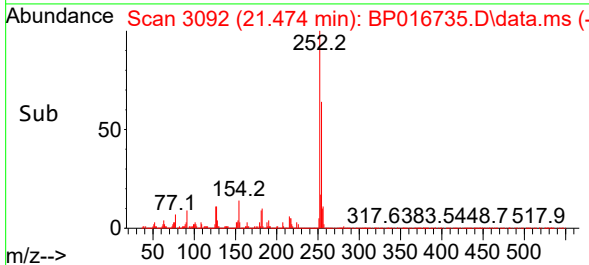
Supervised By :mohammad ahmed 08/25/2023

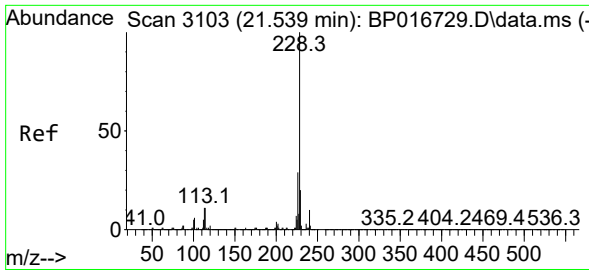


#84
 3,3'-Dichlorobenzidine
 Concen: 38.484 ng/ul
 RT: 21.474 min Scan# 3092
 Delta R.T. -0.000 min
 Lab File: BP016735.D
 Acq: 24 Aug 2023 20:12



Tgt Ion:252 Resp: 1671378
 Ion Ratio Lower Upper
 252 100
 254 63.9 52.1 78.1
 126 11.2 9.6 14.4





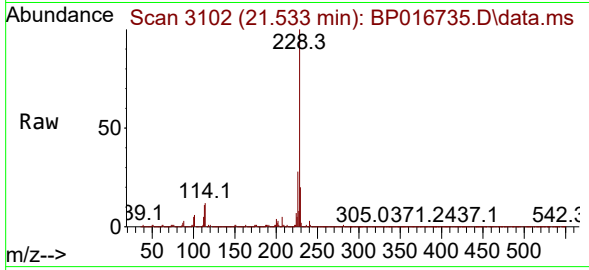
#85
 Benzo(a)anthracene
 Concen: 36.340 ng/uI
 RT: 21.533 min Scan# 3103
 Delta R.T. -0.006 min
 Lab File: BP016735.D
 Acq: 24 Aug 2023 20:12

Instrument :

BNA_P

ClientSampleId :

SLCS829



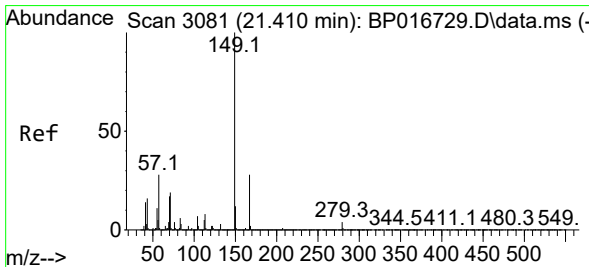
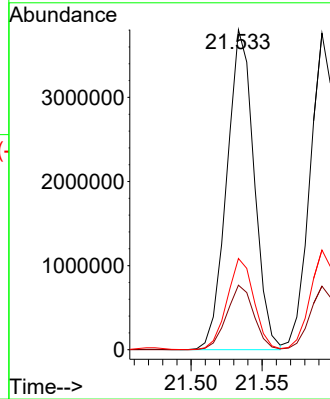
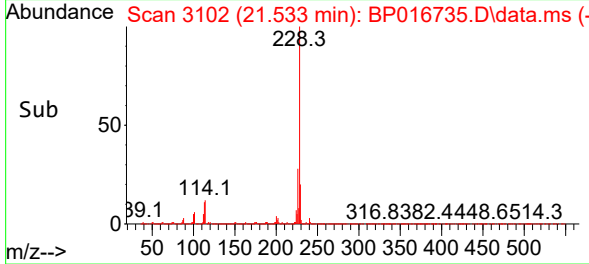
Tgt Ion:228 Resp: 508605
 Ion Ratio Lower Upper
 228 100
 229 20.1 16.2 24.4
 226 28.5 22.9 34.3

Manual Integrations

APPROVED

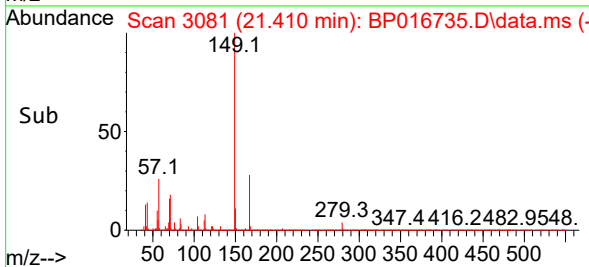
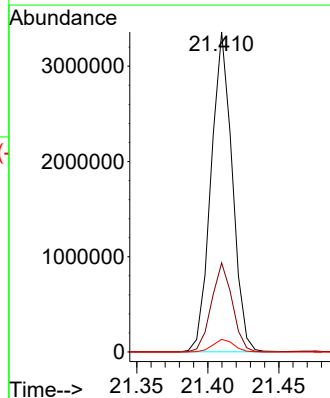
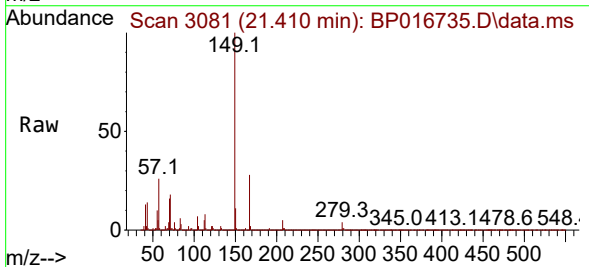
Reviewed By :Yogesh Patel 08/25/2023

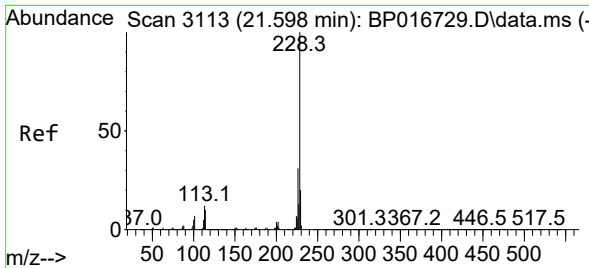
Supervised By :mohammad ahmed 08/25/2023



#86
 Bis(2-ethylhexyl)phthalate
 Concen: 40.001 ng/uI
 RT: 21.410 min Scan# 3081
 Delta R.T. -0.000 min
 Lab File: BP016735.D
 Acq: 24 Aug 2023 20:12

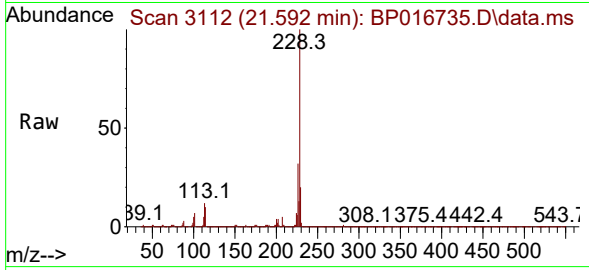
Tgt Ion:149 Resp: 3488007
 Ion Ratio Lower Upper
 149 100
 167 27.9 22.1 33.1
 279 3.9 3.0 4.4





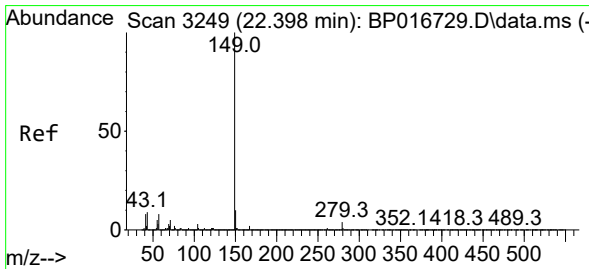
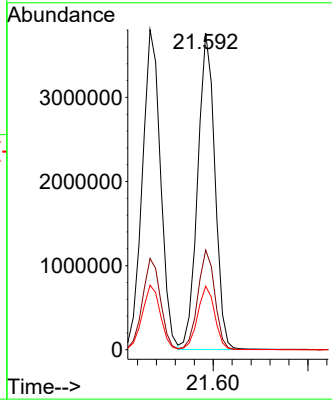
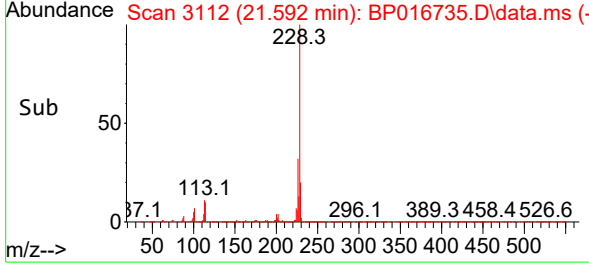
#87
 Chrysene
 Concen: 37.309 ng/uI
 RT: 21.592 min Scan# 3113
 Delta R.T. -0.006 min
 Lab File: BP016735.D
 Acq: 24 Aug 2023 20:12

Instrument : BNA_P
 Client Sample Id : SLCS829

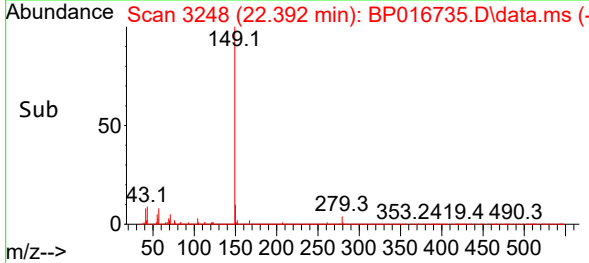
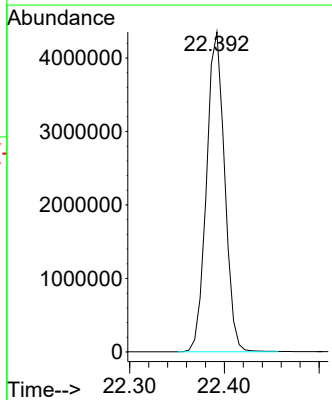
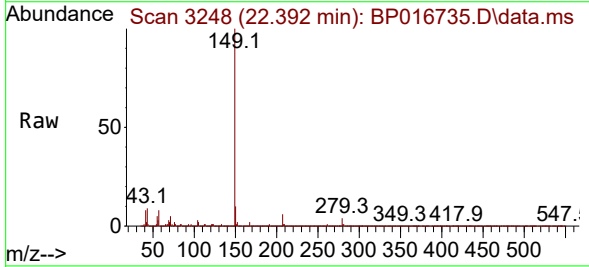


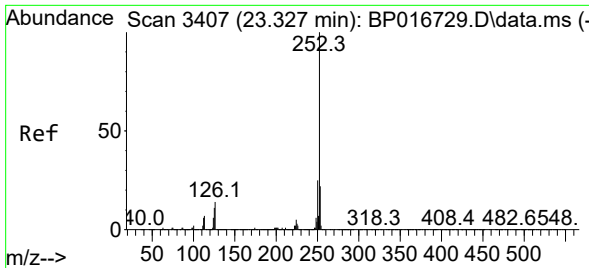
Tgt Ion: 228 Resp: 474322
 Ion Ratio Lower Upper
 228 100
 226 31.5 25.0 37.4
 229 20.1 16.0 24.0

Manual Integrations
APPROVED
 Reviewed By :Yogesh Patel 08/25/2023
 Supervised By :mohammad ahmed 08/25/2023



#89
 Di-n-octyl phthalate
 Concen: 41.274 ng/uI
 RT: 22.392 min Scan# 3248
 Delta R.T. -0.006 min
 Lab File: BP016735.D
 Acq: 24 Aug 2023 20:12
 Tgt Ion: 149 Resp: 5758515





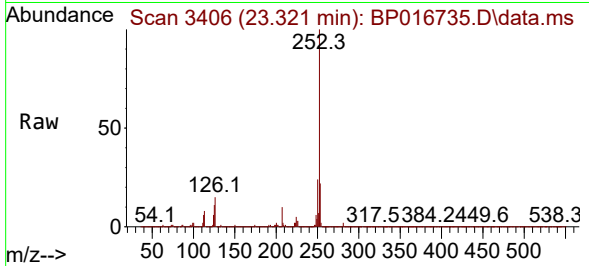
#90
 Benzo(b)fluoranthene
 Concen: 40.438 ng/u1
 RT: 23.321 min Scan# 3407
 Delta R.T. -0.006 min
 Lab File: BP016735.D
 Acq: 24 Aug 2023 20:12

Instrument :

BNA_P

ClientSampleId :

SLCS829



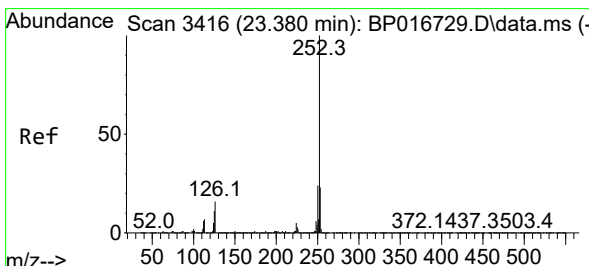
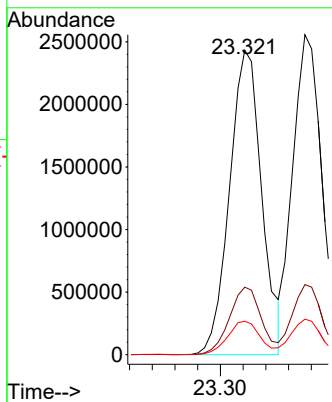
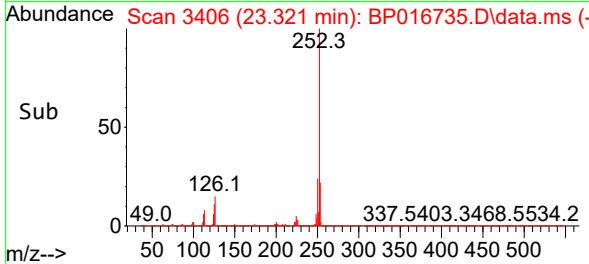
Tgt Ion:252 Resp: 4784104
 Ion Ratio Lower Upper
 252 100
 253 22.2 17.7 26.5
 125 11.0 9.0 13.4

Manual Integrations

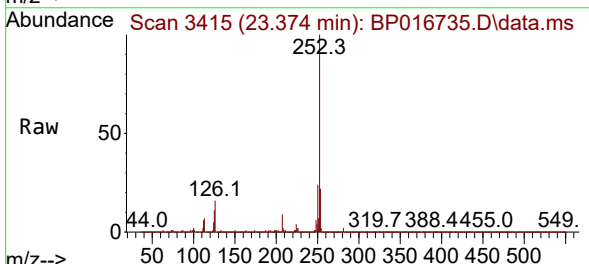
APPROVED

Reviewed By :Yogesh Patel 08/25/2023

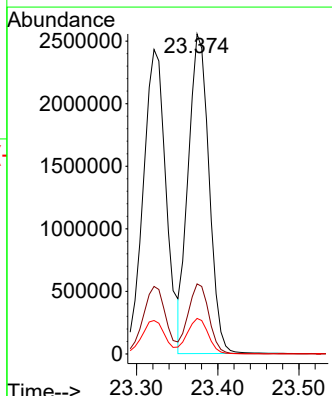
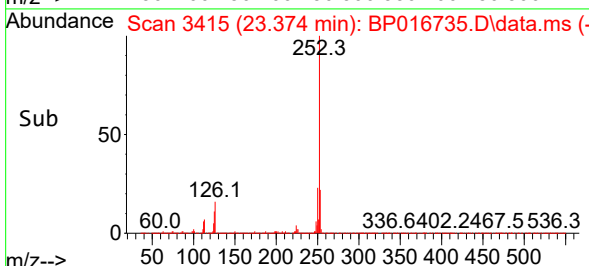
Supervised By :mohammad ahmed 08/25/2023

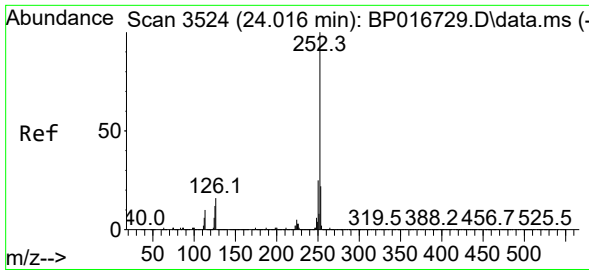


#91
 Benzo(k)fluoranthene
 Concen: 38.796 ng/u1
 RT: 23.374 min Scan# 3415
 Delta R.T. -0.006 min
 Lab File: BP016735.D
 Acq: 24 Aug 2023 20:12



Tgt Ion:252 Resp: 4539294
 Ion Ratio Lower Upper
 252 100
 253 21.9 18.1 27.1
 125 11.1 8.9 13.3





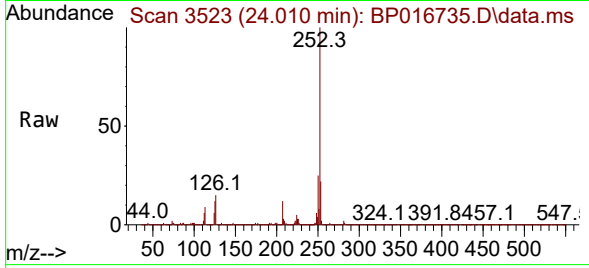
#93
 Benzo(a)pyrene
 Concen: 36.449 ng/u1
 RT: 24.010 min Scan# 31
 Delta R.T. -0.006 min
 Lab File: BP016735.D
 Acq: 24 Aug 2023 20:12

Instrument :

BNA_P

ClientSampleId :

SLCS829



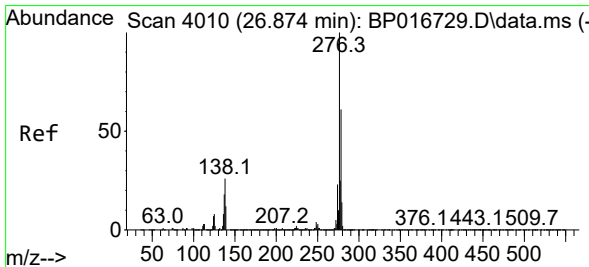
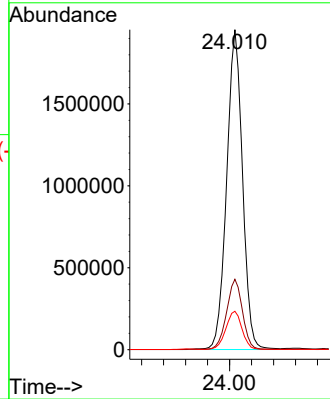
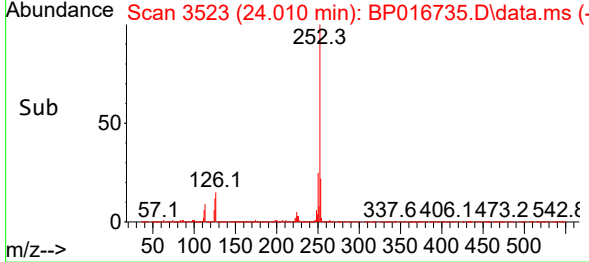
Tgt Ion:252 Resp: 390044
 Ion Ratio Lower Upper
 252 100
 253 22.0 17.8 26.8
 125 12.0 9.9 14.9

Manual Integrations

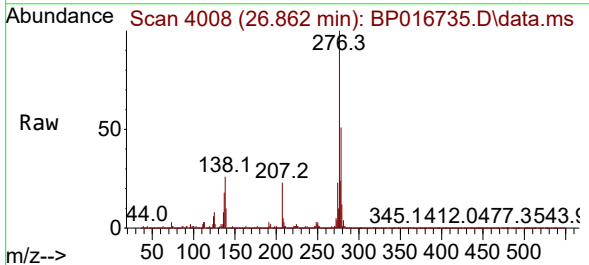
APPROVED

Reviewed By :Yogesh Patel 08/25/2023

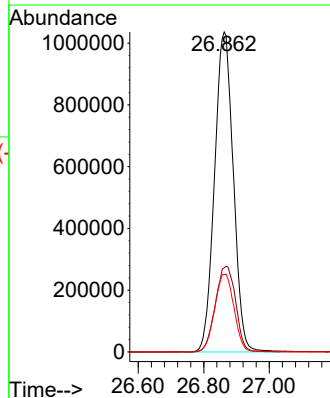
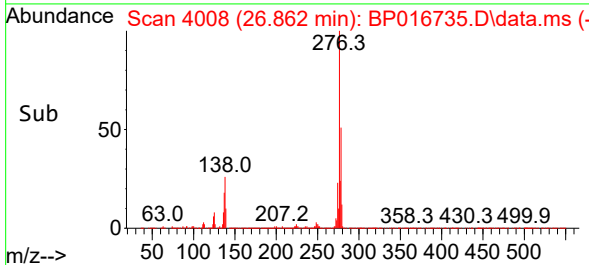
Supervised By :mohammad ahmed 08/25/2023

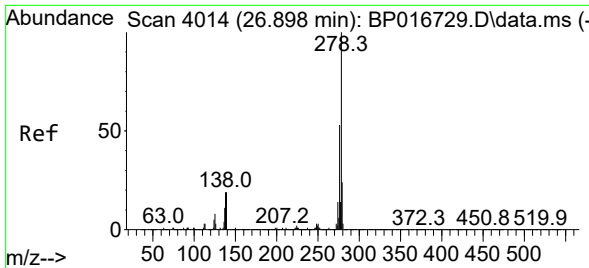


#94
 Indeno(1,2,3-cd)pyrene
 Concen: 37.626 ng/u1
 RT: 26.862 min Scan# 4008
 Delta R.T. -0.012 min
 Lab File: BP016735.D
 Acq: 24 Aug 2023 20:12



Tgt Ion:276 Resp: 4114363
 Ion Ratio Lower Upper
 276 100
 138 26.3 20.9 31.3
 277 24.2 19.8 29.6





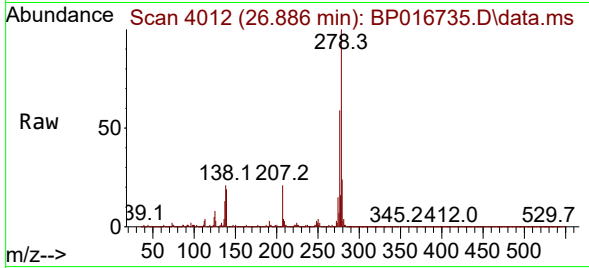
#95
 Dibenzo(a,h)anthracene
 Concen: 37.747 ng/ul
 RT: 26.886 min Scan# 4012
 Delta R.T. -0.012 min
 Lab File: BP016735.D
 Acq: 24 Aug 2023 20:12

Instrument :

BNA_P

Client SampleId :

SLCS829

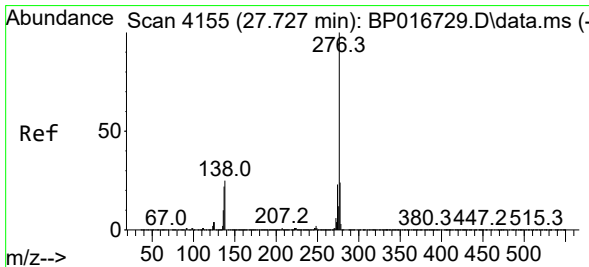
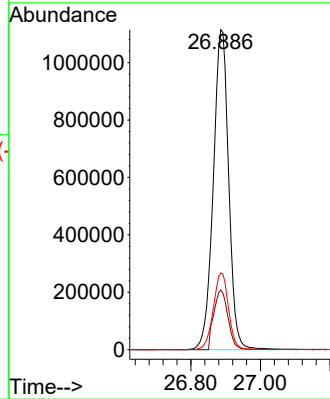
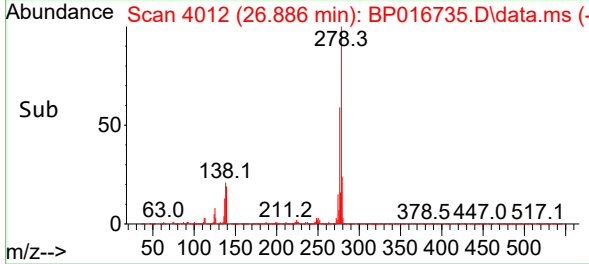


Tgt Ion: 278 Resp: 342836
 Ion Ratio Lower Upper
 278 100
 139 18.7 15.0 22.6
 279 24.0 19.4 29.2

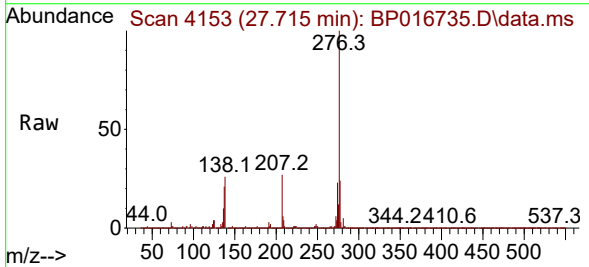
Manual Integrations

APPROVED

Reviewed By :Yogesh Patel 08/25/2023
 Supervised By :mohammad ahmed 08/25/2023



#96
 Benzo(g,h,i)perylene
 Concen: 38.058 ng/ul
 RT: 27.715 min Scan# 4153
 Delta R.T. -0.012 min
 Lab File: BP016735.D
 Acq: 24 Aug 2023 20:12



Tgt Ion: 276 Resp: 3155074
 Ion Ratio Lower Upper
 276 100
 138 25.5 20.2 30.4
 277 23.9 19.3 28.9

