

Data Path : Z:\svoasrv\HPCHEM1\BNA_P\Data\BP082823\
 Data File : BP016824.D
 Acq On : 29 Aug 2023 09:57
 Operator : MA/JU
 Sample : 04123-20
 Misc :
 ALS Vial : 41 Sample Multiplier: 1

Instrument :
 BNA_P
 ClientSampleId :
 BHAU0

Integration Parameters: LSCINT.P

Integrator: RTE
 Smoothing : OFF Filtering: 5
 Sampling : 1 Min Area: 0.1 % of largest Peak
 Start Thrs: 0.2 Max Peaks: 100
 Stop Thrs : 0 Peak Location: TOP

If leading or trailing edge < 100 prefer < Baseline drop else tangent >
 Peak separation: 5

Method : Z:\svoasrv\HPCHEM1\BNA_P\Methods\SFAM-EPA-BP082423.MA.M
 Title : SVOA CALIBRATION

Signal : TIC: BP016824.D\data.ms

peak #	R.T. min	first scan	max scan	last scan	PK TY	peak height	corr. area	corr. % max.	% of total
1	3.334	3	8	13	rBV	827129	1253881	7.31%	0.838%
2	3.376	13	15	20	rVB	161913	224490	1.31%	0.150%
3	3.764	78	81	85	rVB2	15161	19396	0.11%	0.013%
4	3.817	85	90	110	rBV	1082117	1857580	10.82%	1.241%
5	4.017	120	124	131	rVB	45924	73487	0.43%	0.049%
6	4.134	140	144	152	rVB	20969	34739	0.20%	0.023%
7	4.658	227	233	250	rBV	1151926	1847545	10.77%	1.235%
8	5.070	299	303	307	rVB	16156	21736	0.13%	0.015%
9	5.652	397	402	407	rVB5	11331	23118	0.13%	0.015%
10	5.993	457	460	468	rVB2	16768	26846	0.16%	0.018%
11	6.716	578	583	588	rBV	11378	17451	0.10%	0.012%
12	7.169	650	660	673	rBV	1251445	1974517	11.51%	1.320%
13	7.364	685	693	705	rBV	2374383	3662860	21.34%	2.448%
14	7.458	705	709	715	rVV2	10739	18762	0.11%	0.013%
15	7.546	715	724	736	rVV	2401910	3749183	21.85%	2.506%
16	7.640	737	740	745	rVB4	10118	17293	0.10%	0.012%
17	7.716	747	753	759	rVB3	28265	66257	0.39%	0.044%
18	7.952	787	793	799	rBV	39412	61085	0.36%	0.041%
19	8.028	799	806	815	rBV	1413070	2223315	12.96%	1.486%
20	8.728	917	925	937	rBV	2282102	3699663	21.56%	2.473%
21	8.946	956	962	971	rVB	30008	51913	0.30%	0.035%
22	9.222	999	1009	1023	rBV	2737087	4584127	26.71%	3.064%
23	9.393	1033	1038	1042	rVV6	12819	20761	0.12%	0.014%
24	9.446	1042	1047	1055	rVB4	13777	25579	0.15%	0.017%
25	9.940	1123	1131	1146	rBV	2268778	3684314	21.47%	2.462%
26	10.463	1210	1220	1238	rBV	3310776	5521704	32.18%	3.690%
27	10.857	1279	1287	1296	rBV	2104547	3462442	20.18%	2.314%
28	11.016	1306	1314	1327	rBV	2926783	5009403	29.19%	3.348%
29	11.128	1329	1333	1341	rVB4	30931	64894	0.38%	0.043%
30	11.993	1475	1480	1486	rVB2	38795	61508	0.36%	0.041%
31	12.128	1497	1503	1510	rBV2	11598	24770	0.14%	0.017%
32	12.434	1549	1555	1562	rVB	61319	98450	0.57%	0.066%
33	12.634	1584	1589	1595	rBV2	20802	39286	0.23%	0.026%
34	13.528	1734	1741	1748	rVB	36644	62950	0.37%	0.042%
35	13.646	1754	1761	1767	rBV2	11225	23929	0.14%	0.016%
36	13.769	1776	1782	1787	rBV	26587	44355	0.26%	0.030%

Data Path : Z:\svoasrv\HPCHEM1\BNA_P\Data\BP082823\
 Data File : BP016824.D
 Acq On : 29 Aug 2023 09:57
 Operator : MA/JU
 Sample : 04123-20
 Misc :
 ALS Vial : 41 Sample Multiplier: 1

Instrument :
 BNA_P
 ClientSampleId :
 BHAU0

Integration Parameters: LSCINT.P

Integrator: RTE
 Smoothing : OFF Filtering: 5
 Sampling : 1 Min Area: 0.1 % of largest Peak
 Start Thrs: 0.2 Max Peaks: 100
 Stop Thrs : 0 Peak Location: TOP

If leading or trailing edge < 100 prefer < Baseline drop else tangent >
 Peak separation: 5

Method : Z:\svoasrv\HPCHEM1\BNA_P\Methods\SFAM-EPA-BP082423.MA.M
 Title : SVOA CALIBRATION

37	13.975	1812	1817	1822	rBV	15123	24249	0.14%	0.016%
38	14.093	1830	1837	1851	rBV	6250449	8549323	49.82%	5.714%
39	14.381	1879	1886	1905	rBV	7400970	10664829	62.15%	7.128%
40	14.681	1930	1937	1944	rBV	3166822	4643740	27.06%	3.104%
41	14.887	1965	1972	1987	rBV	946275	1675532	9.76%	1.120%
42	15.681	2099	2107	2113	rBV	9046973	13240425	77.16%	8.849%
43	15.734	2113	2116	2121	rVV	128827	192552	1.12%	0.129%
44	15.798	2121	2127	2142	rVB	3107319	4186515	24.40%	2.798%
45	15.916	2142	2147	2150	rBV2	36357	55744	0.32%	0.037%
46	16.204	2193	2196	2200	rVB3	13500	17211	0.10%	0.012%
47	16.334	2216	2218	2225	rVB4	16213	20955	0.12%	0.014%
48	17.181	2359	2362	2366	rVB3	24832	29377	0.17%	0.020%
49	17.451	2401	2408	2418	rBV	4036587	5684842	33.13%	3.799%
50	17.551	2418	2425	2439	rVV2	10631085	14685035	85.57%	9.814%
51	18.075	2512	2514	2518	rVB4	19250	23925	0.14%	0.016%
52	18.286	2546	2550	2560	rBV	241550	376340	2.19%	0.252%
53	19.357	2728	2732	2736	rBV	130828	169518	0.99%	0.113%
54	19.422	2740	2743	2752	rVB	122711	164702	0.96%	0.110%
55	19.522	2756	2760	2767	rBV2	149331	229829	1.34%	0.154%
56	19.786	2799	2805	2816	rBV	12952556	17160692	100.00%	11.469%
57	21.545	3099	3104	3113	rBV	4167047	5464181	31.84%	3.652%
58	23.951	3503	3513	3527	rVB2	6416373	14067765	81.98%	9.402%
59	24.116	3535	3541	3553	rVB	2182900	4645182	27.07%	3.105%

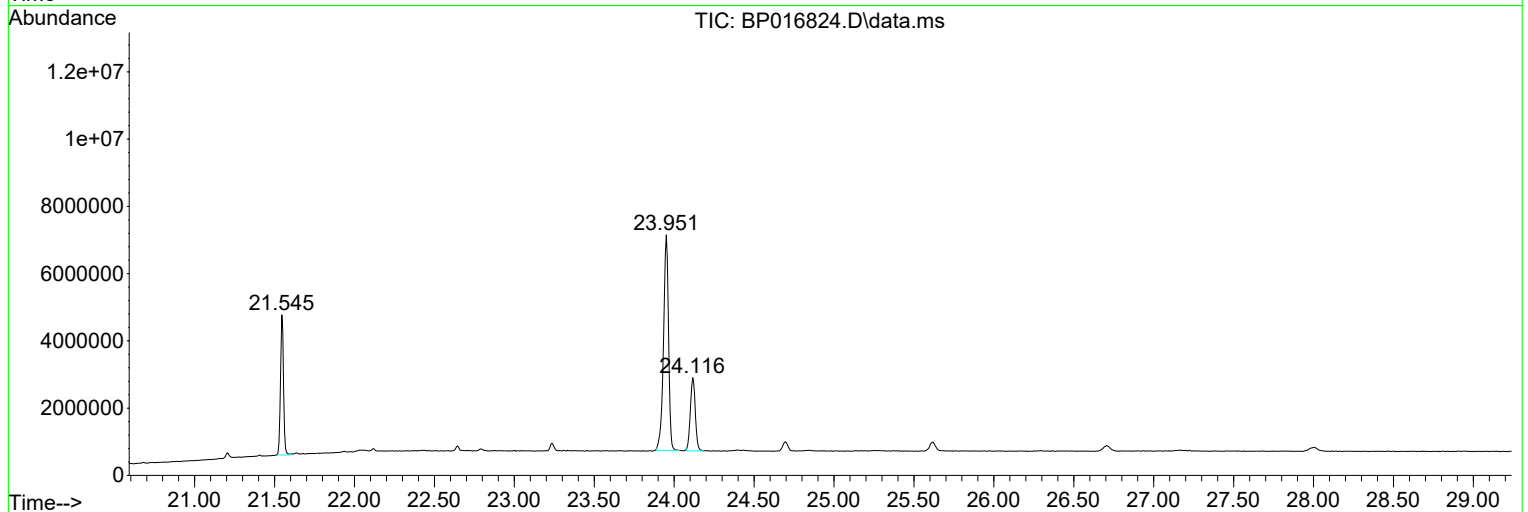
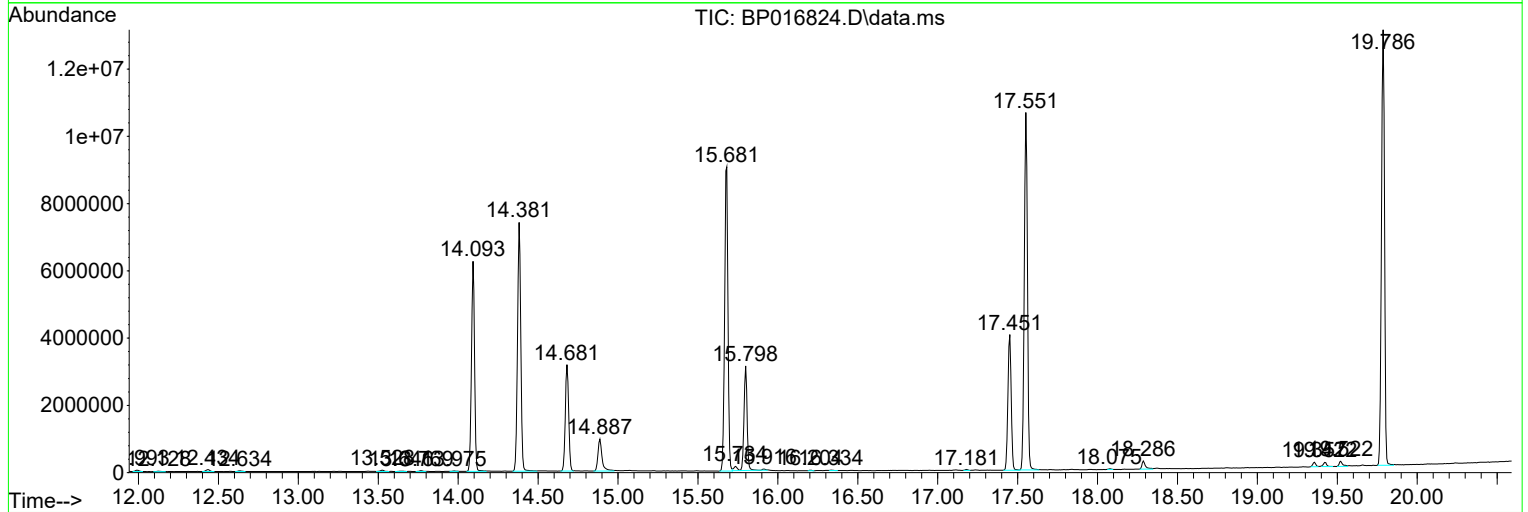
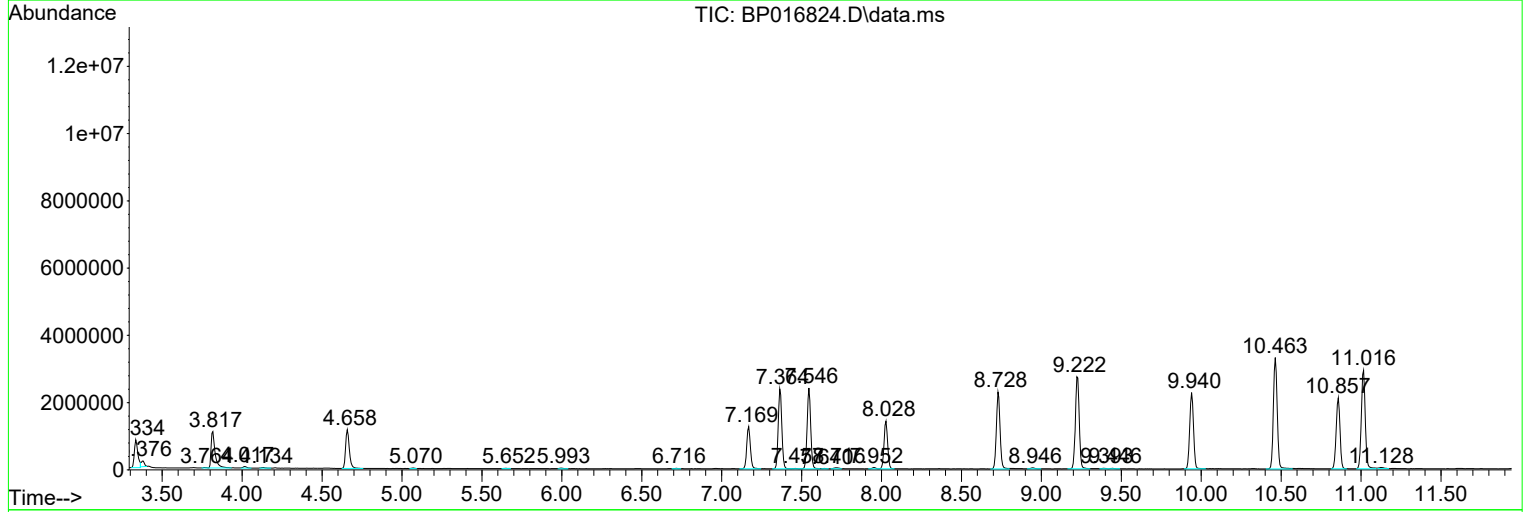
Sum of corrected areas: 149626052

Data Path : Z:\svoasrv\HPCHEM1\BNA_P\Data\BP082823\
 Data File : BP016824.D
 Acq On : 29 Aug 2023 09:57
 Operator : MA/JU
 Sample : 04123-20
 Misc :
 ALS Vial : 41 Sample Multiplier: 1

Instrument :
 BNA_P
ClientSampleId :
 BHAU0

Quant Method : Z:\svoasrv\HPCHEM1\BNA_P\Methods\SFAM-EPA-BP082423.MA.M
 Quant Title : SVOA CALIBRATION

TIC Library : C:\DATABASE\NIST20.L
 TIC Integration Parameters: LSCINT.P



Data Path : Z:\svoasrv\HPCHEM1\BNA_P\Data\BP082823\
 Data File : BP016824.D
 Acq On : 29 Aug 2023 09:57
 Operator : MA/JU
 Sample : 04123-20
 Misc :
 ALS Vial : 41 Sample Multiplier: 1

Instrument :
 BNA_P
 ClientSampleId :
 BHAU0

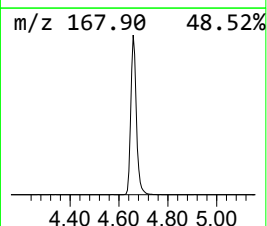
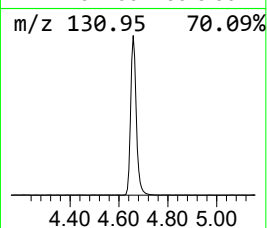
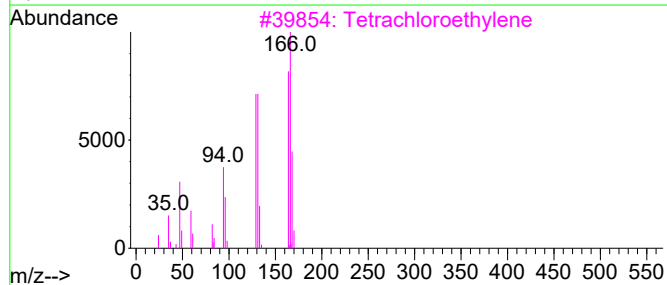
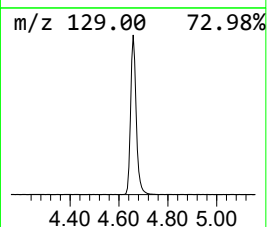
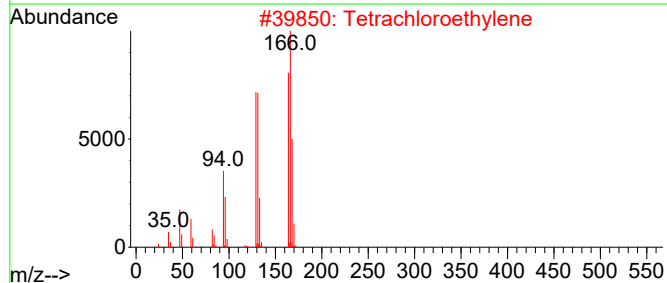
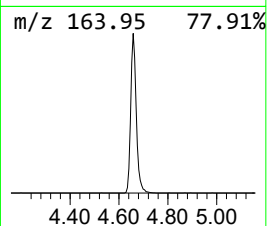
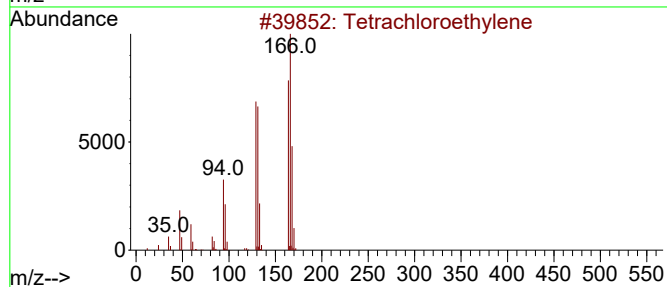
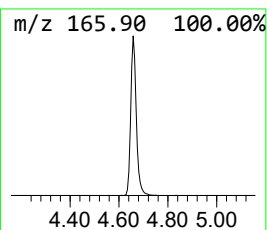
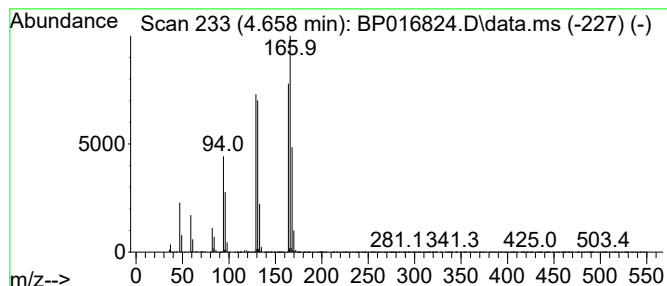
Quant Method : Z:\svoasrv\HPCHEM1\BNA_P\Methods\SFAM-EPA-BP082423.MA.M
 Quant Title : SVOA CALIBRATION

TIC Library : C:\DATABASE\NIST20.L
 TIC Integration Parameters: LSCINT.P

 Peak Number 1 Tetrachloroethylene Concentration Rank 1

R.T.	EstConc	Area	Relative to ISTD	R.T.
4.658	16.62 ng/ul	1847550	1,4-Dichlorobenzene-d4	8.028

Hit#	of	5	Tentative ID	MW	MolForm	CAS#	Qual
1			Tetrachloroethylene	164	C2Cl4	000127-18-4	98
2			Tetrachloroethylene	164	C2Cl4	000127-18-4	98
3			Tetrachloroethylene	164	C2Cl4	000127-18-4	97
4			Tetrachloroethylene	164	C2Cl4	000127-18-4	96
5			Pyrimidine, 5-fluoro-2,4-dichloro-	166	C4HC12FN2	002927-71-1	38



Data Path : Z:\svoasrv\HPCHEM1\BNA_P\Data\BP082823\
Data File : BP016824.D
Acq On : 29 Aug 2023 09:57
Operator : MA/JU
Sample : 04123-20
Misc :
ALS Vial : 41 Sample Multiplier: 1

Instrument :
BNA_P
ClientSampleId :
BHAU0

Quant Method : Z:\svoasrv\HPCHEM1\BNA_P\Methods\SFAM-EPA-BP082423.MA.M
Quant Title : SVOA CALIBRATION

TIC Library : C:\DATABASE\NIST20.L
TIC Integration Parameters: LSCINT.P

TIC Top Hit name	RT	EstConc	Units	Response	--Internal Standard--			
					#	RT	Resp	Conc
Tetrachloroethy...	4.658	16.6	ng/ul	1847550	1	8.028	2223320	20.0