

Data Path : Z:\svoasrv\HPCHEM1\BNA_P\Data\BP090823\
 Data File : BP017014.D
 Acq On : 08 Sep 2023 16:13
 Operator : MA/JU
 Sample : 04123-16
 Misc :
 ALS Vial : 23 Sample Multiplier: 1

Instrument :
 BNA_P
 ClientSampleId :
 BHAL9

Quant Time: Sep 09 00:44:39 2023
 Quant Method : Z:\svoasrv\HPCHEM1\BNA_P\Methods\SFAM-EPA-BP090523.MA.M
 Quant Title : SVOA CALIBRATION
 QLast Update : Wed Sep 06 01:52:05 2023
 Response via : Initial Calibration

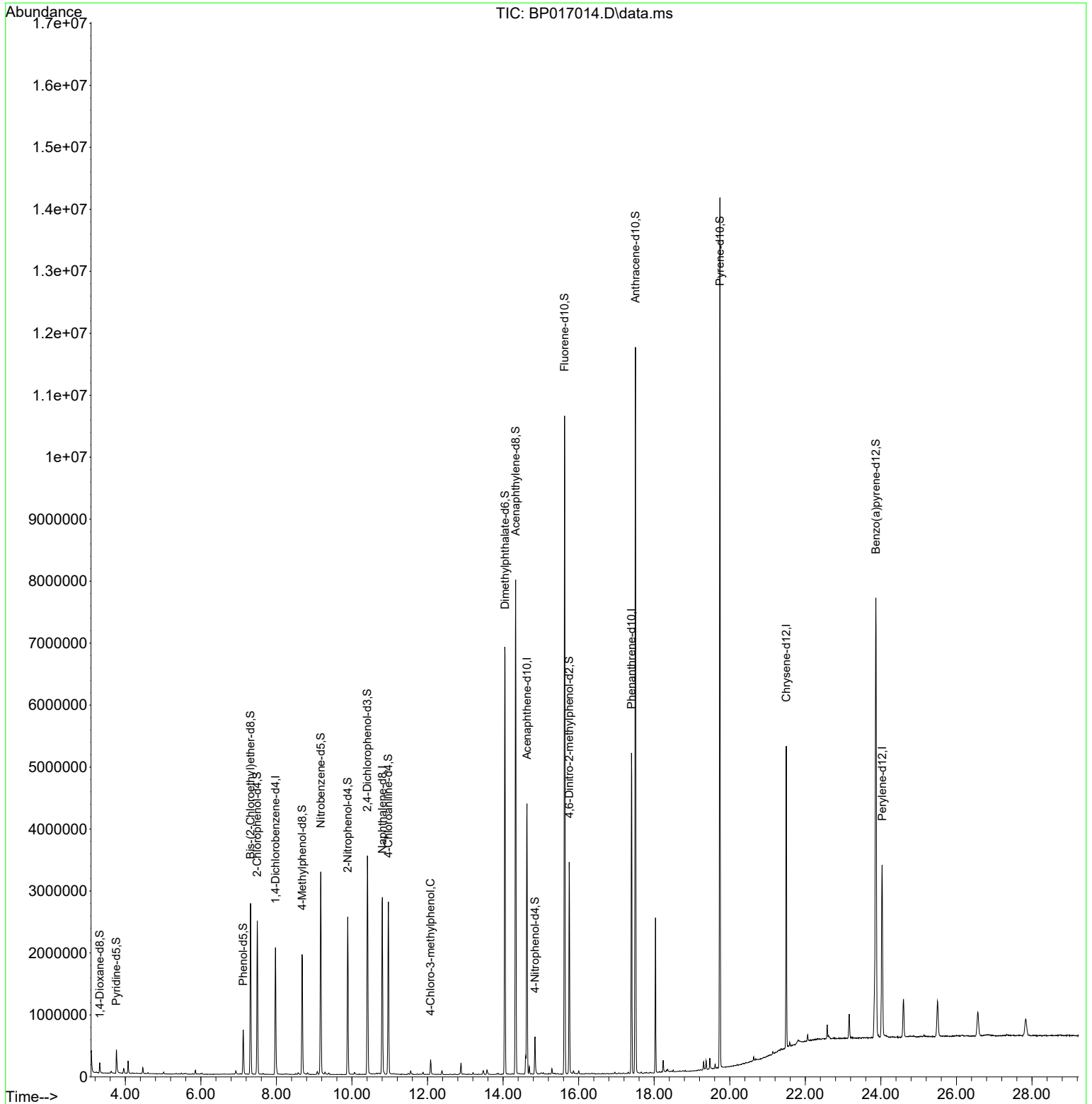
Compound	R.T.	QIon	Response	Conc	Units	Dev(Min)
Internal Standards						
1) 1,4-Dichlorobenzene-d4	7.975	152	505445	20.000	ng/ul	0.00
20) Naphthalene-d8	10.805	136	2226557	20.000	ng/ul	0.00
38) Acenaphthene-d10	14.634	164	1385480	20.000	ng/ul	0.00
64) Phenanthrene-d10	17.398	188	2838922	20.000	ng/ul	-0.01
79) Chrysene-d12	21.498	240	2075362	20.000	ng/ul	-0.01
88) Perylene-d12	24.033	264	1953881	20.000	ng/ul	-0.02
System Monitoring Compounds						
3) 1,4-Dioxane-d8	3.323	96	79805	5.972	ng/uL	0.00
4) Pyridine-d5	3.764	84	208150	5.452	ng/ul	0.00
7) Phenol-d5	7.122	99	367276	7.954	ng/ul	0.00
9) Bis-(2-Chloroethyl)eth...	7.316	67	1192119	41.272	ng/ul	0.00
11) 2-Chlorophenol-d4	7.493	132	1028627	30.778	ng/ul	-0.01
15) 4-Methylphenol-d8	8.681	113	689648	19.604	ng/ul	-0.01
21) Nitrobenzene-d5	9.175	128	705664	40.852	ng/ul	0.00
24) 2-Nitrophenol-d4	9.887	143	736063	39.309	ng/ul	-0.01
28) 2,4-Dichlorophenol-d3	10.410	165	1176314	34.027	ng/ul	-0.01
31) 4-Chloroaniline-d4	10.963	131	1345661	26.980	ng/ul	0.00
46) Dimethylphthalate-d6	14.051	166	4352556	42.204	ng/ul	0.00
49) Acenaphthylene-d8	14.334	160	4830186	40.583	ng/ul	0.00
54) 4-Nitrophenol-d4	14.846	143	128071	6.357	ng/ul	-0.01
60) Fluorene-d10	15.628	176	3737027	42.322	ng/ul	0.00
65) 4,6-Dinitro-2-methylph...	15.751	200	584992	34.241	ng/ul	-0.01
73) Anthracene-d10	17.504	188	6030764	46.257	ng/ul	0.00
81) Pyrene-d10	19.739	212	6482199	51.279	ng/ul	0.00
92) Benzo(a)pyrene-d12	23.869	264	4877220	49.203	ng/ul	-0.01
Target Compounds						
35) 4-Chloro-3-methylphenol	12.081	107	78277	2.027	ng/ul	100

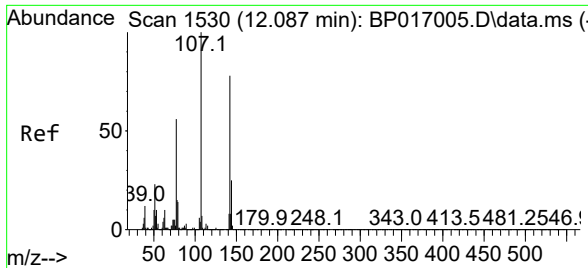
(#) = qualifier out of range (m) = manual integration (+) = signals summed

Data Path : Z:\svoasrv\HPCHEM1\BNA_P\Data\BP090823\
 Data File : BP017014.D
 Acq On : 08 Sep 2023 16:13
 Operator : MA/JU
 Sample : 04123-16
 Misc :
 ALS Vial : 23 Sample Multiplier: 1

Instrument :
 BNA_P
 ClientSampleId :
 BHAL9

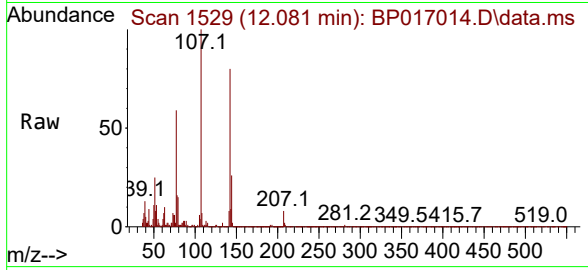
Quant Time: Sep 09 00:44:39 2023
 Quant Method : Z:\svoasrv\HPCHEM1\BNA_P\Methods\SFAM-EPA-BP090523.MA.M
 Quant Title : SVOA CALIBRATION
 QLast Update : Wed Sep 06 01:52:05 2023
 Response via : Initial Calibration





#35
 4-Chloro-3-methylphenol
 Concen: 2.027 ng/ul
 RT: 12.081 min Scan# 11
 Delta R.T. -0.011 min
 Lab File: BP017014.D
 Acq: 08 Sep 2023 16:13

Instrument :
 BNA_P
 ClientSampleId :
 BHAL9



Tgt Ion:107 Resp: 78277

Ion	Ratio	Lower	Upper
107	100		
144	25.6	20.3	30.5
142	80.1	63.8	95.8

