

Data Path : Z:\svoasrv\HPCHEM1\BNA_P\Data\BP090921\
 Data File : BP006925.D
 Acq On : 10 Sep 2021 06:03
 Operator : CG/JU
 Sample : M3651-14
 Misc :
 ALS Vial : 23 Sample Multiplier: 1

Instrument :
 BNA_P
 ClientSampleId :
 DBKM8

Integration Parameters: LSCINT.P
 Integrator: RTE
 Smoothing : OFF Filtering: 5
 Sampling : 1 Min Area: 0.1 % of largest Peak
 Start Thrs: 0.2 Max Peaks: 100
 Stop Thrs : 0 Peak Location: TOP

If leading or trailing edge < 100 prefer < Baseline drop else tangent >
 Peak separation: 5

Method : Z:\SVOASRV\HPCHEM1\BNA_P\METHODS\SFAM-EPA-BP090821.M
 Title : SVOA CALIBRATION

Signal : TIC: BP006925.D\data.ms

peak #	R.T. min	first scan	max scan	last scan	PK TY	peak height	corr. area	corr. % max.	% of total
1	3.369	44	48	56	rVB	38281	51541	0.59%	0.070%
2	3.793	117	120	141	rBV	258484	462030	5.32%	0.628%
3	4.022	155	159	169	rVB	30646	53676	0.62%	0.073%
4	4.116	171	175	179	rVV	25564	33103	0.38%	0.045%
5	6.940	651	655	658	rVB2	8883	12272	0.14%	0.017%
6	7.093	674	681	692	rBV	275201	476647	5.49%	0.648%
7	7.263	704	710	729	rVB	1024495	1653765	19.06%	2.247%
8	7.463	736	744	757	rBV	999758	1583109	18.24%	2.151%
9	7.934	817	824	832	rBV	1005361	1622607	18.70%	2.205%
10	8.004	832	836	841	rVB4	12558	19174	0.22%	0.026%
11	8.175	860	865	871	rBV3	14033	27671	0.32%	0.038%
12	8.481	913	917	921	rBV2	9784	15214	0.18%	0.021%
13	8.634	936	943	959	rBV	792278	1303349	15.02%	1.771%
14	9.093	1013	1021	1035	rBV	1157637	1895042	21.84%	2.575%
15	9.263	1046	1050	1060	rVB	4843	11284	0.13%	0.015%
16	9.528	1089	1095	1102	rVB4	9697	19917	0.23%	0.027%
17	9.816	1136	1144	1155	rBV	749226	1230533	14.18%	1.672%
18	10.351	1226	1235	1251	rBV	1311705	2167774	24.98%	2.946%
19	10.528	1258	1265	1273	rBV	39125	83464	0.96%	0.113%
20	10.734	1293	1300	1310	rBV	1378925	2314211	26.67%	3.145%
21	10.869	1314	1323	1340	rBV	1293855	2225800	25.65%	3.025%
22	12.322	1563	1570	1575	rVB2	25608	43789	0.50%	0.060%
23	13.398	1748	1753	1758	rBV4	7845	12764	0.15%	0.017%
24	13.534	1773	1776	1780	rVB6	6763	9006	0.10%	0.012%
25	13.969	1843	1850	1861	rBV	2714644	3742927	43.13%	5.086%
26	14.251	1891	1898	1912	rBV	3220737	4557364	52.52%	6.193%
27	14.557	1943	1950	1961	rVV	2087715	3059091	35.25%	4.157%
28	14.739	1973	1981	2000	rBV	157867	309887	3.57%	0.421%
29	15.298	2069	2076	2083	rBV	180318	256846	2.96%	0.349%
30	15.551	2109	2119	2132	rBV	4187522	6087120	70.15%	8.271%
31	15.663	2132	2138	2152	rVV	912595	1309531	15.09%	1.779%
32	15.792	2155	2160	2167	rVV	32537	61392	0.71%	0.083%
33	16.333	2249	2252	2257	rVB6	10974	15836	0.18%	0.022%
34	16.916	2346	2351	2356	rBV5	5829	11383	0.13%	0.015%
35	17.092	2374	2381	2384	rBV2	11820	22899	0.26%	0.031%
36	17.304	2411	2417	2426	rBV	2553453	3638222	41.93%	4.944%

Data Path : Z:\svoasrv\HPCHEM1\BNA_P\Data\BP090921\
 Data File : BP006925.D
 Acq On : 10 Sep 2021 06:03
 Operator : CG/JU
 Sample : M3651-14
 Misc :
 ALS Vial : 23 Sample Multiplier: 1

Instrument :
 BNA_P
 ClientSampleId :
 DBKM8

Integration Parameters: LSCINT.P

Integrator: RTE
 Smoothing : OFF Filtering: 5
 Sampling : 1 Min Area: 0.1 % of largest Peak
 Start Thrs: 0.2 Max Peaks: 100
 Stop Thrs : 0 Peak Location: TOP

If leading or trailing edge < 100 prefer < Baseline drop else tangent >
 Peak separation: 5

Method : Z:\SVOASRV\HPCHEM1\BNA_P\METHODS\SFAM-EPA-BP090821.M
 Title : SVOA CALIBRATION

37	17.404	2428	2434	2446	rBV	4908723	6919260	79.74%	9.402%
38	17.980	2528	2532	2536	rVB5	14555	20856	0.24%	0.028%
39	18.092	2548	2551	2554	rBV5	11276	14818	0.17%	0.020%
40	18.192	2564	2568	2576	rBV	59636	102845	1.19%	0.140%
41	19.216	2738	2742	2748	rBV3	46682	70630	0.81%	0.096%
42	19.280	2749	2753	2759	rBV	63838	87999	1.01%	0.120%
43	19.422	2774	2777	2783	rVB6	21415	30303	0.35%	0.041%
44	19.639	2808	2814	2826	rBV	6333985	8396995	96.77%	11.410%
45	21.098	3058	3062	3068	rBV3	191241	269815	3.11%	0.367%
46	21.386	3106	3111	3120	rVB	3163236	4160689	47.95%	5.654%
47	23.662	3491	3498	3506	rBV	4478854	8677643	100.00%	11.792%
48	23.821	3518	3525	3535	rVB2	2229688	4439572	51.16%	6.033%

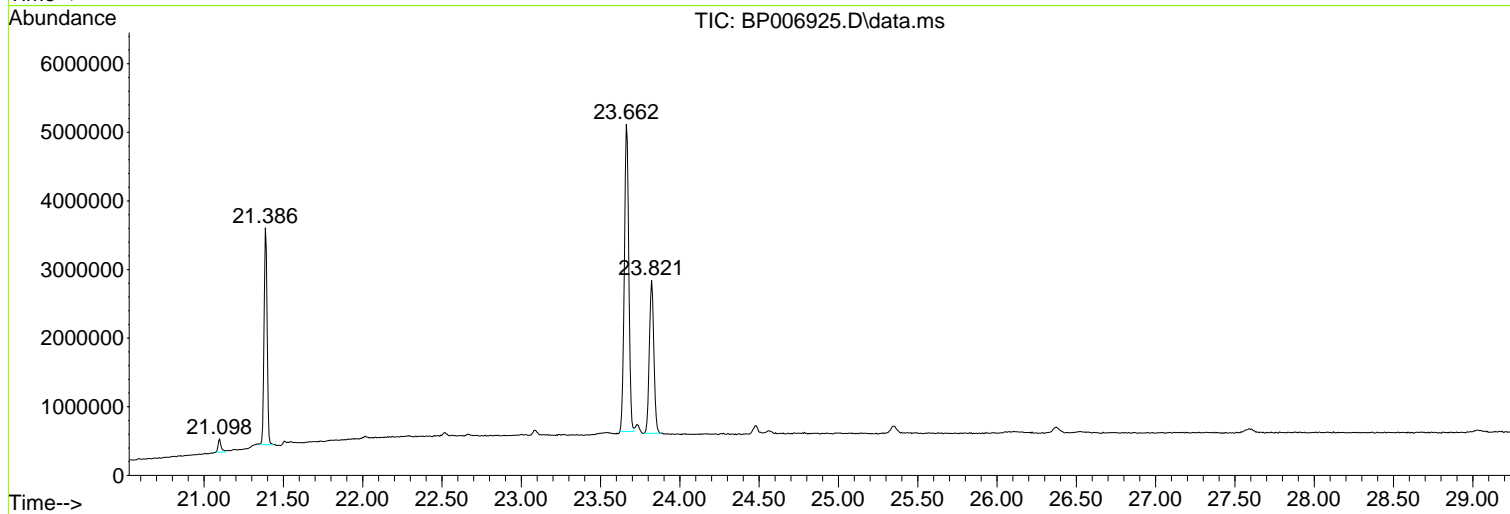
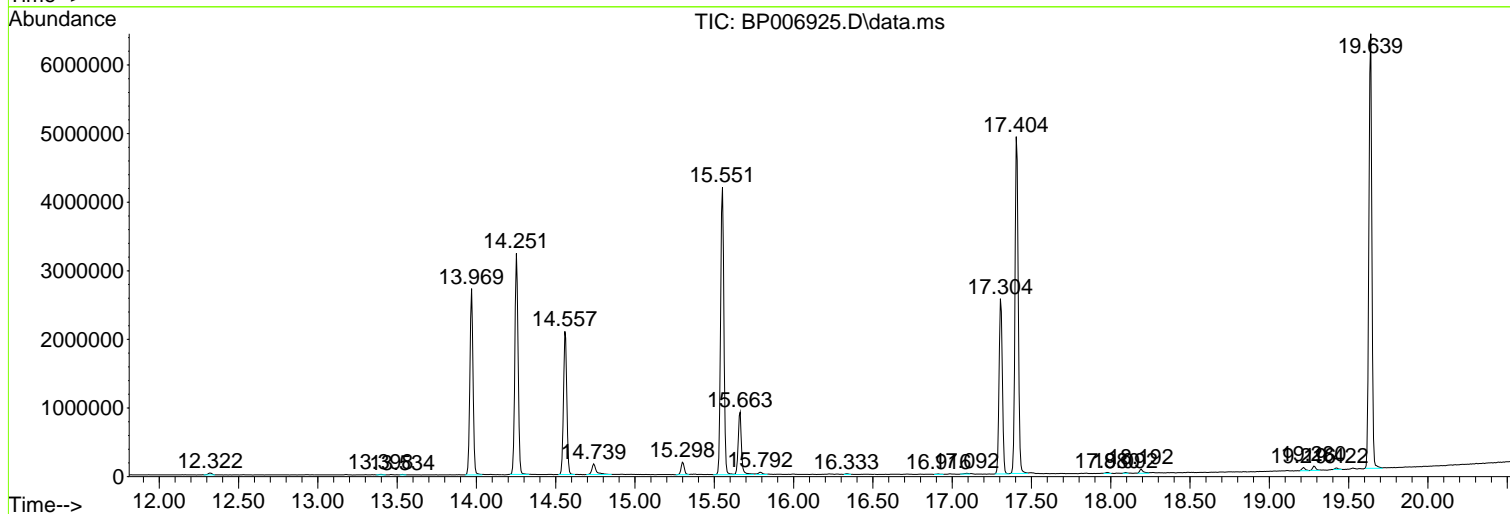
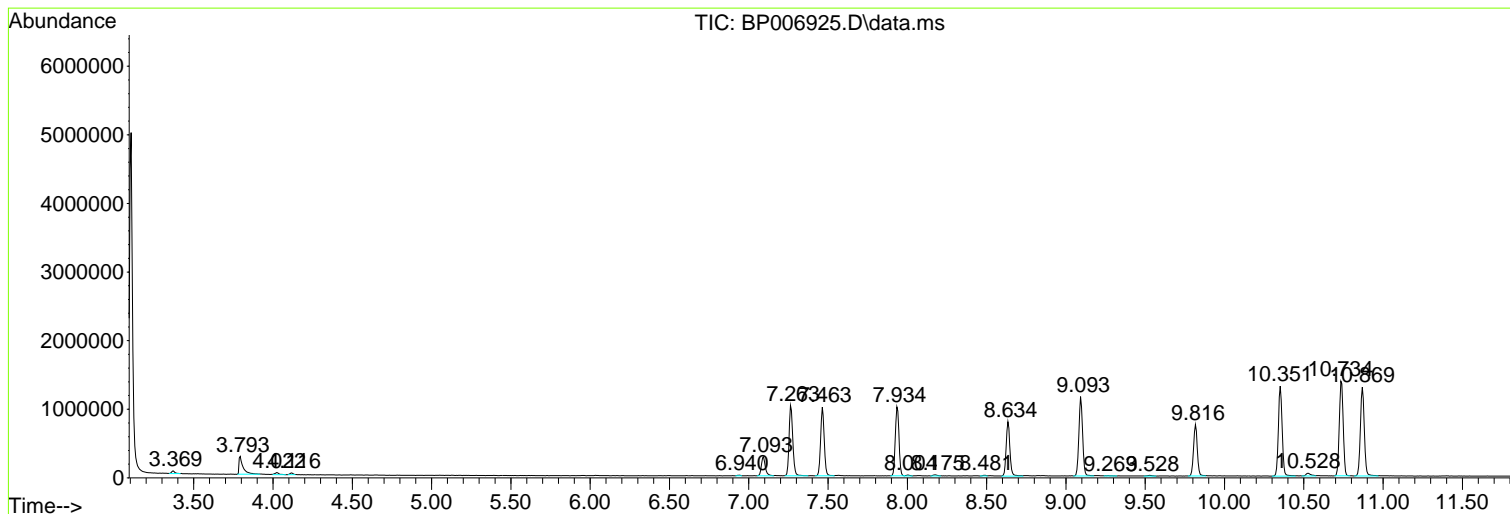
Sum of corrected areas: 73591665

Data Path : Z:\svoasrv\HPCHEM1\BNA_P\Data\BP090921\
 Data File : BP006925.D
 Acq On : 10 Sep 2021 06:03
 Operator : CG/JU
 Sample : M3651-14
 Misc :
 ALS Vial : 23 Sample Multiplier: 1

Instrument :
 BNA_P
ClientSampled :
 DBKM8

Quant Method : Z:\SVOASRV\HPCHEM1\BNA_P\METHODS\SFAM-EPA-BP090821.M
 Quant Title : SVOA CALIBRATION

TIC Library : C:\DATABASE\NIST20.L
 TIC Integration Parameters: LSCINT.P



Data Path : Z:\svoasrv\HPCHEM1\BNA_P\Data\BP090921\
Data File : BP006925.D
Acq On : 10 Sep 2021 06:03
Operator : CG/JU
Sample : M3651-14
Misc :
ALS Vial : 23 Sample Multiplier: 1

Instrument :
BNA_P
ClientSampleId :
DBKM8

Quant Method : Z:\SVOASRV\HPCHEM1\BNA_P\METHODS\SFAM-EPA-BP090821.M
Quant Title : SVOA CALIBRATION

TIC Library : C:\DATABASE\NIST20.L
TIC Integration Parameters: LSCINT.P

No Library Search Compounds Detected

Data Path : Z:\svoasrv\HPCHEM1\BNA_P\Data\BP090921\
Data File : BP006925.D
Acq On : 10 Sep 2021 06:03
Operator : CG/JU
Sample : M3651-14
Misc :
ALS Vial : 23 Sample Multiplier: 1

Instrument :
BNA_P
ClientSampleId :
DBKM8

Quant Method : Z:\SVOASRV\HPCHEM1\BNA_P\METHODS\SFAM-EPA-BP090821.M
Quant Title : SVOA CALIBRATION

TIC Library : C:\DATABASE\NIST20.L
TIC Integration Parameters: LSCINT.P

TIC Top Hit name	RT	EstConc	Units	Response	--Internal Standard--		
					#	RT	Resp Conc
