

Data Path : Z:\svoasrv\HPCHEM1\BNA_P\Data\BP090922\
 Data File : BP011666.D
 Acq On : 09 Sep 2022 16:47
 Operator : CG/JU
 Sample : N4539-04
 Misc :
 ALS Vial : 7 Sample Multiplier: 1

Instrument :
 BNA_P
 ClientSampleId :
 MBD-WC-S-MP-1-0-46

Quant Time: Sep 10 00:53:32 2022
 Quant Method : Z:\svoasrv\HPCHEM1\BNA_P\Methods\8270E-BP090222.M
 Quant Title : ASP BNA STANDARDS FOR 5 POINT CALIBRATION
 QLast Update : Sat Sep 10 00:48:09 2022
 Response via : Initial Calibration

Compound	R.T.	QIon	Response	Conc	Units	Dev(Min)
Internal Standards						
1) 1,4-Dichlorobenzene-d4	7.963	152	438355	20.000	ng	0.00
21) Naphthalene-d8	10.775	136	1703047	20.000	ng	# 0.00
39) Acenaphthene-d10	14.604	164	967688	20.000	ng	0.00
64) Phenanthrene-d10	17.357	188	1997085	20.000	ng	0.00
76) Chrysene-d12	21.433	240	1904597	20.000	ng	0.00
86) Perylene-d12	23.910	264	2041557	20.000	ng	0.00
System Monitoring Compounds						
5) 2-Fluorophenol	5.516	112	3465853	139.834	ng	0.00
7) Phenol-d6	7.116	99	4040207	123.191	ng	0.00
23) Nitrobenzene-d5	9.128	82	2520030	90.831	ng	0.00
42) 2,4,6-Tribromophenol	16.092	330	1828109	167.205	ng	0.00
45) 2-Fluorobiphenyl	13.228	172	6228248	92.038	ng	0.00
79) Terphenyl-d14	19.910	244	9505317	104.530	ng	0.00

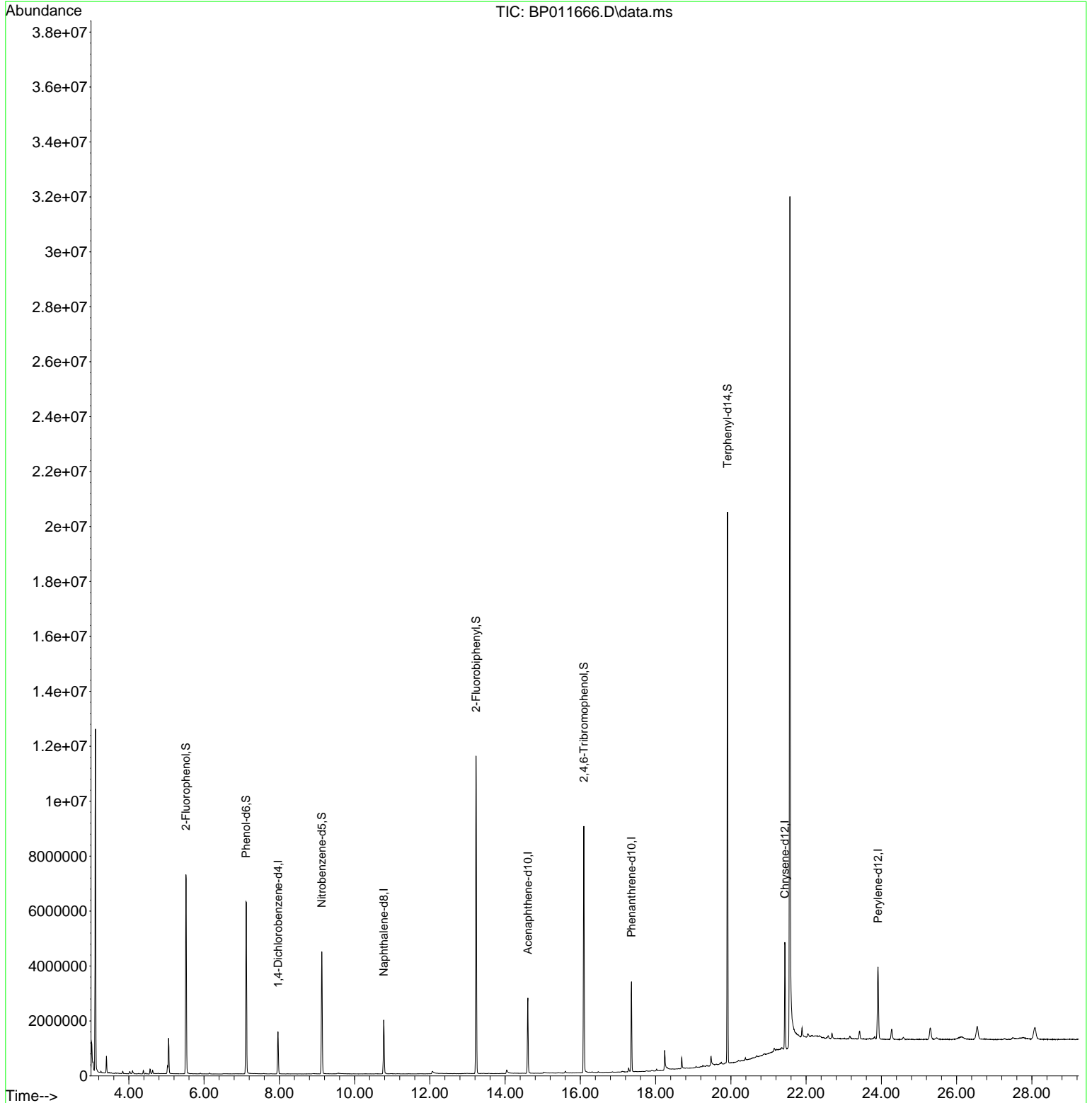
Target Compounds Qvalue

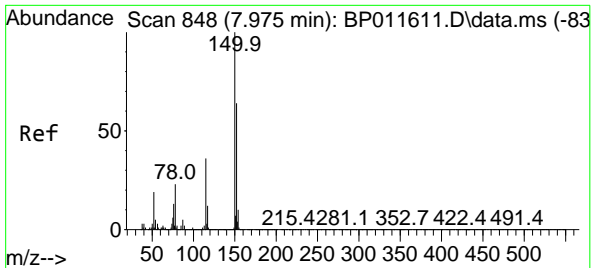
(#) = qualifier out of range (m) = manual integration (+) = signals summed

Data Path : Z:\svoasrv\HPCHEM1\BNA_P\Data\BP090922\
 Data File : BP011666.D
 Acq On : 09 Sep 2022 16:47
 Operator : CG/JU
 Sample : N4539-04
 Misc :
 ALS Vial : 7 Sample Multiplier: 1

Instrument :
 BNA_P
 ClientSampleId :
 MBD-WC-S-MP-1-0-46

Quant Time: Sep 10 00:53:32 2022
 Quant Method : Z:\svoasrv\HPCHEM1\BNA_P\Methods\8270E-BP090222.M
 Quant Title : ASP BNA STANDARDS FOR 5 POINT CALIBRATION
 QLast Update : Sat Sep 10 00:48:09 2022
 Response via : Initial Calibration

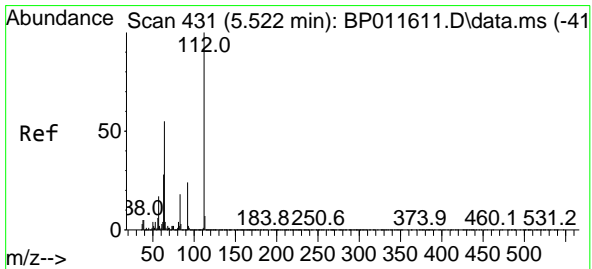
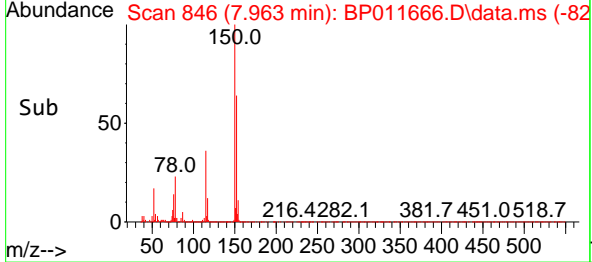
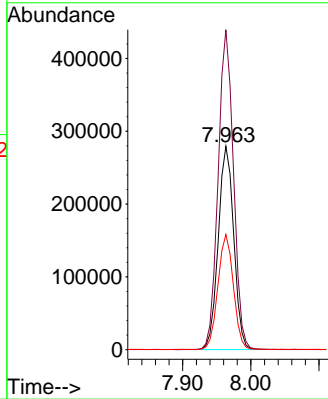
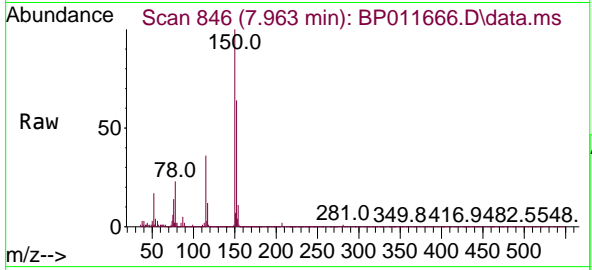




#1
 1,4-Dichlorobenzene-d4
 Concen: 20.000 ng
 RT: 7.963 min Scan# 84
 Delta R.T. -0.001 min
 Lab File: BP011666.D
 Acq: 09 Sep 2022 16:47

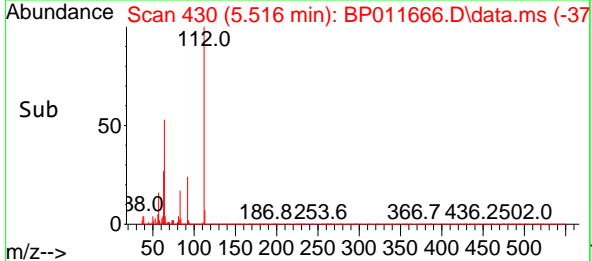
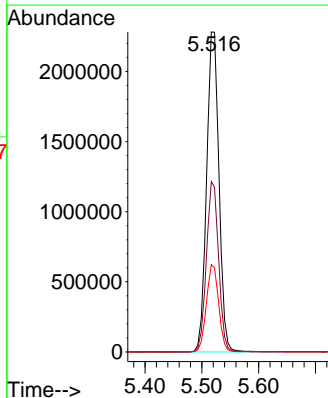
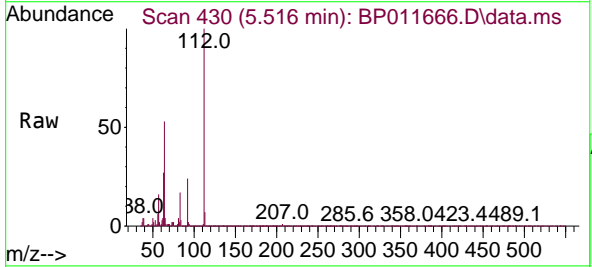
Instrument :
 BNA_P
 ClientSampleId :
 MBD-WC-S-MP-1-0-46

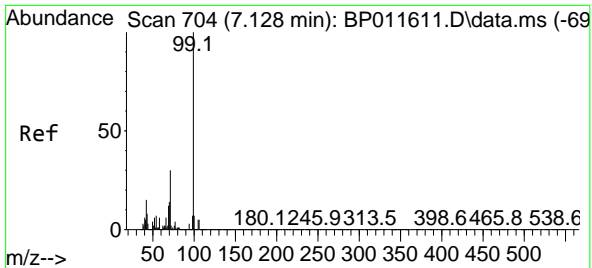
Tgt Ion:152 Resp: 438355
 Ion Ratio Lower Upper
 152 100
 150 157.5 123.4 185.2
 115 56.7 51.3 76.9



#5
 2-Fluorophenol
 Concen: 139.834 ng
 RT: 5.516 min Scan# 430
 Delta R.T. -0.000 min
 Lab File: BP011666.D
 Acq: 09 Sep 2022 16:47

Tgt Ion:112 Resp: 3465853
 Ion Ratio Lower Upper
 112 100
 64 53.3 56.9 85.3#
 63 27.3 31.2 46.8#



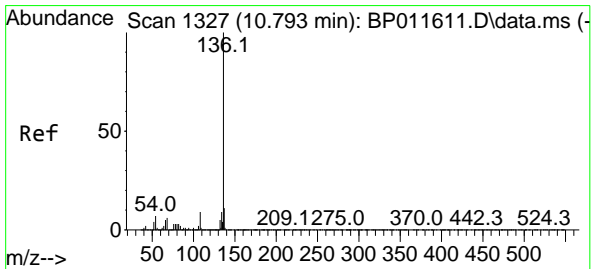
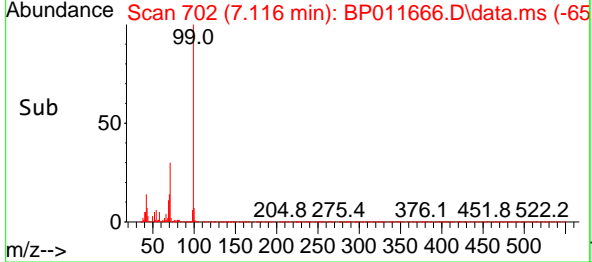
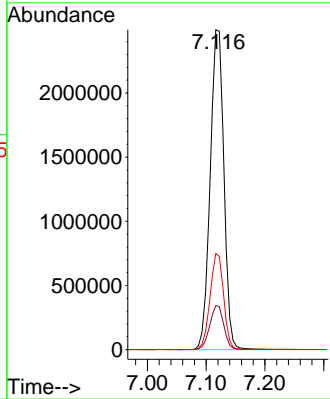
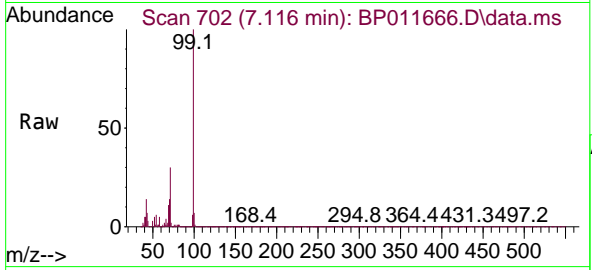


#7
 Phenol-d6
 Concen: 123.191 ng
 RT: 7.116 min Scan# 702
 Delta R.T. -0.000 min
 Lab File: BP011666.D
 Acq: 09 Sep 2022 16:47

Instrument : BNA_P
 ClientSampleId : MBD-WC-S-MP-1-0-46

Tgt Ion: 99 Resp: 4040207

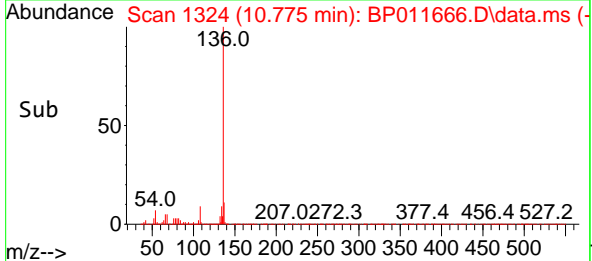
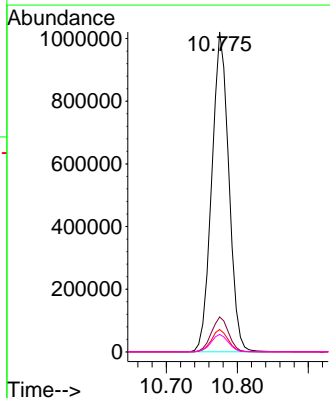
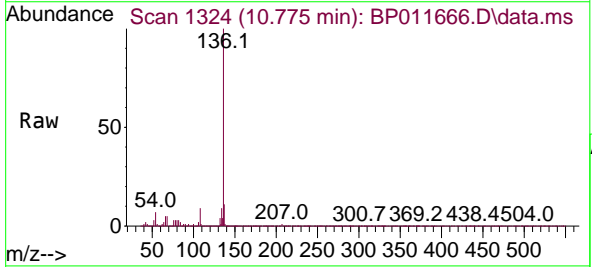
Ion	Ratio	Lower	Upper
99	100		
42	13.8	20.3	30.5#
71	30.0	33.9	50.9#

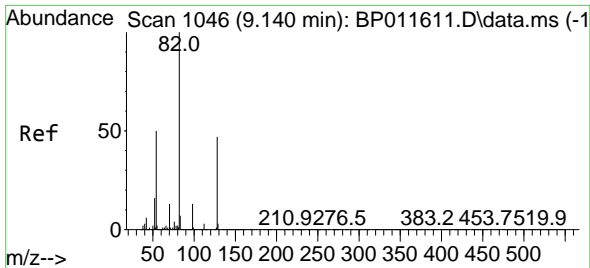


#21
 Naphthalene-d8
 Concen: 20.000 ng
 RT: 10.775 min Scan# 1324
 Delta R.T. -0.000 min
 Lab File: BP011666.D
 Acq: 09 Sep 2022 16:47

Tgt Ion: 136 Resp: 1703047

Ion	Ratio	Lower	Upper
136	100		
137	10.9	9.0	13.4
54	7.0	8.7	13.1#
68	5.5	4.8	7.2



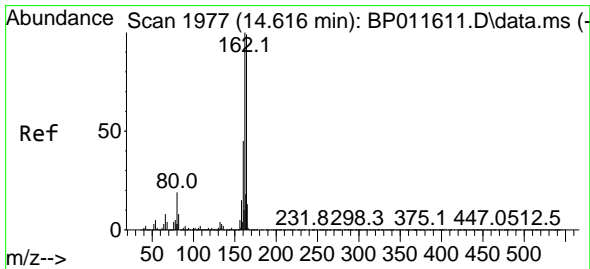
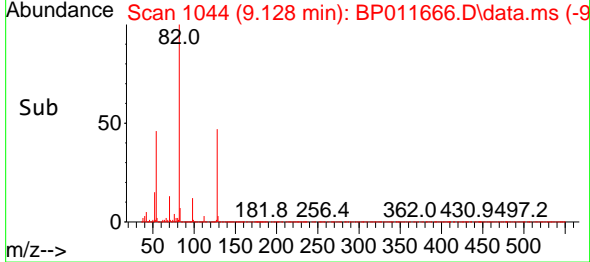
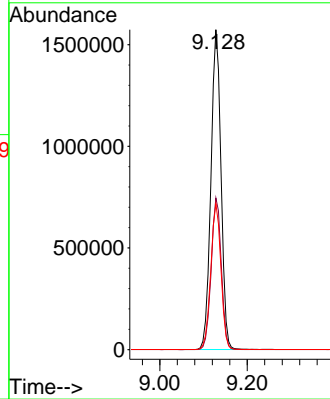
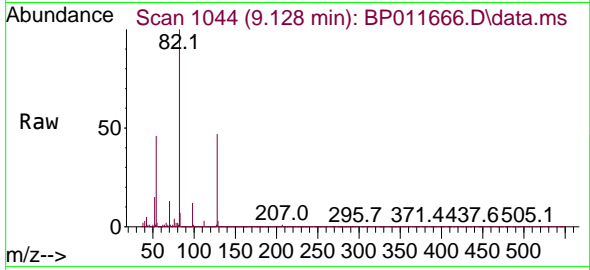


#23
 Nitrobenzene-d5
 Concen: 90.831 ng
 RT: 9.128 min Scan# 1046
 Delta R.T. -0.000 min
 Lab File: BP011666.D
 Acq: 09 Sep 2022 16:47

Instrument :
 BNA_P
 ClientSampleId :
 MBD-WC-S-MP-1-0-46

Tgt Ion: 82 Resp: 2520030

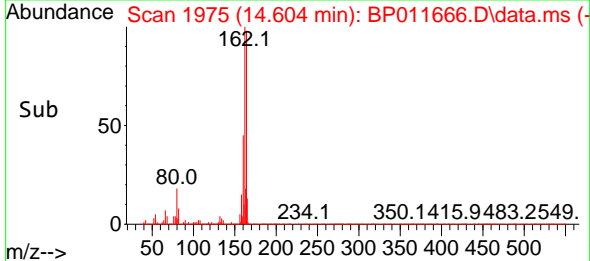
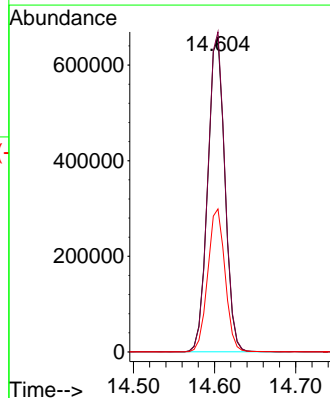
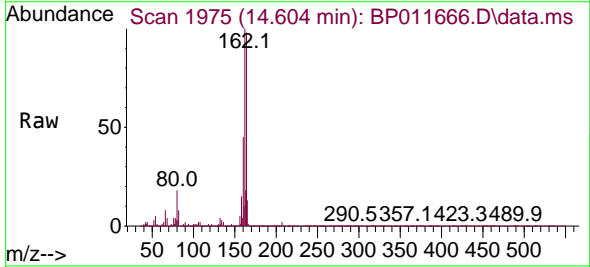
Ion	Ratio	Lower	Upper
82	100		
128	47.4	31.3	46.9#
54	45.6	49.8	74.8#

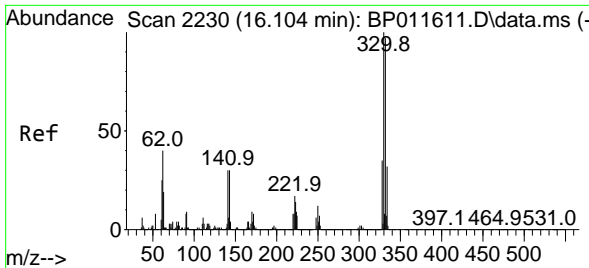


#39
 Acenaphthene-d10
 Concen: 20.000 ng
 RT: 14.604 min Scan# 1975
 Delta R.T. -0.000 min
 Lab File: BP011666.D
 Acq: 09 Sep 2022 16:47

Tgt Ion: 164 Resp: 967688

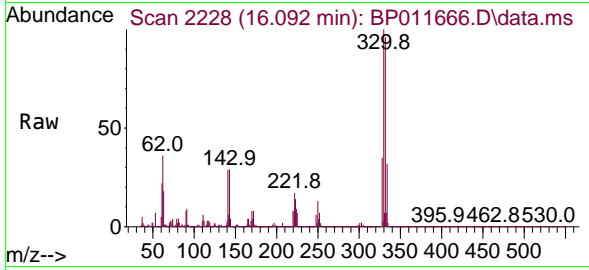
Ion	Ratio	Lower	Upper
164	100		
162	101.8	81.9	122.9
160	45.5	34.6	51.8



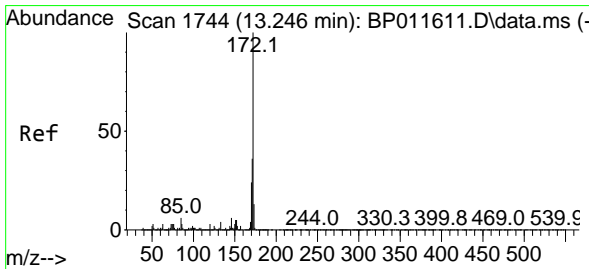
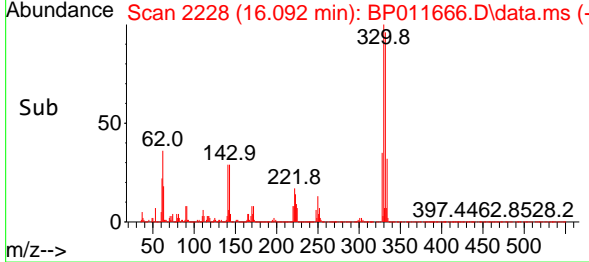
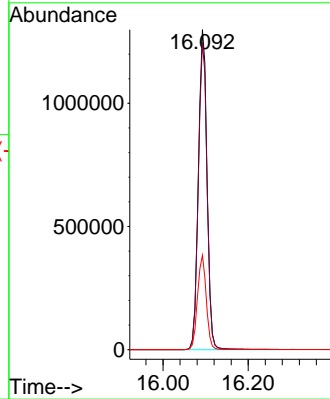


#42
 2,4,6-Tribromophenol
 Concen: 167.205 ng
 RT: 16.092 min Scan# 21
 Delta R.T. -0.000 min
 Lab File: BP011666.D
 Acq: 09 Sep 2022 16:47

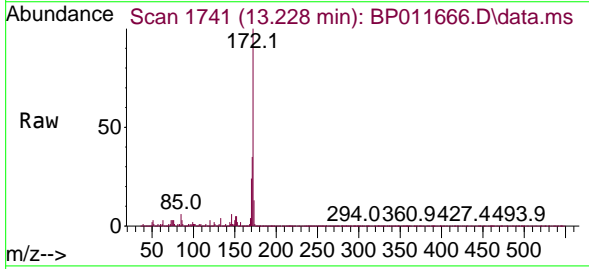
Instrument :
 BNA_P
 ClientSampleId :
 MBD-WC-S-MP-1-0-46



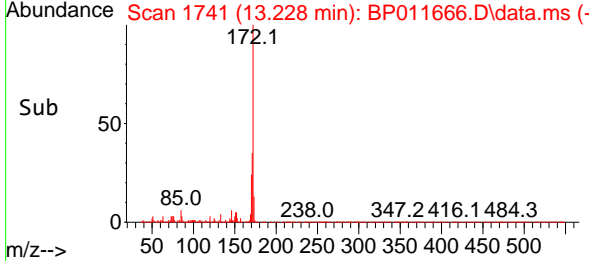
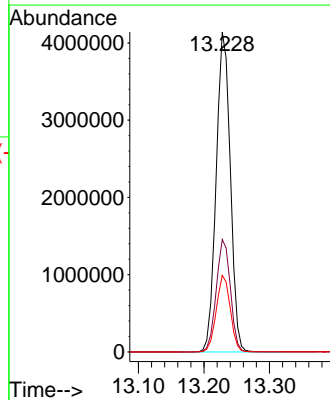
Tgt Ion:330 Resp: 1828109
 Ion Ratio Lower Upper
 330 100
 332 96.7 78.1 117.1
 141 29.8 31.4 47.2#

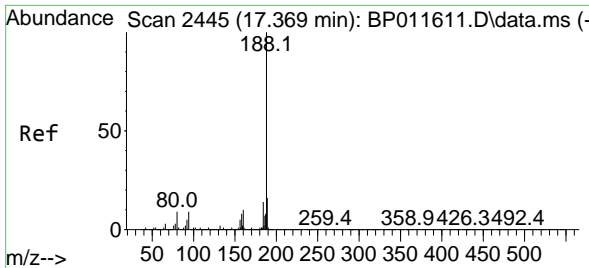


#45
 2-Fluorobiphenyl
 Concen: 92.038 ng
 RT: 13.228 min Scan# 1741
 Delta R.T. -0.000 min
 Lab File: BP011666.D
 Acq: 09 Sep 2022 16:47



Tgt Ion:172 Resp: 6228248
 Ion Ratio Lower Upper
 172 100
 171 35.1 27.9 41.9
 170 23.9 18.2 27.2



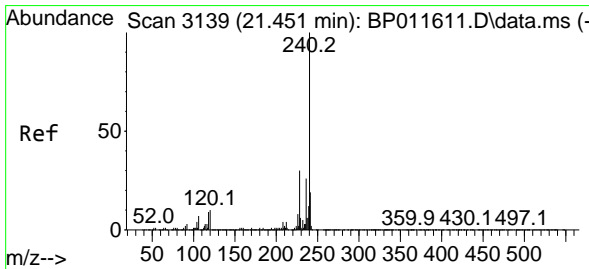
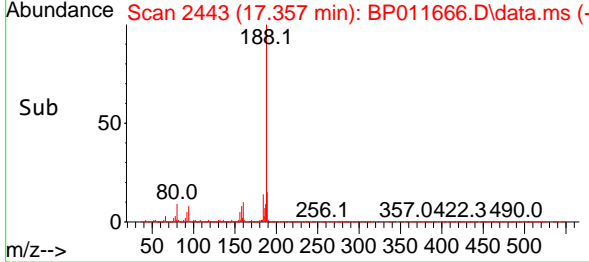
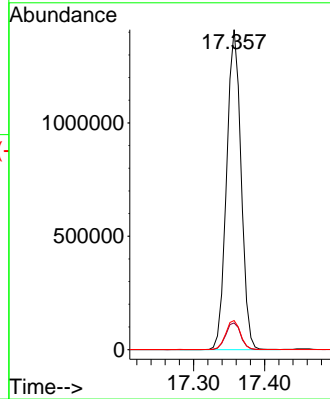
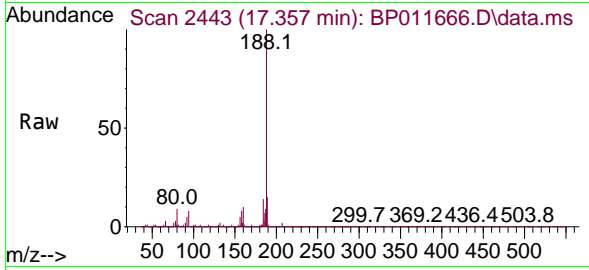


#64
 Phenanthrene-d10
 Concen: 20.000 ng
 RT: 17.357 min Scan# 2445
 Delta R.T. -0.000 min
 Lab File: BP011666.D
 Acq: 09 Sep 2022 16:47

Instrument :
 BNA_P
 ClientSampleId :
 MBD-WC-S-MP-1-0-46

Tgt Ion:188 Resp: 1997085

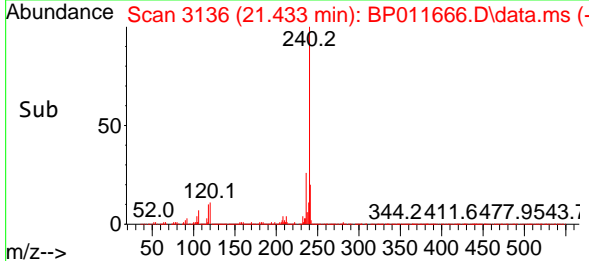
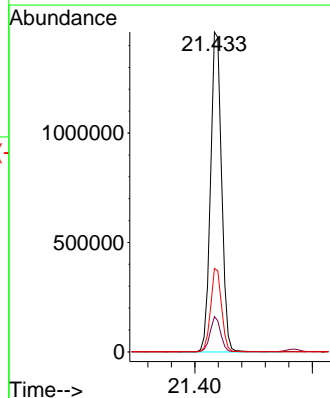
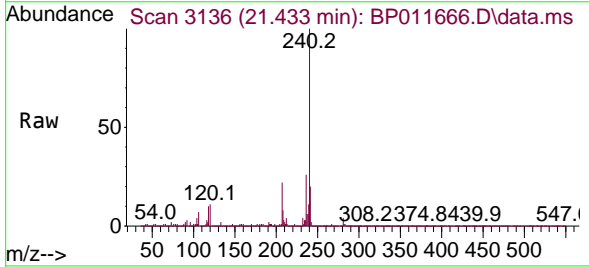
Ion	Ratio	Lower	Upper
188	100		
94	8.3	6.6	10.0
80	9.1	8.0	12.0

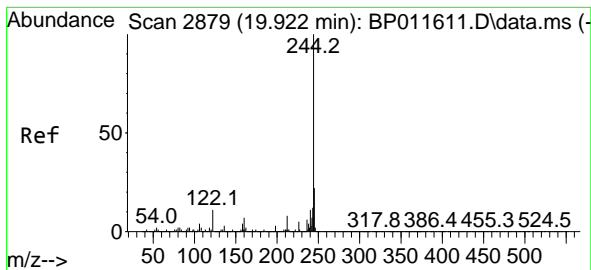


#76
 Chrysene-d12
 Concen: 20.000 ng
 RT: 21.433 min Scan# 3136
 Delta R.T. -0.006 min
 Lab File: BP011666.D
 Acq: 09 Sep 2022 16:47

Tgt Ion:240 Resp: 1904597

Ion	Ratio	Lower	Upper
240	100		
120	11.0	8.6	12.8
236	26.1	19.8	29.6



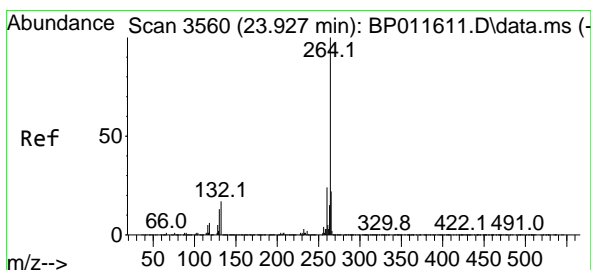
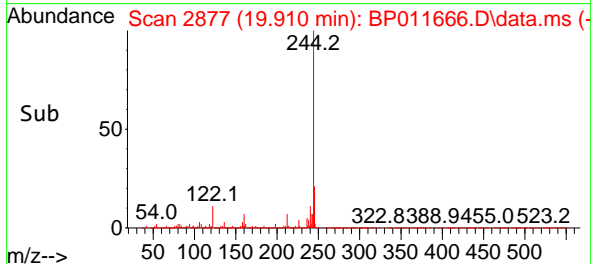
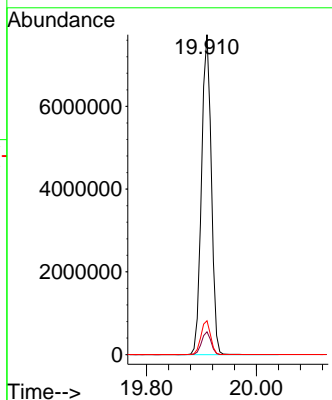
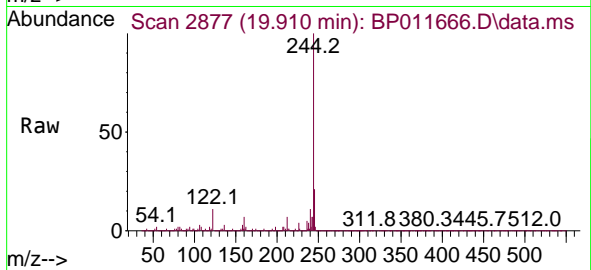


#79
 Terphenyl-d14
 Concen: 104.530 ng
 RT: 19.910 min Scan# 2879
 Delta R.T. -0.000 min
 Lab File: BP011666.D
 Acq: 09 Sep 2022 16:47

Instrument : BNA_P
 Client Sample Id : MBD-WC-S-MP-1-0-46

Tgt Ion: 244 Resp: 9505317

Ion	Ratio	Lower	Upper
244	100		
212	7.2	5.8	8.8
122	10.6	7.6	11.4



#86
 Perylene-d12
 Concen: 20.000 ng
 RT: 23.910 min Scan# 3557
 Delta R.T. -0.000 min
 Lab File: BP011666.D
 Acq: 09 Sep 2022 16:47

Tgt Ion: 264 Resp: 2041557

Ion	Ratio	Lower	Upper
264	100		
260	24.2	19.3	28.9
265	22.7	18.0	27.0

