

Data Path : Z:\svoasrv\HPCHEM1\BNA\_P\Data\BP092123\  
 Data File : BP017270.D  
 Acq On : 21 Sep 2023 16:38  
 Operator : MA/JU  
 Sample : 04387-12  
 Misc :  
 ALS Vial : 16 Sample Multiplier: 1

Instrument :  
 BNA\_P  
 ClientSampleId :  
 C0AF3

Quant Time: Sep 21 22:28:41 2023  
 Quant Method : Z:\svoasrv\HPCHEM1\BNA\_P\Methods\SFAM-EPA-BP092023.MA.M  
 Quant Title : SVOA CALIBRATION  
 QLast Update : Wed Sep 20 14:34:55 2023  
 Response via : Initial Calibration

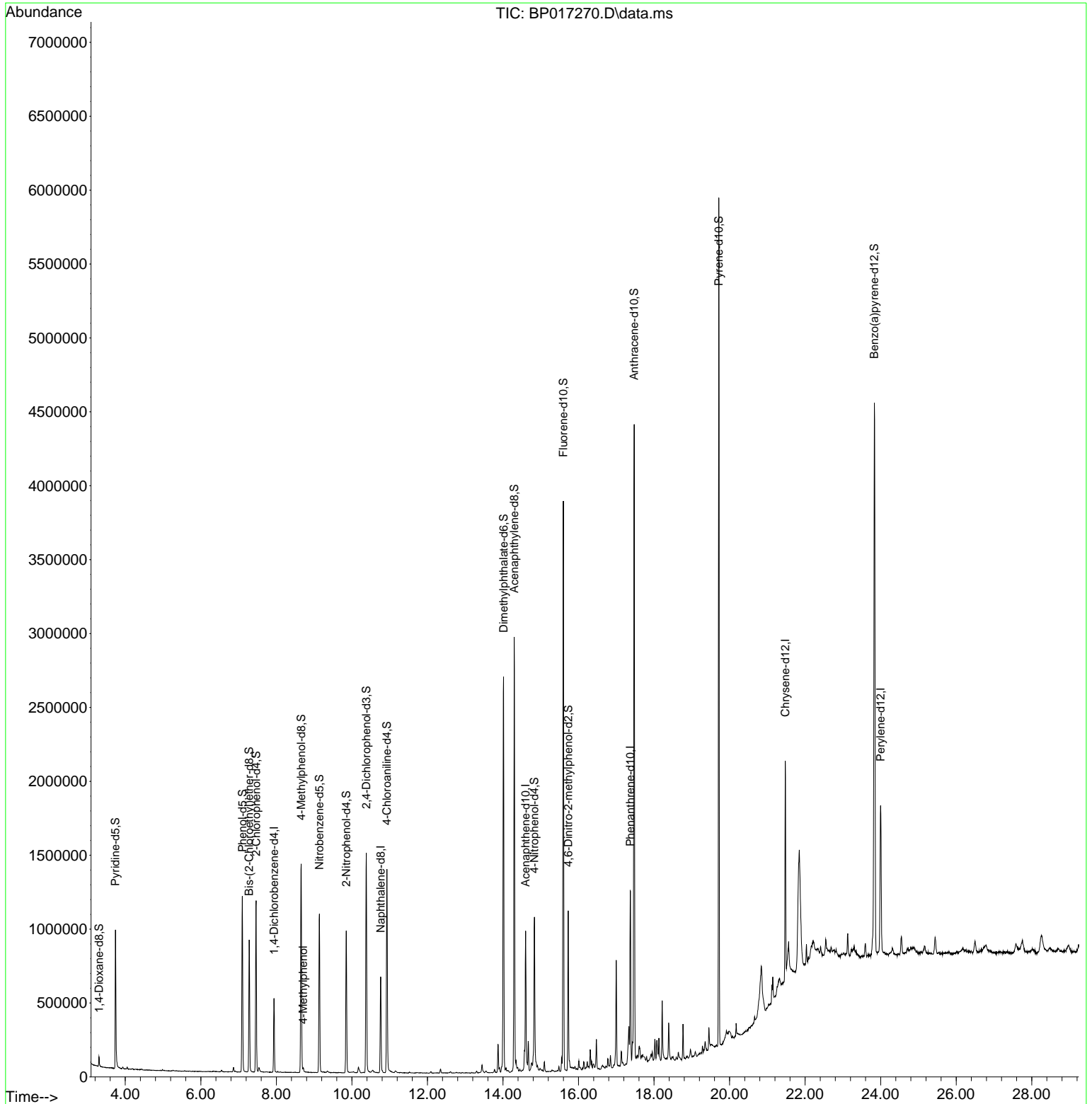
Compound	R.T.	QIon	Response	Conc	Units	Dev(Min)
Internal Standards						
1) 1,4-Dichlorobenzene-d4	7.940	152	133641	20.000	ng/u1	0.00
20) Naphthalene-d8	10.763	136	527464	20.000	ng/u1	0.00
38) Acenaphthene-d10	14.598	164	300948	20.000	ng/u1	0.00
64) Phenanthrene-d10	17.369	188	691388	20.000	ng/u1	-0.01
79) Chrysene-d12	21.475	240	681375	20.000	ng/u1	-0.01
88) Perylene-d12	23.998	264	791588	20.000	ng/u1	-0.02
System Monitoring Compounds						
3) 1,4-Dioxane-d8	3.305	96	32446	9.972	ng/uL	0.00
4) Pyridine-d5	3.740	84	501772	55.165	ng/u1	0.00
7) Phenol-d5	7.099	99	678467	61.814	ng/u1	0.00
9) Bis-(2-Chloroethyl)eth...	7.281	67	384441	58.039	ng/u1	0.00
11) 2-Chlorophenol-d4	7.464	132	538353	61.842	ng/u1	0.00
15) 4-Methylphenol-d8	8.658	113	550710	64.537	ng/u1	0.00
21) Nitrobenzene-d5	9.140	128	267254	70.086	ng/u1	0.00
24) 2-Nitrophenol-d4	9.852	143	312844	75.557	ng/u1	0.00
28) 2,4-Dichlorophenol-d3	10.381	165	543810	69.518	ng/u1	0.00
31) 4-Chloroaniline-d4	10.928	131	731732	64.574	ng/u1	0.00
46) Dimethylphthalate-d6	14.016	166	1638163	75.985	ng/u1	0.00
49) Acenaphthylene-d8	14.298	160	1877281	75.711	ng/u1	0.00
54) 4-Nitrophenol-d4	14.834	143	276940	73.733	ng/u1	0.00
60) Fluorene-d10	15.598	176	1430335	77.064	ng/u1	0.00
65) 4,6-Dinitro-2-methylph...	15.728	200	222988	57.223	ng/u1	0.00
73) Anthracene-d10	17.475	188	2312095	75.402	ng/u1	0.00
81) Pyrene-d10	19.716	212	2815486	76.410	ng/u1	0.00
92) Benzo(a)pyrene-d12	23.833	264	2868616	75.267	ng/u1	-0.01
Target Compounds						
18) 4-Methylphenol	8.711	108	9470	1.082	ng/u1	100

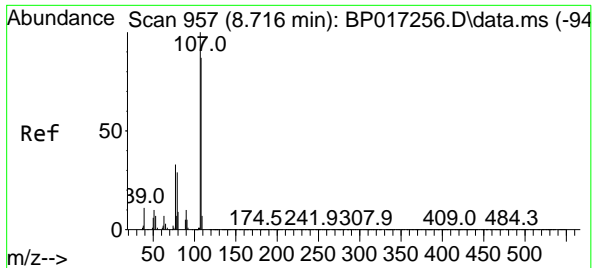
(#) = qualifier out of range (m) = manual integration (+) = signals summed

Data Path : Z:\svoasrv\HPCHEM1\BNA\_P\Data\BP092123\  
 Data File : BP017270.D  
 Acq On : 21 Sep 2023 16:38  
 Operator : MA/JU  
 Sample : 04387-12  
 Misc :  
 ALS Vial : 16 Sample Multiplier: 1

Instrument :  
 BNA\_P  
 ClientSampleId :  
 C0AF3

Quant Time: Sep 21 22:28:41 2023  
 Quant Method : Z:\svoasrv\HPCHEM1\BNA\_P\Methods\SFAM-EPA-BP092023.MA.M  
 Quant Title : SVOA CALIBRATION  
 QLast Update : Wed Sep 20 14:34:55 2023  
 Response via : Initial Calibration





#18  
 4-Methylphenol  
 Concen: 1.082 ng/ul  
 RT: 8.711 min Scan# 91  
 Delta R.T. -0.006 min  
 Lab File: BP017270.D  
 Acq: 21 Sep 2023 16:38

Instrument :  
 BNA\_P  
 ClientSampleId :  
 COAF3

Tgt Ion:108 Resp: 9470  
 Ion Ratio Lower Upper  
 108 100  
 107 112.6 90.0 135.0

