

Data Path : Z:\svoasrv\HPCHEM1\BNA_P\Data\BP092424\
 Data File : BP022020.D
 Acq On : 25 Sep 2024 08:36
 Operator : RC/JU
 Sample : P4106-01
 Misc :
 ALS Vial : 24 Sample Multiplier: 1

Instrument :
 BNA_P
 ClientSampleId :
 COSX5

Integration Parameters: LSCINT.P

Integrator: RTE
 Smoothing : OFF Filtering: 5
 Sampling : 1 Min Area: 0.1 % of largest Peak
 Start Thrs: 0.2 Max Peaks: 100
 Stop Thrs : 0 Peak Location: TOP

If leading or trailing edge < 100 prefer < Baseline drop else tangent >
 Peak separation: 5

Method : Z:\svoasrv\HPCHEM1\BNA_P\Methods\SFAM-EPA-BP092424.MA.M
 Title : SVOA CALIBRATION

Signal : TIC: BP022020.D\data.ms

peak #	R.T. min	first scan	max scan	last scan	PK TY	peak height	corr. area	corr. % max.	% of total
1	3.222	35	40	44	rBV2	37670	47236	1.32%	0.146%
2	3.264	45	47	50	rVB3	5293	4888	0.14%	0.015%
3	3.640	107	111	120	rBV	184530	260137	7.29%	0.802%
4	3.964	161	166	172	rVB2	8905	12108	0.34%	0.037%
5	4.522	259	261	267	rVB5	3360	4109	0.12%	0.013%
6	4.605	271	275	281	rBV5	5793	9497	0.27%	0.029%
7	4.705	289	292	297	rVB5	2895	4689	0.13%	0.014%
8	4.805	304	309	315	rVB	9802	15697	0.44%	0.048%
9	4.875	315	321	330	rVB	104251	149609	4.19%	0.461%
10	5.075	345	355	360	rBV	108125	159833	4.48%	0.493%
11	5.122	360	363	369	rVB6	3959	4926	0.14%	0.015%
12	5.393	405	409	416	rBV6	5035	12528	0.35%	0.039%
13	5.787	473	476	482	rVB8	3240	5590	0.16%	0.017%
14	6.140	532	536	545	rBV8	5313	11479	0.32%	0.035%
15	6.228	545	551	557	rVV2	8375	14631	0.41%	0.045%
16	6.893	656	664	676	rBV	117803	217356	6.09%	0.670%
17	7.052	684	691	699	rBV	340580	517090	14.49%	1.593%
18	7.205	713	717	719	rBV4	8272	10997	0.31%	0.034%
19	7.252	719	725	735	rVV	253793	436171	12.22%	1.344%
20	7.352	737	742	743	rVV5	2721	4719	0.13%	0.015%
21	7.363	743	744	750	rVB5	5337	5309	0.15%	0.016%
22	7.599	778	784	791	rVB	38282	62109	1.74%	0.191%
23	7.710	796	803	807	rBV	374592	607422	17.02%	1.872%
24	8.058	853	862	870	rBV	1007469	1634431	45.80%	5.036%
25	8.405	914	921	932	rBV	347739	573316	16.06%	1.767%
26	8.846	987	996	1000	rBV	408534	706367	19.79%	2.177%
27	8.887	1000	1003	1014	rVB	500939	778681	21.82%	2.399%
28	9.010	1021	1024	1029	rVB7	3275	4793	0.13%	0.015%
29	9.275	1064	1069	1079	rVB	34600	61227	1.72%	0.189%
30	9.405	1085	1091	1097	rBV4	8301	14100	0.40%	0.043%
31	9.557	1110	1117	1129	rBV	187586	343814	9.63%	1.059%
32	10.099	1201	1209	1216	rBV	303710	532085	14.91%	1.640%
33	10.163	1216	1220	1229	rVV4	10542	20504	0.57%	0.063%
34	10.252	1229	1235	1242	rVV6	7616	14705	0.41%	0.045%
35	10.334	1242	1249	1262	rVV	313813	538700	15.09%	1.660%
36	10.463	1264	1271	1279	rVV	442199	741634	20.78%	2.285%

Data Path : Z:\svoasrv\HPCHEM1\BNA_P\Data\BP092424\
 Data File : BP022020.D
 Acq On : 25 Sep 2024 08:36
 Operator : RC/JU
 Sample : P4106-01
 Misc :
 ALS Vial : 24 Sample Multiplier: 1

Instrument :
 BNA_P
 ClientSampleId :
 COSX5

Integration Parameters: LSCINT.P

Integrator: RTE
 Smoothing : OFF Filtering: 5
 Sampling : 1 Min Area: 0.1 % of largest Peak
 Start Thrs: 0.2 Max Peaks: 100
 Stop Thrs : 0 Peak Location: TOP

If leading or trailing edge < 100 prefer < Baseline drop else tangent >
 Peak separation: 5

Method : Z:\svoasrv\HPCHEM1\BNA_P\Methods\SFAM-EPA-BP092424.MA.M
 Title : SVOA CALIBRATION

37	10.604	1285	1295	1306	rBV2	177228	310899	8.71%	0.958%
38	10.846	1329	1336	1345	rVB	130295	241699	6.77%	0.745%
39	11.057	1364	1372	1381	rVV	405755	701540	19.66%	2.162%
40	11.134	1382	1385	1391	rVV7	4846	10305	0.29%	0.032%
41	11.204	1391	1397	1401	rVV5	3577	7604	0.21%	0.023%
42	11.275	1401	1409	1422	rVB	119985	213673	5.99%	0.658%
43	11.751	1484	1490	1497	rBV	53207	86938	2.44%	0.268%
44	11.987	1523	1530	1536	rBV	26441	44292	1.24%	0.136%
45	12.046	1536	1540	1547	rVB	10222	16904	0.47%	0.052%
46	12.440	1601	1607	1612	rBV3	15851	27553	0.77%	0.085%
47	12.493	1612	1616	1625	rVB5	12154	21350	0.60%	0.066%
48	12.728	1650	1656	1664	rVV6	15699	35247	0.99%	0.109%
49	12.816	1667	1671	1672	rVV3	3044	4463	0.13%	0.014%
50	12.881	1676	1682	1687	rBV3	16080	27504	0.77%	0.085%
51	12.934	1687	1691	1696	rVB2	7012	10701	0.30%	0.033%
52	13.057	1706	1712	1715	rBV5	12309	19090	0.53%	0.059%
53	13.110	1715	1721	1730	rVV2	80004	130982	3.67%	0.404%
54	13.210	1734	1738	1743	rVV7	4194	7870	0.22%	0.024%
55	13.269	1743	1748	1753	rVV8	9074	17712	0.50%	0.055%
56	13.340	1753	1760	1770	rVB4	20430	46286	1.30%	0.143%
57	13.728	1817	1826	1839	rVV	1131799	1404781	39.36%	4.329%
58	14.010	1867	1874	1883	rBV	1036560	1471516	41.23%	4.534%
59	14.069	1883	1884	1889	rVB5	2900	4159	0.12%	0.013%
60	14.316	1917	1926	1938	rBV	669371	1061431	29.74%	3.271%
61	14.534	1956	1963	1973	rBV2	34401	84700	2.37%	0.261%
62	14.745	1994	1999	2003	rBV7	10501	16306	0.46%	0.050%
63	14.804	2004	2009	2018	rBV7	16886	27729	0.78%	0.085%
64	14.951	2029	2034	2038	rBV8	4939	7022	0.20%	0.022%
65	15.128	2060	2064	2070	rVB7	9469	13283	0.37%	0.041%
66	15.322	2090	2097	2102	rBV	1350486	1965986	55.09%	6.058%
67	15.375	2102	2106	2114	rVV	132161	209552	5.87%	0.646%
68	15.445	2114	2118	2127	rVB	104369	139474	3.91%	0.430%
69	15.563	2135	2138	2143	rVB5	8207	12082	0.34%	0.037%
70	15.698	2151	2161	2168	rBV2	42170	87807	2.46%	0.271%
71	15.910	2192	2197	2203	rVB10	5707	9326	0.26%	0.029%
72	16.128	2231	2234	2238	rVB6	3630	5008	0.14%	0.015%
73	16.322	2261	2267	2274	rVB7	21977	36083	1.01%	0.111%
74	16.492	2294	2296	2303	rVB8	5125	9045	0.25%	0.028%
75	16.622	2313	2318	2320	rBV5	3603	5504	0.15%	0.017%
76	16.657	2320	2324	2332	rVB5	7194	15485	0.43%	0.048%

Data Path : Z:\svoasrv\HPCHEM1\BNA_P\Data\BP092424\
 Data File : BP022020.D
 Acq On : 25 Sep 2024 08:36
 Operator : RC/JU
 Sample : P4106-01
 Misc :
 ALS Vial : 24 Sample Multiplier: 1

Instrument :
 BNA_P
 ClientSampleId :
 COSX5

Integration Parameters: LSCINT.P

Integrator: RTE
 Smoothing : OFF Filtering: 5
 Sampling : 1 Min Area: 0.1 % of largest Peak
 Start Thrs: 0.2 Max Peaks: 100
 Stop Thrs : 0 Peak Location: TOP

If leading or trailing edge < 100 prefer < Baseline drop else tangent >
 Peak separation: 5

Method : Z:\svoasrv\HPCHEM1\BNA_P\Methods\SFAM-EPA-BP092424.MA.M
 Title : SVOA CALIBRATION

77	16.839	2351	2355	2359	rBV7	3729	5551	0.16%	0.017%
78	16.875	2359	2361	2366	rVB5	3076	4813	0.13%	0.015%
79	17.122	2395	2403	2411	rBV	1010362	1393534	39.05%	4.294%
80	17.210	2412	2418	2430	rVV	1597059	2319278	64.99%	7.147%
81	17.316	2431	2436	2439	rVV7	15392	30361	0.85%	0.094%
82	17.357	2439	2443	2447	rVV6	9830	17574	0.49%	0.054%
83	17.722	2501	2505	2507	rBV5	3238	4423	0.12%	0.014%
84	17.763	2507	2512	2516	rVV8	11323	17618	0.49%	0.054%
85	17.869	2527	2530	2534	rVB6	5035	6674	0.19%	0.021%
86	18.057	2556	2562	2569	rBV3	60762	105743	2.96%	0.326%
87	18.122	2570	2573	2579	rVB6	10407	19256	0.54%	0.059%
88	18.245	2590	2594	2598	rBV7	6045	8676	0.24%	0.027%
89	18.539	2635	2644	2651	rBV2	271829	390088	10.93%	1.202%
90	18.616	2655	2657	2660	rVV4	6898	8669	0.24%	0.027%
91	18.663	2663	2665	2676	rVB4	15302	27349	0.77%	0.084%
92	18.886	2700	2703	2707	rVB5	8593	11645	0.33%	0.036%
93	19.016	2721	2725	2730	rBV6	9906	22155	0.62%	0.068%
94	19.139	2742	2746	2750	rVB3	20988	31281	0.88%	0.096%
95	19.216	2756	2759	2764	rVB2	16944	25811	0.72%	0.080%
96	19.392	2785	2789	2794	rBV2	67139	97070	2.72%	0.299%
97	19.592	2816	2823	2833	rBV	1916968	3080266	86.31%	9.491%
98	21.551	3149	3156	3164	rBV	1271013	2030254	56.89%	6.256%
99	24.610	3667	3676	3692	rVB	1441086	3568924	100.00%	10.997%
100	24.833	3706	3714	3727	rVB	869659	2114890	59.26%	6.517%

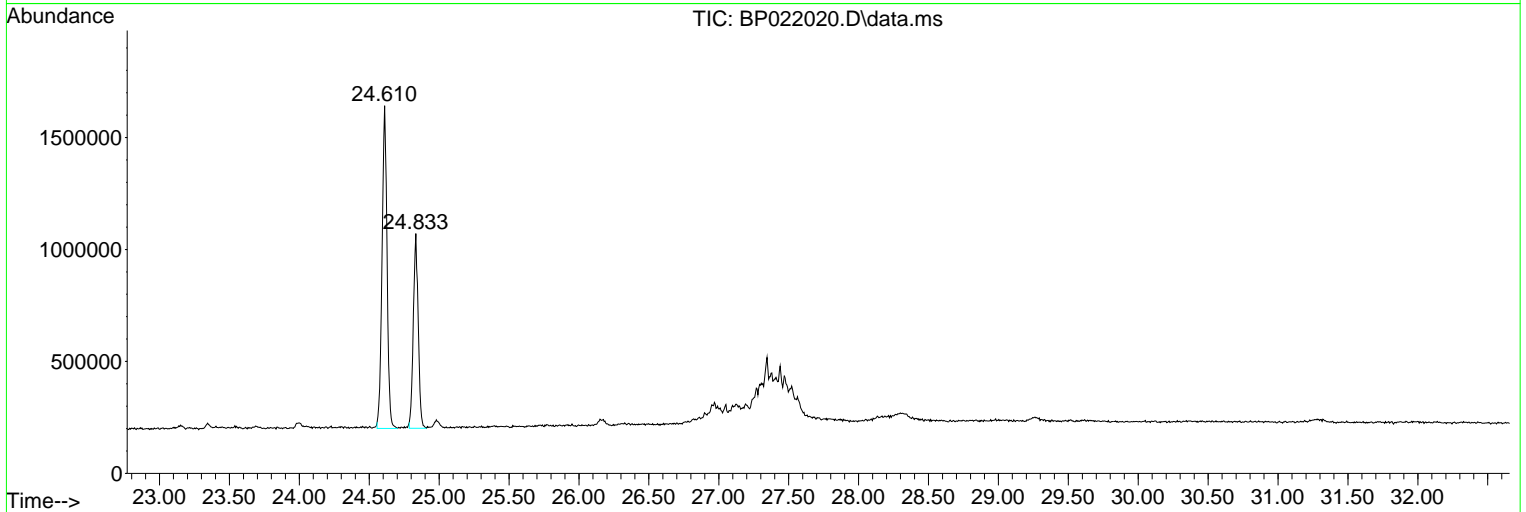
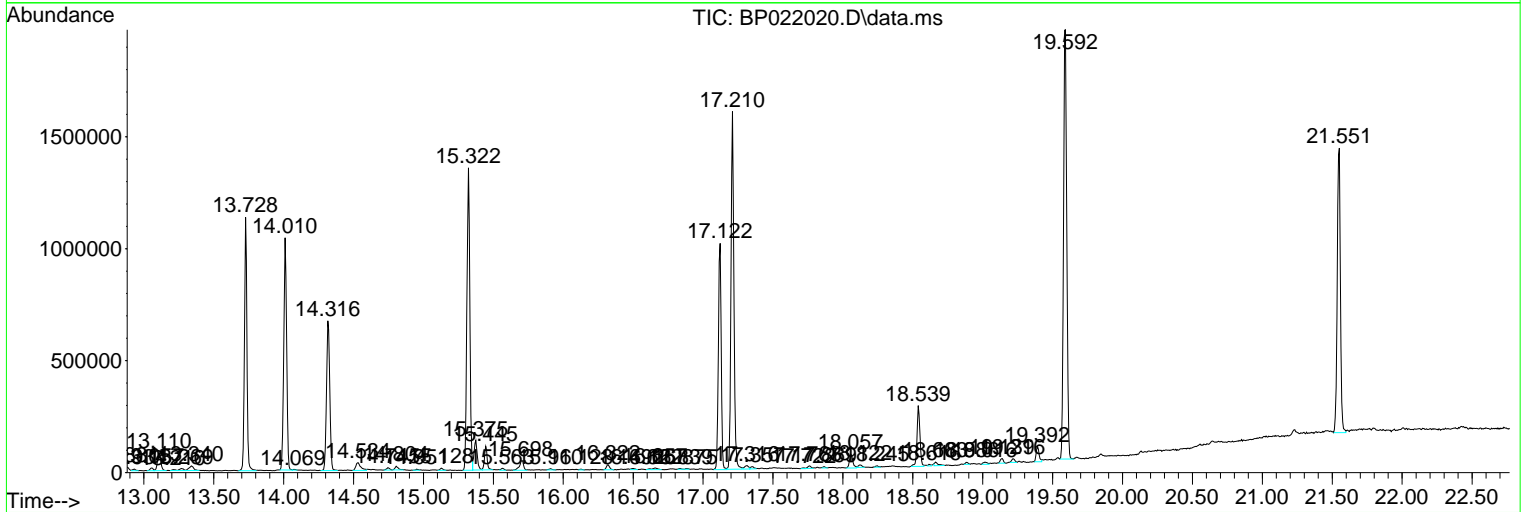
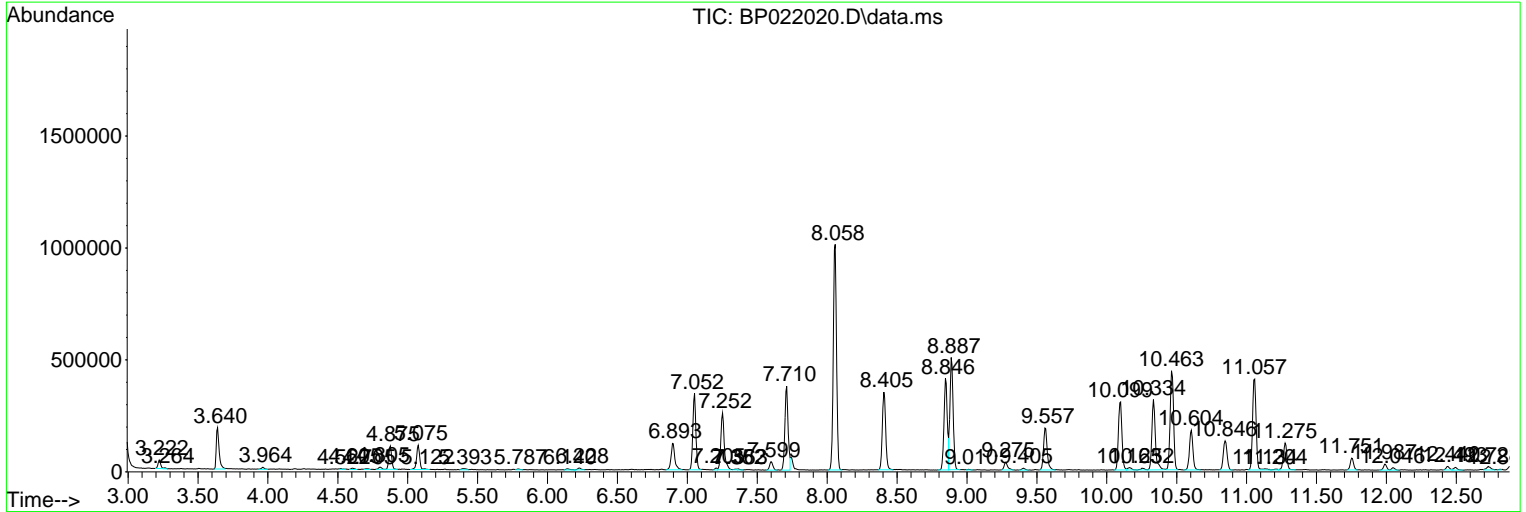
Sum of corrected areas: 32453281

Data Path : Z:\svoasrv\HPCHEM1\BNA_P\Data\BP092424\
 Data File : BP022020.D
 Acq On : 25 Sep 2024 08:36
 Operator : RC/JU
 Sample : P4106-01
 Misc :
 ALS Vial : 24 Sample Multiplier: 1

Instrument :
 BNA_P
 ClientSampleId :
 C0SX5

Quant Method : Z:\svoasrv\HPCHEM1\BNA_P\Methods\SFAM-EPA-BP092424.MA.M
 Quant Title : SVOA CALIBRATION

TIC Library : C:\DATABASE\NIST20.L
 TIC Integration Parameters: LSCINT.P



Data Path : Z:\svoasrv\HPCHEM1\BNA_P\Data\BP092424\
 Data File : BP022020.D
 Acq On : 25 Sep 2024 08:36
 Operator : RC/JU
 Sample : P4106-01
 Misc :
 ALS Vial : 24 Sample Multiplier: 1

Instrument :
 BNA_P
 ClientSampleId :
 C0SX5

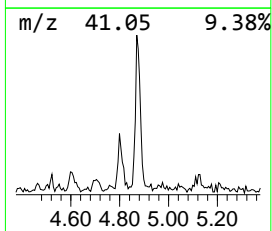
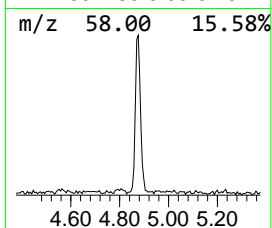
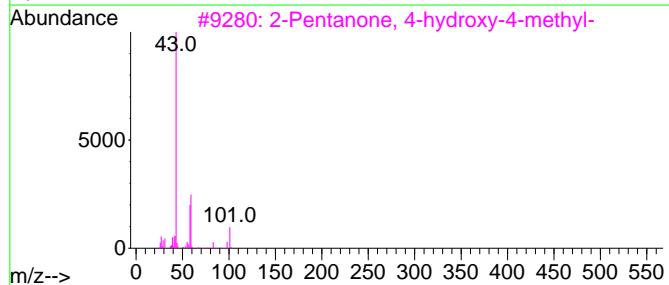
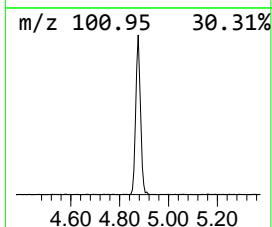
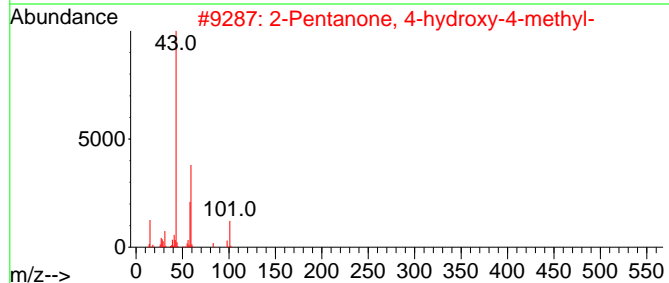
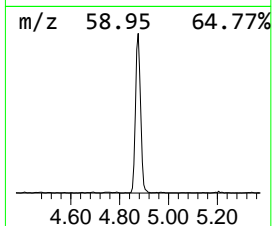
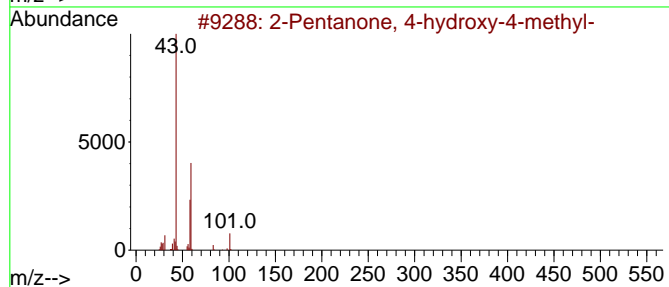
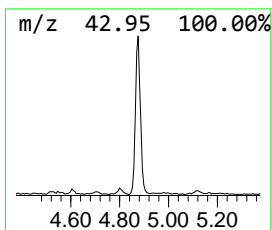
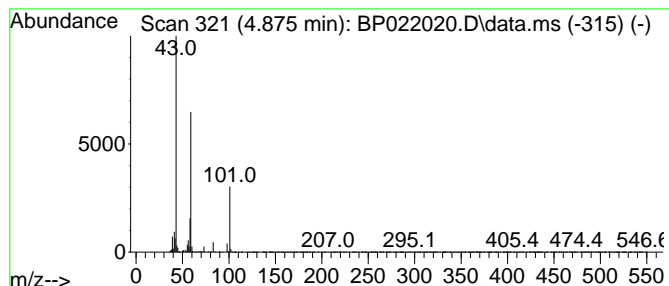
Quant Method : Z:\svoasrv\HPCHEM1\BNA_P\Methods\SFAM-EPA-BP092424.MA.M
 Quant Title : SVOA CALIBRATION

TIC Library : C:\DATABASE\NIST20.L
 TIC Integration Parameters: LSCINT.P

 Peak Number 1 2-Pentanone, 4-hydroxy-4-me... Concentration Rank 8

R.T.	EstConc	Area	Relative to ISTD	R.T.
4.875	4.93 ng/ul	149609	1,4-Dichlorobenzene-d4	7.710

Hit#	of	5	Tentative ID	MW	MolForm	CAS#	Qual
1	2-Pentanone, 4-hydroxy-4-methyl-	116	C6H12O2	000123-42-2	64		
2	2-Pentanone, 4-hydroxy-4-methyl-	116	C6H12O2	000123-42-2	50		
3	2-Pentanone, 4-hydroxy-4-methyl-	116	C6H12O2	000123-42-2	45		
4	2-Pentanone, 4-hydroxy-4-methyl-	116	C6H12O2	000123-42-2	40		
5	DL-Lactamide, N,N-dimethyl-, met...	131	C6H13NO2	1000452-57-0	28		



Data Path : Z:\svoasrv\HPCHEM1\BNA_P\Data\BP092424\
 Data File : BP022020.D
 Acq On : 25 Sep 2024 08:36
 Operator : RC/JU
 Sample : P4106-01
 Misc :
 ALS Vial : 24 Sample Multiplier: 1

Instrument :
 BNA_P
 ClientSampleId :
 COSX5

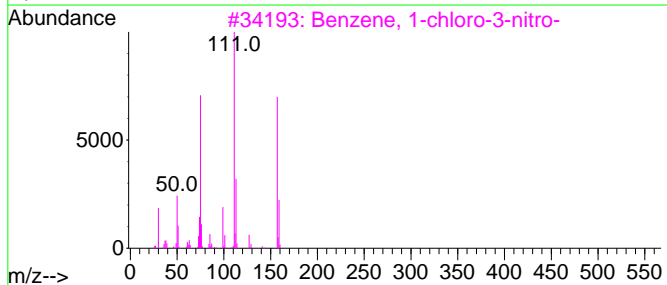
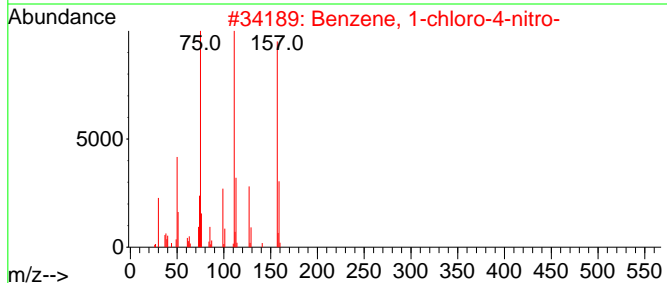
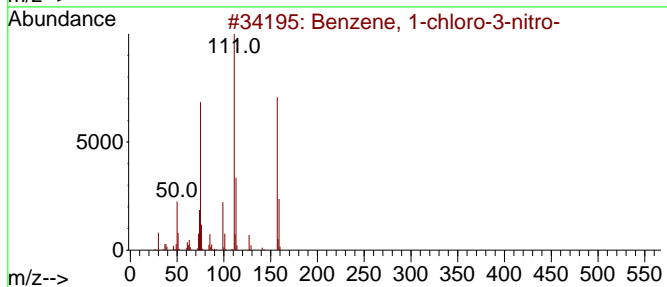
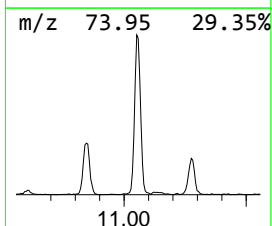
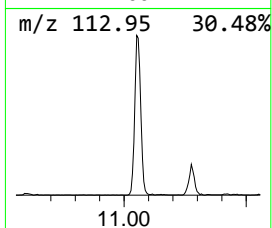
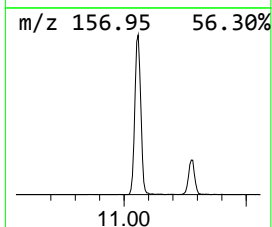
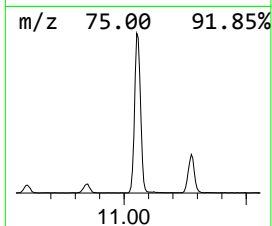
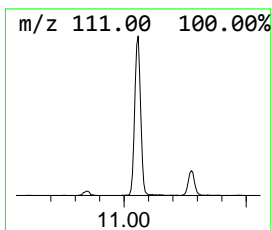
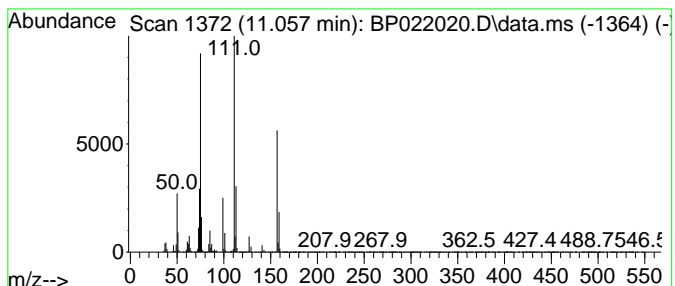
Quant Method : Z:\svoasrv\HPCHEM1\BNA_P\Methods\SFAM-EPA-BP092424.MA.M
 Quant Title : SVOA CALIBRATION

TIC Library : C:\DATABASE\NIST20.L
 TIC Integration Parameters: LSCINT.P

 Peak Number 7 Benzene, 1-chloro-3-nitro- Concentration Rank 2

R.T.	EstConc	Area	Relative to ISTD	R.T.
11.057	18.92 ng/ul	701540	Naphthalene-d8	10.463

Hit#	of	5	Tentative ID	MW	MolForm	CAS#	Qual
1			Benzene, 1-chloro-3-nitro-	157	C6H4ClNO2	000121-73-3	97
2			Benzene, 1-chloro-4-nitro-	157	C6H4ClNO2	000100-00-5	94
3			Benzene, 1-chloro-3-nitro-	157	C6H4ClNO2	000121-73-3	93
4			Benzene, 1-chloro-3-nitro-	157	C6H4ClNO2	000121-73-3	93
5			Benzene, 1-chloro-4-nitro-	157	C6H4ClNO2	000100-00-5	93



Data Path : Z:\svoasrv\HPCHEM1\BNA_P\Data\BP092424\
 Data File : BP022020.D
 Acq On : 25 Sep 2024 08:36
 Operator : RC/JU
 Sample : P4106-01
 Misc :
 ALS Vial : 24 Sample Multiplier: 1

Instrument :
 BNA_P
 ClientSampleId :
 COSX5

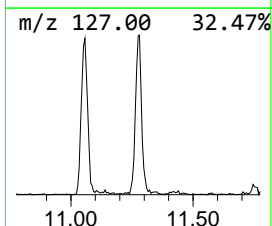
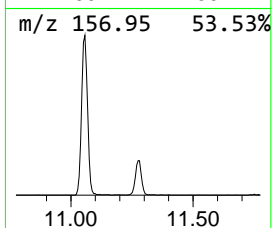
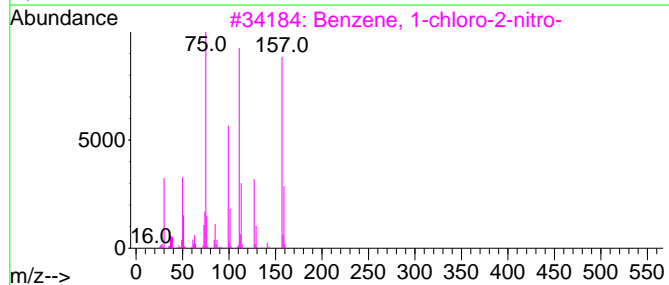
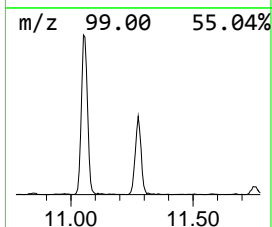
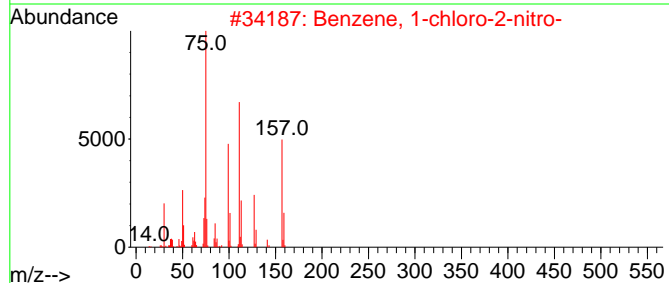
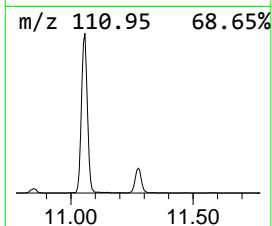
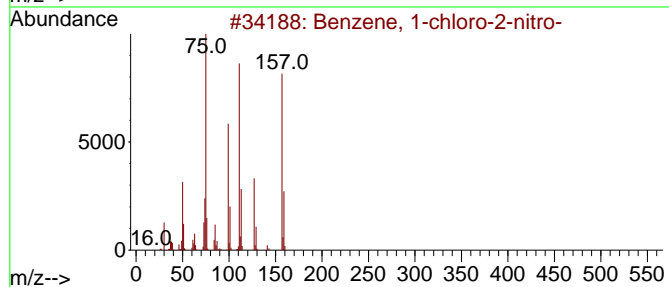
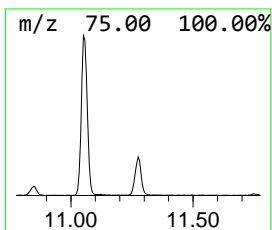
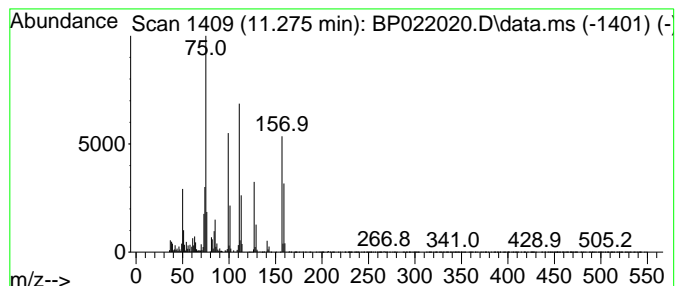
Quant Method : Z:\svoasrv\HPCHEM1\BNA_P\Methods\SFAM-EPA-BP092424.MA.M
 Quant Title : SVOA CALIBRATION

TIC Library : C:\DATABASE\NIST20.L
 TIC Integration Parameters: LSCINT.P

 Peak Number 8 Benzene, 1-chloro-2-nitro- Concentration Rank 5

R.T.	EstConc	Area	Relative to ISTD	R.T.
11.275	5.76 ng/ul	213673	Naphthalene-d8	10.463

Hit#	of	Tentative ID	MW	MolForm	CAS#	Qual
1	5	Benzene, 1-chloro-2-nitro-	157	C6H4ClNO2	000088-73-3	94
2		Benzene, 1-chloro-2-nitro-	157	C6H4ClNO2	000088-73-3	93
3		Benzene, 1-chloro-2-nitro-	157	C6H4ClNO2	000088-73-3	87
4		Benzene, 1-chloro-4-nitro-	157	C6H4ClNO2	000100-00-5	81
5		Benzene, 1-chloro-2-nitro-	157	C6H4ClNO2	000088-73-3	78



Data Path : Z:\svoasrv\HPCHEM1\BNA_P\Data\BP092424\
 Data File : BP022020.D
 Acq On : 25 Sep 2024 08:36
 Operator : RC/JU
 Sample : P4106-01
 Misc :
 ALS Vial : 24 Sample Multiplier: 1

Instrument :
 BNA_P
 ClientSampleId :
 COSX5

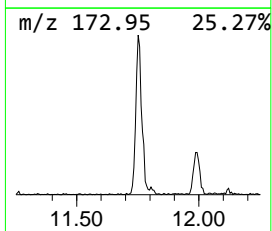
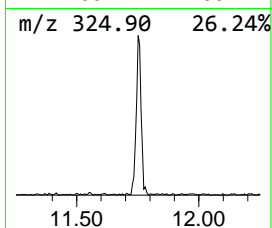
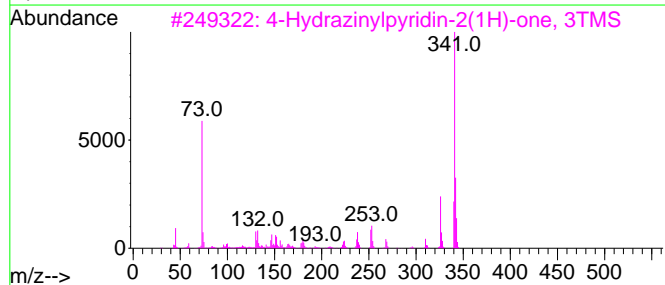
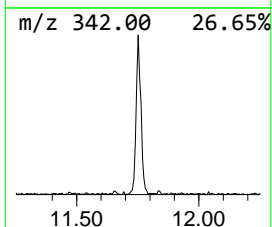
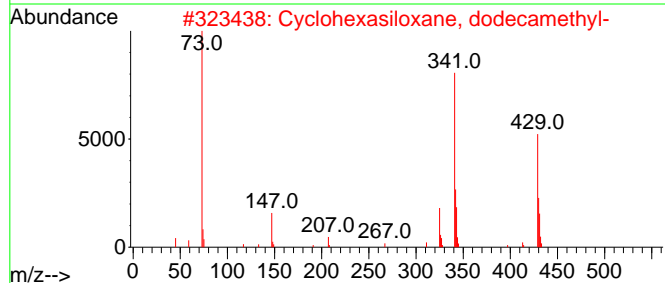
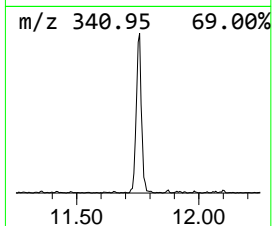
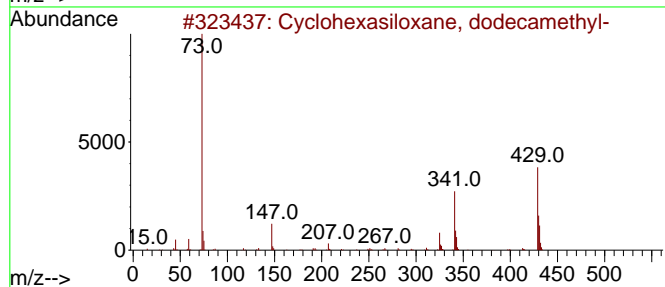
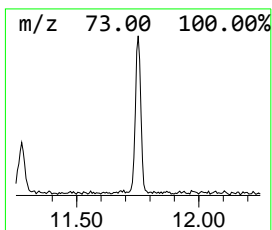
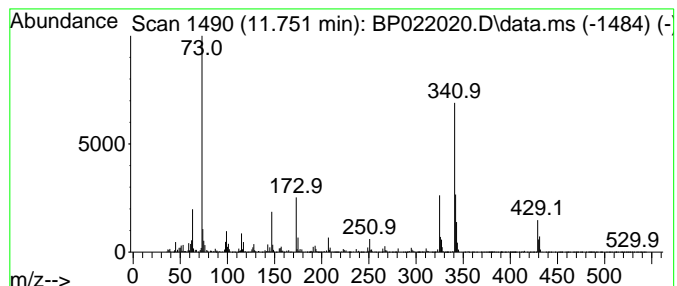
Quant Method : Z:\svoasrv\HPCHEM1\BNA_P\Methods\SFAM-EPA-BP092424.MA.M
 Quant Title : SVOA CALIBRATION

TIC Library : C:\DATABASE\NIST20.L
 TIC Integration Parameters: LSCINT.P

 Peak Number 9 Cyclohexasiloxane, dodecane... Concentration Rank 10

R.T.	EstConc	Area	Relative to ISTD	R.T.
11.752	2.34 ng/ul	86938	Naphthalene-d8	10.463

Hit#	of	5	Tentative ID	MW	MolForm	CAS#	Qual
1			Cyclohexasiloxane, dodecamethyl-	444	C12H36O6Si6	000540-97-6	72
2			Cyclohexasiloxane, dodecamethyl-	444	C12H36O6Si6	000540-97-6	64
3			4-Hydrazinylpyridin-2(1H)-one, 3TMS	341	C14H31N3OSi3	1000499-42-7	49
4			4-Amino-1,2-benzenediol, O,O',N-...	341	C15H31N02Si3	1000493-87-4	49
5			Phosphonoacetic Acid, 3TMS deriv...	356	C11H29O5PSi3	053044-27-2	40



Data Path : Z:\svoasrv\HPCHEM1\BNA_P\Data\BP092424\
 Data File : BP022020.D
 Acq On : 25 Sep 2024 08:36
 Operator : RC/JU
 Sample : P4106-01
 Misc :
 ALS Vial : 24 Sample Multiplier: 1

Instrument :
 BNA_P
 ClientSampleId :
 C0SX5

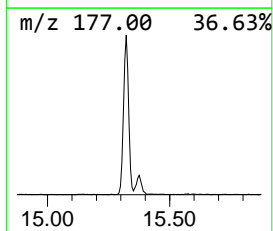
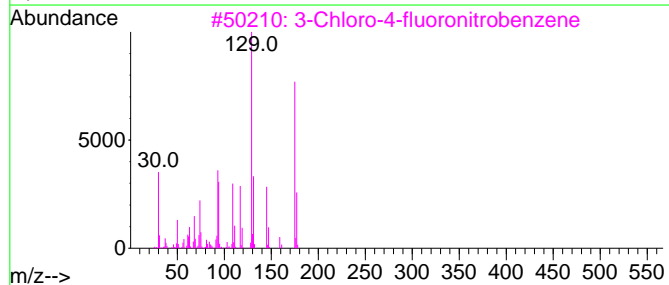
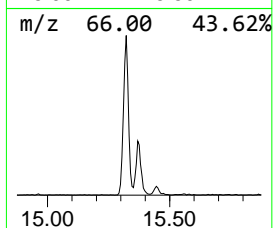
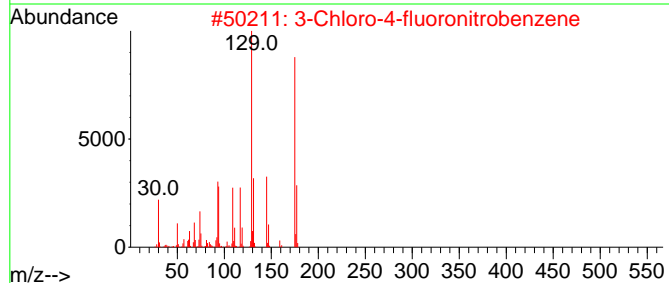
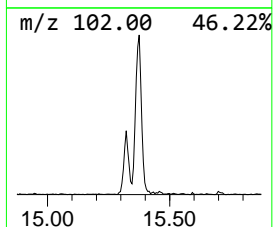
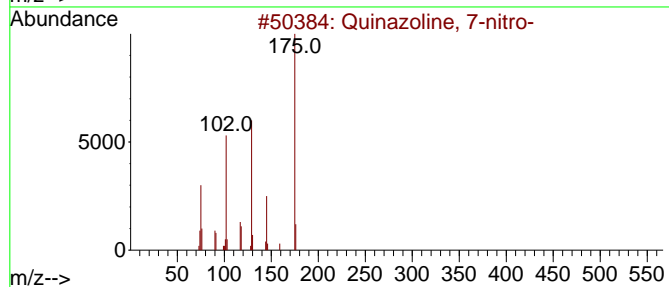
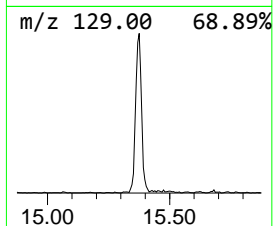
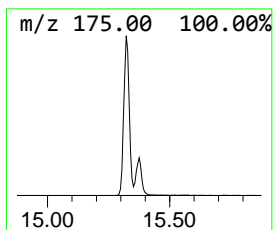
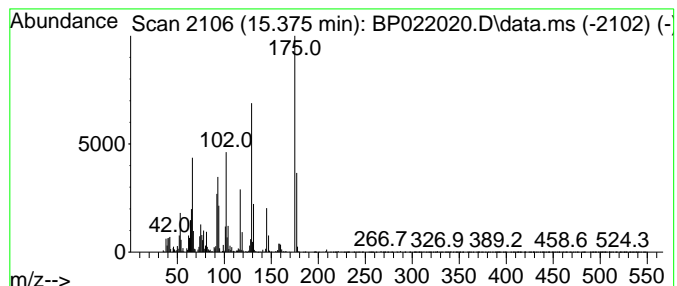
Quant Method : Z:\svoasrv\HPCHEM1\BNA_P\Methods\SFAM-EPA-BP092424.MA.M
 Quant Title : SVOA CALIBRATION

TIC Library : C:\DATABASE\NIST20.L
 TIC Integration Parameters: LSCINT.P

 Peak Number 10 Quinazoline, 7-nitro- Concentration Rank 9

R.T.	EstConc	Area	Relative to ISTD	R.T.
15.375	3.95 ng/ul	209552	Acenaphthene-d10	14.316

Hit#	of	5	Tentative ID	MW	MolForm	CAS#	Qual
1			Quinazoline, 7-nitro-	175	C8H5N3O2	007557-00-8	52
2			3-Chloro-4-fluoronitrobenzene	175	C6H3ClFNO2	000350-30-1	38
3			3-Chloro-4-fluoronitrobenzene	175	C6H3ClFNO2	000350-30-1	35
4			Quinazoline, 6-nitro-	175	C8H5N3O2	007556-95-8	35
5			3-Chloro-4-fluoronitrobenzene	175	C6H3ClFNO2	000350-30-1	27



Data Path : Z:\svoasrv\HPCHEM1\BNA_P\Data\BP092424\
 Data File : BP022020.D
 Acq On : 25 Sep 2024 08:36
 Operator : RC/JU
 Sample : P4106-01
 Misc :
 ALS Vial : 24 Sample Multiplier: 1

Instrument :
 BNA_P
 ClientSampleId :
 C0SX5

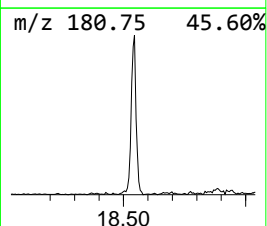
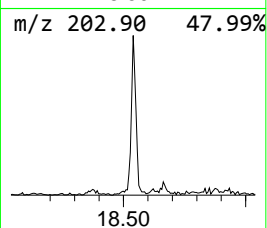
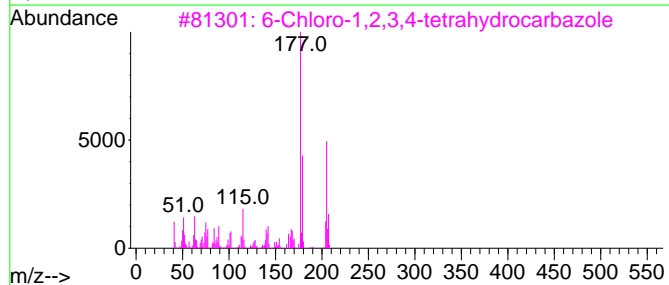
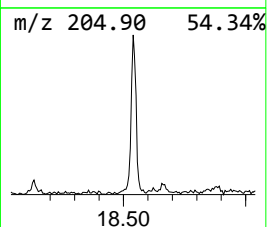
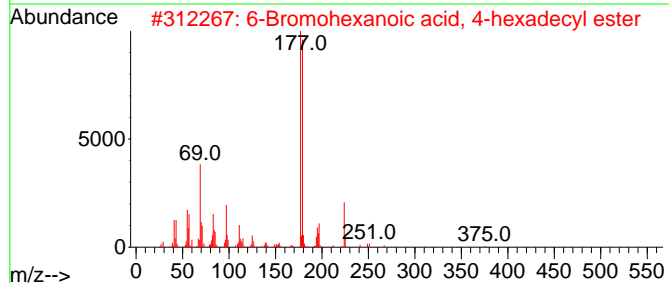
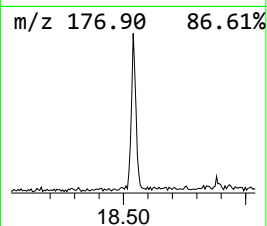
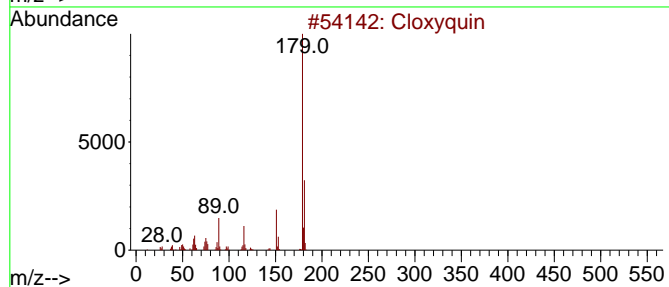
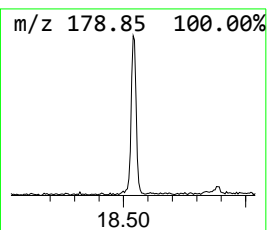
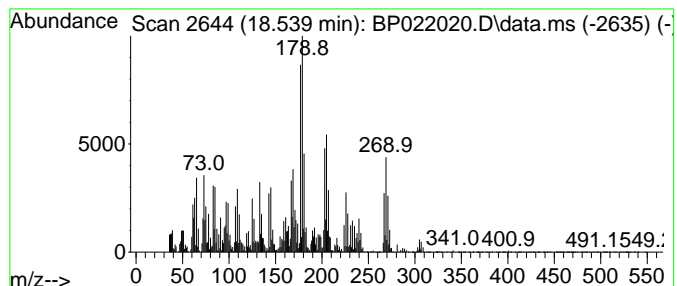
Quant Method : Z:\svoasrv\HPCHEM1\BNA_P\Methods\SFAM-EPA-BP092424.MA.M
 Quant Title : SVOA CALIBRATION

TIC Library : C:\DATABASE\NIST20.L
 TIC Integration Parameters: LSCINT.P

 Peak Number 11 unknown-01 Concentration Rank 6

R.T.	EstConc	Area	Relative to ISTD	R.T.
18.539	5.60 ng/ul	390088	Phenanthrene-d10	17.122

Hit#	of	5	Tentative ID	MW	MolForm	CAS#	Qual
1			Cloxyquin	179	C9H6ClNO	000130-16-5	25
2			6-Bromohexanoic acid, 4-hexadecy...	418	C22H43BrO2	1000282-90-6	25
3			6-Chloro-1,2,3,4-tetrahydrocarba...	205	C12H12ClN	036684-65-8	20
4			Benzofuroxan-5-carboxamide	179	C7H5N3O3	036389-09-0	15
5			3-Fluorobenzotrchloride	212	C7H4Cl3F	1000342-36-1	14



Data Path : Z:\svoasrv\HPCHEM1\BNA_P\Data\BP092424\
Data File : BP022020.D
Acq On : 25 Sep 2024 08:36
Operator : RC/JU
Sample : P4106-01
Misc :
ALS Vial : 24 Sample Multiplier: 1

Instrument :
BNA_P
ClientSampleId :
C0SX5

Quant Method : Z:\svoasrv\HPCHEM1\BNA_P\Methods\SFAM-EPA-BP092424.MA.M
Quant Title : SVOA CALIBRATION

TIC Library : C:\DATABASE\NIST20.L
TIC Integration Parameters: LSCINT.P

TIC Top Hit name	RT	EstConc	Units	Response	--Internal Standard--			
					#	RT	Resp	Conc
2-Pentanone, 4-...	4.875	4.9	ng/ul	149609	1	7.710	607422	20.0
Benzene, 1-chlo...	11.057	18.9	ng/ul	701540	2	10.463	741634	20.0
Benzene, 1-chlo...	11.275	5.8	ng/ul	213673	2	10.463	741634	20.0
Cyclohexasiloxa...	11.752	2.3	ng/ul	86938	2	10.463	741634	20.0
Quinazoline, 7-...	15.375	4.0	ng/ul	209552	3	14.316	1061430	20.0
unknown-01	18.539	5.6	ng/ul	390088	4	17.122	1393530	20.0