

Data Path : Z:\svoasrv\HPCHEM1\BNA_P\Data\BP092424\
 Data File : BP022060.D
 Acq On : 26 Sep 2024 13:08
 Operator : RC/JU
 Sample : P4080-02
 Misc :
 ALS Vial : 37 Sample Multiplier: 1

Instrument :
 BNA_P
 ClientSampleId :
 C0AP5

Integration Parameters: LSCINT.P

Integrator: RTE
 Smoothing : OFF
 Sampling : 1
 Start Thrs: 0.2
 Stop Thrs : 0
 Filtering: 5
 Min Area: 0.1 % of largest Peak
 Max Peaks: 100
 Peak Location: TOP

If leading or trailing edge < 100 prefer < Baseline drop else tangent >
 Peak separation: 5

Method : Z:\svoasrv\HPCHEM1\BNA_P\Methods\SFAM-EPA-BP092424.MA.M
 Title : SVOA CALIBRATION

Signal : TIC: BP022060.D\data.ms

peak #	R.T. min	first scan	max scan	last scan	PK TY	peak height	corr. area	corr. % max.	% of total
1	3.223	36	40	49	rVB	30746	45201	0.78%	0.100%
2	3.640	107	111	124	rVB	109168	168381	2.90%	0.372%
3	3.958	160	165	170	rBV3	9516	14090	0.24%	0.031%
4	5.387	403	408	417	rVB	170906	260205	4.48%	0.576%
5	5.669	451	456	465	rBV	20502	34132	0.59%	0.075%
6	6.222	543	550	554	rBV3	16350	26064	0.45%	0.058%
7	6.699	627	631	640	rBV2	7675	14571	0.25%	0.032%
8	6.887	656	663	671	rBV	211296	339697	5.84%	0.751%
9	7.046	683	690	697	rBV	436066	676981	11.65%	1.497%
10	7.105	697	700	705	rVB2	10982	16765	0.29%	0.037%
11	7.246	717	724	733	rBV	590195	900346	15.49%	1.991%
12	7.358	736	743	751	rVV	65196	104976	1.81%	0.232%
13	7.705	794	802	810	rBV	402924	659701	11.35%	1.459%
14	7.775	810	814	817	rVV4	9139	15457	0.27%	0.034%
15	7.816	817	821	826	rVV	18243	31667	0.54%	0.070%
16	7.858	826	828	836	rVB6	6111	9610	0.17%	0.021%
17	8.069	857	864	868	rBV	11844	22473	0.39%	0.050%
18	8.128	868	874	880	rVV	86415	137628	2.37%	0.304%
19	8.187	880	884	891	rVB3	12133	20325	0.35%	0.045%
20	8.322	900	907	914	rBV3	68231	135430	2.33%	0.300%
21	8.405	914	921	931	rVV	529032	888192	15.28%	1.964%
22	8.499	931	937	943	rVB	101723	152646	2.63%	0.338%
23	8.640	954	961	966	rBV	40946	65947	1.13%	0.146%
24	8.693	966	970	980	rVB	29754	54200	0.93%	0.120%
25	8.793	980	987	990	rBV	78107	126706	2.18%	0.280%
26	8.840	990	995	1007	rVB	557047	947488	16.30%	2.096%
27	9.116	1036	1042	1048	rBV3	14814	27524	0.47%	0.061%
28	9.305	1069	1074	1079	rVV	71905	112546	1.94%	0.249%
29	9.363	1079	1084	1092	rVB	119295	189040	3.25%	0.418%
30	9.557	1107	1117	1130	rBV	475342	842051	14.49%	1.862%
31	9.722	1139	1145	1153	rVB	28030	43601	0.75%	0.096%
32	9.875	1162	1171	1178	rBV2	93565	179651	3.09%	0.397%
33	9.940	1178	1182	1190	rVB6	8456	15614	0.27%	0.035%
34	10.087	1193	1207	1217	rBV	760848	1339024	23.04%	2.962%
35	10.169	1217	1221	1226	rVV5	7549	14658	0.25%	0.032%
36	10.252	1230	1235	1242	rVB8	4169	7976	0.14%	0.018%

Data Path : Z:\svoasrv\HPCHEM1\BNA_P\Data\BP092424\
 Data File : BP022060.D
 Acq On : 26 Sep 2024 13:08
 Operator : RC/JU
 Sample : P4080-02
 Misc :
 ALS Vial : 37 Sample Multiplier: 1

Instrument :
 BNA_P
 ClientSampleId :
 C0AP5

Integration Parameters: LSCINT.P

Integrator: RTE
 Smoothing : OFF
 Sampling : 1
 Start Thrs: 0.2
 Stop Thrs : 0
 Filtering: 5
 Min Area: 0.1 % of largest Peak
 Max Peaks: 100
 Peak Location: TOP

If leading or trailing edge < 100 prefer < Baseline drop else tangent >
 Peak separation: 5

Method : Z:\svoasrv\HPCHEM1\BNA_P\Methods\SFAM-EPA-BP092424.MA.M
 Title : SVOA CALIBRATION

37	10.469	1261	1272	1277	rBV	488499	886811	15.26%	1.961%
38	10.516	1277	1280	1286	rVV	71725	106886	1.84%	0.236%
39	10.593	1286	1293	1305	rVV	523221	934234	16.07%	2.066%
40	10.675	1305	1307	1312	rVB4	4907	7189	0.12%	0.016%
41	11.404	1420	1431	1440	rBV4	7215	22629	0.39%	0.050%
42	11.569	1453	1459	1465	rBV4	3720	8823	0.15%	0.020%
43	11.840	1501	1505	1510	rVB7	4224	6953	0.12%	0.015%
44	12.046	1532	1540	1547	rBV3	10595	25101	0.43%	0.056%
45	12.122	1547	1553	1558	rVB9	4916	10673	0.18%	0.024%
46	12.181	1558	1563	1568	rBV4	10253	15851	0.27%	0.035%
47	12.340	1583	1590	1598	rVB10	7373	19519	0.34%	0.043%
48	12.422	1598	1604	1614	rBV3	11447	29031	0.50%	0.064%
49	12.722	1649	1655	1657	rBV6	9358	16954	0.29%	0.037%
50	12.763	1657	1662	1670	rVB	63486	99735	1.72%	0.221%
51	12.916	1685	1688	1694	rVB3	4668	7180	0.12%	0.016%
52	13.034	1700	1708	1714	rBV8	6487	17231	0.30%	0.038%
53	13.110	1716	1721	1727	rVB3	8234	14341	0.25%	0.032%
54	13.269	1743	1748	1751	rBV2	29499	41529	0.71%	0.092%
55	13.310	1751	1755	1769	rVB	125011	211103	3.63%	0.467%
56	13.434	1769	1776	1780	rBV2	53662	86709	1.49%	0.192%
57	13.481	1780	1784	1788	rVV2	35023	58628	1.01%	0.130%
58	13.528	1788	1792	1797	rVV3	25309	39713	0.68%	0.088%
59	13.604	1801	1805	1813	rVB3	16202	24430	0.42%	0.054%
60	13.722	1818	1825	1834	rVV	1506763	2122093	36.51%	4.693%
61	13.793	1834	1837	1843	rVB6	5538	8653	0.15%	0.019%
62	13.928	1853	1860	1865	rBV	73305	109039	1.88%	0.241%
63	14.004	1865	1873	1881	rVV	1564576	2290859	39.42%	5.067%
64	14.081	1884	1886	1891	rVV3	10112	16856	0.29%	0.037%
65	14.134	1892	1895	1902	rVB9	5450	9874	0.17%	0.022%
66	14.240	1908	1913	1915	rBV6	4964	9029	0.16%	0.020%
67	14.269	1915	1918	1919	rVV3	6220	7998	0.14%	0.018%
68	14.316	1919	1926	1936	rVV	883798	1366846	23.52%	3.023%
69	14.487	1945	1955	1959	rVB9	17556	56405	0.97%	0.125%
70	14.540	1959	1964	1978	rVV	234068	396509	6.82%	0.877%
71	14.640	1978	1981	1984	rVV5	6086	9323	0.16%	0.021%
72	14.675	1984	1987	1994	rVV9	6975	15281	0.26%	0.034%
73	14.745	1996	1999	2004	rVB7	8642	13958	0.24%	0.031%
74	14.851	2012	2017	2019	rBV3	7863	11542	0.20%	0.026%
75	14.975	2030	2038	2040	rBV8	5580	13629	0.23%	0.030%
76	15.022	2041	2046	2056	rVB3	13259	33183	0.57%	0.073%

Data Path : Z:\svoasrv\HPCHEM1\BNA_P\Data\BP092424\
 Data File : BP022060.D
 Acq On : 26 Sep 2024 13:08
 Operator : RC/JU
 Sample : P4080-02
 Misc :
 ALS Vial : 37 Sample Multiplier: 1

Instrument :
 BNA_P
 ClientSampleId :
 C0AP5

Integration Parameters: LSCINT.P
 Integrator: RTE
 Smoothing : OFF
 Sampling : 1
 Start Thrs: 0.2
 Stop Thrs : 0
 Filtering: 5
 Min Area: 0.1 % of largest Peak
 Max Peaks: 100
 Peak Location: TOP

If leading or trailing edge < 100 prefer < Baseline drop else tangent >
 Peak separation: 5

Method : Z:\svoasrv\HPCHEM1\BNA_P\Methods\SFAM-EPA-BP092424.MA.M
 Title : SVOA CALIBRATION

77	15.222	2076	2080	2086	rVB4	5491	8717	0.15%	0.019%
78	15.322	2090	2097	2110	rBV	2368697	3117817	53.64%	6.896%
79	15.440	2110	2117	2122	rBV	607830	945416	16.27%	2.091%
80	15.492	2122	2126	2137	rVV	237502	412610	7.10%	0.913%
81	15.569	2137	2139	2148	rVB6	15536	30581	0.53%	0.068%
82	15.734	2163	2167	2171	rVB3	10407	17774	0.31%	0.039%
83	15.904	2193	2196	2203	rVB9	5484	9421	0.16%	0.021%
84	16.128	2229	2234	2239	rBV2	16661	25169	0.43%	0.056%
85	16.922	2361	2369	2377	rBV	132599	171591	2.95%	0.380%
86	17.110	2394	2401	2409	rBV	1394676	1907840	32.83%	4.220%
87	17.216	2411	2419	2430	rBV2	2446462	3863738	66.48%	8.546%
88	17.357	2440	2443	2447	rVB	7632	9416	0.16%	0.021%
89	17.498	2464	2467	2473	rVB4	7814	12789	0.22%	0.028%
90	18.051	2556	2561	2565	rBV	76734	95637	1.65%	0.212%
91	18.539	2641	2644	2650	rVB6	12399	18596	0.32%	0.041%
92	18.798	2685	2688	2694	rVB	16414	20701	0.36%	0.046%
93	19.145	2742	2747	2751	rBV	40967	57105	0.98%	0.126%
94	19.210	2754	2758	2763	rVV	43248	60288	1.04%	0.133%
95	19.375	2783	2786	2793	rBV3	43145	66458	1.14%	0.147%
96	19.586	2817	2822	2830	rBV	4228314	5237624	90.12%	11.584%
97	19.651	2830	2833	2838	rVB	25067	32347	0.56%	0.072%
98	21.539	3147	3154	3164	rBV	1746311	2658019	45.73%	5.879%
99	24.598	3664	3674	3687	rVB	2267514	5812114	100.00%	12.855%
100	24.816	3702	3711	3726	rVB	1112756	2798904	48.16%	6.190%

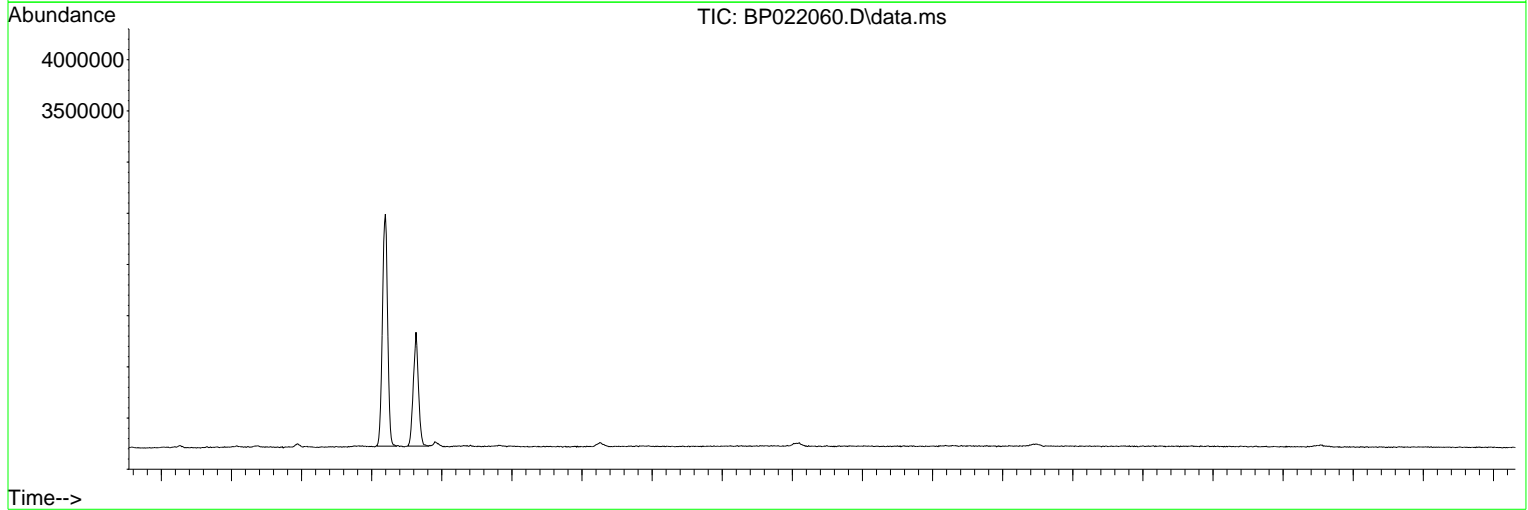
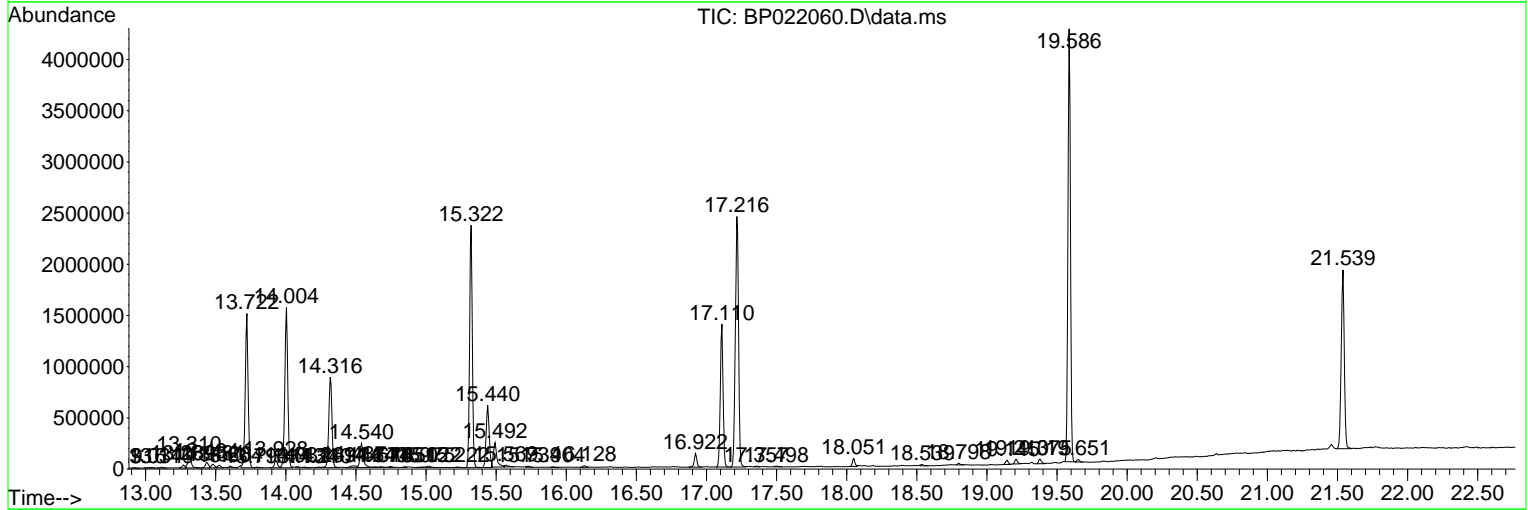
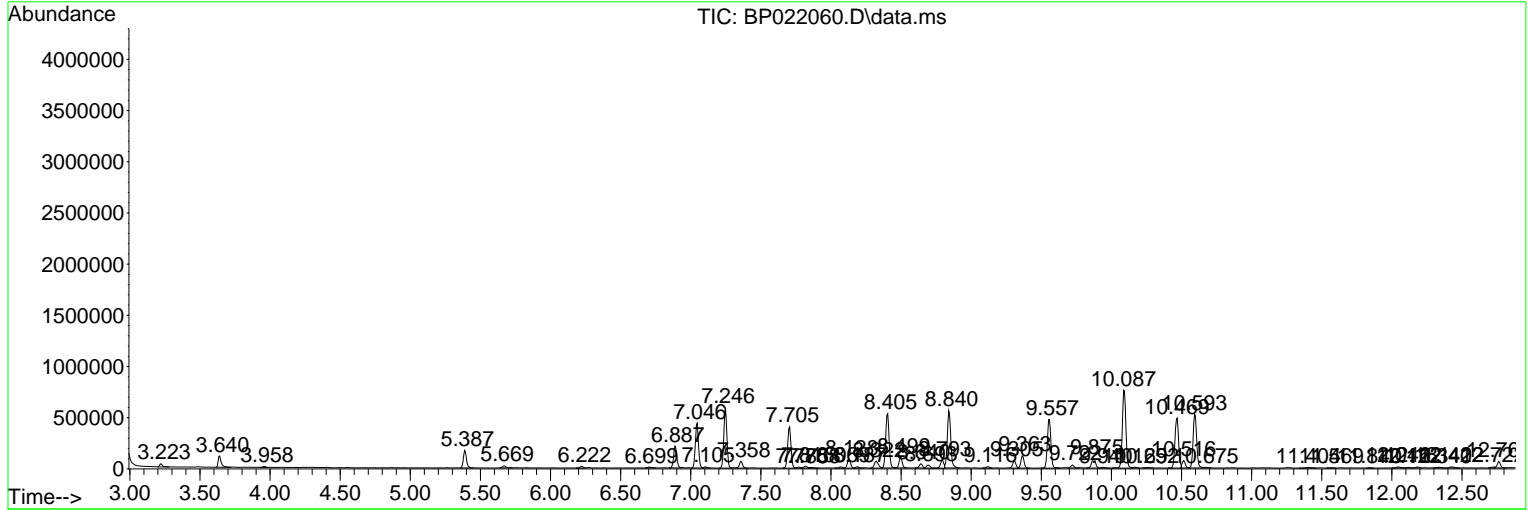
Sum of corrected areas: 45213566

Data Path : Z:\svoasrv\HPCHEM1\BNA_P\Data\BP092424\
 Data File : BP022060.D
 Acq On : 26 Sep 2024 13:08
 Operator : RC/JU
 Sample : P4080-02
 Misc :
 ALS Vial : 37 Sample Multiplier: 1

Instrument :
 BNA_P
 ClientSampleId :
 C0AP5

Quant Method : Z:\svoasrv\HPCHEM1\BNA_P\Methods\SFAM-EPA-BP092424.MA.M
 Quant Title : SVOA CALIBRATION

TIC Library : C:\DATABASE\NIST20.L
 TIC Integration Parameters: LSCINT.P



Data Path : Z:\svoasrv\HPCHEM1\BNA_P\Data\BP092424\
 Data File : BP022060.D
 Acq On : 26 Sep 2024 13:08
 Operator : RC/JU
 Sample : P4080-02
 Misc :
 ALS Vial : 37 Sample Multiplier: 1

Instrument :
 BNA_P
 ClientSampleId :
 C0AP5

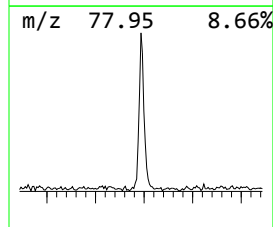
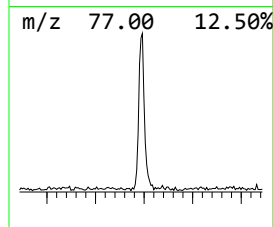
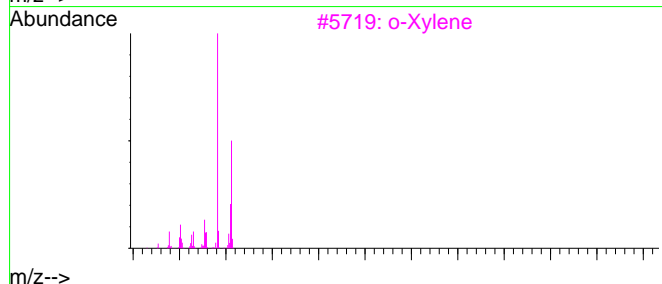
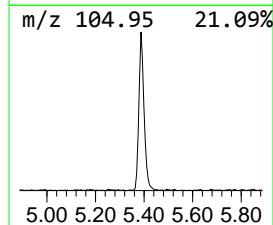
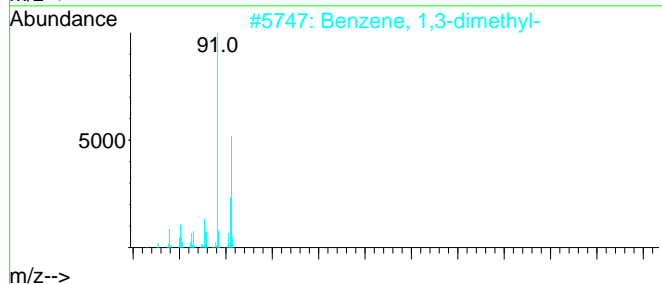
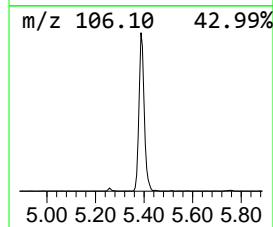
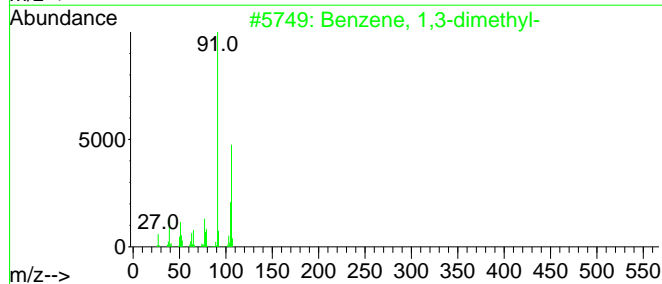
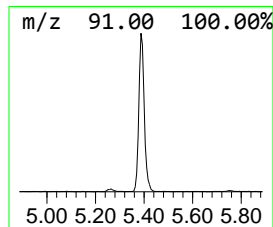
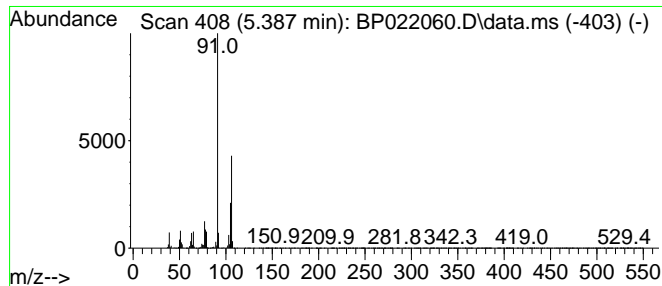
Quant Method : Z:\svoasrv\HPCHEM1\BNA_P\Methods\SFAM-EPA-BP092424.MA.M
 Quant Title : SVOA CALIBRATION

TIC Library : C:\DATABASE\NIST20.L
 TIC Integration Parameters: LSCINT.P

 Peak Number 1 Benzene, 1,3-dimethyl- Concentration Rank 1

R.T.	EstConc	Area	Relative to ISTD	R.T.
5.387	7.89 ng/ul	260205	1,4-Dichlorobenzene-d4	7.705

Hit#	of	Tentative ID	MW	MolForm	CAS#	Qual
1	5	Benzene, 1,3-dimethyl-	106	C8H10	000108-38-3	97
2		Benzene, 1,3-dimethyl-	106	C8H10	000108-38-3	97
3		o-Xylene	106	C8H10	000095-47-6	97
4		p-Xylene	106	C8H10	000106-42-3	95
5		p-Xylene	106	C8H10	000106-42-3	95



Data Path : Z:\svoasrv\HPCHEM1\BNA_P\Data\BP092424\
 Data File : BP022060.D
 Acq On : 26 Sep 2024 13:08
 Operator : RC/JU
 Sample : P4080-02
 Misc :
 ALS Vial : 37 Sample Multiplier: 1

Instrument :
 BNA_P
 ClientSampleId :
 C0AP5

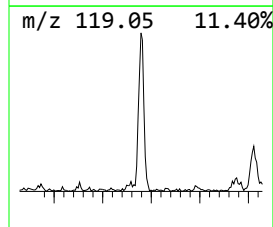
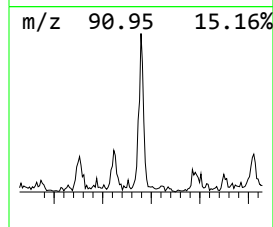
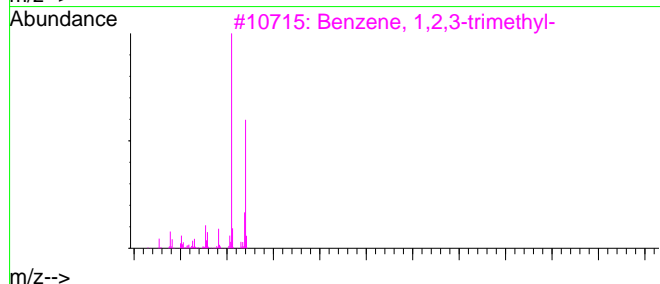
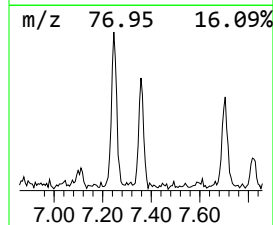
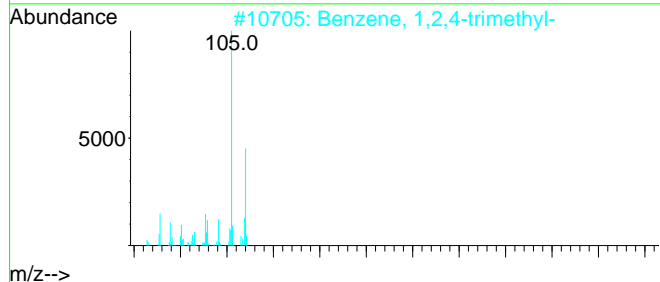
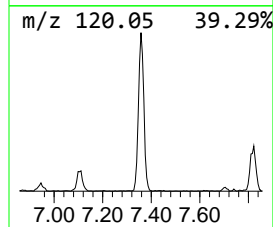
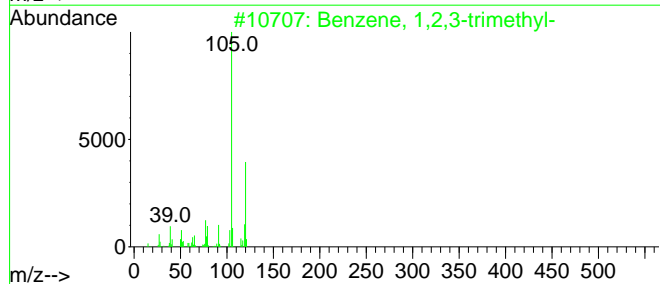
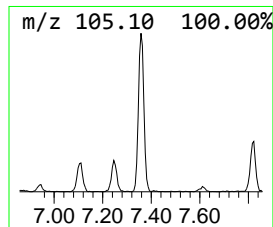
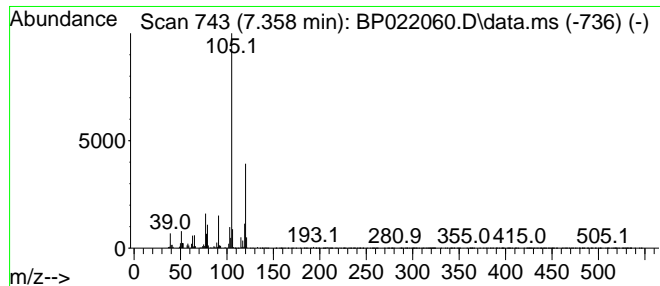
Quant Method : Z:\svoasrv\HPCHEM1\BNA_P\Methods\SFAM-EPA-BP092424.MA.M
 Quant Title : SVOA CALIBRATION

TIC Library : C:\DATABASE\NIST20.L
 TIC Integration Parameters: LSCINT.P

 Peak Number 2 Benzene, 1,2,3-trimethyl- Concentration Rank 8

R.T.	EstConc	Area	Relative to ISTD	R.T.
7.358	3.18 ng/ul	104976	1,4-Dichlorobenzene-d4	7.705

Hit# of	5	Tentative ID	MW	MolForm	CAS#	Qual
1		Benzene, 1,2,3-trimethyl-	120	C9H12	000526-73-8	95
2		Benzene, 1,2,4-trimethyl-	120	C9H12	000095-63-6	95
3		Benzene, 1,2,3-trimethyl-	120	C9H12	000526-73-8	94
4		Mesitylene	120	C9H12	000108-67-8	94
5		Benzene, 1,2,3-trimethyl-	120	C9H12	000526-73-8	91



Data Path : Z:\svoasrv\HPCHEM1\BNA_P\Data\BP092424\
 Data File : BP022060.D
 Acq On : 26 Sep 2024 13:08
 Operator : RC/JU
 Sample : P4080-02
 Misc :
 ALS Vial : 37 Sample Multiplier: 1

Instrument :
 BNA_P
 ClientSampleId :
 C0AP5

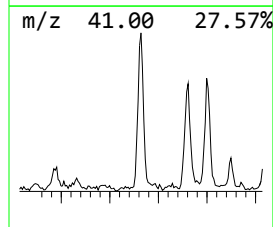
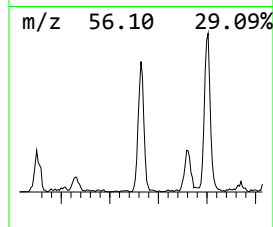
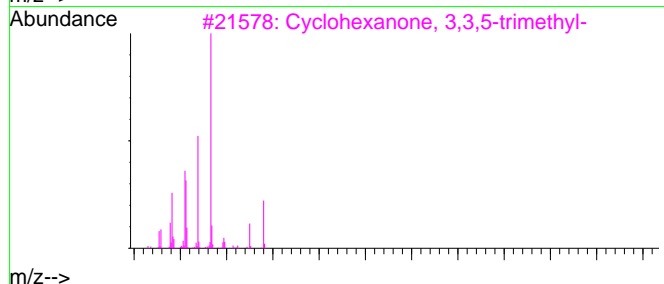
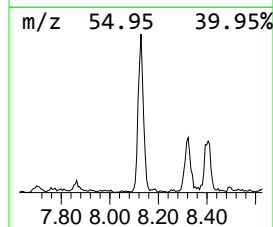
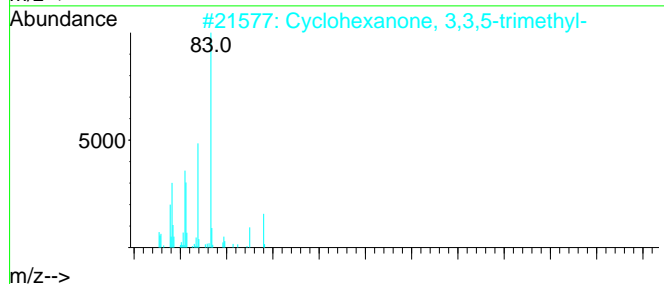
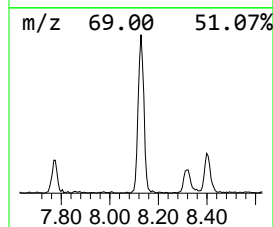
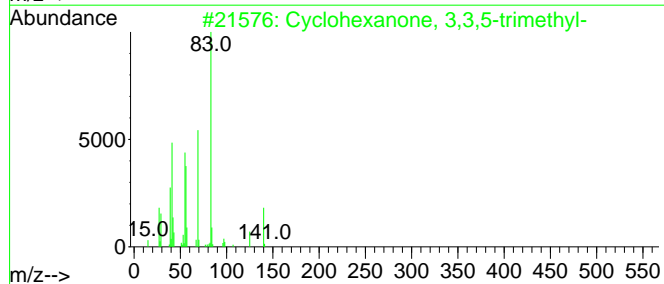
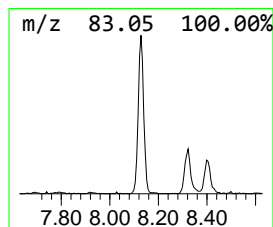
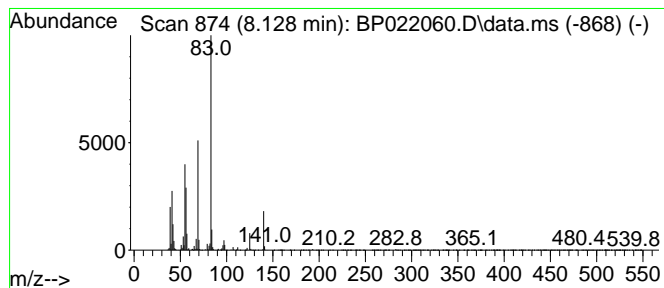
Quant Method : Z:\svoasrv\HPCHEM1\BNA_P\Methods\SFAM-EPA-BP092424.MA.M
 Quant Title : SVOA CALIBRATION

TIC Library : C:\DATABASE\NIST20.L
 TIC Integration Parameters: LSCINT.P

 Peak Number 3 Cyclohexanone, 3,3,5-trimet... Concentration Rank 5

R.T.	EstConc	Area	Relative to ISTD	R.T.
8.128	4.17 ng/ul	137628	1,4-Dichlorobenzene-d4	7.705

Hit#	of	Tentative ID	MW	MolForm	CAS#	Qual
1	5	Cyclohexanone, 3,3,5-trimethyl-	140	C9H16O	000873-94-9	95
2		Cyclohexanone, 3,3,5-trimethyl-	140	C9H16O	000873-94-9	95
3		Cyclohexanone, 3,3,5-trimethyl-	140	C9H16O	000873-94-9	94
4		Cyclohexanone, 3,3,5-trimethyl-	140	C9H16O	000873-94-9	91
5		2,4,6-Trimethyl-3-heptene	140	C10H20	1000113-56-9	59



Data Path : Z:\svoasrv\HPCHEM1\BNA_P\Data\BP092424\
 Data File : BP022060.D
 Acq On : 26 Sep 2024 13:08
 Operator : RC/JU
 Sample : P4080-02
 Misc :
 ALS Vial : 37 Sample Multiplier: 1

Instrument :
 BNA_P
 ClientSampleId :
 C0AP5

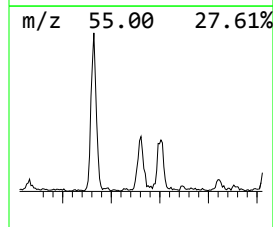
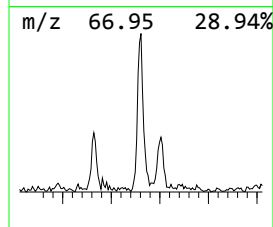
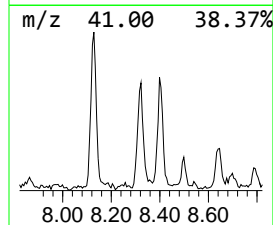
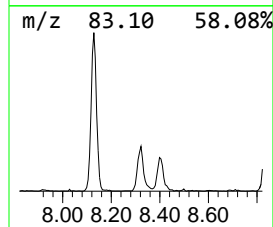
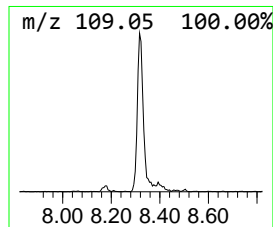
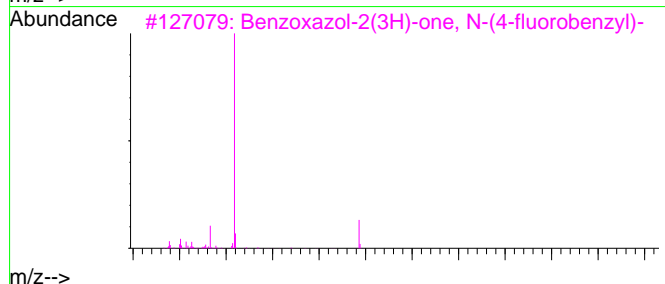
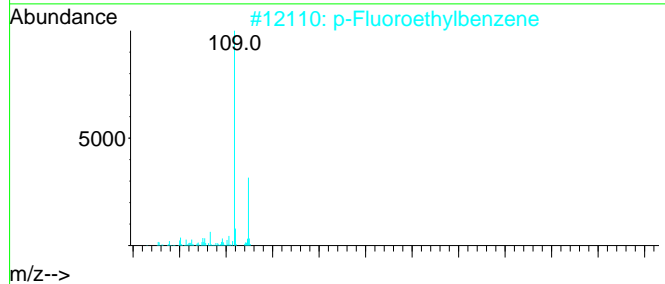
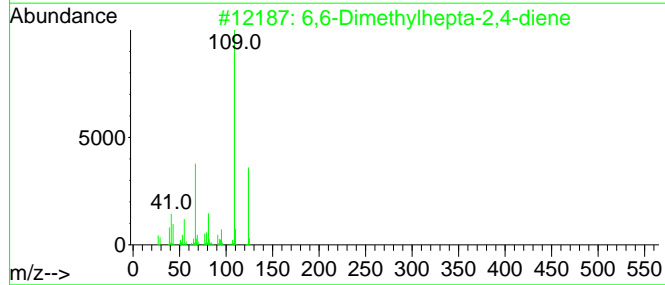
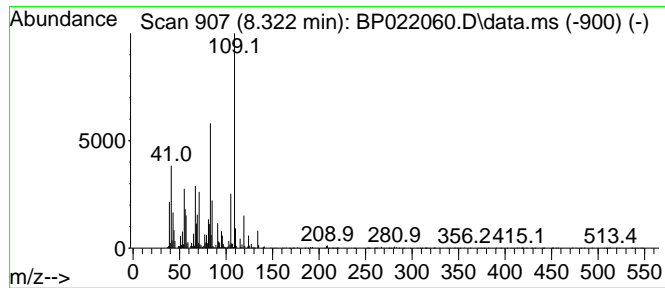
Quant Method : Z:\svoasrv\HPCHEM1\BNA_P\Methods\SFAM-EPA-BP092424.MA.M
 Quant Title : SVOA CALIBRATION

TIC Library : C:\DATABASE\NIST20.L
 TIC Integration Parameters: LSCINT.P

 Peak Number 4 unknown-01 Concentration Rank 6

R.T.	EstConc	Area	Relative to ISTD	R.T.
8.322	4.11 ng/ul	135430	1,4-Dichlorobenzene-d4	7.705

Hit#	of	Tentative ID	MW	MolForm	CAS#	Qual
1	5	6,6-Dimethylhepta-2,4-diene	124	C9H16	1000195-03-3	43
2		p-Fluoroethylbenzene	124	C8H9F	000459-47-2	43
3		Benzoxazol-2(3H)-one, N-(4-fluor...	243	C14H10FNO2	190074-23-8	38
4		Cyclopropanecarboxylic acid, 2,2...	168	C10H16O2	033383-56-1	35
5		3-Heptyne, 5-ethyl-5-methyl-	138	C10H18	061228-10-2	35



Data Path : Z:\svoasrv\HPCHEM1\BNA_P\Data\BP092424\
 Data File : BP022060.D
 Acq On : 26 Sep 2024 13:08
 Operator : RC/JU
 Sample : P4080-02
 Misc :
 ALS Vial : 37 Sample Multiplier: 1

Instrument :
 BNA_P
 ClientSampleId :
 C0AP5

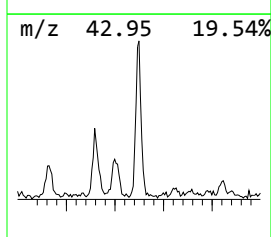
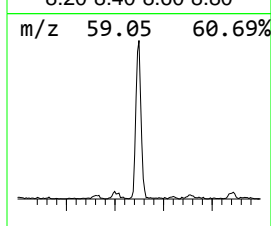
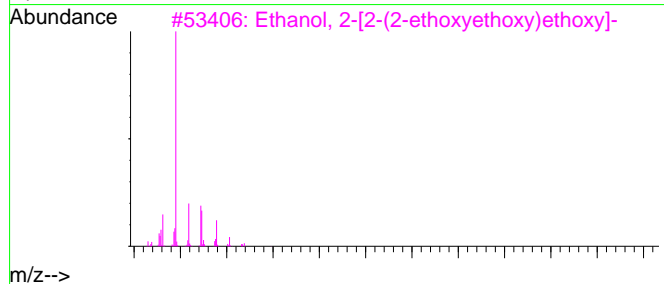
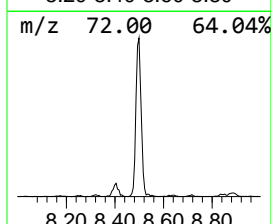
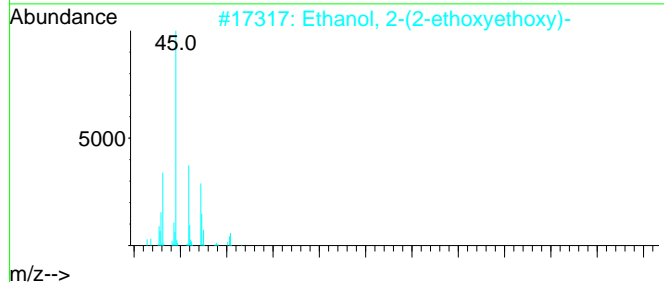
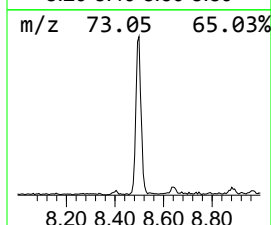
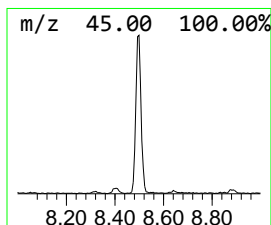
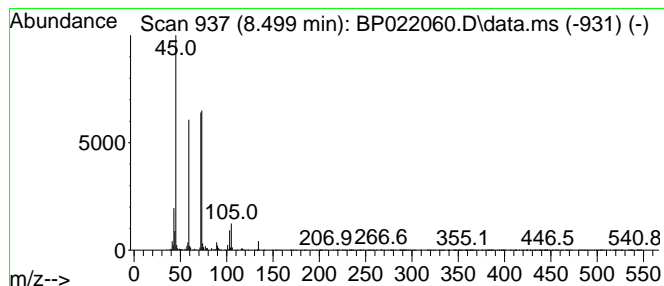
Quant Method : Z:\svoasrv\HPCHEM1\BNA_P\Methods\SFAM-EPA-BP092424.MA.M
 Quant Title : SVOA CALIBRATION

TIC Library : C:\DATABASE\NIST20.L
 TIC Integration Parameters: LSCINT.P

 Peak Number 5 Diethyl carbitol Concentration Rank 3

R.T.	EstConc	Area	Relative to ISTD	R.T.
8.499	4.63 ng/ul	152646	1,4-Dichlorobenzene-d4	7.705

Hit# of	5	Tentative ID	MW	MolForm	CAS#	Qual
1		Diethyl carbitol	162	C8H18O3	000112-36-7	78
2		Ethanol, 2-(2-ethoxyethoxy)-	134	C6H14O3	000111-90-0	74
3		Ethanol, 2-[2-(2-ethoxyethoxy)et...	178	C8H18O4	000112-50-5	72
4		Tetraethylene glycol diethyl ether	250	C12H26O5	004353-28-0	50
5		Isoxazolidine	73	C3H7NO	000504-72-3	47



Data Path : Z:\svoasrv\HPCHEM1\BNA_P\Data\BP092424\
 Data File : BP022060.D
 Acq On : 26 Sep 2024 13:08
 Operator : RC/JU
 Sample : P4080-02
 Misc :
 ALS Vial : 37 Sample Multiplier: 1

Instrument :
 BNA_P
 ClientSampleId :
 C0AP5

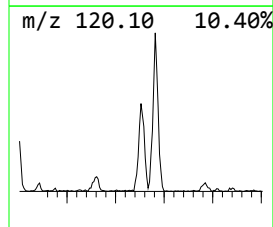
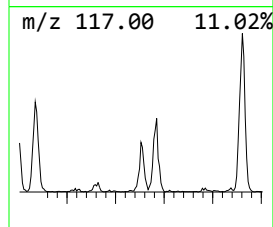
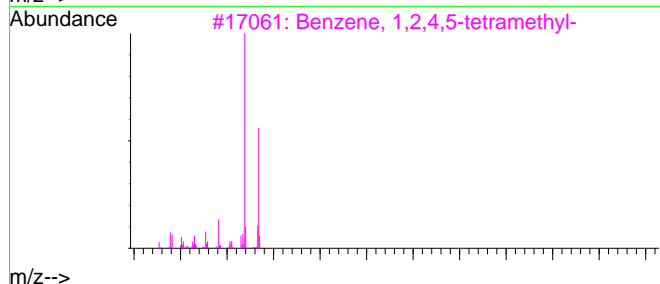
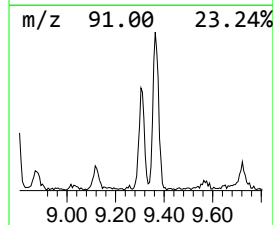
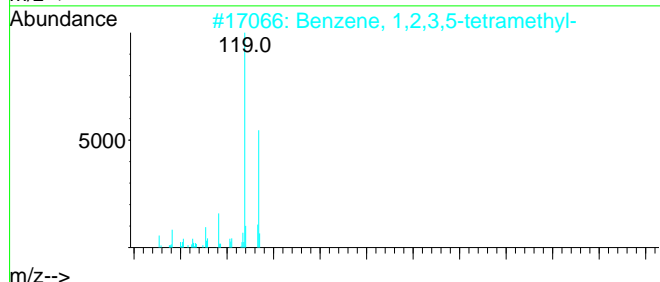
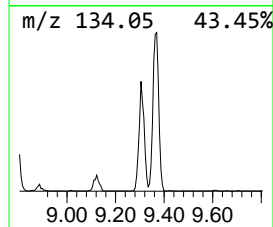
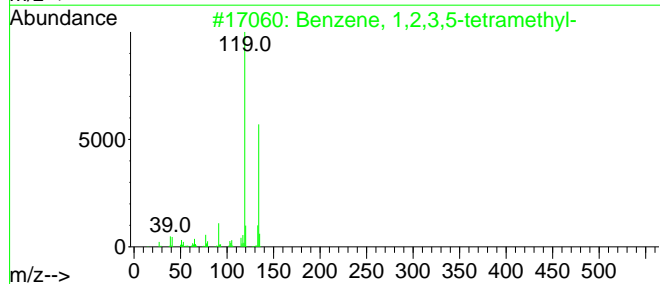
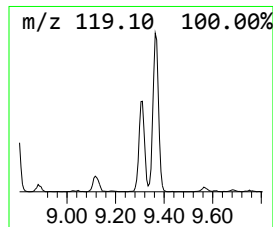
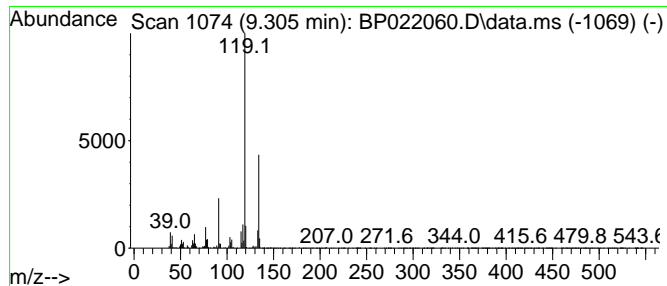
Quant Method : Z:\svoasrv\HPCHEM1\BNA_P\Methods\SFAM-EPA-BP092424.MA.M
 Quant Title : SVOA CALIBRATION

TIC Library : C:\DATABASE\NIST20.L
 TIC Integration Parameters: LSCINT.P

 Peak Number 6 Benzene, 1,2,3,5-tetramethyl- Concentration Rank 10

R.T.	EstConc	Area	Relative to ISTD	R.T.
9.305	2.54 ng/ul	112546	Naphthalene-d8	10.469

Hit# of	5	Tentative ID	MW	MolForm	CAS#	Qual
1		Benzene, 1,2,3,5-tetramethyl-	134	C10H14	000527-53-7	95
2		Benzene, 1,2,3,5-tetramethyl-	134	C10H14	000527-53-7	94
3		Benzene, 1,2,4,5-tetramethyl-	134	C10H14	000095-93-2	94
4		Benzene, 1,2,3,4-tetramethyl-	134	C10H14	000488-23-3	94
5		Benzene, 1,2,4,5-tetramethyl-	134	C10H14	000095-93-2	94



Data Path : Z:\svoasrv\HPCHEM1\BNA_P\Data\BP092424\
 Data File : BP022060.D
 Acq On : 26 Sep 2024 13:08
 Operator : RC/JU
 Sample : P4080-02
 Misc :
 ALS Vial : 37 Sample Multiplier: 1

Instrument :
 BNA_P
 ClientSampleId :
 C0AP5

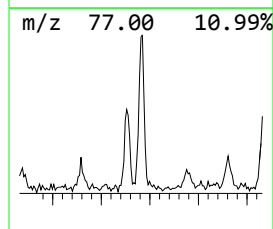
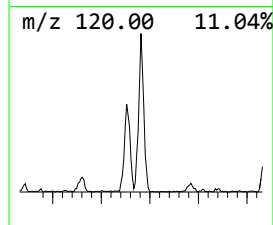
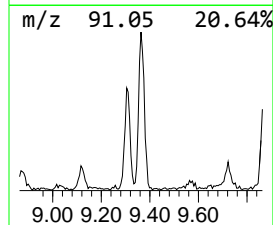
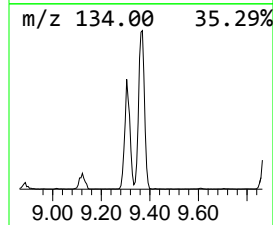
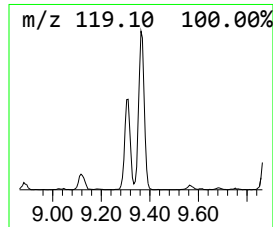
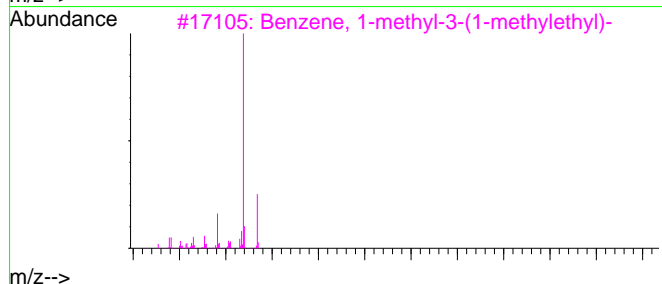
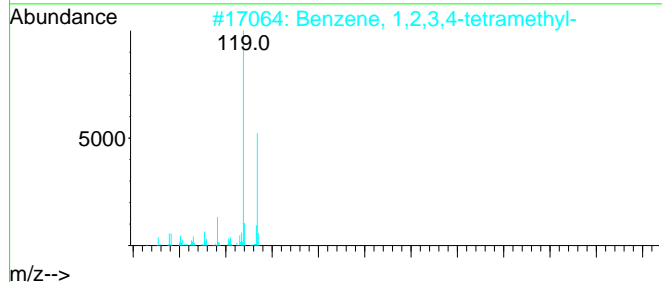
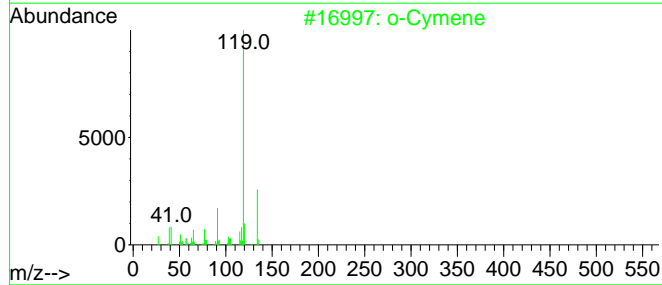
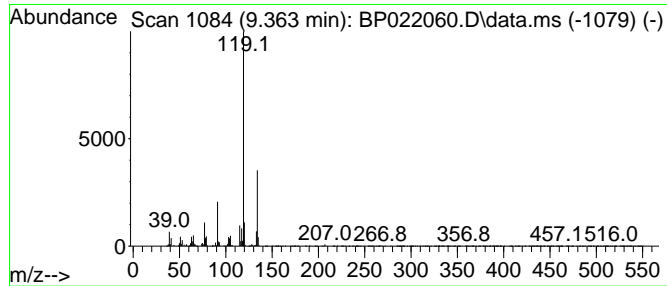
Quant Method : Z:\svoasrv\HPCHEM1\BNA_P\Methods\SFAM-EPA-BP092424.MA.M
 Quant Title : SVOA CALIBRATION

TIC Library : C:\DATABASE\NIST20.L
 TIC Integration Parameters: LSCINT.P

 Peak Number 7 o-Cymene Concentration Rank 4

R.T.	EstConc	Area	Relative to ISTD	R.T.
9.363	4.26 ng/ul	189040	Naphthalene-d8	10.469

Hit# of 5	Tentative ID	MW	MolForm	CAS#	Qual
1	o-Cymene	134	C10H14	000527-84-4	97
2	Benzene, 1,2,3,4-tetramethyl-	134	C10H14	000488-23-3	95
3	Benzene, 1-methyl-3-(1-methyleth...	134	C10H14	000535-77-3	94
4	Benzene, 1,2,3,5-tetramethyl-	134	C10H14	000527-53-7	94
5	Benzene, 1,2,4,5-tetramethyl-	134	C10H14	000095-93-2	94



Data Path : Z:\svoasrv\HPCHEM1\BNA_P\Data\BP092424\
 Data File : BP022060.D
 Acq On : 26 Sep 2024 13:08
 Operator : RC/JU
 Sample : P4080-02
 Misc :
 ALS Vial : 37 Sample Multiplier: 1

Instrument :
 BNA_P
 ClientSampleId :
 C0AP5

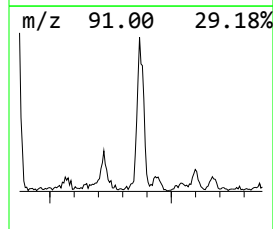
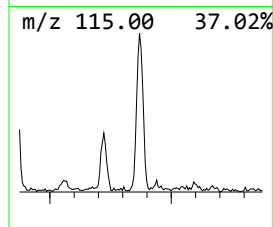
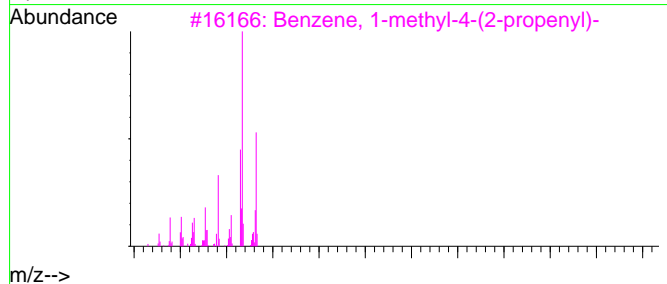
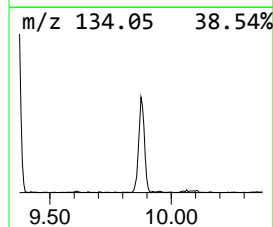
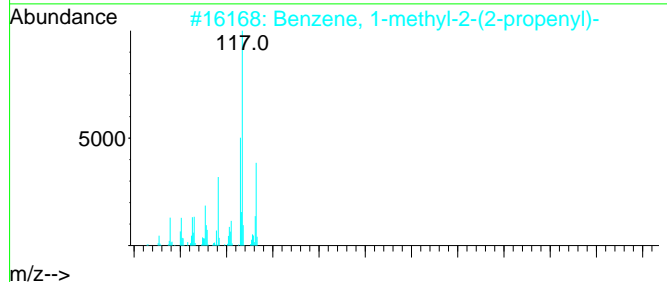
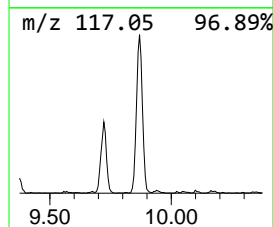
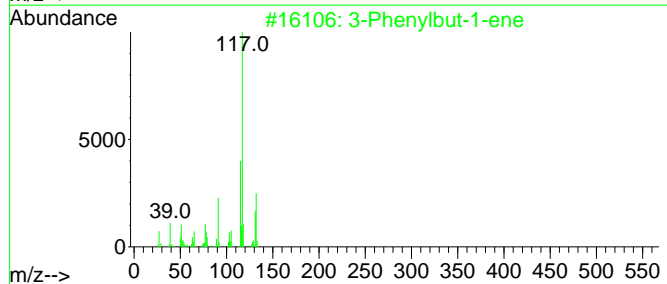
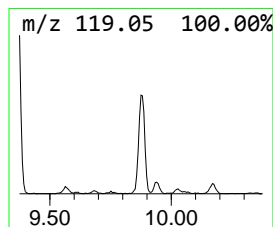
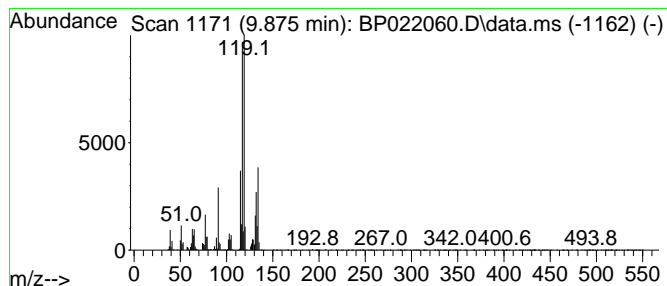
Quant Method : Z:\svoasrv\HPCHEM1\BNA_P\Methods\SFAM-EPA-BP092424.MA.M
 Quant Title : SVOA CALIBRATION

TIC Library : C:\DATABASE\NIST20.L
 TIC Integration Parameters: LSCINT.P

 Peak Number 8 3-Phenylbut-1-ene Concentration Rank 7

R.T.	EstConc	Area	Relative to ISTD	R.T.
9.875	4.05 ng/ul	179651	Naphthalene-d8	10.469

Hit# of 5	Tentative ID	MW	MolForm	CAS#	Qual
1	3-Phenylbut-1-ene	132	C10H12	000934-10-1	86
2	Benzene, 1-methyl-2-(2-propenyl)-	132	C10H12	001587-04-8	74
3	Benzene, 1-methyl-4-(2-propenyl)-	132	C10H12	003333-13-9	64
4	Benzene, 2-ethyl-1,4-dimethyl-	134	C10H14	001758-88-9	55
5	Benzene, 1-ethyl-2,3-dimethyl-	134	C10H14	000933-98-2	55



Data Path : Z:\svoasrv\HPCHEM1\BNA_P\Data\BP092424\
 Data File : BP022060.D
 Acq On : 26 Sep 2024 13:08
 Operator : RC/JU
 Sample : P4080-02
 Misc :
 ALS Vial : 37 Sample Multiplier: 1

Instrument :
 BNA_P
 ClientSampleId :
 C0AP5

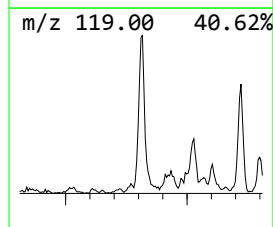
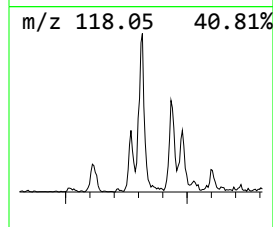
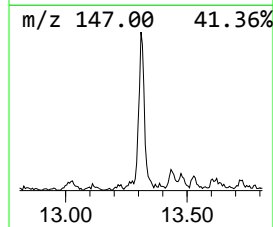
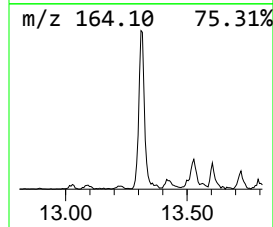
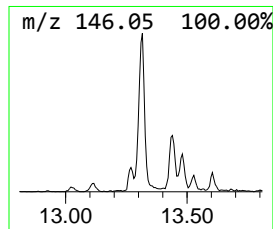
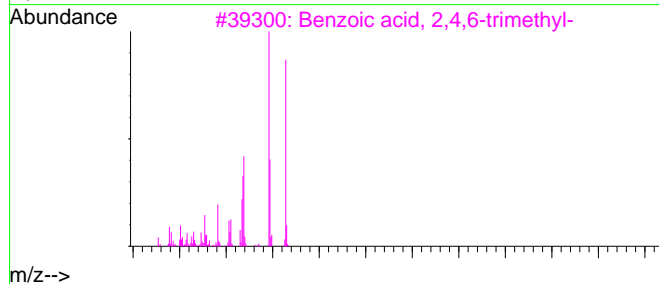
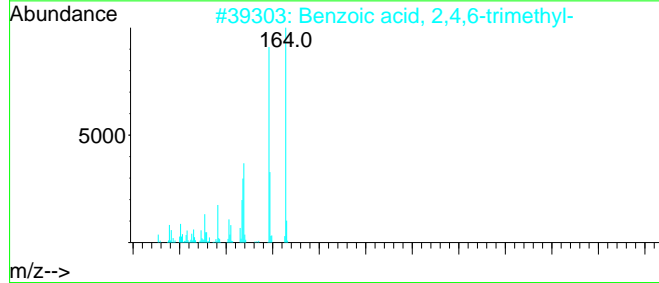
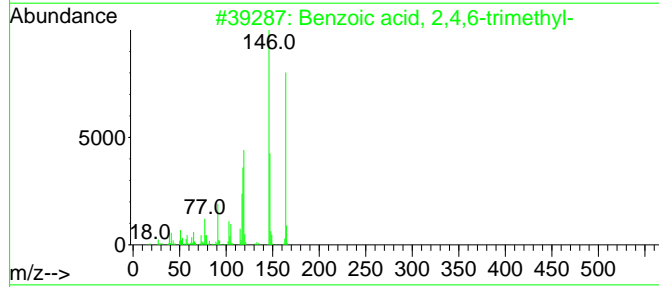
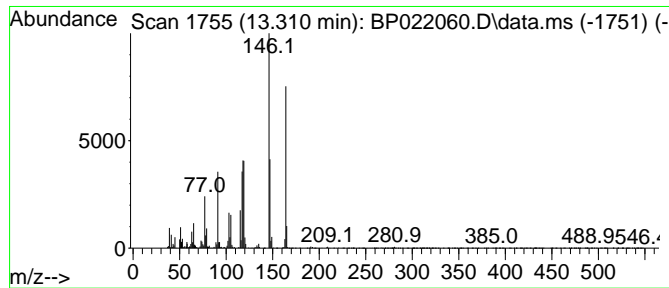
Quant Method : Z:\svoasrv\HPCHEM1\BNA_P\Methods\SFAM-EPA-BP092424.MA.M
 Quant Title : SVOA CALIBRATION

TIC Library : C:\DATABASE\NIST20.L
 TIC Integration Parameters: LSCINT.P

 Peak Number 9 Benzoic acid, 2,4,6-trimethyl- Concentration Rank 9

R.T.	EstConc	Area	Relative to ISTD	R.T.
13.310	3.09 ng/ul	211103	Acenaphthene-d10	14.316

Hit# of 5	Tentative ID	MW	MolForm	CAS#	Qual
1	Benzoic acid, 2,4,6-trimethyl-	164	C10H12O2	000480-63-7	94
2	Benzoic acid, 2,4,6-trimethyl-	164	C10H12O2	000480-63-7	91
3	Benzoic acid, 2,4,6-trimethyl-	164	C10H12O2	000480-63-7	87
4	Benzoic acid, 2,4,5-trimethyl-	164	C10H12O2	000528-90-5	53
5	p-Coumaric acid, trans	164	C9H8O3	000501-98-4	43



Data Path : Z:\svoasrv\HPCHEM1\BNA_P\Data\BP092424\
 Data File : BP022060.D
 Acq On : 26 Sep 2024 13:08
 Operator : RC/JU
 Sample : P4080-02
 Misc :
 ALS Vial : 37 Sample Multiplier: 1

Instrument :
 BNA_P
 ClientSampleId :
 C0AP5

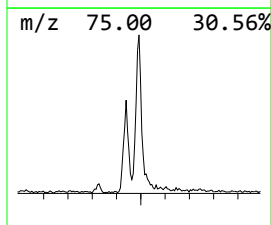
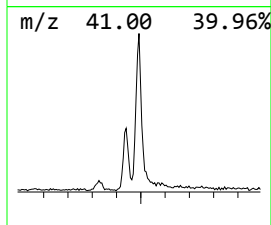
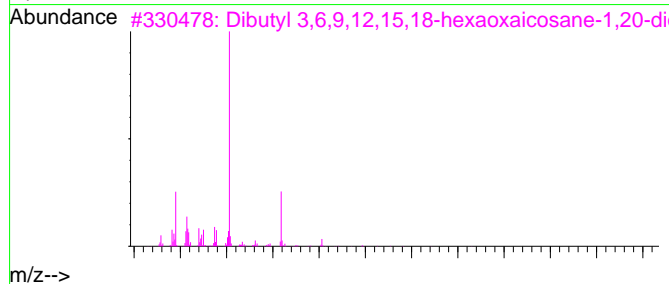
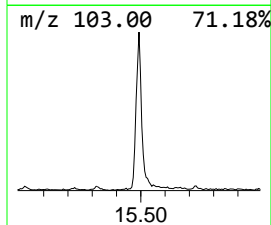
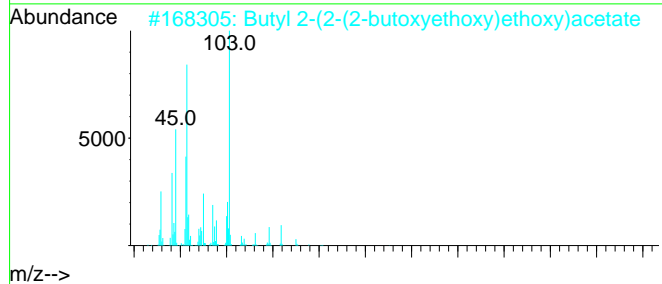
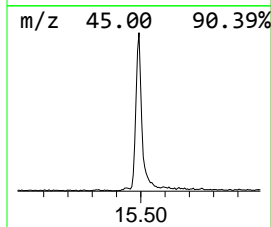
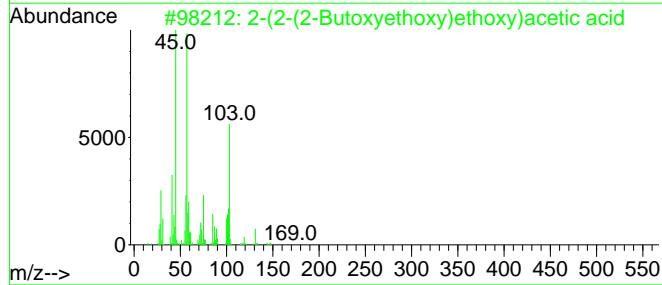
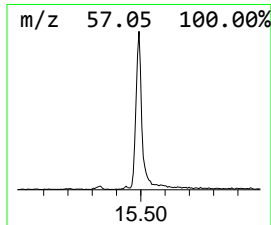
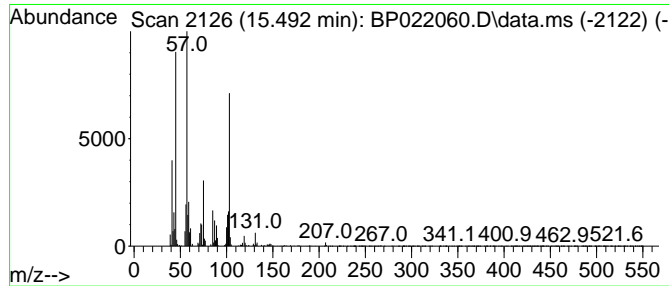
Quant Method : Z:\svoasrv\HPCHEM1\BNA_P\Methods\SFAM-EPA-BP092424.MA.M
 Quant Title : SVOA CALIBRATION

TIC Library : C:\DATABASE\NIST20.L
 TIC Integration Parameters: LSCINT.P

 Peak Number 10 2-(2-(2-Butoxyethoxy)ethoxy)... Concentration Rank 2

R.T.	EstConc	Area	Relative to ISTD	R.T.
15.493	6.04 ng/ul	412610	Acenaphthene-d10	14.316

Hit#	of	Tentative ID	MW	MolForm	CAS#	Qual
1	5	2-(2-(2-Butoxyethoxy)ethoxy)acet...	220	C10H20O5	075427-76-8	91
2		Butyl 2-(2-(2-butoxyethoxy)ethox...	276	C14H28O5	1000366-77-4	83
3		Dibutyl 3,6,9,12,15,18-hexaoxaic...	466	C22H42O10	1000366-80-0	72
4		Dibutyl 3,6,9,12,15-pentaoxahept...	422	C20H38O9	1000366-80-1	72
5		Dibutyl 3,6,9,12,15,18,21-heptao...	510	C24H46O11	1010366-79-9	72



Data Path : Z:\svoasrv\HPCHEM1\BNA_P\Data\BP092424\
 Data File : BP022060.D
 Acq On : 26 Sep 2024 13:08
 Operator : RC/JU
 Sample : P4080-02
 Misc :
 ALS Vial : 37 Sample Multiplier: 1

Instrument :
 BNA_P
 ClientSampleId :
 C0AP5

Quant Method : Z:\svoasrv\HPCHEM1\BNA_P\Methods\SFAM-EPA-BP092424.MA.M
 Quant Title : SVOA CALIBRATION

TIC Library : C:\DATABASE\NIST20.L
 TIC Integration Parameters: LSCINT.P

TIC Top Hit name	RT	EstConc	Units	Response	--Internal Standard--			
					#	RT	Resp	Conc
Benzene, 1,3-di...	5.387	7.9	ng/ul	260205	1	7.705	659701	20.0
Benzene, 1,2,3-...	7.358	3.2	ng/ul	104976	1	7.705	659701	20.0
Cyclohexanone, ...	8.128	4.2	ng/ul	137628	1	7.705	659701	20.0
unknown-01	8.322	4.1	ng/ul	135430	1	7.705	659701	20.0
Diethyl carbitol	8.499	4.6	ng/ul	152646	1	7.705	659701	20.0
Benzene, 1,2,3,...	9.305	2.5	ng/ul	112546	2	10.469	886811	20.0
o-Cymene	9.363	4.3	ng/ul	189040	2	10.469	886811	20.0
3-Phenylbut-1-ene	9.875	4.0	ng/ul	179651	2	10.469	886811	20.0
Benzoic acid, 2...	13.310	3.1	ng/ul	211103	3	14.316	1366850	20.0
2-(2-(2-Butoxye...	15.493	6.0	ng/ul	412610	3	14.316	1366850	20.0