

Data Path : Z:\svoasrv\HPCHEM1\BNA\_P\Data\BP092521\  
 Data File : BP007183.D  
 Acq On : 25 Sep 2021 13:01  
 Operator : CG/JU  
 Sample : PB139369BL  
 Misc :  
 ALS Vial : 3 Sample Multiplier: 1

Instrument :  
 BNA\_P  
 ClientSampleId :

Quant Time: Sep 26 02:13:15 2021  
 Quant Method : Z:\svoasrv\HPCHEM1\BNA\_P\Methods\8270E-BP092121.M  
 Quant Title : ASP BNA STANDARDS FOR 5 POINT CALIBRATION  
 QLast Update : Thu Sep 23 11:17:25 2021  
 Response via : Initial Calibration

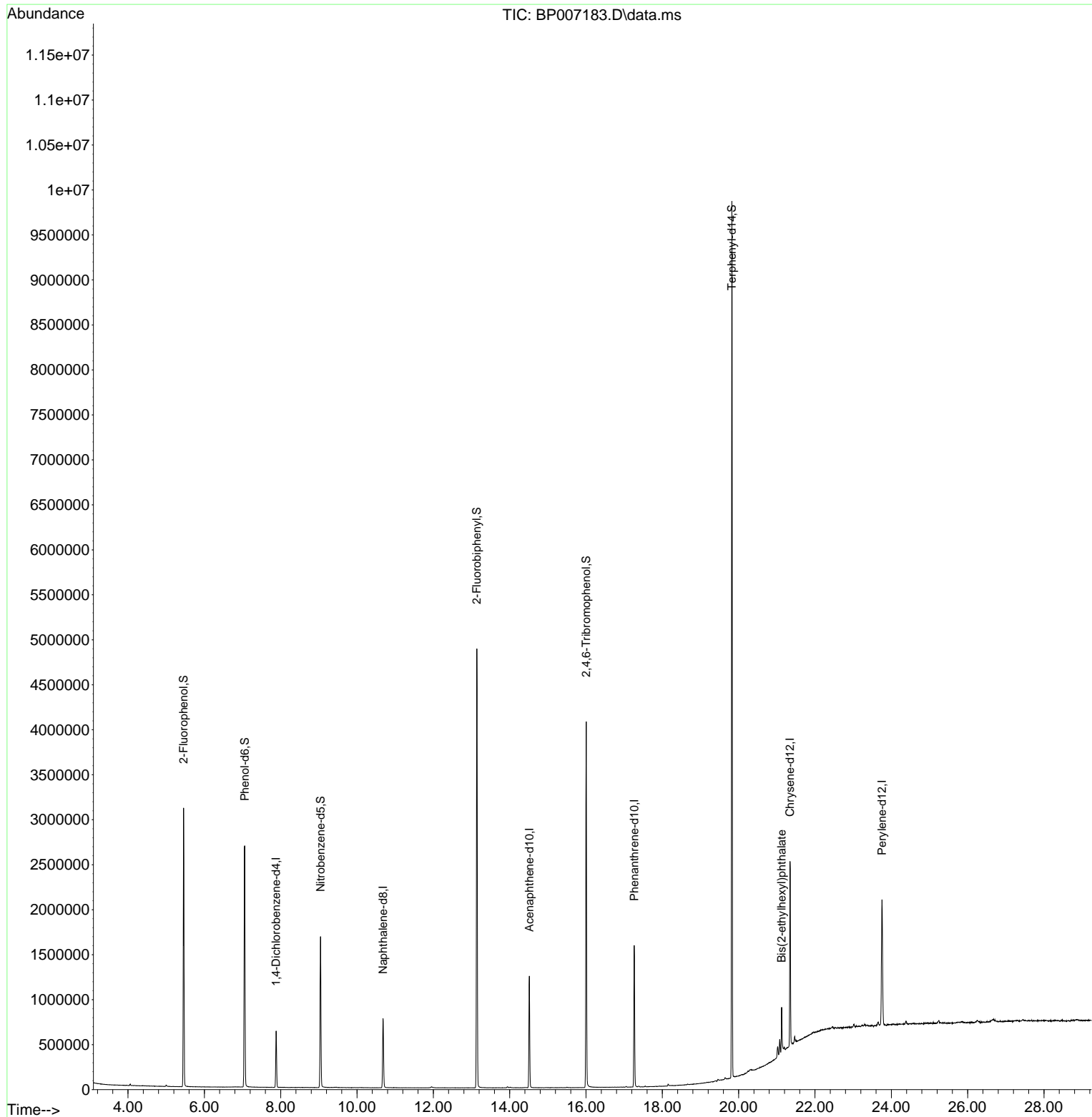
Compound	R.T.	QIon	Response	Conc	Units	Dev(Min)
-----						
Internal Standards						
1) 1,4-Dichlorobenzene-d4	7.881	152	178453	20.000	ng	-0.01
21) Naphthalene-d8	10.681	136	684692	20.000	ng	#-0.01
39) Acenaphthene-d10	14.516	164	441393	20.000	ng	-0.01
64) Phenanthrene-d10	17.263	188	987127	20.000	ng	#-0.01
76) Chrysene-d12	21.345	240	1032035	20.000	ng	#-0.01
86) Perylene-d12	23.757	264	1116533	20.000	ng	-0.01
System Monitoring Compounds						
5) 2-Fluorophenol	5.458	112	1414188	132.655	ng	0.00
7) Phenol-d6	7.058	99	1704198	116.963	ng	0.00
23) Nitrobenzene-d5	9.046	82	997594	84.850	ng	-0.01
42) 2,4,6-Tribromophenol	16.004	330	849694	148.485	ng	-0.01
45) 2-Fluorobiphenyl	13.140	172	2630736	85.386	ng	-0.01
79) Terphenyl-d14	19.822	244	4676105	86.825	ng	-0.01
Target Compounds						
84) Bis(2-ethylhexyl)phtha...	21.127	149	216210	5.546	ng	Qvalue # 54
-----						

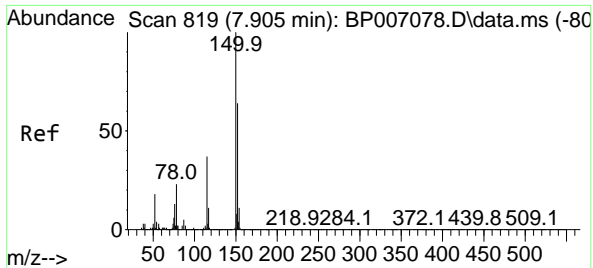
(#) = qualifier out of range (m) = manual integration (+) = signals summed

Data Path : Z:\svoasrv\HPCHEM1\BNA\_P\Data\BP092521\  
 Data File : BP007183.D  
 Acq On : 25 Sep 2021 13:01  
 Operator : CG/JU  
 Sample : PB139369BL  
 Misc :  
 ALS Vial : 3 Sample Multiplier: 1

Instrument :  
 BNA\_P  
 ClientSampleId :

Quant Time: Sep 26 02:13:15 2021  
 Quant Method : Z:\svoasrv\HPCHEM1\BNA\_P\Methods\8270E-BP092121.M  
 Quant Title : ASP BNA STANDARDS FOR 5 POINT CALIBRATION  
 QLast Update : Thu Sep 23 11:17:25 2021  
 Response via : Initial Calibration

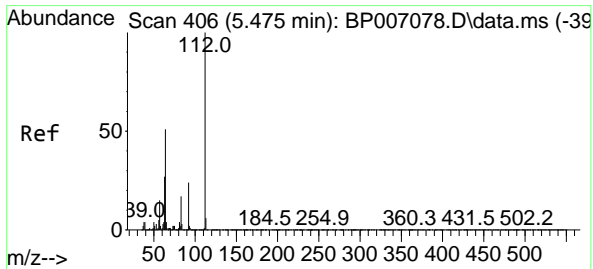
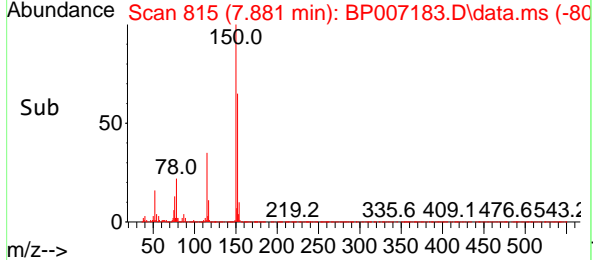
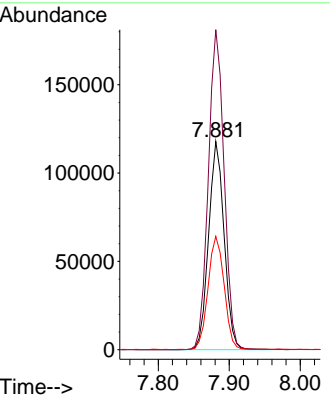
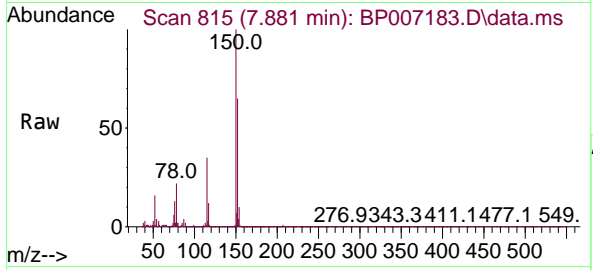




#1  
 1,4-Dichlorobenzene-d4  
 Concen: 20.000 ng  
 RT: 7.881 min Scan# 815  
 Delta R.T. -0.012 min  
 Lab File: BP007183.D  
 Acq: 25 Sep 2021 13:01

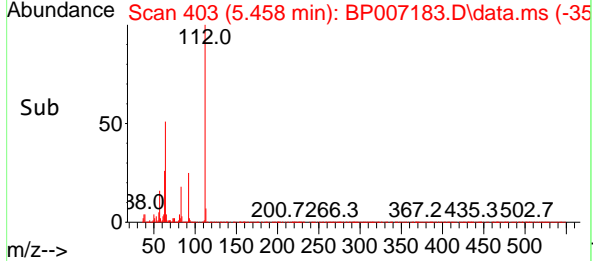
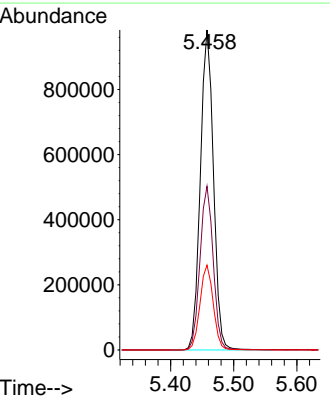
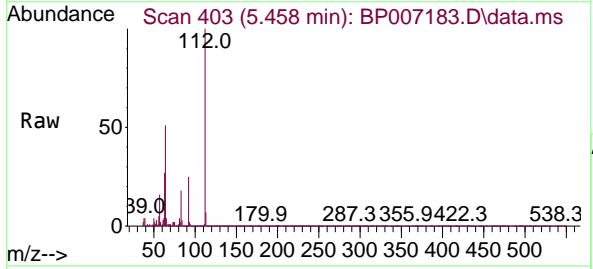
Instrument :  
 BNA\_P  
 ClientSampled :

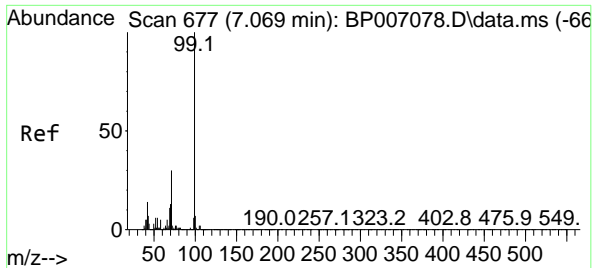
Tgt Ion	Resp	Lower	Upper
152	178453		
100	100		
150	153.8	125.6	188.4
115	54.5	48.5	72.7



#5  
 2-Fluorophenol  
 Concen: 132.655 ng  
 RT: 5.458 min Scan# 403  
 Delta R.T. -0.006 min  
 Lab File: BP007183.D  
 Acq: 25 Sep 2021 13:01

Tgt Ion	Resp	Lower	Upper
112	1414188		
100	100		
64	51.2	41.4	62.2
63	26.5	23.8	35.8



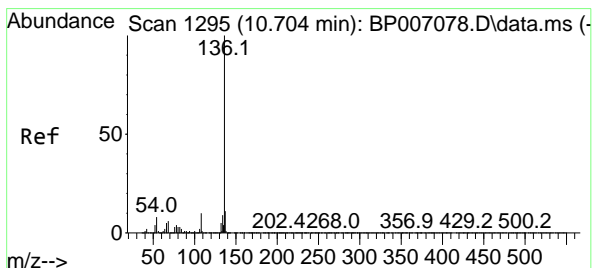
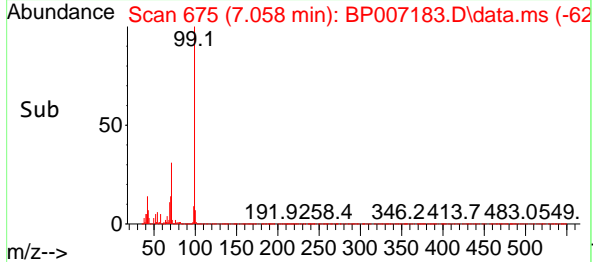
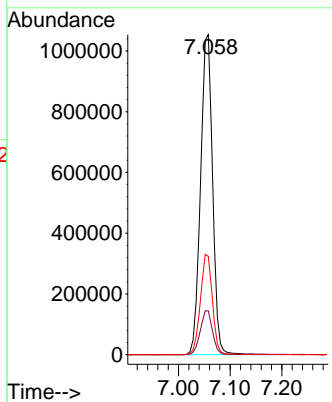
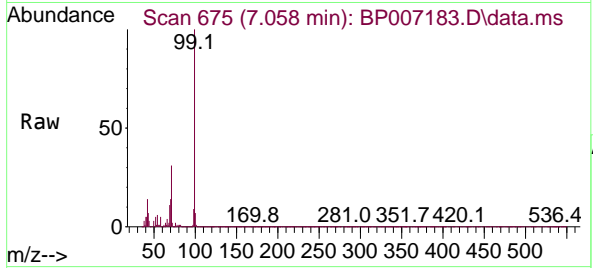


#7  
 Phenol-d6  
 Concen: 116.963 ng  
 RT: 7.058 min Scan# 675  
 Delta R.T. -0.006 min  
 Lab File: BP007183.D  
 Acq: 25 Sep 2021 13:01

Instrument :  
 BNA\_P  
 ClientSampleId :

Tgt Ion: 99 Resp: 1704198

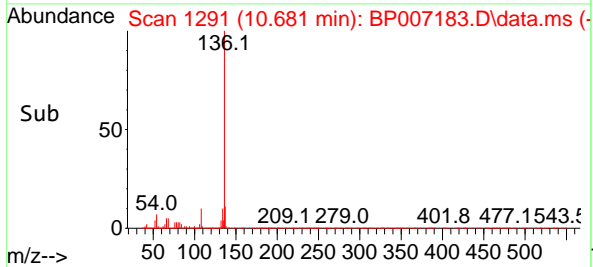
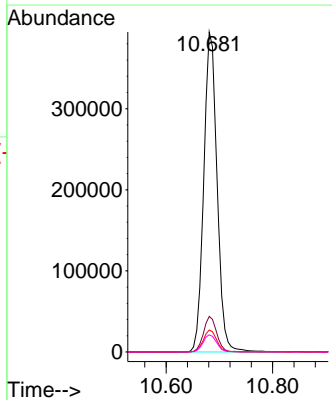
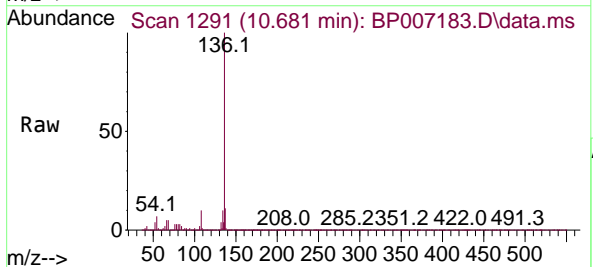
Ion	Ratio	Lower	Upper
99	100		
42	13.7	13.4	20.0
71	30.8	30.6	46.0

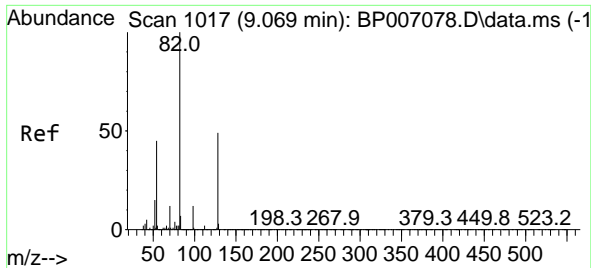


#21  
 Naphthalene-d8  
 Concen: 20.000 ng  
 RT: 10.681 min Scan# 1291  
 Delta R.T. -0.012 min  
 Lab File: BP007183.D  
 Acq: 25 Sep 2021 13:01

Tgt Ion: 136 Resp: 684692

Ion	Ratio	Lower	Upper
136	100		
137	11.1	8.6	12.8
54	6.9	4.6	6.8#
68	5.3	3.6	5.4

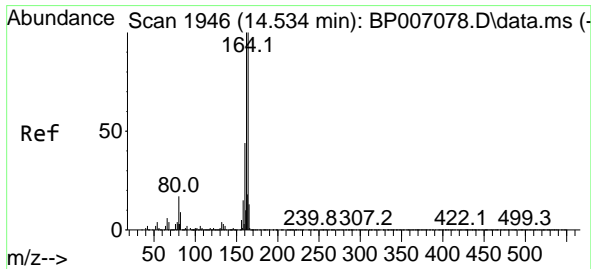
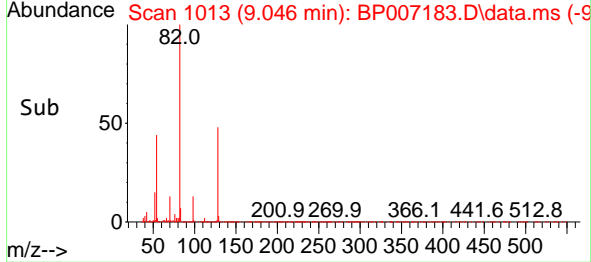
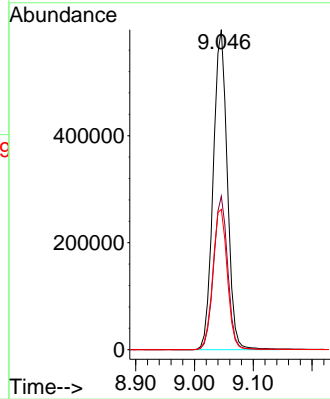
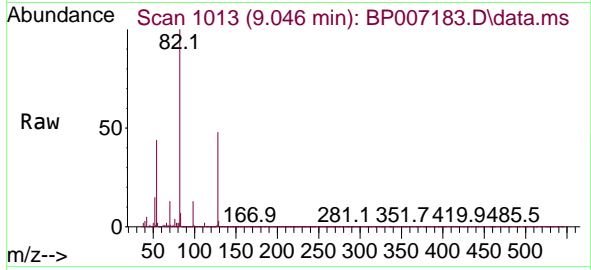




#23  
 Nitrobenzene-d5  
 Concen: 84.850 ng  
 RT: 9.046 min Scan# 1013  
 Delta R.T. -0.012 min  
 Lab File: BP007183.D  
 Acq: 25 Sep 2021 13:01

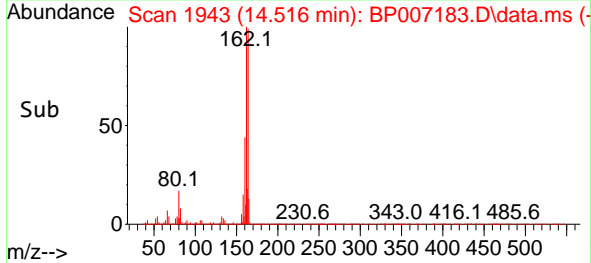
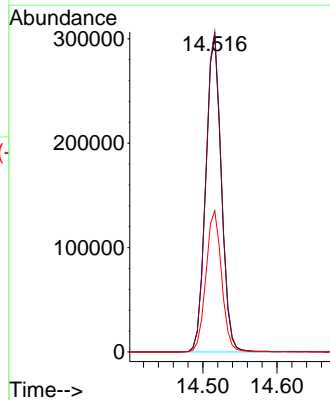
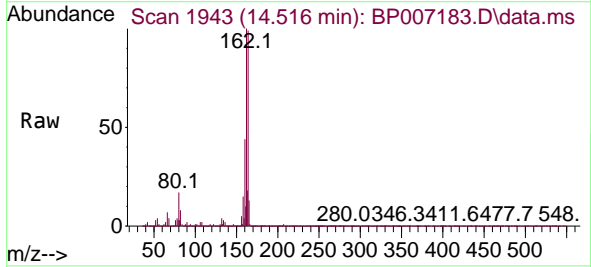
Instrument :  
 BNA\_P  
 ClientSampled :

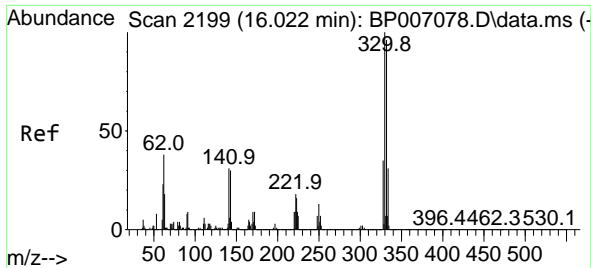
Tgt Ion	Resp	Lower	Upper
82	997594		
128	48.0	35.7	53.5
54	43.9	35.0	52.4



#39  
 Acenaphthene-d10  
 Concen: 20.000 ng  
 RT: 14.516 min Scan# 1943  
 Delta R.T. -0.012 min  
 Lab File: BP007183.D  
 Acq: 25 Sep 2021 13:01

Tgt Ion	Resp	Lower	Upper
164	441393		
162	101.2	80.2	120.2
160	44.6	34.5	51.7

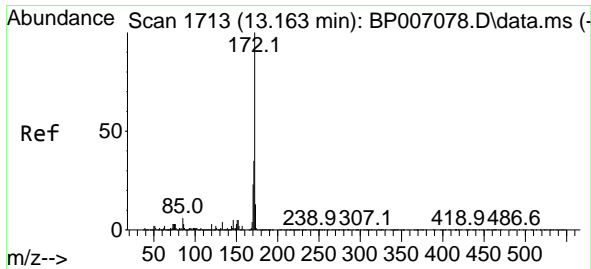
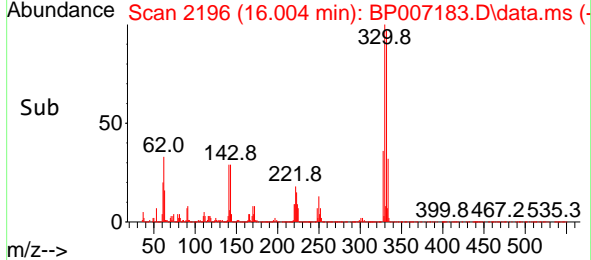
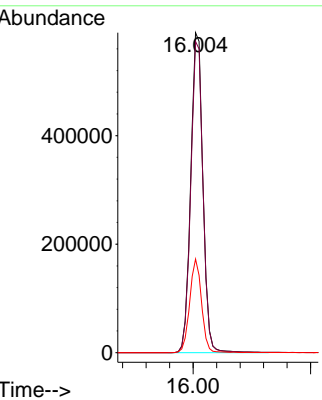
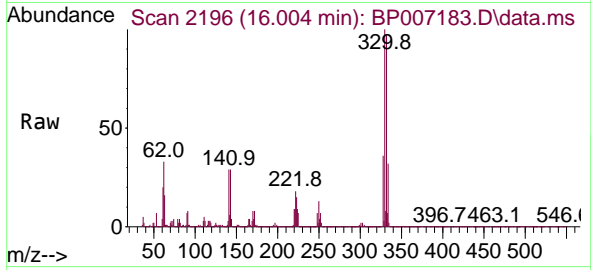




#42  
 2,4,6-Tribromophenol  
 Concen: 148.485 ng  
 RT: 16.004 min Scan# 2196  
 Delta R.T. -0.012 min  
 Lab File: BP007183.D  
 Acq: 25 Sep 2021 13:01

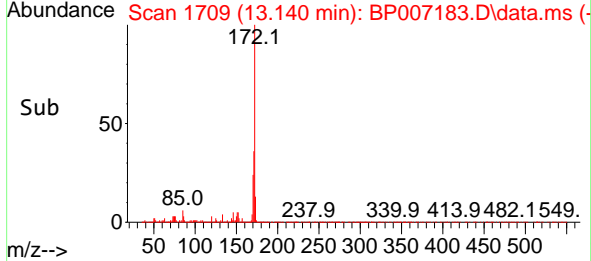
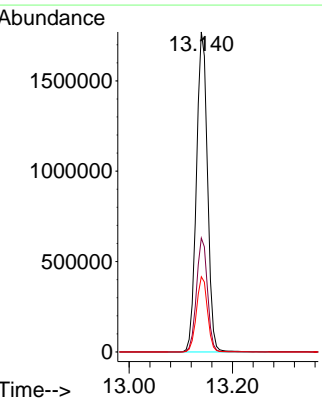
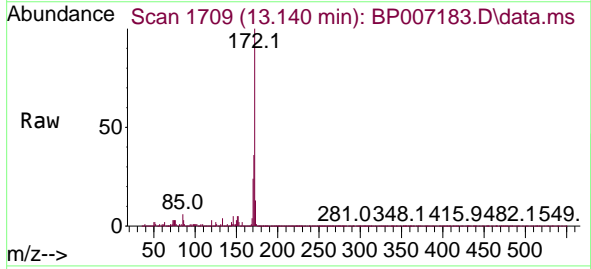
Instrument :  
 BNA\_P  
 ClientSampled :

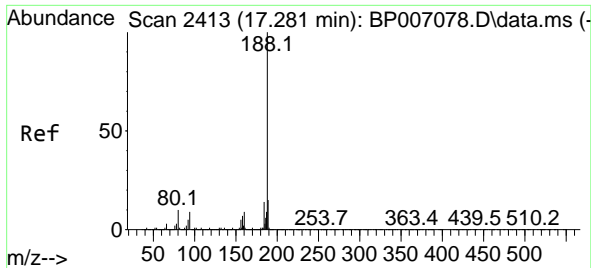
Tgt Ion	Resp	Lower	Upper
330	849694		
330	100		
332	97.5	77.8	116.8
141	28.5	25.4	38.2



#45  
 2-Fluorobiphenyl  
 Concen: 85.386 ng  
 RT: 13.140 min Scan# 1709  
 Delta R.T. -0.012 min  
 Lab File: BP007183.D  
 Acq: 25 Sep 2021 13:01

Tgt Ion	Resp	Lower	Upper
172	2630736		
172	100		
171	35.6	27.9	41.9
170	23.5	18.6	27.8

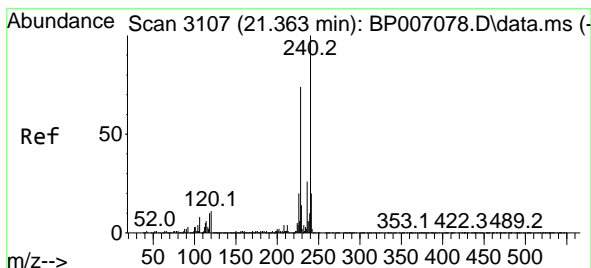
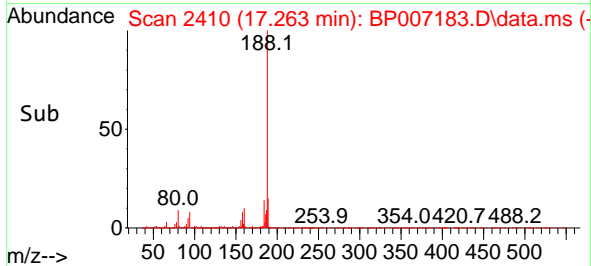
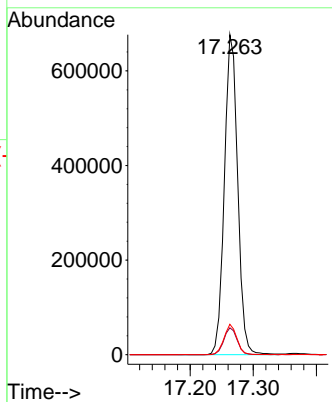
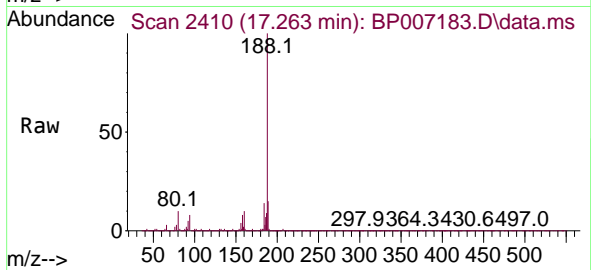




#64  
 Phenanthrene-d10  
 Concen: 20.000 ng  
 RT: 17.263 min Scan# 2410  
 Delta R.T. -0.012 min  
 Lab File: BP007183.D  
 Acq: 25 Sep 2021 13:01

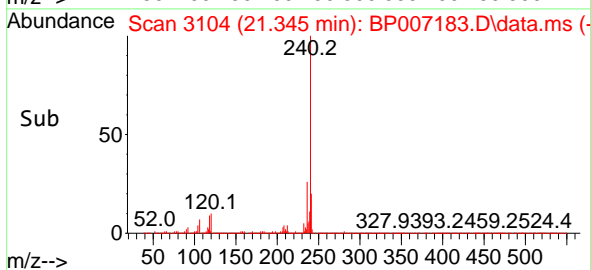
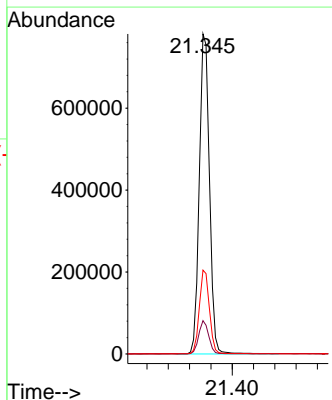
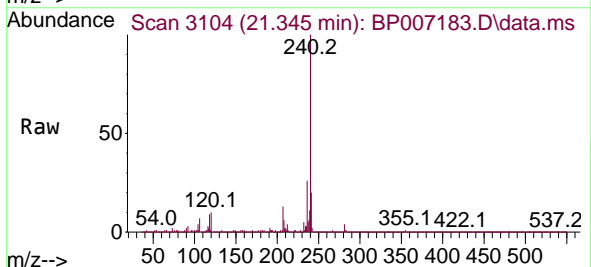
Instrument :  
 BNA\_P  
 ClientSampled :

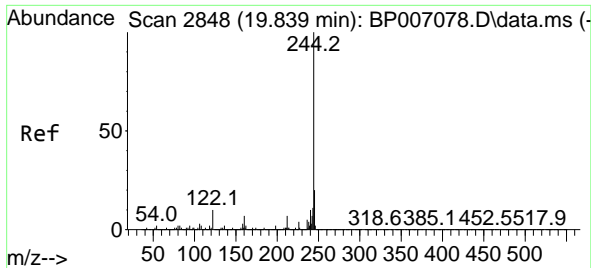
Tgt Ion	Resp	Lower	Upper
188	100		
94	8.4	5.6	8.4#
80	9.5	6.3	9.5#



#76  
 Chrysene-d12  
 Concen: 20.000 ng  
 RT: 21.345 min Scan# 3104  
 Delta R.T. -0.012 min  
 Lab File: BP007183.D  
 Acq: 25 Sep 2021 13:01

Tgt Ion	Resp	Lower	Upper
240	100		
120	10.4	6.5	9.7#
236	26.2	20.6	31.0



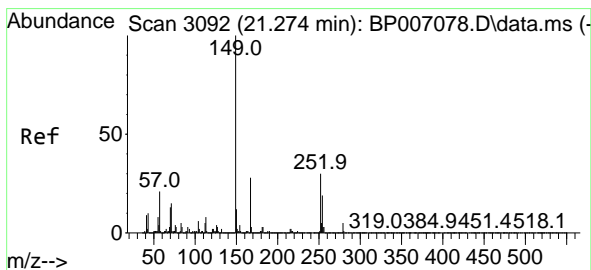
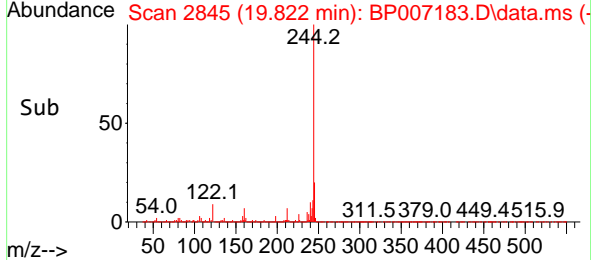
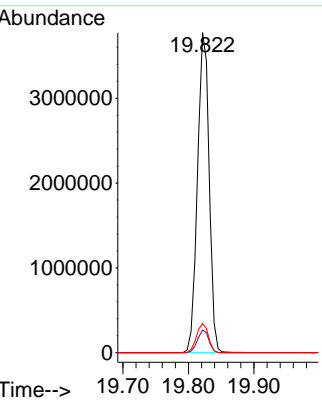
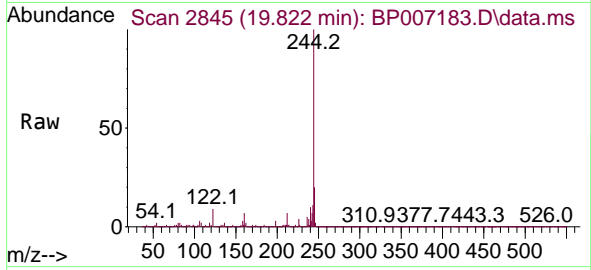


#79  
 Terphenyl-d14  
 Concen: 86.825 ng  
 RT: 19.822 min Scan# 2845  
 Delta R.T. -0.012 min  
 Lab File: BP007183.D  
 Acq: 25 Sep 2021 13:01

Instrument :  
 BNA\_P  
 ClientSampled :

Tgt Ion:244 Resp: 4676105

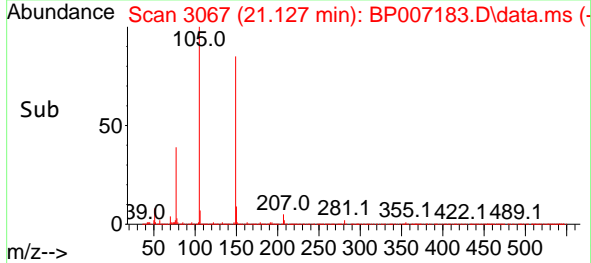
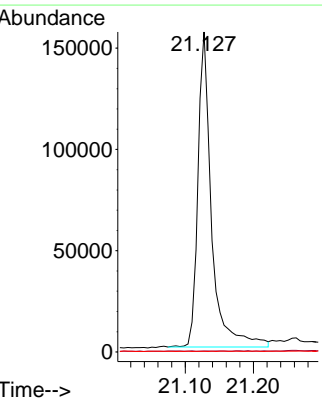
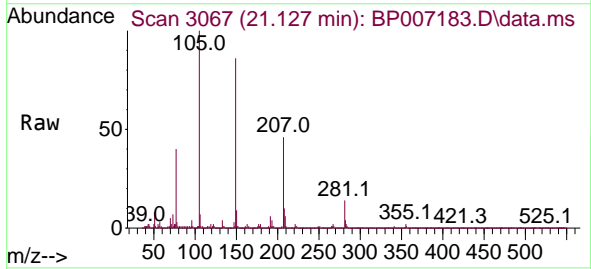
Ion	Ratio	Lower	Upper
244	100		
212	7.1	6.0	9.0
122	9.1	7.1	10.7



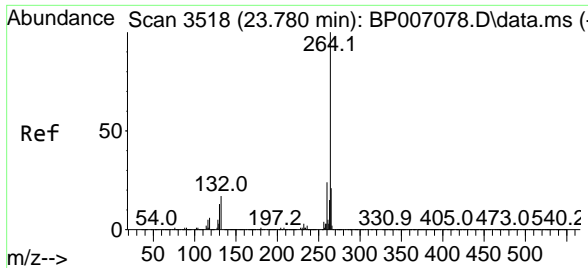
#84  
 Bis(2-ethylhexyl)phthalate  
 Concen: 5.546 ng  
 RT: 21.127 min Scan# 3067  
 Delta R.T. -0.141 min  
 Lab File: BP007183.D  
 Acq: 25 Sep 2021 13:01

Tgt Ion:149 Resp: 216210

Ion	Ratio	Lower	Upper
149	100		
167	0.3	21.9	32.9#
279	0.2	4.3	6.5#

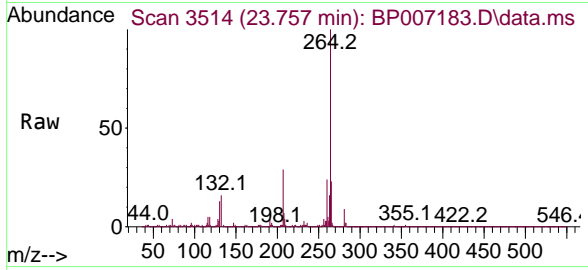






#86  
 Perylene-d12  
 Concen: 20.000 ng  
 RT: 23.757 min Scan# 3514  
 Delta R.T. -0.012 min  
 Lab File: BP007183.D  
 Acq: 25 Sep 2021 13:01

Instrument :  
 BNA\_P  
 ClientSampled :



Tgt Ion: 264 Resp: 1116533

Ion	Ratio	Lower	Upper
264	100		
260	23.9	18.6	28.0
265	22.7	17.6	26.4

