

Data Path : Z:\svoasrv\HPCHEM1\BNA\_P\Data\BP092523\  
 Data File : BP017371.D  
 Acq On : 26 Sep 2023 20:26  
 Operator : MA/JU  
 Sample : 04450-15  
 Misc :  
 ALS Vial : 63 Sample Multiplier: 1

Instrument :  
 BNA\_P  
 ClientSampleId :  
 BBBN0

Quant Time: Sep 27 00:30:23 2023  
 Quant Method : Z:\svoasrv\HPCHEM1\BNA\_P\Methods\SFAM-EPA-BP092023.MA.M  
 Quant Title : SVOA CALIBRATION  
 QLast Update : Tue Sep 26 04:52:29 2023  
 Response via : Initial Calibration

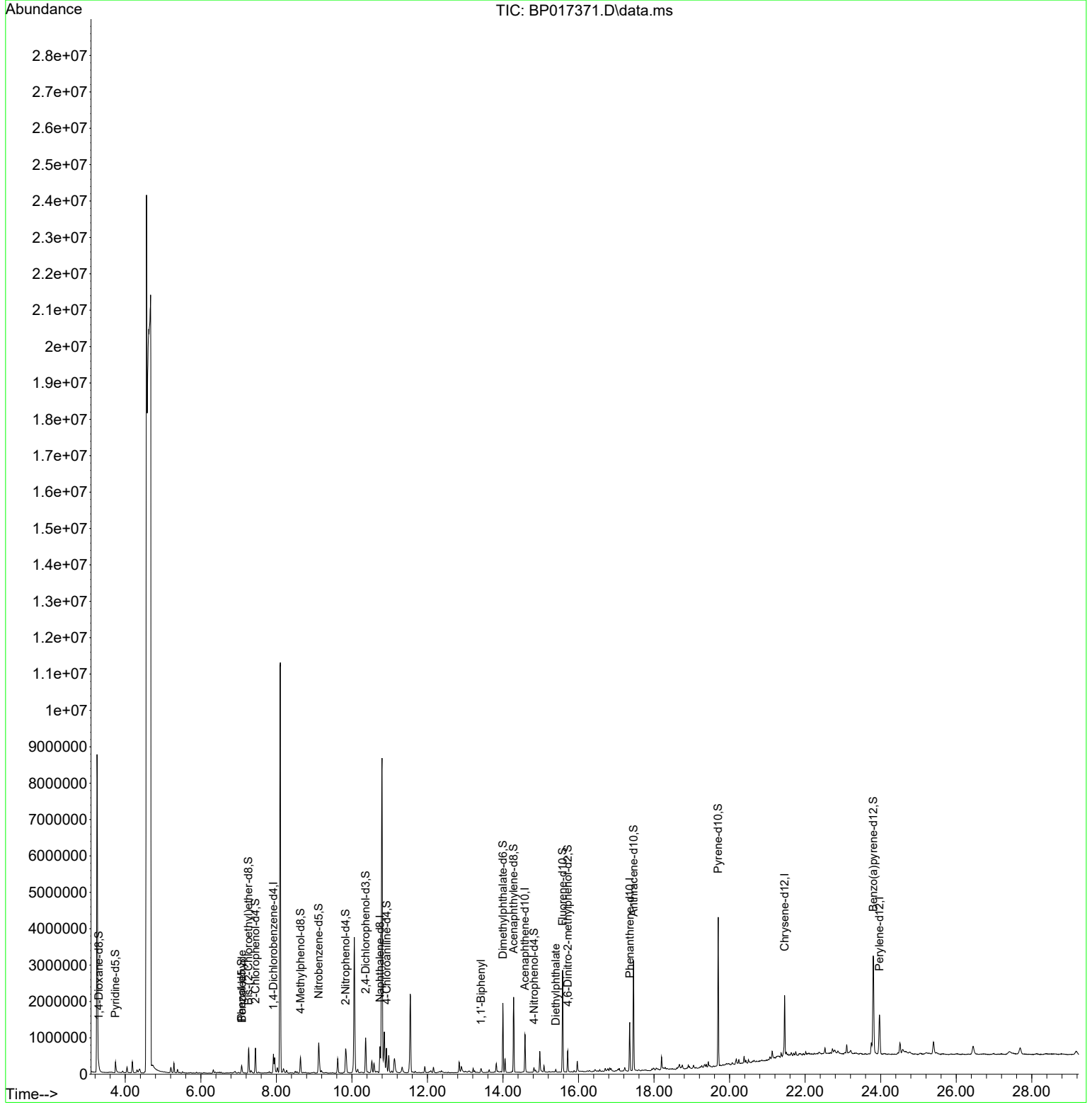
| Compound                      | R.T.   | QIon | Response | Conc   | Units | Dev(Min) |
|-------------------------------|--------|------|----------|--------|-------|----------|
| -----                         |        |      |          |        |       |          |
| Internal Standards            |        |      |          |        |       |          |
| 1) 1,4-Dichlorobenzene-d4     | 7.922  | 152  | 134572   | 20.000 | ng/ul | 0.00     |
| 20) Naphthalene-d8            | 10.746 | 136  | 578736   | 20.000 | ng/ul | 0.00     |
| 38) Acenaphthene-d10          | 14.581 | 164  | 343133   | 20.000 | ng/ul | 0.00     |
| 64) Phenanthrene-d10          | 17.357 | 188  | 776333   | 20.000 | ng/ul | 0.00     |
| 79) Chrysene-d12              | 21.457 | 240  | 747868   | 20.000 | ng/ul | 0.00     |
| 88) Perylene-d12              | 23.968 | 264  | 843654   | 20.000 | ng/ul | 0.00     |
| System Monitoring Compounds   |        |      |          |        |       |          |
| 3) 1,4-Dioxane-d8             | 3.299  | 96   | 20780    | 6.343  | ng/uL | 0.00     |
| 4) Pyridine-d5                | 3.740  | 84   | 163365   | 17.836 | ng/ul | 0.01     |
| 7) Phenol-d5                  | 7.081  | 99   | 109912   | 9.945  | ng/ul | 0.00     |
| 9) Bis-(2-Chloroethyl)eth...  | 7.263  | 67   | 292557   | 43.861 | ng/ul | 0.00     |
| 11) 2-Chlorophenol-d4         | 7.446  | 132  | 294461   | 33.591 | ng/ul | 0.00     |
| 15) 4-Methylphenol-d8         | 8.640  | 113  | 157692   | 18.352 | ng/ul | 0.00     |
| 21) Nitrobenzene-d5           | 9.122  | 128  | 177762   | 42.487 | ng/ul | 0.00     |
| 24) 2-Nitrophenol-d4          | 9.834  | 143  | 172300   | 37.927 | ng/ul | 0.00     |
| 28) 2,4-Dichlorophenol-d3     | 10.363 | 165  | 333645   | 38.873 | ng/ul | 0.00     |
| 31) 4-Chloroaniline-d4        | 10.916 | 131  | 332932   | 26.778 | ng/ul | 0.00     |
| 46) Dimethylphthalate-d6      | 13.998 | 166  | 1174280  | 47.772 | ng/ul | 0.00     |
| 49) Acenaphthylene-d8         | 14.281 | 160  | 1298410  | 45.927 | ng/ul | 0.00     |
| 54) 4-Nitrophenol-d4          | 14.822 | 143  | 32396    | 7.565  | ng/ul | 0.00     |
| 60) Fluorene-d10              | 15.581 | 176  | 1020282  | 48.213 | ng/ul | 0.00     |
| 65) 4,6-Dinitro-2-methylph... | 15.716 | 200  | 114888   | 26.257 | ng/ul | 0.00     |
| 73) Anthracene-d10            | 17.457 | 188  | 1641224  | 47.667 | ng/ul | 0.00     |
| 81) Pyrene-d10                | 19.698 | 212  | 2029779  | 50.189 | ng/ul | 0.00     |
| 92) Benzo(a)pyrene-d12        | 23.804 | 264  | 1982094  | 48.797 | ng/ul | 0.00     |
| Target Compounds              |        |      |          |        |       |          |
| 6) Benzaldehyde               | 7.087  | 77   | 6477     | 1.148  | ng/ul | 93       |
| 43) 1,1'-Biphenyl             | 13.416 | 154  | 30385    | 1.167  | ng/ul | 95       |
| 59) Diethylphthalate          | 15.398 | 149  | 38054    | 1.590  | ng/ul | 96       |
| -----                         |        |      |          |        |       |          |

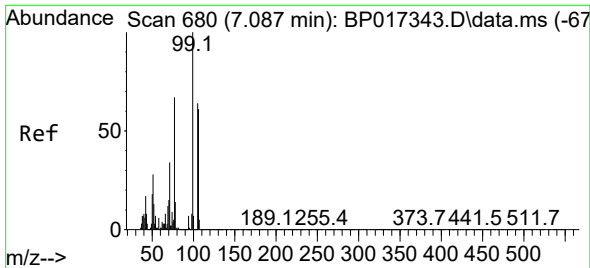
(#) = qualifier out of range (m) = manual integration (+) = signals summed

Data Path : Z:\svoasrv\HPCHEM1\BNA\_P\Data\BP092523\  
 Data File : BP017371.D  
 Acq On : 26 Sep 2023 20:26  
 Operator : MA/JU  
 Sample : 04450-15  
 Misc :  
 ALS Vial : 63 Sample Multiplier: 1

Instrument :  
 BNA\_P  
 ClientSampleId :  
 BBBN0

Quant Time: Sep 27 00:30:23 2023  
 Quant Method : Z:\svoasrv\HPCHEM1\BNA\_P\Methods\SFAM-EPA-BP092023.MA.M  
 Quant Title : SVOA CALIBRATION  
 QLast Update : Tue Sep 26 04:52:29 2023  
 Response via : Initial Calibration



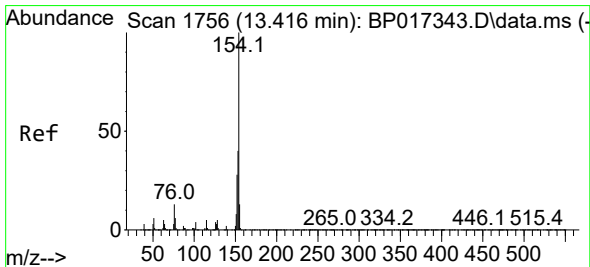
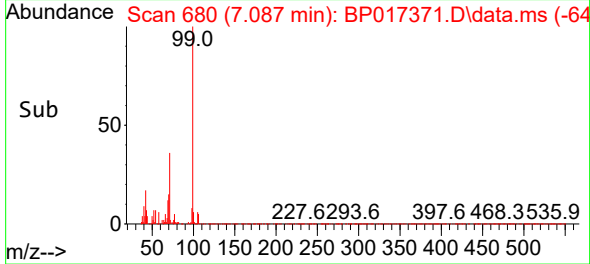
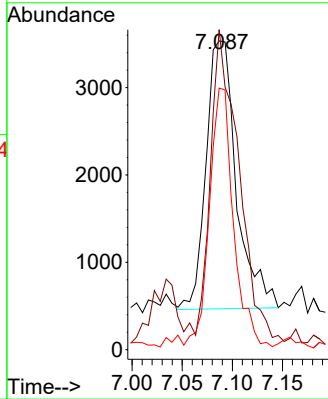
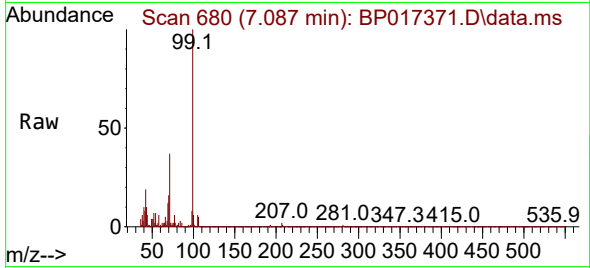


#6  
Benzaldehyde  
Concen: 1.148 ng/ul  
RT: 7.087 min Scan# 680  
Delta R.T. -0.000 min  
Lab File: BP017371.D  
Acq: 26 Sep 2023 20:26

Instrument :  
BNA\_P  
Client Sample Id :  
BBBN0

Tgt Ion: 77 Resp: 6477

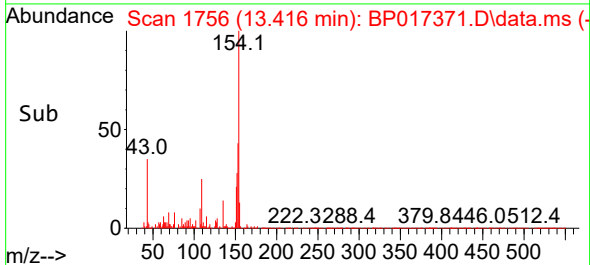
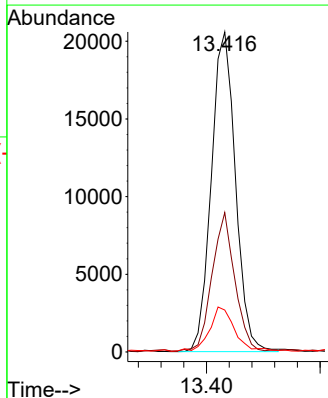
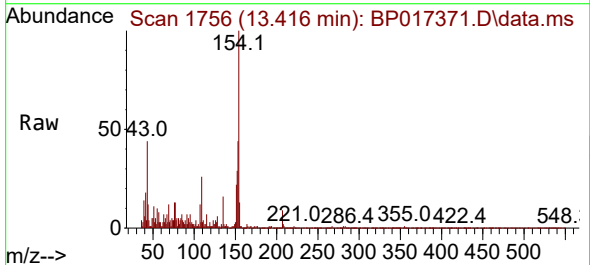
| Ion | Ratio | Lower | Upper |
|-----|-------|-------|-------|
| 77  | 100   |       |       |
| 105 | 103.6 | 78.0  | 117.0 |
| 106 | 84.7  | 73.2  | 109.8 |

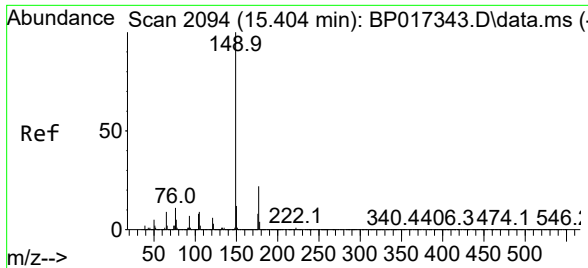


#43  
1,1'-Biphenyl  
Concen: 1.167 ng/ul  
RT: 13.416 min Scan# 1756  
Delta R.T. -0.000 min  
Lab File: BP017371.D  
Acq: 26 Sep 2023 20:26

Tgt Ion: 154 Resp: 30385

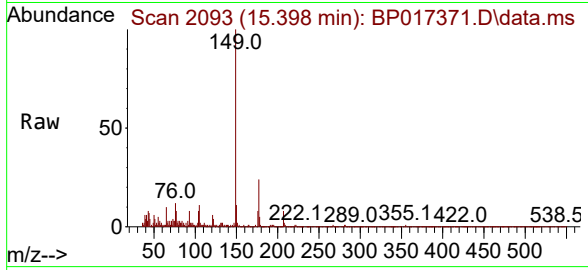
| Ion | Ratio | Lower | Upper |
|-----|-------|-------|-------|
| 154 | 100   |       |       |
| 153 | 43.5  | 31.5  | 47.3  |
| 76  | 13.1  | 11.0  | 16.6  |





#59  
 Diethylphthalate  
 Concen: 1.590 ng/ul  
 RT: 15.398 min Scan# 2093  
 Delta R.T. -0.006 min  
 Lab File: BP017371.D  
 Acq: 26 Sep 2023 20:26

Instrument : BNA\_P  
 ClientSampleId : BBBN0



Tgt Ion:149 Resp: 38054

| Ion | Ratio | Lower | Upper |
|-----|-------|-------|-------|
| 149 | 100   |       |       |
| 177 | 23.6  | 17.0  | 25.6  |
| 150 | 11.1  | 9.8   | 14.6  |

