

Data Path : Z:\svoasrv\HPCHEM1\BNA\_P\Data\BP092823\  
 Data File : BP017414.D  
 Acq On : 28 Sep 2023 15:15  
 Operator : MA/JU  
 Sample : 04417-40  
 Misc :  
 ALS Vial : 6 Sample Multiplier: 1

Instrument :  
 BNA\_P  
 ClientSampleId :  
 EZYE7

Integration Parameters: LSCINT.P

Integrator: RTE  
 Smoothing : OFF Filtering: 5  
 Sampling : 1 Min Area: 0.1 % of largest Peak  
 Start Thrs: 0.2 Max Peaks: 100  
 Stop Thrs : 0 Peak Location: TOP

If leading or trailing edge < 100 prefer < Baseline drop else tangent >  
 Peak separation: 5

Method : Z:\svoasrv\HPCHEM1\BNA\_P\Methods\SFAM-EPA-BP092023.MA.M  
 Title : SVOA CALIBRATION

Signal : TIC: BP017414.D\data.ms

peak #	R.T. min	first scan	max scan	last scan	PK TY	peak height	corr. area	corr. % max.	% of total
1	3.299	33	36	43	rVB	31792	43301	1.56%	0.097%
2	3.734	107	110	122	rBV	329489	494060	17.77%	1.107%
3	3.846	125	129	138	rVV	106867	136347	4.90%	0.306%
4	3.928	138	143	148	rVB	74372	110091	3.96%	0.247%
5	4.046	159	163	168	rVB	20678	30749	1.11%	0.069%
6	4.187	182	187	193	rVB4	25434	41024	1.48%	0.092%
7	4.434	225	229	234	rVB	28574	40599	1.46%	0.091%
8	4.981	316	322	330	rBV	50727	79959	2.88%	0.179%
9	5.111	340	344	350	rVB4	22930	37109	1.33%	0.083%
10	6.352	550	555	559	rBV	22972	35566	1.28%	0.080%
11	7.110	677	684	702	rBV	426210	694665	24.98%	1.557%
12	7.299	708	716	725	rVB	457335	697293	25.08%	1.563%
13	7.475	737	746	754	rBV	279732	461038	16.58%	1.033%
14	7.563	756	761	768	rVV	18589	32285	1.16%	0.072%
15	7.957	821	828	839	rBV	613796	954016	34.31%	2.138%
16	8.675	941	950	961	rBV	431848	717371	25.80%	1.608%
17	9.122	1017	1026	1028	rVV	32970	51338	1.85%	0.115%
18	9.163	1028	1033	1044	rVV	523691	842766	30.31%	1.889%
19	9.640	1109	1114	1120	rBV6	12886	29072	1.05%	0.065%
20	9.881	1150	1155	1162	rVV2	75238	134840	4.85%	0.302%
21	9.957	1162	1168	1175	rVB9	14589	38972	1.40%	0.087%
22	10.304	1218	1227	1234	rBV9	9433	27639	0.99%	0.062%
23	10.410	1239	1245	1257	rBV	159283	287392	10.34%	0.644%
24	10.616	1276	1280	1284	rBV4	16298	30979	1.11%	0.069%
25	10.681	1286	1291	1296	rVB	109736	155443	5.59%	0.348%
26	10.793	1303	1310	1317	rBV	855915	1443082	51.90%	3.234%
27	10.857	1317	1321	1328	rVB2	71858	146808	5.28%	0.329%
28	10.963	1330	1339	1355	rBV	517151	957298	34.43%	2.145%
29	11.204	1375	1380	1385	rVB5	20314	34674	1.25%	0.078%
30	11.440	1414	1420	1424	rBV6	27208	47471	1.71%	0.106%
31	11.551	1434	1439	1445	rBV5	18593	36616	1.32%	0.082%
32	11.634	1449	1453	1461	rVB2	30609	49687	1.79%	0.111%
33	11.734	1465	1470	1475	rBV	100278	140450	5.05%	0.315%
34	12.004	1509	1516	1521	rBV7	26195	54245	1.95%	0.122%
35	12.104	1526	1533	1535	rBV3	15642	32551	1.17%	0.073%
36	12.145	1535	1540	1547	rVB	280222	388046	13.95%	0.870%

Data Path : Z:\svoasrv\HPCHEM1\BNA\_P\Data\BP092823\  
 Data File : BP017414.D  
 Acq On : 28 Sep 2023 15:15  
 Operator : MA/JU  
 Sample : 04417-40  
 Misc :  
 ALS Vial : 6 Sample Multiplier: 1

Instrument :  
 BNA\_P  
 ClientSampleId :  
 EZYE7

Integration Parameters: LSCINT.P

Integrator: RTE  
 Smoothing : OFF Filtering: 5  
 Sampling : 1 Min Area: 0.1 % of largest Peak  
 Start Thrs: 0.2 Max Peaks: 100  
 Stop Thrs : 0 Peak Location: TOP

If leading or trailing edge < 100 prefer < Baseline drop else tangent >  
 Peak separation: 5

Method : Z:\svoasrv\HPCHEM1\BNA\_P\Methods\SFAM-EPA-BP092023.MA.M  
 Title : SVOA CALIBRATION

37	12.463	1588	1594	1599	rBV	96165	158626	5.70%	0.355%
38	12.681	1626	1631	1637	rBV	73867	115633	4.16%	0.259%
39	12.781	1640	1648	1652	rVV4	29031	58939	2.12%	0.132%
40	12.851	1656	1660	1664	rVV4	23388	44284	1.59%	0.099%
41	12.887	1664	1666	1670	rVB4	25027	28723	1.03%	0.064%
42	12.963	1672	1679	1683	rBV	51006	85231	3.07%	0.191%
43	13.045	1688	1693	1697	rVB	33002	50644	1.82%	0.113%
44	13.098	1697	1702	1708	rBV	136105	192620	6.93%	0.432%
45	13.398	1745	1753	1758	rVV	360251	539079	19.39%	1.208%
46	13.492	1761	1769	1777	rVV	397414	718650	25.84%	1.610%
47	13.798	1815	1821	1823	rBV3	81349	145652	5.24%	0.326%
48	13.957	1843	1848	1853	rVB2	110952	198305	7.13%	0.444%
49	14.010	1853	1857	1860	rBV	113598	174629	6.28%	0.391%
50	14.063	1860	1866	1871	rVV	1151252	1736169	62.44%	3.890%
51	14.098	1871	1872	1882	rVB4	59388	79163	2.85%	0.177%
52	14.198	1882	1889	1892	rBV2	57700	121152	4.36%	0.271%
53	14.263	1898	1900	1907	rVB4	30583	47119	1.69%	0.106%
54	14.351	1907	1915	1922	rBV	1264882	1946596	70.00%	4.362%
55	14.428	1923	1928	1932	rVB6	32464	52492	1.89%	0.118%
56	14.481	1932	1937	1944	rVB	502471	634825	22.83%	1.423%
57	14.569	1945	1952	1955	rBV5	44965	82010	2.95%	0.184%
58	14.616	1956	1960	1961	rVV3	40173	54300	1.95%	0.122%
59	14.651	1961	1966	1975	rVB	1213104	1733462	62.34%	3.884%
60	14.845	1995	1999	2006	rVB3	39014	92305	3.32%	0.207%
61	14.928	2008	2013	2018	rBV4	38857	84578	3.04%	0.190%
62	14.981	2018	2022	2025	rVB	42941	50162	1.80%	0.112%
63	15.034	2025	2031	2038	rBV3	92842	173870	6.25%	0.390%
64	15.098	2038	2042	2051	rVB3	106288	243807	8.77%	0.546%
65	15.175	2051	2055	2060	rVB4	41299	61027	2.19%	0.137%
66	15.257	2064	2069	2074	rBV	68165	122623	4.41%	0.275%
67	15.316	2074	2079	2087	rVB3	77498	135906	4.89%	0.305%
68	15.439	2088	2100	2107	rBV	595961	910697	32.75%	2.041%
69	15.657	2131	2137	2145	rBV	1505394	2205696	79.32%	4.943%
70	15.839	2163	2168	2173	rBV	196568	331696	11.93%	0.743%
71	15.892	2174	2177	2183	rVB5	29608	46623	1.68%	0.104%
72	16.004	2192	2196	2203	rVB4	92228	156083	5.61%	0.350%
73	16.075	2204	2208	2211	rBV2	59334	82428	2.96%	0.185%
74	16.145	2217	2220	2223	rBV4	22630	29986	1.08%	0.067%
75	16.316	2244	2249	2256	rBV	831183	1285772	46.24%	2.881%
76	16.663	2304	2308	2310	rBV4	28261	46889	1.69%	0.105%

Data Path : Z:\svoasrv\HPCHEM1\BNA\_P\Data\BP092823\  
 Data File : BP017414.D  
 Acq On : 28 Sep 2023 15:15  
 Operator : MA/JU  
 Sample : 04417-40  
 Misc :  
 ALS Vial : 6 Sample Multiplier: 1

Instrument :  
 BNA\_P  
 ClientSampleId :  
 EZYE7

Integration Parameters: LSCINT.P

Integrator: RTE  
 Smoothing : OFF Filtering: 5  
 Sampling : 1 Min Area: 0.1 % of largest Peak  
 Start Thrs: 0.2 Max Peaks: 100  
 Stop Thrs : 0 Peak Location: TOP

If leading or trailing edge < 100 prefer < Baseline drop else tangent >  
 Peak separation: 5

Method : Z:\svoasrv\HPCHEM1\BNA\_P\Methods\SFAM-EPA-BP092023.MA.M  
 Title : SVOA CALIBRATION

77	16.780	2325	2328	2331	rBV3	29934	36554	1.31%	0.082%
78	16.828	2333	2336	2342	rVB2	53041	72177	2.60%	0.162%
79	16.898	2344	2348	2350	rBV2	49256	61644	2.22%	0.138%
80	17.122	2382	2386	2389	rBV	601852	653256	23.49%	1.464%
81	17.163	2389	2393	2398	rVB	346497	481405	17.31%	1.079%
82	17.251	2406	2408	2413	rBV	39932	49197	1.77%	0.110%
83	17.439	2434	2440	2444	rBV	1276123	1822444	65.54%	4.084%
84	17.480	2444	2447	2452	rVV	285768	393443	14.15%	0.882%
85	17.539	2452	2457	2465	rVV	1483256	2050648	73.75%	4.595%
86	17.869	2509	2513	2518	rBV	427872	533182	19.17%	1.195%
87	18.016	2535	2538	2543	rVB	107624	128710	4.63%	0.288%
88	18.304	2584	2587	2590	rBV	83934	104040	3.74%	0.233%
89	18.545	2625	2628	2635	rVB	370783	457104	16.44%	1.024%
90	19.163	2730	2733	2736	rBV	414183	482735	17.36%	1.082%
91	19.457	2780	2783	2787	rBV	228288	279421	10.05%	0.626%
92	19.733	2827	2830	2833	rVB	509808	556841	20.03%	1.248%
93	19.792	2835	2840	2850	rVV	1783496	2780704	100.00%	6.231%
94	20.257	2915	2919	2924	rBV2	776131	1024032	36.83%	2.295%
95	20.745	2999	3002	3006	rBV	797533	874041	31.43%	1.959%
96	21.210	3078	3081	3084	rBV	903438	1011221	36.37%	2.266%
97	21.568	3139	3142	3147	rVB	1192811	1459075	52.47%	3.270%
98	21.663	3155	3158	3167	rVB2	1155843	1473176	52.98%	3.301%
99	22.145	3237	3240	3251	rVB	1138804	1884413	67.77%	4.223%
100	22.674	3327	3330	3335	rBV	987977	1363285	49.03%	3.055%

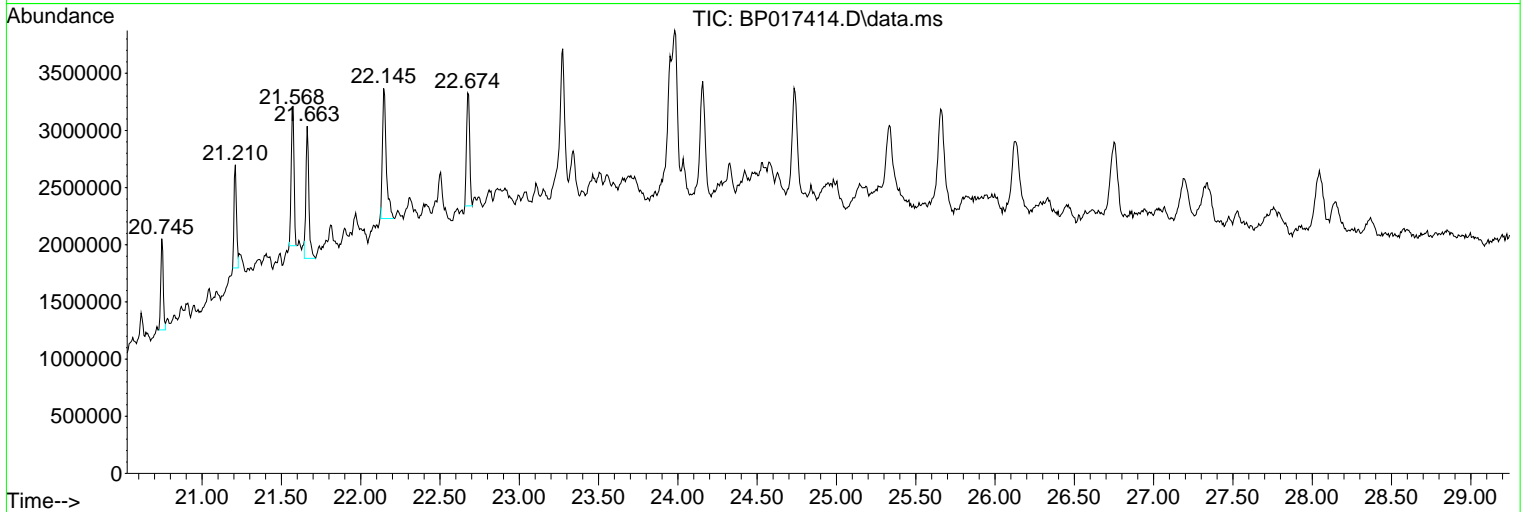
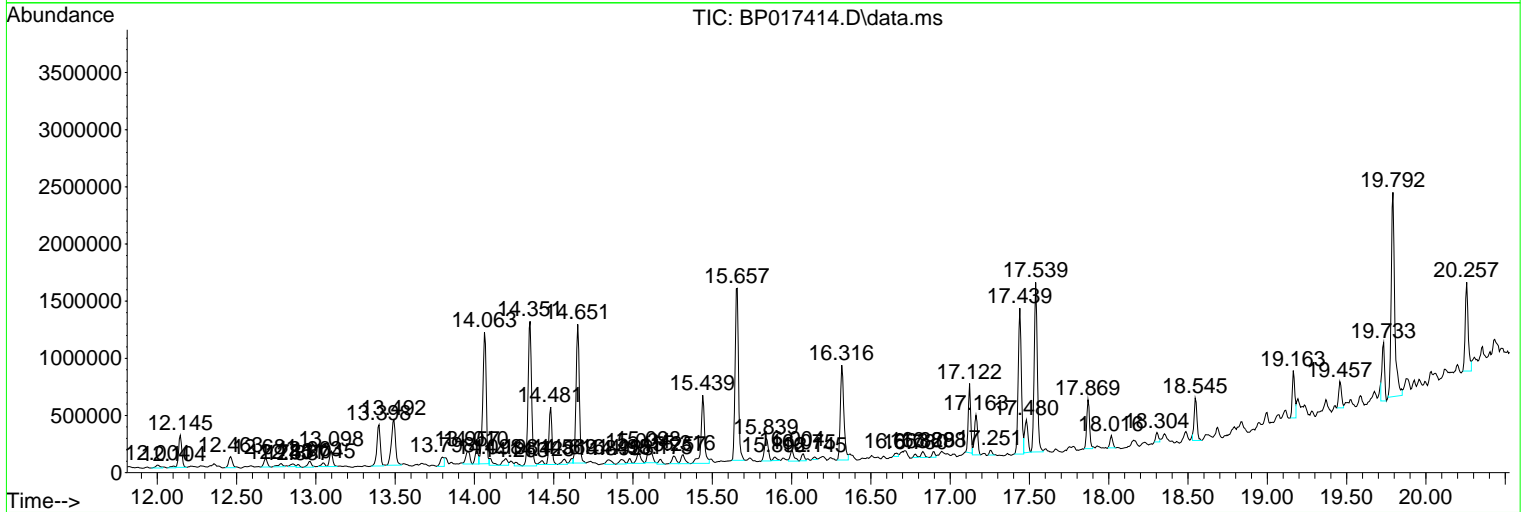
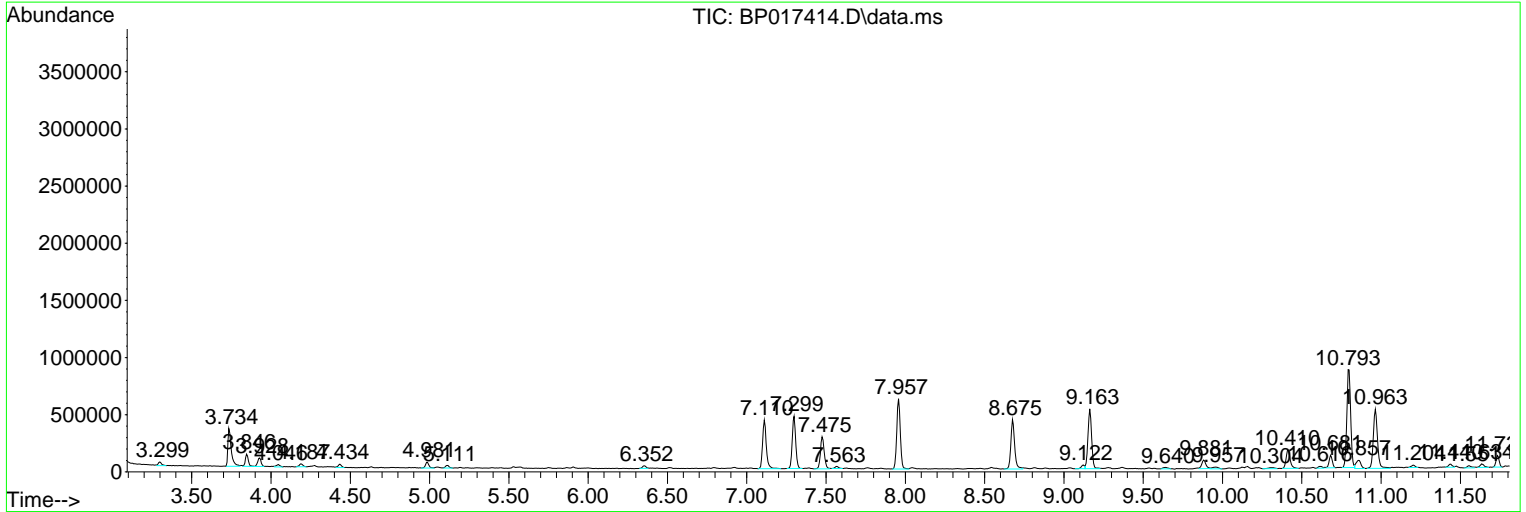
Sum of corrected areas: 44626041

Data Path : Z:\svoasrv\HPCHEM1\BNA\_P\Data\BP092823\  
 Data File : BP017414.D  
 Acq On : 28 Sep 2023 15:15  
 Operator : MA/JU  
 Sample : 04417-40  
 Misc :  
 ALS Vial : 6 Sample Multiplier: 1

Instrument :  
 BNA\_P  
 ClientSampleId :  
 EZYE7

Quant Method : Z:\svoasrv\HPCHEM1\BNA\_P\Methods\SFAM-EPA-BP092023.MA.M  
 Quant Title : SVOA CALIBRATION

TIC Library : C:\DATABASE\NIST20.L  
 TIC Integration Parameters: LSCINT.P



Data Path : Z:\svoasrv\HPCHEM1\BNA\_P\Data\BP092823\  
 Data File : BP017414.D  
 Acq On : 28 Sep 2023 15:15  
 Operator : MA/JU  
 Sample : 04417-40  
 Misc :  
 ALS Vial : 6 Sample Multiplier: 1

Instrument :  
 BNA\_P  
 ClientSampleId :  
 EZYE7

Quant Method : Z:\svoasrv\HPCHEM1\BNA\_P\Methods\SFAM-EPA-BP092023.MA.M  
 Quant Title : SVOA CALIBRATION

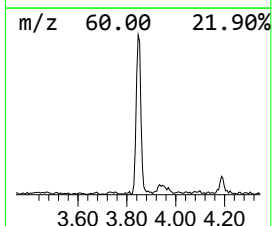
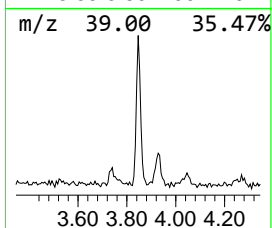
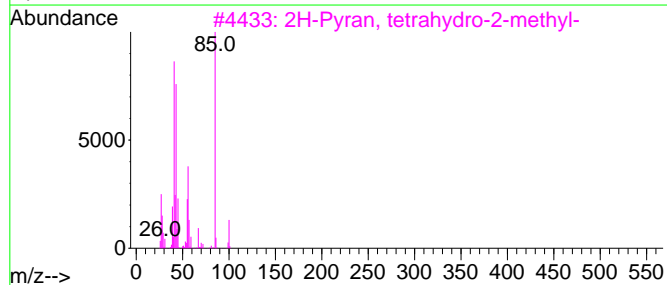
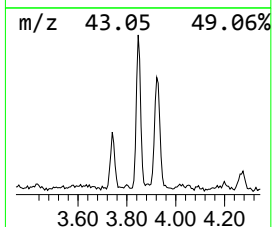
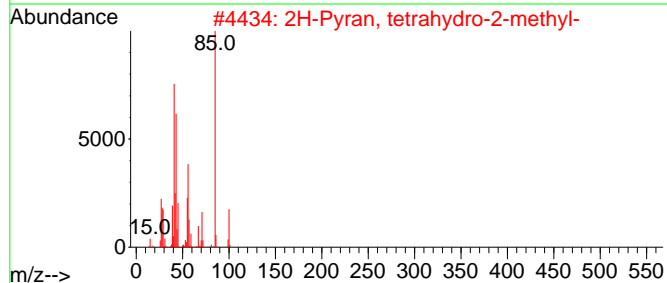
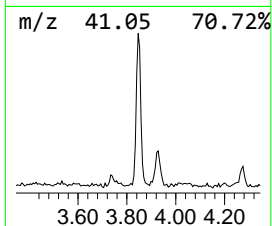
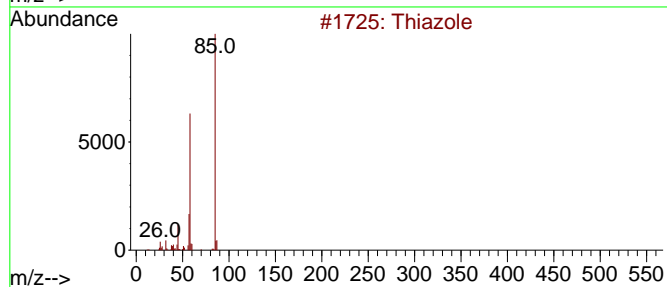
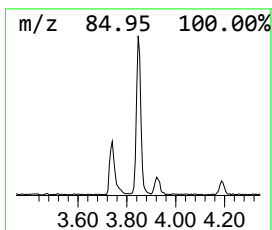
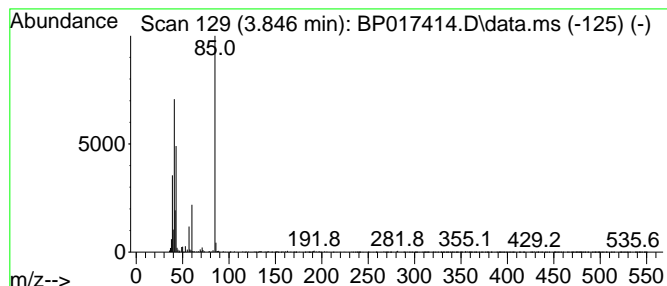
TIC Library : C:\DATABASE\NIST20.L  
 TIC Integration Parameters: LSCINT.P

\*\*\*\*\*  
 Peak Number 1 unknown-01 Concentration Rank 20

R.T.	EstConc	Area	Relative to ISTD	R.T.
3.846	2.86 ng/ul	136347	1,4-Dichlorobenzene-d4	7.957

Hit#	of 5	Tentative ID	MW	MolForm	CAS#	Qual
1		Thiazole	85	C3H3NS	000288-47-1	40
2		2H-Pyran, tetrahydro-2-methyl-	100	C6H12O	010141-72-7	38
3		2H-Pyran, tetrahydro-2-methyl-	100	C6H12O	010141-72-7	38
4		2-(Bromomethyl)acrylic acid	164	C4H5BrO2	072707-66-5	33
5		2-Pyrrolidinone	85	C4H7NO	000616-45-5	28



Data Path : Z:\svoasrv\HPCHEM1\BNA\_P\Data\BP092823\  
 Data File : BP017414.D  
 Acq On : 28 Sep 2023 15:15  
 Operator : MA/JU  
 Sample : 04417-40  
 Misc :  
 ALS Vial : 6 Sample Multiplier: 1

Instrument :  
 BNA\_P  
 ClientSampleId :  
 EZYE7

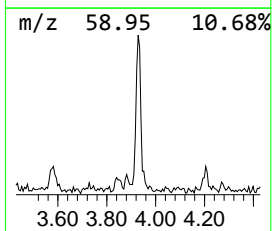
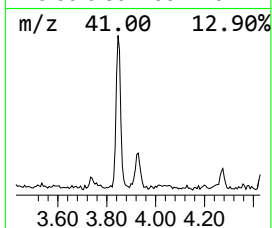
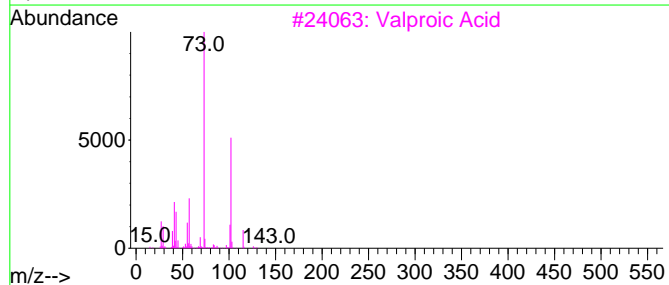
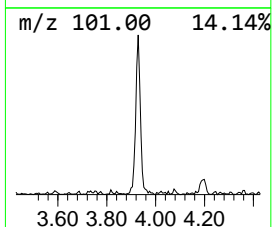
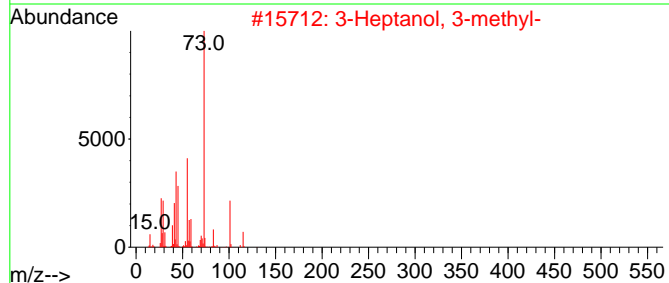
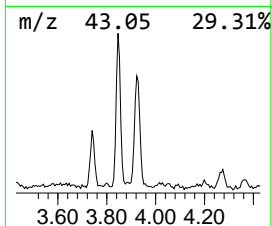
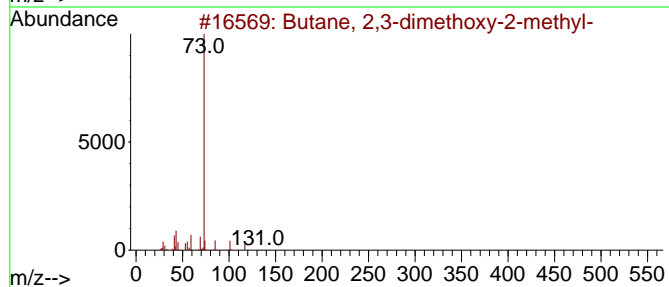
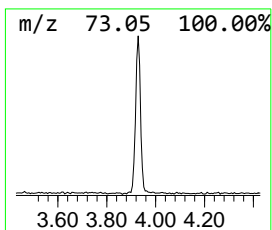
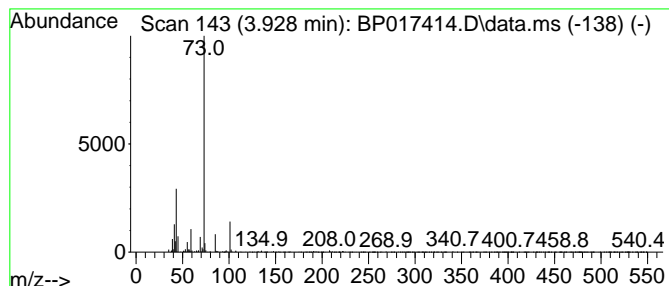
Quant Method : Z:\svoasrv\HPCHEM1\BNA\_P\Methods\SFAM-EPA-BP092023.MA.M  
 Quant Title : SVOA CALIBRATION

TIC Library : C:\DATABASE\NIST20.L  
 TIC Integration Parameters: LSCINT.P

\*\*\*\*\*  
 Peak Number 2 Butane, 2,3-dimethoxy-2-met... Concentration Rank 22

R.T.	EstConc	Area	Relative to ISTD	R.T.
3.928	2.31 ng/ul	110091	1,4-Dichlorobenzene-d4	7.957

Hit#	of	5	Tentative ID	MW	MolForm	CAS#	Qual
1			Butane, 2,3-dimethoxy-2-methyl-	132	C7H16O2	074421-00-4	50
2			3-Heptanol, 3-methyl-	130	C8H18O	005582-82-1	37
3			Valproic Acid	144	C8H16O2	000099-66-1	25
4			Pentane, 3-methoxy-	102	C6H14O	036839-67-5	10
5			N-Ethylformamide	73	C3H7NO	000627-45-2	9



Data Path : Z:\svoasrv\HPCHEM1\BNA\_P\Data\BP092823\  
 Data File : BP017414.D  
 Acq On : 28 Sep 2023 15:15  
 Operator : MA/JU  
 Sample : 04417-40  
 Misc :  
 ALS Vial : 6 Sample Multiplier: 1

Instrument :  
 BNA\_P  
 ClientSampleId :  
 EZYE7

Quant Method : Z:\svoasrv\HPCHEM1\BNA\_P\Methods\SFAM-EPA-BP092023.MA.M  
 Quant Title : SVOA CALIBRATION

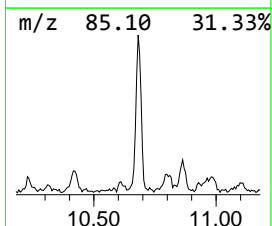
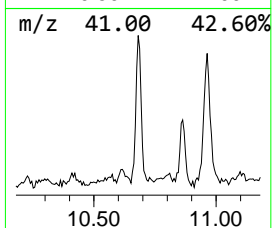
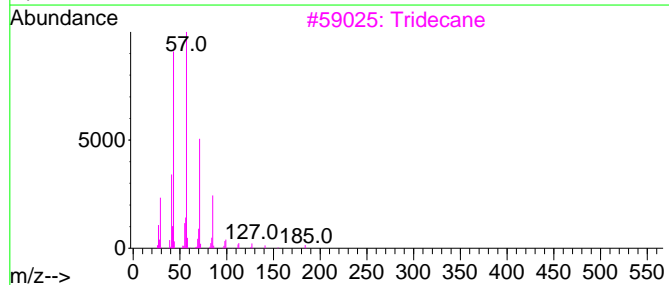
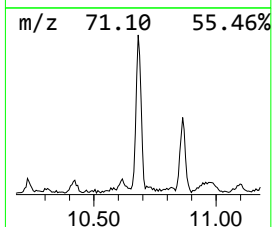
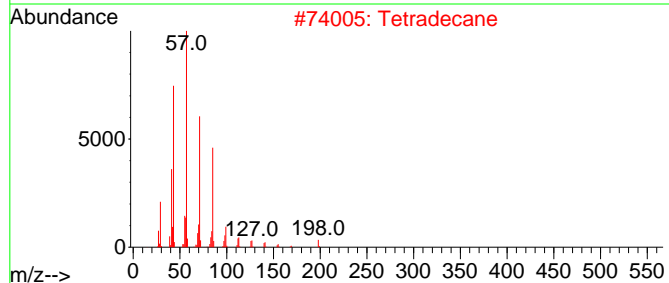
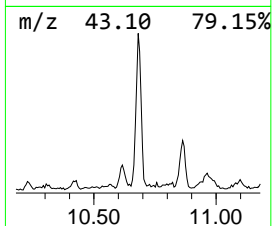
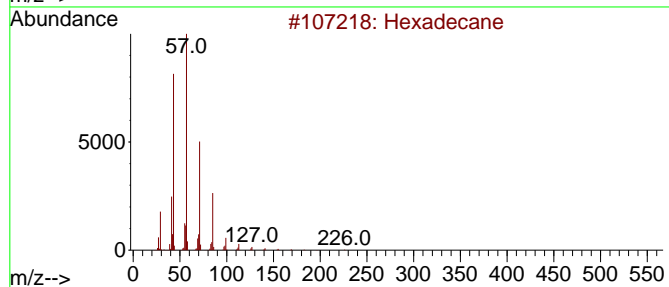
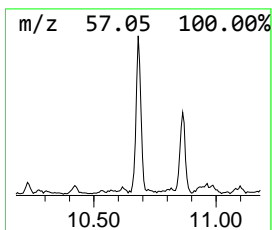
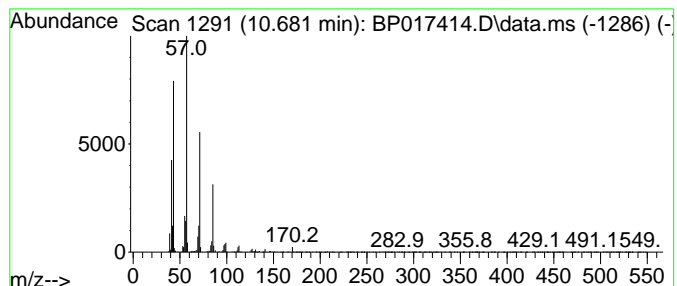
TIC Library : C:\DATABASE\NIST20.L  
 TIC Integration Parameters: LSCINT.P

\*\*\*\*\*  
 Peak Number 3 (DEL) Alkane: Straight-Chai... Concentration Rank 25

R.T.	EstConc	Area	Relative to ISTD	R.T.
10.681	2.15 ng/ul	155443	Naphthalene-d8	10.793

Hit#	of 5	Tentative ID	MW	MolForm	CAS#	Qual
1		Hexadecane	226	C16H34	000544-76-3	91
2		Tetradecane	198	C14H30	000629-59-4	90
3		Tridecane	184	C13H28	000629-50-5	86
4		Hexadecane	226	C16H34	000544-76-3	86
5		Hexatriacontane	507	C36H74	000630-06-8	83



Data Path : Z:\svoasrv\HPCHEM1\BNA\_P\Data\BP092823\  
 Data File : BP017414.D  
 Acq On : 28 Sep 2023 15:15  
 Operator : MA/JU  
 Sample : 04417-40  
 Misc :  
 ALS Vial : 6 Sample Multiplier: 1

Instrument :  
 BNA\_P  
 ClientSampleId :  
 EZYE7

Quant Method : Z:\svoasrv\HPCHEM1\BNA\_P\Methods\SFAM-EPA-BP092023.MA.M  
 Quant Title : SVOA CALIBRATION

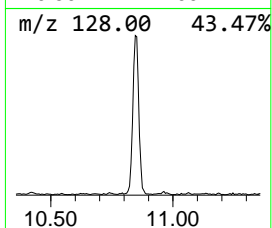
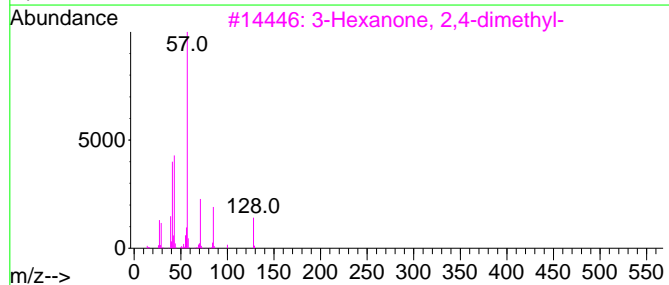
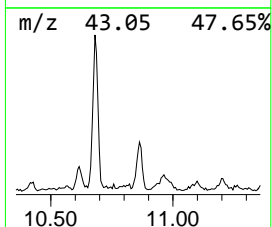
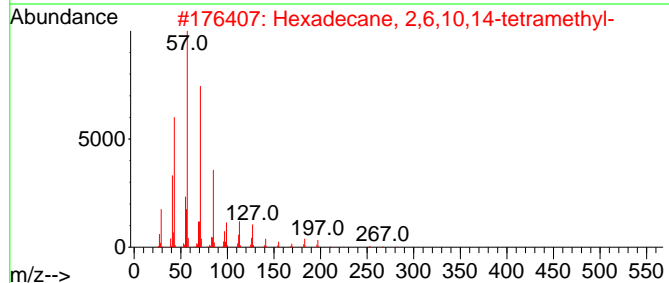
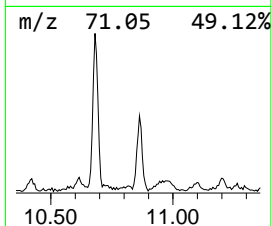
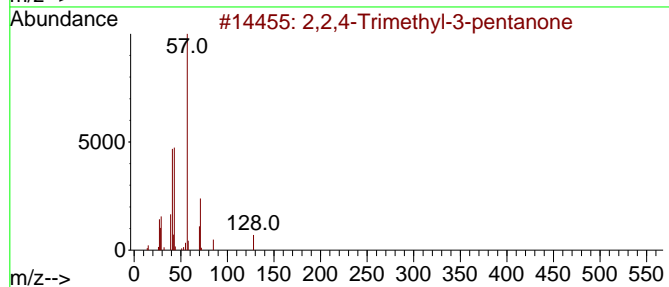
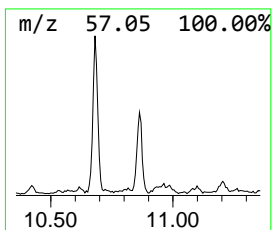
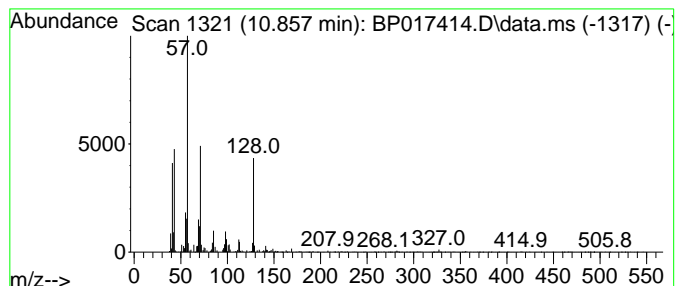
TIC Library : C:\DATABASE\NIST20.L  
 TIC Integration Parameters: LSCINT.P

\*\*\*\*\*  
 Peak Number 4 2,2,4-Trimethyl-3-pentanone Concentration Rank 26

R.T.	EstConc	Area	Relative to ISTD	R.T.
10.857	2.03 ng/ul	146808	Naphthalene-d8	10.793

Hit#	of 5	Tentative ID	MW	MolForm	CAS#	Qual
1		2,2,4-Trimethyl-3-pentanone	128	C8H16O	005857-36-3	50
2		Hexadecane, 2,6,10,14-tetramethyl-	282	C20H42	000638-36-8	45
3		3-Hexanone, 2,4-dimethyl-	128	C8H16O	018641-70-8	43
4		3-Hexanone, 2,2-dimethyl-	128	C8H16O	005405-79-8	38
5		Heptadecane, 2,6-dimethyl-	268	C19H40	054105-67-8	38





Data Path : Z:\svoasrv\HPCHEM1\BNA\_P\Data\BP092823\  
 Data File : BP017414.D  
 Acq On : 28 Sep 2023 15:15  
 Operator : MA/JU  
 Sample : 04417-40  
 Misc :  
 ALS Vial : 6 Sample Multiplier: 1

Instrument :  
 BNA\_P  
 ClientSampleId :  
 EZYE7

Quant Method : Z:\svoasrv\HPCHEM1\BNA\_P\Methods\SFAM-EPA-BP092023.MA.M  
 Quant Title : SVOA CALIBRATION

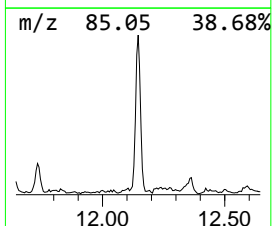
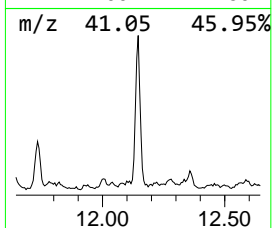
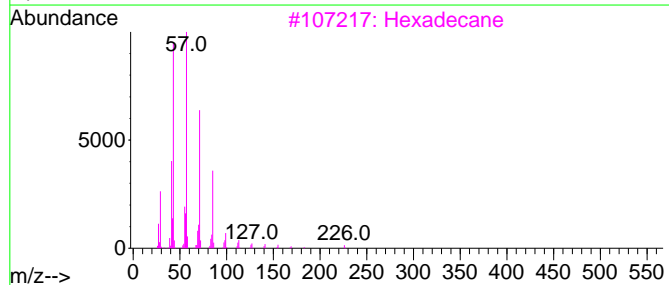
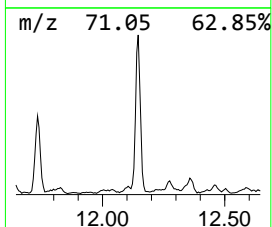
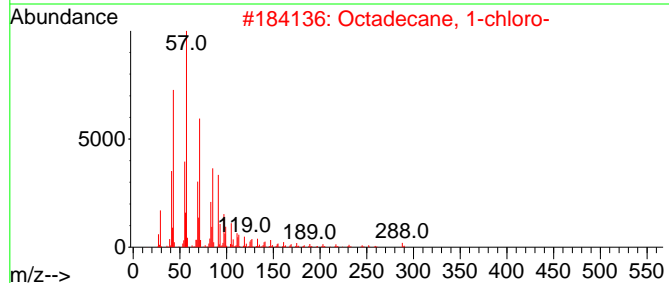
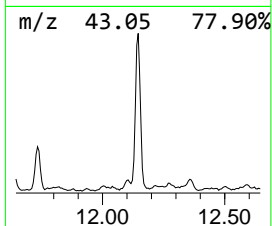
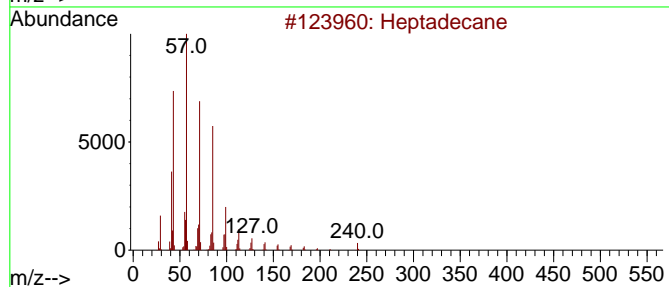
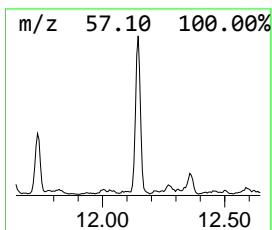
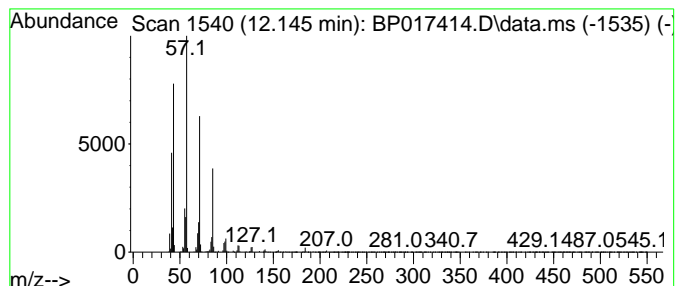
TIC Library : C:\DATABASE\NIST20.L  
 TIC Integration Parameters: LSCINT.P

\*\*\*\*\*  
 Peak Number 5 (DEL) Alkane: Straight-Chai... Concentration Rank 15

R.T.	EstConc	Area	Relative to ISTD	R.T.
12.145	5.38 ng/ul	388046	Naphthalene-d8	10.793

Hit#	of 5	Tentative ID	MW	MolForm	CAS#	Qual
1		Heptadecane	240	C17H36	000629-78-7	94
2		Octadecane, 1-chloro-	288	C18H37Cl	003386-33-2	90
3		Hexadecane	226	C16H34	000544-76-3	90
4		Tetradecane, 2,6,10-trimethyl-	240	C17H36	014905-56-7	87
5		Nonane, 3,7-dimethyl-	156	C11H24	017302-32-8	86



Data Path : Z:\svoasrv\HPCHEM1\BNA\_P\Data\BP092823\  
 Data File : BP017414.D  
 Acq On : 28 Sep 2023 15:15  
 Operator : MA/JU  
 Sample : 04417-40  
 Misc :  
 ALS Vial : 6 Sample Multiplier: 1

Instrument :  
 BNA\_P  
 ClientSampleId :  
 EZYE7

Quant Method : Z:\svoasrv\HPCHEM1\BNA\_P\Methods\SFAM-EPA-BP092023.MA.M  
 Quant Title : SVOA CALIBRATION

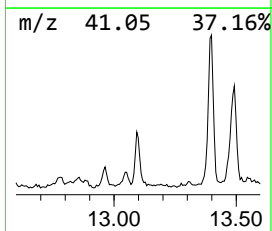
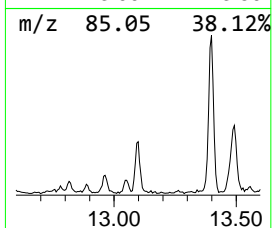
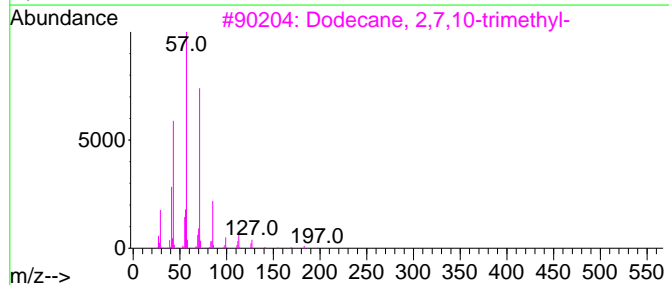
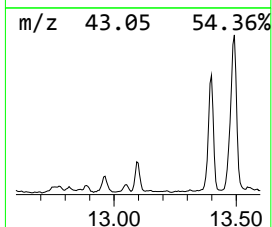
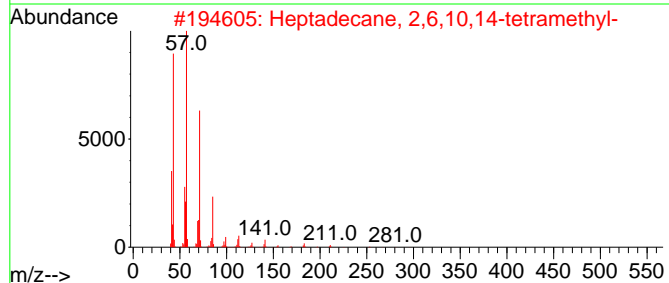
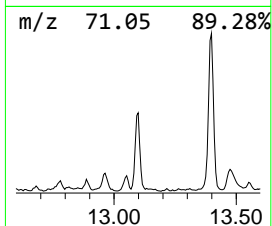
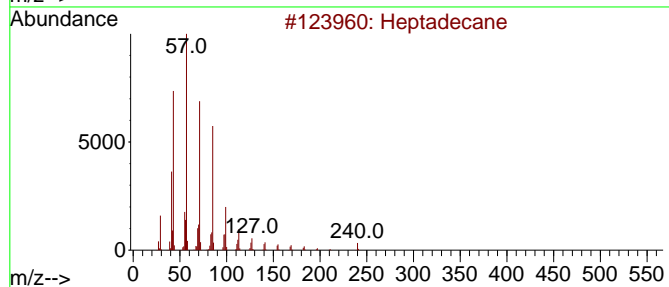
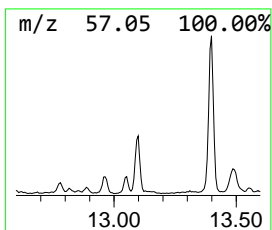
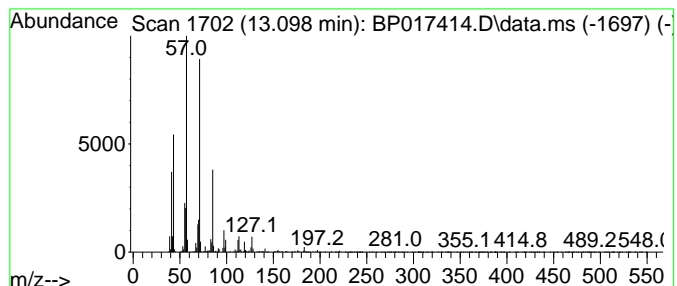
TIC Library : C:\DATABASE\NIST20.L  
 TIC Integration Parameters: LSCINT.P

\*\*\*\*\*  
 Peak Number 6 (DEL) Alkane: Straight-Chai... Concentration Rank 24

R.T.	EstConc	Area	Relative to ISTD	R.T.
13.098	2.22 ng/ul	192620	Acenaphthene-d10	14.651

Hit#	of 5	Tentative ID	MW	MolForm	CAS#	Qual
1		Heptadecane	240	C17H36	000629-78-7	76
2		Heptadecane, 2,6,10,14-tetramethyl-	296	C21H44	018344-37-1	74
3		Dodecane, 2,7,10-trimethyl-	212	C15H32	074645-98-0	72
4		Undecane, 4,6-dimethyl-	184	C13H28	017312-82-2	64
5		1-Iodo-2-methylundecane	296	C12H25I	073105-67-6	64



Data Path : Z:\svoasrv\HPCHEM1\BNA\_P\Data\BP092823\  
 Data File : BP017414.D  
 Acq On : 28 Sep 2023 15:15  
 Operator : MA/JU  
 Sample : 04417-40  
 Misc :  
 ALS Vial : 6 Sample Multiplier: 1

Instrument :  
 BNA\_P  
 ClientSampleId :  
 EZYE7

Quant Method : Z:\svoasrv\HPCHEM1\BNA\_P\Methods\SFAM-EPA-BP092023.MA.M  
 Quant Title : SVOA CALIBRATION

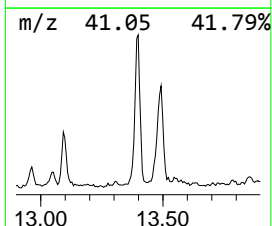
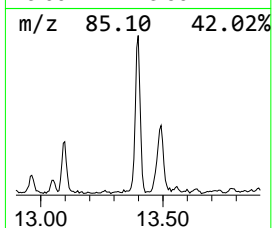
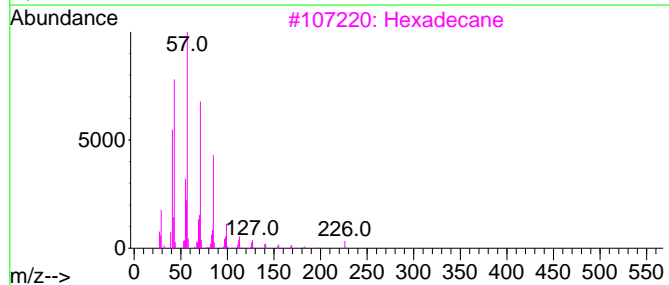
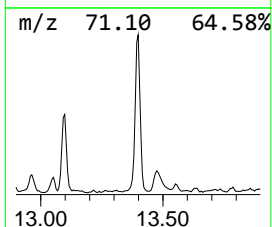
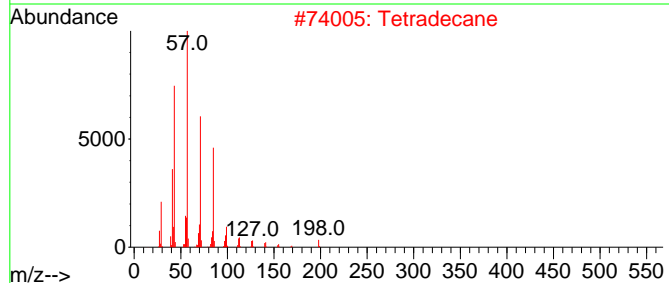
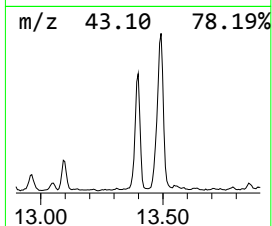
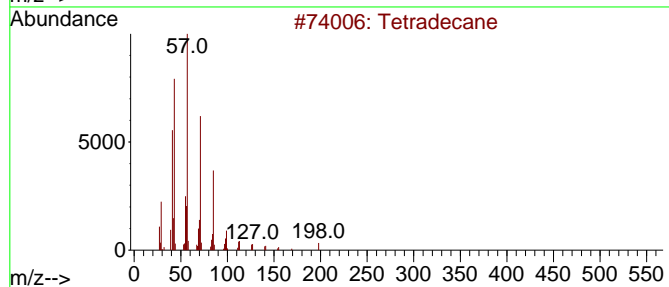
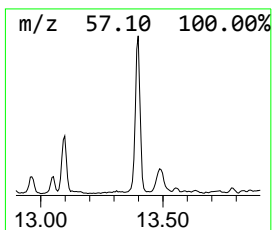
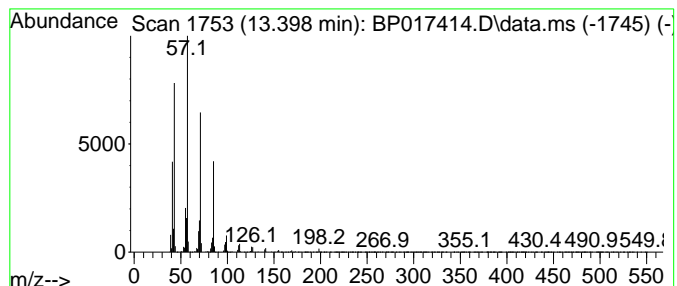
TIC Library : C:\DATABASE\NIST20.L  
 TIC Integration Parameters: LSCINT.P

\*\*\*\*\*  
 Peak Number 7 (DEL) Alkane: Straight-Chai... Concentration Rank 13

R.T.	EstConc	Area	Relative to ISTD	R.T.
13.398	6.22 ng/ul	539079	Acenaphthene-d10	14.651

Hit#	of 5	Tentative ID	MW	MolForm	CAS#	Qual
1		Tetradecane	198	C14H30	000629-59-4	97
2		Tetradecane	198	C14H30	000629-59-4	95
3		Hexadecane	226	C16H34	000544-76-3	91
4		Tridecane	184	C13H28	000629-50-5	86
5		Decane, 2,3,5-trimethyl-	184	C13H28	062238-11-3	83



Data Path : Z:\svoasrv\HPCHEM1\BNA\_P\Data\BP092823\  
 Data File : BP017414.D  
 Acq On : 28 Sep 2023 15:15  
 Operator : MA/JU  
 Sample : 04417-40  
 Misc :  
 ALS Vial : 6 Sample Multiplier: 1

Instrument :  
 BNA\_P  
 ClientSampleId :  
 EZYE7

Quant Method : Z:\svoasrv\HPCHEM1\BNA\_P\Methods\SFAM-EPA-BP092023.MA.M  
 Quant Title : SVOA CALIBRATION

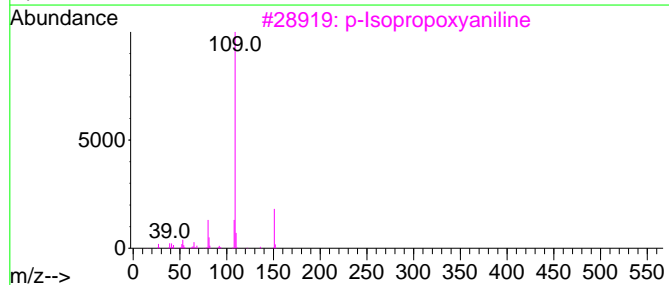
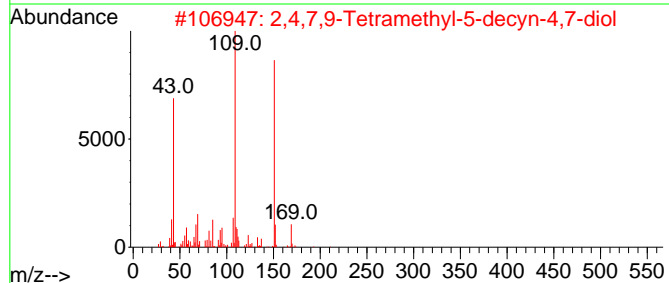
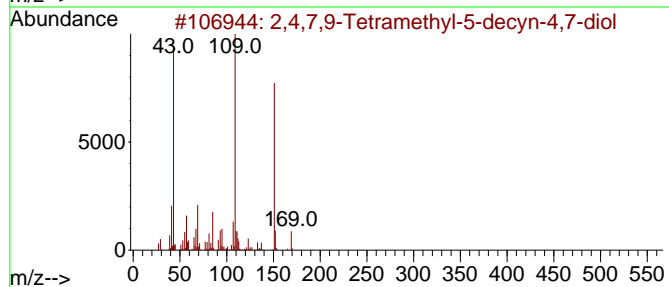
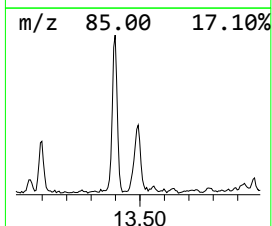
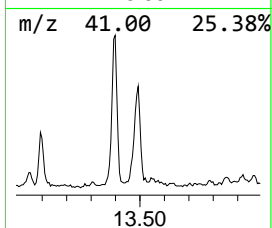
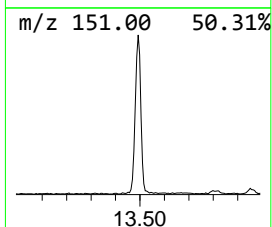
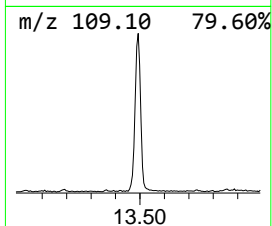
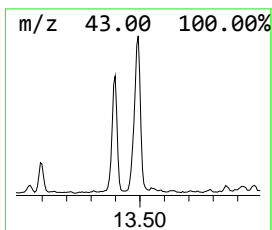
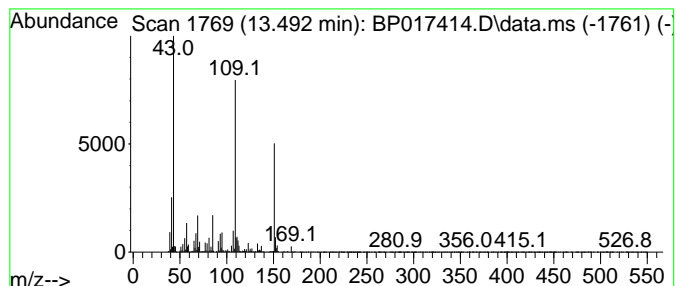
TIC Library : C:\DATABASE\NIST20.L  
 TIC Integration Parameters: LSCINT.P

\*\*\*\*\*  
 Peak Number 8 2,4,7,9-Tetramethyl-5-decyn... Concentration Rank 9

R.T.	EstConc	Area	Relative to ISTD	R.T.
13.492	8.29 ng/ul	718650	Acenaphthene-d10	14.651

Hit#	of 5	Tentative ID	MW	MolForm	CAS#	Qual
1		2,4,7,9-Tetramethyl-5-decyn-4,7-...	226	C14H26O2	000126-86-3	91
2		2,4,7,9-Tetramethyl-5-decyn-4,7-...	226	C14H26O2	000126-86-3	90
3		p-Isopropoxyaniline	151	C9H13NO	007664-66-6	58
4		Metacetamol	151	C8H9NO2	000621-42-1	58
5		m-Isopropoxyaniline	151	C9H13NO	041406-00-2	53



Data Path : Z:\svoasrv\HPCHEM1\BNA\_P\Data\BP092823\  
 Data File : BP017414.D  
 Acq On : 28 Sep 2023 15:15  
 Operator : MA/JU  
 Sample : 04417-40  
 Misc :  
 ALS Vial : 6 Sample Multiplier: 1

Instrument :  
 BNA\_P  
 ClientSampleId :  
 EZYE7

Quant Method : Z:\svoasrv\HPCHEM1\BNA\_P\Methods\SFAM-EPA-BP092023.MA.M  
 Quant Title : SVOA CALIBRATION

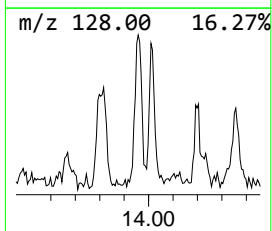
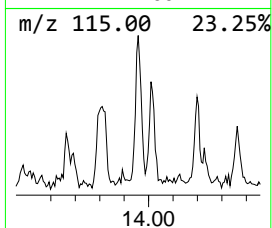
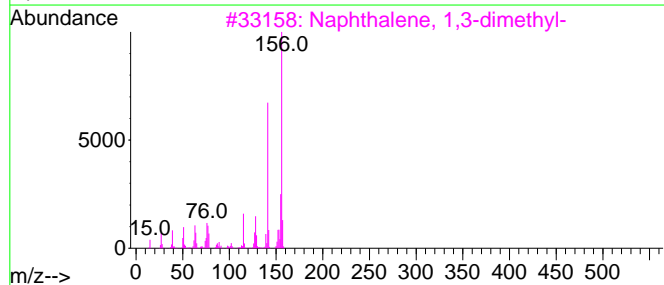
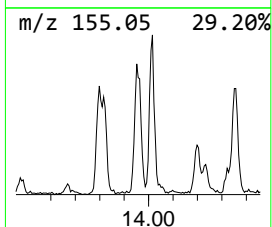
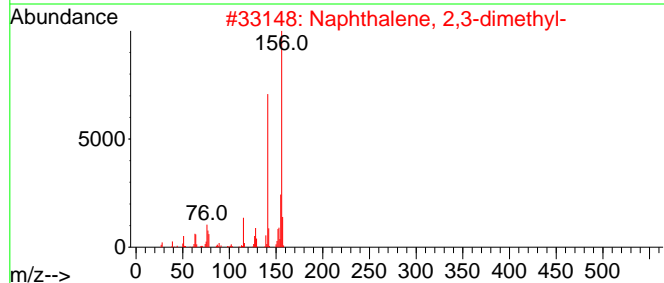
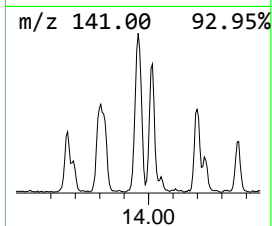
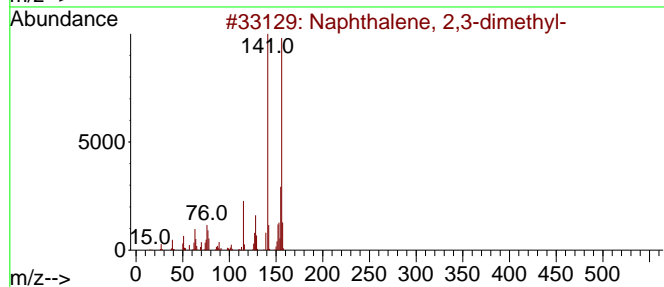
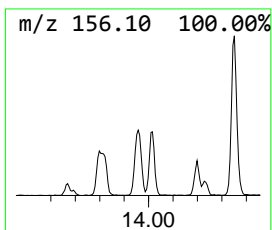
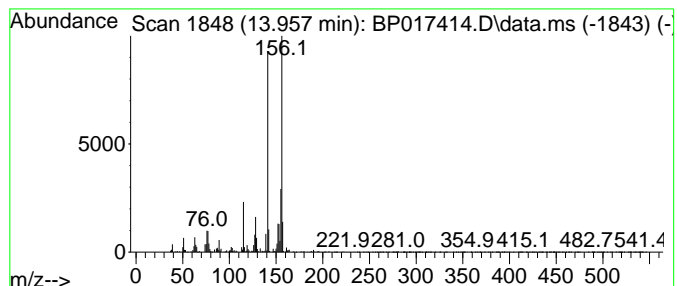
TIC Library : C:\DATABASE\NIST20.L  
 TIC Integration Parameters: LSCINT.P

\*\*\*\*\*  
 Peak Number 9 Naphthalene, 2,3-dimethyl- Concentration Rank 23

R.T.	EstConc	Area	Relative to ISTD	R.T.
13.957	2.29 ng/ul	198305	Acenaphthene-d10	14.651

Hit#	of	5	Tentative ID	MW	MolForm	CAS#	Qual
1			Naphthalene, 2,3-dimethyl-	156	C12H12	000581-40-8	98
2			Naphthalene, 2,3-dimethyl-	156	C12H12	000581-40-8	97
3			Naphthalene, 1,3-dimethyl-	156	C12H12	000575-41-7	97
4			Naphthalene, 2,7-dimethyl-	156	C12H12	000582-16-1	97
5			Naphthalene, 1,6-dimethyl-	156	C12H12	000575-43-9	97



Data Path : Z:\svoasrv\HPCHEM1\BNA\_P\Data\BP092823\  
 Data File : BP017414.D  
 Acq On : 28 Sep 2023 15:15  
 Operator : MA/JU  
 Sample : 04417-40  
 Misc :  
 ALS Vial : 6 Sample Multiplier: 1

Instrument :  
 BNA\_P  
 ClientSampleId :  
 EZYE7

Quant Method : Z:\svoasrv\HPCHEM1\BNA\_P\Methods\SFAM-EPA-BP092023.MA.M  
 Quant Title : SVOA CALIBRATION

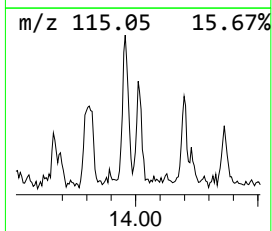
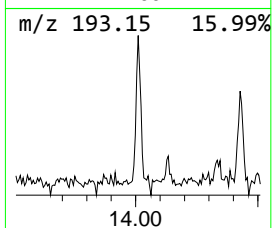
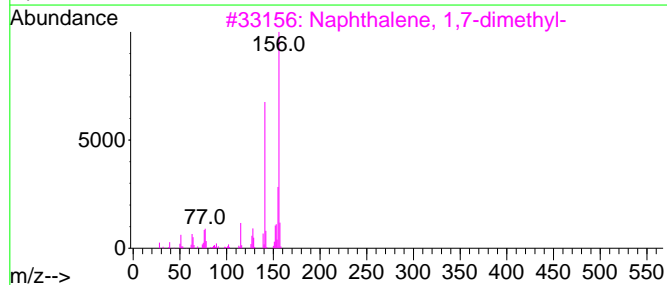
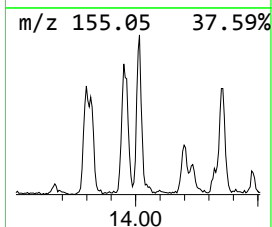
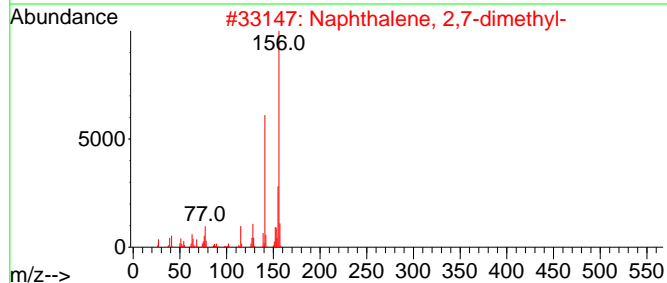
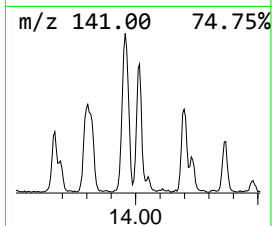
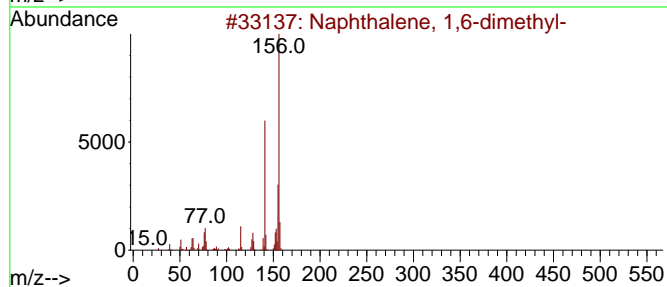
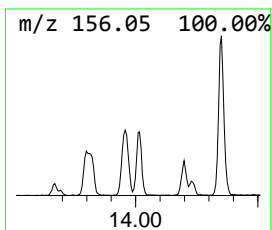
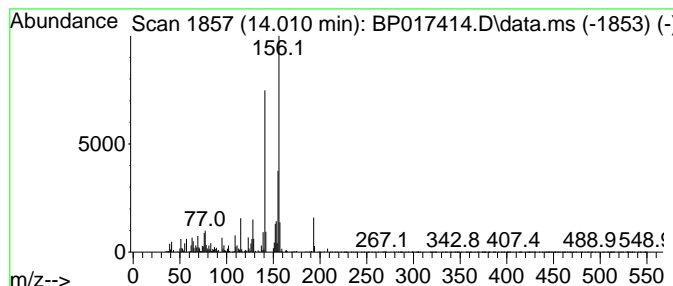
TIC Library : C:\DATABASE\NIST20.L  
 TIC Integration Parameters: LSCINT.P

\*\*\*\*\*  
 Peak Number 10 Naphthalene, 1,6-dimethyl- Concentration Rank 27

R.T.	EstConc	Area	Relative to ISTD	R.T.
14.010	2.01 ng/ul	174629	Acenaphthene-d10	14.651

Hit#	of 5	Tentative ID	MW	MolForm	CAS#	Qual
1		Naphthalene, 1,6-dimethyl-	156	C12H12	000575-43-9	96
2		Naphthalene, 2,7-dimethyl-	156	C12H12	000582-16-1	96
3		Naphthalene, 1,7-dimethyl-	156	C12H12	000575-37-1	96
4		Naphthalene, 1,3-dimethyl-	156	C12H12	000575-41-7	96
5		Naphthalene, 1,2-dimethyl-	156	C12H12	000573-98-8	96



Data Path : Z:\svoasrv\HPCHEM1\BNA\_P\Data\BP092823\  
 Data File : BP017414.D  
 Acq On : 28 Sep 2023 15:15  
 Operator : MA/JU  
 Sample : 04417-40  
 Misc :  
 ALS Vial : 6 Sample Multiplier: 1

Instrument :  
 BNA\_P  
 ClientSampleId :  
 EZYE7

Quant Method : Z:\svoasrv\HPCHEM1\BNA\_P\Methods\SFAM-EPA-BP092023.MA.M  
 Quant Title : SVOA CALIBRATION

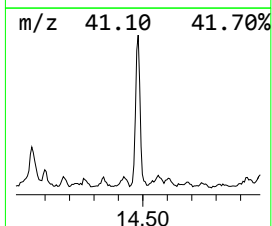
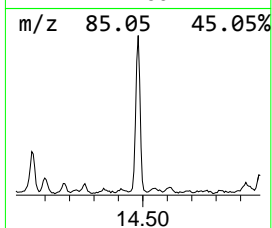
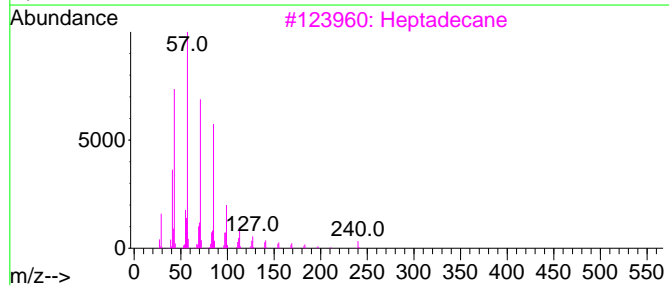
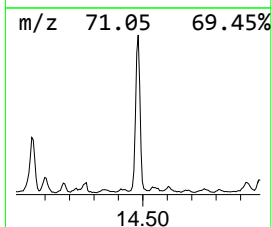
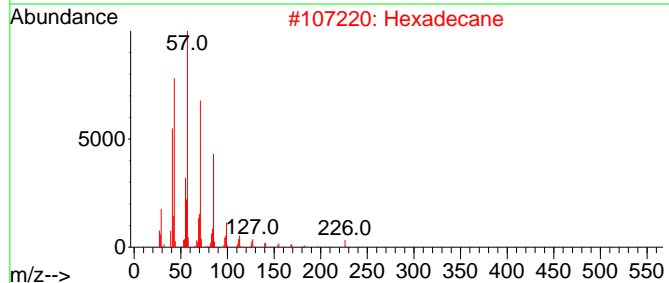
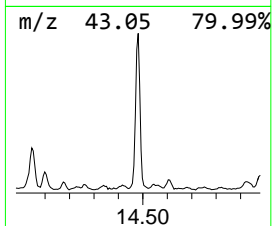
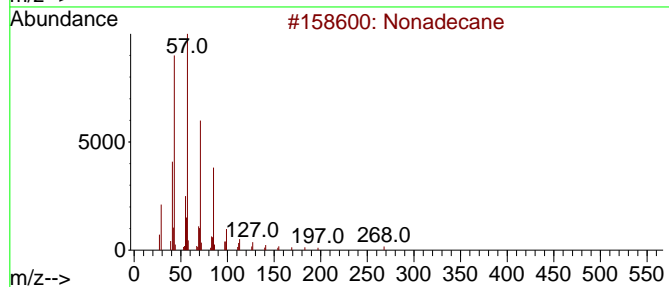
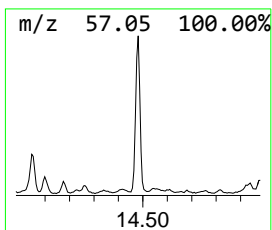
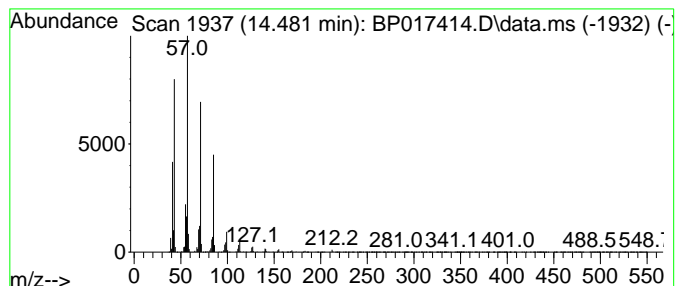
TIC Library : C:\DATABASE\NIST20.L  
 TIC Integration Parameters: LSCINT.P

\*\*\*\*\*  
 Peak Number 11 (DEL) Alkane: Straight-Chai... Concentration Rank 11

R.T.	EstConc	Area	Relative to ISTD	R.T.
14.481	7.32 ng/ul	634825	Acenaphthene-d10	14.651

Hit#	of 5	Tentative ID	MW	MolForm	CAS#	Qual
1		Nonadecane	268	C19H40	000629-92-5	91
2		Hexadecane	226	C16H34	000544-76-3	91
3		Heptadecane	240	C17H36	000629-78-7	90
4		Octane, 2,4,6-trimethyl-	156	C11H24	062016-37-9	86
5		Heptadecane	240	C17H36	000629-78-7	86



Data Path : Z:\svoasrv\HPCHEM1\BNA\_P\Data\BP092823\  
 Data File : BP017414.D  
 Acq On : 28 Sep 2023 15:15  
 Operator : MA/JU  
 Sample : 04417-40  
 Misc :  
 ALS Vial : 6 Sample Multiplier: 1

Instrument :  
 BNA\_P  
 ClientSampleId :  
 EZYE7

Quant Method : Z:\svoasrv\HPCHEM1\BNA\_P\Methods\SFAM-EPA-BP092023.MA.M  
 Quant Title : SVOA CALIBRATION

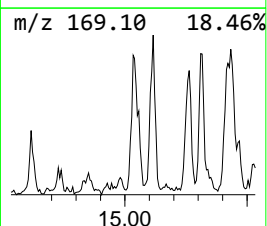
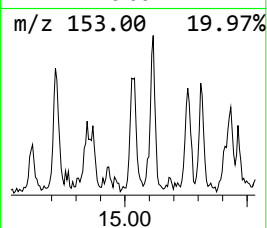
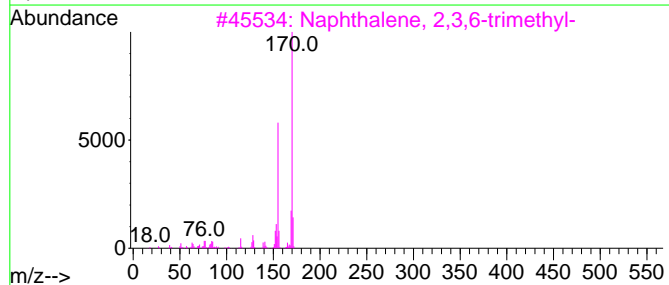
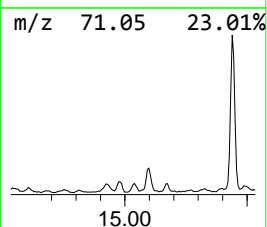
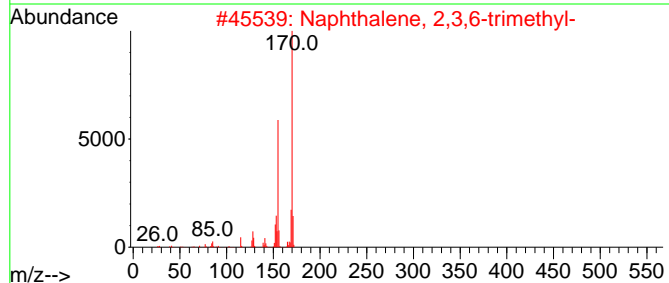
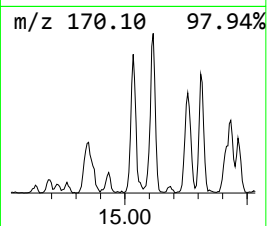
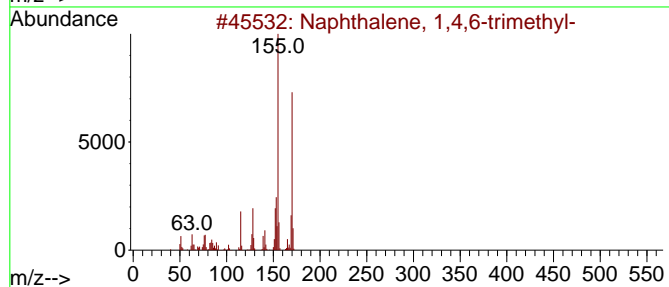
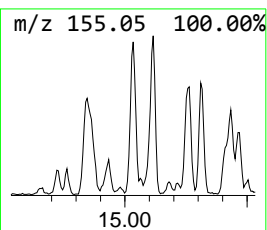
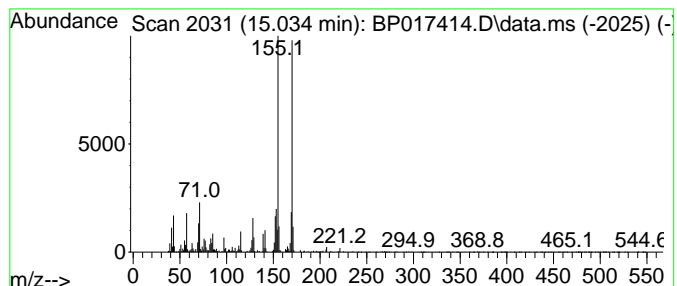
TIC Library : C:\DATABASE\NIST20.L  
 TIC Integration Parameters: LSCINT.P

\*\*\*\*\*  
 Peak Number 12 Naphthalene, 1,4,6-trimethyl- Concentration Rank 28

R.T.	EstConc	Area	Relative to ISTD	R.T.
15.034	2.01 ng/ul	173870	Acenaphthene-d10	14.651

Hit#	of	5	Tentative ID	MW	MolForm	CAS#	Qual
1			Naphthalene, 1,4,6-trimethyl-	170	C13H14	002131-42-2	97
2			Naphthalene, 2,3,6-trimethyl-	170	C13H14	000829-26-5	97
3			Naphthalene, 2,3,6-trimethyl-	170	C13H14	000829-26-5	96
4			Naphthalene, 2,3,6-trimethyl-	170	C13H14	000829-26-5	96
5			Naphthalene, 1,6,7-trimethyl-	170	C13H14	002245-38-7	95





Data Path : Z:\svoasrv\HPCHEM1\BNA\_P\Data\BP092823\  
 Data File : BP017414.D  
 Acq On : 28 Sep 2023 15:15  
 Operator : MA/JU  
 Sample : 04417-40  
 Misc :  
 ALS Vial : 6 Sample Multiplier: 1

Instrument :  
 BNA\_P  
 ClientSampleId :  
 EZYE7

Quant Method : Z:\svoasrv\HPCHEM1\BNA\_P\Methods\SFAM-EPA-BP092023.MA.M  
 Quant Title : SVOA CALIBRATION

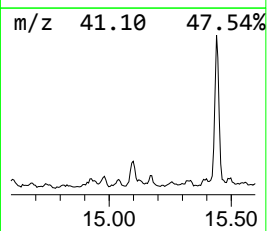
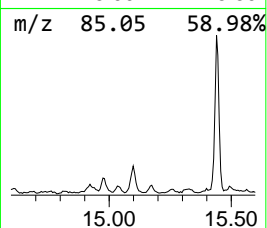
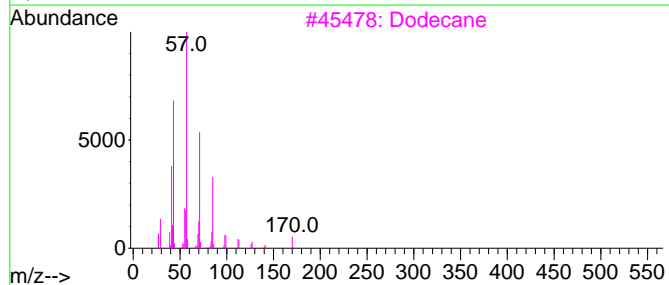
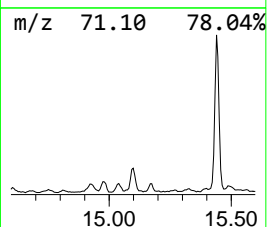
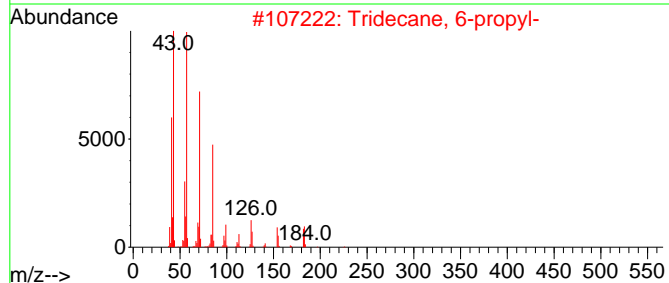
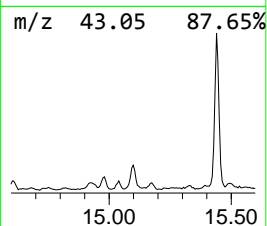
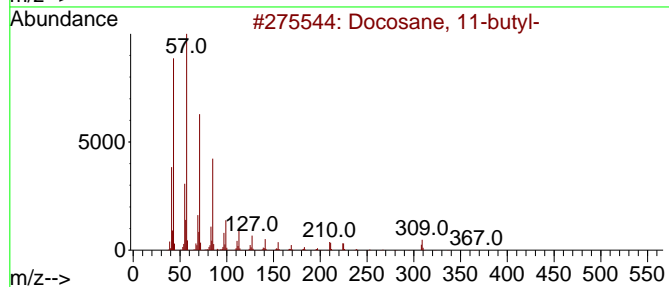
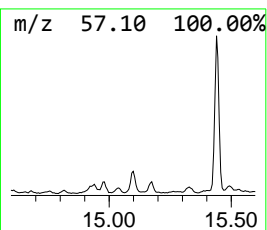
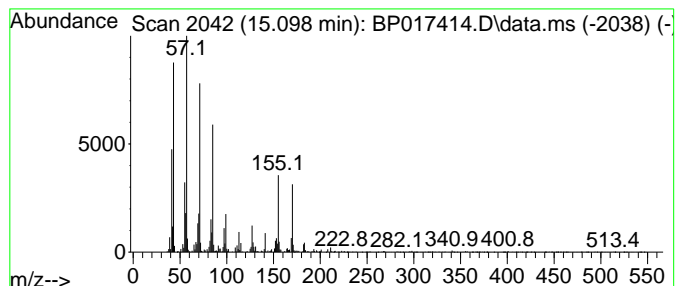
TIC Library : C:\DATABASE\NIST20.L  
 TIC Integration Parameters: LSCINT.P

\*\*\*\*\*  
 Peak Number 13 (DEL) Alkane: Straight-Chai... Concentration Rank 21

R.T.	EstConc	Area	Relative to ISTD	R.T.
15.098	2.81 ng/ul	243807	Acenaphthene-d10	14.651

Hit#	of 5	Tentative ID	MW	MolForm	CAS#	Qual
1		Docosane, 11-butyl-	366	C26H54	013475-76-8	93
2		Tridecane, 6-propyl-	226	C16H34	055045-10-8	81
3		Dodecane	170	C12H26	000112-40-3	81
4		Tetracosane, 1-iodo-	464	C24H49I	1000406-32-0	76
5		Eicosane, 3-methyl-	296	C21H44	006418-46-8	76



Data Path : Z:\svoasrv\HPCHEM1\BNA\_P\Data\BP092823\  
 Data File : BP017414.D  
 Acq On : 28 Sep 2023 15:15  
 Operator : MA/JU  
 Sample : 04417-40  
 Misc :  
 ALS Vial : 6 Sample Multiplier: 1

Instrument :  
 BNA\_P  
 ClientSampleId :  
 EZYE7

Quant Method : Z:\svoasrv\HPCHEM1\BNA\_P\Methods\SFAM-EPA-BP092023.MA.M  
 Quant Title : SVOA CALIBRATION

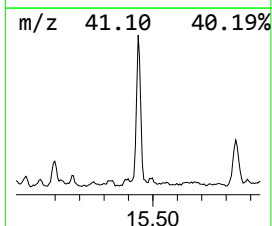
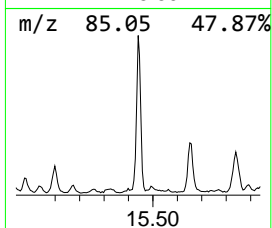
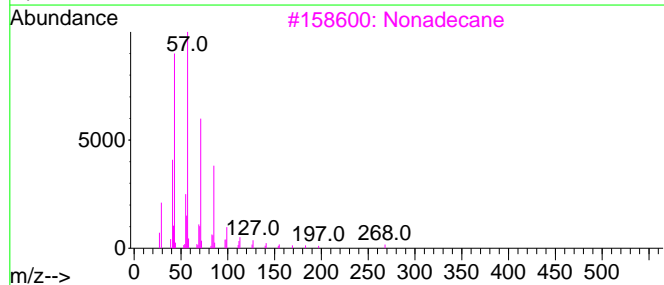
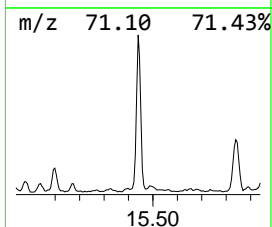
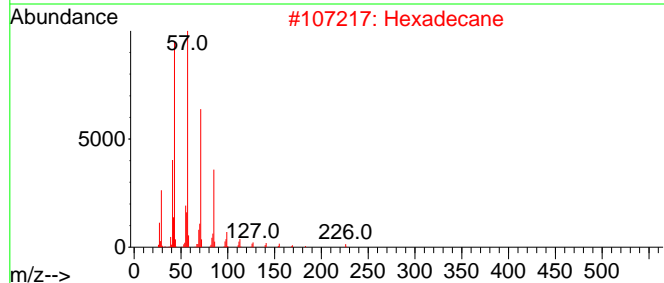
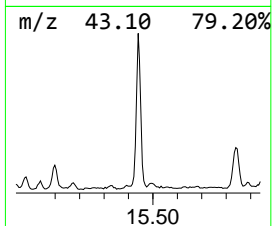
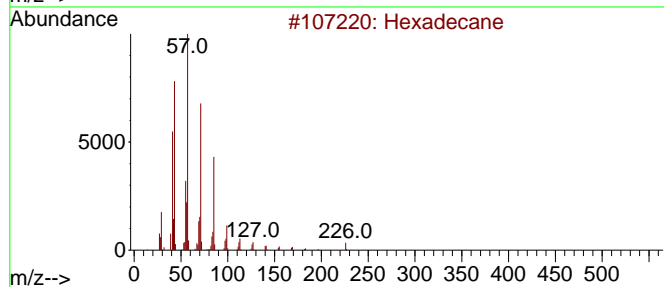
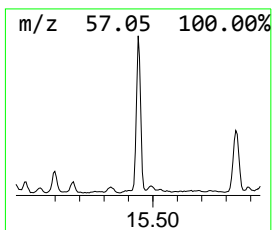
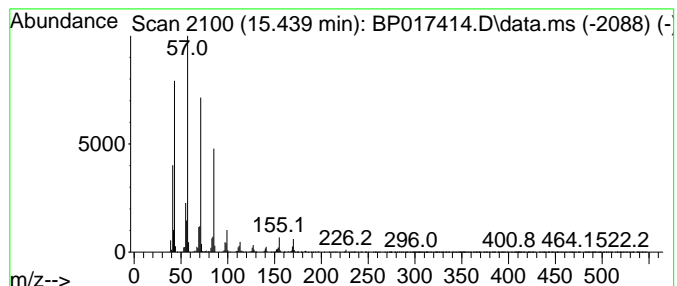
TIC Library : C:\DATABASE\NIST20.L  
 TIC Integration Parameters: LSCINT.P

\*\*\*\*\*  
 Peak Number 14 (DEL) Alkane: Straight-Chai... Concentration Rank 8

R.T.	EstConc	Area	Relative to ISTD	R.T.
15.439	10.51 ng/ul	910697	Acenaphthene-d10	14.651

Hit#	of 5	Tentative ID	MW	MolForm	CAS#	Qual
1		Hexadecane	226	C16H34	000544-76-3	93
2		Hexadecane	226	C16H34	000544-76-3	93
3		Nonadecane	268	C19H40	000629-92-5	91
4		Nonadecane	268	C19H40	000629-92-5	90
5		Tridecane	184	C13H28	000629-50-5	83



Data Path : Z:\svoasrv\HPCHEM1\BNA\_P\Data\BP092823\  
 Data File : BP017414.D  
 Acq On : 28 Sep 2023 15:15  
 Operator : MA/JU  
 Sample : 04417-40  
 Misc :  
 ALS Vial : 6 Sample Multiplier: 1

Instrument :  
 BNA\_P  
 ClientSampleId :  
 EZYE7

Quant Method : Z:\svoasrv\HPCHEM1\BNA\_P\Methods\SFAM-EPA-BP092023.MA.M  
 Quant Title : SVOA CALIBRATION

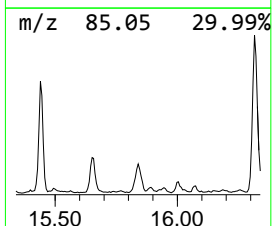
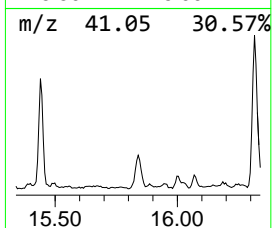
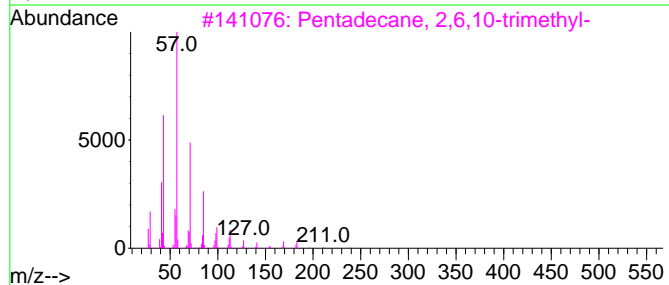
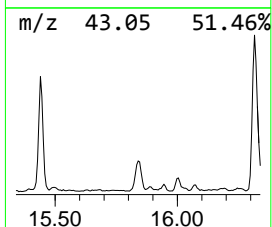
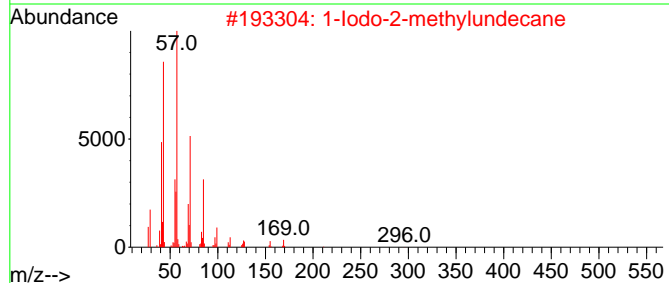
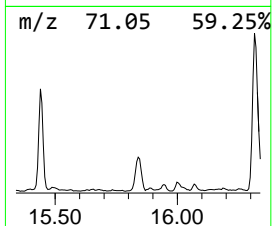
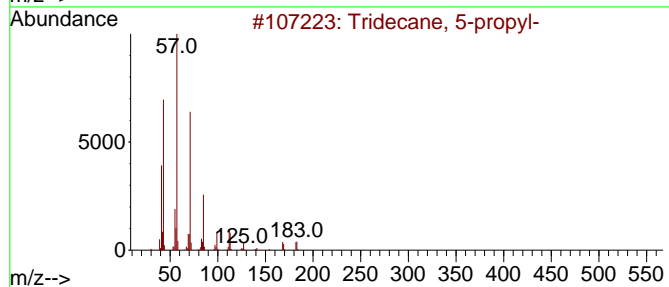
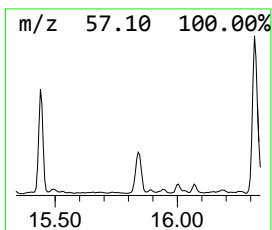
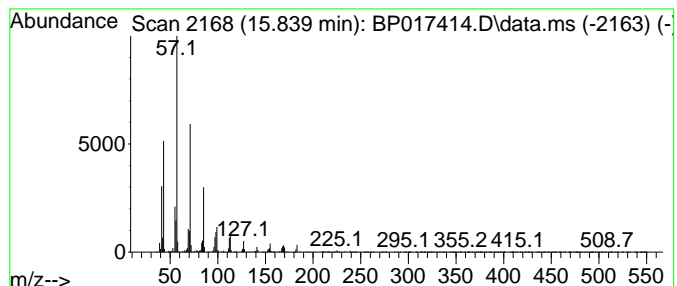
TIC Library : C:\DATABASE\NIST20.L  
 TIC Integration Parameters: LSCINT.P

\*\*\*\*\*  
 Peak Number 15 (DEL) Alkane: Straight-Chai... Concentration Rank 19

R.T.	EstConc	Area	Relative to ISTD	R.T.
15.839	3.83 ng/ul	331696	Acenaphthene-d10	14.651

Hit# of 5	Tentative ID	MW	MolForm	CAS#	Qual
1	Tridecane, 5-propyl-	226	C16H34	055045-11-9	90
2	1-Iodo-2-methylundecane	296	C12H25I	073105-67-6	90
3	Pentadecane, 2,6,10-trimethyl-	254	C18H38	003892-00-0	87
4	Tetradecane, 1-iodo-	324	C14H29I	019218-94-1	83
5	Eicosane	282	C20H42	000112-95-8	83



Data Path : Z:\svoasrv\HPCHEM1\BNA\_P\Data\BP092823\  
 Data File : BP017414.D  
 Acq On : 28 Sep 2023 15:15  
 Operator : MA/JU  
 Sample : 04417-40  
 Misc :  
 ALS Vial : 6 Sample Multiplier: 1

Instrument :  
 BNA\_P  
 ClientSampleId :  
 EZYE7

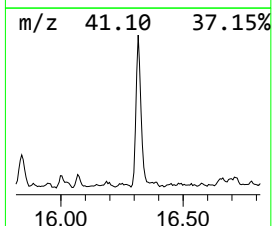
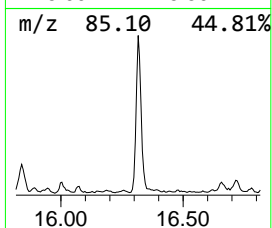
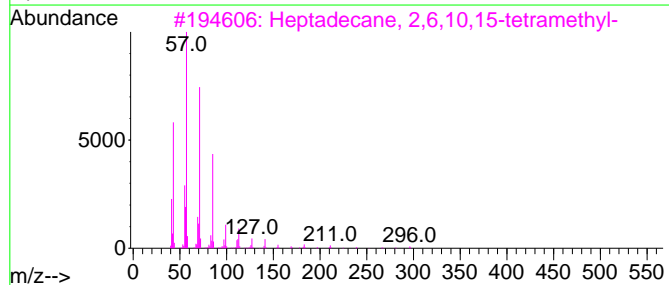
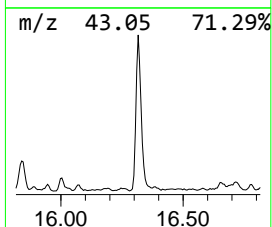
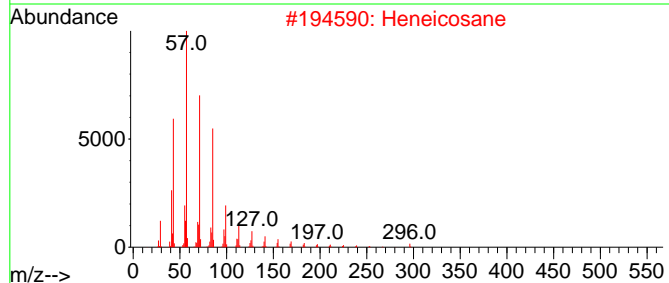
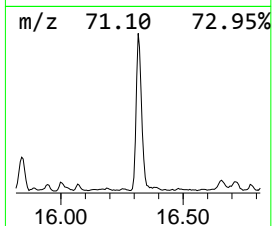
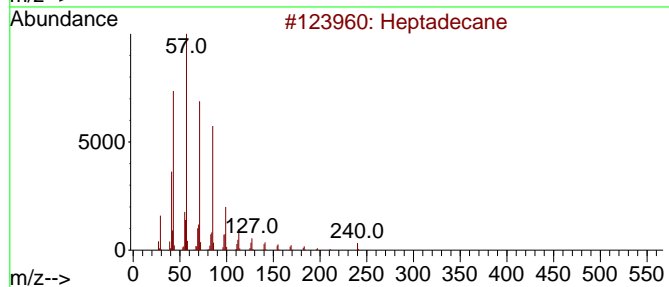
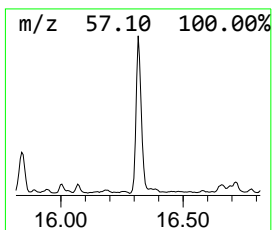
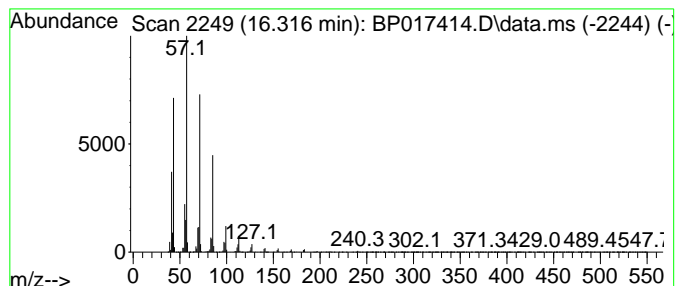
Quant Method : Z:\svoasrv\HPCHEM1\BNA\_P\Methods\SFAM-EPA-BP092023.MA.M  
 Quant Title : SVOA CALIBRATION

TIC Library : C:\DATABASE\NIST20.L  
 TIC Integration Parameters: LSCINT.P

\*\*\*\*\*  
 Peak Number 16 (DEL) Alkane: Straight-Chai... Concentration Rank 4

R.T.	EstConc	Area	Relative to ISTD	R.T.
16.316	14.11 ng/ul	1285770	Phenanthrene-d10	17.439

Hit#	of 5	Tentative ID	MW	MolForm	CAS#	Qual
1		Heptadecane	240	C17H36	000629-78-7	95
2		Heneicosane	296	C21H44	000629-94-7	91
3		Heptadecane, 2,6,10,15-tetramethyl-	296	C21H44	054833-48-6	91
4		Nonadecane	268	C19H40	000629-92-5	91
5		Sulfurous acid, 2-propyl tetrade...	320	C17H36O3S	1010309-12-5	90



Data Path : Z:\svoasrv\HPCHEM1\BNA\_P\Data\BP092823\  
 Data File : BP017414.D  
 Acq On : 28 Sep 2023 15:15  
 Operator : MA/JU  
 Sample : 04417-40  
 Misc :  
 ALS Vial : 6 Sample Multiplier: 1

Instrument :  
 BNA\_P  
 ClientSampleId :  
 EZYE7

Quant Method : Z:\svoasrv\HPCHEM1\BNA\_P\Methods\SFAM-EPA-BP092023.MA.M  
 Quant Title : SVOA CALIBRATION

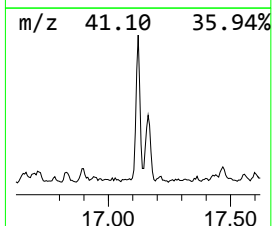
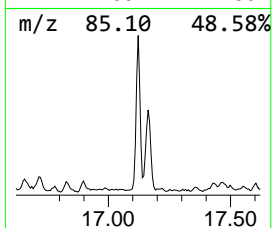
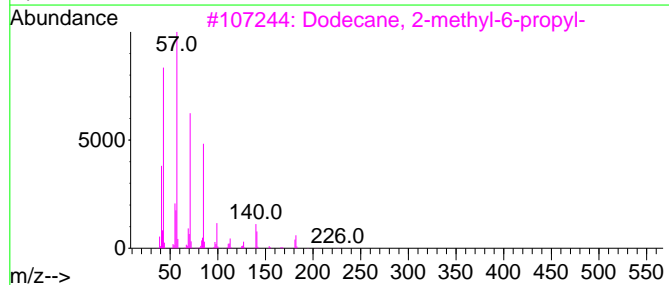
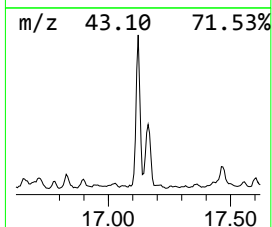
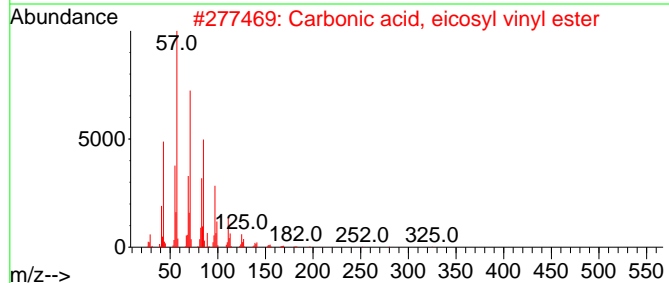
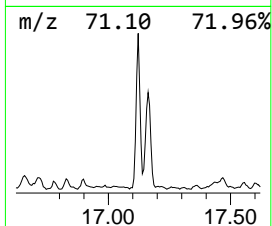
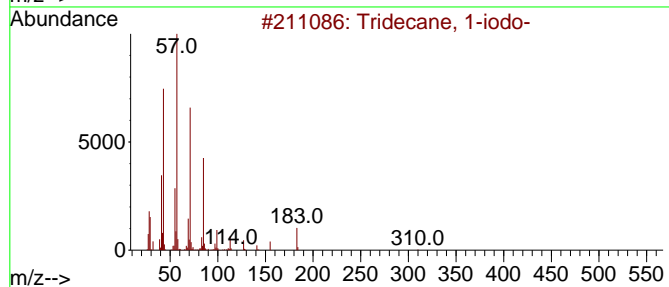
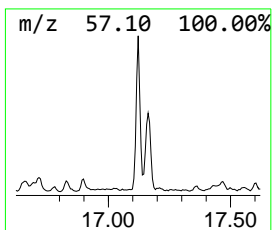
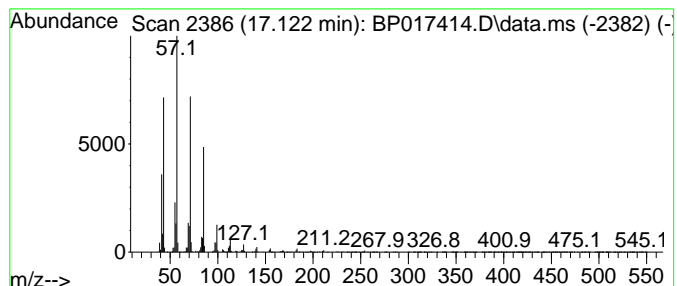
TIC Library : C:\DATABASE\NIST20.L  
 TIC Integration Parameters: LSCINT.P

\*\*\*\*\*  
 Peak Number 17 Tridecane, 1-iodo- Concentration Rank 12

R.T.	EstConc	Area	Relative to ISTD	R.T.
17.122	7.17 ng/ul	653256	Phenanthrene-d10	17.439

Hit#	of 5	Tentative ID	MW	MolForm	CAS#	Qual
1		Tridecane, 1-iodo-	310	C13H27I	035599-77-0	91
2		Carbonic acid, eicosyl vinyl ester	368	C23H44O3	1000382-54-3	91
3		Dodecane, 2-methyl-6-propyl-	226	C16H34	055045-08-4	90
4		Tetradecane	198	C14H30	000629-59-4	90
5		Heneicosane	296	C21H44	000629-94-7	90



Data Path : Z:\svoasrv\HPCHEM1\BNA\_P\Data\BP092823\  
 Data File : BP017414.D  
 Acq On : 28 Sep 2023 15:15  
 Operator : MA/JU  
 Sample : 04417-40  
 Misc :  
 ALS Vial : 6 Sample Multiplier: 1

Instrument :  
 BNA\_P  
 ClientSampleId :  
 EZYE7

Quant Method : Z:\svoasrv\HPCHEM1\BNA\_P\Methods\SFAM-EPA-BP092023.MA.M  
 Quant Title : SVOA CALIBRATION

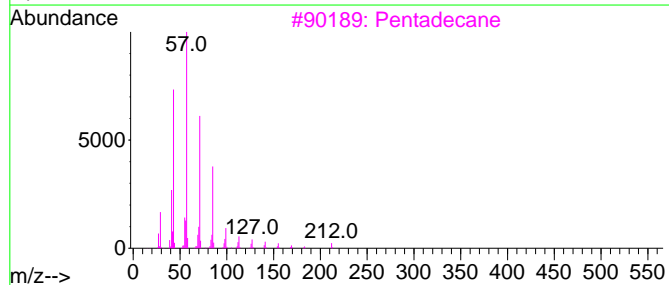
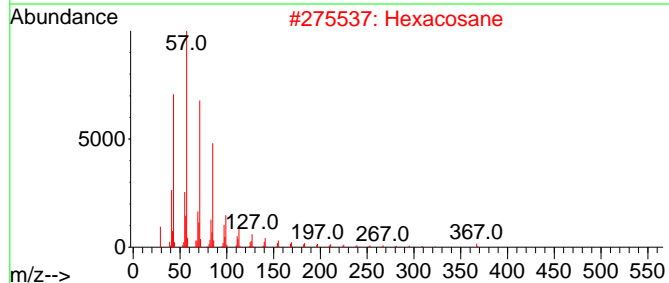
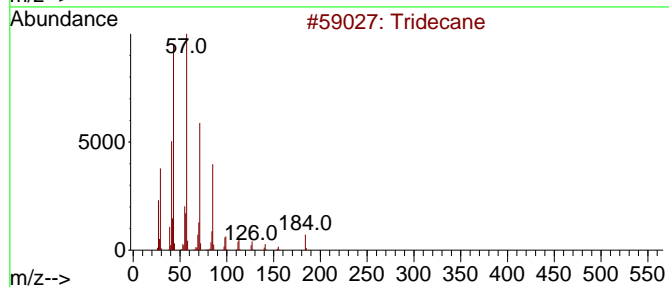
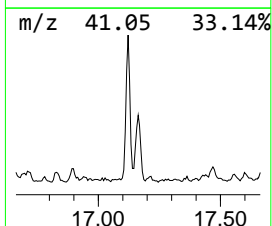
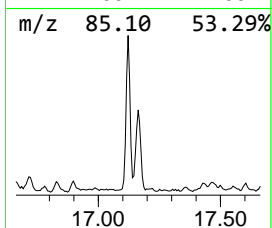
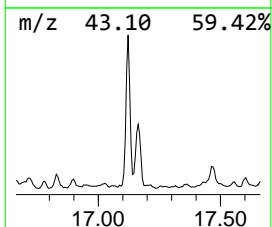
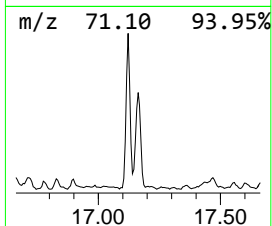
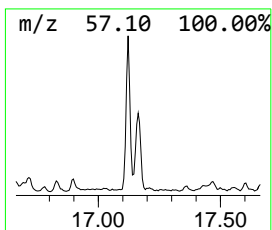
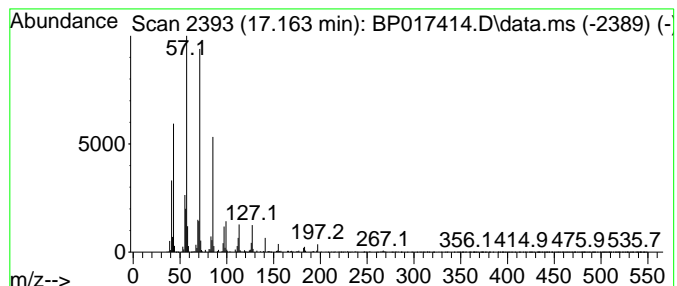
TIC Library : C:\DATABASE\NIST20.L  
 TIC Integration Parameters: LSCINT.P

\*\*\*\*\*  
 Peak Number 18 (DEL) Alkane: Straight-Chai... Concentration Rank 17

R.T.	EstConc	Area	Relative to ISTD	R.T.
17.163	5.28 ng/ul	481405	Phenanthrene-d10	17.439

Hit#	of 5	Tentative ID	MW	MolForm	CAS#	Qual
1		Tridecane	184	C13H28	000629-50-5	90
2		Hexacosane	366	C26H54	000630-01-3	90
3		Pentadecane	212	C15H32	000629-62-9	87
4		Heptadecane, 2,6,10,15-tetramethyl-	296	C21H44	054833-48-6	86
5		Hexadecane, 2,6,10,14-tetramethyl-	282	C20H42	000638-36-8	83



Data Path : Z:\svoasrv\HPCHEM1\BNA\_P\Data\BP092823\  
 Data File : BP017414.D  
 Acq On : 28 Sep 2023 15:15  
 Operator : MA/JU  
 Sample : 04417-40  
 Misc :  
 ALS Vial : 6 Sample Multiplier: 1

Instrument :  
 BNA\_P  
 ClientSampleId :  
 EZYE7

Quant Method : Z:\svoasrv\HPCHEM1\BNA\_P\Methods\SFAM-EPA-BP092023.MA.M  
 Quant Title : SVOA CALIBRATION

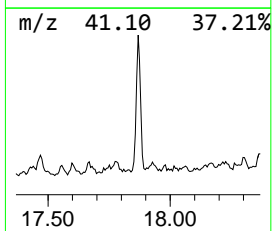
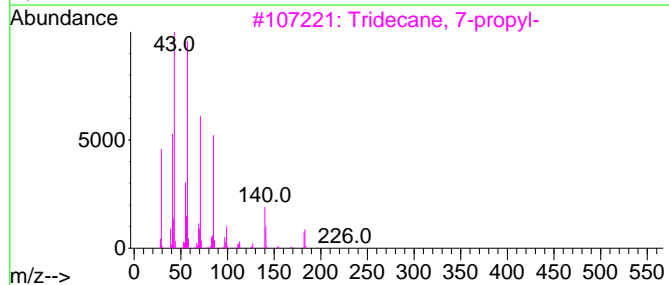
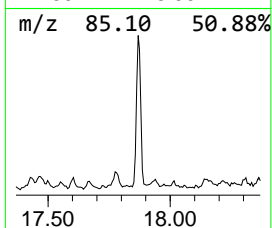
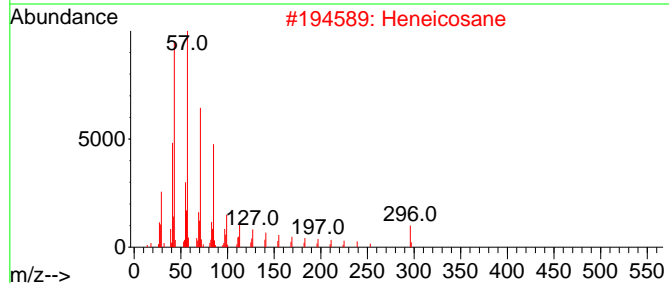
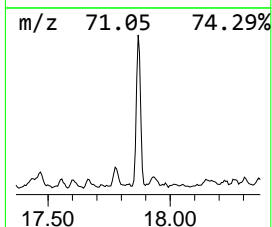
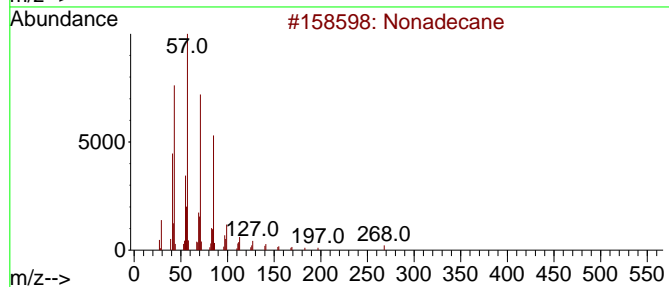
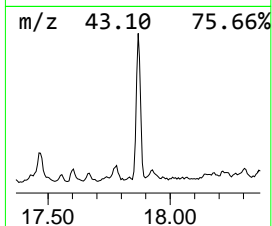
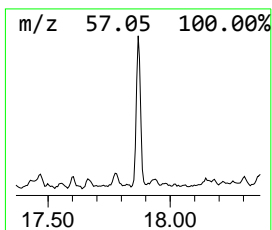
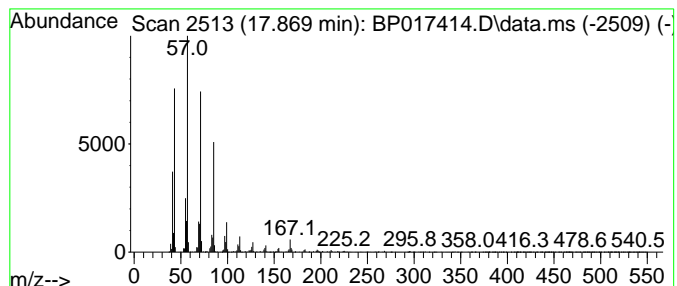
TIC Library : C:\DATABASE\NIST20.L  
 TIC Integration Parameters: LSCINT.P

\*\*\*\*\*  
 Peak Number 19 (DEL) Alkane: Straight-Chai... Concentration Rank 14

R.T.	EstConc	Area	Relative to ISTD	R.T.
17.869	5.85 ng/ul	533182	Phenanthrene-d10	17.439

Hit#	of 5	Tentative ID	MW	MolForm	CAS#	Qual
1		Nonadecane	268	C19H40	000629-92-5	98
2		Heneicosane	296	C21H44	000629-94-7	95
3		Tridecane, 7-propyl-	226	C16H34	055045-09-5	91
4		Pentacosane	352	C25H52	000629-99-2	91
5		Heneicosane	296	C21H44	000629-94-7	91



Data Path : Z:\svoasrv\HPCHEM1\BNA\_P\Data\BP092823\  
 Data File : BP017414.D  
 Acq On : 28 Sep 2023 15:15  
 Operator : MA/JU  
 Sample : 04417-40  
 Misc :  
 ALS Vial : 6 Sample Multiplier: 1

Instrument :  
 BNA\_P  
 ClientSampleId :  
 EZYE7

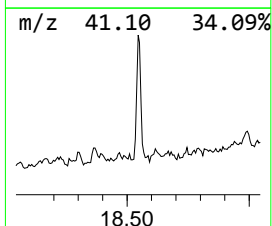
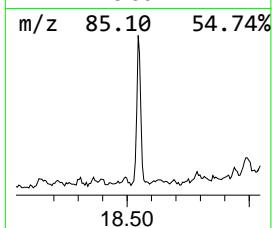
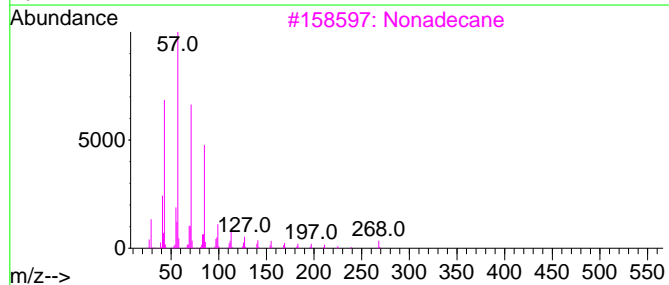
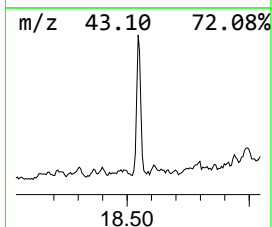
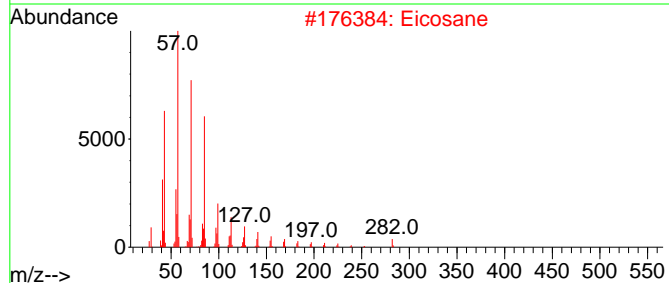
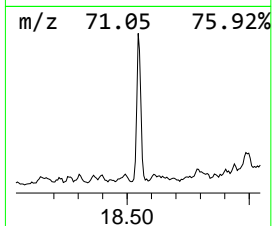
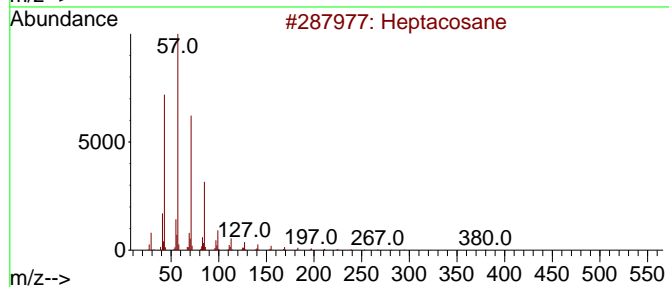
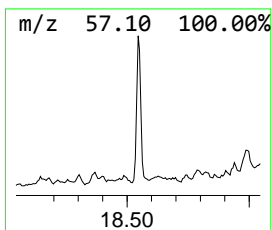
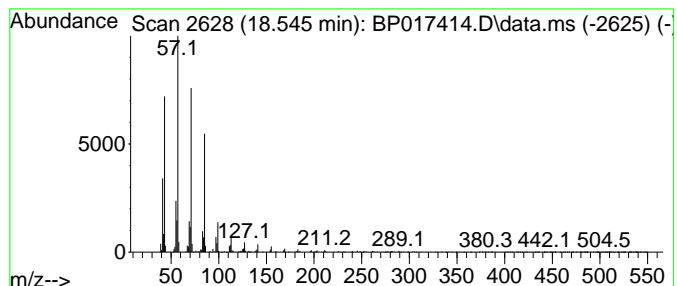
Quant Method : Z:\svoasrv\HPCHEM1\BNA\_P\Methods\SFAM-EPA-BP092023.MA.M  
 Quant Title : SVOA CALIBRATION

TIC Library : C:\DATABASE\NIST20.L  
 TIC Integration Parameters: LSCINT.P

\*\*\*\*\*  
 Peak Number 20 (DEL) Alkane: Straight-Chai... Concentration Rank 18

R.T.	EstConc	Area	Relative to ISTD	R.T.
18.545	5.02 ng/ul	457104	Phenanthrene-d10	17.439

Hit#	of 5	Tentative ID	MW	MolForm	CAS#	Qual
1		Heptacosane	380	C27H56	000593-49-7	97
2		Eicosane	282	C20H42	000112-95-8	94
3		Nonadecane	268	C19H40	000629-92-5	91
4		Nonadecane	268	C19H40	000629-92-5	91
5		Pentadecane	212	C15H32	000629-62-9	91





Data Path : Z:\svoasrv\HPCHEM1\BNA\_P\Data\BP092823\  
 Data File : BP017414.D  
 Acq On : 28 Sep 2023 15:15  
 Operator : MA/JU  
 Sample : 04417-40  
 Misc :  
 ALS Vial : 6 Sample Multiplier: 1

Instrument :  
 BNA\_P  
 ClientSampleId :  
 EZYE7

Quant Method : Z:\svoasrv\HPCHEM1\BNA\_P\Methods\SFAM-EPA-BP092023.MA.M  
 Quant Title : SVOA CALIBRATION

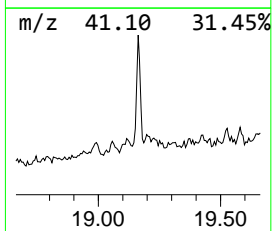
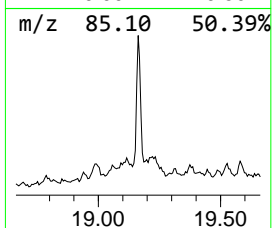
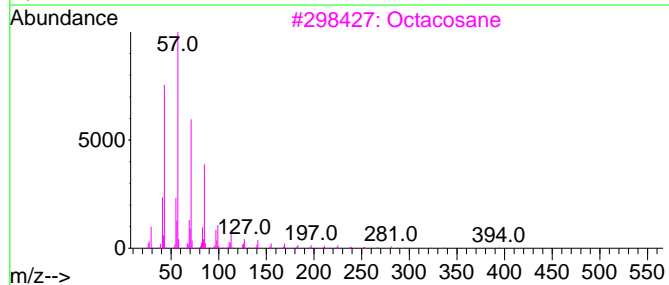
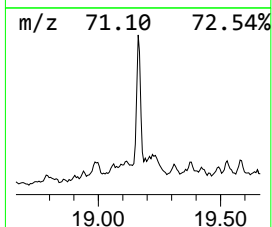
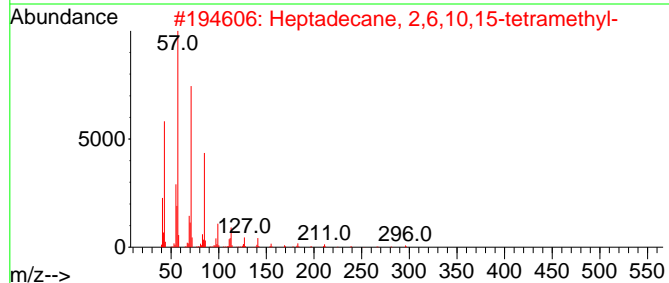
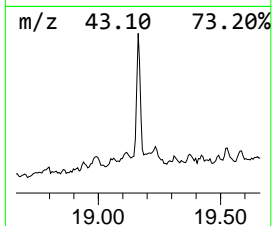
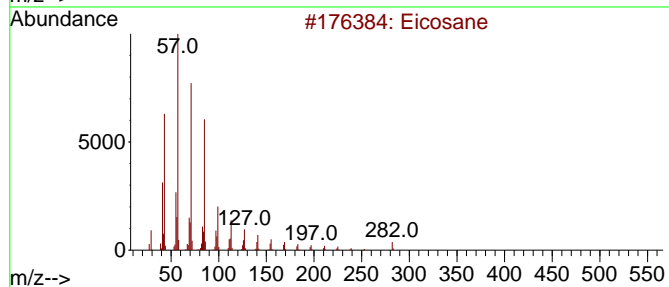
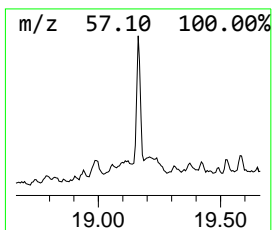
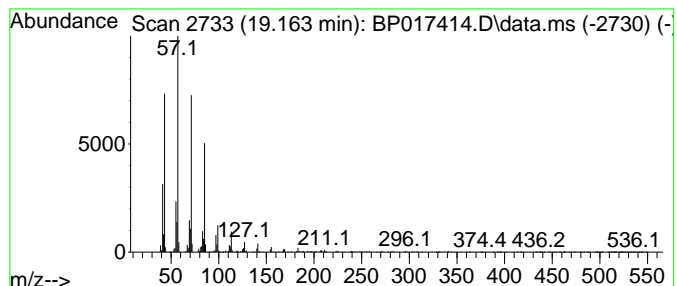
TIC Library : C:\DATABASE\NIST20.L  
 TIC Integration Parameters: LSCINT.P

\*\*\*\*\*  
 Peak Number 21 (DEL) Alkane: Straight-Chai... Concentration Rank 16

R.T.	EstConc	Area	Relative to ISTD	R.T.
19.163	5.30 ng/ul	482735	Phenanthrene-d10	17.439

Hit# of 5	Tentative ID	MW	MolForm	CAS#	Qual
1	Eicosane	282	C20H42	000112-95-8	93
2	Heptadecane, 2,6,10,15-tetramethyl-	296	C21H44	054833-48-6	92
3	Octacosane	394	C28H58	000630-02-4	90
4	Tricosane	324	C23H48	000638-67-5	89
5	Tetracosane	338	C24H50	000646-31-1	87



Data Path : Z:\svoasrv\HPCHEM1\BNA\_P\Data\BP092823\  
 Data File : BP017414.D  
 Acq On : 28 Sep 2023 15:15  
 Operator : MA/JU  
 Sample : 04417-40  
 Misc :  
 ALS Vial : 6 Sample Multiplier: 1

Instrument :  
 BNA\_P  
 ClientSampleId :  
 EZYE7

Quant Method : Z:\svoasrv\HPCHEM1\BNA\_P\Methods\SFAM-EPA-BP092023.MA.M  
 Quant Title : SVOA CALIBRATION

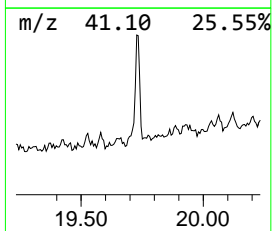
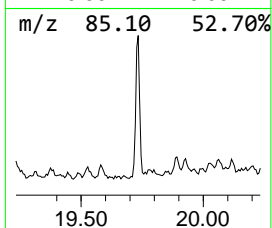
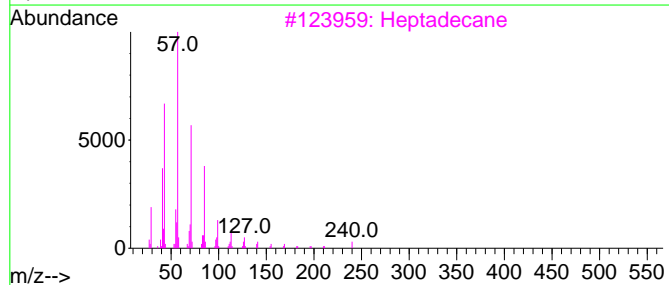
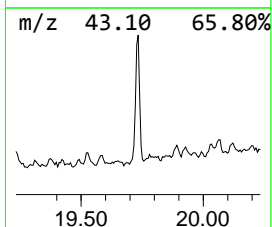
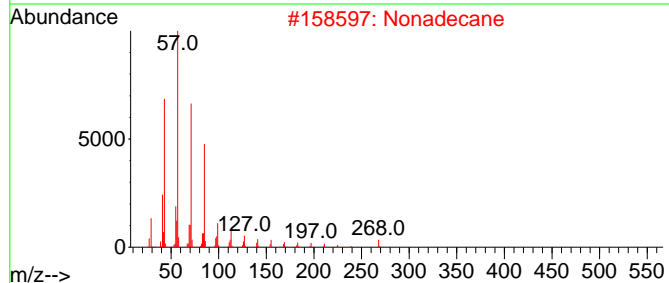
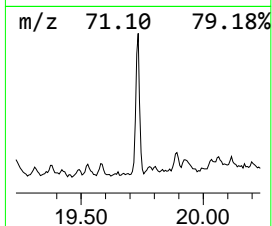
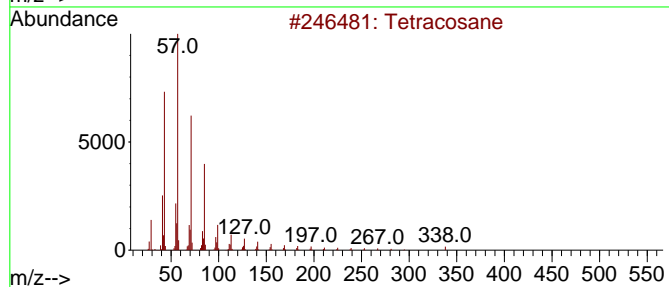
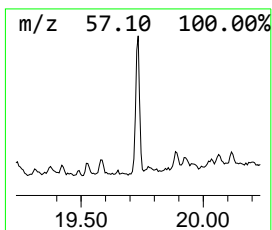
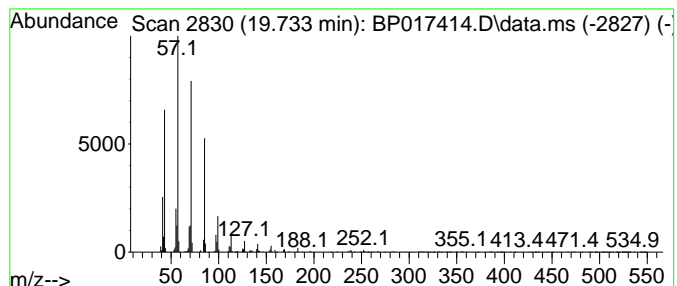
TIC Library : C:\DATABASE\NIST20.L  
 TIC Integration Parameters: LSCINT.P

\*\*\*\*\*  
 Peak Number 22 (DEL) Alkane: Straight-Chai... Concentration Rank 10

R.T.	EstConc	Area	Relative to ISTD	R.T.
19.733	7.63 ng/ul	556841	Chrysene-d12	21.569

Hit#	of 5	Tentative ID	MW	MolForm	CAS#	Qual
1		Tetracosane	338	C24H50	000646-31-1	91
2		Nonadecane	268	C19H40	000629-92-5	90
3		Heptadecane	240	C17H36	000629-78-7	90
4		Tetradecane, 1-iodo-	324	C14H29I	019218-94-1	90
5		Heptacosane	380	C27H56	000593-49-7	83



Data Path : Z:\svoasrv\HPCHEM1\BNA\_P\Data\BP092823\  
 Data File : BP017414.D  
 Acq On : 28 Sep 2023 15:15  
 Operator : MA/JU  
 Sample : 04417-40  
 Misc :  
 ALS Vial : 6 Sample Multiplier: 1

Instrument :  
 BNA\_P  
 ClientSampleId :  
 EZYE7

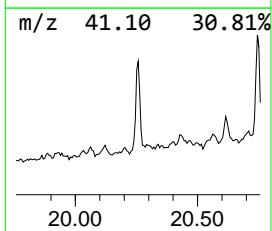
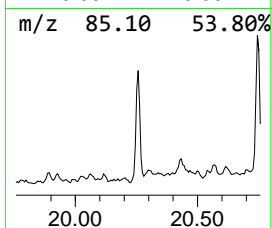
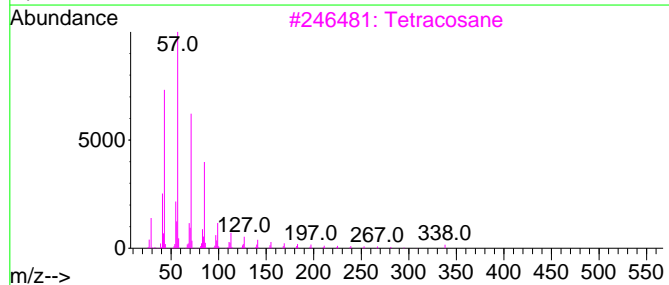
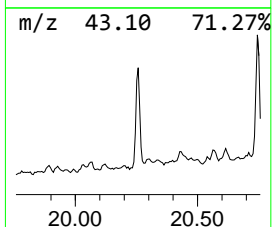
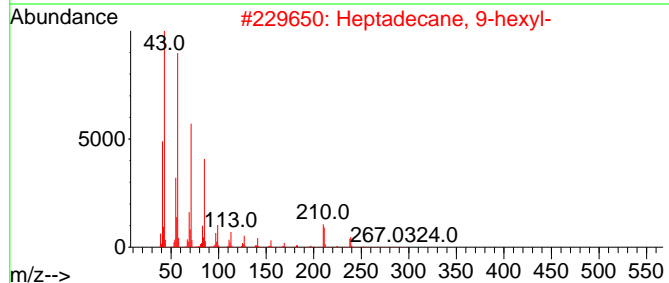
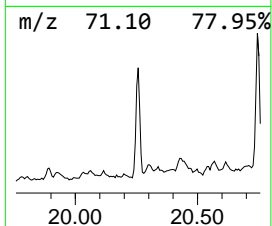
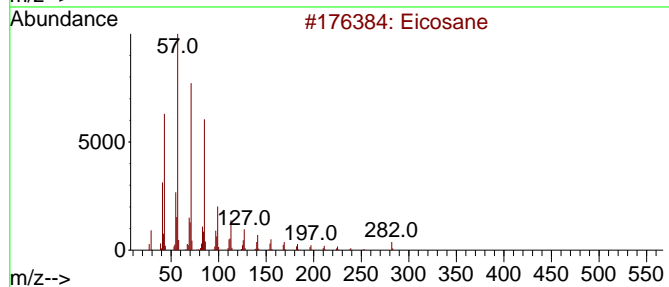
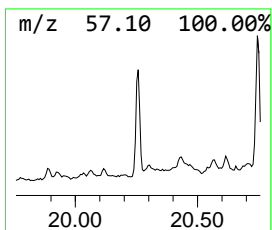
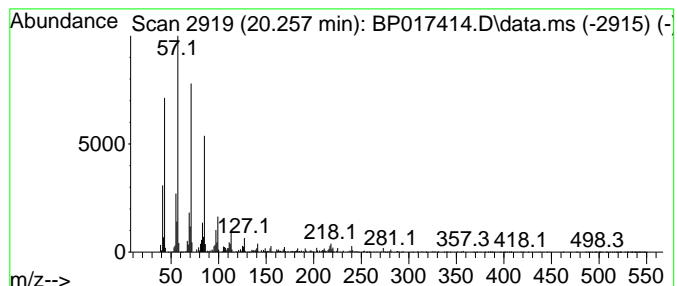
Quant Method : Z:\svoasrv\HPCHEM1\BNA\_P\Methods\SFAM-EPA-BP092023.MA.M  
 Quant Title : SVOA CALIBRATION

TIC Library : C:\DATABASE\NIST20.L  
 TIC Integration Parameters: LSCINT.P

\*\*\*\*\*  
 Peak Number 23 (DEL) Alkane: Straight-Chai... Concentration Rank 5

R.T.	EstConc	Area	Relative to ISTD	R.T.
20.257	14.04 ng/ul	1024030	Chrysene-d12	21.569

Hit#	of 5	Tentative ID	MW	MolForm	CAS#	Qual
1		Eicosane	282	C20H42	000112-95-8	97
2		Heptadecane, 9-hexyl-	324	C23H48	055124-79-3	94
3		Tetracosane	338	C24H50	000646-31-1	91
4		Heneicosane	296	C21H44	000629-94-7	91
5		Hexadecane, 5-butyl-	282	C20H42	006912-07-8	91



Data Path : Z:\svoasrv\HPCHEM1\BNA\_P\Data\BP092823\  
 Data File : BP017414.D  
 Acq On : 28 Sep 2023 15:15  
 Operator : MA/JU  
 Sample : 04417-40  
 Misc :  
 ALS Vial : 6 Sample Multiplier: 1

Instrument :  
 BNA\_P  
 ClientSampleId :  
 EZYE7

Quant Method : Z:\svoasrv\HPCHEM1\BNA\_P\Methods\SFAM-EPA-BP092023.MA.M  
 Quant Title : SVOA CALIBRATION

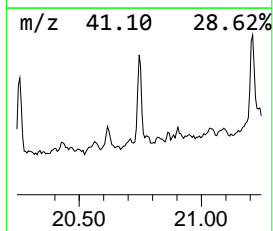
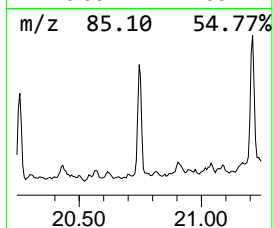
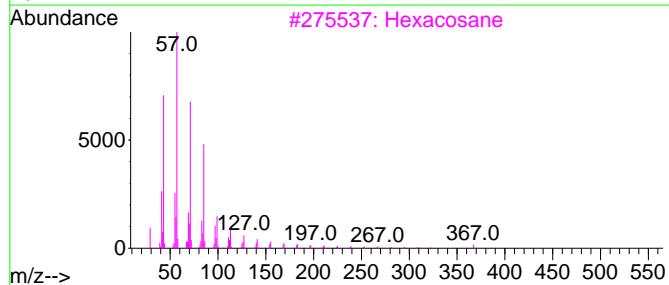
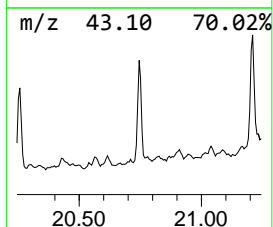
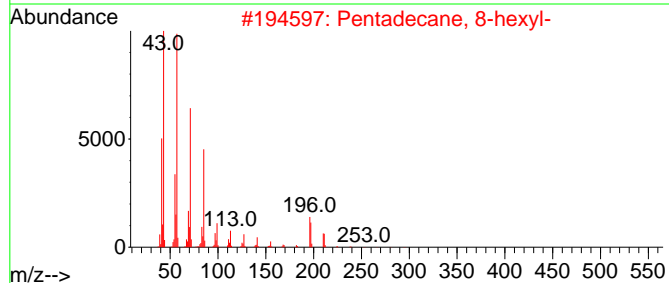
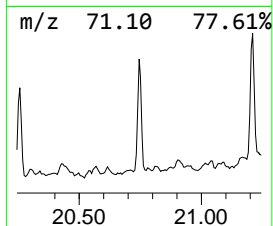
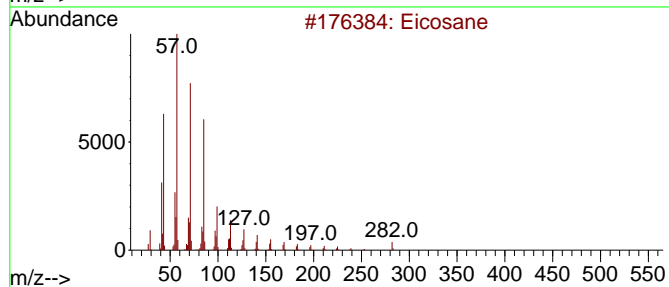
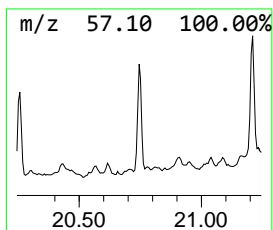
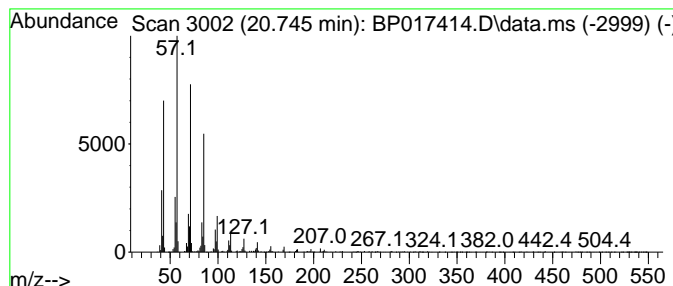
TIC Library : C:\DATABASE\NIST20.L  
 TIC Integration Parameters: LSCINT.P

\*\*\*\*\*  
 Peak Number 24 (DEL) Alkane: Straight-Chai... Concentration Rank 7

R.T.	EstConc	Area	Relative to ISTD	R.T.
20.745	11.98 ng/ul	874041	Chrysene-d12	21.569

Hit#	of 5	Tentative ID	MW	MolForm	CAS#	Qual
1		Eicosane	282	C20H42	000112-95-8	97
2		Pentadecane, 8-hexyl-	296	C21H44	013475-75-7	94
3		Hexacosane	366	C26H54	000630-01-3	91
4		Heneicosane	296	C21H44	000629-94-7	91
5		Eicosane, 7-hexyl-	366	C26H54	055333-99-8	91



Data Path : Z:\svoasrv\HPCHEM1\BNA\_P\Data\BP092823\  
 Data File : BP017414.D  
 Acq On : 28 Sep 2023 15:15  
 Operator : MA/JU  
 Sample : 04417-40  
 Misc :  
 ALS Vial : 6 Sample Multiplier: 1

Instrument :  
 BNA\_P  
 ClientSampleId :  
 EZYE7

Quant Method : Z:\svoasrv\HPCHEM1\BNA\_P\Methods\SFAM-EPA-BP092023.MA.M  
 Quant Title : SVOA CALIBRATION

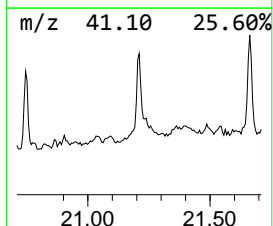
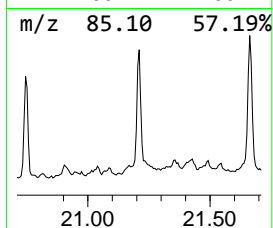
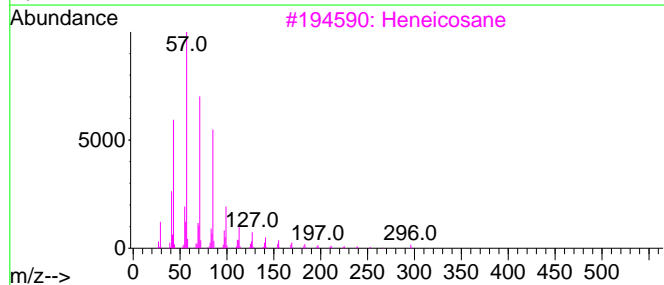
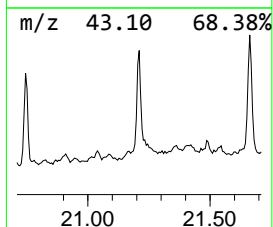
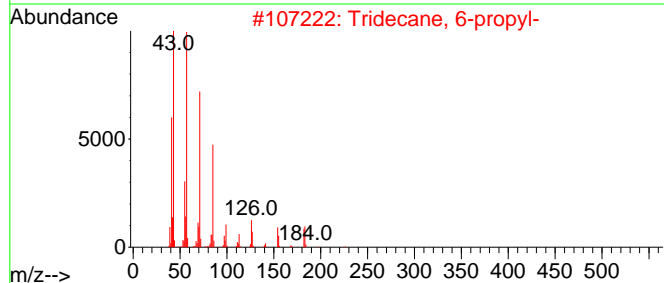
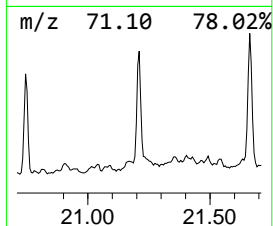
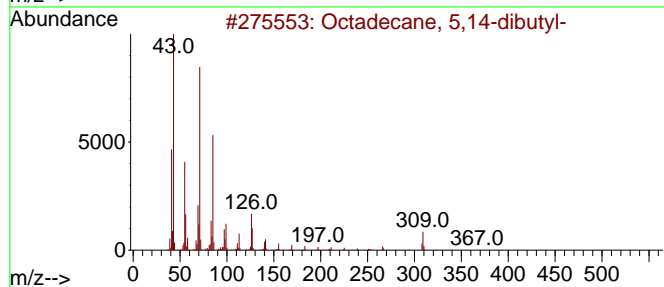
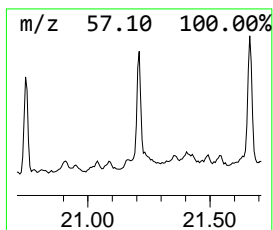
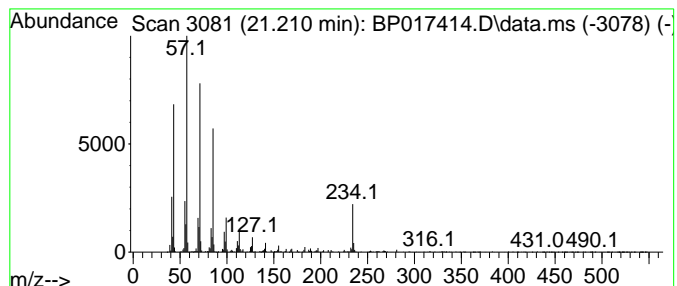
TIC Library : C:\DATABASE\NIST20.L  
 TIC Integration Parameters: LSCINT.P

\*\*\*\*\*  
 Peak Number 25 (DEL) Alkane: Straight-Chai... Concentration Rank 6

R.T.	EstConc	Area	Relative to ISTD	R.T.
21.210	13.86 ng/ul	1011220	Chrysene-d12	21.569

Hit#	of 5	Tentative ID	MW	MolForm	CAS#	Qual
1		Octadecane, 5,14-dibutyl-	366	C26H54	055282-13-8	91
2		Tridecane, 6-propyl-	226	C16H34	055045-10-8	87
3		Heneicosane	296	C21H44	000629-94-7	87
4		Tetracosane, 1-iodo-	464	C24H49I	1000406-32-0	83
5		Octacosane, 1-iodo-	520	C28H57I	1000406-32-2	83



Data Path : Z:\svoasrv\HPCHEM1\BNA\_P\Data\BP092823\  
 Data File : BP017414.D  
 Acq On : 28 Sep 2023 15:15  
 Operator : MA/JU  
 Sample : 04417-40  
 Misc :  
 ALS Vial : 6 Sample Multiplier: 1

Instrument :  
 BNA\_P  
 ClientSampleId :  
 EZYE7

Quant Method : Z:\svoasrv\HPCHEM1\BNA\_P\Methods\SFAM-EPA-BP092023.MA.M  
 Quant Title : SVOA CALIBRATION

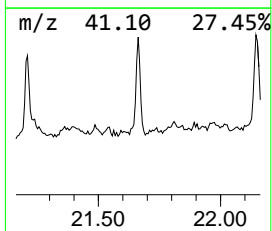
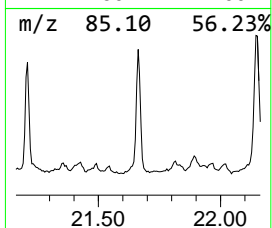
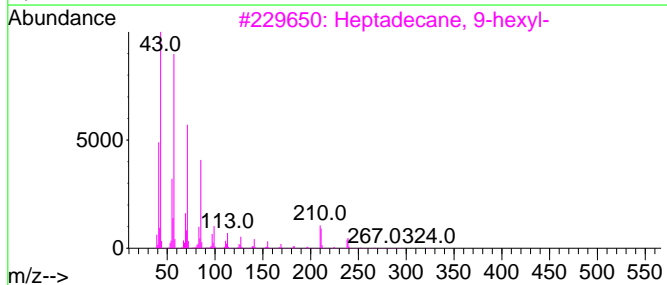
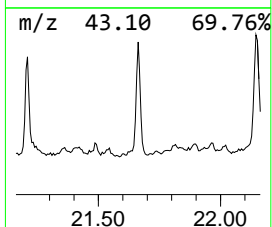
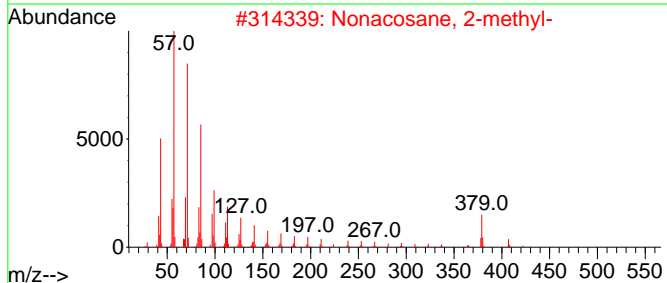
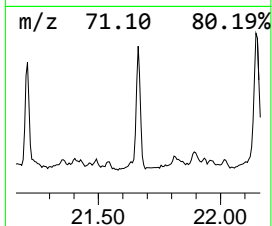
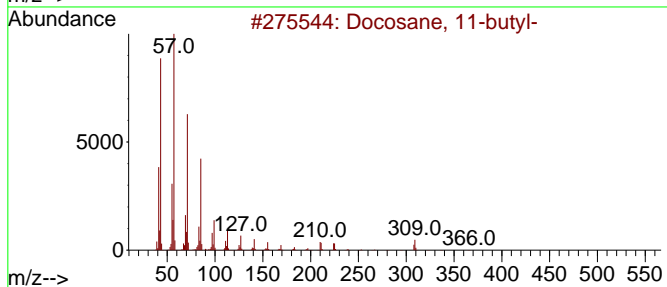
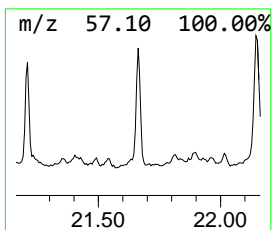
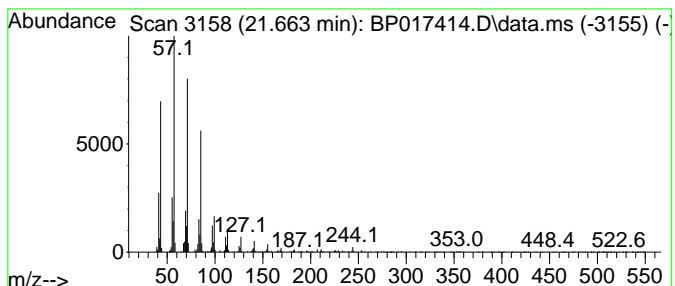
TIC Library : C:\DATABASE\NIST20.L  
 TIC Integration Parameters: LSCINT.P

\*\*\*\*\*  
 Peak Number 26 (DEL) Alkane: Straight-Chai... Concentration Rank 2

R.T.	EstConc	Area	Relative to ISTD	R.T.
21.663	20.19 ng/ul	1473180	Chrysene-d12	21.569

Hit#	of 5	Tentative ID	MW	MolForm	CAS#	Qual
1		Docosane, 11-butyl-	366	C26H54	013475-76-8	95
2		Nonacosane, 2-methyl-	422	C30H62	001560-75-4	94
3		Heptadecane, 9-hexyl-	324	C23H48	055124-79-3	94
4		Heptadecane, 2,6,10,15-tetramethyl-	296	C21H44	054833-48-6	94
5		Eicosane, 9-octyl-	394	C28H58	013475-77-9	94



Data Path : Z:\svoasrv\HPCHEM1\BNA\_P\Data\BP092823\  
 Data File : BP017414.D  
 Acq On : 28 Sep 2023 15:15  
 Operator : MA/JU  
 Sample : 04417-40  
 Misc :  
 ALS Vial : 6 Sample Multiplier: 1

Instrument :  
 BNA\_P  
 ClientSampleId :  
 EZYE7

Quant Method : Z:\svoasrv\HPCHEM1\BNA\_P\Methods\SFAM-EPA-BP092023.MA.M  
 Quant Title : SVOA CALIBRATION

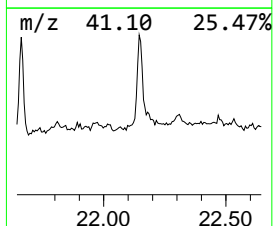
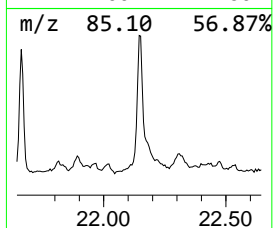
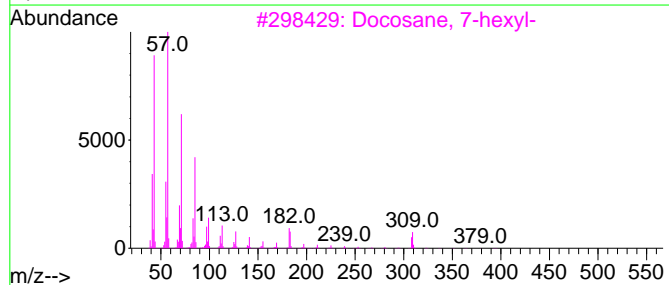
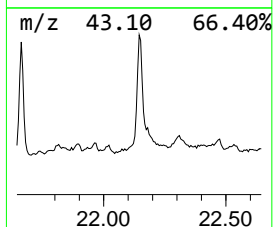
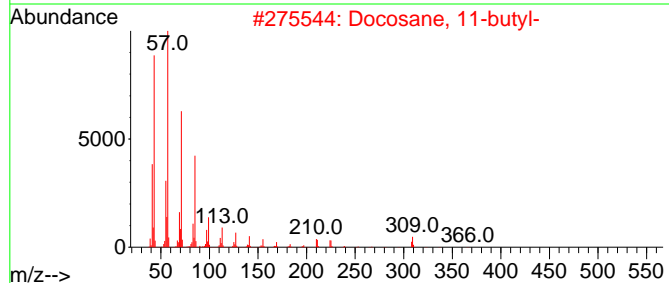
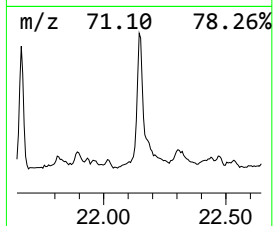
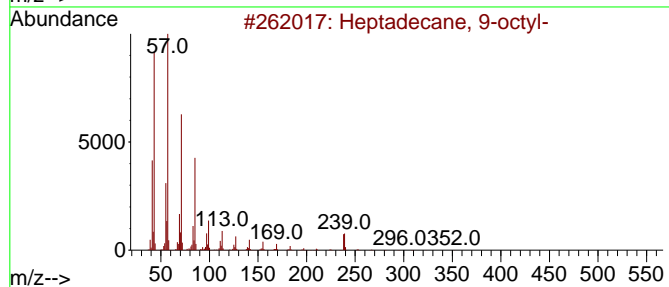
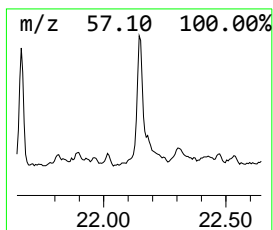
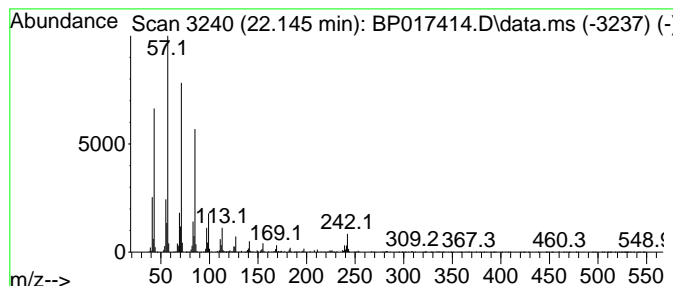
TIC Library : C:\DATABASE\NIST20.L  
 TIC Integration Parameters: LSCINT.P

\*\*\*\*\*  
 Peak Number 27 (DEL) Alkane: Straight-Chai... Concentration Rank 1

R.T.	EstConc	Area	Relative to ISTD	R.T.
22.145	25.83 ng/ul	1884410	Chrysene-d12	21.569

Hit#	of 5	Tentative ID	MW	MolForm	CAS#	Qual
1		Heptadecane, 9-octyl-	352	C25H52	007225-64-1	95
2		Docosane, 11-butyl-	366	C26H54	013475-76-8	95
3		Docosane, 7-hexyl-	394	C28H58	055373-86-9	93
4		2-Methylpentacosane	366	C26H54	000629-87-8	93
5		Heptacosane	380	C27H56	000593-49-7	91



Data Path : Z:\svoasrv\HPCHEM1\BNA\_P\Data\BP092823\  
 Data File : BP017414.D  
 Acq On : 28 Sep 2023 15:15  
 Operator : MA/JU  
 Sample : 04417-40  
 Misc :  
 ALS Vial : 6 Sample Multiplier: 1

Instrument :  
 BNA\_P  
 ClientSampleId :  
 EZYE7

Quant Method : Z:\svoasrv\HPCHEM1\BNA\_P\Methods\SFAM-EPA-BP092023.MA.M  
 Quant Title : SVOA CALIBRATION

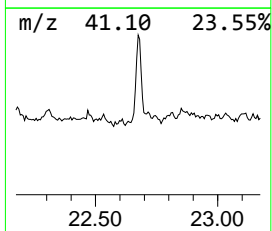
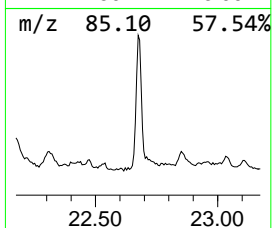
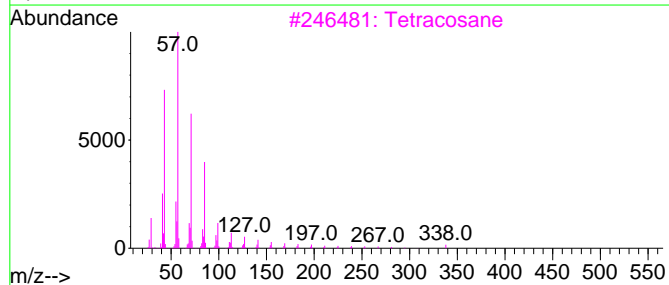
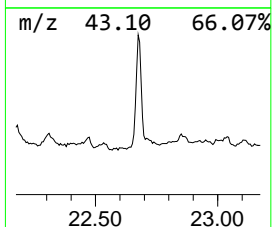
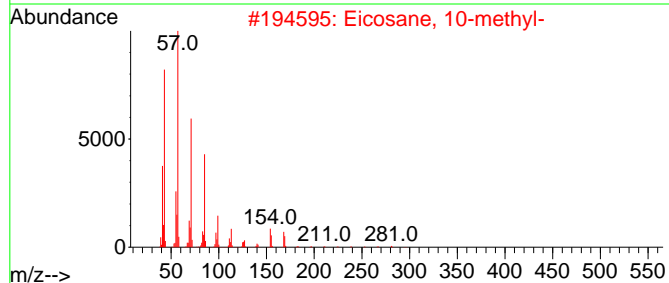
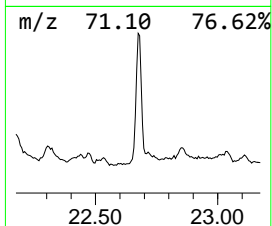
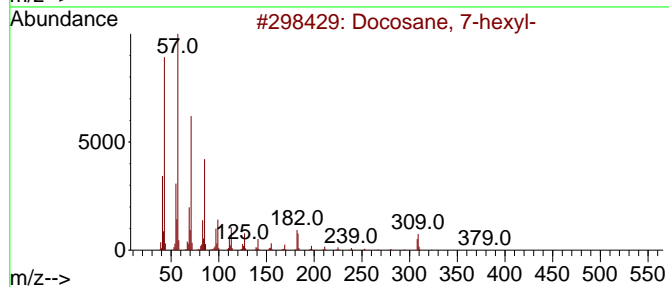
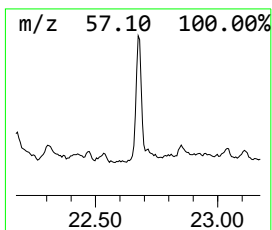
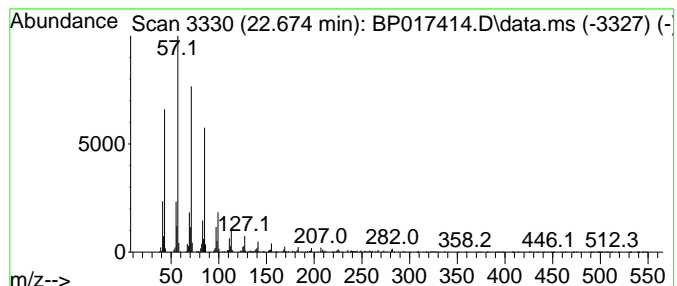
TIC Library : C:\DATABASE\NIST20.L  
 TIC Integration Parameters: LSCINT.P

\*\*\*\*\*  
 Peak Number 28 (DEL) Alkane: Straight-Chai... Concentration Rank 3

R.T.	EstConc	Area	Relative to ISTD	R.T.
22.674	18.69 ng/ul	1363290	Chrysene-d12	21.569

Hit#	of 5	Tentative ID	MW	MolForm	CAS#	Qual
1		Docosane, 7-hexyl-	394	C28H58	055373-86-9	94
2		Eicosane, 10-methyl-	296	C21H44	054833-23-7	93
3		Tetracosane	338	C24H50	000646-31-1	93
4		Heneicosane	296	C21H44	000629-94-7	91
5		2-Methylheptacosane	394	C28H58	001561-00-8	91





Data Path : Z:\svoasrv\HPCHEM1\BNA\_P\Data\BP092823\  
 Data File : BP017414.D  
 Acq On : 28 Sep 2023 15:15  
 Operator : MA/JU  
 Sample : 04417-40  
 Misc :  
 ALS Vial : 6 Sample Multiplier: 1

Instrument :  
 BNA\_P  
 ClientSampleId :  
 EZYE7

Quant Method : Z:\svoasrv\HPCHEM1\BNA\_P\Methods\SFAM-EPA-BP092023.MA.M  
 Quant Title : SVOA CALIBRATION

TIC Library : C:\DATABASE\NIST20.L  
 TIC Integration Parameters: LSCINT.P

TIC Top Hit name	RT	EstConc	Units	Response	--Internal Standard--			
					#	RT	Resp	Conc
unknown-01	3.846	2.9	ng/ul	136347	1	7.957	954016	20.0
Butane, 2,3-dim...	3.928	2.3	ng/ul	110091	1	7.957	954016	20.0
(DEL) Alkane: S...	10.681	2.1	ng/ul	155443	2	10.793	1443080	20.0
2,2,4-Trimethyl...	10.857	2.0	ng/ul	146808	2	10.793	1443080	20.0
(DEL) Alkane: S...	12.145	5.4	ng/ul	388046	2	10.793	1443080	20.0
(DEL) Alkane: S...	13.098	2.2	ng/ul	192620	3	14.651	1733460	20.0
(DEL) Alkane: S...	13.398	6.2	ng/ul	539079	3	14.651	1733460	20.0
2,4,7,9-Tetrame...	13.492	8.3	ng/ul	718650	3	14.651	1733460	20.0
Naphthalene, 2,...	13.957	2.3	ng/ul	198305	3	14.651	1733460	20.0
Naphthalene, 1,...	14.010	2.0	ng/ul	174629	3	14.651	1733460	20.0
(DEL) Alkane: S...	14.481	7.3	ng/ul	634825	3	14.651	1733460	20.0
Naphthalene, 1,...	15.034	2.0	ng/ul	173870	3	14.651	1733460	20.0
(DEL) Alkane: S...	15.098	2.8	ng/ul	243807	3	14.651	1733460	20.0
(DEL) Alkane: S...	15.439	10.5	ng/ul	910697	3	14.651	1733460	20.0
(DEL) Alkane: S...	15.839	3.8	ng/ul	331696	3	14.651	1733460	20.0
(DEL) Alkane: S...	16.316	14.1	ng/ul	1285770	4	17.439	1822440	20.0
Tridecane, 1-iodo-	17.122	7.2	ng/ul	653256	4	17.439	1822440	20.0
(DEL) Alkane: S...	17.163	5.3	ng/ul	481405	4	17.439	1822440	20.0
(DEL) Alkane: S...	17.869	5.8	ng/ul	533182	4	17.439	1822440	20.0
(DEL) Alkane: S...	18.545	5.0	ng/ul	457104	4	17.439	1822440	20.0
(DEL) Alkane: S...	19.163	5.3	ng/ul	482735	4	17.439	1822440	20.0
(DEL) Alkane: S...	19.733	7.6	ng/ul	556841	5	21.569	1459080	20.0
(DEL) Alkane: S...	20.257	14.0	ng/ul	1024030	5	21.569	1459080	20.0
(DEL) Alkane: S...	20.745	12.0	ng/ul	874041	5	21.569	1459080	20.0
(DEL) Alkane: S...	21.210	13.9	ng/ul	1011220	5	21.569	1459080	20.0
(DEL) Alkane: S...	21.663	20.2	ng/ul	1473180	5	21.569	1459080	20.0
(DEL) Alkane: S...	22.145	25.8	ng/ul	1884410	5	21.569	1459080	20.0
(DEL) Alkane: S...	22.674	18.7	ng/ul	1363290	5	21.569	1459080	20.0