

Data Path : Z:\SVOASRV\HPCHEM1\BNA P\DATA\BP100919\  
 Data File : BP000595.D  
 Acq On : 10 Oct 2019 01:54  
 Operator : JU  
 Sample : K5097-06  
 Misc :  
 ALS Vial : 22 Sample Multiplier: 1

Instrument :  
 BNA\_P  
 ClientSampleId :

Quant Time: Oct 10 02:39:43 2019  
 Quant Method : Z:\SVOASRV\HPCHEM1\BNA\_P\METHODS\SOM-EPA-BP100919MA.M  
 Quant Title : SVOA CALIBRATION  
 QLast Update : Wed Oct 09 17:20:45 2019  
 Response via : Initial Calibration

Internal Standards	R.T.	QIon	Response	Conc	Units	Dev(Min)
1) 1,4-Dichlorobenzene-d4	6.75	152	214331	20.00	ng/ul	0.00
18) Naphthalene-d8	8.03	136	826565	20.00	ng/ul	0.00
36) Acenaphthene-d10	9.80	164	478682	20.00	ng/ul	0.00
62) Phenanthrene-d10	11.29	188	904719	20.00	ng/ul	0.00
78) Chrysene-d12	13.96	240	805668	20.00	ng/ul	0.00
86) Perylene-d12	15.44	264	881632	20.00	ng/ul	0.00

## System Monitoring Compounds

3) 1,4-Dioxane-d8	2.36	96	28175	5.45	ng/uL	-0.01
5) Phenol-d5	6.39	99	504290	30.50	ng/ul	0.00
7) Bis-(2-Chloroethyl)ether-d	6.43	67	255696	30.93	ng/ul	0.00
9) 2-Chlorophenol-d4	6.52	132	420742	30.21	ng/ul	0.00
13) 4-Methylphenol-d8	7.13	113	399287	31.61	ng/ul	0.00
19) Nitrobenzene-d5	7.31	128	196063	31.20	ng/ul	0.00
22) 2-Nitrophenol-d4	7.63	143	211758	31.65	ng/ul	0.00
26) 2,4-Dichlorophenol-d3	7.89	165	387399	30.25	ng/ul	0.00
29) 4-Chloroaniline-d4	8.10	131	513548	36.06	ng/ul	0.00
44) Dimethylphthalate-d6	9.49	166	1057857	31.57	ng/ul	0.00
47) Acenaphthylene-d8	9.64	160	1286488	31.21	ng/ul	0.00
52) 4-Nitrophenol-d4	9.90	143	117047	22.68	ng/ul	0.00
58) Fluorene-d10	10.32	176	900787	31.42	ng/ul	0.00
63) 4,6-Dinitro-2-methylphenol	10.39	200	73254	17.00	ng/ul	0.00
71) Anthracene-d10	11.35	188	1314265	31.36	ng/ul	0.00
79) Pyrene-d10	12.73	212	1381928	30.33	ng/ul	0.00
90) Benzo(a)pyrene-d12	15.35	264	1364689	31.35	ng/ul	0.00

## Target Compounds

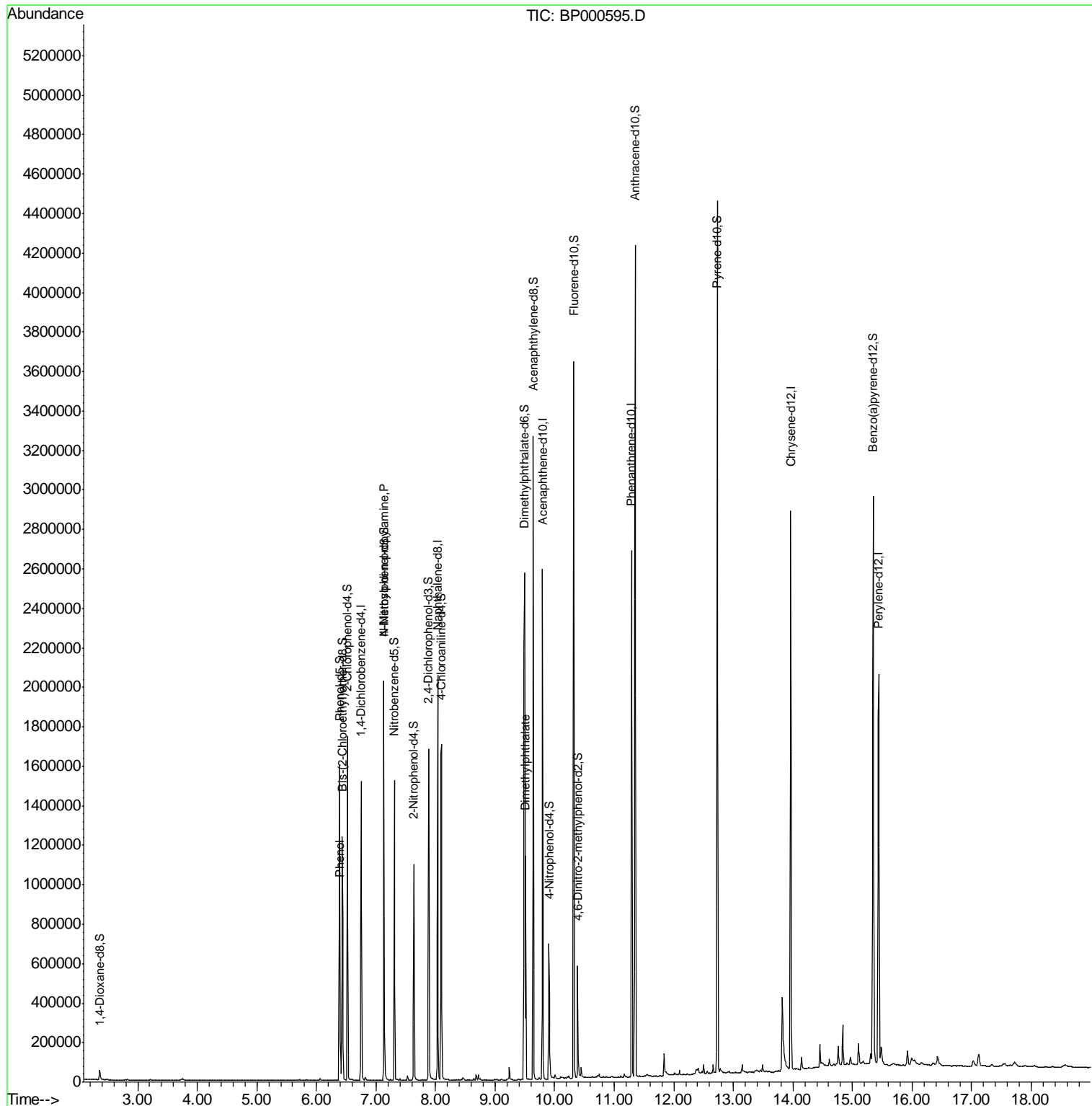
Target Compounds	R.T.	QIon	Response	Conc	Units	Ovalue
6) Phenol	6.40	94	81351	4.881	ng/ul	97
15) N-Nitroso-di-n-propylamine	7.13	70	8701	1.036	ng/ul#	1
45) Dimethylphthalate	9.51	163	418526	12.535	ng/ul	99

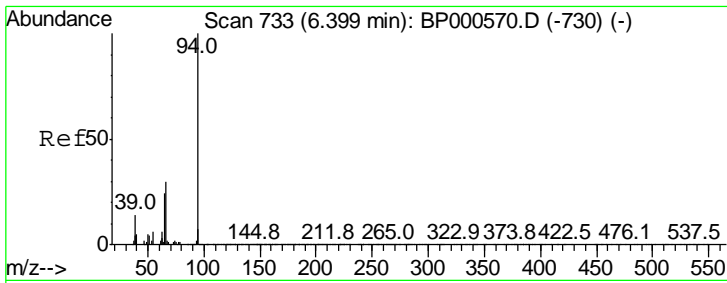
(#) = qualifier out of range (m) = manual integration (+) = signals summed

Data Path : Z:\SVOASRV\HPCHEM1\BNA P\DATA\BP100919\  
 Data File : BP000595.D  
 Acq On : 10 Oct 2019 01:54  
 Operator : JU  
 Sample : K5097-06  
 Misc :  
 ALS Vial : 22 Sample Multiplier: 1

Instrument :  
 BNA\_P  
 ClientSampled :

Quant Time: Oct 10 02:39:43 2019  
 Quant Method : Z:\SVOASRV\HPCHEM1\BNA\_P\METHODS\SOM-EPA-BP100919MA.M  
 Quant Title : SVOA CALIBRATION  
 QLast Update : Wed Oct 09 17:20:45 2019  
 Response via : Initial Calibration

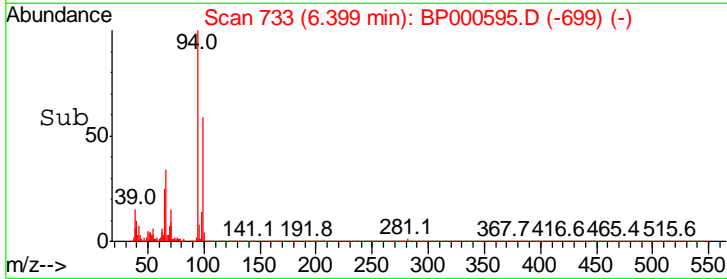
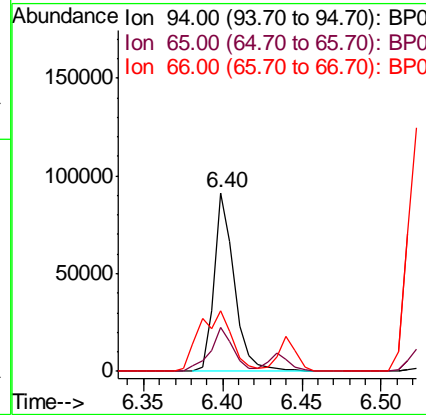
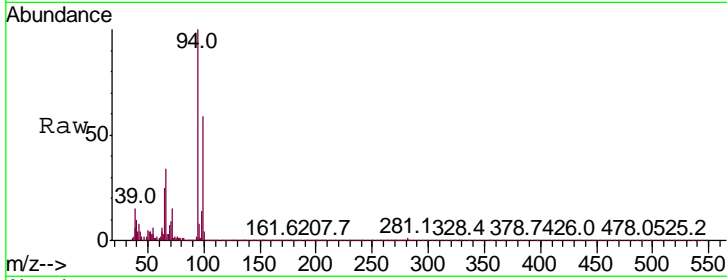




#6  
 Phenol  
 Concen: 4.881 ng/ul  
 RT: 6.40 min Scan# 733  
 Delta R.T. 0.00 min  
 Lab File: BP000595.D  
 Acq: 10 Oct 2019 01:54

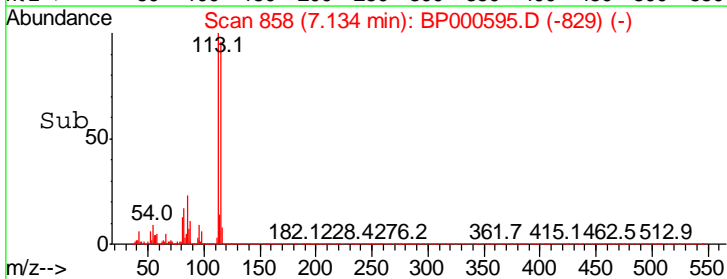
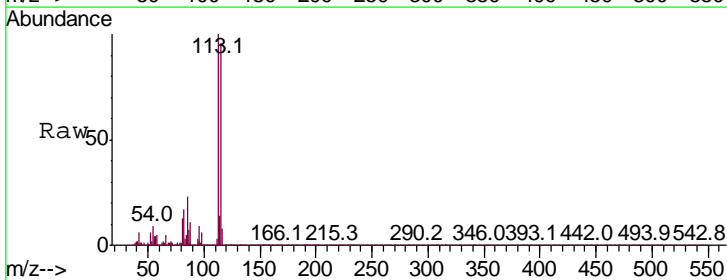
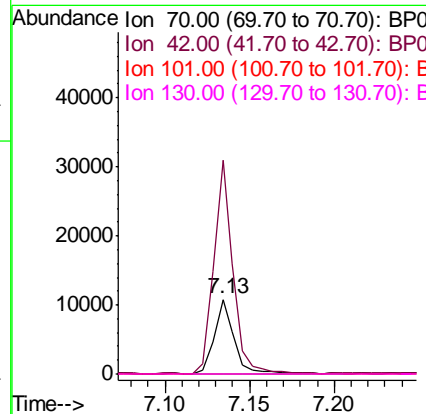
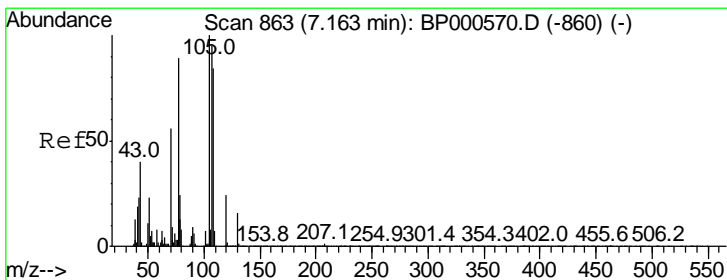
Instrument :  
 BNA\_P  
 ClientSampleId :

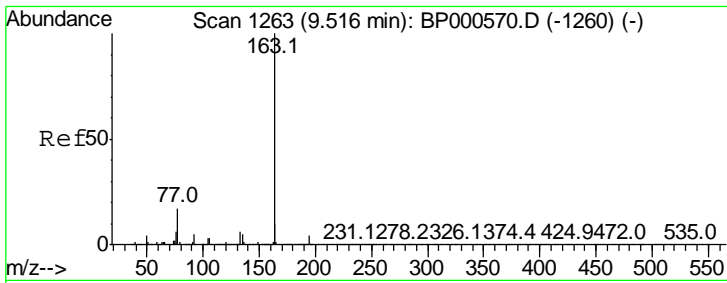
Tgt Ion	Resp	Lower	Upper
94	100		
65	24.8	19.2	28.8
66	33.9	25.7	38.5



#15  
 N-Nitroso-di-n-propylamine  
 Concen: 1.036 ng/ul  
 RT: 7.13 min Scan# 858  
 Delta R.T. -0.03 min  
 Lab File: BP000595.D  
 Acq: 10 Oct 2019 01:54

Tgt Ion	Resp	Lower	Upper
70	100		
42	285.2	33.5	50.3#
101	0.1	9.6	14.4#
130	0.2	21.8	32.8#





#45  
 Dimethylphthalate  
 Concen: 12.535 ng/ul  
 RT: 9.51 min Scan# 1262  
 Delta R.T. -0.01 min  
 Lab File: BP000595.D  
 Acq: 10 Oct 2019 01:54

**Instrument :**  
 BNA\_P  
**ClientSampleId :**

Tot Ion	Ratio	Lower	Upper
163	100		
194	4.2	3.3	4.9
164	10.4	8.1	12.1

