

Data Path : Z:\SVOASRV\HPCHEM1\BNA P\DATA\BP101219\
 Data File : BP000671.D
 Acq On : 12 Oct 2019 16:43
 Operator : JU
 Sample : SSTDCCC020
 Misc :
 ALS Vial : 2 Sample Multiplier: 1

Instrument :
 BNA_P
 ClientSampleId :

Quant Time: Oct 12 21:48:00 2019
 Quant Method : Z:\SVOASRV\HPCHEM1\BNA_P\METHODS\SOM-EPA-BP100919MA.M
 Quant Title : SVOA CALIBRATION
 QLast Update : Wed Oct 09 17:20:45 2019
 Response via : Initial Calibration

Internal Standards	R.T.	QIon	Response	Conc	Units	Dev(Min)
1) 1,4-Dichlorobenzene-d4	6.75	152	199011	20.00	ng/ul	0.00
18) Naphthalene-d8	8.03	136	753368	20.00	ng/ul	0.00
36) Acenaphthene-d10	9.80	164	414620	20.00	ng/ul	0.00
62) Phenanthrene-d10	11.29	188	766525	20.00	ng/ul	0.00
78) Chrysene-d12	13.97	240	672838	20.00	ng/ul	0.00
86) Perylene-d12	15.45	264	769357	20.00	ng/ul	0.00

System Monitoring Compounds

3) 1,4-Dioxane-d8	2.36	96	39030	8.14	ng/uL	-0.01
5) Phenol-d5	6.38	99	305086	19.87	ng/ul	0.00
7) Bis-(2-Chloroethyl)ether-d	6.43	67	154067	20.07	ng/ul	0.00
9) 2-Chlorophenol-d4	6.52	132	255866	19.78	ng/ul	0.00
13) 4-Methylphenol-d8	7.13	113	234216	19.97	ng/ul	0.00
19) Nitrobenzene-d5	7.30	128	116418	20.33	ng/ul	0.00
22) 2-Nitrophenol-d4	7.63	143	123246	20.21	ng/ul	0.00
26) 2,4-Dichlorophenol-d3	7.88	165	235519	20.18	ng/ul	0.00
29) 4-Chloroaniline-d4	8.09	131	282081	21.73	ng/ul	0.00
44) Dimethylphthalate-d6	9.49	166	580804	20.01	ng/ul	0.00
47) Acenaphthylene-d8	9.64	160	721831	20.22	ng/ul	0.00
52) 4-Nitrophenol-d4	9.91	143	78986	17.67	ng/ul	0.00
58) Fluorene-d10	10.32	176	499619	20.12	ng/ul	0.00
63) 4,6-Dinitro-2-methylphenol	10.39	200	64335	17.62	ng/ul	0.00
71) Anthracene-d10	11.35	188	727213	20.48	ng/ul	0.00
79) Pyrene-d10	12.73	212	753840	19.81	ng/ul	0.00
90) Benzo(a)pyrene-d12	15.35	264	750702	19.76	ng/ul	0.00

Target Compounds

Target Compounds	R.T.	QIon	Response	Conc	Units	Ovalue
2) 1,4-Dioxane	2.42	88	40154	8.192	ng/uL	97
4) Benzaldehyde	6.29	77	199613	20.629	ng/ul	97
6) Phenol	6.40	94	320774	20.727	ng/ul	95
8) Bis(2-Chloroethyl)ether	6.48	93	246975	20.368	ng/ul	98
10) 2-Chlorophenol	6.53	128	267244	19.835	ng/ul	98
11) 2-Methylphenol	7.00	108	240555	20.020	ng/ul	99
12) 2,2'-oxybis(1-Chloropropan	7.03	45	226201	20.544	ng/ul	99
14) Acetophenone	7.16	105	362860	20.905	ng/ul	96
15) N-Nitroso-di-n-propylamine	7.16	70	151958	19.481	ng/ul	99
16) 4-Methylphenol	7.16	108	251752	21.431	ng/ul	93
17) Hexachloroethane	7.26	117	103748	19.830	ng/ul	99
20) Nitrobenzene	7.33	77	244483	20.085	ng/ul	94
21) Isophorone	7.57	82	466887	19.837	ng/ul	99
23) 2-Nitrophenol	7.65	139	136612	20.506	ng/ul	97
24) 2,4-Dimethylphenol	7.69	107	264622	20.156	ng/ul	99
25) Bis(2-Chloroethoxy)methane	7.78	93	310114	19.966	ng/ul	99
27) 2,4-Dichlorophenol	7.89	162	230777	20.094	ng/ul	98
28) Naphthalene	8.05	128	772623	20.346	ng/ul	100
30) 4-Chloroaniline	8.10	127	290017	22.294	ng/ul	99
31) Hexachlorobutadiene	8.18	225	148945	20.334	ng/ul	98
32) Caprolactam	8.43	113	70674	19.161	ng/ul	96
33) 4-Chloro-3-methylphenol	8.59	107	227280	19.987	ng/ul	97
34) 2-Methylnaphthalene	8.75	142	533778	20.239	ng/ul	100

Data Path : Z:\SVOASRV\HPCHEM1\BNA P\DATA\BP101219\
 Data File : BP000671.D
 Acq On : 12 Oct 2019 16:43
 Operator : JU
 Sample : SSTDCCC020
 Misc :
 ALS Vial : 2 Sample Multiplier: 1

Instrument :
 BNA_P
 ClientSampleId :

Quant Time: Oct 12 21:48:00 2019
 Quant Method : Z:\SVOASRV\HPCHEM1\BNA_P\METHODS\SOM-EPA-BP100919MA.M
 Quant Title : SVOA CALIBRATION
 QLast Update : Wed Oct 09 17:20:45 2019
 Response via : Initial Calibration

Internal Standards	R.T.	QIon	Response	Conc	Units	Dev(Min)
35) 1-Methylnaphthalene	8.85	142	510415	20.167	ng/ul	99
37) 1,2,4,5-Tetrachlorobenzene	8.92	216	268810	20.597	ng/ul	98
38) Hexachlorocyclopentadiene	8.91	237	95478	24.800	ng/ul	98
39) 2,4,6-Trichlorophenol	9.03	196	154591	19.750	ng/ul	98
40) 2,4,5-Trichlorophenol	9.07	196	168739	19.863	ng/ul	100
41) 1,1'-Biphenyl	9.22	154	649169	20.517	ng/ul	99
42) 2-Chloronaphthalene	9.24	162	507345	20.567	ng/ul	98
43) 2-Nitroaniline	9.33	65	112943	20.273	ng/ul	90
45) Dimethylphthalate	9.52	163	584698	20.218	ng/ul	99
46) 2,6-Dinitrotoluene	9.57	165	120070	20.930	ng/ul	95
48) Acenaphthylene	9.66	152	764029	20.739	ng/ul	99
49) 3-Nitroaniline	9.75	138	126789	21.132	ng/ul	94
50) Acenaphthene	9.83	153	519945	20.389	ng/ul	100
51) 2,4-Dinitrophenol	9.86	184	39817	18.850	ng/ul	96
53) 4-Nitrophenol	9.92	109	54363	17.808	ng/ul	94
54) Dibenzofuran	10.00	168	725457	20.440	ng/ul	97
55) 2,4-Dinitrotoluene	9.99	165	163986	20.694	ng/ul	96
56) 2,3,4,6-Tetrachlorophenol	10.13	232	119397	19.377	ng/ul	93
57) Diethylphthalate	10.22	149	568264	20.346	ng/ul	99
59) Fluorene	10.35	166	564153	20.454	ng/ul	100
60) 4-Chlorophenyl-phenylether	10.34	204	287953	20.379	ng/ul	95
61) 4-Nitroaniline	10.36	138	138355	20.250	ng/ul	95
64) 4,6-Dinitro-2-methylphenol	10.40	198	70790	18.489	ng/ul#	92
65) N-Nitrosodiphenylamine	10.46	169	492278	20.135	ng/ul	99
66) 4-Bromophenyl-phenylether	10.83	248	177508	20.008	ng/ul	94
67) Hexachlorobenzene	10.91	284	188171	20.025	ng/ul	94
68) Atrazine	10.99	200	169204	20.391	ng/ul	98
69) Pentachlorophenol	11.10	266	73806	19.955	ng/ul	97
70) Phenanthrene	11.32	178	855688	20.483	ng/ul	100
72) Anthracene	11.37	178	873740	20.610	ng/ul	100
73) 1,2,3,4-Tetrachlorobenzene	9.20	216	259021	20.485	ng/uL	100
74) Pentachlorobenzene	9.97	250	239251	20.178	ng/uL	98
75) Carbazole	11.53	167	786408	21.742	ng/ul	99
76) Di-n-butylphthalate	11.87	149	915014	21.080	ng/ul	99
77) Fluoranthene	12.52	202	949135	22.174	ng/ul	98
80) Pyrene	12.75	202	965264	20.220	ng/ul#	93
81) Butylbenzylphthalate	13.39	149	396648	20.332	ng/ul	99
82) 3,3'-Dichlorobenzidine	13.92	252	334302	19.558	ng/ul	99
83) Benzo(a)anthracene	13.96	228	906911	20.083	ng/ul	100
84) Bis(2-ethylhexyl)phthalate	13.96	149	555669	21.429	ng/ul	100
85) Chrysene	14.00	228	861652	20.529	ng/ul	100
87) Di-n-octyl phthalate	14.58	149	964628	21.869	ng/ul	100
88) Benzo(b)fluoranthene	15.02	252	956768	20.843	ng/ul	100
89) Benzo(k)fluoranthene	15.05	252	842468	19.273	ng/ul	100
91) Benzo(a)pyrene	15.38	252	874808	20.128	ng/ul	100
92) Indeno(1,2,3-cd)pyrene	16.91	276	995198	19.977	ng/ul	99
93) Dibenzo(a,h)anthracene	16.92	278	823957	20.177	ng/ul	100
94) Benzo(a,h,i)perylene	17.35	276	834283	20.113	ng/ul	99

Data Path : Z:\SVOASRV\HPCHEM1\BNA P\DATA\BP101219\
 Data File : BP000671.D
 Acq On : 12 Oct 2019 16:43
 Operator : JU
 Sample : SSTDCCC020
 Misc :
 ALS Vial : 2 Sample Multiplier: 1

Instrument :
 BNA_P
 ClientSampleId :

Quant Time: Oct 12 21:48:00 2019
 Quant Method : Z:\SVOASRV\HPCHEM1\BNA_P\METHODS\SOM-EPA-BP100919MA.M
 Quant Title : SVOA CALIBRATION
 QLast Update : Wed Oct 09 17:20:45 2019
 Response via : Initial Calibration

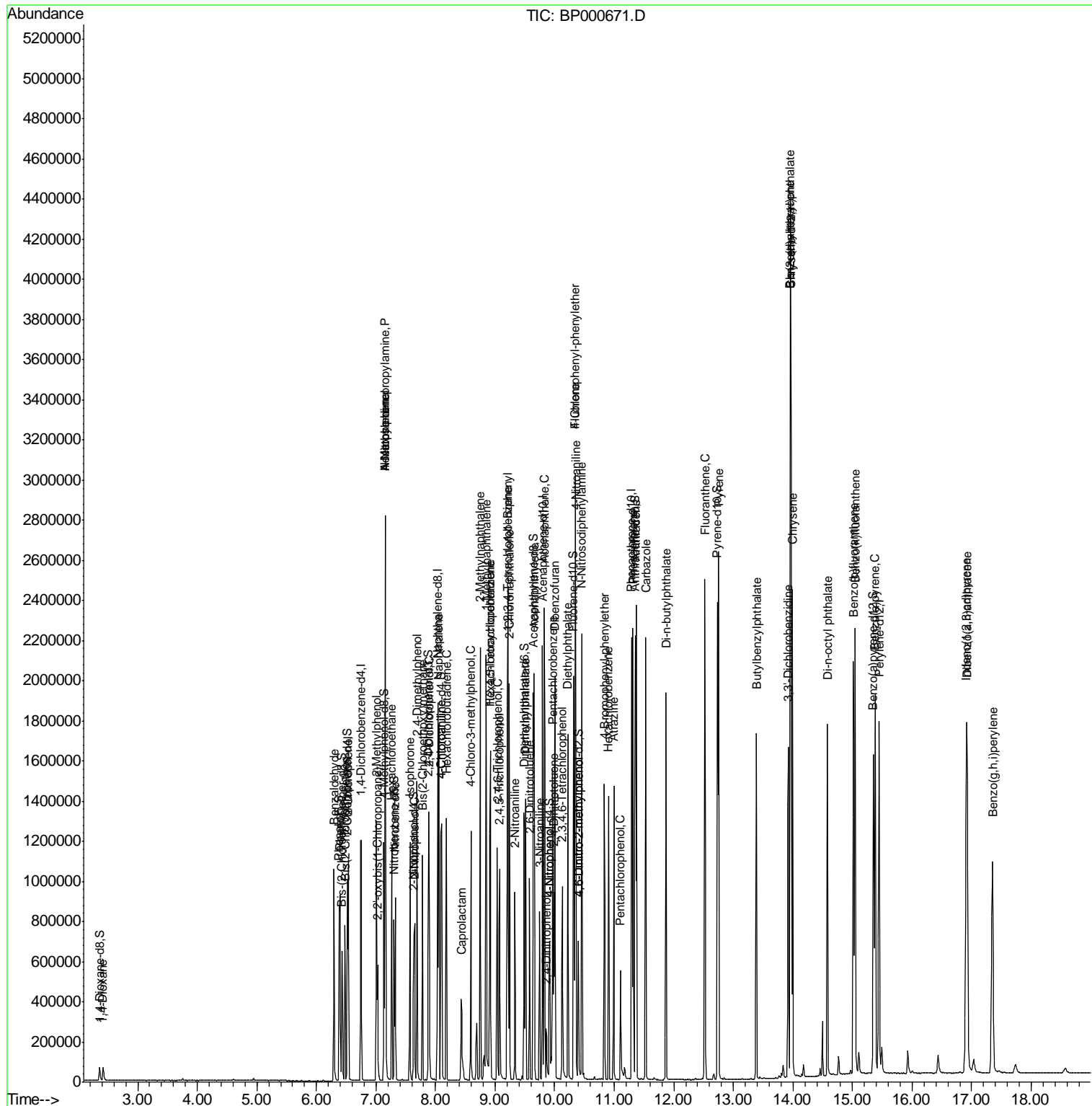
Internal Standards	R.T.	QIon	Response	Conc	Units	Dev(Min)

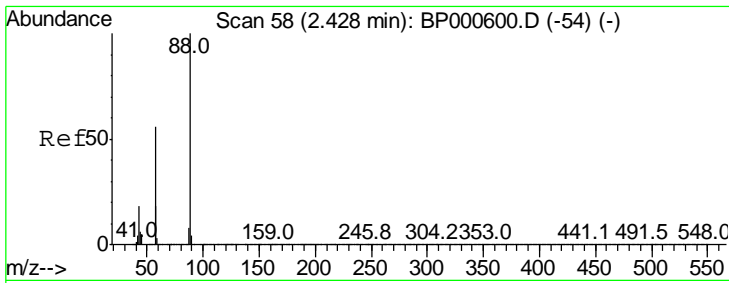
(#) = qualifier out of range (m) = manual integration (+) = signals summed						

Data Path : Z:\SVOASRV\HPCHEM1\BNA P\DATA\BP101219\
 Data File : BP000671.D
 Acq On : 12 Oct 2019 16:43
 Operator : JU
 Sample : SSTDCCC020
 Misc :
 ALS Vial : 2 Sample Multiplier: 1

Instrument :
 BNA_P
 ClientSampled :

Quant Time: Oct 12 21:48:00 2019
 Quant Method : Z:\SVOASRV\HPCHEM1\BNA_P\METHODS\SOM-EPA-BP100919MA.M
 Quant Title : SVOA CALIBRATION
 QLast Update : Wed Oct 09 17:20:45 2019
 Response via : Initial Calibration

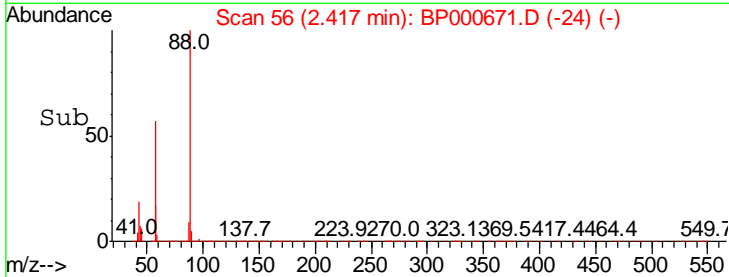
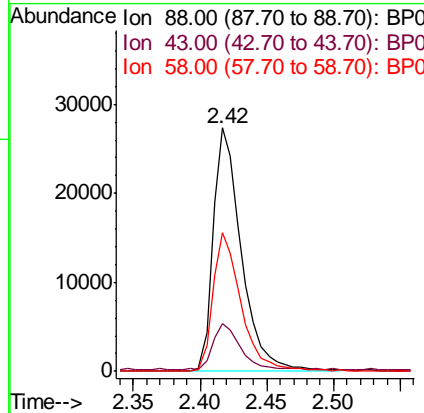
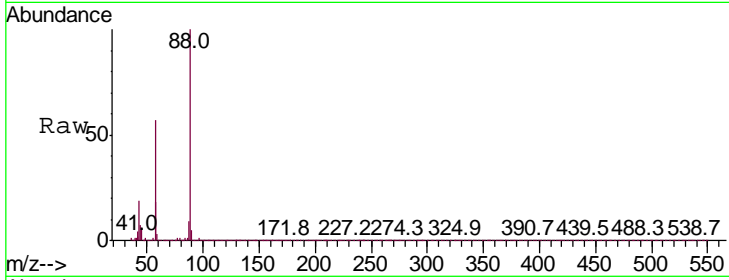




#2
 1,4-Dioxane
 Concen: 8.192 ng/uL
 RT: 2.42 min Scan# 56
 Delta R.T. -0.01 min
 Lab File: BP000671.D
 Acq: 12 Oct 2019 16:43

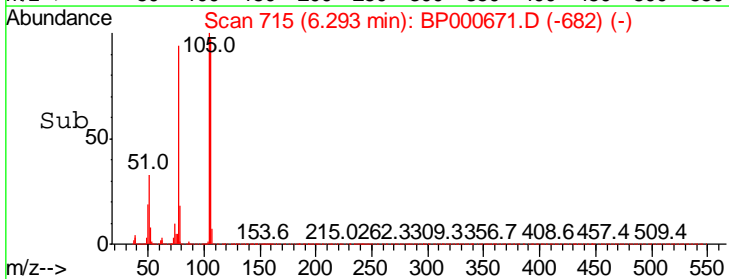
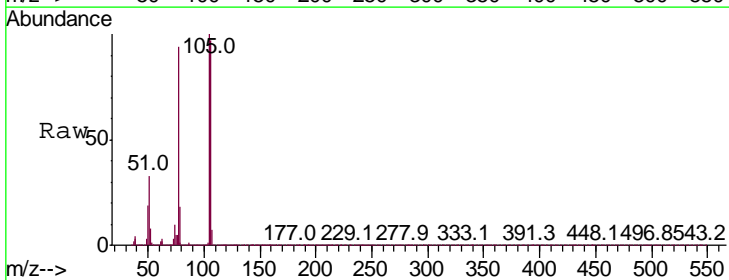
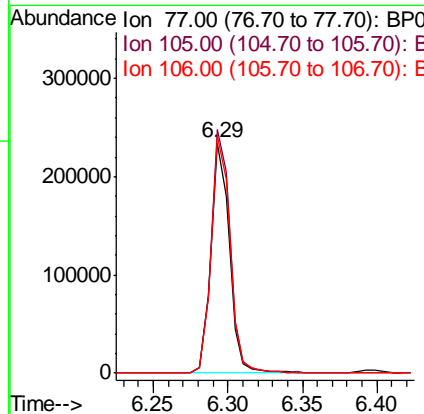
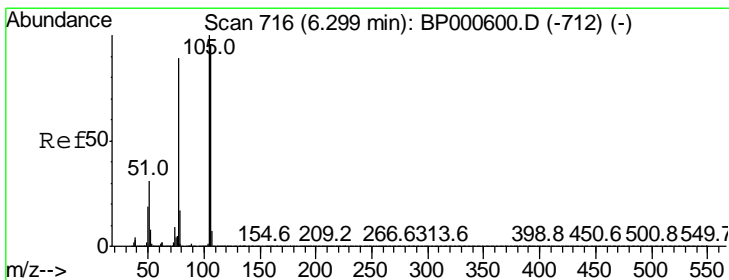
Instrument :
 BNA_P
 ClientSampled :

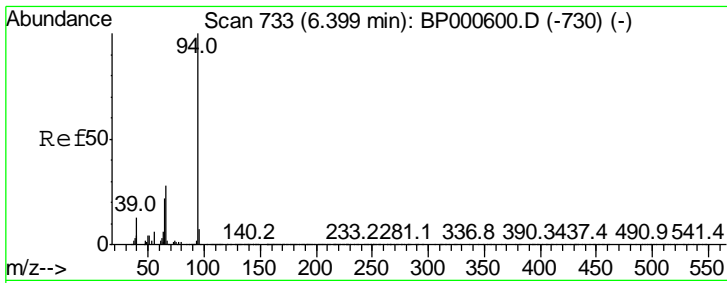
Tgt Ion	Resp	Lower	Upper
88	40154		
43	19.4	16.9	25.3
58	56.8	47.5	71.3



#4
 Benzaldehyde
 Concen: 20.629 ng/ul
 RT: 6.29 min Scan# 715
 Delta R.T. -0.01 min
 Lab File: BP000671.D
 Acq: 12 Oct 2019 16:43

Tgt Ion	Resp	Lower	Upper
77	199613		
105	106.1	87.4	131.2
106	103.1	84.3	126.5



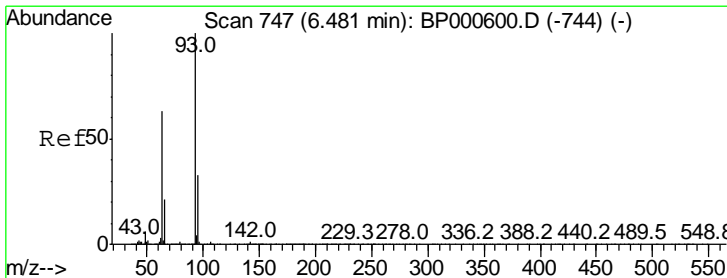
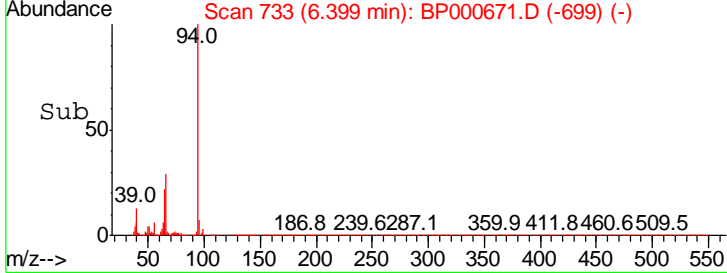
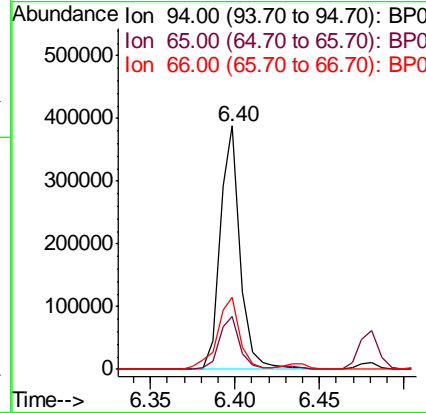
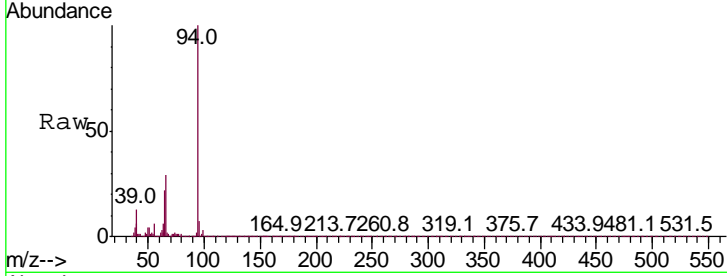


#6
 Phenol
 Concen: 20.727 ng/ul
 RT: 6.40 min Scan# 733
 Delta R.T. -0.00 min
 Lab File: BP000671.D
 Acq: 12 Oct 2019 16:43

Instrument :
 BNA_P
 ClientSampled :

Tgt Ion: 94 Resp: 320774

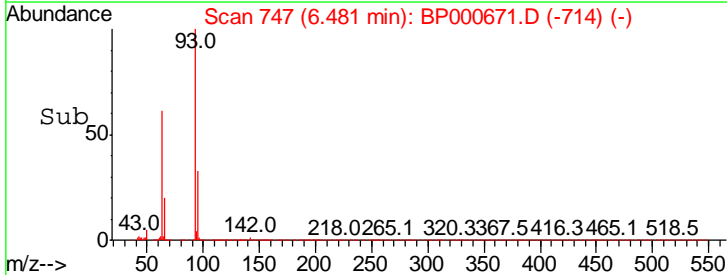
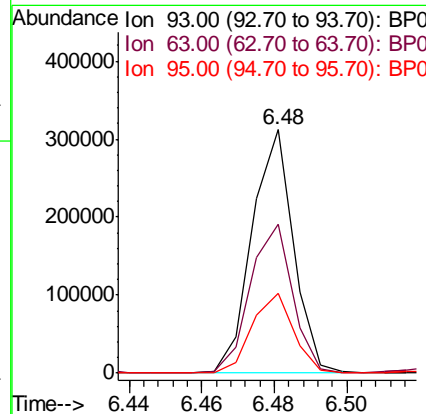
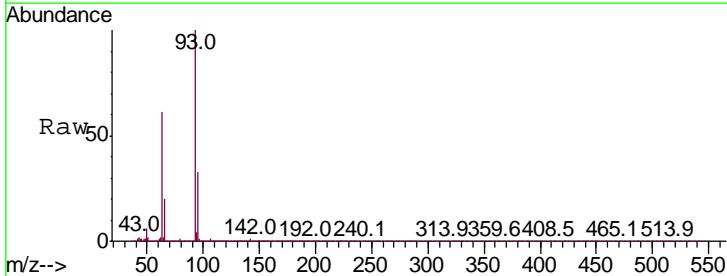
Ion	Ratio	Lower	Upper
94	100		
65	21.9	19.2	28.8
66	29.4	25.7	38.5

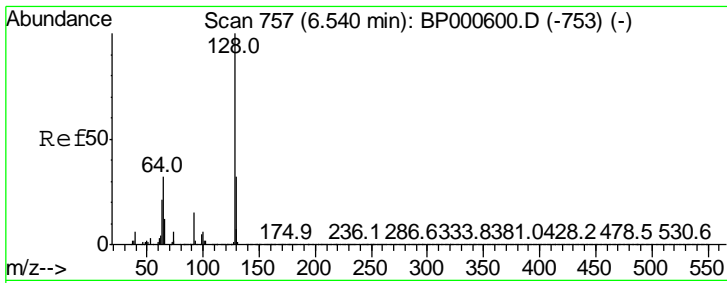


#8
 Bis(2-Chloroethyl)ether
 Concen: 20.368 ng/ul
 RT: 6.48 min Scan# 747
 Delta R.T. -0.01 min
 Lab File: BP000671.D
 Acq: 12 Oct 2019 16:43

Tgt Ion: 93 Resp: 246975

Ion	Ratio	Lower	Upper
93	100		
63	61.2	47.5	71.3
95	32.6	26.3	39.5

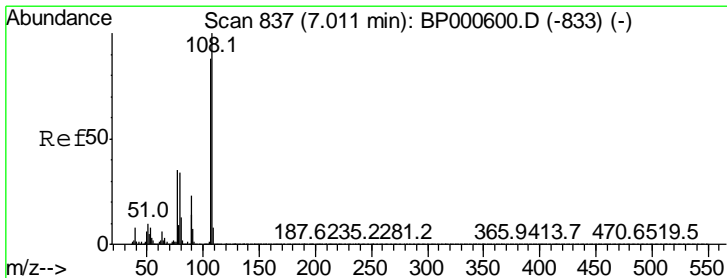
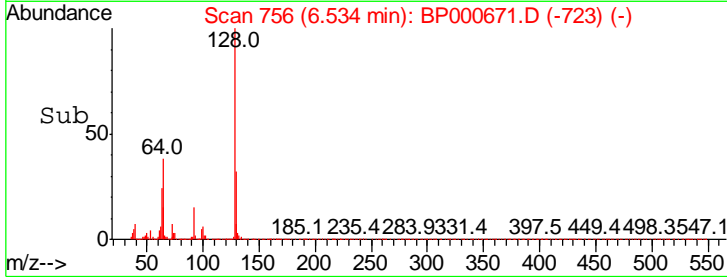
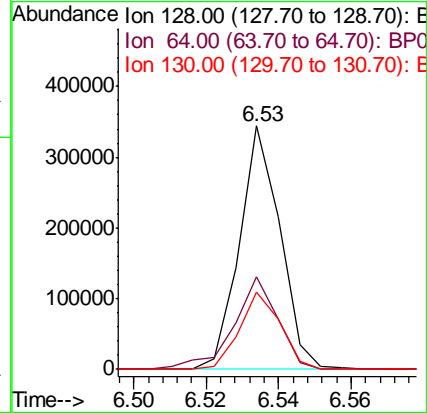
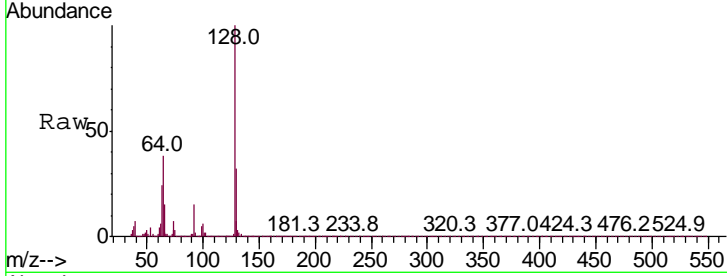




#10
 2-Chlorophenol
 Concen: 19.835 ng/ul
 RT: 6.53 min Scan# 756
 Delta R.T. -0.01 min
 Lab File: BP000671.D
 Acq: 12 Oct 2019 16:43

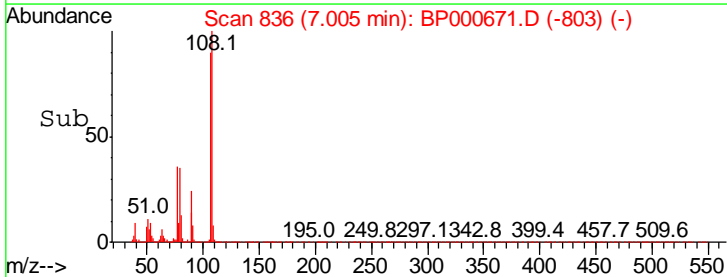
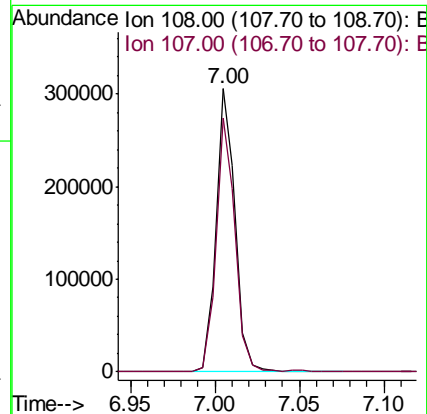
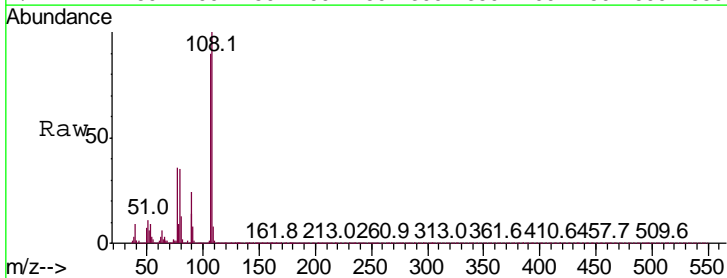
Instrument :
 BNA_P
 ClientSampled :

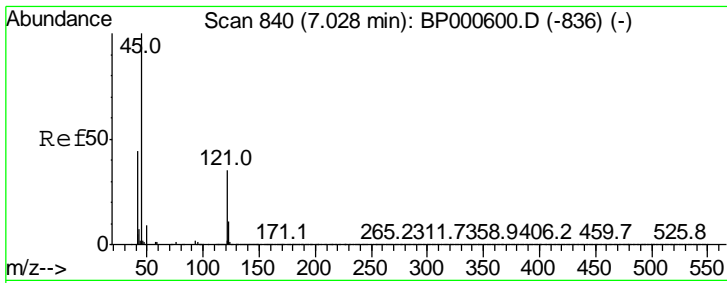
Tgt Ion	Resp	Lower	Upper
128	100		
64	38.1	29.3	43.9
130	31.6	26.0	39.0



#11
 2-Methylphenol
 Concen: 20.020 ng/ul
 RT: 7.00 min Scan# 836
 Delta R.T. -0.01 min
 Lab File: BP000671.D
 Acq: 12 Oct 2019 16:43

Tgt Ion	Resp	Lower	Upper
108	100		
107	89.5	71.1	106.7

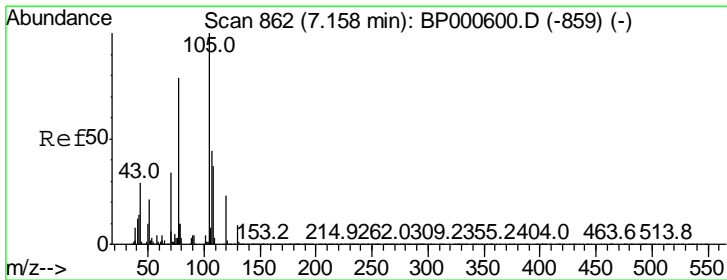
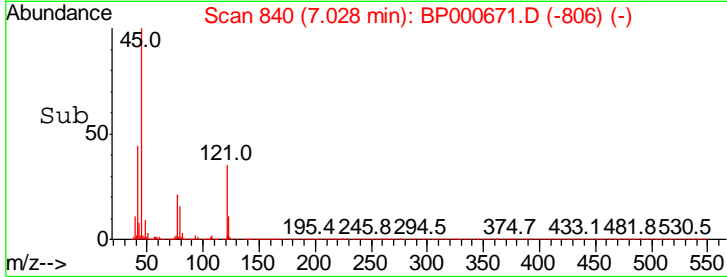
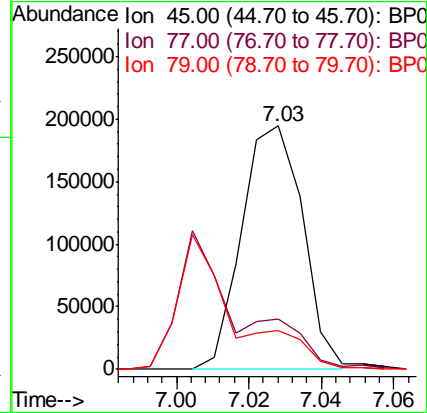
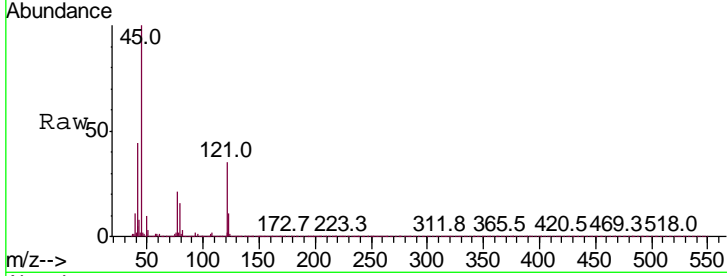




#12
 2,2'-oxybis(1-Chloropropane)
 Concen: 20.544 ng/ul
 RT: 7.03 min Scan# 840
 Delta R.T. -0.00 min
 Lab File: BP000671.D
 Acq: 12 Oct 2019 16:43

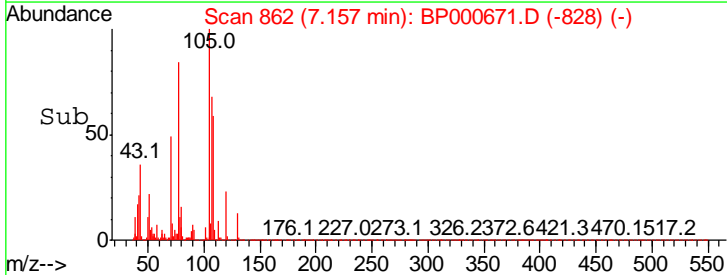
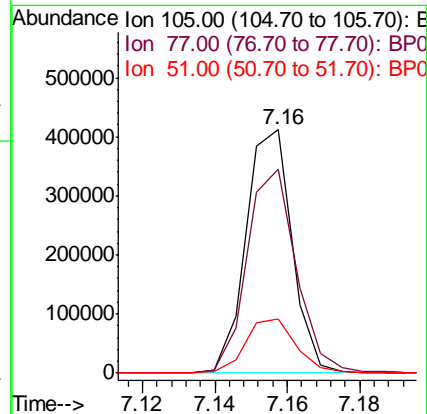
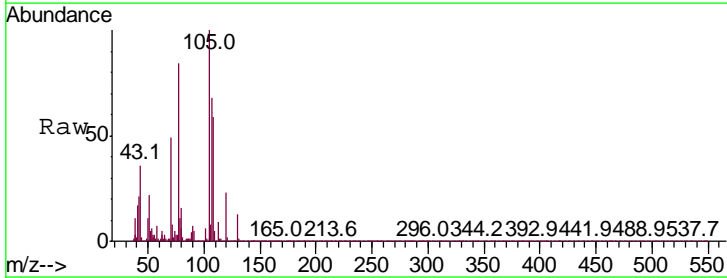
Instrument :
 BNA_P
 ClientSampleId :

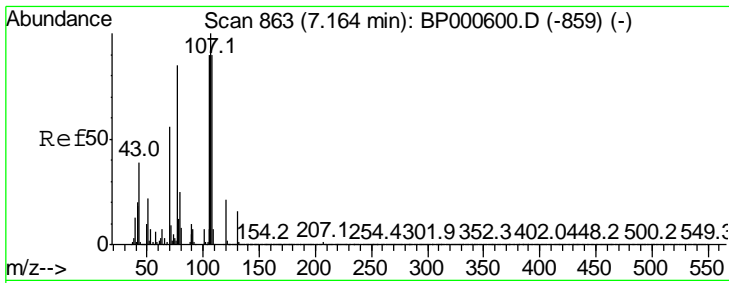
Tgt Ion	Resp	Lower	Upper
45	100		
77	20.6	16.3	24.5
79	15.9	12.2	18.4



#14
 Acetophenone
 Concen: 20.905 ng/ul
 RT: 7.16 min Scan# 862
 Delta R.T. -0.00 min
 Lab File: BP000671.D
 Acq: 12 Oct 2019 16:43

Tgt Ion	Resp	Lower	Upper
105	100		
77	83.8	63.4	95.0
51	22.1	17.5	26.3

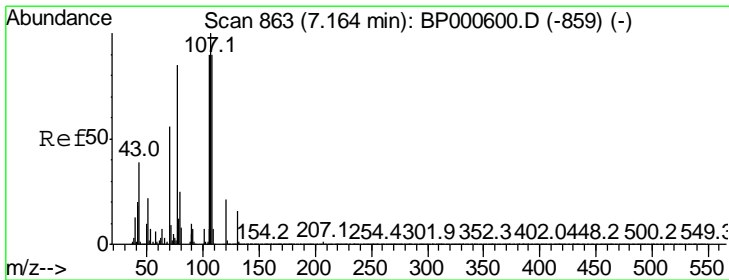
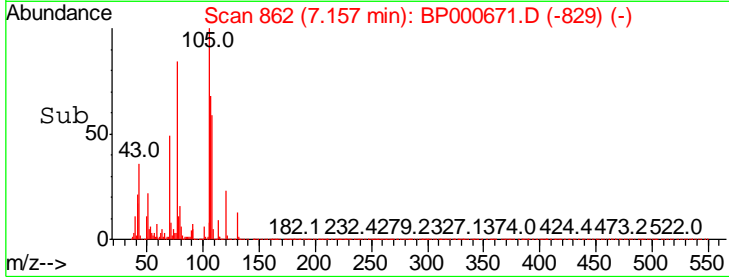
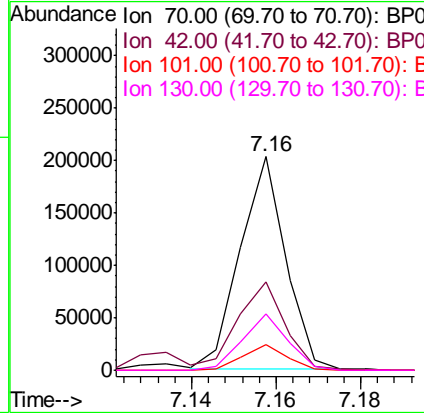
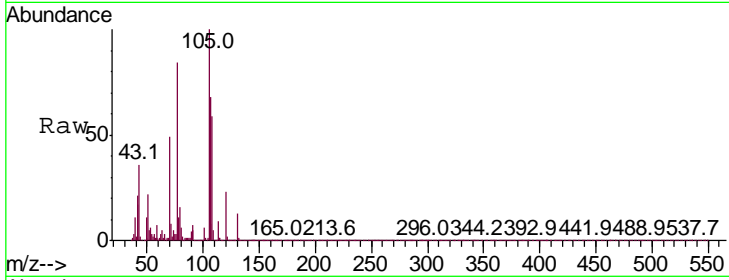




#15
 N-Nitroso-di-n-propylamine
 Concen: 19.481 ng/ul
 RT: 7.16 min Scan# 862
 Delta R.T. -0.01 min
 Lab File: BP000671.D
 Acq: 12 Oct 2019 16:43

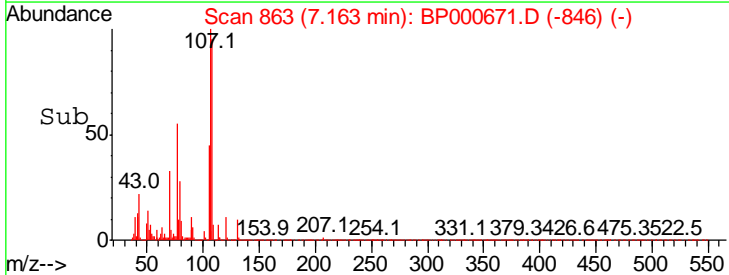
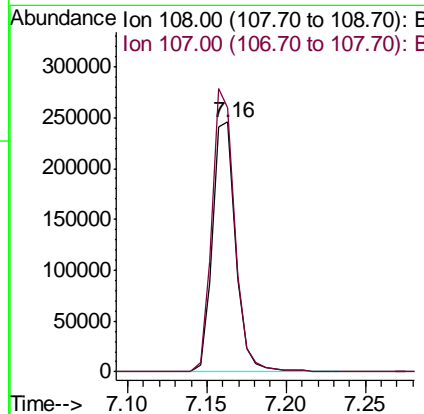
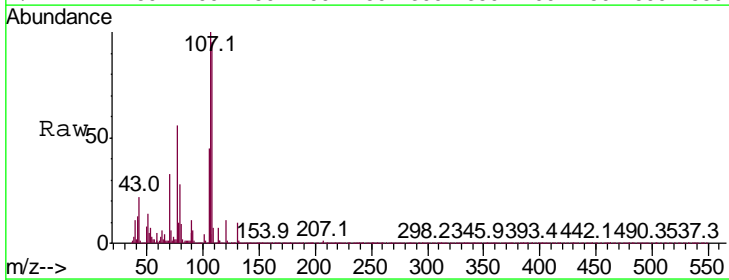
Instrument :
 BNA_P
 ClientSampleId :

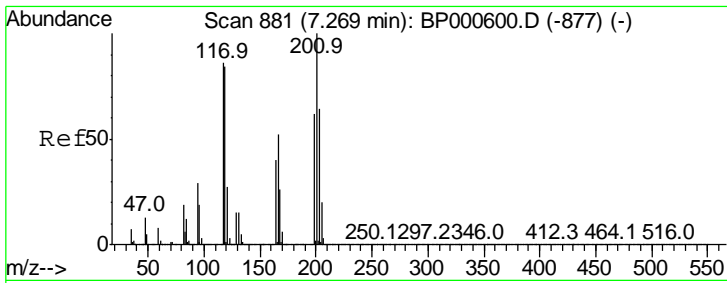
Tgt Ion	Resp	Lower	Upper
70	151958		
70	100		
42	41.6	33.5	50.3
101	12.0	9.6	14.4
130	26.1	21.8	32.8



#16
 4-Methylphenol
 Concen: 21.431 ng/ul
 RT: 7.16 min Scan# 863
 Delta R.T. -0.00 min
 Lab File: BP000671.D
 Acq: 12 Oct 2019 16:43

Tgt Ion	Resp	Lower	Upper
108	251752		
108	100		
107	105.5	90.5	135.7

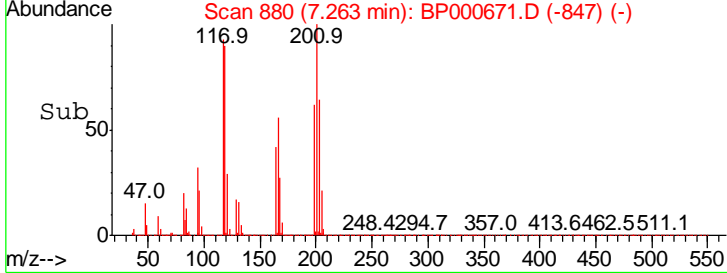
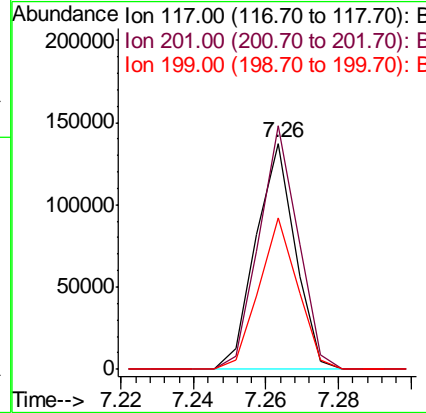
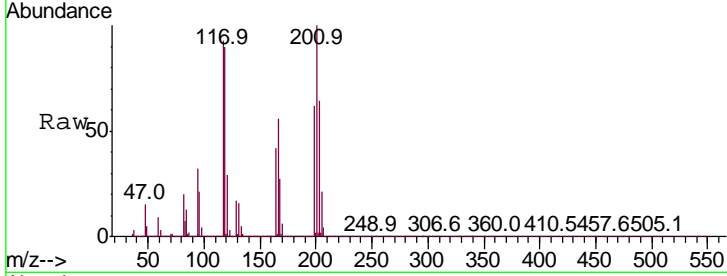




#17
 Hexachloroethane
 Concen: 19.830 ng/ul
 RT: 7.26 min Scan# 880
 Delta R.T. -0.01 min
 Lab File: BP000671.D
 Acq: 12 Oct 2019 16:43

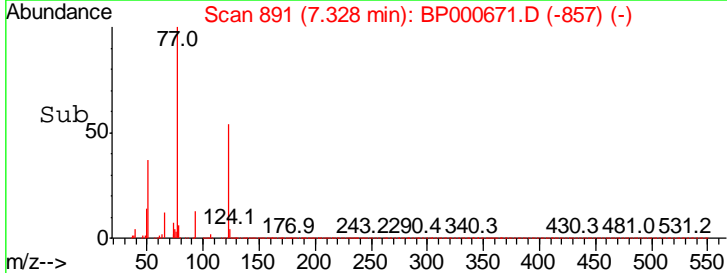
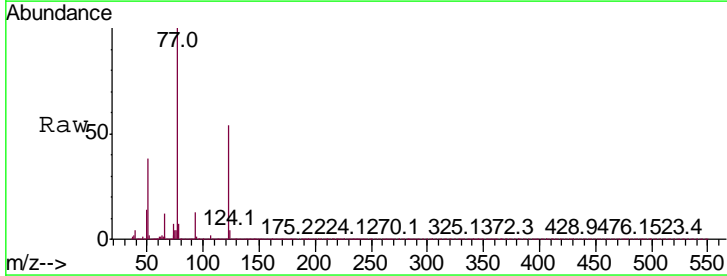
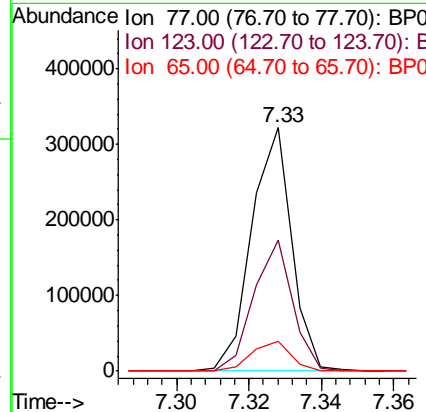
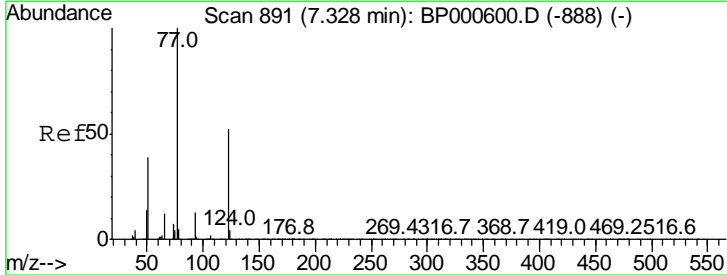
Instrument :
 BNA_P
 ClientSampled :

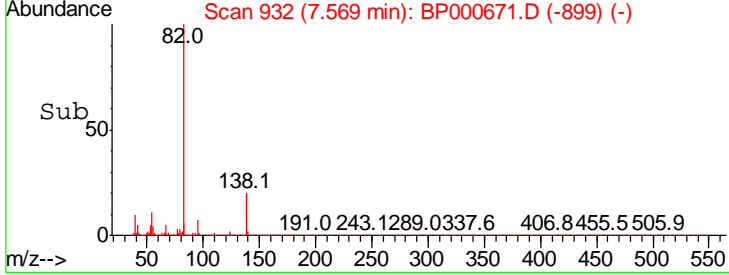
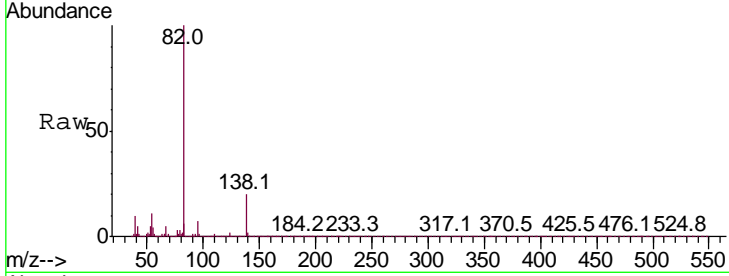
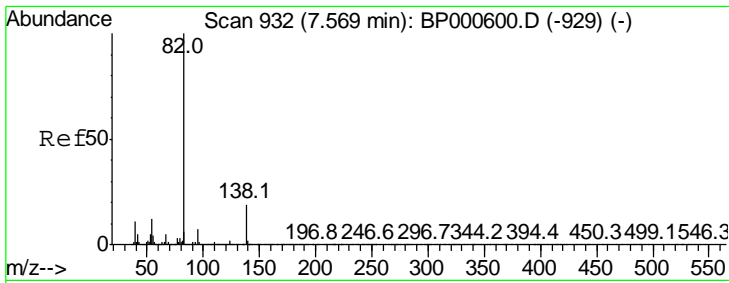
Tgt Ion	Resp	Lower	Upper
117	103748		
117	100		
201	107.6	87.0	130.4
199	67.2	54.1	81.1



#20
 Nitrobenzene
 Concen: 20.085 ng/ul
 RT: 7.33 min Scan# 891
 Delta R.T. -0.00 min
 Lab File: BP000671.D
 Acq: 12 Oct 2019 16:43

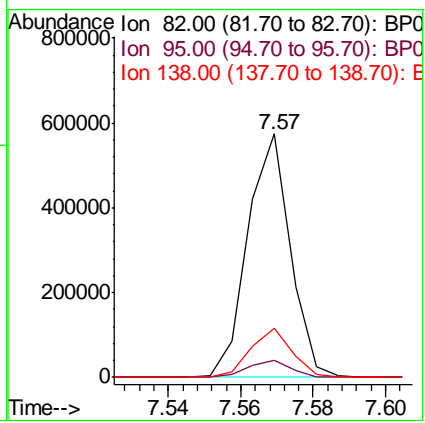
Tgt Ion	Resp	Lower	Upper
77	244483		
77	100		
123	53.8	39.3	58.9
65	12.1	9.8	14.6



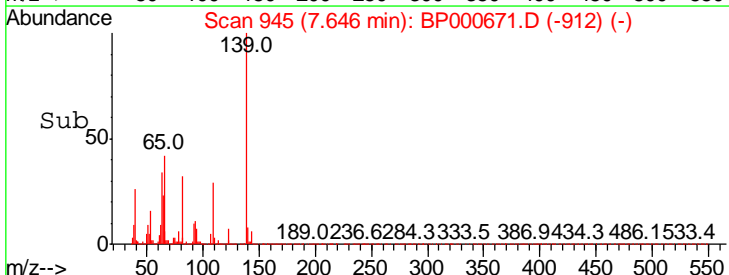
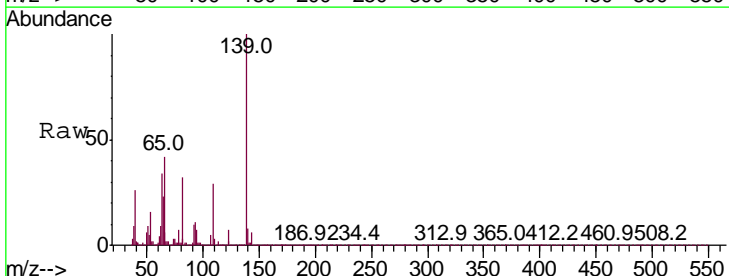
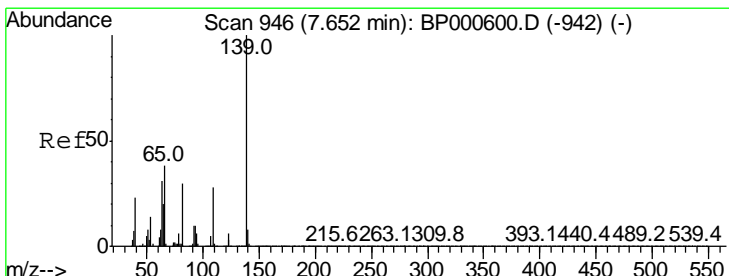


#21
 Isophorone
 Concen: 19.837 ng/ul
 RT: 7.57 min Scan# 932
 Delta R.T. -0.01 min
 Lab File: BP000671.D
 Acq: 12 Oct 2019 16:43

Tgt Ion	Resp	Lower	Upper
82	100		
95	7.2	5.7	8.5
138	20.3	16.6	25.0

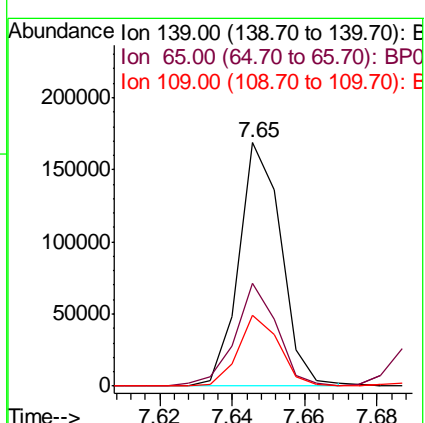


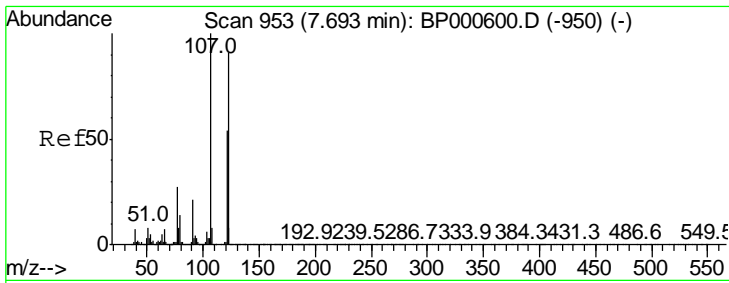
Instrument :
 BNA_P
 ClientSampled :



#23
 2-Nitrophenol
 Concen: 20.506 ng/ul
 RT: 7.65 min Scan# 945
 Delta R.T. -0.01 min
 Lab File: BP000671.D
 Acq: 12 Oct 2019 16:43

Tgt Ion	Resp	Lower	Upper
139	100		
65	42.1	32.2	48.2
109	29.1	22.1	33.1

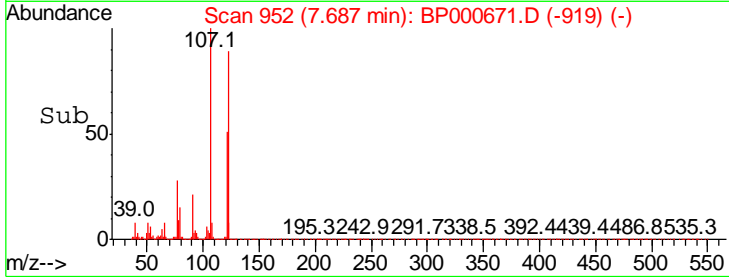
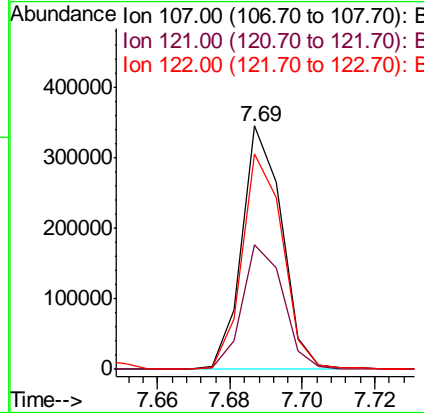
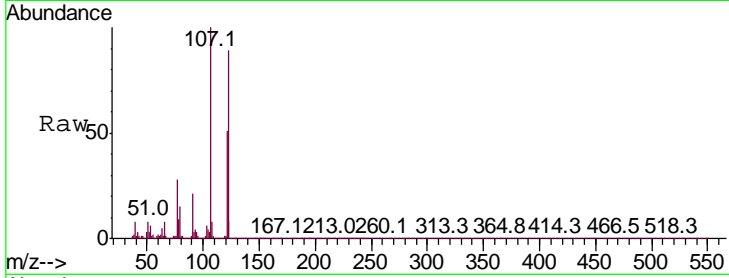




#24
 2,4-Dimethylphenol
 Concen: 20.156 ng/ul
 RT: 7.69 min Scan# 952
 Delta R.T. -0.01 min
 Lab File: BP000671.D
 Acq: 12 Oct 2019 16:43

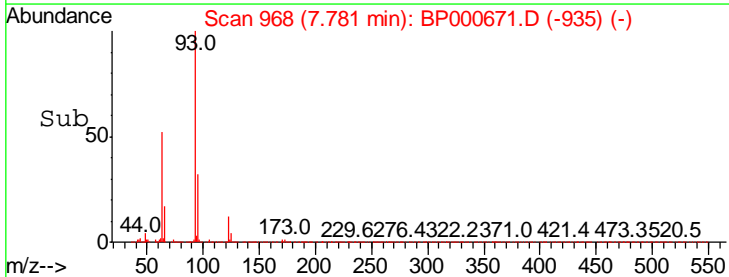
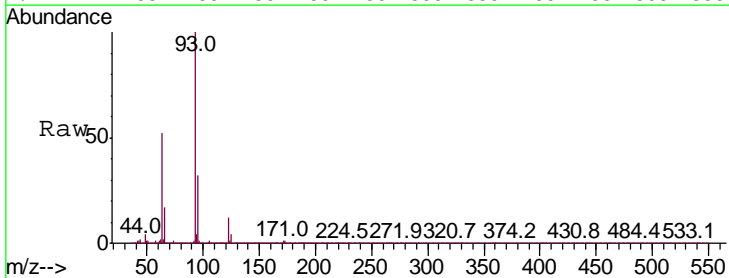
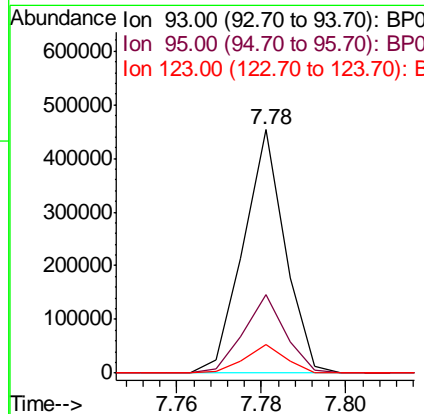
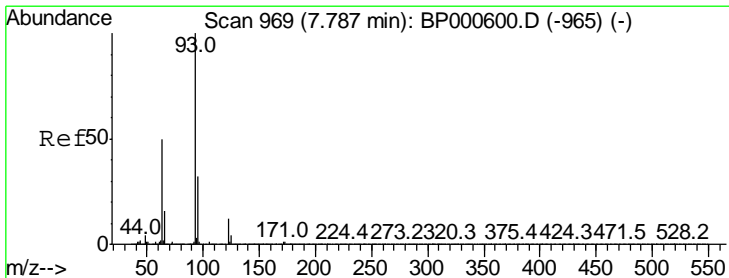
Instrument :
 BNA_P
 ClientSampled :

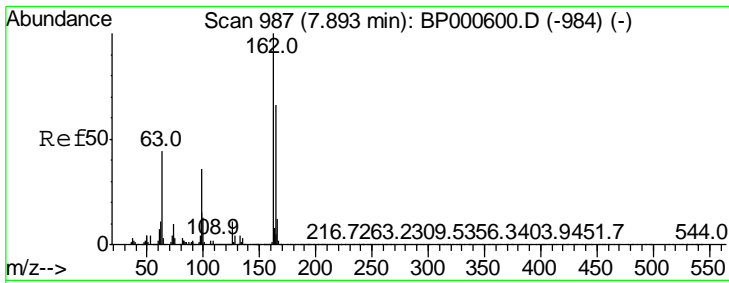
Tgt Ion	Resp	Lower	Upper
107	100		
121	51.3	41.5	62.3
122	88.6	71.8	107.8



#25
 Bis(2-Chloroethoxy)methane
 Concen: 19.966 ng/ul
 RT: 7.78 min Scan# 968
 Delta R.T. -0.01 min
 Lab File: BP000671.D
 Acq: 12 Oct 2019 16:43

Tgt Ion	Resp	Lower	Upper
93	100		
95	32.2	26.0	39.0
123	11.6	9.6	14.4

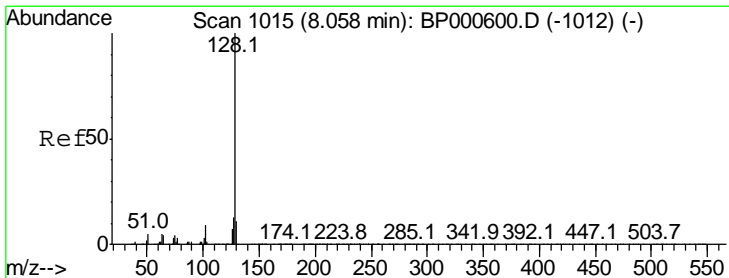
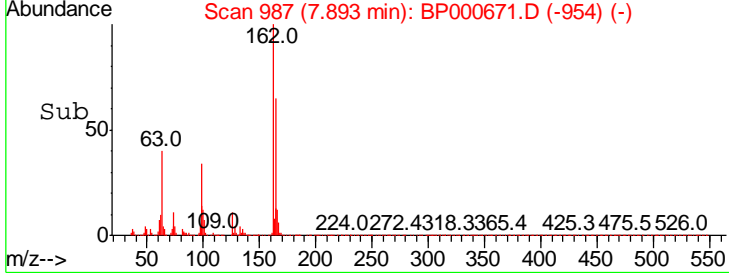
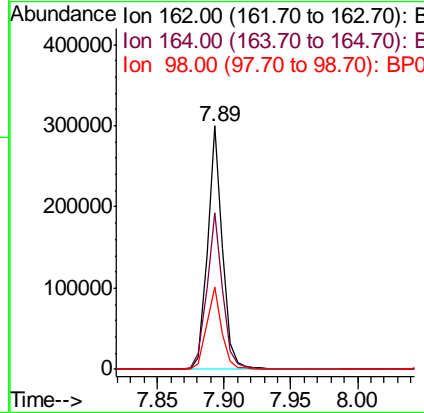
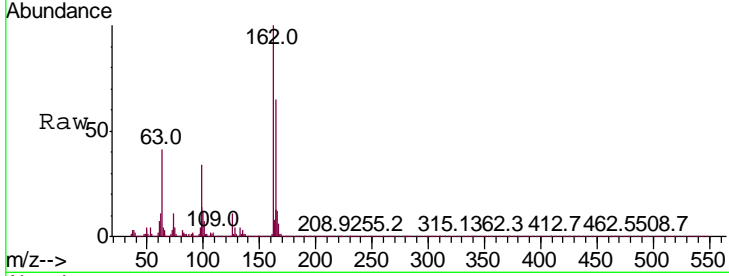




#27
 2,4-Dichlorophenol
 Concen: 20.094 ng/ul
 RT: 7.89 min Scan# 987
 Delta R.T. -0.01 min
 Lab File: BP000671.D
 Acq: 12 Oct 2019 16:43

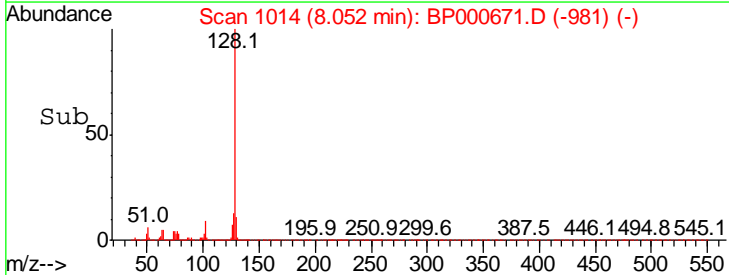
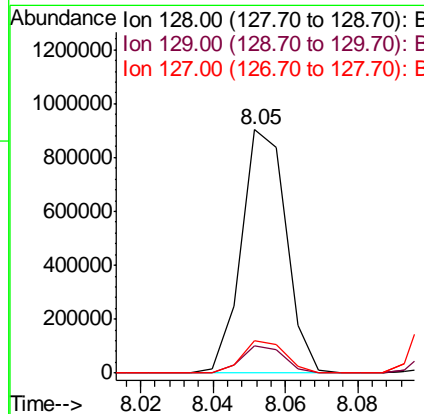
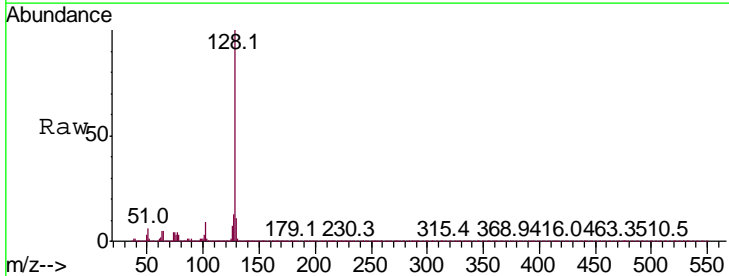
Instrument :
 BNA_P
 ClientSampled :

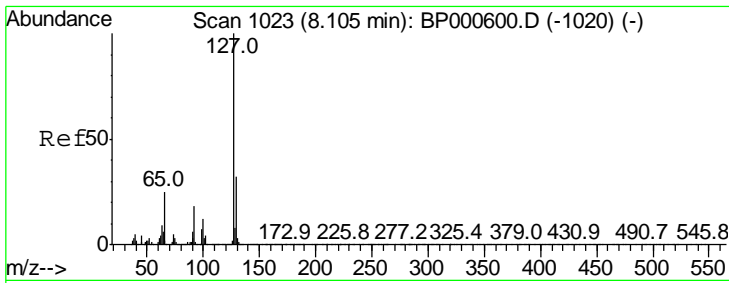
Tgt Ion	Resp	Lower	Upper
162	100		
164	64.6	52.2	78.4
98	34.1	25.8	38.8



#28
 Naphthalene
 Concen: 20.346 ng/ul
 RT: 8.05 min Scan# 1014
 Delta R.T. -0.01 min
 Lab File: BP000671.D
 Acq: 12 Oct 2019 16:43

Tgt Ion	Resp	Lower	Upper
128	100		
129	11.2	8.9	13.3
127	13.2	10.5	15.7

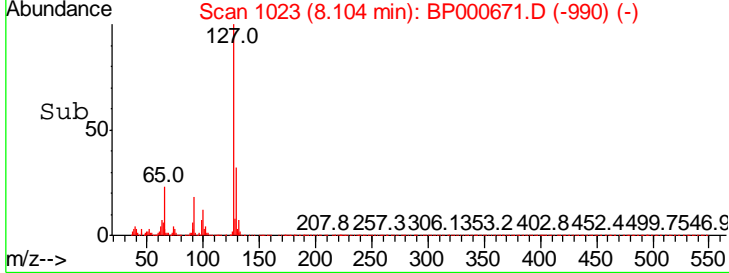
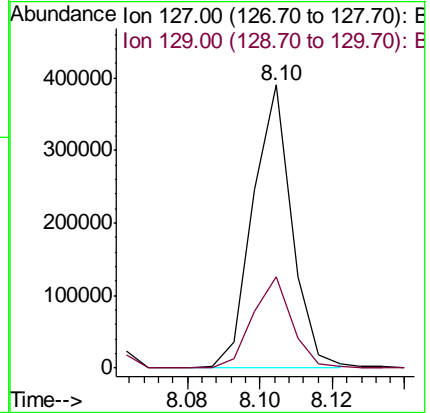
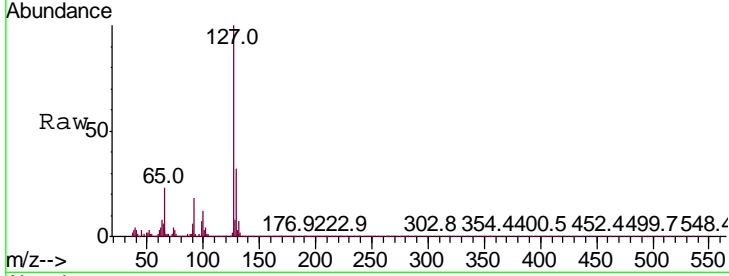




#30
 4-Chloroaniline
 Concen: 22.294 ng/ul
 RT: 8.10 min Scan# 1023
 Delta R.T. -0.01 min
 Lab File: BP000671.D
 Acq: 12 Oct 2019 16:43

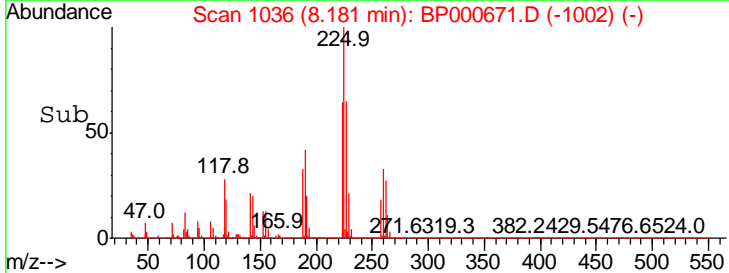
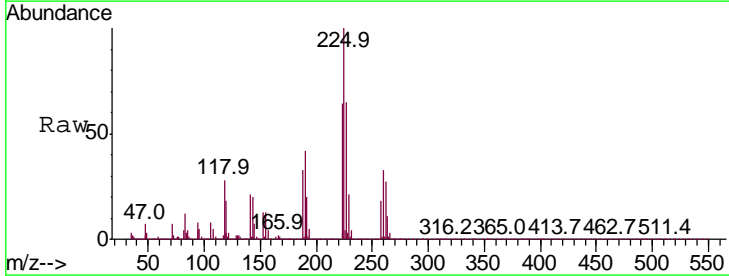
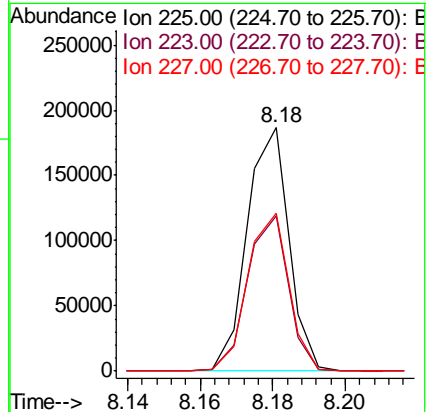
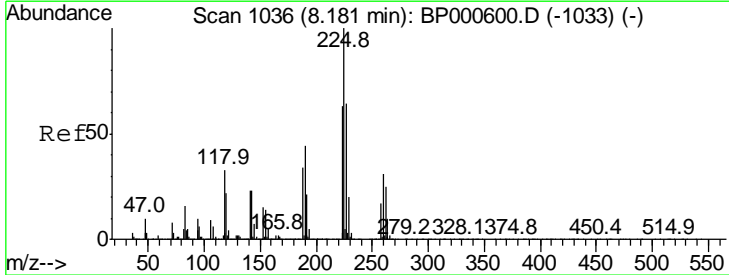
Instrument :
 BNA_P
 ClientSampled :

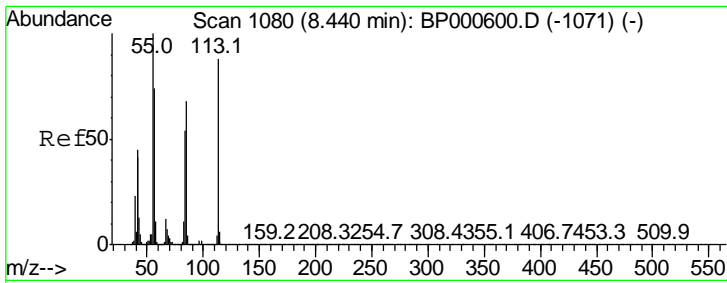
Tgt Ion	Resp	Lower	Upper
127	290017		
129	32.2	26.1	39.1



#31
 Hexachlorobutadiene
 Concen: 20.334 ng/ul
 RT: 8.18 min Scan# 1036
 Delta R.T. -0.00 min
 Lab File: BP000671.D
 Acq: 12 Oct 2019 16:43

Tgt Ion	Resp	Lower	Upper
225	148945		
223	63.7	51.6	77.4
227	65.1	50.4	75.6

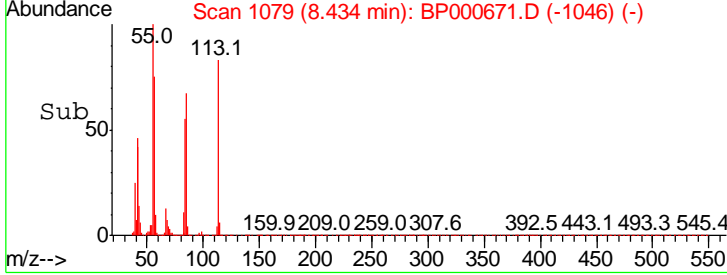
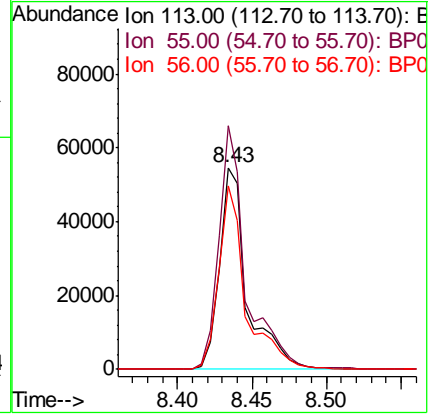
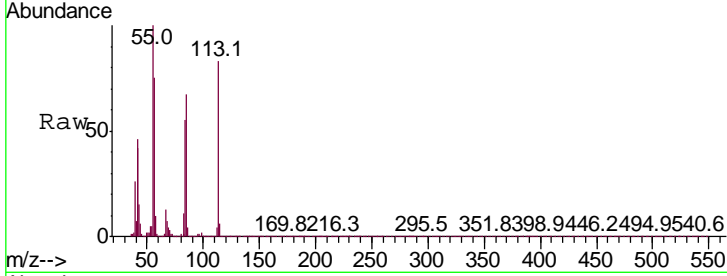




#32
 Caprolactam
 Concen: 19.161 ng/ul
 RT: 8.43 min Scan# 1079
 Delta R.T. -0.01 min
 Lab File: BP000671.D
 Acq: 12 Oct 2019 16:43

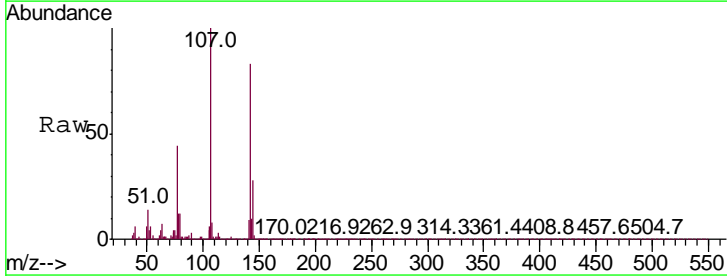
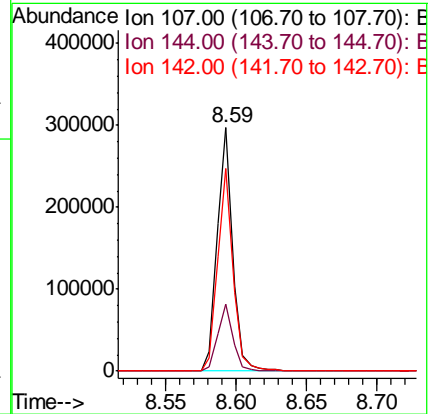
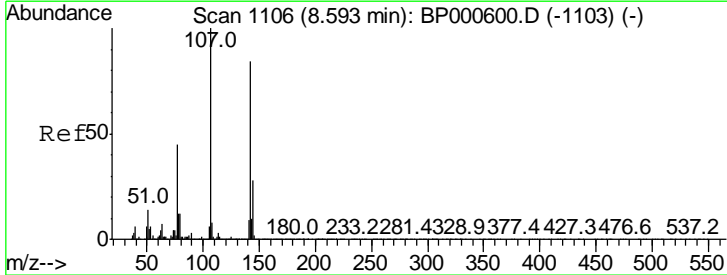
Instrument :
 BNA_P
 ClientSampled :

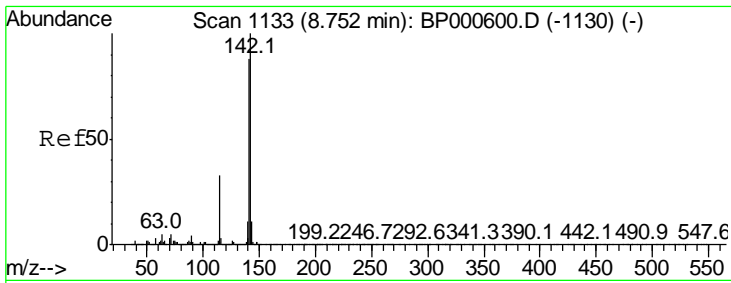
Tgt Ion	Resp	Lower	Upper
113	70674		
55	120.6	93.0	139.6
56	90.9	69.4	104.2



#33
 4-Chloro-3-methylphenol
 Concen: 19.987 ng/ul
 RT: 8.59 min Scan# 1106
 Delta R.T. -0.00 min
 Lab File: BP000671.D
 Acq: 12 Oct 2019 16:43

Tgt Ion	Resp	Lower	Upper
107	227280		
144	27.6	20.6	30.8
142	83.1	64.6	96.8

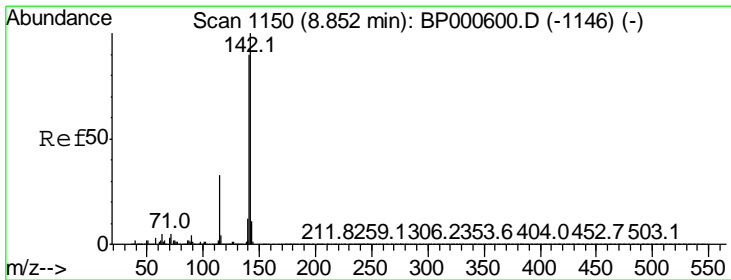
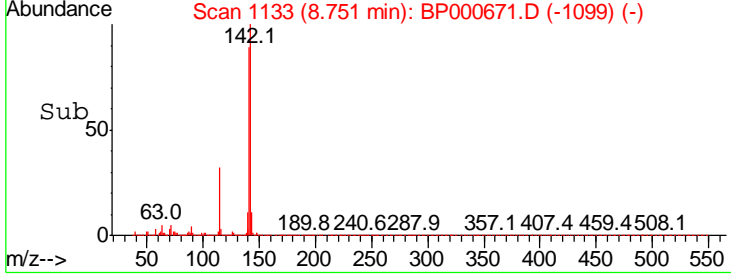
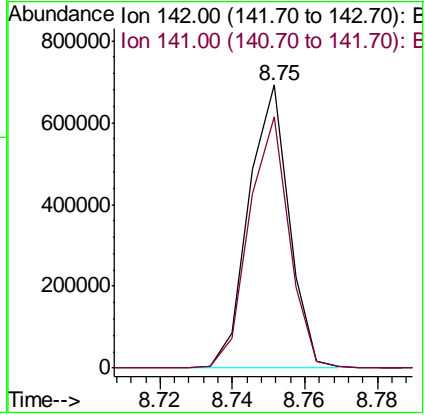
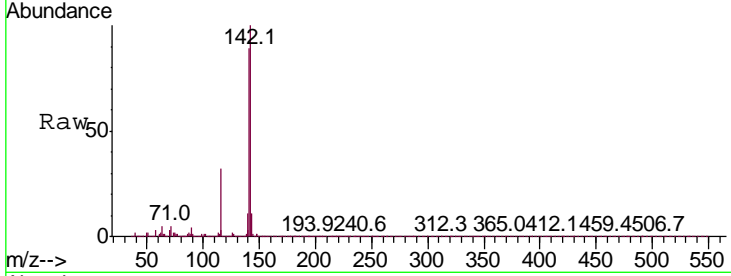




#34
 2-Methylnaphthalene
 Concen: 20.239 ng/ul
 RT: 8.75 min Scan# 1133
 Delta R.T. -0.00 min
 Lab File: BP000671.D
 Acq: 12 Oct 2019 16:43

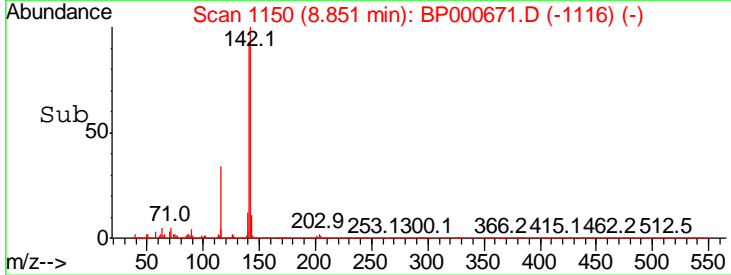
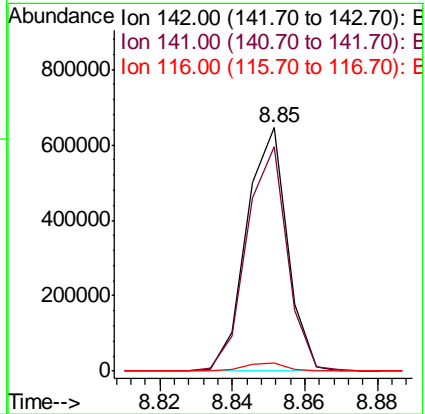
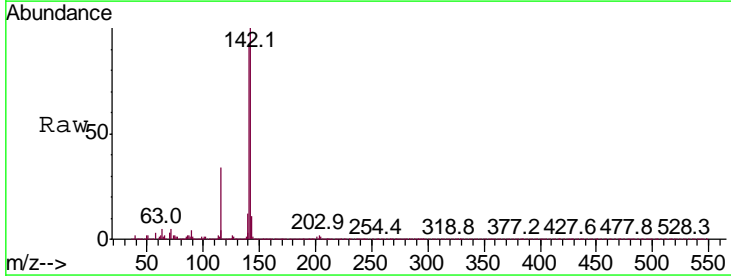
Instrument :
 BNA_P
 ClientSampled :

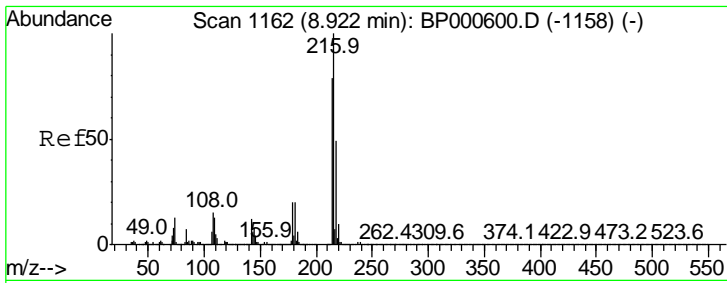
Tgt Ion:142 Resp: 533778
 Ion Ratio Lower Upper
 142 100
 141 88.7 71.0 106.4



#35
 1-Methylnaphthalene
 Concen: 20.167 ng/ul
 RT: 8.85 min Scan# 1150
 Delta R.T. -0.00 min
 Lab File: BP000671.D
 Acq: 12 Oct 2019 16:43

Tgt Ion:142 Resp: 510415
 Ion Ratio Lower Upper
 142 100
 141 92.1 73.0 109.4
 116 3.5 3.0 4.4

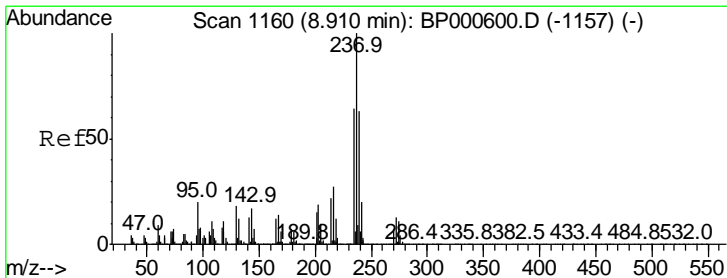
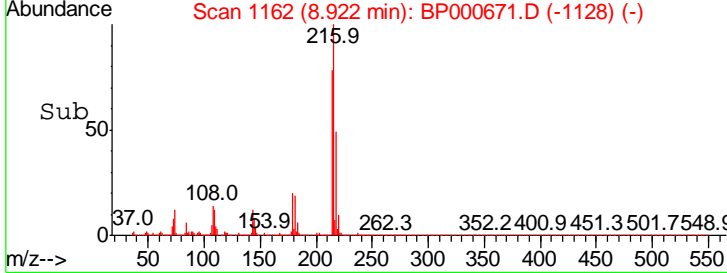
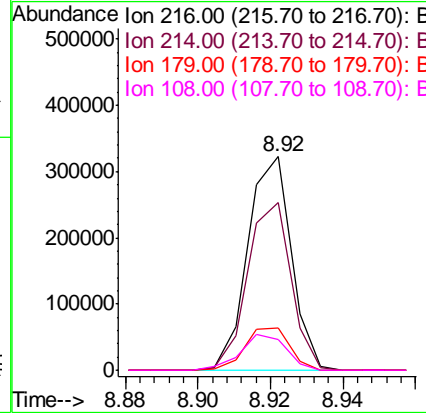
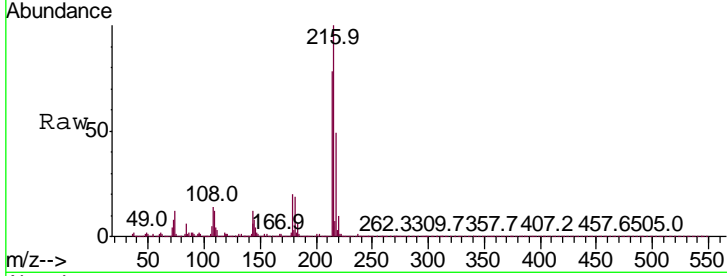




#37
 1,2,4,5-Tetrachlorobenzene
 Concen: 20.597 ng/ul
 RT: 8.92 min Scan# 1162
 Delta R.T. -0.00 min
 Lab File: BP000671.D
 Acq: 12 Oct 2019 16:43

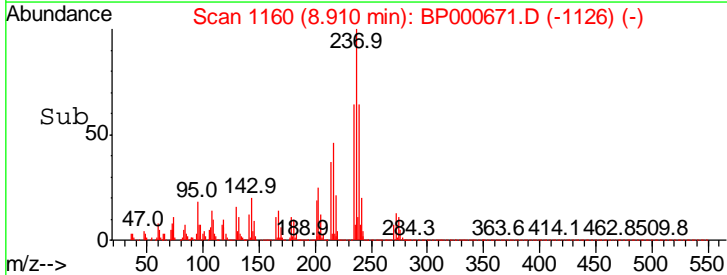
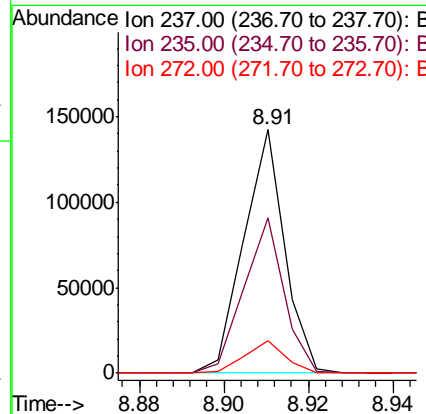
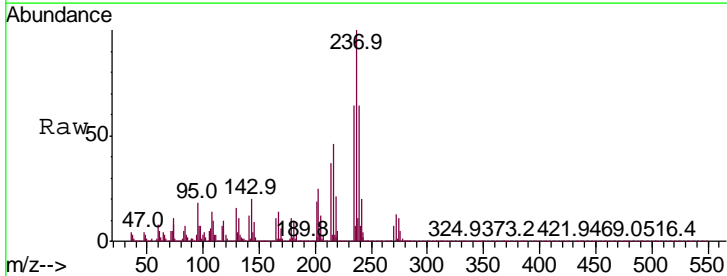
Instrument :
 BNA_P
 ClientSampled :

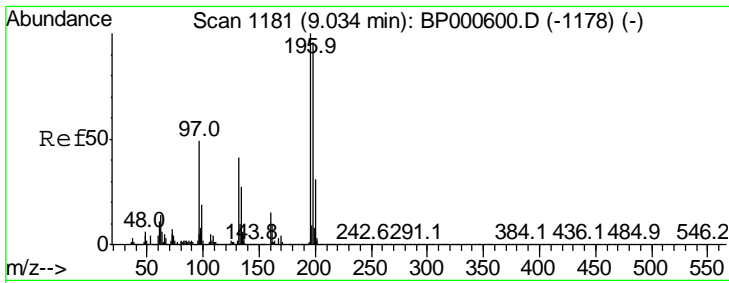
Tgt Ion	Resp	Lower	Upper
216	268810		
216	100		
214	78.4	63.6	95.4
179	19.5	16.6	24.8
108	14.3	13.1	19.7



#38
 Hexachlorocyclopentadiene
 Concen: 24.800 ng/ul
 RT: 8.91 min Scan# 1160
 Delta R.T. -0.00 min
 Lab File: BP000671.D
 Acq: 12 Oct 2019 16:43

Tgt Ion	Resp	Lower	Upper
237	95478		
237	100		
235	63.5	50.1	75.1
272	13.3	9.6	14.4

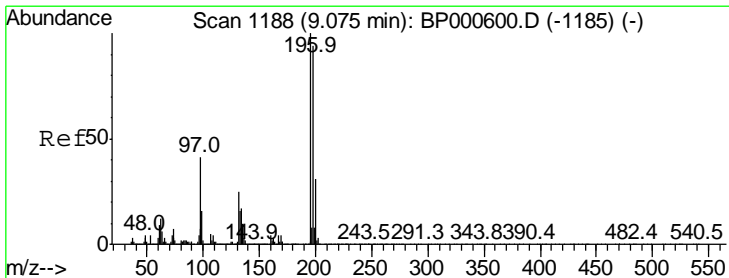
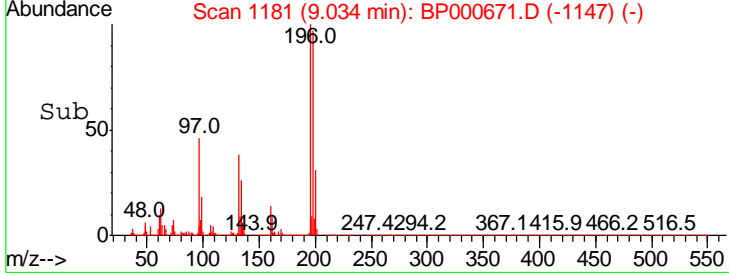
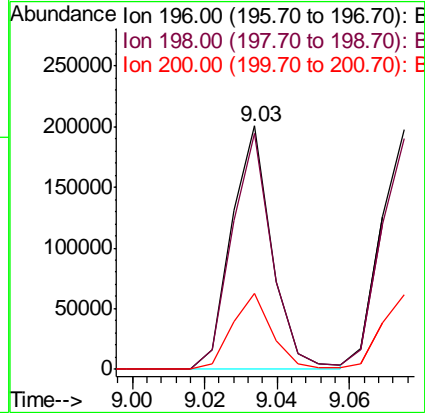
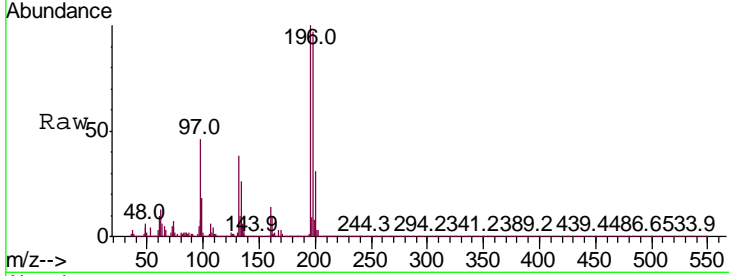




#39
 2,4,6-Trichlorophenol
 Concen: 19.750 ng/ul
 RT: 9.03 min Scan# 1181
 Delta R.T. -0.00 min
 Lab File: BP000671.D
 Acq: 12 Oct 2019 16:43

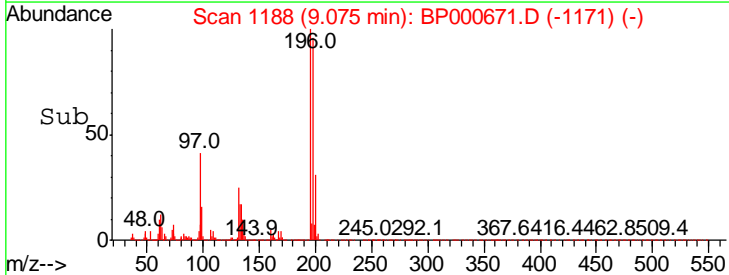
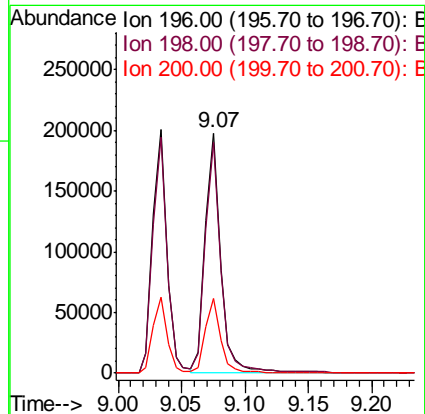
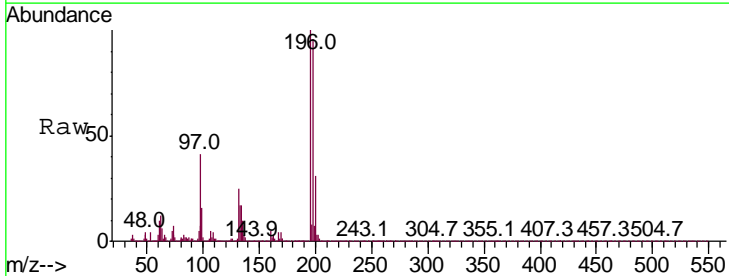
Instrument :
 BNA_P
 ClientSampleID :

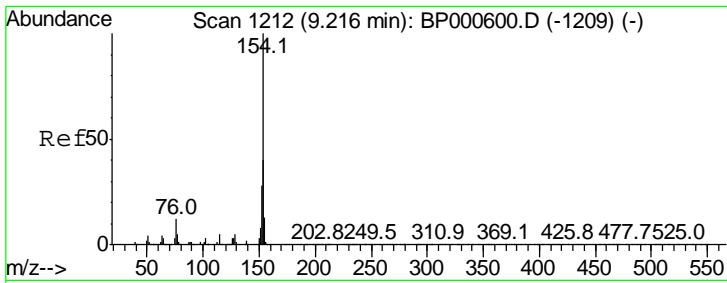
Tgt Ion	Resp	Lower	Upper
196	100		
198	96.8	75.8	113.6
200	31.3	24.2	36.4



#40
 2,4,5-Trichlorophenol
 Concen: 19.863 ng/ul
 RT: 9.07 min Scan# 1188
 Delta R.T. -0.00 min
 Lab File: BP000671.D
 Acq: 12 Oct 2019 16:43

Tgt Ion	Resp	Lower	Upper
196	100		
198	95.8	76.6	114.8
200	31.2	24.2	36.4

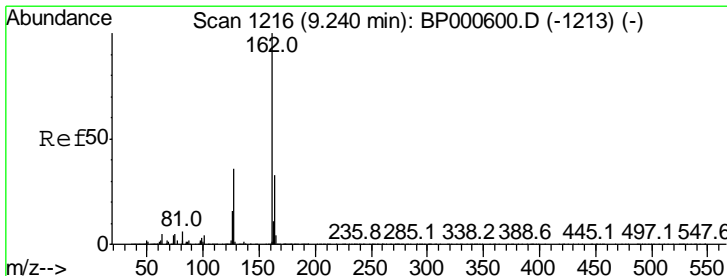
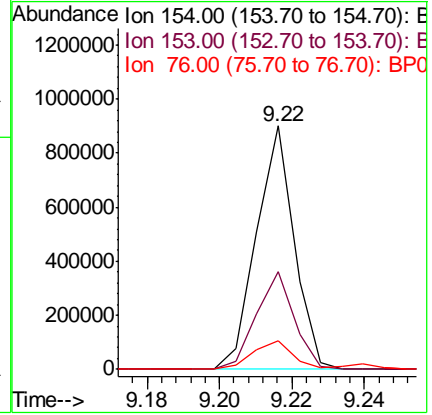
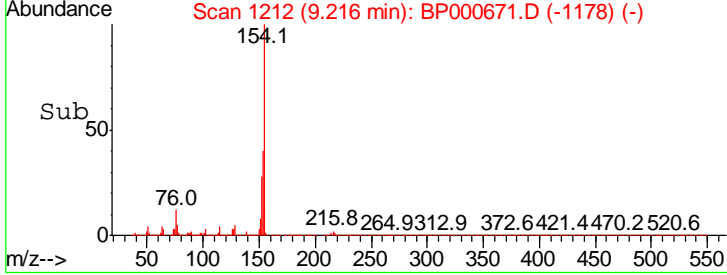
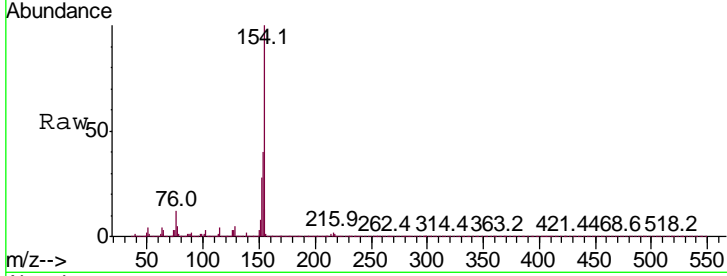




#41
 1,1'-Biphenyl
 Concen: 20.517 ng/ul
 RT: 9.22 min Scan# 1212
 Delta R.T. -0.00 min
 Lab File: BP000671.D
 Acq: 12 Oct 2019 16:43

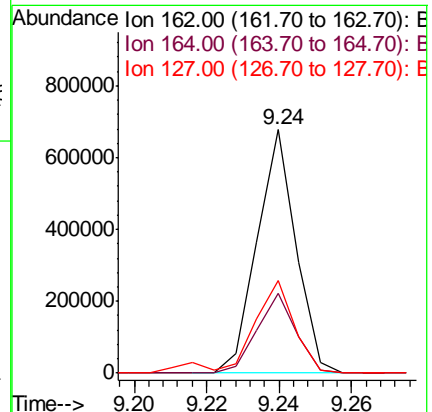
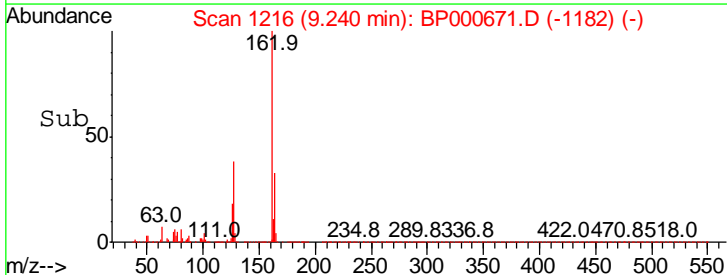
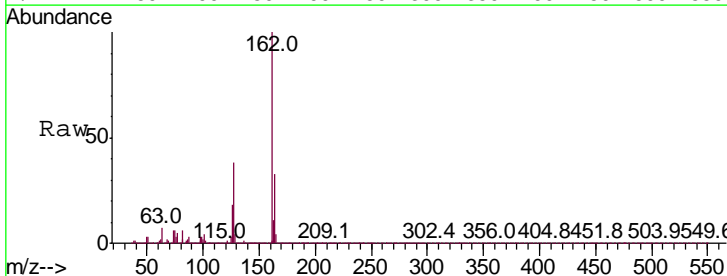
Instrument :
 BNA_P
 ClientSampled :

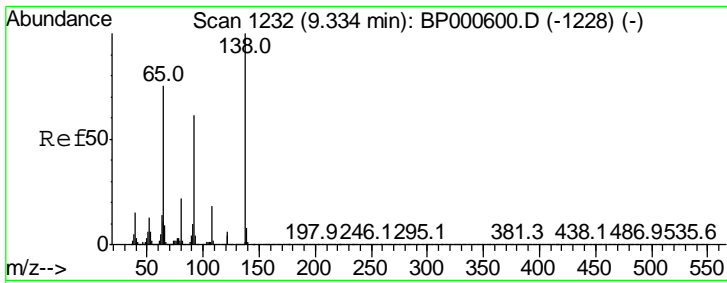
Tgt Ion	Ratio	Lower	Upper
154	100		
153	40.1	32.3	48.5
76	11.6	10.0	15.0



#42
 2-Chloronaphthalene
 Concen: 20.567 ng/ul
 RT: 9.24 min Scan# 1216
 Delta R.T. -0.00 min
 Lab File: BP000671.D
 Acq: 12 Oct 2019 16:43

Tgt Ion	Ratio	Lower	Upper
162	100		
164	32.9	26.0	39.0
127	38.2	31.7	47.5

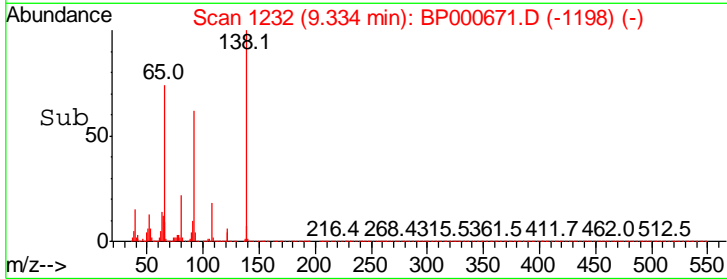
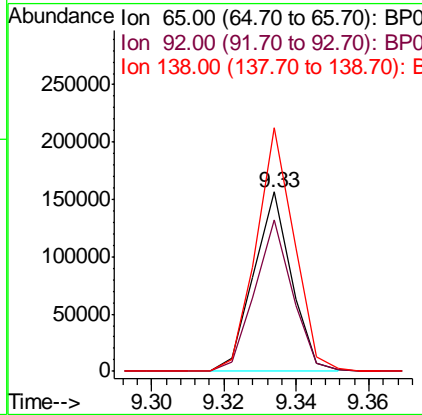
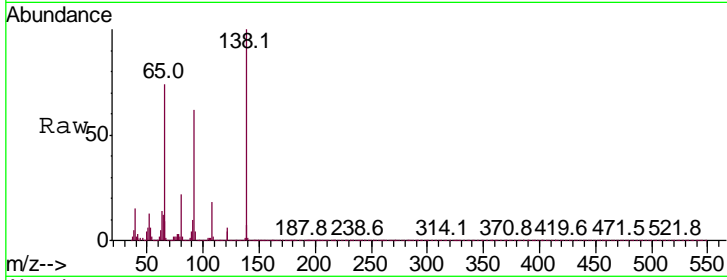




#43
 2-Nitroaniline
 Concen: 20.273 ng/ul
 RT: 9.33 min Scan# 1232
 Delta R.T. -0.00 min
 Lab File: BP000671.D
 Acq: 12 Oct 2019 16:43

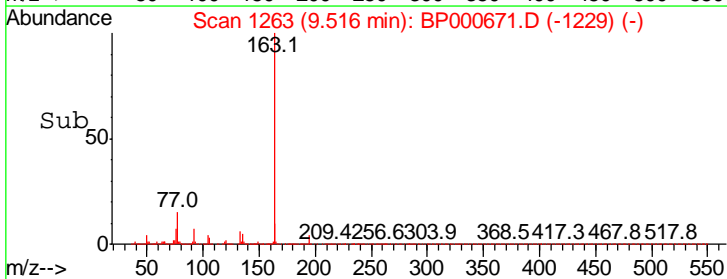
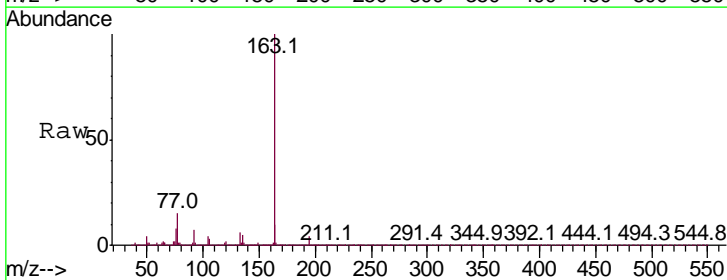
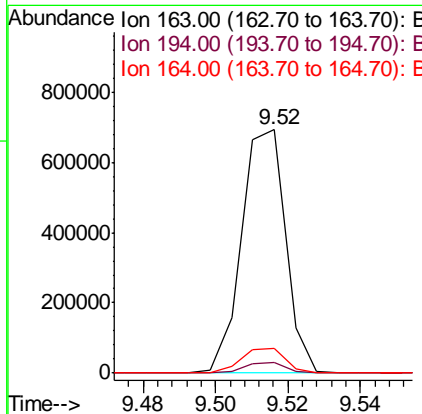
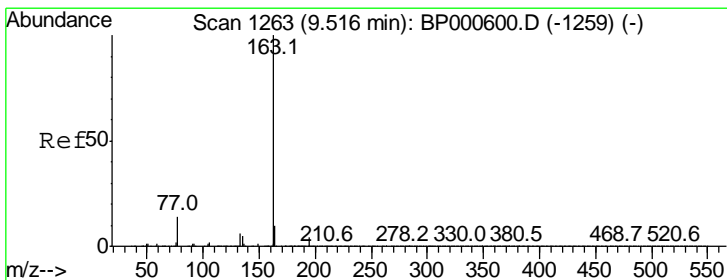
Instrument :
 BNA_P
 ClientSampled :

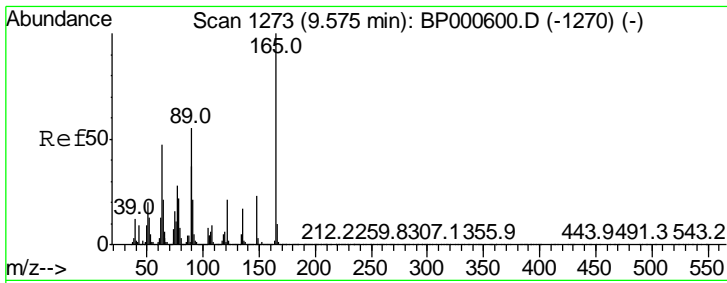
Tgt Ion	Resp	Lower	Upper
65	112943		
92	84.8	64.4	96.6
138	135.9	97.0	145.6



#45
 Dimethylphthalate
 Concen: 20.218 ng/ul
 RT: 9.52 min Scan# 1263
 Delta R.T. -0.00 min
 Lab File: BP000671.D
 Acq: 12 Oct 2019 16:43

Tgt Ion	Resp	Lower	Upper
163	584698		
194	4.3	3.3	4.9
164	9.9	8.1	12.1

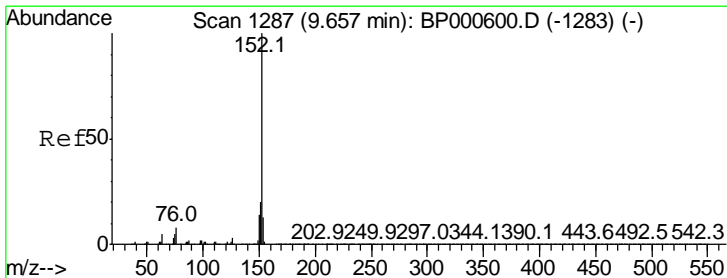
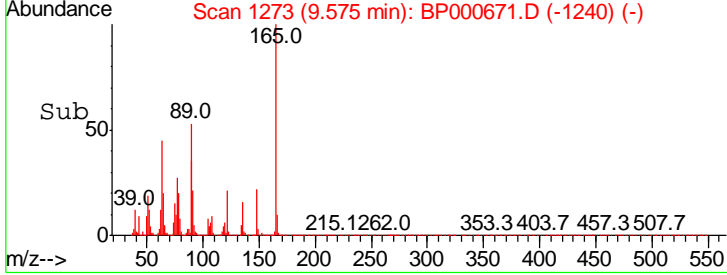
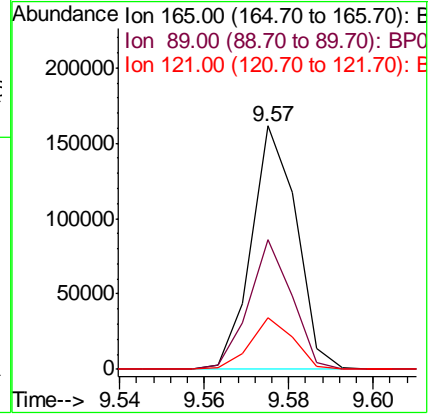
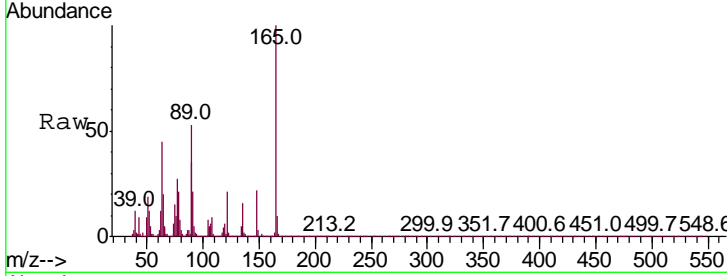




#46
 2,6-Dinitrotoluene
 Concen: 20.930 ng/ul
 RT: 9.57 min Scan# 1273
 Delta R.T. -0.01 min
 Lab File: BP000671.D
 Acq: 12 Oct 2019 16:43

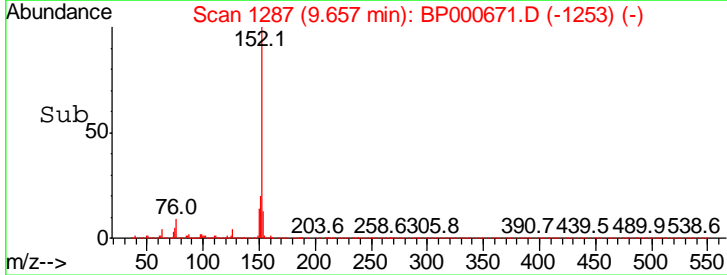
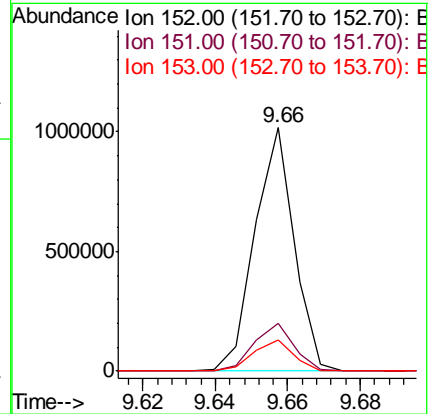
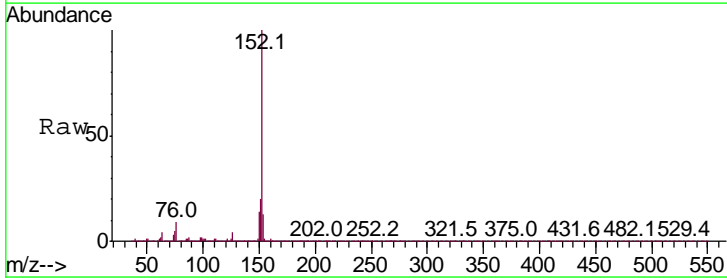
Instrument :
 BNA_P
 ClientSampled :

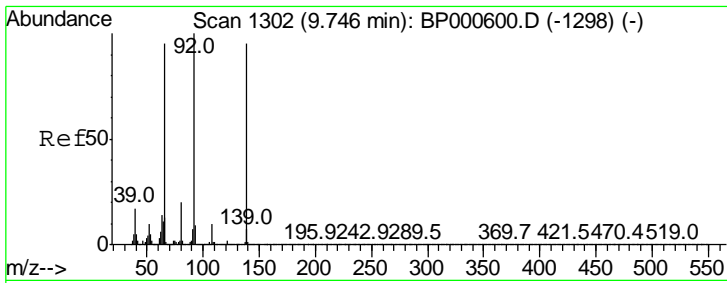
Tgt Ion	Resp	Lower	Upper
165	100		
89	53.2	39.4	59.2
121	21.2	15.9	23.9



#48
 Acenaphthylene
 Concen: 20.739 ng/ul
 RT: 9.66 min Scan# 1287
 Delta R.T. -0.00 min
 Lab File: BP000671.D
 Acq: 12 Oct 2019 16:43

Tgt Ion	Resp	Lower	Upper
152	100		
151	19.8	16.2	24.4
153	12.9	10.9	16.3

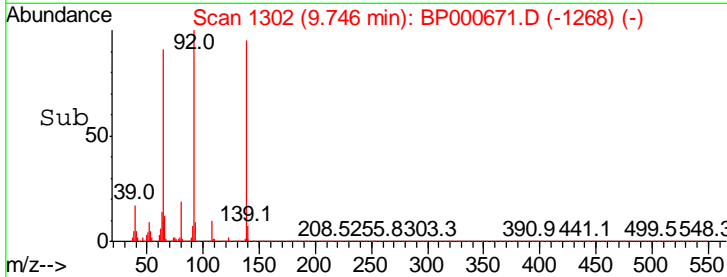
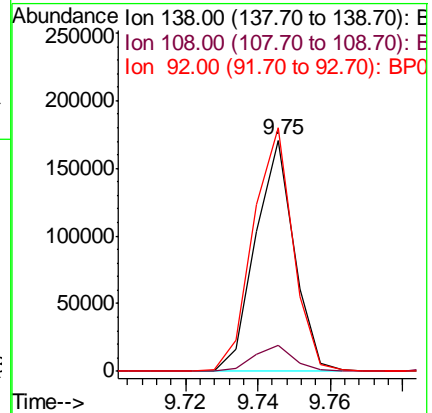
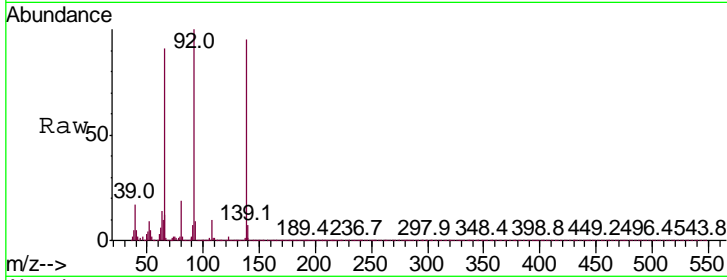




#49
 3-Nitroaniline
 Concen: 21.132 ng/ul
 RT: 9.75 min Scan# 1302
 Delta R.T. -0.00 min
 Lab File: BP000671.D
 Acq: 12 Oct 2019 16:43

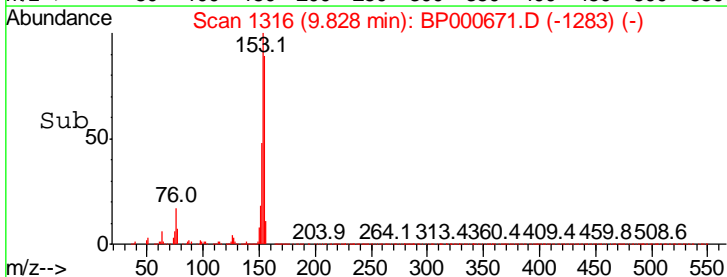
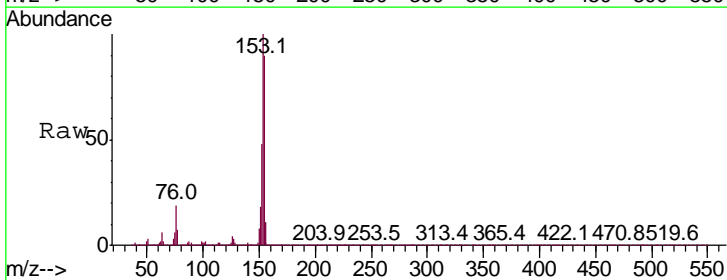
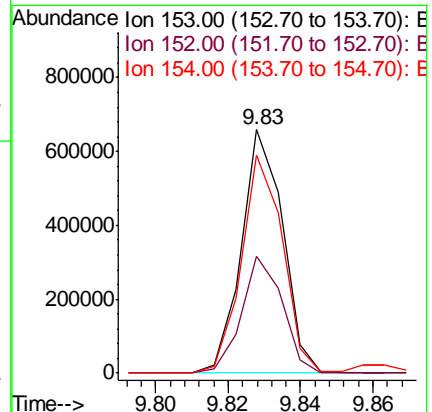
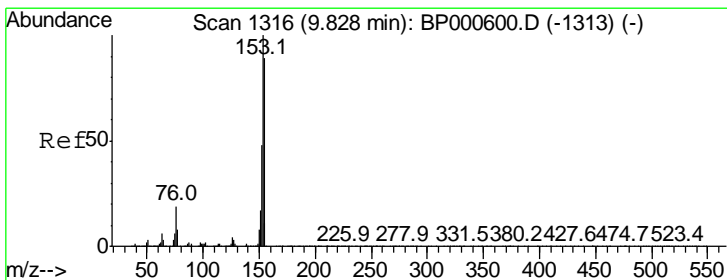
Instrument :
 BNA_P
 ClientSampled :

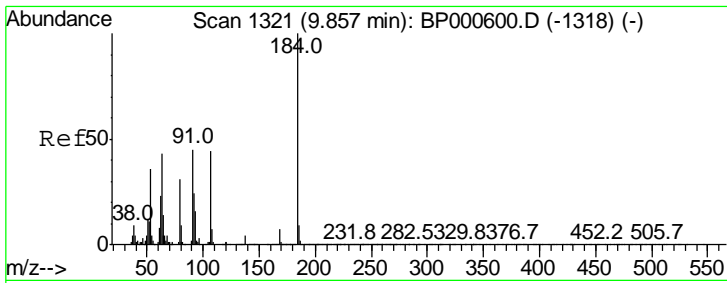
Tgt Ion	Resp	Lower	Upper
138	126789		
108	11.0	8.8	13.2
92	105.2	90.0	135.0



#50
 Acenaphthene
 Concen: 20.389 ng/ul
 RT: 9.83 min Scan# 1316
 Delta R.T. -0.01 min
 Lab File: BP000671.D
 Acq: 12 Oct 2019 16:43

Tgt Ion	Resp	Lower	Upper
153	519945		
152	47.9	38.6	57.8
154	89.6	71.9	107.9

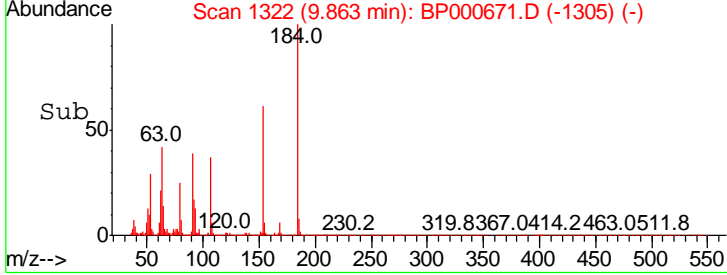
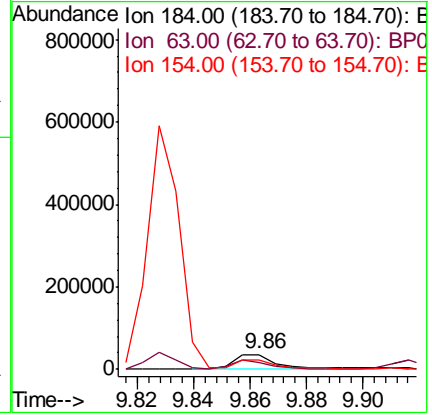
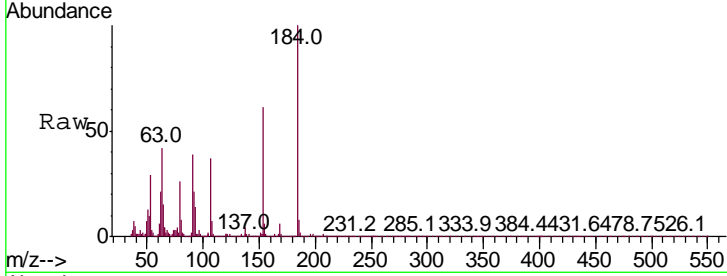




#51
 2,4-Dinitrophenol
 Concen: 18.850 ng/ul
 RT: 9.86 min Scan# 1322
 Delta R.T. -0.00 min
 Lab File: BP000671.D
 Acq: 12 Oct 2019 16:43

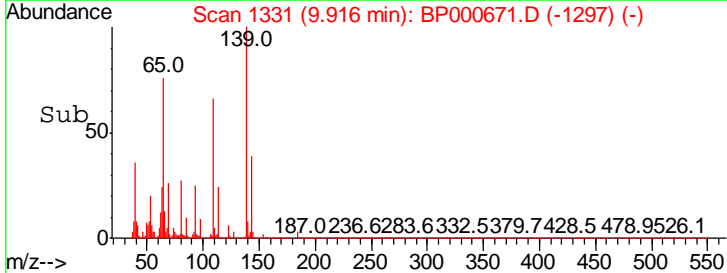
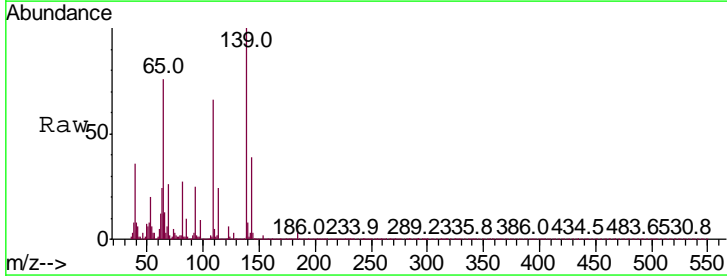
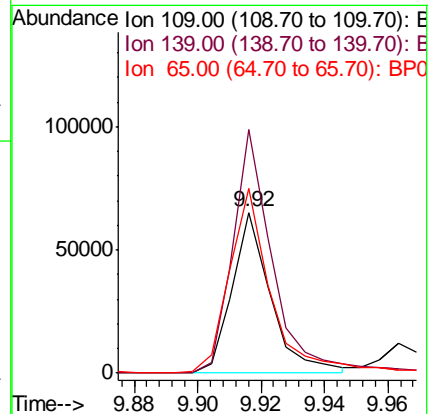
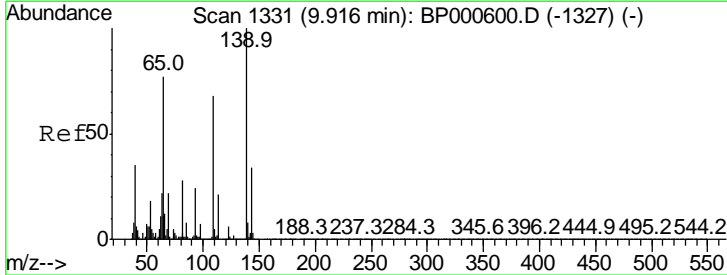
Instrument :
 BNA_P
 ClientSampled :

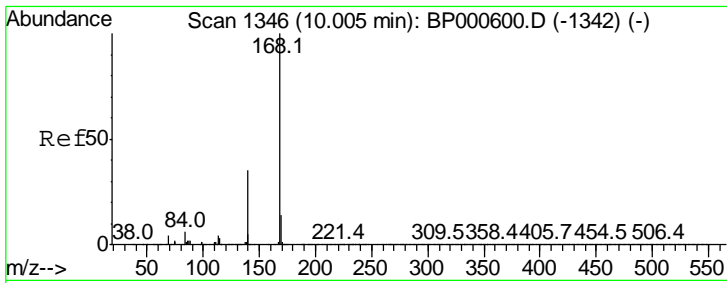
Tgt Ion	Resp	Lower	Upper
184	39817		
63	42.2	37.9	56.9
154	60.6	49.2	73.8



#53
 4-Nitrophenol
 Concen: 17.808 ng/ul
 RT: 9.92 min Scan# 1331
 Delta R.T. -0.00 min
 Lab File: BP000671.D
 Acq: 12 Oct 2019 16:43

Tgt Ion	Resp	Lower	Upper
109	54363		
139	151.7	115.1	172.7
65	115.4	97.9	146.9

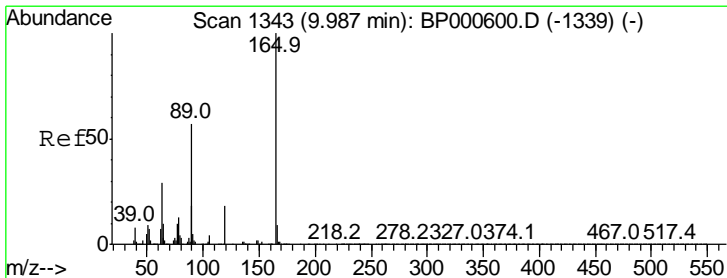
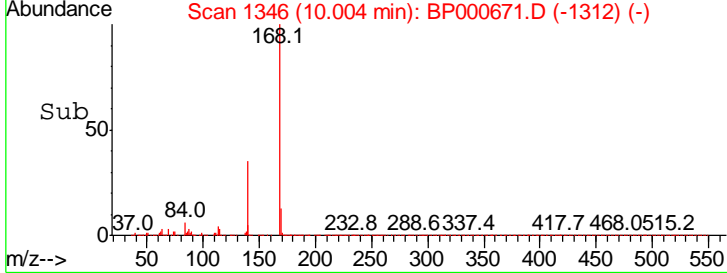
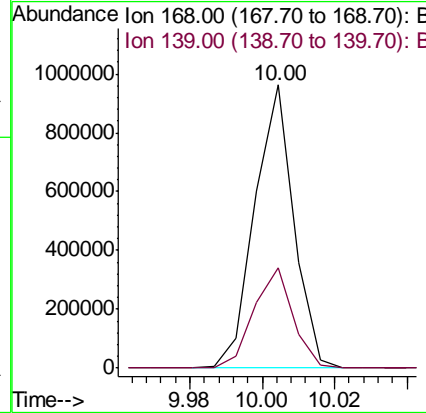
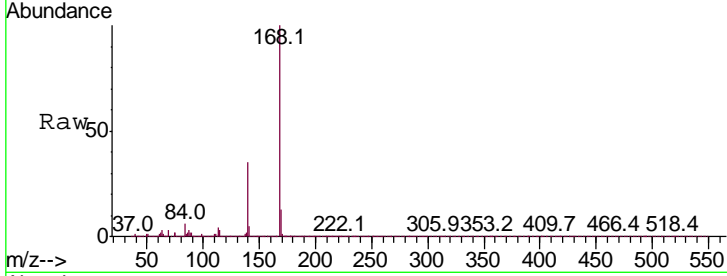




#54
 Dibenzofuran
 Concen: 20.440 ng/ul
 RT: 10.00 min Scan# 1346
 Delta R.T. -0.00 min
 Lab File: BP000671.D
 Acq: 12 Oct 2019 16:43

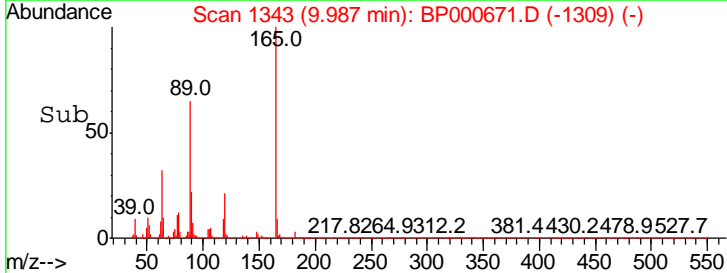
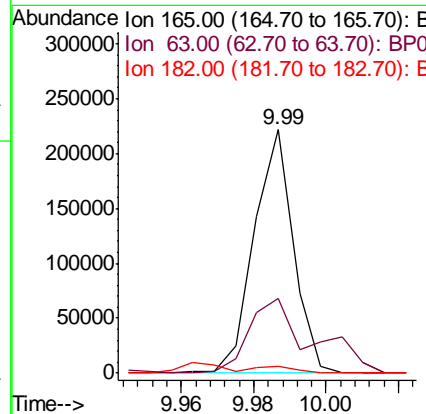
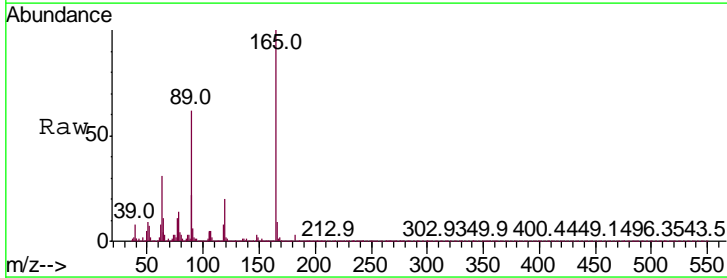
Instrument :
 BNA_P
 ClientSampled :

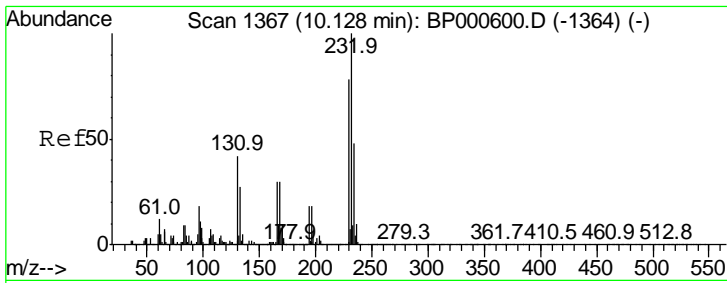
Tgt Ion:168 Resp: 725457
 Ion Ratio Lower Upper
 168 100
 139 35.2 29.8 44.6



#55
 2,4-Dinitrotoluene
 Concen: 20.694 ng/ul
 RT: 9.99 min Scan# 1343
 Delta R.T. -0.00 min
 Lab File: BP000671.D
 Acq: 12 Oct 2019 16:43

Tgt Ion:165 Resp: 163986
 Ion Ratio Lower Upper
 165 100
 63 30.5 26.4 39.6
 182 2.9 2.3 3.5



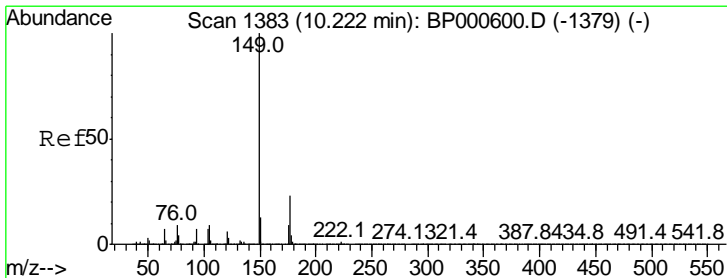
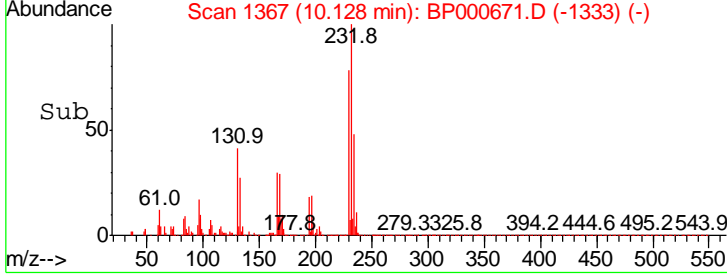
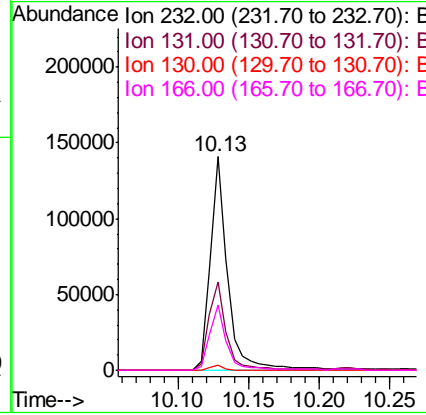
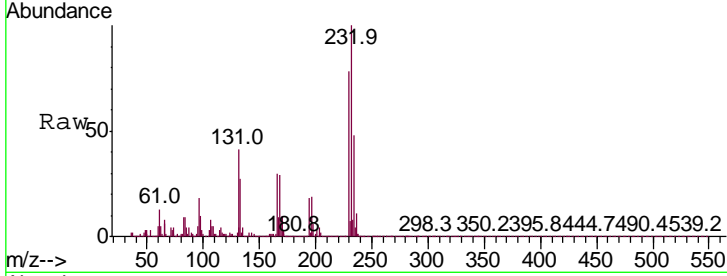


#56
 2,3,4,6-Tetrachlorophenol
 Concen: 19.377 ng/ul
 RT: 10.13 min Scan# 1367
 Delta R.T. -0.00 min
 Lab File: BP000671.D
 Acq: 12 Oct 2019 16:43

Instrument :
 BNA_P
 ClientSampled :

Tgt Ion: 232 Resp: 119397

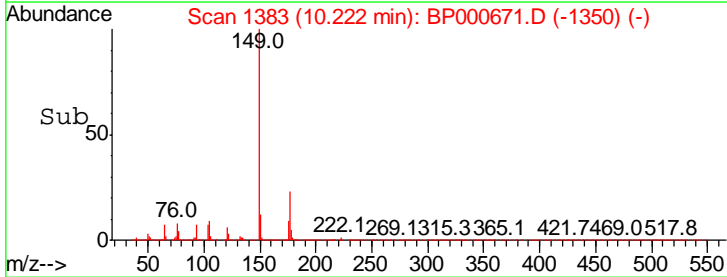
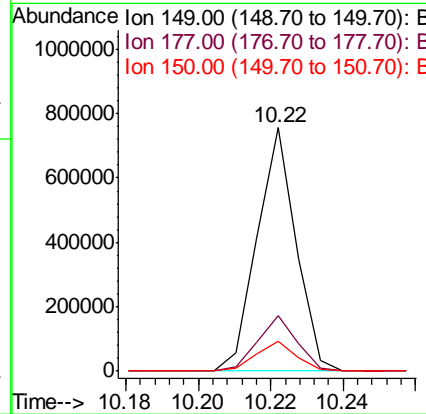
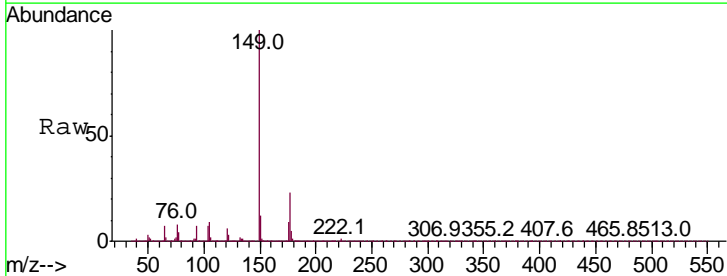
Ion	Ratio	Lower	Upper
232	100		
131	41.3	38.1	57.1
130	2.2	1.8	2.8
166	30.3	26.2	39.2

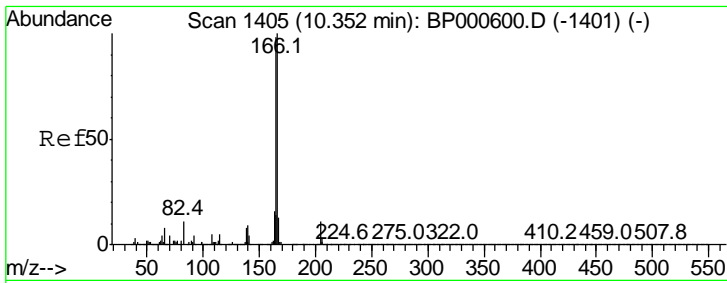


#57
 Diethylphthalate
 Concen: 20.346 ng/ul
 RT: 10.22 min Scan# 1383
 Delta R.T. -0.01 min
 Lab File: BP000671.D
 Acq: 12 Oct 2019 16:43

Tgt Ion: 149 Resp: 568264

Ion	Ratio	Lower	Upper
149	100		
177	22.9	19.0	28.4
150	12.4	9.8	14.8

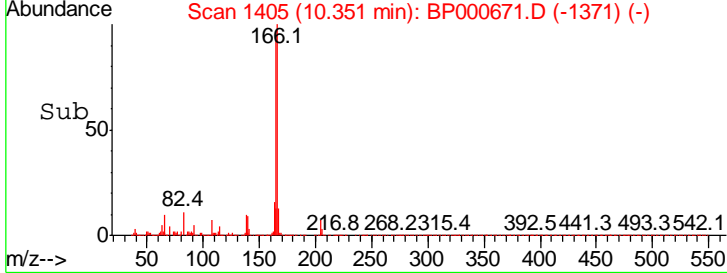
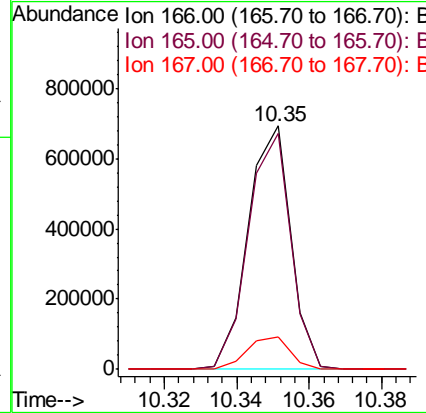
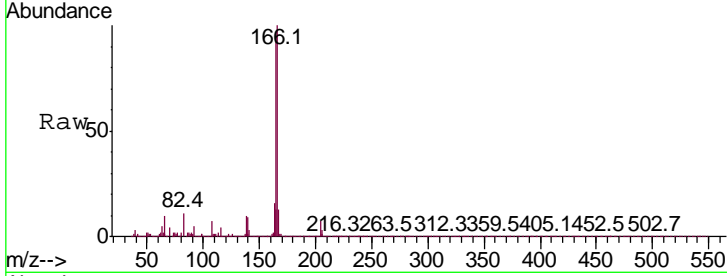




#59
 Fluorene
 Concen: 20.454 ng/ul
 RT: 10.35 min Scan# 1405
 Delta R.T. -0.00 min
 Lab File: BP000671.D
 Acq: 12 Oct 2019 16:43

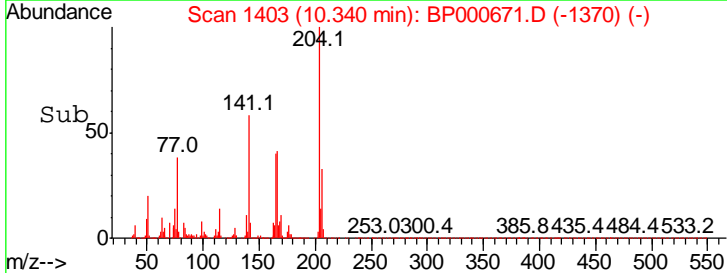
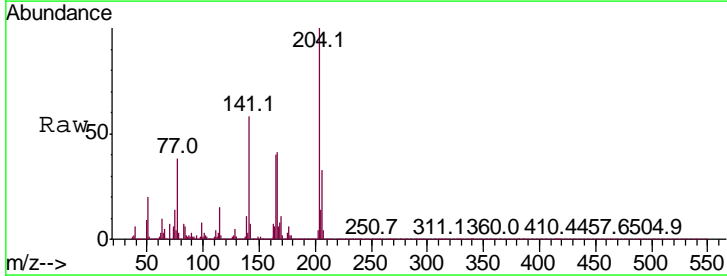
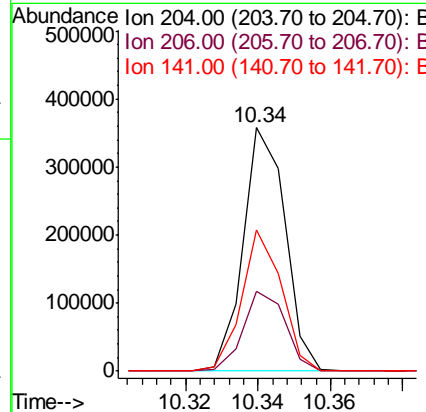
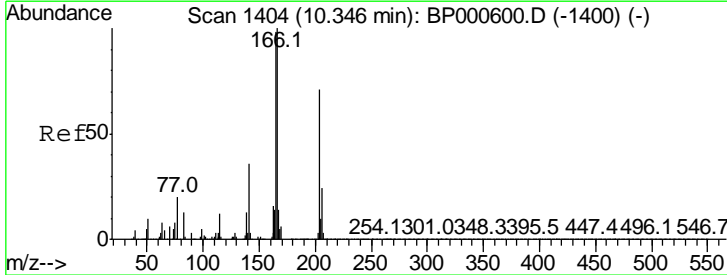
Instrument :
 BNA_P
 ClientSampled :

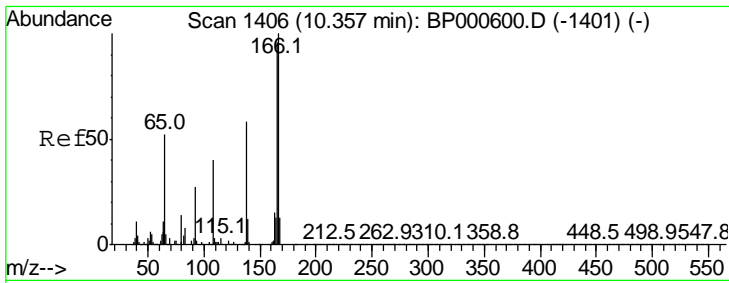
Tgt Ion	Resp	Lower	Upper
166	100		
165	96.8	77.4	116.0
167	13.1	10.8	16.2



#60
 4-Chlorophenyl-phenylether
 Concen: 20.379 ng/ul
 RT: 10.34 min Scan# 1403
 Delta R.T. -0.01 min
 Lab File: BP000671.D
 Acq: 12 Oct 2019 16:43

Tgt Ion	Resp	Lower	Upper
204	100		
206	32.9	26.2	39.2
141	57.9	42.2	63.4

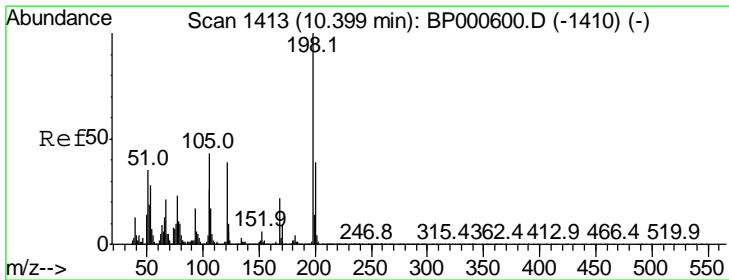
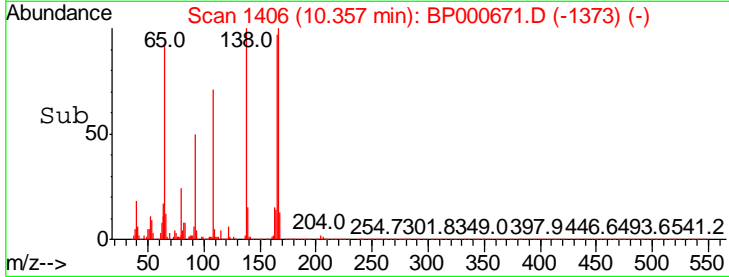
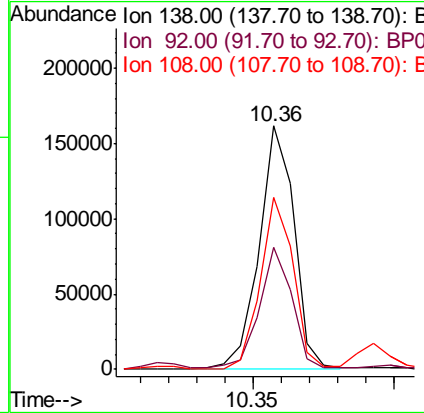
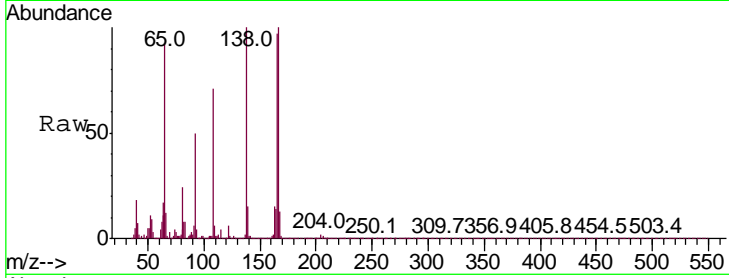




#61
 4-Nitroaniline
 Concen: 20.250 ng/ul
 RT: 10.36 min Scan# 1406
 Delta R.T. -0.01 min
 Lab File: BP000671.D
 Acq: 12 Oct 2019 16:43

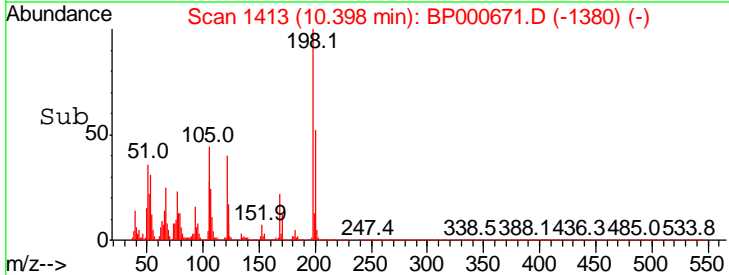
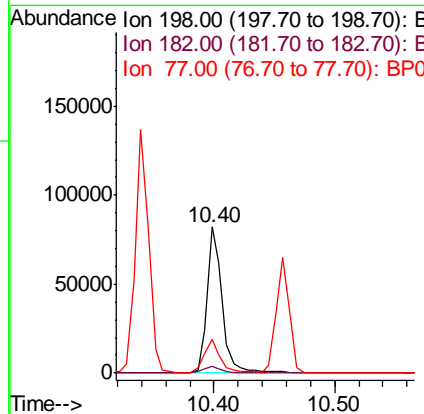
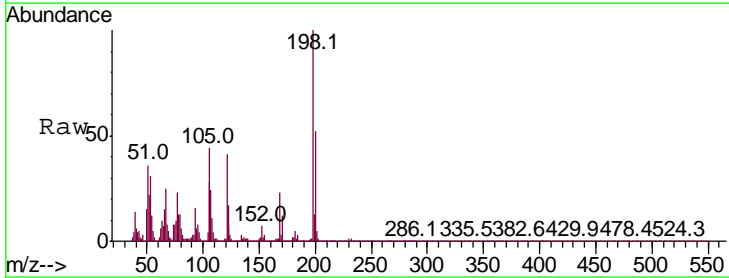
Instrument :
 BNA_P
 ClientSampled :

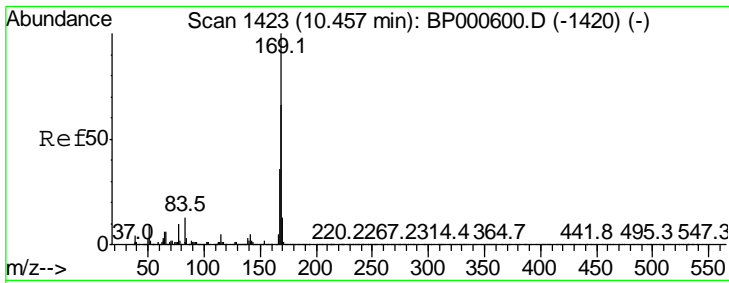
Tgt Ion	Ratio	Lower	Upper
138	100		
92	50.3	36.2	54.4
108	70.8	54.5	81.7



#64
 4,6-Dinitro-2-methylphenol
 Concen: 18.489 ng/ul
 RT: 10.40 min Scan# 1413
 Delta R.T. -0.01 min
 Lab File: BP000671.D
 Acq: 12 Oct 2019 16:43

Tgt Ion	Ratio	Lower	Upper
198	100		
182	4.5	3.2	4.8
77	23.3	15.2	22.8#

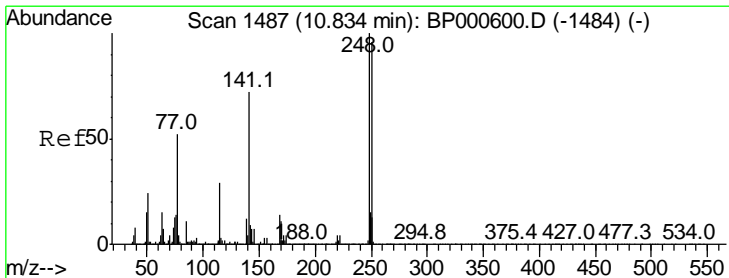
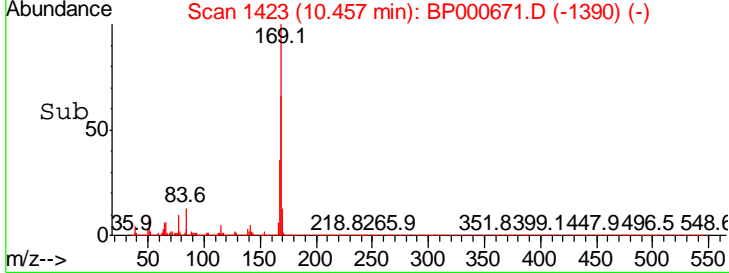
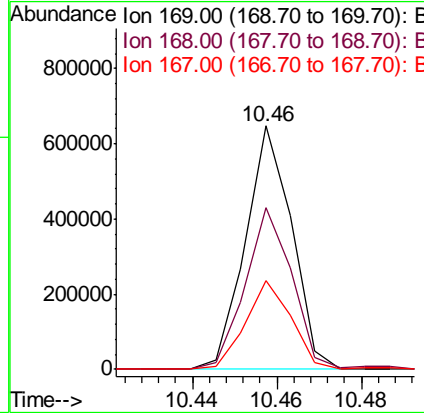
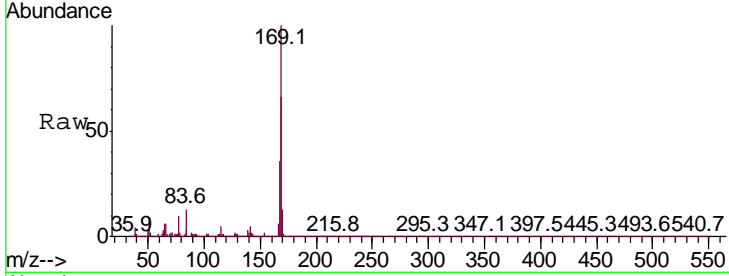




#65
 N-Nitrosodiphenylamine
 Concen: 20.135 ng/ul
 RT: 10.46 min Scan# 1423
 Delta R.T. -0.01 min
 Lab File: BP000671.D
 Acq: 12 Oct 2019 16:43

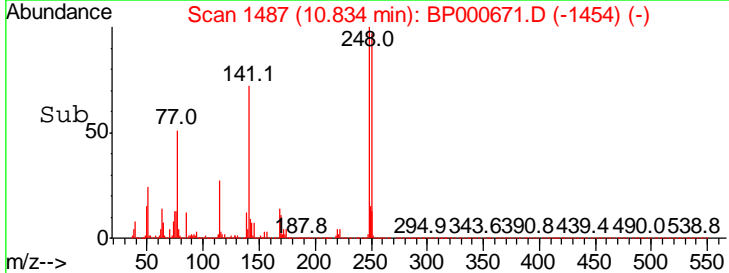
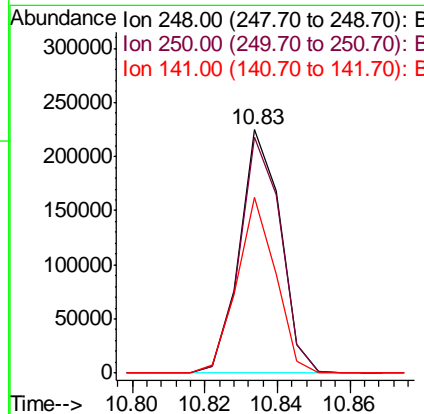
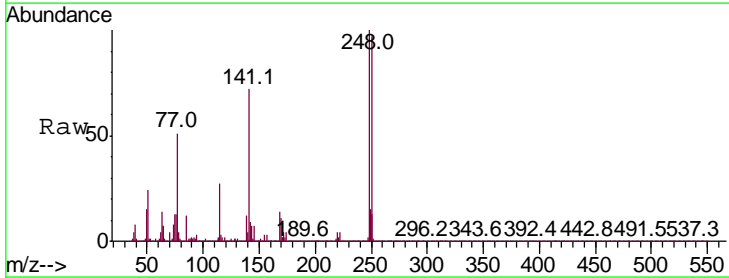
Instrument :
 BNA_P
 ClientSampled :

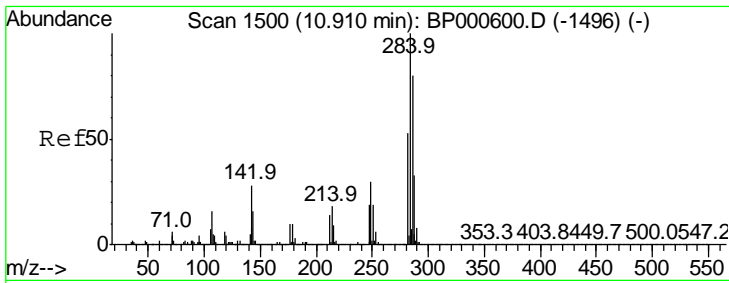
Tgt Ion	Resp	Lower	Upper
169	100		
168	66.4	52.4	78.6
167	36.4	28.6	42.8



#66
 4-Bromophenyl-phenylether
 Concen: 20.008 ng/ul
 RT: 10.83 min Scan# 1487
 Delta R.T. -0.01 min
 Lab File: BP000671.D
 Acq: 12 Oct 2019 16:43

Tgt Ion	Resp	Lower	Upper
248	100		
250	96.8	76.7	115.1
141	72.4	49.7	74.5

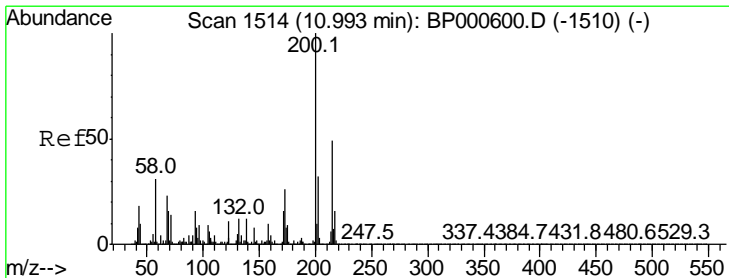
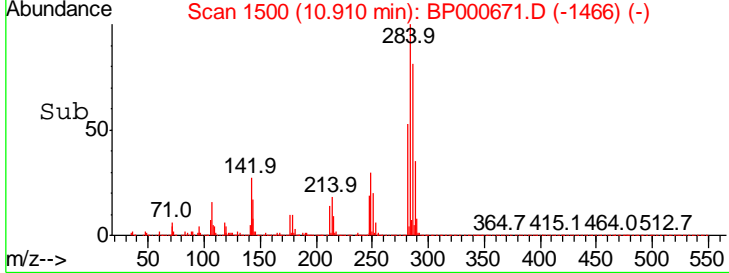
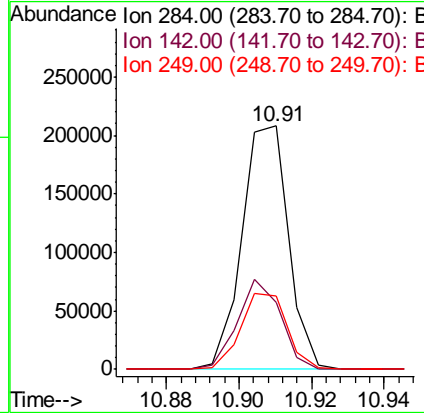
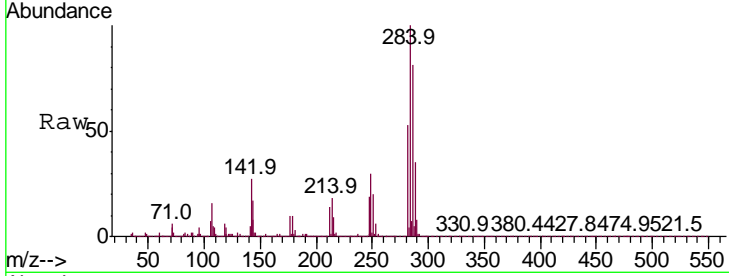




#67
 Hexachlorobenzene
 Concen: 20.025 ng/ul
 RT: 10.91 min Scan# 1500
 Delta R.T. -0.00 min
 Lab File: BP000671.D
 Acq: 12 Oct 2019 16:43

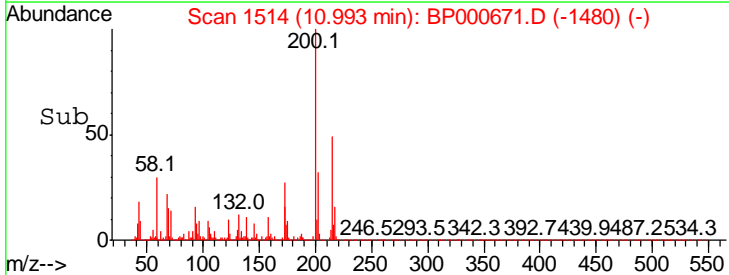
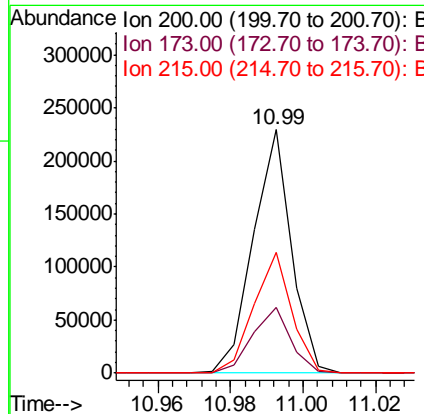
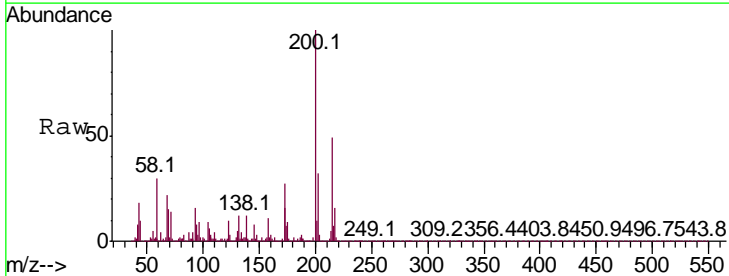
Instrument :
 BNA_P
 ClientSampled :

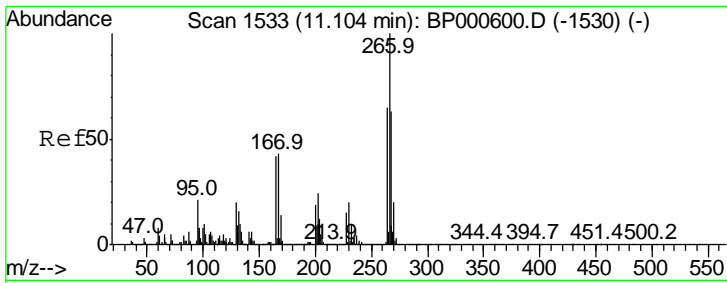
Tgt Ion	Resp	Lower	Upper
284	100		
142	27.5	26.4	39.6
249	30.0	25.0	37.6



#68
 Atrazine
 Concen: 20.391 ng/ul
 RT: 10.99 min Scan# 1514
 Delta R.T. -0.00 min
 Lab File: BP000671.D
 Acq: 12 Oct 2019 16:43

Tgt Ion	Resp	Lower	Upper
200	100		
173	26.8	22.0	33.0
215	49.4	38.5	57.7

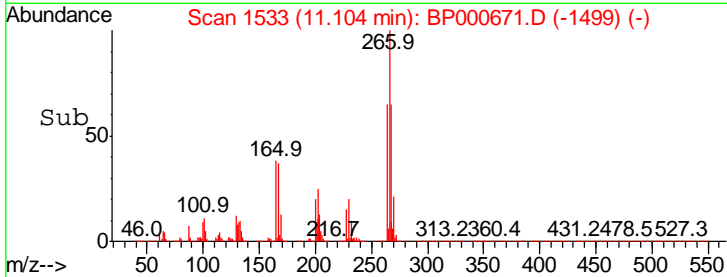
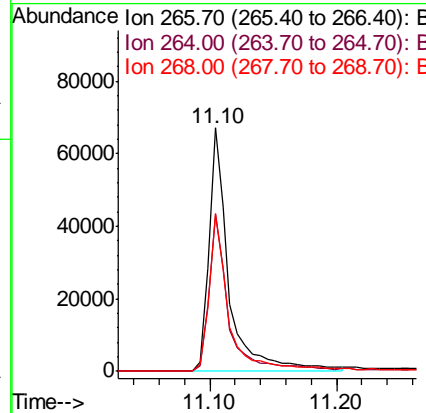
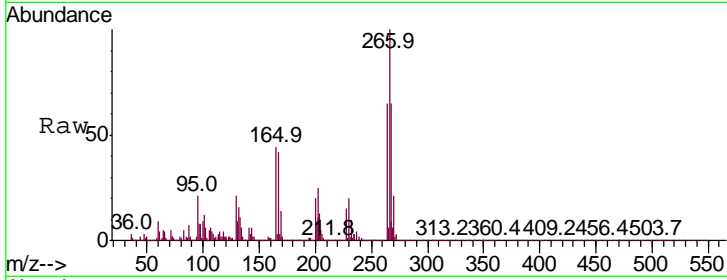




#69
 Pentachlorophenol
 Concen: 19.955 ng/ul
 RT: 11.10 min Scan# 1533
 Delta R.T. -0.00 min
 Lab File: BP000671.D
 Acq: 12 Oct 2019 16:43

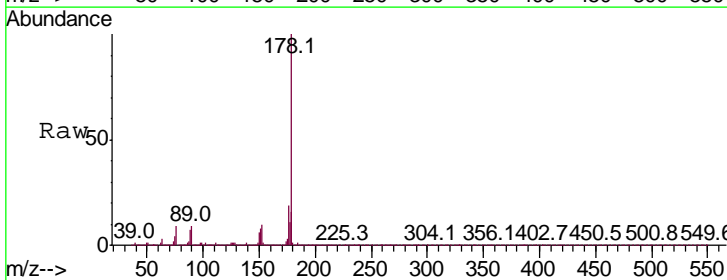
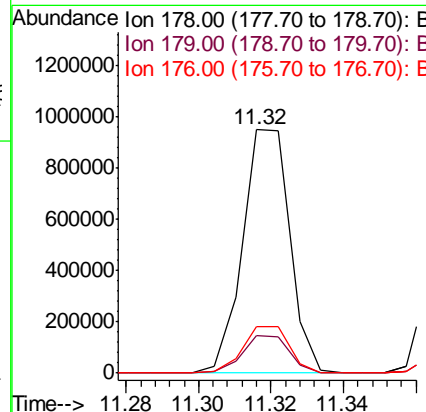
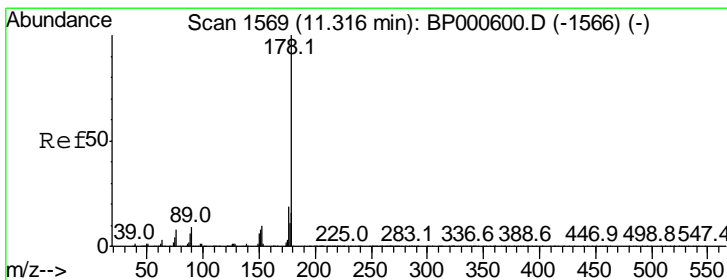
Instrument :
 BNA_P
 ClientSampled :

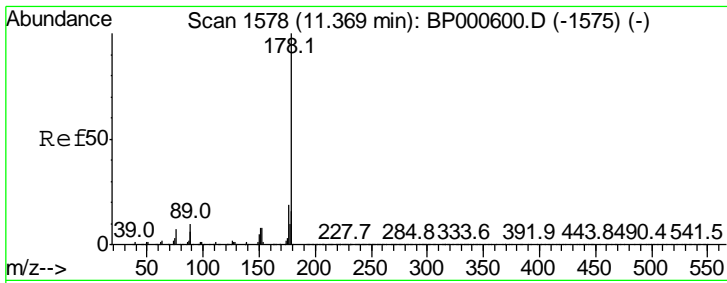
Tgt Ion	Resp	Lower	Upper
266	100		
264	64.5	49.6	74.4
268	64.8	49.6	74.4



#70
 Phenanthrene
 Concen: 20.483 ng/ul
 RT: 11.32 min Scan# 1569
 Delta R.T. -0.01 min
 Lab File: BP000671.D
 Acq: 12 Oct 2019 16:43

Tgt Ion	Resp	Lower	Upper
178	100		
179	15.6	12.5	18.7
176	19.2	15.4	23.2

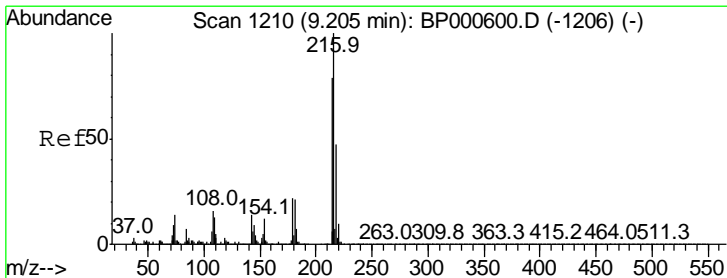
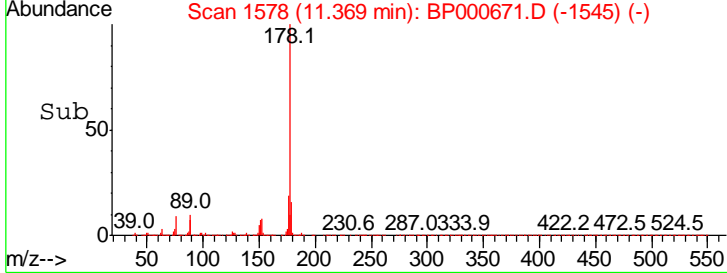
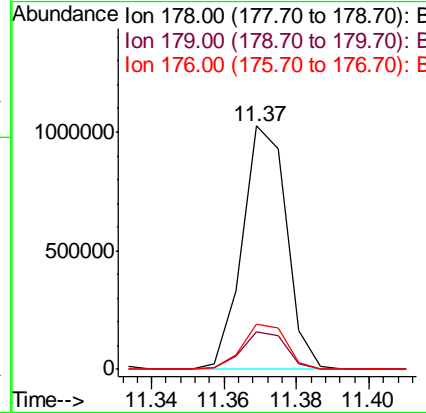
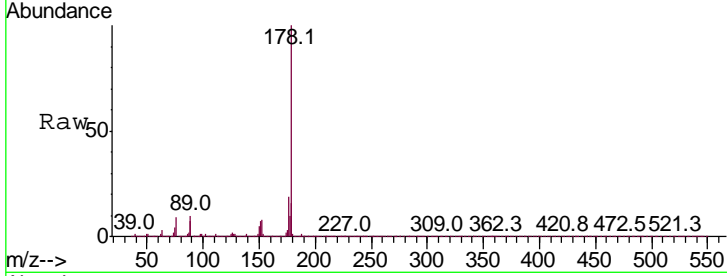




#72
 Anthracene
 Concen: 20.610 ng/ul
 RT: 11.37 min Scan# 1578
 Delta R.T. -0.01 min
 Lab File: BP000671.D
 Acq: 12 Oct 2019 16:43

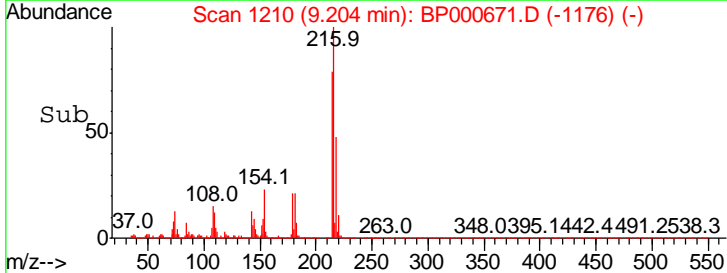
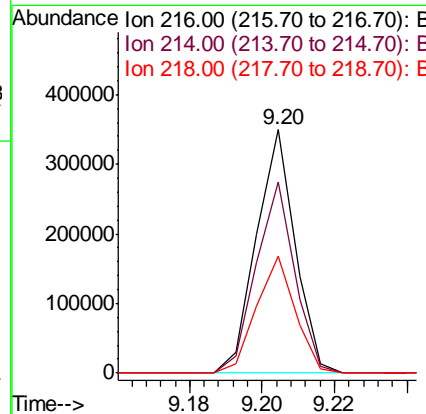
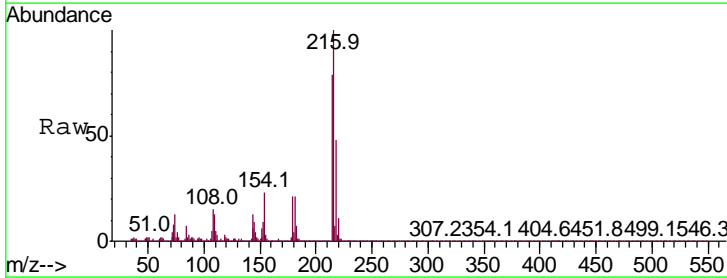
Instrument :
 BNA_P
 ClientSampled :

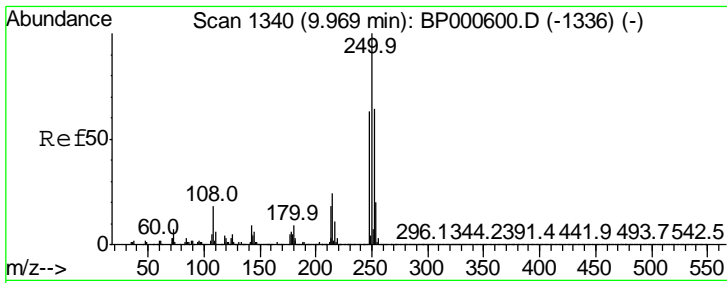
Tgt Ion	Resp	Lower	Upper
178	100		
179	15.6	12.4	18.6
176	18.7	15.1	22.7



#73
 1,2,3,4-Tetrachlorobenzene
 Concen: 20.485 ng/uL
 RT: 9.20 min Scan# 1210
 Delta R.T. -0.00 min
 Lab File: BP000671.D
 Acq: 12 Oct 2019 16:43

Tgt Ion	Resp	Lower	Upper
216	100		
214	78.6	63.4	95.0
218	48.2	38.6	57.8

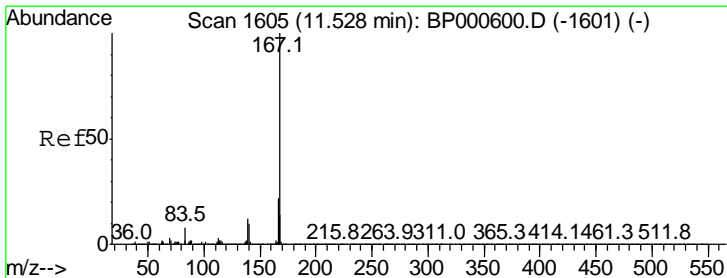
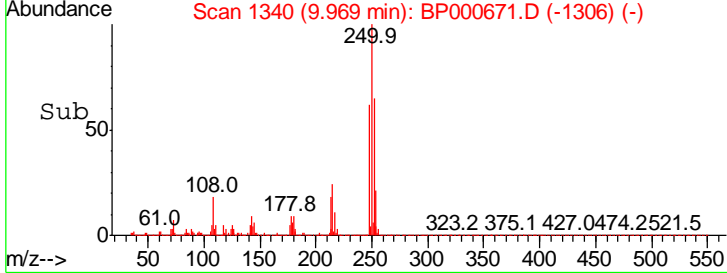
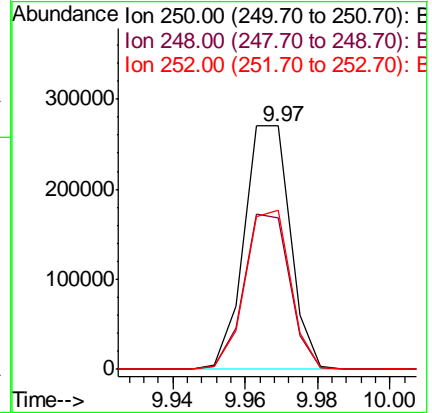
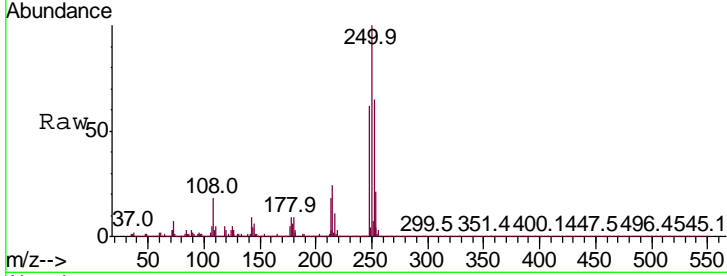




#74
 Pentachlorobenzene
 Concen: 20.178 ng/uL
 RT: 9.97 min Scan# 1340
 Delta R.T. -0.00 min
 Lab File: BP000671.D
 Acq: 12 Oct 2019 16:43

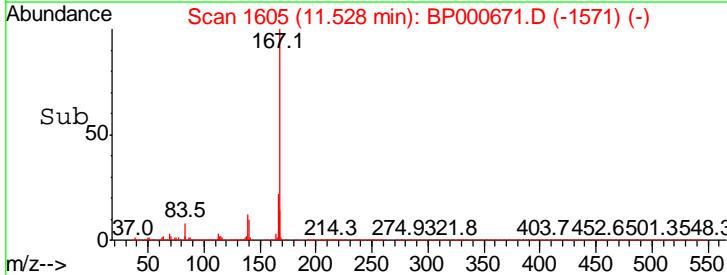
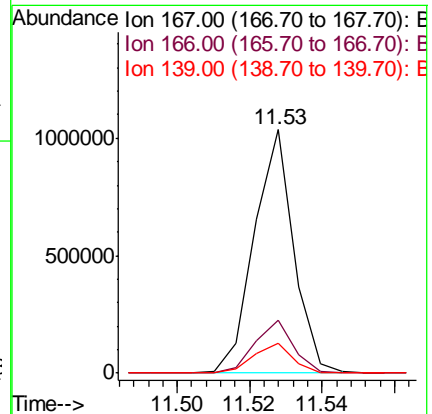
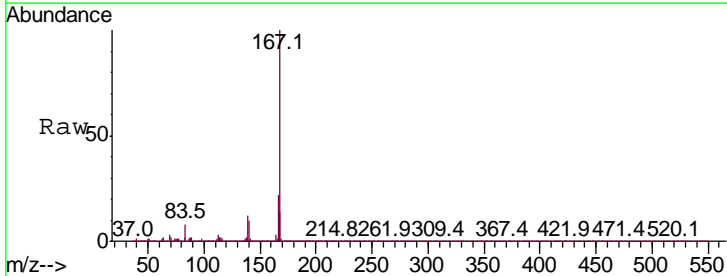
Instrument :
 BNA_P
 ClientSampled :

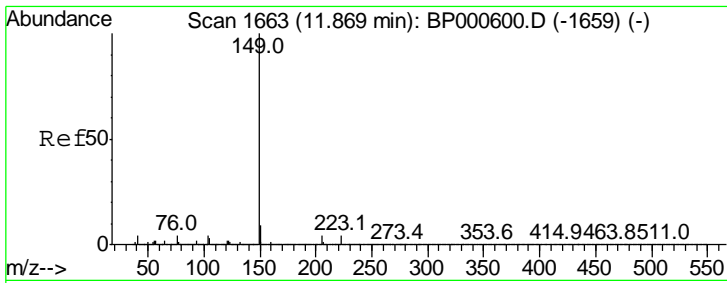
Tgt Ion	Resp	Lower	Upper
250	239251		
250	100		
248	62.4	50.6	76.0
252	65.2	50.4	75.6



#75
 Carbazole
 Concen: 21.742 ng/uL
 RT: 11.53 min Scan# 1605
 Delta R.T. -0.00 min
 Lab File: BP000671.D
 Acq: 12 Oct 2019 16:43

Tgt Ion	Resp	Lower	Upper
167	786408		
167	100		
166	21.6	17.4	26.0
139	12.3	10.2	15.4



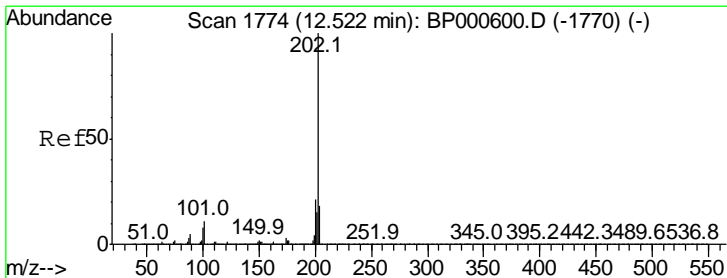
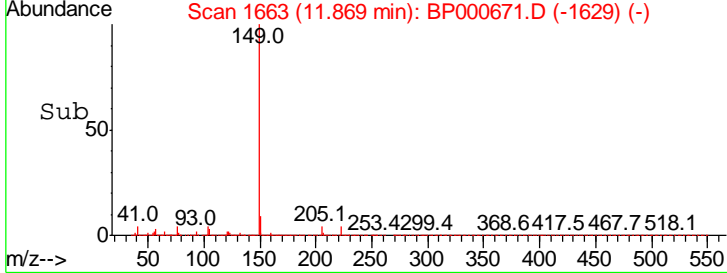
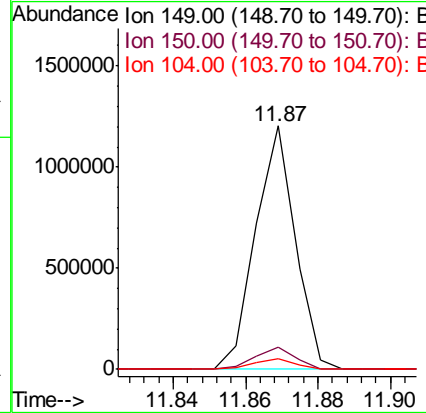
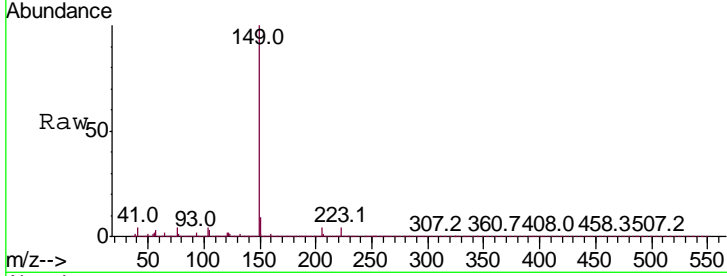


#76
 Di-n-butylphthalate
 Concen: 21.080 ng/ul
 RT: 11.87 min Scan# 1663
 Delta R.T. -0.00 min
 Lab File: BP000671.D
 Acq: 12 Oct 2019 16:43

Instrument :
 BNA_P
 ClientSampled :

Tgt Ion:149 Resp: 915014

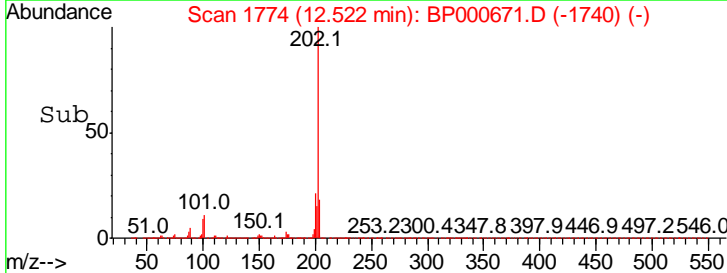
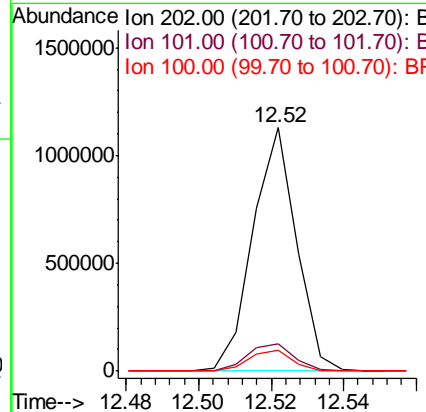
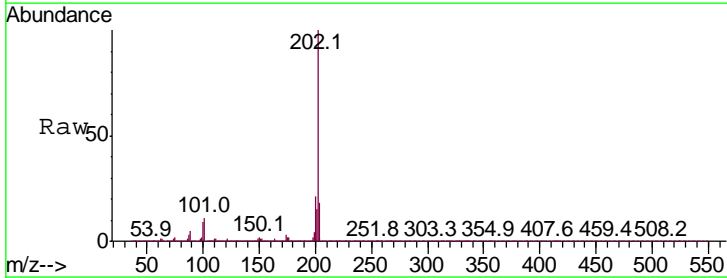
Ion	Ratio	Lower	Upper
149	100		
150	9.1	7.6	11.4
104	4.5	3.7	5.5

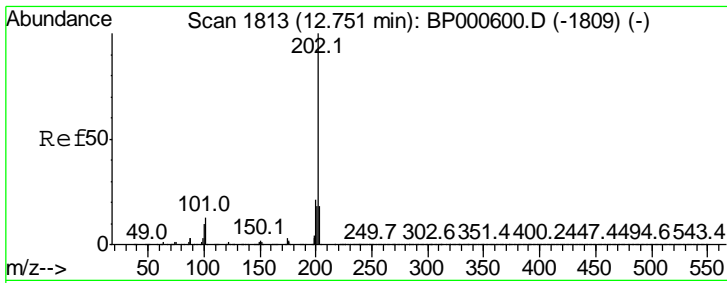


#77
 Fluoranthene
 Concen: 22.174 ng/ul
 RT: 12.52 min Scan# 1774
 Delta R.T. -0.00 min
 Lab File: BP000671.D
 Acq: 12 Oct 2019 16:43

Tgt Ion:202 Resp: 949135

Ion	Ratio	Lower	Upper
202	100		
101	11.4	9.8	14.6
100	8.5	7.2	10.8

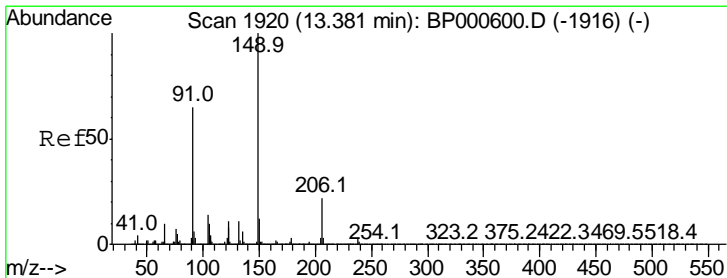
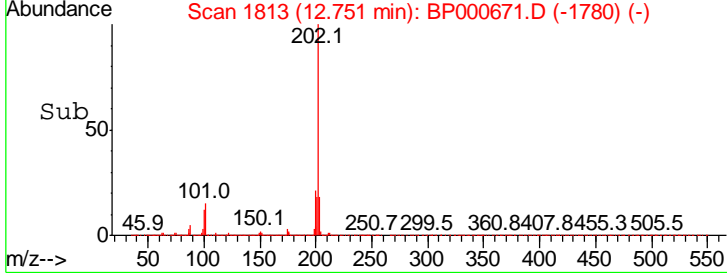
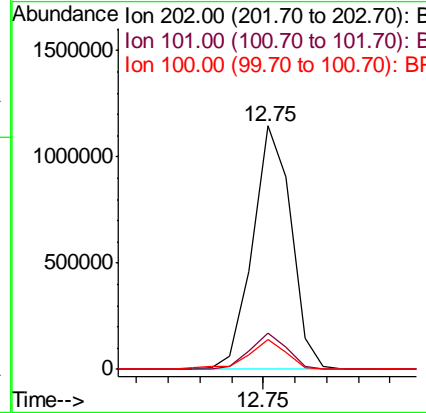
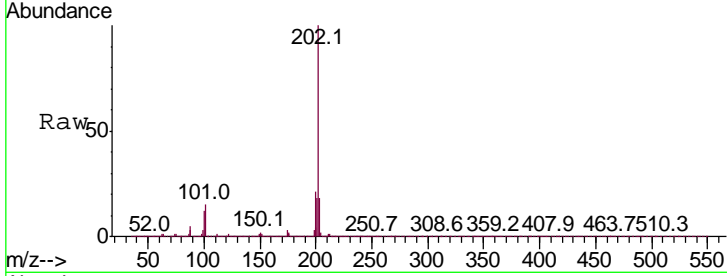




#80
 Pyrene
 Concen: 20.220 ng/ul
 RT: 12.75 min Scan# 1813
 Delta R.T. -0.01 min
 Lab File: BP000671.D
 Acq: 12 Oct 2019 16:43

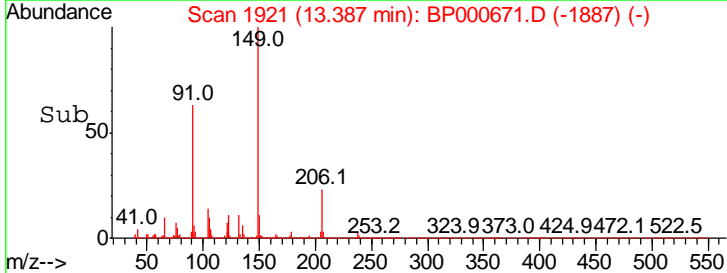
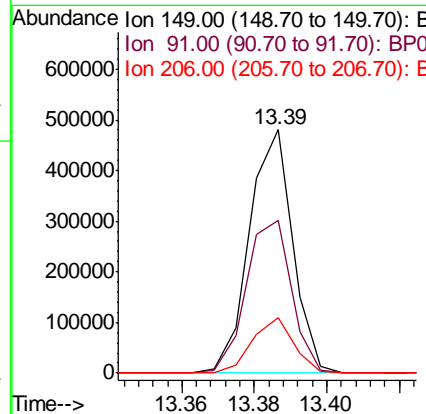
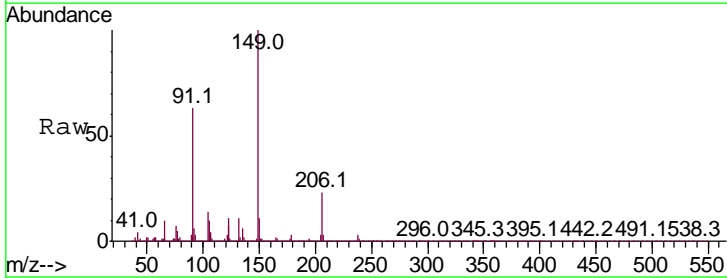
Instrument :
 BNA_P
 ClientSampled :

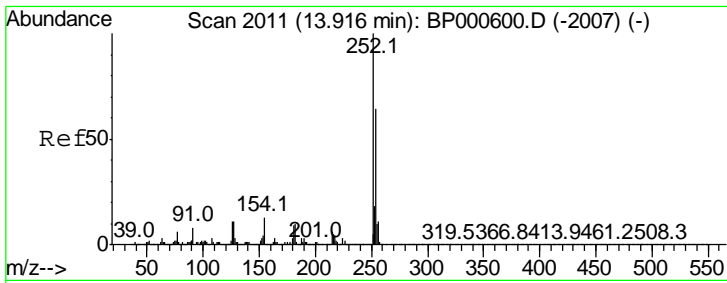
Tgt Ion	Ratio	Lower	Upper
202	100		
101	15.0	9.7	14.5#
100	12.0	7.8	11.8#



#81
 Butylbenzylphthalate
 Concen: 20.332 ng/ul
 RT: 13.39 min Scan# 1921
 Delta R.T. -0.00 min
 Lab File: BP000671.D
 Acq: 12 Oct 2019 16:43

Tgt Ion	Ratio	Lower	Upper
149	100		
91	62.5	50.6	75.8
206	22.7	17.8	26.6

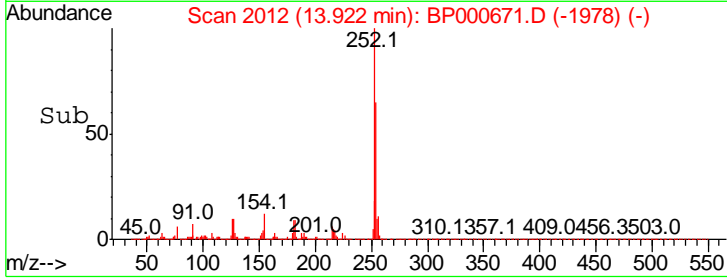
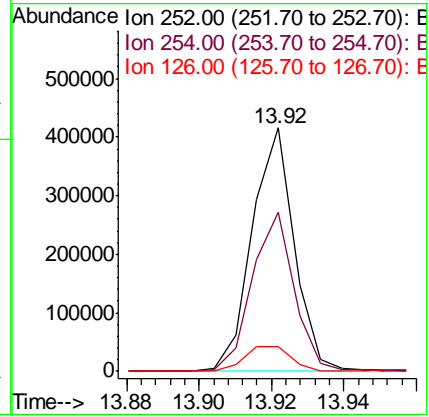
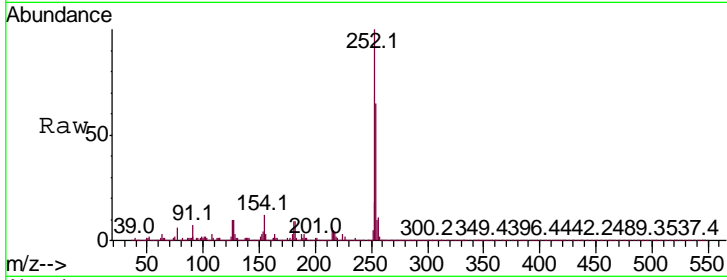




#82
 3,3'-Dichlorobenzidine
 Concen: 19.558 ng/ul
 RT: 13.92 min Scan# 2012
 Delta R.T. -0.00 min
 Lab File: BP000671.D
 Acq: 12 Oct 2019 16:43

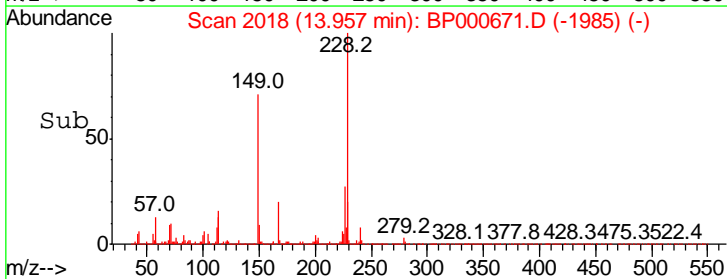
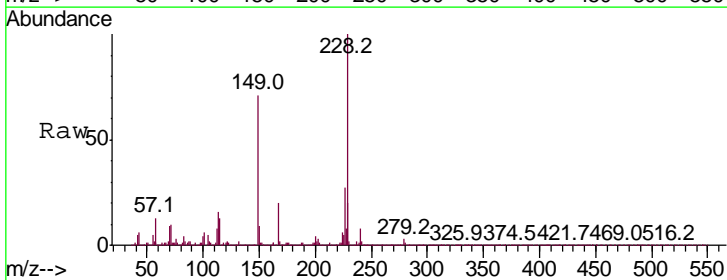
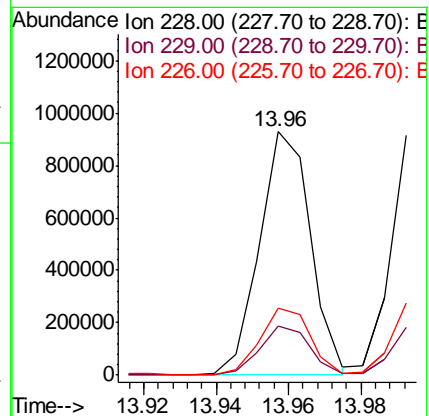
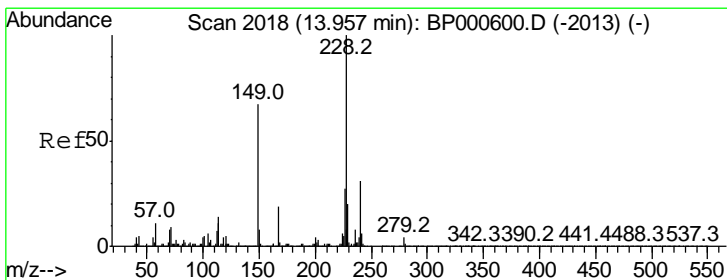
Instrument :
 BNA_P
 ClientSampled :

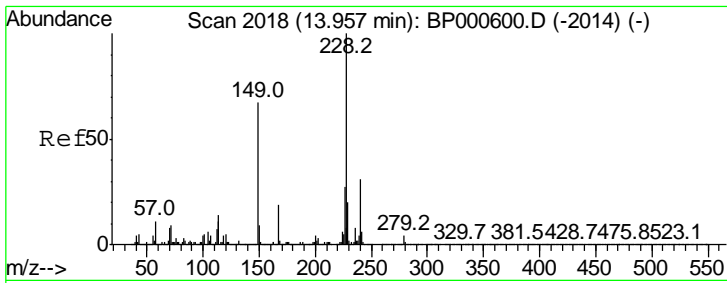
Tgt Ion	Resp	Lower	Upper
252	100		
254	65.3	51.5	77.3
126	10.4	8.5	12.7



#83
 Benzo(a)anthracene
 Concen: 20.083 ng/ul
 RT: 13.96 min Scan# 2018
 Delta R.T. -0.01 min
 Lab File: BP000671.D
 Acq: 12 Oct 2019 16:43

Tgt Ion	Resp	Lower	Upper
228	100		
229	20.0	15.6	23.4
226	27.3	21.8	32.8

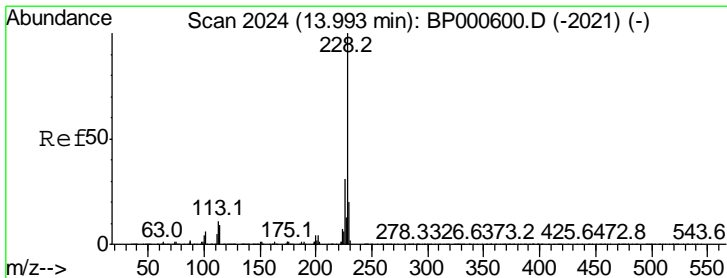
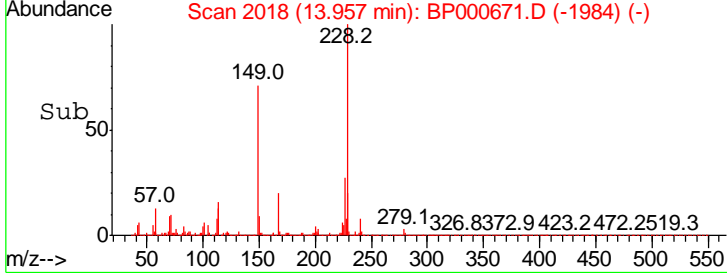
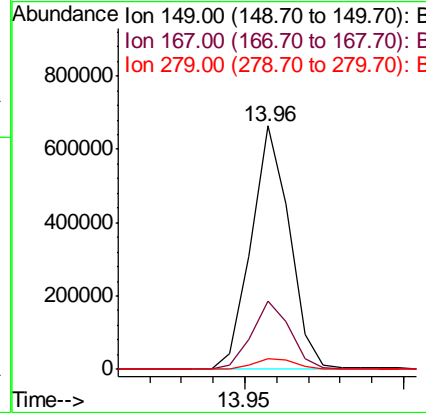
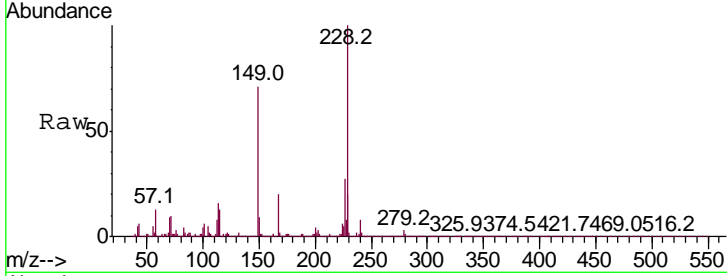




#84
 Bis(2-ethylhexyl)phthalate
 Concen: 21.429 ng/ul
 RT: 13.96 min Scan# 2018
 Delta R.T. -0.00 min
 Lab File: BP000671.D
 Acq: 12 Oct 2019 16:43

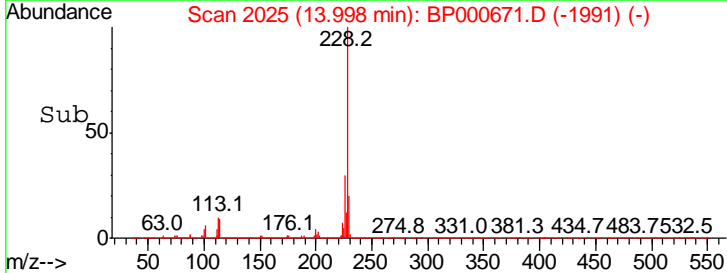
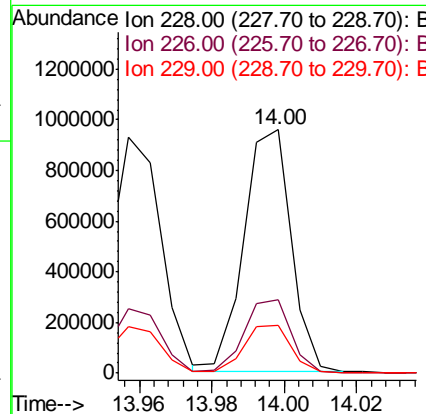
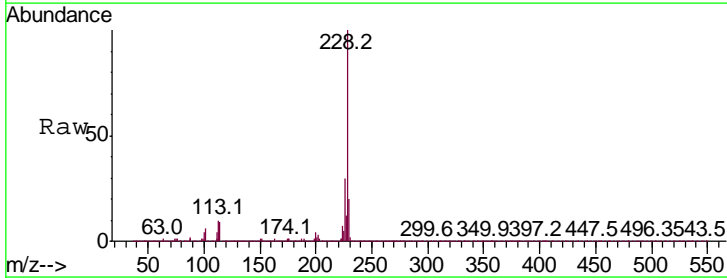
Instrument :
 BNA_P
 ClientSampled :

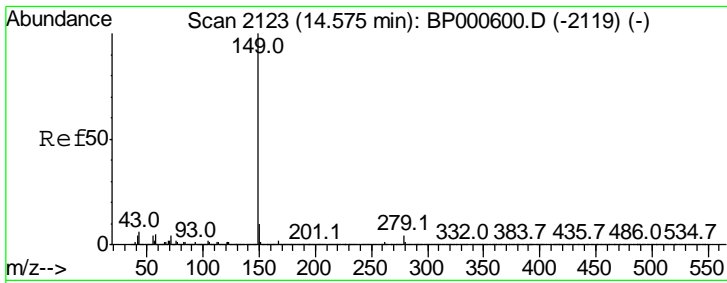
Tgt Ion	Resp	Lower	Upper
149	100		
167	28.1	22.3	33.5
279	4.4	3.2	4.8



#85
 Chrysene
 Concen: 20.529 ng/ul
 RT: 14.00 min Scan# 2025
 Delta R.T. -0.00 min
 Lab File: BP000671.D
 Acq: 12 Oct 2019 16:43

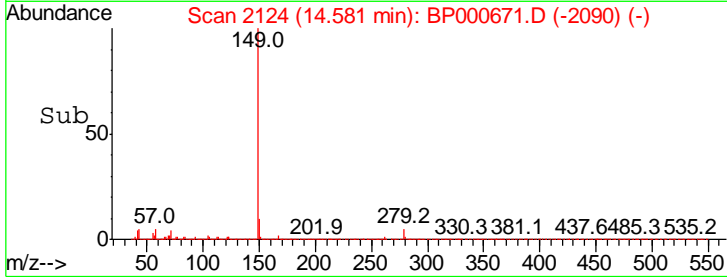
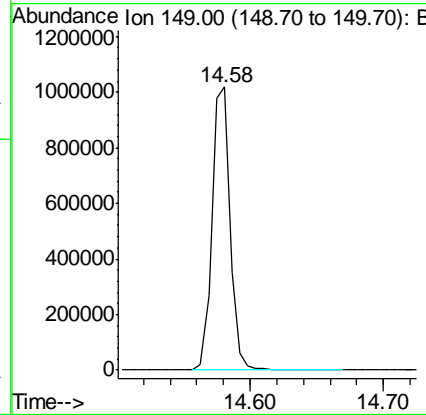
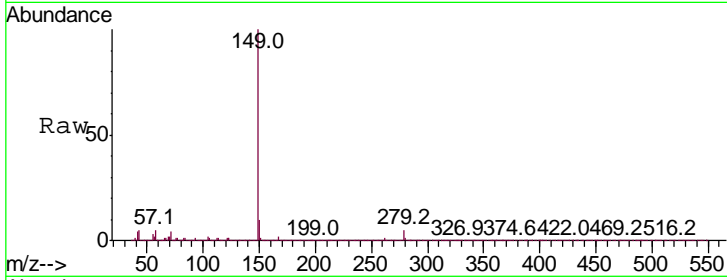
Tgt Ion	Resp	Lower	Upper
228	100		
226	30.0	24.2	36.4
229	19.6	15.8	23.6





#87
 Di-n-octyl phthalate
 Concen: 21.869 ng/ul
 RT: 14.58 min Scan# 2124
 Delta R.T. -0.00 min
 Lab File: BP000671.D
 Acq: 12 Oct 2019 16:43
 Tgt Ion:149 Resp: 964628

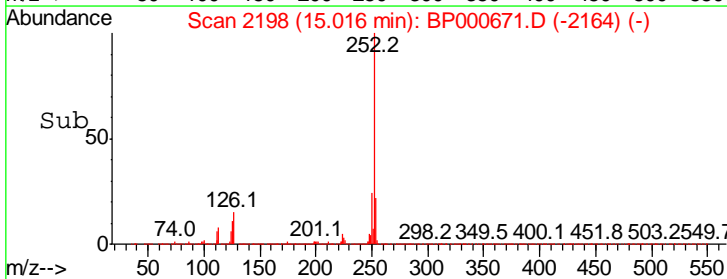
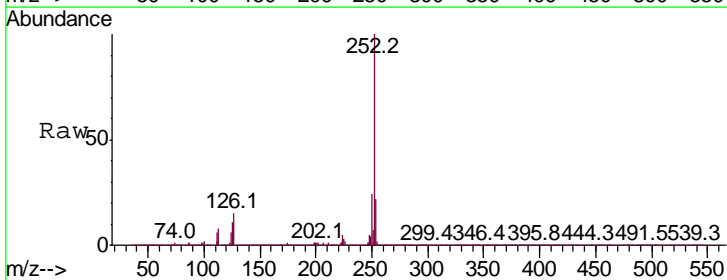
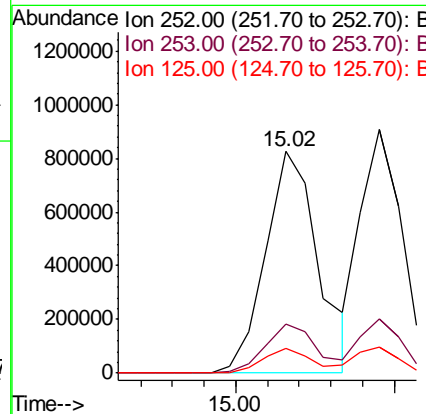
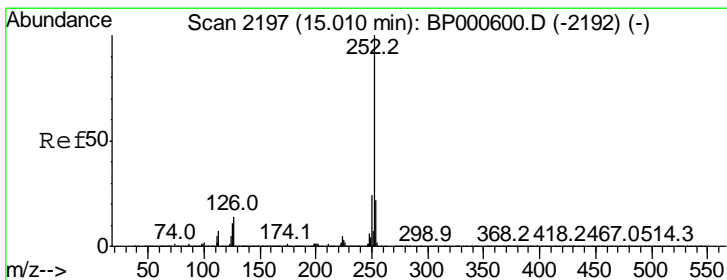
Instrument :
 BNA_P
 ClientSampled :

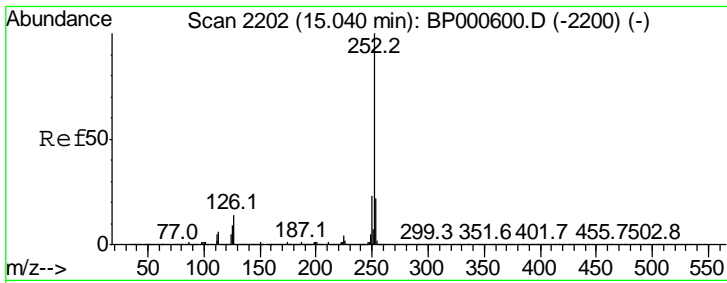


#88
 Benzo(b)fluoranthene
 Concen: 20.843 ng/ul
 RT: 15.02 min Scan# 2198
 Delta R.T. -0.00 min
 Lab File: BP000671.D
 Acq: 12 Oct 2019 16:43

Tgt Ion:252 Resp: 956768

Ion	Ratio	Lower	Upper
252	100		
253	22.1	17.6	26.4
125	10.9	8.7	13.1

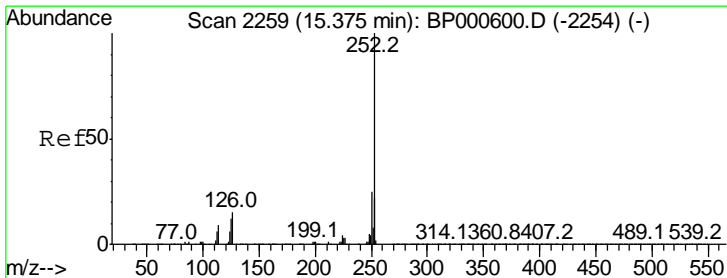
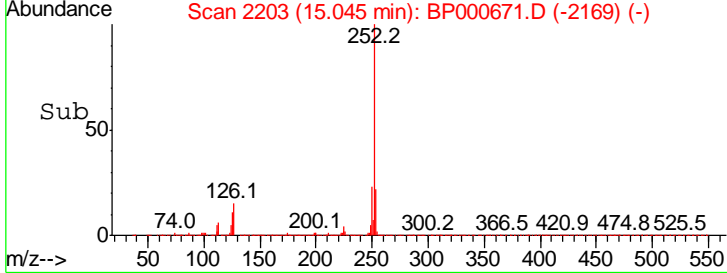
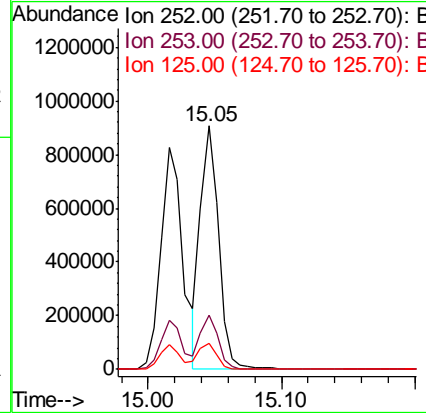
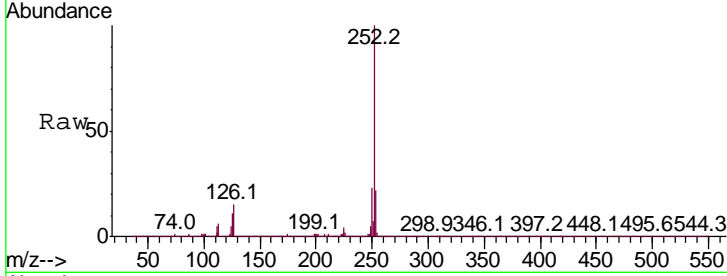




#89
 Benzo(k)fluoranthene
 Concen: 19.273 ng/ul
 RT: 15.05 min Scan# 2203
 Delta R.T. -0.00 min
 Lab File: BP000671.D
 Acq: 12 Oct 2019 16:43

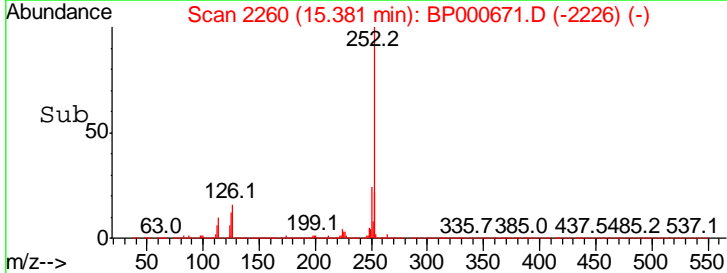
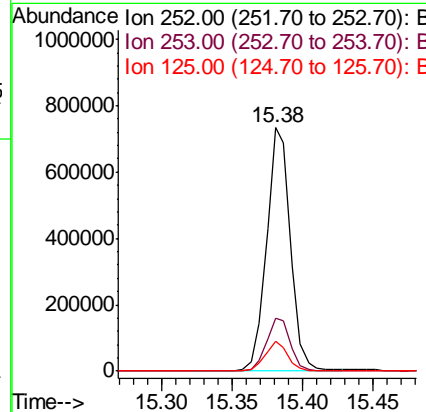
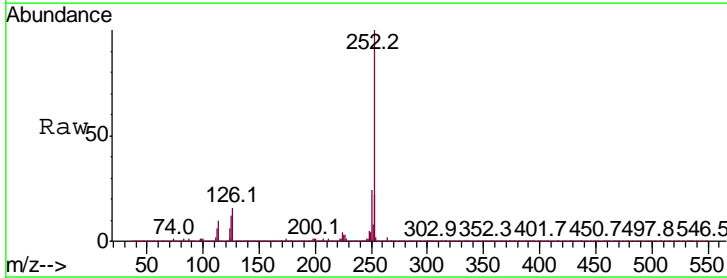
Instrument :
 BNA_P
 ClientSampled :

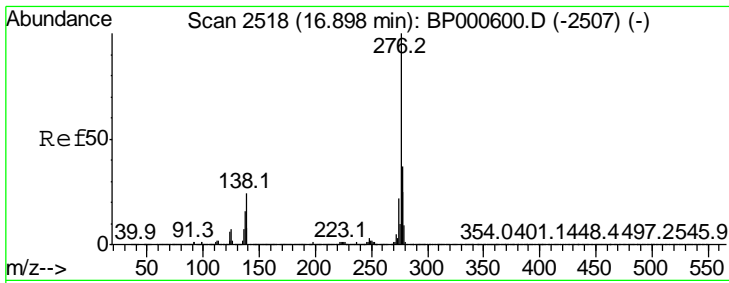
Tgt Ion	Resp	Lower	Upper
252	100		
253	22.2	17.8	26.6
125	10.7	8.2	12.4



#91
 Benzo(a)pyrene
 Concen: 20.128 ng/ul
 RT: 15.38 min Scan# 2260
 Delta R.T. -0.00 min
 Lab File: BP000671.D
 Acq: 12 Oct 2019 16:43

Tgt Ion	Resp	Lower	Upper
252	100		
253	22.0	17.6	26.4
125	12.1	9.7	14.5

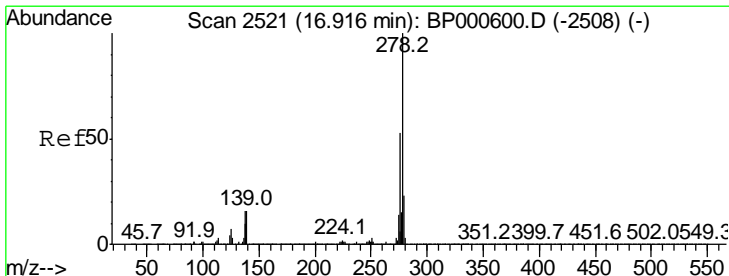
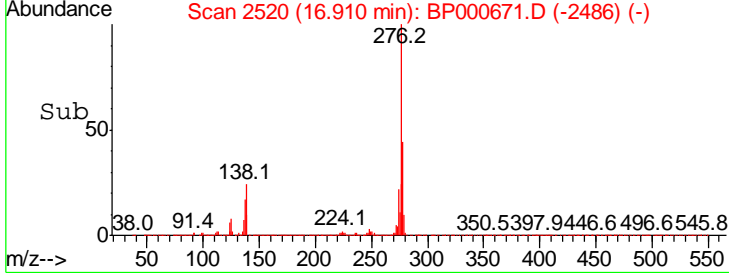
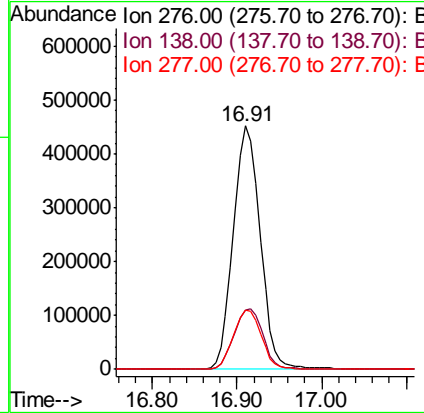
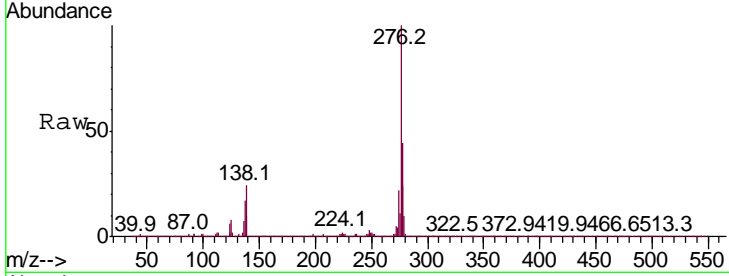




#92
 Indeno(1,2,3-cd)pyrene
 Concen: 19.977 ng/ul
 RT: 16.91 min Scan# 2520
 Delta R.T. -0.00 min
 Lab File: BP000671.D
 Acq: 12 Oct 2019 16:43

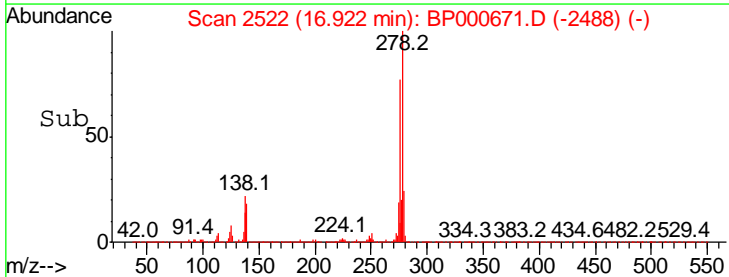
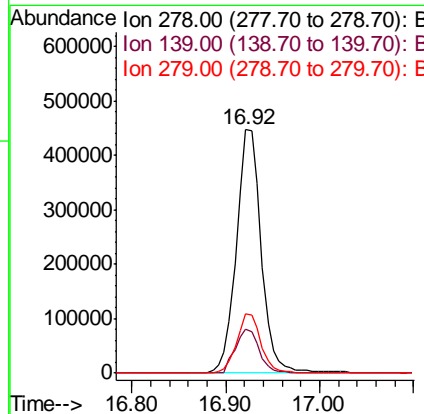
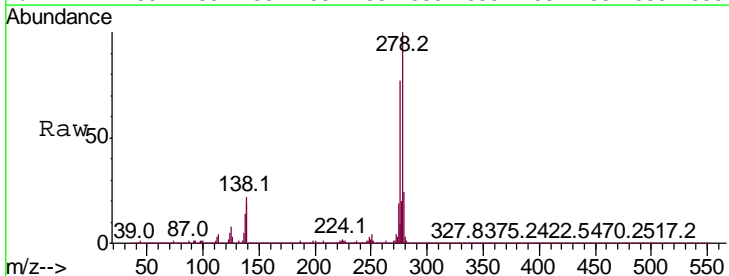
Instrument :
 BNA_P
 ClientSampled :

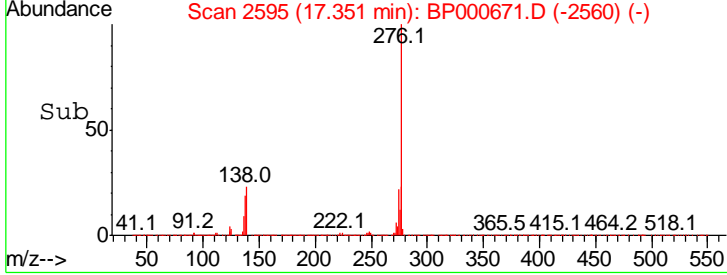
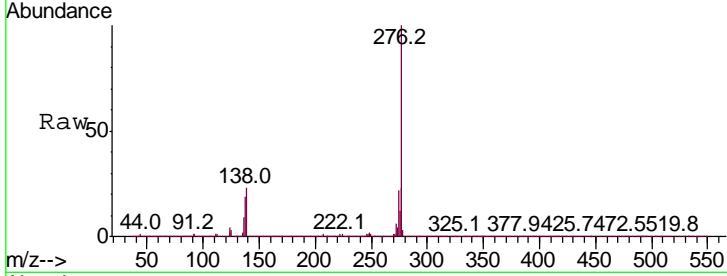
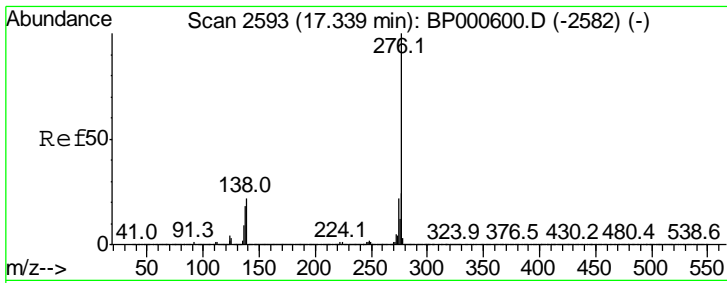
Tgt Ion	Resp	Lower	Upper
276	100		
138	24.3	20.0	30.0
277	24.4	19.8	29.8



#93
 Dibenzo(a,h)anthracene
 Concen: 20.177 ng/ul
 RT: 16.92 min Scan# 2522
 Delta R.T. -0.00 min
 Lab File: BP000671.D
 Acq: 12 Oct 2019 16:43

Tgt Ion	Resp	Lower	Upper
278	100		
139	17.9	14.2	21.4
279	24.2	19.2	28.8





#94
 Benzo(a,h,i)perylene
 Concen: 20.113 ng/ul
 RT: 17.35 min Scan# 2595
 Delta R.T. 0.01 min
 Lab File: BP000671.D
 Acq: 12 Oct 2019 16:43

Instrument :
 BNA_P
 ClientSampleId :

Tot Ion: 276 Resp: 834283

Ion	Ratio	Lower	Upper
276	100		
138	22.5	18.4	27.6
277	23.3	19.4	29.0

