

Data Path : Z:\SVOASRV\HPCHEM1\BNA P\DATA\BP101619\
 Data File : BP000770.D
 Acq On : 15 Oct 2019 16:57
 Operator : JU
 Sample : K5175-19
 Misc :
 ALS Vial : 19 Sample Multiplier: 1

Instrument :
 BNA_P
 ClientSampleId :
 BEP91

Quant Time: Oct 16 02:39:49 2019
 Quant Method : Z:\SVOASRV\HPCHEM1\BNA_P\METHODS\SOM-EPA-BP100919MA.M
 Quant Title : SVOA CALIBRATION
 QLast Update : Wed Oct 16 02:22:01 2019
 Response via : Initial Calibration

Internal Standards	R.T.	QIon	Response	Conc	Units	Dev(Min)
1) 1,4-Dichlorobenzene-d4	6.75	152	235018	20.00	ng/ul	0.00
18) Naphthalene-d8	8.03	136	920439	20.00	ng/ul	0.00
36) Acenaphthene-d10	9.80	164	530471	20.00	ng/ul	0.00
62) Phenanthrene-d10	11.29	188	997933	20.00	ng/ul	0.00
78) Chrysene-d12	13.97	240	803731	20.00	ng/ul	0.00
86) Perylene-d12	15.45	264	783081	20.00	ng/ul	0.00

System Monitoring Compounds

3) 1,4-Dioxane-d8	2.36	96	24939	4.40	ng/uL	-0.02
5) Phenol-d5	6.39	99	441540	24.36	ng/ul	0.00
7) Bis-(2-Chloroethyl)ether-d	6.43	67	242748	26.78	ng/ul	0.00
9) 2-Chlorophenol-d4	6.52	132	393766	25.78	ng/ul	0.00
13) 4-Methylphenol-d8	7.13	113	331862	23.96	ng/ul	0.00
19) Nitrobenzene-d5	7.30	128	197657	28.25	ng/ul	0.00
22) 2-Nitrophenol-d4	7.63	143	214920	28.85	ng/ul	0.00
26) 2,4-Dichlorophenol-d3	7.88	165	357942	25.10	ng/ul	0.00
29) 4-Chloroaniline-d4	8.09	131	453660	28.61	ng/ul	0.00
44) Dimethylphthalate-d6	9.49	166	1056747	28.46	ng/ul	0.00
47) Acenaphthylene-d8	9.64	160	1253673	27.44	ng/ul	0.00
52) 4-Nitrophenol-d4	9.91	143	109547	19.15	ng/ul	0.00
58) Fluorene-d10	10.32	176	889995	28.01	ng/ul	0.00
63) 4,6-Dinitro-2-methylphenol	10.39	200	100317	21.11	ng/ul	0.00
71) Anthracene-d10	11.35	188	1274189	27.57	ng/ul	0.00
79) Pyrene-d10	12.74	212	1429188	31.45	ng/ul	0.00
90) Benzo(a)pyrene-d12	15.36	264	1169980	30.26	ng/ul	0.00

Target Compounds

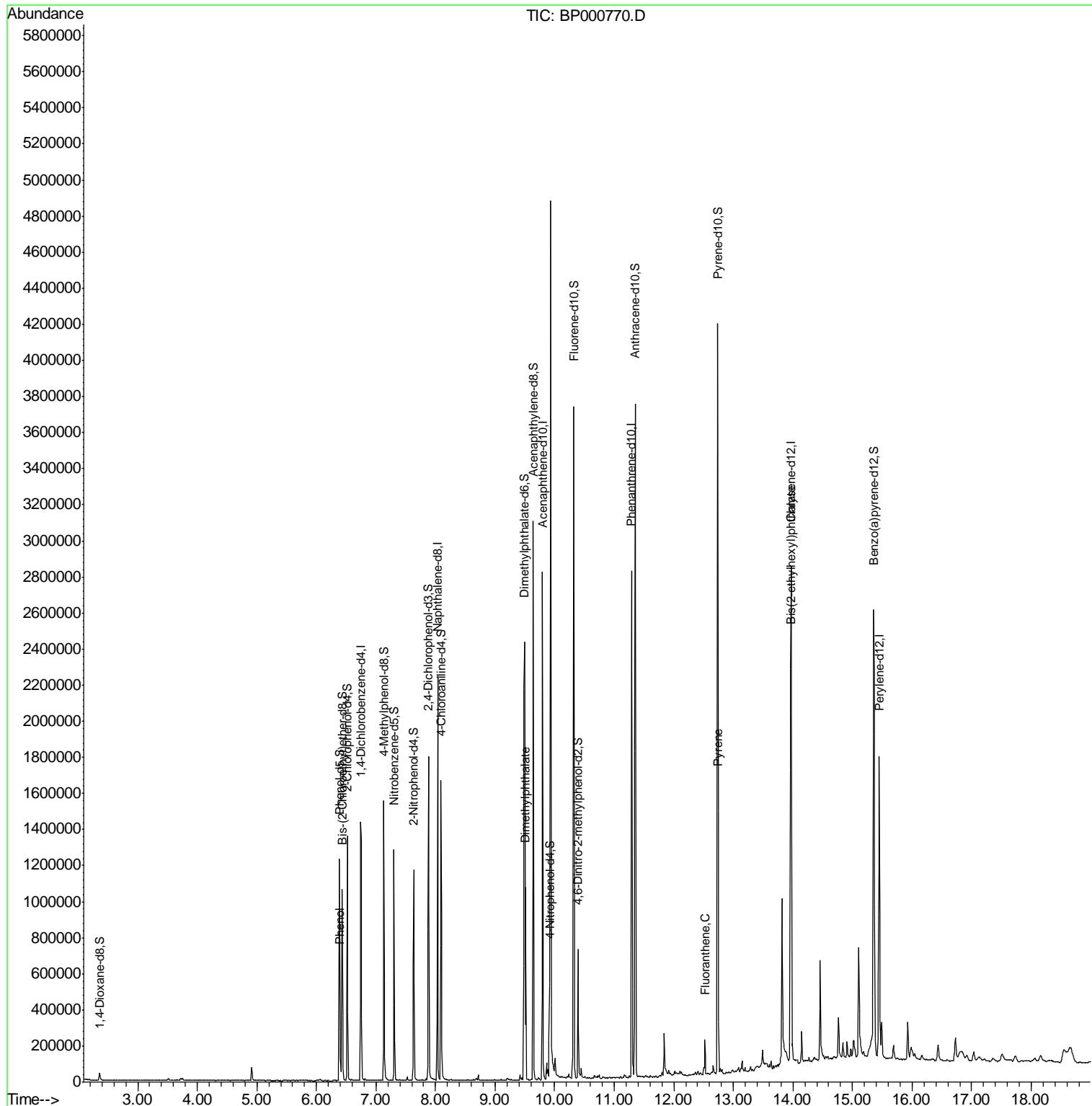
					Ovalue
6) Phenol	6.40	94	64900	3.551	ng/ul 99
45) Dimethylphthalate	9.51	163	384605	10.394	ng/ul 99
77) Fluoranthene	12.52	202	71521	1.283	ng/ul 98
80) Pyrene	12.75	202	67412	1.182	ng/ul# 90
84) Bis(2-ethylhexyl)phthalate	13.96	149	365180	11.789	ng/ul 99

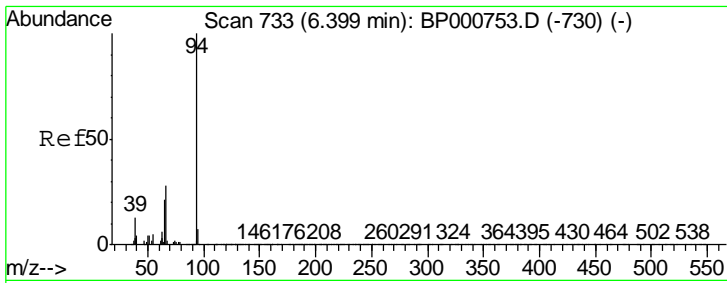
(#) = qualifier out of range (m) = manual integration (+) = signals summed

Data Path : Z:\SVOASRV\HPCHEM1\BNA P\DATA\BP101619\
 Data File : BP000770.D
 Acq On : 15 Oct 2019 16:57
 Operator : JU
 Sample : K5175-19
 Misc :
 ALS Vial : 19 Sample Multiplier: 1

Instrument :
 BNA_P
 Client Sampled :
 BEP91

Quant Time: Oct 16 02:39:49 2019
 Quant Method : Z:\SVOASRV\HPCHEM1\BNA_P\METHODS\SOM-EPA-BP100919MA.M
 Quant Title : SVOA CALIBRATION
 QLast Update : Wed Oct 16 02:22:01 2019
 Response via : Initial Calibration

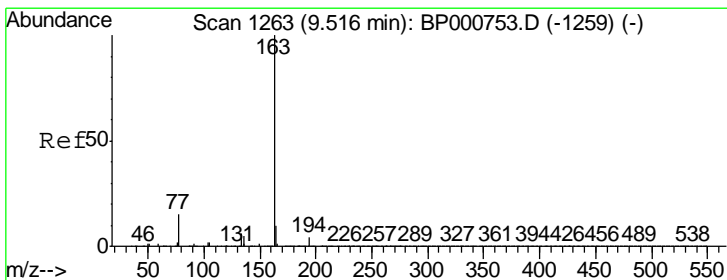
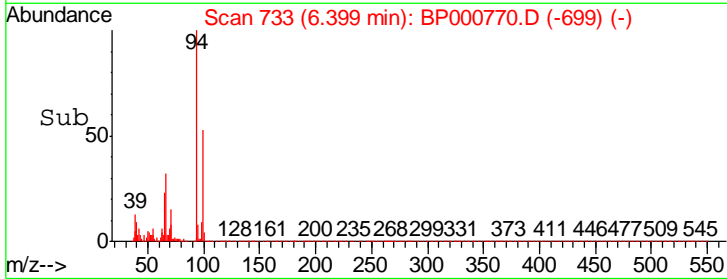
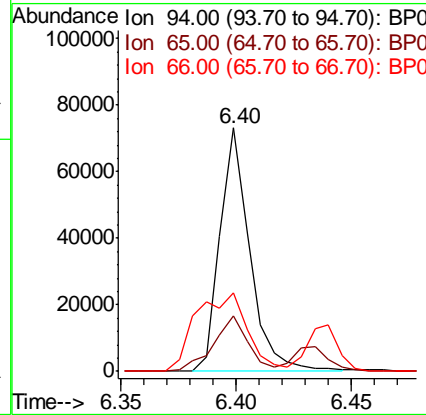
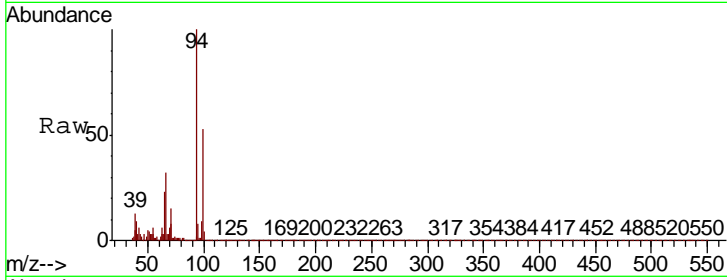




#6
 Phenol
 Concen: 3.551 ng/ul
 RT: 6.40 min Scan# 733
 Delta R.T. 0.00 min
 Lab File: BP000770.D
 Acq: 15 Oct 2019 16:57

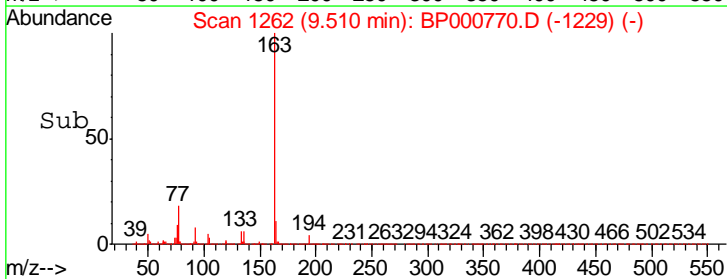
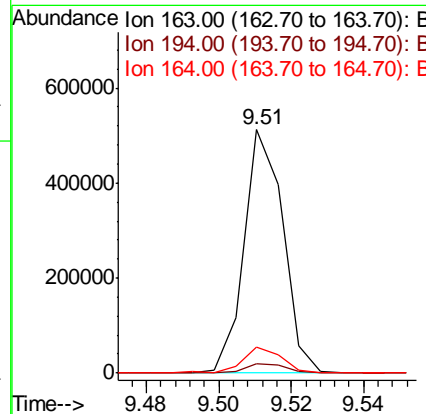
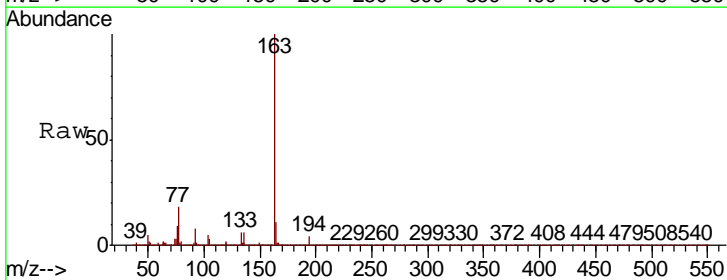
Instrument :
 BNA_P
 ClientSampled :
 BEP91

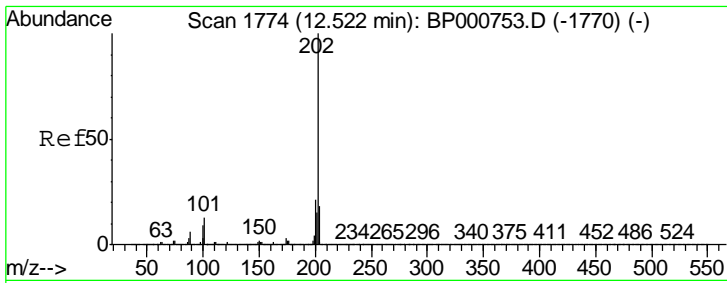
Tgt Ion	Resp	Lower	Upper
94	64900		
65	22.6	19.2	28.8
66	32.1	25.7	38.5



#45
 Dimethylphthalate
 Concen: 10.394 ng/ul
 RT: 9.51 min Scan# 1262
 Delta R.T. -0.01 min
 Lab File: BP000770.D
 Acq: 15 Oct 2019 16:57

Tgt Ion	Resp	Lower	Upper
163	384605		
194	4.0	3.3	4.9
164	10.5	8.1	12.1

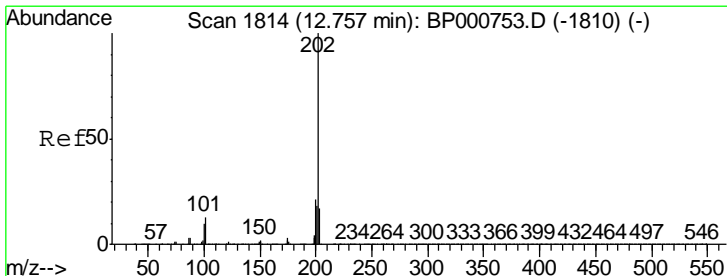
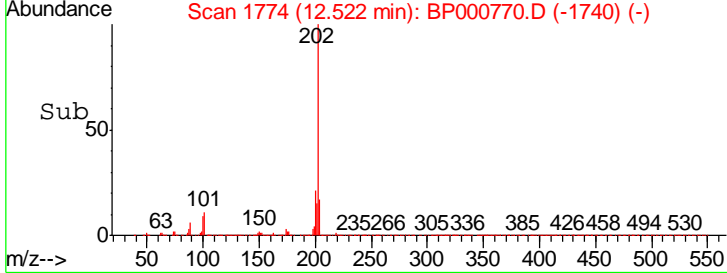
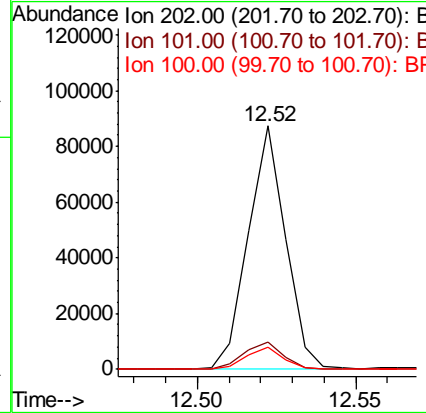
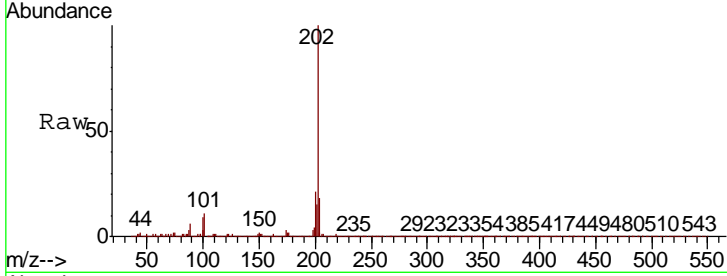




#77
 Fluoranthene
 Concen: 1.283 ng/ul
 RT: 12.52 min Scan# 1774
 Delta R.T. 0.00 min
 Lab File: BP000770.D
 Acq: 15 Oct 2019 16:57

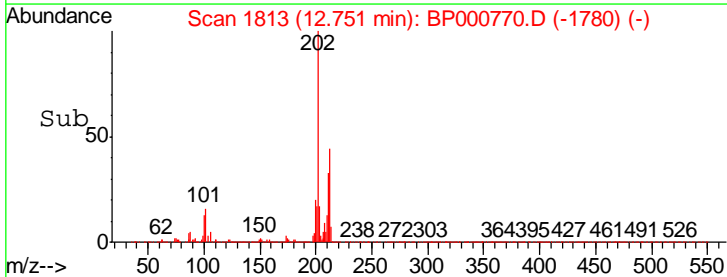
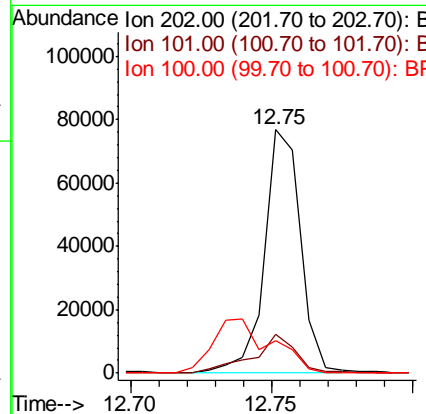
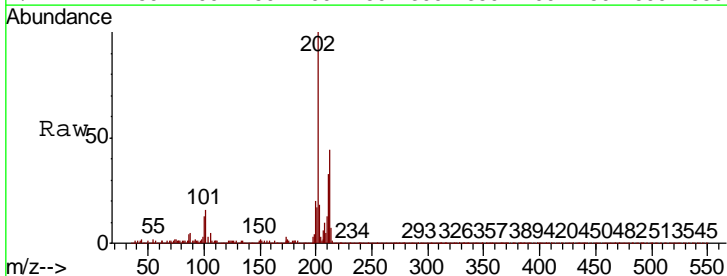
Instrument :
 BNA_P
 ClientSampled :
 BEP91

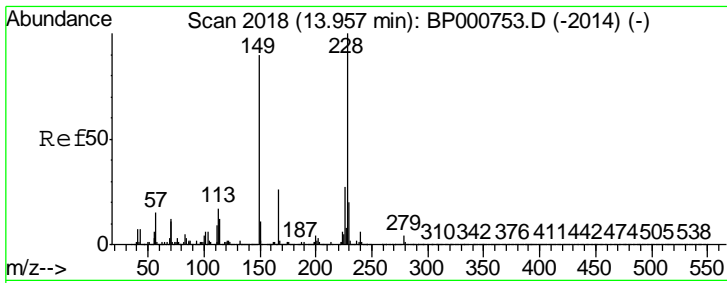
Tgt Ion	Resp	Lower	Upper
202	71521		
101	11.1	9.8	14.6
100	9.2	7.2	10.8



#80
 Pyrene
 Concen: 1.182 ng/ul
 RT: 12.75 min Scan# 1813
 Delta R.T. -0.01 min
 Lab File: BP000770.D
 Acq: 15 Oct 2019 16:57

Tgt Ion	Resp	Lower	Upper
202	67412		
101	15.8	9.7	14.5#
100	13.3	7.8	11.8#





#84
 Bis(2-ethylhexyl)phthalate
 Concen: 11.789 ng/ul
 RT: 13.96 min Scan# 2018
 Delta R.T. 0.00 min
 Lab File: BP000770.D
 Acq: 15 Oct 2019 16:57

Instrument :
 BNA_P
 ClientSampleID :
 BEP91

Tot Ion	Resp	Lower	Upper
149	365180		
167	28.4	22.3	33.5
279	4.4	3.2	4.8

