

Data Path : Z:\svoasrv\HPCHEM1\BNA\_P\Data\BP102121\  
 Data File : BP007588.D  
 Acq On : 22 Oct 2021 14:07  
 Operator : CG/JU  
 Sample : M4281-06  
 Misc :  
 ALS Vial : 48 Sample Multiplier: 1

Instrument :  
 BNA\_P  
 ClientSampleId :  
 BFY62

Integration Parameters: LSCINT.P

Integrator: RTE  
 Smoothing : OFF Filtering: 5  
 Sampling : 1 Min Area: 0.1 % of largest Peak  
 Start Thrs: 0.2 Max Peaks: 100  
 Stop Thrs : 0 Peak Location: TOP

If leading or trailing edge < 100 prefer < Baseline drop else tangent >  
 Peak separation: 5

Method : Z:\SVOASRV\HPCHEM1\BNA\_P\METHODS\SFAM-EPA-BP101421.M  
 Title : SVOA CALIBRATION

Signal : TIC: BP007588.D\data.ms

peak #	R.T. min	first scan	max scan	last scan	PK TY	peak height	corr. area	corr. % max.	% of total
1	3.375	11	15	19	rBV	45021	54193	1.12%	0.109%
2	3.652	59	62	68	rBV	20680	32897	0.68%	0.066%
3	3.793	83	86	99	rBV	251294	400421	8.27%	0.806%
4	4.034	123	127	132	rVV	26331	38910	0.80%	0.078%
5	4.128	139	143	148	rBV	21544	30010	0.62%	0.060%
6	4.787	247	255	259	rBV	24785	43266	0.89%	0.087%
7	4.934	272	280	287	rBV	60674	98504	2.04%	0.198%
8	5.381	352	356	363	rVV2	22653	37446	0.77%	0.075%
9	5.516	374	379	386	rVB3	12226	22287	0.46%	0.045%
10	6.028	462	466	472	rVB	19428	28798	0.60%	0.058%
11	6.334	511	518	523	rBV2	70769	124231	2.57%	0.250%
12	6.440	531	536	543	rVB9	10084	19460	0.40%	0.039%
13	6.934	612	620	622	rBV5	10640	18262	0.38%	0.037%
14	7.105	644	649	658	rVB2	97212	190969	3.95%	0.384%
15	7.275	669	678	689	rBV	547829	872696	18.03%	1.756%
16	7.475	705	712	722	rBV	279839	454532	9.39%	0.915%
17	7.552	722	725	731	rBV3	16089	31122	0.64%	0.063%
18	7.634	737	739	749	rVB7	12643	30003	0.62%	0.060%
19	7.875	772	780	784	rBV	42723	72288	1.49%	0.145%
20	7.946	785	792	800	rVV	653244	1033470	21.35%	2.080%
21	8.022	800	805	811	rVB2	16865	30803	0.64%	0.062%
22	8.652	906	912	917	rVV2	272873	446204	9.22%	0.898%
23	8.710	917	922	928	rVV	65373	115815	2.39%	0.233%
24	8.987	960	969	977	rBV4	23182	50444	1.04%	0.102%
25	9.104	979	989	1000	rBV	624736	1036116	21.41%	2.085%
26	9.281	1014	1019	1024	rVV2	22722	35730	0.74%	0.072%
27	9.510	1050	1058	1064	rBV2	81494	133789	2.76%	0.269%
28	9.569	1064	1068	1076	rVB2	37864	60712	1.25%	0.122%
29	9.828	1103	1112	1119	rBV	223526	389888	8.06%	0.785%
30	9.887	1119	1122	1126	rVV	19452	26307	0.54%	0.053%
31	9.951	1127	1133	1138	rVV3	23922	42934	0.89%	0.086%
32	10.104	1154	1159	1163	rVV3	45312	75934	1.57%	0.153%
33	10.151	1163	1167	1174	rVV5	19155	34314	0.71%	0.069%
34	10.240	1174	1182	1188	rVV5	18311	39302	0.81%	0.079%
35	10.369	1195	1204	1213	rBV	405847	684729	14.15%	1.378%
36	10.534	1225	1232	1244	rBV	761178	1190699	24.60%	2.396%

Data Path : Z:\svoasrv\HPCHEM1\BNA\_P\Data\BP102121\  
 Data File : BP007588.D  
 Acq On : 22 Oct 2021 14:07  
 Operator : CG/JU  
 Sample : M4281-06  
 Misc :  
 ALS Vial : 48 Sample Multiplier: 1

Instrument :  
 BNA\_P  
 ClientSampleId :  
 BFY62

Integration Parameters: LSCINT.P

Integrator: RTE  
 Smoothing : OFF Filtering: 5  
 Sampling : 1 Min Area: 0.1 % of largest Peak  
 Start Thrs: 0.2 Max Peaks: 100  
 Stop Thrs : 0 Peak Location: TOP

If leading or trailing edge < 100 prefer < Baseline drop else tangent >  
 Peak separation: 5

Method : Z:\SVOASRV\HPCHEM1\BNA\_P\METHODS\SFAM-EPA-BP101421.M  
 Title : SVOA CALIBRATION

37	10.751	1259	1269	1276	rBV	889231	1463688	30.24%	2.945%
38	10.881	1283	1291	1304	rBV	718219	1285370	26.56%	2.587%
39	11.545	1395	1404	1409	rBV10	15163	36660	0.76%	0.074%
40	11.657	1417	1423	1427	rBV2	15803	26034	0.54%	0.052%
41	11.734	1431	1436	1441	rBV2	14129	21867	0.45%	0.044%
42	11.804	1443	1448	1450	rBV3	15101	22932	0.47%	0.046%
43	11.951	1468	1473	1476	rVV3	13827	20955	0.43%	0.042%
44	11.993	1476	1480	1487	rVV7	13528	35183	0.73%	0.071%
45	12.069	1487	1493	1501	rVB4	33277	86881	1.80%	0.175%
46	12.222	1510	1519	1520	rBV7	10561	21727	0.45%	0.044%
47	12.240	1520	1522	1527	rVV4	13598	21240	0.44%	0.043%
48	12.340	1534	1539	1549	rVV4	28361	60947	1.26%	0.123%
49	13.175	1671	1681	1688	rBV	67206	124049	2.56%	0.250%
50	13.428	1719	1724	1728	rVB4	15525	20540	0.42%	0.041%
51	13.492	1728	1735	1741	rBV2	33201	63177	1.31%	0.127%
52	13.628	1754	1758	1762	rVB	13918	18076	0.37%	0.036%
53	13.710	1767	1772	1779	rBV8	19940	41655	0.86%	0.084%
54	13.804	1779	1788	1797	rVB2	44269	89070	1.84%	0.179%
55	13.992	1807	1820	1826	rBV	1582396	2256033	46.61%	4.540%
56	14.275	1858	1868	1877	rBV	1715339	2519311	52.05%	5.070%
57	14.398	1885	1889	1893	rVB	22823	30724	0.63%	0.062%
58	14.504	1901	1907	1912	rBV	101677	148807	3.07%	0.299%
59	14.581	1913	1920	1931	rVB	1350987	1970316	40.71%	3.965%
60	14.739	1942	1947	1948	rBV2	14350	18644	0.39%	0.038%
61	14.769	1948	1952	1960	rVB2	73697	119315	2.47%	0.240%
62	14.975	1983	1987	1990	rBV2	17529	26903	0.56%	0.054%
63	15.134	2009	2014	2026	rVV2	24657	74263	1.53%	0.149%
64	15.228	2026	2030	2036	rVB8	21099	34864	0.72%	0.070%
65	15.328	2041	2047	2054	rVB3	19294	39351	0.81%	0.079%
66	15.575	2082	2089	2097	rBV	2294854	3357230	69.36%	6.756%
67	15.686	2103	2108	2114	rBV	182833	259399	5.36%	0.522%
68	15.816	2127	2130	2134	rBV2	26047	37893	0.78%	0.076%
69	16.022	2159	2165	2172	rBV6	24107	38347	0.79%	0.077%
70	16.133	2180	2184	2192	rVB6	13389	25276	0.52%	0.051%
71	16.369	2220	2224	2228	rVB5	13491	19476	0.40%	0.039%
72	16.739	2283	2287	2292	rBV4	29529	39208	0.81%	0.079%
73	17.116	2348	2351	2354	rVV4	17705	25322	0.52%	0.051%
74	17.151	2354	2357	2365	rVB10	13483	22296	0.46%	0.045%
75	17.333	2378	2388	2395	rBV	1742096	2705595	55.90%	5.445%
76	17.433	2399	2405	2415	rBV2	2761429	3926111	81.12%	7.901%

Data Path : Z:\svoasrv\HPCHEM1\BNA\_P\Data\BP102121\  
 Data File : BP007588.D  
 Acq On : 22 Oct 2021 14:07  
 Operator : CG/JU  
 Sample : M4281-06  
 Misc :  
 ALS Vial : 48 Sample Multiplier: 1

Instrument :  
 BNA\_P  
 ClientSampleId :  
 BFY62

Integration Parameters: LSCINT.P

Integrator: RTE  
 Smoothing : OFF Filtering: 5  
 Sampling : 1 Min Area: 0.1 % of largest Peak  
 Start Thrs: 0.2 Max Peaks: 100  
 Stop Thrs : 0 Peak Location: TOP

If leading or trailing edge < 100 prefer < Baseline drop else tangent >  
 Peak separation: 5

Method : Z:\SVOASRV\HPCHEM1\BNA\_P\METHODS\SFAM-EPA-BP101421.M  
 Title : SVOA CALIBRATION

77	17.645	2437	2441	2448	rVB10	20756	33384	0.69%	0.067%
78	18.022	2500	2505	2509	rBV	164807	192752	3.98%	0.388%
79	18.104	2516	2519	2526	rVB7	21519	29754	0.61%	0.060%
80	18.233	2536	2541	2550	rBV	812213	1124167	23.23%	2.262%
81	18.527	2587	2591	2597	rBV5	24582	43575	0.90%	0.088%
82	19.151	2689	2697	2704	rBV3	203659	310850	6.42%	0.626%
83	19.245	2710	2713	2716	rBV2	41202	51837	1.07%	0.104%
84	19.280	2716	2719	2721	rVB	35297	33466	0.69%	0.067%
85	19.316	2721	2725	2728	rBV2	76739	106371	2.20%	0.214%
86	19.345	2728	2730	2734	rVB4	37721	43672	0.90%	0.088%
87	19.463	2746	2750	2757	rBV2	308240	409466	8.46%	0.824%
88	19.610	2773	2775	2779	rVB3	31717	31699	0.65%	0.064%
89	19.669	2779	2785	2791	rBV	3590366	4839977	100.00%	9.740%
90	19.722	2791	2794	2801	rVB2	103853	114238	2.36%	0.230%
91	20.210	2873	2877	2880	rVB	111451	118053	2.44%	0.238%
92	20.692	2956	2959	2962	rVB	186954	180140	3.72%	0.363%
93	21.145	3031	3036	3044	rBV2	712807	1030588	21.29%	2.074%
94	21.421	3078	3083	3089	rBV	2170287	2787342	57.59%	5.609%
95	21.592	3108	3112	3118	rVB	274772	314542	6.50%	0.633%
96	22.063	3188	3192	3197	rBV	260129	370733	7.66%	0.746%
97	22.574	3276	3279	3290	rVB2	240998	370055	7.65%	0.745%
98	23.151	3373	3377	3382	rVB	208014	313120	6.47%	0.630%
99	23.715	3465	3473	3482	rBV2	2320818	4773953	98.64%	9.607%
100	23.868	3493	3499	3509	rVB2	1362349	2887628	59.66%	5.811%

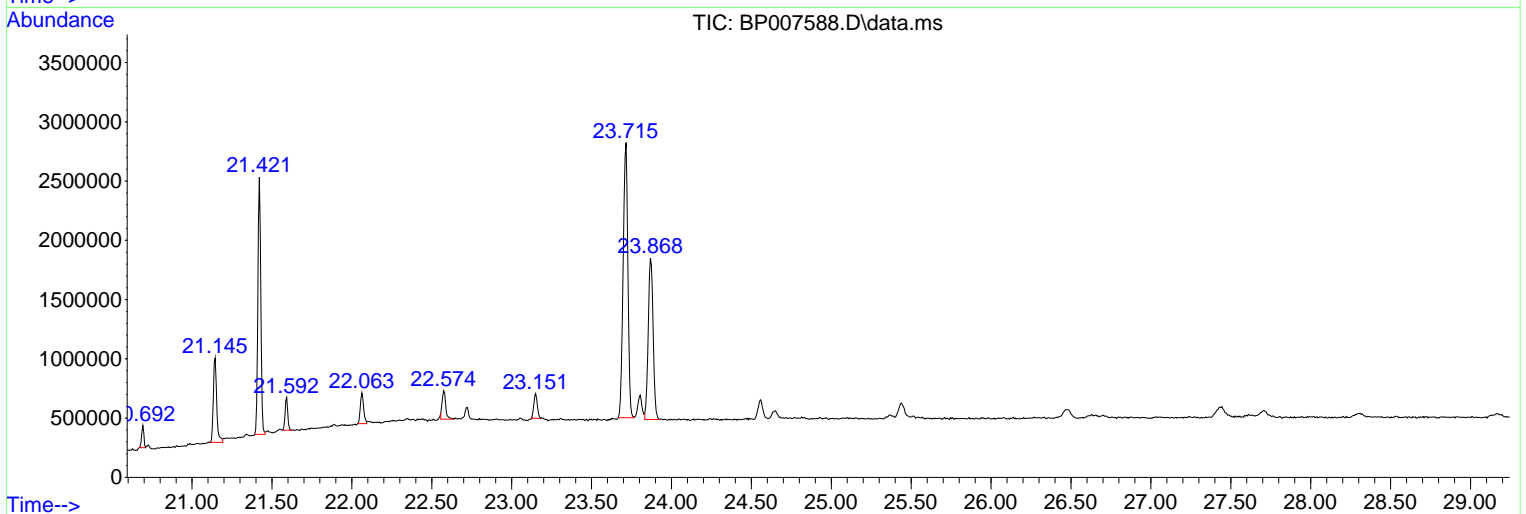
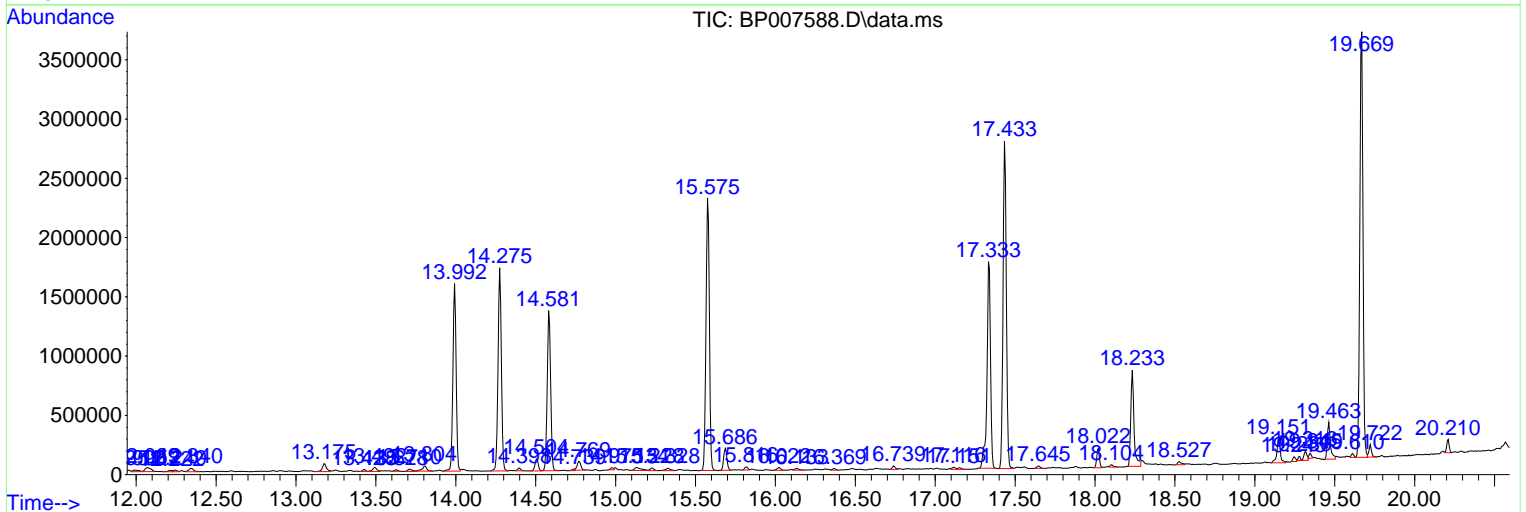
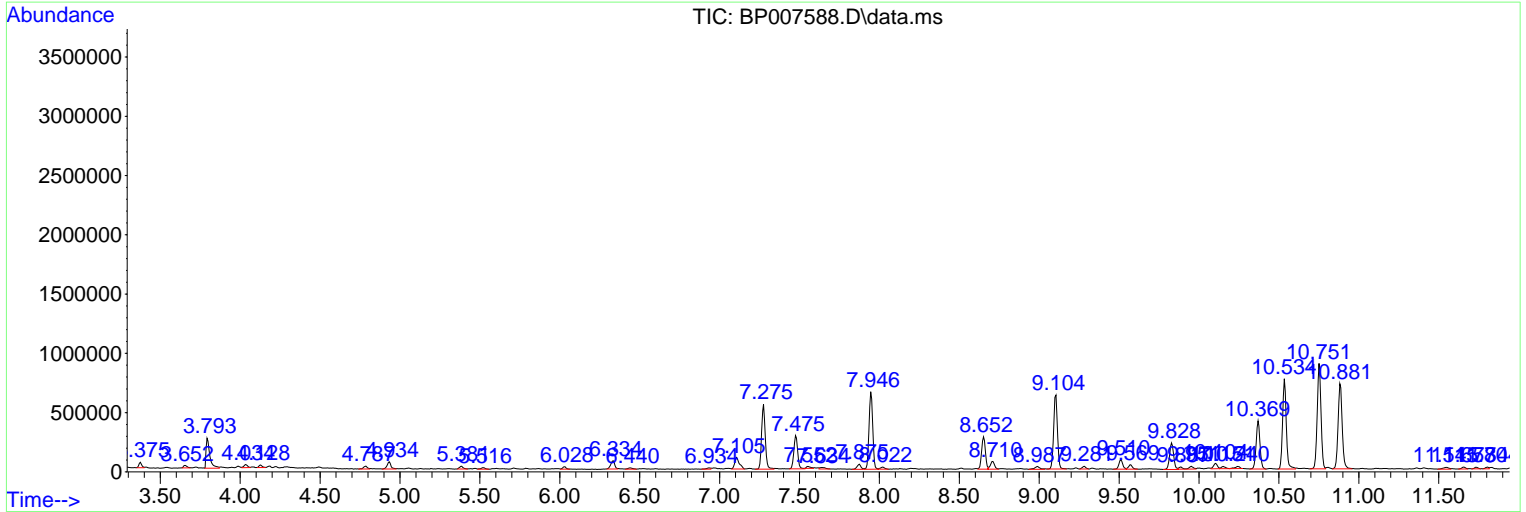
Sum of corrected areas: 49693582

Data Path : Z:\svoasrv\HPCHEM1\BNA\_P\Data\BP102121\  
 Data File : BP007588.D  
 Acq On : 22 Oct 2021 14:07  
 Operator : CG/JU  
 Sample : M4281-06  
 Misc :  
 ALS Vial : 48 Sample Multiplier: 1

Instrument :  
 BNA\_P  
 ClientSampled :  
 BFY62

Quant Method : Z:\SVOASRV\HPCHEM1\BNA\_P\METHODS\SFAM-EPA-BP101421.M  
 Quant Title : SVOA CALIBRATION

TIC Library : C:\DATABASE\NIST20.L  
 TIC Integration Parameters: LSCINT.P



Data Path : Z:\svoasrv\HPCHEM1\BNA\_P\Data\BP102121\  
 Data File : BP007588.D  
 Acq On : 22 Oct 2021 14:07  
 Operator : CG/JU  
 Sample : M4281-06  
 Misc :  
 ALS Vial : 48 Sample Multiplier: 1

Instrument :  
 BNA\_P  
 ClientSampleID :  
 BFY62

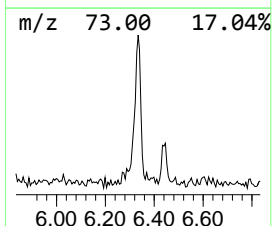
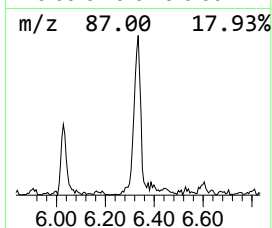
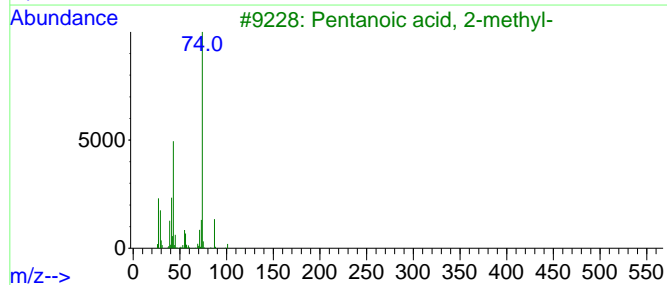
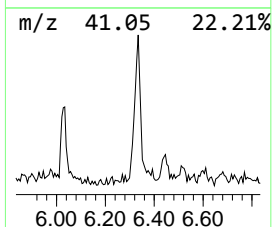
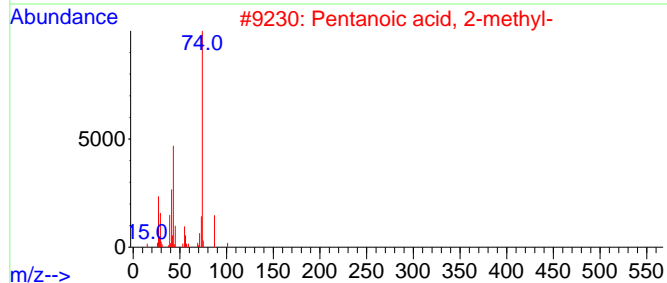
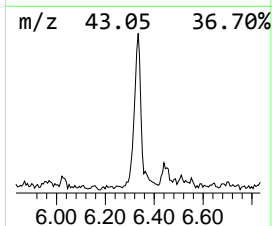
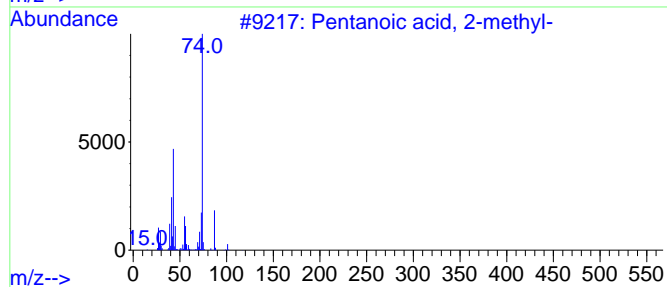
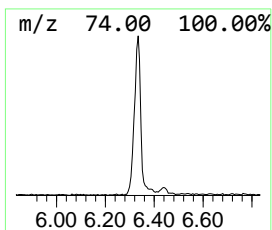
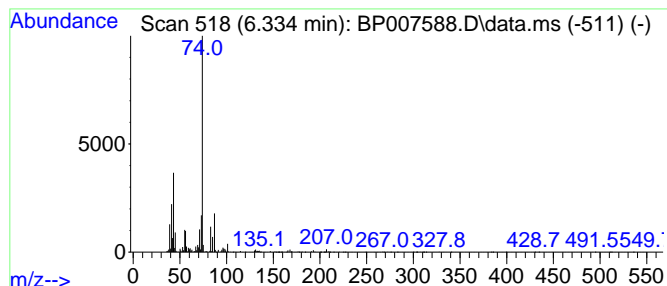
Quant Method : Z:\SVOASRV\HPCHEM1\BNA\_P\METHODS\SFAM-EPA-BP101421.M  
 Quant Title : SVOA CALIBRATION

TIC Library : C:\DATABASE\NIST20.L  
 TIC Integration Parameters: LSCINT.P

\*\*\*\*\*  
 Peak Number 1 Pentanoic acid, 2-methyl- Concentration Rank 7

R.T.	EstConc	Area	Relative to ISTD	R.T.
6.334	2.40 ng/ul	124231	1,4-Dichlorobenzene-d4	7.946

Hit#	of	5	Tentative ID	MW	MolForm	CAS#	Qual
1			Pentanoic acid, 2-methyl-	116	C6H12O2	000097-61-0	80
2			Pentanoic acid, 2-methyl-	116	C6H12O2	000097-61-0	72
3			Pentanoic acid, 2-methyl-	116	C6H12O2	000097-61-0	72
4			Butanoic acid, 2-methyl-	102	C5H10O2	000116-53-0	64
5			Hexanoic acid, 2-methyl-	130	C7H14O2	004536-23-6	64



Data Path : Z:\svoasrv\HPCHEM1\BNA\_P\Data\BP102121\  
 Data File : BP007588.D  
 Acq On : 22 Oct 2021 14:07  
 Operator : CG/JU  
 Sample : M4281-06  
 Misc :  
 ALS Vial : 48 Sample Multiplier: 1

Instrument :  
 BNA\_P  
 ClientSampleId :  
 BFY62

Quant Method : Z:\SVOASRV\HPCHEM1\BNA\_P\METHODS\SFAM-EPA-BP101421.M  
 Quant Title : SVOA CALIBRATION

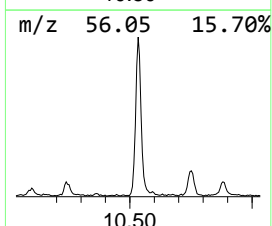
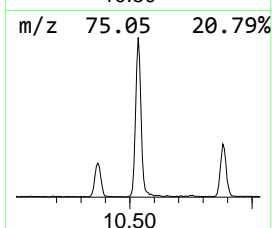
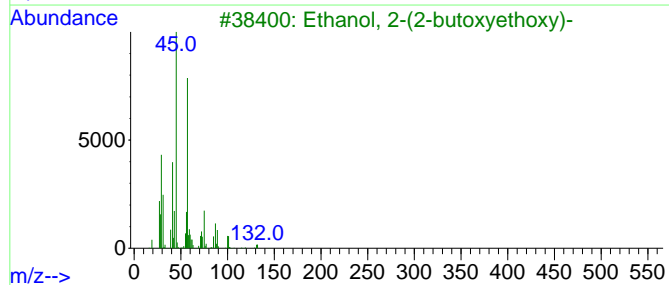
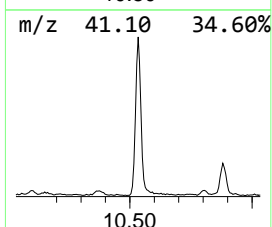
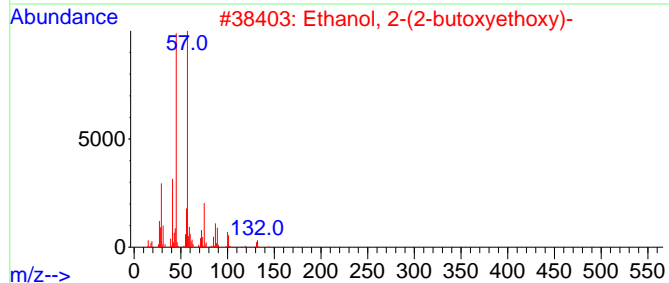
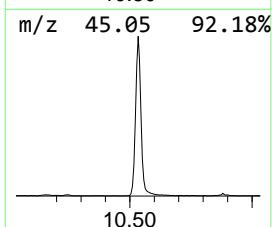
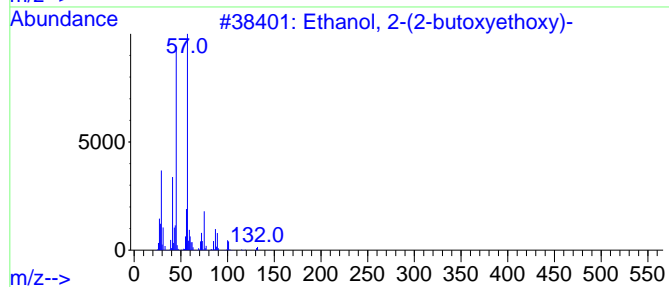
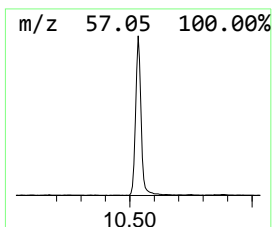
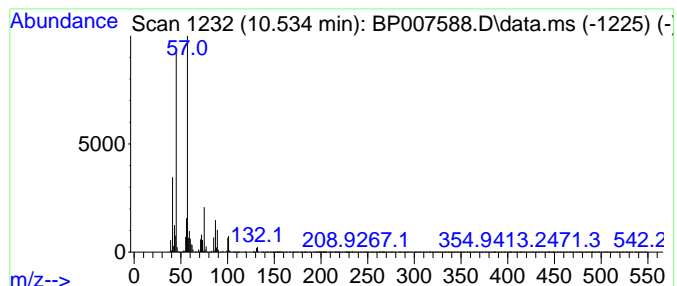
TIC Library : C:\DATABASE\NIST20.L  
 TIC Integration Parameters: LSCINT.P

\*\*\*\*\*  
 Peak Number 2 Ethanol, 2-(2-butoxyethoxy)- Concentration Rank 1

R.T.	EstConc	Area	Relative to ISTD	R.T.
10.534	16.27 ng/ul	1190700	Naphthalene-d8	10.751

Hit#	of 5	Tentative ID	MW	MolForm	CAS#	Qual
1		Ethanol, 2-(2-butoxyethoxy)-	162	C8H18O3	000112-34-5	90
2		Ethanol, 2-(2-butoxyethoxy)-	162	C8H18O3	000112-34-5	90
3		Ethanol, 2-(2-butoxyethoxy)-	162	C8H18O3	000112-34-5	90
4		Ethanol, 1-(2-butoxyethoxy)-	162	C8H18O3	054446-78-5	83
5		Ethanol, 1-(2-butoxyethoxy)-	162	C8H18O3	054446-78-5	83



Data Path : Z:\svoasrv\HPCHEM1\BNA\_P\Data\BP102121\  
 Data File : BP007588.D  
 Acq On : 22 Oct 2021 14:07  
 Operator : CG/JU  
 Sample : M4281-06  
 Misc :  
 ALS Vial : 48 Sample Multiplier: 1

Instrument :  
 BNA\_P  
 ClientSampleId :  
 BFY62

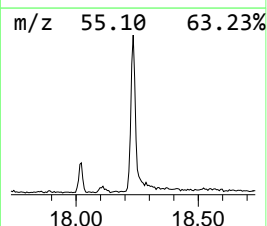
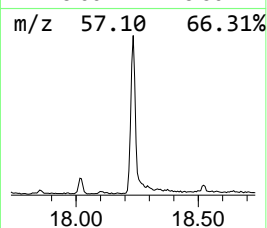
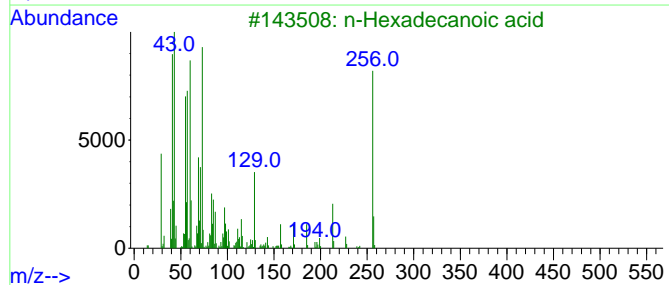
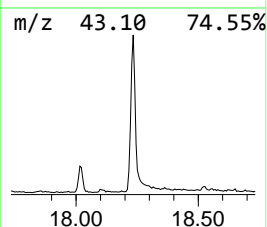
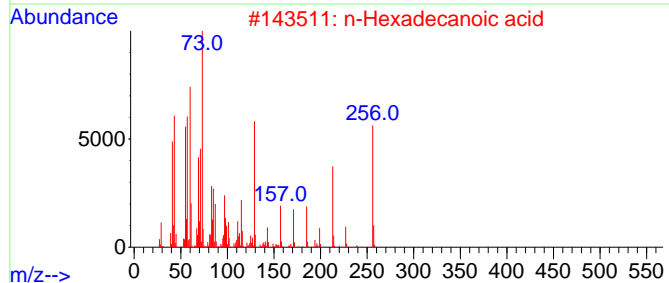
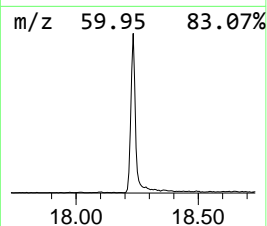
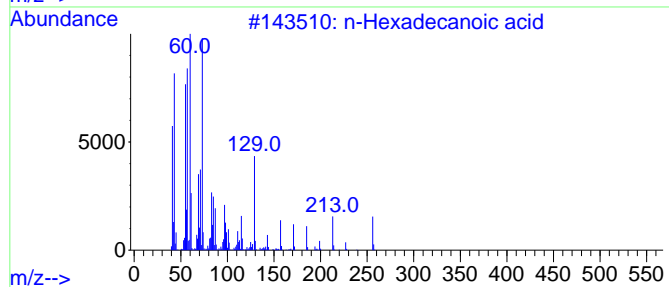
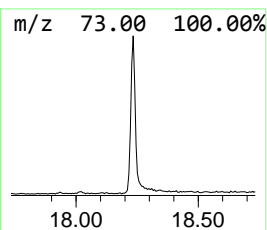
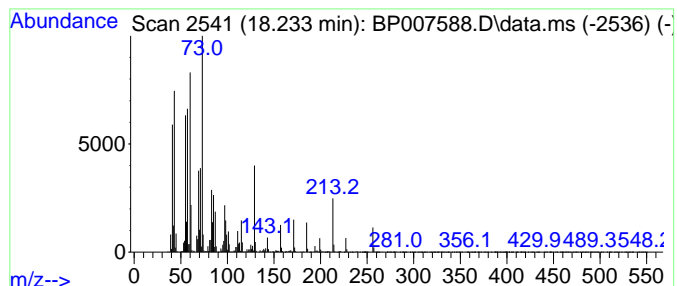
Quant Method : Z:\SVOASRV\HPCHEM1\BNA\_P\METHODS\SFAM-EPA-BP101421.M  
 Quant Title : SVOA CALIBRATION

TIC Library : C:\DATABASE\NIST20.L  
 TIC Integration Parameters: LSCINT.P

\*\*\*\*\*  
 Peak Number 3 n-Hexadecanoic acid Concentration Rank 2

R.T.	EstConc	Area	Relative to ISTD	R.T.
18.233	8.31 ng/ul	1124170	Phenanthrene-d10	17.333

Hit#	of	5	Tentative ID	MW	MolForm	CAS#	Qual
1	n-Hexadecanoic acid	256	C16H32O2	000057-10-3	99		
2	n-Hexadecanoic acid	256	C16H32O2	000057-10-3	99		
3	n-Hexadecanoic acid	256	C16H32O2	000057-10-3	99		
4	n-Hexadecanoic acid	256	C16H32O2	000057-10-3	98		
5	n-Hexadecanoic acid	256	C16H32O2	000057-10-3	95		



Data Path : Z:\svoasrv\HPCHEM1\BNA\_P\Data\BP102121\  
 Data File : BP007588.D  
 Acq On : 22 Oct 2021 14:07  
 Operator : CG/JU  
 Sample : M4281-06  
 Misc :  
 ALS Vial : 48 Sample Multiplier: 1

Instrument :  
 BNA\_P  
 ClientSampleID :  
 BFY62

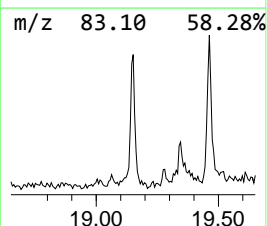
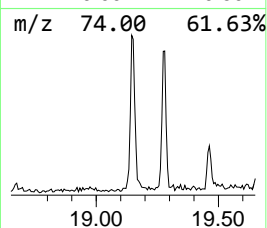
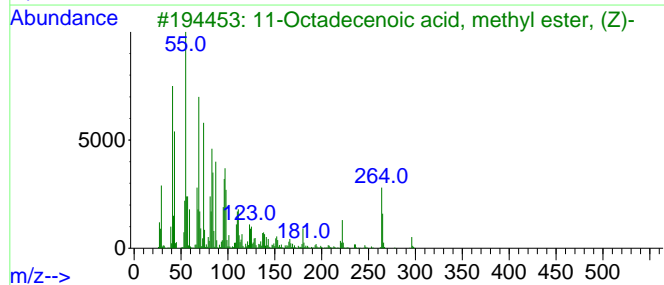
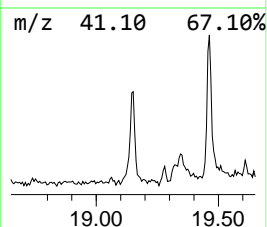
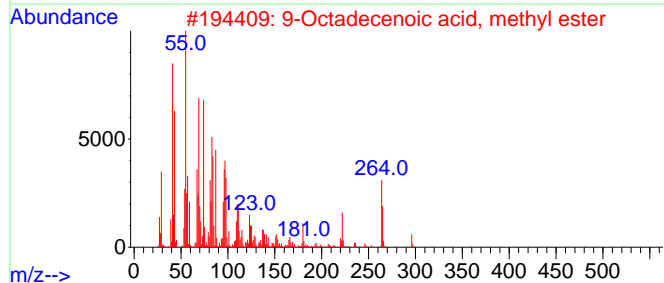
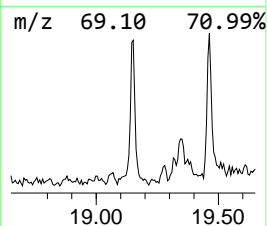
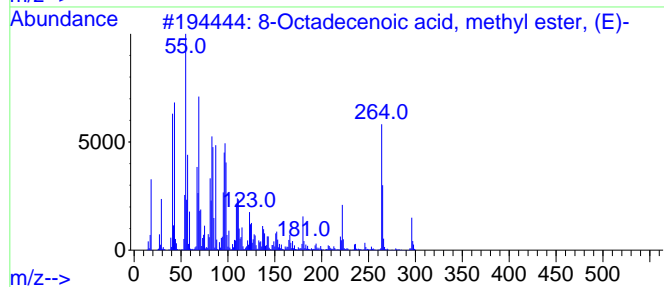
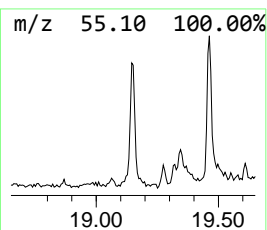
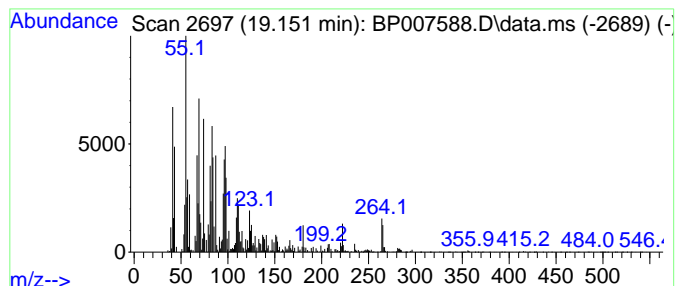
Quant Method : Z:\SVOASRV\HPCHEM1\BNA\_P\METHODS\SFAM-EPA-BP101421.M  
 Quant Title : SVOA CALIBRATION

TIC Library : C:\DATABASE\NIST20.L  
 TIC Integration Parameters: LSCINT.P

\*\*\*\*\*  
 Peak Number 4 8-Octadecenoic acid, methyl... Concentration Rank 8

R.T.	EstConc	Area	Relative to ISTD	R.T.
19.151	2.30 ng/ul	310850	Phenanthrene-d10	17.333

Hit#	of	5	Tentative ID	MW	MolForm	CAS#	Qual
1			8-Octadecenoic acid, methyl este...	296	C19H36O2	026528-50-7	99
2			9-Octadecenoic acid, methyl ester	296	C19H36O2	002462-84-2	99
3			11-Octadecenoic acid, methyl est...	296	C19H36O2	001937-63-9	99
4			10-Octadecenoic acid, methyl ester	296	C19H36O2	013481-95-3	99
5			6-Octadecenoic acid, methyl ester	296	C19H36O2	052355-31-4	99





Data Path : Z:\svoasrv\HPCHEM1\BNA\_P\Data\BP102121\  
 Data File : BP007588.D  
 Acq On : 22 Oct 2021 14:07  
 Operator : CG/JU  
 Sample : M4281-06  
 Misc :  
 ALS Vial : 48 Sample Multiplier: 1

Instrument :  
 BNA\_P  
 ClientSampleID :  
 BFY62

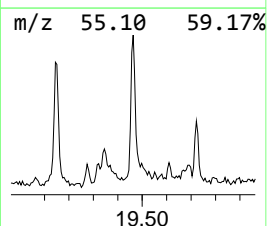
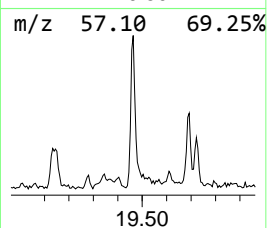
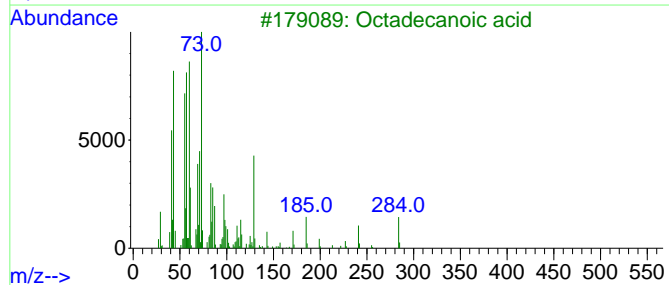
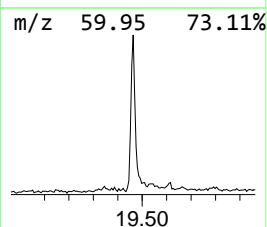
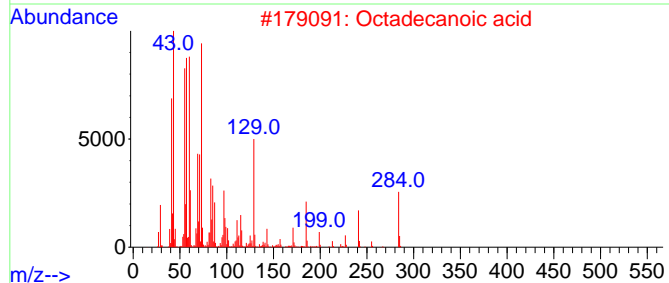
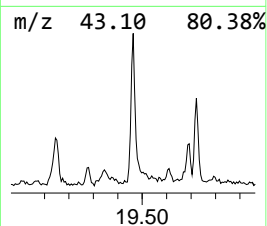
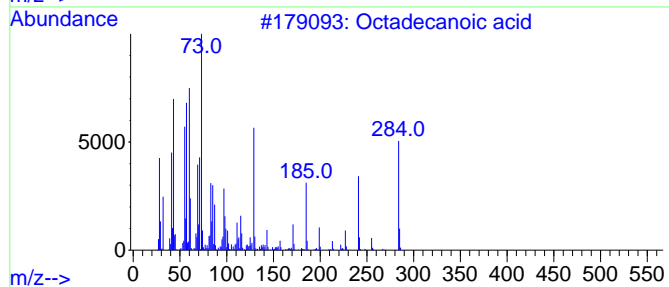
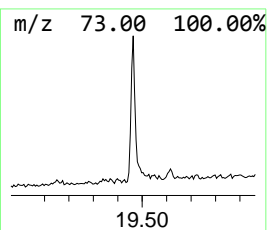
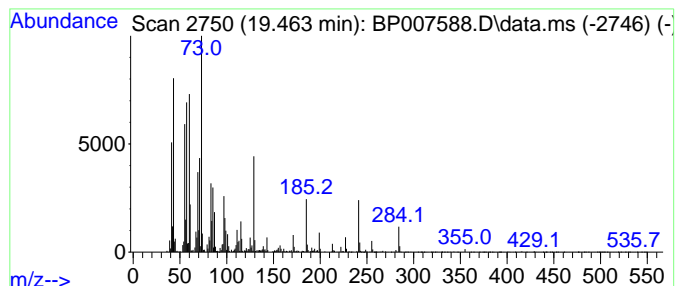
Quant Method : Z:\SVOASRV\HPCHEM1\BNA\_P\METHODS\SFAM-EPA-BP101421.M  
 Quant Title : SVOA CALIBRATION

TIC Library : C:\DATABASE\NIST20.L  
 TIC Integration Parameters: LSCINT.P

\*\*\*\*\*  
 Peak Number 5 Octadecanoic acid Concentration Rank 4

R.T.	EstConc	Area	Relative to ISTD	R.T.
19.463	2.94 ng/ul	409466	Chrysene-d12	21.421

Hit#	of	5	Tentative ID	MW	MolForm	CAS#	Qual
1			Octadecanoic acid	284	C18H36O2	000057-11-4	99
2			Octadecanoic acid	284	C18H36O2	000057-11-4	99
3			Octadecanoic acid	284	C18H36O2	000057-11-4	99
4			Octadecanoic acid	284	C18H36O2	000057-11-4	98
5			Octadecanoic acid	284	C18H36O2	000057-11-4	95



Data Path : Z:\svoasrv\HPCHEM1\BNA\_P\Data\BP102121\  
 Data File : BP007588.D  
 Acq On : 22 Oct 2021 14:07  
 Operator : CG/JU  
 Sample : M4281-06  
 Misc :  
 ALS Vial : 48 Sample Multiplier: 1

Instrument :  
 BNA\_P  
 ClientSampleId :  
 BFY62

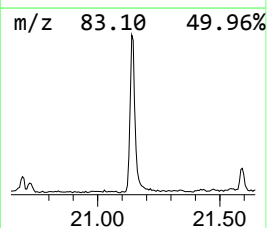
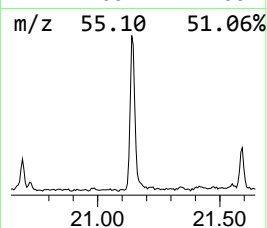
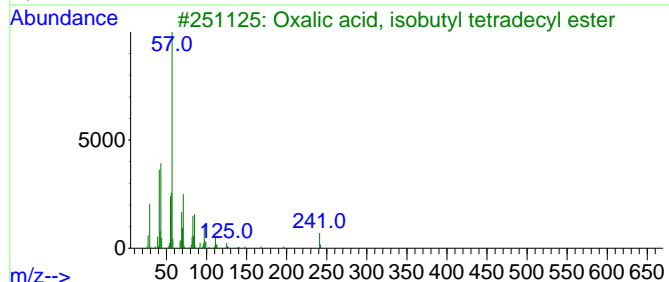
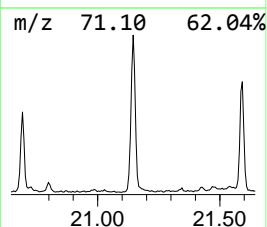
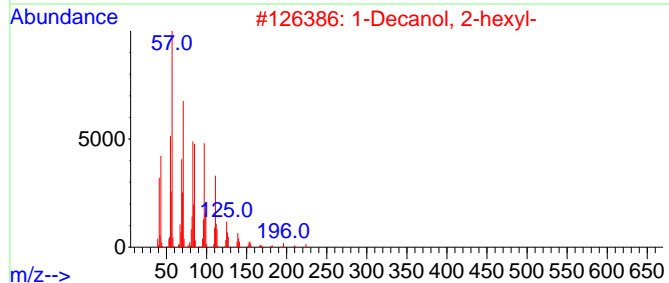
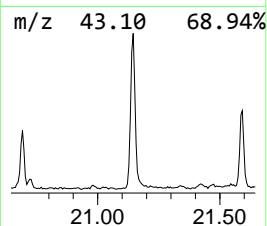
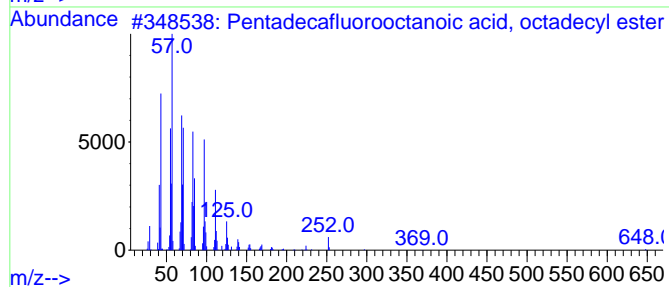
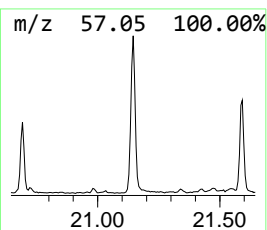
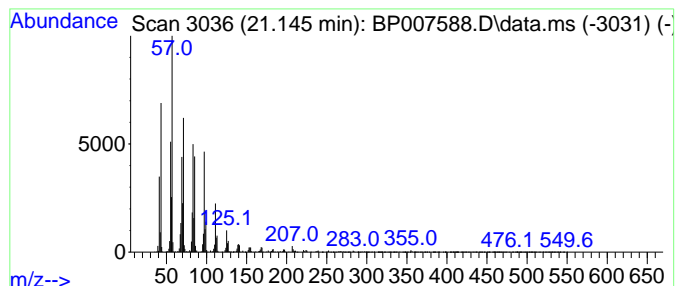
Quant Method : Z:\SVOASRV\HPCHEM1\BNA\_P\METHODS\SFAM-EPA-BP101421.M  
 Quant Title : SVOA CALIBRATION

TIC Library : C:\DATABASE\NIST20.L  
 TIC Integration Parameters: LSCINT.P

\*\*\*\*\*  
 Peak Number 6 Pentadecafluorooctanoic aci... Concentration Rank 3

R.T.	EstConc	Area	Relative to ISTD	R.T.
21.145	7.39 ng/ul	1030590	Chrysene-d12	21.421

Hit#	of	5	Tentative ID	MW	MolForm	CAS#	Qual
1			Pentadecafluorooctanoic acid, oc...	666	C26H37F15O2	1000406-04-8	93
2			1-Decanol, 2-hexyl-	242	C16H34O	002425-77-6	91
3			Oxalic acid, isobutyl tetradecyl...	342	C20H38O4	1000309-37-9	91
4			Oxalic acid, isobutyl octadecyl ...	398	C24H46O4	1000309-38-3	91
5			Oxalic acid, octadecyl propyl ester	384	C23H44O4	1000309-27-0	91



Data Path : Z:\svoasrv\HPCHEM1\BNA\_P\Data\BP102121\  
 Data File : BP007588.D  
 Acq On : 22 Oct 2021 14:07  
 Operator : CG/JU  
 Sample : M4281-06  
 Misc :  
 ALS Vial : 48 Sample Multiplier: 1

Instrument :  
 BNA\_P  
 ClientSampleId :  
 BFY62

Quant Method : Z:\SVOASRV\HPCHEM1\BNA\_P\METHODS\SFAM-EPA-BP101421.M  
 Quant Title : SVOA CALIBRATION

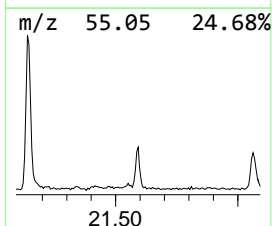
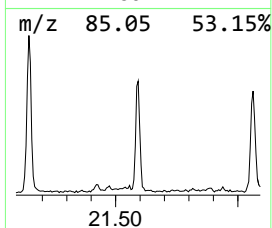
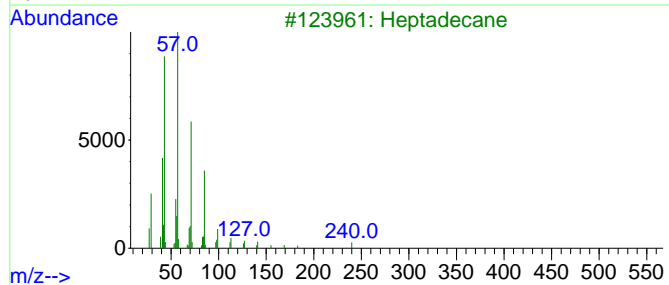
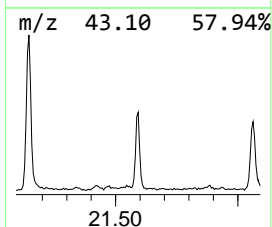
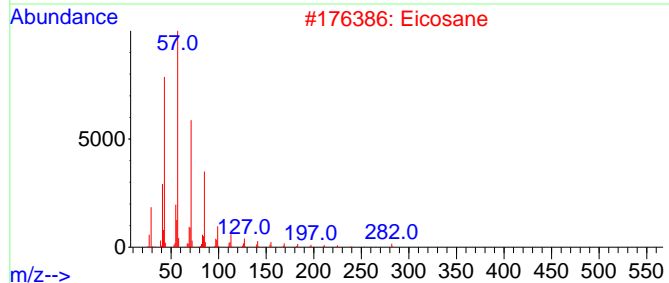
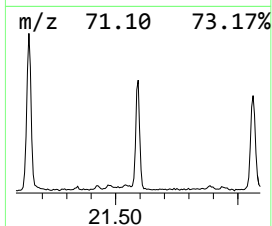
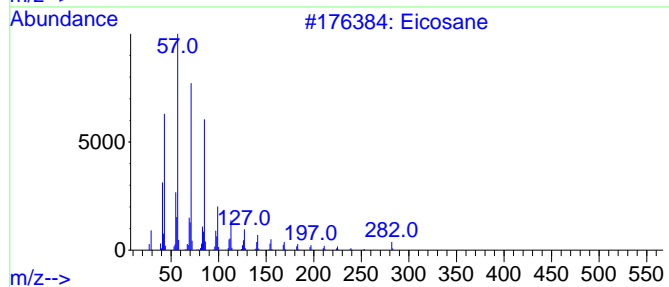
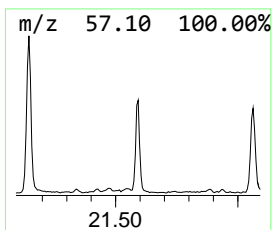
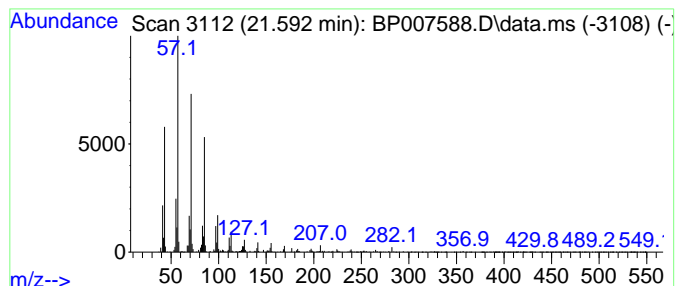
TIC Library : C:\DATABASE\NIST20.L  
 TIC Integration Parameters: LSCINT.P

\*\*\*\*\*  
 Peak Number 7 (DEL) Alkane: Straight-Chai... Concentration Rank 9

R.T.	EstConc	Area	Relative to ISTD	R.T.
21.592	2.26 ng/ul	314542	Chrysene-d12	21.421

Hit#	of 5	Tentative ID	MW	MolForm	CAS#	Qual
1		Eicosane	282	C20H42	000112-95-8	95
2		Eicosane	282	C20H42	000112-95-8	93
3		Heptadecane	240	C17H36	000629-78-7	93
4		2-Methylpentacosane	366	C26H54	000629-87-8	91
5		Heneicosane	296	C21H44	000629-94-7	91



Data Path : Z:\svoasrv\HPCHEM1\BNA\_P\Data\BP102121\  
 Data File : BP007588.D  
 Acq On : 22 Oct 2021 14:07  
 Operator : CG/JU  
 Sample : M4281-06  
 Misc :  
 ALS Vial : 48 Sample Multiplier: 1

Instrument :  
 BNA\_P  
 ClientSampleId :  
 BFY62

Quant Method : Z:\SVOASRV\HPCHEM1\BNA\_P\METHODS\SFAM-EPA-BP101421.M  
 Quant Title : SVOA CALIBRATION

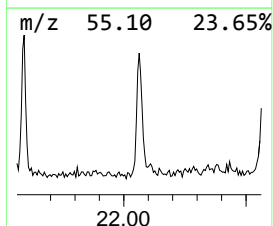
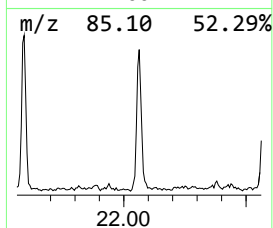
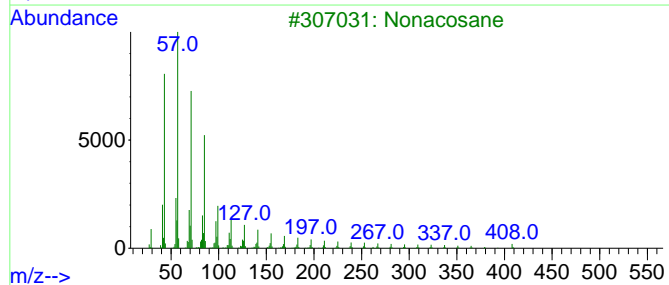
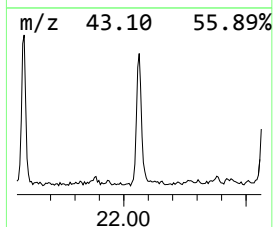
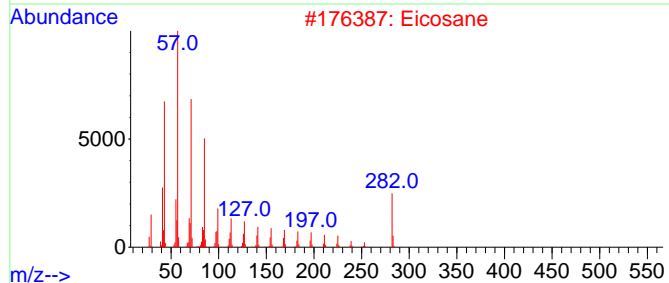
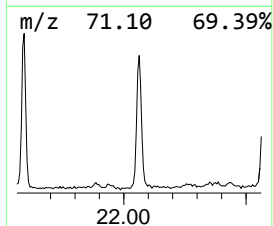
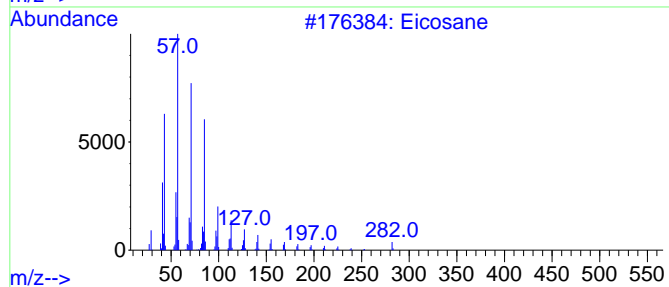
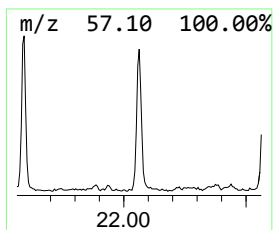
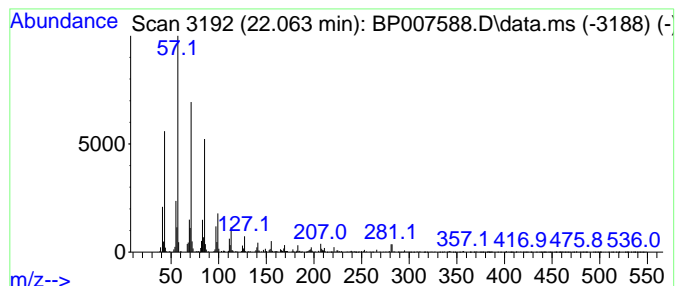
TIC Library : C:\DATABASE\NIST20.L  
 TIC Integration Parameters: LSCINT.P

\*\*\*\*\*  
 Peak Number 8 (DEL) Alkane: Straight-Chai... Concentration Rank 5

R.T.	EstConc	Area	Relative to ISTD	R.T.
22.063	2.66 ng/ul	370733	Chrysene-d12	21.421

Hit#	of 5	Tentative ID	MW	MolForm	CAS#	Qual
1		Eicosane	282	C20H42	000112-95-8	93
2		Eicosane	282	C20H42	000112-95-8	93
3		Nonacosane	408	C29H60	000630-03-5	93
4		Eicosane	282	C20H42	000112-95-8	93
5		Eicosane, 10-methyl-	296	C21H44	054833-23-7	93



Data Path : Z:\svoasrv\HPCHEM1\BNA\_P\Data\BP102121\  
 Data File : BP007588.D  
 Acq On : 22 Oct 2021 14:07  
 Operator : CG/JU  
 Sample : M4281-06  
 Misc :  
 ALS Vial : 48 Sample Multiplier: 1

Instrument :  
 BNA\_P  
 ClientSampleId :  
 BFY62

Quant Method : Z:\SVOASRV\HPCHEM1\BNA\_P\METHODS\SFAM-EPA-BP101421.M  
 Quant Title : SVOA CALIBRATION

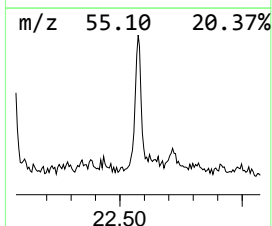
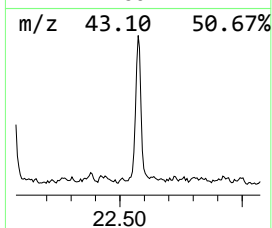
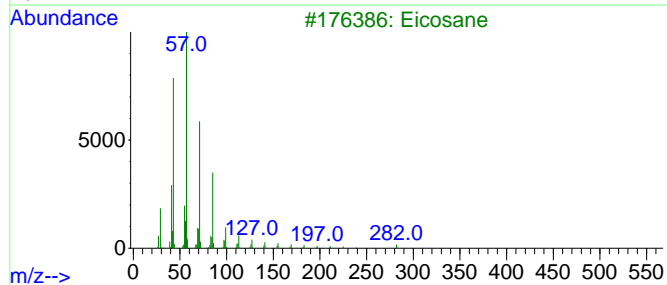
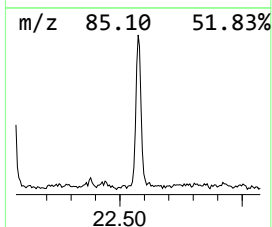
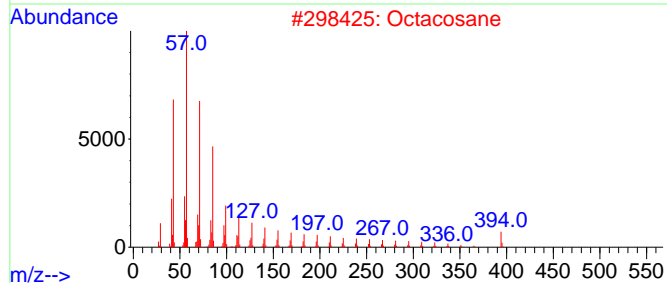
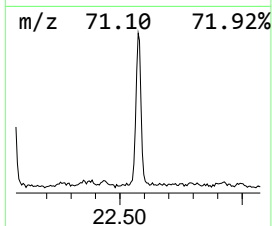
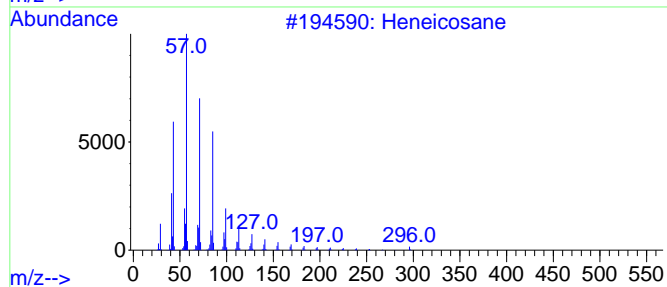
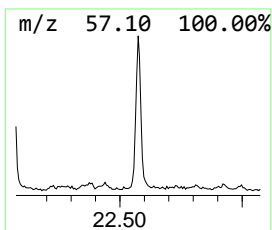
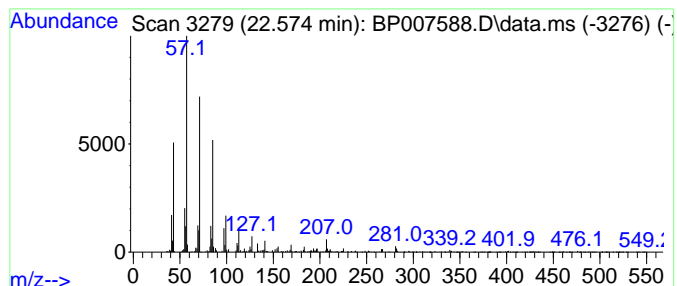
TIC Library : C:\DATABASE\NIST20.L  
 TIC Integration Parameters: LSCINT.P

\*\*\*\*\*  
 Peak Number 9 (DEL) Alkane: Straight-Chai... Concentration Rank 6

R.T.	EstConc	Area	Relative to ISTD	R.T.
22.574	2.66 ng/ul	370055	Chrysene-d12	21.421

Hit#	of 5	Tentative ID	MW	MolForm	CAS#	Qual
1		Heneicosane	296	C21H44	000629-94-7	96
2		Octacosane	394	C28H58	000630-02-4	93
3		Eicosane	282	C20H42	000112-95-8	93
4		Eicosane	282	C20H42	000112-95-8	93
5		Hexadecane, 1-iodo-	352	C16H33I	000544-77-4	93



Data Path : Z:\svoasrv\HPCHEM1\BNA\_P\Data\BP102121\  
 Data File : BP007588.D  
 Acq On : 22 Oct 2021 14:07  
 Operator : CG/JU  
 Sample : M4281-06  
 Misc :  
 ALS Vial : 48 Sample Multiplier: 1

Instrument :  
 BNA\_P  
 ClientSampleId :  
 BFY62

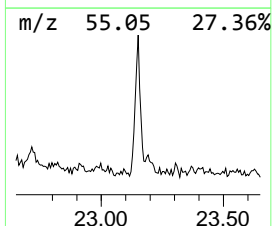
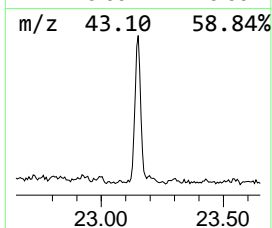
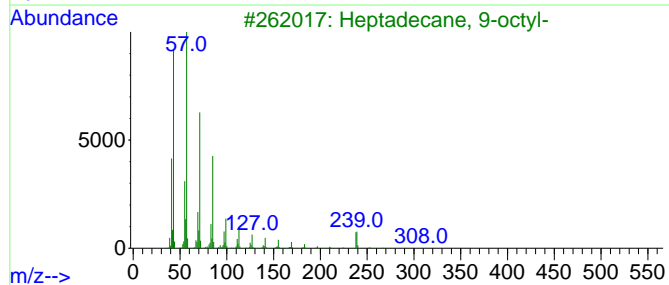
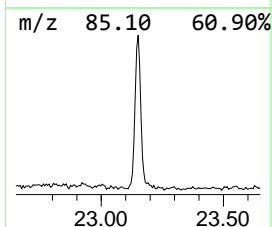
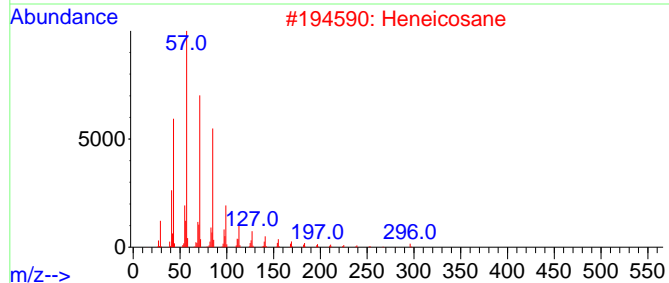
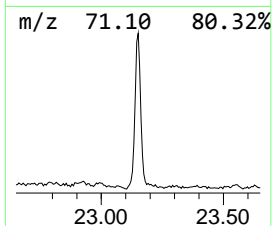
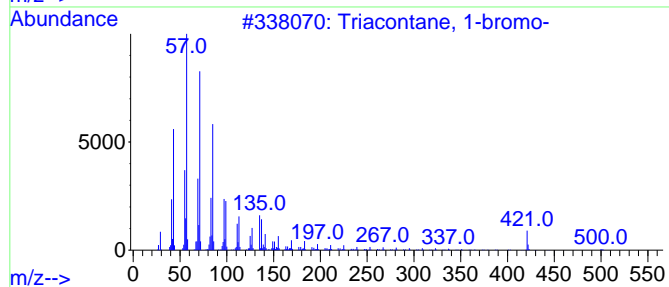
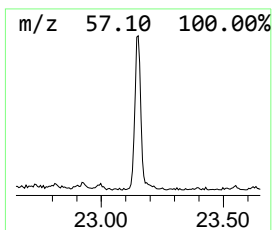
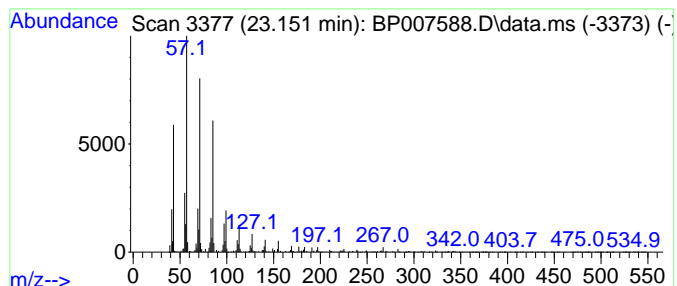
Quant Method : Z:\SVOASRV\HPCHEM1\BNA\_P\METHODS\SFAM-EPA-BP101421.M  
 Quant Title : SVOA CALIBRATION

TIC Library : C:\DATABASE\NIST20.L  
 TIC Integration Parameters: LSCINT.P

\*\*\*\*\*  
 Peak Number 10 Triacontane, 1-bromo- Concentration Rank 10

R.T.	EstConc	Area	Relative to ISTD	R.T.
23.151	2.17 ng/ul	313120	Perylene-d12	23.868

Hit#	of 5	Tentative ID	MW	MolForm	CAS#	Qual
1		Triacontane, 1-bromo-	500	C30H61Br	004209-22-7	93
2		Heneicosane	296	C21H44	000629-94-7	91
3		Heptadecane, 9-octyl-	352	C25H52	007225-64-1	91
4		Octacosane, 2-methyl-	408	C29H60	001560-98-1	91
5		Triacontane	422	C30H62	000638-68-6	91



Data Path : Z:\svoasrv\HPCHEM1\BNA\_P\Data\BP102121\  
 Data File : BP007588.D  
 Acq On : 22 Oct 2021 14:07  
 Operator : CG/JU  
 Sample : M4281-06  
 Misc :  
 ALS Vial : 48 Sample Multiplier: 1

Instrument :  
 BNA\_P  
 ClientSampleId :  
 BFY62

Quant Method : Z:\SVOASRV\HPCHEM1\BNA\_P\METHODS\SFAM-EPA-BP101421.M  
 Quant Title : SVOA CALIBRATION

TIC Library : C:\DATABASE\NIST0.L  
 TIC Integration Parameters: LSCINT.P

TIC Top Hit name	RT	EstConc	Units	Response	--Internal Standard--			
					#	RT	Resp	Conc
Pentanoic acid,...	6.334	2.4	ng/ul	124231	1	7.946	1033470	20.0
Ethanol, 2-(2-b...	10.534	16.3	ng/ul	1190700	2	10.751	1463690	20.0
n-Hexadecanoic ...	18.233	8.3	ng/ul	1124170	4	17.333	2705600	20.0
8-Octadecenoic ...	19.151	2.3	ng/ul	310850	4	17.333	2705600	20.0
Octadecanoic acid	19.463	2.9	ng/ul	409466	5	21.421	2787340	20.0
Pentadecafluoro...	21.145	7.4	ng/ul	1030590	5	21.421	2787340	20.0
(DEL) Alkane: S...	21.592	2.3	ng/ul	314542	5	21.421	2787340	20.0
(DEL) Alkane: S...	22.063	2.7	ng/ul	370733	5	21.421	2787340	20.0
(DEL) Alkane: S...	22.574	2.7	ng/ul	370055	5	21.421	2787340	20.0
Triacontane, 1-...	23.151	2.2	ng/ul	313120	6	23.868	2887630	20.0