

Data Path : Z:\svoasrv\HPCHEM1\BNA_P\Data\BP102323\
 Data File : BP017801.D
 Acq On : 25 Oct 2023 05:01
 Operator : MA/JU
 Sample : 04927-15
 Misc :
 ALS Vial : 50 Sample Multiplier: 1

Instrument :
 BNA_P
 ClientSampleId :
 GCD19

Quant Time: Oct 25 05:43:06 2023
 Quant Method : Z:\svoasrv\HPCHEM1\BNA_P\Methods\SFAM-EPA-BP101823.MA.M
 Quant Title : SVOA CALIBRATION
 QLast Update : Thu Oct 19 01:32:15 2023
 Response via : Initial Calibration

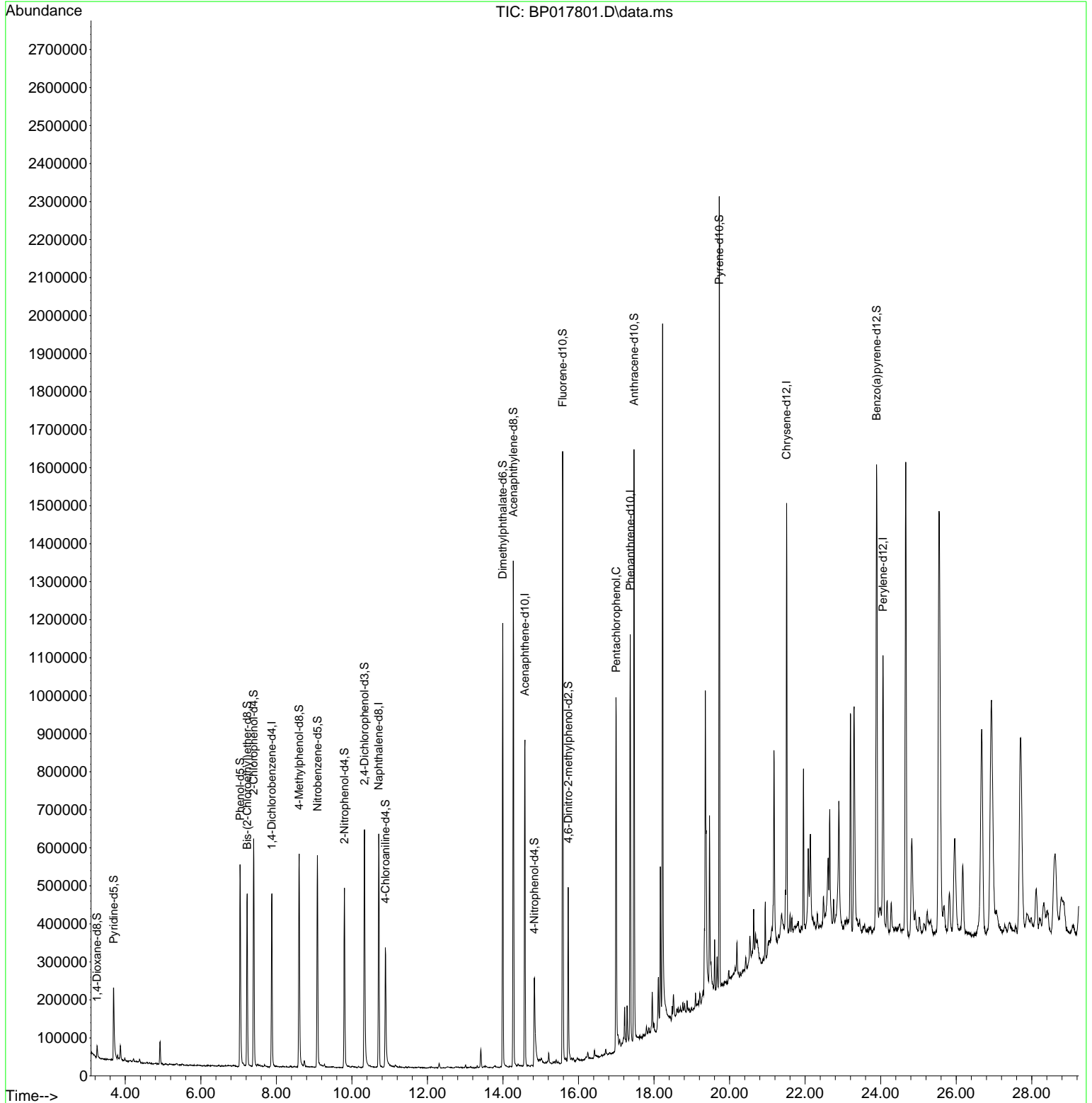
Compound	R.T.	QIon	Response	Conc	Units	Dev(Min)
Internal Standards						
1) 1,4-Dichlorobenzene-d4	7.881	152	116890	20.000	ng/ul	0.00
20) Naphthalene-d8	10.710	136	463504	20.000	ng/ul	-0.01
38) Acenaphthene-d10	14.581	164	279789	20.000	ng/ul	0.00
64) Phenanthrene-d10	17.369	188	586170	20.000	ng/ul	0.00
79) Chrysene-d12	21.510	240	489166	20.000	ng/ul	0.00
88) Perylene-d12	24.062	264	515499	20.000	ng/ul	0.00
System Monitoring Compounds						
3) 1,4-Dioxane-d8	3.252	96	17410	5.541	ng/uL	0.00
4) Pyridine-d5	3.693	84	124936	15.187	ng/ul	0.00
7) Phenol-d5	7.040	99	296243	30.456	ng/ul	0.00
9) Bis-(2-Chloroethyl)eth...	7.228	67	198873	33.106	ng/ul	0.00
11) 2-Chlorophenol-d4	7.399	132	254737	32.109	ng/ul	-0.01
15) 4-Methylphenol-d8	8.604	113	212190	27.779	ng/ul	0.00
21) Nitrobenzene-d5	9.087	128	122253	32.550	ng/ul	-0.01
24) 2-Nitrophenol-d4	9.804	143	138334	33.335	ng/ul	0.00
28) 2,4-Dichlorophenol-d3	10.334	165	237744	29.206	ng/ul	0.00
31) 4-Chloroaniline-d4	10.887	131	185252	17.389	ng/ul	0.00
46) Dimethylphthalate-d6	13.992	166	718753	30.602	ng/ul	-0.01
49) Acenaphthylene-d8	14.275	160	812142	31.006	ng/ul	0.00
54) 4-Nitrophenol-d4	14.834	143	79155	23.652	ng/ul	0.00
60) Fluorene-d10	15.581	176	604061	29.752	ng/ul	-0.01
65) 4,6-Dinitro-2-methylph...	15.728	200	88497	22.921	ng/ul	0.00
73) Anthracene-d10	17.469	188	852844	28.471	ng/ul	0.00
81) Pyrene-d10	19.727	212	1025861	33.450	ng/ul	0.00
92) Benzo(a)pyrene-d12	23.892	264	873772	30.432	ng/ul	0.00
Target Compounds						
71) Pentachlorophenol	16.998	266	149873	31.660	ng/ul	98

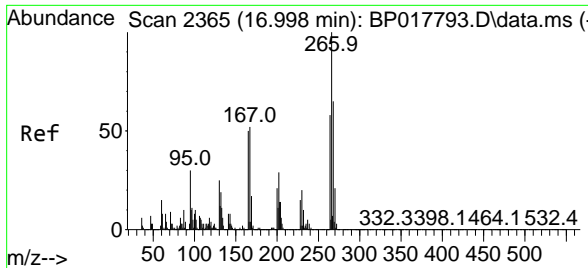
(#) = qualifier out of range (m) = manual integration (+) = signals summed

Data Path : Z:\svoasrv\HPCHEM1\BNA_P\Data\BP102323\
 Data File : BP017801.D
 Acq On : 25 Oct 2023 05:01
 Operator : MA/JU
 Sample : 04927-15
 Misc :
 ALS Vial : 50 Sample Multiplier: 1

Instrument :
 BNA_P
 ClientSampleId :
 GCD19

Quant Time: Oct 25 05:43:06 2023
 Quant Method : Z:\svoasrv\HPCHEM1\BNA_P\Methods\SFAM-EPA-BP101823.MA.M
 Quant Title : SVOA CALIBRATION
 QLast Update : Thu Oct 19 01:32:15 2023
 Response via : Initial Calibration





#71
 Pentachlorophenol
 Concen: 31.660 ng/ul
 RT: 16.998 min Scan# 21
 Delta R.T. -0.006 min
 Lab File: BP017801.D
 Acq: 25 Oct 2023 05:01

Instrument :
 BNA_P
 ClientSampleId :
 GCD19

Tgt Ion:266 Resp: 149873

Ion	Ratio	Lower	Upper
266	100		
264	63.8	49.4	74.2
268	64.4	50.3	75.5

