

Data Path : Z:\svoasrv\HPCHEM1\BNA\_P\Data\BP110123\  
 Data File : BP017879.D  
 Acq On : 02 Nov 2023 10:55  
 Operator : MA/JU  
 Sample : PB156595BS  
 Misc :  
 ALS Vial : 34 Sample Multiplier: 1

Instrument :  
 BNA\_P  
 ClientSampleId :  
 SLC5595

Quant Time: Nov 02 23:34:17 2023  
 Quant Method : Z:\svoasrv\HPCHEM1\BNA\_P\Methods\SFAM-EPA-BP101823.MA.M  
 Quant Title : SVOA CALIBRATION  
 QLast Update : Thu Oct 19 01:32:15 2023  
 Response via : Initial Calibration

Compound	R.T.	QIon	Response	Conc	Units	Dev(Min)
Internal Standards						
1) 1,4-Dichlorobenzene-d4	7.875	152	154025	20.000	ng/ul	-0.01
20) Naphthalene-d8	10.710	136	577628	20.000	ng/ul	-0.01
38) Acenaphthene-d10	14.575	164	331277	20.000	ng/ul	-0.01
64) Phenanthrene-d10	17.369	188	671300	20.000	ng/ul	0.00
79) Chrysene-d12	21.516	240	548834	20.000	ng/ul	0.00
88) Perylene-d12	24.074	264	590633	20.000	ng/ul	0.00
System Monitoring Compounds						
3) 1,4-Dioxane-d8	3.269	96	23199	5.603	ng/uL	0.01
4) Pyridine-d5	3.699	84	277045	25.558	ng/ul	0.00
7) Phenol-d5	7.040	99	399918	31.202	ng/ul	0.00
9) Bis-(2-Chloroethyl)eth...	7.228	67	241257	30.479	ng/ul	0.00
11) 2-Chlorophenol-d4	7.399	132	332120	31.770	ng/ul	-0.01
15) 4-Methylphenol-d8	8.604	113	312763	31.073	ng/ul	0.00
21) Nitrobenzene-d5	9.087	128	155596	33.243	ng/ul	-0.01
24) 2-Nitrophenol-d4	9.799	143	179560	34.721	ng/ul	-0.01
28) 2,4-Dichlorophenol-d3	10.328	165	316864	31.235	ng/ul	-0.01
31) 4-Chloroaniline-d4	10.881	131	384721	28.978	ng/ul	-0.01
46) Dimethylphthalate-d6	13.998	166	859436	30.904	ng/ul	0.00
49) Acenaphthylene-d8	14.275	160	966748	31.172	ng/ul	0.00
54) 4-Nitrophenol-d4	14.828	143	126420	31.904	ng/ul	0.00
60) Fluorene-d10	15.586	176	715130	29.748	ng/ul	0.00
65) 4,6-Dinitro-2-methylph...	15.734	200	133770	30.253	ng/ul	0.00
73) Anthracene-d10	17.475	188	1082438	31.553	ng/ul	0.00
81) Pyrene-d10	19.733	212	1171261	34.039	ng/ul	0.00
92) Benzo(a)pyrene-d12	23.910	264	1027297	31.228	ng/ul	0.01
Target Compounds						
2) 1,4-Dioxane	3.305	88	47313	10.773	ng/uL	97
5) Pyridine	3.717	79	274995	24.760	ng/ul	94
6) Benzaldehyde	7.046	77	205513	29.806	ng/ul	98
8) Phenol	7.069	94	402869	31.879	ng/ul	98
10) Bis(2-Chloroethyl)ether	7.322	93	321299	30.474	ng/ul	95
12) 2-Chlorophenol	7.434	128	336131	32.014	ng/ul	99
13) 2-Methylphenol	8.334	108	297316	31.173	ng/ul	99
14) 2,2'-oxybis(1-Chloropr...	8.393	45	232454	17.912	ng/ul	98
16) Acetophenone	8.740	105	490276	30.983	ng/ul	98
17) N-Nitroso-di-n-propyla...	8.704	70	228526	30.447	ng/ul	99
18) 4-Methylphenol	8.669	108	314648	31.066	ng/ul	96
19) Hexachloroethane	8.934	117	155293	32.189	ng/ul	88
22) Nitrobenzene	9.128	77	402683	34.552	ng/ul	100
23) Isophorone	9.640	82	706100	33.881	ng/ul	98
25) 2-Nitrophenol	9.834	139	182340	33.032	ng/ul#	88
26) 2,4-Dimethylphenol	9.875	107	351765	32.467	ng/ul	97
27) Bis(2-Chloroethoxy)met...	10.134	93	403578	31.310	ng/ul	97
29) 2,4-Dichlorophenol	10.357	162	306867	31.633	ng/ul	95
30) Naphthalene	10.763	128	1019604	30.673	ng/ul	99
32) 4-Chloroaniline	10.910	127	331453	26.072	ng/ul	98
33) Hexachlorobutadiene	10.981	225	232179	29.477	ng/ul	98
34) Caprolactam	11.751	113	83801	33.549	ng/ul	97
35) 4-Chloro-3-methylphenol	12.028	107	317398	34.754	ng/ul	91
36) 2-Methylnaphthalene	12.381	142	668287	29.762	ng/ul	99

Data Path : Z:\svoasrv\HPCHEM1\BNA\_P\Data\BP110123\  
 Data File : BP017879.D  
 Acq On : 02 Nov 2023 10:55  
 Operator : MA/JU  
 Sample : PB156595BS  
 Misc :  
 ALS Vial : 34 Sample Multiplier: 1

Instrument :  
 BNA\_P  
 ClientSampleId :  
 SLC5595

Quant Time: Nov 02 23:34:17 2023  
 Quant Method : Z:\svoasrv\HPCHEM1\BNA\_P\Methods\SFAM-EPA-BP101823.MA.M  
 Quant Title : SVOA CALIBRATION  
 QLast Update : Thu Oct 19 01:32:15 2023  
 Response via : Initial Calibration

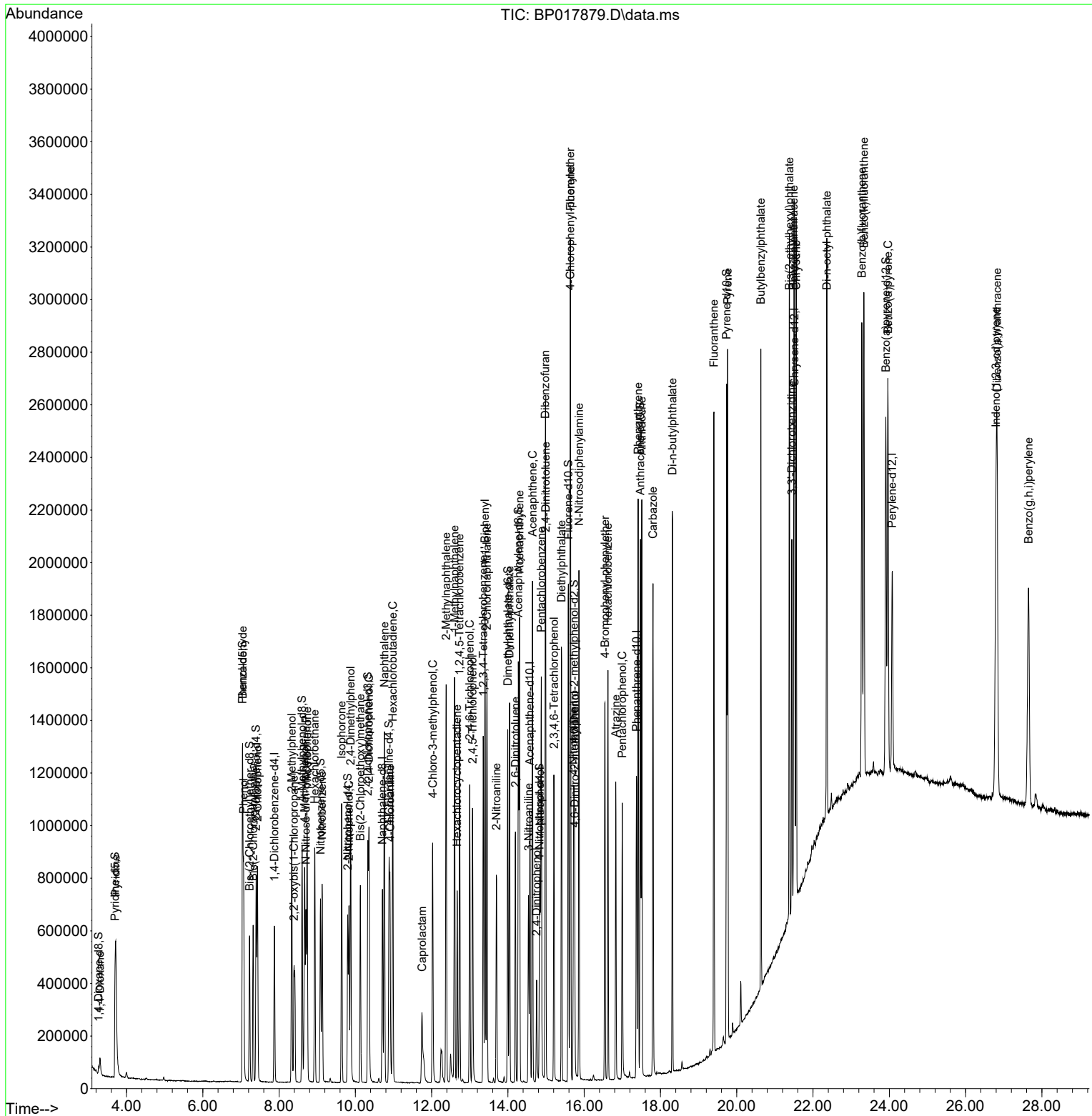
Compound	R.T.	QIon	Response	Conc	Units	Dev(Min)
37) 1-Methylnaphthalene	12.598	142	658525	28.677	ng/ul	96
39) 1,2,4,5-Tetrachloroben...	12.734	216	379636	30.970	ng/ul	97
40) Hexachlorocyclopentadiene	12.669	237	185142	26.289	ng/ul	99
41) 2,4,6-Trichlorophenol	12.998	196	242123	32.912	ng/ul	97
42) 2,4,5-Trichlorophenol	13.075	196	254318	33.437	ng/ul	99
43) 1,1'-Biphenyl	13.398	154	867401	31.782	ng/ul	99
44) 2-Chloronaphthalene	13.451	162	693259	31.422	ng/ul	96
45) 2-Nitroaniline	13.698	65	206398	41.168	ng/ul	91
47) Dimethylphthalate	14.045	163	858359	31.318	ng/ul	99
48) 2,6-Dinitrotoluene	14.198	165	177855	35.255	ng/ul	96
50) Acenaphthylene	14.304	152	1122206	32.303	ng/ul	99
51) 3-Nitroaniline	14.539	138	161156	33.588	ng/ul	93
52) Acenaphthene	14.645	153	730454	31.104	ng/ul	99
53) 2,4-Dinitrophenol	14.751	184	78556	27.740	ng/ul	87
55) 4-Nitrophenol	14.845	109	147135	35.077	ng/ul	95
56) Dibenzofuran	14.981	168	1008335	30.581	ng/ul	91
57) 2,4-Dinitrotoluene	14.992	165	256770	34.487	ng/ul	92
58) 2,3,4,6-Tetrachlorophenol	15.210	232	203334	30.125	ng/ul#	93
59) Diethylphthalate	15.404	149	865701	32.714	ng/ul	99
61) Fluorene	15.639	166	829293	30.619	ng/ul	98
62) 4-Chlorophenyl-phenyle...	15.634	204	432039	30.012	ng/ul	93
63) 4-Nitroaniline	15.722	138	156704	36.210	ng/ul	92
66) 4,6-Dinitro-2-methylph...	15.751	198	140505	29.667	ng/ul	94
67) N-Nitrosodiphenylamine	15.863	169	677729	33.324	ng/ul	100
68) 4-Bromophenyl-phenylether	16.545	248	248865	31.684	ng/ul	93
69) Hexachlorobenzene	16.622	284	273928	30.378	ng/ul#	89
70) Atrazine	16.828	200	199233	26.654	ng/ul	98
71) Pentachlorophenol	16.998	266	160641	29.632	ng/ul	100
72) Phenanthrene	17.416	178	1241757	31.577	ng/ul	100
74) Anthracene	17.510	178	1276146	32.041	ng/ul	100
75) 1,2,3,4-Tetrachloroben...	13.357	216	369718	32.824	ng/uL	98
76) Pentachlorobenzene	14.875	250	323724	29.655	ng/uL	98
77) Carbazole	17.804	167	1090255	32.388	ng/ul	98
78) Di-n-butylphthalate	18.316	149	1447257	37.033	ng/ul	99
80) Fluoranthene	19.404	202	1425157	36.049	ng/ul	99
82) Pyrene	19.763	202	1450062	34.621	ng/ul	99
83) Butylbenzylphthalate	20.633	149	627392	43.551	ng/ul	99
84) 3,3'-Dichlorobenzidine	21.445	252	394434	31.810	ng/ul	98
85) Benzo(a)anthracene	21.498	228	1351327	32.388	ng/ul	99
86) Bis(2-ethylhexyl)phtha...	21.380	149	896130	44.562	ng/ul	100
87) Chrysene	21.557	228	1261491	31.972	ng/ul	100
89) Di-n-octyl phthalate	22.363	149	1510672	40.379	ng/ul	100
90) Benzo(b)fluoranthene	23.280	252	1288643	32.058	ng/ul	99
91) Benzo(k)fluoranthene	23.333	252	1251343	30.716	ng/ul	99
93) Benzo(a)pyrene	23.962	252	1196285	31.701	ng/ul	99
94) Indeno(1,2,3-cd)pyrene	26.798	276	1457133	32.398	ng/ul	99
95) Dibenzo(a,h)anthracene	26.827	278	1202338	32.040	ng/ul	99
96) Benzo(g,h,i)perylene	27.651	276	1158233	31.963	ng/ul	99

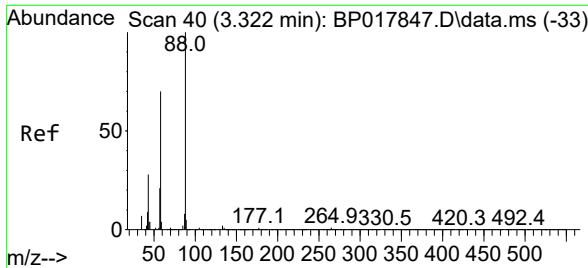
(#) = qualifier out of range (m) = manual integration (+) = signals summed

Data Path : Z:\svoasrv\HPCHEM1\BNA\_P\Data\BP110123\  
 Data File : BP017879.D  
 Acq On : 02 Nov 2023 10:55  
 Operator : MA/JU  
 Sample : PB156595BS  
 Misc :  
 ALS Vial : 34 Sample Multiplier: 1

Instrument :  
 BNA\_P  
 ClientSampleId :  
 SLCS595

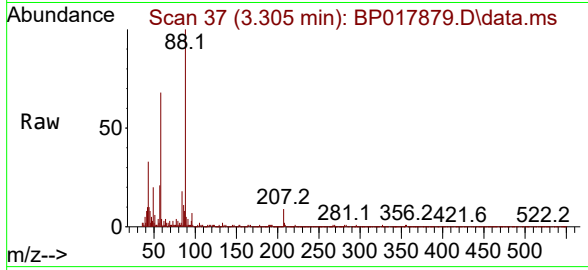
Quant Time: Nov 02 23:34:17 2023  
 Quant Method : Z:\svoasrv\HPCHEM1\BNA\_P\Methods\SFAM-EPA-BP101823.MA.M  
 Quant Title : SVOA CALIBRATION  
 QLast Update : Thu Oct 19 01:32:15 2023  
 Response via : Initial Calibration





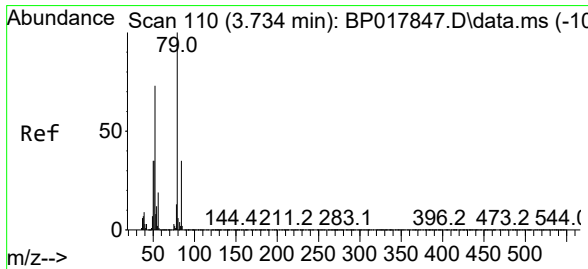
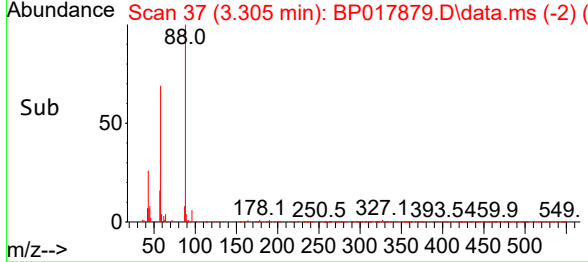
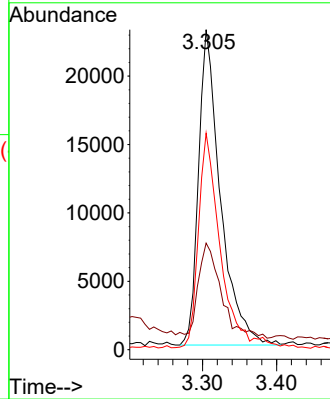
#2  
 1,4-Dioxane  
 Concen: 10.773 ng/uL  
 RT: 3.305 min Scan# 31  
 Delta R.T. 0.006 min  
 Lab File: BP017879.D  
 Acq: 02 Nov 2023 10:55

Instrument :  
 BNA\_P  
 ClientSampleId :  
 SLCS595



Tgt Ion: 88 Resp: 47313

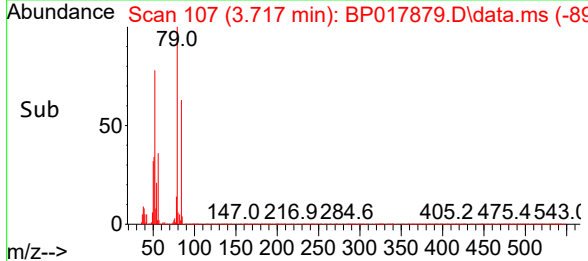
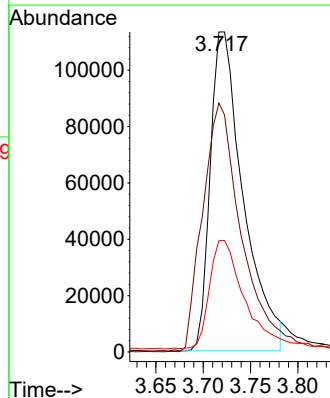
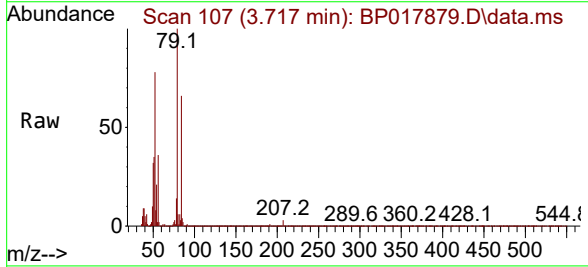
Ion	Ratio	Lower	Upper
88	100		
43	33.3	24.4	36.6
58	67.7	53.0	79.6

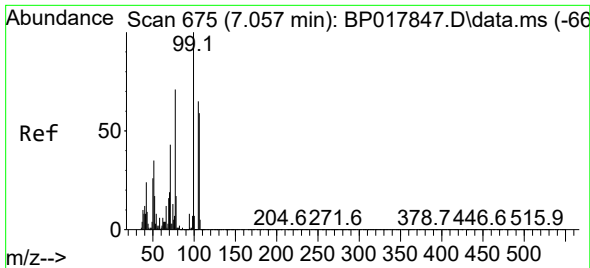


#5  
 Pyridine  
 Concen: 24.760 ng/uL  
 RT: 3.717 min Scan# 107  
 Delta R.T. 0.006 min  
 Lab File: BP017879.D  
 Acq: 02 Nov 2023 10:55

Tgt Ion: 79 Resp: 274995

Ion	Ratio	Lower	Upper
79	100		
52	77.7	57.2	85.8
51	34.8	28.6	42.8



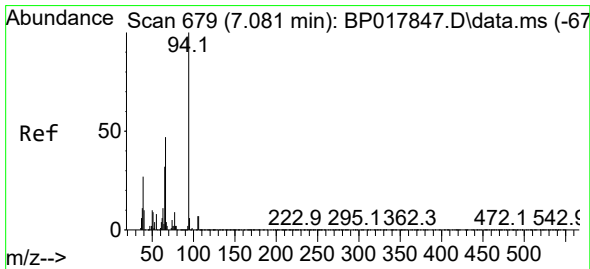
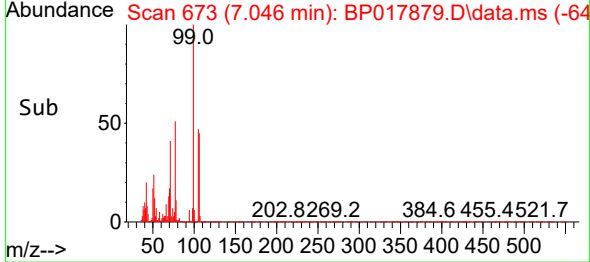
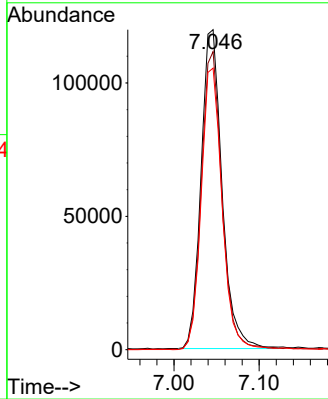
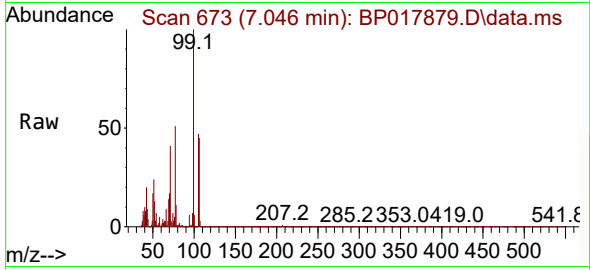


#6  
 Benzaldehyde  
 Concen: 29.806 ng/uI  
 RT: 7.046 min Scan# 61  
 Delta R.T. -0.006 min  
 Lab File: BP017879.D  
 Acq: 02 Nov 2023 10:55

Instrument :  
 BNA\_P  
 ClientSampleId :  
 SLCS595

Tgt Ion: 77 Resp: 205513

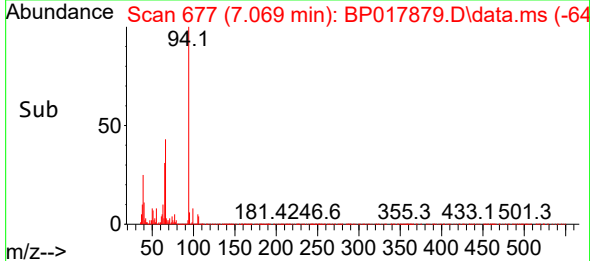
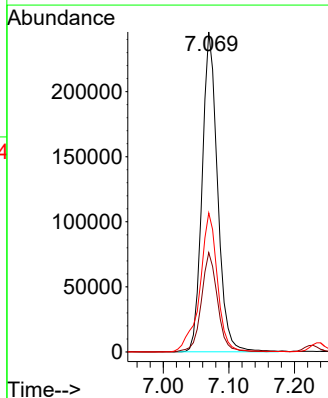
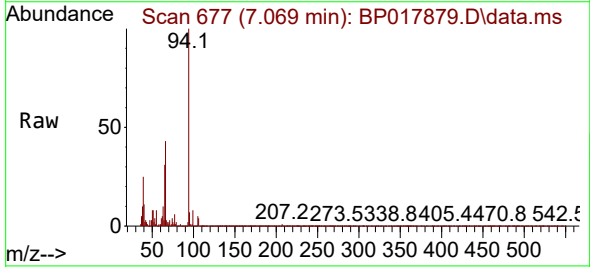
Ion	Ratio	Lower	Upper
77	100		
105	93.2	75.4	113.2
106	88.0	72.3	108.5

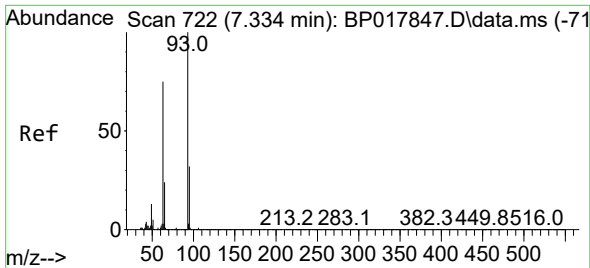


#8  
 Phenol  
 Concen: 31.879 ng/uI  
 RT: 7.069 min Scan# 677  
 Delta R.T. -0.006 min  
 Lab File: BP017879.D  
 Acq: 02 Nov 2023 10:55

Tgt Ion: 94 Resp: 402869

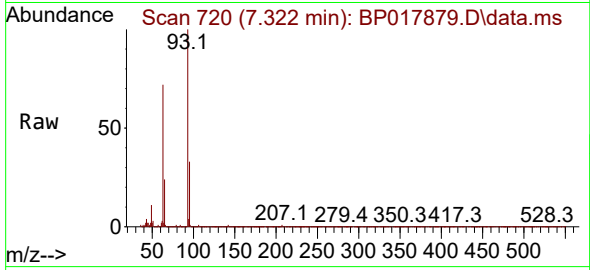
Ion	Ratio	Lower	Upper
94	100		
65	31.0	25.0	37.4
66	43.5	33.0	49.6



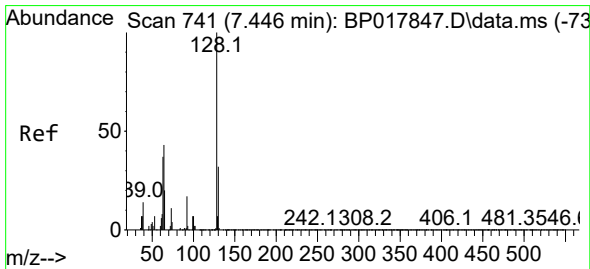
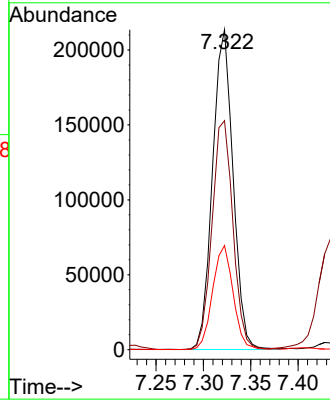
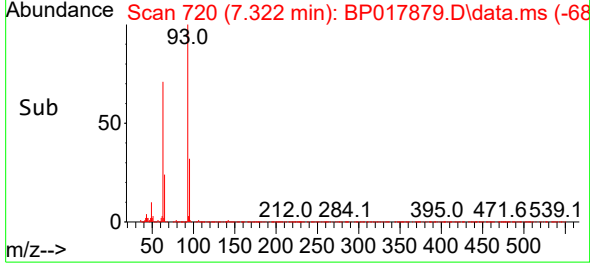


#10  
 Bis(2-Chloroethyl)ether  
 Concen: 30.474 ng/ul  
 RT: 7.322 min Scan# 719  
 Delta R.T. -0.006 min  
 Lab File: BP017879.D  
 Acq: 02 Nov 2023 10:55

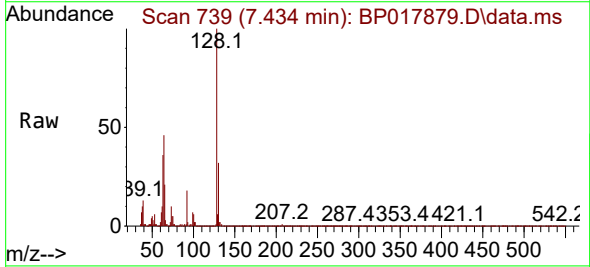
Instrument :  
 BNA\_P  
 ClientSampleId :  
 SLCS595



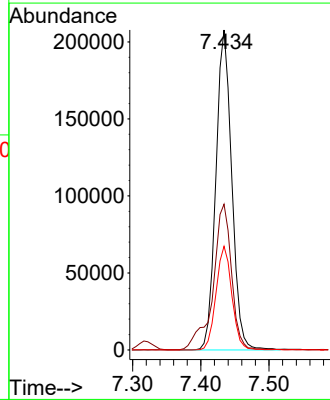
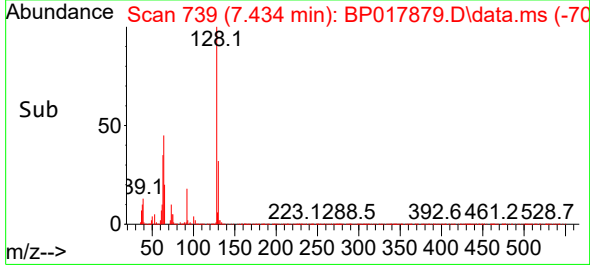
Tgt Ion: 93 Resp: 321299  
 Ion Ratio Lower Upper  
 93 100  
 63 71.6 60.7 91.1  
 95 32.5 27.8 41.6

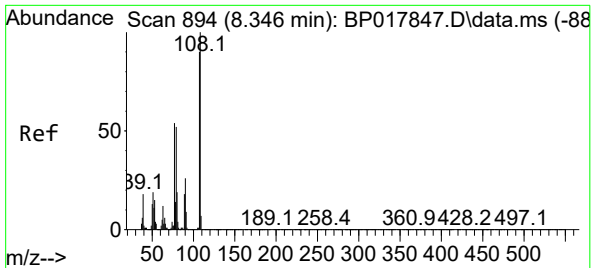


#12  
 2-Chlorophenol  
 Concen: 32.014 ng/ul  
 RT: 7.434 min Scan# 739  
 Delta R.T. -0.006 min  
 Lab File: BP017879.D  
 Acq: 02 Nov 2023 10:55



Tgt Ion: 128 Resp: 336131  
 Ion Ratio Lower Upper  
 128 100  
 64 45.6 36.7 55.1  
 130 32.4 26.2 39.2

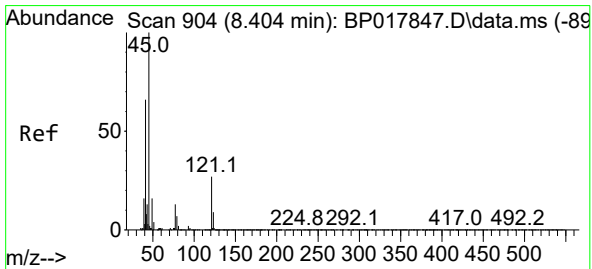
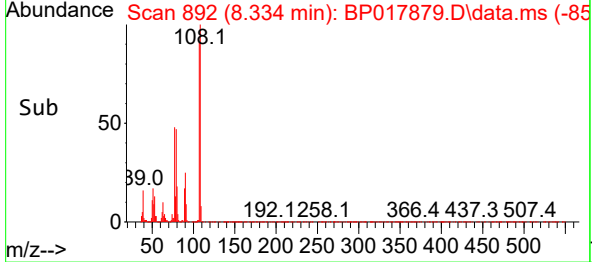
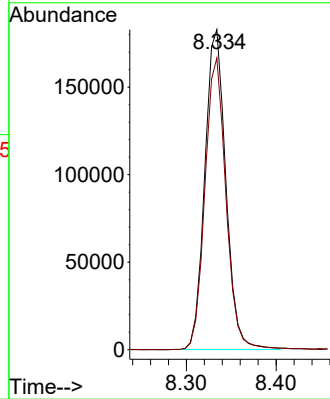
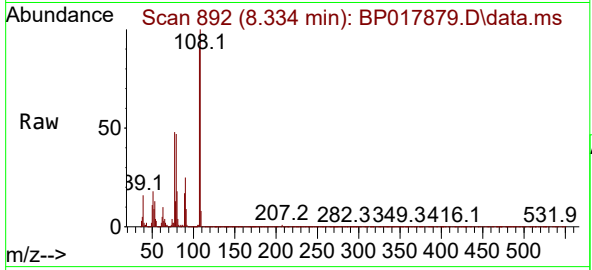




#13  
 2-Methylphenol  
 Concen: 31.173 ng/ul  
 RT: 8.334 min Scan# 894  
 Delta R.T. -0.006 min  
 Lab File: BP017879.D  
 Acq: 02 Nov 2023 10:55

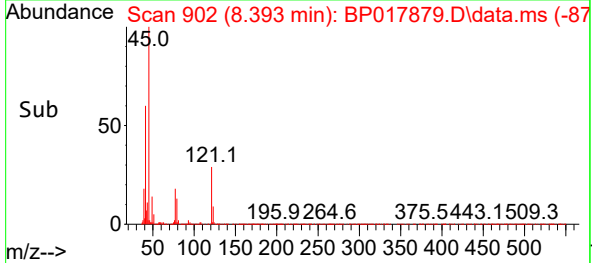
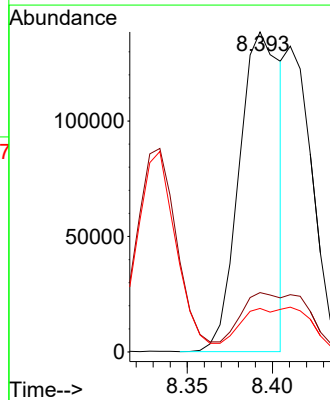
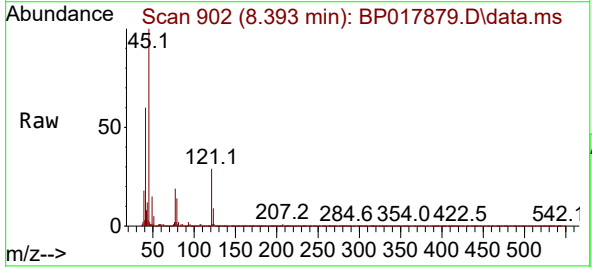
Instrument :  
 BNA\_P  
 ClientSampleId :  
 SLCS595

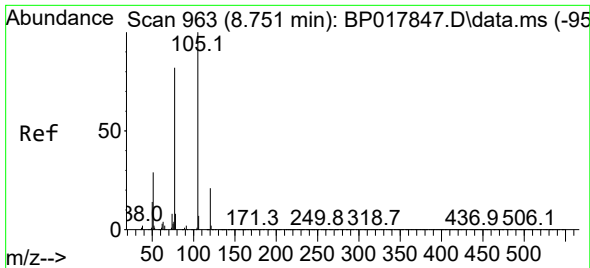
Tgt Ion:108 Resp: 297316  
 Ion Ratio Lower Upper  
 108 100  
 107 91.1 73.4 110.2



#14  
 2,2'-oxybis(1-Chloropropane)  
 Concen: 17.912 ng/ul  
 RT: 8.393 min Scan# 902  
 Delta R.T. -0.012 min  
 Lab File: BP017879.D  
 Acq: 02 Nov 2023 10:55

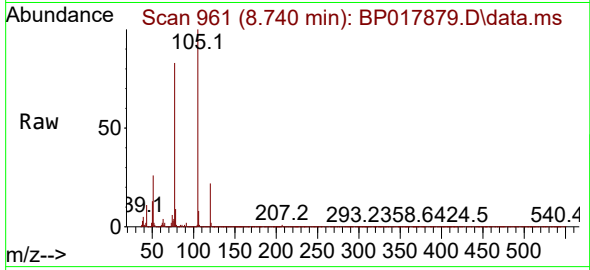
Tgt Ion: 45 Resp: 232454  
 Ion Ratio Lower Upper  
 45 100  
 77 18.6 14.2 21.4  
 79 13.6 10.3 15.5



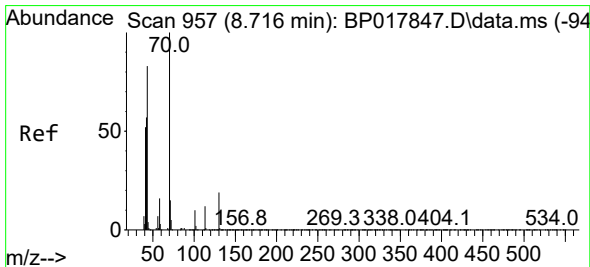
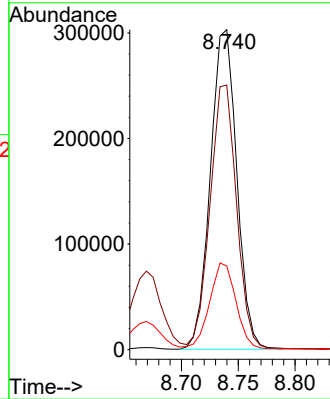
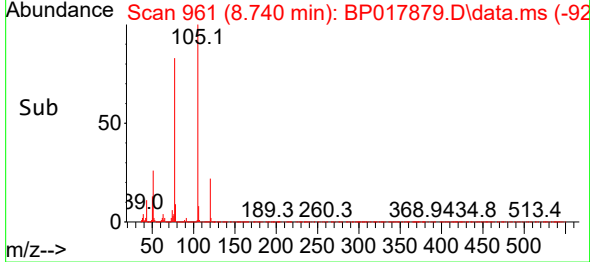


#16  
 Acetophenone  
 Concen: 30.983 ng/ul  
 RT: 8.740 min Scan# 90  
 Delta R.T. -0.006 min  
 Lab File: BP017879.D  
 Acq: 02 Nov 2023 10:55

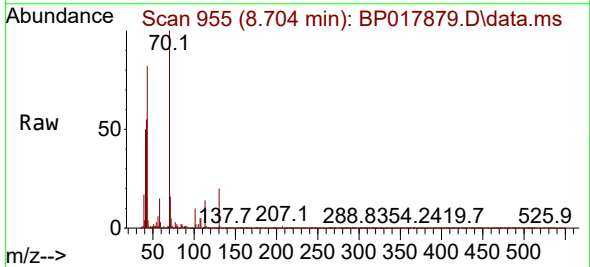
Instrument :  
 BNA\_P  
 ClientSampleId :  
 SLCS595



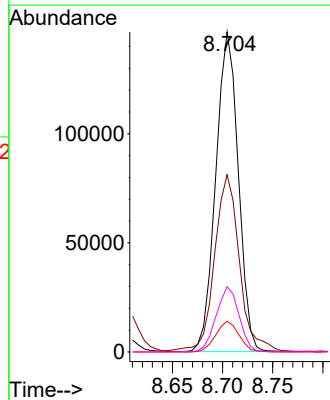
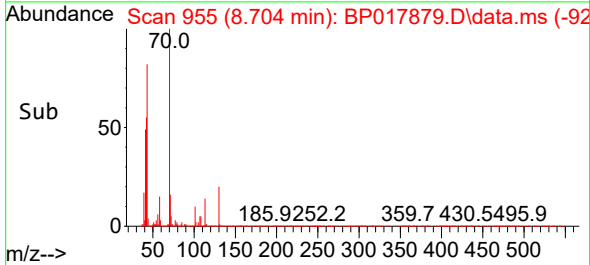
Tgt Ion: 105 Resp: 490276  
 Ion Ratio Lower Upper  
 105 100  
 77 82.7 64.4 96.6  
 51 26.2 21.2 31.8



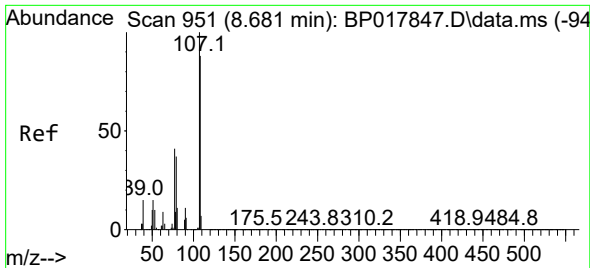
#17  
 N-Nitroso-di-n-propylamine  
 Concen: 30.447 ng/ul  
 RT: 8.704 min Scan# 955  
 Delta R.T. -0.012 min  
 Lab File: BP017879.D  
 Acq: 02 Nov 2023 10:55



Tgt Ion: 70 Resp: 228526  
 Ion Ratio Lower Upper  
 70 100  
 42 55.3 44.6 66.8  
 101 9.6 7.5 11.3  
 130 20.4 17.3 25.9



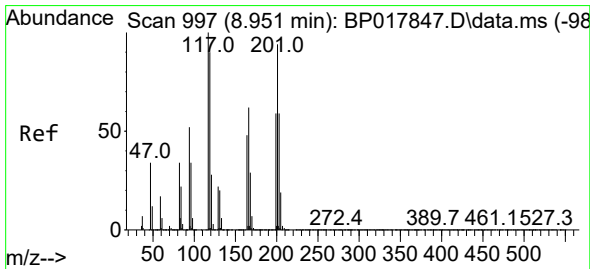
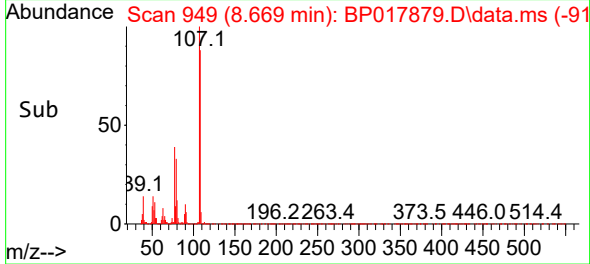
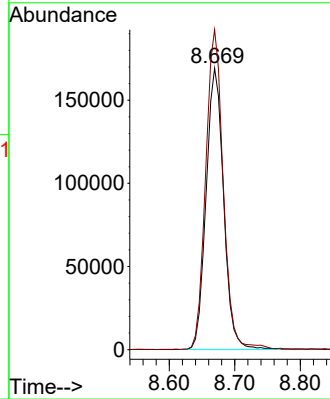
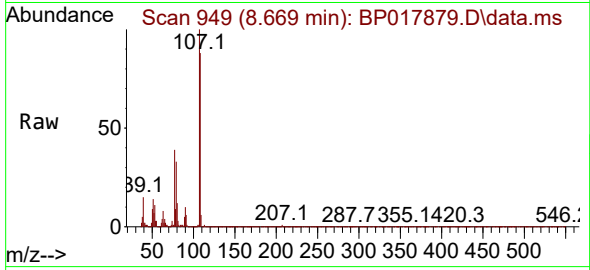




#18  
 4-Methylphenol  
 Concen: 31.066 ng/ul  
 RT: 8.669 min Scan# 94  
 Delta R.T. -0.006 min  
 Lab File: BP017879.D  
 Acq: 02 Nov 2023 10:55

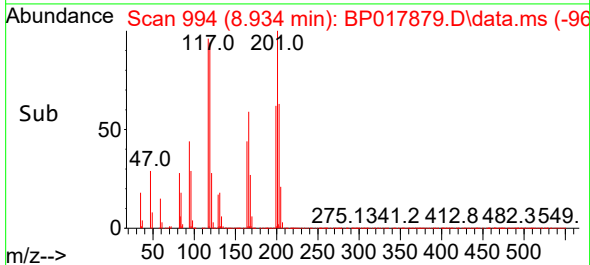
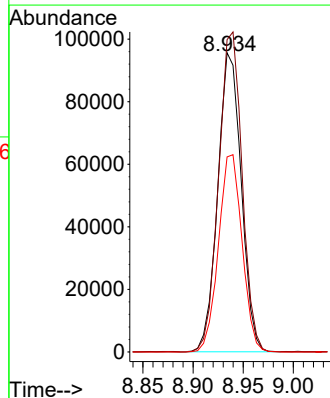
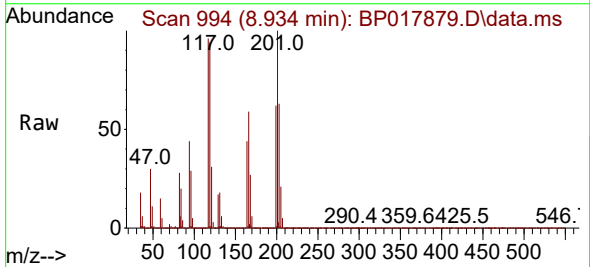
Instrument :  
 BNA\_P  
 ClientSampleId :  
 SLCS595

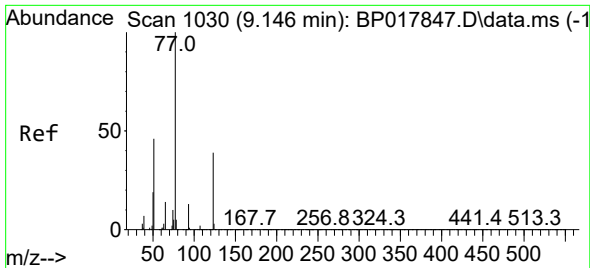
Tgt Ion:108 Resp: 314648  
 Ion Ratio Lower Upper  
 108 100  
 107 113.7 87.5 131.3



#19  
 Hexachloroethane  
 Concen: 32.189 ng/ul  
 RT: 8.934 min Scan# 994  
 Delta R.T. -0.018 min  
 Lab File: BP017879.D  
 Acq: 02 Nov 2023 10:55

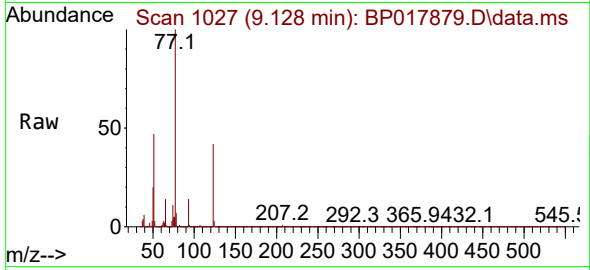
Tgt Ion:117 Resp: 155293  
 Ion Ratio Lower Upper  
 117 100  
 201 104.4 96.3 144.5  
 199 65.2 57.7 86.5



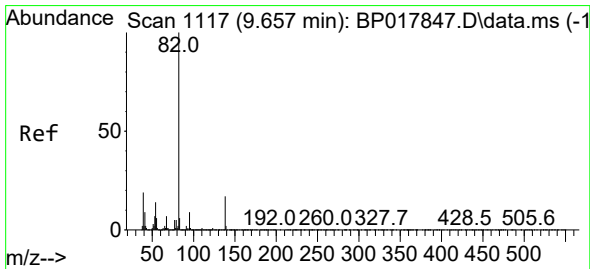
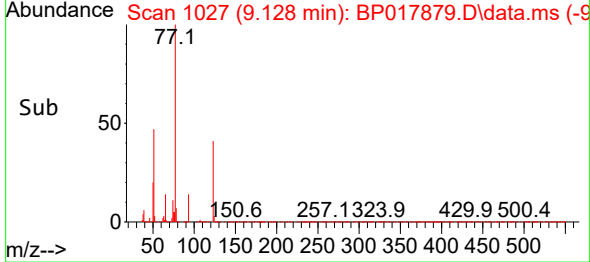
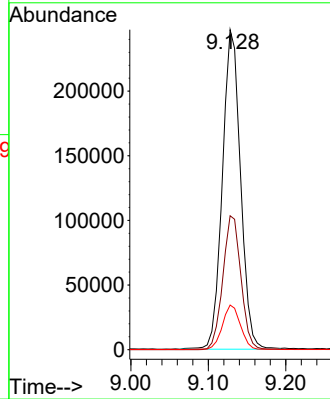


#22  
 Nitrobenzene  
 Concen: 34.552 ng/u1  
 RT: 9.128 min Scan# 1030  
 Delta R.T. -0.012 min  
 Lab File: BP017879.D  
 Acq: 02 Nov 2023 10:55

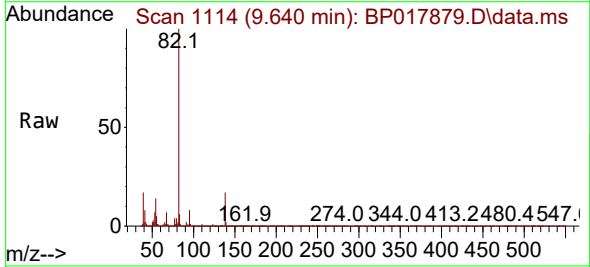
Instrument :  
 BNA\_P  
 ClientSampleId :  
 SLCS595



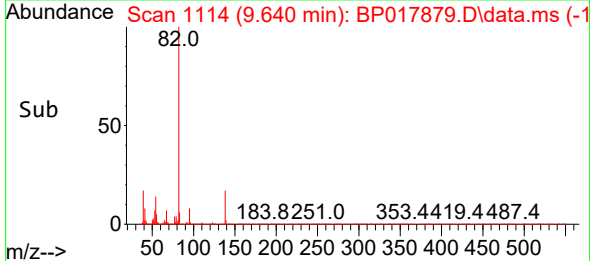
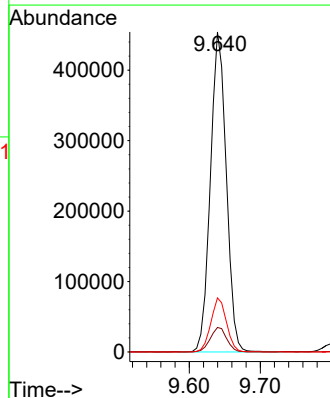
Tgt Ion: 77 Resp: 402683  
 Ion Ratio Lower Upper  
 77 100  
 123 41.8 33.5 50.3  
 65 13.9 10.8 16.2

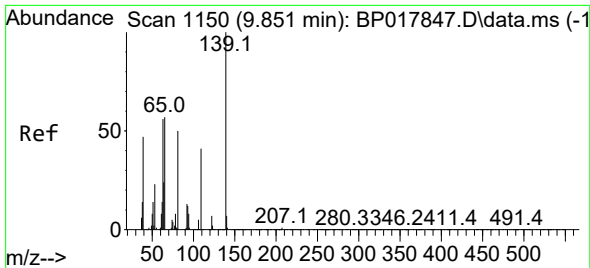


#23  
 Isophorone  
 Concen: 33.881 ng/u1  
 RT: 9.640 min Scan# 1114  
 Delta R.T. -0.012 min  
 Lab File: BP017879.D  
 Acq: 02 Nov 2023 10:55



Tgt Ion: 82 Resp: 706100  
 Ion Ratio Lower Upper  
 82 100  
 95 7.7 6.2 9.2  
 138 16.9 14.4 21.6



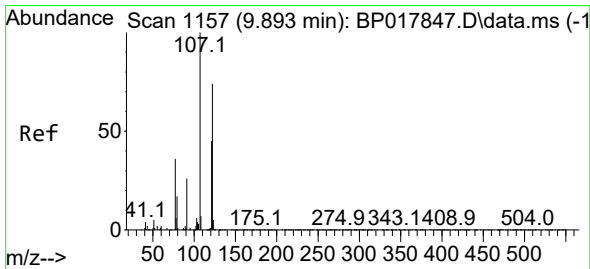
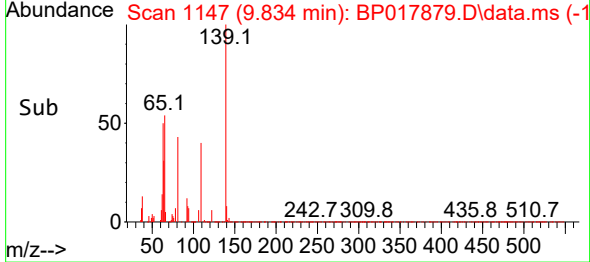
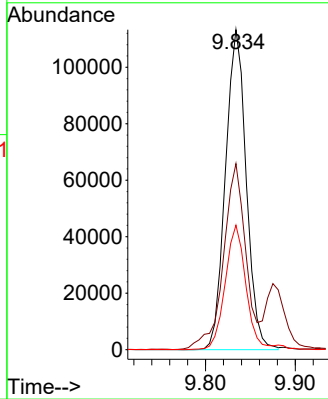
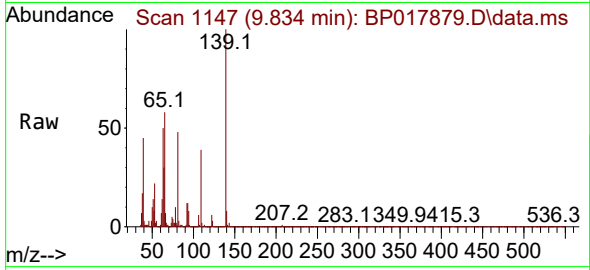


#25  
 2-Nitrophenol  
 Concen: 33.032 ng/ul  
 RT: 9.834 min Scan# 1114  
 Delta R.T. -0.012 min  
 Lab File: BP017879.D  
 Acq: 02 Nov 2023 10:55

Instrument :  
 BNA\_P  
 ClientSampleId :  
 SLCS595

Tgt Ion:139 Resp: 182340

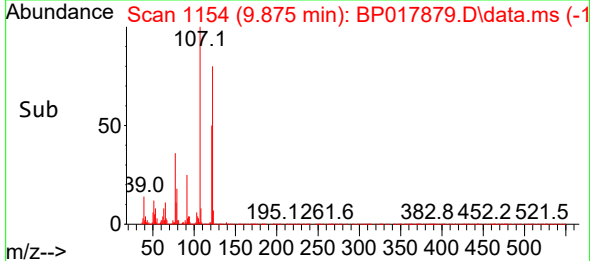
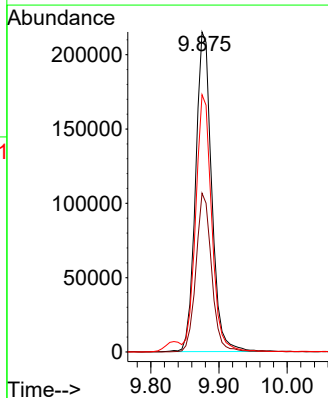
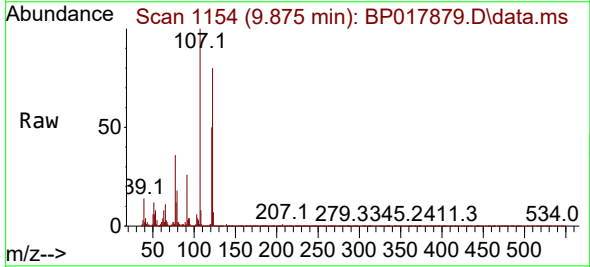
Ion	Ratio	Lower	Upper
139	100		
65	58.2	40.4	60.6
109	38.9	25.4	38.2#

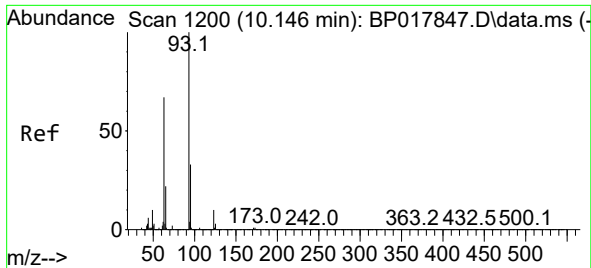


#26  
 2,4-Dimethylphenol  
 Concen: 32.467 ng/ul  
 RT: 9.875 min Scan# 1154  
 Delta R.T. -0.012 min  
 Lab File: BP017879.D  
 Acq: 02 Nov 2023 10:55

Tgt Ion:107 Resp: 351765

Ion	Ratio	Lower	Upper
107	100		
121	49.6	40.6	61.0
122	80.4	66.9	100.3



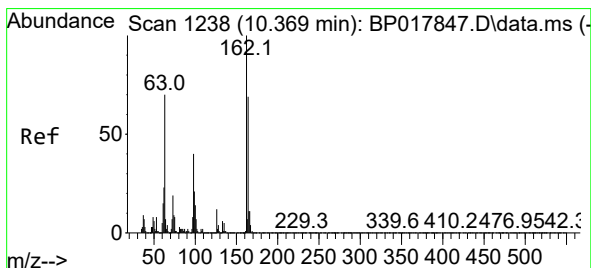
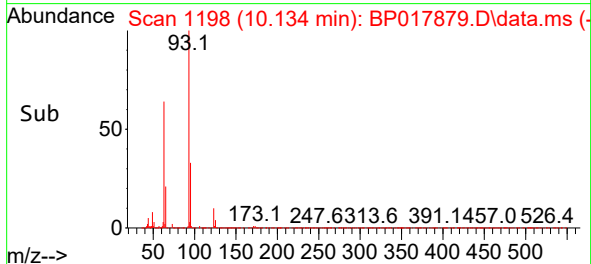
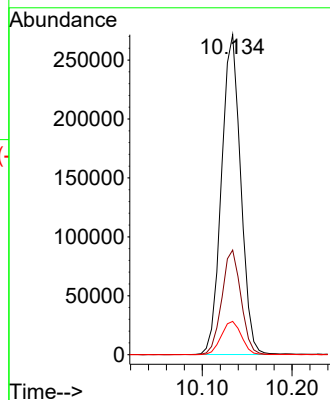
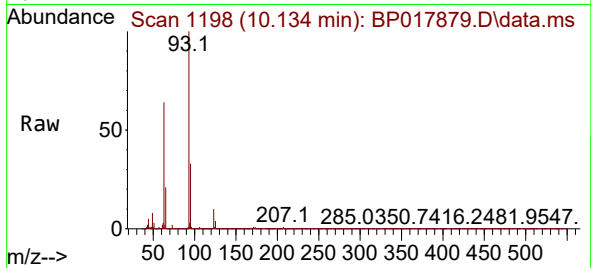


#27  
 Bis(2-Chloroethoxy)methane  
 Concen: 31.310 ng/ul  
 RT: 10.134 min Scan# 1119  
 Delta R.T. -0.012 min  
 Lab File: BP017879.D  
 Acq: 02 Nov 2023 10:55

Instrument :  
 BNA\_P  
 ClientSampleId :  
 SLCS595

Tgt Ion: 93 Resp: 403578

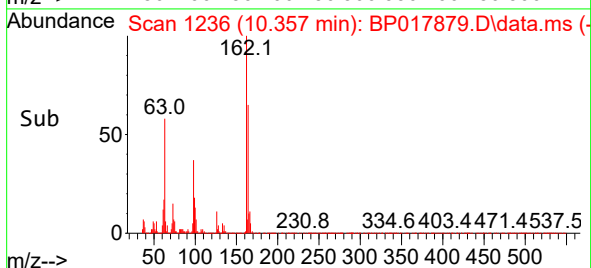
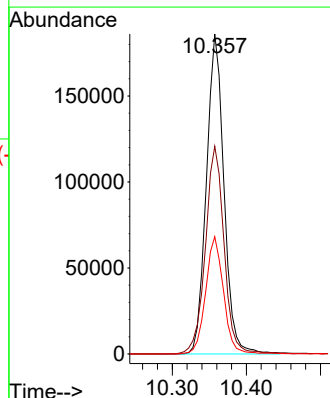
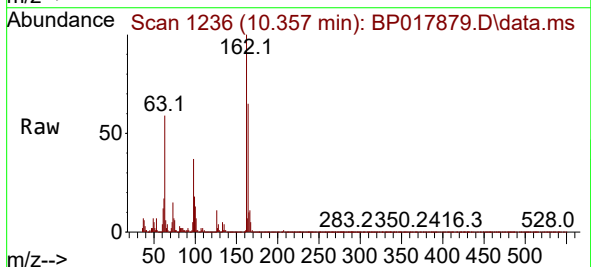
Ion	Ratio	Lower	Upper
93	100		
95	32.7	24.7	37.1
123	10.4	8.9	13.3

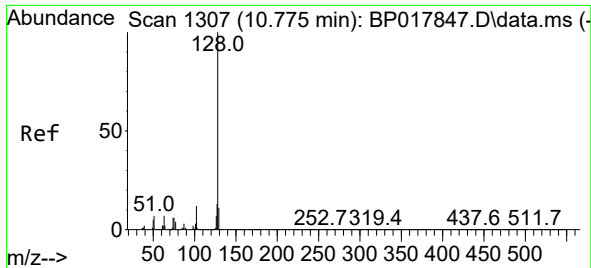


#29  
 2,4-Dichlorophenol  
 Concen: 31.633 ng/ul  
 RT: 10.357 min Scan# 1236  
 Delta R.T. -0.012 min  
 Lab File: BP017879.D  
 Acq: 02 Nov 2023 10:55

Tgt Ion: 162 Resp: 306867

Ion	Ratio	Lower	Upper
162	100		
164	64.9	53.8	80.8
98	36.7	25.5	38.3

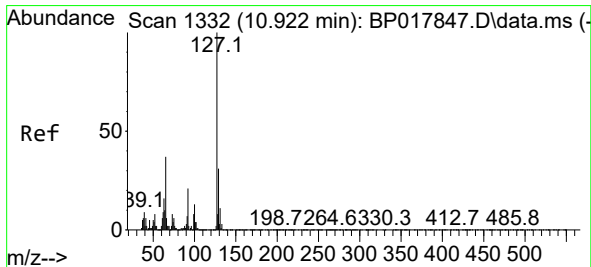
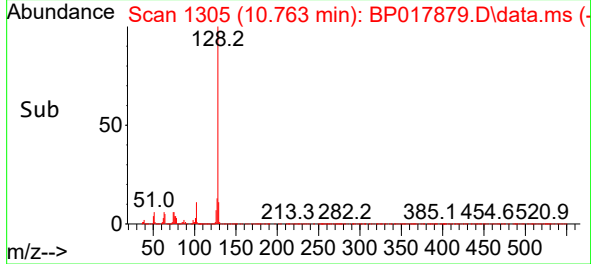
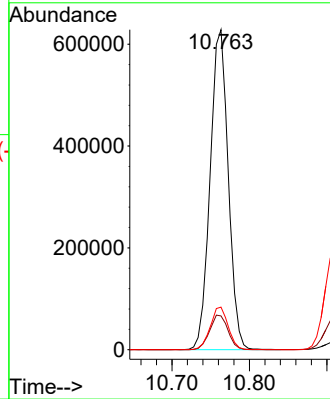
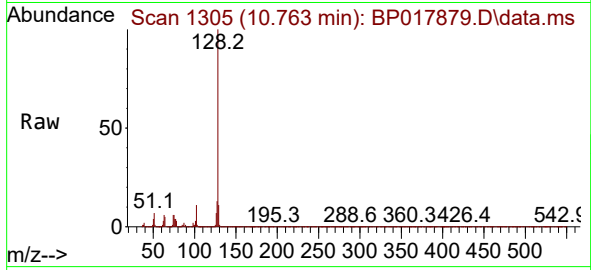




#30  
 Naphthalene  
 Concen: 30.673 ng/uI  
 RT: 10.763 min Scan# 111  
 Delta R.T. -0.012 min  
 Lab File: BP017879.D  
 Acq: 02 Nov 2023 10:55

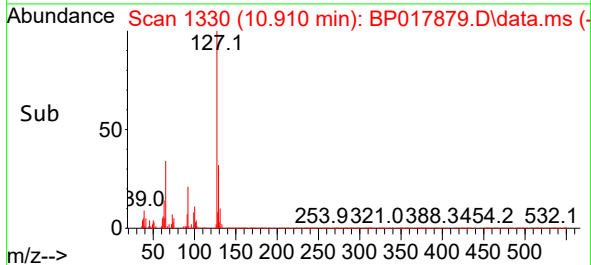
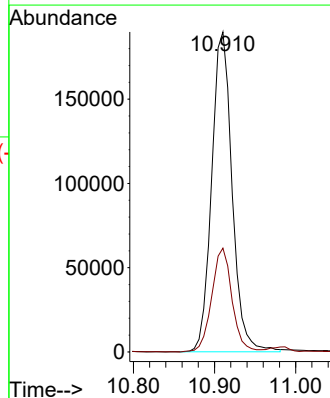
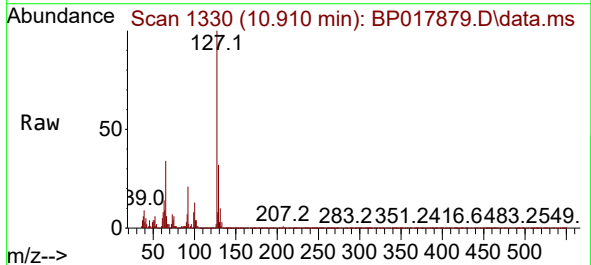
Instrument :  
 BNA\_P  
 ClientSampleId :  
 SLCS595

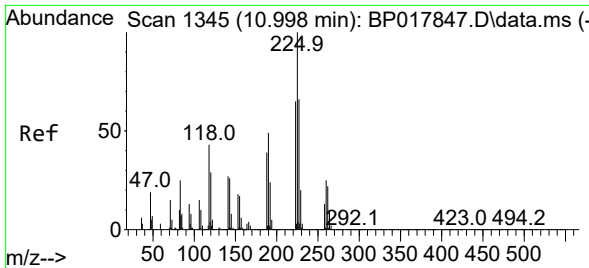
Tgt Ion:128 Resp: 1019604  
 Ion Ratio Lower Upper  
 128 100  
 129 10.6 8.7 13.1  
 127 13.3 10.5 15.7



#32  
 4-Chloroaniline  
 Concen: 26.072 ng/uI  
 RT: 10.910 min Scan# 1330  
 Delta R.T. -0.006 min  
 Lab File: BP017879.D  
 Acq: 02 Nov 2023 10:55

Tgt Ion:127 Resp: 331453  
 Ion Ratio Lower Upper  
 127 100  
 129 32.4 25.1 37.7

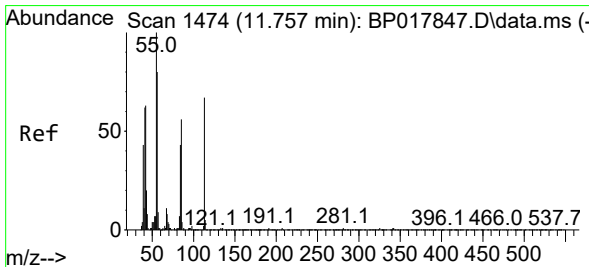
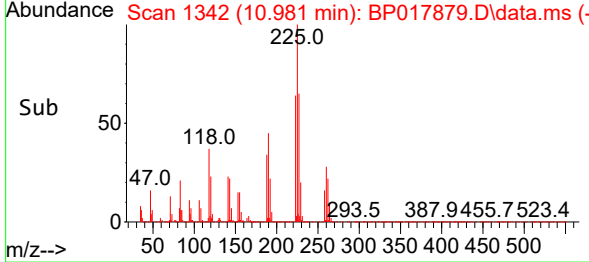
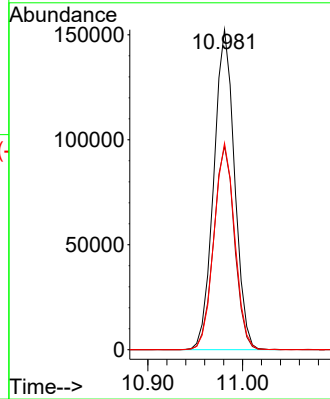
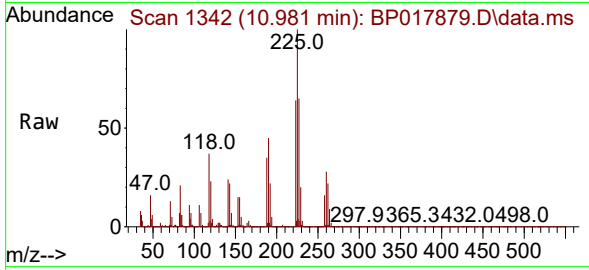




#33  
 Hexachlorobutadiene  
 Concen: 29.477 ng/uI  
 RT: 10.981 min Scan# 111  
 Delta R.T. -0.012 min  
 Lab File: BP017879.D  
 Acq: 02 Nov 2023 10:55

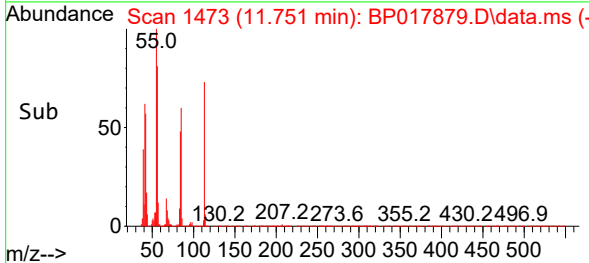
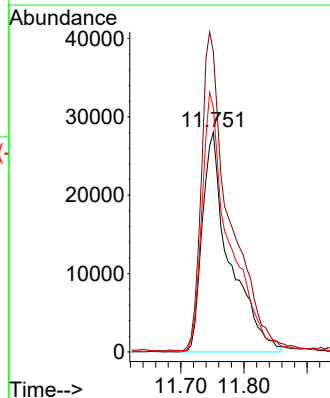
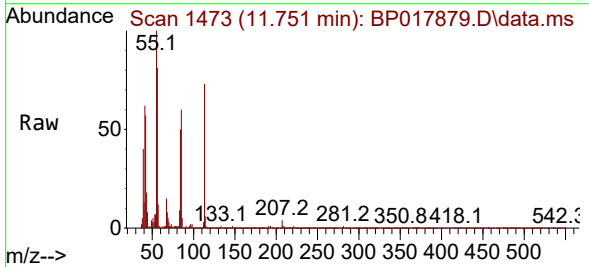
Instrument :  
 BNA\_P  
 ClientSampleId :  
 SLCS595

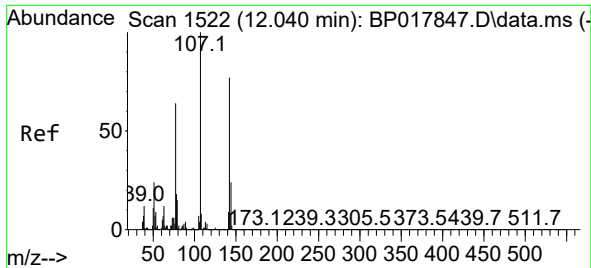
Tgt Ion	Resp	Lower	Upper
225	100		
223	63.6	50.6	75.8
227	64.6	50.1	75.1



#34  
 Caprolactam  
 Concen: 33.549 ng/uI  
 RT: 11.751 min Scan# 1473  
 Delta R.T. -0.018 min  
 Lab File: BP017879.D  
 Acq: 02 Nov 2023 10:55

Tgt Ion	Resp	Lower	Upper
113	100		
55	136.8	112.1	168.1
56	111.4	87.0	130.6

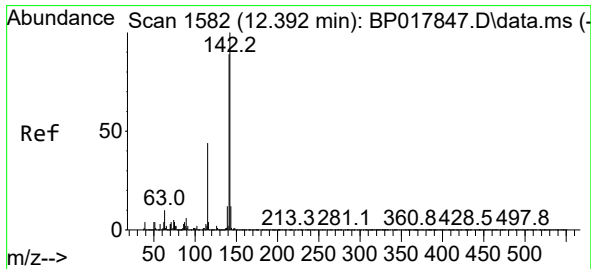
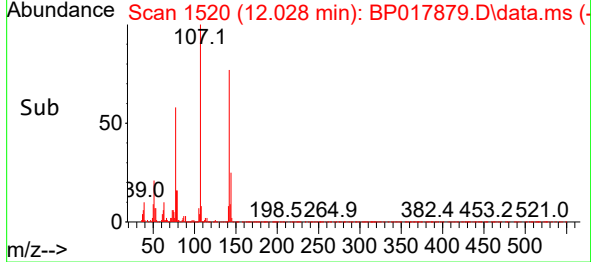
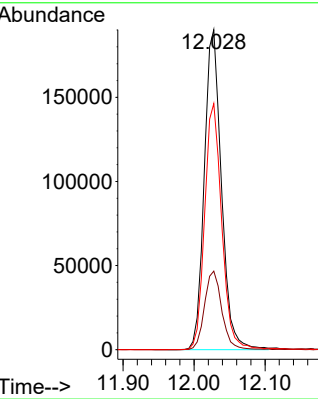
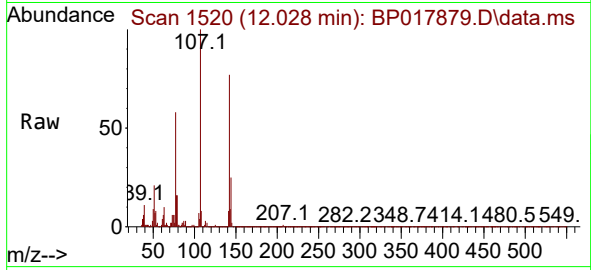




#35  
 4-Chloro-3-methylphenol  
 Concen: 34.754 ng/ul  
 RT: 12.028 min Scan# 1520  
 Delta R.T. -0.006 min  
 Lab File: BP017879.D  
 Acq: 02 Nov 2023 10:55

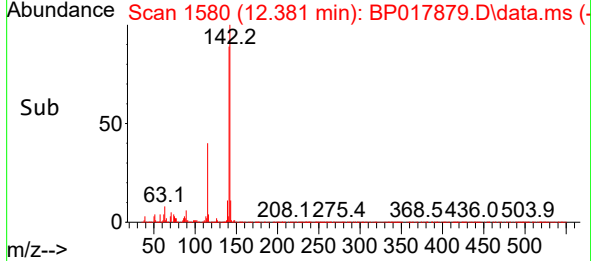
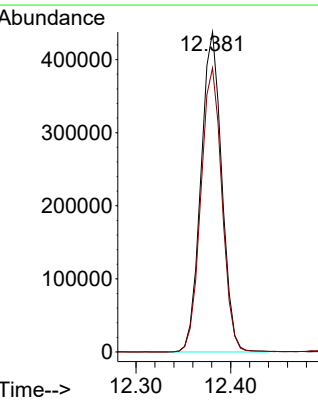
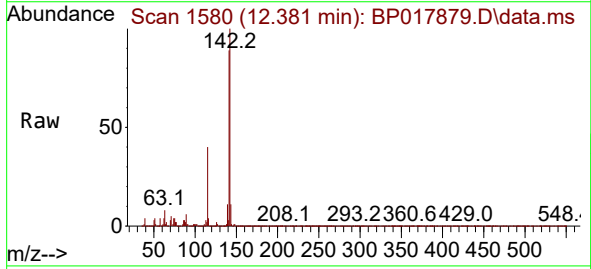
Instrument :  
 BNA\_P  
 ClientSampleId :  
 SLCS595

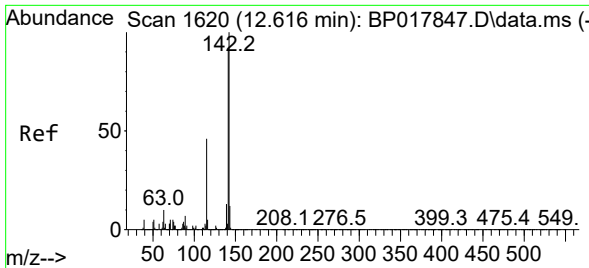
Tgt Ion	Resp	Lower	Upper
107	317398		
144	24.6	22.9	34.3
142	76.9	68.1	102.1



#36  
 2-Methylnaphthalene  
 Concen: 29.762 ng/ul  
 RT: 12.381 min Scan# 1580  
 Delta R.T. -0.012 min  
 Lab File: BP017879.D  
 Acq: 02 Nov 2023 10:55

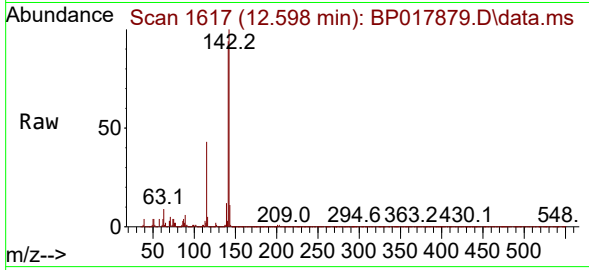
Tgt Ion	Resp	Lower	Upper
142	668287		
141	88.8	71.5	107.3



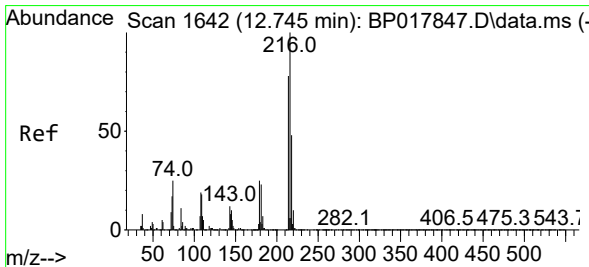
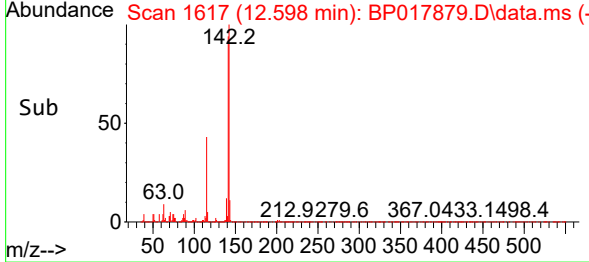
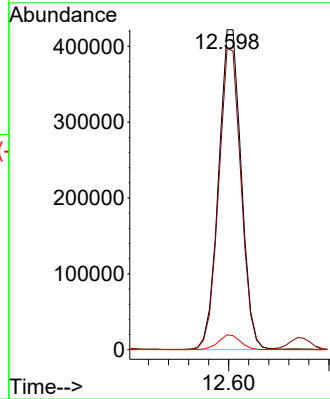


#37  
 1-Methylnaphthalene  
 Concen: 28.677 ng/ul  
 RT: 12.598 min Scan# 1617  
 Delta R.T. -0.012 min  
 Lab File: BP017879.D  
 Acq: 02 Nov 2023 10:55

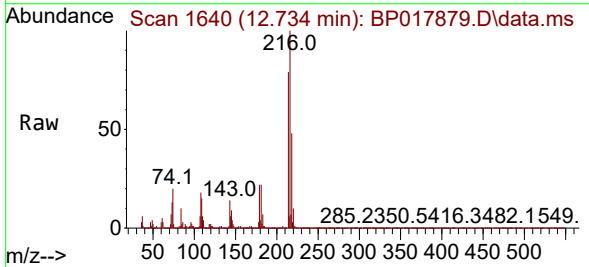
Instrument : BNA\_P  
 ClientSampleId : SLCS595



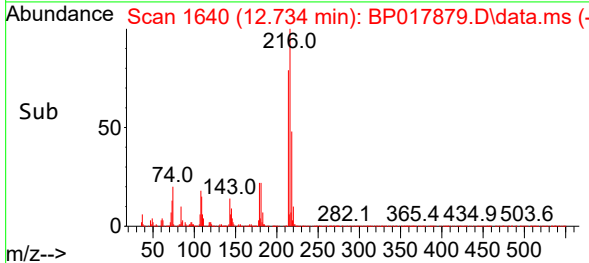
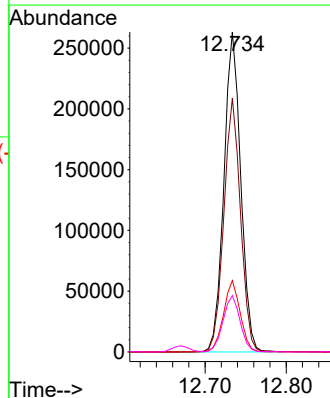
Tgt Ion:142 Resp: 658525  
 Ion Ratio Lower Upper  
 142 100  
 141 94.2 72.5 108.7  
 116 4.7 3.4 5.2



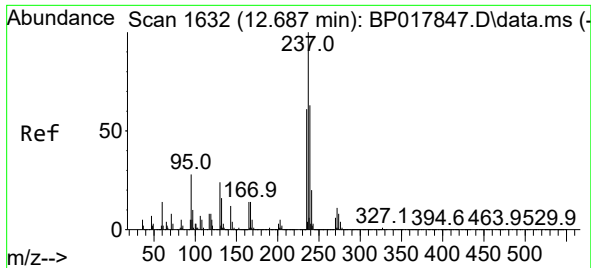
#39  
 1,2,4,5-Tetrachlorobenzene  
 Concen: 30.970 ng/ul  
 RT: 12.734 min Scan# 1640  
 Delta R.T. -0.012 min  
 Lab File: BP017879.D  
 Acq: 02 Nov 2023 10:55



Tgt Ion:216 Resp: 379636  
 Ion Ratio Lower Upper  
 216 100  
 214 79.3 62.2 93.2  
 179 22.3 15.8 23.8  
 108 17.6 12.6 18.8



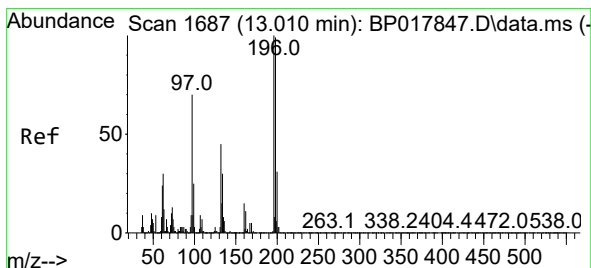
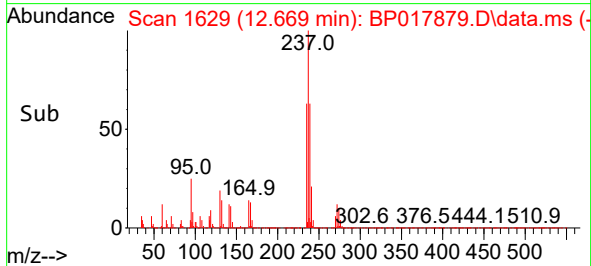
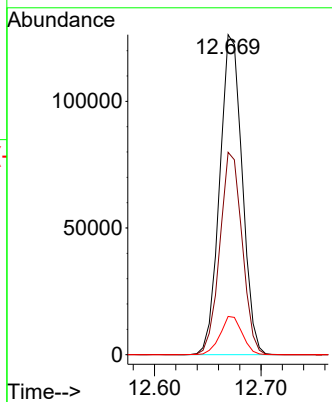
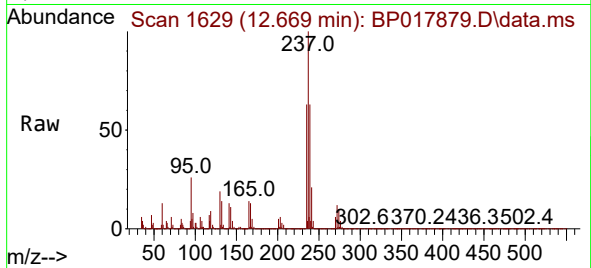




#40  
 Hexachlorocyclopentadiene  
 Concen: 26.289 ng/ul  
 RT: 12.669 min Scan# 1629  
 Delta R.T. -0.018 min  
 Lab File: BP017879.D  
 Acq: 02 Nov 2023 10:55

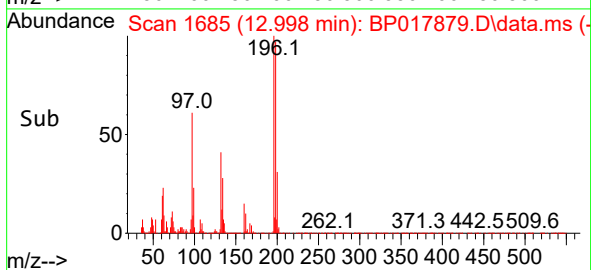
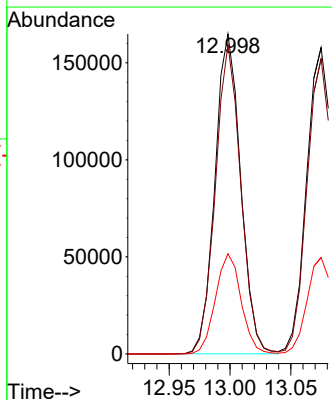
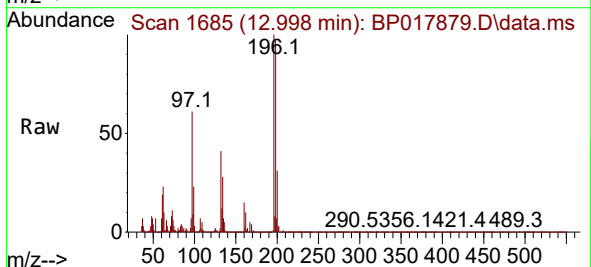
Instrument : BNA\_P  
 ClientSampleId : SLCS595

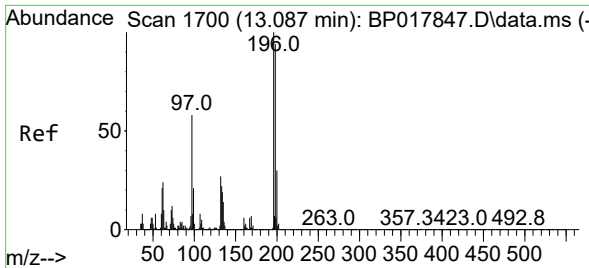
Tgt Ion	Resp	Lower	Upper
237	185142		
235	63.2	50.3	75.5
272	11.9	11.1	16.7



#41  
 2,4,6-Trichlorophenol  
 Concen: 32.912 ng/ul  
 RT: 12.998 min Scan# 1685  
 Delta R.T. -0.006 min  
 Lab File: BP017879.D  
 Acq: 02 Nov 2023 10:55

Tgt Ion	Resp	Lower	Upper
196	242123		
198	96.7	74.7	112.1
200	31.3	23.7	35.5



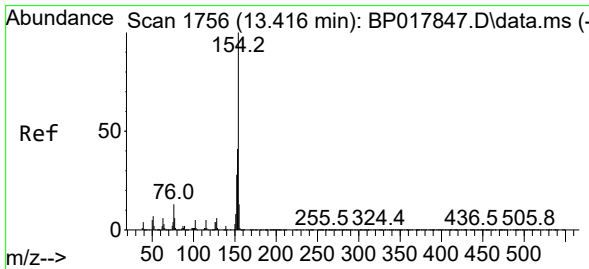
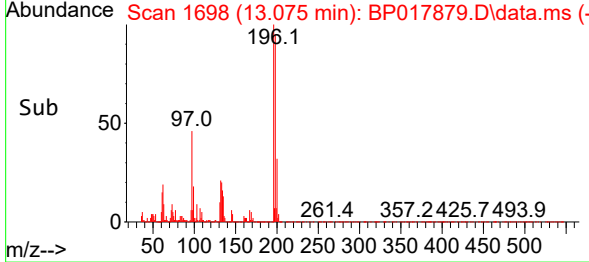
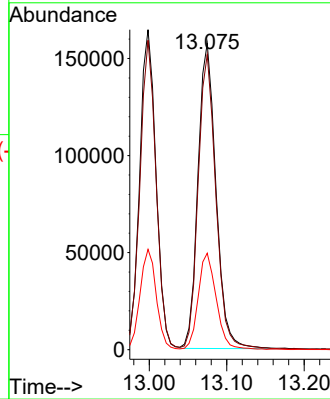
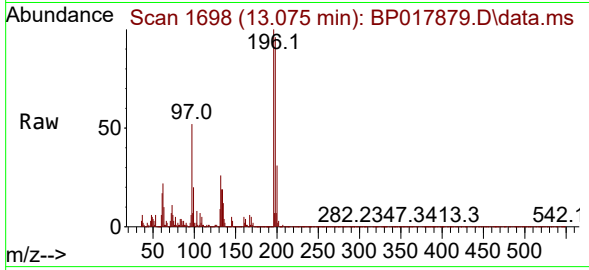


#42  
 2,4,5-Trichlorophenol  
 Concen: 33.437 ng/ul  
 RT: 13.075 min Scan# 1  
 Delta R.T. -0.006 min  
 Lab File: BP017879.D  
 Acq: 02 Nov 2023 10:55

Instrument :  
 BNA\_P  
 ClientSampleId :  
 SLCS595

Tgt Ion:196 Resp: 254318

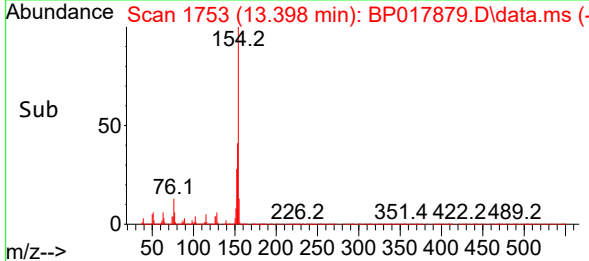
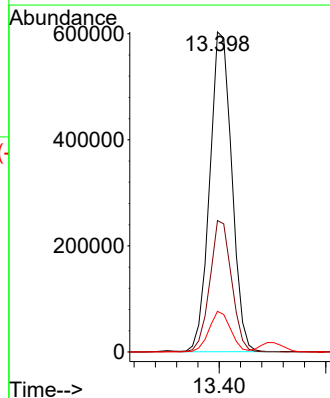
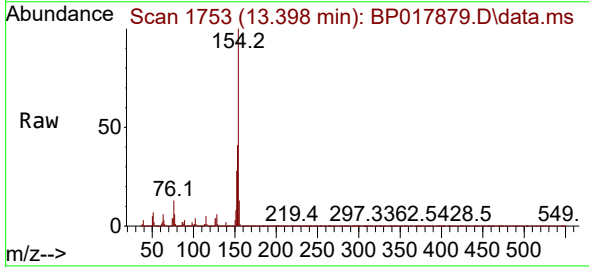
Ion	Ratio	Lower	Upper
196	100		
198	96.3	76.0	114.0
200	31.5	24.3	36.5

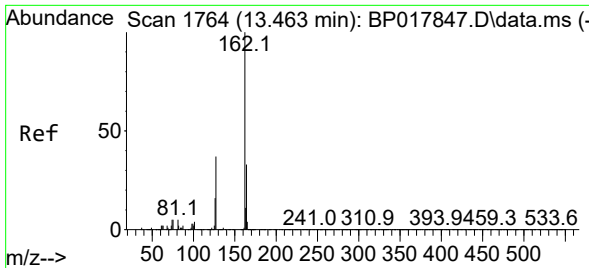


#43  
 1,1'-Biphenyl  
 Concen: 31.782 ng/ul  
 RT: 13.398 min Scan# 1753  
 Delta R.T. -0.012 min  
 Lab File: BP017879.D  
 Acq: 02 Nov 2023 10:55

Tgt Ion:154 Resp: 867401

Ion	Ratio	Lower	Upper
154	100		
153	41.1	32.6	49.0
76	12.7	9.8	14.8



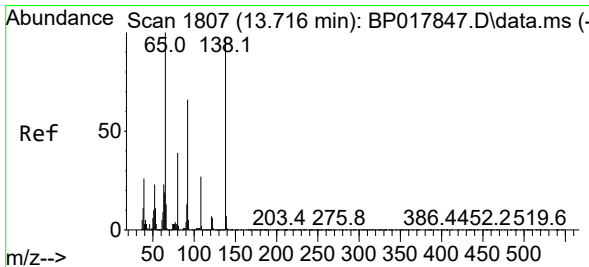
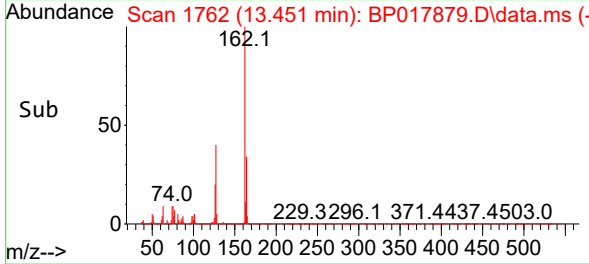
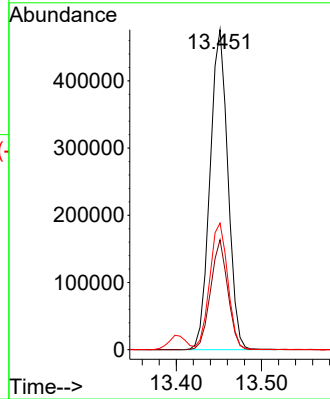
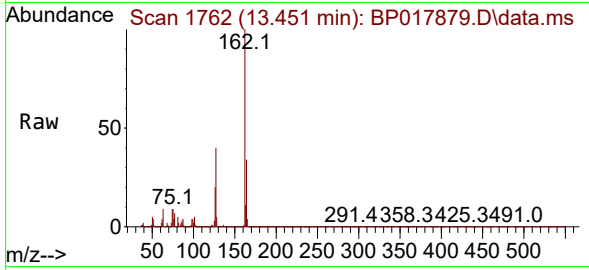


#44  
 2-Chloronaphthalene  
 Concen: 31.422 ng/ul  
 RT: 13.451 min Scan# 1762  
 Delta R.T. -0.006 min  
 Lab File: BP017879.D  
 Acq: 02 Nov 2023 10:55

Instrument :  
 BNA\_P  
 ClientSampleId :  
 SLCS595

Tgt Ion:162 Resp: 693259

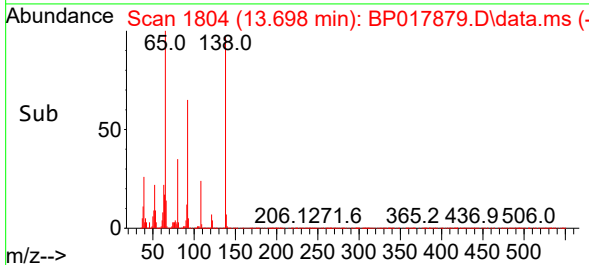
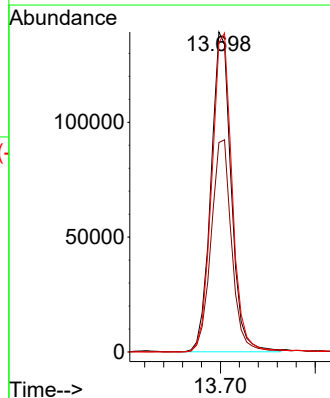
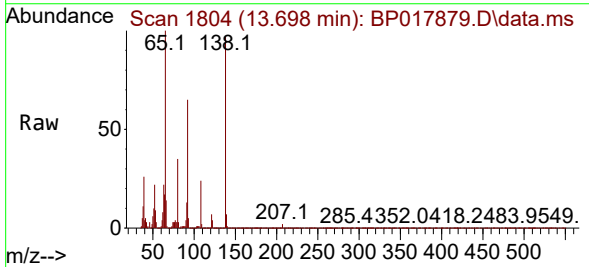
Ion	Ratio	Lower	Upper
162	100		
164	34.3	25.9	38.9
127	39.6	29.9	44.9

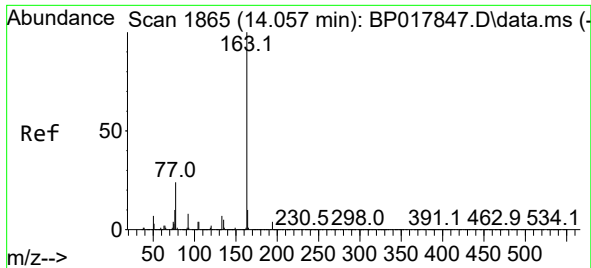


#45  
 2-Nitroaniline  
 Concen: 41.168 ng/ul  
 RT: 13.698 min Scan# 1804  
 Delta R.T. -0.012 min  
 Lab File: BP017879.D  
 Acq: 02 Nov 2023 10:55

Tgt Ion: 65 Resp: 206398

Ion	Ratio	Lower	Upper
65	100		
92	65.4	56.2	84.4
138	96.6	85.9	128.9



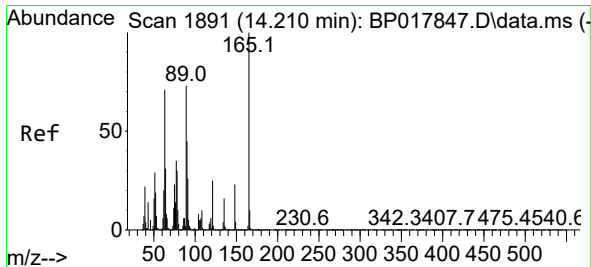
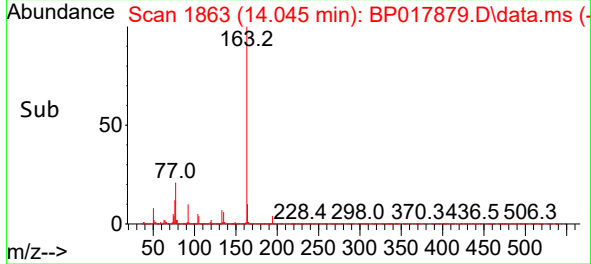
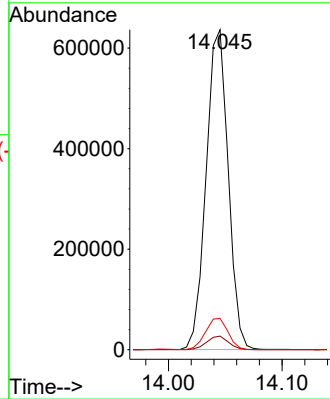
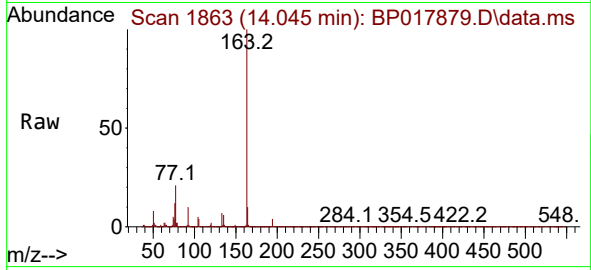


#47  
 Dimethylphthalate  
 Concen: 31.318 ng/ul  
 RT: 14.045 min Scan# 1863  
 Delta R.T. -0.006 min  
 Lab File: BP017879.D  
 Acq: 02 Nov 2023 10:55

Instrument :  
 BNA\_P  
 ClientSampleId :  
 SLCS595

Tgt Ion:163 Resp: 858359

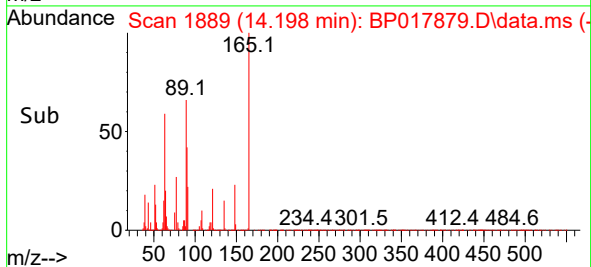
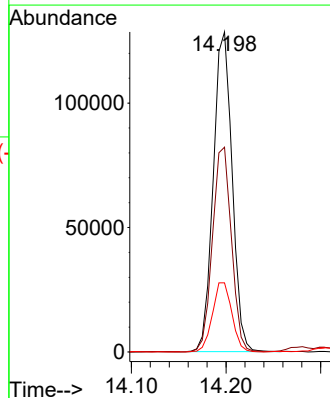
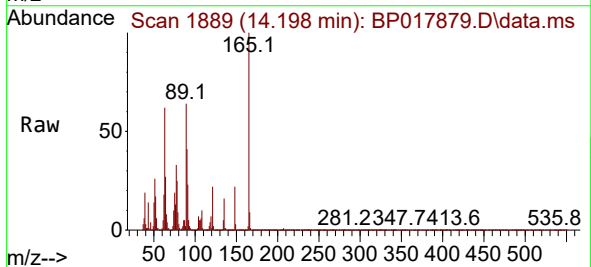
Ion	Ratio	Lower	Upper
163	100		
194	4.2	3.4	5.0
164	9.8	8.2	12.4

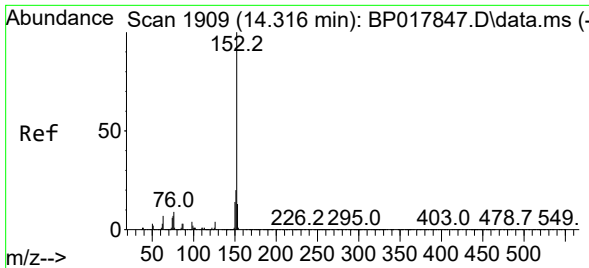


#48  
 2,6-Dinitrotoluene  
 Concen: 35.255 ng/ul  
 RT: 14.198 min Scan# 1889  
 Delta R.T. -0.006 min  
 Lab File: BP017879.D  
 Acq: 02 Nov 2023 10:55

Tgt Ion:165 Resp: 177855

Ion	Ratio	Lower	Upper
165	100		
89	64.0	48.0	72.0
121	21.6	16.6	24.8



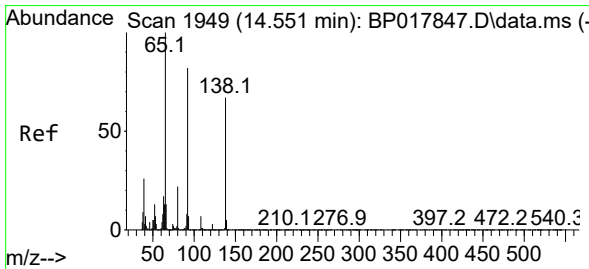
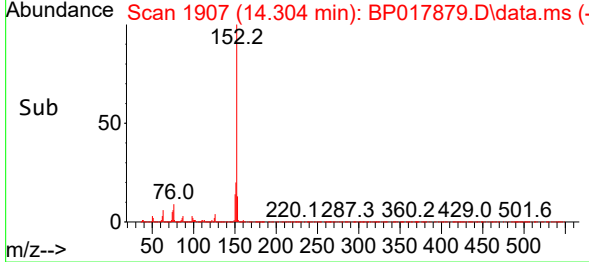
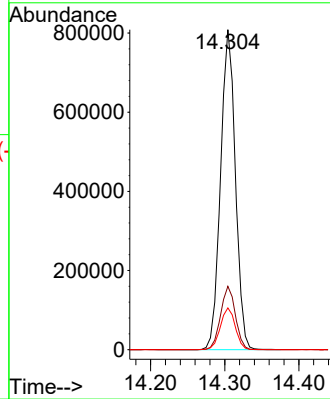
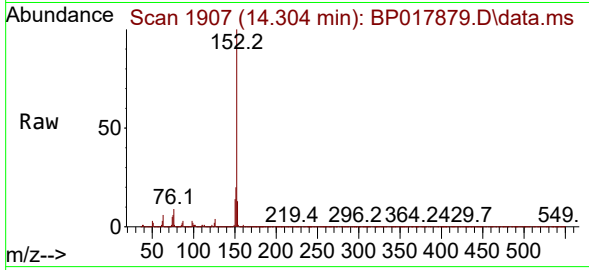


#50  
 Acenaphthylene  
 Concen: 32.303 ng/ul  
 RT: 14.304 min Scan# 1907  
 Delta R.T. -0.006 min  
 Lab File: BP017879.D  
 Acq: 02 Nov 2023 10:55

Instrument :  
 BNA\_P  
 ClientSampleId :  
 SLCS595

Tgt Ion:152 Resp: 1122206

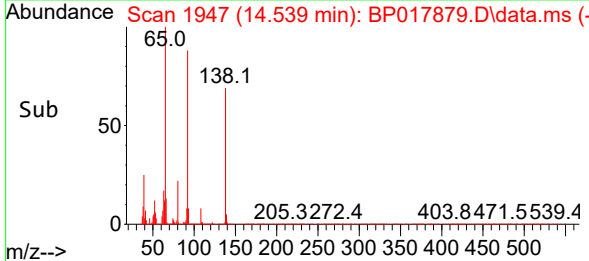
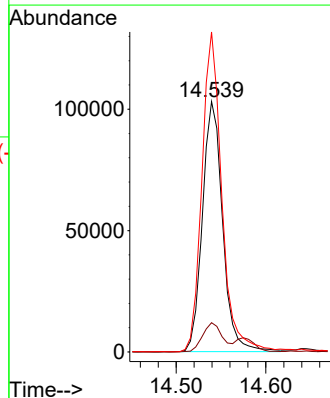
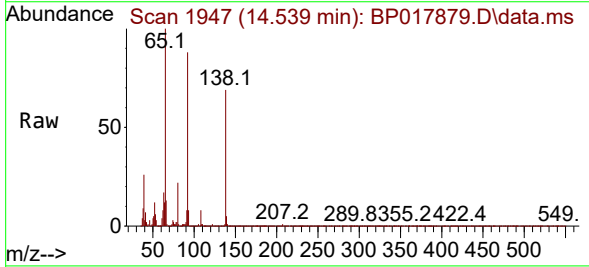
Ion	Ratio	Lower	Upper
152	100		
151	19.8	15.9	23.9
153	13.0	10.8	16.2

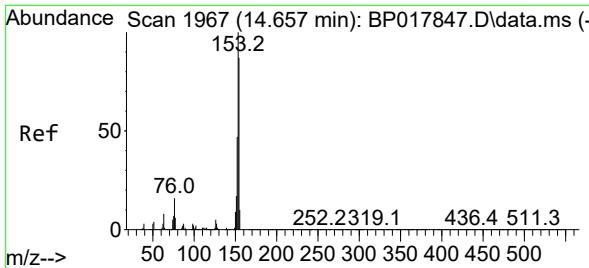


#51  
 3-Nitroaniline  
 Concen: 33.588 ng/ul  
 RT: 14.539 min Scan# 1947  
 Delta R.T. -0.006 min  
 Lab File: BP017879.D  
 Acq: 02 Nov 2023 10:55

Tgt Ion:138 Resp: 161156

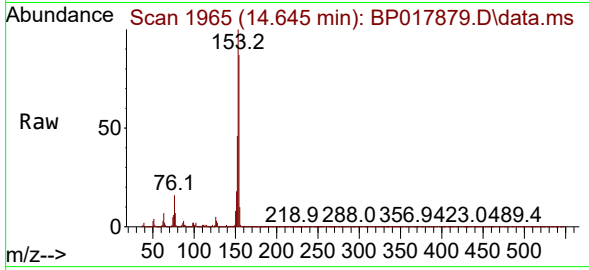
Ion	Ratio	Lower	Upper
138	100		
108	11.7	9.3	13.9
92	127.8	95.2	142.8





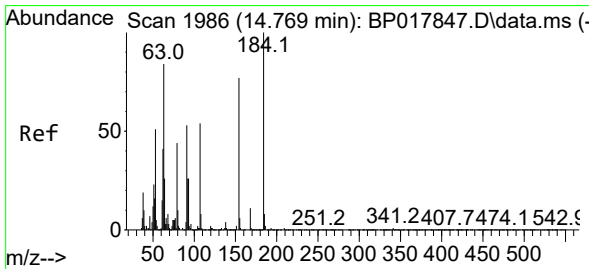
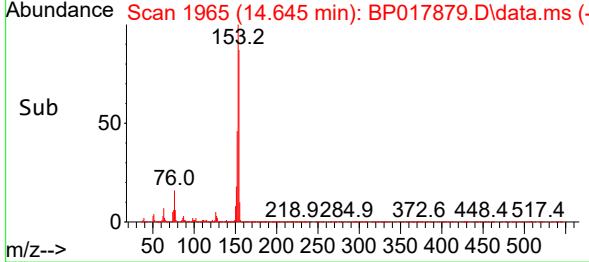
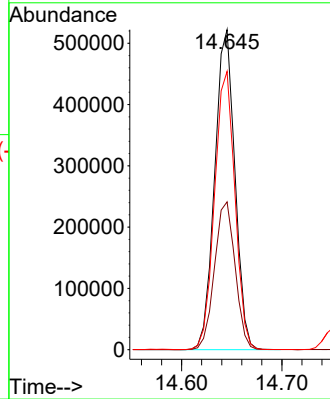
#52  
 Acenaphthene  
 Concen: 31.104 ng/uI  
 RT: 14.645 min Scan# 1965  
 Delta R.T. -0.006 min  
 Lab File: BP017879.D  
 Acq: 02 Nov 2023 10:55

Instrument :  
 BNA\_P  
 ClientSampleId :  
 SLCS595



Tgt Ion:153 Resp: 730454

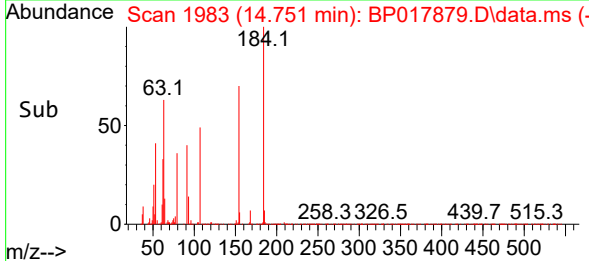
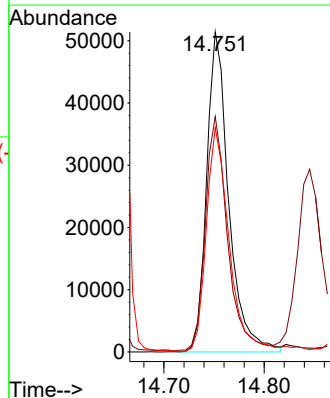
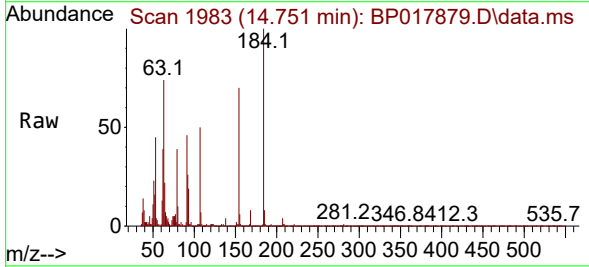
Ion	Ratio	Lower	Upper
153	100		
152	46.2	37.6	56.4
154	87.0	70.0	105.0

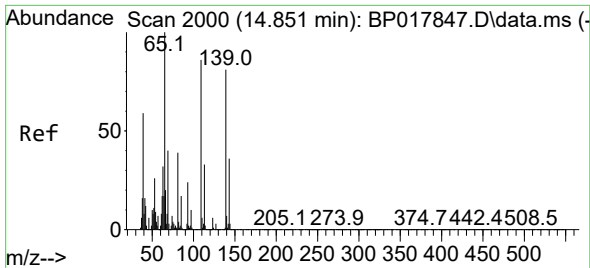


#53  
 2,4-Dinitrophenol  
 Concen: 27.740 ng/uI  
 RT: 14.751 min Scan# 1983  
 Delta R.T. -0.006 min  
 Lab File: BP017879.D  
 Acq: 02 Nov 2023 10:55

Tgt Ion:184 Resp: 78556

Ion	Ratio	Lower	Upper
184	100		
63	73.5	50.6	76.0
154	70.1	47.9	71.9

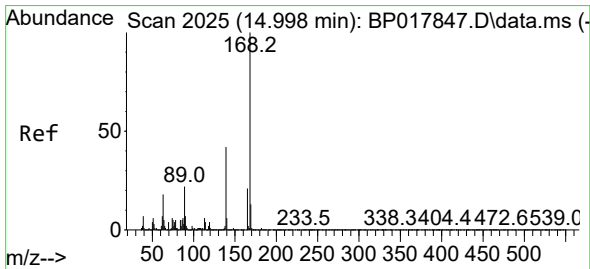
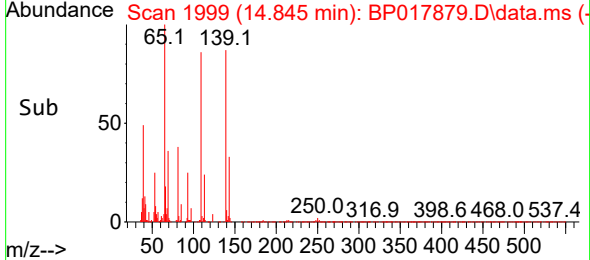
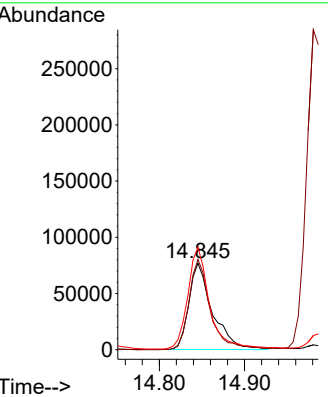
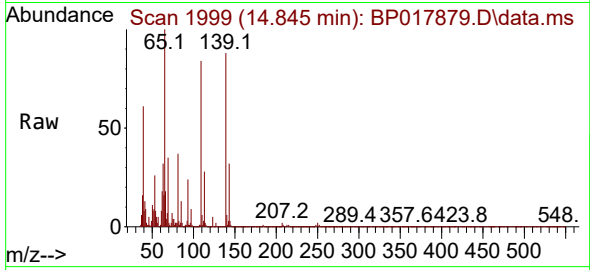




#55  
 4-Nitrophenol  
 Concen: 35.077 ng/uI  
 RT: 14.845 min Scan# 1999  
 Delta R.T. -0.000 min  
 Lab File: BP017879.D  
 Acq: 02 Nov 2023 10:55

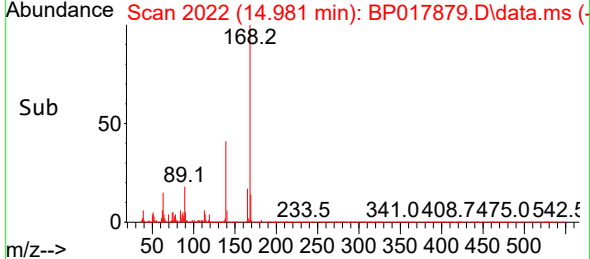
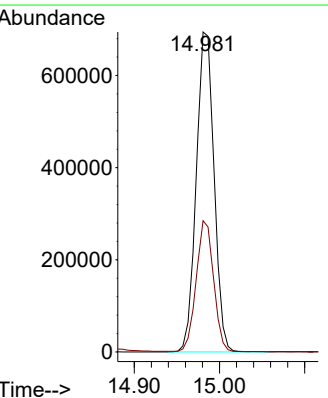
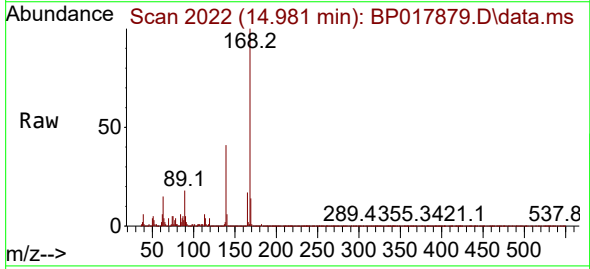
Instrument :  
 BNA\_P  
 ClientSampleId :  
 SLCS595

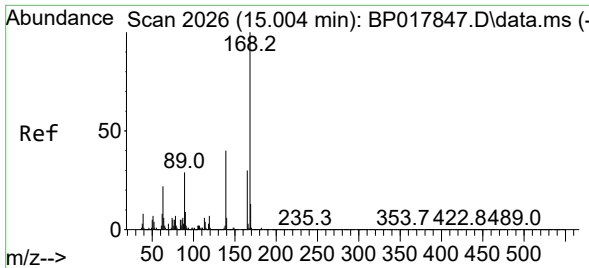
Tgt Ion	Resp	Lower	Upper
109	147135		
109	100		
139	104.5	92.9	139.3
65	118.5	94.5	141.7



#56  
 Dibenzofuran  
 Concen: 30.581 ng/uI  
 RT: 14.981 min Scan# 2022  
 Delta R.T. -0.012 min  
 Lab File: BP017879.D  
 Acq: 02 Nov 2023 10:55

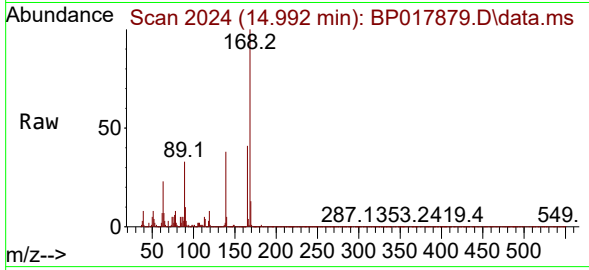
Tgt Ion	Resp	Lower	Upper
168	1008335		
168	100		
139	41.0	28.6	43.0



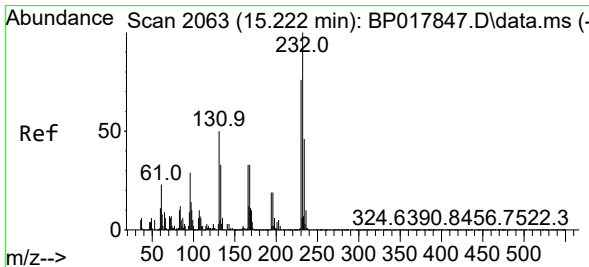
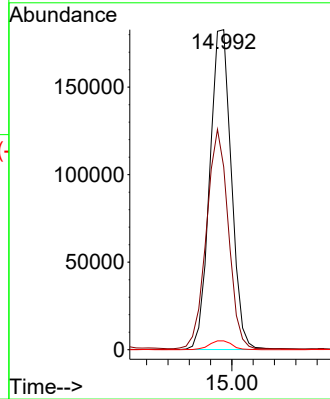
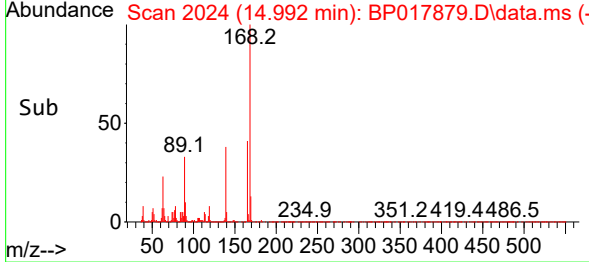


#57  
 2,4-Dinitrotoluene  
 Concen: 34.487 ng/ul  
 RT: 14.992 min Scan# 2024  
 Delta R.T. -0.000 min  
 Lab File: BP017879.D  
 Acq: 02 Nov 2023 10:55

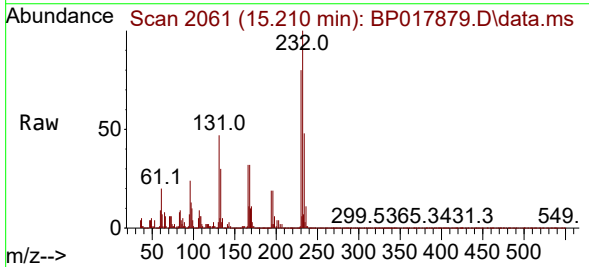
Instrument :  
 BNA\_P  
 ClientSampleId :  
 SLCS595



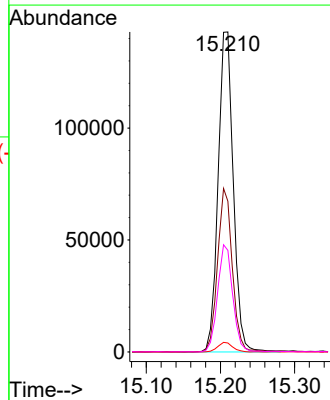
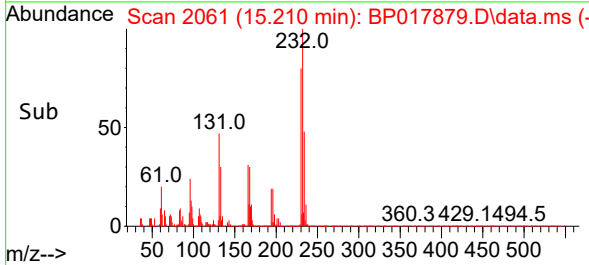
Tgt Ion:165 Resp: 256770  
 Ion Ratio Lower Upper  
 165 100  
 63 57.1 51.1 76.7  
 182 2.8 2.7 4.1



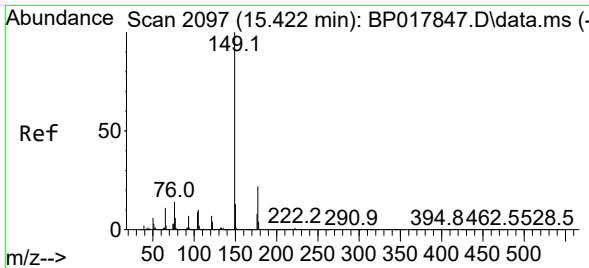
#58  
 2,3,4,6-Tetrachlorophenol  
 Concen: 30.125 ng/ul  
 RT: 15.210 min Scan# 2061  
 Delta R.T. -0.006 min  
 Lab File: BP017879.D  
 Acq: 02 Nov 2023 10:55



Tgt Ion:232 Resp: 203334  
 Ion Ratio Lower Upper  
 232 100  
 131 47.1 32.9 49.3  
 130 2.8 1.8 2.8#  
 166 31.7 23.3 34.9



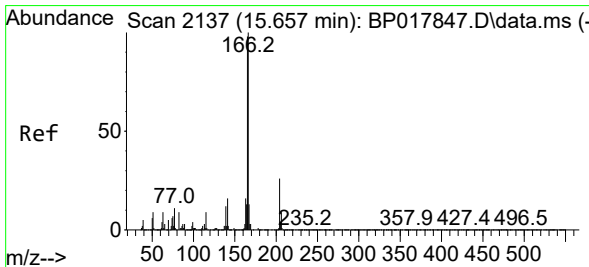
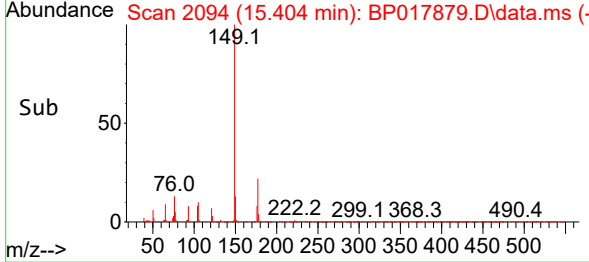
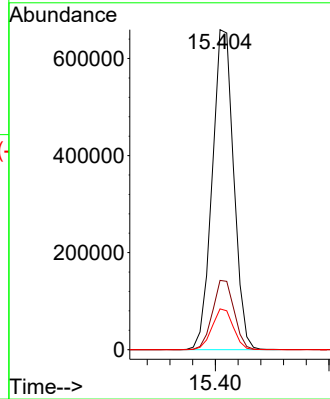
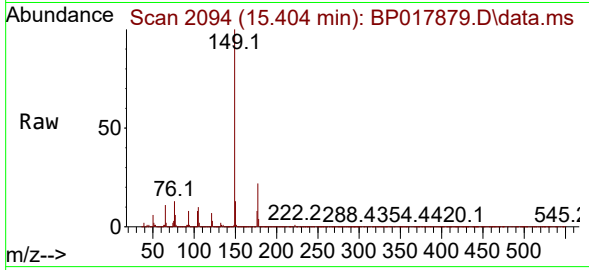




#59  
 Diethylphthalate  
 Concen: 32.714 ng/ul  
 RT: 15.404 min Scan# 2094  
 Delta R.T. -0.006 min  
 Lab File: BP017879.D  
 Acq: 02 Nov 2023 10:55

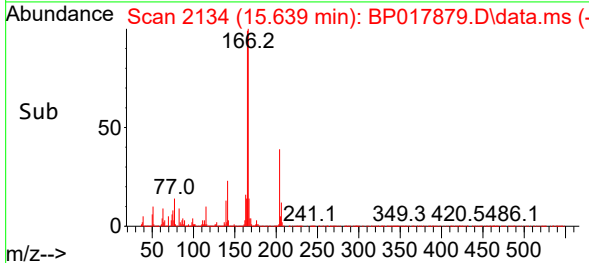
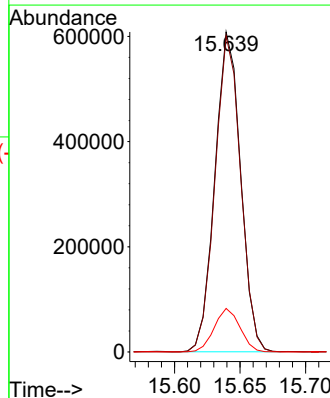
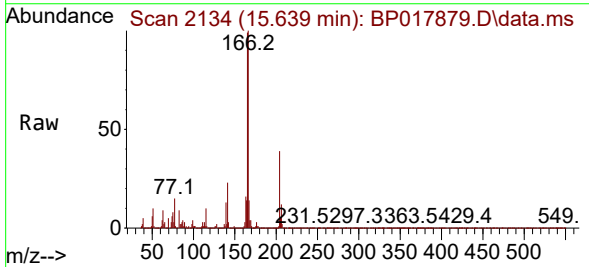
Instrument :  
 BNA\_P  
 ClientSampleId :  
 SLCS595

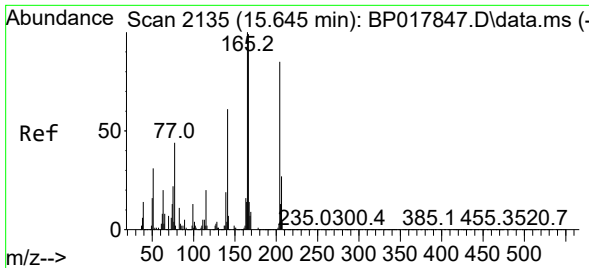
Tgt Ion:149 Resp: 865701  
 Ion Ratio Lower Upper  
 149 100  
 177 21.7 18.0 27.0  
 150 12.8 10.2 15.4



#61  
 Fluorene  
 Concen: 30.619 ng/ul  
 RT: 15.639 min Scan# 2134  
 Delta R.T. -0.006 min  
 Lab File: BP017879.D  
 Acq: 02 Nov 2023 10:55

Tgt Ion:166 Resp: 829293  
 Ion Ratio Lower Upper  
 166 100  
 165 98.8 77.4 116.0  
 167 13.6 10.9 16.3



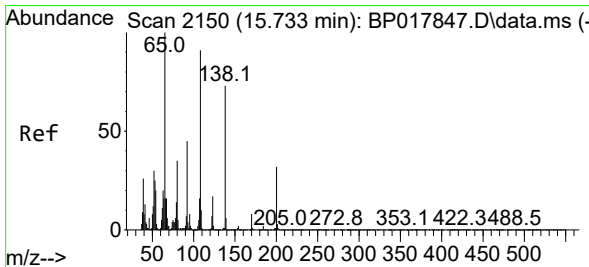
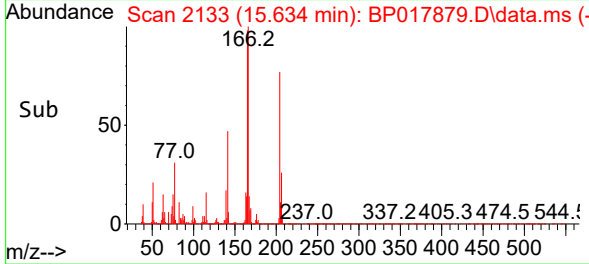
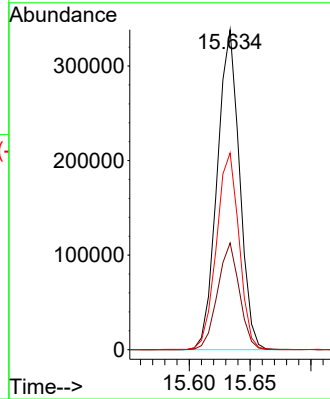
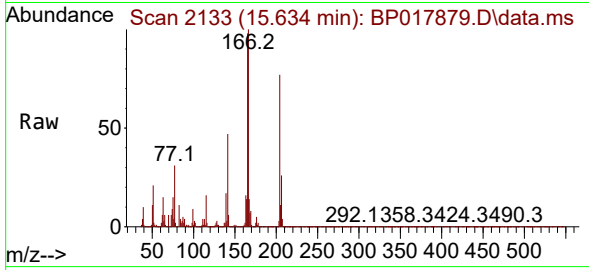


#62  
 4-Chlorophenyl-phenylether  
 Concen: 30.012 ng/ul  
 RT: 15.634 min Scan# 2113  
 Delta R.T. -0.006 min  
 Lab File: BP017879.D  
 Acq: 02 Nov 2023 10:55

Instrument :  
 BNA\_P  
 ClientSampleId :  
 SLCS595

Tgt Ion:204 Resp: 432039

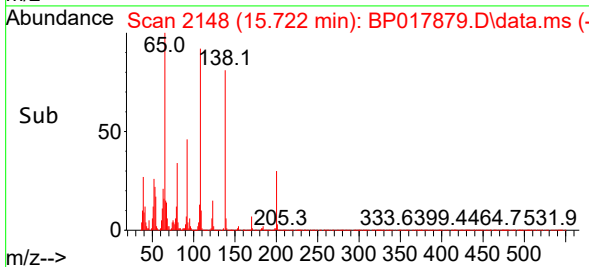
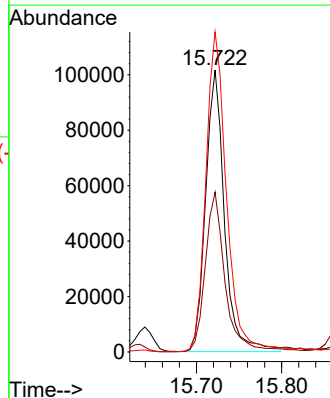
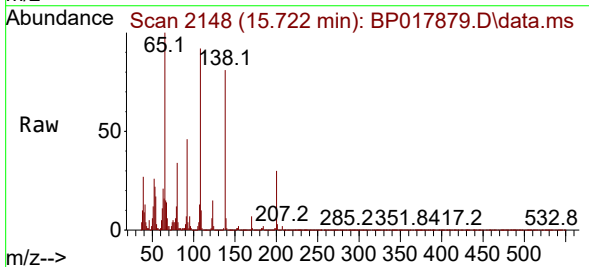
Ion	Ratio	Lower	Upper
204	100		
206	33.3	26.2	39.4
141	61.5	42.9	64.3

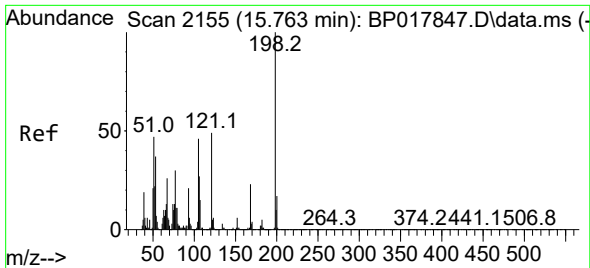


#63  
 4-Nitroaniline  
 Concen: 36.210 ng/ul  
 RT: 15.722 min Scan# 2148  
 Delta R.T. -0.000 min  
 Lab File: BP017879.D  
 Acq: 02 Nov 2023 10:55

Tgt Ion:138 Resp: 156704

Ion	Ratio	Lower	Upper
138	100		
92	56.7	43.0	64.6
108	113.5	82.7	124.1



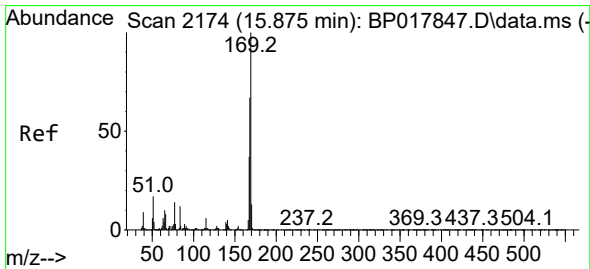
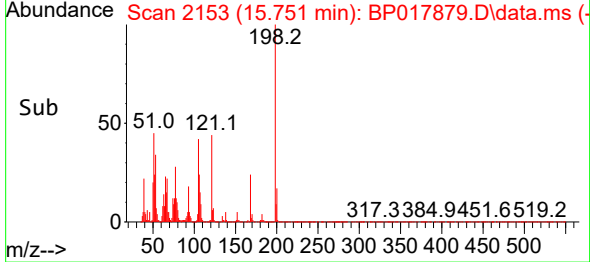
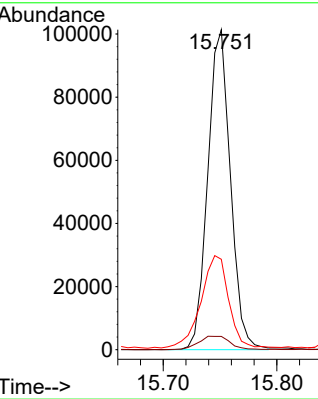
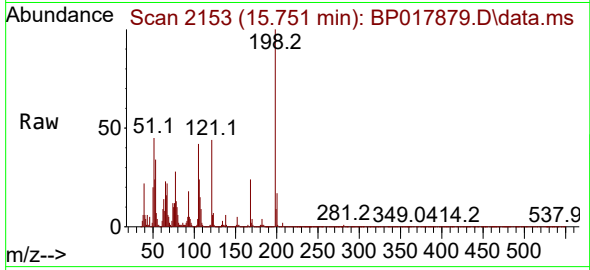


#66  
 4,6-Dinitro-2-methylphenol  
 Concen: 29.667 ng/ul  
 RT: 15.751 min Scan# 2153  
 Delta R.T. -0.000 min  
 Lab File: BP017879.D  
 Acq: 02 Nov 2023 10:55

Instrument :  
 BNA\_P  
 ClientSampleId :  
 SLCS595

Tgt Ion:198 Resp: 140505

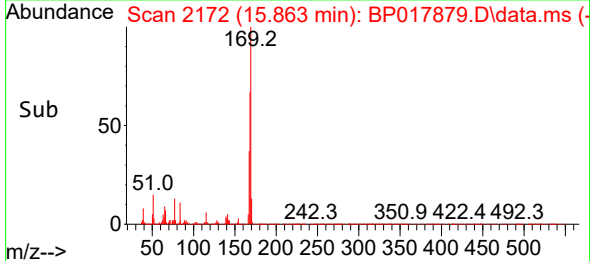
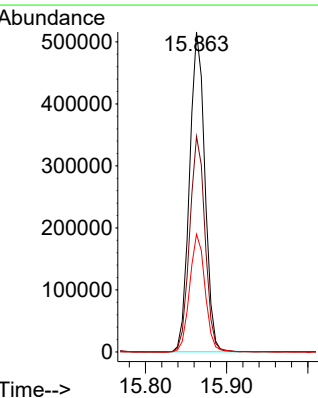
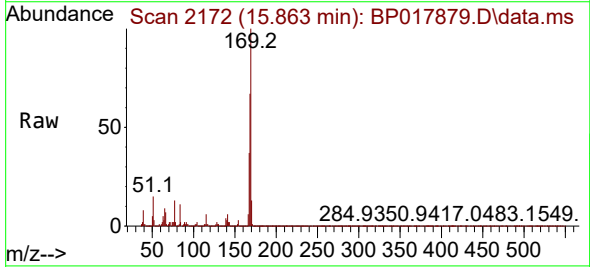
Ion	Ratio	Lower	Upper
198	100		
182	4.2	3.9	5.9
77	28.3	19.8	29.8

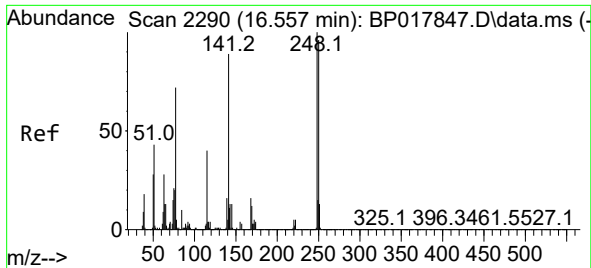


#67  
 N-Nitrosodiphenylamine  
 Concen: 33.324 ng/ul  
 RT: 15.863 min Scan# 2172  
 Delta R.T. -0.006 min  
 Lab File: BP017879.D  
 Acq: 02 Nov 2023 10:55

Tgt Ion:169 Resp: 677729

Ion	Ratio	Lower	Upper
169	100		
168	67.4	53.7	80.5
167	36.8	29.4	44.0

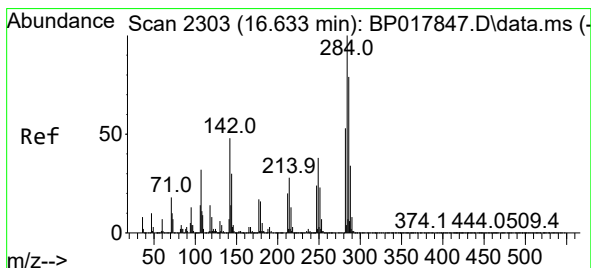
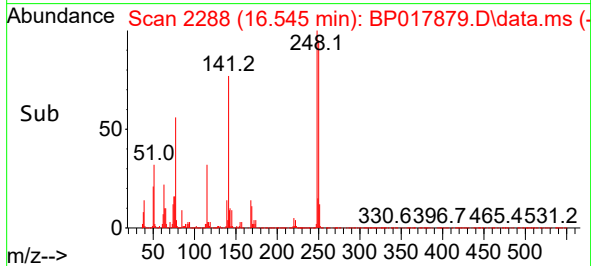
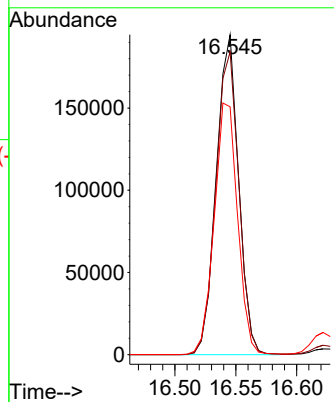
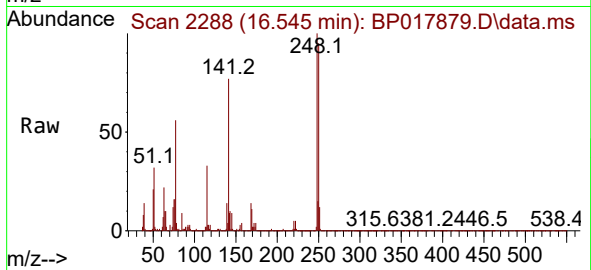




#68  
 4-Bromophenyl-phenylether  
 Concen: 31.684 ng/ul  
 RT: 16.545 min Scan# 21  
 Delta R.T. -0.006 min  
 Lab File: BP017879.D  
 Acq: 02 Nov 2023 10:55

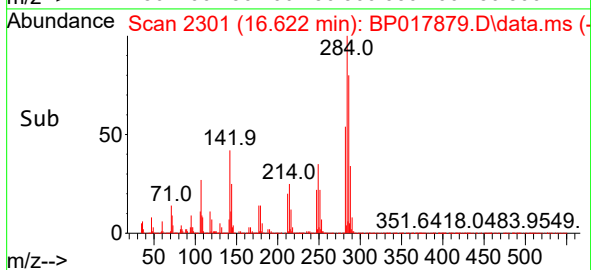
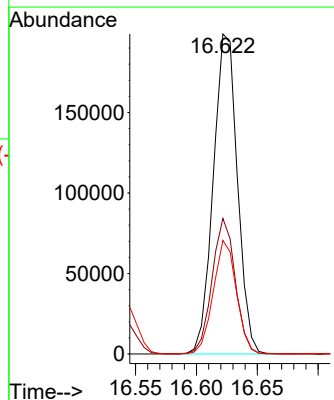
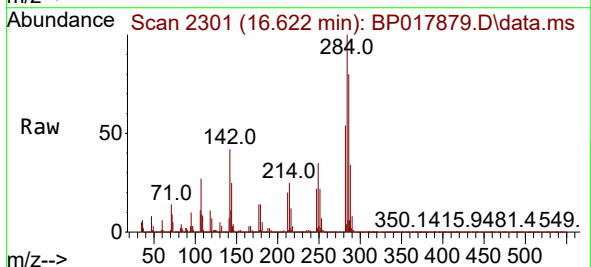
Instrument :  
 BNA\_P  
 ClientSampleId :  
 SLCS595

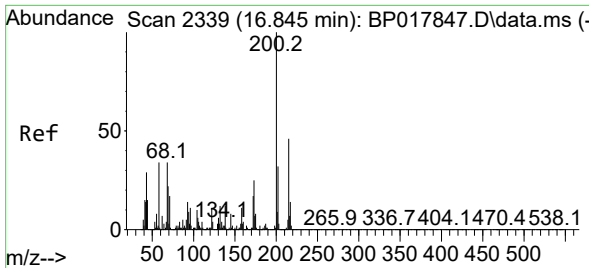
Tgt Ion	Resp	Lower	Upper
248	100		
250	94.7	76.8	115.2
141	77.4	52.4	78.6



#69  
 Hexachlorobenzene  
 Concen: 30.378 ng/ul  
 RT: 16.622 min Scan# 2301  
 Delta R.T. -0.006 min  
 Lab File: BP017879.D  
 Acq: 02 Nov 2023 10:55

Tgt Ion	Resp	Lower	Upper
284	100		
142	42.4	27.6	41.4#
249	35.5	24.5	36.7



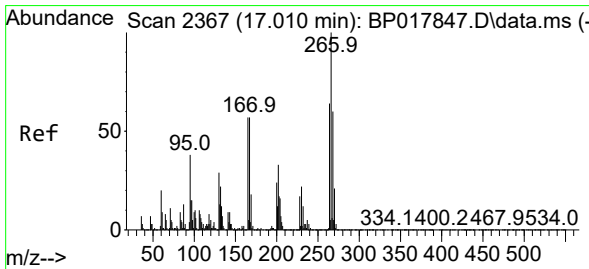
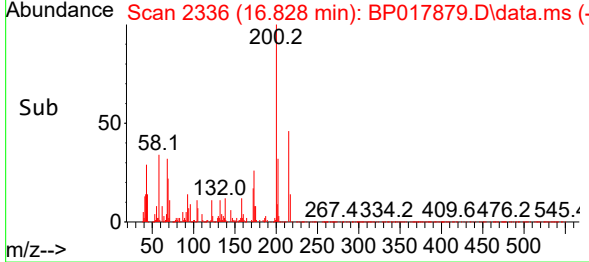
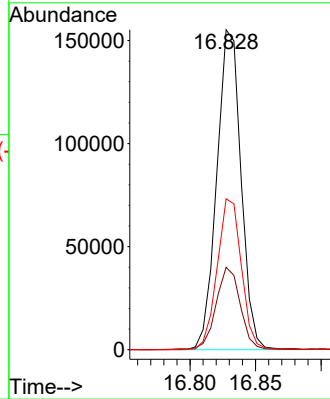
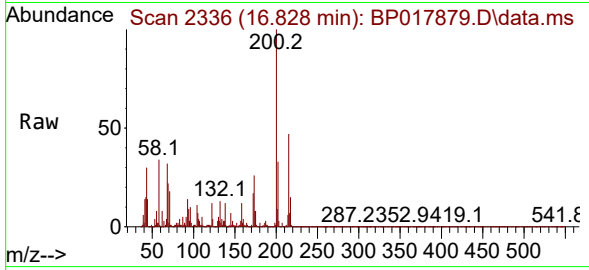


#70  
 Atrazine  
 Concen: 26.654 ng/uI  
 RT: 16.828 min Scan# 21  
 Delta R.T. -0.006 min  
 Lab File: BP017879.D  
 Acq: 02 Nov 2023 10:55

Instrument :  
 BNA\_P  
 ClientSampleId :  
 SLCS595

Tgt Ion:200 Resp: 199233

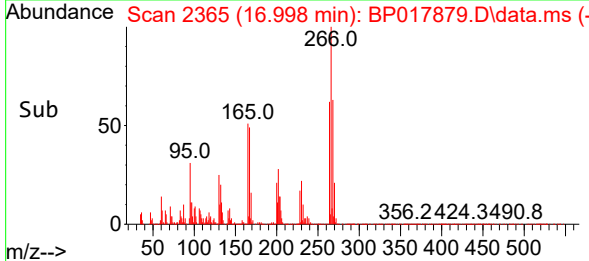
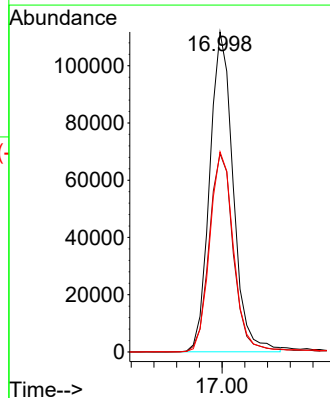
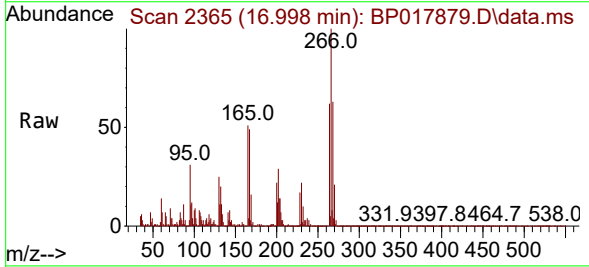
Ion	Ratio	Lower	Upper
200	100		
173	25.7	19.8	29.6
215	47.1	38.5	57.7

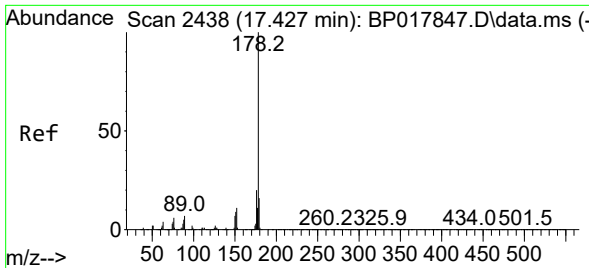


#71  
 Pentachlorophenol  
 Concen: 29.632 ng/uI  
 RT: 16.998 min Scan# 2365  
 Delta R.T. -0.006 min  
 Lab File: BP017879.D  
 Acq: 02 Nov 2023 10:55

Tgt Ion:266 Resp: 160641

Ion	Ratio	Lower	Upper
266	100		
264	61.9	49.4	74.2
268	62.6	50.3	75.5



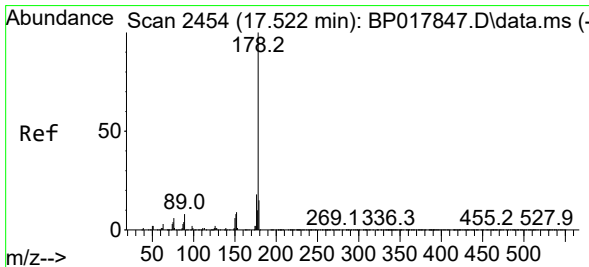
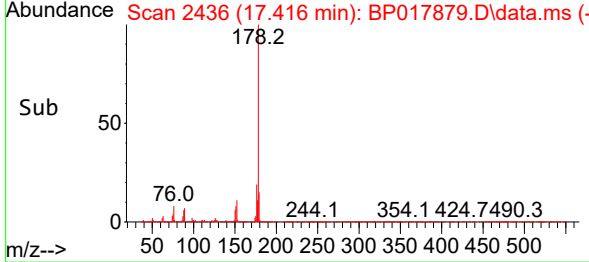
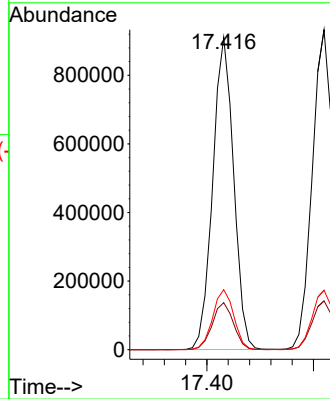
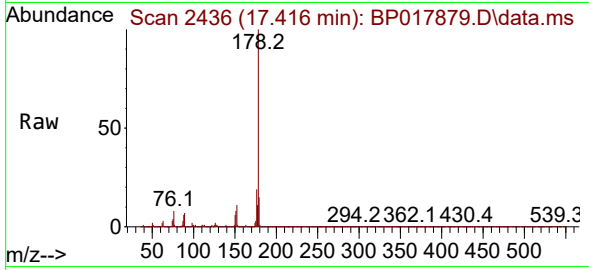


#72  
 Phenanthrene  
 Concen: 31.577 ng/uI  
 RT: 17.416 min Scan# 2436  
 Delta R.T. -0.006 min  
 Lab File: BP017879.D  
 Acq: 02 Nov 2023 10:55

Instrument :  
 BNA\_P  
 ClientSampleId :  
 SLCS595

Tgt Ion:178 Resp: 1241757

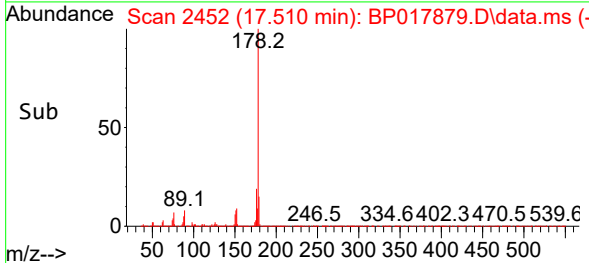
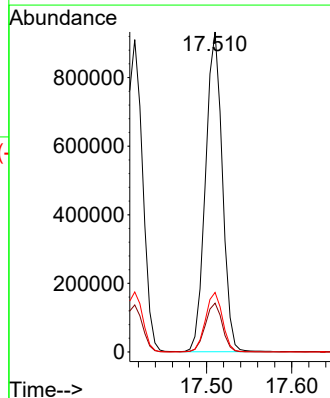
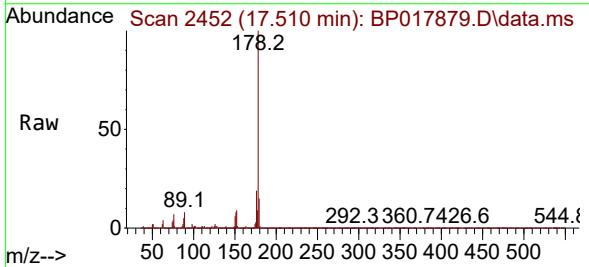
Ion	Ratio	Lower	Upper
178	100		
179	15.1	12.2	18.2
176	19.2	15.3	22.9

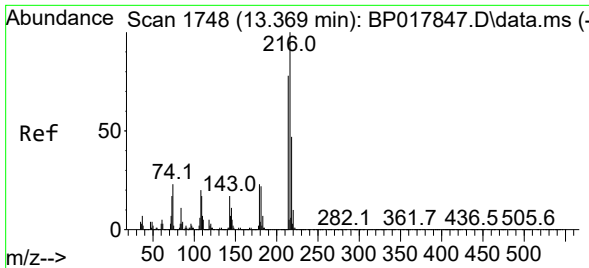


#74  
 Anthracene  
 Concen: 32.041 ng/uI  
 RT: 17.510 min Scan# 2452  
 Delta R.T. -0.000 min  
 Lab File: BP017879.D  
 Acq: 02 Nov 2023 10:55

Tgt Ion:178 Resp: 1276146

Ion	Ratio	Lower	Upper
178	100		
179	15.2	12.0	18.0
176	18.6	14.8	22.2



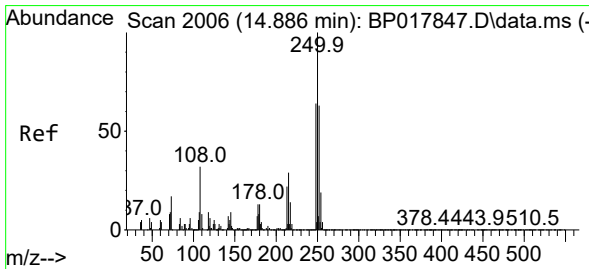
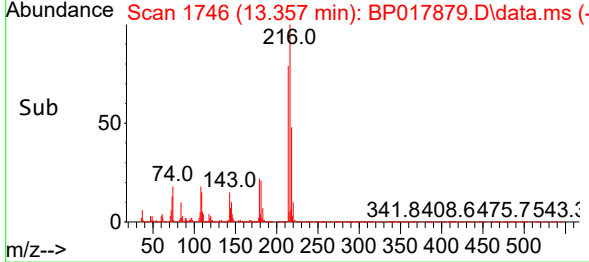
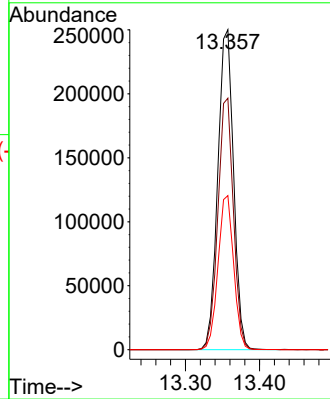
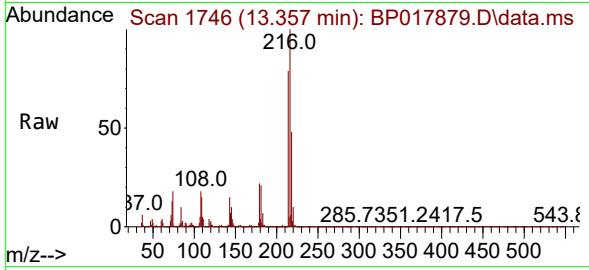


#75  
 1,2,3,4-Tetrachlorobenzene  
 Concen: 32.824 ng/uL  
 RT: 13.357 min Scan# 11  
 Delta R.T. -0.006 min  
 Lab File: BP017879.D  
 Acq: 02 Nov 2023 10:55

Instrument :  
 BNA\_P  
 ClientSampleId :  
 SLCS595

Tgt Ion:216 Resp: 369718

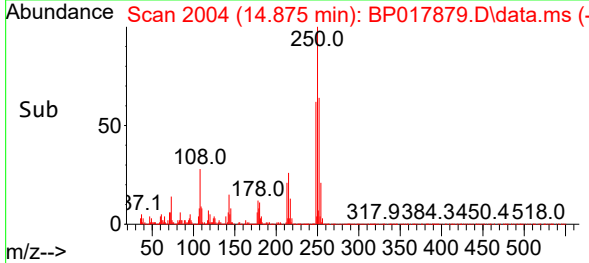
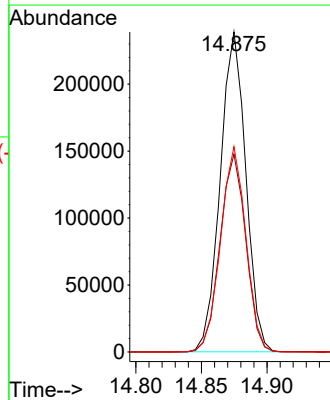
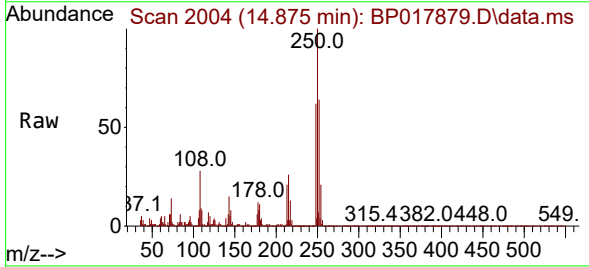
Ion	Ratio	Lower	Upper
216	100		
214	78.6	60.7	91.1
218	48.2	38.2	57.4

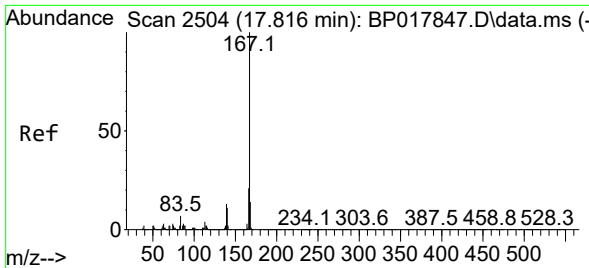


#76  
 Pentachlorobenzene  
 Concen: 29.655 ng/uL  
 RT: 14.875 min Scan# 2004  
 Delta R.T. -0.006 min  
 Lab File: BP017879.D  
 Acq: 02 Nov 2023 10:55

Tgt Ion:250 Resp: 323724

Ion	Ratio	Lower	Upper
250	100		
248	61.8	50.2	75.4
252	64.1	49.6	74.4



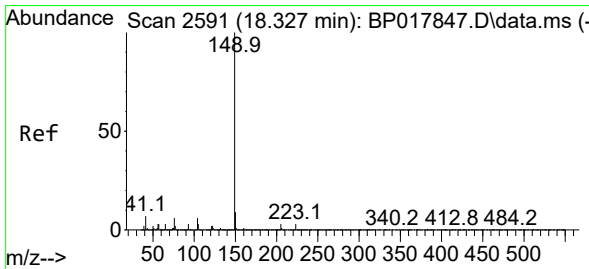
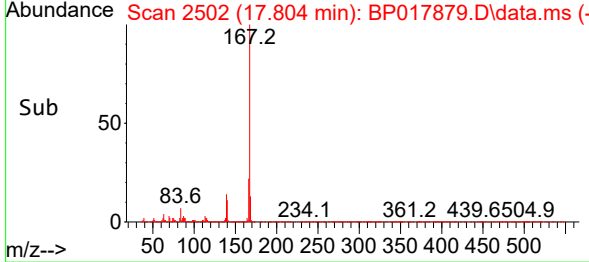
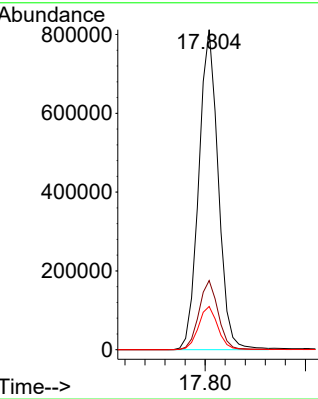
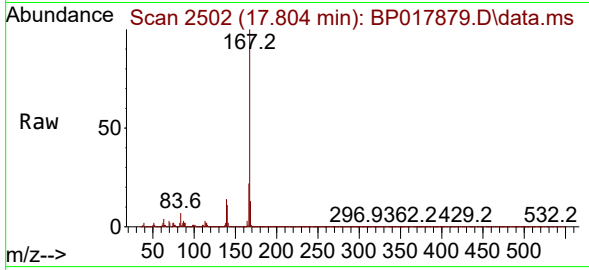


#77  
 Carbazole  
 Concen: 32.388 ng/uI  
 RT: 17.804 min Scan# 21  
 Delta R.T. -0.006 min  
 Lab File: BP017879.D  
 Acq: 02 Nov 2023 10:55

Instrument :  
 BNA\_P  
 ClientSampleId :  
 SLCS595

Tgt Ion:167 Resp: 1090255

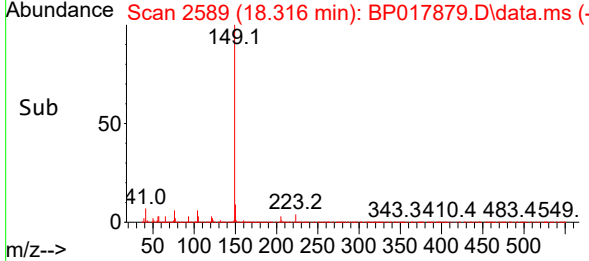
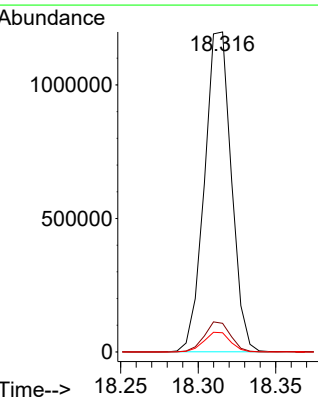
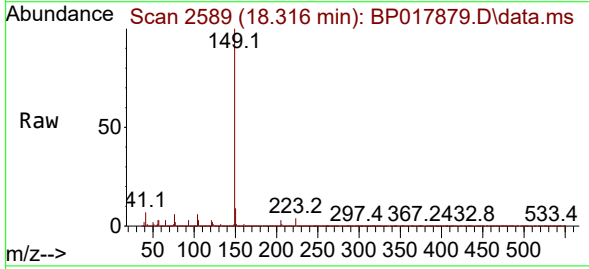
Ion	Ratio	Lower	Upper
167	100		
166	21.6	16.7	25.1
139	13.5	9.8	14.6



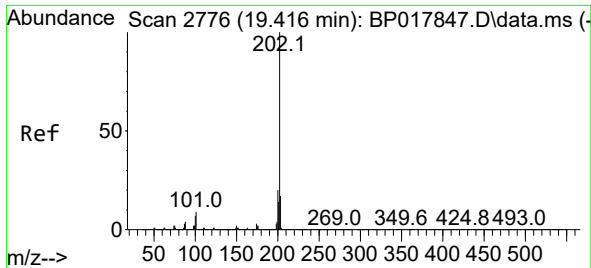
#78  
 Di-n-butylphthalate  
 Concen: 37.033 ng/uI  
 RT: 18.316 min Scan# 2589  
 Delta R.T. -0.006 min  
 Lab File: BP017879.D  
 Acq: 02 Nov 2023 10:55

Tgt Ion:149 Resp: 1447257

Ion	Ratio	Lower	Upper
149	100		
150	9.0	7.2	10.8
104	6.0	4.3	6.5





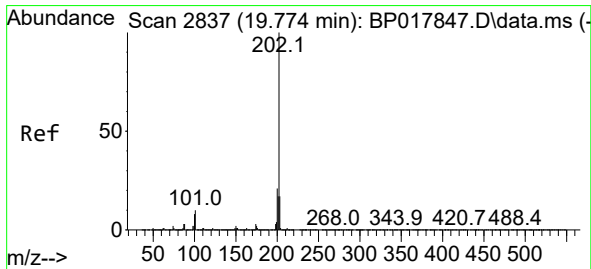
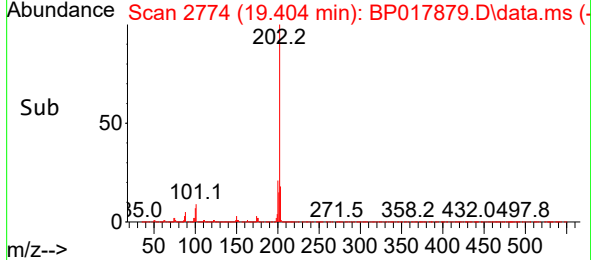
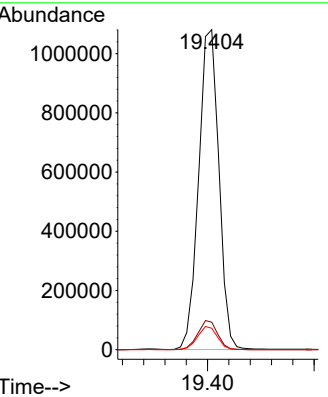
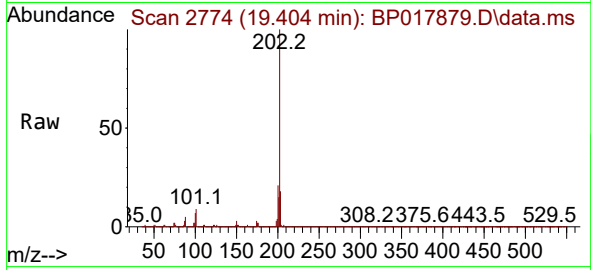


#80  
 Fluoranthene  
 Concen: 36.049 ng/u1  
 RT: 19.404 min Scan# 21  
 Delta R.T. -0.000 min  
 Lab File: BP017879.D  
 Acq: 02 Nov 2023 10:55

Instrument : BNA\_P  
 ClientSampleId : SLCS595

Tgt Ion:202 Resp: 1425157

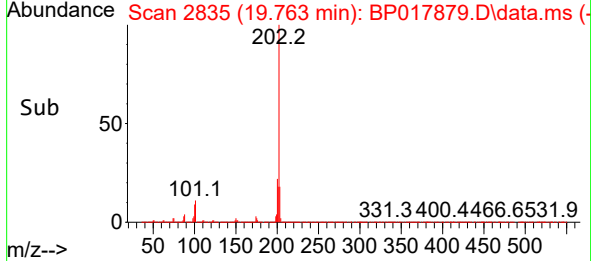
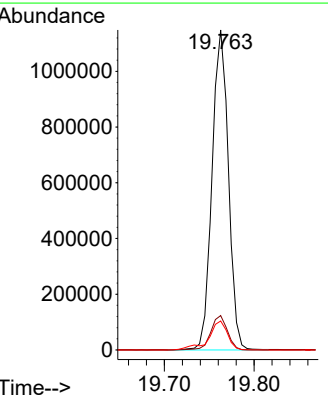
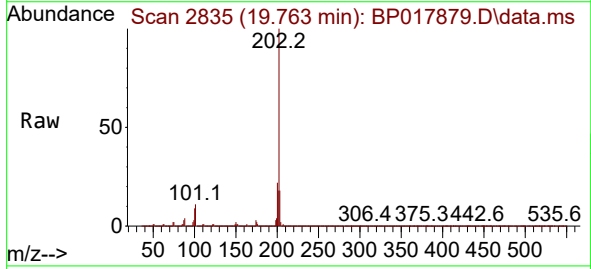
Ion	Ratio	Lower	Upper
202	100		
101	8.6	7.1	10.7
100	6.7	5.7	8.5

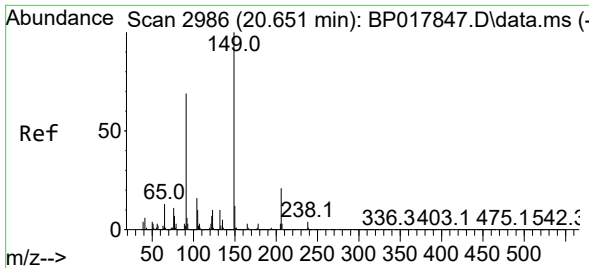


#82  
 Pyrene  
 Concen: 34.621 ng/u1  
 RT: 19.763 min Scan# 2835  
 Delta R.T. -0.000 min  
 Lab File: BP017879.D  
 Acq: 02 Nov 2023 10:55

Tgt Ion:202 Resp: 1450062

Ion	Ratio	Lower	Upper
202	100		
101	10.8	8.3	12.5
100	9.1	7.4	11.0

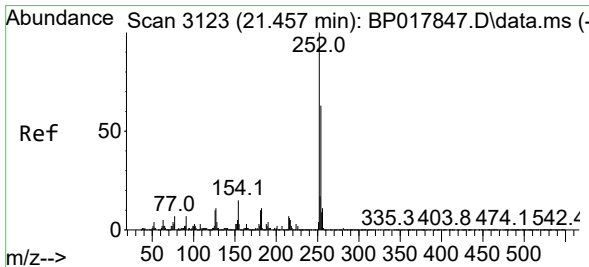
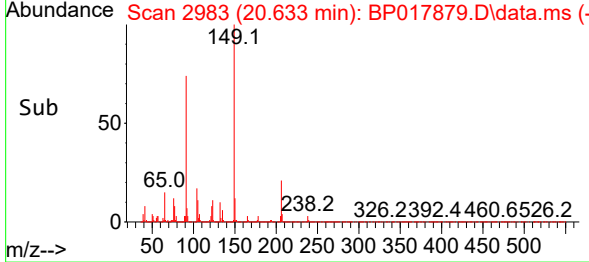
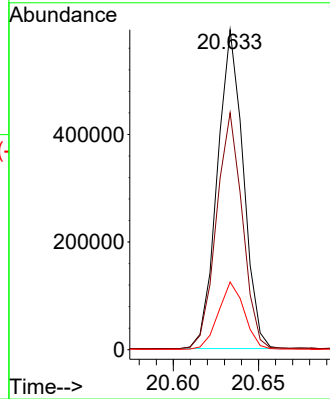
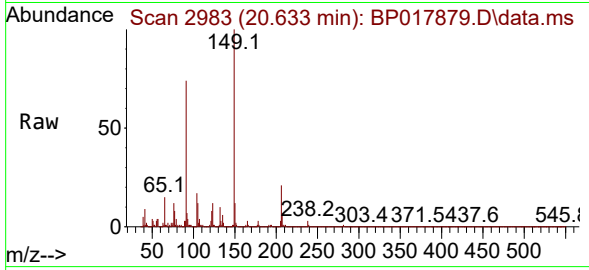




#83  
 Butylbenzylphthalate  
 Concen: 43.551 ng/ul  
 RT: 20.633 min Scan# 2983  
 Delta R.T. -0.000 min  
 Lab File: BP017879.D  
 Acq: 02 Nov 2023 10:55

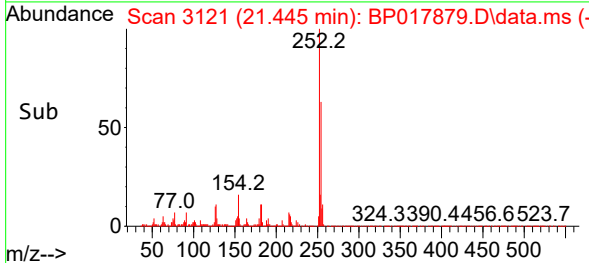
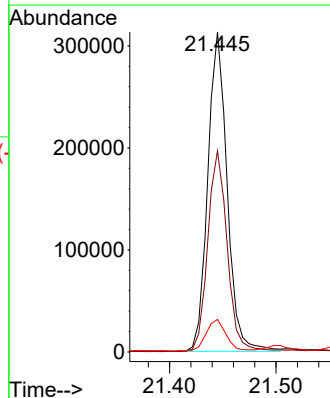
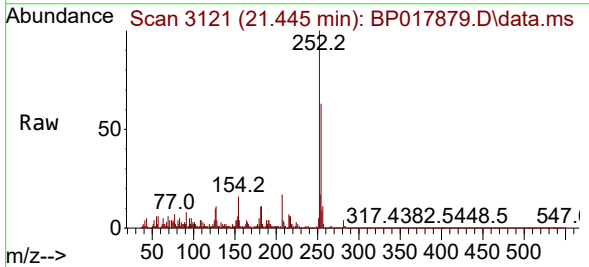
Instrument :  
 BNA\_P  
 ClientSampleId :  
 SLCS595

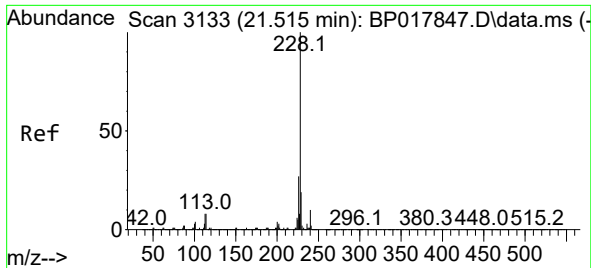
Tgt Ion	Resp	Ion Ratio	Lower	Upper
149	627392	100		
91		74.1	58.8	88.2
206		21.2	17.5	26.3



#84  
 3,3'-Dichlorobenzidine  
 Concen: 31.810 ng/ul  
 RT: 21.445 min Scan# 3121  
 Delta R.T. -0.000 min  
 Lab File: BP017879.D  
 Acq: 02 Nov 2023 10:55

Tgt Ion	Resp	Ion Ratio	Lower	Upper
252	394434	100		
254		62.9	51.8	77.8
126		10.1	7.8	11.6



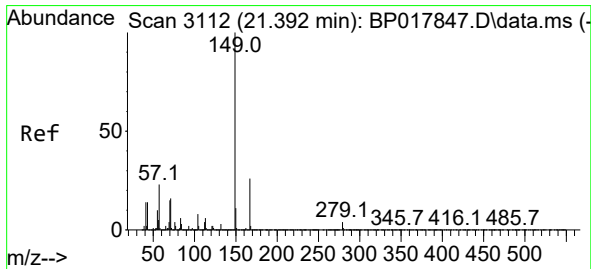
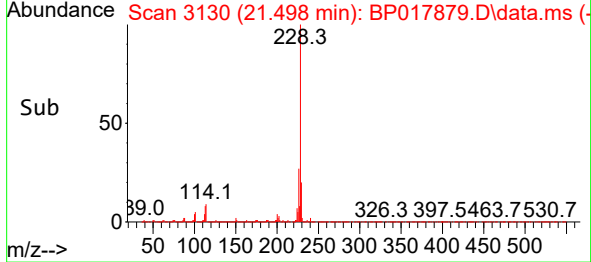
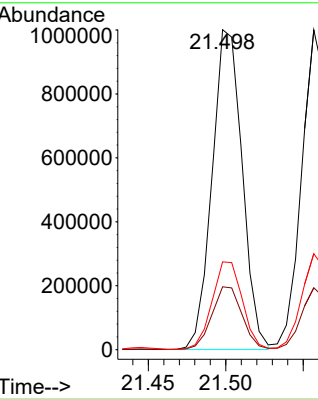
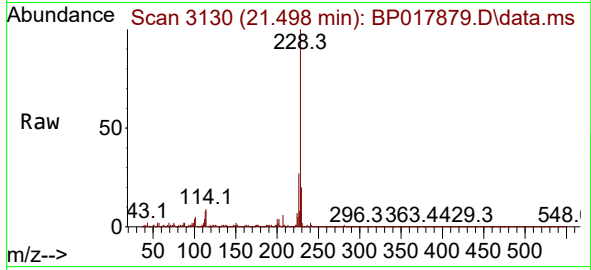


#85  
 Benzo(a)anthracene  
 Concen: 32.388 ng/ul  
 RT: 21.498 min Scan# 3130  
 Delta R.T. -0.000 min  
 Lab File: BP017879.D  
 Acq: 02 Nov 2023 10:55

Instrument : BNA\_P  
 Client Sample Id : SLCS595

Tgt Ion: 228 Resp: 1351327

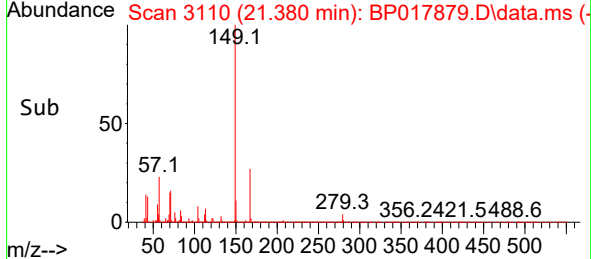
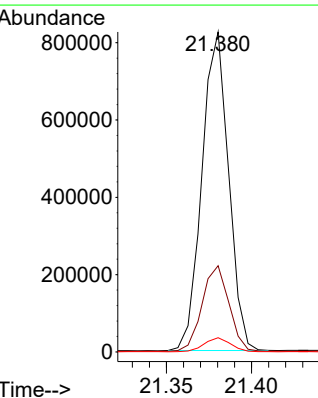
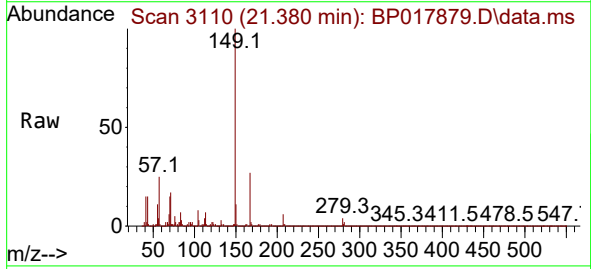
Ion	Ratio	Lower	Upper
228	100		
229	19.6	15.6	23.4
226	27.5	21.1	31.7

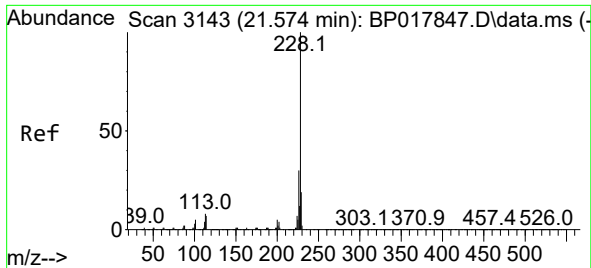


#86  
 Bis(2-ethylhexyl)phthalate  
 Concen: 44.562 ng/ul  
 RT: 21.380 min Scan# 3110  
 Delta R.T. -0.000 min  
 Lab File: BP017879.D  
 Acq: 02 Nov 2023 10:55

Tgt Ion: 149 Resp: 896130

Ion	Ratio	Lower	Upper
149	100		
167	27.0	21.6	32.4
279	4.5	3.6	5.4

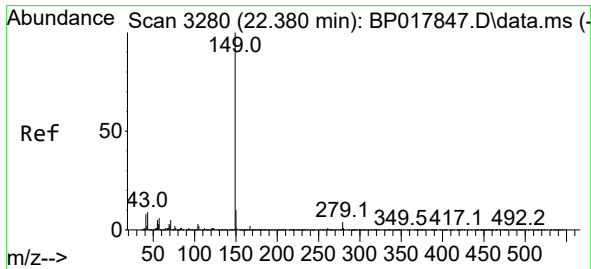
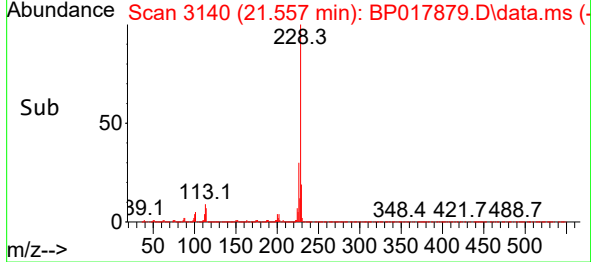
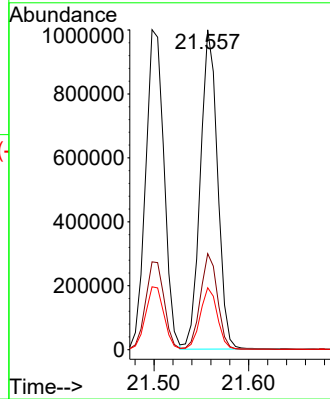
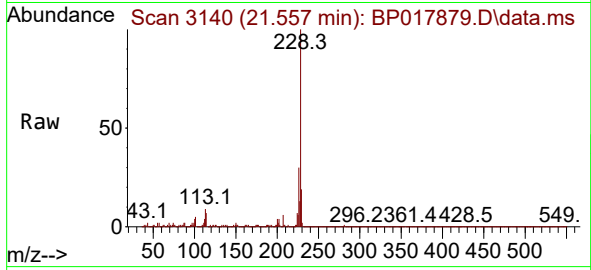




#87  
 Chrysene  
 Concen: 31.972 ng/ul  
 RT: 21.557 min Scan# 3143  
 Delta R.T. -0.000 min  
 Lab File: BP017879.D  
 Acq: 02 Nov 2023 10:55

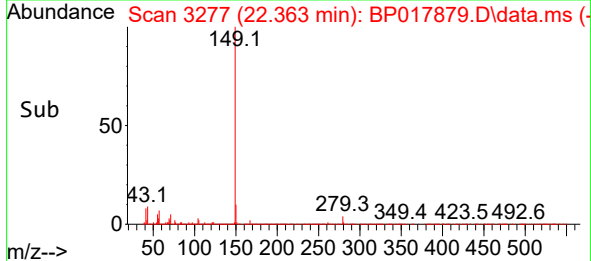
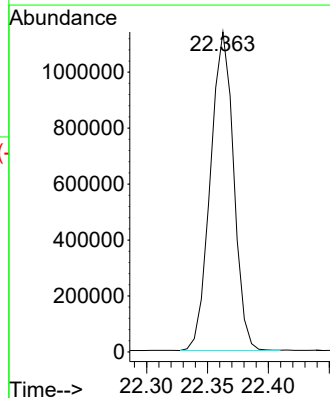
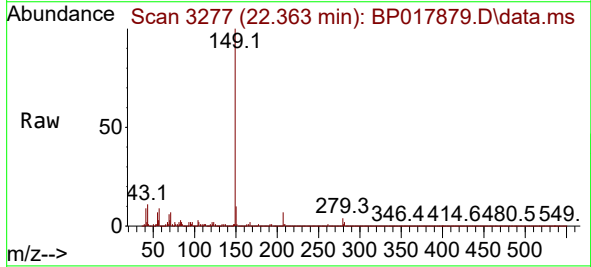
Instrument :  
 BNA\_P  
 ClientSampleId :  
 SLCS595

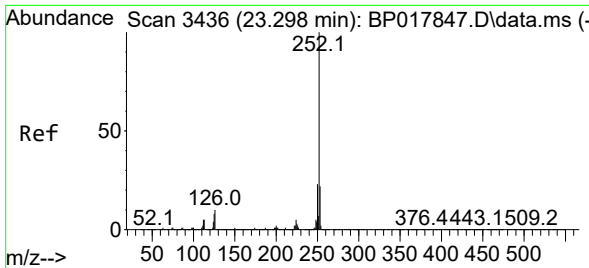
Tgt Ion:228 Resp: 1261491  
 Ion Ratio Lower Upper  
 228 100  
 226 30.0 24.0 36.0  
 229 19.4 15.5 23.3



#89  
 Di-n-octyl phthalate  
 Concen: 40.379 ng/ul  
 RT: 22.363 min Scan# 3277  
 Delta R.T. -0.000 min  
 Lab File: BP017879.D  
 Acq: 02 Nov 2023 10:55

Tgt Ion:149 Resp: 1510672



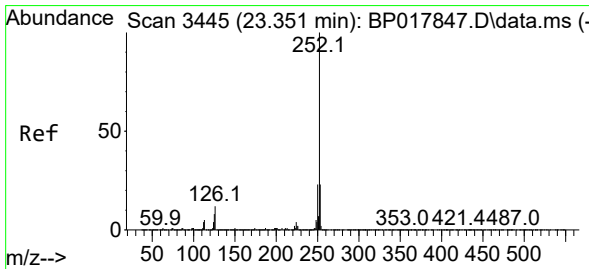
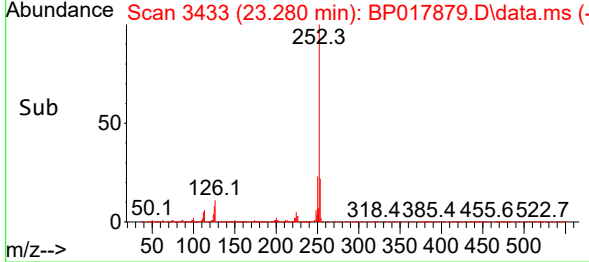
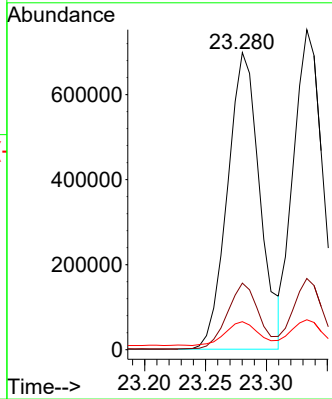
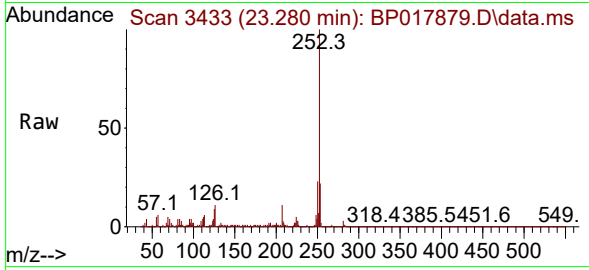


#90  
 Benzo(b)fluoranthene  
 Concen: 32.058 ng/ul  
 RT: 23.280 min Scan# 3436  
 Delta R.T. 0.006 min  
 Lab File: BP017879.D  
 Acq: 02 Nov 2023 10:55

Instrument : BNA\_P  
 ClientSampleId : SLCS595

Tgt Ion:252 Resp: 1288643

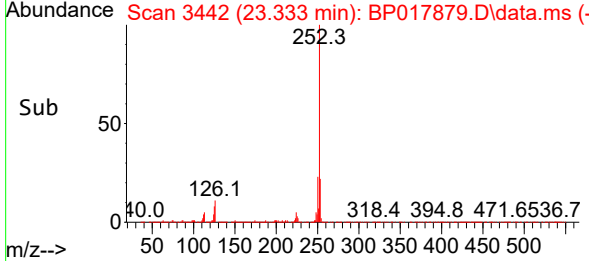
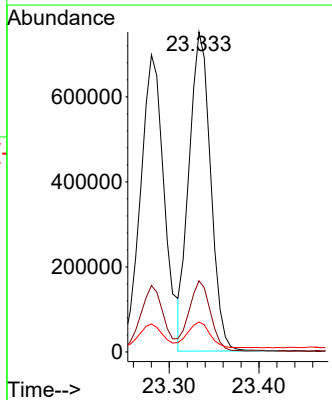
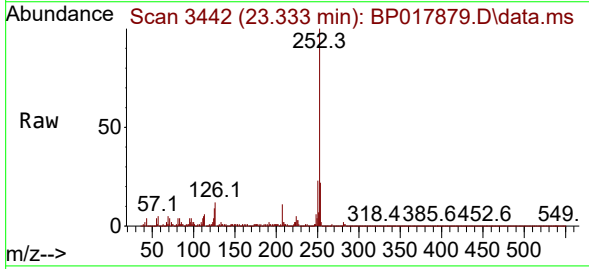
Ion	Ratio	Lower	Upper
252	100		
253	22.4	17.4	26.0
125	9.4	7.1	10.7

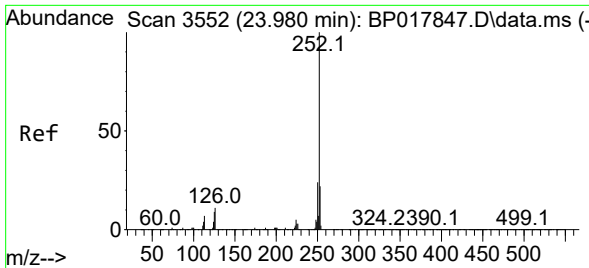


#91  
 Benzo(k)fluoranthene  
 Concen: 30.716 ng/ul  
 RT: 23.333 min Scan# 3442  
 Delta R.T. 0.006 min  
 Lab File: BP017879.D  
 Acq: 02 Nov 2023 10:55

Tgt Ion:252 Resp: 1251343

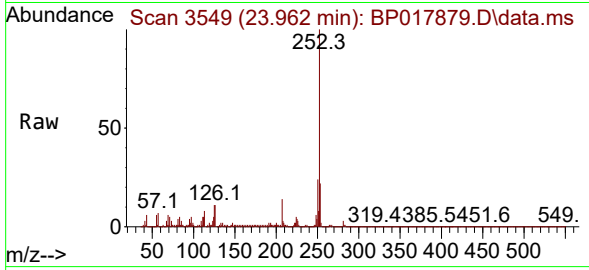
Ion	Ratio	Lower	Upper
252	100		
253	22.2	17.5	26.3
125	9.3	7.0	10.6



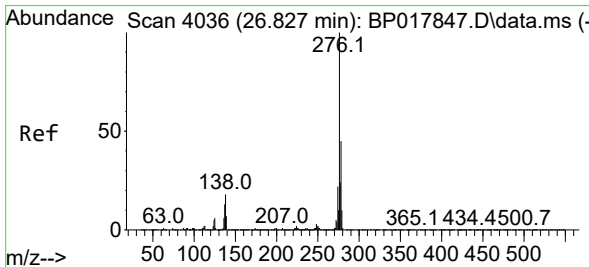
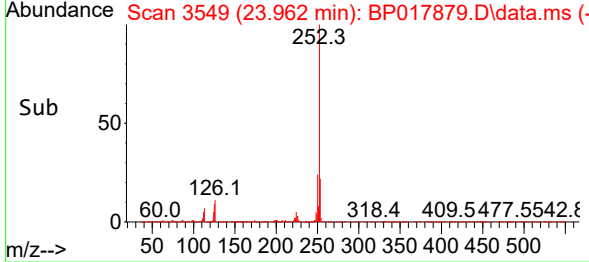
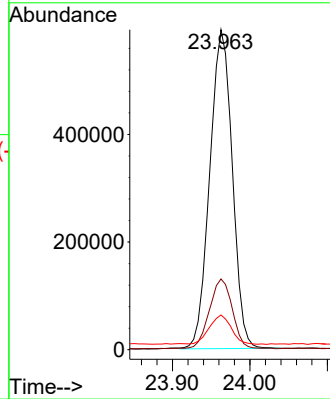


#93  
 Benzo(a)pyrene  
 Concen: 31.701 ng/u1  
 RT: 23.962 min Scan# 31  
 Delta R.T. 0.006 min  
 Lab File: BP017879.D  
 Acq: 02 Nov 2023 10:55

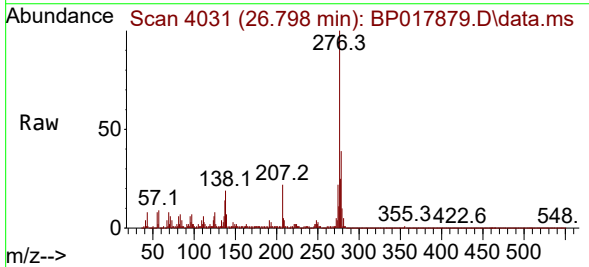
Instrument :  
 BNA\_P  
 ClientSampleId :  
 SLCS595



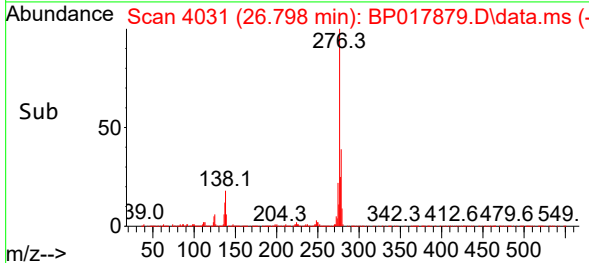
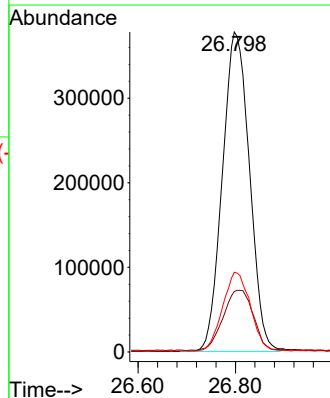
Tgt Ion:252 Resp: 1196285  
 Ion Ratio Lower Upper  
 252 100  
 253 22.1 17.4 26.2  
 125 10.9 7.8 11.6

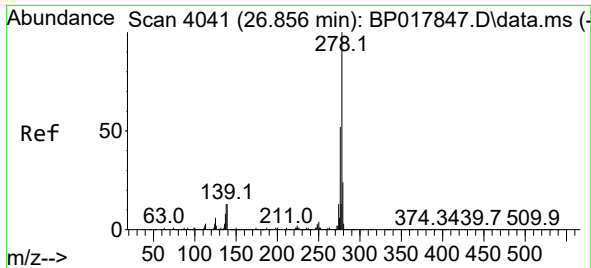


#94  
 Indeno(1,2,3-cd)pyrene  
 Concen: 32.398 ng/u1  
 RT: 26.798 min Scan# 4031  
 Delta R.T. 0.018 min  
 Lab File: BP017879.D  
 Acq: 02 Nov 2023 10:55



Tgt Ion:276 Resp: 1457133  
 Ion Ratio Lower Upper  
 276 100  
 138 18.9 15.6 23.4  
 277 24.9 19.4 29.2



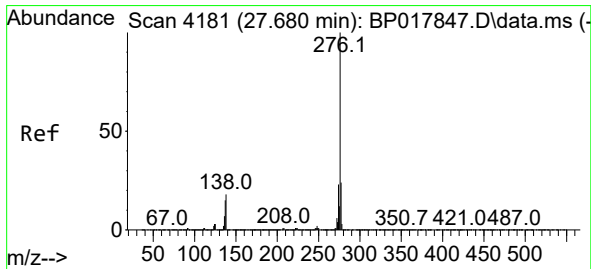
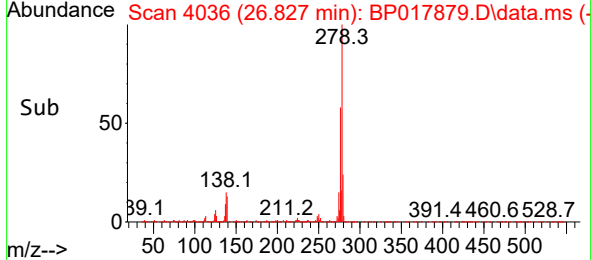
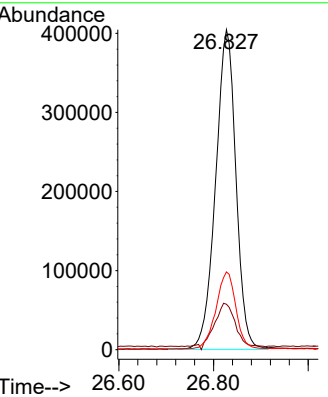
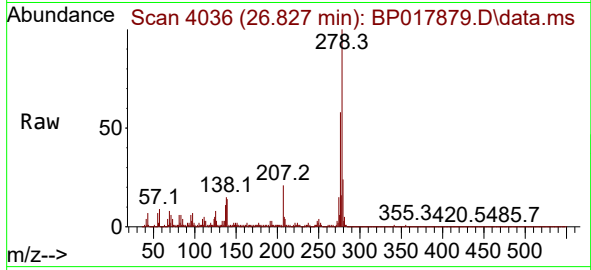


#95  
 Dibenzo(a,h)anthracene  
 Concen: 32.040 ng/ul  
 RT: 26.827 min Scan# 4036  
 Delta R.T. 0.018 min  
 Lab File: BP017879.D  
 Acq: 02 Nov 2023 10:55

Instrument : BNA\_P  
 ClientSampleId : SLCS595

Tgt Ion:278 Resp: 1202338

Ion	Ratio	Lower	Upper
278	100		
139	14.2	11.4	17.2
279	24.3	18.8	28.2



#96  
 Benzo(g,h,i)perylene  
 Concen: 31.963 ng/ul  
 RT: 27.651 min Scan# 4176  
 Delta R.T. 0.023 min  
 Lab File: BP017879.D  
 Acq: 02 Nov 2023 10:55

Tgt Ion:276 Resp: 1158233

Ion	Ratio	Lower	Upper
276	100		
138	18.3	15.0	22.6
277	23.9	18.5	27.7

