

Data Path : Z:\svoasrv\HPCHEM1\BNA_P\Data\BP111320\
 Data File : BP003951.D
 Acq On : 13 Nov 2020 13:05
 Operator : CG/JU
 Sample : SSTDCCC040
 Misc :
 ALS Vial : 2 Sample Multiplier: 1

Instrument :
 BNA_P
 ClientSampleId :
 SSTDCCC040

Quant Time: Nov 13 14:21:41 2020
 Quant Method : Z:\SVOASRV\HPCHEM1\BNA_P\METHODS\8270-BP110320.M
 Quant Title : ASP BNA STANDARDS FOR 5 POINT CALIBRATION
 QLast Update : Thu Nov 12 15:22:47 2020
 Response via : Initial Calibration

Compound	R.T.	QIon	Response	Conc Units	Dev(Min)	
Internal Standards						
1) 1,4-Dichlorobenzene-d4	8.281	152	148922	20.00 ng	0.00	
21) Naphthalene-d8	11.116	136	552752	20.00 ng	# 0.00	
39) Acenaphthene-d10	14.910	164	355562	20.00 ng	0.00	
64) Phenanthrene-d10	17.639	188	770626	20.00 ng	# 0.00	
76) Chrysene-d12	21.680	240	657510	20.00 ng	0.00	
86) Perylene-d12	24.162	264	695599	20.00 ng	0.00	
System Monitoring Compounds						
5) 2-Fluorophenol	5.804	112	696438	78.05 ng	0.00	
7) Phenol-d6	7.457	99	990510	77.33 ng	0.00	
23) Nitrobenzene-d5	9.445	82	890197	78.87 ng	0.00	
42) 2,4,6-Tribromophenol	16.392	330	365947	82.29 ng	0.00	
45) 2-Fluorobiphenyl	13.528	172	1912121	75.18 ng	0.00	
79) Terphenyl-d14	20.139	244	2772859	81.47 ng	0.00	
Target Compounds						
2) 1,4-Dioxane	3.493	88	140027	36.37 ng	# 59	
3) Pyridine	3.934	79	415396	36.79 ng	# 58	
4) n-Nitrosodimethylamine	3.834	42	208430	40.10 ng	# 51	
6) Aniline	7.587	93	562869	38.70 ng	# 82	
8) 2-Chlorophenol	7.851	128	370795	39.14 ng	# 79	
9) Benzaldehyde	7.387	77	239723	42.33 ng	# 79	
10) Phenol	7.481	94	473159	38.28 ng	80	
11) bis(2-Chloroethyl)ether	7.675	93	378482	38.10 ng	# 79	
12) 1,3-Dichlorobenzene	8.181	146	447266	38.52 ng	# 95	
13) 1,4-Dichlorobenzene	8.316	146	454669	38.84 ng	96	
14) 1,2-Dichlorobenzene	8.651	146	430224	38.48 ng	97	
15) Benzyl Alcohol	8.516	79	364937	41.13 ng	# 87	
16) 2,2'-oxybis(1-Chloropr...	8.810	45	641994	38.37 ng	81	
17) 2-Methylphenol	8.745	107	320137	39.45 ng	# 93	
18) Hexachloroethane	9.393	117	167458	40.26 ng	97	
19) n-Nitroso-di-n-propyla...	9.087	70	311538	40.69 ng	# 75	
20) 3+4-Methylphenols	9.075	107	433275	40.00 ng	93	
22) Acetophenone	9.104	105	584647	39.41 ng	# 85	
24) Nitrobenzene	9.492	77	452313	40.33 ng	# 81	
25) Isophorone	10.016	82	801089	41.79 ng	# 91	
26) 2-Nitrophenol	10.216	139	207941	47.48 ng	# 73	
27) 2,4-Dimethylphenol	10.281	122	292959	40.10 ng	92	
28) bis(2-Chloroethoxy)met...	10.487	93	514498	39.11 ng	98	
29) 2,4-Dichlorophenol	10.775	162	360548	40.96 ng	95	
30) 1,2,4-Trichlorobenzene	10.987	180	420629	39.22 ng	98	
31) Naphthalene	11.169	128	1108609	37.37 ng	99	
32) Benzoic acid	10.445	122	144932	31.67 ng	# 81	
33) 4-Chloroaniline	11.257	127	485334	38.50 ng	# 89	
34) Hexachlorobutadiene	11.475	225	275895	39.44 ng	97	
35) Caprolactam	11.998	113	119731	43.99 ng	# 14	
36) 4-Chloro-3-methylphenol	12.386	107	382627	40.26 ng	89	
37) 2-Methylnaphthalene	12.751	142	813886	38.34 ng	98	
38) 1-Methylnaphthalene	12.969	142	770253	38.04 ng	97	
40) 1,2,4,5-Tetrachloroben...	13.133	216	444933	37.81 ng	99	
41) Hexachlorocyclopentadiene	13.122	237	185312	31.21 ng	99	
43) 2,4,6-Trichlorophenol	13.357	196	292230	40.17 ng	99	

Data Path : Z:\svoasrv\HPCHEM1\BNA_P\Data\BP111320\
 Data File : BP003951.D
 Acq On : 13 Nov 2020 13:05
 Operator : CG/JU
 Sample : SSTDCCC040
 Misc :
 ALS Vial : 2 Sample Multiplier: 1

Instrument :
 BNA_P
 ClientSampleId :
 SSTDCCC040

Quant Time: Nov 13 14:21:41 2020
 Quant Method : Z:\SVOASRV\HPCHEM1\BNA_P\METHODS\8270-BP110320.M
 Quant Title : ASP BNA STANDARDS FOR 5 POINT CALIBRATION
 QLast Update : Thu Nov 12 15:22:47 2020
 Response via : Initial Calibration

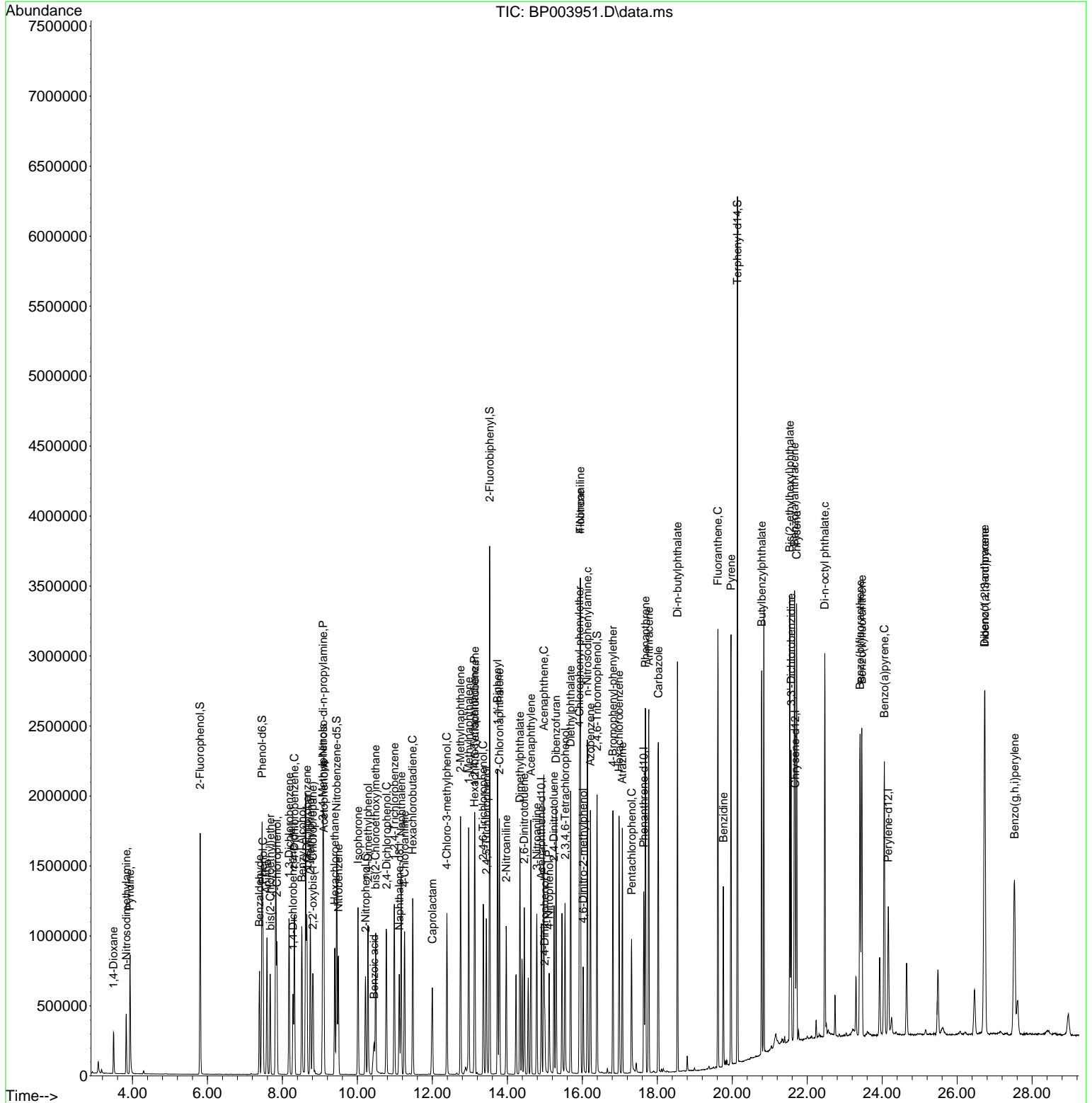
Compound	R.T.	QIon	Response	Conc	Units	Dev(Min)	
44) 2,4,5-Trichlorophenol	13.439	196	289406	37.78	ng	#	95
46) 1,1'-Biphenyl	13.739	154	1059043	38.37	ng		98
47) 2-Chloronaphthalene	13.786	162	860843	38.01	ng		99
48) 2-Nitroaniline	13.969	65	298204	44.13	ng	#	58
49) Acenaphthylene	14.628	152	1268329	38.14	ng		100
50) Dimethylphthalate	14.333	163	1037228	37.32	ng		100
51) 2,6-Dinitrotoluene	14.451	165	238469	41.82	ng	#	72
52) Acenaphthene	14.975	154	821484	37.08	ng		98
53) 3-Nitroaniline	14.786	138	262067	41.52	ng	#	76
54) 2,4-Dinitrophenol	14.998	184	91127	37.81	ng	#	69
55) Dibenzofuran	15.298	168	1223045	37.16	ng		98
56) 4-Nitrophenol	15.116	139	173538	38.14	ng	#	61
57) 2,4-Dinitrotoluene	15.245	165	327061	42.72	ng	#	74
58) Fluorene	15.945	166	1021544	38.76	ng		99
59) 2,3,4,6-Tetrachlorophenol	15.539	232	257060	37.23	ng		97
60) Diethylphthalate	15.686	149	1102587	40.52	ng		99
61) 4-Chlorophenyl-phenyle...	15.922	204	557296	38.69	ng		100
62) 4-Nitroaniline	15.945	138	281682	42.80	ng		85
63) Azobenzene	16.216	77	1013320	39.44	ng		83
65) 4,6-Dinitro-2-methylph...	16.022	198	158365	39.47	ng	#	77
66) n-Nitrosodiphenylamine	16.133	169	902572	38.26	ng		97
67) 4-Bromophenyl-phenylether	16.816	248	346911	38.47	ng		97
68) Hexachlorobenzene	16.980	284	388455	37.76	ng		96
69) Atrazine	17.069	200	307493	39.70	ng		99
70) Pentachlorophenol	17.316	266	186606	37.92	ng		99
71) Phenanthrene	17.686	178	1621525	37.49	ng		99
72) Anthracene	17.774	178	1591457	38.10	ng		99
73) Carbazole	18.027	167	1482075	38.24	ng		100
74) Di-n-butylphthalate	18.539	149	1881435	41.94	ng	#	99
75) Fluoranthene	19.615	202	1810574	36.28	ng		99
77) Benzidine	19.763	184	673911	43.45	ng		99
78) Pyrene	19.968	202	1842861	41.30	ng		98
80) Butylbenzylphthalate	20.786	149	788000	47.40	ng	#	87
81) Benzo(a)anthracene	21.662	228	1698531	39.17	ng		98
82) 3,3'-Dichlorobenzidine	21.568	252	614633	41.09	ng		99
83) Chrysene	21.715	228	1596401	38.32	ng		99
84) Bis(2-ethylhexyl)phtha...	21.533	149	1094360	44.66	ng		99
85) Di-n-octyl phthalate	22.468	149	1843400	45.15	ng	#	86
87) Indeno(1,2,3-cd)pyrene	26.739	276	1841781	36.70	ng		98
88) Benzo(b)fluoranthene	23.409	252	1695216	37.24	ng		99
89) Benzo(k)fluoranthene	23.456	252	1567459	34.87	ng		98
90) Benzo(a)pyrene	24.056	252	1560056	37.02	ng		99
91) Dibenzo(a,h)anthracene	26.733	278	1541942	36.86	ng		98
92) Benzo(g,h,i)perylene	27.533	276	1489635	36.79	ng		97

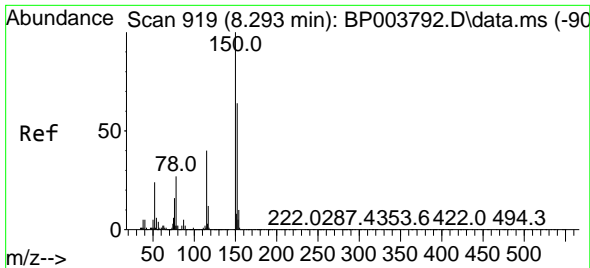
(#) = qualifier out of range (m) = manual integration (+) = signals summed

Data Path : Z:\svoasrv\HPCHEM1\BNA_P\Data\BP111320\
 Data File : BP003951.D
 Acq On : 13 Nov 2020 13:05
 Operator : CG/JU
 Sample : SSTDCCC040
 Misc :
 ALS Vial : 2 Sample Multiplier: 1

Instrument :
 BNA_P
 Client Sampled :
 SSTDCCC040

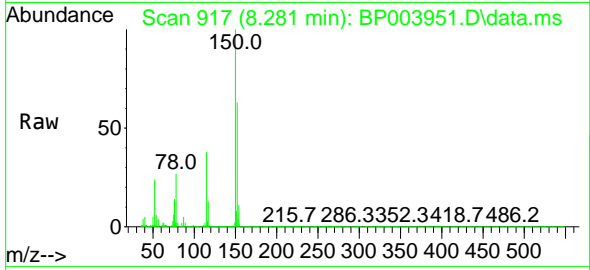
Quant Time: Nov 13 14:21:41 2020
 Quant Method : Z:\SVOASRV\HPCHEM1\BNA_P\METHODS\8270-BP110320.M
 Quant Title : ASP BNA STANDARDS FOR 5 POINT CALIBRATION
 QLast Update : Thu Nov 12 15:22:47 2020
 Response via : Initial Calibration





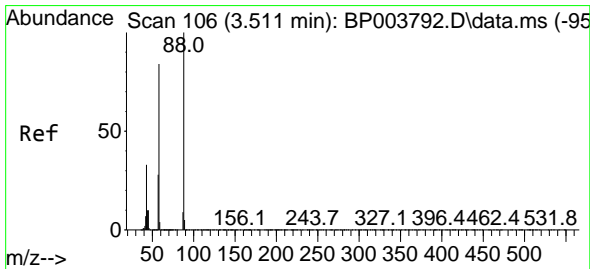
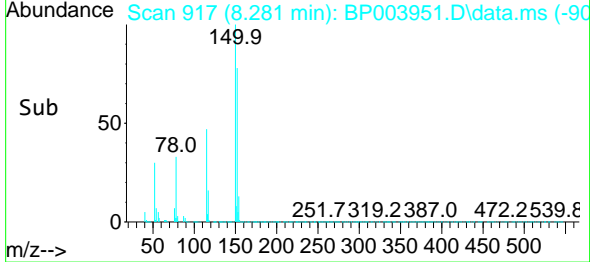
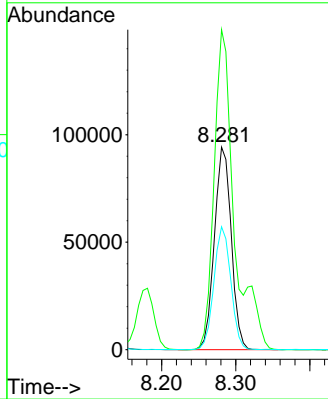
#1
 1,4-Dichlorobenzene-d4
 Concen: 20.00 ng
 RT: 8.281 min Scan# 917
 Delta R.T. -0.000 min
 Lab File: BP003951.D
 Acq: 13 Nov 2020 13:05

Instrument :
 BNA_P
 ClientSampled :
 SSTDCCC040



Tgt Ion:152 Resp: 148922

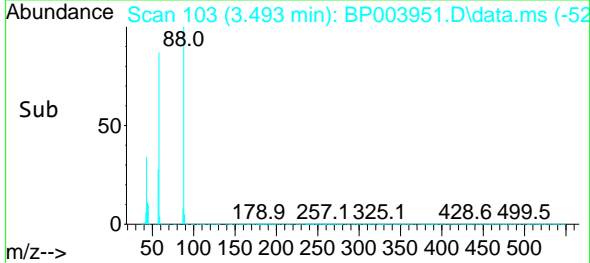
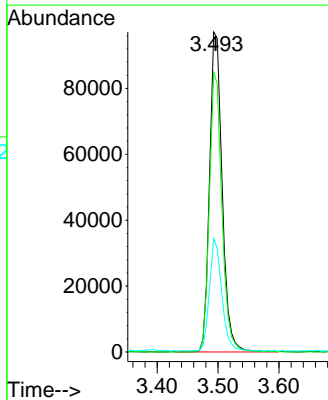
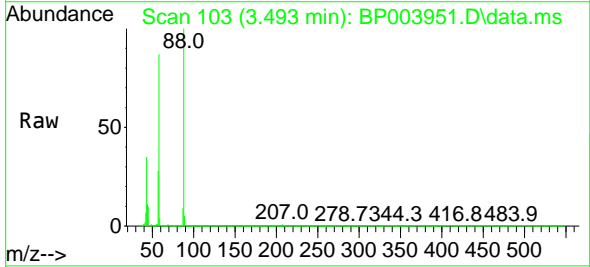
Ion	Ratio	Lower	Upper
152	100		
150	158.0	123.8	185.6
115	60.7	43.8	65.6

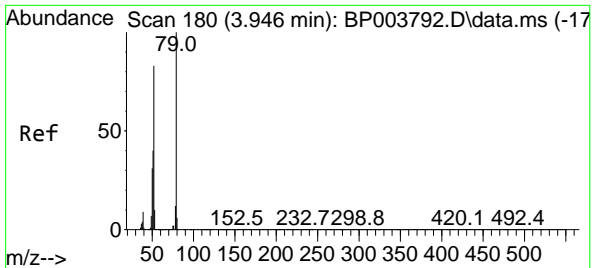


#2
 1,4-Dioxane
 Concen: 36.37 ng
 RT: 3.493 min Scan# 103
 Delta R.T. -0.000 min
 Lab File: BP003951.D
 Acq: 13 Nov 2020 13:05

Tgt Ion: 88 Resp: 140027

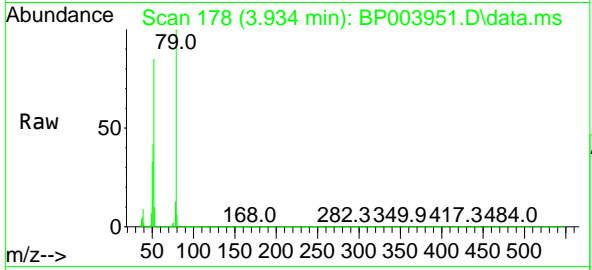
Ion	Ratio	Lower	Upper
88	100		
58	86.5	44.2	66.4#
43	34.5	15.2	22.8#





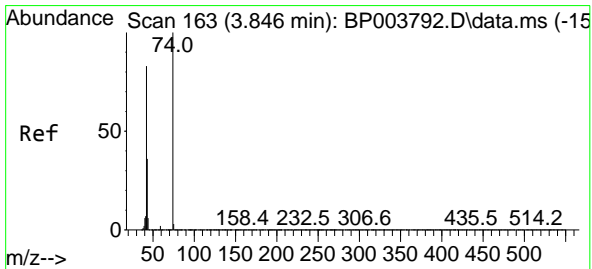
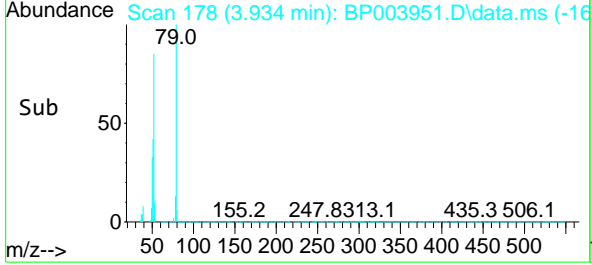
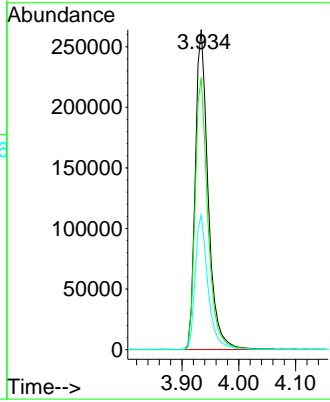
#3
 Pyridine
 Concen: 36.79 ng
 RT: 3.934 min Scan# 178
 Delta R.T. 0.006 min
 Lab File: BP003951.D
 Acq: 13 Nov 2020 13:05

Instrument :
 BNA_P
ClientSampleId :
 SSTDCCC040

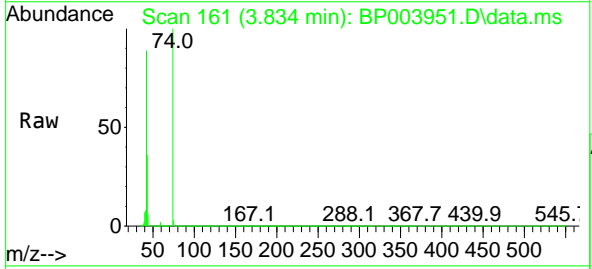


Tgt Ion: 79 Resp: 415396

Ion	Ratio	Lower	Upper
79	100		
52	85.0	41.3	61.9#
51	42.0	21.2	31.8#

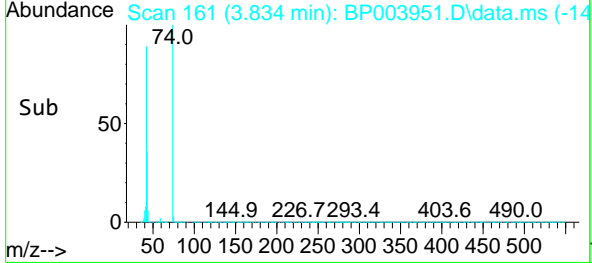
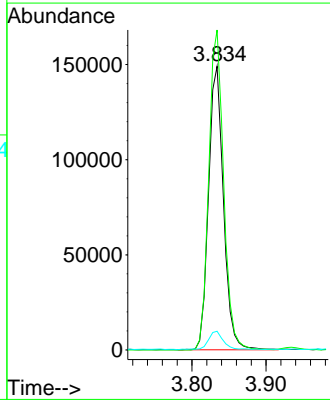


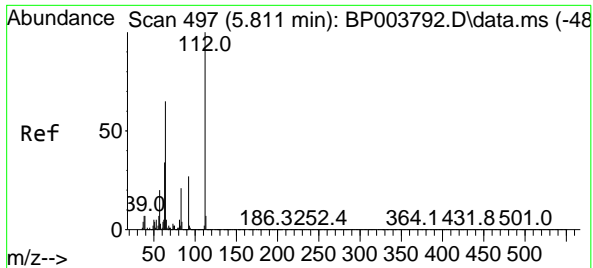
#4
 n-Nitrosodimethylamine
 Concen: 40.10 ng
 RT: 3.834 min Scan# 161
 Delta R.T. 0.006 min
 Lab File: BP003951.D
 Acq: 13 Nov 2020 13:05



Tgt Ion: 42 Resp: 208430

Ion	Ratio	Lower	Upper
42	100		
74	112.8	148.6	223.0#
44	6.6	5.3	7.9

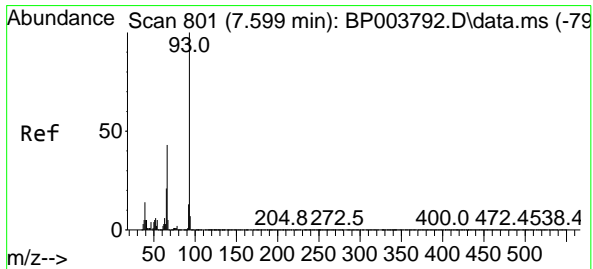
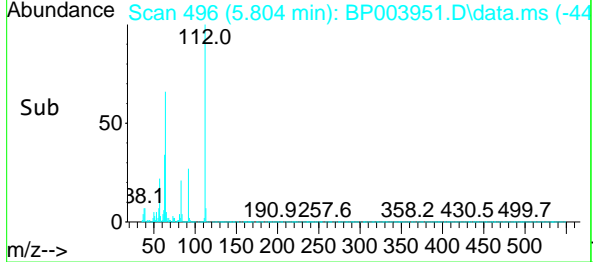
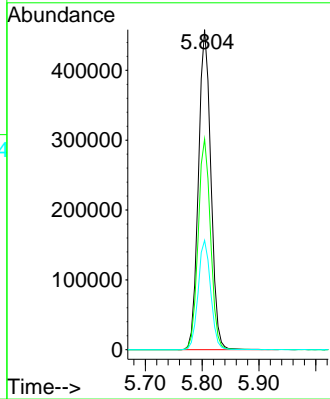
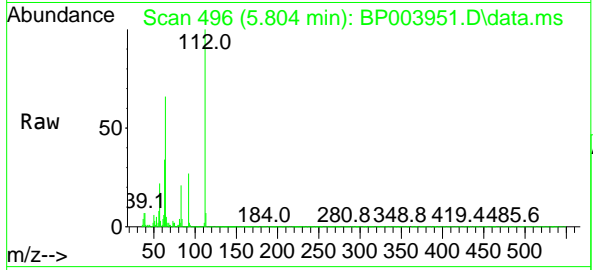




#5
 2-Fluorophenol
 Concen: 78.05 ng
 RT: 5.804 min Scan# 496
 Delta R.T. -0.000 min
 Lab File: BP003951.D
 Acq: 13 Nov 2020 13:05

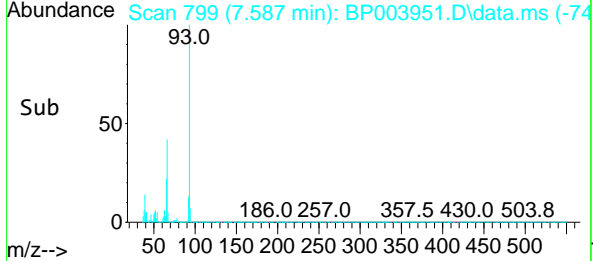
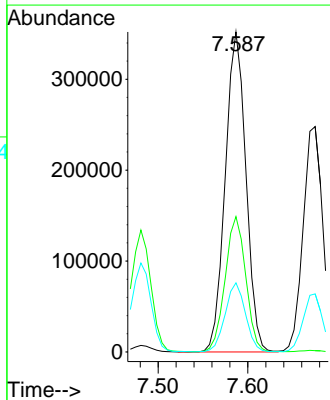
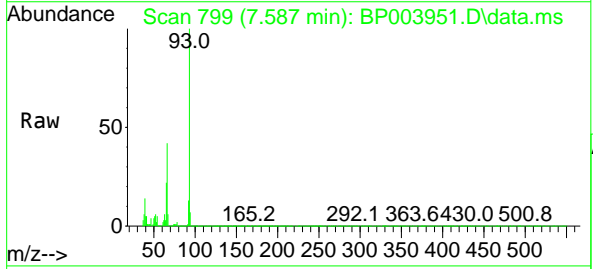
Instrument :
 BNA_P
ClientSampleId :
 SSTDCCC040

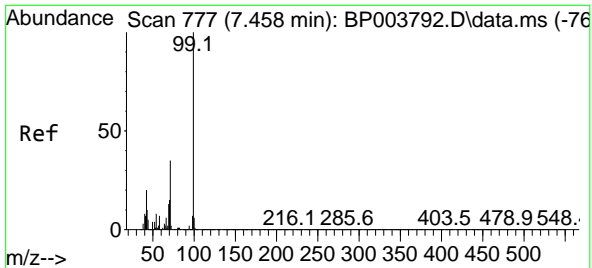
Tgt Ion	Resp	Lower	Upper
112	100		
64	65.8	32.8	49.2#
63	34.2	17.0	25.4#



#6
 Aniline
 Concen: 38.70 ng
 RT: 7.587 min Scan# 799
 Delta R.T. -0.000 min
 Lab File: BP003951.D
 Acq: 13 Nov 2020 13:05

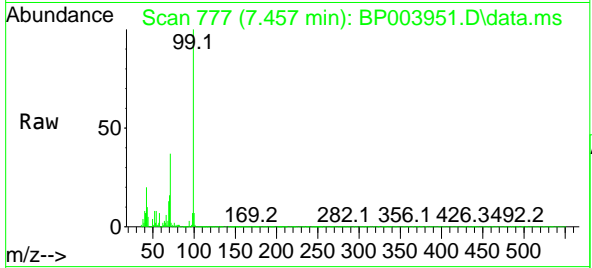
Tgt Ion	Resp	Lower	Upper
93	100		
66	42.3	25.4	38.0#
65	21.6	12.5	18.7#



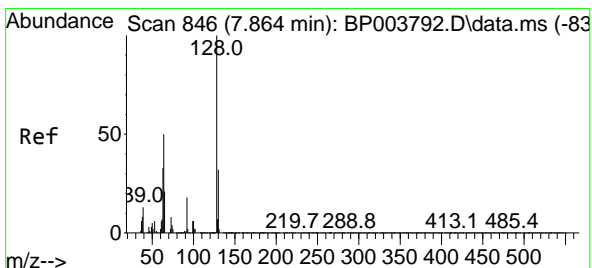
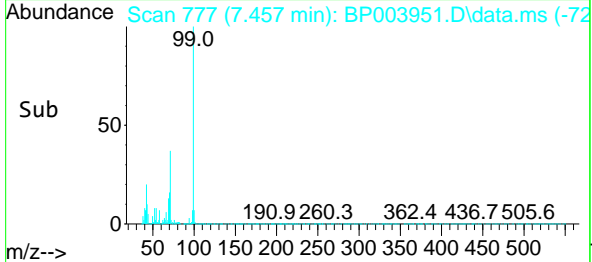
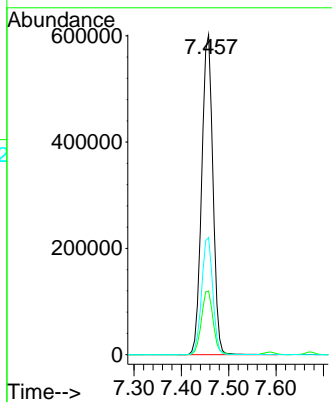


#7
 Phenol-d6
 Concen: 77.33 ng
 RT: 7.457 min Scan# 777
 Delta R.T. 0.006 min
 Lab File: BP003951.D
 Acq: 13 Nov 2020 13:05

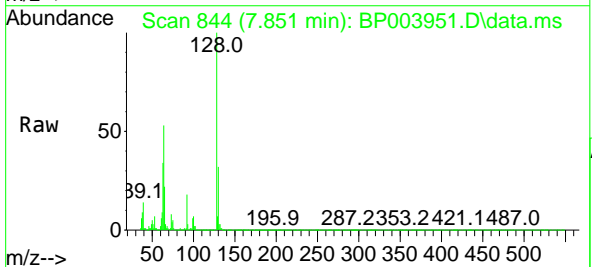
Instrument :
 BNA_P
 ClientSampleId :
 SSTDCCC040



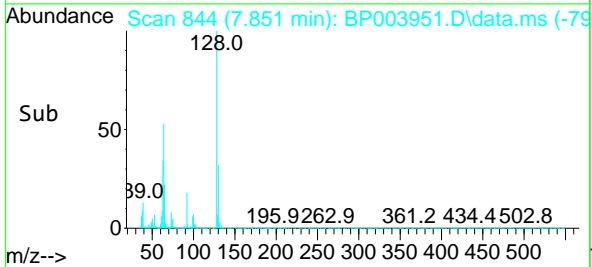
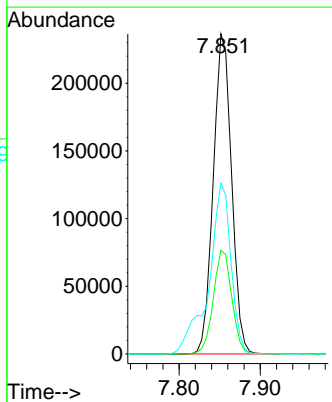
Tgt Ion: 99 Resp: 990510
 Ion Ratio Lower Upper
 99 100
 42 19.9 8.6 13.0#
 71 36.6 23.4 35.2#

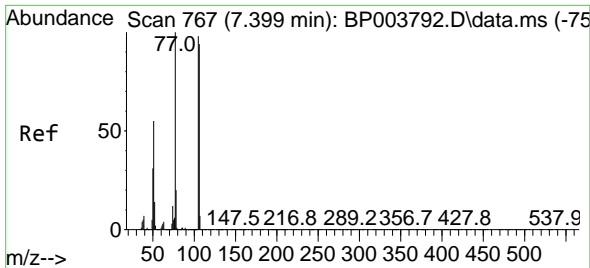


#8
 2-Chlorophenol
 Concen: 39.14 ng
 RT: 7.851 min Scan# 844
 Delta R.T. -0.000 min
 Lab File: BP003951.D
 Acq: 13 Nov 2020 13:05



Tgt Ion: 128 Resp: 370795
 Ion Ratio Lower Upper
 128 100
 130 32.4 13.0 53.0
 64 53.4 10.4 50.4#

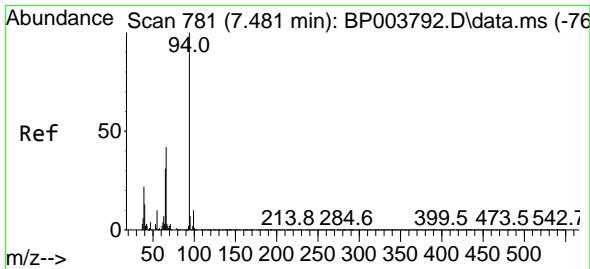
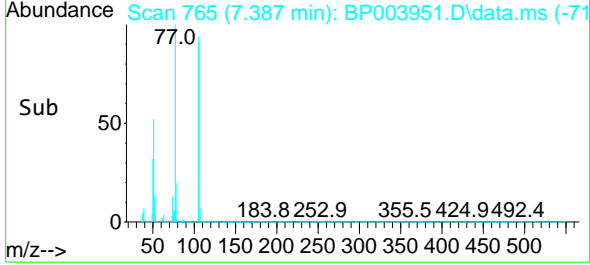
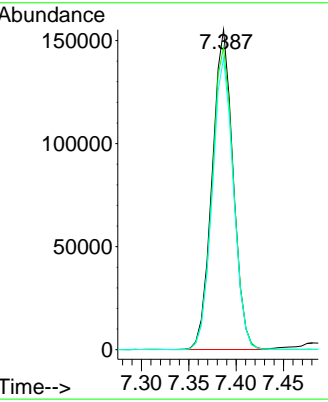
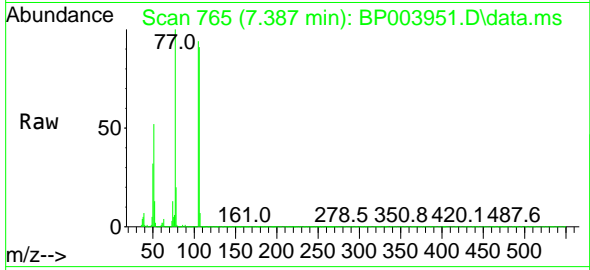




#9
 Benzaldehyde
 Concen: 42.33 ng
 RT: 7.387 min Scan# 765
 Delta R.T. -0.000 min
 Lab File: BP003951.D
 Acq: 13 Nov 2020 13:05

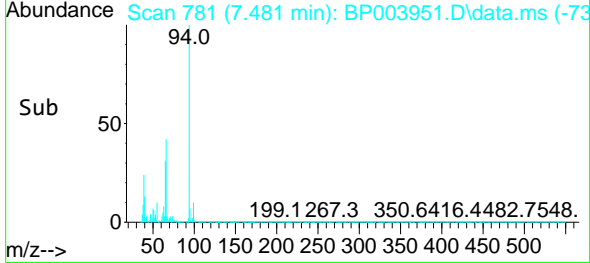
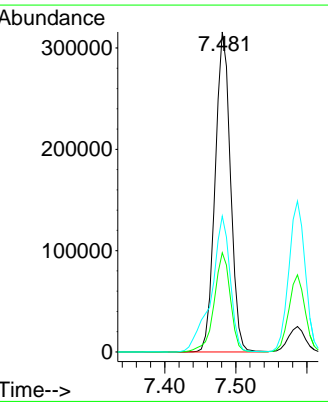
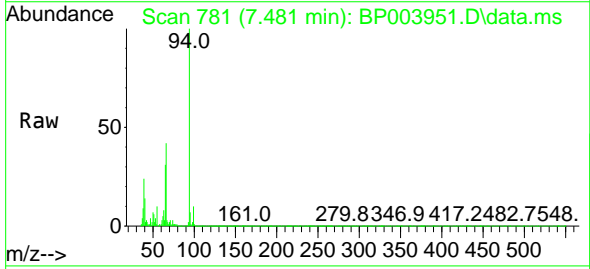
Instrument :
 BNA_P
ClientSampled :
 SSTDCCC040

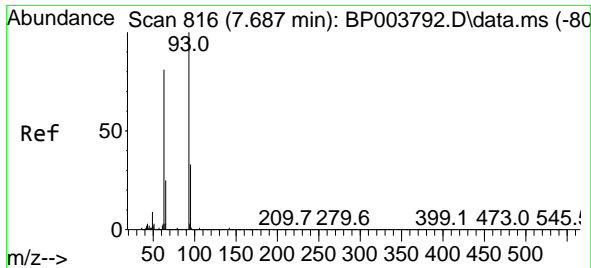
Tgt Ion	Resp	Lower	Upper
77	100		
105	94.4	97.1	137.1#
106	91.1	93.7	133.7#



#10
 Phenol
 Concen: 38.28 ng
 RT: 7.481 min Scan# 781
 Delta R.T. -0.000 min
 Lab File: BP003951.D
 Acq: 13 Nov 2020 13:05

Tgt Ion	Resp	Lower	Upper
94	100		
65	31.0	2.3	42.3
66	42.5	10.9	50.9

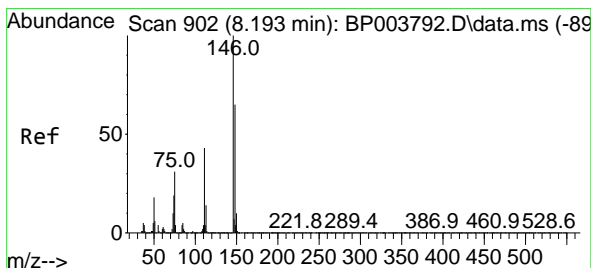
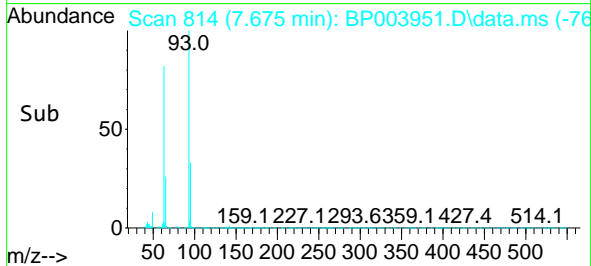
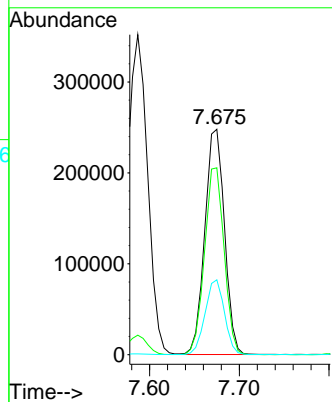
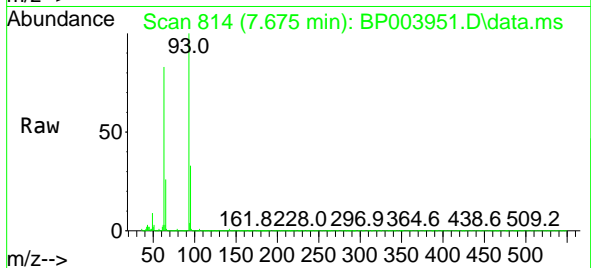




#11
 bis(2-Chloroethyl)ether
 Concen: 38.10 ng
 RT: 7.675 min Scan# 814
 Delta R.T. 0.006 min
 Lab File: BP003951.D
 Acq: 13 Nov 2020 13:05

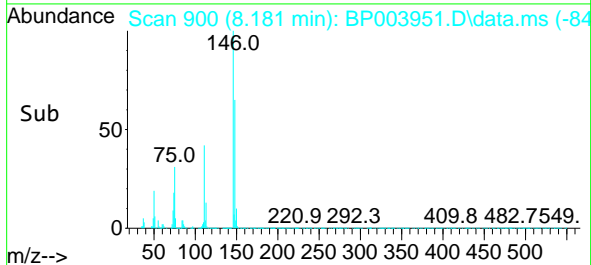
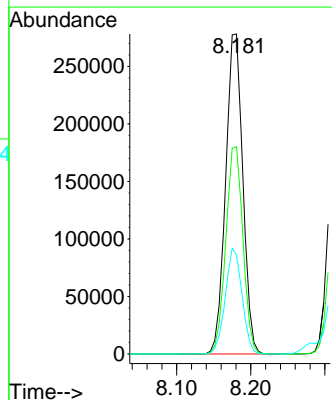
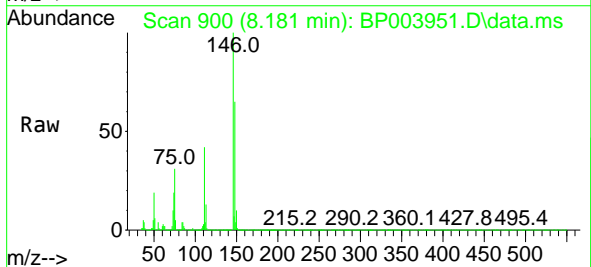
Instrument :
 BNA_P
 ClientSampleId :
 SSTDCCC040

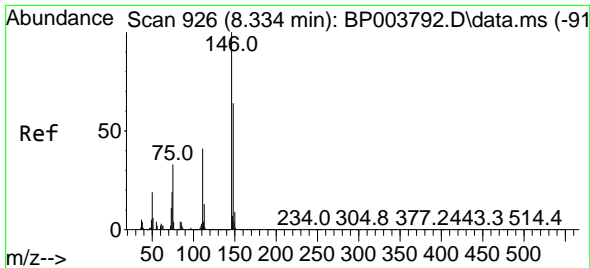
Tgt Ion: 93 Resp: 378482
 Ion Ratio Lower Upper
 93 100
 63 82.9 39.0 79.0#
 95 33.2 12.8 52.8



#12
 1,3-Dichlorobenzene
 Concen: 38.52 ng
 RT: 8.181 min Scan# 900
 Delta R.T. 0.006 min
 Lab File: BP003951.D
 Acq: 13 Nov 2020 13:05

Tgt Ion: 146 Resp: 447266
 Ion Ratio Lower Upper
 146 100
 148 64.8 52.5 78.7
 75 31.0 18.1 27.1#

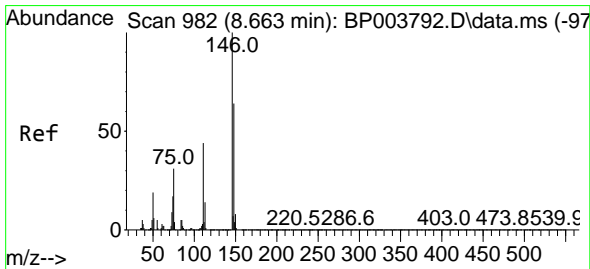
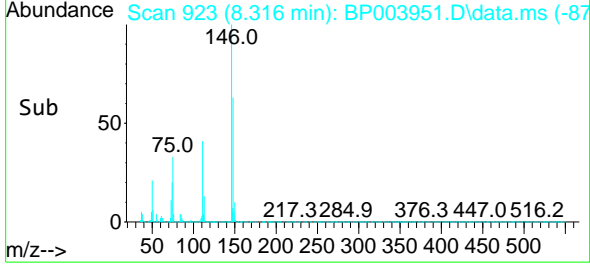
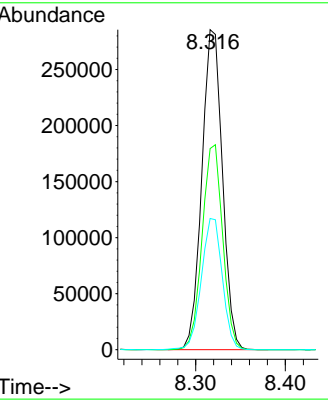
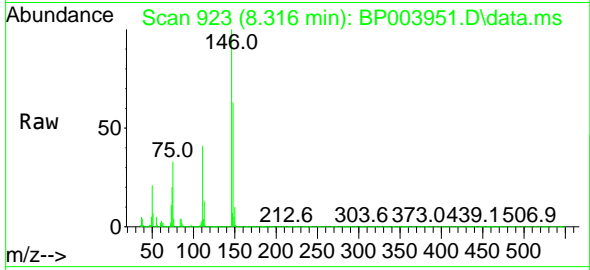




#13
 1,4-Dichlorobenzene
 Concen: 38.84 ng
 RT: 8.316 min Scan# 923
 Delta R.T. -0.000 min
 Lab File: BP003951.D
 Acq: 13 Nov 2020 13:05

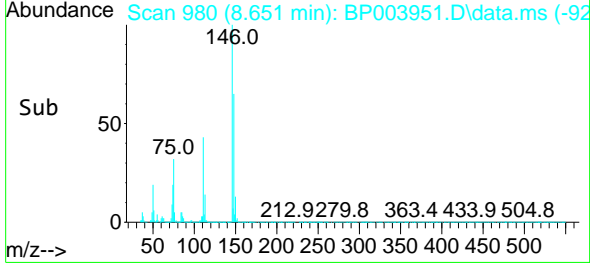
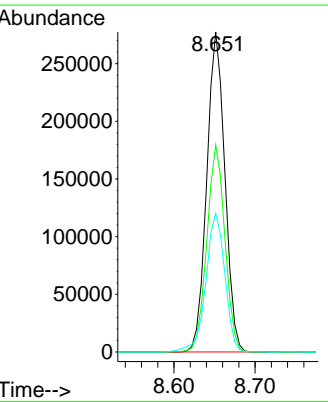
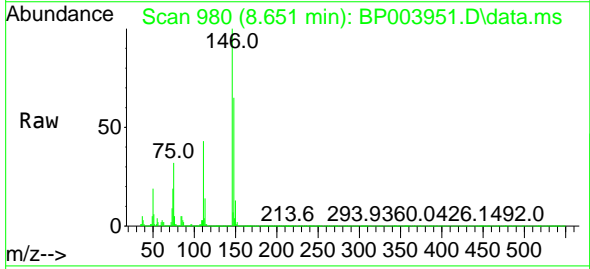
Instrument :
 BNA_P
 ClientSampleId :
 SSTDCCC040

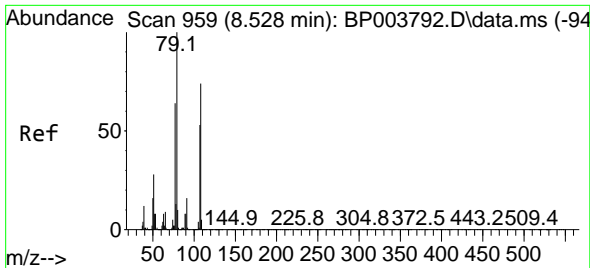
Tgt Ion	Resp	Lower	Upper
146	100		
148	62.8	51.3	76.9
111	41.0	28.9	43.3



#14
 1,2-Dichlorobenzene
 Concen: 38.48 ng
 RT: 8.651 min Scan# 980
 Delta R.T. -0.000 min
 Lab File: BP003951.D
 Acq: 13 Nov 2020 13:05

Tgt Ion	Resp	Lower	Upper
146	100		
148	64.6	51.6	77.4
111	43.4	31.0	46.6

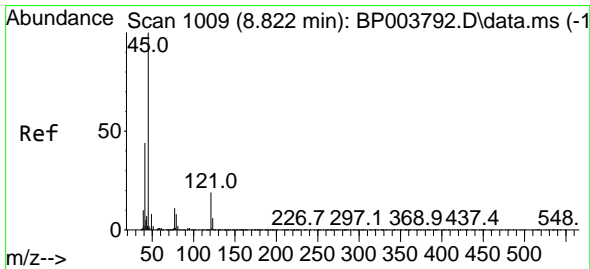
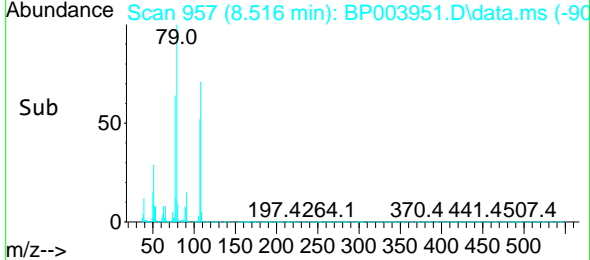
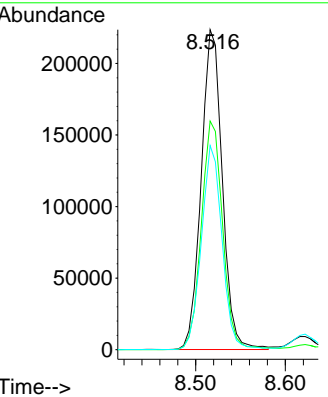
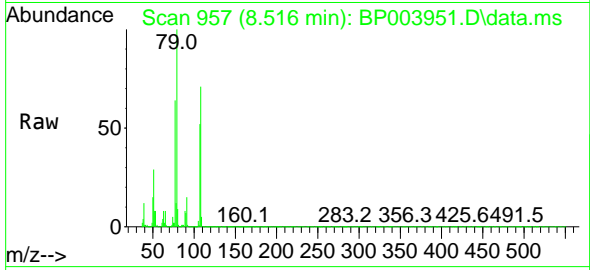




#15
 Benzyl Alcohol
 Concen: 41.13 ng
 RT: 8.516 min Scan# 957
 Delta R.T. -0.000 min
 Lab File: BP003951.D
 Acq: 13 Nov 2020 13:05

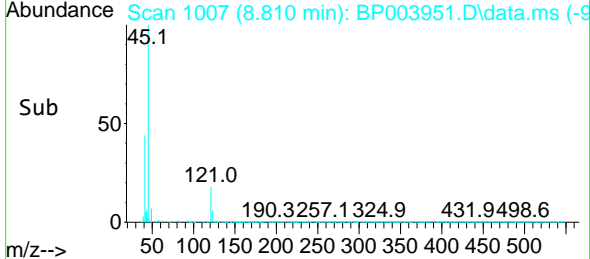
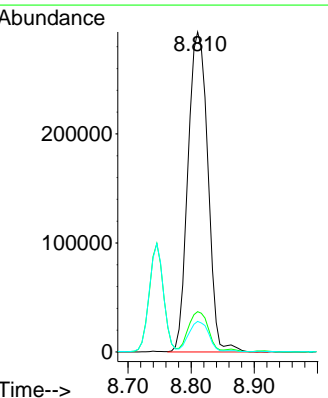
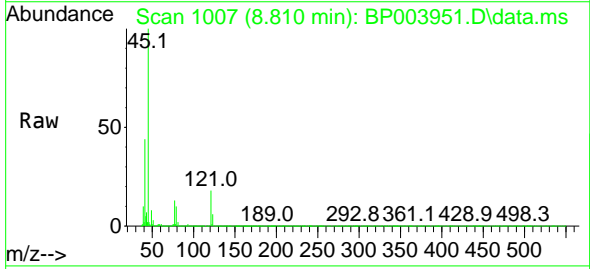
Instrument :
 BNA_P
 ClientSampleId :
 SSTDCCC040

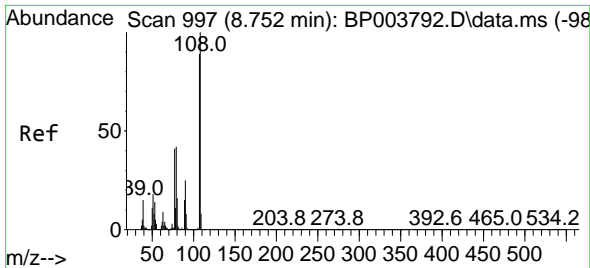
Tgt Ion	Resp	Lower	Upper
79	100		
108	71.4	73.5	110.3#
77	63.8	50.3	75.5



#16
 2,2'-oxybis(1-Chloropropane)
 Concen: 38.37 ng
 RT: 8.810 min Scan# 1007
 Delta R.T. -0.000 min
 Lab File: BP003951.D
 Acq: 13 Nov 2020 13:05

Tgt Ion	Resp	Lower	Upper
45	100		
77	12.6	2.3	42.3
79	9.5	0.0	36.6

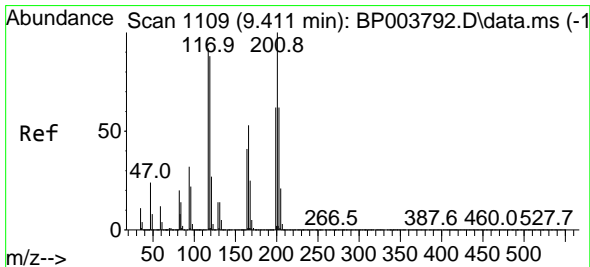
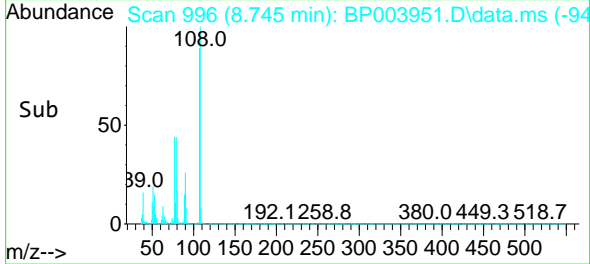
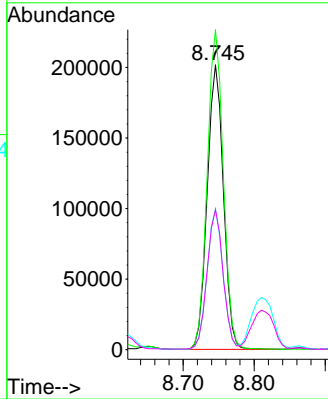
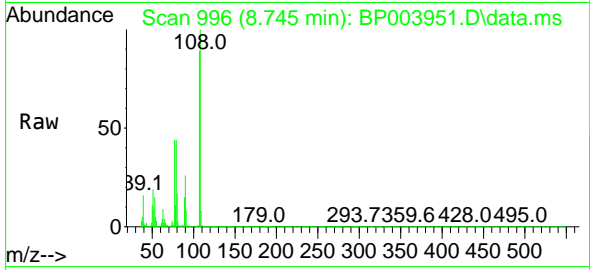




#17
 2-Methylphenol
 Concen: 39.45 ng
 RT: 8.745 min Scan# 996
 Delta R.T. -0.000 min
 Lab File: BP003951.D
 Acq: 13 Nov 2020 13:05

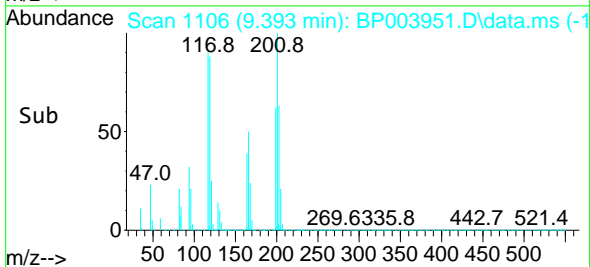
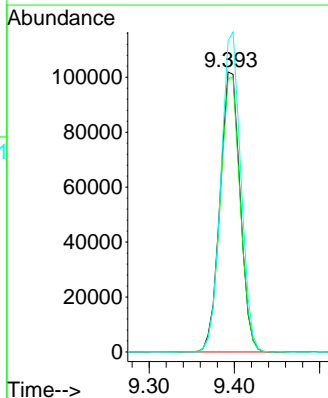
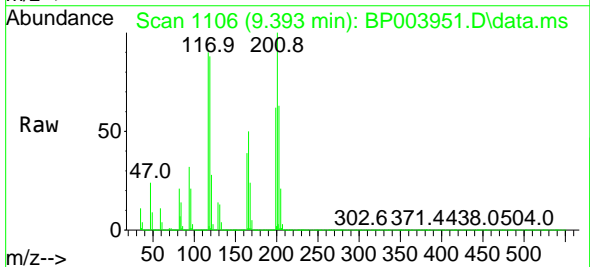
Instrument :
 BNA_P
 ClientSampleId :
 SSTDCCC040

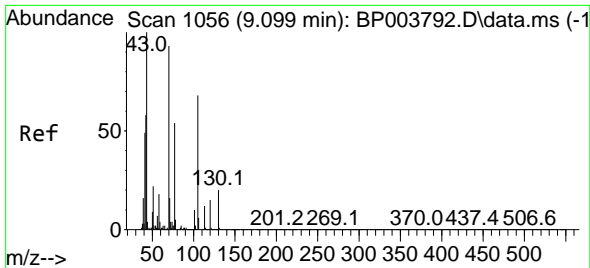
Tgt Ion	Resp	Lower	Upper
107	100		
108	112.3	89.6	134.4
77	49.3	31.8	47.6#
79	49.2	31.1	46.7#



#18
 Hexachloroethane
 Concen: 40.26 ng
 RT: 9.393 min Scan# 1106
 Delta R.T. -0.000 min
 Lab File: BP003951.D
 Acq: 13 Nov 2020 13:05

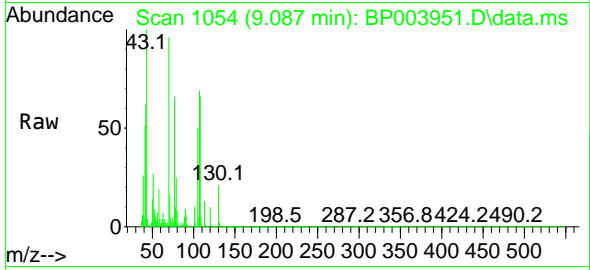
Tgt Ion	Resp	Lower	Upper
117	100		
119	97.6	78.8	118.2
201	111.1	92.3	138.5





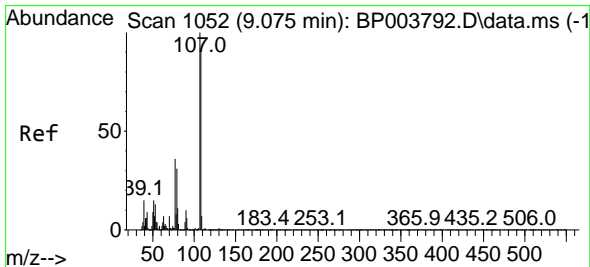
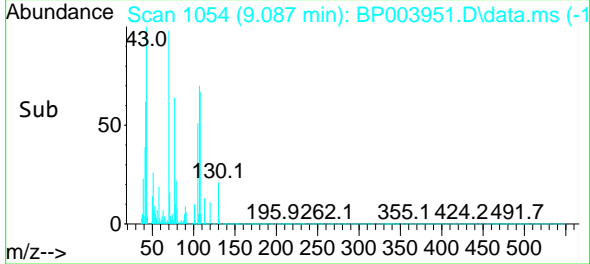
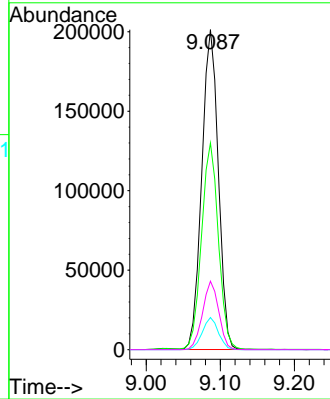
#19
 n-Nitroso-di-n-propylamine
 Concen: 40.69 ng
 RT: 9.087 min Scan# 1054
 Delta R.T. -0.000 min
 Lab File: BP003951.D
 Acq: 13 Nov 2020 13:05

Instrument :
 BNA_P
 ClientSampleId :
 SSTDCCC040

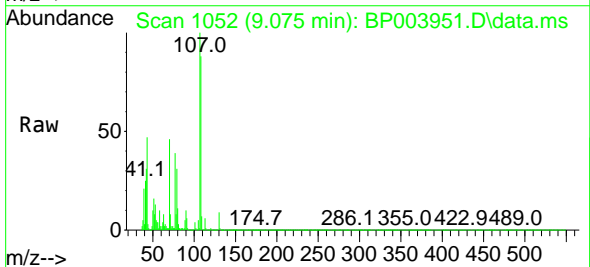


Tgt Ion: 70 Resp: 311538

Ion	Ratio	Lower	Upper
70	100		
42	64.6	32.8	49.2#
101	10.1	9.6	14.4
130	21.4	24.3	36.5#

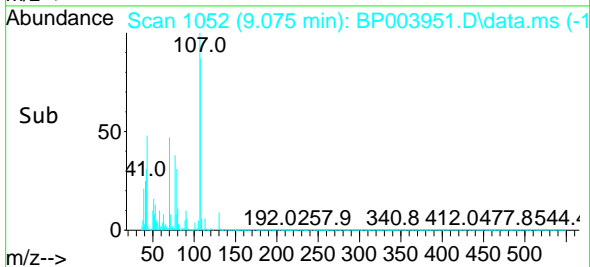
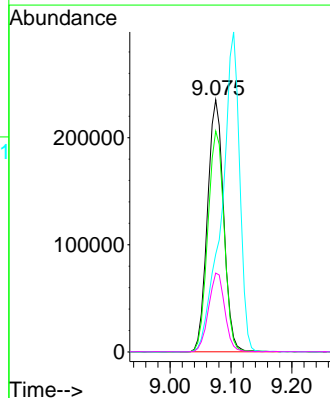


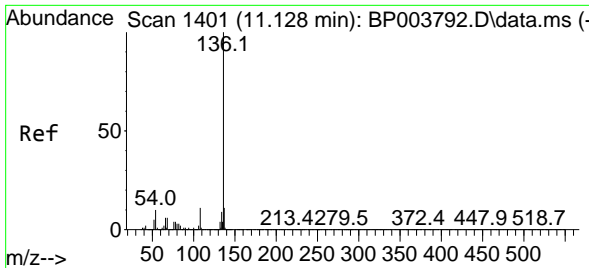
#20
 3+4-Methylphenols
 Concen: 40.00 ng
 RT: 9.075 min Scan# 1052
 Delta R.T. -0.000 min
 Lab File: BP003951.D
 Acq: 13 Nov 2020 13:05



Tgt Ion: 107 Resp: 433275

Ion	Ratio	Lower	Upper
107	100		
108	87.6	69.0	109.0
77	38.8	8.5	48.5
79	31.3	4.8	44.8



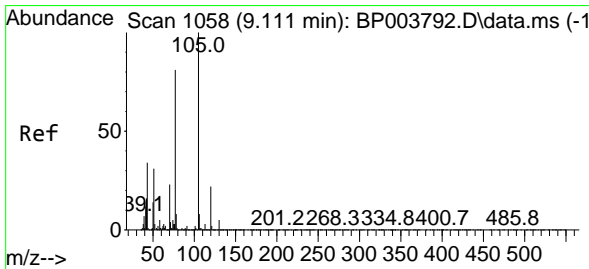
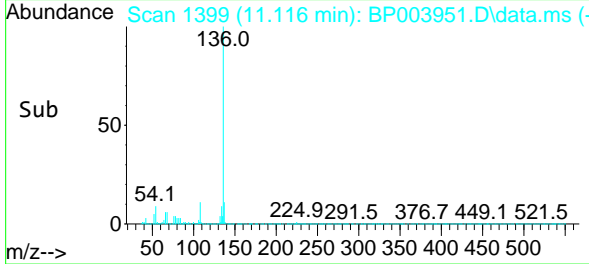
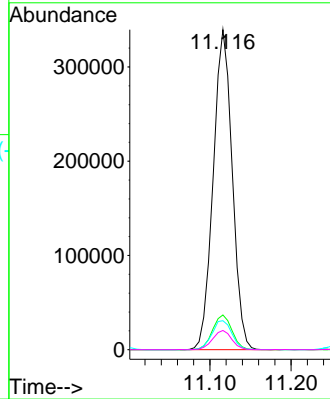
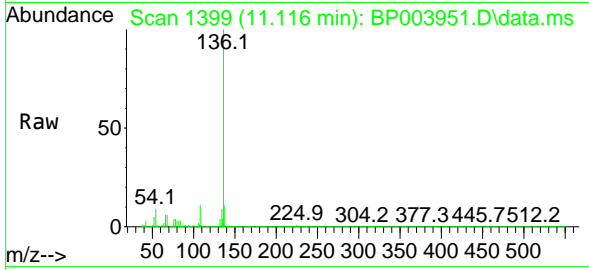


#21
 Naphthalene-d8
 Concen: 20.00 ng
 RT: 11.116 min Scan# 1399
 Delta R.T. -0.000 min
 Lab File: BP003951.D
 Acq: 13 Nov 2020 13:05

Instrument :
 BNA_P
 ClientSampleId :
 SSTDCCC040

Tgt Ion:136 Resp: 552752

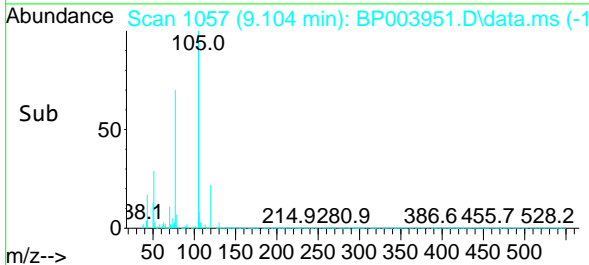
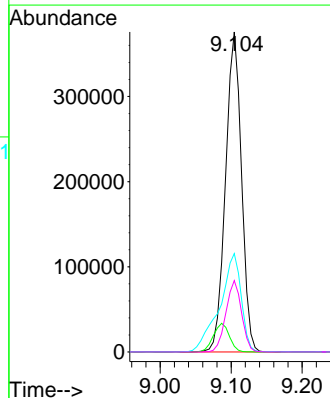
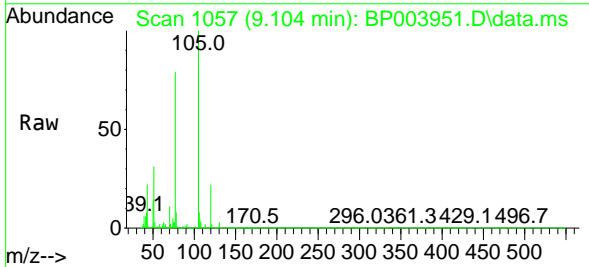
Ion	Ratio	Lower	Upper
136	100		
137	10.9	8.6	13.0
54	9.1	3.6	5.4#
68	6.0	3.3	4.9#

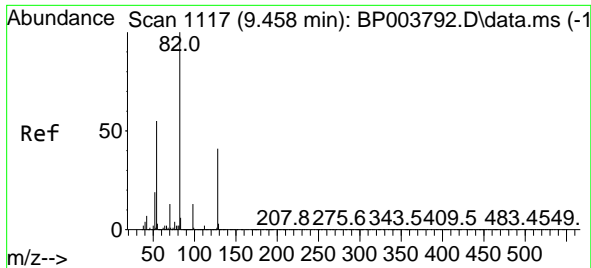


#22
 Acetophenone
 Concen: 39.41 ng
 RT: 9.104 min Scan# 1057
 Delta R.T. -0.000 min
 Lab File: BP003951.D
 Acq: 13 Nov 2020 13:05

Tgt Ion:105 Resp: 584647

Ion	Ratio	Lower	Upper
105	100		
71	1.8	2.6	3.8#
51	30.7	13.5	20.3#
120	22.3	19.6	29.4

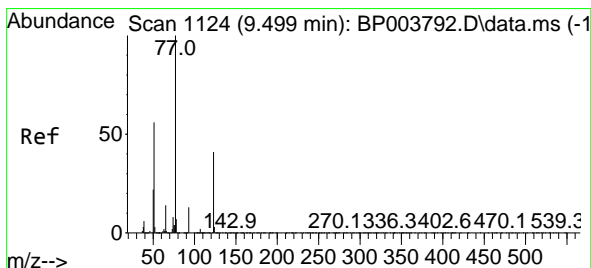
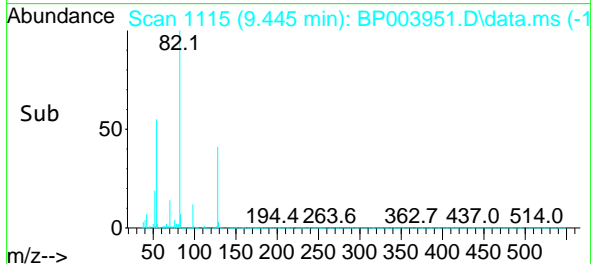
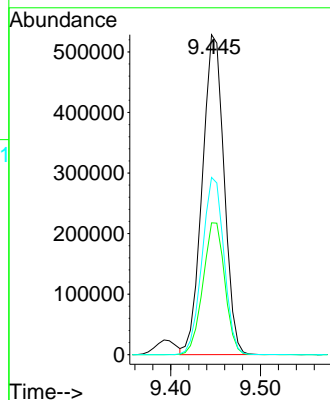
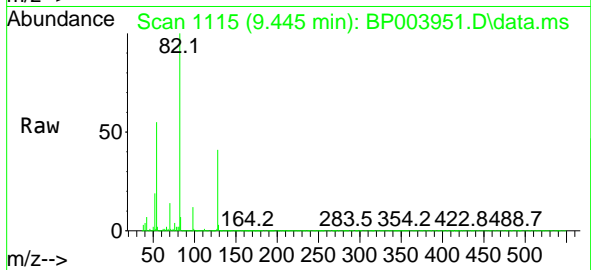




#23
 Nitrobenzene-d5
 Concen: 78.87 ng
 RT: 9.445 min Scan# 1115
 Delta R.T. -0.000 min
 Lab File: BP003951.D
 Acq: 13 Nov 2020 13:05

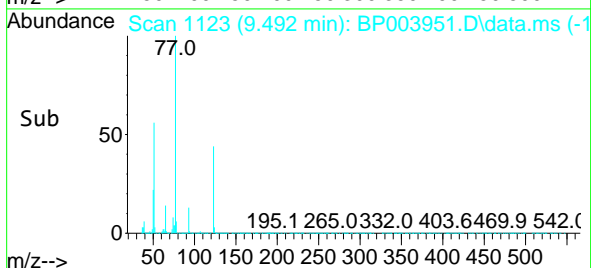
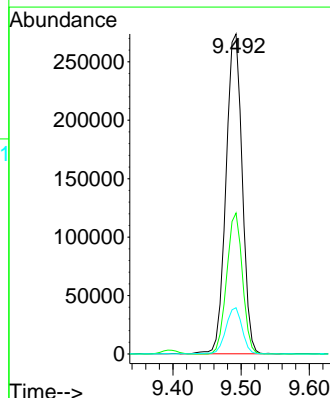
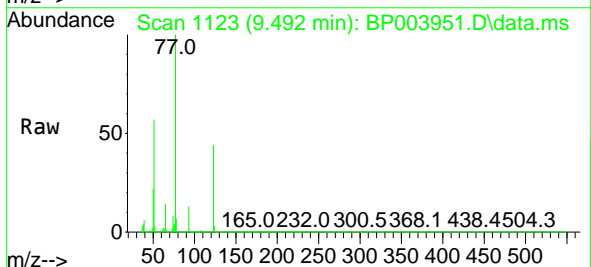
Instrument :
 BNA_P
 ClientSampleId :
 SSTDCCC040

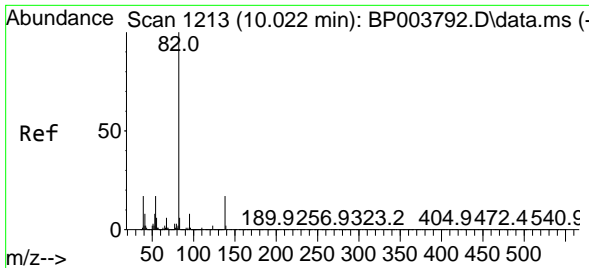
Tgt Ion: 82 Resp: 890197
 Ion Ratio Lower Upper
 82 100
 128 41.2 45.6 68.4#
 54 55.4 30.1 45.1#



#24
 Nitrobenzene
 Concen: 40.33 ng
 RT: 9.492 min Scan# 1123
 Delta R.T. 0.006 min
 Lab File: BP003951.D
 Acq: 13 Nov 2020 13:05

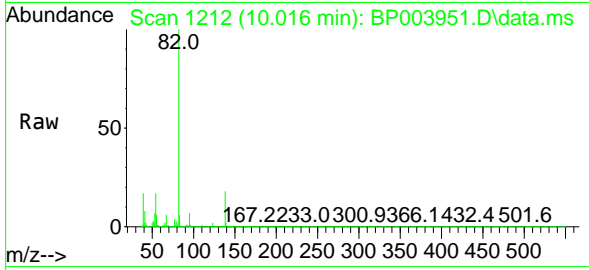
Tgt Ion: 77 Resp: 452313
 Ion Ratio Lower Upper
 77 100
 123 44.1 48.6 72.8#
 65 14.5 10.0 15.0





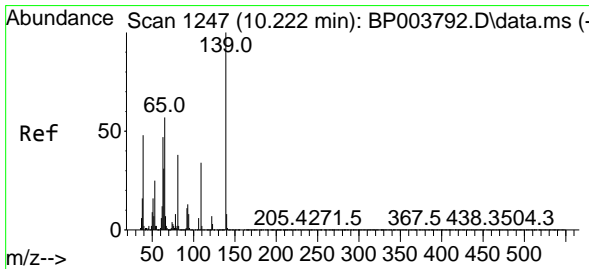
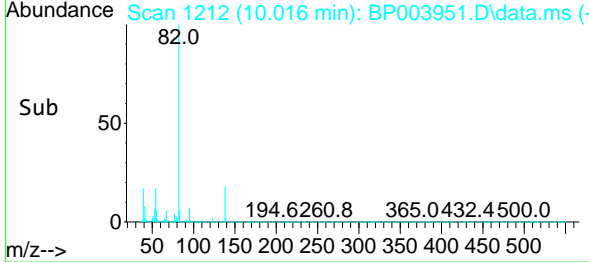
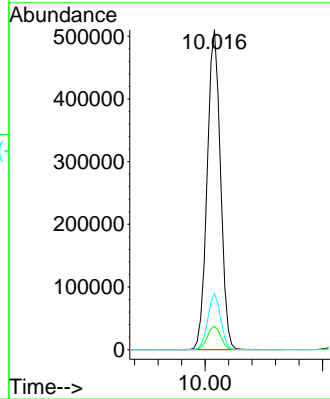
#25
 Isophorone
 Concen: 41.79 ng
 RT: 10.016 min Scan# 1212
 Delta R.T. -0.000 min
 Lab File: BP003951.D
 Acq: 13 Nov 2020 13:05

Instrument :
 BNA_P
ClientSampled :
 SSTDCCC040



Tgt Ion: 82 Resp: 801089

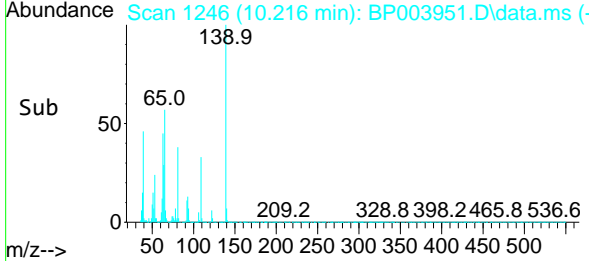
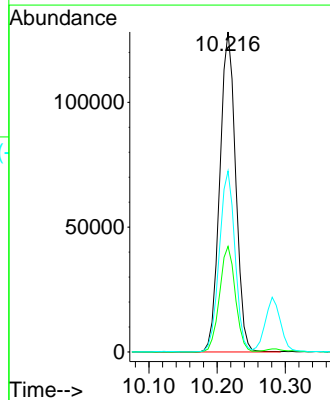
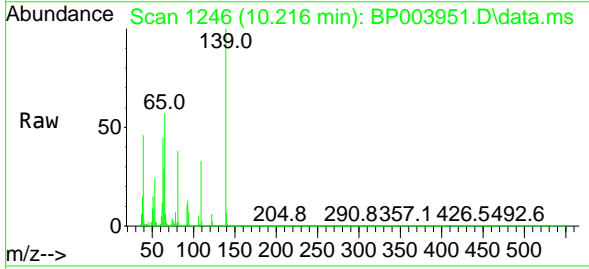
Ion	Ratio	Lower	Upper
82	100		
95	7.3	6.4	9.6
138	17.6	18.7	28.1#

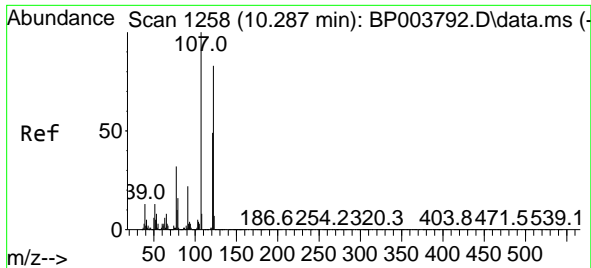


#26
 2-Nitrophenol
 Concen: 47.48 ng
 RT: 10.216 min Scan# 1246
 Delta R.T. -0.000 min
 Lab File: BP003951.D
 Acq: 13 Nov 2020 13:05

Tgt Ion: 139 Resp: 207941

Ion	Ratio	Lower	Upper
139	100		
109	33.0	22.1	33.1
65	56.6	26.5	39.7#

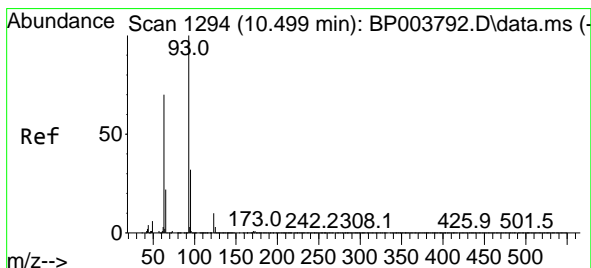
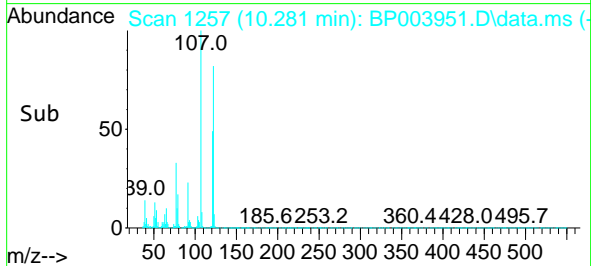
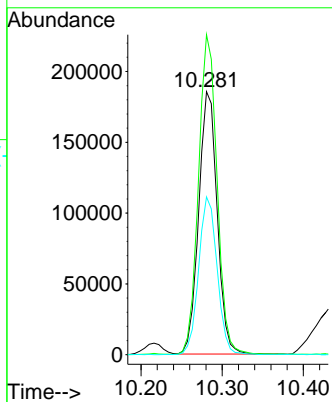
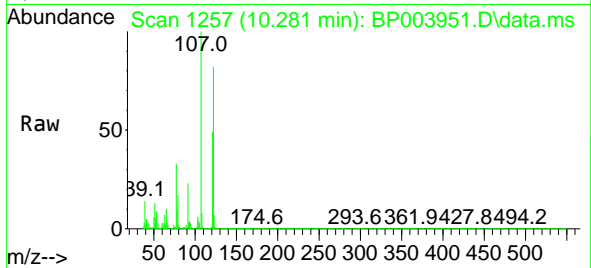




#27
 2,4-Dimethylphenol
 Concen: 40.10 ng
 RT: 10.281 min Scan# 1257
 Delta R.T. -0.000 min
 Lab File: BP003951.D
 Acq: 13 Nov 2020 13:05

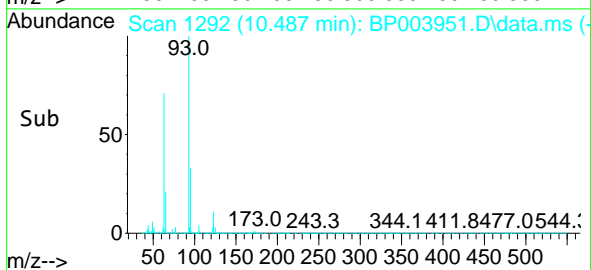
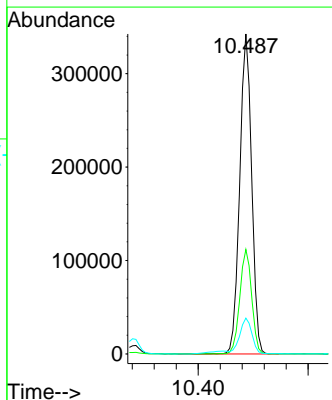
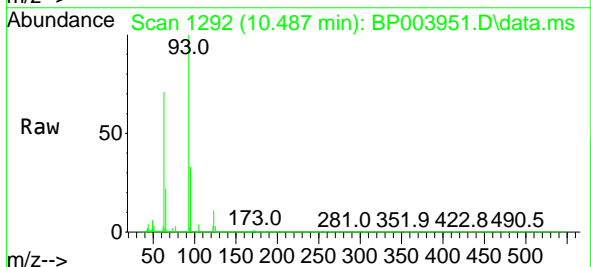
Instrument :
 BNA_P
 ClientSampleId :
 SSTDCCC040

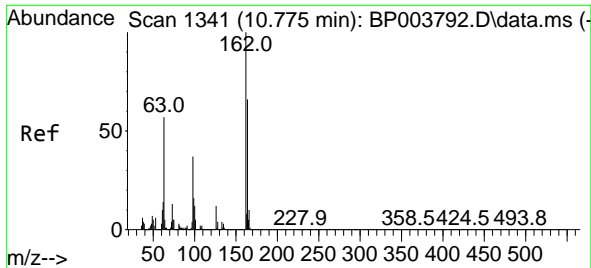
Tgt Ion	Resp	Lower	Upper
122	292959		
107	121.7	87.3	130.9
121	60.0	47.3	70.9



#28
 bis(2-Chloroethoxy)methane
 Concen: 39.11 ng
 RT: 10.487 min Scan# 1292
 Delta R.T. -0.000 min
 Lab File: BP003951.D
 Acq: 13 Nov 2020 13:05

Tgt Ion	Resp	Lower	Upper
93	514498		
95	32.6	26.7	40.1
123	11.2	10.5	15.7

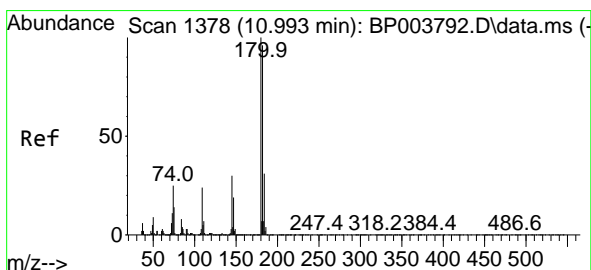
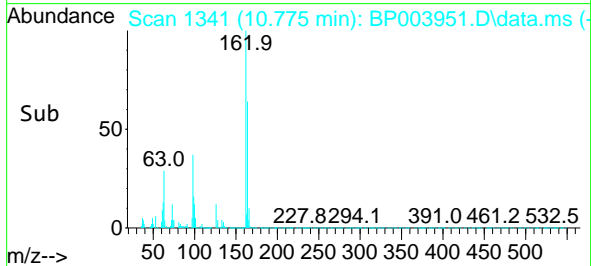
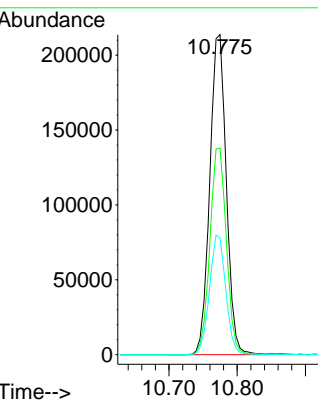
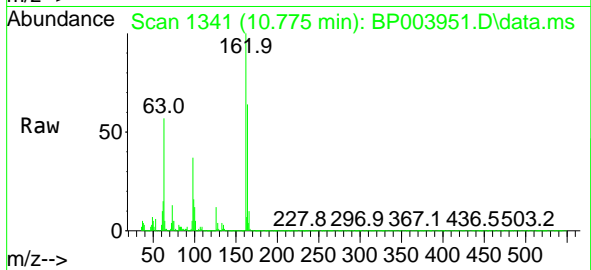




#29
 2,4-Dichlorophenol
 Concen: 40.96 ng
 RT: 10.775 min Scan# 1341
 Delta R.T. 0.006 min
 Lab File: BP003951.D
 Acq: 13 Nov 2020 13:05

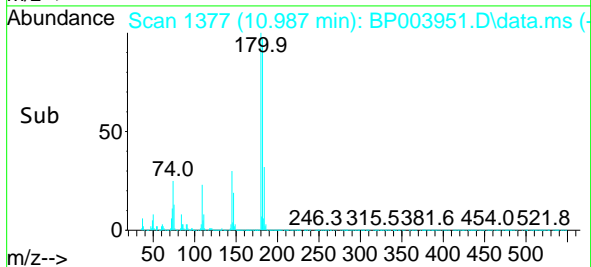
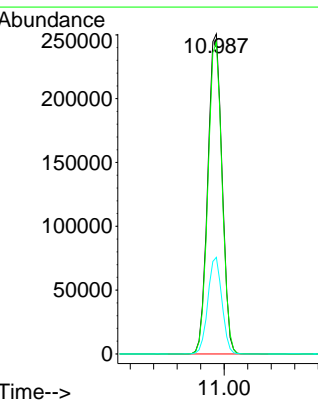
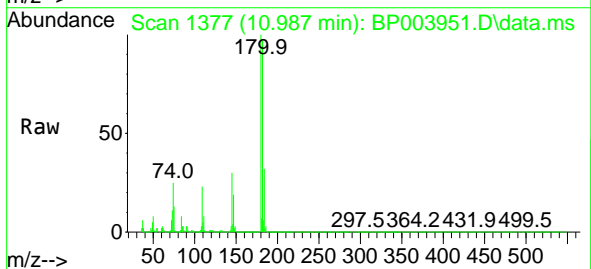
Instrument :
 BNA_P
 ClientSampleId :
 SSTDCCC040

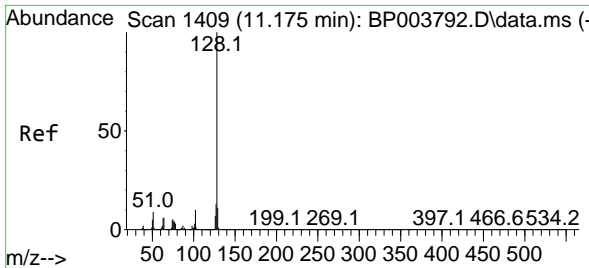
Tgt Ion	Resp	Lower	Upper
162	100		
164	64.5	45.8	85.8
98	36.6	10.2	50.2



#30
 1,2,4-Trichlorobenzene
 Concen: 39.22 ng
 RT: 10.987 min Scan# 1377
 Delta R.T. 0.006 min
 Lab File: BP003951.D
 Acq: 13 Nov 2020 13:05

Tgt Ion	Resp	Lower	Upper
180	100		
182	97.4	76.2	114.2
145	30.2	23.8	35.8



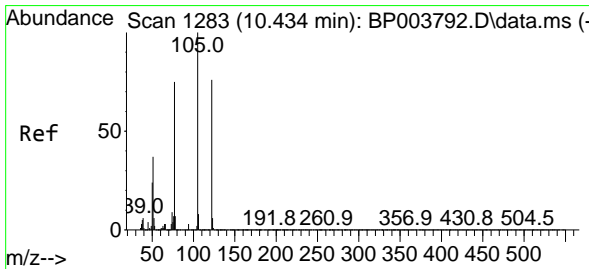
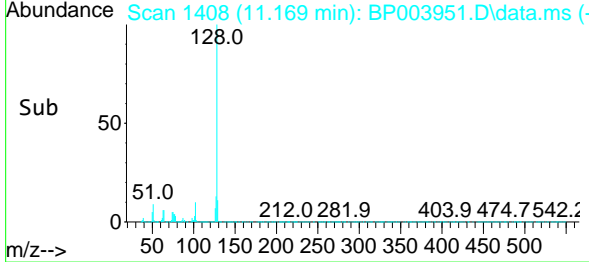
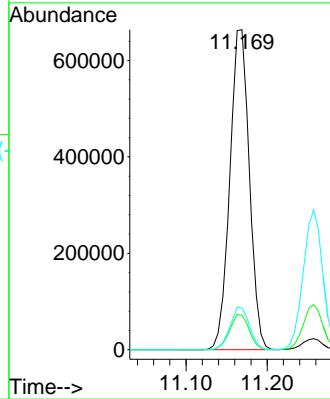
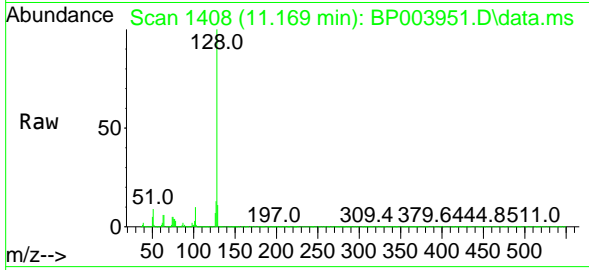


#31
 Naphthalene
 Concen: 37.37 ng
 RT: 11.169 min Scan# 1408
 Delta R.T. 0.006 min
 Lab File: BP003951.D
 Acq: 13 Nov 2020 13:05

Instrument :
 BNA_P
 ClientSampled :
 SSTDCCC040

Tgt Ion:128 Resp: 1108609

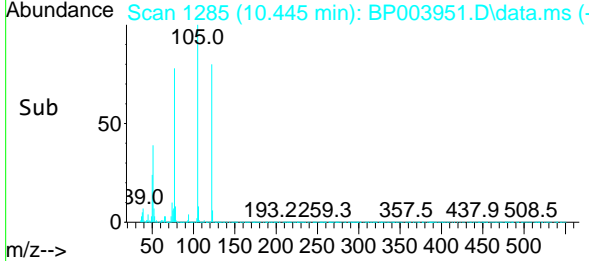
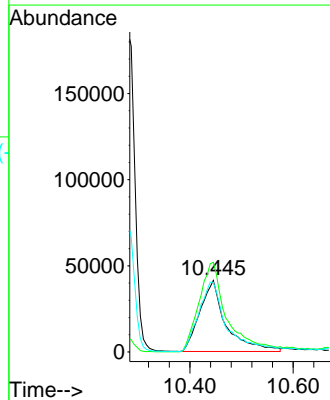
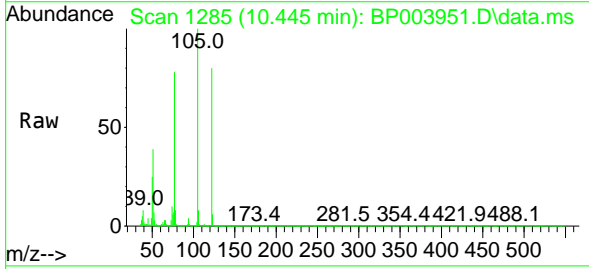
Ion	Ratio	Lower	Upper
128	100		
129	10.8	8.8	13.2
127	13.0	10.6	15.8

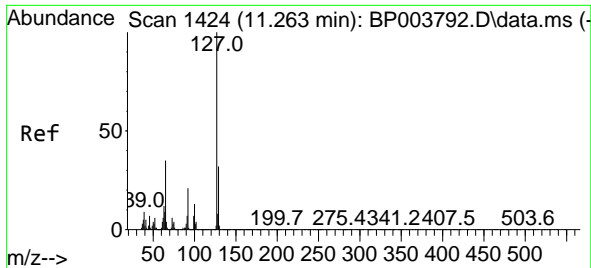


#32
 Benzoic acid
 Concen: 31.67 ng
 RT: 10.445 min Scan# 1285
 Delta R.T. 0.006 min
 Lab File: BP003951.D
 Acq: 13 Nov 2020 13:05

Tgt Ion:122 Resp: 144932

Ion	Ratio	Lower	Upper
122	100		
105	125.2	94.1	134.1
77	97.6	50.1	90.1#

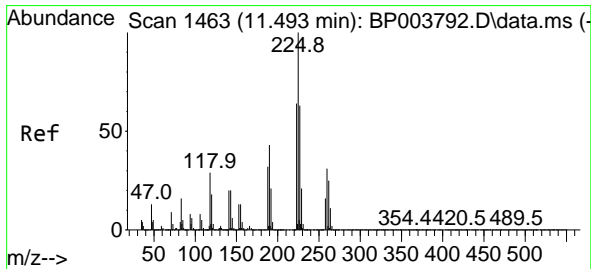
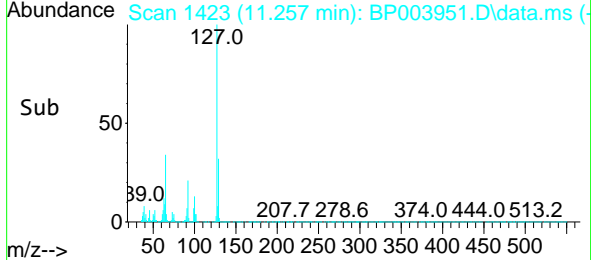
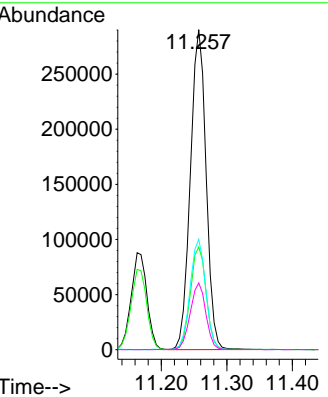
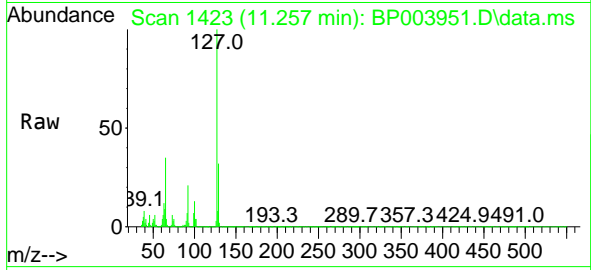




#33
 4-Chloroaniline
 Concen: 38.50 ng
 RT: 11.257 min Scan# 1423
 Delta R.T. -0.000 min
 Lab File: BP003951.D
 Acq: 13 Nov 2020 13:05

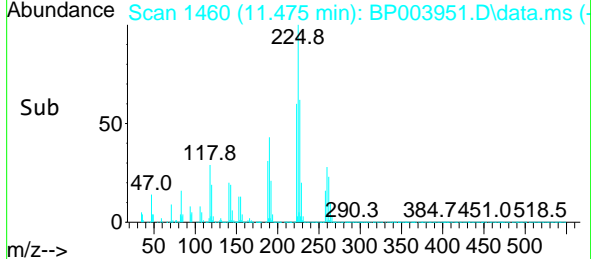
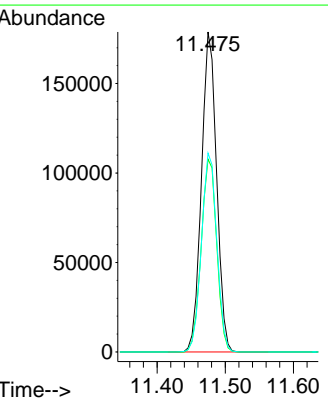
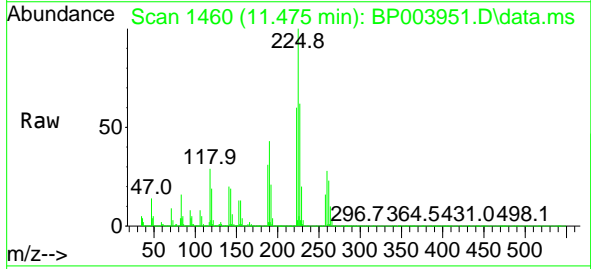
Instrument :
 BNA_P
ClientSampleId :
 SSTDCCC040

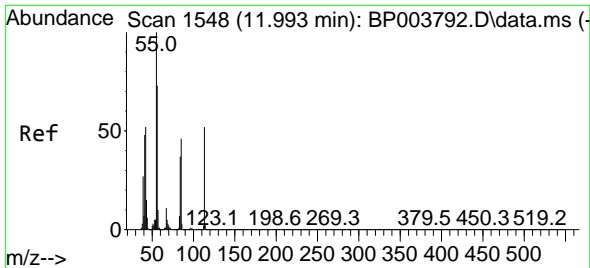
Tgt Ion	Resp	Lower	Upper
127	485334		
129	32.1	25.7	38.5
65	34.5	17.3	25.9#
92	20.9	12.9	19.3#



#34
 Hexachlorobutadiene
 Concen: 39.44 ng
 RT: 11.475 min Scan# 1460
 Delta R.T. -0.000 min
 Lab File: BP003951.D
 Acq: 13 Nov 2020 13:05

Tgt Ion	Resp	Lower	Upper
225	275895		
223	60.2	50.1	75.1
227	62.2	51.4	77.2

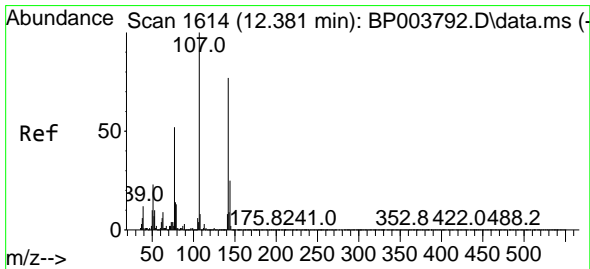
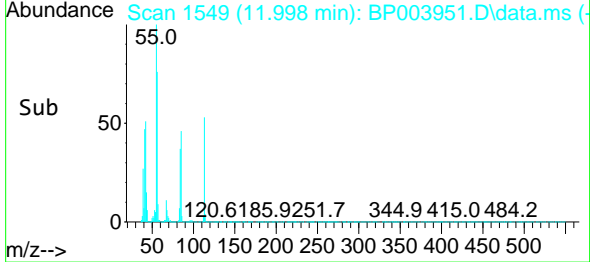
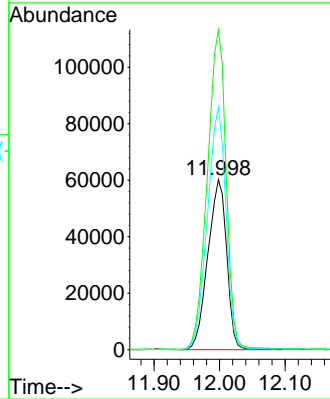
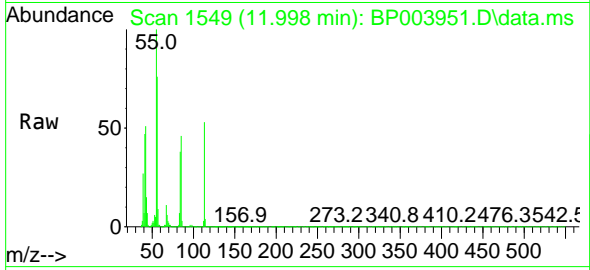




#35
 Caprolactam
 Concen: 43.99 ng
 RT: 11.998 min Scan# 1549
 Delta R.T. -0.000 min
 Lab File: BP003951.D
 Acq: 13 Nov 2020 13:05

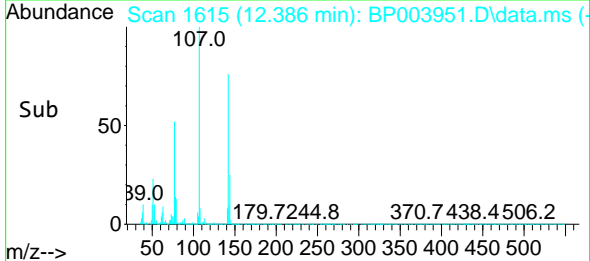
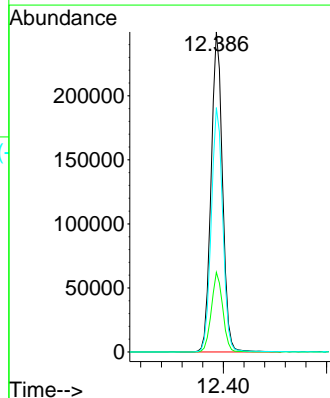
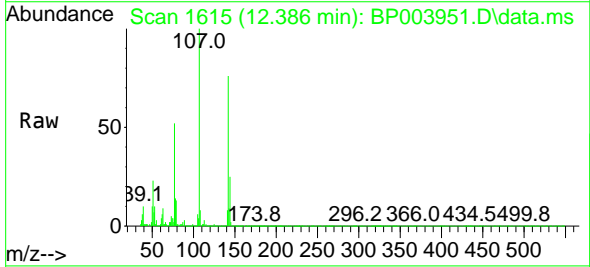
Instrument :
 BNA_P
 ClientSampleId :
 SSTDCCC040

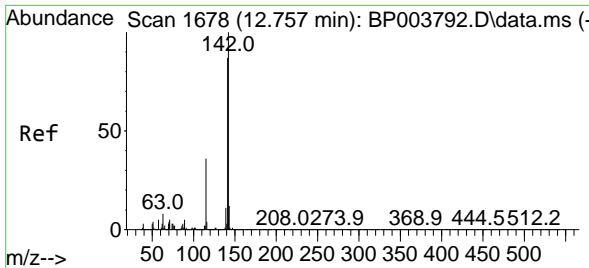
Tgt Ion:113 Resp: 119731
 Ion Ratio Lower Upper
 113 100
 55 188.1 77.3 117.3#
 56 142.8 55.9 95.9#



#36
 4-Chloro-3-methylphenol
 Concen: 40.26 ng
 RT: 12.386 min Scan# 1615
 Delta R.T. -0.000 min
 Lab File: BP003951.D
 Acq: 13 Nov 2020 13:05

Tgt Ion:107 Resp: 382627
 Ion Ratio Lower Upper
 107 100
 144 24.9 22.7 34.1
 142 76.3 70.7 106.1

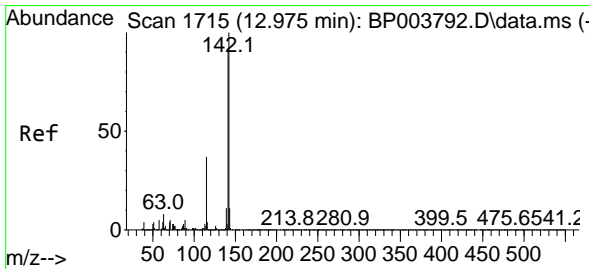
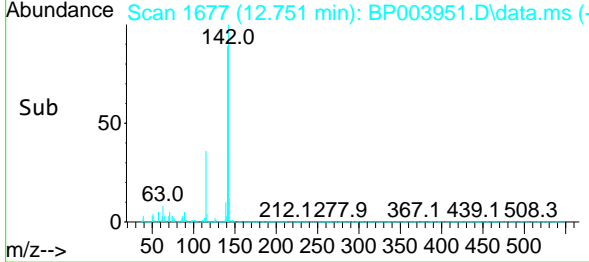
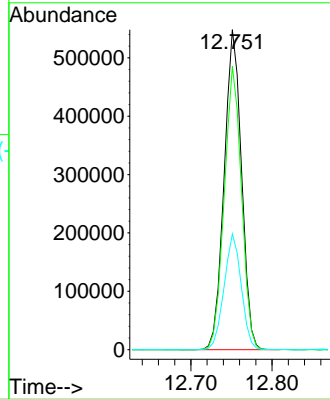
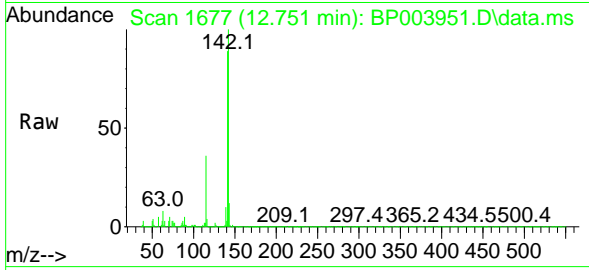




#37
 2-Methylnaphthalene
 Concen: 38.34 ng
 RT: 12.751 min Scan# 1677
 Delta R.T. -0.000 min
 Lab File: BP003951.D
 Acq: 13 Nov 2020 13:05

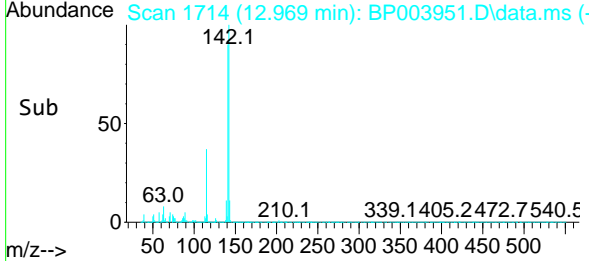
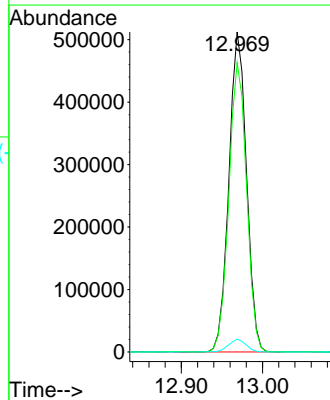
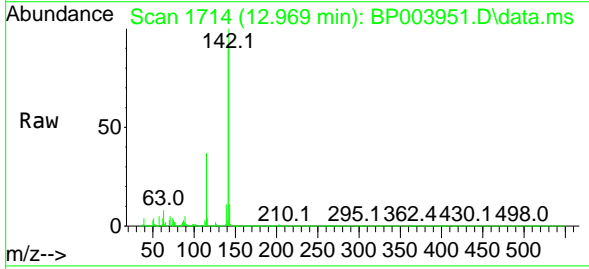
Instrument :
 BNA_P
ClientSampled :
 SSTDCCC040

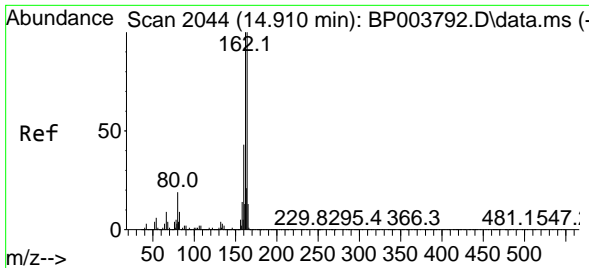
Tgt Ion	Resp	Lower	Upper
142	813886		
141	88.6	71.4	107.2
115	36.2	25.8	38.6



#38
 1-Methylnaphthalene
 Concen: 38.04 ng
 RT: 12.969 min Scan# 1714
 Delta R.T. -0.000 min
 Lab File: BP003951.D
 Acq: 13 Nov 2020 13:05

Tgt Ion	Resp	Lower	Upper
142	770253		
141	90.4	74.4	111.6
116	4.1	2.9	4.3

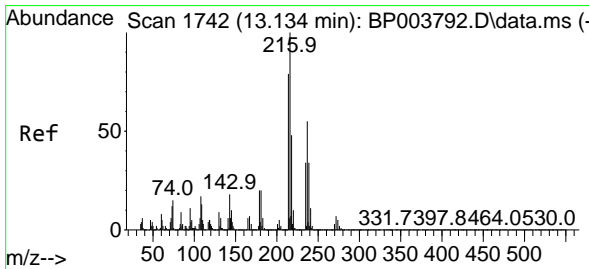
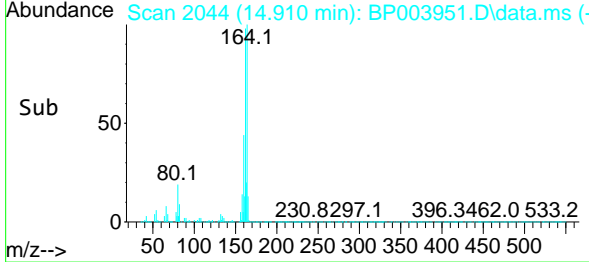
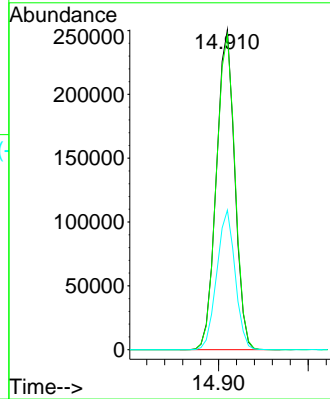
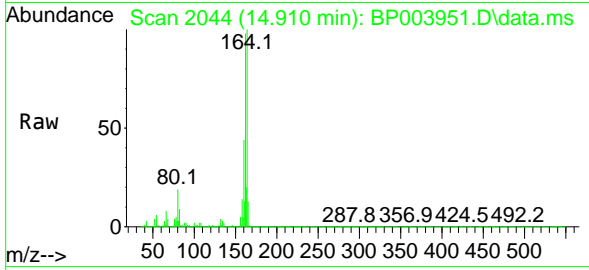




#39
 Acenaphthene-d10
 Concen: 20.00 ng
 RT: 14.910 min Scan# 2044
 Delta R.T. -0.000 min
 Lab File: BP003951.D
 Acq: 13 Nov 2020 13:05

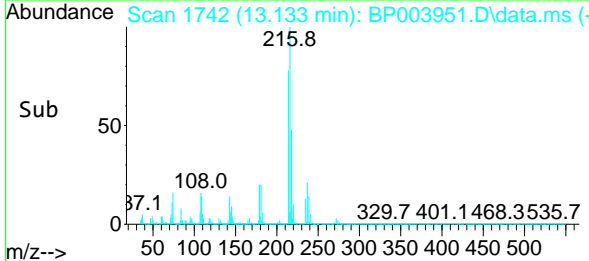
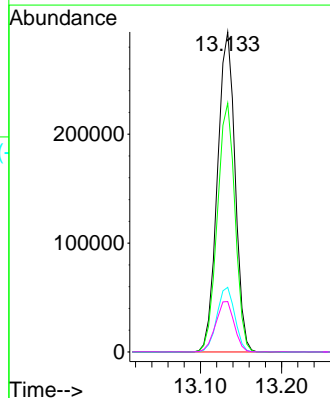
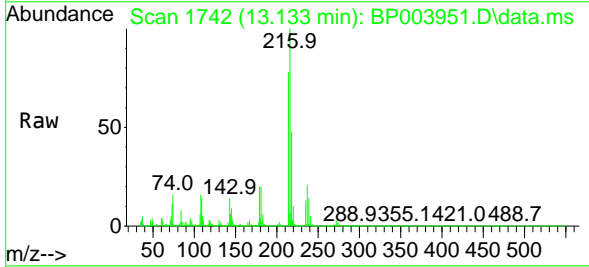
Instrument :
 BNA_P
 ClientSampleId :
 SSTDCCC040

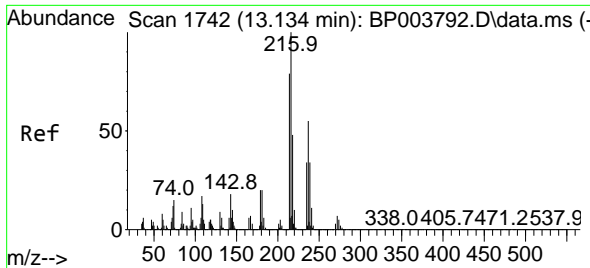
Tgt Ion	Resp	Lower	Upper
164	100		
162	98.4	79.4	119.2
160	43.6	36.1	54.1



#40
 1,2,4,5-Tetrachlorobenzene
 Concen: 37.81 ng
 RT: 13.133 min Scan# 1742
 Delta R.T. -0.000 min
 Lab File: BP003951.D
 Acq: 13 Nov 2020 13:05

Tgt Ion	Resp	Lower	Upper
216	100		
214	77.8	63.0	94.6
179	20.4	16.9	25.3
108	16.6	12.6	19.0

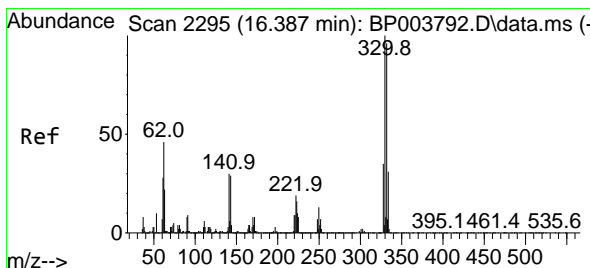
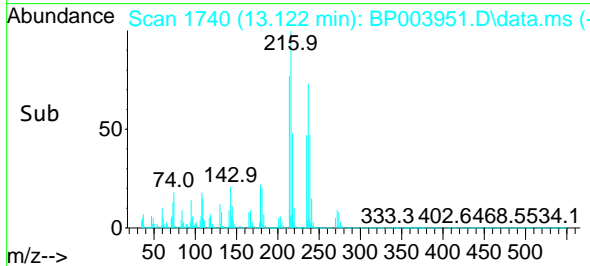
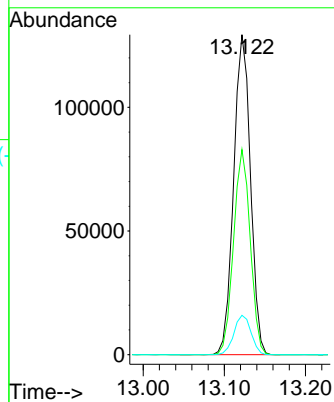
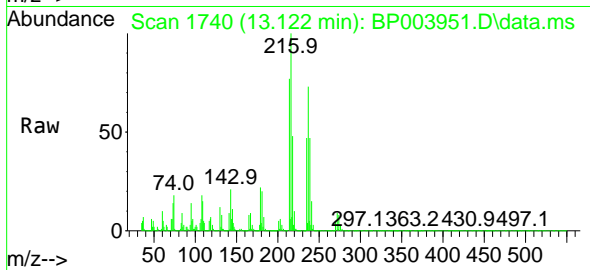




#41
 Hexachlorocyclopentadiene
 Concen: 31.21 ng
 RT: 13.122 min Scan# 1740
 Delta R.T. -0.000 min
 Lab File: BP003951.D
 Acq: 13 Nov 2020 13:05

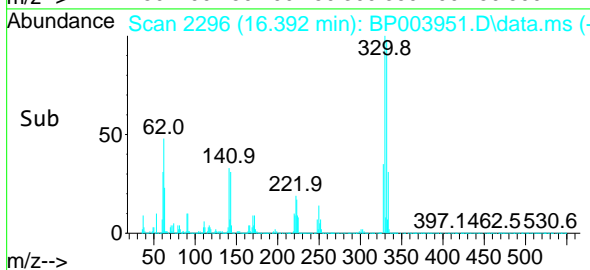
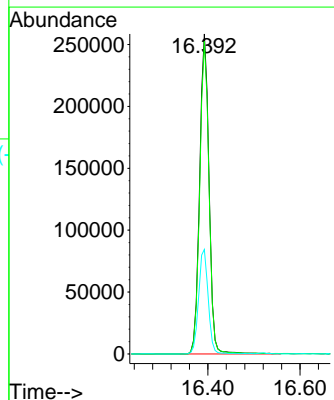
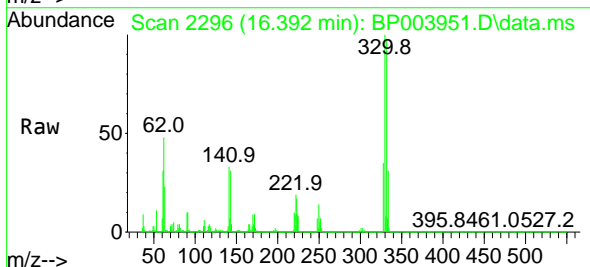
Instrument :
 BNA_P
ClientSampled :
 SSTDCCC040

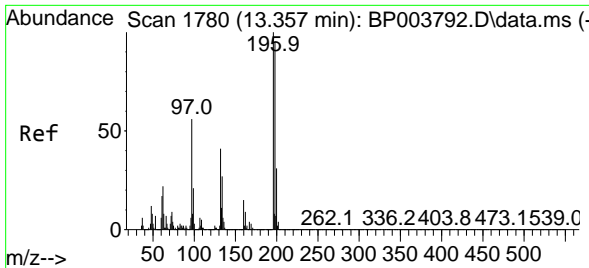
Tgt Ion	Resp	Lower	Upper
237	185312		
235	64.1	43.2	83.2
272	12.3	0.0	33.3



#42
 2,4,6-Tribromophenol
 Concen: 82.29 ng
 RT: 16.392 min Scan# 2296
 Delta R.T. -0.000 min
 Lab File: BP003951.D
 Acq: 13 Nov 2020 13:05

Tgt Ion	Resp	Lower	Upper
330	365947		
332	96.3	77.1	115.7
141	33.1	23.4	35.2

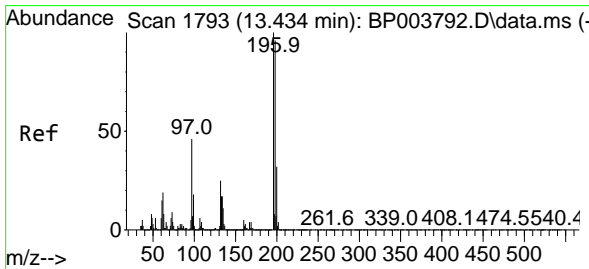
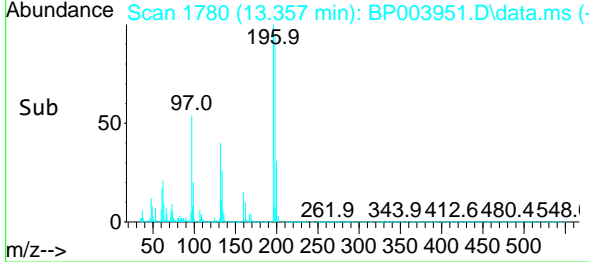
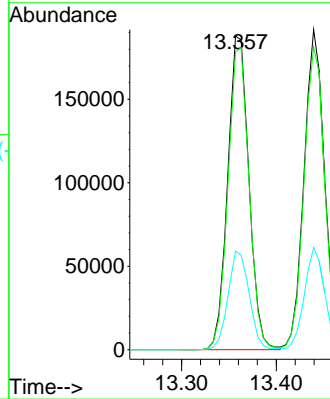
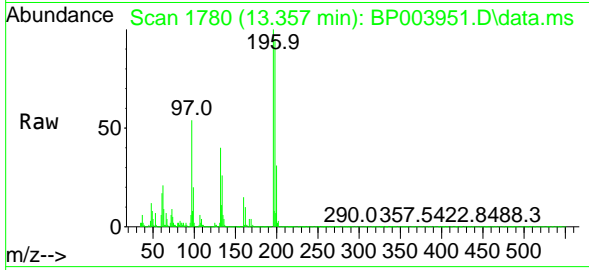




#43
 2,4,6-Trichlorophenol
 Concen: 40.17 ng
 RT: 13.357 min Scan# 1780
 Delta R.T. -0.000 min
 Lab File: BP003951.D
 Acq: 13 Nov 2020 13:05

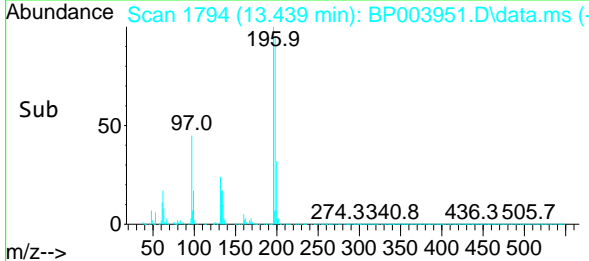
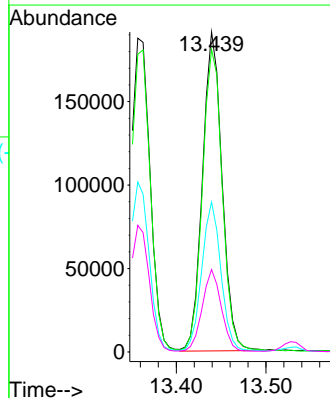
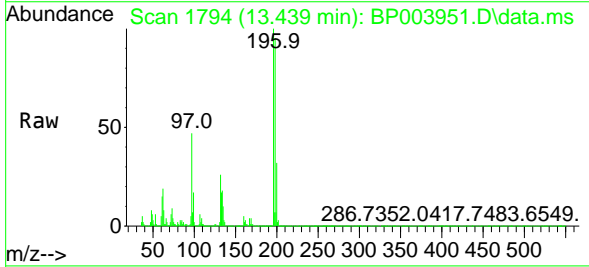
Instrument :
 BNA_P
 ClientSampleId :
 SSTDCCC040

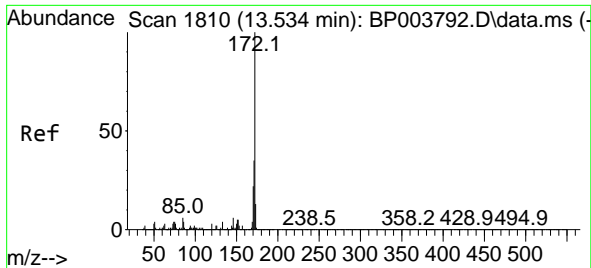
Tgt Ion	Resp	Lower	Upper
196	292230		
196	100		
198	94.9	77.0	115.6
200	31.4	25.1	37.7



#44
 2,4,5-Trichlorophenol
 Concen: 37.78 ng
 RT: 13.439 min Scan# 1794
 Delta R.T. -0.000 min
 Lab File: BP003951.D
 Acq: 13 Nov 2020 13:05

Tgt Ion	Resp	Lower	Upper
196	289406		
196	100		
198	94.6	77.3	115.9
97	46.8	31.0	46.4#
132	25.8	20.9	31.3

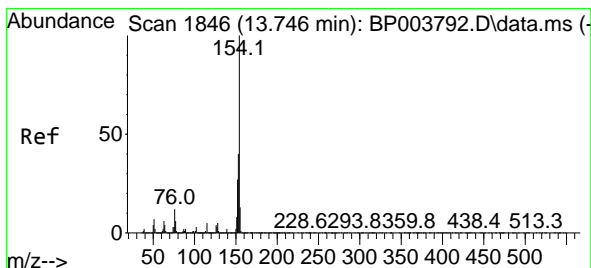
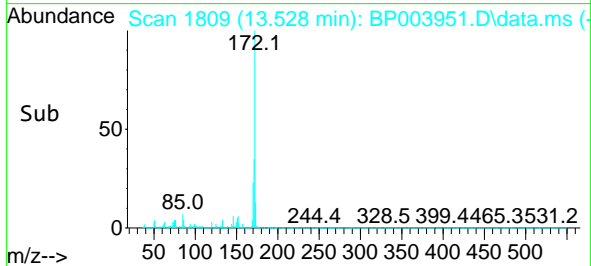
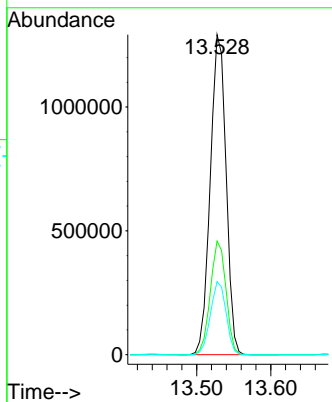
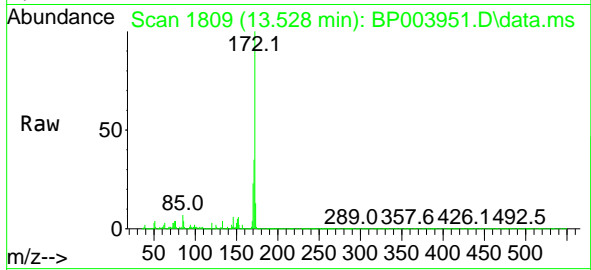




#45
 2-Fluorobiphenyl
 Concen: 75.18 ng
 RT: 13.528 min Scan# 1809
 Delta R.T. -0.000 min
 Lab File: BP003951.D
 Acq: 13 Nov 2020 13:05

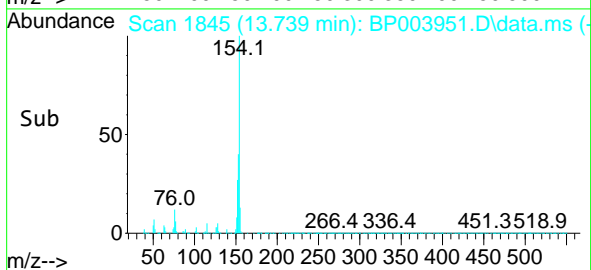
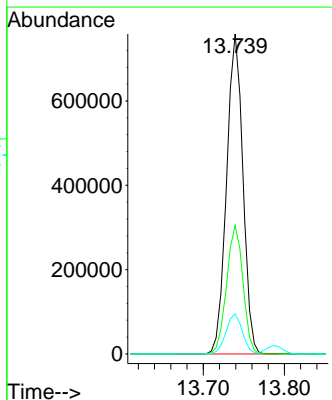
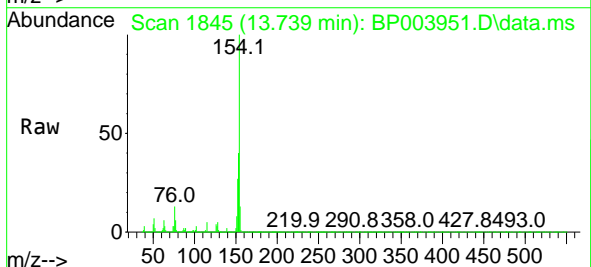
Instrument :
 BNA_P
 ClientSampled :
 SSTDCCC040

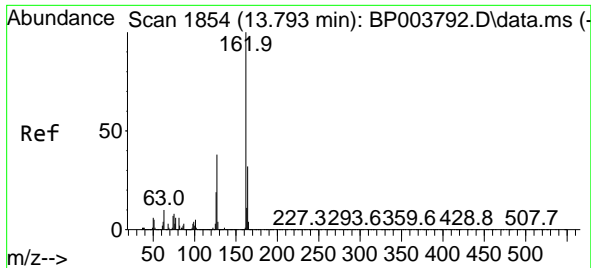
Tgt Ion	Resp	Lower	Upper
172	100		
171	35.5	28.5	42.7
170	22.8	19.2	28.8



#46
 1,1'-Biphenyl
 Concen: 38.37 ng
 RT: 13.739 min Scan# 1845
 Delta R.T. -0.000 min
 Lab File: BP003951.D
 Acq: 13 Nov 2020 13:05

Tgt Ion	Resp	Lower	Upper
154	100		
153	40.2	20.4	60.4
76	12.5	0.0	29.3

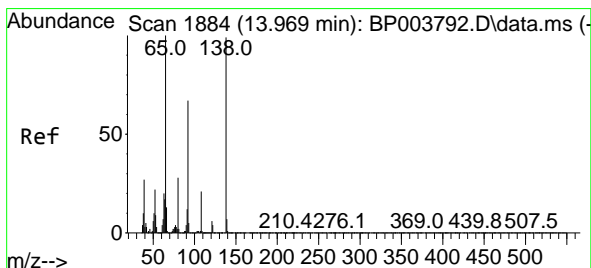
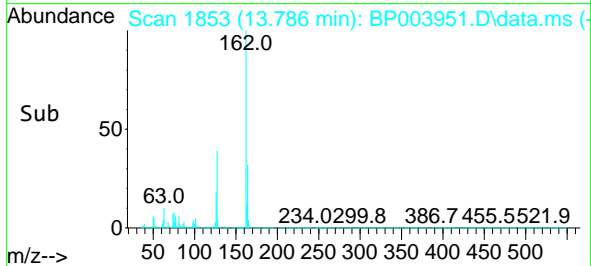
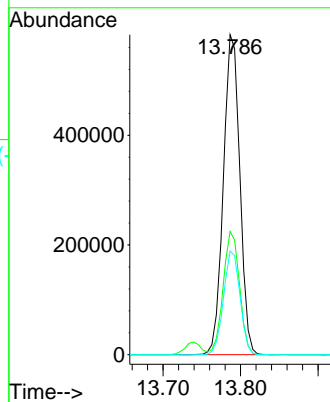
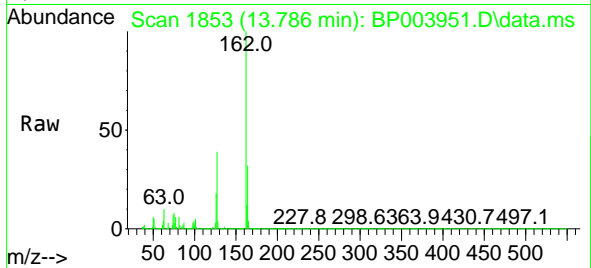




#47
 2-Chloronaphthalene
 Concen: 38.01 ng
 RT: 13.786 min Scan# 1853
 Delta R.T. -0.000 min
 Lab File: BP003951.D
 Acq: 13 Nov 2020 13:05

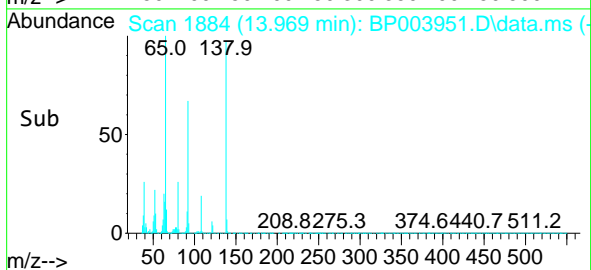
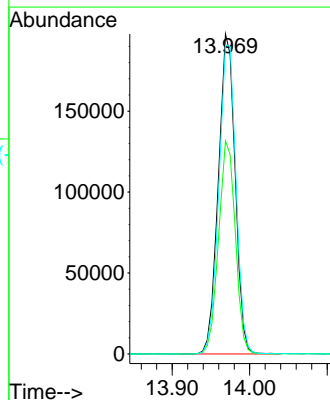
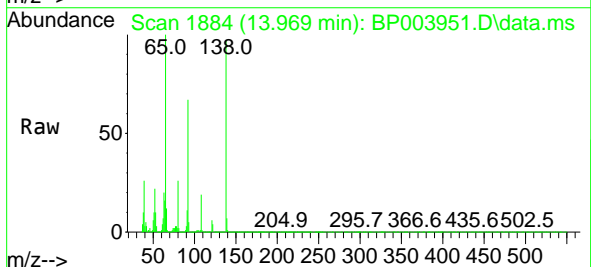
Instrument :
 BNA_P
 ClientSampled :
 SSTDCCC040

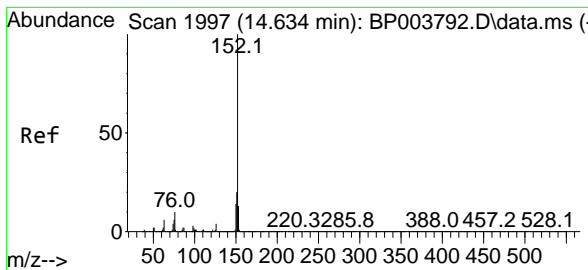
Tgt Ion	Resp	Lower	Upper
162	860843		
162	100		
127	38.5	29.9	44.9
164	32.4	26.1	39.1



#48
 2-Nitroaniline
 Concen: 44.13 ng
 RT: 13.969 min Scan# 1884
 Delta R.T. -0.000 min
 Lab File: BP003951.D
 Acq: 13 Nov 2020 13:05

Tgt Ion	Resp	Lower	Upper
65	298204		
65	100		
92	66.6	70.6	106.0#
138	96.6	133.6	200.4#



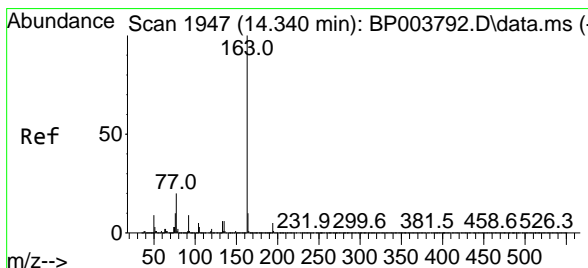
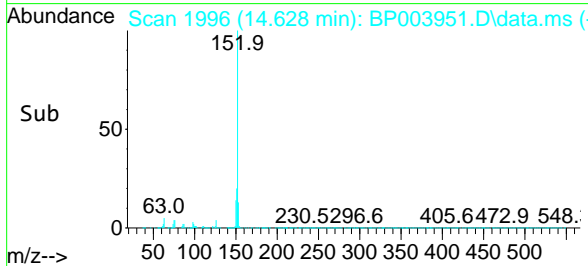
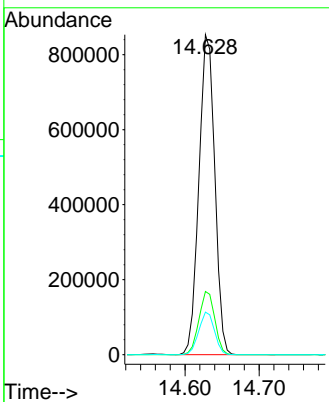
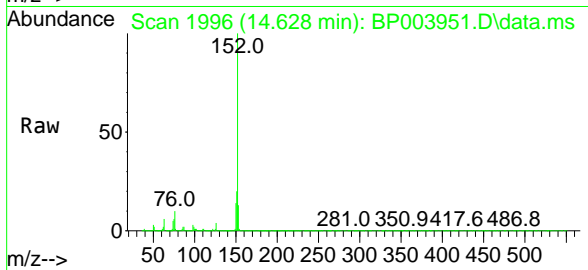


#49
 Acenaphthylene
 Concen: 38.14 ng
 RT: 14.628 min Scan# 1996
 Delta R.T. -0.000 min
 Lab File: BP003951.D
 Acq: 13 Nov 2020 13:05

Instrument :
 BNA_P
ClientSampled :
 SSTDCCC040

Tgt Ion:152 Resp: 1268329

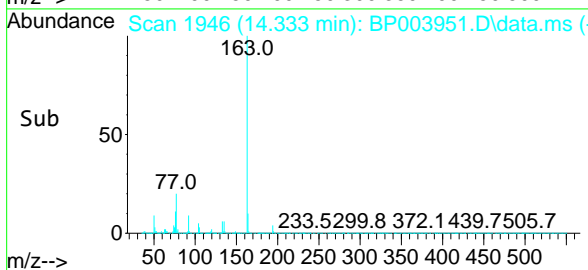
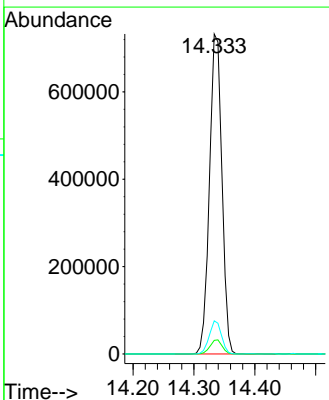
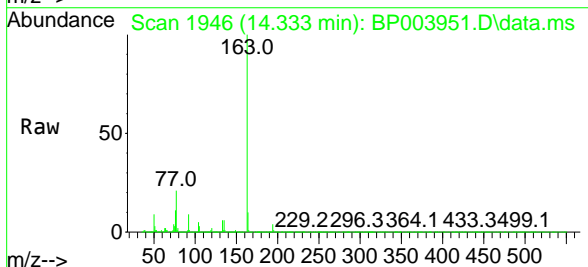
Ion	Ratio	Lower	Upper
152	100		
151	19.7	15.9	23.9
153	13.3	10.5	15.7

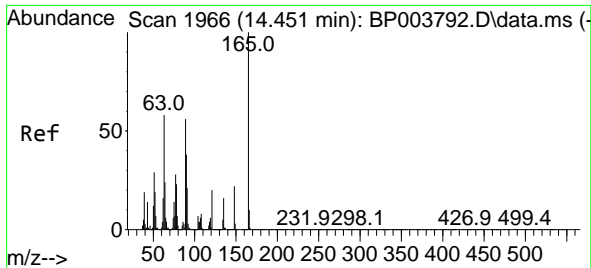


#50
 Dimethylphthalate
 Concen: 37.32 ng
 RT: 14.333 min Scan# 1946
 Delta R.T. -0.000 min
 Lab File: BP003951.D
 Acq: 13 Nov 2020 13:05

Tgt Ion:163 Resp: 1037228

Ion	Ratio	Lower	Upper
163	100		
194	4.2	3.3	4.9
164	10.4	8.2	12.2

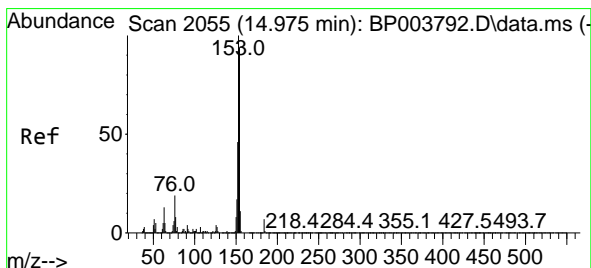
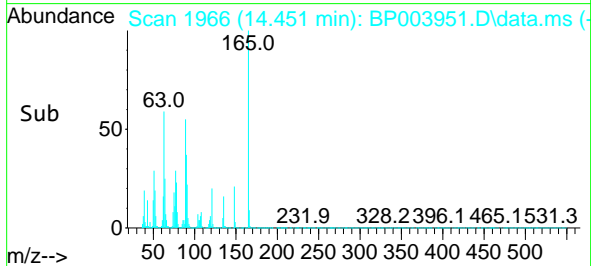
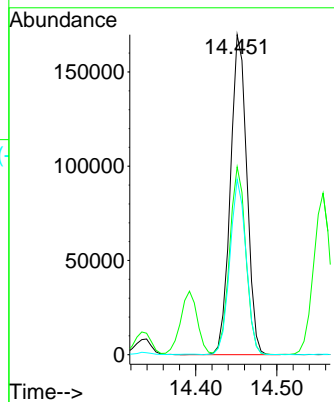
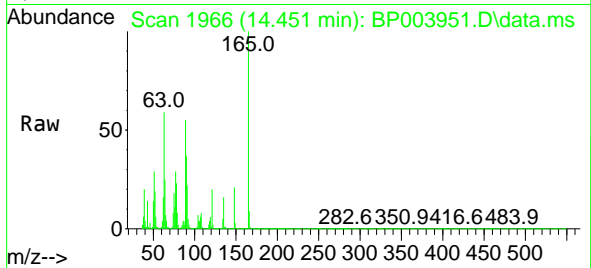




#51
 2,6-Dinitrotoluene
 Concen: 41.82 ng
 RT: 14.451 min Scan# 1966
 Delta R.T. -0.000 min
 Lab File: BP003951.D
 Acq: 13 Nov 2020 13:05

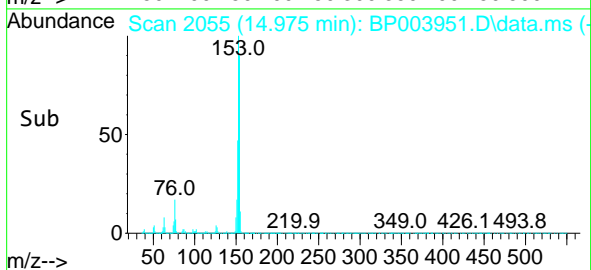
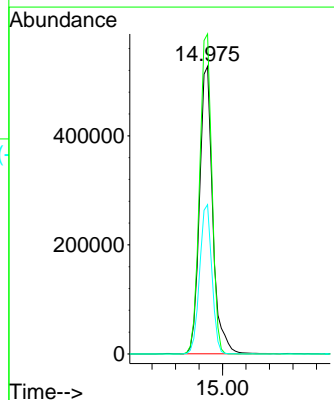
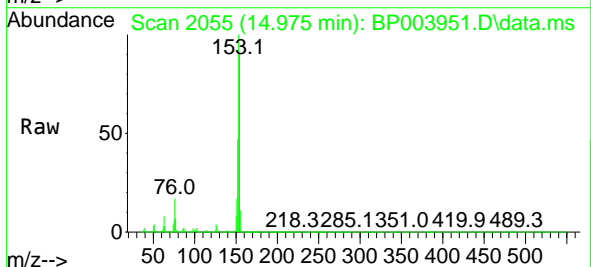
Instrument :
 BNA_P
 ClientSampleId :
 SSTDCCC040

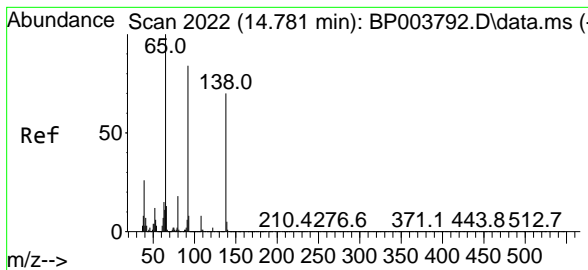
Tgt Ion	Resp	Lower	Upper
165	100		
63	58.7	27.8	41.6#
89	54.8	34.6	52.0#



#52
 Acenaphthene
 Concen: 37.08 ng
 RT: 14.975 min Scan# 2055
 Delta R.T. 0.006 min
 Lab File: BP003951.D
 Acq: 13 Nov 2020 13:05

Tgt Ion	Resp	Lower	Upper
154	100		
153	111.3	91.0	136.6
152	51.9	43.0	64.6

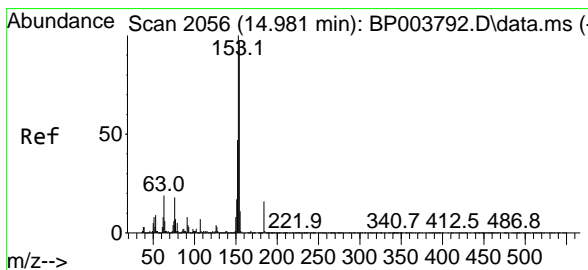
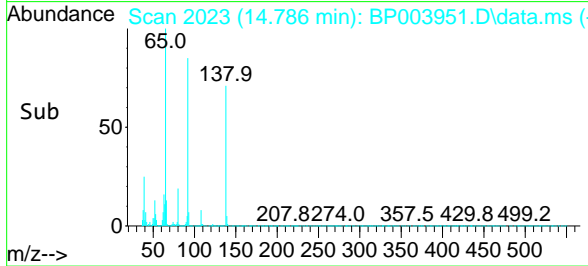
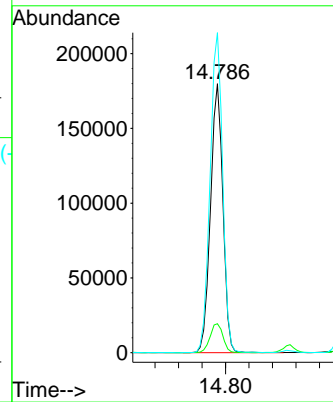
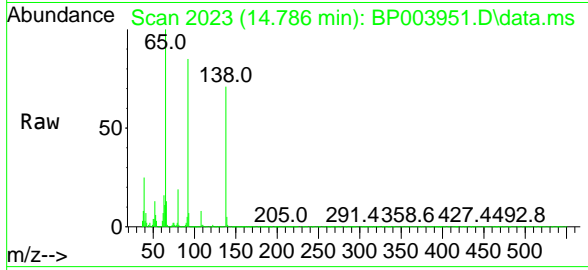




#53
 3-Nitroaniline
 Concen: 41.52 ng
 RT: 14.786 min Scan# 2023
 Delta R.T. -0.000 min
 Lab File: BP003951.D
 Acq: 13 Nov 2020 13:05

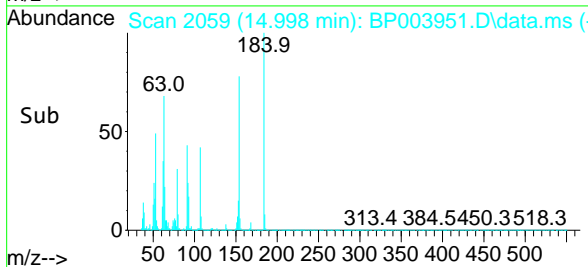
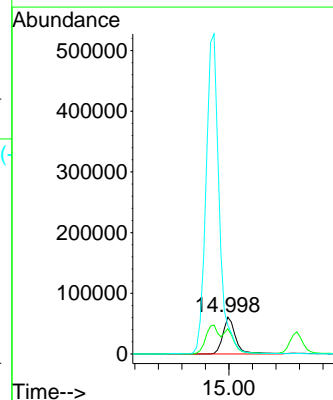
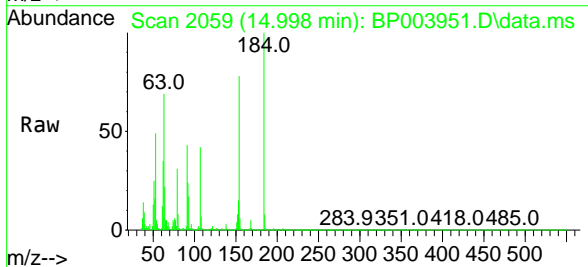
Instrument :
 BNA_P
 ClientSampleID :
 SSTDCCC040

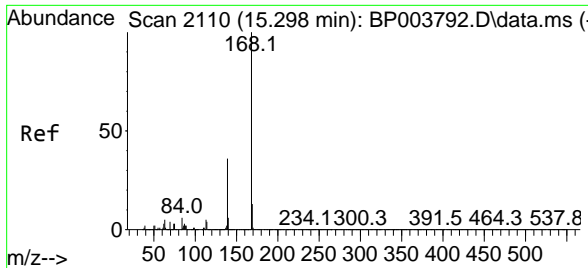
Tgt Ion	Ratio	Lower	Upper
138	100		
108	10.8	7.5	11.3
92	119.0	75.0	112.6#



#54
 2,4-Dinitrophenol
 Concen: 37.81 ng
 RT: 14.998 min Scan# 2059
 Delta R.T. -0.000 min
 Lab File: BP003951.D
 Acq: 13 Nov 2020 13:05

Tgt Ion	Ratio	Lower	Upper
184	100		
63	68.6	32.3	48.5#
154	77.9	49.1	73.7#



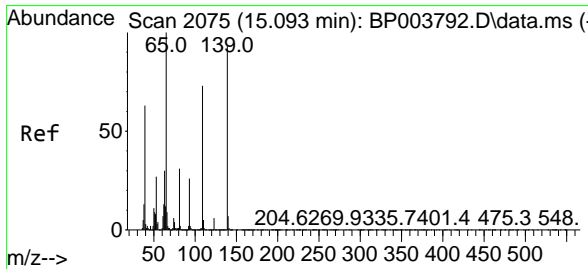
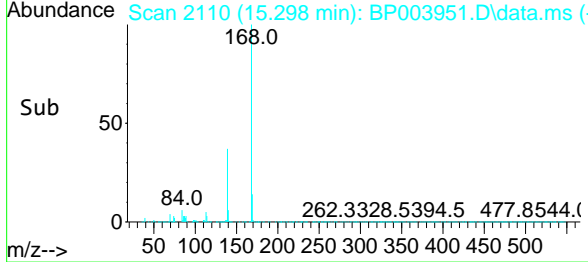
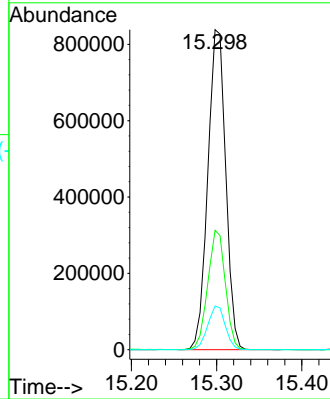
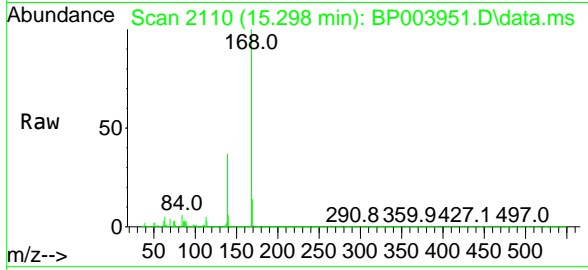


#55
 Dibenzofuran
 Concen: 37.16 ng
 RT: 15.298 min Scan# 2110
 Delta R.T. -0.000 min
 Lab File: BP003951.D
 Acq: 13 Nov 2020 13:05

Instrument :
 BNA_P
 ClientSampleId :
 SSTDCCC040

Tgt Ion:168 Resp: 1223045

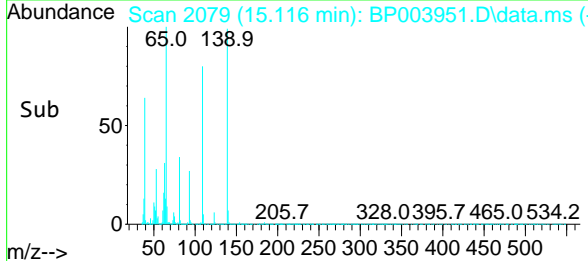
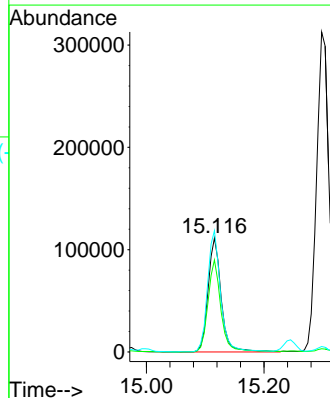
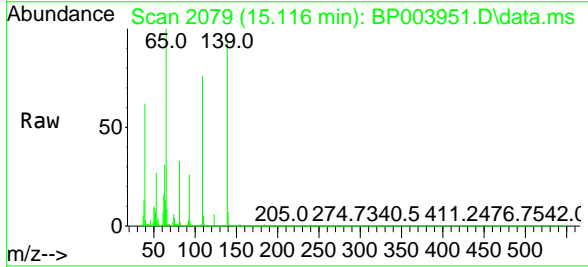
Ion	Ratio	Lower	Upper
168	100		
139	37.3	29.1	43.7
169	13.6	10.4	15.6

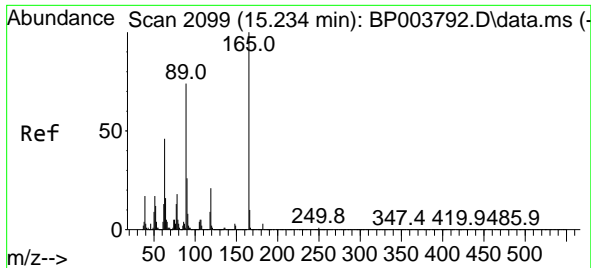


#56
 4-Nitrophenol
 Concen: 38.14 ng
 RT: 15.116 min Scan# 2079
 Delta R.T. 0.006 min
 Lab File: BP003951.D
 Acq: 13 Nov 2020 13:05

Tgt Ion:139 Resp: 173538

Ion	Ratio	Lower	Upper
139	100		
109	80.6	44.6	84.6
65	106.4	41.6	81.6#

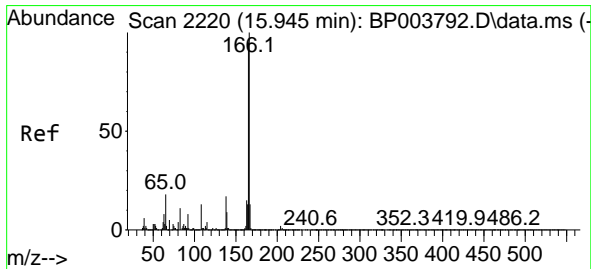
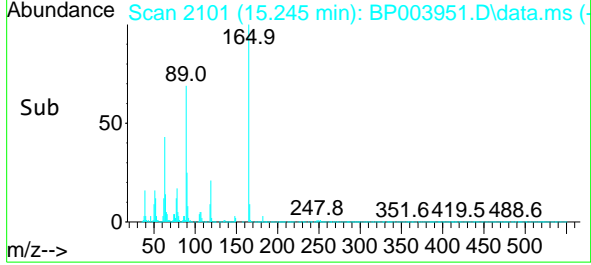
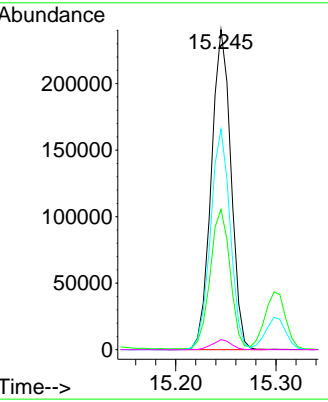
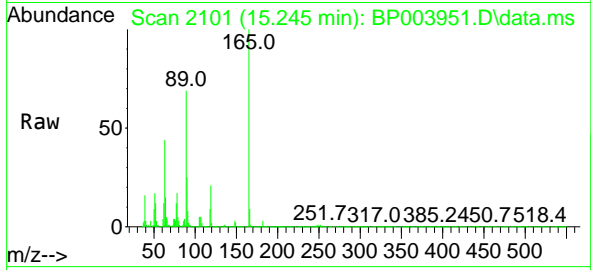




#57
 2,4-Dinitrotoluene
 Concen: 42.72 ng
 RT: 15.245 min Scan# 2101
 Delta R.T. -0.000 min
 Lab File: BP003951.D
 Acq: 13 Nov 2020 13:05

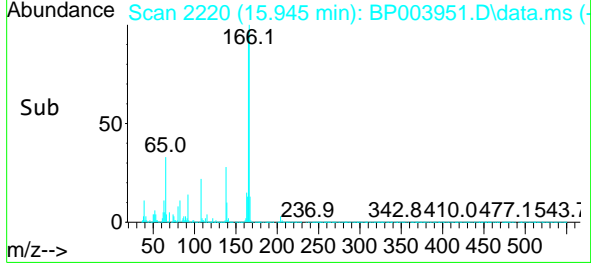
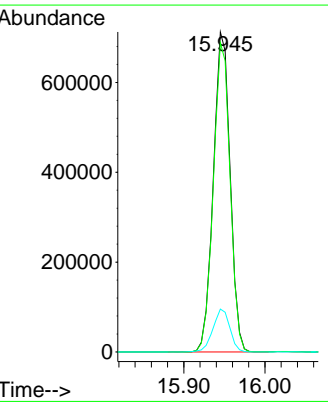
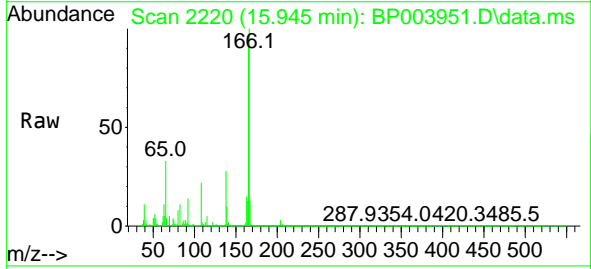
Instrument :
 BNA_P
ClientSampled :
 SSTDCCC040

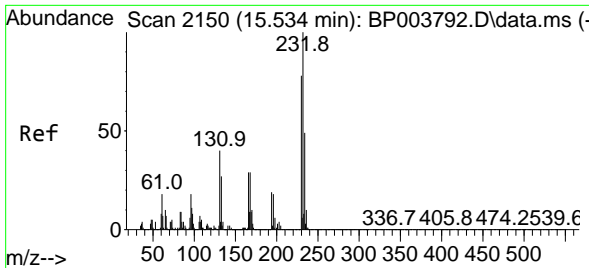
Tgt Ion	Resp	Lower	Upper
165	100		
63	43.9	20.6	31.0#
89	69.0	42.6	63.8#
182	3.2	2.4	3.6



#58
 Fluorene
 Concen: 38.76 ng
 RT: 15.945 min Scan# 2220
 Delta R.T. -0.000 min
 Lab File: BP003951.D
 Acq: 13 Nov 2020 13:05

Tgt Ion	Resp	Lower	Upper
166	100		
165	96.6	77.8	116.8
167	13.4	11.0	16.4



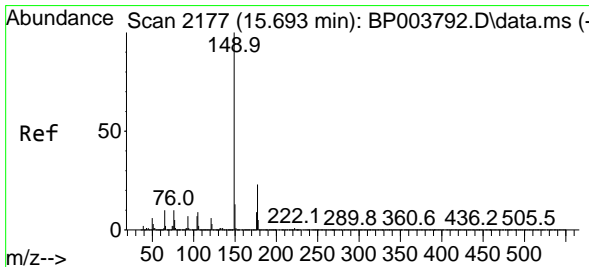
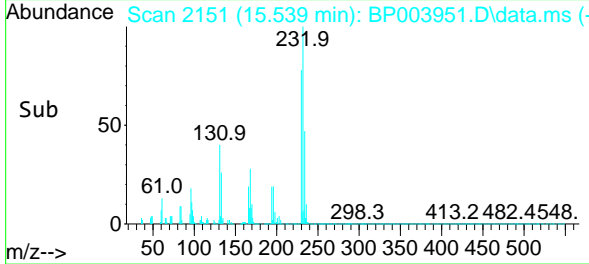
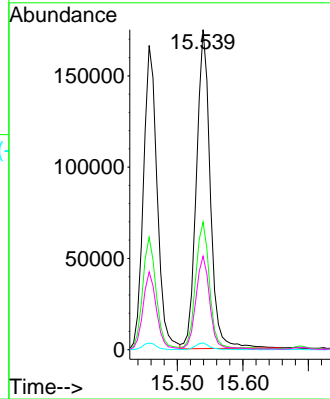
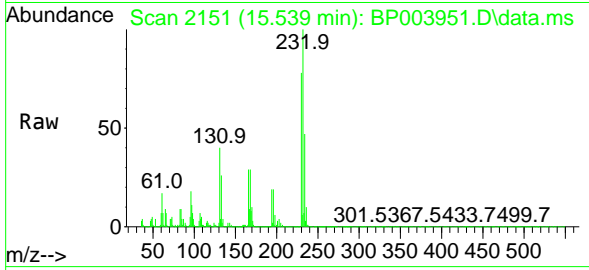


#59
 2,3,4,6-Tetrachlorophenol
 Concen: 37.23 ng
 RT: 15.539 min Scan# 2151
 Delta R.T. -0.000 min
 Lab File: BP003951.D
 Acq: 13 Nov 2020 13:05

Instrument :
 BNA_P
 ClientSampled :
 SSTDCCC040

Tgt Ion:232 Resp: 257060

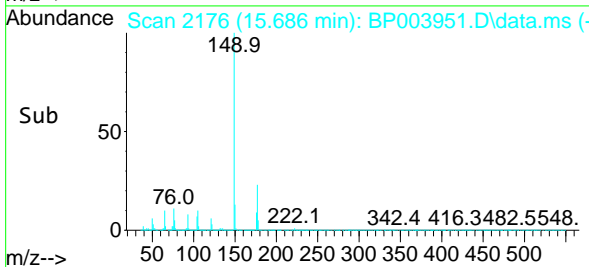
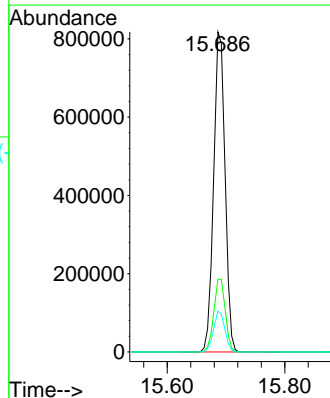
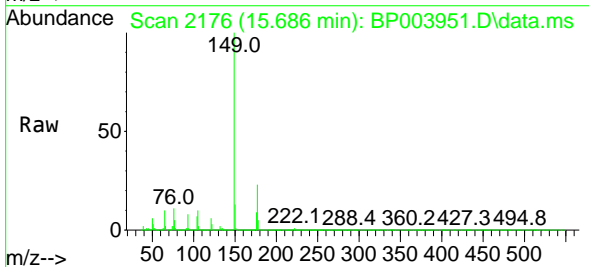
Ion	Ratio	Lower	Upper
232	100		
131	39.8	34.1	51.1
130	2.1	1.8	2.8
166	29.7	24.6	36.8

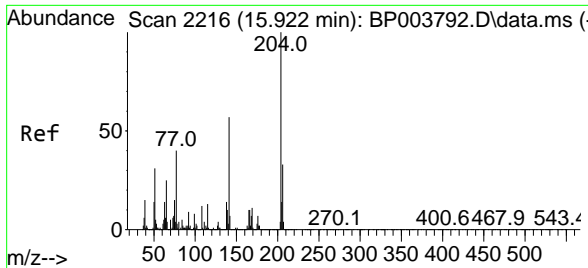


#60
 Diethylphthalate
 Concen: 40.52 ng
 RT: 15.686 min Scan# 2176
 Delta R.T. -0.000 min
 Lab File: BP003951.D
 Acq: 13 Nov 2020 13:05

Tgt Ion:149 Resp: 1102587

Ion	Ratio	Lower	Upper
149	100		
177	22.8	18.0	27.0
150	12.8	10.0	15.0

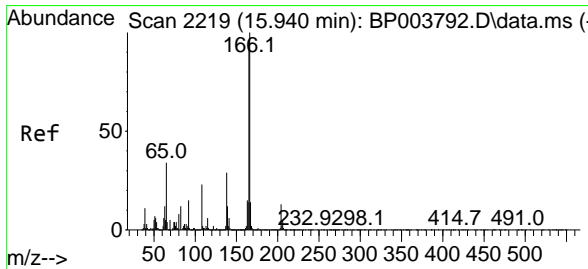
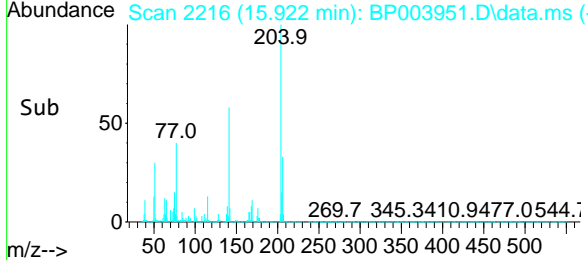
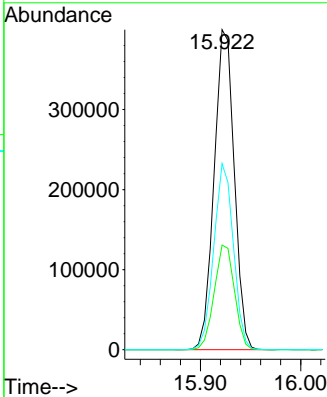
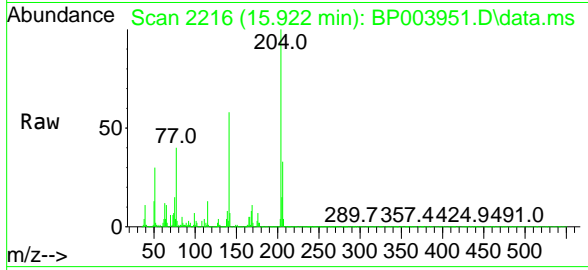




#61
 4-Chlorophenyl-phenylether
 Concen: 38.69 ng
 RT: 15.922 min Scan# 2216
 Delta R.T. -0.000 min
 Lab File: BP003951.D
 Acq: 13 Nov 2020 13:05

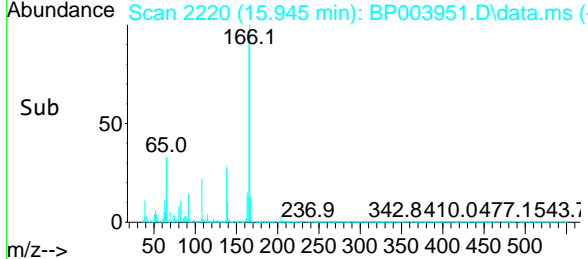
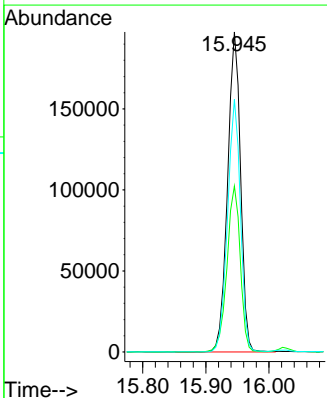
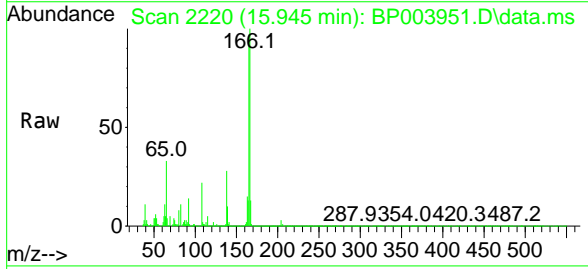
Instrument :
 BNA_P
 ClientSampleId :
 SSTDCCC040

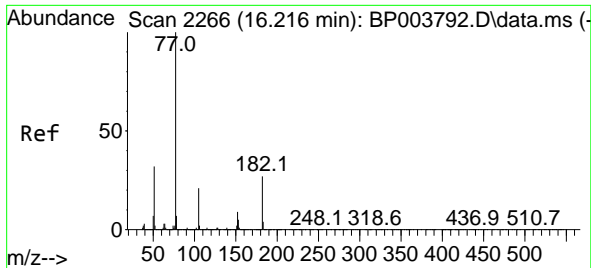
Tgt Ion	Resp	Lower	Upper
204	100		
206	32.7	25.9	38.9
141	58.2	46.5	69.7



#62
 4-Nitroaniline
 Concen: 42.80 ng
 RT: 15.945 min Scan# 2220
 Delta R.T. -0.000 min
 Lab File: BP003951.D
 Acq: 13 Nov 2020 13:05

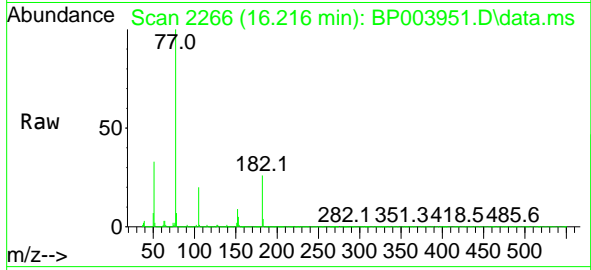
Tgt Ion	Resp	Lower	Upper
138	100		
92	51.9	20.7	60.7
108	78.9	47.8	87.8





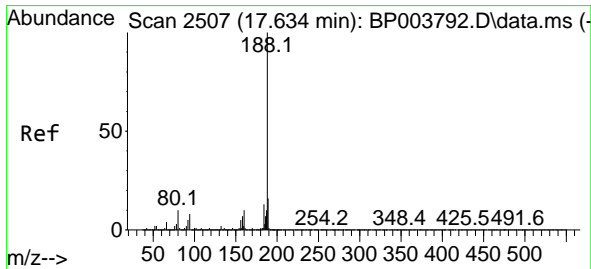
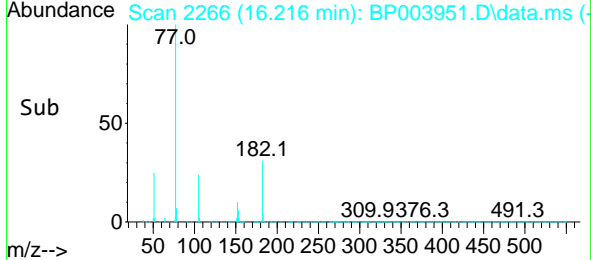
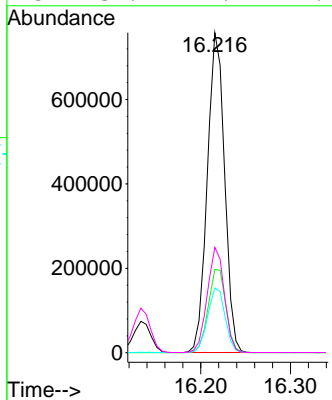
#63
 Azobenzene
 Concen: 39.44 ng
 RT: 16.216 min Scan# 2266
 Delta R.T. -0.000 min
 Lab File: BP003951.D
 Acq: 13 Nov 2020 13:05

Instrument :
 BNA_P
ClientSampled :
 SSTDCCC040

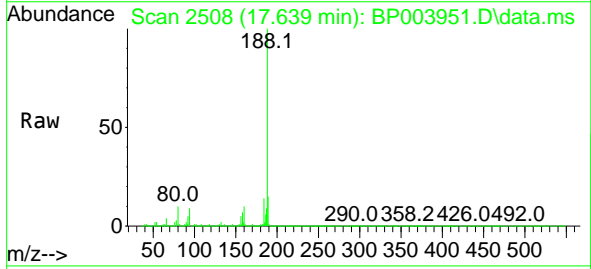


Tgt Ion: 77 Resp: 1013320

Ion	Ratio	Lower	Upper
77	100		
182	26.0	16.9	56.9
105	20.3	5.6	45.6
51	32.9	2.9	42.9

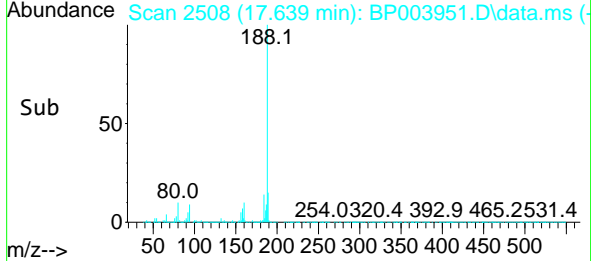
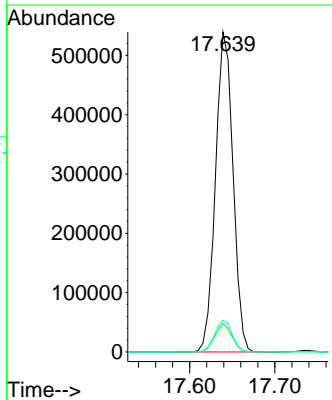


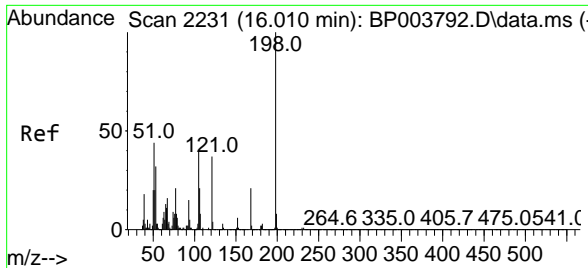
#64
 Phenanthrene-d10
 Concen: 20.00 ng
 RT: 17.639 min Scan# 2508
 Delta R.T. -0.000 min
 Lab File: BP003951.D
 Acq: 13 Nov 2020 13:05



Tgt Ion: 188 Resp: 770626

Ion	Ratio	Lower	Upper
188	100		
94	8.9	6.2	9.2
80	9.9	6.2	9.2

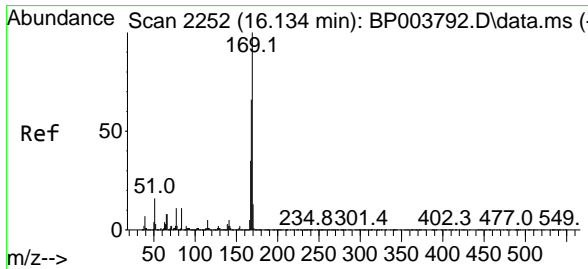
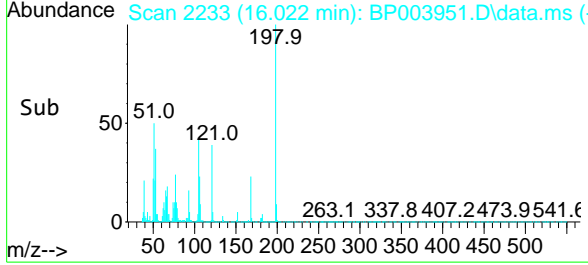
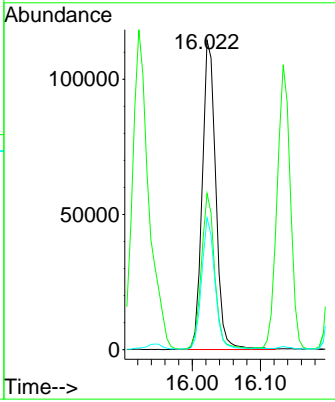
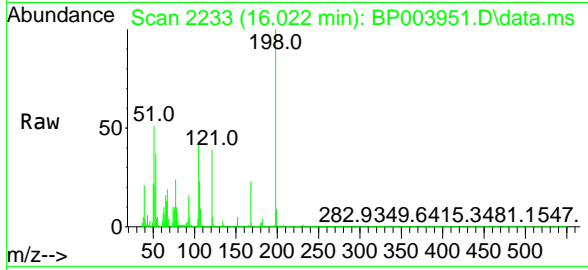




#65
 4,6-Dinitro-2-methylphenol
 Concen: 39.47 ng
 RT: 16.022 min Scan# 2233
 Delta R.T. -0.000 min
 Lab File: BP003951.D
 Acq: 13 Nov 2020 13:05

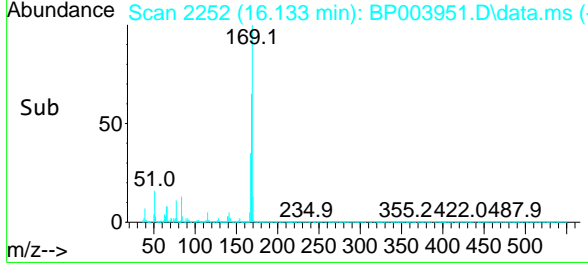
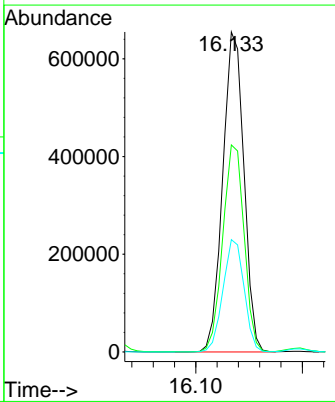
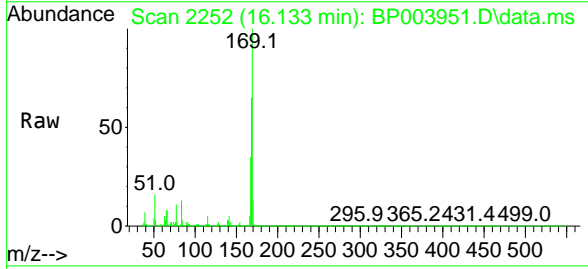
Instrument :
 BNA_P
ClientSampled :
 SSTDCCC040

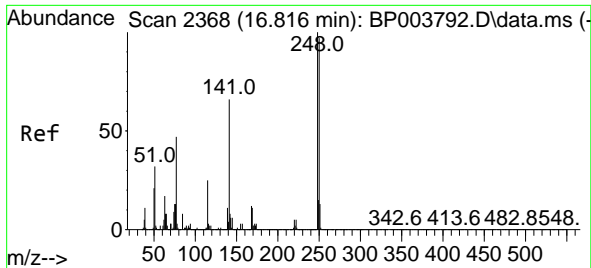
Tgt Ion	Resp	Lower	Upper
198	158365		
51	50.5	6.4	46.4#
105	42.7	18.9	58.9



#66
 n-Nitrosodiphenylamine
 Concen: 38.26 ng
 RT: 16.133 min Scan# 2252
 Delta R.T. -0.000 min
 Lab File: BP003951.D
 Acq: 13 Nov 2020 13:05

Tgt Ion	Resp	Lower	Upper
169	902572		
168	64.7	53.8	80.6
167	35.1	28.9	43.3



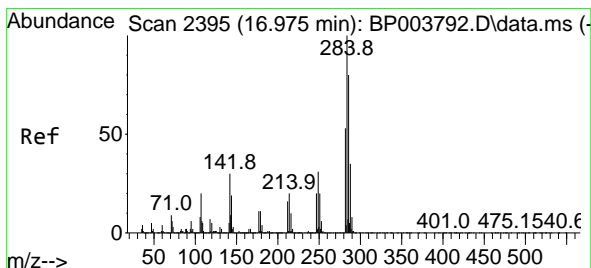
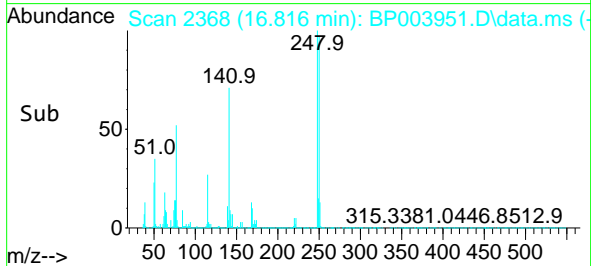
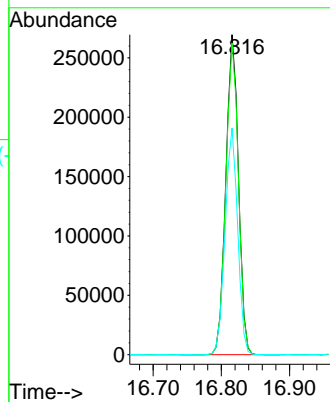
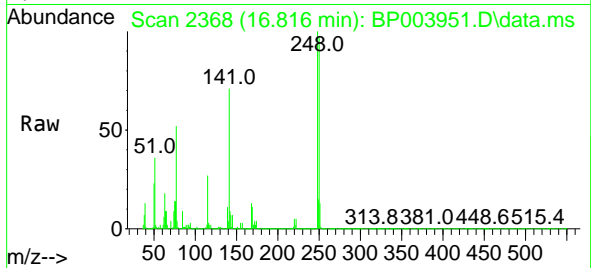


#67
 4-Bromophenyl-phenylether
 Concen: 38.47 ng
 RT: 16.816 min Scan# 2368
 Delta R.T. -0.000 min
 Lab File: BP003951.D
 Acq: 13 Nov 2020 13:05

Instrument :
 BNA_P
 ClientSampleId :
 SSTDCCC040

Tgt Ion:248 Resp: 346911

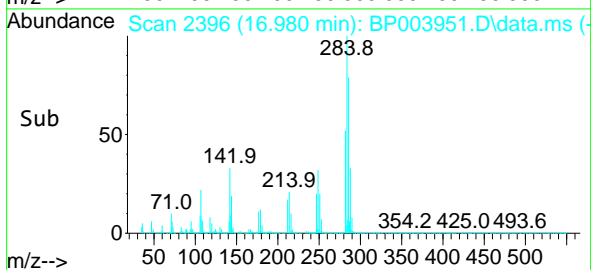
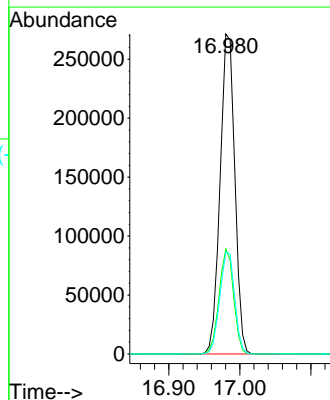
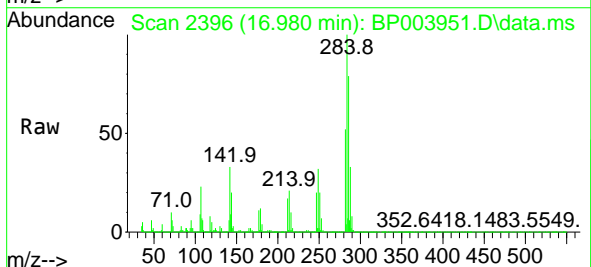
Ion	Ratio	Lower	Upper
248	100		
250	97.4	76.7	115.1
141	70.8	53.0	79.6

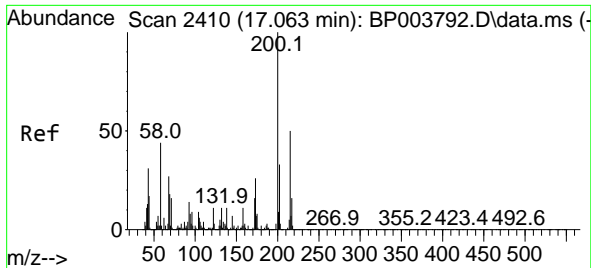


#68
 Hexachlorobenzene
 Concen: 37.76 ng
 RT: 16.980 min Scan# 2396
 Delta R.T. -0.000 min
 Lab File: BP003951.D
 Acq: 13 Nov 2020 13:05

Tgt Ion:284 Resp: 388455

Ion	Ratio	Lower	Upper
284	100		
142	32.8	24.2	36.4
249	31.8	23.8	35.8

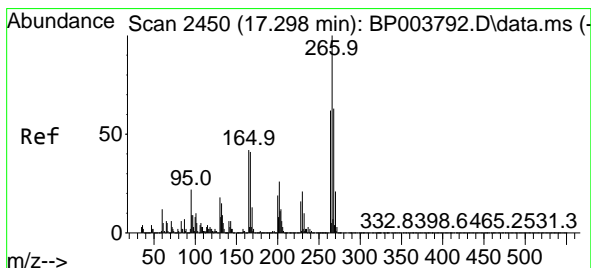
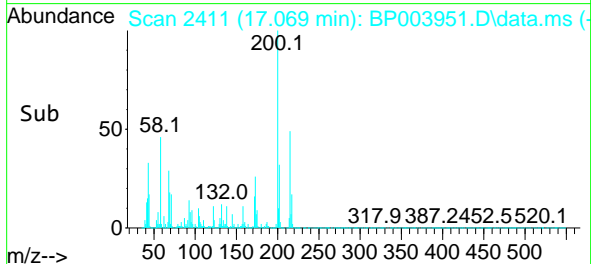
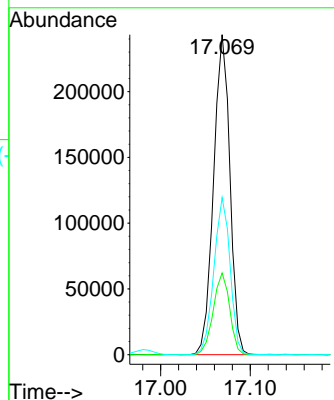
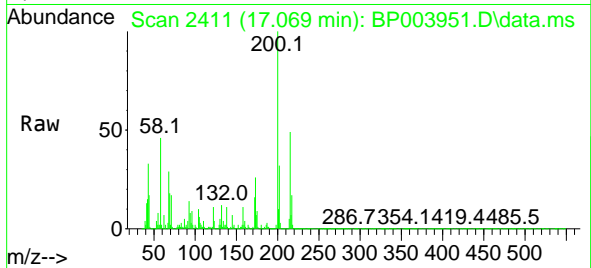




#69
 Atrazine
 Concen: 39.70 ng
 RT: 17.069 min Scan# 2411
 Delta R.T. -0.000 min
 Lab File: BP003951.D
 Acq: 13 Nov 2020 13:05

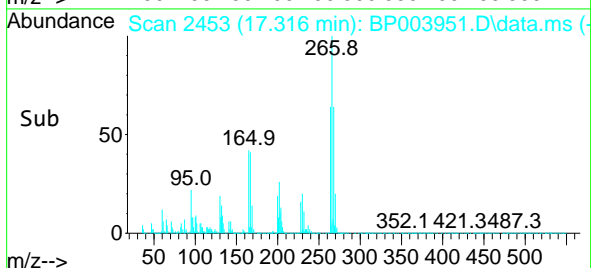
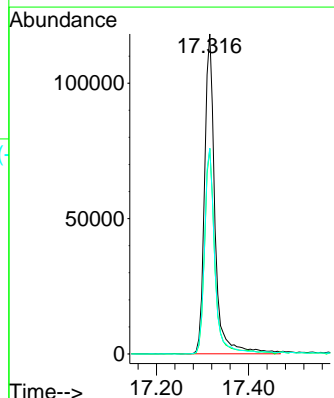
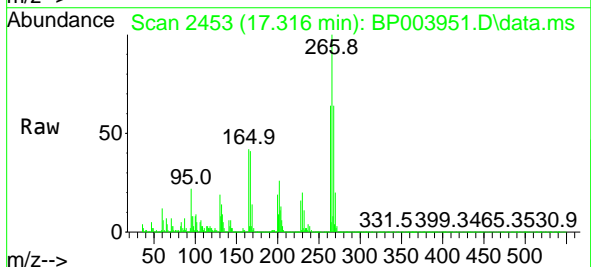
Instrument :
 BNA_P
 ClientSampleId :
 SSTDCCC040

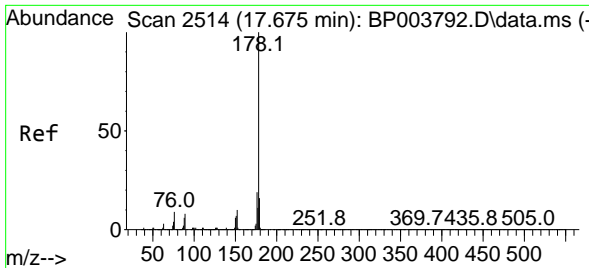
Tgt Ion:200 Resp: 307493
 Ion Ratio Lower Upper
 200 100
 173 25.5 5.9 45.9
 215 49.1 28.4 68.4



#70
 Pentachlorophenol
 Concen: 37.92 ng
 RT: 17.316 min Scan# 2453
 Delta R.T. 0.006 min
 Lab File: BP003951.D
 Acq: 13 Nov 2020 13:05

Tgt Ion:266 Resp: 186606
 Ion Ratio Lower Upper
 266 100
 268 64.2 51.1 76.7
 264 64.3 50.6 76.0



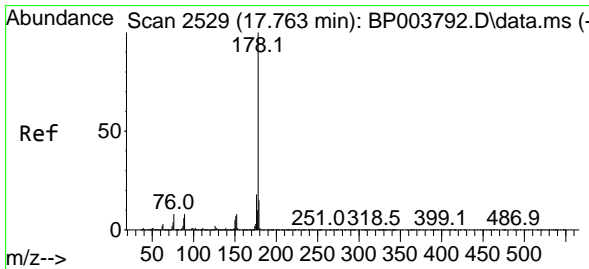
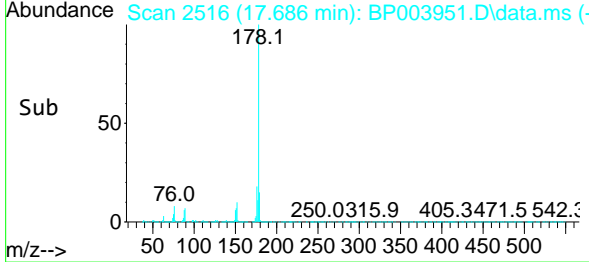
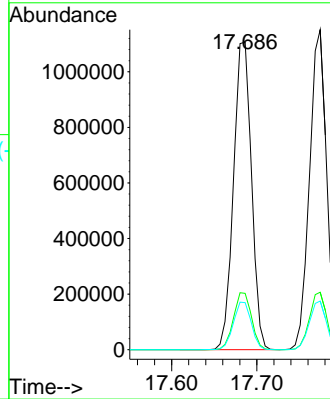
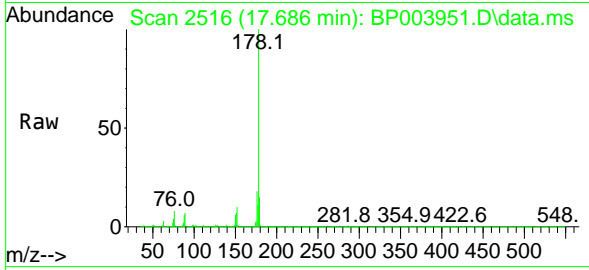


#71
 Phenanthrene
 Concen: 37.49 ng
 RT: 17.686 min Scan# 2516
 Delta R.T. 0.006 min
 Lab File: BP003951.D
 Acq: 13 Nov 2020 13:05

Instrument :
 BNA_P
ClientSampled :
 SSTDCCC040

Tgt Ion:178 Resp: 1621525

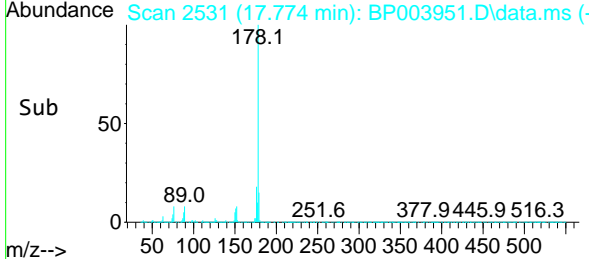
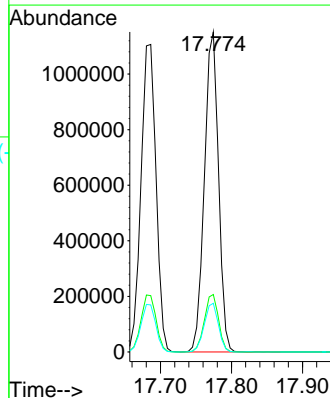
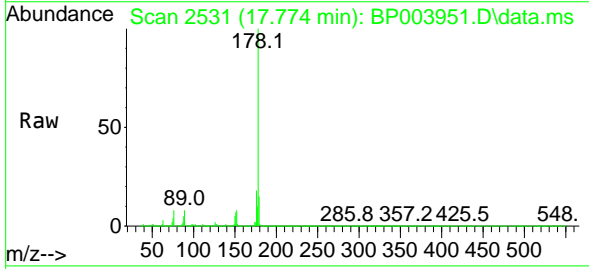
Ion	Ratio	Lower	Upper
178	100		
176	18.3	15.3	22.9
179	15.3	12.5	18.7

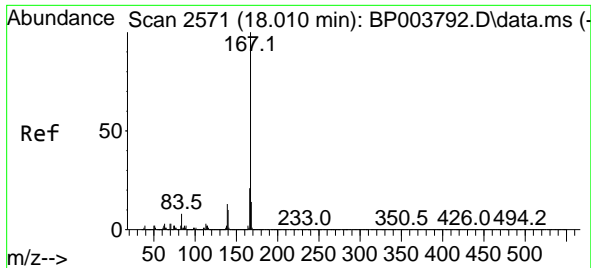


#72
 Anthracene
 Concen: 38.10 ng
 RT: 17.774 min Scan# 2531
 Delta R.T. 0.006 min
 Lab File: BP003951.D
 Acq: 13 Nov 2020 13:05

Tgt Ion:178 Resp: 1591457

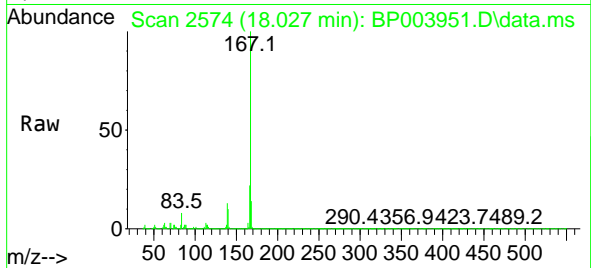
Ion	Ratio	Lower	Upper
178	100		
176	17.9	15.0	22.4
179	15.2	12.5	18.7





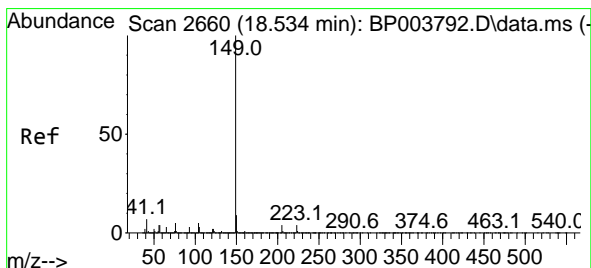
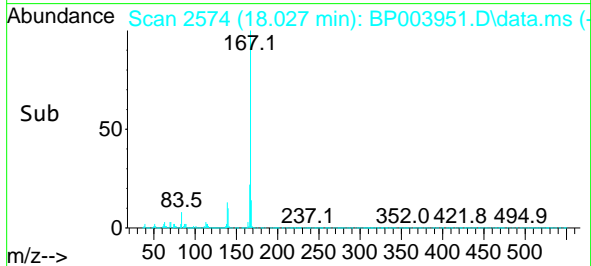
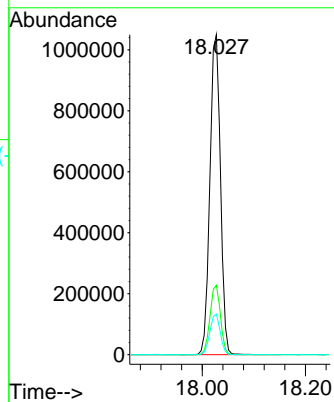
#73
 Carbazole
 Concen: 38.24 ng
 RT: 18.027 min Scan# 2574
 Delta R.T. 0.006 min
 Lab File: BP003951.D
 Acq: 13 Nov 2020 13:05

Instrument :
 BNA_P
ClientSampled :
 SSTDCCC040



Tgt Ion:167 Resp: 1482075

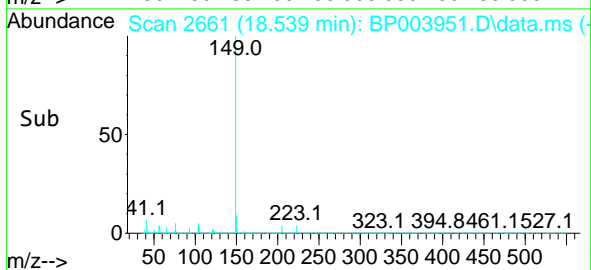
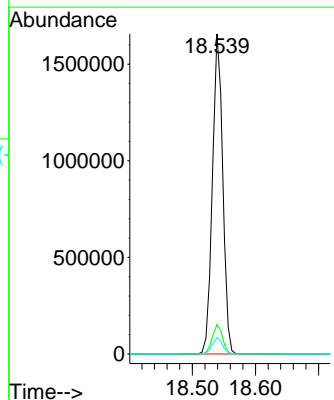
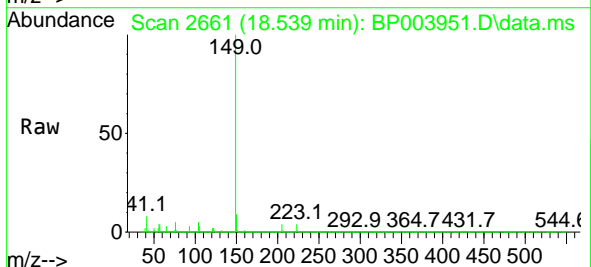
Ion	Ratio	Lower	Upper
167	100		
166	21.7	17.6	26.4
139	12.7	10.2	15.4

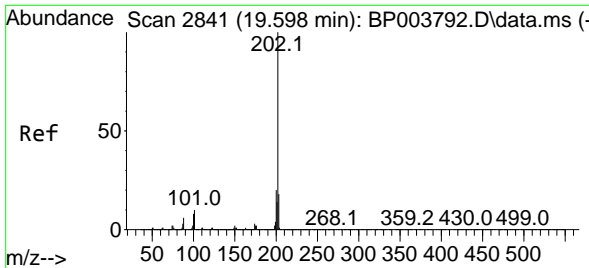


#74
 Di-n-butylphthalate
 Concen: 41.94 ng
 RT: 18.539 min Scan# 2661
 Delta R.T. -0.000 min
 Lab File: BP003951.D
 Acq: 13 Nov 2020 13:05

Tgt Ion:149 Resp: 1881435

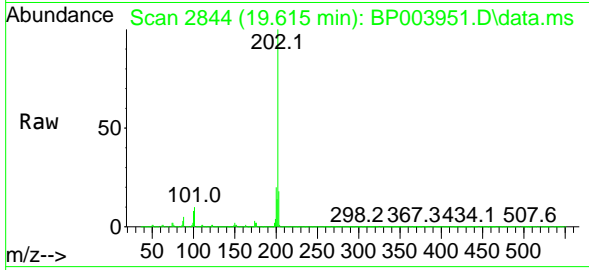
Ion	Ratio	Lower	Upper
149	100		
150	9.2	7.3	10.9
104	5.2	3.4	5.0





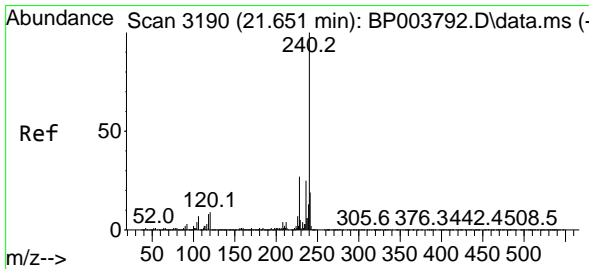
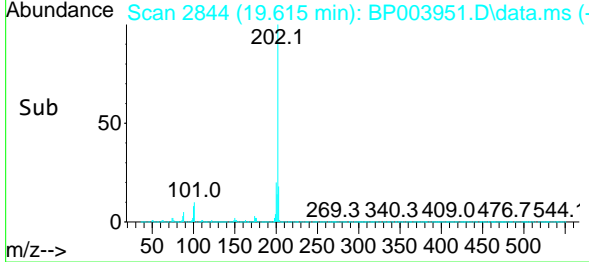
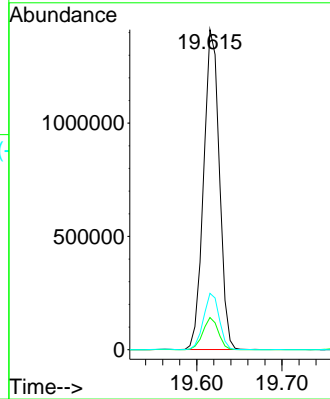
#75
 Fluoranthene
 Concen: 36.28 ng
 RT: 19.615 min Scan# 2844
 Delta R.T. -0.000 min
 Lab File: BP003951.D
 Acq: 13 Nov 2020 13:05

Instrument :
 BNA_P
ClientSampled :
 SSTDCCC040



Tgt Ion: 202 Resp: 1810574

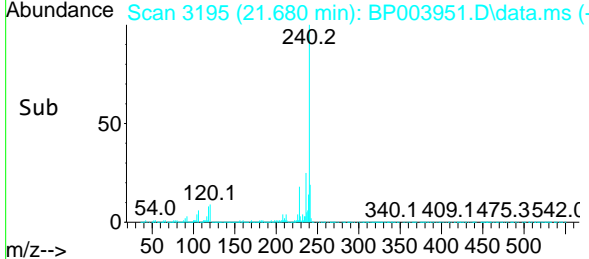
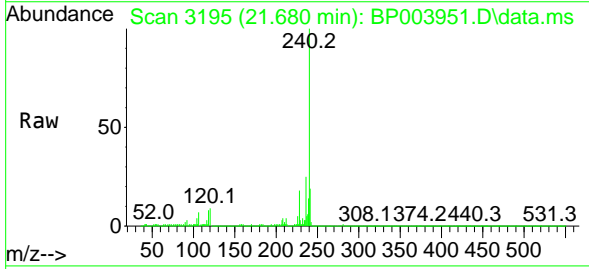
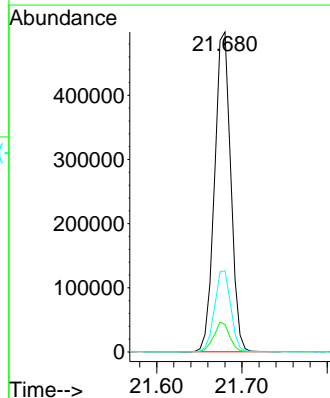
Ion	Ratio	Lower	Upper
202	100		
101	10.1	0.0	29.4
203	17.6	0.0	37.8

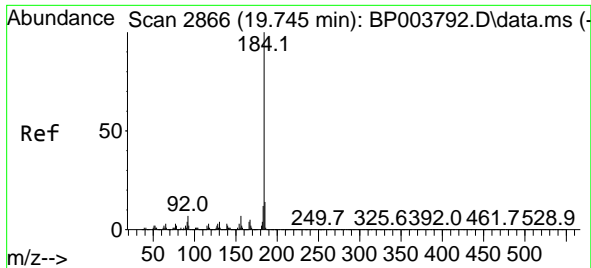


#76
 Chrysene-d12
 Concen: 20.00 ng
 RT: 21.680 min Scan# 3195
 Delta R.T. 0.006 min
 Lab File: BP003951.D
 Acq: 13 Nov 2020 13:05

Tgt Ion: 240 Resp: 657510

Ion	Ratio	Lower	Upper
240	100		
120	8.6	7.8	11.6
236	25.4	20.8	31.2

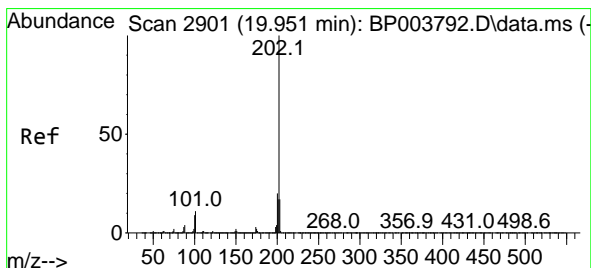
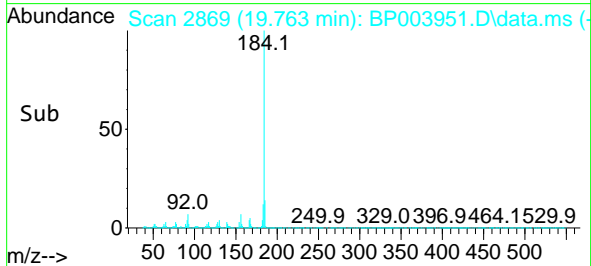
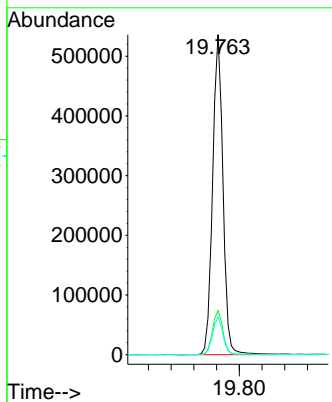
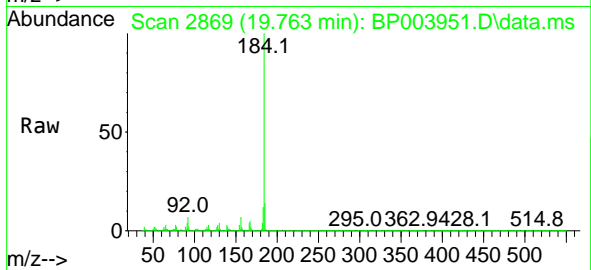




#77
 Benzidine
 Concen: 43.45 ng
 RT: 19.763 min Scan# 2869
 Delta R.T. -0.000 min
 Lab File: BP003951.D
 Acq: 13 Nov 2020 13:05

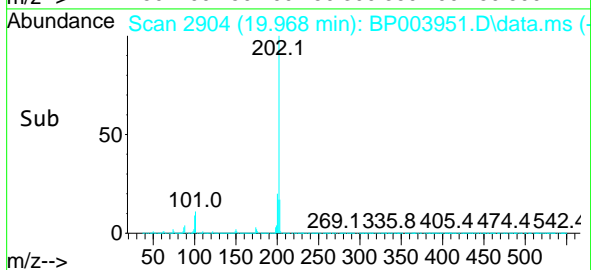
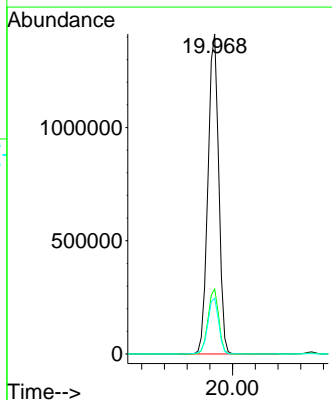
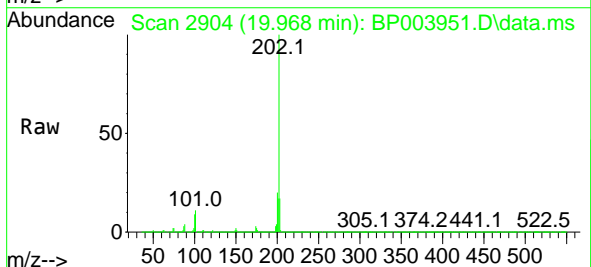
Instrument :
 BNA_P
 ClientSampled :
 SSTDCCC040

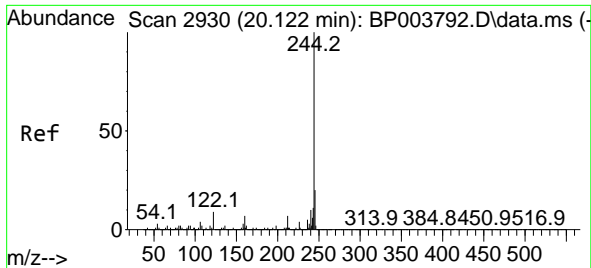
Tgt Ion	Resp	Lower	Upper
184	673911		
185	13.8	11.5	17.3
183	11.7	9.6	14.4



#78
 Pyrene
 Concen: 41.30 ng
 RT: 19.968 min Scan# 2904
 Delta R.T. 0.006 min
 Lab File: BP003951.D
 Acq: 13 Nov 2020 13:05

Tgt Ion	Resp	Lower	Upper
202	1842861		
200	20.3	17.1	25.7
203	17.4	14.2	21.2



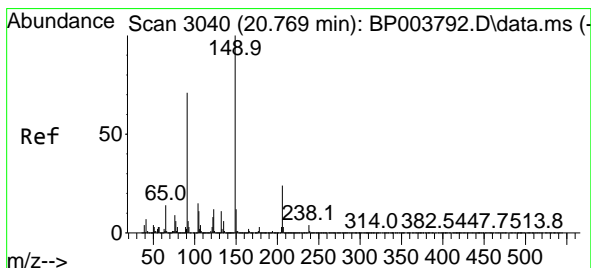
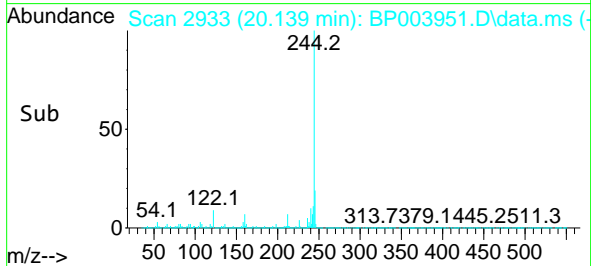
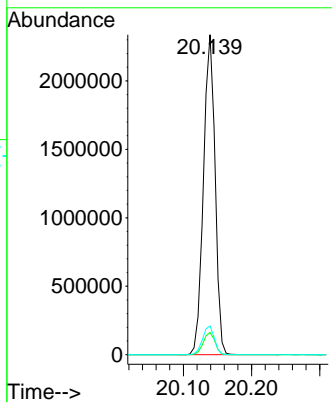
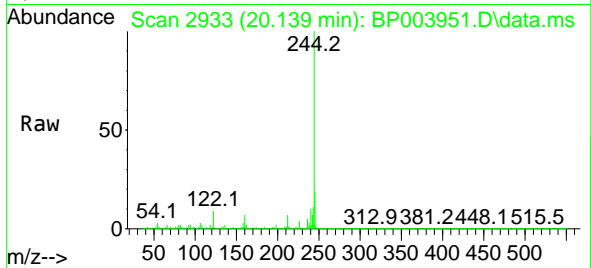


#79
 Terphenyl-d14
 Concen: 81.47 ng
 RT: 20.139 min Scan# 2933
 Delta R.T. 0.006 min
 Lab File: BP003951.D
 Acq: 13 Nov 2020 13:05

Instrument :
 BNA_P
 ClientSampled :
 SSTDCCC040

Tgt Ion:244 Resp: 2772859

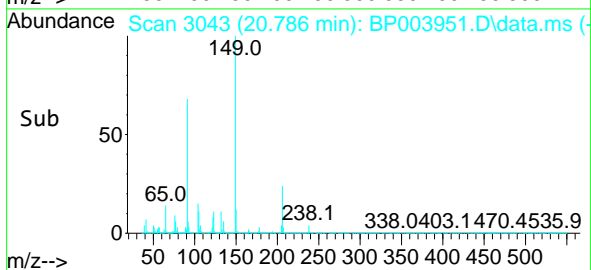
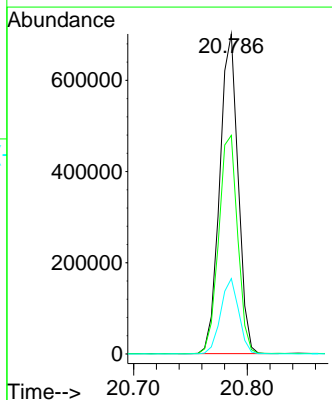
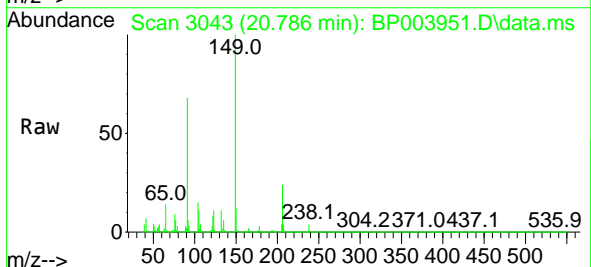
Ion	Ratio	Lower	Upper
244	100		
212	7.0	5.8	8.6
122	9.0	7.8	11.8

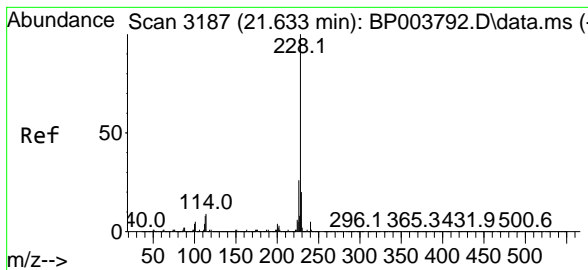


#80
 Butylbenzylphthalate
 Concen: 47.40 ng
 RT: 20.786 min Scan# 3043
 Delta R.T. 0.006 min
 Lab File: BP003951.D
 Acq: 13 Nov 2020 13:05

Tgt Ion:149 Resp: 788000

Ion	Ratio	Lower	Upper
149	100		
91	68.3	45.4	68.0#
206	23.5	17.1	25.7

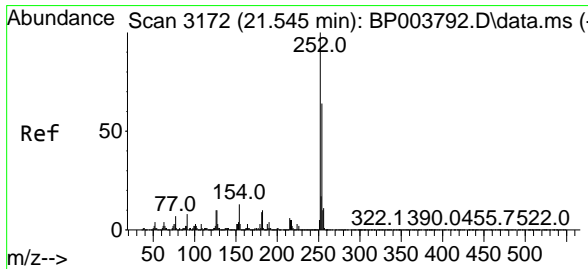
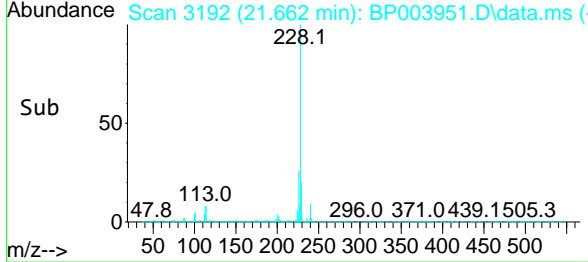
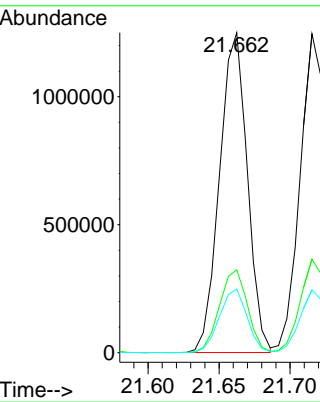
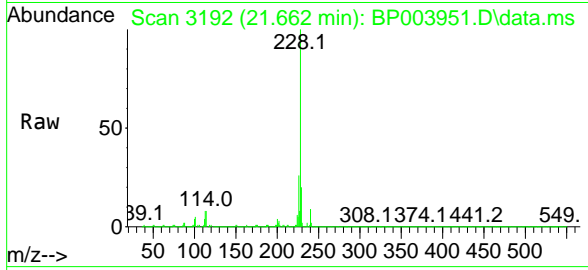




#81
 Benzo(a)anthracene
 Concen: 39.17 ng
 RT: 21.662 min Scan# 3192
 Delta R.T. 0.006 min
 Lab File: BP003951.D
 Acq: 13 Nov 2020 13:05

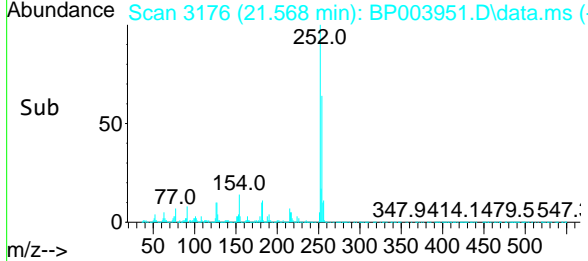
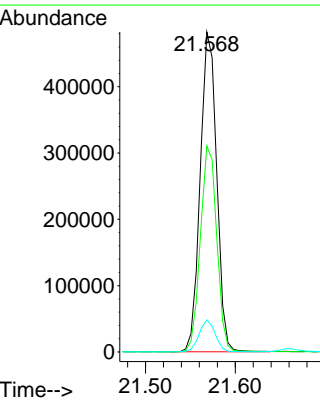
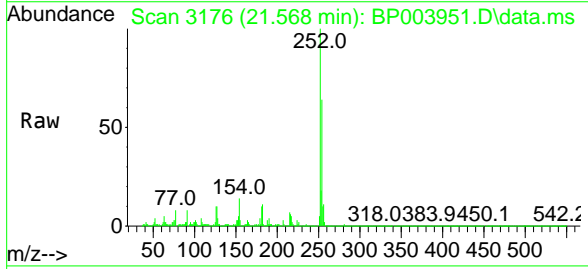
Instrument :
 BNA_P
 ClientSampled :
 SSTDCCC040

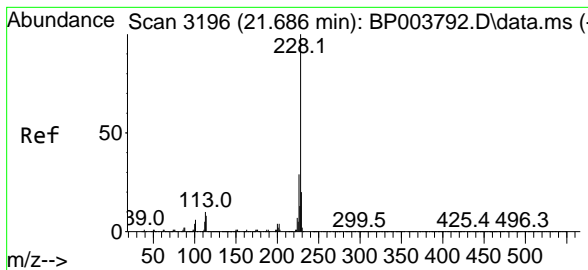
Tgt Ion	Resp	Lower	Upper
228	1698531		
226	25.9	22.1	33.1
229	19.9	15.9	23.9



#82
 3,3'-Dichlorobenzidine
 Concen: 41.09 ng
 RT: 21.568 min Scan# 3176
 Delta R.T. -0.000 min
 Lab File: BP003951.D
 Acq: 13 Nov 2020 13:05

Tgt Ion	Resp	Lower	Upper
252	614633		
254	64.3	51.0	76.4
126	10.0	7.9	11.9



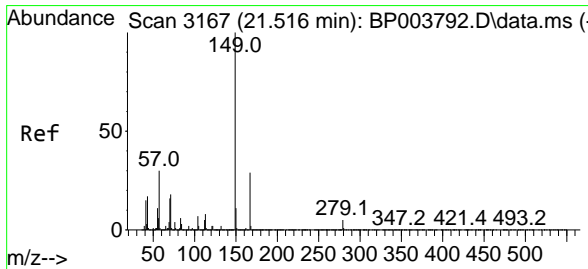
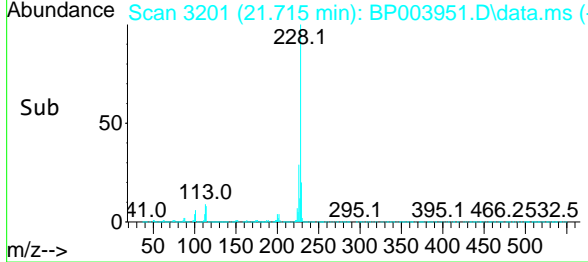
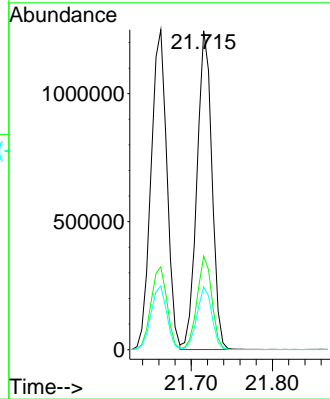
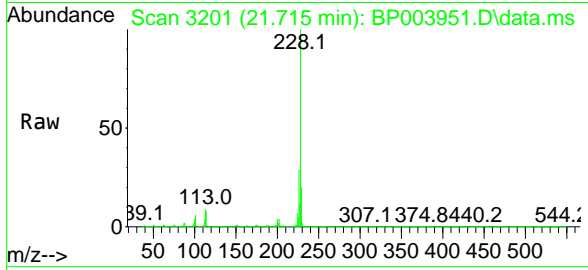


#83
 Chrysene
 Concen: 38.32 ng
 RT: 21.715 min Scan# 3201
 Delta R.T. -0.000 min
 Lab File: BP003951.D
 Acq: 13 Nov 2020 13:05

Instrument :
 BNA_P
 ClientSampleId :
 SSTDCCC040

Tgt Ion:228 Resp: 1596401

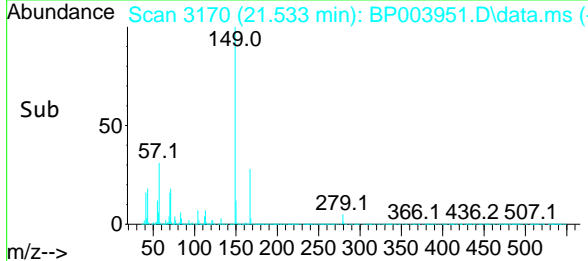
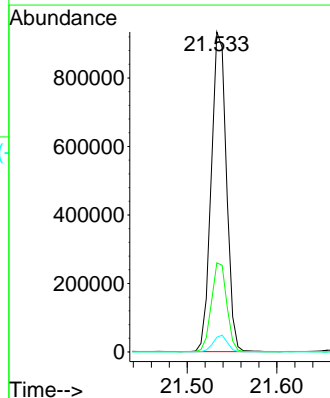
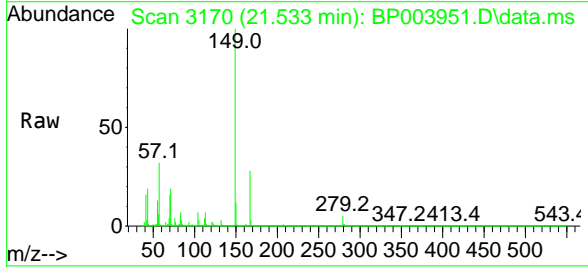
Ion	Ratio	Lower	Upper
228	100		
226	29.3	24.4	36.6
229	19.7	15.8	23.6

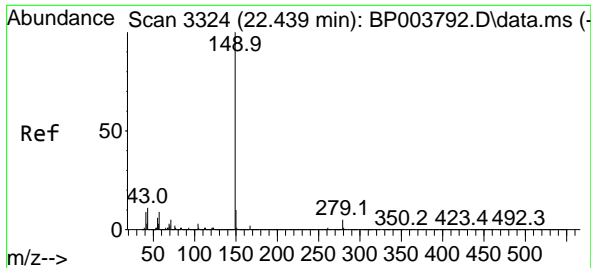


#84
 Bis(2-ethylhexyl)phthalate
 Concen: 44.66 ng
 RT: 21.533 min Scan# 3170
 Delta R.T. -0.000 min
 Lab File: BP003951.D
 Acq: 13 Nov 2020 13:05

Tgt Ion:149 Resp: 1094360

Ion	Ratio	Lower	Upper
149	100		
167	27.9	22.6	34.0
279	4.6	4.2	6.2



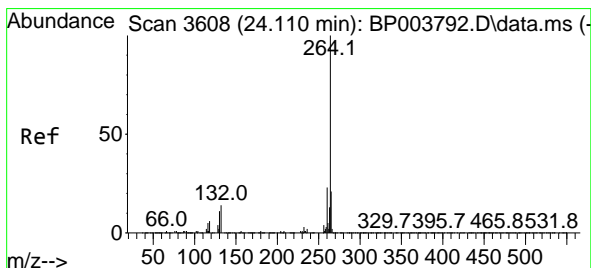
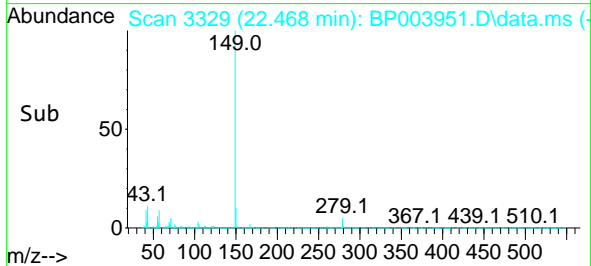
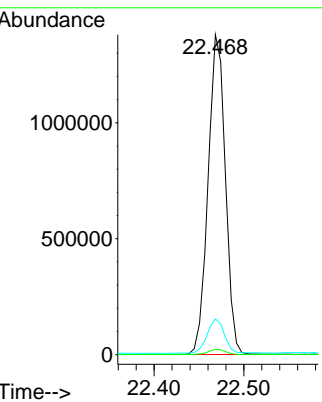
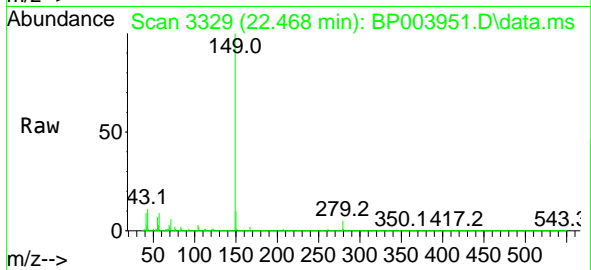


#85
 Di-n-octyl phthalate
 Concen: 45.15 ng
 RT: 22.468 min Scan# 3329
 Delta R.T. -0.000 min
 Lab File: BP003951.D
 Acq: 13 Nov 2020 13:05

Instrument :
 BNA_P
ClientSampleId :
 SSTDCCC040

Tgt Ion:149 Resp: 1843400

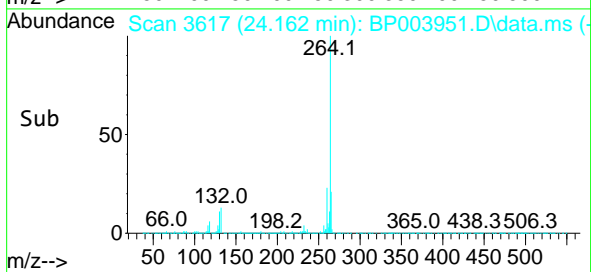
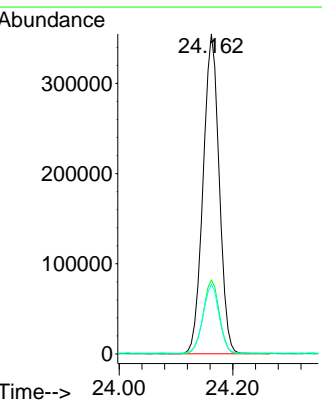
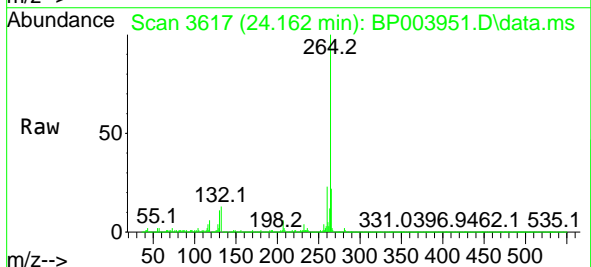
Ion	Ratio	Lower	Upper
149	100		
167	1.7	1.3	1.9
43	10.9	3.7	5.5#

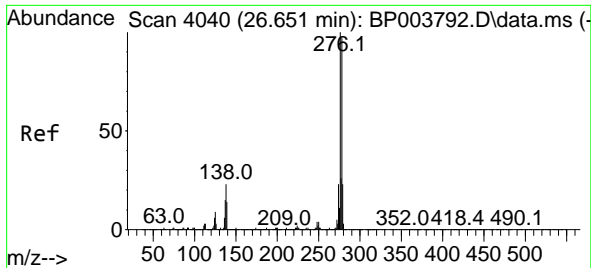


#86
 Perylene-d12
 Concen: 20.00 ng
 RT: 24.162 min Scan# 3617
 Delta R.T. 0.006 min
 Lab File: BP003951.D
 Acq: 13 Nov 2020 13:05

Tgt Ion:264 Resp: 695599

Ion	Ratio	Lower	Upper
264	100		
260	23.1	18.8	28.2
265	21.8	17.4	26.2

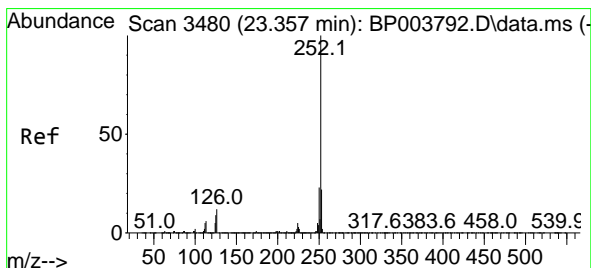
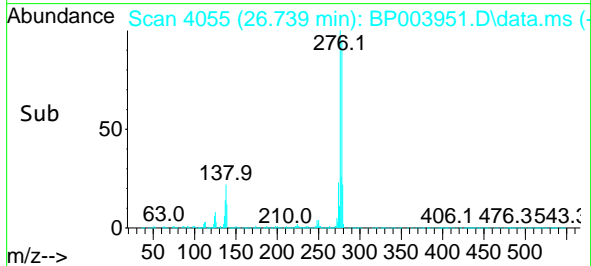
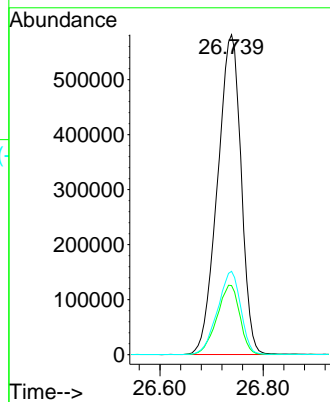
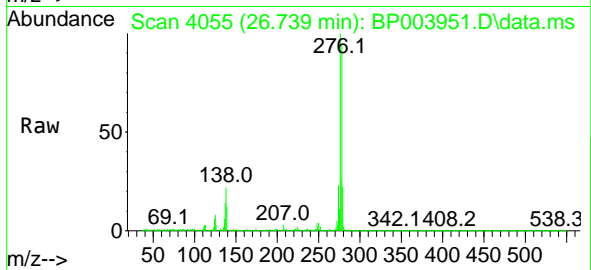




#87
 Indeno(1,2,3-cd)pyrene
 Concen: 36.70 ng
 RT: 26.739 min Scan# 4055
 Delta R.T. 0.012 min
 Lab File: BP003951.D
 Acq: 13 Nov 2020 13:05

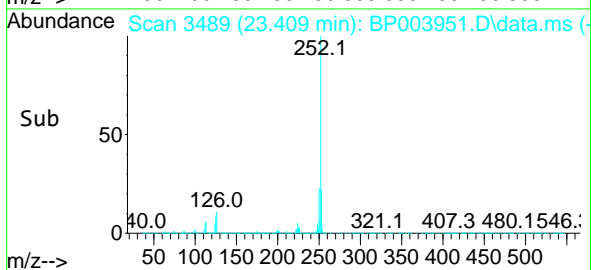
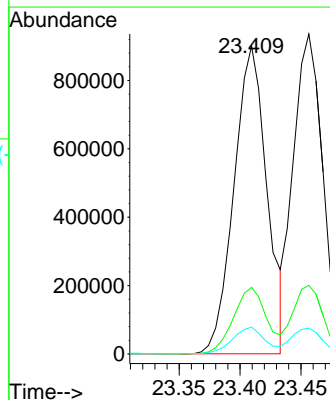
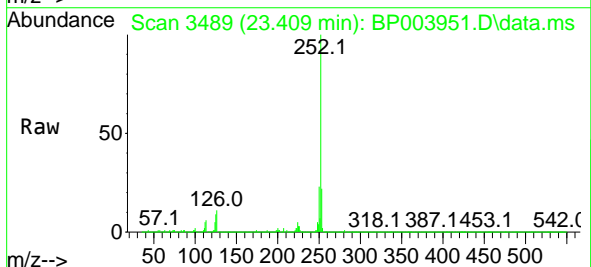
Instrument :
 BNA_P
 ClientSampleId :
 SSTDCCC040

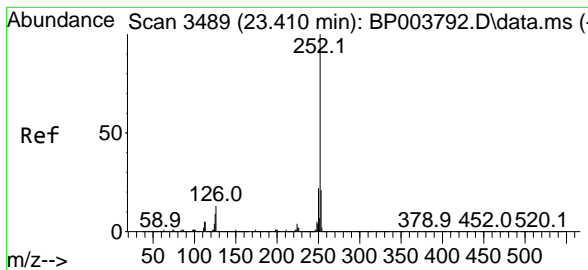
Tgt Ion:276 Resp: 1841781
 Ion Ratio Lower Upper
 276 100
 138 21.0 18.7 28.1
 277 25.6 20.4 30.6



#88
 Benzo(b)fluoranthene
 Concen: 37.24 ng
 RT: 23.409 min Scan# 3489
 Delta R.T. 0.006 min
 Lab File: BP003951.D
 Acq: 13 Nov 2020 13:05

Tgt Ion:252 Resp: 1695216
 Ion Ratio Lower Upper
 252 100
 253 21.6 17.6 26.4
 125 8.7 7.3 10.9



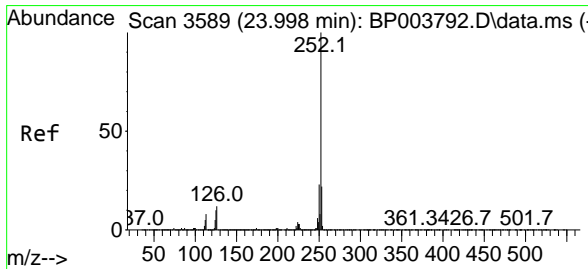
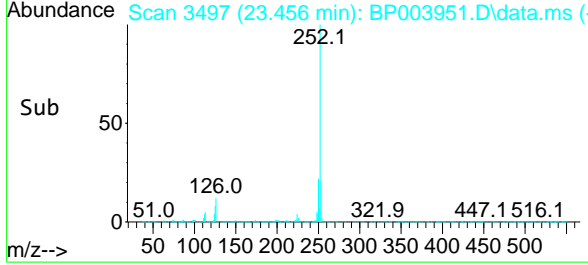
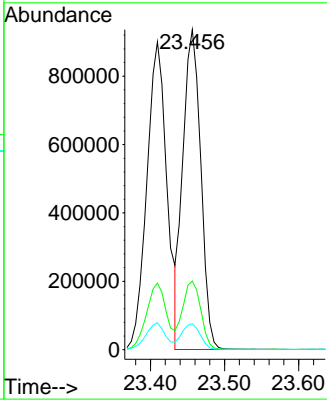
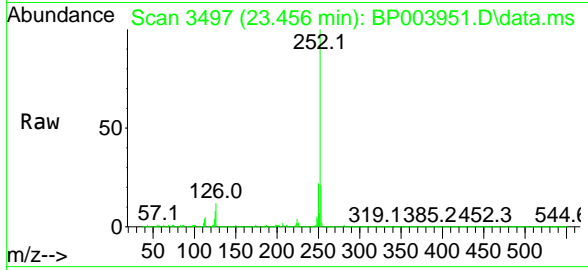


#89
 Benzo(k)fluoranthene
 Concen: 34.87 ng
 RT: 23.456 min Scan# 3497
 Delta R.T. 0.006 min
 Lab File: BP003951.D
 Acq: 13 Nov 2020 13:05

Instrument :
 BNA_P
ClientSampled :
 SSTDCCC040

Tgt Ion:252 Resp: 1567459

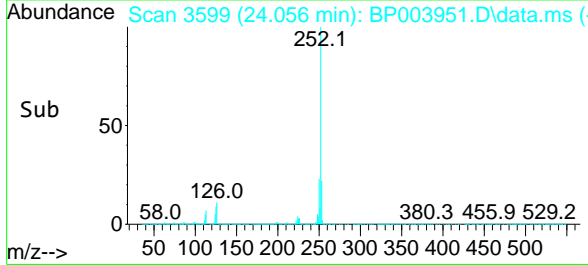
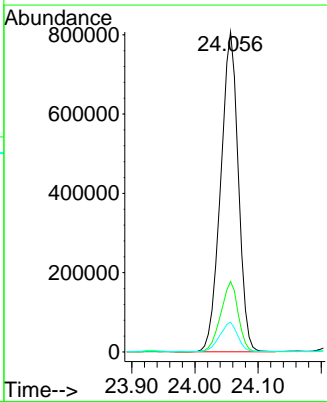
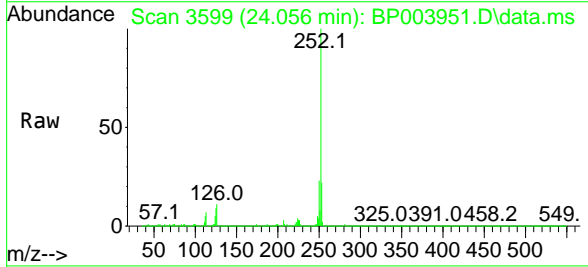
Ion	Ratio	Lower	Upper
252	100		
253	21.4	17.8	26.8
125	8.1	7.4	11.2

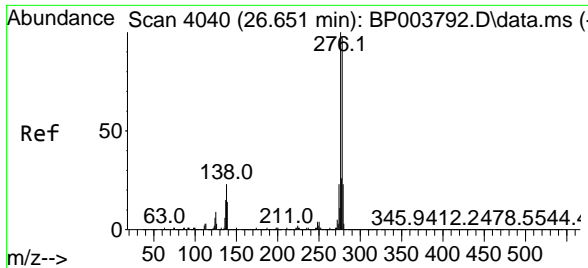


#90
 Benzo(a)pyrene
 Concen: 37.02 ng
 RT: 24.056 min Scan# 3599
 Delta R.T. 0.006 min
 Lab File: BP003951.D
 Acq: 13 Nov 2020 13:05

Tgt Ion:252 Resp: 1560056

Ion	Ratio	Lower	Upper
252	100		
253	22.0	17.4	26.0
125	9.3	8.2	12.4

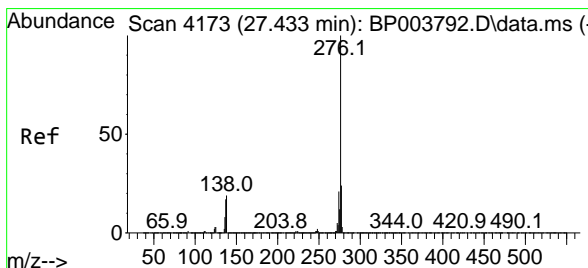
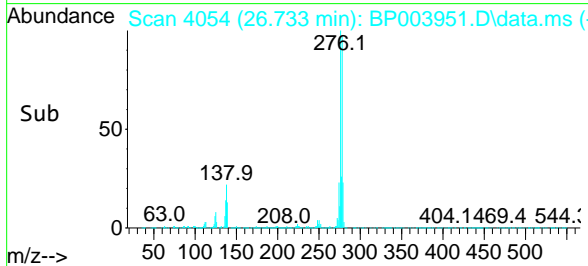
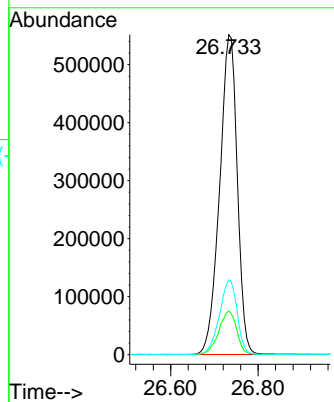
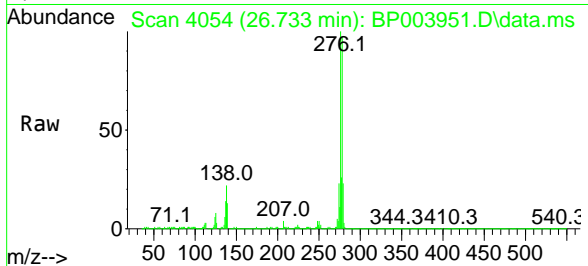




#91
 Dibenzo(a,h)anthracene
 Concen: 36.86 ng
 RT: 26.733 min Scan# 4054
 Delta R.T. 0.006 min
 Lab File: BP003951.D
 Acq: 13 Nov 2020 13:05

Instrument :
 BNA_P
 ClientSampleId :
 SSTDCCC040

Tgt Ion:278 Resp: 1541942
 Ion Ratio Lower Upper
 278 100
 139 13.6 12.4 18.6
 279 23.4 19.0 28.6



#92
 Benzo(g,h,i)perylene
 Concen: 36.79 ng
 RT: 27.533 min Scan# 4190
 Delta R.T. 0.012 min
 Lab File: BP003951.D
 Acq: 13 Nov 2020 13:05

Tgt Ion:276 Resp: 1489635
 Ion Ratio Lower Upper
 276 100
 277 24.0 19.0 28.6
 138 18.1 16.6 24.8

