

Data Path : Z:\svoasrv\HPCHEM1\BNA_P\Data\BP111523\
 Data File : BP018184.D
 Acq On : 15 Nov 2023 21:05
 Operator : MA/JU
 Sample : PB157123BS
 Misc :
 ALS Vial : 11 Sample Multiplier: 1

Instrument :
 BNA_P
 ClientSampleId :
 SLCS123

Manual Integrations
 APPROVED

Reviewed By :Yogesh Patel 11/16/2023
 Supervised By :mohammad ahmed 11/17/2023

Quant Time: Nov 15 22:15:10 2023
 Quant Method : Z:\svoasrv\HPCHEM1\BNA_P\Methods\SFAM-EPA-BP111023.MA.M
 Quant Title : SVOA CALIBRATION
 QLast Update : Wed Nov 15 18:13:37 2023
 Response via : Initial Calibration

Compound	R.T.	QIon	Response	Conc	Units	Dev(Min)
Internal Standards						
1) 1,4-Dichlorobenzene-d4	7.787	152	55287	20.000	ng/u1	0.00
20) Naphthalene-d8	10.599	136	218706	20.000	ng/u1	0.00
38) Acenaphthene-d10	14.463	164	142792	20.000	ng/u1	0.00
64) Phenanthrene-d10	17.245	188	316951	20.000	ng/u1	0.00
79) Chrysene-d12	21.375	240	324824	20.000	ng/u1	0.00
88) Perylene-d12	23.845	264	355389	20.000	ng/u1	0.00
System Monitoring Compounds						
3) 1,4-Dioxane-d8	3.158	96	9479	6.048	ng/uL	0.00
4) Pyridine-d5	3.593	84	104896	25.669	ng/u1	0.00
7) Phenol-d5	6.952	99	146345	27.418	ng/u1	0.00
9) Bis-(2-Chloroethyl)eth...	7.134	67	93119	29.687	ng/u1	0.00
11) 2-Chlorophenol-d4	7.305	132	122311	28.937	ng/u1	0.00
15) 4-Methylphenol-d8	8.511	113	116175	26.562	ng/u1	0.00
21) Nitrobenzene-d5	8.987	128	55731	28.284	ng/u1	0.00
24) 2-Nitrophenol-d4	9.699	143	67136	30.075	ng/u1	0.00
28) 2,4-Dichlorophenol-d3	10.228	165	117389	29.505	ng/u1	0.00
31) 4-Chloroaniline-d4	10.781	131	114793	21.039	ng/u1	0.00
46) Dimethylphthalate-d6	13.887	166	388847	29.514	ng/u1	0.00
49) Acenaphthylene-d8	14.163	160	416004	28.990	ng/u1	0.00
54) 4-Nitrophenol-d4	14.722	143	42201	21.435	ng/u1	-0.01
60) Fluorene-d10	15.463	176	325366	29.912	ng/u1	0.00
65) 4,6-Dinitro-2-methylph...	15.628	200	64560	28.176	ng/u1	0.00
73) Anthracene-d10	17.345	188	523555	30.542	ng/u1	0.00
81) Pyrene-d10	19.604	212	648989	29.912	ng/u1	0.00
92) Benzo(a)pyrene-d12	23.680	264	654467	31.671	ng/u1	0.00
Target Compounds						
2) 1,4-Dioxane	3.193	88	20349	11.898	ng/uL	95
5) Pyridine	3.611	79	116165	27.544	ng/u1	99
6) Benzaldehyde	6.958	77	82623	28.743	ng/u1	99
8) Phenol	6.981	94	143125	27.182	ng/u1	96
10) Bis(2-Chloroethyl)ether	7.228	93	118035	28.895	ng/u1	95
12) 2-Chlorophenol	7.334	128	119768	28.221	ng/u1	98
13) 2-Methylphenol	8.240	108	107165	26.936	ng/u1	92
14) 2,2'-oxybis(1-Chloropr...	8.293	45	134349m	28.803	ng/u1	
16) Acetophenone	8.640	105	190599	27.415	ng/u1	97
17) N-Nitroso-di-n-propyla...	8.605	70	100114	26.375	ng/u1	96
18) 4-Methylphenol	8.575	108	114035	26.283	ng/u1	95
19) Hexachloroethane	8.828	117	62176	30.621	ng/u1	90
22) Nitrobenzene	9.034	77	161127	30.284	ng/u1	95
23) Isophorone	9.534	82	274224	28.246	ng/u1	98
25) 2-Nitrophenol	9.734	139	67775	29.545	ng/u1	92
26) 2,4-Dimethylphenol	9.775	107	131187	26.884	ng/u1	98
27) Bis(2-Chloroethoxy)met...	10.028	93	154710	29.223	ng/u1	100
29) 2,4-Dichlorophenol	10.257	162	110642	29.122	ng/u1	96
30) Naphthalene	10.652	128	386808	29.082	ng/u1	99
32) 4-Chloroaniline	10.805	127	123223	23.578	ng/u1	98
33) Hexachlorobutadiene	10.863	225	89069	31.934	ng/u1	97
34) Caprolactam	11.628	113	36185m	28.670	ng/u1	
35) 4-Chloro-3-methylphenol	11.922	107	132299	28.944	ng/u1	96
36) 2-Methylnaphthalene	12.269	142	264371	28.952	ng/u1	97

Data Path : Z:\svoasrv\HPCHEM1\BNA_P\Data\BP111523\
 Data File : BP018184.D
 Acq On : 15 Nov 2023 21:05
 Operator : MA/JU
 Sample : PB157123BS
 Misc :
 ALS Vial : 11 Sample Multiplier: 1

Instrument :
 BNA_P
ClientSampleId :
 SLCS123

Manual Integrations
APPROVED
 Reviewed By :Yogesh Patel 11/16/2023
 Supervised By :mohammad ahmed 11/17/2023

Quant Time: Nov 15 22:15:10 2023
 Quant Method : Z:\svoasrv\HPCHEM1\BNA_P\Methods\SFAM-EPA-BP111023.MA.M
 Quant Title : SVOA CALIBRATION
 QLast Update : Wed Nov 15 18:13:37 2023
 Response via : Initial Calibration

Compound	R.T.	QIon	Response	Conc	Units	Dev(Min)
37) 1-Methylnaphthalene	12.493	142	262565	27.982	ng/ul	99
39) 1,2,4,5-Tetrachloroben...	12.622	216	146259	30.320	ng/ul	95
40) Hexachlorocyclopentadiene	12.557	237	46028	19.768	ng/ul	98
41) 2,4,6-Trichlorophenol	12.893	196	88210	27.876	ng/ul	98
42) 2,4,5-Trichlorophenol	12.969	196	91621	27.511	ng/ul	96
43) 1,1'-Biphenyl	13.293	154	354771	29.218	ng/ul	99
44) 2-Chloronaphthalene	13.340	162	279425	28.986	ng/ul	99
45) 2-Nitroaniline	13.598	65	94534	30.389	ng/ul	92
47) Dimethylphthalate	13.934	163	384235	29.730	ng/ul	99
48) 2,6-Dinitrotoluene	14.093	165	74740	29.095	ng/ul	95
50) Acenaphthylene	14.193	152	465810	28.751	ng/ul	100
51) 3-Nitroaniline	14.440	138	65952	27.668	ng/ul	88
52) Acenaphthene	14.528	153	313415	29.173	ng/ul	98
53) 2,4-Dinitrophenol	14.663	184	19333	13.796	ng/ul	94
55) 4-Nitrophenol	14.740	109	73930	28.290	ng/ul	87
56) Dibenzofuran	14.869	168	435316	29.568	ng/ul	94
57) 2,4-Dinitrotoluene	14.887	165	117386	30.585	ng/ul	98
58) 2,3,4,6-Tetrachlorophenol	15.093	232	76721	25.897	ng/ul#	96
59) Diethylphthalate	15.293	149	422783	31.312	ng/ul	100
61) Fluorene	15.522	166	372052	29.766	ng/ul	99
62) 4-Chlorophenyl-phenyle...	15.516	204	188280	30.739	ng/ul	98
63) 4-Nitroaniline	15.616	138	66052	29.364	ng/ul	95
66) 4,6-Dinitro-2-methylph...	15.640	198	62950	26.476	ng/ul	94
67) N-Nitrosodiphenylamine	15.745	169	309913	30.489	ng/ul	99
68) 4-Bromophenyl-phenylether	16.422	248	111561	31.230	ng/ul	95
69) Hexachlorobenzene	16.504	284	122603	30.758	ng/ul	98
70) Atrazine	16.710	200	74733	21.077	ng/ul	97
71) Pentachlorophenol	16.881	266	24435	10.099	ng/ul	96
72) Phenanthrene	17.287	178	602664	30.968	ng/ul	99
74) Anthracene	17.381	178	606295	30.529	ng/ul	99
75) 1,2,3,4-Tetrachloroben...	13.246	216	146868	30.344	ng/uL	97
76) Pentachlorobenzene	14.757	250	146728	30.967	ng/uL	96
77) Carbazole	17.681	167	551435	31.975	ng/ul	100
78) Di-n-butylphthalate	18.186	149	752348	34.382	ng/ul	98
80) Fluoranthene	19.275	202	750666	29.625	ng/ul	98
82) Pyrene	19.633	202	783957	29.525	ng/ul	98
83) Butylbenzylphthalate	20.498	149	364833	32.672	ng/ul	93
84) 3,3'-Dichlorobenzidine	21.310	252	232043	29.900	ng/ul	97
85) Benzo(a)anthracene	21.357	228	826182	31.499	ng/ul	99
86) Bis(2-ethylhexyl)phtha...	21.245	149	533775	34.671	ng/ul	99
87) Chrysene	21.416	228	762115	31.058	ng/ul	100
89) Di-n-octyl phthalate	22.192	149	938087	35.296	ng/ul	100
90) Benzo(b)fluoranthene	23.080	252	799681	31.618	ng/ul	97
91) Benzo(k)fluoranthene	23.133	252	811512	31.891	ng/ul	99
93) Benzo(a)pyrene	23.733	252	761382	31.877	ng/ul	99
94) Indeno(1,2,3-cd)pyrene	26.462	276	903926	31.554	ng/ul	100
95) Dibenzo(a,h)anthracene	26.492	278	755121	32.013	ng/ul	98
96) Benzo(g,h,i)perylene	27.280	276	724874	31.636	ng/ul	96

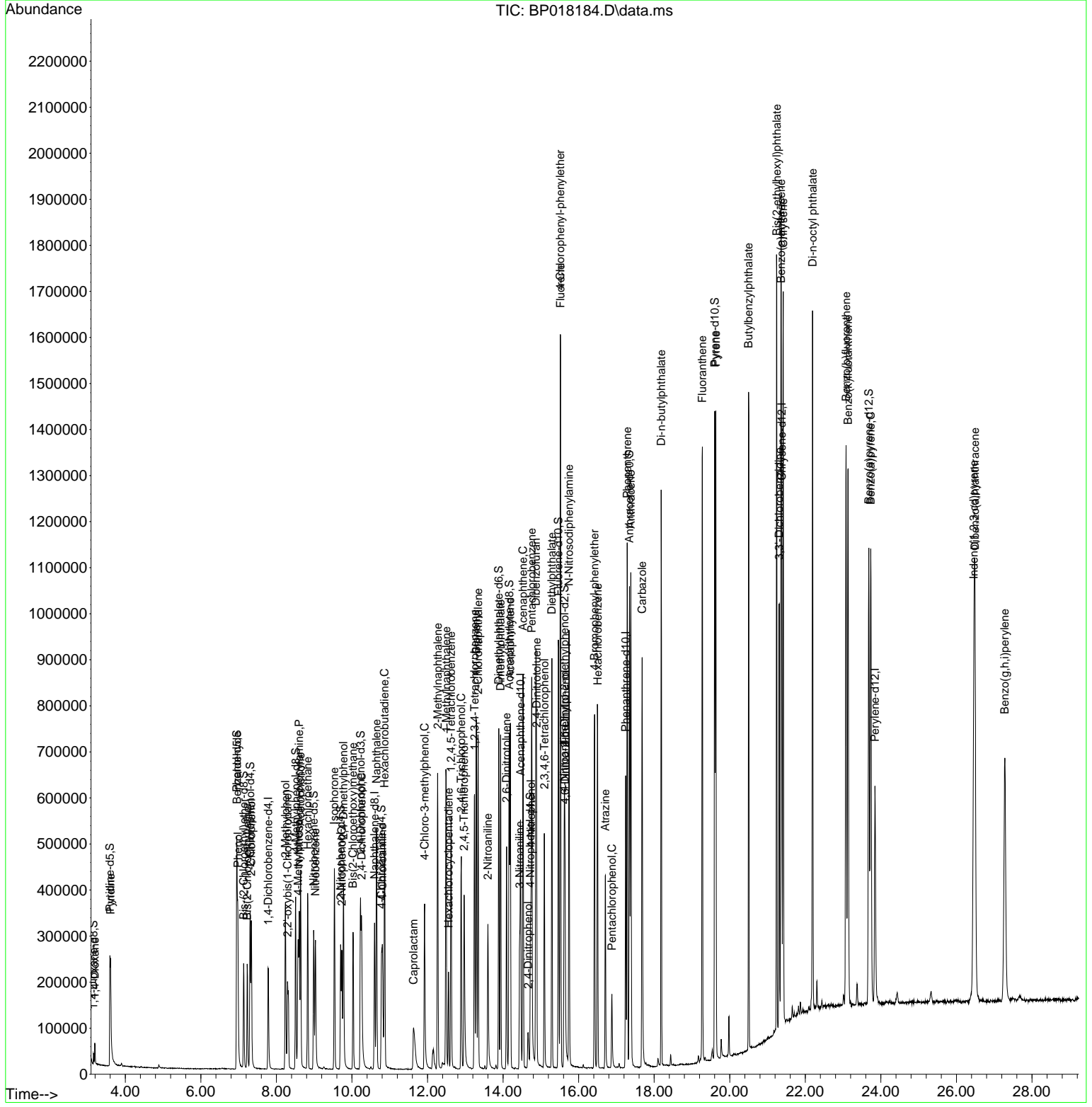
(#) = qualifier out of range (m) = manual integration (+) = signals summed

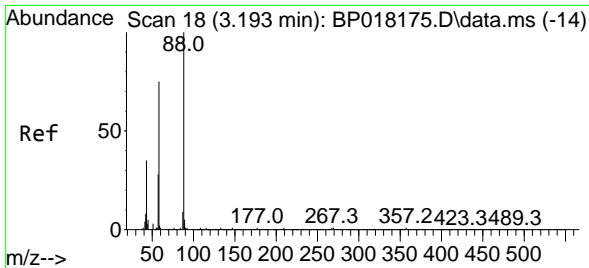
Data Path : Z:\svoasrv\HPCHEM1\BNA_P\Data\BP111523\
 Data File : BP018184.D
 Acq On : 15 Nov 2023 21:05
 Operator : MA/JU
 Sample : PB157123BS
 Misc :
 ALS Vial : 11 Sample Multiplier: 1

Instrument :
 BNA_P
 ClientSampleId :
 SLCS123

Quant Time: Nov 15 22:15:10 2023
 Quant Method : Z:\svoasrv\HPCHEM1\BNA_P\Methods\SFAM-EPA-BP111023.MA.M
 Quant Title : SVOA CALIBRATION
 QLast Update : Wed Nov 15 18:13:37 2023
 Response via : Initial Calibration

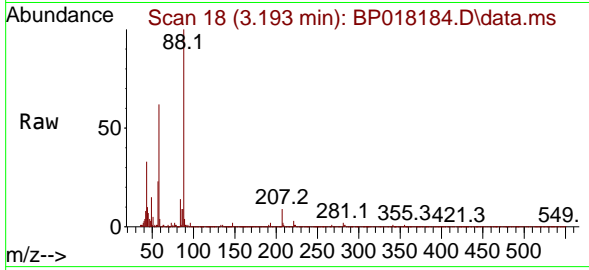
Manual Integrations
APPROVED
 Reviewed By :Yogesh Patel 11/16/2023
 Supervised By :mohammad ahmed 11/17/2023





#2
 1,4-Dioxane
 Concen: 11.898 ng/uL
 RT: 3.193 min Scan# 18
 Delta R.T. 0.000 min
 Lab File: BP018184.D
 Acq: 15 Nov 2023 21:05

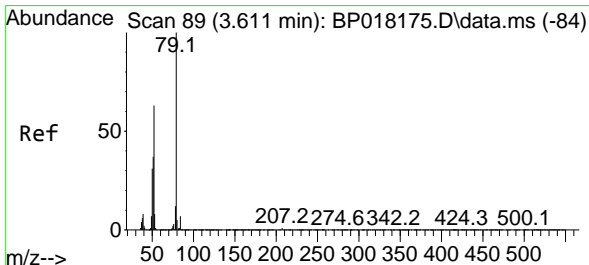
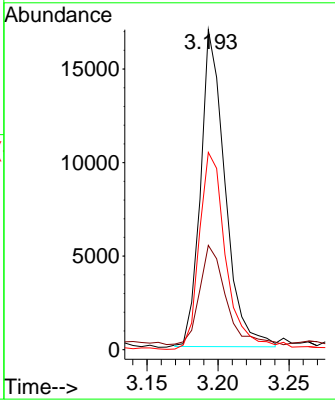
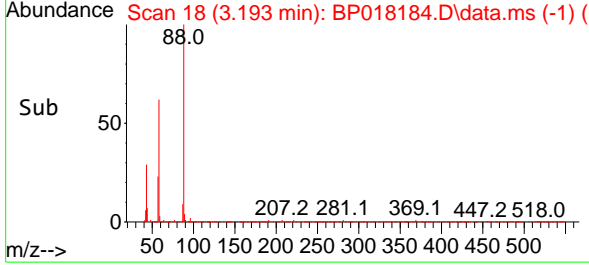
Instrument : BNA_P
 Client Sample Id : SLCS123



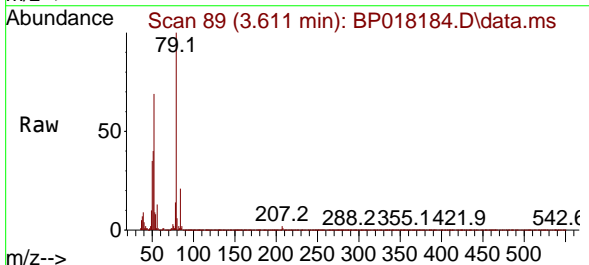
Tgt Ion: 88 Resp: 20349

Ion	Ratio	Lower	Upper
88	100		
43	32.6	25.4	38.2
58	61.7	53.3	79.9

Manual Integrations
APPROVED
 Reviewed By :Yogesh Patel 11/16/2023
 Supervised By :mohammad ahmed 11/17/2023

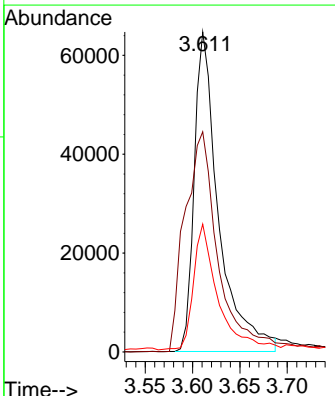
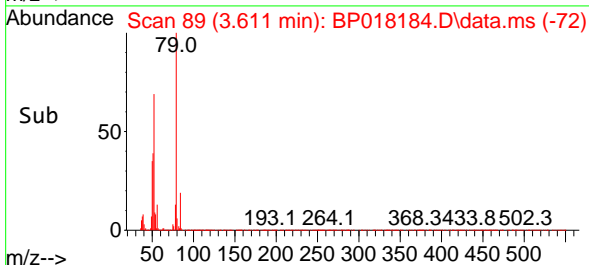


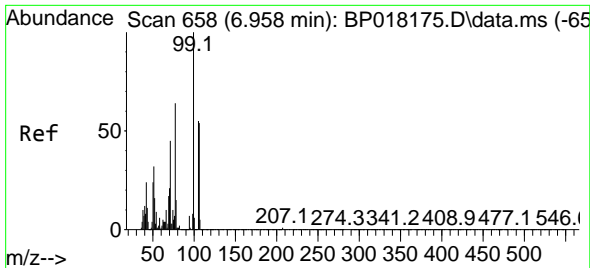
#5
 Pyridine
 Concen: 27.544 ng/uL
 RT: 3.611 min Scan# 89
 Delta R.T. 0.000 min
 Lab File: BP018184.D
 Acq: 15 Nov 2023 21:05



Tgt Ion: 79 Resp: 116165

Ion	Ratio	Lower	Upper
79	100		
52	68.8	53.9	80.9
51	39.9	32.2	48.2





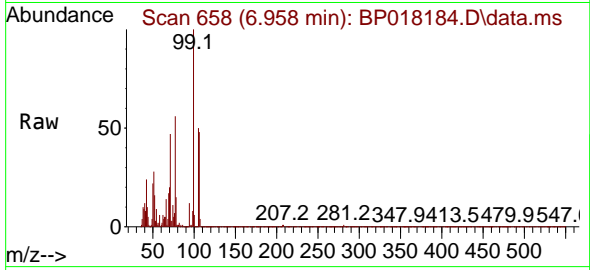
#6
Benzaldehyde
Concen: 28.743 ng/u1
RT: 6.958 min Scan# 611
Delta R.T. 0.000 min
Lab File: BP018184.D
Acq: 15 Nov 2023 21:05

Instrument :

BNA_P

ClientSampleId :

SLCS123



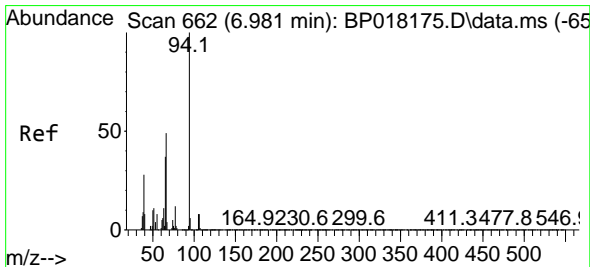
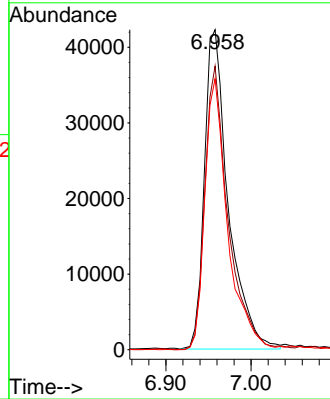
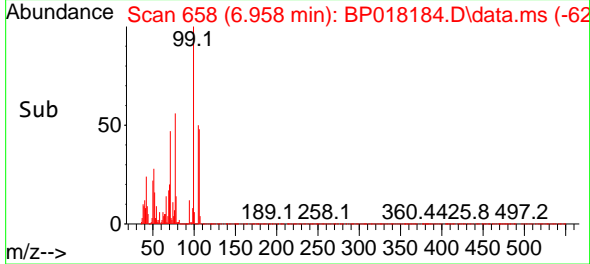
Tgt Ion: 77 Resp: 8262
Ion Ratio Lower Upper
77 100
105 88.6 72.7 109.1
106 84.7 67.5 101.3

Manual Integrations

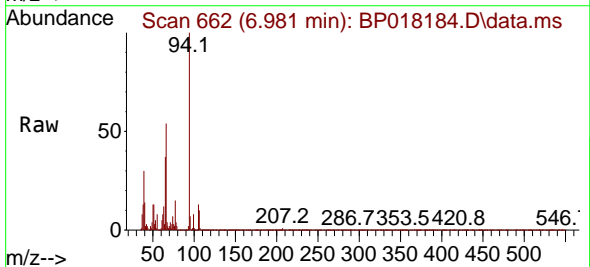
APPROVED

Reviewed By :Yogesh Patel 11/16/2023

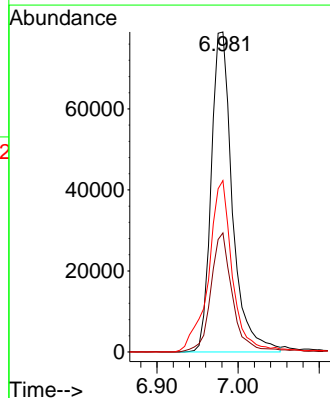
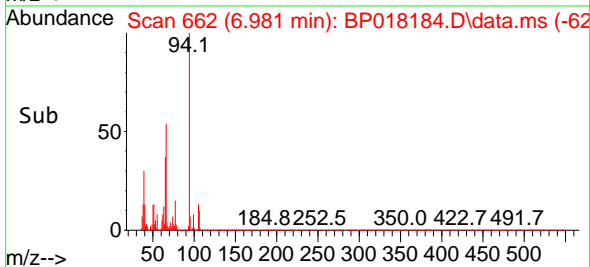
Supervised By :mohammad ahmed 11/17/2023

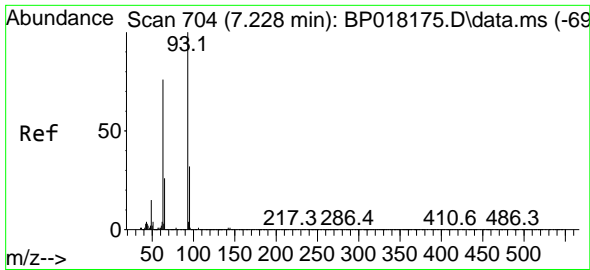


#8
Phenol
Concen: 27.182 ng/u1
RT: 6.981 min Scan# 662
Delta R.T. 0.000 min
Lab File: BP018184.D
Acq: 15 Nov 2023 21:05



Tgt Ion: 94 Resp: 143125
Ion Ratio Lower Upper
94 100
65 37.2 28.2 42.2
66 53.6 40.3 60.5





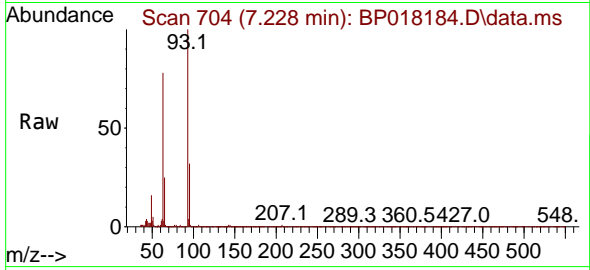
#10
 Bis(2-Chloroethyl)ether
 Concen: 28.895 ng/ul
 RT: 7.228 min Scan# 704
 Delta R.T. 0.000 min
 Lab File: BP018184.D
 Acq: 15 Nov 2023 21:05

Instrument :

BNA_P

ClientSampleId :

SLCS123



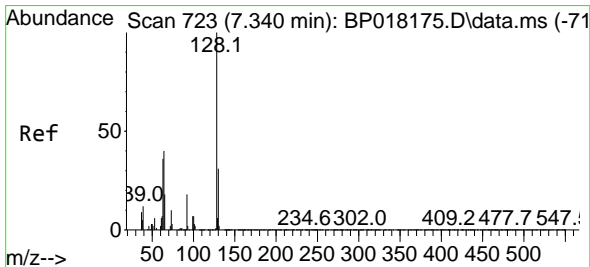
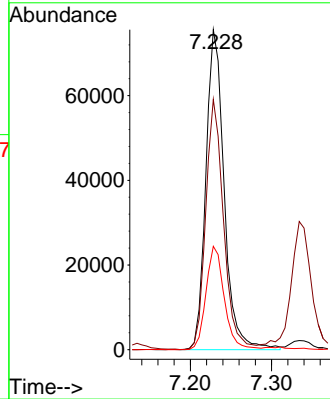
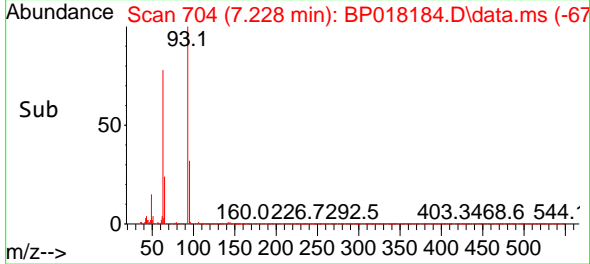
Tgt Ion: 93 Resp: 11803
 Ion Ratio Lower Upper
 93 100
 63 78.2 57.8 86.6
 95 32.3 25.5 38.3

Manual Integrations

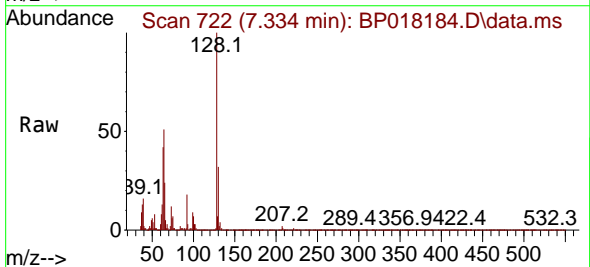
APPROVED

Reviewed By :Yogesh Patel 11/16/2023

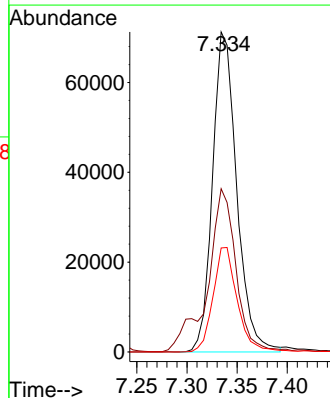
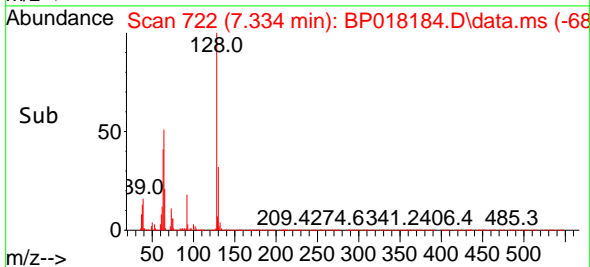
Supervised By :mohammad ahmed 11/17/2023

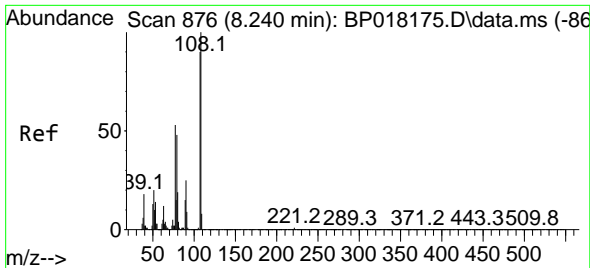


#12
 2-Chlorophenol
 Concen: 28.221 ng/ul
 RT: 7.334 min Scan# 722
 Delta R.T. -0.006 min
 Lab File: BP018184.D
 Acq: 15 Nov 2023 21:05



Tgt Ion:128 Resp: 119768
 Ion Ratio Lower Upper
 128 100
 64 51.0 39.2 58.8
 130 32.5 26.6 40.0





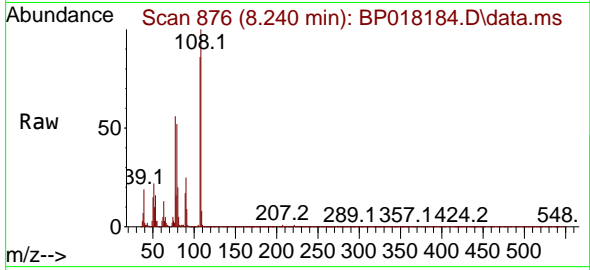
#13
 2-Methylphenol
 Concen: 26.936 ng/ul
 RT: 8.240 min Scan# 81
 Delta R.T. 0.000 min
 Lab File: BP018184.D
 Acq: 15 Nov 2023 21:05

Instrument :

BNA_P

ClientSampleId :

SLCS123



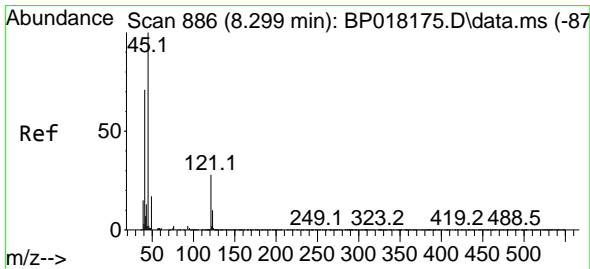
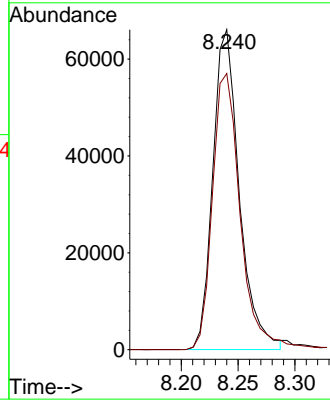
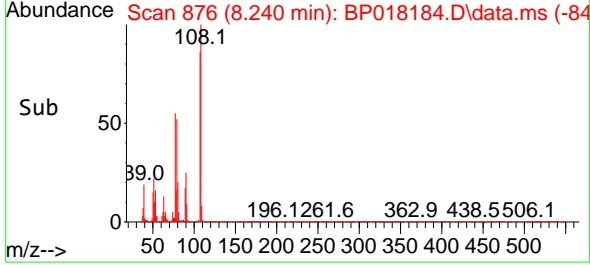
Tgt Ion: 108 Resp: 10716
 Ion Ratio Lower Upper
 108 100
 107 86.3 75.2 112.8

Manual Integrations

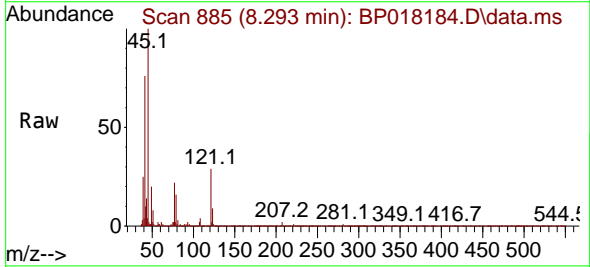
APPROVED

Reviewed By :Yogesh Patel 11/16/2023

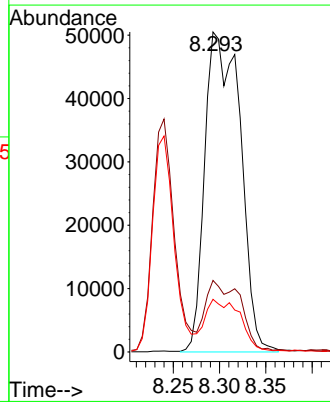
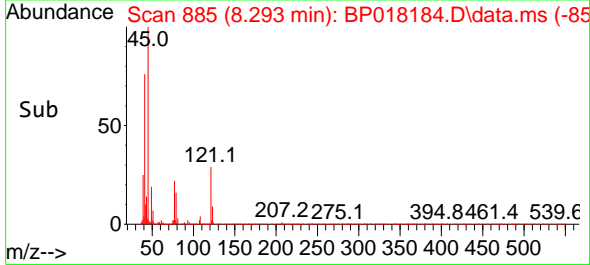
Supervised By :mohammad ahmed 11/17/2023

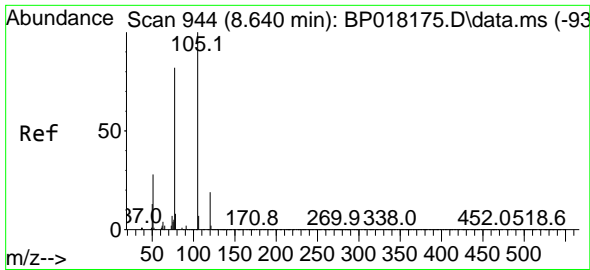


#14
 2,2'-oxybis(1-Chloropropane)
 Concen: 28.803 ng/ul m
 RT: 8.293 min Scan# 885
 Delta R.T. -0.006 min
 Lab File: BP018184.D
 Acq: 15 Nov 2023 21:05



Tgt Ion: 45 Resp: 134349
 Ion Ratio Lower Upper
 45 100
 77 22.4 16.1 24.1
 79 16.5 11.1 16.7





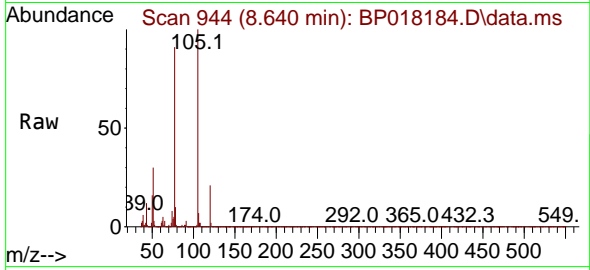
#16
 Acetophenone
 Concen: 27.415 ng/uI
 RT: 8.640 min Scan# 944
 Delta R.T. 0.000 min
 Lab File: BP018184.D
 Acq: 15 Nov 2023 21:05

Instrument :

BNA_P

Client SampleId :

SLCS123



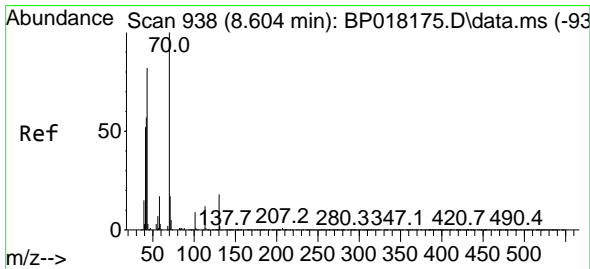
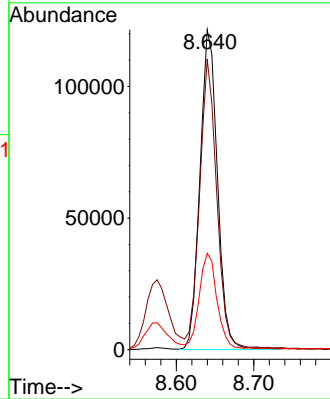
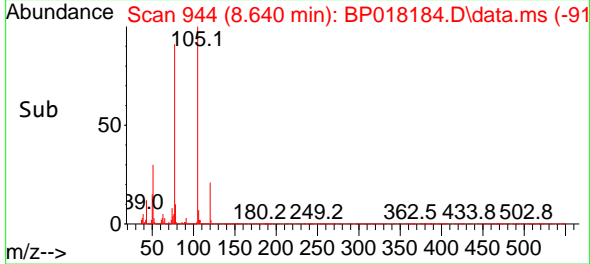
Tgt Ion: 105 Resp: 190599
 Ion Ratio Lower Upper
 105 100
 77 90.9 70.1 105.1
 51 30.1 23.4 35.0

Manual Integrations

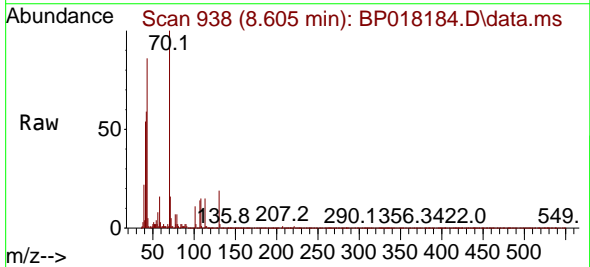
APPROVED

Reviewed By :Yogesh Patel 11/16/2023

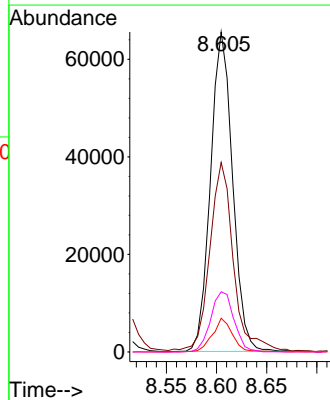
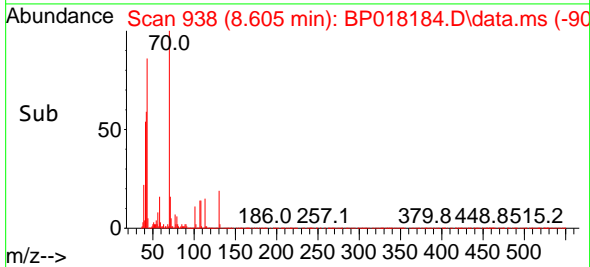
Supervised By :mohammad ahmed 11/17/2023

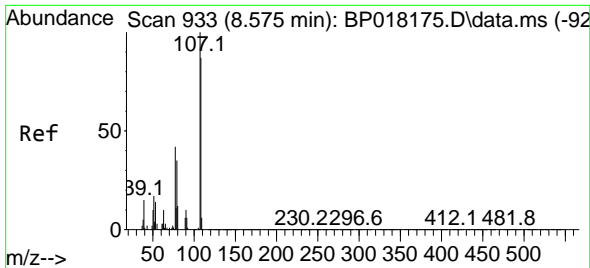


#17
 N-Nitroso-di-n-propylamine
 Concen: 26.375 ng/uI
 RT: 8.605 min Scan# 938
 Delta R.T. 0.000 min
 Lab File: BP018184.D
 Acq: 15 Nov 2023 21:05



Tgt Ion: 70 Resp: 100114
 Ion Ratio Lower Upper
 70 100
 42 59.2 43.7 65.5
 101 10.6 8.2 12.4
 130 18.8 15.2 22.8





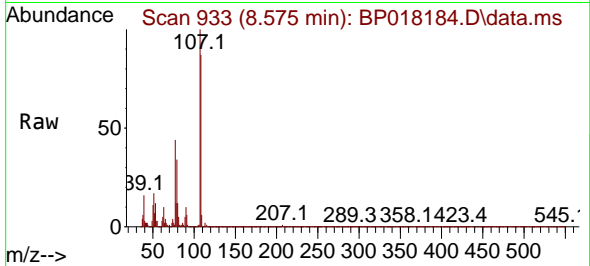
#18
 4-Methylphenol
 Concen: 26.283 ng/u1
 RT: 8.575 min Scan# 911
 Delta R.T. 0.000 min
 Lab File: BP018184.D
 Acq: 15 Nov 2023 21:05

Instrument :

BNA_P

ClientSampleId :

SLCS123



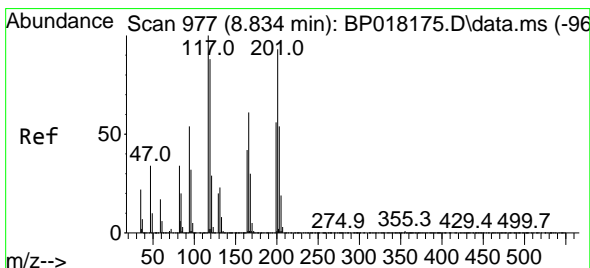
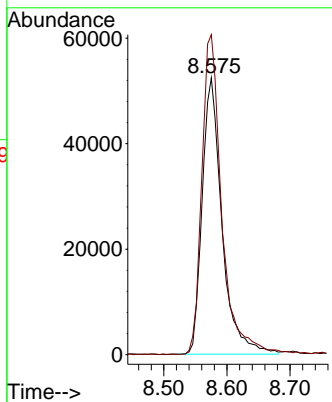
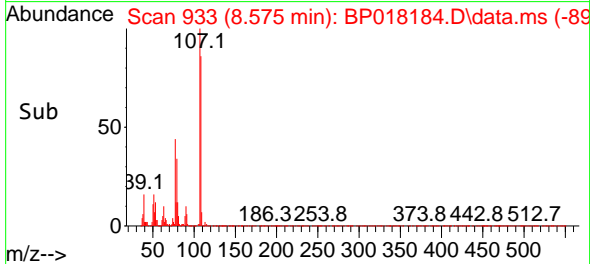
Tgt Ion:108 Resp: 11403
 Ion Ratio Lower Upper
 108 100
 107 115.6 88.2 132.4

Manual Integrations

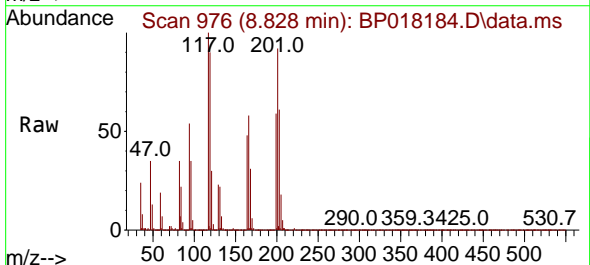
APPROVED

Reviewed By :Yogesh Patel 11/16/2023

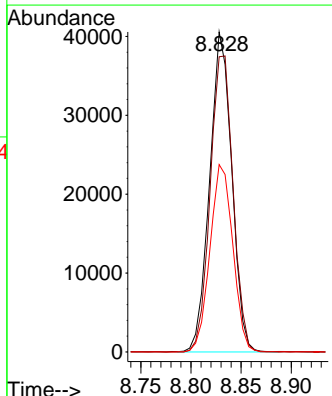
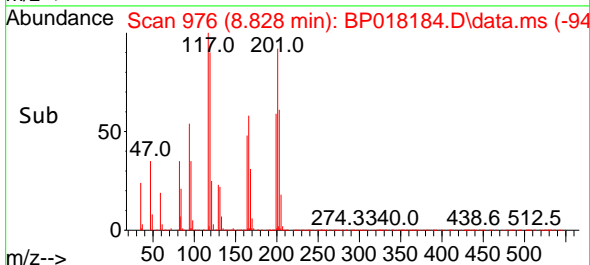
Supervised By :mohammad ahmed 11/17/2023

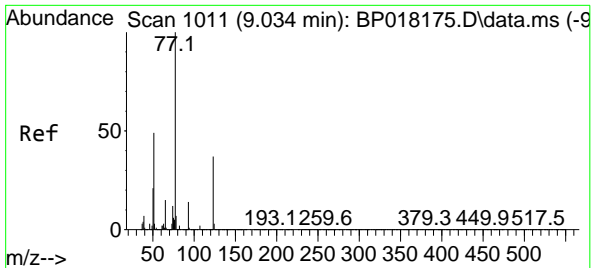


#19
 Hexachloroethane
 Concen: 30.621 ng/u1
 RT: 8.828 min Scan# 976
 Delta R.T. -0.006 min
 Lab File: BP018184.D
 Acq: 15 Nov 2023 21:05



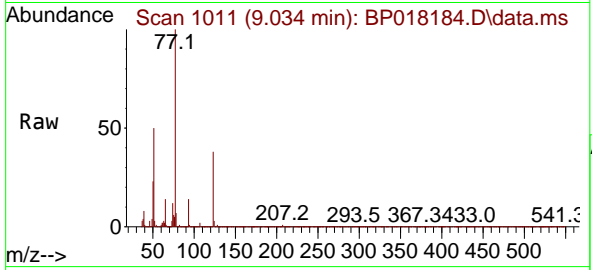
Tgt Ion:117 Resp: 62176
 Ion Ratio Lower Upper
 117 100
 201 92.2 84.8 127.2
 199 58.5 49.0 73.4





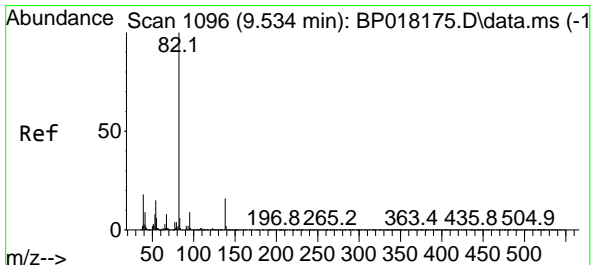
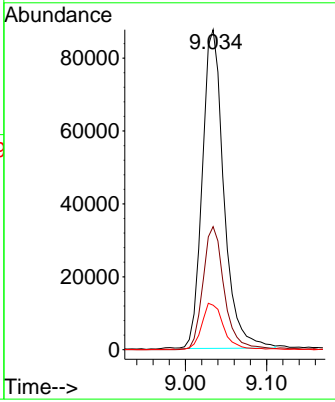
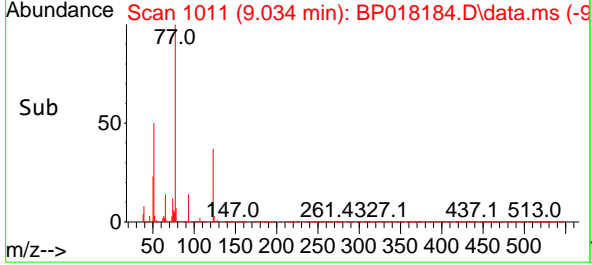
#22
 Nitrobenzene
 Concen: 30.284 ng/u1
 RT: 9.034 min Scan# 1011
 Delta R.T. 0.000 min
 Lab File: BP018184.D
 Acq: 15 Nov 2023 21:05

Instrument : BNA_P
 ClientSampleId : SLCS123

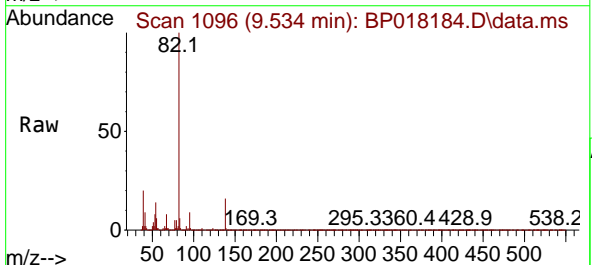


Tgt Ion: 77 Resp: 16112
 Ion Ratio Lower Upper
 77 100
 123 38.4 27.8 41.8
 65 13.9 11.5 17.3

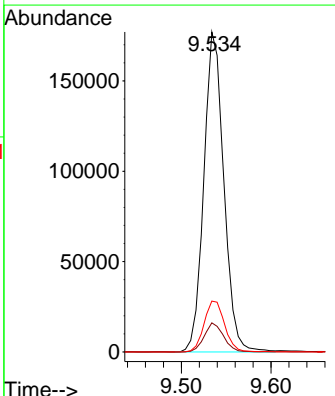
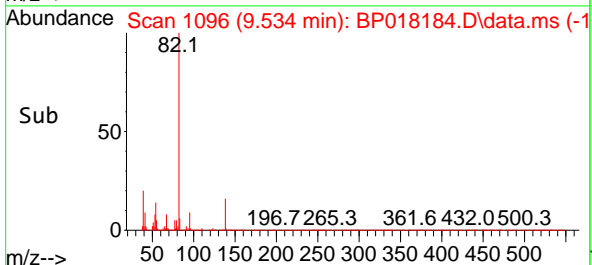
Manual Integrations
APPROVED
 Reviewed By :Yogesh Patel 11/16/2023
 Supervised By :mohammad ahmed 11/17/2023

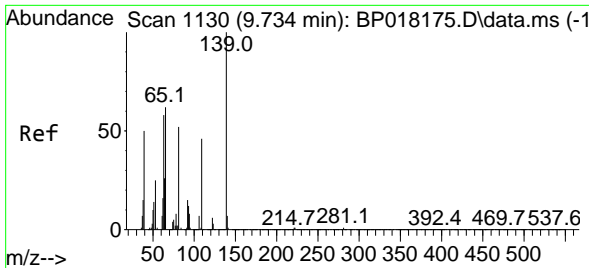


#23
 Isophorone
 Concen: 28.246 ng/u1
 RT: 9.534 min Scan# 1096
 Delta R.T. 0.000 min
 Lab File: BP018184.D
 Acq: 15 Nov 2023 21:05



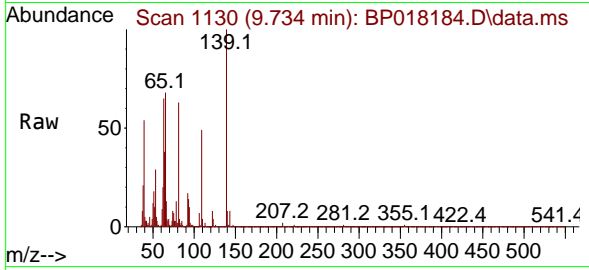
Tgt Ion: 82 Resp: 274224
 Ion Ratio Lower Upper
 82 100
 95 9.1 6.6 9.8
 138 15.9 13.1 19.7





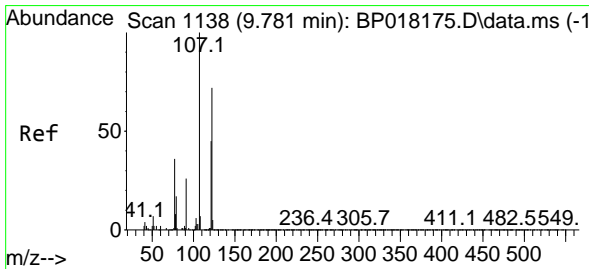
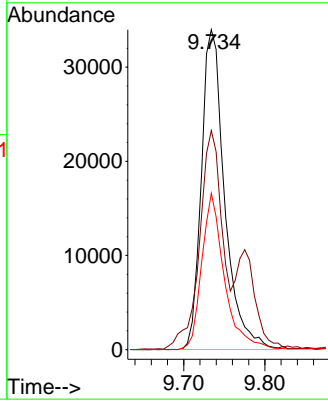
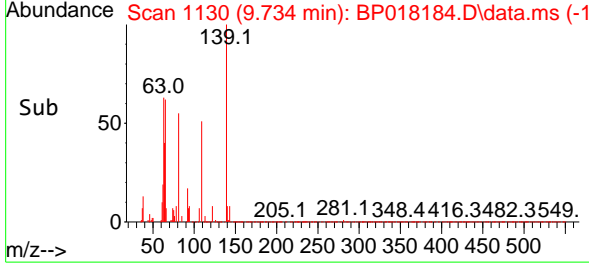
#25
 2-Nitrophenol
 Concen: 29.545 ng/ul
 RT: 9.734 min Scan# 1130
 Delta R.T. 0.000 min
 Lab File: BP018184.D
 Acq: 15 Nov 2023 21:05

Instrument : BNA_P
 ClientSampleId : SLCS123

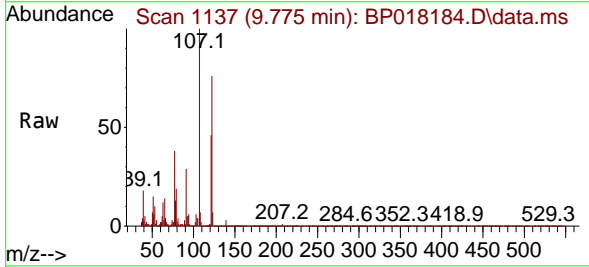


Tgt Ion:139 Resp: 6777
 Ion Ratio Lower Upper
 139 100
 65 68.4 51.4 77.0
 109 48.9 33.1 49.7

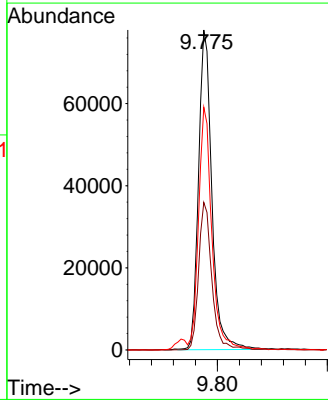
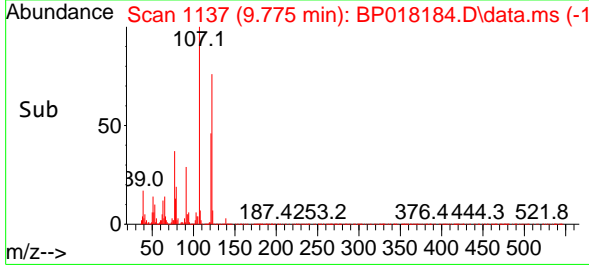
Manual Integrations
APPROVED
 Reviewed By :Yogesh Patel 11/16/2023
 Supervised By :mohammad ahmed 11/17/2023

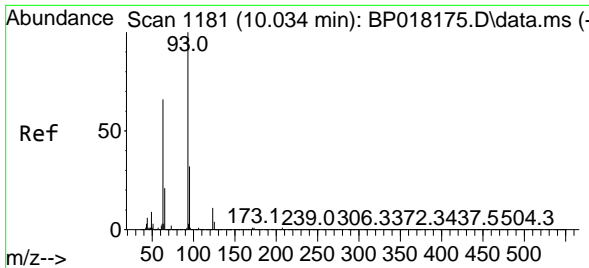


#26
 2,4-Dimethylphenol
 Concen: 26.884 ng/ul
 RT: 9.775 min Scan# 1137
 Delta R.T. -0.006 min
 Lab File: BP018184.D
 Acq: 15 Nov 2023 21:05



Tgt Ion:107 Resp: 131187
 Ion Ratio Lower Upper
 107 100
 121 46.1 37.8 56.8
 122 75.8 62.1 93.1





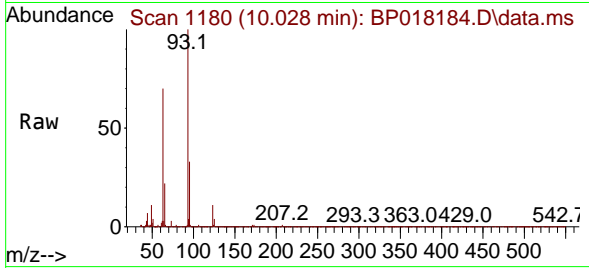
#27
 Bis(2-Chloroethoxy)methane
 Concen: 29.223 ng/ul
 RT: 10.028 min Scan# 1181
 Delta R.T. -0.006 min
 Lab File: BP018184.D
 Acq: 15 Nov 2023 21:05

Instrument :

BNA_P

ClientSampleId :

SLCS123



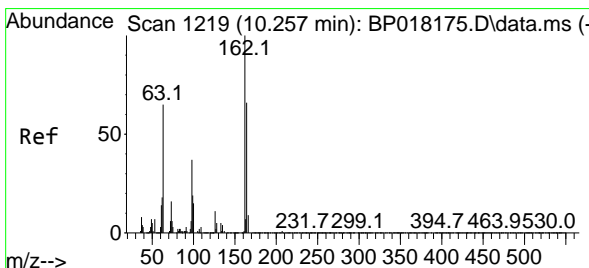
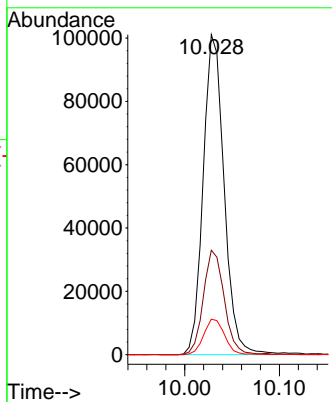
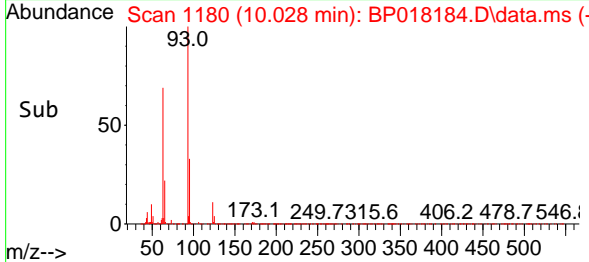
Tgt Ion: 93 Resp: 154710
 Ion Ratio Lower Upper
 93 100
 95 32.7 26.2 39.2
 123 11.1 8.6 12.8

Manual Integrations

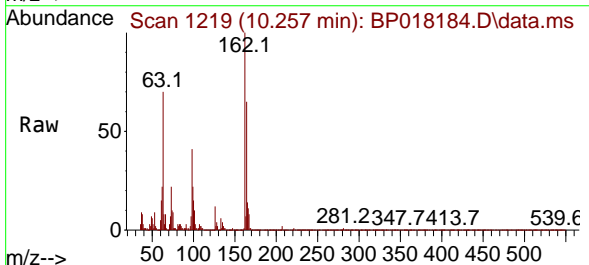
APPROVED

Reviewed By :Yogesh Patel 11/16/2023

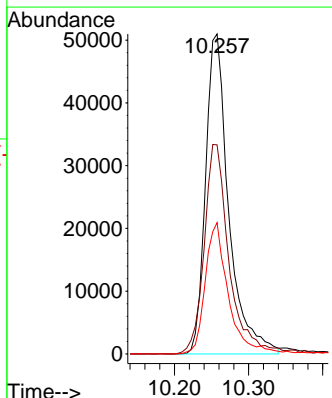
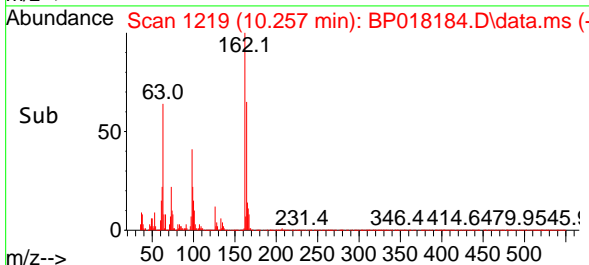
Supervised By :mohammad ahmed 11/17/2023

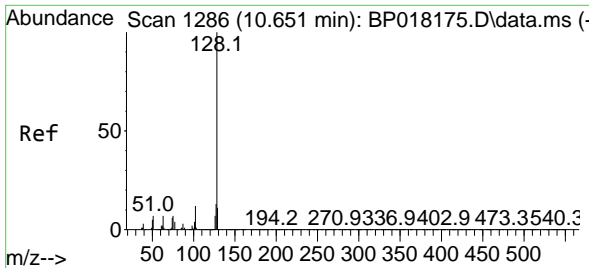


#29
 2,4-Dichlorophenol
 Concen: 29.122 ng/ul
 RT: 10.257 min Scan# 1219
 Delta R.T. 0.000 min
 Lab File: BP018184.D
 Acq: 15 Nov 2023 21:05



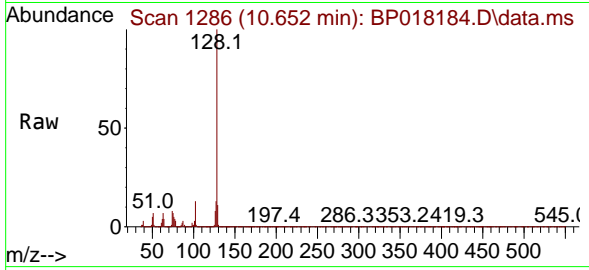
Tgt Ion:162 Resp: 110642
 Ion Ratio Lower Upper
 162 100
 164 65.4 51.8 77.6
 98 41.0 28.7 43.1





#30
 Naphthalene
 Concen: 29.082 ng/u1
 RT: 10.652 min Scan# 11
 Delta R.T. 0.000 min
 Lab File: BP018184.D
 Acq: 15 Nov 2023 21:05

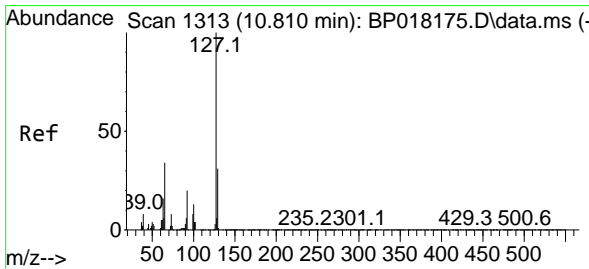
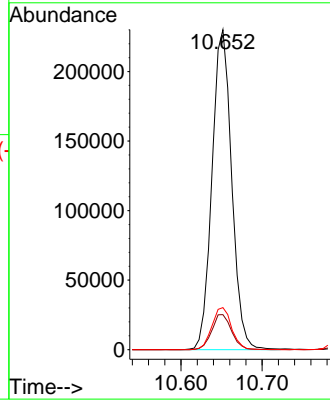
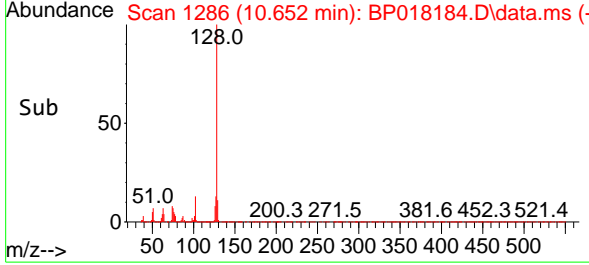
Instrument : BNA_P
 ClientSampleId : SLCS123



Tgt Ion:128 Resp: 386800
 Ion Ratio Lower Upper
 128 100
 129 11.0 9.0 13.4
 127 13.1 10.3 15.5

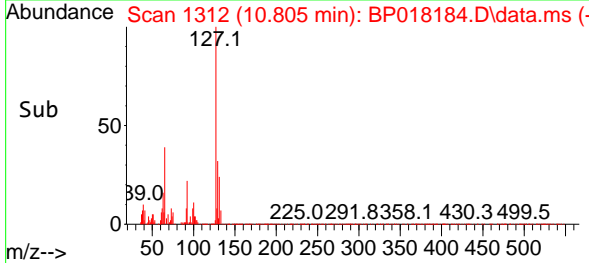
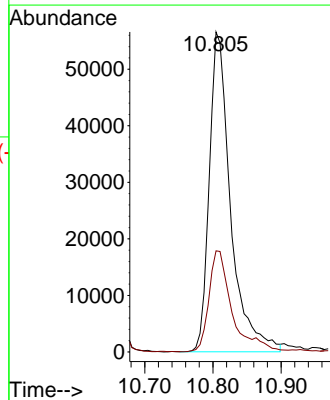
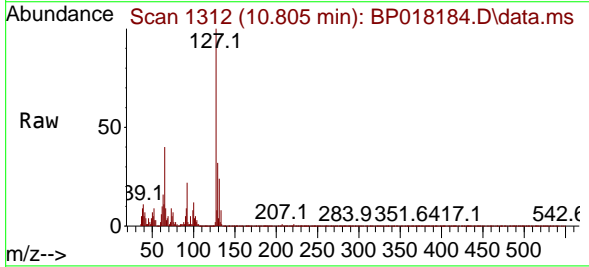
Manual Integrations
 APPROVED

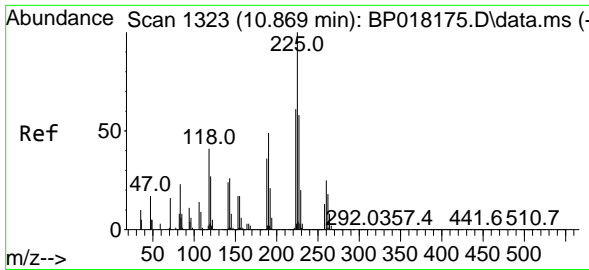
Reviewed By :Yogesh Patel 11/16/2023
 Supervised By :mohammad ahmed 11/17/2023



#32
 4-Chloroaniline
 Concen: 23.578 ng/u1
 RT: 10.805 min Scan# 1312
 Delta R.T. -0.006 min
 Lab File: BP018184.D
 Acq: 15 Nov 2023 21:05

Tgt Ion:127 Resp: 123223
 Ion Ratio Lower Upper
 127 100
 129 31.6 26.1 39.1





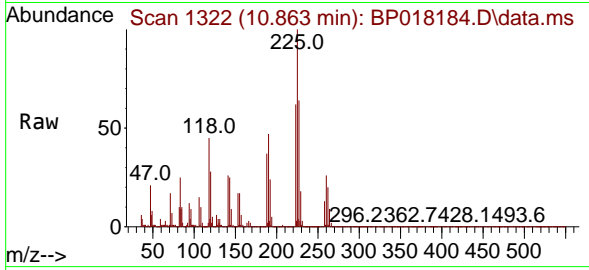
#33
 Hexachlorobutadiene
 Concen: 31.934 ng/u1
 RT: 10.863 min Scan# 111
 Delta R.T. -0.006 min
 Lab File: BP018184.D
 Acq: 15 Nov 2023 21:05

Instrument :

BNA_P

ClientSampleId :

SLCS123



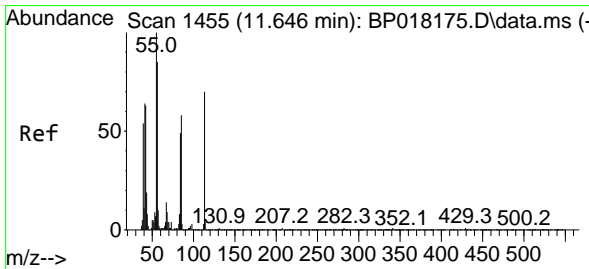
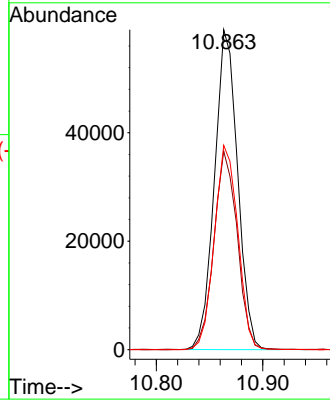
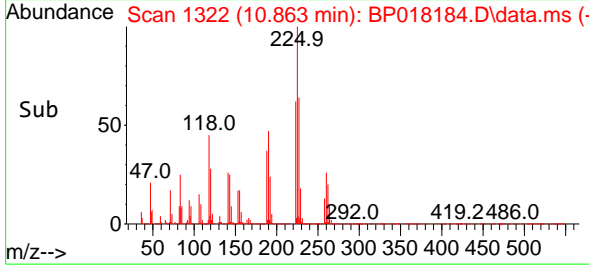
Tgt Ion:225 Resp: 89069
 Ion Ratio Lower Upper
 225 100
 223 62.1 52.5 78.7
 227 63.9 51.9 77.9

Manual Integrations

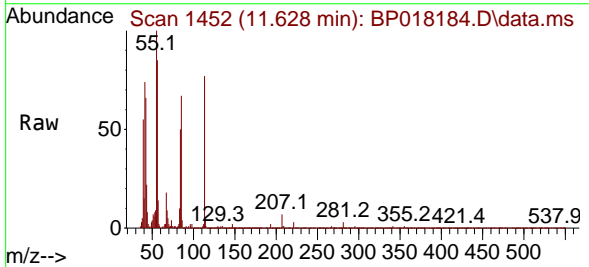
APPROVED

Reviewed By :Yogesh Patel 11/16/2023

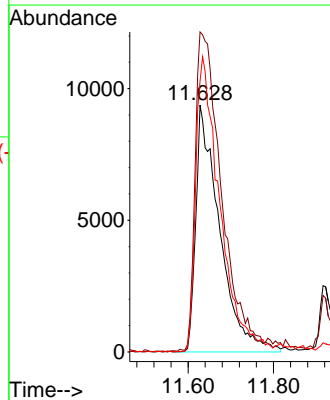
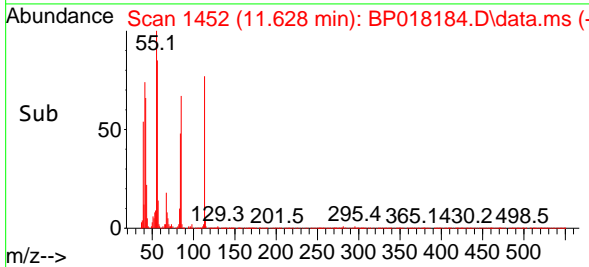
Supervised By :mohammad ahmed 11/17/2023

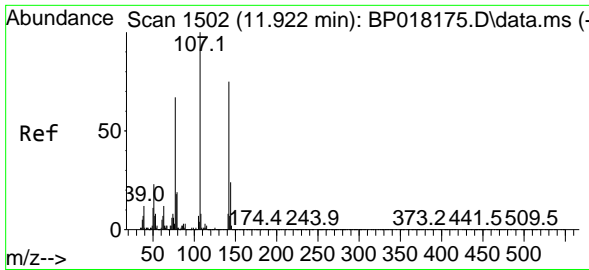


#34
 Caprolactam
 Concen: 28.670 ng/u1 m
 RT: 11.628 min Scan# 1452
 Delta R.T. -0.018 min
 Lab File: BP018184.D
 Acq: 15 Nov 2023 21:05



Tgt Ion:113 Resp: 36185
 Ion Ratio Lower Upper
 113 100
 55 129.6 118.3 177.5
 56 109.7 95.6 143.4





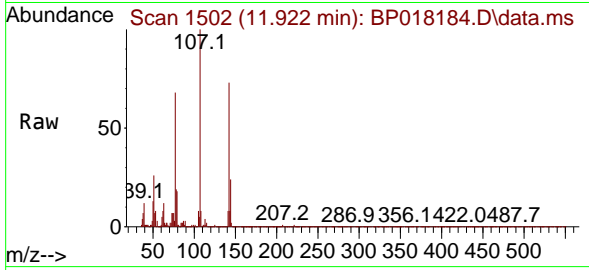
#35
 4-Chloro-3-methylphenol
 Concen: 28.944 ng/ul
 RT: 11.922 min Scan# 1502
 Delta R.T. 0.000 min
 Lab File: BP018184.D
 Acq: 15 Nov 2023 21:05

Instrument :

BNA_P

ClientSampleId :

SLCS123



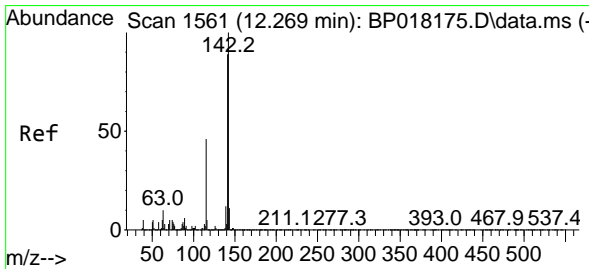
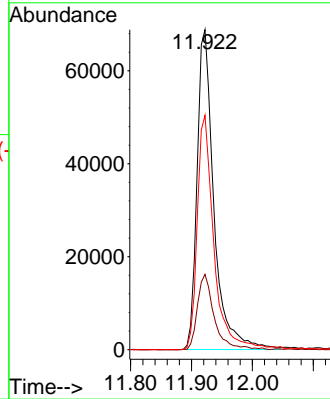
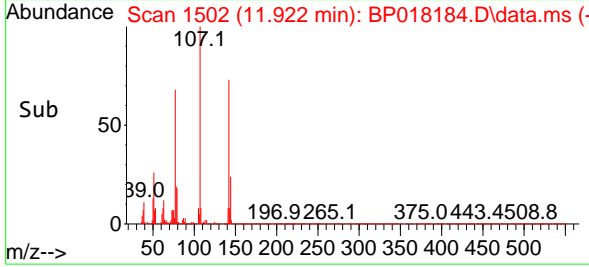
Tgt Ion:107 Resp: 132299
 Ion Ratio Lower Upper
 107 100
 144 23.6 19.1 28.7
 142 73.2 54.8 82.2

Manual Integrations

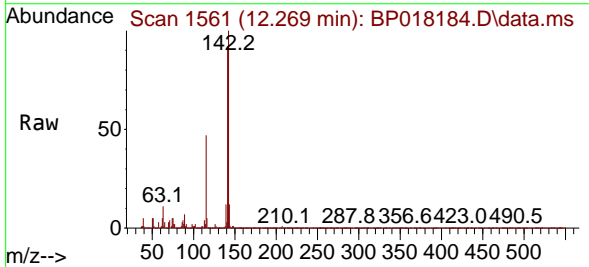
APPROVED

Reviewed By :Yogesh Patel 11/16/2023

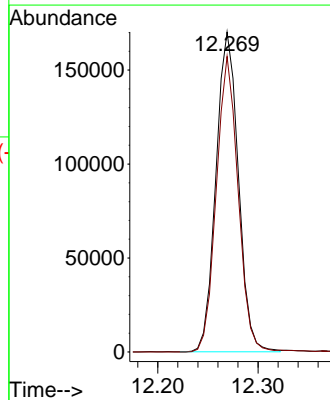
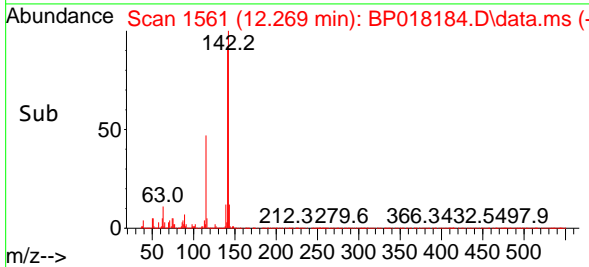
Supervised By :mohammad ahmed 11/17/2023

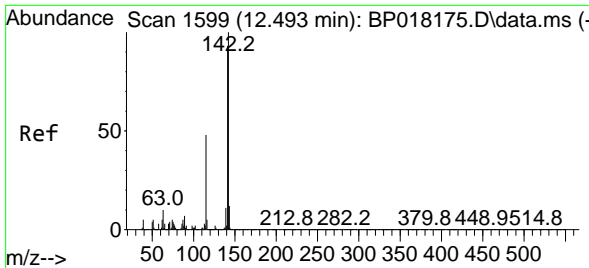


#36
 2-Methylnaphthalene
 Concen: 28.952 ng/ul
 RT: 12.269 min Scan# 1561
 Delta R.T. 0.000 min
 Lab File: BP018184.D
 Acq: 15 Nov 2023 21:05



Tgt Ion:142 Resp: 264371
 Ion Ratio Lower Upper
 142 100
 141 92.4 71.7 107.5





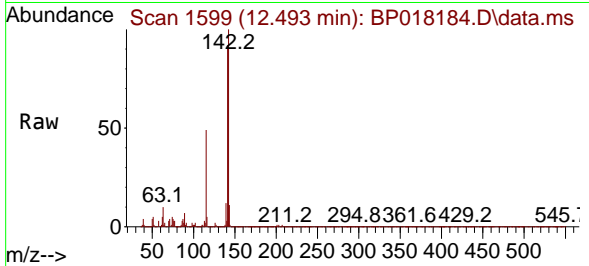
#37
 1-Methylnaphthalene
 Concen: 27.982 ng/uI
 RT: 12.493 min Scan# 1599
 Delta R.T. 0.000 min
 Lab File: BP018184.D
 Acq: 15 Nov 2023 21:05

Instrument :

BNA_P

ClientSampleId :

SLCS123



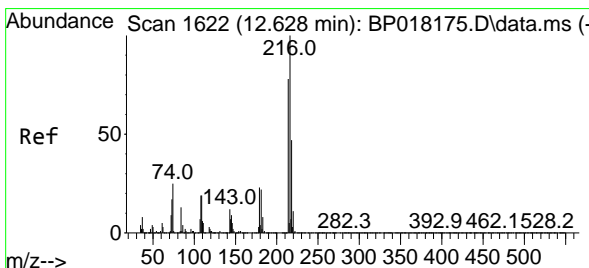
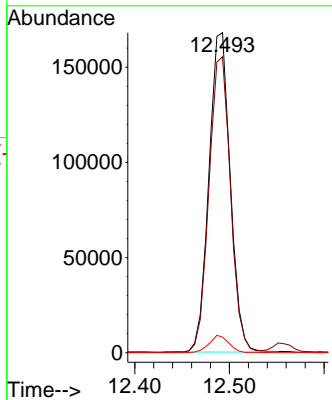
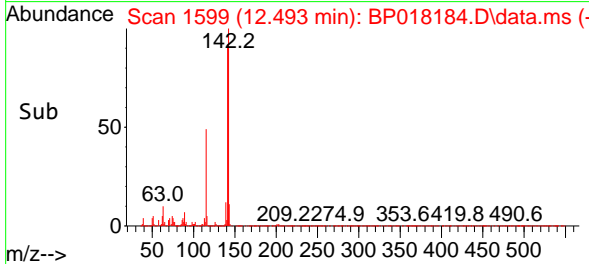
Tgt Ion:142 Resp: 26256
 Ion Ratio Lower Upper
 142 100
 141 92.4 72.8 109.2
 116 4.9 4.0 6.0

Manual Integrations

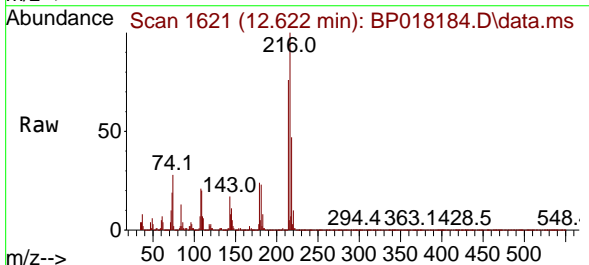
APPROVED

Reviewed By :Yogesh Patel 11/16/2023

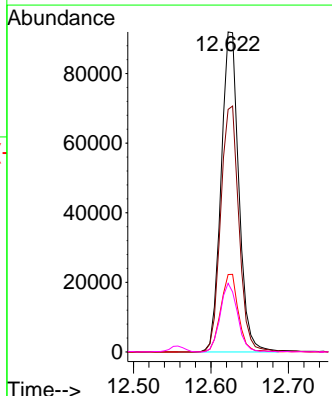
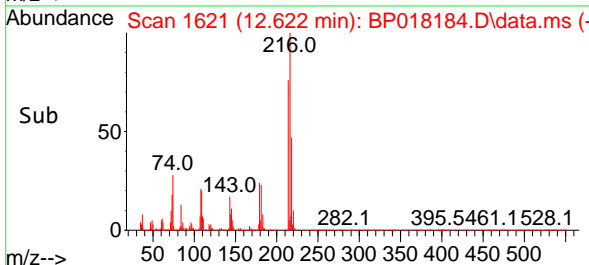
Supervised By :mohammad ahmed 11/17/2023

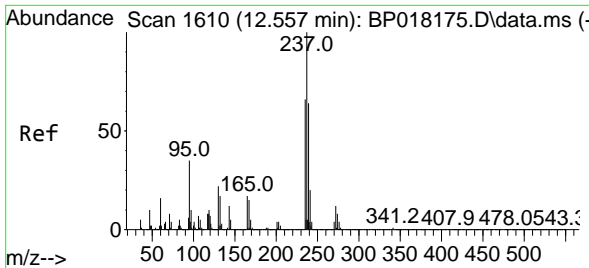


#39
 1,2,4,5-Tetrachlorobenzene
 Concen: 30.320 ng/uI
 RT: 12.622 min Scan# 1621
 Delta R.T. -0.006 min
 Lab File: BP018184.D
 Acq: 15 Nov 2023 21:05



Tgt Ion:216 Resp: 146259
 Ion Ratio Lower Upper
 216 100
 214 75.8 64.8 97.2
 179 24.2 18.3 27.5
 108 21.5 15.7 23.5





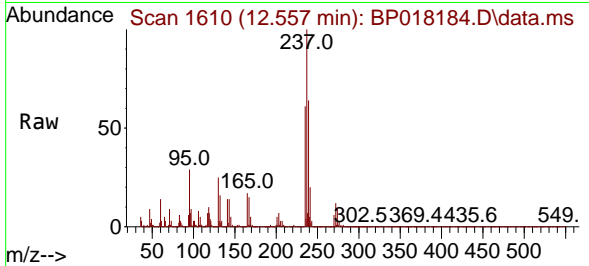
#40
 Hexachlorocyclopentadiene
 Concen: 19.768 ng/ul
 RT: 12.557 min Scan# 1610
 Delta R.T. 0.000 min
 Lab File: BP018184.D
 Acq: 15 Nov 2023 21:05

Instrument :

BNA_P

Client Sample Id :

SLCS123



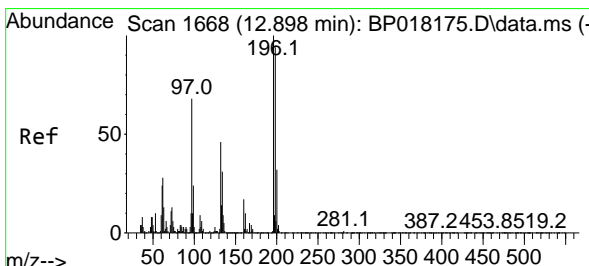
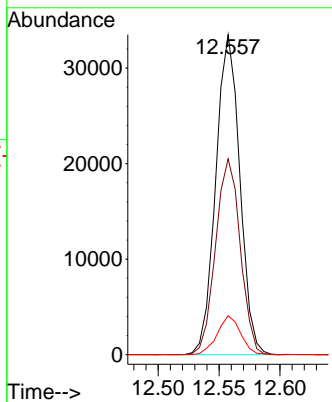
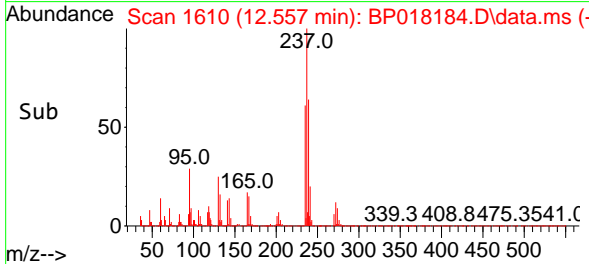
Tgt Ion: 237 Resp: 46028
 Ion Ratio Lower Upper
 237 100
 235 61.2 49.9 74.9
 272 12.1 8.9 13.3

Manual Integrations

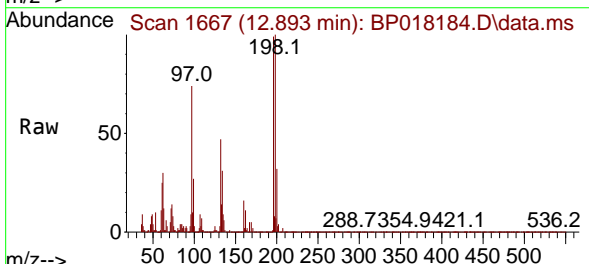
APPROVED

Reviewed By :Yogesh Patel 11/16/2023

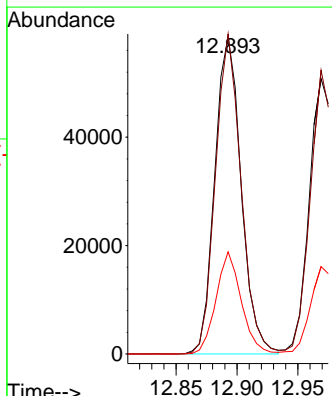
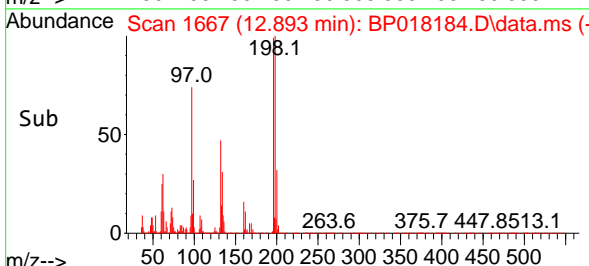
Supervised By :mohammad ahmed 11/17/2023

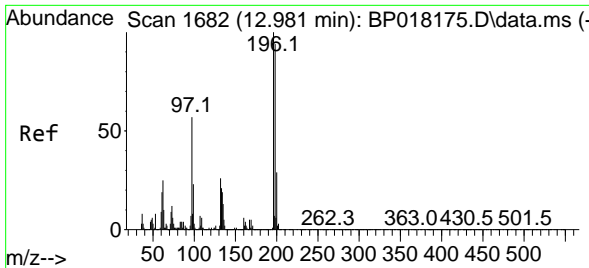


#41
 2,4,6-Trichlorophenol
 Concen: 27.876 ng/ul
 RT: 12.893 min Scan# 1667
 Delta R.T. -0.006 min
 Lab File: BP018184.D
 Acq: 15 Nov 2023 21:05



Tgt Ion: 196 Resp: 88210
 Ion Ratio Lower Upper
 196 100
 198 100.9 78.9 118.3
 200 32.2 25.8 38.8





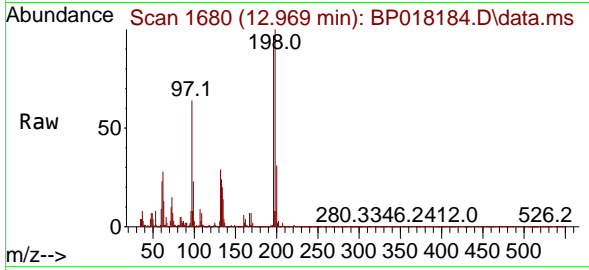
#42
 2,4,5-Trichlorophenol
 Concen: 27.511 ng/ul
 RT: 12.969 min Scan# 1680
 Delta R.T. -0.012 min
 Lab File: BP018184.D
 Acq: 15 Nov 2023 21:05

Instrument :

BNA_P

ClientSampleId :

SLCS123



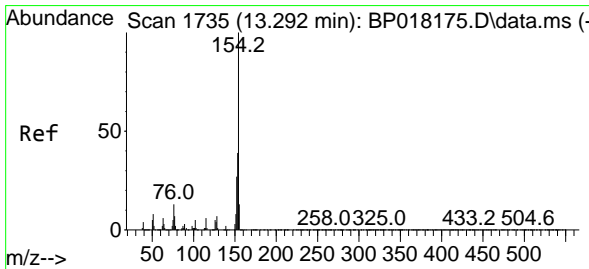
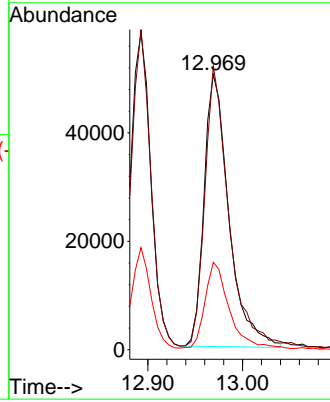
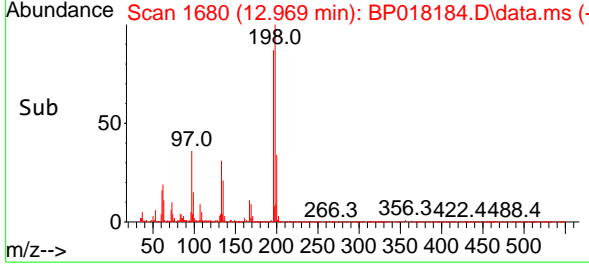
Tgt Ion:196 Resp: 9162
 Ion Ratio Lower Upper
 196 100
 198 103.1 78.9 118.3
 200 31.7 26.6 40.0

Manual Integrations

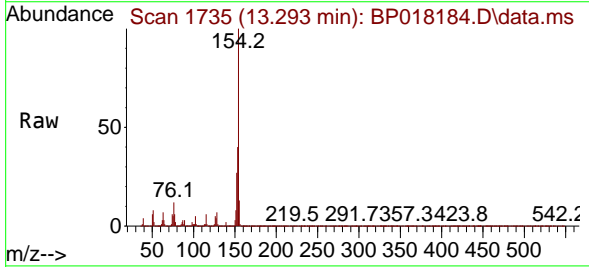
APPROVED

Reviewed By :Yogesh Patel 11/16/2023

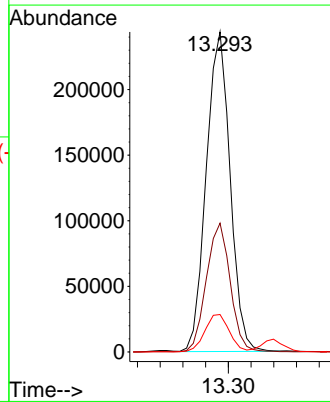
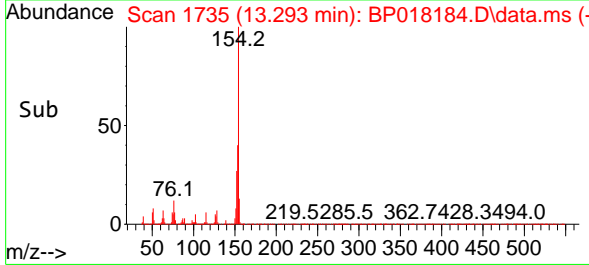
Supervised By :mohammad ahmed 11/17/2023

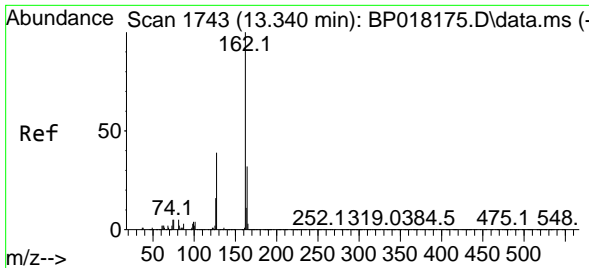


#43
 1,1'-Biphenyl
 Concen: 29.218 ng/ul
 RT: 13.293 min Scan# 1735
 Delta R.T. 0.000 min
 Lab File: BP018184.D
 Acq: 15 Nov 2023 21:05



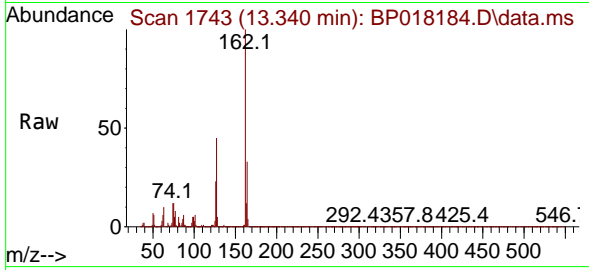
Tgt Ion:154 Resp: 354771
 Ion Ratio Lower Upper
 154 100
 153 40.2 32.4 48.6
 76 11.7 9.8 14.8





#44
 2-Chloronaphthalene
 Concen: 28.986 ng/uI
 RT: 13.340 min Scan# 1743
 Delta R.T. 0.000 min
 Lab File: BP018184.D
 Acq: 15 Nov 2023 21:05

Instrument : BNA_P
 Client SampleId : SLCS123

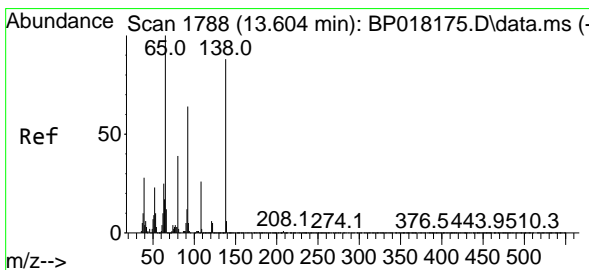
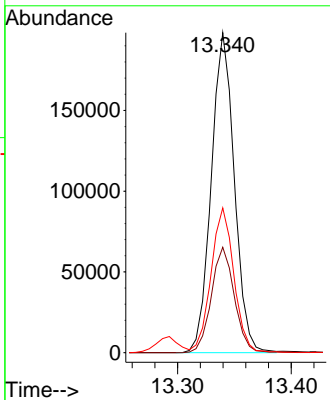
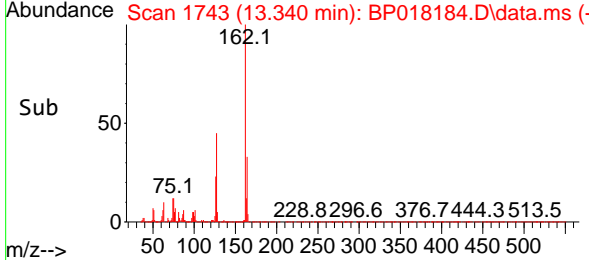


Tgt Ion: 162 Resp: 27942

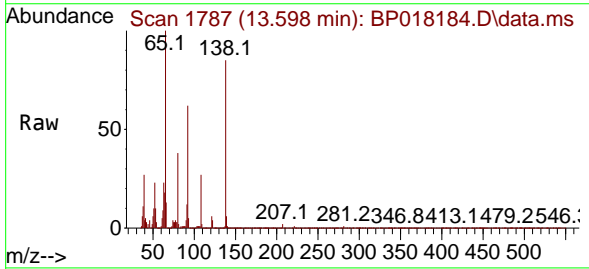
Ion	Ratio	Lower	Upper
162	100		
164	33.0	26.9	40.3
127	45.3	35.4	53.2

Manual Integrations
 APPROVED

Reviewed By :Yogesh Patel 11/16/2023
 Supervised By :mohammad ahmed 11/17/2023

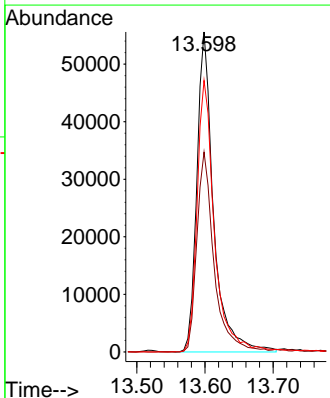
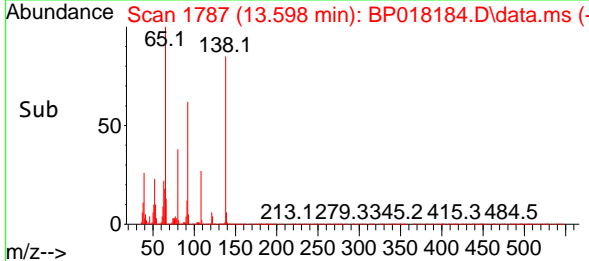


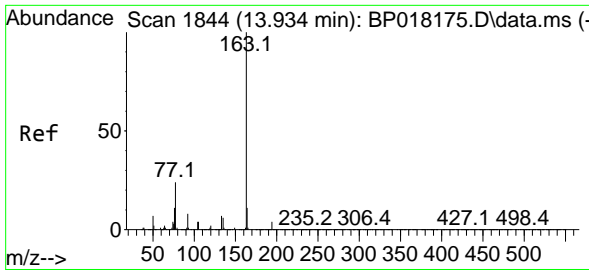
#45
 2-Nitroaniline
 Concen: 30.389 ng/uI
 RT: 13.598 min Scan# 1787
 Delta R.T. -0.006 min
 Lab File: BP018184.D
 Acq: 15 Nov 2023 21:05



Tgt Ion: 65 Resp: 94534

Ion	Ratio	Lower	Upper
65	100		
92	62.4	53.8	80.6
138	84.9	75.1	112.7





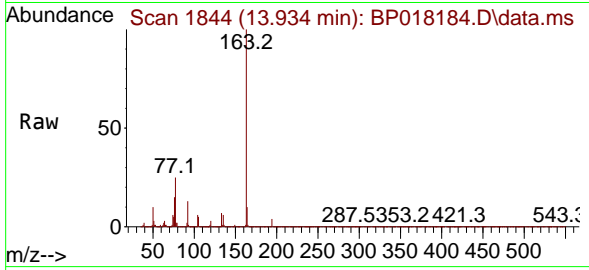
#47
 Dimethylphthalate
 Concen: 29.730 ng/ul
 RT: 13.934 min Scan# 1844
 Delta R.T. 0.000 min
 Lab File: BP018184.D
 Acq: 15 Nov 2023 21:05

Instrument :

BNA_P

ClientSampleId :

SLCS123



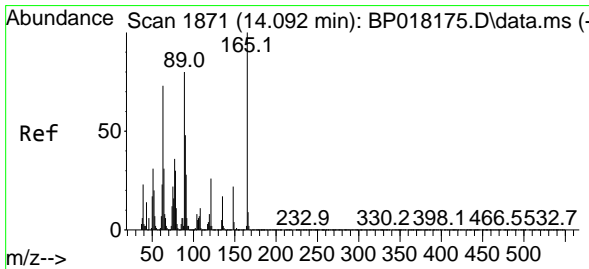
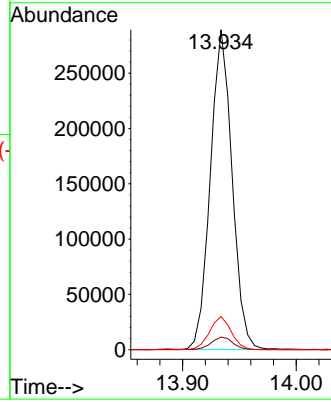
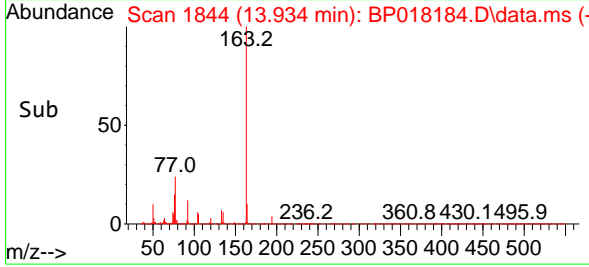
Tgt Ion:163 Resp: 38423
 Ion Ratio Lower Upper
 163 100
 194 3.9 3.5 5.3
 164 10.4 8.0 12.0

Manual Integrations

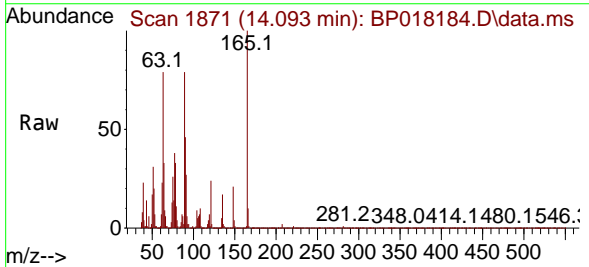
APPROVED

Reviewed By :Yogesh Patel 11/16/2023

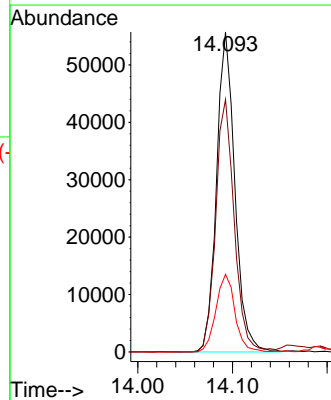
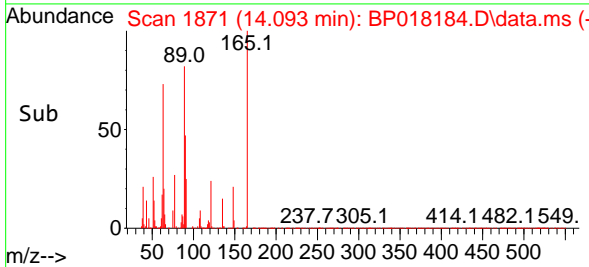
Supervised By :mohammad ahmed 11/17/2023

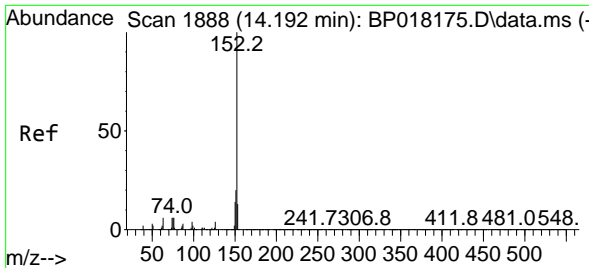


#48
 2,6-Dinitrotoluene
 Concen: 29.095 ng/ul
 RT: 14.093 min Scan# 1871
 Delta R.T. 0.000 min
 Lab File: BP018184.D
 Acq: 15 Nov 2023 21:05



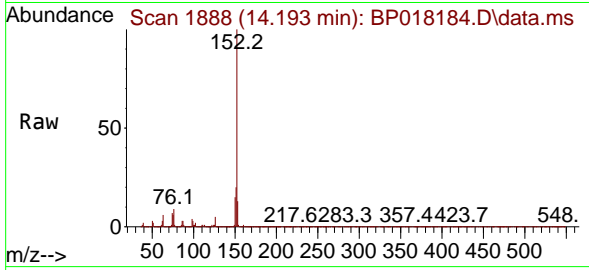
Tgt Ion:165 Resp: 74740
 Ion Ratio Lower Upper
 165 100
 89 78.9 59.4 89.0
 121 24.2 18.2 27.4





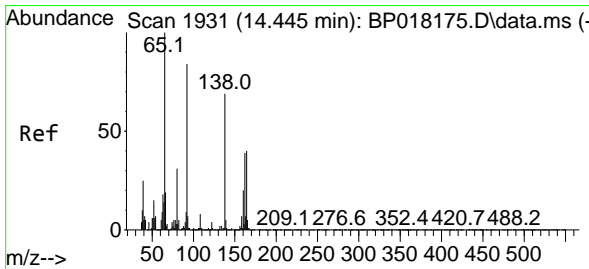
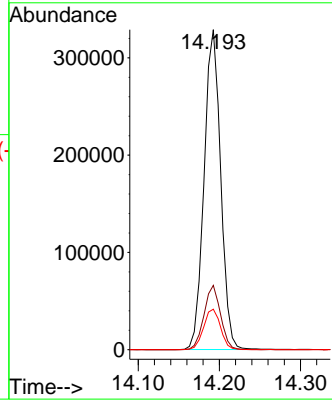
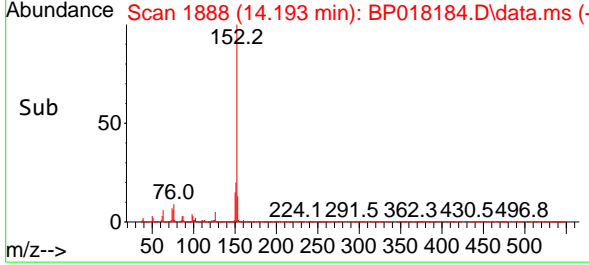
#50
 Acenaphthylene
 Concen: 28.751 ng/u1
 RT: 14.193 min Scan# 1888
 Delta R.T. 0.000 min
 Lab File: BP018184.D
 Acq: 15 Nov 2023 21:05

Instrument : BNA_P
 ClientSampleId : SLCS123

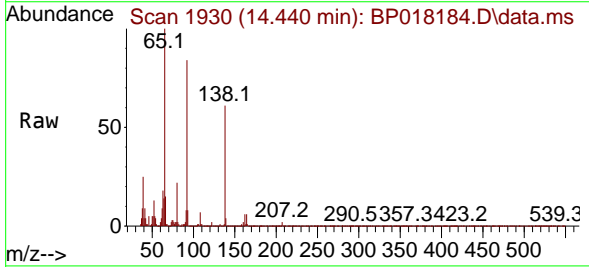


Tgt Ion:152 Resp: 465810
 Ion Ratio Lower Upper
 152 100
 151 20.1 16.2 24.2
 153 12.7 10.4 15.6

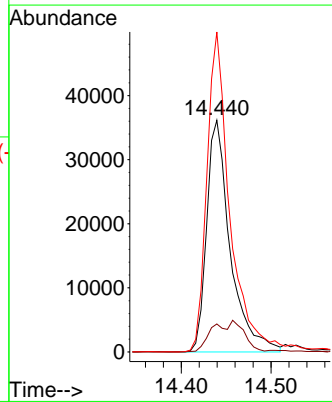
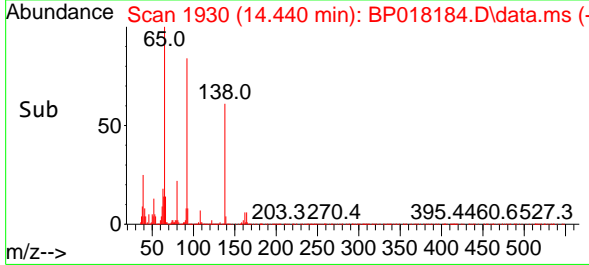
Manual Integrations
APPROVED
 Reviewed By :Yogesh Patel 11/16/2023
 Supervised By :mohammad ahmed 11/17/2023

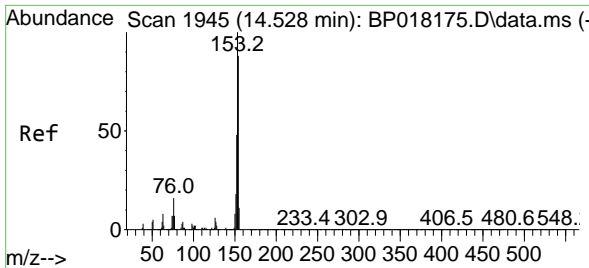


#51
 3-Nitroaniline
 Concen: 27.668 ng/u1
 RT: 14.440 min Scan# 1930
 Delta R.T. -0.006 min
 Lab File: BP018184.D
 Acq: 15 Nov 2023 21:05



Tgt Ion:138 Resp: 65952
 Ion Ratio Lower Upper
 138 100
 108 12.1 8.3 12.5
 92 138.1 99.0 148.4





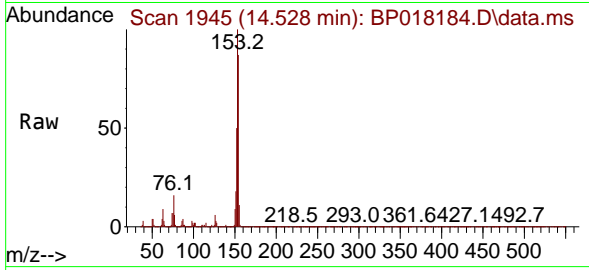
#52
 Acenaphthene
 Concen: 29.173 ng/u1
 RT: 14.528 min Scan# 1945
 Delta R.T. 0.000 min
 Lab File: BP018184.D
 Acq: 15 Nov 2023 21:05

Instrument :

BNA_P

Client Sample Id :

SLCS123



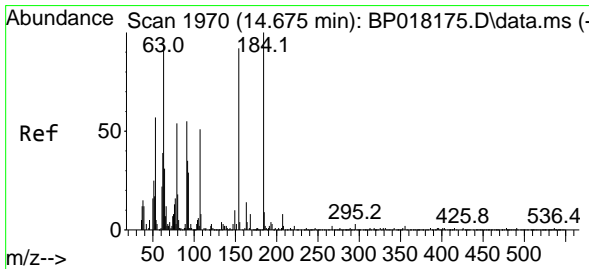
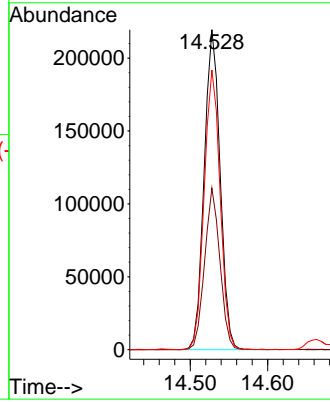
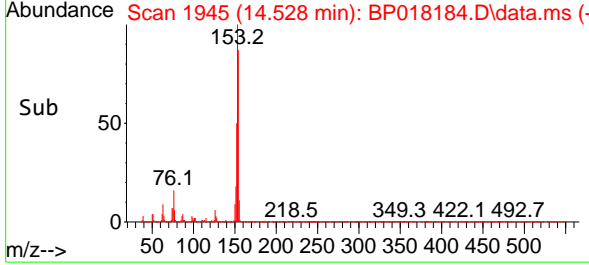
Tgt Ion:153 Resp: 31341
 Ion Ratio Lower Upper
 153 100
 152 50.5 39.0 58.6
 154 87.4 71.0 106.4

Manual Integrations

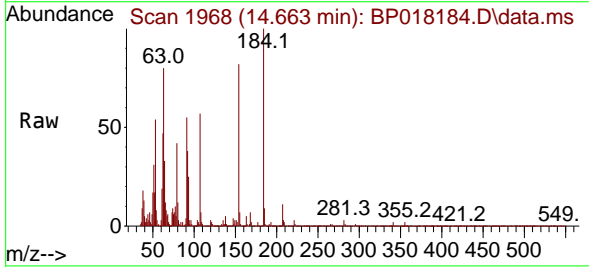
APPROVED

Reviewed By :Yogesh Patel 11/16/2023

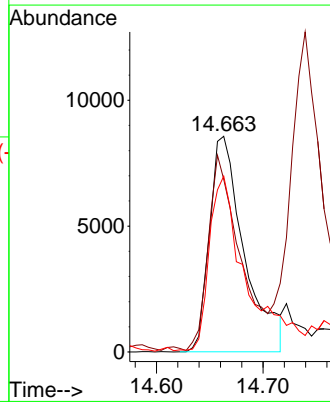
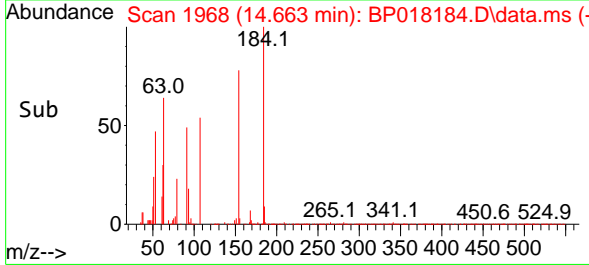
Supervised By :mohammad ahmed 11/17/2023

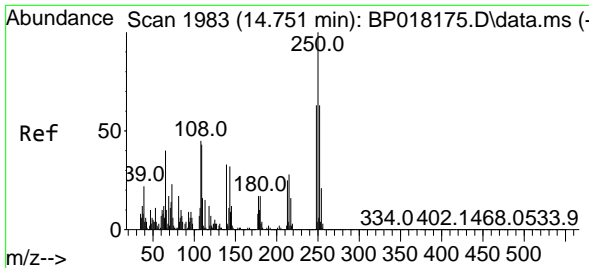


#53
 2,4-Dinitrophenol
 Concen: 13.796 ng/u1
 RT: 14.663 min Scan# 1968
 Delta R.T. -0.012 min
 Lab File: BP018184.D
 Acq: 15 Nov 2023 21:05



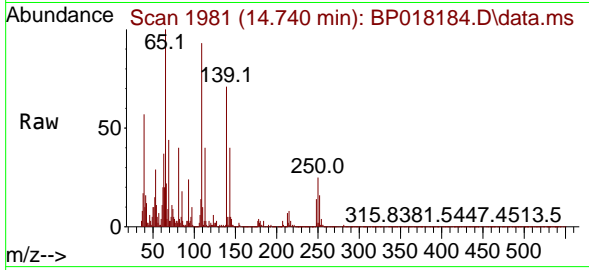
Tgt Ion:184 Resp: 19333
 Ion Ratio Lower Upper
 184 100
 63 80.0 67.7 101.5
 154 81.5 60.2 90.4





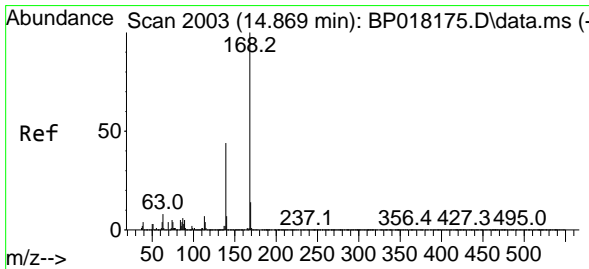
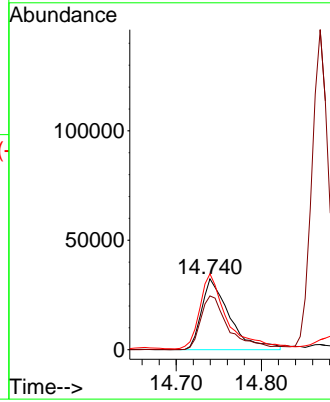
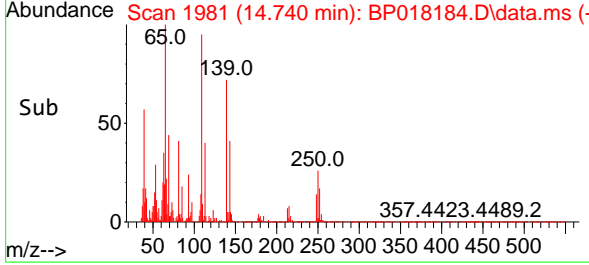
#55
 4-Nitrophenol
 Concen: 28.290 ng/ul
 RT: 14.740 min Scan# 1983
 Delta R.T. -0.012 min
 Lab File: BP018184.D
 Acq: 15 Nov 2023 21:05

Instrument : BNA_P
 ClientSampleId : SLCS123



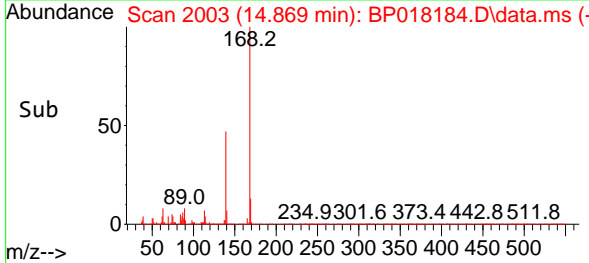
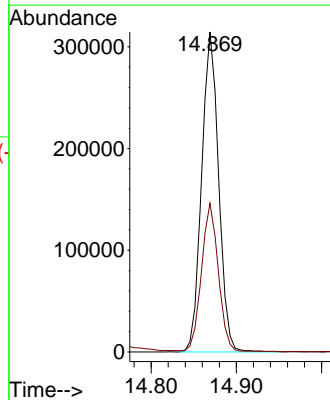
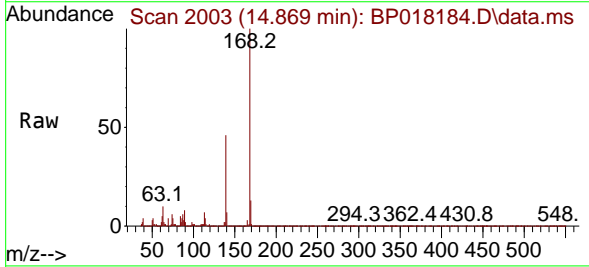
Tgt Ion:109 Resp: 73930
 Ion Ratio Lower Upper
 109 100
 139 76.0 74.9 112.3
 65 107.0 93.8 140.6

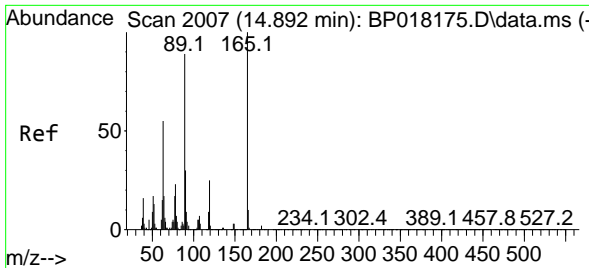
Manual Integrations
APPROVED
 Reviewed By :Yogesh Patel 11/16/2023
 Supervised By :mohammad ahmed 11/17/2023



#56
 Dibenzofuran
 Concen: 29.568 ng/ul
 RT: 14.869 min Scan# 2003
 Delta R.T. 0.000 min
 Lab File: BP018184.D
 Acq: 15 Nov 2023 21:05

Tgt Ion:168 Resp: 435316
 Ion Ratio Lower Upper
 168 100
 139 46.5 34.0 51.0





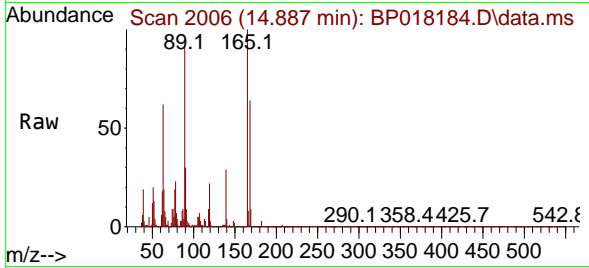
#57
 2,4-Dinitrotoluene
 Concen: 30.585 ng/ul
 RT: 14.887 min Scan# 2006
 Delta R.T. -0.006 min
 Lab File: BP018184.D
 Acq: 15 Nov 2023 21:05

Instrument :

BNA_P

Client SampleId :

SLCS123



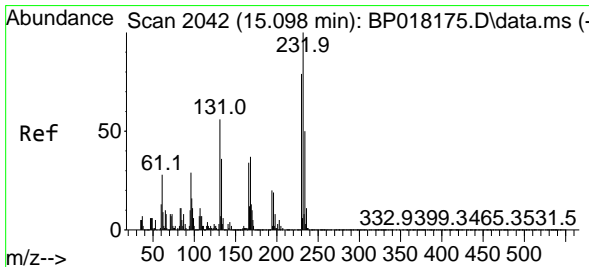
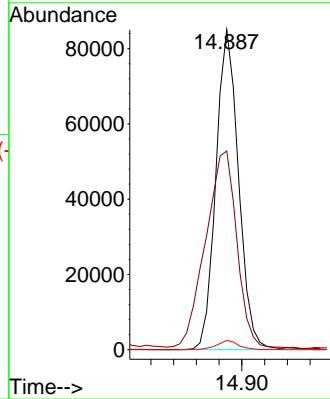
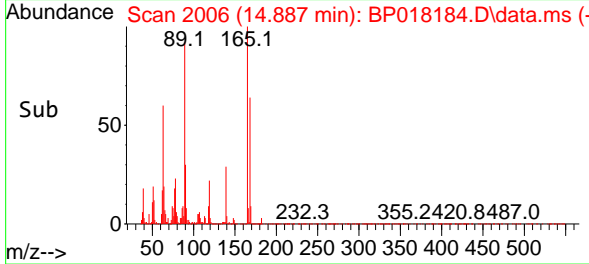
Tgt Ion:165 Resp: 117386
 Ion Ratio Lower Upper
 165 100
 63 62.1 48.6 72.8
 182 2.9 2.1 3.1

Manual Integrations

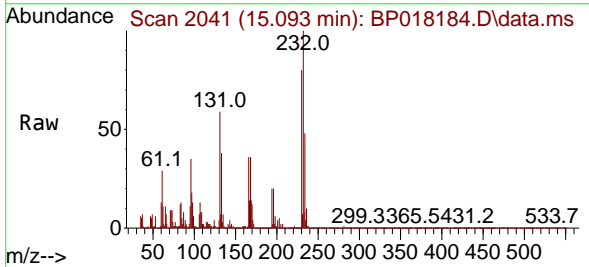
APPROVED

Reviewed By :Yogesh Patel 11/16/2023

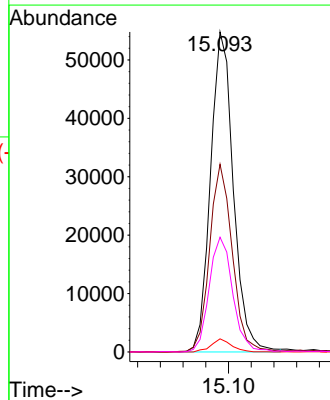
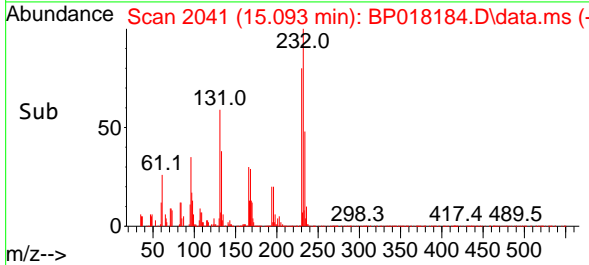
Supervised By :mohammad ahmed 11/17/2023

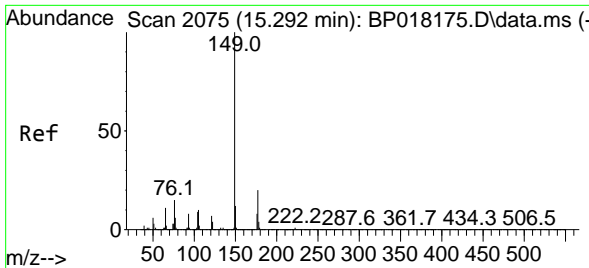


#58
 2,3,4,6-Tetrachlorophenol
 Concen: 25.897 ng/ul
 RT: 15.093 min Scan# 2041
 Delta R.T. -0.006 min
 Lab File: BP018184.D
 Acq: 15 Nov 2023 21:05



Tgt Ion:232 Resp: 76721
 Ion Ratio Lower Upper
 232 100
 131 58.6 44.1 66.1
 130 4.1 2.5 3.7#
 166 35.8 27.9 41.9





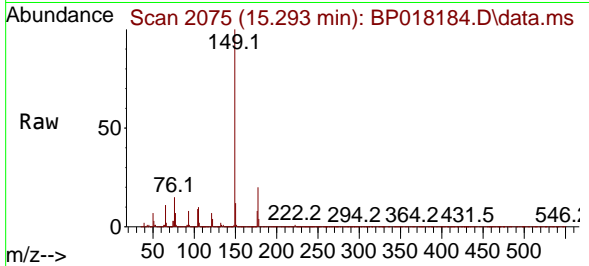
#59
 Diethylphthalate
 Concen: 31.312 ng/ul
 RT: 15.293 min Scan# 2075
 Delta R.T. 0.000 min
 Lab File: BP018184.D
 Acq: 15 Nov 2023 21:05

Instrument :

BNA_P

Client SampleId :

SLCS123



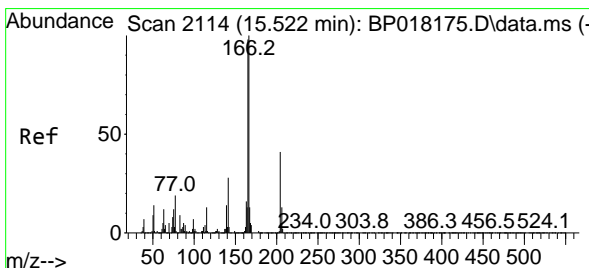
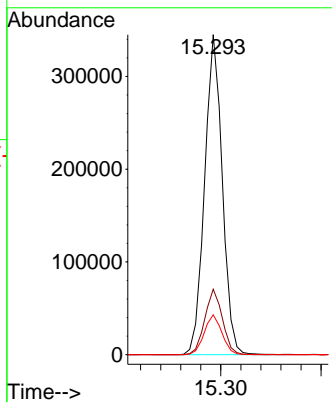
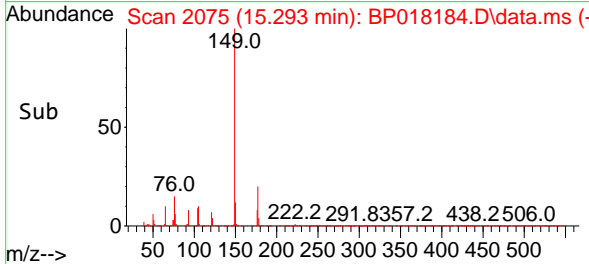
Tgt Ion:149 Resp: 42278
 Ion Ratio Lower Upper
 149 100
 177 20.5 16.3 24.5
 150 12.5 10.0 15.0

Manual Integrations

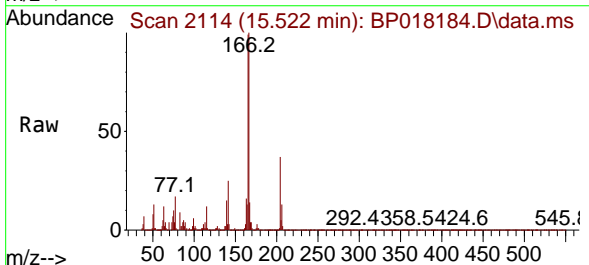
APPROVED

Reviewed By :Yogesh Patel 11/16/2023

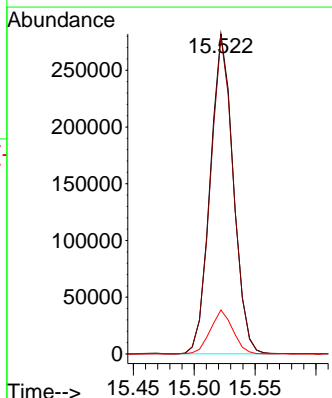
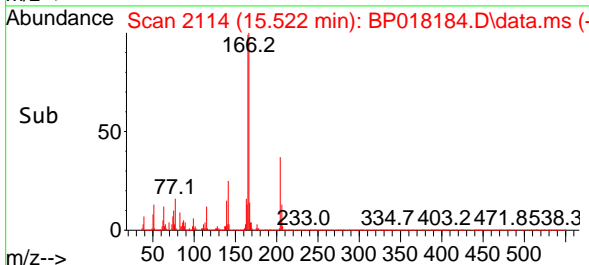
Supervised By :mohammad ahmed 11/17/2023

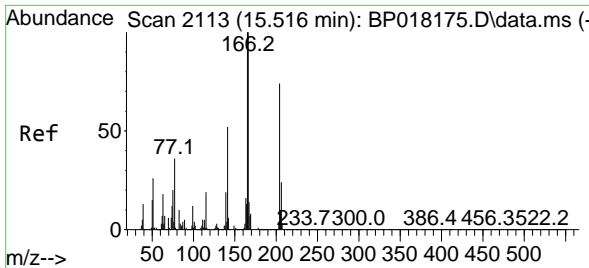


#61
 Fluorene
 Concen: 29.766 ng/ul
 RT: 15.522 min Scan# 2114
 Delta R.T. 0.000 min
 Lab File: BP018184.D
 Acq: 15 Nov 2023 21:05



Tgt Ion:166 Resp: 372052
 Ion Ratio Lower Upper
 166 100
 165 99.3 79.0 118.6
 167 13.8 10.6 16.0





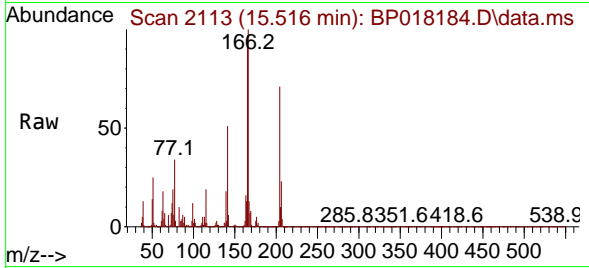
#62
 4-Chlorophenyl-phenylether
 Concen: 30.739 ng/ul
 RT: 15.516 min Scan# 2113
 Delta R.T. 0.000 min
 Lab File: BP018184.D
 Acq: 15 Nov 2023 21:05

Instrument :

BNA_P

ClientSampleId :

SLCS123



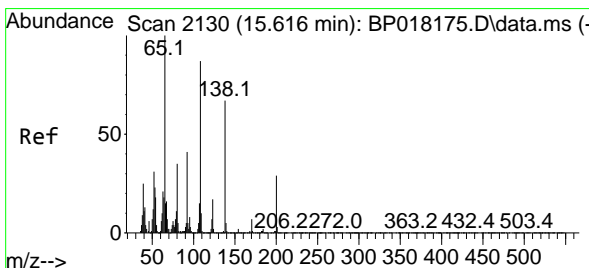
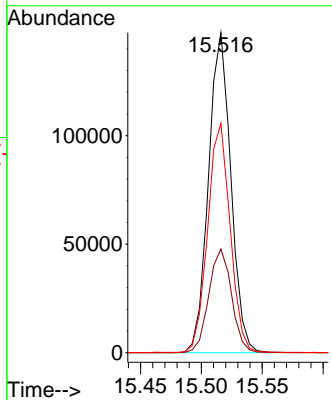
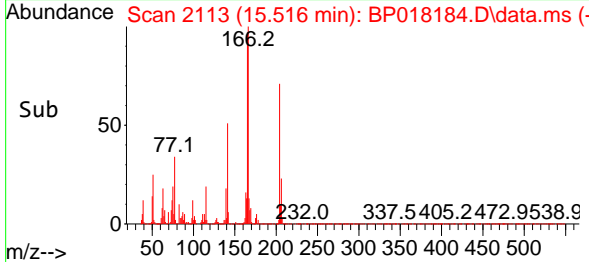
Tgt Ion:204 Resp: 188280
 Ion Ratio Lower Upper
 204 100
 206 32.4 26.2 39.2
 141 71.7 56.0 84.0

Manual Integrations

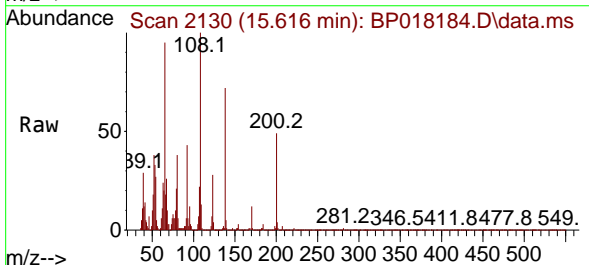
APPROVED

Reviewed By :Yogesh Patel 11/16/2023

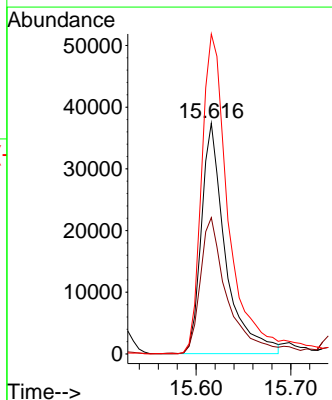
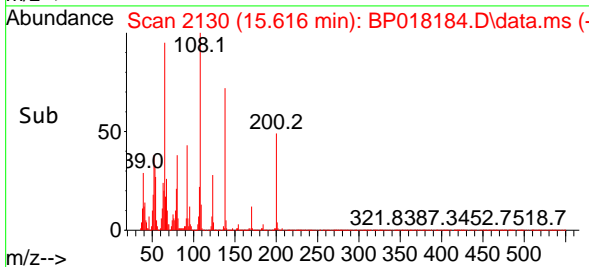
Supervised By :mohammad ahmed 11/17/2023

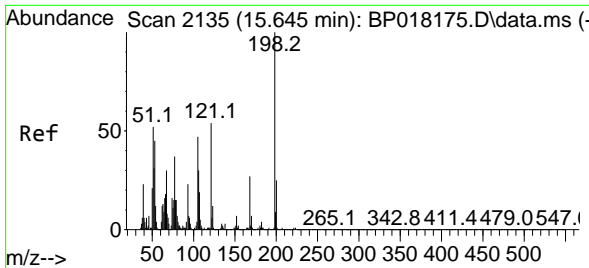


#63
 4-Nitroaniline
 Concen: 29.364 ng/ul
 RT: 15.616 min Scan# 2130
 Delta R.T. 0.000 min
 Lab File: BP018184.D
 Acq: 15 Nov 2023 21:05



Tgt Ion:138 Resp: 66052
 Ion Ratio Lower Upper
 138 100
 92 59.1 46.6 70.0
 108 138.7 104.7 157.1





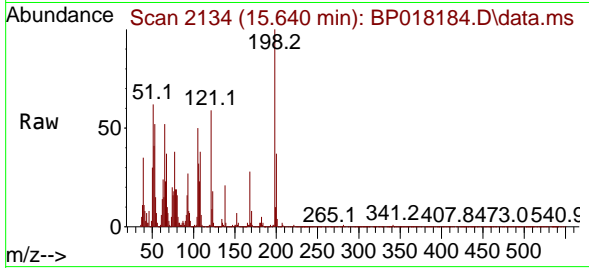
#66
 4,6-Dinitro-2-methylphenol
 Concen: 26.476 ng/ul
 RT: 15.640 min Scan# 2135
 Delta R.T. -0.006 min
 Lab File: BP018184.D
 Acq: 15 Nov 2023 21:05

Instrument :

BNA_P

ClientSampleId :

SLCS123



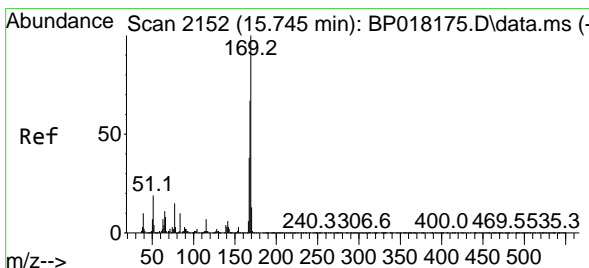
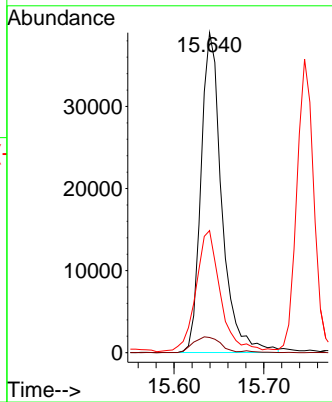
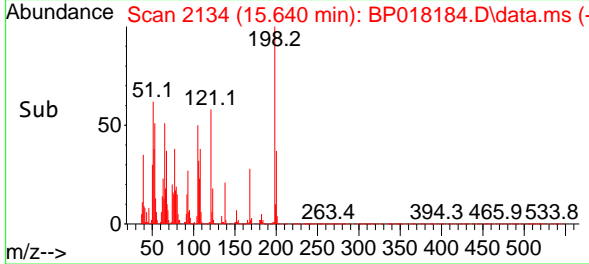
Tgt Ion:198 Resp: 62950
 Ion Ratio Lower Upper
 198 100
 182 4.8 3.8 5.6
 77 38.1 27.2 40.8

Manual Integrations

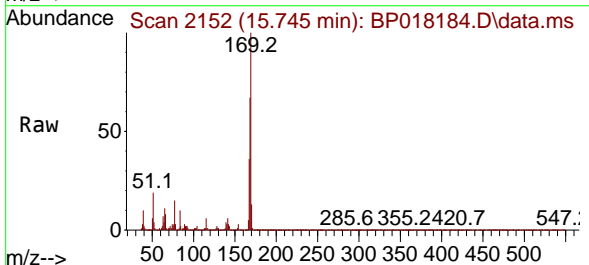
APPROVED

Reviewed By :Yogesh Patel 11/16/2023

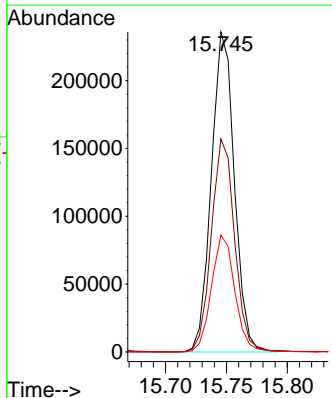
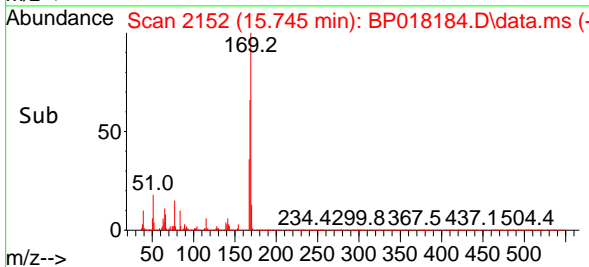
Supervised By :mohammad ahmed 11/17/2023

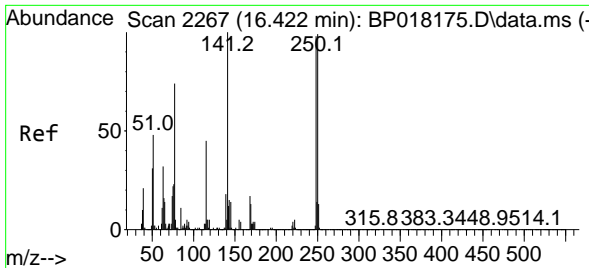


#67
 N-Nitrosodiphenylamine
 Concen: 30.489 ng/ul
 RT: 15.745 min Scan# 2152
 Delta R.T. 0.000 min
 Lab File: BP018184.D
 Acq: 15 Nov 2023 21:05



Tgt Ion:169 Resp: 309913
 Ion Ratio Lower Upper
 169 100
 168 66.5 53.8 80.8
 167 36.5 29.8 44.6





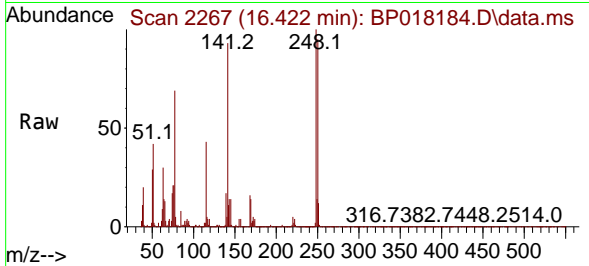
#68
 4-Bromophenyl-phenylether
 Concen: 31.230 ng/ul
 RT: 16.422 min Scan# 2267
 Delta R.T. 0.000 min
 Lab File: BP018184.D
 Acq: 15 Nov 2023 21:05

Instrument :

BNA_P

ClientSampleId :

SLCS123



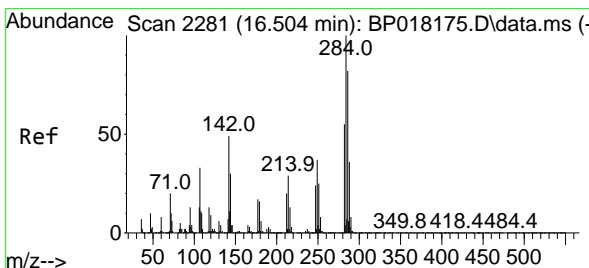
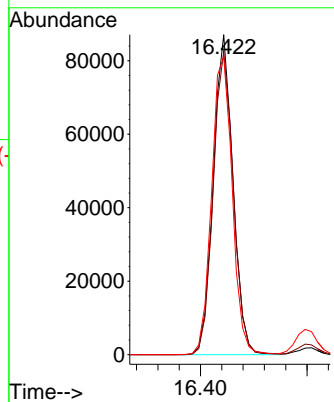
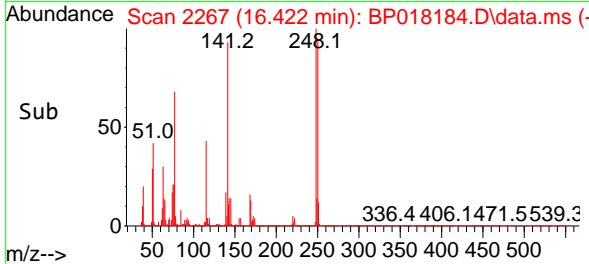
Tgt Ion:248 Resp: 11156
 Ion Ratio Lower Upper
 248 100
 250 94.7 72.7 109.1
 141 93.1 70.4 105.6

Manual Integrations

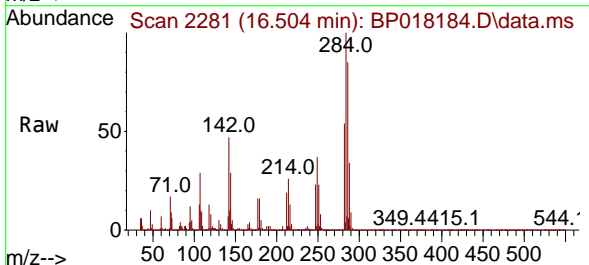
APPROVED

Reviewed By :Yogesh Patel 11/16/2023

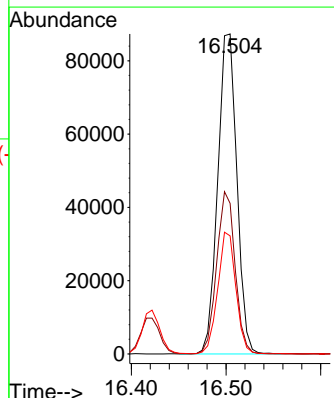
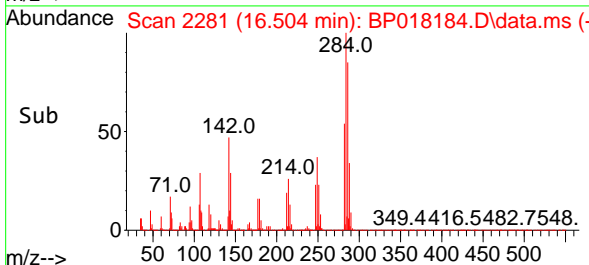
Supervised By :mohammad ahmed 11/17/2023

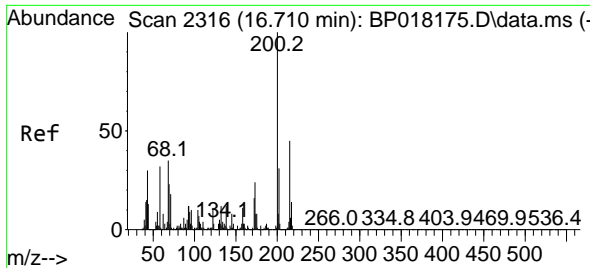


#69
 Hexachlorobenzene
 Concen: 30.758 ng/ul
 RT: 16.504 min Scan# 2281
 Delta R.T. 0.000 min
 Lab File: BP018184.D
 Acq: 15 Nov 2023 21:05



Tgt Ion:284 Resp: 122603
 Ion Ratio Lower Upper
 284 100
 142 47.0 38.9 58.3
 249 36.9 28.6 43.0





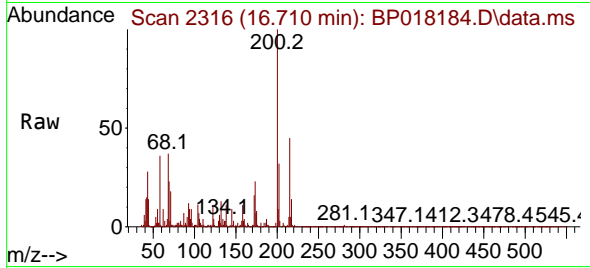
#70
 Atrazine
 Concen: 21.077 ng/uI
 RT: 16.710 min Scan# 21
 Delta R.T. 0.000 min
 Lab File: BP018184.D
 Acq: 15 Nov 2023 21:05

Instrument :

BNA_P

ClientSampleId :

SLCS123

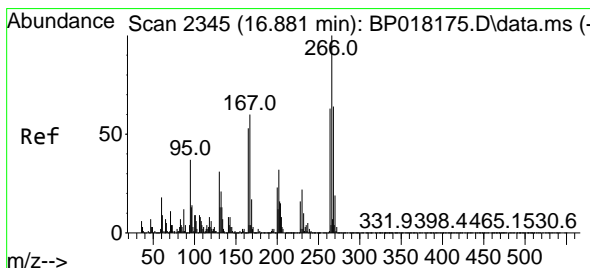
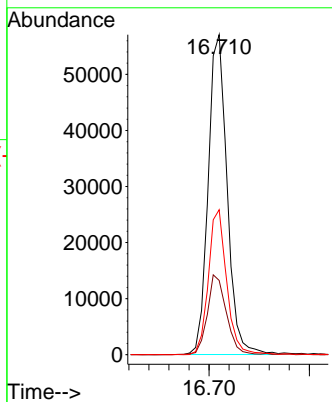
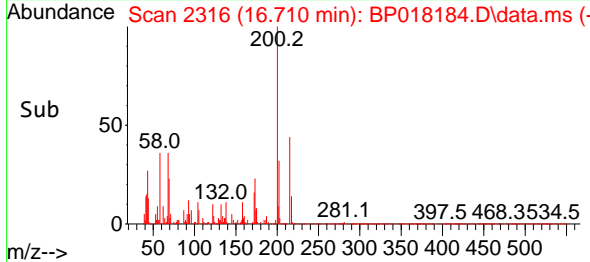


Tgt Ion:200 Resp: 7473
 Ion Ratio Lower Upper
 200 100
 173 23.2 20.2 30.2
 215 45.3 37.8 56.8

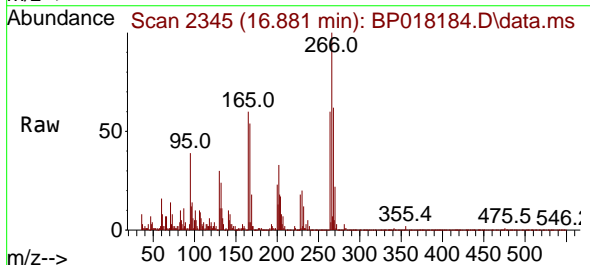
Manual Integrations

APPROVED

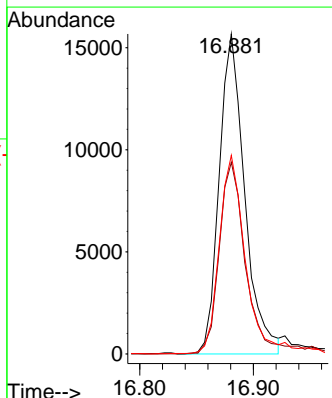
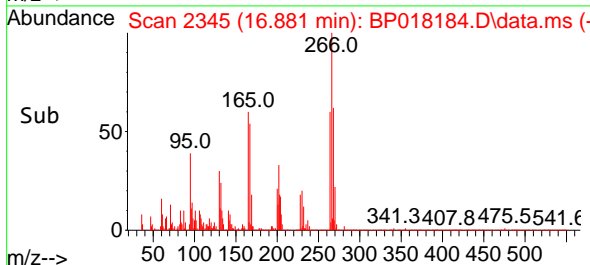
Reviewed By :Yogesh Patel 11/16/2023
 Supervised By :mohammad ahmed 11/17/2023

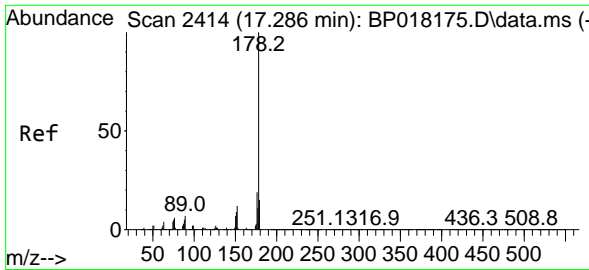


#71
 Pentachlorophenol
 Concen: 10.099 ng/uI
 RT: 16.881 min Scan# 2345
 Delta R.T. 0.000 min
 Lab File: BP018184.D
 Acq: 15 Nov 2023 21:05



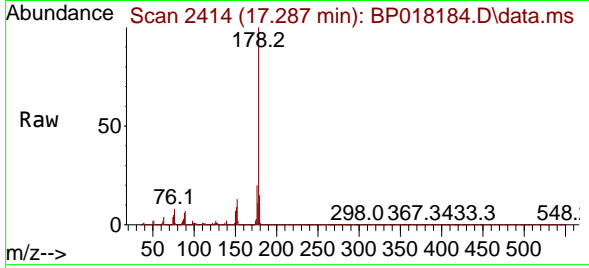
Tgt Ion:266 Resp: 24435
 Ion Ratio Lower Upper
 266 100
 264 59.9 50.7 76.1
 268 62.1 52.4 78.6





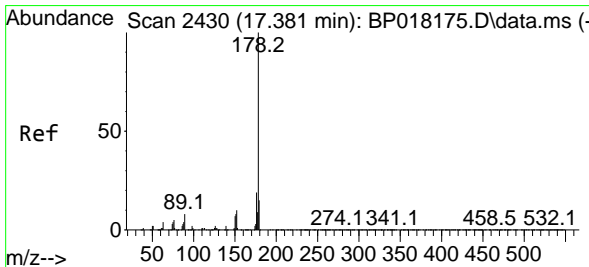
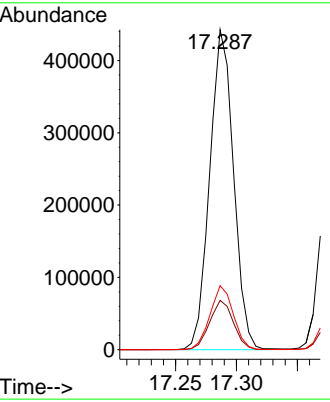
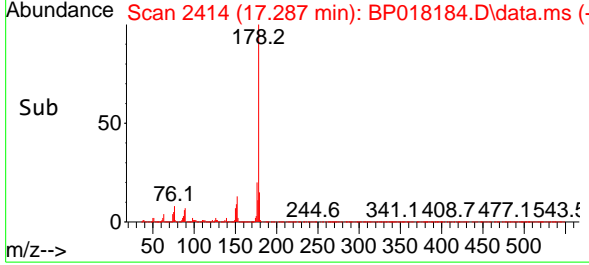
#72
 Phenanthrene
 Concen: 30.968 ng/u1
 RT: 17.287 min Scan# 2414
 Delta R.T. 0.000 min
 Lab File: BP018184.D
 Acq: 15 Nov 2023 21:05

Instrument : BNA_P
 ClientSampleId : SLCS123

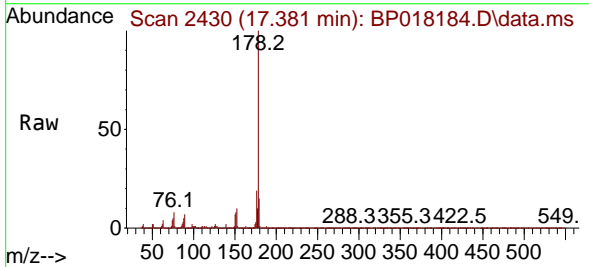


Tgt Ion:178 Resp: 602664
 Ion Ratio Lower Upper
 178 100
 179 15.4 12.0 18.0
 176 20.0 15.5 23.3

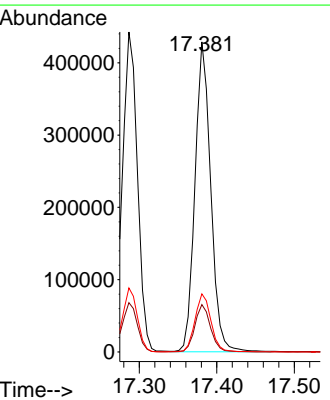
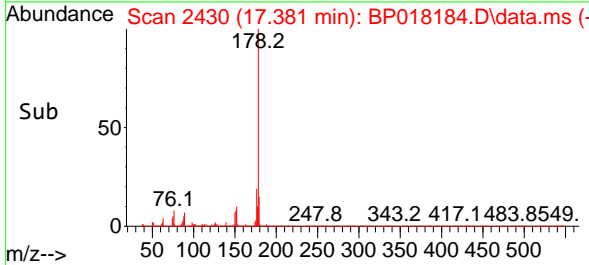
Manual Integrations
APPROVED
 Reviewed By :Yogesh Patel 11/16/2023
 Supervised By :mohammad ahmed 11/17/2023

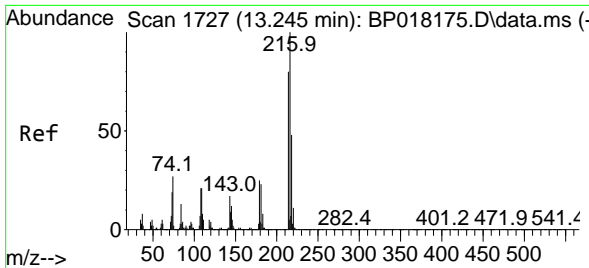


#74
 Anthracene
 Concen: 30.529 ng/u1
 RT: 17.381 min Scan# 2430
 Delta R.T. 0.000 min
 Lab File: BP018184.D
 Acq: 15 Nov 2023 21:05



Tgt Ion:178 Resp: 606295
 Ion Ratio Lower Upper
 178 100
 179 15.3 12.6 19.0
 176 18.7 15.4 23.0





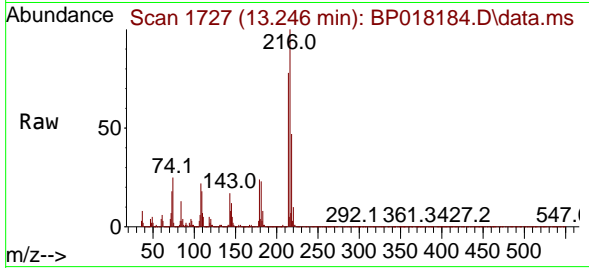
#75
 1,2,3,4-Tetrachlorobenzene
 Concen: 30.344 ng/uL
 RT: 13.246 min Scan# 1727
 Delta R.T. 0.000 min
 Lab File: BP018184.D
 Acq: 15 Nov 2023 21:05

Instrument :

BNA_P

Client SampleId :

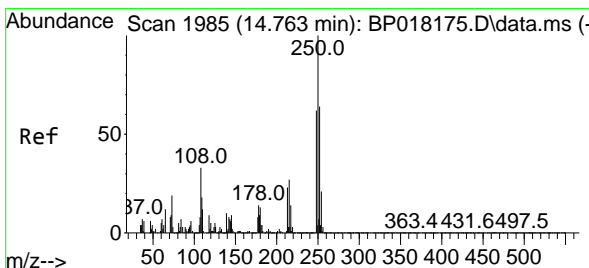
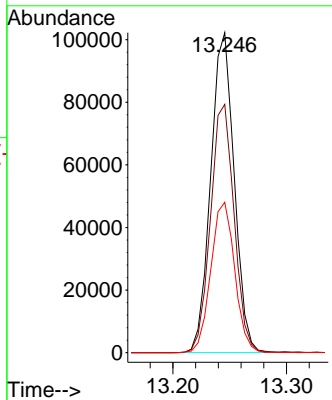
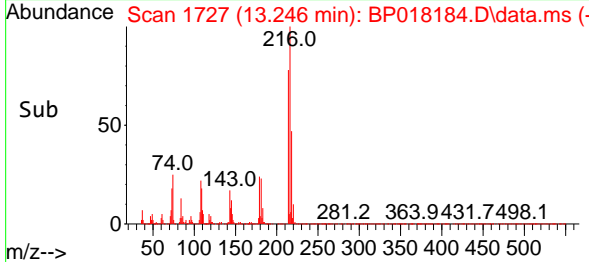
SLCS123



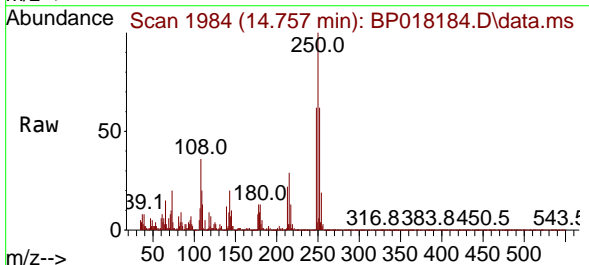
Tgt Ion:216 Resp: 146868
 Ion Ratio Lower Upper
 216 100
 214 77.6 64.0 96.0
 218 47.0 39.0 58.4

Manual Integrations
 APPROVED

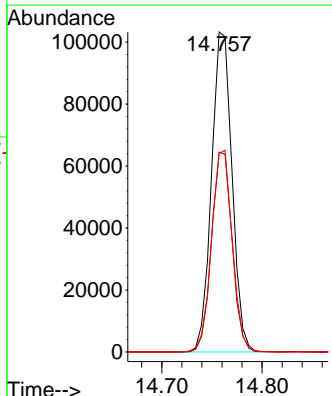
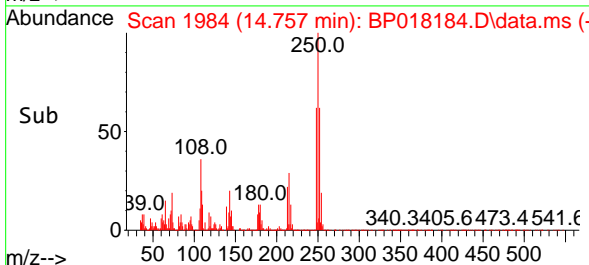
Reviewed By :Yogesh Patel 11/16/2023
 Supervised By :mohammad ahmed 11/17/2023

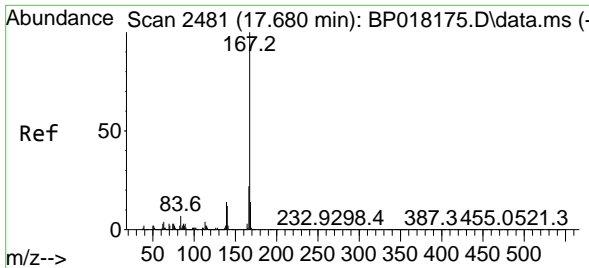


#76
 Pentachlorobenzene
 Concen: 30.967 ng/uL
 RT: 14.757 min Scan# 1984
 Delta R.T. -0.006 min
 Lab File: BP018184.D
 Acq: 15 Nov 2023 21:05



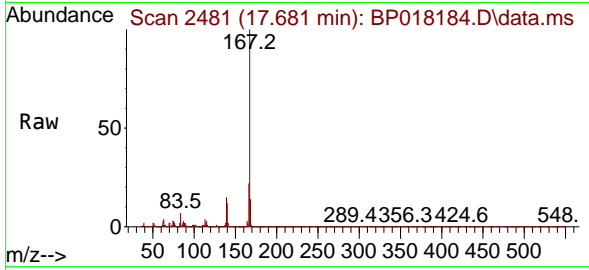
Tgt Ion:250 Resp: 146728
 Ion Ratio Lower Upper
 250 100
 248 62.5 52.7 79.1
 252 62.1 52.3 78.5





#77
 Carbazole
 Concen: 31.975 ng/u1
 RT: 17.681 min Scan# 2481
 Delta R.T. 0.000 min
 Lab File: BP018184.D
 Acq: 15 Nov 2023 21:05

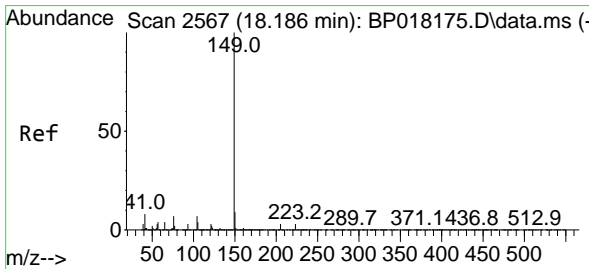
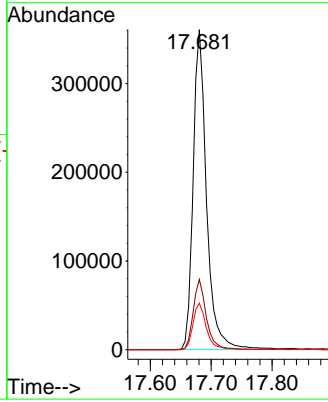
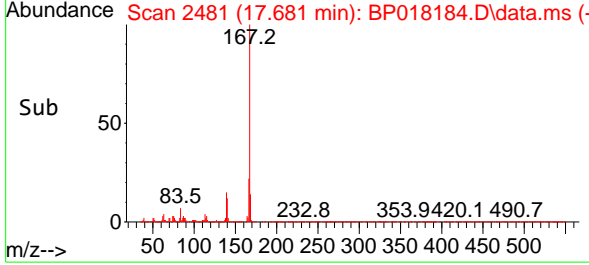
Instrument : BNA_P
 ClientSampleId : SLCS123



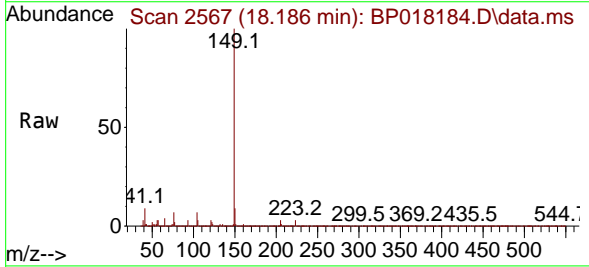
Tgt Ion:167 Resp: 55143
 Ion Ratio Lower Upper
 167 100
 166 22.0 17.6 26.4
 139 14.6 11.4 17.0

Manual Integrations
 APPROVED

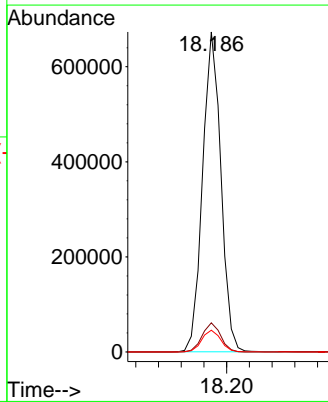
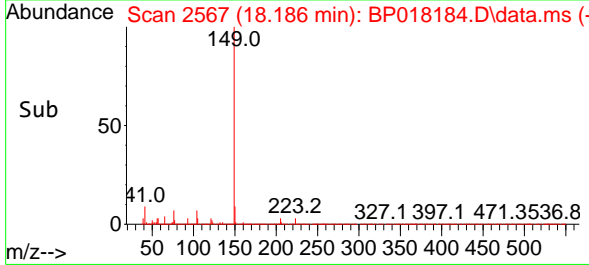
Reviewed By :Yogesh Patel 11/16/2023
 Supervised By :mohammad ahmed 11/17/2023

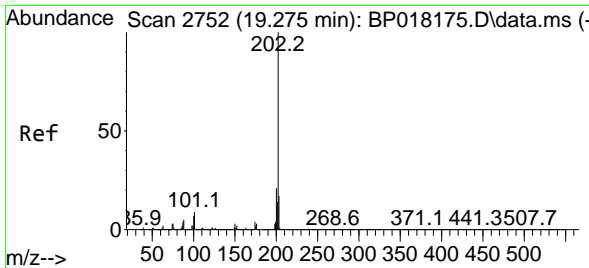


#78
 Di-n-butylphthalate
 Concen: 34.382 ng/u1
 RT: 18.186 min Scan# 2567
 Delta R.T. 0.000 min
 Lab File: BP018184.D
 Acq: 15 Nov 2023 21:05



Tgt Ion:149 Resp: 752348
 Ion Ratio Lower Upper
 149 100
 150 9.1 6.7 10.1
 104 6.8 5.1 7.7





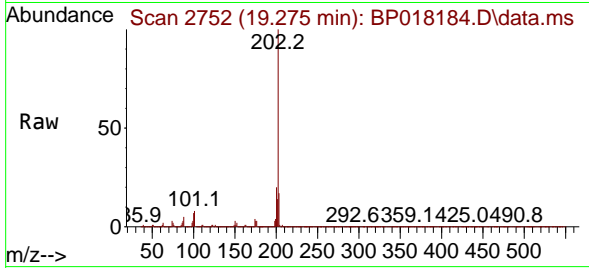
#80
 Fluoranthene
 Concen: 29.625 ng/u1
 RT: 19.275 min Scan# 2752
 Delta R.T. 0.000 min
 Lab File: BP018184.D
 Acq: 15 Nov 2023 21:05

Instrument :

BNA_P

Client SampleId :

SLCS123



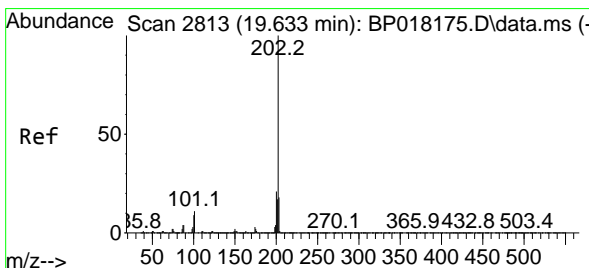
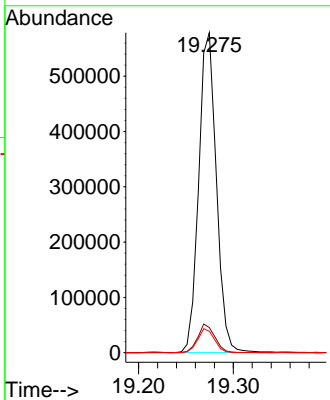
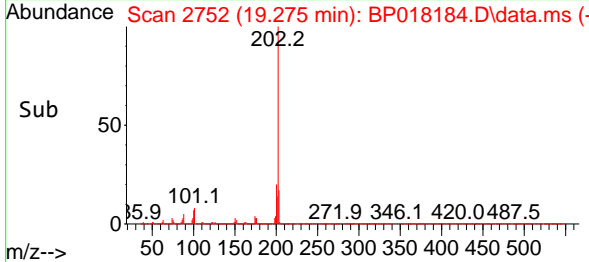
Tgt Ion:202 Resp: 750660
 Ion Ratio Lower Upper
 202 100
 101 7.8 7.2 10.8
 100 6.7 5.8 8.6

Manual Integrations

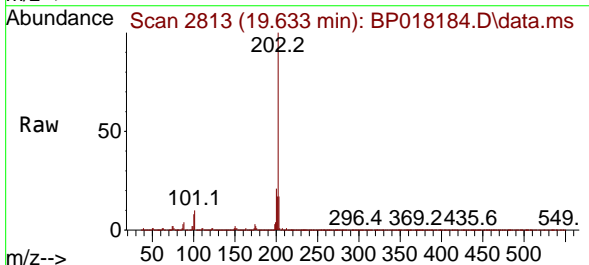
APPROVED

Reviewed By :Yogesh Patel 11/16/2023

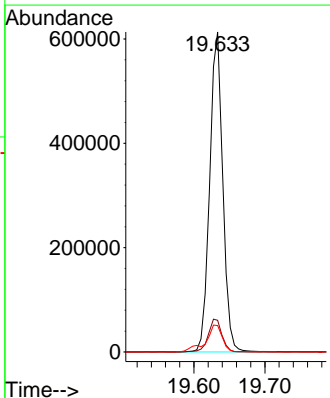
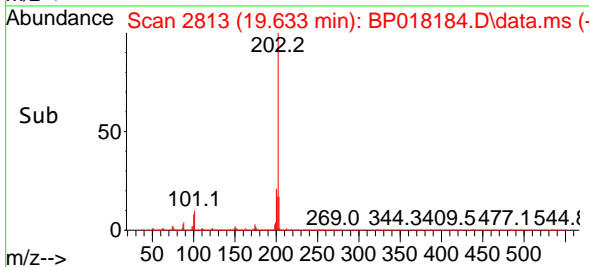
Supervised By :mohammad ahmed 11/17/2023

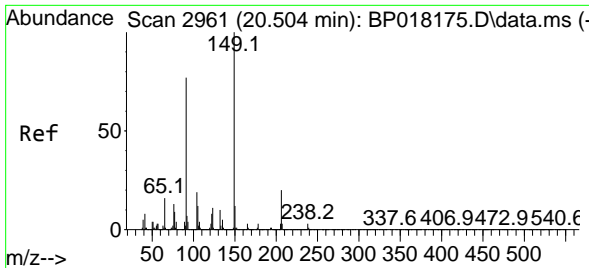


#82
 Pyrene
 Concen: 29.525 ng/u1
 RT: 19.633 min Scan# 2813
 Delta R.T. 0.000 min
 Lab File: BP018184.D
 Acq: 15 Nov 2023 21:05



Tgt Ion:202 Resp: 783957
 Ion Ratio Lower Upper
 202 100
 101 9.9 8.3 12.5
 100 8.2 7.4 11.2





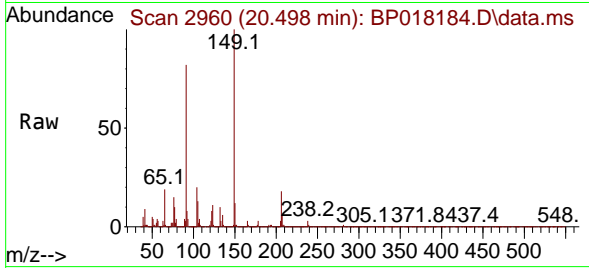
#83
 Butylbenzylphthalate
 Concen: 32.672 ng/ul
 RT: 20.498 min Scan# 2960
 Delta R.T. -0.006 min
 Lab File: BP018184.D
 Acq: 15 Nov 2023 21:05

Instrument :

BNA_P

ClientSampleId :

SLCS123

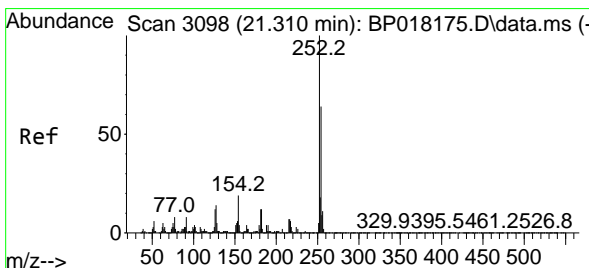
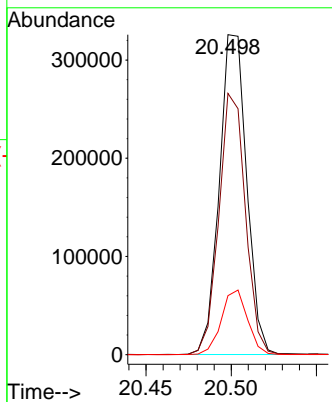
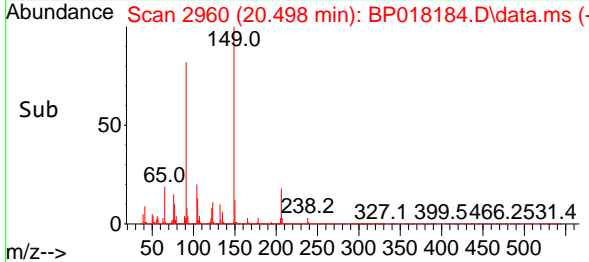


Tgt Ion:149 Resp: 36483
 Ion Ratio Lower Upper
 149 100
 91 81.7 59.6 89.4
 206 18.4 14.3 21.5

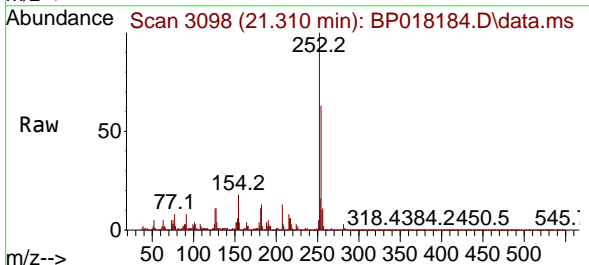
Manual Integrations

APPROVED

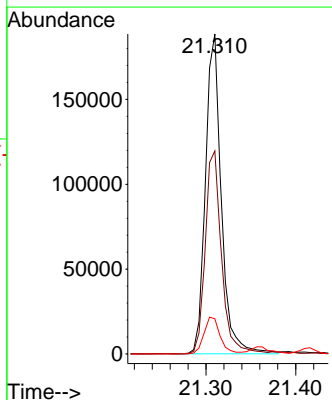
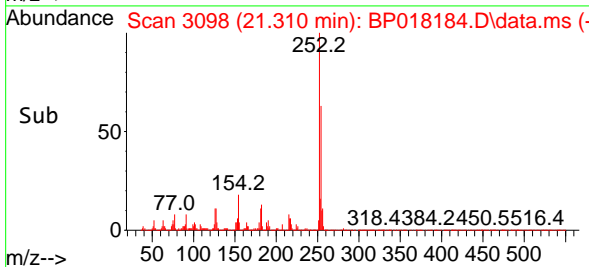
Reviewed By :Yogesh Patel 11/16/2023
 Supervised By :mohammad ahmed 11/17/2023

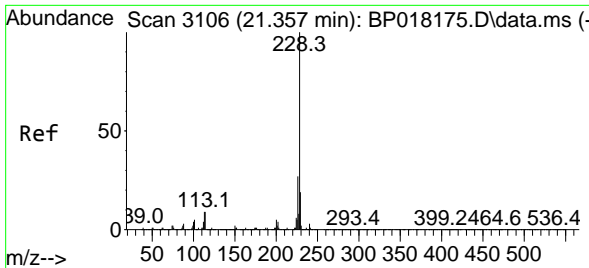


#84
 3,3'-Dichlorobenzidine
 Concen: 29.900 ng/ul
 RT: 21.310 min Scan# 3098
 Delta R.T. 0.000 min
 Lab File: BP018184.D
 Acq: 15 Nov 2023 21:05



Tgt Ion:252 Resp: 232043
 Ion Ratio Lower Upper
 252 100
 254 63.5 48.9 73.3
 126 11.0 9.4 14.0





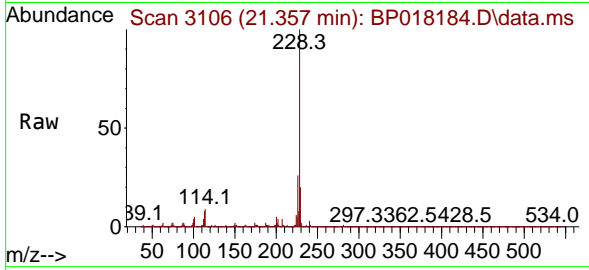
#85
 Benzo(a)anthracene
 Concen: 31.499 ng/ul
 RT: 21.357 min Scan# 3106
 Delta R.T. 0.000 min
 Lab File: BP018184.D
 Acq: 15 Nov 2023 21:05

Instrument :

BNA_P

ClientSampleId :

SLCS123



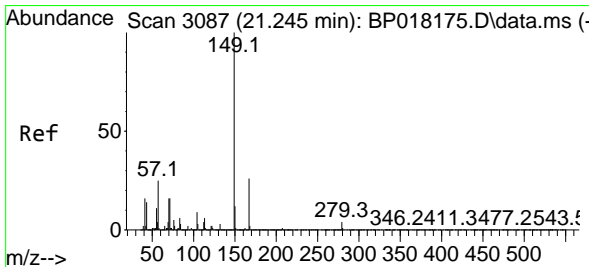
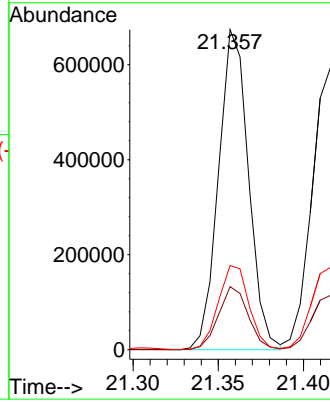
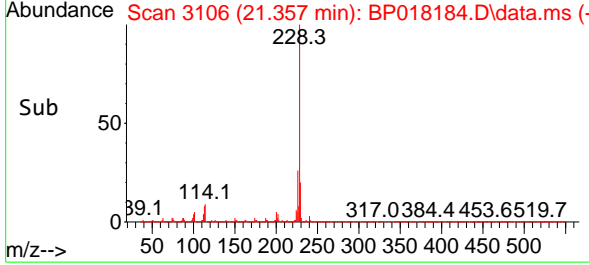
Tgt Ion:228 Resp: 82618
 Ion Ratio Lower Upper
 228 100
 229 19.7 15.4 23.0
 226 26.3 21.4 32.0

Manual Integrations

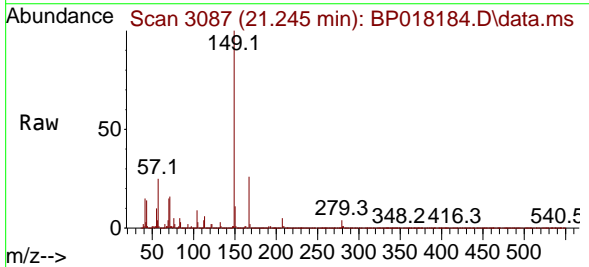
APPROVED

Reviewed By :Yogesh Patel 11/16/2023

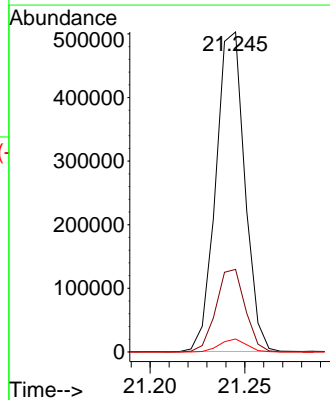
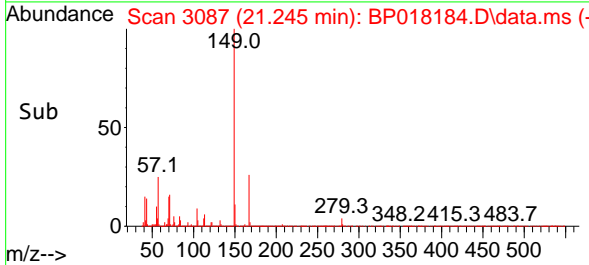
Supervised By :mohammad ahmed 11/17/2023

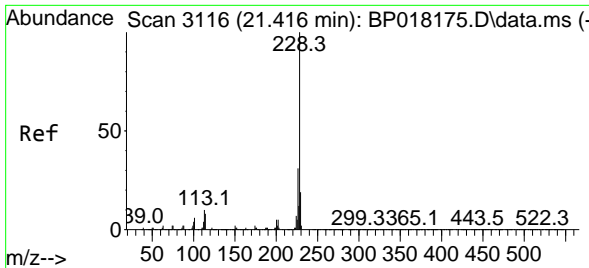


#86
 Bis(2-ethylhexyl)phthalate
 Concen: 34.671 ng/ul
 RT: 21.245 min Scan# 3087
 Delta R.T. 0.000 min
 Lab File: BP018184.D
 Acq: 15 Nov 2023 21:05



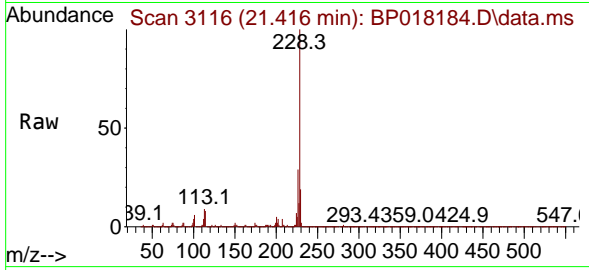
Tgt Ion:149 Resp: 533775
 Ion Ratio Lower Upper
 149 100
 167 25.8 21.0 31.4
 279 4.1 3.2 4.8





#87
 Chrysene
 Concen: 31.058 ng/uI
 RT: 21.416 min Scan# 3116
 Delta R.T. 0.000 min
 Lab File: BP018184.D
 Acq: 15 Nov 2023 21:05

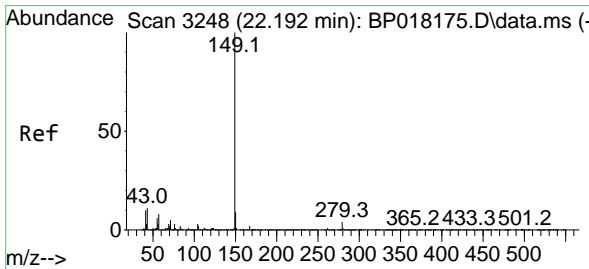
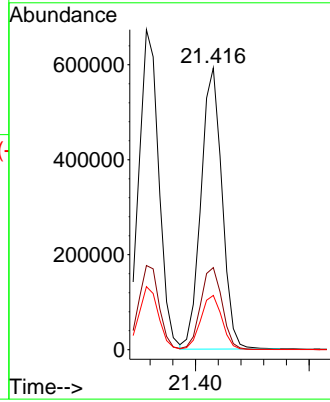
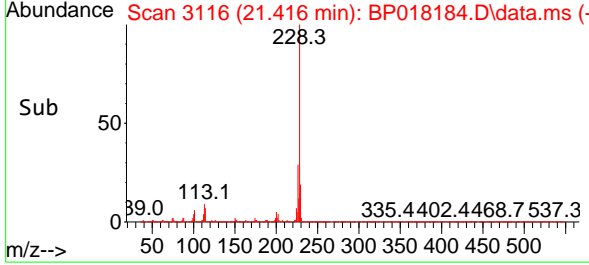
Instrument : BNA_P
 Client Sample Id : SLCS123



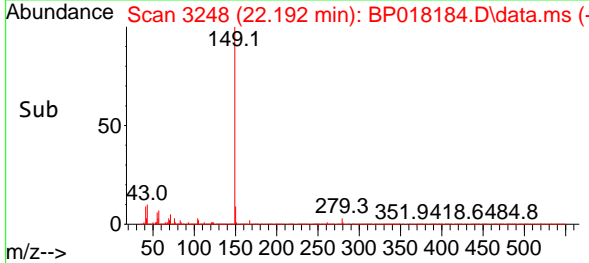
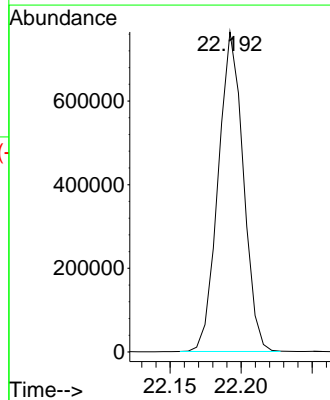
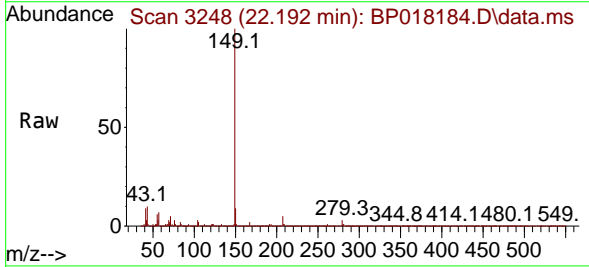
Tgt Ion: 228 Resp: 762111
 Ion Ratio Lower Upper
 228 100
 226 29.1 23.1 34.7
 229 19.3 15.4 23.0

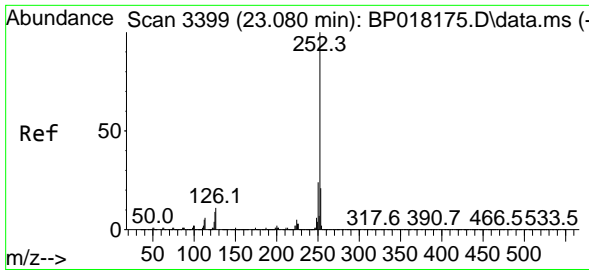
Manual Integrations
 APPROVED

Reviewed By : Yogesh Patel 11/16/2023
 Supervised By : mohammad ahmed 11/17/2023



#89
 Di-n-octyl phthalate
 Concen: 35.296 ng/uI
 RT: 22.192 min Scan# 3248
 Delta R.T. 0.000 min
 Lab File: BP018184.D
 Acq: 15 Nov 2023 21:05
 Tgt Ion: 149 Resp: 938087





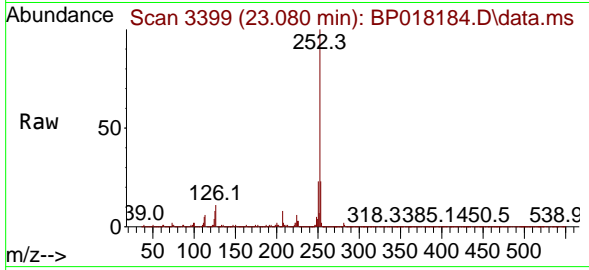
#90
 Benzo(b)fluoranthene
 Concen: 31.618 ng/ul
 RT: 23.080 min Scan# 31
 Delta R.T. 0.000 min
 Lab File: BP018184.D
 Acq: 15 Nov 2023 21:05

Instrument :

BNA_P

ClientSampleId :

SLCS123



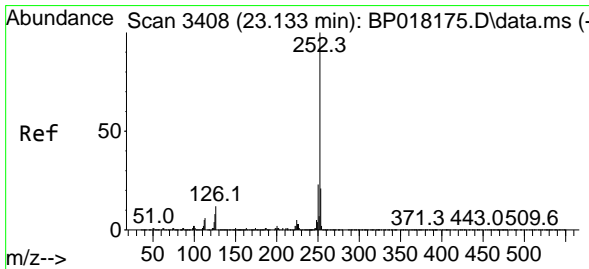
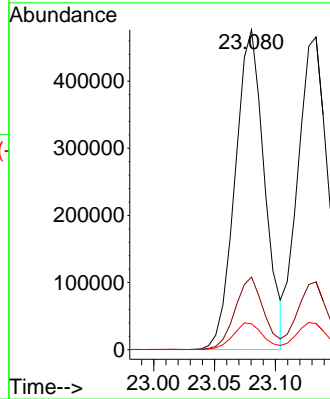
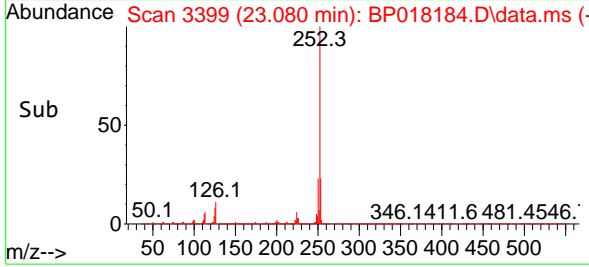
Tgt Ion:252 Resp: 79968
 Ion Ratio Lower Upper
 252 100
 253 22.7 17.0 25.4
 125 8.1 7.0 10.6

Manual Integrations

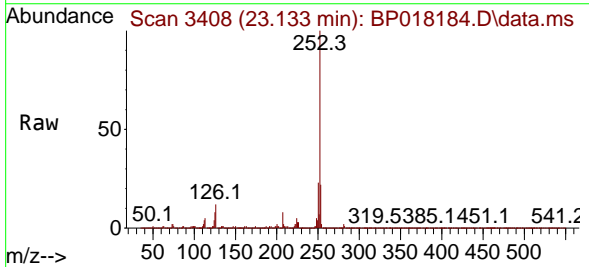
APPROVED

Reviewed By :Yogesh Patel 11/16/2023

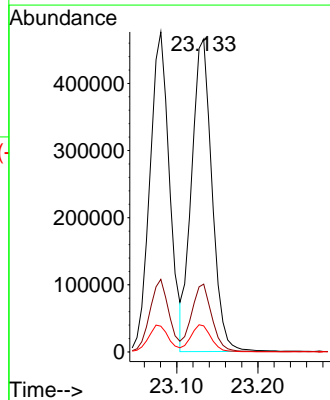
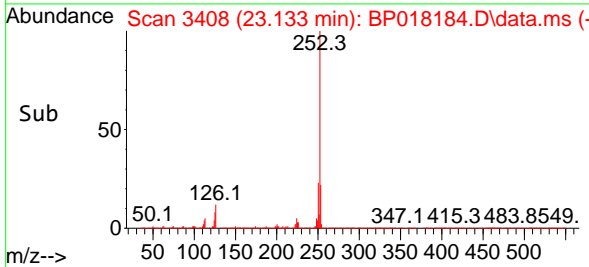
Supervised By :mohammad ahmed 11/17/2023

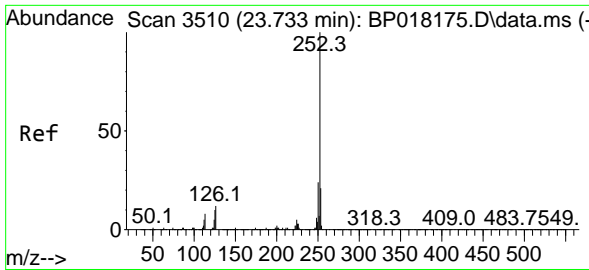


#91
 Benzo(k)fluoranthene
 Concen: 31.891 ng/ul
 RT: 23.133 min Scan# 3408
 Delta R.T. 0.000 min
 Lab File: BP018184.D
 Acq: 15 Nov 2023 21:05



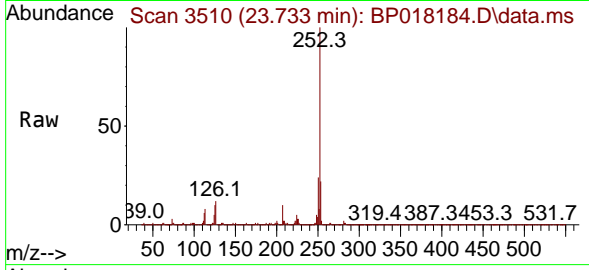
Tgt Ion:252 Resp: 811512
 Ion Ratio Lower Upper
 252 100
 253 21.7 17.6 26.4
 125 8.3 6.8 10.2





#93
 Benzo(a)pyrene
 Concen: 31.877 ng/u1
 RT: 23.733 min Scan# 3510
 Delta R.T. 0.000 min
 Lab File: BP018184.D
 Acq: 15 Nov 2023 21:05

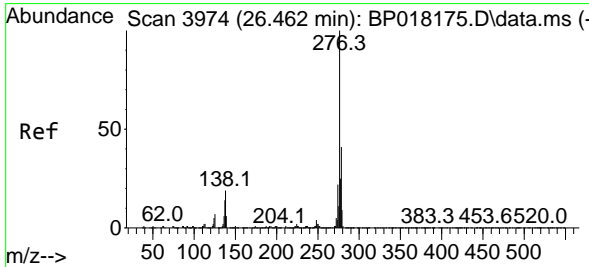
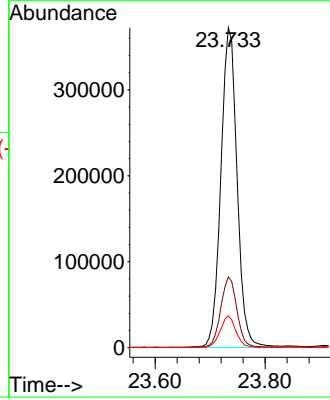
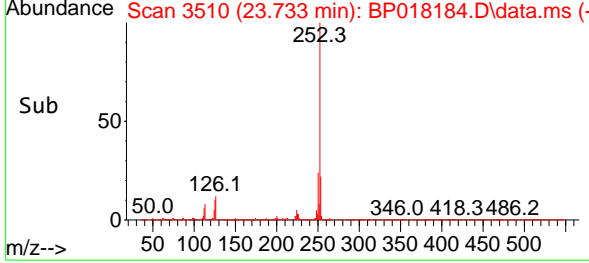
Instrument : BNA_P
 Client SampleId : SLCS123



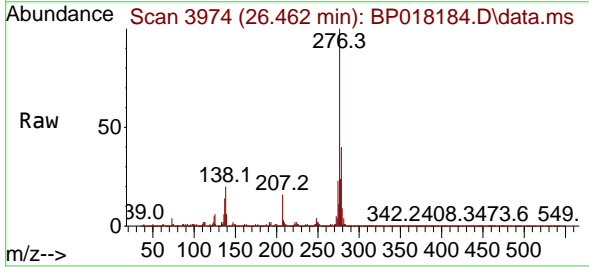
Tgt Ion: 252 Resp: 76138
 Ion Ratio Lower Upper
 252 100
 253 22.1 17.4 26.0
 125 10.0 7.3 10.9

Manual Integrations
APPROVED

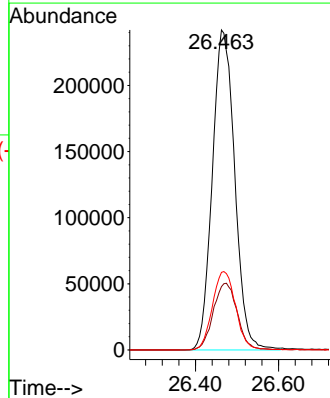
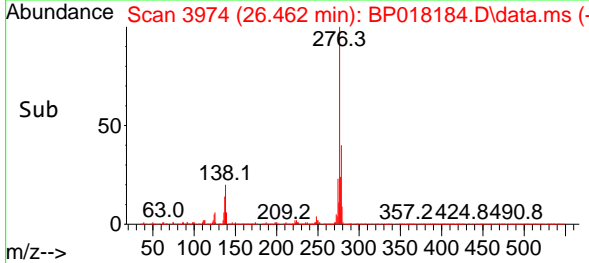
Reviewed By :Yogesh Patel 11/16/2023
 Supervised By :mohammad ahmed 11/17/2023

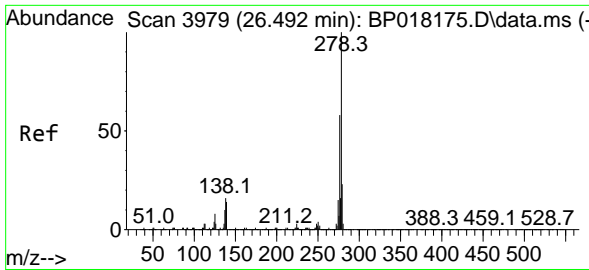


#94
 Indeno(1,2,3-cd)pyrene
 Concen: 31.554 ng/u1
 RT: 26.462 min Scan# 3974
 Delta R.T. 0.000 min
 Lab File: BP018184.D
 Acq: 15 Nov 2023 21:05



Tgt Ion: 276 Resp: 903926
 Ion Ratio Lower Upper
 276 100
 138 19.8 15.6 23.4
 277 24.2 19.3 28.9





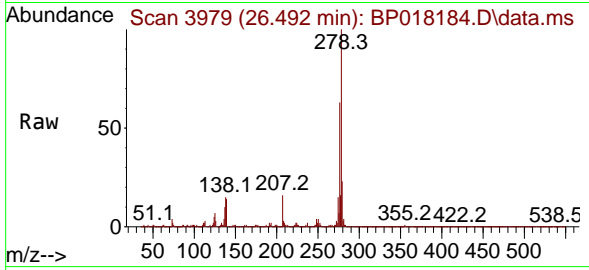
#95
 Dibenzo(a,h)anthracene
 Concen: 32.013 ng/ul
 RT: 26.492 min Scan# 3979
 Delta R.T. 0.000 min
 Lab File: BP018184.D
 Acq: 15 Nov 2023 21:05

Instrument :

BNA_P

ClientSampleId :

SLCS123



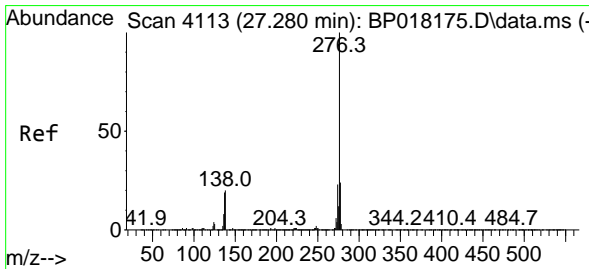
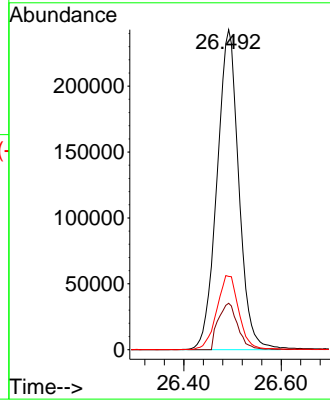
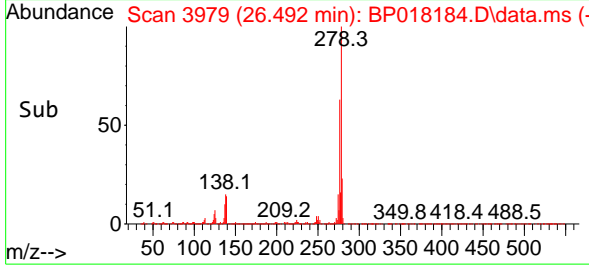
Tgt Ion:278 Resp: 75512
 Ion Ratio Lower Upper
 278 100
 139 14.5 11.1 16.7
 279 22.9 19.0 28.4

Manual Integrations

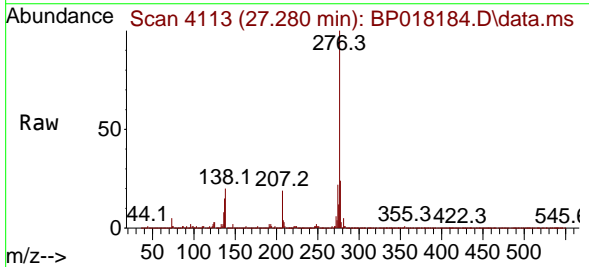
APPROVED

Reviewed By :Yogesh Patel 11/16/2023

Supervised By :mohammad ahmed 11/17/2023



#96
 Benzo(g,h,i)perylene
 Concen: 31.636 ng/ul
 RT: 27.280 min Scan# 4113
 Delta R.T. 0.000 min
 Lab File: BP018184.D
 Acq: 15 Nov 2023 21:05



Tgt Ion:276 Resp: 724874
 Ion Ratio Lower Upper
 276 100
 138 19.7 13.8 20.6
 277 24.0 20.2 30.2

