

Data Path : Z:\svoasrv\HPCHEM1\BNA\_P\Data\BP112922\  
 Data File : BP012844.D  
 Acq On : 29 Nov 2022 10:39  
 Operator : CG/JU  
 Sample : PB149186BS  
 Misc :  
 ALS Vial : 4 Sample Multiplier: 1

Instrument :  
 BNA\_P  
 ClientSampleId :  
 SLCS186

Quant Time: Nov 29 21:56:08 2022  
 Quant Method : Z:\svoasrv\HPCHEM1\BNA\_P\Methods\SFAM-EPA-BP112522.M  
 Quant Title : SVOA CALIBRATION  
 QLast Update : Sun Nov 27 22:55:08 2022  
 Response via : Initial Calibration

Compound	R.T.	QIon	Response	Conc	Units	Dev(Min)
Internal Standards						
1) 1,4-Dichlorobenzene-d4	8.016	152	471402	20.000	ng/ul	0.00
20) Naphthalene-d8	10.828	136	2151466	20.000	ng/ul	0.00
38) Acenaphthene-d10	14.651	164	1460866	20.000	ng/ul	0.00
64) Phenanthrene-d10	17.404	188	3209323	20.000	ng/ul	0.00
79) Chrysene-d12	21.492	240	3236965	20.000	ng/ul	0.00
88) Perylene-d12	23.998	264	2961400	20.000	ng/ul	-0.01
System Monitoring Compounds						
3) 1,4-Dioxane-d8	3.393	96	60386	5.489	ng/uL	0.00
4) Pyridine-d5	3.816	84	857419	26.045	ng/ul	0.00
7) Phenol-d5	7.163	99	1189839	30.716	ng/ul	0.00
9) Bis-(2-Chloroethyl)eth...	7.334	67	724205	30.341	ng/ul	0.00
11) 2-Chlorophenol-d4	7.540	132	917341	31.079	ng/ul	0.00
15) 4-Methylphenol-d8	8.716	113	950508	30.455	ng/ul	0.00
21) Nitrobenzene-d5	9.181	128	439008	33.339	ng/ul	0.00
24) 2-Nitrophenol-d4	9.904	143	485676	34.735	ng/ul	0.00
28) 2,4-Dichlorophenol-d3	10.445	165	998451	30.605	ng/ul	0.00
31) 4-Chloroaniline-d4	10.963	131	1307456	29.266	ng/ul	0.00
46) Dimethylphthalate-d6	14.057	166	3117969	31.008	ng/ul	0.00
49) Acenaphthylene-d8	14.345	160	3541021	30.181	ng/ul	0.00
54) 4-Nitrophenol-d4	14.833	143	585891	32.681	ng/ul	0.00
60) Fluorene-d10	15.639	176	2760735	31.350	ng/ul	0.00
65) 4,6-Dinitro-2-methylph...	15.751	200	500930	32.657	ng/ul	0.00
73) Anthracene-d10	17.504	188	4357944	30.848	ng/ul	0.00
81) Pyrene-d10	19.727	212	5233557	27.825	ng/ul	0.00
92) Benzo(a)pyrene-d12	23.839	264	4616357	31.736	ng/ul	0.00
Target Compounds						
2) 1,4-Dioxane	3.428	88	121503	10.284	ng/uL	97
5) Pyridine	3.834	79	853689	26.502	ng/ul	96
6) Benzaldehyde	7.146	77	657907	34.785	ng/ul	99
8) Phenol	7.187	94	1191006	29.322	ng/ul	99
10) Bis(2-Chloroethyl)ether	7.428	93	952856	28.632	ng/ul	99
12) 2-Chlorophenol	7.575	128	935500	29.137	ng/ul	100
13) 2-Methylphenol	8.451	108	908350	28.774	ng/ul	98
14) 2,2'-oxybis(1-Chloropr...	8.545	45	1352897	28.184	ng/ul	99
16) Acetophenone	8.840	105	1482411	29.968	ng/ul	99
17) N-Nitroso-di-n-propyla...	8.828	70	721861	29.623	ng/ul	97
18) 4-Methylphenol	8.781	108	1008891	29.019	ng/ul	98
19) Hexachloroethane	9.104	117	353616	28.720	ng/ul	99
22) Nitrobenzene	9.222	77	1050365	30.413	ng/ul	99
23) Isophorone	9.751	82	2097392	27.547	ng/ul	100
25) 2-Nitrophenol	9.934	139	530632	31.617	ng/ul	98
26) 2,4-Dimethylphenol	9.992	107	1002057	26.869	ng/ul	99
27) Bis(2-Chloroethoxy)met...	10.234	93	1308504	28.032	ng/ul	99
29) 2,4-Dichlorophenol	10.469	162	973124	28.794	ng/ul	99
30) Naphthalene	10.881	128	3190726	28.322	ng/ul	100
32) 4-Chloroaniline	10.986	127	1277983	27.854	ng/ul	100
33) Hexachlorobutadiene	11.169	225	617679	27.439	ng/ul	98
34) Caprolactam	11.757	113	183522	17.684	ng/ul	96
35) 4-Chloro-3-methylphenol	12.098	107	1028804	30.061	ng/ul	99
36) 2-Methylnaphthalene	12.481	142	2215023	28.552	ng/ul	98

Data Path : Z:\svoasrv\HPCHEM1\BNA\_P\Data\BP112922\  
 Data File : BP012844.D  
 Acq On : 29 Nov 2022 10:39  
 Operator : CG/JU  
 Sample : PB149186BS  
 Misc :  
 ALS Vial : 4 Sample Multiplier: 1

Instrument :  
 BNA\_P  
 ClientSampleId :  
 SLCS186

Quant Time: Nov 29 21:56:08 2022  
 Quant Method : Z:\svoasrv\HPCHEM1\BNA\_P\Methods\SFAM-EPA-BP112522.M  
 Quant Title : SVOA CALIBRATION  
 QLast Update : Sun Nov 27 22:55:08 2022  
 Response via : Initial Calibration

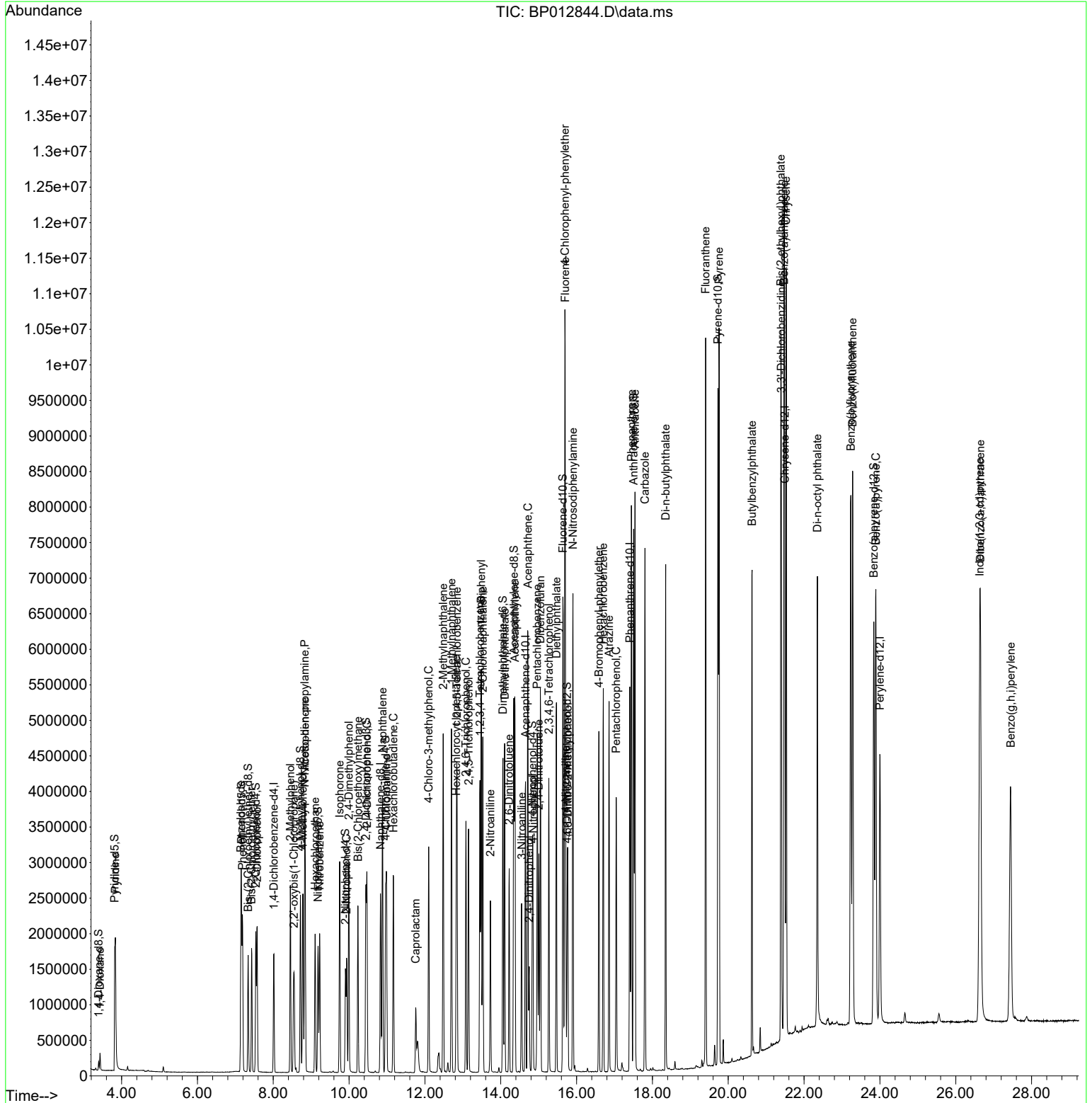
Compound	R.T.	QIon	Response	Conc	Units	Dev(Min)
37) 1-Methylnaphthalene	12.698	142	2249262	28.929	ng/ul	99
39) 1,2,4,5-Tetrachloroben...	12.845	216	1274736	27.364	ng/ul	99
40) Hexachlorocyclopentadiene	12.828	237	555808	24.762	ng/ul	99
41) 2,4,6-Trichlorophenol	13.081	196	834512	28.630	ng/ul	100
42) 2,4,5-Trichlorophenol	13.151	196	910017	29.042	ng/ul	99
43) 1,1'-Biphenyl	13.486	154	2991789	28.113	ng/ul	99
44) 2-Chloronaphthalene	13.528	162	2390008	28.073	ng/ul	100
45) 2-Nitroaniline	13.728	65	602973	36.199	ng/ul	98
47) Dimethylphthalate	14.104	163	3083394	29.253	ng/ul	99
48) 2,6-Dinitrotoluene	14.222	165	577231	34.993	ng/ul	98
50) Acenaphthylene	14.375	152	3694366	28.797	ng/ul	100
51) 3-Nitroaniline	14.551	138	588845	30.823	ng/ul	98
52) Acenaphthene	14.716	153	2581505	28.582	ng/ul	99
53) 2,4-Dinitrophenol	14.751	184	305041	28.777	ng/ul	96
55) 4-Nitrophenol	14.851	109	402729	30.920	ng/ul	94
56) Dibenzofuran	15.045	168	3643858	29.269	ng/ul	100
57) 2,4-Dinitrotoluene	15.004	165	866717	35.605	ng/ul	100
58) 2,3,4,6-Tetrachlorophenol	15.269	232	821400	30.414	ng/ul	99
59) Diethylphthalate	15.469	149	3020310	29.602	ng/ul	99
61) Fluorene	15.698	166	3000076	30.049	ng/ul	99
62) 4-Chlorophenyl-phenyle...	15.692	204	1534052	29.614	ng/ul	99
63) 4-Nitroaniline	15.716	138	599606	36.825	ng/ul	99
66) 4,6-Dinitro-2-methylph...	15.769	198	516574	31.375	ng/ul	95
67) N-Nitrosodiphenylamine	15.904	169	2605295	28.564	ng/ul	99
68) 4-Bromophenyl-phenylether	16.586	248	956573	30.284	ng/ul	99
69) Hexachlorobenzene	16.704	284	1157998	28.764	ng/ul	97
70) Atrazine	16.857	200	917901	29.332	ng/ul	100
71) Pentachlorophenol	17.045	266	694940	28.109	ng/ul	99
72) Phenanthrene	17.445	178	5003286	29.251	ng/ul	99
74) Anthracene	17.539	178	4974121	29.395	ng/ul	99
75) 1,2,3,4-Tetrachloroben...	13.451	216	1270298	25.603	ng/uL	99
76) Pentachlorobenzene	14.963	250	1262869	24.486	ng/uL	99
77) Carbazole	17.804	167	4560108	31.855	ng/ul	100
78) Di-n-butylphthalate	18.351	149	5084004	30.001	ng/ul	100
80) Fluoranthene	19.404	202	6007480	25.678	ng/ul	99
82) Pyrene	19.757	202	6211660	25.671	ng/ul	100
83) Butylbenzylphthalate	20.627	149	2041873	36.061	ng/ul	92
84) 3,3'-Dichlorobenzidine	21.398	252	1853588	31.182	ng/ul	99
85) Benzo(a)anthracene	21.474	228	6095227	27.225	ng/ul	99
86) Bis(2-ethylhexyl)phtha...	21.386	149	2939099	33.942	ng/ul	99
87) Chrysene	21.527	228	5718359	26.416	ng/ul	100
89) Di-n-octyl phthalate	22.351	149	4699008	27.786	ng/ul	100
90) Benzo(b)fluoranthene	23.233	252	5904612	26.925	ng/ul	100
91) Benzo(k)fluoranthene	23.280	252	5792537	26.462	ng/ul	99
93) Benzo(a)pyrene	23.892	252	5030983	27.899	ng/ul	99
94) Indeno(1,2,3-cd)pyrene	26.633	276	5485567	31.531	ng/ul	99
95) Dibenzo(a,h)anthracene	26.650	278	4844894	30.690	ng/ul	99
96) Benzo(g,h,i)perylene	27.450	276	4627361	30.923	ng/ul	98

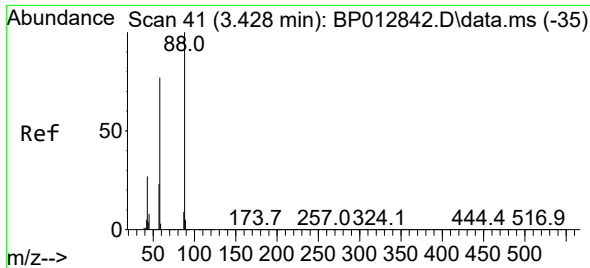
(#) = qualifier out of range (m) = manual integration (+) = signals summed

Data Path : Z:\svoasrv\HPCHEM1\BNA\_P\Data\BP112922\  
 Data File : BP012844.D  
 Acq On : 29 Nov 2022 10:39  
 Operator : CG/JU  
 Sample : PB149186BS  
 Misc :  
 ALS Vial : 4 Sample Multiplier: 1

Instrument :  
 BNA\_P  
 ClientSampleId :  
 SLCS186

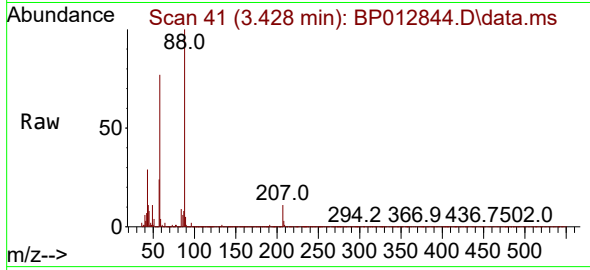
Quant Time: Nov 29 21:56:08 2022  
 Quant Method : Z:\svoasrv\HPCHEM1\BNA\_P\Methods\SFAM-EPA-BP112522.M  
 Quant Title : SVOA CALIBRATION  
 QLast Update : Sun Nov 27 22:55:08 2022  
 Response via : Initial Calibration



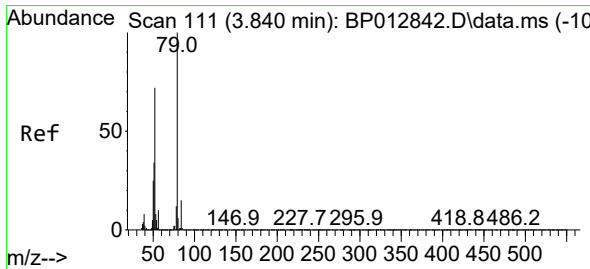
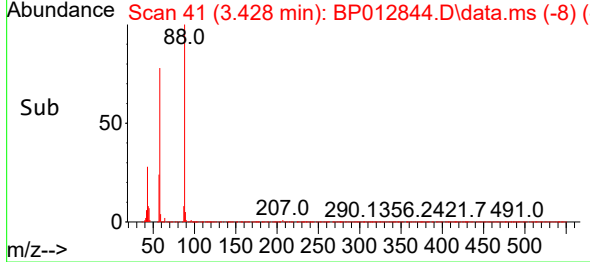
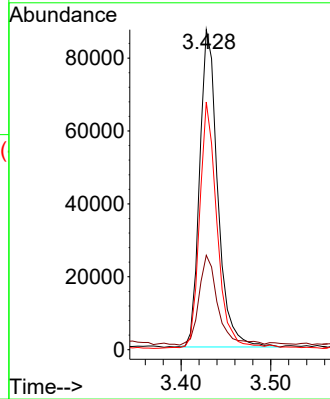


#2  
 1,4-Dioxane  
 Concen: 10.284 ng/uL  
 RT: 3.428 min Scan# 41  
 Delta R.T. -0.006 min  
 Lab File: BP012844.D  
 Acq: 29 Nov 2022 10:39

Instrument :  
 BNA\_P  
 ClientSampleId :  
 SLCS186

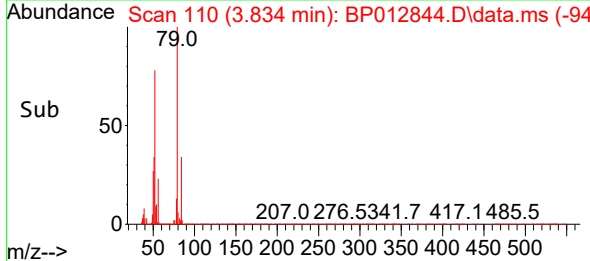
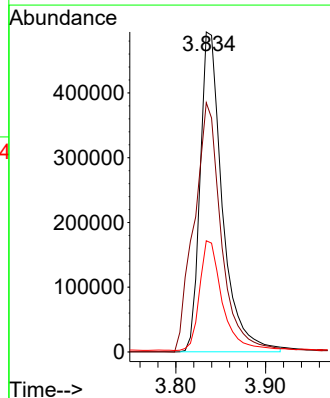
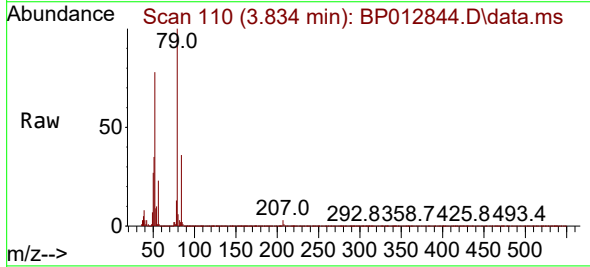


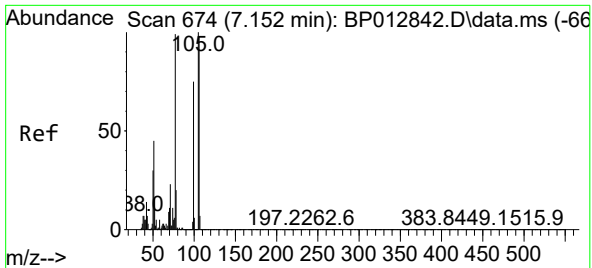
Tgt Ion: 88 Resp: 121503  
 Ion Ratio Lower Upper  
 88 100  
 43 29.5 22.6 34.0  
 58 77.4 59.6 89.4



#5  
 Pyridine  
 Concen: 26.502 ng/uL  
 RT: 3.834 min Scan# 110  
 Delta R.T. -0.006 min  
 Lab File: BP012844.D  
 Acq: 29 Nov 2022 10:39

Tgt Ion: 79 Resp: 853689  
 Ion Ratio Lower Upper  
 79 100  
 52 77.9 58.9 88.3  
 51 34.8 27.3 40.9



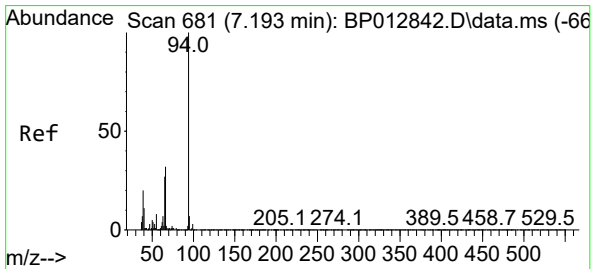
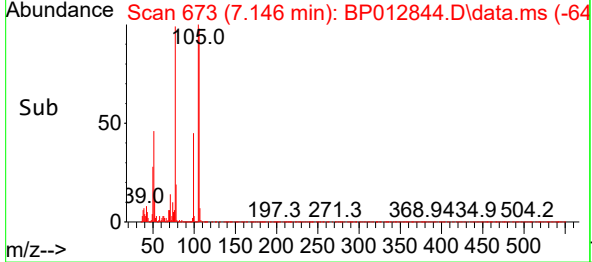
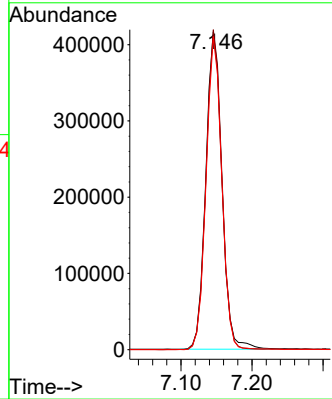
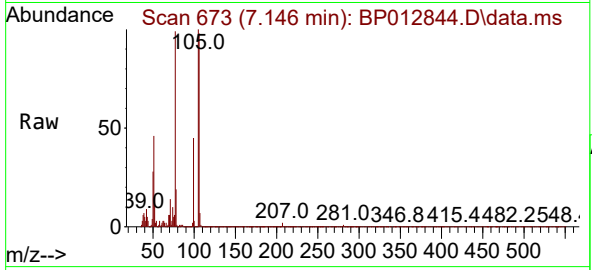


#6  
 Benzaldehyde  
 Concen: 34.785 ng/uI  
 RT: 7.146 min Scan# 61  
 Delta R.T. -0.006 min  
 Lab File: BP012844.D  
 Acq: 29 Nov 2022 10:39

Instrument : BNA\_P  
 ClientSampleId : SLCS186

Tgt Ion: 77 Resp: 657907

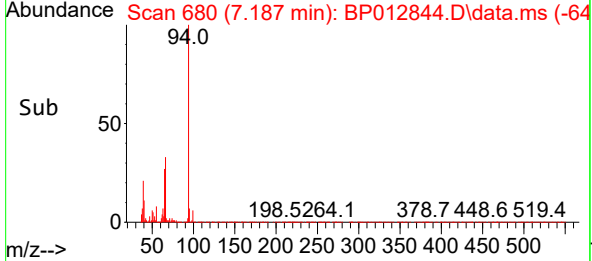
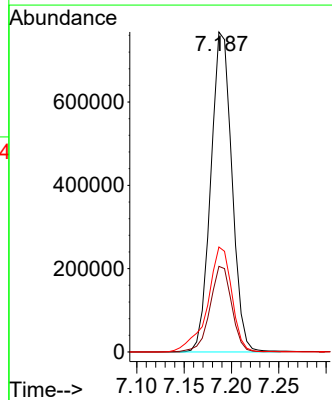
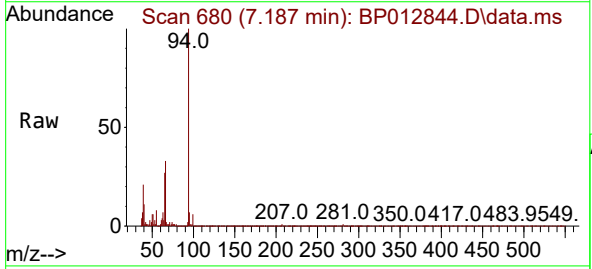
Ion	Ratio	Lower	Upper
77	100		
105	100.6	81.4	122.2
106	98.5	77.4	116.0

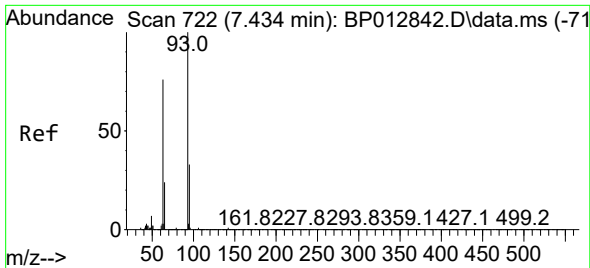


#8  
 Phenol  
 Concen: 29.322 ng/uI  
 RT: 7.187 min Scan# 680  
 Delta R.T. -0.006 min  
 Lab File: BP012844.D  
 Acq: 29 Nov 2022 10:39

Tgt Ion: 94 Resp: 1191006

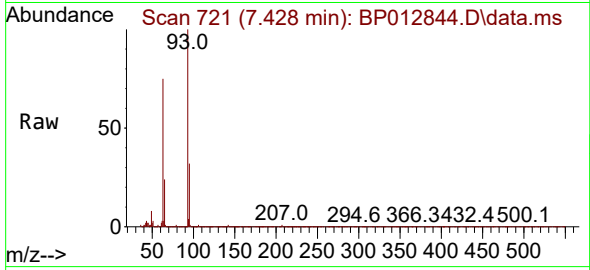
Ion	Ratio	Lower	Upper
94	100		
65	26.8	20.9	31.3
66	32.8	26.0	39.0





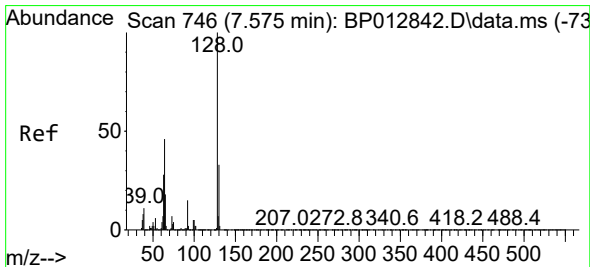
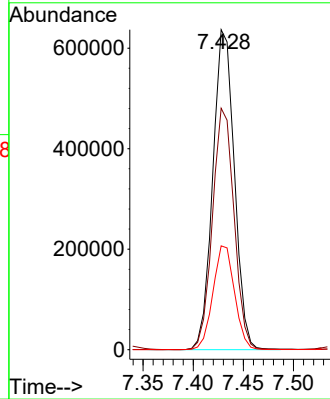
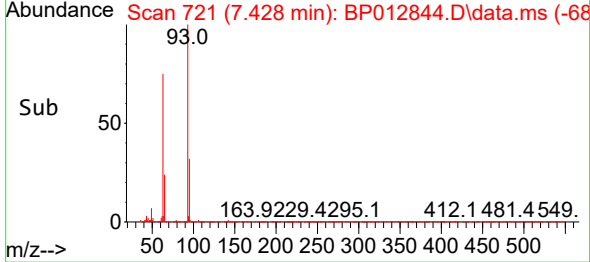
#10  
 Bis(2-Chloroethyl)ether  
 Concen: 28.632 ng/ul  
 RT: 7.428 min Scan# 721  
 Delta R.T. -0.006 min  
 Lab File: BP012844.D  
 Acq: 29 Nov 2022 10:39

Instrument :  
 BNA\_P  
 ClientSampleId :  
 SLCS186

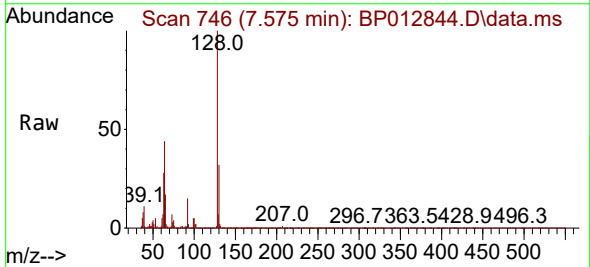


Tgt Ion: 93 Resp: 952856

Ion	Ratio	Lower	Upper
93	100		
63	75.5	59.7	89.5
95	32.4	25.8	38.6

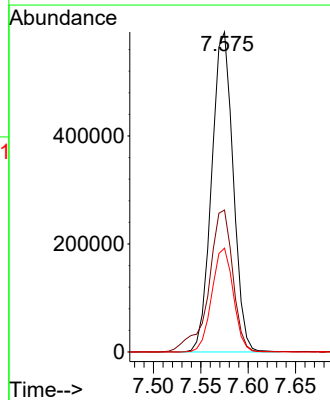
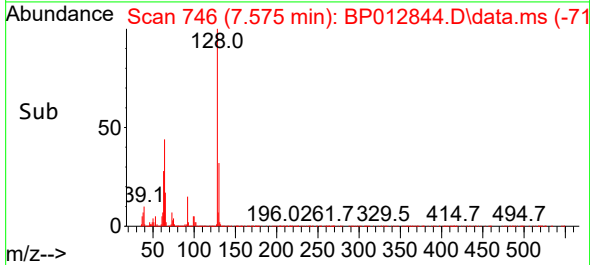


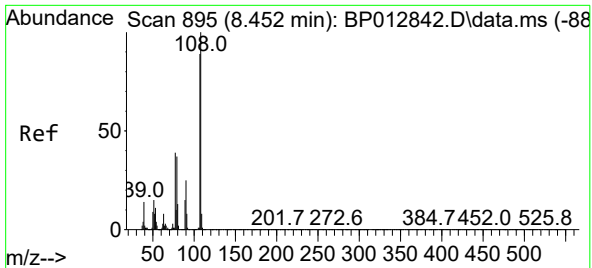
#12  
 2-Chlorophenol  
 Concen: 29.137 ng/ul  
 RT: 7.575 min Scan# 746  
 Delta R.T. -0.000 min  
 Lab File: BP012844.D  
 Acq: 29 Nov 2022 10:39



Tgt Ion: 128 Resp: 935500

Ion	Ratio	Lower	Upper
128	100		
64	44.4	35.6	53.4
130	32.4	26.0	39.0

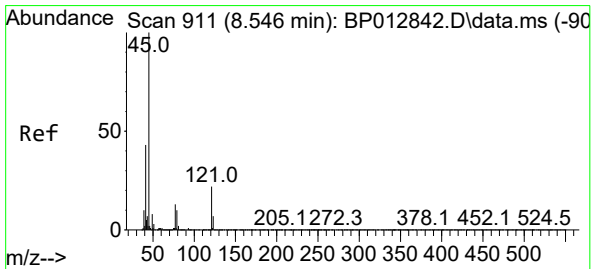
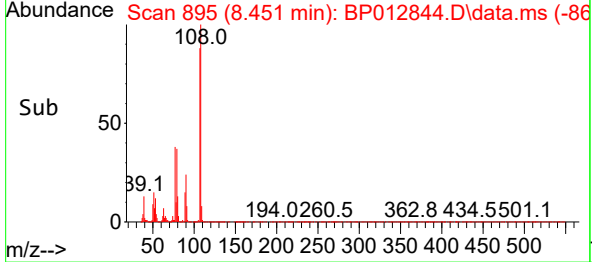
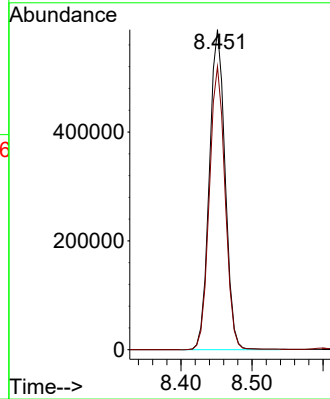
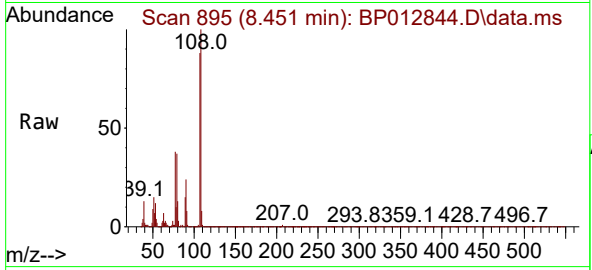




#13  
 2-Methylphenol  
 Concen: 28.774 ng/ul  
 RT: 8.451 min Scan# 895  
 Delta R.T. -0.006 min  
 Lab File: BP012844.D  
 Acq: 29 Nov 2022 10:39

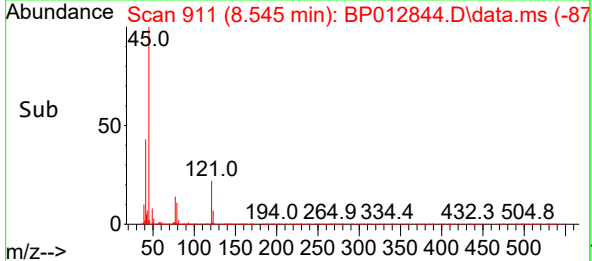
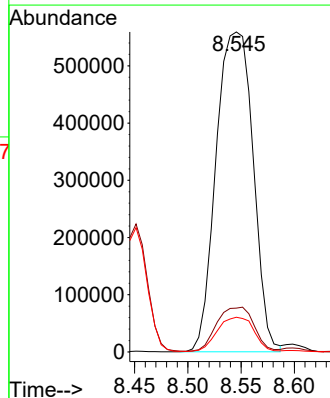
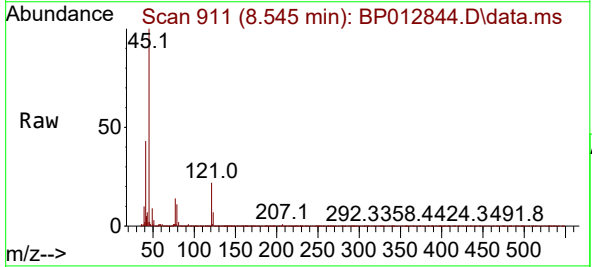
Instrument :  
 BNA\_P  
 ClientSampleId :  
 SLCS186

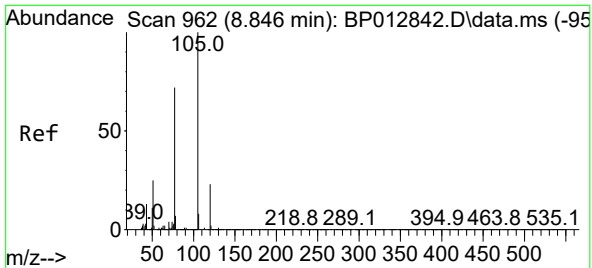
Tgt Ion:108 Resp: 908350  
 Ion Ratio Lower Upper  
 108 100  
 107 88.5 69.3 103.9



#14  
 2,2'-oxybis(1-Chloropropane)  
 Concen: 28.184 ng/ul  
 RT: 8.545 min Scan# 911  
 Delta R.T. -0.000 min  
 Lab File: BP012844.D  
 Acq: 29 Nov 2022 10:39

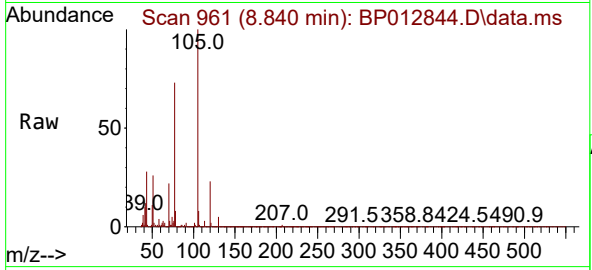
Tgt Ion: 45 Resp: 1352897  
 Ion Ratio Lower Upper  
 45 100  
 77 13.7 11.3 16.9  
 79 10.8 8.6 12.8





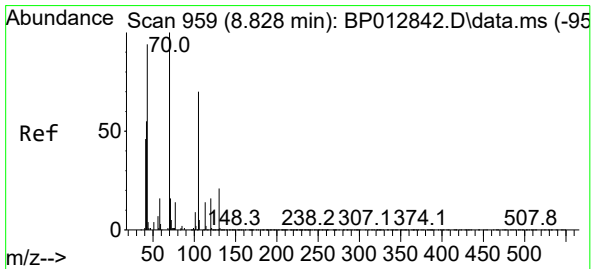
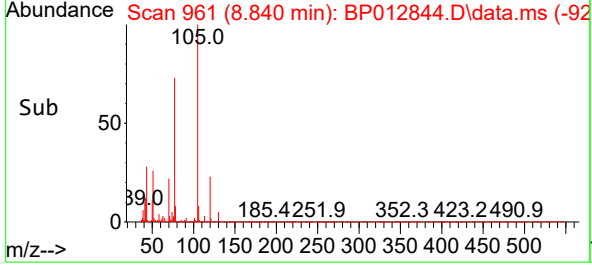
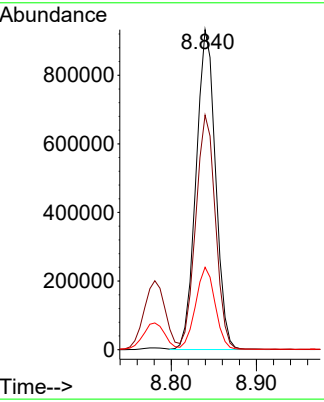
#16  
 Acetophenone  
 Concen: 29.968 ng/ul  
 RT: 8.840 min Scan# 901  
 Delta R.T. -0.006 min  
 Lab File: BP012844.D  
 Acq: 29 Nov 2022 10:39

Instrument :  
 BNA\_P  
 ClientSampleId :  
 SLCS186



Tgt Ion: 105 Resp: 1482411

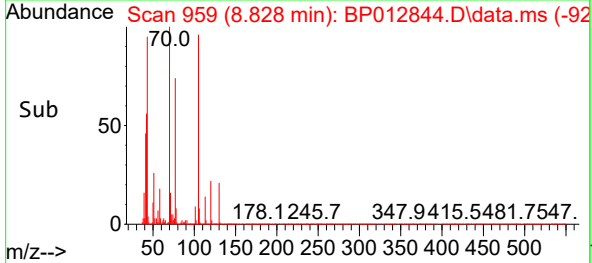
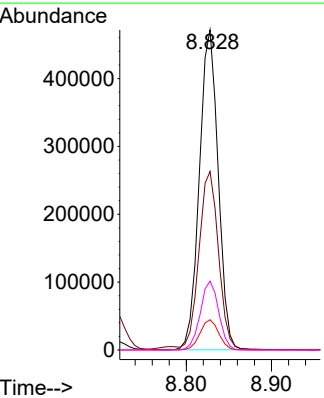
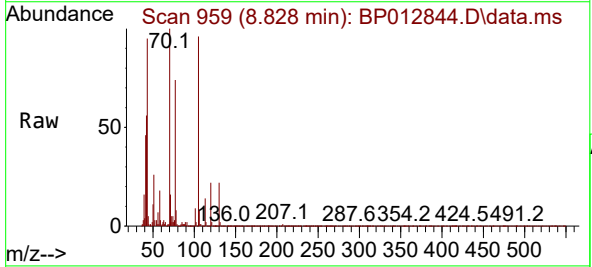
Ion	Ratio	Lower	Upper
105	100		
77	73.3	59.7	89.5
51	25.7	20.9	31.3



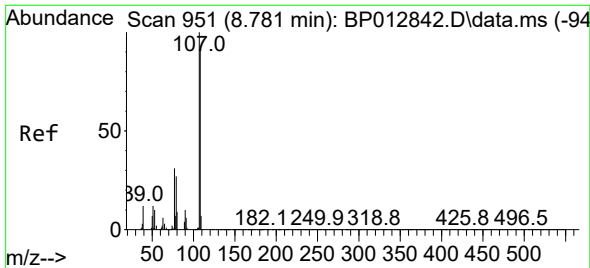
#17  
 N-Nitroso-di-n-propylamine  
 Concen: 29.623 ng/ul  
 RT: 8.828 min Scan# 959  
 Delta R.T. -0.006 min  
 Lab File: BP012844.D  
 Acq: 29 Nov 2022 10:39

Tgt Ion: 70 Resp: 721861

Ion	Ratio	Lower	Upper
70	100		
42	55.8	46.1	69.1
101	9.5	7.4	11.2
130	21.5	15.8	23.6



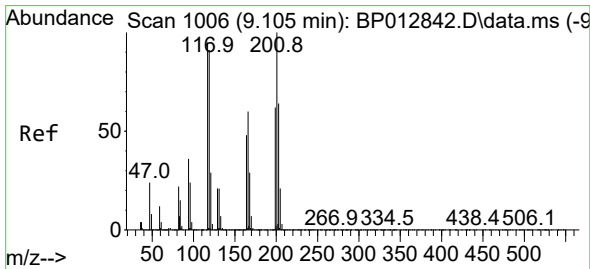
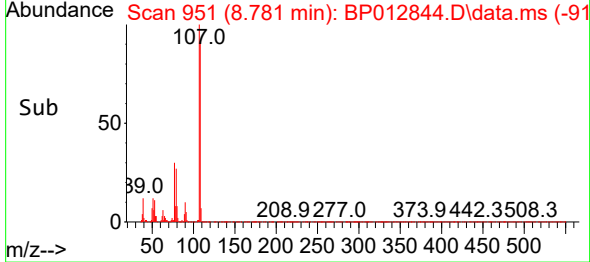
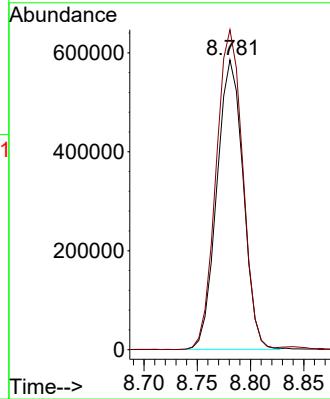
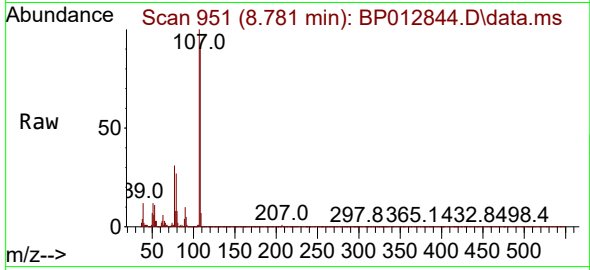




#18  
 4-Methylphenol  
 Concen: 29.019 ng/ul  
 RT: 8.781 min Scan# 911  
 Delta R.T. -0.006 min  
 Lab File: BP012844.D  
 Acq: 29 Nov 2022 10:39

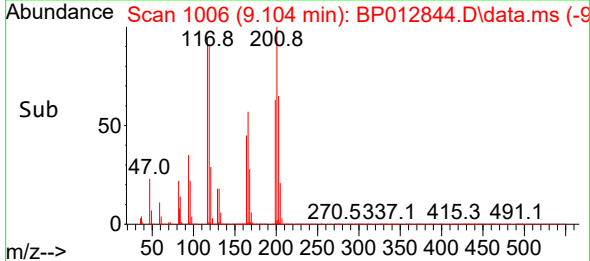
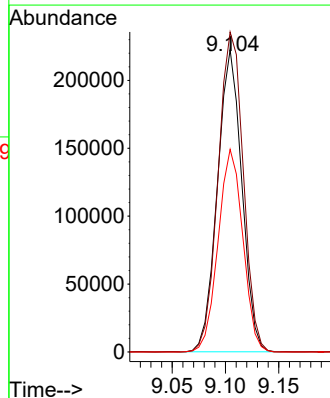
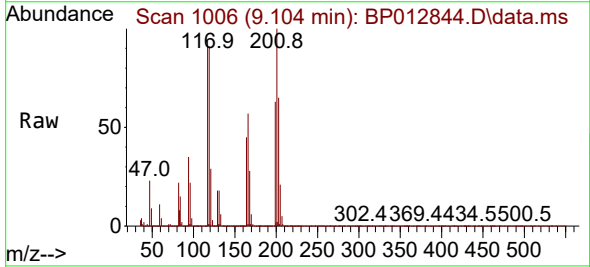
Instrument : BNA\_P  
 Client Sample Id : SLCS186

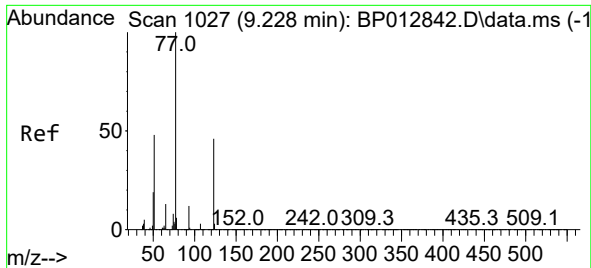
Tgt Ion: 108 Resp: 1008891  
 Ion Ratio Lower Upper  
 108 100  
 107 110.4 90.2 135.2



#19  
 Hexachloroethane  
 Concen: 28.720 ng/ul  
 RT: 9.104 min Scan# 1006  
 Delta R.T. -0.006 min  
 Lab File: BP012844.D  
 Acq: 29 Nov 2022 10:39

Tgt Ion: 117 Resp: 353616  
 Ion Ratio Lower Upper  
 117 100  
 201 105.9 85.7 128.5  
 199 67.0 52.9 79.3

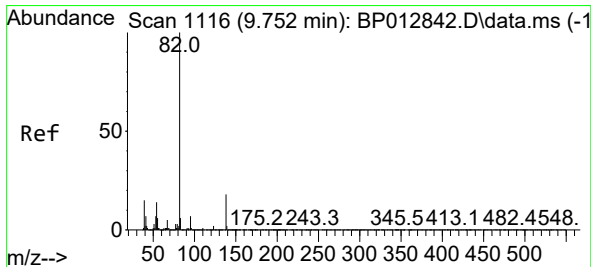
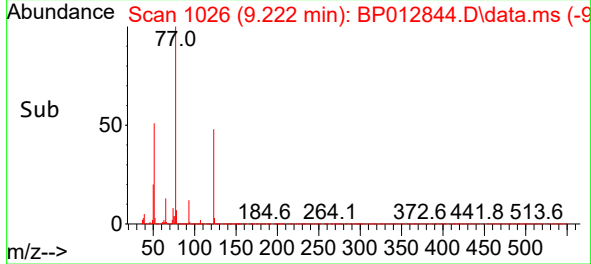
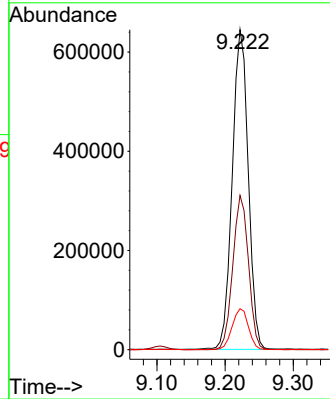
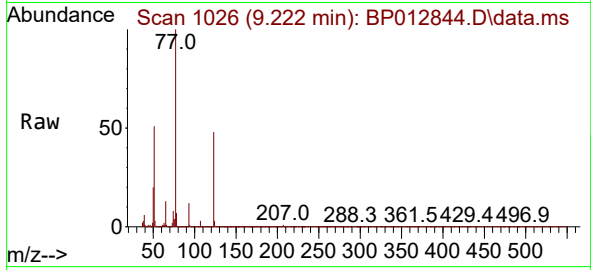




#22  
 Nitrobenzene  
 Concen: 30.413 ng/uI  
 RT: 9.222 min Scan# 1026  
 Delta R.T. -0.006 min  
 Lab File: BP012844.D  
 Acq: 29 Nov 2022 10:39

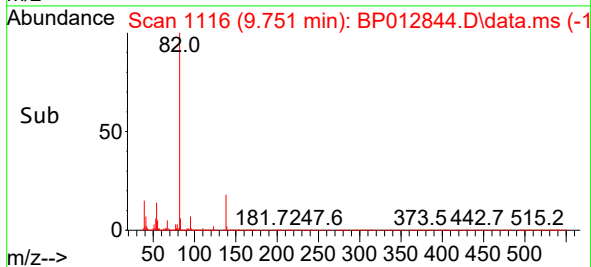
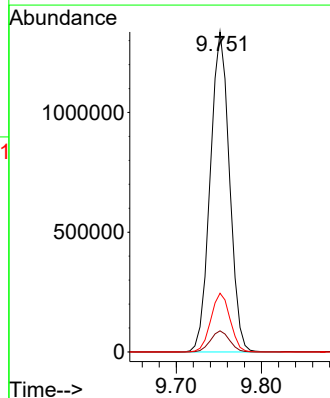
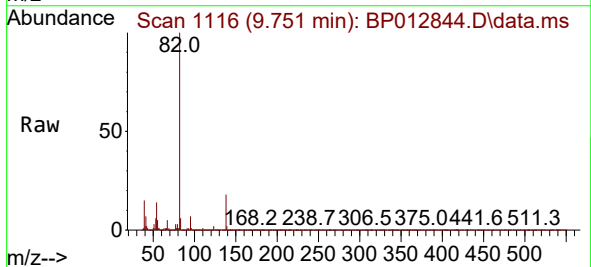
Instrument :  
 BNA\_P  
 ClientSampleId :  
 SLCS186

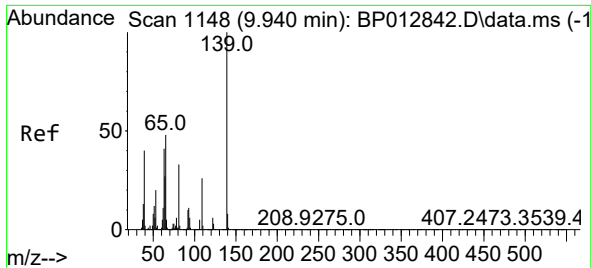
Tgt Ion: 77 Resp: 1050365  
 Ion Ratio Lower Upper  
 77 100  
 123 48.2 38.2 57.2  
 65 12.8 10.2 15.4



#23  
 Isophorone  
 Concen: 27.547 ng/uI  
 RT: 9.751 min Scan# 1116  
 Delta R.T. -0.006 min  
 Lab File: BP012844.D  
 Acq: 29 Nov 2022 10:39

Tgt Ion: 82 Resp: 2097392  
 Ion Ratio Lower Upper  
 82 100  
 95 6.6 5.2 7.8  
 138 18.3 14.5 21.7



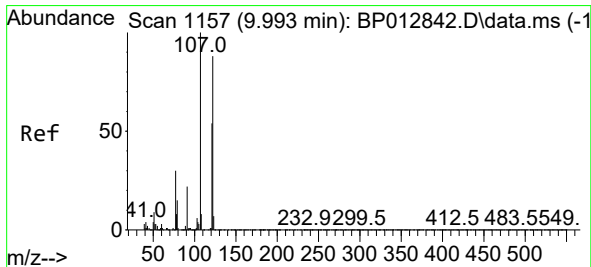
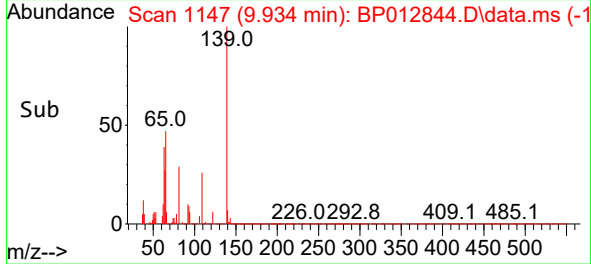
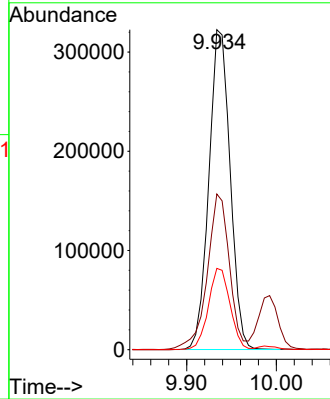
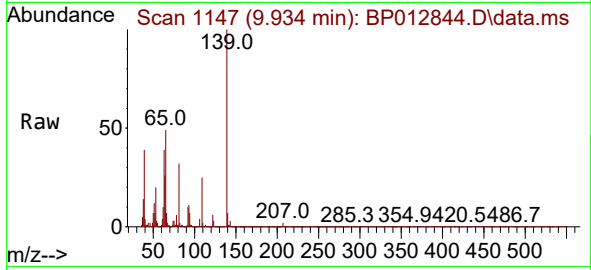


#25  
 2-Nitrophenol  
 Concen: 31.617 ng/ul  
 RT: 9.934 min Scan# 1148  
 Delta R.T. -0.006 min  
 Lab File: BP012844.D  
 Acq: 29 Nov 2022 10:39

Instrument :  
 BNA\_P  
 ClientSampleId :  
 SLCS186

Tgt Ion:139 Resp: 530632

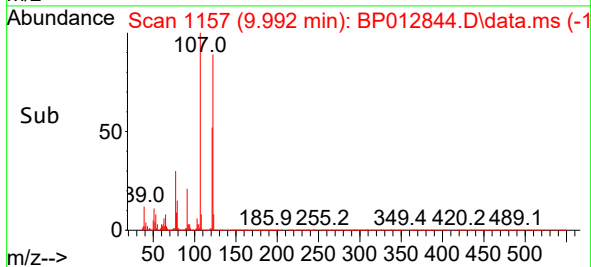
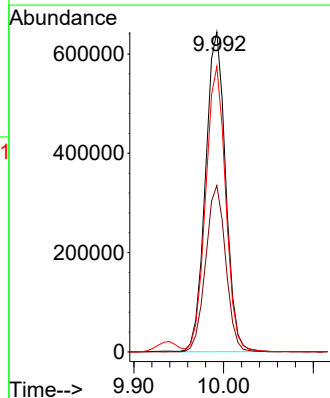
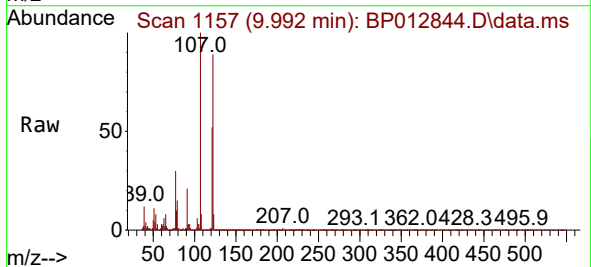
Ion	Ratio	Lower	Upper
139	100		
65	48.7	39.5	59.3
109	25.4	21.4	32.0

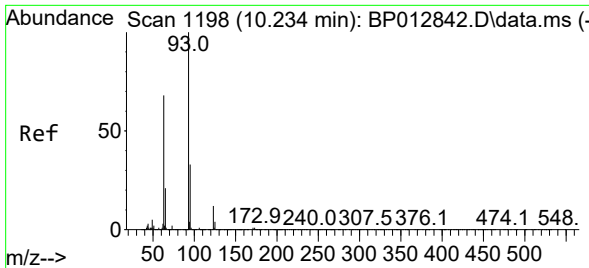


#26  
 2,4-Dimethylphenol  
 Concen: 26.869 ng/ul  
 RT: 9.992 min Scan# 1157  
 Delta R.T. -0.006 min  
 Lab File: BP012844.D  
 Acq: 29 Nov 2022 10:39

Tgt Ion:107 Resp: 1002057

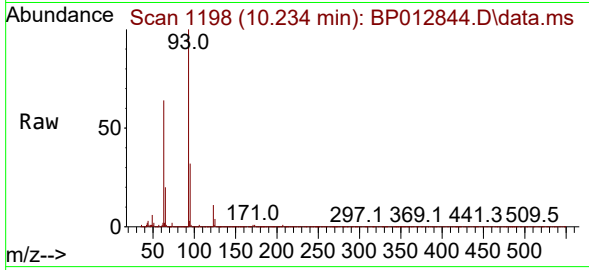
Ion	Ratio	Lower	Upper
107	100		
121	52.0	41.8	62.6
122	89.2	72.3	108.5





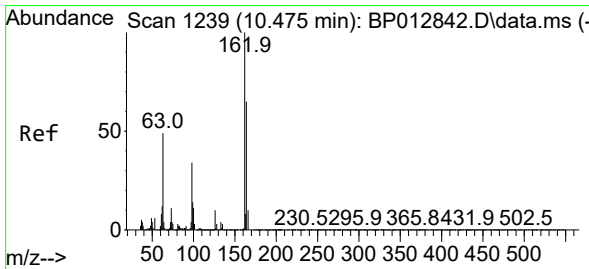
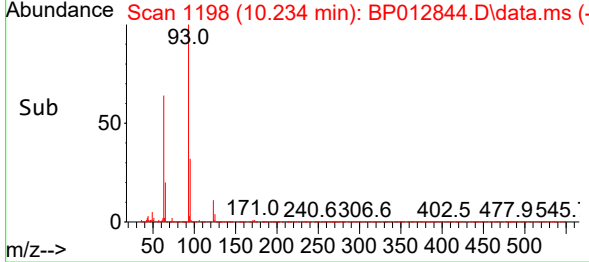
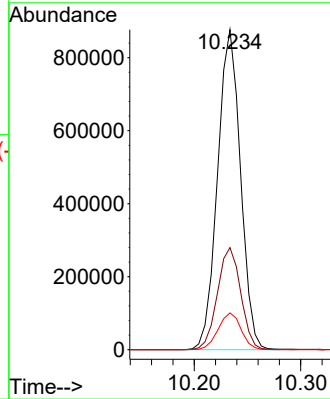
#27  
 Bis(2-Chloroethoxy)methane  
 Concen: 28.032 ng/ul  
 RT: 10.234 min Scan# 1198  
 Delta R.T. -0.006 min  
 Lab File: BP012844.D  
 Acq: 29 Nov 2022 10:39

Instrument :  
 BNA\_P  
 ClientSampleId :  
 SLCS186

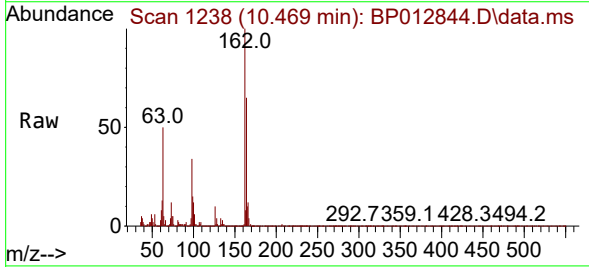


Tgt Ion: 93 Resp: 1308504

Ion	Ratio	Lower	Upper
93	100		
95	31.9	26.1	39.1
123	11.5	9.0	13.6

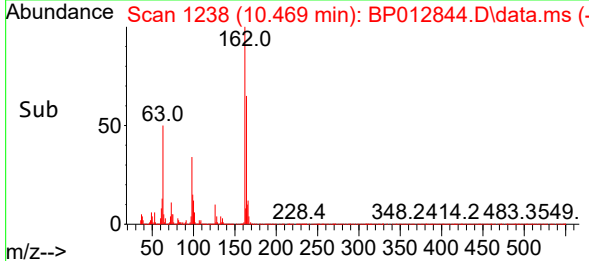
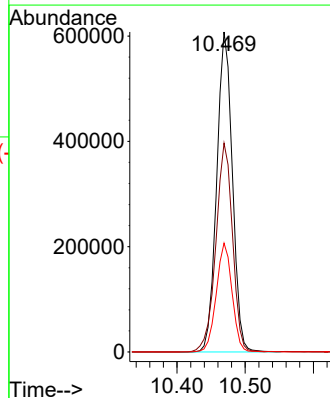


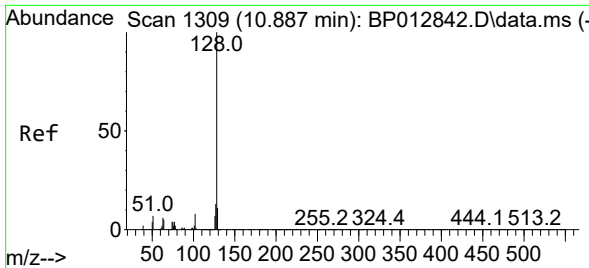
#29  
 2,4-Dichlorophenol  
 Concen: 28.794 ng/ul  
 RT: 10.469 min Scan# 1238  
 Delta R.T. -0.006 min  
 Lab File: BP012844.D  
 Acq: 29 Nov 2022 10:39



Tgt Ion: 162 Resp: 973124

Ion	Ratio	Lower	Upper
162	100		
164	65.2	52.9	79.3
98	34.0	26.6	40.0



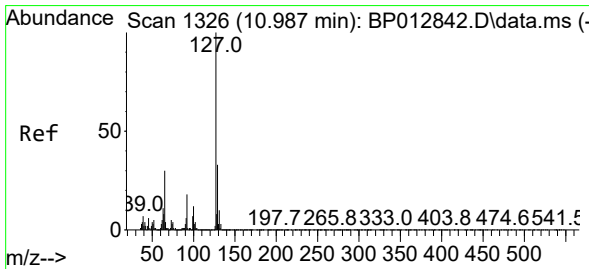
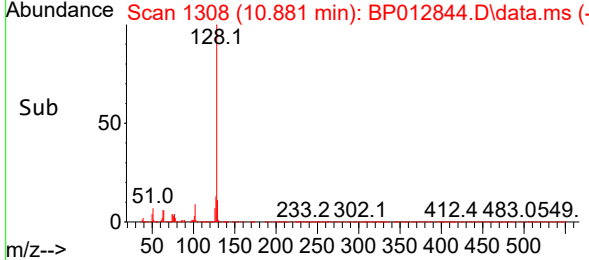
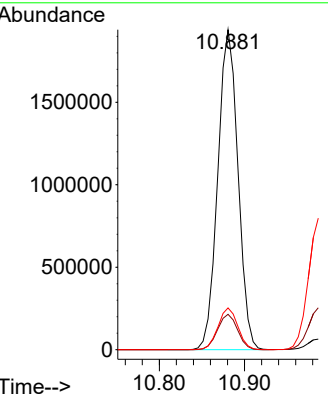
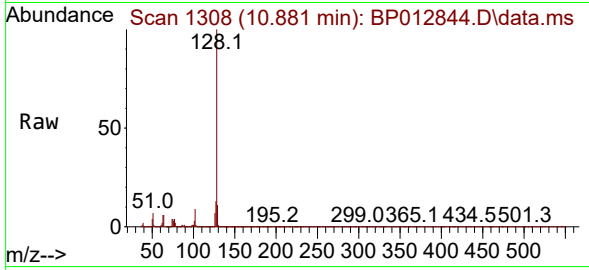


#30  
 Naphthalene  
 Concen: 28.322 ng/uI  
 RT: 10.881 min Scan# 1309  
 Delta R.T. -0.006 min  
 Lab File: BP012844.D  
 Acq: 29 Nov 2022 10:39

Instrument :  
 BNA\_P  
 ClientSampleId :  
 SLCS186

Tgt Ion:128 Resp: 3190726

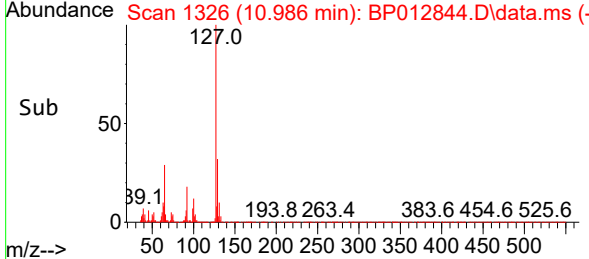
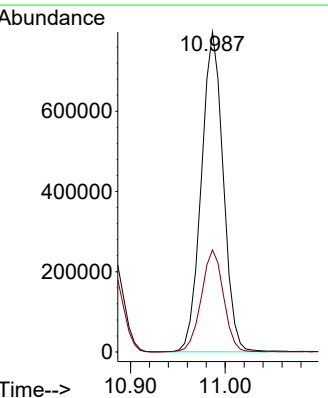
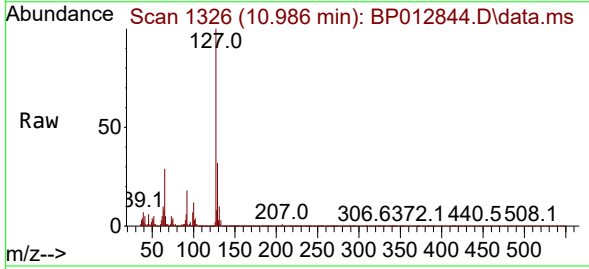
Ion	Ratio	Lower	Upper
128	100		
129	11.1	8.7	13.1
127	13.1	10.4	15.6

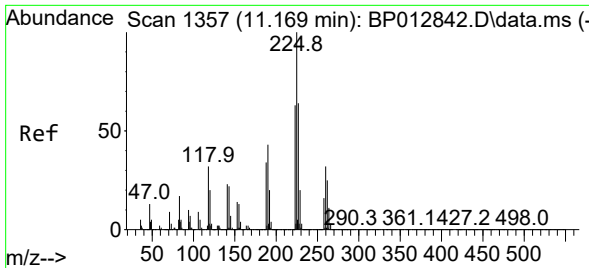


#32  
 4-Chloroaniline  
 Concen: 27.854 ng/uI  
 RT: 10.986 min Scan# 1326  
 Delta R.T. -0.006 min  
 Lab File: BP012844.D  
 Acq: 29 Nov 2022 10:39

Tgt Ion:127 Resp: 1277983

Ion	Ratio	Lower	Upper
127	100		
129	31.9	25.7	38.5



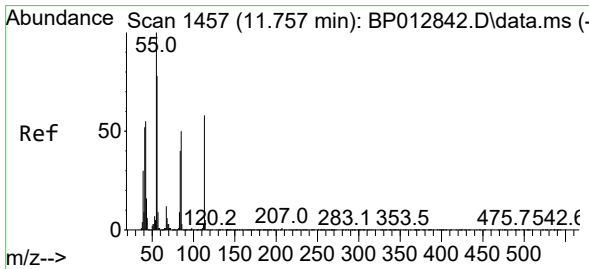
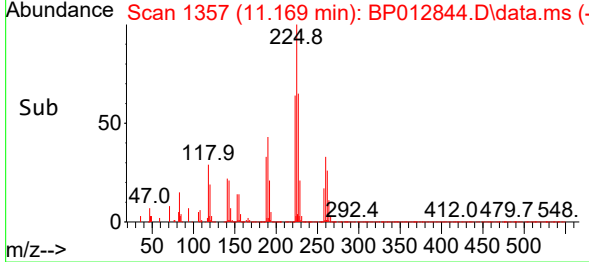
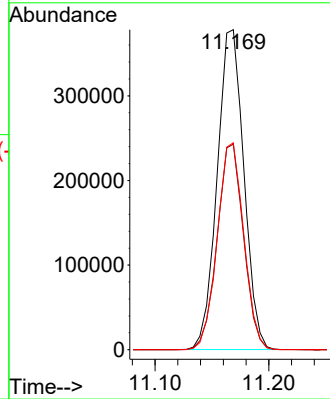
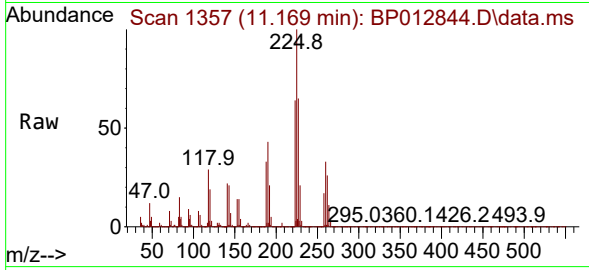


#33  
 Hexachlorobutadiene  
 Concen: 27.439 ng/uI  
 RT: 11.169 min Scan# 111  
 Delta R.T. -0.006 min  
 Lab File: BP012844.D  
 Acq: 29 Nov 2022 10:39

Instrument :  
 BNA\_P  
 ClientSampleId :  
 SLCS186

Tgt Ion:225 Resp: 617679

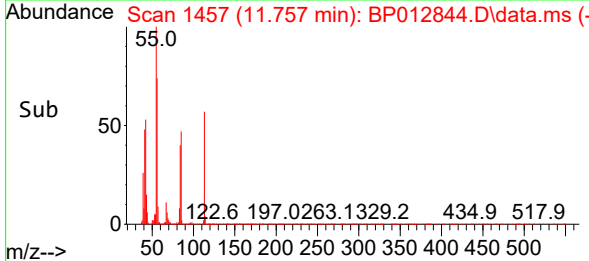
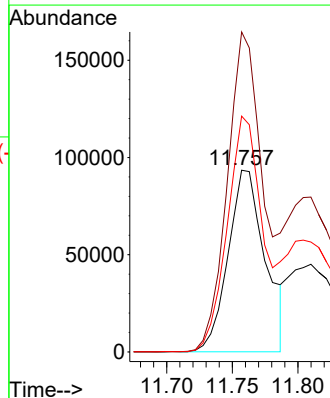
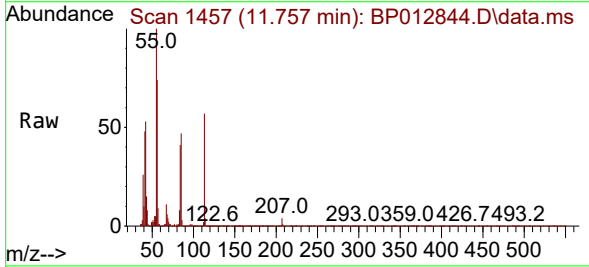
Ion	Ratio	Lower	Upper
225	100		
223	64.2	49.6	74.4
227	64.6	51.0	76.6

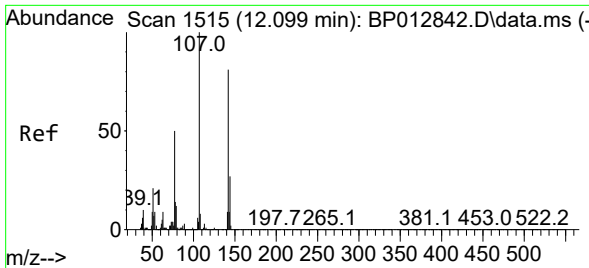


#34  
 Caprolactam  
 Concen: 17.684 ng/uI  
 RT: 11.757 min Scan# 1457  
 Delta R.T. -0.000 min  
 Lab File: BP012844.D  
 Acq: 29 Nov 2022 10:39

Tgt Ion:113 Resp: 183522

Ion	Ratio	Lower	Upper
113	100		
55	176.0	145.9	218.9
56	129.8	107.1	160.7



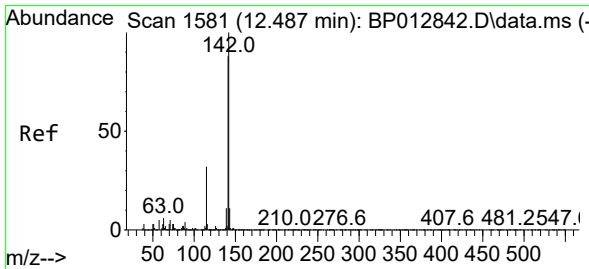
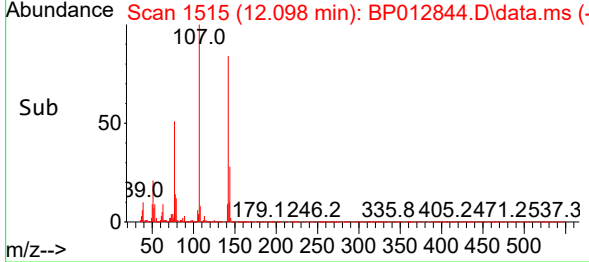
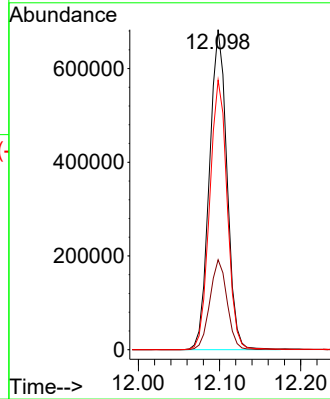
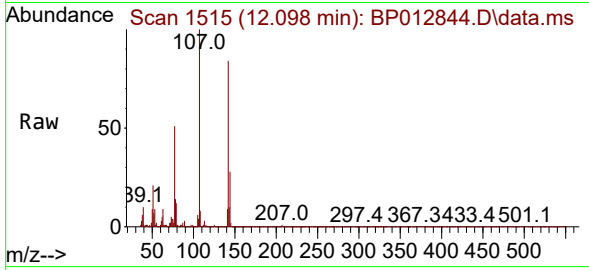


#35  
 4-Chloro-3-methylphenol  
 Concen: 30.061 ng/ul  
 RT: 12.098 min Scan# 1515  
 Delta R.T. -0.006 min  
 Lab File: BP012844.D  
 Acq: 29 Nov 2022 10:39

Instrument : BNA\_P  
 ClientSampleId : SLCS186

Tgt Ion:107 Resp: 1028804

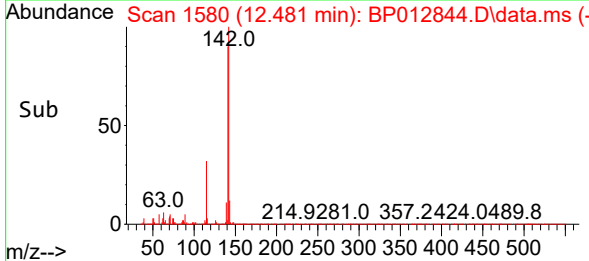
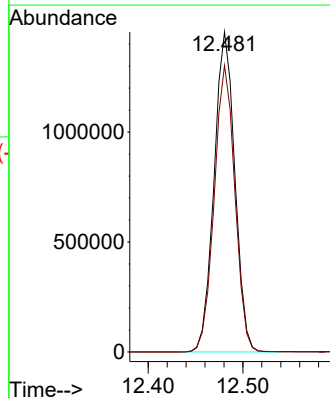
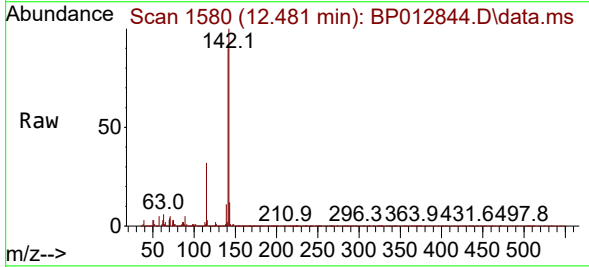
Ion	Ratio	Lower	Upper
107	100		
144	28.1	21.4	32.2
142	84.2	66.6	100.0

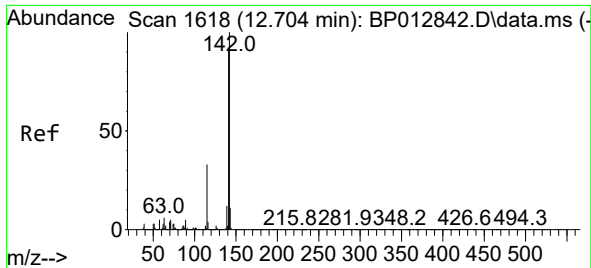


#36  
 2-Methylnaphthalene  
 Concen: 28.552 ng/ul  
 RT: 12.481 min Scan# 1580  
 Delta R.T. -0.006 min  
 Lab File: BP012844.D  
 Acq: 29 Nov 2022 10:39

Tgt Ion:142 Resp: 2215023

Ion	Ratio	Lower	Upper
142	100		
141	89.6	70.2	105.2



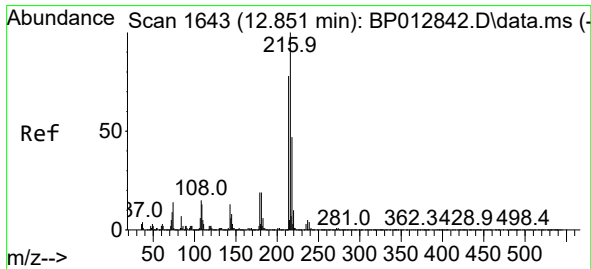
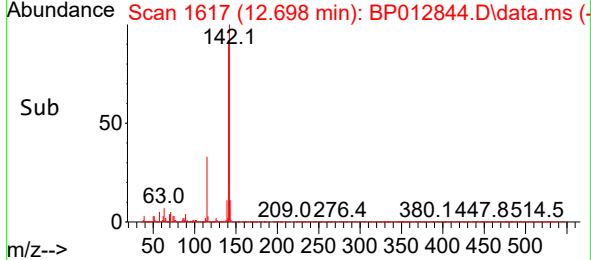
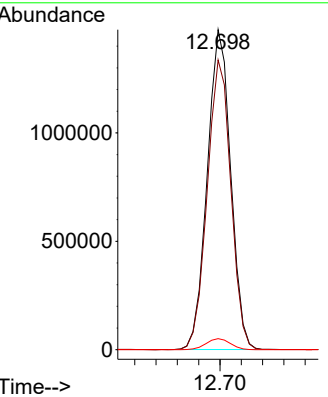
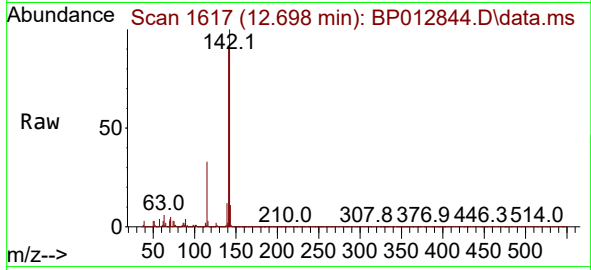


#37  
 1-Methylnaphthalene  
 Concen: 28.929 ng/ul  
 RT: 12.698 min Scan# 1617  
 Delta R.T. -0.006 min  
 Lab File: BP012844.D  
 Acq: 29 Nov 2022 10:39

Instrument : BNA\_P  
 ClientSampleId : SLCS186

Tgt Ion:142 Resp: 2249262

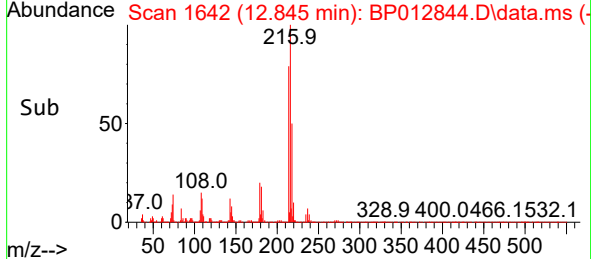
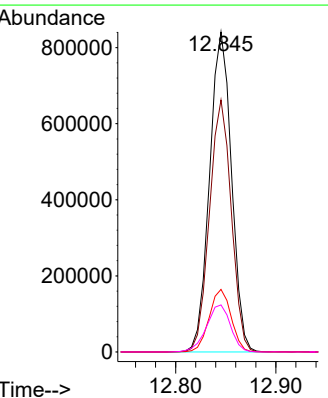
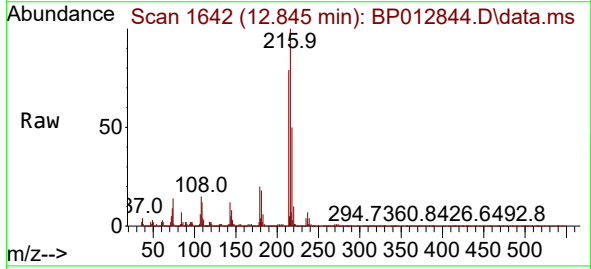
Ion	Ratio	Lower	Upper
142	100		
141	90.6	73.3	109.9
116	3.5	2.9	4.3



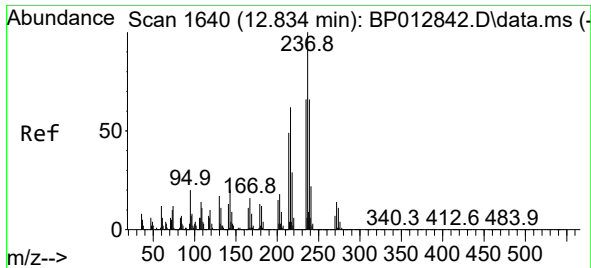
#39  
 1,2,4,5-Tetrachlorobenzene  
 Concen: 27.364 ng/ul  
 RT: 12.845 min Scan# 1642  
 Delta R.T. -0.006 min  
 Lab File: BP012844.D  
 Acq: 29 Nov 2022 10:39

Tgt Ion:216 Resp: 1274736

Ion	Ratio	Lower	Upper
216	100		
214	78.7	63.0	94.6
179	19.5	16.2	24.4
108	14.7	12.7	19.1



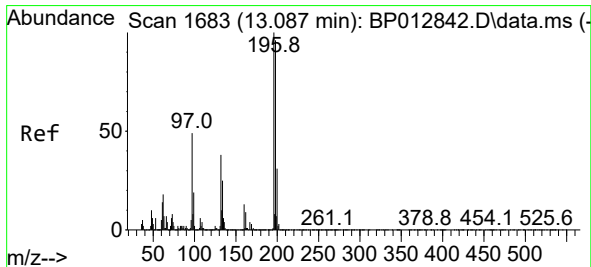
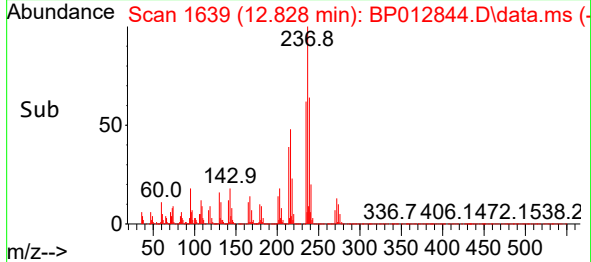
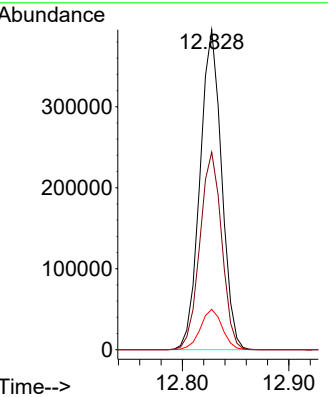
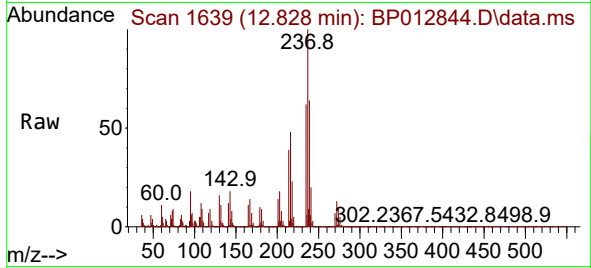




#40  
 Hexachlorocyclopentadiene  
 Concen: 24.762 ng/ul  
 RT: 12.828 min Scan# 1639  
 Delta R.T. -0.006 min  
 Lab File: BP012844.D  
 Acq: 29 Nov 2022 10:39

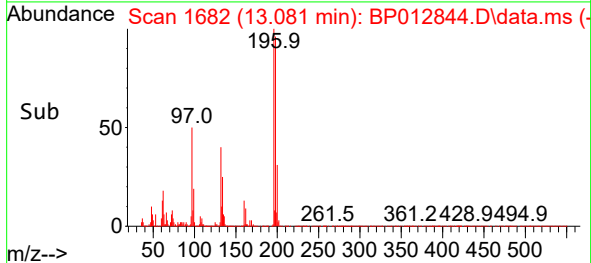
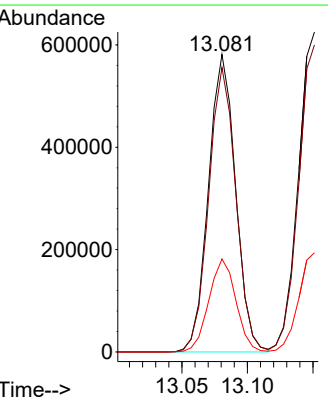
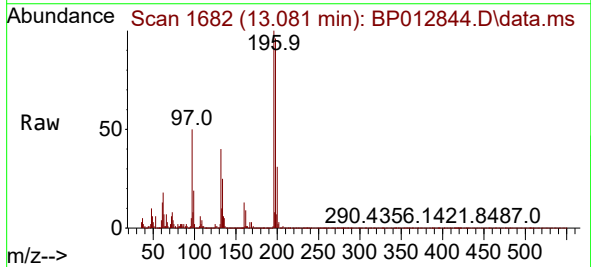
Instrument : BNA\_P  
 Client Sample Id : SLCS186

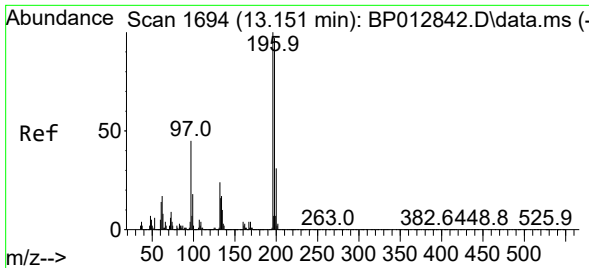
Tgt Ion	Resp	Lower	Upper
237	100		
235	61.7	50.2	75.4
272	12.6	10.2	15.2



#41  
 2,4,6-Trichlorophenol  
 Concen: 28.630 ng/ul  
 RT: 13.081 min Scan# 1682  
 Delta R.T. -0.006 min  
 Lab File: BP012844.D  
 Acq: 29 Nov 2022 10:39

Tgt Ion	Resp	Lower	Upper
196	100		
198	95.6	76.5	114.7
200	31.2	25.3	37.9

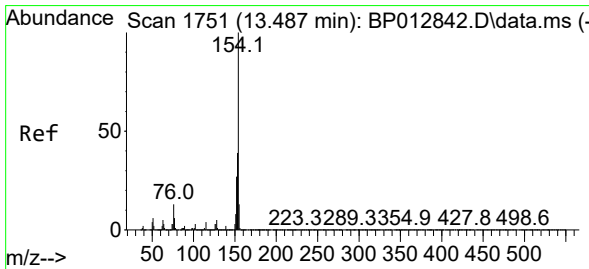
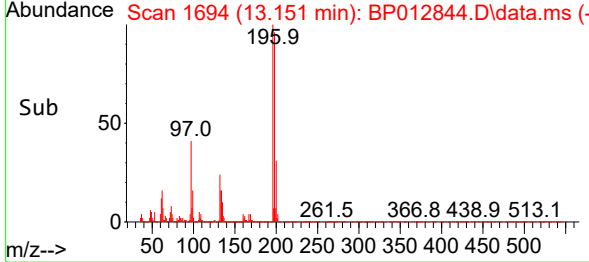
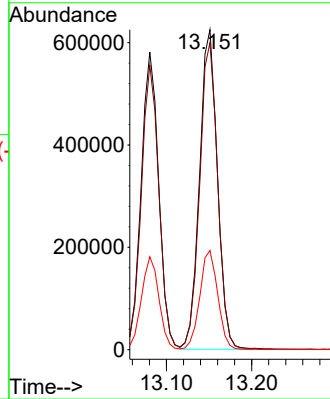
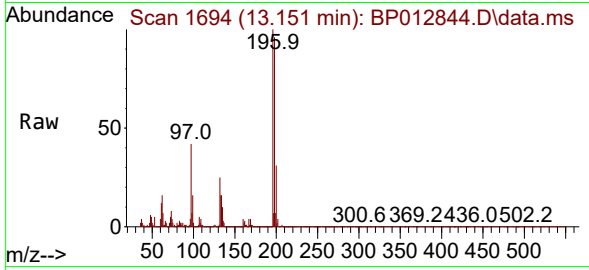




#42  
 2,4,5-Trichlorophenol  
 Concen: 29.042 ng/ul  
 RT: 13.151 min Scan# 1694  
 Delta R.T. -0.006 min  
 Lab File: BP012844.D  
 Acq: 29 Nov 2022 10:39

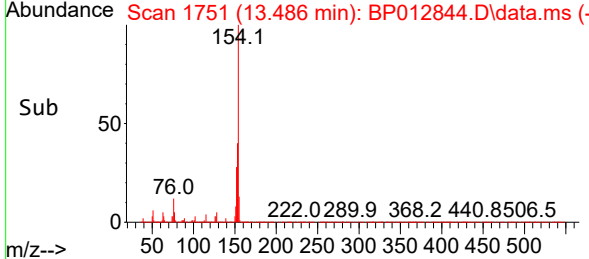
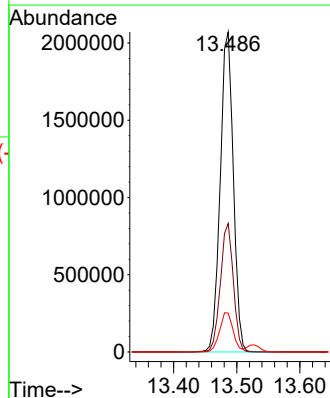
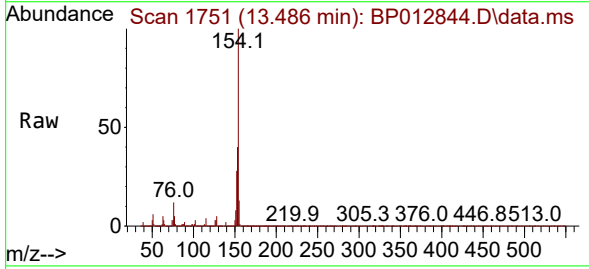
Instrument : BNA\_P  
 ClientSampleId : SLCS186

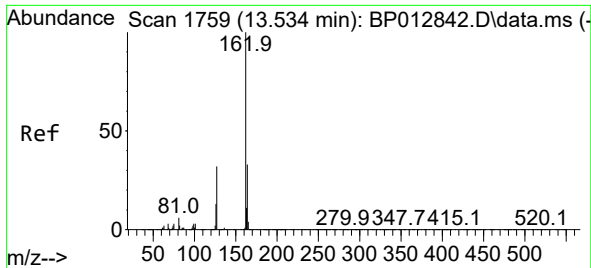
Tgt Ion	Resp	Lower	Upper
196	100		
198	95.9	77.6	116.4
200	31.0	24.2	36.4



#43  
 1,1'-Biphenyl  
 Concen: 28.113 ng/ul  
 RT: 13.486 min Scan# 1751  
 Delta R.T. -0.006 min  
 Lab File: BP012844.D  
 Acq: 29 Nov 2022 10:39

Tgt Ion	Resp	Lower	Upper
154	100		
153	40.2	32.0	48.0
76	12.1	10.2	15.4



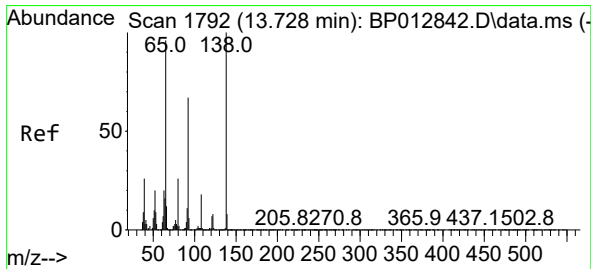
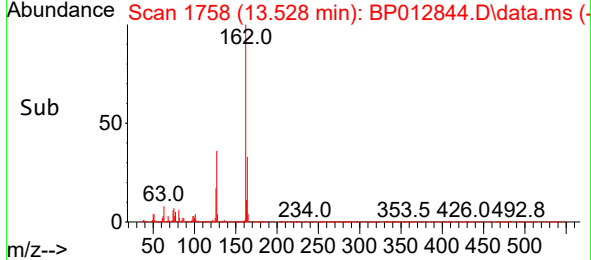
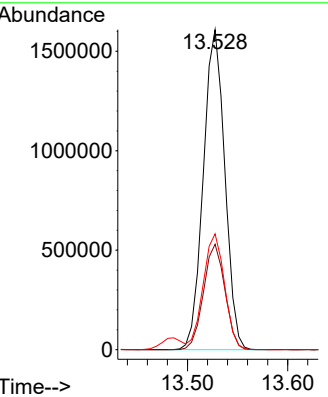
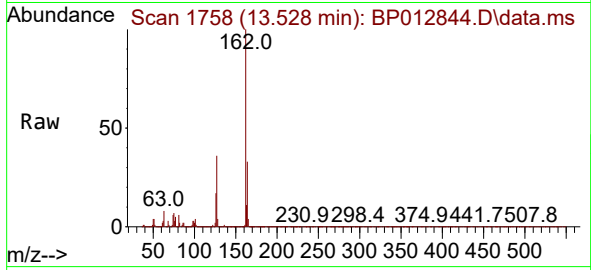


#44  
 2-Chloronaphthalene  
 Concen: 28.073 ng/ul  
 RT: 13.528 min Scan# 1758  
 Delta R.T. -0.006 min  
 Lab File: BP012844.D  
 Acq: 29 Nov 2022 10:39

Instrument :  
 BNA\_P  
 ClientSampleId :  
 SLCS186

Tgt Ion:162 Resp: 2390008

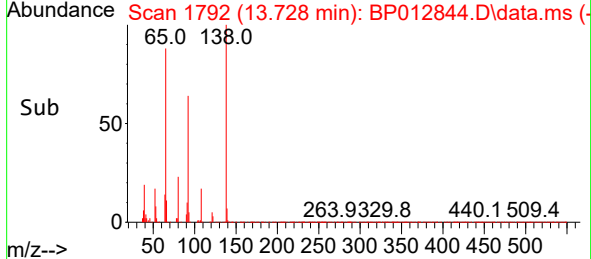
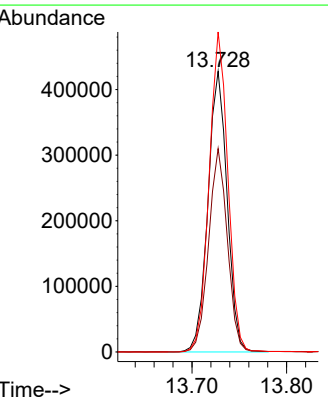
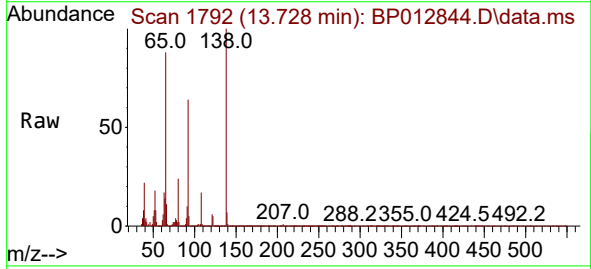
Ion	Ratio	Lower	Upper
162	100		
164	33.0	26.5	39.7
127	36.2	28.8	43.2

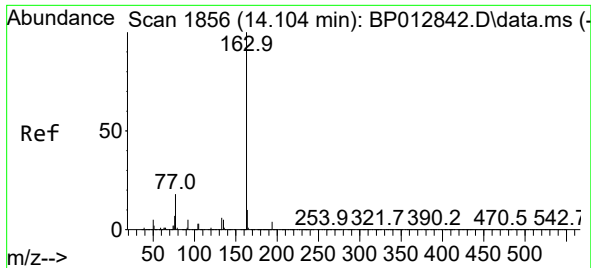


#45  
 2-Nitroaniline  
 Concen: 36.199 ng/ul  
 RT: 13.728 min Scan# 1792  
 Delta R.T. -0.006 min  
 Lab File: BP012844.D  
 Acq: 29 Nov 2022 10:39

Tgt Ion: 65 Resp: 602973

Ion	Ratio	Lower	Upper
65	100		
92	72.5	57.8	86.8
138	114.0	94.6	142.0



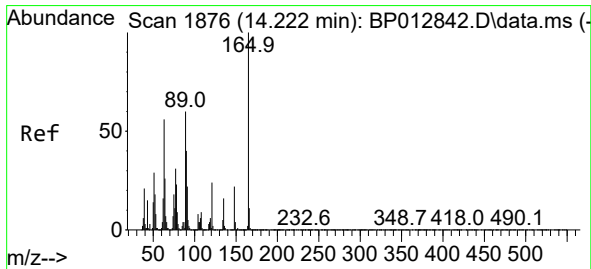
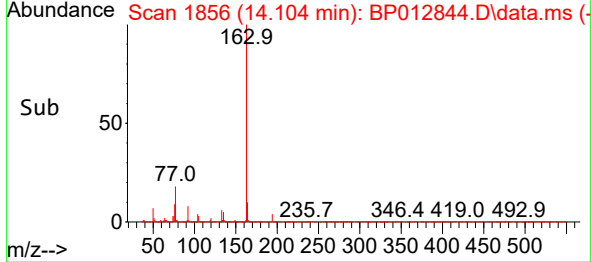
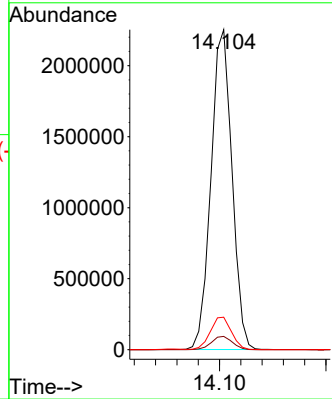
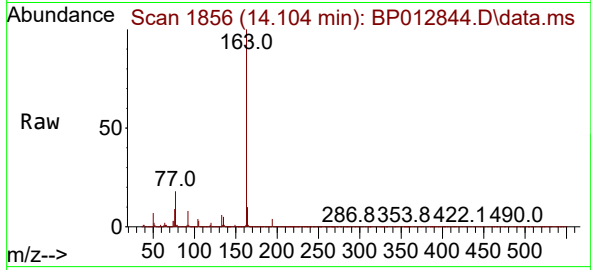


#47  
 Dimethylphthalate  
 Concen: 29.253 ng/ul  
 RT: 14.104 min Scan# 1856  
 Delta R.T. -0.006 min  
 Lab File: BP012844.D  
 Acq: 29 Nov 2022 10:39

Instrument : BNA\_P  
 ClientSampleId : SLCS186

Tgt Ion:163 Resp: 3083394

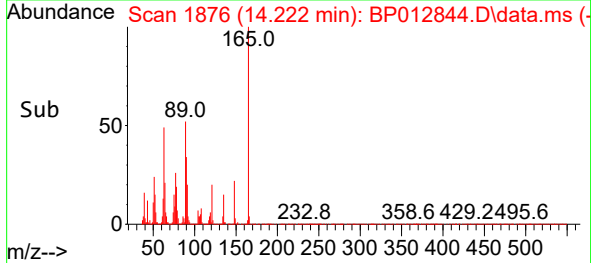
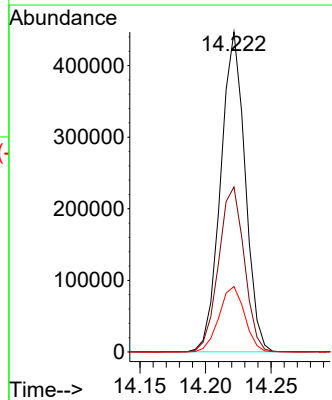
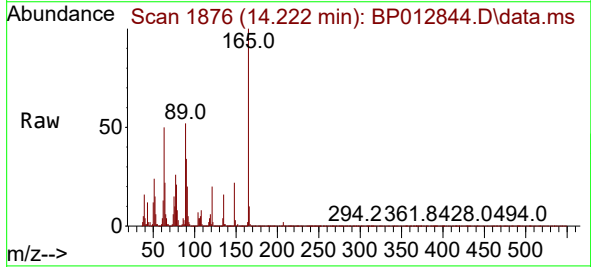
Ion	Ratio	Lower	Upper
163	100		
194	4.2	3.4	5.0
164	10.1	7.8	11.8

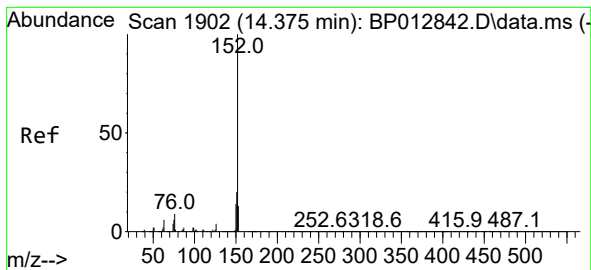


#48  
 2,6-Dinitrotoluene  
 Concen: 34.993 ng/ul  
 RT: 14.222 min Scan# 1876  
 Delta R.T. -0.006 min  
 Lab File: BP012844.D  
 Acq: 29 Nov 2022 10:39

Tgt Ion:165 Resp: 577231

Ion	Ratio	Lower	Upper
165	100		
89	51.6	42.7	64.1
121	20.4	16.9	25.3



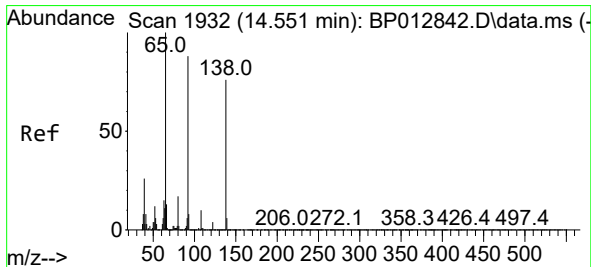
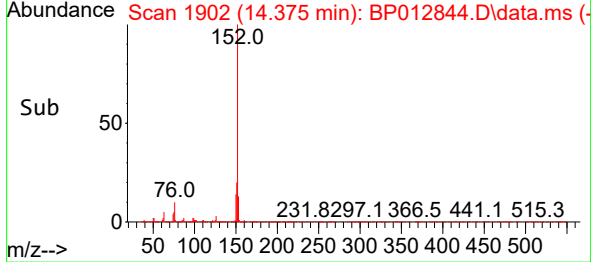
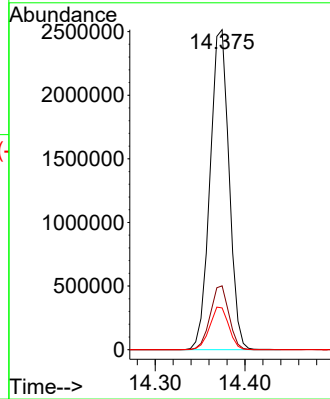
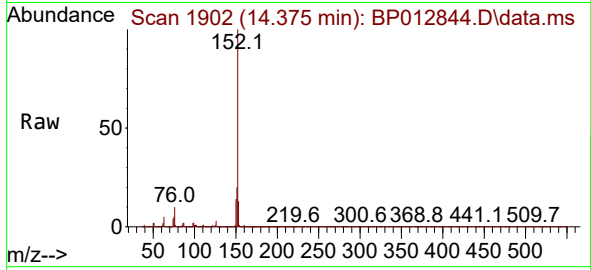


#50  
 Acenaphthylene  
 Concen: 28.797 ng/ul  
 RT: 14.375 min Scan# 1902  
 Delta R.T. -0.000 min  
 Lab File: BP012844.D  
 Acq: 29 Nov 2022 10:39

Instrument : BNA\_P  
 ClientSampleId : SLCS186

Tgt Ion:152 Resp: 3694366

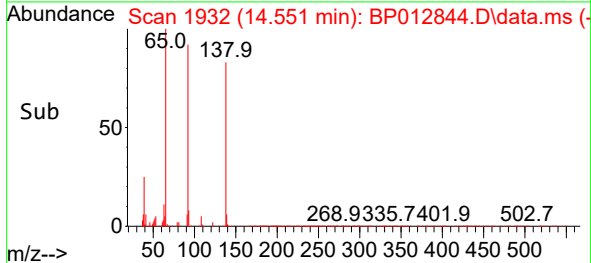
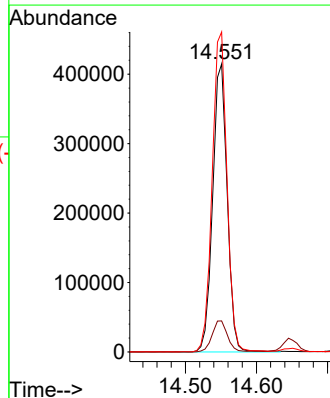
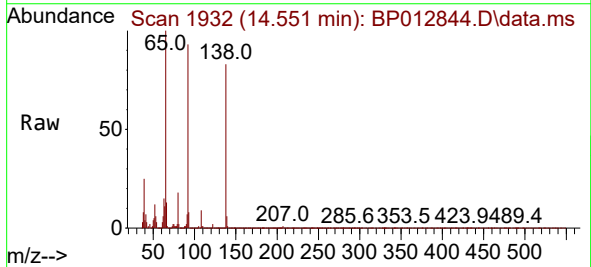
Ion	Ratio	Lower	Upper
152	100		
151	19.9	15.9	23.9
153	13.0	10.7	16.1

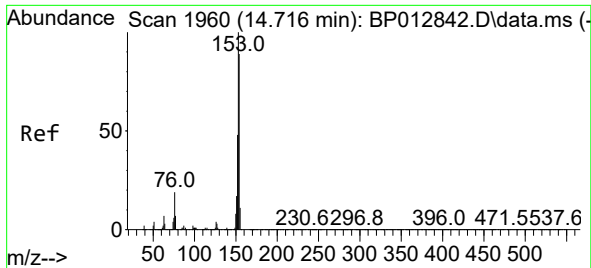


#51  
 3-Nitroaniline  
 Concen: 30.823 ng/ul  
 RT: 14.551 min Scan# 1932  
 Delta R.T. -0.000 min  
 Lab File: BP012844.D  
 Acq: 29 Nov 2022 10:39

Tgt Ion:138 Resp: 588845

Ion	Ratio	Lower	Upper
138	100		
108	10.8	9.9	14.9
92	111.1	90.2	135.2



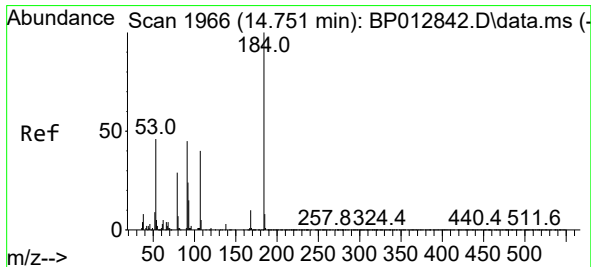
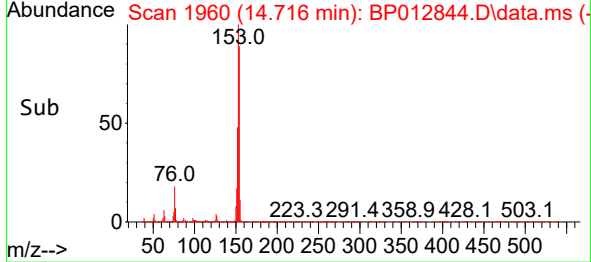
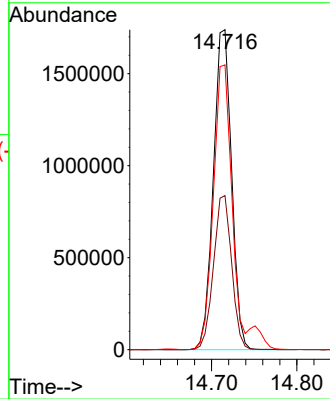
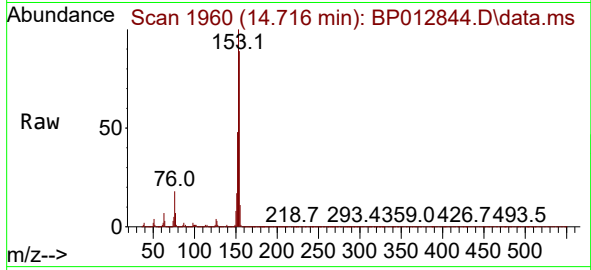


#52  
 Acenaphthene  
 Concen: 28.582 ng/uI  
 RT: 14.716 min Scan# 1960  
 Delta R.T. -0.000 min  
 Lab File: BP012844.D  
 Acq: 29 Nov 2022 10:39

Instrument :  
 BNA\_P  
 ClientSampleId :  
 SLCS186

Tgt Ion:153 Resp: 2581505

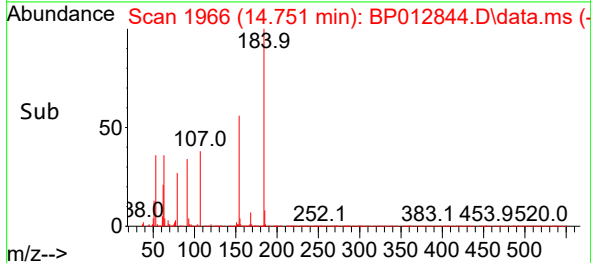
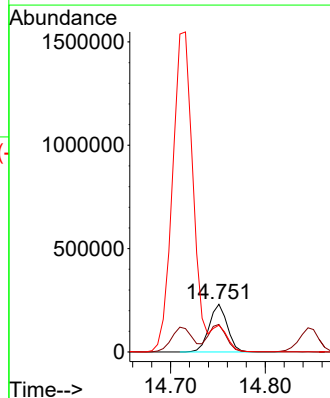
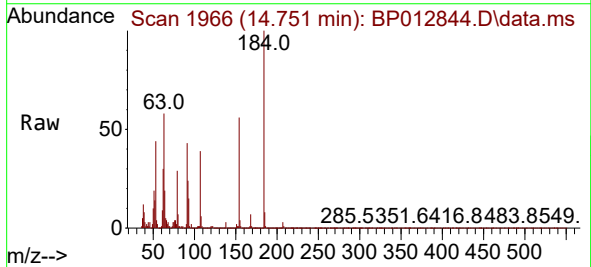
Ion	Ratio	Lower	Upper
153	100		
152	48.2	38.2	57.4
154	89.0	69.8	104.6

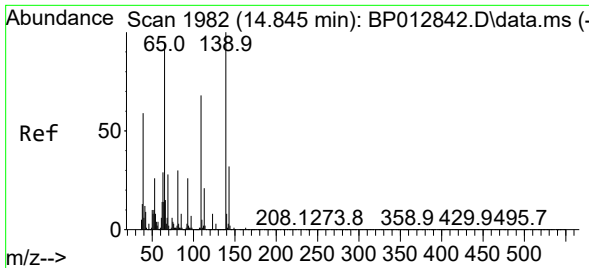


#53  
 2,4-Dinitrophenol  
 Concen: 28.777 ng/uI  
 RT: 14.751 min Scan# 1966  
 Delta R.T. -0.006 min  
 Lab File: BP012844.D  
 Acq: 29 Nov 2022 10:39

Tgt Ion:184 Resp: 305041

Ion	Ratio	Lower	Upper
184	100		
63	57.6	48.1	72.1
154	56.2	47.4	71.2

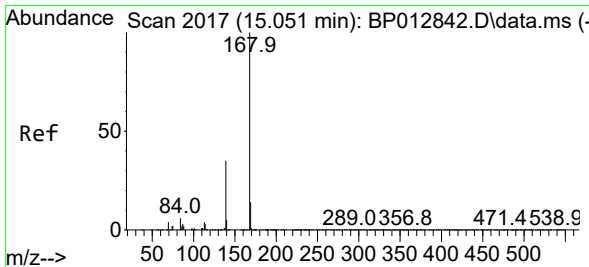
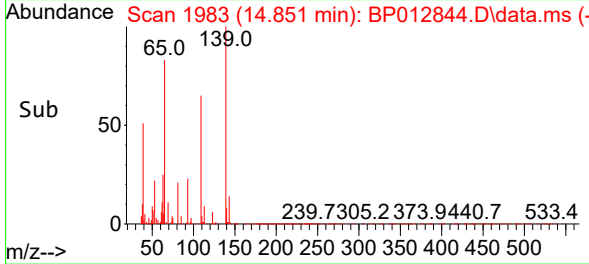
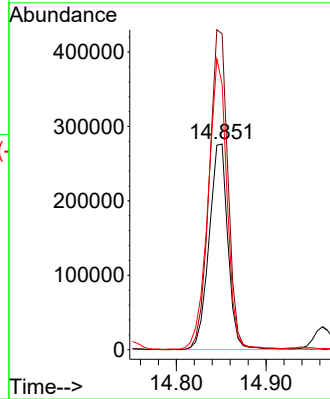
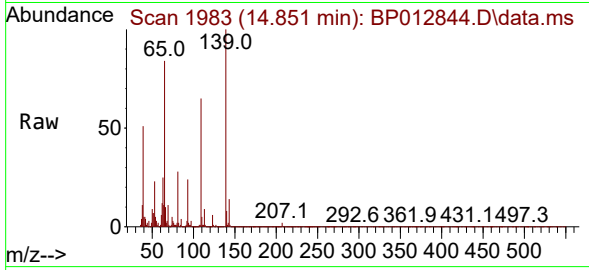




#55  
 4-Nitrophenol  
 Concen: 30.920 ng/ul  
 RT: 14.851 min Scan# 1983  
 Delta R.T. -0.000 min  
 Lab File: BP012844.D  
 Acq: 29 Nov 2022 10:39

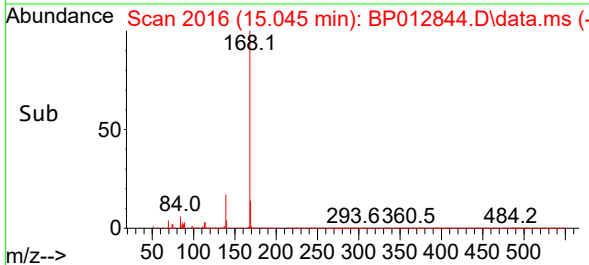
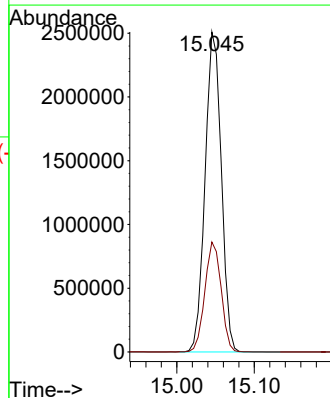
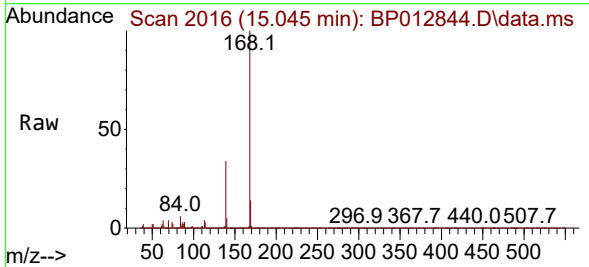
Instrument :  
 BNA\_P  
 ClientSampleId :  
 SLCS186

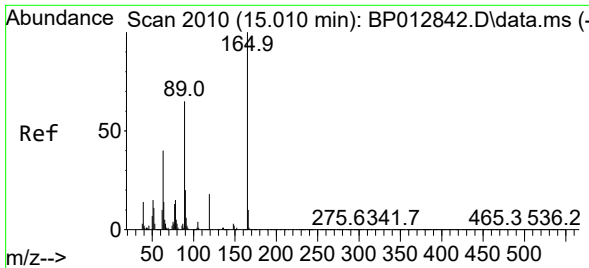
Tgt Ion:109 Resp: 402729  
 Ion Ratio Lower Upper  
 109 100  
 139 153.7 119.2 178.8  
 65 129.1 110.7 166.1



#56  
 Dibenzofuran  
 Concen: 29.269 ng/ul  
 RT: 15.045 min Scan# 2016  
 Delta R.T. -0.006 min  
 Lab File: BP012844.D  
 Acq: 29 Nov 2022 10:39

Tgt Ion:168 Resp: 3643858  
 Ion Ratio Lower Upper  
 168 100  
 139 34.4 27.7 41.5



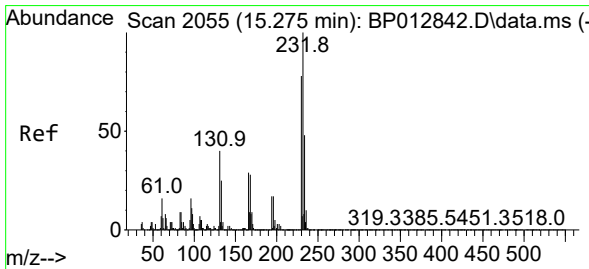
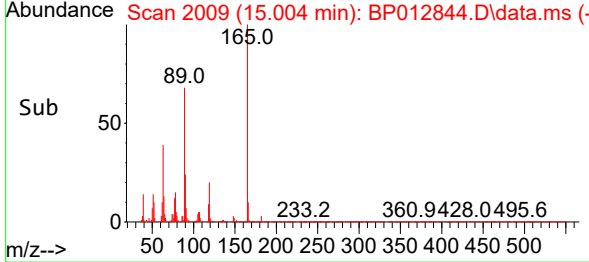
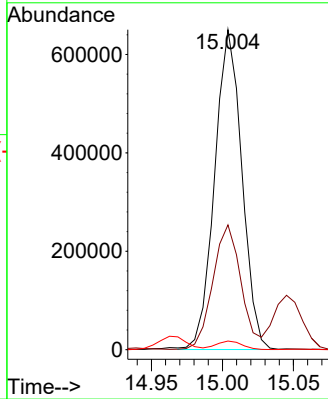
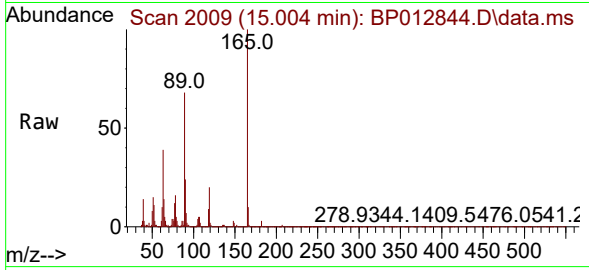


#57  
 2,4-Dinitrotoluene  
 Concen: 35.605 ng/ul  
 RT: 15.004 min Scan# 2009  
 Delta R.T. -0.006 min  
 Lab File: BP012844.D  
 Acq: 29 Nov 2022 10:39

Instrument : BNA\_P  
 ClientSampleId : SLCS186

Tgt Ion:165 Resp: 866717

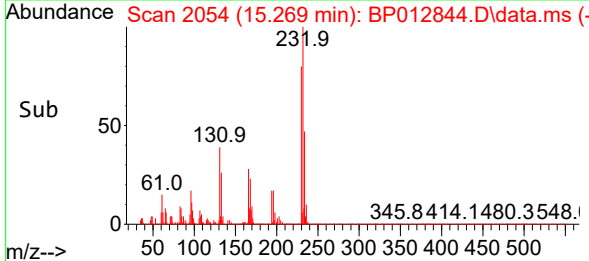
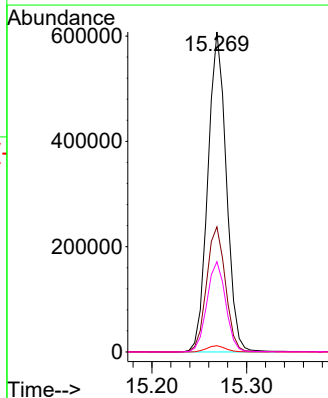
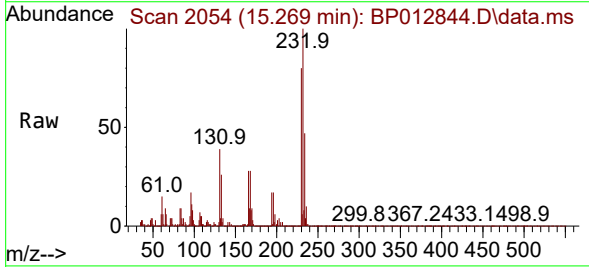
Ion	Ratio	Lower	Upper
165	100		
63	39.0	31.0	46.4
182	2.7	2.0	3.0



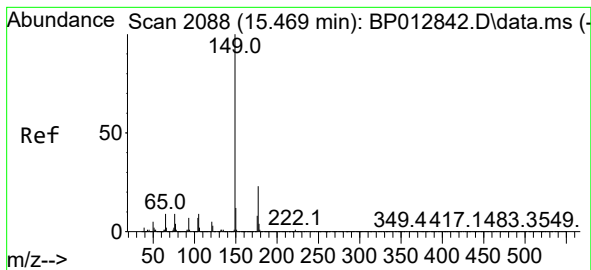
#58  
 2,3,4,6-Tetrachlorophenol  
 Concen: 30.414 ng/ul  
 RT: 15.269 min Scan# 2054  
 Delta R.T. -0.006 min  
 Lab File: BP012844.D  
 Acq: 29 Nov 2022 10:39

Tgt Ion:232 Resp: 821400

Ion	Ratio	Lower	Upper
232	100		
131	39.1	32.0	48.0
130	2.0	1.5	2.3
166	28.2	23.2	34.8



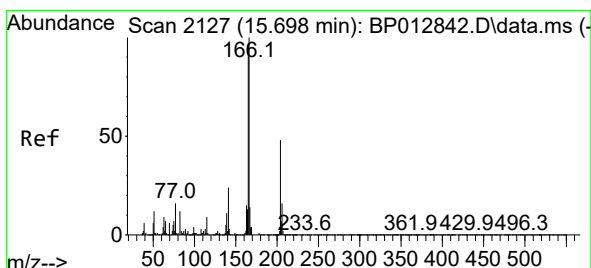
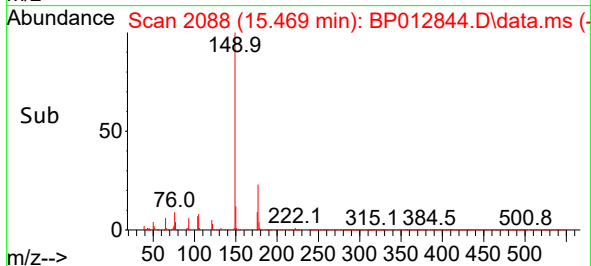
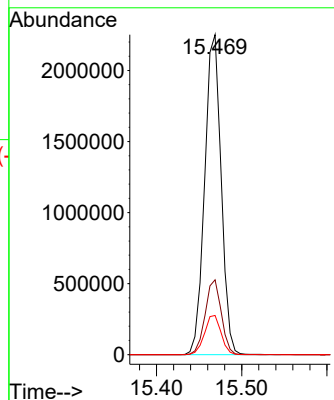
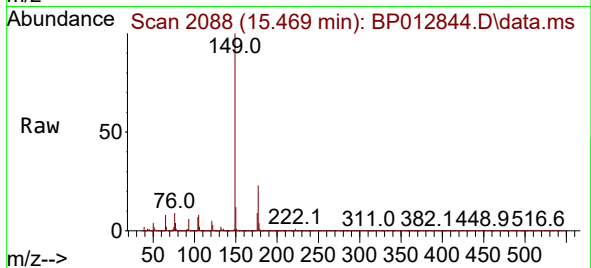




#59  
 Diethylphthalate  
 Concen: 29.602 ng/ul  
 RT: 15.469 min Scan# 2088  
 Delta R.T. -0.006 min  
 Lab File: BP012844.D  
 Acq: 29 Nov 2022 10:39

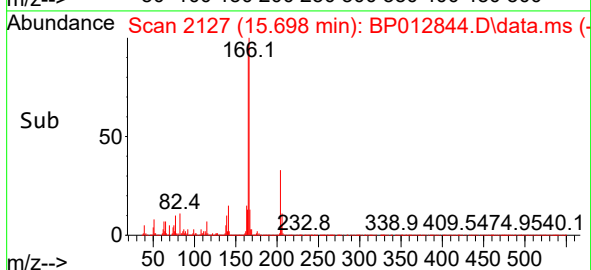
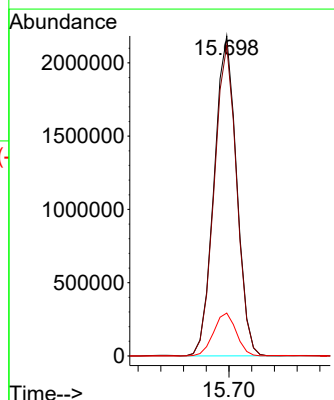
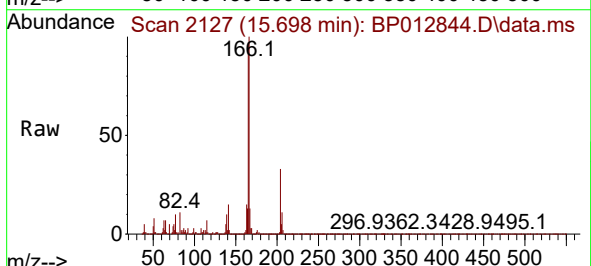
Instrument : BNA\_P  
 ClientSampleId : SLCS186

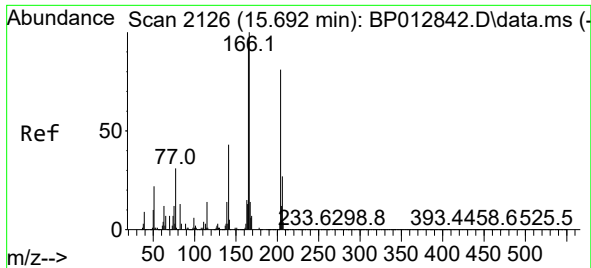
Tgt Ion:149 Resp: 3020310  
 Ion Ratio Lower Upper  
 149 100  
 177 23.4 18.1 27.1  
 150 12.3 9.8 14.8



#61  
 Fluorene  
 Concen: 30.049 ng/ul  
 RT: 15.698 min Scan# 2127  
 Delta R.T. -0.006 min  
 Lab File: BP012844.D  
 Acq: 29 Nov 2022 10:39

Tgt Ion:166 Resp: 3000076  
 Ion Ratio Lower Upper  
 166 100  
 165 97.1 78.2 117.2  
 167 13.4 10.9 16.3



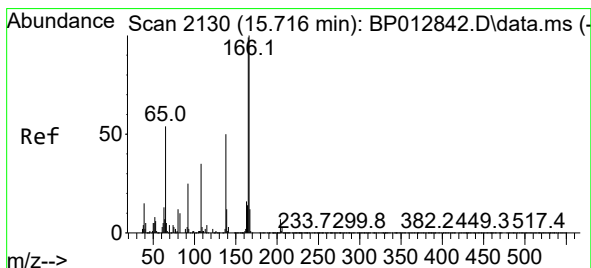
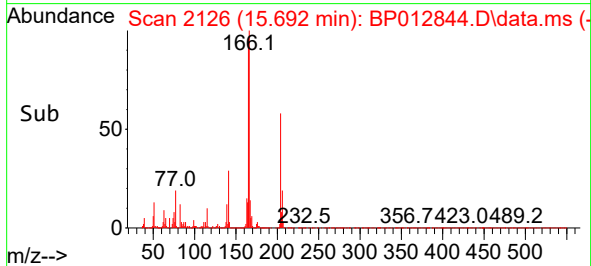
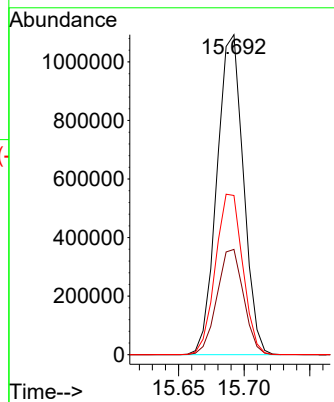
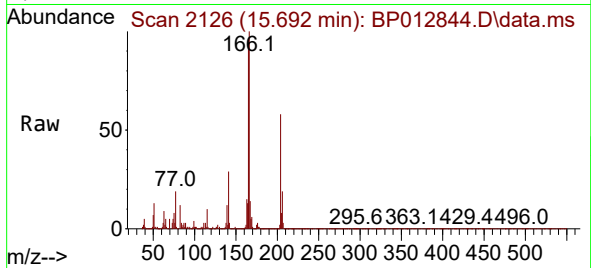


#62  
 4-Chlorophenyl-phenylether  
 Concen: 29.614 ng/ul  
 RT: 15.692 min Scan# 2126  
 Delta R.T. -0.006 min  
 Lab File: BP012844.D  
 Acq: 29 Nov 2022 10:39

Instrument :  
 BNA\_P  
 ClientSampleId :  
 SLCS186

Tgt Ion:204 Resp: 1534052

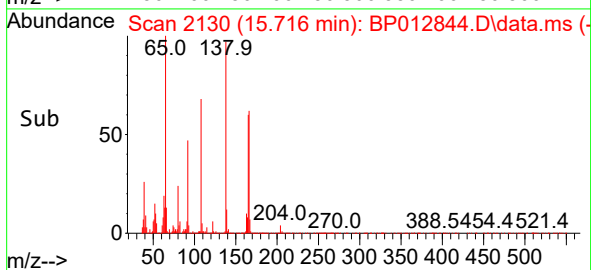
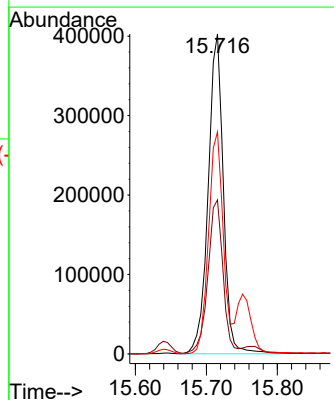
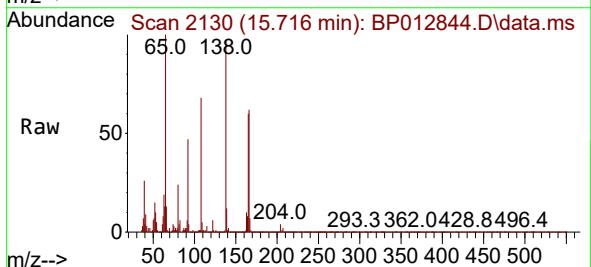
Ion	Ratio	Lower	Upper
204	100		
206	32.9	26.0	39.0
141	49.7	40.7	61.1

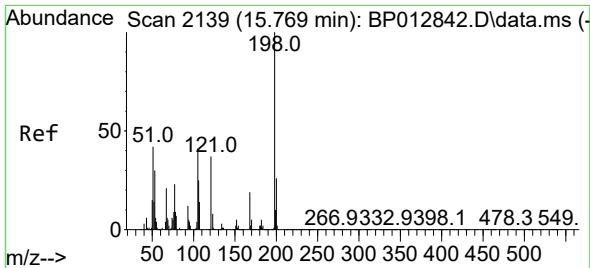


#63  
 4-Nitroaniline  
 Concen: 36.825 ng/ul  
 RT: 15.716 min Scan# 2130  
 Delta R.T. -0.000 min  
 Lab File: BP012844.D  
 Acq: 29 Nov 2022 10:39

Tgt Ion:138 Resp: 599606

Ion	Ratio	Lower	Upper
138	100		
92	48.2	38.6	57.8
108	69.4	56.4	84.6



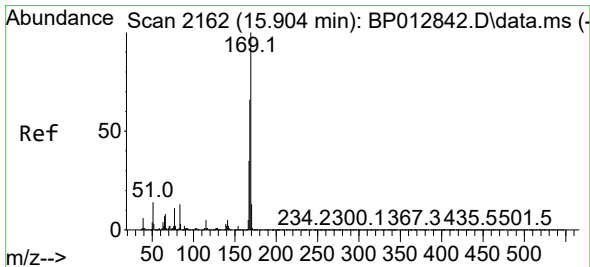
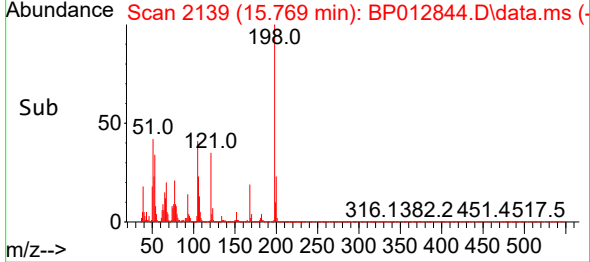
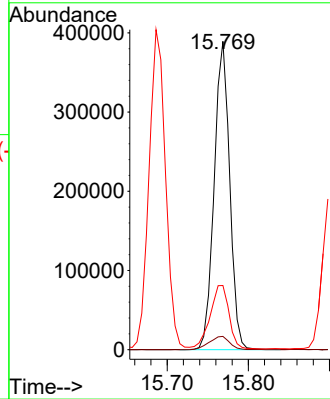
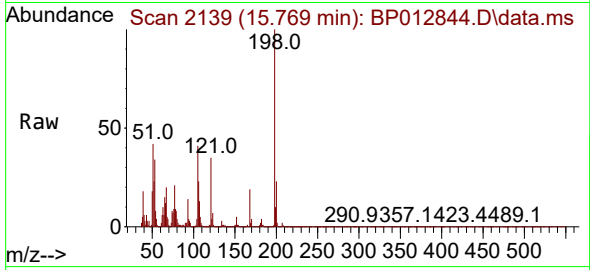


#66  
 4,6-Dinitro-2-methylphenol  
 Concen: 31.375 ng/ul  
 RT: 15.769 min Scan# 2139  
 Delta R.T. -0.006 min  
 Lab File: BP012844.D  
 Acq: 29 Nov 2022 10:39

Instrument :  
 BNA\_P  
 ClientSampleId :  
 SLCS186

Tgt Ion:198 Resp: 516574

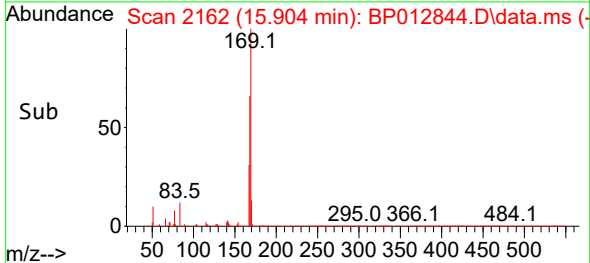
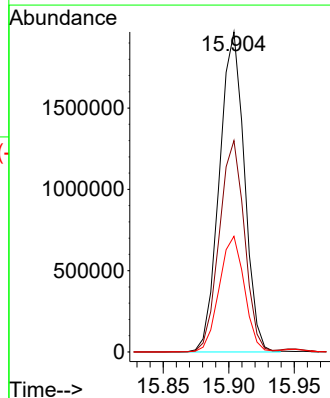
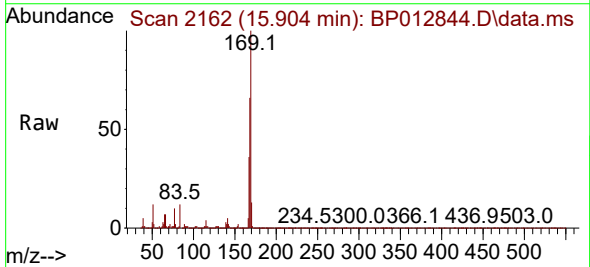
Ion	Ratio	Lower	Upper
198	100		
182	4.3	4.1	6.1
77	20.8	18.9	28.3

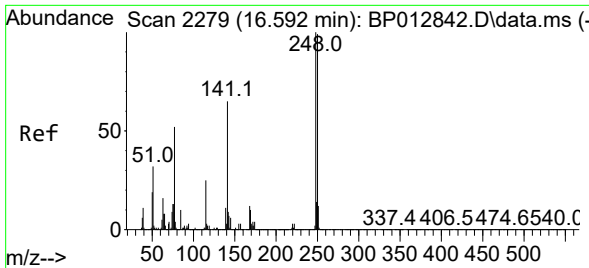


#67  
 N-Nitrosodiphenylamine  
 Concen: 28.564 ng/ul  
 RT: 15.904 min Scan# 2162  
 Delta R.T. -0.006 min  
 Lab File: BP012844.D  
 Acq: 29 Nov 2022 10:39

Tgt Ion:169 Resp: 2605295

Ion	Ratio	Lower	Upper
169	100		
168	66.1	53.2	79.8
167	36.1	29.6	44.4

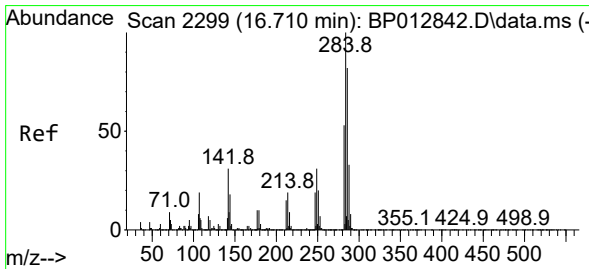
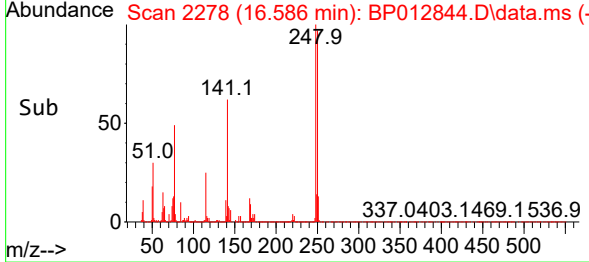
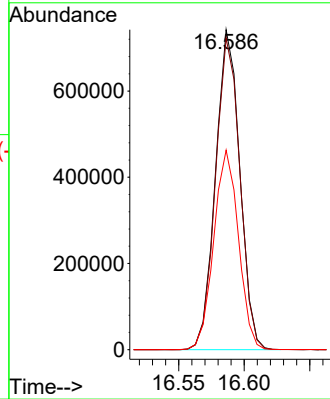
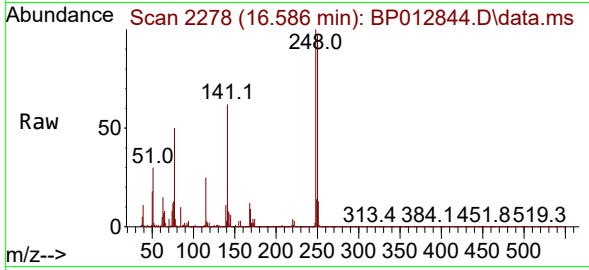




#68  
 4-Bromophenyl-phenylether  
 Concen: 30.284 ng/ul  
 RT: 16.586 min Scan# 21  
 Delta R.T. -0.006 min  
 Lab File: BP012844.D  
 Acq: 29 Nov 2022 10:39

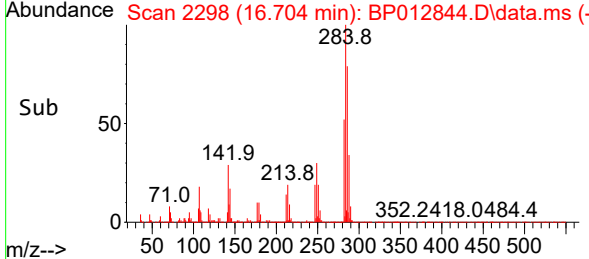
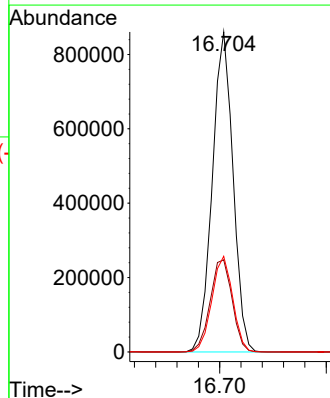
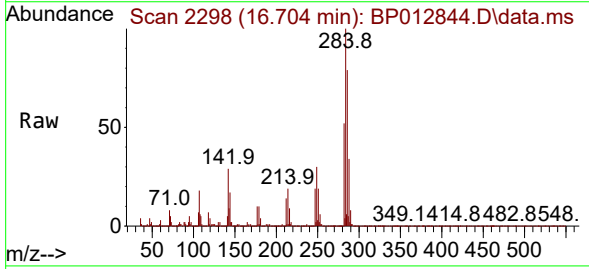
Instrument :  
 BNA\_P  
 ClientSampleId :  
 SLCS186

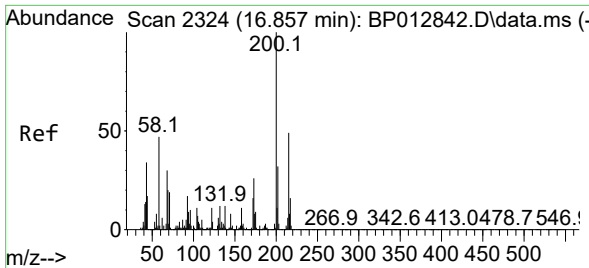
Tgt Ion	Resp	Lower	Upper
248	100		
250	97.3	78.6	118.0
141	62.4	48.7	73.1



#69  
 Hexachlorobenzene  
 Concen: 28.764 ng/ul  
 RT: 16.704 min Scan# 2298  
 Delta R.T. -0.006 min  
 Lab File: BP012844.D  
 Acq: 29 Nov 2022 10:39

Tgt Ion	Resp	Lower	Upper
284	100		
142	28.8	25.0	37.6
249	29.9	24.6	36.8



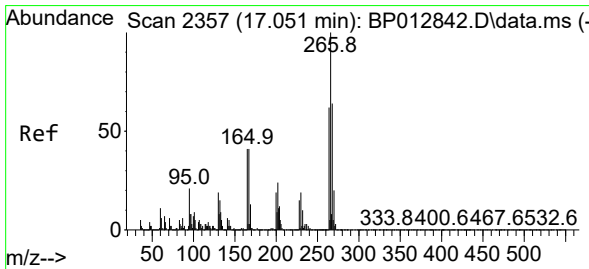
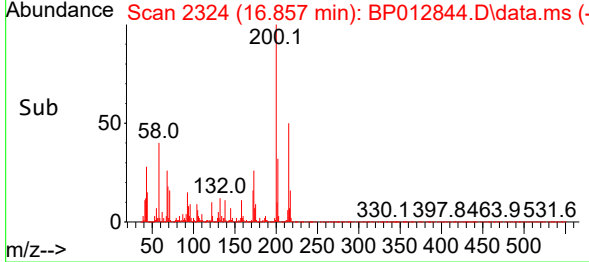
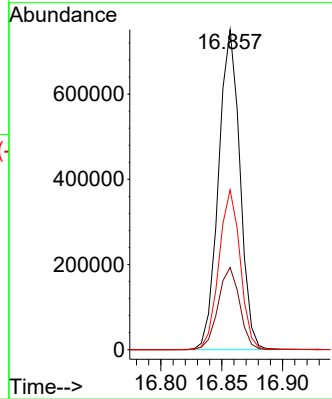
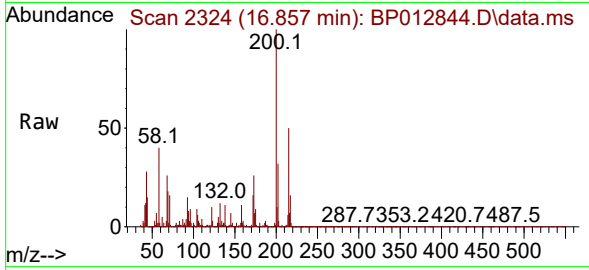


#70  
 Atrazine  
 Concen: 29.332 ng/ul  
 RT: 16.857 min Scan# 21  
 Delta R.T. -0.006 min  
 Lab File: BP012844.D  
 Acq: 29 Nov 2022 10:39

Instrument : BNA\_P  
 ClientSampleId : SLCS186

Tgt Ion:200 Resp: 917901

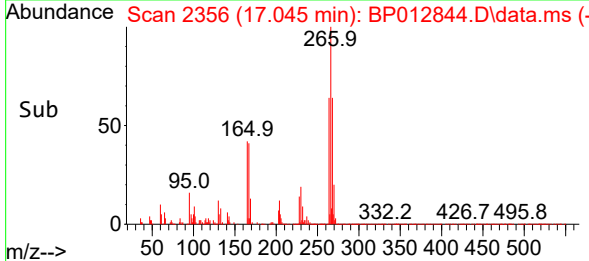
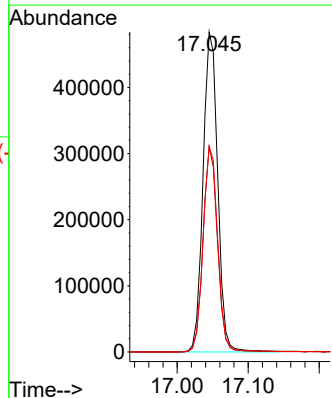
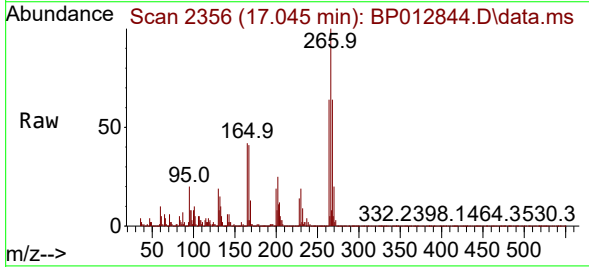
Ion	Ratio	Lower	Upper
200	100		
173	25.7	20.3	30.5
215	50.0	40.1	60.1

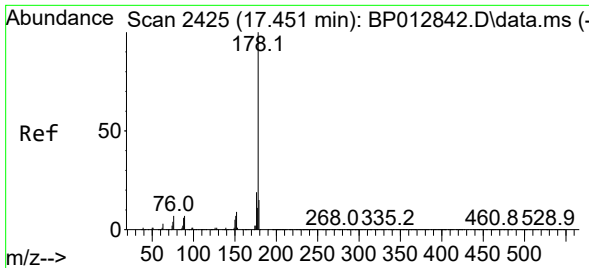


#71  
 Pentachlorophenol  
 Concen: 28.109 ng/ul  
 RT: 17.045 min Scan# 2356  
 Delta R.T. -0.006 min  
 Lab File: BP012844.D  
 Acq: 29 Nov 2022 10:39

Tgt Ion:266 Resp: 694940

Ion	Ratio	Lower	Upper
266	100		
264	64.1	50.7	76.1
268	64.2	51.8	77.8



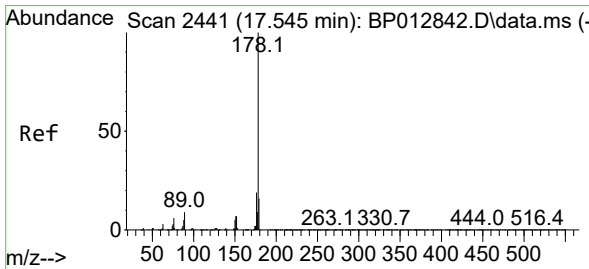
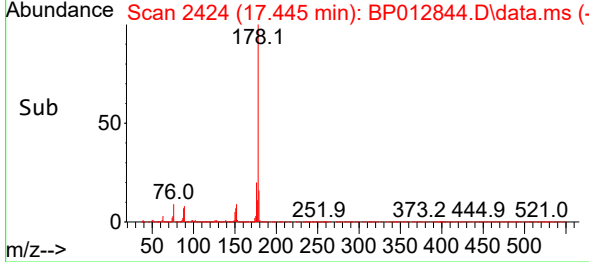
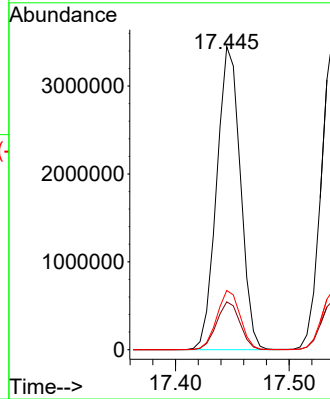
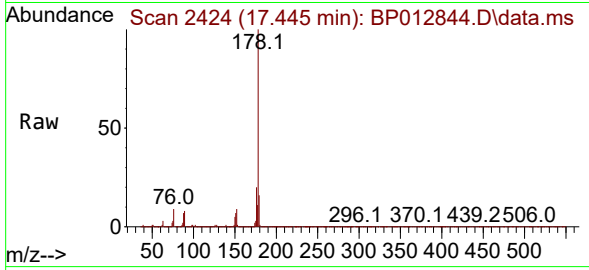


#72  
 Phenanthrene  
 Concen: 29.251 ng/uI  
 RT: 17.445 min Scan# 2424  
 Delta R.T. -0.006 min  
 Lab File: BP012844.D  
 Acq: 29 Nov 2022 10:39

Instrument :  
 BNA\_P  
 ClientSampleId :  
 SLCS186

Tgt Ion:178 Resp: 5003286

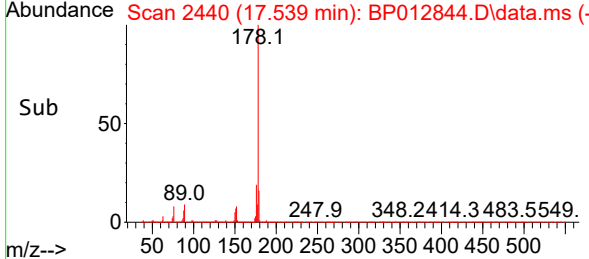
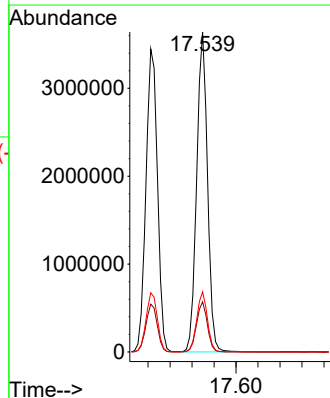
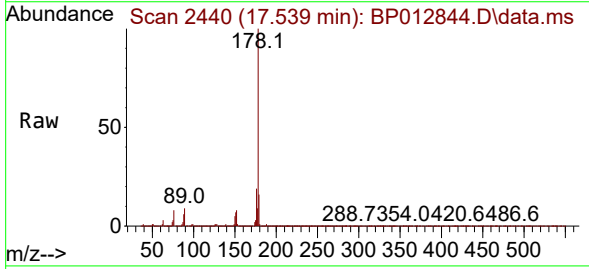
Ion	Ratio	Lower	Upper
178	100		
179	15.8	12.3	18.5
176	19.5	15.4	23.0

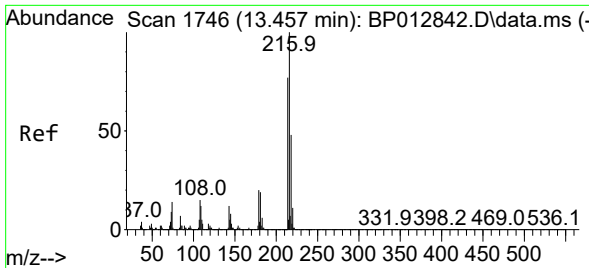


#74  
 Anthracene  
 Concen: 29.395 ng/uI  
 RT: 17.539 min Scan# 2440  
 Delta R.T. -0.006 min  
 Lab File: BP012844.D  
 Acq: 29 Nov 2022 10:39

Tgt Ion:178 Resp: 4974121

Ion	Ratio	Lower	Upper
178	100		
179	15.6	12.4	18.6
176	18.8	14.8	22.2



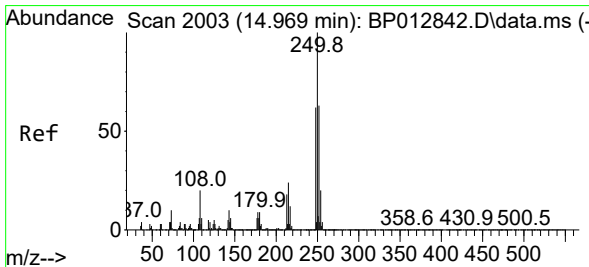
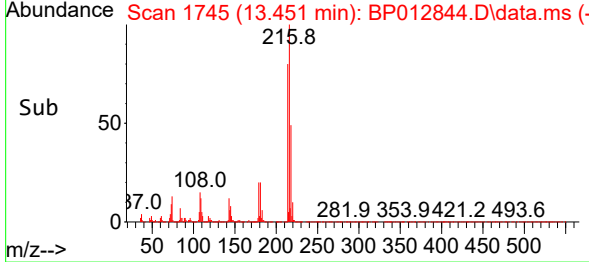
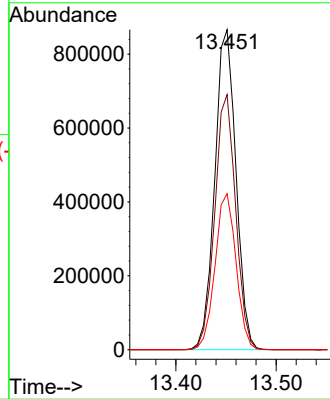
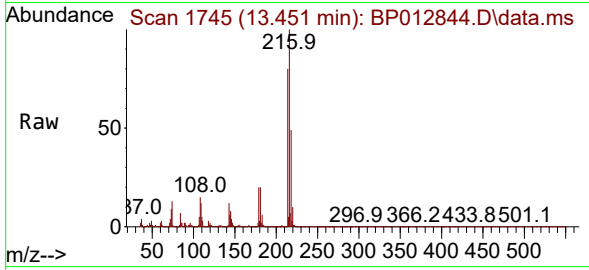


#75  
 1,2,3,4-Tetrachlorobenzene  
 Concen: 25.603 ng/uL  
 RT: 13.451 min Scan# 11  
 Delta R.T. -0.006 min  
 Lab File: BP012844.D  
 Acq: 29 Nov 2022 10:39

Instrument :  
 BNA\_P  
 ClientSampleId :  
 SLCS186

Tgt Ion:216 Resp: 1270298

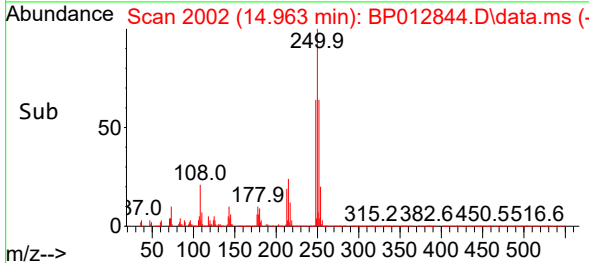
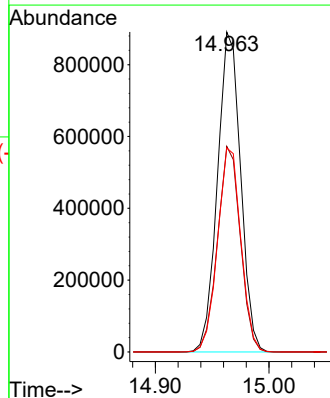
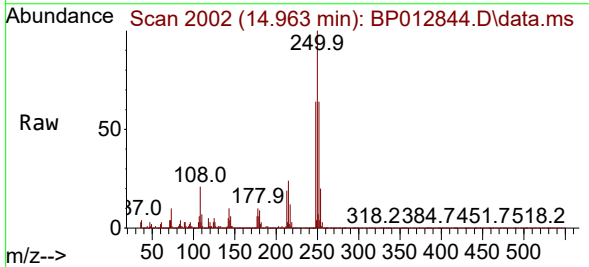
Ion	Ratio	Lower	Upper
216	100		
214	79.7	62.3	93.5
218	48.8	39.1	58.7

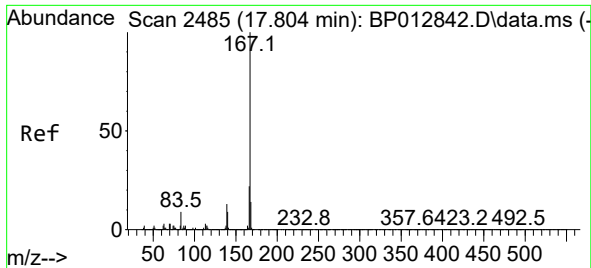


#76  
 Pentachlorobenzene  
 Concen: 24.486 ng/uL  
 RT: 14.963 min Scan# 2002  
 Delta R.T. -0.006 min  
 Lab File: BP012844.D  
 Acq: 29 Nov 2022 10:39

Tgt Ion:250 Resp: 1262869

Ion	Ratio	Lower	Upper
250	100		
248	64.3	50.6	76.0
252	63.8	50.5	75.7



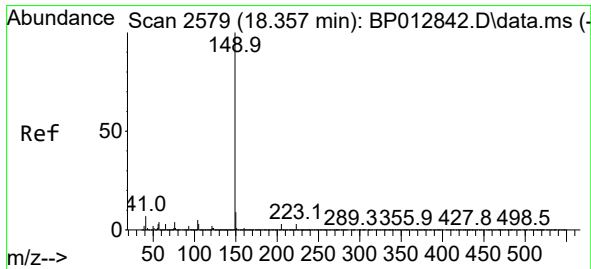
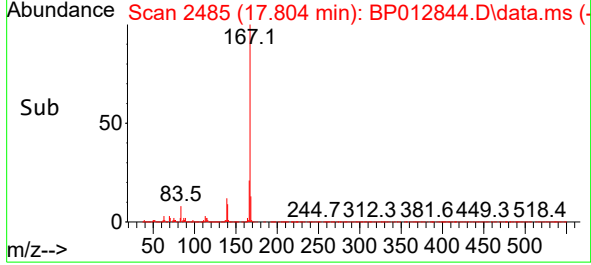
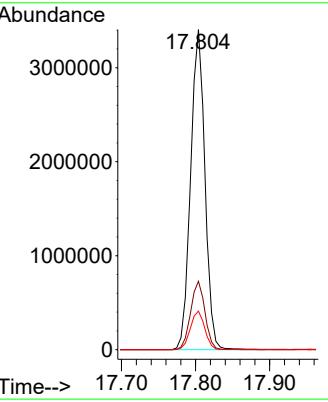
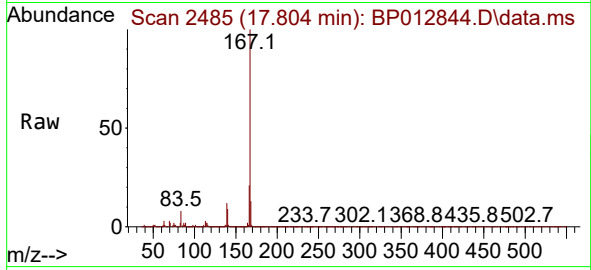


#77  
 Carbazole  
 Concen: 31.855 ng/uI  
 RT: 17.804 min Scan# 2485  
 Delta R.T. -0.006 min  
 Lab File: BP012844.D  
 Acq: 29 Nov 2022 10:39

Instrument : BNA\_P  
 ClientSampleId : SLCS186

Tgt Ion:167 Resp: 4560108

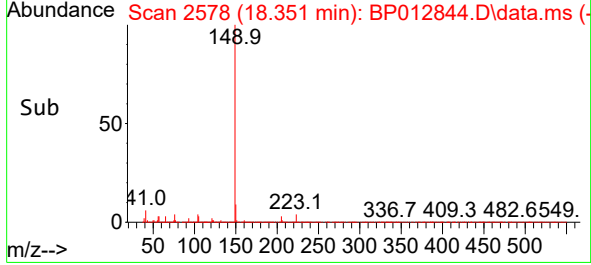
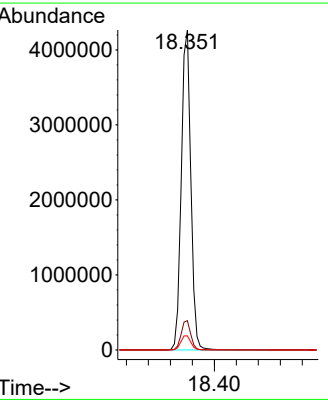
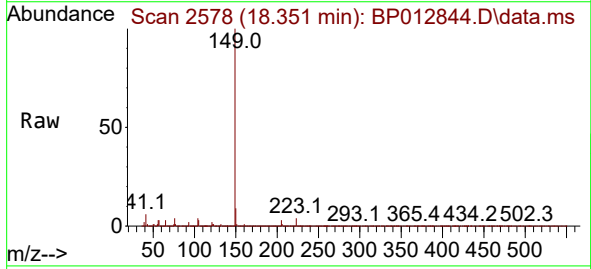
Ion	Ratio	Lower	Upper
167	100		
166	21.4	17.1	25.7
139	12.1	9.8	14.8



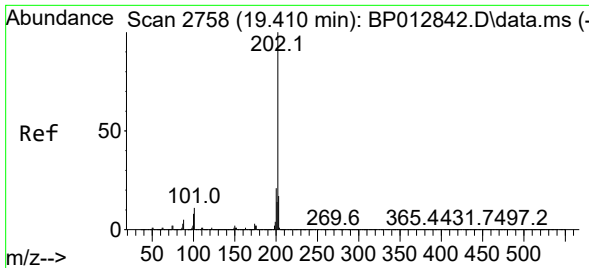
#78  
 Di-n-butylphthalate  
 Concen: 30.001 ng/uI  
 RT: 18.351 min Scan# 2578  
 Delta R.T. -0.006 min  
 Lab File: BP012844.D  
 Acq: 29 Nov 2022 10:39

Tgt Ion:149 Resp: 5084004

Ion	Ratio	Lower	Upper
149	100		
150	9.1	7.2	10.8
104	4.4	3.7	5.5





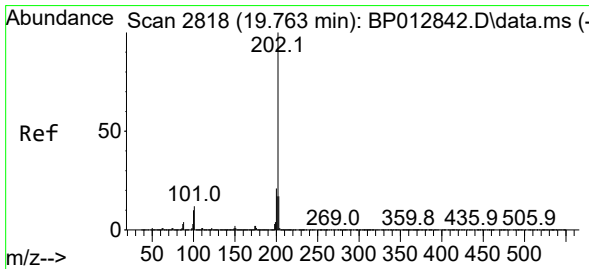
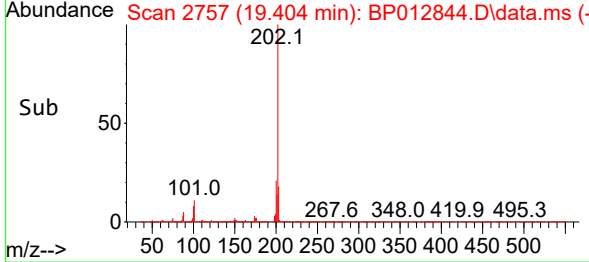
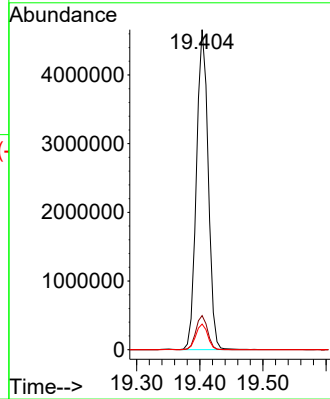
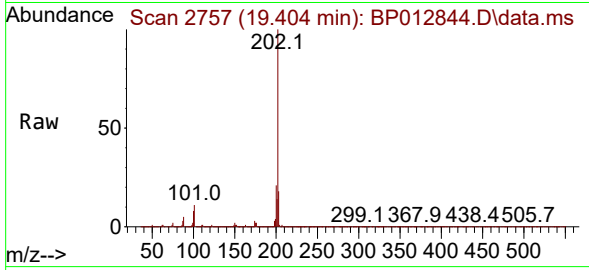


#80  
 Fluoranthene  
 Concen: 25.678 ng/uI  
 RT: 19.404 min Scan# 21  
 Delta R.T. -0.006 min  
 Lab File: BP012844.D  
 Acq: 29 Nov 2022 10:39

Instrument :  
 BNA\_P  
 ClientSampleId :  
 SLCS186

Tgt Ion:202 Resp: 6007480

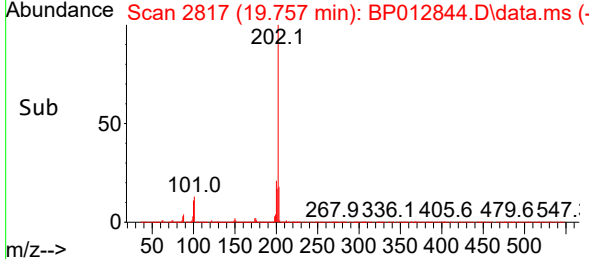
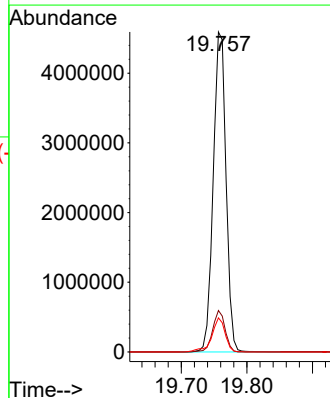
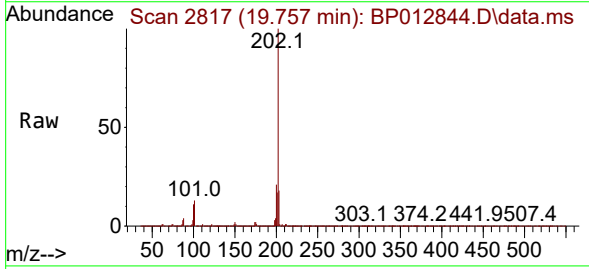
Ion	Ratio	Lower	Upper
202	100		
101	10.7	8.7	13.1
100	8.0	6.9	10.3

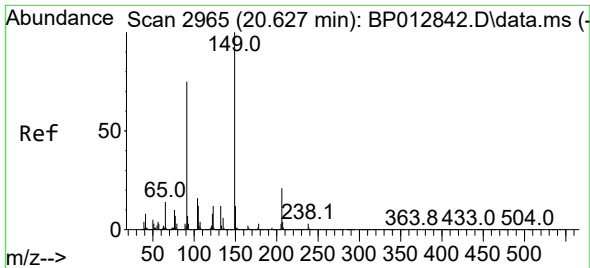


#82  
 Pyrene  
 Concen: 25.671 ng/uI  
 RT: 19.757 min Scan# 2817  
 Delta R.T. -0.006 min  
 Lab File: BP012844.D  
 Acq: 29 Nov 2022 10:39

Tgt Ion:202 Resp: 6211660

Ion	Ratio	Lower	Upper
202	100		
101	12.9	10.3	15.5
100	10.7	8.6	13.0



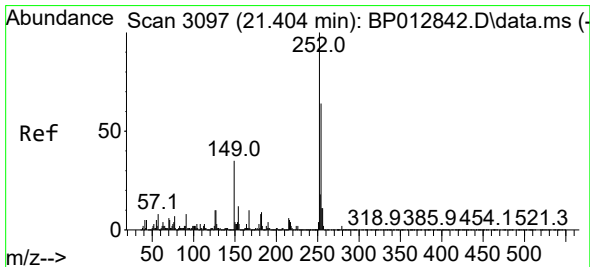
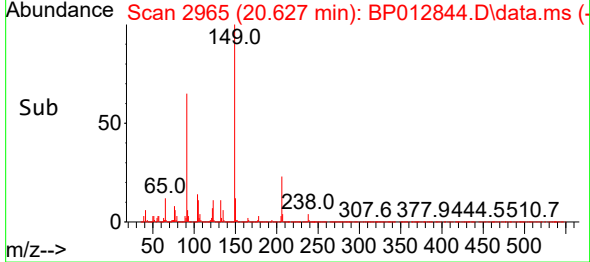
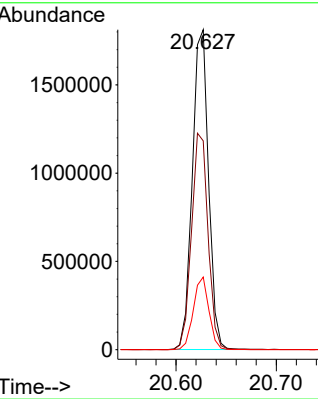
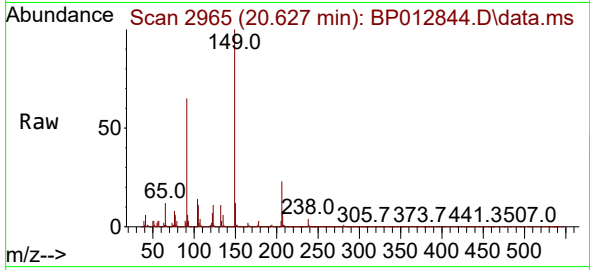


#83  
 Butylbenzylphthalate  
 Concen: 36.061 ng/ul  
 RT: 20.627 min Scan# 2965  
 Delta R.T. -0.006 min  
 Lab File: BP012844.D  
 Acq: 29 Nov 2022 10:39

Instrument :  
 BNA\_P  
 ClientSampleId :  
 SLCS186

Tgt Ion:149 Resp: 2041873

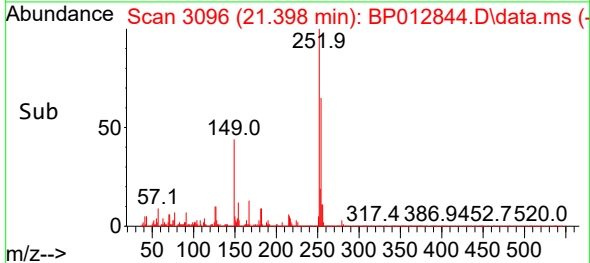
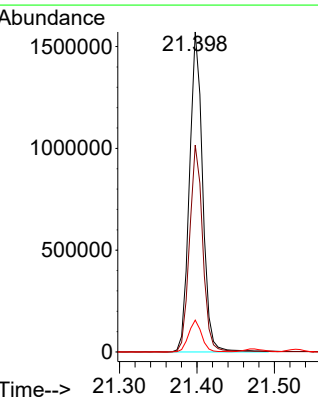
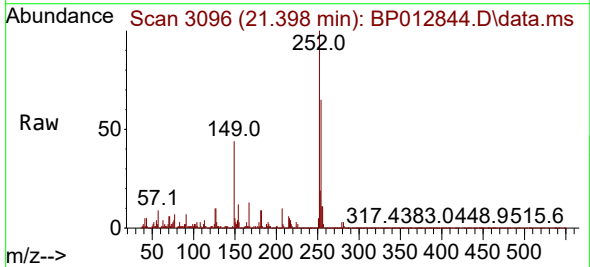
Ion	Ratio	Lower	Upper
149	100		
91	65.3	58.2	87.2
206	22.7	16.5	24.7

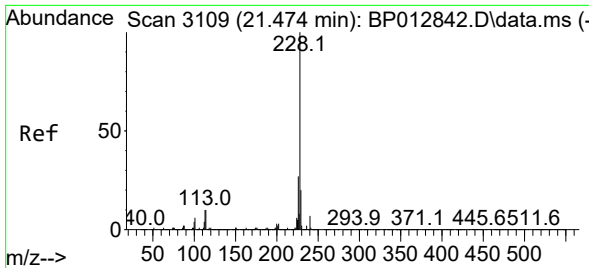


#84  
 3,3'-Dichlorobenzidine  
 Concen: 31.182 ng/ul  
 RT: 21.398 min Scan# 3096  
 Delta R.T. -0.006 min  
 Lab File: BP012844.D  
 Acq: 29 Nov 2022 10:39

Tgt Ion:252 Resp: 1853588

Ion	Ratio	Lower	Upper
252	100		
254	64.6	52.3	78.5
126	10.0	7.6	11.4



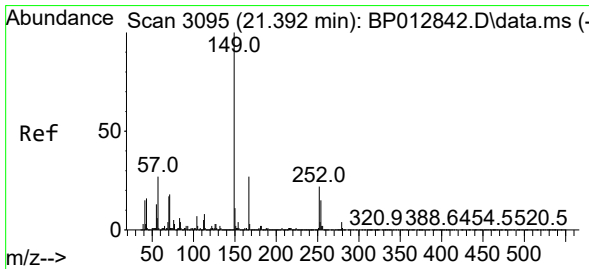
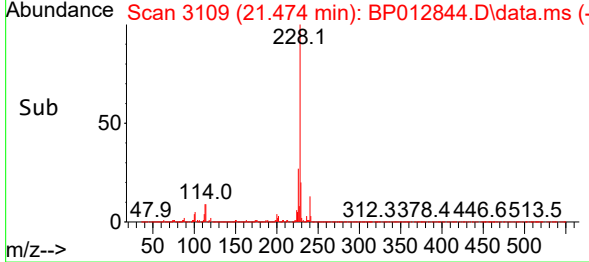
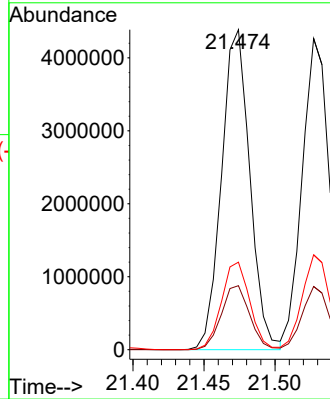
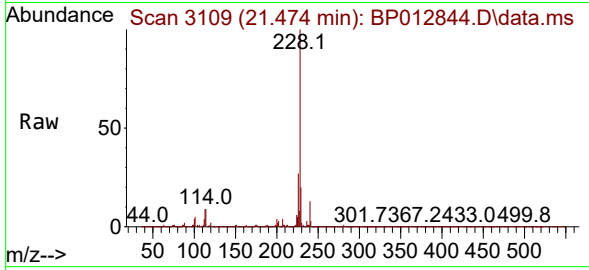


#85  
 Benzo(a)anthracene  
 Concen: 27.225 ng/ul  
 RT: 21.474 min Scan# 3109  
 Delta R.T. -0.006 min  
 Lab File: BP012844.D  
 Acq: 29 Nov 2022 10:39

Instrument :  
 BNA\_P  
 ClientSampleId :  
 SLCS186

Tgt Ion:228 Resp: 6095227

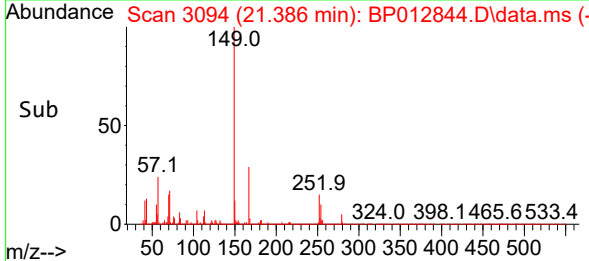
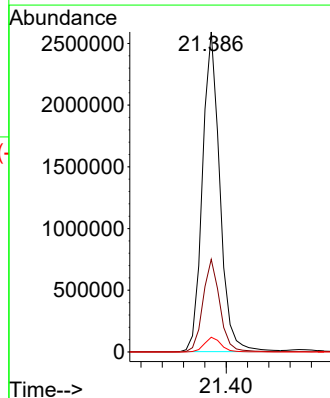
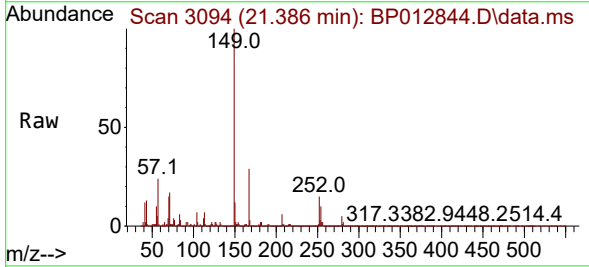
Ion	Ratio	Lower	Upper
228	100		
229	20.0	16.2	24.2
226	27.3	22.2	33.2

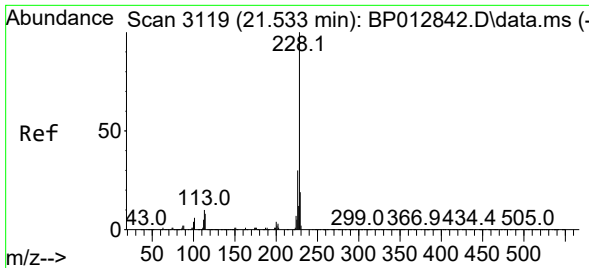


#86  
 Bis(2-ethylhexyl)phthalate  
 Concen: 33.942 ng/ul  
 RT: 21.386 min Scan# 3094  
 Delta R.T. -0.012 min  
 Lab File: BP012844.D  
 Acq: 29 Nov 2022 10:39

Tgt Ion:149 Resp: 2939099

Ion	Ratio	Lower	Upper
149	100		
167	29.0	22.7	34.1
279	4.6	3.8	5.6



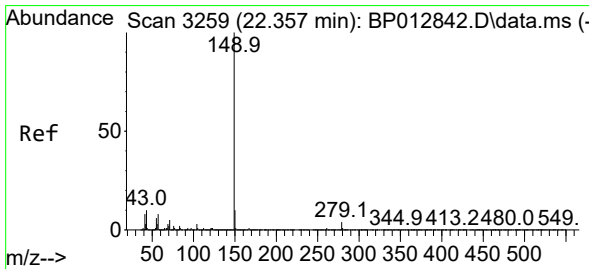
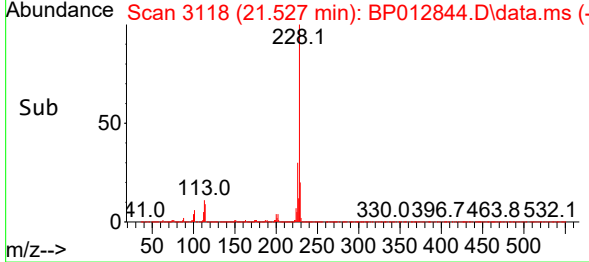
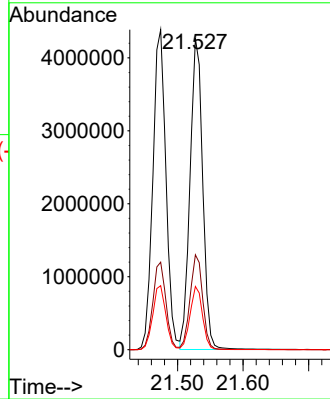
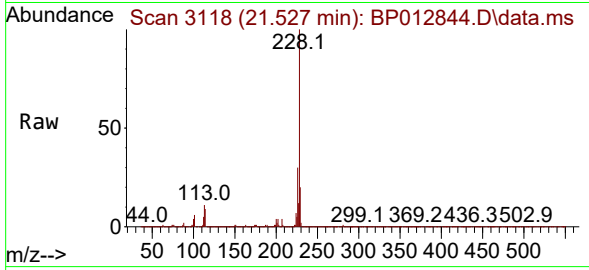


#87  
 Chrysene  
 Concen: 26.416 ng/ul  
 RT: 21.527 min Scan# 3118  
 Delta R.T. -0.006 min  
 Lab File: BP012844.D  
 Acq: 29 Nov 2022 10:39

Instrument :  
 BNA\_P  
 ClientSampleId :  
 SLCS186

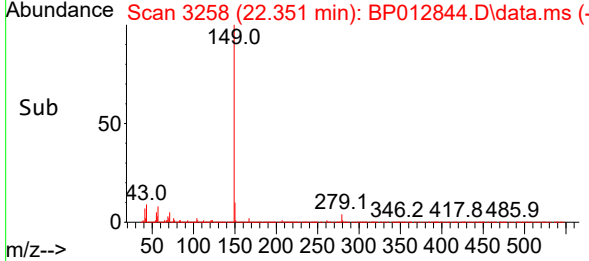
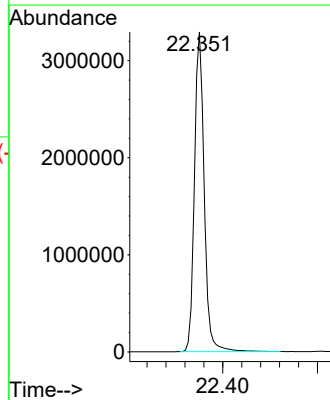
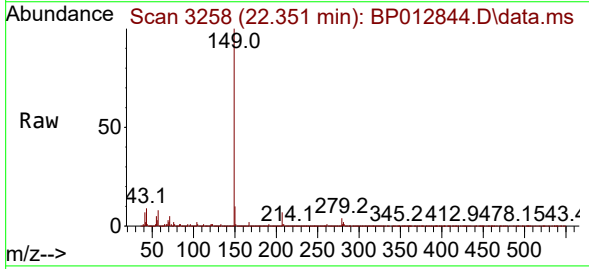
Tgt Ion:228 Resp: 5718359

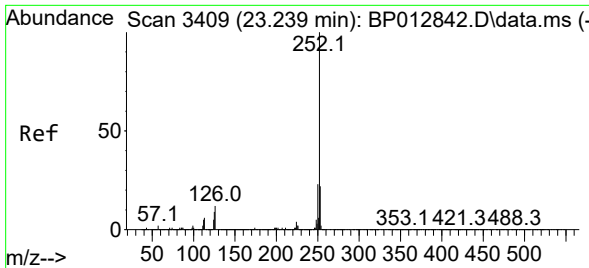
Ion	Ratio	Lower	Upper
228	100		
226	30.5	24.3	36.5
229	20.3	15.9	23.9



#89  
 Di-n-octyl phthalate  
 Concen: 27.786 ng/ul  
 RT: 22.351 min Scan# 3258  
 Delta R.T. -0.012 min  
 Lab File: BP012844.D  
 Acq: 29 Nov 2022 10:39

Tgt Ion:149 Resp: 4699008



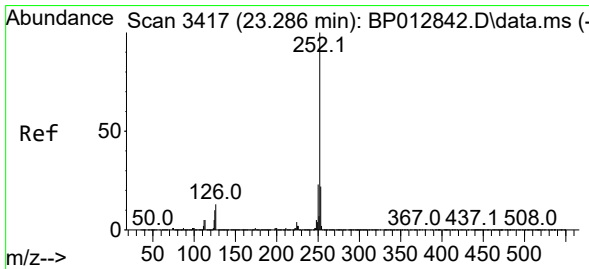
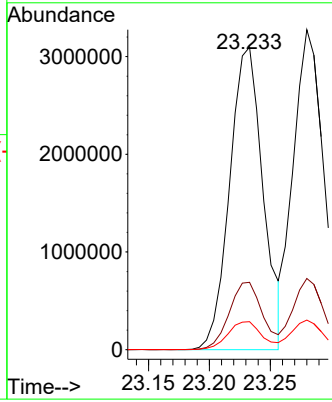
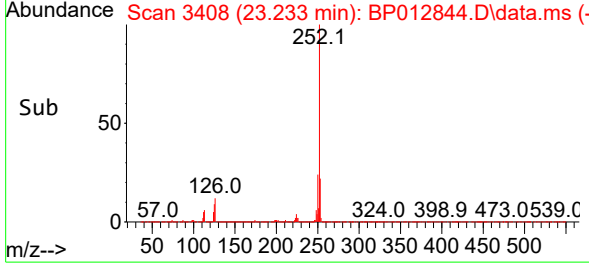
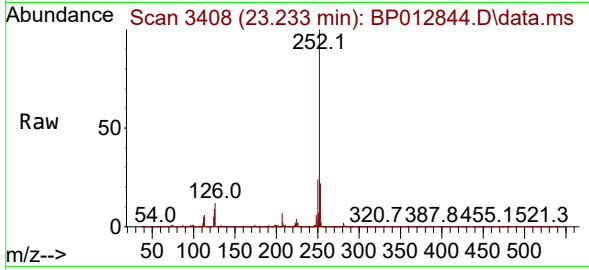


#90  
 Benzo(b)fluoranthene  
 Concen: 26.925 ng/ul  
 RT: 23.233 min Scan# 3409  
 Delta R.T. -0.006 min  
 Lab File: BP012844.D  
 Acq: 29 Nov 2022 10:39

Instrument : BNA\_P  
 ClientSampleId : SLCS186

Tgt Ion:252 Resp: 5904612

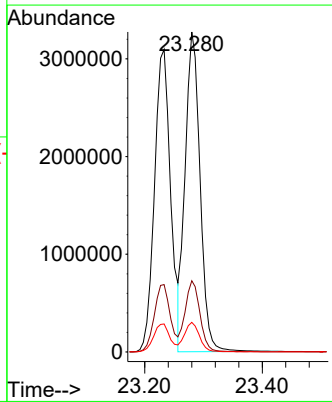
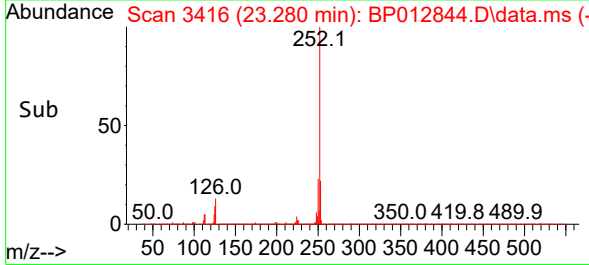
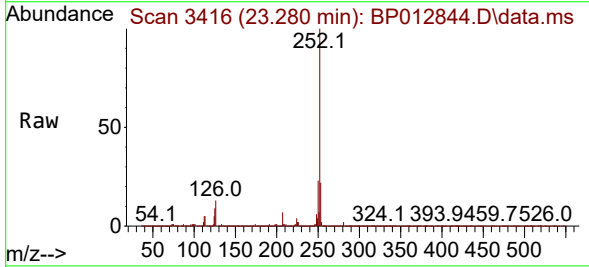
Ion	Ratio	Lower	Upper
252	100		
253	22.2	17.6	26.4
125	9.2	7.4	11.2

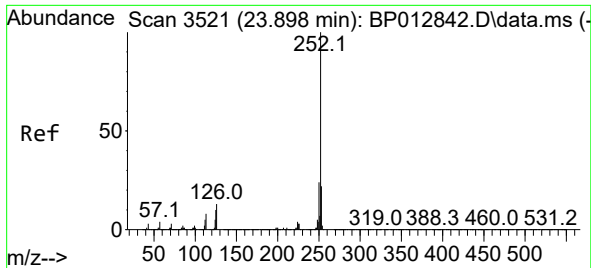


#91  
 Benzo(k)fluoranthene  
 Concen: 26.462 ng/ul  
 RT: 23.280 min Scan# 3416  
 Delta R.T. -0.012 min  
 Lab File: BP012844.D  
 Acq: 29 Nov 2022 10:39

Tgt Ion:252 Resp: 5792537

Ion	Ratio	Lower	Upper
252	100		
253	22.2	17.8	26.8
125	9.3	7.8	11.8



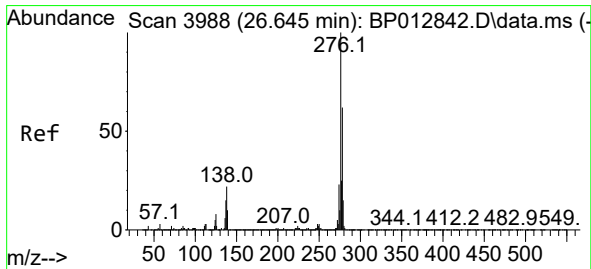
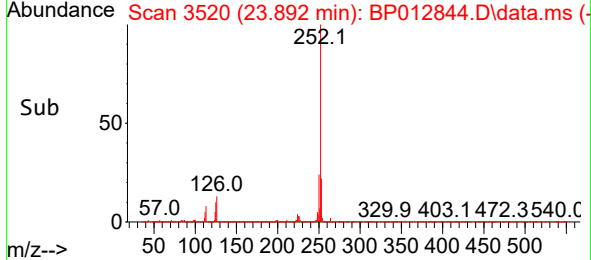
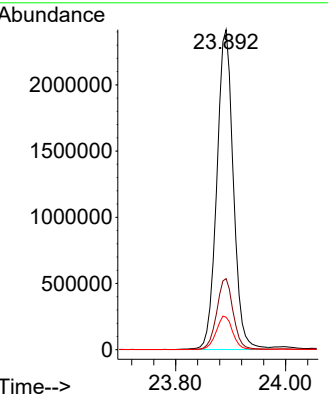
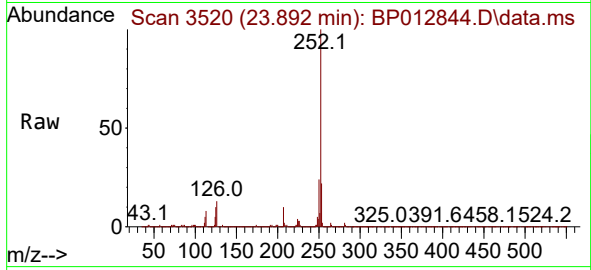


#93  
 Benzo(a)pyrene  
 Concen: 27.899 ng/u1  
 RT: 23.892 min Scan# 31  
 Delta R.T. -0.006 min  
 Lab File: BP012844.D  
 Acq: 29 Nov 2022 10:39

Instrument : BNA\_P  
 Client SampleId : SLCS186

Tgt Ion:252 Resp: 5030983

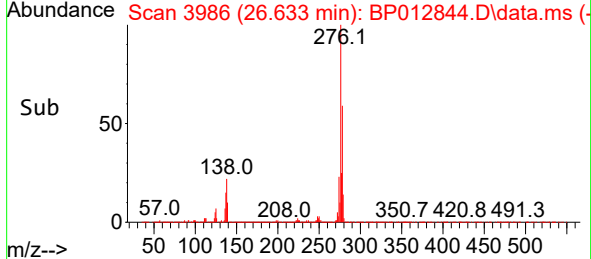
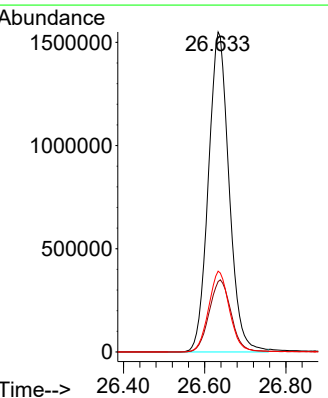
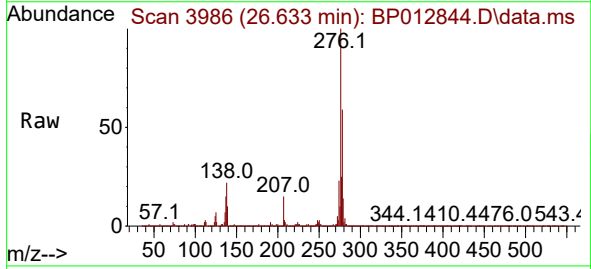
Ion	Ratio	Lower	Upper
252	100		
253	22.2	17.6	26.4
125	10.1	8.5	12.7

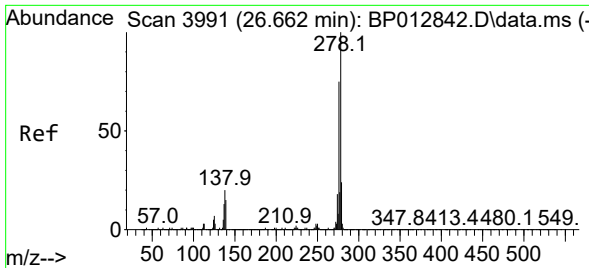


#94  
 Indeno(1,2,3-cd)pyrene  
 Concen: 31.531 ng/u1  
 RT: 26.633 min Scan# 3986  
 Delta R.T. -0.018 min  
 Lab File: BP012844.D  
 Acq: 29 Nov 2022 10:39

Tgt Ion:276 Resp: 5485567

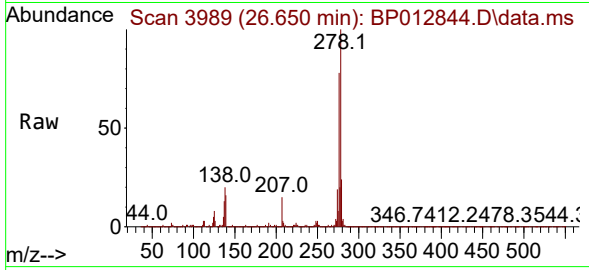
Ion	Ratio	Lower	Upper
276	100		
138	22.0	18.3	27.5
277	25.3	19.8	29.8



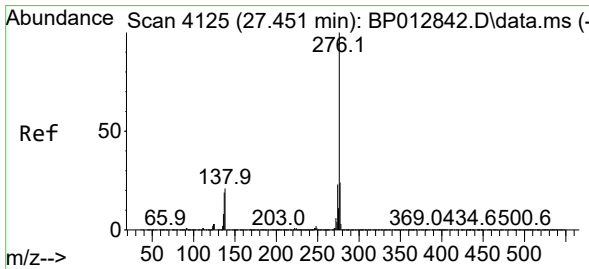
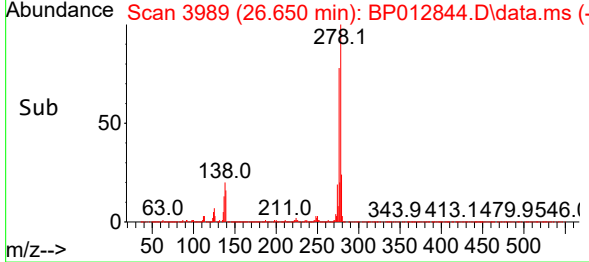
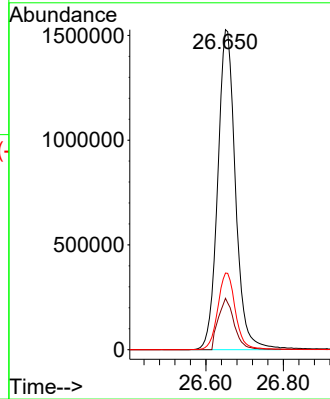


#95  
 Dibenzo(a,h)anthracene  
 Concen: 30.690 ng/ul  
 RT: 26.650 min Scan# 3989  
 Delta R.T. -0.024 min  
 Lab File: BP012844.D  
 Acq: 29 Nov 2022 10:39

Instrument : BNA\_P  
 ClientSampleId : SLCS186



Tgt Ion:278 Resp: 4844894  
 Ion Ratio Lower Upper  
 278 100  
 139 16.0 12.6 18.8  
 279 24.0 19.4 29.2



#96  
 Benzo(g,h,i)perylene  
 Concen: 30.923 ng/ul  
 RT: 27.450 min Scan# 4125  
 Delta R.T. -0.006 min  
 Lab File: BP012844.D  
 Acq: 29 Nov 2022 10:39

Tgt Ion:276 Resp: 4627361  
 Ion Ratio Lower Upper  
 276 100  
 138 19.5 16.7 25.1  
 277 23.4 19.1 28.7

