

Data Path : Z:\svoasrv\HPCHEM1\BNA\_P\Data\BP112922\  
 Data File : BP012844.D  
 Acq On : 29 Nov 2022 10:39  
 Operator : CG/JU  
 Sample : PB149186BS  
 Misc :  
 ALS Vial : 4 Sample Multiplier: 1

Instrument :  
 BNA\_P  
 ClientSampleId :  
 SLCS186

Manual Integrations  
 APPROVED

Reviewed By :Jagrut Upadhyay 11/30/2022  
 Supervised By :mohammad ahmed 11/30/2022

Quant Time: Nov 29 21:56:08 2022  
 Quant Method : Z:\svoasrv\HPCHEM1\BNA\_P\Methods\SFAM-EPA-BP112522.M  
 Quant Title : SVOA CALIBRATION  
 QLast Update : Sun Nov 27 22:55:08 2022  
 Response via : Initial Calibration

| Compound                           | R.T.   | QIon | Response | Conc   | Units | Dev(Min) | Qvalue |
|------------------------------------|--------|------|----------|--------|-------|----------|--------|
| <b>Internal Standards</b>          |        |      |          |        |       |          |        |
| 1) 1,4-Dichlorobenzene-d4          | 8.016  | 152  | 471402   | 20.000 | ng/ul | 0.00     |        |
| 20) Naphthalene-d8                 | 10.828 | 136  | 2151466  | 20.000 | ng/ul | 0.00     |        |
| 38) Acenaphthene-d10               | 14.651 | 164  | 1460866  | 20.000 | ng/ul | 0.00     |        |
| 64) Phenanthrene-d10               | 17.404 | 188  | 3209323  | 20.000 | ng/ul | 0.00     |        |
| 79) Chrysene-d12                   | 21.492 | 240  | 3236965  | 20.000 | ng/ul | 0.00     |        |
| 88) Perylene-d12                   | 23.998 | 264  | 2961400  | 20.000 | ng/ul | -0.01    |        |
| <b>System Monitoring Compounds</b> |        |      |          |        |       |          |        |
| 3) 1,4-Dioxane-d8                  | 3.393  | 96   | 60386    | 5.489  | ng/uL | 0.00     |        |
| 4) Pyridine-d5                     | 3.816  | 84   | 857419   | 26.045 | ng/ul | 0.00     |        |
| 7) Phenol-d5                       | 7.163  | 99   | 1189839  | 30.716 | ng/ul | 0.00     |        |
| 9) Bis-(2-Chloroethyl)eth...       | 7.334  | 67   | 724205   | 30.341 | ng/ul | 0.00     |        |
| 11) 2-Chlorophenol-d4              | 7.540  | 132  | 917341   | 31.079 | ng/ul | 0.00     |        |
| 15) 4-Methylphenol-d8              | 8.716  | 113  | 950508   | 30.455 | ng/ul | 0.00     |        |
| 21) Nitrobenzene-d5                | 9.181  | 128  | 439008   | 33.339 | ng/ul | 0.00     |        |
| 24) 2-Nitrophenol-d4               | 9.904  | 143  | 485676   | 34.735 | ng/ul | 0.00     |        |
| 28) 2,4-Dichlorophenol-d3          | 10.445 | 165  | 998451   | 30.605 | ng/ul | 0.00     |        |
| 31) 4-Chloroaniline-d4             | 10.963 | 131  | 1307456  | 29.266 | ng/ul | 0.00     |        |
| 46) Dimethylphthalate-d6           | 14.057 | 166  | 3117969  | 31.008 | ng/ul | 0.00     |        |
| 49) Acenaphthylene-d8              | 14.345 | 160  | 3541021  | 30.181 | ng/ul | 0.00     |        |
| 54) 4-Nitrophenol-d4               | 14.833 | 143  | 585891   | 32.681 | ng/ul | 0.00     |        |
| 60) Fluorene-d10                   | 15.639 | 176  | 2760735  | 31.350 | ng/ul | 0.00     |        |
| 65) 4,6-Dinitro-2-methylph...      | 15.751 | 200  | 500930   | 32.657 | ng/ul | 0.00     |        |
| 73) Anthracene-d10                 | 17.504 | 188  | 4357944  | 30.848 | ng/ul | 0.00     |        |
| 81) Pyrene-d10                     | 19.727 | 212  | 5233557  | 27.825 | ng/ul | 0.00     |        |
| 92) Benzo(a)pyrene-d12             | 23.839 | 264  | 4616357  | 31.736 | ng/ul | 0.00     |        |
| <b>Target Compounds</b>            |        |      |          |        |       |          |        |
| 2) 1,4-Dioxane                     | 3.428  | 88   | 121503   | 10.284 | ng/uL | 97       |        |
| 5) Pyridine                        | 3.834  | 79   | 853689   | 26.502 | ng/ul | 96       |        |
| 6) Benzaldehyde                    | 7.146  | 77   | 657907   | 34.785 | ng/ul | 99       |        |
| 8) Phenol                          | 7.187  | 94   | 1191006  | 29.322 | ng/ul | 99       |        |
| 10) Bis(2-Chloroethyl)ether        | 7.428  | 93   | 952856   | 28.632 | ng/ul | 99       |        |
| 12) 2-Chlorophenol                 | 7.575  | 128  | 935500   | 29.137 | ng/ul | 100      |        |
| 13) 2-Methylphenol                 | 8.451  | 108  | 908350   | 28.774 | ng/ul | 98       |        |
| 14) 2,2'-oxybis(1-Chloropr...      | 8.545  | 45   | 1352897  | 28.184 | ng/ul | 99       |        |
| 16) Acetophenone                   | 8.840  | 105  | 1482411  | 29.968 | ng/ul | 99       |        |
| 17) N-Nitroso-di-n-propyla...      | 8.828  | 70   | 721861   | 29.623 | ng/ul | 97       |        |
| 18) 4-Methylphenol                 | 8.781  | 108  | 1008891  | 29.019 | ng/ul | 98       |        |
| 19) Hexachloroethane               | 9.104  | 117  | 353616   | 28.720 | ng/ul | 99       |        |
| 22) Nitrobenzene                   | 9.222  | 77   | 1050365  | 30.413 | ng/ul | 99       |        |
| 23) Isophorone                     | 9.751  | 82   | 2097392  | 27.547 | ng/ul | 100      |        |
| 25) 2-Nitrophenol                  | 9.934  | 139  | 530632   | 31.617 | ng/ul | 98       |        |
| 26) 2,4-Dimethylphenol             | 9.992  | 107  | 1002057  | 26.869 | ng/ul | 99       |        |
| 27) Bis(2-Chloroethoxy)met...      | 10.234 | 93   | 1308504  | 28.032 | ng/ul | 99       |        |
| 29) 2,4-Dichlorophenol             | 10.469 | 162  | 973124   | 28.794 | ng/ul | 99       |        |
| 30) Naphthalene                    | 10.881 | 128  | 3190726  | 28.322 | ng/ul | 100      |        |
| 32) 4-Chloroaniline                | 10.986 | 127  | 1277983  | 27.854 | ng/ul | 100      |        |
| 33) Hexachlorobutadiene            | 11.169 | 225  | 617679   | 27.439 | ng/ul | 98       |        |
| 34) Caprolactam                    | 11.757 | 113  | 308919m  | 29.767 | ng/ul |          |        |
| 35) 4-Chloro-3-methylphenol        | 12.098 | 107  | 1028804  | 30.061 | ng/ul | 99       |        |
| 36) 2-Methylnaphthalene            | 12.481 | 142  | 2215023  | 28.552 | ng/ul | 98       |        |

Data Path : Z:\svoasrv\HPCHEM1\BNA\_P\Data\BP112922\  
 Data File : BP012844.D  
 Acq On : 29 Nov 2022 10:39  
 Operator : CG/JU  
 Sample : PB149186BS  
 Misc :  
 ALS Vial : 4 Sample Multiplier: 1

**Instrument :**  
 BNA\_P  
**ClientSampleId :**  
 SLCS186

**Manual Integrations**  
**APPROVED**  
 Reviewed By :Jagrut Upadhyay 11/30/2022  
 Supervised By :mohammad ahmed 11/30/2022

Quant Time: Nov 29 21:56:08 2022  
 Quant Method : Z:\svoasrv\HPCHEM1\BNA\_P\Methods\SFAM-EPA-BP112522.M  
 Quant Title : SVOA CALIBRATION  
 QLast Update : Sun Nov 27 22:55:08 2022  
 Response via : Initial Calibration

| Compound                      | R.T.   | QIon | Response | Conc   | Units | Dev(Min) |
|-------------------------------|--------|------|----------|--------|-------|----------|
| 37) 1-Methylnaphthalene       | 12.698 | 142  | 2249262  | 28.929 | ng/ul | 99       |
| 39) 1,2,4,5-Tetrachloroben... | 12.845 | 216  | 1274736  | 27.364 | ng/ul | 99       |
| 40) Hexachlorocyclopentadiene | 12.828 | 237  | 555808   | 24.762 | ng/ul | 99       |
| 41) 2,4,6-Trichlorophenol     | 13.081 | 196  | 834512   | 28.630 | ng/ul | 100      |
| 42) 2,4,5-Trichlorophenol     | 13.151 | 196  | 910017   | 29.042 | ng/ul | 99       |
| 43) 1,1'-Biphenyl             | 13.486 | 154  | 2991789  | 28.113 | ng/ul | 99       |
| 44) 2-Chloronaphthalene       | 13.528 | 162  | 2390008  | 28.073 | ng/ul | 100      |
| 45) 2-Nitroaniline            | 13.728 | 65   | 602973   | 36.199 | ng/ul | 98       |
| 47) Dimethylphthalate         | 14.104 | 163  | 3083394  | 29.253 | ng/ul | 99       |
| 48) 2,6-Dinitrotoluene        | 14.222 | 165  | 577231   | 34.993 | ng/ul | 98       |
| 50) Acenaphthylene            | 14.375 | 152  | 3694366  | 28.797 | ng/ul | 100      |
| 51) 3-Nitroaniline            | 14.551 | 138  | 588845   | 30.823 | ng/ul | 98       |
| 52) Acenaphthene              | 14.716 | 153  | 2581505  | 28.582 | ng/ul | 99       |
| 53) 2,4-Dinitrophenol         | 14.751 | 184  | 305041   | 28.777 | ng/ul | 96       |
| 55) 4-Nitrophenol             | 14.851 | 109  | 402729   | 30.920 | ng/ul | 94       |
| 56) Dibenzofuran              | 15.045 | 168  | 3643858  | 29.269 | ng/ul | 100      |
| 57) 2,4-Dinitrotoluene        | 15.004 | 165  | 866717   | 35.605 | ng/ul | 100      |
| 58) 2,3,4,6-Tetrachlorophenol | 15.269 | 232  | 821400   | 30.414 | ng/ul | 99       |
| 59) Diethylphthalate          | 15.469 | 149  | 3020310  | 29.602 | ng/ul | 99       |
| 61) Fluorene                  | 15.698 | 166  | 3000076  | 30.049 | ng/ul | 99       |
| 62) 4-Chlorophenyl-phenyle... | 15.692 | 204  | 1534052  | 29.614 | ng/ul | 99       |
| 63) 4-Nitroaniline            | 15.716 | 138  | 599606   | 36.825 | ng/ul | 99       |
| 66) 4,6-Dinitro-2-methylph... | 15.769 | 198  | 516574   | 31.375 | ng/ul | 95       |
| 67) N-Nitrosodiphenylamine    | 15.904 | 169  | 2605295  | 28.564 | ng/ul | 99       |
| 68) 4-Bromophenyl-phenylether | 16.586 | 248  | 956573   | 30.284 | ng/ul | 99       |
| 69) Hexachlorobenzene         | 16.704 | 284  | 1157998  | 28.764 | ng/ul | 97       |
| 70) Atrazine                  | 16.857 | 200  | 917901   | 29.332 | ng/ul | 100      |
| 71) Pentachlorophenol         | 17.045 | 266  | 694940   | 28.109 | ng/ul | 99       |
| 72) Phenanthrene              | 17.445 | 178  | 5003286  | 29.251 | ng/ul | 99       |
| 74) Anthracene                | 17.539 | 178  | 4974121  | 29.395 | ng/ul | 99       |
| 75) 1,2,3,4-Tetrachloroben... | 13.451 | 216  | 1270298  | 25.603 | ng/uL | 99       |
| 76) Pentachlorobenzene        | 14.963 | 250  | 1262869  | 24.486 | ng/uL | 99       |
| 77) Carbazole                 | 17.804 | 167  | 4560108  | 31.855 | ng/ul | 100      |
| 78) Di-n-butylphthalate       | 18.351 | 149  | 5084004  | 30.001 | ng/ul | 100      |
| 80) Fluoranthene              | 19.404 | 202  | 6007480  | 25.678 | ng/ul | 99       |
| 82) Pyrene                    | 19.757 | 202  | 6211660  | 25.671 | ng/ul | 100      |
| 83) Butylbenzylphthalate      | 20.627 | 149  | 2041873  | 36.061 | ng/ul | 92       |
| 84) 3,3'-Dichlorobenzidine    | 21.398 | 252  | 1853588  | 31.182 | ng/ul | 99       |
| 85) Benzo(a)anthracene        | 21.474 | 228  | 6095227  | 27.225 | ng/ul | 99       |
| 86) Bis(2-ethylhexyl)phtha... | 21.386 | 149  | 2939099  | 33.942 | ng/ul | 99       |
| 87) Chrysene                  | 21.527 | 228  | 5718359  | 26.416 | ng/ul | 100      |
| 89) Di-n-octyl phthalate      | 22.351 | 149  | 4699008  | 27.786 | ng/ul | 100      |
| 90) Benzo(b)fluoranthene      | 23.233 | 252  | 5904612  | 26.925 | ng/ul | 100      |
| 91) Benzo(k)fluoranthene      | 23.280 | 252  | 5792537  | 26.462 | ng/ul | 99       |
| 93) Benzo(a)pyrene            | 23.892 | 252  | 5030983  | 27.899 | ng/ul | 99       |
| 94) Indeno(1,2,3-cd)pyrene    | 26.633 | 276  | 5485567  | 31.531 | ng/ul | 99       |
| 95) Dibenzo(a,h)anthracene    | 26.650 | 278  | 4844894  | 30.690 | ng/ul | 99       |
| 96) Benzo(g,h,i)perylene      | 27.450 | 276  | 4627361  | 30.923 | ng/ul | 98       |

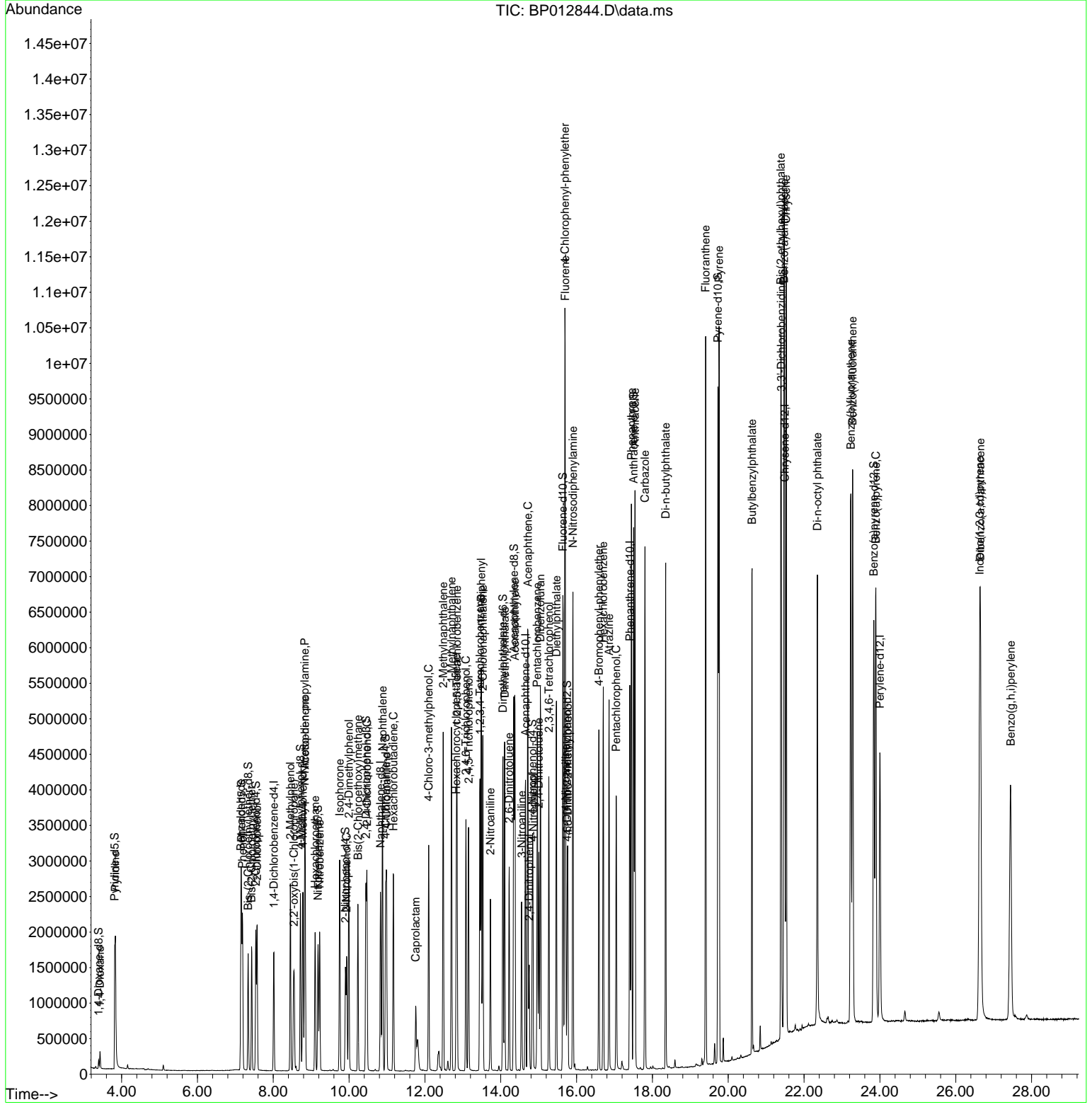
(#) = qualifier out of range (m) = manual integration (+) = signals summed

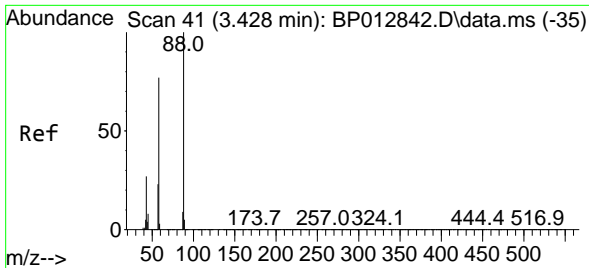
Data Path : Z:\svoasrv\HPCHEM1\BNA\_P\Data\BP112922\  
 Data File : BP012844.D  
 Acq On : 29 Nov 2022 10:39  
 Operator : CG/JU  
 Sample : PB149186BS  
 Misc :  
 ALS Vial : 4 Sample Multiplier: 1

Instrument :  
 BNA\_P  
 ClientSampleId :  
 SLCS186

Quant Time: Nov 29 21:56:08 2022  
 Quant Method : Z:\svoasrv\HPCHEM1\BNA\_P\Methods\SFAM-EPA-BP112522.M  
 Quant Title : SVOA CALIBRATION  
 QLast Update : Sun Nov 27 22:55:08 2022  
 Response via : Initial Calibration

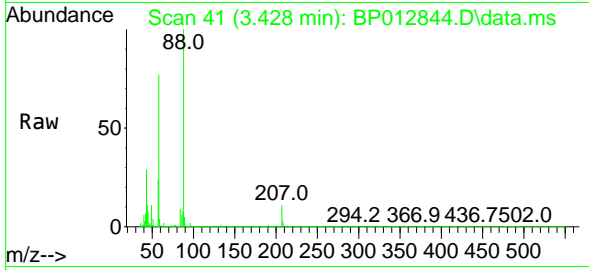
Manual Integrations  
**APPROVED**  
 Reviewed By :Jagrut Upadhyay 11/30/2022  
 Supervised By :mohammad ahmed 11/30/2022





#2  
 1,4-Dioxane  
 Concen: 10.284 ng/uL  
 RT: 3.428 min Scan# 41  
 Delta R.T. -0.006 min  
 Lab File: BP012844.D  
 Acq: 29 Nov 2022 10:39

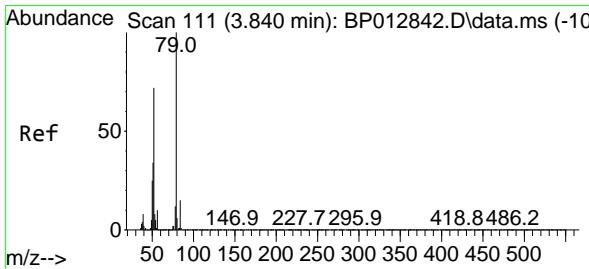
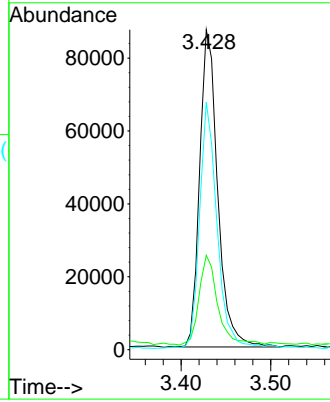
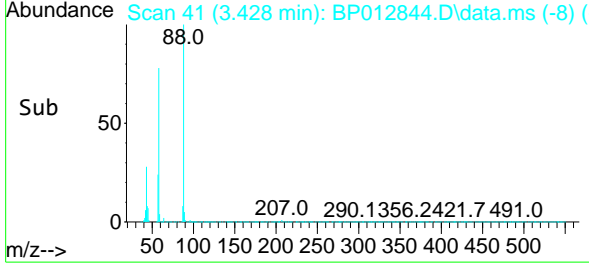
Instrument :  
 BNA\_P  
 ClientSampleId :  
 SLCS186



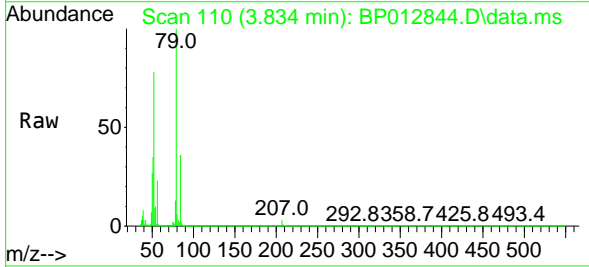
Tgt Ion: 88 Resp: 121500  
 Ion Ratio Lower Upper  
 88 100  
 43 29.5 22.6 34.0  
 58 77.4 59.6 89.4

Manual Integrations  
 APPROVED

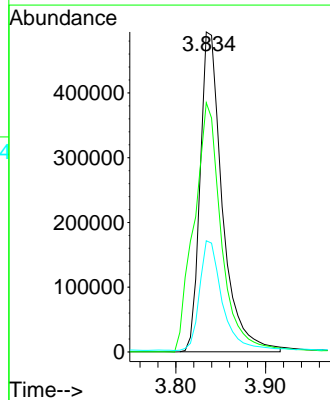
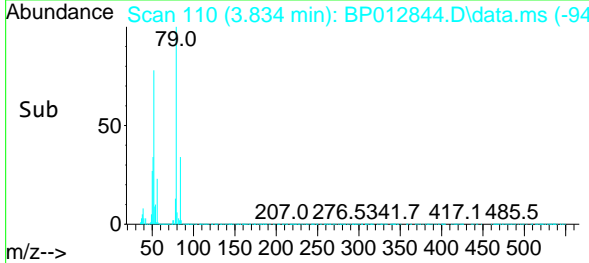
Reviewed By :Jagrut Upadhyay 11/30/2022  
 Supervised By :mohammad ahmed 11/30/2022

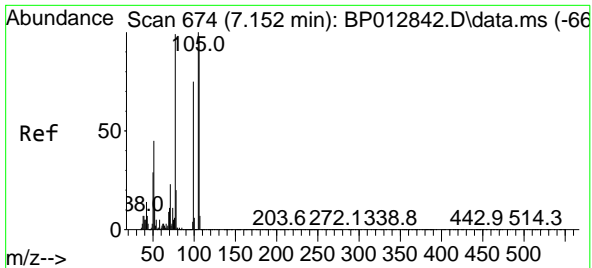


#5  
 Pyridine  
 Concen: 26.502 ng/uL  
 RT: 3.834 min Scan# 110  
 Delta R.T. -0.006 min  
 Lab File: BP012844.D  
 Acq: 29 Nov 2022 10:39



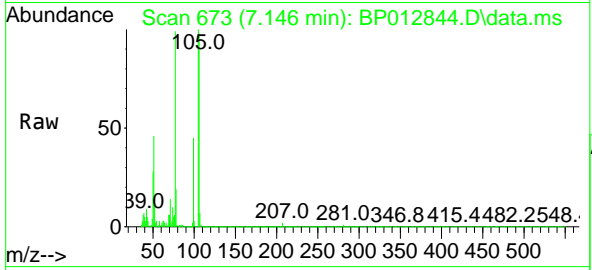
Tgt Ion: 79 Resp: 853689  
 Ion Ratio Lower Upper  
 79 100  
 52 77.9 58.9 88.3  
 51 34.8 27.3 40.9





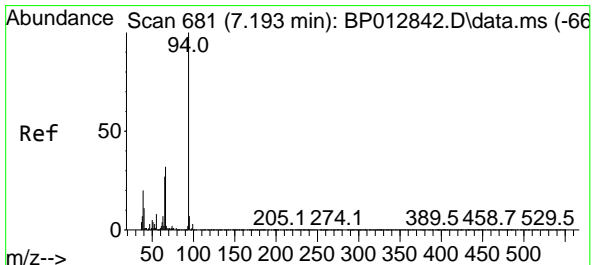
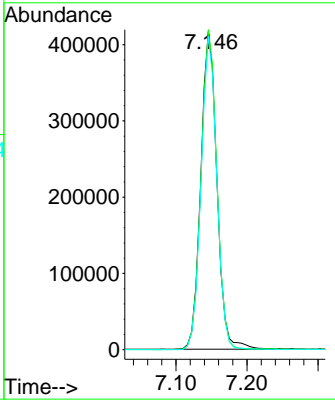
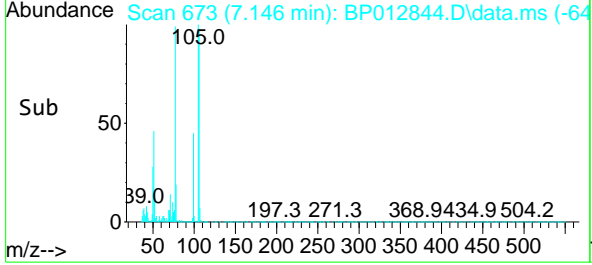
#6  
Benzaldehyde  
Concen: 34.785 ng/u1  
RT: 7.146 min Scan# 61  
Delta R.T. -0.006 min  
Lab File: BP012844.D  
Acq: 29 Nov 2022 10:39

Instrument : BNA\_P  
ClientSampleId : SLCS186

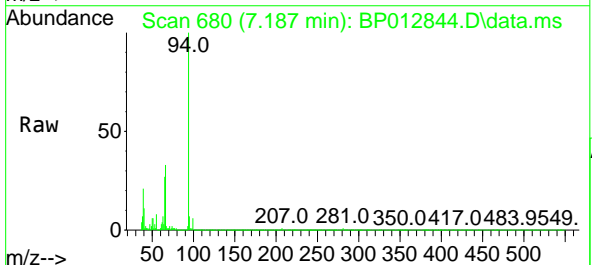


Tgt Ion: 77 Resp: 65790  
Ion Ratio Lower Upper  
77 100  
105 100.6 81.4 122.2  
106 98.5 77.4 116.0

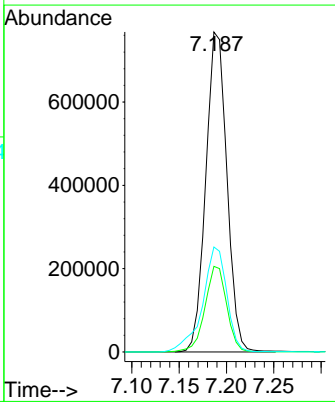
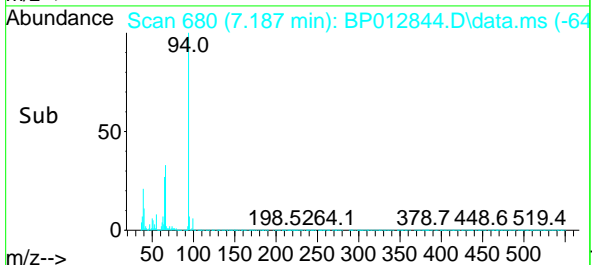
Manual Integrations  
**APPROVED**  
Reviewed By :Jagrut Upadhyay 11/30/2022  
Supervised By :mohammad ahmed 11/30/2022

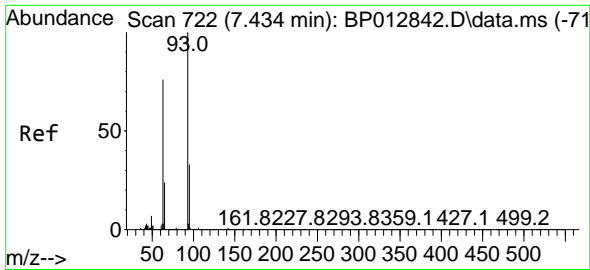


#8  
Phenol  
Concen: 29.322 ng/u1  
RT: 7.187 min Scan# 680  
Delta R.T. -0.006 min  
Lab File: BP012844.D  
Acq: 29 Nov 2022 10:39



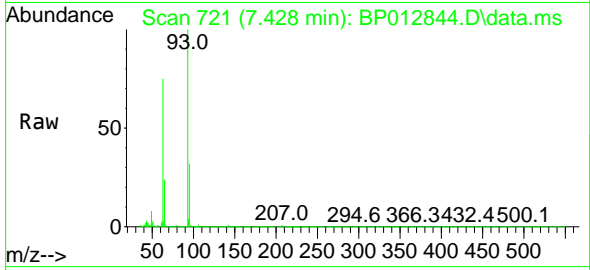
Tgt Ion: 94 Resp: 1191006  
Ion Ratio Lower Upper  
94 100  
65 26.8 20.9 31.3  
66 32.8 26.0 39.0





#10  
 Bis(2-Chloroethyl)ether  
 Concen: 28.632 ng/ul  
 RT: 7.428 min Scan# 721  
 Delta R.T. -0.006 min  
 Lab File: BP012844.D  
 Acq: 29 Nov 2022 10:39

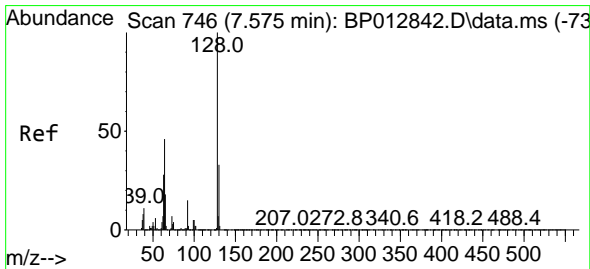
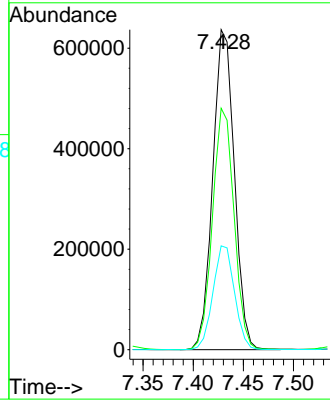
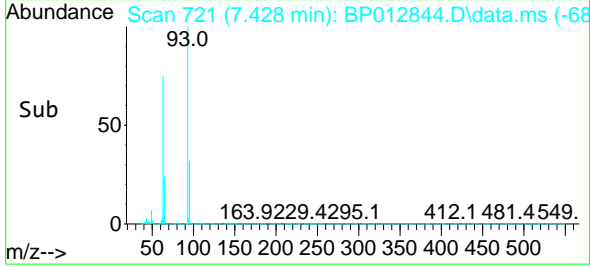
Instrument :  
 BNA\_P  
 ClientSampleId :  
 SLCS186



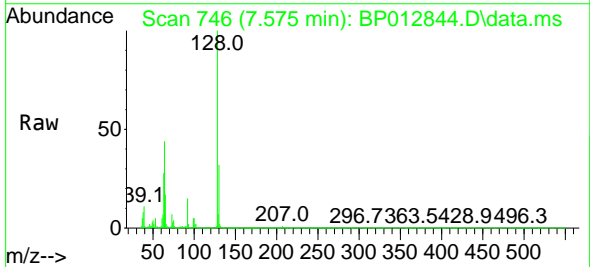
Tgt Ion: 93 Resp: 952850  
 Ion Ratio Lower Upper  
 93 100  
 63 75.5 59.7 89.5  
 95 32.4 25.8 38.6

Manual Integrations  
 APPROVED

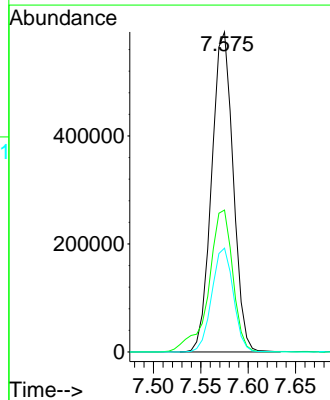
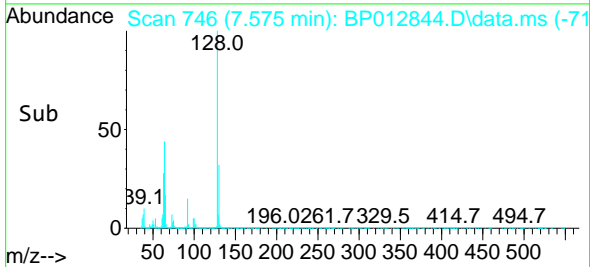
Reviewed By :Jagrut Upadhyay 11/30/2022  
 Supervised By :mohammad ahmed 11/30/2022

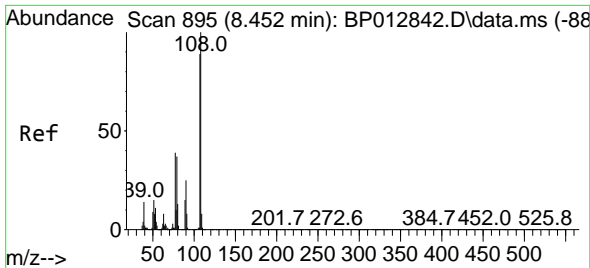


#12  
 2-Chlorophenol  
 Concen: 29.137 ng/ul  
 RT: 7.575 min Scan# 746  
 Delta R.T. -0.000 min  
 Lab File: BP012844.D  
 Acq: 29 Nov 2022 10:39



Tgt Ion:128 Resp: 935500  
 Ion Ratio Lower Upper  
 128 100  
 64 44.4 35.6 53.4  
 130 32.4 26.0 39.0





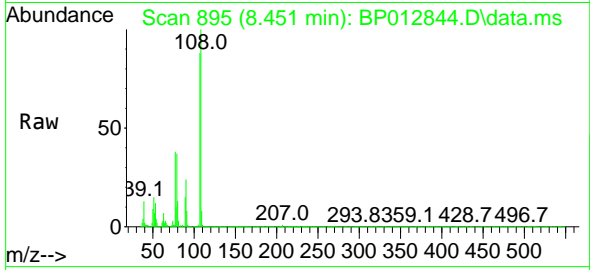
#13  
 2-Methylphenol  
 Concen: 28.774 ng/ul  
 RT: 8.451 min Scan# 895  
 Delta R.T. -0.006 min  
 Lab File: BP012844.D  
 Acq: 29 Nov 2022 10:39

Instrument :

BNA\_P

Client SampleId :

SLCS186

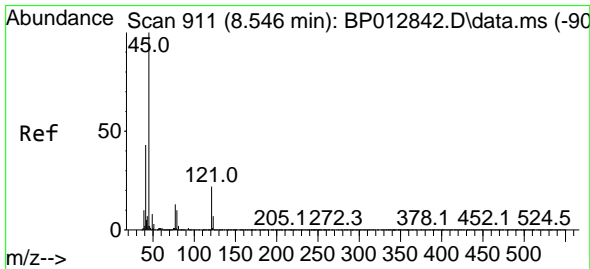
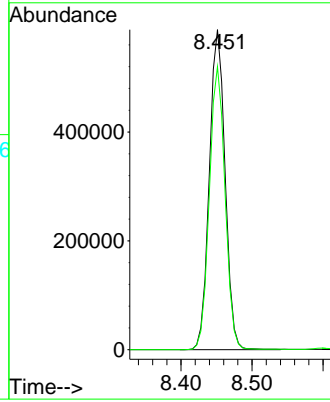
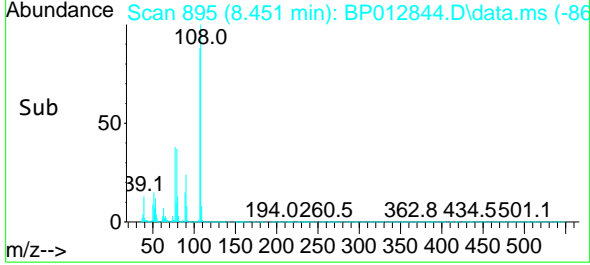


Tgt Ion: 108 Resp: 908350  
 Ion Ratio Lower Upper  
 108 100  
 107 88.5 69.3 103.9

Manual Integrations

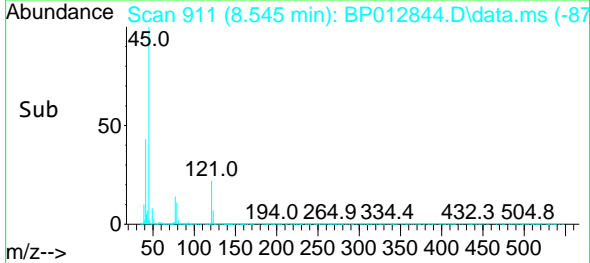
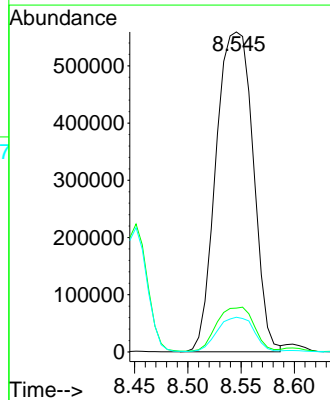
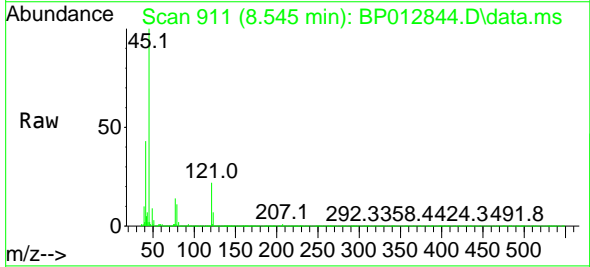
APPROVED

Reviewed By :Jagrut Upadhyay 11/30/2022  
 Supervised By :mohammad ahmed 11/30/2022

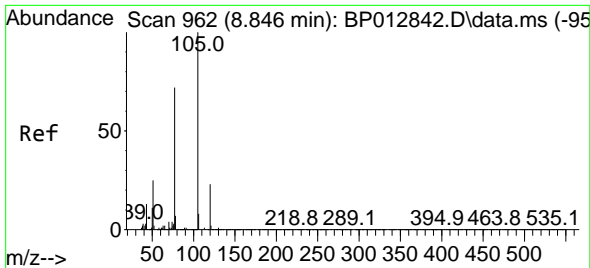


#14  
 2,2'-oxybis(1-Chloropropane)  
 Concen: 28.184 ng/ul  
 RT: 8.545 min Scan# 911  
 Delta R.T. -0.000 min  
 Lab File: BP012844.D  
 Acq: 29 Nov 2022 10:39

Tgt Ion: 45 Resp: 1352897  
 Ion Ratio Lower Upper  
 45 100  
 77 13.7 11.3 16.9  
 79 10.8 8.6 12.8







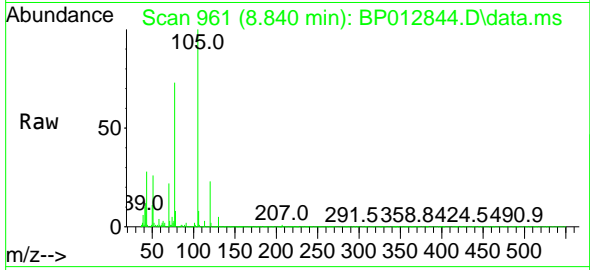
#16  
 Acetophenone  
 Concen: 29.968 ng/uI  
 RT: 8.840 min Scan# 901  
 Delta R.T. -0.006 min  
 Lab File: BP012844.D  
 Acq: 29 Nov 2022 10:39

Instrument :

BNA\_P

Client SampleId :

SLCS186

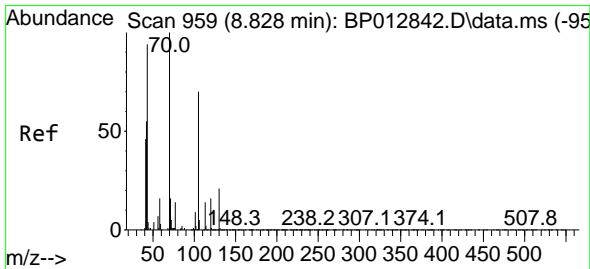
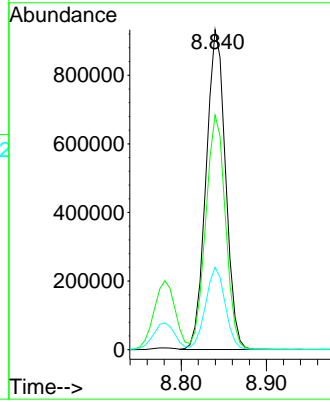
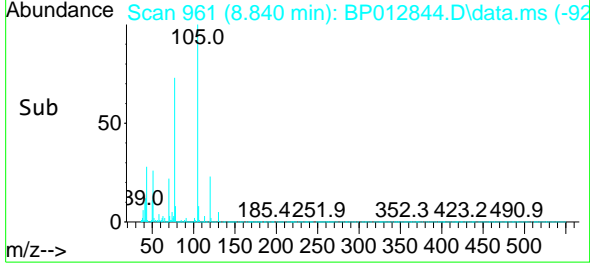


Tgt Ion: 105 Resp: 148241  
 Ion Ratio Lower Upper  
 105 100  
 77 73.3 59.7 89.5  
 51 25.7 20.9 31.3

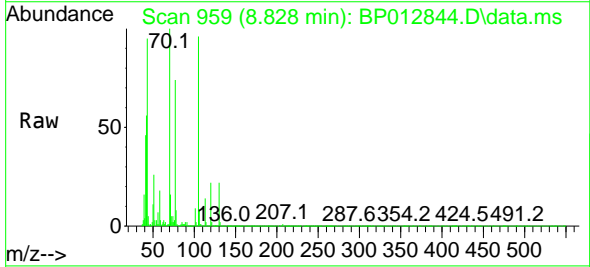
Manual Integrations

APPROVED

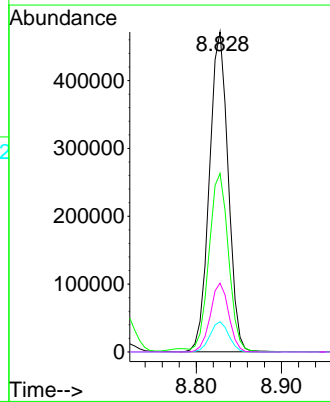
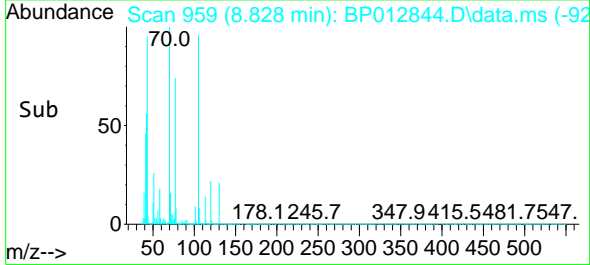
Reviewed By :Jagrut Upadhyay 11/30/2022  
 Supervised By :mohammad ahmed 11/30/2022



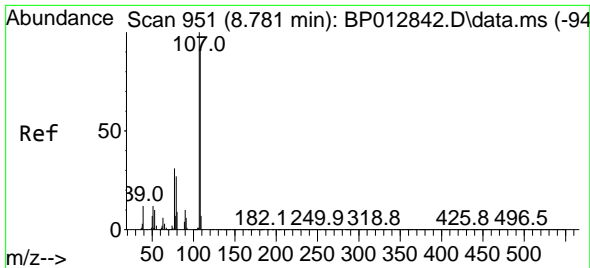
#17  
 N-Nitroso-di-n-propylamine  
 Concen: 29.623 ng/uI  
 RT: 8.828 min Scan# 959  
 Delta R.T. -0.006 min  
 Lab File: BP012844.D  
 Acq: 29 Nov 2022 10:39



Tgt Ion: 70 Resp: 721861  
 Ion Ratio Lower Upper  
 70 100  
 42 55.8 46.1 69.1  
 101 9.5 7.4 11.2  
 130 21.5 15.8 23.6







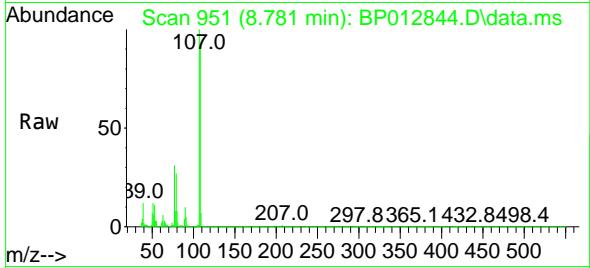
#18  
 4-Methylphenol  
 Concen: 29.019 ng/ul  
 RT: 8.781 min Scan# 91  
 Delta R.T. -0.006 min  
 Lab File: BP012844.D  
 Acq: 29 Nov 2022 10:39

Instrument :

BNA\_P

ClientSampleId :

SLCS186

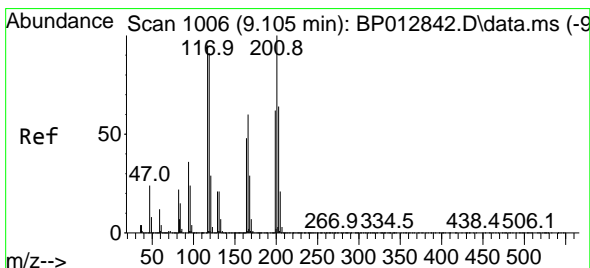
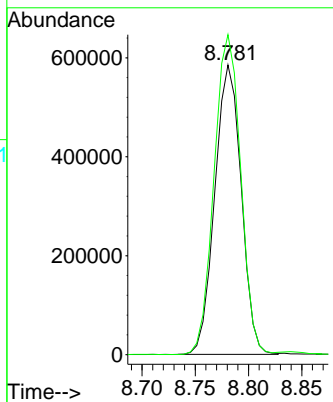
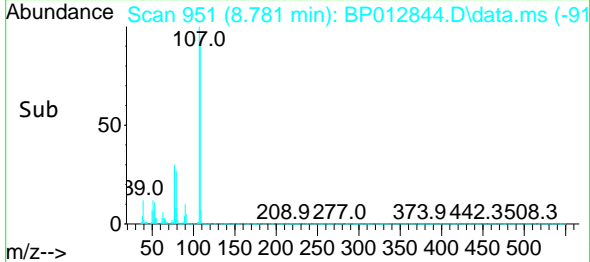


Tgt Ion:108 Resp: 100889  
 Ion Ratio Lower Upper  
 108 100  
 107 110.4 90.2 135.2

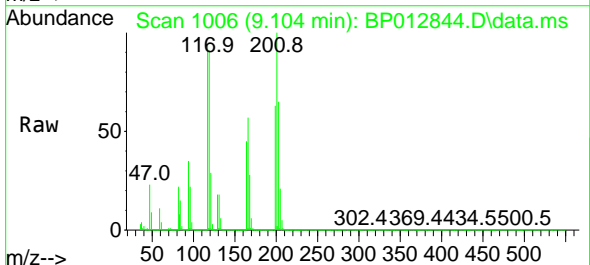
Manual Integrations

APPROVED

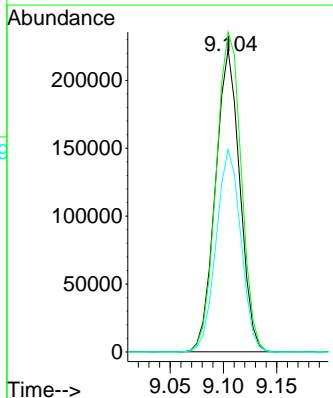
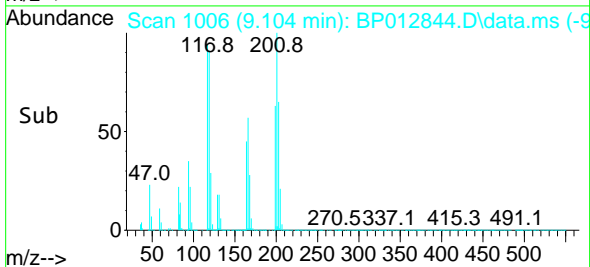
Reviewed By :Jagrut Upadhyay 11/30/2022  
 Supervised By :mohammad ahmed 11/30/2022

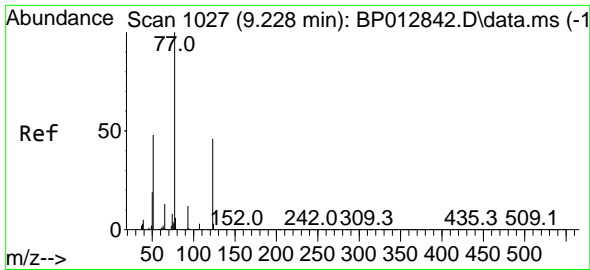


#19  
 Hexachloroethane  
 Concen: 28.720 ng/ul  
 RT: 9.104 min Scan# 1006  
 Delta R.T. -0.006 min  
 Lab File: BP012844.D  
 Acq: 29 Nov 2022 10:39



Tgt Ion:117 Resp: 353616  
 Ion Ratio Lower Upper  
 117 100  
 201 105.9 85.7 128.5  
 199 67.0 52.9 79.3





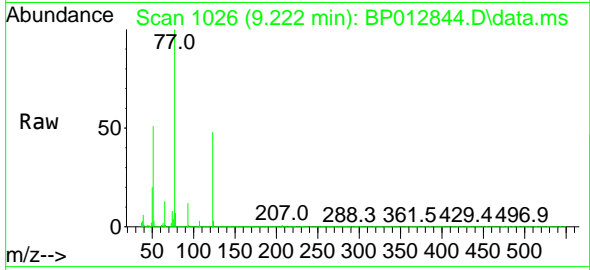
#22  
 Nitrobenzene  
 Concen: 30.413 ng/u1  
 RT: 9.222 min Scan# 1026  
 Delta R.T. -0.006 min  
 Lab File: BP012844.D  
 Acq: 29 Nov 2022 10:39

Instrument :

BNA\_P

ClientSampleId :

SLCS186

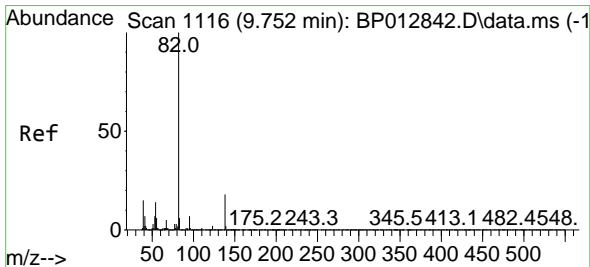
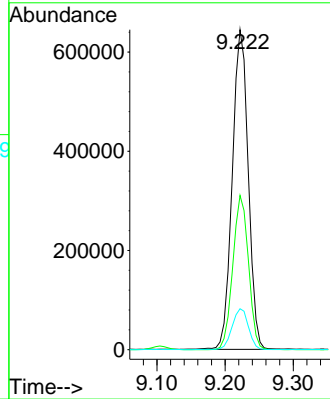
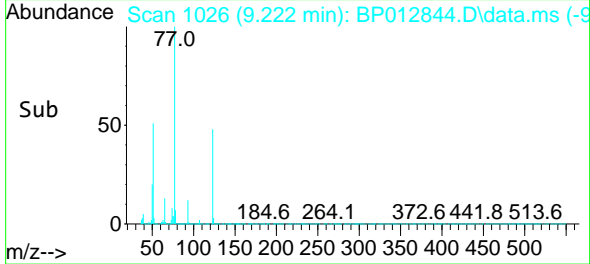


Tgt Ion: 77 Resp: 105036  
 Ion Ratio Lower Upper  
 77 100  
 123 48.2 38.2 57.2  
 65 12.8 10.2 15.4

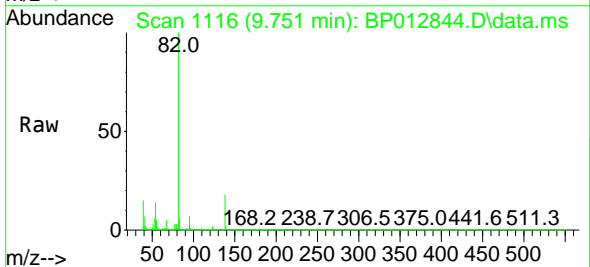
Manual Integrations

APPROVED

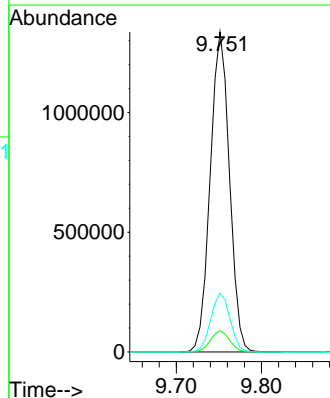
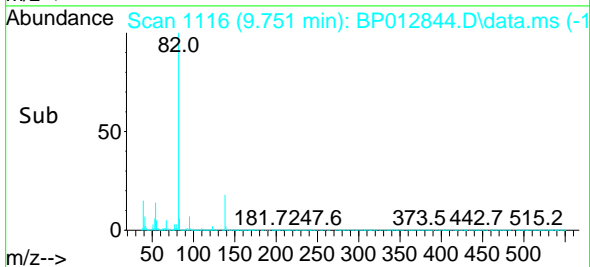
Reviewed By :Jagrut Upadhyay 11/30/2022  
 Supervised By :mohammad ahmed 11/30/2022

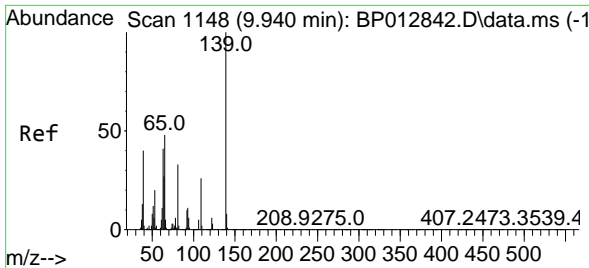


#23  
 Isophorone  
 Concen: 27.547 ng/u1  
 RT: 9.751 min Scan# 1116  
 Delta R.T. -0.006 min  
 Lab File: BP012844.D  
 Acq: 29 Nov 2022 10:39



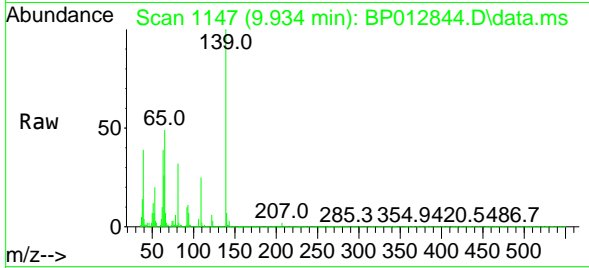
Tgt Ion: 82 Resp: 2097392  
 Ion Ratio Lower Upper  
 82 100  
 95 6.6 5.2 7.8  
 138 18.3 14.5 21.7





#25  
 2-Nitrophenol  
 Concen: 31.617 ng/ul  
 RT: 9.934 min Scan# 1147  
 Delta R.T. -0.006 min  
 Lab File: BP012844.D  
 Acq: 29 Nov 2022 10:39

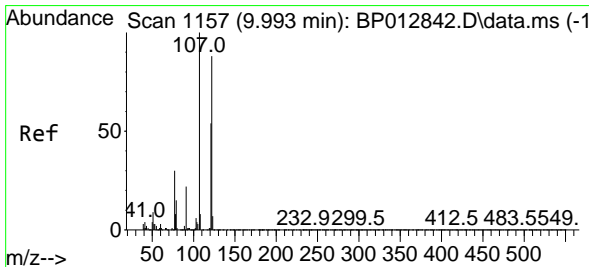
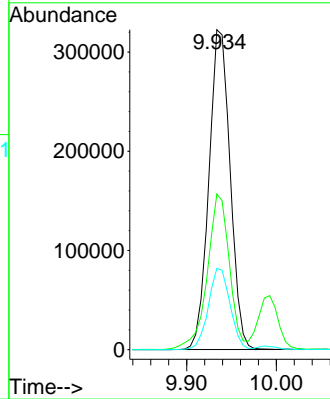
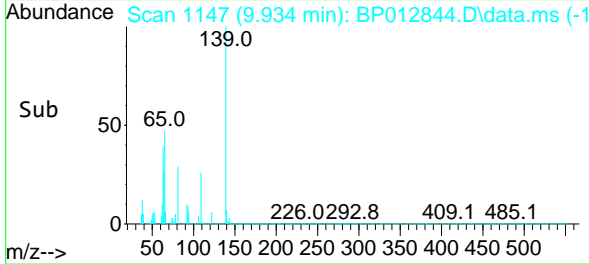
Instrument : BNA\_P  
 ClientSampleId : SLCS186



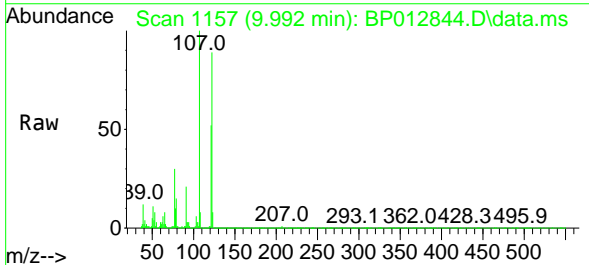
Tgt Ion:139 Resp: 53063  
 Ion Ratio Lower Upper  
 139 100  
 65 48.7 39.5 59.3  
 109 25.4 21.4 32.0

Manual Integrations  
**APPROVED**

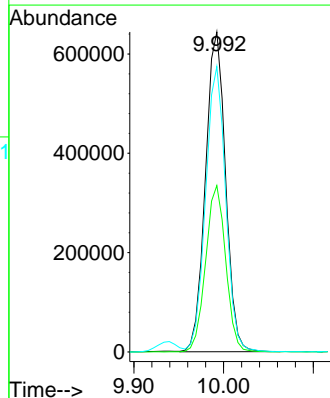
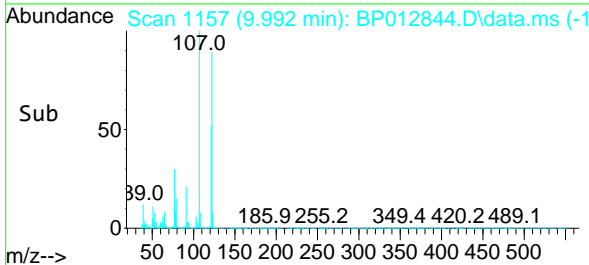
Reviewed By :Jagrut Upadhyay 11/30/2022  
 Supervised By :mohammad ahmed 11/30/2022

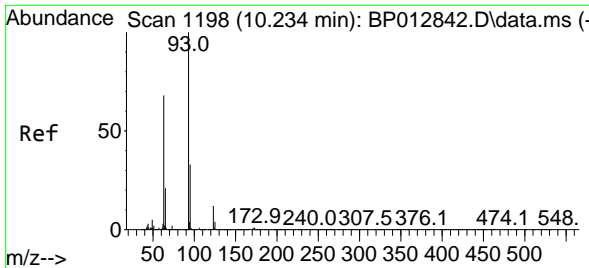


#26  
 2,4-Dimethylphenol  
 Concen: 26.869 ng/ul  
 RT: 9.992 min Scan# 1157  
 Delta R.T. -0.006 min  
 Lab File: BP012844.D  
 Acq: 29 Nov 2022 10:39



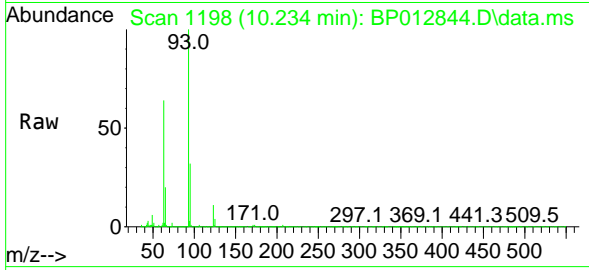
Tgt Ion:107 Resp: 1002057  
 Ion Ratio Lower Upper  
 107 100  
 121 52.0 41.8 62.6  
 122 89.2 72.3 108.5





#27  
 Bis(2-Chloroethoxy)methane  
 Concen: 28.032 ng/ul  
 RT: 10.234 min Scan# 1198  
 Delta R.T. -0.006 min  
 Lab File: BP012844.D  
 Acq: 29 Nov 2022 10:39

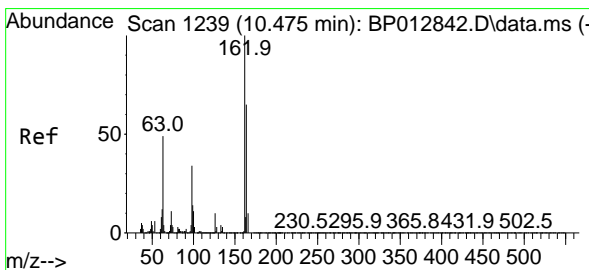
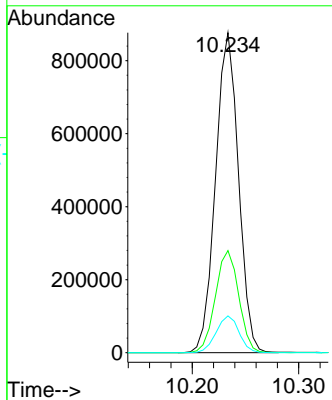
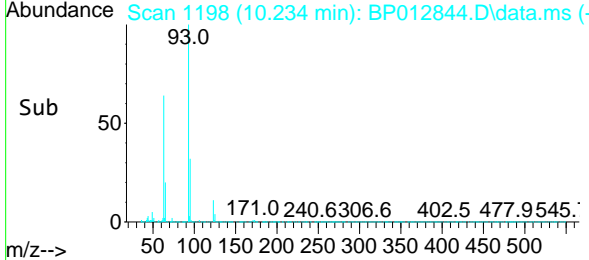
Instrument : BNA\_P  
 Client Sample Id : SLCS186



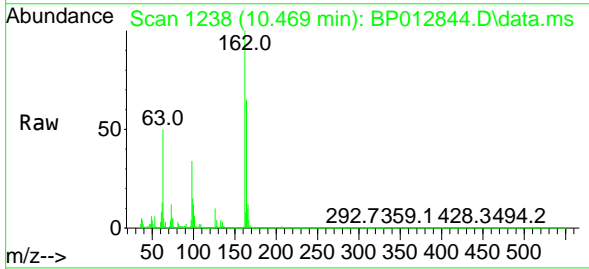
Tgt Ion: 93 Resp: 1308504  
 Ion Ratio Lower Upper  
 93 100  
 95 31.9 26.1 39.1  
 123 11.5 9.0 13.6

Manual Integrations  
 APPROVED

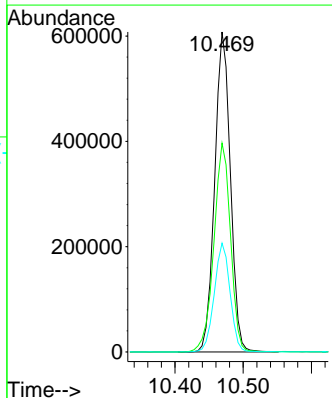
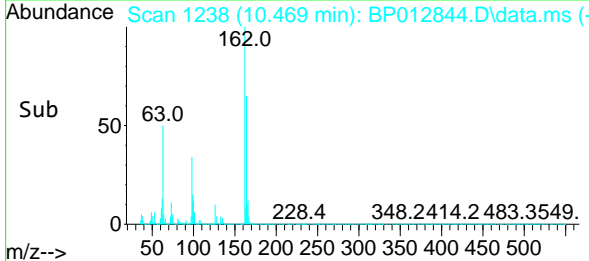
Reviewed By :Jagrut Upadhyay 11/30/2022  
 Supervised By :mohammad ahmed 11/30/2022

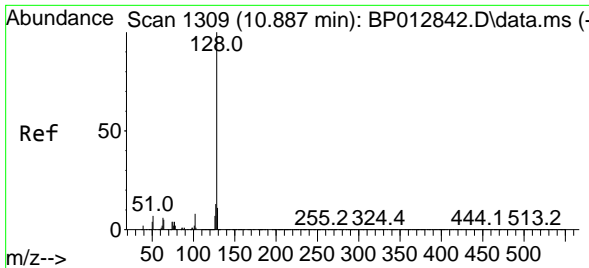


#29  
 2,4-Dichlorophenol  
 Concen: 28.794 ng/ul  
 RT: 10.469 min Scan# 1238  
 Delta R.T. -0.006 min  
 Lab File: BP012844.D  
 Acq: 29 Nov 2022 10:39



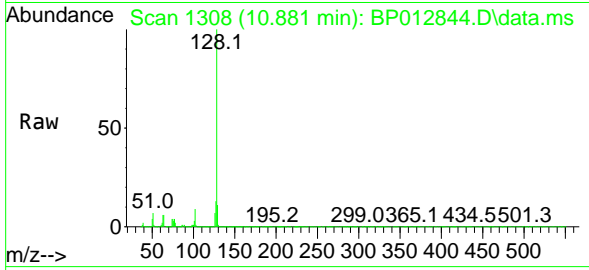
Tgt Ion:162 Resp: 973124  
 Ion Ratio Lower Upper  
 162 100  
 164 65.2 52.9 79.3  
 98 34.0 26.6 40.0





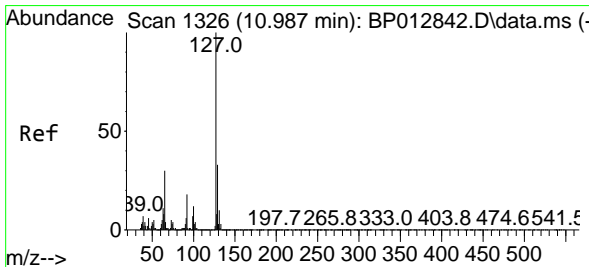
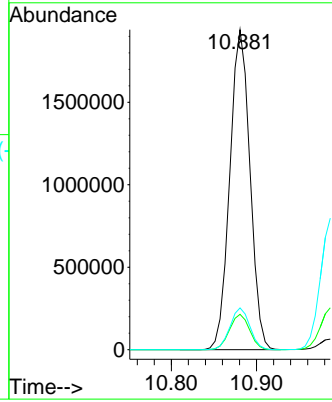
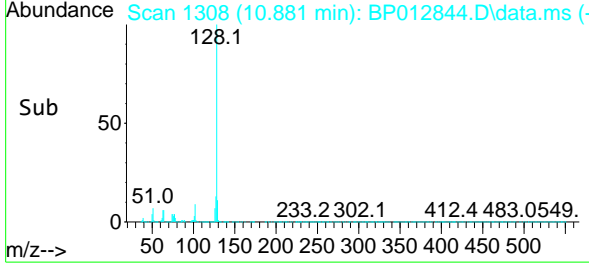
#30  
 Naphthalene  
 Concen: 28.322 ng/u1  
 RT: 10.881 min Scan# 1309  
 Delta R.T. -0.006 min  
 Lab File: BP012844.D  
 Acq: 29 Nov 2022 10:39

Instrument : BNA\_P  
 Client Sample Id : SLCS186



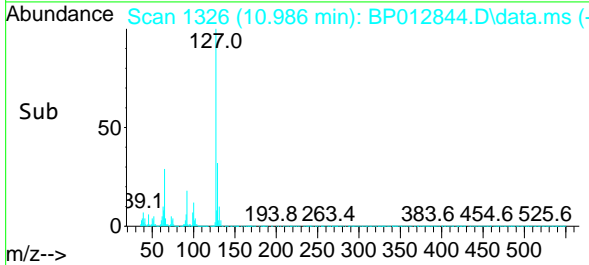
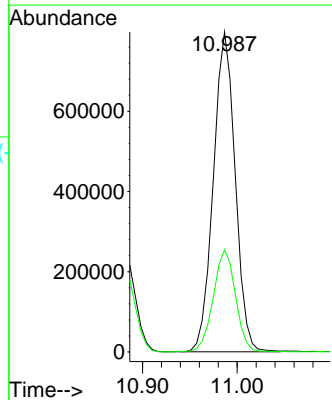
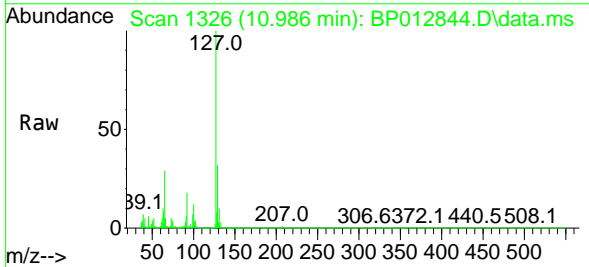
Tgt Ion:128 Resp: 3190720  
 Ion Ratio Lower Upper  
 128 100  
 129 11.1 8.7 13.1  
 127 13.1 10.4 15.6

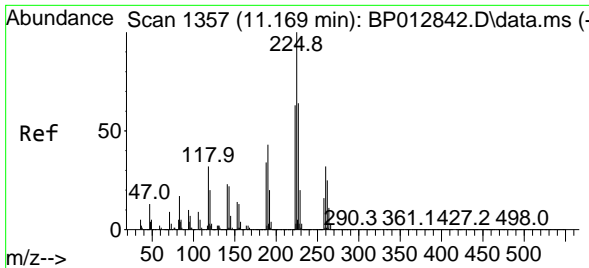
Manual Integrations  
**APPROVED**  
 Reviewed By :Jagrut Upadhyay 11/30/2022  
 Supervised By :mohammad ahmed 11/30/2022



#32  
 4-Chloroaniline  
 Concen: 27.854 ng/u1  
 RT: 10.986 min Scan# 1326  
 Delta R.T. -0.006 min  
 Lab File: BP012844.D  
 Acq: 29 Nov 2022 10:39

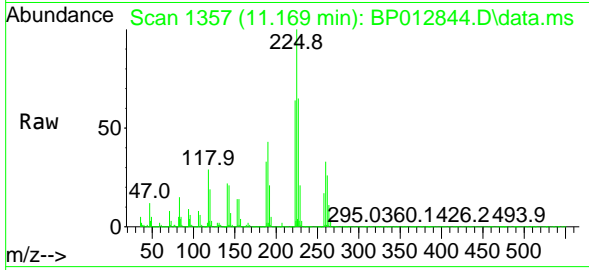
Tgt Ion:127 Resp: 1277983  
 Ion Ratio Lower Upper  
 127 100  
 129 31.9 25.7 38.5





#33  
 Hexachlorobutadiene  
 Concen: 27.439 ng/u1  
 RT: 11.169 min Scan# 11  
 Delta R.T. -0.006 min  
 Lab File: BP012844.D  
 Acq: 29 Nov 2022 10:39

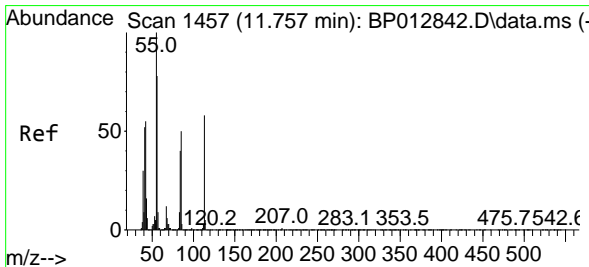
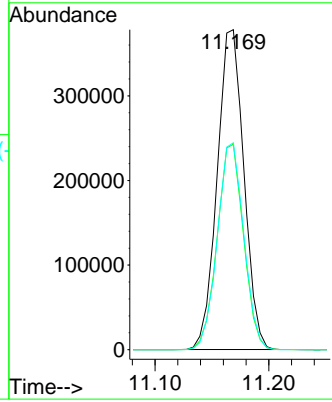
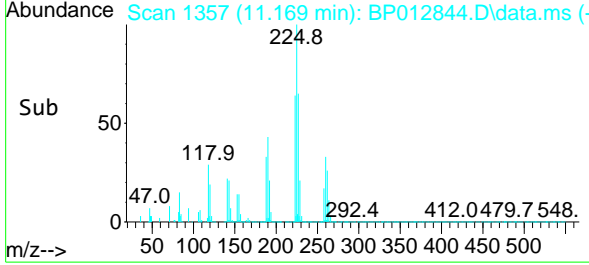
Instrument : BNA\_P  
 ClientSampleId : SLCS186



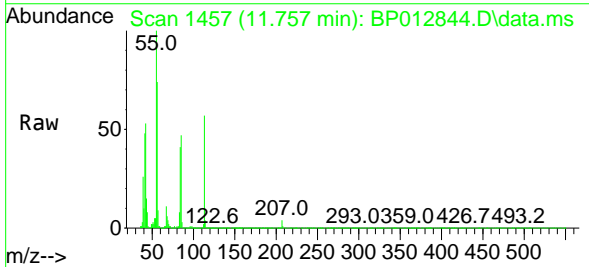
Tgt Ion:225 Resp: 617679  
 Ion Ratio Lower Upper  
 225 100  
 223 64.2 49.6 74.4  
 227 64.6 51.0 76.6

Manual Integrations  
 APPROVED

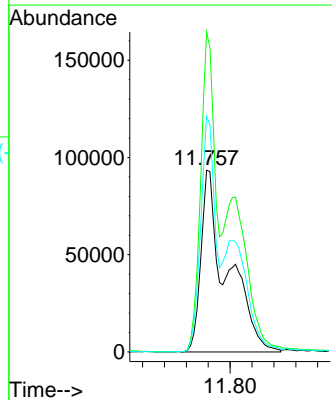
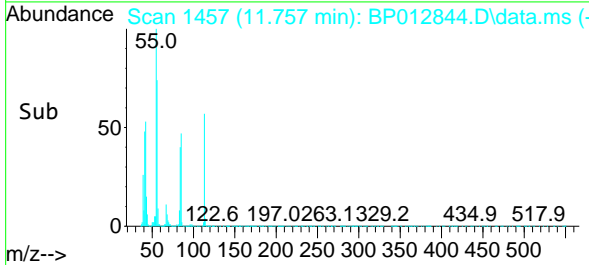
Reviewed By :Jagrut Upadhyay 11/30/2022  
 Supervised By :mohammad ahmed 11/30/2022

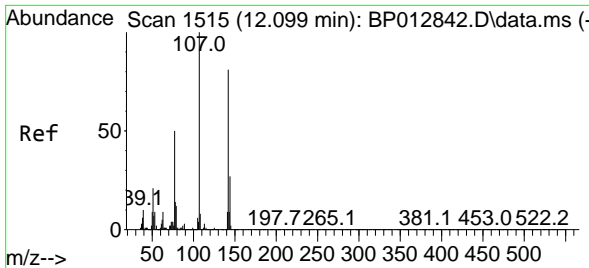


#34  
 Caprolactam  
 Concen: 29.767 ng/u1 m  
 RT: 11.757 min Scan# 1457  
 Delta R.T. -0.000 min  
 Lab File: BP012844.D  
 Acq: 29 Nov 2022 10:39



Tgt Ion:113 Resp: 308919  
 Ion Ratio Lower Upper  
 113 100  
 55 176.0 145.9 218.9  
 56 129.8 107.1 160.7





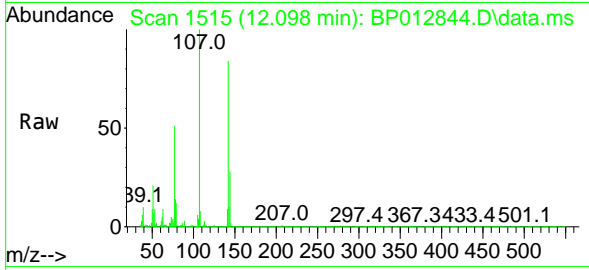
#35  
 4-Chloro-3-methylphenol  
 Concen: 30.061 ng/ul  
 RT: 12.098 min Scan# 1515  
 Delta R.T. -0.006 min  
 Lab File: BP012844.D  
 Acq: 29 Nov 2022 10:39

Instrument :

BNA\_P

ClientSampleId :

SLCS186

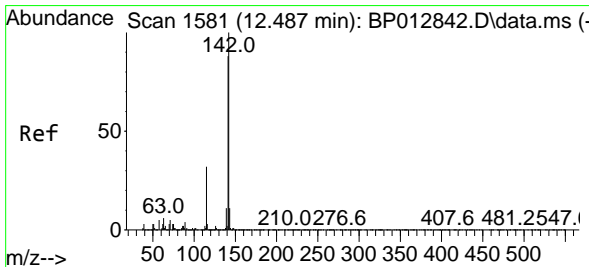
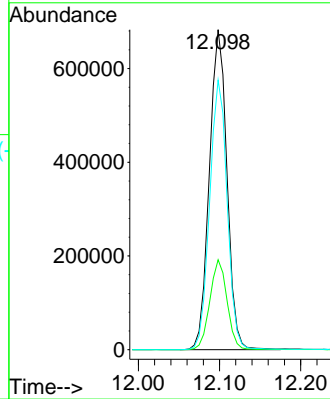
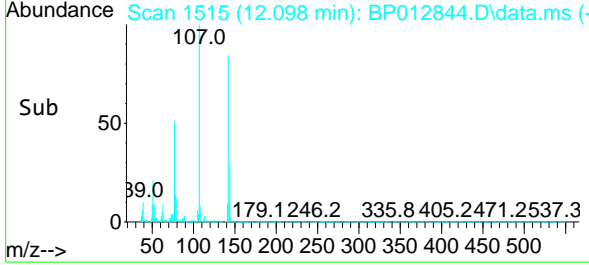


Tgt Ion:107 Resp: 1028804  
 Ion Ratio Lower Upper  
 107 100  
 144 28.1 21.4 32.2  
 142 84.2 66.6 100.0

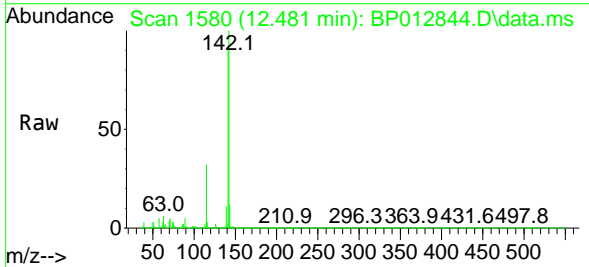
Manual Integrations

APPROVED

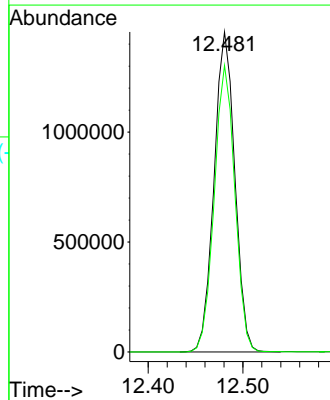
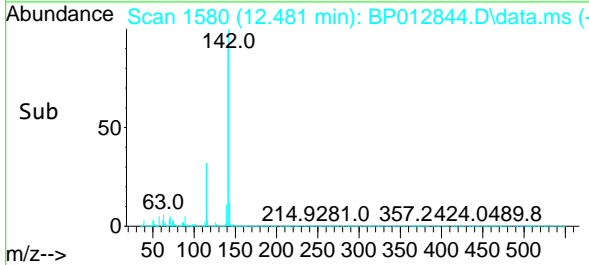
Reviewed By :Jagrut Upadhyay 11/30/2022  
 Supervised By :mohammad ahmed 11/30/2022



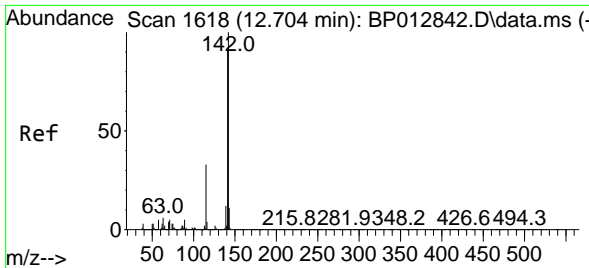
#36  
 2-Methylnaphthalene  
 Concen: 28.552 ng/ul  
 RT: 12.481 min Scan# 1580  
 Delta R.T. -0.006 min  
 Lab File: BP012844.D  
 Acq: 29 Nov 2022 10:39



Tgt Ion:142 Resp: 2215023  
 Ion Ratio Lower Upper  
 142 100  
 141 89.6 70.2 105.2







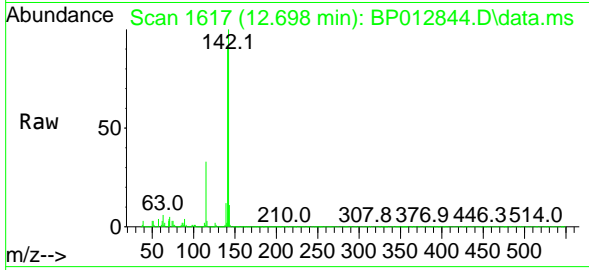
#37  
 1-Methylnaphthalene  
 Concen: 28.929 ng/uI  
 RT: 12.698 min Scan# 1617  
 Delta R.T. -0.006 min  
 Lab File: BP012844.D  
 Acq: 29 Nov 2022 10:39

Instrument :

BNA\_P

Client SampleId :

SLCS186

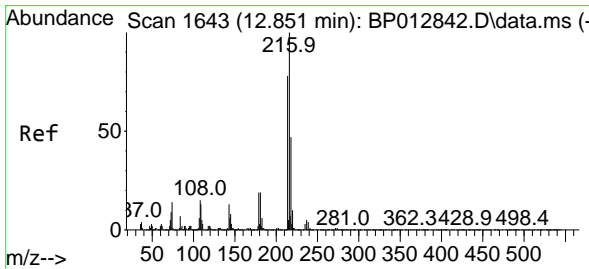
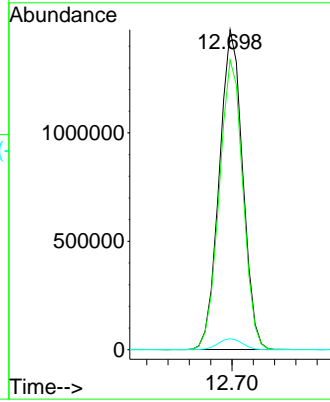
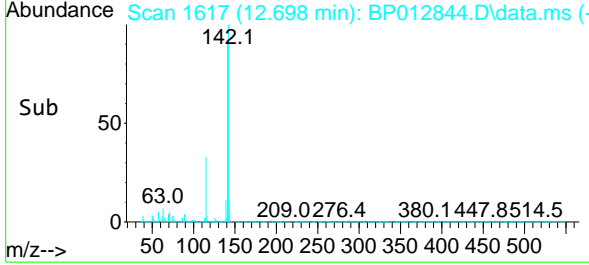


Tgt Ion:142 Resp: 224926  
 Ion Ratio Lower Upper  
 142 100  
 141 90.6 73.3 109.9  
 116 3.5 2.9 4.3

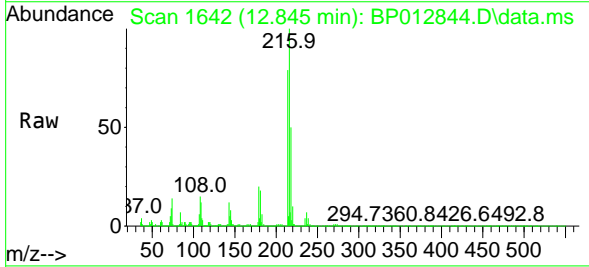
Manual Integrations

APPROVED

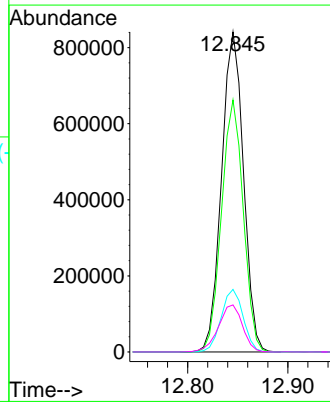
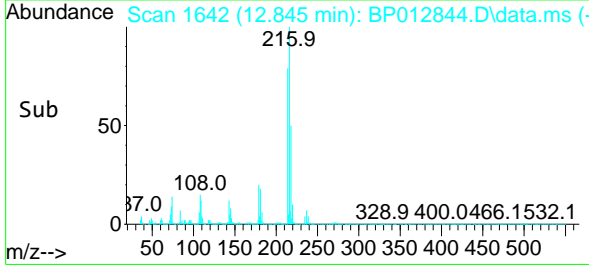
Reviewed By :Jagrut Upadhyay 11/30/2022  
 Supervised By :mohammad ahmed 11/30/2022

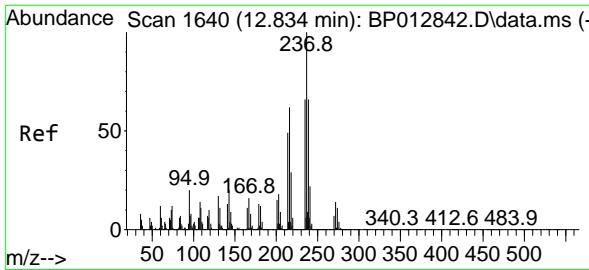


#39  
 1,2,4,5-Tetrachlorobenzene  
 Concen: 27.364 ng/uI  
 RT: 12.845 min Scan# 1642  
 Delta R.T. -0.006 min  
 Lab File: BP012844.D  
 Acq: 29 Nov 2022 10:39



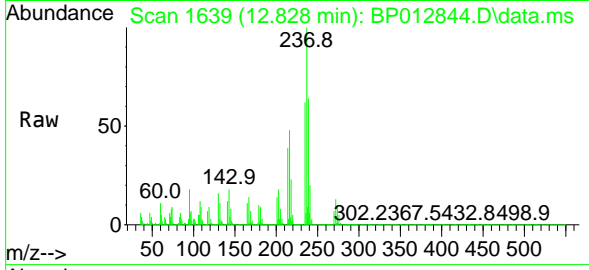
Tgt Ion:216 Resp: 1274736  
 Ion Ratio Lower Upper  
 216 100  
 214 78.7 63.0 94.6  
 179 19.5 16.2 24.4  
 108 14.7 12.7 19.1





#40  
 Hexachlorocyclopentadiene  
 Concen: 24.762 ng/u1  
 RT: 12.828 min Scan# 1639  
 Delta R.T. -0.006 min  
 Lab File: BP012844.D  
 Acq: 29 Nov 2022 10:39

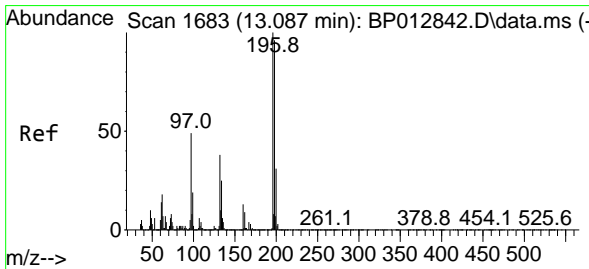
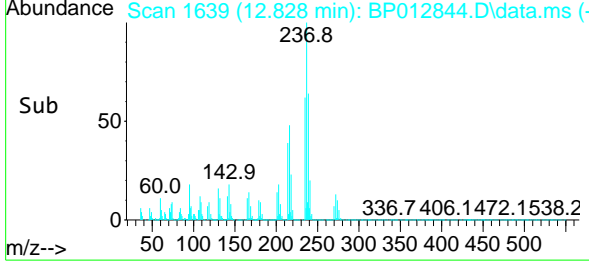
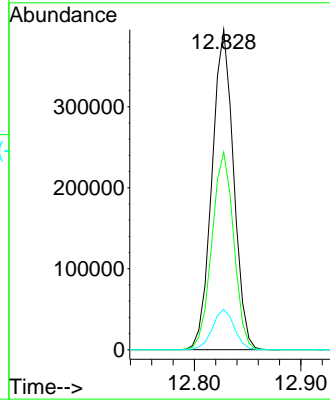
Instrument :  
 BNA\_P  
 ClientSampleId :  
 SLCS186



Tgt Ion:237 Resp: 555808  
 Ion Ratio Lower Upper  
 237 100  
 235 61.7 50.2 75.4  
 272 12.6 10.2 15.2

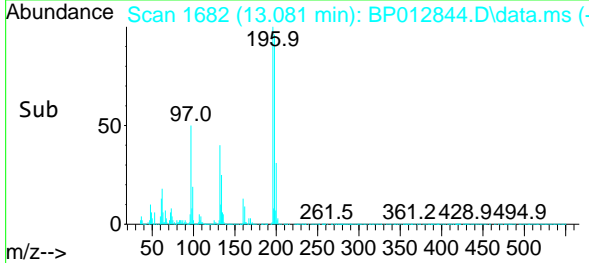
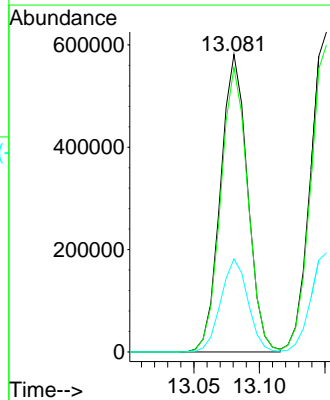
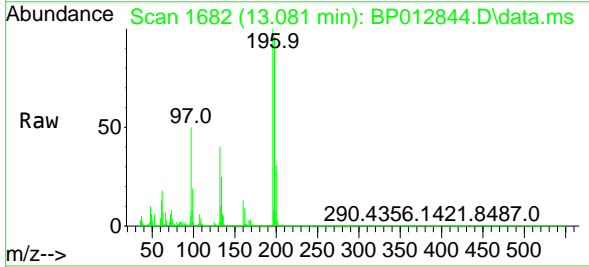
Manual Integrations  
 APPROVED

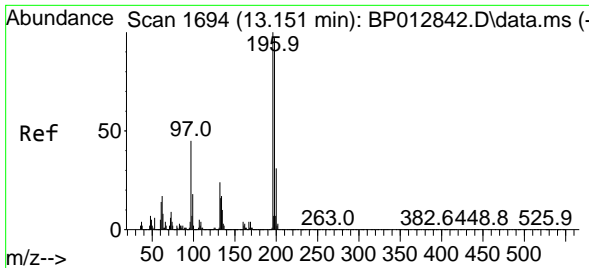
Reviewed By :Jagrut Upadhyay 11/30/2022  
 Supervised By :mohammad ahmed 11/30/2022



#41  
 2,4,6-Trichlorophenol  
 Concen: 28.630 ng/u1  
 RT: 13.081 min Scan# 1682  
 Delta R.T. -0.006 min  
 Lab File: BP012844.D  
 Acq: 29 Nov 2022 10:39

Tgt Ion:196 Resp: 834512  
 Ion Ratio Lower Upper  
 196 100  
 198 95.6 76.5 114.7  
 200 31.2 25.3 37.9





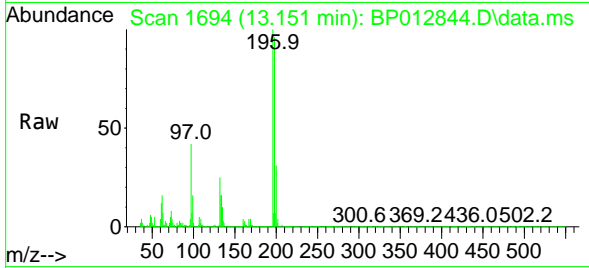
#42  
 2,4,5-Trichlorophenol  
 Concen: 29.042 ng/ul  
 RT: 13.151 min Scan# 1694  
 Delta R.T. -0.006 min  
 Lab File: BP012844.D  
 Acq: 29 Nov 2022 10:39

Instrument :

BNA\_P

ClientSampleId :

SLCS186

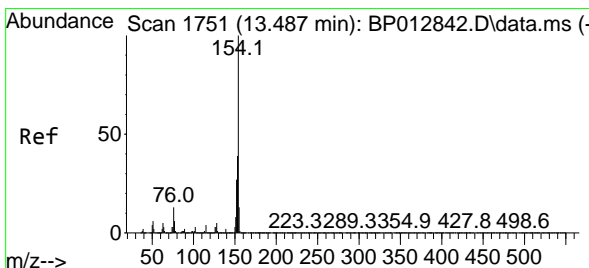
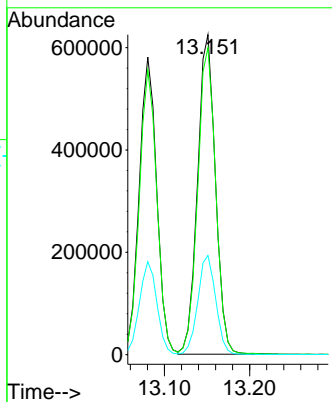
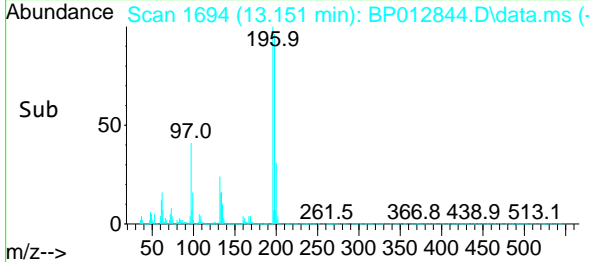


Tgt Ion:196 Resp: 91001  
 Ion Ratio Lower Upper  
 196 100  
 198 95.9 77.6 116.4  
 200 31.0 24.2 36.4

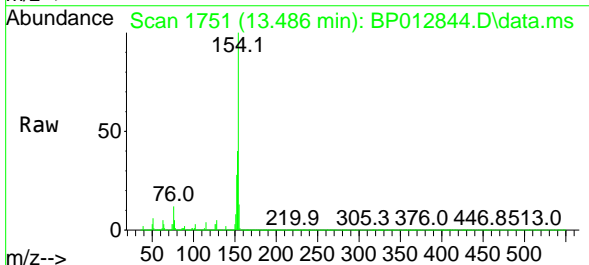
Manual Integrations

APPROVED

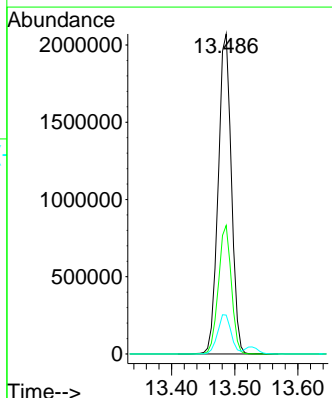
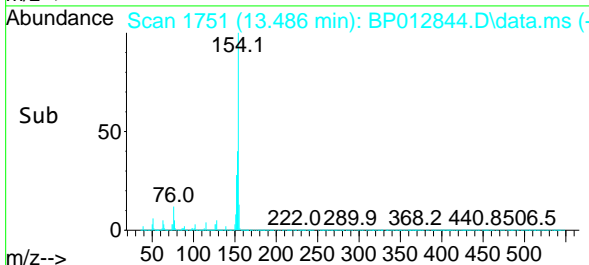
Reviewed By :Jagrut Upadhyay 11/30/2022  
 Supervised By :mohammad ahmed 11/30/2022

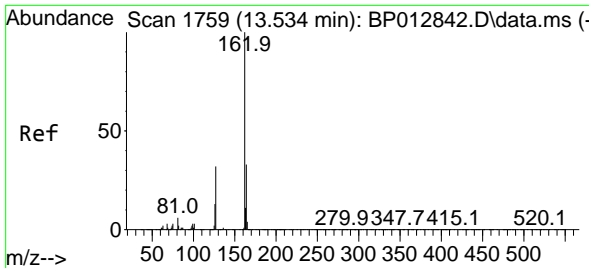


#43  
 1,1'-Biphenyl  
 Concen: 28.113 ng/ul  
 RT: 13.486 min Scan# 1751  
 Delta R.T. -0.006 min  
 Lab File: BP012844.D  
 Acq: 29 Nov 2022 10:39



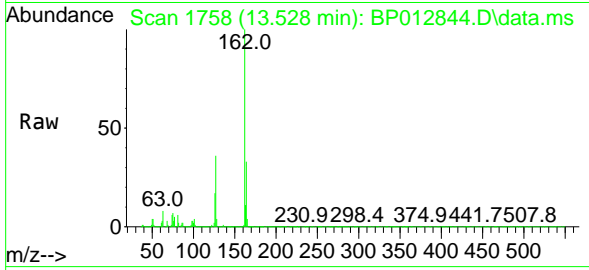
Tgt Ion:154 Resp: 2991789  
 Ion Ratio Lower Upper  
 154 100  
 153 40.2 32.0 48.0  
 76 12.1 10.2 15.4





#44  
 2-Chloronaphthalene  
 Concen: 28.073 ng/u1  
 RT: 13.528 min Scan# 1758  
 Delta R.T. -0.006 min  
 Lab File: BP012844.D  
 Acq: 29 Nov 2022 10:39

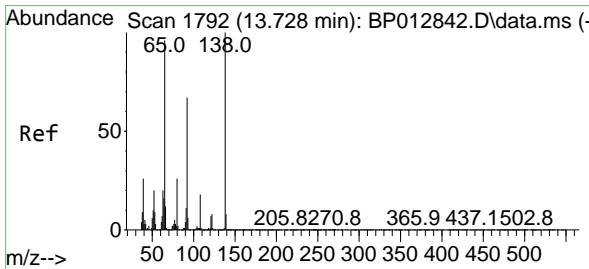
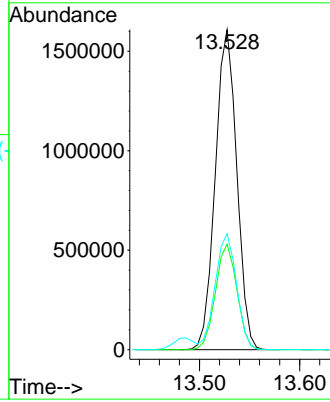
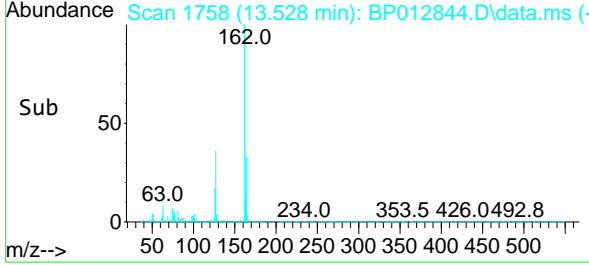
Instrument : BNA\_P  
 ClientSampleId : SLCS186



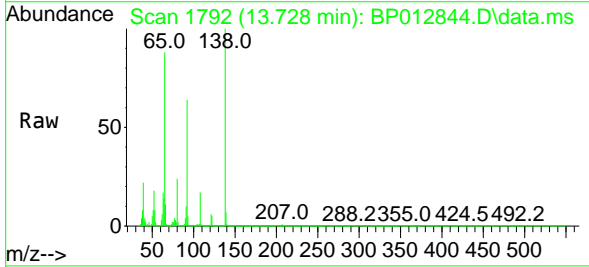
Tgt Ion:162 Resp: 239000  
 Ion Ratio Lower Upper  
 162 100  
 164 33.0 26.5 39.7  
 127 36.2 28.8 43.2

Manual Integrations  
 APPROVED

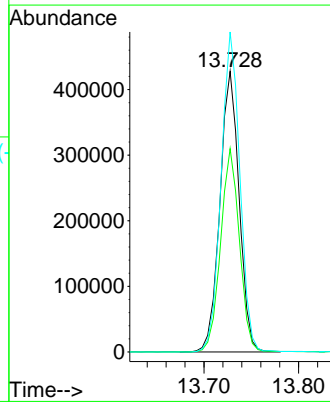
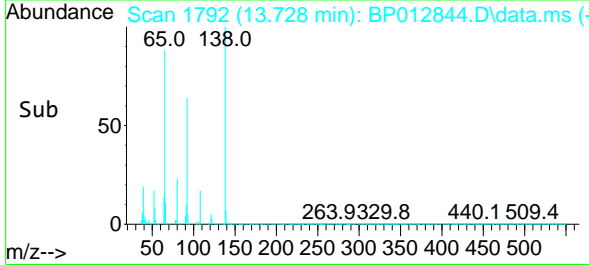
Reviewed By :Jagrut Upadhyay 11/30/2022  
 Supervised By :mohammad ahmed 11/30/2022

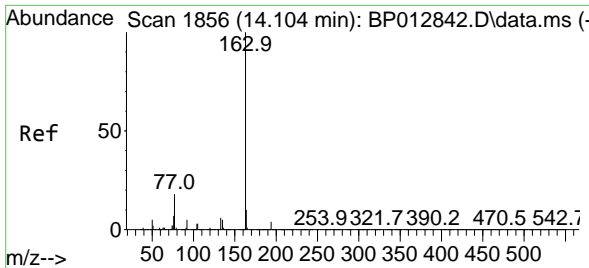


#45  
 2-Nitroaniline  
 Concen: 36.199 ng/u1  
 RT: 13.728 min Scan# 1792  
 Delta R.T. -0.006 min  
 Lab File: BP012844.D  
 Acq: 29 Nov 2022 10:39



Tgt Ion: 65 Resp: 602973  
 Ion Ratio Lower Upper  
 65 100  
 92 72.5 57.8 86.8  
 138 114.0 94.6 142.0





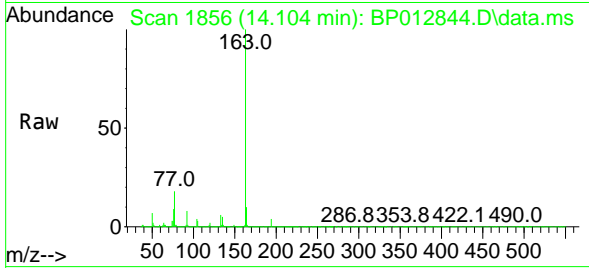
#47  
 Dimethylphthalate  
 Concen: 29.253 ng/ul  
 RT: 14.104 min Scan# 1856  
 Delta R.T. -0.006 min  
 Lab File: BP012844.D  
 Acq: 29 Nov 2022 10:39

Instrument :

BNA\_P

ClientSampleId :

SLCS186

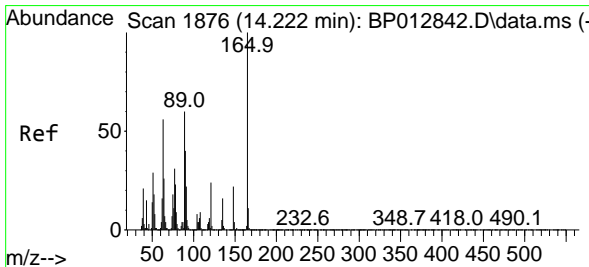
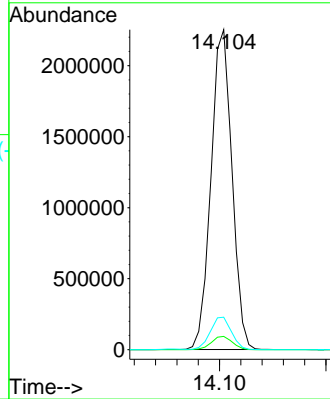
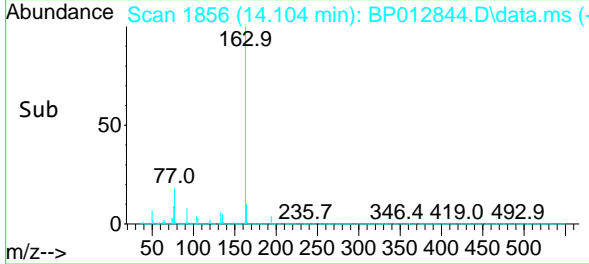


Tgt Ion:163 Resp: 3083394  
 Ion Ratio Lower Upper  
 163 100  
 194 4.2 3.4 5.0  
 164 10.1 7.8 11.8

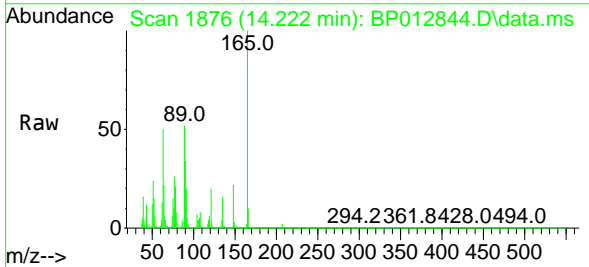
Manual Integrations

APPROVED

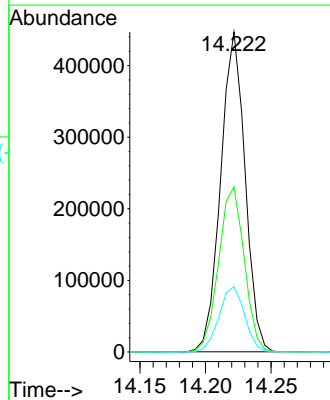
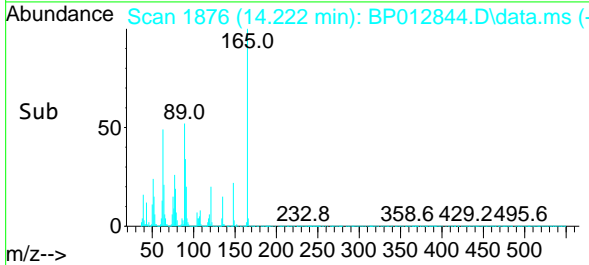
Reviewed By :Jagrut Upadhyay 11/30/2022  
 Supervised By :mohammad ahmed 11/30/2022

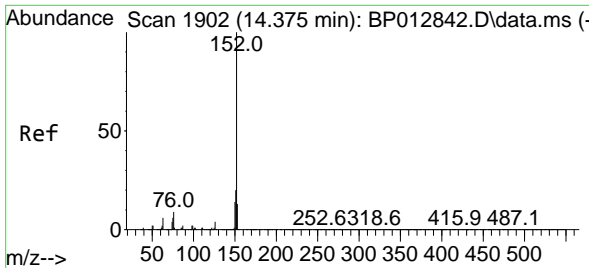


#48  
 2,6-Dinitrotoluene  
 Concen: 34.993 ng/ul  
 RT: 14.222 min Scan# 1876  
 Delta R.T. -0.006 min  
 Lab File: BP012844.D  
 Acq: 29 Nov 2022 10:39



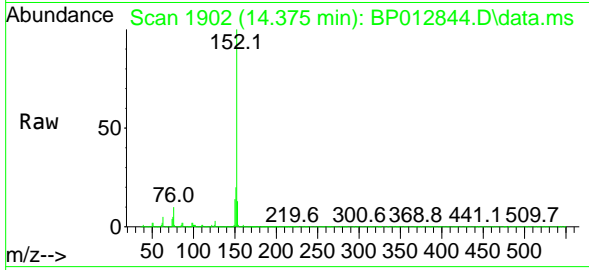
Tgt Ion:165 Resp: 577231  
 Ion Ratio Lower Upper  
 165 100  
 89 51.6 42.7 64.1  
 121 20.4 16.9 25.3





#50  
 Acenaphthylene  
 Concen: 28.797 ng/u1  
 RT: 14.375 min Scan# 1902  
 Delta R.T. -0.000 min  
 Lab File: BP012844.D  
 Acq: 29 Nov 2022 10:39

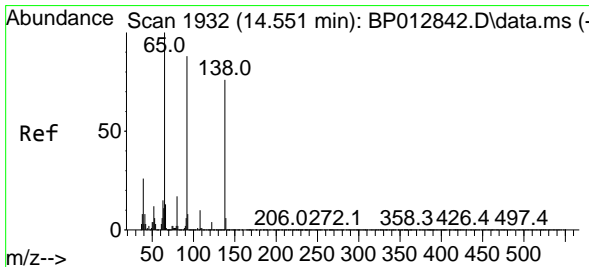
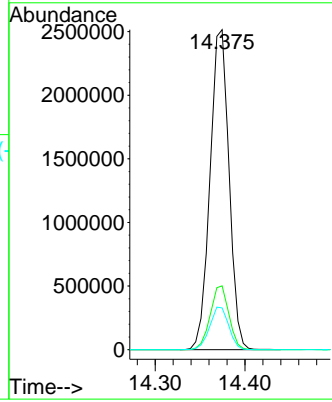
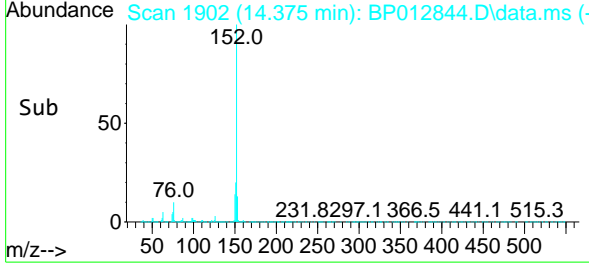
Instrument : BNA\_P  
 ClientSampleId : SLCS186



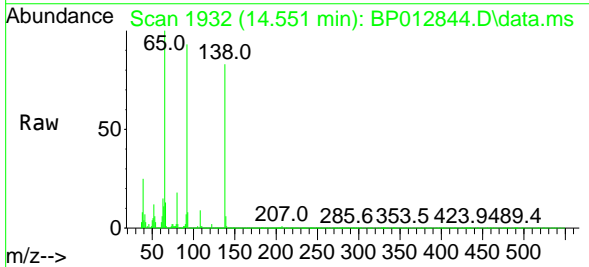
Tgt Ion:152 Resp: 369436  
 Ion Ratio Lower Upper  
 152 100  
 151 19.9 15.9 23.9  
 153 13.0 10.7 16.1

Manual Integrations  
 APPROVED

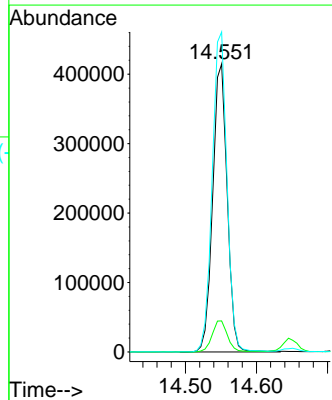
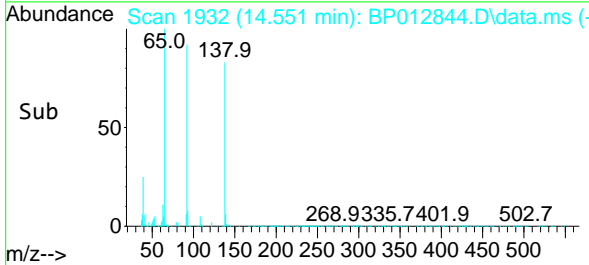
Reviewed By :Jagrut Upadhyay 11/30/2022  
 Supervised By :mohammad ahmed 11/30/2022

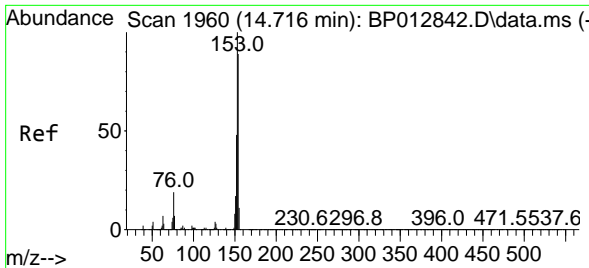


#51  
 3-Nitroaniline  
 Concen: 30.823 ng/u1  
 RT: 14.551 min Scan# 1932  
 Delta R.T. -0.000 min  
 Lab File: BP012844.D  
 Acq: 29 Nov 2022 10:39



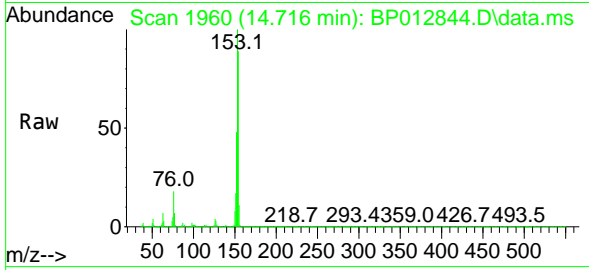
Tgt Ion:138 Resp: 588845  
 Ion Ratio Lower Upper  
 138 100  
 108 10.8 9.9 14.9  
 92 111.1 90.2 135.2





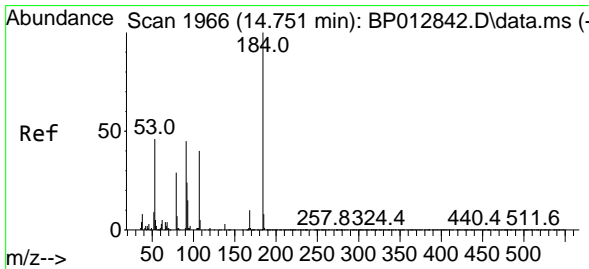
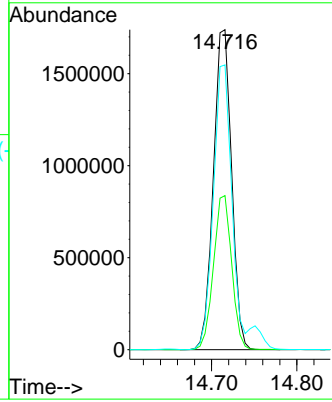
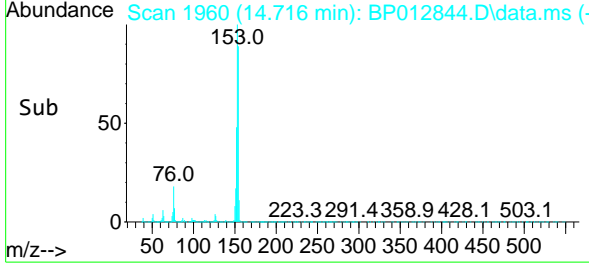
#52  
 Acenaphthene  
 Concen: 28.582 ng/u1  
 RT: 14.716 min Scan# 1960  
 Delta R.T. -0.000 min  
 Lab File: BP012844.D  
 Acq: 29 Nov 2022 10:39

Instrument : BNA\_P  
 ClientSampleId : SLCS186

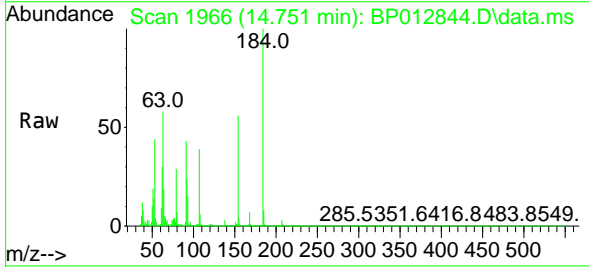


Tgt Ion:153 Resp: 258150  
 Ion Ratio Lower Upper  
 153 100  
 152 48.2 38.2 57.4  
 154 89.0 69.8 104.6

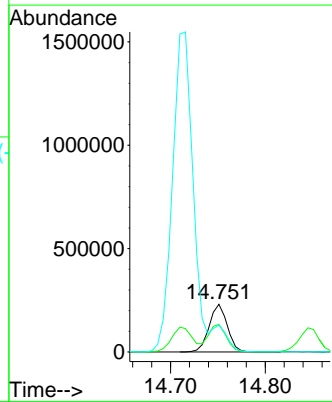
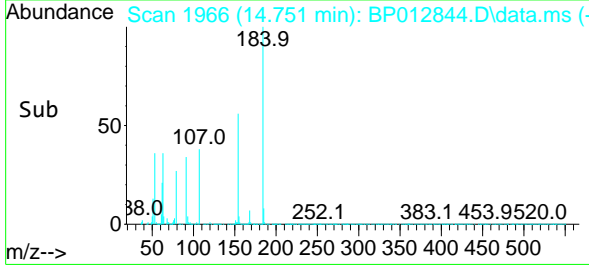
Manual Integrations  
**APPROVED**  
 Reviewed By :Jagrut Upadhyay 11/30/2022  
 Supervised By :mohammad ahmed 11/30/2022



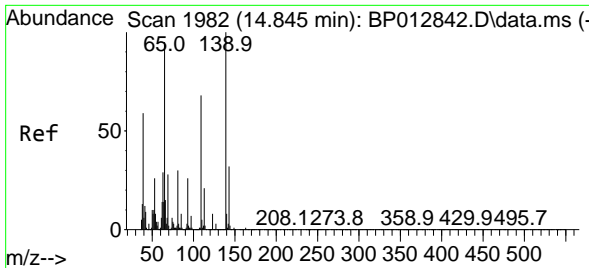
#53  
 2,4-Dinitrophenol  
 Concen: 28.777 ng/u1  
 RT: 14.751 min Scan# 1966  
 Delta R.T. -0.006 min  
 Lab File: BP012844.D  
 Acq: 29 Nov 2022 10:39



Tgt Ion:184 Resp: 305041  
 Ion Ratio Lower Upper  
 184 100  
 63 57.6 48.1 72.1  
 154 56.2 47.4 71.2

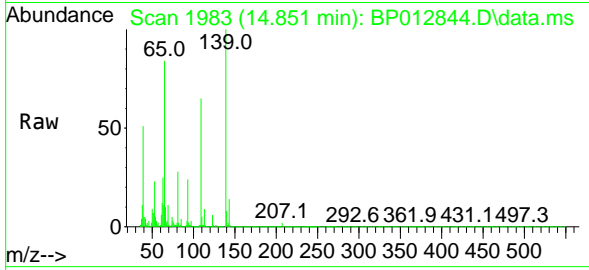






#55  
 4-Nitrophenol  
 Concen: 30.920 ng/uI  
 RT: 14.851 min Scan# 1982  
 Delta R.T. -0.000 min  
 Lab File: BP012844.D  
 Acq: 29 Nov 2022 10:39

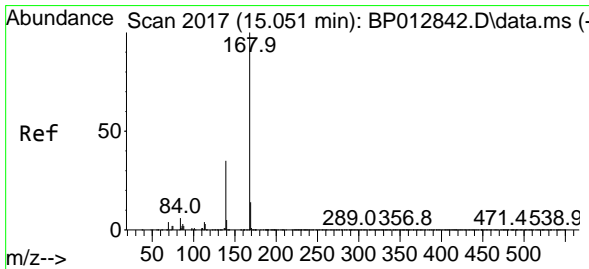
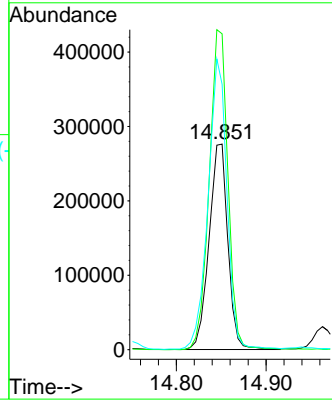
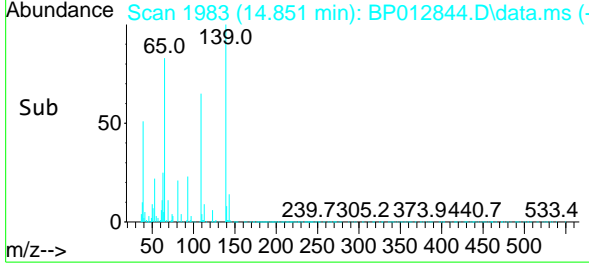
Instrument :  
 BNA\_P  
 ClientSampleId :  
 SLCS186



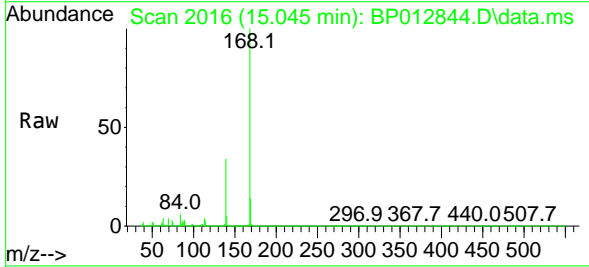
Tgt Ion:109 Resp: 402729  
 Ion Ratio Lower Upper  
 109 100  
 139 153.7 119.2 178.8  
 65 129.1 110.7 166.1

Manual Integrations  
 APPROVED

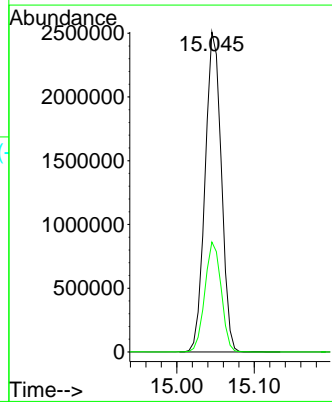
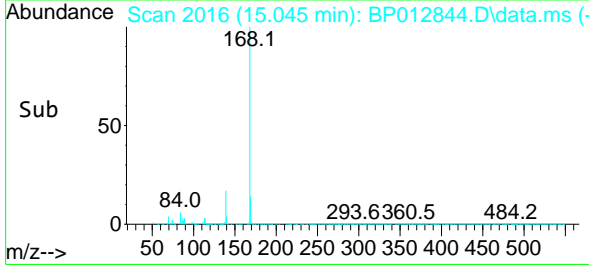
Reviewed By :Jagrut Upadhyay 11/30/2022  
 Supervised By :mohammad ahmed 11/30/2022

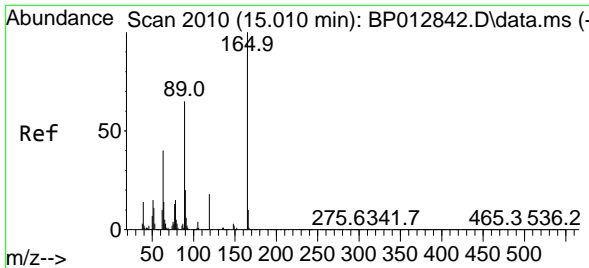


#56  
 Dibenzofuran  
 Concen: 29.269 ng/uI  
 RT: 15.045 min Scan# 2016  
 Delta R.T. -0.006 min  
 Lab File: BP012844.D  
 Acq: 29 Nov 2022 10:39



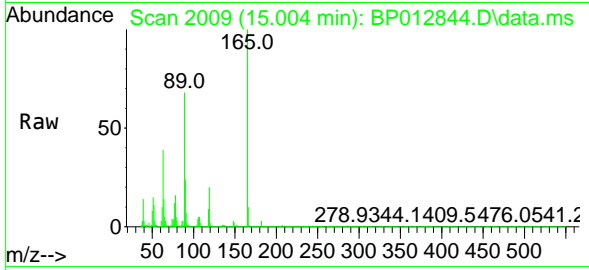
Tgt Ion:168 Resp: 3643858  
 Ion Ratio Lower Upper  
 168 100  
 139 34.4 27.7 41.5





#57  
 2,4-Dinitrotoluene  
 Concen: 35.605 ng/ul  
 RT: 15.004 min Scan# 2009  
 Delta R.T. -0.006 min  
 Lab File: BP012844.D  
 Acq: 29 Nov 2022 10:39

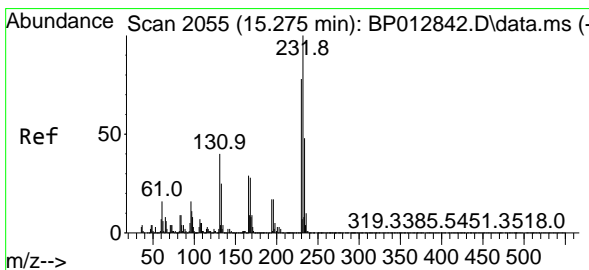
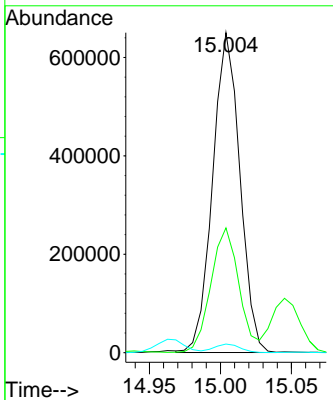
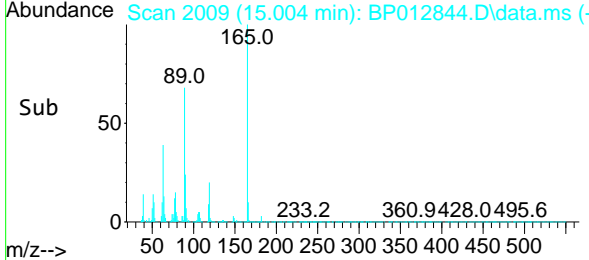
Instrument : BNA\_P  
 ClientSampleId : SLCS186



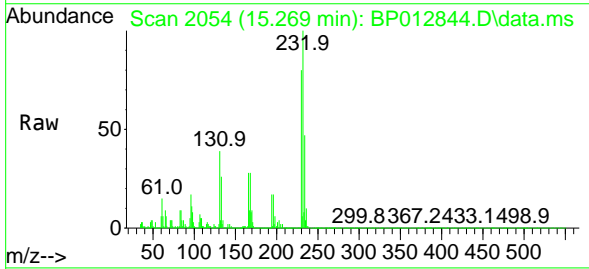
Tgt Ion:165 Resp: 86671  
 Ion Ratio Lower Upper  
 165 100  
 63 39.0 31.0 46.4  
 182 2.7 2.0 3.0

Manual Integrations  
 APPROVED

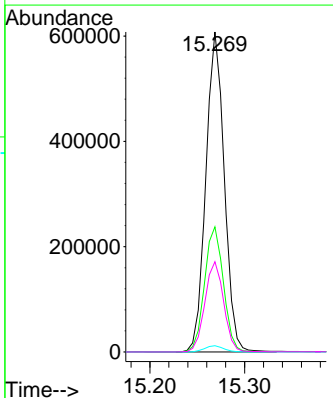
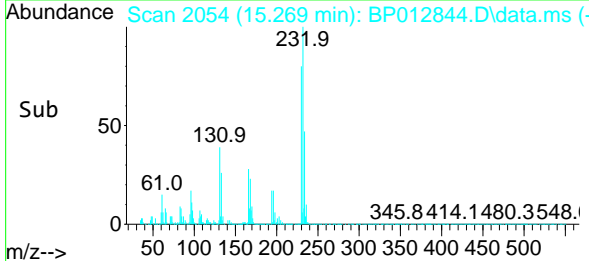
Reviewed By :Jagrut Upadhyay 11/30/2022  
 Supervised By :mohammad ahmed 11/30/2022

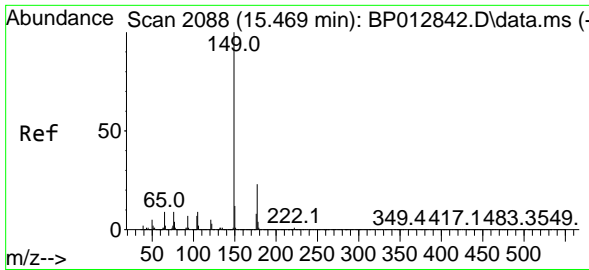


#58  
 2,3,4,6-Tetrachlorophenol  
 Concen: 30.414 ng/ul  
 RT: 15.269 min Scan# 2054  
 Delta R.T. -0.006 min  
 Lab File: BP012844.D  
 Acq: 29 Nov 2022 10:39



Tgt Ion:232 Resp: 821400  
 Ion Ratio Lower Upper  
 232 100  
 131 39.1 32.0 48.0  
 130 2.0 1.5 2.3  
 166 28.2 23.2 34.8





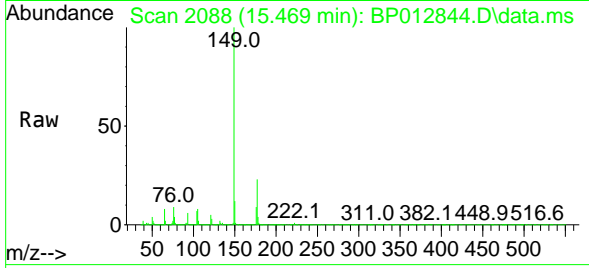
#59  
 Diethylphthalate  
 Concen: 29.602 ng/u1  
 RT: 15.469 min Scan# 2088  
 Delta R.T. -0.006 min  
 Lab File: BP012844.D  
 Acq: 29 Nov 2022 10:39

Instrument :

BNA\_P

ClientSampleId :

SLCS186

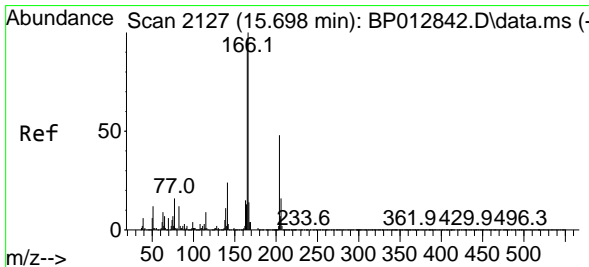
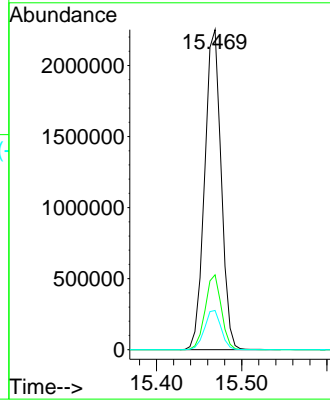
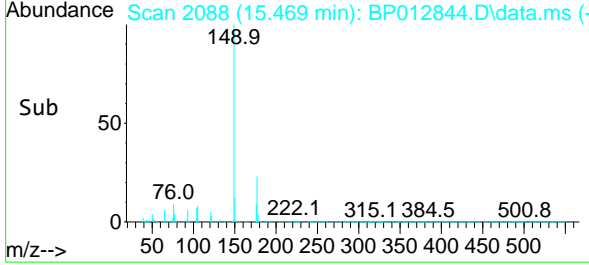


Tgt Ion:149 Resp: 3020310  
 Ion Ratio Lower Upper  
 149 100  
 177 23.4 18.1 27.1  
 150 12.3 9.8 14.8

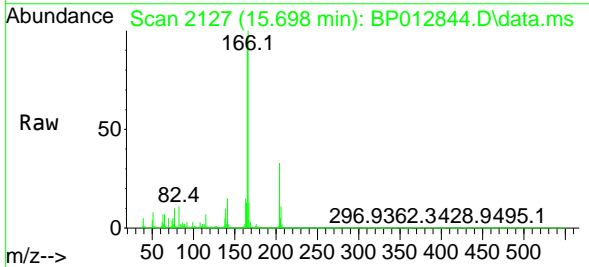
Manual Integrations

APPROVED

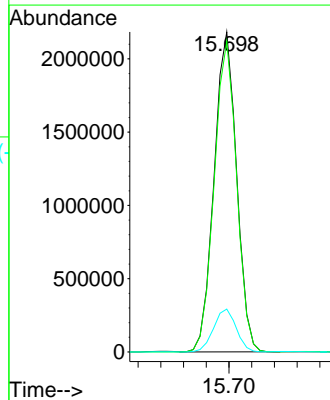
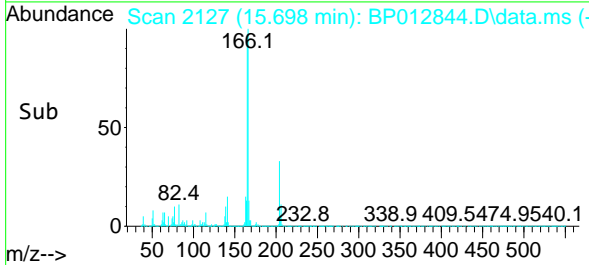
Reviewed By :Jagrut Upadhyay 11/30/2022  
 Supervised By :mohammad ahmed 11/30/2022

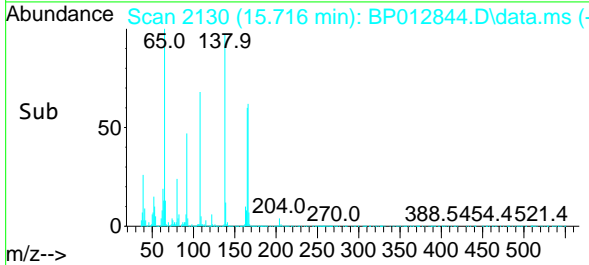
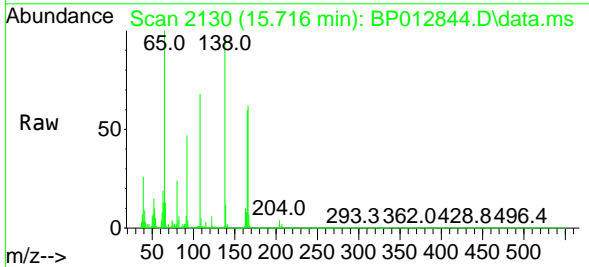
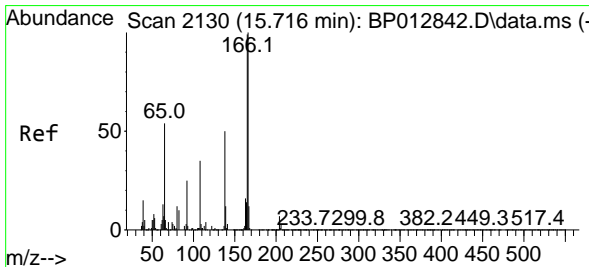
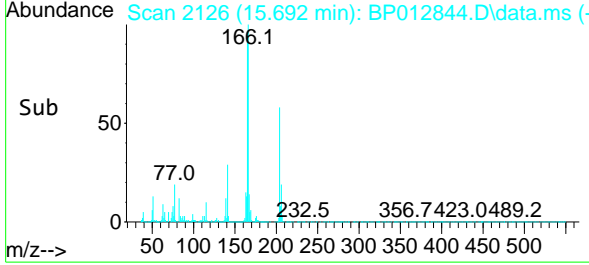
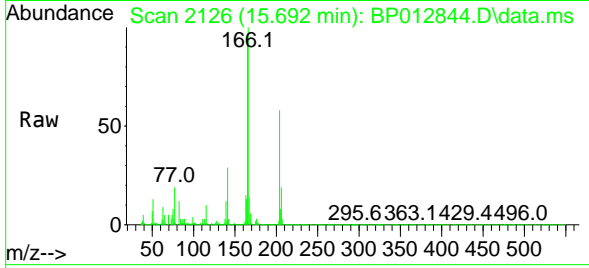
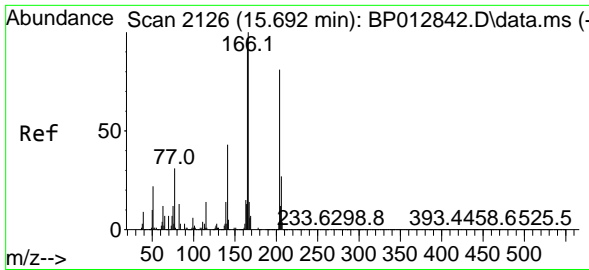


#61  
 Fluorene  
 Concen: 30.049 ng/u1  
 RT: 15.698 min Scan# 2127  
 Delta R.T. -0.006 min  
 Lab File: BP012844.D  
 Acq: 29 Nov 2022 10:39



Tgt Ion:166 Resp: 3000076  
 Ion Ratio Lower Upper  
 166 100  
 165 97.1 78.2 117.2  
 167 13.4 10.9 16.3





#62  
 4-Chlorophenyl-phenylether  
 Concen: 29.614 ng/ul  
 RT: 15.692 min Scan# 2126  
 Delta R.T. -0.006 min  
 Lab File: BP012844.D  
 Acq: 29 Nov 2022 10:39

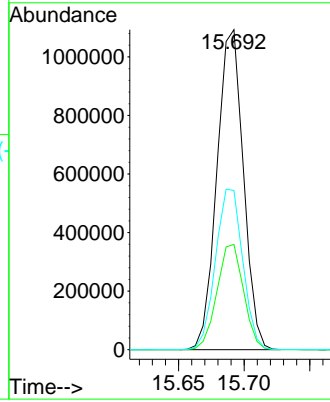
Instrument : BNA\_P  
 ClientSampleId : SLCS186

Tgt Ion: 204 Resp: 153405

| Ion | Ratio | Lower | Upper |
|-----|-------|-------|-------|
| 204 | 100   |       |       |
| 206 | 32.9  | 26.0  | 39.0  |
| 141 | 49.7  | 40.7  | 61.1  |

Manual Integrations  
 APPROVED

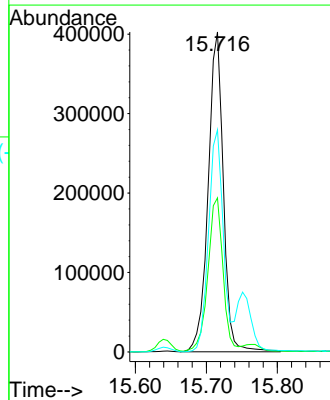
Reviewed By :Jagrut Upadhyay 11/30/2022  
 Supervised By :mohammad ahmed 11/30/2022

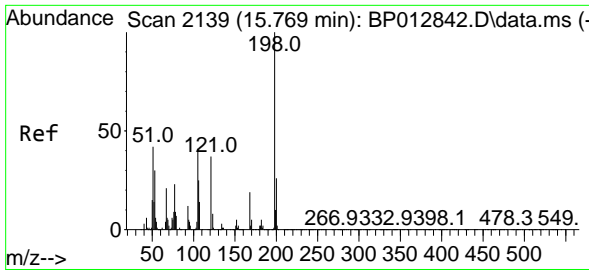


#63  
 4-Nitroaniline  
 Concen: 36.825 ng/ul  
 RT: 15.716 min Scan# 2130  
 Delta R.T. -0.000 min  
 Lab File: BP012844.D  
 Acq: 29 Nov 2022 10:39

Tgt Ion: 138 Resp: 599606

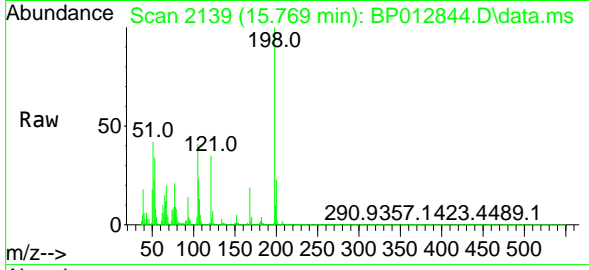
| Ion | Ratio | Lower | Upper |
|-----|-------|-------|-------|
| 138 | 100   |       |       |
| 92  | 48.2  | 38.6  | 57.8  |
| 108 | 69.4  | 56.4  | 84.6  |





#66  
 4,6-Dinitro-2-methylphenol  
 Concen: 31.375 ng/ul  
 RT: 15.769 min Scan# 2139  
 Delta R.T. -0.006 min  
 Lab File: BP012844.D  
 Acq: 29 Nov 2022 10:39

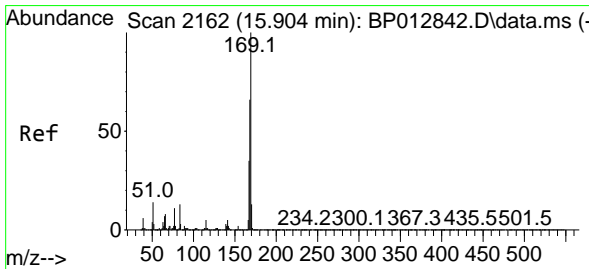
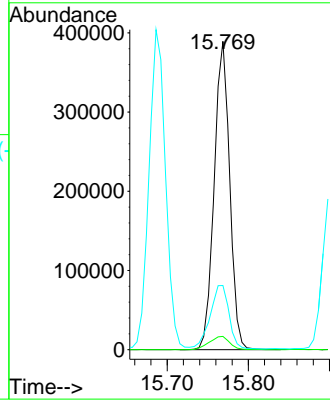
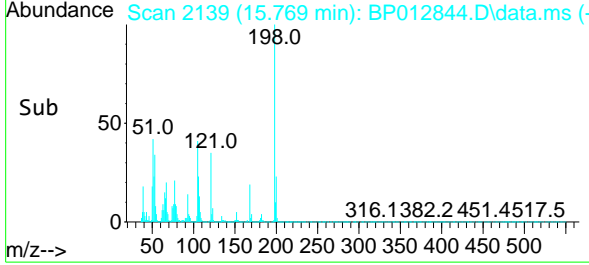
Instrument : BNA\_P  
 ClientSampleId : SLCS186



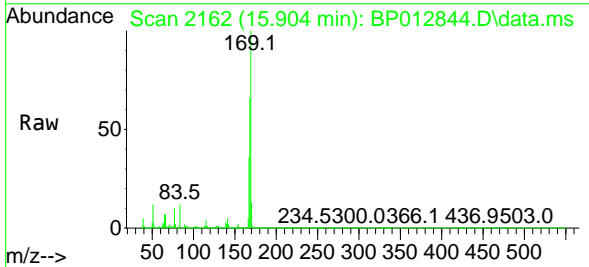
Tgt Ion:198 Resp: 516574  
 Ion Ratio Lower Upper  
 198 100  
 182 4.3 4.1 6.1  
 77 20.8 18.9 28.3

Manual Integrations  
 APPROVED

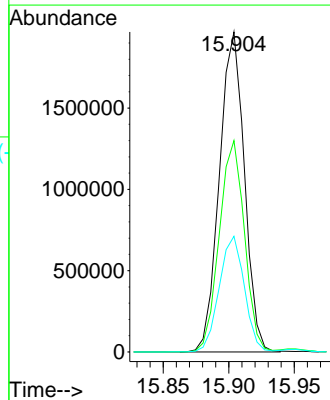
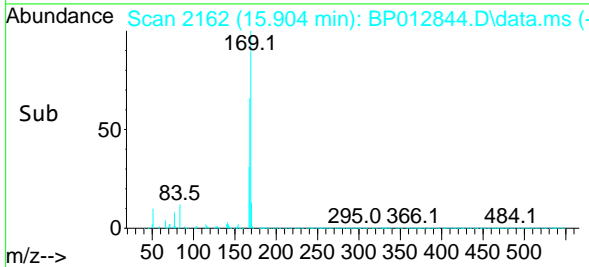
Reviewed By :Jagrut Upadhyay 11/30/2022  
 Supervised By :mohammad ahmed 11/30/2022

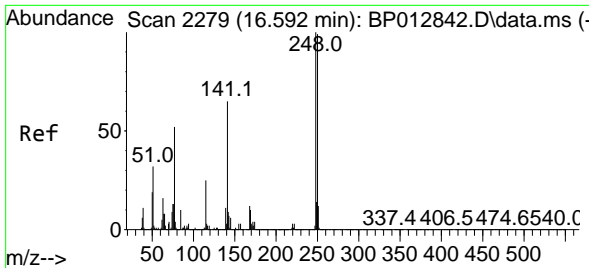


#67  
 N-Nitrosodiphenylamine  
 Concen: 28.564 ng/ul  
 RT: 15.904 min Scan# 2162  
 Delta R.T. -0.006 min  
 Lab File: BP012844.D  
 Acq: 29 Nov 2022 10:39



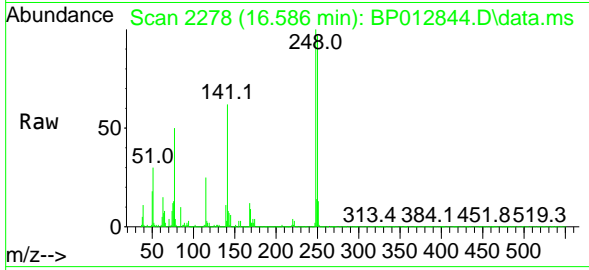
Tgt Ion:169 Resp: 2605295  
 Ion Ratio Lower Upper  
 169 100  
 168 66.1 53.2 79.8  
 167 36.1 29.6 44.4





#68  
 4-Bromophenyl-phenylether  
 Concen: 30.284 ng/ul  
 RT: 16.586 min Scan# 2278  
 Delta R.T. -0.006 min  
 Lab File: BP012844.D  
 Acq: 29 Nov 2022 10:39

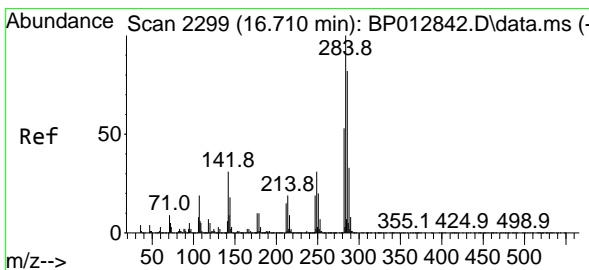
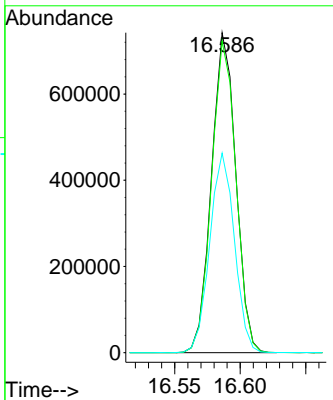
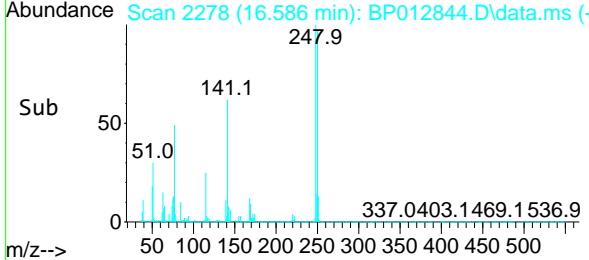
Instrument : BNA\_P  
 ClientSampleId : SLCS186



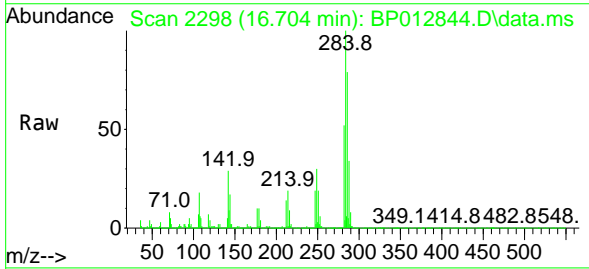
Tgt Ion: 248 Resp: 95657

| Ion | Ratio | Lower | Upper |
|-----|-------|-------|-------|
| 248 | 100   |       |       |
| 250 | 97.3  | 78.6  | 118.0 |
| 141 | 62.4  | 48.7  | 73.1  |

Manual Integrations  
**APPROVED**  
 Reviewed By :Jagrut Upadhyay 11/30/2022  
 Supervised By :mohammad ahmed 11/30/2022

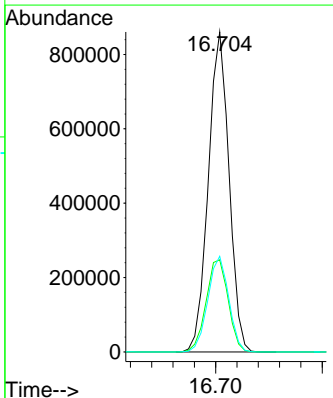
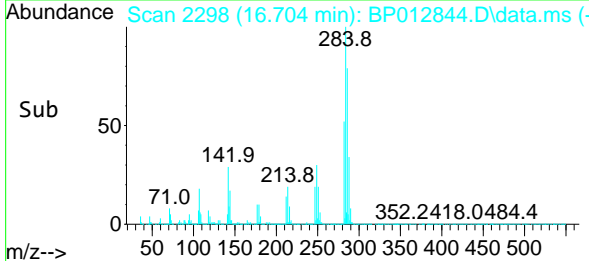


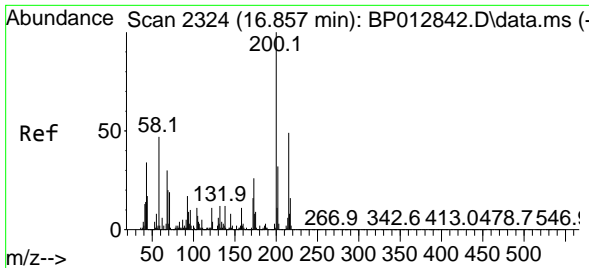
#69  
 Hexachlorobenzene  
 Concen: 28.764 ng/ul  
 RT: 16.704 min Scan# 2298  
 Delta R.T. -0.006 min  
 Lab File: BP012844.D  
 Acq: 29 Nov 2022 10:39



Tgt Ion: 284 Resp: 1157998

| Ion | Ratio | Lower | Upper |
|-----|-------|-------|-------|
| 284 | 100   |       |       |
| 142 | 28.8  | 25.0  | 37.6  |
| 249 | 29.9  | 24.6  | 36.8  |





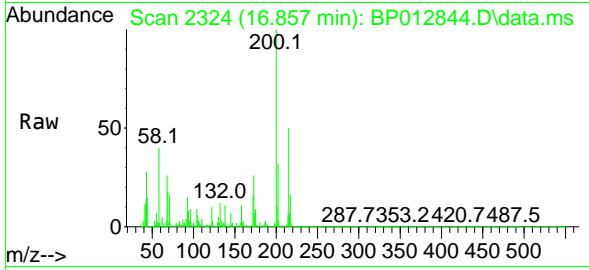
#70  
 Atrazine  
 Concen: 29.332 ng/uI  
 RT: 16.857 min Scan# 21  
 Delta R.T. -0.006 min  
 Lab File: BP012844.D  
 Acq: 29 Nov 2022 10:39

Instrument :

BNA\_P

ClientSampleId :

SLCS186

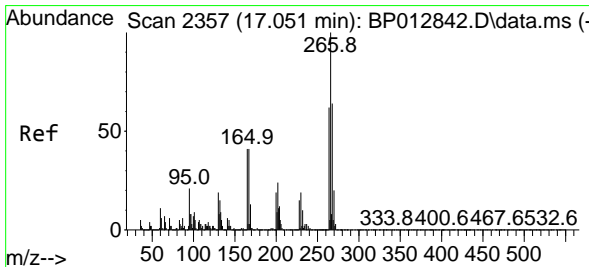
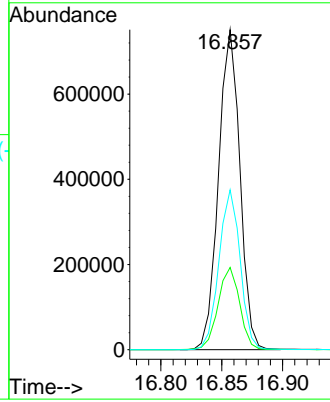
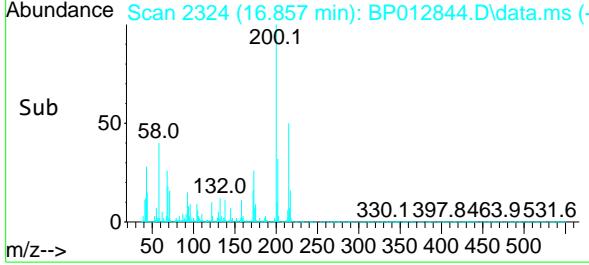


Tgt Ion:200 Resp: 91790  
 Ion Ratio Lower Upper  
 200 100  
 173 25.7 20.3 30.5  
 215 50.0 40.1 60.1

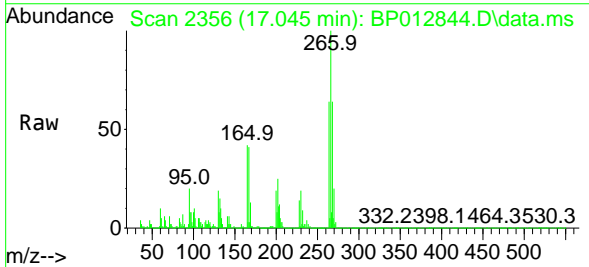
Manual Integrations

APPROVED

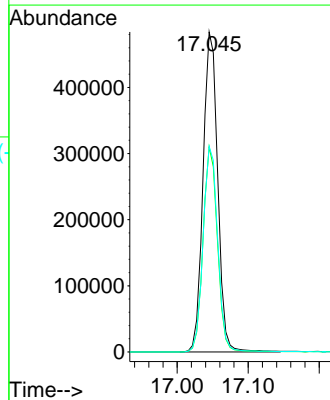
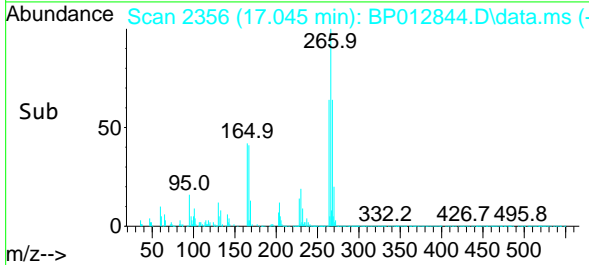
Reviewed By :Jagrut Upadhyay 11/30/2022  
 Supervised By :mohammad ahmed 11/30/2022



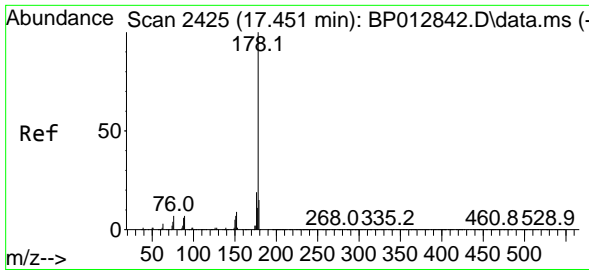
#71  
 Pentachlorophenol  
 Concen: 28.109 ng/uI  
 RT: 17.045 min Scan# 2356  
 Delta R.T. -0.006 min  
 Lab File: BP012844.D  
 Acq: 29 Nov 2022 10:39



Tgt Ion:266 Resp: 694940  
 Ion Ratio Lower Upper  
 266 100  
 264 64.1 50.7 76.1  
 268 64.2 51.8 77.8

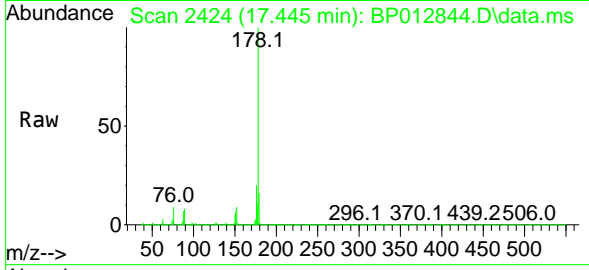






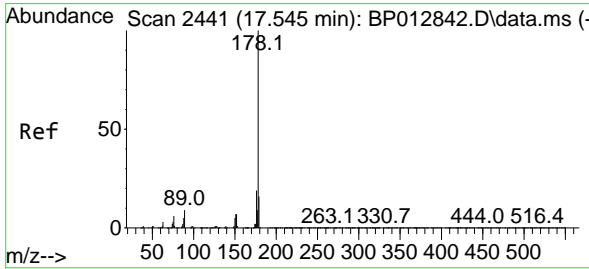
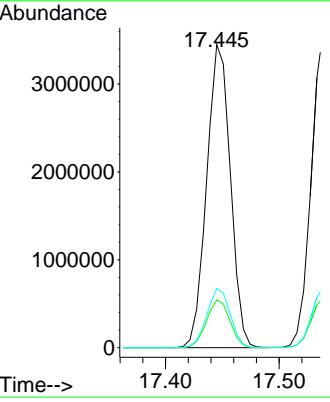
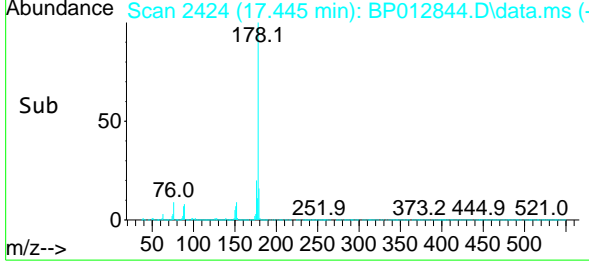
#72  
 Phenanthrene  
 Concen: 29.251 ng/uI  
 RT: 17.445 min Scan# 2424  
 Delta R.T. -0.006 min  
 Lab File: BP012844.D  
 Acq: 29 Nov 2022 10:39

Instrument : BNA\_P  
 Client SampleId : SLCS186

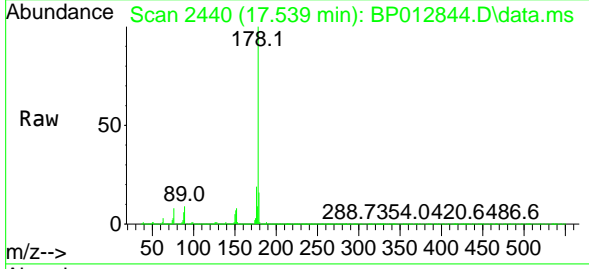


Tgt Ion:178 Resp: 5003280  
 Ion Ratio Lower Upper  
 178 100  
 179 15.8 12.3 18.5  
 176 19.5 15.4 23.0

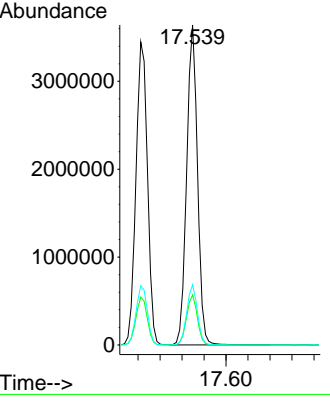
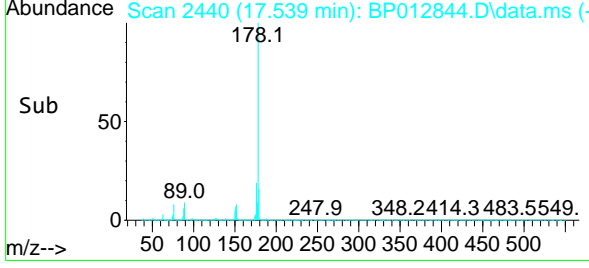
Manual Integrations  
**APPROVED**  
 Reviewed By :Jagrut Upadhyay 11/30/2022  
 Supervised By :mohammad ahmed 11/30/2022

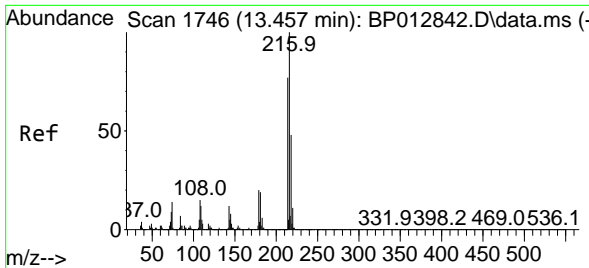


#74  
 Anthracene  
 Concen: 29.395 ng/uI  
 RT: 17.539 min Scan# 2440  
 Delta R.T. -0.006 min  
 Lab File: BP012844.D  
 Acq: 29 Nov 2022 10:39



Tgt Ion:178 Resp: 4974121  
 Ion Ratio Lower Upper  
 178 100  
 179 15.6 12.4 18.6  
 176 18.8 14.8 22.2





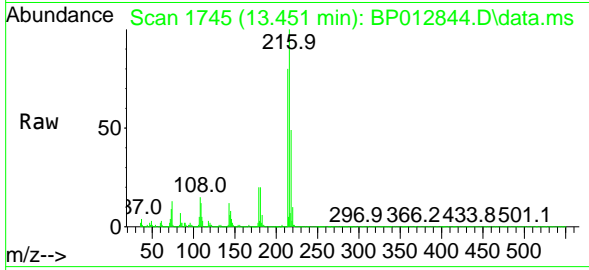
#75  
 1,2,3,4-Tetrachlorobenzene  
 Concen: 25.603 ng/uL  
 RT: 13.451 min Scan# 11  
 Delta R.T. -0.006 min  
 Lab File: BP012844.D  
 Acq: 29 Nov 2022 10:39

Instrument :

BNA\_P

ClientSampleId :

SLCS186

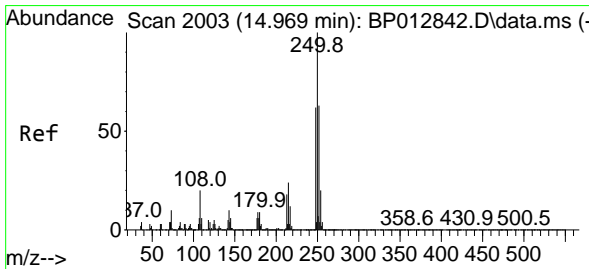
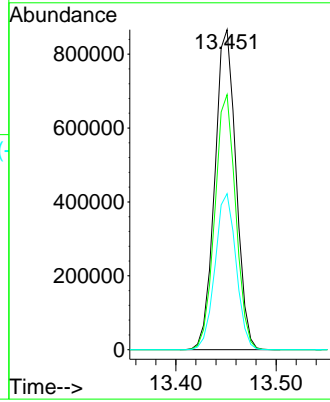
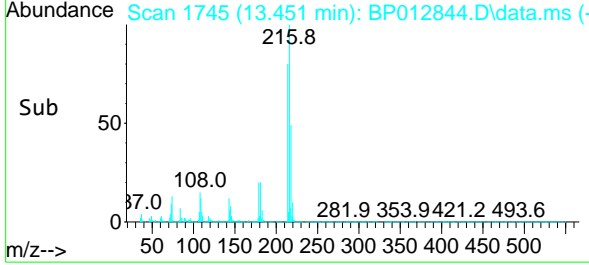


Tgt Ion:216 Resp: 1270298  
 Ion Ratio Lower Upper  
 216 100  
 214 79.7 62.3 93.5  
 218 48.8 39.1 58.7

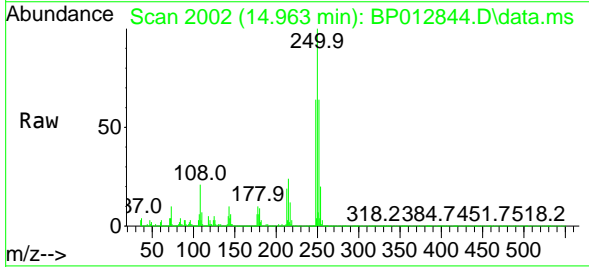
Manual Integrations

APPROVED

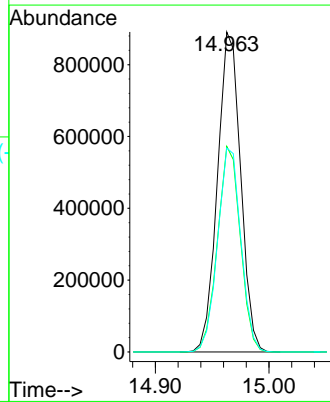
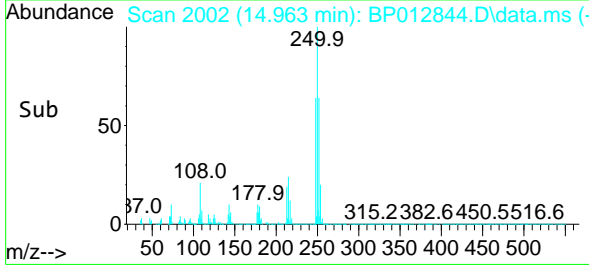
Reviewed By :Jagrut Upadhyay 11/30/2022  
 Supervised By :mohammad ahmed 11/30/2022

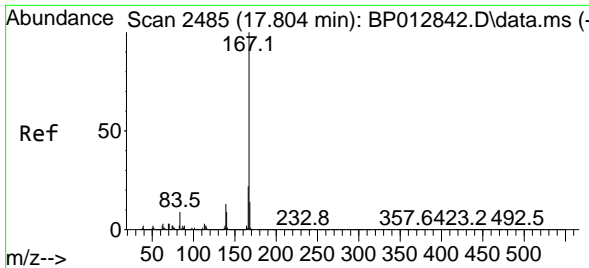


#76  
 Pentachlorobenzene  
 Concen: 24.486 ng/uL  
 RT: 14.963 min Scan# 2002  
 Delta R.T. -0.006 min  
 Lab File: BP012844.D  
 Acq: 29 Nov 2022 10:39



Tgt Ion:250 Resp: 1262869  
 Ion Ratio Lower Upper  
 250 100  
 248 64.3 50.6 76.0  
 252 63.8 50.5 75.7





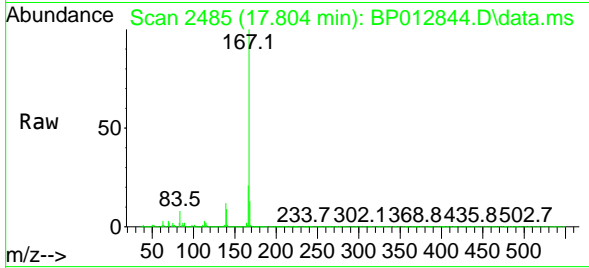
#77  
 Carbazole  
 Concen: 31.855 ng/uI  
 RT: 17.804 min Scan# 2485  
 Delta R.T. -0.006 min  
 Lab File: BP012844.D  
 Acq: 29 Nov 2022 10:39

Instrument :

BNA\_P

Client SampleId :

SLCS186

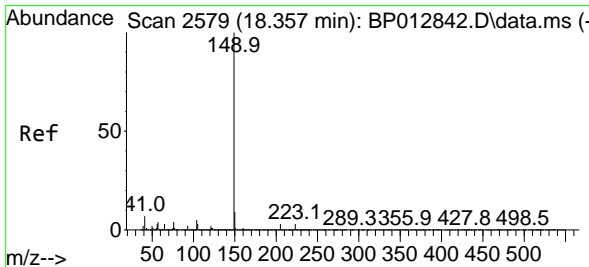
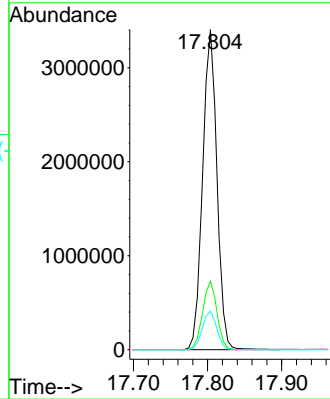
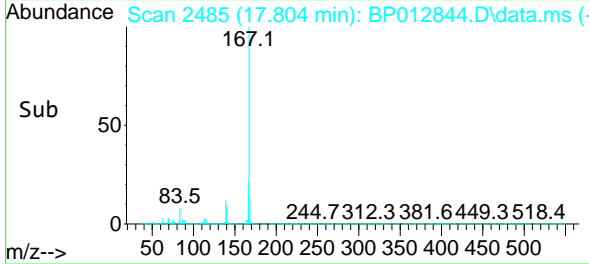


Tgt Ion:167 Resp: 4560100  
 Ion Ratio Lower Upper  
 167 100  
 166 21.4 17.1 25.7  
 139 12.1 9.8 14.8

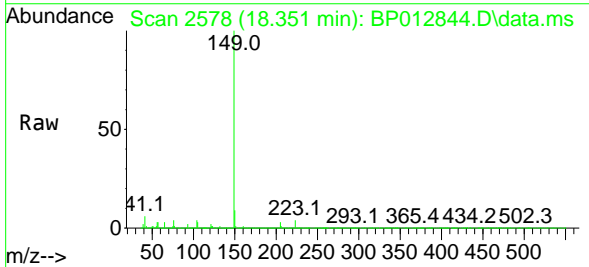
Manual Integrations

APPROVED

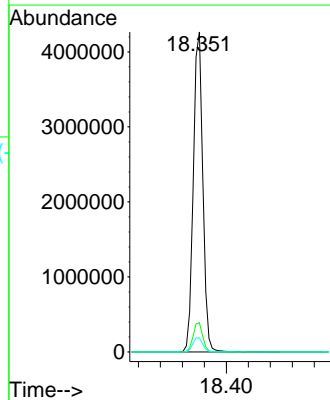
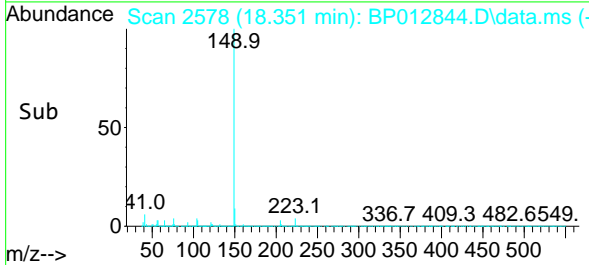
Reviewed By :Jagrut Upadhyay 11/30/2022  
 Supervised By :mohammad ahmed 11/30/2022

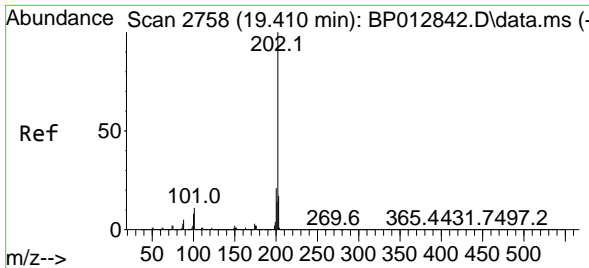


#78  
 Di-n-butylphthalate  
 Concen: 30.001 ng/uI  
 RT: 18.351 min Scan# 2578  
 Delta R.T. -0.006 min  
 Lab File: BP012844.D  
 Acq: 29 Nov 2022 10:39



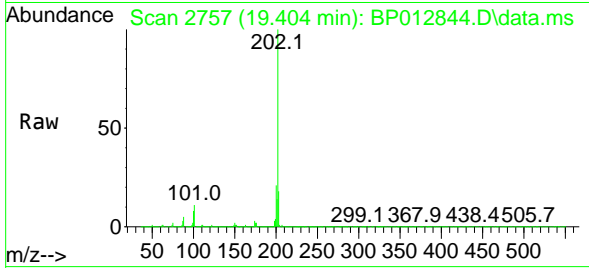
Tgt Ion:149 Resp: 5084004  
 Ion Ratio Lower Upper  
 149 100  
 150 9.1 7.2 10.8  
 104 4.4 3.7 5.5





#80  
 Fluoranthene  
 Concen: 25.678 ng/u1  
 RT: 19.404 min Scan# 21  
 Delta R.T. -0.006 min  
 Lab File: BP012844.D  
 Acq: 29 Nov 2022 10:39

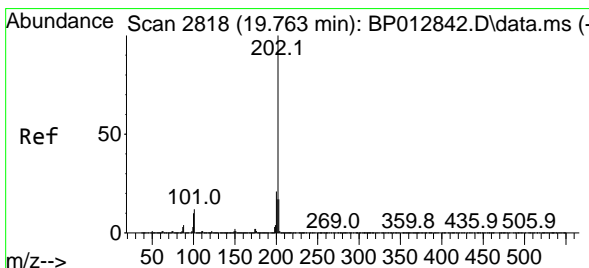
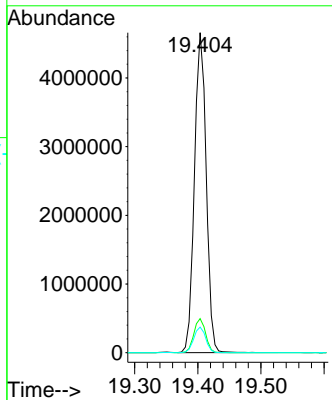
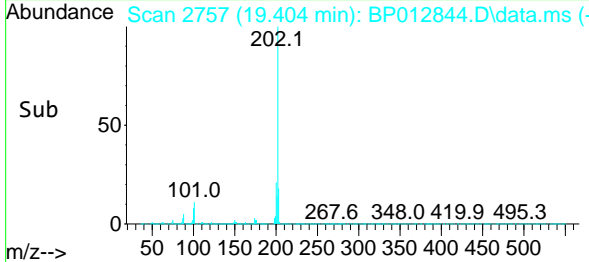
Instrument : BNA\_P  
 ClientSampleId : SLCS186



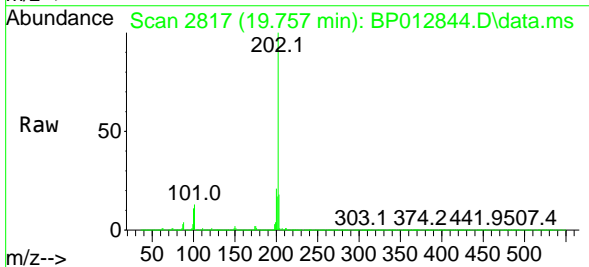
Tgt Ion:202 Resp: 6007480  
 Ion Ratio Lower Upper  
 202 100  
 101 10.7 8.7 13.1  
 100 8.0 6.9 10.3

Manual Integrations  
 APPROVED

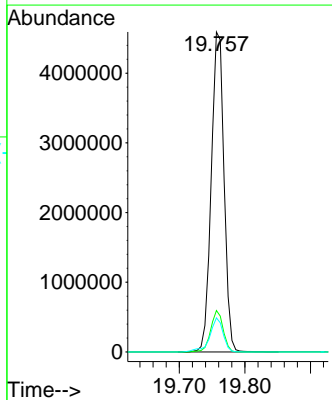
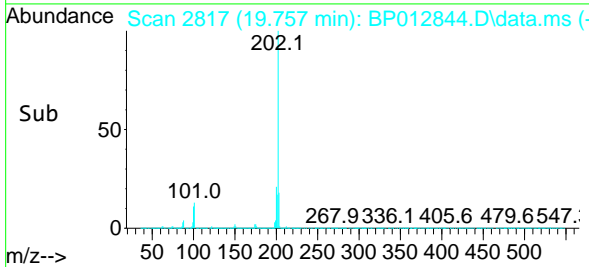
Reviewed By :Jagrut Upadhyay 11/30/2022  
 Supervised By :mohammad ahmed 11/30/2022

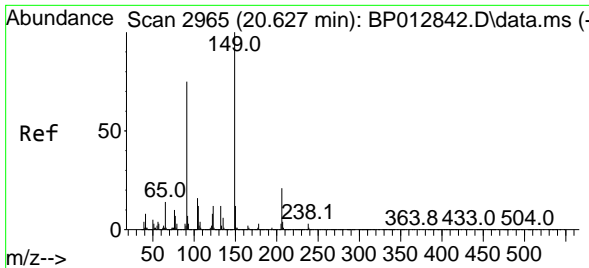


#82  
 Pyrene  
 Concen: 25.671 ng/u1  
 RT: 19.757 min Scan# 2817  
 Delta R.T. -0.006 min  
 Lab File: BP012844.D  
 Acq: 29 Nov 2022 10:39



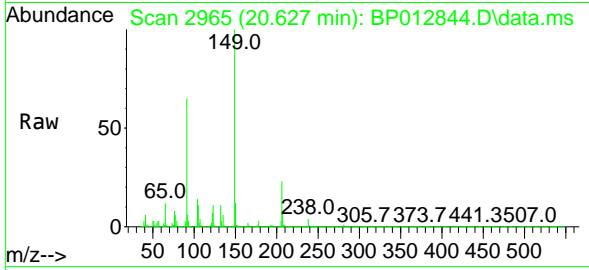
Tgt Ion:202 Resp: 6211660  
 Ion Ratio Lower Upper  
 202 100  
 101 12.9 10.3 15.5  
 100 10.7 8.6 13.0





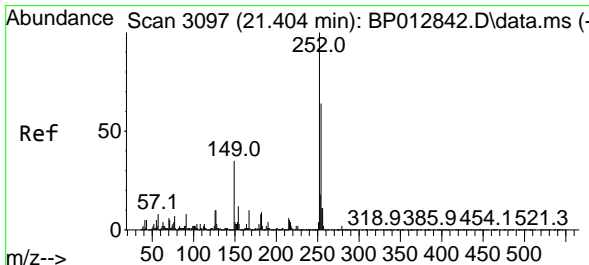
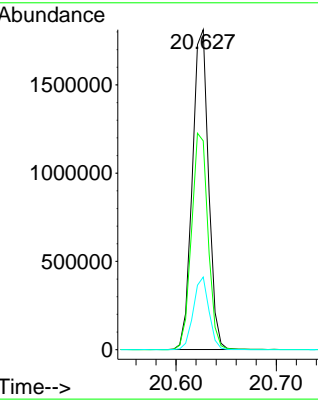
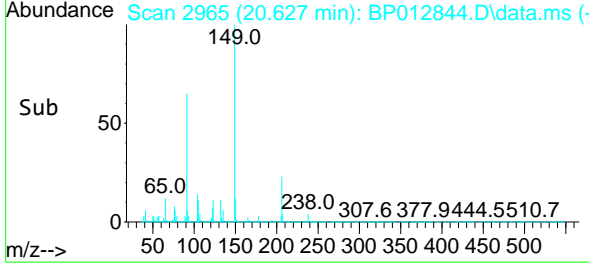
#83  
 Butylbenzylphthalate  
 Concen: 36.061 ng/uI  
 RT: 20.627 min Scan# 2965  
 Delta R.T. -0.006 min  
 Lab File: BP012844.D  
 Acq: 29 Nov 2022 10:39

Instrument : BNA\_P  
 ClientSampleId : SLCS186

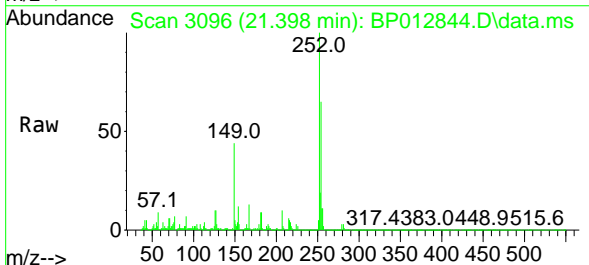


Tgt Ion:149 Resp: 204187  
 Ion Ratio Lower Upper  
 149 100  
 91 65.3 58.2 87.2  
 206 22.7 16.5 24.7

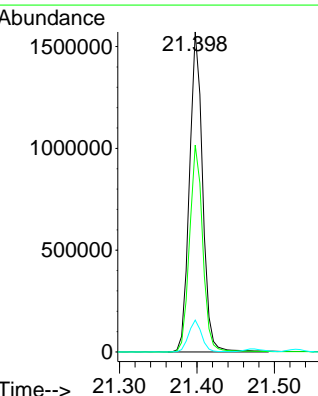
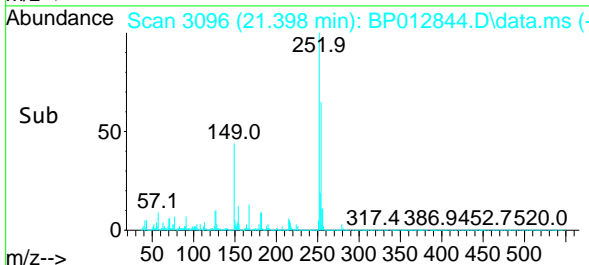
Manual Integrations  
**APPROVED**  
 Reviewed By :Jagrut Upadhyay 11/30/2022  
 Supervised By :mohammad ahmed 11/30/2022

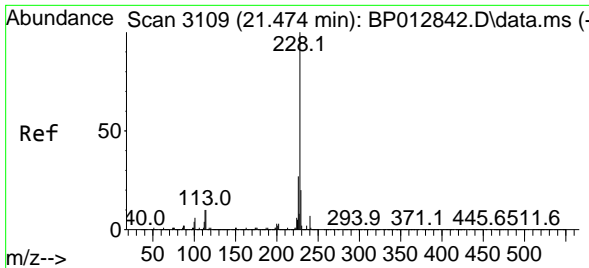


#84  
 3,3'-Dichlorobenzidine  
 Concen: 31.182 ng/uI  
 RT: 21.398 min Scan# 3096  
 Delta R.T. -0.006 min  
 Lab File: BP012844.D  
 Acq: 29 Nov 2022 10:39



Tgt Ion:252 Resp: 1853588  
 Ion Ratio Lower Upper  
 252 100  
 254 64.6 52.3 78.5  
 126 10.0 7.6 11.4





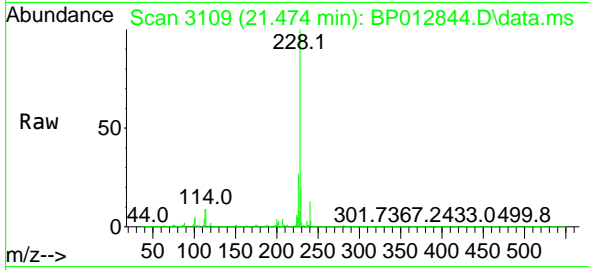
#85  
 Benzo(a)anthracene  
 Concen: 27.225 ng/uI  
 RT: 21.474 min Scan# 3109  
 Delta R.T. -0.006 min  
 Lab File: BP012844.D  
 Acq: 29 Nov 2022 10:39

Instrument :

BNA\_P

ClientSampleId :

SLCS186

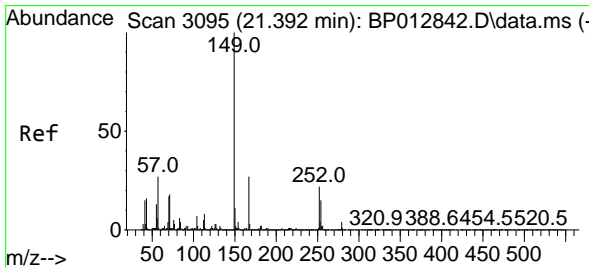
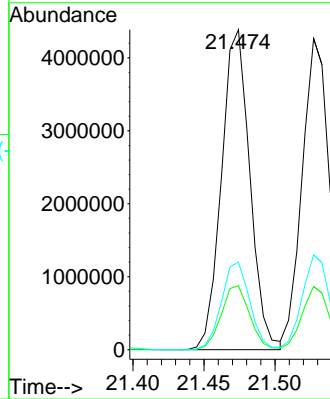
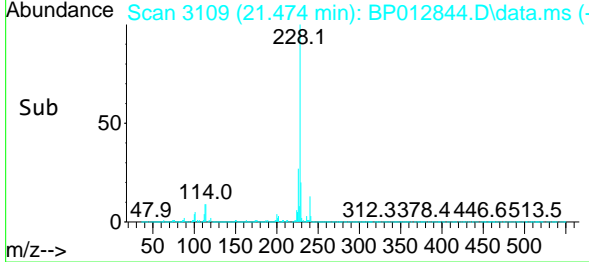


Tgt Ion:228 Resp: 609522  
 Ion Ratio Lower Upper  
 228 100  
 229 20.0 16.2 24.2  
 226 27.3 22.2 33.2

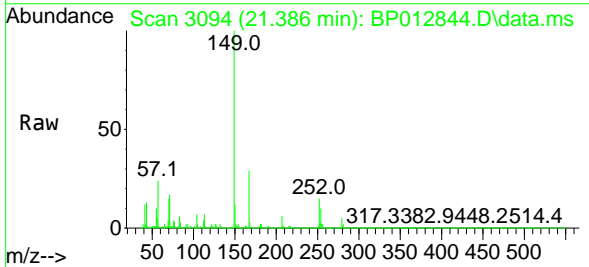
Manual Integrations

APPROVED

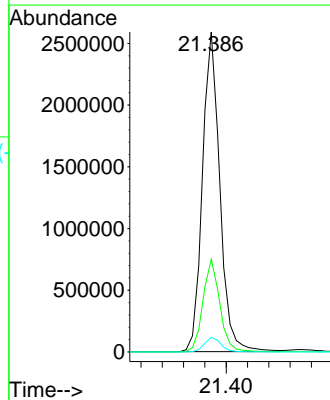
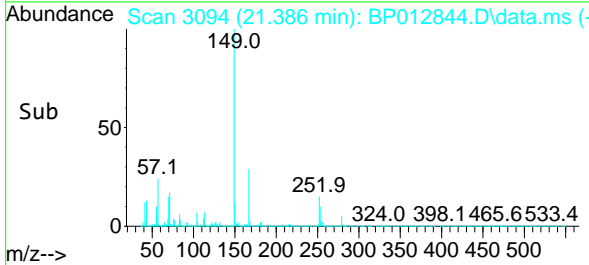
Reviewed By :Jagrut Upadhyay 11/30/2022  
 Supervised By :mohammad ahmed 11/30/2022

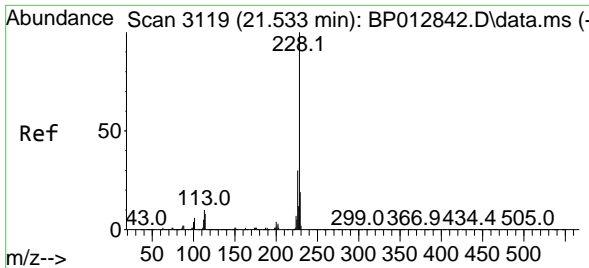


#86  
 Bis(2-ethylhexyl)phthalate  
 Concen: 33.942 ng/uI  
 RT: 21.386 min Scan# 3094  
 Delta R.T. -0.012 min  
 Lab File: BP012844.D  
 Acq: 29 Nov 2022 10:39



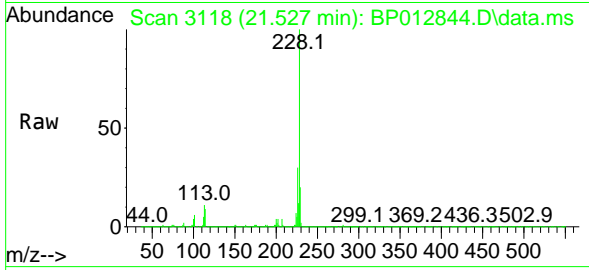
Tgt Ion:149 Resp: 2939099  
 Ion Ratio Lower Upper  
 149 100  
 167 29.0 22.7 34.1  
 279 4.6 3.8 5.6





#87  
 Chrysene  
 Concen: 26.416 ng/u1  
 RT: 21.527 min Scan# 3118  
 Delta R.T. -0.006 min  
 Lab File: BP012844.D  
 Acq: 29 Nov 2022 10:39

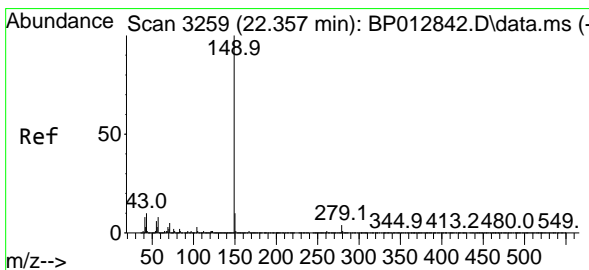
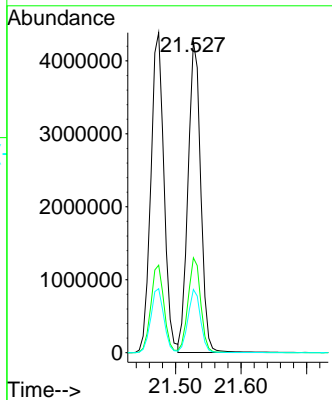
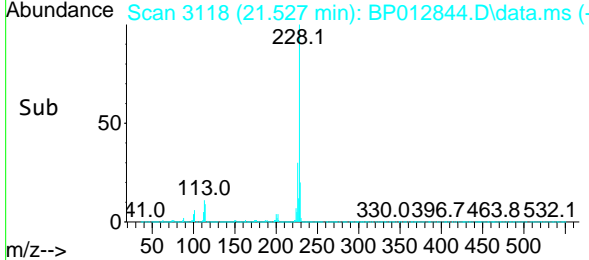
Instrument : BNA\_P  
 Client Sample Id : SLCS186



Tgt Ion: 228 Resp: 571835  
 Ion Ratio Lower Upper  
 228 100  
 226 30.5 24.3 36.5  
 229 20.3 15.9 23.9

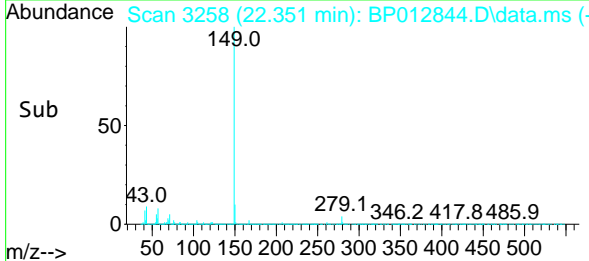
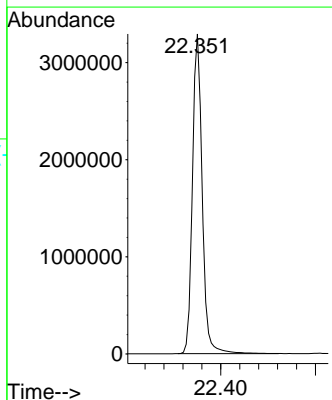
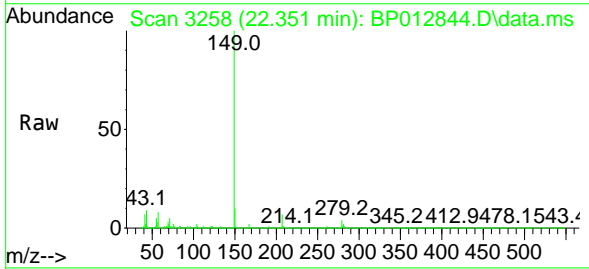
Manual Integrations  
 APPROVED

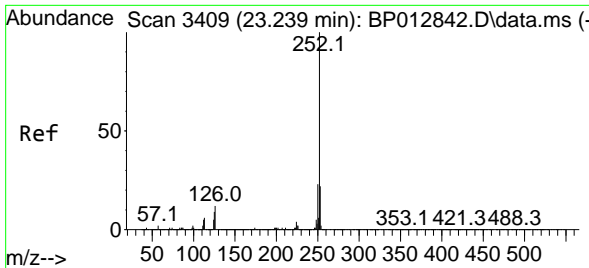
Reviewed By :Jagrut Upadhyay 11/30/2022  
 Supervised By :mohammad ahmed 11/30/2022



#89  
 Di-n-octyl phthalate  
 Concen: 27.786 ng/u1  
 RT: 22.351 min Scan# 3258  
 Delta R.T. -0.012 min  
 Lab File: BP012844.D  
 Acq: 29 Nov 2022 10:39

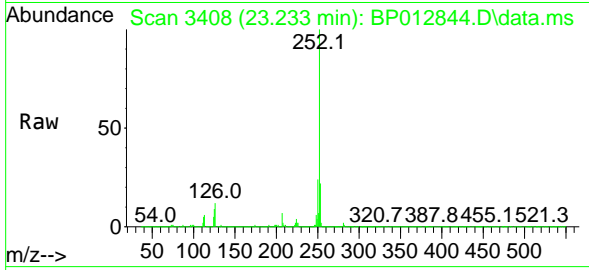
Tgt Ion: 149 Resp: 4699008





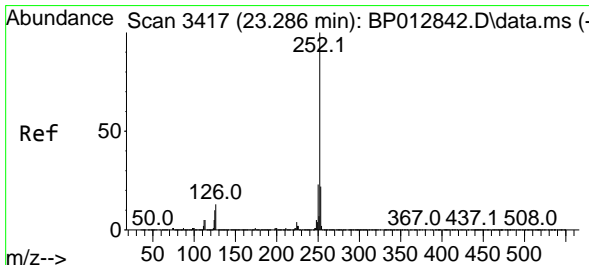
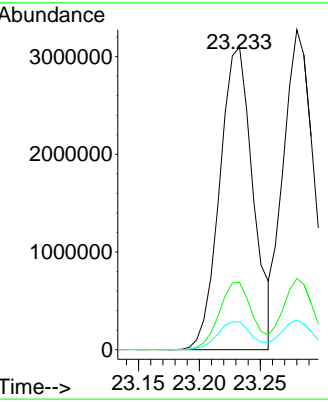
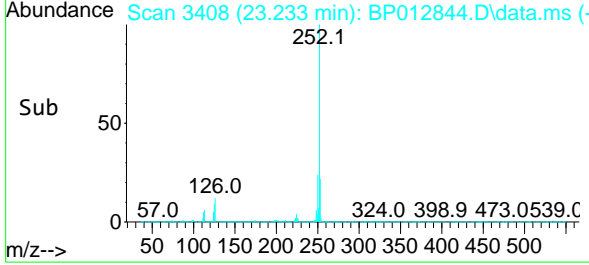
#90  
 Benzo(b)fluoranthene  
 Concen: 26.925 ng/ul  
 RT: 23.233 min Scan# 3409  
 Delta R.T. -0.006 min  
 Lab File: BP012844.D  
 Acq: 29 Nov 2022 10:39

Instrument : BNA\_P  
 ClientSampleId : SLCS186

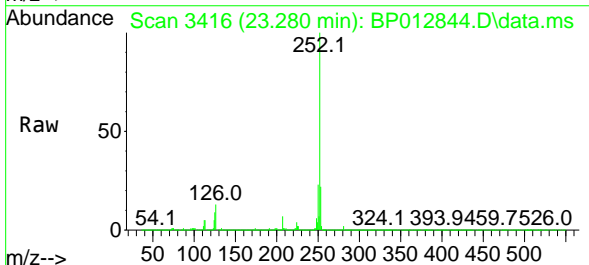


Tgt Ion:252 Resp: 590461  
 Ion Ratio Lower Upper  
 252 100  
 253 22.2 17.6 26.4  
 125 9.2 7.4 11.2

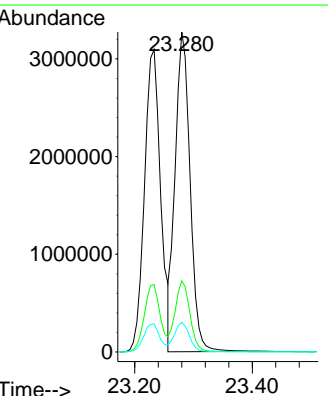
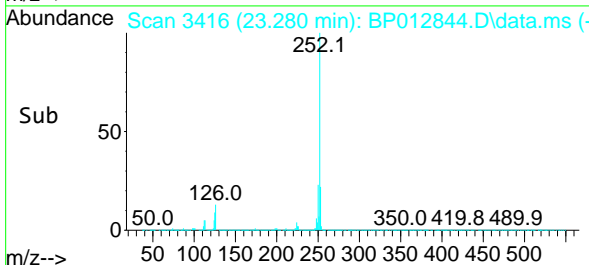
Manual Integrations  
**APPROVED**  
 Reviewed By :Jagrut Upadhyay 11/30/2022  
 Supervised By :mohammad ahmed 11/30/2022



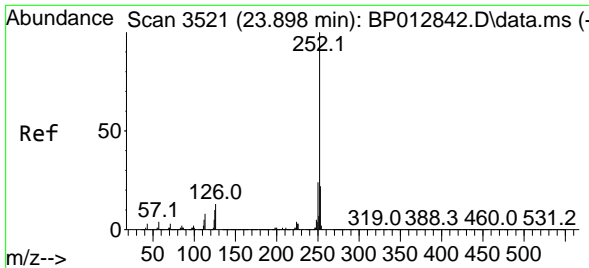
#91  
 Benzo(k)fluoranthene  
 Concen: 26.462 ng/ul  
 RT: 23.280 min Scan# 3416  
 Delta R.T. -0.012 min  
 Lab File: BP012844.D  
 Acq: 29 Nov 2022 10:39



Tgt Ion:252 Resp: 5792537  
 Ion Ratio Lower Upper  
 252 100  
 253 22.2 17.8 26.8  
 125 9.3 7.8 11.8







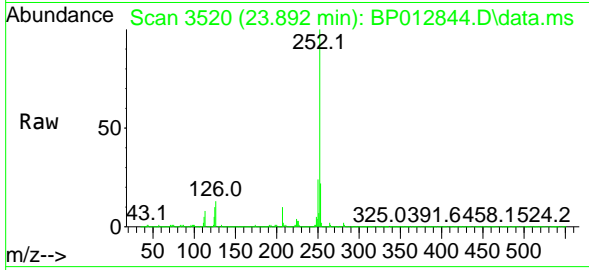
#93  
 Benzo(a)pyrene  
 Concen: 27.899 ng/u1  
 RT: 23.892 min Scan# 31  
 Delta R.T. -0.006 min  
 Lab File: BP012844.D  
 Acq: 29 Nov 2022 10:39

Instrument :

BNA\_P

ClientSampleId :

SLCS186

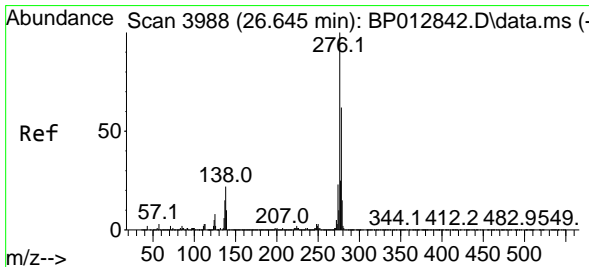
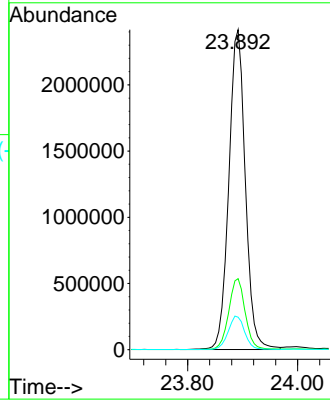
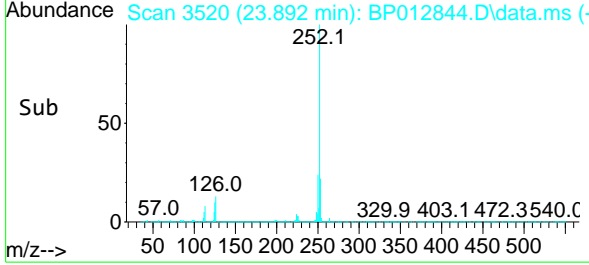


Tgt Ion:252 Resp: 503098  
 Ion Ratio Lower Upper  
 252 100  
 253 22.2 17.6 26.4  
 125 10.1 8.5 12.7

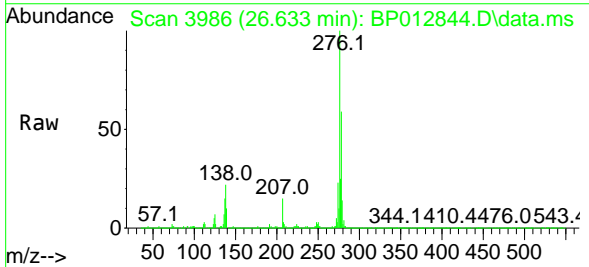
Manual Integrations

APPROVED

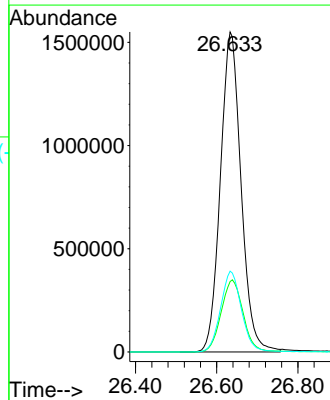
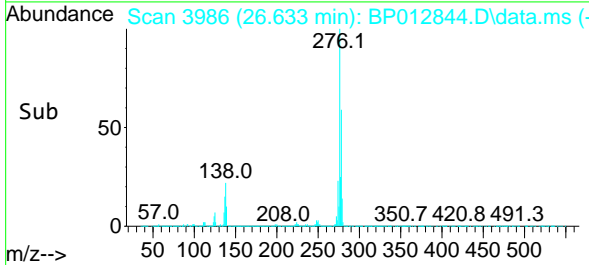
Reviewed By :Jagrut Upadhyay 11/30/2022  
 Supervised By :mohammad ahmed 11/30/2022

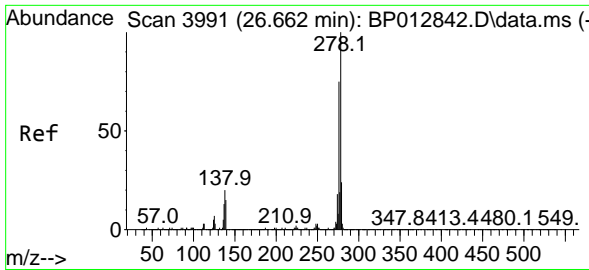


#94  
 Indeno(1,2,3-cd)pyrene  
 Concen: 31.531 ng/u1  
 RT: 26.633 min Scan# 3986  
 Delta R.T. -0.018 min  
 Lab File: BP012844.D  
 Acq: 29 Nov 2022 10:39



Tgt Ion:276 Resp: 5485567  
 Ion Ratio Lower Upper  
 276 100  
 138 22.0 18.3 27.5  
 277 25.3 19.8 29.8





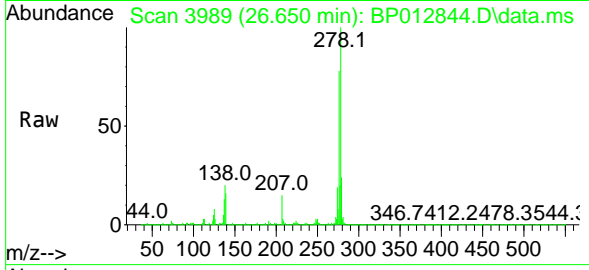
#95  
 Dibenzo(a,h)anthracene  
 Concen: 30.690 ng/ul  
 RT: 26.650 min Scan# 3989  
 Delta R.T. -0.024 min  
 Lab File: BP012844.D  
 Acq: 29 Nov 2022 10:39

Instrument :

BNA\_P

Client Sample Id :

SLCS186

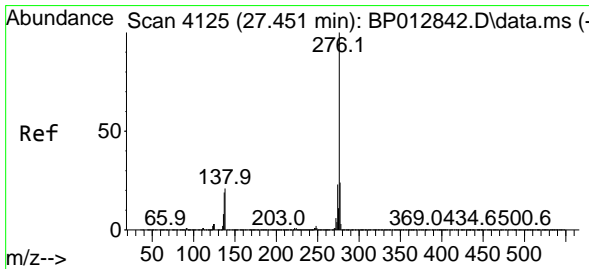
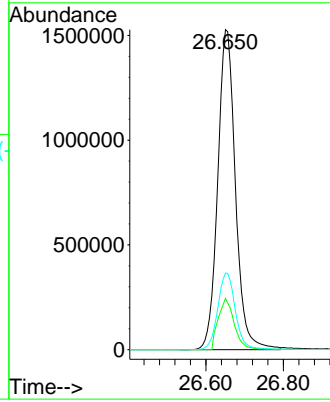
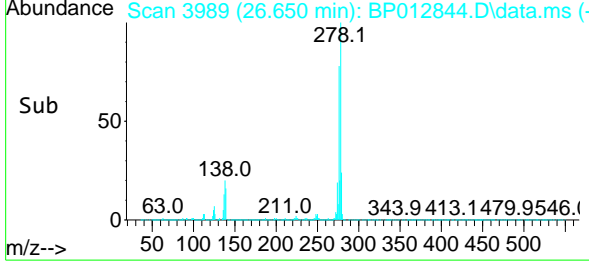


Tgt Ion: 278 Resp: 4844894  
 Ion Ratio Lower Upper  
 278 100  
 139 16.0 12.6 18.8  
 279 24.0 19.4 29.2

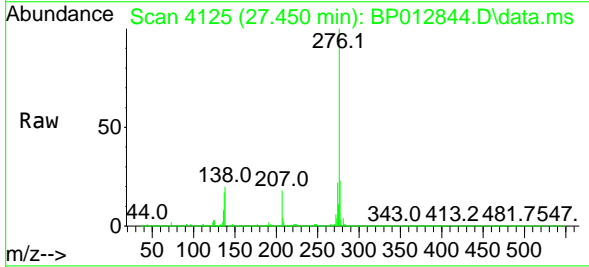
Manual Integrations

APPROVED

Reviewed By :Jagrut Upadhyay 11/30/2022  
 Supervised By :mohammad ahmed 11/30/2022



#96  
 Benzo(g,h,i)perylene  
 Concen: 30.923 ng/ul  
 RT: 27.450 min Scan# 4125  
 Delta R.T. -0.006 min  
 Lab File: BP012844.D  
 Acq: 29 Nov 2022 10:39



Tgt Ion: 276 Resp: 4627361  
 Ion Ratio Lower Upper  
 276 100  
 138 19.5 16.7 25.1  
 277 23.4 19.1 28.7

