

Data Path : Z:\SVOASRV\HPCHEM1\BNA P\DATA\BP120319\  
 Data File : BP001172.D  
 Acq On : 03 Dec 2019 23:37  
 Operator : JU  
 Sample : K6022-11  
 Misc :  
 ALS Vial : 17 Sample Multiplier: 1

Instrument :  
 BNA\_P  
 ClientSampleId :  
 TP-16-D

Quant Time: Dec 04 06:13:23 2019  
 Quant Method : Z:\SVOASRV\HPCHEM1\BNA P\METHODS\8270-BP112719.M  
 Quant Title : ASP BNA STANDARDS FOR 5 POINT CALIBRATION  
 QLast Update : Wed Nov 27 17:38:46 2019  
 Response via : Initial Calibration

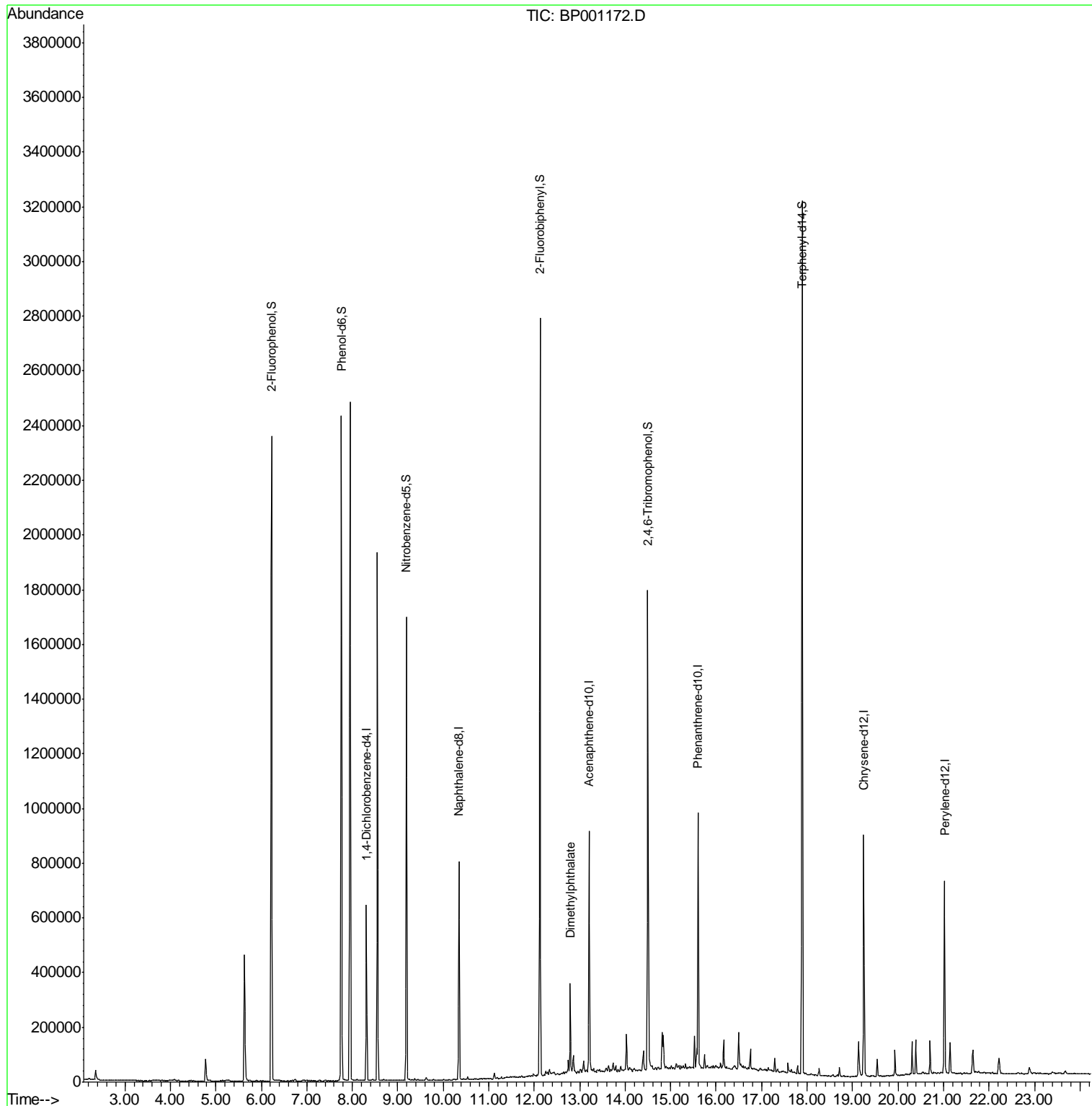
Internal Standards	R.T.	QIon	Response	Conc	Units	Dev(Min)
1) 1,4-Dichlorobenzene-d4	8.31	152	111256	20.00	ng	-0.02
21) Naphthalene-d8	10.35	136	405975	20.00	ng	-0.02
39) Acenaphthene-d10	13.21	164	223355	20.00	ng	-0.02
64) Phenanthrene-d10	15.60	188	426082	20.00	ng	-0.02
76) Chrysene-d12	19.25	240	338707	20.00	ng	-0.03
87) Perylene-d12	21.02	264	348857	20.00	ng	-0.03
System Monitoring Compounds						
5) 2-Fluorophenol	6.22	112	745847	111.22	ng	0.00
7) Phenol-d6	7.76	99	1022554	114.46	ng	0.00
23) Nitrobenzene-d5	9.19	82	676885	72.34	ng	-0.02
42) 2,4,6-Tribromophenol	14.50	330	233245	108.95	ng	-0.02
45) 2-Fluorobiphenyl	12.13	172	1052222	68.95	ng	-0.02
79) Terphenyl-d14	17.89	244	1219119	66.59	ng	-0.02
Target Compounds						Qvalue
50) Dimethylphthalate	12.79	163	150099	8.985	ng	100

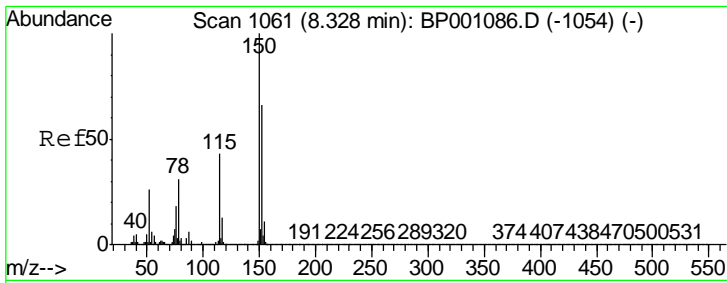
(#) = qualifier out of range (m) = manual integration (+) = signals summed

Data Path : Z:\SVOASRV\HPCHEM1\BNA P\DATA\BP120319\  
 Data File : BP001172.D  
 Acq On : 03 Dec 2019 23:37  
 Operator : JU  
 Sample : K6022-11  
 Misc :  
 ALS Vial : 17 Sample Multiplier: 1

Instrument :  
 BNA\_P  
 ClientSampled :  
 TP-16-D

Quant Time: Dec 04 06:13:23 2019  
 Quant Method : Z:\SVOASRV\HPCHEM1\BNA P\METHODS\8270-BP112719.M  
 Quant Title : ASP BNA STANDARDS FOR 5 POINT CALIBRATION  
 QLast Update : Wed Nov 27 17:38:46 2019  
 Response via : Initial Calibration

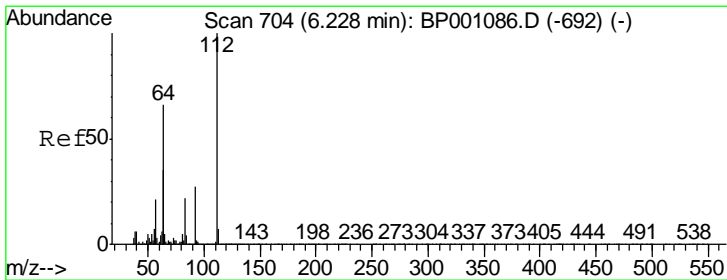
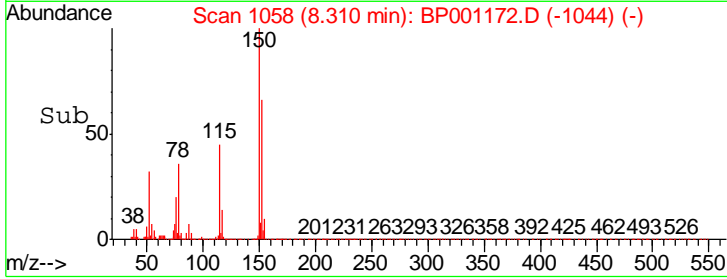
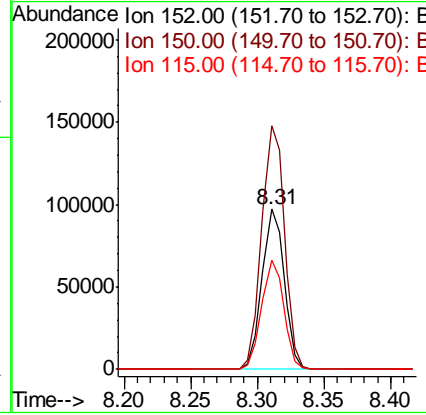
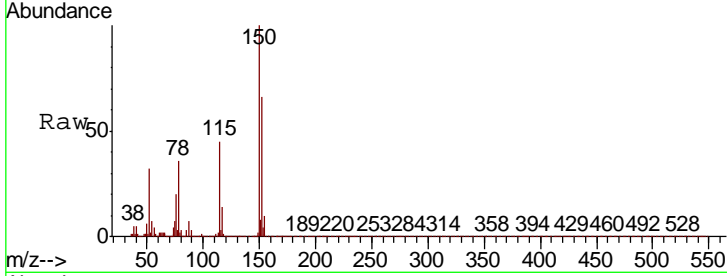




#1  
 1,4-Dichlorobenzene-d4  
 Concen: 20.000 ng  
 RT: 8.31 min Scan# 1058  
 Delta R.T. -0.02 min  
 Lab File: BP001172.D  
 Acq: 03 Dec 2019 23:37

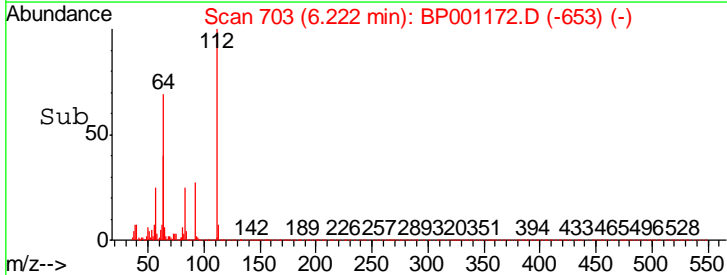
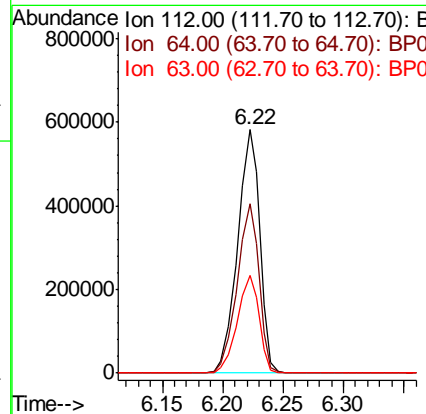
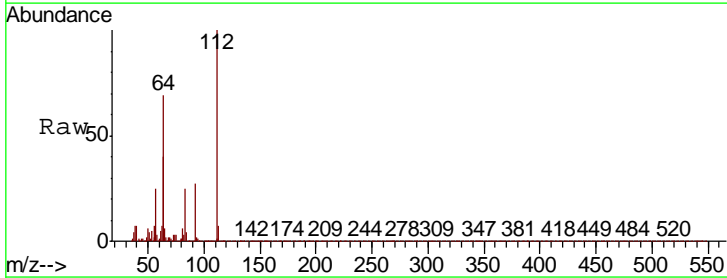
Instrument :  
 BNA\_P  
 ClientSampled :  
 TP-16-D

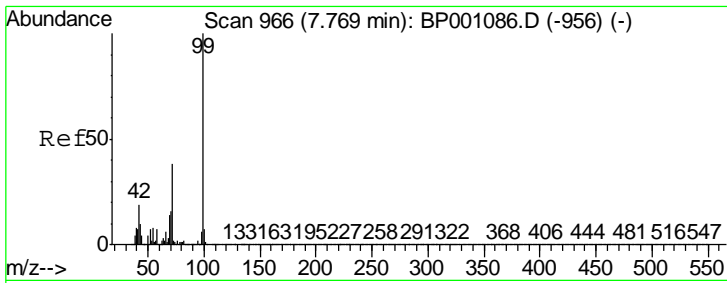
Tgt Ion	Resp	Lower	Upper
152	111256		
150	100	120.6	181.0
115	68.4	51.6	77.4



#5  
 2-Fluorophenol  
 Concen: 111.223 ng  
 RT: 6.22 min Scan# 703  
 Delta R.T. -0.01 min  
 Lab File: BP001172.D  
 Acq: 03 Dec 2019 23:37

Tgt Ion	Resp	Lower	Upper
112	745847		
64	100	52.8	79.2
63	40.3	28.2	42.2

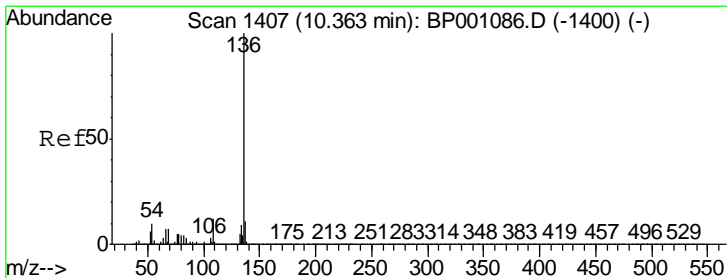
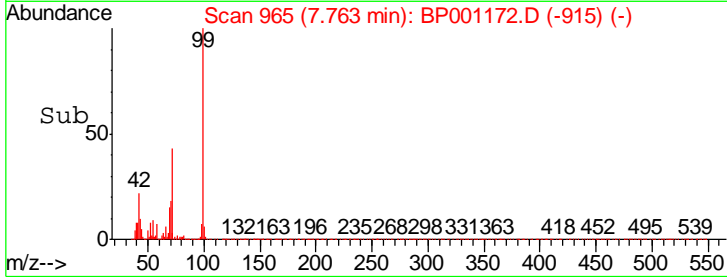
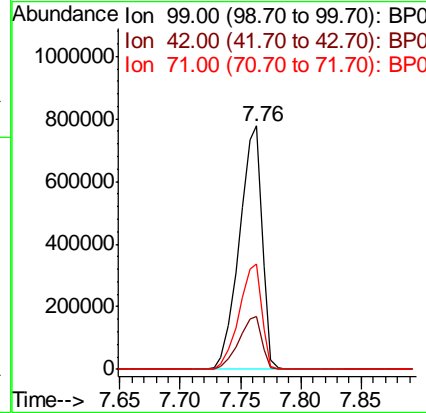
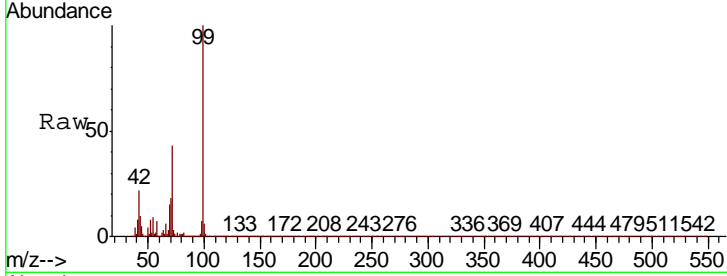




#7  
 Phenol-d6  
 Concen: 114.458 ng  
 RT: 7.76 min Scan# 965  
 Delta R.T. -0.01 min  
 Lab File: BP001172.D  
 Acq: 03 Dec 2019 23:37

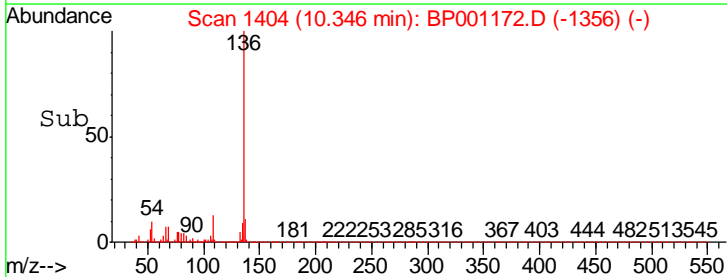
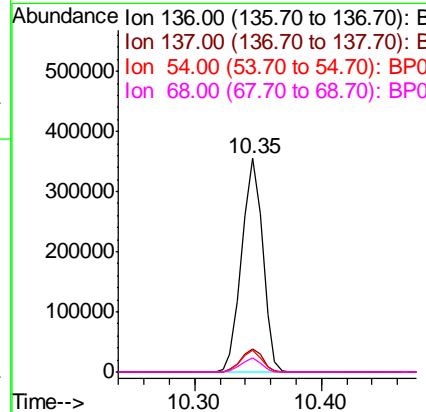
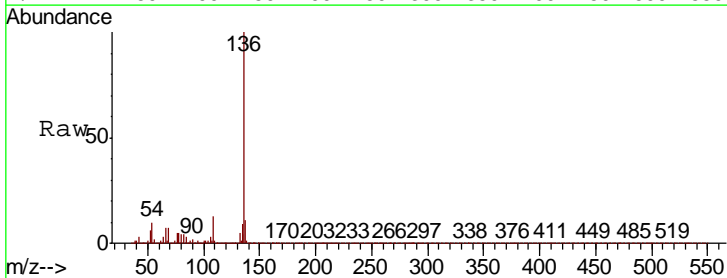
Instrument :  
 BNA\_P  
 ClientSampled :  
 TP-16-D

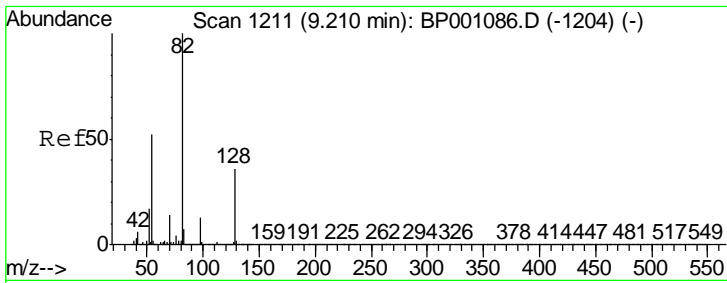
Tgt Ion	Resp	Lower	Upper
99	1022554		
42	21.7	15.4	23.0
71	43.1	30.8	46.2



#21  
 Naphthalene-d8  
 Concen: 20.000 ng  
 RT: 10.35 min Scan# 1404  
 Delta R.T. -0.02 min  
 Lab File: BP001172.D  
 Acq: 03 Dec 2019 23:37

Tgt Ion	Resp	Lower	Upper
136	405975		
137	10.8	8.8	13.2
54	10.1	7.9	11.9
68	6.6	5.6	8.4

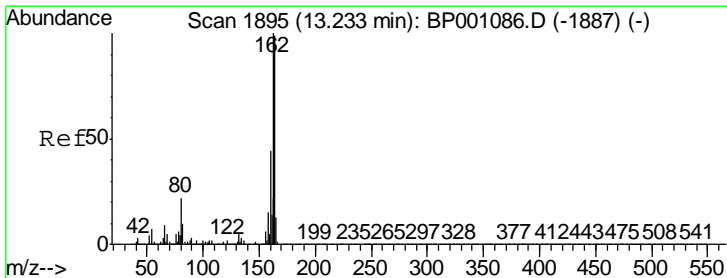
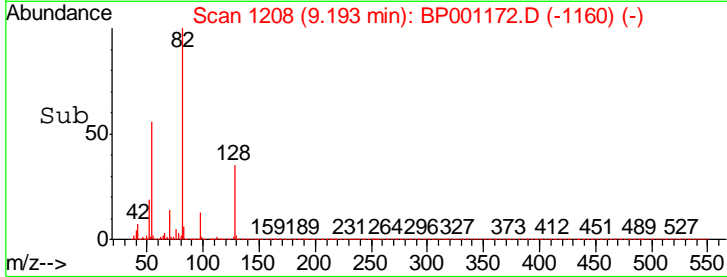
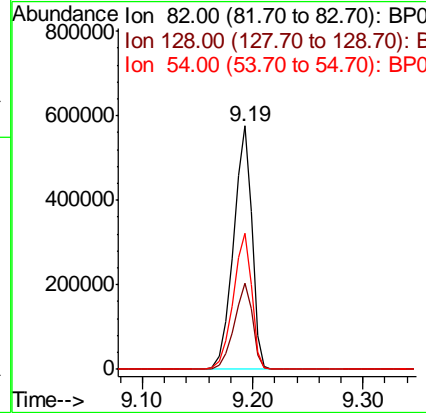
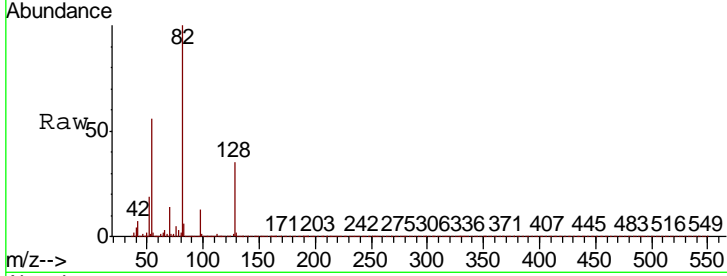




#23  
 Nitrobenzene-d5  
 Concen: 72.338 ng  
 RT: 9.19 min Scan# 1208  
 Delta R.T. -0.02 min  
 Lab File: BP001172.D  
 Acq: 03 Dec 2019 23:37

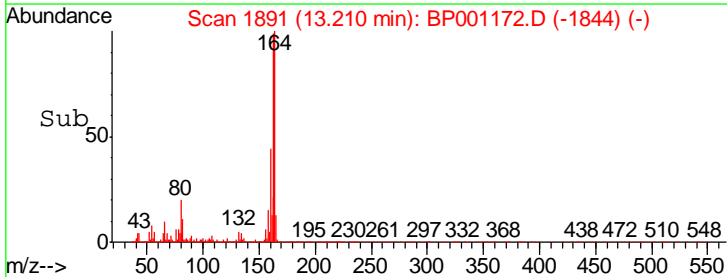
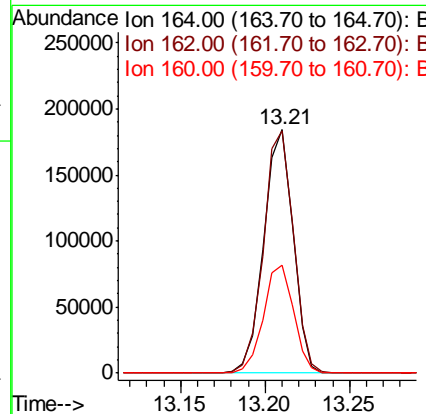
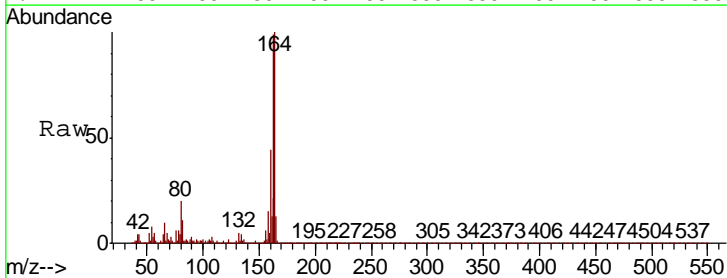
Instrument :  
 BNA\_P  
 ClientSampled :  
 TP-16-D

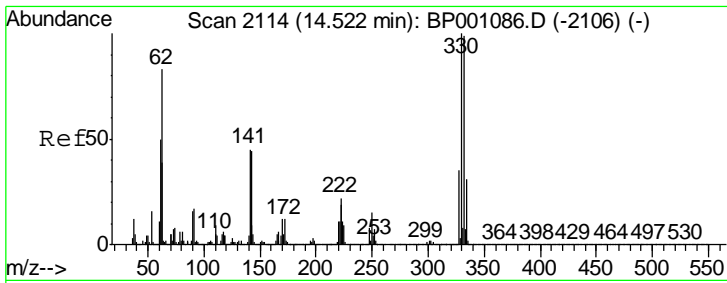
Tgt Ion	Resp	Lower	Upper
82	676885		
128	35.2	28.9	43.3
54	56.1	41.9	62.9



#39  
 Acenaphthene-d10  
 Concen: 20.000 ng  
 RT: 13.21 min Scan# 1891  
 Delta R.T. -0.02 min  
 Lab File: BP001172.D  
 Acq: 03 Dec 2019 23:37

Tgt Ion	Resp	Lower	Upper
164	223355		
162	99.4	80.6	120.8
160	44.1	35.4	53.2

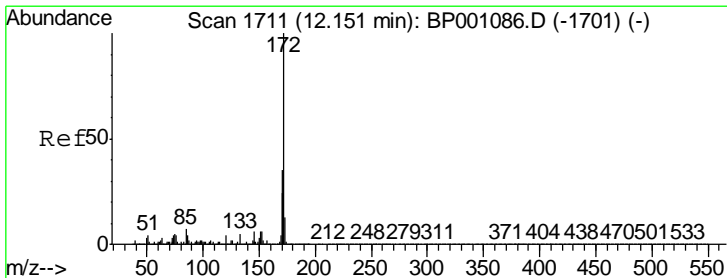
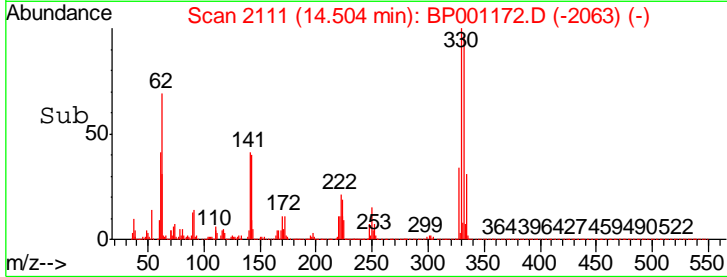
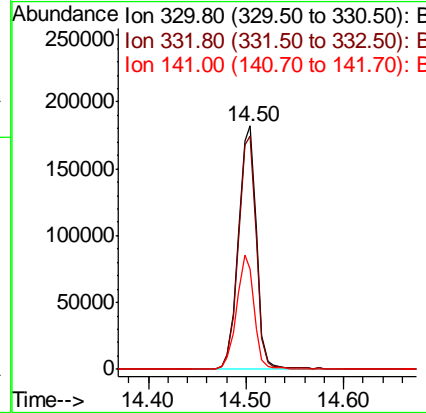
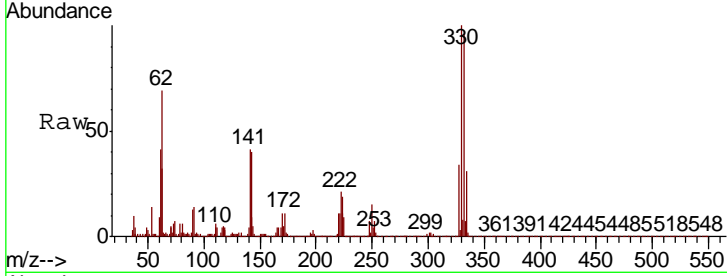




#42  
 2,4,6-Tribromophenol  
 Concen: 108.949 ng  
 RT: 14.50 min Scan# 2111  
 Delta R.T. -0.02 min  
 Lab File: BP001172.D  
 Acq: 03 Dec 2019 23:37

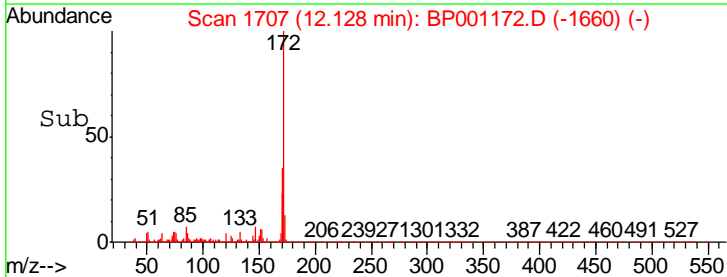
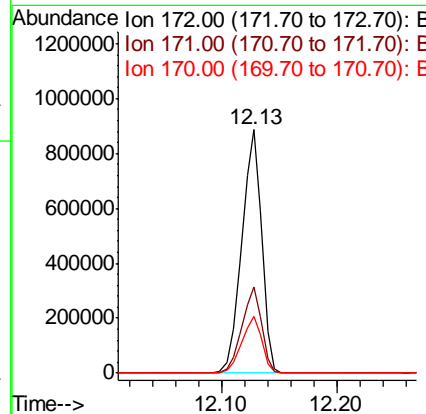
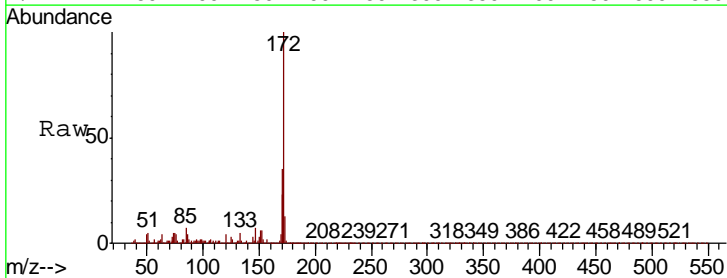
Instrument :  
 BNA\_P  
 ClientSampled :  
 TP-16-D

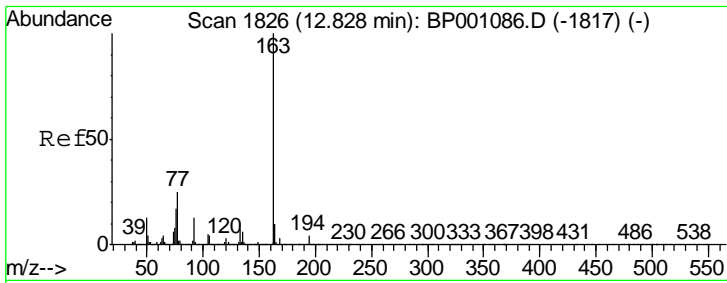
Tgt Ion	Resp	Lower	Upper
330	100		
332	95.6	77.6	116.4
141	45.1	34.2	51.2



#45  
 2-Fluorobiphenyl  
 Concen: 68.949 ng  
 RT: 12.13 min Scan# 1707  
 Delta R.T. -0.02 min  
 Lab File: BP001172.D  
 Acq: 03 Dec 2019 23:37

Tgt Ion	Resp	Lower	Upper
172	100		
171	35.3	27.9	41.9
170	23.3	19.0	28.4

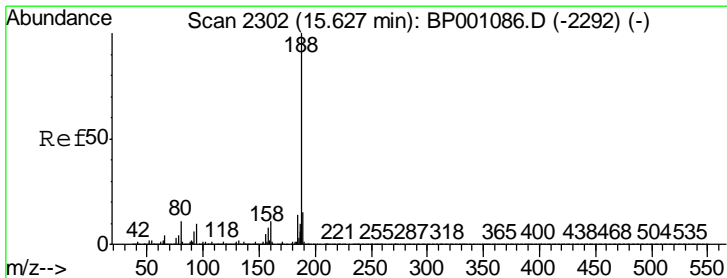
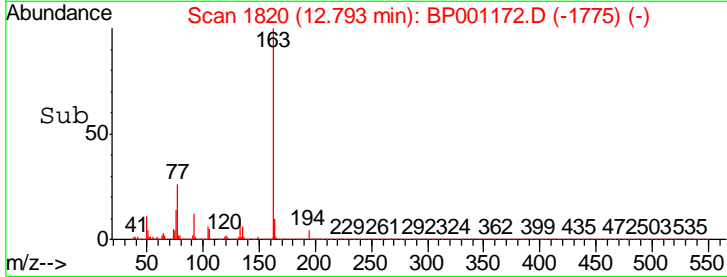
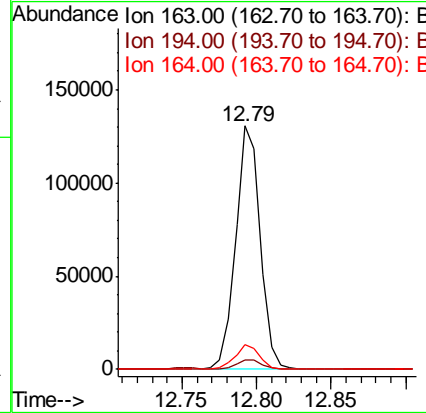
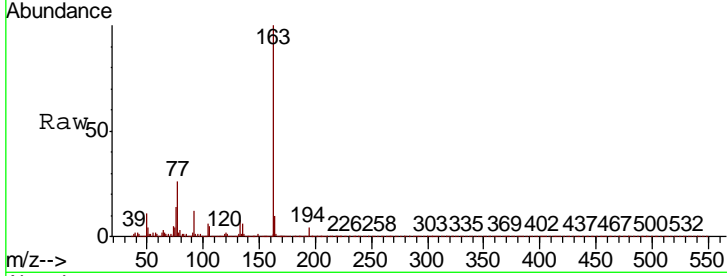




#50  
 Dimethylphthalate  
 Concen: 8.985 ng  
 RT: 12.79 min Scan# 1820  
 Delta R.T. -0.04 min  
 Lab File: BP001172.D  
 Acq: 03 Dec 2019 23:37

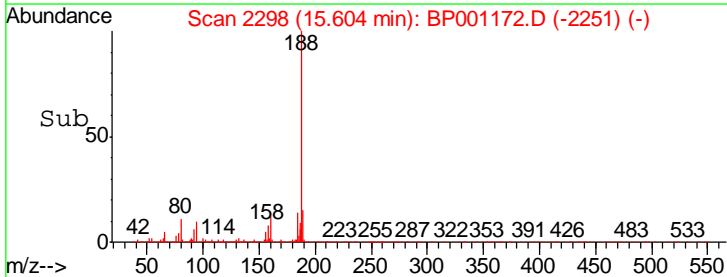
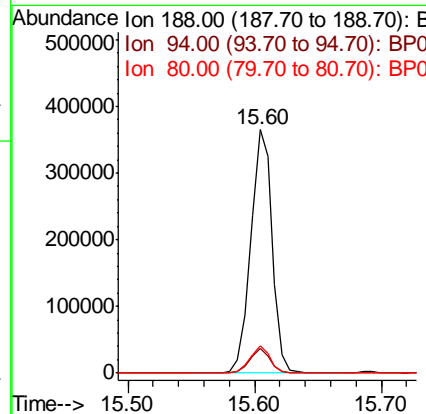
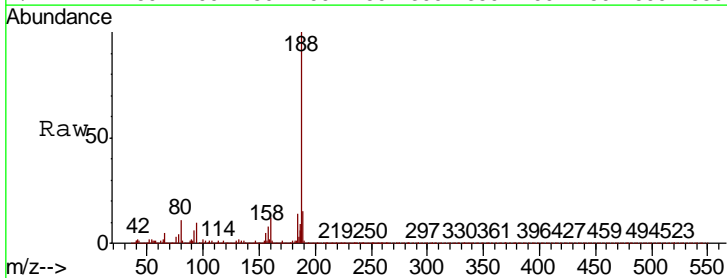
**Instrument :**  
 BNA\_P  
**ClientSampled :**  
 TP-16-D

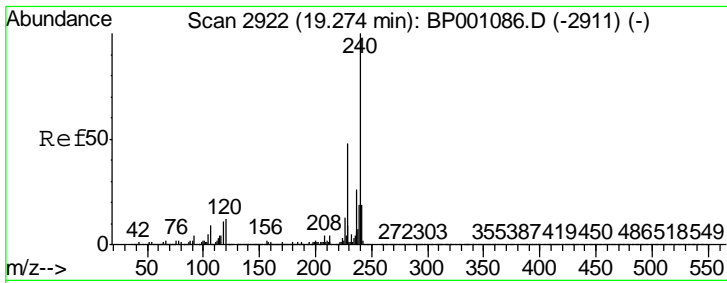
Tgt Ion	Resp	Lower	Upper
163	150099		
194	4.0	3.1	4.7
164	10.1	8.1	12.1



#64  
 Phenanthrene-d10  
 Concen: 20.000 ng  
 RT: 15.60 min Scan# 2298  
 Delta R.T. -0.02 min  
 Lab File: BP001172.D  
 Acq: 03 Dec 2019 23:37

Tgt Ion	Resp	Lower	Upper
188	426082		
94	10.4	7.9	11.9
80	11.2	8.8	13.2

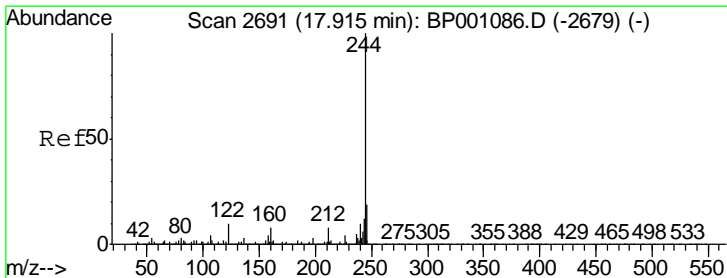
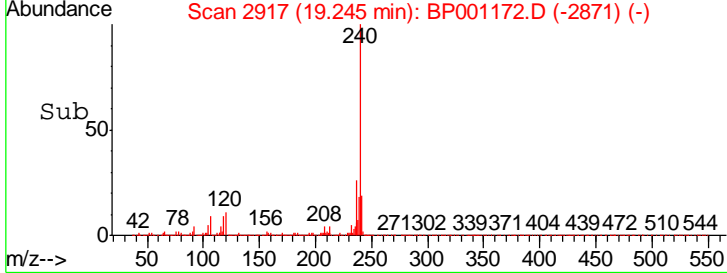
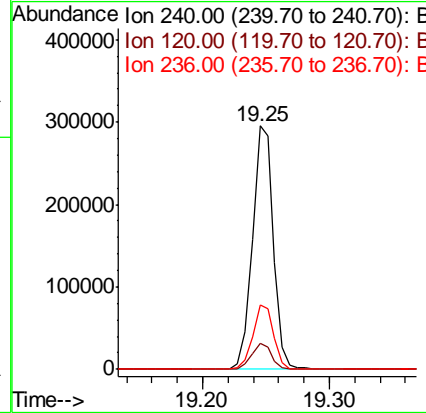
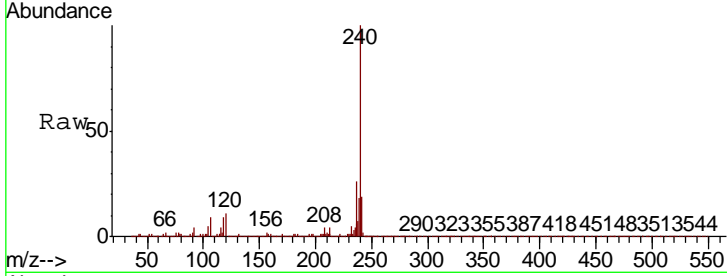




#76  
 Chrysene-d12  
 Concen: 20.000 ng  
 RT: 19.25 min Scan# 2917  
 Delta R.T. -0.03 min  
 Lab File: BP001172.D  
 Acq: 03 Dec 2019 23:37

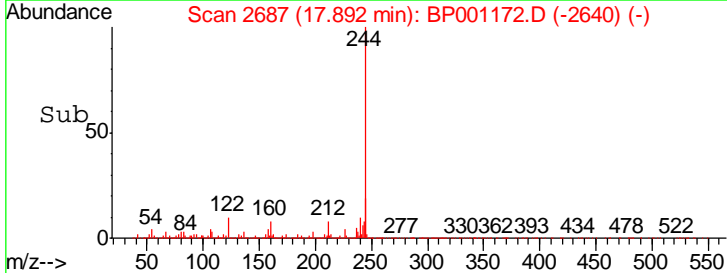
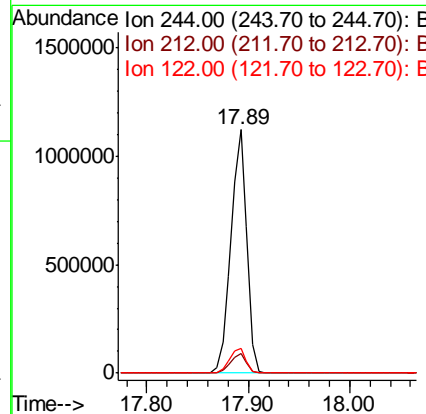
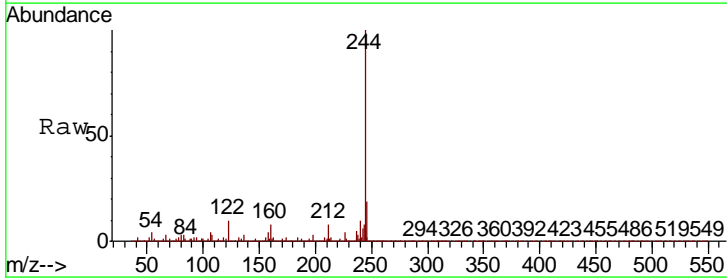
Instrument :  
 BNA\_P  
 ClientSampled :  
 TP-16-D

Tgt Ion	Resp	Lower	Upper
240	338707		
120	10.8	9.5	14.3
236	26.5	20.4	30.6

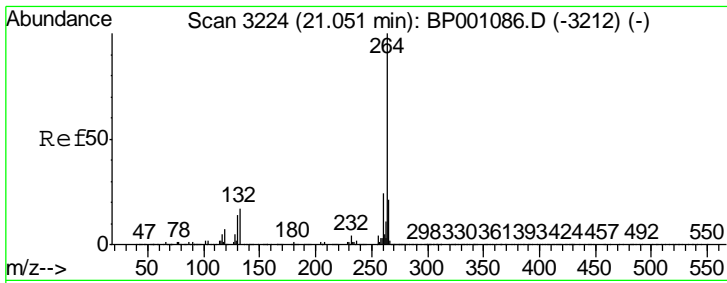


#79  
 Terphenyl-d14  
 Concen: 66.591 ng  
 RT: 17.89 min Scan# 2687  
 Delta R.T. -0.02 min  
 Lab File: BP001172.D  
 Acq: 03 Dec 2019 23:37

Tgt Ion	Resp	Lower	Upper
244	1219119		
212	7.9	6.2	9.2
122	10.3	8.2	12.2







#87  
 Perylene-d12  
 Concen: 20.000 ng  
 RT: 21.02 min Scan# 3219  
 Delta R.T. -0.03 min  
 Lab File: BP001172.D  
 Acq: 03 Dec 2019 23:37

Instrument :  
 BNA\_P  
 ClientSampleId :  
 TP-16-D

Tot Ion	Ratio	Lower	Upper
264	100		
260	24.4	18.8	28.2
265	21.3	16.9	25.3

