

Data Path : Z:\svoasrv\HPCHEM1\BNA_P\Data\BP120721\
 Data File : BP008268.D
 Acq On : 08 Dec 2021 01:10
 Operator : CG/JU
 Sample : M4954-01 2X
 Misc :
 ALS Vial : 17 Sample Multiplier: 1

Instrument :
 BNA_P
 ClientSampleId :
 SB-1(2.5-3)

Integration Parameters: rteint.p

Integrator: RTE
 Smoothing : ON Filtering: 5
 Sampling : 1 Min Area: 3 % of largest Peak
 Start Thrs: 0.2 Max Peaks: 100
 Stop Thrs : 0 Peak Location: TOP

If leading or trailing edge < 100 prefer < Baseline drop else tangent >
 Peak separation: 5

Method : Z:\svoasrv\HPCHEM1\BNA_P\Methods\8270E-BP112521.M
 Title : ASP BNA STANDARDS FOR 5 POINT CALIBRATION

Signal : TIC: BP008268.D\data.ms

peak #	R.T. min	first scan	max scan	last scan	PK TY	peak height	corr. area	corr. % max.	% of total
1	4.505	253	258	267	rVB	42636	66942	2.29%	0.263%
2	5.375	400	406	413	rBV	462391	682140	23.38%	2.681%
3	6.969	672	677	689	rVB	387348	667403	22.88%	2.623%
4	7.781	806	815	822	rBV	289421	471056	16.15%	1.851%
5	8.946	1006	1013	1020	rBV	244954	426587	14.62%	1.676%
6	9.016	1020	1025	1030	rVB2	21757	34983	1.20%	0.137%
7	10.575	1279	1290	1296	rBV	336632	620786	21.28%	2.440%
8	10.628	1296	1299	1306	rVB	30611	50293	1.72%	0.198%
9	11.416	1427	1433	1440	rBV2	65828	132223	4.53%	0.520%
10	11.616	1461	1467	1472	rBV2	25047	43690	1.50%	0.172%
11	12.010	1530	1534	1542	rVB	24790	38243	1.31%	0.150%
12	12.246	1566	1574	1584	rBV2	49231	97311	3.34%	0.382%
13	12.387	1591	1598	1607	rBV	102656	268190	9.19%	1.054%
14	12.469	1607	1612	1621	rVB2	55596	110808	3.80%	0.435%
15	13.051	1704	1711	1718	rBV	597276	880024	30.16%	3.458%
16	13.263	1742	1747	1759	rVB3	46151	73648	2.52%	0.289%
17	13.593	1798	1803	1805	rBV2	24765	37482	1.28%	0.147%
18	13.751	1825	1830	1835	rBV	58419	103049	3.53%	0.405%
19	13.804	1835	1839	1845	rVB	40565	59771	2.05%	0.235%
20	13.922	1856	1859	1863	rVB2	29744	37048	1.27%	0.146%
21	13.987	1864	1870	1874	rBV3	37308	66310	2.27%	0.261%
22	14.092	1883	1888	1893	rBV7	23098	46164	1.58%	0.181%
23	14.151	1893	1898	1909	rVB	117377	183550	6.29%	0.721%
24	14.340	1926	1930	1936	rVB	29610	41516	1.42%	0.163%
25	14.434	1937	1946	1951	rVV	537661	807784	27.69%	3.175%
26	14.492	1952	1956	1965	rVB	100051	178267	6.11%	0.701%
27	14.640	1977	1981	1989	rBV4	15782	38980	1.34%	0.153%
28	14.834	2009	2014	2018	rBV2	101076	149338	5.12%	0.587%
29	14.910	2024	2027	2032	rVB	28823	40040	1.37%	0.157%
30	15.051	2047	2051	2056	rBV3	23882	45273	1.55%	0.178%
31	15.228	2074	2081	2084	rBV4	41510	82576	2.83%	0.325%
32	15.292	2089	2092	2099	rVB3	33756	55179	1.89%	0.217%
33	15.445	2114	2118	2120	rBV4	28032	38587	1.32%	0.152%
34	15.487	2120	2125	2130	rVB2	147612	214147	7.34%	0.842%
35	15.651	2149	2153	2157	rVB5	22019	32015	1.10%	0.126%
36	15.698	2158	2161	2166	rBV5	25051	39883	1.37%	0.157%

Data Path : Z:\svoasrv\HPCHEM1\BNA_P\Data\BP120721\
 Data File : BP008268.D
 Acq On : 08 Dec 2021 01:10
 Operator : CG/JU
 Sample : M4954-01 2X
 Misc :
 ALS Vial : 17 Sample Multiplier: 1

Instrument :
 BNA_P
 ClientSampleId :
 SB-1(2.5-3)

Integration Parameters: rteint.p
 Integrator: RTE
 Smoothing : ON Filtering: 5
 Sampling : 1 Min Area: 3 % of largest Peak
 Start Thrs: 0.2 Max Peaks: 100
 Stop Thrs : 0 Peak Location: TOP

If leading or trailing edge < 100 prefer < Baseline drop else tangent >
 Peak separation: 5

Method : Z:\svoasrv\HPCHEM1\BNA_P\Methods\8270E-BP112521.M
 Title : ASP BNA STANDARDS FOR 5 POINT CALIBRATION

37	15.781	2171	2175	2182	rVB	70184	110161	3.78%	0.433%
38	15.934	2195	2201	2208	rBV	617026	905017	31.02%	3.557%
39	16.004	2210	2213	2220	rVB4	32865	69900	2.40%	0.275%
40	16.163	2236	2240	2241	rBV	75018	84075	2.88%	0.330%
41	16.734	2333	2337	2341	rBV3	45261	84287	2.89%	0.331%
42	16.851	2353	2357	2362	rBV	86455	120090	4.12%	0.472%
43	17.010	2381	2384	2394	rVB	100056	177319	6.08%	0.697%
44	17.198	2410	2416	2419	rBV	668391	1024533	35.12%	4.026%
45	17.239	2419	2423	2428	rVB	1602451	2223333	76.21%	8.738%
46	17.328	2434	2438	2444	rVB	413619	569387	19.52%	2.238%
47	17.604	2483	2485	2493	rVB	109751	145235	4.98%	0.571%
48	18.069	2560	2564	2567	rBV	197336	262099	8.98%	1.030%
49	18.116	2567	2572	2577	rVB2	336429	571847	19.60%	2.247%
50	18.198	2583	2586	2591	rVB	119892	147115	5.04%	0.578%
51	18.257	2592	2596	2600	rBV2	274494	464032	15.91%	1.824%
52	18.557	2643	2647	2651	rBV	185034	240671	8.25%	0.946%
53	18.604	2652	2655	2659	rVB	123747	162485	5.57%	0.639%
54	19.222	2755	2760	2765	rBV	2028763	2715313	93.07%	10.671%
55	19.575	2811	2820	2828	rBV	1787581	2917493	100.00%	11.466%
56	19.769	2849	2853	2857	rVB	1160933	1379978	47.30%	5.423%
57	21.086	3074	3077	3082	rVB2	620827	774283	26.54%	3.043%
58	21.298	3109	3113	3118	rBV3	1219736	2362197	80.97%	9.283%
59	21.345	3118	3121	3126	rVB	807769	973678	33.37%	3.826%

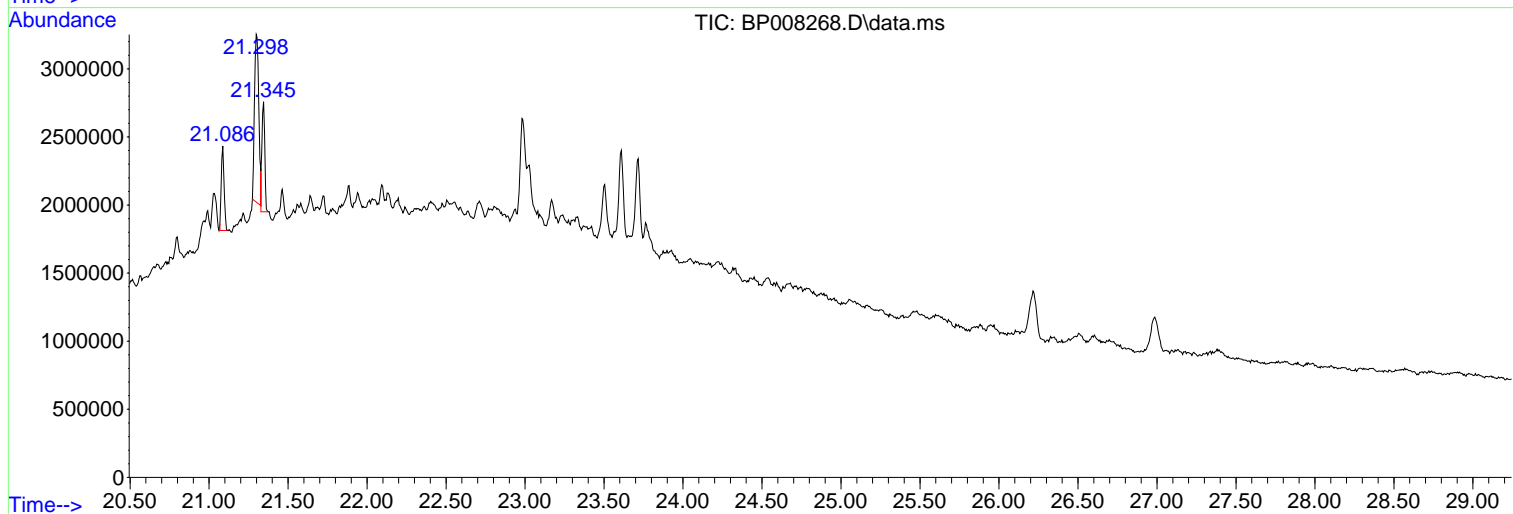
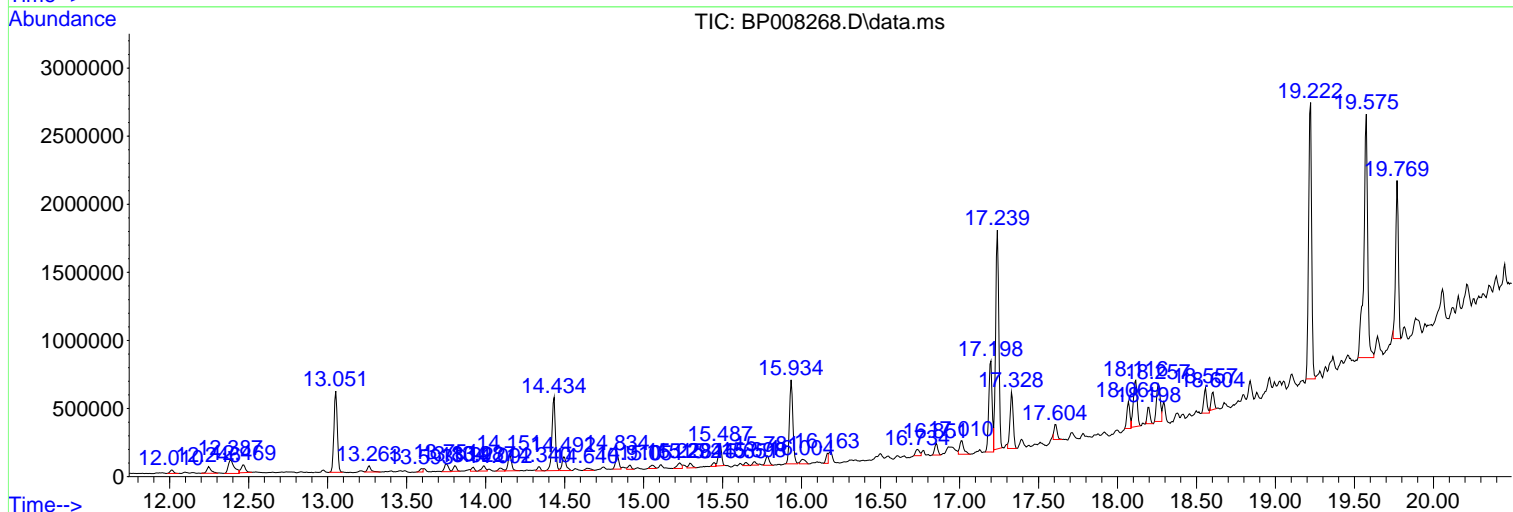
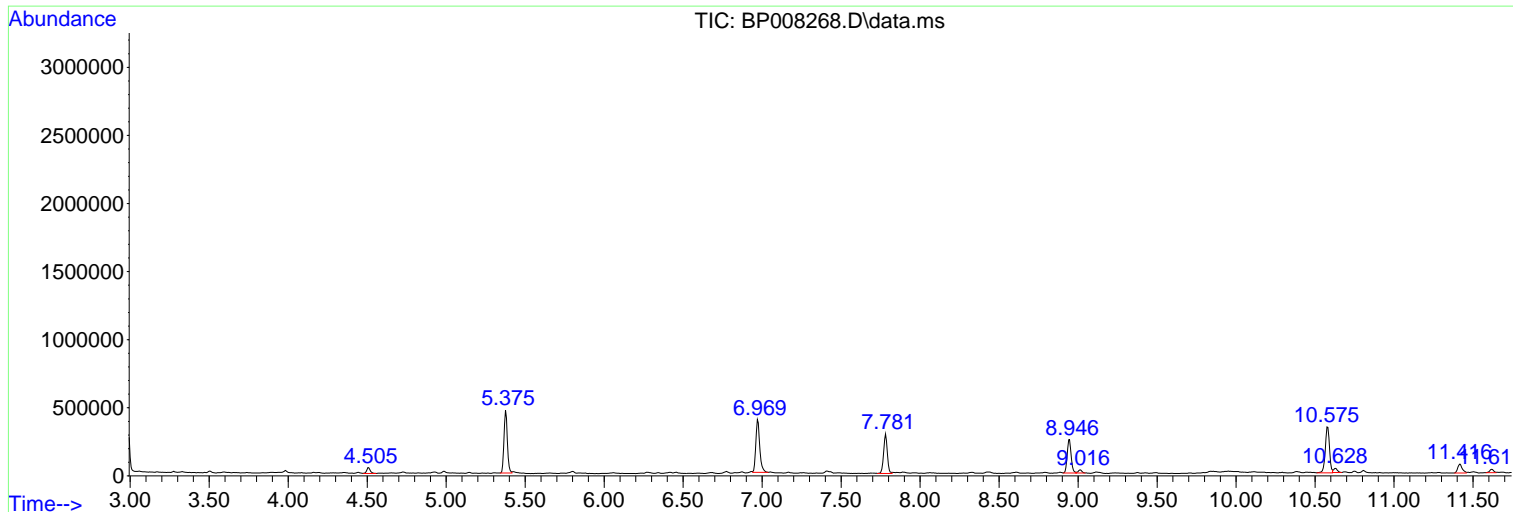
Sum of corrected areas: 25445814

Data Path : Z:\svoasrv\HPCHEM1\BNA_P\Data\BP120721\
 Data File : BP008268.D
 Acq On : 08 Dec 2021 01:10
 Operator : CG/JU
 Sample : M4954-01 2X
 Misc :
 ALS Vial : 17 Sample Multiplier: 1

Instrument :
 BNA_P
ClientSampleId :
 SB-1(2.5-3)

Quant Method : Z:\svoasrv\HPCHEM1\BNA_P\Methods\8270E-BP112521.M
 Quant Title : ASP BNA STANDARDS FOR 5 POINT CALIBRATION

TIC Library : C:\Database\NIST20.L
 TIC Integration Parameters: LSCINT.P



Data Path : Z:\svoasrv\HPCHEM1\BNA_P\Data\BP120721\
 Data File : BP008268.D
 Acq On : 08 Dec 2021 01:10
 Operator : CG/JU
 Sample : M4954-01 2X
 Misc :
 ALS Vial : 17 Sample Multiplier: 1

Instrument :
 BNA_P
 ClientSampleId :
 SB-1(2.5-3)

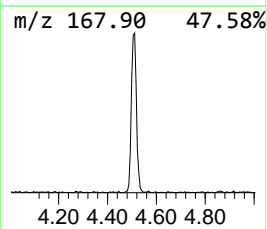
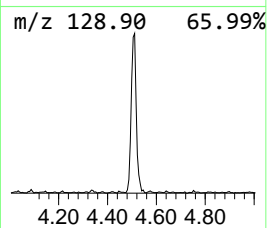
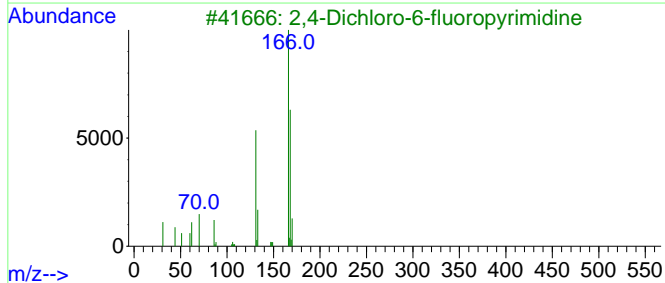
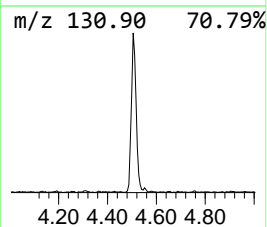
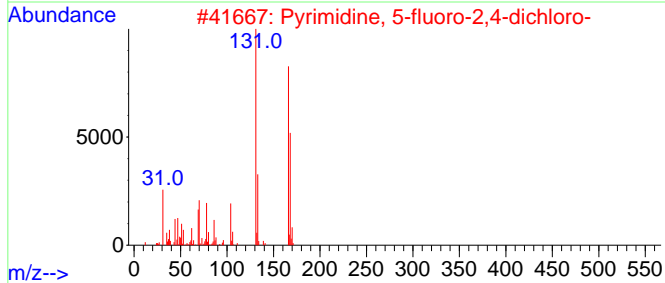
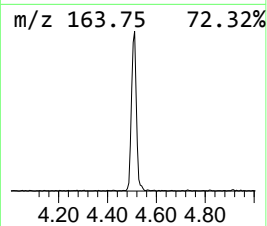
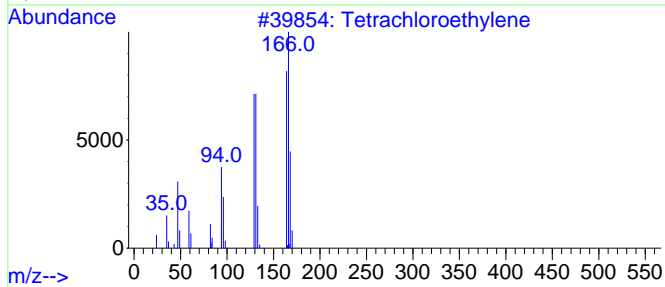
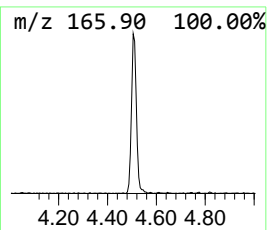
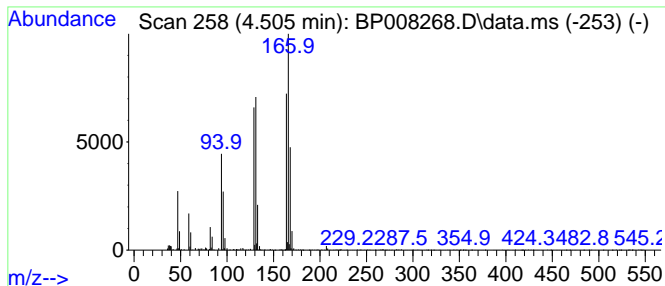
Quant Method : Z:\svoasrv\HPCHEM1\BNA_P\Methods\8270E-BP112521.M
 Quant Title : ASP BNA STANDARDS FOR 5 POINT CALIBRATION

TIC Library : C:\Database\NIST20.L
 TIC Integration Parameters: LSCINT.P

 Peak Number 1 unknown4.505 Concentration Rank 11

R.T.	EstConc	Area	Relative to ISTD	R.T.
4.505	2.84 ng	66942	1,4-Dichlorobenzene-d4	7.781

Hit#	of 5	Tentative ID	MW	MolForm	CAS#	Qual
1		Tetrachloroethylene	164	C2Cl4	000127-18-4	98
2		Pyrimidine, 5-fluoro-2,4-dichloro-	166	C4HC12FN2	002927-71-1	43
3		2,4-Dichloro-6-fluoropyrimidine	166	C4HC12FN2	003833-57-6	38
4		4,6-Dichloro-2-fluoropyrimidine	166	C4HC12FN2	003824-45-1	17
5		5-Chloro-2-(chloromethyl)-1,3-be...	201	C8H5Cl2NO	063842-22-8	10



Data Path : Z:\svoasrv\HPCHEM1\BNA_P\Data\BP120721\
 Data File : BP008268.D
 Acq On : 08 Dec 2021 01:10
 Operator : CG/JU
 Sample : M4954-01 2X
 Misc :
 ALS Vial : 17 Sample Multiplier: 1

Instrument :
 BNA_P
 ClientSampleId :
 SB-1(2.5-3)

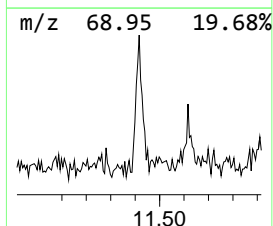
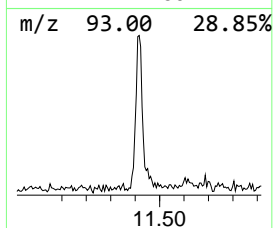
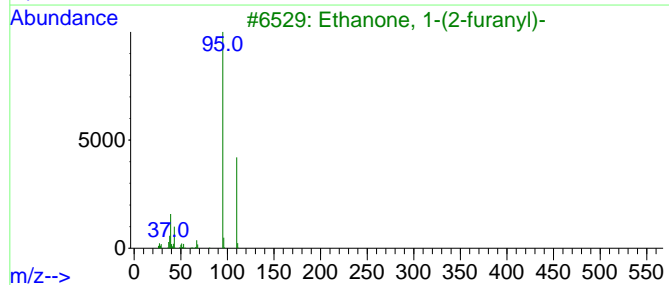
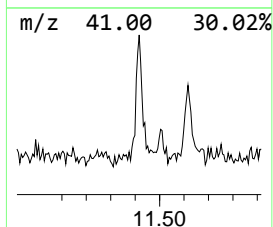
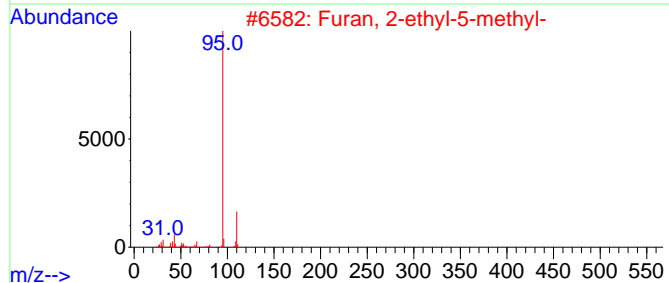
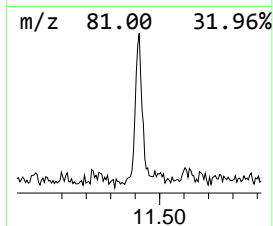
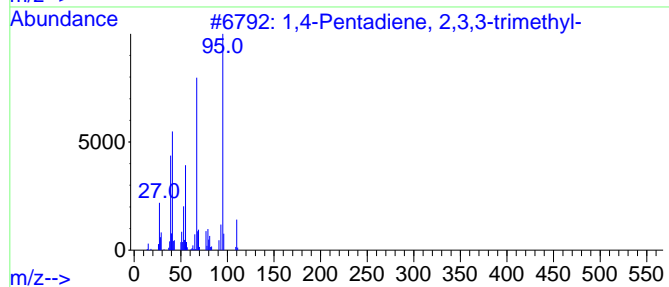
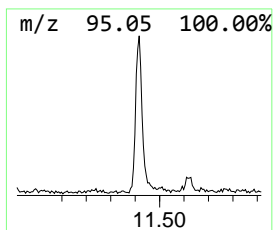
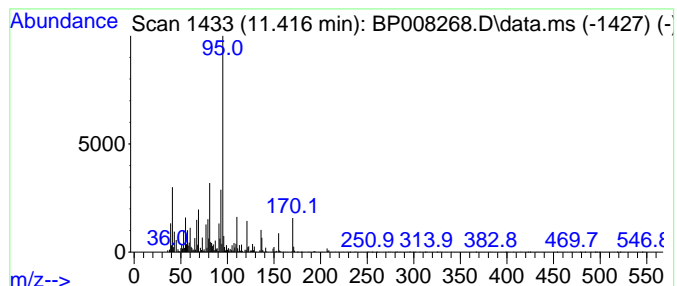
Quant Method : Z:\svoasrv\HPCHEM1\BNA_P\Methods\8270E-BP112521.M
 Quant Title : ASP BNA STANDARDS FOR 5 POINT CALIBRATION

TIC Library : C:\Database\NIST20.L
 TIC Integration Parameters: LSCINT.P

 Peak Number 2 unknown11.416 Concentration Rank 7

R.T.	EstConc	Area	Relative to ISTD	R.T.
11.416	4.26 ng	132223	Naphthalene-d8	10.581

Hit#	of	5	Tentative ID	MW	MolForm	CAS#	Qual
1			1,4-Pentadiene, 2,3,3-trimethyl-	110	C8H14	000756-02-5	47
2			Furan, 2-ethyl-5-methyl-	110	C7H10O	001703-52-2	46
3			Ethanone, 1-(2-furanyl)-	110	C6H6O2	001192-62-7	43
4			2,4-Hexadiene, 2,5-dimethyl-	110	C8H14	000764-13-6	43
5			Pilocarpine	208	C11H16N2O2	000092-13-7	38



Data Path : Z:\svoasrv\HPCHEM1\BNA_P\Data\BP120721\
 Data File : BP008268.D
 Acq On : 08 Dec 2021 01:10
 Operator : CG/JU
 Sample : M4954-01 2X
 Misc :
 ALS Vial : 17 Sample Multiplier: 1

Instrument :
 BNA_P
 ClientSampleId :
 SB-1(2.5-3)

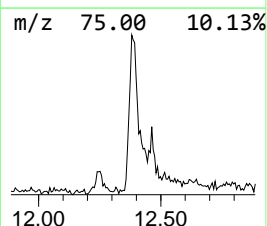
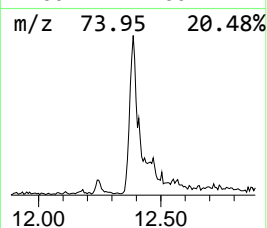
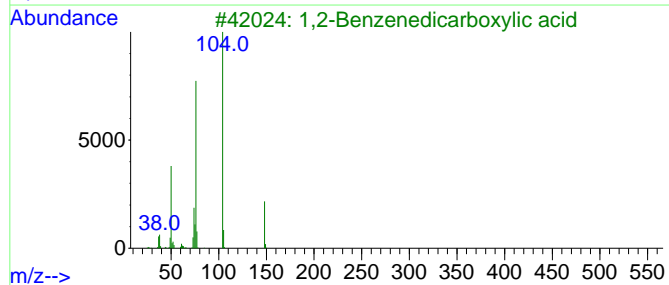
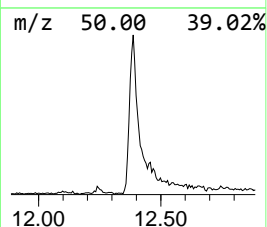
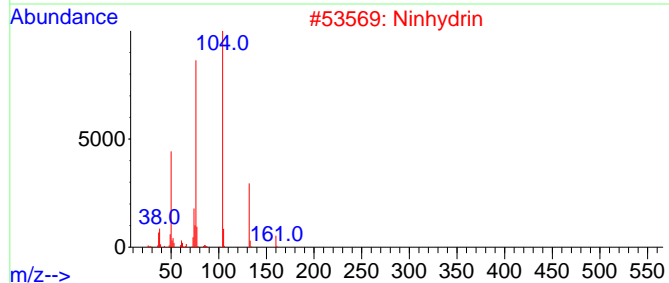
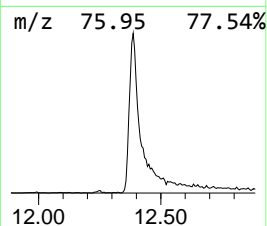
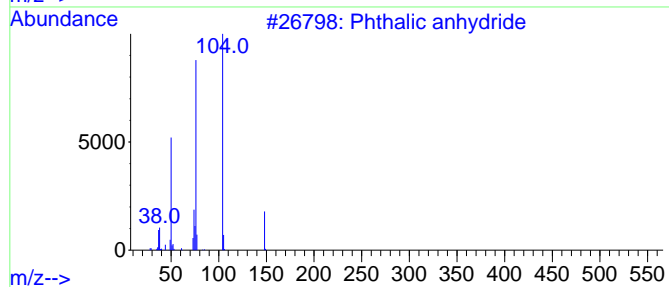
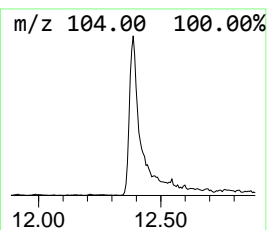
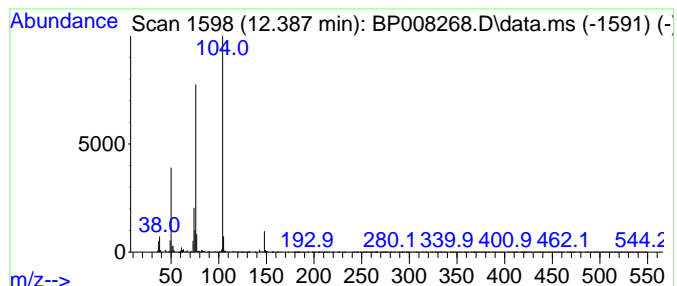
Quant Method : Z:\svoasrv\HPCHEM1\BNA_P\Methods\8270E-BP112521.M
 Quant Title : ASP BNA STANDARDS FOR 5 POINT CALIBRATION

TIC Library : C:\Database\NIST20.L
 TIC Integration Parameters: LSCINT.P

 Peak Number 3 Phthalic anhydride Concentration Rank 3

R.T.	EstConc	Area	Relative to ISTD	R.T.
12.387	8.64 ng	268190	Naphthalene-d8	10.581

Hit#	of	Tentative ID	MW	MolForm	CAS#	Qual
1	5	Phthalic anhydride	148	C8H4O3	000085-44-9	91
2		Ninhydrin	178	C9H6O4	000485-47-2	90
3		1,2-Benzenedicarboxylic acid	166	C8H6O4	000088-99-3	90
4		Bicyclo[4.2.0]octa-1,3,5-triene...	132	C8H4O2	006383-11-5	86
5		Indan-1,2,3-trione	160	C9H4O3	000938-24-9	83



Data Path : Z:\svoasrv\HPCHEM1\BNA_P\Data\BP120721\
 Data File : BP008268.D
 Acq On : 08 Dec 2021 01:10
 Operator : CG/JU
 Sample : M4954-01 2X
 Misc :
 ALS Vial : 17 Sample Multiplier: 1

Instrument :
 BNA_P
 ClientSampleId :
 SB-1(2.5-3)

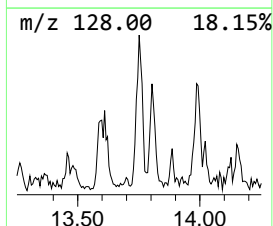
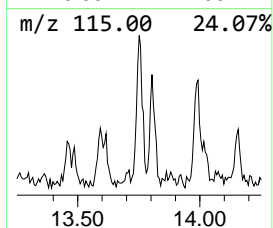
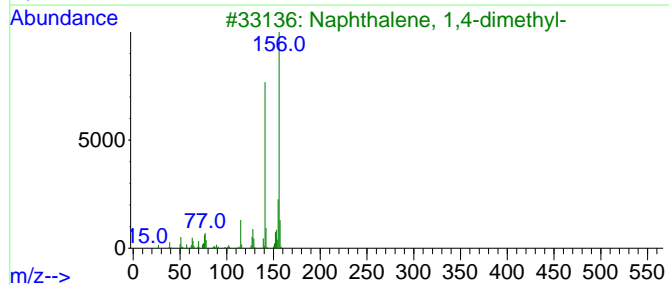
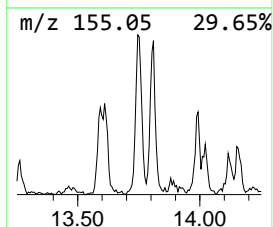
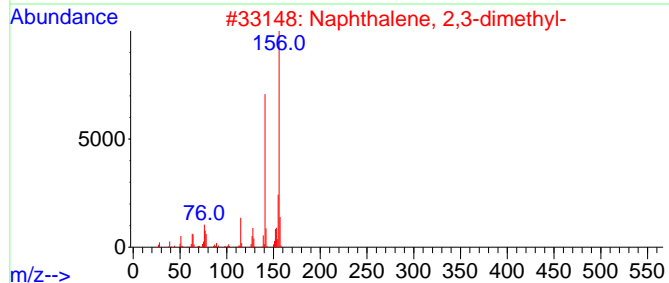
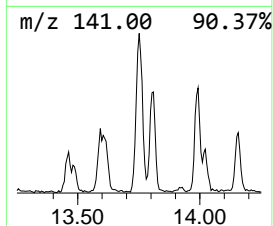
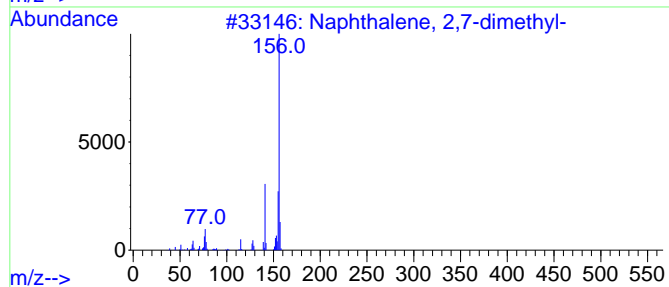
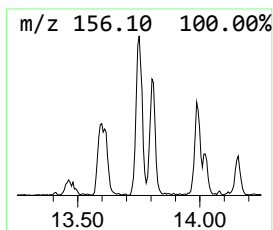
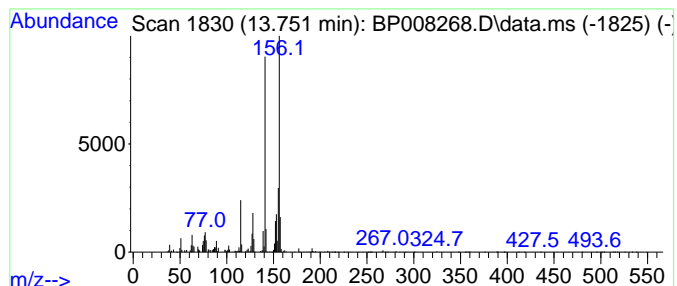
Quant Method : Z:\svoasrv\HPCHEM1\BNA_P\Methods\8270E-BP112521.M
 Quant Title : ASP BNA STANDARDS FOR 5 POINT CALIBRATION

TIC Library : C:\Database\NIST20.L
 TIC Integration Parameters: LSCINT.P

 Peak Number 4 Naphthalene, 2,7-dimethyl- Concentration Rank 13

R.T.	EstConc	Area	Relative to ISTD	R.T.
13.751	2.55 ng	103049	Acenaphthene-d10	14.434

Hit#	of	5	Tentative ID	MW	MolForm	CAS#	Qual
1			Naphthalene, 2,7-dimethyl-	156	C12H12	000582-16-1	95
2			Naphthalene, 2,3-dimethyl-	156	C12H12	000581-40-8	95
3			Naphthalene, 1,4-dimethyl-	156	C12H12	000571-58-4	95
4			Naphthalene, 1,5-dimethyl-	156	C12H12	000571-61-9	95
5			Naphthalene, 1,7-dimethyl-	156	C12H12	000575-37-1	95



Data Path : Z:\svoasrv\HPCHEM1\BNA_P\Data\BP120721\
 Data File : BP008268.D
 Acq On : 08 Dec 2021 01:10
 Operator : CG/JU
 Sample : M4954-01 2X
 Misc :
 ALS Vial : 17 Sample Multiplier: 1

Instrument :
 BNA_P
 ClientSampleId :
 SB-1(2.5-3)

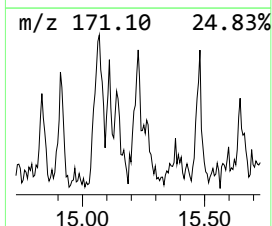
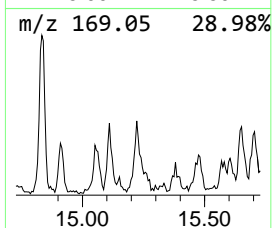
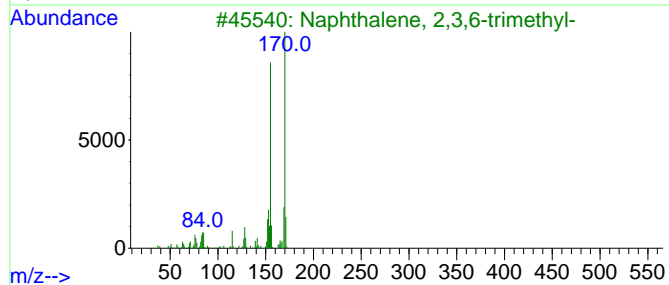
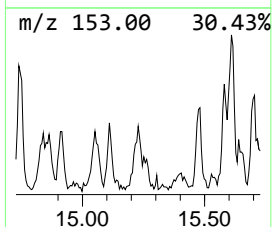
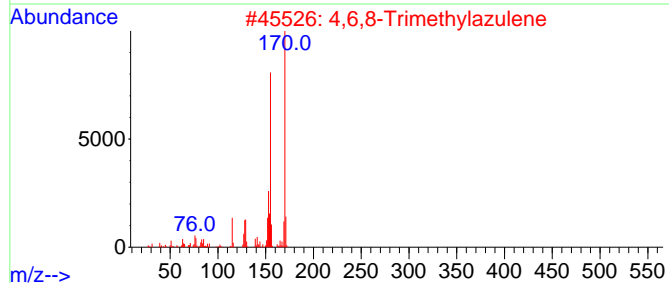
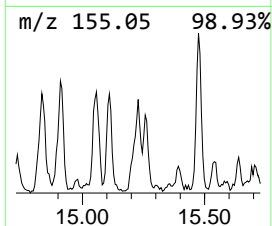
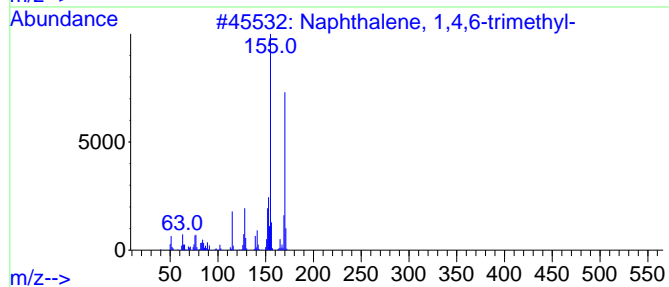
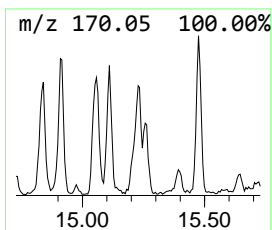
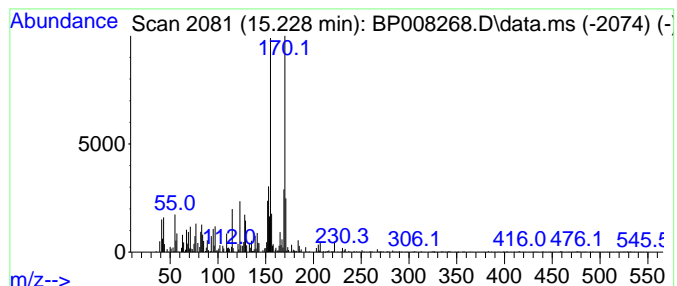
Quant Method : Z:\svoasrv\HPCHEM1\BNA_P\Methods\8270E-BP112521.M
 Quant Title : ASP BNA STANDARDS FOR 5 POINT CALIBRATION

TIC Library : C:\Database\NIST20.L
 TIC Integration Parameters: LSCINT.P

 Peak Number 5 Naphthalene, 1,4,6-trimethyl- Concentration Rank 15

R.T.	EstConc	Area	Relative to ISTD	R.T.
15.228	2.04 ng	82576	Acenaphthene-d10	14.434

Hit#	of	5	Tentative ID	MW	MolForm	CAS#	Qual
1			Naphthalene, 1,4,6-trimethyl-	170	C13H14	002131-42-2	91
2			4,6,8-Trimethylazulene	170	C13H14	000941-81-1	90
3			Naphthalene, 2,3,6-trimethyl-	170	C13H14	000829-26-5	81
4			Naphthalene, 1,6,7-trimethyl-	170	C13H14	002245-38-7	81
5			1-(2,2-Dimethylcyclopropyl)-2-ph...	170	C13H14	1000294-91-1	74



Data Path : Z:\svoasrv\HPCHEM1\BNA_P\Data\BP120721\
 Data File : BP008268.D
 Acq On : 08 Dec 2021 01:10
 Operator : CG/JU
 Sample : M4954-01 2X
 Misc :
 ALS Vial : 17 Sample Multiplier: 1

Instrument :
 BNA_P
 ClientSampleId :
 SB-1(2.5-3)

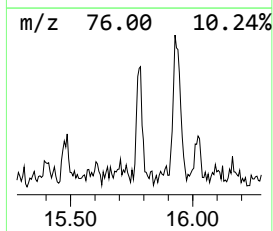
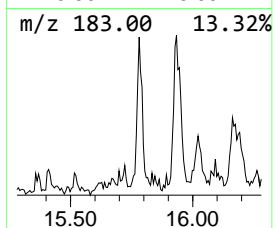
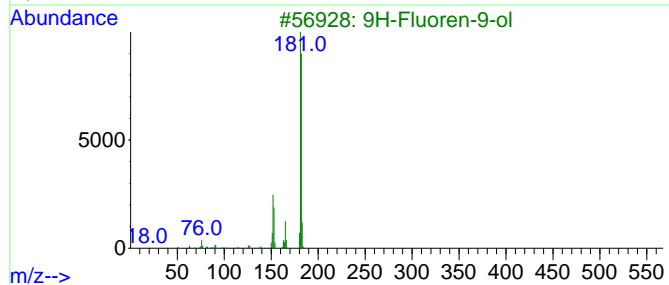
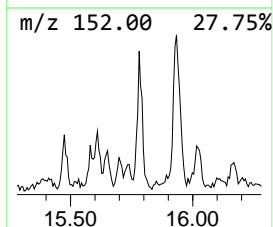
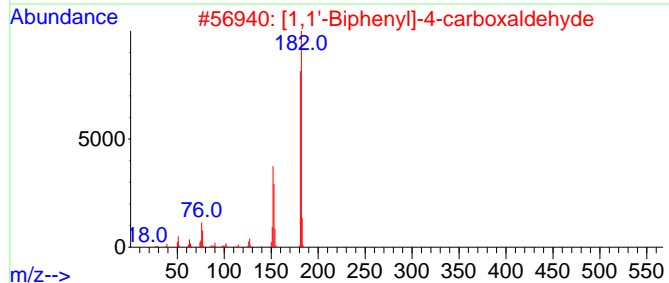
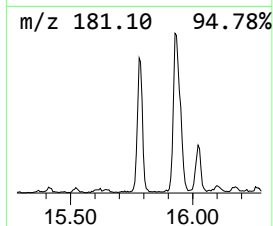
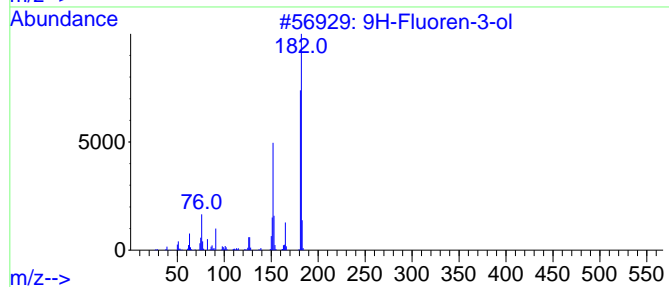
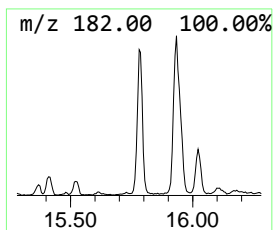
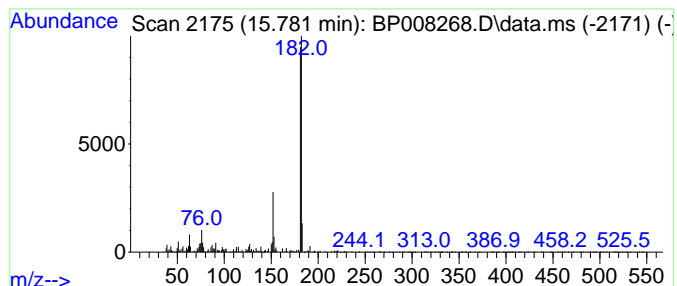
Quant Method : Z:\svoasrv\HPCHEM1\BNA_P\Methods\8270E-BP112521.M
 Quant Title : ASP BNA STANDARDS FOR 5 POINT CALIBRATION

TIC Library : C:\Database\NIST20.L
 TIC Integration Parameters: LSCINT.P

 Peak Number 6 9H-Fluoren-3-ol Concentration Rank 12

R.T.	EstConc	Area	Relative to ISTD	R.T.
15.781	2.73 ng	110161	Acenaphthene-d10	14.434

Hit#	of 5	Tentative ID	MW	MolForm	CAS#	Qual
1		9H-Fluoren-3-ol	182	C13H10O	006344-67-8	91
2		[1,1'-Biphenyl]-4-carboxaldehyde	182	C13H10O	003218-36-8	91
3		9H-Fluoren-9-ol	182	C13H10O	001689-64-1	86
4		Dibenzofuran, 4-methyl-	182	C13H10O	007320-53-8	68
5		2-Hydroxyfluorene	182	C13H10O	002443-58-5	64



Data Path : Z:\svoasrv\HPCHEM1\BNA_P\Data\BP120721\
 Data File : BP008268.D
 Acq On : 08 Dec 2021 01:10
 Operator : CG/JU
 Sample : M4954-01 2X
 Misc :
 ALS Vial : 17 Sample Multiplier: 1

Instrument :
 BNA_P
 ClientSampleId :
 SB-1(2.5-3)

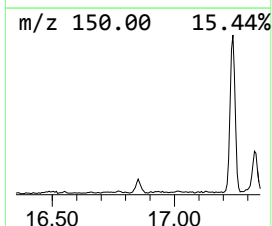
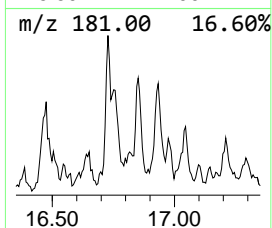
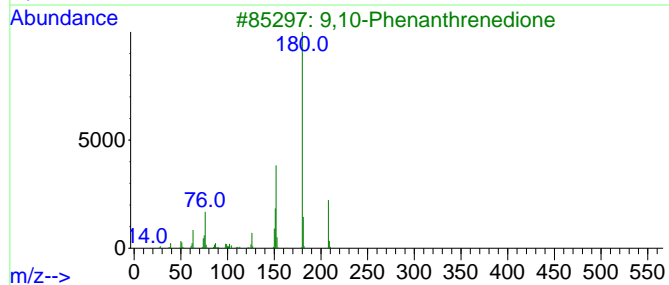
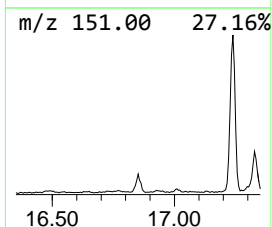
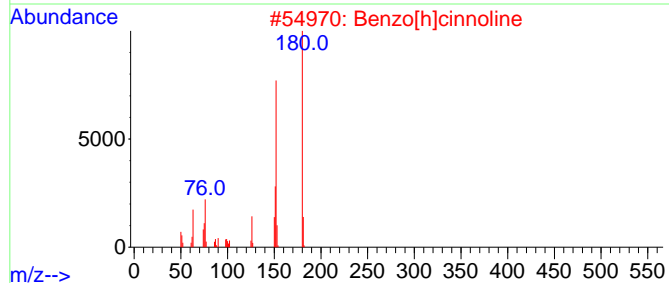
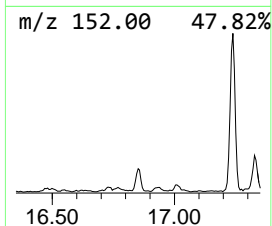
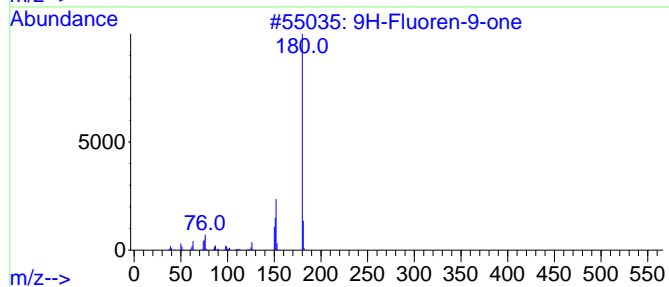
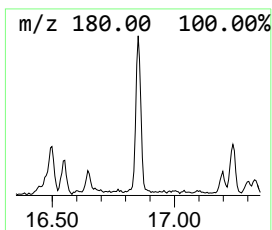
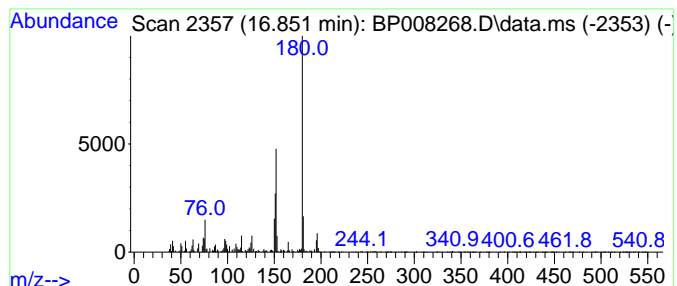
Quant Method : Z:\svoasrv\HPCHEM1\BNA_P\Methods\8270E-BP112521.M
 Quant Title : ASP BNA STANDARDS FOR 5 POINT CALIBRATION

TIC Library : C:\Database\NIST20.L
 TIC Integration Parameters: LSCINT.P

 Peak Number 7 9H-Fluoren-9-one Concentration Rank 14

R.T.	EstConc	Area	Relative to ISTD	R.T.
16.851	2.34 ng	120090	Phenanthrene-d10	17.198

Hit#	of	5	Tentative ID	MW	MolForm	CAS#	Qual
1			9H-Fluoren-9-one	180	C13H8O	000486-25-9	94
2			Benzo[h]cinnoline	180	C12H8N2	000230-31-9	83
3			9,10-Phenanthredione	208	C14H8O2	000084-11-7	80
4			Diphenic anhydride	224	C14H8O3	006050-13-1	78
5			1H-Phenalen-1-one	180	C13H8O	000548-39-0	72



Data Path : Z:\svoasrv\HPCHEM1\BNA_P\Data\BP120721\
 Data File : BP008268.D
 Acq On : 08 Dec 2021 01:10
 Operator : CG/JU
 Sample : M4954-01 2X
 Misc :
 ALS Vial : 17 Sample Multiplier: 1

Instrument :
 BNA_P
 ClientSampleId :
 SB-1(2.5-3)

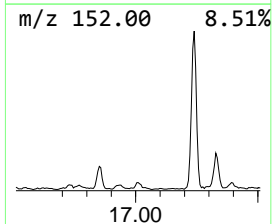
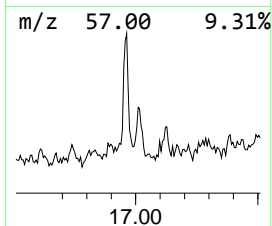
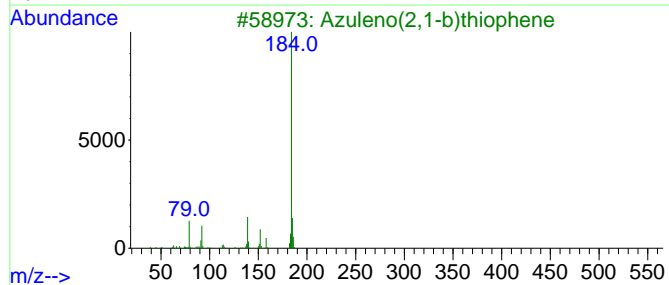
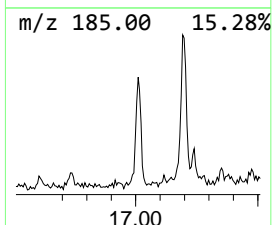
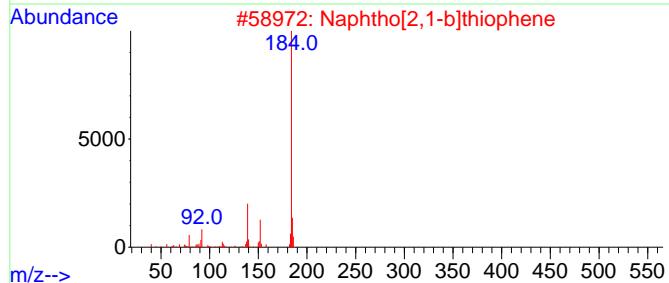
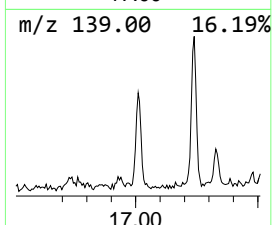
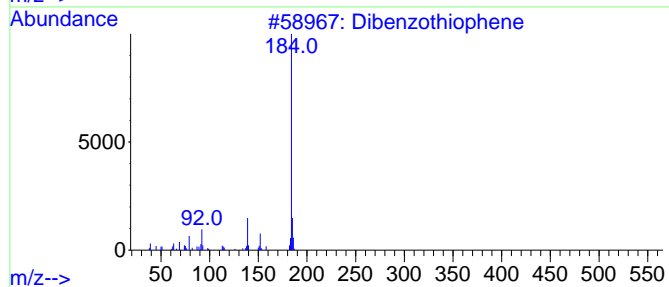
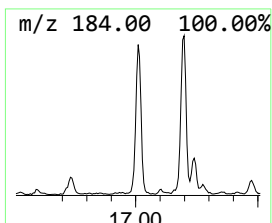
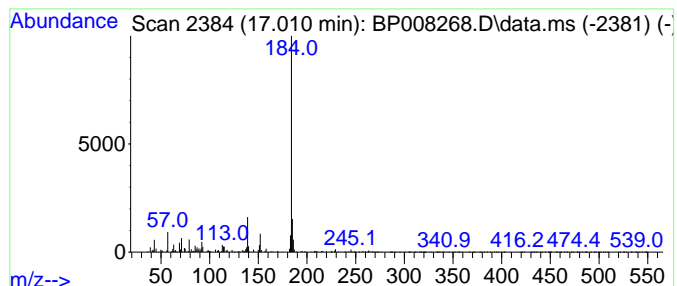
Quant Method : Z:\svoasrv\HPCHEM1\BNA_P\Methods\8270E-BP112521.M
 Quant Title : ASP BNA STANDARDS FOR 5 POINT CALIBRATION

TIC Library : C:\Database\NIST20.L
 TIC Integration Parameters: LSCINT.P

 Peak Number 8 Dibenzothiophene Concentration Rank 8

R.T.	EstConc	Area	Relative to ISTD	R.T.
17.010	3.46 ng	177319	Phenanthrene-d10	17.198

Hit#	of 5	Tentative ID	MW	MolForm	CAS#	Qual
1		Dibenzothiophene	184	C12H8S	000132-65-0	91
2		Naphtho[2,1-b]thiophene	184	C12H8S	000233-02-3	90
3		Azuleno(2,1-b)thiophene	184	C12H8S	000248-13-5	87
4		Naphtho[2,3-b]thiophene	184	C12H8S	000268-77-9	83
5		Naphtho[1,2-b]thiophene	184	C12H8S	000234-41-3	72



Data Path : Z:\svoasrv\HPCHEM1\BNA_P\Data\BP120721\
 Data File : BP008268.D
 Acq On : 08 Dec 2021 01:10
 Operator : CG/JU
 Sample : M4954-01 2X
 Misc :
 ALS Vial : 17 Sample Multiplier: 1

Instrument :
 BNA_P
 ClientSampleId :
 SB-1(2.5-3)

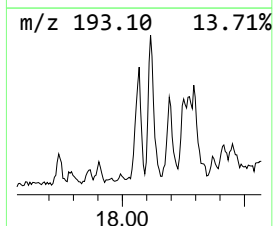
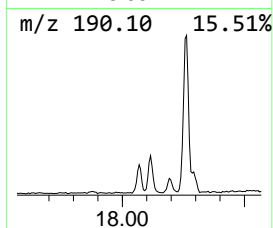
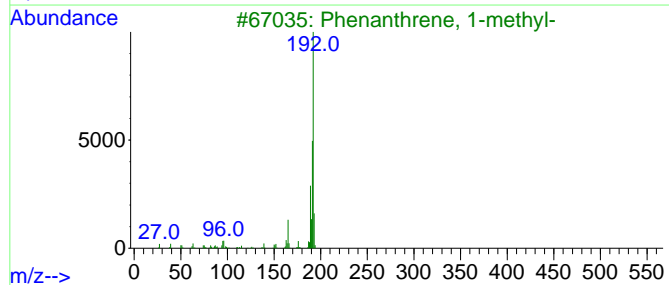
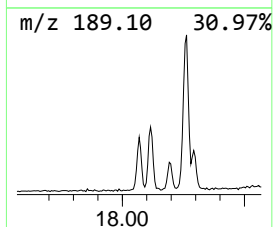
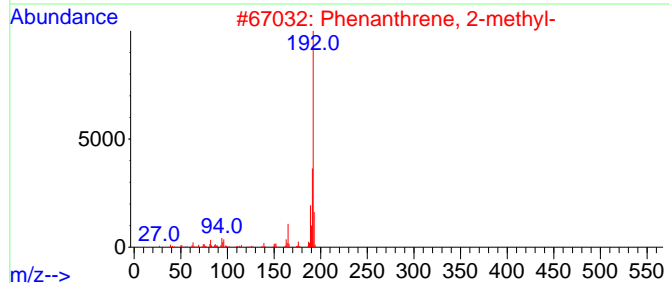
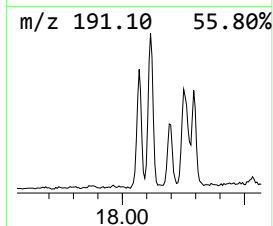
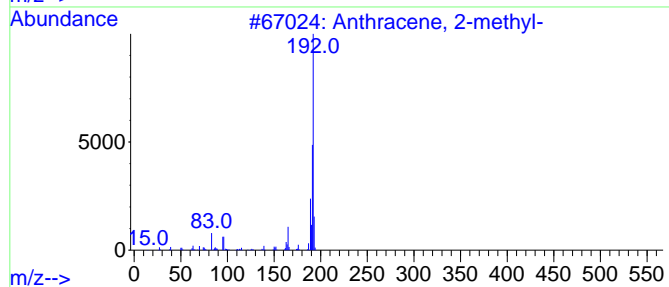
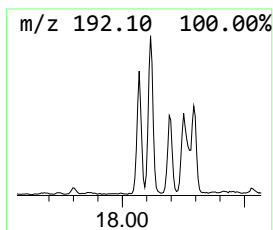
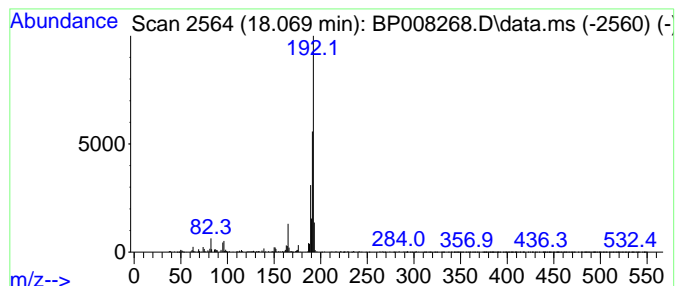
Quant Method : Z:\svoasrv\HPCHEM1\BNA_P\Methods\8270E-BP112521.M
 Quant Title : ASP BNA STANDARDS FOR 5 POINT CALIBRATION

TIC Library : C:\Database\NIST20.L
 TIC Integration Parameters: LSCINT.P

 Peak Number 9 Phenanthrene, 2-methyl- Concentration Rank 5

R.T.	EstConc	Area	Relative to ISTD	R.T.
18.069	5.12 ng	262099	Phenanthrene-d10	17.198

Hit#	of	5	Tentative ID	MW	MolForm	CAS#	Qual
1			Anthracene, 2-methyl-	192	C15H12	000613-12-7	95
2			Phenanthrene, 2-methyl-	192	C15H12	002531-84-2	94
3			Phenanthrene, 1-methyl-	192	C15H12	000832-69-9	94
4			Anthracene, 1-methyl-	192	C15H12	000610-48-0	91
5			1H-Cyclopropa[1]phenanthrene,1a,...	192	C15H12	000949-41-7	91



Data Path : Z:\svoasrv\HPCHEM1\BNA_P\Data\BP120721\
 Data File : BP008268.D
 Acq On : 08 Dec 2021 01:10
 Operator : CG/JU
 Sample : M4954-01 2X
 Misc :
 ALS Vial : 17 Sample Multiplier: 1

Instrument :
 BNA_P
 ClientSampleId :
 SB-1(2.5-3)

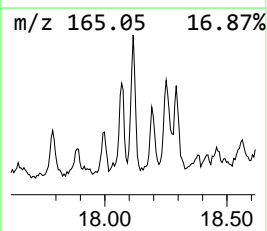
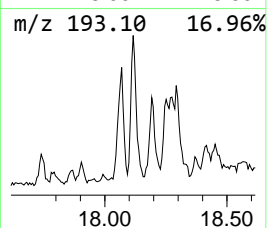
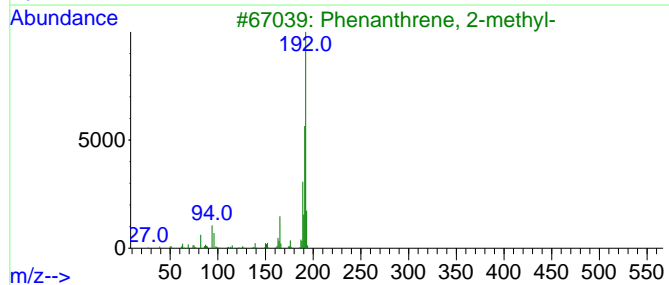
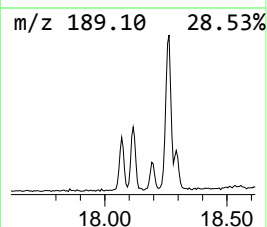
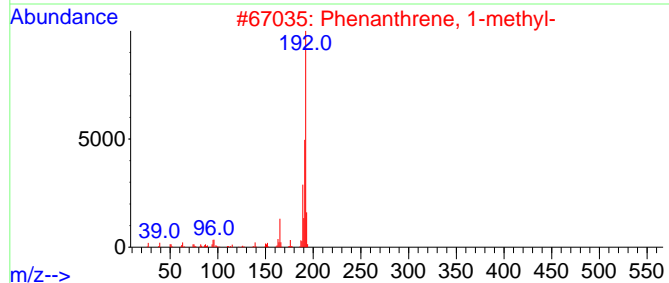
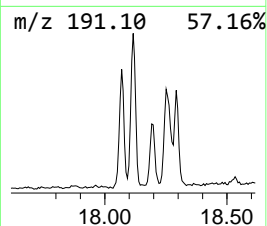
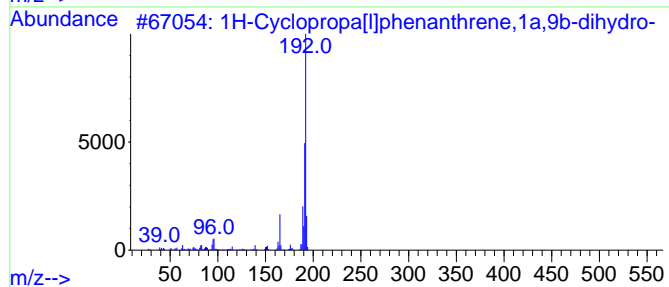
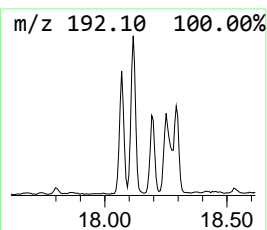
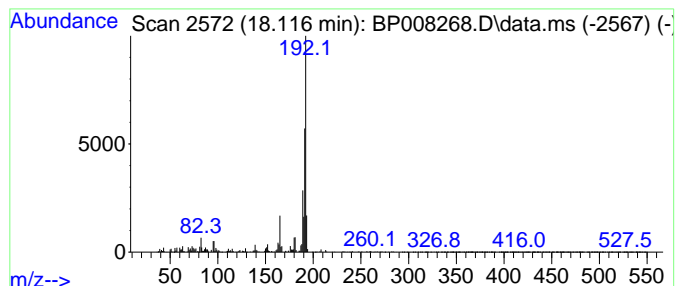
Quant Method : Z:\svoasrv\HPCHEM1\BNA_P\Methods\8270E-BP112521.M
 Quant Title : ASP BNA STANDARDS FOR 5 POINT CALIBRATION

TIC Library : C:\Database\NIST20.L
 TIC Integration Parameters: LSCINT.P

 Peak Number 10 1H-Cyclopropa[1]phenanthren... Concentration Rank 1

R.T.	EstConc	Area	Relative to ISTD	R.T.
18.116	11.16 ng	571847	Phenanthrene-d10	17.198

Hit#	of 5	Tentative ID	MW	MolForm	CAS#	Qual
1		1H-Cyclopropa[1]phenanthrene,1a,...	192	C15H12	000949-41-7	96
2		Phenanthrene, 1-methyl-	192	C15H12	000832-69-9	96
3		Phenanthrene, 2-methyl-	192	C15H12	002531-84-2	96
4		Anthracene, 2-methyl-	192	C15H12	000613-12-7	95
5		1H-Indene, 2-phenyl-	192	C15H12	004505-48-0	94



Data Path : Z:\svoasrv\HPCHEM1\BNA_P\Data\BP120721\
 Data File : BP008268.D
 Acq On : 08 Dec 2021 01:10
 Operator : CG/JU
 Sample : M4954-01 2X
 Misc :
 ALS Vial : 17 Sample Multiplier: 1

Instrument :
 BNA_P
 ClientSampleId :
 SB-1(2.5-3)

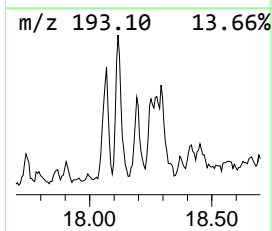
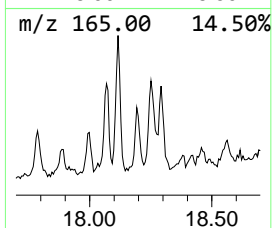
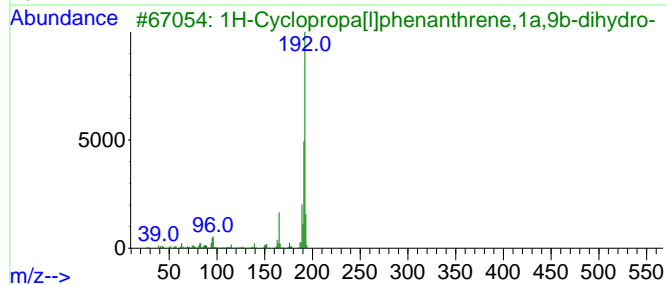
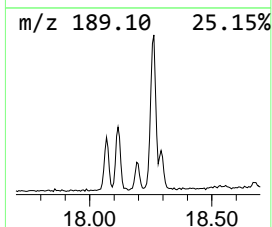
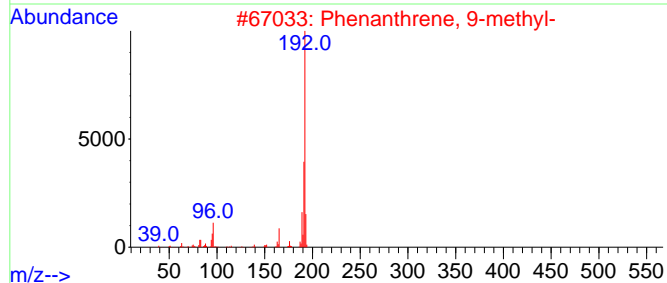
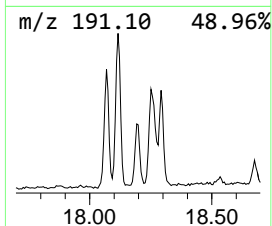
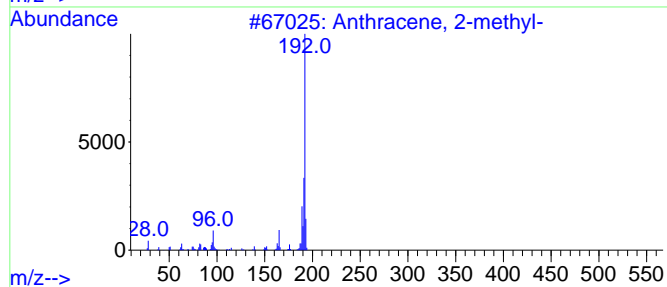
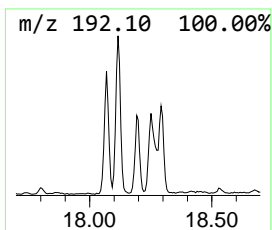
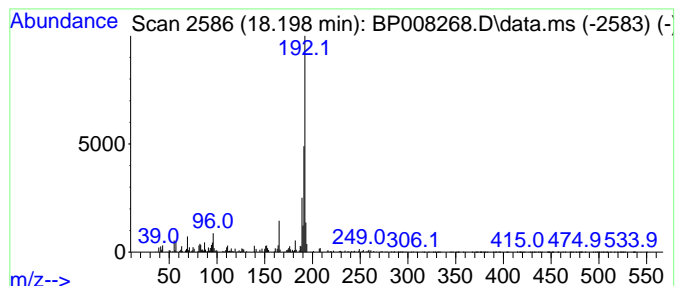
Quant Method : Z:\svoasrv\HPCHEM1\BNA_P\Methods\8270E-BP112521.M
 Quant Title : ASP BNA STANDARDS FOR 5 POINT CALIBRATION

TIC Library : C:\Database\NIST20.L
 TIC Integration Parameters: LSCINT.P

 Peak Number 11 Anthracene, 2-methyl- Concentration Rank 10

R.T.	EstConc	Area	Relative to ISTD	R.T.
18.198	2.87 ng	147115	Phenanthrene-d10	17.198

Hit#	of	5	Tentative ID	MW	MolForm	CAS#	Qual
1			Anthracene, 2-methyl-	192	C15H12	000613-12-7	92
2			Phenanthrene, 9-methyl-	192	C15H12	000883-20-5	91
3			1H-Cyclopropa[1]phenanthrene,1a,...	192	C15H12	000949-41-7	91
4			Phenanthrene, 1-methyl-	192	C15H12	000832-69-9	91
5			1H-Indene, 2-phenyl-	192	C15H12	004505-48-0	91



Data Path : Z:\svoasrv\HPCHEM1\BNA_P\Data\BP120721\
 Data File : BP008268.D
 Acq On : 08 Dec 2021 01:10
 Operator : CG/JU
 Sample : M4954-01 2X
 Misc :
 ALS Vial : 17 Sample Multiplier: 1

Instrument :
 BNA_P
 ClientSampleId :
 SB-1(2.5-3)

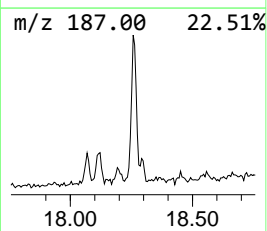
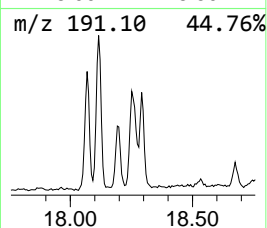
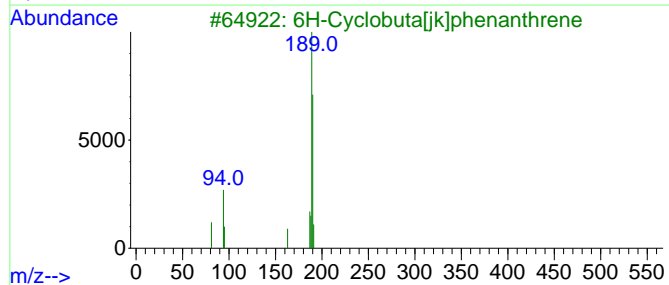
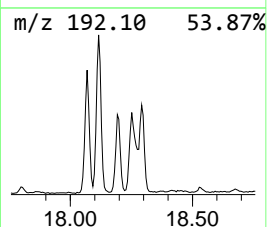
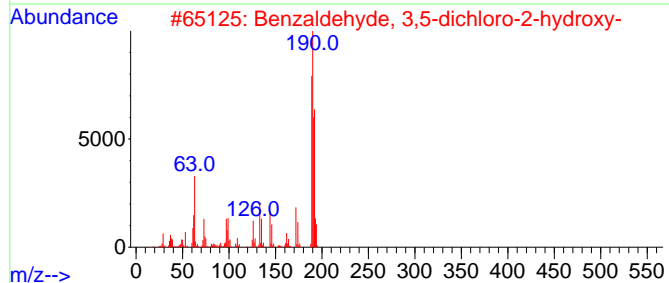
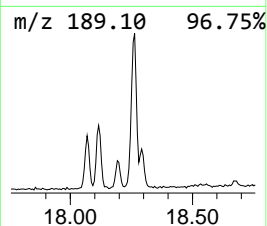
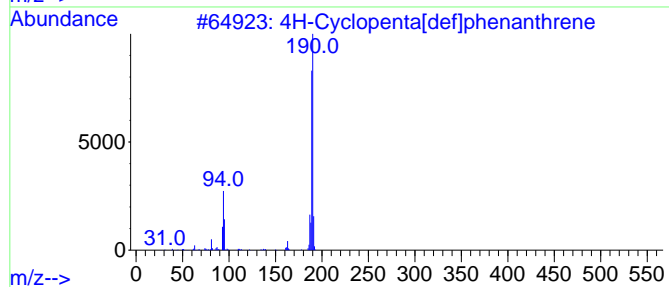
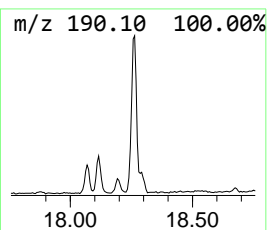
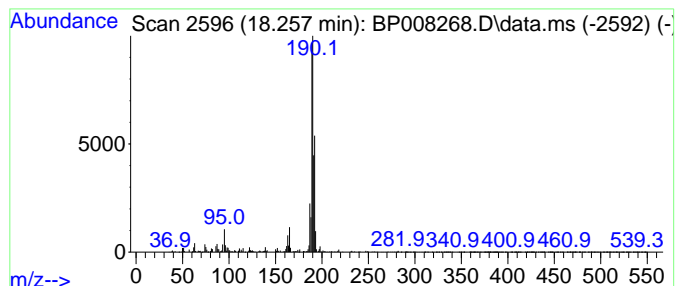
Quant Method : Z:\svoasrv\HPCHEM1\BNA_P\Methods\8270E-BP112521.M
 Quant Title : ASP BNA STANDARDS FOR 5 POINT CALIBRATION

TIC Library : C:\Database\NIST20.L
 TIC Integration Parameters: LSCINT.P

 Peak Number 12 4H-Cyclopenta[def]phenanthrene Concentration Rank 2

R.T.	EstConc	Area	Relative to ISTD	R.T.
18.257	9.06 ng	464032	Phenanthrene-d10	17.198

Hit#	of	5	Tentative ID	MW	MolForm	CAS#	Qual
1			4H-Cyclopenta[def]phenanthrene	190	C15H10	000203-64-5	64
2			Benzaldehyde, 3,5-dichloro-2-hyd...	190	C7H4Cl2O2	000090-60-8	53
3			6H-Cyclobuta[jk]phenanthrene	190	C15H10	083469-43-6	52
4			Phenanthrene, 1-methyl-	192	C15H12	000832-69-9	38
5			1H-Indene, 2-phenyl-	192	C15H12	004505-48-0	30



Data Path : Z:\svoasrv\HPCHEM1\BNA_P\Data\BP120721\
 Data File : BP008268.D
 Acq On : 08 Dec 2021 01:10
 Operator : CG/JU
 Sample : M4954-01 2X
 Misc :
 ALS Vial : 17 Sample Multiplier: 1

Instrument :
 BNA_P
 ClientSampleId :
 SB-1(2.5-3)

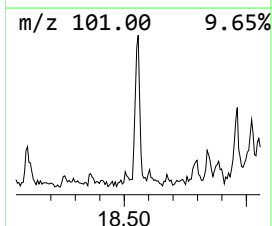
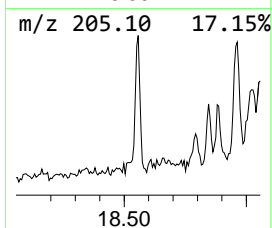
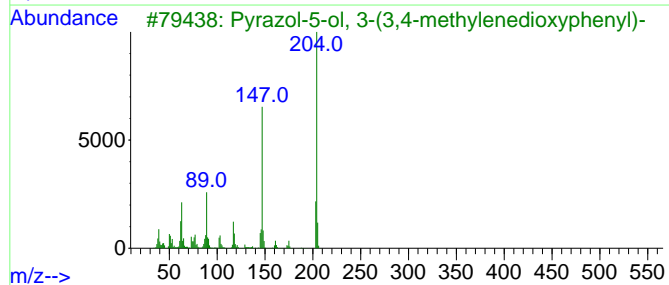
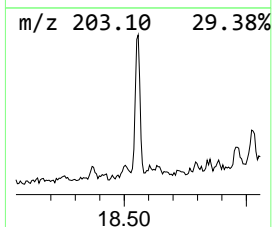
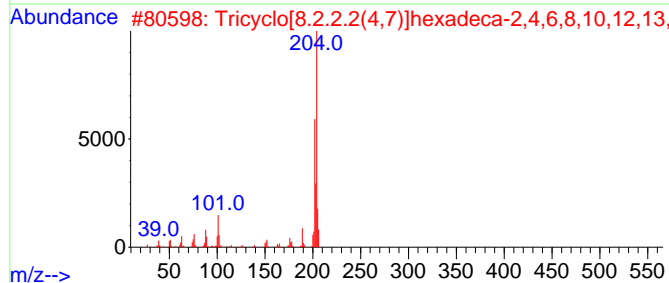
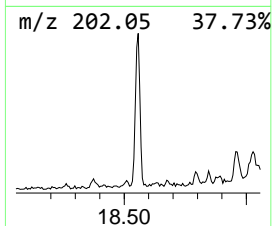
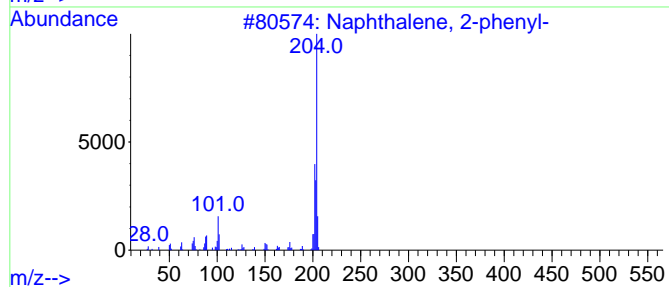
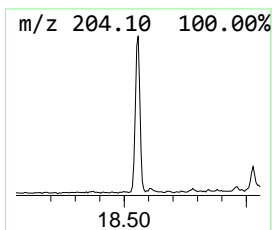
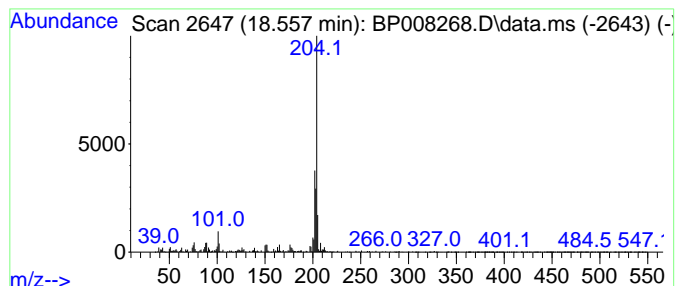
Quant Method : Z:\svoasrv\HPCHEM1\BNA_P\Methods\8270E-BP112521.M
 Quant Title : ASP BNA STANDARDS FOR 5 POINT CALIBRATION

TIC Library : C:\Database\NIST20.L
 TIC Integration Parameters: LSCINT.P

 Peak Number 13 Naphthalene, 2-phenyl- Concentration Rank 6

R.T.	EstConc	Area	Relative to ISTD	R.T.
18.557	4.70 ng	240671	Phenanthrene-d10	17.198

Hit#	of	5	Tentative ID	MW	MolForm	CAS#	Qual
1			Naphthalene, 2-phenyl-	204	C16H12	000612-94-2	90
2			Tricyclo[8.2.2.2(4,7)]hexadeca-2...	204	C16H12	006572-60-7	81
3			Pyrazol-5-ol, 3-(3,4-methylenedi...	204	C10H8N2O3	1000271-76-1	58
4			9,10-Bis(bromomethyl)anthracene	362	C16H12Br2	034373-96-1	58
5			Naphthalene, 1-phenyl-	204	C16H12	000605-02-7	53



Data Path : Z:\svoasrv\HPCHEM1\BNA_P\Data\BP120721\
 Data File : BP008268.D
 Acq On : 08 Dec 2021 01:10
 Operator : CG/JU
 Sample : M4954-01 2X
 Misc :
 ALS Vial : 17 Sample Multiplier: 1

Instrument :
 BNA_P
 ClientSampleId :
 SB-1(2.5-3)

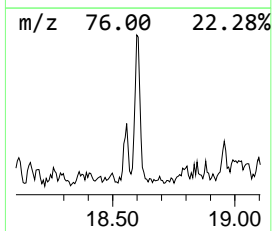
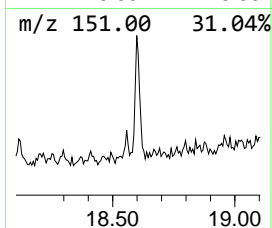
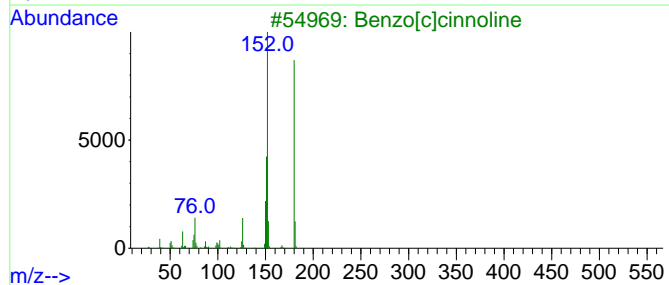
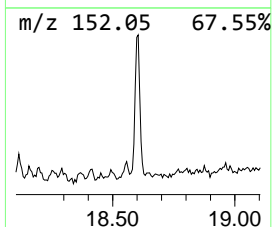
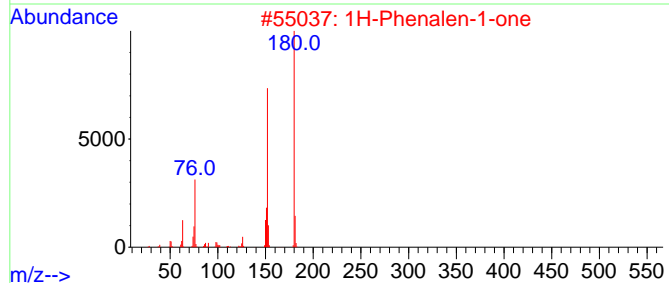
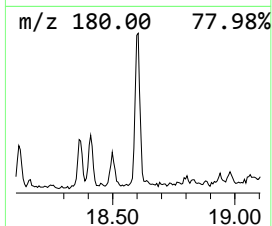
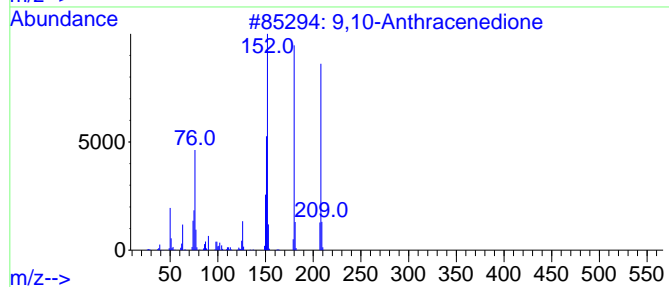
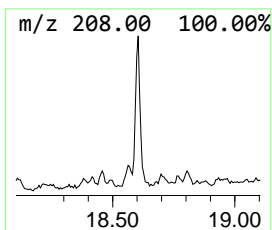
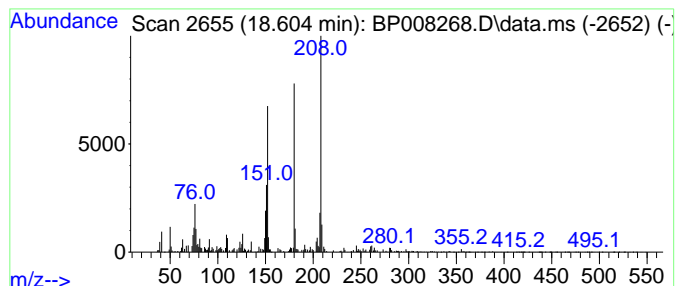
Quant Method : Z:\svoasrv\HPCHEM1\BNA_P\Methods\8270E-BP112521.M
 Quant Title : ASP BNA STANDARDS FOR 5 POINT CALIBRATION

TIC Library : C:\Database\NIST20.L
 TIC Integration Parameters: LSCINT.P

 Peak Number 14 9,10-Anthracenedione Concentration Rank 9

R.T.	EstConc	Area	Relative to ISTD	R.T.
18.604	3.17 ng	162485	Phenanthrene-d10	17.198

Hit#	of 5	Tentative ID	MW	MolForm	CAS#	Qual
1		9,10-Anthracenedione	208	C14H8O2	000084-65-1	94
2		1H-Phenalen-1-one	180	C13H8O	000548-39-0	55
3		Benzo[c]cinnoline	180	C12H8N2	000230-17-1	53
4		2-(Dicyanomethylene)indene-1,3-d...	208	C12H4N2O2	016954-74-8	53
5		9H-Fluoren-9-one	180	C13H8O	000486-25-9	49



Data Path : Z:\svoasrv\HPCHEM1\BNA_P\Data\BP120721\
 Data File : BP008268.D
 Acq On : 08 Dec 2021 01:10
 Operator : CG/JU
 Sample : M4954-01 2X
 Misc :
 ALS Vial : 17 Sample Multiplier: 1

Instrument :
 BNA_P
 ClientSampleId :
 SB-1(2.5-3)

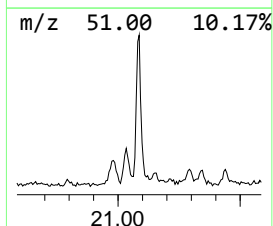
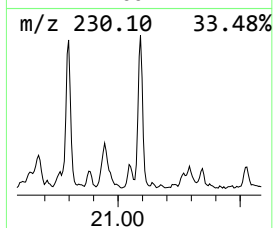
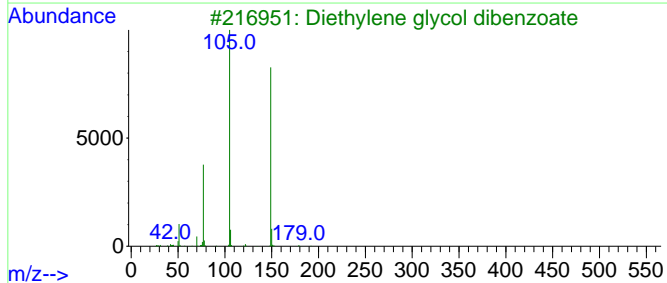
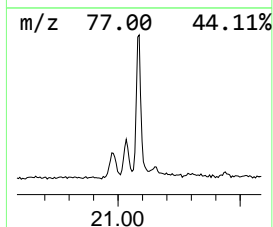
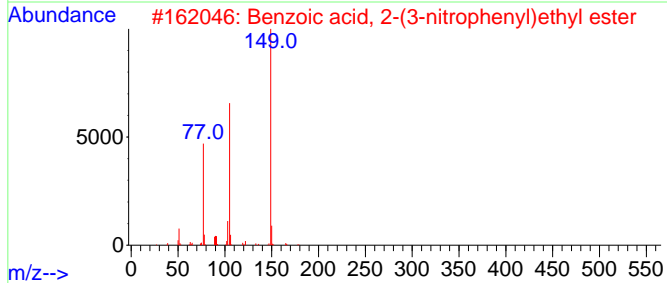
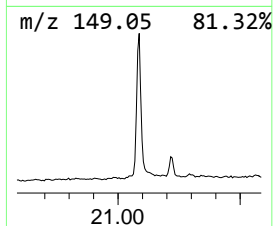
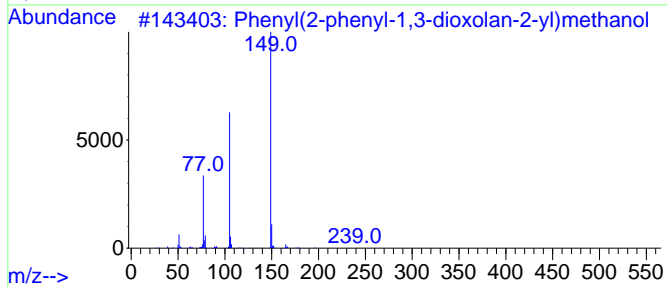
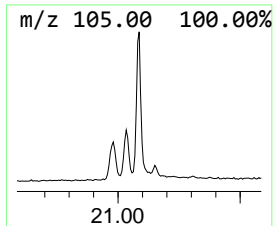
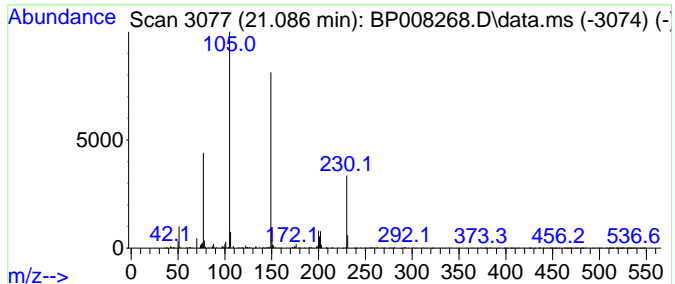
Quant Method : Z:\svoasrv\HPCHEM1\BNA_P\Methods\8270E-BP112521.M
 Quant Title : ASP BNA STANDARDS FOR 5 POINT CALIBRATION

TIC Library : C:\Database\NIST20.L
 TIC Integration Parameters: LSCINT.P

 Peak Number 15 Phenyl(2-phenyl-1,3-dioxola... Concentration Rank 4

R.T.	EstConc	Area	Relative to ISTD	R.T.
21.086	6.56 ng	774283	Chrysene-d12	21.310

Hit#	of	5	Tentative ID	MW	MolForm	CAS#	Qual
1			Phenyl(2-phenyl-1,3-dioxolan-2-y...	256	C16H16O3	005694-69-9	59
2			Benzoic acid, 2-(3-nitrophenyl)e...	271	C15H13NO4	1000368-22-4	59
3			Diethylene glycol dibenzoate	314	C18H18O5	000120-55-8	59
4			Phenyl(2-phenyl-1,3-dioxolan-2-y...	270	C17H18O3	1000507-07-6	59
5			2-(2-Carboxyvinyl)pyridine, trans	149	C8H7NO2	007340-22-9	47



Data Path : Z:\svoasrv\HPCHEM1\BNA_P\Data\BP120721\
 Data File : BP008268.D
 Acq On : 08 Dec 2021 01:10
 Operator : CG/JU
 Sample : M4954-01 2X
 Misc :
 ALS Vial : 17 Sample Multiplier: 1

Instrument :
 BNA_P
 ClientSampleId :
 SB-1(2.5-3)

Quant Method : Z:\svoasrv\HPCHEM1\BNA_P\Methods\8270E-BP112521.M
 Quant Title : ASP BNA STANDARDS FOR 5 POINT CALIBRATION

TIC Library : C:\Database\NIST0.L
 TIC Integration Parameters: LSCINT.P

TIC Top Hit name	RT	EstConc	Units	Response	--Internal Standard--			
					#	RT	Resp	Conc
unknown4.505	4.505	2.8	ng	66942	1	7.781	471056	20.0
unknown11.416	11.416	4.3	ng	132223	2	10.581	620786	20.0
Phthalic anhydride	12.387	8.6	ng	268190	2	10.581	620786	20.0
Naphthalene, 2,...	13.751	2.5	ng	103049	3	14.434	807784	20.0
Naphthalene, 1,...	15.228	2.0	ng	82576	3	14.434	807784	20.0
9H-Fluorene-3-ol	15.781	2.7	ng	110161	3	14.434	807784	20.0
9H-Fluorene-9-one	16.851	2.3	ng	120090	4	17.198	1024530	20.0
Dibenzothiophene	17.010	3.5	ng	177319	4	17.198	1024530	20.0
Phenanthrene, 2...	18.069	5.1	ng	262099	4	17.198	1024530	20.0
1H-Cyclopropa[1...	18.116	11.2	ng	571847	4	17.198	1024530	20.0
Anthracene, 2-m...	18.198	2.9	ng	147115	4	17.198	1024530	20.0
4H-Cyclopenta[d...	18.257	9.1	ng	464032	4	17.198	1024530	20.0
Naphthalene, 2-...	18.557	4.7	ng	240671	4	17.198	1024530	20.0
9,10-Anthracene...	18.604	3.2	ng	162485	4	17.198	1024530	20.0
Phenyl(2-phenyl...	21.086	6.6	ng	774283	5	21.310	2362200	20.0