

Data Path : Z:\svoasrv\HPCHEM1\BNA_P\Data\BP121021\
 Data File : BP008347.D
 Acq On : 10 Dec 2021 18:51
 Operator : CG/JU
 Sample : M4966-06MSD
 Misc :
 ALS Vial : 6 Sample Multiplier: 1

Instrument :
 BNA_P
 ClientSampleId :
 P1-COMPMSD

Quant Time: Dec 11 04:00:31 2021
 Quant Method : Z:\svoasrv\HPCHEM1\BNA_P\Methods\8270E-BP112521.M
 Quant Title : ASP BNA STANDARDS FOR 5 POINT CALIBRATION
 QLast Update : Sat Dec 11 03:53:01 2021
 Response via : Initial Calibration

Compound	R.T.	QIon	Response	Conc Units	Dev(Min)	
Internal Standards						
1) 1,4-Dichlorobenzene-d4	7.763	152	75637	20.000 ng	0.00	
21) Naphthalene-d8	10.557	136	254570	20.000 ng	0.00	
39) Acenaphthene-d10	14.410	164	143659	20.000 ng	0.00	
64) Phenanthrene-d10	17.175	188	269734	20.000 ng	0.00	
76) Chrysene-d12	21.286	240	243016	20.000 ng	0.00	
86) Perylene-d12	23.669	264	274408	20.000 ng	0.00	
System Monitoring Compounds						
5) 2-Fluorophenol	5.364	112	582167	123.927 ng	0.00	
7) Phenol-d6	6.952	99	648040	102.190 ng	0.00	
23) Nitrobenzene-d5	8.922	82	553914	98.944 ng	0.00	
42) 2,4,6-Tribromophenol	15.916	330	248667	135.424 ng	0.00	
45) 2-Fluorobiphenyl	13.028	172	992529	100.355 ng	0.00	
79) Terphenyl-d14	19.751	244	1255882	108.005 ng	0.00	
Target Compounds						
2) 1,4-Dioxane	3.275	88	91233	41.628 ng		Qvalue # 33
3) Pyridine	3.681	79	125268	21.415 ng		99
4) n-Nitrosodimethylamine	3.581	42	116643	47.808 ng		# 96
6) Aniline	7.099	93	119571	16.085 ng		95
8) 2-Chlorophenol	7.334	128	224053	46.591 ng		98
9) Benzaldehyde	6.911	77	123312	34.493 ng		99
10) Phenol	6.981	94	265267	40.706 ng		97
11) bis(2-Chloroethyl)ether	7.193	93	252194	48.417 ng		98
12) 1,3-Dichlorobenzene	7.652	146	258550	46.579 ng		99
13) 1,4-Dichlorobenzene	7.799	146	270935	48.143 ng		97
14) 1,2-Dichlorobenzene	8.111	146	257243	45.961 ng		97
15) Benzyl Alcohol	8.016	79	241148	47.995 ng		94
16) 2,2'-oxybis(1-Chloropr...	8.299	45	381039	48.482 ng		99
17) 2-Methylphenol	8.222	107	190676	44.975 ng		96
18) Hexachloroethane	8.834	117	102022	48.755 ng		94
19) n-Nitroso-di-n-propyla...	8.575	70	200617	45.719 ng		99
20) 3+4-Methylphenols	8.558	107	244345	41.760 ng		97
22) Acetophenone	8.593	105	362322	52.034 ng		# 97
24) Nitrobenzene	8.969	77	298603	55.001 ng		99
25) Isophorone	9.499	82	489935	50.023 ng		99
26) 2-Nitrophenol	9.675	139	120423	51.410 ng		95
27) 2,4-Dimethylphenol	9.752	122	190656	54.424 ng		98
28) bis(2-Chloroethoxy)met...	9.975	93	295830	47.393 ng		98
29) 2,4-Dichlorophenol	10.228	162	204683	48.921 ng		98
30) 1,2,4-Trichlorobenzene	10.422	180	245282	50.509 ng		98
31) Naphthalene	10.604	128	651881	49.988 ng		100
32) Benzoic acid	9.946	122	107483	37.508 ng		98
33) 4-Chloroaniline	10.746	127	63816	11.796 ng		97
34) Hexachlorobutadiene	10.893	225	173390	52.174 ng		97
35) Caprolactam	11.540	113	41508	44.662 ng		99
36) 4-Chloro-3-methylphenol	11.881	107	219703	45.935 ng		96
37) 2-Methylnaphthalene	12.222	142	458107	49.668 ng		98
38) 1-Methylnaphthalene	12.446	142	420155	46.799 ng		99
40) 1,2,4,5-Tetrachloroben...	12.599	216	269860	57.829 ng		99
41) Hexachlorocyclopentadiene	12.575	237	250971	139.886 ng		100
43) 2,4,6-Trichlorophenol	12.851	196	161102	50.955 ng		97

Data Path : Z:\svoasrv\HPCHEM1\BNA_P\Data\BP121021\
 Data File : BP008347.D
 Acq On : 10 Dec 2021 18:51
 Operator : CG/JU
 Sample : M4966-06MSD
 Misc :
 ALS Vial : 6 Sample Multiplier: 1

Instrument :
 BNA_P
 ClientSampleId :
 P1-COMPMSD

Quant Time: Dec 11 04:00:31 2021
 Quant Method : Z:\svoasrv\HPCHEM1\BNA_P\Methods\8270E-BP112521.M
 Quant Title : ASP BNA STANDARDS FOR 5 POINT CALIBRATION
 QLast Update : Sat Dec 11 03:53:01 2021
 Response via : Initial Calibration

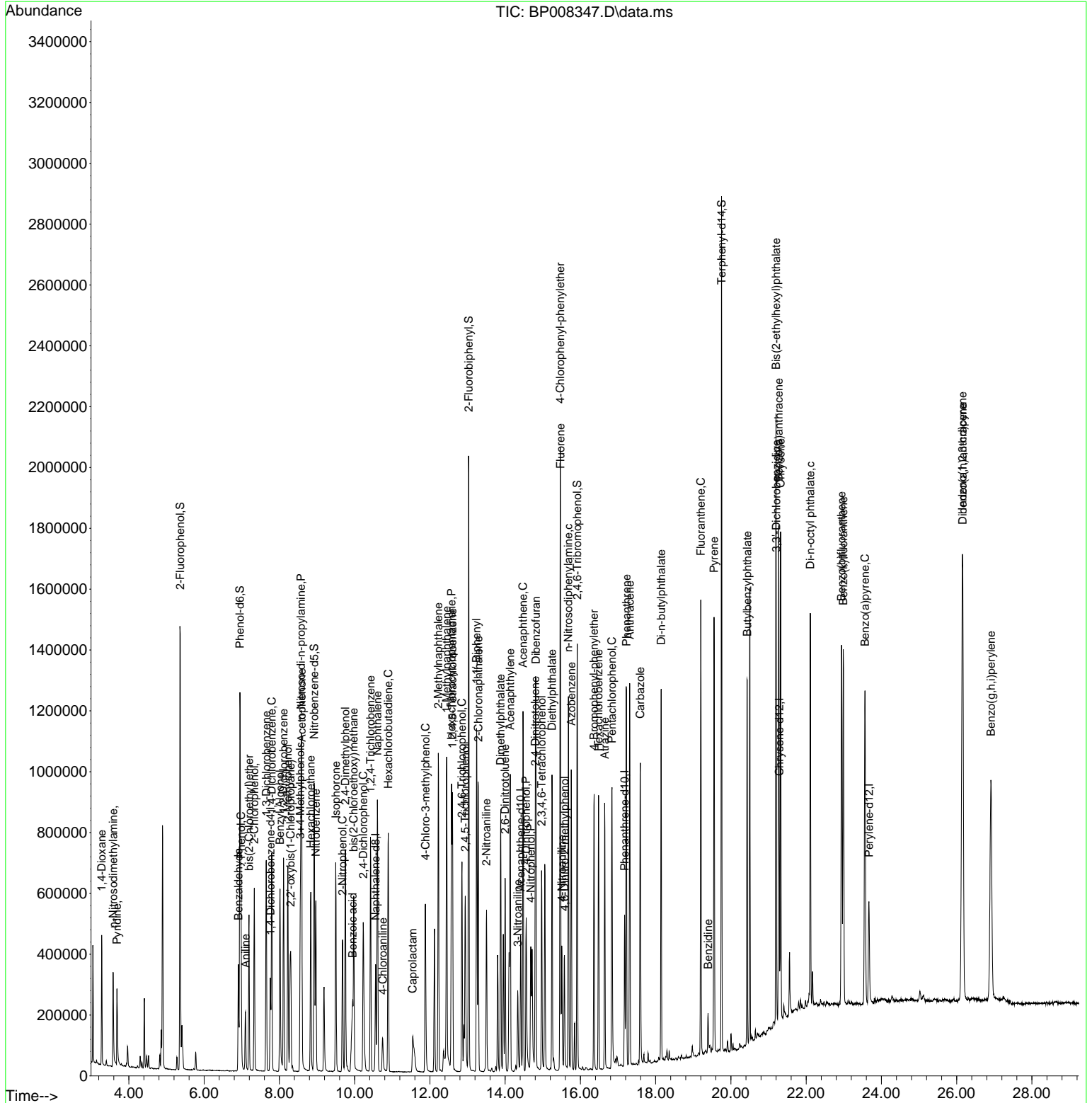
Compound	R.T.	QIon	Response	Conc	Units	Dev(Min)
44) 2,4,5-Trichlorophenol	12.940	196	172288	50.854	ng	96
46) 1,1'-Biphenyl	13.240	154	549109	52.682	ng	99
47) 2-Chloronaphthalene	13.287	162	444942	54.055	ng	98
48) 2-Nitroaniline	13.504	65	159776	56.328	ng	98
49) Acenaphthylene	14.134	152	650682	51.240	ng	99
50) Dimethylphthalate	13.881	163	518104	48.027	ng	99
51) 2,6-Dinitrotoluene	13.998	165	114212	51.013	ng	94
52) Acenaphthene	14.475	154	392181	51.822	ng	100
53) 3-Nitroaniline	14.334	138	58651	25.850	ng #	89
54) 2,4-Dinitrophenol	14.557	184	125094	94.501	ng	88
55) Dibenzofuran	14.816	168	625918	48.400	ng	98
56) 4-Nitrophenol	14.681	139	133770	76.919	ng	84
57) 2,4-Dinitrotoluene	14.798	165	150433	48.961	ng #	87
58) Fluorene	15.469	166	493491	46.968	ng	100
59) 2,3,4,6-Tetrachlorophenol	14.969	232	135903	45.111	ng	99
60) Diethylphthalate	15.245	149	495658	46.300	ng	100
61) 4-Chlorophenyl-phenyle...	15.463	204	264104	45.826	ng	99
62) 4-Nitroaniline	15.504	138	87651	37.229	ng	94
63) Azobenzene	15.757	77	545678	49.833	ng	97
65) 4,6-Dinitro-2-methylph...	15.575	198	81278	46.069	ng	94
66) n-Nitrosodiphenylamine	15.681	169	416921	53.360	ng	99
67) 4-Bromophenyl-phenylether	16.363	248	160545	53.525	ng	99
68) Hexachlorobenzene	16.481	284	178544	55.687	ng	98
69) Atrazine	16.645	200	153992	75.939	ng	98
70) Pentachlorophenol	16.839	266	178216	93.478	ng	99
71) Phenanthrene	17.222	178	740578	52.002	ng	99
72) Anthracene	17.310	178	744864	52.703	ng	99
73) Carbazole	17.592	167	636067	46.103	ng	99
74) Di-n-butylphthalate	18.145	149	765070	44.298	ng	100
75) Fluoranthene	19.198	202	835776	43.564	ng	100
77) Benzidine	19.392	184	81373	24.411	ng	97
78) Pyrene	19.551	202	855489	56.556	ng	99
80) Butylbenzylphthalate	20.433	149	334115	48.282	ng	99
81) Benzo(a)anthracene	21.269	228	786920	48.859	ng	99
82) 3,3'-Dichlorobenzidine	21.204	252	191068	25.179	ng	100
83) Chrysene	21.322	228	776080	50.637	ng	99
84) Bis(2-ethylhexyl)phtha...	21.198	149	494530	47.068	ng	98
85) Di-n-octyl phthalate	22.110	149	790611	44.296	ng	99
87) Indeno(1,2,3-cd)pyrene	26.151	276	1193743	59.796	ng	97
88) Benzo(b)fluoranthene	22.939	252	857342	51.826	ng	99
89) Benzo(k)fluoranthene	22.986	252	850080	52.489	ng	99
90) Benzo(a)pyrene	23.563	252	852848	60.321	ng	98
91) Dibenzo(a,h)anthracene	26.162	278	1017785	61.387	ng	97
92) Benzo(g,h,i)perylene	26.910	276	1052158	62.905	ng	96

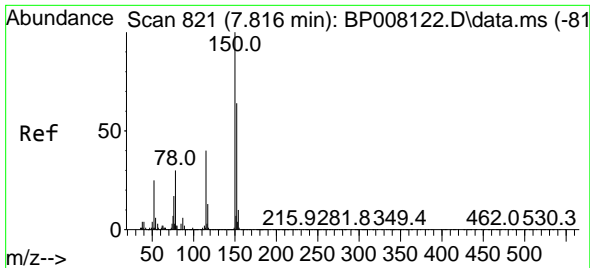
(#) = qualifier out of range (m) = manual integration (+) = signals summed

Data Path : Z:\svoasrv\HPCHEM1\BNA_P\Data\BP121021\
 Data File : BP008347.D
 Acq On : 10 Dec 2021 18:51
 Operator : CG/JU
 Sample : M4966-06MSD
 Misc :
 ALS Vial : 6 Sample Multiplier: 1

Instrument :
 BNA_P
 ClientSampleId :
 P1-COMPMSD

Quant Time: Dec 11 04:00:31 2021
 Quant Method : Z:\svoasrv\HPCHEM1\BNA_P\Methods\8270E-BP112521.M
 Quant Title : ASP BNA STANDARDS FOR 5 POINT CALIBRATION
 QLast Update : Sat Dec 11 03:53:01 2021
 Response via : Initial Calibration



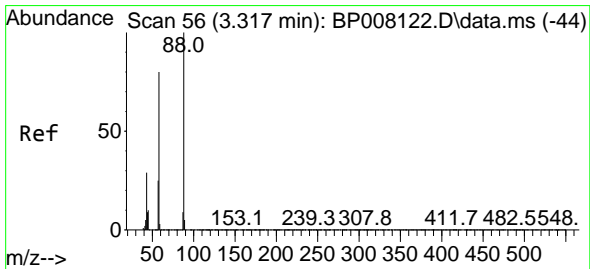
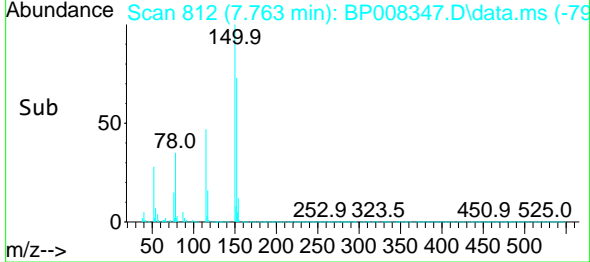
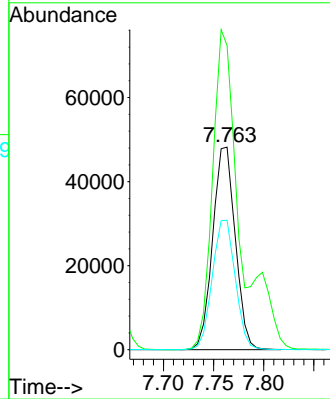
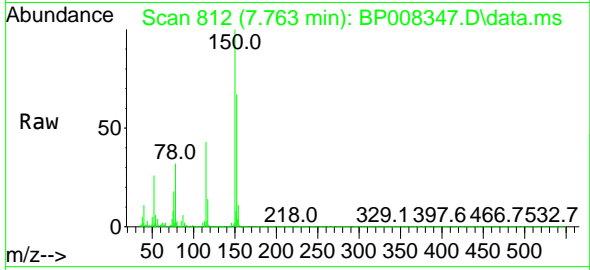


#1
 1,4-Dichlorobenzene-d4
 Concen: 20.000 ng
 RT: 7.763 min Scan# 81
 Delta R.T. 0.000 min
 Lab File: BP008347.D
 Acq: 10 Dec 2021 18:51

Instrument :
 BNA_P
 ClientSampleId :
 P1-COMPMSD

Tgt Ion: 152 Resp: 75637

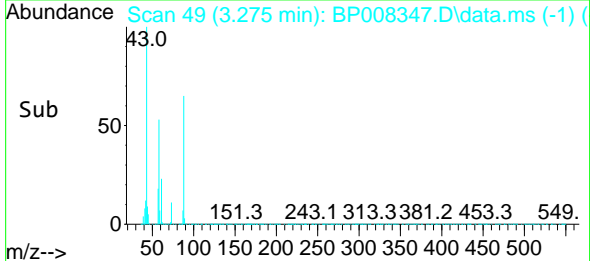
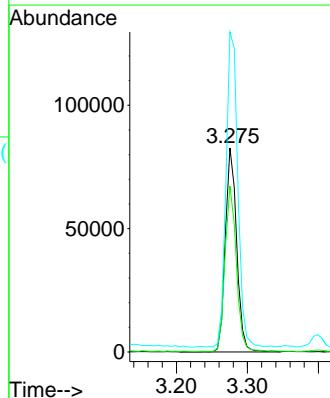
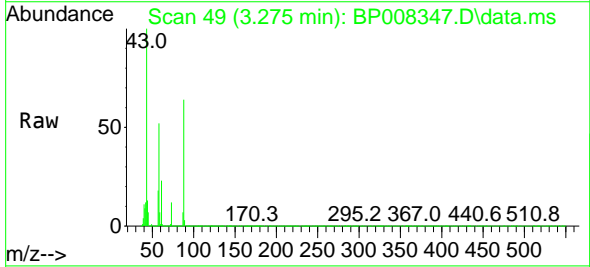
Ion	Ratio	Lower	Upper
152	100		
150	150.2	125.7	188.5
115	63.9	50.7	76.1

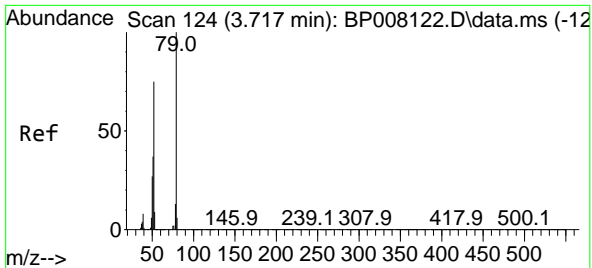


#2
 1,4-Dioxane
 Concen: 41.628 ng
 RT: 3.275 min Scan# 49
 Delta R.T. 0.018 min
 Lab File: BP008347.D
 Acq: 10 Dec 2021 18:51

Tgt Ion: 88 Resp: 91233

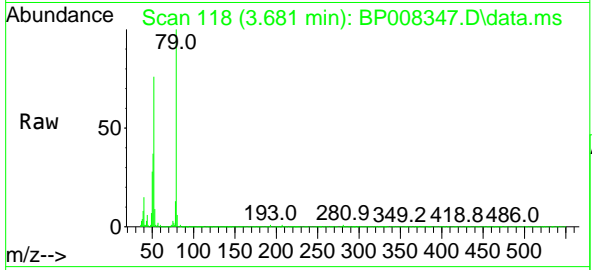
Ion	Ratio	Lower	Upper
88	100		
58	81.1	63.5	95.3
43	159.8	23.4	35.2#



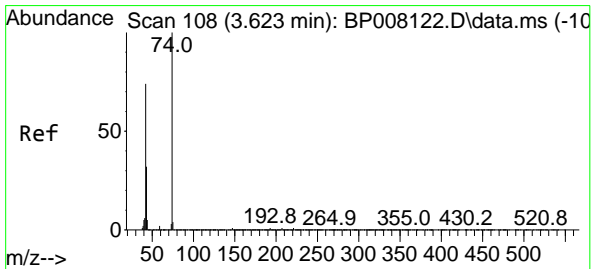
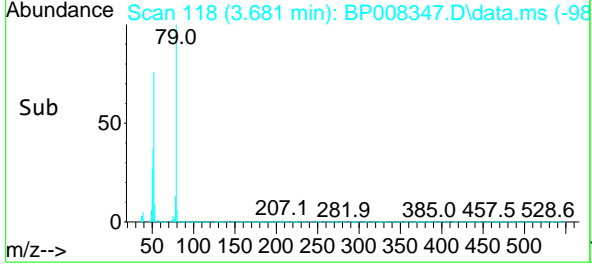
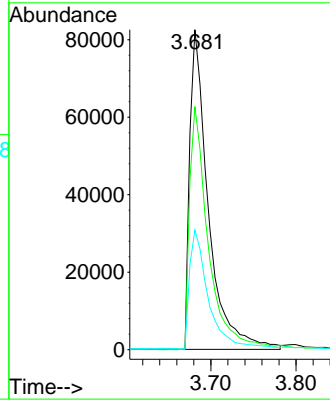


#3
 Pyridine
 Concen: 21.415 ng
 RT: 3.681 min Scan# 11
 Delta R.T. 0.018 min
 Lab File: BP008347.D
 Acq: 10 Dec 2021 18:51

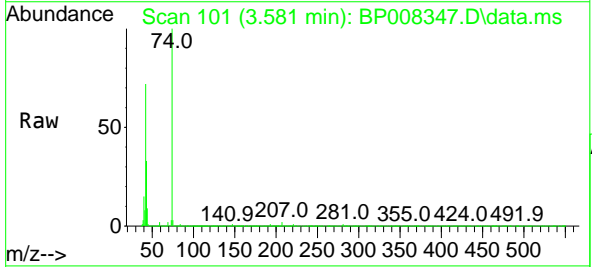
Instrument :
 BNA_P
 ClientSampleId :
 P1-COMPMSD



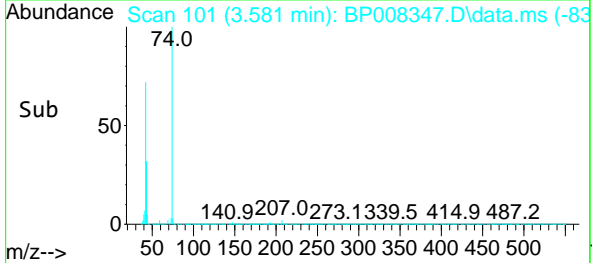
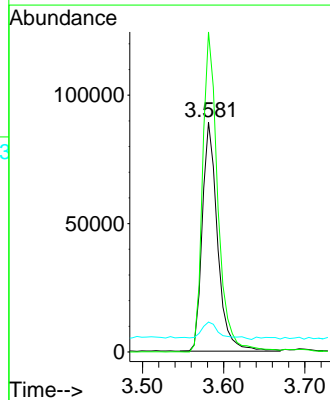
Tgt Ion: 79 Resp: 125268
 Ion Ratio Lower Upper
 79 100
 52 76.0 60.0 90.0
 51 37.4 29.6 44.4

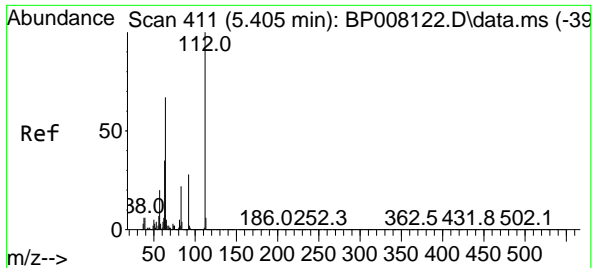


#4
 n-Nitrosodimethylamine
 Concen: 47.808 ng
 RT: 3.581 min Scan# 101
 Delta R.T. 0.006 min
 Lab File: BP008347.D
 Acq: 10 Dec 2021 18:51



Tgt Ion: 42 Resp: 116643
 Ion Ratio Lower Upper
 42 100
 74 139.2 108.0 162.0
 44 13.0 5.8 8.6#



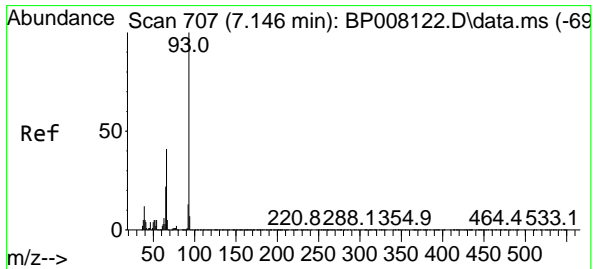
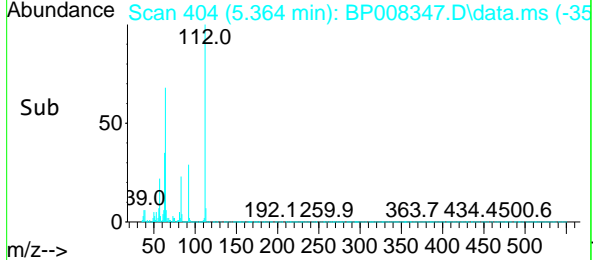
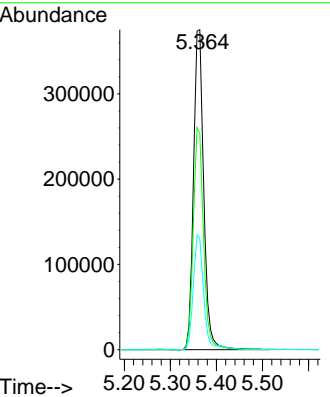
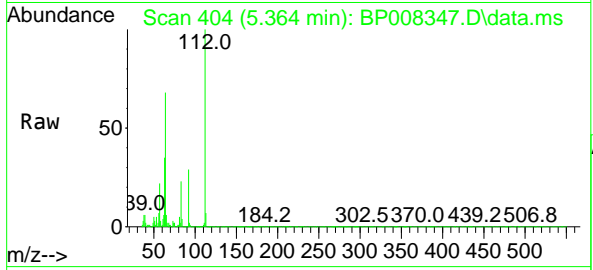


#5
 2-Fluorophenol
 Concen: 123.927 ng
 RT: 5.364 min Scan# 404
 Delta R.T. 0.006 min
 Lab File: BP008347.D
 Acq: 10 Dec 2021 18:51

Instrument : BNA_P
 ClientSampleId : P1-COMPMSD

Tgt Ion:112 Resp: 582167

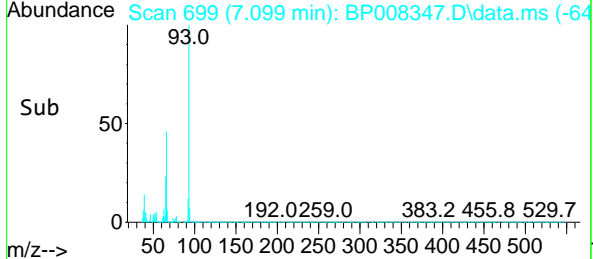
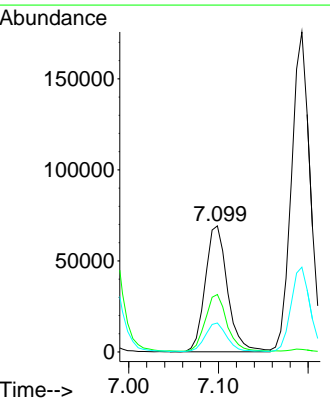
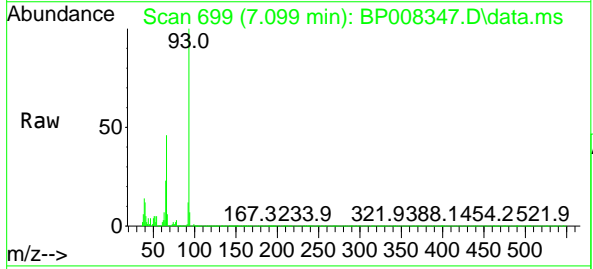
Ion	Ratio	Lower	Upper
112	100		
64	67.6	53.4	80.2
63	34.8	27.8	41.8

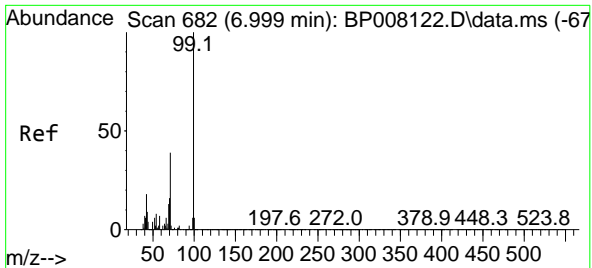


#6
 Aniline
 Concen: 16.085 ng
 RT: 7.099 min Scan# 699
 Delta R.T. 0.006 min
 Lab File: BP008347.D
 Acq: 10 Dec 2021 18:51

Tgt Ion: 93 Resp: 119571

Ion	Ratio	Lower	Upper
93	100		
66	45.5	32.9	49.3
65	23.0	17.5	26.3



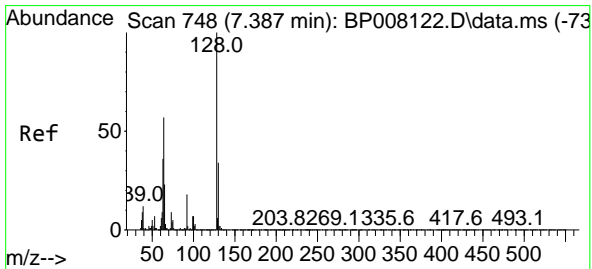
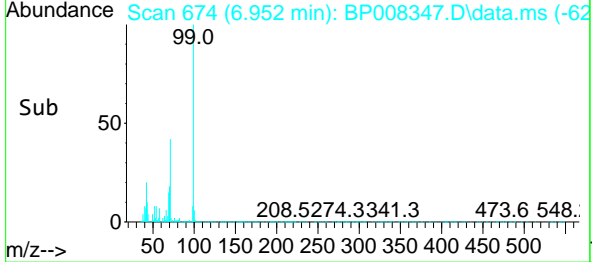
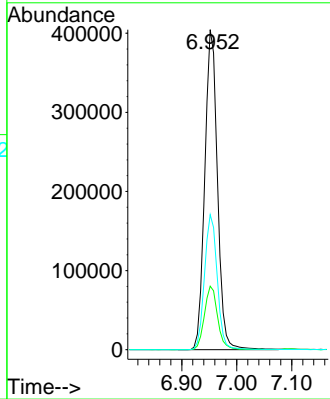
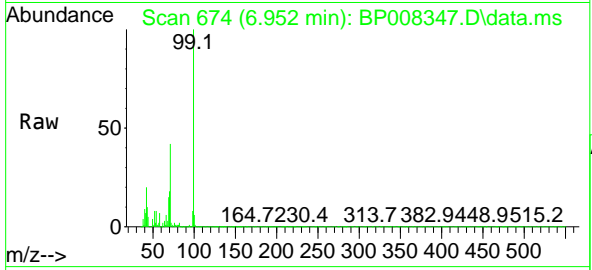


#7
 Phenol-d6
 Concen: 102.190 ng
 RT: 6.952 min Scan# 61
 Delta R.T. 0.000 min
 Lab File: BP008347.D
 Acq: 10 Dec 2021 18:51

Instrument : BNA_P
 ClientSampleId : P1-COMPMSD

Tgt Ion: 99 Resp: 648040

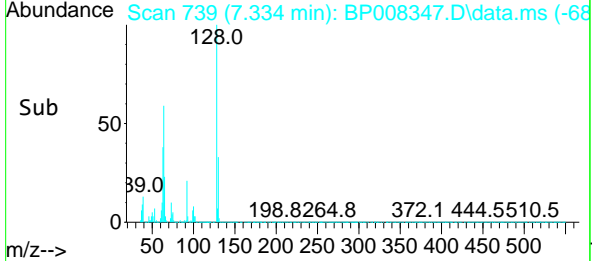
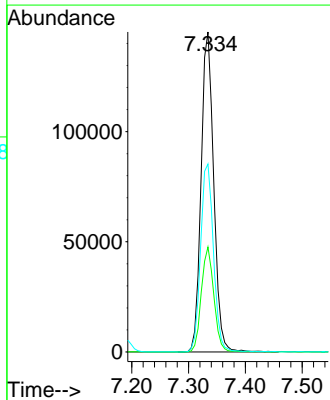
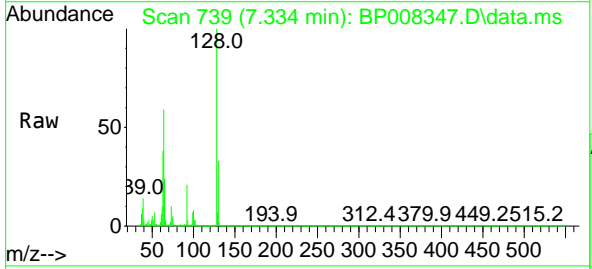
Ion	Ratio	Lower	Upper
99	100		
42	19.9	14.6	22.0
71	42.2	31.1	46.7

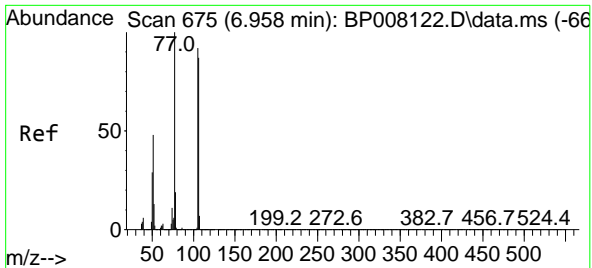


#8
 2-Chlorophenol
 Concen: 46.591 ng
 RT: 7.334 min Scan# 739
 Delta R.T. 0.006 min
 Lab File: BP008347.D
 Acq: 10 Dec 2021 18:51

Tgt Ion: 128 Resp: 224053

Ion	Ratio	Lower	Upper
128	100		
130	32.8	13.5	53.5
64	58.8	37.4	77.4



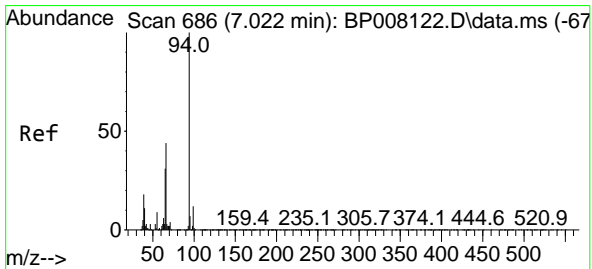
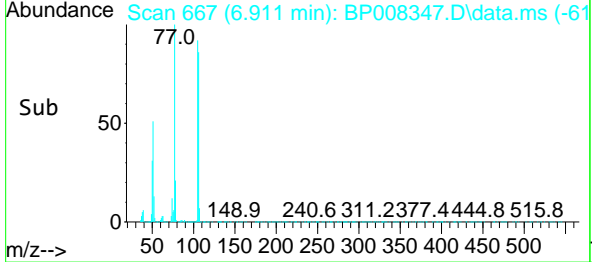
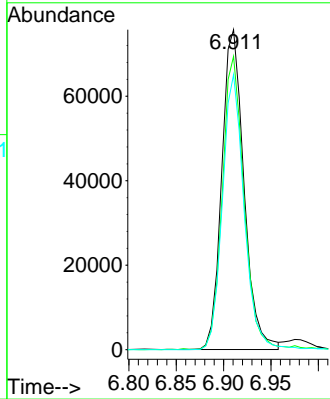
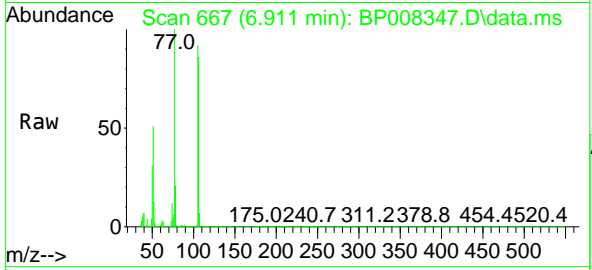


#9
 Benzaldehyde
 Concen: 34.493 ng
 RT: 6.911 min Scan# 60
 Delta R.T. 0.000 min
 Lab File: BP008347.D
 Acq: 10 Dec 2021 18:51

Instrument : BNA_P
 ClientSampleId : P1-COMPMSD

Tgt Ion: 77 Resp: 123312

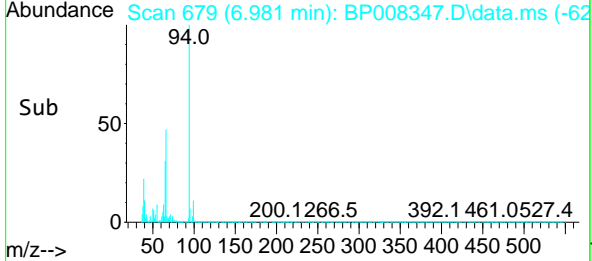
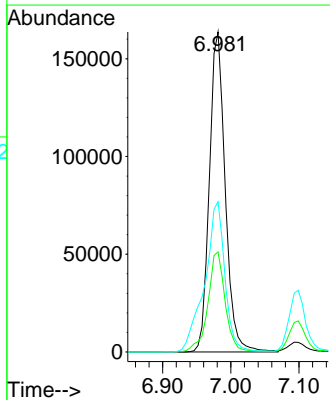
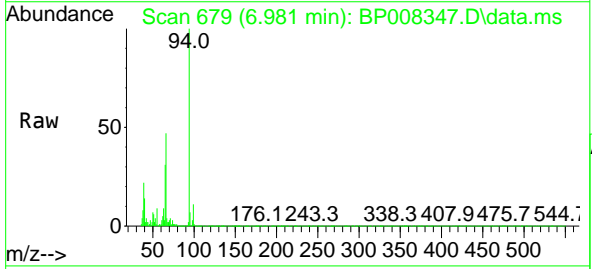
Ion	Ratio	Lower	Upper
77	100		
105	91.7	71.8	111.8
106	86.0	67.3	107.3

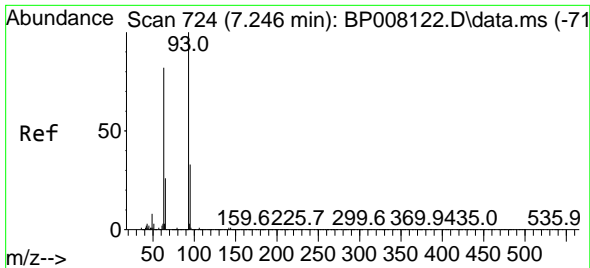


#10
 Phenol
 Concen: 40.706 ng
 RT: 6.981 min Scan# 679
 Delta R.T. 0.006 min
 Lab File: BP008347.D
 Acq: 10 Dec 2021 18:51

Tgt Ion: 94 Resp: 265267

Ion	Ratio	Lower	Upper
94	100		
65	31.3	10.9	50.9
66	46.9	24.3	64.3

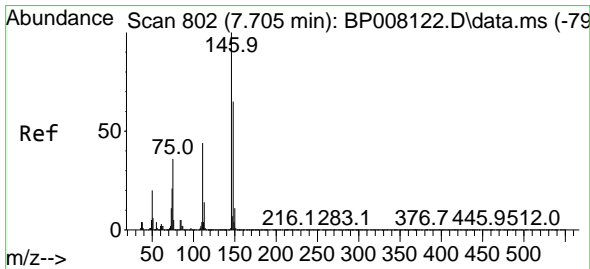
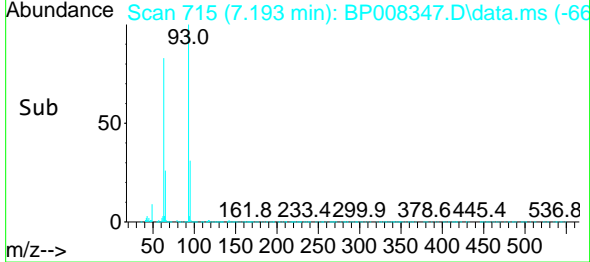
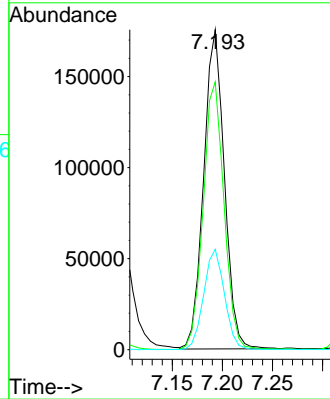
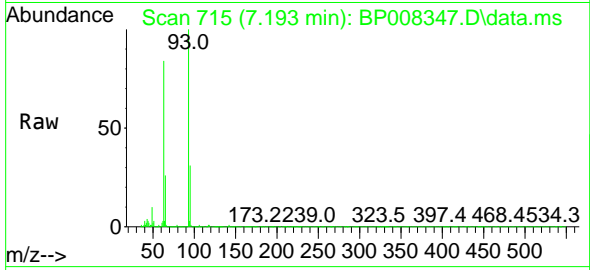




#11
 bis(2-Chloroethyl)ether
 Concen: 48.417 ng
 RT: 7.193 min Scan# 715
 Delta R.T. 0.000 min
 Lab File: BP008347.D
 Acq: 10 Dec 2021 18:51

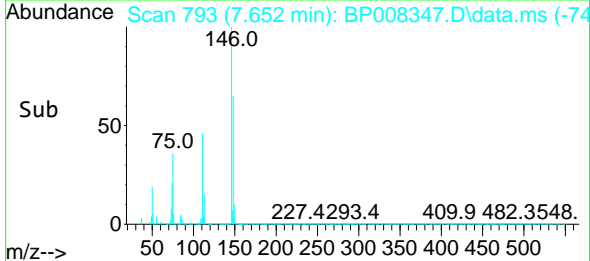
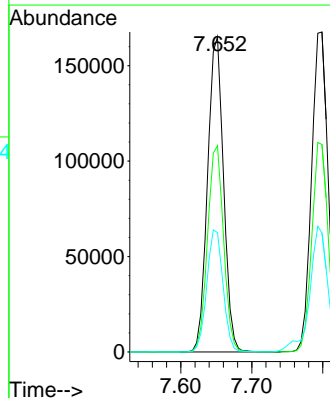
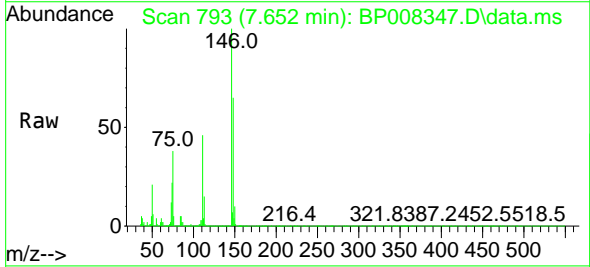
Instrument :
 BNA_P
 ClientSampleId :
 P1-COMPMSD

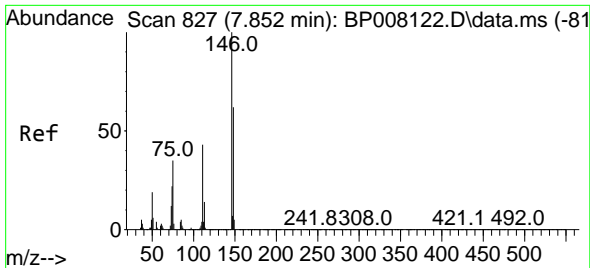
Tgt Ion: 93 Resp: 252194
 Ion Ratio Lower Upper
 93 100
 63 83.7 61.8 101.8
 95 31.4 12.5 52.5



#12
 1,3-Dichlorobenzene
 Concen: 46.579 ng
 RT: 7.652 min Scan# 793
 Delta R.T. 0.006 min
 Lab File: BP008347.D
 Acq: 10 Dec 2021 18:51

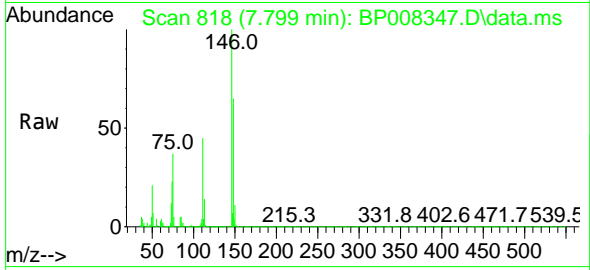
Tgt Ion: 146 Resp: 258550
 Ion Ratio Lower Upper
 146 100
 148 65.4 51.9 77.9
 75 37.9 29.0 43.6



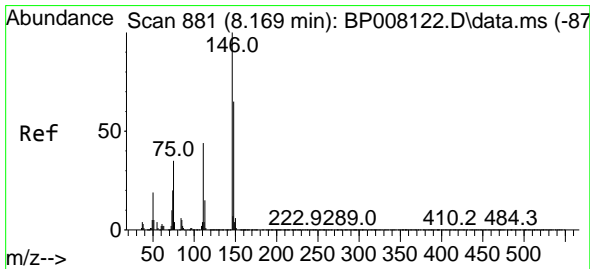
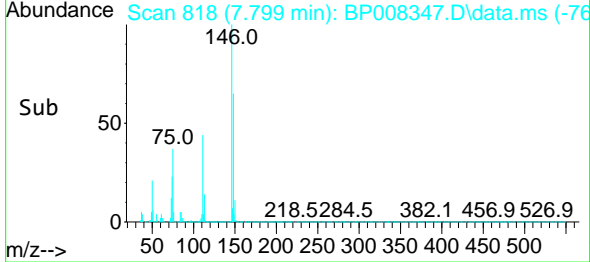
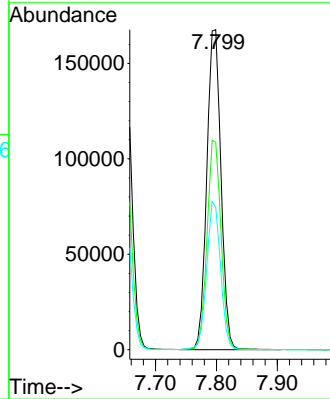


#13
 1,4-Dichlorobenzene
 Concen: 48.143 ng
 RT: 7.799 min Scan# 81
 Delta R.T. 0.006 min
 Lab File: BP008347.D
 Acq: 10 Dec 2021 18:51

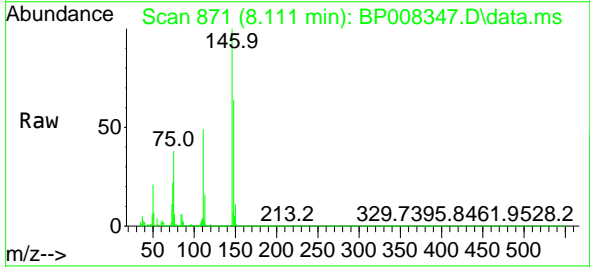
Instrument :
 BNA_P
 ClientSampleId :
 P1-COMPMSD



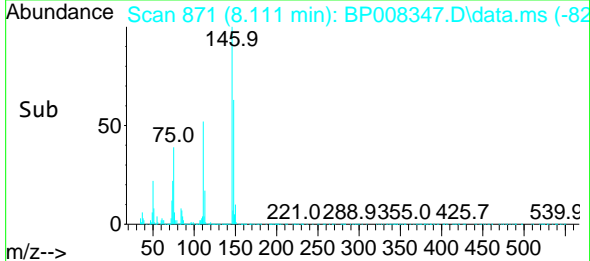
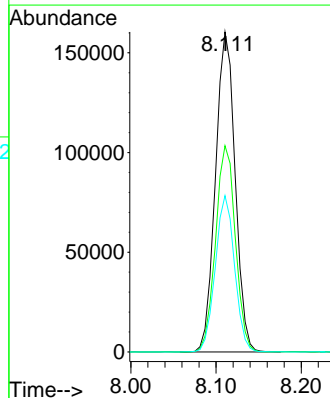
Tgt Ion:146 Resp: 270935
 Ion Ratio Lower Upper
 146 100
 148 64.9 49.6 74.4
 111 44.5 34.7 52.1

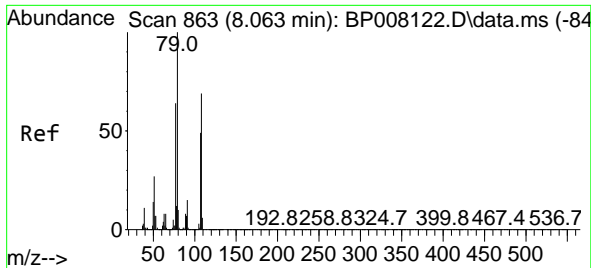


#14
 1,2-Dichlorobenzene
 Concen: 45.961 ng
 RT: 8.111 min Scan# 871
 Delta R.T. 0.000 min
 Lab File: BP008347.D
 Acq: 10 Dec 2021 18:51



Tgt Ion:146 Resp: 257243
 Ion Ratio Lower Upper
 146 100
 148 64.5 51.8 77.6
 111 48.9 35.0 52.6

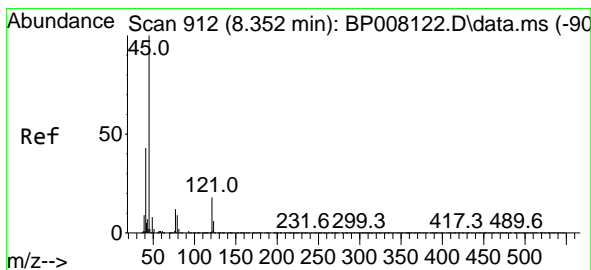
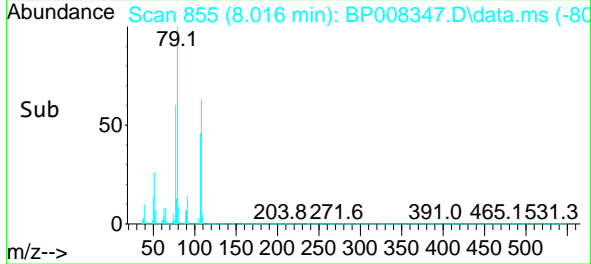
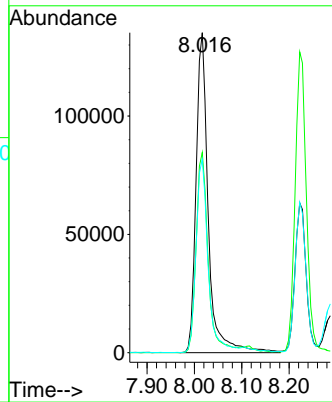
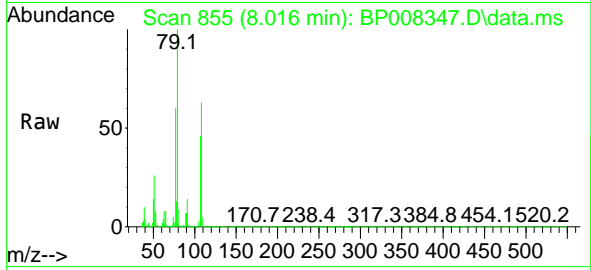




#15
 Benzyl Alcohol
 Concen: 47.995 ng
 RT: 8.016 min Scan# 801
 Delta R.T. 0.006 min
 Lab File: BP008347.D
 Acq: 10 Dec 2021 18:51

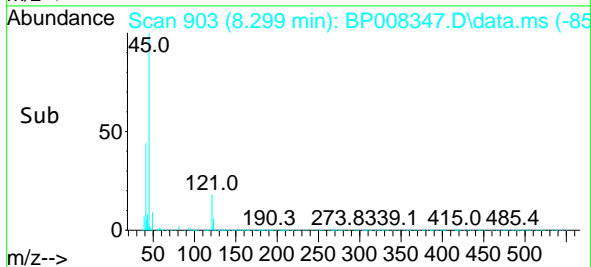
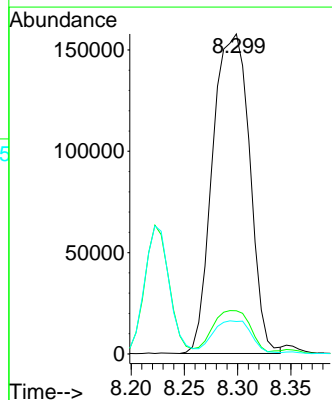
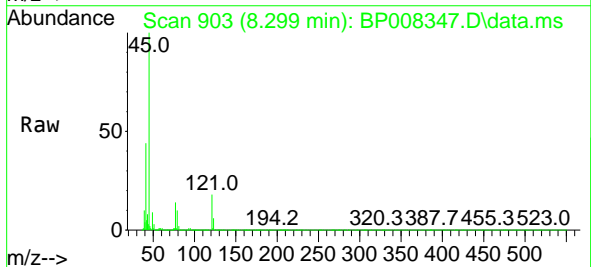
Instrument :
 BNA_P
 ClientSampleId :
 P1-COMPMSD

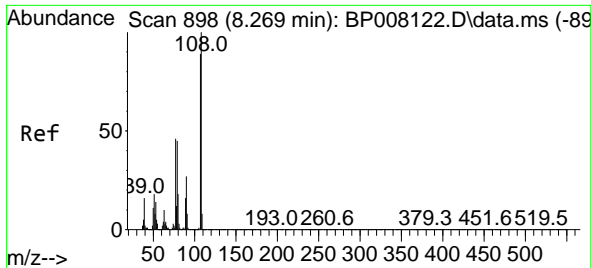
Tgt Ion: 79 Resp: 241148
 Ion Ratio Lower Upper
 79 100
 108 62.6 55.5 83.3
 77 60.5 51.0 76.6



#16
 2,2'-oxybis(1-Chloropropane)
 Concen: 48.482 ng
 RT: 8.299 min Scan# 903
 Delta R.T. 0.000 min
 Lab File: BP008347.D
 Acq: 10 Dec 2021 18:51

Tgt Ion: 45 Resp: 381039
 Ion Ratio Lower Upper
 45 100
 77 13.5 0.0 33.8
 79 10.2 0.0 30.4



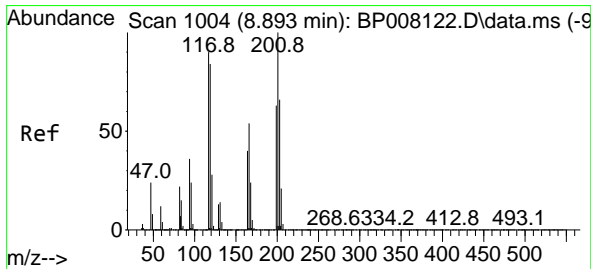
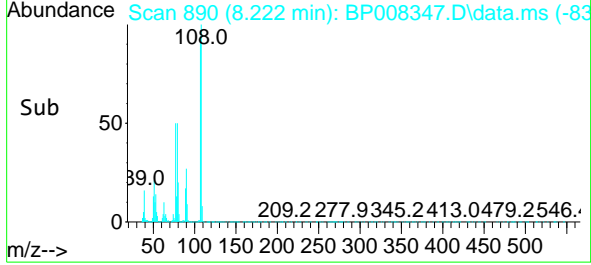
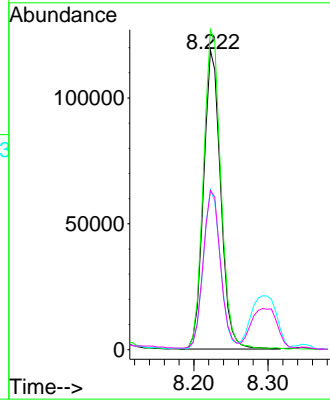
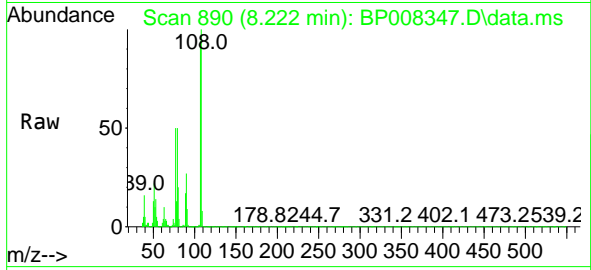


#17
 2-Methylphenol
 Concen: 44.975 ng
 RT: 8.222 min Scan# 898
 Delta R.T. 0.000 min
 Lab File: BP008347.D
 Acq: 10 Dec 2021 18:51

Instrument :
 BNA_P
 ClientSampleId :
 P1-COMPMSD

Tgt Ion:107 Resp: 190676

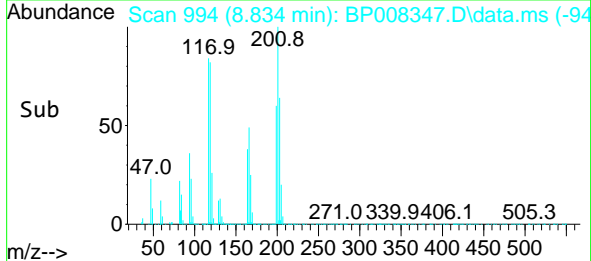
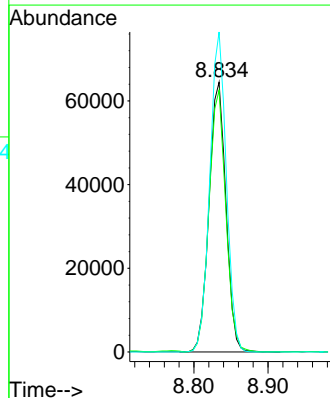
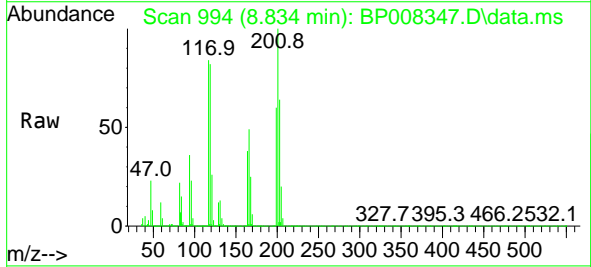
Ion	Ratio	Lower	Upper
107	100		
108	106.9	90.2	135.2
77	53.4	41.3	61.9
79	53.2	41.0	61.6

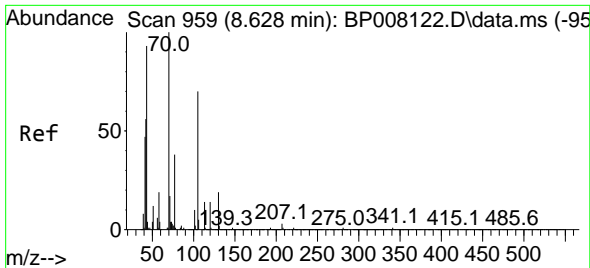


#18
 Hexachloroethane
 Concen: 48.755 ng
 RT: 8.834 min Scan# 994
 Delta R.T. 0.000 min
 Lab File: BP008347.D
 Acq: 10 Dec 2021 18:51

Tgt Ion:117 Resp: 102022

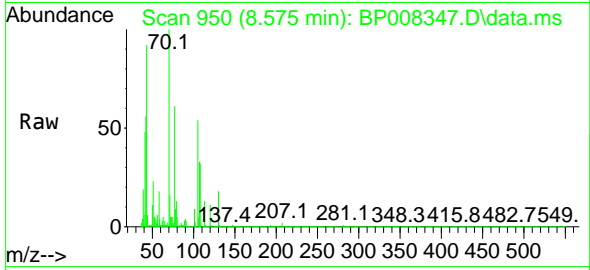
Ion	Ratio	Lower	Upper
117	100		
119	97.0	74.7	112.1
201	118.6	88.6	132.8



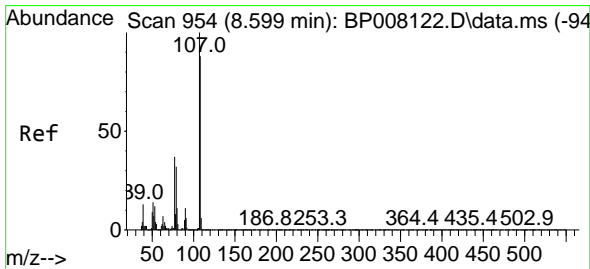
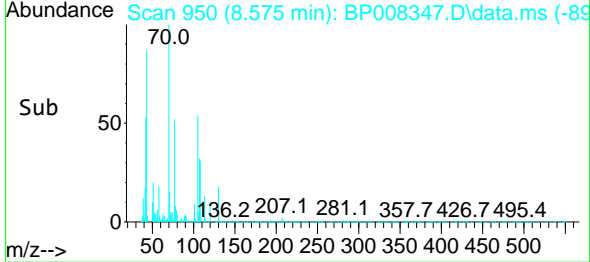
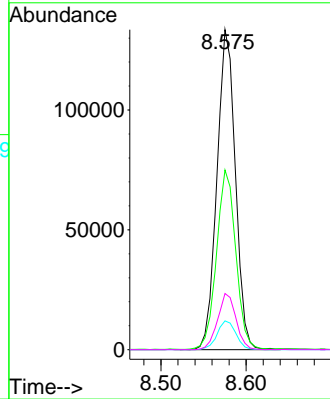


#19
 n-Nitroso-di-n-propylamine
 Concen: 45.719 ng
 RT: 8.575 min Scan# 91
 Delta R.T. 0.000 min
 Lab File: BP008347.D
 Acq: 10 Dec 2021 18:51

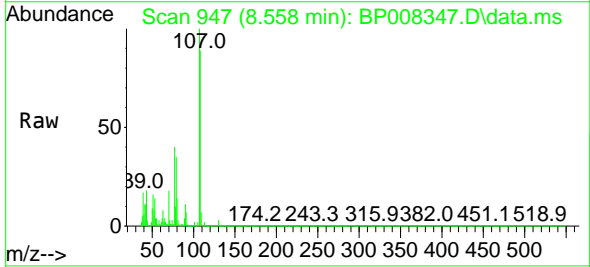
Instrument :
 BNA_P
 ClientSampleId :
 P1-COMPMSD



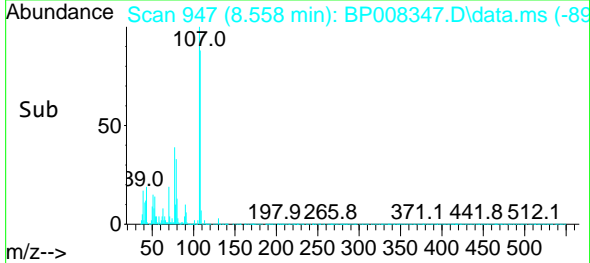
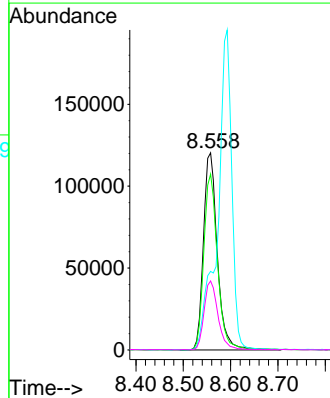
Tgt Ion: 70 Resp: 200617
 Ion Ratio Lower Upper
 70 100
 42 56.1 45.4 68.2
 101 9.0 7.6 11.4
 130 17.6 15.1 22.7

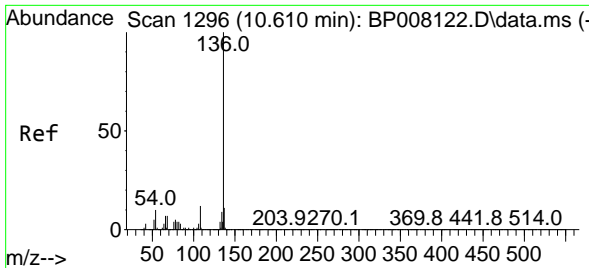


#20
 3+4-Methylphenols
 Concen: 41.760 ng
 RT: 8.558 min Scan# 947
 Delta R.T. 0.006 min
 Lab File: BP008347.D
 Acq: 10 Dec 2021 18:51



Tgt Ion: 107 Resp: 244345
 Ion Ratio Lower Upper
 107 100
 108 89.2 68.2 108.2
 77 39.9 16.9 56.9
 79 35.0 12.5 52.5



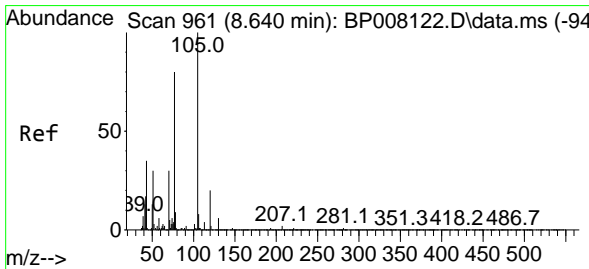
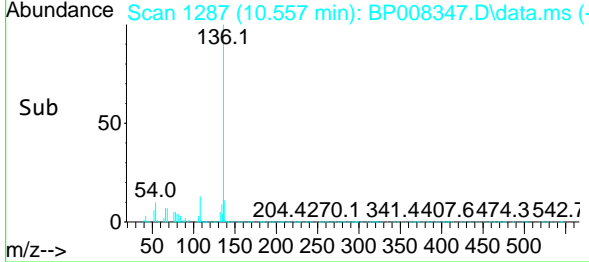
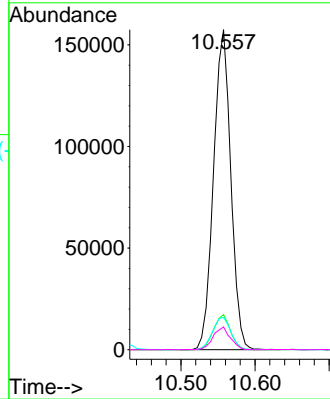
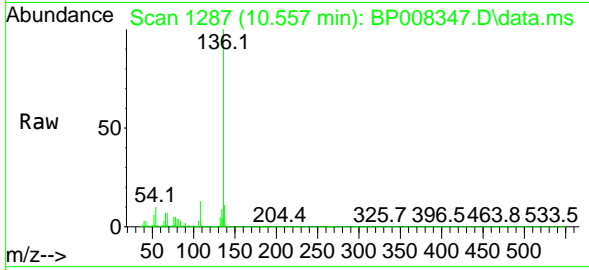


#21
 Naphthalene-d8
 Concen: 20.000 ng
 RT: 10.557 min Scan# 11
 Delta R.T. 0.000 min
 Lab File: BP008347.D
 Acq: 10 Dec 2021 18:51

Instrument :
 BNA_P
 ClientSampleId :
 P1-COMPMSD

Tgt Ion:136 Resp: 254570

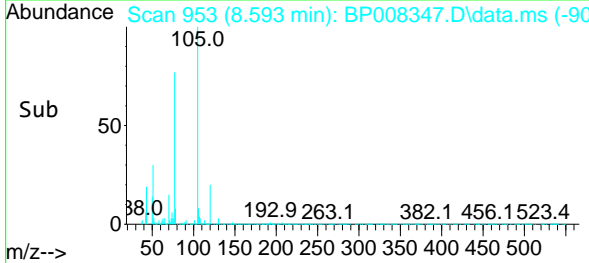
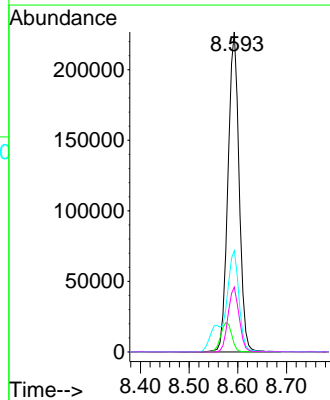
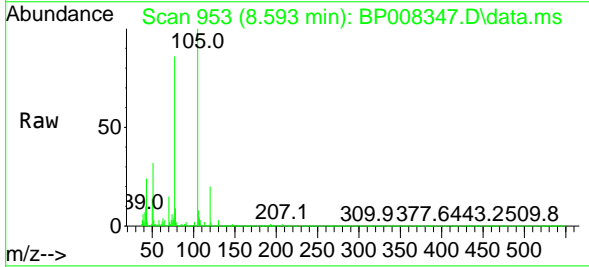
Ion	Ratio	Lower	Upper
136	100		
137	11.0	9.0	13.6
54	10.1	8.2	12.4
68	7.1	5.8	8.8

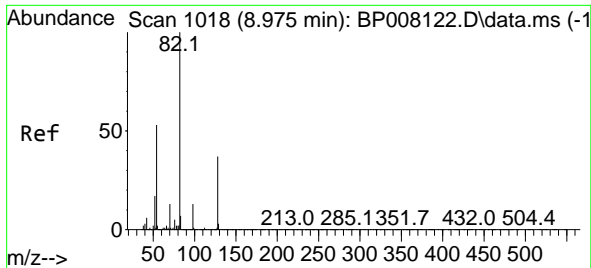


#22
 Acetophenone
 Concen: 52.034 ng
 RT: 8.593 min Scan# 953
 Delta R.T. 0.000 min
 Lab File: BP008347.D
 Acq: 10 Dec 2021 18:51

Tgt Ion:105 Resp: 362322

Ion	Ratio	Lower	Upper
105	100		
71	2.4	4.0	6.0
51	31.7	23.8	35.6
120	20.2	16.0	24.0

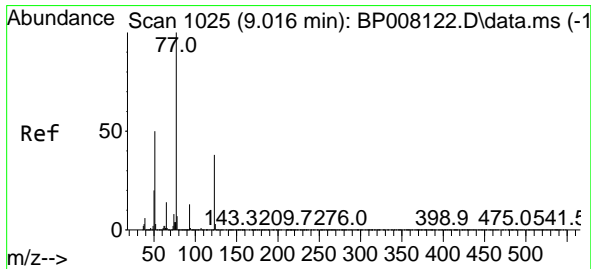
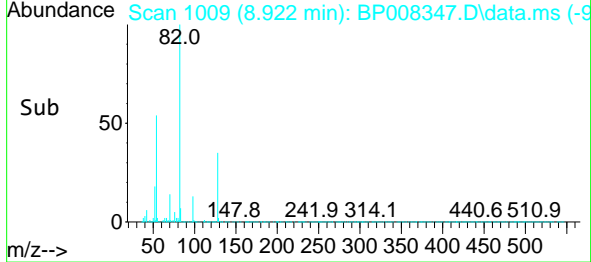
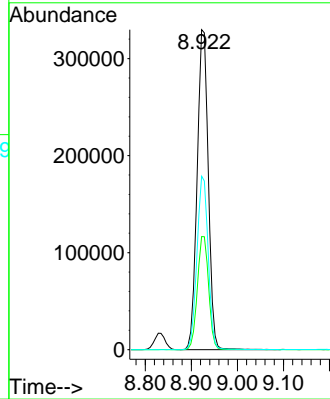
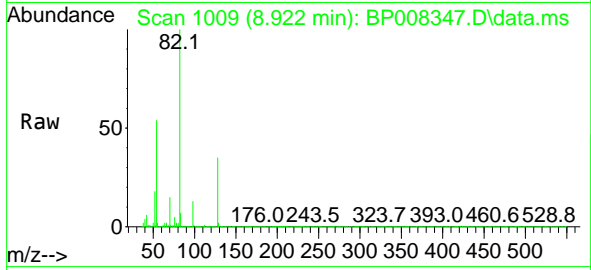




#23
 Nitrobenzene-d5
 Concen: 98.944 ng
 RT: 8.922 min Scan# 1009
 Delta R.T. -0.006 min
 Lab File: BP008347.D
 Acq: 10 Dec 2021 18:51

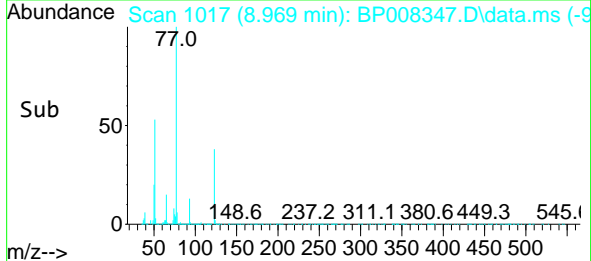
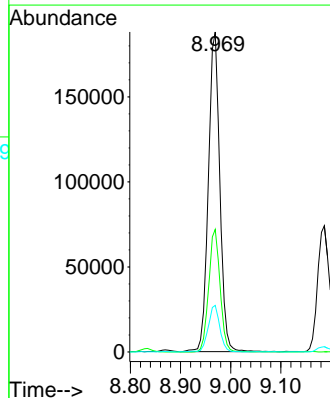
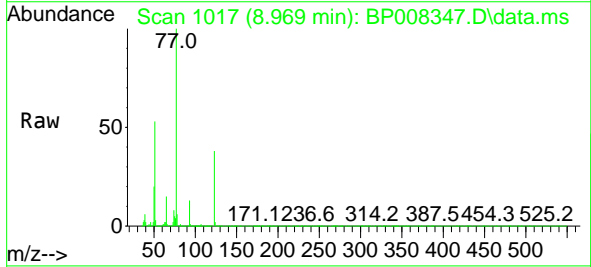
Instrument : BNA_P
 Client Sample Id : P1-COMPMSD

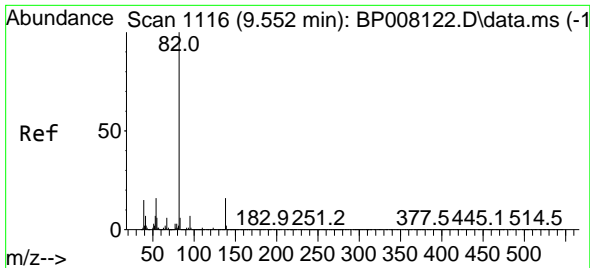
Tgt Ion: 82 Resp: 553914
 Ion Ratio Lower Upper
 82 100
 128 35.3 29.6 44.4
 54 54.2 42.7 64.1



#24
 Nitrobenzene
 Concen: 55.001 ng
 RT: 8.969 min Scan# 1017
 Delta R.T. 0.000 min
 Lab File: BP008347.D
 Acq: 10 Dec 2021 18:51

Tgt Ion: 77 Resp: 298603
 Ion Ratio Lower Upper
 77 100
 123 38.3 30.4 45.6
 65 14.5 11.3 16.9



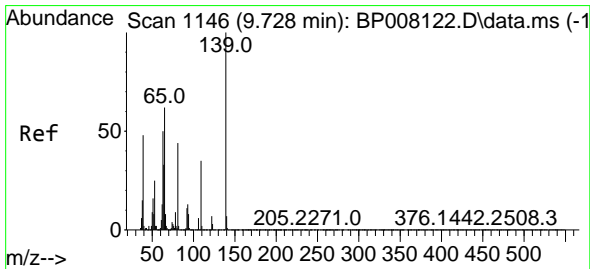
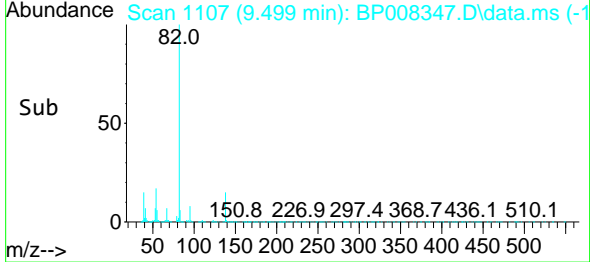
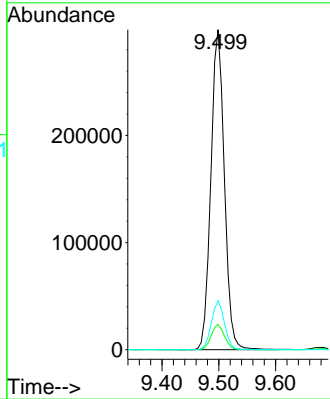
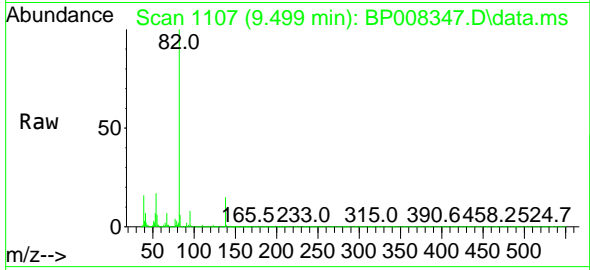


#25
 Isophorone
 Concen: 50.023 ng
 RT: 9.499 min Scan# 1116
 Delta R.T. 0.000 min
 Lab File: BP008347.D
 Acq: 10 Dec 2021 18:51

Instrument : BNA_P
 ClientSampleId : P1-COMPMSD

Tgt Ion: 82 Resp: 489935

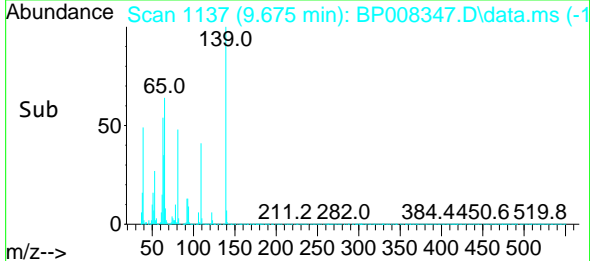
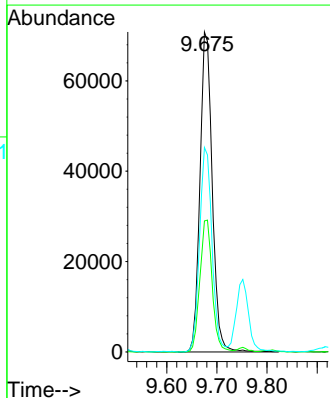
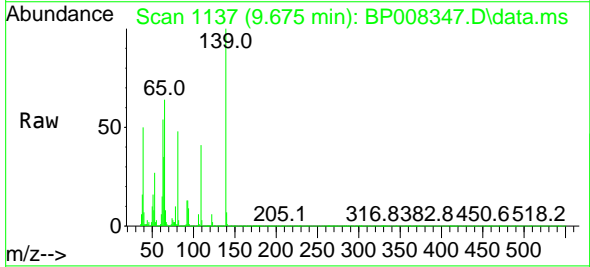
Ion	Ratio	Lower	Upper
82	100		
95	7.9	5.9	8.9
138	15.3	12.7	19.1

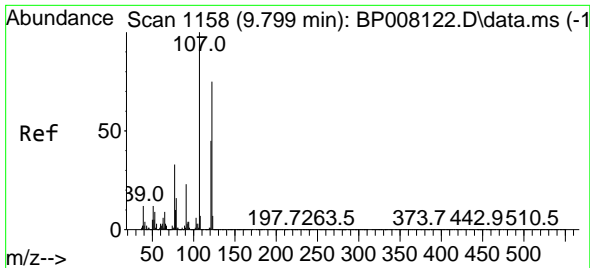


#26
 2-Nitrophenol
 Concen: 51.410 ng
 RT: 9.675 min Scan# 1137
 Delta R.T. -0.006 min
 Lab File: BP008347.D
 Acq: 10 Dec 2021 18:51

Tgt Ion: 139 Resp: 120423

Ion	Ratio	Lower	Upper
139	100		
109	40.9	28.3	42.5
65	63.9	49.7	74.5





#27
 2,4-Dimethylphenol
 Concen: 54.424 ng
 RT: 9.752 min Scan# 1115
 Delta R.T. 0.000 min
 Lab File: BP008347.D
 Acq: 10 Dec 2021 18:51

Instrument :

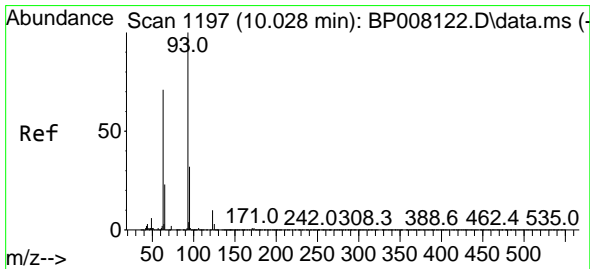
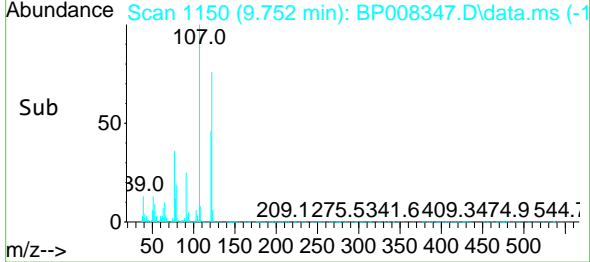
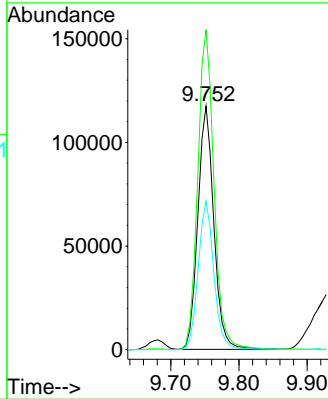
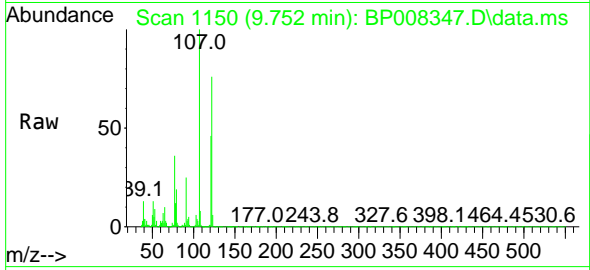
BNA_P

ClientSampleId :

P1-COMPMSD

Tgt Ion:122 Resp: 190656

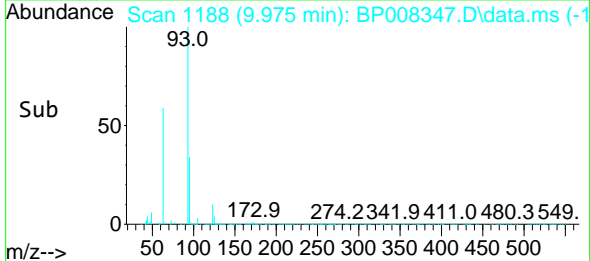
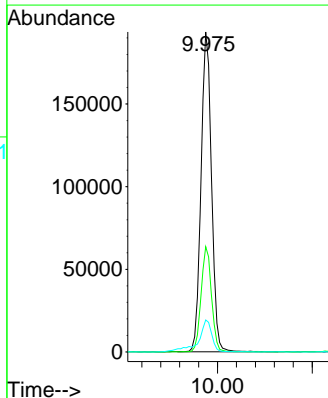
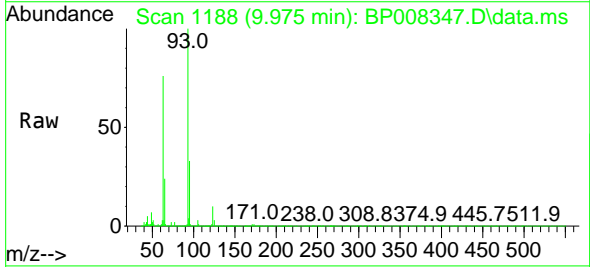
Ion	Ratio	Lower	Upper
122	100		
107	131.4	106.6	160.0
121	61.0	48.1	72.1

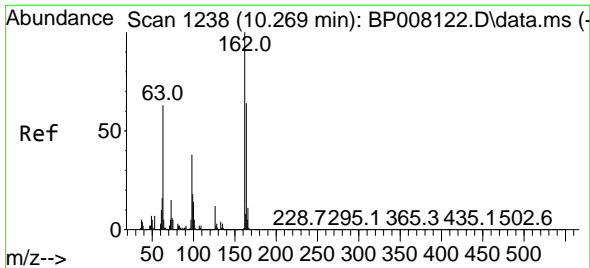


#28
 bis(2-Chloroethoxy)methane
 Concen: 47.393 ng
 RT: 9.975 min Scan# 1188
 Delta R.T. 0.000 min
 Lab File: BP008347.D
 Acq: 10 Dec 2021 18:51

Tgt Ion: 93 Resp: 295830

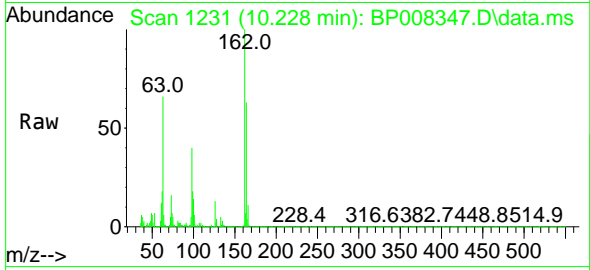
Ion	Ratio	Lower	Upper
93	100		
95	32.9	25.4	38.2
123	10.0	7.8	11.6





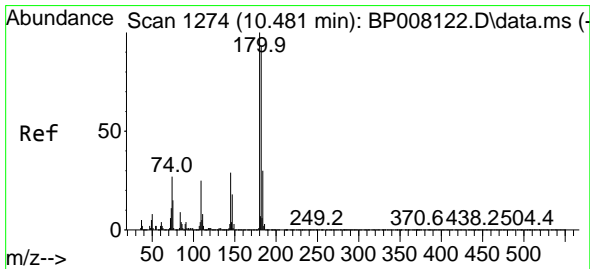
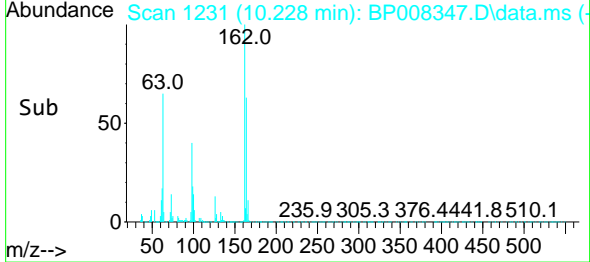
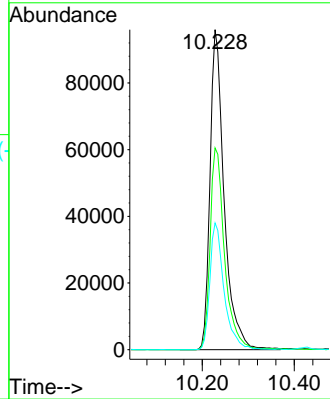
#29
 2,4-Dichlorophenol
 Concen: 48.921 ng
 RT: 10.228 min Scan# 11
 Delta R.T. 0.000 min
 Lab File: BP008347.D
 Acq: 10 Dec 2021 18:51

Instrument :
 BNA_P
 ClientSampleId :
 P1-COMPMSD



Tgt Ion:162 Resp: 204683

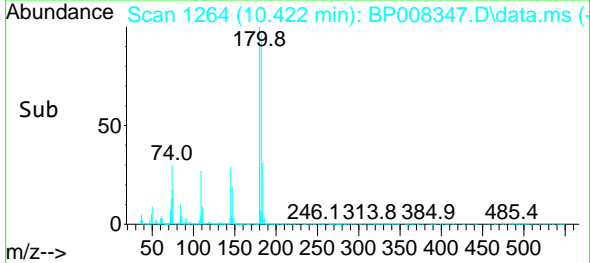
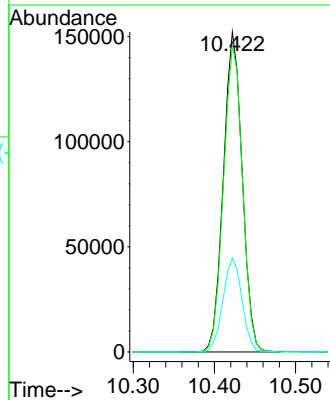
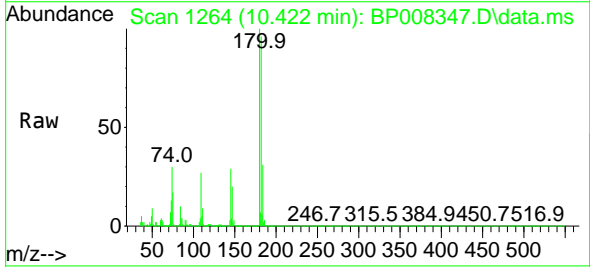
Ion	Ratio	Lower	Upper
162	100		
164	63.0	43.9	83.9
98	39.6	17.9	57.9

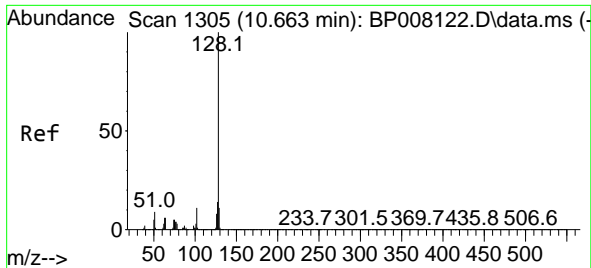


#30
 1,2,4-Trichlorobenzene
 Concen: 50.509 ng
 RT: 10.422 min Scan# 1264
 Delta R.T. 0.000 min
 Lab File: BP008347.D
 Acq: 10 Dec 2021 18:51

Tgt Ion:180 Resp: 245282

Ion	Ratio	Lower	Upper
180	100		
182	95.9	74.8	112.2
145	29.4	23.2	34.8



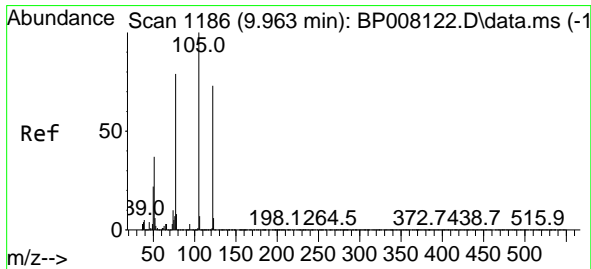
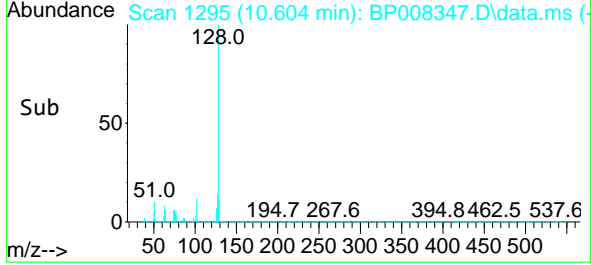
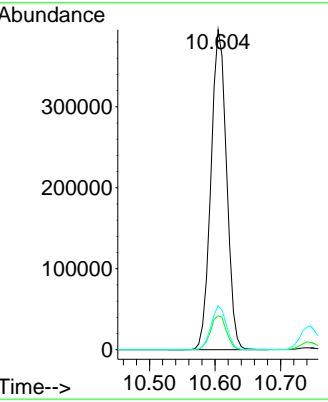
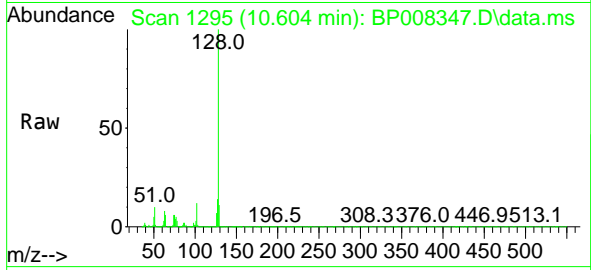


#31
 Naphthalene
 Concen: 49.988 ng
 RT: 10.604 min Scan# 1183
 Delta R.T. -0.006 min
 Lab File: BP008347.D
 Acq: 10 Dec 2021 18:51

Instrument :
 BNA_P
 ClientSampleId :
 P1-COMPMSD

Tgt Ion:128 Resp: 651881

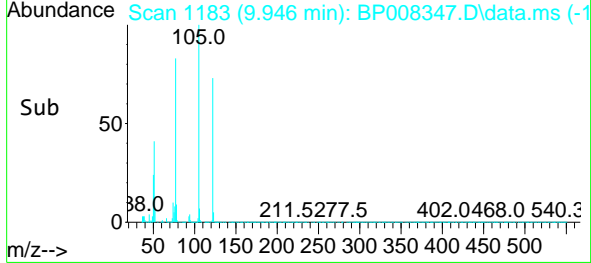
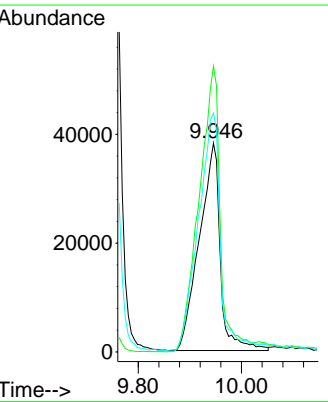
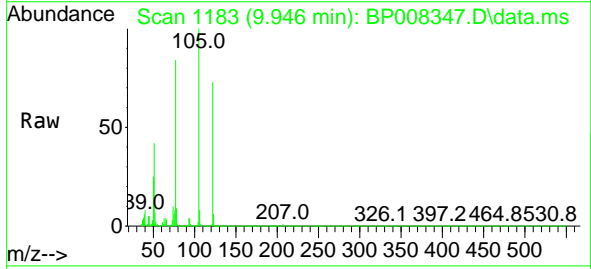
Ion	Ratio	Lower	Upper
128	100		
129	10.6	8.5	12.7
127	13.7	10.9	16.3

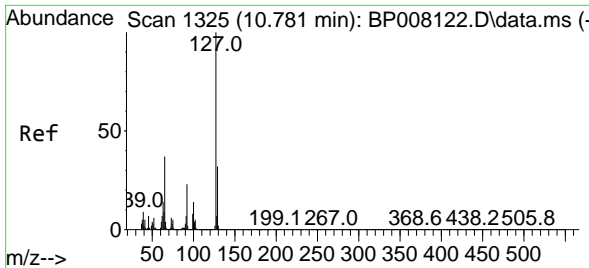


#32
 Benzoic acid
 Concen: 37.508 ng
 RT: 9.946 min Scan# 1183
 Delta R.T. -0.006 min
 Lab File: BP008347.D
 Acq: 10 Dec 2021 18:51

Tgt Ion:122 Resp: 107483

Ion	Ratio	Lower	Upper
122	100		
105	136.7	117.4	157.4
77	114.3	89.2	129.2

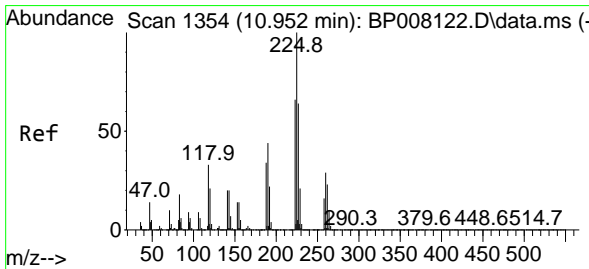
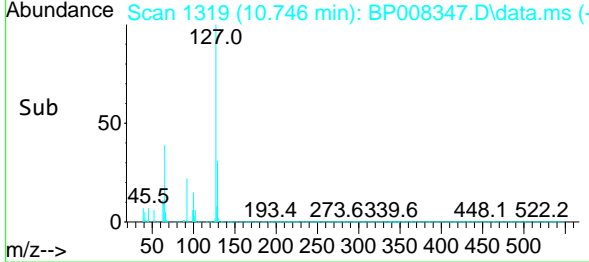
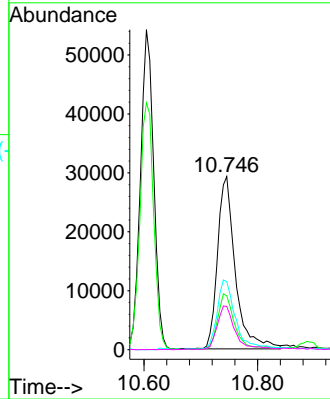
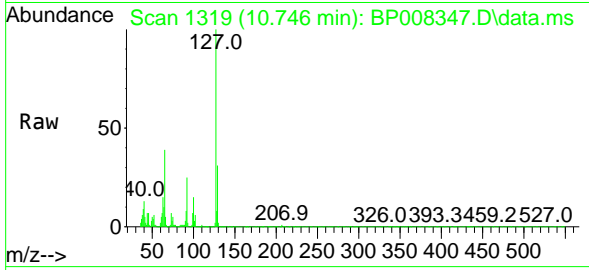




#33
 4-Chloroaniline
 Concen: 11.796 ng
 RT: 10.746 min Scan# 11
 Delta R.T. 0.012 min
 Lab File: BP008347.D
 Acq: 10 Dec 2021 18:51

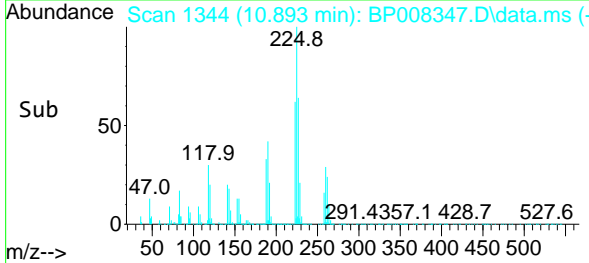
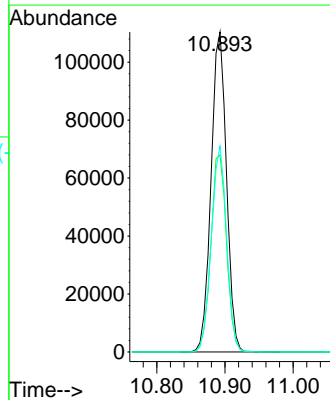
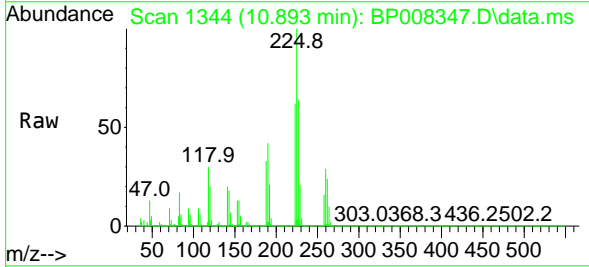
Instrument : BNA_P
 ClientSampleId : P1-COMPMSD

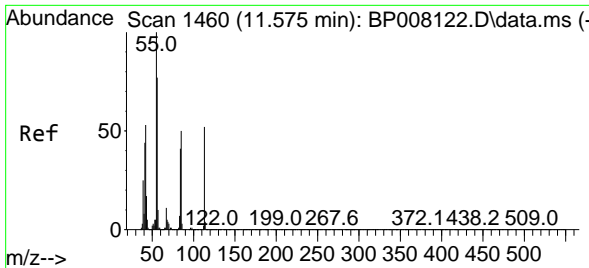
Tgt Ion	Resp	Lower	Upper
127	63816		
129	31.2	25.4	38.2
65	39.2	29.5	44.3
92	25.0	18.2	27.4



#34
 Hexachlorobutadiene
 Concen: 52.174 ng
 RT: 10.893 min Scan# 1344
 Delta R.T. 0.000 min
 Lab File: BP008347.D
 Acq: 10 Dec 2021 18:51

Tgt Ion	Resp	Lower	Upper
225	173390		
223	61.6	52.5	78.7
227	64.3	51.0	76.6

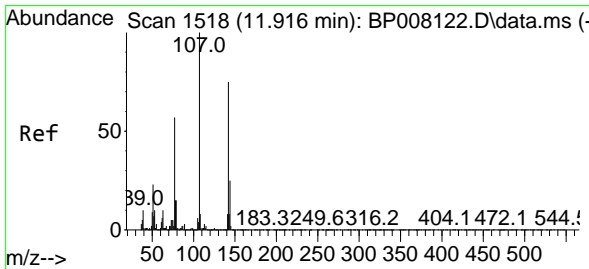
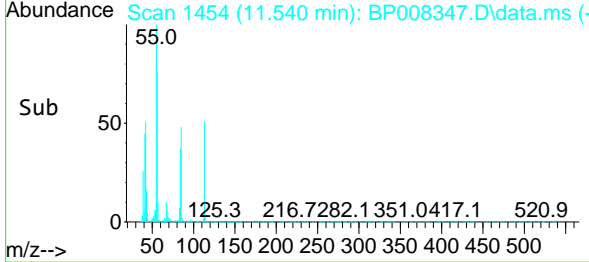
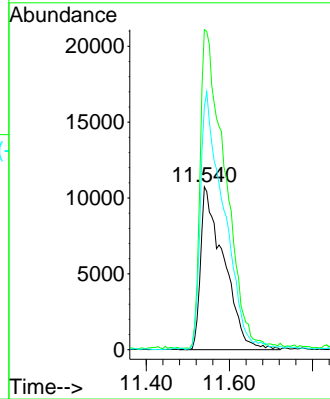
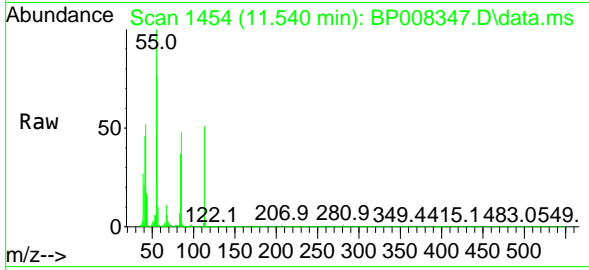




#35
 Caprolactam
 Concen: 44.662 ng
 RT: 11.540 min Scan# 1460
 Delta R.T. 0.000 min
 Lab File: BP008347.D
 Acq: 10 Dec 2021 18:51

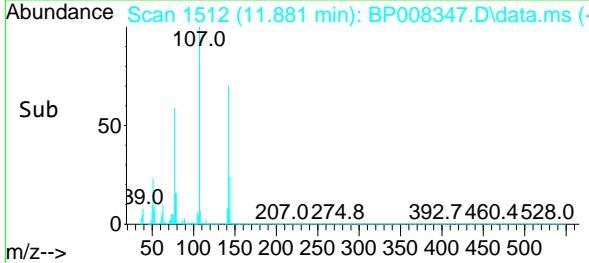
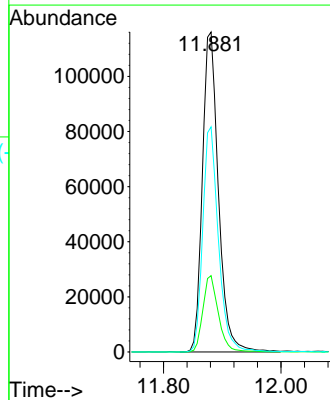
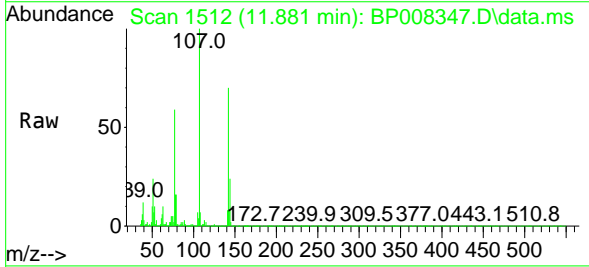
Instrument :
 BNA_P
 ClientSampleId :
 P1-COMPMSD

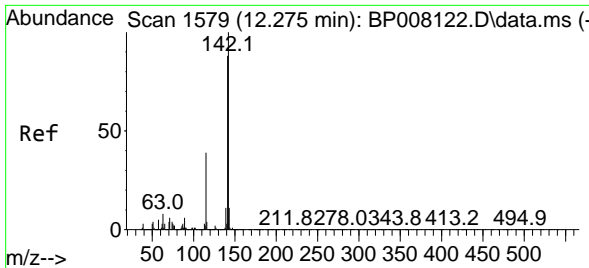
Tgt Ion:113 Resp: 41508
 Ion Ratio Lower Upper
 113 100
 55 196.4 174.2 214.2
 56 148.9 130.3 170.3



#36
 4-Chloro-3-methylphenol
 Concen: 45.935 ng
 RT: 11.881 min Scan# 1512
 Delta R.T. 0.006 min
 Lab File: BP008347.D
 Acq: 10 Dec 2021 18:51

Tgt Ion:107 Resp: 219703
 Ion Ratio Lower Upper
 107 100
 144 23.9 19.7 29.5
 142 70.4 59.6 89.4





#37
 2-Methylnaphthalene
 Concen: 49.668 ng
 RT: 12.222 min Scan# 11
 Delta R.T. -0.006 min
 Lab File: BP008347.D
 Acq: 10 Dec 2021 18:51

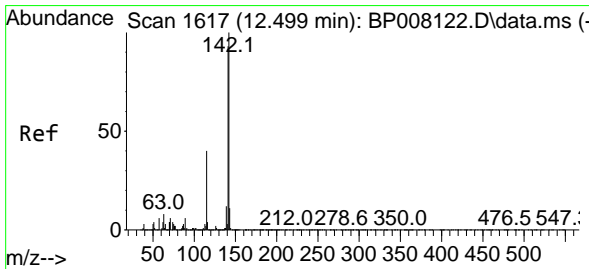
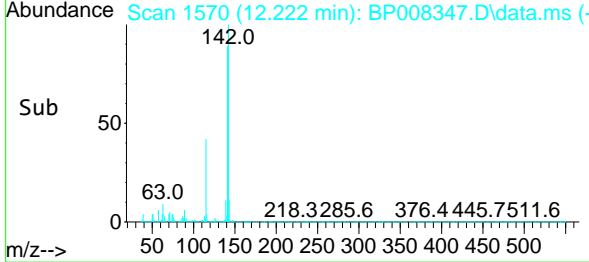
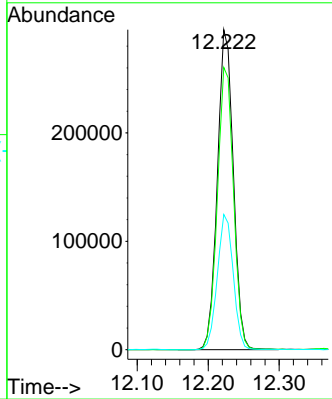
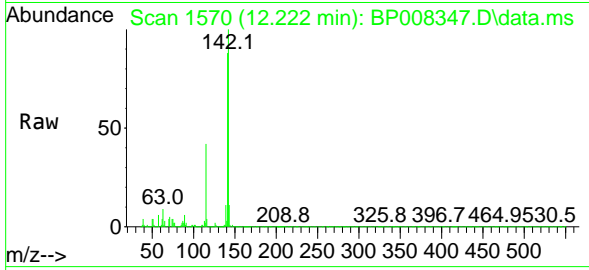
Instrument :

BNA_P

ClientSampleId :

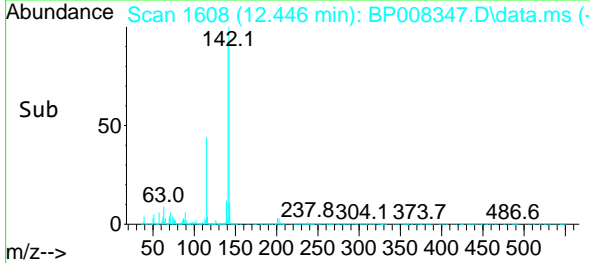
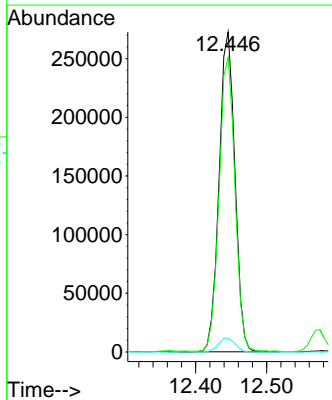
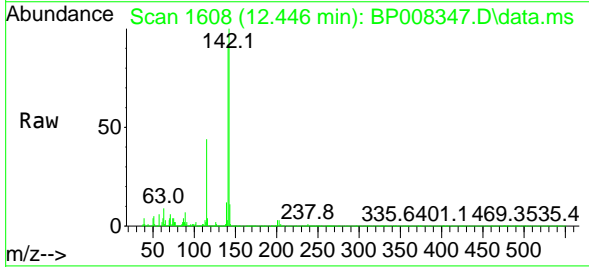
P1-COMPMSD

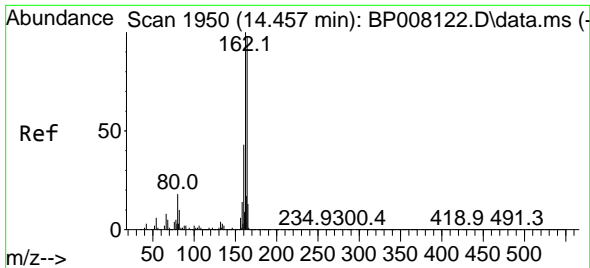
Tgt Ion:142 Resp: 458107
 Ion Ratio Lower Upper
 142 100
 141 88.2 70.7 106.1
 115 42.2 30.9 46.3



#38
 1-Methylnaphthalene
 Concen: 46.799 ng
 RT: 12.446 min Scan# 1608
 Delta R.T. 0.000 min
 Lab File: BP008347.D
 Acq: 10 Dec 2021 18:51

Tgt Ion:142 Resp: 420155
 Ion Ratio Lower Upper
 142 100
 141 92.0 74.2 111.4
 116 4.3 3.4 5.2



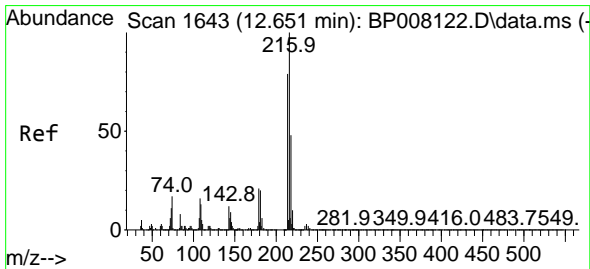
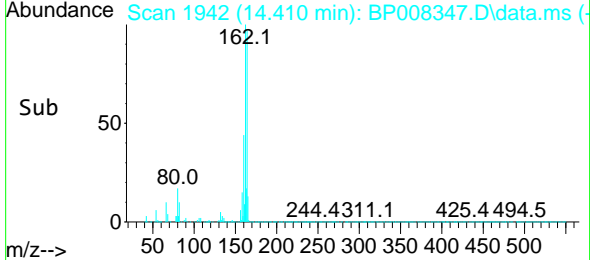
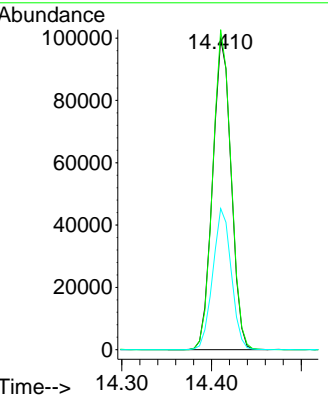
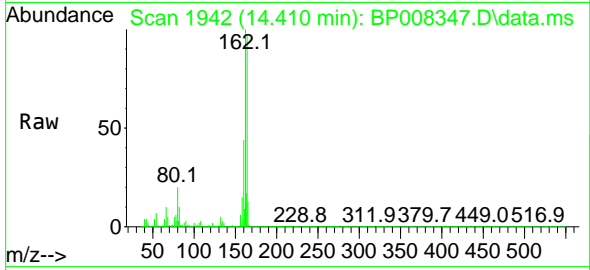


#39
 Acenaphthene-d10
 Concen: 20.000 ng
 RT: 14.410 min Scan# 1950
 Delta R.T. -0.006 min
 Lab File: BP008347.D
 Acq: 10 Dec 2021 18:51

Instrument : BNA_P
 ClientSampleId : P1-COMPMSD

Tgt Ion:164 Resp: 143659

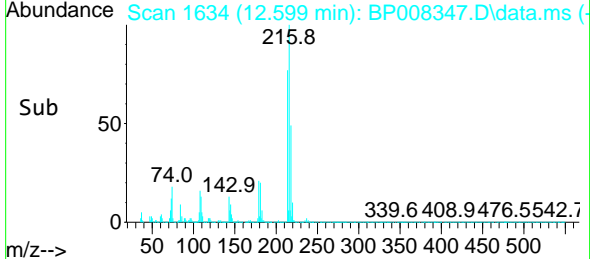
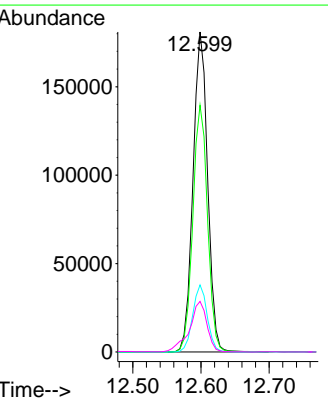
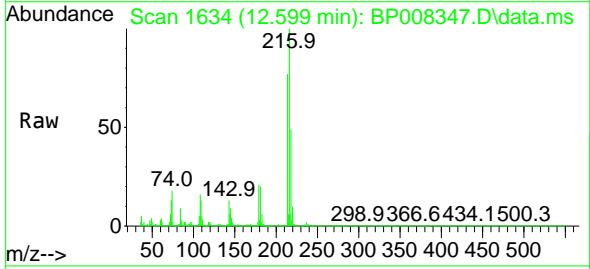
Ion	Ratio	Lower	Upper
164	100		
162	102.8	81.9	122.9
160	45.3	35.4	53.0

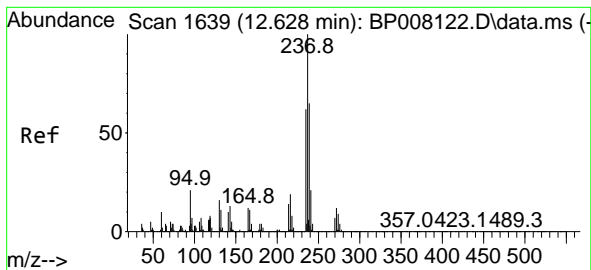


#40
 1,2,4,5-Tetrachlorobenzene
 Concen: 57.829 ng
 RT: 12.599 min Scan# 1634
 Delta R.T. -0.006 min
 Lab File: BP008347.D
 Acq: 10 Dec 2021 18:51

Tgt Ion:216 Resp: 269860

Ion	Ratio	Lower	Upper
216	100		
214	77.6	62.5	93.7
179	20.8	16.4	24.6
108	19.1	13.8	20.8

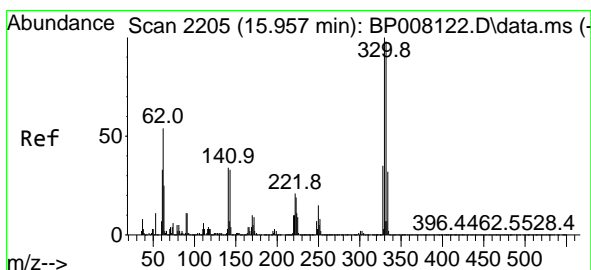
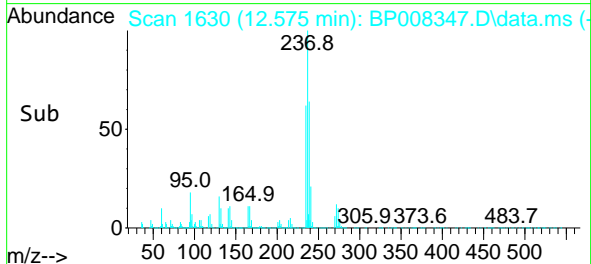
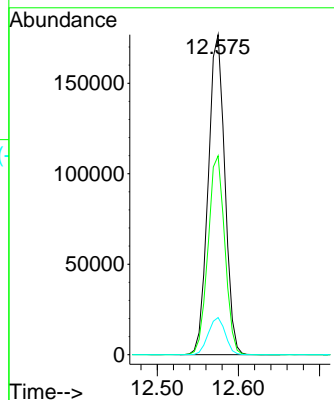
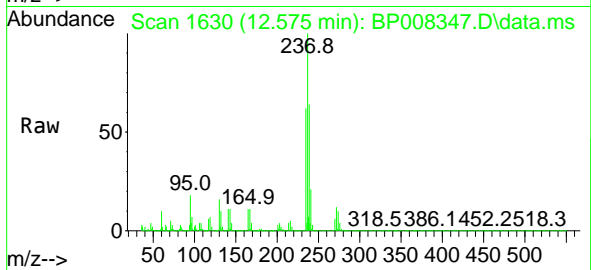




#41
 Hexachlorocyclopentadiene
 Concen: 139.886 ng
 RT: 12.575 min Scan# 10
 Delta R.T. 0.000 min
 Lab File: BP008347.D
 Acq: 10 Dec 2021 18:51

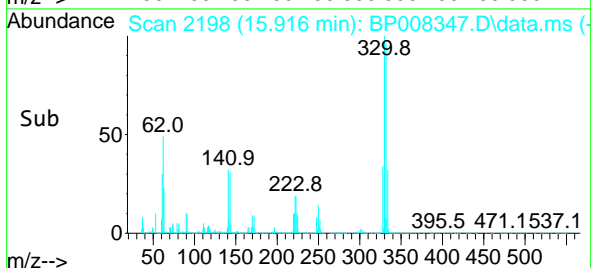
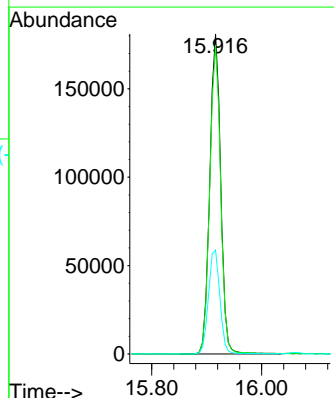
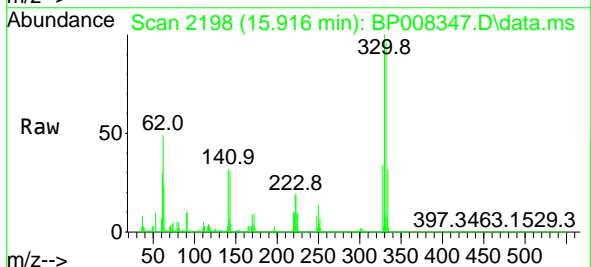
Instrument :
 BNA_P
 ClientSampleId :
 P1-COMPMSD

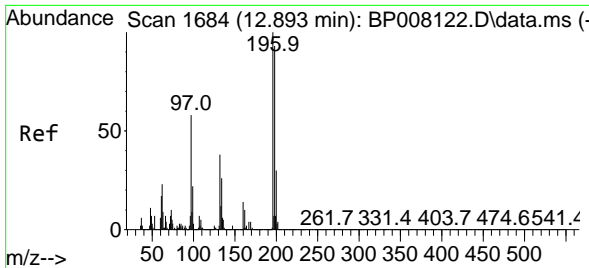
Tgt Ion:237 Resp: 250971
 Ion Ratio Lower Upper
 237 100
 235 62.1 42.3 82.3
 272 11.6 0.0 32.2



#42
 2,4,6-Tribromophenol
 Concen: 135.424 ng
 RT: 15.916 min Scan# 2198
 Delta R.T. 0.000 min
 Lab File: BP008347.D
 Acq: 10 Dec 2021 18:51

Tgt Ion:330 Resp: 248667
 Ion Ratio Lower Upper
 330 100
 332 96.3 77.0 115.4
 141 34.0 28.4 42.6

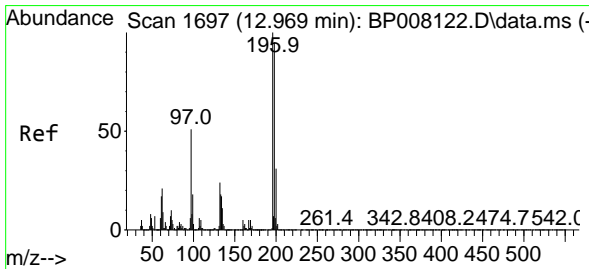
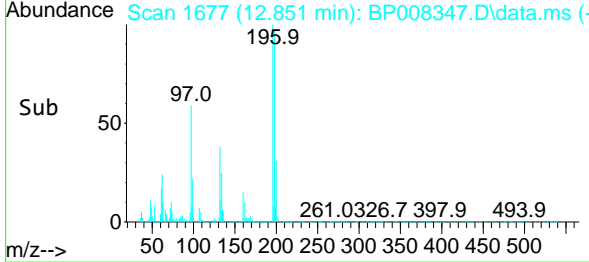
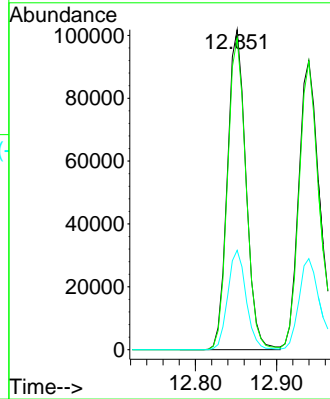
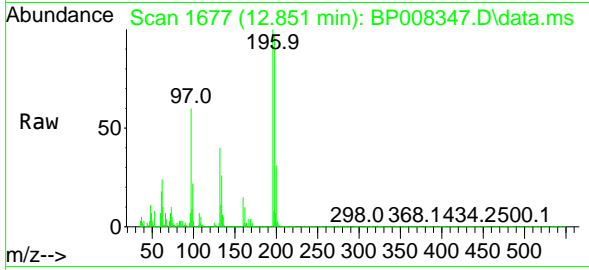




#43
 2,4,6-Trichlorophenol
 Concen: 50.955 ng
 RT: 12.851 min Scan# 1677
 Delta R.T. 0.000 min
 Lab File: BP008347.D
 Acq: 10 Dec 2021 18:51

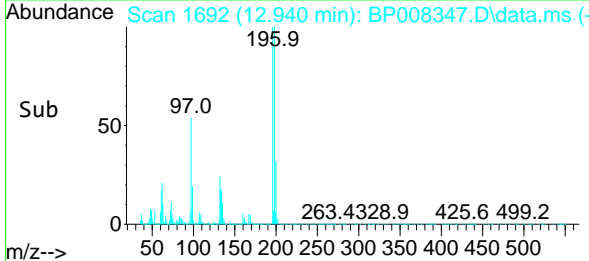
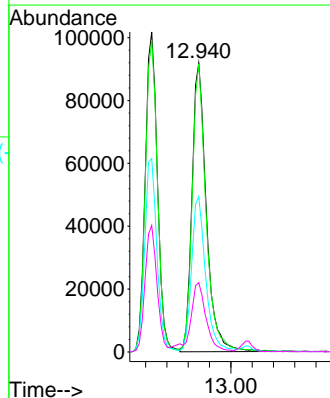
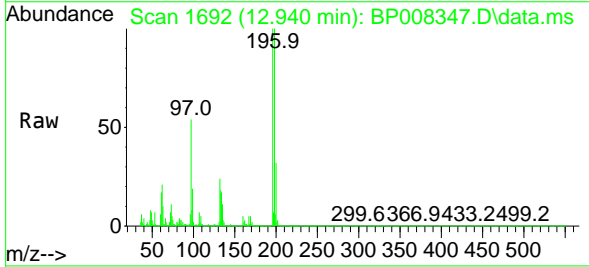
Instrument :
 BNA_P
 ClientSampleId :
 P1-COMPMSD

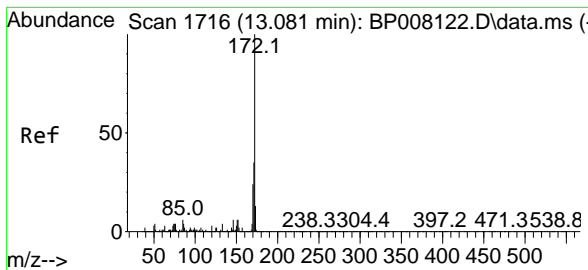
Tgt Ion	Resp	Lower	Upper
196	161102		
198	97.4	74.8	112.2
200	31.1	24.3	36.5



#44
 2,4,5-Trichlorophenol
 Concen: 50.854 ng
 RT: 12.940 min Scan# 1692
 Delta R.T. 0.000 min
 Lab File: BP008347.D
 Acq: 10 Dec 2021 18:51

Tgt Ion	Resp	Lower	Upper
196	172288		
198	99.7	76.2	114.4
97	53.7	40.8	61.2
132	24.0	19.0	28.4



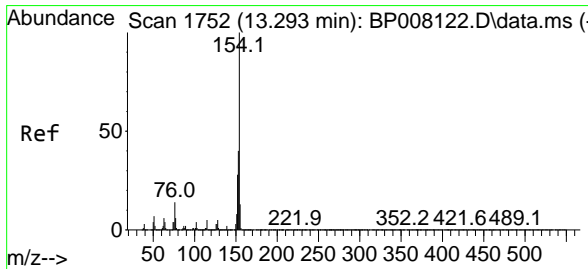
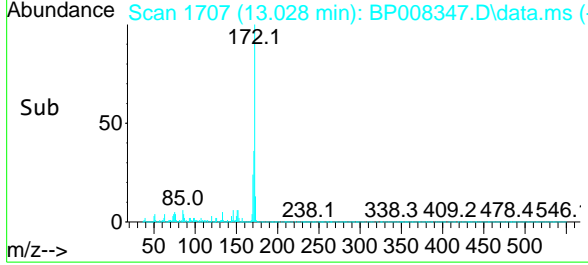
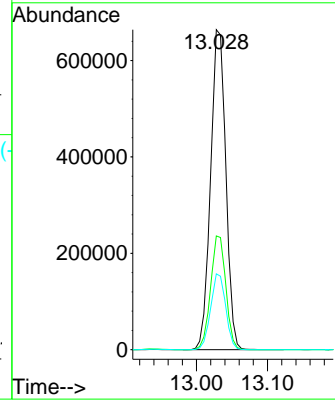
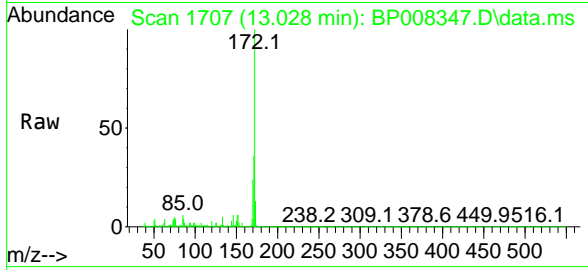


#45
 2-Fluorobiphenyl
 Concen: 100.355 ng
 RT: 13.028 min Scan# 11
 Delta R.T. -0.006 min
 Lab File: BP008347.D
 Acq: 10 Dec 2021 18:51

Instrument : BNA_P
 ClientSampleId : P1-COMPMSD

Tgt Ion:172 Resp: 992529

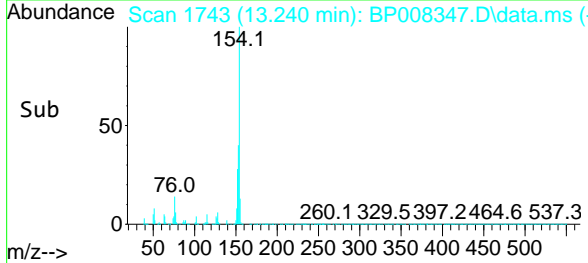
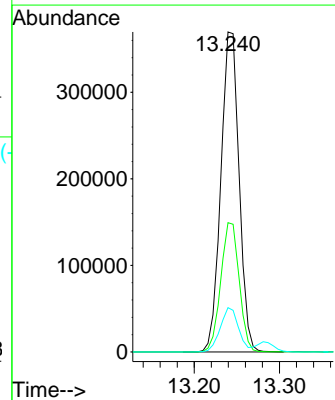
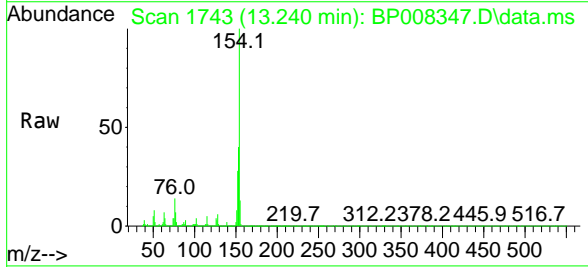
Ion	Ratio	Lower	Upper
172	100		
171	35.6	28.0	42.0
170	23.7	18.9	28.3

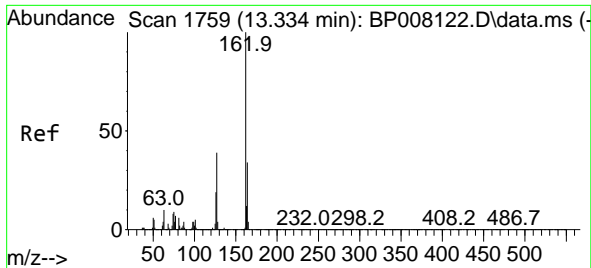


#46
 1,1'-Biphenyl
 Concen: 52.682 ng
 RT: 13.240 min Scan# 1743
 Delta R.T. -0.006 min
 Lab File: BP008347.D
 Acq: 10 Dec 2021 18:51

Tgt Ion:154 Resp: 549109

Ion	Ratio	Lower	Upper
154	100		
153	40.4	19.7	59.7
76	13.9	0.0	33.7

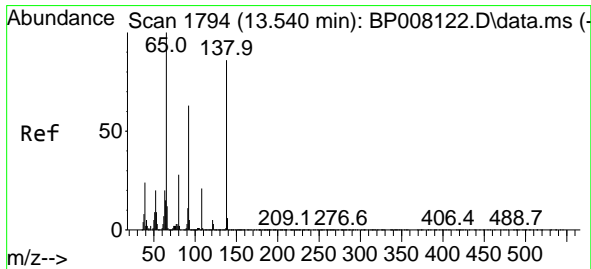
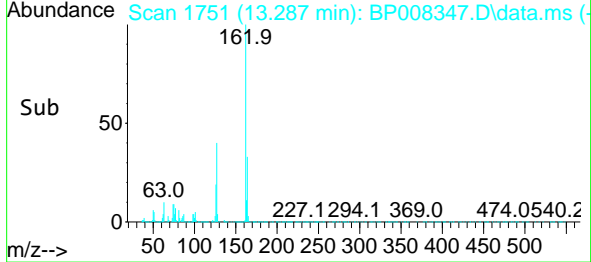
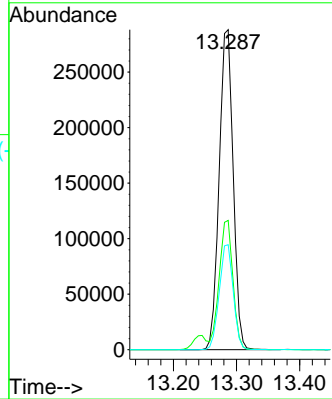
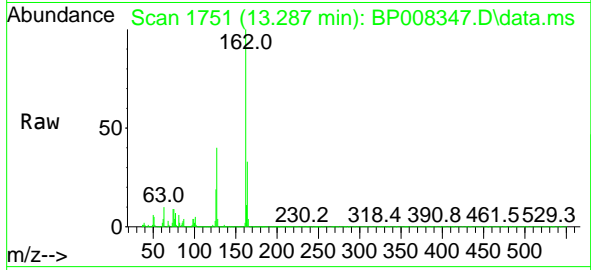




#47
 2-Chloronaphthalene
 Concen: 54.055 ng
 RT: 13.287 min Scan# 11
 Delta R.T. 0.000 min
 Lab File: BP008347.D
 Acq: 10 Dec 2021 18:51

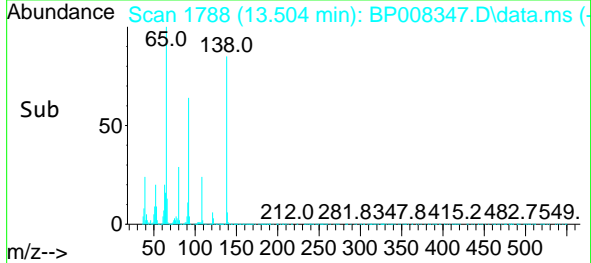
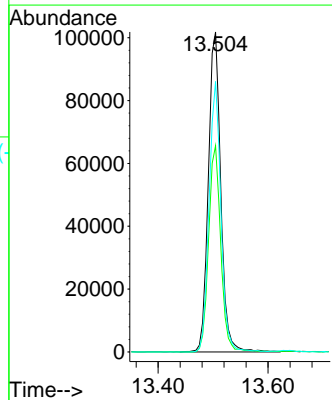
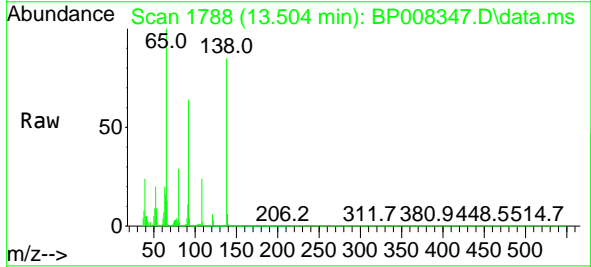
Instrument : BNA_P
 Client Sample Id : P1-COMPMSD

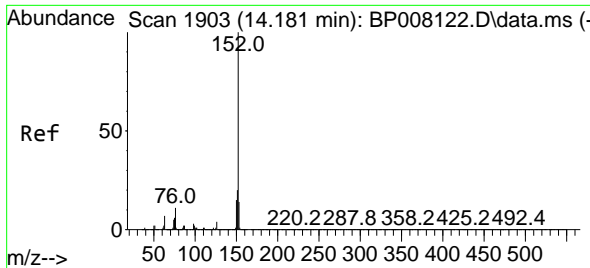
Tgt Ion	Resp	Lower	Upper
162	444942		
127	40.4	31.3	46.9
164	32.8	26.9	40.3



#48
 2-Nitroaniline
 Concen: 56.328 ng
 RT: 13.504 min Scan# 1788
 Delta R.T. 0.000 min
 Lab File: BP008347.D
 Acq: 10 Dec 2021 18:51

Tgt Ion	Resp	Lower	Upper
65	159776		
92	64.5	50.6	75.8
138	84.5	68.7	103.1



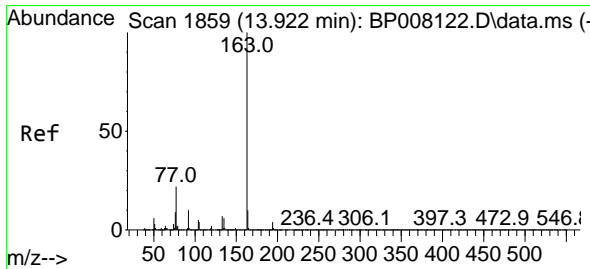
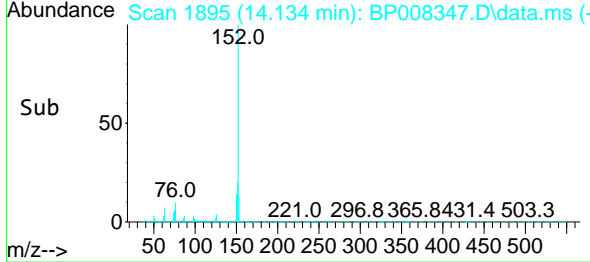
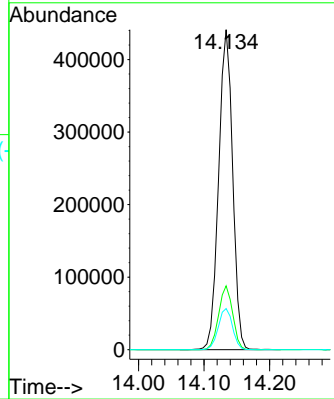
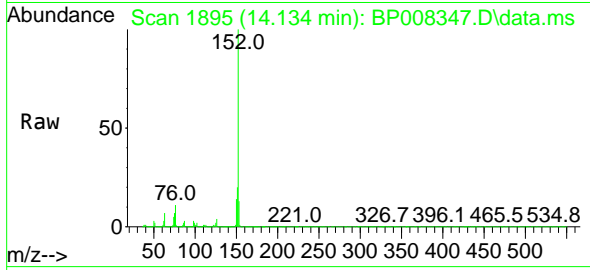


#49
 Acenaphthylene
 Concen: 51.240 ng
 RT: 14.134 min Scan# 1895
 Delta R.T. 0.000 min
 Lab File: BP008347.D
 Acq: 10 Dec 2021 18:51

Instrument : BNA_P
 Client Sample Id : P1-COMPMSD

Tgt Ion: 152 Resp: 650682

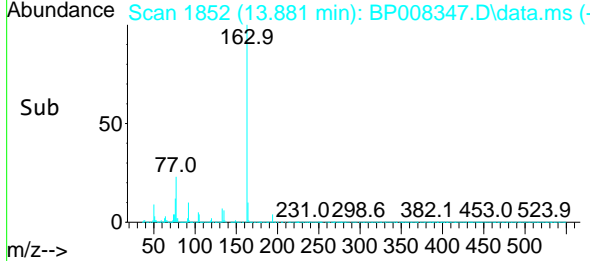
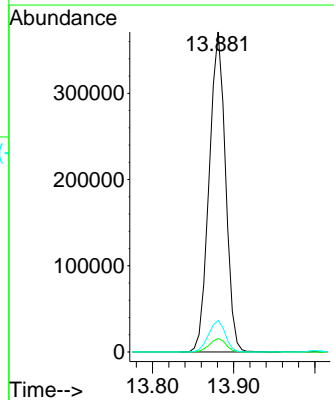
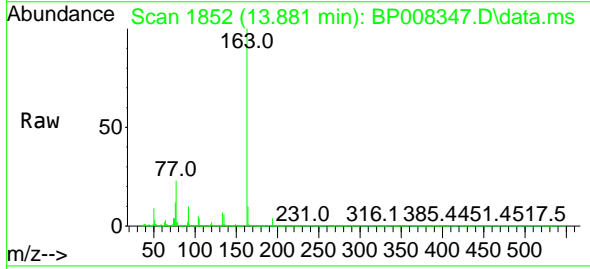
Ion	Ratio	Lower	Upper
152	100		
151	20.0	16.2	24.4
153	12.8	10.9	16.3

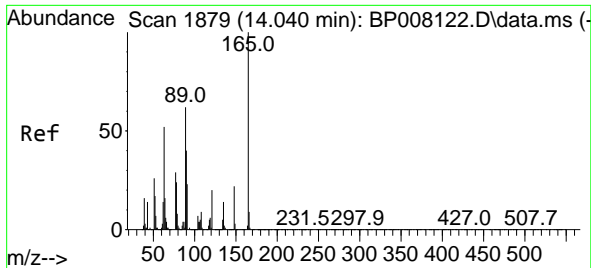


#50
 Dimethylphthalate
 Concen: 48.027 ng
 RT: 13.881 min Scan# 1852
 Delta R.T. -0.006 min
 Lab File: BP008347.D
 Acq: 10 Dec 2021 18:51

Tgt Ion: 163 Resp: 518104

Ion	Ratio	Lower	Upper
163	100		
194	4.2	3.4	5.2
164	9.8	8.2	12.2

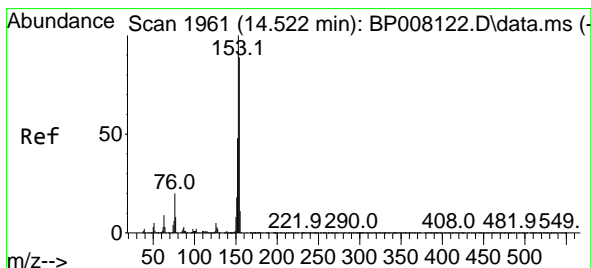
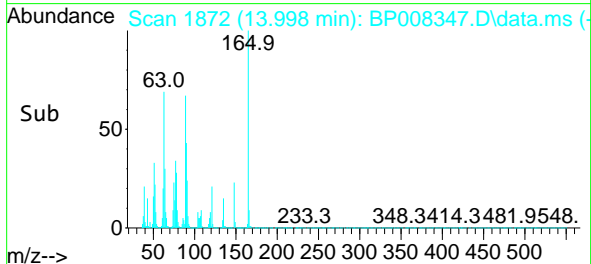
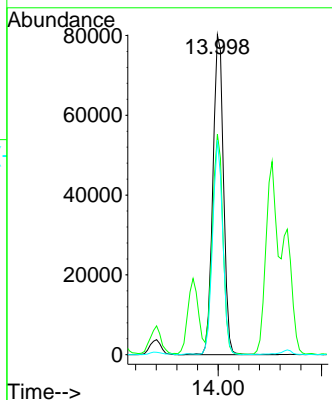
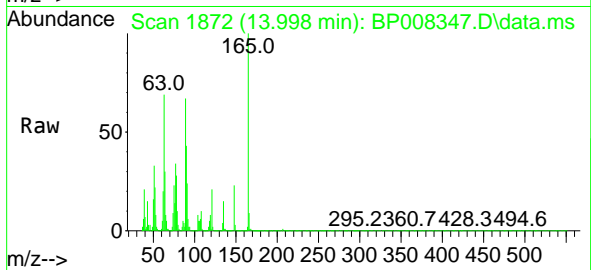




#51
 2,6-Dinitrotoluene
 Concen: 51.013 ng
 RT: 13.998 min Scan# 11
 Delta R.T. -0.006 min
 Lab File: BP008347.D
 Acq: 10 Dec 2021 18:51

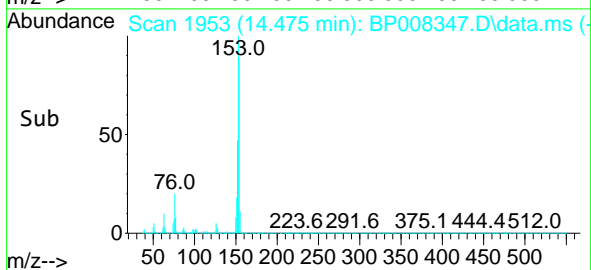
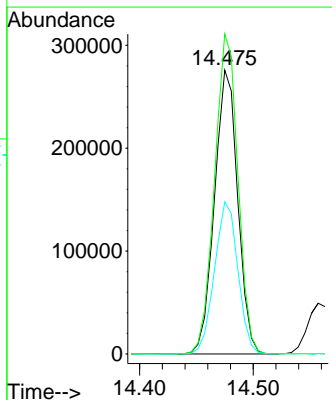
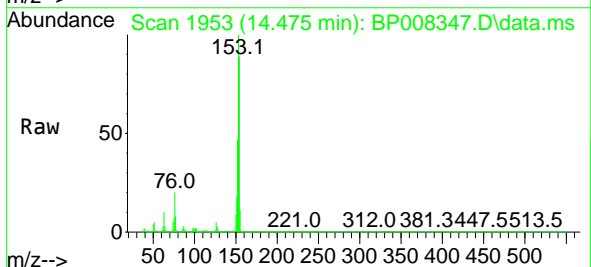
Instrument :
 BNA_P
 ClientSampleId :
 P1-COMPMSD

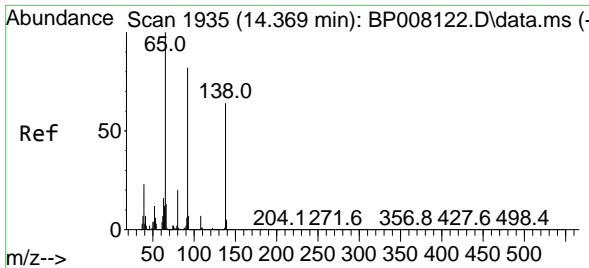
Tgt Ion	Resp	Lower	Upper
165	114212		
63	68.9	50.8	76.2
89	67.0	50.0	75.0



#52
 Acenaphthene
 Concen: 51.822 ng
 RT: 14.475 min Scan# 1953
 Delta R.T. -0.006 min
 Lab File: BP008347.D
 Acq: 10 Dec 2021 18:51

Tgt Ion	Resp	Lower	Upper
154	392181		
153	112.7	90.3	135.5
152	53.5	43.3	64.9

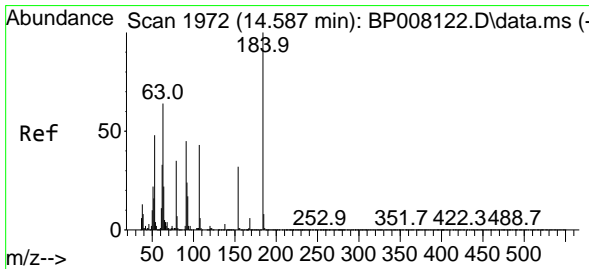
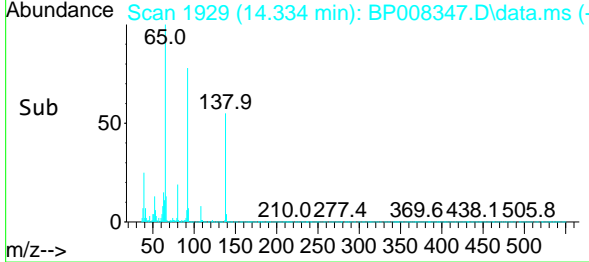
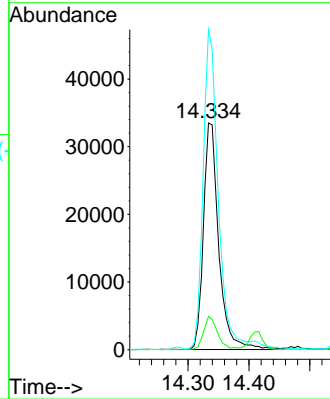
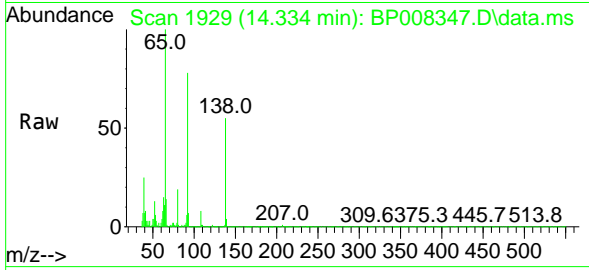




#53
 3-Nitroaniline
 Concen: 25.850 ng
 RT: 14.334 min Scan# 1935
 Delta R.T. -0.006 min
 Lab File: BP008347.D
 Acq: 10 Dec 2021 18:51

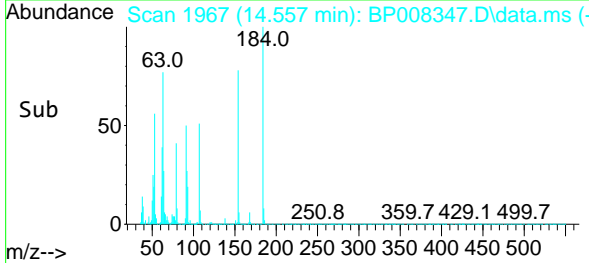
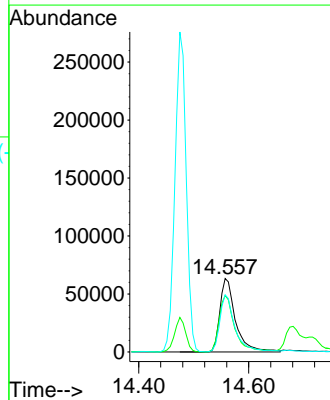
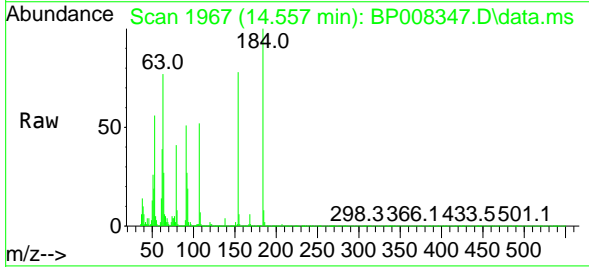
Instrument : BNA_P
 ClientSampleId : P1-COMPMSD

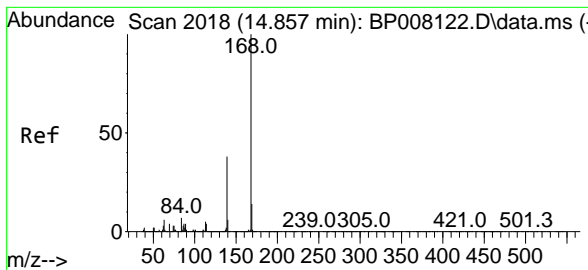
Tgt Ion:138 Resp: 58651
 Ion Ratio Lower Upper
 138 100
 108 14.7 9.2 13.8#
 92 141.2 102.9 154.3



#54
 2,4-Dinitrophenol
 Concen: 94.501 ng
 RT: 14.557 min Scan# 1967
 Delta R.T. -0.006 min
 Lab File: BP008347.D
 Acq: 10 Dec 2021 18:51

Tgt Ion:184 Resp: 125094
 Ion Ratio Lower Upper
 184 100
 63 77.0 53.8 80.6
 154 77.8 54.2 81.2

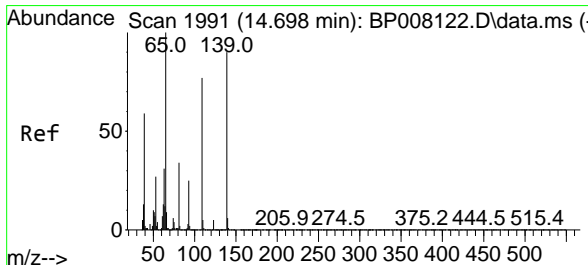
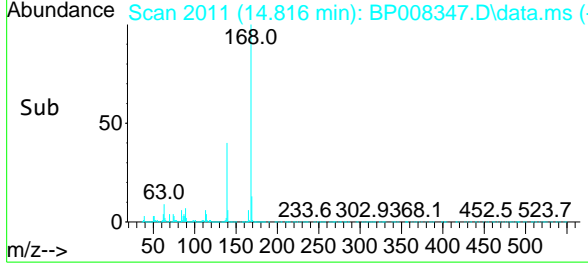
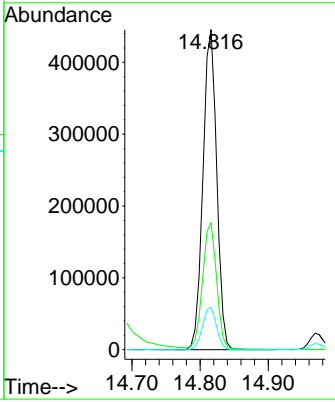
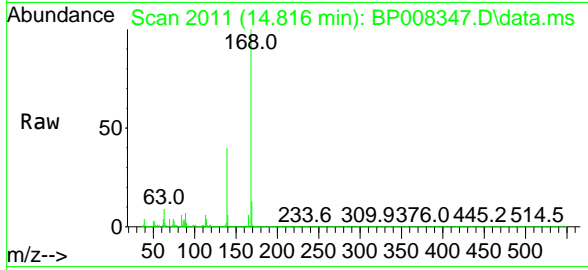




#55
 Dibenzofuran
 Concen: 48.400 ng
 RT: 14.816 min Scan# 2018
 Delta R.T. 0.000 min
 Lab File: BP008347.D
 Acq: 10 Dec 2021 18:51

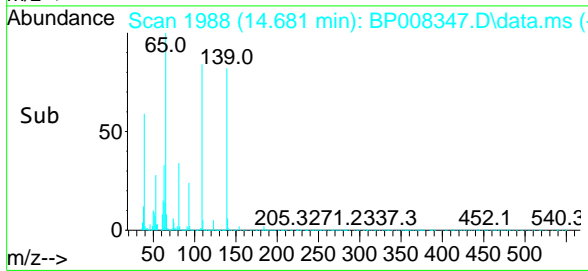
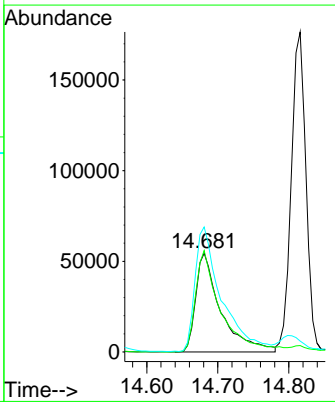
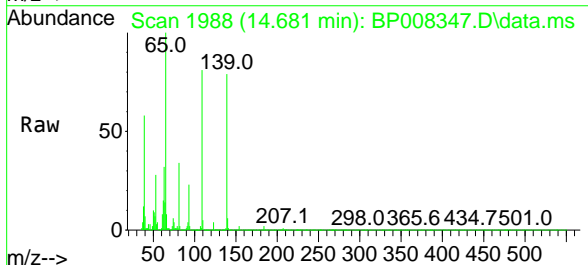
Instrument : BNA_P
 ClientSampleId : P1-COMPMSD

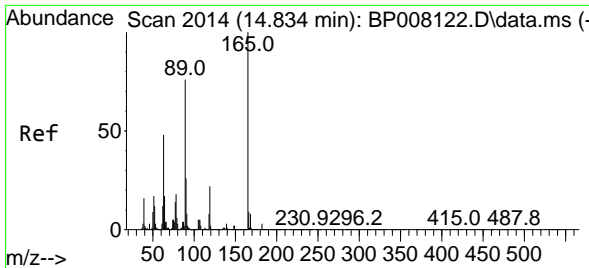
Tgt Ion	Resp	Lower	Upper
168	625918		
139	39.6	30.6	46.0
169	13.3	11.0	16.4



#56
 4-Nitrophenol
 Concen: 76.919 ng
 RT: 14.681 min Scan# 1988
 Delta R.T. 0.000 min
 Lab File: BP008347.D
 Acq: 10 Dec 2021 18:51

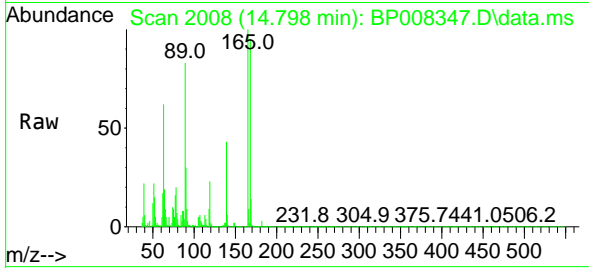
Tgt Ion	Resp	Lower	Upper
139	133770		
109	102.6	65.9	105.9
65	126.5	91.9	131.9



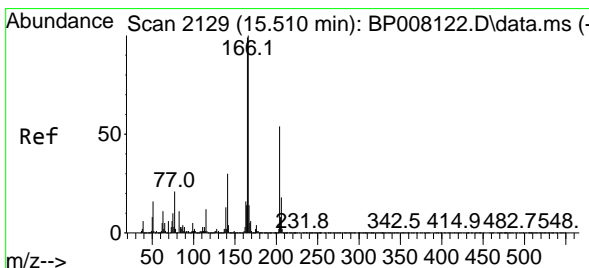
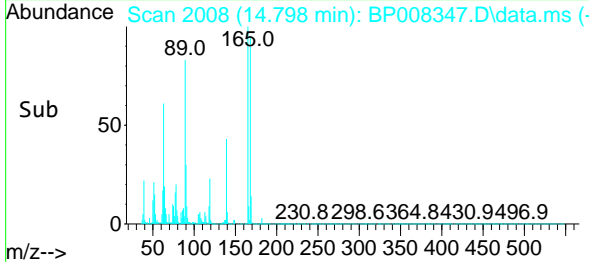
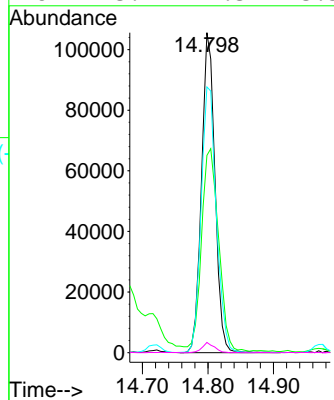


#57
 2,4-Dinitrotoluene
 Concen: 48.961 ng
 RT: 14.798 min Scan# 2014
 Delta R.T. -0.006 min
 Lab File: BP008347.D
 Acq: 10 Dec 2021 18:51

Instrument : BNA_P
 Client Sample Id : P1-COMPMSD

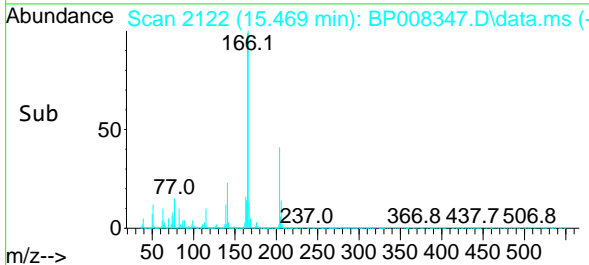
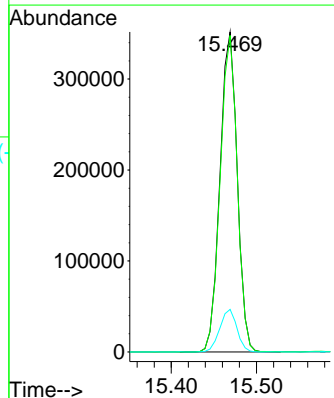
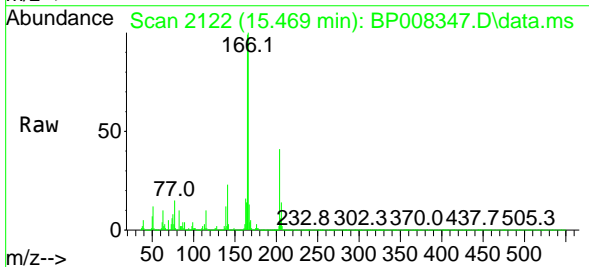


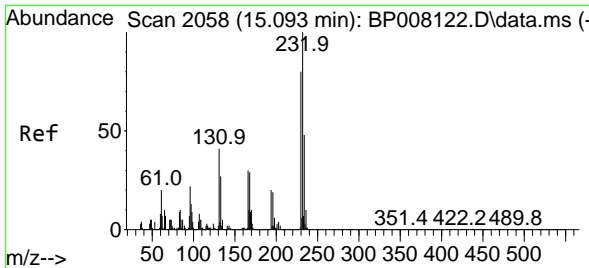
Tgt Ion:165 Resp: 150433
 Ion Ratio Lower Upper
 165 100
 63 61.7 38.9 58.3#
 89 83.0 60.5 90.7
 182 3.2 2.3 3.5



#58
 Fluorene
 Concen: 46.968 ng
 RT: 15.469 min Scan# 2122
 Delta R.T. 0.000 min
 Lab File: BP008347.D
 Acq: 10 Dec 2021 18:51

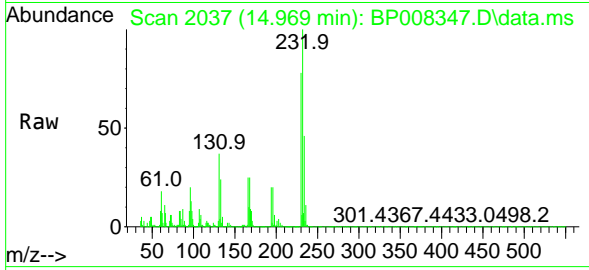
Tgt Ion:166 Resp: 493491
 Ion Ratio Lower Upper
 166 100
 165 98.9 79.4 119.2
 167 13.3 10.9 16.3



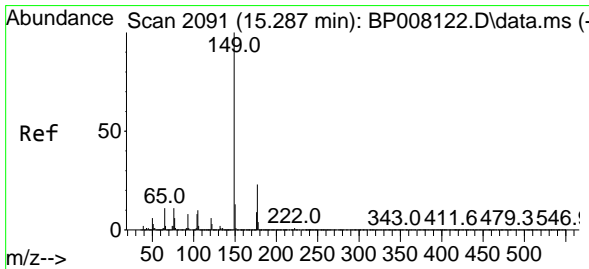
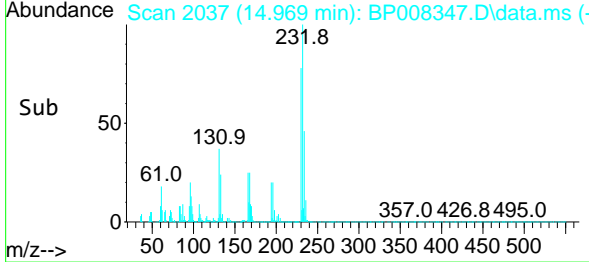
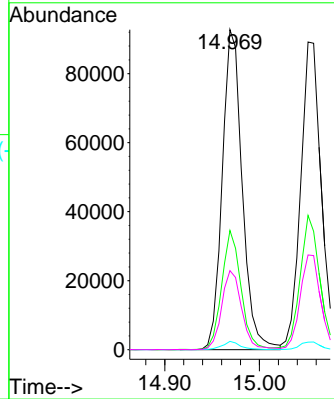


#59
 2,3,4,6-Tetrachlorophenol
 Concen: 45.111 ng
 RT: 14.969 min Scan# 2084
 Delta R.T. -0.088 min
 Lab File: BP008347.D
 Acq: 10 Dec 2021 18:51

Instrument :
 BNA_P
 ClientSampleId :
 P1-COMPMSD

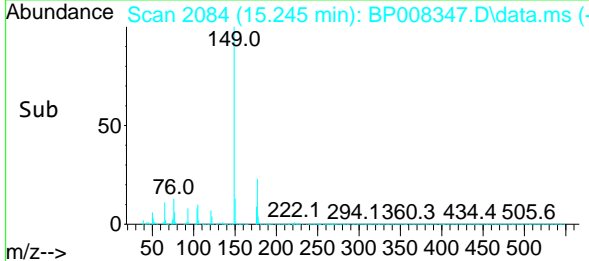
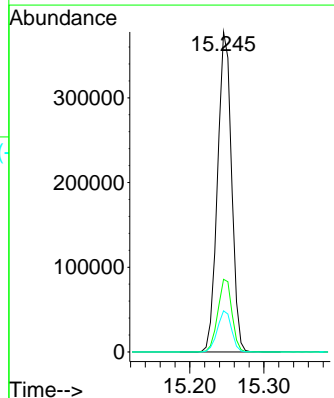
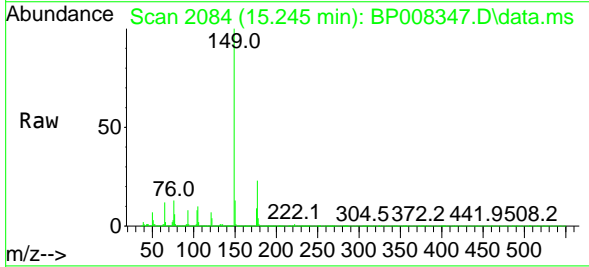


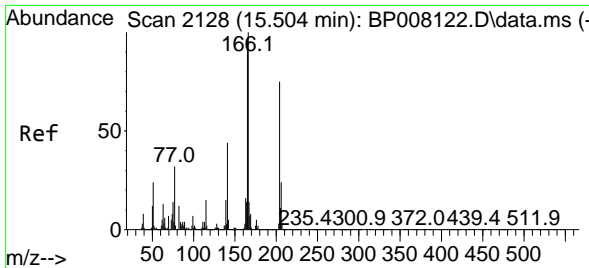
Tgt Ion:232 Resp: 135903
 Ion Ratio Lower Upper
 232 100
 131 35.6 28.1 42.1
 130 2.4 1.8 2.8
 166 24.8 18.9 28.3



#60
 Diethylphthalate
 Concen: 46.300 ng
 RT: 15.245 min Scan# 2084
 Delta R.T. -0.006 min
 Lab File: BP008347.D
 Acq: 10 Dec 2021 18:51

Tgt Ion:149 Resp: 495658
 Ion Ratio Lower Upper
 149 100
 177 22.7 18.2 27.2
 150 12.9 10.3 15.5

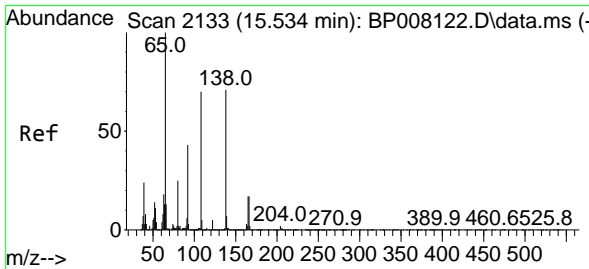
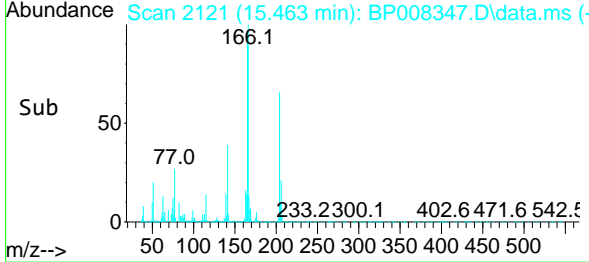
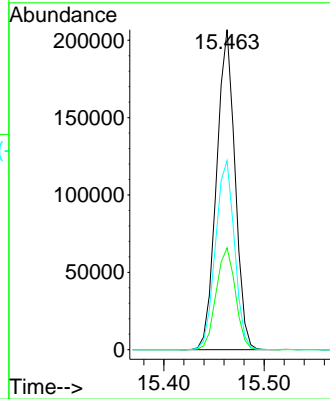
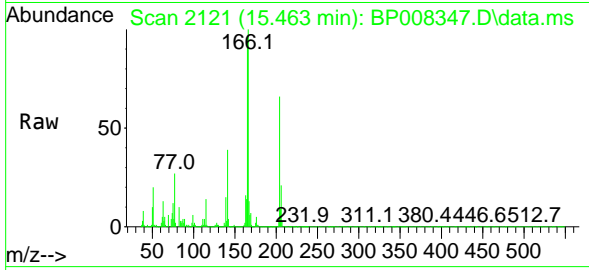




#61
 4-Chlorophenyl-phenylether
 Concen: 45.826 ng
 RT: 15.463 min Scan# 2128
 Delta R.T. 0.000 min
 Lab File: BP008347.D
 Acq: 10 Dec 2021 18:51

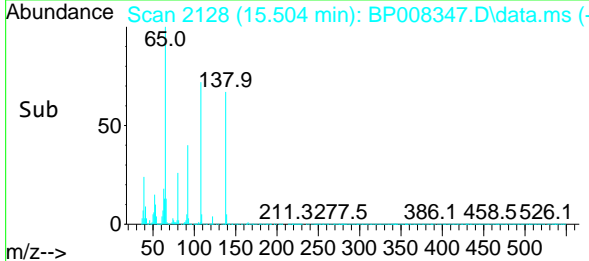
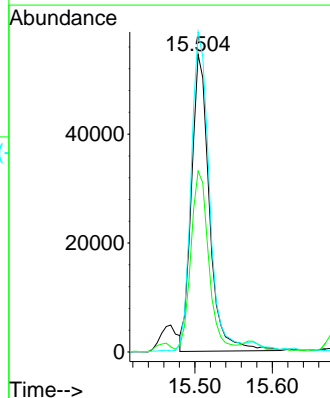
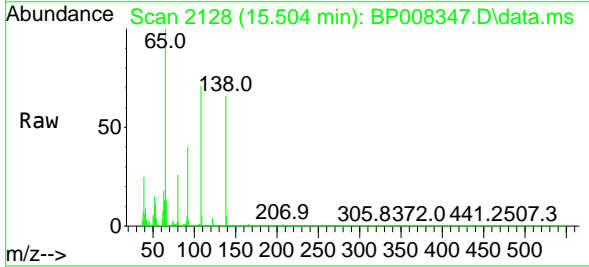
Instrument :
 BNA_P
 ClientSampleId :
 P1-COMPMSD

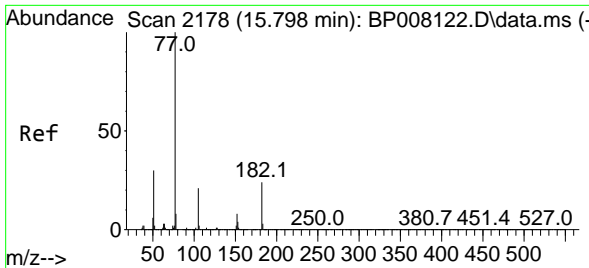
Tgt Ion	Resp	Lower	Upper
204	100		
206	31.8	26.1	39.1
141	59.1	47.4	71.0



#62
 4-Nitroaniline
 Concen: 37.229 ng
 RT: 15.504 min Scan# 2128
 Delta R.T. -0.006 min
 Lab File: BP008347.D
 Acq: 10 Dec 2021 18:51

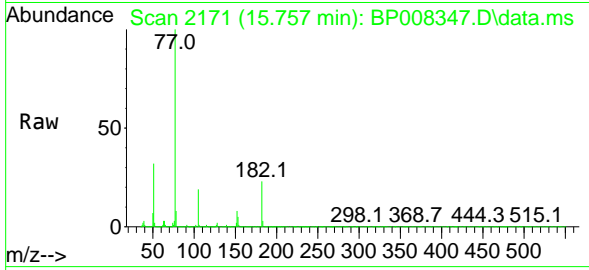
Tgt Ion	Resp	Lower	Upper
138	100		
92	60.8	40.8	80.8
108	107.6	77.9	117.9





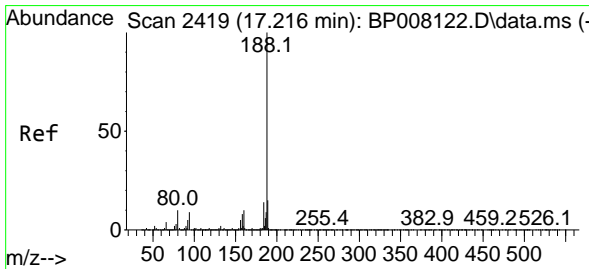
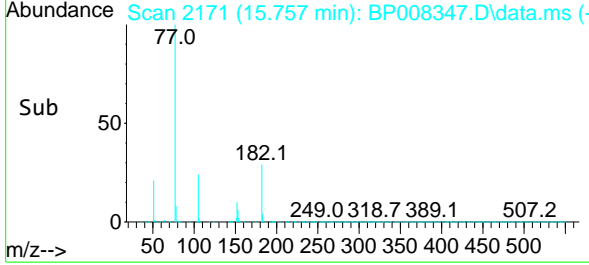
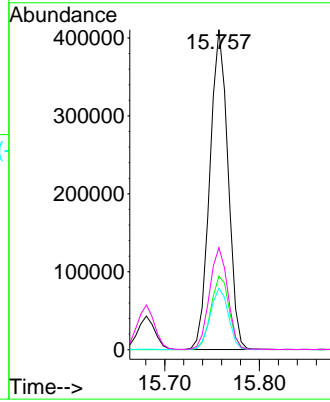
#63
 Azobenzene
 Concen: 49.833 ng
 RT: 15.757 min Scan# 2171
 Delta R.T. -0.006 min
 Lab File: BP008347.D
 Acq: 10 Dec 2021 18:51

Instrument :
 BNA_P
 ClientSampleId :
 P1-COMPMSD

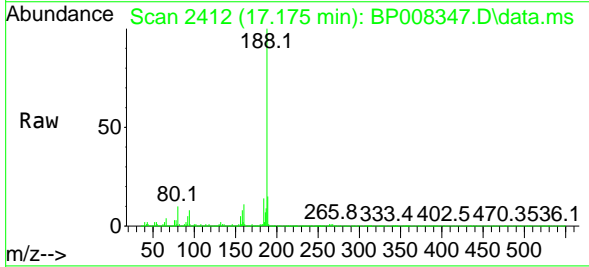


Tgt Ion: 77 Resp: 545678

Ion	Ratio	Lower	Upper
77	100		
182	23.0	3.8	43.8
105	19.2	0.5	40.5
51	31.9	10.0	50.0

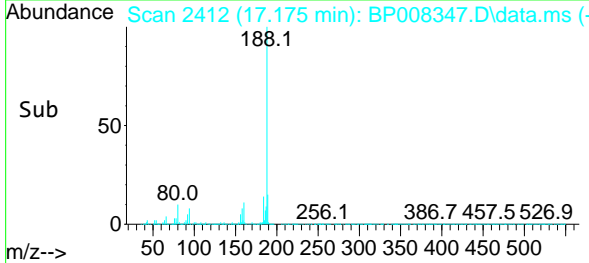
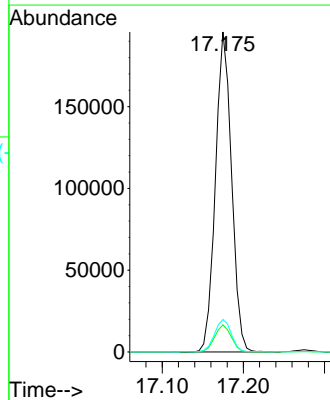


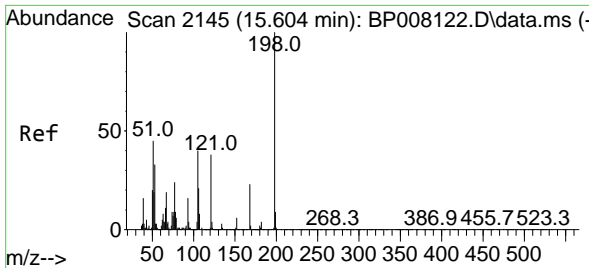
#64
 Phenanthrene-d10
 Concen: 20.000 ng
 RT: 17.175 min Scan# 2412
 Delta R.T. -0.006 min
 Lab File: BP008347.D
 Acq: 10 Dec 2021 18:51



Tgt Ion: 188 Resp: 269734

Ion	Ratio	Lower	Upper
188	100		
94	8.5	7.2	10.8
80	10.2	8.2	12.4

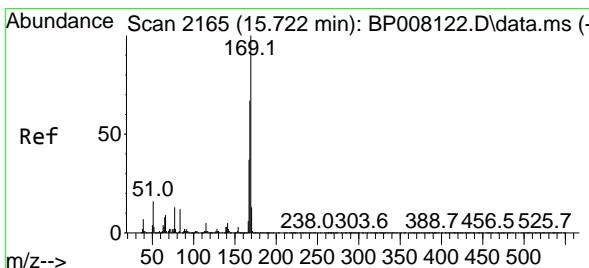
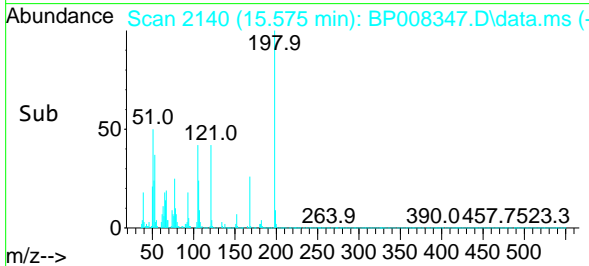
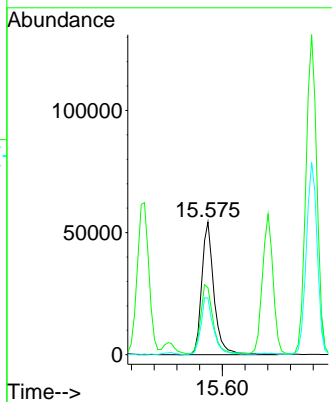
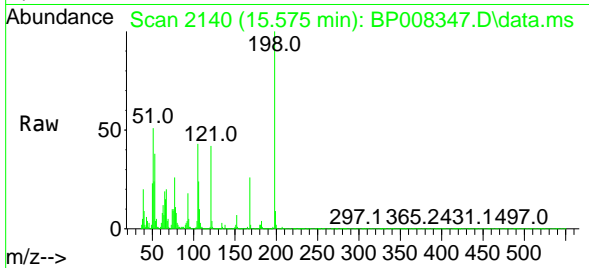




#65
 4,6-Dinitro-2-methylphenol
 Concen: 46.069 ng
 RT: 15.575 min Scan# 2140
 Delta R.T. -0.006 min
 Lab File: BP008347.D
 Acq: 10 Dec 2021 18:51

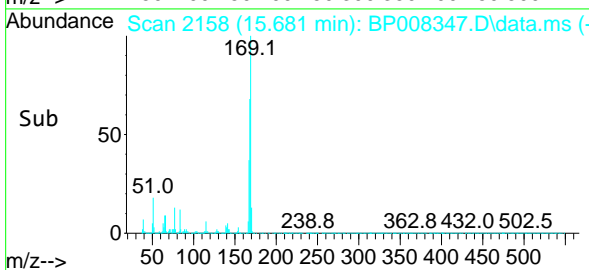
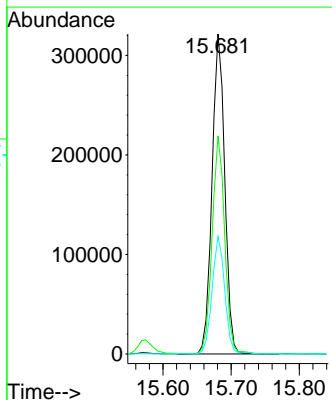
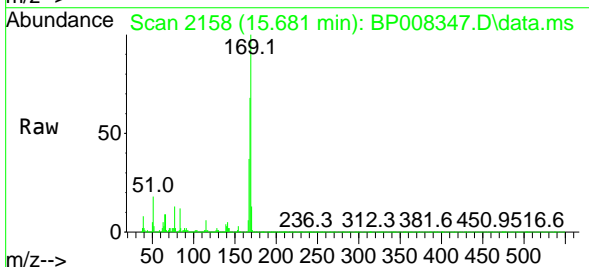
Instrument :
 BNA_P
 ClientSampleId :
 P1-COMPMSD

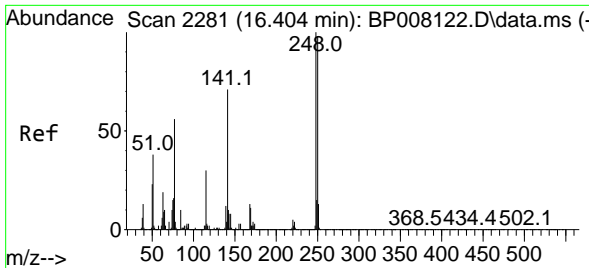
Tgt Ion	Resp	Lower	Upper
198	81278		
51	50.5	25.9	65.9
105	42.7	20.2	60.2



#66
 n-Nitrosodiphenylamine
 Concen: 53.360 ng
 RT: 15.681 min Scan# 2158
 Delta R.T. -0.006 min
 Lab File: BP008347.D
 Acq: 10 Dec 2021 18:51

Tgt Ion	Resp	Lower	Upper
169	416921		
168	68.1	53.5	80.3
167	36.8	29.3	43.9



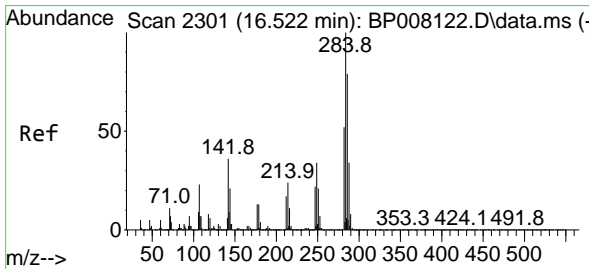
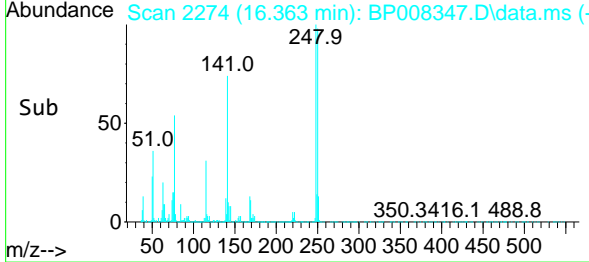
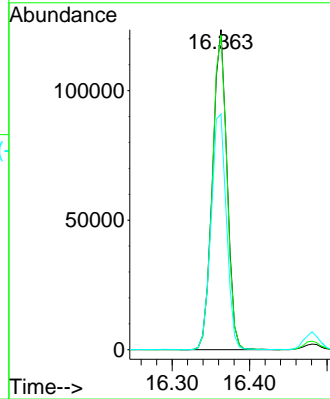
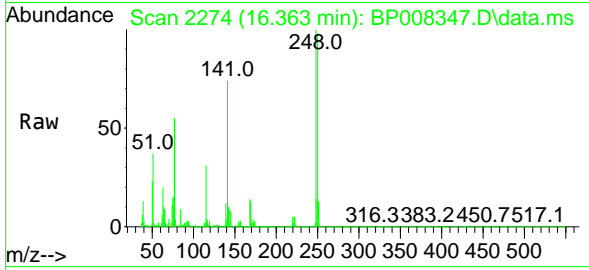


#67
 4-Bromophenyl-phenylether
 Concen: 53.525 ng
 RT: 16.363 min Scan# 21
 Delta R.T. 0.000 min
 Lab File: BP008347.D
 Acq: 10 Dec 2021 18:51

Instrument :
 BNA_P
 ClientSampleId :
 P1-COMPMSD

Tgt Ion:248 Resp: 160545

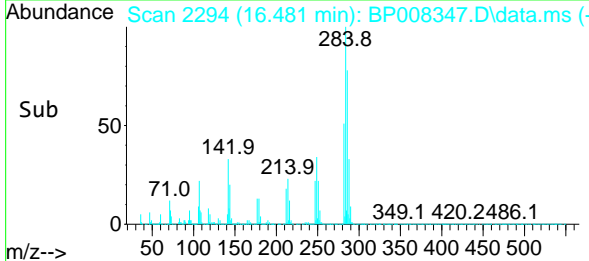
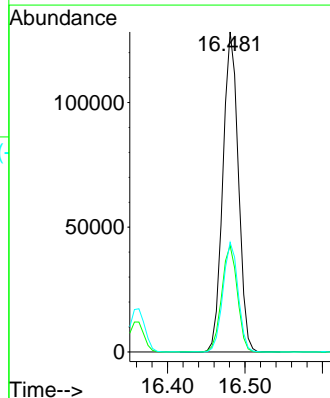
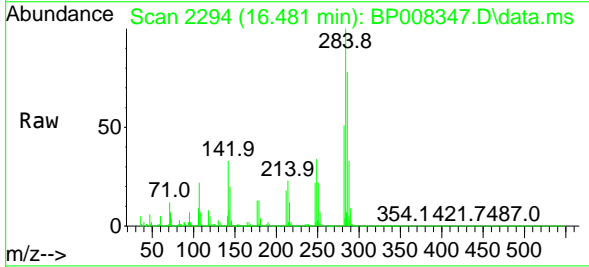
Ion	Ratio	Lower	Upper
248	100		
250	98.3	78.6	117.8
141	73.6	57.0	85.6

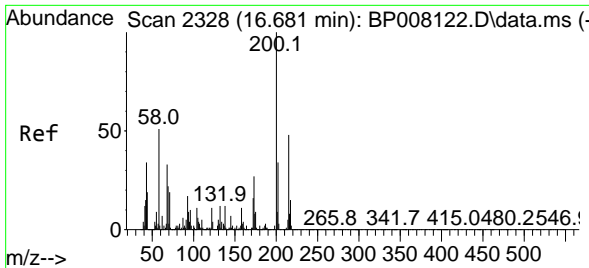


#68
 Hexachlorobenzene
 Concen: 55.687 ng
 RT: 16.481 min Scan# 2294
 Delta R.T. -0.006 min
 Lab File: BP008347.D
 Acq: 10 Dec 2021 18:51

Tgt Ion:284 Resp: 178544

Ion	Ratio	Lower	Upper
284	100		
142	33.2	28.6	42.8
249	34.3	27.1	40.7



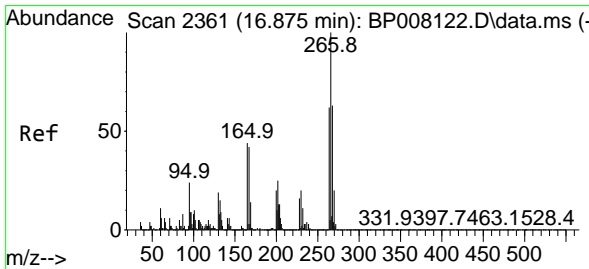
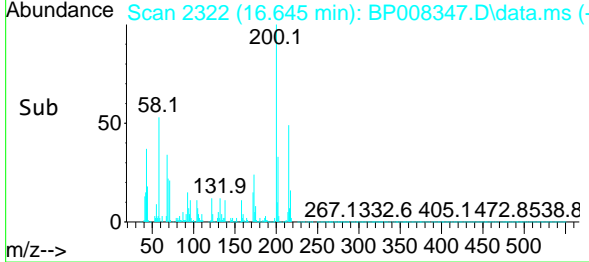
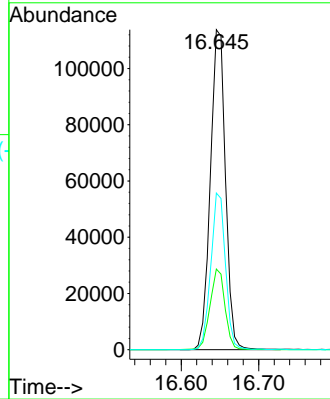
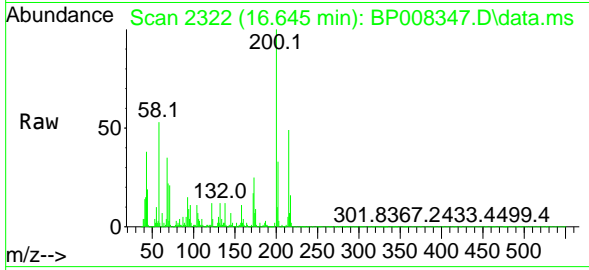


#69
 Atrazine
 Concen: 75.939 ng
 RT: 16.645 min Scan# 21
 Delta R.T. -0.006 min
 Lab File: BP008347.D
 Acq: 10 Dec 2021 18:51

Instrument :
 BNA_P
 ClientSampleId :
 P1-COMPMSD

Tgt Ion:200 Resp: 153992

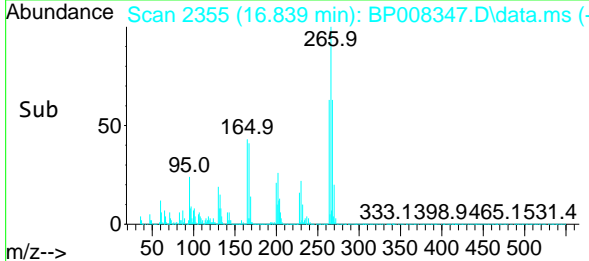
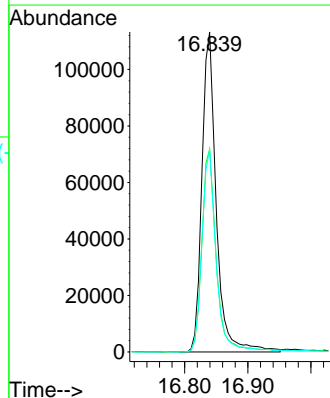
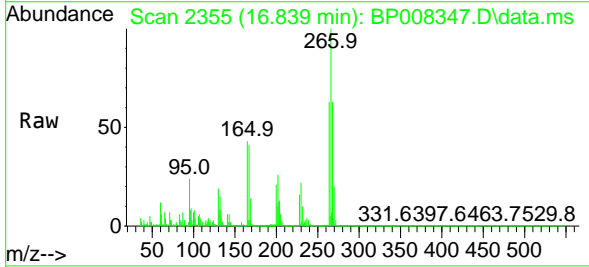
Ion	Ratio	Lower	Upper
200	100		
173	25.2	6.8	46.8
215	48.9	28.4	68.4

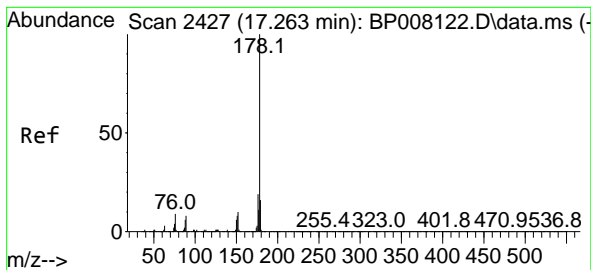


#70
 Pentachlorophenol
 Concen: 93.478 ng
 RT: 16.839 min Scan# 2355
 Delta R.T. -0.006 min
 Lab File: BP008347.D
 Acq: 10 Dec 2021 18:51

Tgt Ion:266 Resp: 178216

Ion	Ratio	Lower	Upper
266	100		
268	63.4	50.1	75.1
264	63.2	49.5	74.3

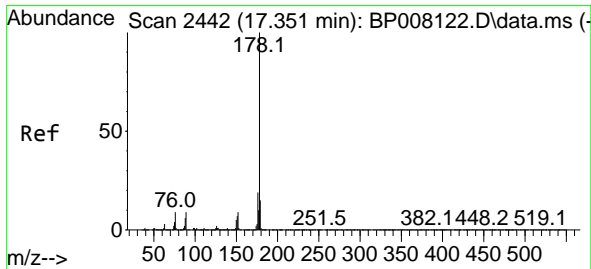
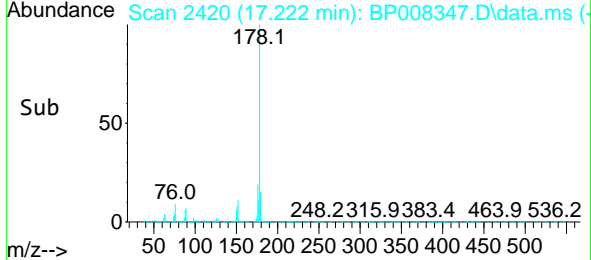
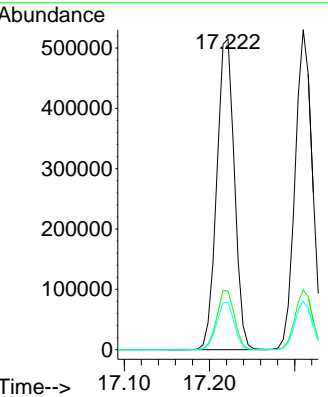
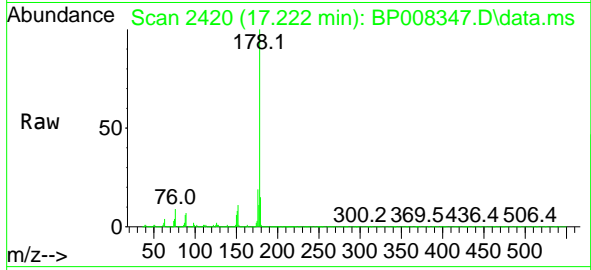




#71
 Phenanthrene
 Concen: 52.002 ng
 RT: 17.222 min Scan# 2420
 Delta R.T. 0.000 min
 Lab File: BP008347.D
 Acq: 10 Dec 2021 18:51

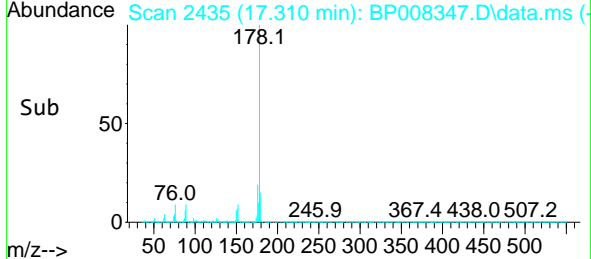
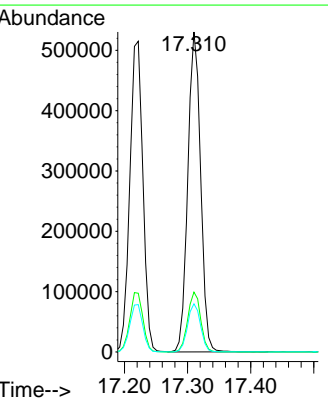
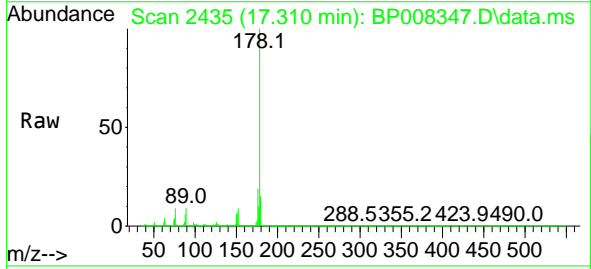
Instrument :
 BNA_P
 ClientSampleId :
 P1-COMPMSD

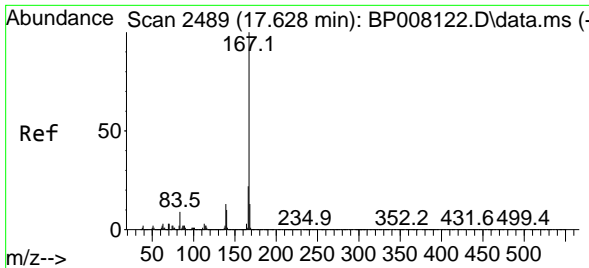
Tgt Ion	Resp	Lower	Upper
178	100		
176	18.9	15.3	22.9
179	15.2	12.5	18.7



#72
 Anthracene
 Concen: 52.703 ng
 RT: 17.310 min Scan# 2435
 Delta R.T. -0.006 min
 Lab File: BP008347.D
 Acq: 10 Dec 2021 18:51

Tgt Ion	Resp	Lower	Upper
178	100		
176	18.7	15.1	22.7
179	15.1	12.3	18.5

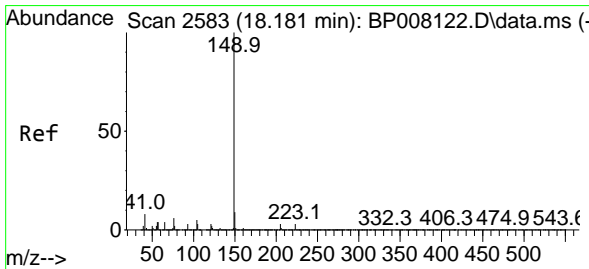
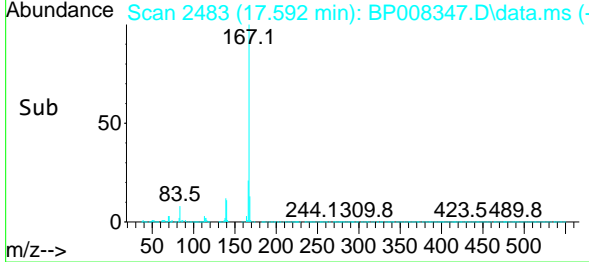
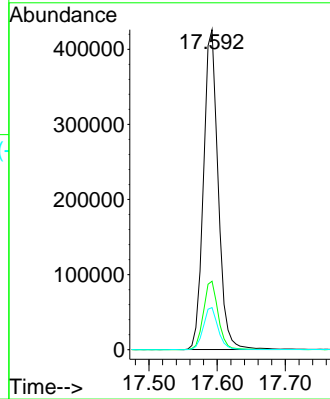
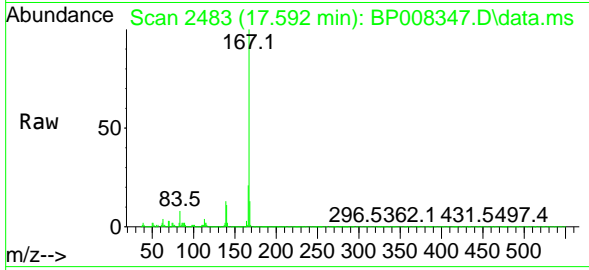




#73
 Carbazole
 Concen: 46.103 ng
 RT: 17.592 min Scan# 24
 Delta R.T. -0.006 min
 Lab File: BP008347.D
 Acq: 10 Dec 2021 18:51

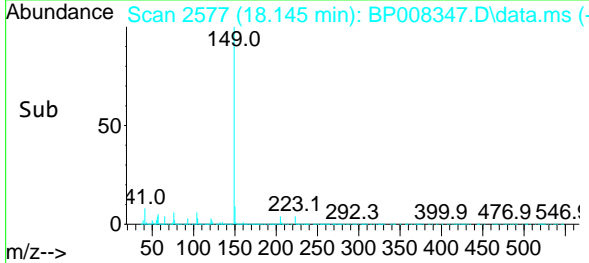
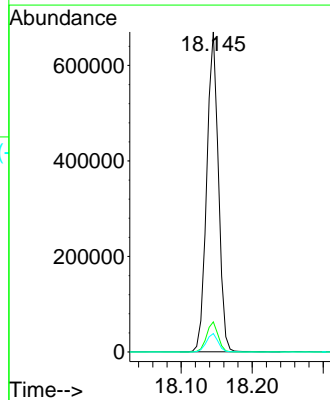
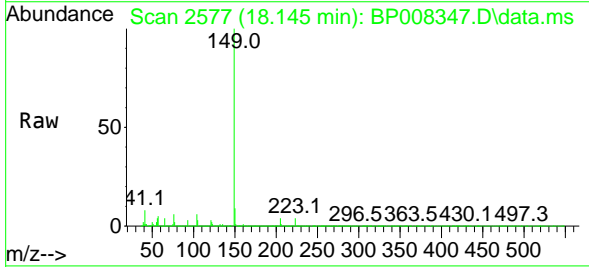
Instrument :
 BNA_P
 Client Sample Id :
 P1-COMPMSD

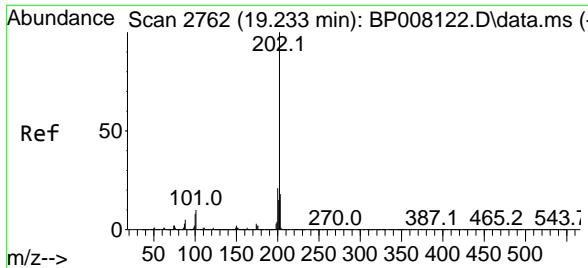
Tgt Ion	Resp	Lower	Upper
167	100		
166	21.4	17.4	26.0
139	13.1	10.2	15.2



#74
 Di-n-butylphthalate
 Concen: 44.298 ng
 RT: 18.145 min Scan# 2577
 Delta R.T. 0.000 min
 Lab File: BP008347.D
 Acq: 10 Dec 2021 18:51

Tgt Ion	Resp	Lower	Upper
149	100		
150	9.4	7.4	11.2
104	5.7	4.4	6.6



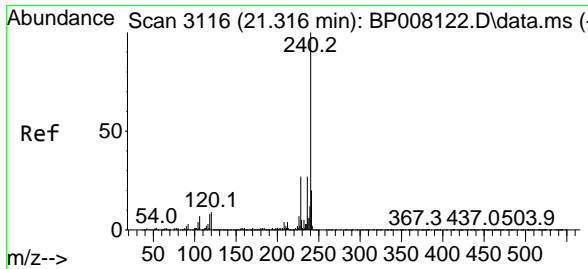
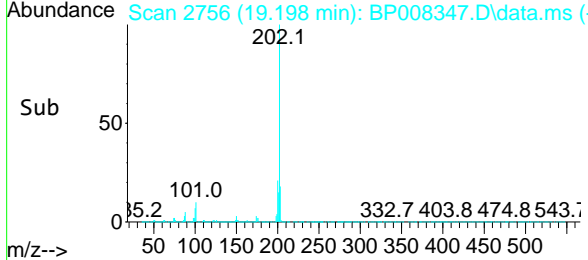
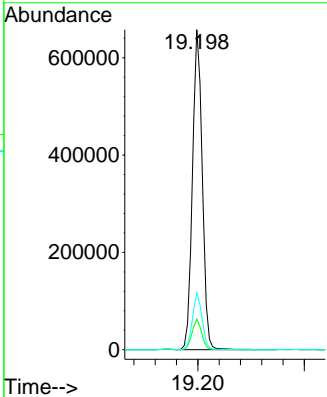
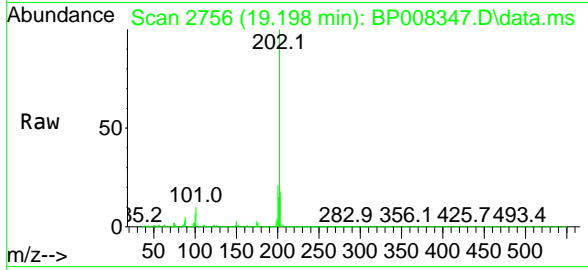


#75
 Fluoranthene
 Concen: 43.564 ng
 RT: 19.198 min Scan# 21
 Delta R.T. -0.006 min
 Lab File: BP008347.D
 Acq: 10 Dec 2021 18:51

Instrument : BNA_P
 ClientSampleId : P1-COMPMSD

Tgt Ion:202 Resp: 835776

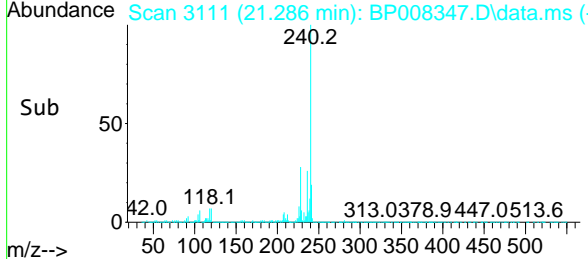
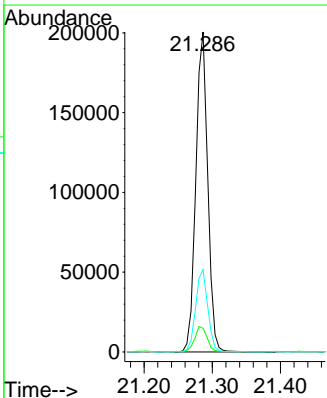
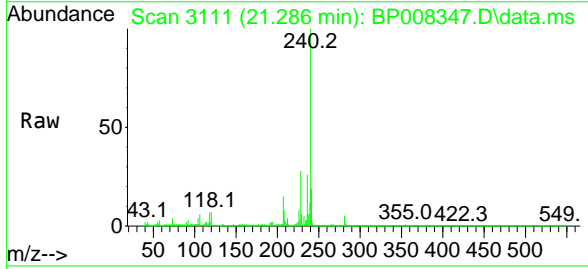
Ion	Ratio	Lower	Upper
202	100		
101	9.5	0.0	29.8
203	17.8	0.0	37.7

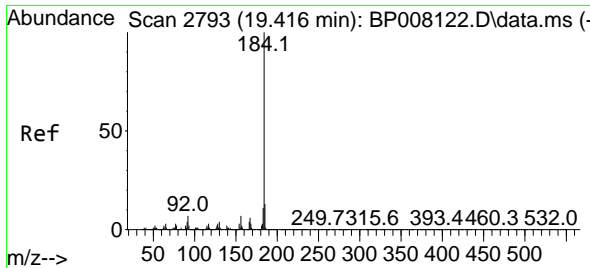


#76
 Chrysene-d12
 Concen: 20.000 ng
 RT: 21.286 min Scan# 3111
 Delta R.T. 0.000 min
 Lab File: BP008347.D
 Acq: 10 Dec 2021 18:51

Tgt Ion:240 Resp: 243016

Ion	Ratio	Lower	Upper
240	100		
120	7.4	7.3	10.9
236	25.8	21.4	32.2



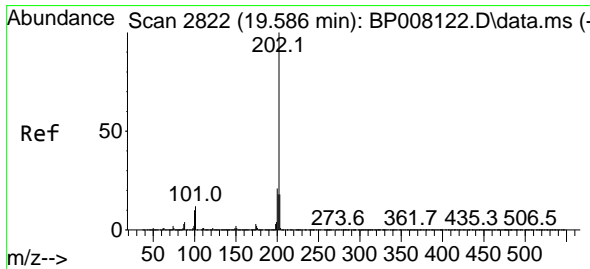
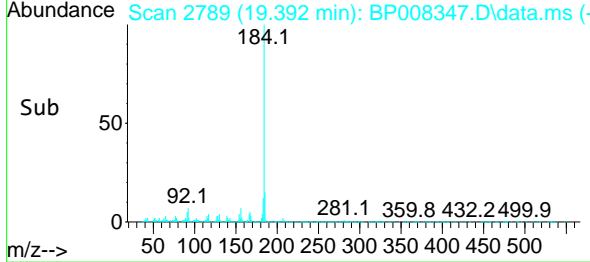
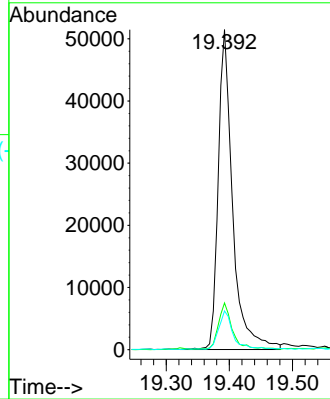
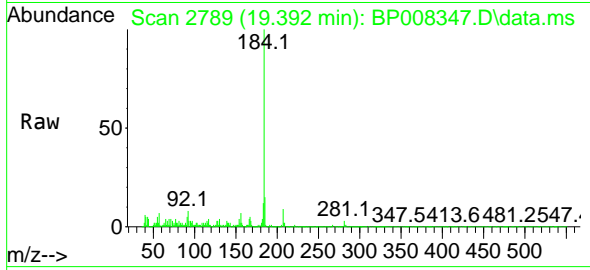


#77
 Benzidine
 Concen: 24.411 ng
 RT: 19.392 min Scan# 21
 Delta R.T. 0.000 min
 Lab File: BP008347.D
 Acq: 10 Dec 2021 18:51

Instrument :
 BNA_P
 ClientSampleId :
 P1-COMPMSD

Tgt Ion:184 Resp: 81373

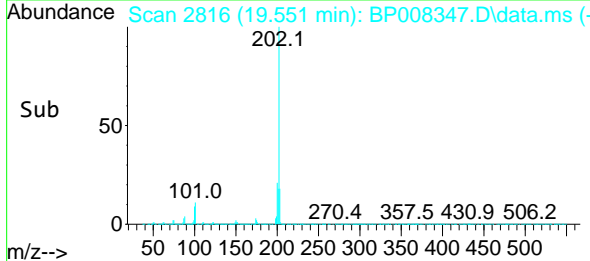
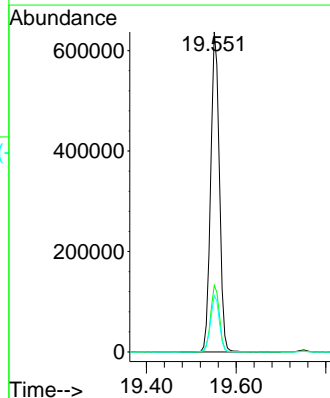
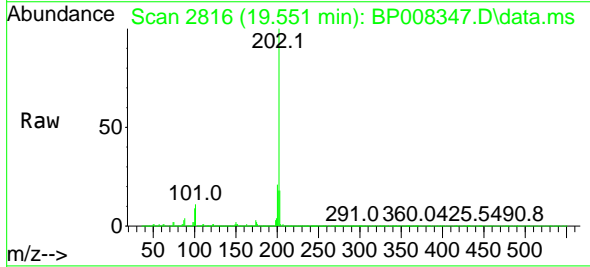
Ion	Ratio	Lower	Upper
184	100		
185	14.6	10.3	15.5
183	12.1	9.1	13.7

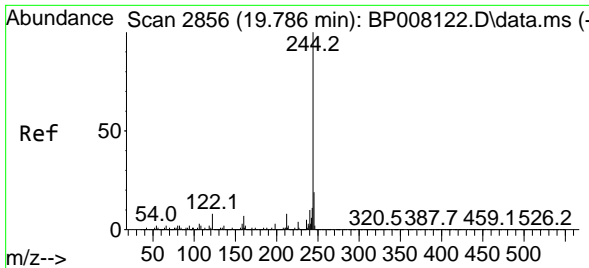


#78
 Pyrene
 Concen: 56.556 ng
 RT: 19.551 min Scan# 2816
 Delta R.T. -0.006 min
 Lab File: BP008347.D
 Acq: 10 Dec 2021 18:51

Tgt Ion:202 Resp: 855489

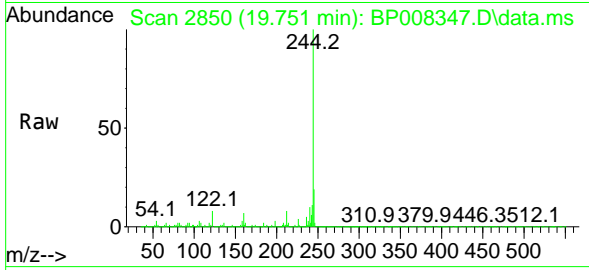
Ion	Ratio	Lower	Upper
202	100		
200	20.8	17.1	25.7
203	17.6	14.2	21.2



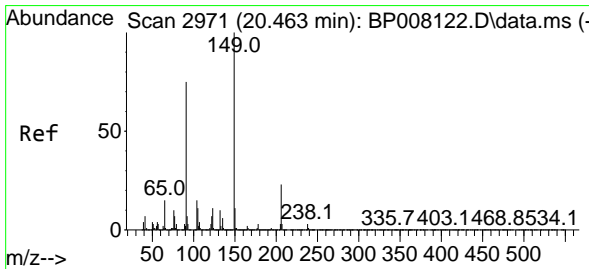
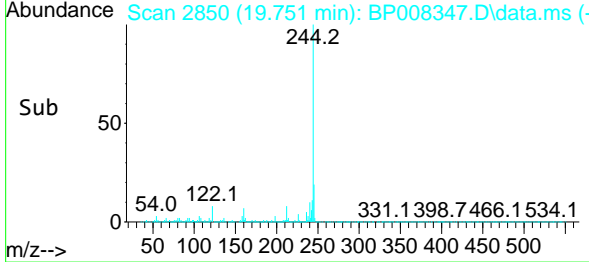
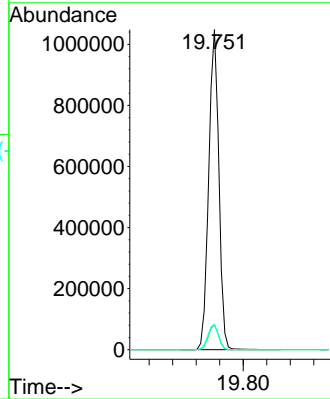


#79
 Terphenyl-d14
 Concen: 108.005 ng
 RT: 19.751 min Scan# 21
 Delta R.T. -0.006 min
 Lab File: BP008347.D
 Acq: 10 Dec 2021 18:51

Instrument :
 BNA_P
 ClientSampleId :
 P1-COMPMSD

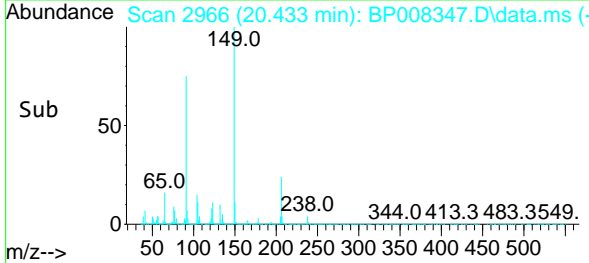
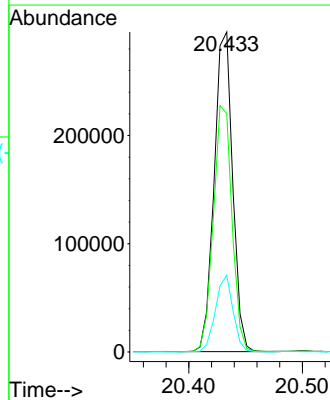
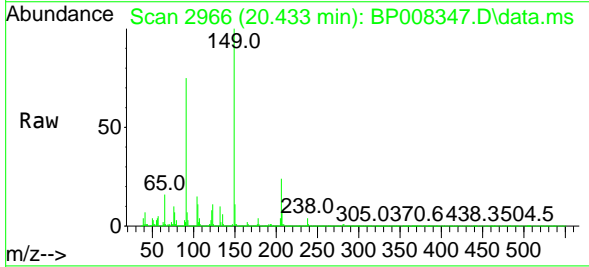


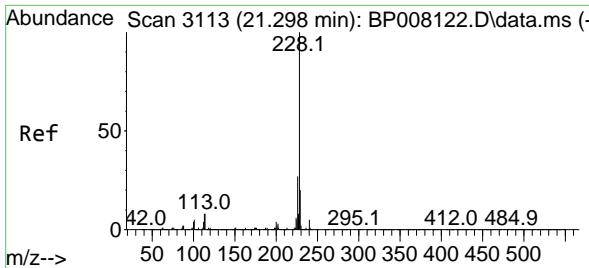
Tgt Ion:244 Resp: 1255882
 Ion Ratio Lower Upper
 244 100
 212 7.7 6.0 9.0
 122 8.0 6.6 9.8



#80
 Butylbenzylphthalate
 Concen: 48.282 ng
 RT: 20.433 min Scan# 2966
 Delta R.T. 0.000 min
 Lab File: BP008347.D
 Acq: 10 Dec 2021 18:51

Tgt Ion:149 Resp: 334115
 Ion Ratio Lower Upper
 149 100
 91 74.5 59.8 89.8
 206 24.0 18.6 27.8



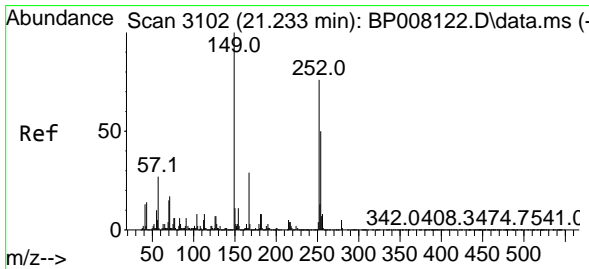
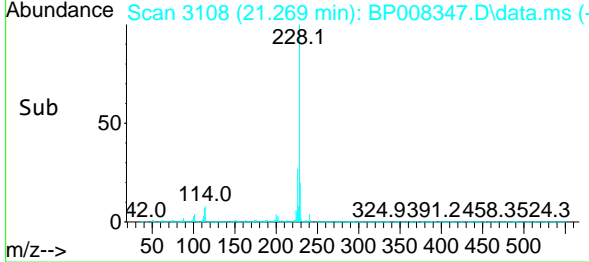
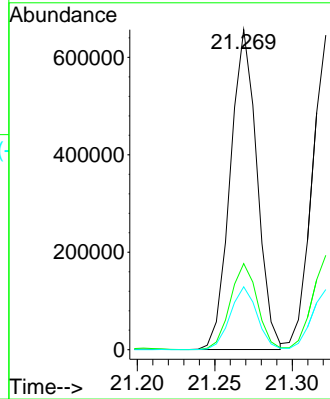
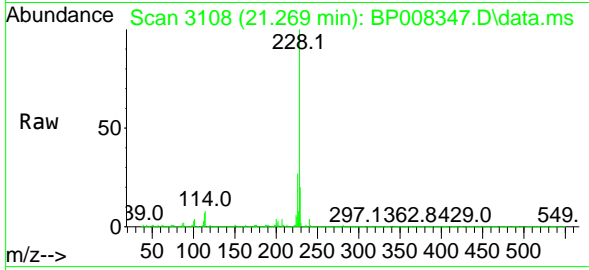


#81
 Benzo(a)anthracene
 Concen: 48.859 ng
 RT: 21.269 min Scan# 3113
 Delta R.T. -0.006 min
 Lab File: BP008347.D
 Acq: 10 Dec 2021 18:51

Instrument :
 BNA_P
 ClientSampleId :
 P1-COMPMSD

Tgt Ion:228 Resp: 786920

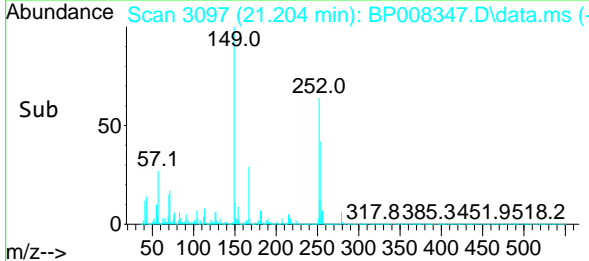
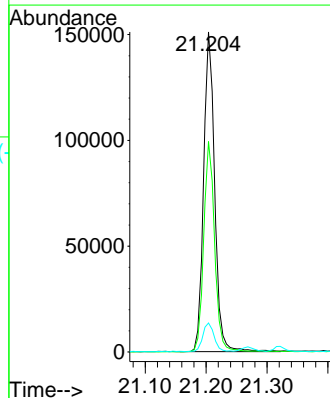
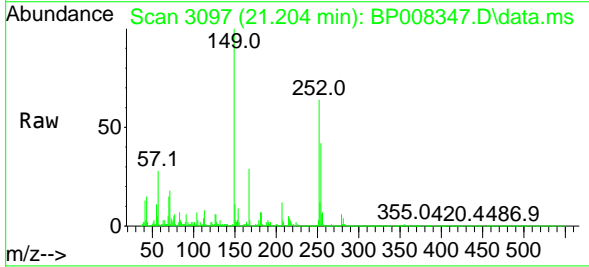
Ion	Ratio	Lower	Upper
228	100		
226	26.9	21.9	32.9
229	19.7	15.9	23.9

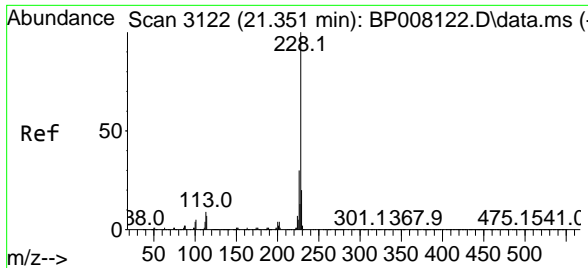


#82
 3,3'-Dichlorobenzidine
 Concen: 25.179 ng
 RT: 21.204 min Scan# 3097
 Delta R.T. -0.006 min
 Lab File: BP008347.D
 Acq: 10 Dec 2021 18:51

Tgt Ion:252 Resp: 191068

Ion	Ratio	Lower	Upper
252	100		
254	65.7	52.4	78.6
126	9.1	7.6	11.4



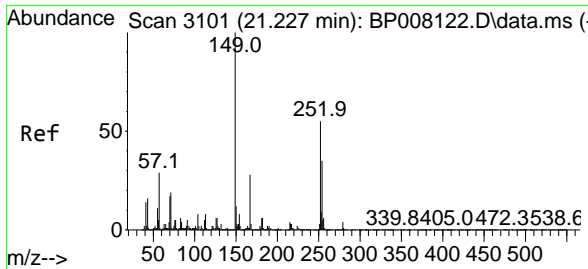
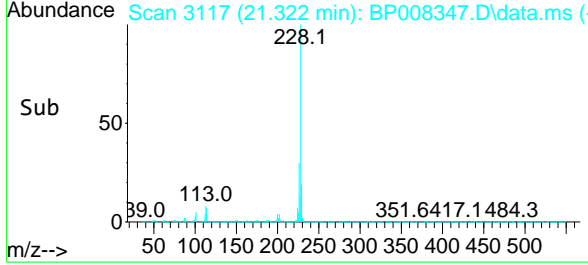
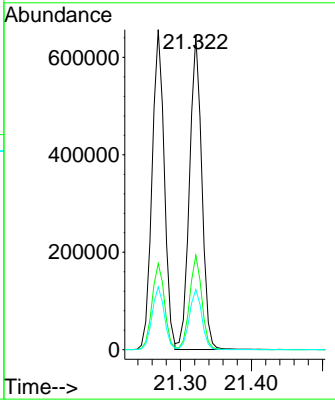
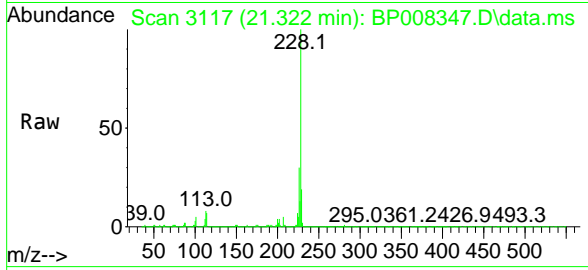


#83
 Chrysene
 Concen: 50.637 ng
 RT: 21.322 min Scan# 31
 Delta R.T. -0.006 min
 Lab File: BP008347.D
 Acq: 10 Dec 2021 18:51

Instrument : BNA_P
 ClientSampleId : P1-COMPMSD

Tgt Ion:228 Resp: 776080

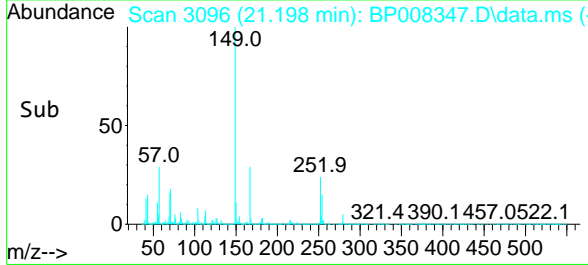
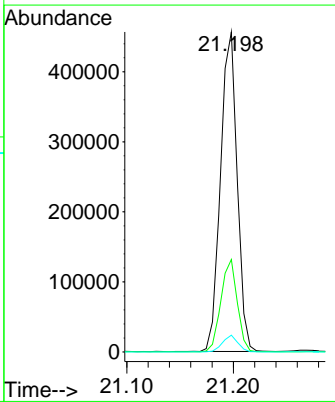
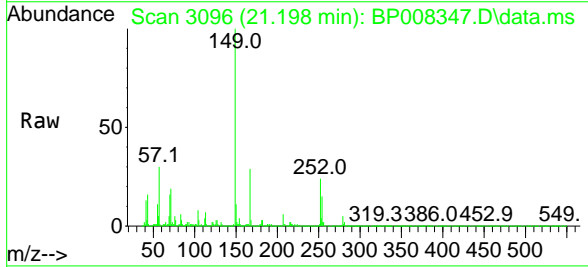
Ion	Ratio	Lower	Upper
228	100		
226	30.0	24.0	36.0
229	19.1	15.8	23.8

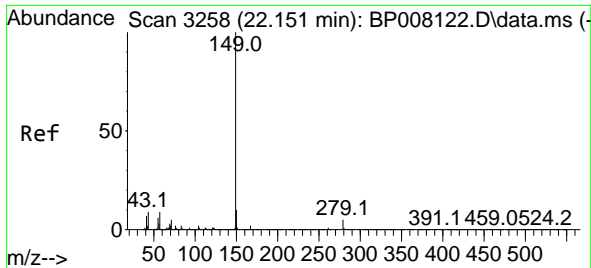


#84
 Bis(2-ethylhexyl)phthalate
 Concen: 47.068 ng
 RT: 21.198 min Scan# 3096
 Delta R.T. 0.000 min
 Lab File: BP008347.D
 Acq: 10 Dec 2021 18:51

Tgt Ion:149 Resp: 494530

Ion	Ratio	Lower	Upper
149	100		
167	28.9	22.5	33.7
279	5.3	3.5	5.3



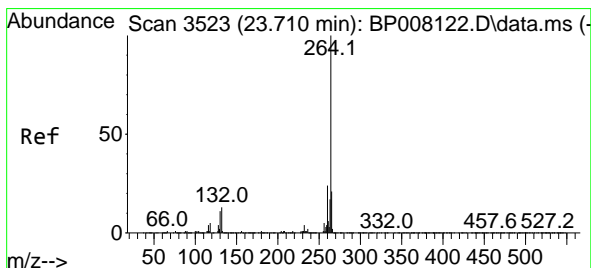
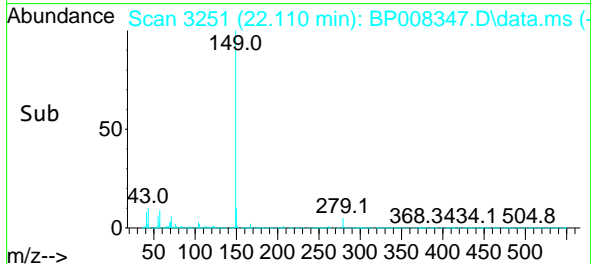
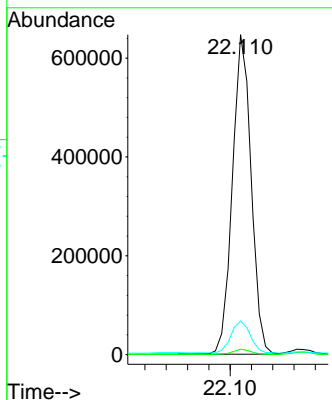
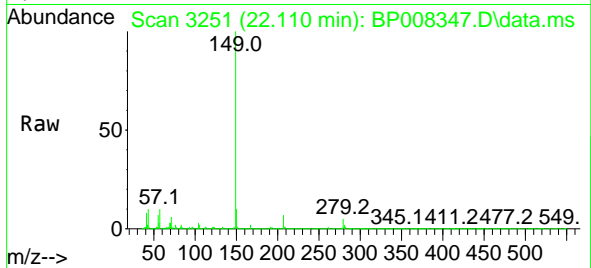


#85
 Di-n-octyl phthalate
 Concen: 44.296 ng
 RT: 22.110 min Scan# 311
 Delta R.T. -0.006 min
 Lab File: BP008347.D
 Acq: 10 Dec 2021 18:51

Instrument :
 BNA_P
 ClientSampleId :
 P1-COMPMSD

Tgt Ion:149 Resp: 790611

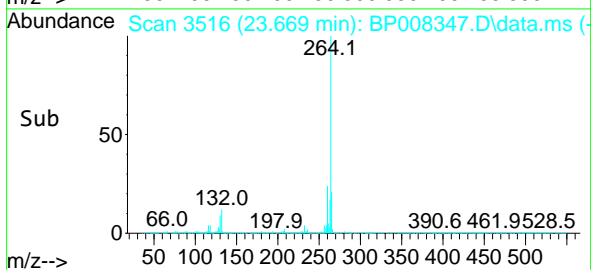
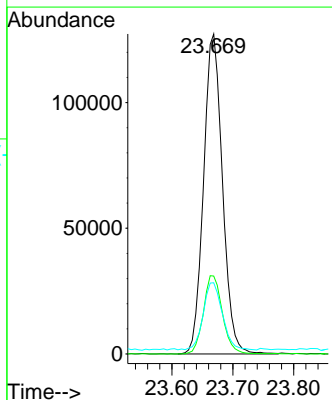
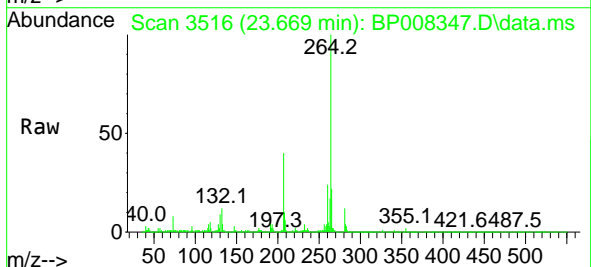
Ion	Ratio	Lower	Upper
149	100		
167	1.7	1.3	1.9
43	10.4	7.9	11.9

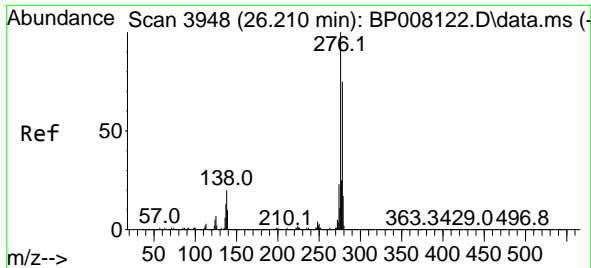


#86
 Perylene-d12
 Concen: 20.000 ng
 RT: 23.669 min Scan# 3516
 Delta R.T. -0.006 min
 Lab File: BP008347.D
 Acq: 10 Dec 2021 18:51

Tgt Ion:264 Resp: 274408

Ion	Ratio	Lower	Upper
264	100		
260	24.4	19.4	29.2
265	22.2	17.6	26.4

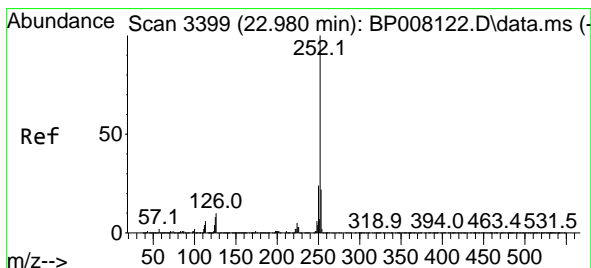
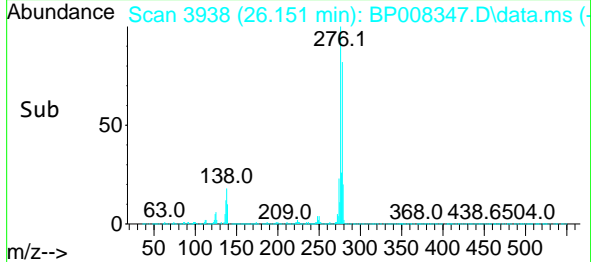
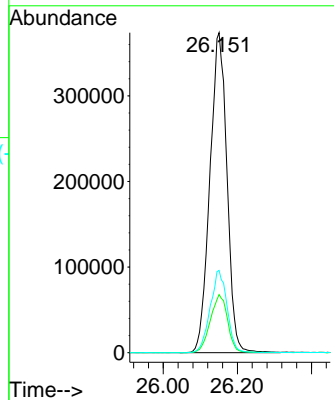
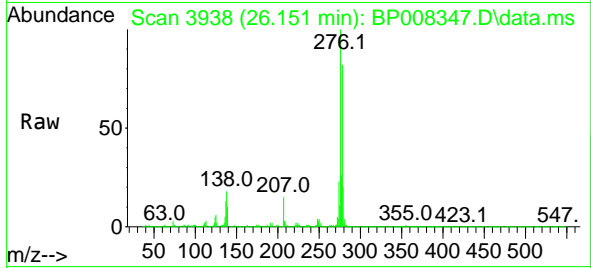




#87
 Indeno(1,2,3-cd)pyrene
 Concen: 59.796 ng
 RT: 26.151 min Scan# 3938
 Delta R.T. -0.012 min
 Lab File: BP008347.D
 Acq: 10 Dec 2021 18:51

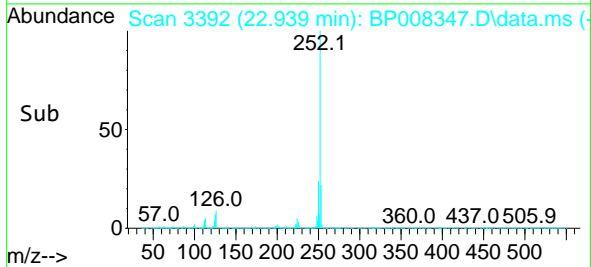
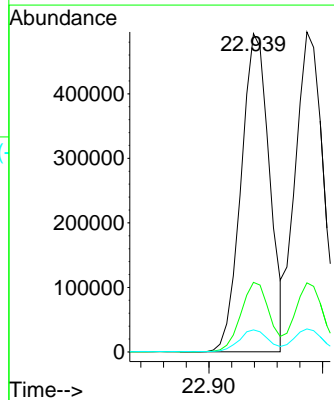
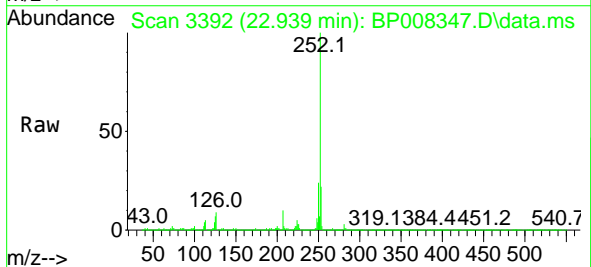
Instrument :
 BNA_P
 ClientSampleId :
 P1-COMPMSD

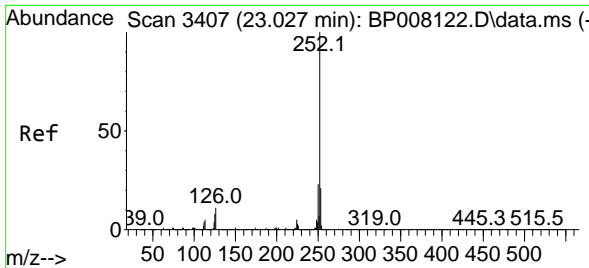
Tgt Ion: 276 Resp: 1193743
 Ion Ratio Lower Upper
 276 100
 138 18.2 16.6 25.0
 277 25.4 20.2 30.2



#88
 Benzo(b)fluoranthene
 Concen: 51.826 ng
 RT: 22.939 min Scan# 3392
 Delta R.T. -0.006 min
 Lab File: BP008347.D
 Acq: 10 Dec 2021 18:51

Tgt Ion: 252 Resp: 857342
 Ion Ratio Lower Upper
 252 100
 253 21.8 17.7 26.5
 125 6.9 6.2 9.4

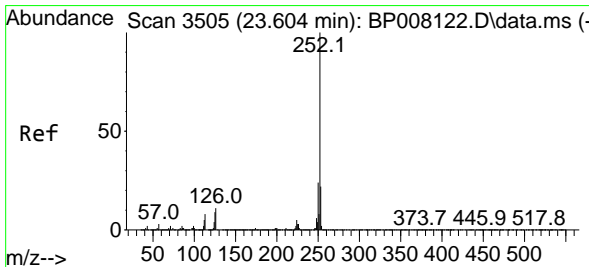
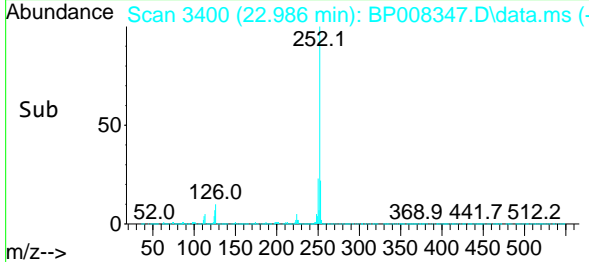
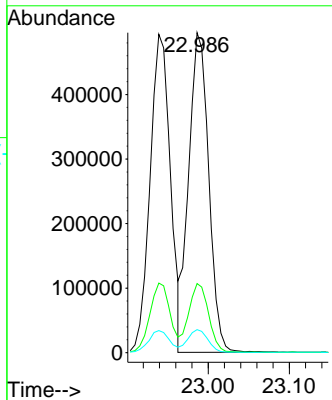
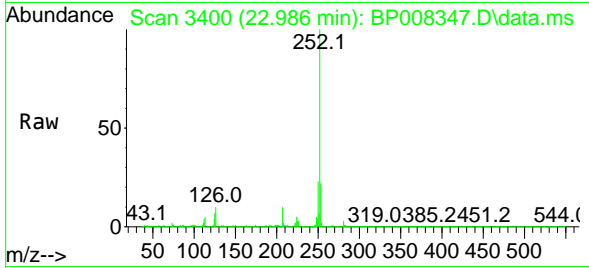




#89
 Benzo(k)fluoranthene
 Concen: 52.489 ng
 RT: 22.986 min Scan# 34
 Delta R.T. -0.012 min
 Lab File: BP008347.D
 Acq: 10 Dec 2021 18:51

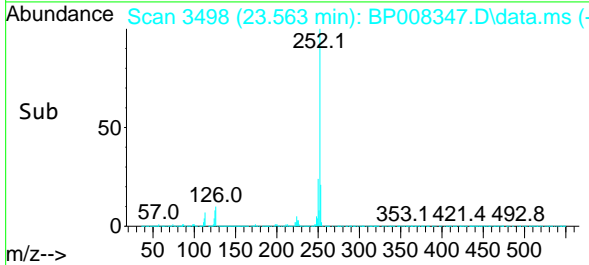
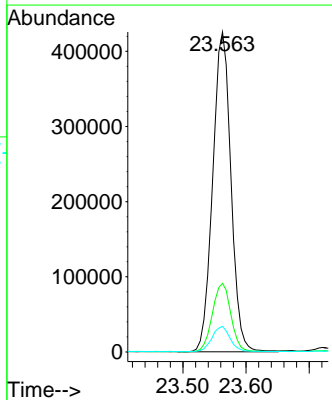
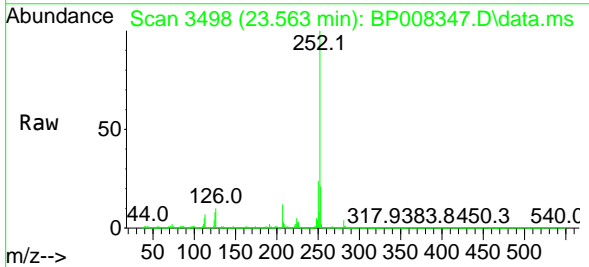
Instrument : BNA_P
 ClientSampleId : P1-COMPMSD

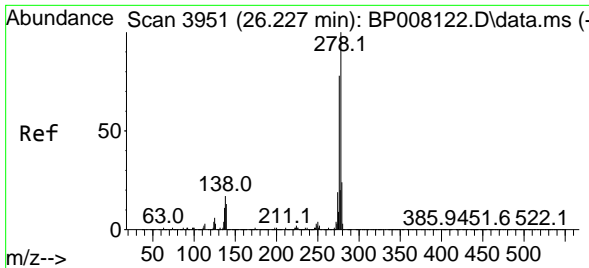
Tgt Ion	Resp	Lower	Upper
252	100		
253	21.6	17.3	25.9
125	7.2	6.5	9.7



#90
 Benzo(a)pyrene
 Concen: 60.321 ng
 RT: 23.563 min Scan# 3498
 Delta R.T. -0.006 min
 Lab File: BP008347.D
 Acq: 10 Dec 2021 18:51

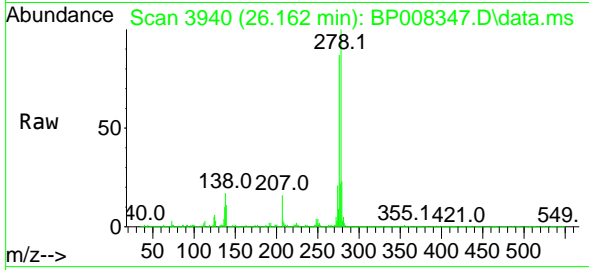
Tgt Ion	Resp	Lower	Upper
252	100		
253	21.5	17.6	26.4
125	8.0	7.4	11.0



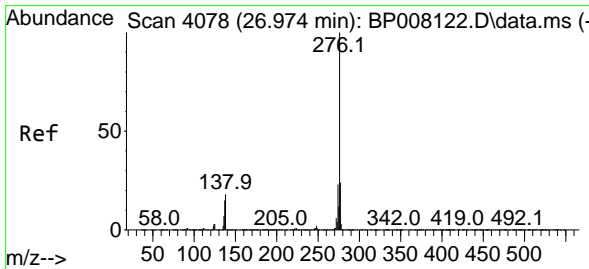
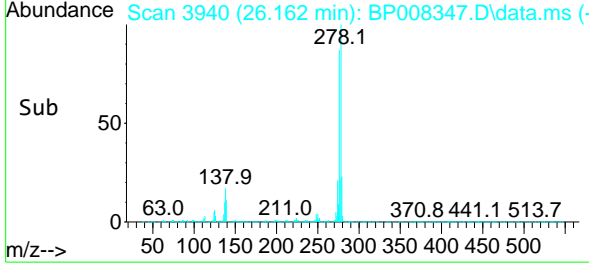
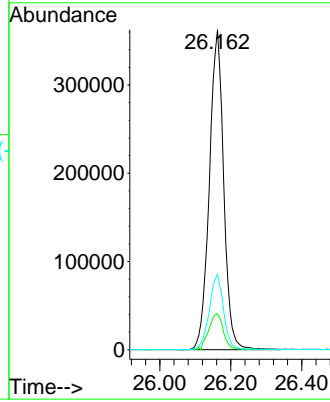


#91
 Dibenzo(a,h)anthracene
 Concen: 61.387 ng
 RT: 26.162 min Scan# 3940
 Delta R.T. -0.006 min
 Lab File: BP008347.D
 Acq: 10 Dec 2021 18:51

Instrument :
 BNA_P
 ClientSampleId :
 P1-COMPMSD



Tgt Ion: 278 Resp: 1017785
 Ion Ratio Lower Upper
 278 100
 139 11.3 10.8 16.2
 279 23.4 19.1 28.7



#92
 Benzo(g,h,i)perylene
 Concen: 62.905 ng
 RT: 26.910 min Scan# 4067
 Delta R.T. -0.012 min
 Lab File: BP008347.D
 Acq: 10 Dec 2021 18:51

Tgt Ion: 276 Resp: 1052158
 Ion Ratio Lower Upper
 276 100
 277 23.0 20.0 30.0
 138 15.4 14.1 21.1

