

Data Path : Z:\svoasrv\HPCHEM1\BNA_P\Data\BP121123\
 Data File : BP018758.D
 Acq On : 12 Dec 2023 09:32
 Operator : MA/JU
 Sample : 05675-09MSD
 Misc :
 ALS Vial : 37 Sample Multiplier: 1

Instrument :
 BNA_P
 ClientSampleId :
 HOAB0MSD

Manual Integrations
 APPROVED

Reviewed By :Yogesh Patel 12/13/2023
 Supervised By :mohammad ahmed 12/14/2023

Quant Time: Dec 12 21:47:59 2023
 Quant Method : Z:\svoasrv\HPCHEM1\BNA_P\Methods\SFAM-EPA-BP120123.MA.M
 Quant Title : SVOA CALIBRATION
 QLast Update : Mon Dec 11 22:02:13 2023
 Response via : Initial Calibration

Compound	R.T.	QIon	Response	Conc	Units	Dev(Min)
Internal Standards						
1) 1,4-Dichlorobenzene-d4	7.840	152	172544	20.000	ng/ul	0.00
20) Naphthalene-d8	10.634	136	668151	20.000	ng/ul	0.00
38) Acenaphthene-d10	14.469	164	427346	20.000	ng/ul	0.00
64) Phenanthrene-d10	17.216	188	1002657	20.000	ng/ul	# 0.00
79) Chrysene-d12	21.310	240	1064200	20.000	ng/ul	# 0.00
88) Perylene-d12	23.668	264	1208497	20.000	ng/ul	-0.01
System Monitoring Compounds						
3) 1,4-Dioxane-d8	3.264	96	19570	3.865	ng/uL	0.00
4) Pyridine-d5	3.687	84	88070m	6.494	ng/ul	0.01
7) Phenol-d5	7.010	99	80130	4.628	ng/ul	0.00
9) Bis-(2-Chloroethyl)eth...	7.175	67	252941	24.647	ng/ul	0.00
11) 2-Chlorophenol-d4	7.369	132	256726	19.001	ng/ul	0.00
15) 4-Methylphenol-d8	8.552	113	150543	10.743	ng/ul	0.00
21) Nitrobenzene-d5	9.004	128	170266	28.632	ng/ul	0.00
24) 2-Nitrophenol-d4	9.722	143	183667	29.790	ng/ul	0.00
28) 2,4-Dichlorophenol-d3	10.257	165	338885	26.881	ng/ul	0.00
31) 4-Chloroaniline-d4	10.775	131	331539	20.123	ng/ul	0.00
46) Dimethylphthalate-d6	13.887	166	1247973	32.720	ng/ul	0.00
49) Acenaphthylene-d8	14.163	160	1259464	29.988	ng/ul	0.00
54) 4-Nitrophenol-d4	14.675	143	40762	6.511	ng/ul	0.00
60) Fluorene-d10	15.463	176	1037389	32.403	ng/ul	0.00
65) 4,6-Dinitro-2-methylph...	15.586	200	217172	36.123	ng/ul	0.00
73) Anthracene-d10	17.316	188	1668753	31.658	ng/ul	0.00
81) Pyrene-d10	19.557	212	2198783	26.543	ng/ul	0.00
92) Benzo(a)pyrene-d12	23.521	264	2420827	34.356	ng/ul	0.00
Target Compounds						
2) 1,4-Dioxane	3.299	88	33387	6.013	ng/uL	96
5) Pyridine	3.705	79	99631	7.274	ng/ul	96
6) Benzaldehyde	6.981	77	243265	27.211	ng/ul	99
8) Phenol	7.034	94	90747	5.344	ng/ul	92
10) Bis(2-Chloroethyl)ether	7.269	93	367367	26.343	ng/ul	99
12) 2-Chlorophenol	7.405	128	272268	19.911	ng/ul	100
13) 2-Methylphenol	8.287	108	183725	14.133	ng/ul	98
14) 2,2'-oxybis(1-Chloropr...	8.363	45	435521	24.613	ng/ul	98
16) Acetophenone	8.663	105	568805	27.236	ng/ul	97
17) N-Nitroso-di-n-propyla...	8.652	70	278387	24.231	ng/ul	99
18) 4-Methylphenol	8.616	108	168793	11.891	ng/ul	100
19) Hexachloroethane	8.916	117	155893	27.809	ng/ul	84
22) Nitrobenzene	9.046	77	445494	30.812	ng/ul	100
23) Isophorone	9.569	82	810962	27.509	ng/ul#	98
25) 2-Nitrophenol	9.751	139	202506	30.677	ng/ul#	93
26) 2,4-Dimethylphenol	9.816	107	193394	14.979	ng/ul	97
27) Bis(2-Chloroethoxy)met...	10.057	93	496034	26.652	ng/ul	100
29) 2,4-Dichlorophenol	10.287	162	341067	28.087	ng/ul	98
30) Naphthalene	10.687	128	1162358	28.677	ng/ul	99
32) 4-Chloroaniline	10.804	127	304130	19.368	ng/ul	100
33) Hexachlorobutadiene	10.969	225	303807	37.357	ng/ul	99
34) Caprolactam	11.587	113	14339	3.851	ng/ul	96
35) 4-Chloro-3-methylphenol	11.922	107	323789	23.802	ng/ul	99
36) 2-Methylnaphthalene	12.298	142	832522	28.993	ng/ul	100

Data Path : Z:\svoasrv\HPCHEM1\BNA_P\Data\BP121123\
 Data File : BP018758.D
 Acq On : 12 Dec 2023 09:32
 Operator : MA/JU
 Sample : 05675-09MSD
 Misc :
 ALS Vial : 37 Sample Multiplier: 1

Instrument :
 BNA_P
ClientSampleId :
 HOAB0MSD

Manual Integrations
APPROVED
 Reviewed By :Yogesh Patel 12/13/2023
 Supervised By :mohammad ahmed 12/14/2023

Quant Time: Dec 12 21:47:59 2023
 Quant Method : Z:\svoasrv\HPCHEM1\BNA_P\Methods\SFAM-EPA-BP120123.MA.M
 Quant Title : SVOA CALIBRATION
 QLast Update : Mon Dec 11 22:02:13 2023
 Response via : Initial Calibration

Compound	R.T.	QIon	Response	Conc	Units	Dev(Min)
37) 1-Methylnaphthalene	12.516	142	812668	28.024	ng/ul#	98
39) 1,2,4,5-Tetrachloroben...	12.663	216	555637	35.837	ng/ul	97
40) Hexachlorocyclopentadiene	12.640	237	242834	26.424	ng/ul	98
41) 2,4,6-Trichlorophenol	12.904	196	339290	34.017	ng/ul	100
42) 2,4,5-Trichlorophenol	12.975	196	368041	34.036	ng/ul	99
43) 1,1'-Biphenyl	13.304	154	1133072	30.657	ng/ul	98
44) 2-Chloronaphthalene	13.345	162	926129	31.727	ng/ul	98
45) 2-Nitroaniline	13.557	65	270820	34.223	ng/ul	97
47) Dimethylphthalate	13.934	163	1293988	34.466	ng/ul	99
48) 2,6-Dinitrotoluene	14.057	165	271030	38.209	ng/ul	94
50) Acenaphthylene	14.192	152	1471778	31.169	ng/ul	99
51) 3-Nitroaniline	14.381	138	226305	31.960	ng/ul	97
52) Acenaphthene	14.534	153	990097	31.713	ng/ul	99
53) 2,4-Dinitrophenol	14.587	184	149779	39.842	ng/ul	92
55) 4-Nitrophenol	14.687	109	42024	8.885	ng/ul	84
56) Dibenzofuran	14.869	168	1431837	32.997	ng/ul	97
57) 2,4-Dinitrotoluene	14.839	165	401998	40.289	ng/ul	97
58) 2,3,4,6-Tetrachlorophenol	15.092	232	359213	39.603	ng/ul	94
59) Diethylphthalate	15.298	149	1314713	35.785	ng/ul	100
61) Fluorene	15.516	166	1176345	34.260	ng/ul	99
62) 4-Chlorophenyl-phenyle...	15.516	204	663354	36.837	ng/ul	96
63) 4-Nitroaniline	15.545	138	257490	38.172	ng/ul#	86
66) 4,6-Dinitro-2-methylph...	15.598	198	248928	38.728	ng/ul	94
67) N-Nitrosodiphenylamine	15.734	169	1008488	30.353	ng/ul	99
68) 4-Bromophenyl-phenylether	16.410	248	466299	36.838	ng/ul	97
69) Hexachlorobenzene	16.522	284	571359	40.428	ng/ul	94
70) Atrazine	16.686	200	219792	22.251	ng/ul	99
71) Pentachlorophenol	16.869	266	344572	40.995	ng/ul	99
72) Phenanthrene	17.263	178	2052750	33.898	ng/ul	100
74) Anthracene	17.351	178	1999961	32.949	ng/ul	100
75) 1,2,3,4-Tetrachloroben...	13.269	216	566761	32.691	ng/ul	99
76) Pentachlorobenzene	14.787	250	608985	35.760	ng/ul	98
77) Carbazole	17.628	167	1842675	38.090	ng/ul	99
78) Di-n-butylphthalate	18.180	149	2347344	36.440	ng/ul	99
80) Fluoranthene	19.227	202	2691961	27.491	ng/ul#	93
82) Pyrene	19.580	202	2733858	27.675	ng/ul#	91
83) Butylbenzylphthalate	20.463	149	1095530	30.294	ng/ul	93
84) 3,3'-Dichlorobenzidine	21.227	252	657489	25.424	ng/ul	99
85) Benzo(a)anthracene	21.292	228	2961230	34.282	ng/ul	100
86) Bis(2-ethylhexyl)phtha...	21.221	149	1619515	32.582	ng/ul#	99
87) Chrysene	21.345	228	2744256	34.499	ng/ul	100
89) Di-n-octyl phthalate	22.133	149	2846801	32.264	ng/ul	100
90) Benzo(b)fluoranthene	22.951	252	3174893	35.632	ng/ul#	97
91) Benzo(k)fluoranthene	22.998	252	3079824	35.723	ng/ul#	97
93) Benzo(a)pyrene	23.568	252	2889533	35.491	ng/ul#	96
94) Indeno(1,2,3-cd)pyrene	26.133	276	3745942	38.508	ng/ul#	92
95) Dibenzo(a,h)anthracene	26.156	278	3131597	38.700	ng/ul#	95
96) Benzo(g,h,i)perylene	26.886	276	2995949	38.270	ng/ul#	93

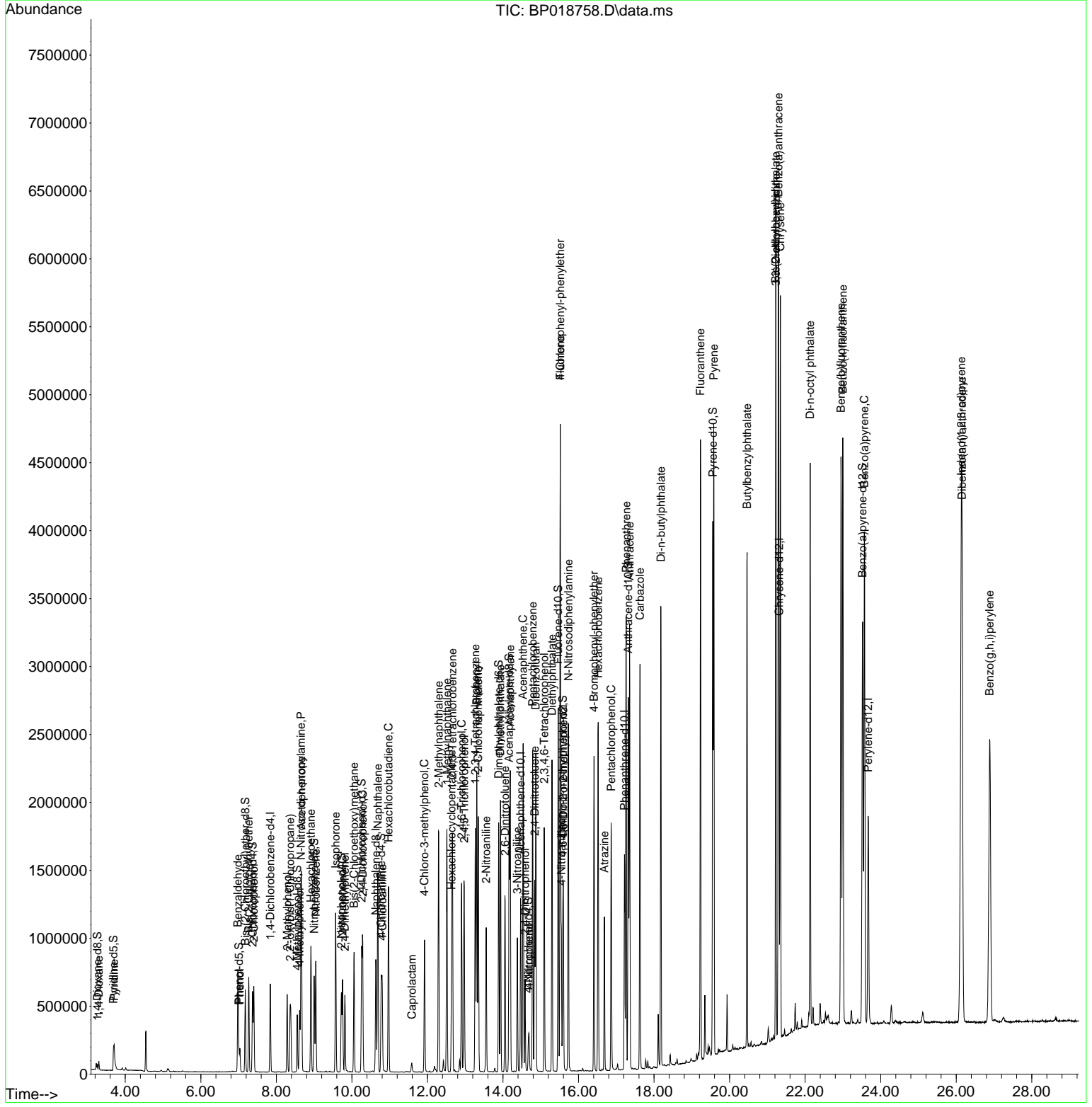
(#) = qualifier out of range (m) = manual integration (+) = signals summed

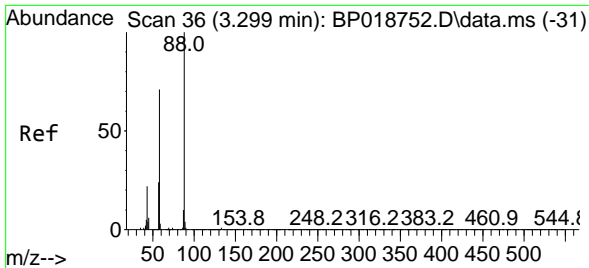
Data Path : Z:\svoasrv\HPCHEM1\BNA_P\Data\BP121123\
 Data File : BP018758.D
 Acq On : 12 Dec 2023 09:32
 Operator : MA/JU
 Sample : 05675-09MSD
 Misc :
 ALS Vial : 37 Sample Multiplier: 1

Instrument :
 BNA_P
 ClientSampleId :
 HOAB0MSD

Quant Time: Dec 12 21:47:59 2023
 Quant Method : Z:\svoasrv\HPCHEM1\BNA_P\Methods\SFAM-EPA-BP120123.MA.M
 Quant Title : SVOA CALIBRATION
 QLast Update : Mon Dec 11 22:02:13 2023
 Response via : Initial Calibration

Manual Integrations
APPROVED
 Reviewed By :Yogesh Patel 12/13/2023
 Supervised By :mohammad ahmed 12/14/2023





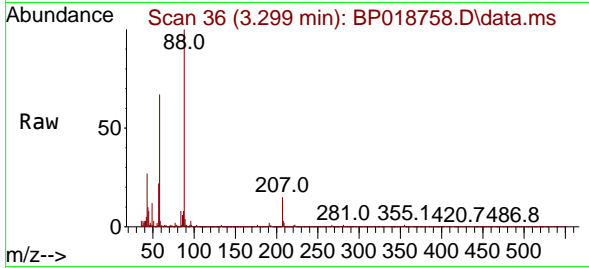
#2
 1,4-Dioxane
 Concen: 6.013 ng/uL
 RT: 3.299 min Scan# 30
 Delta R.T. 0.006 min
 Lab File: BP018758.D
 Acq: 12 Dec 2023 09:32

Instrument :

BNA_P

ClientSampleId :

HOAB0MSD



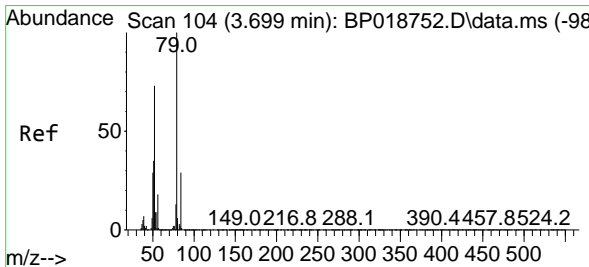
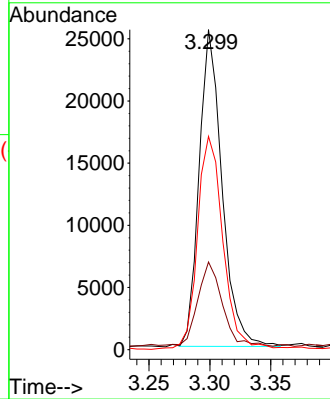
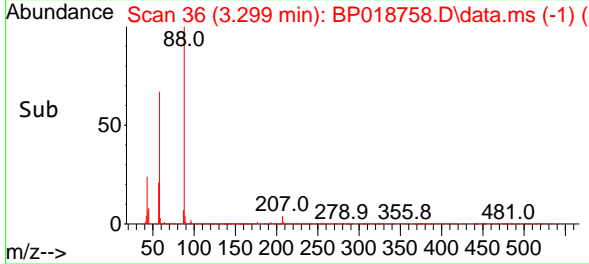
Tgt Ion: 88 Resp: 3338
 Ion Ratio Lower Upper
 88 100
 43 27.4 21.8 32.6
 58 66.6 56.5 84.7

Manual Integrations

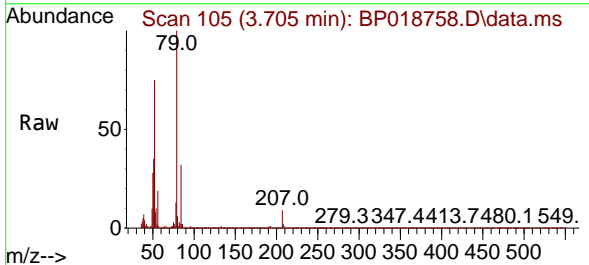
APPROVED

Reviewed By :Yogesh Patel 12/13/2023

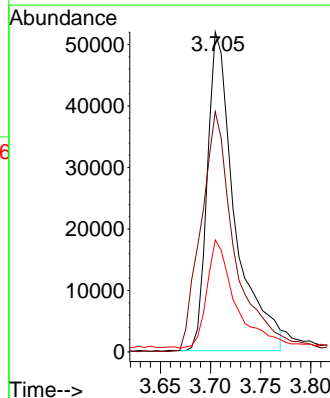
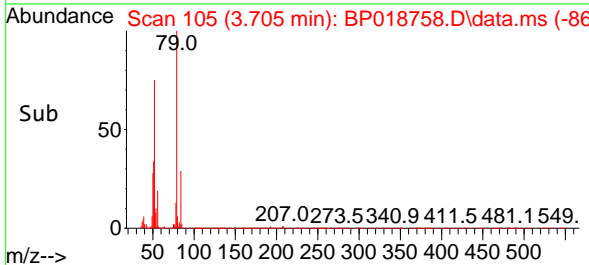
Supervised By :mohammad ahmed 12/14/2023

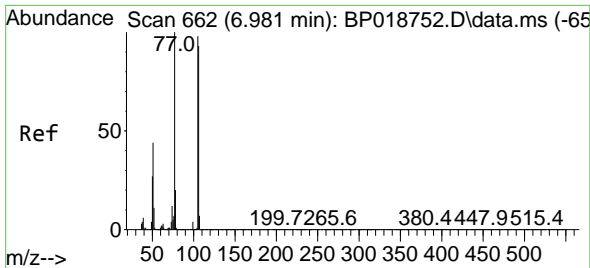


#5
 Pyridine
 Concen: 7.274 ng/uL
 RT: 3.705 min Scan# 105
 Delta R.T. 0.012 min
 Lab File: BP018758.D
 Acq: 12 Dec 2023 09:32



Tgt Ion: 79 Resp: 99631
 Ion Ratio Lower Upper
 79 100
 52 75.1 57.4 86.0
 51 35.0 26.2 39.4





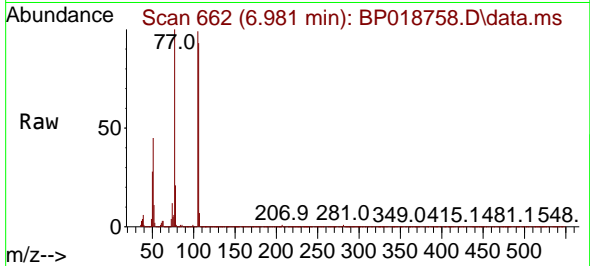
#6
Benzaldehyde
Concen: 27.211 ng/uI
RT: 6.981 min Scan# 60
Delta R.T. 0.006 min
Lab File: BP018758.D
Acq: 12 Dec 2023 09:32

Instrument :

BNA_P

Client SampleId :

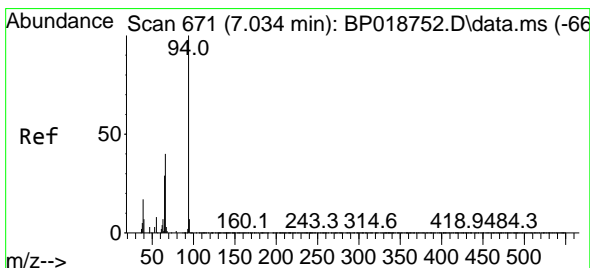
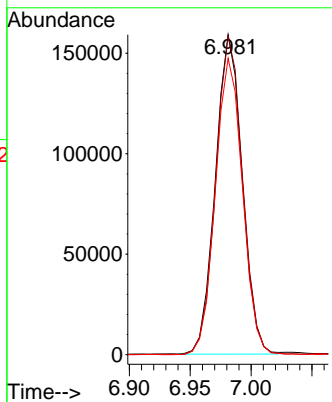
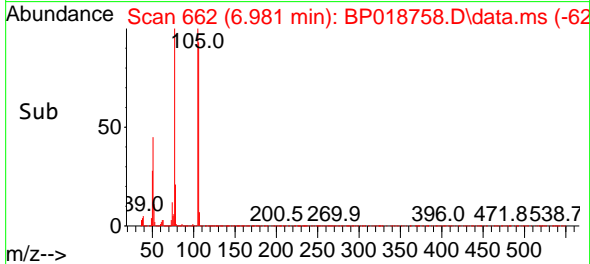
HOAB0MSD



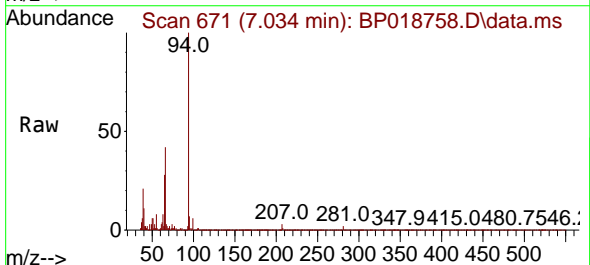
Tgt Ion: 77 Resp: 24326
Ion Ratio Lower Upper
77 100
105 99.5 77.9 116.9
106 92.6 74.6 111.8

Manual Integrations
APPROVED

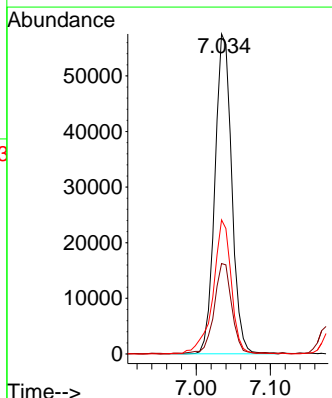
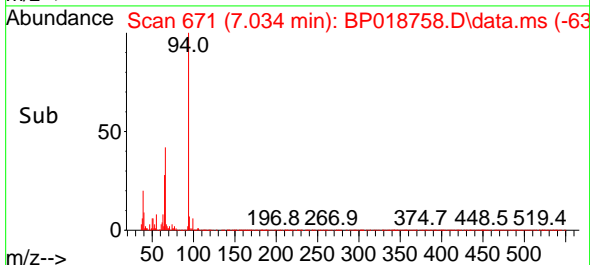
Reviewed By :Yogesh Patel 12/13/2023
Supervised By :mohammad ahmed 12/14/2023

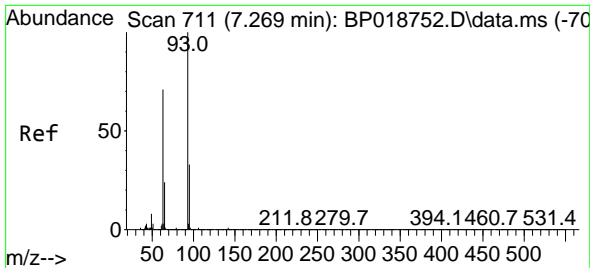


#8
Phenol
Concen: 5.344 ng/uI
RT: 7.034 min Scan# 671
Delta R.T. 0.000 min
Lab File: BP018758.D
Acq: 12 Dec 2023 09:32



Tgt Ion: 94 Resp: 90747
Ion Ratio Lower Upper
94 100
65 28.2 21.0 31.6
66 41.9 28.6 43.0





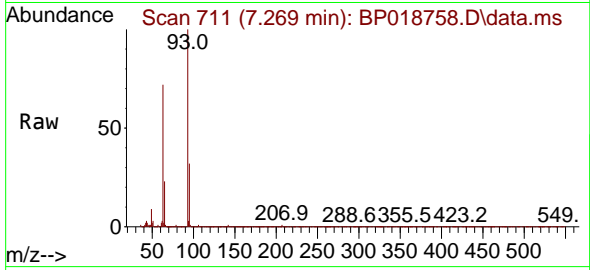
#10
 Bis(2-Chloroethyl)ether
 Concen: 26.343 ng/ul
 RT: 7.269 min Scan# 711
 Delta R.T. 0.006 min
 Lab File: BP018758.D
 Acq: 12 Dec 2023 09:32

Instrument :

BNA_P

ClientSampleId :

HOAB0MSD



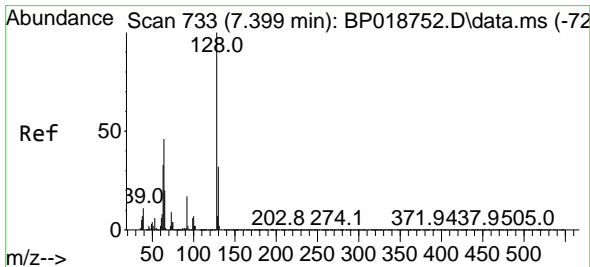
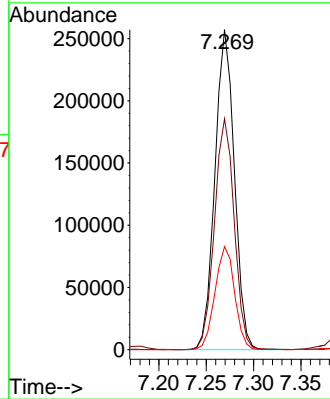
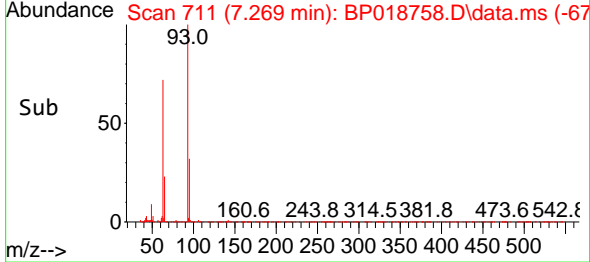
Tgt Ion: 93 Resp: 36736
 Ion Ratio Lower Upper
 93 100
 63 72.2 58.3 87.5
 95 32.2 25.9 38.9

Manual Integrations

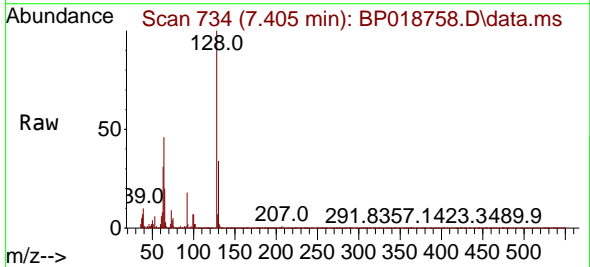
APPROVED

Reviewed By :Yogesh Patel 12/13/2023

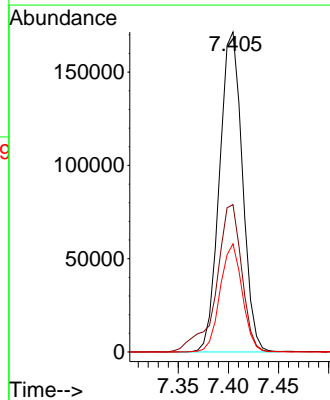
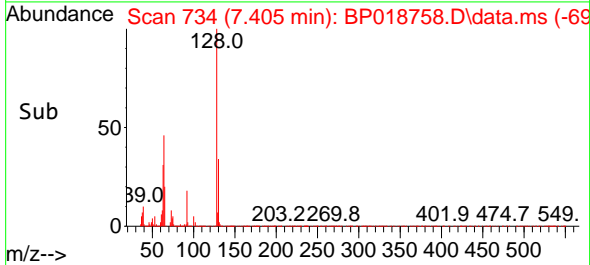
Supervised By :mohammad ahmed 12/14/2023

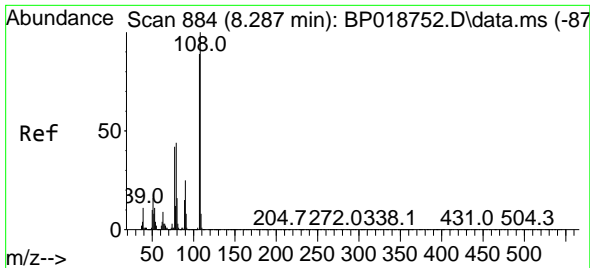


#12
 2-Chlorophenol
 Concen: 19.911 ng/ul
 RT: 7.405 min Scan# 734
 Delta R.T. 0.006 min
 Lab File: BP018758.D
 Acq: 12 Dec 2023 09:32



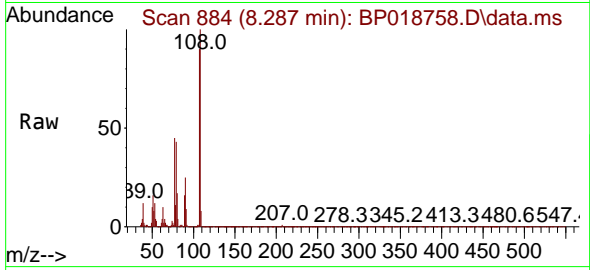
Tgt Ion:128 Resp: 272268
 Ion Ratio Lower Upper
 128 100
 64 46.0 37.0 55.4
 130 33.8 26.8 40.2





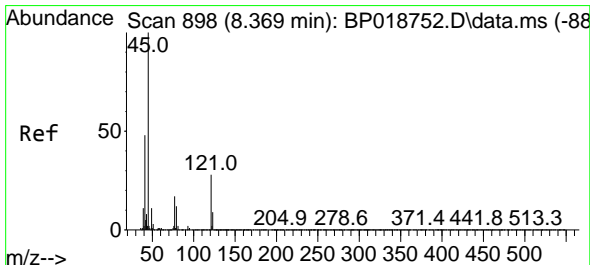
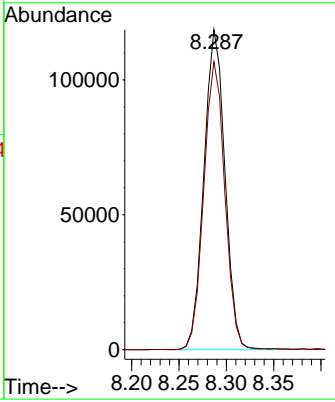
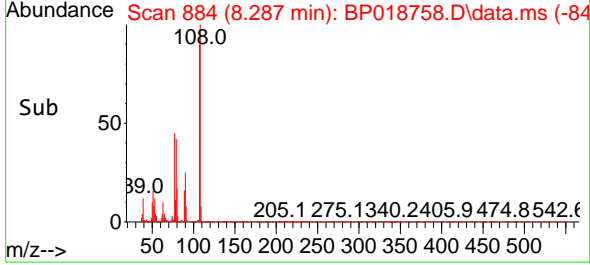
#13
 2-Methylphenol
 Concen: 14.133 ng/ul
 RT: 8.287 min Scan# 884
 Delta R.T. 0.006 min
 Lab File: BP018758.D
 Acq: 12 Dec 2023 09:32

Instrument : BNA_P
 ClientSampleId : HOAB0MSD

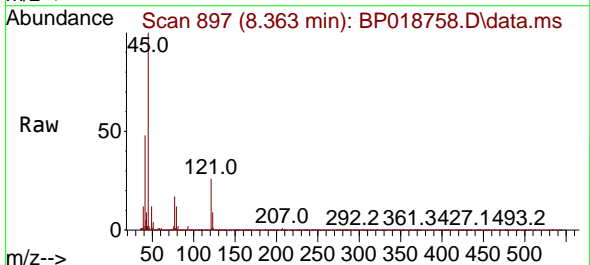


Tgt Ion: 108 Resp: 18372
 Ion Ratio Lower Upper
 108 100
 107 89.9 70.6 105.8

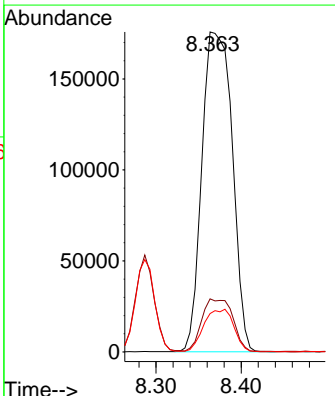
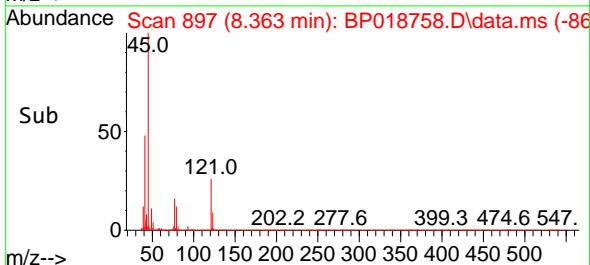
Manual Integrations
APPROVED
 Reviewed By :Yogesh Patel 12/13/2023
 Supervised By :mohammad ahmed 12/14/2023

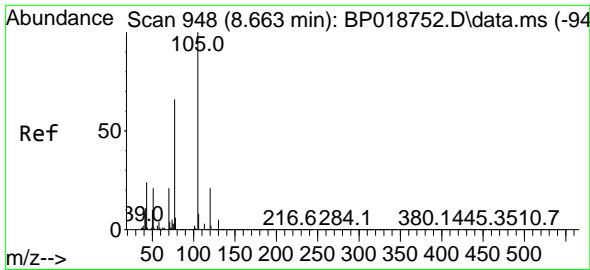


#14
 2,2'-oxybis(1-Chloropropane)
 Concen: 24.613 ng/ul
 RT: 8.363 min Scan# 897
 Delta R.T. -0.006 min
 Lab File: BP018758.D
 Acq: 12 Dec 2023 09:32



Tgt Ion: 45 Resp: 435521
 Ion Ratio Lower Upper
 45 100
 77 16.6 12.7 19.1
 79 12.0 10.5 15.7





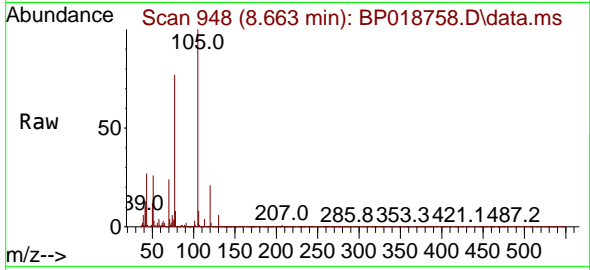
#16
 Acetophenone
 Concen: 27.236 ng/ul
 RT: 8.663 min Scan# 948
 Delta R.T. 0.000 min
 Lab File: BP018758.D
 Acq: 12 Dec 2023 09:32

Instrument :

BNA_P

Client Sample Id :

HOAB0MSD



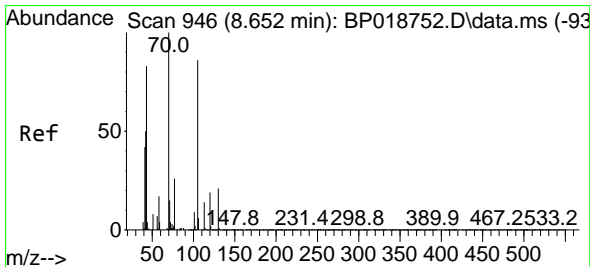
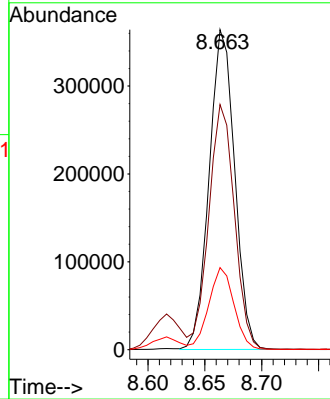
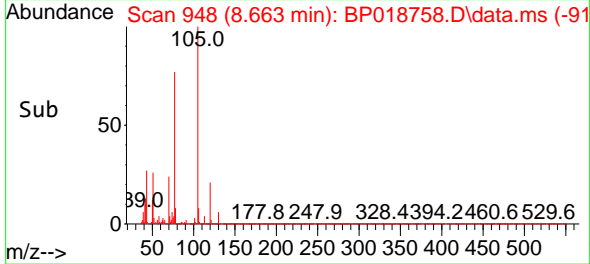
Tgt Ion: 105 Resp: 56880
 Ion Ratio Lower Upper
 105 100
 77 76.6 59.4 89.0
 51 25.6 19.4 29.0

Manual Integrations

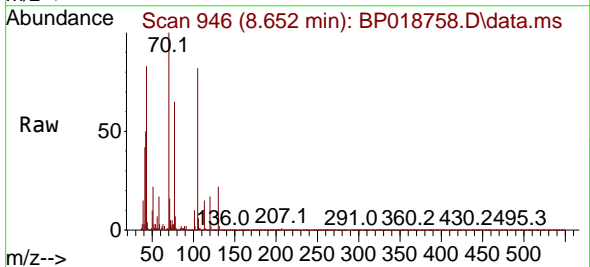
APPROVED

Reviewed By :Yogesh Patel 12/13/2023

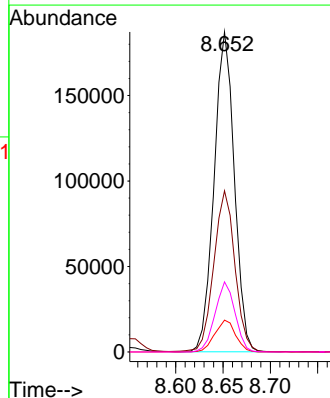
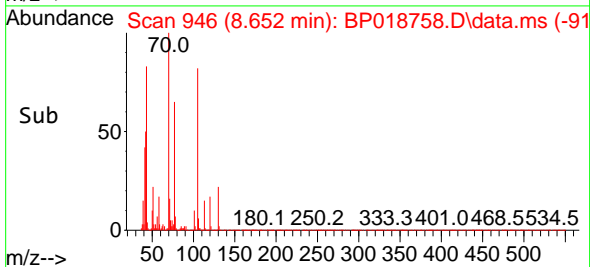
Supervised By :mohammad ahmed 12/14/2023

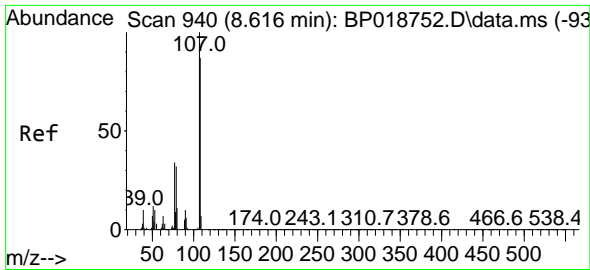


#17
 N-Nitroso-di-n-propylamine
 Concen: 24.231 ng/ul
 RT: 8.652 min Scan# 946
 Delta R.T. 0.000 min
 Lab File: BP018758.D
 Acq: 12 Dec 2023 09:32



Tgt Ion: 70 Resp: 278387
 Ion Ratio Lower Upper
 70 100
 42 50.3 41.0 61.4
 101 9.9 7.8 11.8
 130 21.9 16.9 25.3





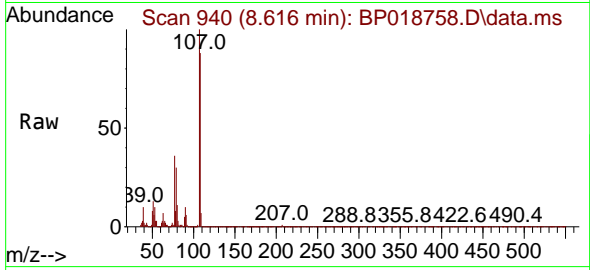
#18
 4-Methylphenol
 Concen: 11.891 ng/u1
 RT: 8.616 min Scan# 940
 Delta R.T. 0.000 min
 Lab File: BP018758.D
 Acq: 12 Dec 2023 09:32

Instrument :

BNA_P

ClientSampleId :

HOAB0MSD



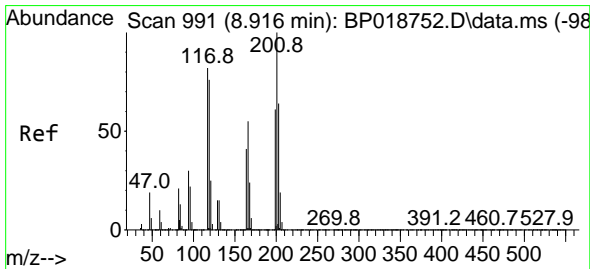
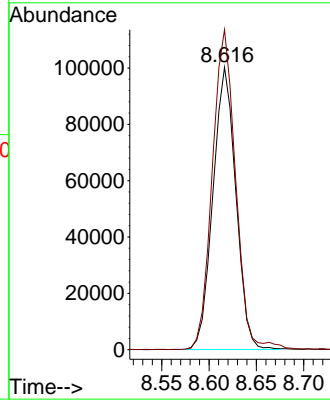
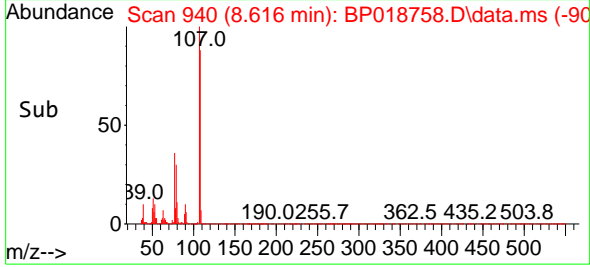
Tgt Ion:108 Resp: 16879
 Ion Ratio Lower Upper
 108 100
 107 113.3 90.6 136.0

Manual Integrations

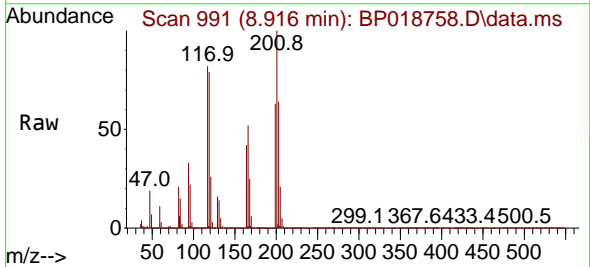
APPROVED

Reviewed By :Yogesh Patel 12/13/2023

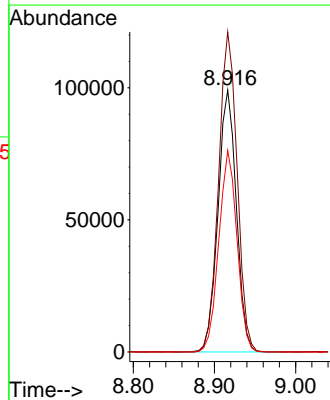
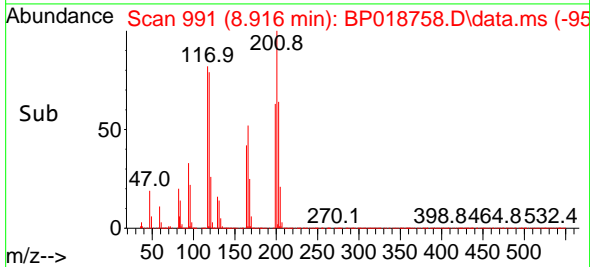
Supervised By :mohammad ahmed 12/14/2023

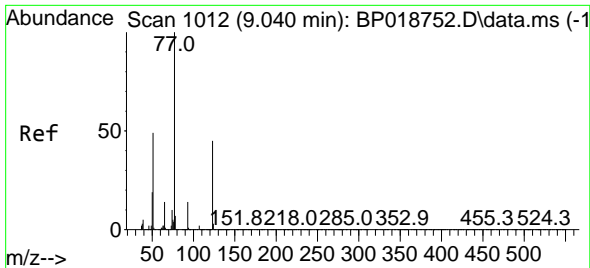


#19
 Hexachloroethane
 Concen: 27.809 ng/u1
 RT: 8.916 min Scan# 991
 Delta R.T. 0.000 min
 Lab File: BP018758.D
 Acq: 12 Dec 2023 09:32



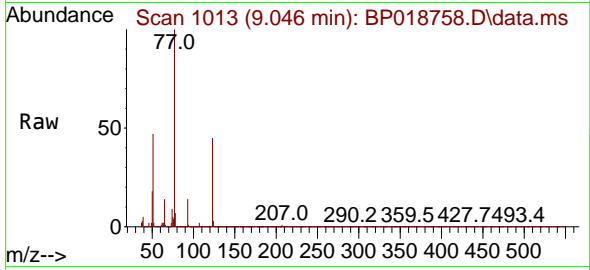
Tgt Ion:117 Resp: 155893
 Ion Ratio Lower Upper
 117 100
 201 122.2 83.7 125.5
 199 76.9 52.3 78.5





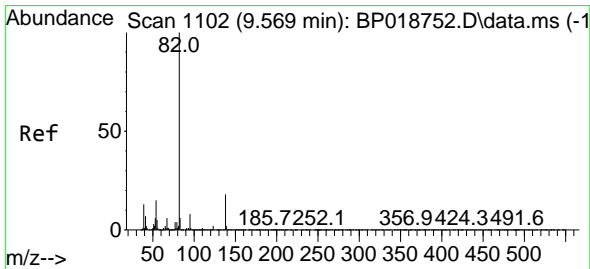
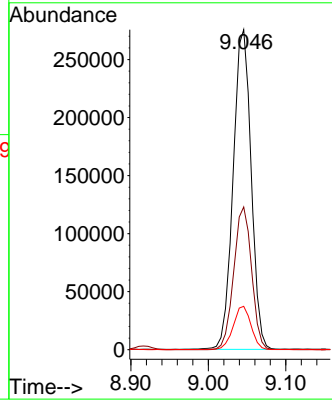
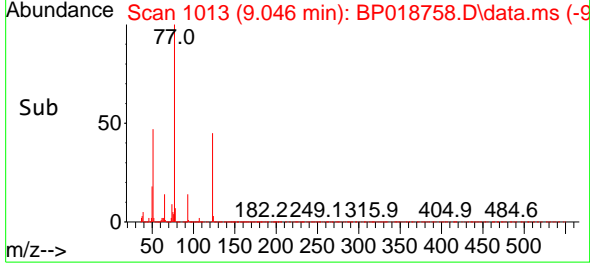
#22
 Nitrobenzene
 Concen: 30.812 ng/u1
 RT: 9.046 min Scan# 1012
 Delta R.T. 0.006 min
 Lab File: BP018758.D
 Acq: 12 Dec 2023 09:32

Instrument : BNA_P
 ClientSampleId : H0AB0MSD

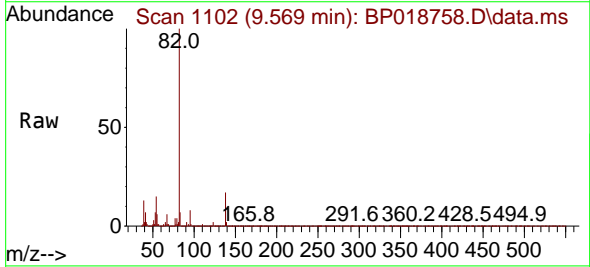


Tgt Ion: 77 Resp: 445494
 Ion Ratio Lower Upper
 77 100
 123 44.6 35.8 53.8
 65 13.6 10.5 15.7

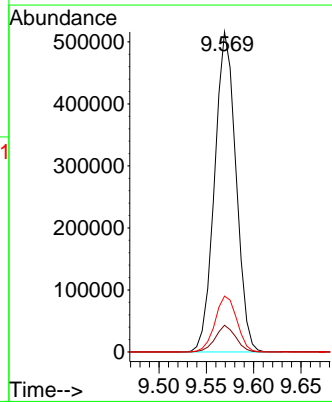
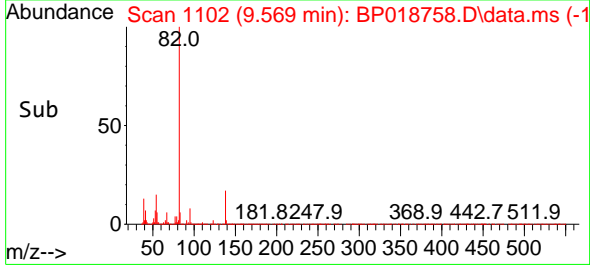
Manual Integrations
APPROVED
 Reviewed By :Yogesh Patel 12/13/2023
 Supervised By :mohammad ahmed 12/14/2023

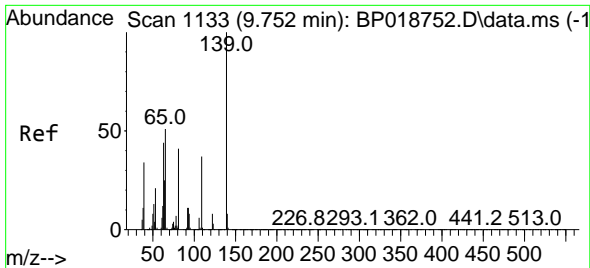


#23
 Isophorone
 Concen: 27.509 ng/u1
 RT: 9.569 min Scan# 1102
 Delta R.T. 0.000 min
 Lab File: BP018758.D
 Acq: 12 Dec 2023 09:32



Tgt Ion: 82 Resp: 810962
 Ion Ratio Lower Upper
 82 100
 95 8.4 5.5 8.3#
 138 17.5 13.5 20.3





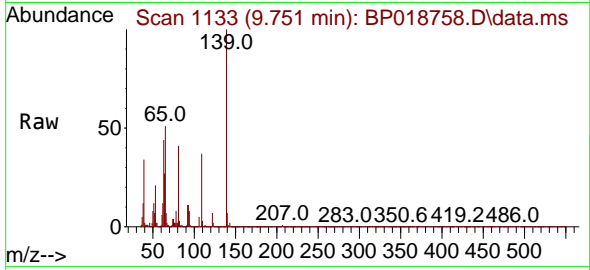
#25
 2-Nitrophenol
 Concen: 30.677 ng/ul
 RT: 9.751 min Scan# 1133
 Delta R.T. 0.000 min
 Lab File: BP018758.D
 Acq: 12 Dec 2023 09:32

Instrument :

BNA_P

ClientSampleId :

HOAB0MSD



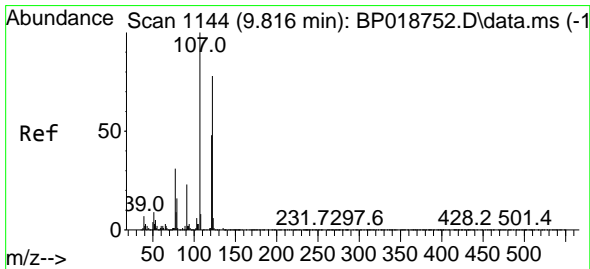
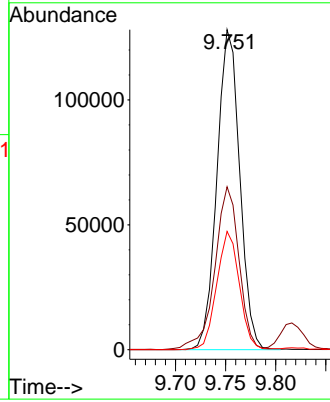
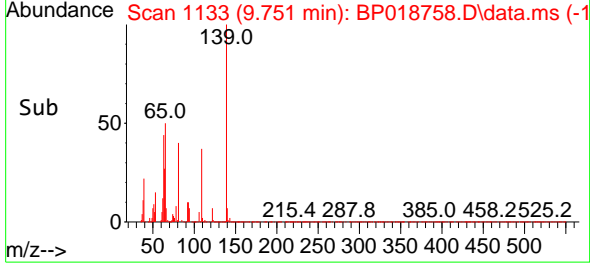
Tgt Ion:139 Resp: 202500
 Ion Ratio Lower Upper
 139 100
 65 50.9 39.1 58.7
 109 37.0 23.8 35.6

Manual Integrations

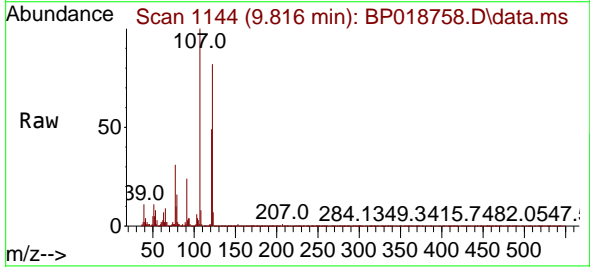
APPROVED

Reviewed By :Yogesh Patel 12/13/2023

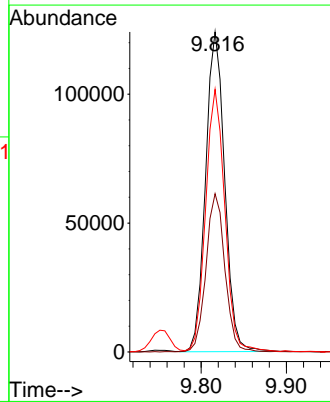
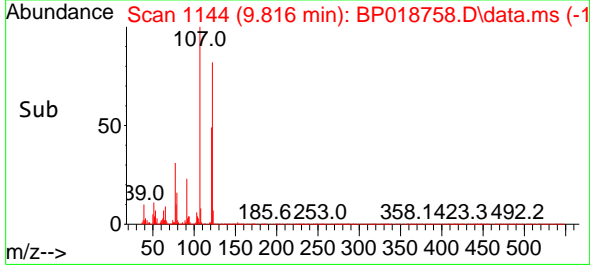
Supervised By :mohammad ahmed 12/14/2023

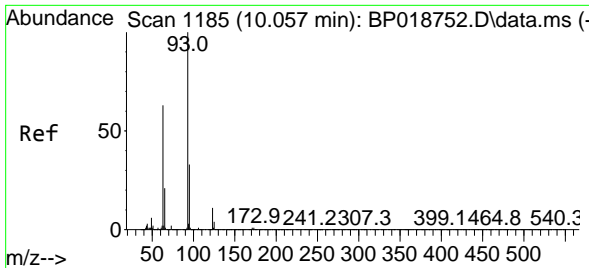


#26
 2,4-Dimethylphenol
 Concen: 14.979 ng/ul
 RT: 9.816 min Scan# 1144
 Delta R.T. 0.000 min
 Lab File: BP018758.D
 Acq: 12 Dec 2023 09:32



Tgt Ion:107 Resp: 193394
 Ion Ratio Lower Upper
 107 100
 121 49.5 40.0 60.0
 122 82.1 69.1 103.7





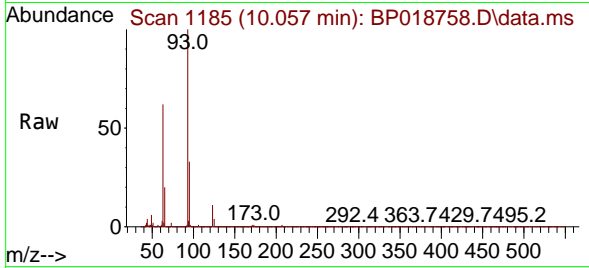
#27
 Bis(2-Chloroethoxy)methane
 Concen: 26.652 ng/ul
 RT: 10.057 min Scan# 1185
 Delta R.T. 0.000 min
 Lab File: BP018758.D
 Acq: 12 Dec 2023 09:32

Instrument :

BNA_P

ClientSampleId :

HOAB0MSD



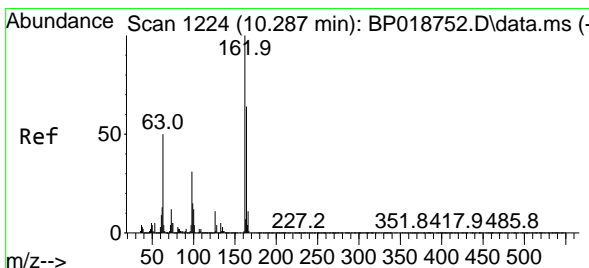
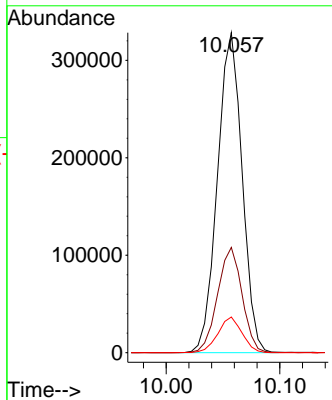
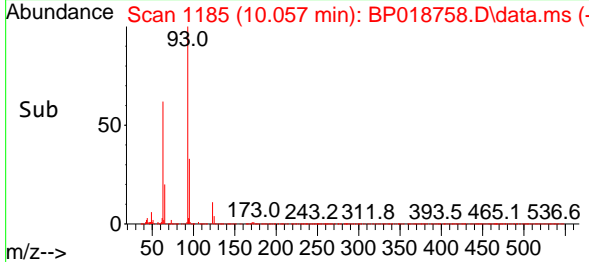
Tgt Ion	Ratio	Lower	Upper
93	100		
95	32.9	26.1	39.1
123	11.1	8.9	13.3

Manual Integrations

APPROVED

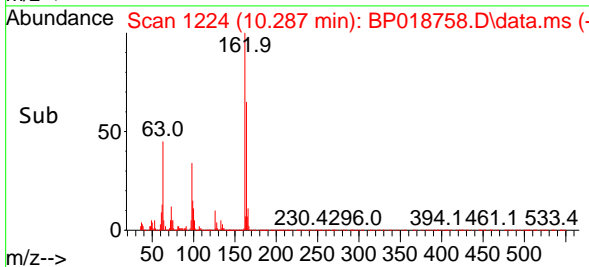
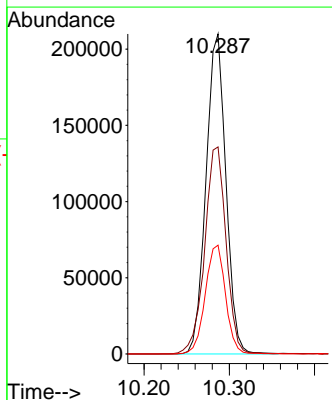
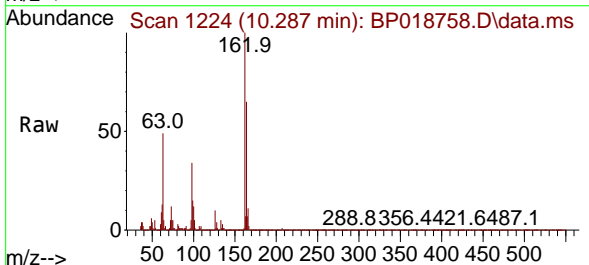
Reviewed By :Yogesh Patel 12/13/2023

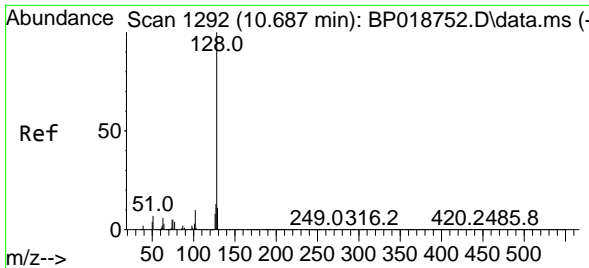
Supervised By :mohammad ahmed 12/14/2023



#29
 2,4-Dichlorophenol
 Concen: 28.087 ng/ul
 RT: 10.287 min Scan# 1224
 Delta R.T. 0.006 min
 Lab File: BP018758.D
 Acq: 12 Dec 2023 09:32

Tgt Ion	Ratio	Lower	Upper
162	100		
164	64.7	51.7	77.5
98	34.0	29.2	43.8





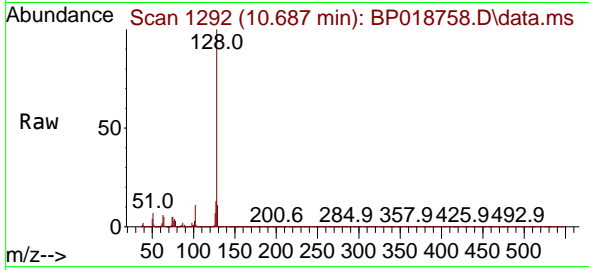
#30
 Naphthalene
 Concen: 28.677 ng/u1
 RT: 10.687 min Scan# 11
 Delta R.T. 0.000 min
 Lab File: BP018758.D
 Acq: 12 Dec 2023 09:32

Instrument :

BNA_P

ClientSampleId :

HOAB0MSD



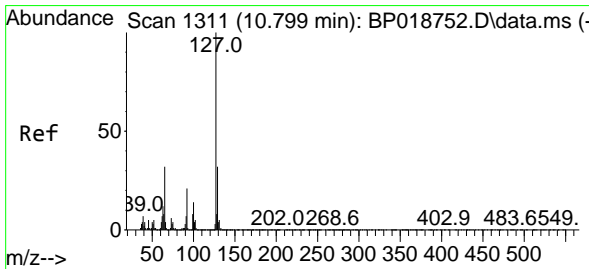
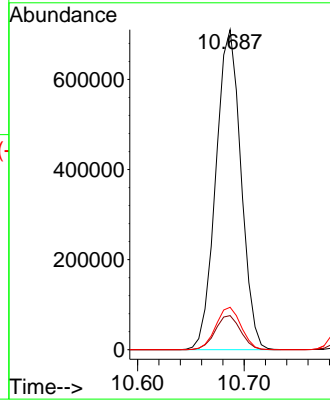
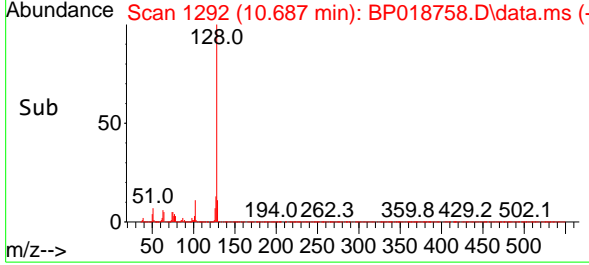
Tgt Ion:128 Resp: 116235
 Ion Ratio Lower Upper
 128 100
 129 10.6 8.9 13.3
 127 13.2 10.5 15.7

Manual Integrations

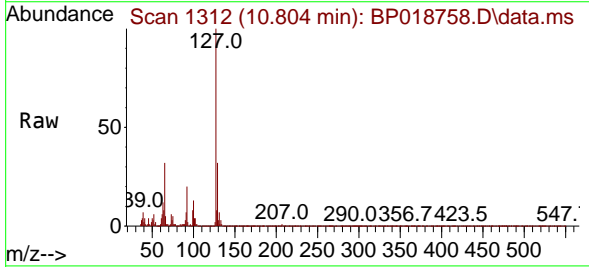
APPROVED

Reviewed By :Yogesh Patel 12/13/2023

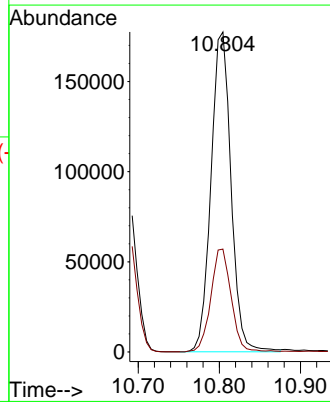
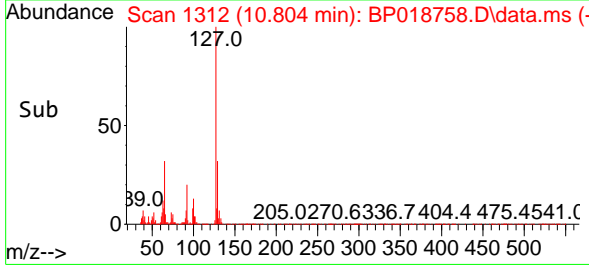
Supervised By :mohammad ahmed 12/14/2023

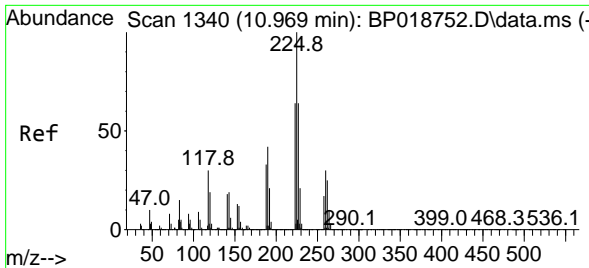


#32
 4-Chloroaniline
 Concen: 19.368 ng/u1
 RT: 10.804 min Scan# 1312
 Delta R.T. 0.006 min
 Lab File: BP018758.D
 Acq: 12 Dec 2023 09:32



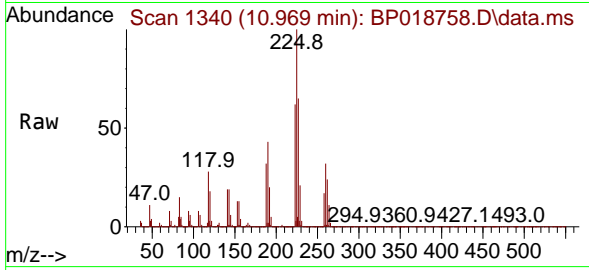
Tgt Ion:127 Resp: 304130
 Ion Ratio Lower Upper
 127 100
 129 32.2 25.6 38.4





#33
 Hexachlorobutadiene
 Concen: 37.357 ng/uI
 RT: 10.969 min Scan# 111
 Delta R.T. 0.000 min
 Lab File: BP018758.D
 Acq: 12 Dec 2023 09:32

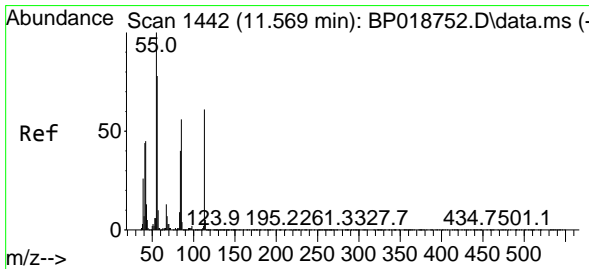
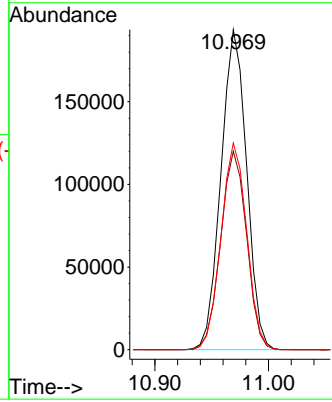
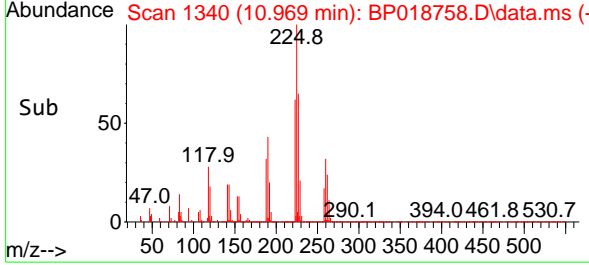
Instrument : BNA_P
 ClientSampleId : H0AB0MSD



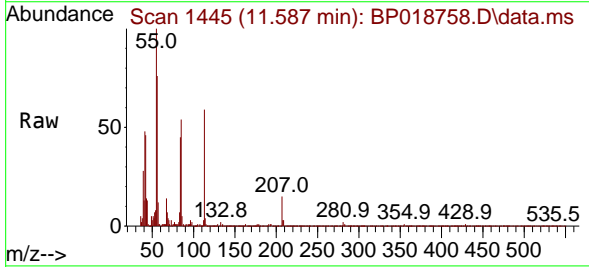
Tgt Ion: 225 Resp: 30380
 Ion Ratio Lower Upper
 225 100
 223 62.0 49.5 74.3
 227 64.6 50.9 76.3

Manual Integrations
 APPROVED

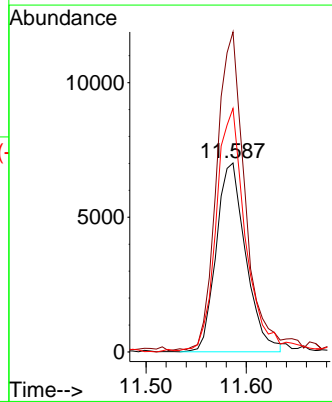
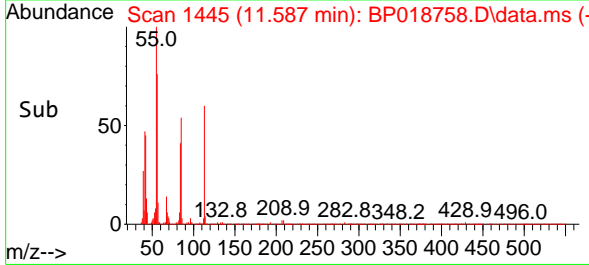
Reviewed By :Yogesh Patel 12/13/2023
 Supervised By :mohammad ahmed 12/14/2023

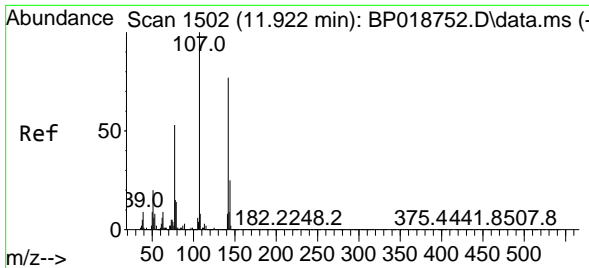


#34
 Caprolactam
 Concen: 3.851 ng/uI
 RT: 11.587 min Scan# 1445
 Delta R.T. 0.012 min
 Lab File: BP018758.D
 Acq: 12 Dec 2023 09:32



Tgt Ion: 113 Resp: 14339
 Ion Ratio Lower Upper
 113 100
 55 169.3 133.7 200.5
 56 128.8 97.4 146.2





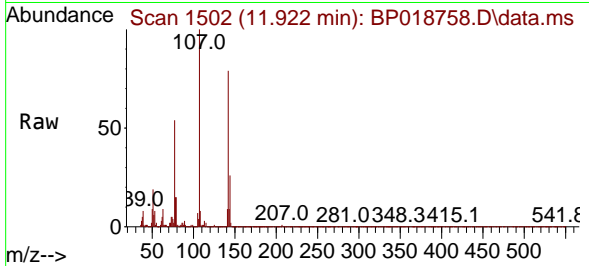
#35
 4-Chloro-3-methylphenol
 Concen: 23.802 ng/ul
 RT: 11.922 min Scan# 1502
 Delta R.T. 0.000 min
 Lab File: BP018758.D
 Acq: 12 Dec 2023 09:32

Instrument :

BNA_P

ClientSampleId :

HOAB0MSD



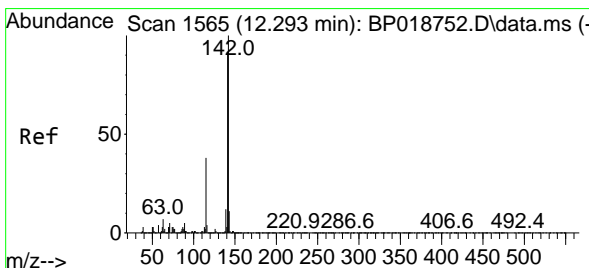
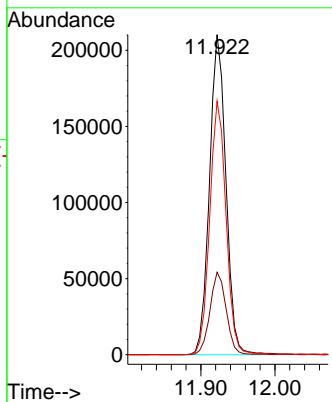
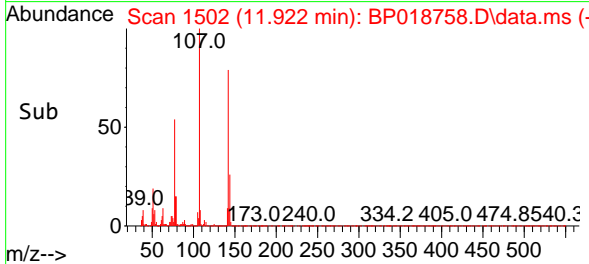
Tgt Ion:107 Resp: 323789
 Ion Ratio Lower Upper
 107 100
 144 25.7 21.0 31.6
 142 79.2 63.6 95.4

Manual Integrations

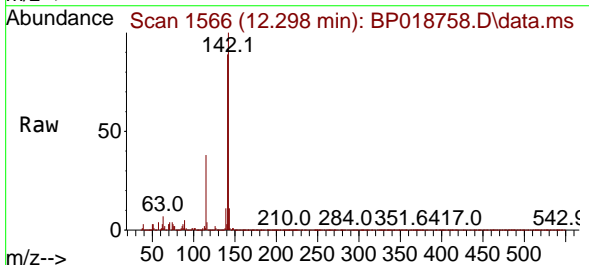
APPROVED

Reviewed By :Yogesh Patel 12/13/2023

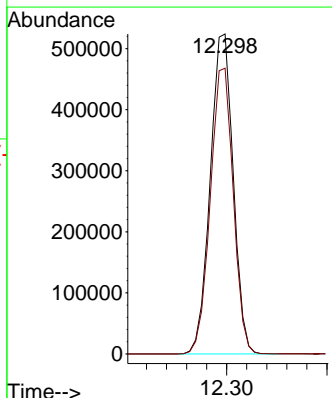
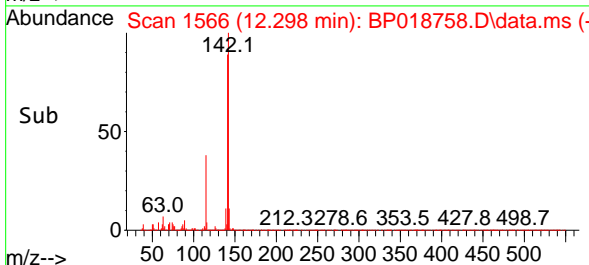
Supervised By :mohammad ahmed 12/14/2023

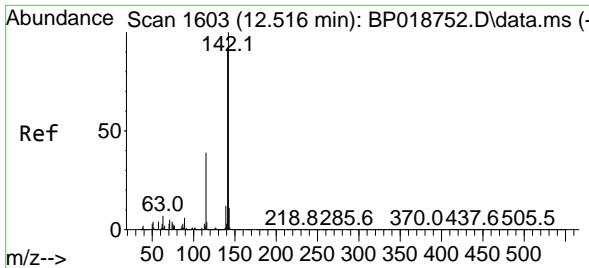


#36
 2-Methylnaphthalene
 Concen: 28.993 ng/ul
 RT: 12.298 min Scan# 1566
 Delta R.T. 0.000 min
 Lab File: BP018758.D
 Acq: 12 Dec 2023 09:32



Tgt Ion:142 Resp: 832522
 Ion Ratio Lower Upper
 142 100
 141 89.3 71.4 107.0





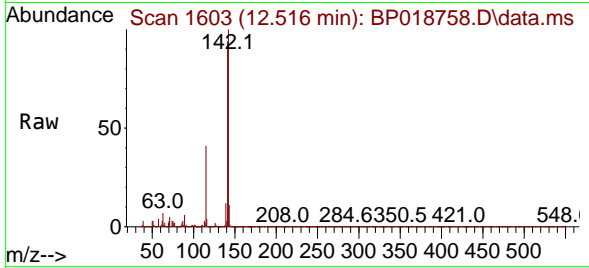
#37
 1-Methylnaphthalene
 Concen: 28.024 ng/ul
 RT: 12.516 min Scan# 1603
 Delta R.T. 0.000 min
 Lab File: BP018758.D
 Acq: 12 Dec 2023 09:32

Instrument :

BNA_P

Client SampleId :

HOAB0MSD



Tgt Ion:142 Resp: 812668

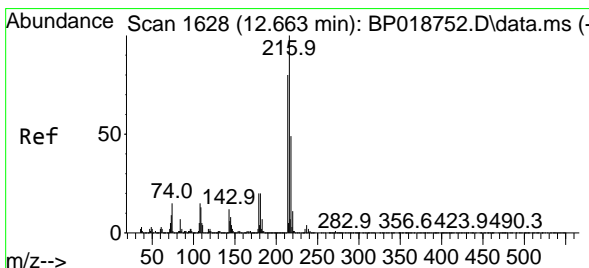
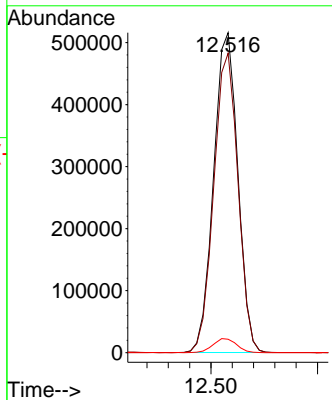
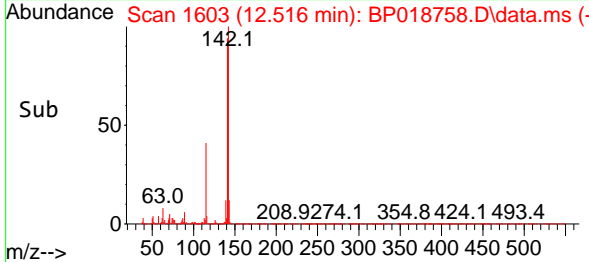
Ion	Ratio	Lower	Upper
142	100		
141	93.6	73.5	110.3
116	4.2	2.8	4.2

Manual Integrations

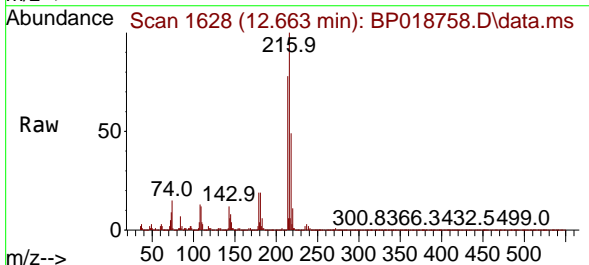
APPROVED

Reviewed By :Yogesh Patel 12/13/2023

Supervised By :mohammad ahmed 12/14/2023

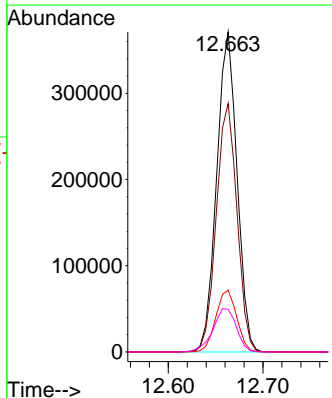
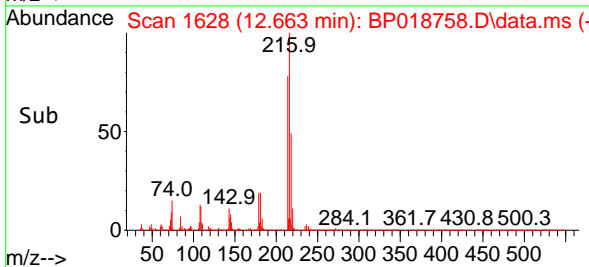


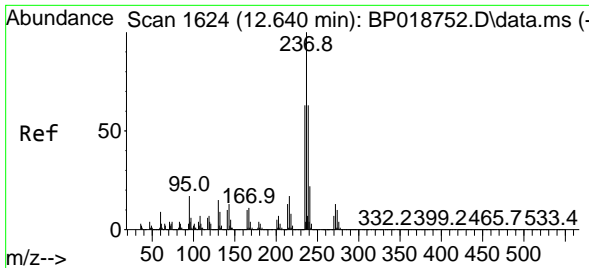
#39
 1,2,4,5-Tetrachlorobenzene
 Concen: 35.837 ng/ul
 RT: 12.663 min Scan# 1628
 Delta R.T. 0.000 min
 Lab File: BP018758.D
 Acq: 12 Dec 2023 09:32



Tgt Ion:216 Resp: 555637

Ion	Ratio	Lower	Upper
216	100		
214	77.7	63.9	95.9
179	19.3	16.3	24.5
108	13.3	12.6	19.0





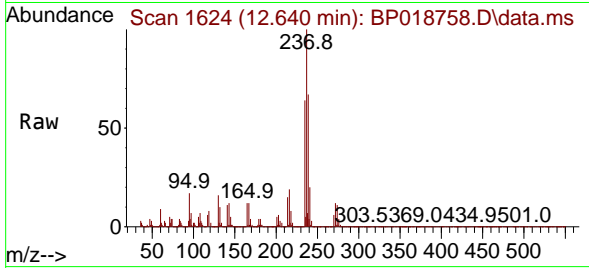
#40
 Hexachlorocyclopentadiene
 Concen: 26.424 ng/ul
 RT: 12.640 min Scan# 1624
 Delta R.T. 0.000 min
 Lab File: BP018758.D
 Acq: 12 Dec 2023 09:32

Instrument :

BNA_P

ClientSampleId :

HOAB0MSD



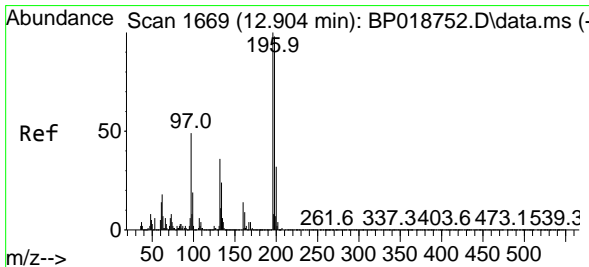
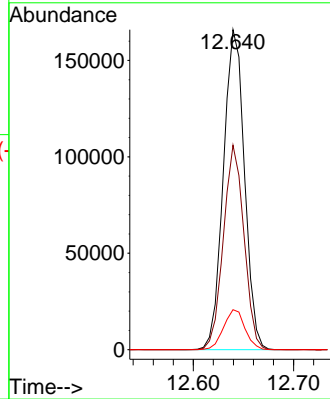
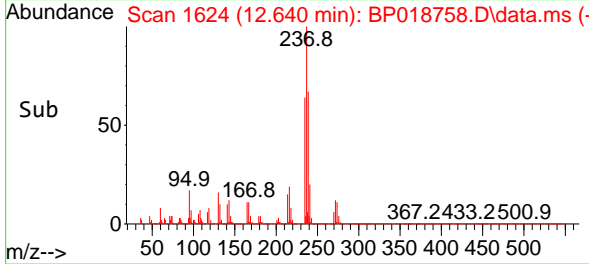
Tgt Ion:237 Resp: 242834
 Ion Ratio Lower Upper
 237 100
 235 63.9 49.4 74.0
 272 12.5 9.8 14.8

Manual Integrations

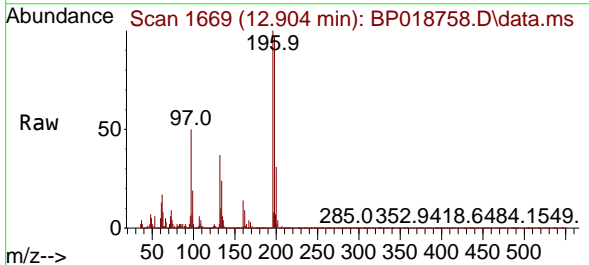
APPROVED

Reviewed By :Yogesh Patel 12/13/2023

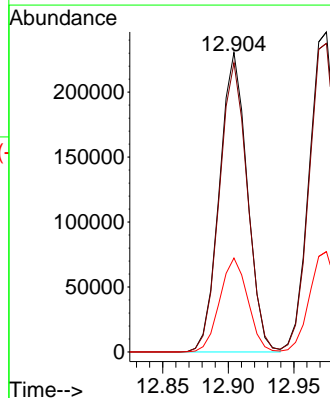
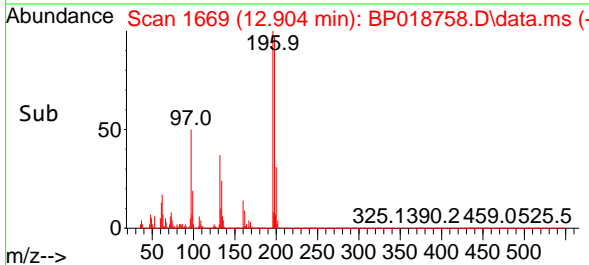
Supervised By :mohammad ahmed 12/14/2023

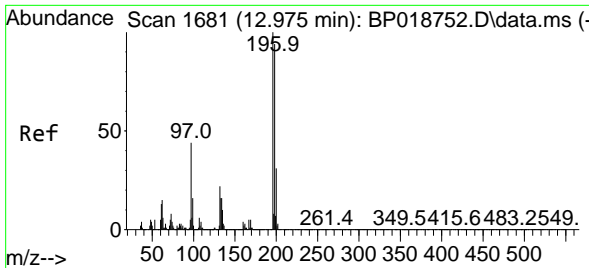


#41
 2,4,6-Trichlorophenol
 Concen: 34.017 ng/ul
 RT: 12.904 min Scan# 1669
 Delta R.T. 0.000 min
 Lab File: BP018758.D
 Acq: 12 Dec 2023 09:32



Tgt Ion:196 Resp: 339290
 Ion Ratio Lower Upper
 196 100
 198 96.6 76.9 115.3
 200 31.4 25.0 37.6





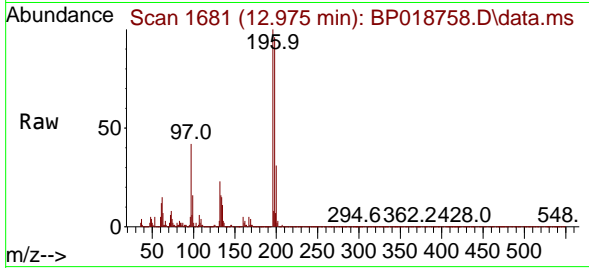
#42
 2,4,5-Trichlorophenol
 Concen: 34.036 ng/u1
 RT: 12.975 min Scan# 1681
 Delta R.T. 0.000 min
 Lab File: BP018758.D
 Acq: 12 Dec 2023 09:32

Instrument :

BNA_P

ClientSampleId :

HOAB0MSD



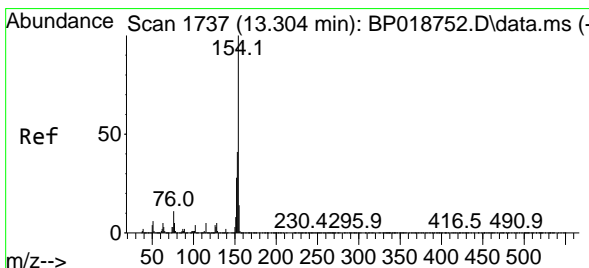
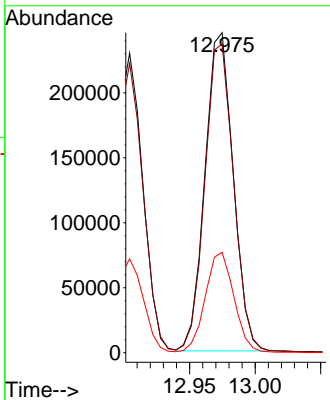
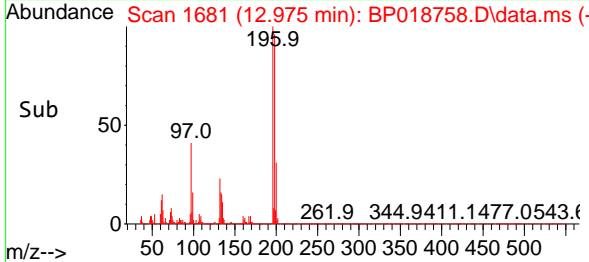
Tgt Ion:196 Resp: 36804
 Ion Ratio Lower Upper
 196 100
 198 96.4 77.9 116.9
 200 31.4 25.2 37.8

Manual Integrations

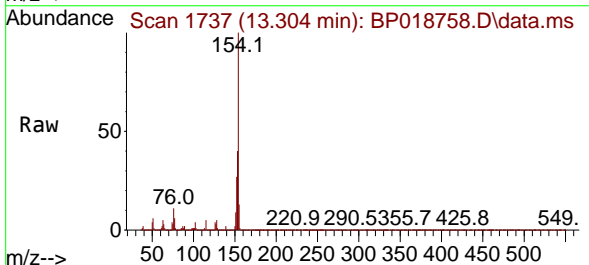
APPROVED

Reviewed By :Yogesh Patel 12/13/2023

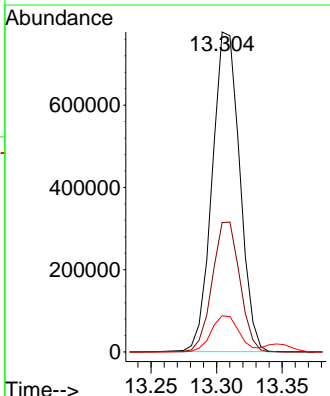
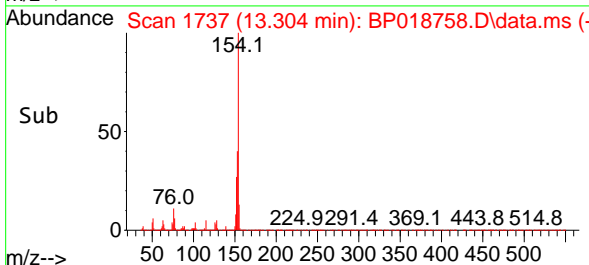
Supervised By :mohammad ahmed 12/14/2023

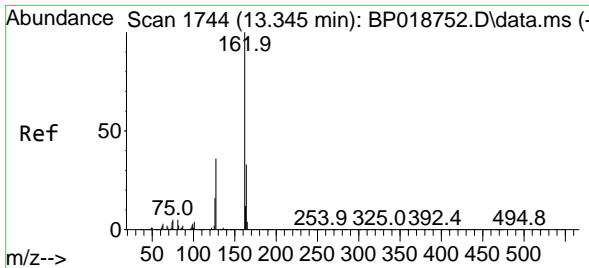


#43
 1,1'-Biphenyl
 Concen: 30.657 ng/u1
 RT: 13.304 min Scan# 1737
 Delta R.T. -0.006 min
 Lab File: BP018758.D
 Acq: 12 Dec 2023 09:32



Tgt Ion:154 Resp: 1133072
 Ion Ratio Lower Upper
 154 100
 153 40.5 32.8 49.2
 76 11.3 10.7 16.1





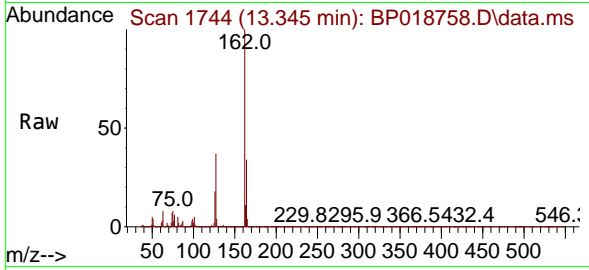
#44
 2-Chloronaphthalene
 Concen: 31.727 ng/ul
 RT: 13.345 min Scan# 1744
 Delta R.T. -0.006 min
 Lab File: BP018758.D
 Acq: 12 Dec 2023 09:32

Instrument :

BNA_P

Client SampleId :

HOAB0MSD



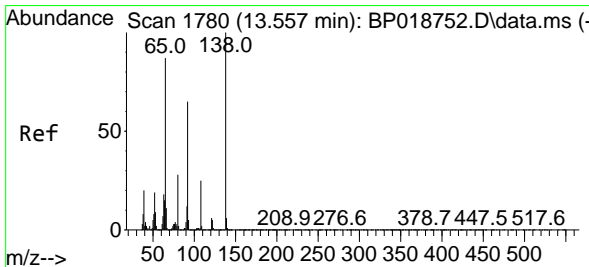
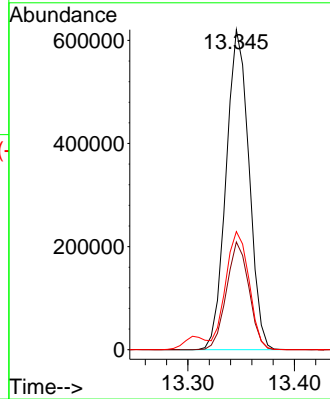
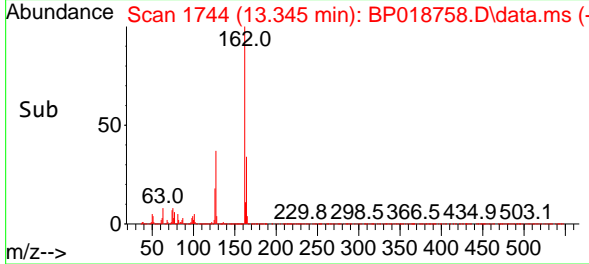
Tgt Ion: 162 Resp: 926129
 Ion Ratio Lower Upper
 162 100
 164 33.6 25.7 38.5
 127 36.9 30.3 45.5

Manual Integrations

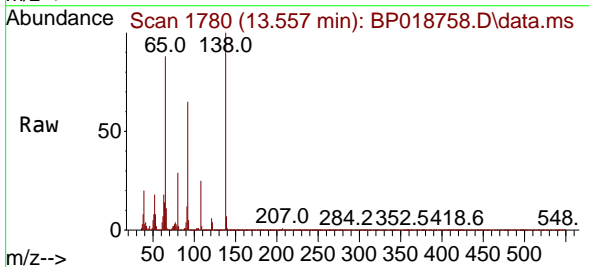
APPROVED

Reviewed By :Yogesh Patel 12/13/2023

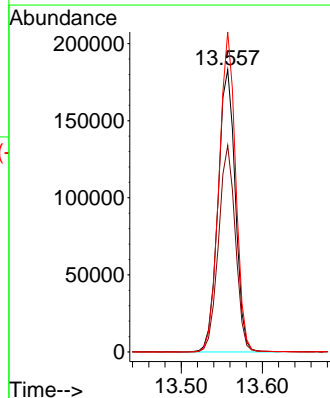
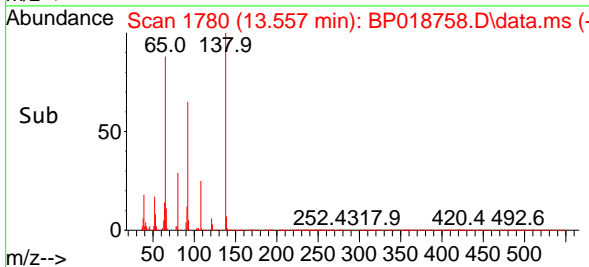
Supervised By :mohammad ahmed 12/14/2023

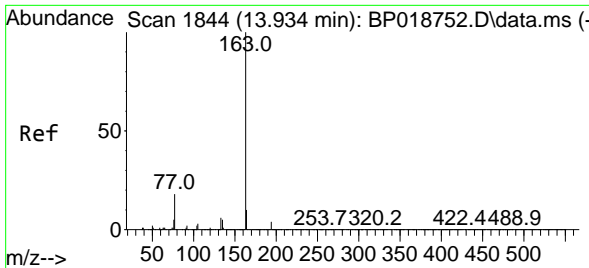


#45
 2-Nitroaniline
 Concen: 34.223 ng/ul
 RT: 13.557 min Scan# 1780
 Delta R.T. 0.000 min
 Lab File: BP018758.D
 Acq: 12 Dec 2023 09:32



Tgt Ion: 65 Resp: 270820
 Ion Ratio Lower Upper
 65 100
 92 73.2 56.9 85.3
 138 113.4 88.2 132.2





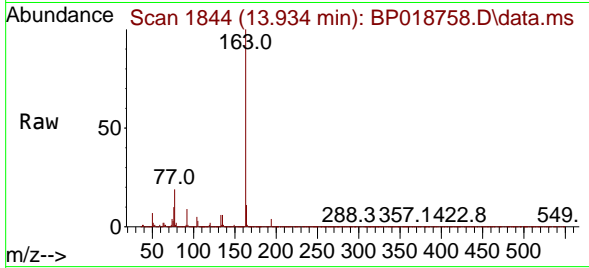
#47
 Dimethylphthalate
 Concen: 34.466 ng/ul
 RT: 13.934 min Scan# 1844
 Delta R.T. 0.000 min
 Lab File: BP018758.D
 Acq: 12 Dec 2023 09:32

Instrument :

BNA_P

ClientSampleId :

HOAB0MSD



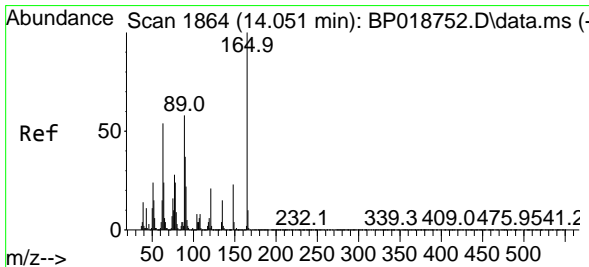
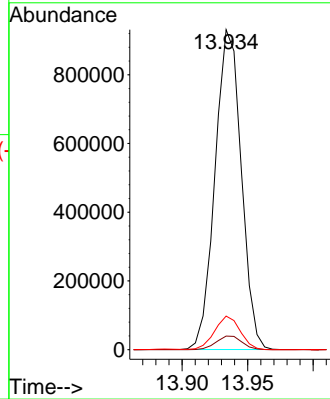
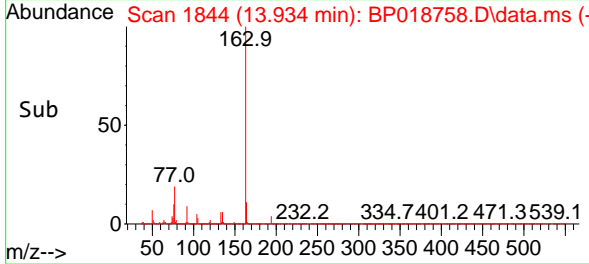
Tgt Ion:163 Resp: 129398
 Ion Ratio Lower Upper
 163 100
 194 4.3 3.2 4.8
 164 10.5 8.0 12.0

Manual Integrations

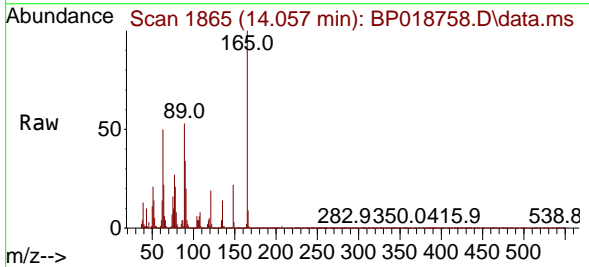
APPROVED

Reviewed By :Yogesh Patel 12/13/2023

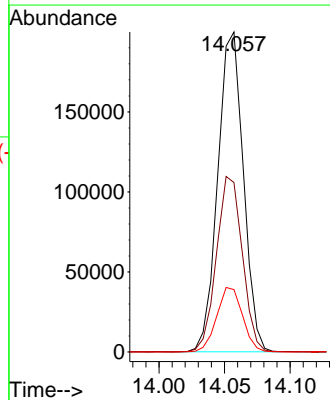
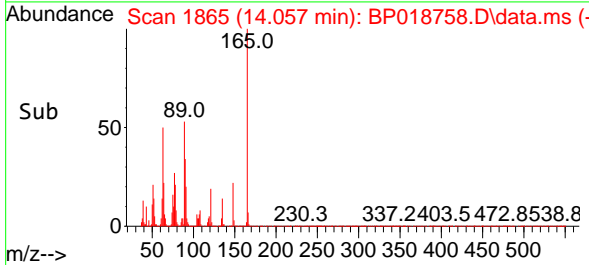
Supervised By :mohammad ahmed 12/14/2023

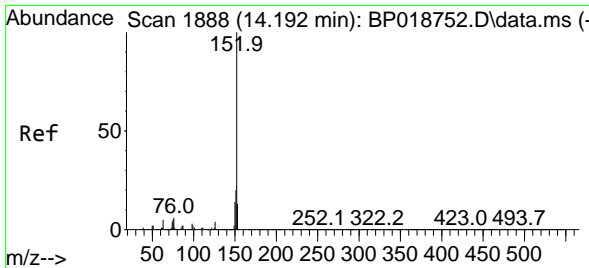


#48
 2,6-Dinitrotoluene
 Concen: 38.209 ng/ul
 RT: 14.057 min Scan# 1865
 Delta R.T. 0.000 min
 Lab File: BP018758.D
 Acq: 12 Dec 2023 09:32



Tgt Ion:165 Resp: 271030
 Ion Ratio Lower Upper
 165 100
 89 52.9 46.6 70.0
 121 19.5 17.3 25.9





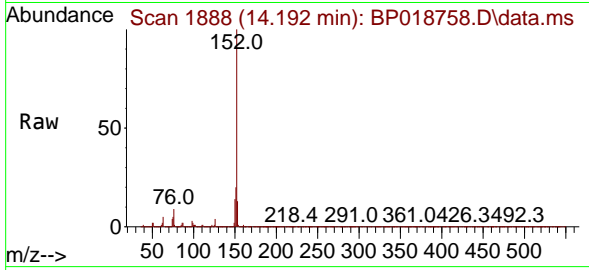
#50
 Acenaphthylene
 Concen: 31.169 ng/u1
 RT: 14.192 min Scan# 1888
 Delta R.T. 0.000 min
 Lab File: BP018758.D
 Acq: 12 Dec 2023 09:32

Instrument :

BNA_P

ClientSampleId :

HOAB0MSD



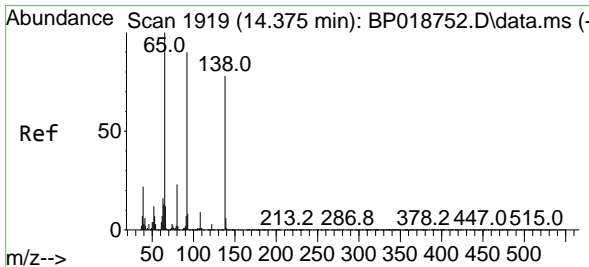
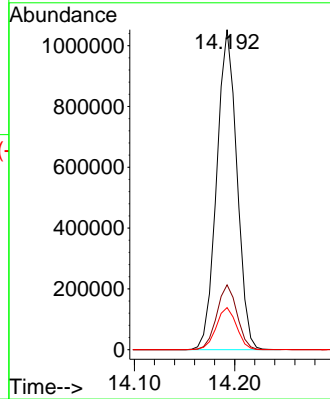
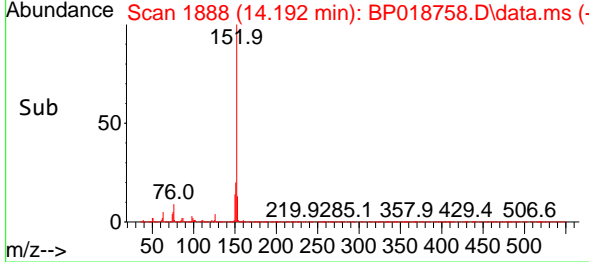
Tgt Ion:152 Resp: 1471778
 Ion Ratio Lower Upper
 152 100
 151 20.3 15.9 23.9
 153 13.2 10.6 16.0

Manual Integrations

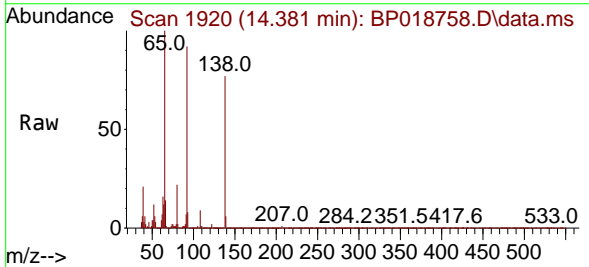
APPROVED

Reviewed By :Yogesh Patel 12/13/2023

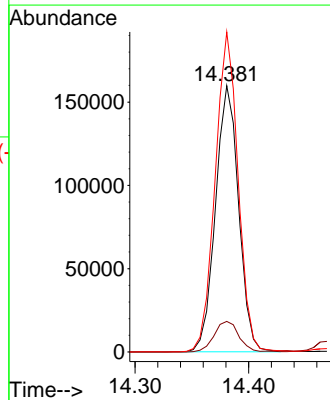
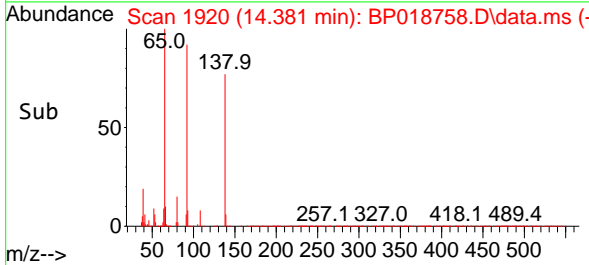
Supervised By :mohammad ahmed 12/14/2023

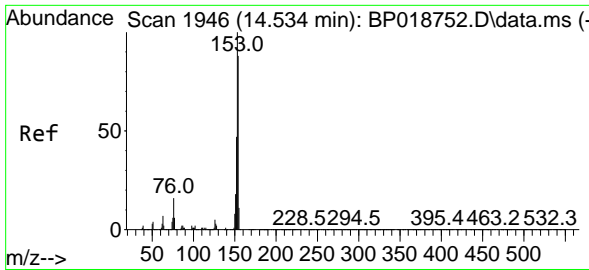


#51
 3-Nitroaniline
 Concen: 31.960 ng/u1
 RT: 14.381 min Scan# 1920
 Delta R.T. 0.000 min
 Lab File: BP018758.D
 Acq: 12 Dec 2023 09:32



Tgt Ion:138 Resp: 226305
 Ion Ratio Lower Upper
 138 100
 108 11.5 9.5 14.3
 92 120.2 93.1 139.7





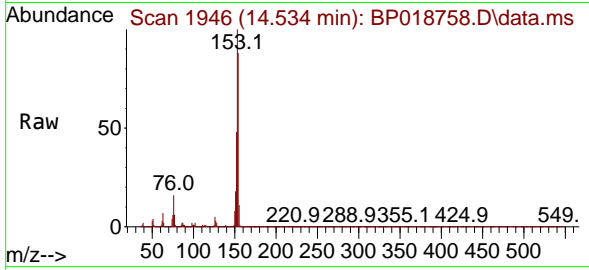
#52
 Acenaphthene
 Concen: 31.713 ng/u1
 RT: 14.534 min Scan# 1946
 Delta R.T. 0.000 min
 Lab File: BP018758.D
 Acq: 12 Dec 2023 09:32

Instrument :

BNA_P

ClientSampleId :

HOAB0MSD



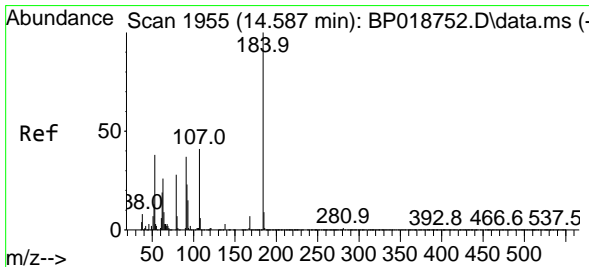
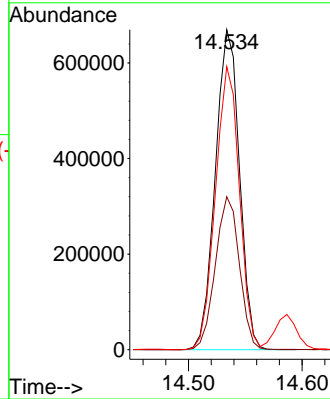
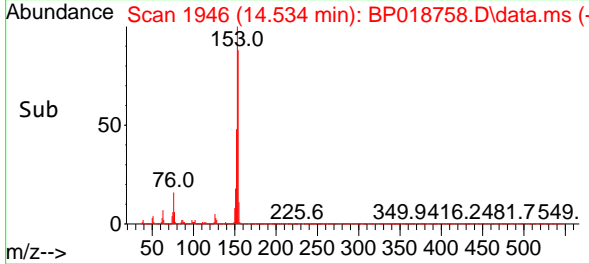
Tgt Ion:153 Resp: 99097
 Ion Ratio Lower Upper
 153 100
 152 47.8 38.1 57.1
 154 88.4 71.7 107.5

Manual Integrations

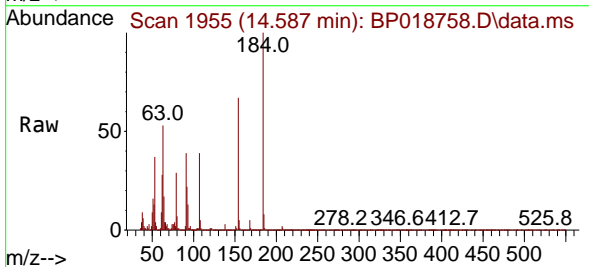
APPROVED

Reviewed By :Yogesh Patel 12/13/2023

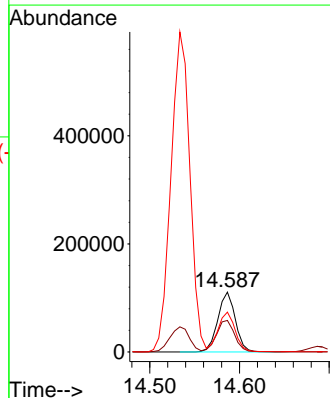
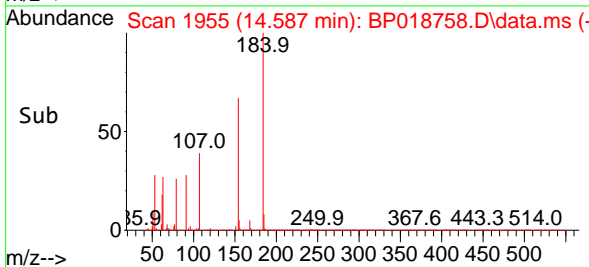
Supervised By :mohammad ahmed 12/14/2023

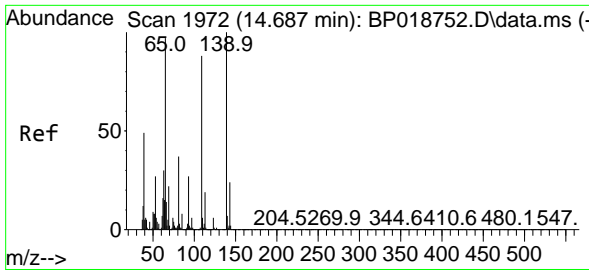


#53
 2,4-Dinitrophenol
 Concen: 39.842 ng/u1
 RT: 14.587 min Scan# 1955
 Delta R.T. 0.000 min
 Lab File: BP018758.D
 Acq: 12 Dec 2023 09:32



Tgt Ion:184 Resp: 149779
 Ion Ratio Lower Upper
 184 100
 63 52.9 48.2 72.4
 154 66.7 49.1 73.7





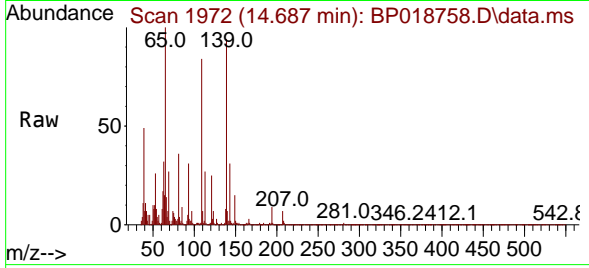
#55
 4-Nitrophenol
 Concen: 8.885 ng/u1
 RT: 14.687 min Scan# 1972
 Delta R.T. -0.006 min
 Lab File: BP018758.D
 Acq: 12 Dec 2023 09:32

Instrument :

BNA_P

ClientSampleId :

HOAB0MSD



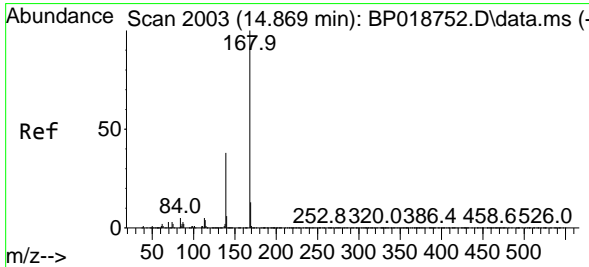
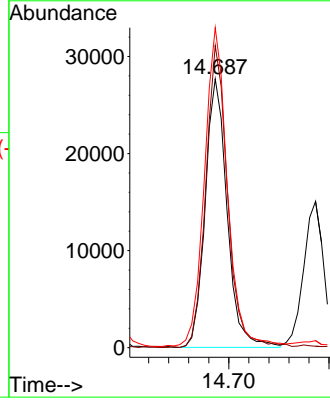
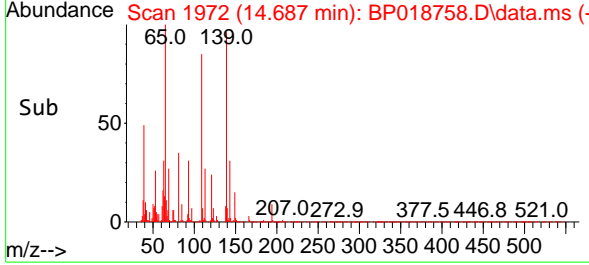
Tgt Ion:109 Resp: 42024
 Ion Ratio Lower Upper
 109 100
 139 112.4 109.0 163.4
 65 119.1 106.2 159.4

Manual Integrations

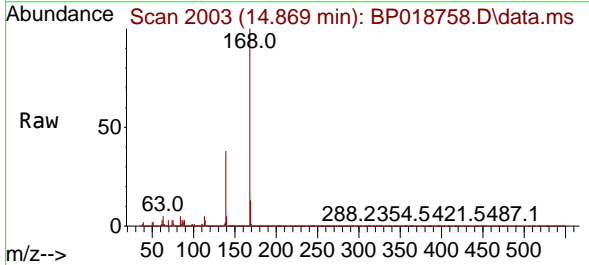
APPROVED

Reviewed By :Yogesh Patel 12/13/2023

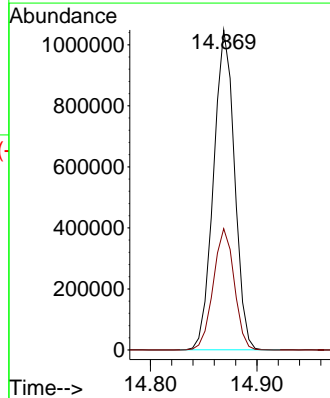
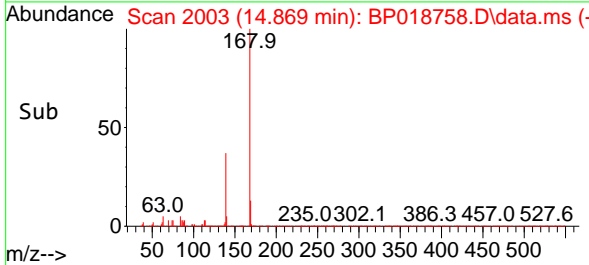
Supervised By :mohammad ahmed 12/14/2023

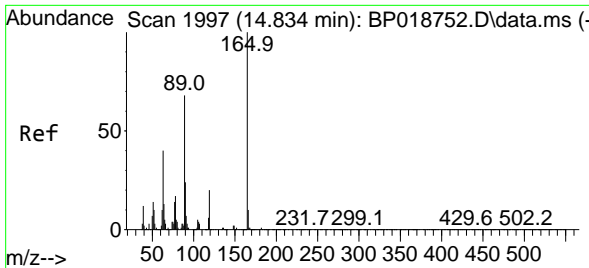


#56
 Dibenzofuran
 Concen: 32.997 ng/u1
 RT: 14.869 min Scan# 2003
 Delta R.T. 0.000 min
 Lab File: BP018758.D
 Acq: 12 Dec 2023 09:32



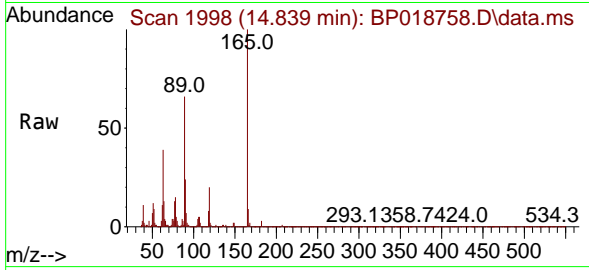
Tgt Ion:168 Resp: 1431837
 Ion Ratio Lower Upper
 168 100
 139 37.9 29.1 43.7





#57
 2,4-Dinitrotoluene
 Concen: 40.289 ng/ul
 RT: 14.839 min Scan# 1998
 Delta R.T. 0.000 min
 Lab File: BP018758.D
 Acq: 12 Dec 2023 09:32

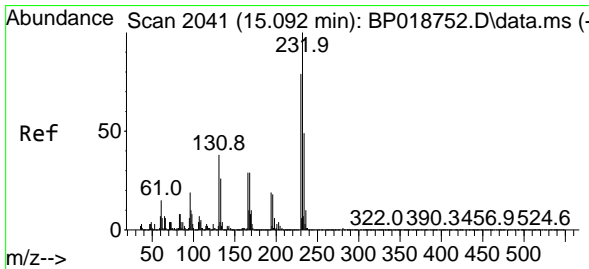
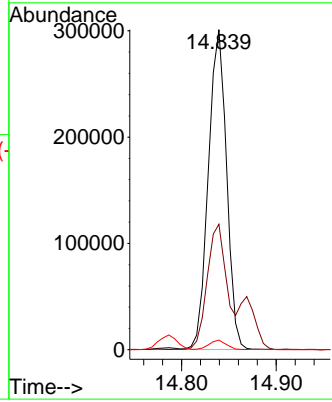
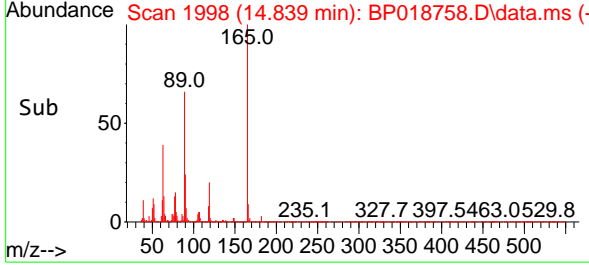
Instrument : BNA_P
 ClientSampleId : HOAB0MSD



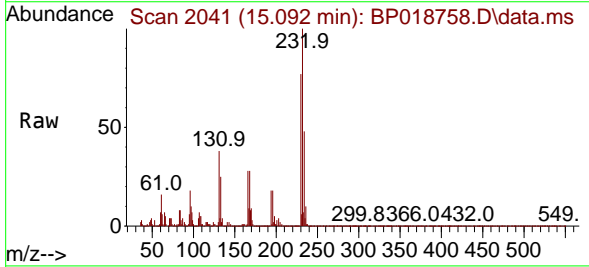
Tgt Ion:165 Resp: 401998
 Ion Ratio Lower Upper
 165 100
 63 39.2 32.7 49.1
 182 3.0 2.1 3.1

Manual Integrations
APPROVED

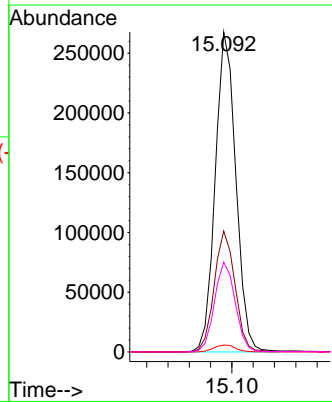
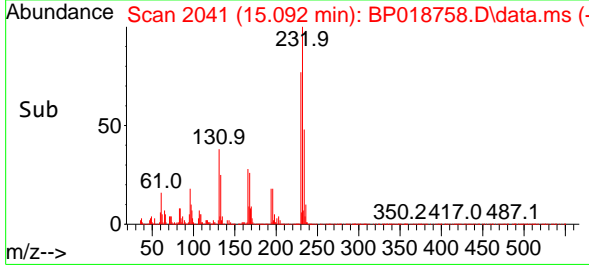
Reviewed By :Yogesh Patel 12/13/2023
 Supervised By :mohammad ahmed 12/14/2023

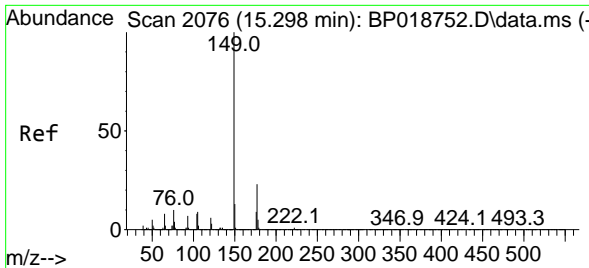


#58
 2,3,4,6-Tetrachlorophenol
 Concen: 39.603 ng/ul
 RT: 15.092 min Scan# 2041
 Delta R.T. -0.006 min
 Lab File: BP018758.D
 Acq: 12 Dec 2023 09:32



Tgt Ion:232 Resp: 359213
 Ion Ratio Lower Upper
 232 100
 131 37.8 33.8 50.8
 130 2.1 1.8 2.8
 166 28.1 24.7 37.1





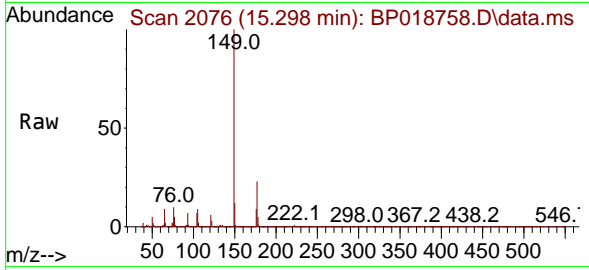
#59
 Diethylphthalate
 Concen: 35.785 ng/u1
 RT: 15.298 min Scan# 2076
 Delta R.T. 0.000 min
 Lab File: BP018758.D
 Acq: 12 Dec 2023 09:32

Instrument :

BNA_P

ClientSampleId :

HOAB0MSD



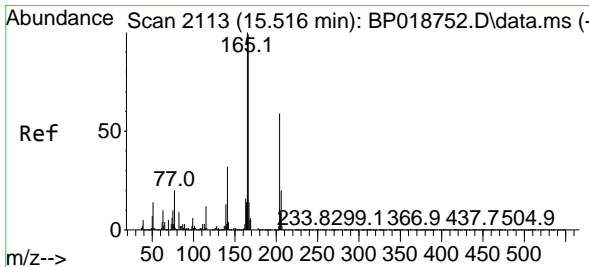
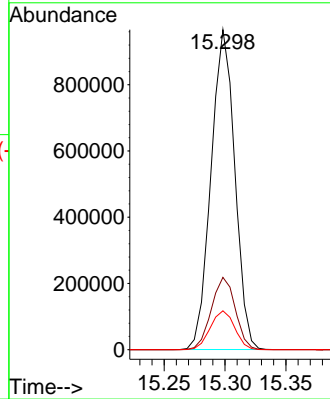
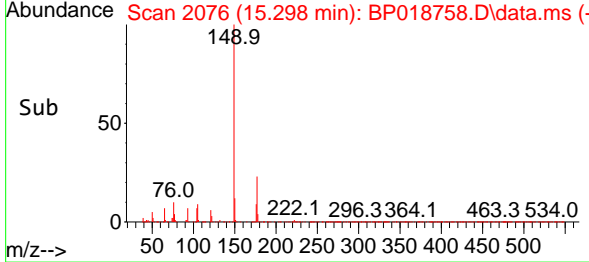
Tgt Ion:149 Resp: 1314711
 Ion Ratio Lower Upper
 149 100
 177 22.6 18.2 27.4
 150 12.2 9.9 14.9

Manual Integrations

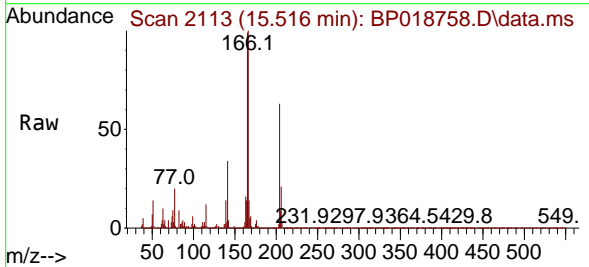
APPROVED

Reviewed By :Yogesh Patel 12/13/2023

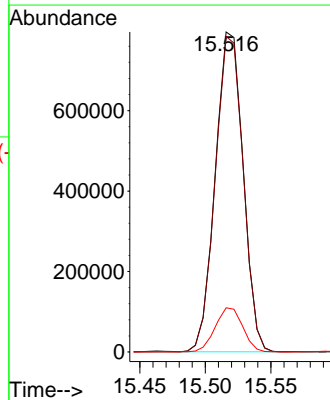
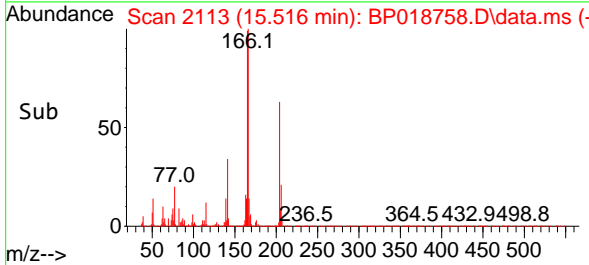
Supervised By :mohammad ahmed 12/14/2023

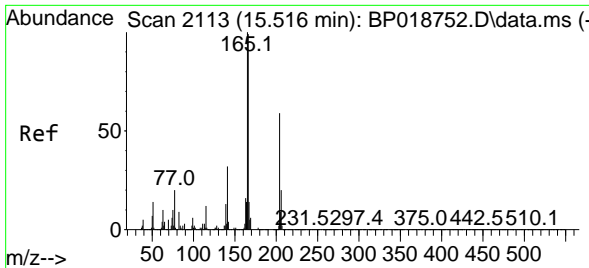


#61
 Fluorene
 Concen: 34.260 ng/u1
 RT: 15.516 min Scan# 2113
 Delta R.T. -0.006 min
 Lab File: BP018758.D
 Acq: 12 Dec 2023 09:32



Tgt Ion:166 Resp: 1176345
 Ion Ratio Lower Upper
 166 100
 165 98.6 78.0 117.0
 167 13.8 10.8 16.2





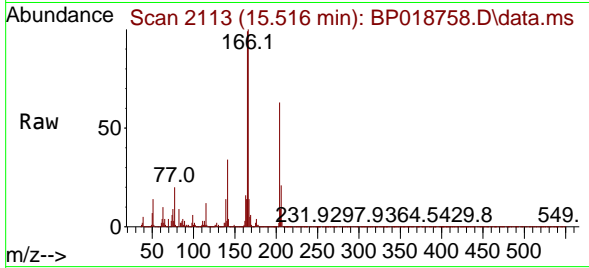
#62
 4-Chlorophenyl-phenylether
 Concen: 36.837 ng/ul
 RT: 15.516 min Scan# 2113
 Delta R.T. 0.000 min
 Lab File: BP018758.D
 Acq: 12 Dec 2023 09:32

Instrument :

BNA_P

ClientSampleId :

H0AB0MSD



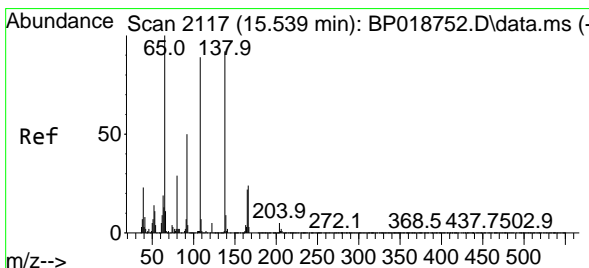
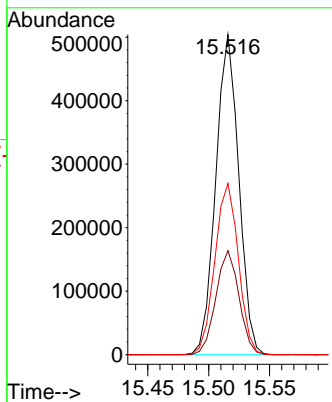
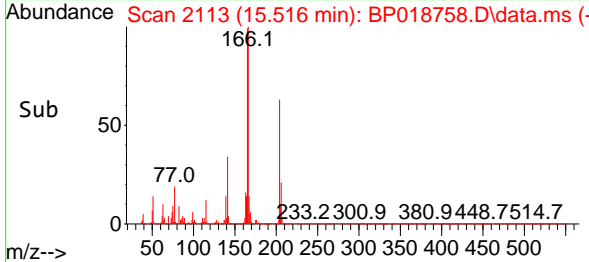
Tgt Ion:204 Resp: 663354
 Ion Ratio Lower Upper
 204 100
 206 32.5 27.1 40.7
 141 53.5 45.8 68.8

Manual Integrations

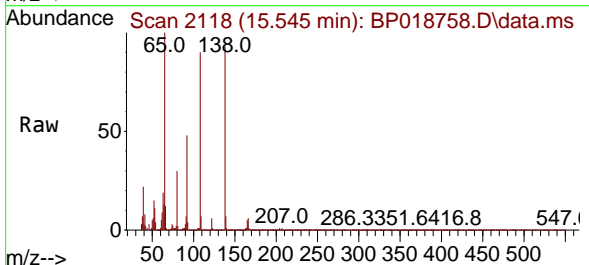
APPROVED

Reviewed By :Yogesh Patel 12/13/2023

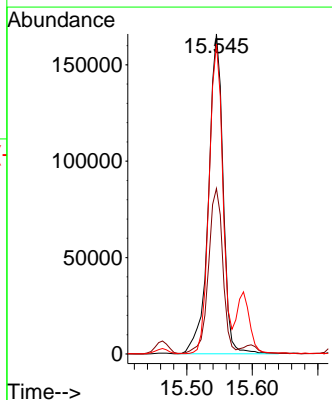
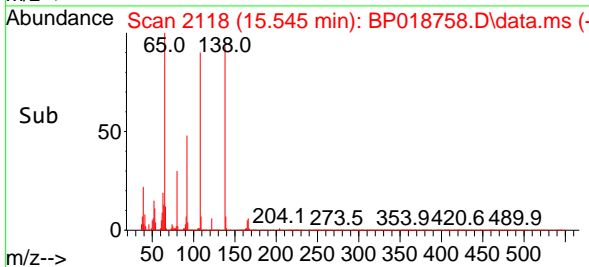
Supervised By :mohammad ahmed 12/14/2023

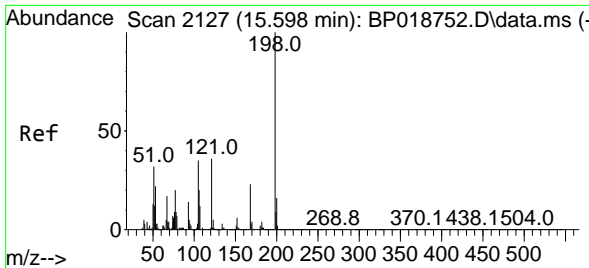


#63
 4-Nitroaniline
 Concen: 38.172 ng/ul
 RT: 15.545 min Scan# 2118
 Delta R.T. 0.000 min
 Lab File: BP018758.D
 Acq: 12 Dec 2023 09:32



Tgt Ion:138 Resp: 257490
 Ion Ratio Lower Upper
 138 100
 92 51.7 42.3 63.5
 108 96.8 62.0 93.0#





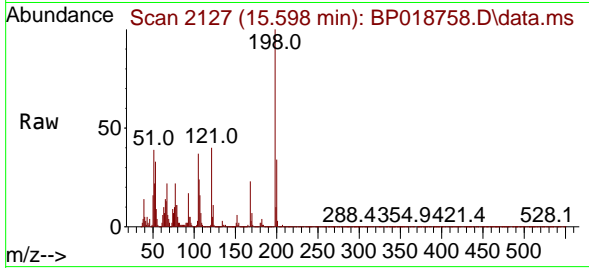
#66
 4,6-Dinitro-2-methylphenol
 Concen: 38.728 ng/ul
 RT: 15.598 min Scan# 2127
 Delta R.T. 0.000 min
 Lab File: BP018758.D
 Acq: 12 Dec 2023 09:32

Instrument :

BNA_P

ClientSampleId :

HOAB0MSD

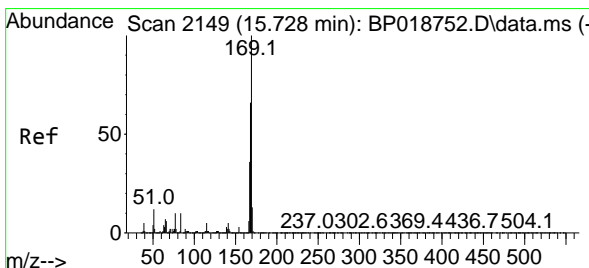
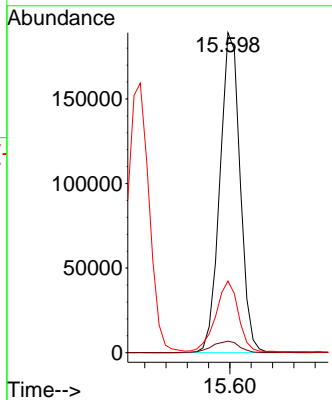
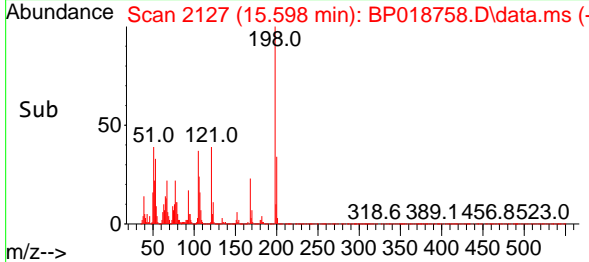


Tgt Ion:198 Resp: 248928
 Ion Ratio Lower Upper
 198 100
 182 3.6 3.4 5.2
 77 22.4 20.6 30.8

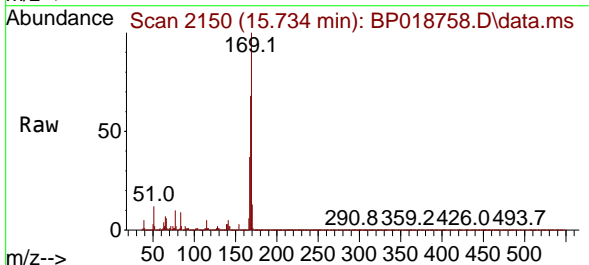
Manual Integrations

APPROVED

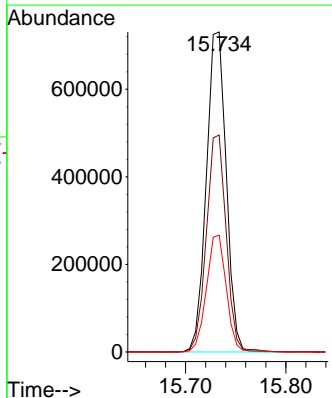
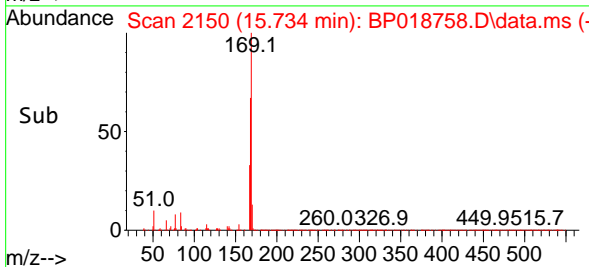
Reviewed By :Yogesh Patel 12/13/2023
 Supervised By :mohammad ahmed 12/14/2023

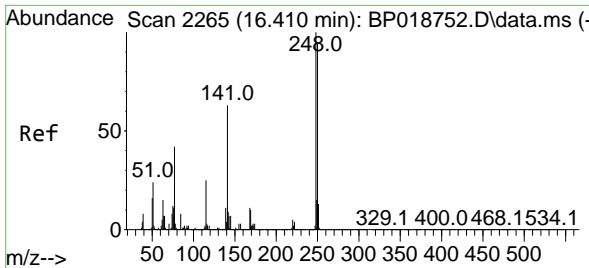


#67
 N-Nitrosodiphenylamine
 Concen: 30.353 ng/ul
 RT: 15.734 min Scan# 2150
 Delta R.T. 0.000 min
 Lab File: BP018758.D
 Acq: 12 Dec 2023 09:32



Tgt Ion:169 Resp: 1008488
 Ion Ratio Lower Upper
 169 100
 168 67.8 53.1 79.7
 167 36.5 29.1 43.7





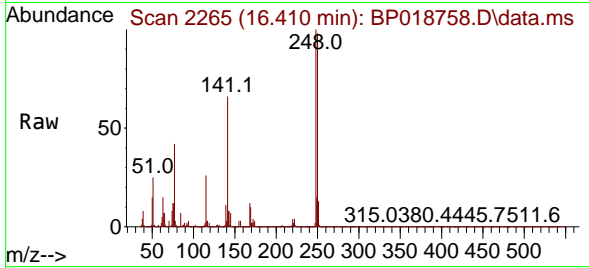
#68
 4-Bromophenyl-phenylether
 Concen: 36.838 ng/ul
 RT: 16.410 min Scan# 2265
 Delta R.T. -0.006 min
 Lab File: BP018758.D
 Acq: 12 Dec 2023 09:32

Instrument :

BNA_P

ClientSampleId :

HOAB0MSD



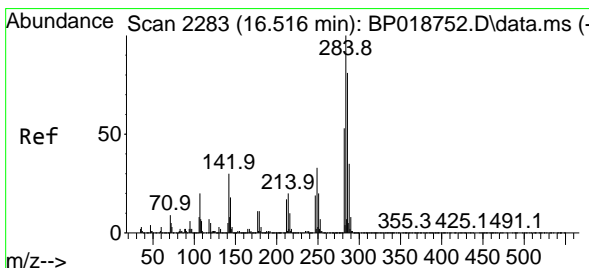
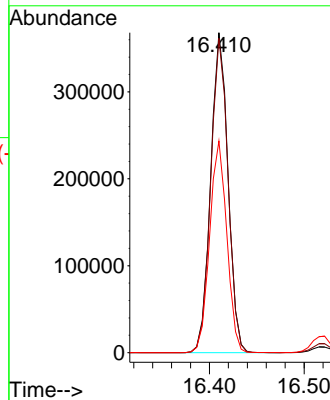
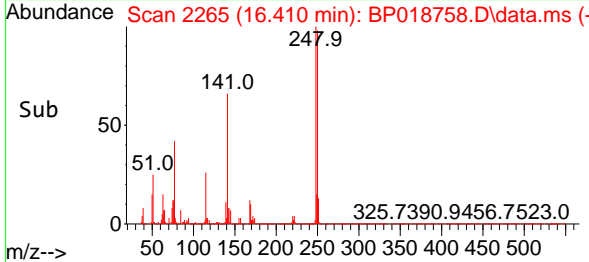
Tgt Ion:248 Resp: 466299
 Ion Ratio Lower Upper
 248 100
 250 98.3 79.3 118.9
 141 66.1 57.2 85.8

Manual Integrations

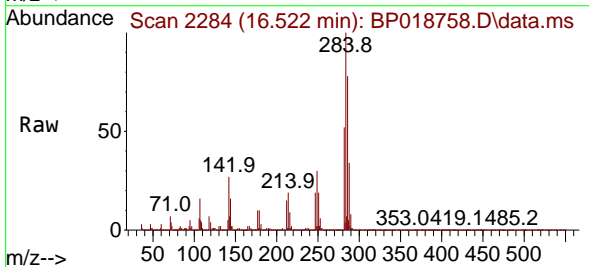
APPROVED

Reviewed By :Yogesh Patel 12/13/2023

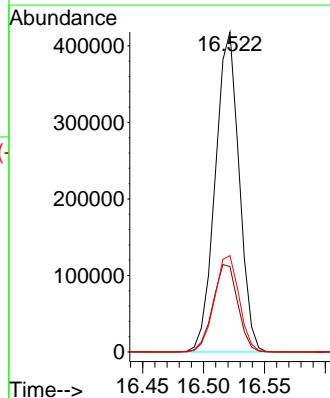
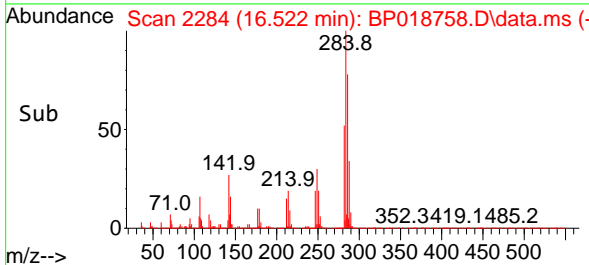
Supervised By :mohammad ahmed 12/14/2023

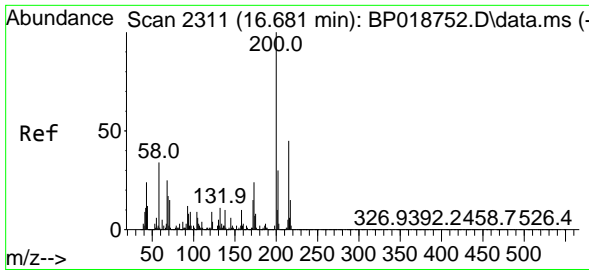


#69
 Hexachlorobenzene
 Concen: 40.428 ng/ul
 RT: 16.522 min Scan# 2284
 Delta R.T. 0.000 min
 Lab File: BP018758.D
 Acq: 12 Dec 2023 09:32



Tgt Ion:284 Resp: 571359
 Ion Ratio Lower Upper
 284 100
 142 26.7 25.8 38.6
 249 30.1 24.9 37.3





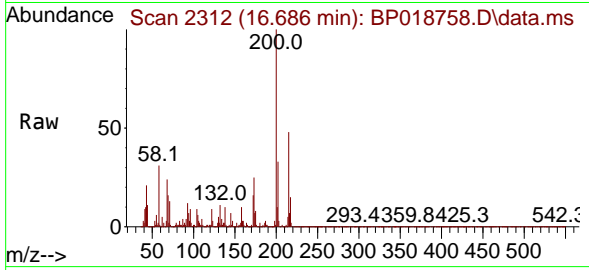
#70
 Atrazine
 Concen: 22.251 ng/uI
 RT: 16.686 min Scan# 21
 Delta R.T. 0.000 min
 Lab File: BP018758.D
 Acq: 12 Dec 2023 09:32

Instrument :

BNA_P

ClientSampleId :

H0AB0MSD



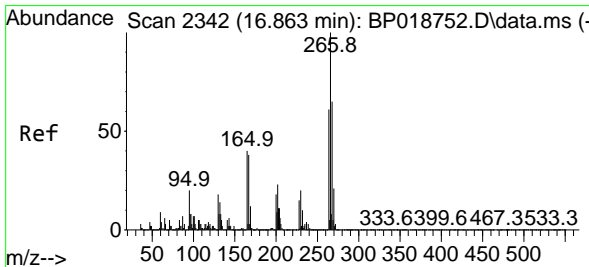
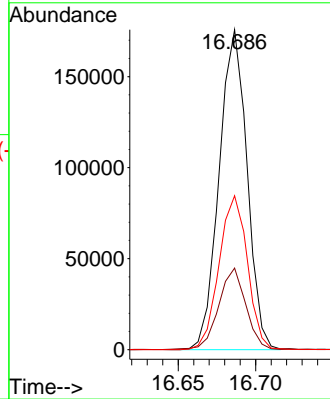
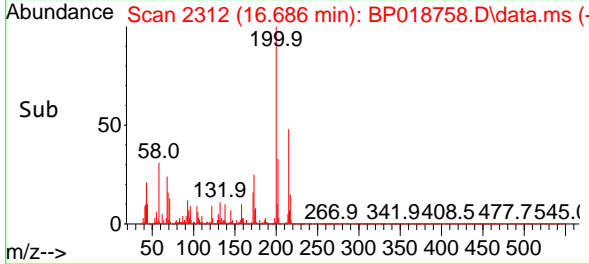
Tgt Ion:200 Resp: 21979
 Ion Ratio Lower Upper
 200 100
 173 25.5 21.0 31.4
 215 48.1 38.2 57.2

Manual Integrations

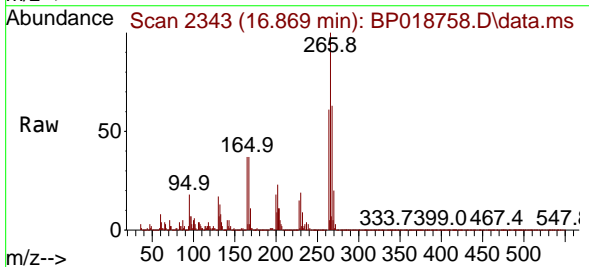
APPROVED

Reviewed By :Yogesh Patel 12/13/2023

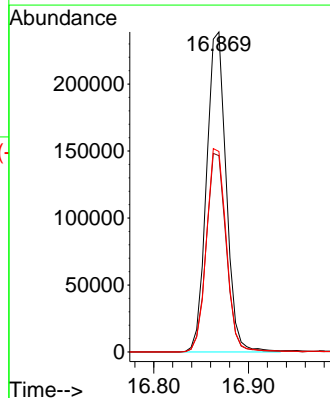
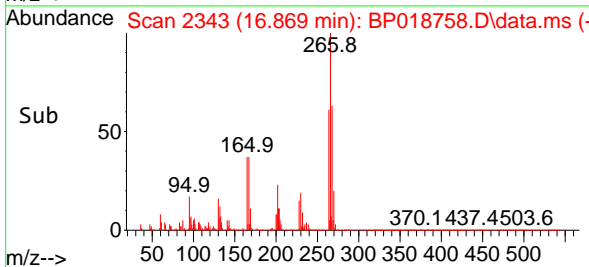
Supervised By :mohammad ahmed 12/14/2023

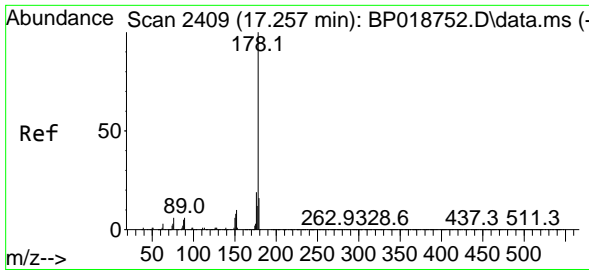


#71
 Pentachlorophenol
 Concen: 40.995 ng/uI
 RT: 16.869 min Scan# 2343
 Delta R.T. 0.000 min
 Lab File: BP018758.D
 Acq: 12 Dec 2023 09:32



Tgt Ion:266 Resp: 344572
 Ion Ratio Lower Upper
 266 100
 264 61.4 50.2 75.2
 268 62.6 50.5 75.7





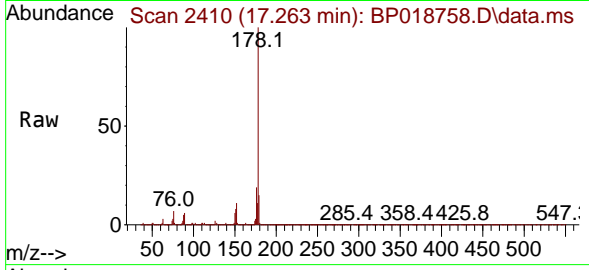
#72
 Phenanthrene
 Concen: 33.898 ng/u1
 RT: 17.263 min Scan# 2410
 Delta R.T. 0.000 min
 Lab File: BP018758.D
 Acq: 12 Dec 2023 09:32

Instrument :

BNA_P

Client SampleId :

HOAB0MSD



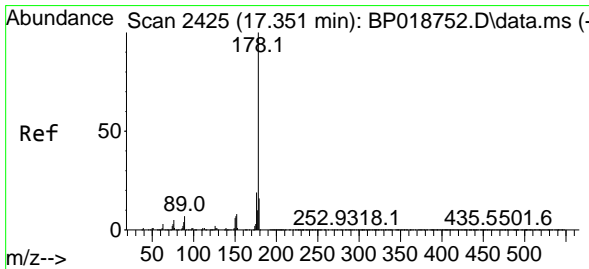
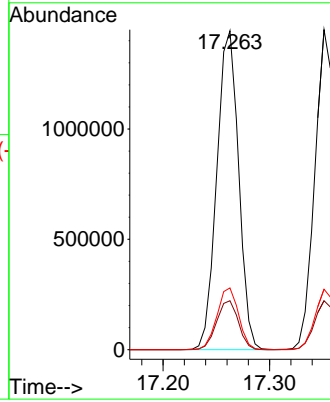
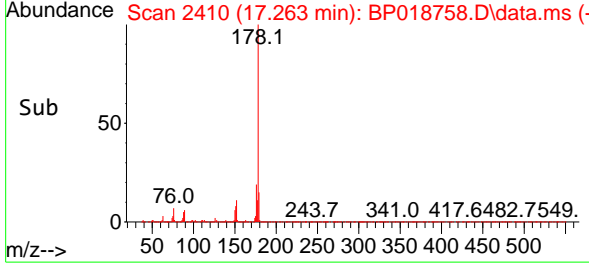
Tgt Ion:178 Resp: 2052750
 Ion Ratio Lower Upper
 178 100
 179 15.4 12.3 18.5
 176 19.4 15.4 23.2

Manual Integrations

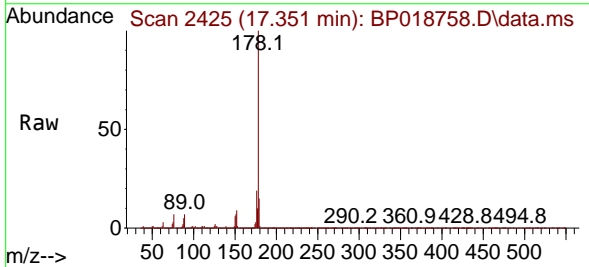
APPROVED

Reviewed By :Yogesh Patel 12/13/2023

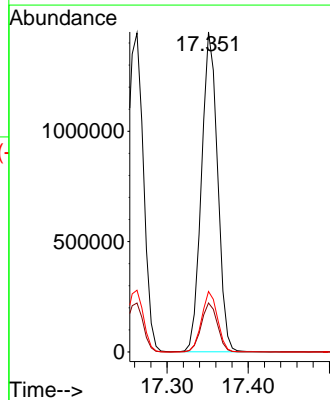
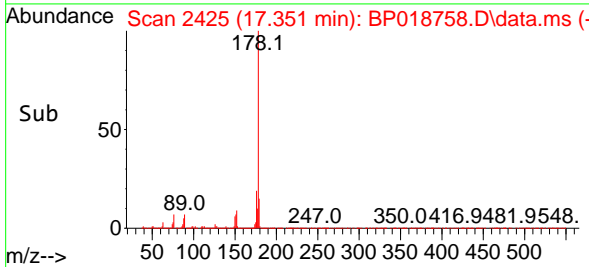
Supervised By :mohammad ahmed 12/14/2023

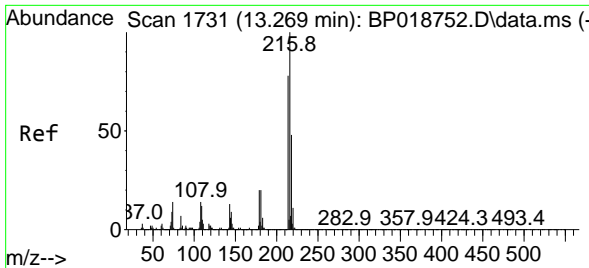


#74
 Anthracene
 Concen: 32.949 ng/u1
 RT: 17.351 min Scan# 2425
 Delta R.T. -0.006 min
 Lab File: BP018758.D
 Acq: 12 Dec 2023 09:32



Tgt Ion:178 Resp: 1999961
 Ion Ratio Lower Upper
 178 100
 179 15.3 12.5 18.7
 176 18.9 15.0 22.6





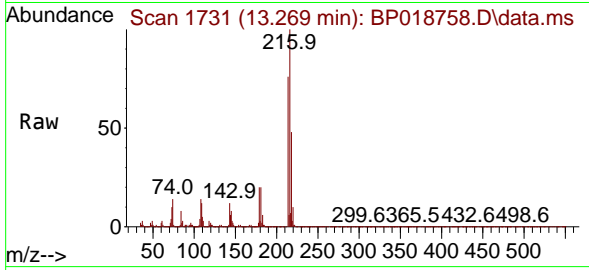
#75
 1,2,3,4-Tetrachlorobenzene
 Concen: 32.691 ng/uL
 RT: 13.269 min Scan# 1731
 Delta R.T. 0.000 min
 Lab File: BP018758.D
 Acq: 12 Dec 2023 09:32

Instrument :

BNA_P

Client Sample Id :

H0AB0MSD



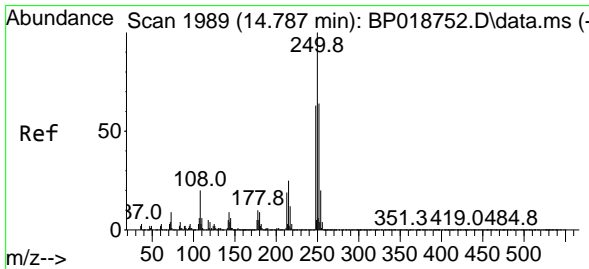
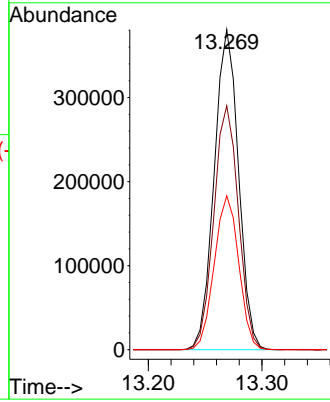
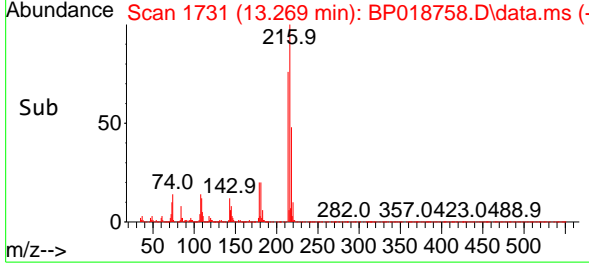
Tgt Ion:216 Resp: 56676
 Ion Ratio Lower Upper
 216 100
 214 76.2 61.4 92.2
 218 48.1 39.2 58.8

Manual Integrations

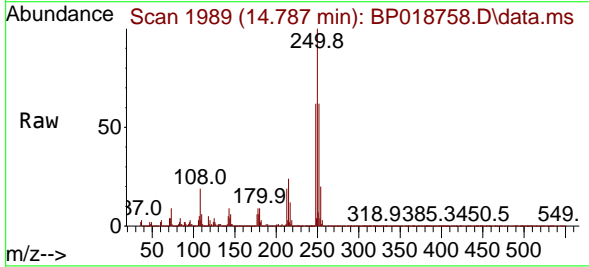
APPROVED

Reviewed By :Yogesh Patel 12/13/2023

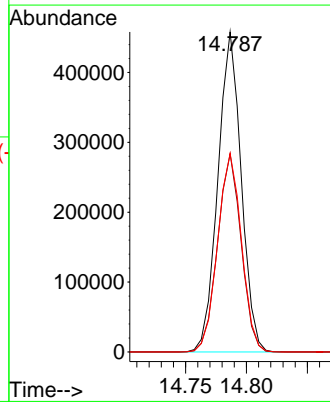
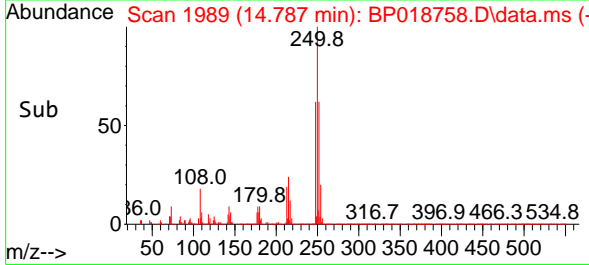
Supervised By :mohammad ahmed 12/14/2023

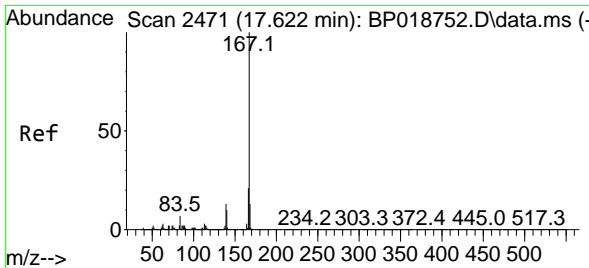


#76
 Pentachlorobenzene
 Concen: 35.760 ng/uL
 RT: 14.787 min Scan# 1989
 Delta R.T. 0.000 min
 Lab File: BP018758.D
 Acq: 12 Dec 2023 09:32



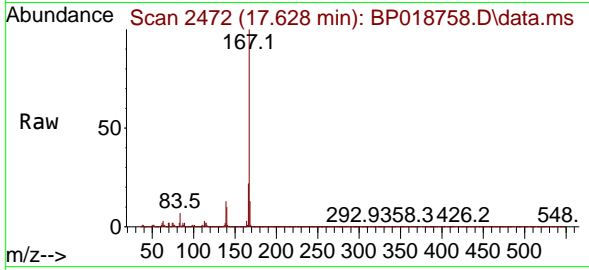
Tgt Ion:250 Resp: 608985
 Ion Ratio Lower Upper
 250 100
 248 61.9 50.6 75.8
 252 62.0 51.3 76.9





#77
 Carbazole
 Concen: 38.090 ng/u1
 RT: 17.628 min Scan# 2471
 Delta R.T. 0.000 min
 Lab File: BP018758.D
 Acq: 12 Dec 2023 09:32

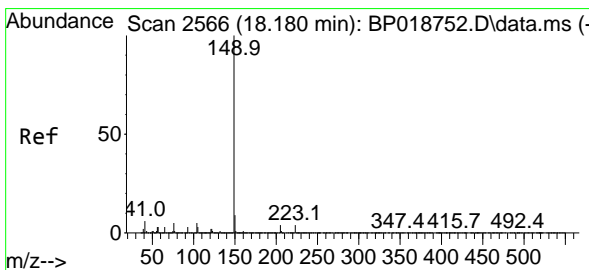
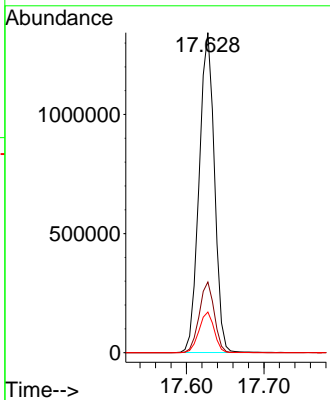
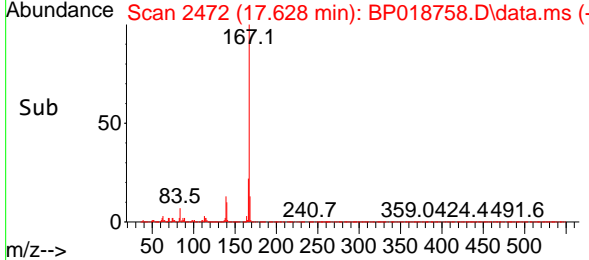
Instrument :
 BNA_P
ClientSampleId :
 H0AB0MSD



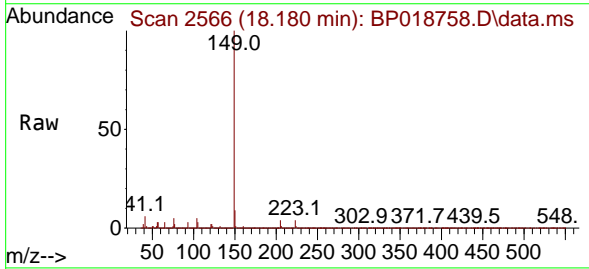
Tgt Ion:167 Resp: 184267
 Ion Ratio Lower Upper
 167 100
 166 22.1 17.1 25.7
 139 12.7 10.2 15.4

Manual Integrations
APPROVED

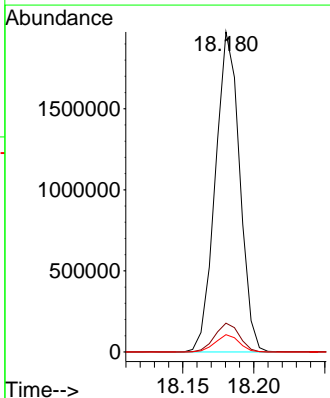
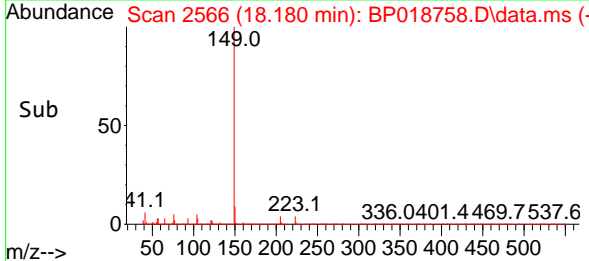
Reviewed By :Yogesh Patel 12/13/2023
 Supervised By :mohammad ahmed 12/14/2023

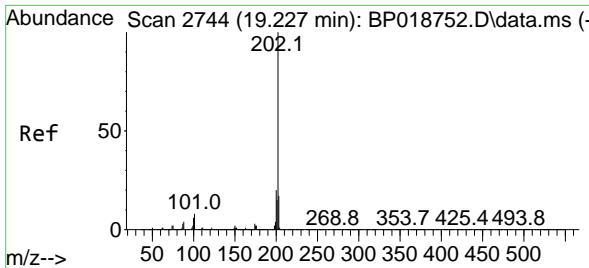


#78
 Di-n-butylphthalate
 Concen: 36.440 ng/u1
 RT: 18.180 min Scan# 2566
 Delta R.T. -0.006 min
 Lab File: BP018758.D
 Acq: 12 Dec 2023 09:32



Tgt Ion:149 Resp: 2347344
 Ion Ratio Lower Upper
 149 100
 150 9.0 7.4 11.2
 104 5.4 3.9 5.9





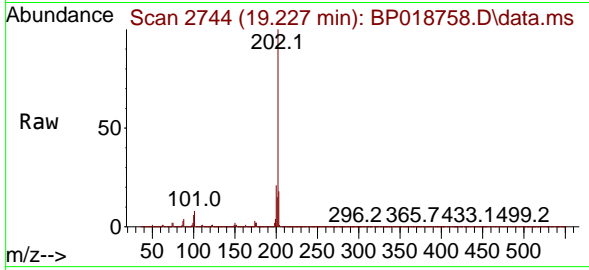
#80
 Fluoranthene
 Concen: 27.491 ng/u1
 RT: 19.227 min Scan# 21
 Delta R.T. -0.006 min
 Lab File: BP018758.D
 Acq: 12 Dec 2023 09:32

Instrument :

BNA_P

ClientSampleId :

HOAB0MSD



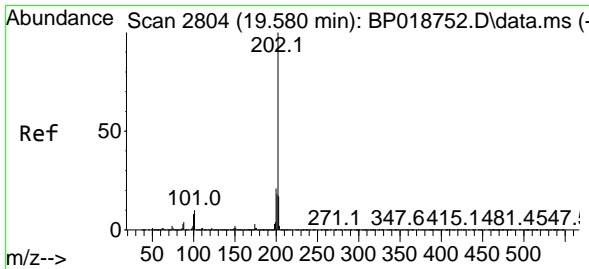
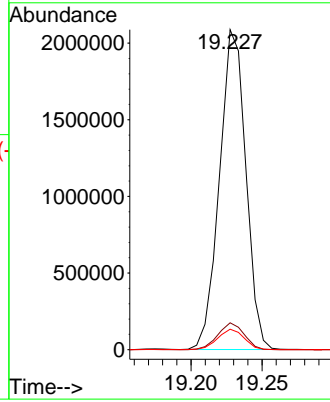
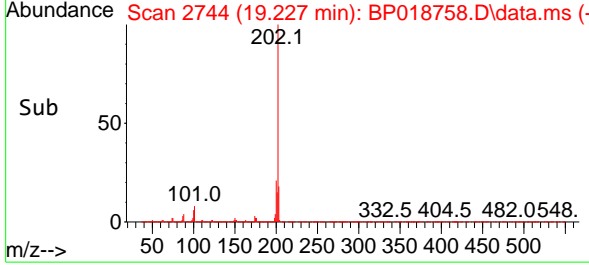
Tgt Ion:202 Resp: 269196
 Ion Ratio Lower Upper
 202 100
 101 8.4 9.1 13.7#
 100 6.4 7.1 10.7#

Manual Integrations

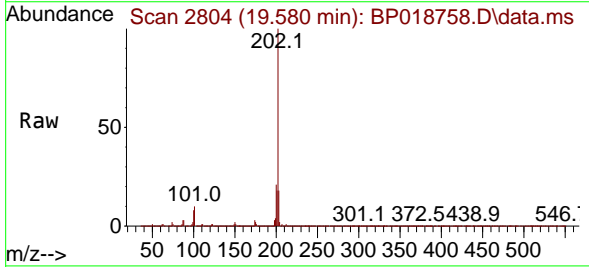
APPROVED

Reviewed By :Yogesh Patel 12/13/2023

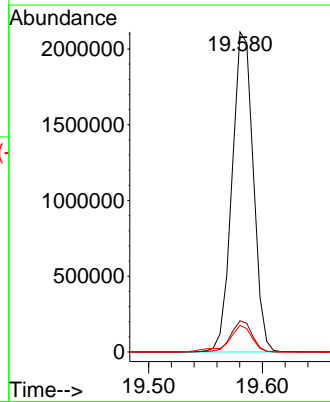
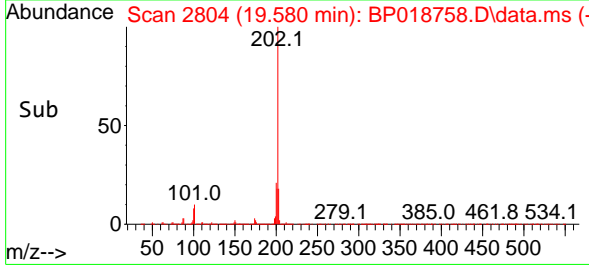
Supervised By :mohammad ahmed 12/14/2023

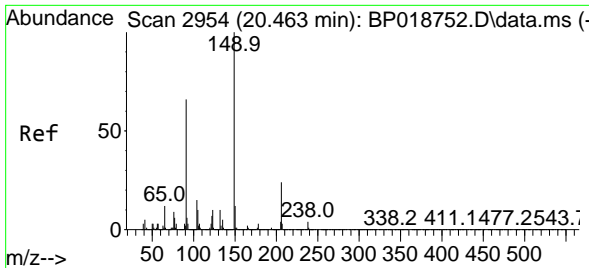


#82
 Pyrene
 Concen: 27.675 ng/u1
 RT: 19.580 min Scan# 2804
 Delta R.T. -0.006 min
 Lab File: BP018758.D
 Acq: 12 Dec 2023 09:32



Tgt Ion:202 Resp: 2733858
 Ion Ratio Lower Upper
 202 100
 101 9.7 11.0 16.4#
 100 8.3 9.1 13.7#





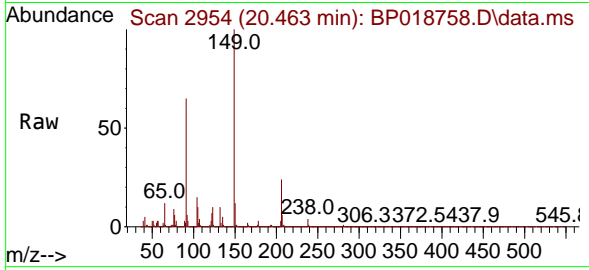
#83
 Butylbenzylphthalate
 Concen: 30.294 ng/uI
 RT: 20.463 min Scan# 2954
 Delta R.T. 0.000 min
 Lab File: BP018758.D
 Acq: 12 Dec 2023 09:32

Instrument :

BNA_P

ClientSampleId :

HOAB0MSD



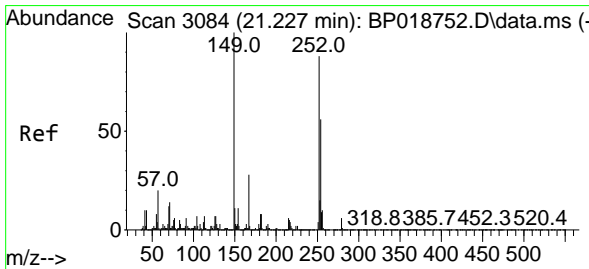
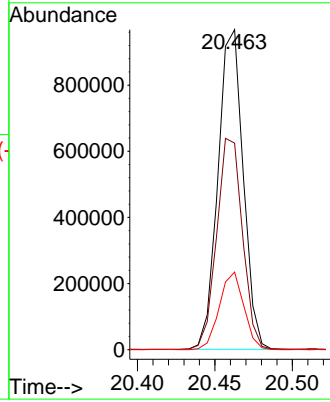
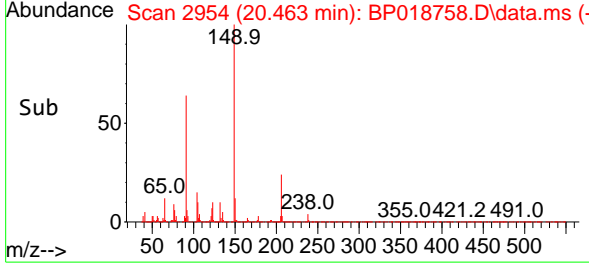
Tgt Ion:149 Resp: 1095530
 Ion Ratio Lower Upper
 149 100
 91 64.5 56.6 85.0
 206 24.2 17.4 26.0

Manual Integrations

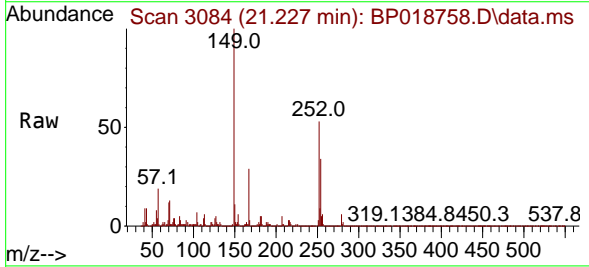
APPROVED

Reviewed By :Yogesh Patel 12/13/2023

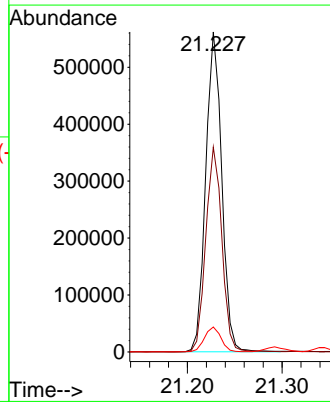
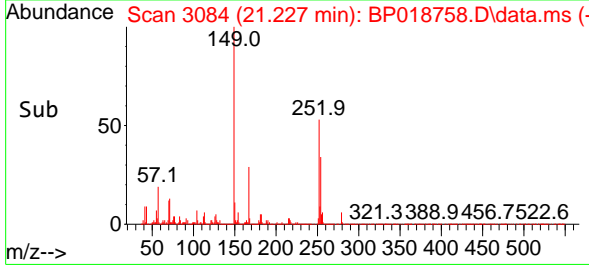
Supervised By :mohammad ahmed 12/14/2023

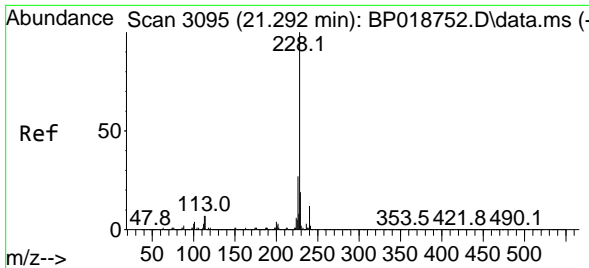


#84
 3,3'-Dichlorobenzidine
 Concen: 25.424 ng/uI
 RT: 21.227 min Scan# 3084
 Delta R.T. -0.006 min
 Lab File: BP018758.D
 Acq: 12 Dec 2023 09:32



Tgt Ion:252 Resp: 657489
 Ion Ratio Lower Upper
 252 100
 254 64.0 51.0 76.4
 126 7.8 7.8 11.6





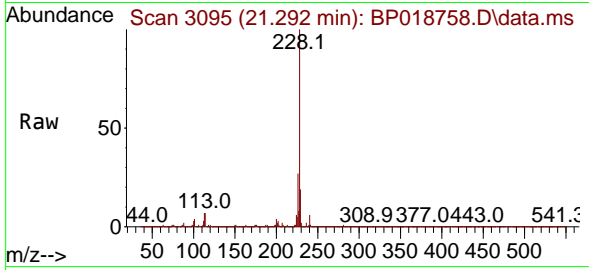
#85
 Benzo(a)anthracene
 Concen: 34.282 ng/u1
 RT: 21.292 min Scan# 3095
 Delta R.T. -0.006 min
 Lab File: BP018758.D
 Acq: 12 Dec 2023 09:32

Instrument :

BNA_P

ClientSampleId :

HOAB0MSD



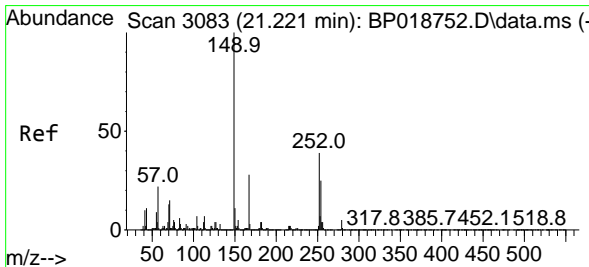
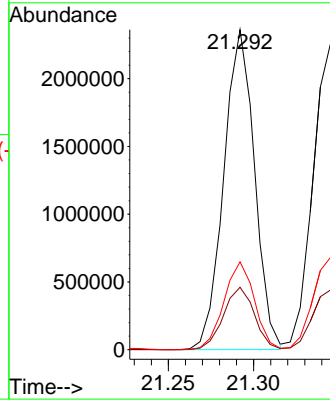
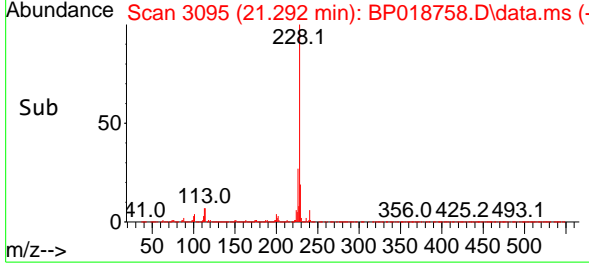
Tgt Ion:228 Resp: 2961230
 Ion Ratio Lower Upper
 228 100
 229 19.5 15.7 23.5
 226 27.5 21.9 32.9

Manual Integrations

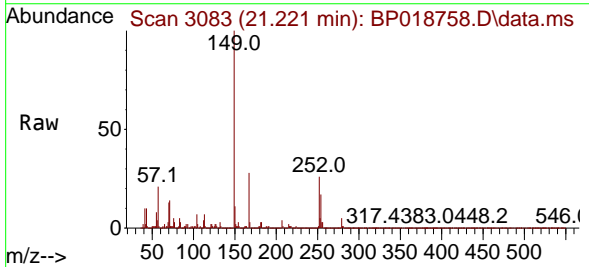
APPROVED

Reviewed By :Yogesh Patel 12/13/2023

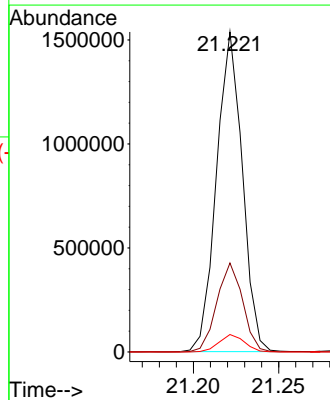
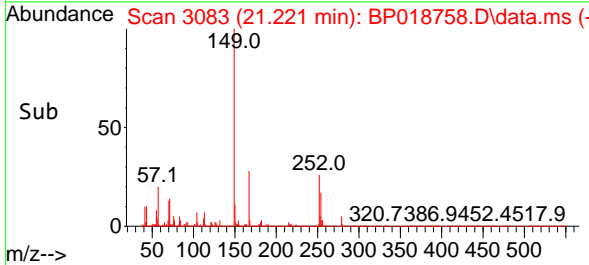
Supervised By :mohammad ahmed 12/14/2023

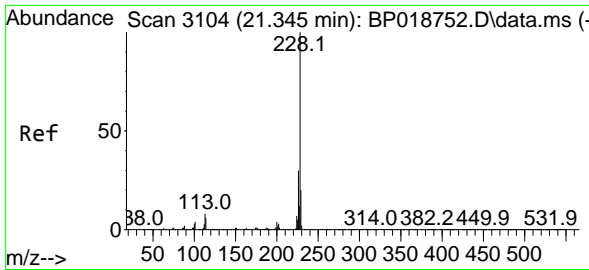


#86
 Bis(2-ethylhexyl)phthalate
 Concen: 32.582 ng/u1
 RT: 21.221 min Scan# 3083
 Delta R.T. -0.006 min
 Lab File: BP018758.D
 Acq: 12 Dec 2023 09:32



Tgt Ion:149 Resp: 1619515
 Ion Ratio Lower Upper
 149 100
 167 27.8 22.2 33.2
 279 5.4 3.3 4.9#





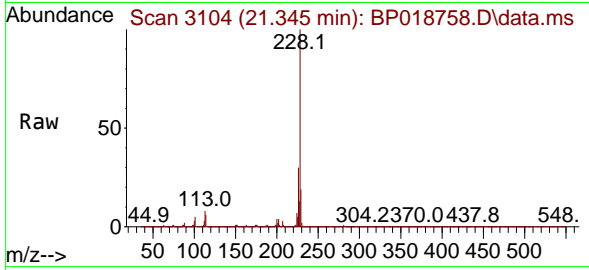
#87
 Chrysene
 Concen: 34.499 ng/u1
 RT: 21.345 min Scan# 3104
 Delta R.T. -0.006 min
 Lab File: BP018758.D
 Acq: 12 Dec 2023 09:32

Instrument :

BNA_P

Client SampleId :

HOAB0MSD



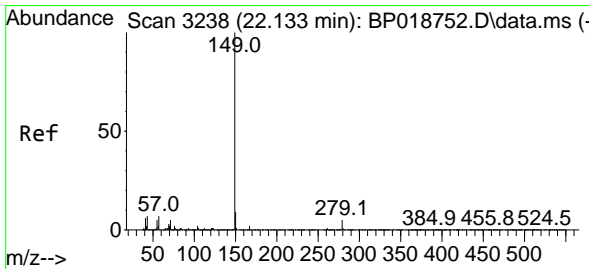
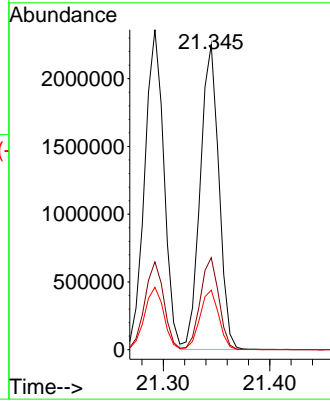
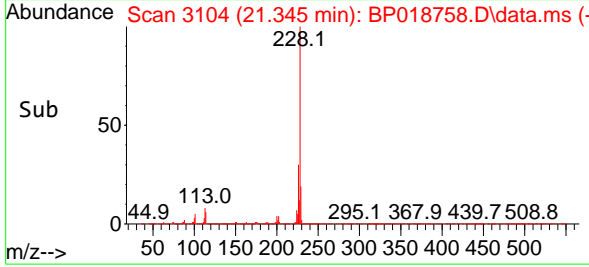
Tgt Ion:228 Resp: 2744250
 Ion Ratio Lower Upper
 228 100
 226 30.1 23.9 35.9
 229 19.5 15.6 23.4

Manual Integrations

APPROVED

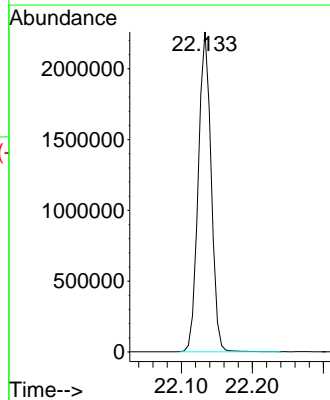
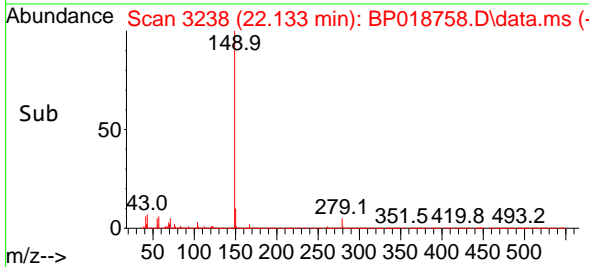
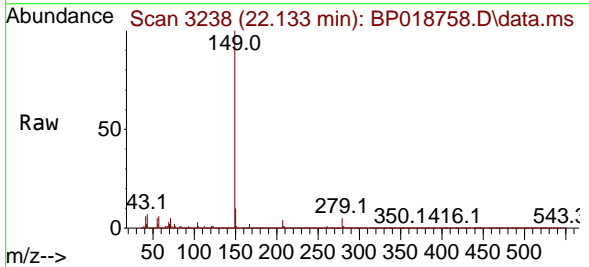
Reviewed By :Yogesh Patel 12/13/2023

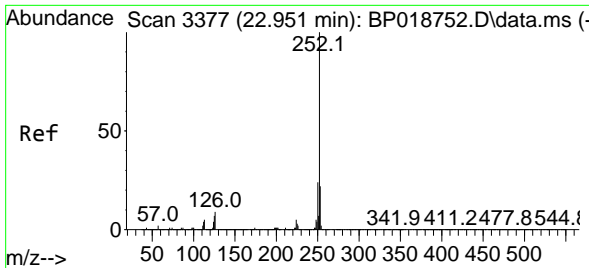
Supervised By :mohammad ahmed 12/14/2023



#89
 Di-n-octyl phthalate
 Concen: 32.264 ng/u1
 RT: 22.133 min Scan# 3238
 Delta R.T. -0.006 min
 Lab File: BP018758.D
 Acq: 12 Dec 2023 09:32

Tgt Ion:149 Resp: 2846801





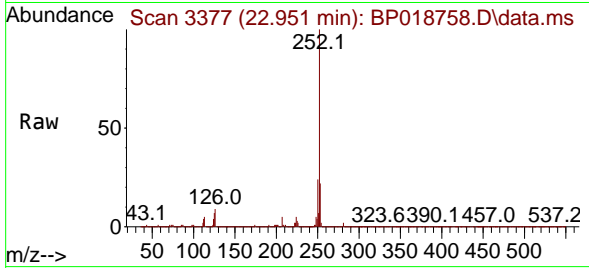
#90
 Benzo(b)fluoranthene
 Concen: 35.632 ng/u1
 RT: 22.951 min Scan# 317489
 Delta R.T. -0.006 min
 Lab File: BP018758.D
 Acq: 12 Dec 2023 09:32

Instrument :

BNA_P

ClientSampleId :

HOAB0MSD



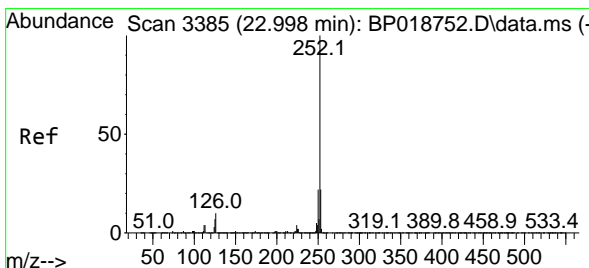
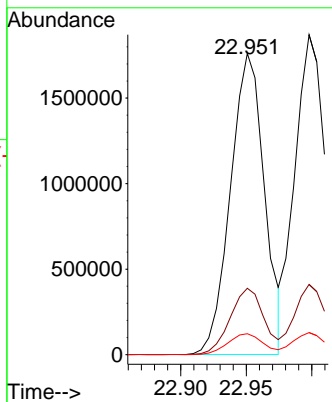
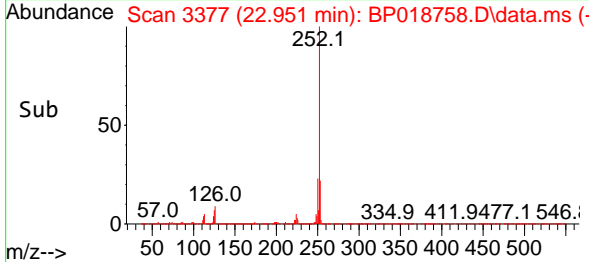
Tgt Ion:252 Resp: 317489
 Ion Ratio Lower Upper
 252 100
 253 22.1 17.3 25.9
 125 7.0 7.8 11.6

Manual Integrations

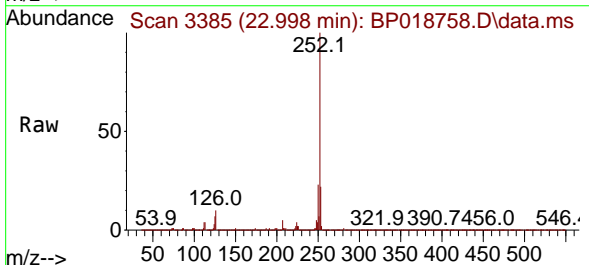
APPROVED

Reviewed By :Yogesh Patel 12/13/2023

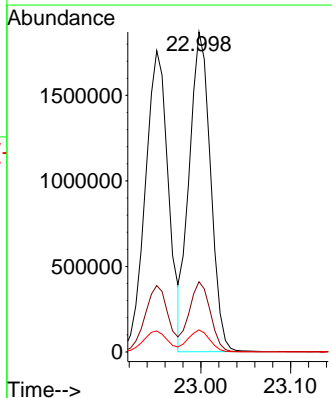
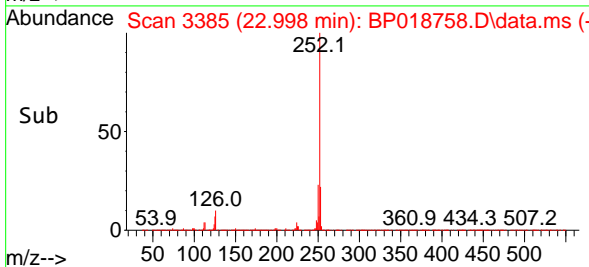
Supervised By :mohammad ahmed 12/14/2023

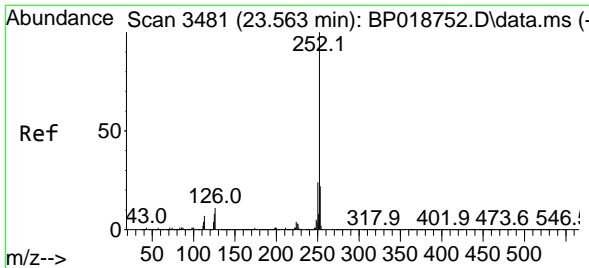


#91
 Benzo(k)fluoranthene
 Concen: 35.723 ng/u1
 RT: 22.998 min Scan# 3385
 Delta R.T. -0.006 min
 Lab File: BP018758.D
 Acq: 12 Dec 2023 09:32



Tgt Ion:252 Resp: 3079824
 Ion Ratio Lower Upper
 252 100
 253 22.0 17.7 26.5
 125 6.9 8.0 12.0#





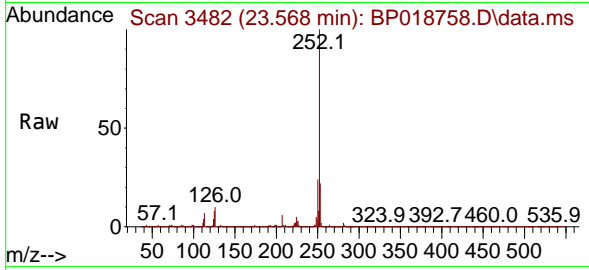
#93
 Benzo(a)pyrene
 Concen: 35.491 ng/u1
 RT: 23.568 min Scan# 3482
 Delta R.T. -0.006 min
 Lab File: BP018758.D
 Acq: 12 Dec 2023 09:32

Instrument :

BNA_P

ClientSampleId :

HOAB0MSD



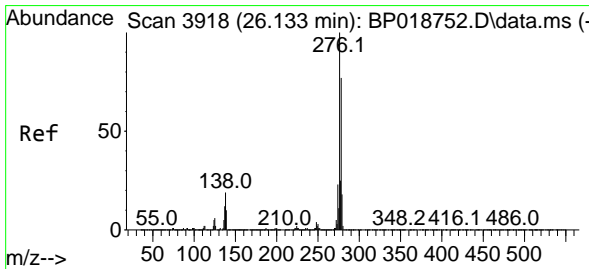
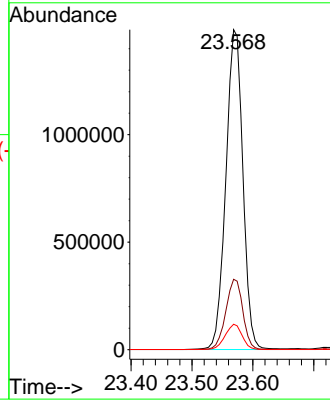
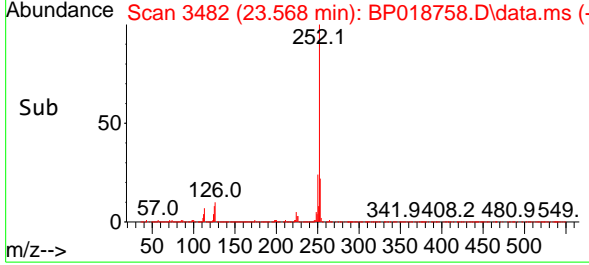
Tgt Ion:252 Resp: 288953
 Ion Ratio Lower Upper
 252 100
 253 22.0 17.8 26.8
 125 7.9 9.2 13.8

Manual Integrations

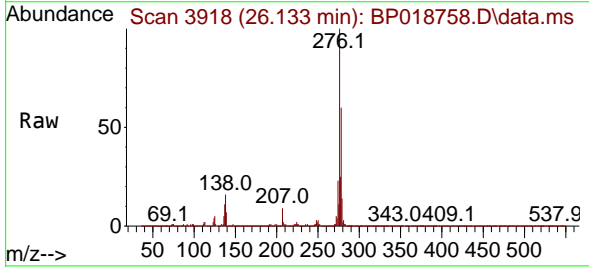
APPROVED

Reviewed By :Yogesh Patel 12/13/2023

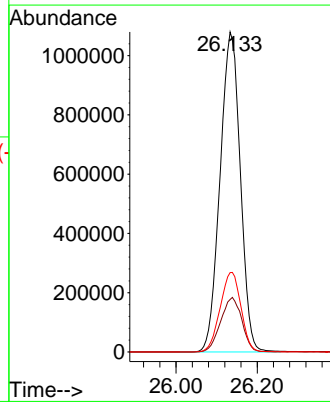
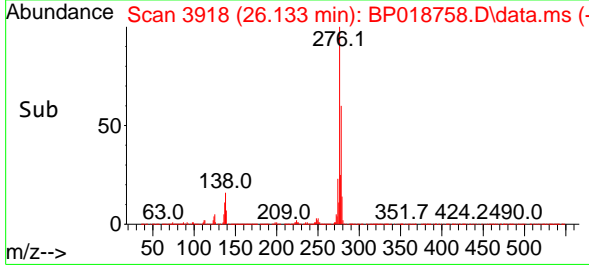
Supervised By :mohammad ahmed 12/14/2023

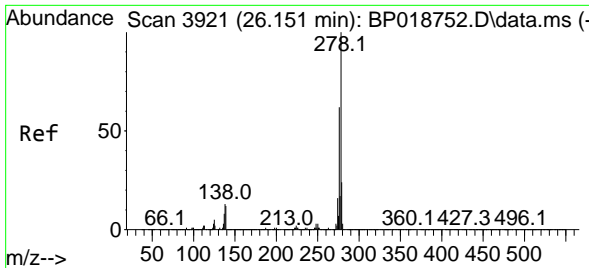


#94
 Indeno(1,2,3-cd)pyrene
 Concen: 38.508 ng/u1
 RT: 26.133 min Scan# 3918
 Delta R.T. -0.006 min
 Lab File: BP018758.D
 Acq: 12 Dec 2023 09:32



Tgt Ion:276 Resp: 3745942
 Ion Ratio Lower Upper
 276 100
 138 16.4 19.4 29.2#
 277 24.8 19.8 29.6





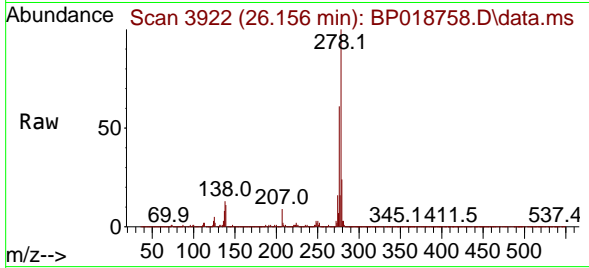
#95
 Dibenzo(a,h)anthracene
 Concen: 38.700 ng/ul
 RT: 26.156 min Scan# 3921
 Delta R.T. -0.006 min
 Lab File: BP018758.D
 Acq: 12 Dec 2023 09:32

Instrument :

BNA_P

ClientSampleId :

HOAB0MSD



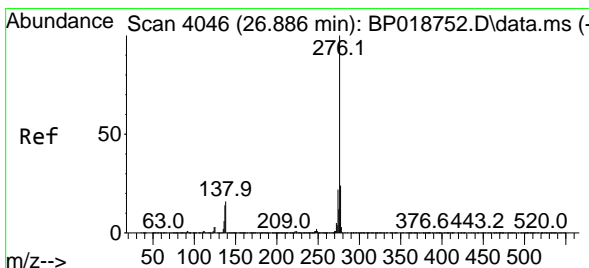
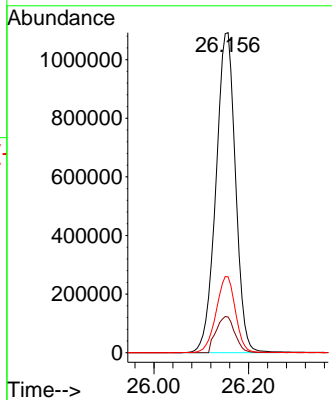
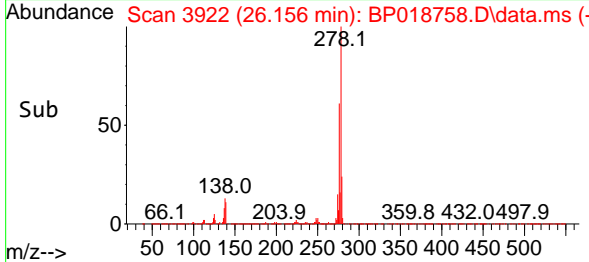
Tgt Ion:278 Resp: 313159
 Ion Ratio Lower Upper
 278 100
 139 11.1 13.0 19.6
 279 23.7 18.7 28.1

Manual Integrations

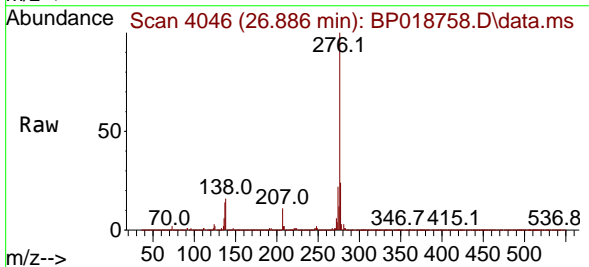
APPROVED

Reviewed By :Yogesh Patel 12/13/2023

Supervised By :mohammad ahmed 12/14/2023



#96
 Benzo(g,h,i)perylene
 Concen: 38.270 ng/ul
 RT: 26.886 min Scan# 4046
 Delta R.T. -0.018 min
 Lab File: BP018758.D
 Acq: 12 Dec 2023 09:32



Tgt Ion:276 Resp: 2995949
 Ion Ratio Lower Upper
 276 100
 138 15.6 18.1 27.1#
 277 24.1 19.4 29.0

