

Data Path : Z:\svoasrv\HPCHEM1\BNA_P\Data\BP121123\
 Data File : BP018776.D
 Acq On : 12 Dec 2023 20:17
 Operator : MA/JU
 Sample : PB157627BL
 Misc :
 ALS Vial : 55 Sample Multiplier: 1

Instrument :
 BNA_P
 ClientSampleId :
 SBLK627

Integration Parameters: LSCINT.P

Integrator: RTE
 Smoothing : OFF Filtering: 5
 Sampling : 1 Min Area: 0.1 % of largest Peak
 Start Thrs: 0.2 Max Peaks: 100
 Stop Thrs : 0 Peak Location: TOP

If leading or trailing edge < 100 prefer < Baseline drop else tangent >
 Peak separation: 5

Method : Z:\svoasrv\HPCHEM1\BNA_P\Methods\SFAM-EPA-BP120123.MA.M
 Title : SVOA CALIBRATION

Signal : TIC: BP018776.D\data.ms

peak #	R.T. min	first scan	max scan	last scan	PK TY	peak height	corr. area	corr. % max.	% of total
1	3.264	26	30	39	rVB	52307	69953	1.35%	0.154%
2	3.681	97	101	116	rBV	614840	937495	18.04%	2.063%
3	4.011	154	157	161	rVB2	9357	11536	0.22%	0.025%
4	7.005	659	666	681	rVB	697000	1105252	21.26%	2.432%
5	7.175	689	695	703	rVB	561843	848601	16.33%	1.867%
6	7.369	721	728	736	rBV	731543	1120112	21.55%	2.464%
7	7.840	801	808	815	rBV	626934	992204	19.09%	2.183%
8	8.552	920	929	938	rBV	822493	1347759	25.93%	2.965%
9	8.999	998	1005	1018	rBV	659434	1039678	20.00%	2.287%
10	9.716	1119	1127	1137	rBV	508568	838408	16.13%	1.845%
11	10.252	1209	1218	1232	rBV	846585	1414617	27.22%	3.112%
12	10.634	1276	1283	1290	rVB	794682	1301870	25.05%	2.864%
13	10.775	1297	1307	1326	rBV	790289	1369124	26.34%	3.012%
14	12.222	1547	1553	1560	rVB2	15017	23612	0.45%	0.052%
15	13.369	1741	1748	1753	rBV8	9911	16094	0.31%	0.035%
16	13.434	1755	1759	1765	rBV8	3296	7166	0.14%	0.016%
17	13.881	1829	1835	1848	rBV	1420876	2020827	38.88%	4.446%
18	14.157	1874	1882	1893	rBV	1583932	2365145	45.50%	5.204%
19	14.469	1925	1935	1943	rBV	1205839	1793133	34.50%	3.945%
20	14.669	1961	1969	1987	rBV	635845	1012086	19.47%	2.227%
21	14.834	1993	1997	2001	rVB7	4368	6889	0.13%	0.015%
22	14.887	2001	2006	2008	rBV6	4327	7122	0.14%	0.016%
23	15.457	2096	2103	2112	rBV	2153206	3079875	59.26%	6.776%
24	15.575	2117	2123	2134	rBV	534060	745962	14.35%	1.641%
25	15.698	2140	2144	2149	rVB2	11849	18041	0.35%	0.040%
26	16.028	2195	2200	2202	rBV6	3921	6323	0.12%	0.014%
27	16.240	2233	2236	2242	rVB8	3542	6382	0.12%	0.014%
28	16.704	2311	2315	2318	rVB5	4608	6329	0.12%	0.014%
29	17.004	2362	2366	2371	rBV5	3659	7142	0.14%	0.016%
30	17.216	2395	2402	2408	rBV	1688837	2308152	44.41%	5.078%
31	17.316	2412	2419	2432	rVV	2447563	3477567	66.91%	7.651%
32	18.104	2550	2553	2557	rBV6	12302	17802	0.34%	0.039%
33	18.428	2605	2608	2613	rVB7	7163	8786	0.17%	0.019%
34	19.128	2723	2727	2731	rVB3	33645	42664	0.82%	0.094%
35	19.192	2734	2738	2743	rBV	35592	55856	1.07%	0.123%
36	19.339	2761	2763	2767	rVB4	11576	12550	0.24%	0.028%

Data Path : Z:\svoasrv\HPCHEM1\BNA_P\Data\BP121123\
Data File : BP018776.D
Acq On : 12 Dec 2023 20:17
Operator : MA/JU
Sample : PB157627BL
Misc :
ALS Vial : 55 Sample Multiplier: 1

Instrument :
BNA_P
ClientSampleId :
SBLK627

Integration Parameters: LSCINT.P
Integrator: RTE
Smoothing : OFF Filtering: 5
Sampling : 1 Min Area: 0.1 % of largest Peak
Start Thrs: 0.2 Max Peaks: 100
Stop Thrs : 0 Peak Location: TOP

If leading or trailing edge < 100 prefer < Baseline drop else tangent >
Peak separation: 5

Method : Z:\svoasrv\HPCHEM1\BNA_P\Methods\SFAM-EPA-BP120123.MA.M
Title : SVOA CALIBRATION

37	19.551	2793	2799	2806	rBV	3368521	4522652	87.01%	9.950%
38	21.304	3091	3097	3105	rBV	2377927	3047103	58.63%	6.704%
39	23.510	3465	3472	3480	rBV2	2664108	5197577	100.00%	11.435%
40	23.663	3492	3498	3509	rVB	1664761	3242829	62.39%	7.135%

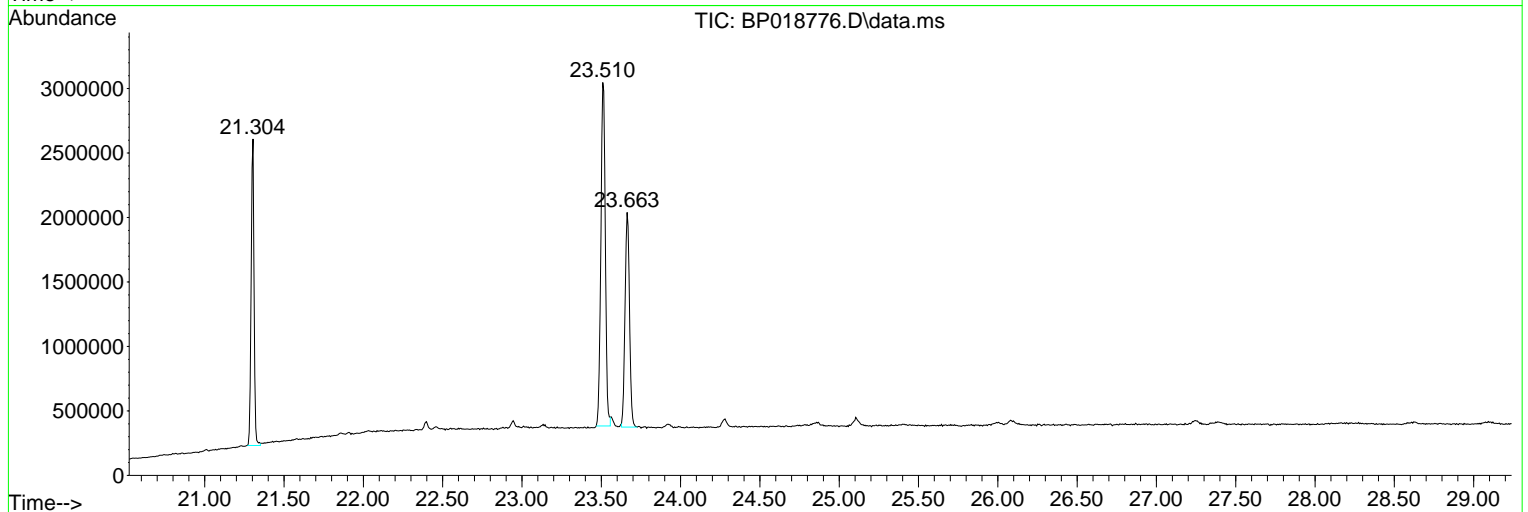
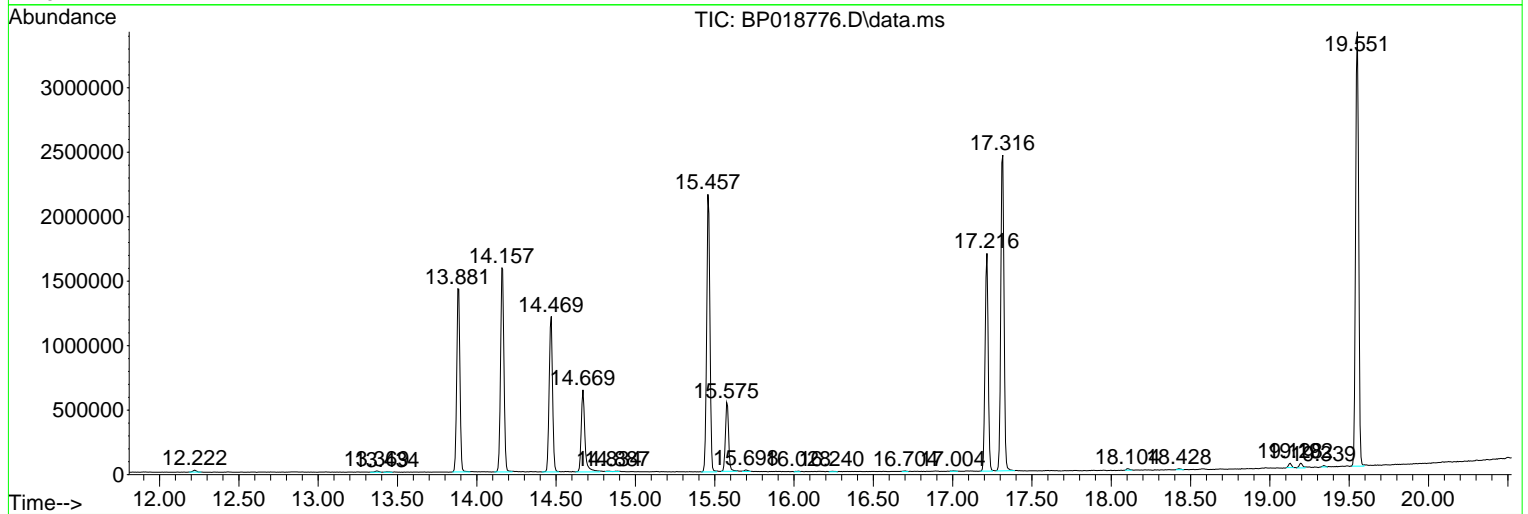
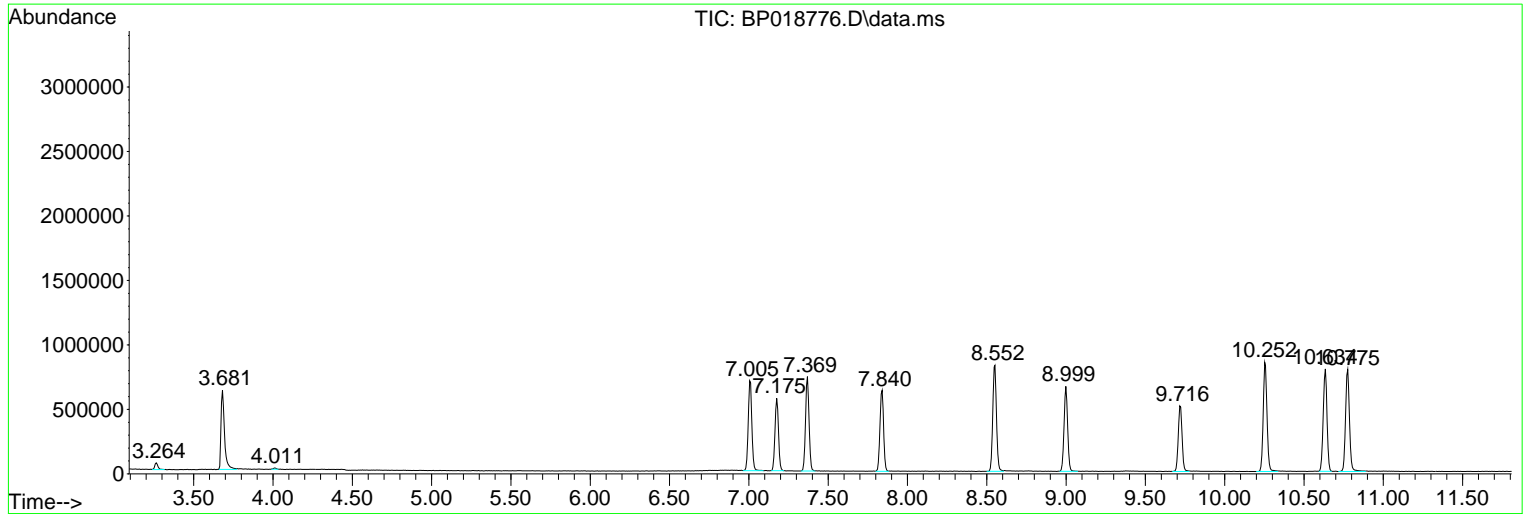
Sum of corrected areas: 45452275

Data Path : Z:\svoasrv\HPCHEM1\BNA_P\Data\BP121123\
 Data File : BP018776.D
 Acq On : 12 Dec 2023 20:17
 Operator : MA/JU
 Sample : PB157627BL
 Misc :
 ALS Vial : 55 Sample Multiplier: 1

Instrument :
 BNA_P
 ClientSampleId :
 SBLK627

Quant Method : Z:\svoasrv\HPCHEM1\BNA_P\Methods\SFAM-EPA-BP120123.MA.M
 Quant Title : SVOA CALIBRATION

TIC Library : C:\DATABASE\NIST20.L
 TIC Integration Parameters: LSCINT.P



Library Search Compound Report

Data Path : Z:\svoasrv\HPCHEM1\BNA_P\Data\BP121123\
Data File : BP018776.D
Acq On : 12 Dec 2023 20:17
Operator : MA/JU
Sample : PB157627BL
Misc :
ALS Vial : 55 Sample Multiplier: 1

Instrument :
BNA_P
ClientSampleId :
SBLK627

Quant Method : Z:\svoasrv\HPCHEM1\BNA_P\Methods\SFAM-EPA-BP120123.MA.M
Quant Title : SVOA CALIBRATION

TIC Library : C:\DATABASE\NIST20.L
TIC Integration Parameters: LSCINT.P

No Library Search Compounds Detected

Data Path : Z:\svoasrv\HPCHEM1\BNA_P\Data\BP121123\
Data File : BP018776.D
Acq On : 12 Dec 2023 20:17
Operator : MA/JU
Sample : PB157627BL
Misc :
ALS Vial : 55 Sample Multiplier: 1

Instrument :
BNA_P
ClientSampleId :
SBLK627

Quant Method : Z:\svoasrv\HPCHEM1\BNA_P\Methods\SFAM-EPA-BP120123.MA.M
Quant Title : SVOA CALIBRATION

TIC Library : C:\DATABASE\NIST0.L
TIC Integration Parameters: LSCINT.P

TIC Top Hit name	RT	EstConc	Units	Response	--Internal Standard--		
					#	RT	Resp Conc
