

Data Path : Z:\svoasrv\HPCHEM1\BNA_P\Data\BP121123\
 Data File : BP018803.D
 Acq On : 13 Dec 2023 12:05
 Operator : MA/JU
 Sample : 05675-19
 Misc :
 ALS Vial : 83 Sample Multiplier: 1

Instrument :
 BNA_P
 ClientSampleId :
 H0AC2

Integration Parameters: LSCINT.P

Integrator: RTE
 Smoothing : OFF Filtering: 5
 Sampling : 1 Min Area: 0.1 % of largest Peak
 Start Thrs: 0.2 Max Peaks: 100
 Stop Thrs : 0 Peak Location: TOP

If leading or trailing edge < 100 prefer < Baseline drop else tangent >
 Peak separation: 5

Method : Z:\svoasrv\HPCHEM1\BNA_P\Methods\SFAM-EPA-BP120123.MA.M
 Title : SVOA CALIBRATION

Signal : TIC: BP018803.D\data.ms

peak #	R.T. min	first scan	max scan	last scan	PK TY	peak height	corr. area	corr. % max.	% of total
1	3.228	19	24	28	rBV	73073	119368	1.77%	0.231%
2	3.264	28	30	33	rVV	42843	48450	0.72%	0.094%
3	3.299	33	36	42	rVB	28339	39155	0.58%	0.076%
4	3.681	98	101	111	rBV	231547	365144	5.40%	0.706%
5	3.911	137	140	145	rVB2	12057	21647	0.32%	0.042%
6	4.011	153	157	162	rVB2	11943	18031	0.27%	0.035%
7	4.540	241	247	259	rVB	605643	894941	13.23%	1.730%
8	7.005	660	666	677	rVB	147012	253476	3.75%	0.490%
9	7.175	688	695	703	rVB	655611	1027737	15.20%	1.987%
10	7.363	720	727	737	rBV	629795	985216	14.57%	1.905%
11	7.834	799	807	818	rBV	668436	1063261	15.72%	2.056%
12	8.546	918	928	936	rBV	453698	714737	10.57%	1.382%
13	8.993	996	1004	1015	rBV	758895	1253243	18.53%	2.423%
14	9.404	1073	1074	1082	rVB7	5221	8447	0.12%	0.016%
15	9.716	1119	1127	1139	rBV	583407	947465	14.01%	1.832%
16	10.251	1210	1218	1233	rBV	912786	1503477	22.23%	2.907%
17	10.628	1274	1282	1291	rBV	861199	1408000	20.82%	2.722%
18	10.769	1299	1306	1319	rBV	793192	1358553	20.09%	2.626%
19	11.381	1406	1410	1415	rBV4	8025	16249	0.24%	0.031%
20	12.216	1546	1552	1559	rVB2	17212	27533	0.41%	0.053%
21	12.422	1583	1587	1593	rVB9	3529	7089	0.10%	0.014%
22	12.869	1660	1663	1671	rVB10	4236	9087	0.13%	0.018%
23	13.363	1742	1747	1754	rBV3	14269	25656	0.38%	0.050%
24	13.881	1829	1835	1848	rBV	1791483	2516642	37.22%	4.865%
25	14.157	1875	1882	1894	rBV	2008137	2865132	42.37%	5.539%
26	14.463	1927	1934	1942	rBV	1344709	1964411	29.05%	3.798%
27	14.675	1964	1970	1984	rBV	88967	184164	2.72%	0.356%
28	15.457	2095	2103	2114	rBV	2777512	3896864	57.63%	7.534%
29	15.575	2117	2123	2136	rVV	763817	1069255	15.81%	2.067%
30	15.698	2140	2144	2153	rVB5	17505	33273	0.49%	0.064%
31	16.698	2307	2314	2318	rBV9	5454	10198	0.15%	0.020%
32	16.981	2358	2362	2367	rBV7	6488	14657	0.22%	0.028%
33	17.216	2395	2402	2412	rBV	1785072	2556974	37.81%	4.943%
34	17.310	2412	2418	2429	rBV	3284786	4734702	70.02%	9.153%
35	17.716	2484	2487	2492	rBV7	7600	10101	0.15%	0.020%
36	17.886	2513	2516	2521	rVB6	8732	12534	0.19%	0.024%

Data Path : Z:\svoasrv\HPCHEM1\BNA_P\Data\BP121123\
 Data File : BP018803.D
 Acq On : 13 Dec 2023 12:05
 Operator : MA/JU
 Sample : 05675-19
 Misc :
 ALS Vial : 83 Sample Multiplier: 1

Instrument :
 BNA_P
 ClientSampleId :
 H0AC2

Integration Parameters: LSCINT.P

Integrator: RTE
 Smoothing : OFF Filtering: 5
 Sampling : 1 Min Area: 0.1 % of largest Peak
 Start Thrs: 0.2 Max Peaks: 100
 Stop Thrs : 0 Peak Location: TOP

If leading or trailing edge < 100 prefer < Baseline drop else tangent >
 Peak separation: 5

Method : Z:\svoasrv\HPCHEM1\BNA_P\Methods\SFAM-EPA-BP120123.MA.M
 Title : SVOA CALIBRATION

37	18.104	2548	2553	2560	rBV2	62203	87603	1.30%	0.169%
38	18.180	2563	2566	2571	rVB3	12852	19197	0.28%	0.037%
39	18.386	2599	2601	2604	rBV4	7311	8868	0.13%	0.017%
40	18.880	2683	2685	2691	rVB4	11735	14257	0.21%	0.028%
41	19.127	2723	2727	2732	rBV2	49030	64007	0.95%	0.124%
42	19.192	2735	2738	2743	rBV	45397	62775	0.93%	0.121%
43	19.339	2760	2763	2767	rBV3	28680	33533	0.50%	0.065%
44	19.551	2793	2799	2805	rBV	4565840	6001756	88.75%	11.603%
45	21.304	3092	3097	3107	rBV	2503820	3195543	47.26%	6.178%
46	23.515	3465	3473	3489	rVB	3469085	6762194	100.00%	13.073%
47	23.668	3492	3499	3515	rVB	1721577	3492238	51.64%	6.751%

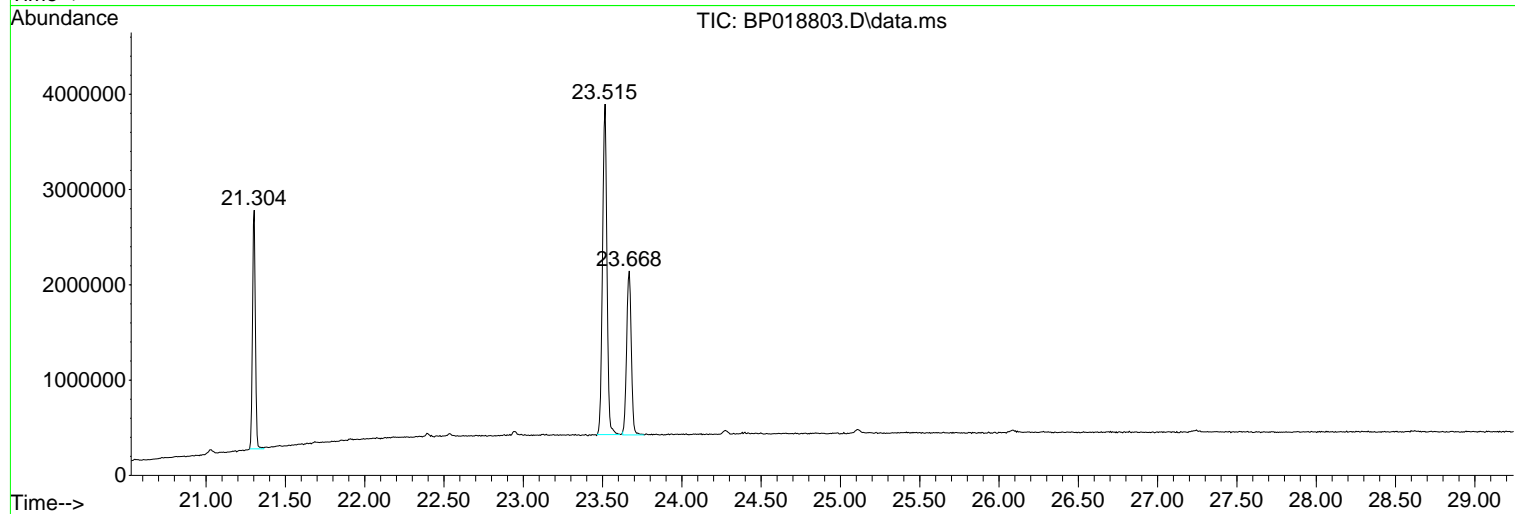
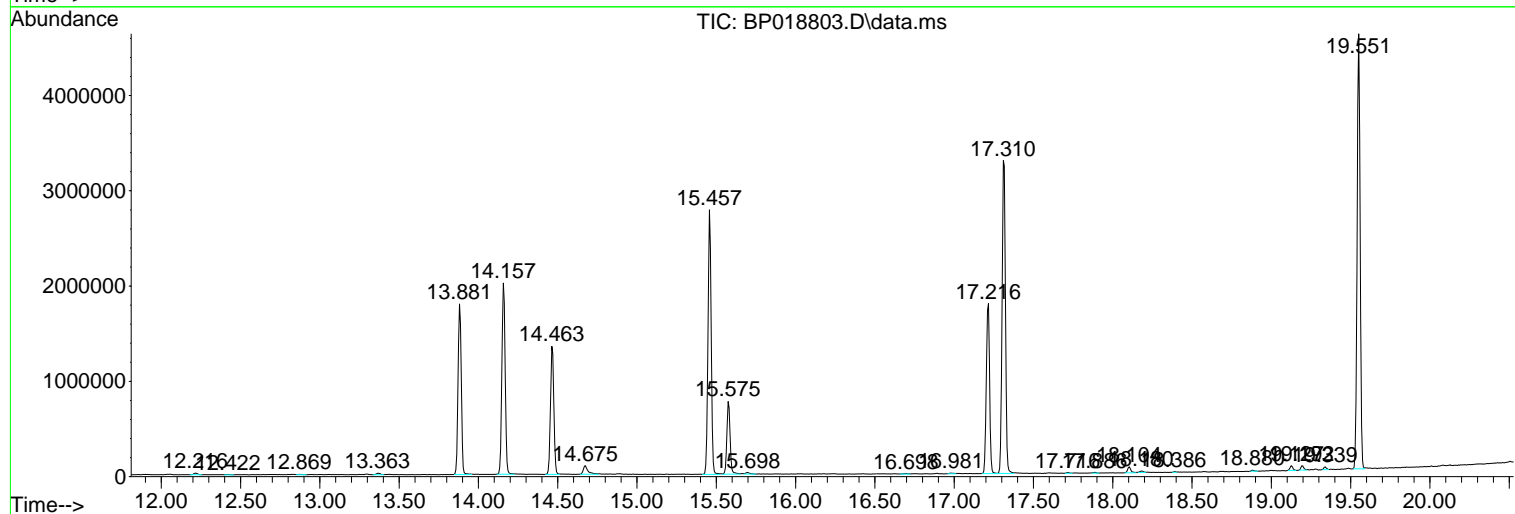
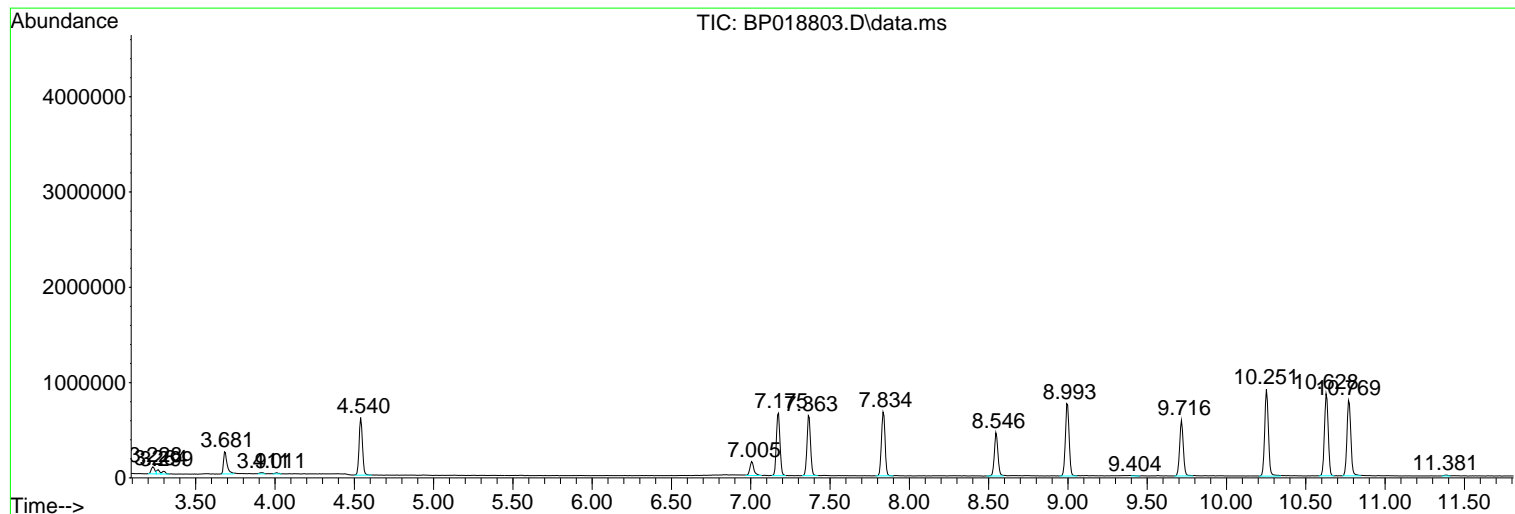
Sum of corrected areas: 51726840

Data Path : Z:\svoasrv\HPCHEM1\BNA_P\Data\BP121123\
 Data File : BP018803.D
 Acq On : 13 Dec 2023 12:05
 Operator : MA/JU
 Sample : 05675-19
 Misc :
 ALS Vial : 83 Sample Multiplier: 1

Instrument :
 BNA_P
 ClientSampleId :
 H0AC2

Quant Method : Z:\svoasrv\HPCHEM1\BNA_P\Methods\SFAM-EPA-BP120123.MA.M
 Quant Title : SVOA CALIBRATION

TIC Library : C:\DATABASE\NIST20.L
 TIC Integration Parameters: LSCINT.P



Library Search Compound Report

Data Path : Z:\svoasrv\HPCHEM1\BNA_P\Data\BP121123\
Data File : BP018803.D
Acq On : 13 Dec 2023 12:05
Operator : MA/JU
Sample : 05675-19
Misc :
ALS Vial : 83 Sample Multiplier: 1

Instrument :
BNA_P
ClientSampleId :
H0AC2

Quant Method : Z:\svoasrv\HPCHEM1\BNA_P\Methods\SFAM-EPA-BP120123.MA.M
Quant Title : SVOA CALIBRATION

TIC Library : C:\DATABASE\NIST20.L
TIC Integration Parameters: LSCINT.P

No Library Search Compounds Detected

Data Path : Z:\svoasrv\HPCHEM1\BNA_P\Data\BP121123\
Data File : BP018803.D
Acq On : 13 Dec 2023 12:05
Operator : MA/JU
Sample : 05675-19
Misc :
ALS Vial : 83 Sample Multiplier: 1

Instrument :
BNA_P
ClientSampleId :
H0AC2

Quant Method : Z:\svoasrv\HPCHEM1\BNA_P\Methods\SFAM-EPA-BP120123.MA.M
Quant Title : SVOA CALIBRATION

TIC Library : C:\DATABASE\NIST0.L
TIC Integration Parameters: LSCINT.P

TIC Top Hit name	RT	EstConc	Units	Response	#	RT	Resp	Conc
------------------	----	---------	-------	----------	---	----	------	------
