

Data Path : Z:\svoasrv\HPCHEM1\BNA_P\Data\BP122821\
 Data File : BP008589.D
 Acq On : 28 Dec 2021 22:16
 Operator : CG/JU
 Sample : PB141705BL
 Misc :
 ALS Vial : 11 Sample Multiplier: 1

Instrument :
 BNA_P
 ClientSampleId :
 PB141705BL

Quant Time: Dec 30 08:47:14 2021
 Quant Method : Z:\svoasrv\HPCHEM1\BNA_P\Methods\8270E-BP122821.M
 Quant Title : ASP BNA STANDARDS FOR 5 POINT CALIBRATION
 QLast Update : Thu Dec 30 08:44:33 2021
 Response via : Initial Calibration

Compound	R.T.	QIon	Response	Conc	Units	Dev(Min)
Internal Standards						
1) 1,4-Dichlorobenzene-d4	7.898	152	631150	20.000	ng	0.00
21) Naphthalene-d8	10.698	136	2539816	20.000	ng	0.00
39) Acenaphthene-d10	14.528	164	1824628	20.000	ng	0.00
64) Phenanthrene-d10	17.274	188	4097016	20.000	ng	0.00
76) Chrysene-d12	21.357	240	3688589	20.000	ng	0.00
86) Perylene-d12	23.780	264	3445503	20.000	ng	0.00
System Monitoring Compounds						
5) 2-Fluorophenol	5.475	112	4633933	134.012	ng	0.00
7) Phenol-d6	7.063	99	5832387	121.180	ng	0.00
23) Nitrobenzene-d5	9.051	82	3478916	81.485	ng	0.00
42) 2,4,6-Tribromophenol	16.016	330	3237685	131.152	ng	0.00
45) 2-Fluorobiphenyl	13.157	172	10282767	81.649	ng	0.00
79) Terphenyl-d14	19.827	244	13888588	76.879	ng	0.00
Target Compounds						
2) 1,4-Dioxane	3.434	88	454	0.033	ng	# 1
3) Pyridine	3.769	79	141	0.004	ng	# 1
4) n-Nitrosodimethylamine	3.681	42	270	0.022	ng	# 1
6) Aniline	7.222	93	1361	0.024	ng	# 64
8) 2-Chlorophenol	7.469	128	185	0.005	ng	# 5
9) Benzaldehyde	7.063	77	9287	0.339	ng	# 3
10) Phenol	7.057	94	1642	0.034	ng	# 1
11) bis(2-Chloroethyl)ether	7.328	93	300	0.008	ng	# 86
12) 1,3-Dichlorobenzene	7.793	146	8	0.000	ng	# 1
13) 1,4-Dichlorobenzene	7.928	146	122	0.003	ng	# 23
14) 1,2-Dichlorobenzene	8.222	146	50	0.001	ng	# 91
15) Benzyl Alcohol	7.893	79	14319	0.415	ng	# 24
16) 2,2'-oxybis(1-Chloropr...	8.428	45	141	0.003	ng	# 1
17) 2-Methylphenol	8.369	107	104	0.003	ng	# 1
18) Hexachloroethane	8.975	117	119	0.008	ng	# 7
19) n-Nitroso-di-n-propyla...	8.728	70	160	0.005	ng	# 1
20) 3+4-Methylphenols	8.663	107	92	0.002	ng	# 1
22) Acetophenone	8.716	105	176	0.003	ng	# 1
24) Nitrobenzene	9.051	77	10485	0.258	ng	# 31
25) Isophorone	9.628	82	202	0.003	ng	# 58
26) 2-Nitrophenol	9.816	139	36	0.002	ng	# 1
27) 2,4-Dimethylphenol	9.863	122	130	0.004	ng	# 43
28) bis(2-Chloroethoxy)met...	9.975	93	187	0.003	ng	# 96
29) 2,4-Dichlorophenol	10.334	162	53	0.001	ng	# 1
30) 1,2,4-Trichlorobenzene	10.569	180	35	0.001	ng	# 1
31) Naphthalene	10.740	128	91	0.001	ng	# 93
32) Benzoic acid	10.034	122	40	0.002	ng	# 1
33) 4-Chloroaniline	10.863	127	182	0.003	ng	# 22
34) Hexachlorobutadiene	11.040	225	12	0.000	ng	# 56
35) Caprolactam	11.639	113	18	0.001	ng	# 1
36) 4-Chloro-3-methylphenol	11.975	107	107	0.003	ng	# 84
37) 2-Methylnaphthalene	12.357	142	156	0.002	ng	# 24
38) 1-Methylnaphthalene	12.563	142	196	0.002	ng	# 23
40) 1,2,4,5-Tetrachloroben...	12.751	216	23	0.000	ng	# 1
41) Hexachlorocyclopentadiene	12.628	237	18	0.001	ng	# 91
43) 2,4,6-Trichlorophenol	12.957	196	84	0.002	ng	# 42

Data Path : Z:\svoasrv\HPCHEM1\BNA_P\Data\BP122821\
 Data File : BP008589.D
 Acq On : 28 Dec 2021 22:16
 Operator : CG/JU
 Sample : PB141705BL
 Misc :
 ALS Vial : 11 Sample Multiplier: 1

Instrument :
 BNA_P
 ClientSampleId :
 PB141705BL

Quant Time: Dec 30 08:47:14 2021
 Quant Method : Z:\svoasrv\HPCHEM1\BNA_P\Methods\8270E-BP122821.M
 Quant Title : ASP BNA STANDARDS FOR 5 POINT CALIBRATION
 QLast Update : Thu Dec 30 08:44:33 2021
 Response via : Initial Calibration

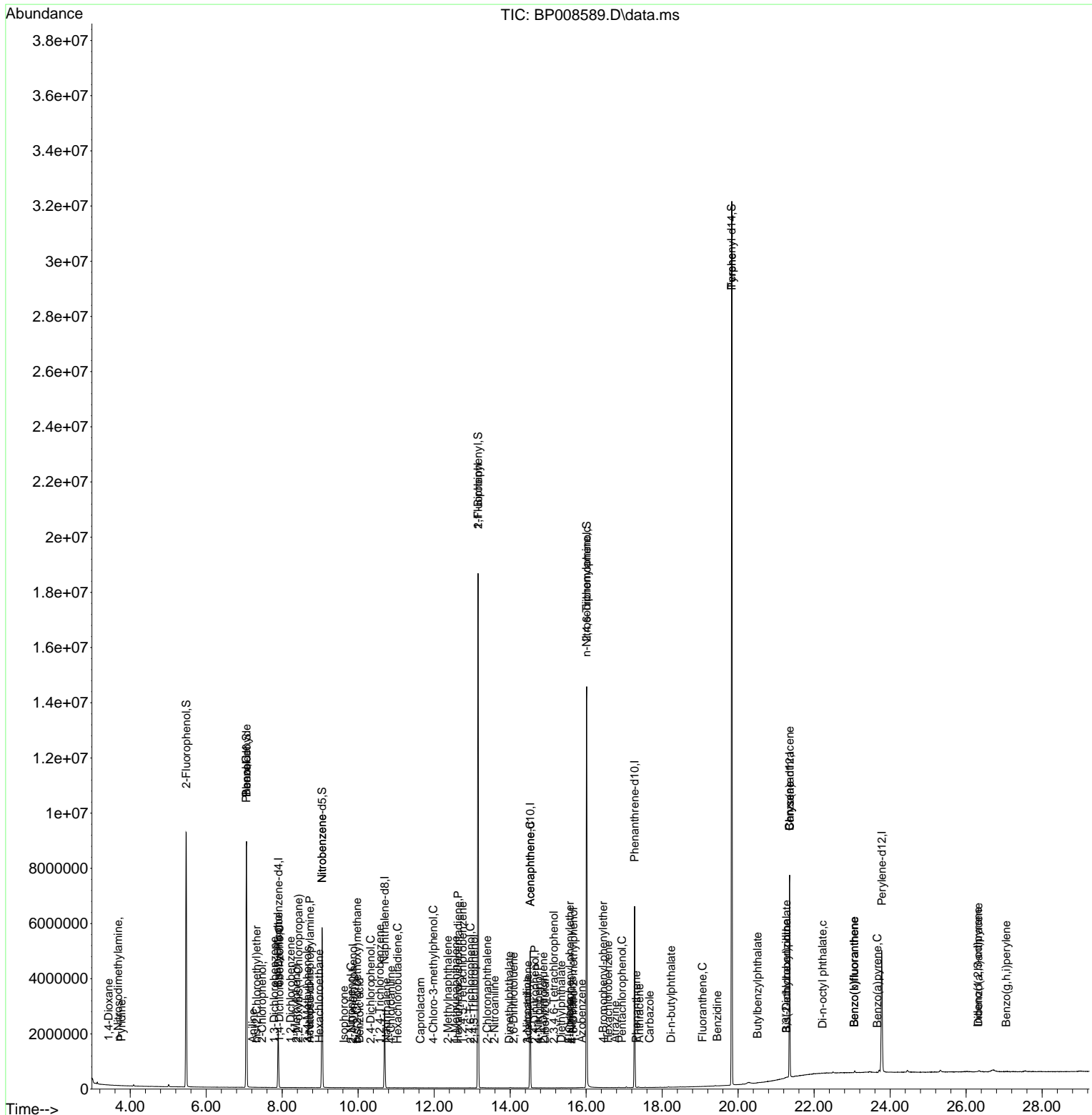
Compound	R.T.	QIon	Response	Conc	Units	Dev(Min)	
44) 2,4,5-Trichlorophenol	13.051	196	46	0.001	ng	#	18
46) 1,1'-Biphenyl	13.157	154	20387	0.151	ng	#	1
47) 2-Chloronaphthalene	13.392	162	40	0.000	ng	#	76
48) 2-Nitroaniline	13.592	65	77	0.003	ng	#	46
49) Acenaphthylene	14.469	152	50	0.000	ng	#	96
50) Dimethylphthalate	13.981	163	240	0.002	ng	#	63
51) 2,6-Dinitrotoluene	14.092	165	270	0.009	ng	#	65
52) Acenaphthene	14.528	154	6269	0.059	ng	#	7
53) 3-Nitroaniline	14.445	138	59	0.002	ng	#	1
54) 2,4-Dinitrophenol	14.651	184	53	0.004	ng	#	1
55) Dibenzofuran	14.922	168	314	0.002	ng	#	80
56) 4-Nitrophenol	14.739	139	35	0.001	ng	#	1
57) 2,4-Dinitrotoluene	14.875	165	241	0.006	ng	#	41
58) Fluorene	15.557	166	203	0.002	ng	#	34
59) 2,3,4,6-Tetrachlorophenol	15.151	232	26	0.001	ng	#	1
60) Diethylphthalate	15.345	149	3960	0.029	ng	#	99
61) 4-Chlorophenyl-phenylether	15.569	204	77	0.001	ng	#	27
62) 4-Nitroaniline	15.633	138	49	0.002	ng	#	89
63) Azobenzene	15.880	77	757	0.007	ng	#	38
65) 4,6-Dinitro-2-methylphthalate	15.663	198	188	0.009	ng	#	1
66) n-Nitrosodiphenylamine	16.010	169	87324	0.706	ng	#	44
67) 4-Bromophenyl-phenylether	16.451	248	156	0.003	ng	#	3
68) Hexachlorobenzene	16.580	284	111	0.002	ng	#	6
69) Atrazine	16.763	200	14	0.000	ng	#	71
70) Pentachlorophenol	16.939	266	117	0.004	ng	#	52
71) Phenanthrene	17.316	178	877	0.004	ng	#	83
72) Anthracene	17.404	178	173	0.001	ng	#	55
73) Carbazole	17.669	167	543	0.003	ng	#	48
74) Di-n-butylphthalate	18.233	149	1585	0.007	ng	#	77
75) Fluoranthene	19.063	202	59	0.000	ng	#	73
77) Benzidine	19.451	184	2536	0.023	ng	#	86
78) Pyrene	19.833	202	57462	0.239	ng	#	69
80) Butylbenzylphthalate	20.510	149	264	0.003	ng	#	89
81) Benzo(a)anthracene	21.357	228	10923	0.046	ng	#	71
82) 3,3'-Dichlorobenzidine	21.268	252	2159	0.025	ng	#	90
83) Chrysene	21.357	228	10923	0.049	ng	#	67
84) Bis(2-ethylhexyl)phthalate	21.274	149	1843	0.013	ng	#	75
85) Di-n-octyl phthalate	22.221	149	612	0.003	ng	#	1
87) Indeno(1,2,3-cd)pyrene	26.309	276	4925	0.021	ng	#	69
88) Benzo(b)fluoranthene	23.057	252	3355	0.015	ng	#	1
89) Benzo(k)fluoranthene	23.057	252	3208	0.015	ng	#	1
90) Benzo(a)pyrene	23.662	252	2954	0.017	ng	#	1
91) Dibenzo(a,h)anthracene	26.321	278	4489	0.023	ng	#	89
92) Benzo(g,h,i)perylene	27.056	276	2093	0.011	ng	#	85

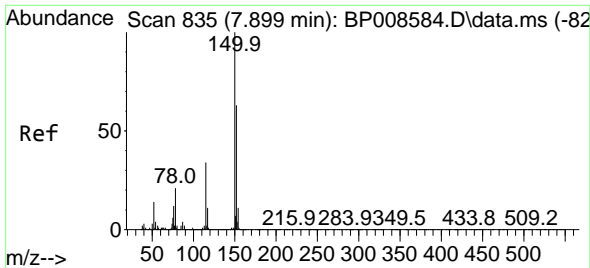
(#) = qualifier out of range (m) = manual integration (+) = signals summed

Data Path : Z:\svoasrv\HPCHEM1\BNA_P\Data\BP122821\
 Data File : BP008589.D
 Acq On : 28 Dec 2021 22:16
 Operator : CG/JU
 Sample : PB141705BL
 Misc :
 ALS Vial : 11 Sample Multiplier: 1

Instrument :
 BNA_P
 ClientSampleId :
 PB141705BL

Quant Time: Dec 30 08:47:14 2021
 Quant Method : Z:\svoasrv\HPCHEM1\BNA_P\Methods\8270E-BP122821.M
 Quant Title : ASP BNA STANDARDS FOR 5 POINT CALIBRATION
 QLast Update : Thu Dec 30 08:44:33 2021
 Response via : Initial Calibration

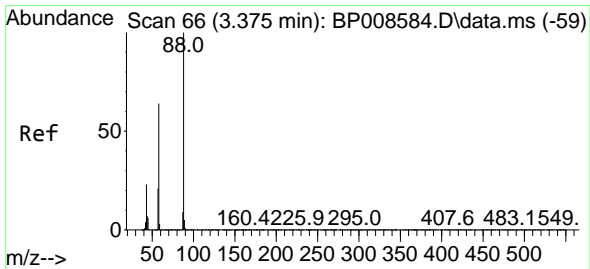
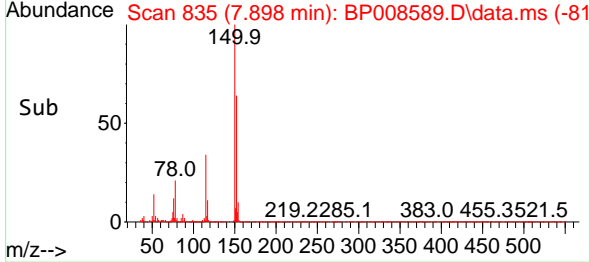
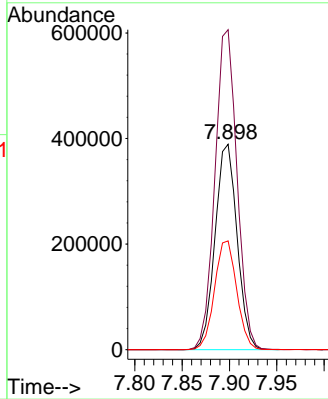
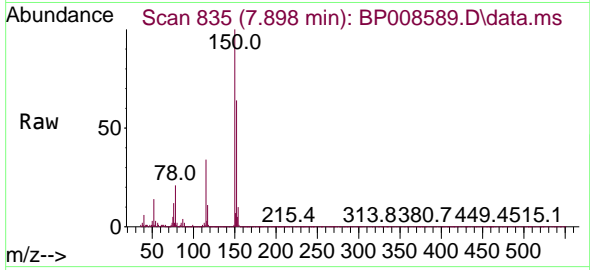




#1
 1,4-Dichlorobenzene-d4
 Concen: 20.000 ng
 RT: 7.898 min Scan# 81
 Delta R.T. -0.001 min
 Lab File: BP008589.D
 Acq: 28 Dec 2021 22:16

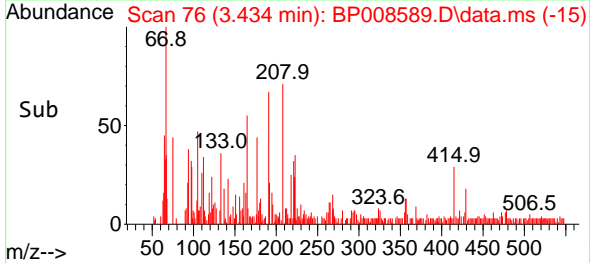
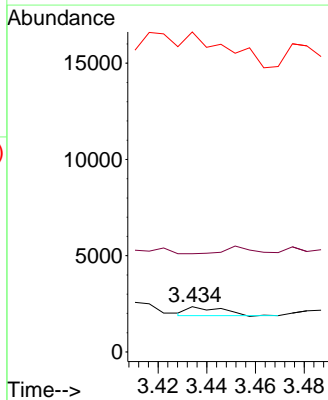
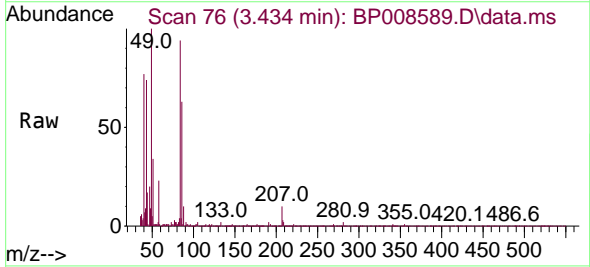
Instrument :
 BNA_P
 ClientSampleId :
 PB141705BL

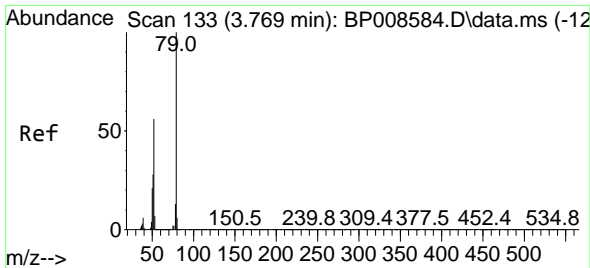
Tgt Ion:152 Resp: 631150
 Ion Ratio Lower Upper
 152 100
 150 155.8 127.0 190.6
 115 53.0 43.7 65.5



#2
 1,4-Dioxane
 Concen: 0.033 ng
 RT: 3.434 min Scan# 76
 Delta R.T. 0.059 min
 Lab File: BP008589.D
 Acq: 28 Dec 2021 22:16

Tgt Ion: 88 Resp: 454
 Ion Ratio Lower Upper
 88 100
 58 306.2 50.6 75.8#
 43 0.0 18.2 27.4#

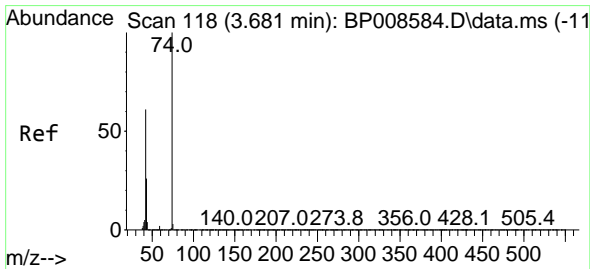
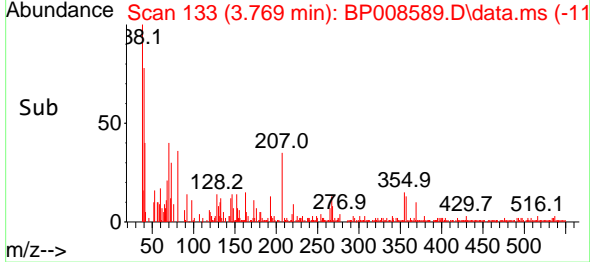
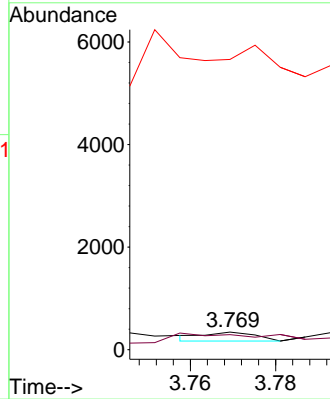
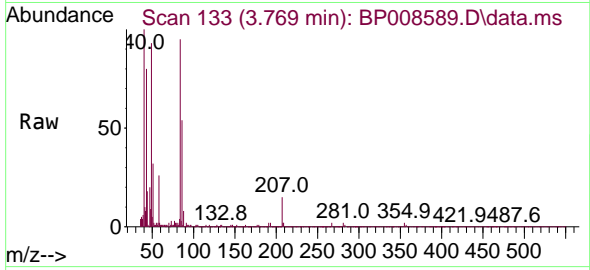




#3
 Pyridine
 Concen: 0.004 ng
 RT: 3.769 min Scan# 111
 Delta R.T. -0.000 min
 Lab File: BP008589.D
 Acq: 28 Dec 2021 22:16

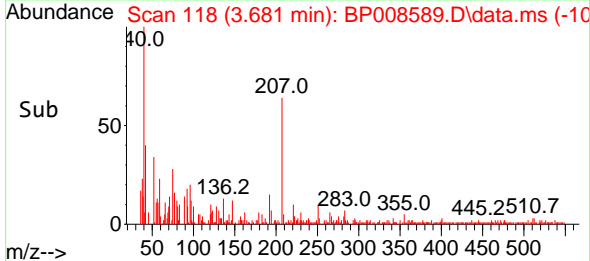
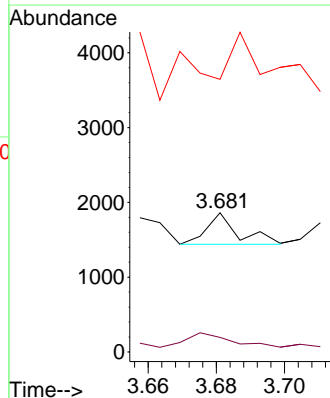
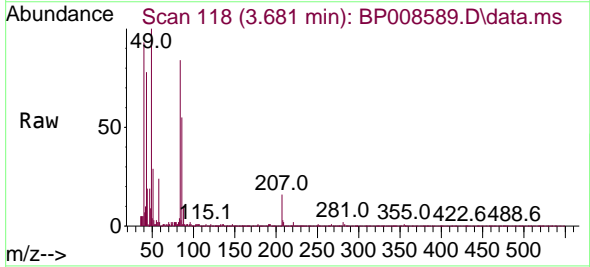
Instrument :
 BNA_P
 ClientSampleId :
 PB141705BL

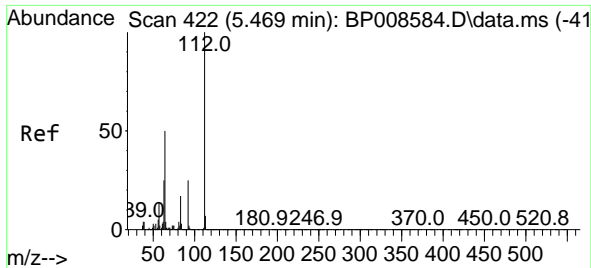
Tgt Ion: 79 Resp: 141
 Ion Ratio Lower Upper
 79 100
 52 86.0 45.1 67.7#
 51 1655.0 23.1 34.7#



#4
 n-Nitrosodimethylamine
 Concen: 0.022 ng
 RT: 3.681 min Scan# 118
 Delta R.T. -0.000 min
 Lab File: BP008589.D
 Acq: 28 Dec 2021 22:16

Tgt Ion: 42 Resp: 270
 Ion Ratio Lower Upper
 42 100
 74 10.5 131.1 196.7#
 44 195.9 6.2 9.2#

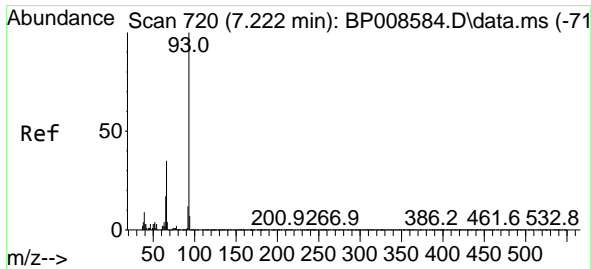
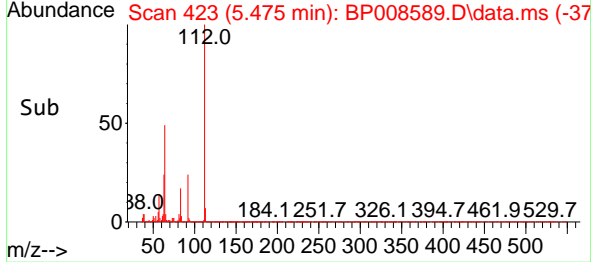
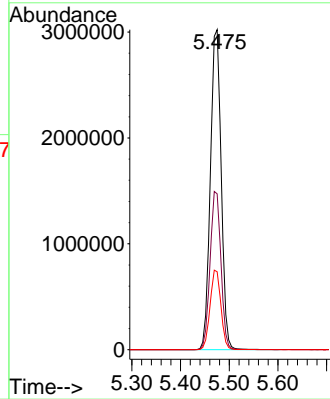
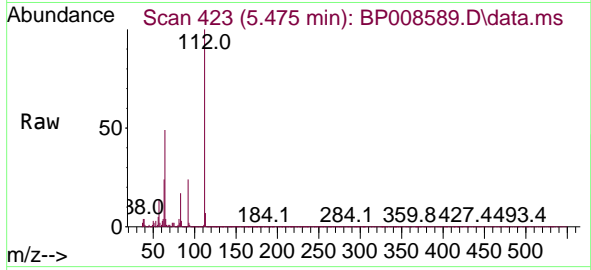




#5
 2-Fluorophenol
 Concen: 134.012 ng
 RT: 5.475 min Scan# 41
 Delta R.T. 0.006 min
 Lab File: BP008589.D
 Acq: 28 Dec 2021 22:16

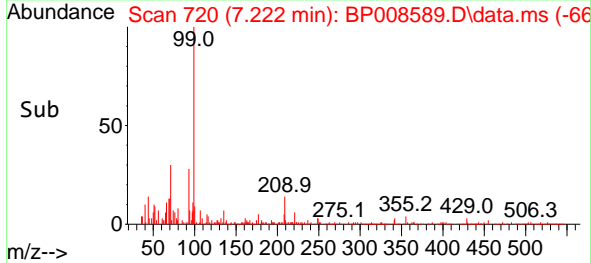
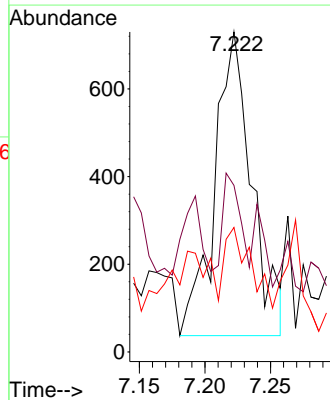
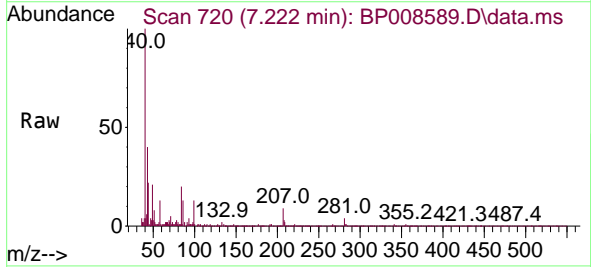
Instrument :
 BNA_P
 ClientSampleId :
 PB141705BL

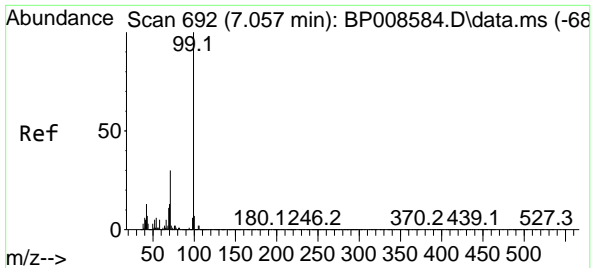
Tgt Ion:112 Resp: 4633933
 Ion Ratio Lower Upper
 112 100
 64 48.7 39.7 59.5
 63 24.4 20.0 30.0



#6
 Aniline
 Concen: 0.024 ng
 RT: 7.222 min Scan# 720
 Delta R.T. -0.000 min
 Lab File: BP008589.D
 Acq: 28 Dec 2021 22:16

Tgt Ion: 93 Resp: 1361
 Ion Ratio Lower Upper
 93 100
 66 52.1 27.8 41.6#
 65 38.9 14.0 21.0#



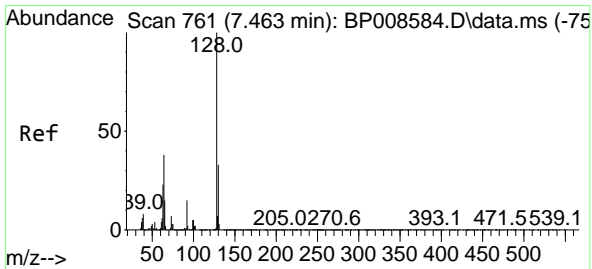
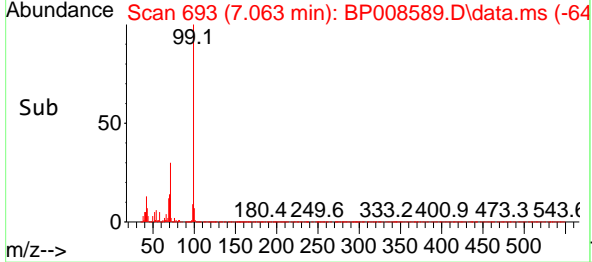
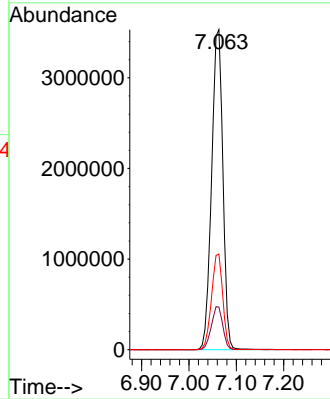
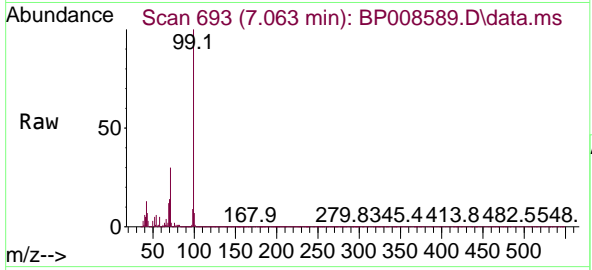


#7
 Phenol-d6
 Concen: 121.180 ng
 RT: 7.063 min Scan# 692
 Delta R.T. 0.006 min
 Lab File: BP008589.D
 Acq: 28 Dec 2021 22:16

Instrument :
 BNA_P
 ClientSampleId :
 PB141705BL

Tgt Ion: 99 Resp: 5832387

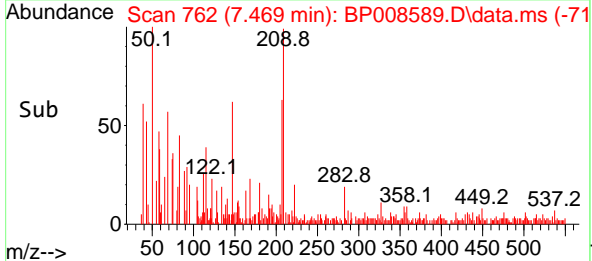
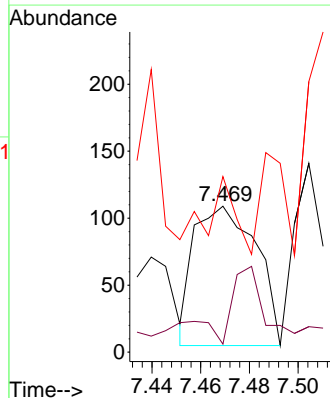
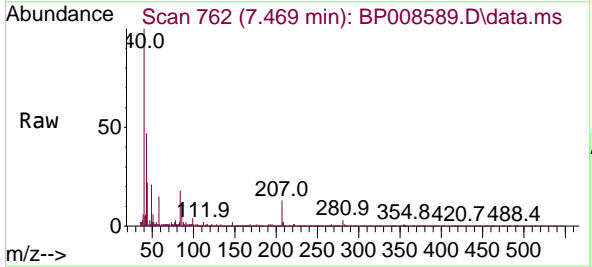
Ion	Ratio	Lower	Upper
99	100		
42	13.3	10.8	16.2
71	29.9	23.8	35.6

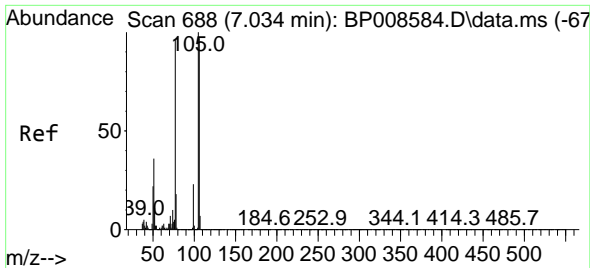


#8
 2-Chlorophenol
 Concen: 0.005 ng
 RT: 7.469 min Scan# 762
 Delta R.T. 0.006 min
 Lab File: BP008589.D
 Acq: 28 Dec 2021 22:16

Tgt Ion: 128 Resp: 185

Ion	Ratio	Lower	Upper
128	100		
130	5.5	12.6	52.6#
64	120.2	18.6	58.6#

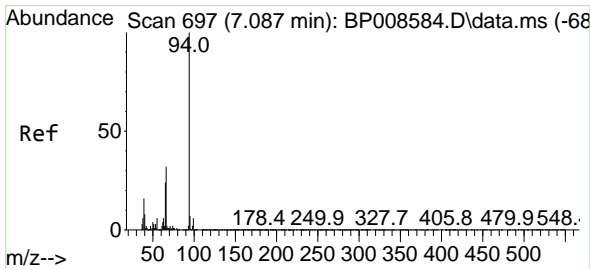
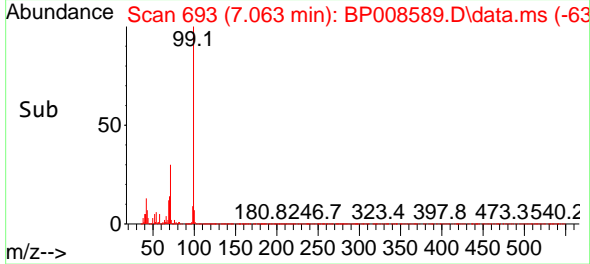
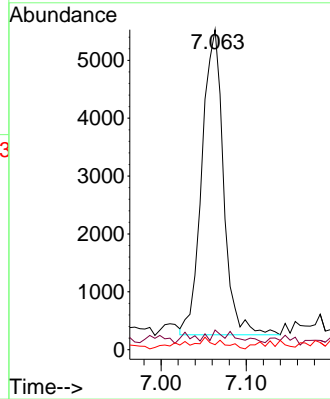
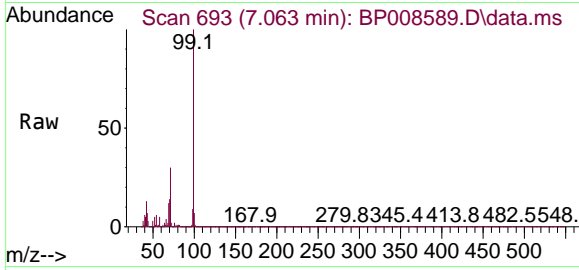




#9
 Benzaldehyde
 Concen: 0.339 ng
 RT: 7.063 min Scan# 691
 Delta R.T. 0.029 min
 Lab File: BP008589.D
 Acq: 28 Dec 2021 22:16

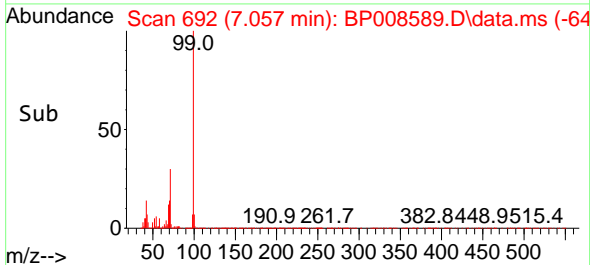
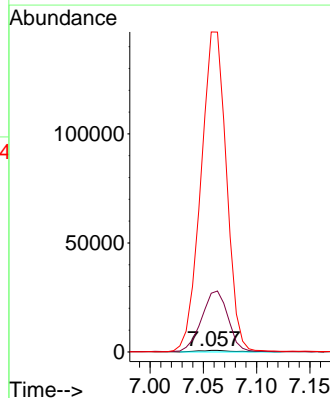
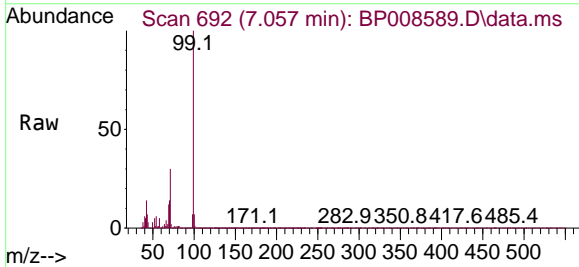
Instrument :
 BNA_P
 ClientSampleId :
 PB141705BL

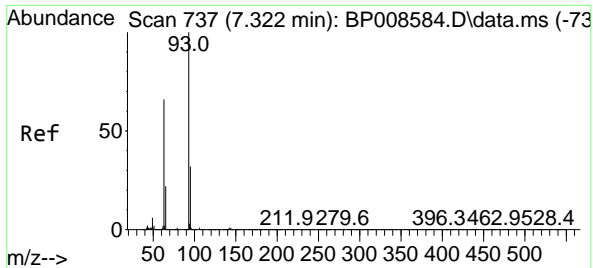
Tgt Ion: 77 Resp: 9287
 Ion Ratio Lower Upper
 77 100
 105 6.2 84.2 124.2#
 106 1.6 80.6 120.6#



#10
 Phenol
 Concen: 0.034 ng
 RT: 7.057 min Scan# 692
 Delta R.T. -0.030 min
 Lab File: BP008589.D
 Acq: 28 Dec 2021 22:16

Tgt Ion: 94 Resp: 1642
 Ion Ratio Lower Upper
 94 100
 65 3723.4 4.1 44.1#
 66 20297.6 12.4 52.4#

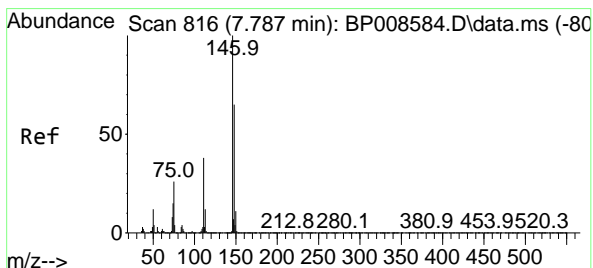
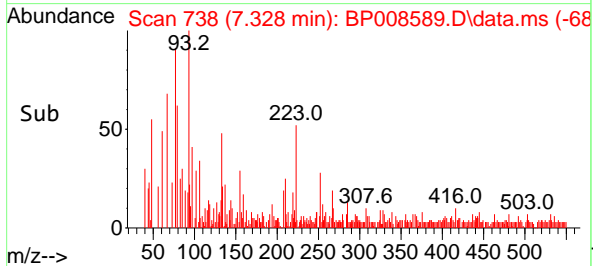
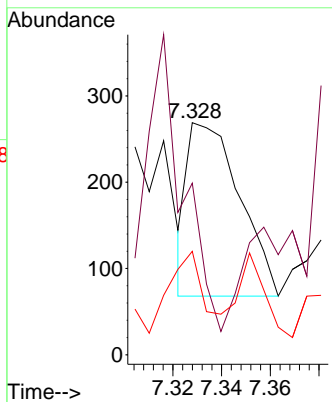
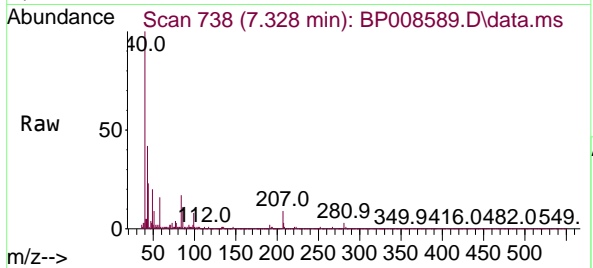




#11
 bis(2-Chloroethyl)ether
 Concen: 0.008 ng
 RT: 7.328 min Scan# 71
 Delta R.T. 0.006 min
 Lab File: BP008589.D
 Acq: 28 Dec 2021 22:16

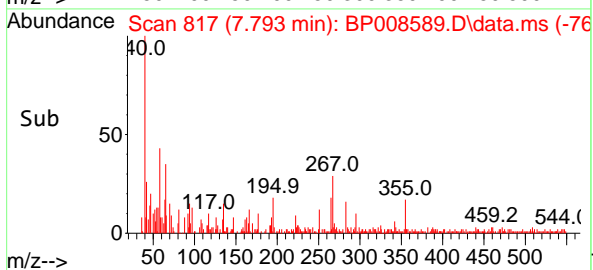
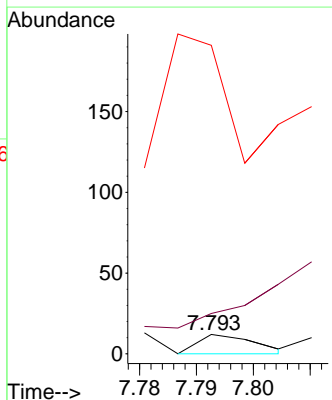
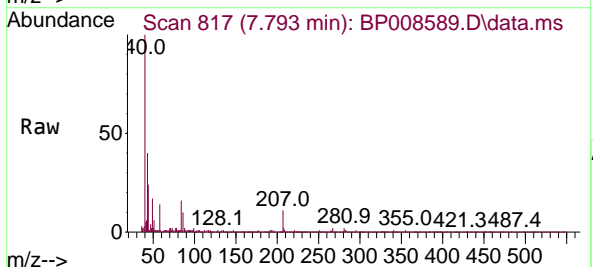
Instrument :
 BNA_P
 ClientSampleId :
 PB141705BL

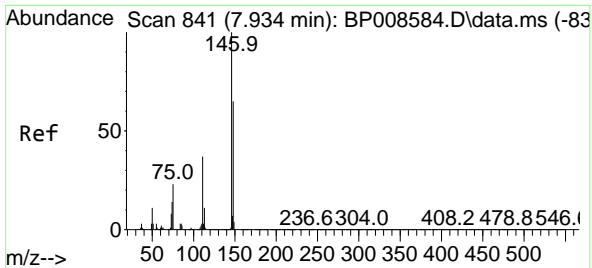
Tgt Ion	Resp	Lower	Upper
93	100		
63	74.0	46.0	86.0
95	44.6	12.2	52.2



#12
 1,3-Dichlorobenzene
 Concen: 0.000 ng
 RT: 7.793 min Scan# 817
 Delta R.T. 0.006 min
 Lab File: BP008589.D
 Acq: 28 Dec 2021 22:16

Tgt Ion	Resp	Lower	Upper
146	100		
148	208.3	51.9	77.9#
75	1591.7	20.5	30.7#

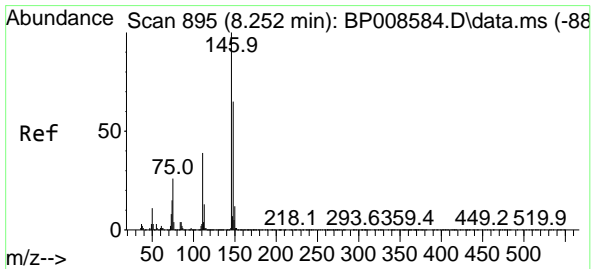
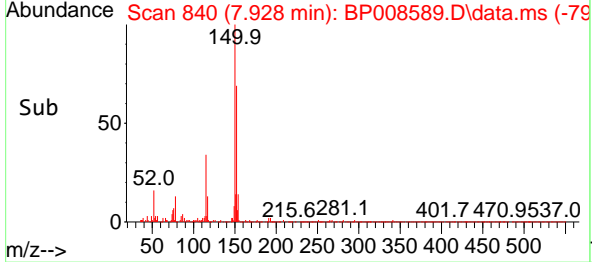
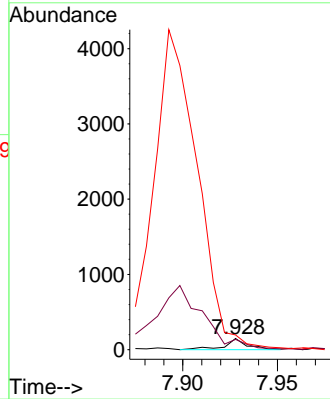
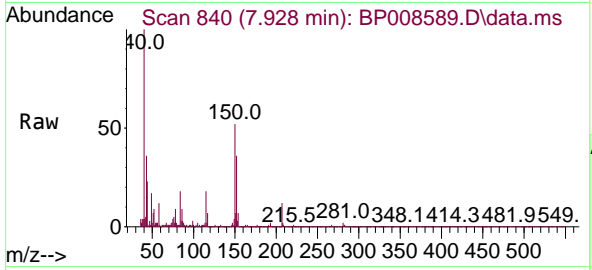




#13
 1,4-Dichlorobenzene
 Concen: 0.003 ng
 RT: 7.928 min Scan# 841
 Delta R.T. -0.006 min
 Lab File: BP008589.D
 Acq: 28 Dec 2021 22:16

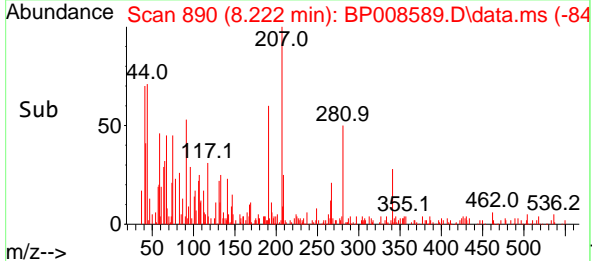
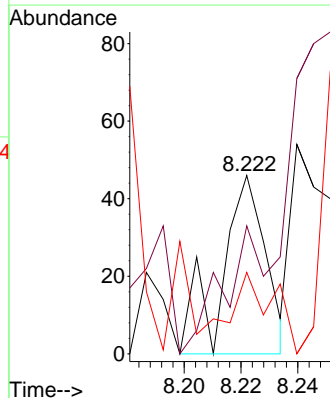
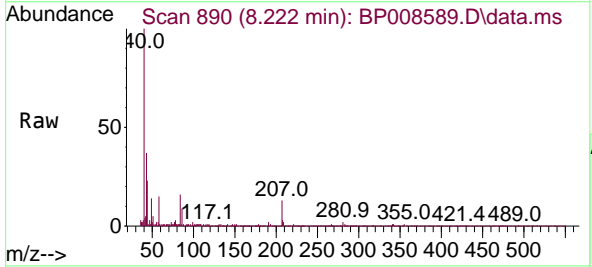
Instrument :
 BNA_P
 ClientSampleId :
 PB141705BL

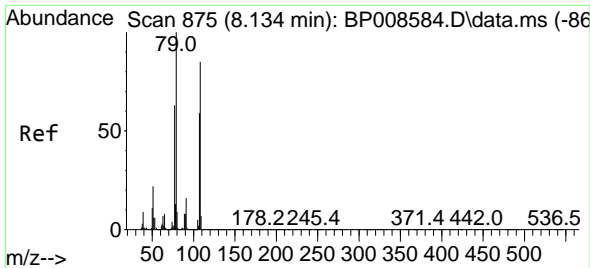
Tgt Ion	Resp	Lower	Upper
146	100		
148	90.6	52.3	78.5#
111	130.9	29.8	44.8#



#14
 1,2-Dichlorobenzene
 Concen: 0.001 ng
 RT: 8.222 min Scan# 890
 Delta R.T. -0.030 min
 Lab File: BP008589.D
 Acq: 28 Dec 2021 22:16

Tgt Ion	Resp	Lower	Upper
146	100		
148	71.7	52.2	78.2
111	45.7	31.1	46.7



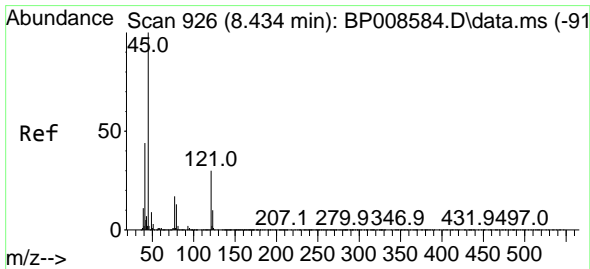
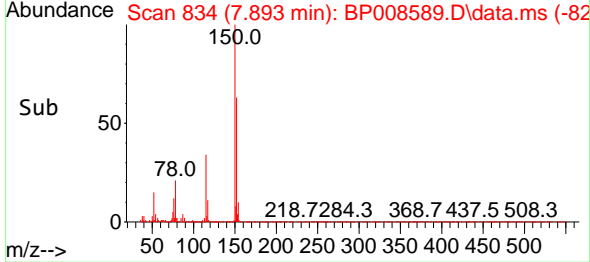
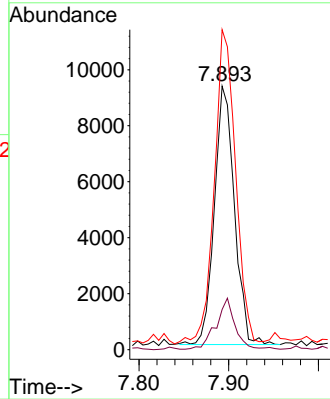
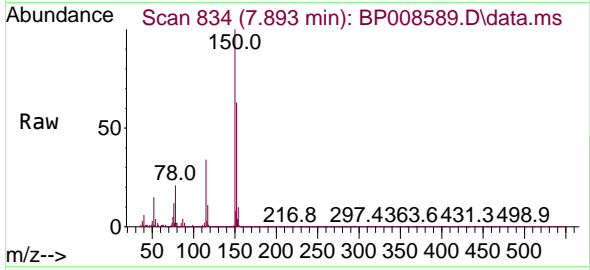


#15
 Benzyl Alcohol
 Concen: 0.415 ng
 RT: 7.893 min Scan# 81
 Delta R.T. -0.241 min
 Lab File: BP008589.D
 Acq: 28 Dec 2021 22:16

Instrument :
 BNA_P
 ClientSampleId :
 PB141705BL

Tgt Ion: 79 Resp: 14319

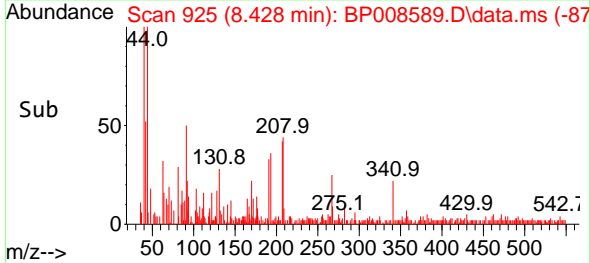
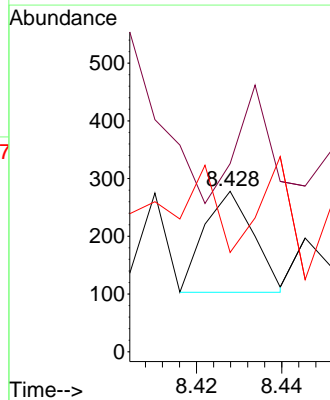
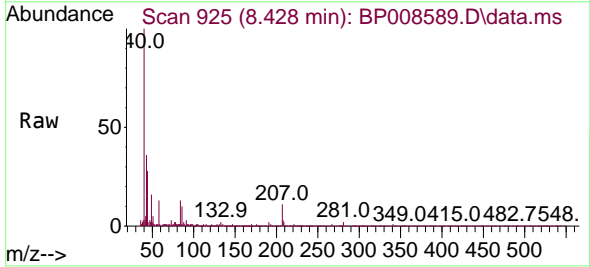
Ion	Ratio	Lower	Upper
79	100		
108	15.2	67.8	101.8#
77	121.4	50.7	76.1#

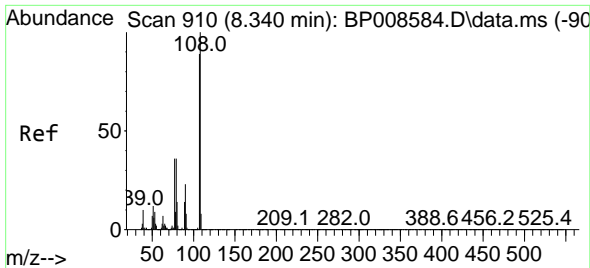


#16
 2,2'-oxybis(1-Chloropropane)
 Concen: 0.003 ng
 RT: 8.428 min Scan# 925
 Delta R.T. -0.006 min
 Lab File: BP008589.D
 Acq: 28 Dec 2021 22:16

Tgt Ion: 45 Resp: 141

Ion	Ratio	Lower	Upper
45	100		
77	117.3	0.0	37.4#
79	61.9	0.0	34.1#

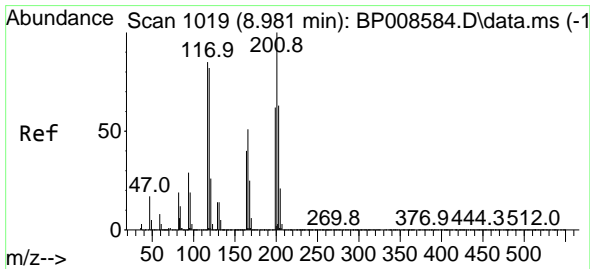
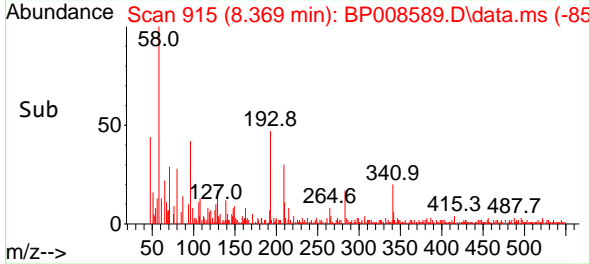
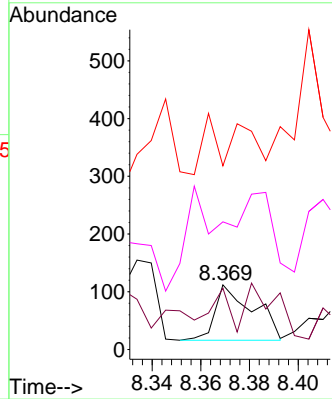
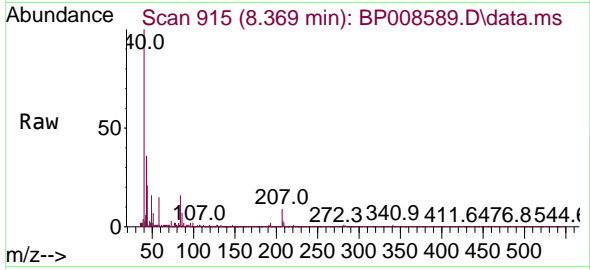




#17
 2-Methylphenol
 Concen: 0.003 ng
 RT: 8.369 min Scan# 910
 Delta R.T. 0.029 min
 Lab File: BP008589.D
 Acq: 28 Dec 2021 22:16

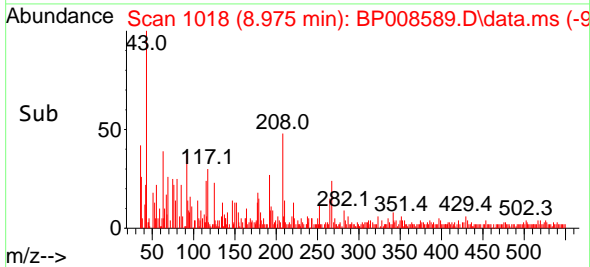
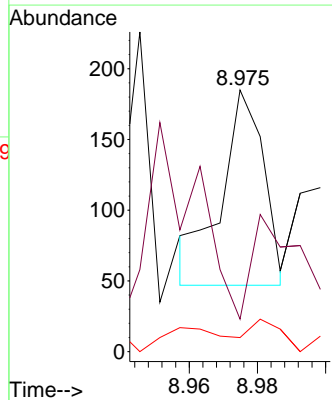
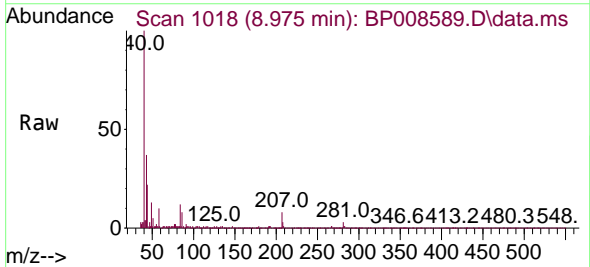
Instrument :
 BNA_P
 ClientSampleId :
 PB141705BL

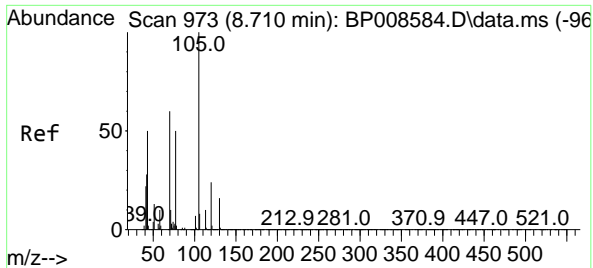
Tgt Ion	Resp	Lower	Upper
107	100		
108	94.6	90.0	135.0
77	283.9	32.7	49.1#
79	197.3	32.1	48.1#



#18
 Hexachloroethane
 Concen: 0.008 ng
 RT: 8.975 min Scan# 1018
 Delta R.T. -0.006 min
 Lab File: BP008589.D
 Acq: 28 Dec 2021 22:16

Tgt Ion	Resp	Lower	Upper
117	100		
119	16.2	76.9	115.3#
201	5.4	93.7	140.5#



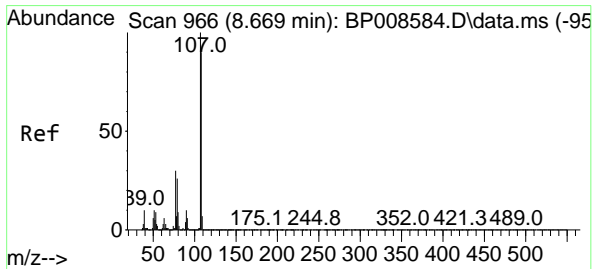
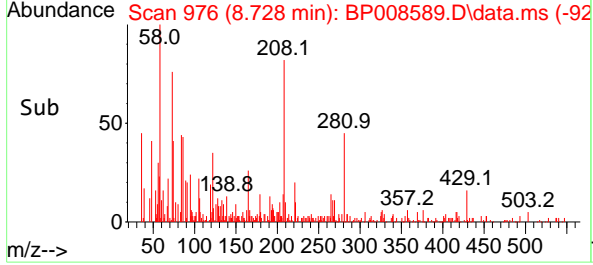
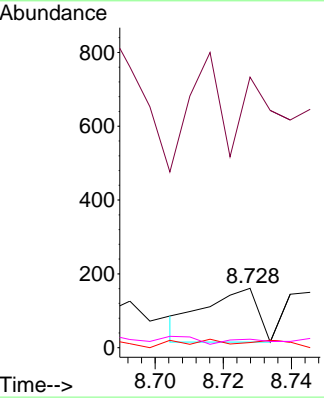
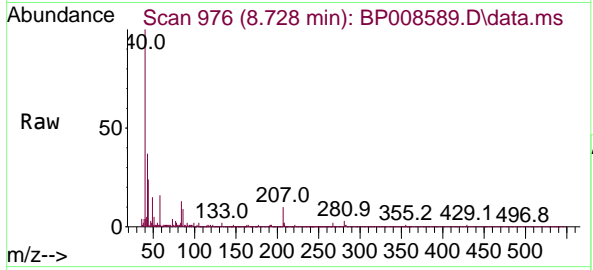


#19
 n-Nitroso-di-n-propylamine
 Concen: 0.005 ng
 RT: 8.728 min Scan# 91
 Delta R.T. 0.018 min
 Lab File: BP008589.D
 Acq: 28 Dec 2021 22:16

Instrument :
 BNA_P
 ClientSampleId :
 PB141705BL

Tgt Ion: 70 Resp: 160

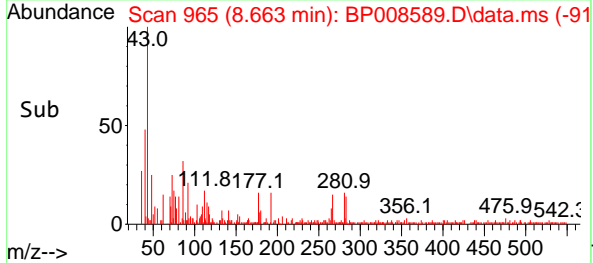
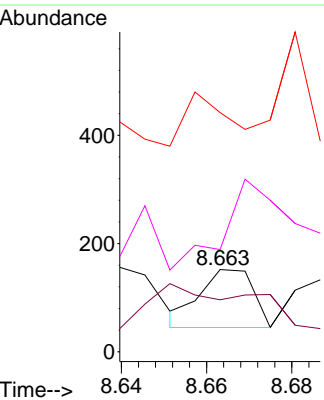
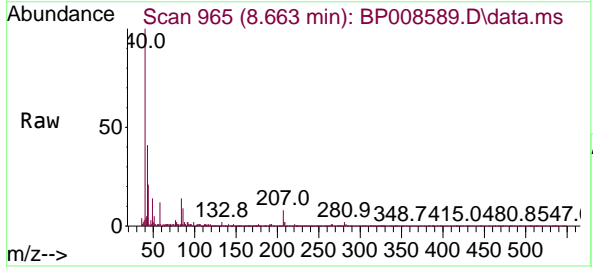
Ion	Ratio	Lower	Upper
70	100		
42	455.3	38.2	57.2#
101	8.7	8.7	13.1#
130	14.3	21.0	31.6#

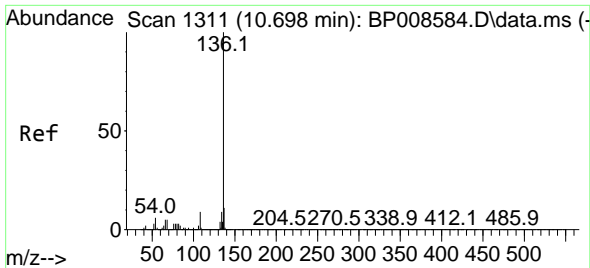


#20
 3+4-Methylphenols
 Concen: 0.002 ng
 RT: 8.663 min Scan# 965
 Delta R.T. -0.006 min
 Lab File: BP008589.D
 Acq: 28 Dec 2021 22:16

Tgt Ion: 107 Resp: 92

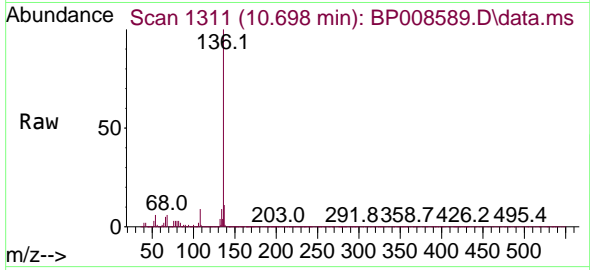
Ion	Ratio	Lower	Upper
107	100		
108	63.2	69.8	109.8#
77	290.8	10.4	50.4#
79	124.3	6.4	46.4#





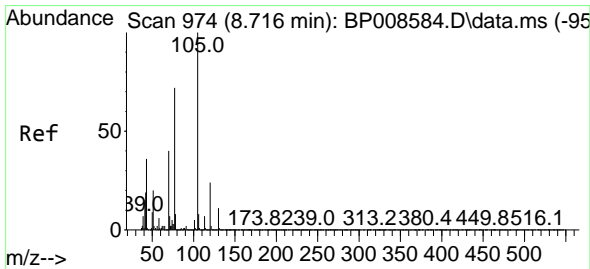
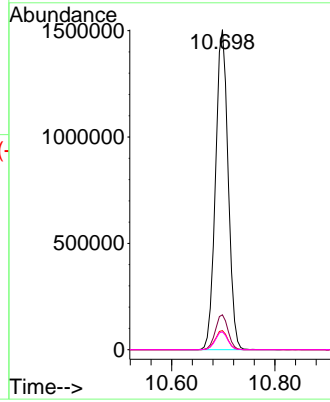
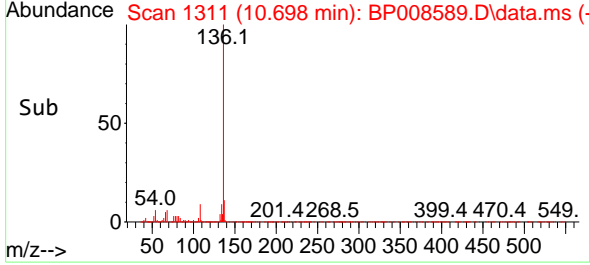
#21
 Naphthalene-d8
 Concen: 20.000 ng
 RT: 10.698 min Scan# 11
 Delta R.T. -0.000 min
 Lab File: BP008589.D
 Acq: 28 Dec 2021 22:16

Instrument :
 BNA_P
 ClientSampleId :
 PB141705BL

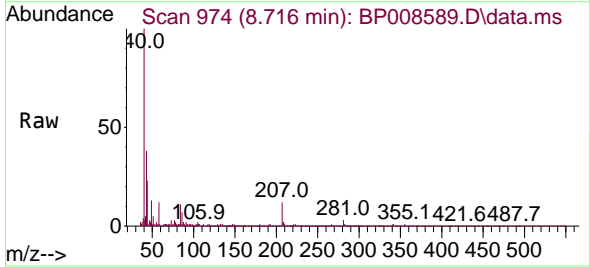


Tgt Ion:136 Resp: 2539816

Ion	Ratio	Lower	Upper
136	100		
137	10.9	9.0	13.4
54	5.9	4.9	7.3
68	5.5	4.3	6.5

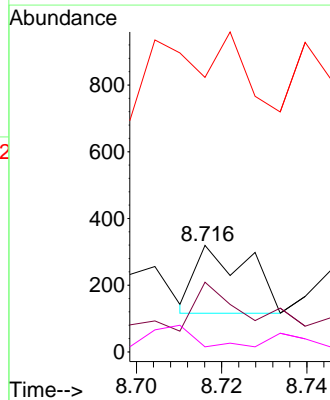
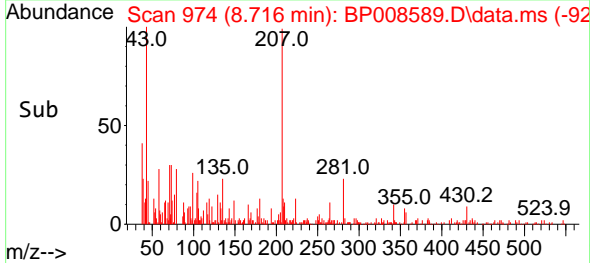


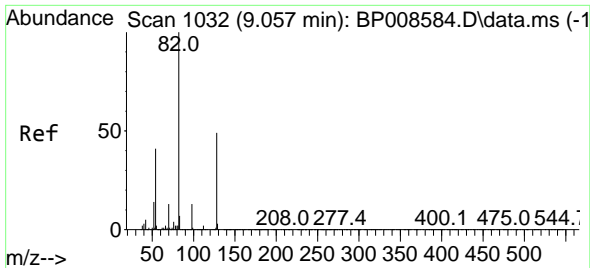
#22
 Acetophenone
 Concen: 0.003 ng
 RT: 8.716 min Scan# 974
 Delta R.T. -0.000 min
 Lab File: BP008589.D
 Acq: 28 Dec 2021 22:16



Tgt Ion:105 Resp: 176

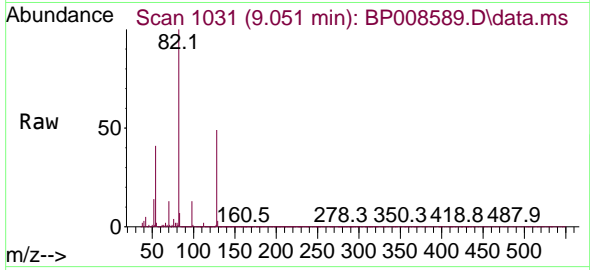
Ion	Ratio	Lower	Upper
105	100		
71	65.5	5.3	7.9#
51	258.0	16.3	24.5#
120	4.7	19.2	28.8#



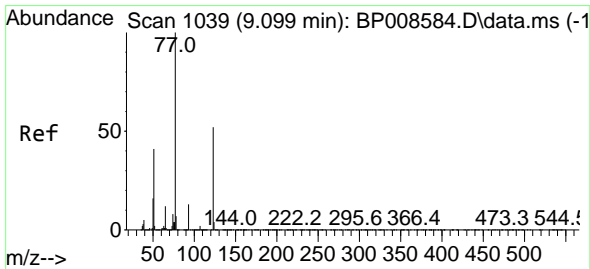
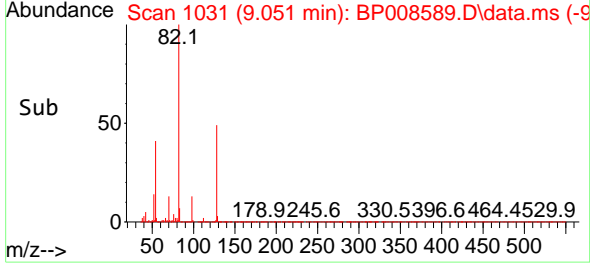
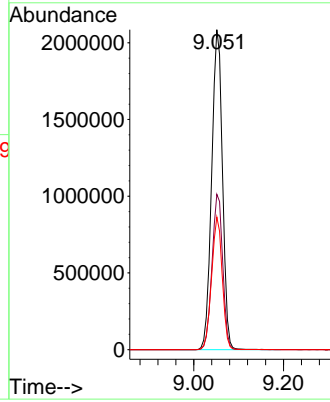


#23
 Nitrobenzene-d5
 Concen: 81.485 ng
 RT: 9.051 min Scan# 1031
 Delta R.T. -0.006 min
 Lab File: BP008589.D
 Acq: 28 Dec 2021 22:16

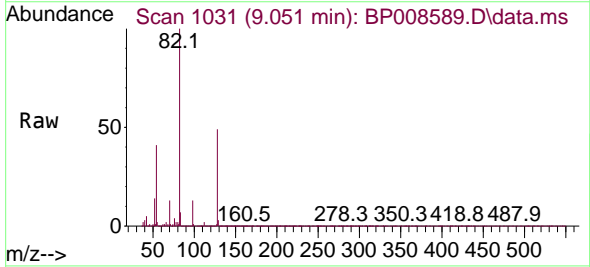
Instrument :
 BNA_P
 ClientSampleId :
 PB141705BL



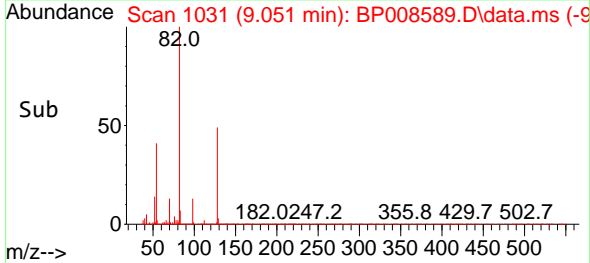
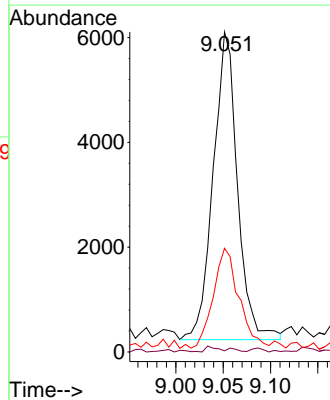
Tgt Ion: 82 Resp: 3478916
 Ion Ratio Lower Upper
 82 100
 128 48.6 39.4 59.2
 54 41.4 32.6 48.8

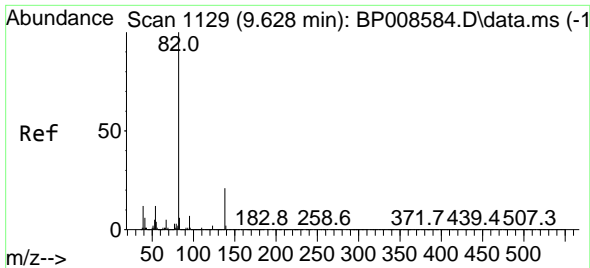


#24
 Nitrobenzene
 Concen: 0.258 ng
 RT: 9.051 min Scan# 1031
 Delta R.T. -0.047 min
 Lab File: BP008589.D
 Acq: 28 Dec 2021 22:16



Tgt Ion: 77 Resp: 10485
 Ion Ratio Lower Upper
 77 100
 123 0.4 41.4 62.2#
 65 32.4 9.8 14.8#



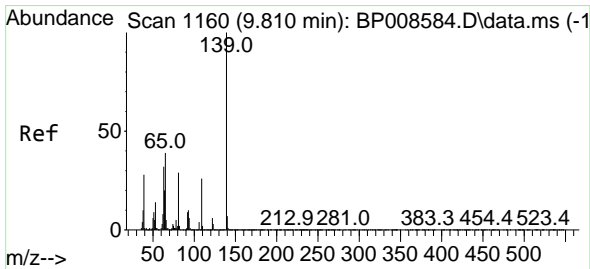
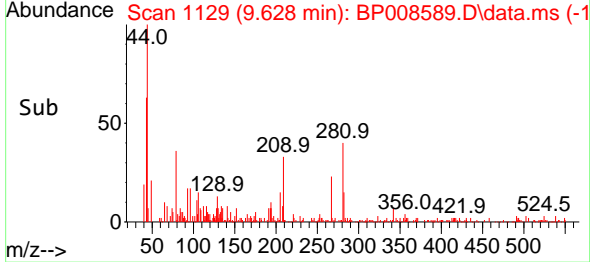
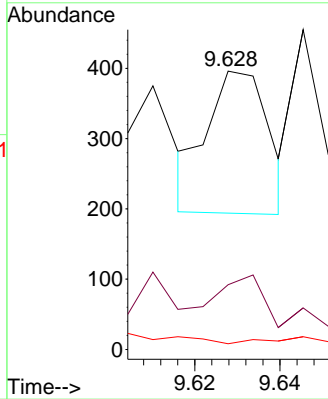
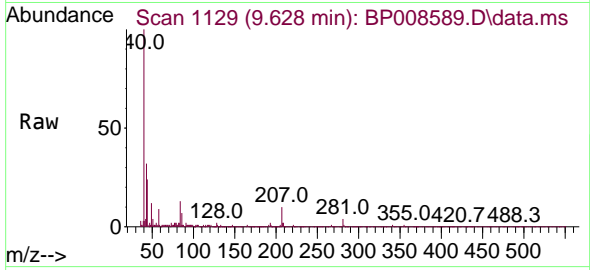


#25
 Isophorone
 Concen: 0.003 ng
 RT: 9.628 min Scan# 1129
 Delta R.T. -0.000 min
 Lab File: BP008589.D
 Acq: 28 Dec 2021 22:16

Instrument :
 BNA_P
 ClientSampleId :
 PB141705BL

Tgt Ion: 82 Resp: 202

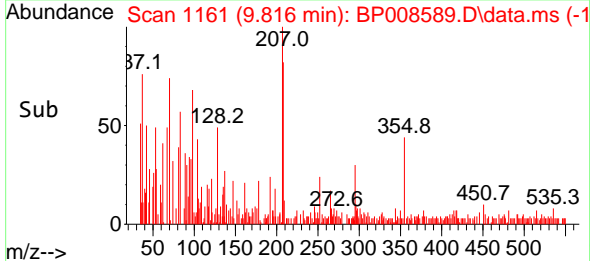
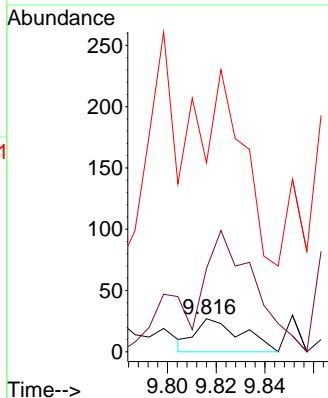
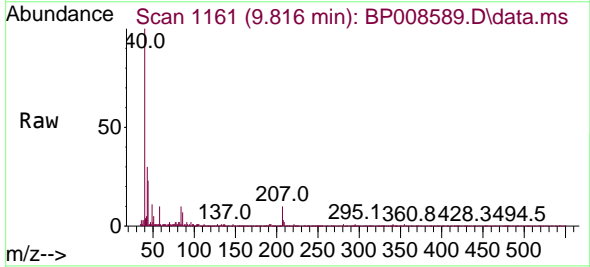
Ion	Ratio	Lower	Upper
82	100		
95	23.2	5.4	8.2#
138	2.0	16.6	24.8#

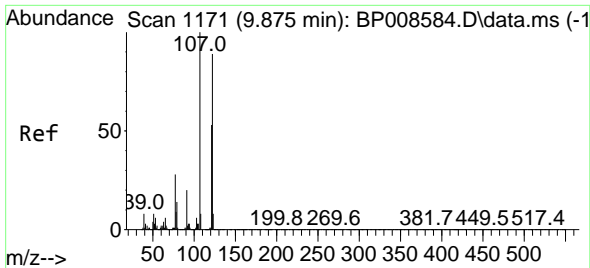


#26
 2-Nitrophenol
 Concen: 0.002 ng
 RT: 9.816 min Scan# 1161
 Delta R.T. 0.006 min
 Lab File: BP008589.D
 Acq: 28 Dec 2021 22:16

Tgt Ion: 139 Resp: 36

Ion	Ratio	Lower	Upper
139	100		
109	251.9	20.7	31.1#
65	570.4	31.6	47.4#



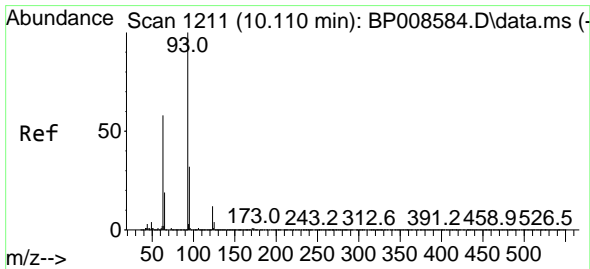
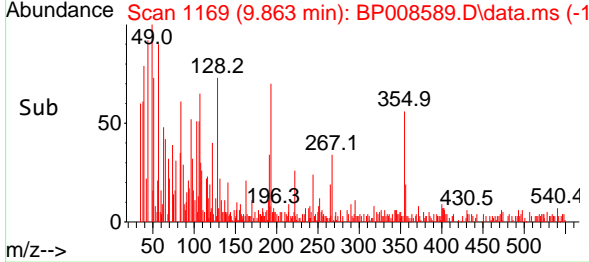
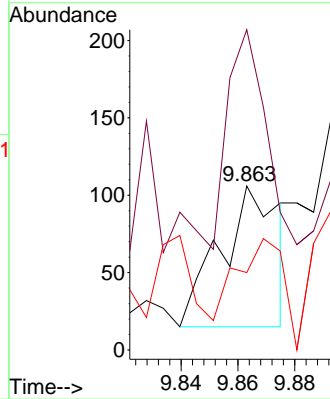
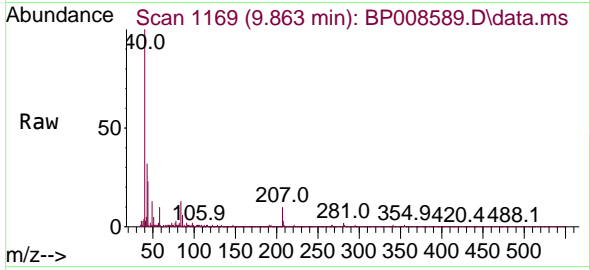


#27
 2,4-Dimethylphenol
 Concen: 0.004 ng
 RT: 9.863 min Scan# 1119
 Delta R.T. -0.012 min
 Lab File: BP008589.D
 Acq: 28 Dec 2021 22:16

Instrument :
 BNA_P
 ClientSampleId :
 PB141705BL

Tgt Ion:122 Resp: 130

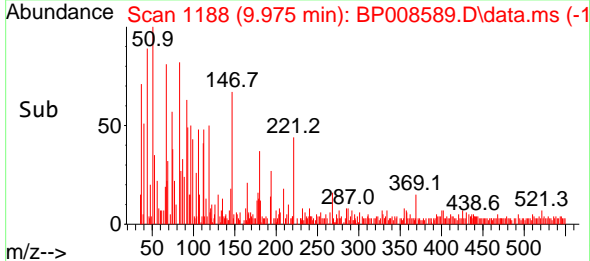
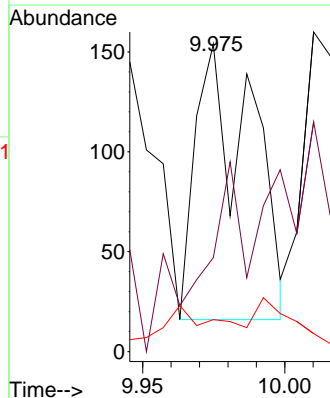
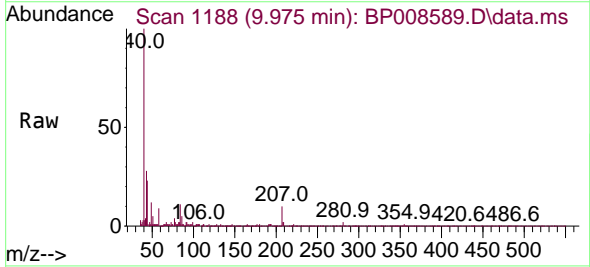
Ion	Ratio	Lower	Upper
122	100		
107	195.3	89.6	134.4#
121	47.2	47.8	71.8#

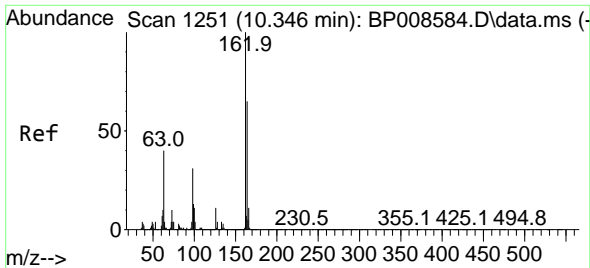


#28
 bis(2-Chloroethoxy)methane
 Concen: 0.003 ng
 RT: 9.975 min Scan# 1188
 Delta R.T. -0.135 min
 Lab File: BP008589.D
 Acq: 28 Dec 2021 22:16

Tgt Ion: 93 Resp: 187

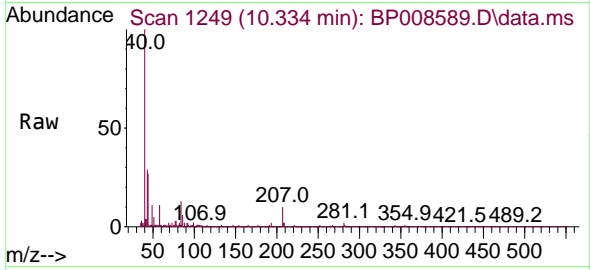
Ion	Ratio	Lower	Upper
93	100		
95	30.5	25.8	38.8
123	10.4	9.7	14.5





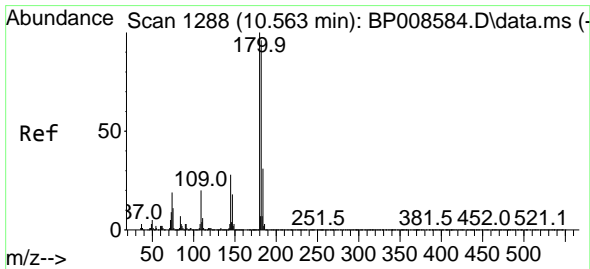
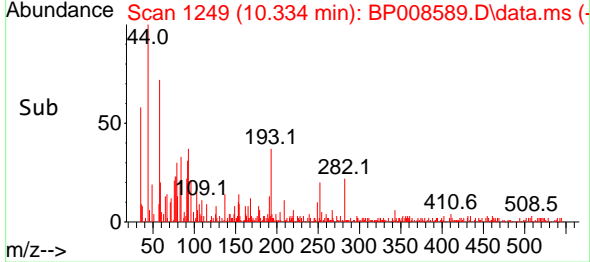
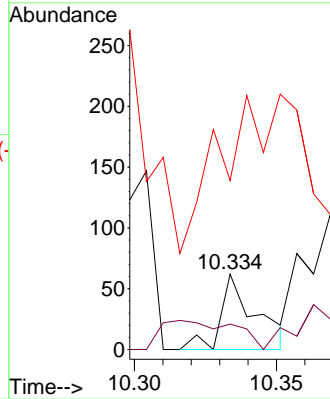
#29
 2,4-Dichlorophenol
 Concen: 0.001 ng
 RT: 10.334 min Scan# 1249
 Delta R.T. -0.012 min
 Lab File: BP008589.D
 Acq: 28 Dec 2021 22:16

Instrument :
 BNA_P
 ClientSampleId :
 PB141705BL



Tgt Ion:162 Resp: 53

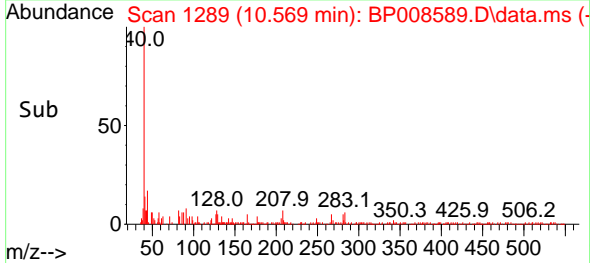
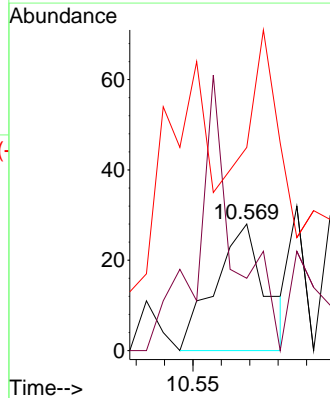
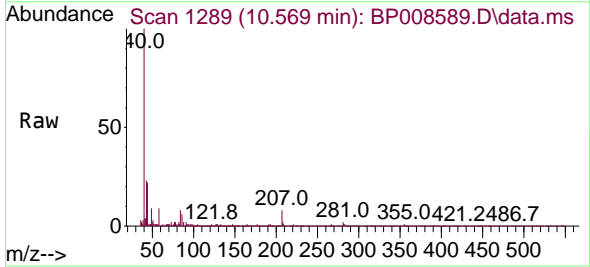
Ion	Ratio	Lower	Upper
162	100		
164	33.9	44.9	84.9#
98	224.2	11.2	51.2#

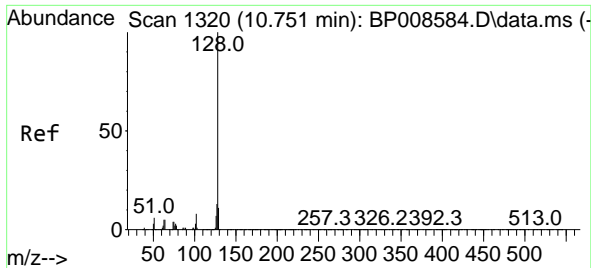


#30
 1,2,4-Trichlorobenzene
 Concen: 0.001 ng
 RT: 10.569 min Scan# 1289
 Delta R.T. 0.006 min
 Lab File: BP008589.D
 Acq: 28 Dec 2021 22:16

Tgt Ion:180 Resp: 35

Ion	Ratio	Lower	Upper
180	100		
182	57.1	76.7	115.1#
145	228.6	22.4	33.6#

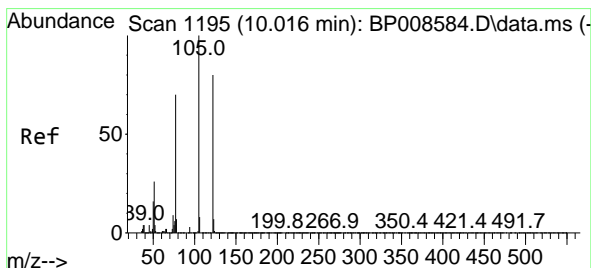
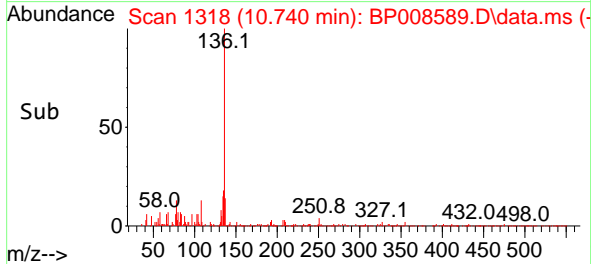
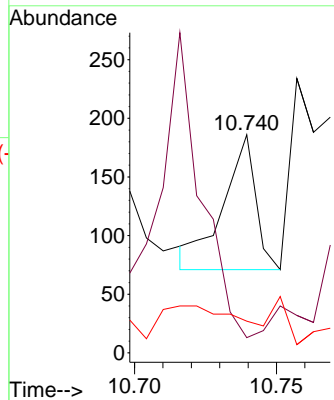
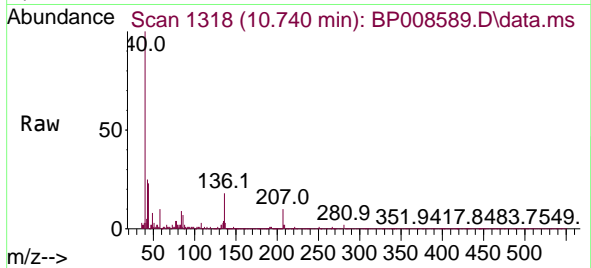




#31
 Naphthalene
 Concen: 0.001 ng
 RT: 10.740 min Scan# 1118
 Delta R.T. -0.012 min
 Lab File: BP008589.D
 Acq: 28 Dec 2021 22:16

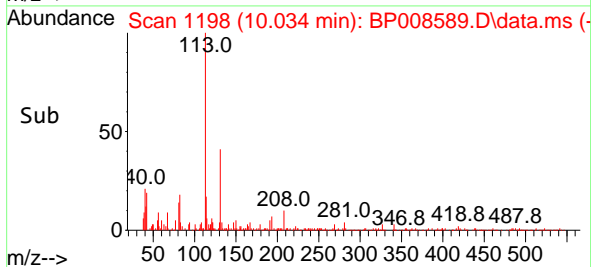
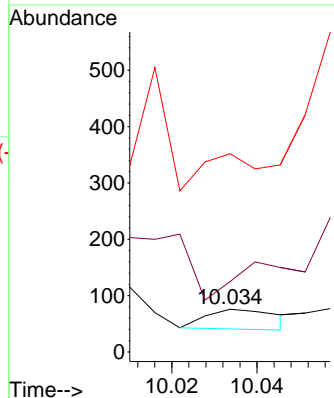
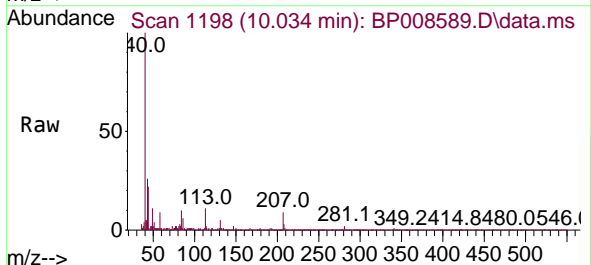
Instrument : BNA_P
 Client Sample Id : PB141705BL

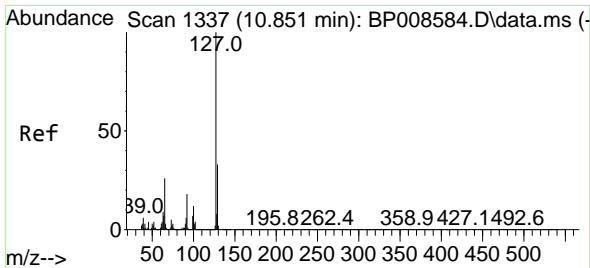
Tgt Ion	Resp	Lower	Upper
128	100		
129	7.0	8.8	13.2#
127	14.5	10.4	15.6



#32
 Benzoic acid
 Concen: 0.002 ng
 RT: 10.034 min Scan# 1198
 Delta R.T. 0.018 min
 Lab File: BP008589.D
 Acq: 28 Dec 2021 22:16

Tgt Ion	Resp	Lower	Upper
122	100		
105	128.9	100.1	140.1
77	362.9	65.5	105.5#

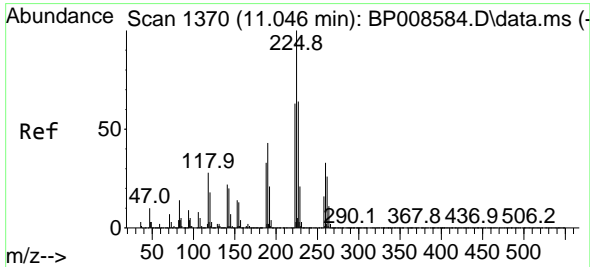
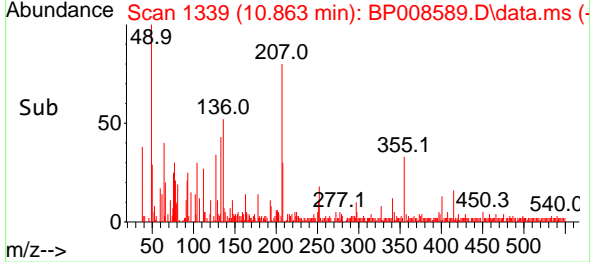
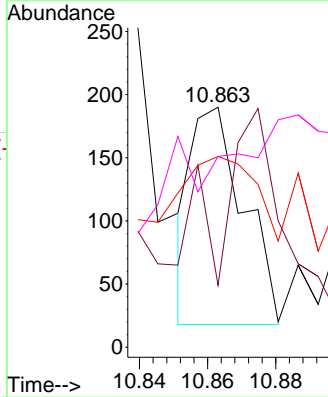
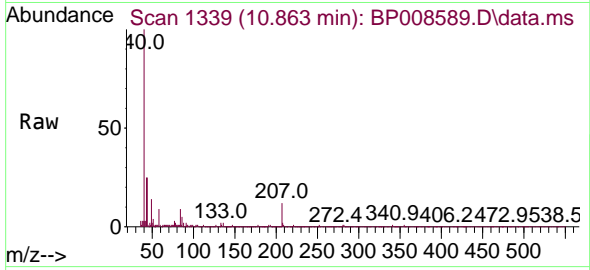




#33
 4-Chloroaniline
 Concen: 0.003 ng
 RT: 10.863 min Scan# 111
 Delta R.T. 0.012 min
 Lab File: BP008589.D
 Acq: 28 Dec 2021 22:16

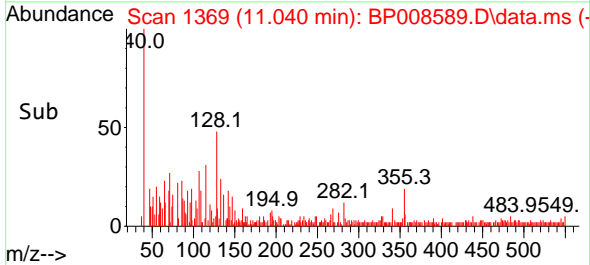
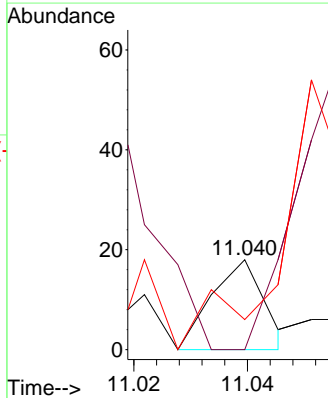
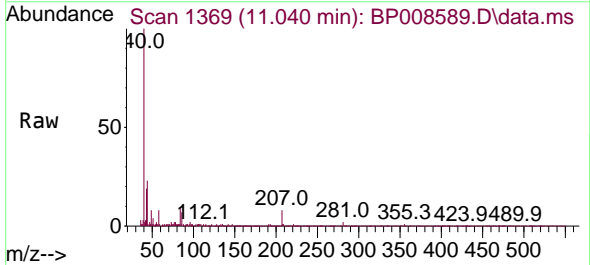
Instrument :
 BNA_P
 ClientSampleId :
 PB141705BL

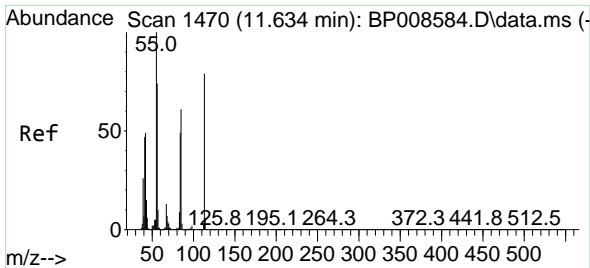
Tgt Ion	Resp	Lower	Upper
127	100		
129	44.7	26.0	39.0#
65	79.5	20.5	30.7#
92	79.5	14.1	21.1#



#34
 Hexachlorobutadiene
 Concen: 0.000 ng
 RT: 11.040 min Scan# 1369
 Delta R.T. -0.006 min
 Lab File: BP008589.D
 Acq: 28 Dec 2021 22:16

Tgt Ion	Resp	Lower	Upper
225	100		
223	100.0	50.1	75.1#
227	33.3	51.5	77.3#

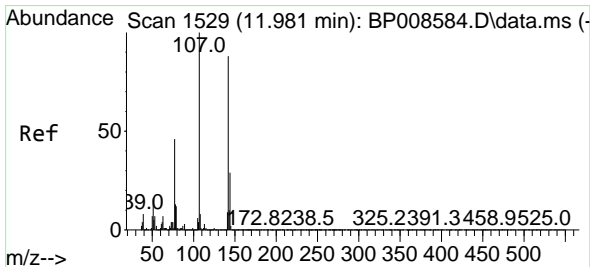
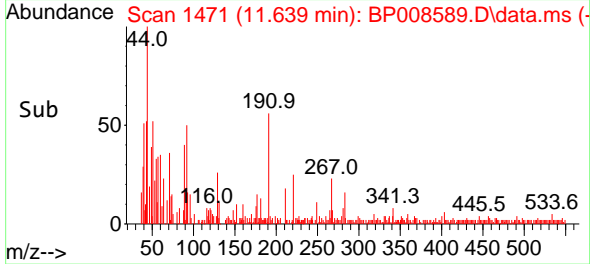
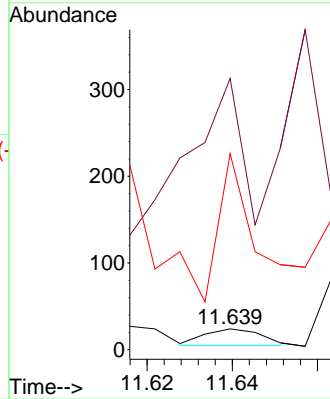
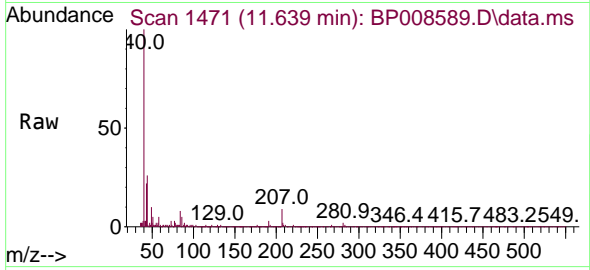




#35
 Caprolactam
 Concen: 0.001 ng
 RT: 11.639 min Scan# 1470
 Delta R.T. 0.006 min
 Lab File: BP008589.D
 Acq: 28 Dec 2021 22:16

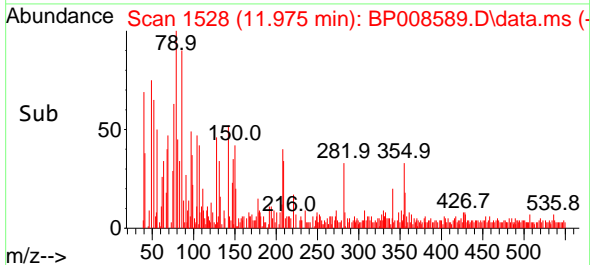
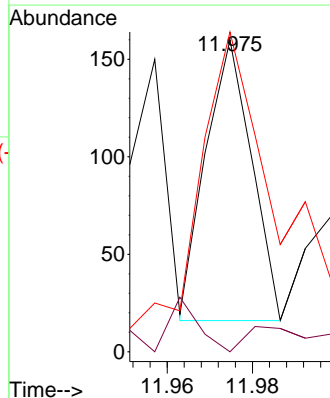
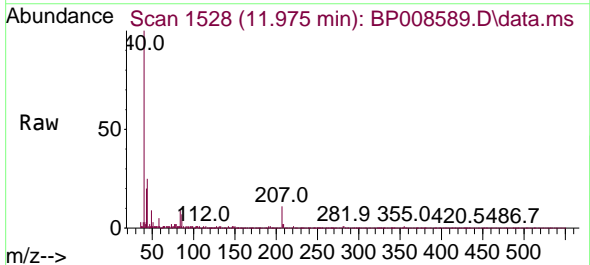
Instrument :
 BNA_P
 ClientSampleId :
 PB141705BL

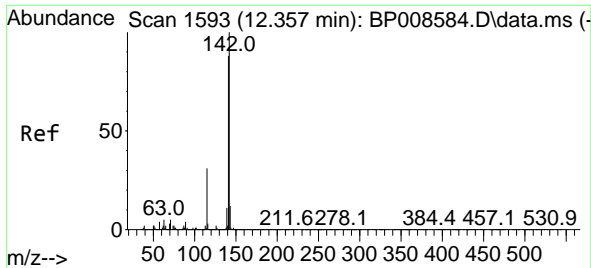
Tgt Ion:113 Resp: 18
 Ion Ratio Lower Upper
 113 100
 55 1304.2 107.1 147.1#
 56 941.7 74.1 114.1#



#36
 4-Chloro-3-methylphenol
 Concen: 0.003 ng
 RT: 11.975 min Scan# 1528
 Delta R.T. -0.006 min
 Lab File: BP008589.D
 Acq: 28 Dec 2021 22:16

Tgt Ion:107 Resp: 107
 Ion Ratio Lower Upper
 107 100
 144 0.0 23.2 34.8#
 142 90.6 70.1 105.1

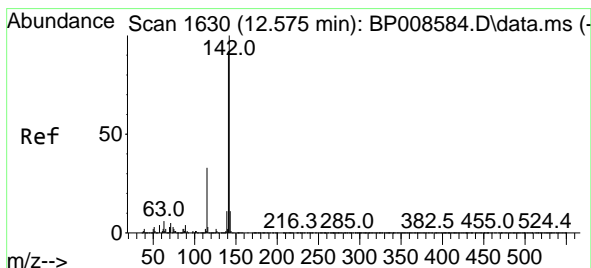
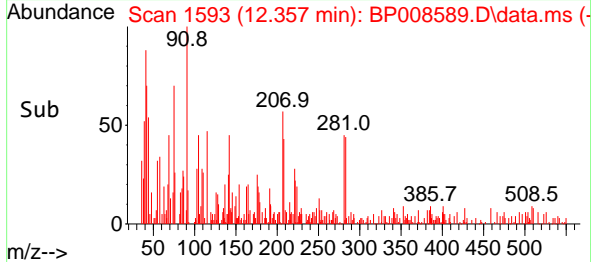
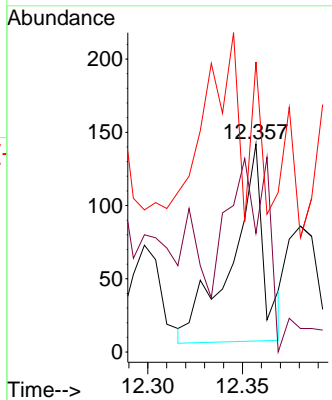
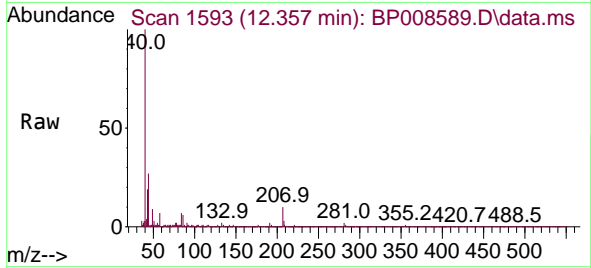




#37
 2-Methylnaphthalene
 Concen: 0.002 ng
 RT: 12.357 min Scan# 11
 Delta R.T. -0.000 min
 Lab File: BP008589.D
 Acq: 28 Dec 2021 22:16

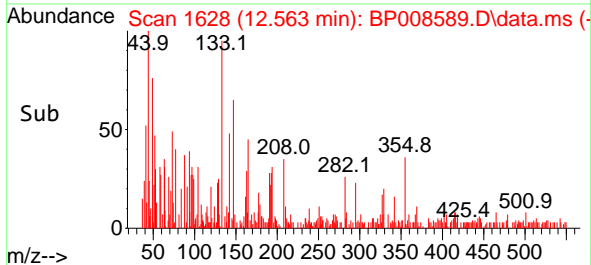
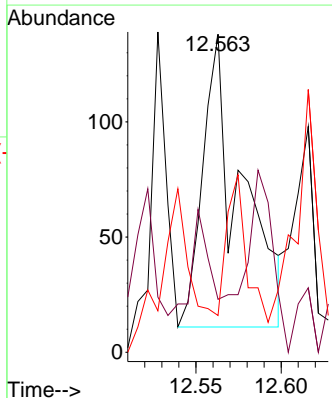
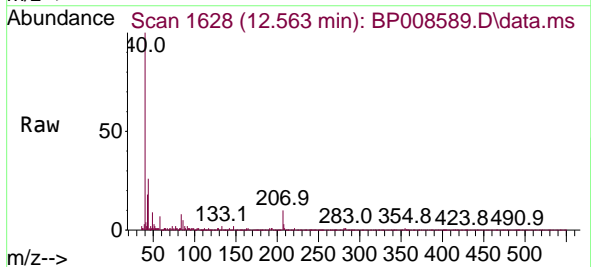
Instrument :
 BNA_P
 ClientSampleId :
 PB141705BL

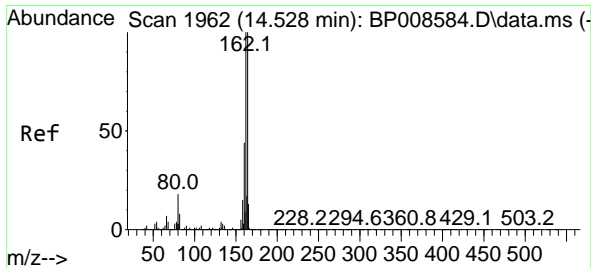
Tgt Ion	Ratio	Lower	Upper
142	100		
141	57.0	70.5	105.7#
115	139.4	24.6	36.8#



#38
 1-Methylnaphthalene
 Concen: 0.002 ng
 RT: 12.563 min Scan# 1628
 Delta R.T. -0.012 min
 Lab File: BP008589.D
 Acq: 28 Dec 2021 22:16

Tgt Ion	Ratio	Lower	Upper
142	100		
141	16.7	73.2	109.8#
116	11.6	2.7	4.1#



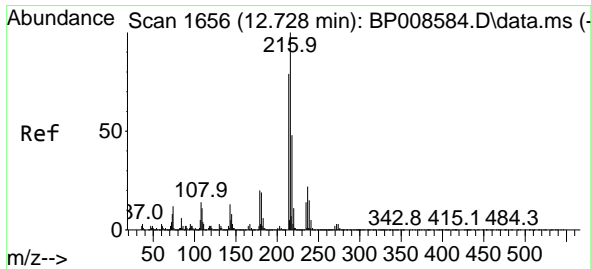
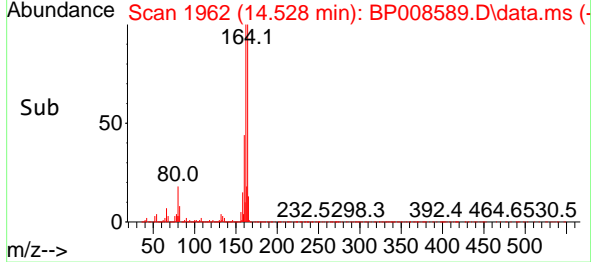
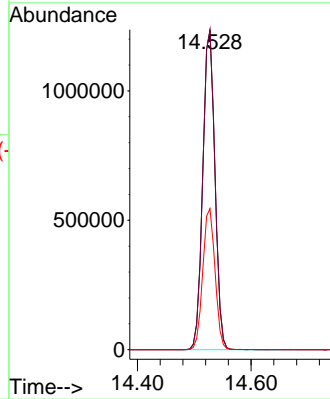
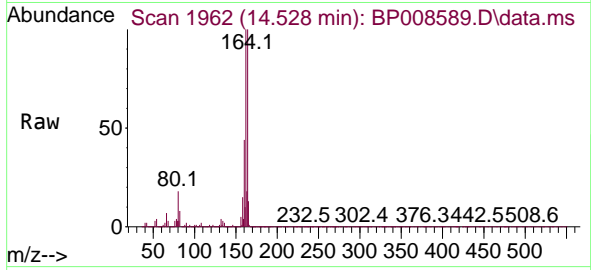


#39
 Acenaphthene-d10
 Concen: 20.000 ng
 RT: 14.528 min Scan# 1962
 Delta R.T. -0.000 min
 Lab File: BP008589.D
 Acq: 28 Dec 2021 22:16

Instrument : BNA_P
 ClientSampleId : PB141705BL

Tgt Ion:164 Resp: 1824628

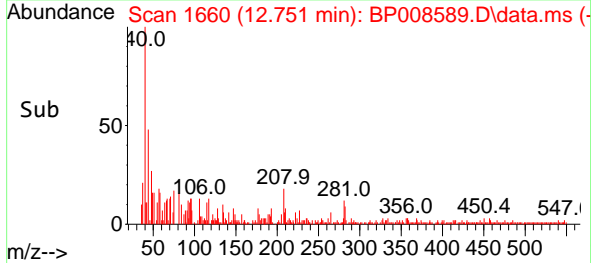
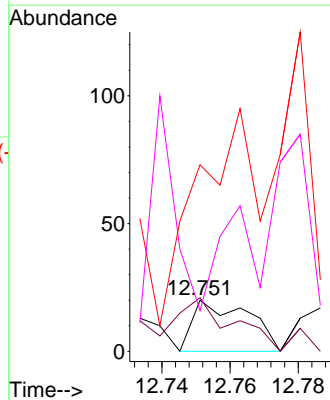
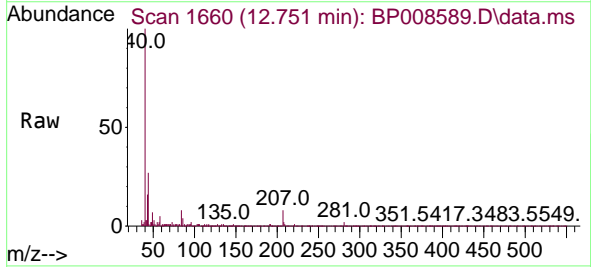
Ion	Ratio	Lower	Upper
164	100		
162	100.5	79.9	119.9
160	44.3	35.5	53.3

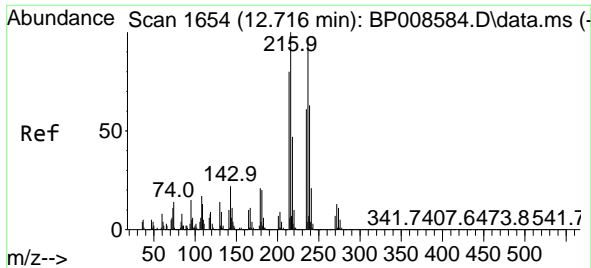


#40
 1,2,4,5-Tetrachlorobenzene
 Concen: 0.000 ng
 RT: 12.751 min Scan# 1660
 Delta R.T. 0.023 min
 Lab File: BP008589.D
 Acq: 28 Dec 2021 22:16

Tgt Ion:216 Resp: 23

Ion	Ratio	Lower	Upper
216	100		
214	100.0	63.1	94.7#
179	439.1	16.0	24.0#
108	0.0	11.9	17.9#

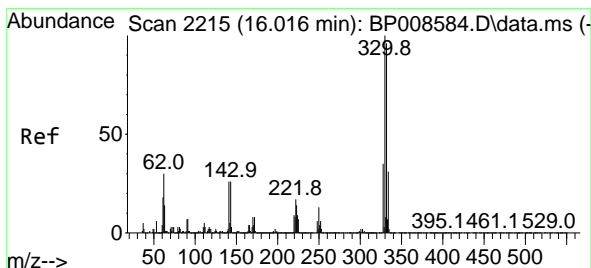
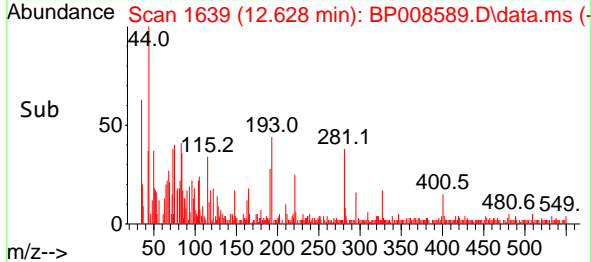
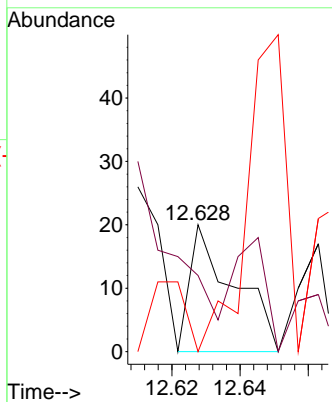
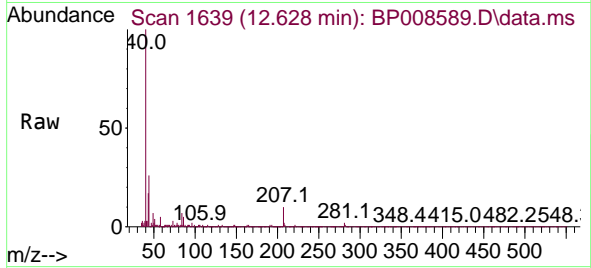




#41
 Hexachlorocyclopentadiene
 Concen: 0.001 ng
 RT: 12.628 min Scan# 10
 Delta R.T. -0.088 min
 Lab File: BP008589.D
 Acq: 28 Dec 2021 22:16

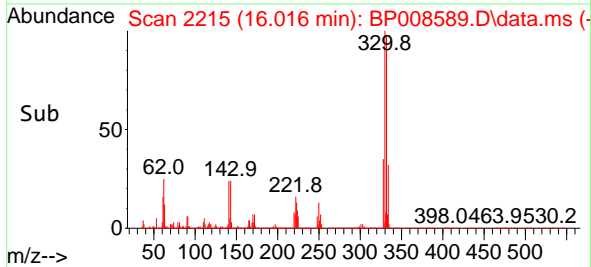
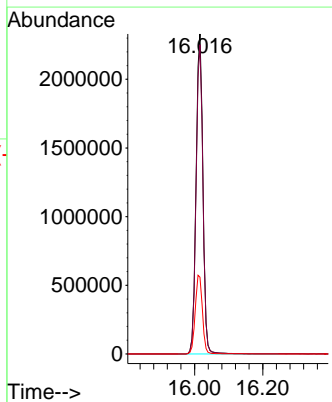
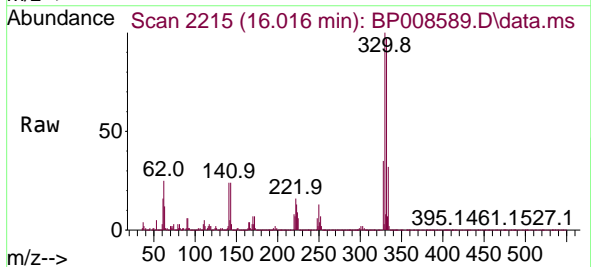
Instrument :
 BNA_P
 ClientSampleId :
 PB141705BL

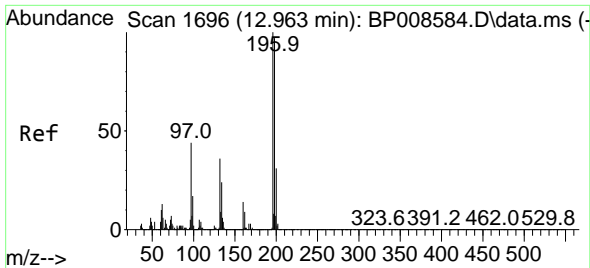
Tgt Ion	Resp	Lower	Upper
237	100		
235	60.0	42.9	82.9
272	0.0	0.0	33.8



#42
 2,4,6-Tribromophenol
 Concen: 131.152 ng
 RT: 16.016 min Scan# 2215
 Delta R.T. -0.000 min
 Lab File: BP008589.D
 Acq: 28 Dec 2021 22:16

Tgt Ion	Resp	Lower	Upper
330	100		
332	96.4	77.0	115.4
141	25.9	21.3	31.9

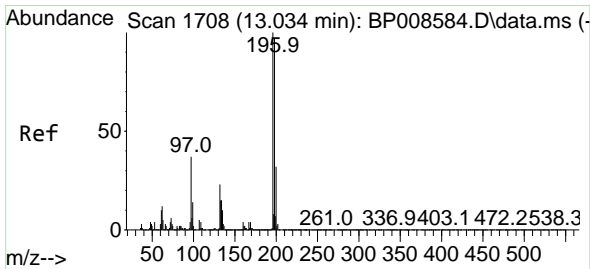
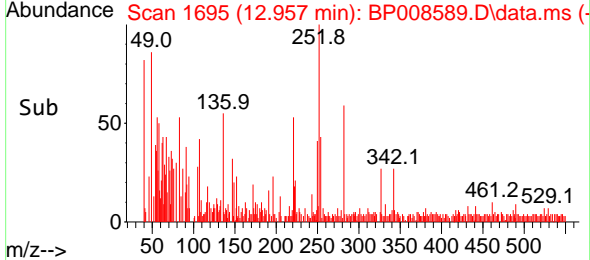
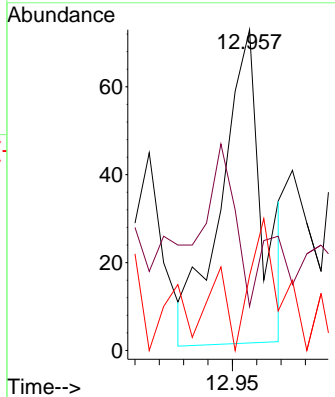
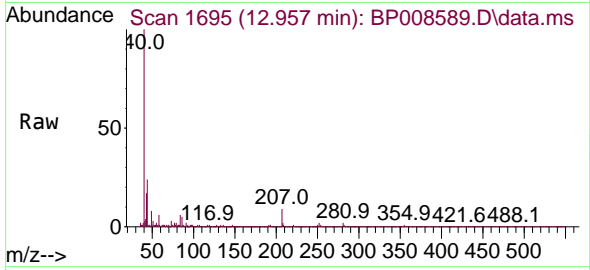




#43
 2,4,6-Trichlorophenol
 Concen: 0.002 ng
 RT: 12.957 min Scan# 1710
 Delta R.T. -0.006 min
 Lab File: BP008589.D
 Acq: 28 Dec 2021 22:16

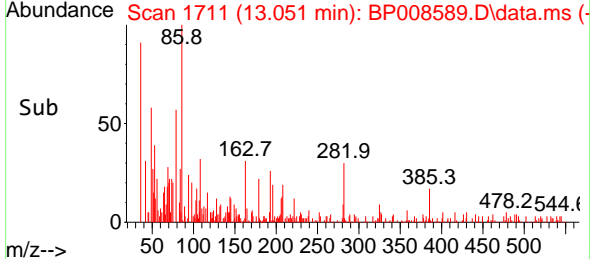
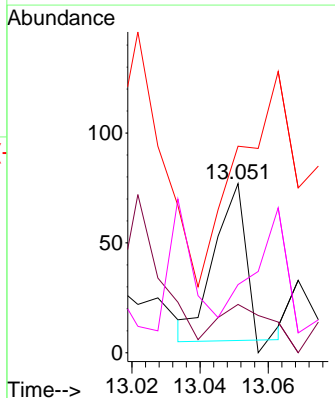
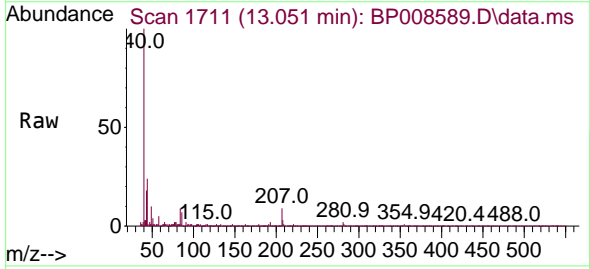
Instrument : BNA_P
 Client Sample Id : PB141705BL

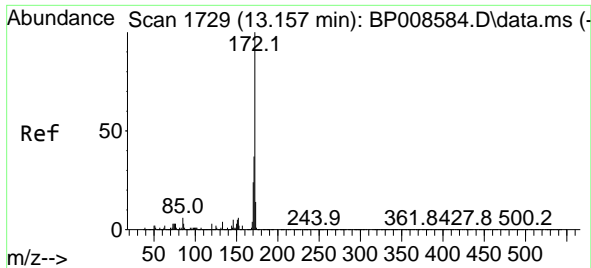
Tgt Ion	Resp	Lower	Upper
196	100		
198	27.4	77.8	116.8#
200	39.7	24.7	37.1#



#44
 2,4,5-Trichlorophenol
 Concen: 0.001 ng
 RT: 13.051 min Scan# 1711
 Delta R.T. 0.017 min
 Lab File: BP008589.D
 Acq: 28 Dec 2021 22:16

Tgt Ion	Resp	Lower	Upper
196	100		
198	28.6	77.7	116.5#
97	122.1	29.6	44.4#
132	40.3	18.7	28.1#



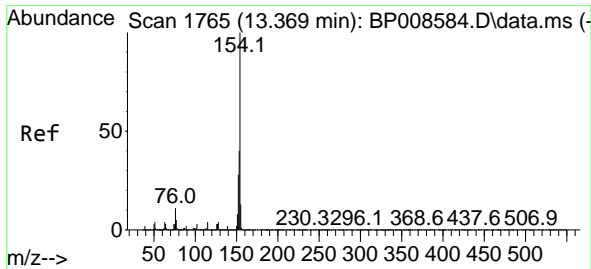
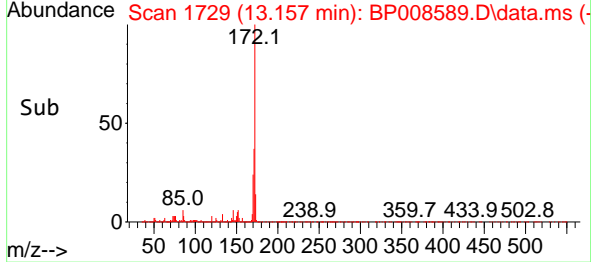
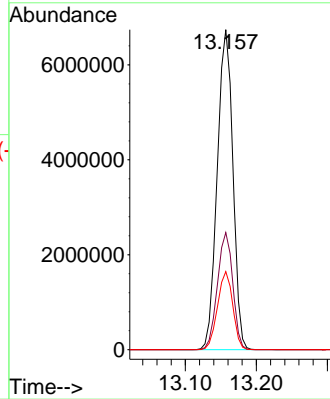
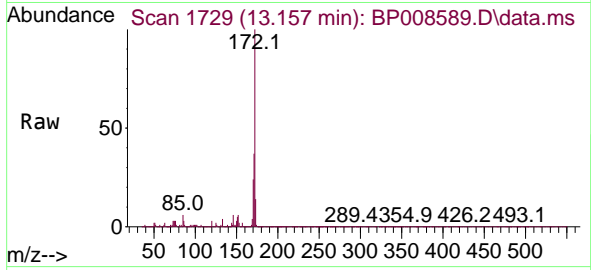


#45
 2-Fluorobiphenyl
 Concen: 81.649 ng
 RT: 13.157 min Scan# 1729
 Delta R.T. 0.000 min
 Lab File: BP008589.D
 Acq: 28 Dec 2021 22:16

Instrument :
 BNA_P
 ClientSampleId :
 PB141705BL

Tgt Ion:172 Resp:10282767

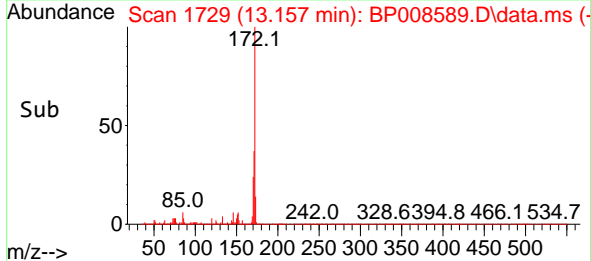
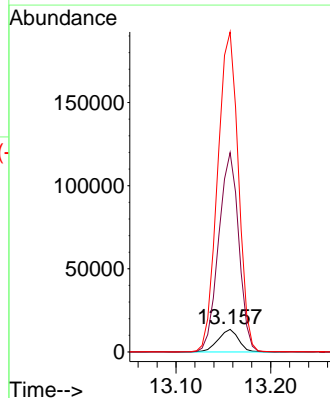
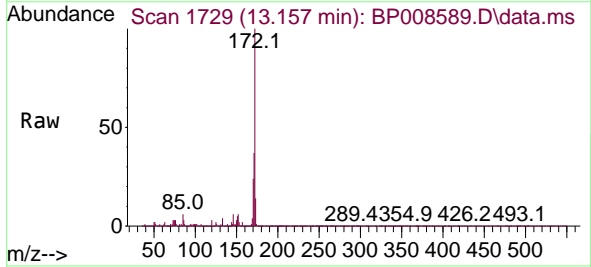
Ion	Ratio	Lower	Upper
172	100		
171	36.6	29.3	43.9
170	24.4	19.5	29.3

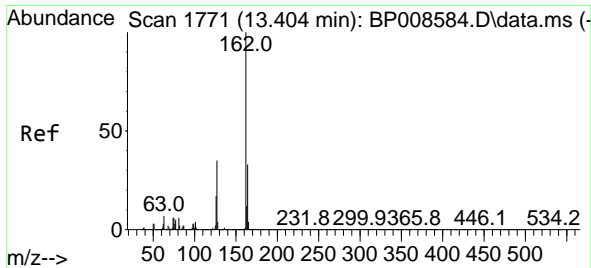


#46
 1,1'-Biphenyl
 Concen: 0.151 ng
 RT: 13.157 min Scan# 1729
 Delta R.T. -0.212 min
 Lab File: BP008589.D
 Acq: 28 Dec 2021 22:16

Tgt Ion:154 Resp: 20387

Ion	Ratio	Lower	Upper
154	100		
153	882.2	20.3	60.3#
76	1416.3	0.0	31.1#

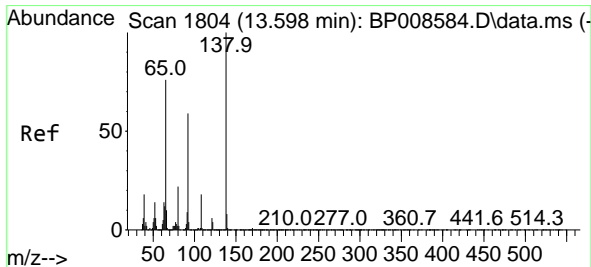
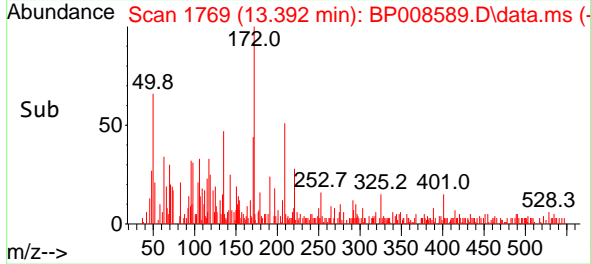
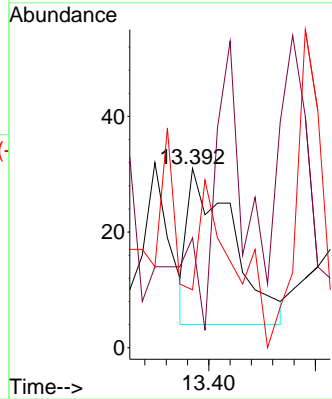
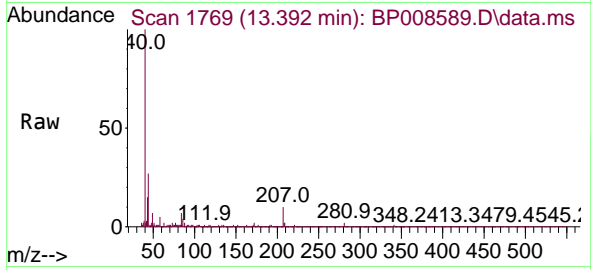




#47
 2-Chloronaphthalene
 Concen: 0.000 ng
 RT: 13.392 min Scan# 11
 Delta R.T. -0.012 min
 Lab File: BP008589.D
 Acq: 28 Dec 2021 22:16

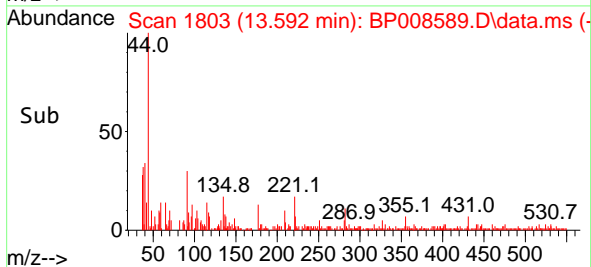
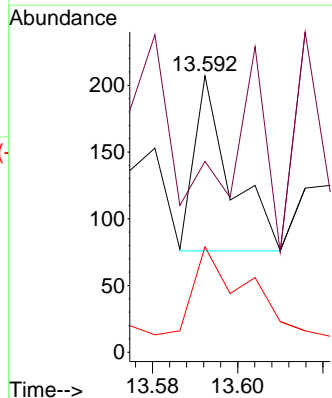
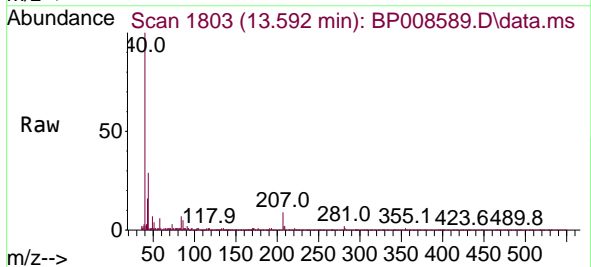
Instrument :
 BNA_P
 ClientSampleId :
 PB141705BL

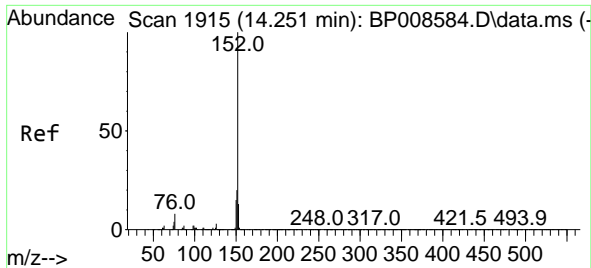
Tgt Ion	Resp	Lower	Upper
162	100		
127	61.3	28.4	42.6#
164	32.3	26.8	40.2



#48
 2-Nitroaniline
 Concen: 0.003 ng
 RT: 13.592 min Scan# 1803
 Delta R.T. -0.006 min
 Lab File: BP008589.D
 Acq: 28 Dec 2021 22:16

Tgt Ion	Resp	Lower	Upper
65	100		
92	69.1	62.2	93.4
138	38.2	105.8	158.8#

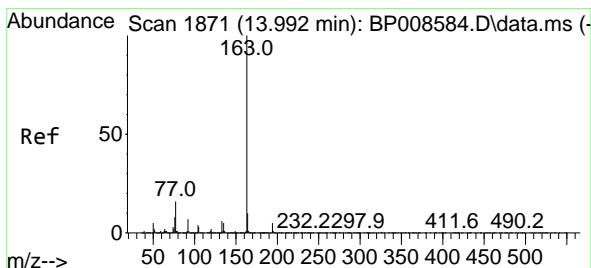
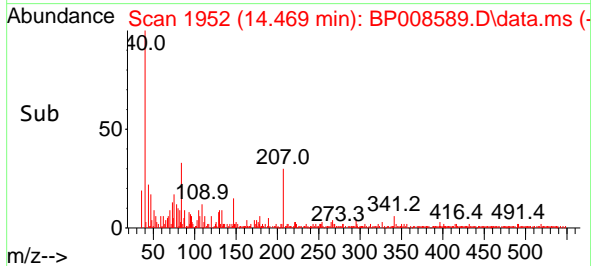
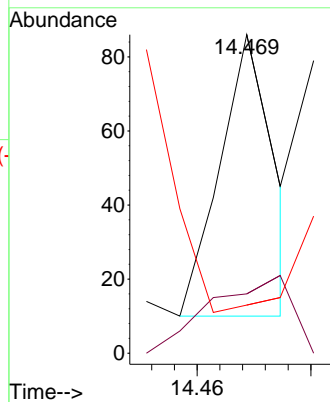
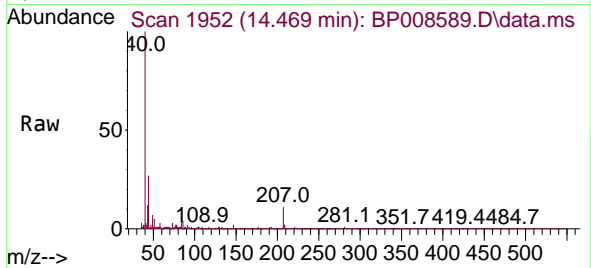




#49
 Acenaphthylene
 Concen: 0.000 ng
 RT: 14.469 min Scan# 1915
 Delta R.T. 0.218 min
 Lab File: BP008589.D
 Acq: 28 Dec 2021 22:16

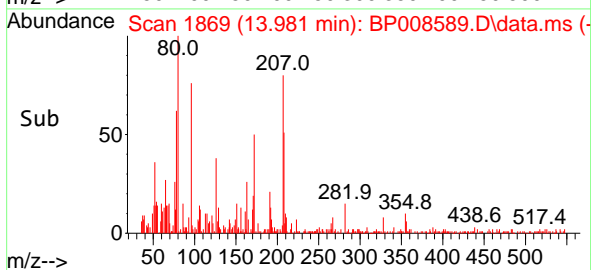
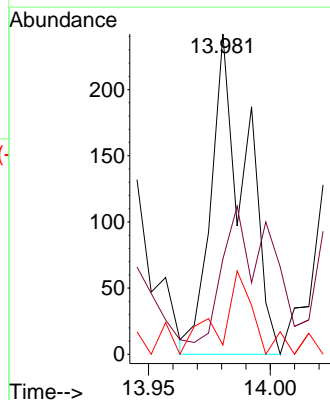
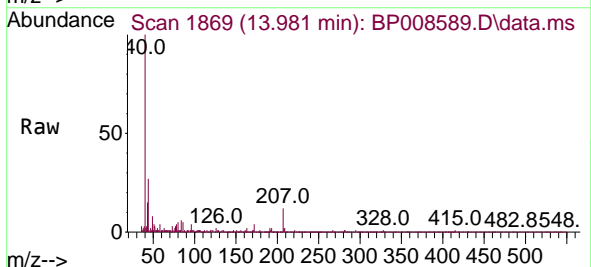
Instrument :
 BNA_P
 ClientSampleId :
 PB141705BL

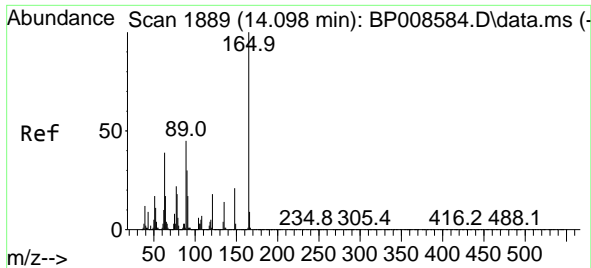
Tgt Ion	Resp	Lower	Upper
152	100		
151	18.6	16.1	24.1
153	15.1	10.6	16.0



#50
 Dimethylphthalate
 Concen: 0.002 ng
 RT: 13.981 min Scan# 1869
 Delta R.T. -0.011 min
 Lab File: BP008589.D
 Acq: 28 Dec 2021 22:16

Tgt Ion	Resp	Lower	Upper
163	100		
194	29.8	3.8	5.6#
164	2.9	8.2	12.2#





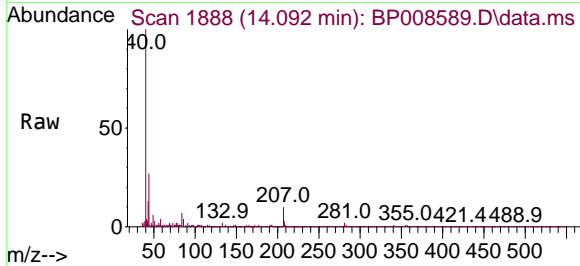
#51
 2,6-Dinitrotoluene
 Concen: 0.009 ng
 RT: 14.092 min Scan# 1888
 Delta R.T. -0.006 min
 Lab File: BP008589.D
 Acq: 28 Dec 2021 22:16

Instrument :

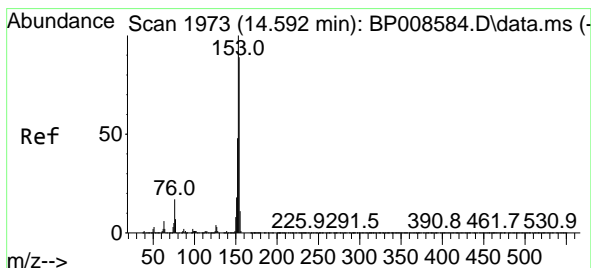
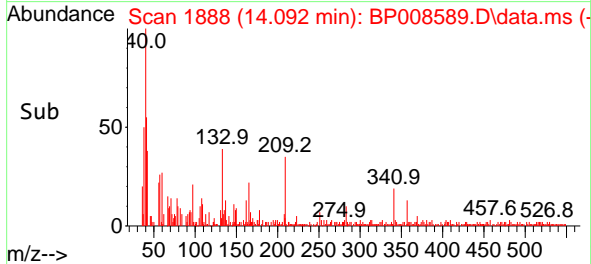
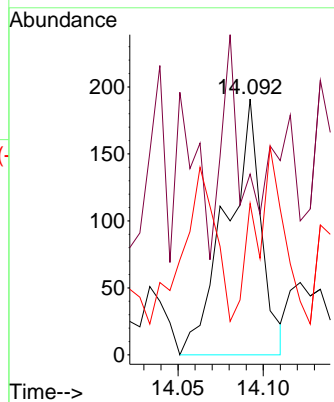
BNA_P

Client Sample Id :

PB141705BL

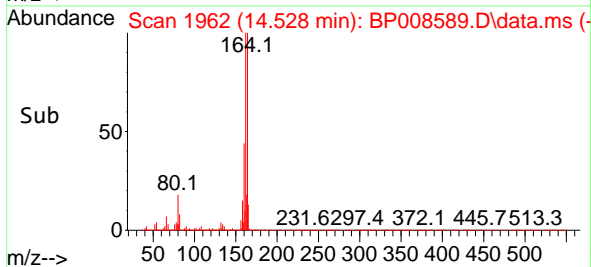
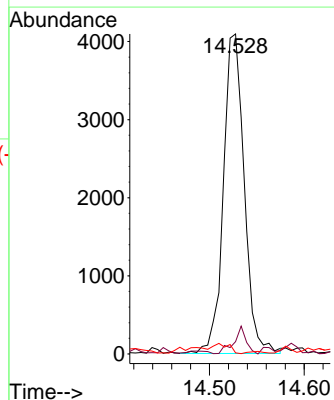
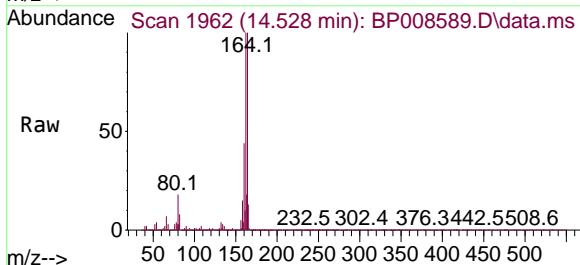


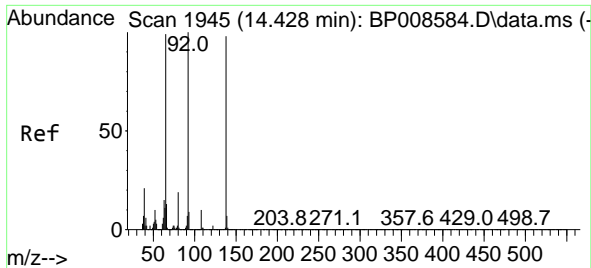
Tgt Ion	Ratio	Lower	Upper
165	100		
63	70.7	31.8	47.8#
89	59.2	36.1	54.1#



#52
 Acenaphthene
 Concen: 0.059 ng
 RT: 14.528 min Scan# 1962
 Delta R.T. -0.065 min
 Lab File: BP008589.D
 Acq: 28 Dec 2021 22:16

Tgt Ion	Ratio	Lower	Upper
154	100		
153	3.9	89.4	134.2#
152	0.3	42.6	63.8#

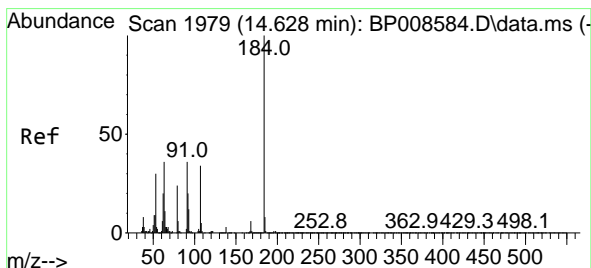
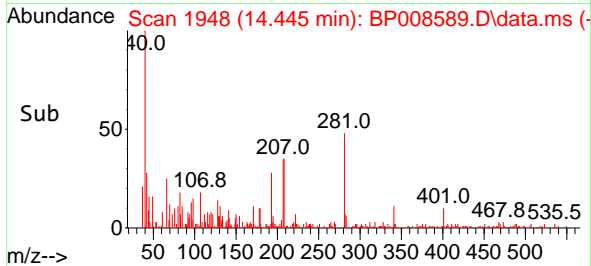
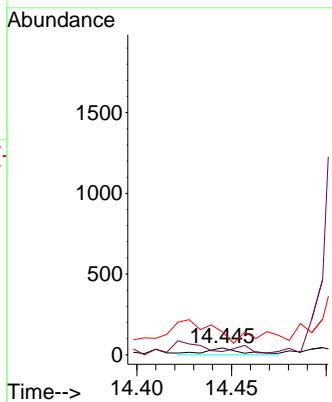
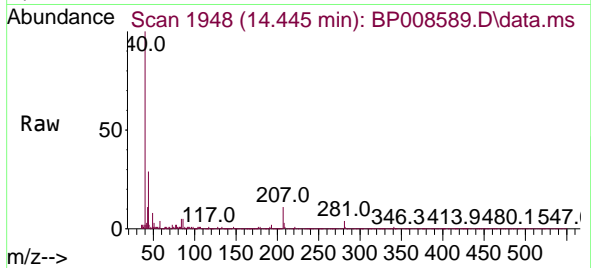




#53
 3-Nitroaniline
 Concen: 0.002 ng
 RT: 14.445 min Scan# 1948
 Delta R.T. 0.017 min
 Lab File: BP008589.D
 Acq: 28 Dec 2021 22:16

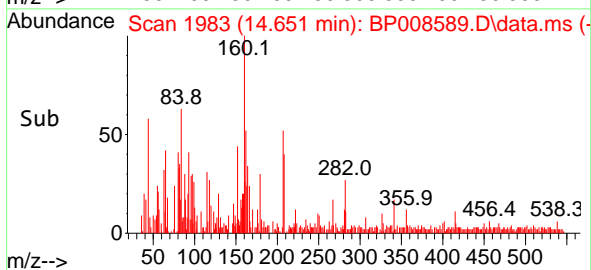
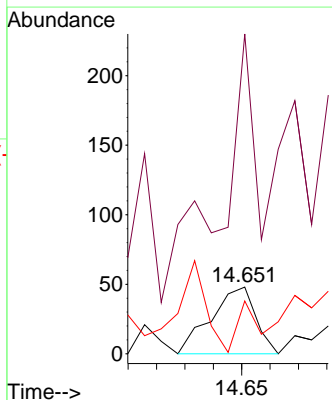
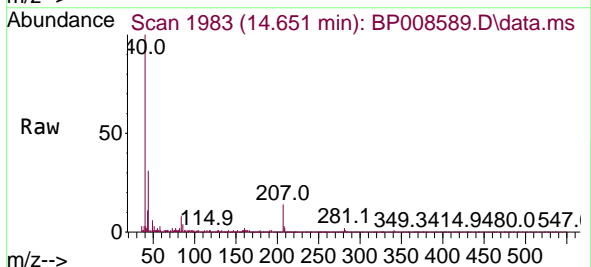
Instrument : BNA_P
 ClientSampleId : PB141705BL

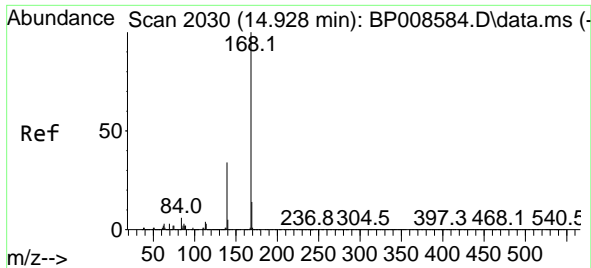
Tgt Ion	Resp	Lower	Upper
138	100		
108	47.6	8.0	12.0#
92	335.7	81.7	122.5#



#54
 2,4-Dinitrophenol
 Concen: 0.004 ng
 RT: 14.651 min Scan# 1983
 Delta R.T. 0.023 min
 Lab File: BP008589.D
 Acq: 28 Dec 2021 22:16

Tgt Ion	Resp	Lower	Upper
184	100		
63	497.9	35.6	53.4#
154	79.2	43.4	65.0#

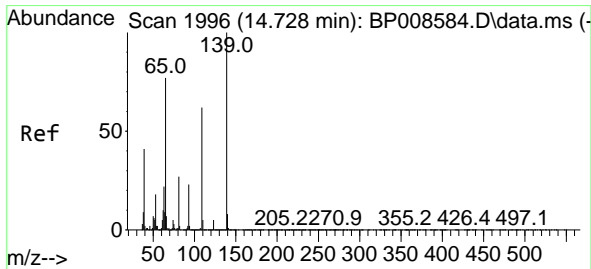
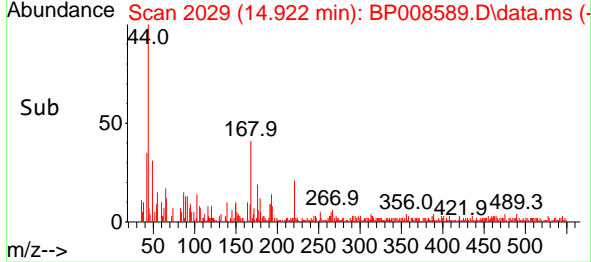
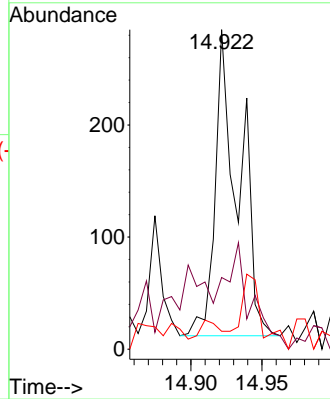
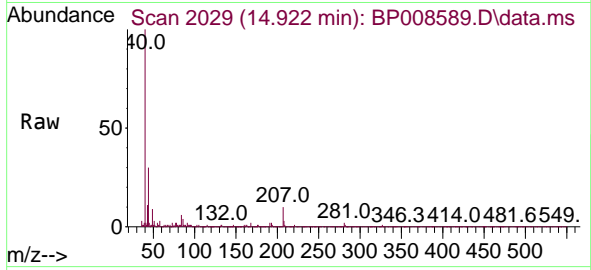




#55
 Dibenzofuran
 Concen: 0.002 ng
 RT: 14.922 min Scan# 20
 Delta R.T. -0.006 min
 Lab File: BP008589.D
 Acq: 28 Dec 2021 22:16

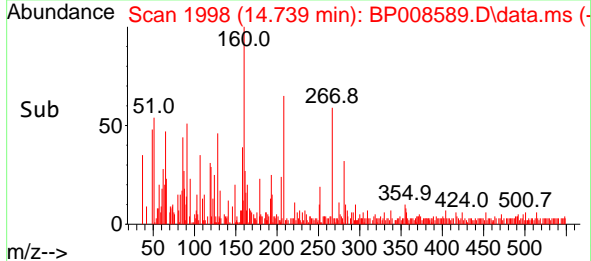
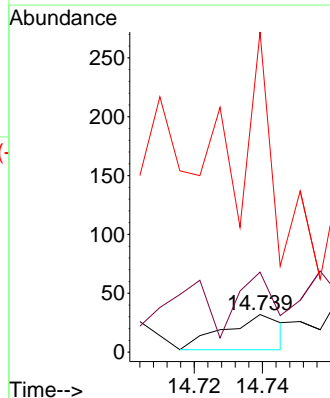
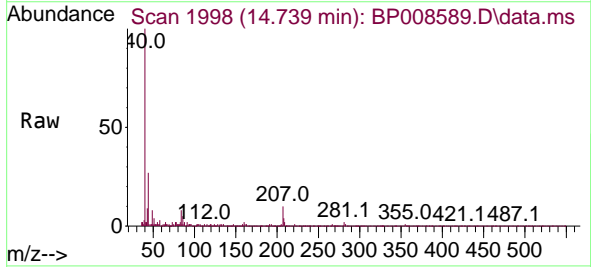
Instrument :
 BNA_P
 ClientSampleId :
 PB141705BL

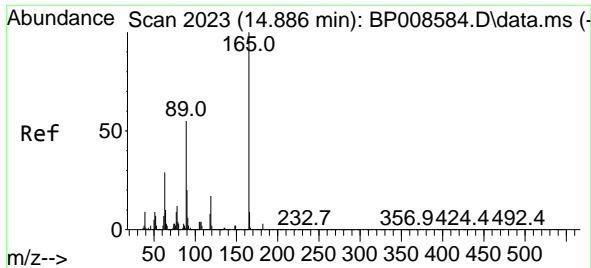
Tgt Ion	Resp	Lower	Upper
168	100		
139	22.5	27.4	41.0#
169	5.6	10.9	16.3#



#56
 4-Nitrophenol
 Concen: 0.001 ng
 RT: 14.739 min Scan# 1998
 Delta R.T. 0.011 min
 Lab File: BP008589.D
 Acq: 28 Dec 2021 22:16

Tgt Ion	Resp	Lower	Upper
139	100		
109	212.5	42.2	82.2#
65	850.0	57.3	97.3#

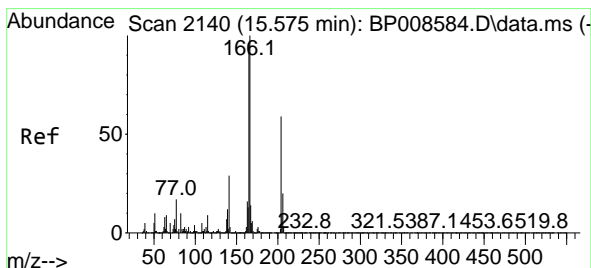
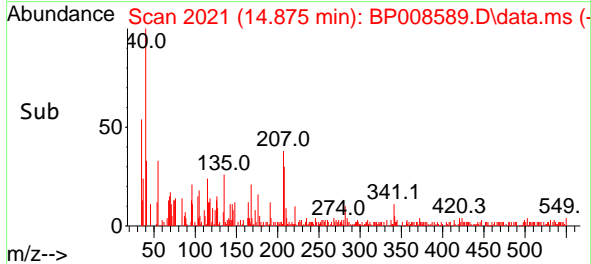
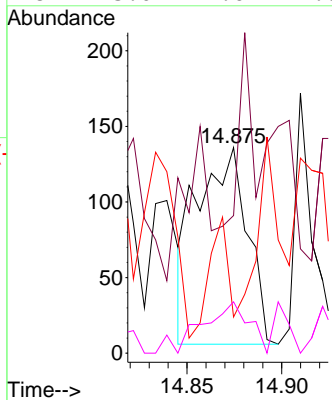
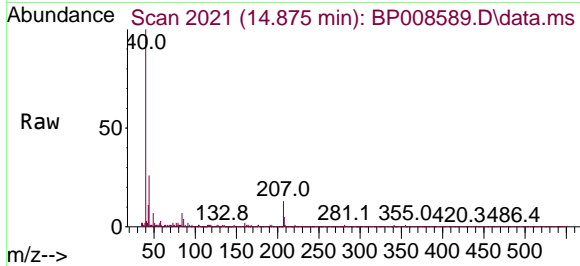




#57
 2,4-Dinitrotoluene
 Concen: 0.006 ng
 RT: 14.875 min Scan# 20
 Delta R.T. -0.011 min
 Lab File: BP008589.D
 Acq: 28 Dec 2021 22:16

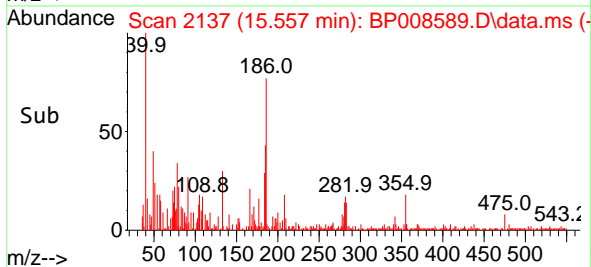
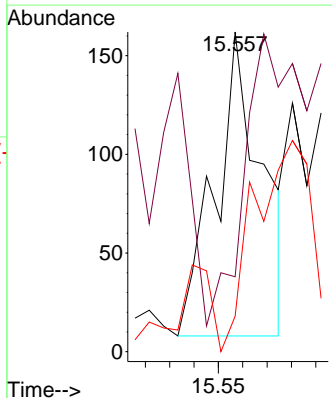
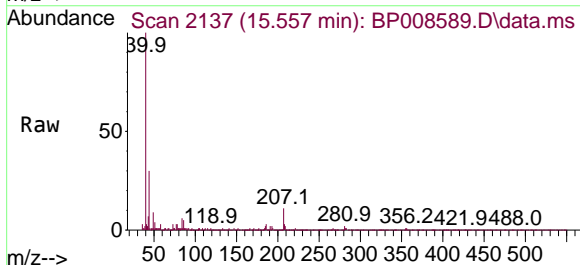
Instrument :
 BNA_P
 ClientSampleId :
 PB141705BL

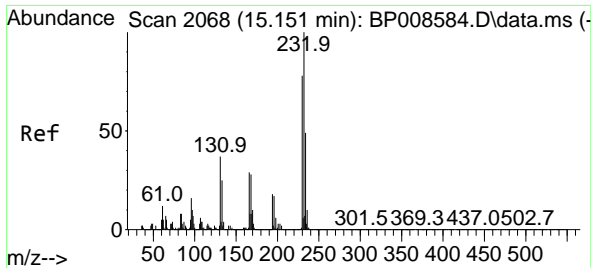
Tgt Ion	Resp	Lower	Upper
165	100		
63	66.9	23.3	34.9#
89	17.6	44.2	66.4#
182	25.0	2.6	4.0#



#58
 Fluorene
 Concen: 0.002 ng
 RT: 15.557 min Scan# 2137
 Delta R.T. -0.018 min
 Lab File: BP008589.D
 Acq: 28 Dec 2021 22:16

Tgt Ion	Resp	Lower	Upper
166	100		
165	23.5	77.2	115.8#
167	11.1	11.2	16.8#

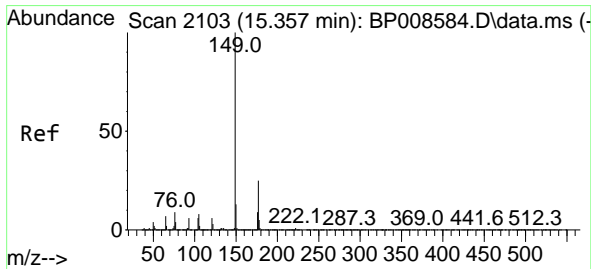
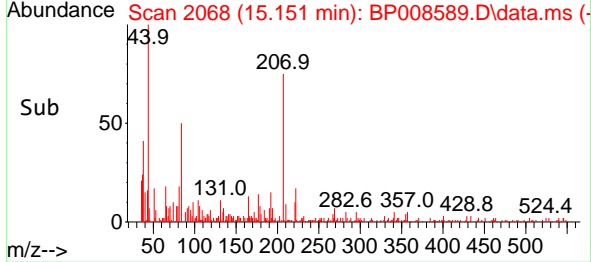
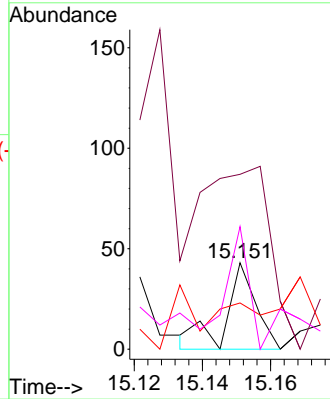
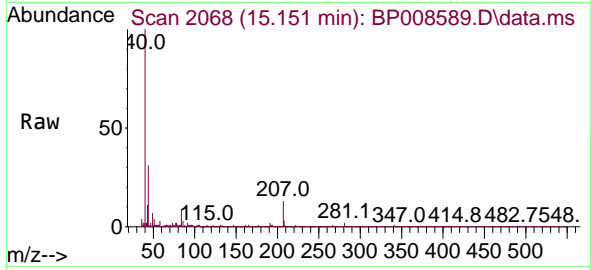




#59
 2,3,4,6-Tetrachlorophenol
 Concen: 0.001 ng
 RT: 15.151 min Scan# 20
 Delta R.T. -0.000 min
 Lab File: BP008589.D
 Acq: 28 Dec 2021 22:16

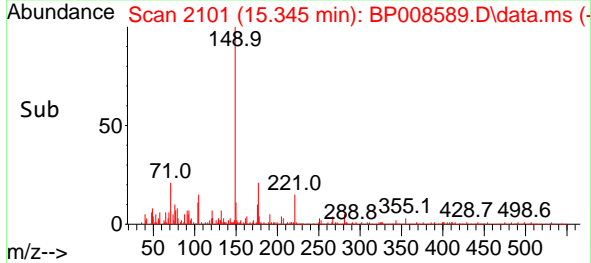
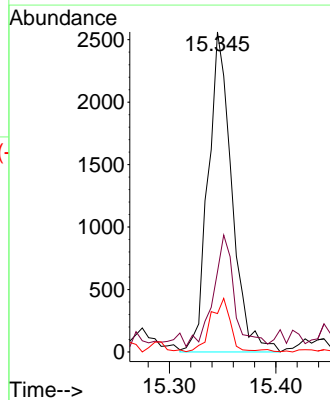
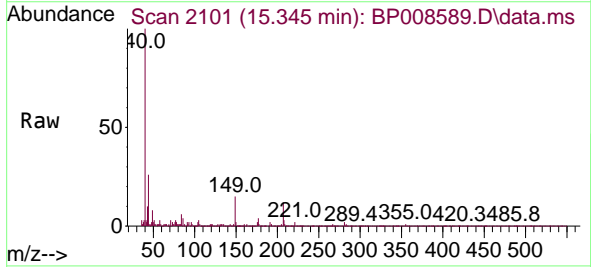
Instrument :
 BNA_P
 ClientSampleId :
 PB141705BL

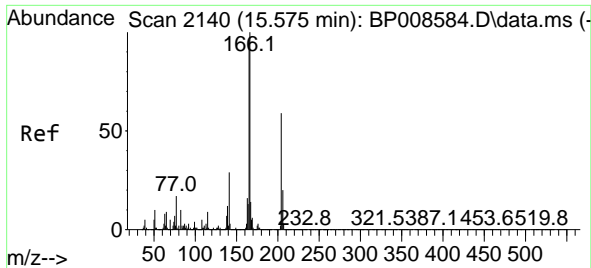
Tgt Ion	Resp	Lower	Upper
232	100		
131	388.5	25.2	37.8#
130	0.0	1.4	2.2#
166	92.3	17.8	26.6#



#60
 Diethylphthalate
 Concen: 0.029 ng
 RT: 15.345 min Scan# 2101
 Delta R.T. -0.012 min
 Lab File: BP008589.D
 Acq: 28 Dec 2021 22:16

Tgt Ion	Resp	Lower	Upper
149	100		
177	25.1	19.9	29.9
150	12.0	10.3	15.5

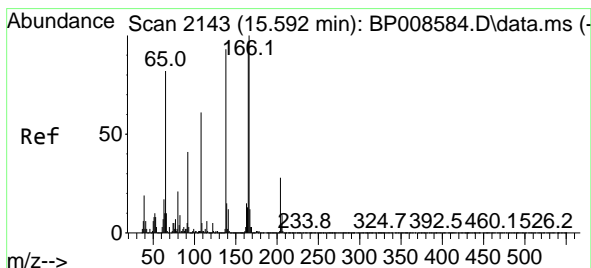
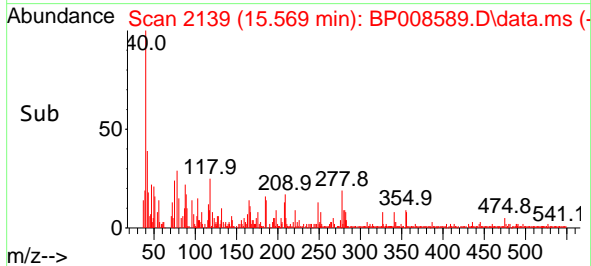
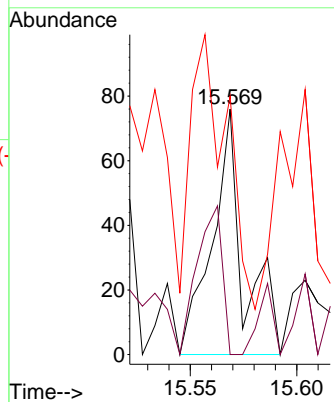
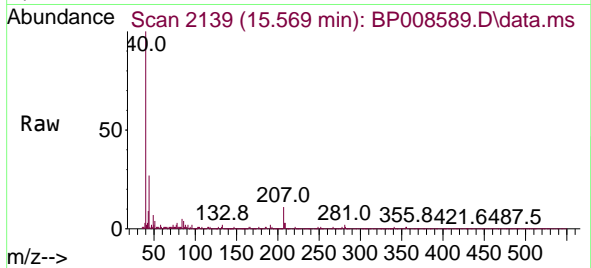




#61
 4-Chlorophenyl-phenylether
 Concen: 0.001 ng
 RT: 15.569 min Scan# 2140
 Delta R.T. -0.006 min
 Lab File: BP008589.D
 Acq: 28 Dec 2021 22:16

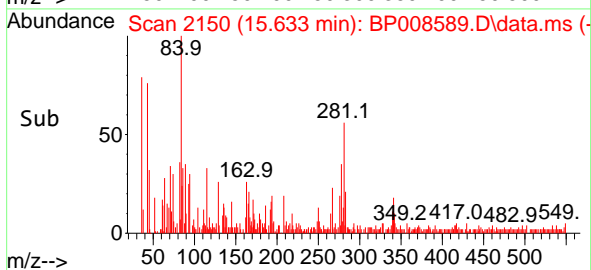
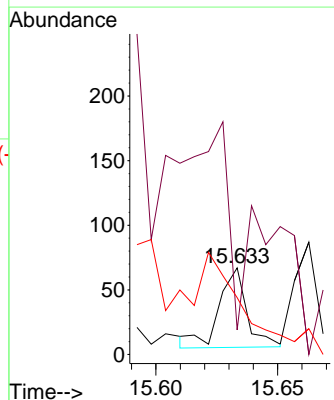
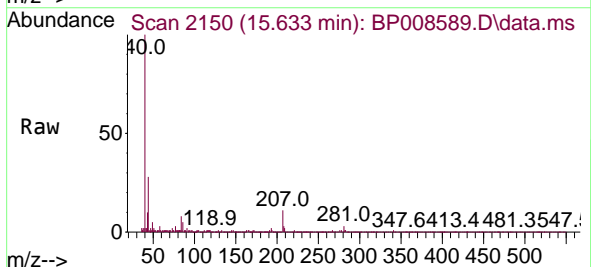
Instrument :
 BNA_P
 ClientSampleId :
 PB141705BL

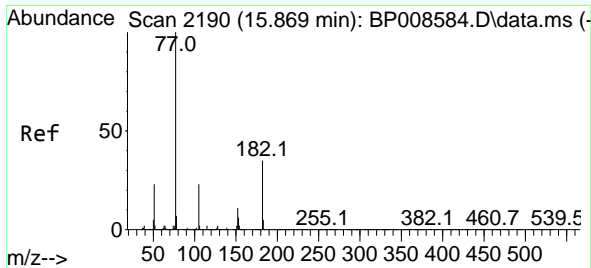
Tgt Ion	Resp	Lower	Upper
204	100		
206	0.0	26.3	39.5#
141	105.3	39.1	58.7#



#62
 4-Nitroaniline
 Concen: 0.002 ng
 RT: 15.633 min Scan# 2150
 Delta R.T. 0.041 min
 Lab File: BP008589.D
 Acq: 28 Dec 2021 22:16

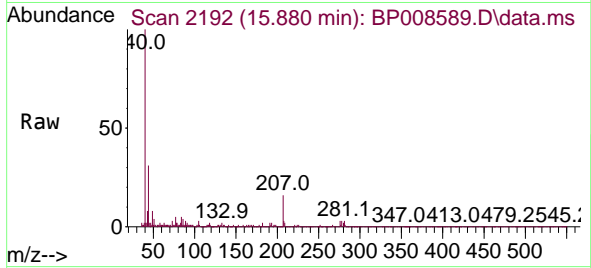
Tgt Ion	Resp	Lower	Upper
138	100		
92	28.4	24.3	64.3
108	65.7	44.8	84.8





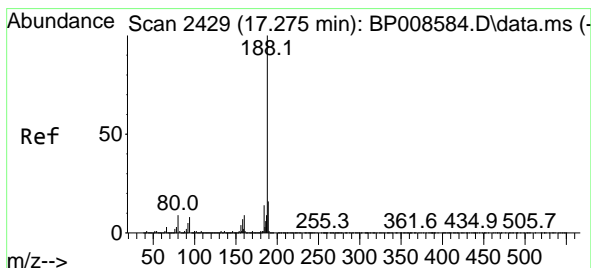
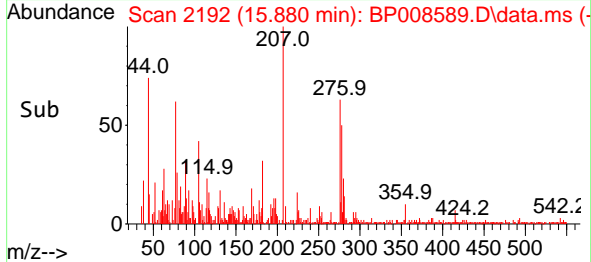
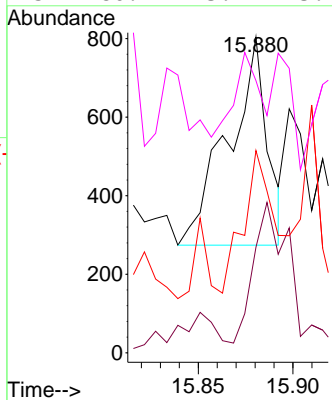
#63
 Azobenzene
 Concen: 0.007 ng
 RT: 15.880 min Scan# 2190
 Delta R.T. 0.012 min
 Lab File: BP008589.D
 Acq: 28 Dec 2021 22:16

Instrument :
 BNA_P
 ClientSampleId :
 PB141705BL



Tgt Ion: 77 Resp: 757

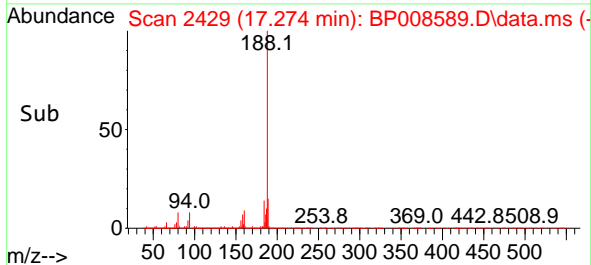
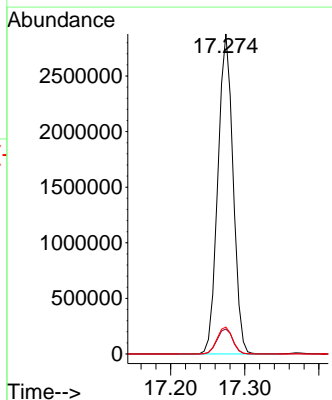
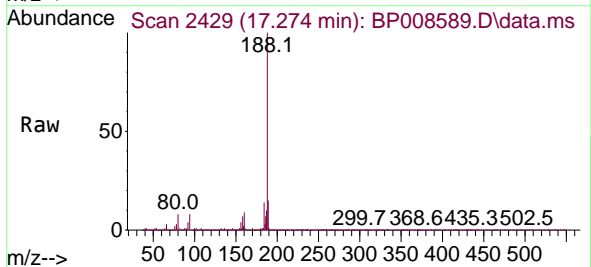
Ion	Ratio	Lower	Upper
77	100		
182	33.5	15.3	55.3
105	64.1	3.2	43.2#
51	86.2	3.4	43.4#

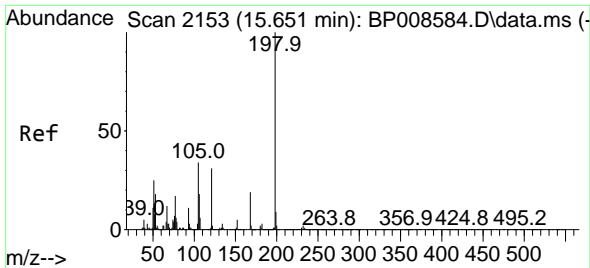


#64
 Phenanthrene-d10
 Concen: 20.000 ng
 RT: 17.274 min Scan# 2429
 Delta R.T. -0.001 min
 Lab File: BP008589.D
 Acq: 28 Dec 2021 22:16

Tgt Ion: 188 Resp: 4097016

Ion	Ratio	Lower	Upper
188	100		
94	7.8	6.8	10.2
80	8.4	7.2	10.8

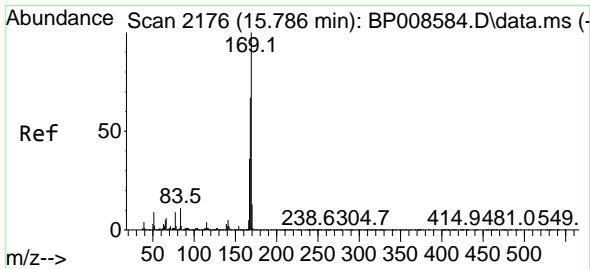
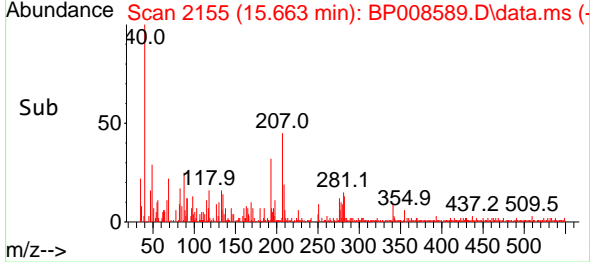
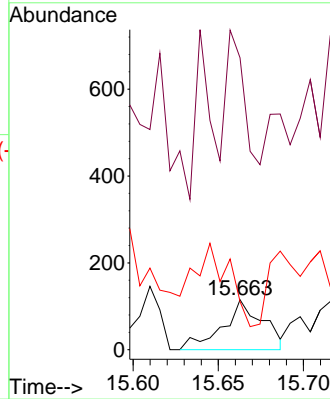
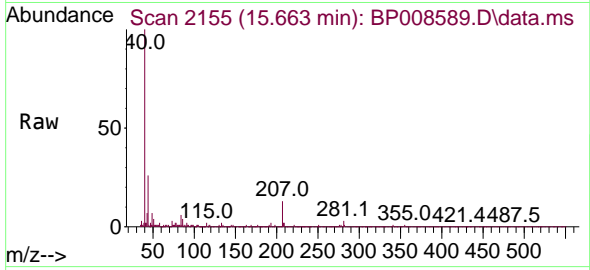




#65
 4,6-Dinitro-2-methylphenol
 Concen: 0.009 ng
 RT: 15.663 min Scan# 2114
 Delta R.T. 0.012 min
 Lab File: BP008589.D
 Acq: 28 Dec 2021 22:16

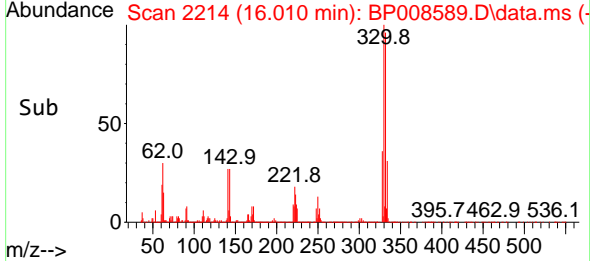
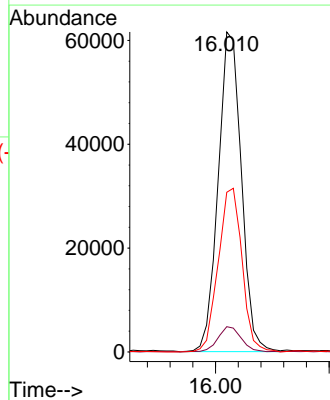
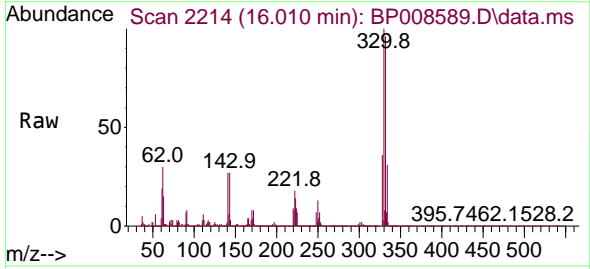
Instrument : BNA_P
 ClientSampleId : PB141705BL

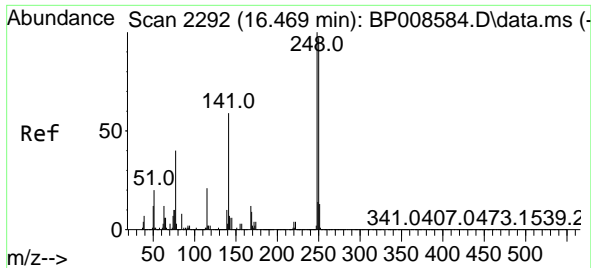
Tgt Ion	Resp	Lower	Upper
198	100		
51	584.3	6.8	46.8#
105	96.5	14.4	54.4#



#66
 n-Nitrosodiphenylamine
 Concen: 0.706 ng
 RT: 16.010 min Scan# 2214
 Delta R.T. 0.223 min
 Lab File: BP008589.D
 Acq: 28 Dec 2021 22:16

Tgt Ion	Resp	Lower	Upper
169	100		
168	7.9	53.3	79.9#
167	49.9	29.0	43.6#



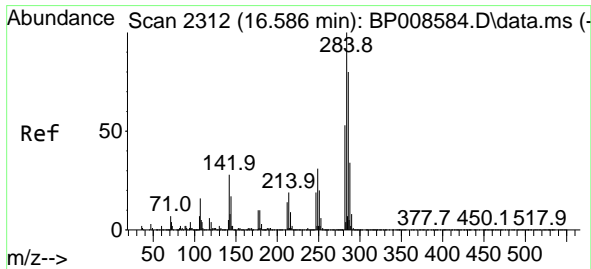
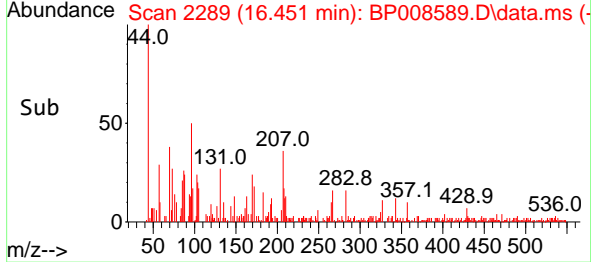
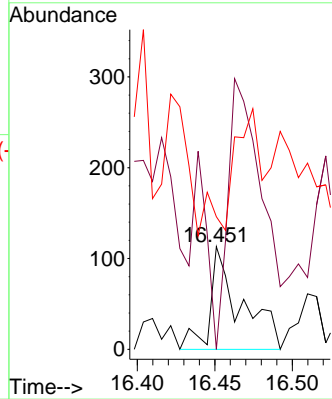
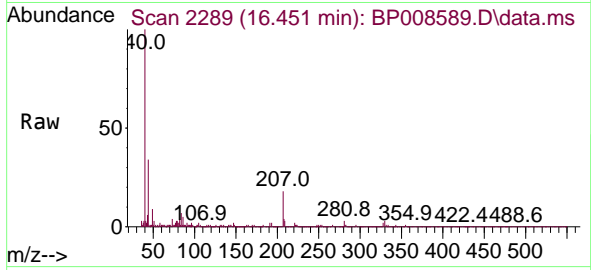


#67
 4-Bromophenyl-phenylether
 Concen: 0.003 ng
 RT: 16.451 min Scan# 211
 Delta R.T. -0.018 min
 Lab File: BP008589.D
 Acq: 28 Dec 2021 22:16

Instrument :
 BNA_P
 ClientSampleId :
 PB141705BL

Tgt Ion:248 Resp: 156

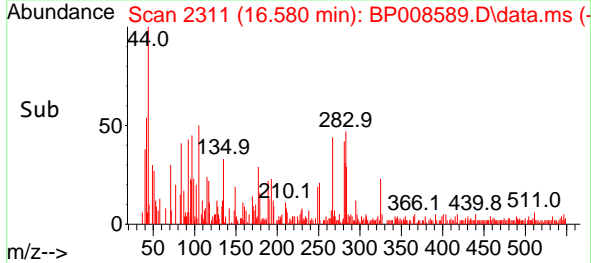
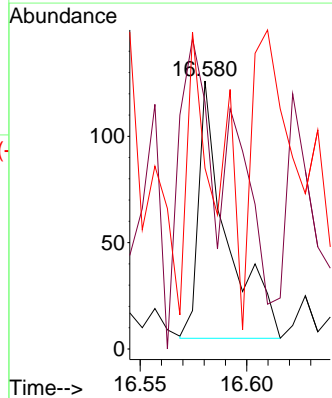
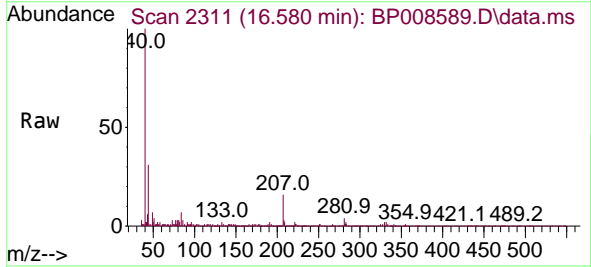
Ion	Ratio	Lower	Upper
248	100		
250	0.0	77.6	116.4#
141	129.2	47.4	71.2#

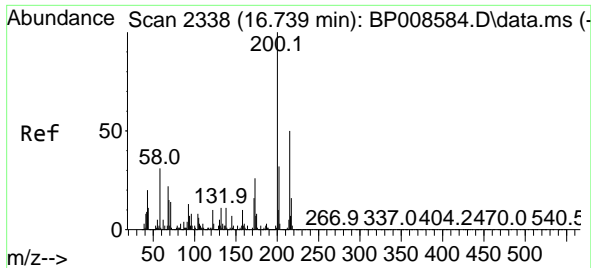


#68
 Hexachlorobenzene
 Concen: 0.002 ng
 RT: 16.580 min Scan# 2311
 Delta R.T. -0.006 min
 Lab File: BP008589.D
 Acq: 28 Dec 2021 22:16

Tgt Ion:284 Resp: 111

Ion	Ratio	Lower	Upper
284	100		
142	92.1	22.4	33.6#
249	67.5	24.4	36.6#

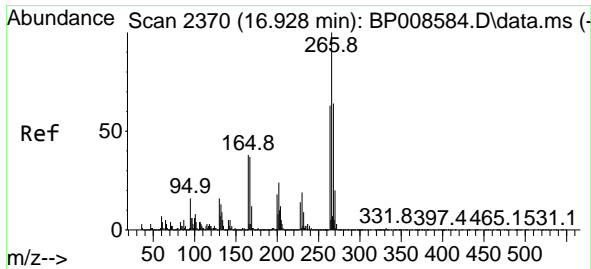
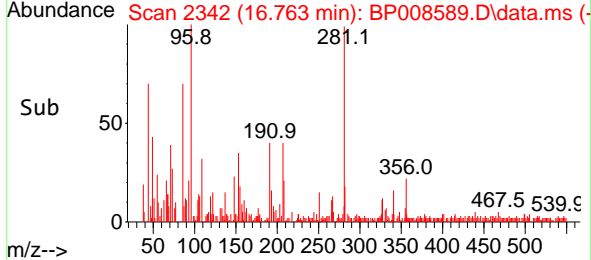
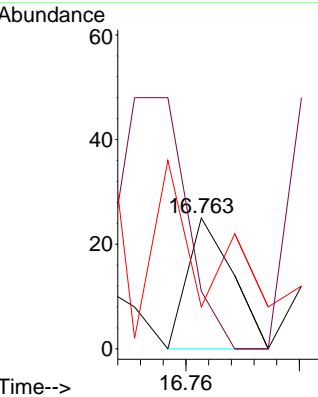
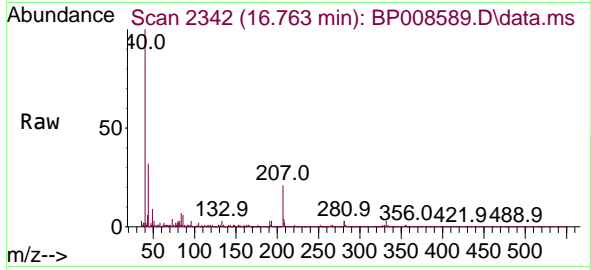




#69
 Atrazine
 Concen: 0.000 ng
 RT: 16.763 min Scan# 21
 Delta R.T. 0.023 min
 Lab File: BP008589.D
 Acq: 28 Dec 2021 22:16

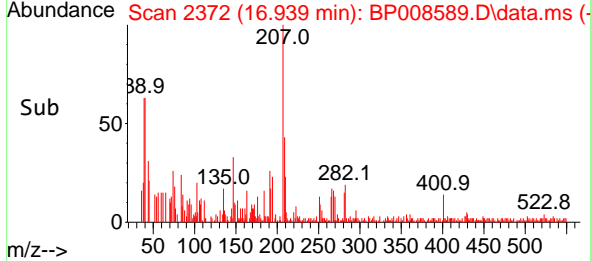
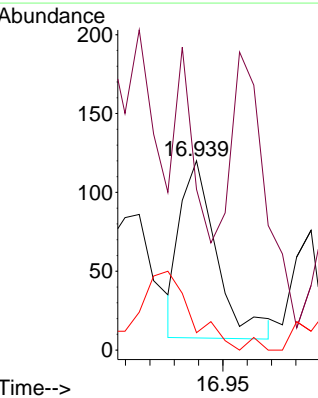
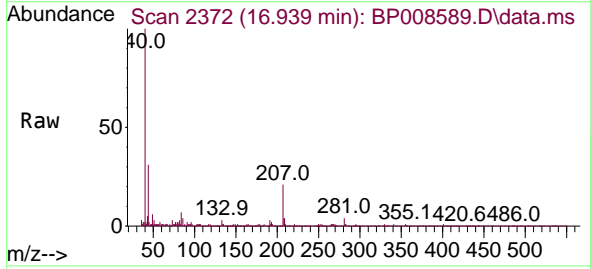
Instrument :
 BNA_P
 ClientSampleId :
 PB141705BL

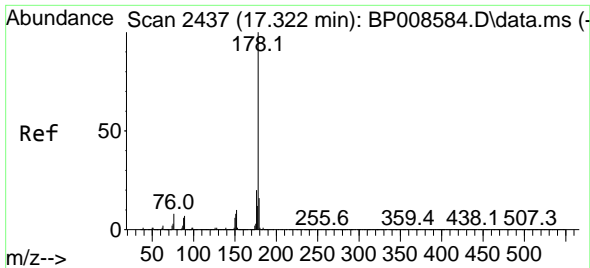
Tgt Ion	Resp	Lower	Upper
200	100		
173	44.0	6.5	46.5
215	32.0	29.6	69.6



#70
 Pentachlorophenol
 Concen: 0.004 ng
 RT: 16.939 min Scan# 2372
 Delta R.T. 0.012 min
 Lab File: BP008589.D
 Acq: 28 Dec 2021 22:16

Tgt Ion	Resp	Lower	Upper
266	100		
268	85.0	50.9	76.3#
264	9.2	50.3	75.5#

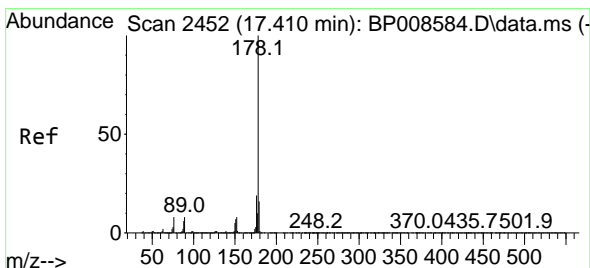
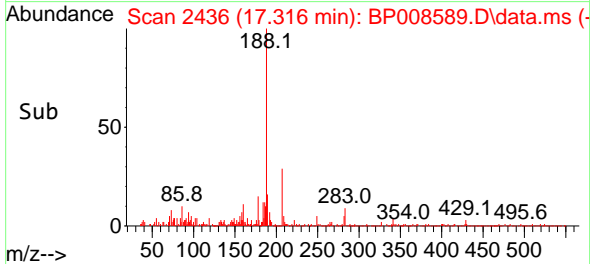
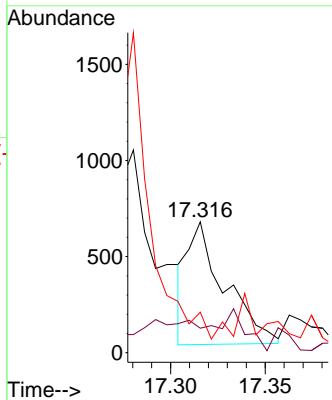
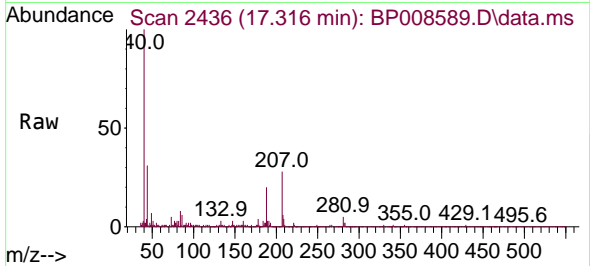




#71
 Phenanthrene
 Concen: 0.004 ng
 RT: 17.316 min Scan# 2436
 Delta R.T. -0.006 min
 Lab File: BP008589.D
 Acq: 28 Dec 2021 22:16

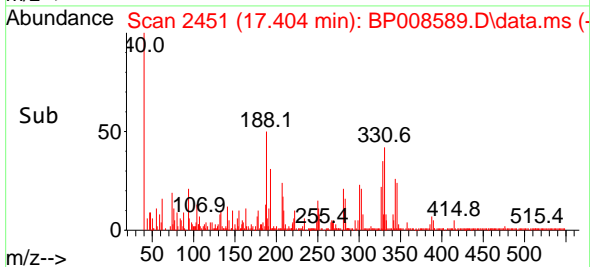
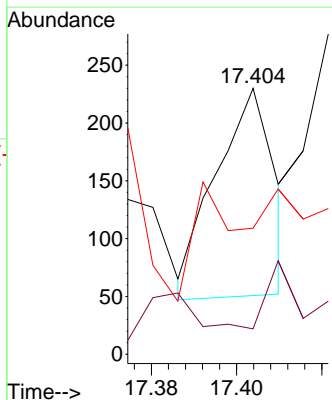
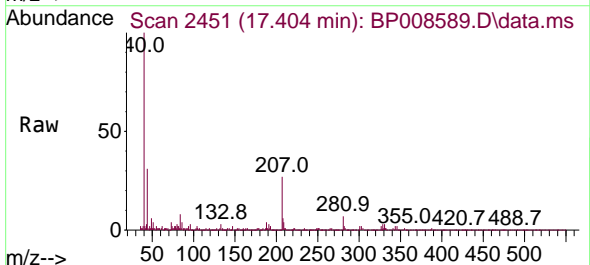
Instrument : BNA_P
 Client Sample Id : PB141705BL

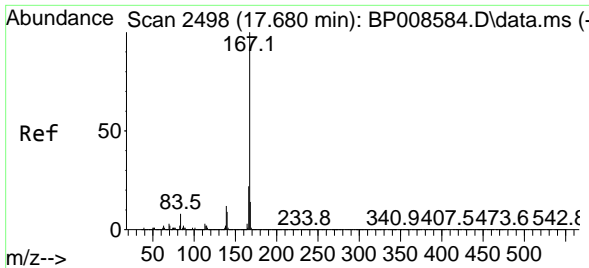
Tgt Ion	Resp	Lower	Upper
178	100		
176	18.6	16.0	24.0
179	31.0	13.0	19.4



#72
 Anthracene
 Concen: 0.001 ng
 RT: 17.404 min Scan# 2451
 Delta R.T. -0.006 min
 Lab File: BP008589.D
 Acq: 28 Dec 2021 22:16

Tgt Ion	Resp	Lower	Upper
178	100		
176	9.6	15.1	22.7
179	47.4	12.8	19.2

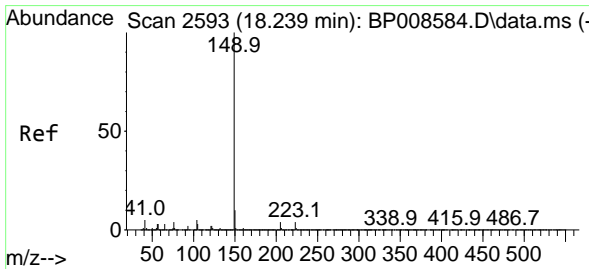
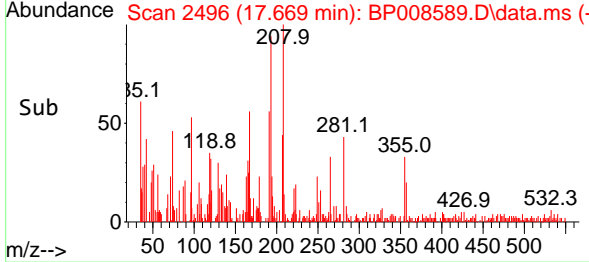
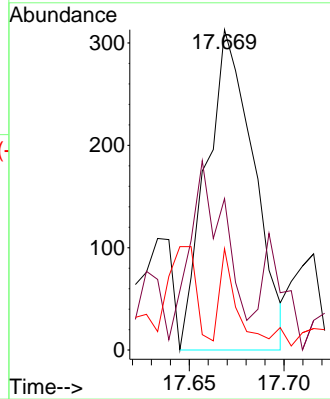
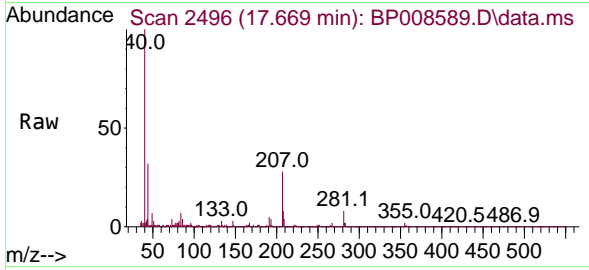




#73
 Carbazole
 Concen: 0.003 ng
 RT: 17.669 min Scan# 2496
 Delta R.T. -0.011 min
 Lab File: BP008589.D
 Acq: 28 Dec 2021 22:16

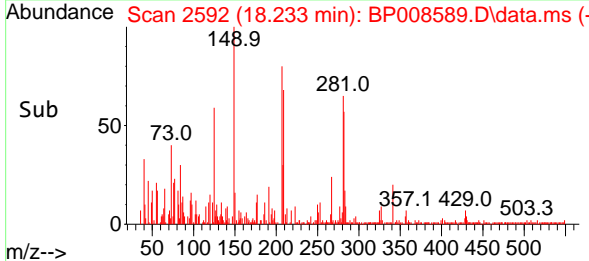
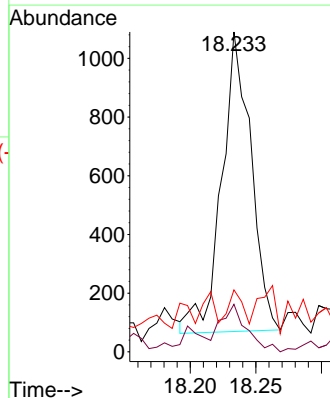
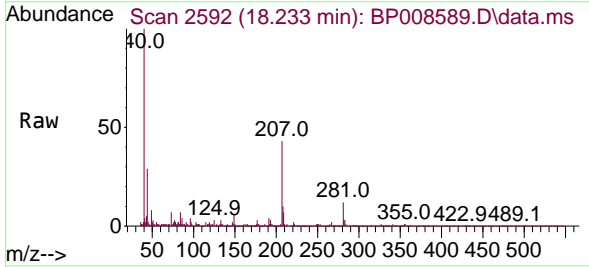
Instrument :
 BNA_P
 Client Sample Id :
 PB141705BL

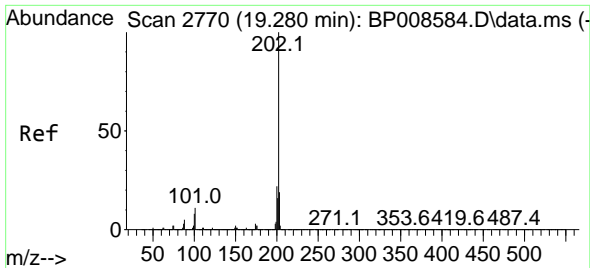
Tgt Ion	Resp	Lower	Upper
167	100		
166	47.3	17.7	26.5#
139	31.6	9.8	14.6#



#74
 Di-n-butylphthalate
 Concen: 0.007 ng
 RT: 18.233 min Scan# 2592
 Delta R.T. -0.006 min
 Lab File: BP008589.D
 Acq: 28 Dec 2021 22:16

Tgt Ion	Resp	Lower	Upper
149	100		
150	14.9	7.9	11.9#
104	19.4	3.7	5.5#

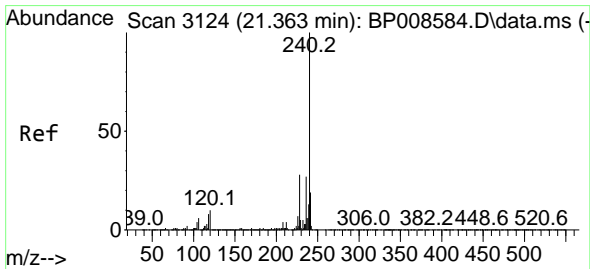
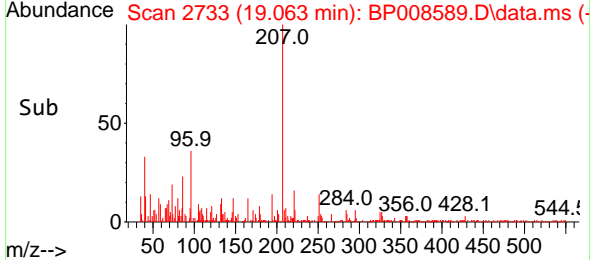
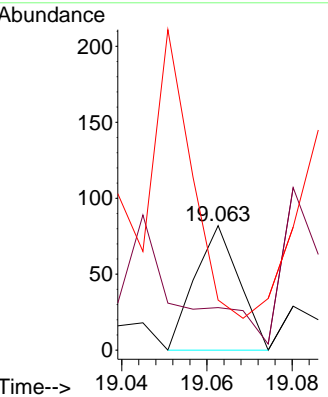
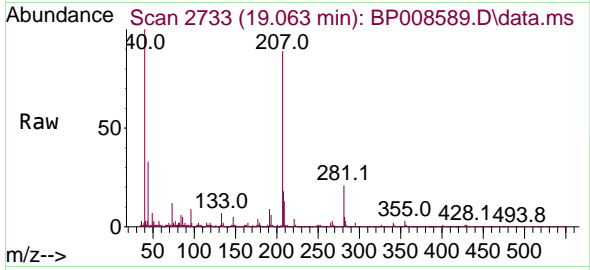




#75
 Fluoranthene
 Concen: 0.000 ng
 RT: 19.063 min Scan# 21
 Delta R.T. -0.217 min
 Lab File: BP008589.D
 Acq: 28 Dec 2021 22:16

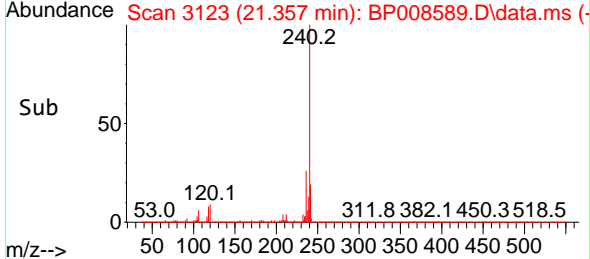
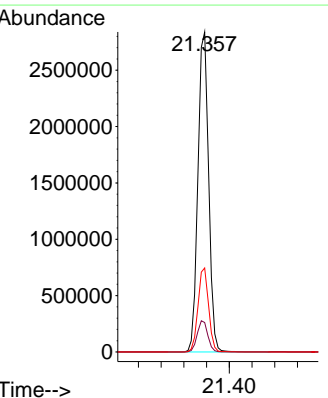
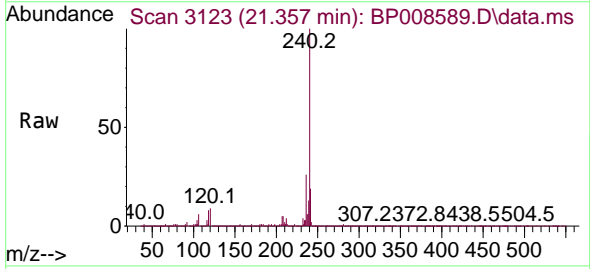
Instrument :
 BNA_P
 ClientSampleId :
 PB141705BL

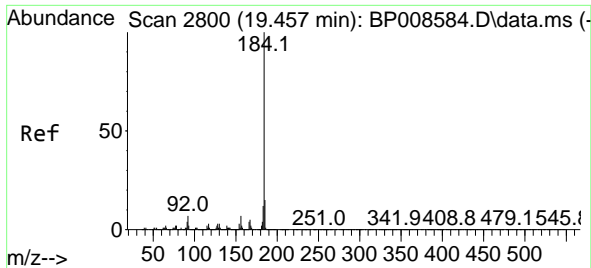
Tgt Ion	Resp	Lower	Upper
202	100		
101	24.3	0.0	30.7
203	28.7	0.0	38.9



#76
 Chrysene-d12
 Concen: 20.000 ng
 RT: 21.357 min Scan# 3123
 Delta R.T. -0.006 min
 Lab File: BP008589.D
 Acq: 28 Dec 2021 22:16

Tgt Ion	Resp	Lower	Upper
240	100		
120	9.2	7.7	11.5
236	26.2	21.2	31.8



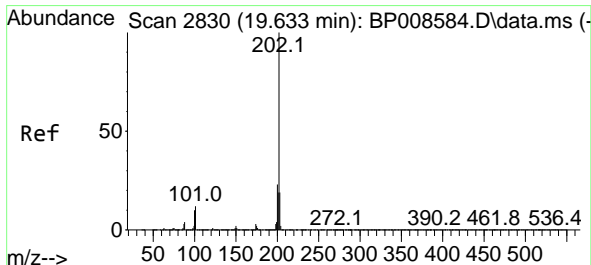
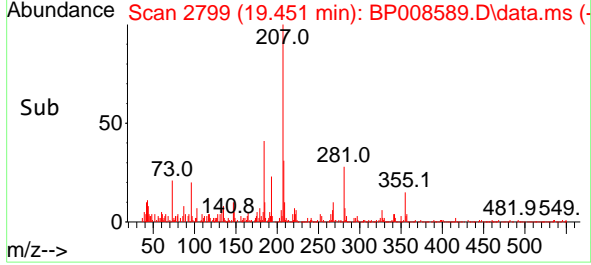
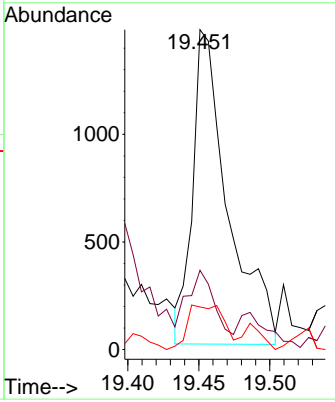
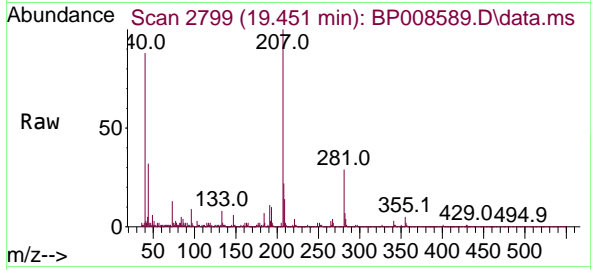


#77
 Benzidine
 Concen: 0.023 ng
 RT: 19.451 min Scan# 21
 Delta R.T. -0.006 min
 Lab File: BP008589.D
 Acq: 28 Dec 2021 22:16

Instrument : BNA_P
 ClientSampleId : PB141705BL

Tgt Ion:184 Resp: 2536

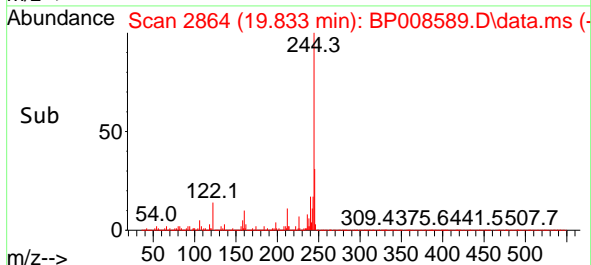
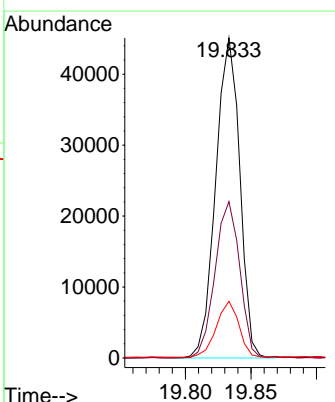
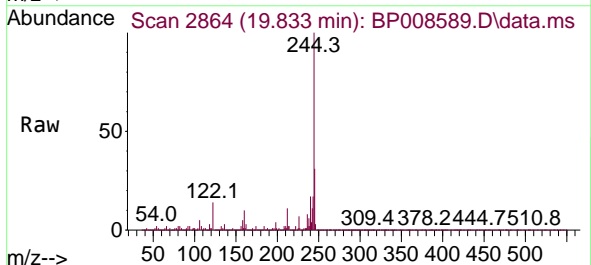
Ion	Ratio	Lower	Upper
184	100		
185	24.8	12.2	18.2#
183	13.3	9.5	14.3

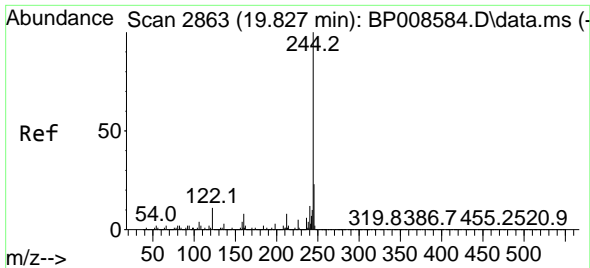


#78
 Pyrene
 Concen: 0.239 ng
 RT: 19.833 min Scan# 2864
 Delta R.T. 0.200 min
 Lab File: BP008589.D
 Acq: 28 Dec 2021 22:16

Tgt Ion:202 Resp: 57462

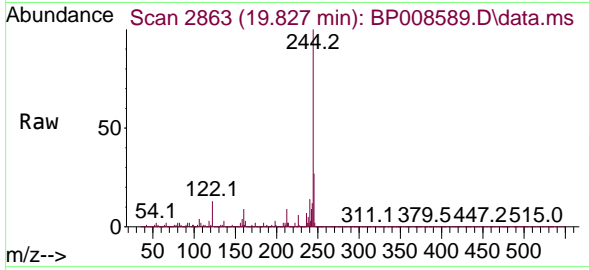
Ion	Ratio	Lower	Upper
202	100		
200	48.9	18.0	27.0#
203	17.7	15.0	22.6



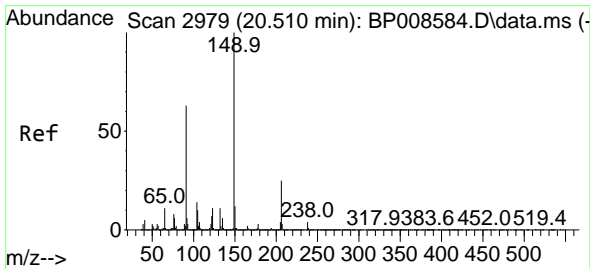
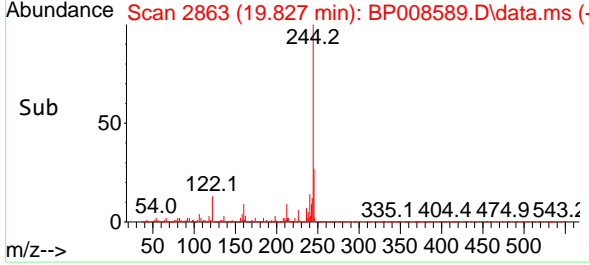
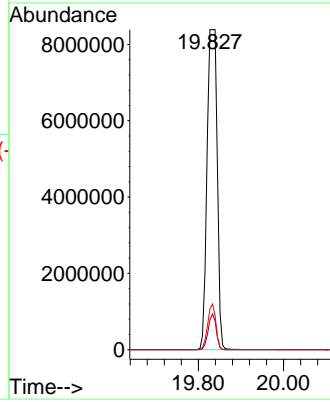


#79
 Terphenyl-d14
 Concen: 76.879 ng
 RT: 19.827 min Scan# 21
 Delta R.T. 0.000 min
 Lab File: BP008589.D
 Acq: 28 Dec 2021 22:16

Instrument :
 BNA_P
 ClientSampleId :
 PB141705BL

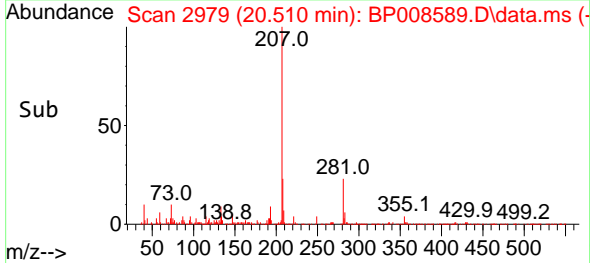
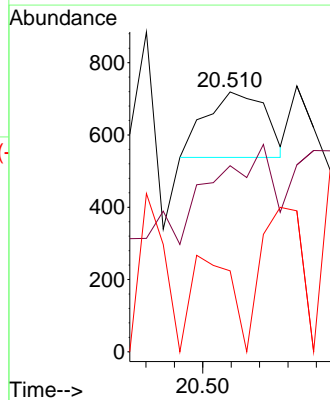
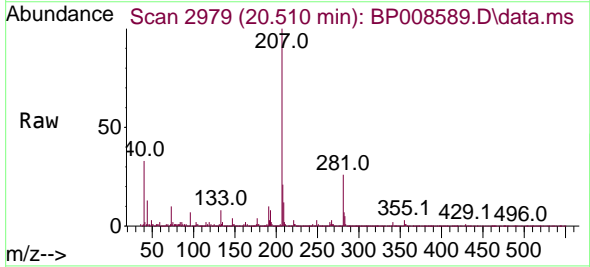


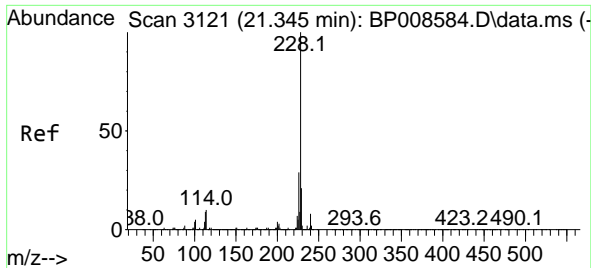
Tgt Ion:244 Resp:13888588
 Ion Ratio Lower Upper
 244 100
 212 9.3 6.5 9.7
 122 12.8 9.2 13.8



#80
 Butylbenzylphthalate
 Concen: 0.003 ng
 RT: 20.510 min Scan# 2979
 Delta R.T. -0.000 min
 Lab File: BP008589.D
 Acq: 28 Dec 2021 22:16

Tgt Ion:149 Resp: 264
 Ion Ratio Lower Upper
 149 100
 91 71.6 50.6 76.0
 206 31.2 19.7 29.5#



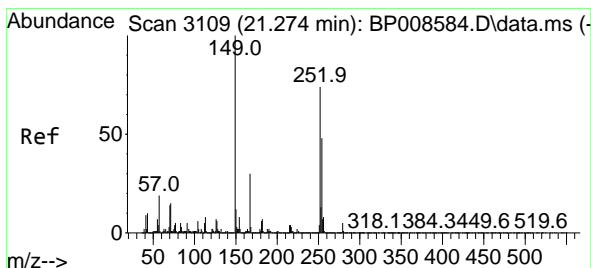
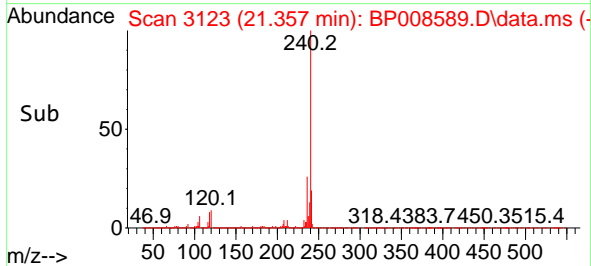
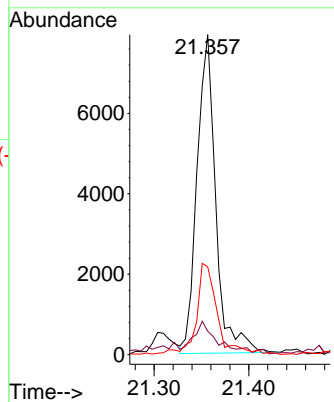
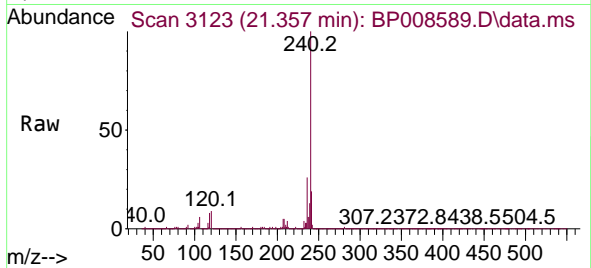


#81
 Benzo(a)anthracene
 Concen: 0.046 ng
 RT: 21.357 min Scan# 3121
 Delta R.T. 0.012 min
 Lab File: BP008589.D
 Acq: 28 Dec 2021 22:16

Instrument :
 BNA_P
 ClientSampleId :
 PB141705BL

Tgt Ion:228 Resp: 10923

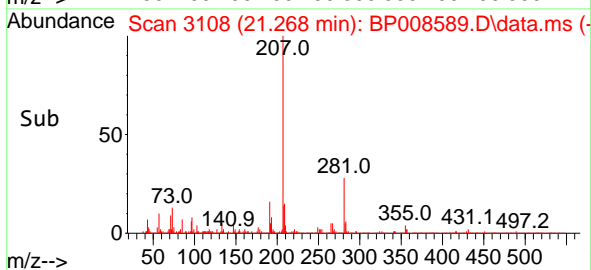
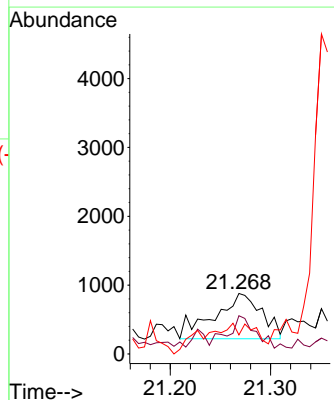
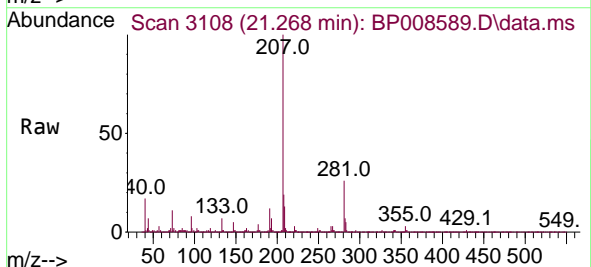
Ion	Ratio	Lower	Upper
228	100		
226	7.3	23.3	34.9#
229	27.5	17.0	25.6#

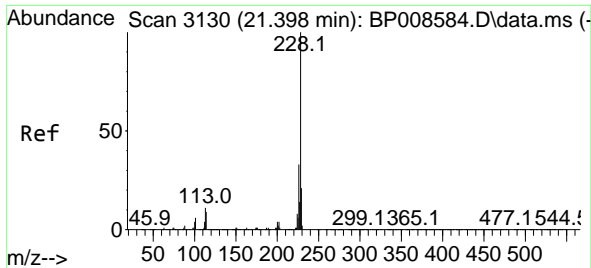


#82
 3,3'-Dichlorobenzidine
 Concen: 0.025 ng
 RT: 21.268 min Scan# 3108
 Delta R.T. -0.006 min
 Lab File: BP008589.D
 Acq: 28 Dec 2021 22:16

Tgt Ion:252 Resp: 2159

Ion	Ratio	Lower	Upper
252	100		
254	63.3	52.4	78.6
126	31.5	7.3	10.9#



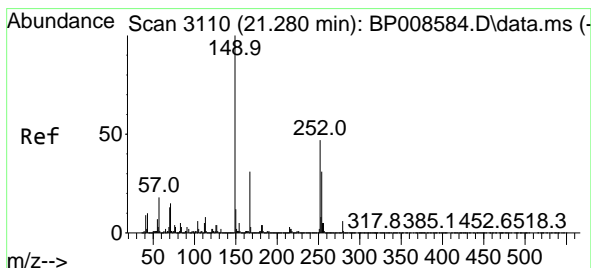
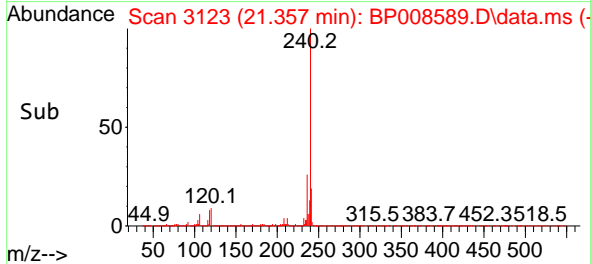
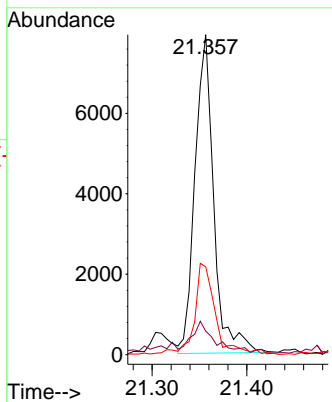
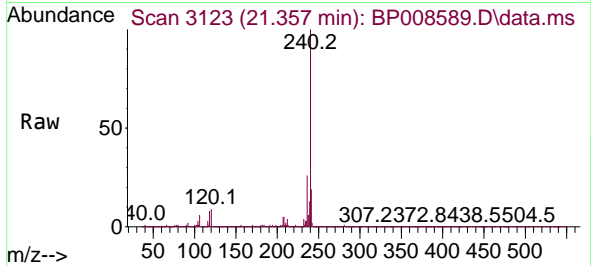


#83
 Chrysene
 Concen: 0.049 ng
 RT: 21.357 min Scan# 3109
 Delta R.T. -0.041 min
 Lab File: BP008589.D
 Acq: 28 Dec 2021 22:16

Instrument :
 BNA_P
 ClientSampleId :
 PB141705BL

Tgt Ion:228 Resp: 10923

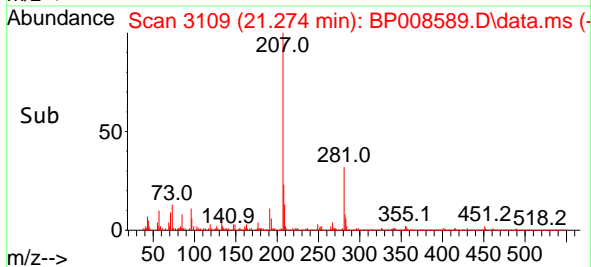
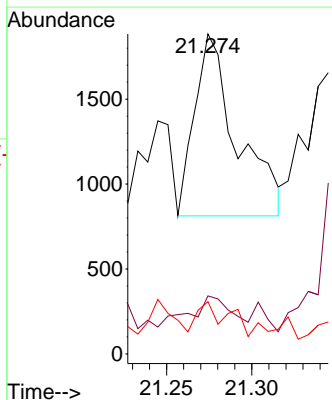
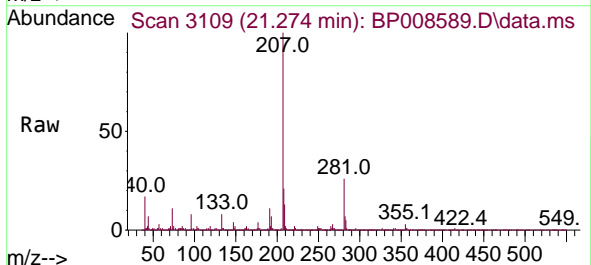
Ion	Ratio	Lower	Upper
228	100		
226	7.3	26.0	39.0#
229	27.5	16.9	25.3#

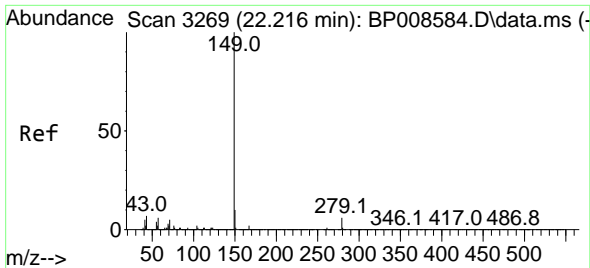


#84
 Bis(2-ethylhexyl)phthalate
 Concen: 0.013 ng
 RT: 21.274 min Scan# 3109
 Delta R.T. -0.006 min
 Lab File: BP008589.D
 Acq: 28 Dec 2021 22:16

Tgt Ion:149 Resp: 1843

Ion	Ratio	Lower	Upper
149	100		
167	18.2	25.0	37.4#
279	16.3	4.8	7.2#

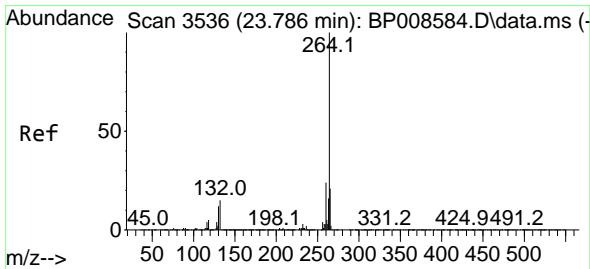
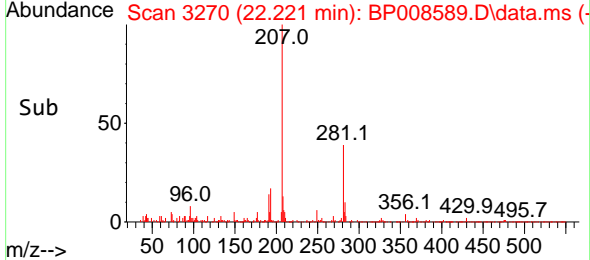
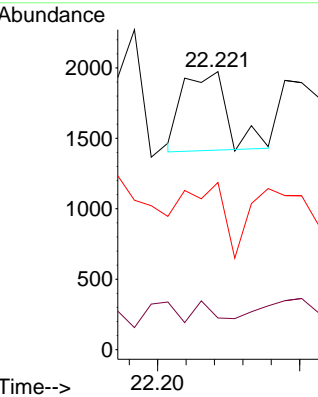
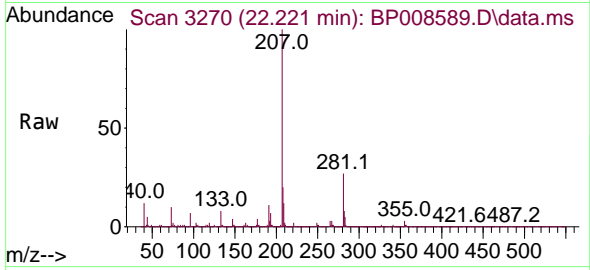




#85
 Di-n-octyl phthalate
 Concen: 0.003 ng
 RT: 22.221 min Scan# 31
 Delta R.T. 0.006 min
 Lab File: BP008589.D
 Acq: 28 Dec 2021 22:16

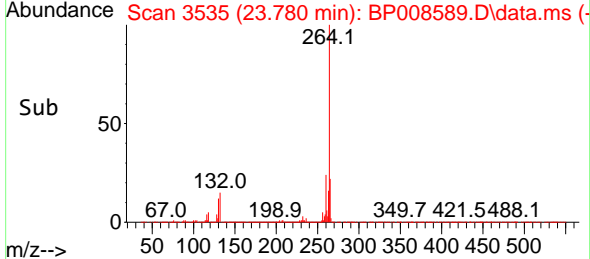
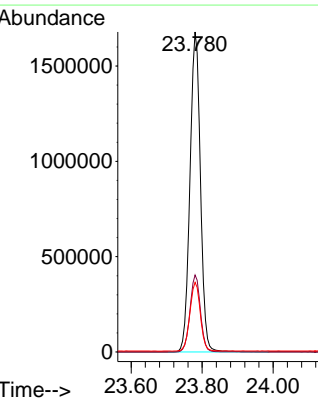
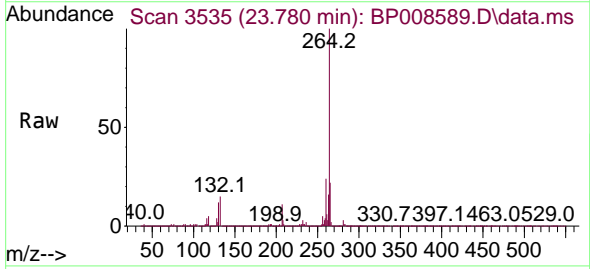
Instrument :
 BNA_P
 ClientSampleId :
 PB141705BL

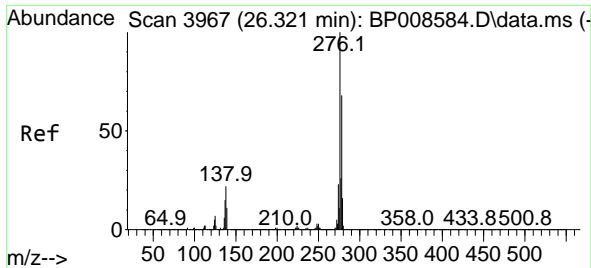
Tgt Ion	Resp	Lower	Upper
149	100		
167	22.2	1.4	2.0#
43	82.8	5.4	8.2#



#86
 Perylene-d12
 Concen: 20.000 ng
 RT: 23.780 min Scan# 3535
 Delta R.T. -0.006 min
 Lab File: BP008589.D
 Acq: 28 Dec 2021 22:16

Tgt Ion	Resp	Lower	Upper
264	100		
260	24.1	19.1	28.7
265	21.8	17.1	25.7

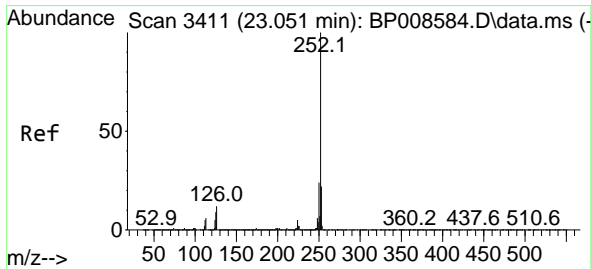
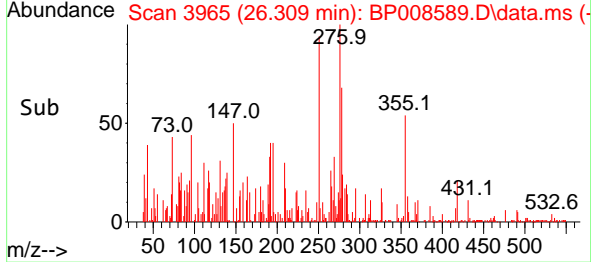
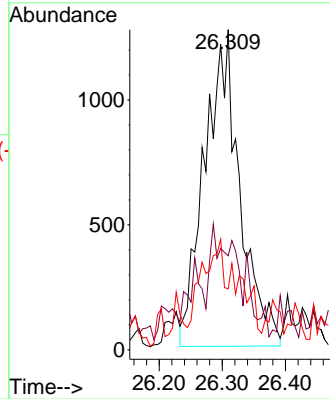
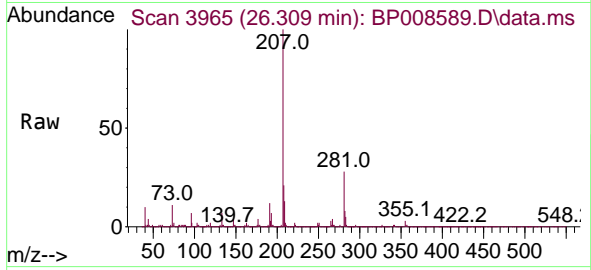




#87
 Indeno(1,2,3-cd)pyrene
 Concen: 0.021 ng
 RT: 26.309 min Scan# 3965
 Delta R.T. -0.012 min
 Lab File: BP008589.D
 Acq: 28 Dec 2021 22:16

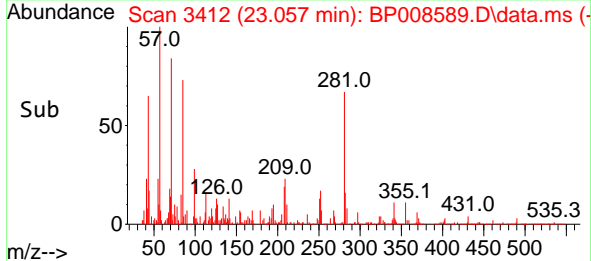
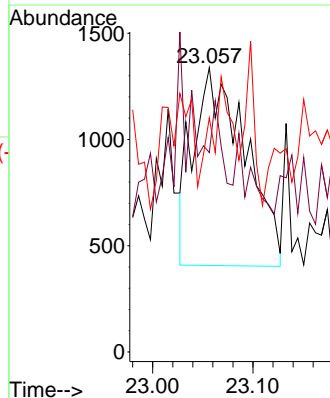
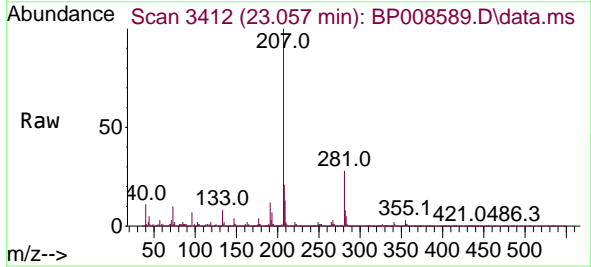
Instrument :
 BNA_P
 Client Sample Id :
 PB141705BL

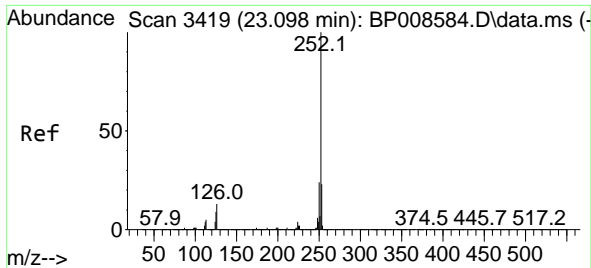
Tgt Ion	Resp	Lower	Upper
276	100		
138	0.0	17.8	26.6#
277	16.8	20.4	30.6#



#88
 Benzo(b)fluoranthene
 Concen: 0.015 ng
 RT: 23.057 min Scan# 3412
 Delta R.T. 0.006 min
 Lab File: BP008589.D
 Acq: 28 Dec 2021 22:16

Tgt Ion	Resp	Lower	Upper
252	100		
253	70.1	18.0	27.0#
125	82.4	6.9	10.3#

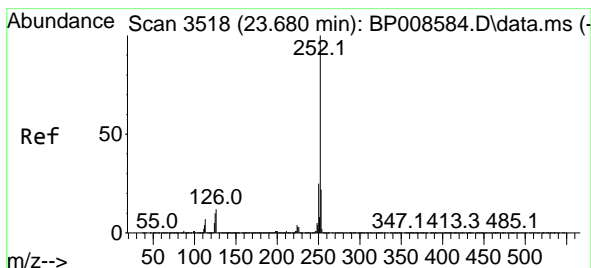
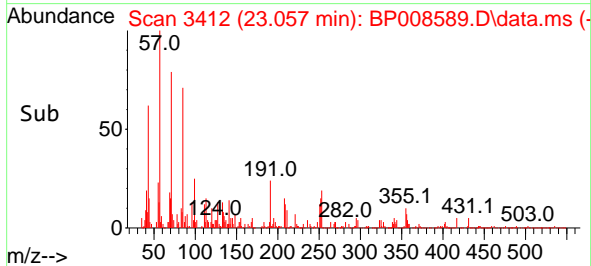
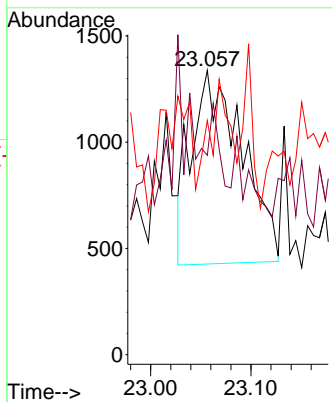
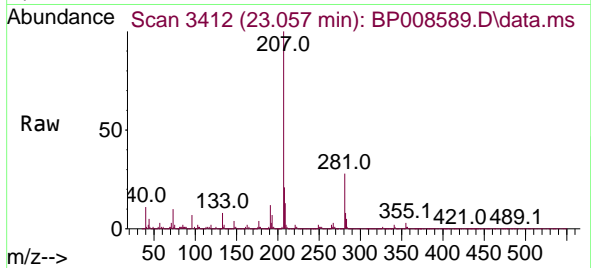




#89
 Benzo(k)fluoranthene
 Concen: 0.015 ng
 RT: 23.057 min Scan# 3419
 Delta R.T. -0.041 min
 Lab File: BP008589.D
 Acq: 28 Dec 2021 22:16

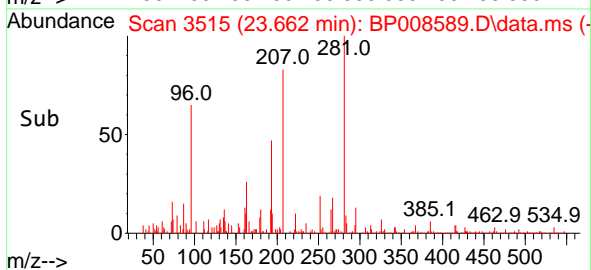
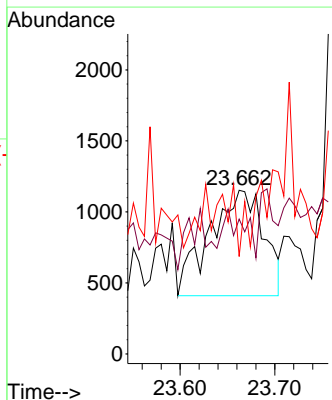
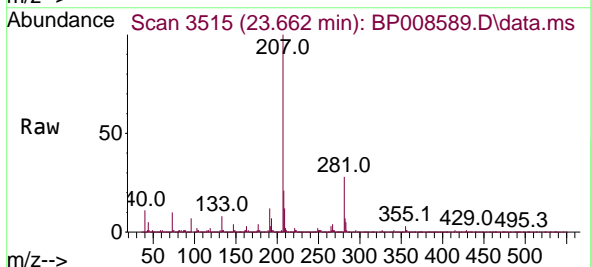
Instrument : BNA_P
 ClientSampleId : PB141705BL

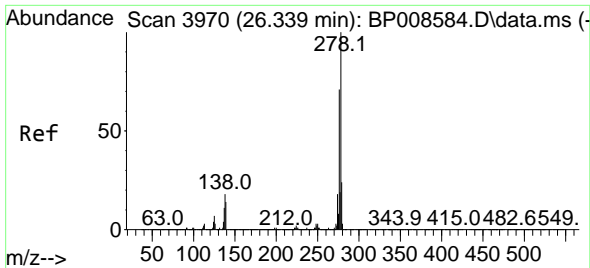
Tgt Ion	Resp	Lower	Upper
252	100		
253	70.1	18.2	27.2#
125	82.4	7.3	10.9#



#90
 Benzo(a)pyrene
 Concen: 0.017 ng
 RT: 23.662 min Scan# 3515
 Delta R.T. -0.018 min
 Lab File: BP008589.D
 Acq: 28 Dec 2021 22:16

Tgt Ion	Resp	Lower	Upper
252	100		
253	82.5	17.8	26.8#
125	59.5	7.8	11.6#

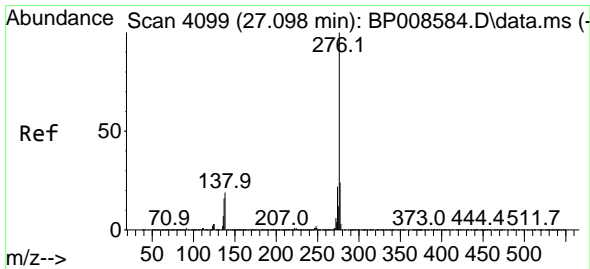
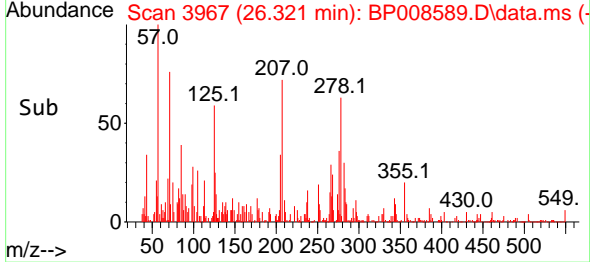
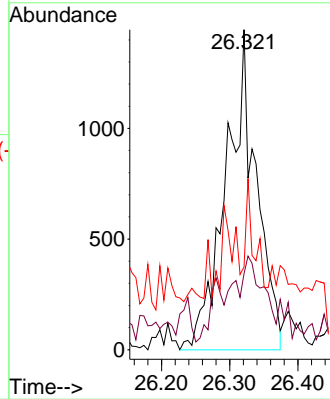
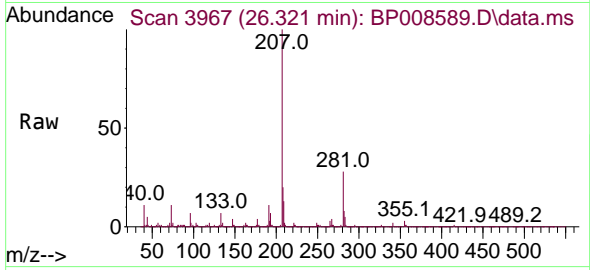




#91
 Dibenzo(a,h)anthracene
 Concen: 0.023 ng
 RT: 26.321 min Scan# 3967
 Delta R.T. -0.018 min
 Lab File: BP008589.D
 Acq: 28 Dec 2021 22:16

Instrument : BNA_P
 Client Sample Id : PB141705BL

Tgt Ion	Resp	Lower	Upper
278	4489		
139	23.8	11.5	17.3#
279	25.9	19.1	28.7



#92
 Benzo(g,h,i)perylene
 Concen: 0.011 ng
 RT: 27.056 min Scan# 4092
 Delta R.T. -0.041 min
 Lab File: BP008589.D
 Acq: 28 Dec 2021 22:16

Tgt Ion	Resp	Lower	Upper
276	2093		
277	30.7	19.2	28.8#
138	26.2	15.0	22.4#

